

# WSM

---

WORKSHOP MANUAL  
**TRACTOR**

**M126XDTPC  
(SUPPLEMENT)**

---

**Kubota**

CLICK HERE TO **DOWNLOAD** THE COMPLETE MANUAL

- Thank you very much for reading the preview of the manual.
- You can download the complete manual from: [www.heydownloads.com](http://www.heydownloads.com) by clicking the link below



- Please note: If there is no response to CLICKING the link, please download this PDF first and then click on it.

CLICK HERE TO **DOWNLOAD** THE COMPLETE MANUAL

- (1) Part No. 3N600-4958-1  
Do not touch hot surface like supply pump, etc..



1AGAIDXAP073A

- (3) Part No. 3P903-9892-2

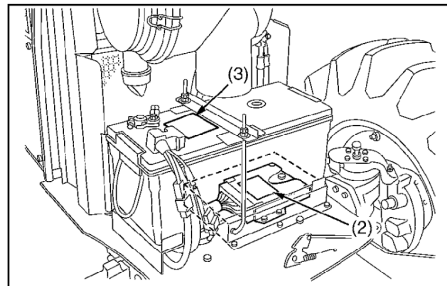
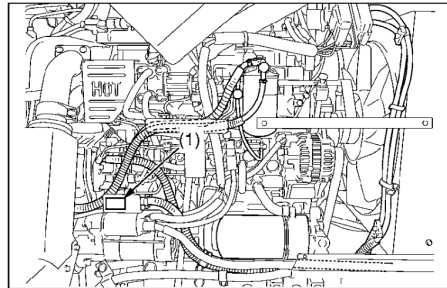
		KEEP OUT OF REACH OF CHILDREN. DO NOT TIP. DO NOT OPEN BATTERY.	
SHIELD EYES. EXPLOSIVE GASES CAN CAUSE BLINDNESS OR INJURY.	NO SPARKS, FLAMES, SMOKING	SULFURIC ACID CAN CAUSE BLINDNESS OR SEVERE BURNS.	FLUSH EYES IMMEDIATELY WITH WATER.
<b>PROPOSITION 65 WARNING</b> BATTERY POSTS, TERMINALS, AND RELATED ACCESSORIES CONTAIN LEAD AND LEAD COMPOUNDS, CHEMICALS KNOWN TO THE STATE OF CALIFORNIA TO CAUSE CANCER AND REPRODUCTIVE HARM. WASH HANDS AFTER HANDLING.			
	<b>180G51 12V</b> <b>(4D-1050)</b> RESERVE CAPACITY (MIN) 300 COLD CRANKING AMPS(-18°C) 1090	<b>S.O.C. INDICATOR</b> 	

1AGAIYAP065A

- (2) Part No. 1J574-5905-3

	<b>警告</b> 感電の恐れあり。 コンピュータ、コネクタの点検・修理時は、キースイッチを「OFF」位置にして下さい。
	<b>WARNING</b> Hazardous high voltage. Turn the starter switch to the OFF position if it is necessary to check or repair the computer, harness, or connectors.

1AGAIHFAP064A



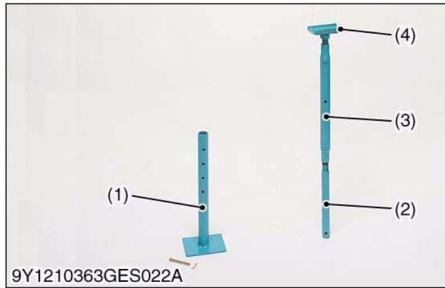
9Y1210363IC1003A

9Y1210363INI0006US0

### 3. MAINTENANCE

No.	Item		Service Interval													Since then	Important	Reference page				
			50	100	150	200	250	300	350	400	450	500	550	600	650				700			
1	Crawler track tension	Adjust	★	☆		☆		☆		☆		☆		☆		☆		☆	every 100 Hr		PG-8	
2	Greasing (crawler)	-	☆	☆	☆	☆	☆	☆	☆	☆	☆	☆	☆	☆	☆	☆	☆	☆	every 50 Hr		PG-7	
3	Guide roller	Adjust		☆		☆		☆		☆		☆		☆		☆		☆	every 100 Hr		PG-10	
4	Greasing	-		☆		☆		☆		☆		☆		☆		☆		☆	every 100 Hr		PG-7	
5	Front idler case oil	Change														☆			every 600 Hr		PG-10	
6	Rear idler case oil	Change														☆			every 600 Hr		PG-10	
7	Track roller case oil	Change														☆			every 600 Hr		PG-10	
8	Sprocket	Replace																	Service as required		PG-11	
9	Crawler track	Replace																				PG-12
10	Crawler track	Rotation																				PG-13

9Y1210363GEG0022US0



**Lifting Stand**

**Application**

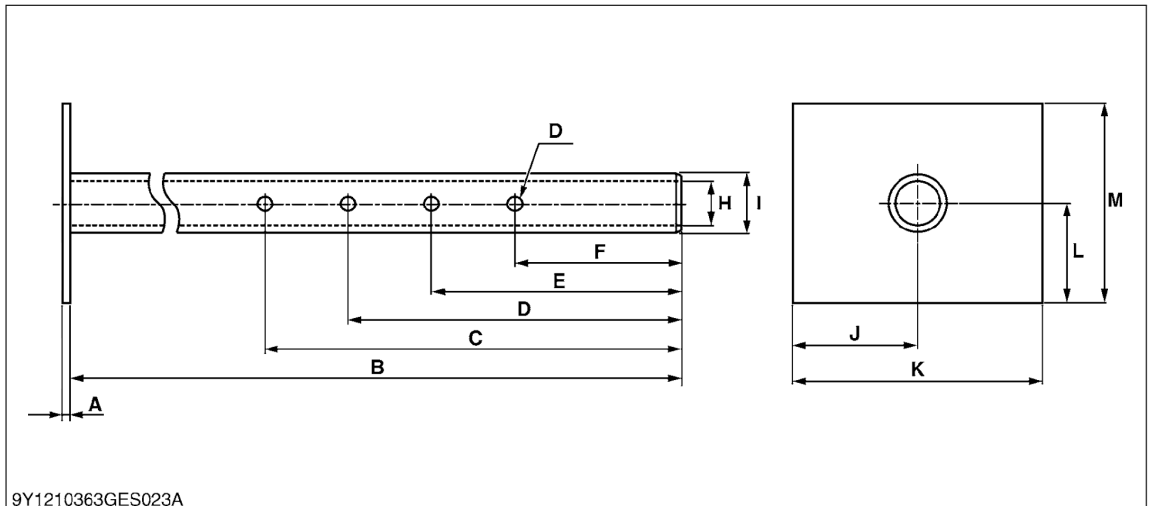
- Use to lift up the cabin.

- (1) Lifting Stand-1
- (2) Lifting Stand-2

- (3) Lifting Stand-3
- (4) Lifting Stand-4

9Y1210363GEG0016US0

**(1) Lifting Stand-1**

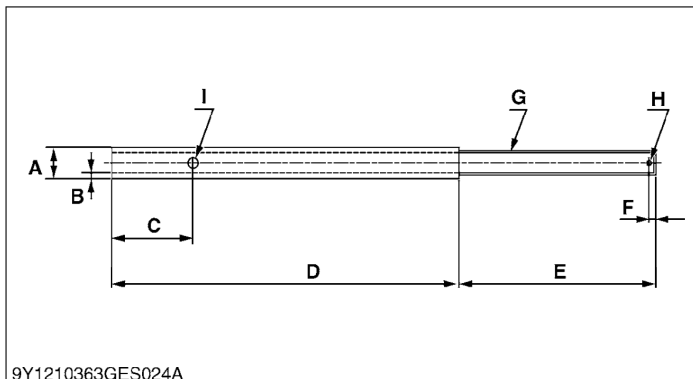


9Y1210363GES023A

<b>A</b>	4.5 mm (0.18 in.)	<b>H</b>	35 mm dia. (1.4 in. dia.)
<b>B</b>	450 mm (17.7 in.)	<b>I</b>	27 mm dia. (1.08 in. dia.)
<b>C</b>	250 mm (9.84 in.)	<b>J</b>	75 mm (3.0 in.)
<b>D</b>	200 mm (7.87 in.)	<b>K</b>	150 mm (5.91 in.)
<b>E</b>	150 mm (5.91 in.)	<b>L</b>	60 mm (2.4 in.)
<b>F</b>	100 mm (3.94 in.)	<b>M</b>	120 mm (4.72 in.)
<b>G</b>	9 mm dia. (0.4 in. dia.)		

9Y1210363GEG0017US0

**(2) Lifting Stand-2**



9Y1210363GES024A

<b>A</b>	27.3 mm dia. (1.07 in. dia.)
<b>B</b>	3.2 mm (0.13 in.)
<b>C</b>	70 mm (2.8 in.)
<b>D</b>	300 mm (11.8 in.)
<b>E</b>	170 mm (6.69 in.)
<b>F</b>	5.0 mm (0.20 in.)
<b>G</b>	M22 × P1.5 LH
<b>H</b>	4.0 mm dia. (0.16 in. dia.)
<b>I</b>	9.0 mm dia. (0.35 in. dia.)

9Y1210363GEG0018US0

### 3. TIGHTENING TORQUES

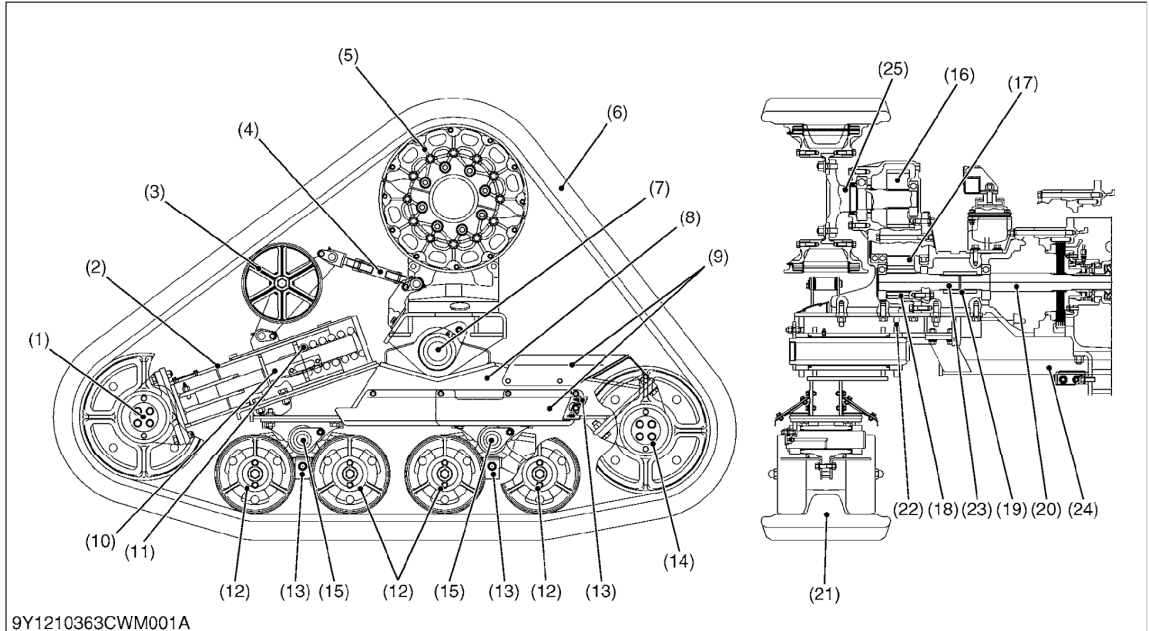
Tightening torques of screws, bolts and nuts on the table below are especially specified.

Item	N·m	kgf·m	lbf·ft
Sprocket nut (M16, 9T)	260 to 304	26.5 to 31.0	192 to 224
Swing shaft mounting screw	260 to 304	26.5 to 31.0	192 to 224
Crossmember mounting nut and screw (M14, 7T)	124 to 147	12.6 to 15.0	91.2 to 108
Crawler frame bracket nut and screw (M16, 7T)	197 to 225	20.0 to 23.0	145 to 166
Final gear case 1 mounting screw (M14, 7T)	124 to 147	12.6 to 15.0	91.2 to 108
Final axle cover mounting screw (M14, 7T)	124 to 147	12.6 to 15.0	91.2 to 108
Final gear case mounting nut and screw (M14, 9T)	167 to 196	17.0 to 20.0	123 to 144
Final gear case mounting stud bolt (M14, 9T)	83.4 to 98.1	8.51 to 10.0	61.6 to 72.3
Final axle staking nut	539 to 637	55.0 to 64.9	398 to 469
Cabin mounting nut (M16, 7T)	197 to 225	20.0 to 23.0	145 to 166
Cabin mounting bracket screw (M14, 9T)	167 to 196	17.0 to 20.0	123 to 144

9Y1210363RAS0003US0

# 1. STRUCTURE

## [1] GENERAL



- |                   |                             |                     |                          |
|-------------------|-----------------------------|---------------------|--------------------------|
| (1) Front Idler   | (8) Crawler Frame           | (14) Rear Idler     | (20) Brake Shaft         |
| (2) Slide Support | (9) Cover                   | (15) Swing Shaft    | (21) Crawler Drive Lug   |
| (3) Guide Roller  | (10) Spring Retainer        | (16) 39T Final Gear | (22) Swing Shaft Bracket |
| (4) Turnbuckle    | (11) Crawler Tension Spring | (17) 28T Idle Gear  | (23) Drive Shaft         |
| (5) Sprocket      | (12) Track Roller           | (18) 20T Gear Shaft | (24) Crossmember         |
| (6) Crawler Track | (13) Scraper                | (19) Coupling       | (25) Final Axle          |
| (7) Swing Shaft   |                             |                     |                          |

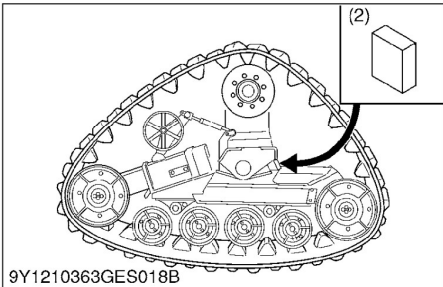
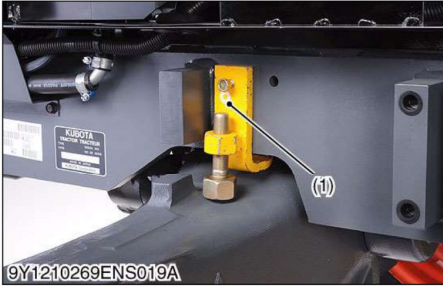
1. Crawler system consists of parts as shown in the figure above.
2. Power is transmitted from the transmission through the final reduction drive gears to sprocket (5), then to the crawler track (6) that rotates forward or reverse.
3. Front idler (1) is supported by slide support (2) with spring that applying tension force to crawler track (6).
4. The grease in the slide support (2) extends the slide support (2) and the crawler tension spring (11) adjusts the crawler tension.
5. Track rollers are sustaining the tractor weight together with rear idler (14).
6. Crawler drive lug (21) hold the crawler track (6) to prevent escape from track rollers (12), sprockets (5), front idler (1) and rear idler (14).
7. The crawler frame (8) swings  $0.52 \text{ rad}$  ( $30^\circ$ ) at the center of swing shaft (7).  
The swing angle is  $0.25 \text{ rad}$  ( $15^\circ$ ) clockwise in front,  $0.26 \text{ rad}$  ( $15^\circ$ ) counterclockwise in rear.
8. Track rollers (12) have the swing shaft (15) so that the crawler track (6) fits the ground condition.
9. The track roller (12) swings  $0.28 \text{ rad}$  ( $16^\circ$ ) at the center of swing shaft (15). The swing angle is  $0.14 \text{ rad}$  ( $8.0^\circ$ ) clockwise in front,  $0.14 \text{ rad}$  ( $8.0^\circ$ ) counterclockwise in rear.
10. The scrapers (13) are located near the track rollers (12), the front idlers (1), the rear idlers (14). They get rid of mud, stone and ice around the track rollers (12), the front idler (1) and the rear idler (14).
11. Clearance between crawler track (6) and guide roller (3) is adjusted with turnbuckle (4), and crawler track (6) is prevented from swing, so that guide roller (3) reduces the vibration and noise of crawler track (6).
12. The crossmember (24) gives torsional strength and rigidity to the both side crawler frames (8).

9Y1210363CWM0001US0

# 5. DISASSEMBLING AND ASSEMBLING

## [1] CRAWLER TRACK

### (1) Removing Crawler Track



#### Preparation

1. Park the tractor on a flat place.
2. Chock the front wheels.
3. Install the front axle rocking restrictor (1) on both sides.  
(Refer to "8. SPECIAL TOOLS" at "G. GENERAL" section.)
4. Install the crawler swing restrictor (2) on both sides.  
(Refer to "8. SPECIAL TOOLS" at "PG. GENERAL" section.)
5. Place the disassembling stand under the drawbar bracket.
6. Jack up the tractor on both side of crawler track off the ground.
7. Be sure to set the 2WD mode.
8. Disconnect the 4WD coupling (3).

#### ■ IMPORTANT

- **Avoid the fear of the machine runaway due to 4WD braking system during turning the sprocket on engine running with only rear crawler track off from the ground.**

- |                                   |                  |
|-----------------------------------|------------------|
| (1) Front Axle Rocking Restrictor | (3) 4WD Coupling |
| (2) Crawler Swing Restrictor      |                  |

9Y1210363CWS0003US0

CLICK HERE TO **DOWNLOAD** THE COMPLETE MANUAL

- Thank you very much for reading the preview of the manual.
- You can download the complete manual from: [www.heydownloads.com](http://www.heydownloads.com) by clicking the link below



- Please note: If there is no response to CLICKING the link, please download this PDF first and then click on it.

CLICK HERE TO **DOWNLOAD** THE COMPLETE MANUAL