

# WSM

---

WORKSHOP MANUAL  
**FRONT LOADER**

**LA714AU,LA854AU**

---

**Kubota**

CLICK HERE TO **DOWNLOAD** THE COMPLETE MANUAL

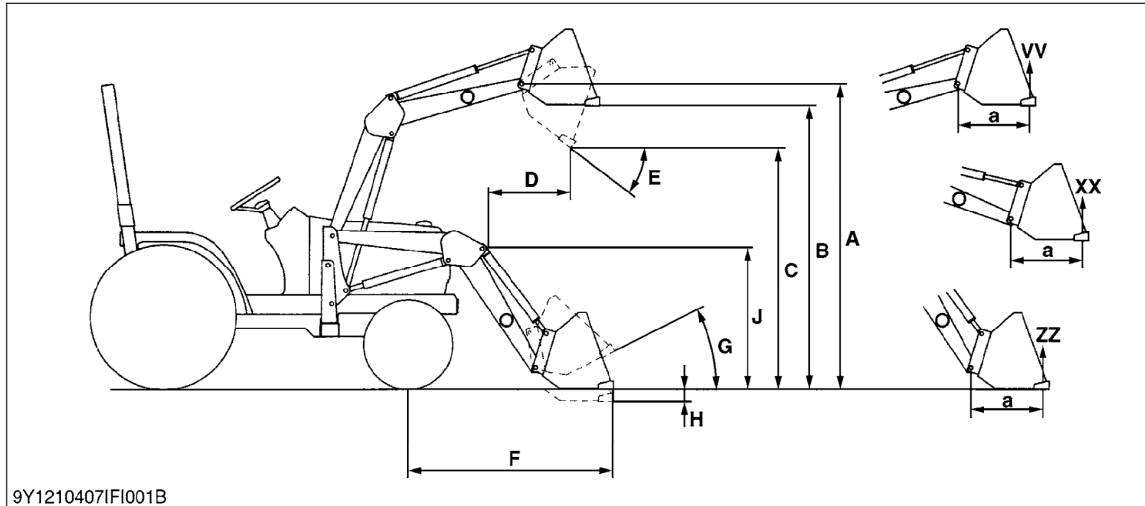
- Thank you very much for reading the preview of the manual.
- You can download the complete manual from: [www.heydownloads.com](http://www.heydownloads.com) by clicking the link below



- Please note: If there is no response to CLICKING the link, please download this PDF first and then click on it.

CLICK HERE TO **DOWNLOAD** THE COMPLETE MANUAL

### [3] DIMENSIONAL AND OPERATIONAL SPECIFICATIONS



■ **Dimensional Specifications**

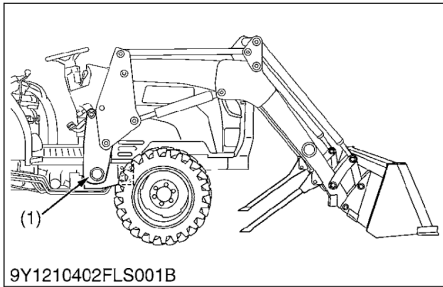
Loader Model		LA714	LA854
Tractor Model		L4240	L5740
<b>A</b>	Maximum lift height (To bucket pivot pin)	2597 mm (102.2 in.)	2863 mm (112.7 in.)
<b>B</b>	Maximum lift height under level bucket	2395 mm (94.3 in.)	2659 mm (104.7 in.)
<b>C</b>	Clearance with bucket dumped	1995 mm (78.5 in.)	2255 mm (88.8 in.)
<b>D</b>	Reach at maximum lift height (Dumping reach)	561 mm (22.1 in.)	570 mm (22.4 in.)
<b>E</b>	Maximum dump angle	45 deg. (0.79 rad)	45 deg. (0.79 rad)
<b>F</b>	Reach with bucket on ground	1763 mm (69.4 in.)	1919 mm (75.6 in.)
<b>G</b>	Bucket roll-back angle	43 deg. (0.75 rad)	43 deg. (0.75 rad)
<b>H</b>	Digging depth	122 mm (4.8 in.)	177 mm (7.0 in.)
<b>J</b>	Overall height in carry position	1380 mm (54.3 in.)	1410 mm (55.5 in.)
<b>a</b>	Length	500 mm (19.7 in.)	500 mm (19.7 in.)

■ **Operational Specifications**

Loader Model		LA714	LA854
Tractor Model		L4240	L5740
Lift capacity to maximum height (Bucket bottom mid point)		600 kg (1320 lbs)	800 kg (1760 lbs)
<b>VV</b>	Bucket roll-back force at Maximum height	8686 N (1953 lbf)	14041 N (3156.5 lbf)
<b>XX</b>	Bucket roll-back force at 1.5 m (59 in.) lift height	12435 N (2795.5 lbf)	17021 N (3826.5 lbf)
<b>ZZ</b>	Bucket roll-back force at ground level	12551 N (2821.6 lbf)	14014 N (3150.5 lbf)
Raising time		3.4 sec.	4.4 sec.
Lowering time		2.1 sec.	2.8 sec.
Bucket dumping time		1.2 sec.	1.5 sec.
Bucket roll-back time		1.6 sec.	1.9 sec.

9Y1210402INI0008US0

### [3] CHECK MAIN FRAME BOLT TORQUE



#### Checking Main Frame Bolt Torque

1. Check main frame bolt torque.
2. If they are loose, tighten them.

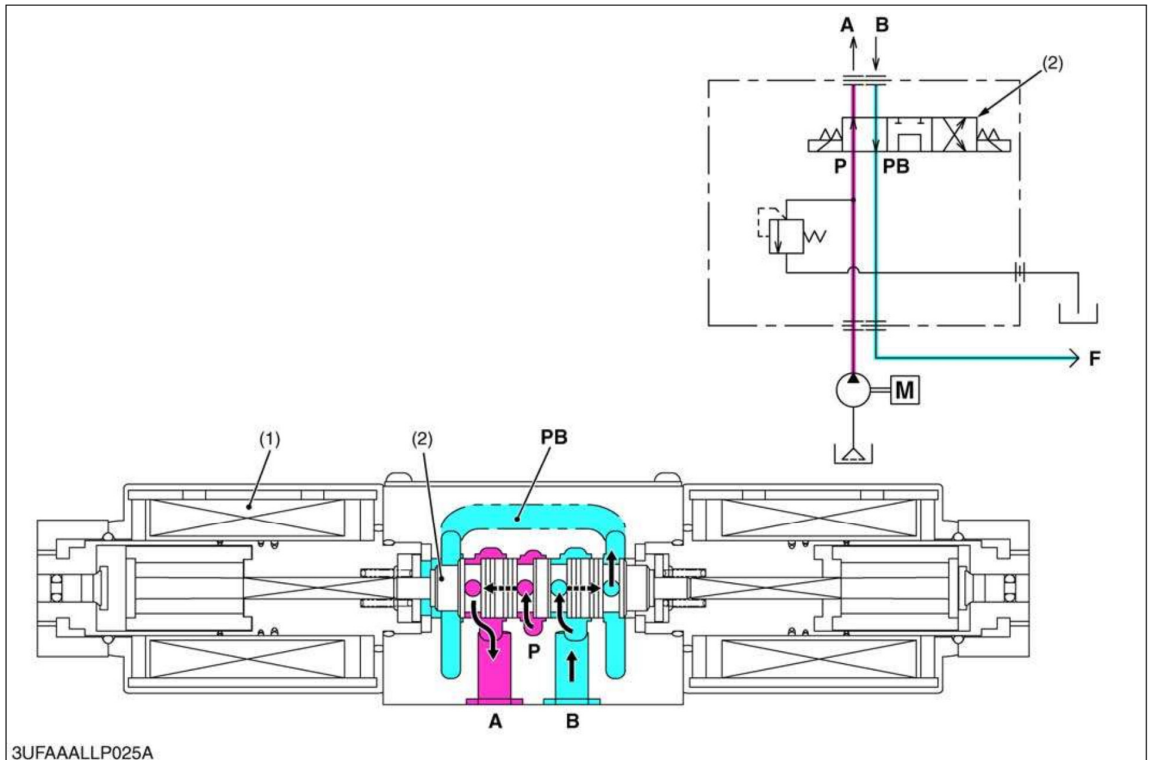
#### ■ IMPORTANT

- **Never operate front loader with a loose main frame.**

Tightening torque	Main frame bolt	226 N·m 23 kgf·m 166 lbf·ft
-------------------	-----------------	-----------------------------------

- (1) Main Frame Bolt

9Y1210402GEG0008US0

**Button A is pushed (Activation Switch A)**

- (1) Coil  
(2) Spool

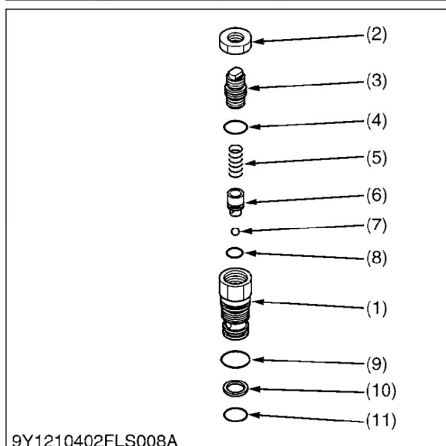
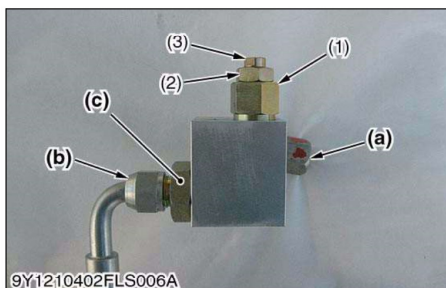
**A : A Port (To Implement)**      **P : Pump Port**  
**B : B Port (From Implement)**    **PB : Power Beyond Port**

**F : To Front Loader**

1. Current passes through the coil (1) while the button **A** is pressed.
2. Therefore the spool (2) is pushed to the right.
3. At that time, oil from the **P** port starts to flow into the **A** port.
4. Oil from the **B** port flows into the **PB** port.

9Y1210402FLM0009US0

## (2) Port Relief Valve



### Port Relief Valve Setting Pressure

1. Attach the hydraulic pressure tester between bucket side hose (b) and port relief valve block adapter (c).
2. Raise up boom about 1 m from ground.
3. Dump bucket to end.
4. Raise up boom during dump end.
5. Check the hydraulic pressure of boom or bucket side.
6. If the pressure is incorrect, need to adjust.
7. Loose the lock nut (2).
8. Adjust the adjusting screw (3).
9. Tighten the lock nut (2).
10. Repeat checking and adjusting.

Port relief valve setting pressure	Factory specification	LA714 LA854	10.51 to 11.09 MPa 107.2 to 113.0 kgf/cm <sup>2</sup> 1525 to 1608 psi
------------------------------------	-----------------------	----------------	--

### Condition

- Engine speed :  
Approx. 2700 min<sup>-1</sup> (rpm) (Except L5240)  
Approx. 2600 min<sup>-1</sup> (rpm) (L5240)
- Oil temperature : 45 to 55 °C (113 to 131 °F)

Tightening torque	Lock nut	19.6 to 23.6 N·m 2.00 to 2.40 kgf·m 14.5 to 17.4 lbf·ft
	Port relief valve and block	34.0 to 39.6 N·m 3.47 to 3.97 kgf·m 25.1 to 28.7 lbf·ft

### NOTE

- Refer to L40 Series "L40 Series Tractor Workshop Manual (9Y121-01090)". It is available to check the pressure by the way. In that case, use a adapter of G1/2 and M12 × 1.5.

- |   |   |
|---|---|
| <ul style="list-style-type: none"> <li>(1) Plug</li> <li>(2) Lock Nut</li> <li>(3) Adjusting Screw</li> <li>(4) O-ring</li> <li>(5) Spring</li> <li>(6) Poppet</li> <li>(7) Ball</li> <li>(8) O-ring</li> <li>(9) O-ring</li> <li>(10) Back-up Ring</li> <li>(11) O-ring</li> </ul> | <ul style="list-style-type: none"> <li>(a) To Boom Cylinder</li> <li>(b) To Bucket Cylinder</li> <li>(c) Port Relief Valve Block Adapter</li> </ul> |
|---|---|

9Y1210402FLS0025US0

CLICK HERE TO **DOWNLOAD** THE COMPLETE MANUAL

- Thank you very much for reading the preview of the manual.
- You can download the complete manual from: [www.heydownloads.com](http://www.heydownloads.com) by clicking the link below



- Please note: If there is no response to CLICKING the link, please download this PDF first and then click on it.

CLICK HERE TO **DOWNLOAD** THE COMPLETE MANUAL