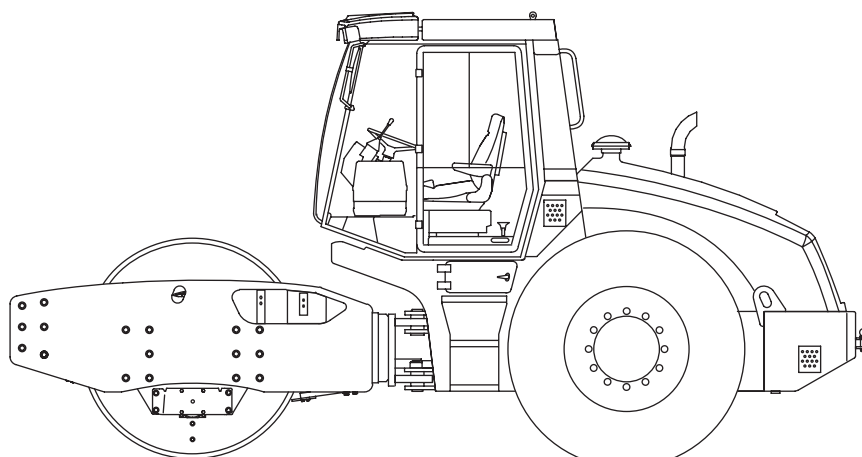


ASC 110

SINGLE DRUM ROLLER
CUMMINS QSB4.5-C160
EU Stage IIIA / U.S. EPA Tier 3



WORKSHOP MANUAL

EDITION 01/2021 EN
Product Identification Number 3001328 -

AMMANN

CLICK HERE TO **DOWNLOAD** THE COMPLETE MANUAL

- Thank you very much for reading the preview of the manual.
- You can download the complete manual from: www.heydownloads.com by clicking the link below



- Please note: If there is no response to CLICKING the link, please download this PDF first and then click on it.

CLICK HERE TO **DOWNLOAD** THE COMPLETE MANUAL

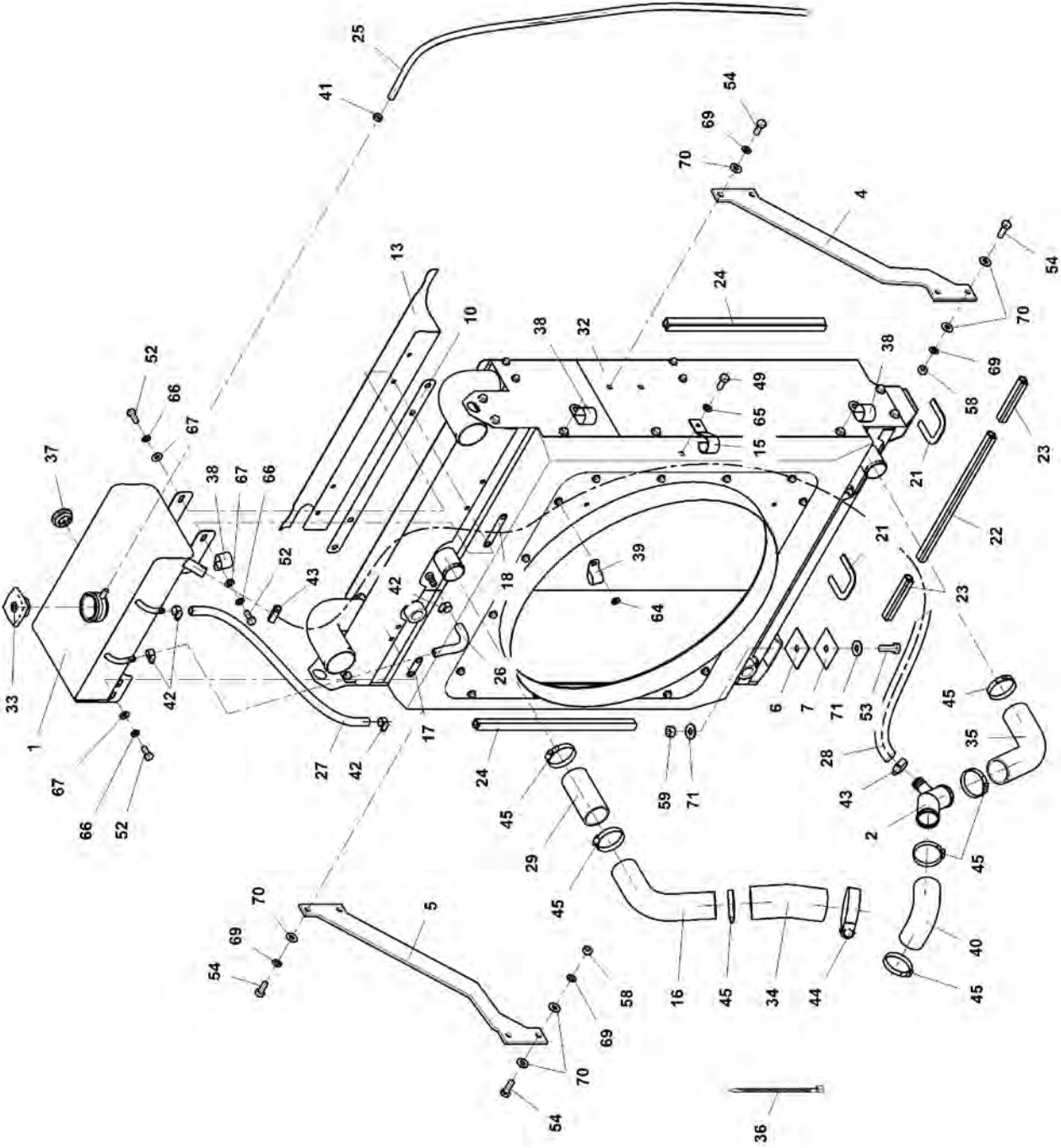
2. Repair safety instructions

4. Specification manual

5. Specification of fluids

6. Lubrication and Maintenance Chart

001-126



4_P107384_C

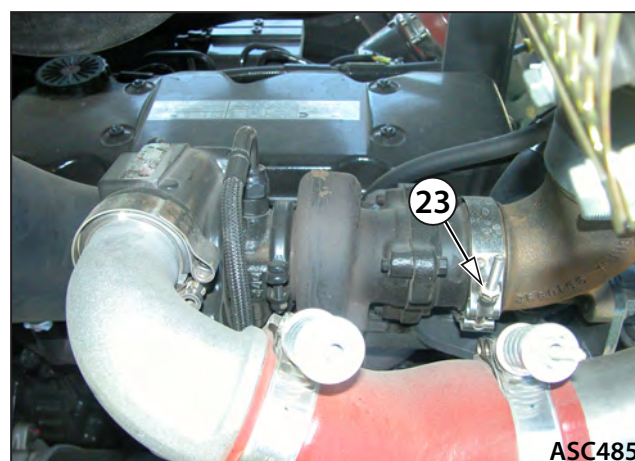
Plug up outlet.



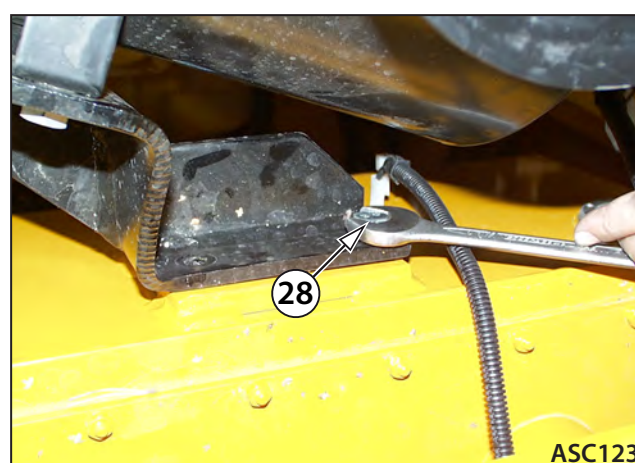
Disconnect hoses to steering pump, plug up.



Loosen bolt of clamp (136-23) on the turbo.



Remove four bolts (136-28) on the air filter holder.

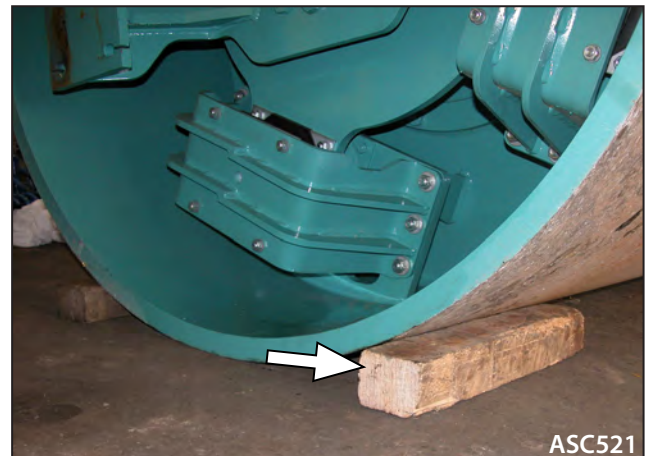


8. Drum Dismounting

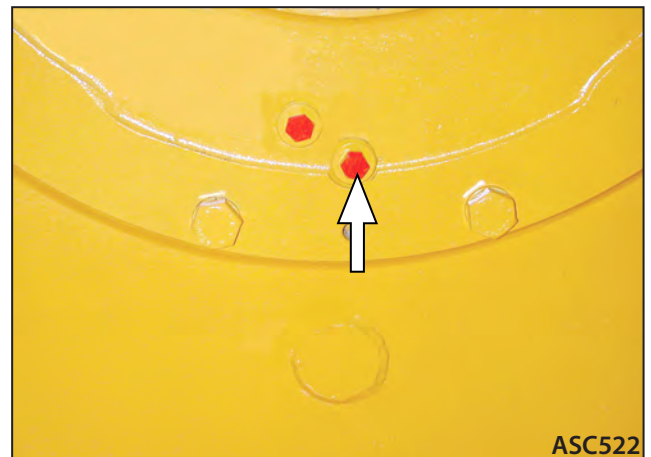
Set the drum so that the drain plug is on the left cover in the lower position.



Secure it against accidental movement by means of blocks.



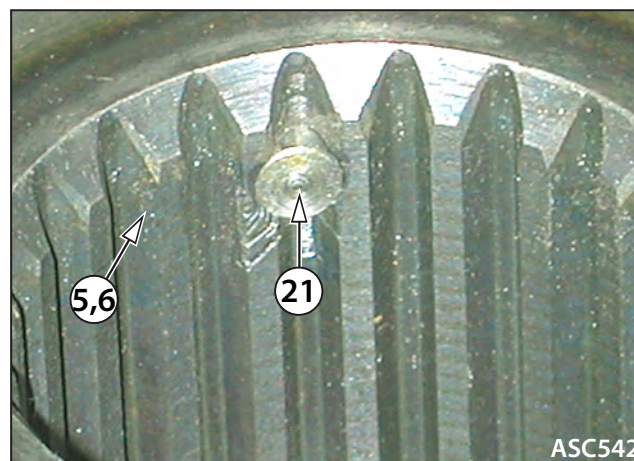
Unscrew the drain plug from the vibrator cover and drain the oil to the drain container.



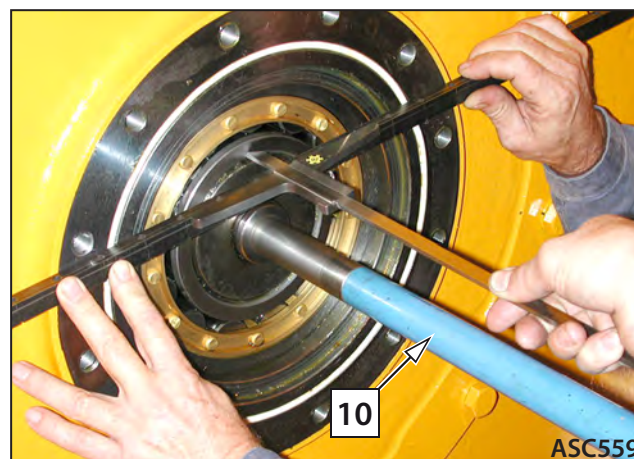
Hang the weight (10-7) on the crane, lift up, unscrew the screws (10-32), push from the drum, and remove.



Strike the pins (20-21) into both shafts (20-5), (20-6) and secure their position by means of jig no. 9.



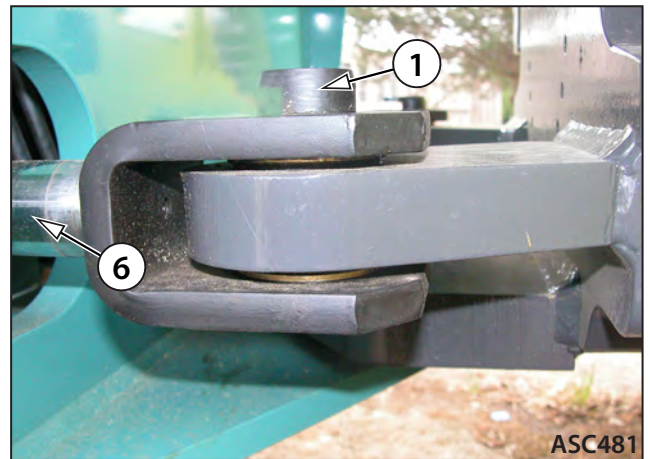
After mounting the covers (1-7), (1-8), test the axial clearance of the bearings of both vibrators 1.5 – 2.5 mm.



Note:

Grease the clutch (24-1) during reassembly.

Using fixture no. 3 press out pins (372-1) out of the ends of pistons of the linear hydraulic motor (372-6).



Remove hose clamps on the drum frame.



Remove clamping of hoses on the hinge and the rear frame.



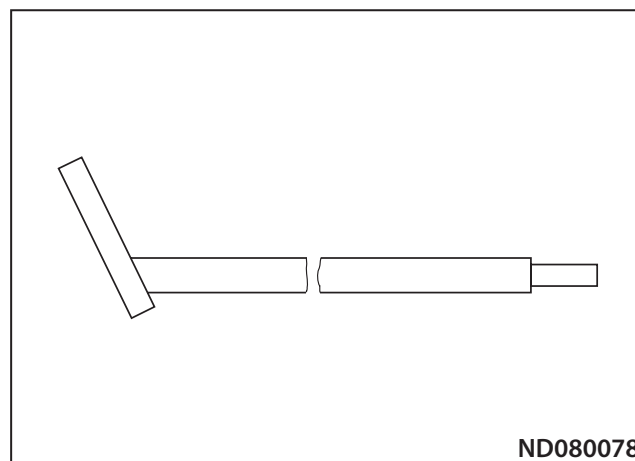
Remove cover of vibration hydraulic motor.



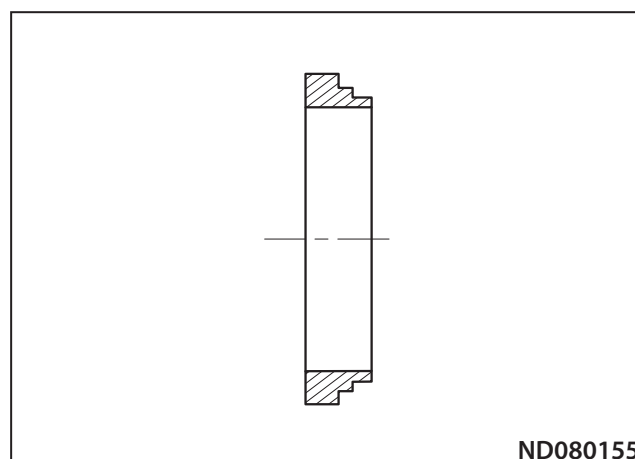
10. Removal of pumps, cento clutch

Fixtures

No.1 - 64-281-099 - Handling (cabin support)

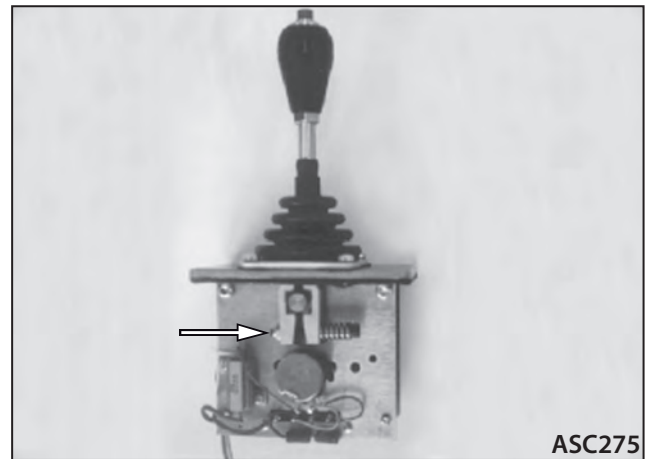


No.2 - 64-298-290 - Assembly (for clutch)



Travel control

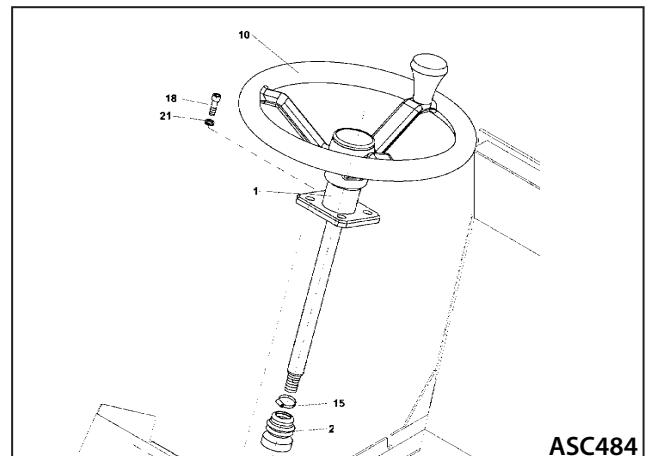
The control may be fixed in position using adjustable clamp.. The travel control operates also as a service and parking brake. The vibrator pushbutton is located in the lever to be available for the interruption of vibrations any time.



ASC275

Steering removal

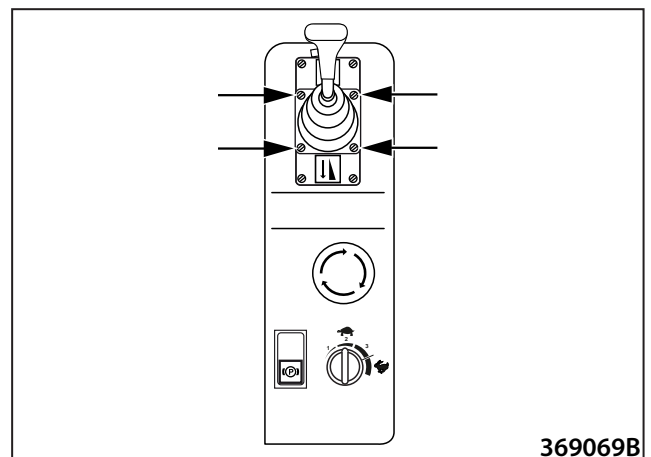
Remove bolts (188-18). Remove steering column (188-1).



ASC484

Removing and reassembling travel control, brake adjustment

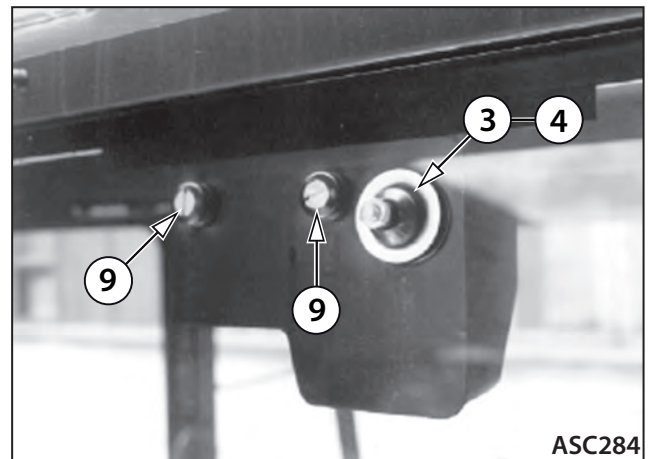
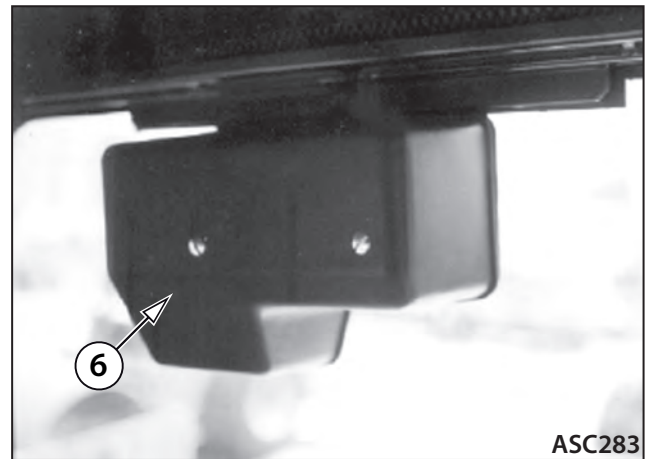
Remove bolts, remove travel controller and disconnect electric installation. Remove the controller plastic cover and set the brake on the lever of the controller.



369069B

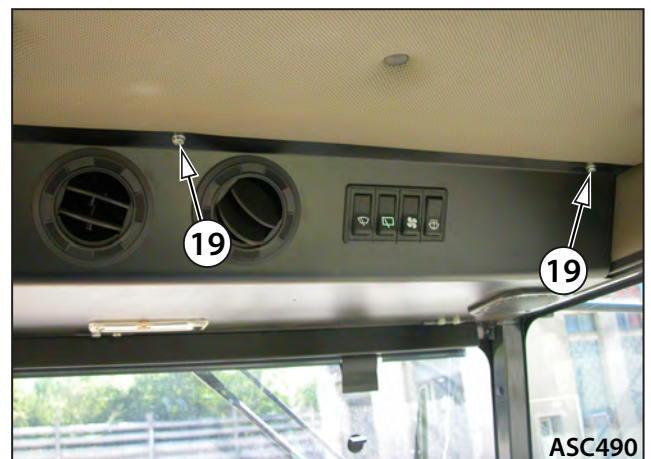
Cabin

Disassembly of rear window wiper (410-1) - remove cover (410-1-6), wiper, nut on the shaft of wiper 1, bolts (410-9) see, clamps (410-1-1) with the wiper motor (410-1-10).



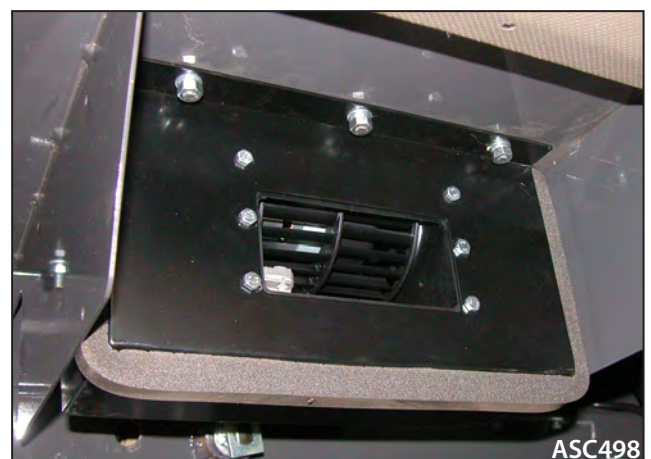
Removing the front wiper and fan

Remove bolts (169-19) of the upper cover (169-1).



Remove fan holder (169-5).

Unbend fan (169-14) and put aside.



Safety rules

- During your work on the A/C system or near it use always goggles and gloves.

First aid

- Should the coolant get in your eyes, wash them with ample quantity of water and seek medical help immediately.
- Should your skin come into contact with the coolant, wash the affected spot with a large quantity of warm (not hot) water. Protect the burn with sterile gauze and seek out medical help immediately.
- Should anyone be overcome by vapors from the coolant, carry such person on fresh air, and if necessary, perform artificial respiration, and call for medical help.

CLICK HERE TO **DOWNLOAD** THE COMPLETE MANUAL

- Thank you very much for reading the preview of the manual.
- You can download the complete manual from: www.heydownloads.com by clicking the link below



- Please note: If there is no response to CLICKING the link, please download this PDF first and then click on it.

CLICK HERE TO **DOWNLOAD** THE COMPLETE MANUAL

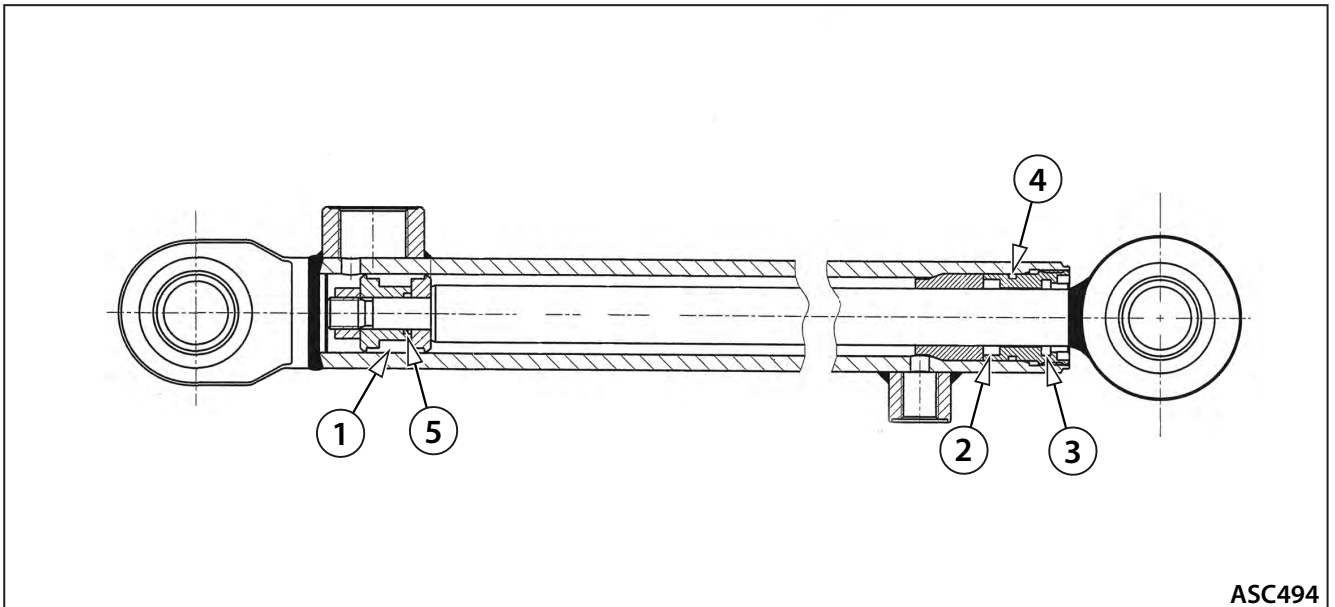
16. Removal of ROPS frame

18. Disassembly of wheel

Bonnet lifting hydromotor

Replace seals after soaking seals in oil.

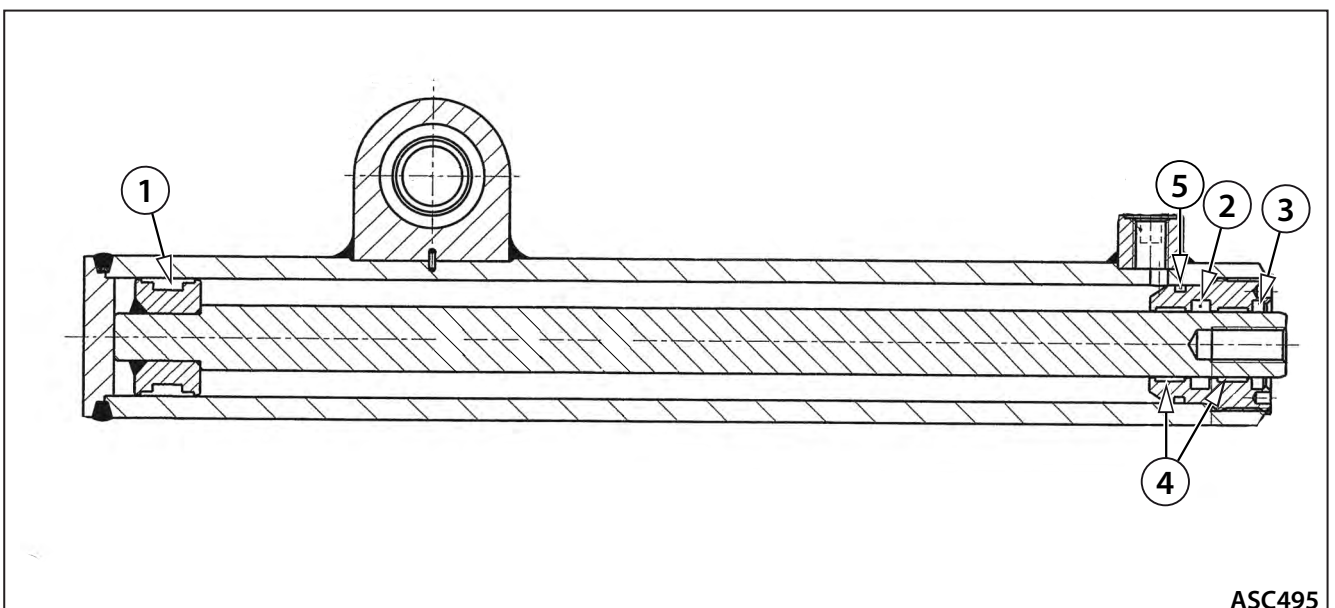
Item No.	Description
1	Sealing
2	Collar
3	Scraping ring
4	Ring
5	Ring



ASC494

Cabin lifting hydromotor

Item No.	Description
1	Sealing
2	Collar
3	Scraping ring
4	Guiding band
5	Ring

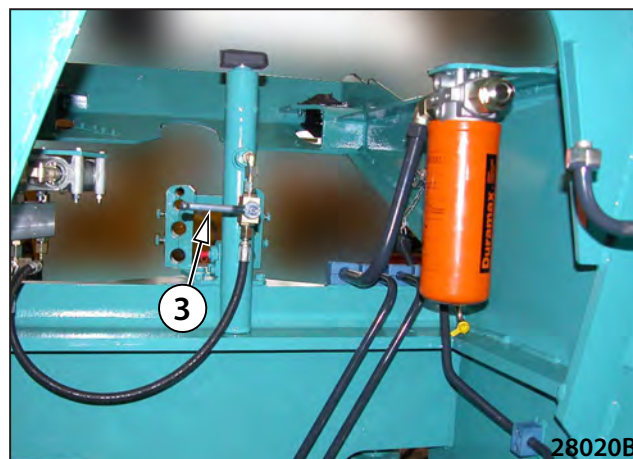


ASC495

Lock the cab in position using the valve (3).



When working on the cab lifting hydraulic circuit, the cab must be secured by the valves (3) and (2). By releasing the valve when the cab lifting hydraulic circuit is open, the cab may fall. Danger of injury!



Disconnect the bonnet connector X18.



Remove the locking of the bonnet pin.



22. Installation of the hydraulic tank

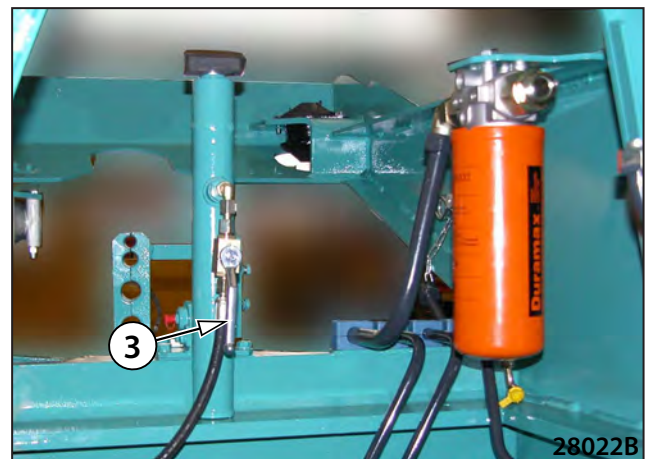
Remove the jig No. 3.



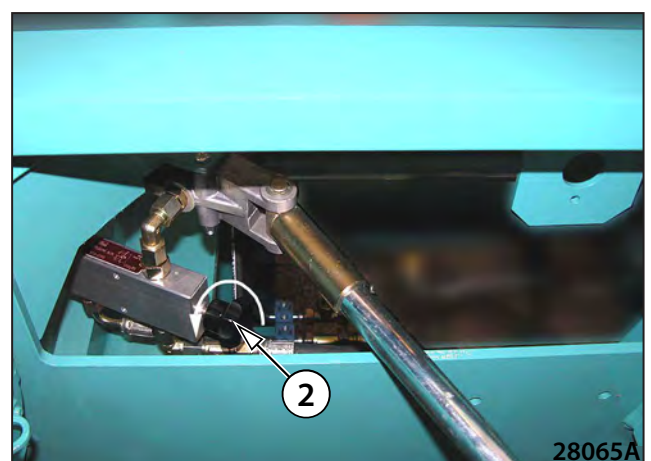
Connect the connector X18.



Unlock the cab using the valve (3).



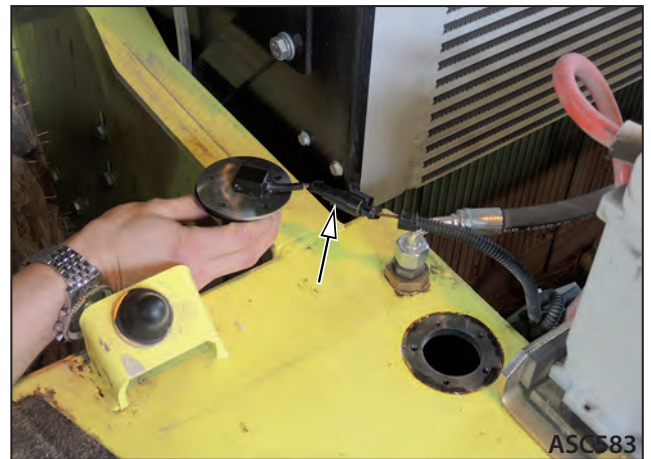
Lower the cab by releasing the valve (2).



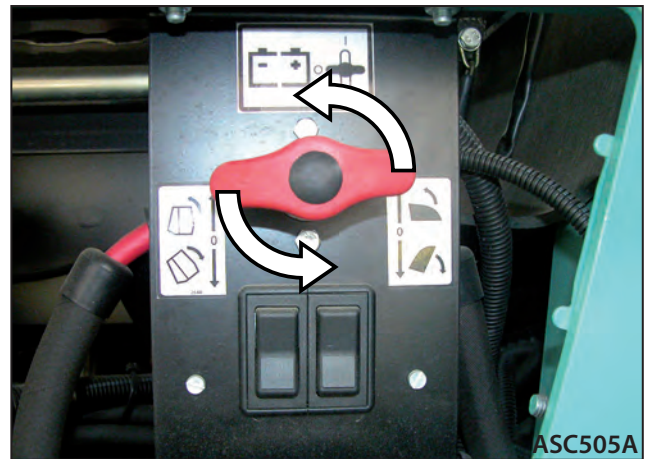
Take out the safety fuse from the new fuel gauge.



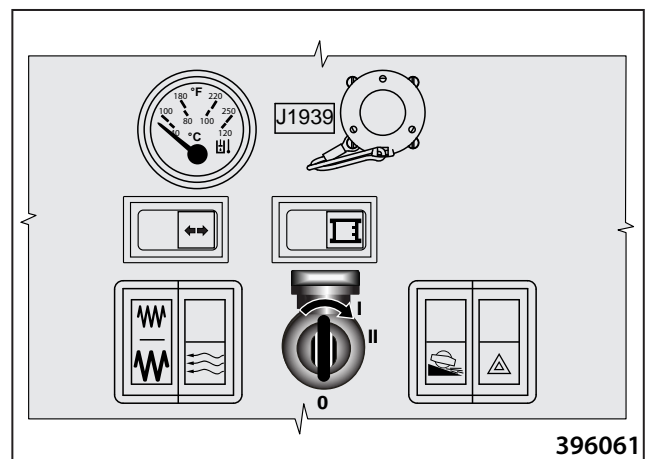
Connect wiring to the new fuel float.

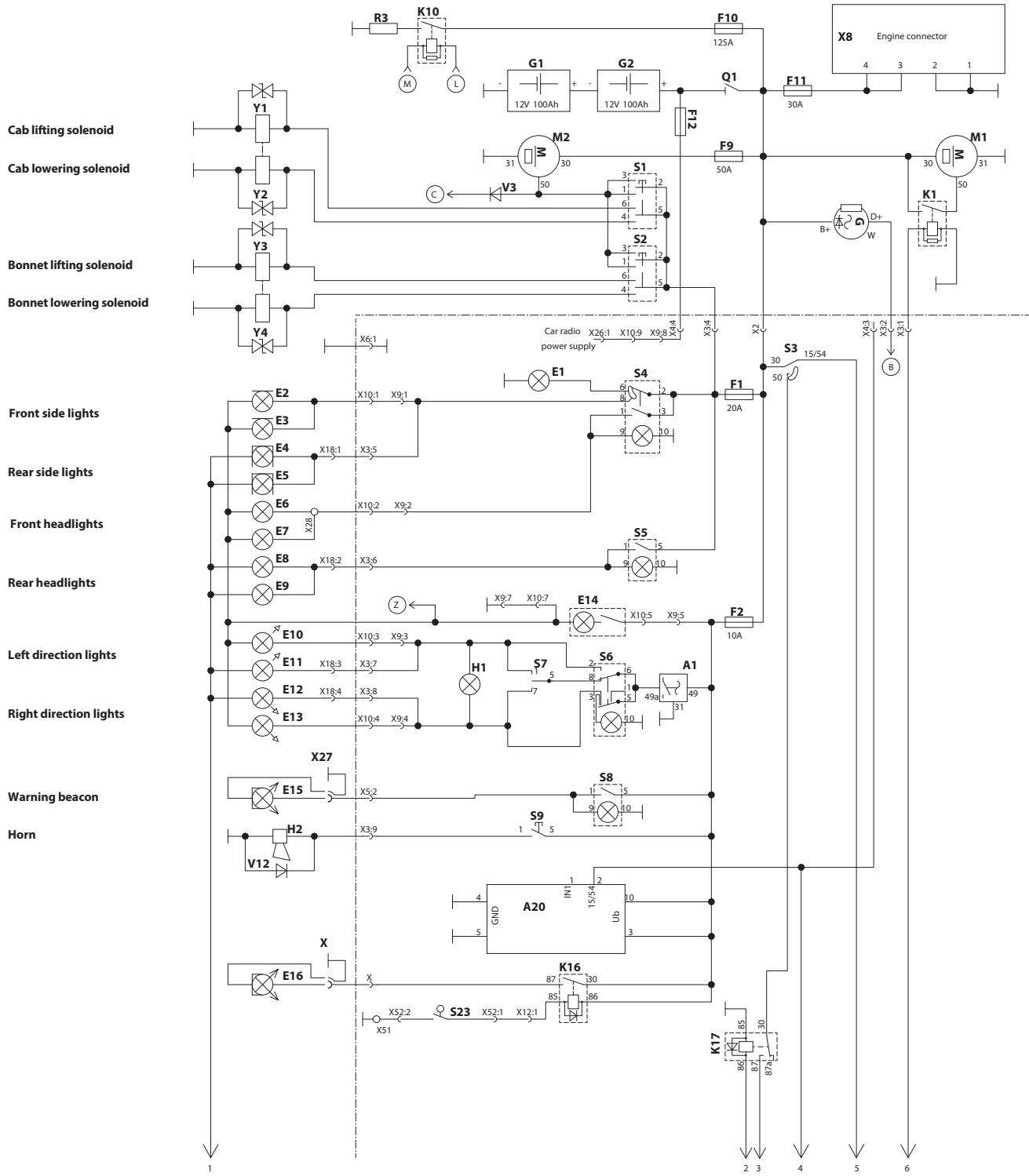


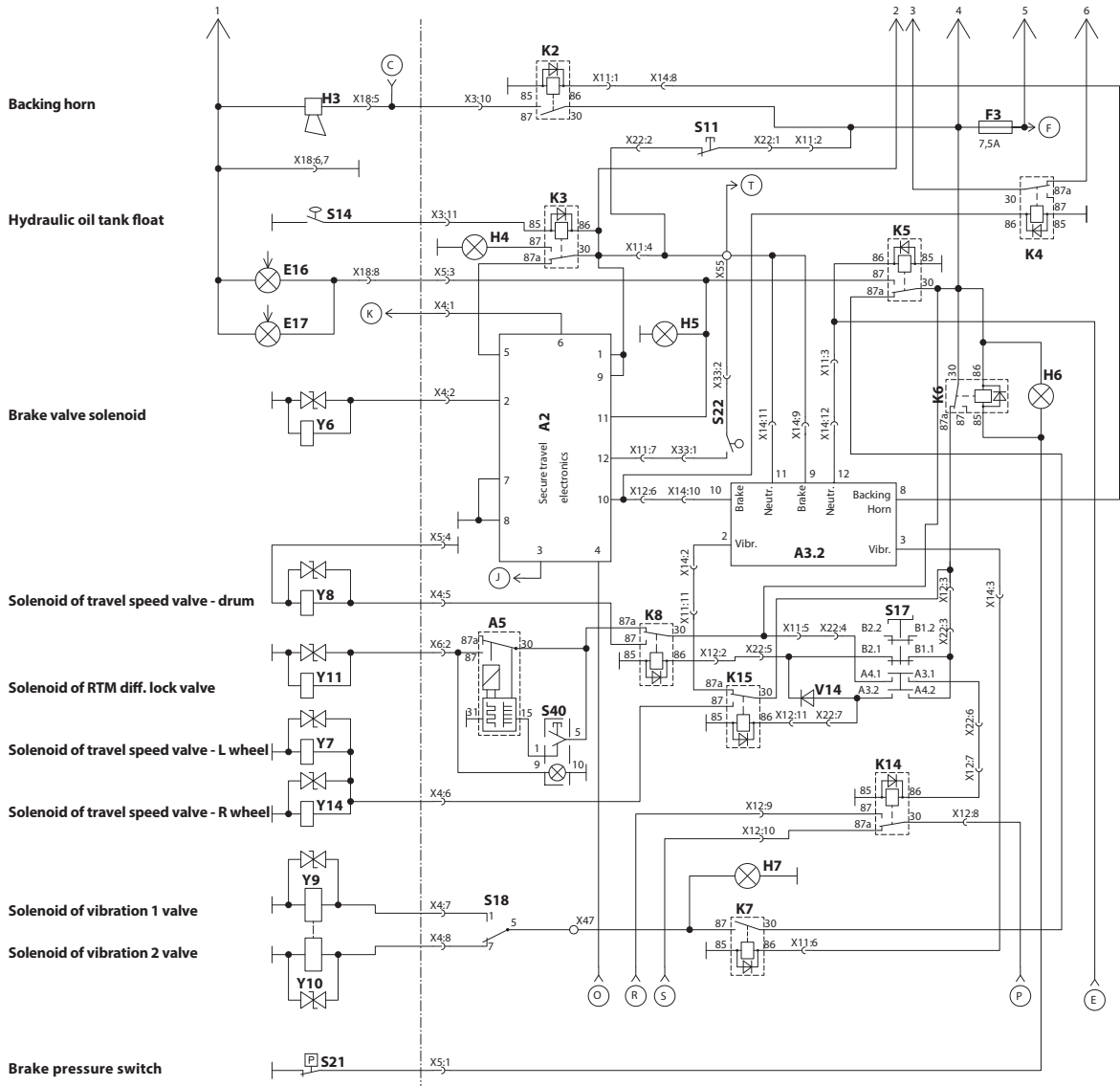
Connect the battery.

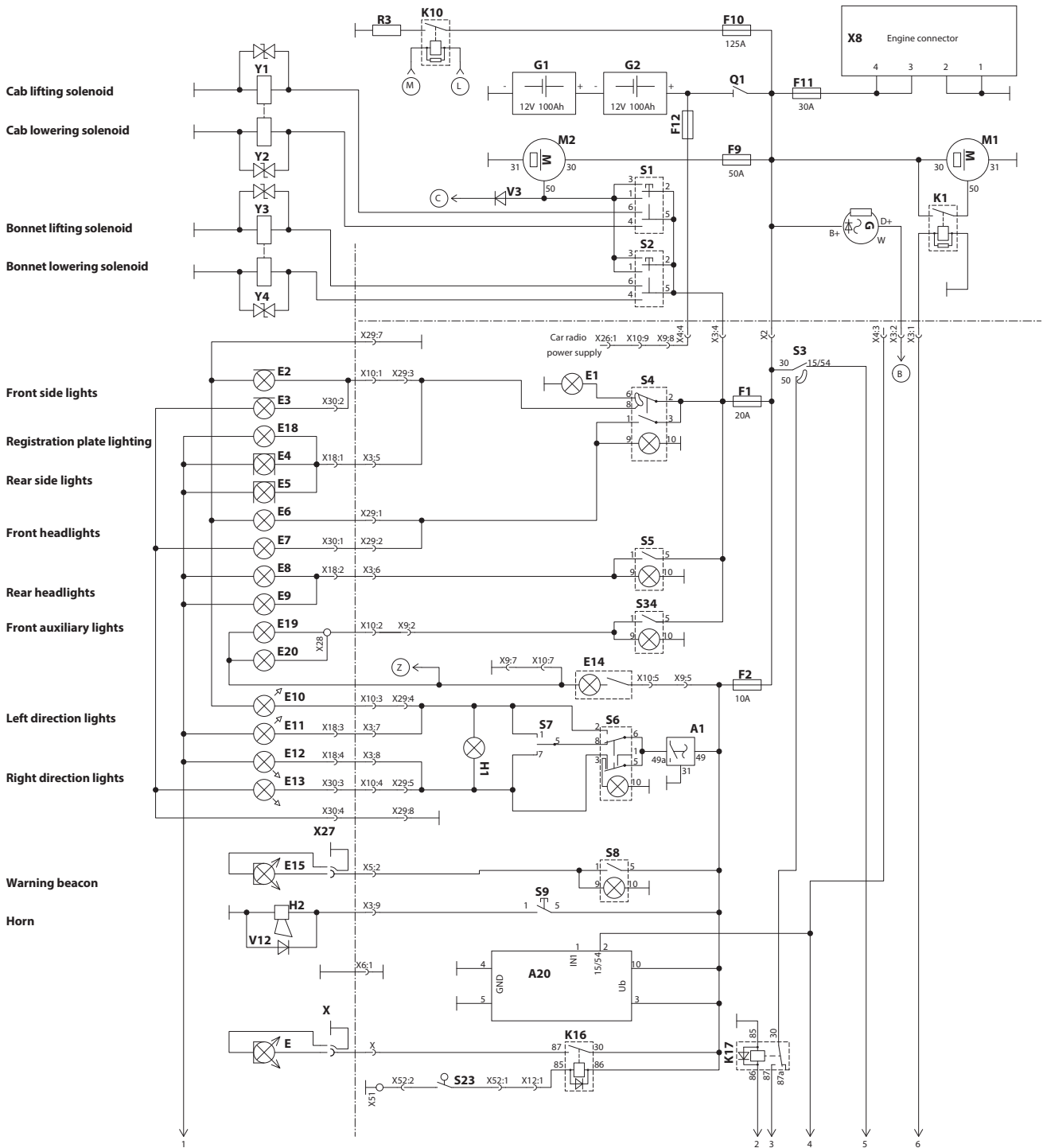


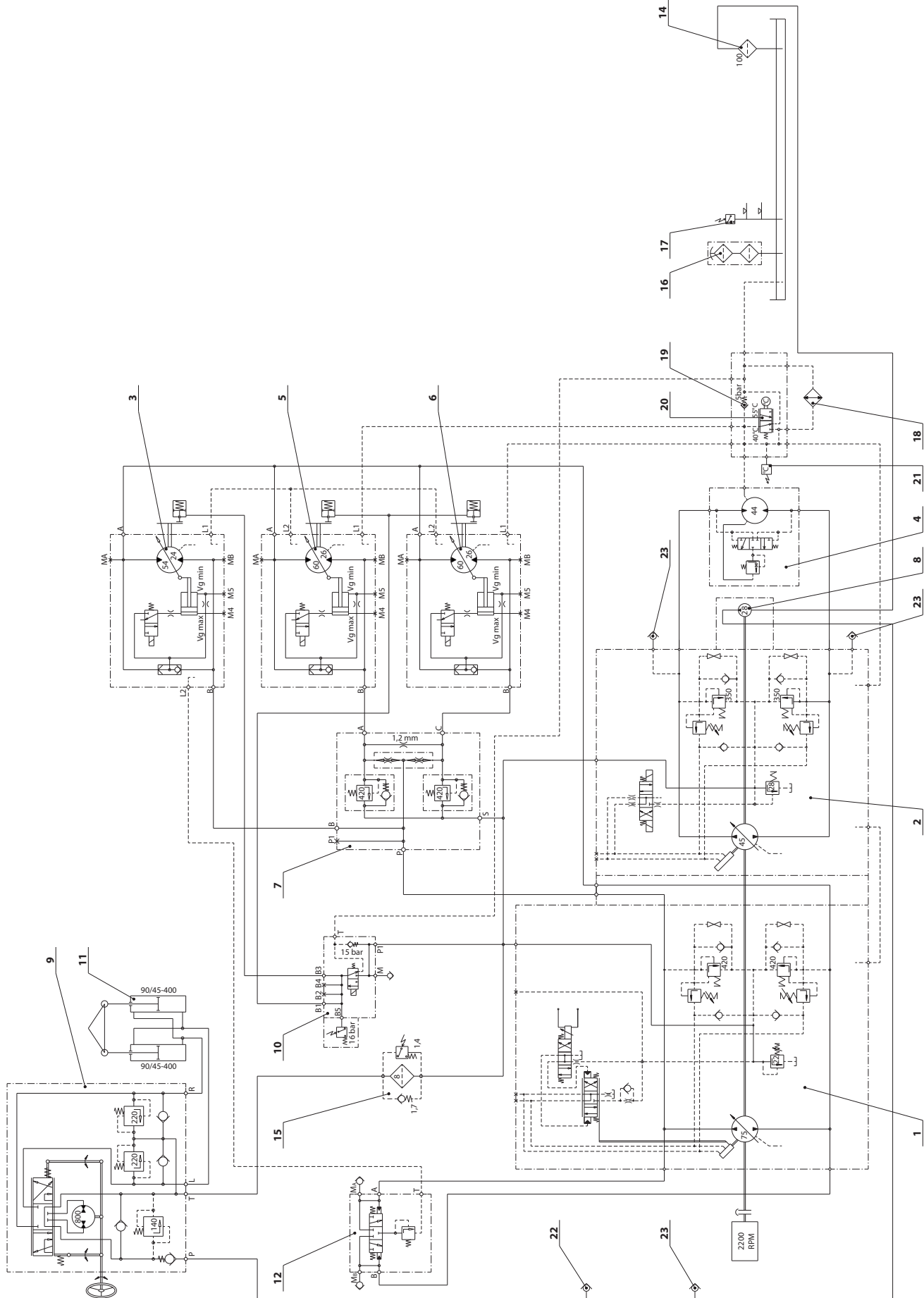
Turn the key in the ignition box to the position "I".







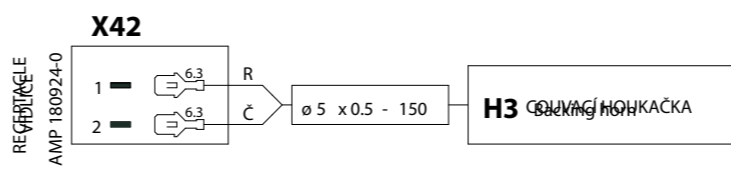
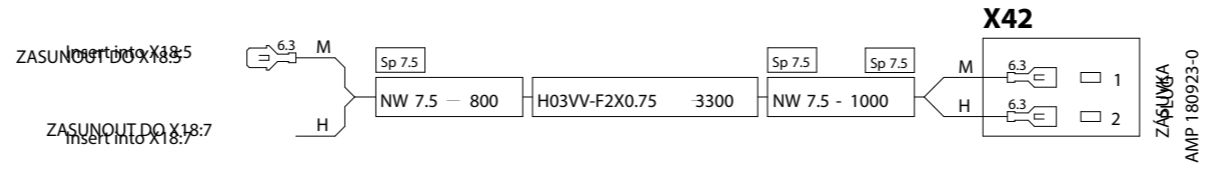




107816

27. Diagnostics of hydraulic system defects

29. Harnesses



CABLE HARNESS END:

- Faston
- Ring Cable eye
- Wire end
- Butt splice
- Contact
- Sealing plug
- Single wire seal
- Lock nut
- Insulation sleeve
- Clip Spona
- Reduction
- Clamp
- T-Mark
- Conductor SEM straight
- Faston connector
- DIN connector
- Sauer connector
- Receptacle connector
- Plug connector

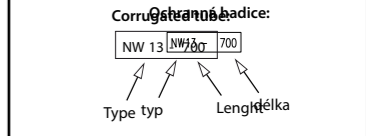
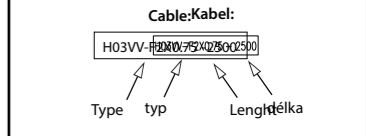
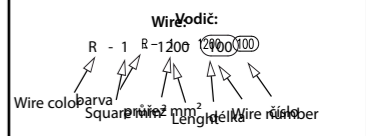
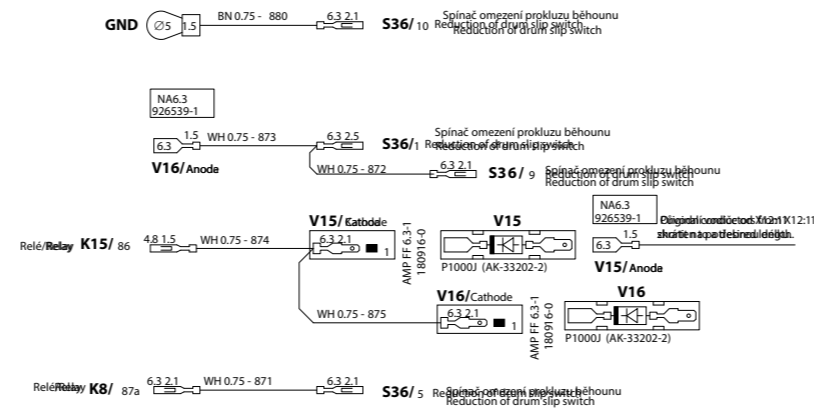


TABLE OF COLOR SYMBOLS:

B	White	Bílá
C	Black	Černá
H	Brown	Hnědá
M	Blue	Modrá
R	Red	Rudá
S	Grey	Šedá
Y	Yellow	Žlutá
Z	Green	Zelená



CABLE HARNESS LEGEND:

- Faston
 - Ring terminal
 - Drum slip switch
 - Splice terminal block
 - Contact
 - Solder plug
 - Single wire seal
 - Male cut
 - No.6.3 insulation sleeve
 - Sijona
 - Redukce
 - Clamp
 - Ovladač T 10-10-7.5
 - End of hand SEM straight
 - Faston factor
 - Břídící díl
 - Břídící díl
 - Břídící díl
 - Wedge connector
 - Plug connector
- VÝBĚR:**
- Wire number → R - 1 - 1200 (100) → Výběz mm² → Účinnost → Výběz number
- Kabel:**
- Typ → H03VV-F2X0.75 - 2500 → Účinnost
- Ochranná hadička:**
- Type → NW13 - 700 → Účinnost

TABLE OF COLOR SYMBOLS:

WH	B	Bílá
BK	C	Černá
BN	H	Červená
BU	M	Bílá
RD	R	Červená
GY	S	Žlutá
YE	Y	Žlutá
GN	Z	Zelená
VT	-	Violetá
OG	-	Oranžová

CABLE HARNESS LEGEND:

- Fastom
- Ring connector
- Diaphragm seal
- Splicing sleeve
- Contact
- Solder plug
- Single wire seal
- Male cut
- Insulation sleeve
- Sleeve
- Reducer
- Clamp
- Connector
- End of line SEM straight
- Fastener factor
- Helical cable
- Helical cable
- Wedge connector
- Plug connector

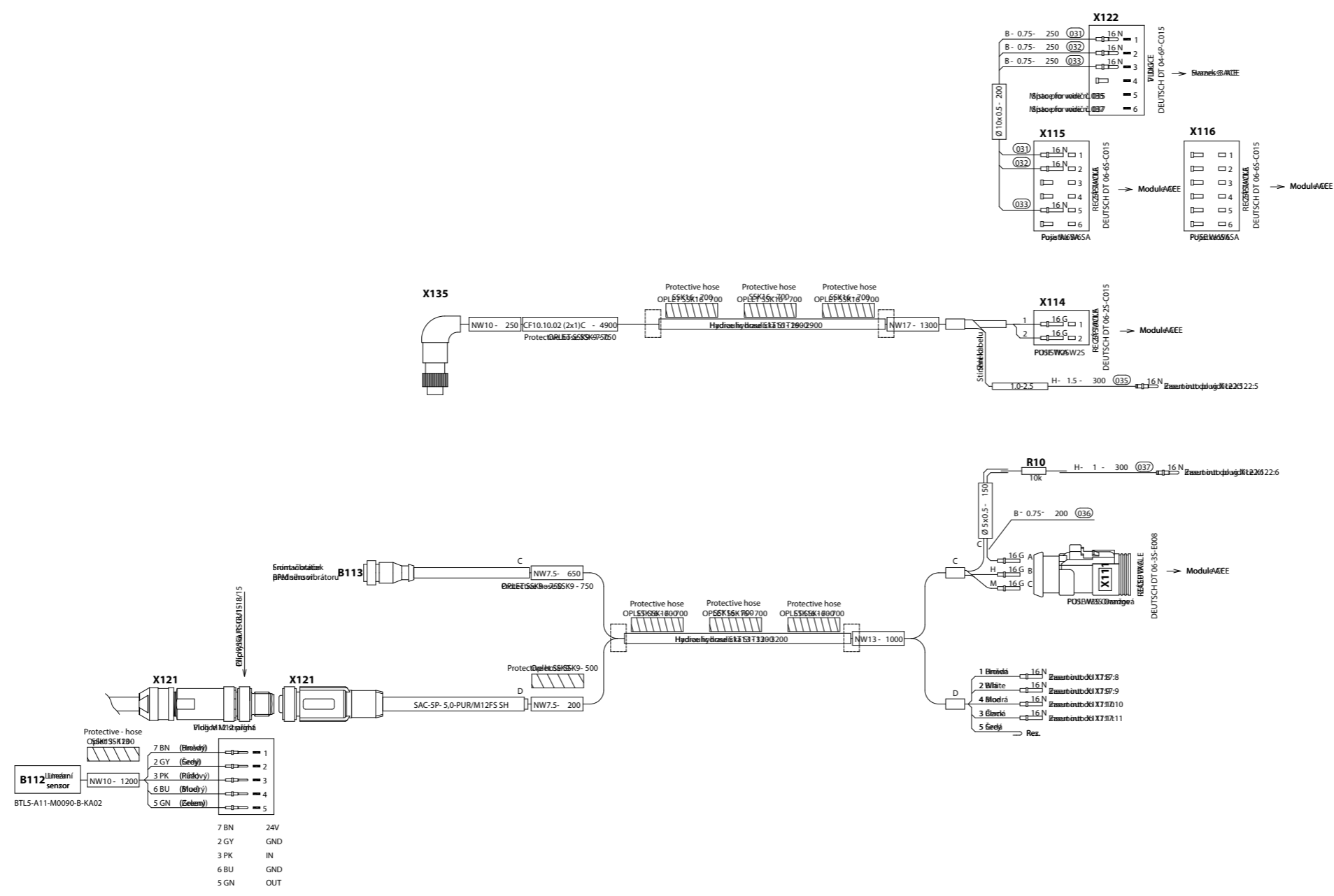
WIRE:
 R - 1 - 1200 (100)
 Wire color Splice mm² Length Wire number

Cable:
 H03W-F2X0.75 - 2500
 Type Length

Color code:
 Type Length

TABLE OF COLOR SYMBOLS:

WH	B	Bílá
BK	C	Černá
BN	H	Bílošedá
BU	M	Bílošedá
RD	R	Redá
GY	S	Šedá
YE	Y	Žlutá
GN	Z	Zelená



Wiring Diagram for X121:

7 BN (Bílá)	1	24V
2 GY (Šedá)	2	GND
3 PK (Růžový)	3	IN
6 BU (Bílý)	4	GND
5 GN (Zelená)	5	OUT

Other Connections:

- B112: 7 BN (Bílá) to 1, 2 GY (Šedá) to 2, 3 PK (Růžový) to 3, 6 BU (Bílý) to 4, 5 GN (Zelená) to 5.
- B113: 16N to 1, 16G to 2, 16G to 3.
- R10: 16N to 1, 16G to 2, 16G to 3.

CLICK HERE TO **DOWNLOAD** THE COMPLETE MANUAL

- Thank you very much for reading the preview of the manual.
- You can download the complete manual from: www.heydownloads.com by clicking the link below



- Please note: If there is no response to CLICKING the link, please download this PDF first and then click on it.

CLICK HERE TO **DOWNLOAD** THE COMPLETE MANUAL