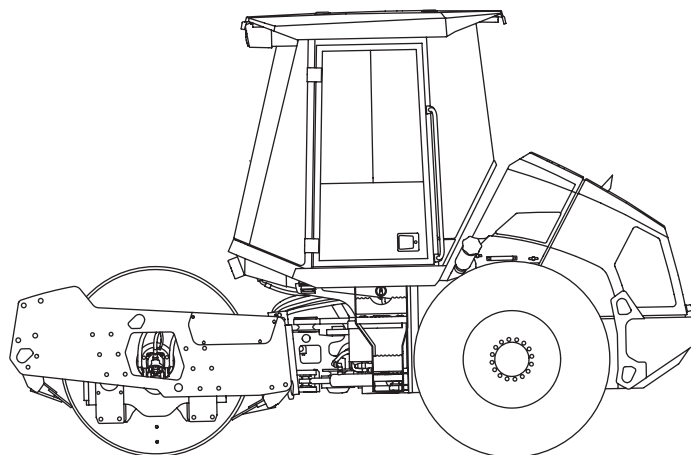


# ARS 70

SINGLE DRUM ROLLER  
KUBOTA V3307-CR-TE5  
EU Stage V / U.S. EPA Tier 4f



## WORKSHOP MANUAL

EDITION 01/2021 EN  
Product Identification Number 3001289 -

**AMMANN**

CLICK HERE TO **DOWNLOAD** THE COMPLETE MANUAL

- Thank you very much for reading the preview of the manual.
- You can download the complete manual from: [www.heydownloads.com](http://www.heydownloads.com) by clicking the link below



- Please note: If there is no response to CLICKING the link, please download this PDF first and then click on it.

CLICK HERE TO **DOWNLOAD** THE COMPLETE MANUAL

**SAFETY NOTICES AND SIGNS:**



The notice warns of a serious risk of personal injury or other personal hazards.



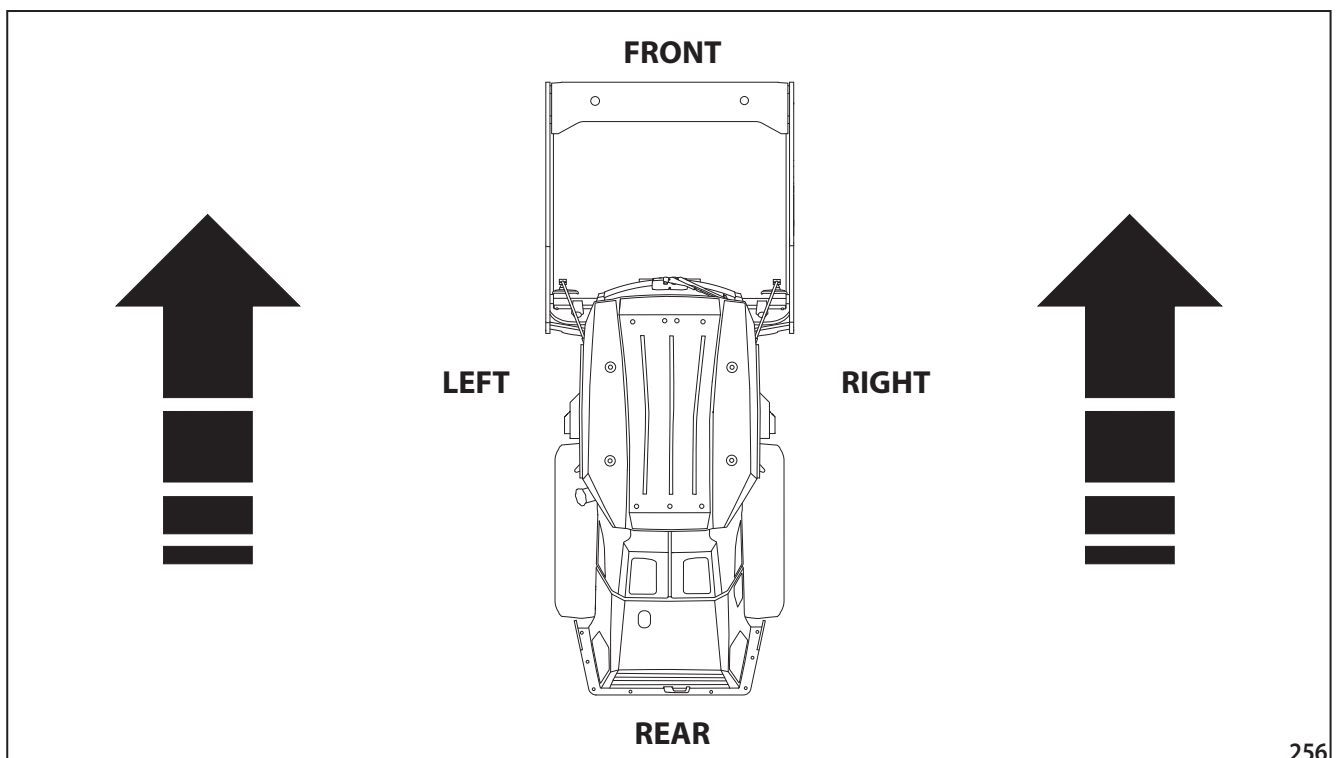
The notice warns of possible damage to the machine or its parts.



The notice warns of the necessity of environmental protection.

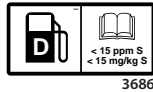
**! CAUTION!**

As used in this operating manual, the terms right, left, front and rear indicate sides of the machine moving forward.



## **3 Specification manual**

## 4.2 Fuel



Diesel is used as fuel:

EN590

ASTM D975: 1D S15, 2D S15

### Note

Do not use fuels with a sulphur content exceeding 0.0015 percent by weight.



**At ambient temperatures below 0 °C (32 °F), use winter diesel fuel.**

**Mixing diesel with special additives is forbidden.**



**Refill the cooling circuit with the same or a completely miscible coolant of the required specification.**

**If the use of a different, immiscible coolant is necessary, the cooling circuit must be completely drained and cleaned with clean water repeatedly, at least 3 times. However, it is not allowed to use a coolant of a different specification than stated by the engine manufacturer.**

**The coolant protects the cooling system from freezing, corrosion, cavitation, overheating, etc.**

**It is forbidden to operate the machine without coolant even for a short time.**

**It is forbidden to use a coolant of a different than prescribed specification and base. The engine and the cooling system can get damaged and the warranty lost.**

**Always check the ratio of antifreeze cooling agent in the coolant with a refractometer before the winter season starts.**

## 4.3 Coolant



The coolant specification must meet requirements of:

- SAE J1034
- SAE J814c



**To fill the cooling circuit, use the coolant in the mixing ratio of 50 % / 50 % with high-quality water (thermal protection up to -37 °C).**

**Change the coolant every 2 years at the latest.**

### Water quality

Do not use hard water with a higher content of calcium and magnesium, which brings calculus formation, and with a higher content of chlorides and sulphates, which causes corrosion.

The maximum content of compounds of calcium and magnesium is 170 milligrams – hardness of water.

The maximum content of compounds of chlorine is 40 milligrams.

The maximum content of compounds of sulphur is 100 milligrams.

### Note

The machines are filled with a cooling solution with the Bantleon Avia Antifreeze NG coolant, specification SAE J 1034 at the manufacturer's during the production.

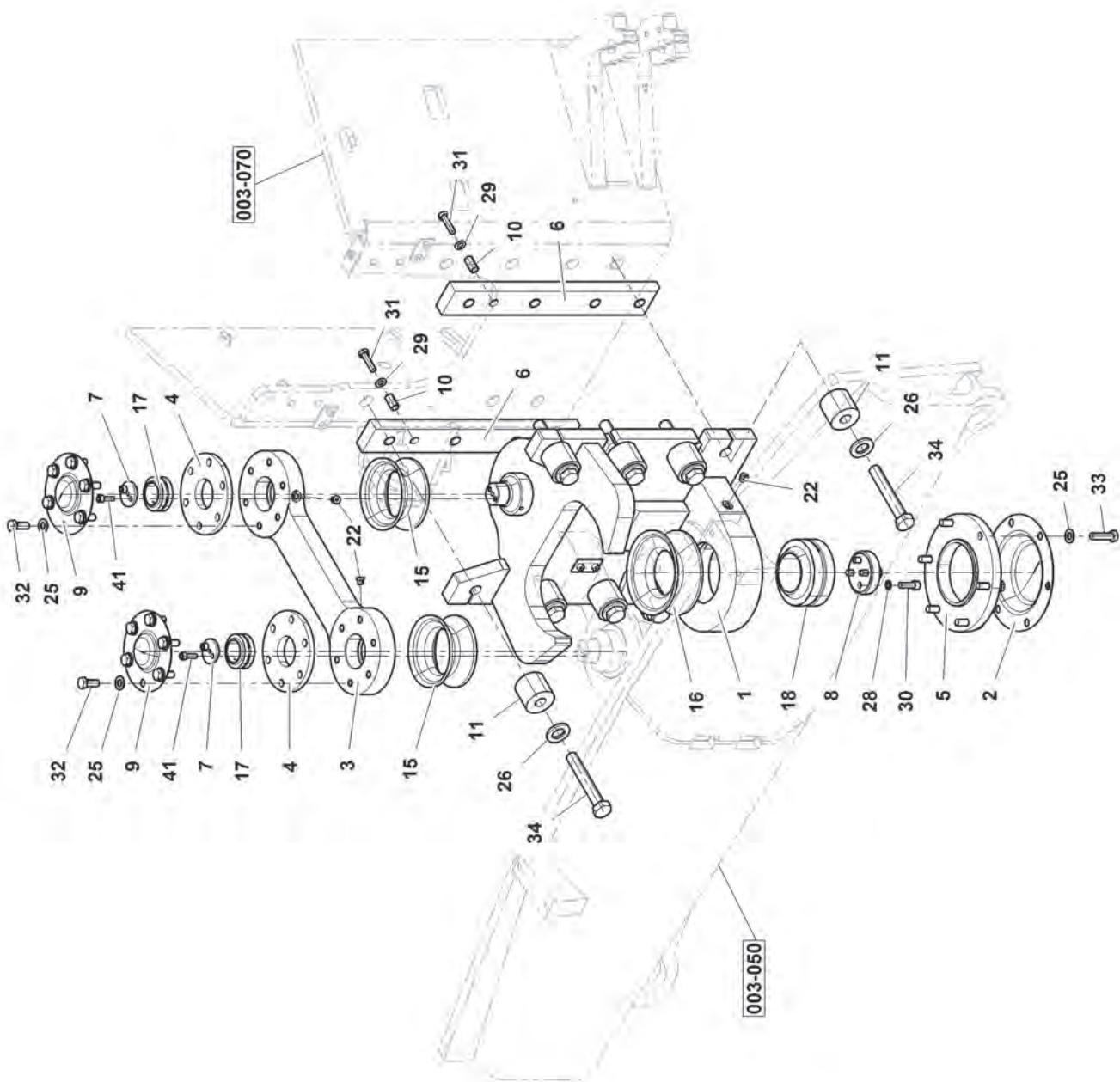
It is a coolant based on monoethyleneglycol containing silicates. It does not contain phosphates, nitrates, amines and borates.

There is an Avia NG label placed at the point to fill the coolant into the machine.

### Safety instructions:

- 1) **Protect your hands with protective gloves.**
- 2) **In case of ingestion immediately seek medical treatment.**
- 3) **In case of contact with skin or clothing immediately wash the affected area with clean water.**
- 4) **Do not mix different types of coolants. The mixture can cause a chemical reaction with formation of harmful substances.**

003-064



### 5.6.4 Hydraulic oil filter replacement

Remove the filter.



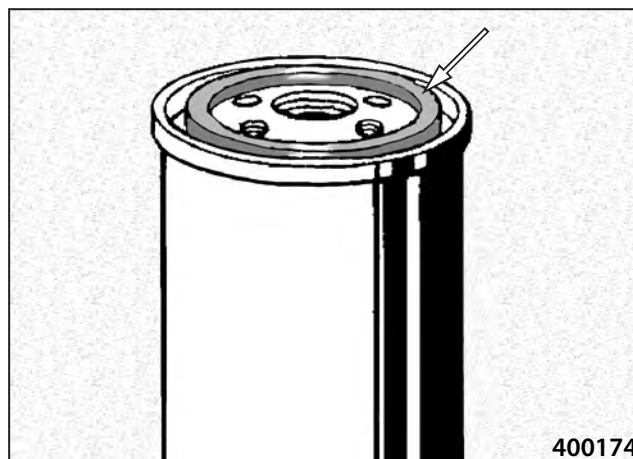
Clean the seating surface underneath.



Check the seal ring for condition.

Lubricate the ring with clean oil.

Mount the new filter.



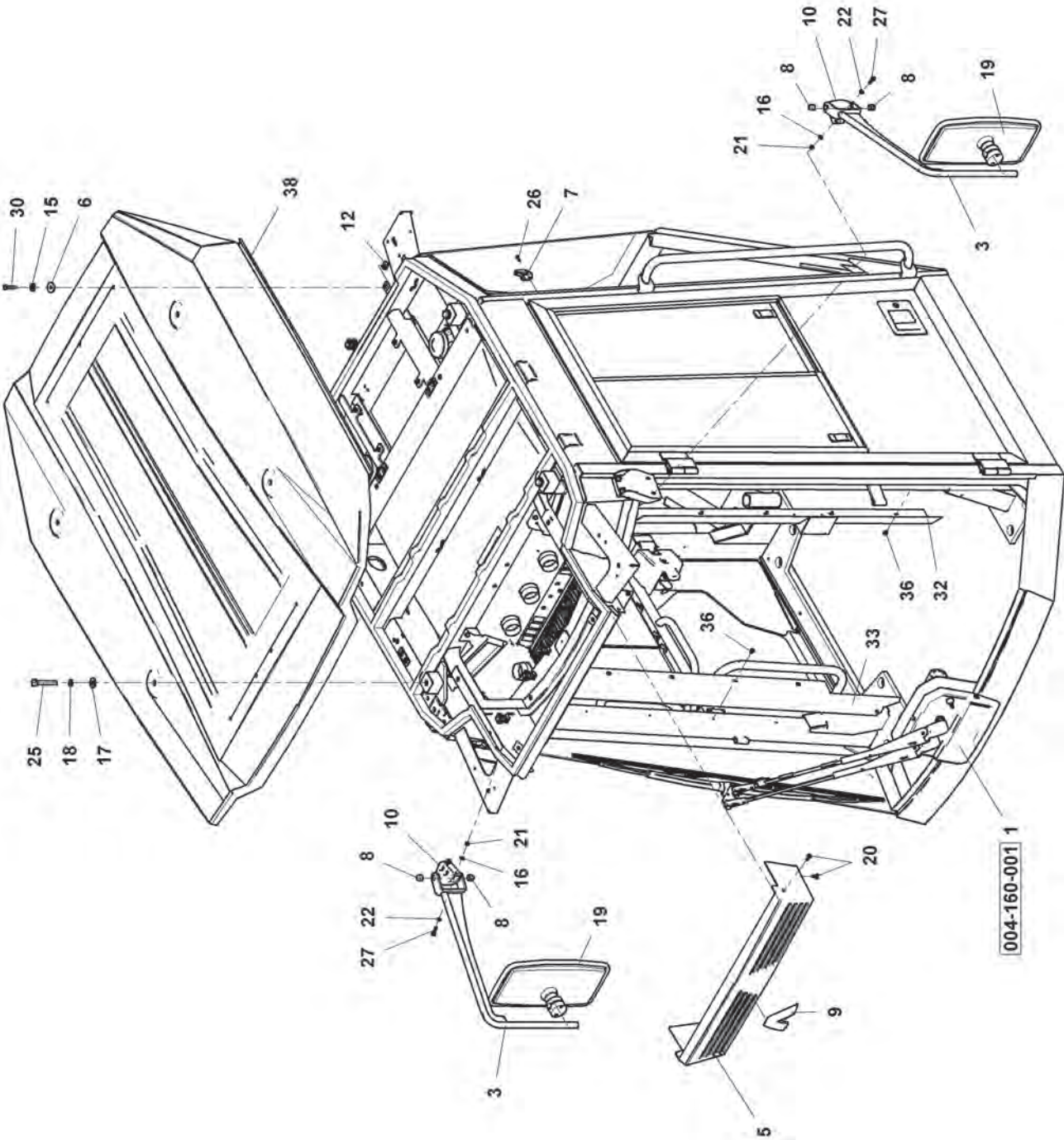
**Always change the oil and replace the filter when inner parts of the units (hydraulic motors, hydraulic generators) were destroyed, or after a major repair of the hydraulic system. Clean and rinse out the hydraulic tank before mounting the new unit and refill with oil. When the engine is running at a higher speed, test functions of the machine. Check for leakage.**

**Use only original filter cartridges according to the spare parts catalogue.**

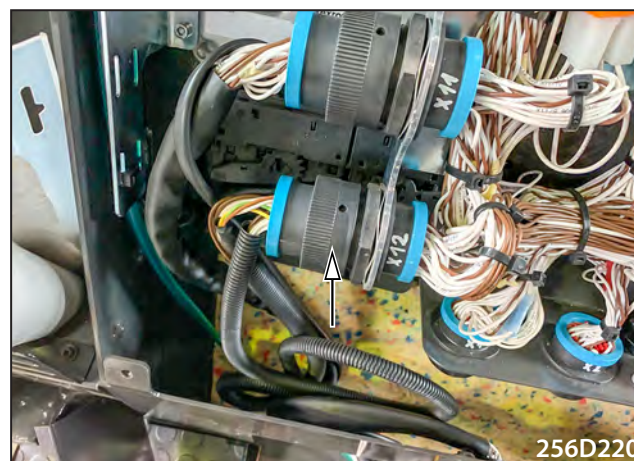


**Used filter cartridges are ecologically hazardous waste – hand them over for disposal.**

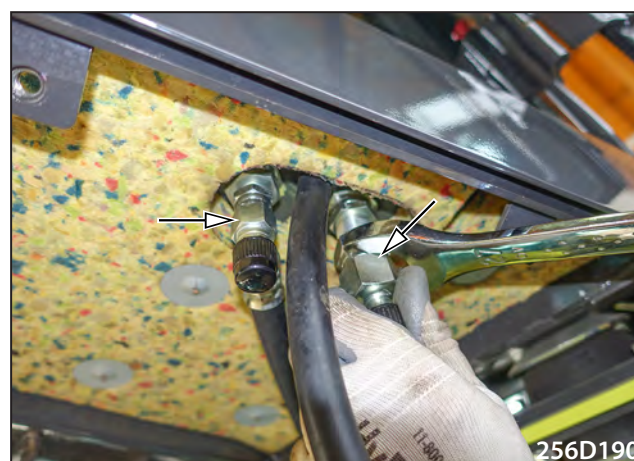
# 004-160



Connect connector X12.



Mount the air-conditioning hoses.



Mount the protective covers of the cab.

Check the hydraulic oil level in the tank and refill to the maximum level if necessary.

Fill the air-conditioning circuit with coolant.



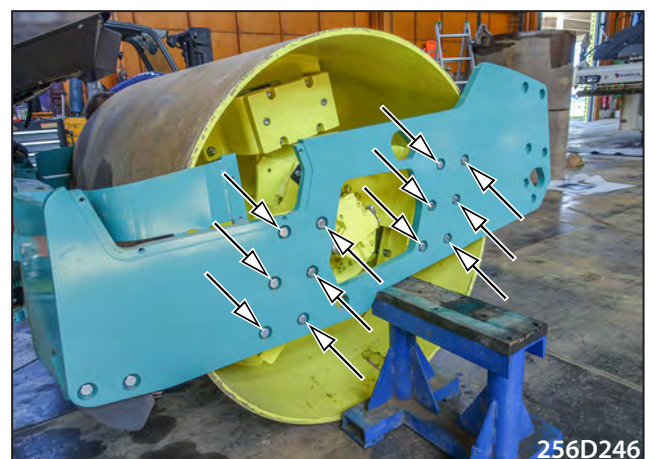
Lift the drum frame so that the drum can slightly touch the ground – or lift it using hydraulic jacks. Support it with solid supports from both sides.



Secure the drum against accidental movement using wedges.



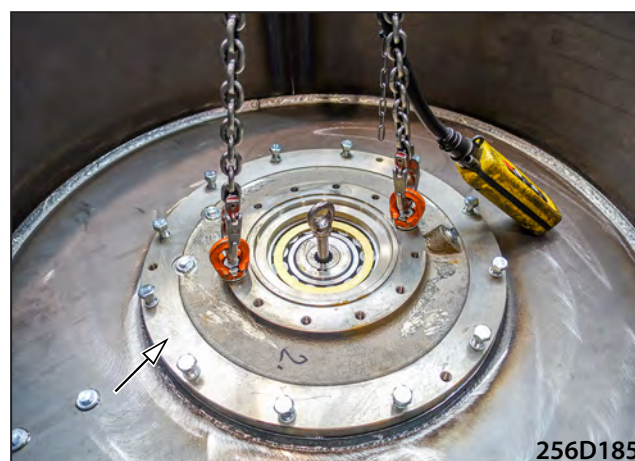
Remove the screws of the bracket on both sides of the machine.



Mount the vibrator to the drum.



Mount the vibrator cover. Secure the screws with the Loxeal 58-11 adhesive.



After mounting the covers, test the bearings of both vibrators for axial clearance of 1.5–2.5 mm.



## **10 Rear axle**

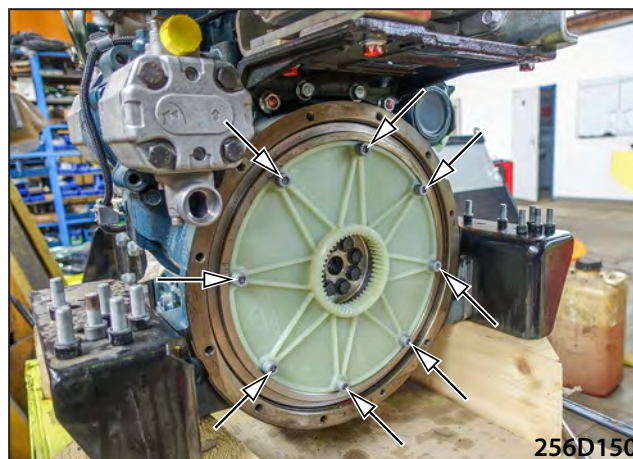
Remove the coupling from the shaft of the travel pump.



Remove the flange.



Remove the coupling carrier.



## Installation

Mount the coupling carrier.

Bond the screws using the adhesive.



**11.2.4 Brake block replacement**

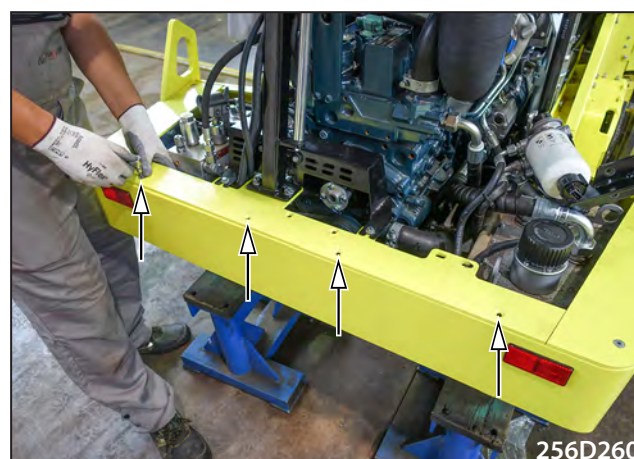
**Removal**

Remove the holder with the fuel pre-filter.



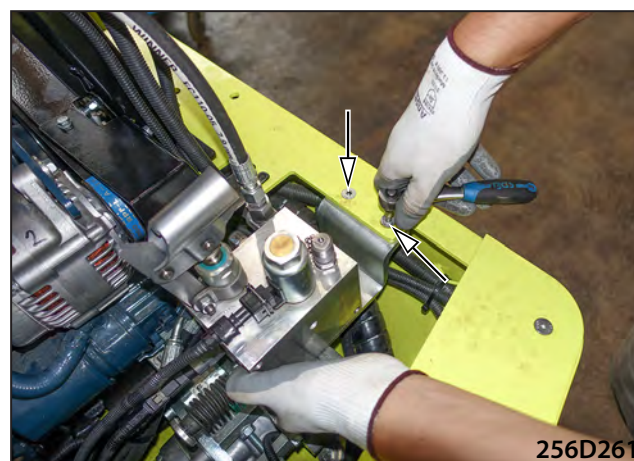
256D259

Remove the screed on the rear frame.



256D260

Remove the holder of the brake block.

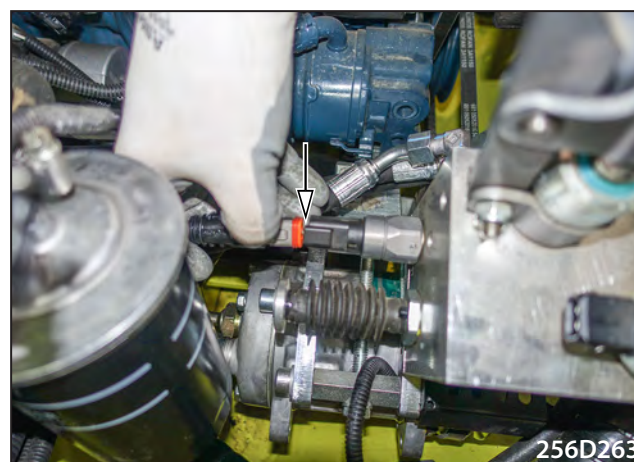


256D261

Disconnect the brake block connectors.



256D262



256D263

CLICK HERE TO **DOWNLOAD** THE COMPLETE MANUAL

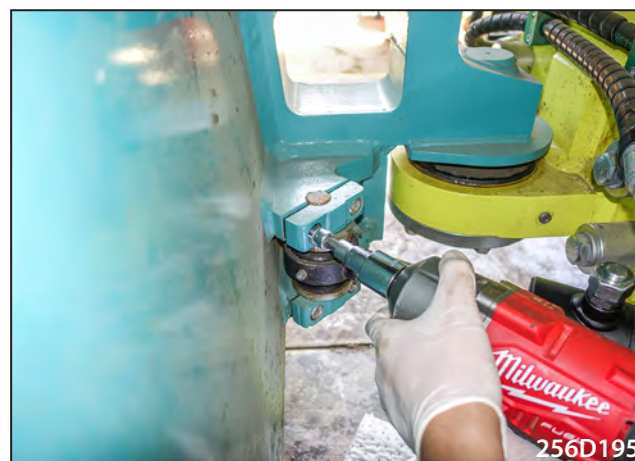
- Thank you very much for reading the preview of the manual.
- You can download the complete manual from: [www.heydownloads.com](http://www.heydownloads.com) by clicking the link below



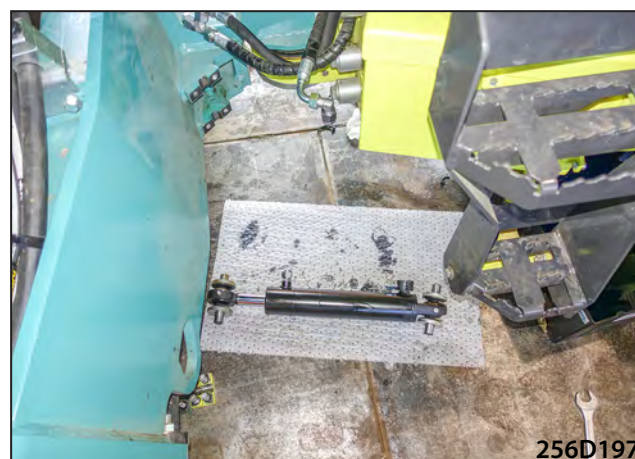
- Please note: If there is no response to CLICKING the link, please download this PDF first and then click on it.

CLICK HERE TO **DOWNLOAD** THE COMPLETE MANUAL

Remove the screws of the linear hydraulic motor attachment and take out the sleeves.



Insert the piston rod of the hydraulic motor, take out the hydraulic motor and lay it aside.



Connect the connector of the steering column.



Mount the screws of the steering column attachment.



Mount the rubber seal of the steering column.



Mount the cover of the steering column.

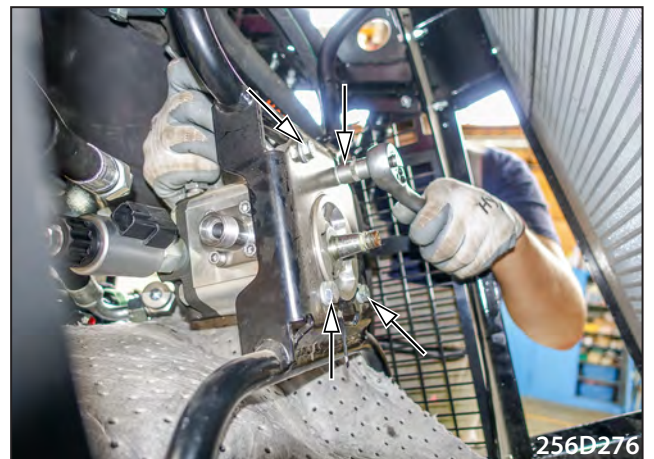


Take out the cooling hydraulic motor.



**Installation**

Insert the hydraulic motor and mount it using screws.

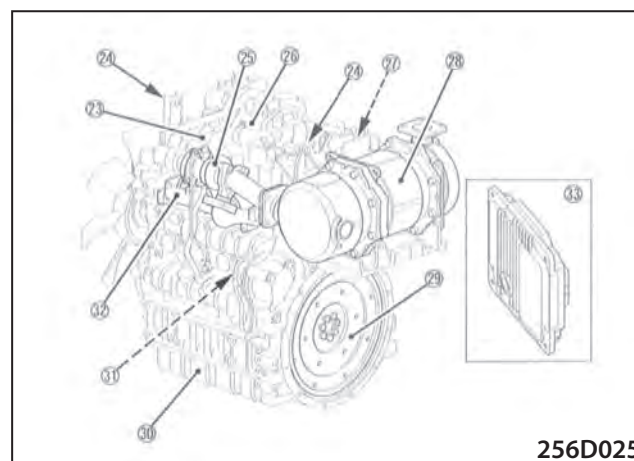


Mount the hydraulic hoses on the cooling hydraulic motor.



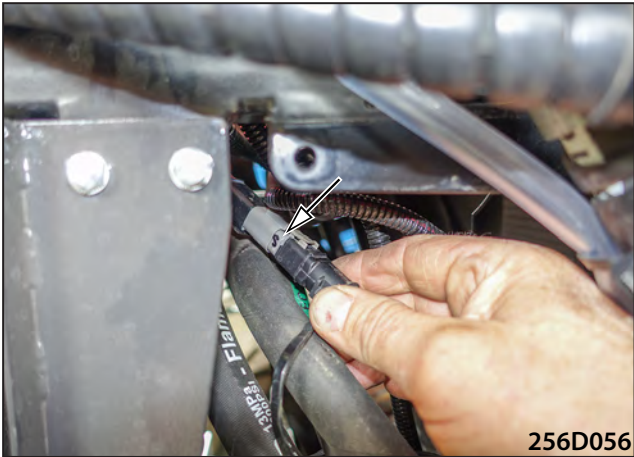
## Left side view

- 18. Engine oil dipstick
- 19. Feed pump
- 20. NO sensor
- 21. Injection
- 22. Sucked air throttle
- 23. Engine head cover
- 24. Lifting lug
- 25. Turbocharger
- 26. EGR cooler
- 27. Boost sensor
- 28. Diesel particulate filter (DPF)
- 29. Flywheel
- 30. Oil tank
- 31. G sensor
- 32. Exhaust piping
- 33. ECU engine control unit



256D025

Disconnect the connectors.



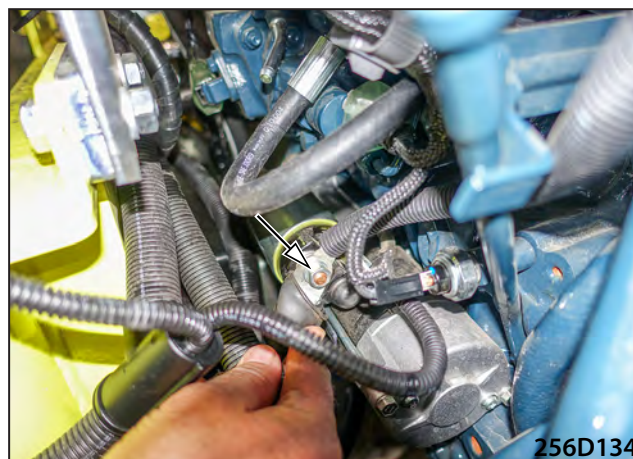
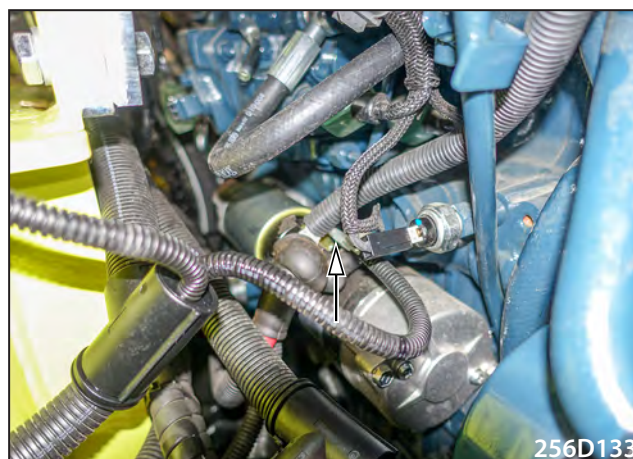
Remove the cooler and put it aside.



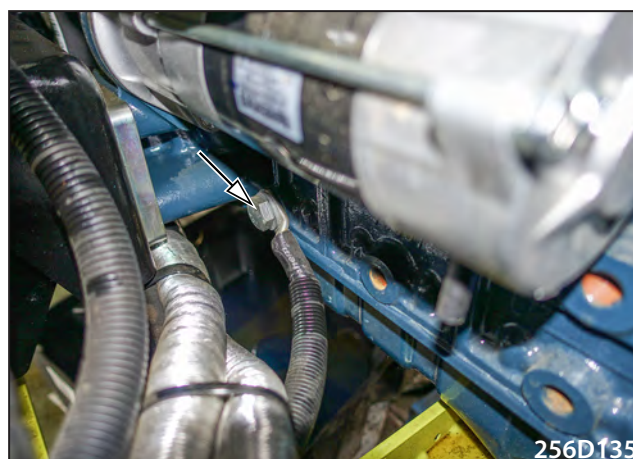
Disconnect connector of the alternator.



Disconnect the wiring from the starter.



Disconnect the grounding point of the engine.



## 17.4 Calibration and setting

### 17.4.1 Pump current calibration

Pump current calibration may help in the following problems:

The machine jerkily stops/starts

When changing a direction, the machine stops for a longer time.



**Calibrate the pump current only if really necessary.**

**If the calibration is performed incorrectly, it may result in significant worsening of machine behaviour while driving.**

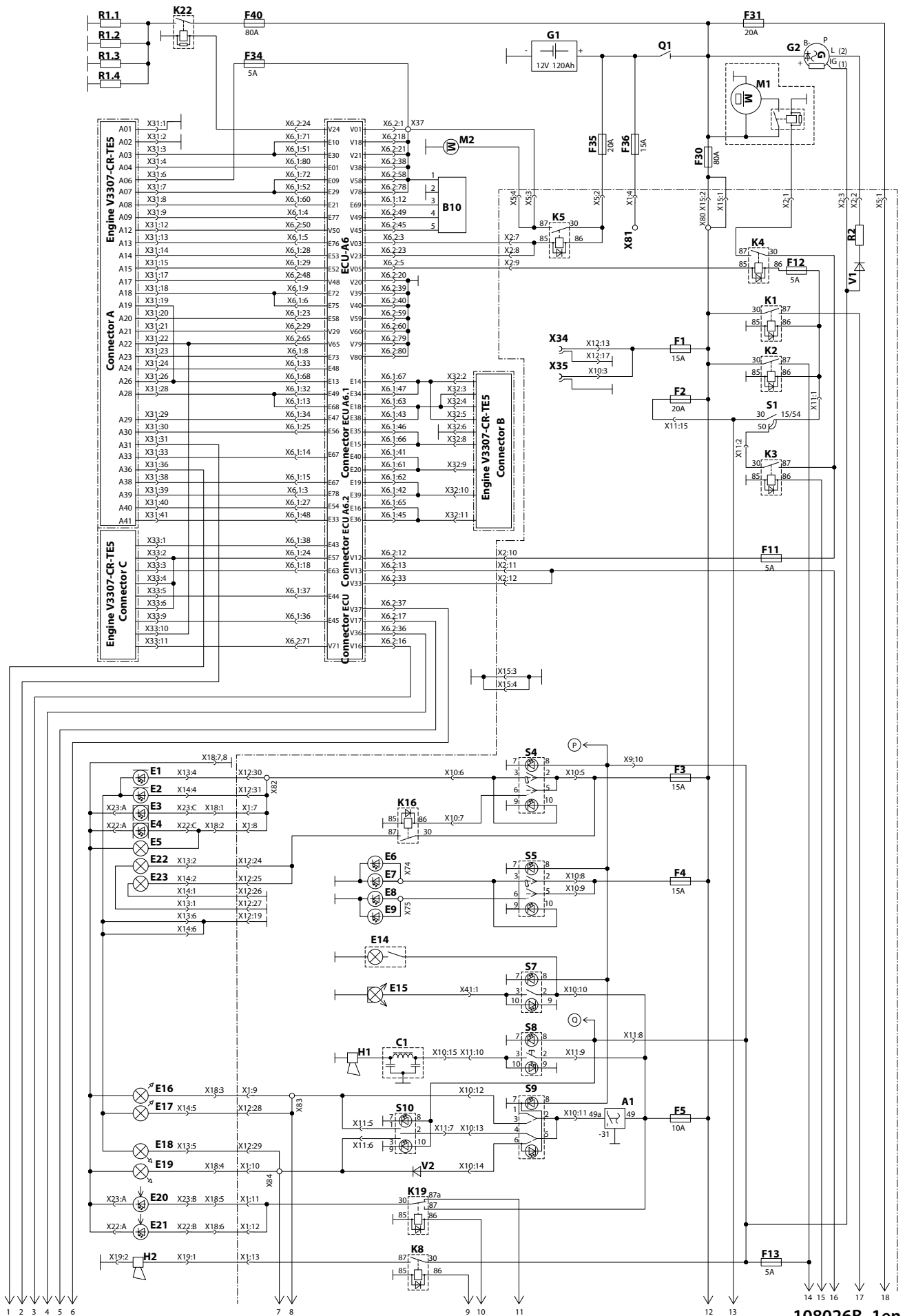
---

#### 17.4.1.1 Required material

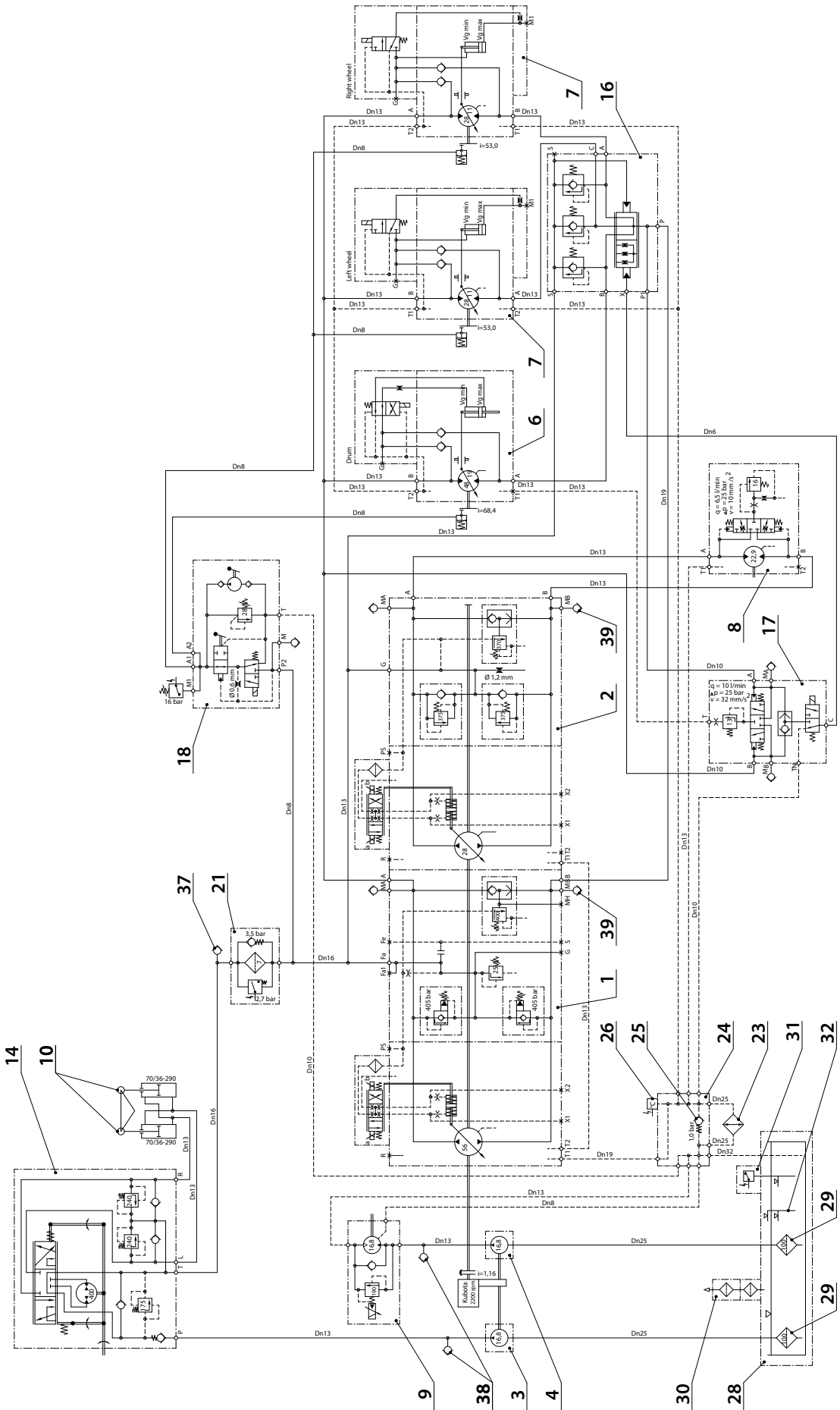
Bodas software

**18.1.1.6 System errors**

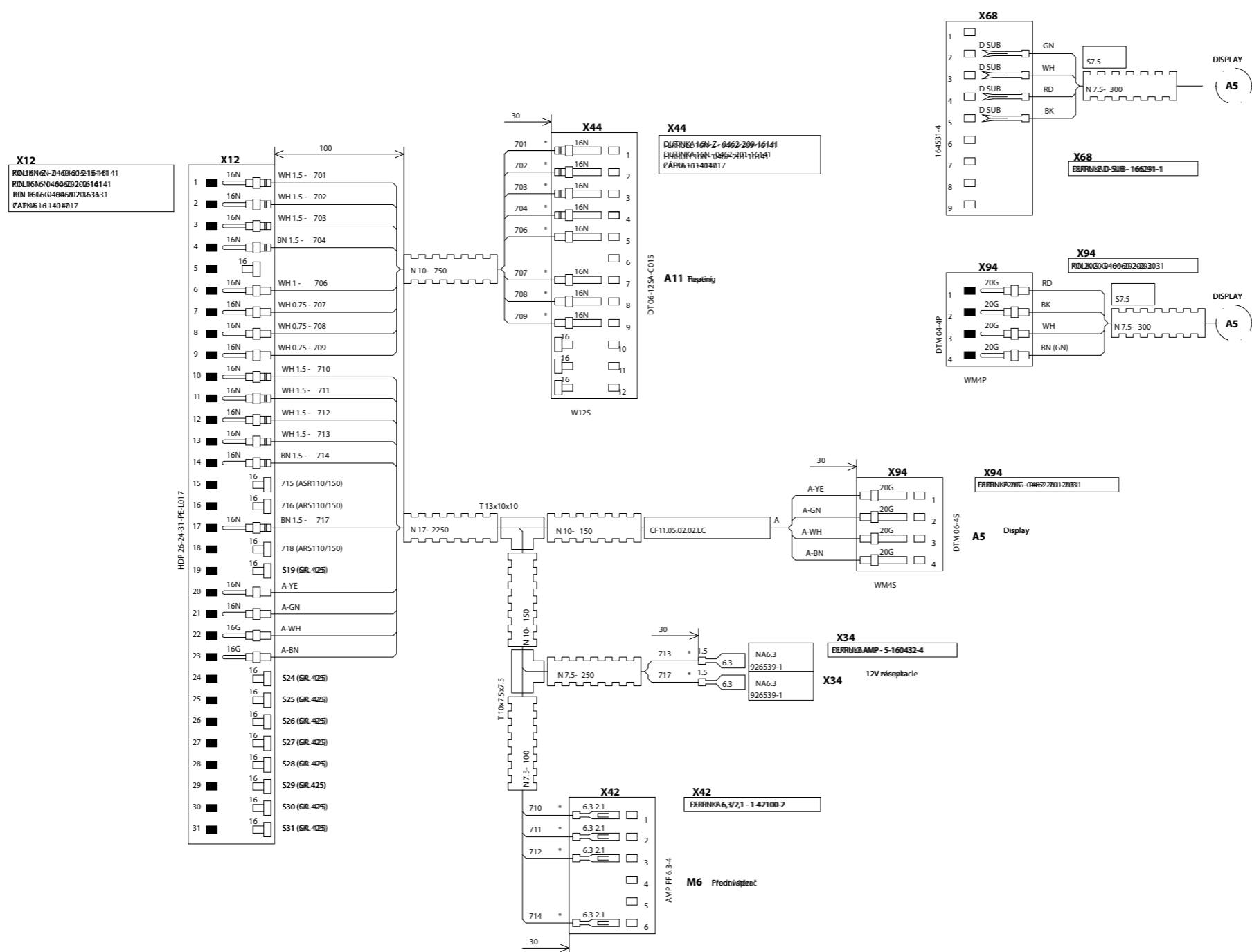
<b>Error number BODAS/HEX</b>	<b>Error number SPN/DEC/Display</b>	<b>Name</b>	<b>Description</b>	<b>Saved</b>	<b>Only the active are displayed</b>
9000	36864	pwrn supply VB low	Low voltage value at the unit power supply.	Yes	Yes
9001	36865	pwrn supply VSS	Low level of input power supply	Yes	Yes
9002	36866	pwrn hwmonitor 1	HW error during self-test.	Yes	Yes
9003	36867	pwrn sequence - startcondition	General error during self-test.	Yes	Yes
9005	36869	pwrn engine speed	Low Diesel engine speed.	Yes	Yes
9006	36870	pwrn hwmonitor 2	HW error during self-test.	Yes	Yes
9007	36871	pwrn sequence - lmobilizer	Active immobilizer.	Yes	Yes
900A	36874	pwrn safout cable brake	Error at the safety outputs, disconnecting.	Yes	Yes
900B	36875	pwrn safout short circuit	Error at the safety outputs, short-circuit.	Yes	Yes
9010	36880	pwrn powerswitch 1	Error in switching the output stage 1.	Yes	Yes
9011	36881	pwrn powersup- ply	Power supply error.	Yes	Yes
9012	36882	pwrn powerswitch 2	Error in switching the output stage 2.	Yes	Yes
9013	36883	pwrn reverse power	Error in connection of the power supply or the sensors.	Yes	Yes
9014	36884	pwrn emergency stop	Emergency pushbutton.	Yes	Yes
9015	36885	pwrn Safety input error	Error in the power supply of the safety outputs.	Yes	Yes
9016	36886	pwrn safout una- vailable	The safety outputs are out of order.	Yes	Yes



108026B\_1en

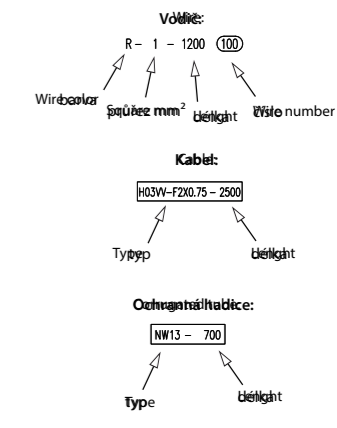


108072en



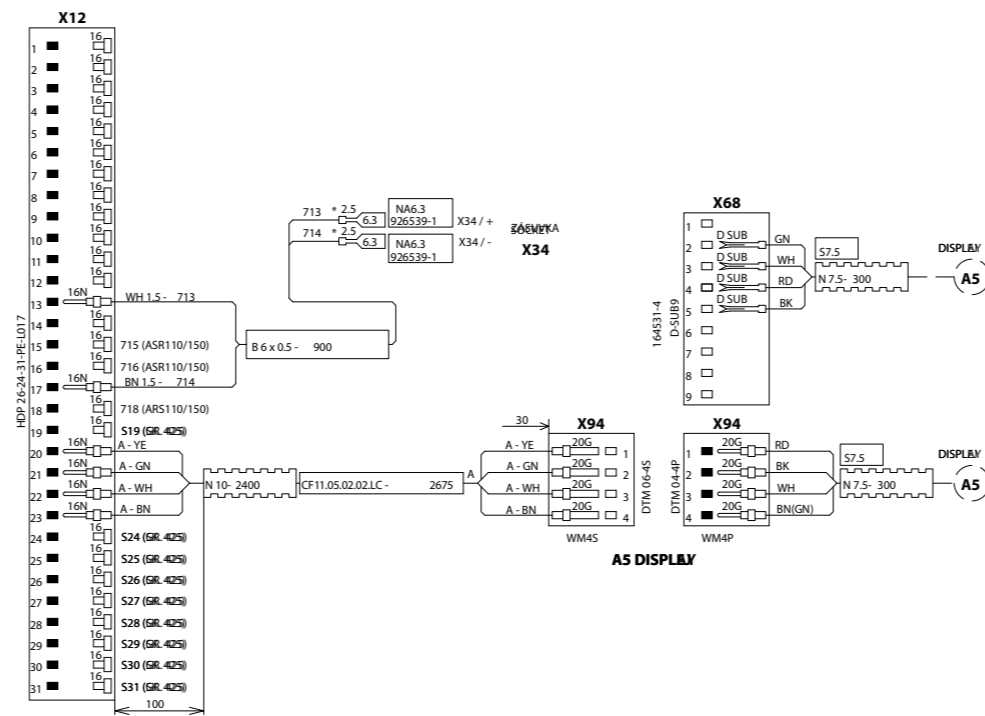
**CABLE HARNESS LEGEND:**

- Faston
- Ring connector
- Diode connector
- Splice connector
- Contact
- Solder plug
- Wire seal
- Mat cut
- Insulation sleeve
- Sleeve
- Reducer
- Clamp
- Cable tie
- End view of SEM straight
- Fastener factor
- Helical cable
- Helical cable
- Cable connector
- Cable connector



**TABLE OF COLOR SYMBOLS:**

WH	B	Bílá
BK	C	Černá
BN	H	Modrá
BU	M	Modrá
RD	R	Červená
GY	S	Žlutá
YE	Y	Žlutá
GN	Z	Zelená



CABLE HARNESS LEGEND:

- Fastom
  - Ring connector
  - Durable connector
  - Splicing sleeve
  - Contact
  - Soldering plug
  - Single wire seal
  - Mat cut
  - No.6.3 insulation sleeve
  - Sijona
  - Redukce
  - Clímka
  - Ovládací tlačítko
  - End of cable and SEM straight
  - Fasten connector
  - Běhovámecháníka
  - Běhovámecháníka
  - 1 and 2 pin connectors
  - Plug connector
- VÝŠKA:**  
 R - 1 - 1200 (100)  
 Wire diameter, square mm, length, wire number
- Kabel:**  
 H03VV-F2X0.75-2500  
 Type, length
- Ochranná hadička:**  
 NW13 - 700  
 Type, length

TABLE OF COLORS SYMBOLS:

WH	B	Bílá
BK	C	Černá
BN	H	Modrá
BU	M	Modrá
RD	R	Červená
GY	S	Žlutá
YE	Y	Žlutá
GN	Z	Zelená
VT	-	Violetá
OG	-	Oranžová

CLICK HERE TO **DOWNLOAD** THE COMPLETE MANUAL

- Thank you very much for reading the preview of the manual.
- You can download the complete manual from: [www.heydownloads.com](http://www.heydownloads.com) by clicking the link below



- Please note: If there is no response to CLICKING the link, please download this PDF first and then click on it.

CLICK HERE TO **DOWNLOAD** THE COMPLETE MANUAL