

SERVICE MANUAL

SERVICE MANUAL SECTION

**3200, 4100, 4200, 4300, 4400, 7300, 7400, 7500, 7600, 7700, 8500, 8600,
MXT, RXT Models Built Oct. 1, 2005 to Feb. 28, 2007 — ELECTRICAL
CIRCUIT DIAGRAMS**

Model: 3200

Start Date: 10/01/2005 End Date: 02/28/2007

Model: 4100

Start Date: 10/01/2005 End Date: 02/28/2007

Model: 4200

Start Date: 10/01/2005 End Date: 02/28/2007

Model: 4300

Start Date: 10/01/2005 End Date: 02/28/2007

Model: 4400

Start Date: 10/01/2005 End Date: 02/28/2007

Model: 7300

Start Date: 10/01/2005 End Date: 02/28/2007

Model: 7400

Start Date: 10/01/2005 End Date: 02/28/2007

Model: 7500

Start Date: 10/01/2005 End Date: 02/28/2007

Model: 7600

Start Date: 10/01/2005 End Date: 02/28/2007

Model: 7700

CLICK HERE TO **DOWNLOAD** THE COMPLETE MANUAL

- Thank you very much for reading the preview of the manual.
- You can download the complete manual from: www.heydownloads.com by clicking the link below



- Please note: If there is no response to CLICKING the link, please download this PDF first and then click on it.

CLICK HERE TO **DOWNLOAD** THE COMPLETE MANUAL

1. INSTRUCTIONS AND CHARTS (CHAPTER 1)

1.1. CIRCUIT NUMBER IDENTIFICATION AND LOCATION CHART, P. 1

INTERNATIONAL TRUCK AND ENGINE CORPORATION <small>THIS PRINT IS PROVIDED ON A RESTRICTED BASIS AND IS NOT TO BE USED IN ANY WAY DETRIMENTAL TO THE INTEREST OF INTERNATIONAL TRUCK AND ENGINE CORPORATION.</small>	ELECTRICAL CIRCUIT DIAGRAM CHAPTER 1 CIRCUIT IDENTIFICATION AND LOCATION CHART																																																											
<h4>PREFIX DESIGNATIONS</h4> <table border="1" style="width: 100%; border-collapse: collapse; margin: 10px 0;"> <thead> <tr> <th style="width: 15%;">PREFIX</th> <th>LOCATION</th> </tr> </thead> <tbody> <tr><td>A</td><td>CAB-INSTRUMENT PANEL</td></tr> <tr><td>B</td><td>CAB-DRIVER CONTROL MODULE</td></tr> <tr><td>C</td><td>CAB-HEADER/CLEARANCE LIGHTS</td></tr> <tr><td>D</td><td>CAB-ROOF/REAR PANEL</td></tr> <tr><td>E</td><td>CAB-LEFT DOOR/DOORS</td></tr> <tr><td>F</td><td>CAB-RIGHT DOOR/DOORS.</td></tr> <tr><td>H</td><td>CAB-SLEEPER</td></tr> <tr><td>J</td><td>CAB-DASH (OUTSIDE)</td></tr> <tr><td>K</td><td>ENGINE/RADIATOR</td></tr> <tr><td>L</td><td>TRANSMISSION</td></tr> <tr><td>M</td><td>CHASSIS/FRONT END (CAB DASH PANEL FORWARD)</td></tr> <tr><td>N</td><td>CHASSIS/CENTER SECTION (CAB DASH PANEL TO CAB RR XMBR)</td></tr> <tr><td>P</td><td>CHASSIS/WHEEL BASE SECTION</td></tr> <tr><td>R</td><td>CHASSIS/SUSPENSION/REAR AXLE/AXLES</td></tr> <tr><td>S</td><td>CHASSIS/AF SECTION/STOP/TAIL/TURN LIGHTS</td></tr> </tbody> </table> <h4 style="text-align: center;">CIRCUIT NUMBER AND IDENTIFICATIONS</h4> <table border="1" style="width: 100%; border-collapse: collapse; margin: 10px 0;"> <thead> <tr> <th style="width: 20%;">CIRCUIT NUMBER</th> <th style="width: 10%;">COLOR</th> <th>DESCRIPTION</th> </tr> </thead> <tbody> <tr><td>1</td><td>LT BL</td><td>ALTERNATOR - FIELD</td></tr> <tr><td>2</td><td>RD</td><td>ALTERNATOR - CHARGE</td></tr> <tr><td>3</td><td>DK BL GY</td><td>1708 DATA LINK, SWITCH DATA LINK (+) 1708 DATA LINK, SWITCH DATA LINK (-)</td></tr> <tr><td>4</td><td></td><td>SERIAL/DATA COMMUNICATION J1922</td></tr> <tr><td>5</td><td>YL GN</td><td>DRIVE TRAIN J1939 DATA LINK (+) DRIVE TRAIN J1939 DATA LINK (-)</td></tr> <tr><td>6</td><td>GY</td><td>LOW VOLTAGE ELECTRONIC FEED (9VOLTS)</td></tr> <tr><td>7</td><td>RD</td><td>ALTERNATOR - RESISTANCE</td></tr> <tr><td>8</td><td></td><td></td></tr> </tbody> </table>		PREFIX	LOCATION	A	CAB-INSTRUMENT PANEL	B	CAB-DRIVER CONTROL MODULE	C	CAB-HEADER/CLEARANCE LIGHTS	D	CAB-ROOF/REAR PANEL	E	CAB-LEFT DOOR/DOORS	F	CAB-RIGHT DOOR/DOORS.	H	CAB-SLEEPER	J	CAB-DASH (OUTSIDE)	K	ENGINE/RADIATOR	L	TRANSMISSION	M	CHASSIS/FRONT END (CAB DASH PANEL FORWARD)	N	CHASSIS/CENTER SECTION (CAB DASH PANEL TO CAB RR XMBR)	P	CHASSIS/WHEEL BASE SECTION	R	CHASSIS/SUSPENSION/REAR AXLE/AXLES	S	CHASSIS/AF SECTION/STOP/TAIL/TURN LIGHTS	CIRCUIT NUMBER	COLOR	DESCRIPTION	1	LT BL	ALTERNATOR - FIELD	2	RD	ALTERNATOR - CHARGE	3	DK BL GY	1708 DATA LINK, SWITCH DATA LINK (+) 1708 DATA LINK, SWITCH DATA LINK (-)	4		SERIAL/DATA COMMUNICATION J1922	5	YL GN	DRIVE TRAIN J1939 DATA LINK (+) DRIVE TRAIN J1939 DATA LINK (-)	6	GY	LOW VOLTAGE ELECTRONIC FEED (9VOLTS)	7	RD	ALTERNATOR - RESISTANCE	8		
PREFIX	LOCATION																																																											
A	CAB-INSTRUMENT PANEL																																																											
B	CAB-DRIVER CONTROL MODULE																																																											
C	CAB-HEADER/CLEARANCE LIGHTS																																																											
D	CAB-ROOF/REAR PANEL																																																											
E	CAB-LEFT DOOR/DOORS																																																											
F	CAB-RIGHT DOOR/DOORS.																																																											
H	CAB-SLEEPER																																																											
J	CAB-DASH (OUTSIDE)																																																											
K	ENGINE/RADIATOR																																																											
L	TRANSMISSION																																																											
M	CHASSIS/FRONT END (CAB DASH PANEL FORWARD)																																																											
N	CHASSIS/CENTER SECTION (CAB DASH PANEL TO CAB RR XMBR)																																																											
P	CHASSIS/WHEEL BASE SECTION																																																											
R	CHASSIS/SUSPENSION/REAR AXLE/AXLES																																																											
S	CHASSIS/AF SECTION/STOP/TAIL/TURN LIGHTS																																																											
CIRCUIT NUMBER	COLOR	DESCRIPTION																																																										
1	LT BL	ALTERNATOR - FIELD																																																										
2	RD	ALTERNATOR - CHARGE																																																										
3	DK BL GY	1708 DATA LINK, SWITCH DATA LINK (+) 1708 DATA LINK, SWITCH DATA LINK (-)																																																										
4		SERIAL/DATA COMMUNICATION J1922																																																										
5	YL GN	DRIVE TRAIN J1939 DATA LINK (+) DRIVE TRAIN J1939 DATA LINK (-)																																																										
6	GY	LOW VOLTAGE ELECTRONIC FEED (9VOLTS)																																																										
7	RD	ALTERNATOR - RESISTANCE																																																										
8																																																												
<table border="1" style="width: 100%; border-collapse: collapse;"> <tr> <th style="width: 8%;">CHK</th> <th style="width: 10%;">DATE</th> <th style="width: 25%;">CHANGE</th> <th style="width: 8%;">REV</th> <th style="width: 12%;">REFERENCE</th> <th style="width: 10%;">DRAWN</th> <th style="width: 37%;">NAME</th> </tr> <tr> <td>CNA</td> <td>22DEC05</td> <td>REVISED COLOR CHART</td> <td>C</td> <td>59581V</td> <td>WOODLCK</td> <td>42/43/44/85/8800 & 73/74/7500 CIRC DIAGRAMS</td> </tr> <tr> <td></td> <td></td> <td></td> <td></td> <td></td> <td>RELEASE NO. 52778H</td> <td>DATE 09AUG00 PART NO. AE08-52365 SHEET 01</td> </tr> </table>		CHK	DATE	CHANGE	REV	REFERENCE	DRAWN	NAME	CNA	22DEC05	REVISED COLOR CHART	C	59581V	WOODLCK	42/43/44/85/8800 & 73/74/7500 CIRC DIAGRAMS						RELEASE NO. 52778H	DATE 09AUG00 PART NO. AE08-52365 SHEET 01																																						
CHK	DATE	CHANGE	REV	REFERENCE	DRAWN	NAME																																																						
CNA	22DEC05	REVISED COLOR CHART	C	59581V	WOODLCK	42/43/44/85/8800 & 73/74/7500 CIRC DIAGRAMS																																																						
					RELEASE NO. 52778H	DATE 09AUG00 PART NO. AE08-52365 SHEET 01																																																						

Figure 1 Circuit Number Identification and Location Chart

1.11. LAMP BULB CHART, P. 11

INTERNATIONAL TRUCK AND ENGINE CORPORATION THIS PRINT IS PROVIDED ON A RESTRICTED BASIS AND IS NOT TO BE USED IN ANY WAY DETRIMENTAL TO THE INTEREST OF INTERNATIONAL TRUCK AND ENGINE CORPORATION.		ELECTRICAL CIRCUIT DIAGRAM CHAPTER 1 LAMP BULB CHART							
BULB APPLICATION	CANDLEPOWER OR WATTS	BULB TRADE NUMBER							
BACK-UP LIGHTS	32 CANDLEPOWER	GE1156							
CLEARANCE & IDENTIFICATION	3 CANDLEPOWER	GE193							
COURTESY LIGHT	3 CANDLEPOWER	GE168							
DOVE LIGHTS	12 CANDLEPOWER	GE561							
FOG LIGHTS	55 CANDLEPOWER	VH550							
HEAD LIGHTS:									
LOW BEAMS	65 WATTS	GE9007							
HIGH BEAMS	65 WATTS	GE9007							
INSTRUMENT CLUSTER:									
GAUGE BACK LIGHT		082S270538-3							
GAUGE WARNING LED (RED)		082S272109-3							
RANGE INHIBIT LED (YELLOW)		082S272109-4							
COLD AMBIENT PROTECTION LED (YELLOW)		082S272109-4							
FUEL FILTER LED (YELLOW)		082S272109-4							
WARN ENGINE LED (YELLOW)		082S272109-4							
STOP ENGINE LED (RED)		082S272109-3							
BRAKE PRESSURE LED (RED)		082S272109-3							
BRAKE FLUID LED (RED)		082S272109-3							
WAIT TO START LED (YELLOW)		082S272109-4							
CHECK TRANSMISSION LED (YELLOW)		082S272109-4							
TRAILER ABS LED (YELLOW)		082S272109-4							
WASHER FLUID LED (YELLOW)		082S272109-4							
LEFT TURN SIGNAL LED (GREEN)		082S272109-2							
TRACTION CONTROL LED (GREEN)		082S272109-2							
WATER IN FUEL LED (YELLOW)		082S272109-4							
PARK FLUID LED LIGHT (RED)		082S272109-3							
CHECK ELECTRICAL SYSTEMS LED (YELLOW)		082S272109-4							
PARK BRAKE LED (RED)		082S272109-3							
CRUISE CTRL ACTIVE LED (GREEN)		082S272109-2							
ANTILOCK BRAKING SYSTEM LED (YELLOW)		082S272109-4							
RIGHT TURN LED (GREEN)		082S272109-2							
COOLANT LEVEL LED (RED)		082S272109-3							
SEAT BELT LED (RED)		082S272109-3							
HIGH BEAM ICON LED (BLUE)		082S272109-5							
CHECK AIR CONDITIONER LED (YELLOW)		082S272109-4							
RETARD OVER HEAT LED (RED)		082S272109-3							
PTO/THROTTLE LED (RED)		082S272109-3							
MAP LIGHT	3 CANDLEPOWER	1816							
SIDE MARKER		2458							
STOP & TURN/TAIL & LICENSE PLATE	32/3 CANDLEPOWER	1157							
TURN SIGNAL/MARKER (FENDER)		3157							
TURN SIGNAL & MARKER LIGHT		2356							
WORK (TRAILER HOOK-UP) LIGHT		4411							
CHK	DATE	CHANGE	REV	REFERENCE	DRAWN	NAME			
PEC	16JAN01	PRODUCTION RELEASE	A	P54304U	U00DLCK	42/43/44/85/8600 & 73/74/7500 CIRC DIAGRAMS			
PEC	18JUN01	REVISED DRWG SHEET.	B	P54634F	P52778H	RELEASE NO.	DATE	PART NO.	SHEET
							20JUN00	AE08-52365	11

Figure 11 Lamp Bulb Chart

2.9. J1939 DATA LINK — MXT, P. 7A

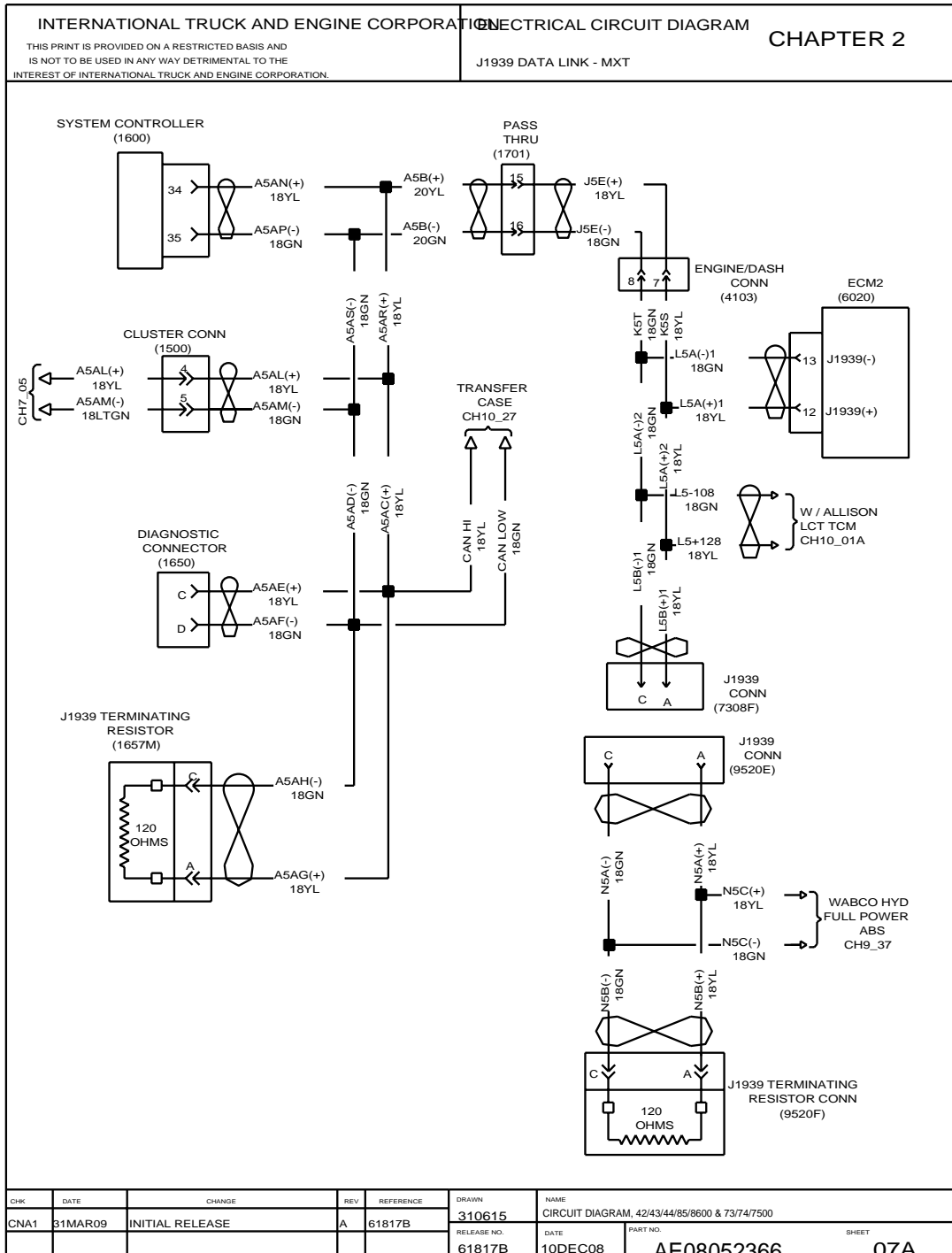


Figure 21 J1939 Data Link — MXT

3.2. CB POWER, P. 2

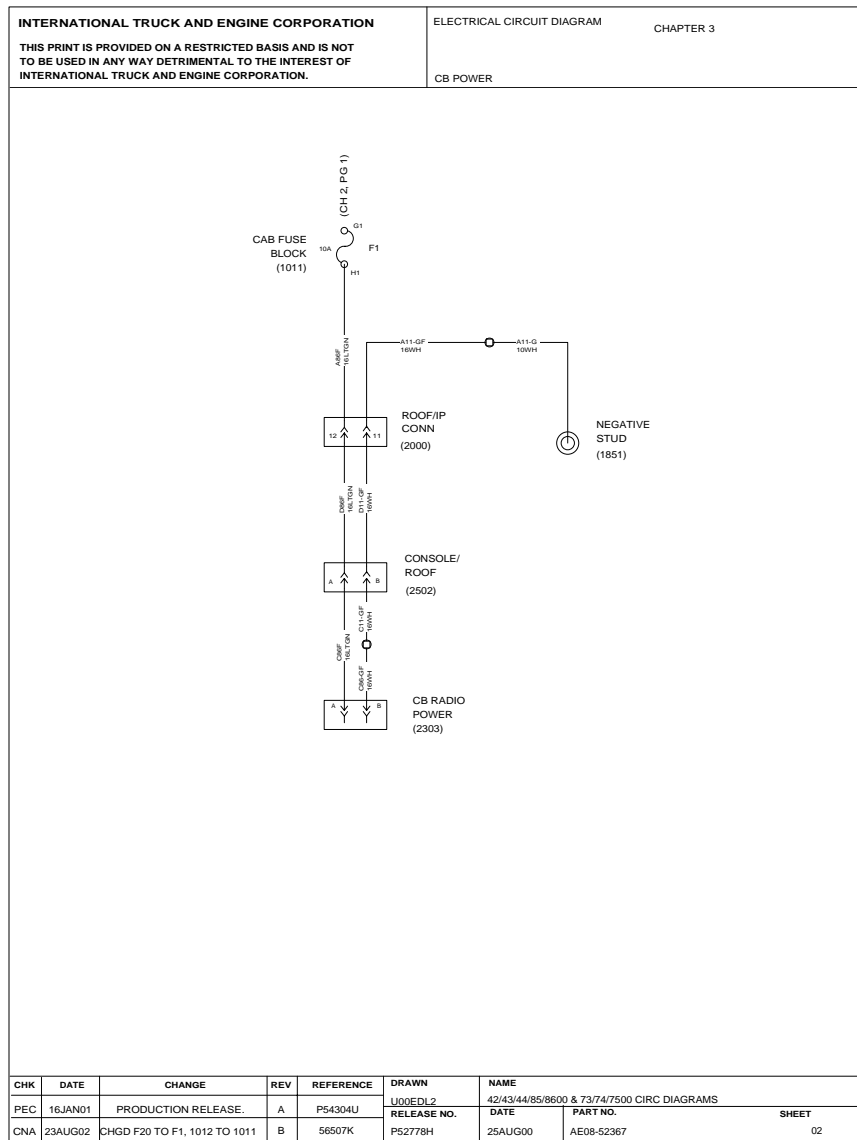


Figure 31 CB Power

3.12. LIGHTED AIR SHIELD, P. 12

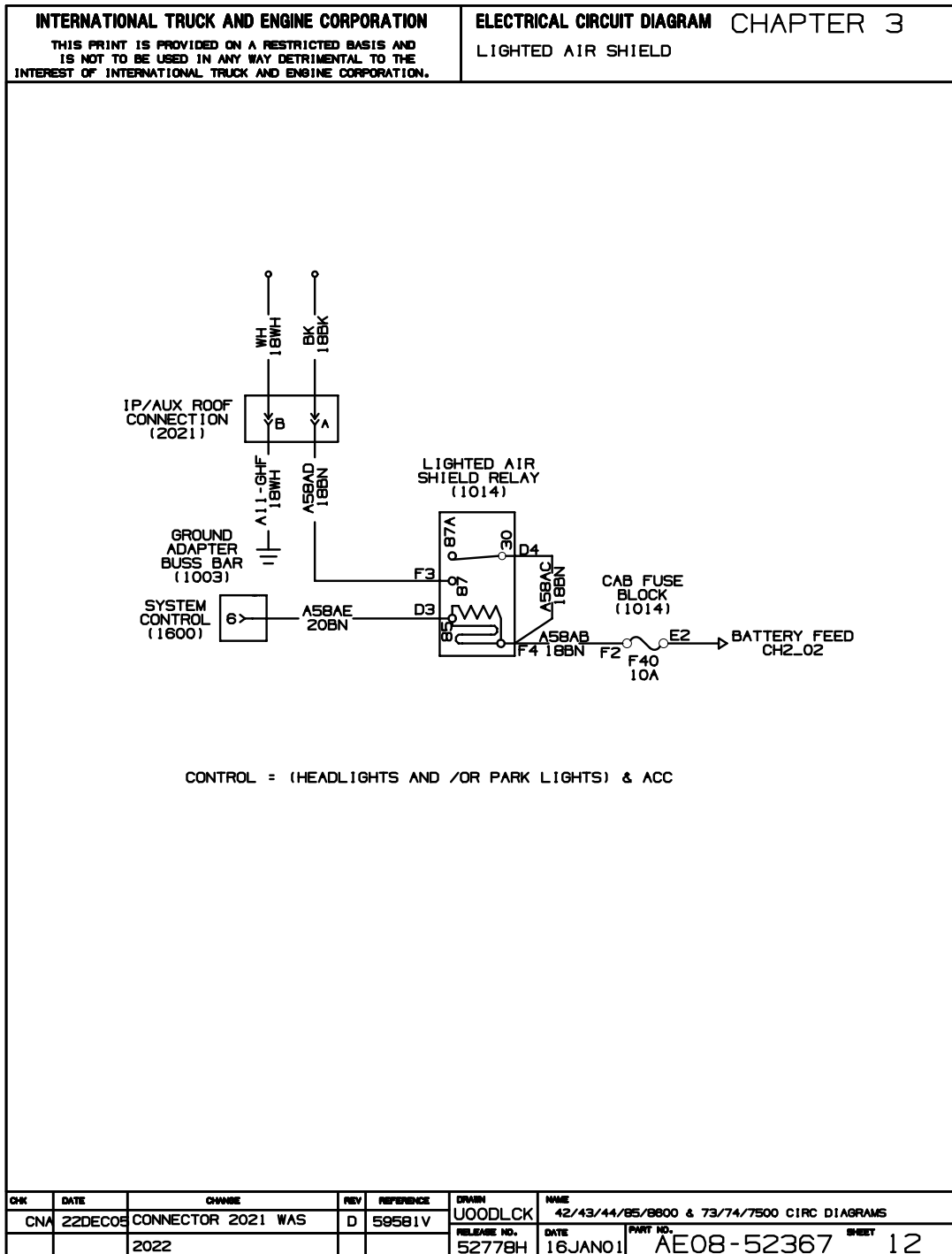


Figure 41 Lighted Air Shield

3.22. TELEMATICS SYSTEM, P. 22

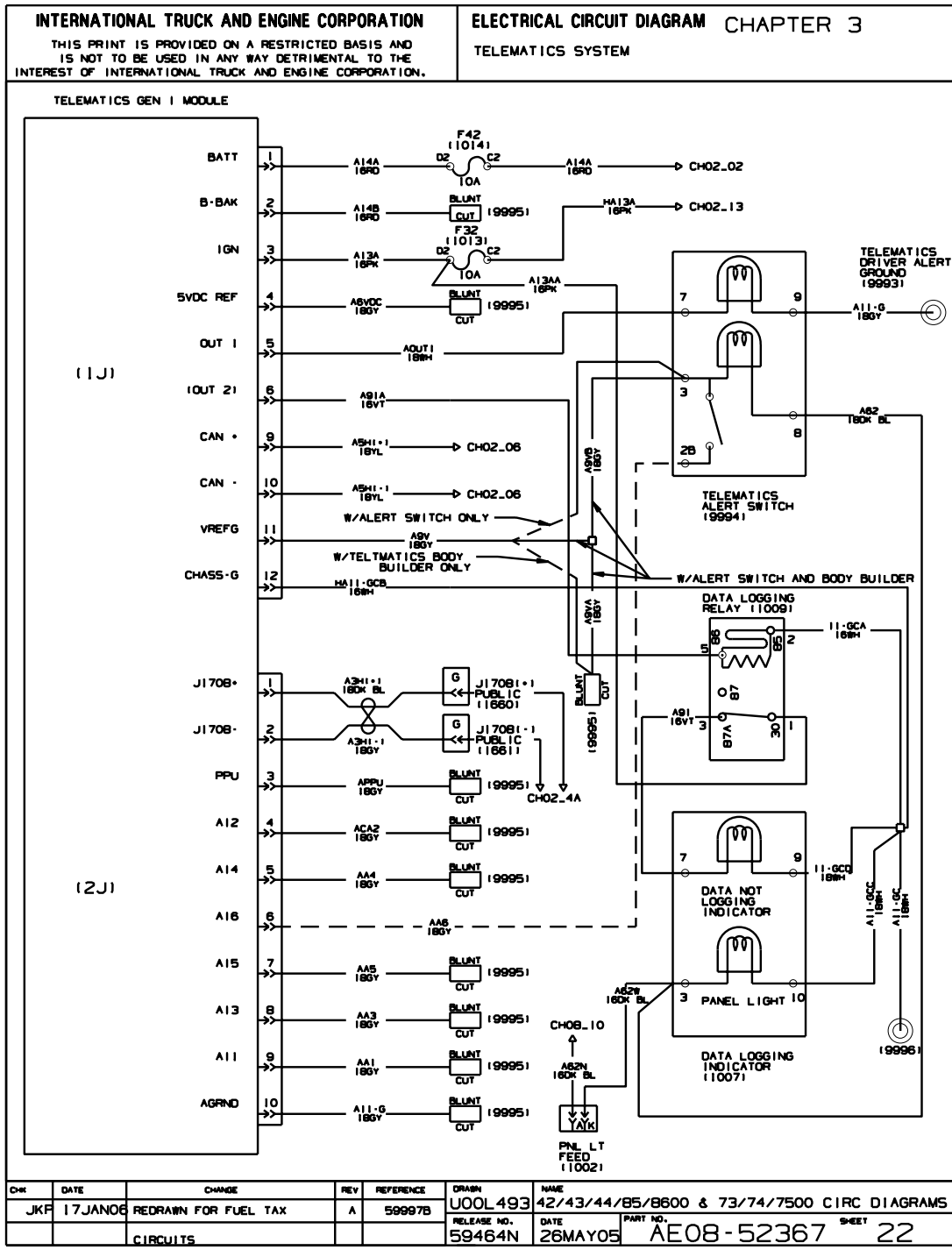


Figure 51 Telematics System

3.32. ENTERTAINMENT SYSTEM — RXT, P. 32

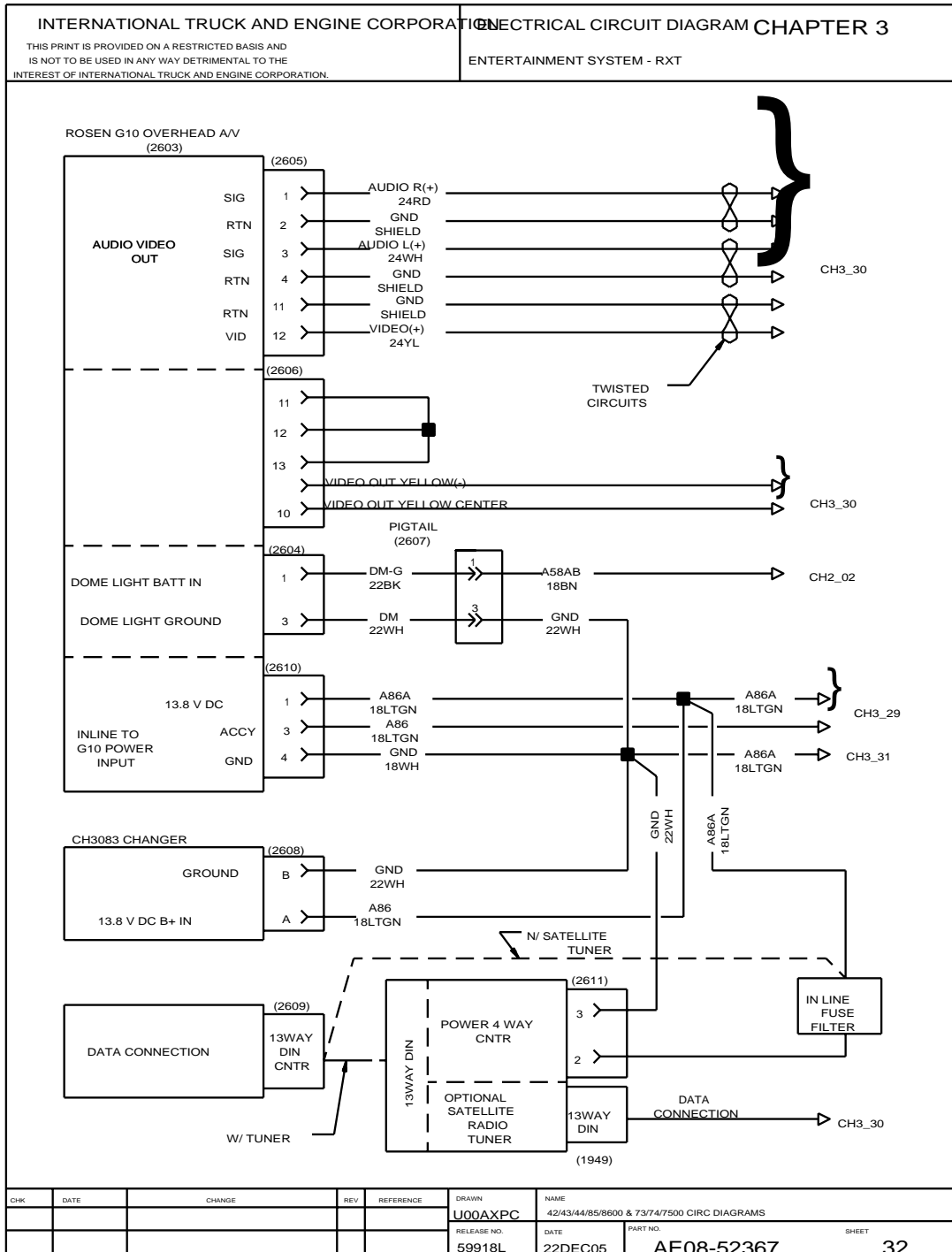


Figure 61 Entertainment System — RXT

4.6. I6 EGR ENGINES WITH AIR START, P. 6

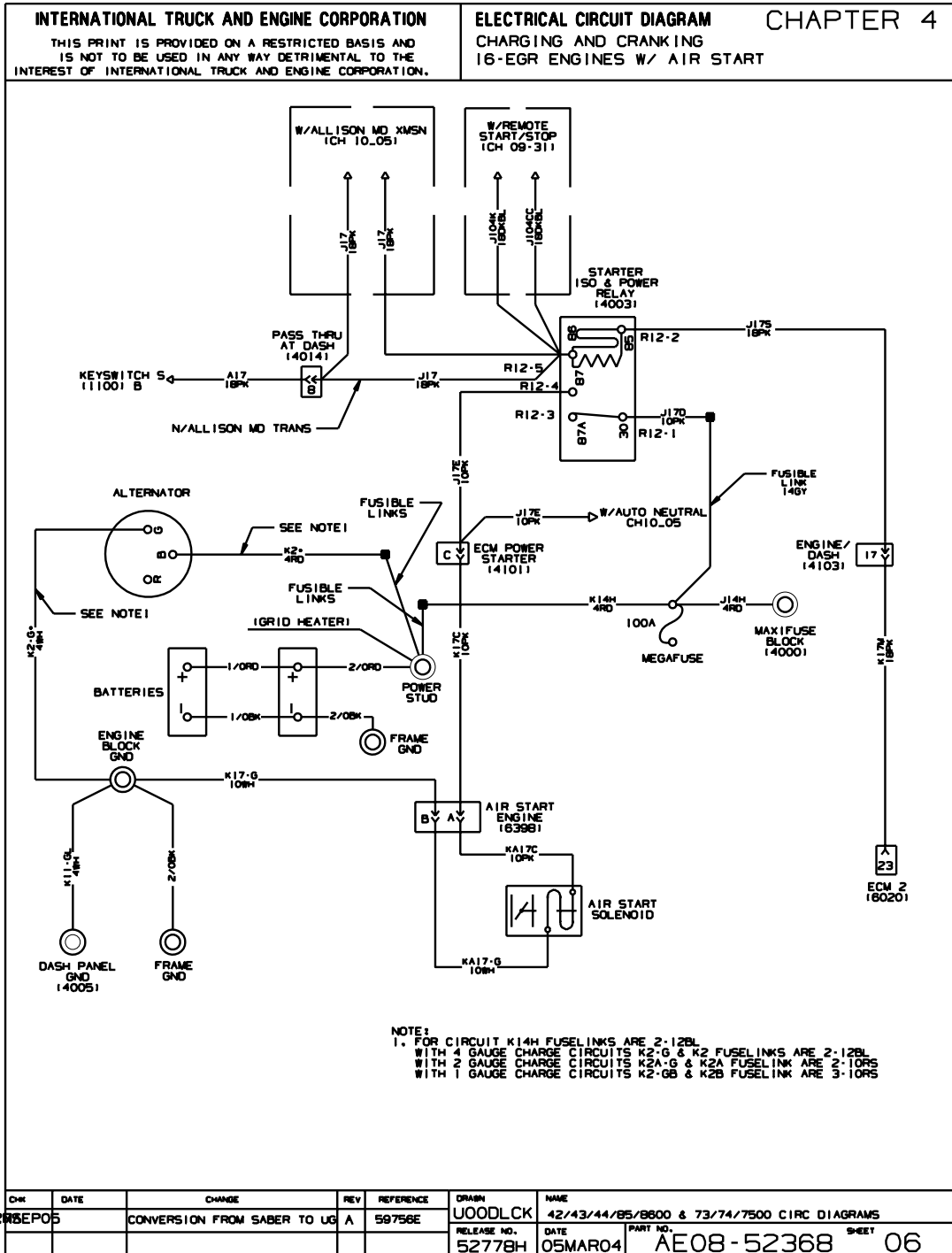


Figure 71 I6 EGR Engines with Air Start

6.3. ELECTRONIC ENGINE CONTROLS, (V8-AVNT) ENGINES, P. 3

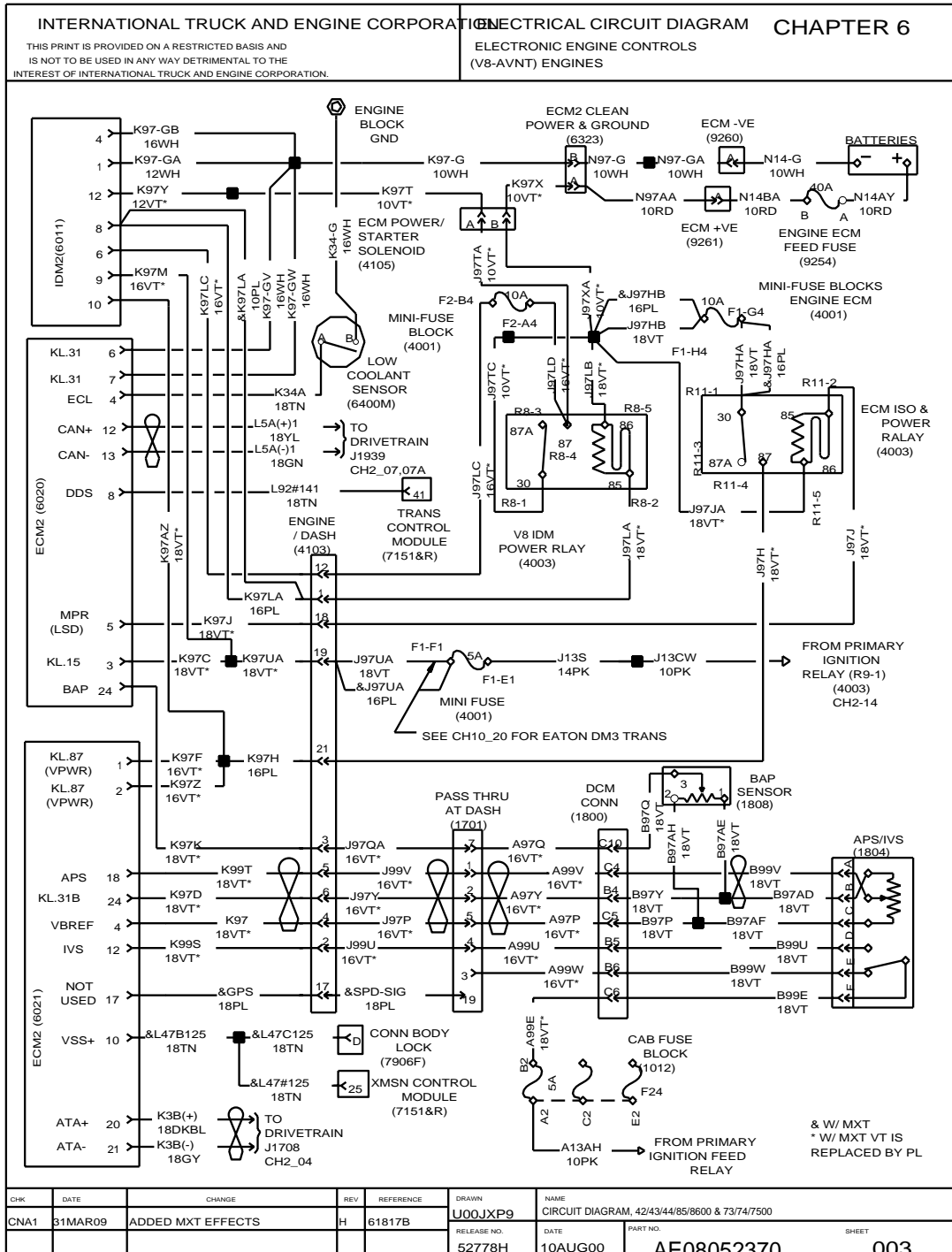


Figure 81 Electronic Engine Controls, (V8-AVNT) Engines

7.3. WARNING LIGHTS CONTROLLED BY ENGINE, TRANSMISSION, ABS CONTROLLER, P. 3

INTERNATIONAL TRUCK AND ENGINE CORPORATION THIS PRINT IS PROVIDED ON A RESTRICTED BASIS AND IS NOT TO BE USED IN ANY WAY DETRIMENTAL TO THE INTEREST OF INTERNATIONAL TRUCK AND ENGINE CORPORATION.				ELECTRICAL CIRCUIT DIAGRAM CHAPTER 7 WARNING LIGHTS CONTROLLED BY ENGINE, TRANSMISSION, ABS CONTROLLER			
THE FOLLOWING WARNING LIGHTS ARE CONTROLLED BY THE ENGINE, TRANSMISSION, OR ABS CONTROLLER OVER THE DATA BUS AND DO NOT HAVE INDEPENDENT CIRCUITRY THAT CAN BE OR NEEDS TO BE SHOWN: DO NOT SHIFT ENGINE (YELLOW LENS) ENGINE (RED LENS) TRAC CTRL CHECK TRANS TRAILER ABS CHECK ELECTR SYS ABS WAIT TO START RETARD OVERHEAT AUTO NEUTRAL OPTIMIZED IDLE							
CHK	DATE	CHANGE	REV	REFERENCE	DRAWN	NAME	
2	05EPO5	CONVERSION FROM SABER TO UG	B	59756E	U00JXP9	42/43/44/85/8600 & 73/74/7500 CIRC DIAGRAMS	
					RELEASE NO.	DATE	
					52778H	20JUN00	
						PART NO.	
						AE08-52371	
						SHEET	
						03	

Figure 91 Warning Lights Controlled by Engine, Transmission, ABS Controller

7.13. FRONT AXLE ENGAGEMENT WARNING LAMP, P. 13

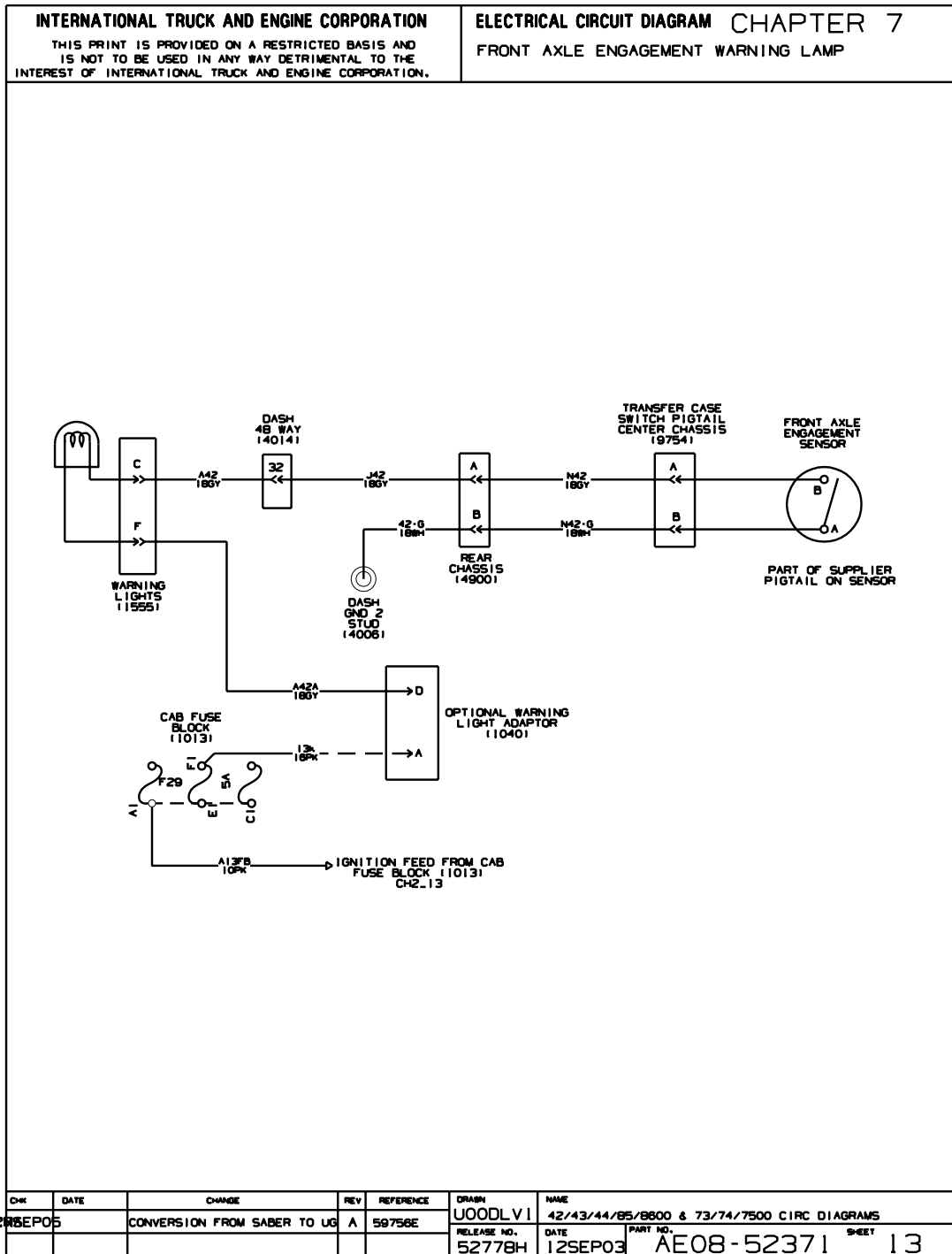


Figure 101 Front Axle Engagement Warning Lamp

8.10. PANEL LIGHTS, P. 10

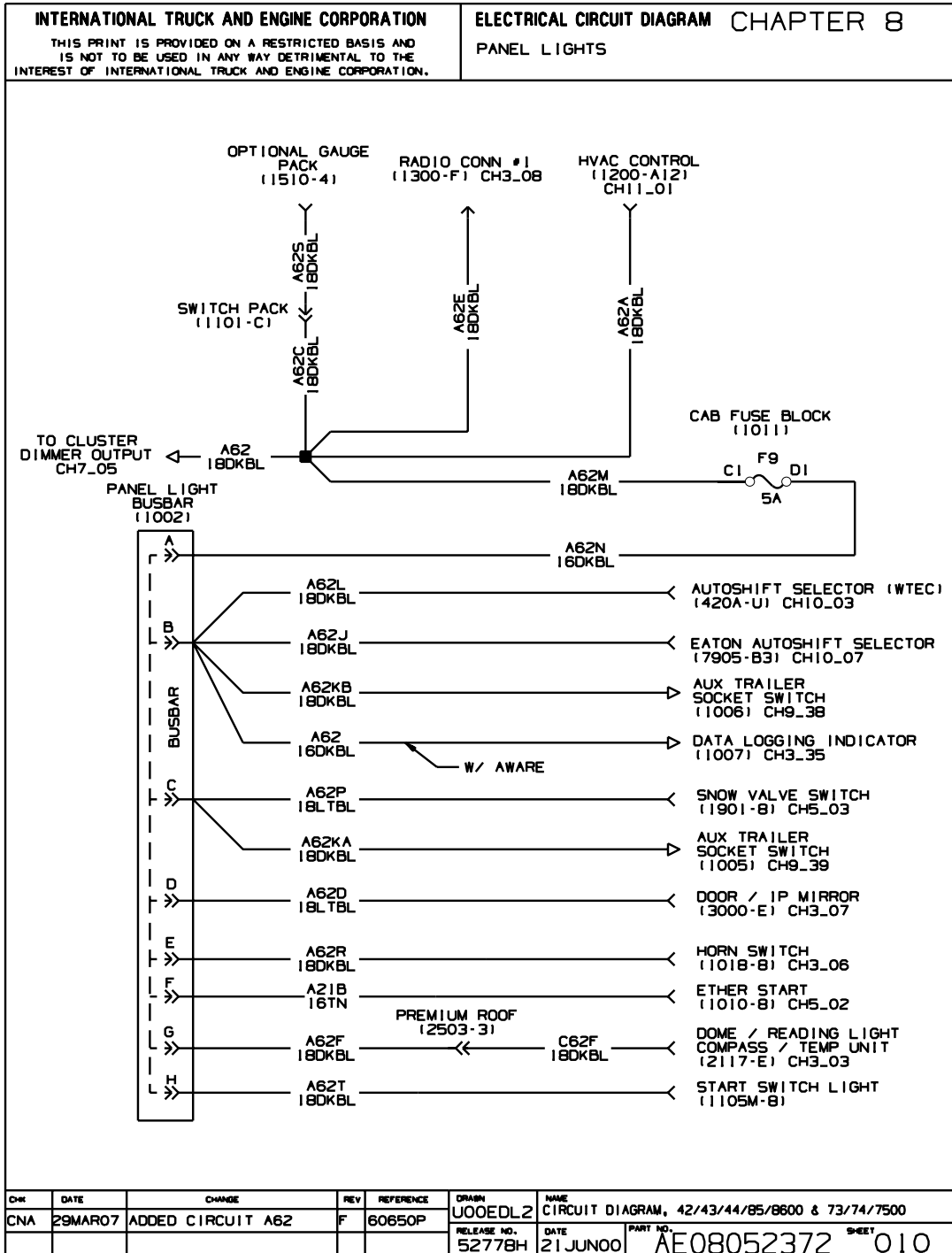


Figure 111 Panel Lights

9.7. TWO SPEED AXLE SWITCH WITH MANUAL TRANSMISSION AND I6 HEUI FUEL HEATER N/WARN LIGHTS, P. 7

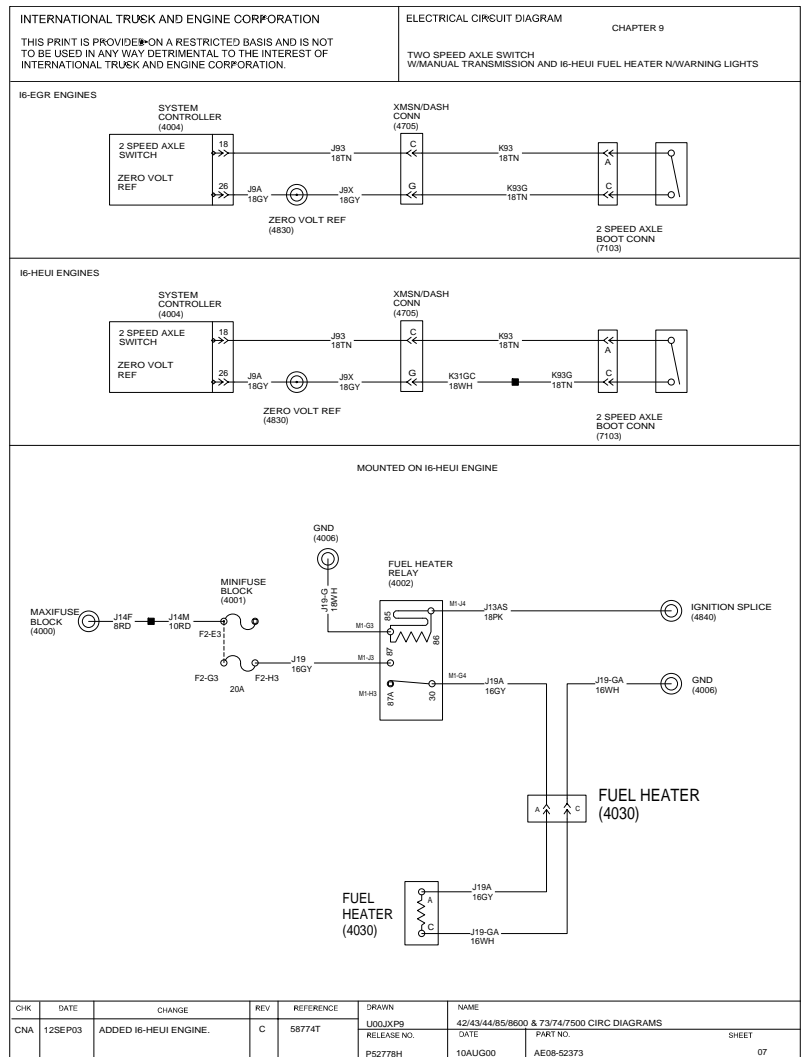


Figure 121 Two Speed Axle Switch With Manual Transmission and I6 HEUI Fuel Heater N/Warn Lights

CLICK HERE TO **DOWNLOAD** THE COMPLETE MANUAL

- Thank you very much for reading the preview of the manual.
- You can download the complete manual from: www.heydownloads.com by clicking the link below



- Please note: If there is no response to CLICKING the link, please download this PDF first and then click on it.

CLICK HERE TO **DOWNLOAD** THE COMPLETE MANUAL

9.17. CHASSIS ACCESSORIES, P. 16

INTERNATIONAL TRUCK AND ENGINE CORPORATION THIS PRINT IS PROVIDED ON A RESTRICTED BASIS AND IS NOT TO BE USED IN ANY WAY DETRIMENTAL TO THE INTEREST OF INTERNATIONAL TRUCK AND ENGINE CORPORATION.	ELECTRICAL CIRCUIT DIAGRAM CHAPTER 9 CHASSIS ACCESSORIES					
PAGE INTENTIONALLY LEFT BLANK						
CHR	DATE	CHANGE	REV	REFERENCE	DRAWN	NAME
2	SEP05	CONVERSION FROM SABER TO UG	B	59756E	U00EDL2	NGV MD. RH, SS ELECTRICAL CIRCUIT DIAGRAM
					RELEASE NO. 52778H	DATE 10JUL00
						PART NO. AE08-52373
						SHEET 16

Figure 131 Chassis Accessories

9.27. FUEL / WATER SEPARATOR WITH 12VDC FUEL PREHEATER, P. 26

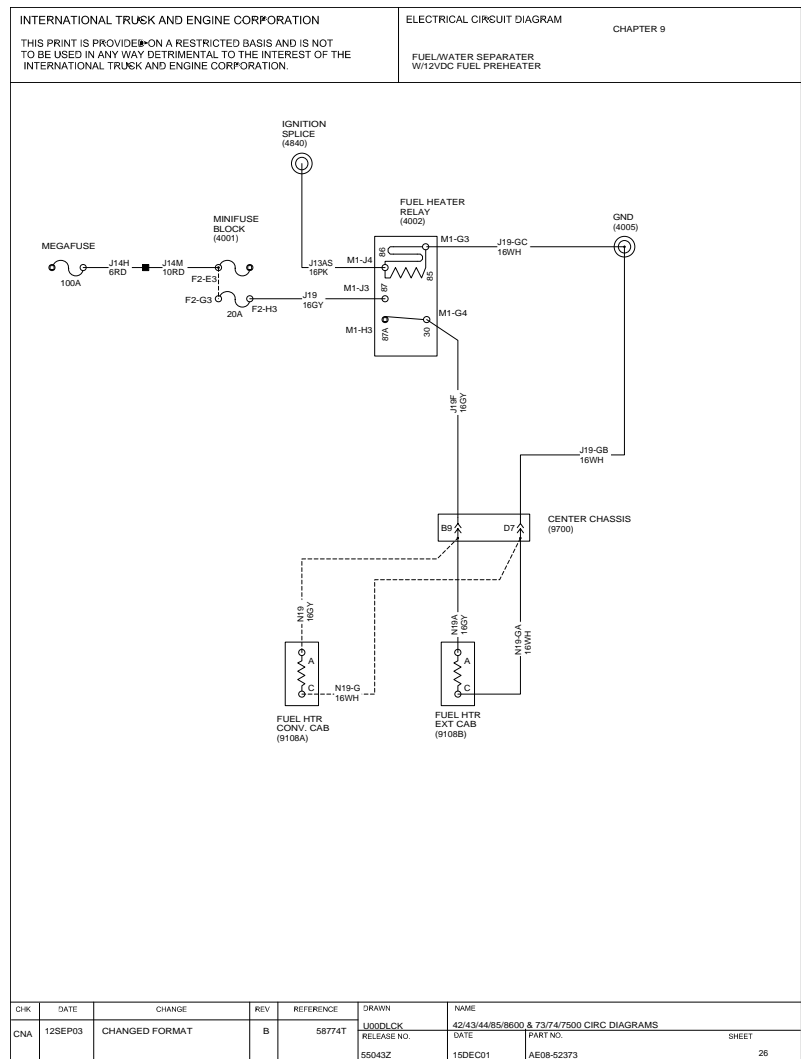


Figure 141 Fuel / Water Separator With 12VDC Fuel Preheater

9.37. AIR PARK BRAKE INTERLOCK, P. 36

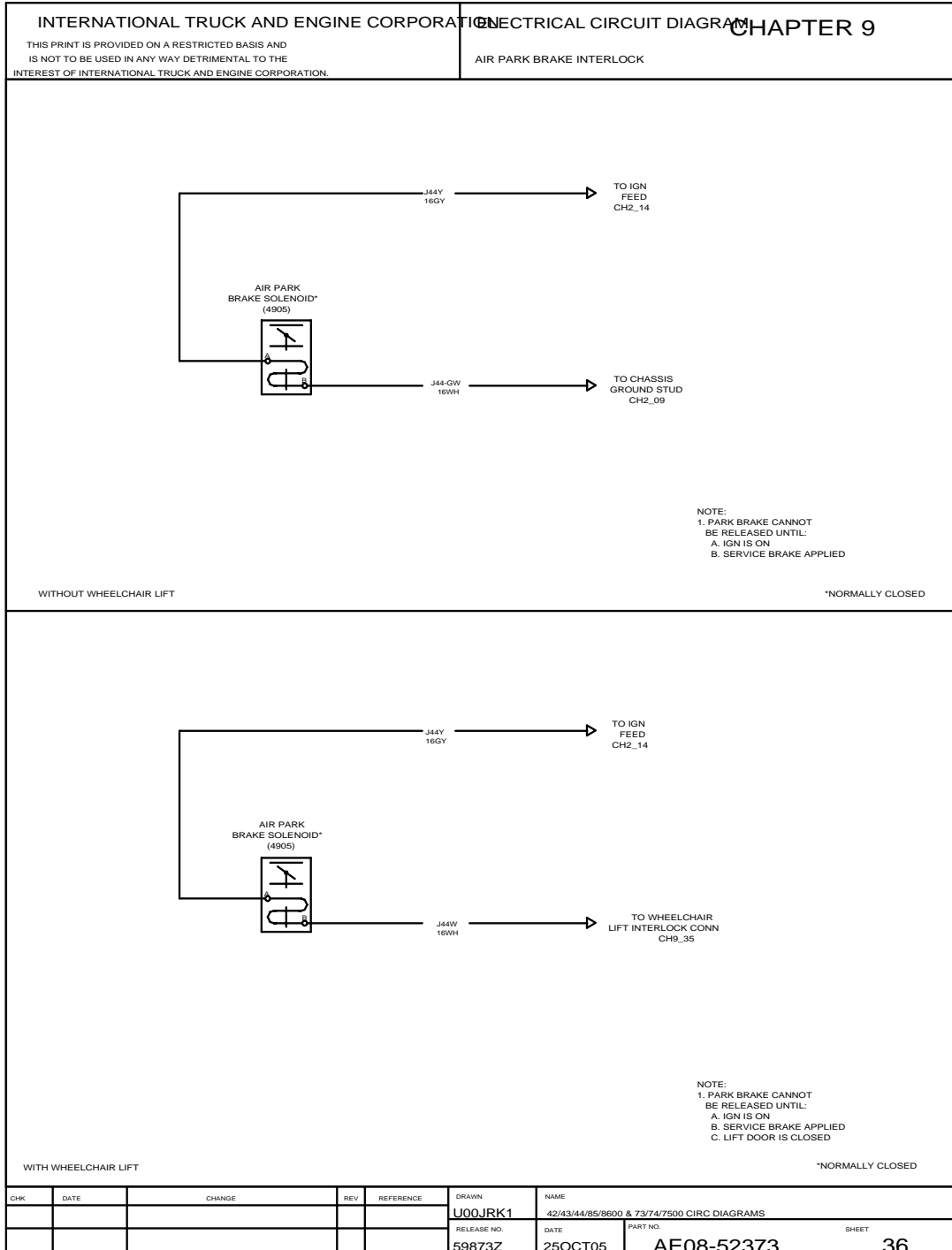


Figure 151 Air Park Brake Interlock

10.4. ALLISON MD TRANSMISSION, P. 2

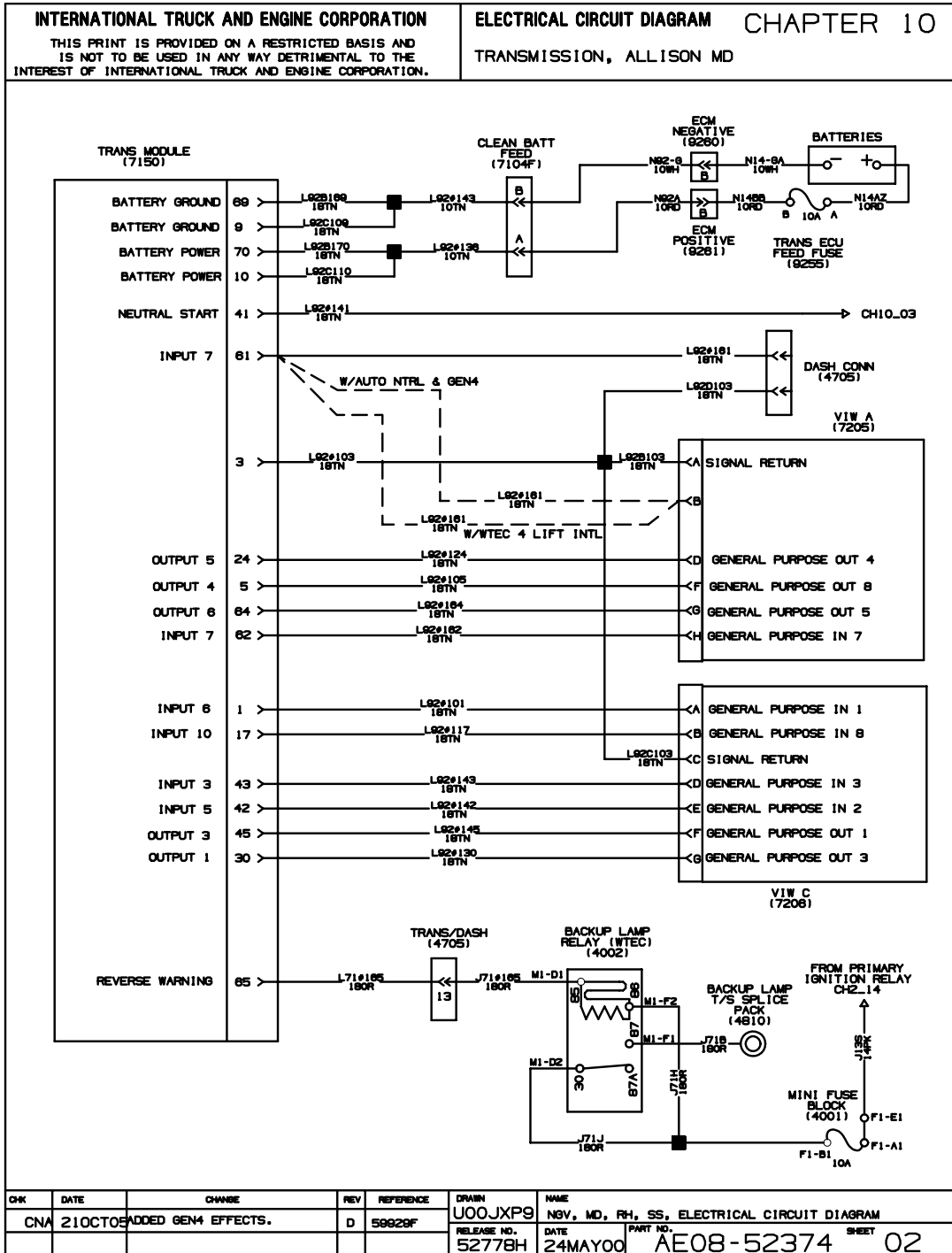


Figure 161 Allison MD Transmission

10.14. ALLISON HD TRANSMISSION, P. 10

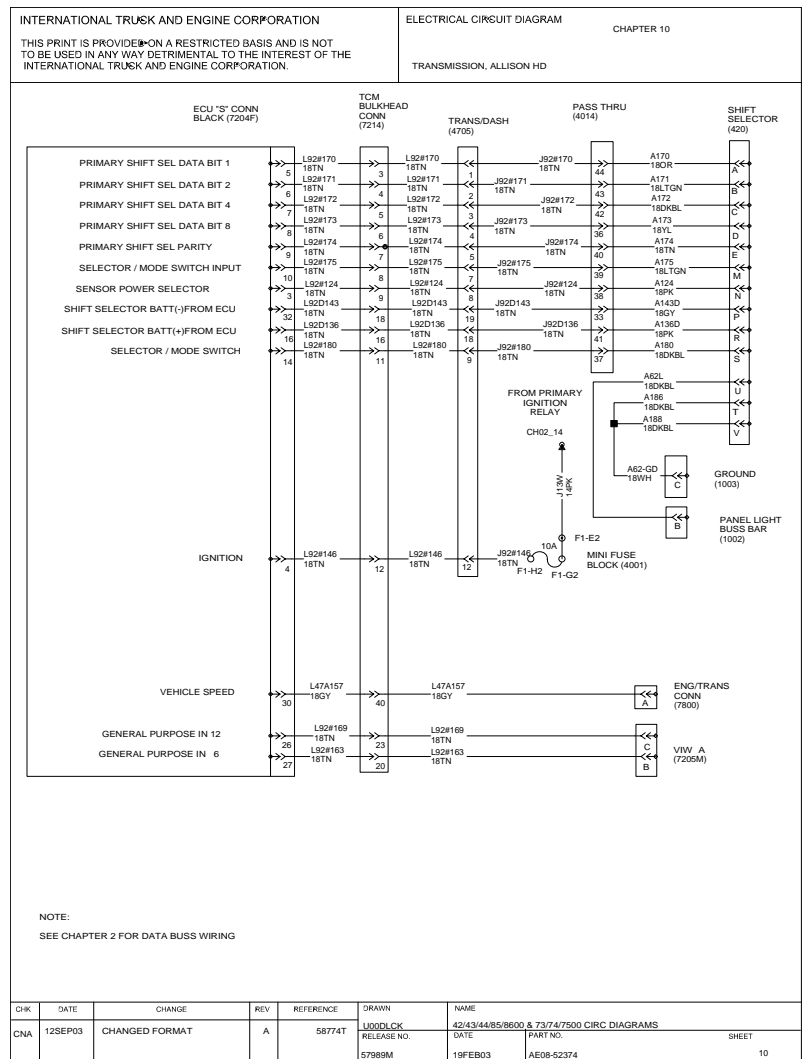


Figure 171 Allison HD Transmission (Cont.)

10.24. WTEC MD TRANSMISSION WITH AUTO NEUTRAL AND WITH 0013WUA, P. 19A

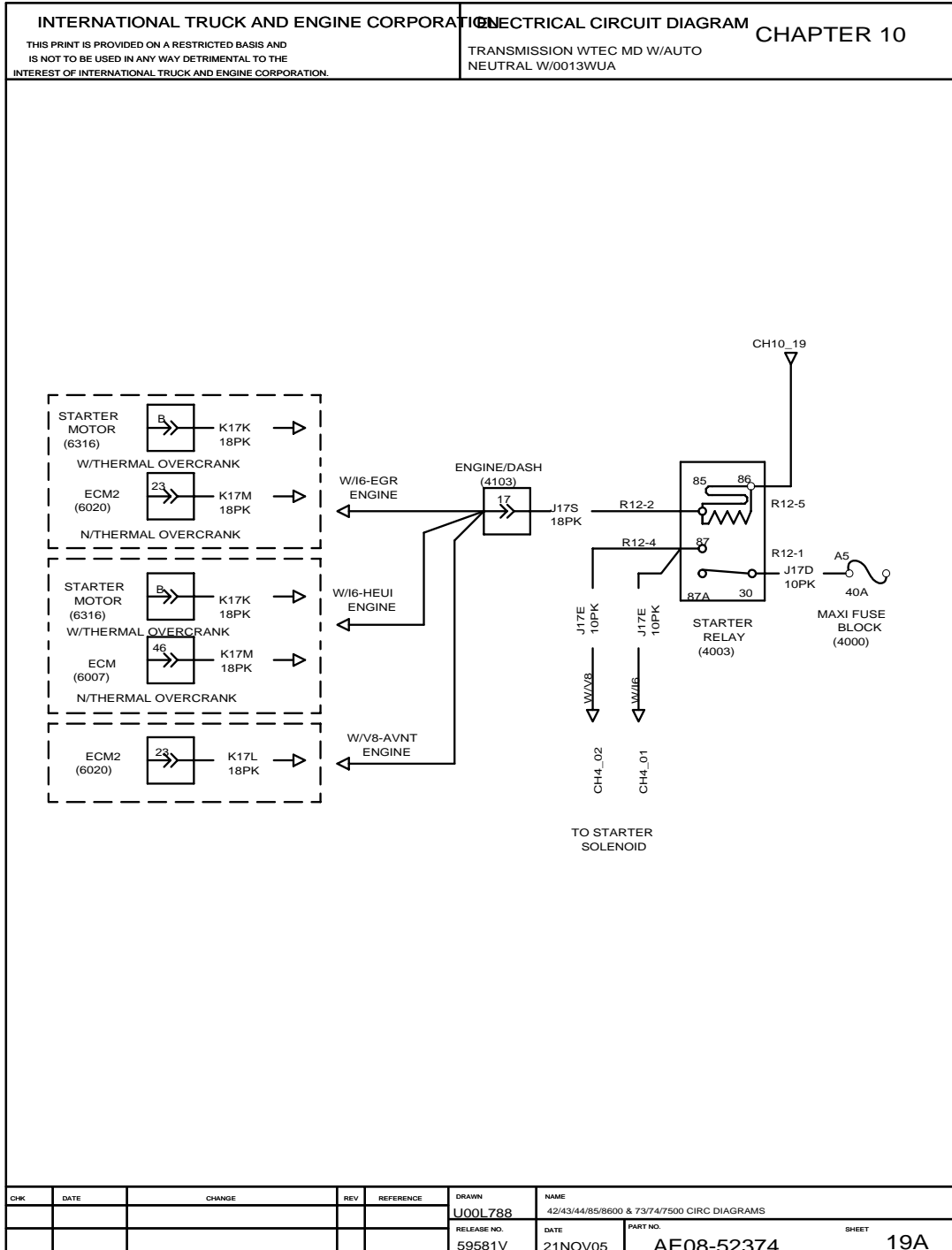


Figure 181 WTEC MD Transmission with Auto Neutral and with 0013WUA

11. AIR CONDITIONING (CHAPTER 11)

11.1. HVAC SYSTEMS, P. 1

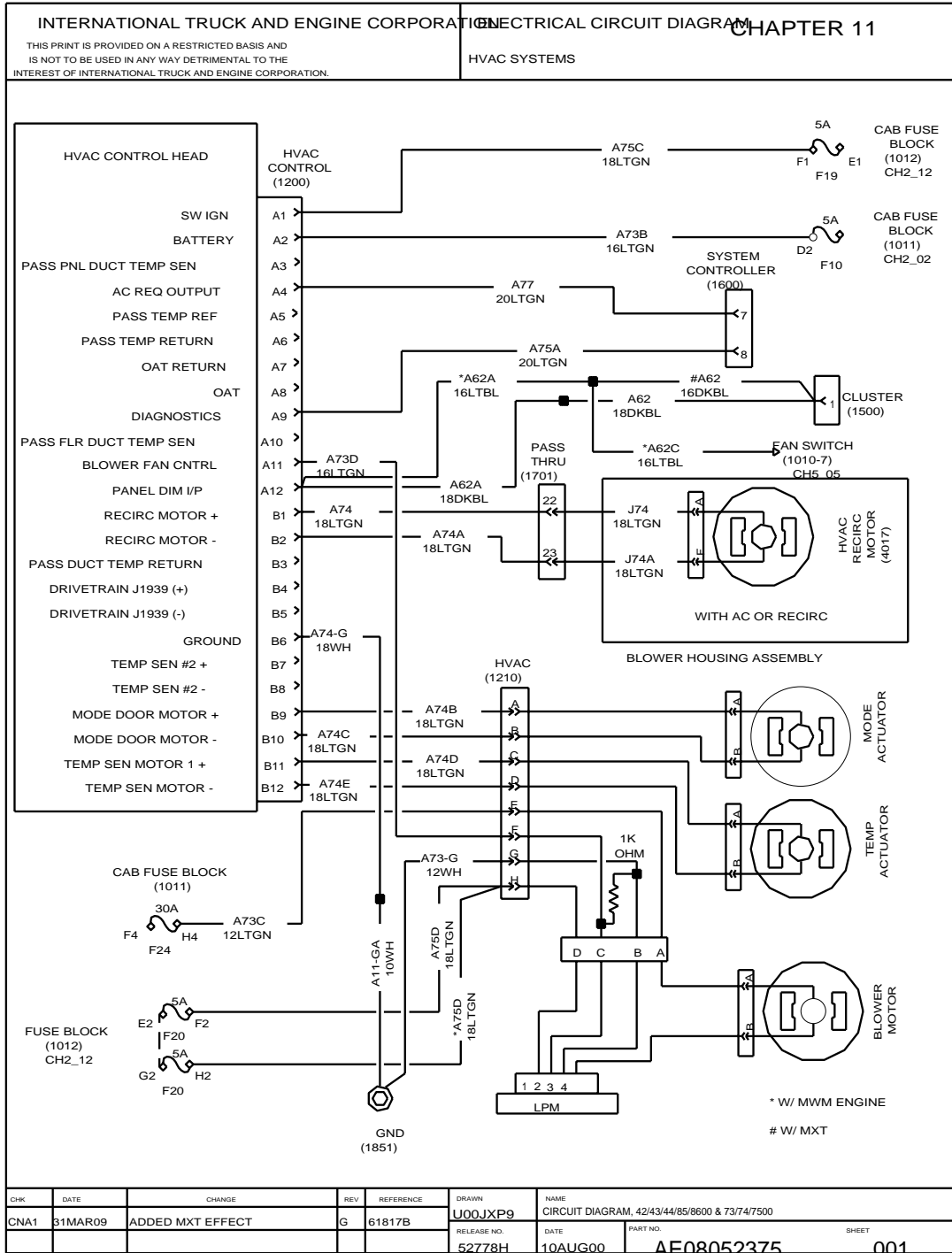


Figure 191 HVAC Systems

12.8. CONNECTOR COMPOSITE (1013), P. 6

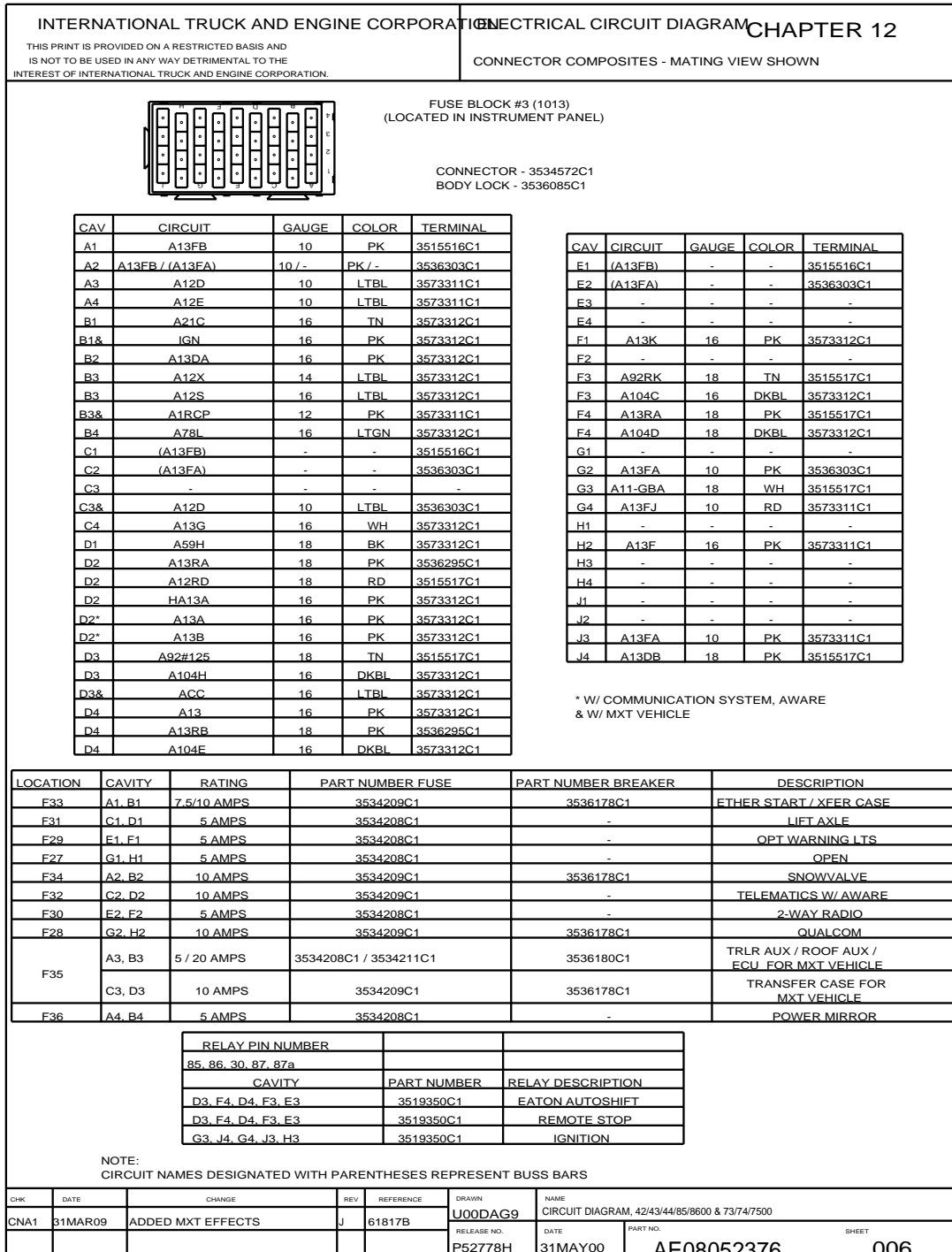


Figure 201 Connector Composite (1013)

12.18. CONNECTOR COMPOSITE (1701), P. 13B

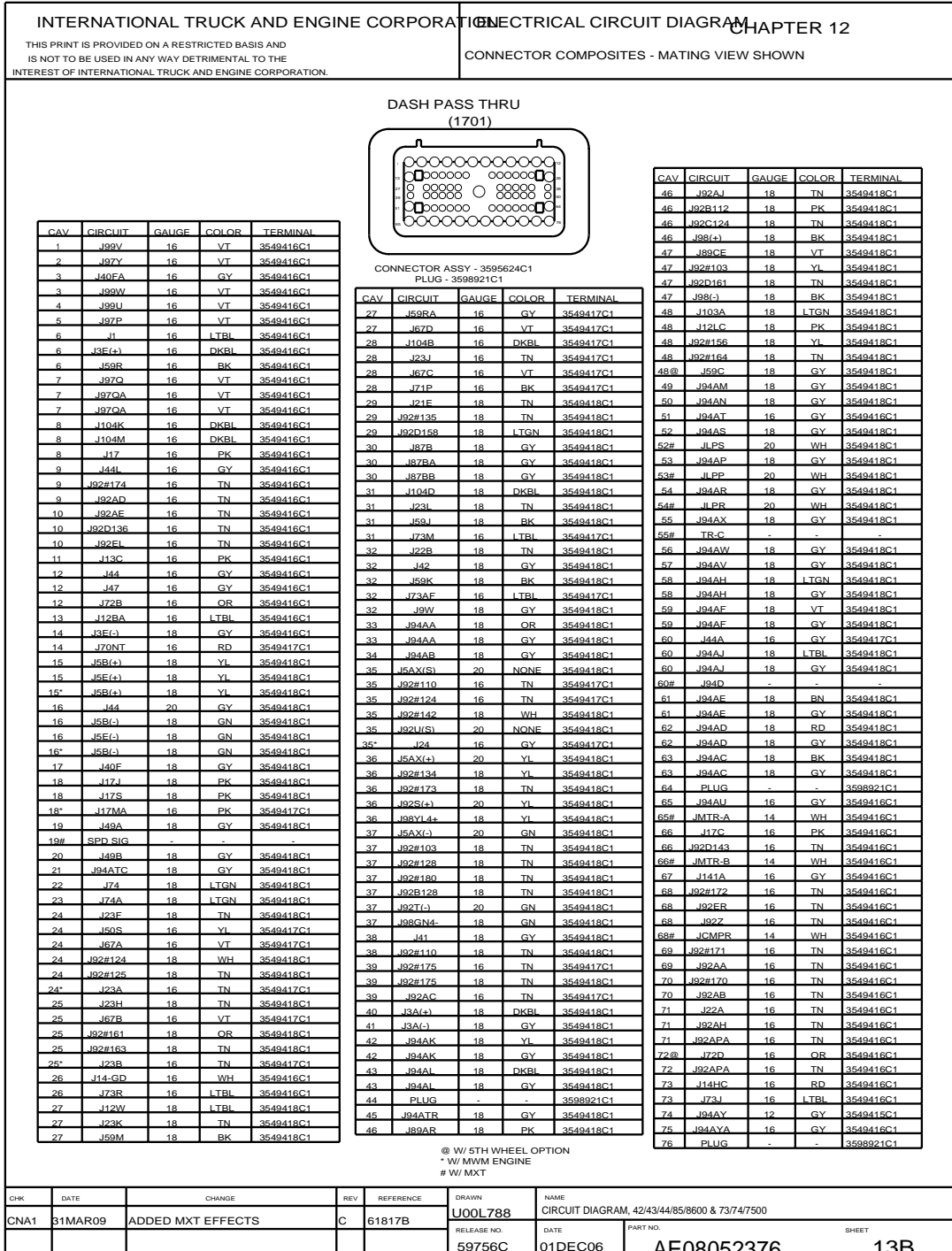


Figure 211 Connector Composite (1701)

12.28. CONNECTOR COMPOSITE (4002), P. 22

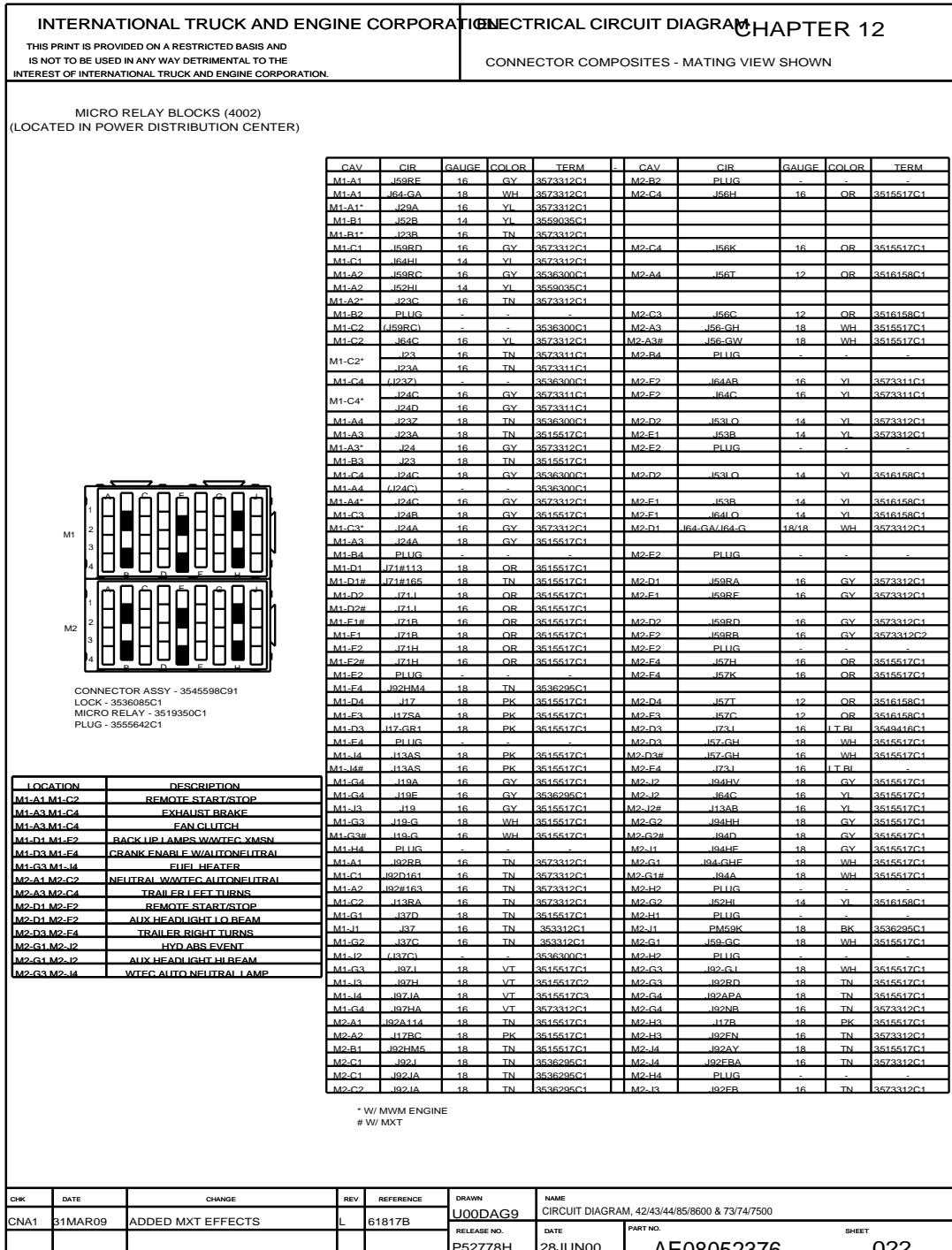


Figure 221 Connector Composite (4002)

12.38. CONNECTOR COMPOSITES (4105), (4111), (4120), (4301), P. 31



INTERNATIONAL TRUCK AND ENGINE CORPORATION	ELECTRICAL CIRCUIT DIAGRAM		CHAPTER 12																																																																																																																																																																																																																																																																																																																																																																																																																																																																																																																																																																																						
THIS PRINT IS PROVIDED ON A RESTRICTED BASIS AND IS NOT TO BE USED IN ANY WAY DETRIMENTAL TO THE INTEREST OF INTERNATIONAL TRUCK AND ENGINE CORPORATION.																																																																																																																																																																																																																																																																																																																																																																																																																																																																																																																																																																																									
CONNECTOR COMPOSITES- MATING VIEW SHOWN																																																																																																																																																																																																																																																																																																																																																																																																																																																																																																																																																																																									
ENGINE HARNESS		ECM POWER/STARTER (4105) (LOCATED NEAR WIPER MOTOR BRACKET)	DASH HARNESS																																																																																																																																																																																																																																																																																																																																																																																																																																																																																																																																																																																						
		<table border="1"><thead><tr><th>CAV</th><th>CIR</th><th>GAUGE</th><th>COLOR</th><th>TERM</th><th>SEAL</th><th>NOTES</th></tr></thead><tbody><tr><td>A</td><td>K97W</td><td>10</td><td>VT</td><td>1667737C1</td><td>1667735C1</td><td>WW/6</td></tr><tr><td>A</td><td>K97T</td><td>10</td><td>VT</td><td>1667737C1</td><td>1667735C1</td><td>WW/8</td></tr><tr><td>B</td><td>K97AA</td><td>10</td><td>VT</td><td>1667737C1</td><td>1667735C1</td><td>WW/6</td></tr><tr><td>B</td><td>K97X</td><td>10</td><td>VT</td><td>1667737C1</td><td>1667735C1</td><td>WW/8</td></tr><tr><td>C</td><td>K17C</td><td>10</td><td>PK</td><td>1667737C1</td><td>1667735C1</td><td></td></tr></tbody></table>	CAV	CIR	GAUGE	COLOR	TERM	SEAL	NOTES	A	K97W	10	VT	1667737C1	1667735C1	WW/6	A	K97T	10	VT	1667737C1	1667735C1	WW/8	B	K97AA	10	VT	1667737C1	1667735C1	WW/6	B	K97X	10	VT	1667737C1	1667735C1	WW/8	C	K17C	10	PK	1667737C1	1667735C1		<table border="1"><thead><tr><th>CAV</th><th>CIR</th><th>GAUGE</th><th>COLOR</th><th>TERM</th><th>SEAL</th><th>NOTES</th></tr></thead><tbody><tr><td>A</td><td>J97W</td><td>10</td><td>VT</td><td>2025425C1</td><td>1667735C1</td><td>WW/6</td></tr><tr><td>A</td><td>J97TA</td><td>10</td><td>VT</td><td>2025425C1</td><td>1667735C1</td><td>WW/8</td></tr><tr><td>A</td><td>J97TA</td><td>10</td><td>VT</td><td>2025425C1</td><td>1667735C1</td><td>WW/8</td></tr><tr><td>B</td><td>J97AA</td><td>12</td><td>VT</td><td>2025425C1</td><td>1671603C1</td><td>WW/8</td></tr><tr><td>B</td><td>J97XA</td><td>10</td><td>VT</td><td>2025425C1</td><td>1667735C1</td><td>WW/8</td></tr><tr><td>B*</td><td>J97XA</td><td>10</td><td>VT</td><td>2025425C1</td><td>1667735C1</td><td>WW/8</td></tr><tr><td>C</td><td>J17E</td><td>10</td><td>PK</td><td>2025425C1</td><td>1667735C1</td><td></td></tr></tbody></table>	CAV	CIR	GAUGE	COLOR	TERM	SEAL	NOTES	A	J97W	10	VT	2025425C1	1667735C1	WW/6	A	J97TA	10	VT	2025425C1	1667735C1	WW/8	A	J97TA	10	VT	2025425C1	1667735C1	WW/8	B	J97AA	12	VT	2025425C1	1671603C1	WW/8	B	J97XA	10	VT	2025425C1	1667735C1	WW/8	B*	J97XA	10	VT	2025425C1	1667735C1	WW/8	C	J17E	10	PK	2025425C1	1667735C1																																																																																																																																																																																																																																																																																																																																																																																																																																																																																					
CAV	CIR	GAUGE	COLOR	TERM	SEAL	NOTES																																																																																																																																																																																																																																																																																																																																																																																																																																																																																																																																																																																			
A	K97W	10	VT	1667737C1	1667735C1	WW/6																																																																																																																																																																																																																																																																																																																																																																																																																																																																																																																																																																																			
A	K97T	10	VT	1667737C1	1667735C1	WW/8																																																																																																																																																																																																																																																																																																																																																																																																																																																																																																																																																																																			
B	K97AA	10	VT	1667737C1	1667735C1	WW/6																																																																																																																																																																																																																																																																																																																																																																																																																																																																																																																																																																																			
B	K97X	10	VT	1667737C1	1667735C1	WW/8																																																																																																																																																																																																																																																																																																																																																																																																																																																																																																																																																																																			
C	K17C	10	PK	1667737C1	1667735C1																																																																																																																																																																																																																																																																																																																																																																																																																																																																																																																																																																																				
CAV	CIR	GAUGE	COLOR	TERM	SEAL	NOTES																																																																																																																																																																																																																																																																																																																																																																																																																																																																																																																																																																																			
A	J97W	10	VT	2025425C1	1667735C1	WW/6																																																																																																																																																																																																																																																																																																																																																																																																																																																																																																																																																																																			
A	J97TA	10	VT	2025425C1	1667735C1	WW/8																																																																																																																																																																																																																																																																																																																																																																																																																																																																																																																																																																																			
A	J97TA	10	VT	2025425C1	1667735C1	WW/8																																																																																																																																																																																																																																																																																																																																																																																																																																																																																																																																																																																			
B	J97AA	12	VT	2025425C1	1671603C1	WW/8																																																																																																																																																																																																																																																																																																																																																																																																																																																																																																																																																																																			
B	J97XA	10	VT	2025425C1	1667735C1	WW/8																																																																																																																																																																																																																																																																																																																																																																																																																																																																																																																																																																																			
B*	J97XA	10	VT	2025425C1	1667735C1	WW/8																																																																																																																																																																																																																																																																																																																																																																																																																																																																																																																																																																																			
C	J17E	10	PK	2025425C1	1667735C1																																																																																																																																																																																																																																																																																																																																																																																																																																																																																																																																																																																				
CONNECTOR - 1667734C1 LOCK - 1667734C1		CONNECTOR - 1667732C1 LOCK - 1667734C1																																																																																																																																																																																																																																																																																																																																																																																																																																																																																																																																																																																							
* W/ MXT		CONNECTOR - 1667732C1 LOCK - 1667734C1																																																																																																																																																																																																																																																																																																																																																																																																																																																																																																																																																																																							
		FAN AIR SOLENOID (4111) (LOCATED NEAR WIPER MOTOR BRACKET)	SNOW VALVE (4120) (LOCATED ON AIR INTAKE FILTER)																																																																																																																																																																																																																																																																																																																																																																																																																																																																																																																																																																																						
<table border="1"><thead><tr><th>CAV</th><th>CIR</th><th>GAUGE</th><th>COLOR</th><th>TERM</th><th>SEAL</th><th>NOTES</th></tr></thead><tbody><tr><td>A</td><td>K23B</td><td>18</td><td>TN</td><td>2033819C1</td><td>1652325C1</td><td>W/BODY BUILDER</td></tr><tr><td>A</td><td>K23A</td><td>16</td><td>TN</td><td>2033819C1</td><td>1652325C1</td><td>N/BODY BUILDER</td></tr><tr><td>B</td><td>K97B</td><td>18</td><td>VT</td><td>2033819C1</td><td>1652325C1</td><td></td></tr></tbody></table>		CAV	CIR	GAUGE	COLOR	TERM	SEAL	NOTES	A	K23B	18	TN	2033819C1	1652325C1	W/BODY BUILDER	A	K23A	16	TN	2033819C1	1652325C1	N/BODY BUILDER	B	K97B	18	VT	2033819C1	1652325C1		<table border="1"><thead><tr><th>CAV</th><th>CIR</th><th>GAUGE</th><th>COLOR</th><th>TERM</th><th>SEAL</th><th>NOTES</th></tr></thead><tbody><tr><td>A</td><td>J23F</td><td>18</td><td>TN</td><td>1661875C1</td><td>1661872C1</td><td></td></tr><tr><td>B</td><td>J23H</td><td>18</td><td>TN</td><td>1661875C1</td><td>1661872C1</td><td></td></tr><tr><td>C</td><td>J23J</td><td>18</td><td>TN</td><td>1661875C1</td><td>1661872C1</td><td></td></tr><tr><td>D</td><td>J23K</td><td>18</td><td>TN</td><td>1661875C1</td><td>1661872C1</td><td></td></tr><tr><td>E</td><td>J23L</td><td>18</td><td>TN</td><td>1661875C1</td><td>1661872C1</td><td></td></tr></tbody></table>		CAV	CIR	GAUGE	COLOR	TERM	SEAL	NOTES	A	J23F	18	TN	1661875C1	1661872C1		B	J23H	18	TN	1661875C1	1661872C1		C	J23J	18	TN	1661875C1	1661872C1		D	J23K	18	TN	1661875C1	1661872C1		E	J23L	18	TN	1661875C1	1661872C1																																																																																																																																																																																																																																																																																																																																																																																																																																																																																																																	
CAV	CIR	GAUGE	COLOR	TERM	SEAL	NOTES																																																																																																																																																																																																																																																																																																																																																																																																																																																																																																																																																																																			
A	K23B	18	TN	2033819C1	1652325C1	W/BODY BUILDER																																																																																																																																																																																																																																																																																																																																																																																																																																																																																																																																																																																			
A	K23A	16	TN	2033819C1	1652325C1	N/BODY BUILDER																																																																																																																																																																																																																																																																																																																																																																																																																																																																																																																																																																																			
B	K97B	18	VT	2033819C1	1652325C1																																																																																																																																																																																																																																																																																																																																																																																																																																																																																																																																																																																				
CAV	CIR	GAUGE	COLOR	TERM	SEAL	NOTES																																																																																																																																																																																																																																																																																																																																																																																																																																																																																																																																																																																			
A	J23F	18	TN	1661875C1	1661872C1																																																																																																																																																																																																																																																																																																																																																																																																																																																																																																																																																																																				
B	J23H	18	TN	1661875C1	1661872C1																																																																																																																																																																																																																																																																																																																																																																																																																																																																																																																																																																																				
C	J23J	18	TN	1661875C1	1661872C1																																																																																																																																																																																																																																																																																																																																																																																																																																																																																																																																																																																				
D	J23K	18	TN	1661875C1	1661872C1																																																																																																																																																																																																																																																																																																																																																																																																																																																																																																																																																																																				
E	J23L	18	TN	1661875C1	1661872C1																																																																																																																																																																																																																																																																																																																																																																																																																																																																																																																																																																																				
CONNECTOR - 1671610C1 LOCK - 1671608C1		CONNECTOR - 352251C1 LOCK - 352253C1C1																																																																																																																																																																																																																																																																																																																																																																																																																																																																																																																																																																																							
CONNECTOR - 3558026C1 LOCK - 3558056C1 PLUG - 3532129C1		FORWARD CHASSIS/DASH (4301) (LOCATED IN ENGINE COMPARTMENT NEAR LEFT FRAME RAIL)	CONNECTOR - 3558022C1 SEAL - 3559047C1 LOCK - 3558056C1 PLUG - 3532129C1																																																																																																																																																																																																																																																																																																																																																																																																																																																																																																																																																																																						
FORWARD CHASSIS HARNESS		FORWARD CHASSIS/DASH (4301) DASH HARNESS	FORWARD CHASSIS/DASH (4301) DASH HARNESS																																																																																																																																																																																																																																																																																																																																																																																																																																																																																																																																																																																						
<table border="1"><thead><tr><th>CAV</th><th>CIR</th><th>GAUGE</th><th>COLOR</th><th>TERM</th><th>SEAL</th><th>NOTES</th></tr></thead><tbody><tr><td>1</td><td>M9</td><td>18</td><td>GY</td><td>3559036C1</td><td>3509903C1</td><td>W/AUX AIR</td></tr><tr><td>1</td><td>M94</td><td>18</td><td>GY</td><td>3559036C1</td><td>3509903C1</td><td>W/AIR ABS</td></tr><tr><td>1</td><td>M94AL</td><td>14</td><td>BL</td><td>3559037C1</td><td>3558022C1</td><td>W/W/ARCO AIR</td></tr><tr><td>2</td><td>M94A</td><td>18</td><td>GY</td><td>3559036C1</td><td>3509903C1</td><td>W/AIR ABS</td></tr><tr><td>2</td><td>M6</td><td>18</td><td>GY</td><td>3559036C1</td><td>3509903C1</td><td>W/AUX AIR</td></tr><tr><td>2</td><td>M94AA</td><td>14</td><td>GN</td><td>3559037C1</td><td>3558022C1</td><td>W/W/ARCO AIR</td></tr><tr><td>3</td><td>M40</td><td>18</td><td>GY</td><td>3559036C1</td><td>3509903C1</td><td>W/AUX AIR</td></tr><tr><td>3</td><td>M94B</td><td>18</td><td>GY</td><td>3559036C1</td><td>3509903C1</td><td>W/AIR ABS</td></tr><tr><td>3</td><td>M94AB</td><td>14</td><td>BN</td><td>3559037C1</td><td>3558022C1</td><td>W/W/ARCO AIR</td></tr><tr><td>4</td><td>M52B</td><td>14</td><td>YL</td><td>3559037C1</td><td>3509903C1</td><td></td></tr><tr><td>5</td><td>M53</td><td>14</td><td>YL</td><td>3559037C1</td><td>3509903C1</td><td></td></tr><tr><td>6</td><td>M94C</td><td>18</td><td>GY</td><td>3559036C1</td><td>3509903C1</td><td>W/AIR ABS</td></tr><tr><td>6</td><td>IM94L</td><td>18</td><td>BK</td><td>3559036C1</td><td>3509903C1</td><td>W/HYD ABS</td></tr><tr><td>6</td><td>M94AC</td><td>18</td><td>BN</td><td>3559036C1</td><td>3558022C1</td><td>W/W/ARCO AIR</td></tr><tr><td>7</td><td>M94D</td><td>18</td><td>GY</td><td>3559036C1</td><td>3509903C1</td><td>W/AIR ABS</td></tr><tr><td>7</td><td>IM94M</td><td>18</td><td>BN</td><td>3559036C1</td><td>3509903C1</td><td>W/HYD ABS</td></tr><tr><td>7</td><td>M94AD</td><td>18</td><td>BK</td><td>3559036C1</td><td>3558022C1</td><td>W/W/ARCO AIR</td></tr><tr><td>8</td><td>M9</td><td>20</td><td>GY</td><td>3559036C1</td><td>3532128C1</td><td></td></tr><tr><td>9</td><td>M56B</td><td>16</td><td>OR</td><td>3559037C1</td><td>3509903C1</td><td></td></tr><tr><td>10</td><td>M85E</td><td>16</td><td>GY</td><td>3559037C1</td><td>3509903C1</td><td></td></tr><tr><td>10*</td><td>M85M</td><td>16</td><td>GY</td><td>3559037C1</td><td>3509903C1</td><td></td></tr><tr><td>11</td><td>M57B</td><td>16</td><td>OR</td><td>3559037C1</td><td>3509903C1</td><td></td></tr><tr><td>12</td><td>M58B</td><td>14</td><td>BN</td><td>3559037C1</td><td>3509903C1</td><td></td></tr><tr><td>13</td><td>M11-G</td><td>12</td><td>WH</td><td>3559037C1</td><td>3509903C1</td><td></td></tr><tr><td>14</td><td>M94E</td><td>18</td><td>GY</td><td>3559036C1</td><td>3509903C1</td><td>W/AIR ABS</td></tr><tr><td>14</td><td>IM94N</td><td>18</td><td>BK</td><td>3559036C1</td><td>3509903C1</td><td>W/HYD ABS</td></tr><tr><td>14</td><td>M94AE</td><td>18</td><td>BN</td><td>3559036C1</td><td>3558022C1</td><td>W/W/ARCO AIR</td></tr><tr><td>15</td><td>M94E</td><td>18</td><td>GY</td><td>3559036C1</td><td>3509903C1</td><td>W/AIR ABS</td></tr><tr><td>15</td><td>IM94P</td><td>18</td><td>BN</td><td>3559036C1</td><td>3509903C1</td><td>W/HYD ABS</td></tr><tr><td>15</td><td>M94AF</td><td>18</td><td>BK</td><td>3559036C1</td><td>3558022C1</td><td>W/W/ARCO AIR</td></tr><tr><td>16</td><td>M94H</td><td>18</td><td>GY</td><td>3559036C1</td><td>3509903C1</td><td></td></tr><tr><td>16</td><td>M94AH</td><td>14</td><td>BL</td><td>3559037C1</td><td>3558022C1</td><td>W/W/ARCO AIR</td></tr><tr><td>17</td><td>M94J</td><td>18</td><td>GY</td><td>3559036C1</td><td>3509903C1</td><td></td></tr><tr><td>17</td><td>M94AL</td><td>14</td><td>GN</td><td>3559037C1</td><td>3558022C1</td><td>W/W/ARCO AIR</td></tr><tr><td>18</td><td>M94K</td><td>18</td><td>GY</td><td>3559036C1</td><td>3509903C1</td><td></td></tr><tr><td>18</td><td>M94AK</td><td>14</td><td>BN</td><td>3559037C1</td><td>3558022C1</td><td>W/W/ARCO AIR</td></tr><tr><td>19</td><td>M21C</td><td>18</td><td>TN</td><td>3559036C1</td><td>3509903C1</td><td></td></tr><tr><td>20</td><td>M64</td><td>16</td><td>YL</td><td>3559037C1</td><td>3509903C1</td><td>W/FOG LIGHTS</td></tr><tr><td>21</td><td>M78H</td><td>16</td><td>LT GN</td><td>3559037C1</td><td>3509903C1</td><td></td></tr><tr><td>22</td><td>M21D</td><td>18</td><td>TN</td><td>3559036C1</td><td>3509903C1</td><td></td></tr><tr><td>23</td><td>M77</td><td>20</td><td>LT GN</td><td>3559036C1</td><td>3532128C1</td><td></td></tr><tr><td>24</td><td>M6</td><td>20</td><td>GY</td><td>3559036C1</td><td>3532128C1</td><td></td></tr></tbody></table>		CAV	CIR	GAUGE	COLOR	TERM	SEAL	NOTES	1	M9	18	GY	3559036C1	3509903C1	W/AUX AIR	1	M94	18	GY	3559036C1	3509903C1	W/AIR ABS	1	M94AL	14	BL	3559037C1	3558022C1	W/W/ARCO AIR	2	M94A	18	GY	3559036C1	3509903C1	W/AIR ABS	2	M6	18	GY	3559036C1	3509903C1	W/AUX AIR	2	M94AA	14	GN	3559037C1	3558022C1	W/W/ARCO AIR	3	M40	18	GY	3559036C1	3509903C1	W/AUX AIR	3	M94B	18	GY	3559036C1	3509903C1	W/AIR ABS	3	M94AB	14	BN	3559037C1	3558022C1	W/W/ARCO AIR	4	M52B	14	YL	3559037C1	3509903C1		5	M53	14	YL	3559037C1	3509903C1		6	M94C	18	GY	3559036C1	3509903C1	W/AIR ABS	6	IM94L	18	BK	3559036C1	3509903C1	W/HYD ABS	6	M94AC	18	BN	3559036C1	3558022C1	W/W/ARCO AIR	7	M94D	18	GY	3559036C1	3509903C1	W/AIR ABS	7	IM94M	18	BN	3559036C1	3509903C1	W/HYD ABS	7	M94AD	18	BK	3559036C1	3558022C1	W/W/ARCO AIR	8	M9	20	GY	3559036C1	3532128C1		9	M56B	16	OR	3559037C1	3509903C1		10	M85E	16	GY	3559037C1	3509903C1		10*	M85M	16	GY	3559037C1	3509903C1		11	M57B	16	OR	3559037C1	3509903C1		12	M58B	14	BN	3559037C1	3509903C1		13	M11-G	12	WH	3559037C1	3509903C1		14	M94E	18	GY	3559036C1	3509903C1	W/AIR ABS	14	IM94N	18	BK	3559036C1	3509903C1	W/HYD ABS	14	M94AE	18	BN	3559036C1	3558022C1	W/W/ARCO AIR	15	M94E	18	GY	3559036C1	3509903C1	W/AIR ABS	15	IM94P	18	BN	3559036C1	3509903C1	W/HYD ABS	15	M94AF	18	BK	3559036C1	3558022C1	W/W/ARCO AIR	16	M94H	18	GY	3559036C1	3509903C1		16	M94AH	14	BL	3559037C1	3558022C1	W/W/ARCO AIR	17	M94J	18	GY	3559036C1	3509903C1		17	M94AL	14	GN	3559037C1	3558022C1	W/W/ARCO AIR	18	M94K	18	GY	3559036C1	3509903C1		18	M94AK	14	BN	3559037C1	3558022C1	W/W/ARCO AIR	19	M21C	18	TN	3559036C1	3509903C1		20	M64	16	YL	3559037C1	3509903C1	W/FOG LIGHTS	21	M78H	16	LT GN	3559037C1	3509903C1		22	M21D	18	TN	3559036C1	3509903C1		23	M77	20	LT GN	3559036C1	3532128C1		24	M6	20	GY	3559036C1	3532128C1		<table border="1"><thead><tr><th>CAV</th><th>CIR</th><th>GAUGE</th><th>COLOR</th><th>TERM</th><th>SEAL</th><th>NOTES</th></tr></thead><tbody><tr><td>1</td><td>J94AP</td><td>18</td><td>GY</td><td>3509874C1</td><td>3509903C1</td><td>W/AIR ABS</td></tr><tr><td>1</td><td>J94A</td><td>18</td><td>GY</td><td>3509874C1</td><td>3509903C1</td><td>W/AUX AIR</td></tr><tr><td>2</td><td>J94AR</td><td>18</td><td>GY</td><td>3509874C1</td><td>3509903C1</td><td>W/AIR ABS</td></tr><tr><td>2</td><td>J6BA</td><td>18</td><td>GY</td><td>3509874C1</td><td>3509903C1</td><td>W/AUX AIR</td></tr><tr><td>3</td><td>J40FA</td><td>18</td><td>GY</td><td>3509874C1</td><td>3509903C1</td><td>W/AUX AIR</td></tr><tr><td>3</td><td>J94AS</td><td>18</td><td>GY</td><td>3509874C1</td><td>3509903C1</td><td>W/AIR ABS</td></tr><tr><td>4</td><td>J52A</td><td>14</td><td>YL</td><td>3559035C1</td><td>3509903C1</td><td>W/STD LIGHTS</td></tr><tr><td>4</td><td>J52B</td><td>14</td><td>YL</td><td>3559035C1</td><td>3509903C1</td><td>W/AUX LIGHTS</td></tr><tr><td>5</td><td>J53A</td><td>14</td><td>YL</td><td>3559035C1</td><td>3509903C1</td><td>W/STD LIGHTS</td></tr><tr><td>5</td><td>J53B</td><td>14</td><td>YL</td><td>3559035C1</td><td>3509903C1</td><td>W/AUX LIGHTS</td></tr><tr><td>6</td><td>J94HM</td><td>18</td><td>GY</td><td>3509874C1</td><td>3509903C1</td><td>W/HYD ABS</td></tr><tr><td>6</td><td>J94AM</td><td>18</td><td>GY</td><td>3509874C1</td><td>3509903C1</td><td>W/AIR ABS</td></tr><tr><td>6*</td><td>J94I</td><td>18</td><td>BK</td><td>3509874C1</td><td>3509903C1</td><td></td></tr><tr><td>7</td><td>J94HN</td><td>18</td><td>GY</td><td>3509874C1</td><td>3509903C1</td><td>W/HYD ABS</td></tr><tr><td>7</td><td>J94AN</td><td>18</td><td>GY</td><td>3509874C1</td><td>3509903C1</td><td>W/AIR ABS</td></tr><tr><td>7*</td><td>J94M</td><td>18</td><td>BN</td><td>3509874C1</td><td>3509903C1</td><td></td></tr><tr><td>8</td><td>J8Y</td><td>20</td><td>GY</td><td>3509874C1</td><td>3532128C1</td><td></td></tr><tr><td>9</td><td>J56A</td><td>16</td><td>OR</td><td>3559035C1</td><td>3509903C1</td><td></td></tr><tr><td>10</td><td>J95AA</td><td>16</td><td>GY</td><td>3559035C1</td><td>3509903C1</td><td></td></tr><tr><td>11</td><td>J57A</td><td>16</td><td>OR</td><td>3559035C1</td><td>3509903C1</td><td></td></tr><tr><td>12</td><td>J68A</td><td>14</td><td>BN</td><td>3559035C1</td><td>3509903C1</td><td></td></tr><tr><td>13</td><td>J11-G</td><td>12</td><td>WH</td><td>3559035C1</td><td>3509903C1</td><td></td></tr><tr><td>14</td><td>J94AT</td><td>18</td><td>GY</td><td>3509874C1</td><td>3509903C1</td><td>W/AIR ABS</td></tr><tr><td>14</td><td>J94HT</td><td>18</td><td>GY</td><td>3509874C1</td><td>3509903C1</td><td>W/HYD ABS</td></tr><tr><td>14*</td><td>J94N</td><td>18</td><td>BK</td><td>3509874C1</td><td>3509903C1</td><td></td></tr><tr><td>15</td><td>J94AU</td><td>18</td><td>GY</td><td>3509874C1</td><td>3509903C1</td><td>W/AIR ABS</td></tr><tr><td>15</td><td>J94HU</td><td>18</td><td>GY</td><td>3509874C1</td><td>3509903C1</td><td>W/HYD ABS</td></tr><tr><td>15*</td><td>J94P</td><td>18</td><td>BN</td><td>3509874C1</td><td>3509903C1</td><td></td></tr><tr><td>16</td><td>J94AV</td><td>18</td><td>GY</td><td>3509874C1</td><td>3509903C1</td><td></td></tr><tr><td>17</td><td>J94AW</td><td>18</td><td>GY</td><td>3509874C1</td><td>3509903C1</td><td></td></tr><tr><td>18</td><td>J94AX</td><td>18</td><td>GY</td><td>3509874C1</td><td>3509903C1</td><td></td></tr><tr><td>19</td><td>J21E</td><td>18</td><td>TN</td><td>3509874C1</td><td>3509903C1</td><td></td></tr><tr><td>20</td><td>J64A</td><td>12</td><td>BN</td><td>3559035C1</td><td>3509903C1</td><td>W/FOG LIGHTS</td></tr><tr><td>21</td><td>J78K</td><td>16</td><td>LT GN</td><td>3559035C1</td><td>3509903C1</td><td></td></tr><tr><td>22</td><td>J21E</td><td>18</td><td>TN</td><td>3509874C1</td><td>3509903C1</td><td></td></tr><tr><td>23</td><td>J77C</td><td>20</td><td>LT GN</td><td>3509874C1</td><td>3532128C1</td><td></td></tr><tr><td>24</td><td>J6E</td><td>18</td><td>LT GN</td><td>3509874C1</td><td>3509903C1</td><td></td></tr></tbody></table>	CAV	CIR	GAUGE	COLOR	TERM	SEAL	NOTES	1	J94AP	18	GY	3509874C1	3509903C1	W/AIR ABS	1	J94A	18	GY	3509874C1	3509903C1	W/AUX AIR	2	J94AR	18	GY	3509874C1	3509903C1	W/AIR ABS	2	J6BA	18	GY	3509874C1	3509903C1	W/AUX AIR	3	J40FA	18	GY	3509874C1	3509903C1	W/AUX AIR	3	J94AS	18	GY	3509874C1	3509903C1	W/AIR ABS	4	J52A	14	YL	3559035C1	3509903C1	W/STD LIGHTS	4	J52B	14	YL	3559035C1	3509903C1	W/AUX LIGHTS	5	J53A	14	YL	3559035C1	3509903C1	W/STD LIGHTS	5	J53B	14	YL	3559035C1	3509903C1	W/AUX LIGHTS	6	J94HM	18	GY	3509874C1	3509903C1	W/HYD ABS	6	J94AM	18	GY	3509874C1	3509903C1	W/AIR ABS	6*	J94I	18	BK	3509874C1	3509903C1		7	J94HN	18	GY	3509874C1	3509903C1	W/HYD ABS	7	J94AN	18	GY	3509874C1	3509903C1	W/AIR ABS	7*	J94M	18	BN	3509874C1	3509903C1		8	J8Y	20	GY	3509874C1	3532128C1		9	J56A	16	OR	3559035C1	3509903C1		10	J95AA	16	GY	3559035C1	3509903C1		11	J57A	16	OR	3559035C1	3509903C1		12	J68A	14	BN	3559035C1	3509903C1		13	J11-G	12	WH	3559035C1	3509903C1		14	J94AT	18	GY	3509874C1	3509903C1	W/AIR ABS	14	J94HT	18	GY	3509874C1	3509903C1	W/HYD ABS	14*	J94N	18	BK	3509874C1	3509903C1		15	J94AU	18	GY	3509874C1	3509903C1	W/AIR ABS	15	J94HU	18	GY	3509874C1	3509903C1	W/HYD ABS	15*	J94P	18	BN	3509874C1	3509903C1		16	J94AV	18	GY	3509874C1	3509903C1		17	J94AW	18	GY	3509874C1	3509903C1		18	J94AX	18	GY	3509874C1	3509903C1		19	J21E	18	TN	3509874C1	3509903C1		20	J64A	12	BN	3559035C1	3509903C1	W/FOG LIGHTS	21	J78K	16	LT GN	3559035C1	3509903C1		22	J21E	18	TN	3509874C1	3509903C1		23	J77C	20	LT GN	3509874C1	3532128C1		24	J6E	18	LT GN	3509874C1	3509903C1	
CAV	CIR	GAUGE	COLOR	TERM	SEAL	NOTES																																																																																																																																																																																																																																																																																																																																																																																																																																																																																																																																																																																			
1	M9	18	GY	3559036C1	3509903C1	W/AUX AIR																																																																																																																																																																																																																																																																																																																																																																																																																																																																																																																																																																																			
1	M94	18	GY	3559036C1	3509903C1	W/AIR ABS																																																																																																																																																																																																																																																																																																																																																																																																																																																																																																																																																																																			
1	M94AL	14	BL	3559037C1	3558022C1	W/W/ARCO AIR																																																																																																																																																																																																																																																																																																																																																																																																																																																																																																																																																																																			
2	M94A	18	GY	3559036C1	3509903C1	W/AIR ABS																																																																																																																																																																																																																																																																																																																																																																																																																																																																																																																																																																																			
2	M6	18	GY	3559036C1	3509903C1	W/AUX AIR																																																																																																																																																																																																																																																																																																																																																																																																																																																																																																																																																																																			
2	M94AA	14	GN	3559037C1	3558022C1	W/W/ARCO AIR																																																																																																																																																																																																																																																																																																																																																																																																																																																																																																																																																																																			
3	M40	18	GY	3559036C1	3509903C1	W/AUX AIR																																																																																																																																																																																																																																																																																																																																																																																																																																																																																																																																																																																			
3	M94B	18	GY	3559036C1	3509903C1	W/AIR ABS																																																																																																																																																																																																																																																																																																																																																																																																																																																																																																																																																																																			
3	M94AB	14	BN	3559037C1	3558022C1	W/W/ARCO AIR																																																																																																																																																																																																																																																																																																																																																																																																																																																																																																																																																																																			
4	M52B	14	YL	3559037C1	3509903C1																																																																																																																																																																																																																																																																																																																																																																																																																																																																																																																																																																																				
5	M53	14	YL	3559037C1	3509903C1																																																																																																																																																																																																																																																																																																																																																																																																																																																																																																																																																																																				
6	M94C	18	GY	3559036C1	3509903C1	W/AIR ABS																																																																																																																																																																																																																																																																																																																																																																																																																																																																																																																																																																																			
6	IM94L	18	BK	3559036C1	3509903C1	W/HYD ABS																																																																																																																																																																																																																																																																																																																																																																																																																																																																																																																																																																																			
6	M94AC	18	BN	3559036C1	3558022C1	W/W/ARCO AIR																																																																																																																																																																																																																																																																																																																																																																																																																																																																																																																																																																																			
7	M94D	18	GY	3559036C1	3509903C1	W/AIR ABS																																																																																																																																																																																																																																																																																																																																																																																																																																																																																																																																																																																			
7	IM94M	18	BN	3559036C1	3509903C1	W/HYD ABS																																																																																																																																																																																																																																																																																																																																																																																																																																																																																																																																																																																			
7	M94AD	18	BK	3559036C1	3558022C1	W/W/ARCO AIR																																																																																																																																																																																																																																																																																																																																																																																																																																																																																																																																																																																			
8	M9	20	GY	3559036C1	3532128C1																																																																																																																																																																																																																																																																																																																																																																																																																																																																																																																																																																																				
9	M56B	16	OR	3559037C1	3509903C1																																																																																																																																																																																																																																																																																																																																																																																																																																																																																																																																																																																				
10	M85E	16	GY	3559037C1	3509903C1																																																																																																																																																																																																																																																																																																																																																																																																																																																																																																																																																																																				
10*	M85M	16	GY	3559037C1	3509903C1																																																																																																																																																																																																																																																																																																																																																																																																																																																																																																																																																																																				
11	M57B	16	OR	3559037C1	3509903C1																																																																																																																																																																																																																																																																																																																																																																																																																																																																																																																																																																																				
12	M58B	14	BN	3559037C1	3509903C1																																																																																																																																																																																																																																																																																																																																																																																																																																																																																																																																																																																				
13	M11-G	12	WH	3559037C1	3509903C1																																																																																																																																																																																																																																																																																																																																																																																																																																																																																																																																																																																				
14	M94E	18	GY	3559036C1	3509903C1	W/AIR ABS																																																																																																																																																																																																																																																																																																																																																																																																																																																																																																																																																																																			
14	IM94N	18	BK	3559036C1	3509903C1	W/HYD ABS																																																																																																																																																																																																																																																																																																																																																																																																																																																																																																																																																																																			
14	M94AE	18	BN	3559036C1	3558022C1	W/W/ARCO AIR																																																																																																																																																																																																																																																																																																																																																																																																																																																																																																																																																																																			
15	M94E	18	GY	3559036C1	3509903C1	W/AIR ABS																																																																																																																																																																																																																																																																																																																																																																																																																																																																																																																																																																																			
15	IM94P	18	BN	3559036C1	3509903C1	W/HYD ABS																																																																																																																																																																																																																																																																																																																																																																																																																																																																																																																																																																																			
15	M94AF	18	BK	3559036C1	3558022C1	W/W/ARCO AIR																																																																																																																																																																																																																																																																																																																																																																																																																																																																																																																																																																																			
16	M94H	18	GY	3559036C1	3509903C1																																																																																																																																																																																																																																																																																																																																																																																																																																																																																																																																																																																				
16	M94AH	14	BL	3559037C1	3558022C1	W/W/ARCO AIR																																																																																																																																																																																																																																																																																																																																																																																																																																																																																																																																																																																			
17	M94J	18	GY	3559036C1	3509903C1																																																																																																																																																																																																																																																																																																																																																																																																																																																																																																																																																																																				
17	M94AL	14	GN	3559037C1	3558022C1	W/W/ARCO AIR																																																																																																																																																																																																																																																																																																																																																																																																																																																																																																																																																																																			
18	M94K	18	GY	3559036C1	3509903C1																																																																																																																																																																																																																																																																																																																																																																																																																																																																																																																																																																																				
18	M94AK	14	BN	3559037C1	3558022C1	W/W/ARCO AIR																																																																																																																																																																																																																																																																																																																																																																																																																																																																																																																																																																																			
19	M21C	18	TN	3559036C1	3509903C1																																																																																																																																																																																																																																																																																																																																																																																																																																																																																																																																																																																				
20	M64	16	YL	3559037C1	3509903C1	W/FOG LIGHTS																																																																																																																																																																																																																																																																																																																																																																																																																																																																																																																																																																																			
21	M78H	16	LT GN	3559037C1	3509903C1																																																																																																																																																																																																																																																																																																																																																																																																																																																																																																																																																																																				
22	M21D	18	TN	3559036C1	3509903C1																																																																																																																																																																																																																																																																																																																																																																																																																																																																																																																																																																																				
23	M77	20	LT GN	3559036C1	3532128C1																																																																																																																																																																																																																																																																																																																																																																																																																																																																																																																																																																																				
24	M6	20	GY	3559036C1	3532128C1																																																																																																																																																																																																																																																																																																																																																																																																																																																																																																																																																																																				
CAV	CIR	GAUGE	COLOR	TERM	SEAL	NOTES																																																																																																																																																																																																																																																																																																																																																																																																																																																																																																																																																																																			
1	J94AP	18	GY	3509874C1	3509903C1	W/AIR ABS																																																																																																																																																																																																																																																																																																																																																																																																																																																																																																																																																																																			
1	J94A	18	GY	3509874C1	3509903C1	W/AUX AIR																																																																																																																																																																																																																																																																																																																																																																																																																																																																																																																																																																																			
2	J94AR	18	GY	3509874C1	3509903C1	W/AIR ABS																																																																																																																																																																																																																																																																																																																																																																																																																																																																																																																																																																																			
2	J6BA	18	GY	3509874C1	3509903C1	W/AUX AIR																																																																																																																																																																																																																																																																																																																																																																																																																																																																																																																																																																																			
3	J40FA	18	GY	3509874C1	3509903C1	W/AUX AIR																																																																																																																																																																																																																																																																																																																																																																																																																																																																																																																																																																																			
3	J94AS	18	GY	3509874C1	3509903C1	W/AIR ABS																																																																																																																																																																																																																																																																																																																																																																																																																																																																																																																																																																																			
4	J52A	14	YL	3559035C1	3509903C1	W/STD LIGHTS																																																																																																																																																																																																																																																																																																																																																																																																																																																																																																																																																																																			
4	J52B	14	YL	3559035C1	3509903C1	W/AUX LIGHTS																																																																																																																																																																																																																																																																																																																																																																																																																																																																																																																																																																																			
5	J53A	14	YL	3559035C1	3509903C1	W/STD LIGHTS																																																																																																																																																																																																																																																																																																																																																																																																																																																																																																																																																																																			
5	J53B	14	YL	3559035C1	3509903C1	W/AUX LIGHTS																																																																																																																																																																																																																																																																																																																																																																																																																																																																																																																																																																																			
6	J94HM	18	GY	3509874C1	3509903C1	W/HYD ABS																																																																																																																																																																																																																																																																																																																																																																																																																																																																																																																																																																																			
6	J94AM	18	GY	3509874C1	3509903C1	W/AIR ABS																																																																																																																																																																																																																																																																																																																																																																																																																																																																																																																																																																																			
6*	J94I	18	BK	3509874C1	3509903C1																																																																																																																																																																																																																																																																																																																																																																																																																																																																																																																																																																																				
7	J94HN	18	GY	3509874C1	3509903C1	W/HYD ABS																																																																																																																																																																																																																																																																																																																																																																																																																																																																																																																																																																																			
7	J94AN	18	GY	3509874C1	3509903C1	W/AIR ABS																																																																																																																																																																																																																																																																																																																																																																																																																																																																																																																																																																																			
7*	J94M	18	BN	3509874C1	3509903C1																																																																																																																																																																																																																																																																																																																																																																																																																																																																																																																																																																																				
8	J8Y	20	GY	3509874C1	3532128C1																																																																																																																																																																																																																																																																																																																																																																																																																																																																																																																																																																																				
9	J56A	16	OR	3559035C1	3509903C1																																																																																																																																																																																																																																																																																																																																																																																																																																																																																																																																																																																				
10	J95AA	16	GY	3559035C1	3509903C1																																																																																																																																																																																																																																																																																																																																																																																																																																																																																																																																																																																				
11	J57A	16	OR	3559035C1	3509903C1																																																																																																																																																																																																																																																																																																																																																																																																																																																																																																																																																																																				
12	J68A	14	BN	3559035C1	3509903C1																																																																																																																																																																																																																																																																																																																																																																																																																																																																																																																																																																																				
13	J11-G	12	WH	3559035C1	3509903C1																																																																																																																																																																																																																																																																																																																																																																																																																																																																																																																																																																																				
14	J94AT	18	GY	3509874C1	3509903C1	W/AIR ABS																																																																																																																																																																																																																																																																																																																																																																																																																																																																																																																																																																																			
14	J94HT	18	GY	3509874C1	3509903C1	W/HYD ABS																																																																																																																																																																																																																																																																																																																																																																																																																																																																																																																																																																																			
14*	J94N	18	BK	3509874C1	3509903C1																																																																																																																																																																																																																																																																																																																																																																																																																																																																																																																																																																																				
15	J94AU	18	GY	3509874C1	3509903C1	W/AIR ABS																																																																																																																																																																																																																																																																																																																																																																																																																																																																																																																																																																																			
15	J94HU	18	GY	3509874C1	3509903C1	W/HYD ABS																																																																																																																																																																																																																																																																																																																																																																																																																																																																																																																																																																																			
15*	J94P	18	BN	3509874C1	3509903C1																																																																																																																																																																																																																																																																																																																																																																																																																																																																																																																																																																																				
16	J94AV	18	GY	3509874C1	3509903C1																																																																																																																																																																																																																																																																																																																																																																																																																																																																																																																																																																																				
17	J94AW	18	GY	3509874C1	3509903C1																																																																																																																																																																																																																																																																																																																																																																																																																																																																																																																																																																																				
18	J94AX	18	GY	3509874C1	3509903C1																																																																																																																																																																																																																																																																																																																																																																																																																																																																																																																																																																																				
19	J21E	18	TN	3509874C1	3509903C1																																																																																																																																																																																																																																																																																																																																																																																																																																																																																																																																																																																				
20	J64A	12	BN	3559035C1	3509903C1	W/FOG LIGHTS																																																																																																																																																																																																																																																																																																																																																																																																																																																																																																																																																																																			
21	J78K	16	LT GN	3559035C1	3509903C1																																																																																																																																																																																																																																																																																																																																																																																																																																																																																																																																																																																				
22	J21E	18	TN	3509874C1	3509903C1																																																																																																																																																																																																																																																																																																																																																																																																																																																																																																																																																																																				
23	J77C	20	LT GN	3509874C1	3532128C1																																																																																																																																																																																																																																																																																																																																																																																																																																																																																																																																																																																				
24	J6E	18	LT GN	3509874C1	3509903C1																																																																																																																																																																																																																																																																																																																																																																																																																																																																																																																																																																																				
* W/ MXT		CONNECTOR - 3558022C1 SEAL - 3559047C1 LOCK - 3558056C1 PLUG - 3532129C1																																																																																																																																																																																																																																																																																																																																																																																																																																																																																																																																																																																							
CHK	DATE	CHANGE	REV	REFERENCE	DRAWN	NAME																																																																																																																																																																																																																																																																																																																																																																																																																																																																																																																																																																																			
CNA1	31MAR09	ADDED MXT EFFECTS	F	61817B	UOODAG9	CIRCUIT DIAGRAM, 42/43/44/85/8600 & 73/74/7500																																																																																																																																																																																																																																																																																																																																																																																																																																																																																																																																																																																			
					RELEASE NO.	DATE																																																																																																																																																																																																																																																																																																																																																																																																																																																																																																																																																																																			
					P52778H	21JUN00																																																																																																																																																																																																																																																																																																																																																																																																																																																																																																																																																																																			
						PART NO.																																																																																																																																																																																																																																																																																																																																																																																																																																																																																																																																																																																			
						AE08052376																																																																																																																																																																																																																																																																																																																																																																																																																																																																																																																																																																																			
						SHEET																																																																																																																																																																																																																																																																																																																																																																																																																																																																																																																																																																																			
						031																																																																																																																																																																																																																																																																																																																																																																																																																																																																																																																																																																																			

Figure 231 Connector Composites (4105), (4111), (4120), (4301)

12.48. CONNECTOR COMPOSITES (6020), P. 39A

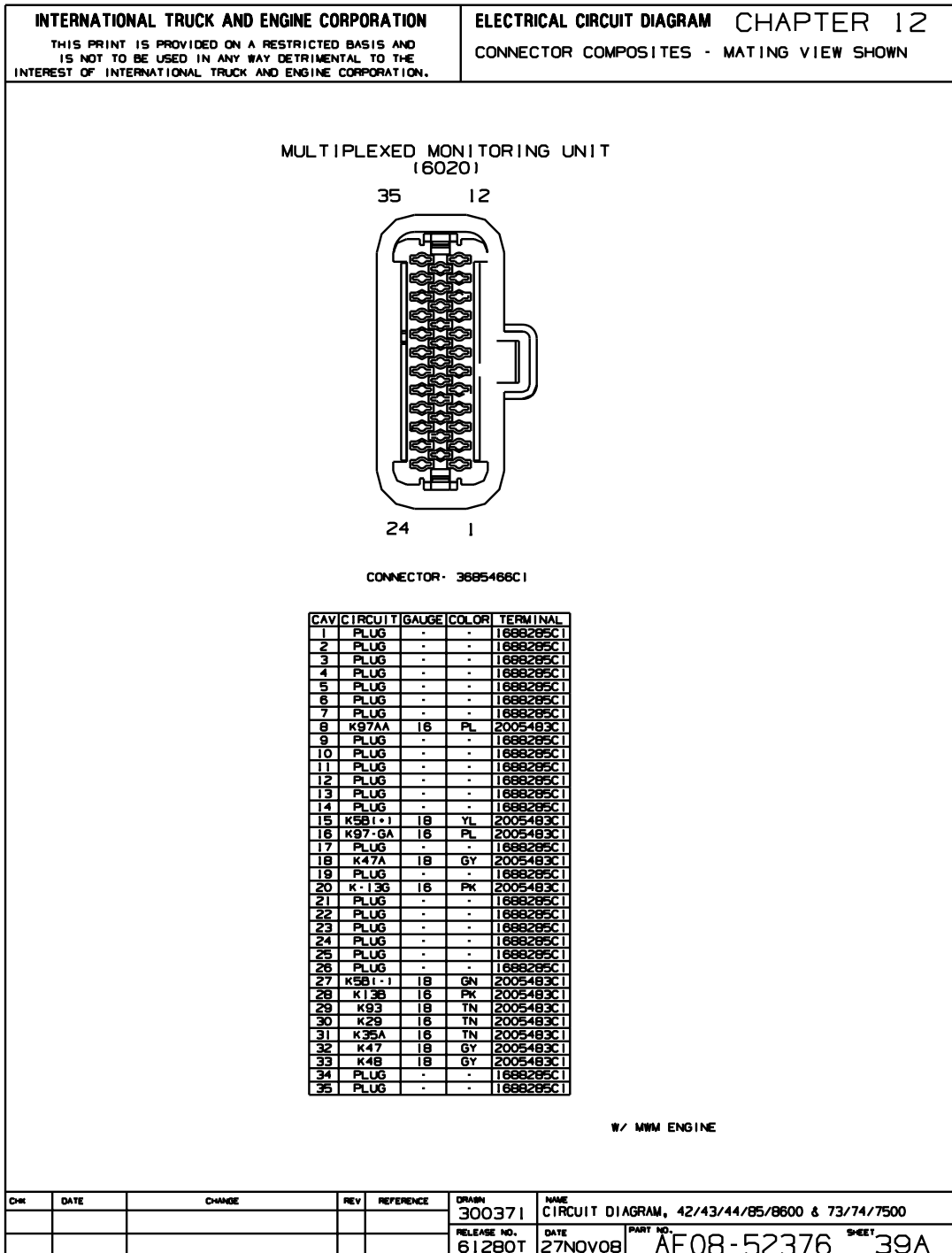


Figure 241 Connector Composites (6020)

12.58. CONNECTOR COMPOSITES (7500), (7502), (7503), (7600), (7601), P. 45A






INTERNATIONAL TRUCK AND ENGINE CORPORATION				ELECTRICAL CIRCUIT DIAGRAM CHAPTER 12																																																			
THIS PRINT IS PROVIDED ON A RESTRICTED BASIS AND IS NOT TO BE USED IN ANY WAY DETRIMENTAL TO THE INTEREST OF INTERNATIONAL TRUCK AND ENGINE CORPORATION.				CONNECTOR COMPOSITES - MATING VIEW SHOWN																																																			
BACK-UP LIGHT SWITCH (7500)  <table border="1" style="margin-left: auto; margin-right: auto;"> <thead> <tr> <th>CAV</th> <th>CIR</th> <th>GAUGE</th> <th>COLOR</th> <th>TERM</th> <th>SEAL</th> </tr> </thead> <tbody> <tr> <td>A</td> <td>L71B</td> <td>16</td> <td>OR</td> <td>1661875C1</td> <td>1661872C1</td> </tr> <tr> <td>A</td> <td>K71D</td> <td>16</td> <td>OR</td> <td>1661875C1</td> <td>1661872C1</td> </tr> <tr> <td>B</td> <td>L71C</td> <td>16</td> <td>OR</td> <td>1661875C1</td> <td>1661872C1</td> </tr> <tr> <td>B</td> <td>L71E</td> <td>16</td> <td>OR</td> <td>1661875C1</td> <td>1661872C1</td> </tr> </tbody> </table> <p>CONNECTOR - 1661778C1 PLUG - 1687798C1 LOCK - 1661874C1</p>				CAV	CIR	GAUGE	COLOR	TERM	SEAL	A	L71B	16	OR	1661875C1	1661872C1	A	K71D	16	OR	1661875C1	1661872C1	B	L71C	16	OR	1661875C1	1661872C1	B	L71E	16	OR	1661875C1	1661872C1	BACK-UP LIGHT (7502)  <table border="1" style="margin-left: auto; margin-right: auto;"> <thead> <tr> <th>CAV</th> <th>CIR</th> <th>GAUGE</th> <th>COLOR</th> <th>TERM</th> <th>SEAL</th> </tr> </thead> <tbody> <tr> <td>A</td> <td>L71</td> <td>16</td> <td>OR</td> <td>1661875C1</td> <td>1661872C1</td> </tr> <tr> <td>B</td> <td>L71A</td> <td>16</td> <td>OR</td> <td>1661875C1</td> <td>1661872C1</td> </tr> </tbody> </table> <p>CONNECTOR - 1661778C1 PLUG - 1687798C1 LOCK - 1661874C1</p>				CAV	CIR	GAUGE	COLOR	TERM	SEAL	A	L71	16	OR	1661875C1	1661872C1	B	L71A	16	OR	1661875C1	1661872C1
CAV	CIR	GAUGE	COLOR	TERM	SEAL																																																		
A	L71B	16	OR	1661875C1	1661872C1																																																		
A	K71D	16	OR	1661875C1	1661872C1																																																		
B	L71C	16	OR	1661875C1	1661872C1																																																		
B	L71E	16	OR	1661875C1	1661872C1																																																		
CAV	CIR	GAUGE	COLOR	TERM	SEAL																																																		
A	L71	16	OR	1661875C1	1661872C1																																																		
B	L71A	16	OR	1661875C1	1661872C1																																																		
BACK-UP LIGHT SWITCH (7503)  <table border="1" style="margin-left: auto; margin-right: auto;"> <thead> <tr> <th>CAV</th> <th>CIR</th> <th>GAUGE</th> <th>COLOR</th> <th>TERM</th> <th>SEAL</th> </tr> </thead> <tbody> <tr> <td>A</td> <td>K71D</td> <td>16</td> <td>OR</td> <td>1661875C1</td> <td>1661872C1</td> </tr> <tr> <td>B</td> <td>K71E</td> <td>16</td> <td>OR</td> <td>1661875C1</td> <td>1661872C1</td> </tr> </tbody> </table> <p>CONNECTOR - 1661778C1 PLUG - 1687798C1 LOCK - 1661874C1</p>				CAV	CIR	GAUGE	COLOR	TERM	SEAL	A	K71D	16	OR	1661875C1	1661872C1	B	K71E	16	OR	1661875C1	1661872C1	THIS SPACE INTENTIONALLY LEFT BLANK																																	
CAV	CIR	GAUGE	COLOR	TERM	SEAL																																																		
A	K71D	16	OR	1661875C1	1661872C1																																																		
B	K71E	16	OR	1661875C1	1661872C1																																																		
OUTPUT SPEED SENSOR (7600)  <table border="1" style="margin-left: auto; margin-right: auto;"> <thead> <tr> <th>CAV</th> <th>CIR</th> <th>GAUGE</th> <th>COLOR</th> <th>TERM</th> </tr> </thead> <tbody> <tr> <td>A</td> <td>L47#215</td> <td>18</td> <td>GY</td> <td>2036586C1</td> </tr> <tr> <td>B</td> <td>L47#216</td> <td>18</td> <td>GY</td> <td>2036586C1</td> </tr> </tbody> </table> <p>CONNECTOR - 2036583C1</p>				CAV	CIR	GAUGE	COLOR	TERM	A	L47#215	18	GY	2036586C1	B	L47#216	18	GY	2036586C1	SPEEDO SENSOR (7601)  <table border="1" style="margin-left: auto; margin-right: auto;"> <thead> <tr> <th>CAV</th> <th>CIR</th> <th>GAUGE</th> <th>COLOR</th> <th>TERM</th> </tr> </thead> <tbody> <tr> <td>A</td> <td>K47</td> <td>18</td> <td>GY</td> <td>2036586C1</td> </tr> <tr> <td>B</td> <td>K47A</td> <td>18</td> <td>GY</td> <td>2036586C1</td> </tr> </tbody> </table> <p>CONNECTOR - 2036583C1</p>				CAV	CIR	GAUGE	COLOR	TERM	A	K47	18	GY	2036586C1	B	K47A	18	GY	2036586C1																		
CAV	CIR	GAUGE	COLOR	TERM																																																			
A	L47#215	18	GY	2036586C1																																																			
B	L47#216	18	GY	2036586C1																																																			
CAV	CIR	GAUGE	COLOR	TERM																																																			
A	K47	18	GY	2036586C1																																																			
B	K47A	18	GY	2036586C1																																																			
THIS SPACE INTENTIONALLY LEFT BLANK																																																							
CHK	DATE	CHANGE	REV	REFERENCE	DRAWN	NAME																																																	
					U00KLH1	42/43/44/85/8600 & 73/74/7500 CIRC DIAGRAMS																																																	
					RELEASE NO.	DATE	PART NO. SHEET																																																
					59929F	13OCT05	AE08-52376 45A																																																

Figure 251 Connector Composites (7500), (7502), (7503), (7600), (7601)

12.68. CONNECTOR COMPOSITES , (9264), (9265), (9303A), (9405), (9501), (9502), (9503), (9504), (9505), (9506), (9506/9911), P. 55

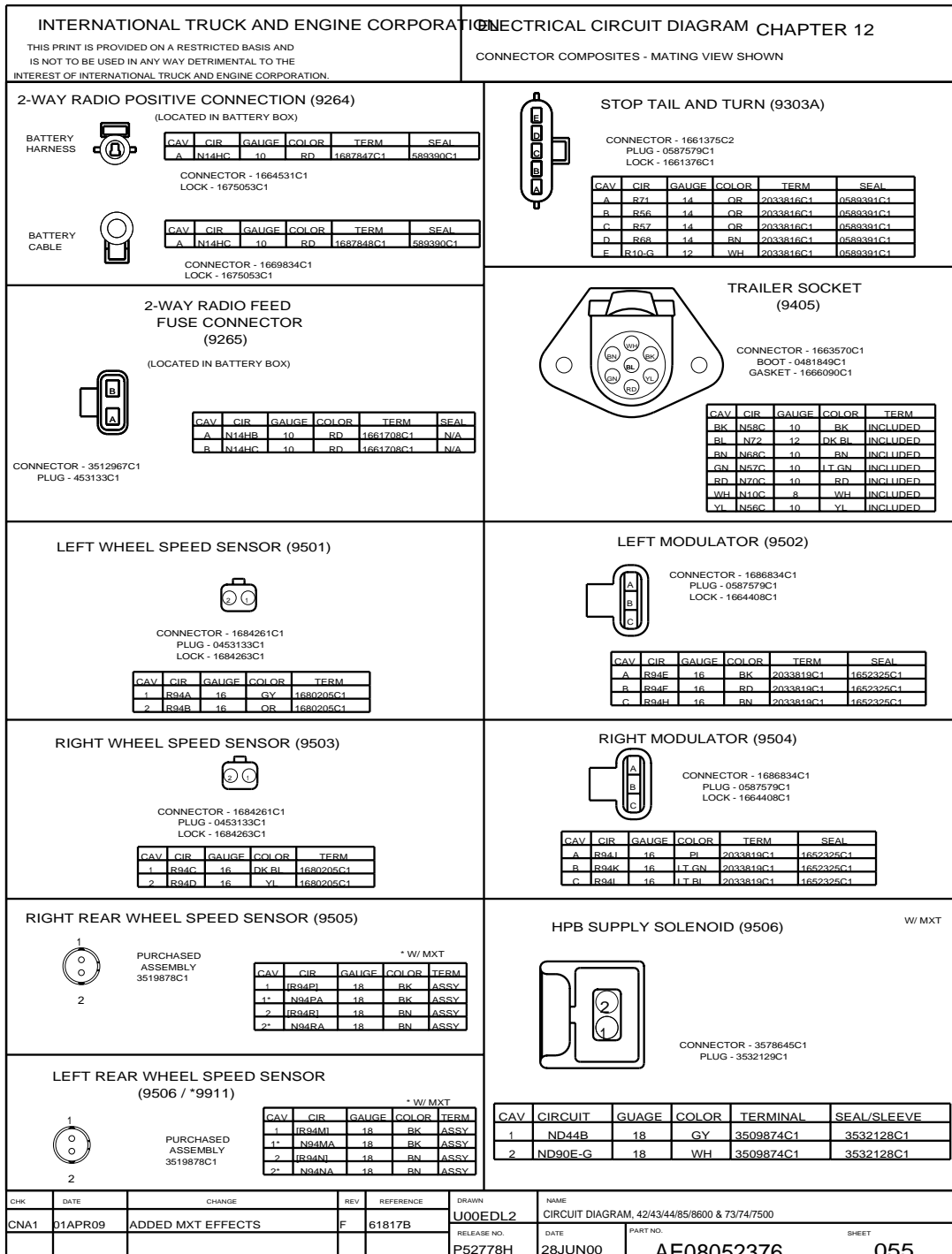


Figure 261 Connector Composites , (9264), (9265), (9303A), (9405), (9501), (9502), (9503), (9504), (9505), (9506), (9506/9911)

CLICK HERE TO **DOWNLOAD** THE COMPLETE MANUAL

- Thank you very much for reading the preview of the manual.
- You can download the complete manual from: www.heydownloads.com by clicking the link below



- Please note: If there is no response to CLICKING the link, please download this PDF first and then click on it.

CLICK HERE TO **DOWNLOAD** THE COMPLETE MANUAL