

# Service Manual Trucks

Group **37**

Wiring diagram

FH, NH

CLICK HERE TO **DOWNLOAD** THE COMPLETE MANUAL

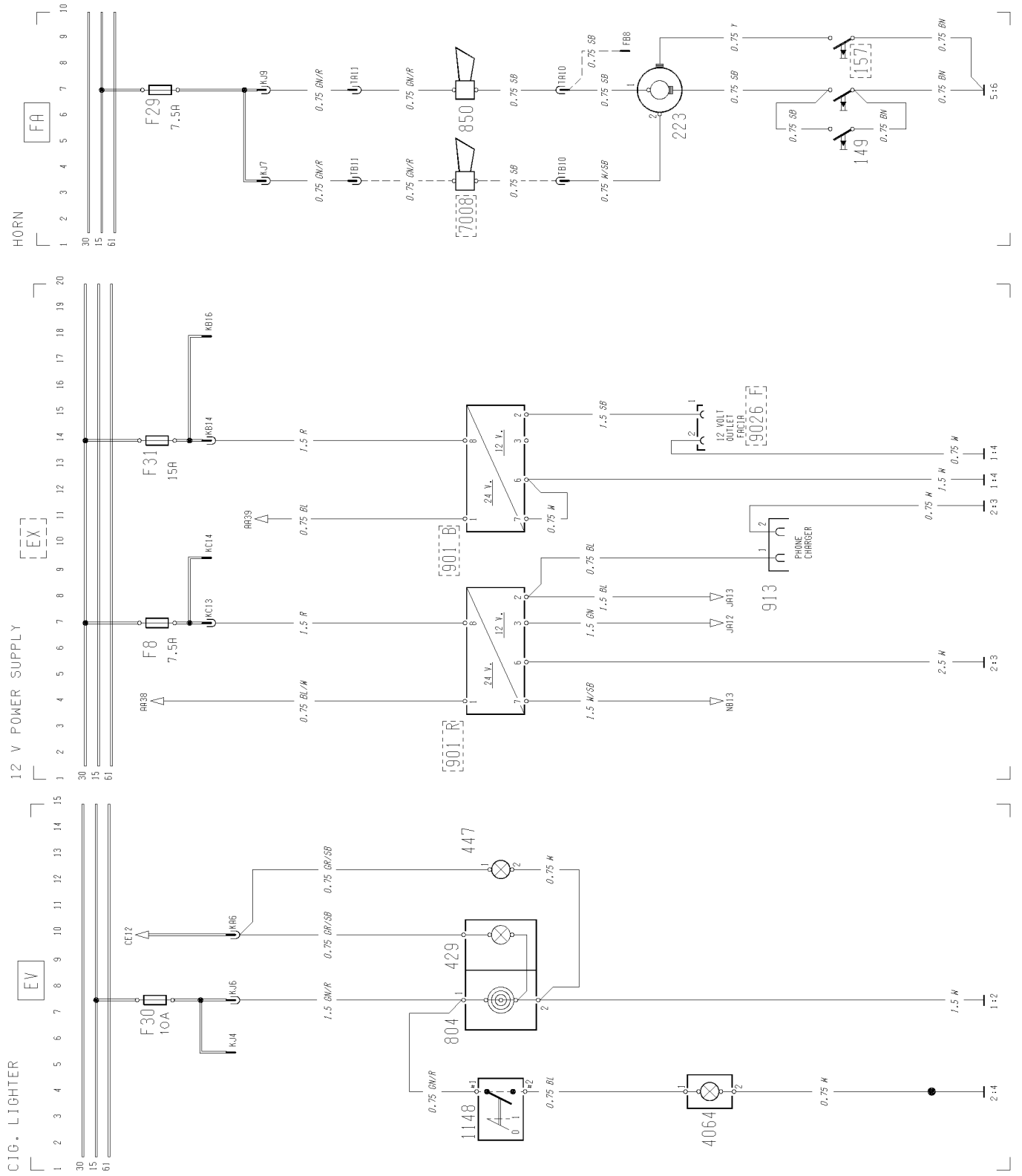
- Thank you very much for reading the preview of the manual.
- You can download the complete manual from: [www.heydownloads.com](http://www.heydownloads.com) by clicking the link below



- Please note: If there is no response to CLICKING the link, please download this PDF first and then click on it.

CLICK HERE TO **DOWNLOAD** THE COMPLETE MANUAL





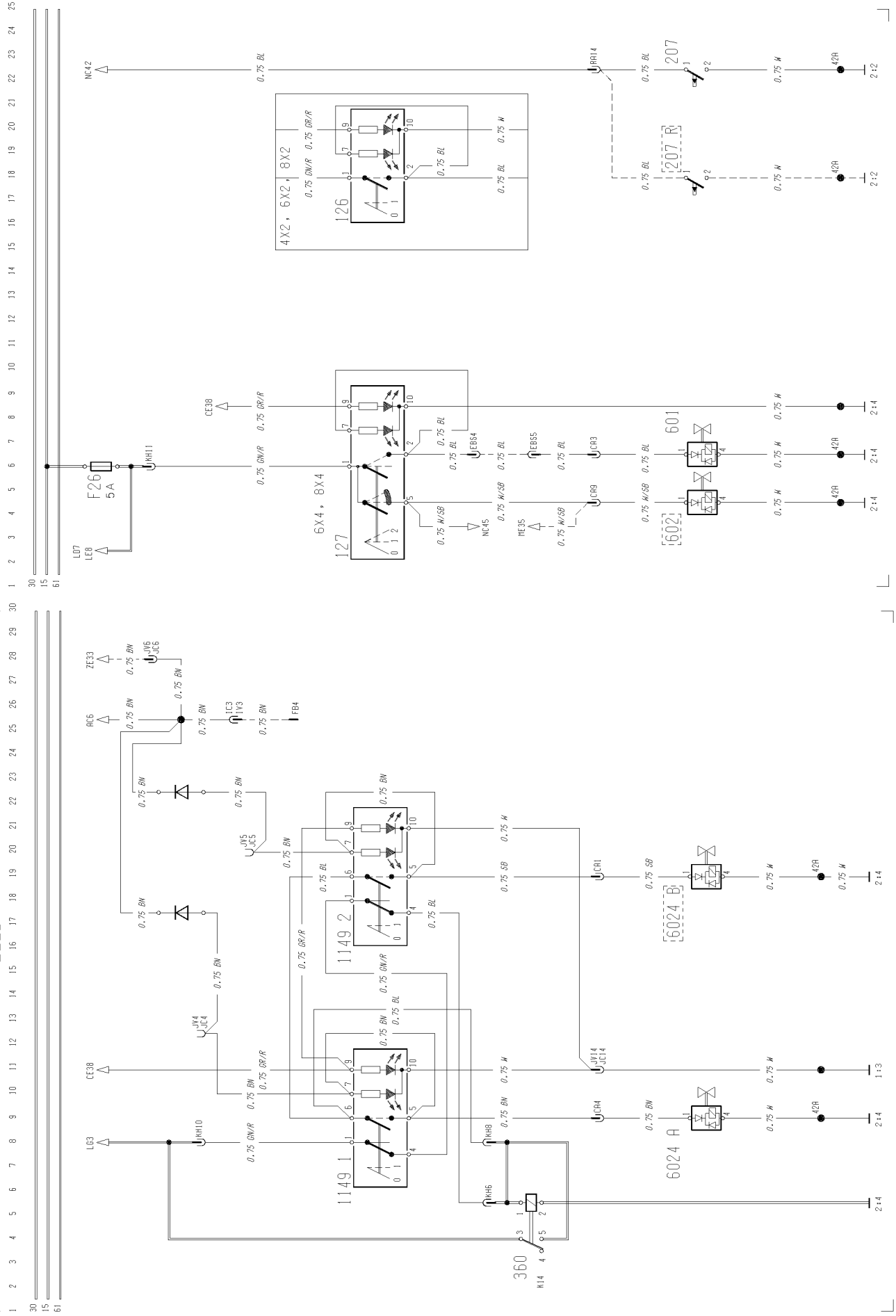
T3010031

DIFF.-LOCK

[LG]

DOUBLE POWER TAKE OFF

[LE]





CLICK HERE TO **DOWNLOAD** THE COMPLETE MANUAL

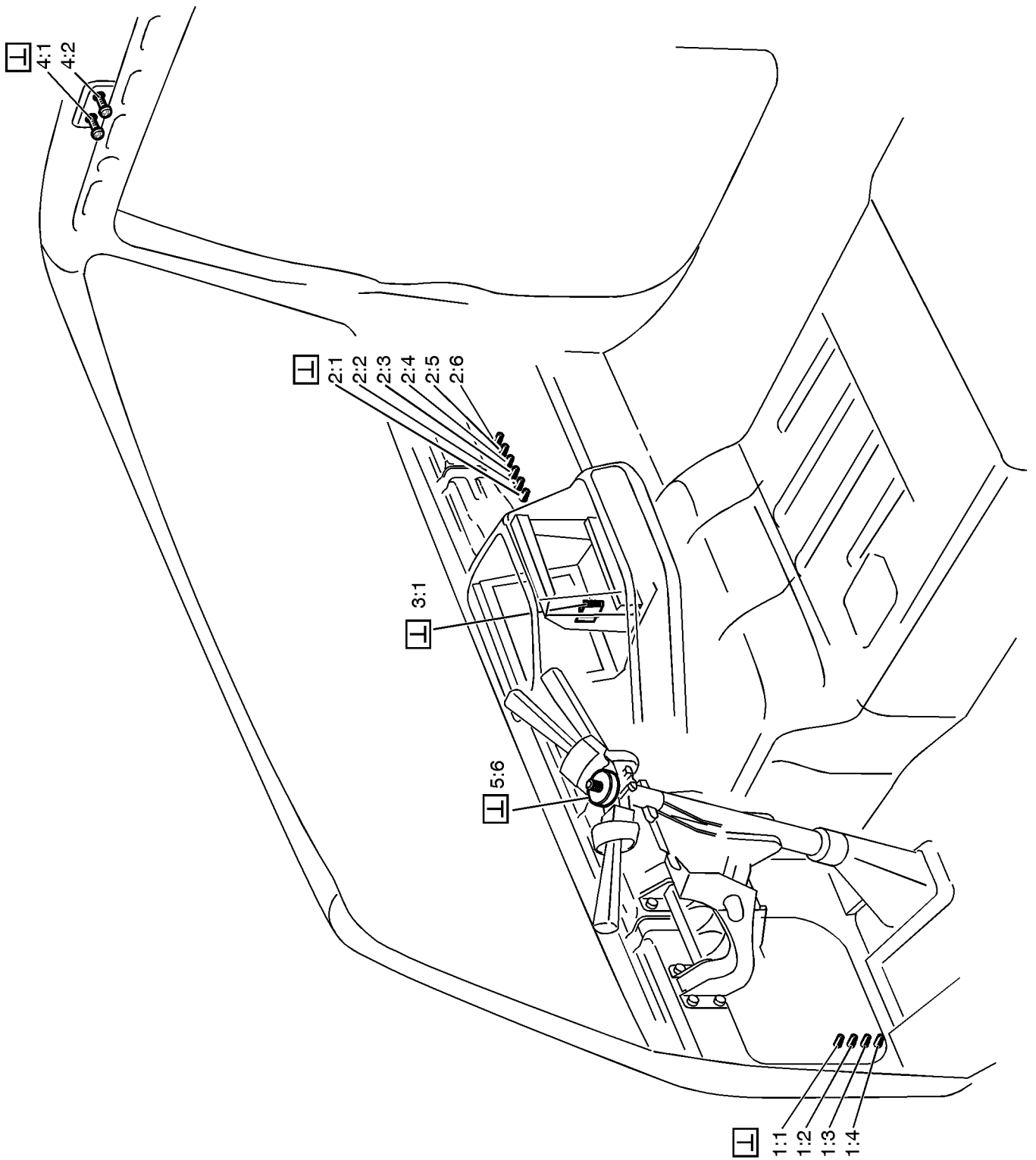
- Thank you very much for reading the preview of the manual.
- You can download the complete manual from: [www.heydownloads.com](http://www.heydownloads.com) by clicking the link below



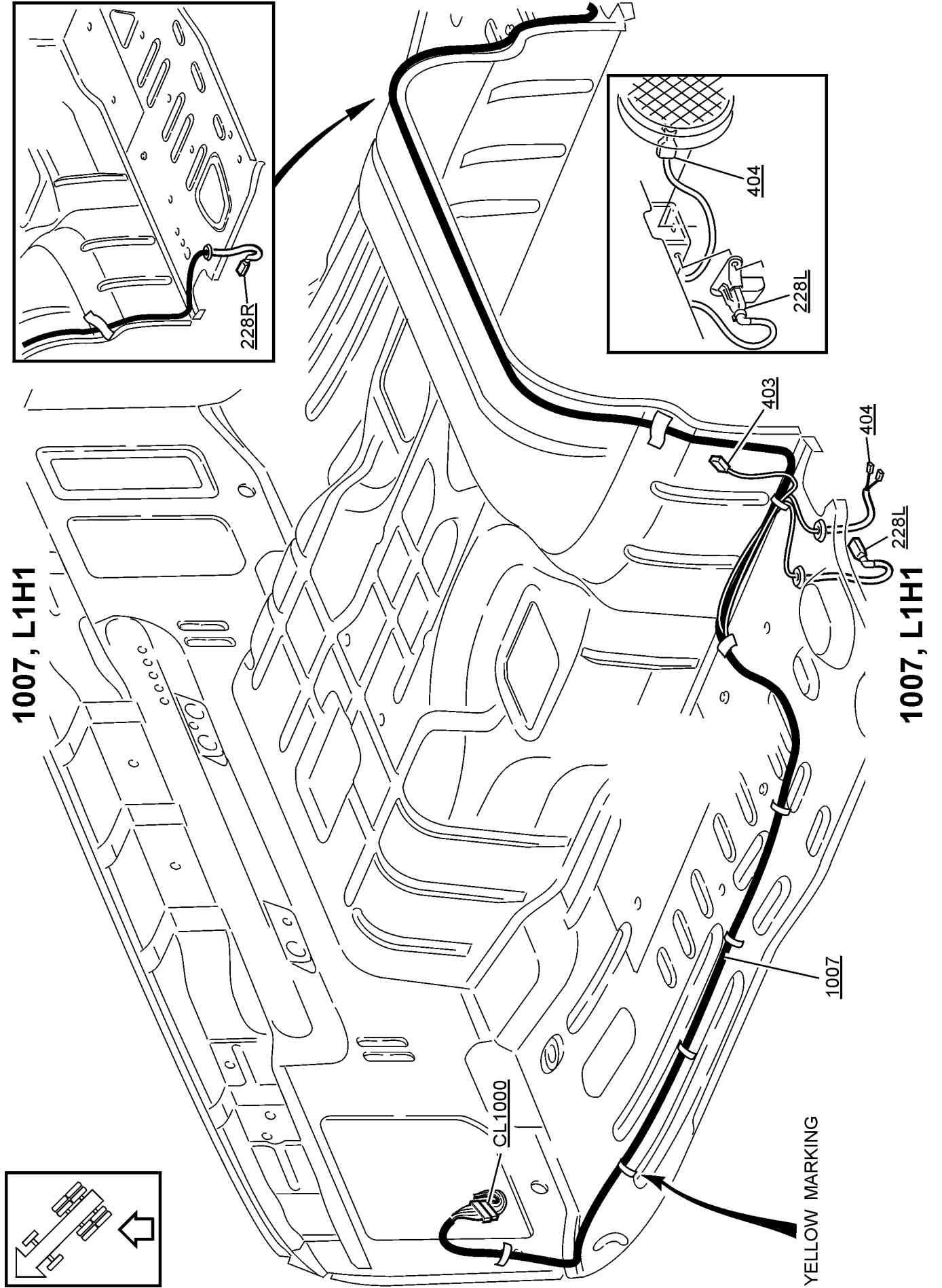
- Please note: If there is no response to CLICKING the link, please download this PDF first and then click on it.

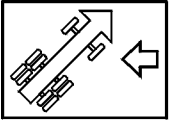
CLICK HERE TO **DOWNLOAD** THE COMPLETE MANUAL

# Illustrations

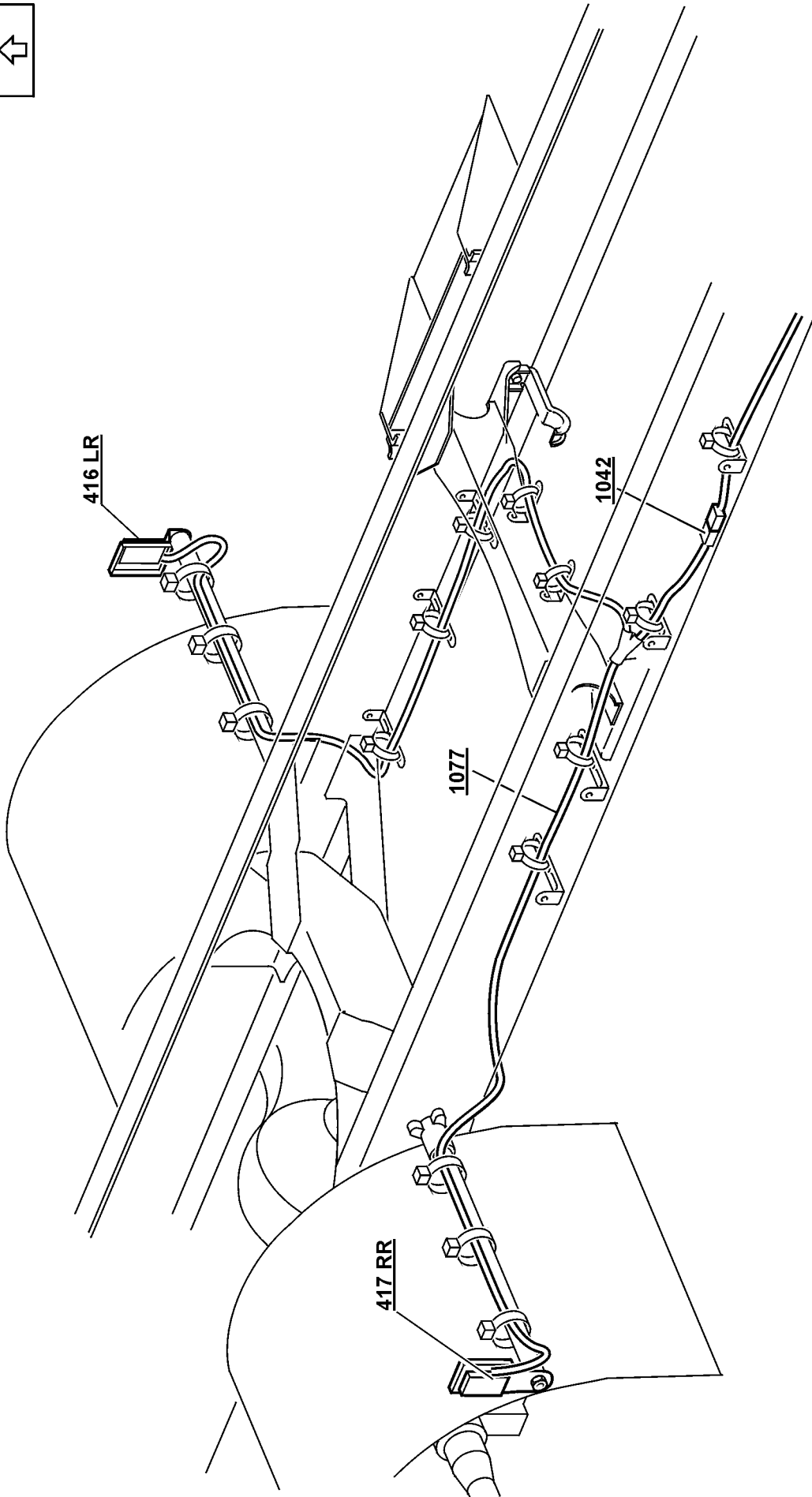


T3010168



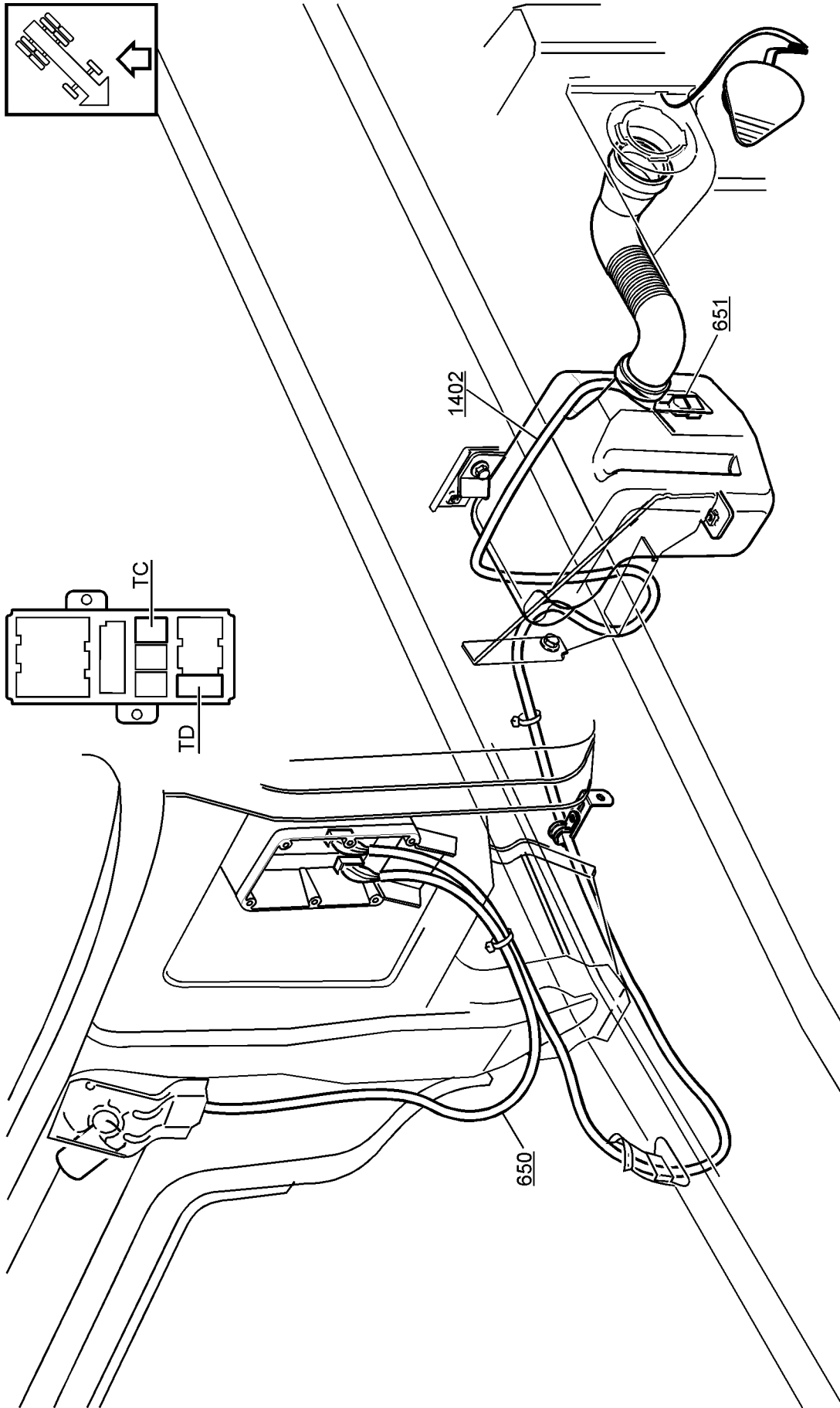


1077



1077

650/1402, NH12



650/1402, NH12

## Cable harness illustration index

650	Windscreen wiper motor .....	page 78
1000	Cable harness, instruments .....	page 52
1002	Cable harness, tachograph (CABLE-EC) .....	page 84
1006	Cable harness, cab, upper .....	page 57
1007	Cable harness, cab, lower .....	page 59
1020	Cable harness, cowl .....	page 61
1030	Cable harness, engine .....	page 63
1042	Cable harness, tail lights .....	page 66
1056	Cable harness, air dryer .....	page 67
1057	Cable harness, chassis .....	page 68
1077	Cable harness, side marking lamp .....	page 69
1083	Cable harness, door .....	page 70
1084	Cable harness, cab, ABS .....	page 74
1086	Cable harness, solenoid valve, ABS .....	page 75
1402	Cable harness, windscreen washers .....	page 78
1425	Cable harness, pulse sensor - tachograph (CABLE-B) .....	page 84
1427	Cable harness, extension .....	page 82
1440	Cable harness, electric heated rearview mirror .....	page 80
1454	Cable harness, cab tilt pump .....	page 81
1465	Cable harness, additional accessories .....	page 82
1476	Cable harness, engine, cab .....	page 83
1489	Cable harness, adapter, without tachograph .....	page 52

133	Switch, bogie lift (LJ11)	211	Closing contact, indicator light, bogie lift (MA16)
133	Switch, bogie lift (MA5)	211	Closing contact, indicator light, bogie lift (MD27)
133	Switch, bogie lift (MD4)	214	Closing contact, indicator light, low split (NB50)
133	Switch, bogie lift (ME40)	214	Closing contact, indicator light, low split (NZ48)
133	Joint sleeve, bogie lift (ZB30)	214	Joint sleeve, indicator light, low split (ZA51)
133	Joint sleeve, bogie lift (ZB61)	216 A	Closing contact, brake lights (CK8)
144	Switch, battery master switch (AA8)	216 A	Joint sleeve, brake lights (ZB48)
144	Joint sleeve, battery master switch (ZA2)	216 B	Closing contact, brake lights (CK4)
144/144AD	Joint sleeve, battery master switch (ZA46)	216 B	Joint sleeve, brake lights (ZB48)
144 ADR	Switch, battery master switch (ZD10)	216 C	Closing contact, brake lights (CK4)
147	Switch, direction indicators (CN7)	217	Closing contact, reversing lights (EA4)
149	Switch, horn (FA6)	217	Joint sleeve, reversing lights (ZA51)
149	Joint sleeve, horn (ZA58)	218	Closing contact, exhaust-pressure governor (AC16)
150	Switch, starting switch (AA15)		
157	Switch, air horn (FA9)	218	Joint sleeve, exhaust-pressure governor (ZB45)
157	Joint sleeve, air horn (ZA58)	223	Slip contact, horn (FA7)
172	Switch, extra (EN10)	223	Joint sleeve, horn (ZA59)
172	Switch, extra (TA5)	228 L	Closing contact, cab lock (NA40)
179	Switch, 3rd axle lock (LJ28)	228 L	Joint sleeve, cab lock (ZA35)
179	Switch, 3rd axle lock (LL10)	228 R	Closing contact, cab lock (NA42)
179	Joint sleeve, 3rd axle lock (ZB28)	228 R	Joint sleeve, cab lock (ZA35)
1101	Switch, parking heater (ZE25)	258	Joint sleeve, thermal, bogie lift (ZA50)
1105	Switch, levelling control, headlights (PA10)	2003	Thermostat, parking heater (HB11)
1105	Joint sleeve, levelling control, headlights (ZA58)	2003	Thermostat, parking heater (HC27)
1107	Switch, door lock (KH13)	2003	Joint sleeve, parking heater (ZB4)
1107	Joint sleeve, door lock (ZA45)	2003	Joint sleeve, parking heater (ZB8)
1122	Switch, retarder (AC52)	2003	Thermostat, parking heater (ZE12)
1132 D	Switch, electric operated rearview mirror (HH4)	2004 L	Break contact, lighting luggage compartment (ER53)
1132 D	Joint sleeve, electric operated rearview mirror (ZA49)	2004 L	Break contact, lighting luggage compartment (ES60)
1132 P	Switch, electric operated rearview mirror (HH10)		
1132 P	Joint sleeve, electric operated rearview mirror (ZA49)	2007	Break contact, clutch pedal (AC34)
		2008	Break contact, brake pedal (AC32)
1135	Switch, cruise control (AC40)	2018	Contact, oil pressure, power steering (NB36)
1146	Switch, snooze function/radio (ER37)	2018	Contact, oil pressure, power steering (NZ35)
1146	Switch, snooze function/radio (ES39)	2018	Joint sleeve, oil pressure, power steering (ZA22)
1146	Switch, snooze function/radio (ZA22)	2019	Contact, lock, seat belt (NB47)
1147 A	Switch, cab tilt pump (HP11)	2019	Contact, lock, seat belt (NZ47)
1147 A	Joint sleeve, cab tilt pump (ZB56)	2019	Joint sleeve, lock, seat belt (ZA29)
1147 B	Switch, cab tilt pump (HP10)	2020 L	Contact, bunk lock (ES54)
1148	Switch, storage compartment lighting (EV4)	2020 L	Joint sleeve, bunk lock (ZA41)
1149 1	Joint sleeve, PTO (ZA61)	2020 R	Contact, bunk lock (ES53)
1149 1	Switch, PTO (LD7)	2020 R	Joint sleeve, bunk lock (ZA43)
1149 1	Switch, PTO (LE8)	2074	Contact, low range (AC9)
1149 2	Switch, PTO (LE18)	301	Relay, fog lights (CG5)
1149 2	Joint sleeve, PTO (ZA61)	302	Relay, spot lights (CH5)
1150	Switch, fuel filter heater (HM7)	302	Relay, spot lights (CI5)
1150	Joint sleeve, fuel filter heater (ZA63)	303	Relay, loading lights (ED6)
1152	Switch, multi-function display (NA33)	303	Joint sleeve, loading lights (ZB54)
200	Closing contact, warning light, parking brake (NB56)	305	Relay, reversing lights (EA8)
200	Closing contact, warning light, parking brake (NZ54)	306	Relay, full beams (CE55)
200	Joint sleeve, warning light, parking brake (ZB45)	307	Relay, dipped beams (CE48)
205 D	Break contact, interior light (ER5)	308	Relay, brake lights (CK8)
205 D	Break contact, interior light (ES5)	308 B	Relay, brake lights (CK15)
205 D	Joint sleeve, interior light (ZA47)	309 L	Relay, parking lights (CE19)
205 P	Break contact, interior light (ER16)	309 L	Joint sleeve, parking lights (ZB13)
205 P	Break contact, interior light (ES17)	309 R	Relay, parking lights (CE26)
205 P	Joint sleeve, interior light (ZB42)	309 R	Joint sleeve, parking lights (ZB13)
207	Closing contact, indicator light, differential lock, rear wheels (LG23)	312	Relay, starting heater (BL51)
207	Joint sleeve, indicator light, differential lock, rear wheels (ZB14)	313	Relay, bogie lift motor (MA23)
207 R	Closing contact, indicator light, differential lock, rear wheels (LG18)	313	Relay, bogie lift motor (MD33)
207 R	Joint sleeve, indicator light, differential lock, rear wheels (ZB11)	314 A	Relay, bogie lift (LJ7)
		314 B	Relay, bogie lift (LJ13)
		314 B	Joint sleeve, bogie lift (ZB29)
		314 D	Joint sleeve, bogie lift (ZB61)
		314 D	Relay, bogie lift (MD9)
		315 R	Relay, starting switch (AA42)

CLICK HERE TO **DOWNLOAD** THE COMPLETE MANUAL

- Thank you very much for reading the preview of the manual.
- You can download the complete manual from: [www.heydownloads.com](http://www.heydownloads.com) by clicking the link below



- Please note: If there is no response to CLICKING the link, please download this PDF first and then click on it.

CLICK HERE TO **DOWNLOAD** THE COMPLETE MANUAL