

# Service Manual Buses

## Wiring Diagram

B5LHC (3), Body X900

Chassis nr:  
181560-



CLICK HERE TO **DOWNLOAD** THE COMPLETE MANUAL

- Thank you very much for reading the preview of the manual.
- You can download the complete manual from: [www.heydownloads.com](http://www.heydownloads.com) by clicking the link below



- Please note: If there is no response to CLICKING the link, please download this PDF first and then click on it.

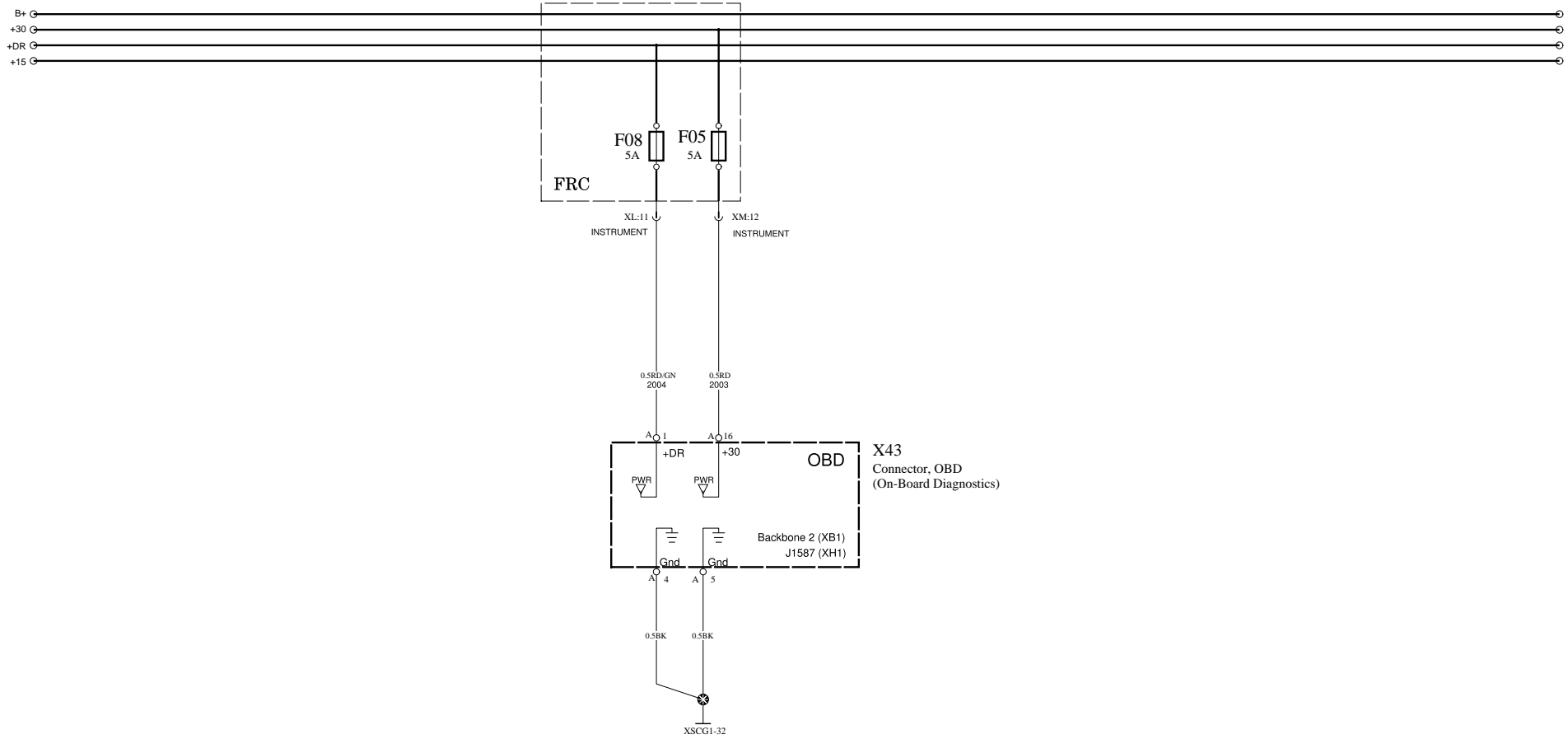
CLICK HERE TO **DOWNLOAD** THE COMPLETE MANUAL





# On Board Diagram OBD

BG1



Volvo Bus Corporation

Document title  
WIRING DIAGRAM

Document type  
PRODUCT SCHEMATIC

Document No

70404600

Issue

06

Volume

02(03)

Page

22(100)

Engineering Release Notice (ERN)	Location	Change Description	A = Added D = Deleted	W = Was	Document Release Status <b>RELEASED</b>
D-15968-60					Date 2014-11-07 Modification Count

## WIRING DIAGRAM P3660 MDE5 EURO6

Issue	Change Description	Date	By
01	Initial release	2010-07-29	CB
02	EMS Pinout P366x MDE 4 Cyl Euro6 Issue 1.6 Reg.no PD1-100304CB Delete Sensor Low Fuel Pressure Delete Valve Single H GIV/RAV Delete Switch Single H Switch Pin Air Filter Indicator for A14 EA29 to A14 EA26 Change number of splices Sensor B54 become Sensor B272 Add Engine Stop Switch for Truck Update pinning for Sensor Coolant High Temp / EGR Temp After Cooler Update pinning for Oil Temp Update pinning AVU Unit Delete injectors	2011-09-07	CB
03	Update pinning of turbo speed B87 (switch pin1 &3)	2012-01-06	GR
04	Moved Heater feedback from relay to preheater Change VGT pinning to match VGT CACIS Pinning from C1 Wave	2012-04-24	GR
05	EMS pinout P366X MDE 4cyl Euro6 issue N°1.9. Reg. no PD1-100304. Delete B272 "sensor, pressure Crankcase". Delete connection between XE35 and XE36 and delete XE36. Delete EB50, EI38 and connection. Delete EA30, EI22 and connection. Delete earth6_213 and earth4_213. Add EB26, EI2:12 and connection. Delete EA26.	2012-06-19	CC
06	Add splice XE80 and XE81	2013-05-30	CC
07	Nothing EMS Pinout document Update wires color for sensor B04 & B05 Delete "virtual splices" Adding information "R4" and variant on specific wires	2014-10-27	CP

The copying, distribution and utilization of this document as well as the communication of its contents to others without expressed authorization is prohibited. Offenders will be held liable for payment of damages. All rights reserved in the event of the grant of a patent, utility model or ornamental design registration.

Document Title  
**WIRING DIAGRAM  
P3660  
MDE5 EURO6**

**VOLVO**  
Volvo Powertrain Corporation

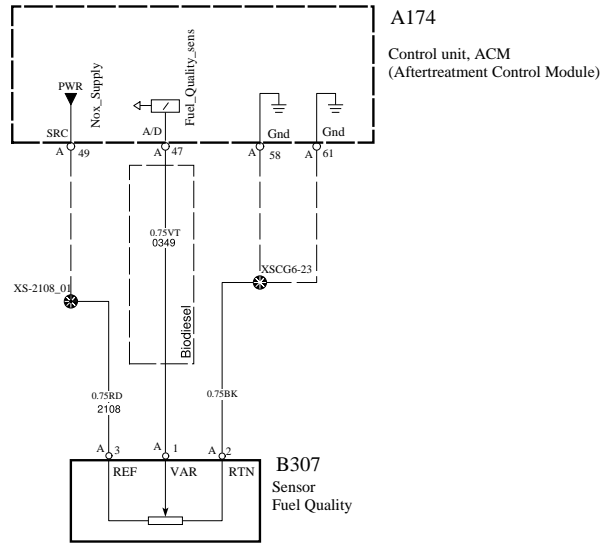
Document Type  
**TECHNICAL REGULATION**

Owner Domain: Document Prefix

Document No <b>21605106</b>	Issue Index <b>07</b>	Volume No <b>01</b>	Page No <b>1(5)</b>
--------------------------------	--------------------------	------------------------	------------------------

# Fuel Quality Sensor FQS

CB1-5



A

A

B

B

C

C

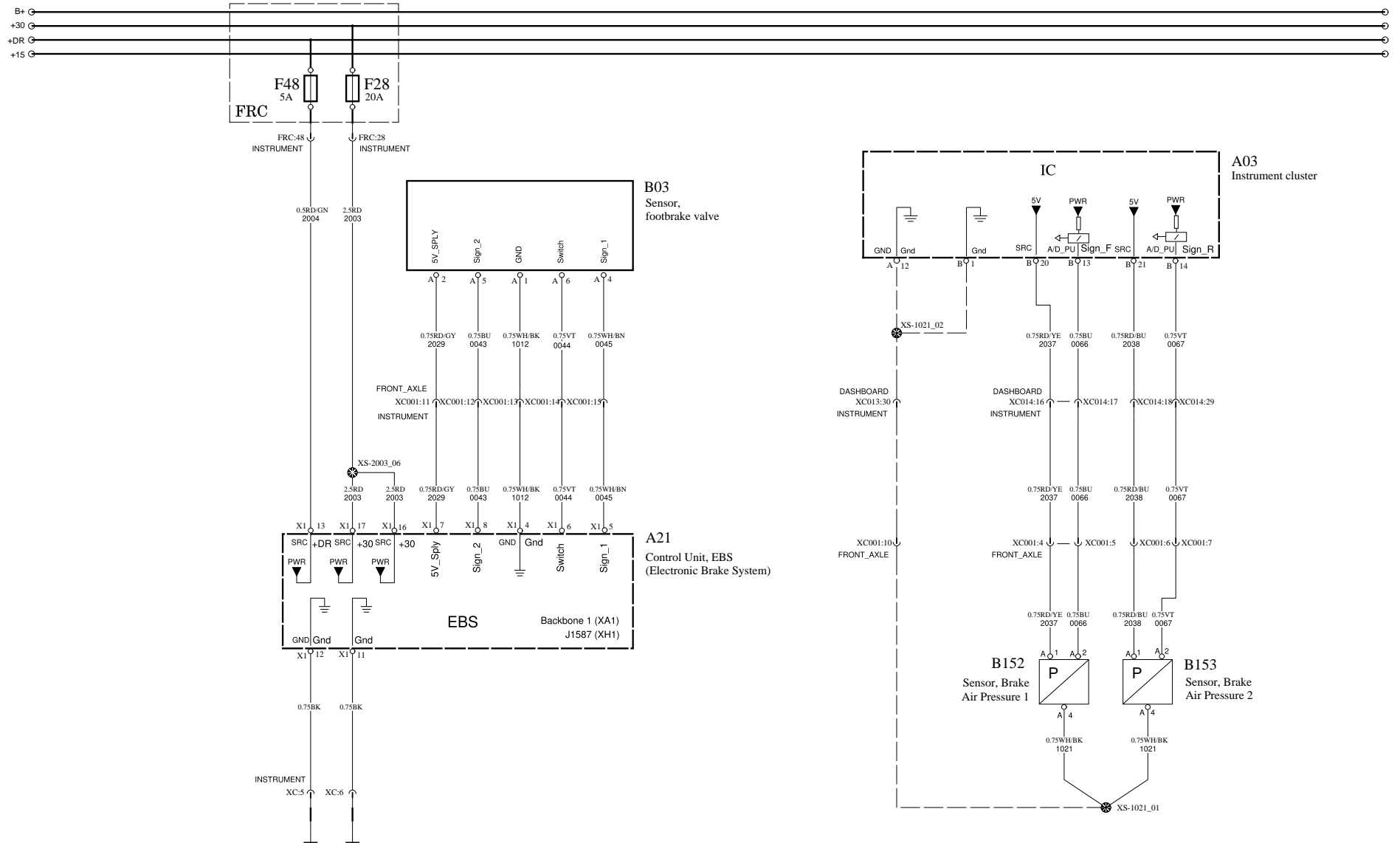
D

D

E

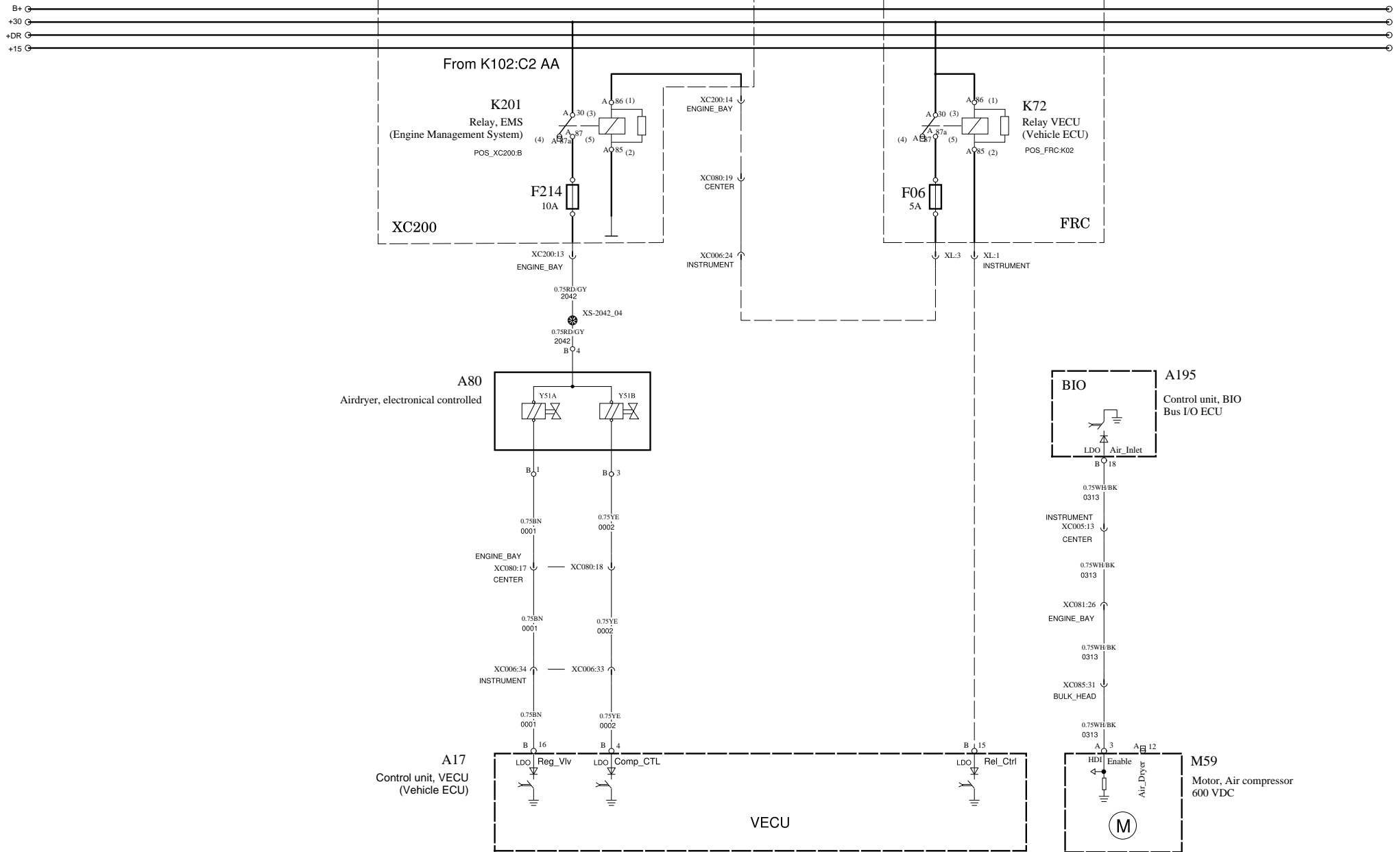
E

### Control



# Air Dryer for Hybrid

FB1



**VOLVO**

Volvo Bus Corporation

Document title  
WIRING DIAGRAM

Document type  
PRODUCT SCHEMATIC

Document No

70404600

Issue

06

Volume

02(03)

Page

57(100)

CLICK HERE TO **DOWNLOAD** THE COMPLETE MANUAL

- Thank you very much for reading the preview of the manual.
- You can download the complete manual from: [www.heydownloads.com](http://www.heydownloads.com) by clicking the link below

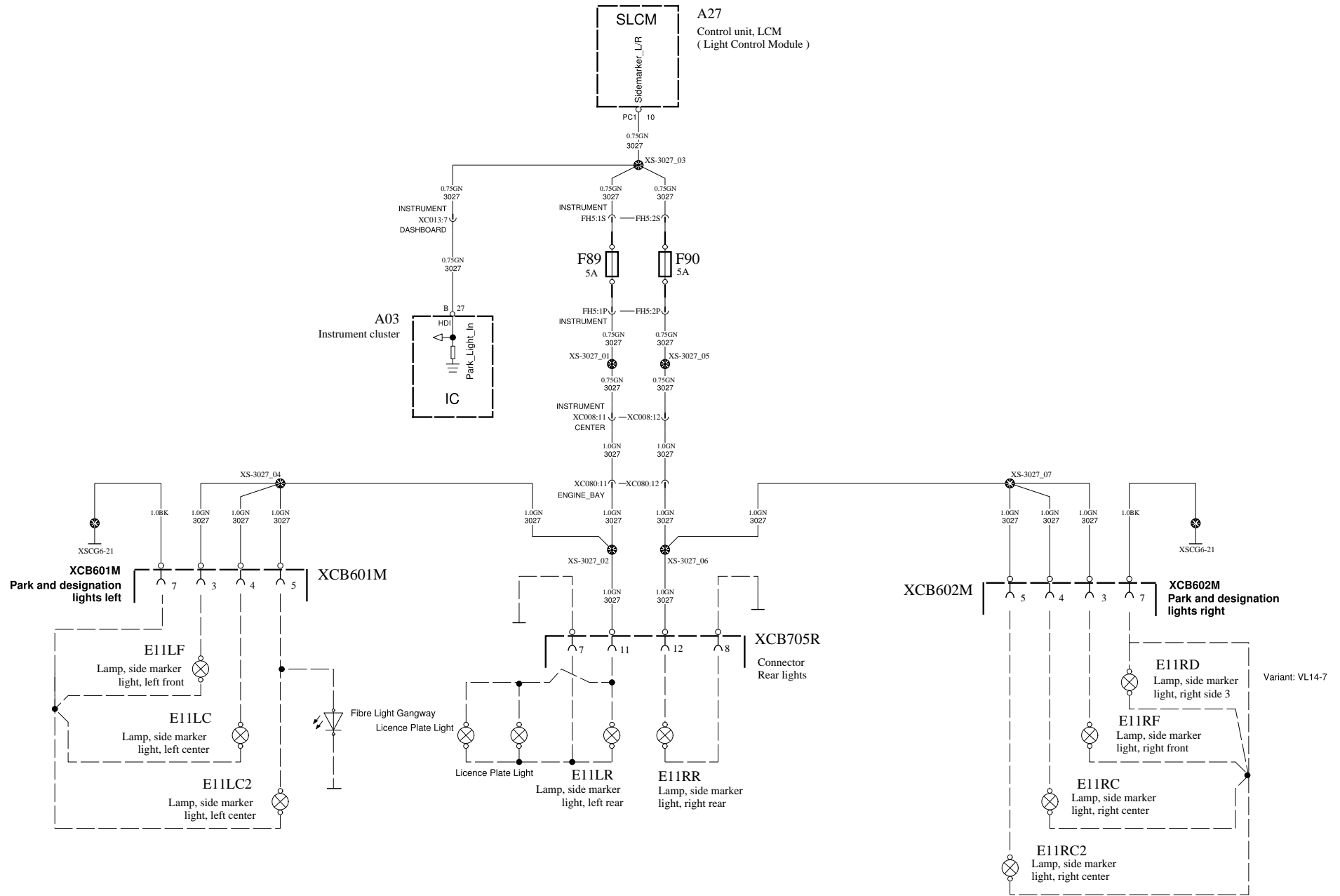


- Please note: If there is no response to CLICKING the link, please download this PDF first and then click on it.

CLICK HERE TO **DOWNLOAD** THE COMPLETE MANUAL

# Designation Lights for BUS

GC2



**VOLVO**

Volvo Bus Corporation

Document title  
WIRING DIAGRAM

Document type  
PRODUCT SCHEMATIC

Document No

70404600

Issue

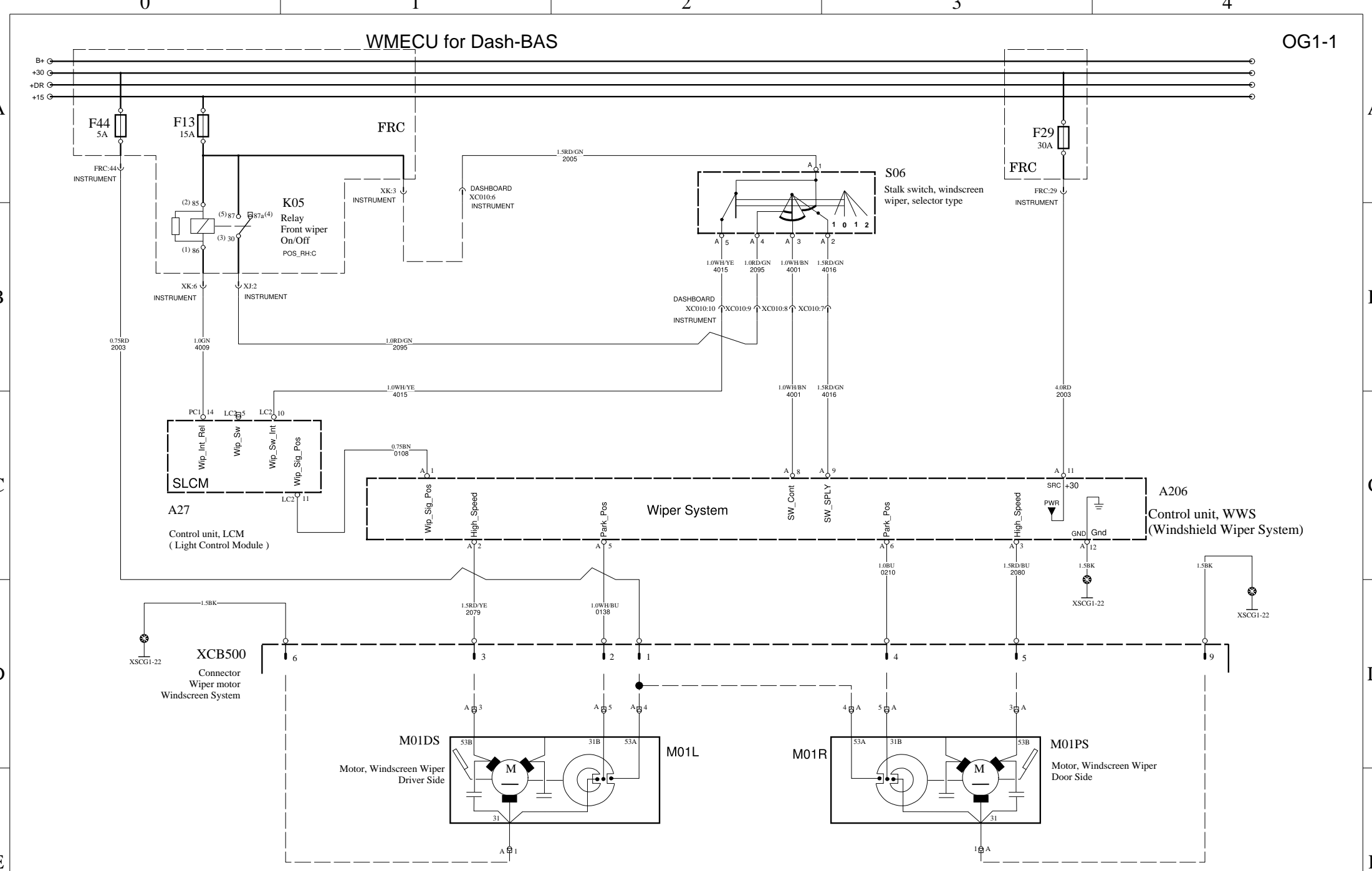
06

Volume

02(03)

Page

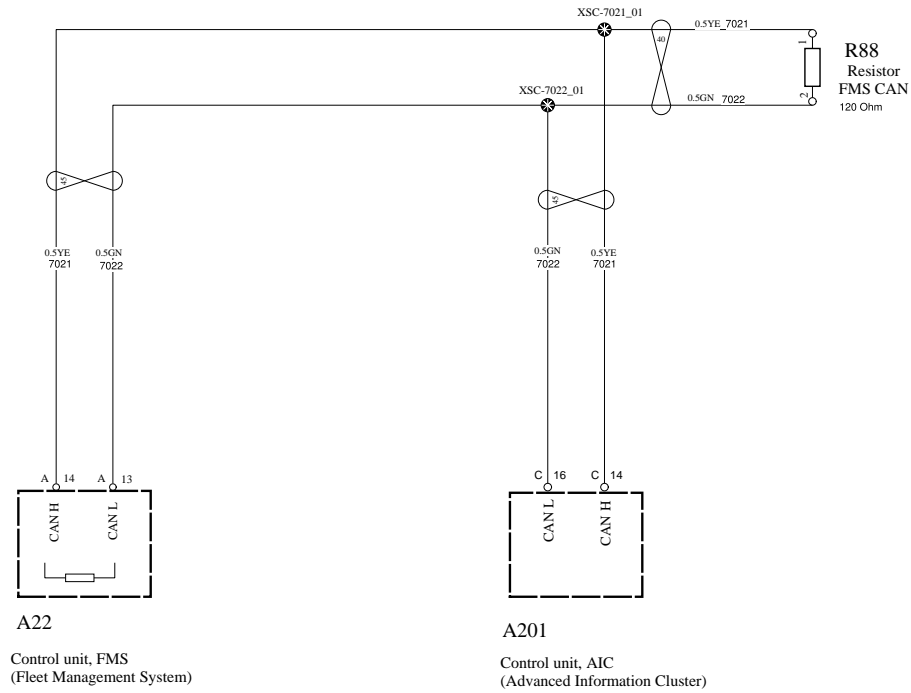
67(100)



<b>VOLVO</b>	Volvo Bus Corporation	Document title WIRING DIAGRAM	Document No <b>70404600</b>	Issue <b>06</b>	Volume <b>02(03)</b>	Page <b>77(100)</b>
		Document type PRODUCT SCHEMATIC				

# FMS CAN

XE1-2



Note:  
 This FA Schematic Topology doesn't show  
 the correct routing, splices etc!



Volvo Bus Corporation

Document title  
 WIRING DIAGRAM

Document type  
 PRODUCT SCHEMATIC

Document No

70404600

Issue

06

Volume

02(03)

Page

87(100)

A

SIGNAL CURRENT  
GROUND  
100mA > I  
(ECU SIGNAL)

B

LOW CURRENT  
GROUND  
1A > I > 100mA  
(RELAY COIL)

C

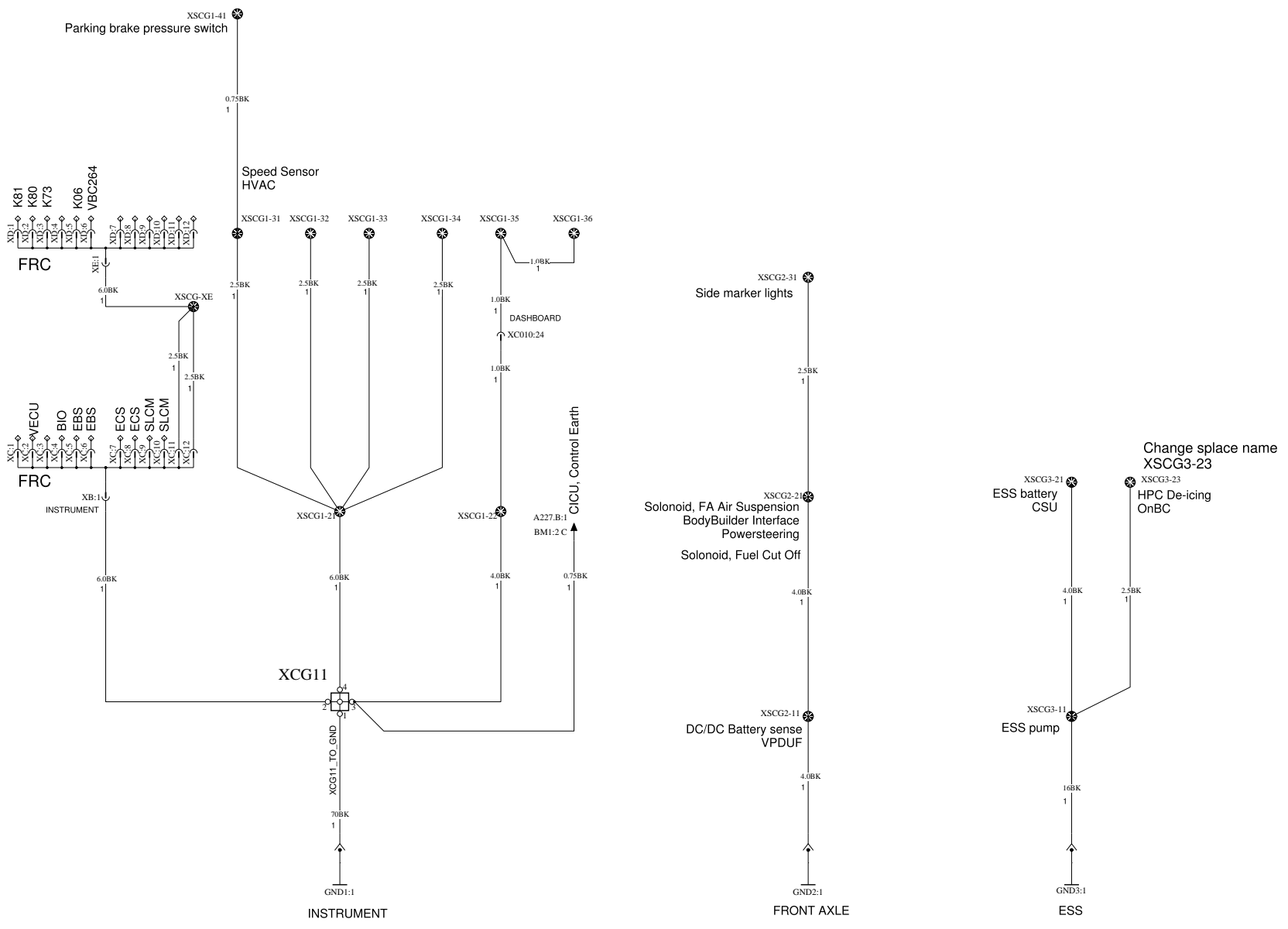
MEDIUM CURRENT  
GROUND  
30A > I > 1A  
(CONSUMERS)

D

HIGH CURRENT  
GROUND  
I > 30A

E

CHASSIS  
FRAME



Volvo Bus Corporation

Document title WIRING DIAGRAM
Document type PRODUCT SCHEMATIC

Document No 70404600	Issue 06	Volume 02(03)	Page 97(100)
-------------------------	-------------	------------------	-----------------

E13RR	Lamp, direction indicator, right rear	{GC1 2 E}	componentSymbol
E27L	Tail lamp module, left	{GD3 2 D} {GB2 1 E} {GC1 1 E} {GD1 1 D} {GD2 1 E}	componentSymbol
E27R	Tail lamp module, right	{GD3 2 D} {GB2 2 E} {GC1 3 E} {GD1 3 D} {GD2 2 E}	componentSymbol
E55L	Lamp, Extra high beam, Left	{GB3 2 B}	componentSymbol
E55R	Lamp, Extra high beam, Right	{GB3 2 B}	componentSymbol
E83L	Headlamp, main, left	{GB1 3 B} {GC1 2 A} {GD2 2 A}	componentSymbol
E83R	Headlamp, main, right	{GB1 3 B} {GC1 2 A} {GD2 2 A}	componentSymbol
E123L	Lamp, front fog light, left	{GB2 2 A}	componentSymbol
E123R	Lamp, front fog light, right	{GB2 2 A}	componentSymbol
E131	Heater, ESS (Energy Storage System) Water Heater 1	{AE1-2 2 B}	componentSymbol
E139	Light HYB Indicator	{BC1 3 B}	componentSymbol
E140	LED Module OnBC Indicator	{AI1 3 D}	componentSymbol
E141	ESS, Cooling Unit	{AE1-2 4 D} {XL1 3 D}	componentSymbol
E916L	Lamp, DRL, Day Light Running Left	{GB1 0 B}	componentSymbol
E916R	Lamp, DRL, Day Light Running Right	{GB1 1 B}	componentSymbol
F01		{EF1 2 A}	componentSymbol
F02		{BF1 1 A} {JD2 2 A}	componentSymbol
F05		{BG1 2 A} {BD1-2 0 A}	componentSymbol
F06		{CA1-1 3 B} {CE2 2 B} {BA1 1 B} {FB3 3 B} {FB1 3 B}	componentSymbol
F07		{CE1 1 B} {BA1 1 B}	componentSymbol
F08		{BG1 2 A} {BE1 1 A} {BD1-1 2 A}	componentSymbol
F09		{CD1 2 A}	componentSymbol
F10		{FC1 1 A} {BD1-2 3 A}	componentSymbol

**VOLVO**

Volvo Bus Corporation

Document Title

**WIRING DIAGRAM**

Document Type

**PRODUCT SCHEMATIC**

Document No

**70404600**

Issue Index

**06**

Volume No

**03(03)**

Page No

**7(38)**

XC001:4		EA1-1 3 C	inline_connector
XC001:5		EA1-1 3 C	inline_connector
XC001:6		EA1-1 3 C	inline_connector
XC001:7		EA1-1 3 C	inline_connector
XC001:8		BD1-3 2 C	inline_connector
XC001:10		EA1-1 2 C	inline_connector
XC001:10		BD1-3 2 C	inline_connector
XC001:11		EA1-1 1 C	inline_connector
XC001:12		EA1-1 1 C	inline_connector
XC001:13		EA1-1 1 C	inline_connector
XC001:14		EA1-1 1 C	inline_connector
XC001:15		EA1-1 2 C	inline_connector
XC001:17		EA1-2 1 C	inline_connector
XC001:18		EA1-2 1 C	inline_connector
XC001:19		EA1-2 0 C	inline_connector
XC001:20		EA1-2 0 C	inline_connector
XC001:21		FA1-2 2 C	inline_connector
XC001:21		FA3 1 B	inline_connector
XC001:22		FA1-2 2 C	inline_connector
XC001:22		FA3 2 B	inline_connector
XC001:23		FA1-2 2 C	inline_connector
XC001:23		FA3 2 B	inline_connector
XC001:24		FA1-2 3 C	inline_connector
XC001:24		FA3 3 B	inline_connector
XC002:1		EA1-2 3 B	inline_connector
XC002:2		EA1-2 3 B	inline_connector
XC002:3		EA1-2 3 B	inline_connector
XC002:4		EA1-2 3 B	inline_connector
XC002:9		FA1-2 1 C	inline_connector
XC002:10		FA1-2 1 C	inline_connector
XC002:11		FA1-2 1 C	inline_connector
XC002:12		FC1 1 B	inline_connector
XC002:12		BD1-2 3 B	inline_connector
XC002:13		FA1-2 2 C	inline_connector
XC002:14		BD1-3 1 C	inline_connector
XC002:15		XF1 3 B	inline_connector
XC002:16		FA1-2 2 C	inline_connector
XC002:17		GC1 1 B	inline_connector
XC002:18		GC1 3 B	inline_connector
XC002:19		YA1-2 3 C	inline_connector
XC002:19		GD2 2 B	inline_connector
XC002:20		YA1-2 3 C	inline_connector
XC002:20		GD2 2 B	inline_connector
XC002:22		XF1 3 B	inline_connector
XC002:23		XF1 3 B	inline_connector
XC002:24		XF1 4 B	inline_connector
XC002:25		EA1-2 2 B	inline_connector
XC003:1		BD1-2 3 C	inline_connector

**VOLVO**

Volvo Bus Corporation

Document Title

**WIRING DIAGRAM**

Document Type

**PRODUCT SCHEMATIC**

Document No

**70404600**

Issue Index

**06**

Volume No

**03(03)**

Page No

**17(38)**

XC100E:1		FC1 1 A	inline_connector
XC100F:1		AA2 3 C	inline_connector
XC150:3		AA2 4 B	inline_connector
XC150:5		AH1 3 B	inline_connector
XC150:6		AA2 4 C	inline_connector
XC150:21		BM1 2 B	inline_connector
XC150C:1		AA2 4 C	inline_connector
XC150D:1		AA2 3 B	inline_connector
XC150E:1		AA2 1 B	inline_connector
XC150F:1		AA2 2 B	inline_connector
XC200:3		BL1 1 B	inline_connector
XC200:7		VD4 1 B	inline_connector
XC200:8		CA1-1 2 B	inline_connector
XC200:9		CD1 2 B	inline_connector
XC200:10		CA1-1 1 B	inline_connector
XC200:12		CB1-1 1 B	inline_connector
XC200:13		FB3 2 B	inline_connector
XC200:13		FB1 2 B	inline_connector
XC200:14		CA1-1 2 A	inline_connector
XC200:14		CE2 2 A	inline_connector
XC200:14		BA1 2 A	inline_connector
XC200:14		FB3 2 A	inline_connector
XC200:14		FB1 2 A	inline_connector
XC200:15		CB1-1 2 B	inline_connector
XC200:16		CA1-1 1 B	inline_connector
XC200:17		CA1-1 2 B	inline_connector
XC200:19		CA1-1 2 B	inline_connector
XC200:20		CA1-1 1 B	inline_connector
XC200:21		CE2 1 B	inline_connector
XC200A:1		AH1 1 B	inline_connector
XC250:1		CC2 1 B	inline_connector
XC250:2		CC2 2 B	inline_connector
XC250:3		CC2 3 B	inline_connector
XC250:4		CC2 0 B	inline_connector
XC250:5		CC1 0 B	inline_connector
XC250:6		CC2 4 B	inline_connector
XC250:7		CC1 4 B	inline_connector
XC250:8		AH1 1 B	inline_connector
XC250:9		AA2 4 D	inline_connector
XC250:10		CC1 3 B	inline_connector
XC250:11		CH1 2 B	inline_connector
XC250:12		AH1 2 B	inline_connector
XC250:13		CC1 2 B	inline_connector
XC250:14		AH1 1 B	inline_connector
XC250:15		CC2 0 B	inline_connector
XC250:16		CC1 1 B	inline_connector
XC250:17		CG1-1 0 B	inline_connector
XC250:17		BJ1 3 B	inline_connector

**VOLVO**

Volvo Bus Corporation

Document Title

**WIRING DIAGRAM**

Document Type

**PRODUCT SCHEMATIC**

Document No

**70404600**

Issue Index

**06**

Volume No

**03(03)**

Page No

**27(38)**

XSCG2-11		{AH1 2 E} {ZA1-1 2 D}	physical_splice_connector
XSCG2-21	Medium current ground	{FA1-2 1 D} {CE1 2 D} {ZA1-1 2 C} {FC1 1 E} {YA1-1 3 C}	physical_splice_connector
XSCG2-31		{ZA1-1 2 B} {GC1 3 B} {GC1 1 B} {GD2 3 B} {GD2 0 B}	physical_splice_connector
XSCG3-11	Medium current ground	{ZA1-1 3 D} {AE1-2 0 E}	physical_splice_connector
XSCG3-21	Low Current Ground	{AE1-1 2 E} {ZA1-1 3 C} {BP1 2 E}	physical_splice_connector
XSCG3-23		{ZA1-1 3 C} {BO1 2 D} {AJ1 2 E}	physical_splice_connector
XSCG5-21	Medium current ground	{FA3 1 D} {ZA1-2 1 C}	physical_splice_connector
XSCG6-11	High current ground	{ZA1-2 1 D}	physical_splice_connector
XSCG6-21	Medium current ground	{CE2 1 D} {GC2 4 C} {GC2 0 C} {ZA1-2 1 C} {CD1 2 D}	physical_splice_connector
XSCG6-22	Medium current ground	{CA1-2 4 D} {CG1-1 1 D} {CH1 3 B} {ZA1-2 1 C} {DA1 1 C}	physical_splice_connector
XSCG6-23	Medium current ground	{AH1 1 D} {CB1-1 2 E} {BJ1 2 E} {ZA1-2 2 C} {CB1-5 2 C}	physical_splice_connector
XSCG6-24	Medium current ground	{ZA1-2 2 C} {BL1 2 E} {BL1 0 E} {BL1 1 E} {BL1 2 E}	physical_splice_connector
XSCG6-31		{CA1-1 2 C} {VD4 3 C} {ZA1-2 1 B}	physical_splice_connector
XSCG6-33		{GC1 3 D} {GC1 1 D} {VD4 1 C} {ZA1-2 1 B}	physical_splice_connector

**VOLVO**

Volvo Bus Corporation

Document Title

**WIRING DIAGRAM**

Document Type

**PRODUCT SCHEMATIC**

Document No

**70404600**

Issue Index

**06**

Volume No

**03(03)**

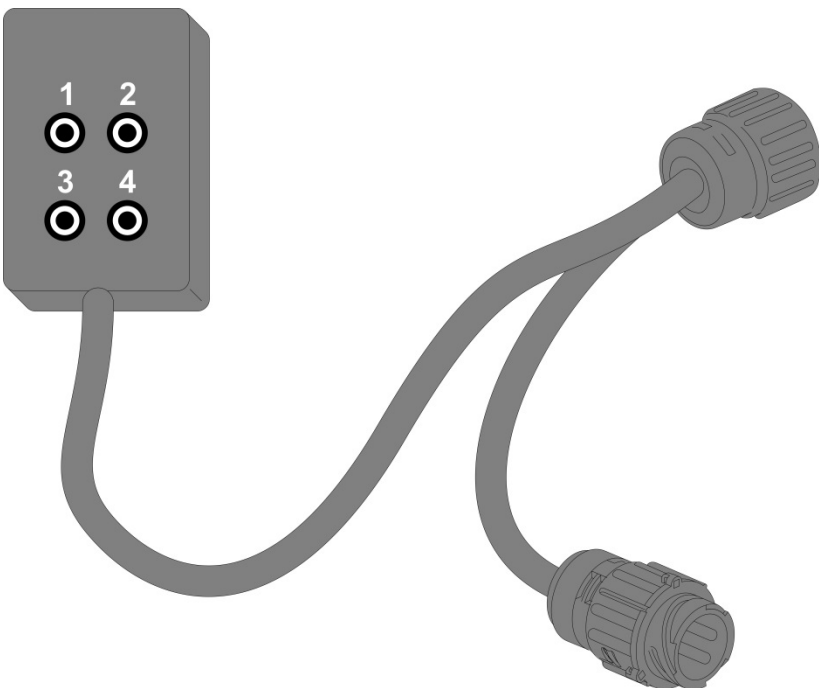
Page No

**37(38)**

88890025



88890039



CLICK HERE TO **DOWNLOAD** THE COMPLETE MANUAL

- Thank you very much for reading the preview of the manual.
- You can download the complete manual from: [www.heydownloads.com](http://www.heydownloads.com) by clicking the link below



- Please note: If there is no response to CLICKING the link, please download this PDF first and then click on it.

CLICK HERE TO **DOWNLOAD** THE COMPLETE MANUAL