

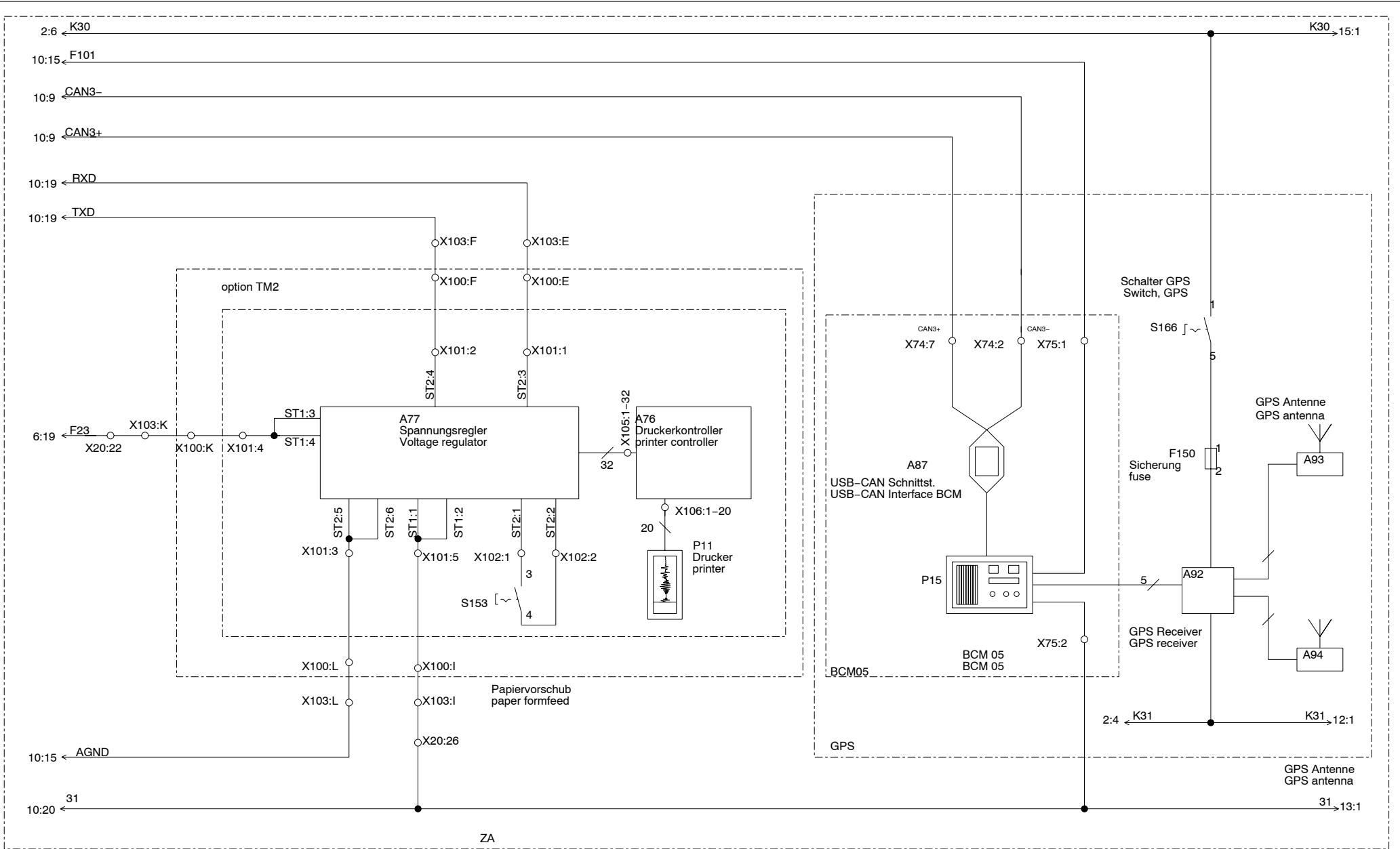
CLICK HERE TO **DOWNLOAD** THE COMPLETE MANUAL

- Thank you very much for reading the preview of the manual.
- You can download the complete manual from: www.heydownloads.com by clicking the link below

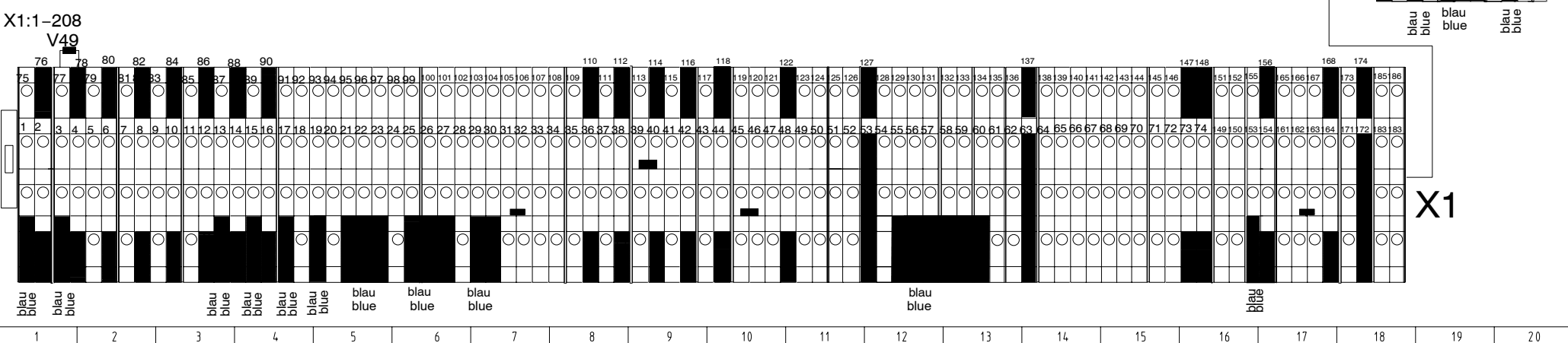
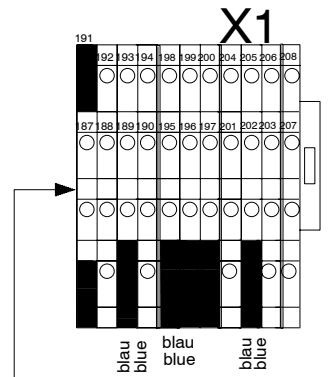
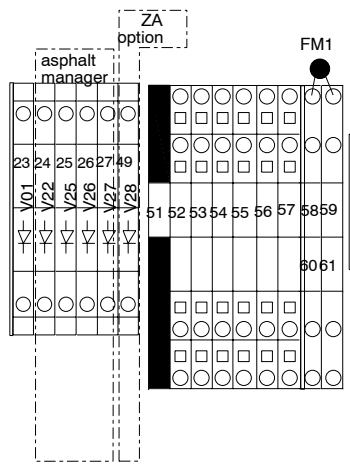
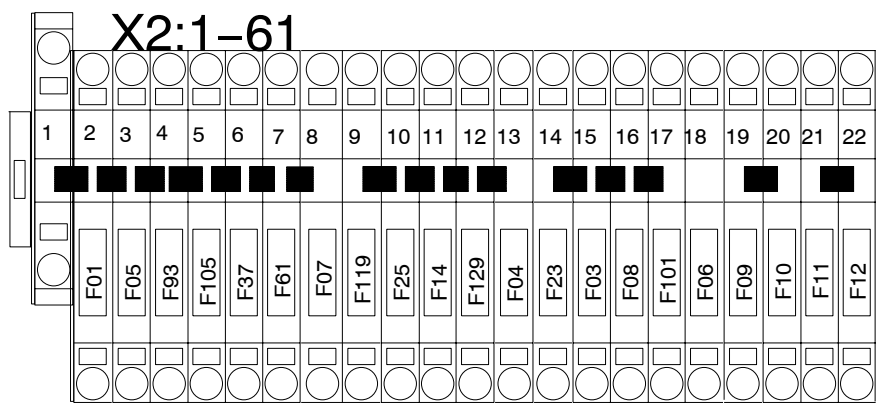
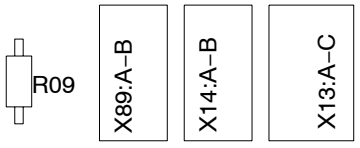
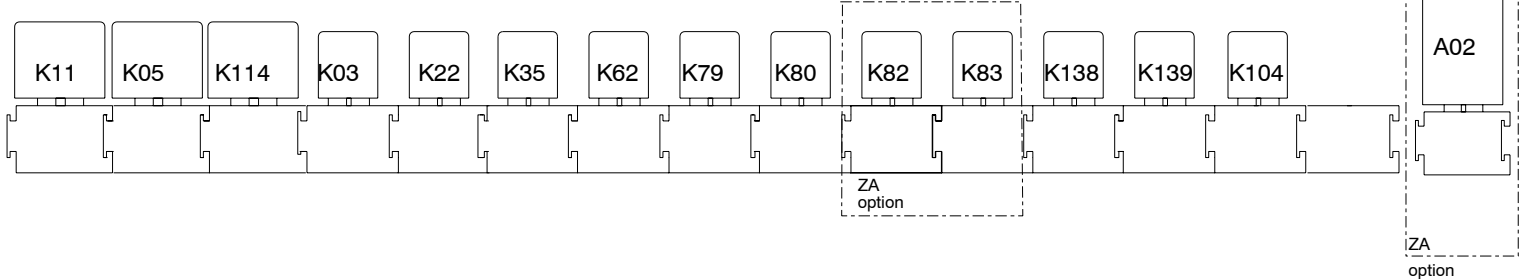
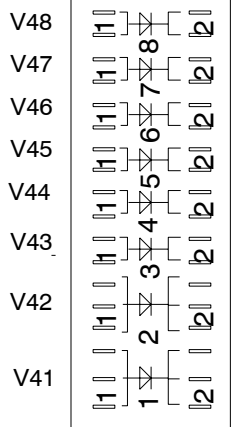


- Please note: If there is no response to CLICKING the link, please download this PDF first and then click on it.

CLICK HERE TO **DOWNLOAD** THE COMPLETE MANUAL



1	2	3	4	5	6	7	8	9	10	11	12	13	14	15	16	17	18	19	20
		Gez.: 26.07.2005 Name: Kneip		Drucker, BCM 05, GPS printer, BCM 05, GPS												Seite: 1 von: 1 page: 1 from: 1		920 100 06	
		Gepr.: 10.02.2005 Name: Nalin														Ers.f.: Replaces:		Blatt Nr.: 011 sheet no.:	



Gez.: 26.07.2005
 Name: Kneip
 Gepr.:
 Name:

Elektrokasten
 cross-bonding box

Seite: 1 von: 1
 page: 1 from: 1
 Ers.f.:
 Replaces:

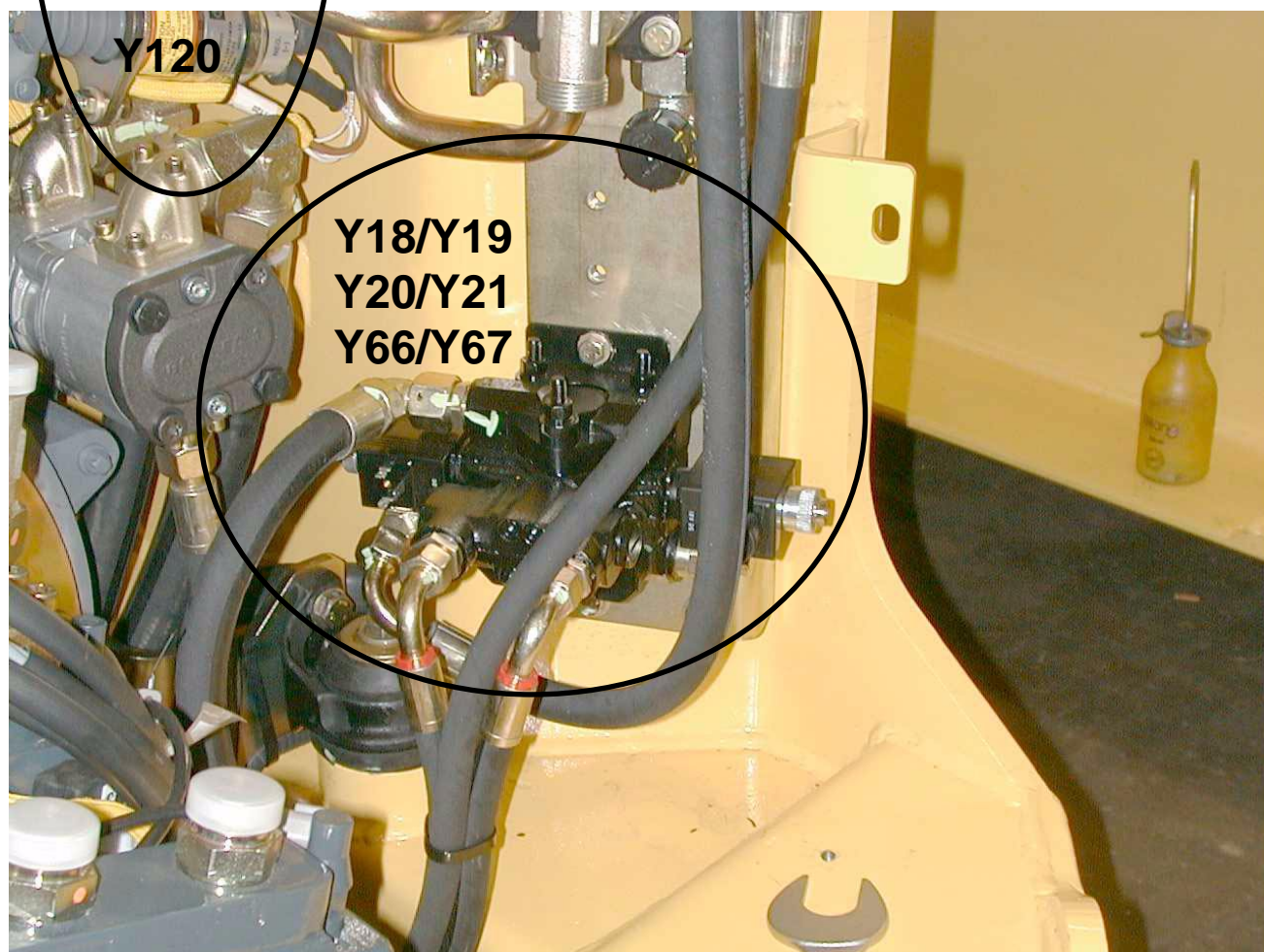
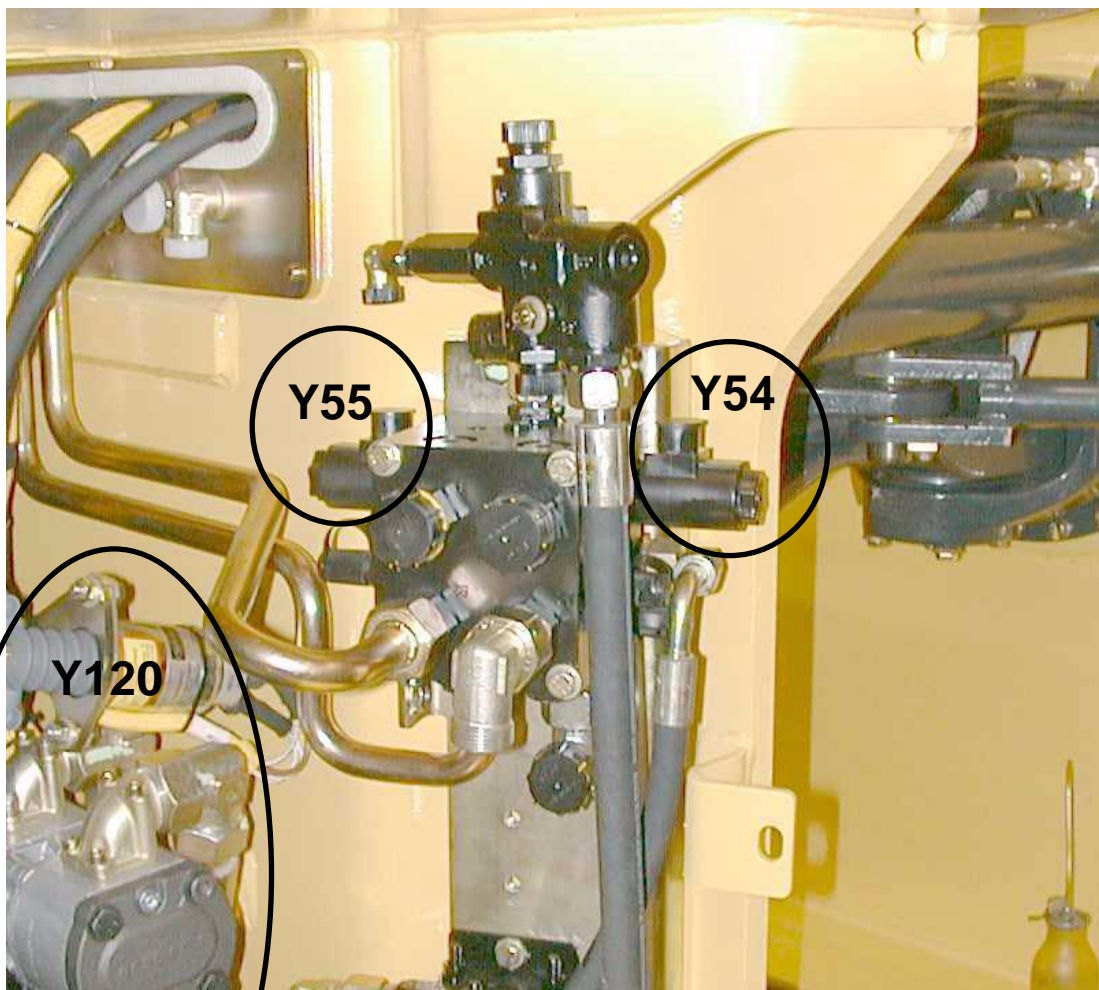
920 100 06
 Blatt Nr.: 021
 sheet no.:

		Name	Bl.	Pf.	Benennung	title	TYP
		X25:6	007	14	LENDE HINTEN	Screen rear	
		X26:1	004	20	WASSERTANK	Water tank	
		X26:2	004	20	WASSERTANK	Water tank	
		X27:1	004	17	WASSERTANK	Water tank	
		X27:2	004	17	WASSERTANK	Water tank	
		X28:1	008	9	MOTORRAUM	Engine room	
		X28:2	008	9	MOTORRAUM	Engine room	
		X29:1	008	10	MOTORRAUM	Engine room	
		X29:2	008	10	MOTORRAUM	Engine room	
		X30:1	013	5	Bandage	Roller drum	
		X30:2	013	6	Bandage	Roller drum	
		X30:3	013	6	Bandage	Roller drum	
		X30:4	013	6	Bandage	Roller drum	
		X31:1	003	18	LENKSAEULE	Steering column	
		X31:2	003	18	LENKSAEULE	Steering column	
		X32:1	013	14	Bandage	Roller drum	
		X32:2	013	15	Bandage	Roller drum	
		X32:3	013	14	Bandage	Roller drum	
		X39:1	015	4	Kabine	cabin	
		X39:2	015	4	Kabine	cabin	
		X40:1	014	1	Kabine	cabin	
		X40:2	014	2	Kabine	cabin	
		X40:3	014	3	Kabine	cabin	
		X40:4	014	3	Kabine	cabin	
		X42:1	014	2	Kabine	cabin	
		X42:2	014	2	Kabine	cabin	
		X42:3	014	2	Kabine	cabin	
		X42:4	014	1	Kabine	cabin	
		X43:1	014	7	FAHRERSTAND	Operators platform	
		X43:2	014	7	FAHRERSTAND	Operators platform	
		X43:3	014	7	FAHRERSTAND	Operators platform	
		X43:4	014	7	FAHRERSTAND	Operators platform	
		X44:31	016	12	Kabine	cabin	
		X44:53	016	12	Kabine	cabin	
		X44:31b	016	13	Kabine	cabin	
		X44:53a	016	12	Kabine	cabin	
		X45:1	014	3	Kabine	cabin	
		X45:2	014	4	Kabine	cabin	
		X45:3	014	3	Kabine	cabin	
		X45:4	014	3	Kabine	cabin	
		X46:31	016	15	Kabine	cabin	
		X46:53	016	15	Kabine	cabin	
		X46:31b	016	16	Kabine	cabin	
		X46:53a	016	15	Kabine	cabin	
		X48:1	016	3	Kabine	cabin	
		X48:2	016	3	Kabine	cabin	
		X49:1	014	9	FAHRERSTAND	Operators platform	
		X49:2	014	9	FAHRERSTAND	Operators platform	
		X50:1	014	7	FAHRERSTAND	Operators platform	
		X51:A	015	17	FAHRERSTAND	Operators platform	
		X51:B	015	10	FAHRERSTAND	Operators platform	
		X51:C	002	3	MOTORRAUM	Engine room	
		X52:1	014	7	FAHRERSTAND	Operators platform	
		X52:2	014	7	FAHRERSTAND	Operators platform	
		X53:3	014	18	Kabine	cabin	
		X53:5	014	19	Kabine	cabin	
		X53:6	014	18	Kabine	cabin	
		X54:1	014	13	Kraftstoffpumpe	fuel pump heating unit	
		X54:2	014	13	Kraftstoffpumpe	fuel pump heating unit	
		X55:1	014	7	FAHRERSTAND	Operators platform	
		X55:2	014	6	FAHRERSTAND	Operators platform	
		X56:1	014	9	FAHRERSTAND	Operators platform	
		X56:2	014	9	FAHRERSTAND	Operators platform	
		X57:1	007	9	Steckdose Splittstreu	Socket, chip spreader	
		X57:2	007	1	Steckdose Splittstreu	Socket, chip spreader	
		X57:3	007	13	Steckdose Splittstreu	Socket, chip spreader	
		X57:4	007	12	Steckdose Splittstreu	Socket, chip spreader	
		X57:5	007	17	Steckdose Splittstreu	Socket, chip spreader	
		X57:7	007	13	Steckdose Splittstreu	Socket, chip spreader	
		X57:8	007	3	STECKDOSE SPLITTSTREU	Socket, chip spreader	
		X58:1	007	9	Stecker Splittstreuer	Connector, chip spreader	
		X58:2	007	1	Stecker Splittstreuer	Connector, chip spreader	
		X58:3	007	13	Stecker Splittstreuer	Connector, chip spreader	
		X58:4	007	12	Stecker Splittstreuer	Connector, chip spreader	
		X58:5	007	17	Stecker Splittstreuer	Connector, chip spreader	
		X58:7	007	13	Stecker Splittstreuer	Connector, chip spreader	
		X59:1	008	17	STECKDOSE SPLITTSTREU	Socket, chip spreader	
		X59:2	008	18	STECKDOSE SPLITTSTREU	Socket, chip spreader	
		X60:1	008	17	STECKER SPLITTSTREUER	Connector, chip spreader	
		X60:2	008	18	STECKER SPLITTSTREUER	Connector, chip spreader	
		X61:A	016	16	Kabine	cabin	
		X61:B	016	16	Kabine	cabin	
		X61:C	016	13	Kabine	cabin	
		X62:1	016	15	Kabine	cabin	
		X62:2	016	16	Kabine	cabin	
		X63:1	016	13	Kabine	cabin	
		X63:2	016	16	Kabine	cabin	
		X63:4	014	9	Kabine	cabin	
		X63:5	015	20	Kabine	cabin	
		X63:6	014	11	Kabine	cabin	
		X63:7	014	7	Kabine	cabin	
		X63:8	015	17	KABINE	Cabin	
		X64:1	016	7	Kabine	cabin	
		X64:2	015	20	Kabine	cabin	
		X64:3	016	12	Kabine	cabin	
		X64:4	016	3	Kabine	cabin	
		X64:5	016	12	Kabine	cabin	
		X64:6	016	13	Kabine	cabin	
		X64:7	016	5	Kabine	cabin	

Gez.: 21.10.05
Name: Seis
Gedr.: 21.10.05
Name: Vogt

Bauteilliste
Component listing

Seite: 9 von: 12
Page: from: 12
Ers.f.: Blatt Nr.: 920 100 06
Replaces: Sheet no.: 109



BW 161-4.... BW 203-4

CLICK HERE TO **DOWNLOAD** THE COMPLETE MANUAL

- Thank you very much for reading the preview of the manual.
- You can download the complete manual from: www.heydownloads.com by clicking the link below



- Please note: If there is no response to CLICKING the link, please download this PDF first and then click on it.

CLICK HERE TO **DOWNLOAD** THE COMPLETE MANUAL