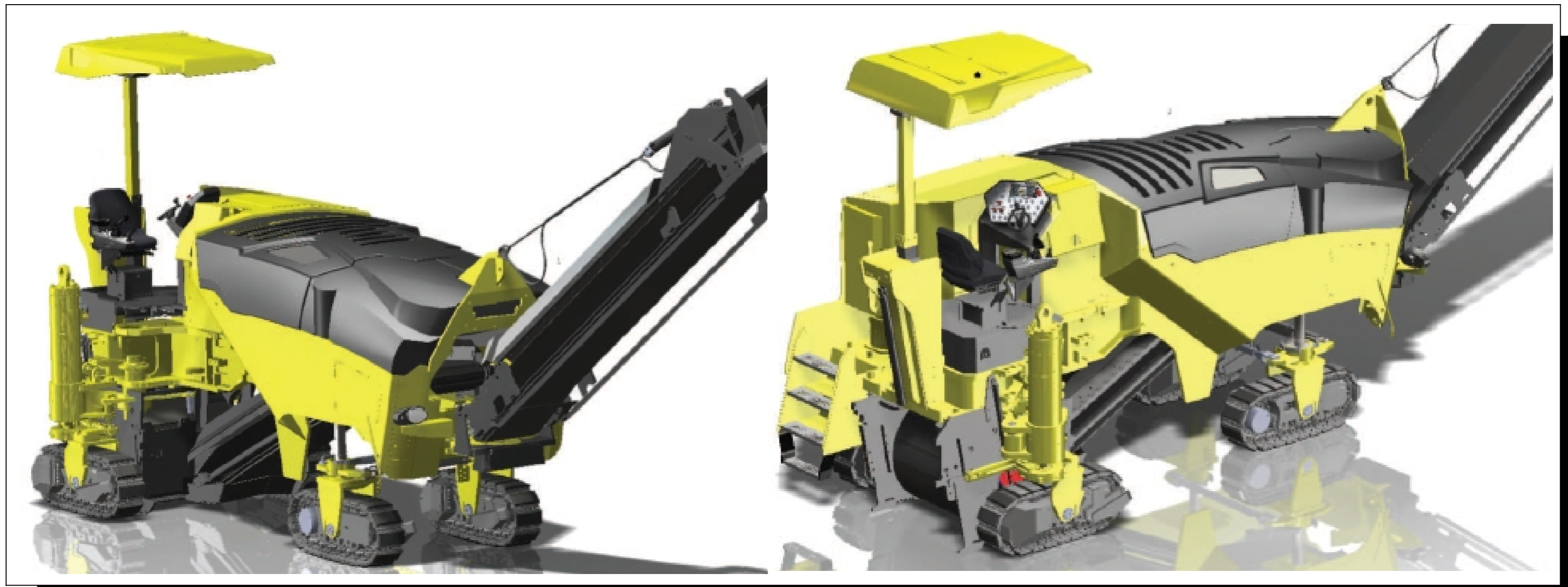


**BOMAG**  
FAYAT GROUP

Bomag GmbH  
Industriegebiet Hellerwald  
D-56154 Boppard



**Tier 3A inside...**

	0	1	2	3	4	5	6	7	8	9				
Created Erstellt	<b>M. Werner</b> 08.09.2014	<b>BM 1000/1200/1300-35</b>		<b>BOMAG</b> FAYAT GROUP	Cover sheet Deckblatt				Higher-level function Anlage	=	Page Blatt	1	from von	75
Checked Geprüft	<b>M. Vogt</b> 08.09.2014								Function Funktion	=				<b>278</b>
									Mounting location Einbauort	+				EPE / 000 / 00

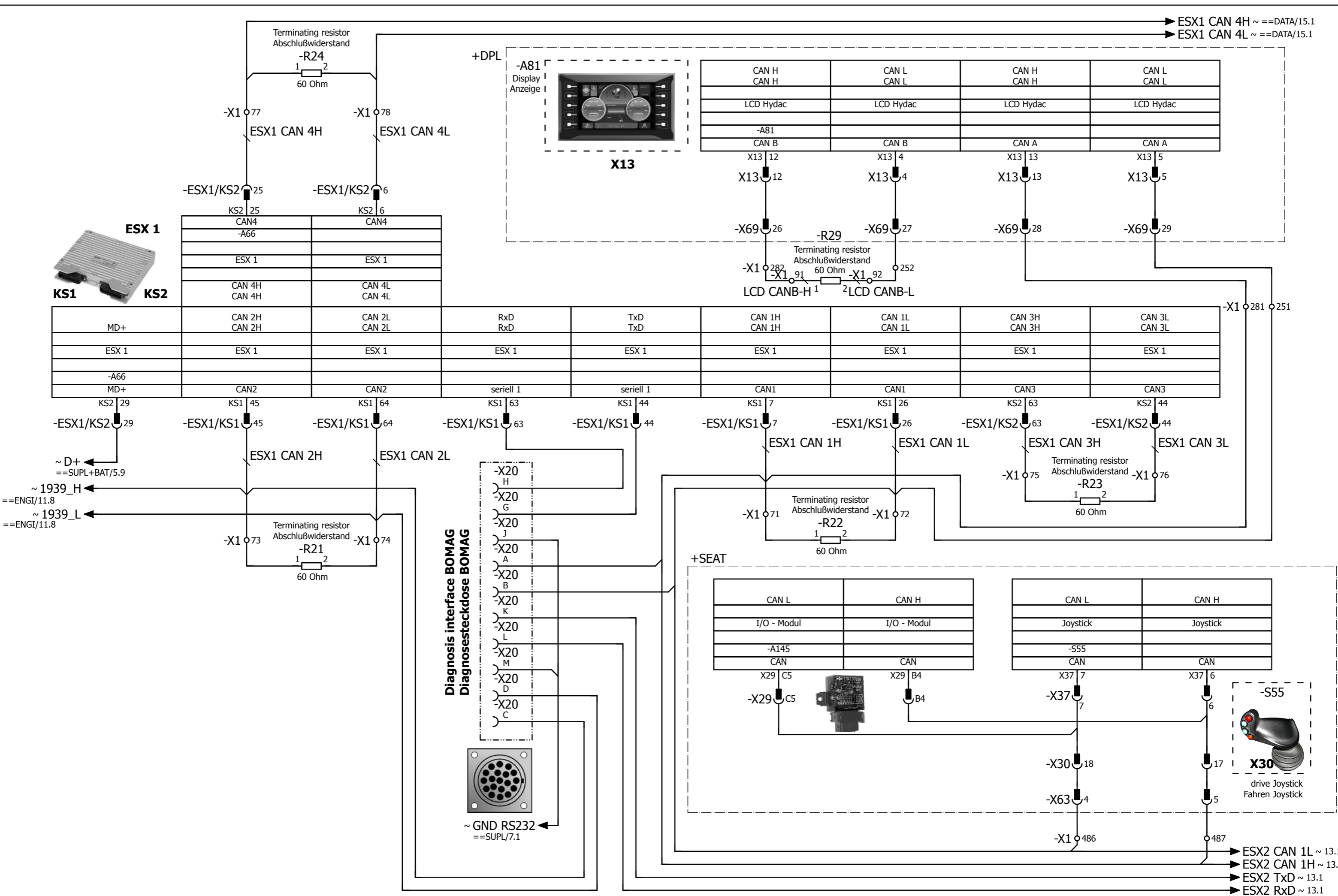
CLICK HERE TO **DOWNLOAD** THE COMPLETE MANUAL

- Thank you very much for reading the preview of the manual.
- You can download the complete manual from: [www.heydownloads.com](http://www.heydownloads.com) by clicking the link below

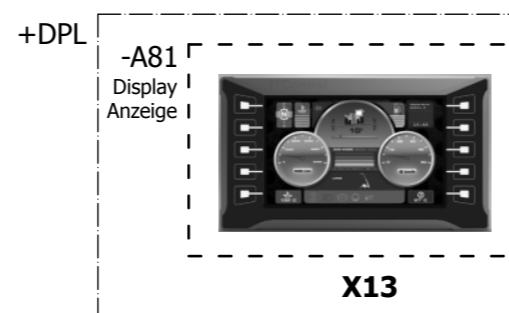


- Please note: If there is no response to CLICKING the link, please download this PDF first and then click on it.

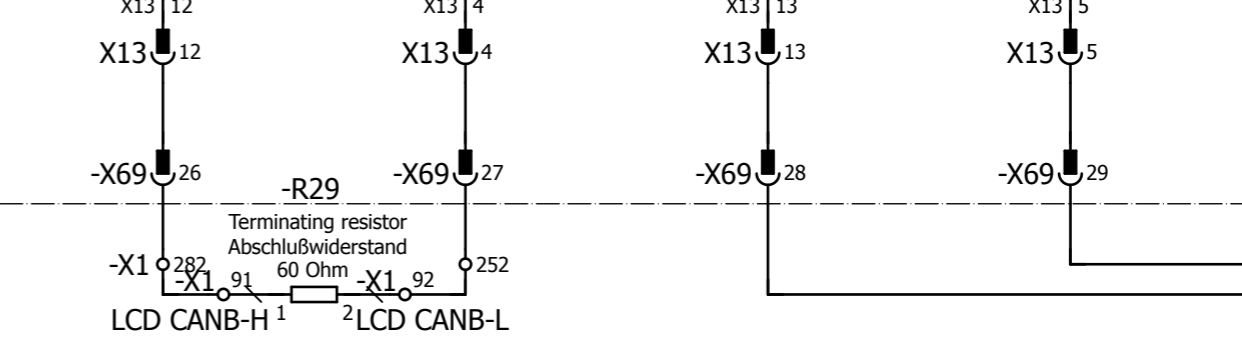
CLICK HERE TO **DOWNLOAD** THE COMPLETE MANUAL



ESX1 CAN 4H ~ ==DATA/15.1  
 ESX1 CAN 4L ~ ==DATA/15.1



CAN H CAN H	CAN L CAN L	CAN H CAN H	CAN L CAN L
LCD Hydac	LCD Hydac	LCD Hydac	LCD Hydac
-A81 CAN B	CAN B	CAN A	CAN A
X13   12	X13   4	X13   13	X13   5



~ D+  
==SUPL+BAT/5.9

~ 1939\_H  
==ENGI/11.8

~ 1939\_L  
==ENGI/11.8

Diagnosis interface BOMAG  
 Diagnosesteckdose BOMAG



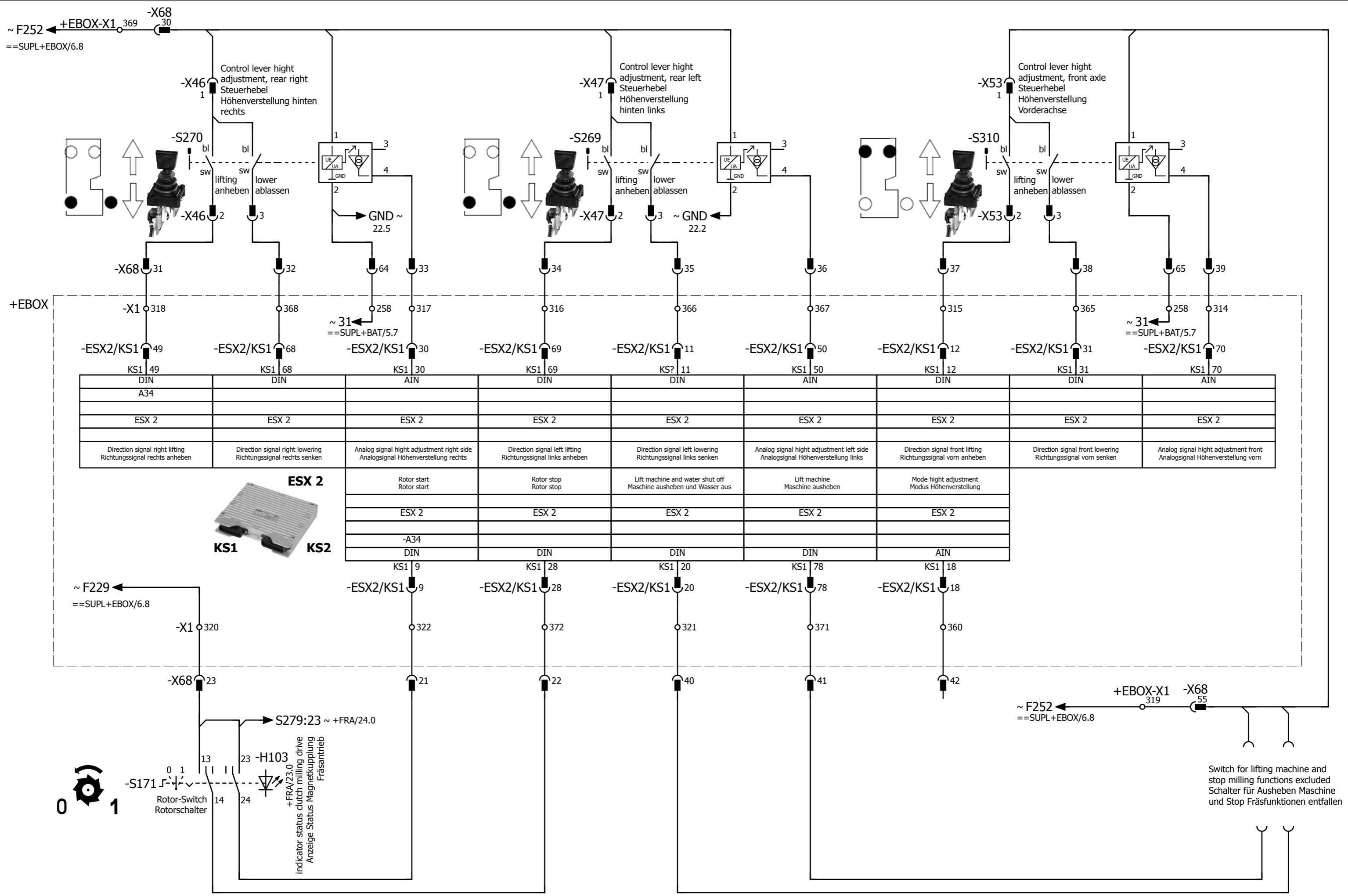
+SEAT

CAN L	CAN H
I/O - Modul	I/O - Modul
-A145 CAN	CAN
X29   C5	X29   B4

CAN L	CAN H
Joystick	Joystick
-S55 CAN	CAN
X37   7	X37   6



ESX2 CAN 1L ~ 13.1  
 ESX2 CAN 1H ~ 13.1  
 ESX2 TxD ~ 13.1  
 ESX2 RxD ~ 13.1



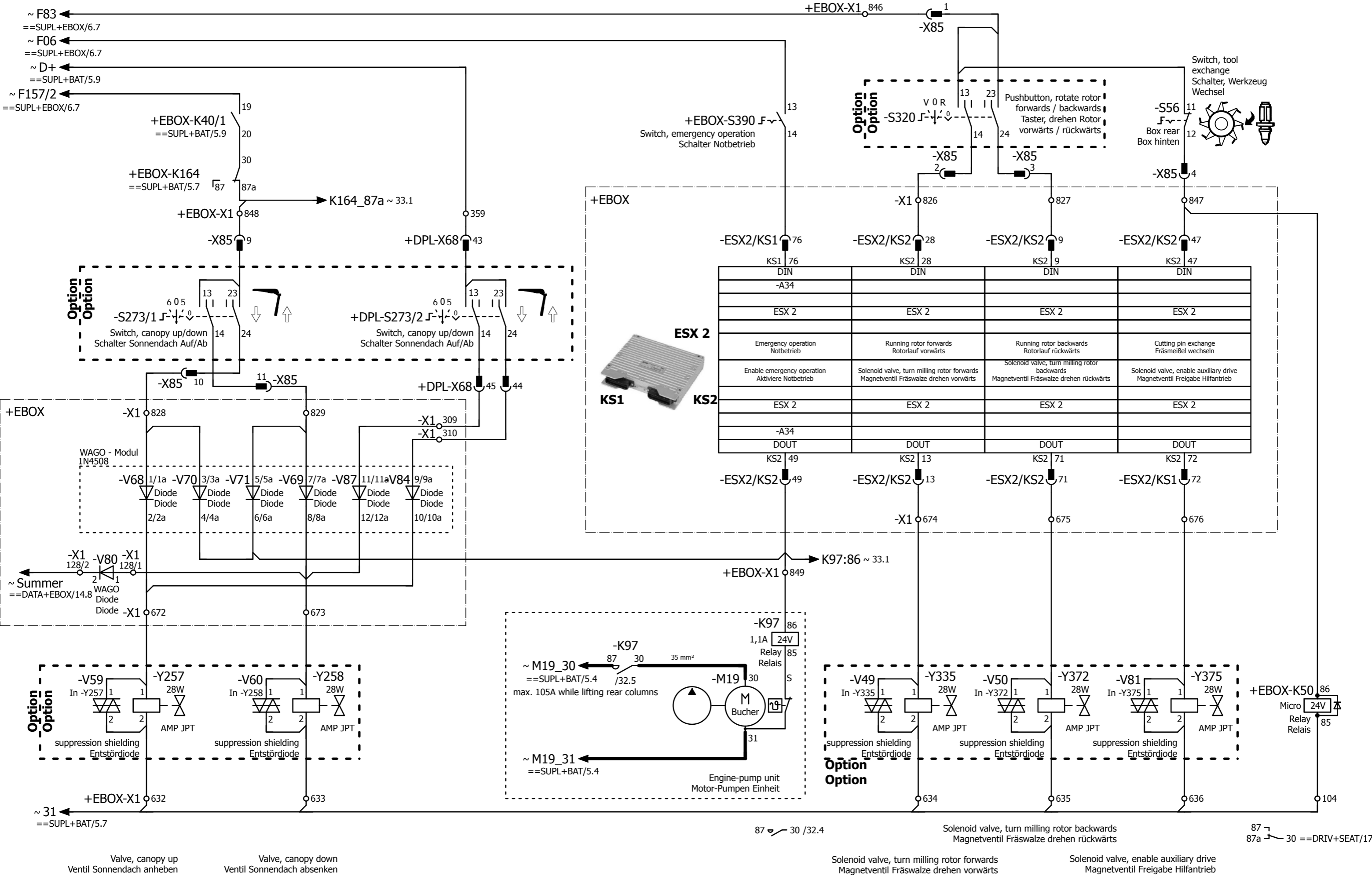
KS1 49	KS1 68	KS1 30	KS1 69	KS1 11	KS1 50	KS1 12	KS1 31	KS1 70
DIN	DIN	AIN	DIN	DIN	AIN	DIN	DIN	AIN
A34								
ESX 2	ESX 2	ESX 2	ESX 2	ESX 2	ESX 2	ESX 2	ESX 2	ESX 2
Direction signal right lifting Richtungssignal rechts anheben	Direction signal right lowering Richtungssignal rechts senken	Analog signal hight adjustment right side Analogsignal Höhenverstellung rechts	Direction signal left lifting Richtungssignal links anheben	Direction signal left lowering Richtungssignal links senken	Analog signal hight adjustment left side Analogsignal Höhenverstellung links	Direction signal front lifting Richtungssignal vorn anheben	Direction signal front lowering Richtungssignal vorn senken	Analog signal hight adjustment front Analogsignal Höhenverstellung vorn



ESX 2	ESX 2	ESX 2	ESX 2	ESX 2	ESX 2	ESX 2	ESX 2
Rotor start Rotor start	Rotor stop Rotor stop	Lift machine and water shut off Maschine ausheben und Wasser aus	Lift machine Maschine ausheben	Mode hight adjustment Modus Höhenverstellung			
-A34							
KS1 9	KS1 28	KS1 20	KS1 78	KS1 18			

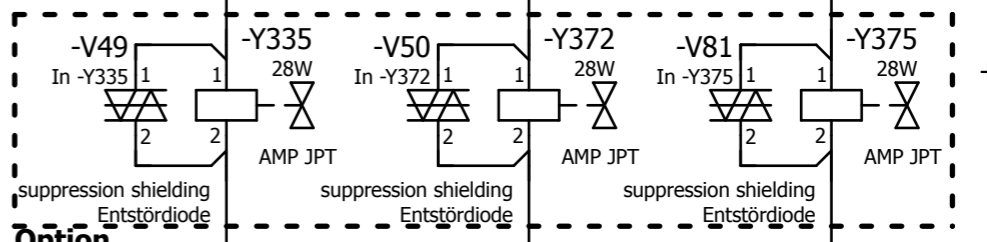
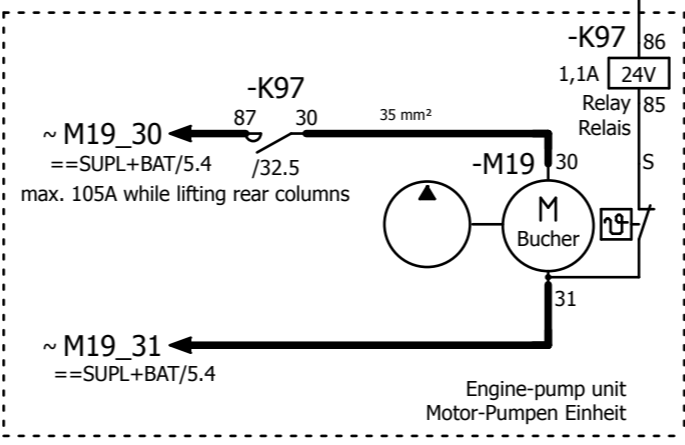
-ESX2/KS1 9	-ESX2/KS1 28	-ESX2/KS1 20	-ESX2/KS1 78	-ESX2/KS1 18
322	372	321	371	360

Switch for lifting machine and stop milling functions excluded  
Schalter für Ausheben Maschine und Stop Fräsfunktionen entfallen



**ESX 2**

DIN	DIN	DIN	DIN
-A34			
ESX 2	ESX 2	ESX 2	ESX 2
Emergency operation Notbetrieb	Running rotor forwards Rotorlauf vorwärts	Running rotor backwards Rotorlauf rückwärts	Cutting pin exchange Fräsmeißel wechseln
Enable emergency operation Aktiviere Notbetrieb	Solenoid valve, turn milling rotor forwards Magnetventil Fräswalze drehen vorwärts	Solenoid valve, turn milling rotor backwards Magnetventil Fräswalze drehen rückwärts	Solenoid valve, enable auxiliary drive Magnetventil Freigabe Hilfantrieb
ESX 2	ESX 2	ESX 2	ESX 2
-A34			
DOUT	DOUT	DOUT	DOUT
KS2 49	KS2 13	KS2 71	KS2 72



Valve, canopy up Ventil Sonnendach anheben      Valve, canopy down Ventil Sonnendach absenken      Solenoid valve, turn milling rotor backwards Magnetventil Fräswalze drehen rückwärts      Solenoid valve, turn milling rotor forwards Magnetventil Fräswalze drehen vorwärts      Solenoid valve, enable auxiliary drive Magnetventil Freigabe Hilfantrieb

# Device tag list

## Betriebsmittelliste

Device tag BMK	Page Path Blatt Pfad	Mounting location Einbauort	Higher-level function Anlage	Function text	Funktionstext	characteristics Techn.-Kenngrößen
V98	26 7	+FRA	=BM	suppression shielding	Entstördiode	In -Y329
V99	26 8	+FRA	=BM	-- " --	-- " --	In -Y374
V100	33 1	+EBOX	=BM	Diode	Diode	1N4508
V101	33 2	+EBOX	=BM	-- " --	-- " --	
V102	33 2	+EBOX	=BM	-- " --	-- " --	
V103	33 2	+EBOX	=BM	-- " --	-- " --	
V104	33 1	+FRA	=BM	suppression shielding	Entstördiode	In -Y349
V105	33 2	+FRA	=BM	-- " --	-- " --	In -Y350
Y04	17 6	+FRA	=BM	Solenoid valve Brake	Magnetspule Ventil Bremse	28W
Y16	18 2	+MOT	=BM	Proportional Valve Travel Pump forward	Proportional Ventil Fahren Pumpe vorwärts	200mA...600mA
Y17	18 3	+MOT	=BM	Proportional Valve Travel Pump backwards	Proportional Ventil Fahren Pumpe rückwärts	200mA...600mA
Y43	29 4	+FRA	=BM	Solenoid valve, waterpump	Magnetventil Wasserpumpe	41W
Y51	29 5	+FRA	=BM	Solenoid valve, rpm waterpump	Magnetventil Drehzahl Wasserpumpe	100A...500mA
Y60	24 6	+FRA	=BM	Floating-Position, rear scraper	Schwimmstellung Abstreifer hinten	22W
Y78	26 5	+MOT	=BM	Solenoid valve, conveying belt backward	Magnetventil Förderband rückwärts	200A...560mA
Y90	18 7	+FRA	=BM	Valve, flow divider	Ventil Mengenteiler	22W
Y92	20 7	+FRA	=BM	Solenoid valve, steering front right	Magnetventil Lenkung vorne rechts	0mA...1000mA
Y93	20 6	+FRA	=BM	Solenoid valve, steering front left	Magnetventil Lenkung vorne links	0mA...1000mA
Y102	24 7	+FRA	=BM	Floating-Position, rear scraper	Schwimmstellung Abstreifer hinten	22W
Y132	18 4	+FRA	=BM	Proportional valve, wheel front left	Proportionalventil Rad vorn links	200mA...600mA
Y133	18 5	+FRA	=BM	Proportional valve, wheel front right	Proportionalventil Rad vorn rechts	200mA...600mA
Y134	18 6	+FRA	=BM	Proportional valve, wheel rear left	Proportionalventil Rad hinten links	200mA...600mA
Y138	10 6	+MOT	=BM	Solenoid valve, heating unit	Magnetventil Heizung	
Y194	17 4	+FRA	=BM	Solenoid valve, activation hydraulic	Magnetventil Aktivierung Hydraulik	28W
Y244	23 8	+FRA	=BM	Valve, hight adjustment rear, left side down	Ventil Höhenverstellung hinten links abwärts	0mA...1000mA
Y245	23 7	+FRA	=BM	Valve, hight adjustment rear, right side down	Ventil Höhenverstellung hinten rechts abwärts	0mA...1000mA
Y246	19 2	+FRA	=BM	Valve, retract wheel	Ventil Rad einklappen	28W
Y247	19 3	+FRA	=BM	Valve, expand wheel	Ventil Rad ausklappen	28W
Y249	23 1	+FRA	=BM	Magnetic clutch milling drive	Magnetkupplung Fräsantrieb	31W
Y250	26 4	+MOT	=BM	Solenoid valve, conveyor belt drive	Magnetventil Förderbandantrieb	200A...560mA
Y251	27 6	+FRA	=BM	Valve, conveyor belt turn left	Ventil Förderband links schwenken	0mA...1000mA
Y252	27 4	+FRA	=BM	Valve, conveyor belt turn right	Ventil Förderband rechts schwenken	0mA...1000mA
Y253	27 5	+FRA	=BM	Valve, conveyor belt up	Ventil Förderband auf	31W
Y254	27 3	+FRA	=BM	Valve, conveyor belt down	Ventil Förderband ab	31W
Y255	23 8	+FRA	=BM	Valve, hight adjustment rear, left side up	Ventil Höhenverstellung hinten links auf	0mA...1000mA
Y256	23 6	+FRA	=BM	Valve, hight adjustment rear, right side up	Ventil Höhenverstellung hinten rechts auf	0mA...1000mA
Y257	32 1	+FRA	=BM	Valve, canopy up	Ventil Sonnendach anheben	28W

# Pin overview

## Pin Übersicht

A81			Display Anzeige		
Pin Kontakt	Page Blatt	Path Pfad	Description Beschreibung	Signal	Signal
X13 : 1	16	1	Potential 31	Supply Ground	Versorgung Erde
X13 : 2	16	2	Potential 31	-- " --	-- " --
X13 : 4	12	6	CAN B	CAN L	CAN L
X13 : 5	12	8	CAN A	-- " --	-- " --
X13 : 6	16	2	Video 2	Signal	Signal
X13 : 7	16	4	Camera 2	Supply	Versorgung
X13 : 8	16	6	Video 1	Signal	Signal
X13 : 9	16	7	Camera 1	Supply	Versorgung
X13 : 10	16	3	Potential 31	Supply Ground	Versorgung Erde
X13 : 12	12	5	CAN B	CAN H	CAN H
X13 : 13	12	7	CAN A	-- " --	-- " --
X13 : 14	16	1	Video 2	Ground	Masse
X13 : 15	16	3	Camera 2	-- " --	-- " --
X13 : 16	16	5	Video 1	-- " --	-- " --
X13 : 17	16	6	Camera 1	-- " --	-- " --
X13 : 18	16	2	Potential 15	Main Power Supply	Haupt Leistung Versorgung
X13 : 19	16	7	Shield	Ethernet	Ethernet
X13 : 20	16	6	TX-	-- " --	-- " --
X13 : 21	16	4	RX-	-- " --	-- " --
X13 : 22	16	5	D+	USB	USB
X13 : 23	16	7	Ground	-- " --	-- " --
X13 : 24	16	5	RX	Console	Konsole
X13 : 25	16	2	TX	RS232	RS232
X13 : 26	16	1	Potential 30	Power Supply	Leistung Versorgung
X13 : 28	16	5	TX+	Ethernet	Ethernet
X13 : 29	16	3	RX+	-- " --	-- " --
X13 : 30	16	4	V bus	USB	USB
X13 : 31	16	6	D-	-- " --	-- " --
X13 : 32	16	4	TX	Console	Konsole
X13 : 33	16	3	Serial	Ground	Masse
X13 : 34	16	1	RX	RS232	RS232

# Plug overview Steckerübersicht

Designation Bezeichnung	Mounting location Einbauort	Function text Funktionstext
<b>X13</b>	<b>=BM+DPL</b>	Connector, display Stecker Anzeigeinheit
<b>Contact Kontakt</b>	<b>Page Blatt</b>	<b>Path Pfad</b>
<b>17</b>	<b>16</b>	<b>6</b>
<b>18</b>	<b>16</b>	<b>2</b>
<b>19</b>	<b>16</b>	<b>7</b>
<b>20</b>	<b>16</b>	<b>6</b>
<b>21</b>	<b>16</b>	<b>4</b>
<b>22</b>	<b>16</b>	<b>5</b>
<b>23</b>	<b>16</b>	<b>7</b>
<b>24</b>	<b>16</b>	<b>5</b>
<b>25</b>	<b>16</b>	<b>2</b>
<b>26</b>	<b>16</b>	<b>1</b>
<b>28</b>	<b>16</b>	<b>5</b>
<b>29</b>	<b>16</b>	<b>3</b>
<b>30</b>	<b>16</b>	<b>4</b>
<b>31</b>	<b>16</b>	<b>6</b>
<b>32</b>	<b>16</b>	<b>4</b>
<b>33</b>	<b>16</b>	<b>3</b>
<b>34</b>	<b>16</b>	<b>1</b>
<b>X14</b>	<b>=BM+MOT</b>	Connector AdBlue dosing unit Stecker AdBlue Dosiereinheit
<b>Contact Kontakt</b>	<b>Page Blatt</b>	<b>Path Pfad</b>
<b>1</b>	<b>10</b>	<b>4</b>
<b>2</b>	<b>10</b>	<b>5</b>
<b>3</b>	<b>10</b>	<b>5</b>
<b>4</b>	<b>10</b>	<b>5</b>
<b>5</b>	<b>10</b>	<b>5</b>
<b>7</b>	<b>10</b>	<b>5</b>
<b>8</b>	<b>10</b>	<b>6</b>
<b>X15</b>	<b>=BM+EBOX</b>	OB2 Connector diagnosis interface engine OB2 Diagnosestecker Dieselmotor
<b>Contact Kontakt</b>	<b>Page Blatt</b>	<b>Path Pfad</b>
<b>4</b>	<b>11</b>	<b>8</b>
<b>5</b>	<b>11</b>	<b>8</b>
<b>6</b>	<b>11</b>	<b>8</b>
<b>8</b>	<b>11</b>	<b>8</b>
<b>14</b>	<b>11</b>	<b>8</b>
<b>16</b>	<b>11</b>	<b>8</b>
<b>X16</b>	<b>=BM+MOT</b>	connector engine controller MCM2 Stecker Motorsteuerung MCM2
<b>Contact Kontakt</b>	<b>Page Blatt</b>	<b>Path Pfad</b>
<b>1</b>	<b>9</b>	<b>5</b>
<b>2</b>	<b>9</b>	<b>5</b>
<b>3</b>	<b>9</b>	<b>5</b>

Designation Bezeichnung	Mounting location Einbauort	Function text Funktionstext
<b>4</b>	<b>9</b>	<b>5</b>
<b>5</b>	<b>9</b>	<b>2</b>
<b>6</b>	<b>9</b>	<b>2</b>
<b>7</b>	<b>9</b>	<b>1</b>
<b>8</b>	<b>9</b>	<b>2</b>
<b>9</b>	<b>9</b>	<b>3</b>
<b>10</b>	<b>9</b>	<b>5</b>
<b>11</b>	<b>9</b>	<b>3</b>
<b>12</b>	<b>9</b>	<b>2</b>
<b>13</b>	<b>9</b>	<b>5</b>
<b>14</b>	<b>9</b>	<b>2</b>
<b>15</b>	<b>9</b>	<b>2</b>
<b>16</b>	<b>9</b>	<b>5</b>
<b>19</b>	<b>9</b>	<b>5</b>
<b>20</b>	<b>9</b>	<b>4</b>
<b>21</b>	<b>9</b>	<b>4</b>
<b>X17</b>	<b>=BM+MOT</b>	connector adblue level sensor Stecker Adblue Füllstandssensor
<b>Contact Kontakt</b>	<b>Page Blatt</b>	<b>Path Pfad</b>
<b>1</b>	<b>10</b>	<b>7</b>
<b>2</b>	<b>10</b>	<b>7</b>
<b>3</b>	<b>10</b>	<b>7</b>
<b>4</b>	<b>10</b>	<b>7</b>
<b>X18</b>	<b>=BM+MOT</b>	connector NOx sensor Stecker NOx Sensor
<b>Contact Kontakt</b>	<b>Page Blatt</b>	<b>Path Pfad</b>
<b>1</b>	<b>10</b>	<b>9</b>
<b>2</b>	<b>10</b>	<b>9</b>
<b>3</b>	<b>10</b>	<b>9</b>
<b>4</b>	<b>10</b>	<b>9</b>
<b>X19</b>	<b>=BM+MOT</b>	connector NOx sensor MISSING TEXT
<b>Contact Kontakt</b>	<b>Page Blatt</b>	<b>Path Pfad</b>
<b>1</b>	<b>10</b>	<b>8</b>
<b>2</b>	<b>10</b>	<b>8</b>
<b>3</b>	<b>10</b>	<b>8</b>
<b>4</b>	<b>10</b>	<b>8</b>
<b>X20</b>	<b>=BM+EBOX</b>	BOMAG diagnosis interface BOMAG Diagnosestecker
<b>Contact Kontakt</b>	<b>Page Blatt</b>	<b>Path Pfad</b>
<b>A</b>	<b>12</b>	<b>3</b>
<b>B</b>	<b>12</b>	<b>3</b>
<b>C</b>	<b>12</b>	<b>3</b>
<b>D</b>	<b>12</b>	<b>3</b>
<b>G</b>	<b>12</b>	<b>3</b>

CLICK HERE TO **DOWNLOAD** THE COMPLETE MANUAL

- Thank you very much for reading the preview of the manual.
- You can download the complete manual from: [www.heydownloads.com](http://www.heydownloads.com) by clicking the link below



- Please note: If there is no response to CLICKING the link, please download this PDF first and then click on it.

CLICK HERE TO **DOWNLOAD** THE COMPLETE MANUAL