



KONICA MINOLTA

The essentials of imaging

# **bizhub C450**

## **User's Guide [Print Operations]**



CLICK HERE TO **DOWNLOAD** THE COMPLETE MANUAL

- Thank you very much for reading the preview of the manual.
- You can download the complete manual from: [www.heydownloads.com](http://www.heydownloads.com) by clicking the link below



- Please note: If there is no response to CLICKING the link, please download this PDF first and then click on it.

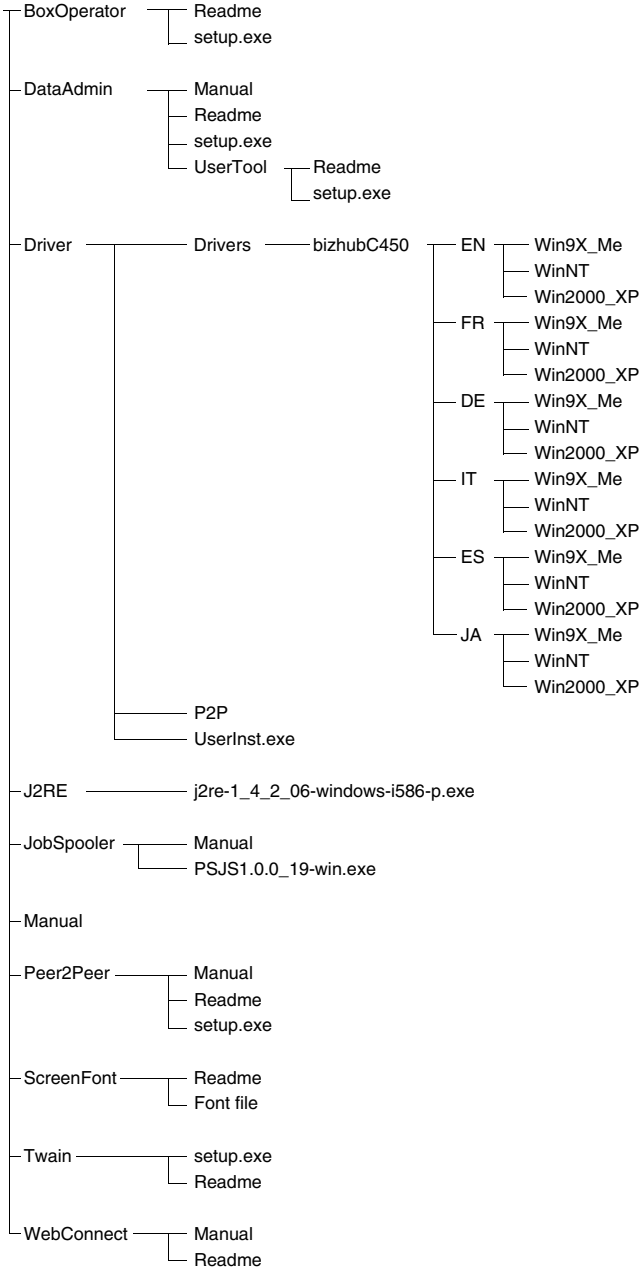
CLICK HERE TO **DOWNLOAD** THE COMPLETE MANUAL



## 5 Setting Up the PCL Driver

<b>5.1</b>	<b>Settings</b> .....	<b>5-1</b>
	Common Settings .....	5-1
	Setup Tab .....	5-2
	Per Page Setting Tab .....	5-2
	Overlay Tab .....	5-3
	Watermark Tab .....	5-3
	Quality Tab .....	5-3
	Font Tab .....	5-3
	FAX Tab .....	5-3
	Version Tab .....	5-4
	Option Tab .....	5-4
<b>5.2</b>	<b>Specifying the Setup Tab Settings</b> .....	<b>5-5</b>
	Printing to Suit the Paper Size .....	5-5
	Saving a Custom Size .....	5-6
	Selecting the Paper Source .....	5-7
	Setting the Paper Source of the Paper Type .....	5-7
	Specifying Duplex/Booklet Printing .....	5-8
	Printing Multiple Pages on One Page (N in 1) .....	5-9
	Setting the File Margin .....	5-10
	Stapling .....	5-11
	Hole Punching .....	5-11
	Selecting the Output Method .....	5-12
	Save in User Box .....	5-13
	Proof and Printing .....	5-14
	Specifying User Authentication Settings .....	5-15
	Specifying Account Track Settings .....	5-16
<b>5.3</b>	<b>Specifying the Per Page Setting Tab Settings</b> .....	<b>5-17</b>
	Printing Documents with a Front Cover/Back Cover .....	5-17
	Printing Multiple Pages .....	5-18
	Per Page Setting .....	5-18
<b>5.4</b>	<b>Specifying the Overlay Tab Settings</b> .....	<b>5-19</b>
	Printing Different Original Documents Together (Overlay) .....	5-19
	Editing Forms .....	5-21
	Creating Forms .....	5-21
<b>5.5</b>	<b>Specifying the Watermark Tab Settings</b> .....	<b>5-23</b>
	Printing a Watermark .....	5-23
	Editing a Watermark .....	5-24
	Printing the Document Number .....	5-25
<b>5.6</b>	<b>Specifying the Quality Tab Settings</b> .....	<b>5-26</b>
	Specifying Settings .....	5-26

### User Software CD-ROM: For Windows



## 1.4 Setting Up the System

In order to use this printing system, it must first be set up.

Setup consists of connecting this machine to a computer and installing the printer driver onto the computer being used.

### To set up the printing system

Setup of the printing system as described below.

- 1 Connect this machine to a computer. (Refer to “Compatible Interfaces” on page 1-10.)
- 2 Install the printer driver. (Refer to “Installing the Printer Driver” on page 2-1.)
- 3 When using a network connection, set up the network. (Refer to “Setting Up Network Printing” on page 3-1.)
- 4 Check the setup by printing a test page. (Refer to “Test Printing” on page 4-2.)
- 5 Install the screen fonts.
  - The User Software CD-ROM and the PostScript Printer Driver CD-ROM contain the Latin TrueType fonts as screen fonts.
  - Install the screen fonts after adding the operating system standard fonts.
  - For details, refer to Help of the operating system.
  - The CD-ROM “Screenfont” or “Screenfonts” folder contains the screen fonts.
  - The Macintosh fonts are compressed. Install the fonts after decompressing them.

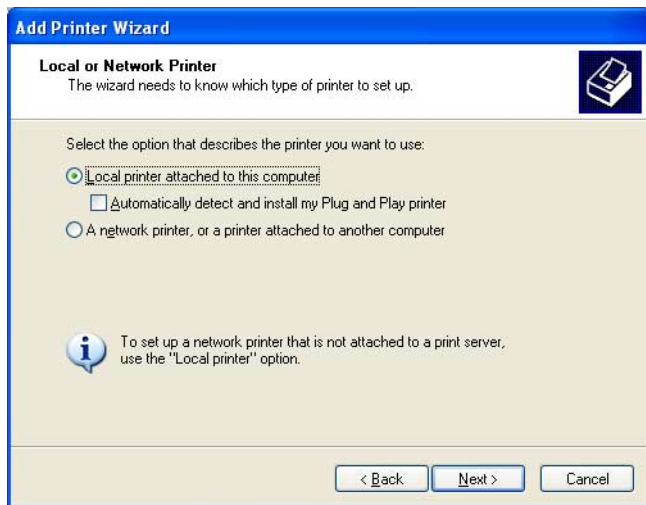
Installation of the printer driver may differ depending on the connection method used with this machine in addition to the operating system of the computer and the type of printer driver being used.



#### Detail

*For details on connecting this machine to a computer, refer to “Compatible Interfaces” on page 1-10.*

- 4 Click the [Next] button.
- 5 Select “Local printer attached to this computer”, and then click the [Next] button.
  - Clear the “Automatically detect and install my Plug and Play printer” check box.



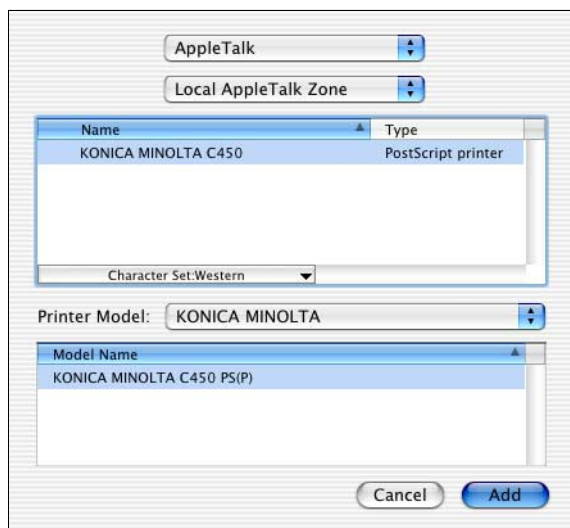
- 6 The Select Printer Port dialog box appears. Select “LPT1” here, and then click the [Next] button.
- 7 Click the [Have Disk] button.
- 8 Click the [Browse] button.
- 9 Specify the folder on the CD-ROM that contains the printer driver for the operating system that you are using, and then click the [OK] button.
  - Konica Minolta PCL Driver: User Software CD-ROM “Driver\Drivers\bizhubC450” folder
  - Konica Minolta PostScript Driver: PostScript Printer Driver CD-ROM “Driver\Drivers” folder
- 10 Click the [OK] button.

## Selecting a Printer

### For Mac OS X

After connecting this machine to a Macintosh computer, it can be used as a printer by selecting it in Print Center or the Printer Setup Utility as the printer to be used.

- 1 Open Print Center or Printer Setup Utility, located in “Applications” – “Utilities” of “Hard Disk”.
- 2 When the Add Printer dialog box appears, click the [Add] button. When the printer list appears, click the [Add] button.
  - If usable printers have already been set up, the Add Printer dialog box does not appear.
- 3 Select the applicable connection method and printer name.
- 4 Select “KONICA MINOLTA” from the “Printer Model” drop-down list.
- 5 Select “KONICA MINOLTA C450 PS(P)”, and then click the [Add] button.



The selected printer is registered in the printer list.

**Detail**

*Although the IP address is entered without using the DHCP server in the procedure described here, it is also possible to automatically assign the IP address from the DHCP server. When “DHCP Setting” is set to “ON”, the IP address, subnet mask, and gateway address settings are automatically assigned from the DHCP server on the network, so it is not necessary to assign them manually. However, note the following when setting “DHCP Setting” to “ON”.*

*Check with the network administrator that the DHCP server exists. If the DHCP server does not exist, be sure to specify settings for “IP Address”, “Subnet Mask”, and “Default Gateway”.*

*If the settings for the IP address and other items have been assigned using the DHCP server, there is a possibility that they may be automatically changed. When the settings for the IP address and other items are changed, if the IP address has been used to specify a printer on the network for printing, there is a possibility that printing may not be possible because this machine cannot communicate with the network. If “DHCP Setting” has been set to “ON”, it is recommended that the IP address assigned to this machine be fixed in the DHCP server settings.*

- 8 In Administrator mode of PageScope Web Connection, select “NetWare” from the Network tab, and then specify the following settings.

Network Setting - Admin Mode - Microsoft Internet Explorer

File Edit View Favorites Tools Help

Ready to Scan  
Ready to Print

Logout

System Box Print Scan Network

▶ TCP/IP  
 ▼ NetWare  
 ▶ NetWare  
 ▶ NetWare Status  
 ▶ IPP  
 ▶ FTP  
 ▶ SNMP  
 ▶ SMB  
 ▶ Apple Talk  
 ▶ LDAP  
 ▶ Email  
 ▶ SSL/TLS  
 ▶ Authentication

**NetWare**  
\* is reflected after reset.

NetWare Print\*

Frame Type\*

Mode\*

Pserver

Print Server Name

Print Server Password

Print Queue Scan Rate\*  Seconds(1-65535)

Bindery/NDS

Bindery

Preferred File Server

NDS

Preferred NDS Context Name

Preferred NDS Tree Name

Nprinter/Rprinter

Printer Name

Printer Number\*  (0-255,255:Auto)

Apply Clear

Done Internet

NetWare Print: Select “Enable”.

Frame Type: Select “Auto”. (Select the frame type according to the network environment.)

Mode: Select “Nprinter/Rprinter”.

Print Server Name: Specify the print server name created in step 4.

Print Server Password: Specify only when setting from the NetWare Server.

Print Queue Scan Rate: Specify “1”. (Change as necessary.)

Bindery/NDS: Select “Bindery/NDS”.

Preferred File Server: Specify the name of the file server that connects to the Pserver.

- 9 Restart this machine (turn it off, then on again).

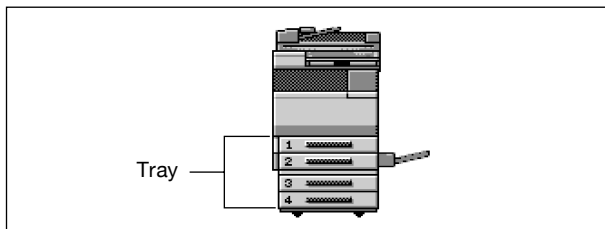
- 10 Use the NetWare server console to display the print server screen, and then check that the created printer is shown as “Waiting for Job” for the connected printer (0).

**For Mac OS 9.2**

- 1 On the Apple menu, point to “Control Panel”, and then click “Apple-Talk”.
- 2 From the “Connect via” drop-down list, select “Ethernet”.
- 3 On the Apple menu, point to “Control Panel”, and then click “TCP/IP”.
- 4 From the “Connect via” drop-down list, select “Ethernet”.
- 5 Select the items from “Configure” that correspond to the network settings for the Macintosh computer that is connected to the network, and then set the IP address and subnet mask.
- 6 Click the close button at the top left of the dialog box.  
The “Save changes to the current configuration?” message appears.
- 7 Click the [Save] button.

## Input Tray (Paper Source)

You can select the input tray as the paper source for printing. When changing the paper type, you can select an input tray according to the paper type.



Operating System	Printer Driver	Refer to
Windows	Konica Minolta PCL	“Specifying the Setup Tab Settings” on page 5-5
	Konica Minolta PostScript	“Specifying the Setup Tab Settings” on page 6-7
	PostScript PPD	“Specifying the Paper Tab Settings” on page 7-4
Mac OS X	PostScript PPD	“Paper Feed” on page 9-9
Mac OS 9.2		“General (Basic Settings)” on page 8-9

## Paper Type (Media)

You can specify the paper type being printed.

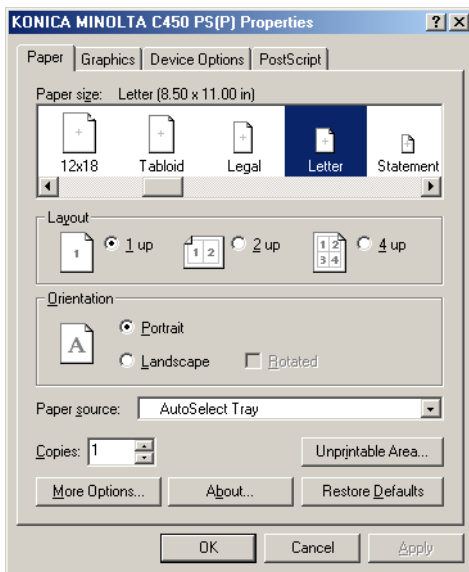
Operating System	Printer Driver	Refer to
Windows	Konica Minolta PCL	“Specifying the Setup Tab Settings” on page 5-5
	Konica Minolta PostScript	“Specifying the Setup Tab Settings” on page 6-7
	PostScript PPD	“Specifying the Paper Tab Settings” on page 7-4



### Note

*With the Konica Minolta PCL driver for Windows, the paper type settings can be pre-set by specifying the paper type of the paper drawer.*

## PostScript PPD Driver



...

**Note**

Use each tab in the dialog box to set up the printer driver.

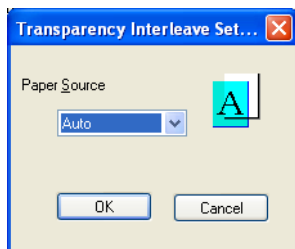
To specify custom settings, click *Print* in the application, and then click the [Preferences] button on the *Print* dialog box. The settings specified on the *Print* dialog box apply only to the current file.

When setting up the installed options in Windows 2000/XP/NT 4.0/Server 2003, right-click the icon of the installed printer, and then click "Properties".

If “Transparency” is selected as the paper type, you can specify transparency interleaving.

When the “Transparency Interleave” check box is selected, the Transparency Interleave Settings dialog box appears, allowing you to select the source of the interleaf paper.

The Transparency Interleave Settings dialog box can also be displayed by clicking the [Settings] button.



### Specifying Duplex/Booklet Printing

You can print a document onto both sides of a page or in a booklet format (two facing pages). This comes in handy when you want to bind multiple-page documents.

- 1 Click the Setup tab.
- 2 From the “Print Type” drop-down list, select “Double-sided” or “Booklet”.



#### Note

*The binding orientation can be specified from the “Binding Position” drop-down list.*

*When optional finisher FS-603 is installed and “Booklet” is specified, you can specify “Center Binding” for binding in the center of a page.*

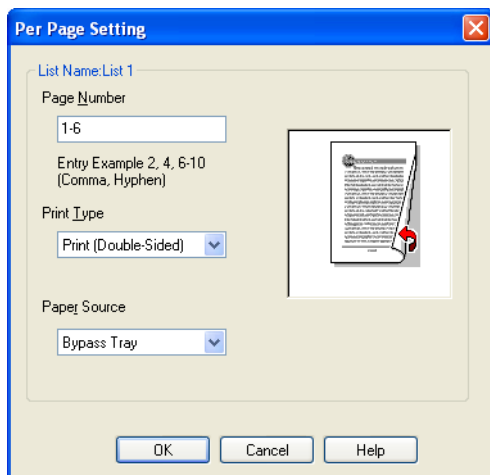
## Printing Multiple Pages

The “Per Page Setting” function comes in handy when you want to change the input tray during a print job when printing multiple pages.

### Per Page Setting

You can specify the print type and input tray for each page.

- 1 Click the Per Page Setting tab.
- 2 Select the “Per Page Setting” check box.
- 3 From the “List Name” drop-down list, select the name of the desired list.
  - When changing the list name, click the [Edit List Name] button after selecting the list name, and then apply the settings on the dialog box that appears.
- 4 Click the [Add] button, and then specify the page number, print type, and paper source in the dialog box that appears.

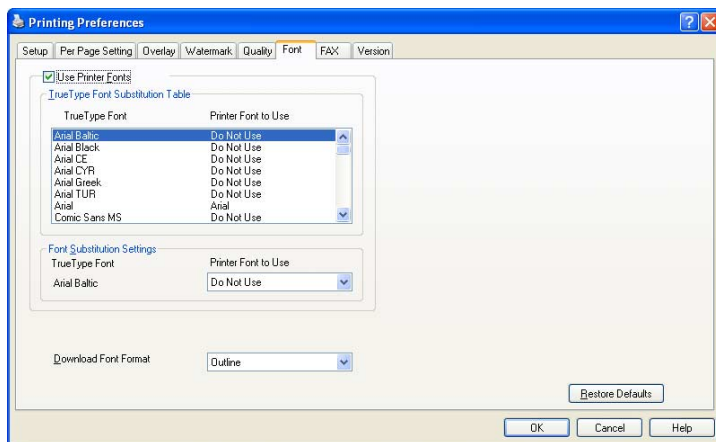


#### Note

For an existing list, click the [Edit] button to change the selected page settings, or click the [Delete] button to delete them.

Click [↑] or [↓] to change the page number starting with the smallest page number.

## 5.7 Specifying the Font Tab Settings



### Specifying Settings

You can replace the TrueType fonts used in Windows with the printer fonts of this machine.

Using the printer fonts will shorten the printing time, however, there may be a difference in the screen display and the print results.

- 1 Click the “Font” tab.
- 2 Select the “Use Printer Fonts” check box.
- 3 Select the TrueType font that you want to replace.
- 4 From the “Printer Font to Use” drop-down list, select the printer font to replace the TrueType font.
- 5 Click the [OK] button.



#### Note

*Using the printer fonts will shorten the printing time, however, there may be a difference in the screen display and the print results.*

*When using TrueType fonts, select from the “Download Font Format” drop-down list the font type to be downloaded to the printer.*

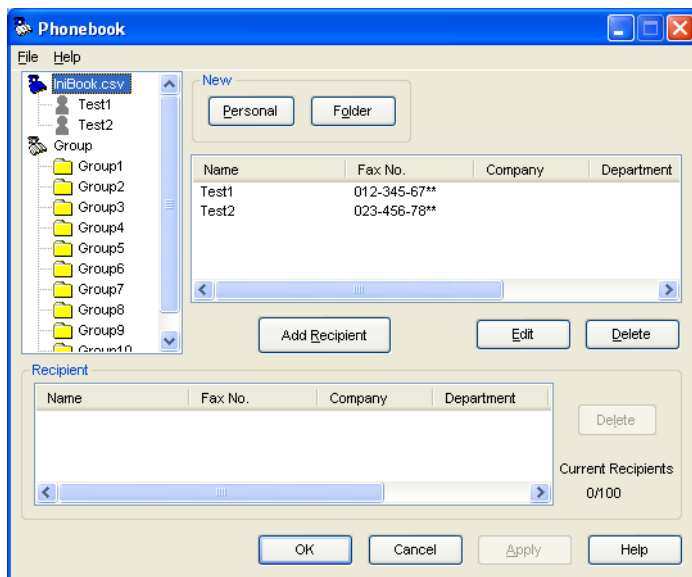
## Registering a Recipient in the Phonebook

You can register the recipient of a fax message in the Phonebook.

### Registering Recipient Information

- 1 In the Printing Preferences dialog box, click the [Phone Book] button in the FAX tab.

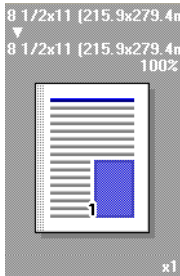
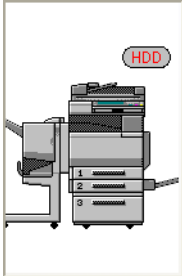
The Phonebook dialog box appears.



- 2 Click the [Personal] button.

The [Personal Information] dialog box appears.

- 3 Enter the appropriate information in the “Name”, “Fax No.”, “Company”, and “Department” text boxes. You can enter titles in the “Name” text box.
  - It is not necessary to change the settings for the “ECM”, “Int. Tx”, and “V.34” check boxes. For details, refer to the C450 User’s Guide [Facsimile Operations].
  - Up to 40 characters can be entered in the “Name”, “Company”, and “Department” text boxes.

Button	Function
Edit	Click this button to change the saved settings.
Default	Click this button to return the settings to their defaults, which were selected when the driver was installed.
View	<p>When the [Paper] button is clicked, a preview of the page layout as specified in the current settings is displayed and a preview image of the print job can be checked.</p> <p>When the [Printer] button is clicked, a printer figure is displayed showing any options, such as the paper drawer, that are installed on this machine.</p> <div style="display: flex; justify-content: space-around; align-items: center;"> <div style="text-align: center;">  <p>Paper</p> </div> <div style="text-align: center;">  <p>Printer</p> </div> </div>



### Note

*To enable any installed options, you must specify the Option settings. For details, refer to “Specifying the Option Tab Settings” on page 6-23.*

## Setup Tab

Item	Function
Orientation	Specifies the orientation of the image being printed on the paper.
Original Size	Specifies the size of the original document.
Output Size	Specifies the output paper size. Automatically enlarges or reduces when the Original Size setting is changed.
Zoom	Specifies the enlargement and reduction ratio.
Paper Source	Selects the paper source for printing.
Paper Type	Selects the paper type for printing.
Copies	Specifies the number of copies to print.
Collate	Specifies whether to print multiple copies in sets.
Offset	When printing multiple copies, shifts the output position of each set.

CLICK HERE TO **DOWNLOAD** THE COMPLETE MANUAL

- Thank you very much for reading the preview of the manual.
- You can download the complete manual from: [www.heydownloads.com](http://www.heydownloads.com) by clicking the link below



- Please note: If there is no response to CLICKING the link, please download this PDF first and then click on it.

CLICK HERE TO **DOWNLOAD** THE COMPLETE MANUAL

## Specifying User Authentication Settings

If user authentication settings have been specified on this machine, a user name must be entered.

- 1 Click the Setup tab.
- 2 Click the User Authentication/Account Track button. Enter the user name and password in the dialog box that appears.

The screenshot shows a Windows dialog box titled "User Authentication/Account Track". The dialog is divided into two main sections. The top section, "User Authentication", is checked with a green box. It contains two radio buttons: "Public User" (unselected) and "Recipient User" (selected). Below these are two text input fields labeled "User Name" and "Password". The bottom section, "Account Track", is unchecked. It contains two text input fields labeled "Department Name" and "Password". At the bottom of the dialog are four buttons: "OK", "Cancel", "Default", and "Help".



### Note

*If this machine has been set to permit public users, the machine can be used without a user name and password.*

*For user authentication settings, consult the administrator of this machine.*

## Font Settings

You can replace the TrueType fonts used in Windows with the printer fonts of this machine.

**1** Click the [Font Settings] button.

**2** Specify settings for the following:

Download Font Format: Select the TrueType downloading method.

User Printer Fonts: Replace TrueType fonts with the printer fonts.



...

### Note

*Using the printer fonts will shorten the printing time, however, there may be a difference in the screen display and the print results.*

*When using TrueType fonts, select from the "Download Font Format" drop-down list the font type to be downloaded to the printer.*

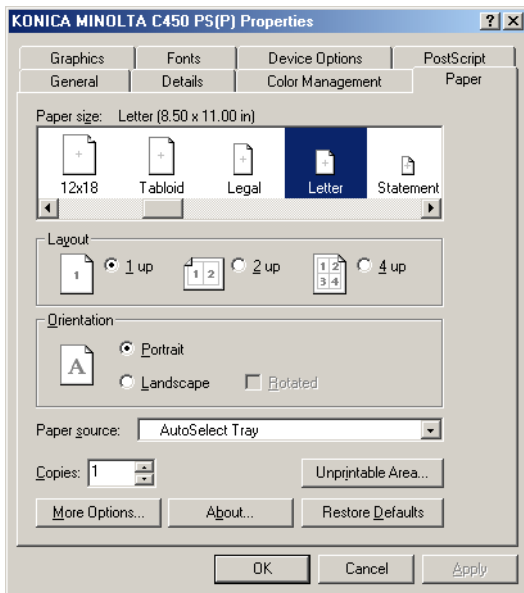
*Specify the font replacement list from the Device Settings tab.*

## 7.2 Specifying the Paper Tab Settings

You can specify the orientation and number of pages to be printed on one page when printing.

### Specifying Settings

- 1 Click the Paper tab.

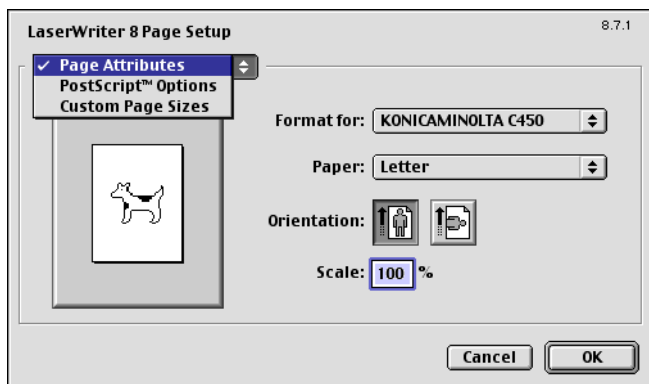


- 2 Specify settings for the following:
  - Paper size: Specifies the paper size.
  - Layout: Specifies printing multiple pages on one page (N in 1 printing).
  - Orientation: Specifies the orientation
  - Rotated: Rotates the paper.
  - Paper source: Selects the input tray.
  - Copies: Specifies the number of copies to print.
  - More Options: Specifies the paper type and output device.

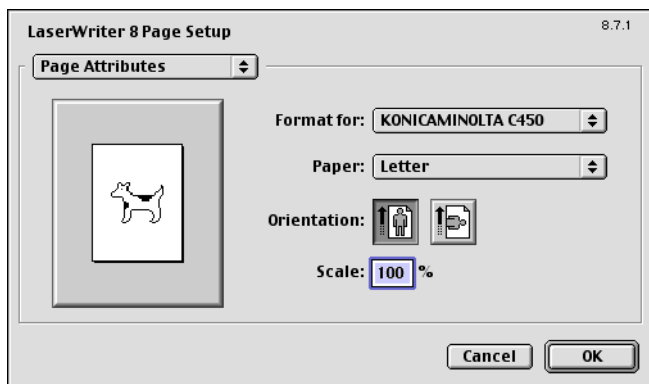
## 8.2 Page Setup

### Page Attributes (Basic Settings)

- 1 Select “Paper Setup” or “Page Setup” from the “File” menu.
- 2 Select “Page Attributes”.



- 3 Specify settings for the following:
  - Paper: Specifies the paper size.
  - Orientation: Specifies the orientation.
  - Scale: Specifies the enlargement and reduction ratio.



#### Note

*The folding function can be selected from the screen that is displayed when “Layout” is selected in the Print dialog box.*

**Note**

Depending on the application, “Page Setup” may be displayed as “Paper Setup”. In addition, you may have to select “Paper Setup” – “Options” from the “File” menu.

The dialog boxes differ depending on the application.

**Print Dialog Box**
**Print Item**

Menu	Item	Function
Copies & Pages	Copies	Specifies the number of copies to print.
	Collated	Prints multiple copies in sets.
	Pages	Specifies the print range to print.
Layout	Pages per Sheet	Specifies the number of pages to print on one page.
	Layout Direction	Specifies the document page order.
	Border	Specifies the borders around pages.
Output Options	Output format	Specifies the format of the file being output.
Scheduler <sup>1</sup>	Print Document	Specifies the print time.
	Preferred Order	Specifies the priority level.
Paper Processing <sup>1</sup>	Reverse Page Order	Prints pages in the reverse order.
	Print	Selects the pages for printing.

## Quality

**1** From the “File” menu, select “Print”.

**2** Select “Quality”.

**3** Specify settings for the following:

Resolution: Specifies the resolution.

Glossy Mode: Prints using a gloss finish.

Original Image Type: Prints with a quality suitable for the original document.

Color Matching (Text): Adjusts the color quality of the text in a document.

Pure Black (Text): Specifies whether to enable grayscale of the text in a document.

Screen (Text): Specifies screening of the text in a document.

Color Matching (Photo): Adjusts the color quality of photos in a document.

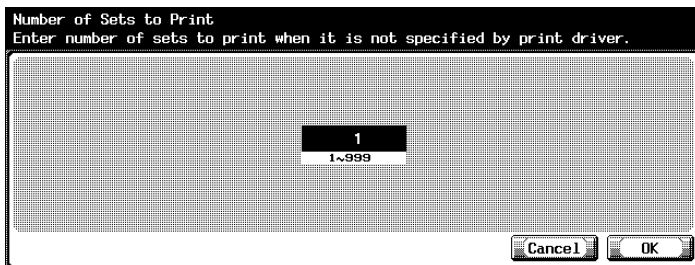
Pure Black (Photo): Specifies whether to enable grayscale of photos in a document.

Screen (Photo): Specifies screening of photos in a document.

Smoothing (Photo): Specifies smoothing of photos in a document.

Color Setting (Graphic): Adjusts the color quality of a chart and graph in a document to the text or photo settings.

- 4 Press the [C] (clear) key to erase the value, and then use the keypad to type in the default number of copies (between 1 and 999 sets).
  - If a value outside of the allowable range is specified, the message “Input Error” appears. Type in a value within the allowable range.

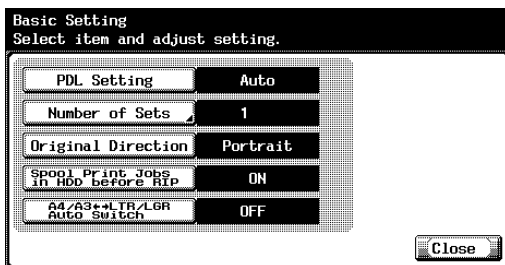


- 5 Touch [OK].
  - The default number of copies is set.
  - To cancel changes to the settings, touch [Cancel].

### Original Direction

You can specify the default image orientation. (Default setting: Portrait)

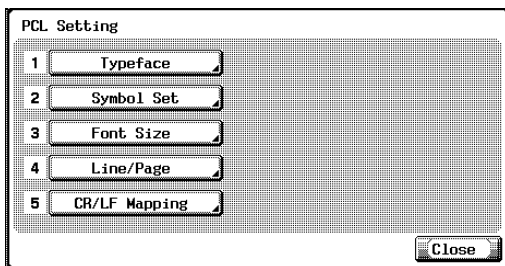
- 1 On the Utility Setting screen, touch [6 Printer Setting].
  - For details on displaying the Utility Setting screen, refer to “To display the Utility Setting screen” on page 10-1.
- 2 Touch [1 Basic Setting].
- 3 Touch [Original Direction].





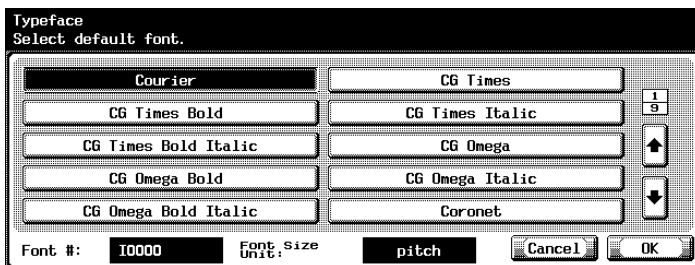
## Typeface

You can specify the font to use when no setting has been specified from the printer driver. (Default setting: Courier)

- 1 On the Utility Setting screen, touch [6 Printer Setting].
  - For details on displaying the Utility Setting screen, refer to “To display the Utility Setting screen” on page 10-1.
- 2 Touch [3 PCL Setting].
- 3 Touch [1 Typeface].



- 4 Touch the button for the desired setting.
  - Touch[  ] or [  ] and then touch the button for the desired setting.
  - You can check the selected font number and font size units.

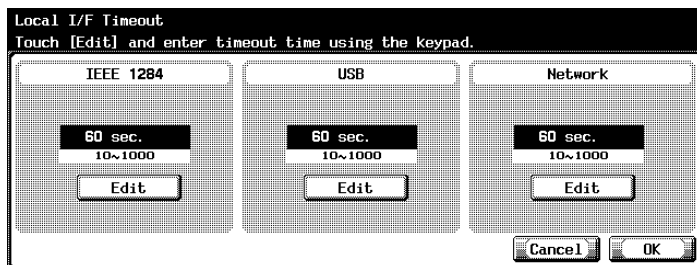


- 5 Touch [OK].
  - To cancel changes to the settings, touch [Cancel].

### Local I/F Timeout

You can set the time until a communication timeout occurs for the parallel, USB, or network interface. (Default setting: 60 seconds)

- 1 On the Administrator Setting screen, touch [7 Printer Setting].
  - For details on displaying the Administrator Setting screen, refer to “To display the Administrator Setting screen” on page 10-21.
- 2 On the Printer Setting screen, touch [1 Local I/F Timeout].  
The Local I/F Timeout screen appears.



- 3 Touch [Edit] below the setting that you are specifying.
- 4 Press the [C] (clear) key to erase the value, and then use the keypad to type in the default length of time (between 10 and 300 seconds).
  - If a value outside of the allowable range is specified, the message “Input Error” appears. Type in a value within the allowable range.
- 5 Touch [OK].  
The time until a communication timeout occurs is set.  
To cancel changes to the settings, touch [Cancel].



**Note**

*This manual describes the printer related functions. For the box and scanner functions of this machine, refer to the C450 User's Guide [Box Operations] and C450 User's Guide [Network Scanner Operations].*

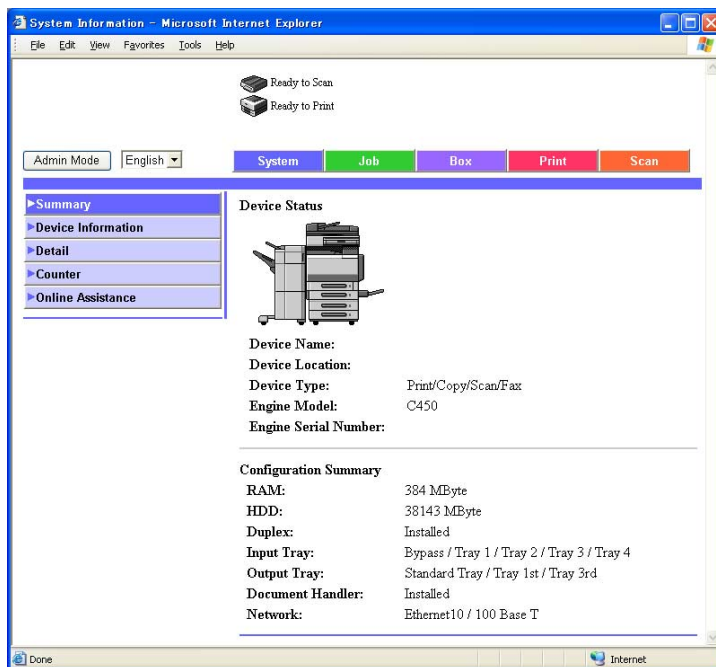
**System Tab**

On the System tab, information and settings concerning the system configuration of this machine are displayed.

**System Tab – Summary**

On the System tab, click “Summary”. In addition, this is the initial page that appears when you access [http://<IP\\_address\\_for\\_this\\_machine>/](http://<IP_address_for_this_machine>/) with your Web browser.

The Summary page shows the current system configuration and status of this machine.



Device Status	This area uses graphics and text to show the configuration of options installed on this machine.
---------------	--------------------------------------------------------------------------------------------------

## Job Tab

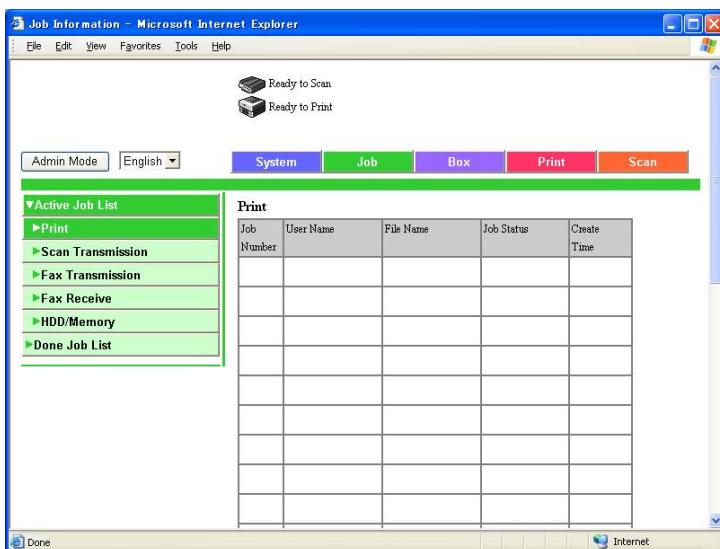
From the “Job” tab, you can check jobs managed by this machine.

### Job Tab – Active Job

Click the Job tab, click “Active Job List” from the menu, and then select each function (print and scanning operations).

You can check jobs that are being printed or that are queued to be printed.

#### Sample Print Page



Print	Displays the print job list and details.
Scan Transmission	Displays the scan job list and details.
Fax Transmission	Displays the fax transmission job list and details.
Fax Receive	Displays the fax reception job list and details.
HDD/Memory	Displays the box job list and details.



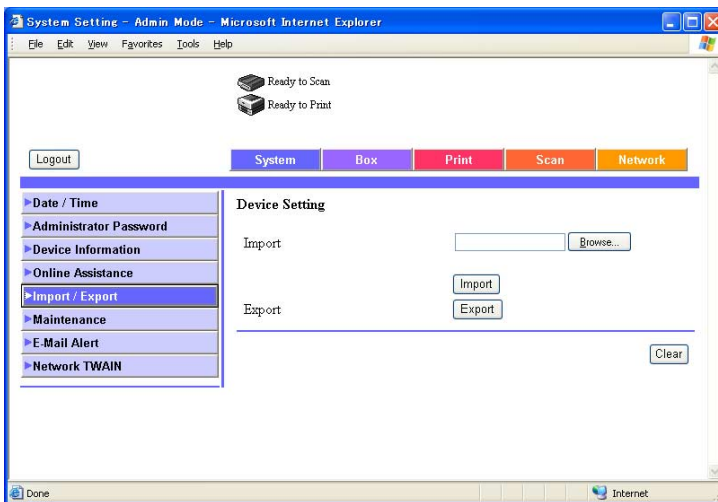
#### Note

*The job number that was assigned when the job was queued in this machine appears as the job number.*

*Click the [Detail] button to display detailed information.*

### System Tab – Import/Export

You can save (export) the information of this machine as a file or write (import) the information from a file to this machine.



Import	To import a file specify the name of the file that you want to import, and then click the [Import] button.
Export	To download a file, click the [Export] button.



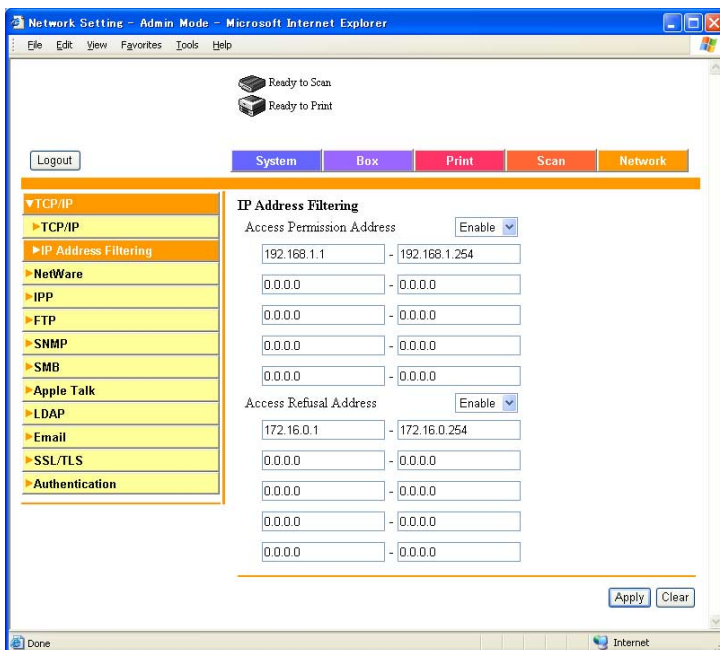
**Note**

*The import and export file format is the encoded binary file.*

### Network Tab – TCP/IP – IP Address Filtering

You can specify the IP address filter function.

You can specify the access limitations by specifying the IP address of the host.

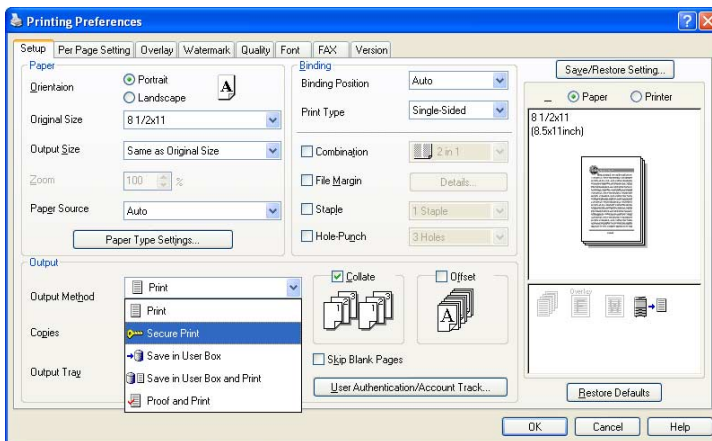


Access Permission Address	Specify whether to enable authorization of an IP address setting.
Setting Range 1—5	Enter the IP address being authorized (format: "****.***.***.***", input range for ***: 0—255).
Access Refusal Address	Specify whether to enable rejection of an IP address setting.
Setting Range 1—5	Enter the IP address being rejected (format: "****.***.***.***", input range for ***: 0—255).



**Detail**

*For details, refer to “Selecting the Output Method” on page 5-12 and page 6-9.*



Symptom	Probable Cause	Action
The machine does not start printing although the print job was completed on the computer.	The printer driver selected for printing is not compatible with the printer controller.	Check the printer name selected.
	The network cable, parallel cable, or US cable is disconnected.	Check that the cable is connected properly.
	An error has occurred in this machine.	Check this machine's control panel.
	A print job is queued in this machine, delaying printing.	Check the job order on the Active Jobs list of the machine's control panel.
	"Save in User Box" was selected for the print job.	Check if the print job is stored on the Box screen of this machine's control panel.
	"Secure Print" was selected for the print job.	Check if the print job is held on the Secure Print User Box screen of this machine's control panel.
	If the account track settings have been applied, an unregistered account name (or password) may have been entered.	Enter the correct account name (or password).
	Available computer memory space is not sufficient.	Perform a test print to check whether printing is possible.
The connection of this machine to the network is not yet established (while connecting to a network).	Consult with the network administrator.	

If the problem persists after all of these procedures have been performed, read the C450 User's Guide [Copy Operations].

Term	Definition
IPP	Abbreviation for Internet Printing Protocol. A protocol that sends and receives print data and controls printers over the Internet on a TCP/IP network. Data can also be sent to printers in remote areas to print over the Internet.
IPX/SPX	Abbreviation for Internetwork Packet Exchange/Sequenced Packet Exchange. A protocol developed by Novell, Inc. that is commonly used under a NetWare environment.
IP Address	A code (address) that is used to identify individual network devices over the Internet. A maximum of three digits for four numbers are displayed such as 192.168.1.10. IP addresses are assigned to devices, including computers, which are connected to the Internet.
LAN	Abbreviation for Local Area Network. A network which connects computers on the same floor, in the same building, or in neighboring buildings.
LPR/LPD	Abbreviation for Line Printer Request/Line Printer Daemon. A printing method over a network in a Windows NT system or UNIX system. Using TCP/IP, you can output print data from Windows or Unix to a printer over a network.
MAC Address	Abbreviation for Media Access Control address. With a special ID number for each Ethernet card, data can be sent and received between the cards. A number consists of 48 bits. The first 24 bits consist of a special number for each manufacture controlling and assigning IEEE. The last 24 bits consist of a number that the manufacturer assigns uniquely to the card.
NDPS	Abbreviation for Novell Distributed Print Services. Provides a highly efficient printing solution in an NDS environment. By using the NDPS as a printer server, you can output from the desired printer, automatically download the printer driver of a newly installed printer, simplify and automate complicated management environments related to printer use, and integrate management related to the network printer.
NDS	Abbreviation for Novell Directory Services. The servers and printers on a network and the shared resources of the user's information, as well as the user's access authority over these items can be consolidated in the hierarchy structure.
NetBIOS	Abbreviation for Network Basic Input Output System. A communication interface developed by IBM.
NetBEUI	Abbreviation for NetBIOS Extended User Interface. A network protocol developed by IBM. By simply specifying the computer name, you can build a small-scale network.
NetWare	Network operating system developed by Novell. NetWare IPX/SPX is used as the communication protocol.
Nprinter/Rprinter	Remote printer support module for using a printer server under a NetWare environment. Use NetWare 3.x with Rprinter, and NetWare 4.x with Nprinter.
OHP/OHT	OHP (overhead projector) transparencies which are used for presentations
OS	Abbreviation for Operating System. Basic software for controlling the system of a computer.

CLICK HERE TO **DOWNLOAD** THE COMPLETE MANUAL

- Thank you very much for reading the preview of the manual.
- You can download the complete manual from: [www.heydownloads.com](http://www.heydownloads.com) by clicking the link below



- Please note: If there is no response to CLICKING the link, please download this PDF first and then click on it.

CLICK HERE TO **DOWNLOAD** THE COMPLETE MANUAL