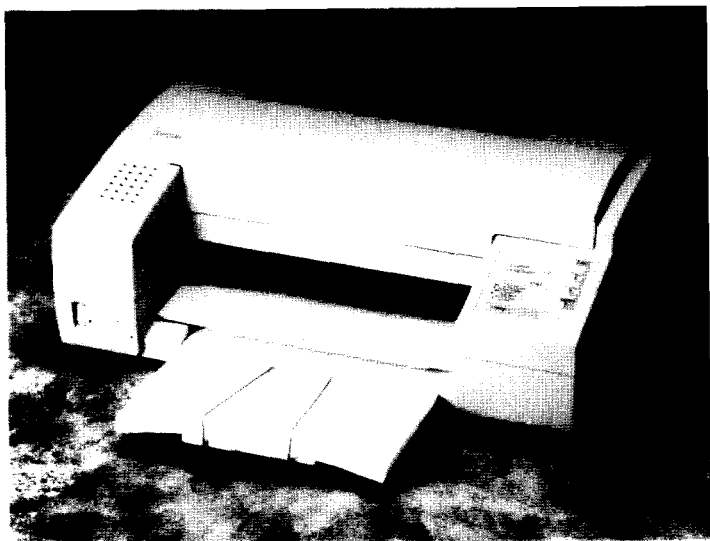


EPSON®

Stylus™ 800



User's Guide



CLICK HERE TO **DOWNLOAD** THE COMPLETE MANUAL

- Thank you very much for reading the preview of the manual.
- You can download the complete manual from: www.heydownloads.com by clicking the link below



- Please note: If there is no response to CLICKING the link, please download this PDF first and then click on it.

CLICK HERE TO **DOWNLOAD** THE COMPLETE MANUAL

Introduction

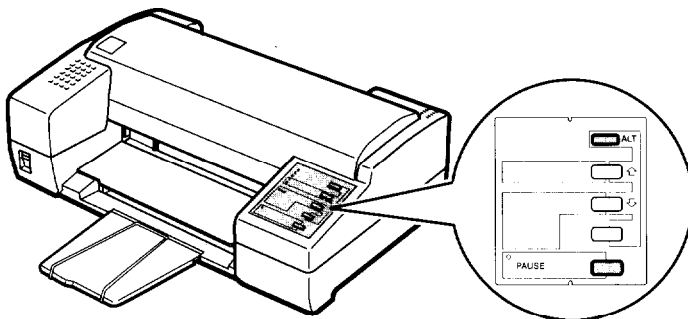
Your new Epson® printer is a 48-nozzle ink jet printer, ideal for quiet, high-speed printing.

Features

Your printer offers the following features:

- ❑ High print quality. Epson's new ink jet technology delivers crisp 360 x 360 dots per inch (dpi) text and graphics.
- ❑ Flexible paper handling. Use the built-in paper feeder to load up to 100 sheets automatically. You can also insert envelopes or single pages manually without removing the paper supply.
- ❑ Fast printing speed. You can print up to 180 characters per second in 12-cpi letter quality (LQ) mode.
- ❑ Quiet printing. Ink jet technology helps maintain a quiet working environment.
- ❑ Compact, streamlined design. Suited to the office or home environment, its small footprint conserves your work space.
- ❑ Epson ESC/P 2™. This enhanced printer control language adds scalable fonts and improved graphics capability.
- ❑ Compatibility. Supports the Epson ESC/P® commands widely used in application programs written for other Epson printers.
- ❑ Convenience. Drop-in ink cartridge prints up to 700 pages at 1000 characters/page.

1. Make sure the printer is turned off.
2. Hold down both the ALT and PAUSE buttons while you turn on the printer. Release the buttons after the printer starts initializing.



The print head moves to the ink cartridge replace position automatically.

Chapter 2

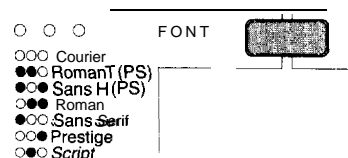
Using Other Printer Functions

Loading Paper Manually.....	2-2
Paper sizes	2-2
Printing on single sheets	2-2
Printing on envelopes	2-4
Operating the Control Panel.....	2-6
Indicator lights.....	2-6
Buttons	2-7
Controlling the Page with Micro Feed	2-8
Adjusting the loading position	2-9
Adjusting the print position	2-10
Selecting Character Fonts	2-11
Scalable Fonts	2-12
Condensed printing	2-12
Using the Default-Settings Mode	2-13
Default settings descriptions	2-14
Changing the default settings	2-15

Selecting Character Fonts

Your printer has seven built-in character fonts including two new Epson fonts: the Epson Roman T and Epson Sans Serif H. (The Roman T is similar to the Times™ font; Sans Serif H is similar to Helvetica™.)

Press the FONT button to select from the seven fonts listed on the control panel. The three FONT lights come on (○) or go off (●) to indicate the active font.



The table below lists the available fonts and shows how the FONT lights appear for each selection.

FONT lights	Fonts	Sample
○ ○ ○	Epson Courier	ABCDEFGHIjklm0123456789
● ● ○	Epson Roman T	ABCDEFGHIjklm0123456789
● ○ ●	Epson Sans Serif H	ABCDEFGHIjklm0123456789
○ ● ●	Epson Roman	ABCDEFGHIjklm0123456789
● ○ ○	Epson Sans Serif	ABCDEFGHIjklm0123456789
○ ○ ●	Epson Prestige	ABCDEFGHIjklm0123456789
○ ● ○	Epson Script	ABCDEFGHIjklm0123456789

○ on ● off

Note:

- Roman T and Sans Serif H fonts are available in proportional spacing only.
- Font selections you make with your application program usually override these control panel selections. For best results, use your application program to select fonts.

4. Lift the cartridge out of the printer and dispose of it properly. Do not take the used cartridge apart or try to refill it.



Caution:

If ink does get on your hands, wash them thoroughly with soap and water. If ink gets into your eyes, flush them immediately with water.

5. Turn to page I-11 and follow the steps there to install the new cartridge.

Note:

When you replace the cartridge, the printer will not recharge the ink delivery system again. However, the print head may start moving as the printer performs normal maintenance procedures. This can take up to 40 seconds to complete.

Cleaning the Print Head

If print quality diminishes, use the printer's built-in print-head cleaning cycle to ensure that the nozzles are delivering ink properly. To avoid wasting ink, clean the print head only if print quality declines.

Follow these steps:

1. Make sure the printer is turned on and the PAUSE light is on. If the PAUSE light is not on, press the PAUSE button to pause the printer.
2. Hold down the ALT button and press the PAUSE button for two seconds.

The cleaning cycle takes about 40 seconds. The PAUSE light flashes throughout the cycle and then stays on when the cleaning cycle is finished.

3. Press the PAUSE button to resume printing.

Appendix

Technical Specifications	A-2
Printer specifications	A-2
Interface specifications	A-7
Initialization	A-11
Command Summary	A-13
Sending printer commands	A-13
Using the command summary.....	A-13
General operation	A-13
Paper feeding.....	A-14
Page format	A-14
Print position motion.....	A-15
Font selection	A-15
Font enhancement	A-17
Spacing	A-17
Character handling	A-18
Bit image	A-20
Graphics	A-21
Character Tables	A-21



Initialization

The printer can be initialized (returned to a fixed set of conditions) in three ways:

Hardware initialization	<ul style="list-style-type: none">• The power is turned on.• The printer receives an INIT signal from the parallel interface (pin 31 goes LOW). The following condition then results: <ol style="list-style-type: none">1) The printer mechanism is initialized.2) The input data buffer is cleared.3) The download character set is cleared.4) The print buffer is cleared.5) The default values are set.
Software initialization	<ul style="list-style-type: none">• Software sends the ESC @ (initialize the printer) command. The following condition then results: <ol style="list-style-type: none">1) The print buffer is cleared.2) The default values are set. (The last panel settings are maintained.)
Control panel initialization	<ul style="list-style-type: none">• Hold down the ALT button and press the LOAD/EJECT button. The following results: <ol style="list-style-type: none">1) The input data buffer is cleared.2) The print buffer is cleared.3) The default values are set. (The last panel settings are kept.)

Graphics

ASCII	Dec.	Hex.	Description
ESC (G nn	40 71	28 47	Select Graphics Mode ESC (G 1 0 n n = 1 or 49 • Cancel Graphics mode with ESC @
ESC nn	46	2E	Print Raster Graphics ESC . c v h m n1 n2 data c = 0: Full graphics mode 1: Compressed mode v = 10, 20: Dot density for vertical in 3600/v DPI h = 10, 20: Dot density for horizontal in 3600/h DPI m: Number of vertical dots 1 ≤ m ≤ 24 n: Number of horizontal dots Total dots = n1 + n2 × 256 • The following combination is not allowed: v = 10 and h = 20

Character Tables

These character tables are selected with the default-setting mode or by using a command.

All tables except the italic character table are the same as the PC437 table for hex codes 00 through 7F, so only the PC437 and italic tables are shown completely. The rest of the tables show only the characters for hex codes 80 through FF.

The tables with * after the table name are available in the European version only; those with ** are available in the North/South American

CLICK HERE TO **DOWNLOAD** THE COMPLETE MANUAL

- Thank you very much for reading the preview of the manual.
- You can download the complete manual from: www.heydownloads.com by clicking the link below



- Please note: If there is no response to CLICKING the link, please download this PDF first and then click on it.

CLICK HERE TO **DOWNLOAD** THE COMPLETE MANUAL