

Combine harvester new features



CLICK HERE TO **DOWNLOAD** THE COMPLETE MANUAL

- Thank you very much for reading the preview of the manual.
- You can download the complete manual from: www.heydownloads.com by clicking the link below



- Please note: If there is no response to CLICKING the link, please download this PDF first and then click on it.

CLICK HERE TO **DOWNLOAD** THE COMPLETE MANUAL

Using AUTO SLOPE

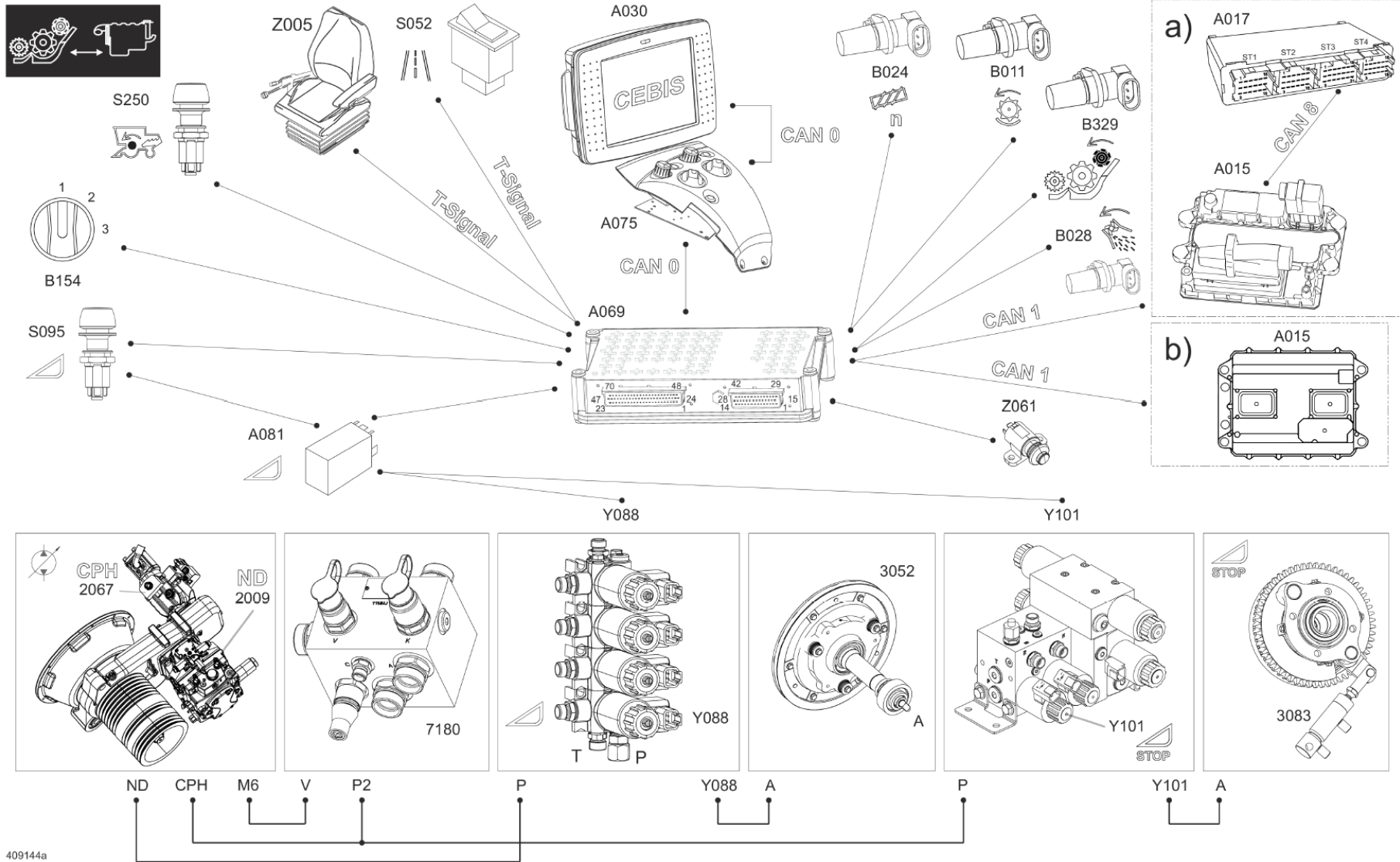


Description:

With the AUTO SLOPE option, which is available for rotor machines and walker machines, the menu (1) is also available in CEBIS. It can be used to switch the AUTO SLOPE (2) function ON/OFF separately. In addition, the Learning menu item (4) learns inclination sensor B126 for this function and, if provided, for CEMOS AUTOMATIC.

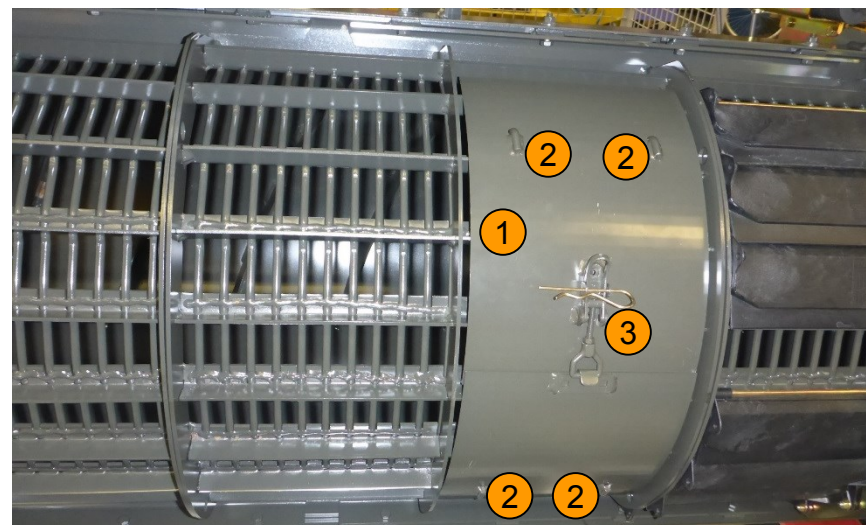
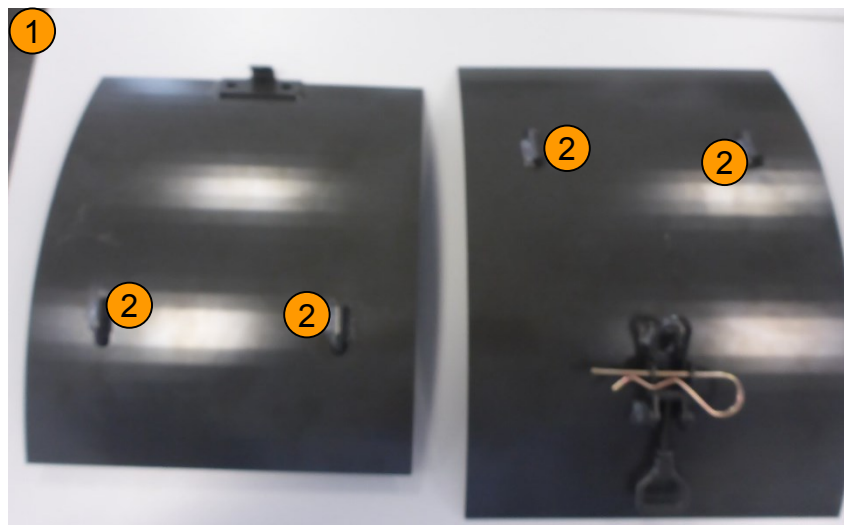
AUTO SLOPE (2): Inclination-dependent fan and sieve adjustment in longitudinal direction

Automatic crop flow control



409144a

Mechanical rotor concave cover as a spare part



Description:

A set of separate rotor covers (1) can be ordered, if required, via the spare parts department using the number 1801 455.x. The set comprises four sets of rotor cover plates so that one set can enclose each set of concaves.

One set comprises two halves which are attached to the rotor concave via hooks (2) and fastened in the middle using the locking pin (3).

Designation:

1. One set of rotor cover plates
2. Hooks
3. Locking pin

Grain tank unloading – functional description

Soft start-up (7XL)

To ensure a soft start-up of the grain tank unloading process which is also gentle to the drive units, the grain tank unloading solenoid coil (Y035) is actuated in a modulated way (PWM) by the vehicle base module (A069).

The speed sensor for the grain tank unloading drive (B529) monitors the coupling process and, if a blockage is detected, the grain tank unloading function is switched off again.

Slip control (7XL)

To avoid damage to the components, the system is monitored for slippage. If the grain tank unloading drive speed sensor (B529) detects a slip which is deemed too large over a short space, the grain tank unloading function is switched off by the vehicle base module (A069).

CLICK HERE TO **DOWNLOAD** THE COMPLETE MANUAL

- Thank you very much for reading the preview of the manual.
- You can download the complete manual from: www.heydownloads.com by clicking the link below



- Please note: If there is no response to CLICKING the link, please download this PDF first and then click on it.

CLICK HERE TO **DOWNLOAD** THE COMPLETE MANUAL