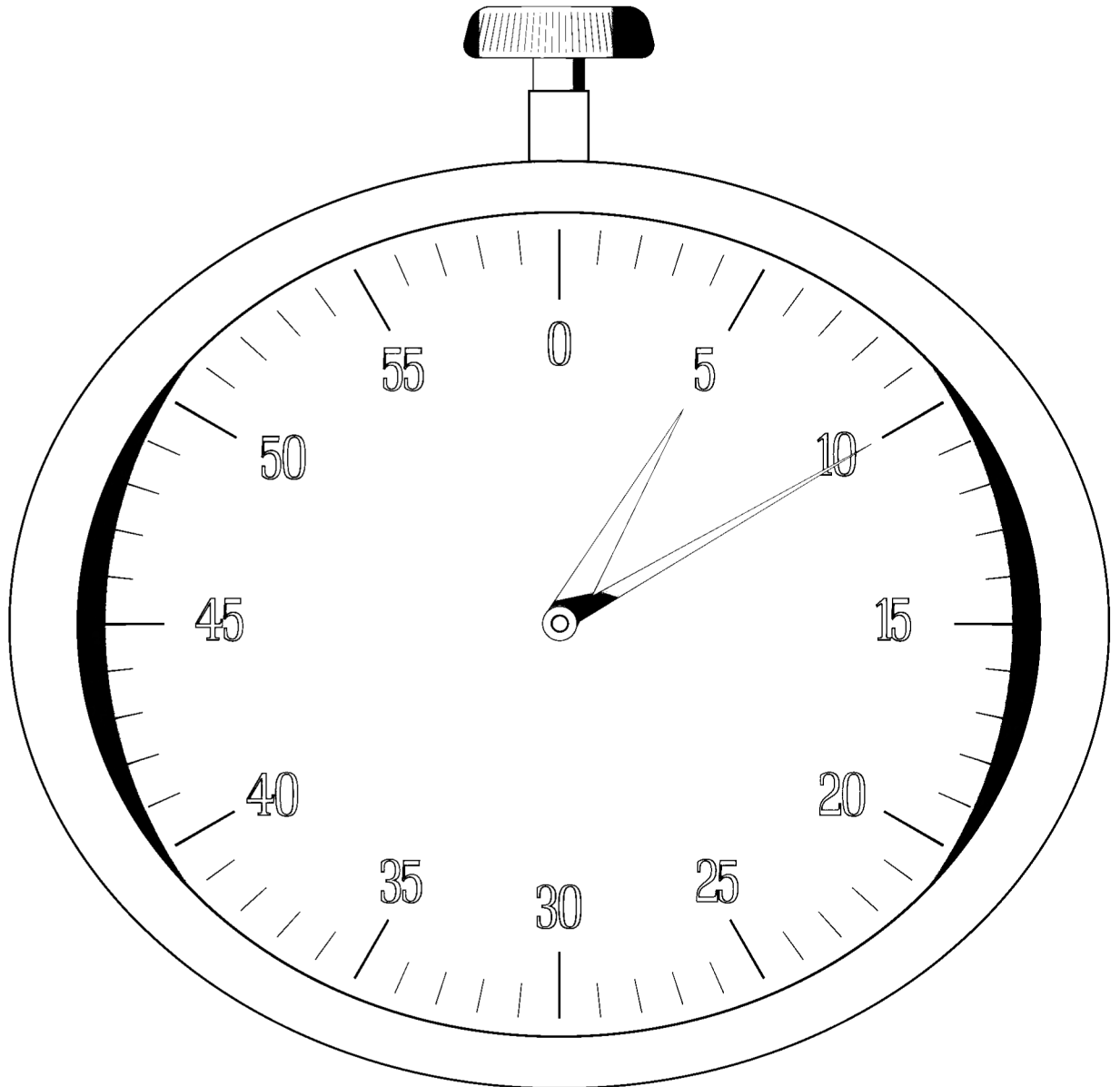


# NECTIS



## Target times manual

**CLAAS**



04.09.2006  
11333190

CLICK HERE TO **DOWNLOAD** THE COMPLETE MANUAL

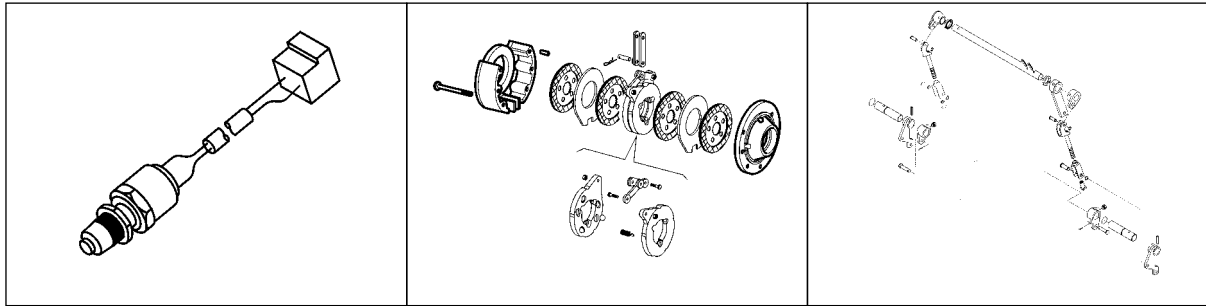
- Thank you very much for reading the preview of the manual.
- You can download the complete manual from: [www.heydownloads.com](http://www.heydownloads.com) by clicking the link below



- Please note: If there is no response to CLICKING the link, please download this PDF first and then click on it.

CLICK HERE TO **DOWNLOAD** THE COMPLETE MANUAL

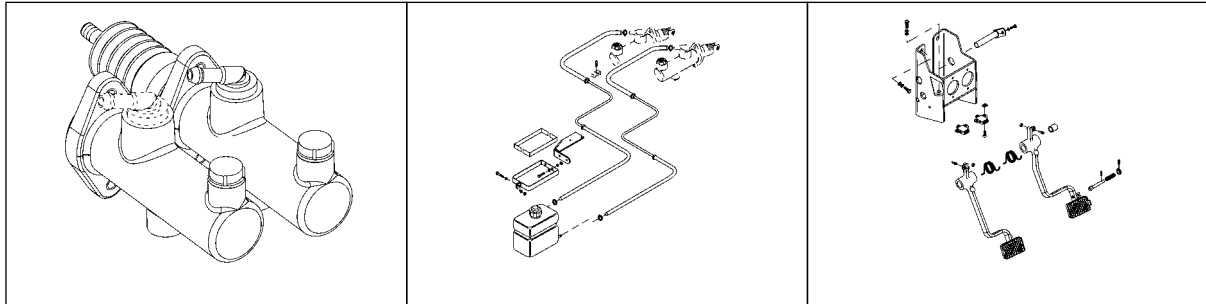
Code	Description	dem	Rep	adj	Total	Ind.
<b>10</b>	<b>Engine</b>					
01005	Complete engine - tractor with cab, air conditioning and third pump	7.50	10.00	1.50	19.00	
01006	Complete engine - tractor with cab, without air conditioning	6.50	9.00	0.75	16.25	
01007	Complete engine - tractor with roll cage	6.00	8.00	0.50	14.50	
<b>11</b>	<b>Crankcase</b>					
05001	Cylinder block - tractor with cab and air conditioning	13.50	23.50	2.00	39.00	
05002	Cylinder block - tractor with roll cage	11.50	21.50	1.50	34.50	
10000	Timing cover	4.25	6.50	0.00	10.75	
10002	Front bearing oil seal	1.75	1.75	0.00	3.50	
15001	Rear bearing oil seal	4.50	6.50	0.00	11.00	
20000	Oil sump	3.00	3.75	0.00	6.75	
20001	Oil dipstick tube	0.00	0.25	0.00	0.25	
<b>12</b>	<b>Rotating parts</b>					
05004	Replacement of all piston rings	6.75	10.50	2.00	19.25	
05005	Engine compression testing	1.00	1.00	1.00	3.00	
05006	Replacement of pistons	7.75	11.50	2.00	21.25	
10000	Changing connecting rods and bearings	7.75	11.50	2.00	21.25	
10001	Big end bearings	4.00	4.75	0.00	8.75	
20000	Crankshaft and bearing shells	9.50	12.00	1.50	23.00	
30000	Engine flywheel	3.25	5.25	0.00	8.50	
30001	Starter ring	3.50	5.50	0.00	9.00	
40000	Balancing shaft	3.25	4.00	0.00	7.25	
<b>13</b>	<b>Cylinder head</b>					
05000	Cylinder head	4.25	6.50	1.25	12.00	
05001	Cylinder head with check of valve clearances	4.25	6.50	1.75	12.50	
05002	Cylinder head with check of flatness	4.25	6.50	1.50	12.25	
05003	Cylinder head gasket	3.50	5.50	1.25	10.25	
07000	Rocker arm cover	0.50	0.50	0.00	1.00	
07001	Replacing rocker arm cover gasket	0.50	0.50	0.00	1.00	
10000	Replacing all valves with grinding	4.25	7.50	1.75	13.50	
15002	Rocker shaft with check - 3 and 4 cylinder tractors	1.00	1.25	0.75	3.00	
15003	Valve clearance adjustment check for 3 and 4 cylinder tractors	0.75	1.25	0.75	2.75	
20000	Camshaft	8.25	12.75	2.00	23.00	
25000	Timing gear	4.25	7.00	0.75	12.00	



36-02

36-10

36-20



36-30

36-35

36-45

Code	Description	dem	Rep	adj	Total	Ind.
50004	Strainer and lines for inlet system	0.50	0.50	0.00	1.00	
50005	Inlet line with O-ring seals (under single or double pump)	0.25	0.25	0.00	0.50	
50006	Inlet line fixed with clamp, left side front gearbox	0.50	0.50	0.00	1.00	
50007	Inlet line fixed under rear axle	0.75	0.75	0.00	1.50	
60001	Return line for third pump	0.25	0.25	0.00	0.50	
60002	Return line for steering pump with filter, one-pump system	0.25	0.25	0.00	0.50	

**49 Power steering**

05000	Steering wheel	0.00	0.25	0.00	0.25	
05001	Adjustable steering column	0.50	1.25	0.00	1.75	
07000	Complete steering gearbox	1.25	2.75	0.00	4.00	
07002	Steering gearbox output connectors	1.00	1.50	0.00	2.50	
07003	Safety unit on steering box	1.25	2.75	0.00	4.00	
10001	Gasket set for steering actuator	1.00	1.00	0.25	2.25	
10002	Steering arm with ball joint	0.50	0.50	0.25	1.25	
10003	Ball joint	0.75	0.50	0.25	1.50	
10004	Complete steering actuator, axial axle	1.00	1.00	0.25	2.25	
10005	Complete steering actuator, swing axle	1.00	1.00	0.25	2.25	
10006	Steering actuator, 2-wheel drive axle	0.25	0.50	0.00	0.75	
15003	Steering unit supply and return lines	1.00	1.50	0.00	2.50	
15004	Rigid supply and return lines, steering box	0.25	0.50	0.00	0.75	
20000	Steering gearbox output actuator supply hoses	1.00	1.00	0.25	2.25	
20001	Steering actuator rigid pressure line	0.25	0.50	0.00	0.75	
20002	Steering actuator outlet hoses	0.25	0.25	0.00	0.50	

Code	Description	dem	Rep	adj	Total	Ind.
<b>74</b>	<b>Wings</b>					
10000	Front wing mudflap and mount	0.00	0.25	0.00	0.25	
10001	Complete mount with fixing plate frame on front axle and mudguard	0.25	0.25	0.00	0.50	
15002	Protection for electrical components under rear wing	0.00	0.25	0.00	0.25	
15003	Right rear wing - tractor with roll cage	0.50	1.00	0.00	1.50	
15004	Left rear wing - tractor with roll cage	0.50	0.75	0.00	1.25	
15005	Rear light cluster unit right or left, TCE 6 linkage	0.25	0.50	0.00	0.75	
25001	Extension bracket, rear wing, narrow track	0.25	0.25	0.00	0.50	
<b>76</b>	<b>Panel/dashboard</b>					
10001	Engine cover top	0.50	1.00	0.00	1.50	
10005	Radiator grille	0.25	0.25	0.00	0.50	
10006	Single unit engine cover, complete	0.50	1.25	0.25	2.00	
10007	Strut bracket reinforcement in engine cover	0.00	0.25	0.00	0.25	
10008	Engine cover reinforcement in engine cover	0.25	0.25	0.00	0.50	
10009	Engine cover front section	0.75	1.00	0.25	2.00	
10010	Engine cover grill - front left or right	0.25	0.25	0.00	0.50	
10011	Engine cover side section, left or right	0.25	0.25	0.00	0.50	
15001	Engine cover strut reinforcement (or hinge) on engine	0.25	0.50	0.00	0.75	
15002	Strut bracket reinforcement on engine	0.00	0.25	0.00	0.25	
15003	Struts for single-piece engine cover	0.00	0.25	0.00	0.25	
20002	Right or left rear side	0.00	0.25	0.00	0.25	
20003	Trim or lower flap under engine cover	0.00	0.25	0.00	0.25	
<b>79</b>	<b>Seat</b>					
01002	Comfort seat, mechanical or pneumatic	0.00	0.25	0.00	0.25	
<b>81</b>	<b>Cab environment</b>					
10002	Left or right step	0.00	0.25	0.00	0.25	
20003	Front cab locator	0.50	0.50	0.00	1.00	
20004	Rear cab locator	1.75	2.50	0.00	4.25	
20005	Cab support front right	0.25	0.25	0.00	0.50	
20006	Cab support front left	0.25	0.50	0.00	0.75	
20007	Cab rear support with side pressure connectors	7.00	13.00	0.00	20.00	
20008	Cab rear support without side pressure connectors	6.00	11.00	0.00	17.00	
20009	Rear support - tractor with roll cage	1.50	2.50	0.00	4.00	
20010	Rear pins for tractor with roll cage	0.50	0.50	0.00	1.00	

CLICK HERE TO **DOWNLOAD** THE COMPLETE MANUAL

- Thank you very much for reading the preview of the manual.
- You can download the complete manual from: [www.heydownloads.com](http://www.heydownloads.com) by clicking the link below



- Please note: If there is no response to CLICKING the link, please download this PDF first and then click on it.

CLICK HERE TO **DOWNLOAD** THE COMPLETE MANUAL