



Technical Manual

CLICK HERE TO **DOWNLOAD** THE COMPLETE MANUAL

- Thank you very much for reading the preview of the manual.
- You can download the complete manual from: www.heydownloads.com by clicking the link below

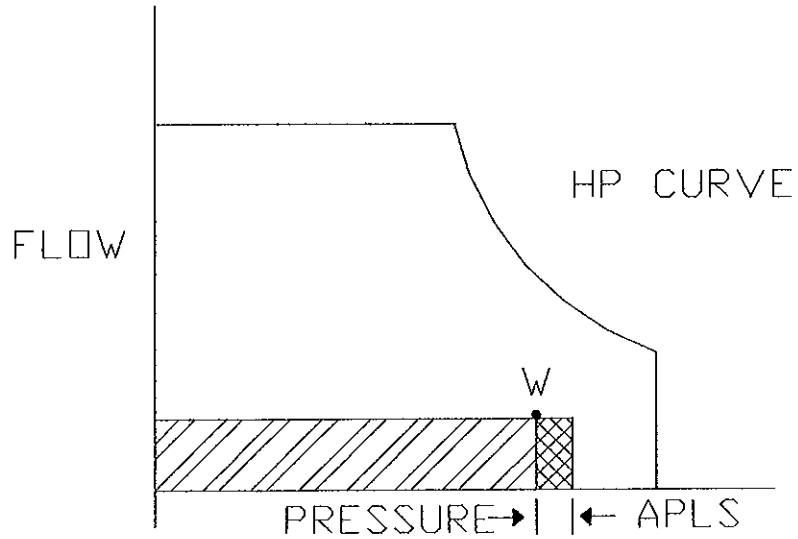


- Please note: If there is no response to CLICKING the link, please download this PDF first and then click on it.

CLICK HERE TO **DOWNLOAD** THE COMPLETE MANUAL

LOAD SENSING

ADJUSTS THE PUMP FLOW BY VARYING THE DISPLACEMENT TO MAINTAIN A CONSTANT PRESSURE DROP ACROSS A METERED ORIFICE INDEPENDENT OF CHANGES IN DRIVE SPEED AND/OR WORKING PRESSURE.



MAIN HYDRAULIC COMPONENT DESCRIPTION

NOTE: THIS A LISTING AND DESCRIPTION OF THE MAIN HYDRAULIC COMPONENTS ONLY. FOR A COMPLETE LISTING OF ALL THE HYDRAULIC COMPONENTS, PLEASE SEE THE HYDRAULIC SECTION OF THE PARTS CATALOG.

PUMP

PART NUMBER: 17663X50

DESCRIPTION: THIS IS A VARIABLE DISPLACEMENT, LOAD SENSING PUMP WITH A HORSEPOWER LIMITER. THE MAXIMUM FLOW IS 42 GPM AT 1750 RPM's. THIS PUMP HAS A PRESSURE RATING OF 5000 PSI CONTINUOUS AND 6090 PSI INTERMITTENT. THIS PUMP PROVIDES FLOW FOR THE ENTIRE HYDRAULIC SYSTEM.

FILTER

PART NUMBER: 17076X22

DESCRIPTION: THIS IS PALL 12 MICRON ABSOLUTE FILTER (BX = 200) WITH A PRESSURE RATING OF 5000 PSI. THIS FILTER PROVIDES EXCELLENT FILTRATION FOR THE ENTIRE HYDRAULIC SYSTEM.

HRC CONTROL VALVE STACK

PART NUMBER: 17815X10

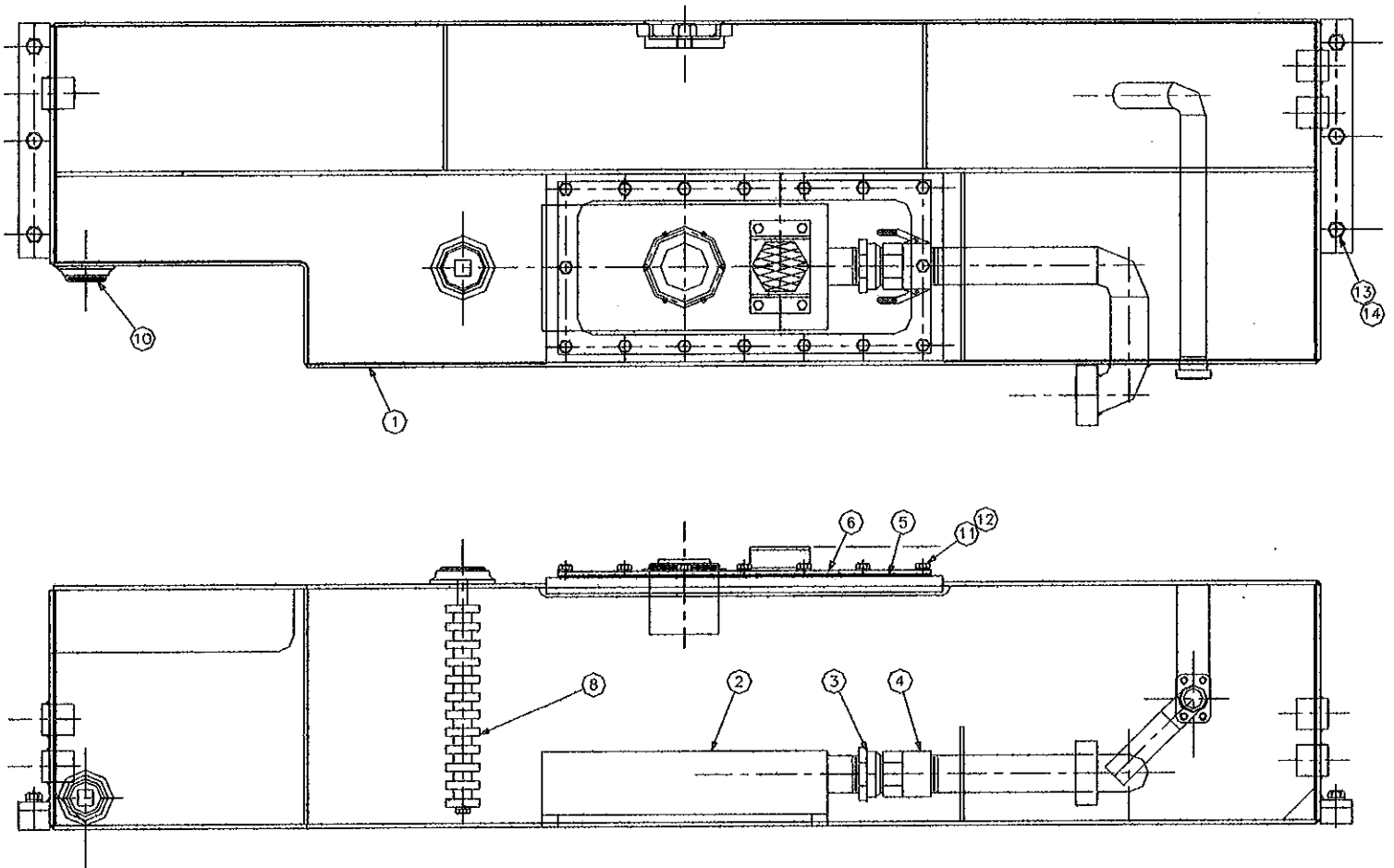
DESCRIPTION: THE HYDRAULIC REMOTE CONTROL (HRC) VALVES STACK IS FOUR INDIVIDUAL HRC VALVES MOUNTED TOGETHER. THESE VALVES HAVE A SPRING RATE THAT EQUALS - ZERO MOVEMENT = ZERO PSI / FULL SHIFT = 145 PSI. THESE VALVES HAVE A MAXIMUM PRESSURE RATING OF 500 PSI. THESE VALVES PROVIDE CONTROL FOR ALL CYLINDER AND TRAM FUNCTIONS.

VALVE BANK

PART NUMBER: 17786X93

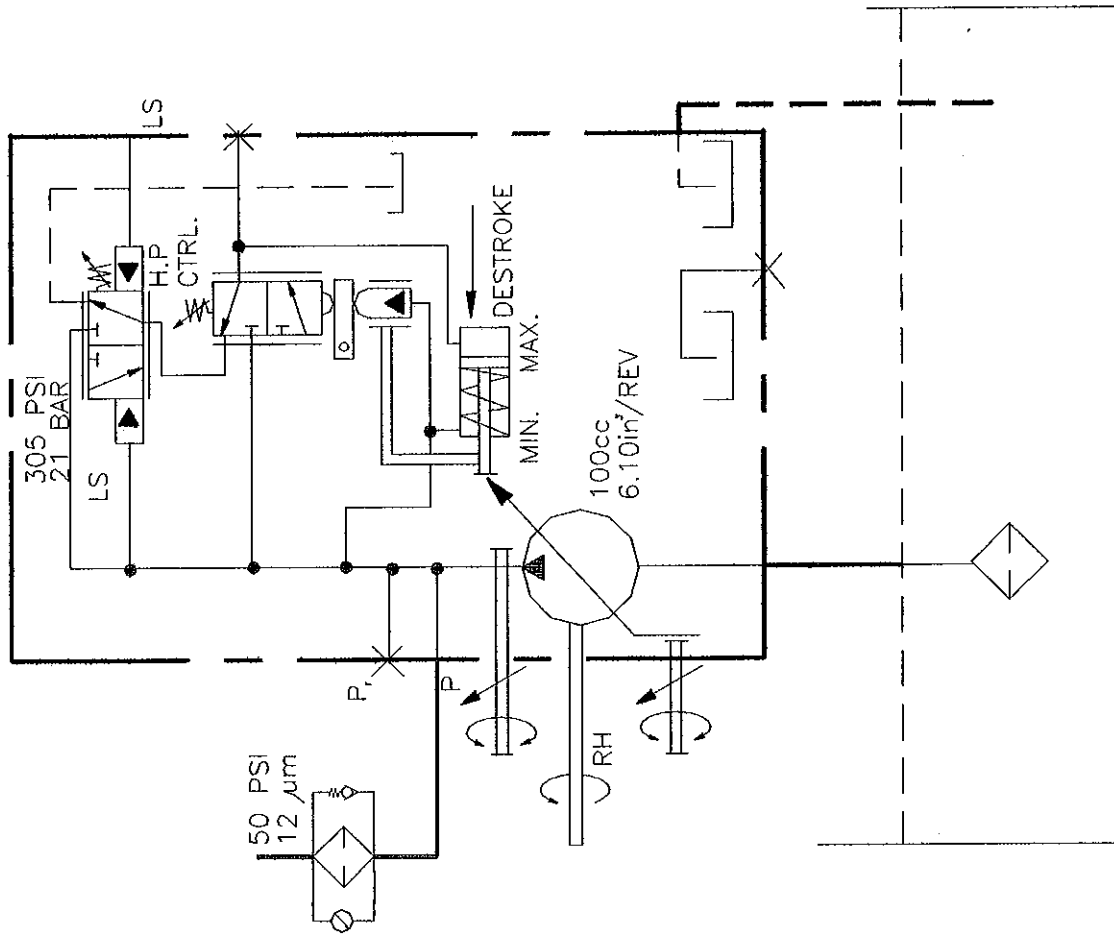
DESCRIPTION: THIS VALVE BANK HAS THESE OPTIONS: SPOOL STOPS, INDIVIDUAL WORKING PORT RELIEFS, ADJUSTABLE COMPENSATORS LOCATED ON EACH OF THE TRAM SECTIONS, MANUAL OVERRIDES AND A LONG-AIRDOX DESIGNED INLET.

OIL TANK

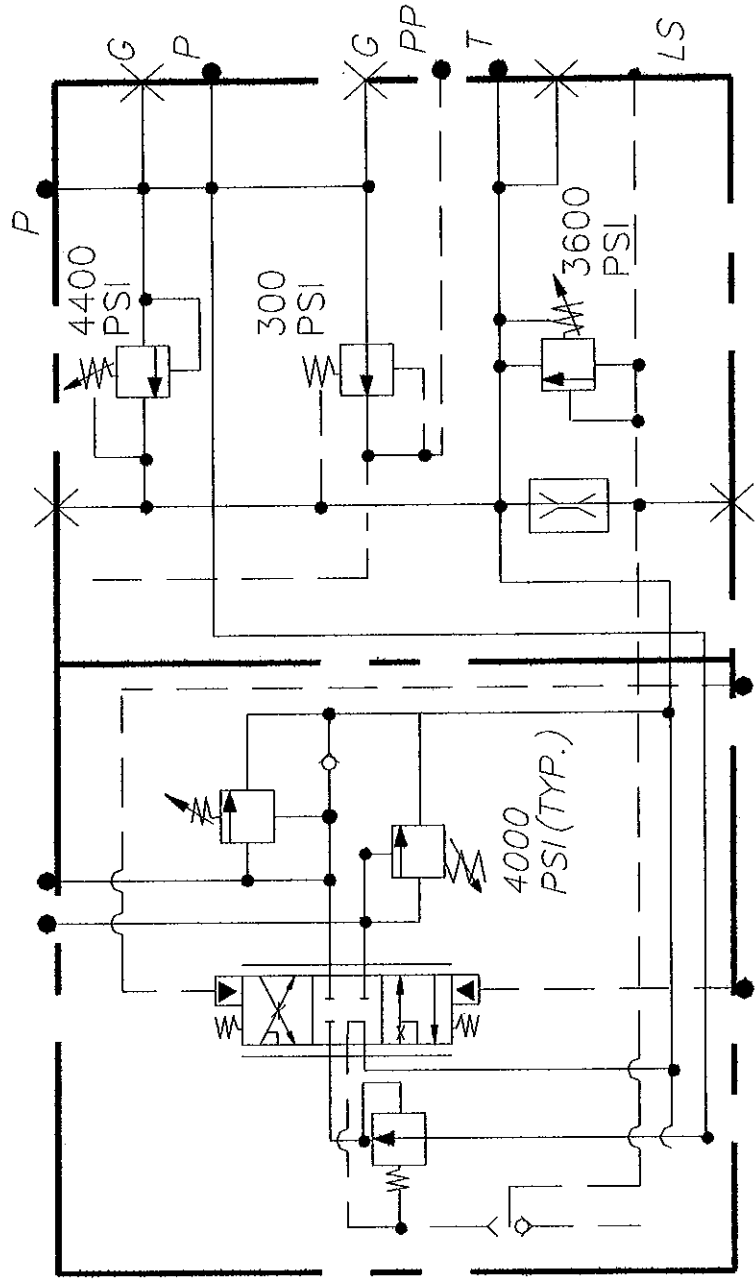


P/N 410070

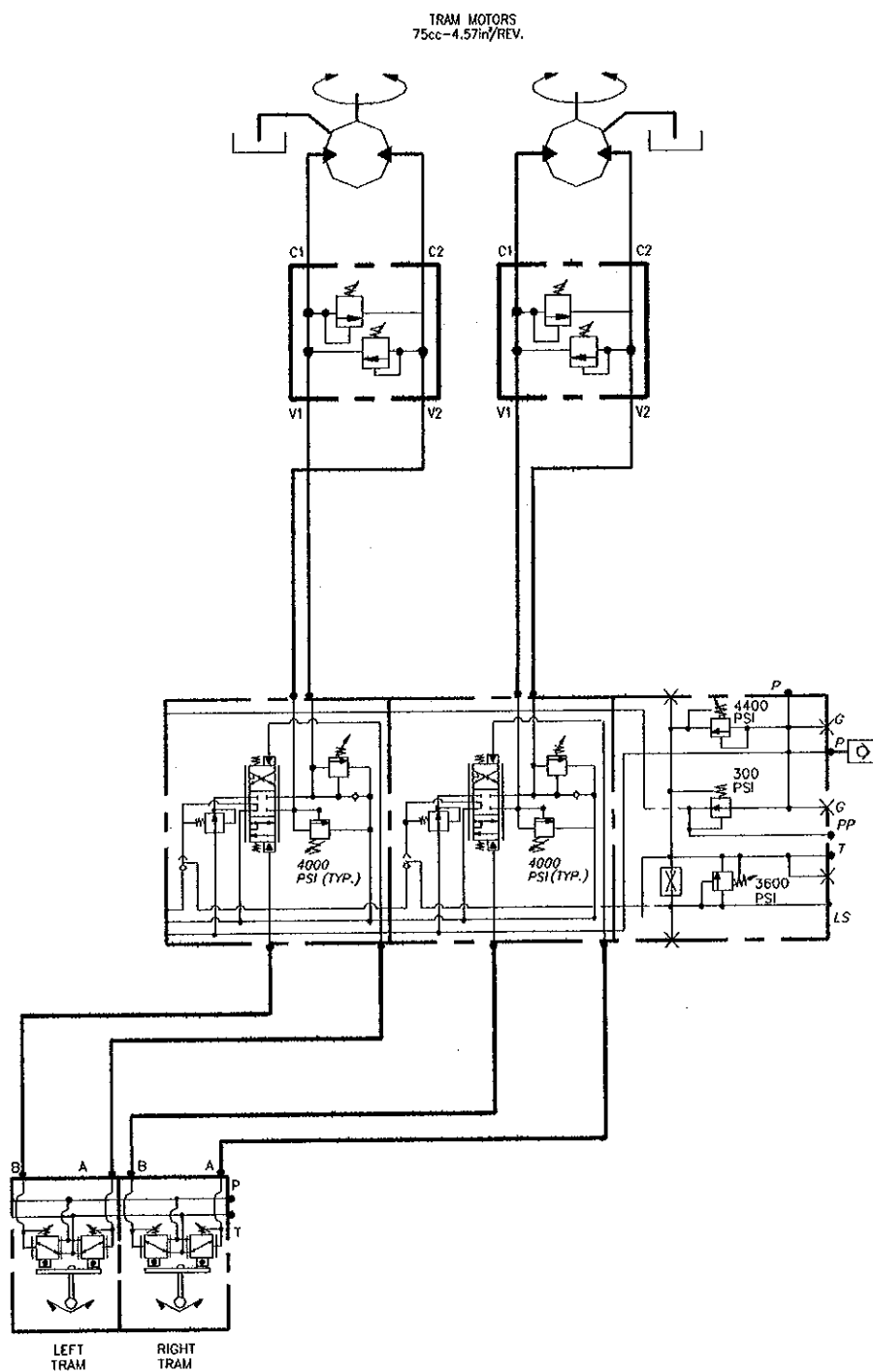
LINDE PUMP 100cc 54 GPM



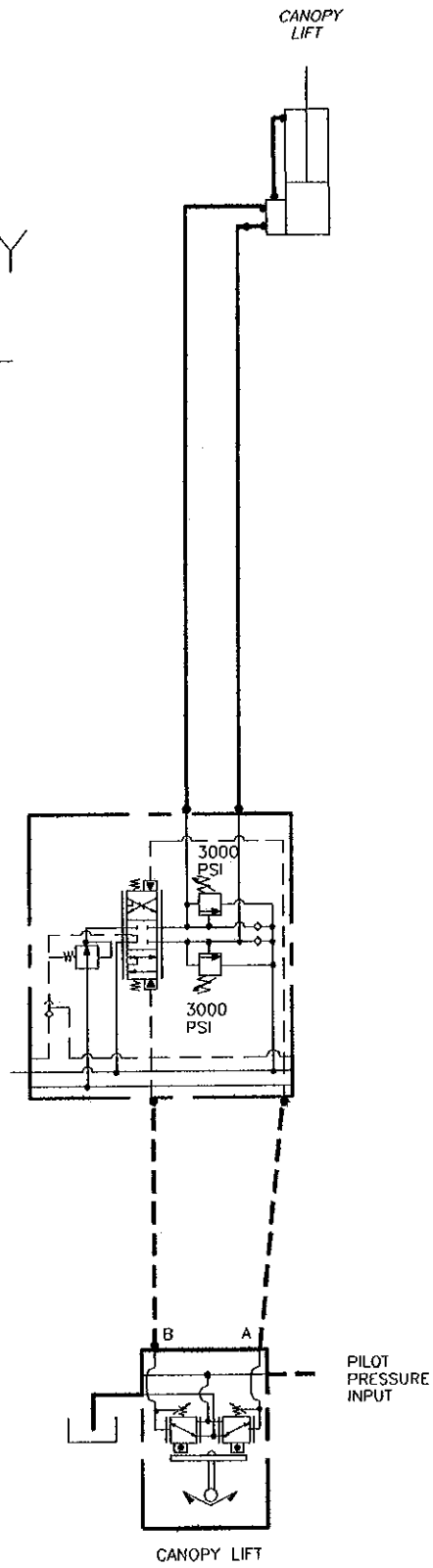
TRAM VALVE SECTION IN CENTER POSITION (CLOSED CENTER)



TRAM CIRCUIT



CANOPY LIFT CIRCUIT



CLICK HERE TO **DOWNLOAD** THE COMPLETE MANUAL

- Thank you very much for reading the preview of the manual.
- You can download the complete manual from: www.heydownloads.com by clicking the link below



- Please note: If there is no response to CLICKING the link, please download this PDF first and then click on it.

CLICK HERE TO **DOWNLOAD** THE COMPLETE MANUAL