



# YFM350S

3GD-AE7

## SUPPLEMENTARY SERVICE MANUAL

CLICK HERE TO **DOWNLOAD** THE COMPLETE MANUAL

- Thank you very much for reading the preview of the manual.
- You can download the complete manual from: [www.heydownloads.com](http://www.heydownloads.com) by clicking the link below



- Please note: If there is no response to CLICKING the link, please download this PDF first and then click on it.

CLICK HERE TO **DOWNLOAD** THE COMPLETE MANUAL

# GENERAL SPECIFICATIONS

**SPEC**



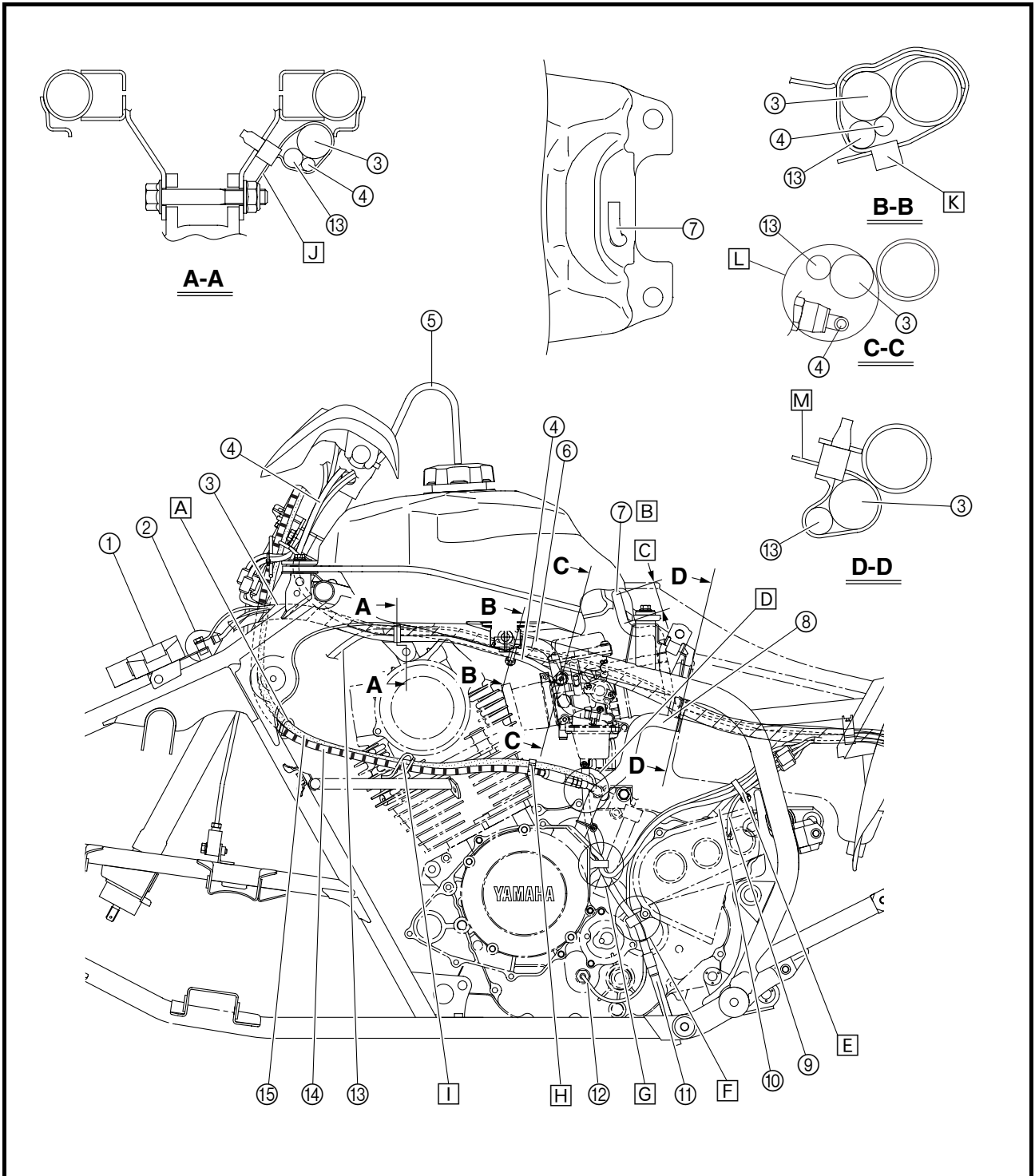
Model	YFM350S
<b>Transmission</b>	
Primary reduction system	Spur gear
Primary reduction ratio	76/24 (3.167)
Secondary reduction system	Chain drive
Secondary reduction ratio	38/13 (2.923)
Transmission type	Constant mesh, 6-speed forward, 1-speed reverse
Operation	Left foot operation
Gear ratio	
1st	36/16 × 20/27 × 29/18 (2.685)
2nd	33/20 × 20/27 × 29/18 (1.969)
3rd	29/23 × 20/27 × 29/18 (1.504)
4th	27/26 × 20/27 × 29/18 (1.239)
5th	25/28 × 20/27 × 29/18 (1.066)
6th	23/29 × 20/27 × 29/18 (0.946)
Reverse	33/16 × 33/10 (6.806)
<b>Chassis</b>	
Frame type	Steel tube frame
Caster angle	6°
Trail	26.0 mm (1.02 in)
Toe-in (unloaded)	20 ~ 30 mm (0.79 ~ 1.18 in)
<b>Tires</b>	
Type	Tubeless
Size	
front	AT21 × 7-10
rear	AT20 × 10-9
Manufacturer	
front	DUNLOP
rear	DUNLOP
Type	
front	KT851B
rear	KT877A
<b>Brakes</b>	
Front brake	type
	operation
Rear brake	type
	operation
Dual disc brake	
Right hand operation	
Single disc brake	
Right foot operation	
<b>Electrical</b>	
Ignition system	DC C.D.I.
Generator system	A.C. magneto
Battery voltage/capacity	12 V/8.6 Ah
Battery type	YTZ10S
<b>Bulb wattage × quantity</b>	
Headlight	12 V 30 W/30 W × 2
Tail/brake light	12 V 5 W/21 W × 1
Neutral indicator light	12 V 1.7 W × 1
Reverse indicator light	12 V 1.7 W × 1

# CABLE ROUTING

**SPEC**

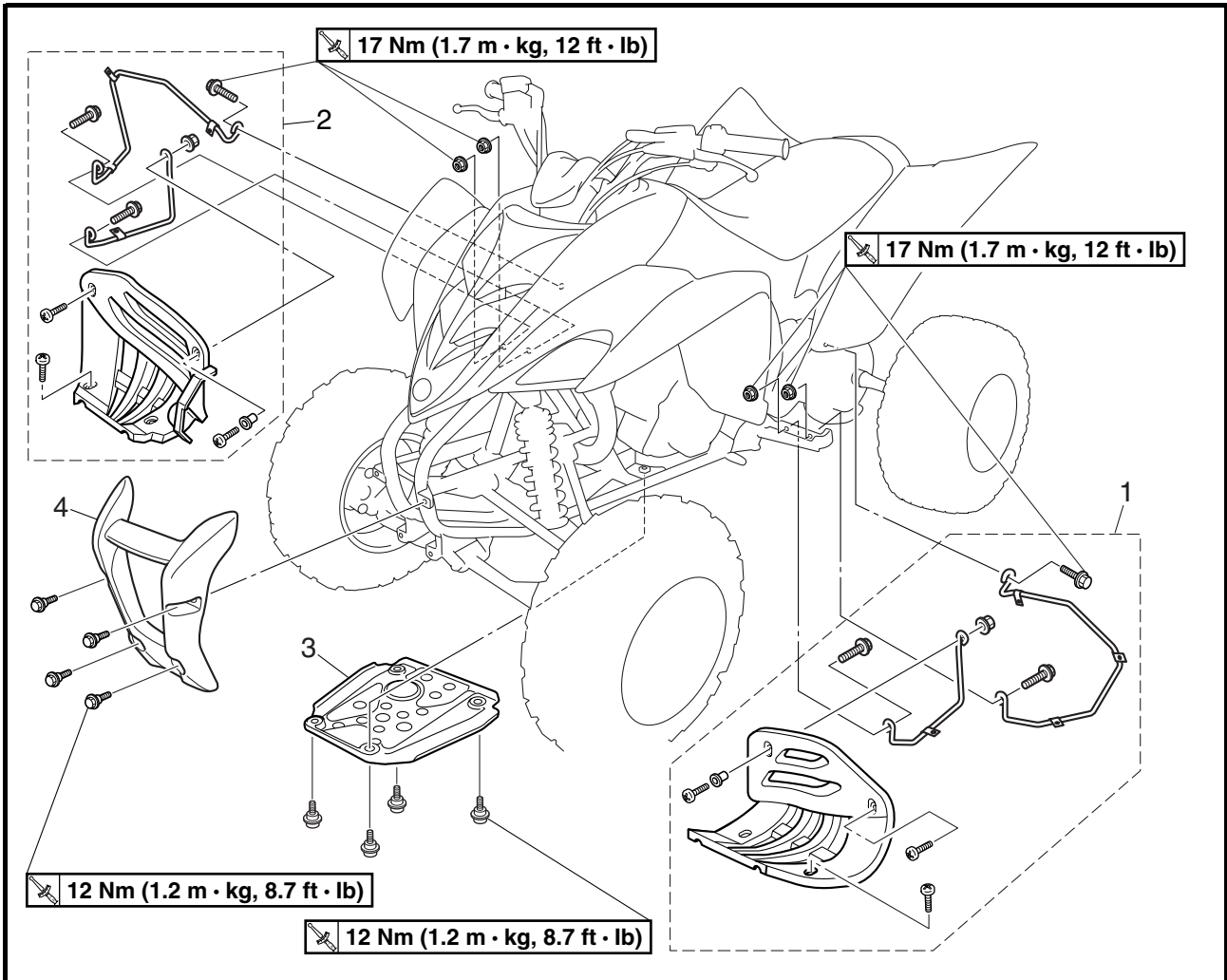


- A** Pass the parking brake cable and clutch cable through the cable guide.
- B** Pass the carburetor air vent hose through the hole in the fuel tank.
- C** The end of the carburetor air vent hose should extend at least 15 mm above the hole but not be higher than the intake of the air filter case.
- D** Pass the clutch cable and parking brake cable between the carburetor overflow hose and crankcase breather hose.
- E** Fasten the A.C. magneto lead, neutral switch lead, reverse switch lead, and negative battery lead with a plastic band. Face the end of the plastic band inward.
- F** Pass the neutral switch lead and carburetor overflow hose through the guide on the drive sprocket cover. Route the neutral switch lead behind the carburetor overflow hose.
- G** Fasten the A.C. magneto lead with the holder.

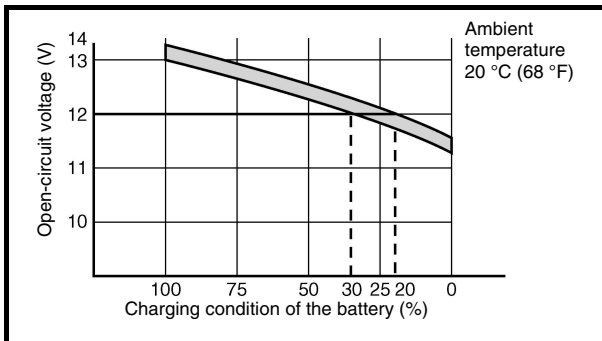
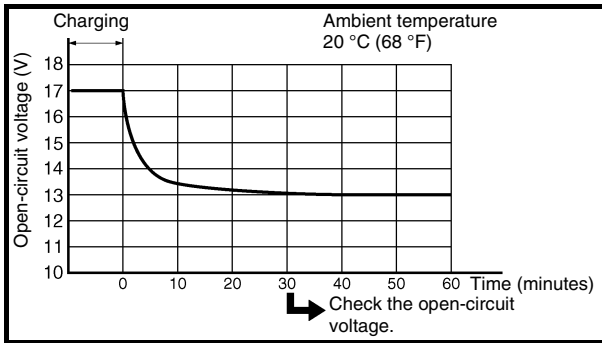


EBS00034

## FOOT PROTECTORS, ENGINE SKID PLATE, AND FRONT BUMPER



Order	Job/Part	Q'ty	Remarks
	<b>Removing the foot protectors, engine skid plate, and front bumper</b>		Remove the parts in the order listed.
1	Left foot protector	1	
2	Right foot protector	1	
3	Engine skid plate	1	
4	Front bumper	1	
			For installation, reverse the removal procedure.



## 6. Charge:

- battery  
(refer to the appropriate charging method illustration)

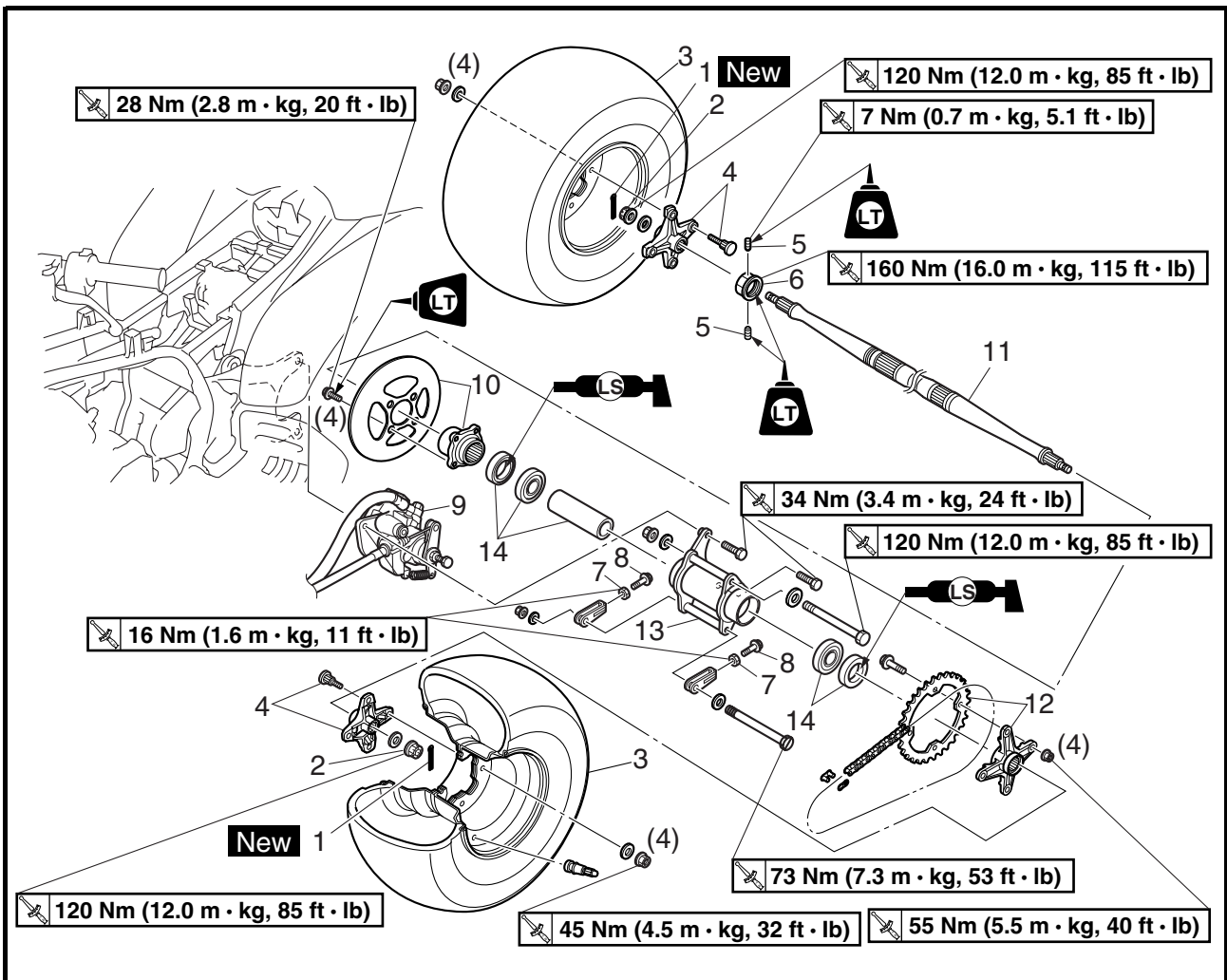
### **⚠ WARNING**

**Do not quick charge a battery.**

### **CAUTION:**

- **Never remove the MF battery sealing caps.**
- **Do not use a high-rate battery charger since it forces a high-amperage current into the battery quickly and can cause battery overheating and battery plate damage.**
- **If it is impossible to regulate the charging current on the battery charger, be careful not to overcharge the battery.**
- **When charging a battery, be sure to remove it from the machine. (If charging has to be done with the battery mounted on the machine, disconnect the negative battery lead from the battery terminal.)**
- **To reduce the chance of sparks, do not plug in the battery charger until the battery charger leads are connected to the battery.**
- **Before removing the battery charger lead clips from the battery terminals, be sure to turn off the battery charger.**
- **Make sure the battery charger lead clips are in full contact with the battery terminal and that they are not shorted. A corroded battery charger lead clip may generate heat in the contact area and a weak clip spring may cause sparks.**
- **If the battery becomes hot to the touch at any time during the charging process, disconnect the battery charger and let the battery cool before reconnecting it. Hot batteries can explode!**
- **As shown in the following illustration, the open-circuit voltage of an MF battery stabilizes about 30 minutes after charging has been completed. Therefore, wait 30 minutes after charging is completed before measuring the open-circuit voltage.**

# REAR WHEELS AND REAR AXLE HUB



Order	Job/Part	Q'ty	Remarks
10	Brake disc/brake disc bracket	1/1	
11	Rear axle	1	Refer to "REMOVING THE REAR AXLE".
12	Driven sprocket/sprocket bracket	1/1	
13	Rear axle hub	1	
14	Spacer/bearing/oil seal	1/2/2	For installation, reverse the removal procedure.

CLICK HERE TO **DOWNLOAD** THE COMPLETE MANUAL

- Thank you very much for reading the preview of the manual.
- You can download the complete manual from: [www.heydownloads.com](http://www.heydownloads.com) by clicking the link below



- Please note: If there is no response to CLICKING the link, please download this PDF first and then click on it.

CLICK HERE TO **DOWNLOAD** THE COMPLETE MANUAL