

## **AT-230-1 42014100009 UPPER**

**PB1000341-01 HYDRAULIC PRESSURE GENERATING SYSTEM**

**PD1000345-01 SWING SYSTEM**

**PE1000321-01 ELEVATING SYSTEM**

**PG1000082-01 TELESCOPING SYSTEM**

**PH1000588-00 SAFETY DEVICES**

**PJ3000012-02 PLATFORM SYSTEM**

**PK1000087-00 FRAME**

**PL1000355-01 CONTROL DEVICES**

**PN1000544-00 ELECTRIC EQUIPMENT**

**PO1000083-01 INDICATION PLATES**

**PW1000072-00 ACCESSORIES & TOOLS**

**PY1001183-00 OPTIONS**

**ASSEMBLY**

CLICK HERE TO **DOWNLOAD** THE COMPLETE MANUAL

- Thank you very much for reading the preview of the manual.
- You can download the complete manual from: [www.heydownloads.com](http://www.heydownloads.com) by clicking the link below



- Please note: If there is no response to CLICKING the link, please download this PDF first and then click on it.

CLICK HERE TO **DOWNLOAD** THE COMPLETE MANUAL

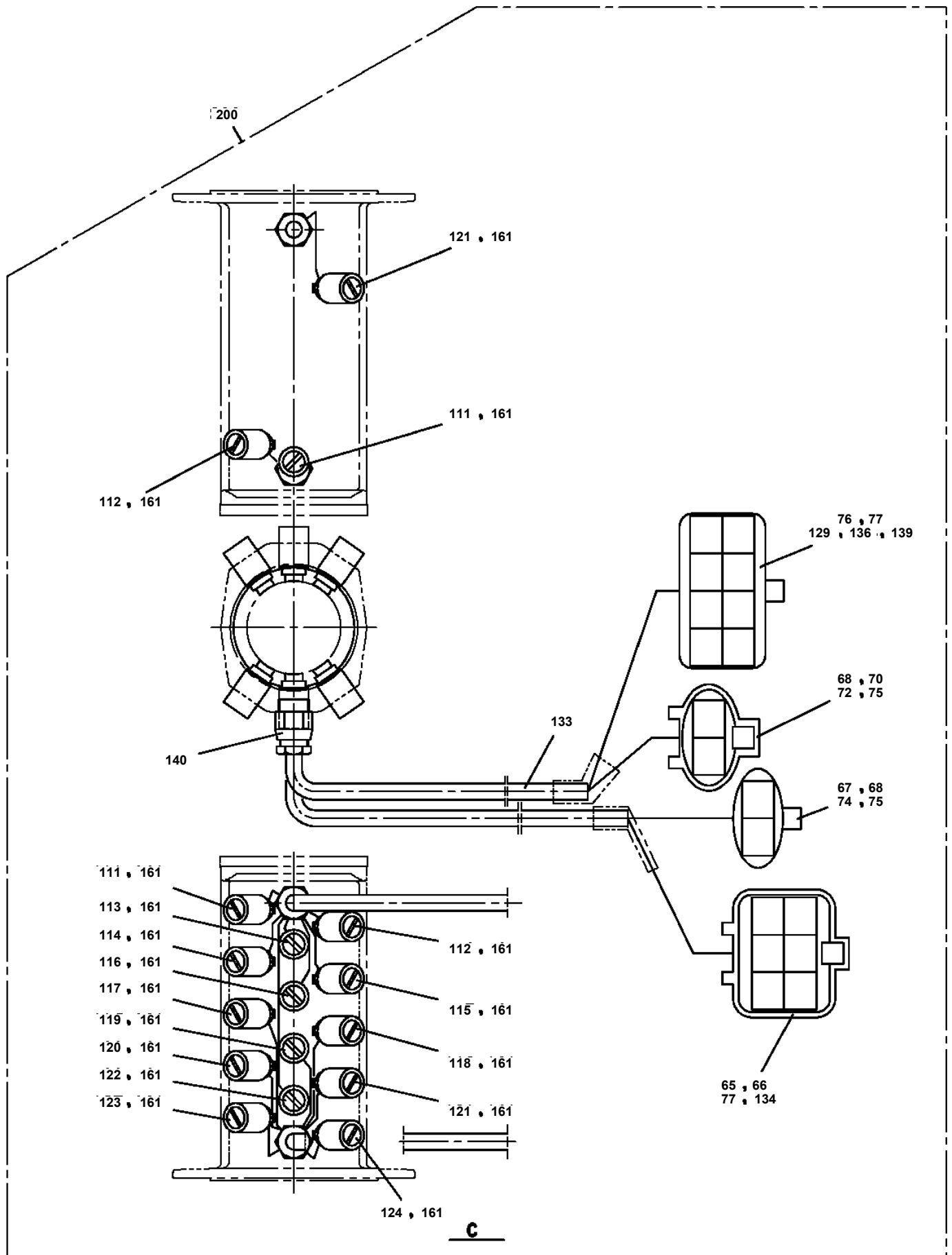
# AT-230-1 42014100009 UPPER

| Pos No. | Parts No    | Parts Name                   | Qty | Unit | Technical Data | Serial No (Start) | Serial No (End) | P |
|---------|-------------|------------------------------|-----|------|----------------|-------------------|-----------------|---|
| 1       | 36117410000 | WORKING AREA LIMITER (AWL-H) | 1   |      |                |                   |                 |   |
| 2       | (*****)     | TOUCH SWITCH (BUCKET)        | 1   |      |                |                   |                 |   |

# AT-230-1 42014100009 UPPER

| Pos No. | Parts No | Parts Name               | Qty | Unit | Technical Data | Serial No (Start) | Serial No (End) | Remark |
|---------|----------|--------------------------|-----|------|----------------|-------------------|-----------------|--------|
| 1       | (*****)  | PLATE ASSY,NAME          | 1   |      |                |                   |                 |        |
| 3       | (*****)  | PLATE ASSY,NAME (BUCKET) | 1   |      |                |                   |                 |        |

**AT-230-1 4201410009 UPPER  
PB1300242-00 JOINT, ROTARY**



# AT-230-1 4201410009 UPPER

| Pos No. | Parts No    | Parts Name         | Qty | Unit | Technical Data | Serial No (Start) | Serial No (End) | Remarks | Pa |
|---------|-------------|--------------------|-----|------|----------------|-------------------|-----------------|---------|----|
| 1       | 36080095010 | GEAR               | 1   |      |                |                   |                 |         |    |
| 2       | 36080095020 | RING,SEAL          | 1   |      |                |                   |                 |         |    |
| 3       | 91001207000 | O-RING             | 1   |      | 1A G70         |                   |                 |         |    |
| 4       | 91216105001 | SEAL,OIL           | 1   |      |                |                   |                 |         |    |
| 5       | 80515006314 | BEARING,BALL       | 1   |      |                |                   |                 |         |    |
| 7       | 36080095040 | WHEEL,WORM         | 1   |      |                |                   |                 |         |    |
| 8       | 36080095050 | KEY                | 1   |      |                |                   |                 |         |    |
| 9       | 36080095130 | BEARING,BALL       | 1   |      |                |                   |                 |         |    |
| 11      | 90101510025 | BOLT               | 12  |      | M10X25         |                   |                 |         |    |
| 12      | 90302041001 | WASHER,SPRING      | 12  |      | 10             |                   |                 |         |    |
| 13      | 80562100120 | WASHER,PLAIN       | 1   |      | AW12           |                   |                 |         |    |
| 14      | 80561100120 | NUT                | 1   |      | AN12           |                   |                 |         |    |
| 17      | 12643302100 | RETAINER           | 1   |      |                |                   |                 |         |    |
| 18      | 91001208500 | O-RING             | 1   |      | 1A G85         |                   |                 |         |    |
| 19      | 12643302120 | SHIM (T=0.1)       | N   |      |                |                   |                 |         |    |
| 20      | 12643302130 | SHIM (T=0.2)       | N   |      |                |                   |                 |         |    |
| 21      | 12643302140 | SHIM (T=0.3)       | N   |      |                |                   |                 |         |    |
| 22      | 36080095120 | BEARING,ROLLER     | 2   |      |                |                   |                 |         |    |
| 23      | 36080095090 | WORM               | 1   |      |                |                   |                 |         |    |
| 24      | 80316030040 | PLUG               | 1   |      | PT1/4          |                   |                 |         |    |
| 25      | 36080095110 | SEAL,OIL           | 1   |      |                |                   |                 |         |    |
| 28      | 36080095072 | GAUGE,OIL          | 1   |      |                |                   |                 |         |    |
| 29      | 36080235080 | WASHER,SEAL        | 1   |      | M16            |                   |                 |         |    |
| 40      | 36080095150 | CASE ASSY          | 1   |      |                |                   |                 |         |    |
| 50      | 36080090000 | DRIVING UNIT,SWING | 1   |      |                |                   |                 |         |    |

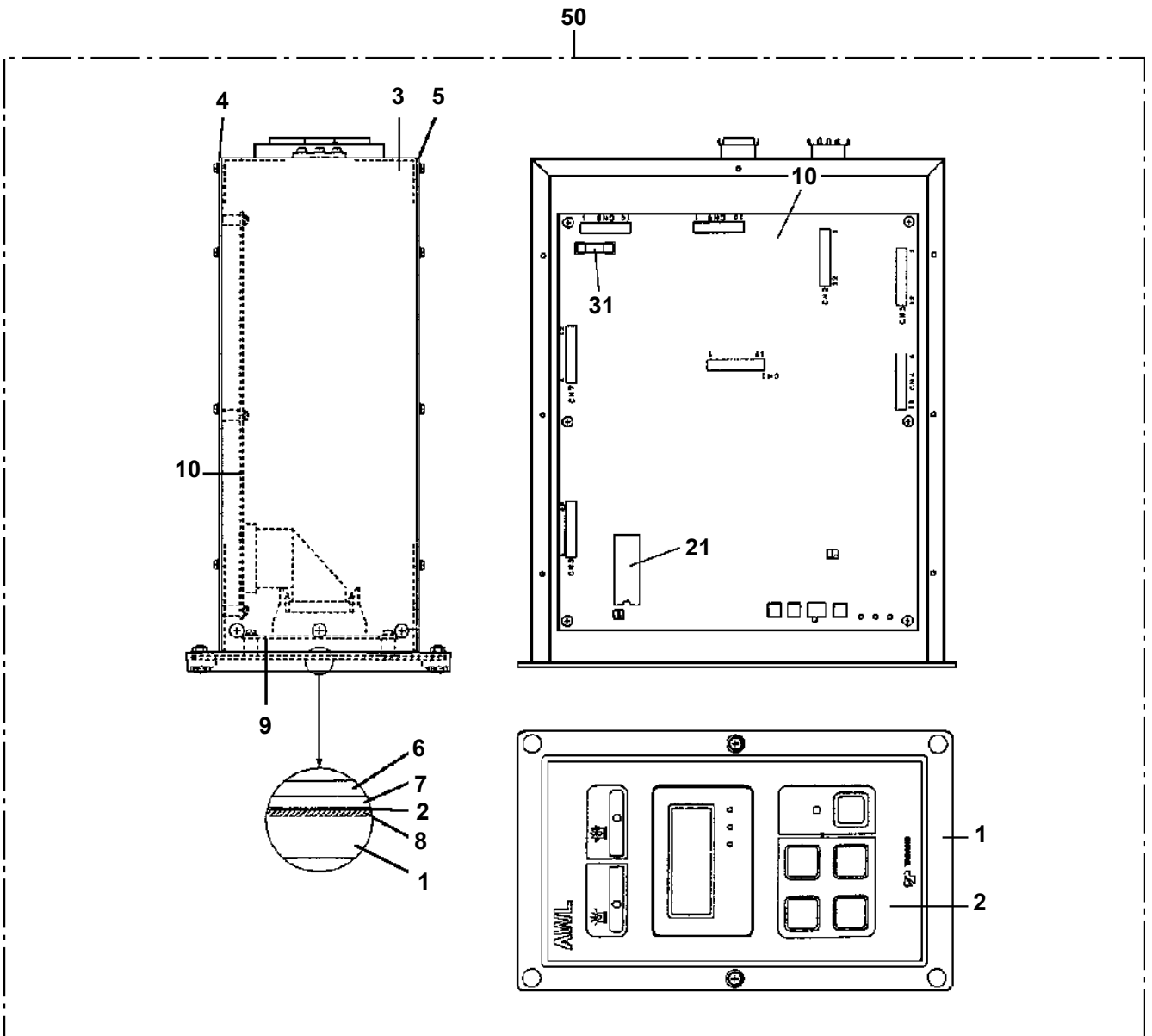
# AT-230-1 4201410009 UPPER

| Pos No. | Parts No    | Parts Name        | Qty | Unit | Technical Data | Serial No (Start) | Serial No (End) | Remarks | Pa |
|---------|-------------|-------------------|-----|------|----------------|-------------------|-----------------|---------|----|
| 1       | 36020655070 | CYLINDER ASSY     | 1   |      |                |                   |                 |         |    |
| 2       | 36020655080 | ROD ASSY          | 1   |      |                |                   |                 |         |    |
| 3       | 36020655030 | PISTON            | 1   |      |                |                   |                 |         |    |
| 4       | 91001101800 | O-RING            | 1   |      | 1A P18         |                   |                 |         |    |
| 5       | 91300006500 | BEARING,PLAIN     | 1   |      |                |                   |                 |         |    |
| 6       | 91684006500 | PACKING           | 2   |      |                |                   |                 |         |    |
| 7       | 91411205501 | RING,BACKUP       | 2   |      |                |                   |                 |         |    |
| 8       | 90302042001 | WASHER,SPRING     | 1   |      | 20             |                   |                 |         |    |
| 9       | 90209702001 | NUT               | 1   |      | M20X2          |                   |                 |         |    |
| 10      | 80612110400 | RING,RITAINING    | 1   |      | AR40           |                   |                 |         |    |
| 12      | 91002906500 | O-RING            | 1   |      | 1B G65         |                   |                 |         |    |
| 13      | 91411106500 | RING,BACKUP       | 1   |      | G-65           |                   |                 |         |    |
| 14      | 36020655090 | COVER,ROD         | 1   |      |                |                   |                 |         |    |
| 15      | 91694003500 | PACKING           | 1   |      |                |                   |                 |         |    |
| 16      | 91410203501 | RING,BACKUP       | 1   |      |                |                   |                 |         |    |
| 17      | 91001207000 | O-RING            | 1   |      | 1A G70         |                   |                 |         |    |
| 18      | 91660003500 | SEAL,DUST         | 1   |      |                |                   |                 |         |    |
| 19      | 80622000350 | RING,RITAINING    | 1   |      | SP35           |                   |                 |         |    |
| 20      | 82456101000 | NIPPLE,GREASE     | 2   |      | A-PT1/8        |                   |                 |         |    |
| 21      | 80820003020 | BEARING,PLAIN     | 2   |      |                |                   |                 |         |    |
| 23      | 59457138000 | PLUG ASSY         | 1   |      |                |                   |                 |         |    |
| 24      | 36020615050 | BEARING,SPHERICAL | 1   |      |                |                   |                 |         |    |
| 50      | 36020650000 | CYLINDER,LEVELING | 1   |      |                |                   |                 |         |    |
| 60      | 36020619900 | PACKING SET       | 1   |      |                |                   |                 |         |    |

# AT-230-1 4201410009 UPPER

| Pos No. | Parts No    | Parts Name          | Qty | Unit | Technical Data | Serial No (Start) | Serial No (End) | Remarks |
|---------|-------------|---------------------|-----|------|----------------|-------------------|-----------------|---------|
| 1       | 37000137860 | PIN                 | 1   |      |                |                   |                 |         |
| 2       | 90171110016 | BOLT                | 16  |      | M10X16         |                   |                 |         |
| 3       | 90302041001 | WASHER,SPRING       | 60  |      | 10             |                   |                 |         |
| 4       | 37000137500 | PIN                 | 1   |      |                |                   |                 |         |
| 5       | 90171114040 | BOLT                | 1   |      | M14X40         |                   |                 |         |
| 7       | 90101208012 | BOLT                | 12  |      | M8X12          |                   |                 |         |
| 8       | 90302040801 | WASHER,SPRING       | 16  |      | 8              |                   |                 |         |
| 9       | 42200020020 | COVER               | 1   |      |                |                   |                 |         |
| 10      | 82400000204 | GROMMET             | 2   |      | L=320          |                   |                 |         |
| 11      | 36090020120 | PLATE               | 1   |      |                |                   |                 |         |
| 12      | 42220020190 | PIN                 | 1   |      |                |                   |                 |         |
| 13      | 90171112020 | BOLT                | 3   |      | M12X20         |                   |                 |         |
| 14      | 90302041201 | WASHER,SPRING       | 3   |      | 12             |                   |                 |         |
| 15      | 80801004550 | BEARING,PLAIN       | 2   |      |                |                   |                 |         |
| 20      | 37000510790 | PLATE               | N   |      | T=0.6          |                   |                 |         |
| 21      | 90101210018 | BOLT                | 4   |      | M10X18         |                   |                 |         |
| 22      | 37002006990 | PLATE,SLIDE         | 2   |      |                |                   |                 |         |
| 24      | 37000510800 | PLATE               | N   |      | T=0.8          |                   |                 |         |
| 25      | 37000508520 | PLATE               | N   |      | T=0.8          |                   |                 |         |
| 26      | 32200000050 | SHIM (T=1)          | N   |      |                |                   |                 |         |
| 28      | 37000138500 | PIN                 | 2   |      | 45             |                   |                 |         |
| 29      | 80602110450 | RING,RITAINING      | 2   |      | R45            |                   |                 |         |
| 30      | 12626208001 | BUSH                | 2   |      |                |                   |                 |         |
| 31      | 42200179530 | BOOM, TOP           | 1   |      |                |                   |                 |         |
| 32      | 42200175000 | BOOM,2ND            | 1   |      |                |                   |                 |         |
| 33      | 42201089510 | BOOM,BASE           | 1   |      |                | 385406            | 385405          |         |
|         | 42201089511 | BOOM,BASE           | 1   |      |                |                   |                 |         |
| 35      | 37002000620 | PLATE,SLIDE         | 6   |      |                |                   |                 |         |
| 36      | 42200170010 | RETAINER            | 4   |      |                |                   |                 |         |
| 37      | 37002006560 | PLATE,SLIDE         | 2   |      |                |                   |                 |         |
| 38      | 80184306012 | SCREW,MACHINE       | 8   |      | M6X12          |                   |                 |         |
| 39      | 37002001720 | PLATE,SLIDE         | 4   |      |                |                   |                 |         |
| 40      | 82456101000 | NIPPLE,GREASE       | 2   |      | A-PT1/8        |                   |                 |         |
| 41      | 37001902270 | ROPE,WIRE           | 1   |      |                |                   | 385405          |         |
| 42      | 42200170020 | PLATE               | 4   |      |                |                   |                 |         |
| 43      | 90201201000 | NUT                 | 8   |      | M10            |                   |                 |         |
| 44      | 42200170030 | PLATE               | 4   |      |                |                   |                 |         |
| 45      | 42200170040 | COVER               | 1   |      |                |                   |                 |         |
| 46      | 90303070801 | WASHER,PLAIN        | 4   |      | 8              |                   |                 |         |
| 47      | 90201200800 | NUT                 | 4   |      | M8             |                   |                 |         |
| 48      | 42200170050 | PLATE               | N   |      |                |                   |                 |         |
| 49      | 37000113840 | PIN                 | 1   |      |                |                   |                 |         |
| 50      | 80601110400 | RING,RITAINING      | 2   |      | S40            |                   |                 |         |
| 51      | 90101210016 | BOLT                | 32  |      | M10X16         |                   |                 |         |
| 52      | 42200080500 | WASHER              | 1   |      |                |                   |                 |         |
| 53      | 80601110500 | RING,RITAINING      | 1   |      | S50            |                   |                 |         |
| 54      | 90171110025 | BOLT                | 2   |      | M10X25         |                   |                 |         |
| 55      | 44260240010 | WASHER              | 2   |      |                |                   |                 |         |
| 56      | 80601110300 | RING,RITAINING      | 2   |      | S30            |                   |                 |         |
| 57      | 37000137800 | PIN                 | 1   |      |                |                   |                 |         |
| 58      | 90202482400 | NUT                 | 4   |      | M24            |                   | 385405          |         |
|         | 90202482200 | NUT                 | 4   |      | M22            | 385406            |                 |         |
| 59      | 90202481800 | NUT                 | 4   |      | M18            | 385406            |                 |         |
| 72      | 37002001720 | PLATE,SLIDE         | 10  |      |                |                   |                 |         |
| 73      | 37000508520 | PLATE               | 28  |      | T=0.8          |                   |                 |         |
| 74      | 80184306012 | SCREW,MACHINE       | 10  |      | M6X12          |                   |                 |         |
| 75      | 42200013410 | SUPPORT             | 4   |      |                |                   |                 |         |
| 81      | 42200013210 | SUPPORT             | 4   |      |                |                   |                 |         |
| 91      | 90172110020 | BOLT,HEXAGON SOCKET | 4   |      | M10X20         |                   |                 |         |
| 92      | 90302041001 | WASHER,SPRING       | 24  |      | 10             |                   |                 |         |
| 93      | 42200171510 | SUPPORT             | 2   |      |                |                   |                 |         |
| 101     | 42200178171 | SHEAVE ASSY         | 2   |      |                |                   |                 |         |
| 102     | 80602110850 | RING,RITAINING      | 2   |      | R85            |                   |                 |         |

AT-230-1 4201410009 UPPER  
PH1350008-00 WORKING AREA LIMITER (AWL-H)



CLICK HERE TO **DOWNLOAD** THE COMPLETE MANUAL

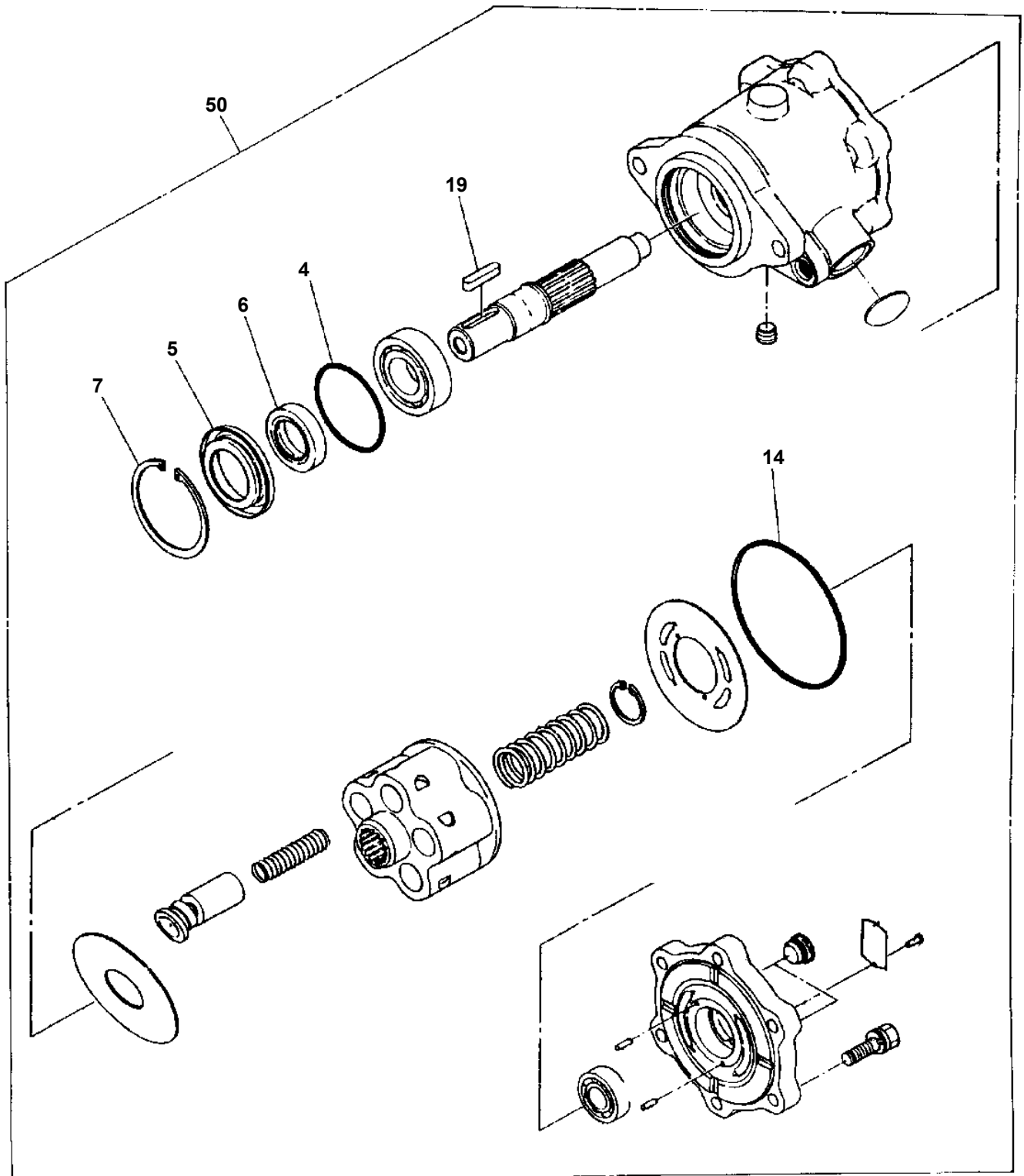
- Thank you very much for reading the preview of the manual.
- You can download the complete manual from: [www.heydownloads.com](http://www.heydownloads.com) by clicking the link below



- Please note: If there is no response to CLICKING the link, please download this PDF first and then click on it.

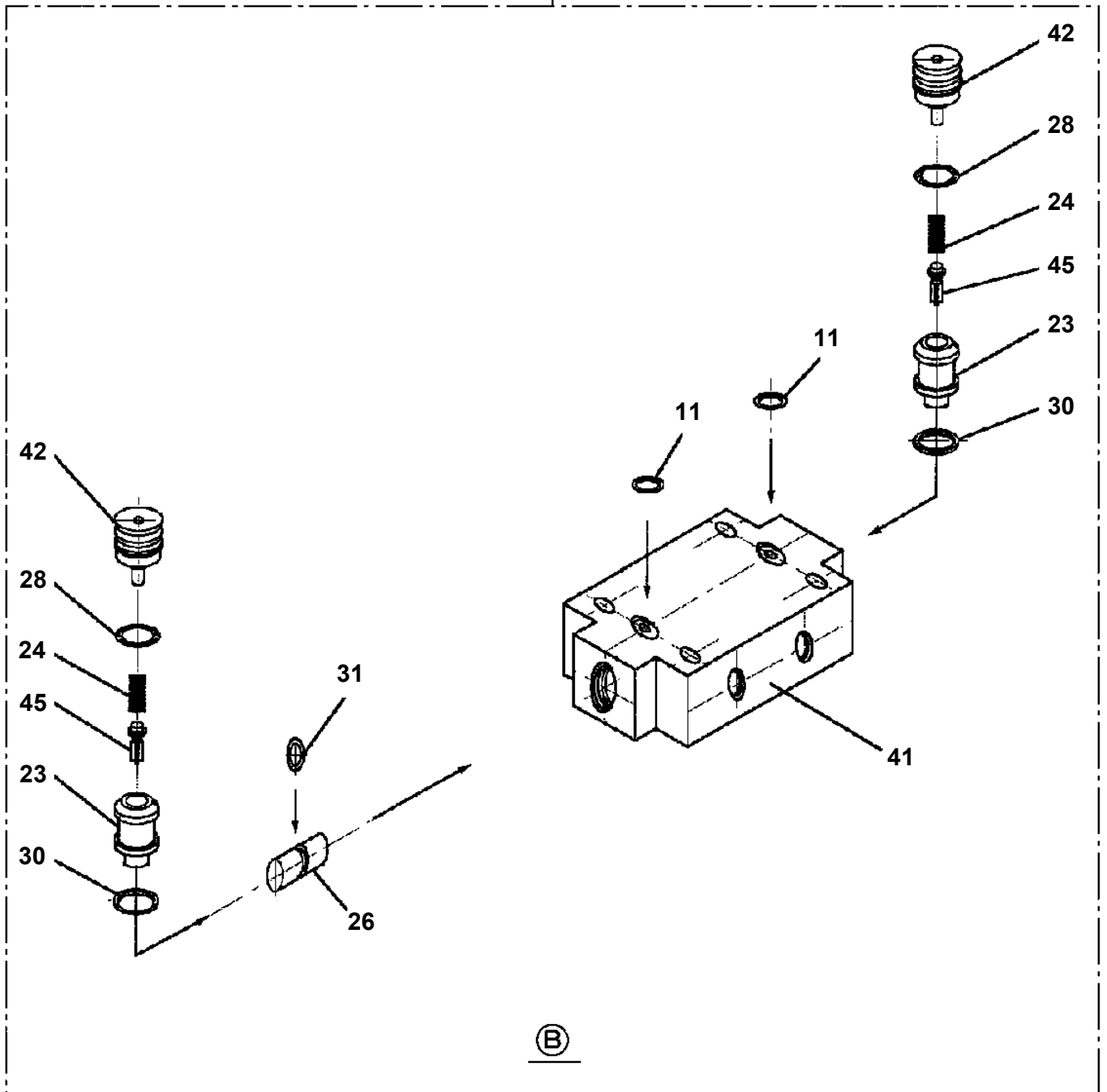
CLICK HERE TO **DOWNLOAD** THE COMPLETE MANUAL

AT-230-1 42014100009 UPPER  
PI1010074-00 MOTOR, HYDRAULIC (SWING)

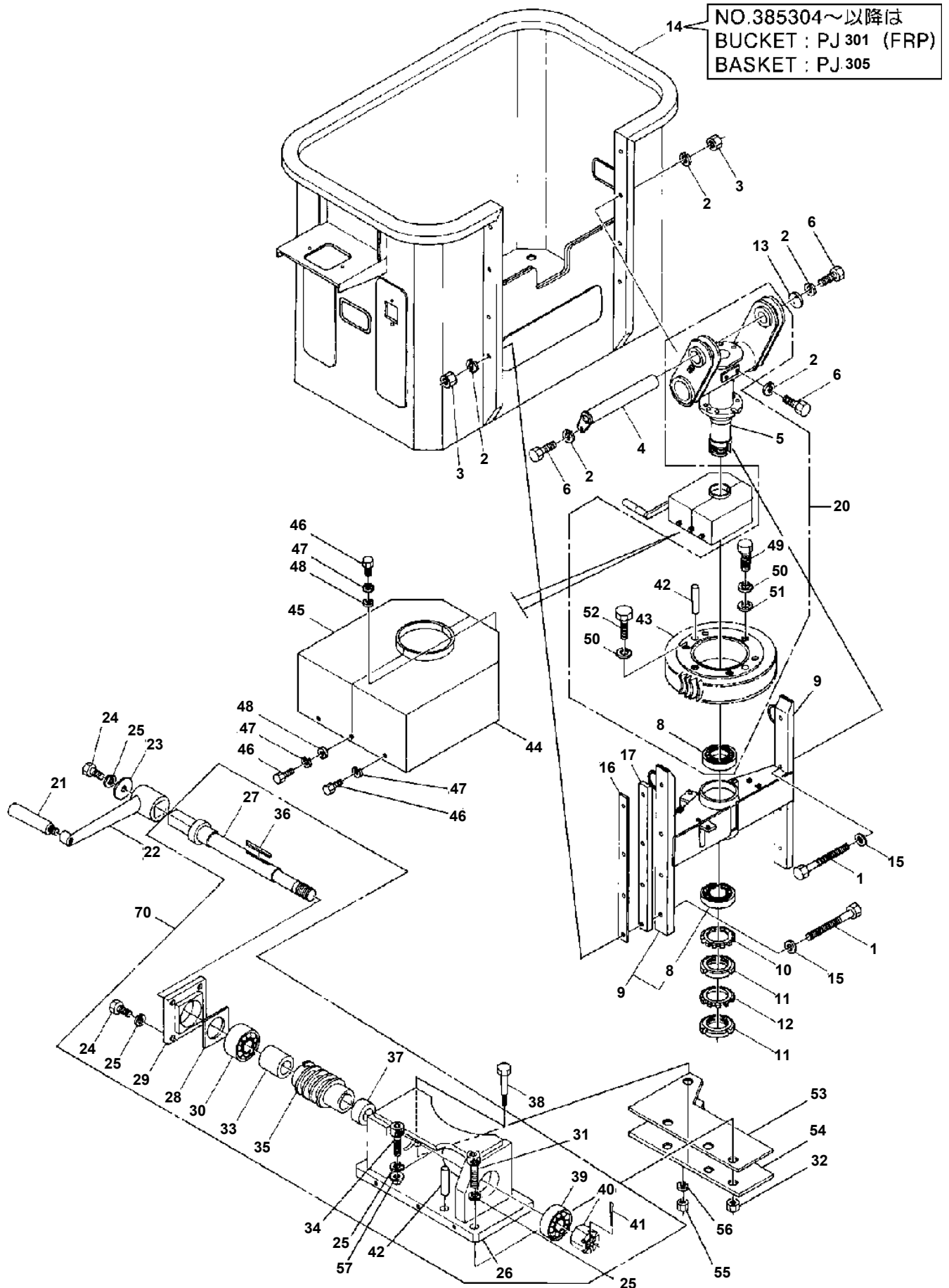


AT-230-1 42014100009 UPPER  
PI1140133-01 VALVE,CHECK

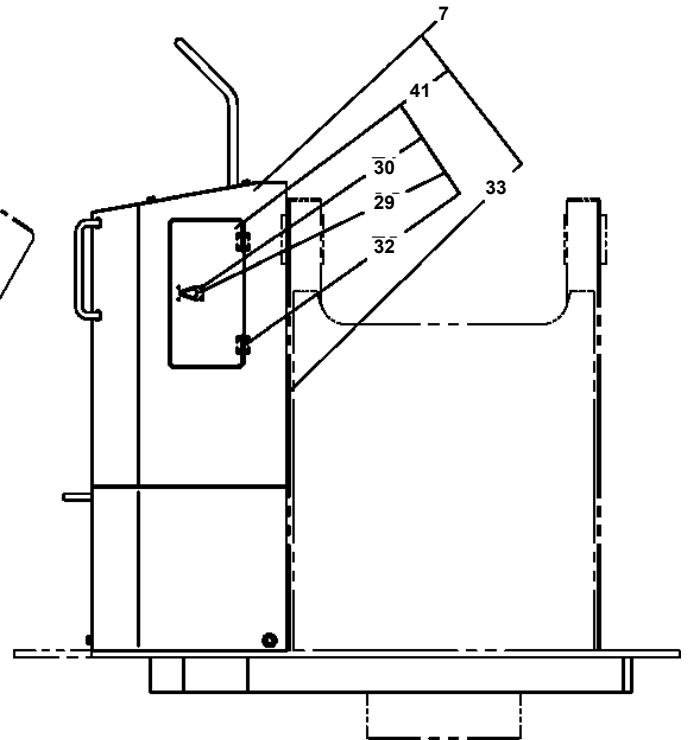
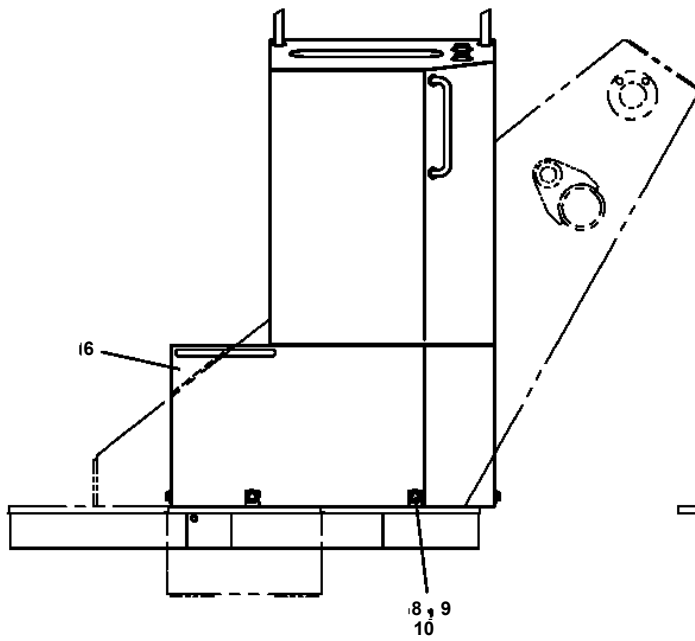
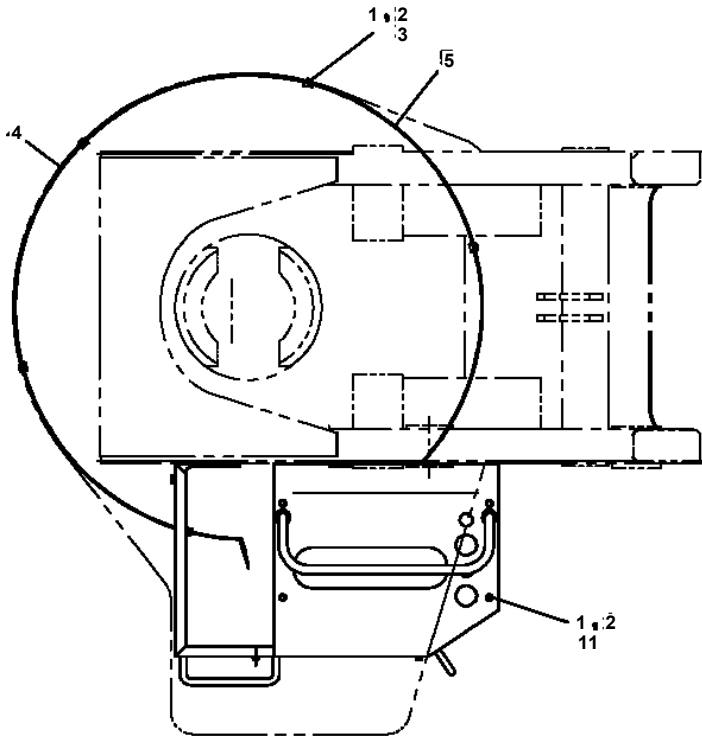
100



**AT-230-1 4201410009 UPPER  
PJ3020006-00 FRAME**



**AT-230-1 4201410009 UPPER  
PK1200283-01 COVER, SWING FRAME**



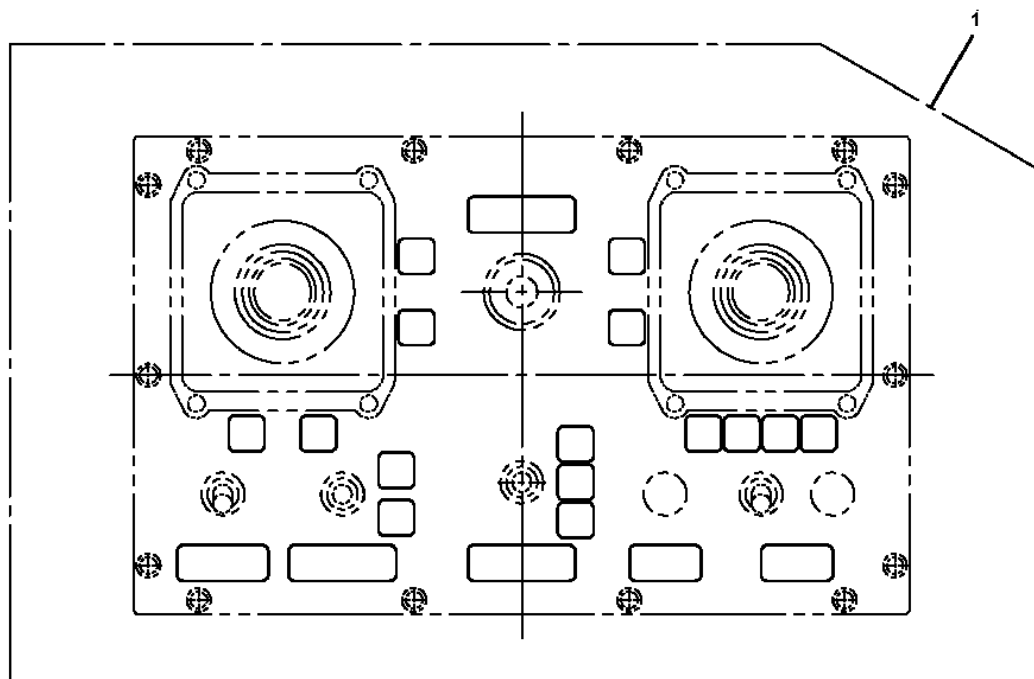
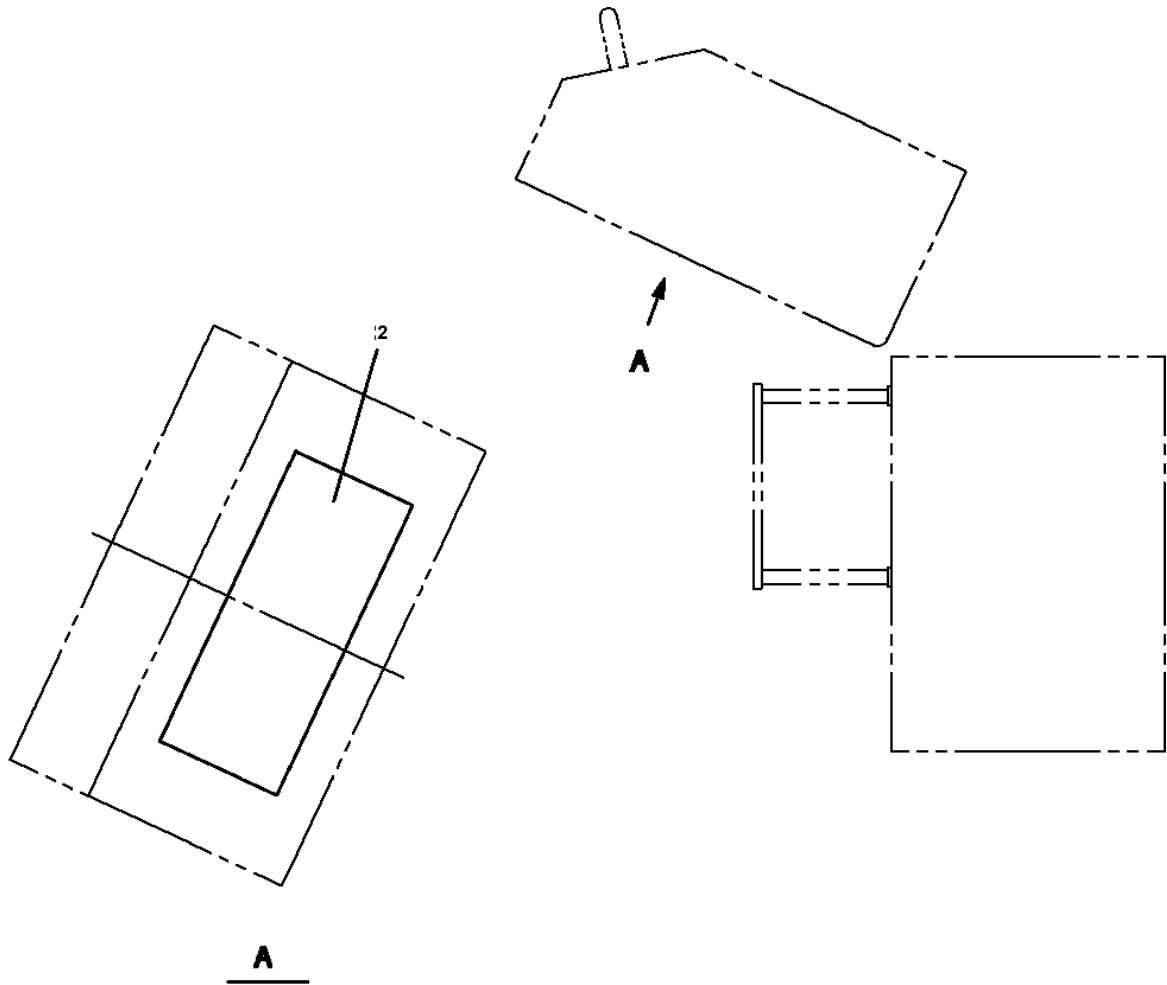
## AT-230-1 4201410009 UPPER

| Pos No. | Parts No    | Parts Name             | Qty | Unit | Technical Data | Serial No (Start) | Serial No (End) | Remarks |
|---------|-------------|------------------------|-----|------|----------------|-------------------|-----------------|---------|
| 1       | 36663955100 | SHAFT                  | 1   |      |                |                   |                 |         |
| 2       | 80500006206 | BEARING,BALL           | 1   |      |                |                   |                 |         |
| 4       | 91001206500 | O-RING                 | 1   |      | 1A G65         |                   |                 |         |
| 5       | 36660025021 | COVER (OIL SEAL)       | 1   |      |                |                   |                 |         |
| 6       | 36660025140 | SEAL,OIL               | 1   |      |                |                   |                 |         |
| 7       | 36663485110 | RING,RETAINING         | 1   |      | R72            |                   |                 |         |
| 8       | 36663955020 | PLATE,THRUST           | 1   |      |                |                   |                 |         |
| 9       | 36663955030 | BARREL ASSY (CYLINDER) | 1   |      |                |                   |                 |         |
| 10      | 36663955040 | PLATE (VALVE)          | 1   |      |                |                   |                 |         |
| 11      | 36661925030 | COVER (BOTTOM)         | 1   |      |                |                   |                 |         |
| 12      | 80500006203 | BEARING,BALL           | 1   |      |                |                   |                 |         |
| 13      | 36662355110 | PIN                    | 2   |      |                |                   |                 |         |
| 14      | 36663955050 | O-RING                 | 1   |      |                |                   |                 |         |
| 15      | 36663955060 | BOLT                   | 6   |      | M10X35         |                   |                 |         |
| 16      | 14125151020 | KEY                    | 1   |      |                |                   |                 |         |
| 17      | 36660125060 | PLUG                   | 2   |      | PF3/8          |                   |                 |         |
| 18      | 36081315130 | PROTECTOR (THREAD)     | 2   |      |                |                   |                 |         |
| 44      | 36660025100 | SPRING (PLUNGER)       | 5   |      |                |                   |                 |         |
| 45      | 14125151300 | RING,RETAINING         | 1   |      |                |                   |                 |         |
| 46      | 12645103171 | SPRING (CENTER)        | 1   |      |                |                   |                 |         |
| 100     | 36664070000 | MOTOR,OIL              | 1   |      |                |                   |                 |         |

# AT-230-1 4201410009 UPPER

| Pos No. | Parts No    | Parts Name                          | Qty | Unit | Technical Data | Serial No (Start) | Serial No |
|---------|-------------|-------------------------------------|-----|------|----------------|-------------------|-----------|
| 1       | 42432460020 | SUPPORT                             | 1   |      |                |                   |           |
| 2       | 37000547510 | PLATE                               | 1   |      |                |                   |           |
| 3       | 90101208012 | BOLT                                | 4   |      | M8X12          |                   |           |
| 4       | 90302040801 | WASHER,SPRING                       | 8   |      | 8              |                   |           |
| 5       | 90303070801 | WASHER,PLAIN                        | 2   |      | 8              |                   |           |
| 6       | 42430070050 | SUPPORT                             | 1   |      |                |                   |           |
| 7       | 37000514710 | PLATE                               | 1   |      |                |                   |           |
| 9       | 82400000221 | GROMMET                             | 1   |      |                |                   |           |
| 10      | 82401601002 | CLAMP                               | 7   |      |                |                   |           |
| 11      | 91810132530 | FASTENER                            | 11  |      |                |                   |           |
| 12      | 44350240100 | SWITCH ASSY                         | 1   |      |                |                   |           |
| 13      | 90101206016 | BOLT                                | 3   |      | M6X16          |                   |           |
| 14      | 90302040601 | WASHER,SPRING                       | 3   |      | 6              |                   |           |
| 15      | 90201200600 | NUT                                 | 3   |      | M6             |                   |           |
| 16      | 42474530100 | LAMP ASSY                           | 1   |      |                |                   |           |
| 17      | 90101208016 | BOLT                                | 4   |      | M8X16          |                   |           |
| 18      | 90201200800 | NUT                                 | 4   |      | M8             |                   |           |
| 19      | 42350880300 | HARNESS                             | 1   |      | L=2450         |                   | 385420    |
|         | 42352610400 | HARNESS                             | 1   |      | L=2450         | 385421            |           |
| 20      | 90813108016 | BOLT,WING                           | 1   |      | M8X16          |                   |           |
| 21      | 42430080010 | SUPPORT                             | 1   |      |                |                   |           |
| 41      | 42351520100 | COVER                               | 1   |      |                |                   |           |
| 42      | 42351520200 | COVER                               | 1   |      |                |                   |           |
| 43      | 90101206012 | BOLT                                | 4   |      | M6X12          |                   |           |
| 44      | 90201200600 | NUT                                 | 4   |      | M6             |                   |           |
| 45      | 90302040601 | WASHER,SPRING                       | 4   |      | 6              |                   |           |
| 46      | 90303070601 | WASHER,PLAIN                        | 4   |      | 6              |                   |           |
| 61      | 82165904020 | LAMP                                | 1   |      | 24V 60W        |                   |           |
| 62      | 90101212020 | BOLT                                | 1   |      | M12X20         |                   |           |
| 63      | 90302041201 | WASHER,SPRING                       | 1   |      | 12             |                   |           |
| 64      | 37000159530 | PIN                                 | 1   |      |                |                   |           |
| 65      | 80620210160 | PIN,SNAP                            | 1   |      |                |                   |           |
| 90      | 82100000054 | BULB,LAMP                           | 1   |      | 24V 60W        |                   |           |
| 96      | 82100002838 | SWITCH ASSY (WITH HARNESS,TERMINAL) | 1   |      |                |                   |           |

AT-230-1 42014100009 UPPER  
PO1012298-01 PLATE ASSY.NAME (OPERATION BOX)



**AT-230-1 42014100009 UPPER**

| Pos No. | Parts No    | Parts Name           | Qty | Unit | Technical Data | Serial No (Start) | Serial No (End) |
|---------|-------------|----------------------|-----|------|----------------|-------------------|-----------------|
| 99      | 36640625420 | ARM                  | 4   |      |                |                   |                 |
| 100     | 80601110140 | RING,RITAINING       | 4   |      | S14            |                   |                 |
| 106     | 36640625470 | BOOT                 | 4   |      |                |                   |                 |
| 107     | 36640625500 | WASHER               | 4   |      | 3              |                   |                 |
| 108     | 36640625480 | PLATE (P)            | 4   |      |                |                   |                 |
| 109     | 36640625490 | SCREW,MACHINE        | 4   |      | M3X6           |                   |                 |
| 110     | 80720104050 | PIN,SPRING           | 4   |      | 4X50           |                   |                 |
| 111     | 36636635090 | CAP (SEAL)           | 4   |      |                |                   |                 |
| 112     | 36646525070 | VALVE,SOLENOID       | 8   |      |                |                   |                 |
| 124     | 36645615260 | C-BOLT               | 4   |      | M5X8           |                   |                 |
| 125     | 36645615270 | PLATE                | 2   |      |                |                   |                 |
| 200     | 36646710000 | VALVE,REMOTE CONTROL | 1   |      |                |                   |                 |

CLICK HERE TO **DOWNLOAD** THE COMPLETE MANUAL

- Thank you very much for reading the preview of the manual.
- You can download the complete manual from: [www.heydownloads.com](http://www.heydownloads.com) by clicking the link below



- Please note: If there is no response to CLICKING the link, please download this PDF first and then click on it.

CLICK HERE TO **DOWNLOAD** THE COMPLETE MANUAL