

## **AT-230-1 42014100007 UPPER**

**PB1000087-01 HYDRAULIC PRESSURE GENERATING SYSTEM**  
**PD1000086-01 SWING SYSTEM**  
**PE1000618-00 ELEVATING SYSTEM**  
**PG1000082-01 TELESCOPING SYSTEM**  
**PH1000081-03 SAFETY DEVICES**  
**PI1000086-01 HYDRAULIC DEVICES**  
**PJ3000012-02 PLATFORM SYSTEM**  
**PK1000087-00 FRAME**  
**PL1000085-03 CONTROL DEVICES**  
**PN1000082-01 ELECTRIC EQUIPMENT**  
**PO1000083-01 INDICATION PLATES**  
**PW1000072-00 ACCESSORIES & TOOLS**  
**PY1000073-01 OPTIONS**  
**ASSEMBLY**

CLICK HERE TO **DOWNLOAD** THE COMPLETE MANUAL

- Thank you very much for reading the preview of the manual.
- You can download the complete manual from: [www.heydownloads.com](http://www.heydownloads.com) by clicking the link below



- Please note: If there is no response to CLICKING the link, please download this PDF first and then click on it.

CLICK HERE TO **DOWNLOAD** THE COMPLETE MANUAL

# AT-230-1 42014100007 UPPER

Pos No.	Parts No	Parts Name	Qty	Unit	Technical Data	Serial No (Start)	Serial No (End)
2	(*****)	DETECTOR,SWING ANGLE	1				
3	36111570000	WORKING AREA LIMITER	1				
4	(*****)	CONNECTION,WORKING AREA LIMITER	1				

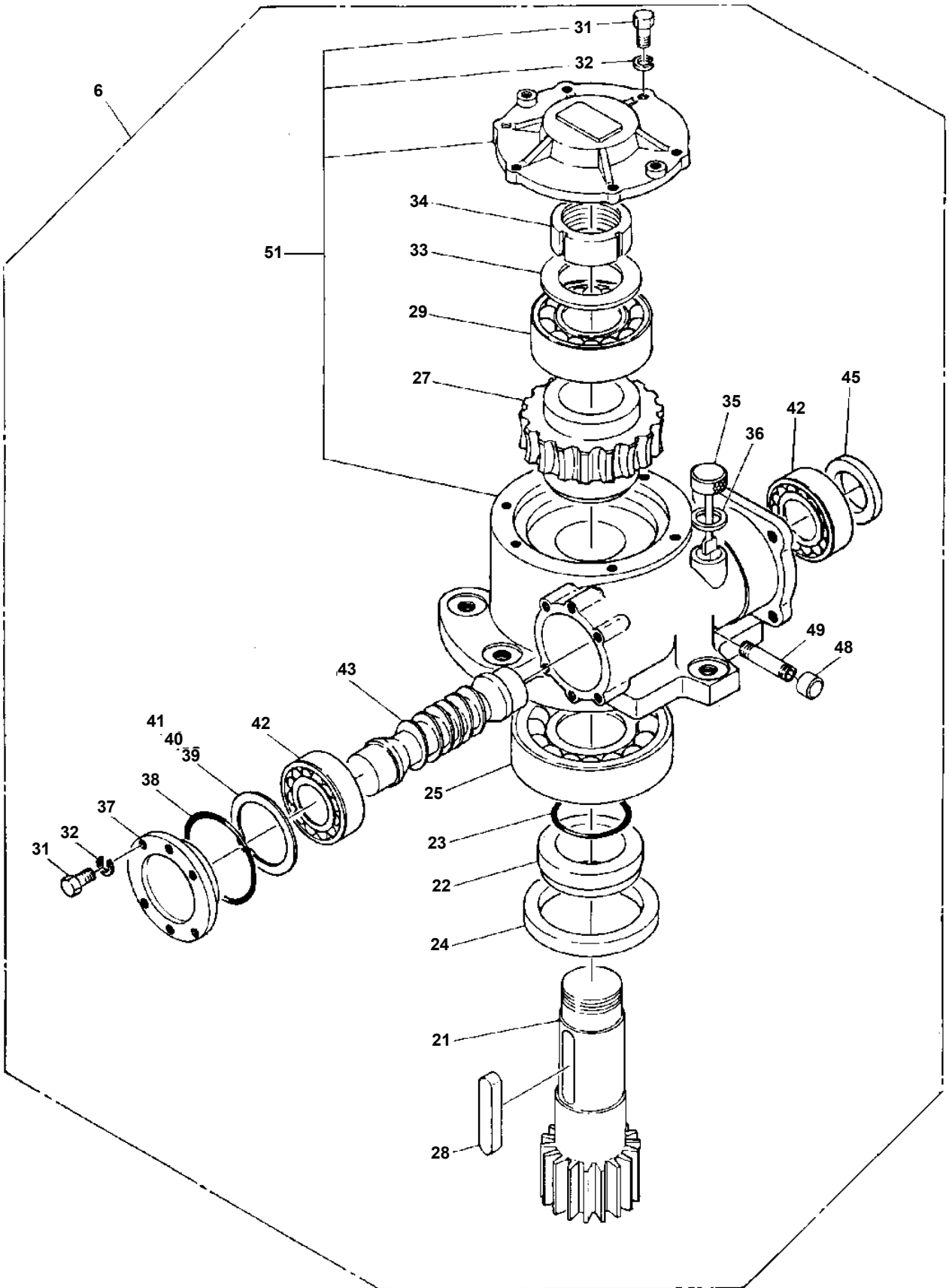
# AT-230-1 42014100007 UPPER

Pos No.	Parts No	Parts Name	Qty	Unit	Technical Data	Serial No (Start)	Serial No (End)	Remarks
1	(*****)	ELEC.ASSY (SWING FRAME)	1					
2	(*****)	ELEC.ASSY (BOOM)	1					
3	(*****)	ELEC.ASSY (BUCKET)	1					

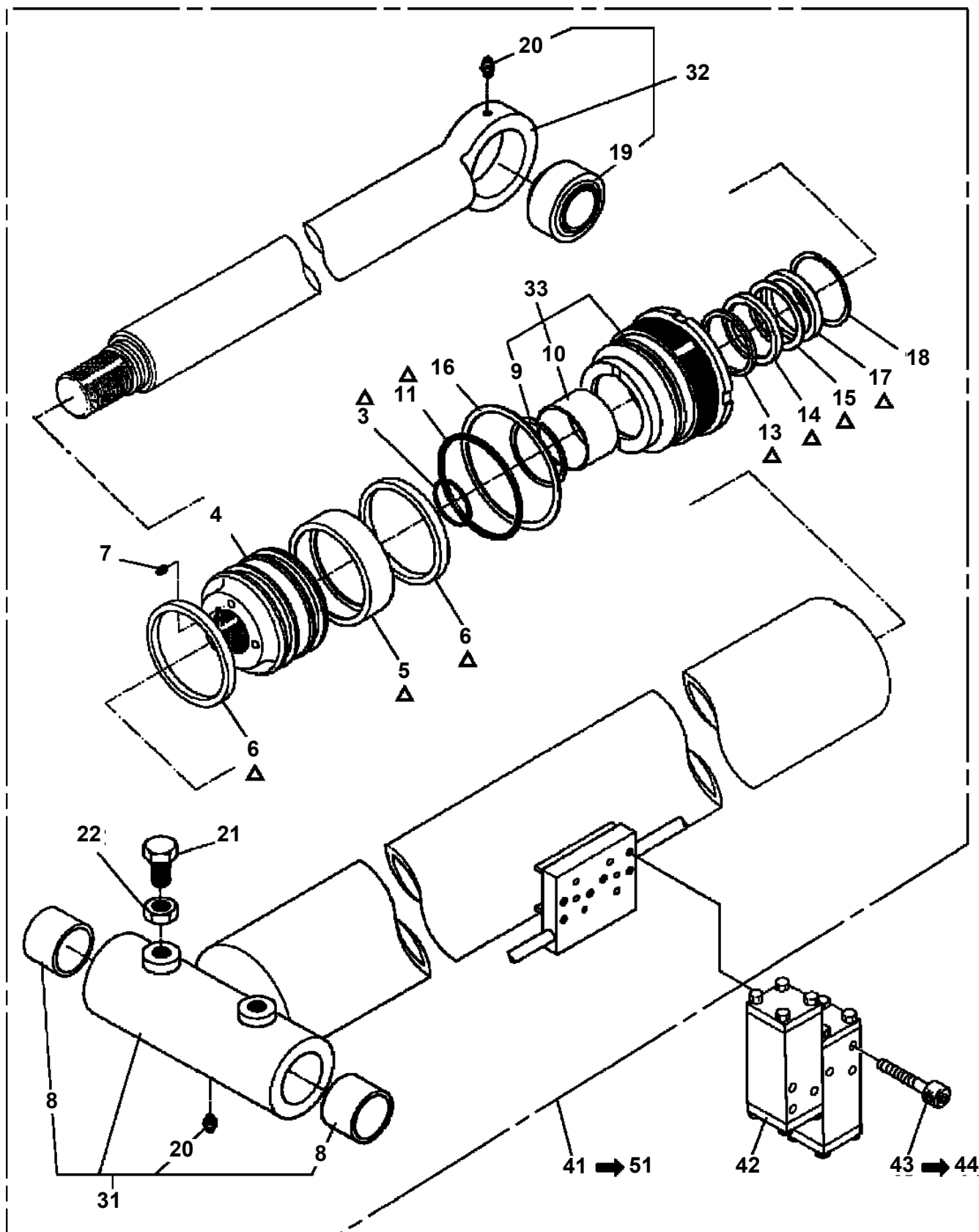
**AT-230-1 42014100007 UPPER**

Pos No.	Parts No	Parts Name	Qty	Unit	Technical Data	Serial No (Start)	Serial No (End)	Rem
85	37004500340	BRUSH (WITH CABLE Y)	1					
86	37004500350	BRUSH (WITH CABLE,B)	1					
87	37004500360	BRUSH (WITH CABLE GY)	1					
88	37004500370	BRUSH (WITH CABLE B/R)	1					
89	37004500380	BRUSH (WITH CABLE W/R)	1					
90	37004500390	BRUSH (WITH CABLE R/G)	1					
91	37004500400	BRUSH (WITH CABLE G/R)	1					
92	37004500410	BRUSH (WITH CABLE Y/R)	1					
93	37004500420	BRUSH (WITH CABLE BR)	1					
94	37004500430	BRUSH (WITH CABLE,O)	1					
95	82100001073	CONNECTOR	2					
96	82100000968	TERMINAL	14					
100	42630028012	JOINT,ROTARY	1					
111	82100001990	BRUSH	14					

AT-230-1 4201410007 UPPER  
PD1010013-01 REDUCER, SWING SPEED (MOUNT)



AT-230-1 4201410007 UPPER  
 PE1070003-05 CYLINDER, ARTICULATING



△: PACKING SET KEY NO.61 (KEY NO. 3, 5, 6, 11, 13, 14, 15, 17)

CLICK HERE TO **DOWNLOAD** THE COMPLETE MANUAL

- Thank you very much for reading the preview of the manual.
- You can download the complete manual from: [www.heydownloads.com](http://www.heydownloads.com) by clicking the link below



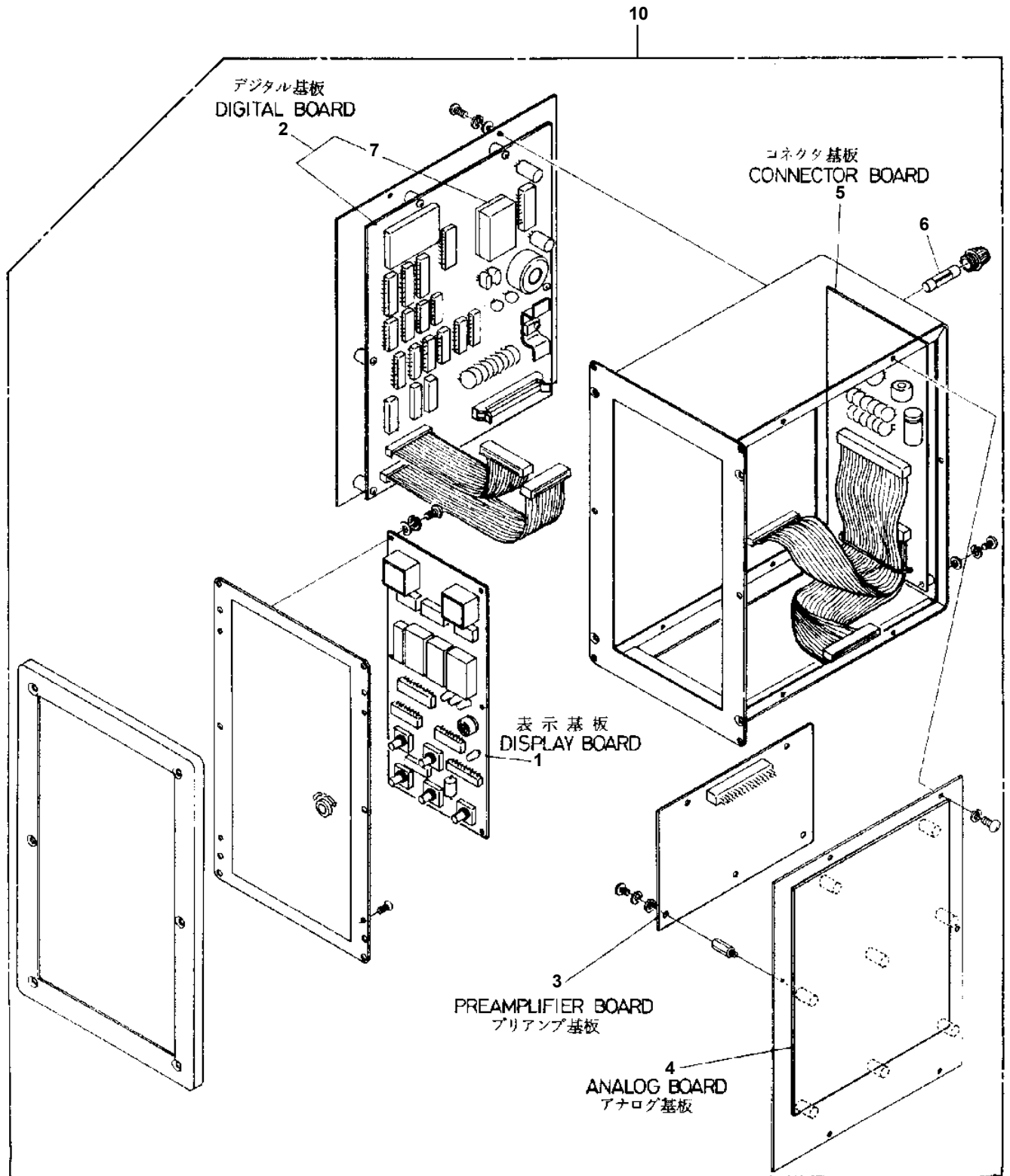
- Please note: If there is no response to CLICKING the link, please download this PDF first and then click on it.

CLICK HERE TO **DOWNLOAD** THE COMPLETE MANUAL

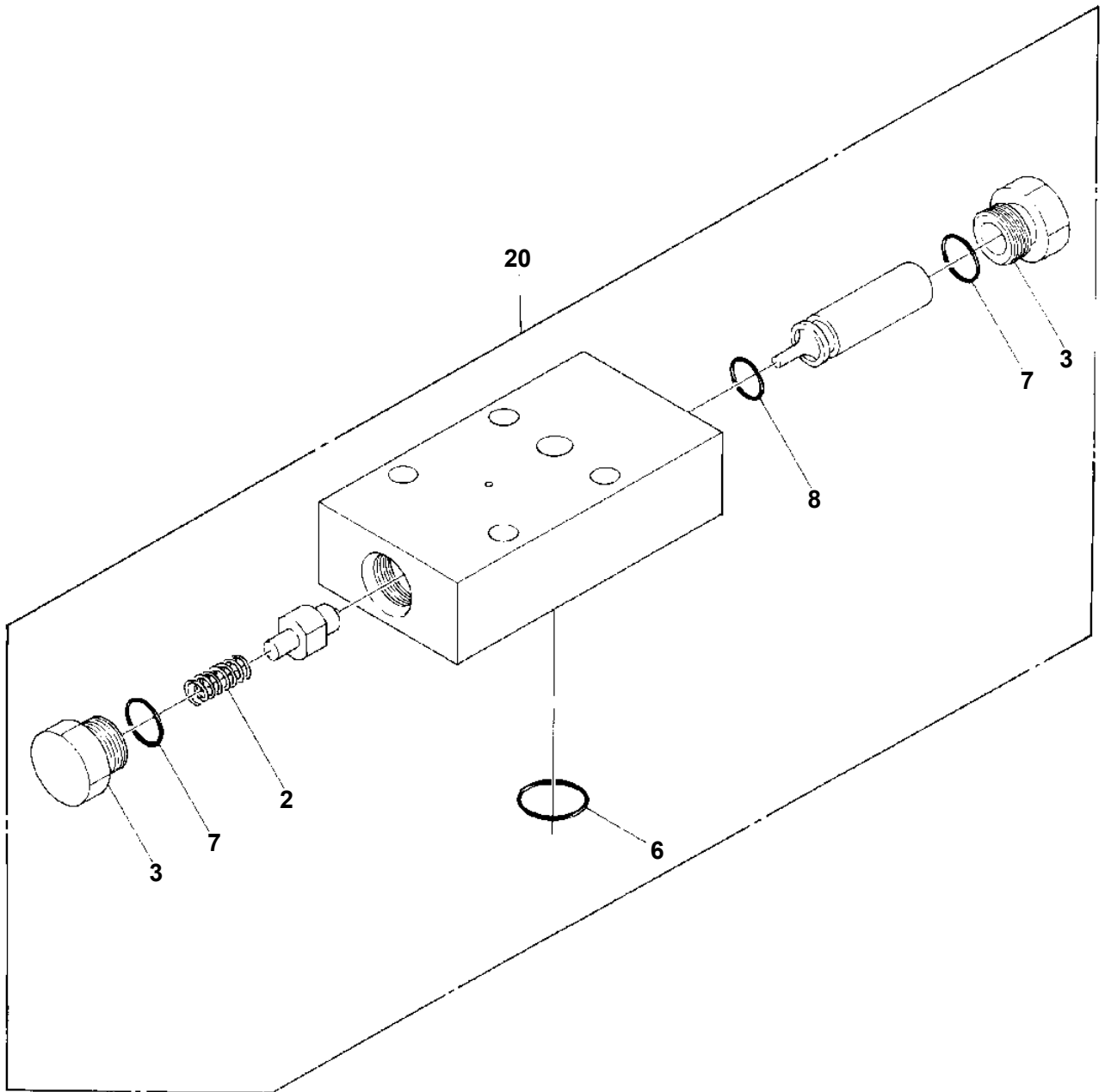
# AT-230-1 4201410007 UPPER

Pos No.	Parts No	Parts Name	Qty	Unit	Technical Data	Serial No (Start)	Serial No (End)	Remarks
1	37000137860	PIN	1					
2	90101510016	BOLT	16		M10X16			
3	90302041001	WASHER,SPRING	60		10			
4	37000137500	PIN	1					
5	90101514040	BOLT	1		M14X40			
7	90101208012	BOLT	12		M8X12			
8	90302040801	WASHER,SPRING	16		8			
9	42200020020	COVER	1					
10	82400000204	GROMMET	2		L=320			
11	36090020120	PLATE	1					
12	42220020190	PIN	1					
13	90101512020	BOLT	3		M12X20			
14	90302041201	WASHER,SPRING	3		12			
15	80801004550	BEARING,PLAIN	2					
20	37000510790	PLATE	10		T=0.6			
21	90101210018	BOLT	4		M10X18			
22	37002002090	PLATE,SLIDE	2					
24	37000510800	PLATE	4		T=0.8			
25	37000508520	PLATE	8		T=0.8			
26	32200000050	SHIM (T=1)	4					
28	37000138500	PIN	2		45			
29	80602110450	RING,RITAINING	2		R45			
30	12626208001	BUSH	2					
31	42200179530	BOOM, TOP	1					
32	42200175000	BOOM,2ND	1					
33	42200179520	BOOM,BASE	1					
35	37002000620	PLATE,SLIDE	6					
36	42200170010	RETAINER	4					
37	37002002070	PLATE,SLIDE	2					
38	80184306012	SCREW,MACHINE	8		M6X12			
39	37002001720	PLATE,SLIDE	4					
40	82456101000	NIPPLE,GREASE	2		A-PT1/8			
41	37001902270	ROPE,WIRE	1					
42	42200170020	PLATE	4					
43	90201201000	NUT	8		M10			
44	42200170030	PLATE	4					
45	42200170040	COVER	1					
46	90303070801	WASHER,PLAIN	4		8			
47	90201200800	NUT	4		M8			
48	42200170050	PLATE	4					
49	37000113840	PIN	1					
50	80601110400	RING,RITAINING	2		S40			
51	90101210016	BOLT	32		M10X16			
52	42200080500	WASHER	1					
53	80601110500	RING,RITAINING	1		S50			
54	90101510025	BOLT	2		M10X25			
55	44260240010	WASHER	2					
56	80601110300	RING,RITAINING	2		S30			
57	37000137800	PIN	1					
58	90202402400	NUT	4		M24			
59	90202401800	NUT	4		M18			
62	37002001720	PLATE,SLIDE	10					
63	37000508520	PLATE	28		T=0.8			
64	80184306012	SCREW,MACHINE	10		M6X12			
65	42200013410	SUPPORT	4					
71	42200013210	SUPPORT	4					
81	90172110020	BOLT,HEXAGON SOCKET	4		M10X20			
82	90302041001	WASHER,SPRING	24		10			
83	42200171510	SUPPORT	2					
91	42200178171	SHEAVE ASSY	2					
92	80602110850	RING,RITAINING	2		R85			
93	80520314912	BEARING,ROLLER	2					
94	42200172020	PLATE	2					

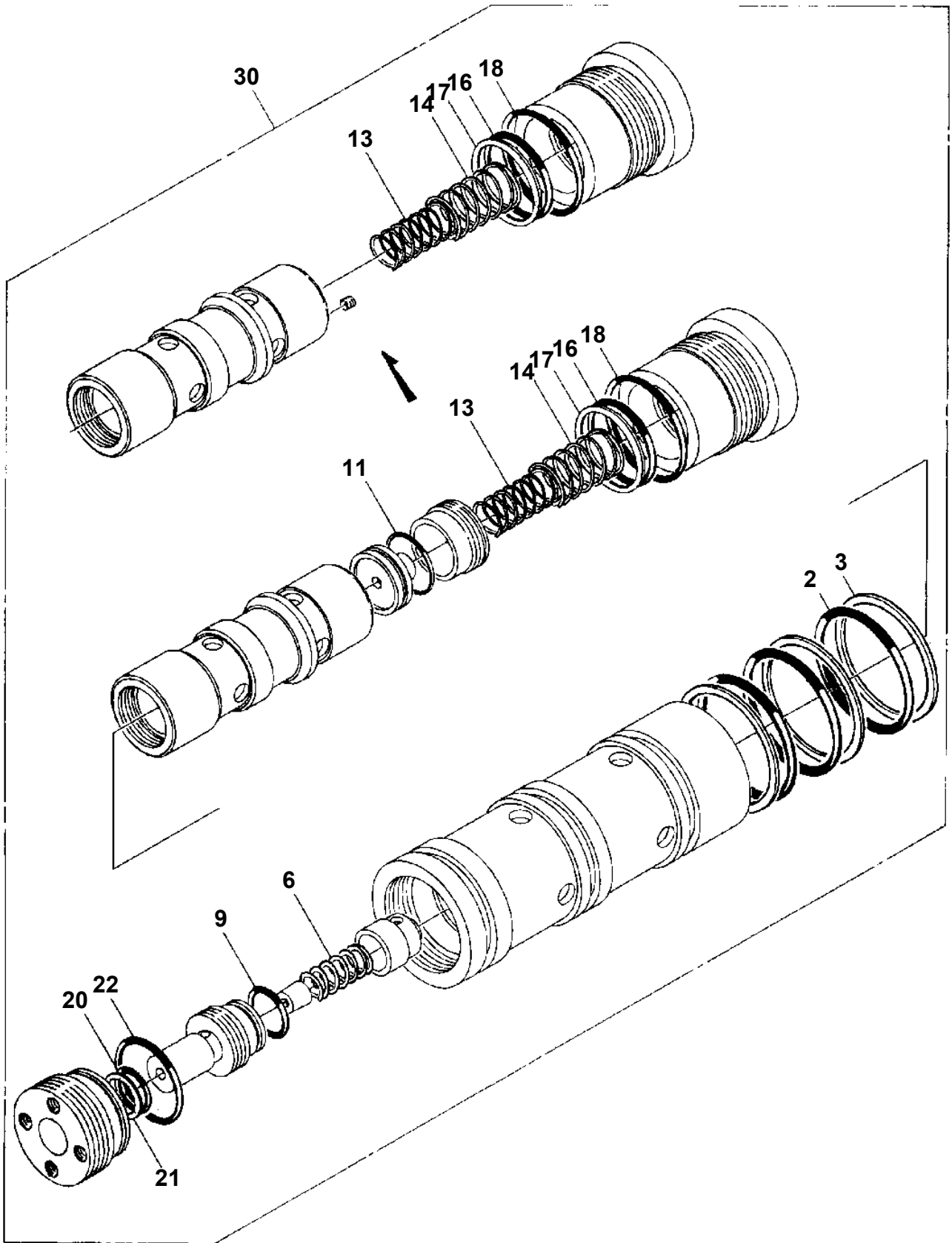
AT-230-1 4201410007 UPPER  
PH1350000-00 WORKING AREA LIMITER



AT-230-1 4201410007 UPPER  
PI1140030-00 VALVE,CHECK



**AT-230-1 4201410007 UPPER  
PI1260011-02 CARTRIDGE, COUNTERBALANCE**

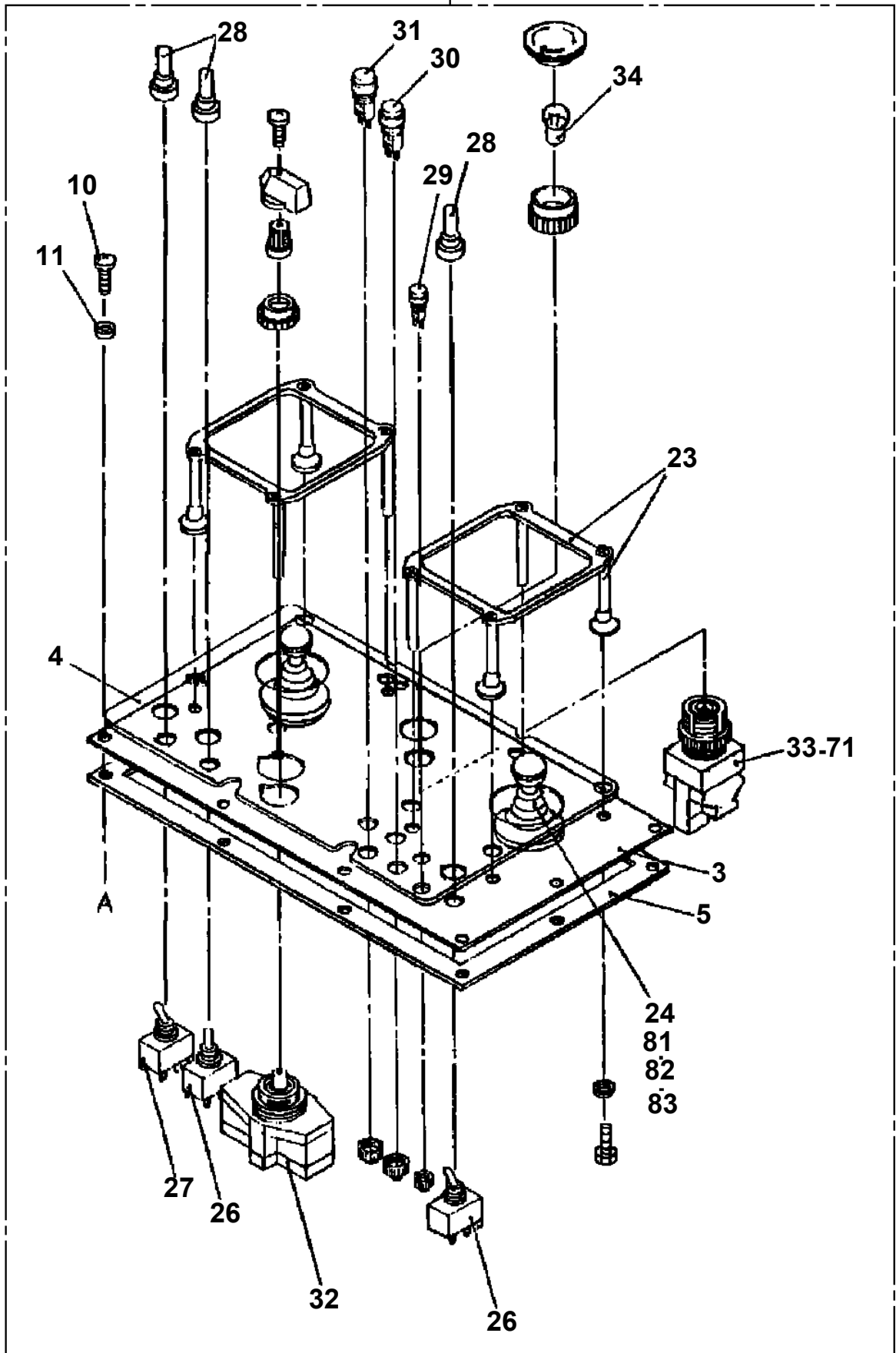


# AT-230-1 4201410007 UPPER

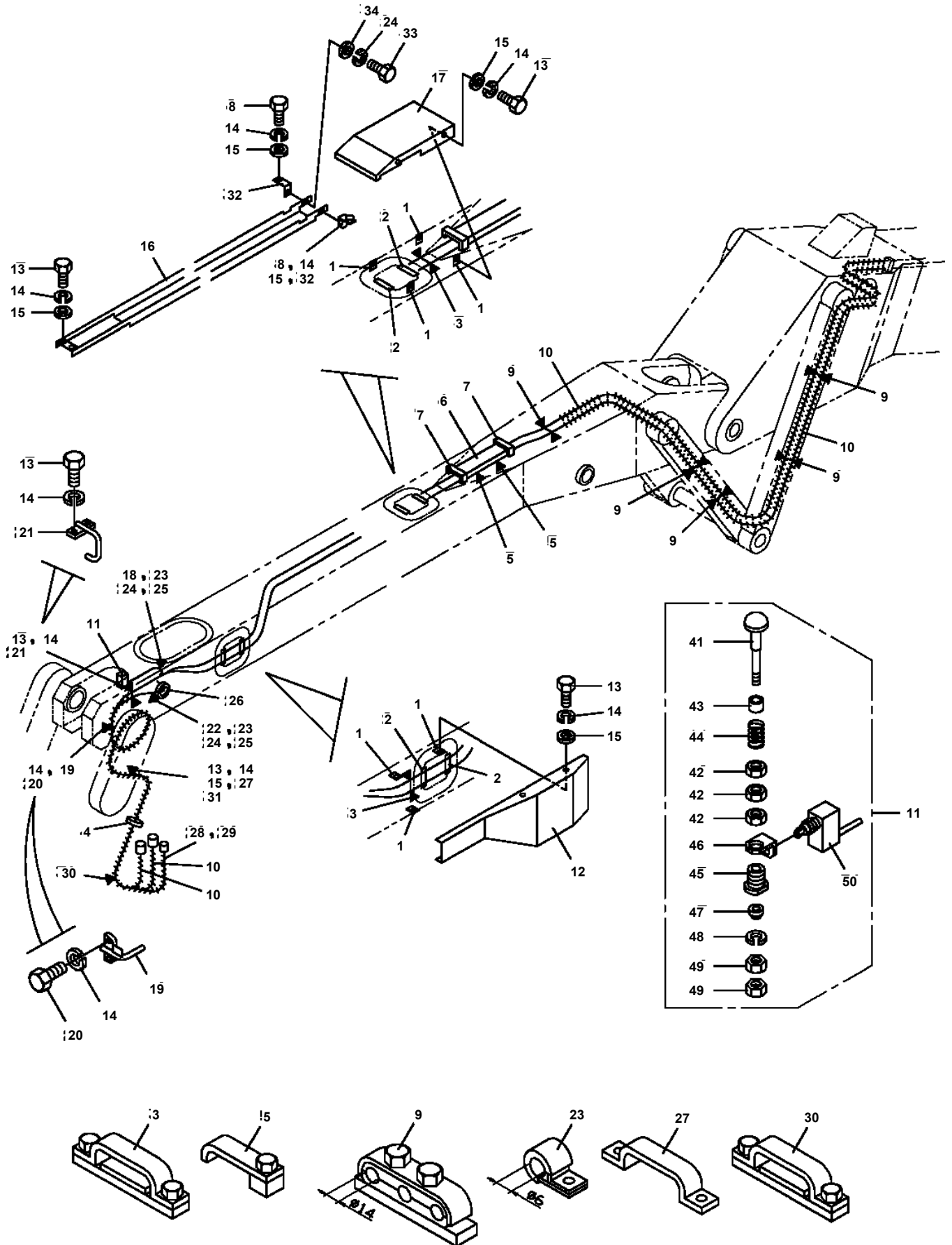
Pos No.	Parts No	Parts Name	Qty	Unit	Technical Data	Serial No (Start)	Serial No (End)	Remarks
2	90302041201	WASHER,SPRING	5		12			
4	42260300050	PIN	1					
5	42260300100	POST	1					
6	90101512025	BOLT	5		M12X25			
8	80516006015	BEARING,BALL	2					
9	42260308011	FRAME ASSY	1					
10	80562100150	WASHER (LOCK)	1		AW15			
11	42260300400	NUT	2					
12	80562100151	WASHER	1		AW15X			
13	36090020120	PLATE	1					
20	42260308042	POST ASSY	1					
21	37003100040	GRIP	1					
22	37003100080	HANDLE	1					
23	42260183160	PLATE	1					
24	90171110016	BOLT	5		M10X16			
25	90302041001	WASHER,SPRING	7		10			
26	42260308050	SUPPORT	1					
27	42260302200	SHAFT	1					
28	44260050500	SHIM	2		T=0.01			
29	44260050040	RETAINER	1					
30	80516005205	BEARING,BALL	1					
31	90131510035	BOLT,HEXAGON SOCKET	1		M10X35			
32	90201401000	NUT	1		M10			
33	37000303620	SPACER	1					
34	90131510030	BOLT,HEXAGON SOCKET	1		M10X30			
35	44260050050	GEAR,WORM	1					
36	80913112500	KEY	1					
37	37000303630	SPACER	1					
38	42260302030	BOLT	1					
39	80513006204	BEARING,BALL	1					
40	90236702000	NUT,CASTLE	1		M20			
41	80136340040	PIN,SPLIT	1		4X40			
42	37000125250	PIN	3					
43	42260302300	WHEEL,WORM	1					
44	42260302400	COVER	1					
45	42260302500	COVER	1					
46	90101206010	BOLT	5		M6X1.0			
47	90302040601	WASHER,SPRING	5		6			
48	90303070601	WASHER,PLAIN	3		6			
49	90101212035	BOLT	2		M12X35			
50	90302041201	WASHER,SPRING	6		12			
51	90303071201	WASHER,PLAIN	2		12			
52	90101212028	BOLT	4		M12X28			
53	42260302010	SHIM	4		T=0.02			
54	42260302020	SHIM	4		T=0.05			
55	90201400800	NUT	1		M8			
56	90302040801	WASHER,SPRING	1		8			
57	90303071001	WASHER,PLAIN	1		10			
70	42260308020	SHAFT ASSY	1					

AT-230-1 4201410007 UPPER  
PL1100048-02 BOX, OPERATION (LED LAMP.WITHOUT WINCH)

100



**AT-230-1 42014100007 UPPER  
PN1010835-00 ELEC.ASSY (BUCKET)**



CLICK HERE TO **DOWNLOAD** THE COMPLETE MANUAL

- Thank you very much for reading the preview of the manual.
- You can download the complete manual from: [www.heydownloads.com](http://www.heydownloads.com) by clicking the link below



- Please note: If there is no response to CLICKING the link, please download this PDF first and then click on it.

CLICK HERE TO **DOWNLOAD** THE COMPLETE MANUAL