

AT-100-5 42063535750 UPPER,LOWER,HINO 2RG-XZU600X-TYTMX6

PB0000275-02 UPPER STRUCTURE SYSTEM

PB0000500-02 LOWER STRUCTURE SYSTEM

ASSEMBLY

CLICK HERE TO **DOWNLOAD** THE COMPLETE MANUAL

- Thank you very much for reading the preview of the manual.
- You can download the complete manual from: www.heydownloads.com by clicking the link below



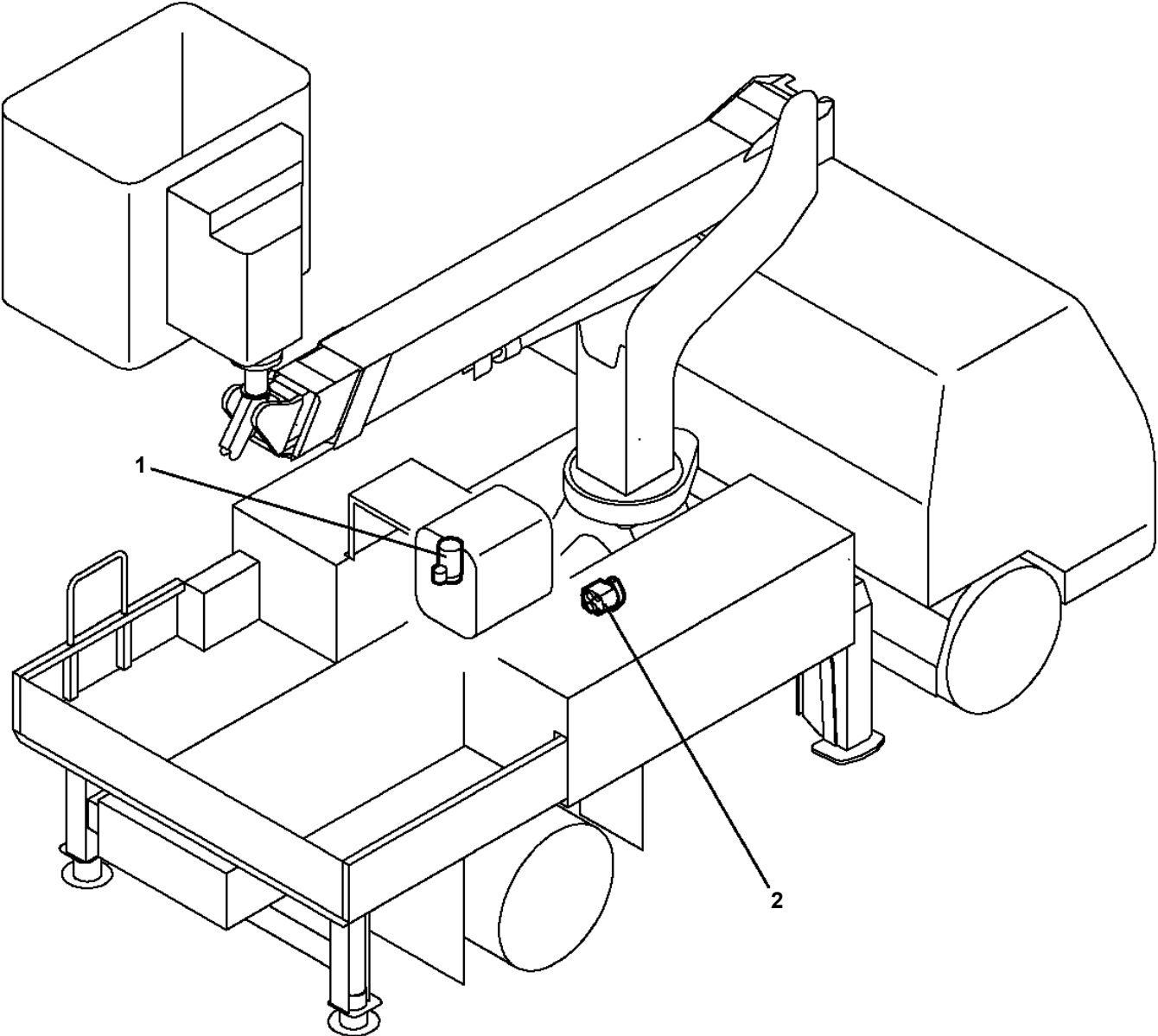
- Please note: If there is no response to CLICKING the link, please download this PDF first and then click on it.

CLICK HERE TO **DOWNLOAD** THE COMPLETE MANUAL

AT-100-5 42063535750 UPPER,LOWER,HINO 2RG-XZU600X-TYTMX6

PV5170018-00 VALVE ASSY,SELECTOR
PV5450154-00 VIEW SYSTEM (REARVIEW SYSTEM/WITHOUT MONITOR)
PW1000118-00 ACCESSORIES & TOOLS
PW1010309-00 ACCESSORIES (MAT)
PW1010337-01 ACCESSORIES
PW1010407-00 ACCESSORIES (MAT)
PW1030049-01 TOOLS
PW1050018-01 WEDGE (STOPPER FOR TIRE/JUSTIN)
PW5110005-00 WEDGE (YELLOW)
PX1270056-00 WOOD BLOCK (OPTION)
PX1350803-00 BOX,TOOL (NEO KANSAI/BUCKET)
PX1351247-00 BOX,TOOL (BUCKET)
PX1390858-00 MODIFICATION PARTS
PX2001963-00 CARRIER UNIT
PX3000859-00 MOUNTING UNIT
PX5010506-00 MOUNT ASSY (SAFETY CONE SUPPORT)
PX5010507-00 MOUNT ASSY (SAFETY CONE BAR SUPPORT)
PX5110045-00 MOUNT ASSY,BOOM SUPPORT
PX5260010-00 MOUNT ASSY,COVER
PX5360177-00 MOUNT ASSY,FRAME
PX5430017-00 MOUNT ASSY,GUARD
PX5430024-01 MOUNT ASSY,GUARD
PX5580007-00 MOUNT ASSY,PTO
PX5670014-00 MOUNT ASSY,STEP
PX5670023-00 MOUNT ASSY,STEP (FOR BOX TOOL OF RIGHT SIDE)
PX5670080-00 MOUNT ASSY,STEP (GUIDE TYPE JACK)
PX5730003-00 MOUNT ASSY,SWIVEL JOINT
PX5740056-00 MOUNT ASSY,TAIL LAMP
PX5760013-00 MOUNT ASSY,TANK SUPPORT
PX5770007-00 MOUNT ASSY,TIRE
PX5780196-01 MOUNT ASSY,TOOL BOX (WITHOUT CENTRAL LOCKING)
PX5780197-01 MOUNT ASSY,TOOL BOX
PX5780381-00 MOUNT ASSY,TOOL BOX (CENTRAL LOCK/ISUZUTPG OR LATER)
PX5780392-00 MOUNT ASSY,TOOL BOX (DRAWER FOR LEFT SLIDE TOOL BOX)
PX5780582-00 MOUNT ASSY,TOOL BOX (CENTRAL LOCK/HINO PPNLT,TOYOTA)
PX5780584-00 MOUNT ASSY,TOOL BOX (HINO PPNLT)
PX5780585-00 MOUNT ASSY,TOOL BOX (WITHOUT CENTRAL LOCK/HINO PPNLT)
PX5820133-00 MOUNT ASSY,WEIGHT
PX5850014-01 MOUNT ASSY,WOOD BLOCK (LARGE)
PY1001969-00 OPTION UNIT,1 (UPPER)
PY1070000-00 ROPE (SAFETY,YELLOW:TD-TYPE)
PY1070001-00 ROPE (SAFETY,1.5M,WITH HOOK)
PY1090001-00 BELT,SAFETY
PY1760001-00 STEP,BUCKET
PY1930004-00 BLOCK,RUBBER (WAZUMI)
PY1930005-00 BLOCK,RUBBER (NAKAMURA)
PY2000288-00 OPTION UNIT,2 (UPPER)
PY2120005-00 BOX,TOOL (FOR BUCKET,FRP)
PY4000063-05 OPTION UNIT,1 (LOWER)
PY5020165-00 ACCESSORIES ASSY (WITHOUT BLOCK,RUBBER)
PY5310003-00 AUTOMATIC MOTION CONTROLLER
PZ0000000-00 TOOL BOX
PZ0000000-00 POWER SUPPLY ASSY,ELECTRICITY (LOWER,100V/HINO PPNLT)
PZ0000000-00 MODIFICATION ASSY
PZ0000000-00 MOUNT ASSY,ROLLER
PZ0000000-00 MOUNT ASSY,TOOL BOX
PZ0000000-00 VIEW SYSTEM (COLOR MONITOR)
PZ0000000-00 PARTS ASSY,ELECTRICITY (CAMERA)
PZ0000000-00 VIEW SYSTEM (COLOR MONITOR)
PZ0000000-00 VIEW SYSTEM
PZ0000000-00 PARTS ASSY,ELECTRICITY (CAMERA)
PZ0000000-00 PARTS ASSY,ELECTRICITY (MONITOR + SONAR)
PZ0000000-00 VIEW SYSTEM
PZ0000000-00 HARNESS

**AT-100-5 42063535750 UPPER,LOWER,HINO 2RG-XZU600X-TYTMX6
PB3000307-00 POWER UNIT**



AT-100-5 42063535750 UPPER,LOWER,HINO 2RG-XZU600X-TYTMX6

Pos No.	Parts No	Parts Name	Qty	Unit	Technical Data	Serial No (Start)	Serial No (End)	Remarks	Pages
1	82119417515	CONNECTOR	1						
2	42654790311	HARNESS	1						000144
3	42474472100	BOX	1						
4	82100002006	CLAMP	1		WR10				
5	90101206014	BOLT	1		M6X14				
6	90201200600	NUT	1		M6				
7	90302040601	WASHER,SPRING	1		6				
8	90303070601	WASHER,PLAIN	1		6				
50	42654790300	BOX ASSY	1						

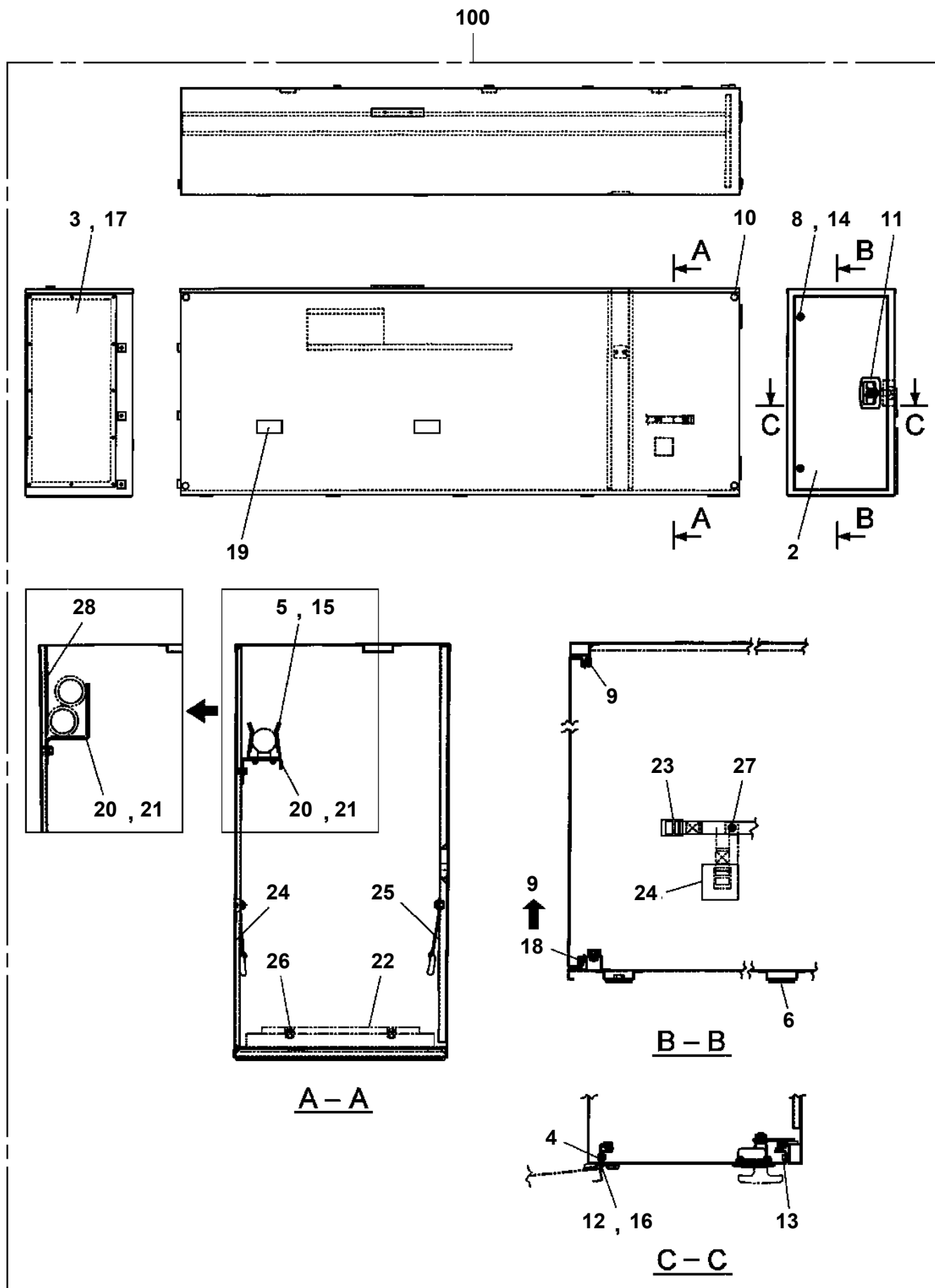
AT-100-5 42063535750 UPPER,LOWER,HINO 2RG-XZU600X-TYTMX6

Pos No.	Parts No	Parts Name	Qty	Unit	Technical Data	Serial No (Start)	Serial No (End)
1	42262250300	BUCKET	1				
3	42470342000	MAT	1				
4	42509510000	COVER ASSY (BUCKET/CLOTH:WHITE)	1				

AT-100-5 42063535750 UPPER,LOWER,HINO 2RG-XZU600X-TYTMX6

Pos No.	Parts No	Parts Name	Qty	Unit	Technical Data	Serial No (Start)	Serial No (End)	Remarks
1	34354781710	RELAY (WITH BRACKET)	1					
4	42973090101	HARNESS	1					
5	91810132530	FASTENER	3					

AT-100-5 42063535750 UPPER,LOWER,HINO 2RG-XZU600X-TYTMX6
PB5410112-03 BOX,TOOL



AT-100-5 42063535750 UPPER,LOWER,HINO 2RG-XZU600X-TYTMX6

Pos No.	Parts No	Parts Name	Qty	Unit	Technical Data	Serial No (Start)	Serial No (End)	Rem
2	42839507510	DOOR ASSY (SLIDE)	1					
3	42837377520	LOCK ASSY	1					
4	42839507520	SHELF	1					
5	42839507530	STOPPER (DOOR)	2					
6	42839507540	GUARD	1					
7	42835257620	PLATE	4					
8	42839117630	SUPPORT	4					
9	42835467570	RAIL	1					
10	42839127510	MAT	1					
11	42835767580	STOPPER	1					
12	42839127520	SEAL (30X30)	1					
13	42833077610	BUSH	9					
14	42836317940	SEAL (TAPE)	2	M				
15	42836317940	SEAL (TAPE)	2	M				
16	42837157510	MOHAIR	1	M				
17	42837377830	COVER (HARNESS)	2	M				
18	42837377830	COVER (HARNESS)	1	M				
19	42835867840	GROMMET	1					
20	42839507560	BOLT (SUS WITH W,SW)	2		M10X16			
21	99164804010	BOLT (M4X10,WITH WASHER)	3					
22	42500577560	SCREW,MACHINE (SEMS)	5		M4X8			
23	42835467840	SCREW,MACHINE (WITH W,SW)	2		M5X22			
24	42834707555	SCREW,MACHINE (WITH W,SW)	2		M6X14			
25	42835257660	SCREW,MACHINE	8		M4X18			
26	42835257680	SCREW,MACHINE (WITH SW,N)	6		M5X10			
27	82401800080	PLUG (FOR M8)	5					
28	82401800100	PLUG (FOR M10)	2					
100	42839121100	BOX,TOOL	1					

AT-100-5 42063535750 UPPER,LOWER,HINO 2RG-XZU600X-TYTMX6

Pos No.	Parts No	Parts Name	Qty	Unit	Technical Data	Serial No (Start)	Serial No (End)
1	(*****)	ELEC.ASSY (SLOPES ALARM)	1				
4	(*****)	PIPING ASSY	1				
6	(*****)	ELEC.ASSY (HORIZONTAL LAMP)	1				
7	(*****)	NAME PLATE ASSY (JACK HORIZONTAL)	1				
12	(*****)	MODIFICATION ASSY	1				

AT-100-5 42063535750 UPPER,LOWER,HINO 2RG-XZU600X-TYTMX6

Pos No.	Parts No	Parts Name	Qty	Unit	Technical Data	Serial No (Start)	Serial No (End)	Remarks
1	42506951000	COVER ASSY	1					
2	42501970100	SUPPORT	2					
3	82464106403	HINGE	2					
4	90190208020	BOLT	4		M8X20			
5	90302510801	WASHER,SPRING (8)	4					
6	42501970021	PLATE	1					
7	80175805014	SCREW,MACHINE	4		M5X14			
8	90201500500	NUT	4		M5			
9	90302510501	WASHER,SPRING	4		5			
10	82400000393	INSULATOR	2					
11	80172804016	SCREW,MACHINE	2		M4X16			
12	90302510401	WASHER,SPRING	2		4			
13	90303520401	WASHER,PLAIN	2		4			
14	80175805012	SCREW,MACHINE	4		M5X12			
15	90303520501	WASHER,PLAIN	4		5			
16	42501970010	PLATE,NAME (OPEN/CLOSE)	1					
17	90303520801	WASHER,PLAIN	4		8			
18	90183108020	BOLT	1		M8X20			
42	82466014702	CATCH	1					
43	42501971200	SUPPORT	1					

AT-100-5 42063535750 UPPER,LOWER,HINO 2RG-XZU600X-TYTMX6

Pos No.	Parts No	Parts Name	Qty	Unit	Technical Data	Serial No (Start)	Serial No (End)
1	42509510000	COVER ASSY (BUCKET/CLOTH:WHITE)	1				

AT-100-5 42063535750 UPPER,LOWER,HINO 2RG-XZU600X-TYTMX6

Pos No.	Parts No	Parts Name	Qty	Unit	Technical Data	Serial No (Start)	Serial No (End)	Remarks	Pages
1	42974350100	COVER	1						
2	42974350200	COVER	1						

AT-100-5 42063535750 UPPER,LOWER,HINO 2RG-XZU600X-TYTMX6

Pos No.	Parts No	Parts Name	Qty	Unit	Technical Data	Serial No (Start)	Serial No (End)	Remarks	Pages
10	42267480200	COVER	1						

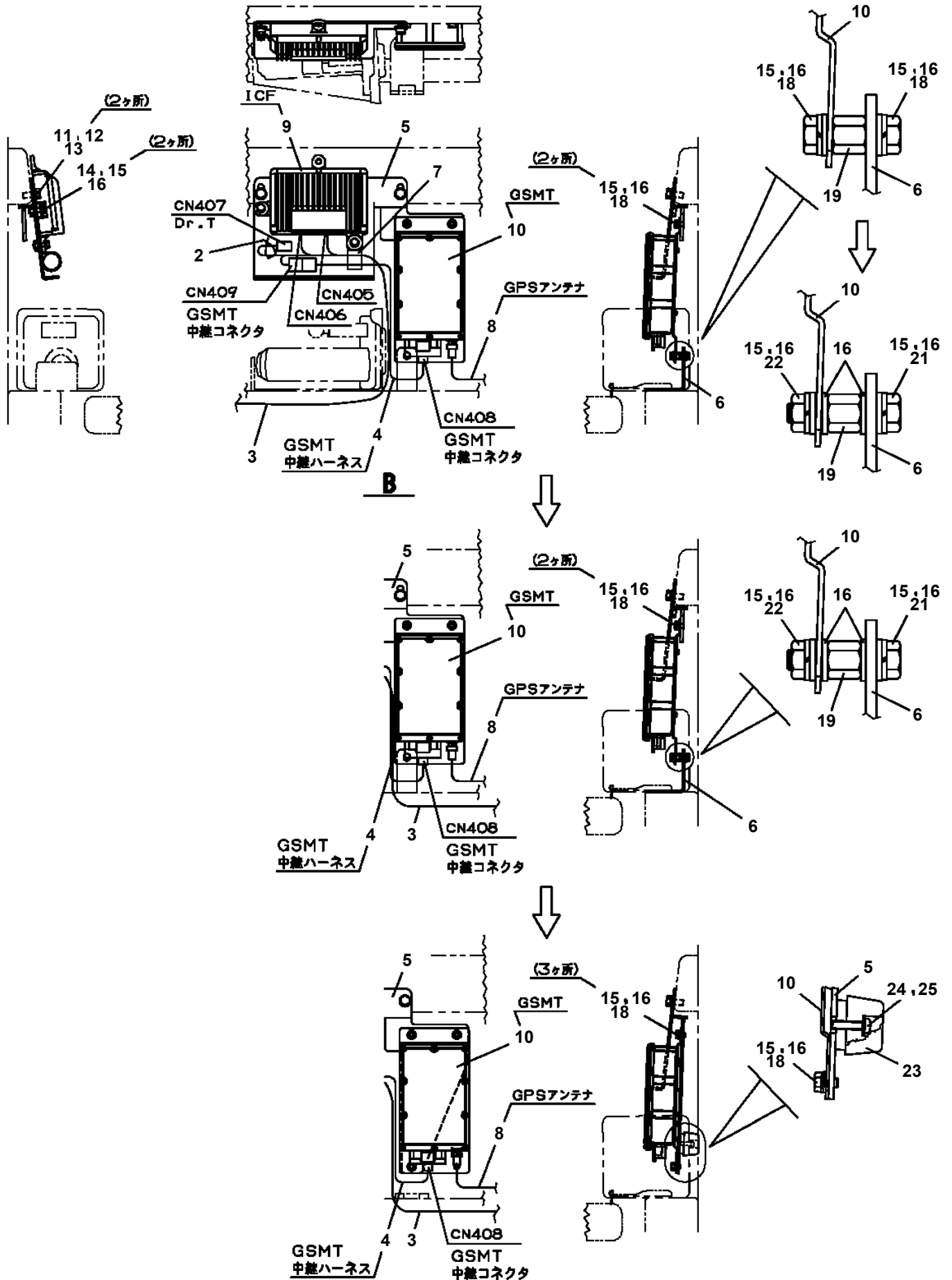
AT-100-5 42063535750 UPPER,LOWER,HINO 2RG-XZU600X-TYTMX6

Pos No.	Parts No	Parts Name	Qty	Unit	Technical Data	Serial No (Start)	Serial No (End)	Re
1	91660005001	SEAL,DUST	1					
2	91430205001	RING,BACKUP	1					
3	91694005000	PACKING	1					
4	91002906500	O-RING	1		1B G65			
5	36018049511	COVER,ROD	1					
6	36018791000	ROD	1					
7	36018792001	CYLINDER	1					
8	91002903000	O-RING	1		1B G30			
9	80801005030	BEARING,PLAIN	1					
10	80612110570	RING,RITAINING	1		AR57			
11	90302043001	WASHER,SPRING	1		30			
12	90209403000	NUT	1		M30			
13	37000114640	PIN	1					
14	37001102380	ROLLER ASSY	1					
15	37000311320	SPACER	2		L=4			
16	80601110150	RING,RITAINING	2		15			
17	91302207000	BEARING,PLAIN	2					
18	91684007001	PACKING	2					
19	36013010500	PISTON	1					
20	91431205701	RING,BACKUP	2					
21	91001207000	O-RING	1		1A G70			
22	36013010200	PLATE	1					
23	90303073001	WASHER,PLAIN	1		30			
41	80516006002	BEARING,BALL	1					
42	80602110320	RING,RITAINING	1		R32			
80	36018049910	PACKING SET	1		50X70			
100	36018790000	CYLINDER ASSY,TELESCOPING	1					

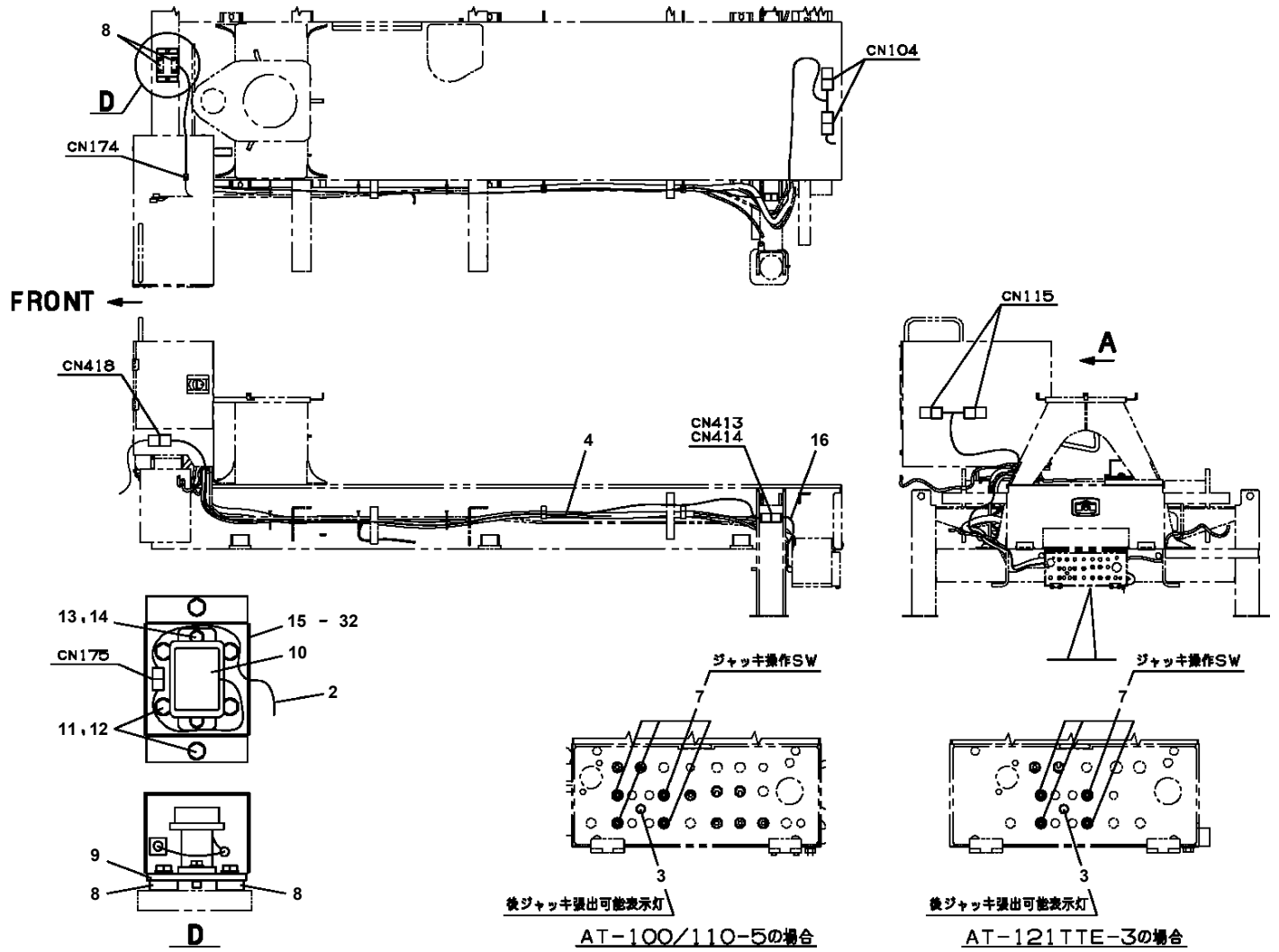
AT-100-5 42063535750 UPPER,LOWER,HINO 2RG-XZU600X-TYTMX6

Pos No.	Parts No	Parts Name	Qty	Unit	Technical Data	Serial No (Start)	Serial No (End)
1	36132155010	PLATE (BASE)	1				
2	36132155020	CASE	1				
3	36132155030	COVER	1				
8	36132395030	BRACKET	1				
9	36131805010	PACKING	1				
10	36131745010	POTENTIOMETER	1				
11	36132155100	GEAR	1				
12	36131825050	GEAR	1				
13	36132405010	WIRE ASSY	1				
14	36132405020	CORD ASSY	1				
51	36132155140	SPRING ASSY	1				
100	36132400001	DETECTOR ASSY,LENGTH (BOOM)	1				

**AT-100-5 42063535750 UPPER,LOWER,HINO 2RG-XZU600X-TYTMX6
PE5020676-03 ELEC.ASSY (TELEMATICS)**



**AT-100-5 42063535750 UPPER,LOWER,HINO 2RG-XZU600X-TYTMX6
PE5020999-00 ELEC.ASSY (RUNAWAY PREVENTION)**



後ジャッキ張出可能表示灯
AT-100/110-5の場合

後ジャッキ張出可能表示灯
AT-121TTE-3の場合

AT-100-5 42063535750 UPPER,LOWER,HINO 2RG-XZU600X-TYTMX6

Pos No.	Parts No	Parts Name	Qty	Unit	Technical Data	Serial No (Start)	Serial No (End)
1	42655500100	HARNESS	1				
2	42651305300	SWITCH ASSY (WITH CONNECTOR)	1				
3	91810132530	FASTENER	10				

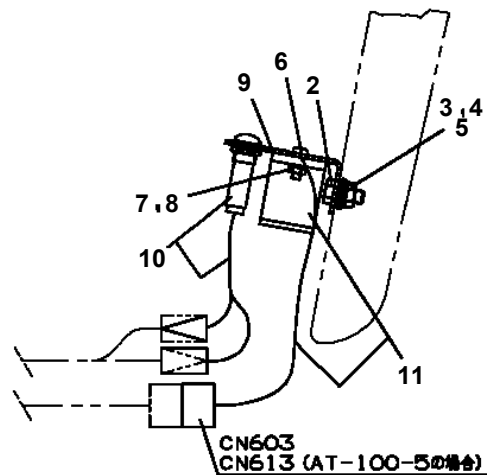
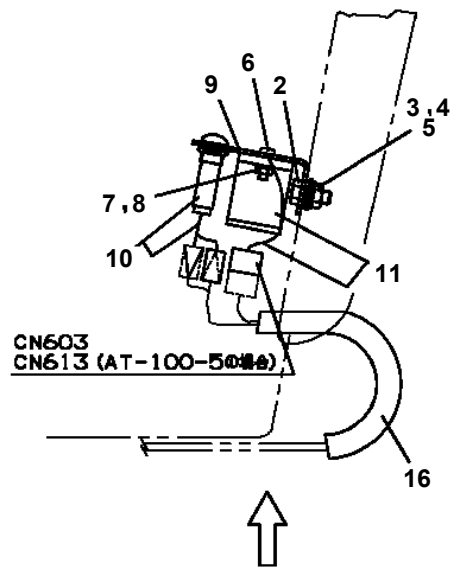
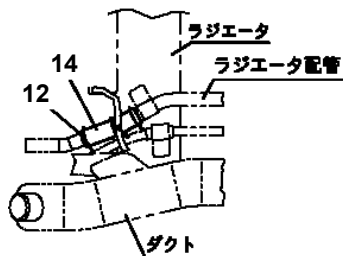
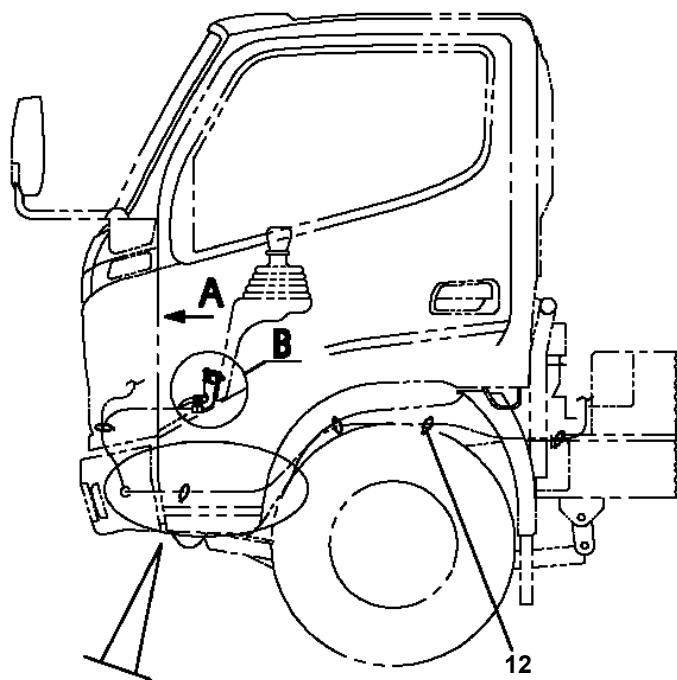
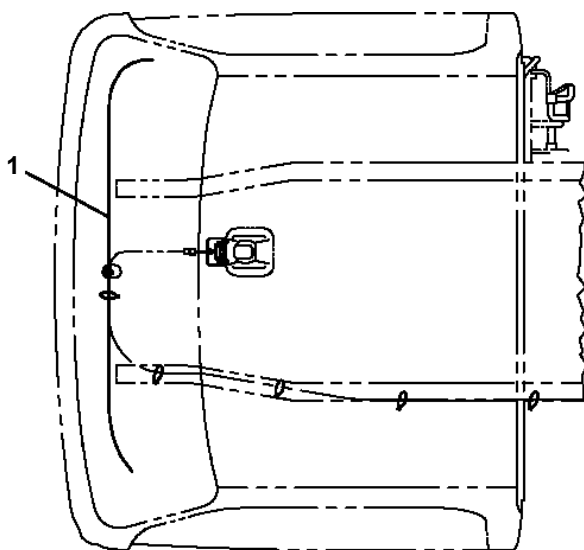
AT-100-5 42063535750 UPPER,LOWER,HINO 2RG-XZU600X-TYTMX6

Pos No.	Parts No	Parts Name	Qty	Unit	Technical Data	Serial No (Start)	Serial No (End)
1	42910391101	HARNESS	1				
2	42837372200	HARNESS (RIGHT TOOL BOX)	1				
3	42837372300	HARNESS (LEFT BOX TOOL)	1				
4	42809631200	LAMP ASSY (RED,WITH HARNESS)	1				
5	42910391201	RELAY BOX ASSY	1				
6	82473012600	SWITCH	4				
8	42910391300	SUPPORT	2				
9	42910391400	SUPPORT	2				
10	42910391500	SUPPORT	1				
11	42910391600	SUPPORT	1				
12	42970380010	PLATE	8		T=0.8		
13	42910391700	SUPPORT	1				
14	42910391800	SUPPORT	1				
15	42970190060	PLATE	4				
16	82100002002	CLAMP	4		WR6		
17	80147310450	RIVET	16		NSA4-5		
18	90101206014	BOLT	11		M6X14		
19	90101205008	BOLT	8		M5X8		
20	80172803010	SCREW,MACHINE	16		M3X10		
21	90302040601	WASHER,SPRING	11		6		
22	90302040501	WASHER,SPRING	8		5		
23	90302510301	WASHER,SPRING (SUS 3)	16				
24	90303520301	WASHER,PLAIN	16		3		
25	90303070601	WASHER,PLAIN	4		6		
26	82401600506	CLAMP	20		D6.5		
27	91810132530	FASTENER	20				
29	42837372160	HARNESS	1				
30	90201200800	NUT	1		M8		
31	90302040801	WASHER,SPRING	1		8		
32	90303070801	WASHER,PLAIN	1		8		
33	82100001803	TUBE,CORRUGATE	1	M	13		

AT-100-5 42063535750 UPPER,LOWER,HINO 2RG-XZU600X-TYTMX6

Pos No.	Parts No	Parts Name	Qty	Unit	Technical Data	Serial No (Start)	Serial No (End)
1	42355780100	HARNESS	1				
3	91810132530	FASTENER	15				
4	42355780200	HARNESS	1				
5	90302040601	WASHER,SPRING	2		6		
6	36140750000	DETECTOR ASSY,ANGLE (ASSY ONLY)	1				
9	90303070601	WASHER,PLAIN	2		6		
11	37000714010	CLAMP ASSY	6		12X1		
13	90172106012	BOLT,HEXAGON SOCKET	2		M6X12		
15	42356790200	HARNESS	1				
16	42350250070	PLUG (2 POLES,MALE)	1				

AT-100-5 42063535750 UPPER,LOWER,HINO 2RG-XZU600X-TYTMX6
 PE5070114-01 ELEC.ASSY,CARRIER



B

AT-100-5 42063535750 UPPER,LOWER,HINO 2RG-XZU600X-TYTMX6

Pos No.	Parts No	Parts Name	Qty	Unit	Technical Data	Serial No (Start)	Serial No (End)	Remarks	Pages
1	42357570101	COVER	1						
2	90101208014	BOLT	3		M8X14				
3	90303070801	WASHER,PLAIN	5		8				
4	90302040801	WASHER,SPRING	4		8				
5	90201200800	NUT	1		M8				
6	91850400601	CLAMP	1						
7	91810132530	FASTENER	10						
8	82100002011	CLAMP	3		WRC15				
9	82100002052	CLAMP	2						
10	90201200600	NUT	2		M6				
11	90302040601	WASHER,SPRING	2		6				
14	90102206018	BOLT	3		M6X18				
16	91850400801	CLAMP	1						

AT-100-5 42063535750 UPPER,LOWER,HINO 2RG-XZU600X-TYTMX6

Pos No.	Parts No	Parts Name	Qty	Unit	Technical Data	Serial No (Start)	Serial No (End)	Remarks	Pages
1	42974320100	GUARD	1						
2	42974320200	GUARD	1						
3	42974320300	GUARD	1						

AT-100-5 42063535750 UPPER,LOWER,HINO 2RG-XZU600X-TYTMX6

Pos No.	Parts No	Parts Name	Qty	Unit	Technical Data	Serial No (Start)	Serial No (End)	Remarks	Pages
1	42739962100	VIEW SYSTEM	1						000106
2	91810130240	FASTENER	10						

AT-100-5 42063535750 UPPER,LOWER,HINO 2RG-XZU600X-TYTMX6

Pos No.	Parts No	Parts Name	Qty	Unit	Technical Data	Serial No (Start)	Serial No (End)	Remarks	I
1	(*****)	VIEW SYSTEM (MONITOR)	1						0
2	(*****)	VIEW SYSTEM (CAMERA)	1						0

AT-100-5 42063535750 UPPER,LOWER,HINO 2RG-XZU600X-TYTMX6

Pos No.	Parts No	Parts Name	Qty	Unit	Technical Data	Serial No (Start)	Serial No (End)	Remarks	Pages
100	42356790200	HARNESS	1						

AT-100-5 42063535750 UPPER,LOWER,HINO 2RG-XZU600X-TYTMX6

Pos No.	Parts No	Parts Name	Qty	Unit	Technical Data	Serial No (Start)	Serial No (End)	Remarks	Pages
100	42355780100	HARNESS	1						

AT-100-5 42063535750 UPPER,LOWER,HINO 2RG-XZU600X-TYTMX6

Pos No.	Parts No	Parts Name	Qty	Unit	Technical Data	Serial No (Start)	Serial No (End)	Remarks	Pages
100	42835860010	HARNESS	1						
	42835860010	HARNESS	1						

AT-100-5 42063535750 UPPER,LOWER,HINO 2RG-XZU600X-TYTMX6

Pos No.	Parts No	Parts Name	Qty	Unit	Technical Data	Serial No (Start)	Serial No (End)	Remarks	Pages
100	42356280010	HARNESS	1						
	42356280010	HARNESS	1						

AT-100-5 42063535750 UPPER,LOWER,HINO 2RG-XZU600X-TYTMX6

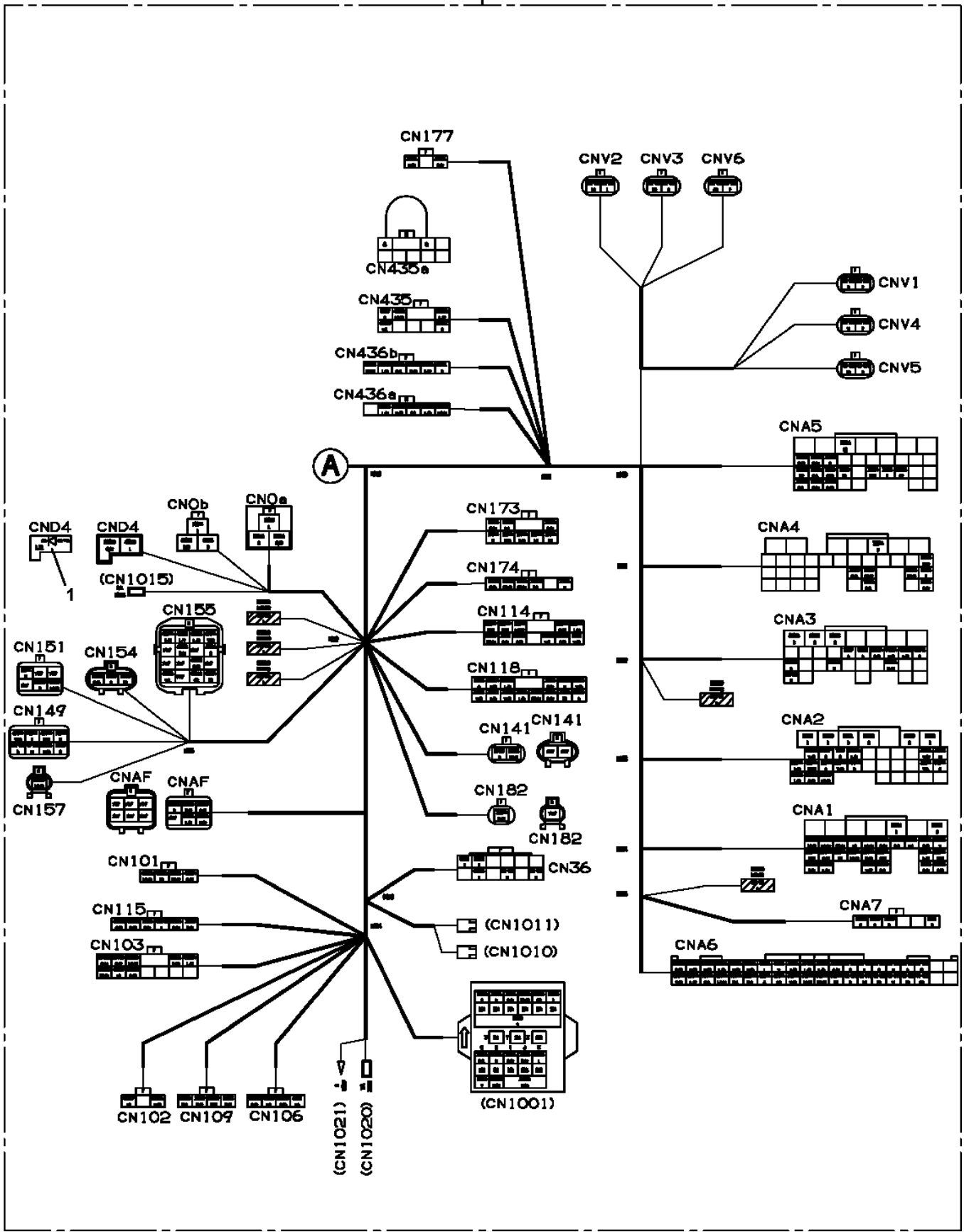
Pos No.	Parts No	Parts Name	Qty	Unit	Technical Data	Serial No (Start)	Serial No (End)	Remark
1	82182819823	DIODE	2		1.5A			
2	82182809623	DIODE	1					
100	42512381100	HARNESS (PTO FAIL SAFE)	1					

AT-100-5 42063535750 UPPER,LOWER,HINO 2RG-XZU600X-TYTMX6

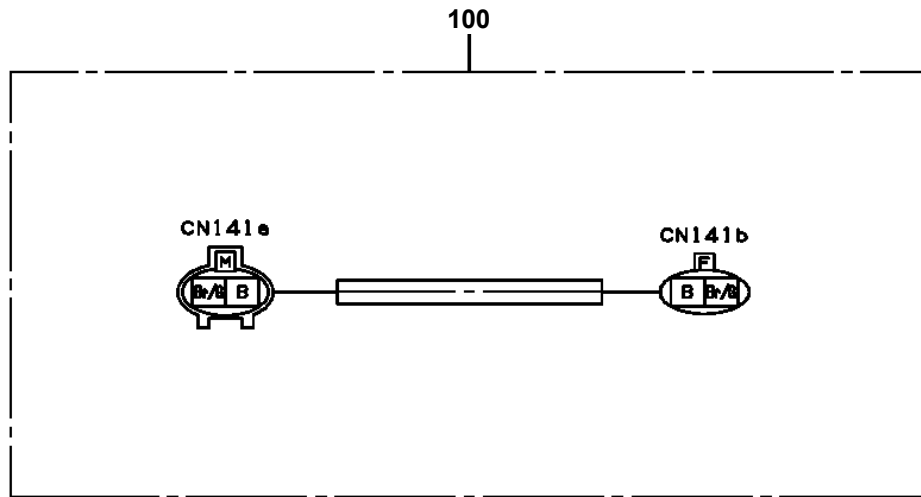
Pos No.	Parts No	Parts Name	Qty	Unit	Technical Data	Serial No (Start)	Serial No (End)	Remarks	Pages
100	42655500100	HARNESS	1						

AT-100-5 42063535750 UPPER,LOWER,HINO 2RG-XZU600X-TYTMX6
 PH5033725-01 HARNESS (FRAME)

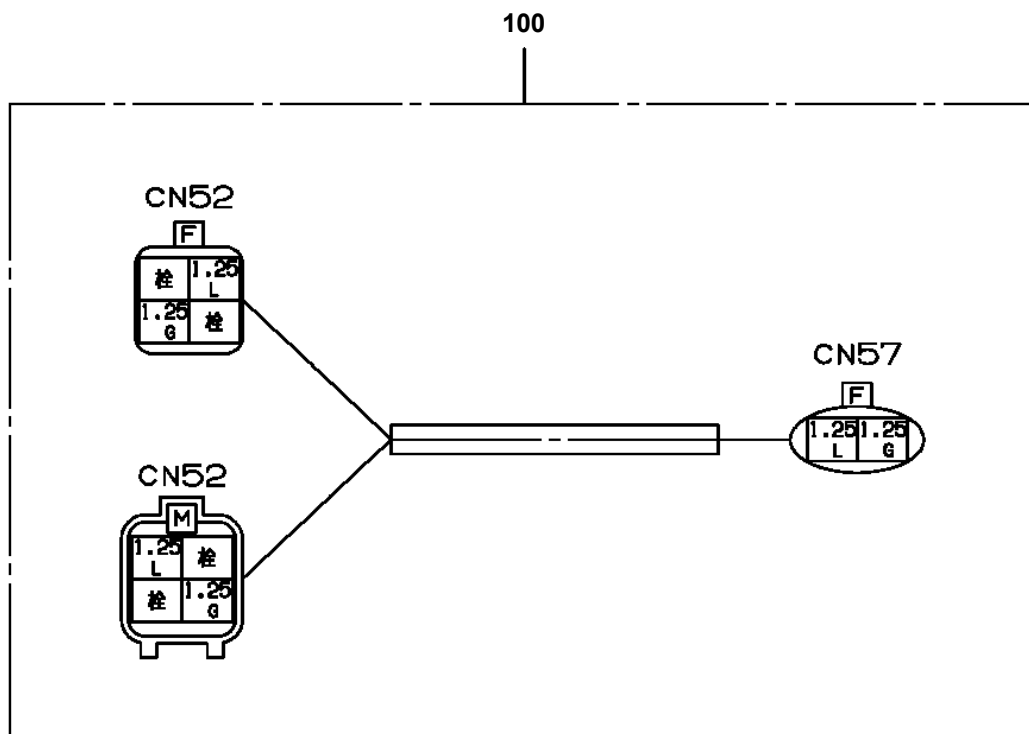
100



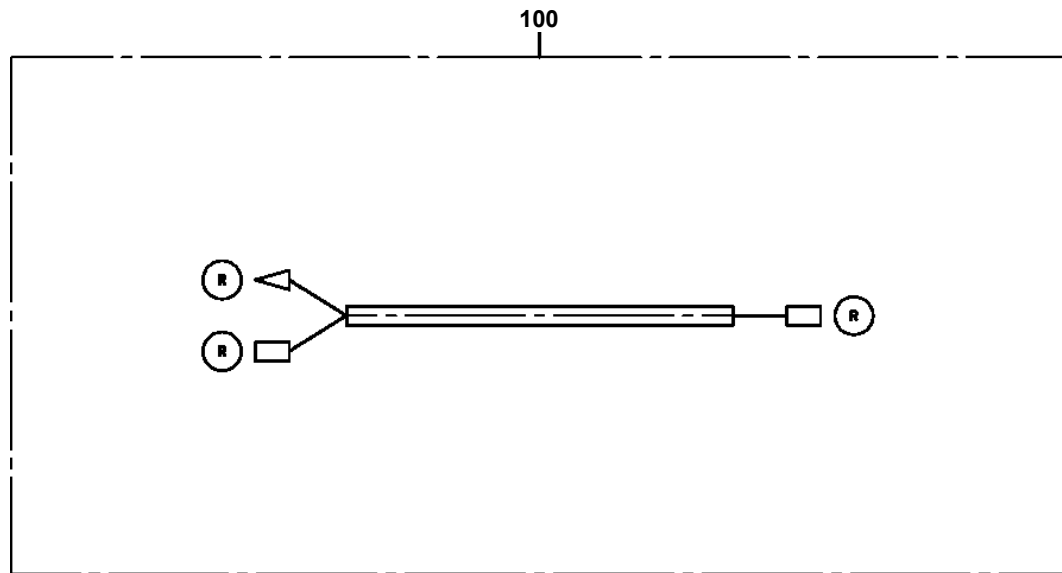
AT-100-5 42063535750 UPPER,LOWER,HINO 2RG-XZU600X-TYTMX6
PH5034163-00 HARNESS



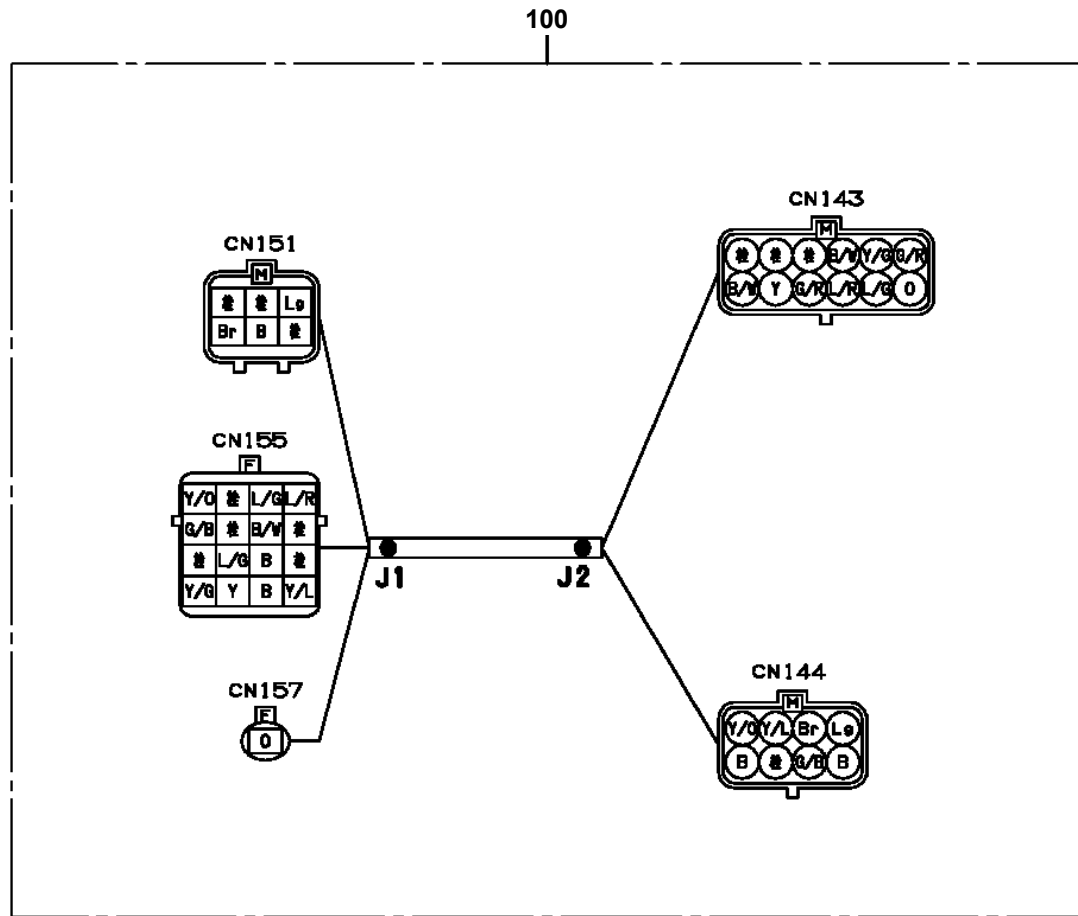
AT-100-5 42063535750 UPPER,LOWER,HINO 2RG-XZU600X-TYTMX6
PH5034172-00 HARNESS



AT-100-5 42063535750 UPPER,LOWER,HINO 2RG-XZU600X-TYTMX6
PH5034180-00 HARNESS

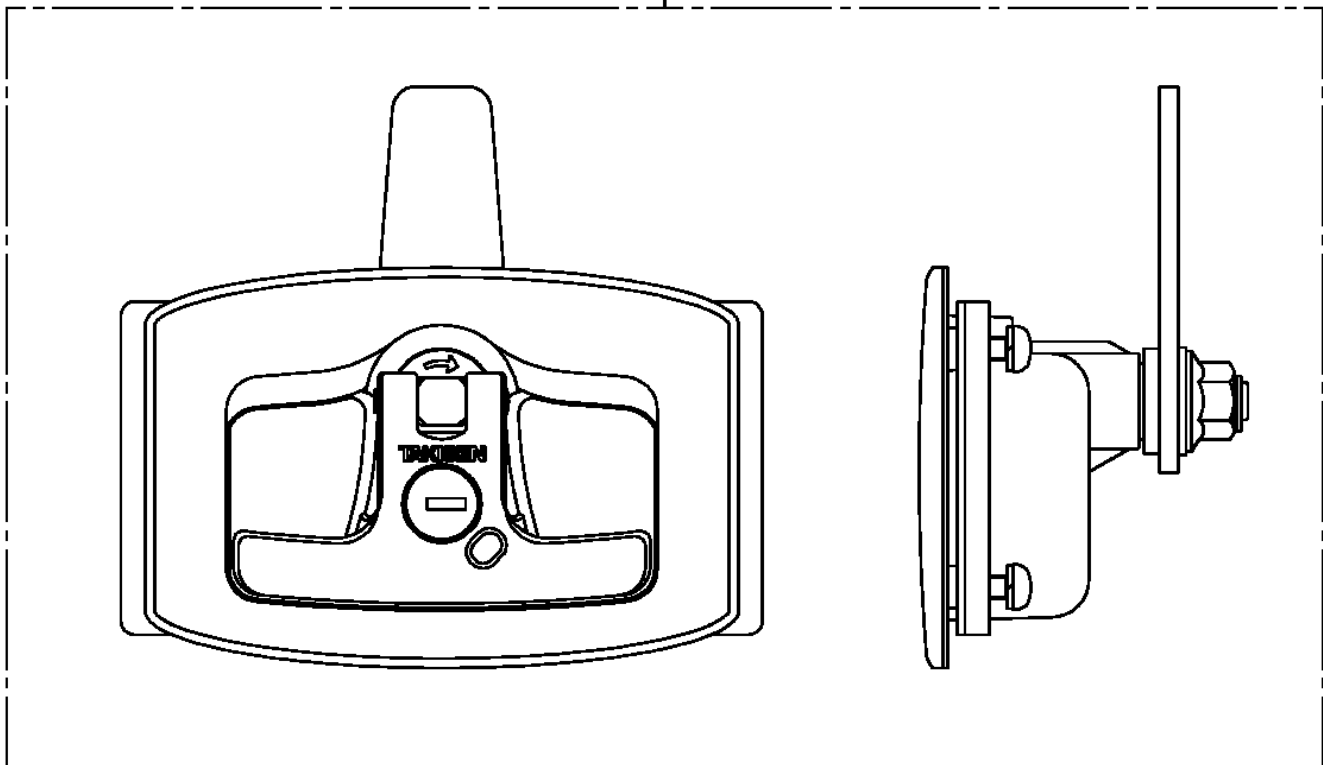


AT-100-5 42063535750 UPPER,LOWER,HINO 2RG-XZU600X-TYTMX6
 PH5034429-00 HARNESS



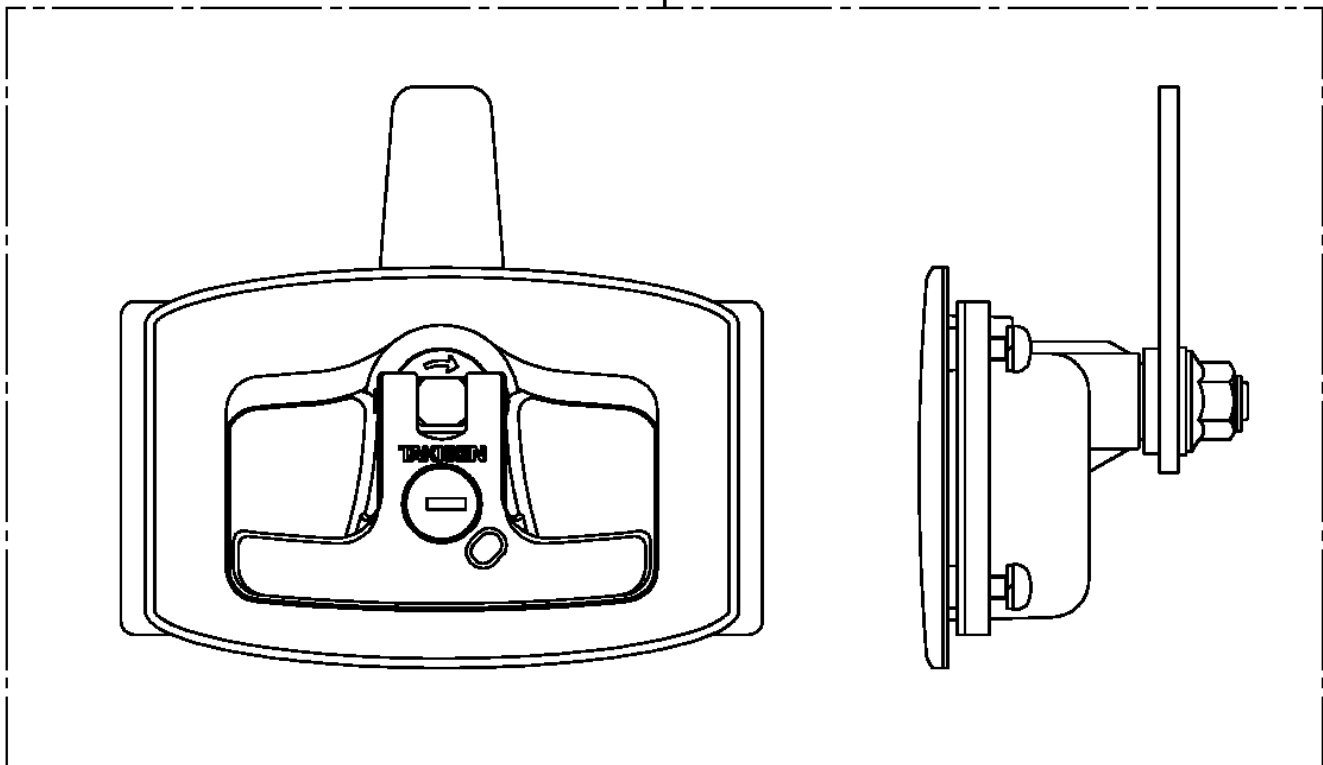
AT-100-5 42063535750 UPPER,LOWER,HINO 2RG-XZU600X-TYTMX6
PH5190001-00 HANDLE

1

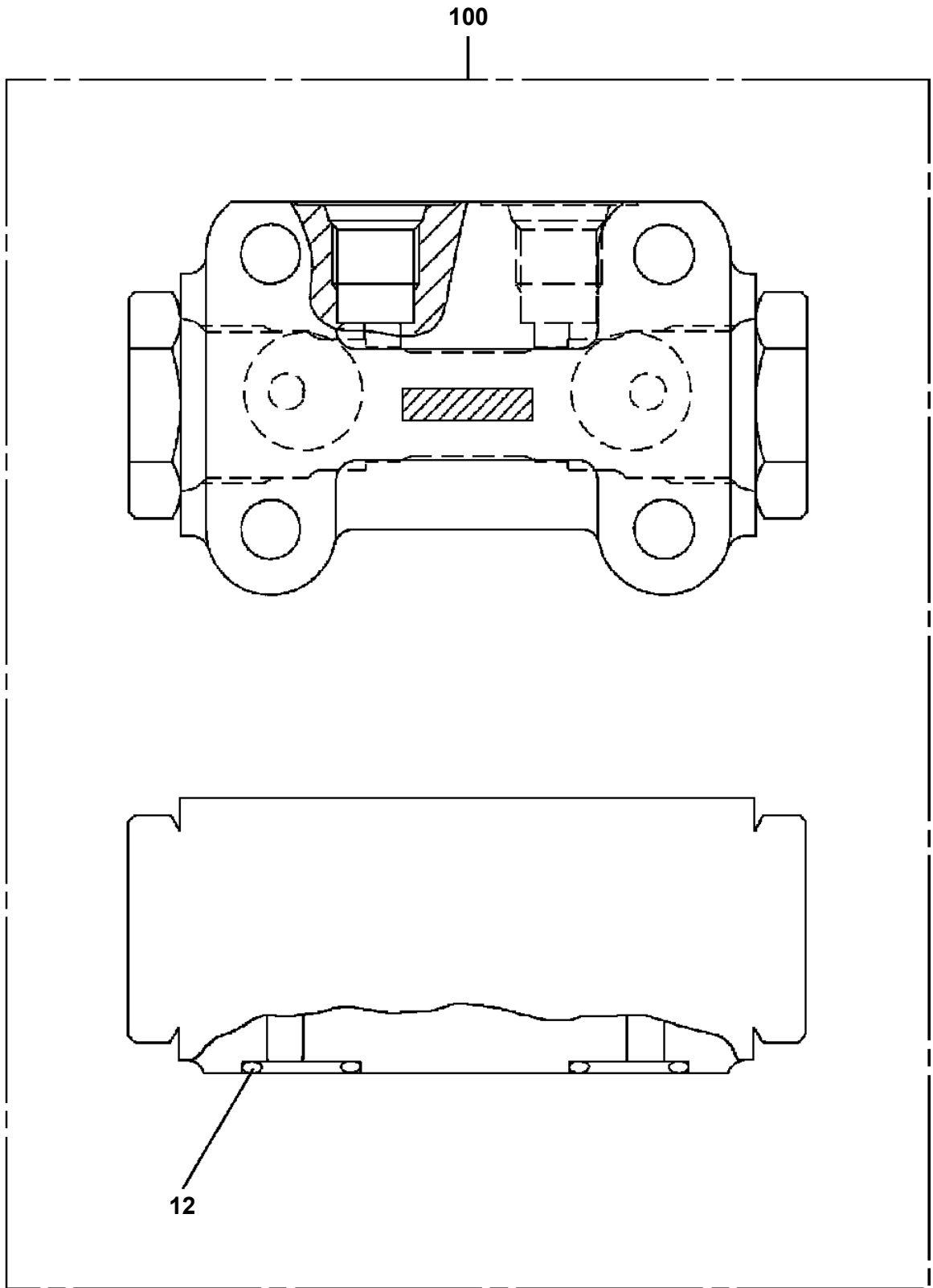


AT-100-5 42063535750 UPPER,LOWER,HINO 2RG-XZU600X-TYTMX6
PH5190001-00 HANDLE

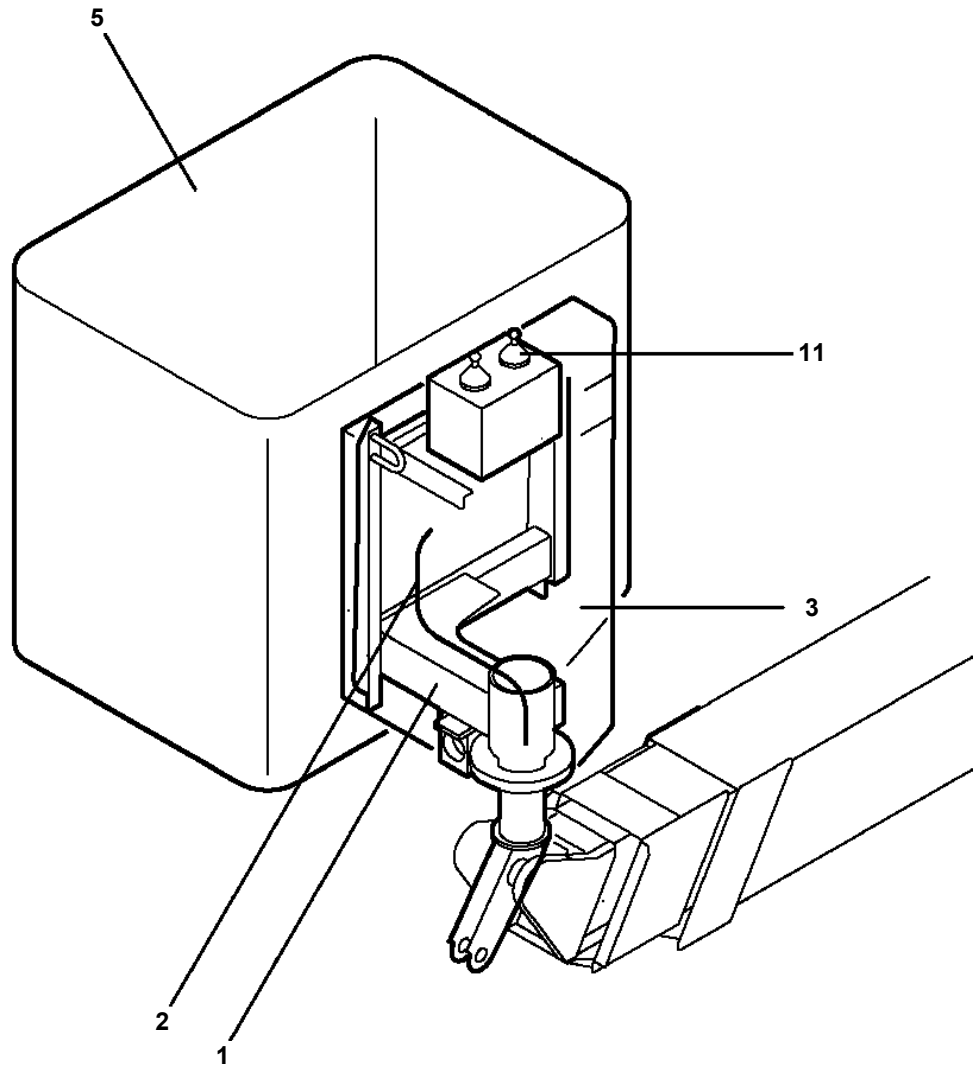
1



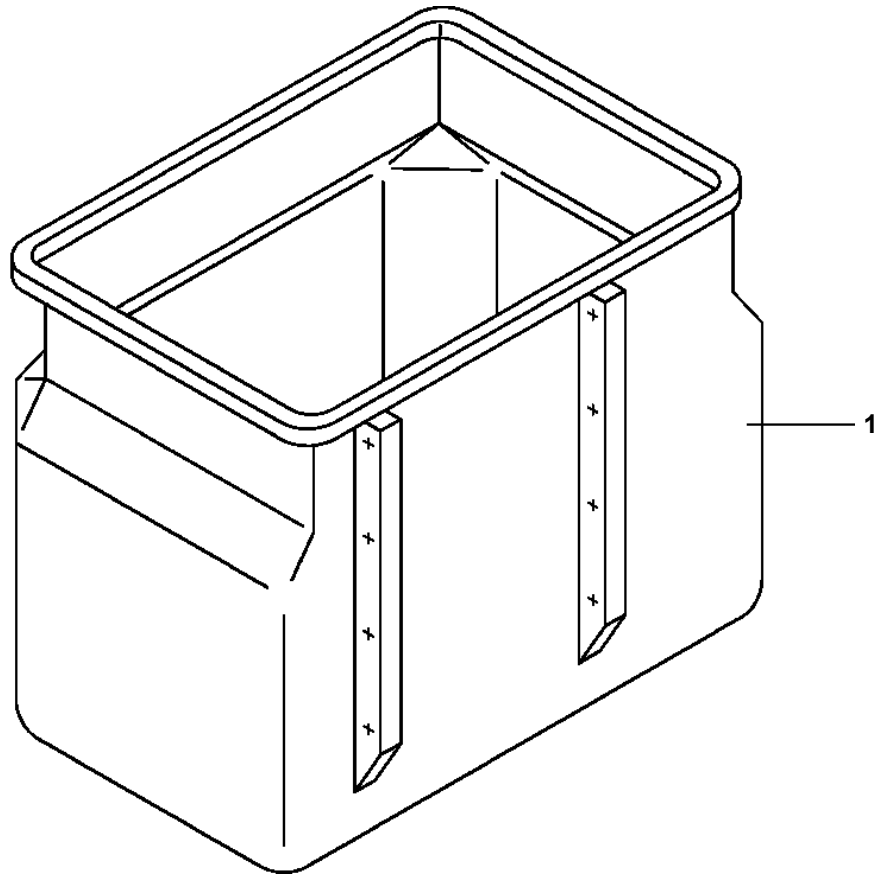
AT-100-5 42063535750 UPPER,LOWER,HINO 2RG-XZU600X-TYTMX6
PI1140227-00 VALVE,CHECK



**AT-100-5 42063535750 UPPER,LOWER,HINO 2RG-XZU600X-TYTMX6
PJ2000016-00 BUCKET SYSTEM**



**AT-100-5 42063535750 UPPER,LOWER,HINO 2RG-XZU600X-TYTMX6
PJ3010299-00 BUCKET (WITH BOSS ON ONE SIDE)**



CLICK HERE TO **DOWNLOAD** THE COMPLETE MANUAL

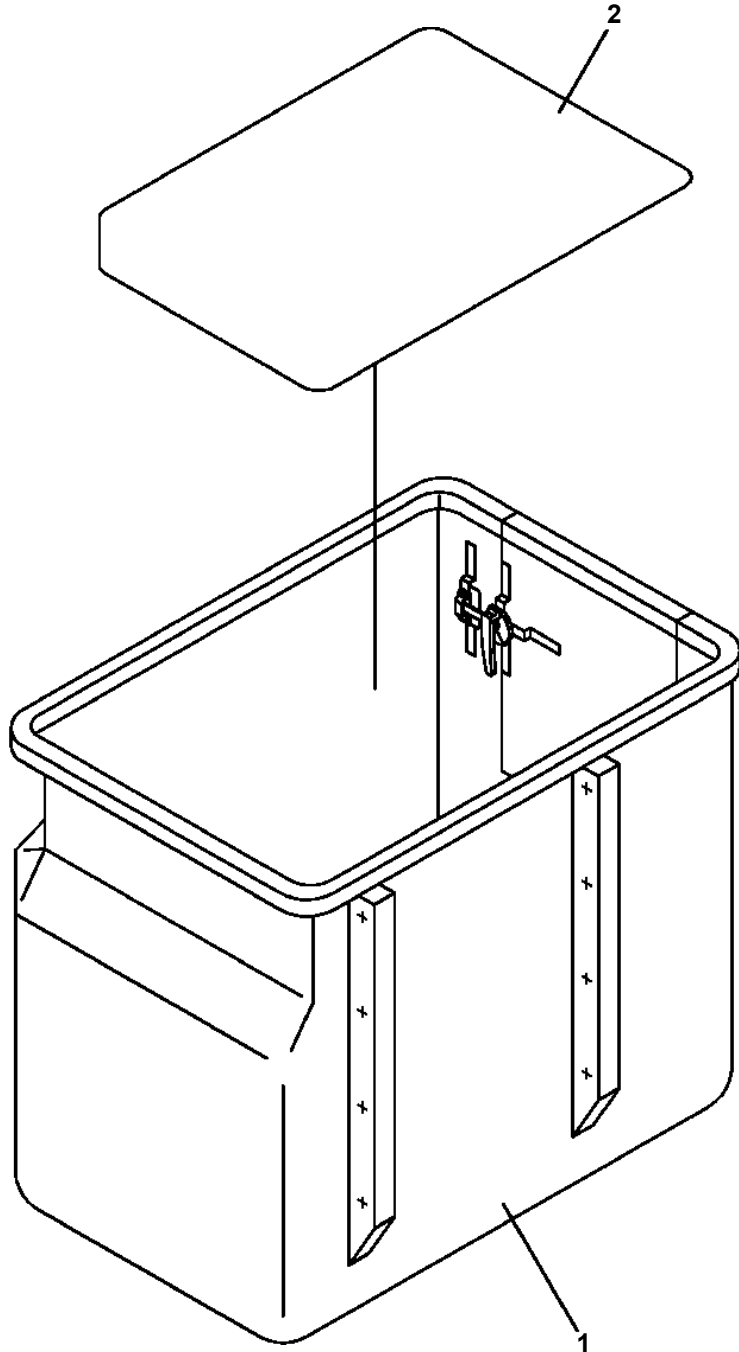
- Thank you very much for reading the preview of the manual.
- You can download the complete manual from: www.heydownloads.com by clicking the link below



- Please note: If there is no response to CLICKING the link, please download this PDF first and then click on it.

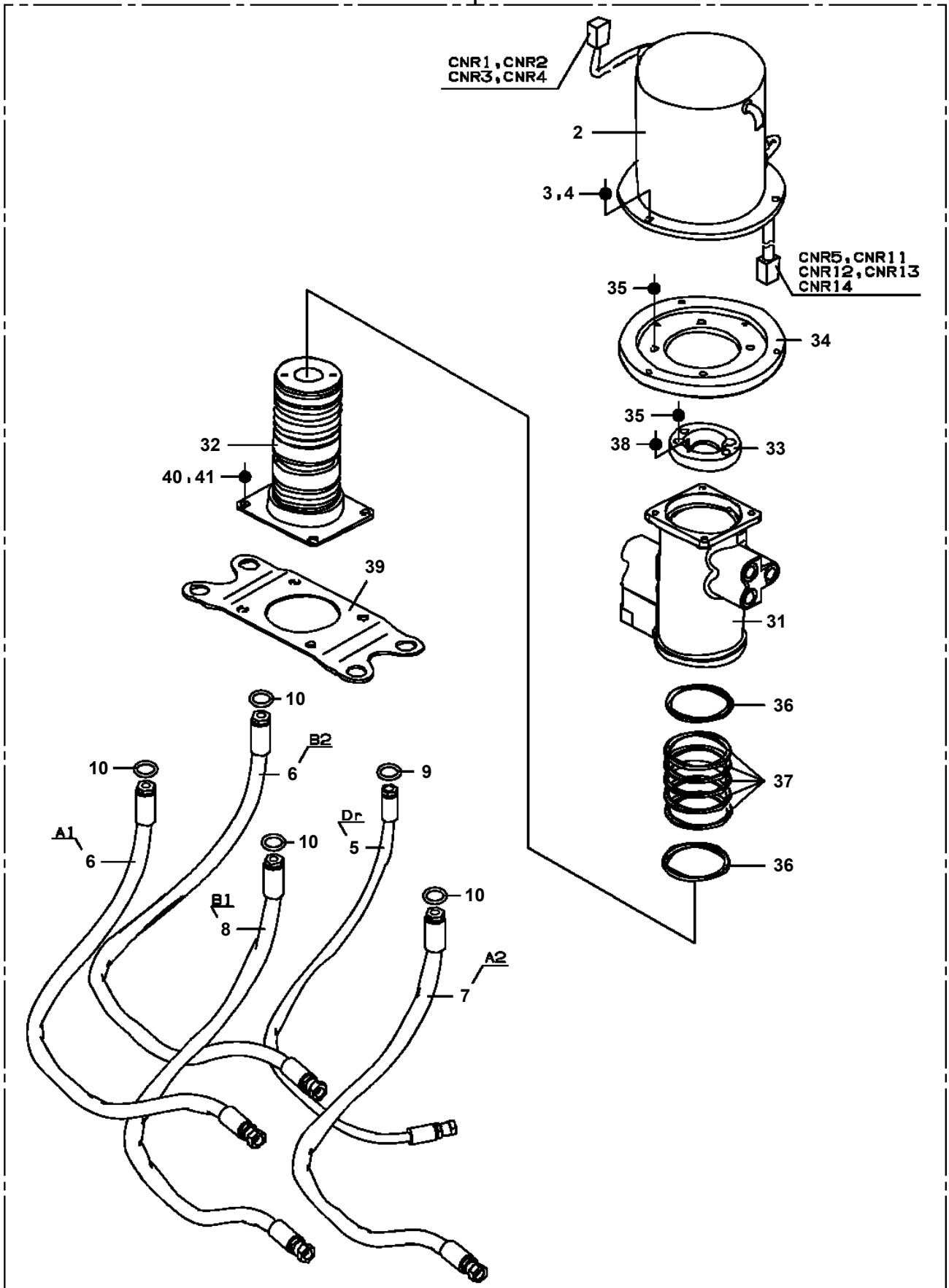
CLICK HERE TO **DOWNLOAD** THE COMPLETE MANUAL

**AT-100-5 42063535750 UPPER,LOWER,HINO 2RG-XZU600X-TYTMX6
PJ3010364-00 BUCKET (WHITE/WITH DOOR)**

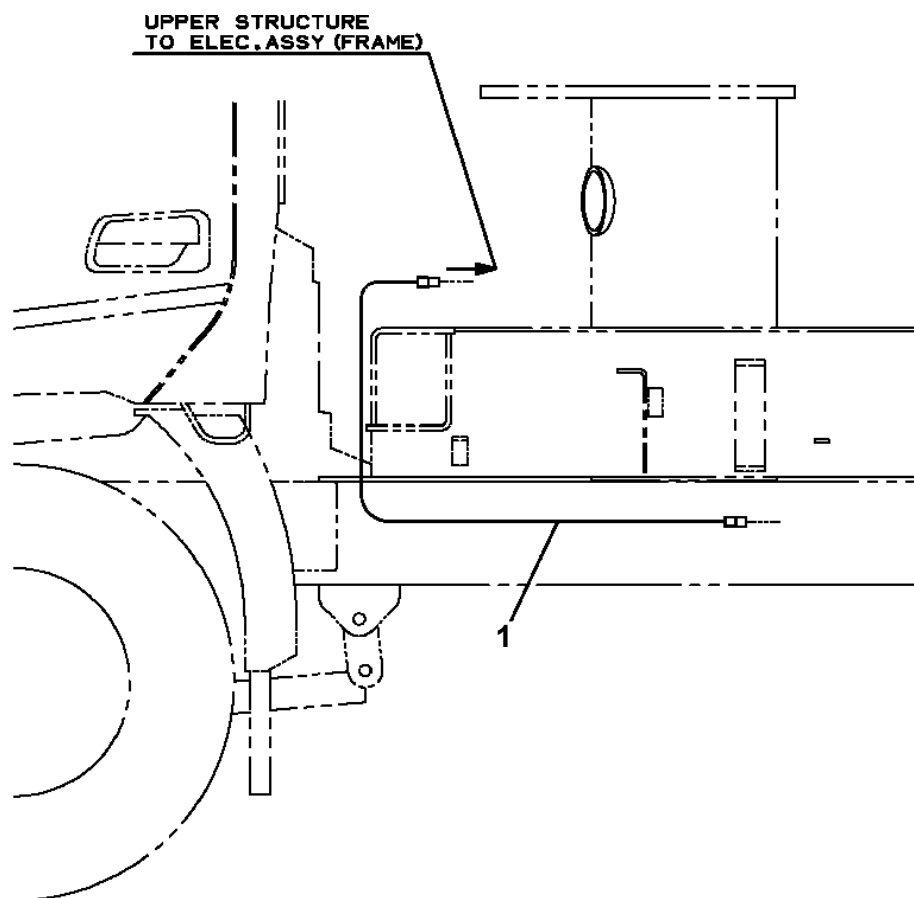


AT-100-5 42063535750 UPPER,LOWER,HINO 2RG-XZU600X-TYTMX6
PJ5090039-00 JOINT ASSY,SWIVEL

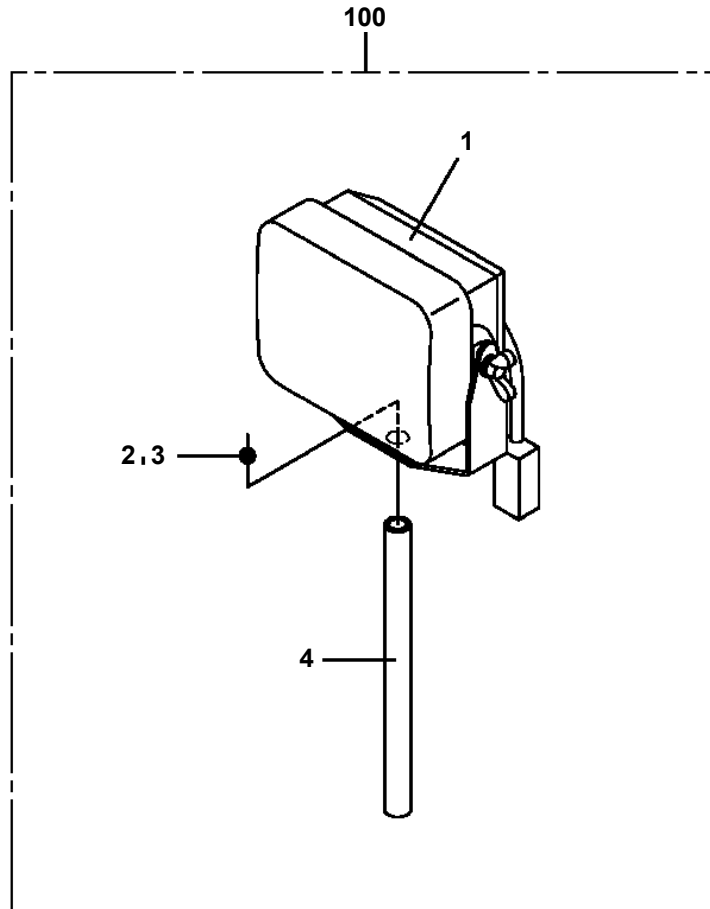
100



**AT-100-5 42063535750 UPPER,LOWER,HINO 2RG-XZU600X-TYTMX6
PL1031085-00 OPE.ASSY,ACCELERATOR**



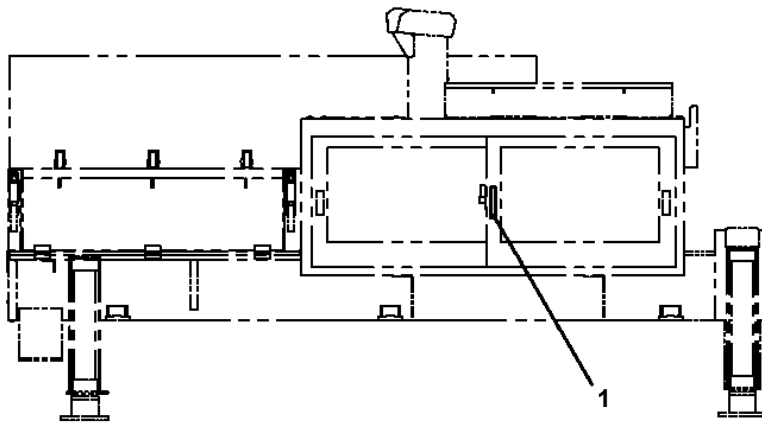
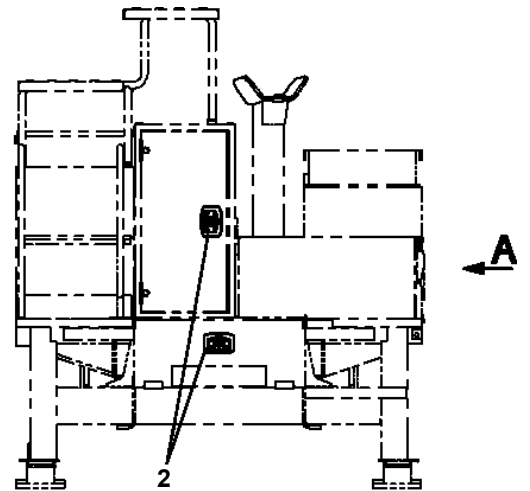
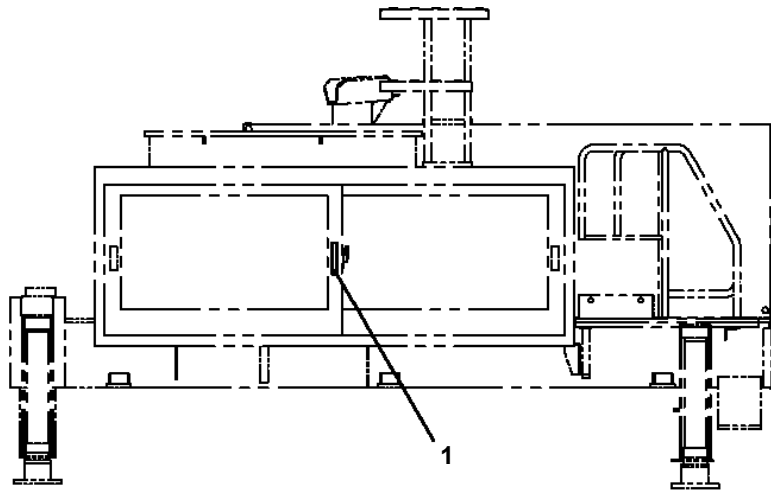
AT-100-5 42063535750 UPPER,LOWER,HINO 2RG-XZU600X-TYTMX6
PL5020197-00 LAMP ASSY (SQUARE TYPE)



AT-100-5 42063535750 UPPER,LOWER,HINO 2RG-XZU600X-TYTMX6

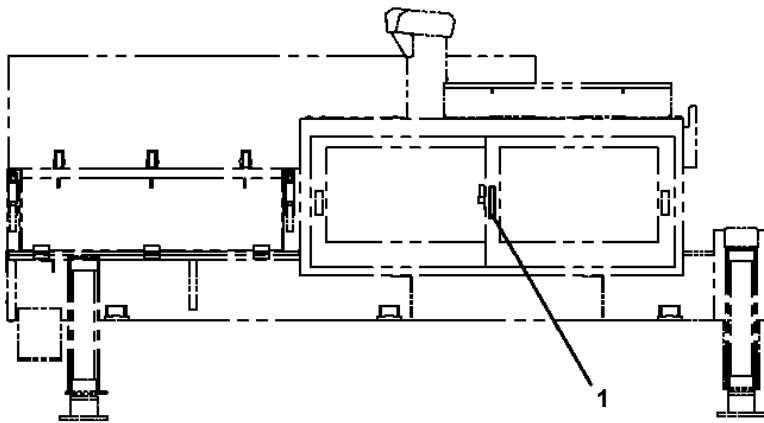
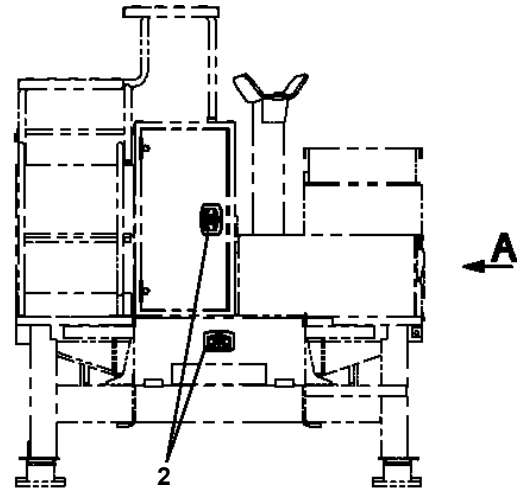
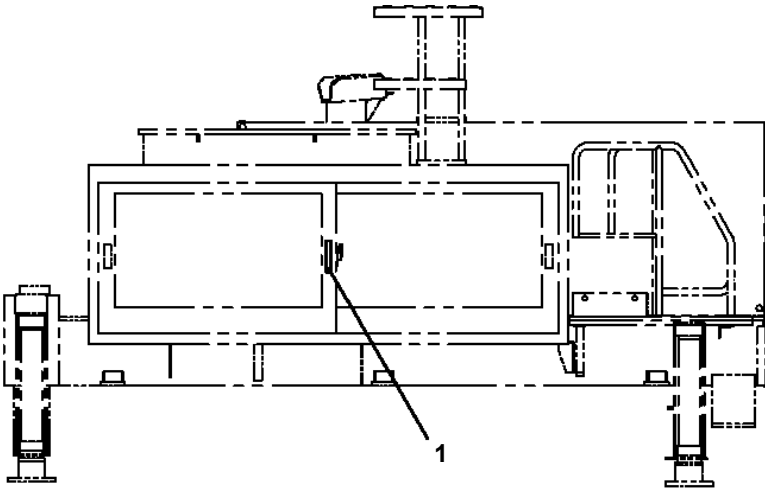
Pos No.	Parts No	Parts Name	Qty	Unit	Technical Data	Serial No (Start)	Serial No (End)	Remarks	Pages
1	42502381300	SUPPORT	1						
2	42508702101	SUPPORT	1						
3	42356280010	HARNESS	1						00013
4	90813108016	BOLT,WING	1		M8X16				
5	82100001822	FASTENER	1						
7	90201200600	NUT	2		M6				
8	90302040601	WASHER,SPRING	2		6				
9	82100002006	CLAMP	1		WR10				
10	91810130240	FASTENER	5						
11	82119434100	CONNECTOR	1						
12	80175304016	SCREW,MACHINE	2		M4X16				
13	42477640080	PLATE,NAME	1						
14	42508140100	HARNESS	1						00011
15	42502381100	LAMP ASSY	1						
16	42501791000	SUPPORT ASSY	1						
17	90201200800	NUT	2		M8				
18	90302040801	WASHER,SPRING	2		8				
19	82100002035	CLAMP	1		WE8				
20	90101206020	BOLT	1		M6X20				
41	82199100032	LAMP	1						
42	90101212020	BOLT	1		M12X20				
43	90302041201	WASHER,SPRING	1		12				
44	37000179070	PIN	1						
61	42501692100	SUPPORT	1						
62	42501791100	SUPPORT	1						
63	82430138010	KNOB	2						
64	90813110016	BOLT,WING	1						
65	90101208030	BOLT	2		M8X30				
66	90303070801	WASHER,PLAIN	2		8				
67	37000506550	PLATE	2		T=1.6				
68	90302040801	WASHER,SPRING	2		8				
81	82100002850	LENS	1						
82	82100005003	BULB,LAMP	1		24V 55W ÊÙ'pÝ				

AT-100-5 42063535750 UPPER,LOWER,HINO 2RG-XZU600X-TYTMX6
PL5270044-00 LOCK ASSY (KEY NO.2)



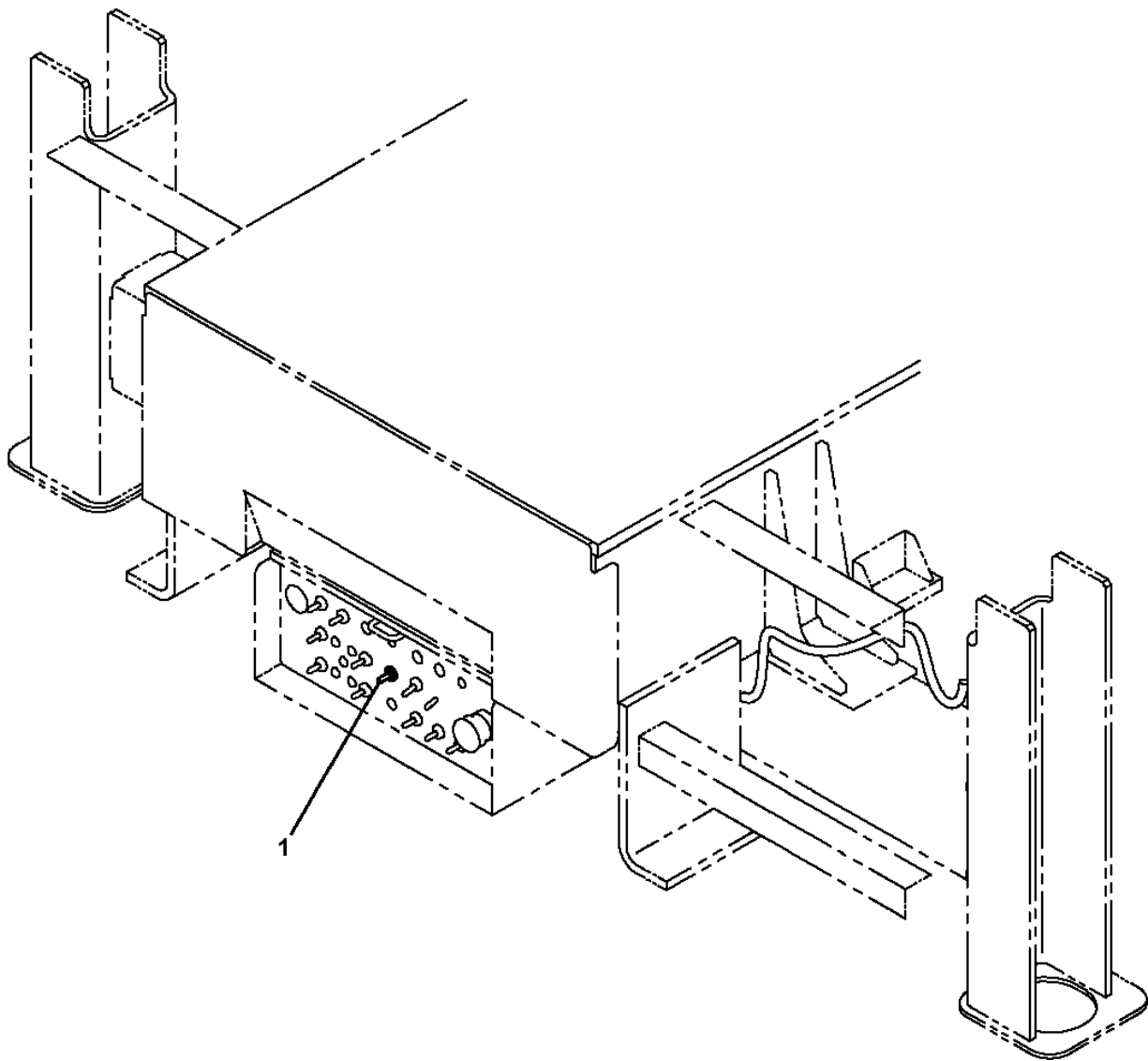
A

AT-100-5 42063535750 UPPER,LOWER,HINO 2RG-XZU600X-TYTMX6
PL5270049-00 LOCK ASSY (KEY NO.7)



A

**AT-100-5 42063535750 UPPER,LOWER,HINO 2RG-XZU600X-TYTMX6
PM5150651-00 MODIFICATION ASSY**



AT-100-5 42063535750 UPPER,LOWER,HINO 2RG-XZU600X-TYTMX6

Pos No.	Parts No	Parts Name	Qty	Unit	Technical Data	Serial No (Start)	Serial No (End)	Remarks	Pages
1	42974461200	STEP	1						
2	42972560300	STEP	1						
3	90101210018	BOLT	2		M10X18				
4	90302041001	WASHER,SPRING	3		10				
5	90303071001	WASHER,PLAIN	2		10				
6	90180210025	BOLT,BUTTON	1		M10X25				
7	37000549940	PLATE	1		T=3.2				
8	90201201000	NUT	1		M10				
13	37002707760	CABLE ASSY	1		L=300				
14	90201200800	NUT	3		M8				
15	90302040801	WASHER,SPRING	3		8				
16	90303070801	WASHER,PLAIN	3		8				
18	90101208020	BOLT	1		M8X20				

AT-100-5 42063535750 UPPER,LOWER,HINO 2RG-XZU600X-TYTMX6

Pos No.	Parts No	Parts Name	Qty	Unit	Technical Data	Serial No (Start)	Serial No (End)
6	82105220286	SWITCH,TOGGLE	3				
50	42651591300	SWITCH ASSY (WITH HARNESS,3 SW)	1				

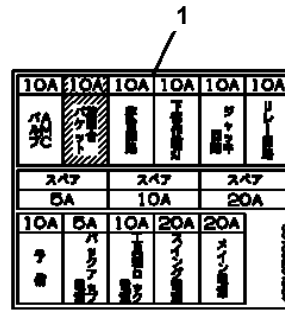
AT-100-5 42063535750 UPPER,LOWER,HINO 2RG-XZU600X-TYTMX6

Pos No.	Parts No	Parts Name	Qty	Unit	Technical Data	Serial No (Start)	Serial No (End)	Remarks	Pages
1	42392583050	PLATE,NAME	2				HK2663		
	42592663170	PLATE,NAME	2			HK2664			

AT-100-5 42063535750 UPPER,LOWER,HINO 2RG-XZU600X-TYTMX6

Pos No.	Parts No	Parts Name	Qty	Unit	Technical Data	Serial No (Start)	Serial No (End)	Remarks	Pages
1	42590221010	PLATE,NAME	1						
2	42590594010	PLATE,NAME	1						
3	42590594020	PLATE,NAME	1						
4	42590594030	PLATE,NAME	1						
5	42590594040	PLATE,NAME	1						
6	42590594050	PLATE,NAME	1						
7	42590594060	PLATE,NAME	1						
8	42475910010	PLATE,NAME	2						
9	42396162040	PLATE,NAME	1						
10	42590594080	PLATE,NAME	1						
11	42590263010	PLATE,NAME	1						

AT-100-5 42063535750 UPPER,LOWER,HINO 2RG-XZU600X-TYTMX6
 PN5011702-00 NAME PLATE ASSY (FUSE,TOOL BOX CENTRAL LOCK)

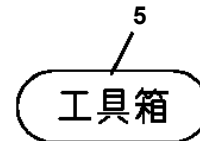
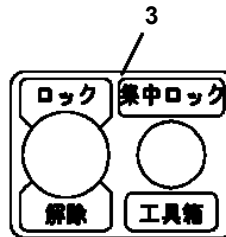


2

⚠ 警告 / 走行時注意

走行時は、扉中央のクレセント錠部で扉のロックおよび施錠を確実に行ってください。扉が開く恐れがあります。

4206-374-76080



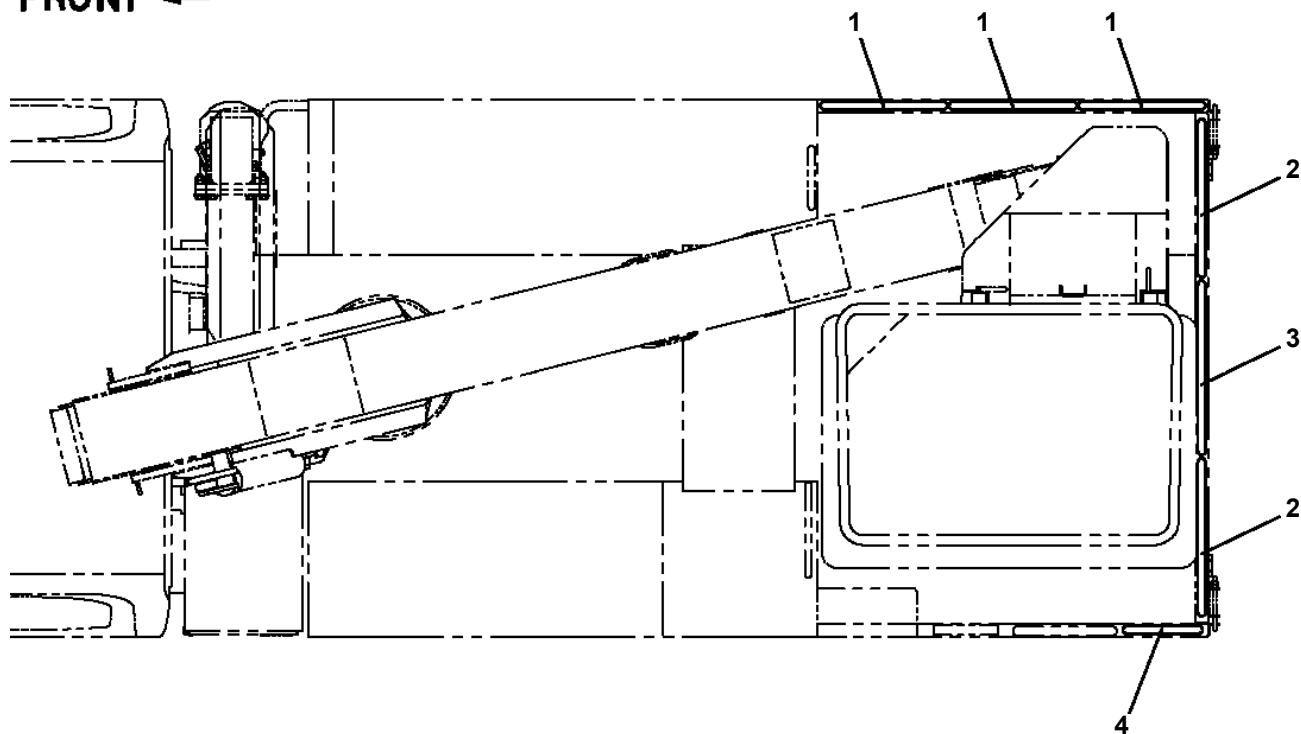
AT-100-5 42063535750 UPPER,LOWER,HINO 2RG-XZU600X-TYTMX6
PO1000182-00 INDICATION PLATES (UPPER)

メイパ ン (シ ョウブ)
INDICATION PLATES (UPPER)

〔組立名称一覧〕より選択してください。
SEE THE CORRESPONDING "ASSEMBLY NAME" LIST.

**AT-100-5 42063535750 UPPER,LOWER,HINO 2RG-XZU600X-TYTMX6
PO1090061-00 NON-SLIP PLATE (NTT SHIKOKU)**

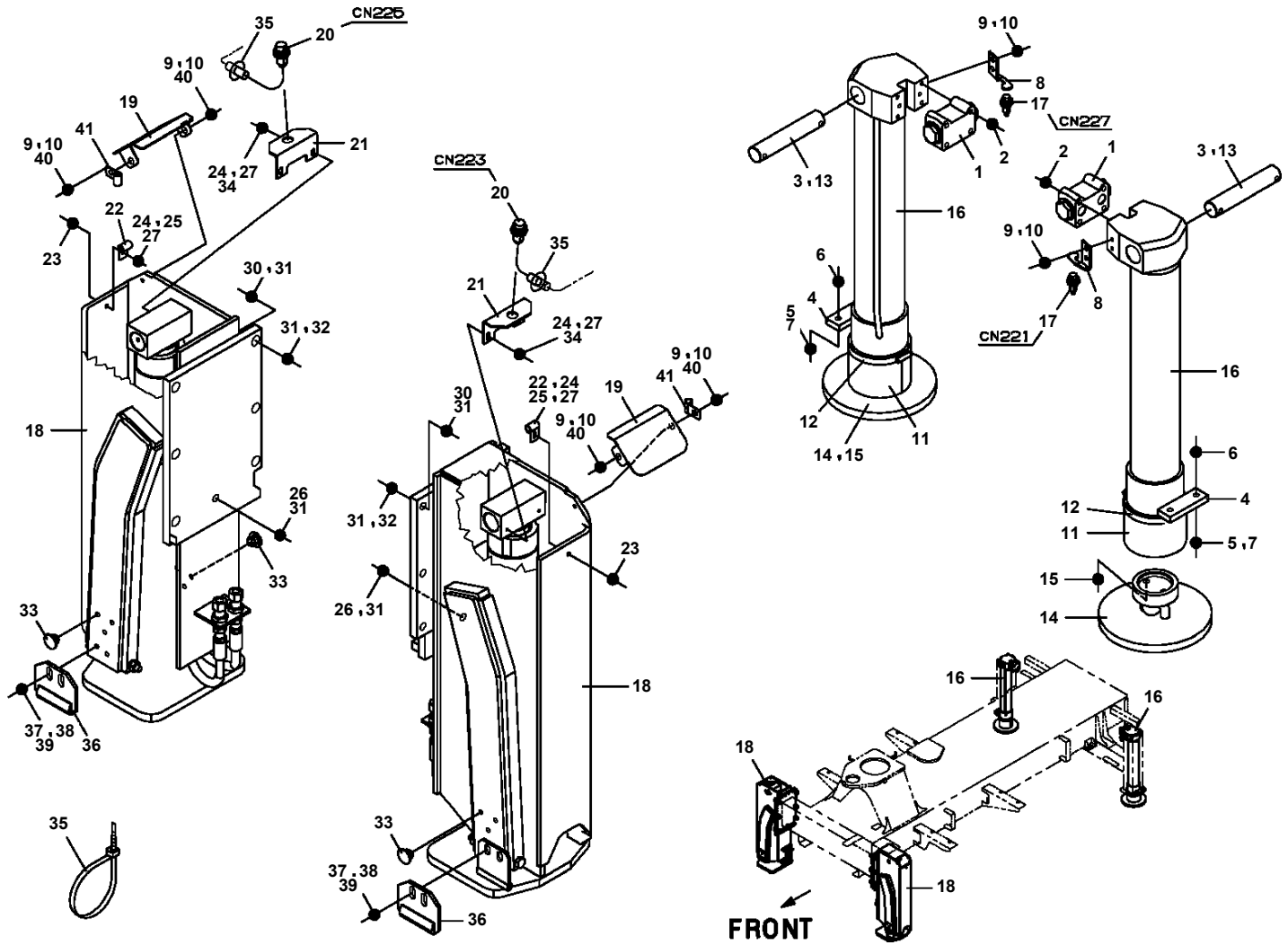
FRONT ←



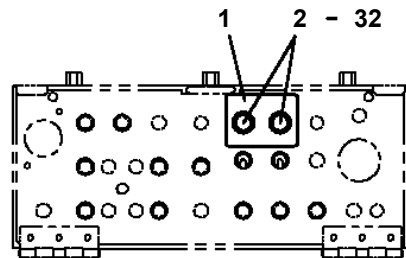
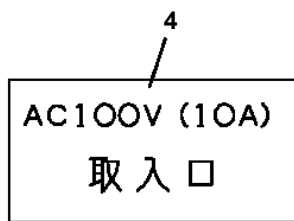
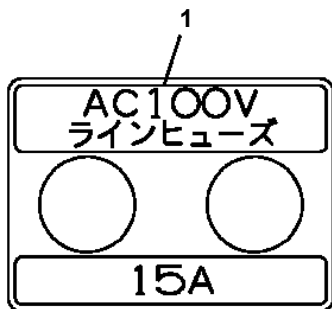
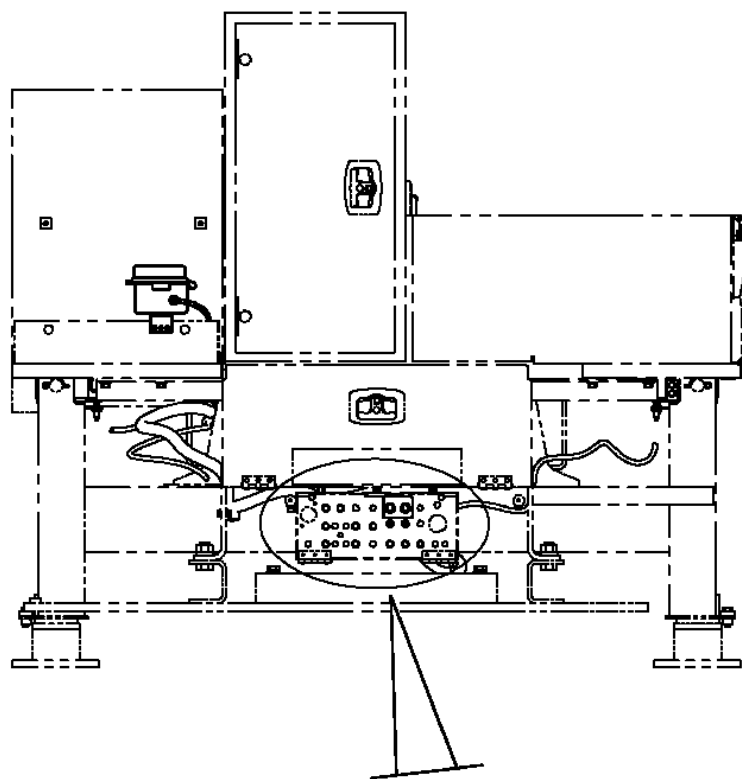
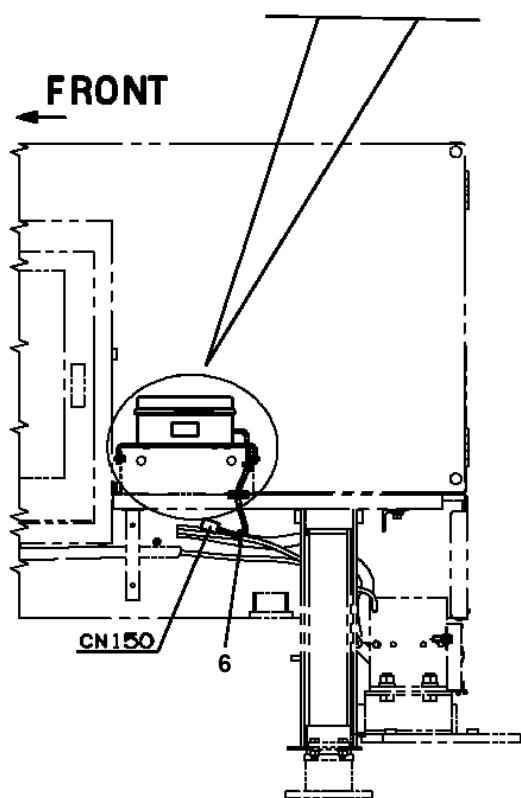
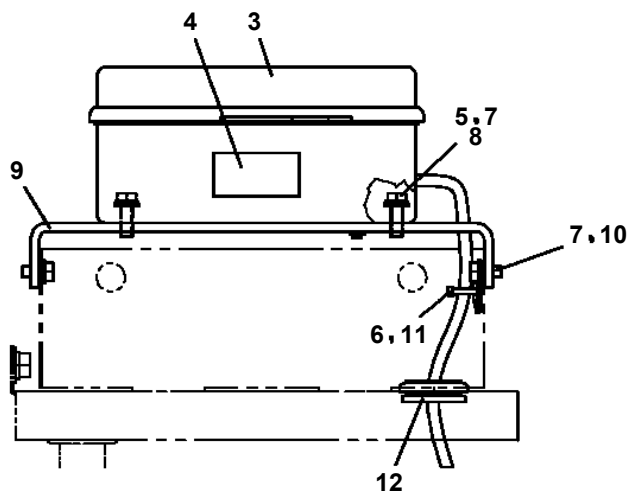
**AT-100-5 42063535750 UPPER,LOWER,HINO 2RG-XZU600X-TYTMX6
PO5050039-01 OPE.ASSY,BUCKET (WITH 3-AXIS ENABLE SW)**

指示番号 KEY NO.	オペ .ASSY,ハ`ケツト (3ジ`クイネーフ`ルSWツキ) OPE.ASSY,BUCKET (WITH 3-AXIS ENABLE SW)
1	オペ .ASSY,ハ`ケツト OPE.ASSY,BUCKET
2	ネームフ`レートASSY (ハ`ケツトソウサフ`) NAME PLATE ASSY (BUCKET CONTROL)
3	ネームフ`レートASSY (ハ`ケツトナイメン) NAME PLATE ASSY (INSIDE BUCKET)
4	ネームフ`レートASSY (アンセ`ンタイヨウローフ`カケ) NAME PLATE ASSY (SAFETY BELT HOOK HOLDER)

AT-100-5 42063535750 UPPER,LOWER,HINO 2RG-XZU600X-TYTMX6 PO5270460-00 OUTRIGGER ASSY (GUIDE TYPE JACK)



AT-100-5 42063535750 UPPER,LOWER,HINO 2RG-XZU600X-TYTMX6
 PP5340026-00 POWER SUPPLY ASSY,ELECTRICITY (LOWER/3-POLE+EARTH)

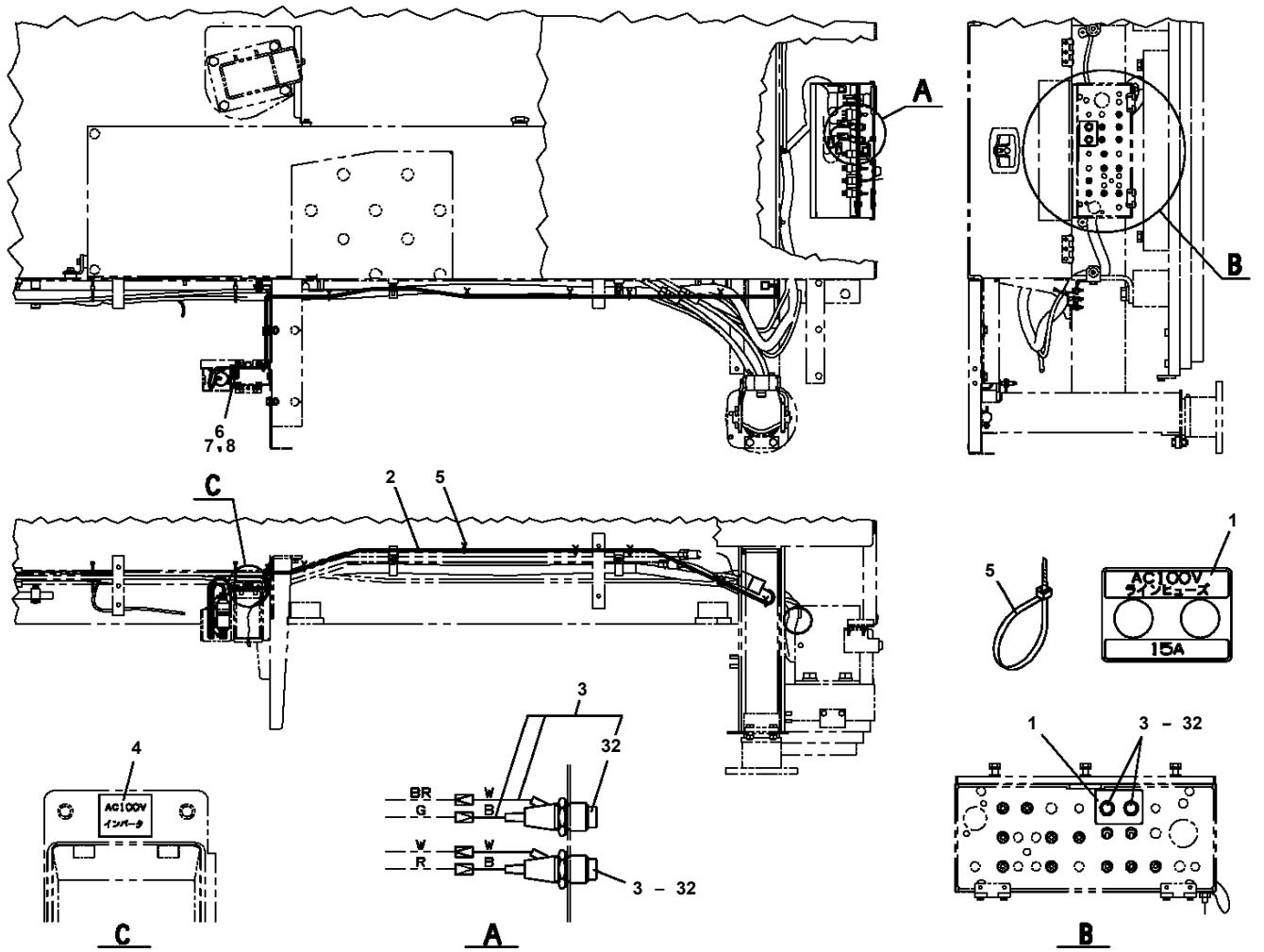


扉を開いた状態

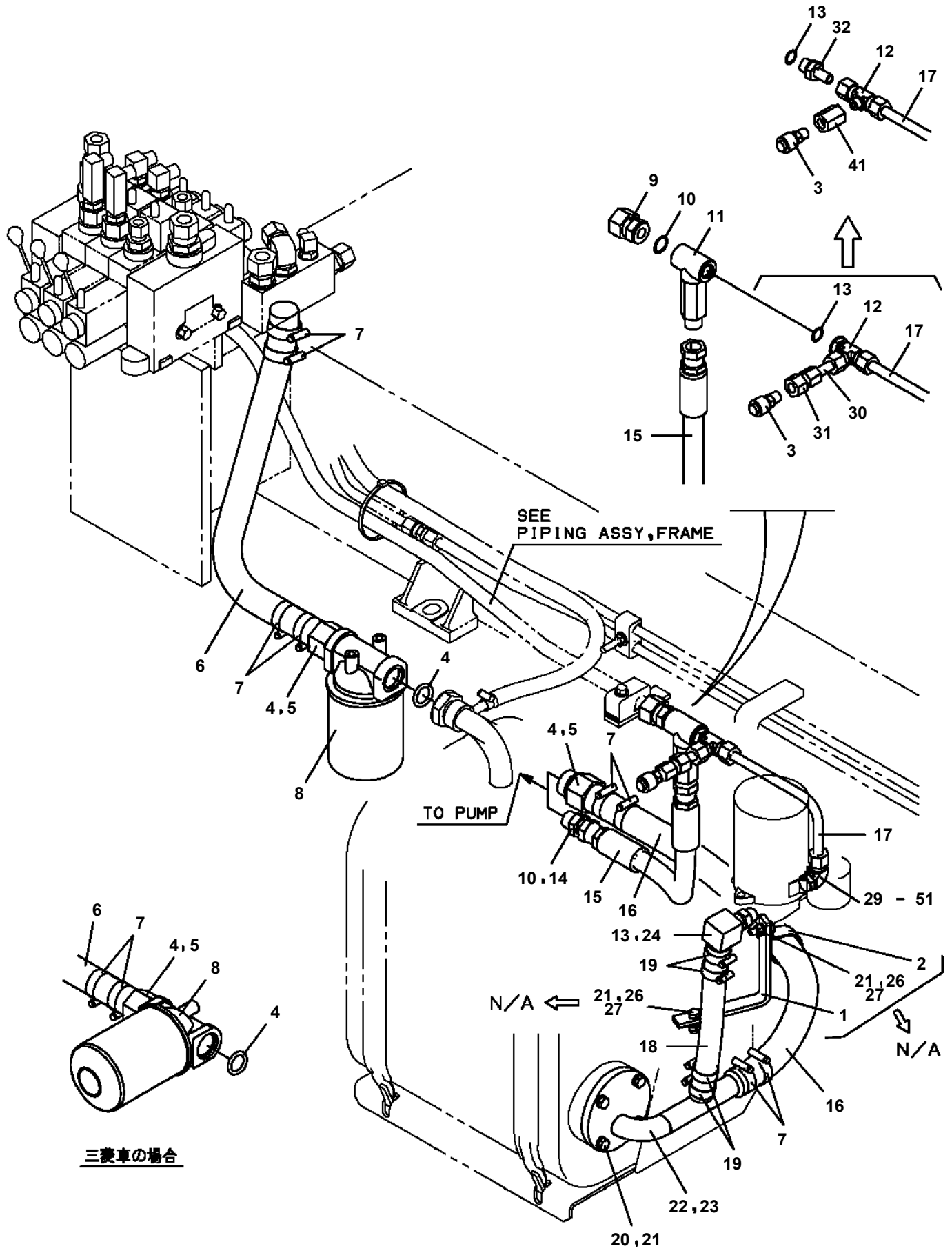
AT-100-5 42063535750 UPPER,LOWER,HINO 2RG-XZU600X-TYTMX6

Pos No.	Parts No	Parts Name	Qty	Unit	Technical Data	Serial No (Start)	Serial No (End)
1	42508701010	PLATE,NAME (AC100V,FUSE,15A)	1				
2	42511373100	CABLE ASSY	1				
3	82119434100	CONNECTOR	1				
4	42501481100	HOLDER ASSY(FUSE,WITH HARNESS)	2				
5	82100002037	CLAMP	1		WE10		
6	90302510601	WASHER,SPRING (6)	1				
7	90201500600	NUT	1		M6		
8	90190206016	BOLT	1		M6X16		
9	80175804020	SCREW,MACHINE	4		M4X20		
10	90201500400	NUT	4		M4		
11	42500583020	PLATE,NAME	1				
12	42500583030	PLATE,NAME	1				
13	90302510401	WASHER,SPRING	4		4		
14	91810130240	FASTENER	8				
32	82100001348	FUSE	2		15A,6.5X30		

**AT-100-5 42063535750 UPPER,LOWER,HINO 2RG-XZU600X-TYTMX6
PP5340041-00 POWER SUPPLY ASSY,ELECTRICITY (LOWER,POWER SUPPLY)**

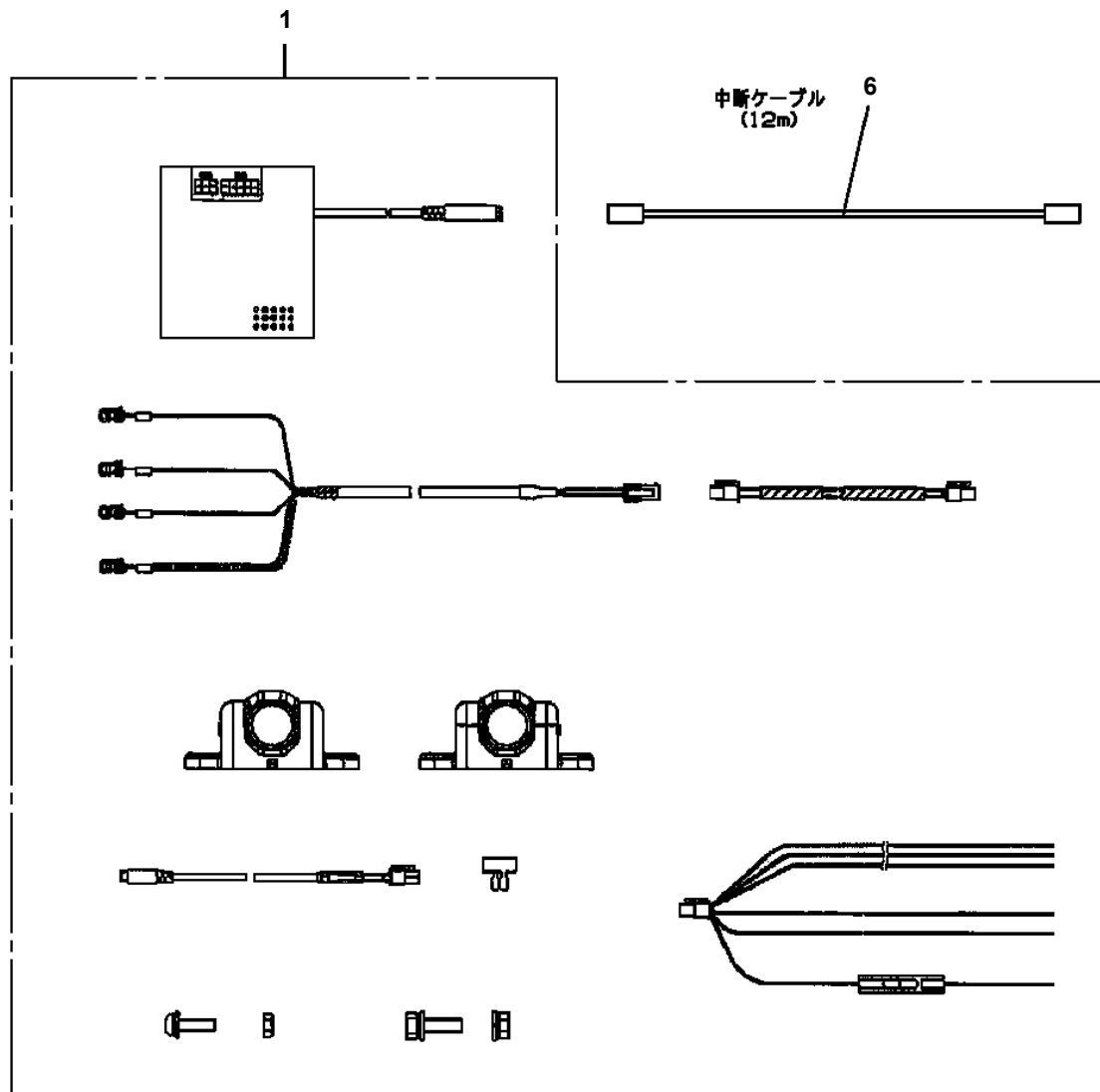


**AT-100-5 42063535750 UPPER,LOWER,HINO 2RG-XZU600X-TYTMX6
PP6210016-03 PIPING ASSY,MOUNTING**

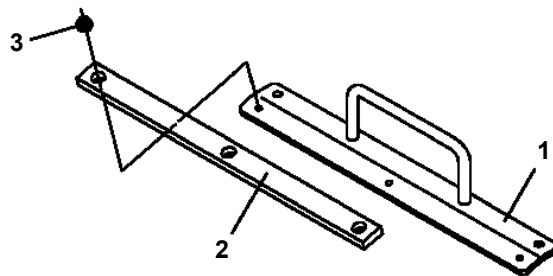
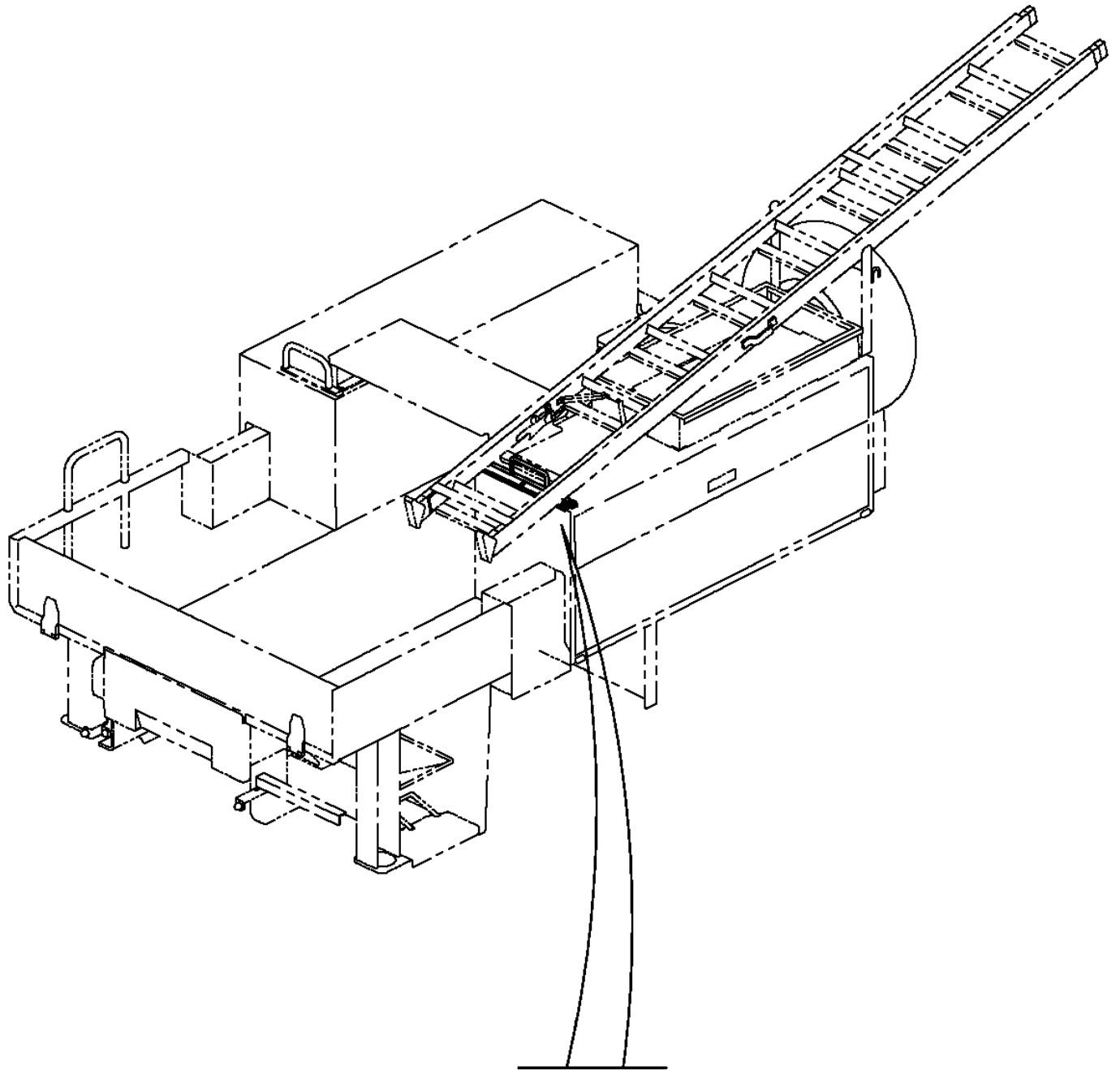


三菱車の場合

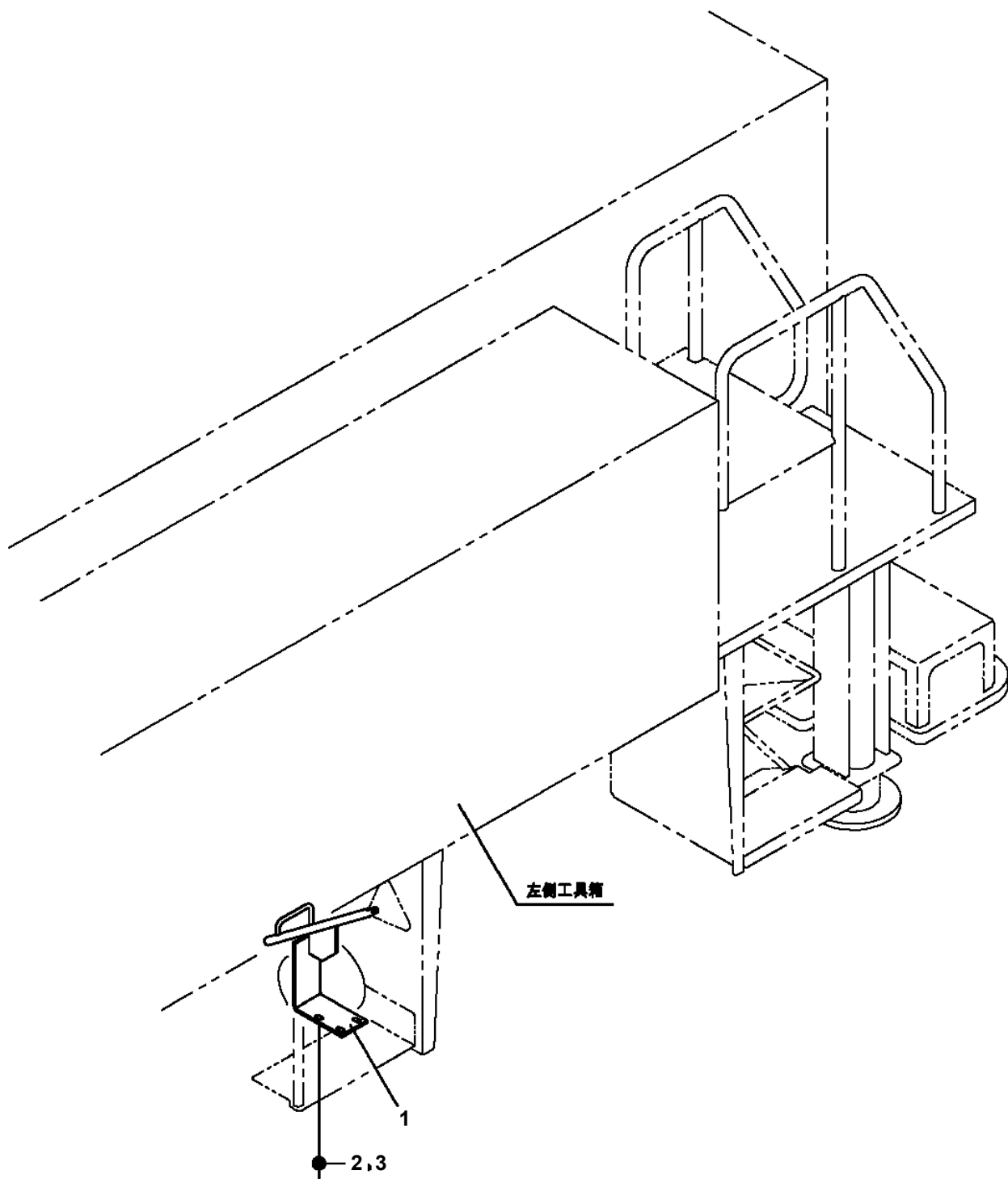
AT-100-5 42063535750 UPPER,LOWER,HINO 2RG-XZU600X-TYTMX6
PS5110004-00 SENSOR



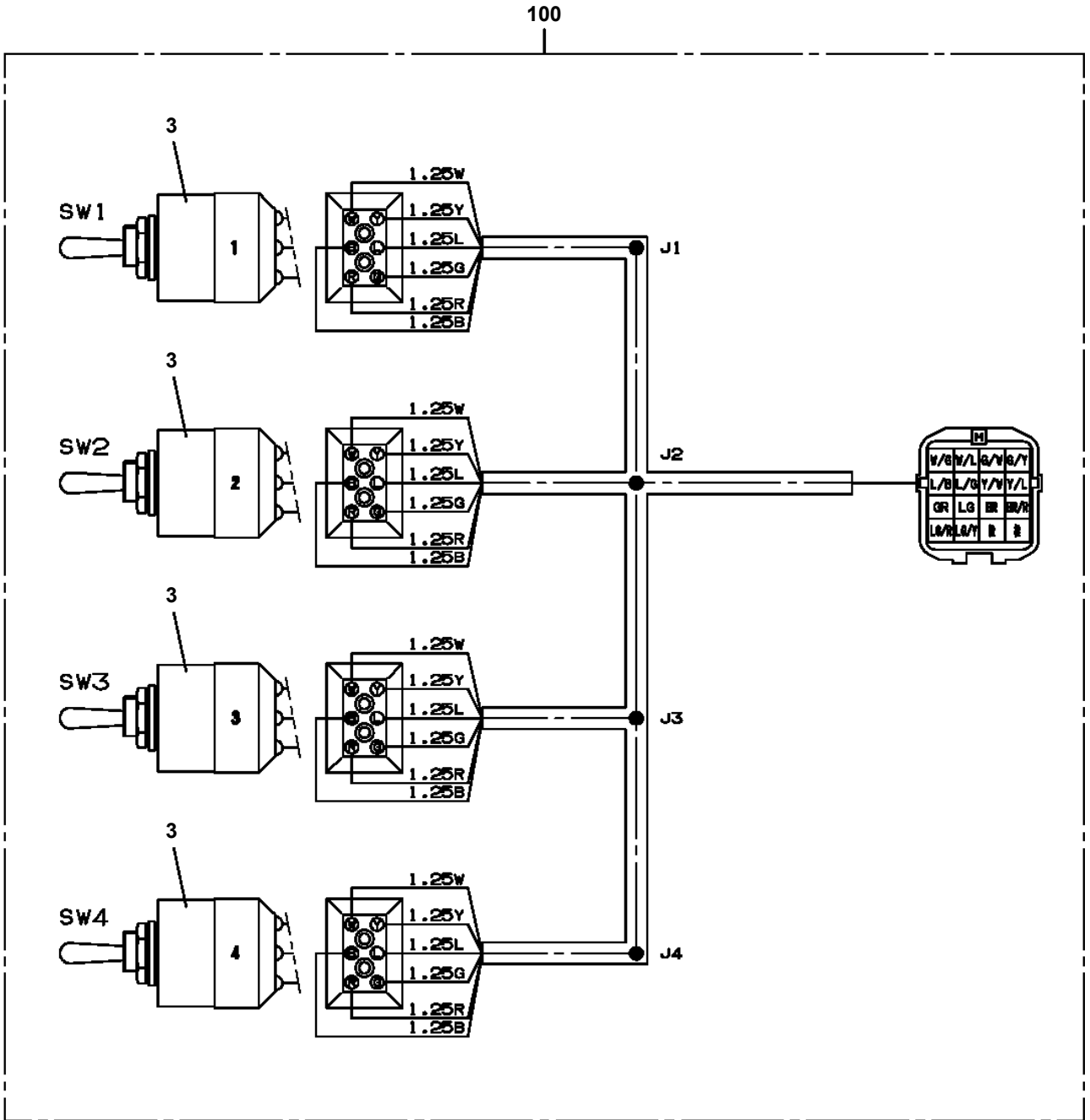
AT-100-5 42063535750 UPPER,LOWER,HINO 2RG-XZU600X-TYTMX6
PS5420481-00 SUPPORT ASSY



AT-100-5 42063535750 UPPER,LOWER,HINO 2RG-XZU600X-TYTMX6
PS5420531-01 SUPPORT ASSY (EARTH REEL,EARTH STICK)



AT-100-5 42063535750 UPPER,LOWER,HINO 2RG-XZU600X-TYTMX6
 PS5530351-00 SWITCH ASSY (WITH HARNESS,4 SW)



**AT-100-5 42063535750 UPPER,LOWER,HINO 2RG-XZU600X-TYTMX6
PS5530424-00 SWITCH ASSY (SAFETY ROPE INTERLOCK/FOR DOUBLE RIDING)**

スイッチASSY (アンセ^ンタイインターロック/フタリノリヨウ)

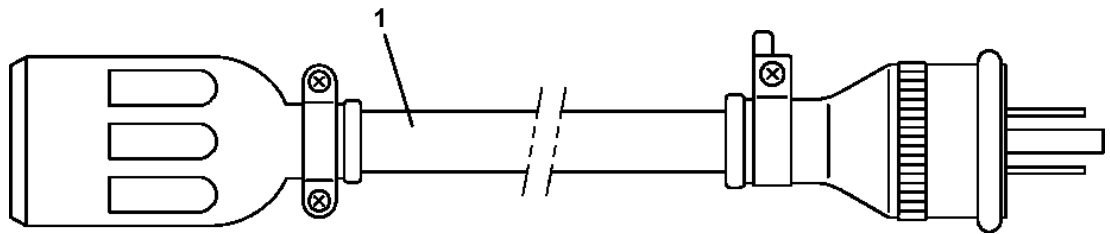
SWITCH ASSY (SAFETY ROPE INTERLOCK/FOR DOUBLE RIDING)

指示番号 KEY NO.	部品名称 PART NAME	備考 REMARK
1	ハイセンASSY ELEC.ASSY	ハ ^ン ケット部配線 (2人用)
3	カイツ ^ウ ASSY MODIFICATION ASSY	ハ ^ン ケットフレーム改造図 (2人用)
5	ハイセンASSY ELEC.ASSY	フレーム後端 人数切換SW

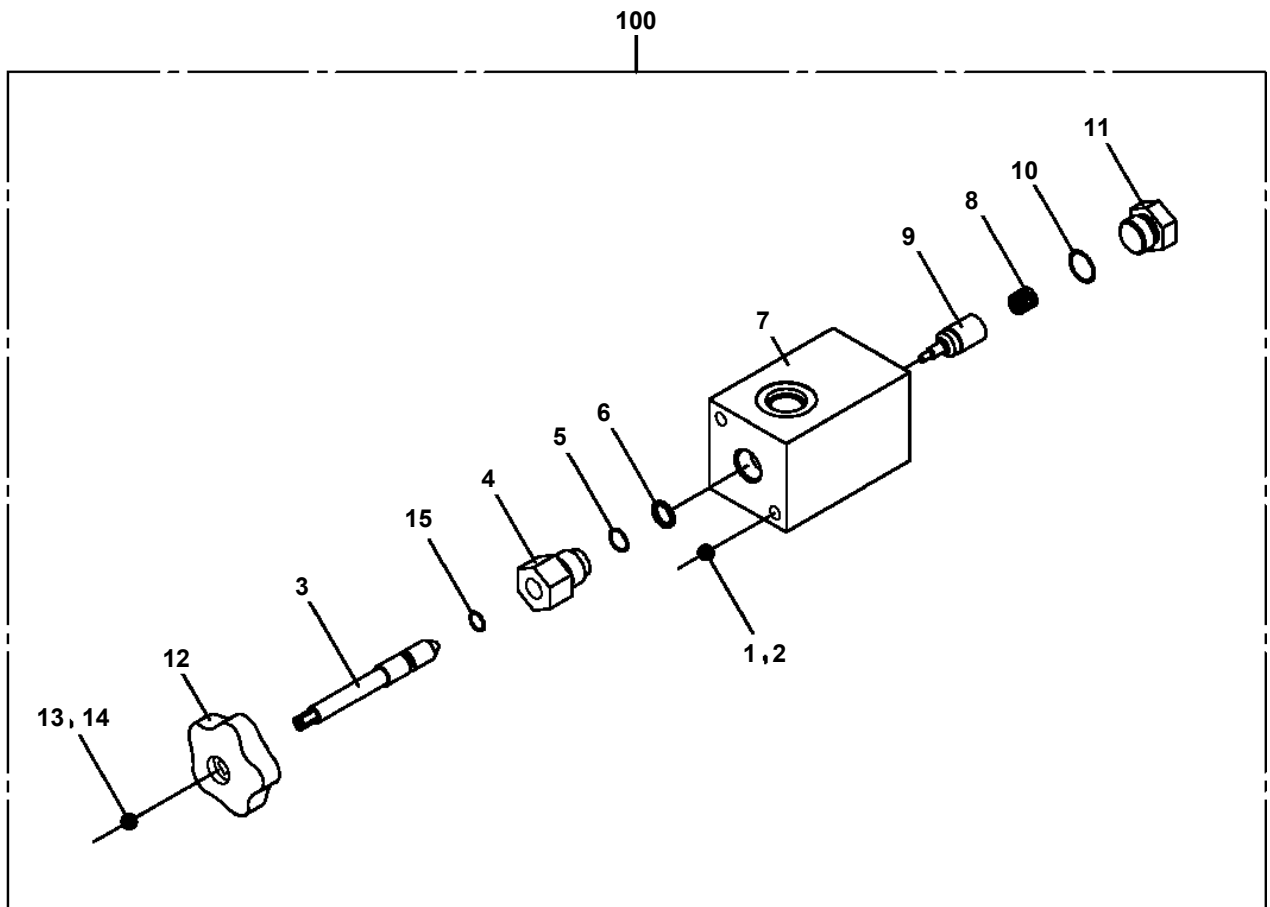
適用製造番号によっては取り付けがないものもあります。

MACHINES OF SOME SERIAL NO. ARE NOT EQUIPPED WITH THESE PARTS.

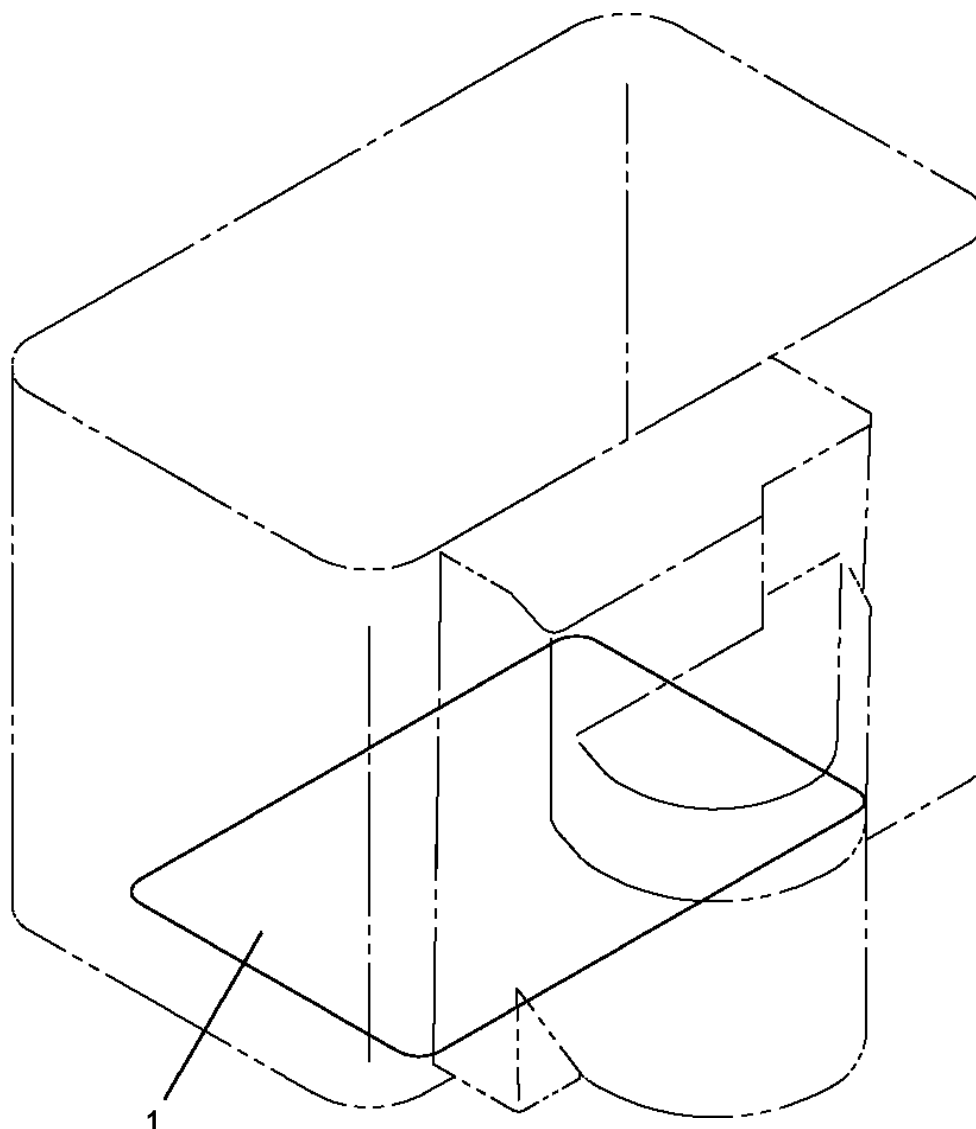
AT-100-5 42063535750 UPPER,LOWER,HINO 2RG-XZU600X-TYTMX6
PV1300020-00 CABLE (3 POLE)



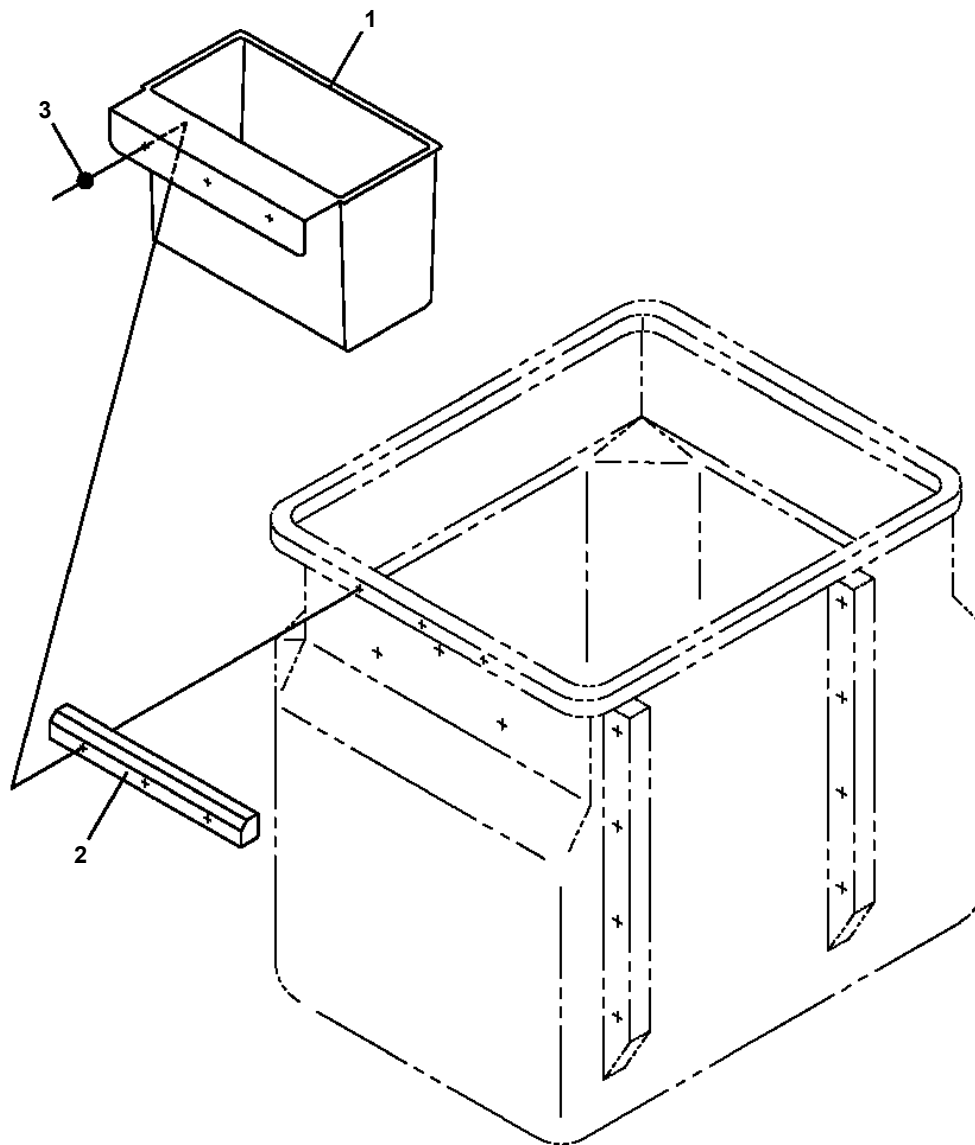
**AT-100-5 42063535750 UPPER,LOWER,HINO 2RG-XZU600X-TYTMX6
PV5170018-00 VALVE ASSY,SELECTOR**



**AT-100-5 42063535750 UPPER,LOWER,HINO 2RG-XZU600X-TYTMX6
PW1010407-00 ACCESSORIES (MAT)**

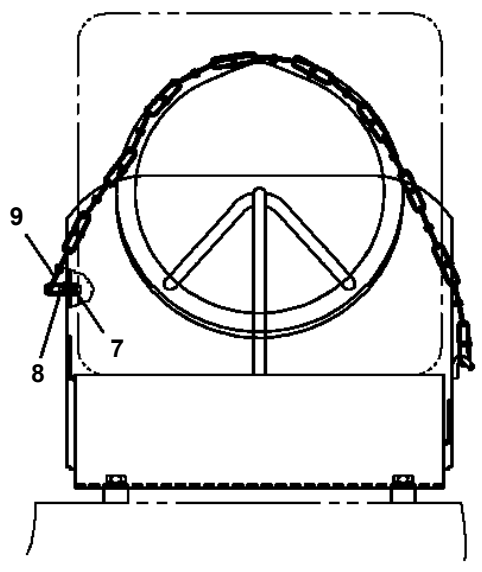
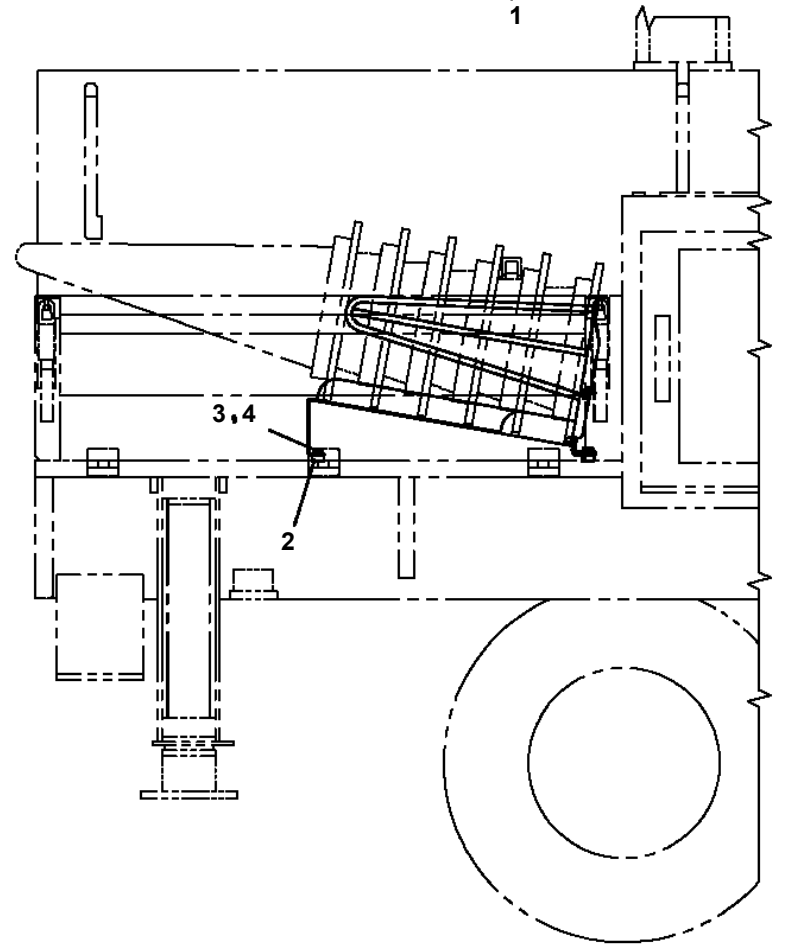
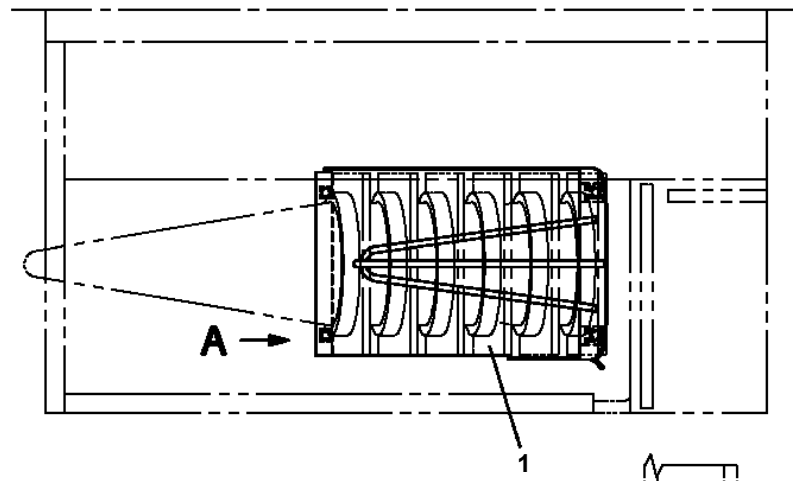


**AT-100-5 42063535750 UPPER,LOWER,HINO 2RG-XZU600X-TYTMX6
PX1350803-00 BOX,TOOL (NEO KANSAI/BUCKET)**



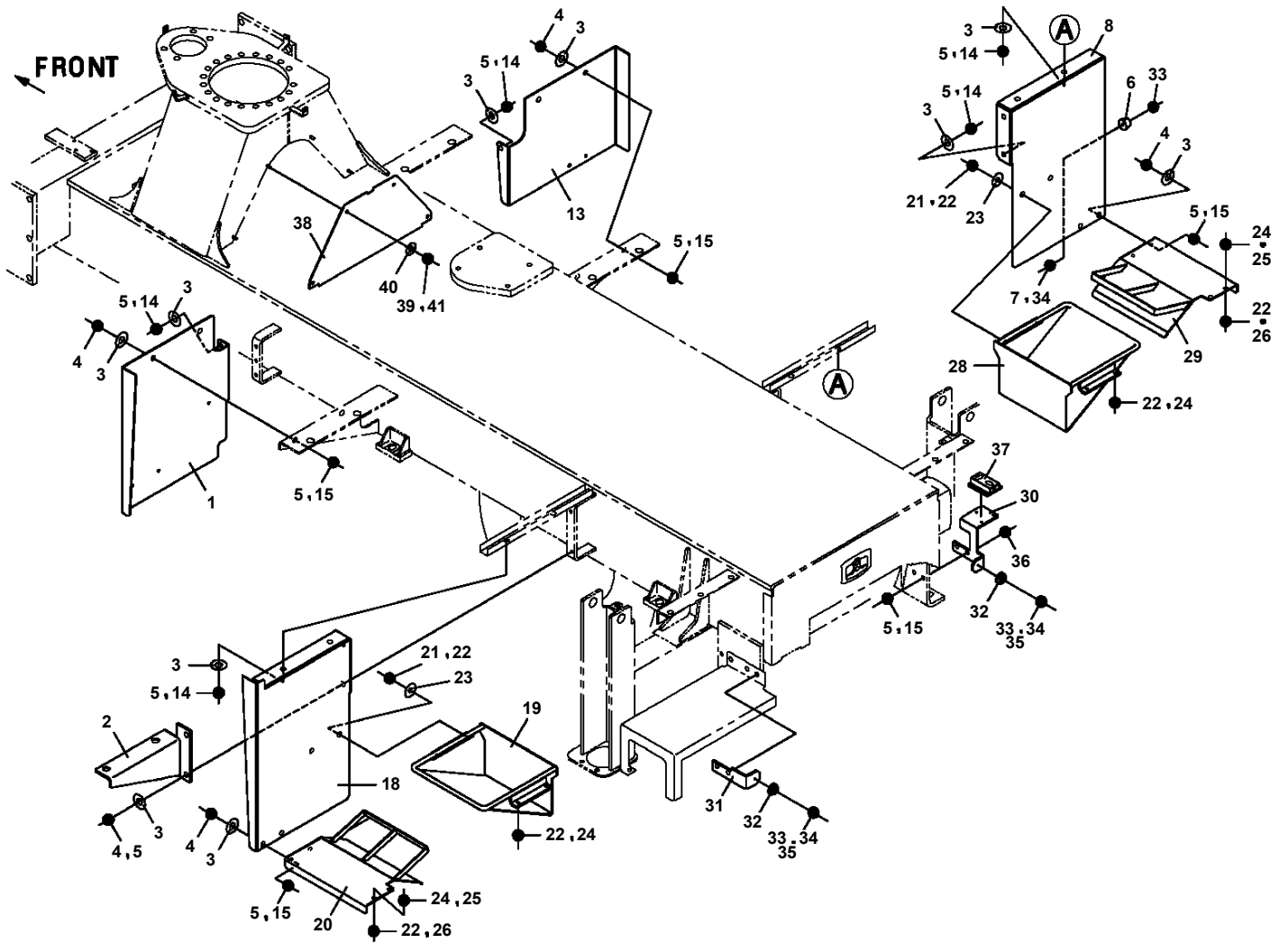
AT-100-5 42063535750 UPPER,LOWER,HINO 2RG-XZU600X-TYTMX6
PX5010506-00 MOUNT ASSY (SAFETY CONE SUPPORT)

→ FRONT

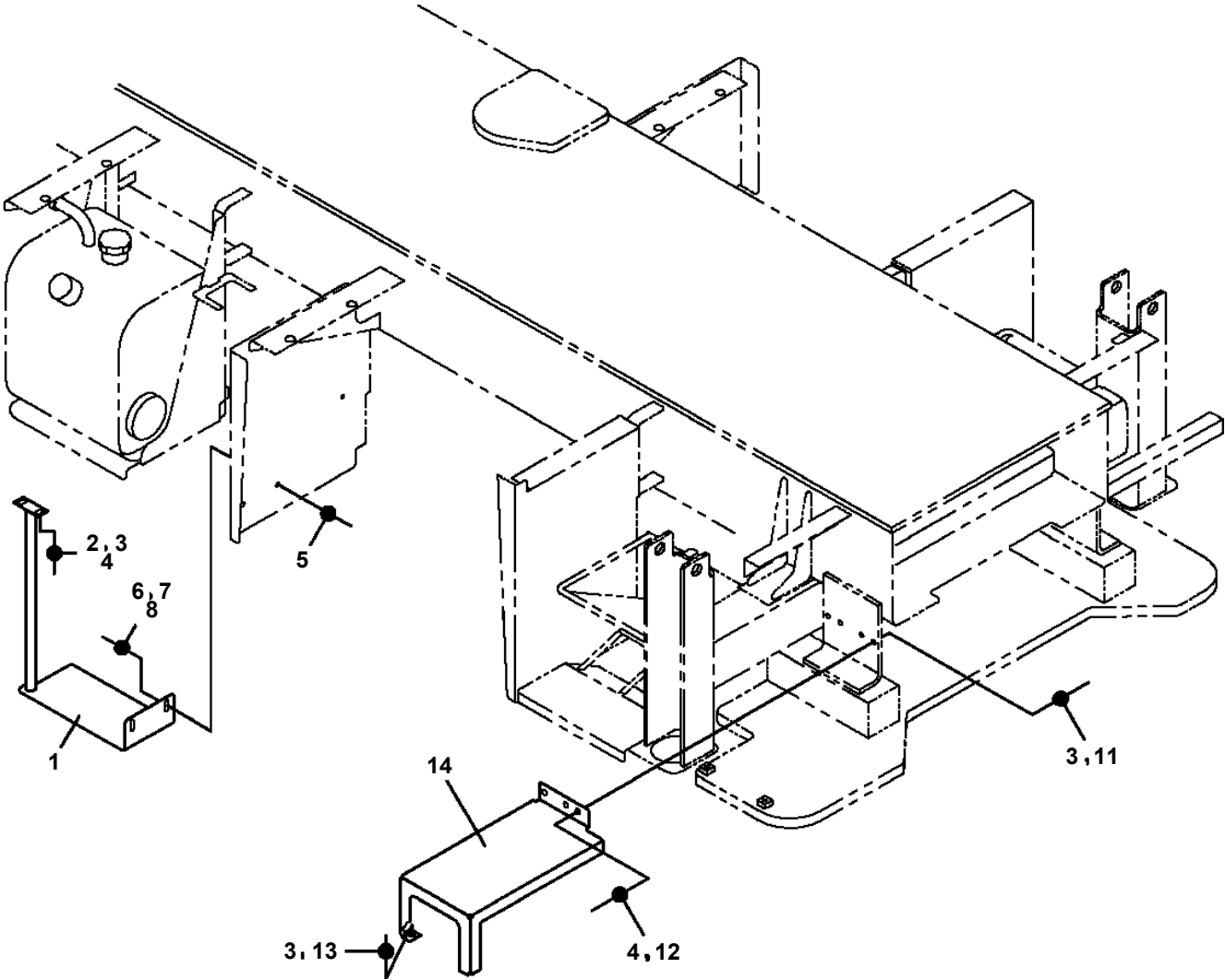


A

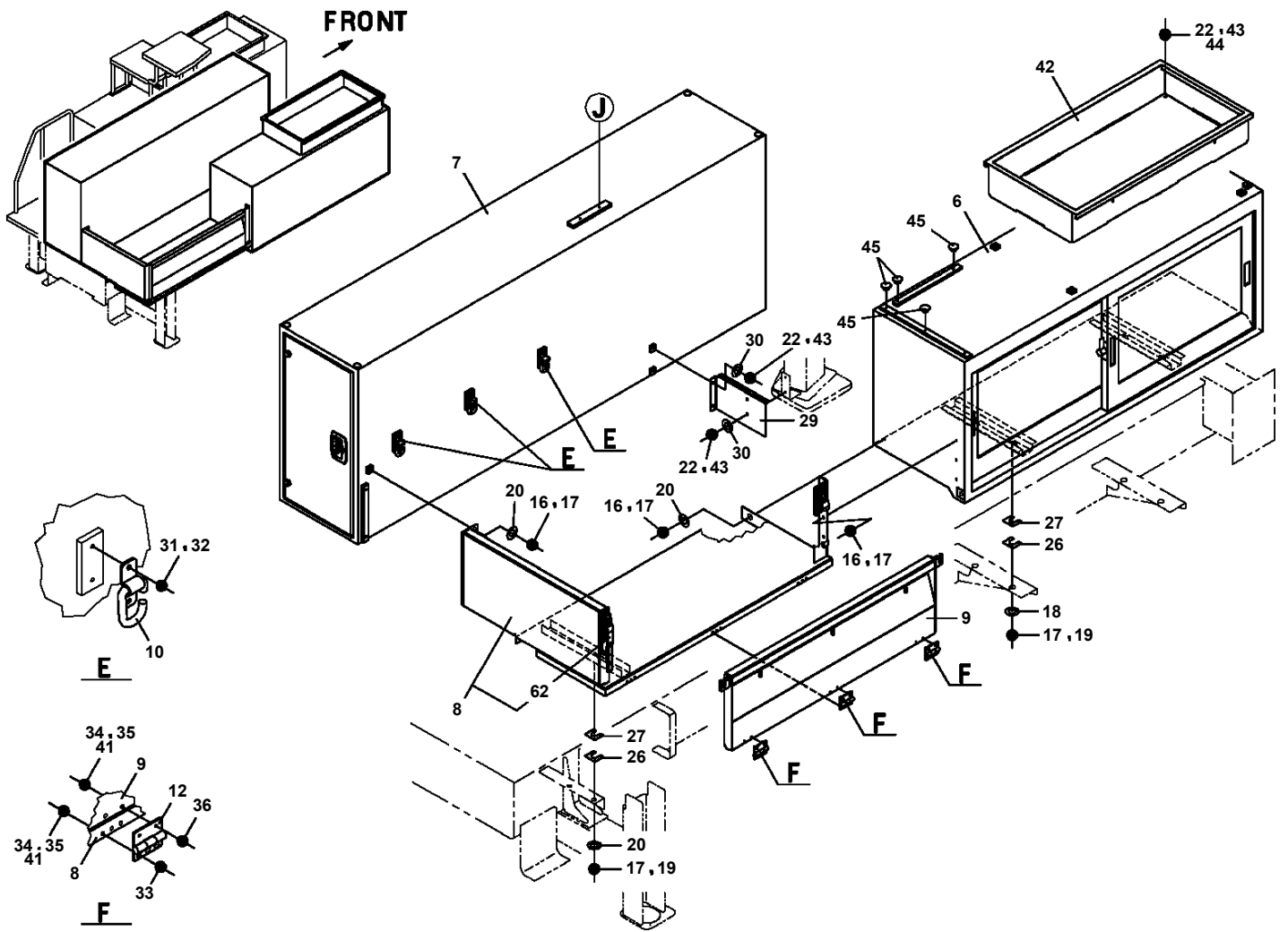
**AT-100-5 42063535750 UPPER,LOWER,HINO 2RG-XZU600X-TYTMX6
PX5430017-00 MOUNT ASSY, GUARD**



**AT-100-5 42063535750 UPPER,LOWER,HINO 2RG-XZU600X-TYTMX6
PX5670080-00 MOUNT ASSY,STEP (GUIDE TYPE JACK)**



**AT-100-5 42063535750 UPPER,LOWER,HINO 2RG-XZU600X-TYTMX6
PX5780196-01 MOUNT ASSY,TOOL BOX (WITHOUT CENTRAL LOCKING)**



**AT-100-5 42063535750 UPPER,LOWER,HINO 2RG-XZU600X-TYTMX6
PX5780582-00 MOUNT ASSY,TOOL BOX (CENTRAL LOCK/HINO PPNLT,TOYOTA)**

マウントASSY, ツールボックス (シユウチユウロツク/ヒノPPNLT, トヨタ)
MOUNT ASSY, TOOL BOX (CENTRAL LOCK/HINO PPNLT, TOYOTA)

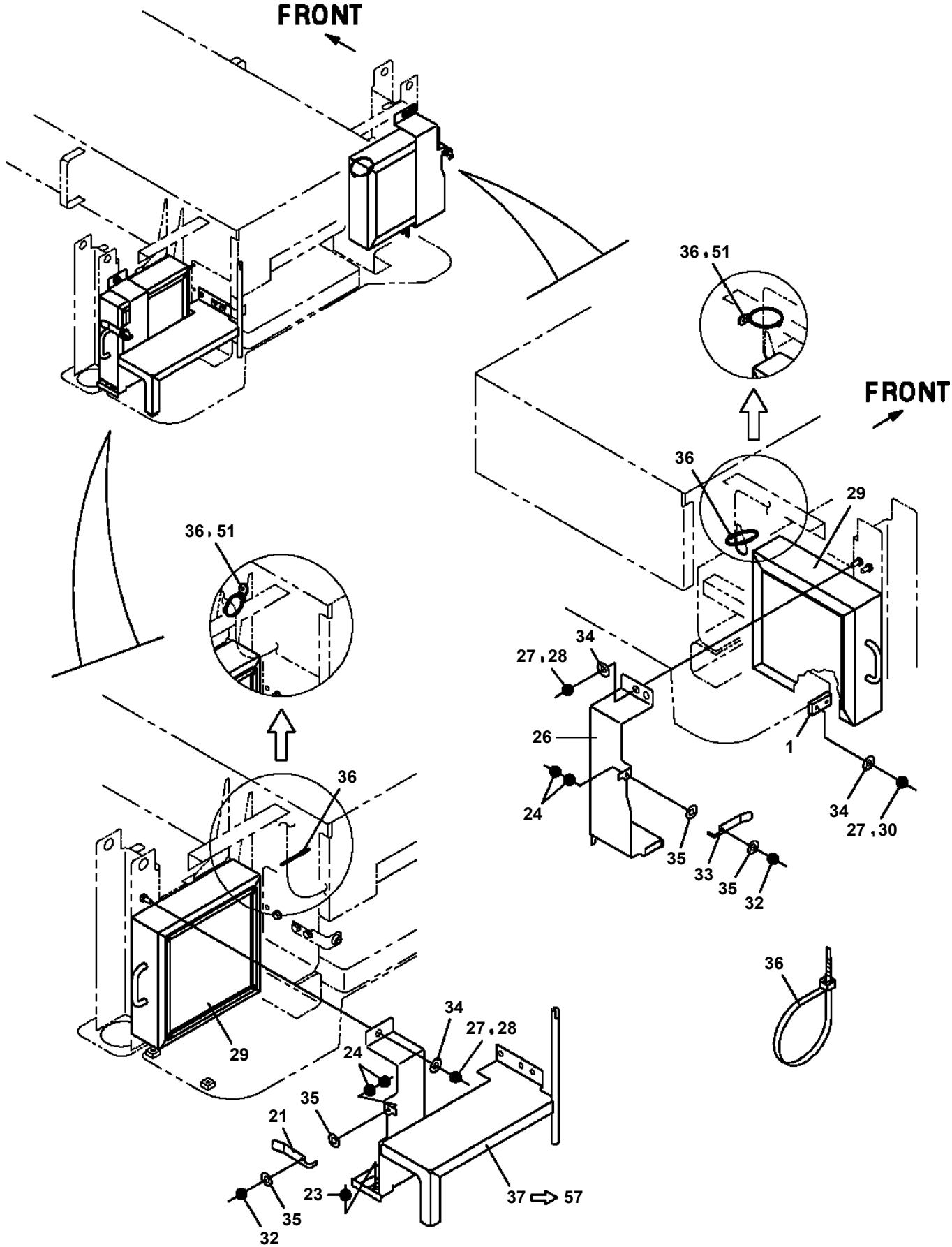
工具箱集中ロック装置
トヨタ・日野 2RG車以降

符号	日本語名称	英語名称	備考
1	カイツウ ASSY	MODIFICATION ASSY	リレーボックス用サポート取付け
2	マウントASSY, ツールボックス	MOUNT ASSY, TOOL BOX	工具箱取付け 日野PPNLT専用
3	ハイセンASSY {フレーム}	ELEC. ASSY {FRAME}	高所側配線
4	ハイセンASSY, キャリヤ	ELEC. ASSY, CARRIER	シャシ側配線 トヨタ・日野PPNLT車以降
5	ネームプレートASSY	NAME PLATE ASSY	銘板
7	ハイセンASSY	ELEC. ASSY	操作スイッチ取付け トヨタ・日野TKG車以降

適用製造番号によっては取付けがないものもあります。

MACHINES OF SOME SERIAL NO. ARE NOT EQUIPPED WITH THESE PARTS.

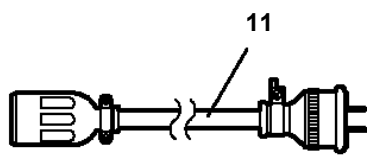
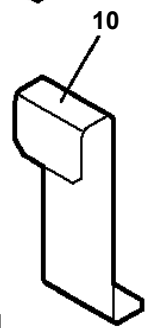
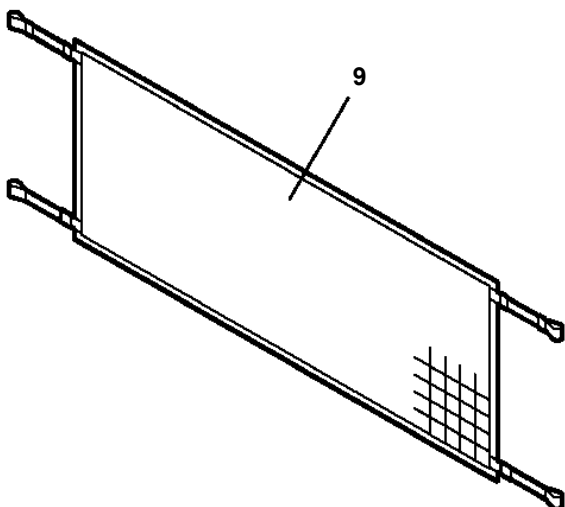
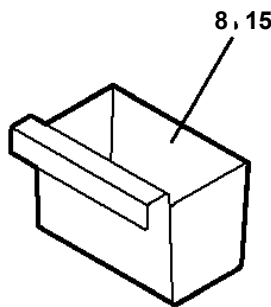
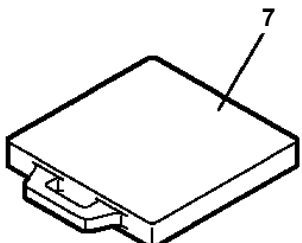
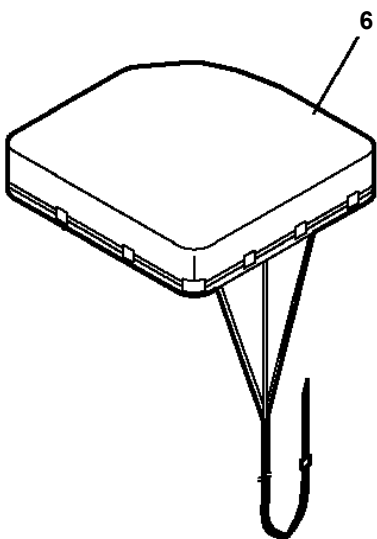
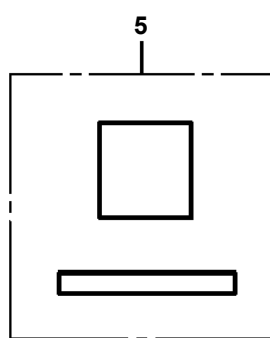
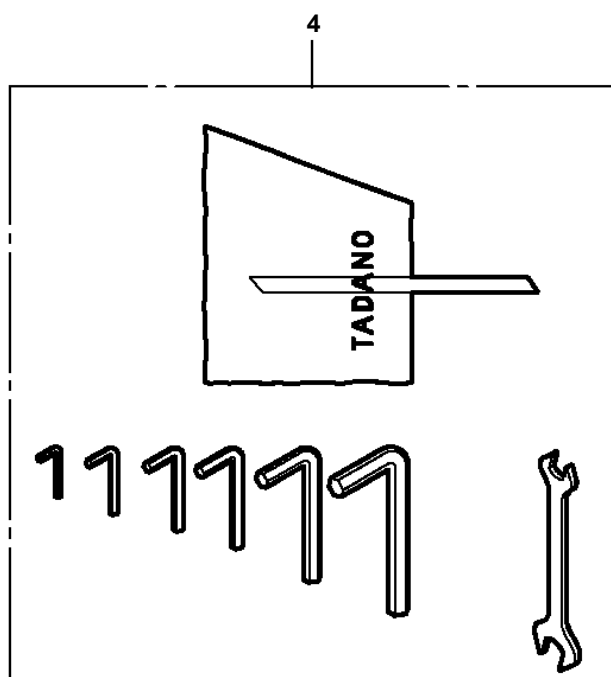
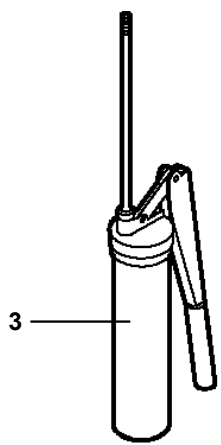
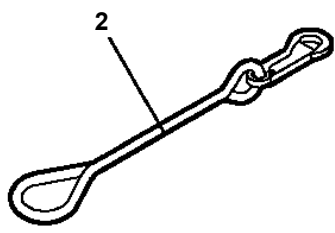
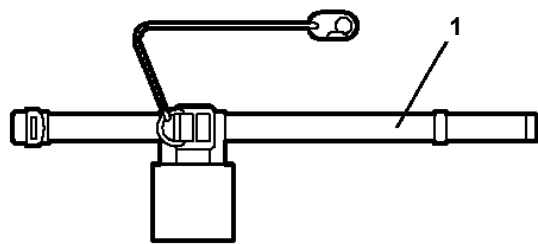
**AT-100-5 42063535750 UPPER,LOWER,HINO 2RG-XZU600X-TYTMX6
PX5850014-01 MOUNT ASSY,WOOD BLOCK (LARGE)**



AT-100-5 42063535750 UPPER,LOWER,HINO 2RG-XZU600X-TYTMX6

Pos No.	Parts No	Parts Name	Qty	Unit	Technical Data	Serial No (Start)	Serial No (End)	R
1	42470050000	ROPE (SAFETY,1.5M,WITH HOOK)	1					

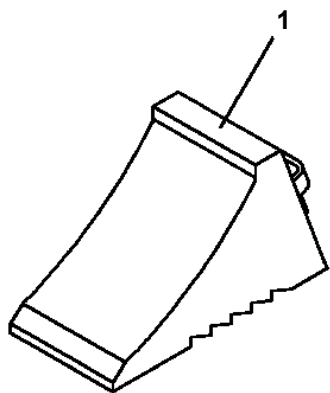
AT-100-5 42063535750 UPPER,LOWER,HINO 2RG-XZU600X-TYTMX6
 PY2000288-00 OPTION UNIT,2 (UPPER)



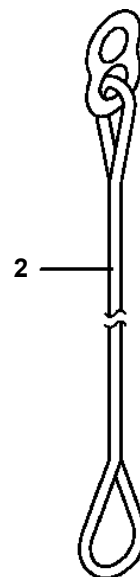
適用製造番号によっては取り付けがないものもあります。

MACHINES OF SOME SERIAL NO. ARE NOT EQUIPPED WITH THESE PARTS.

AT-100-5 42063535750 UPPER,LOWER,HINO 2RG-XZU600X-TYTMX6
PY5020165-00 ACCESSORIES ASSY (WITHOUT BLOCK,RUBBER)



ゴム製



0.5m 8字環付 Ø10

**AT-100-5 42063535750 UPPER,LOWER,HINO 2RG-XZU600X-TYTMX6
PZ0000000-00 MOUNT ASSY,ROLLER**

販売部品 検討中につき、イラストはありません。

**Parts for sale : Under consideration now.
Therefore not illustrated.**

**AT-100-5 42063535750 UPPER,LOWER,HINO 2RG-XZU600X-TYTMX6
PZ0000000-00 VIEW SYSTEM**

販売部品 検討中につき、イラストはありません。

**Parts for sale : Under consideration now.
Therefore not illustrated.**

CLICK HERE TO **DOWNLOAD** THE COMPLETE MANUAL

- Thank you very much for reading the preview of the manual.
- You can download the complete manual from: www.heydownloads.com by clicking the link below



- Please note: If there is no response to CLICKING the link, please download this PDF first and then click on it.

CLICK HERE TO **DOWNLOAD** THE COMPLETE MANUAL