



# CS 20 S

**Horizontal-Kommisionierer**  
**Horizontal order picker Truck**  
**Préparateur de commande au sol**  
**Carrelli elevatori orizzontali per la composizione di ordini**  
**Carretilla elevadora horizontal**



**Ersatz-  
teil-  
Liste**

**Spare  
Parts  
List**

**Catalogue  
de pièces  
détachées**

**Catalogo  
parti di  
ricambio**

**Catálogo  
de  
recambio**

Ident-Nr. 4497648-10.02

71 1034 0 07238



**STILL  
ELECTRONIC  
DOCUMENTATION  
SYSTEM**

# STEDS

**STILL & SAXBY  
STILL WAGNER  
STILL**

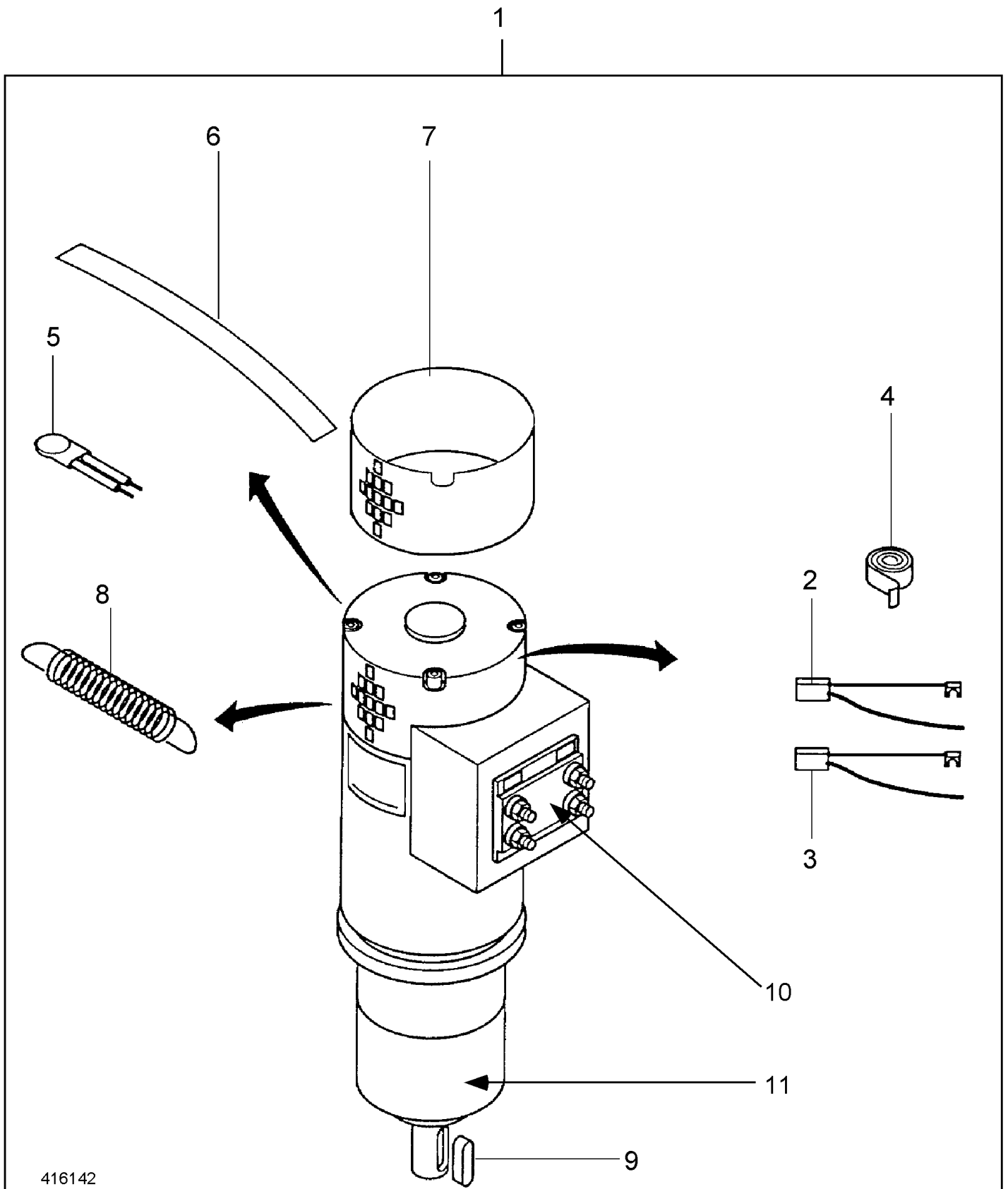
CLICK HERE TO **DOWNLOAD** THE COMPLETE MANUAL

- Thank you very much for reading the preview of the manual.
- You can download the complete manual from: [www.heydownloads.com](http://www.heydownloads.com) by clicking the link below

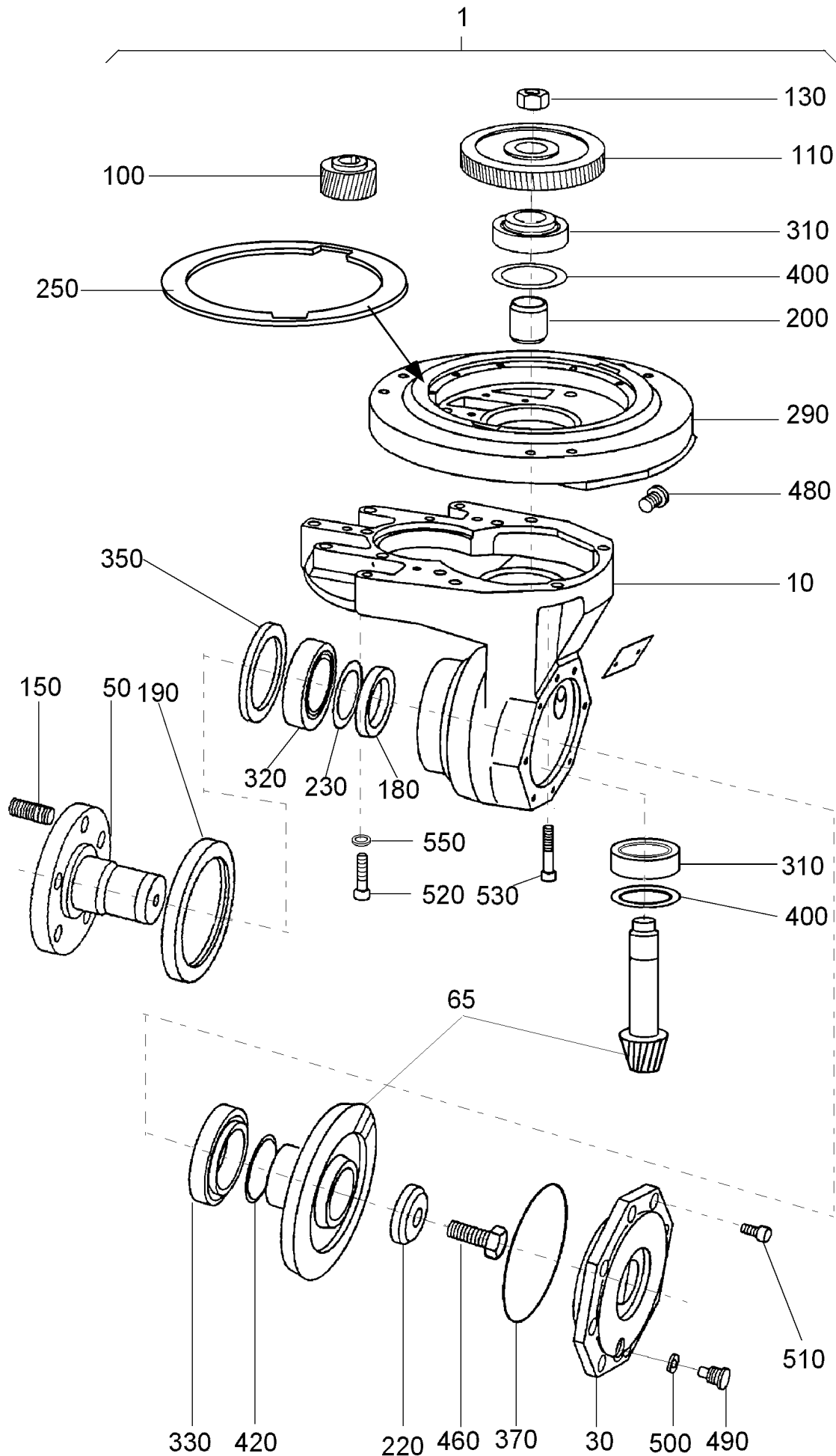


- Please note: If there is no response to CLICKING the link, please download this PDF first and then click on it.

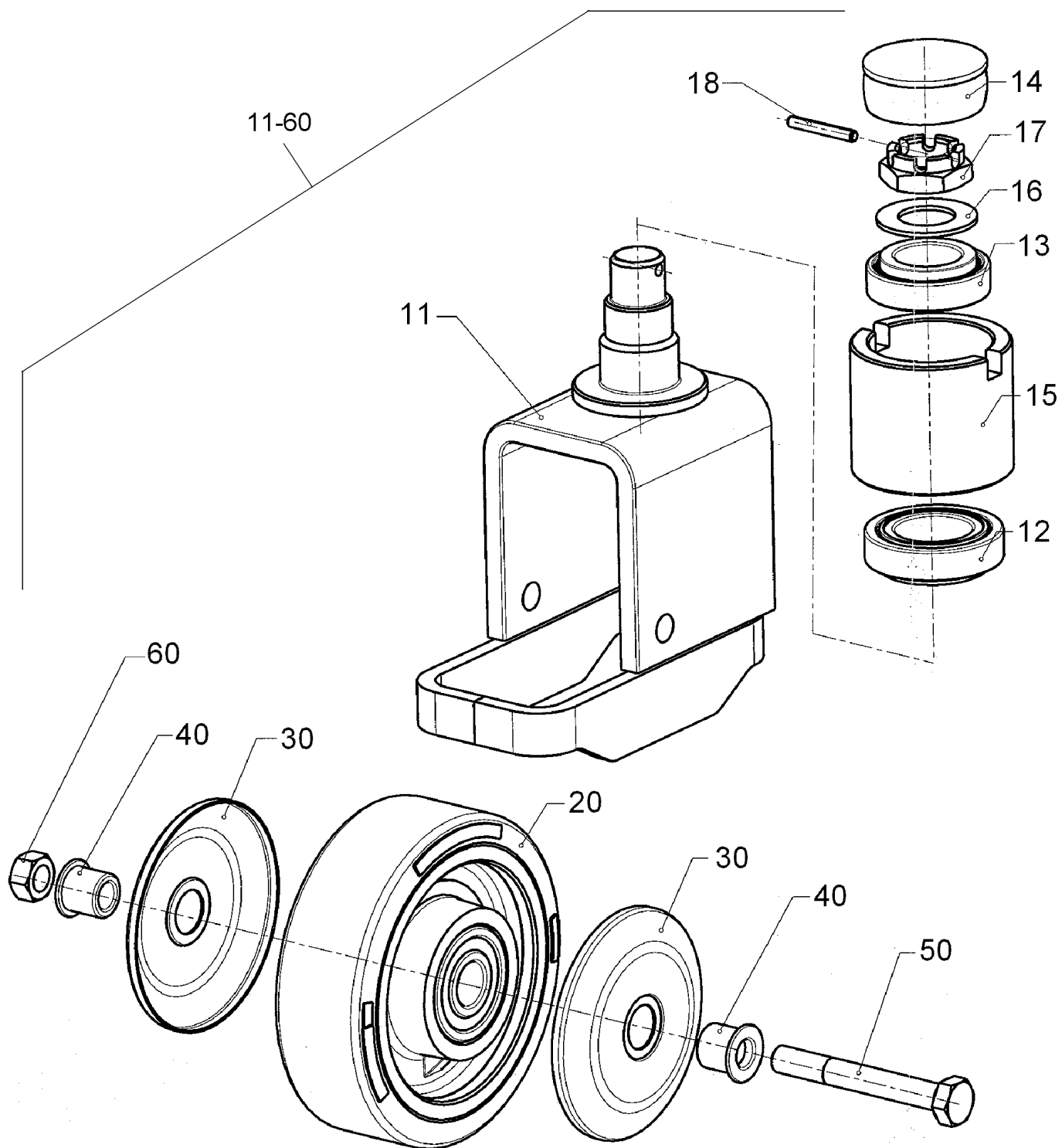
CLICK HERE TO **DOWNLOAD** THE COMPLETE MANUAL

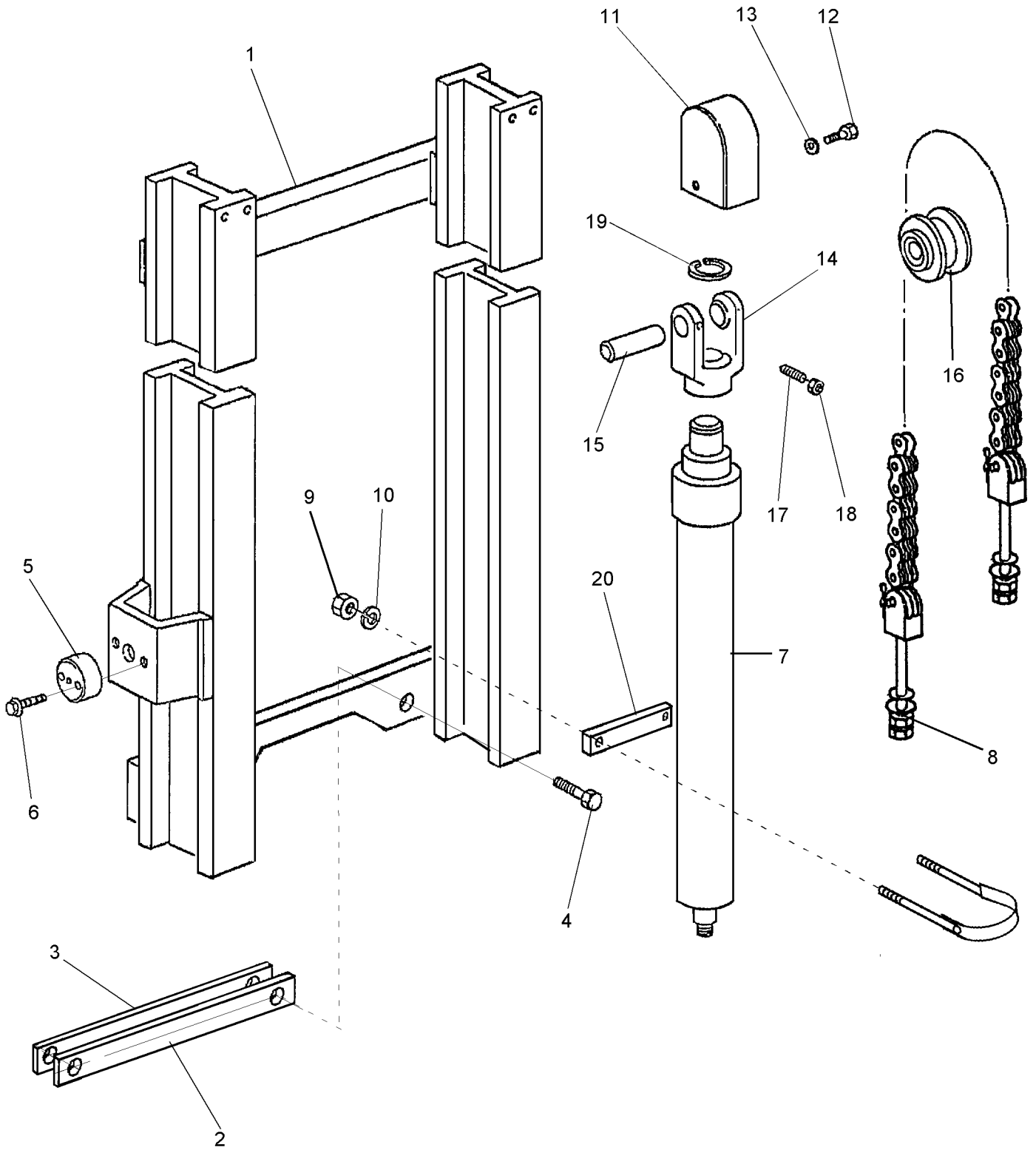


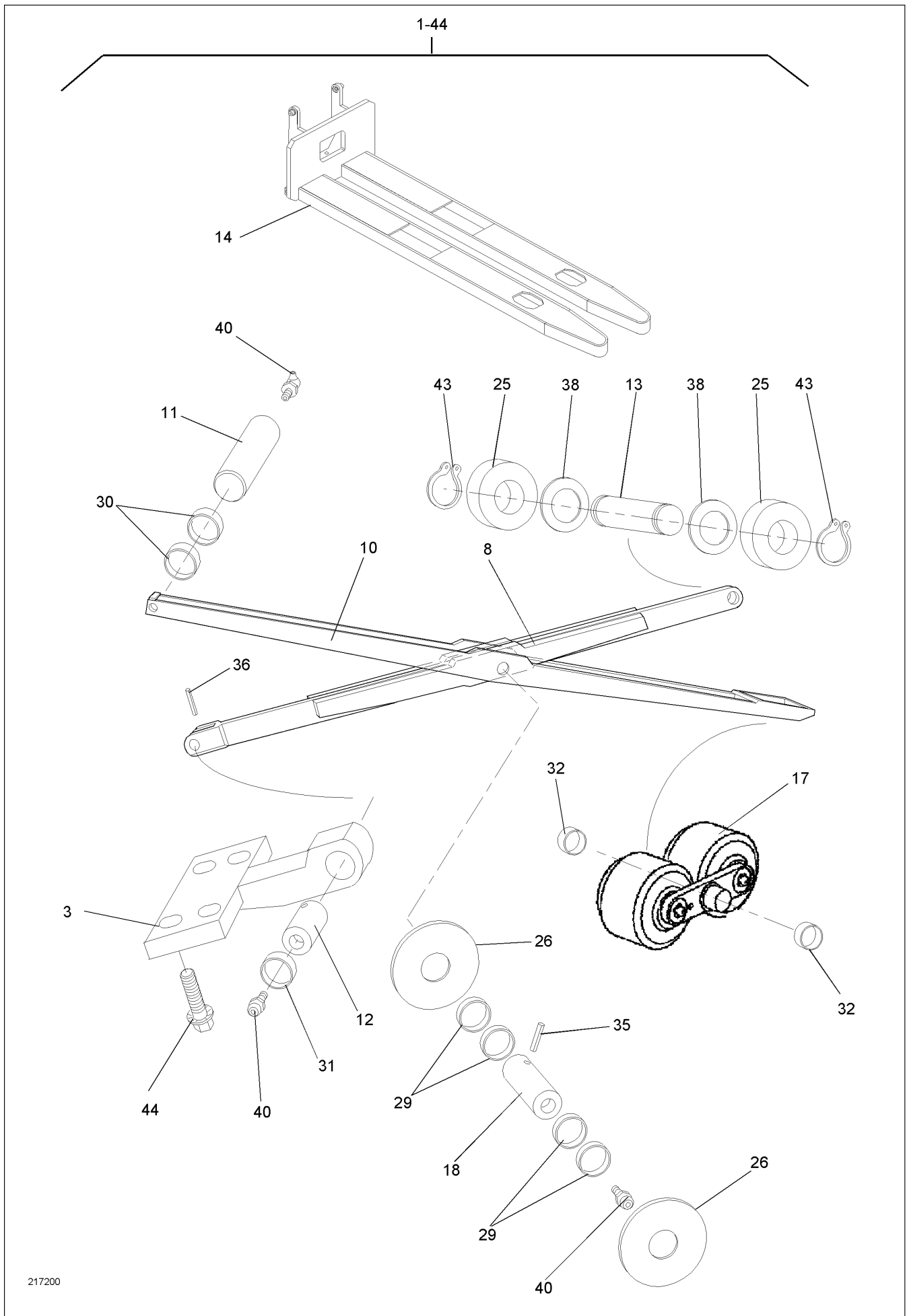




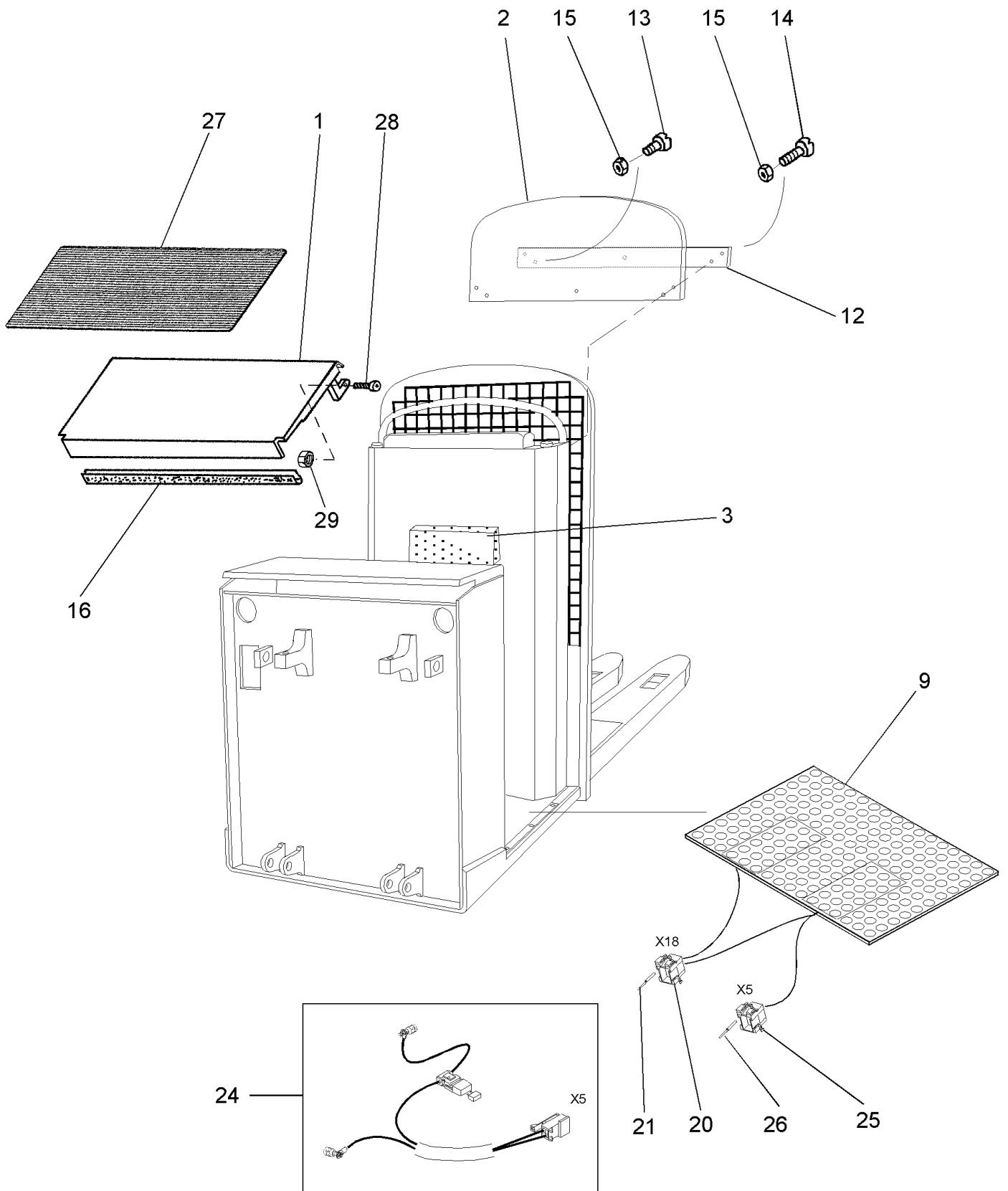


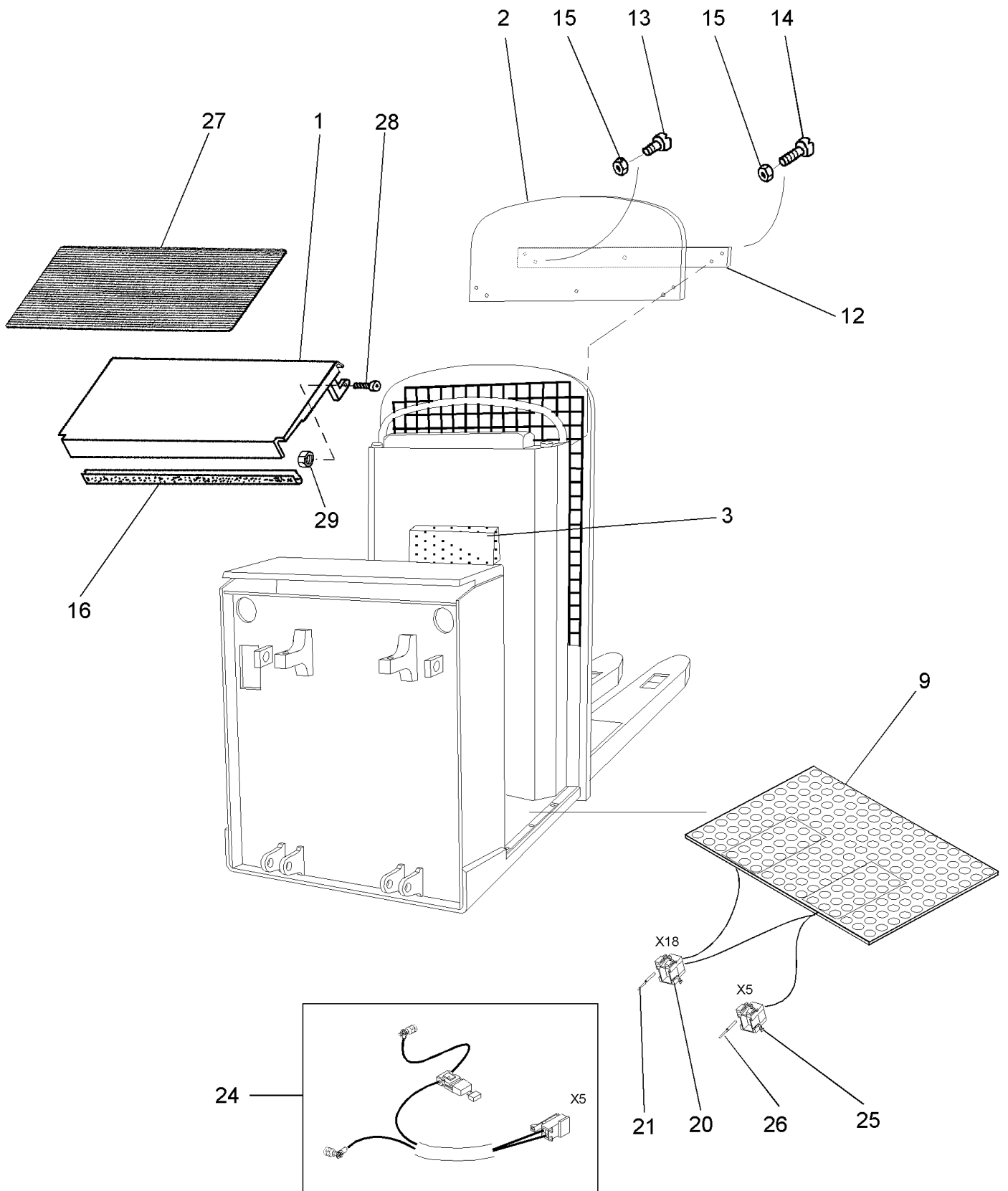






217200











CLICK HERE TO **DOWNLOAD** THE COMPLETE MANUAL

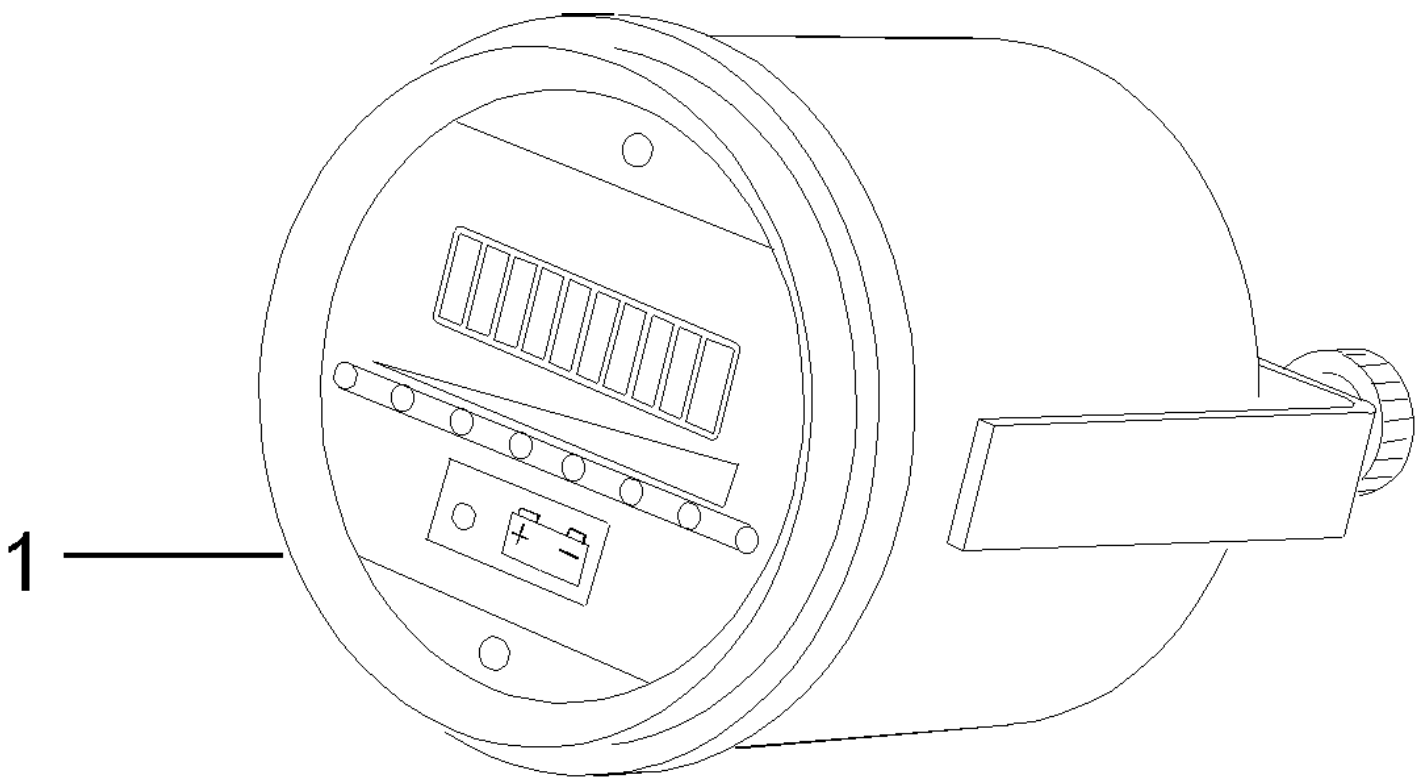
- Thank you very much for reading the preview of the manual.
- You can download the complete manual from: [www.heydownloads.com](http://www.heydownloads.com) by clicking the link below



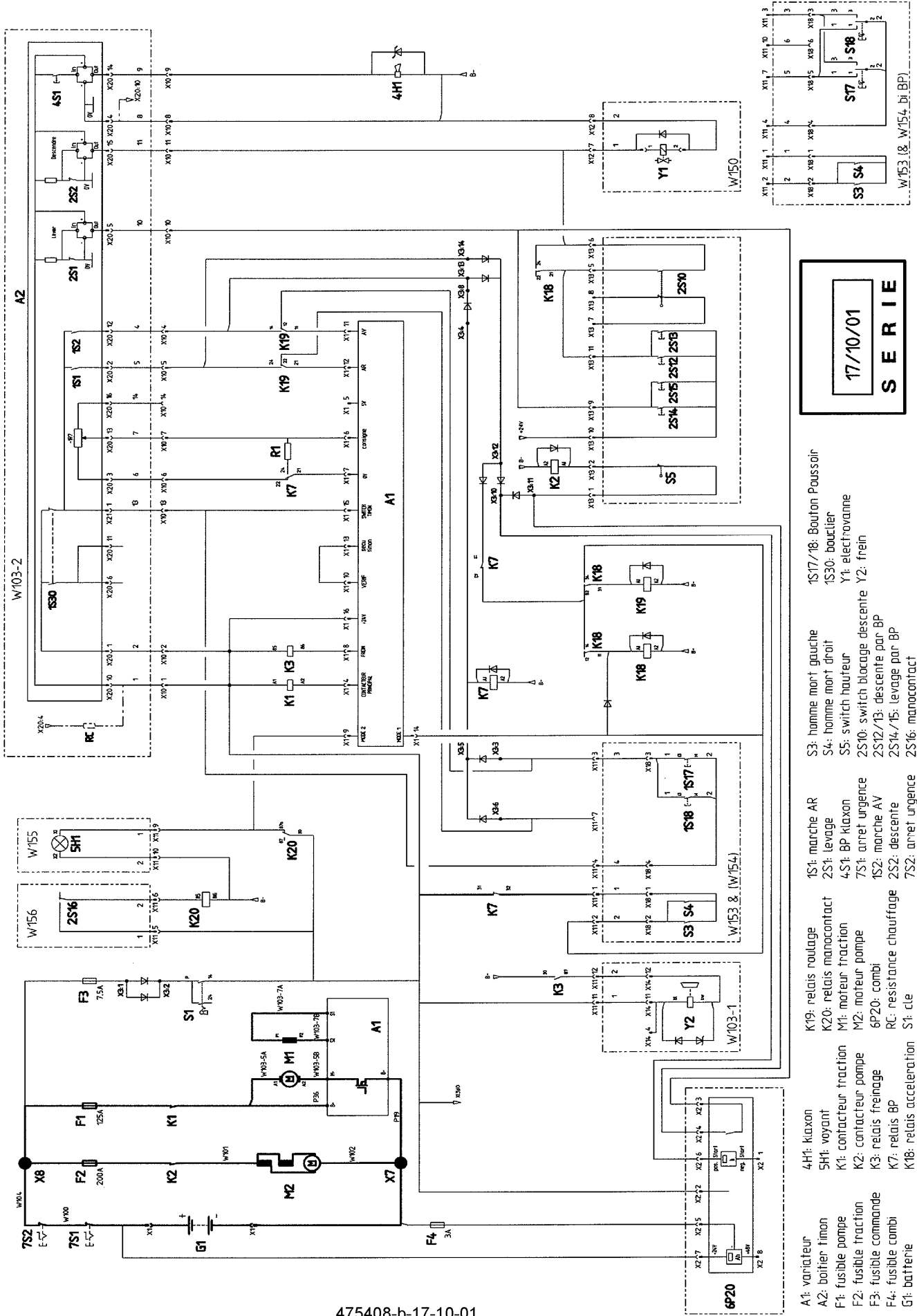
- Please note: If there is no response to CLICKING the link, please download this PDF first and then click on it.

CLICK HERE TO **DOWNLOAD** THE COMPLETE MANUAL





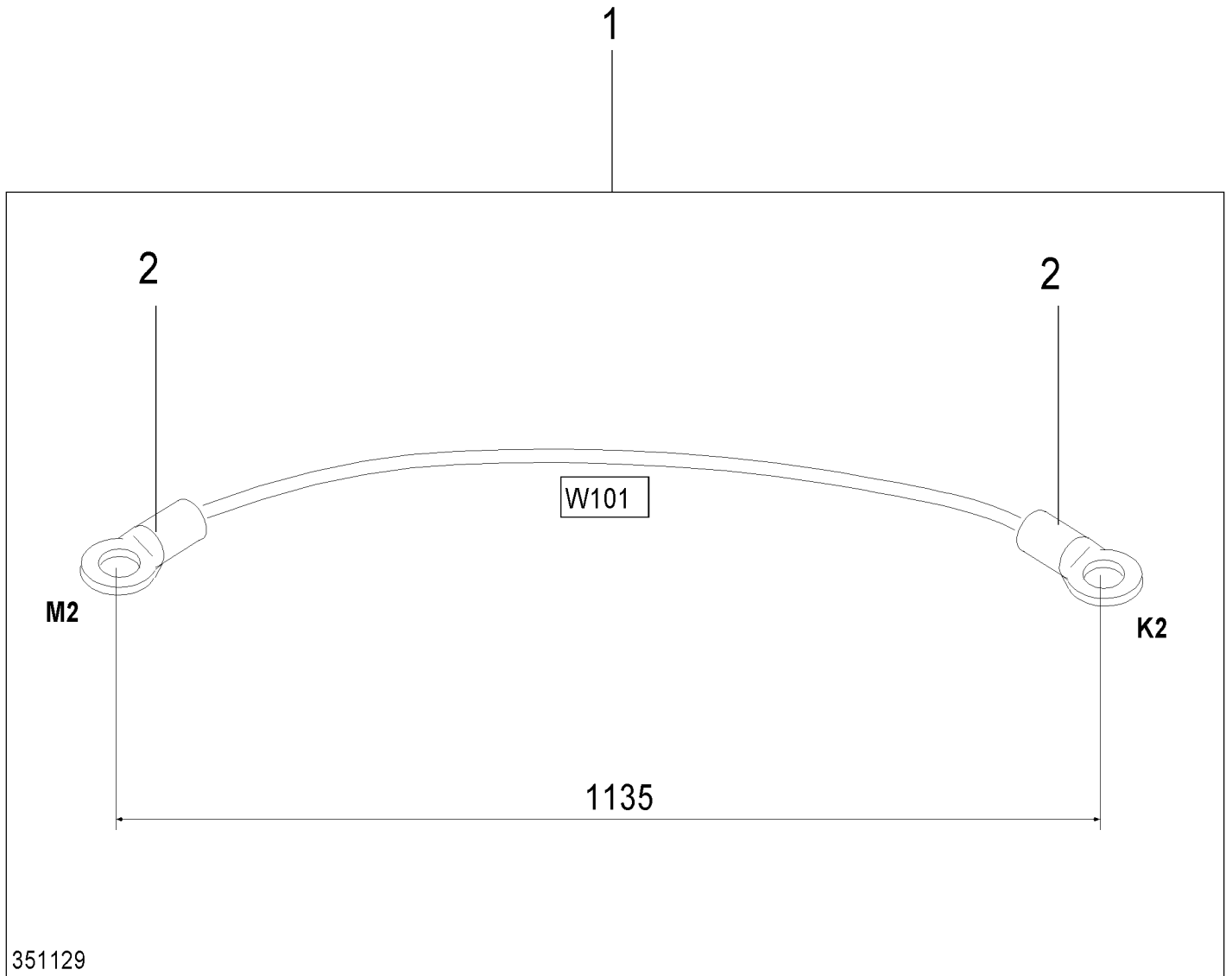
466102

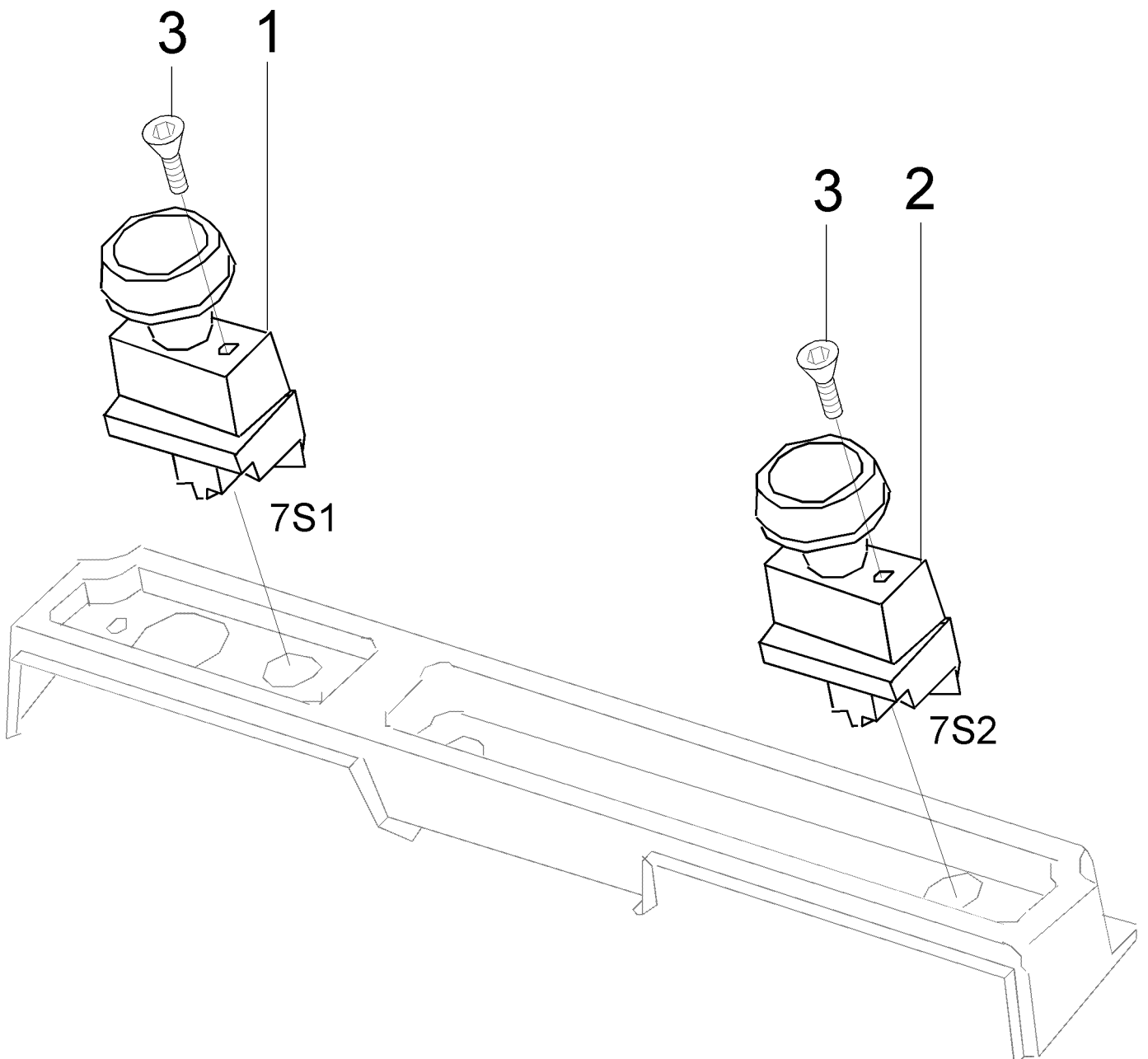


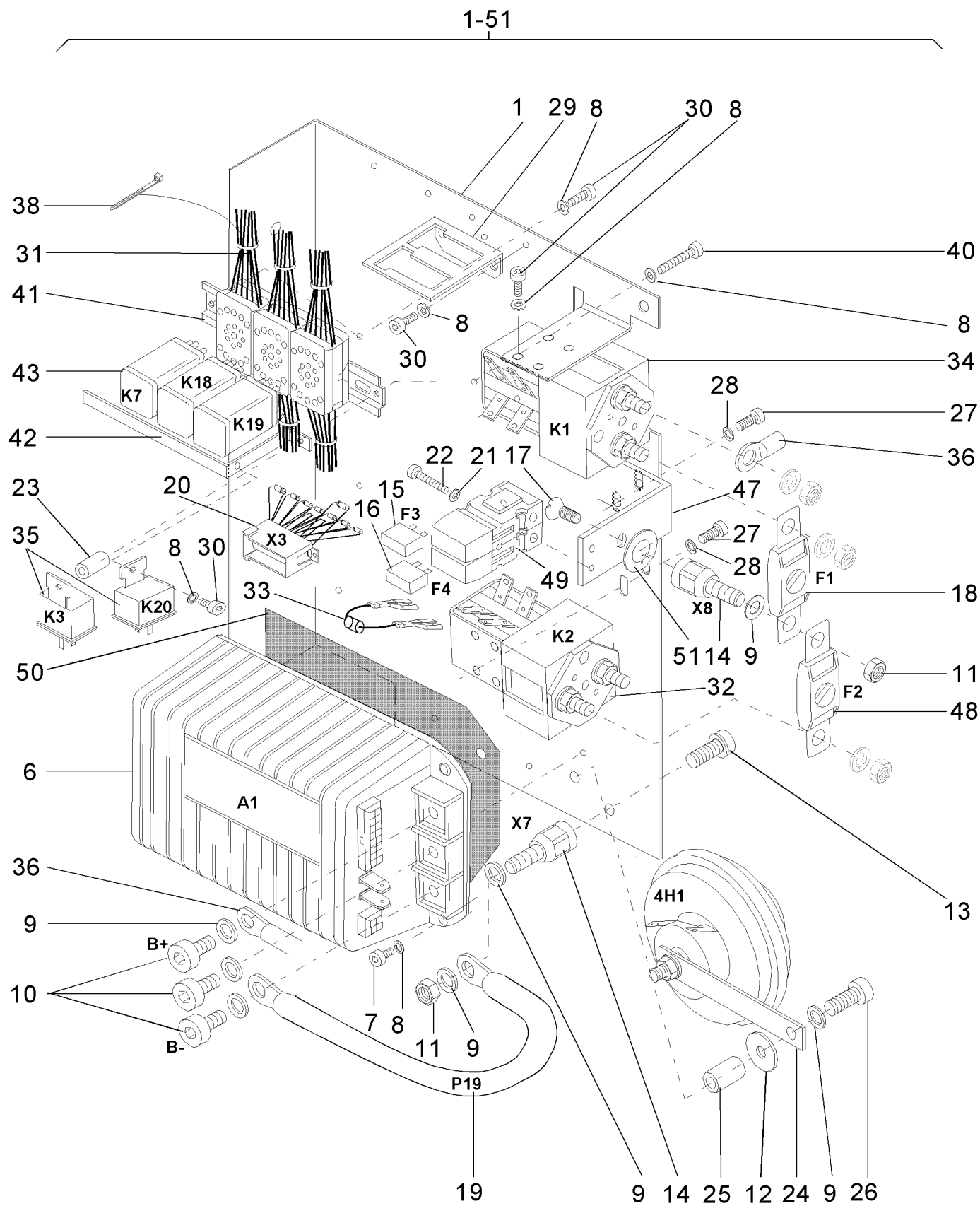
475408-b-17-10-01

17/10/01  
**S E R I E**

- A1: variateur
- A2: boîtier timon
- F1: fusible pompe
- F2: fusible traction
- F3: fusible commande
- F4: fusible combi
- G1: batterie
- K19: relais roulage
- K20: relais manoccontact
- M1: moteur traction
- M2: moteur pompe
- 6P20: combi
- RC: resistance chauffage
- S1: cle
- S3: homme mort gauche
- S4: homme mort droit
- S5: switch hauteur
- 2S10: switch blocage descente
- 2S12/13: descente par BP
- 2S14/15: descente par BP
- 2S16: manoccontact
- 1S1: marche AR
- 2S1: levage
- 4S1: BP klaxon
- 7S1: arrêt urgence
- 1S2: marche AV
- 2S2: descente
- 7S2: arrêt urgence
- K19: relais
- K20: relais
- M1: moteur
- M2: moteur
- 6P20: combi
- RC: resistance
- S1: cle
- S3: homme
- S4: homme
- S5: switch
- 2S10: switch
- 2S12/13: descente
- 2S14/15: descente
- 2S16: manoccontact
- 1S17/18: bouton
- 1S30: boîtier
- Y1: electrovanne

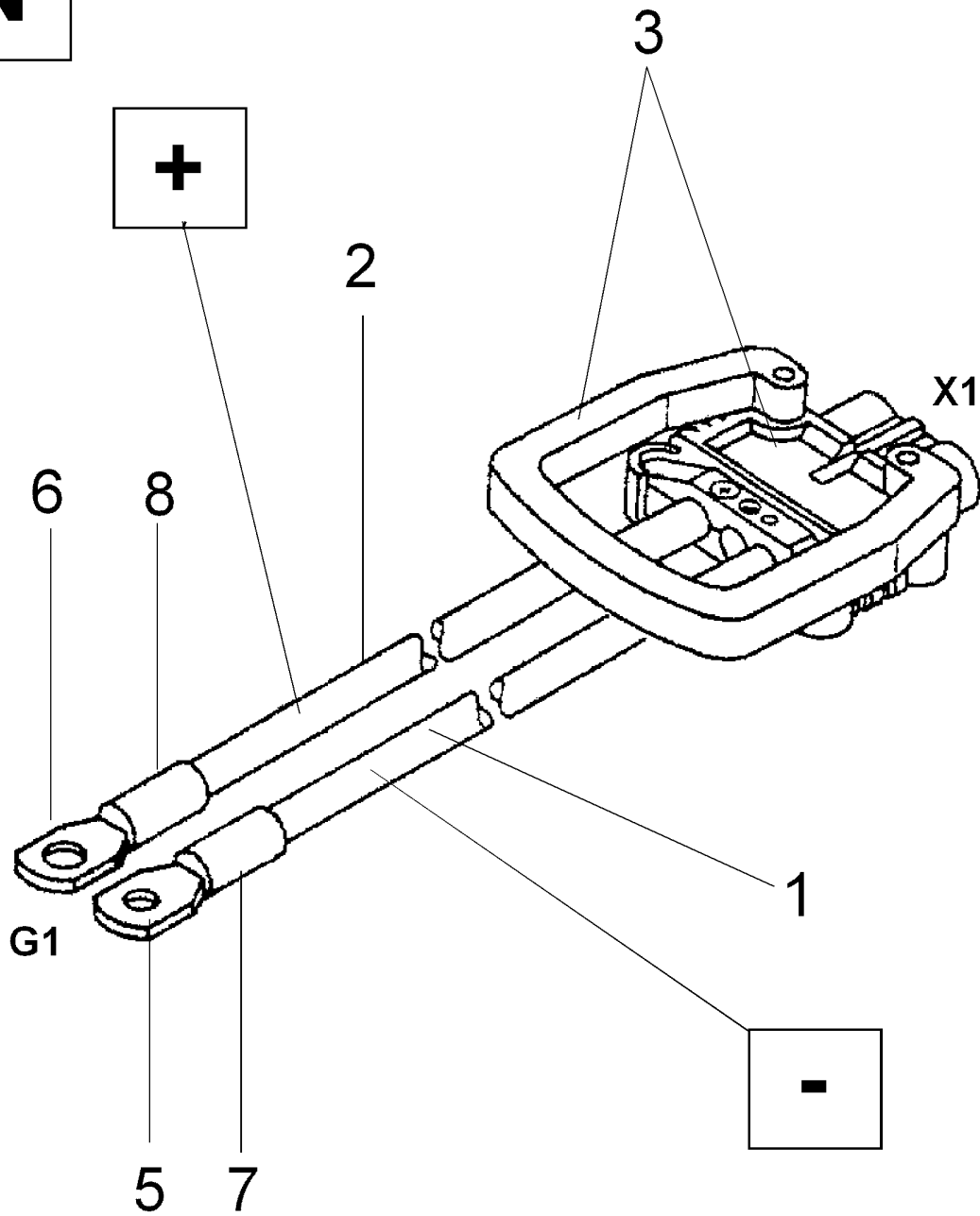






1-8

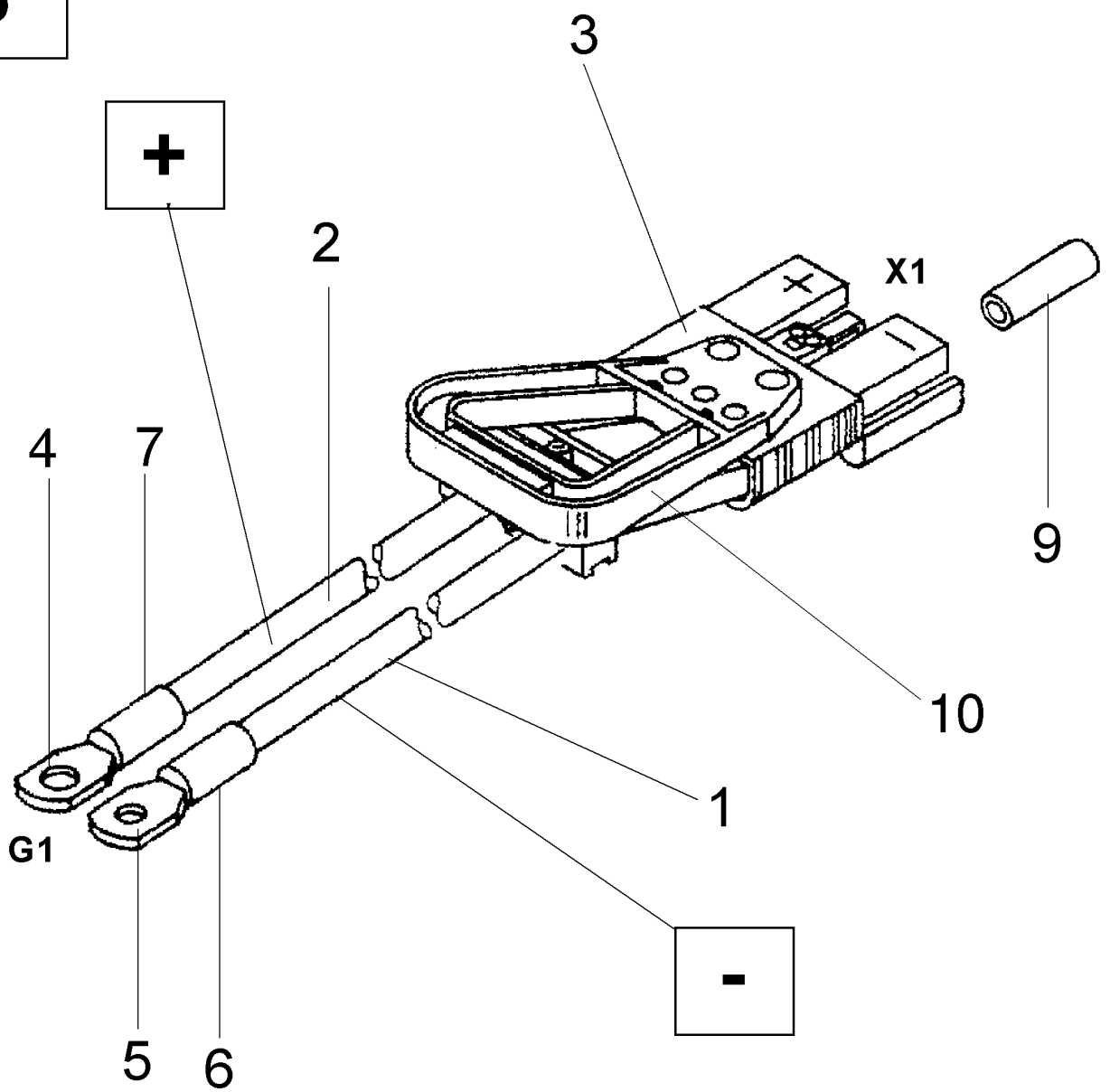
**DIN**



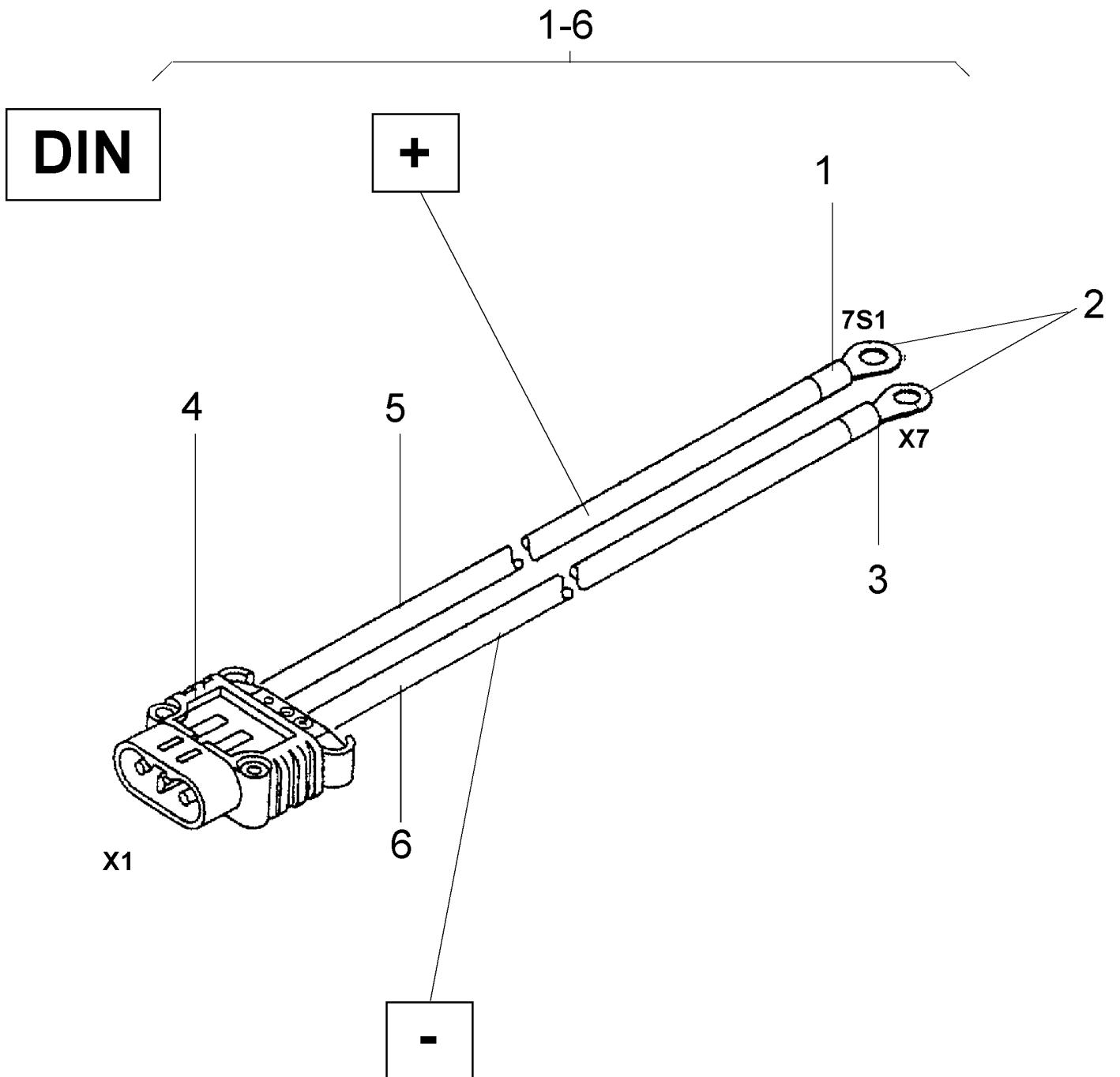
345333

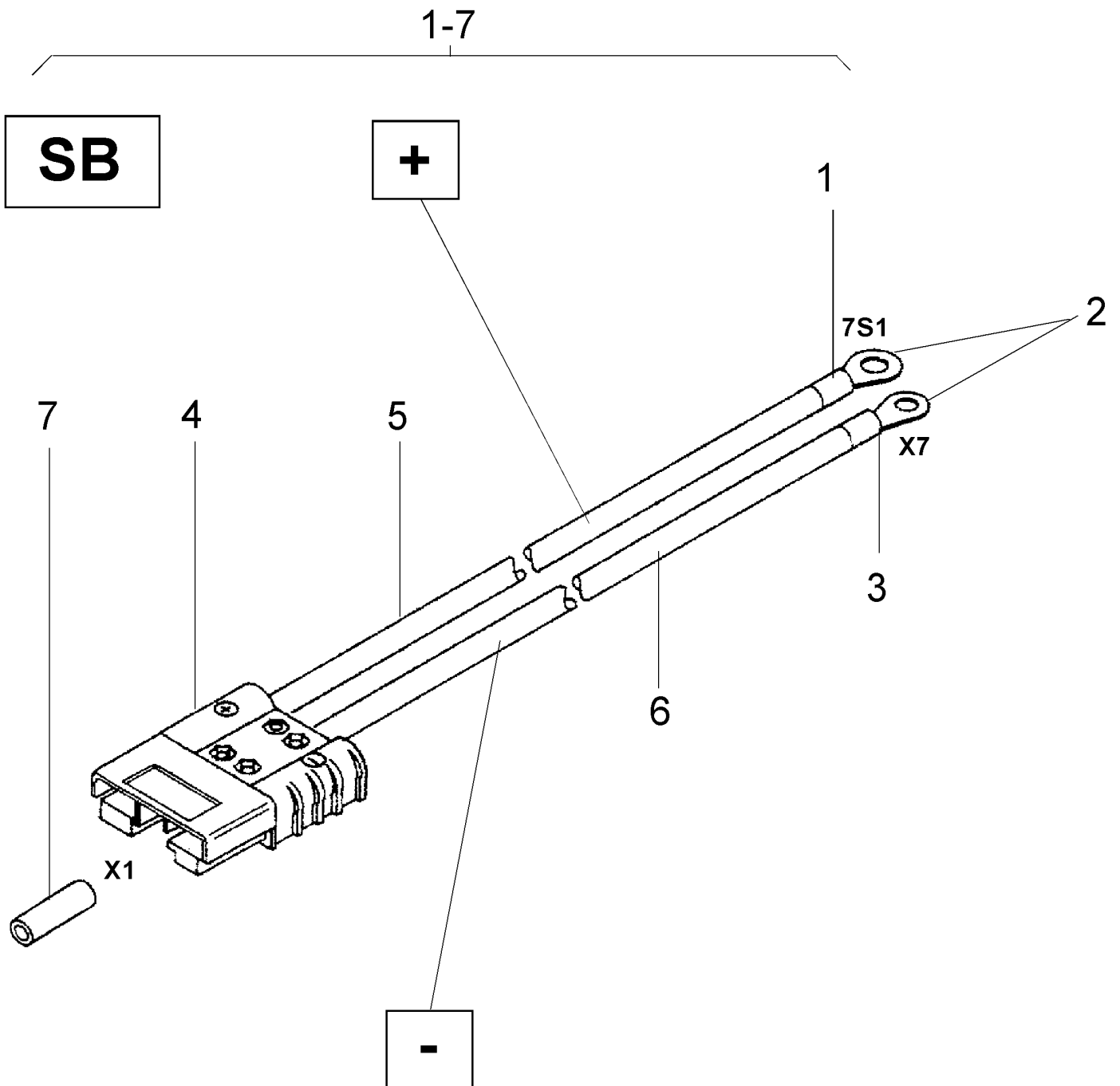
1-9

**SB**

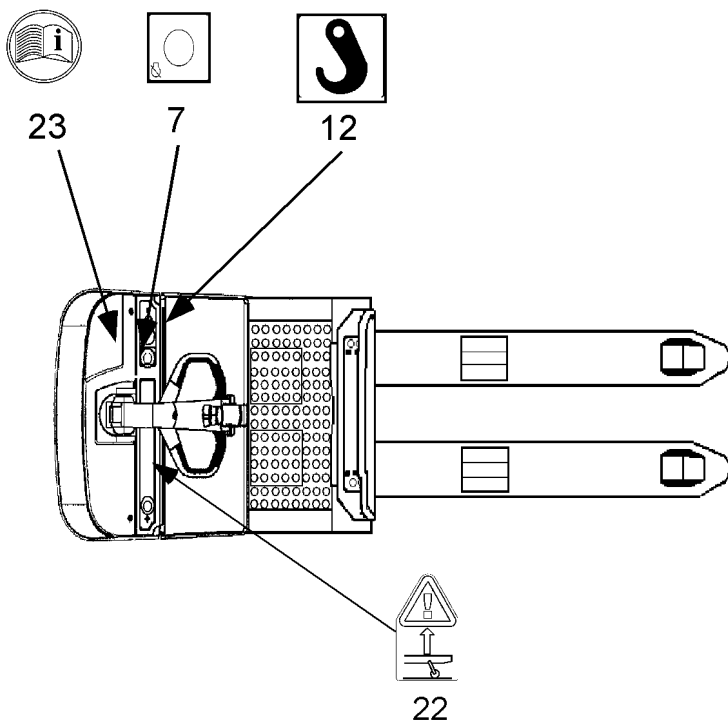
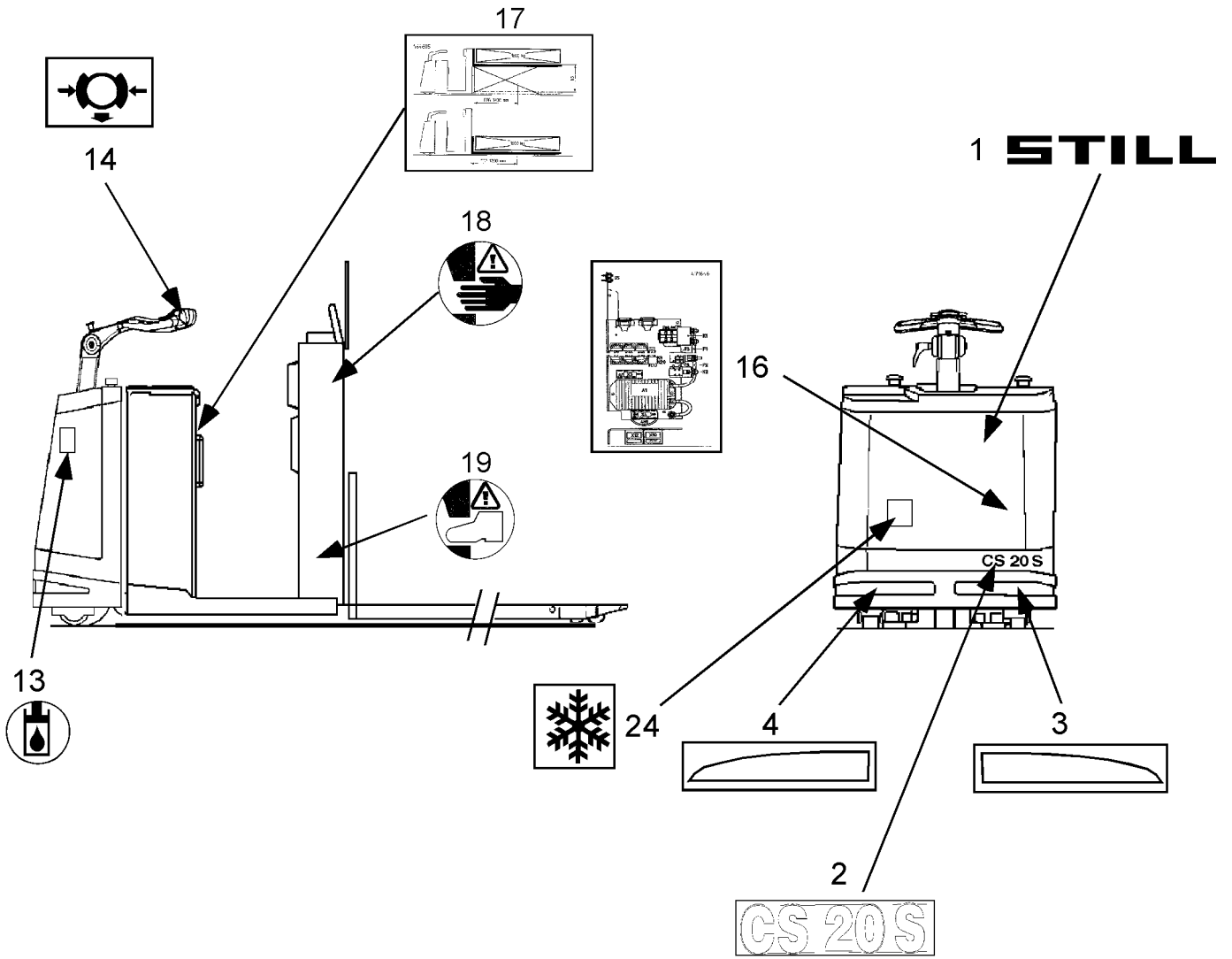


465370









4412589	Page:	20
4412594	Page:	20, 32
4412595	Page:	20, 32
4412596	Page:	20, 32
4412597	Page:	20, 32
4412601	Page:	22
4412602	Page:	20, 32
4412603	Page:	20, 32
4412604	Page:	20, 32
4412605	Page:	22, 32
4412606	Page:	20, 32
4412608	Page:	22
4412609	Page:	20, 32
4412719	Page:	16, 28, 40, 44
4412867	Page:	230
4412868	Page:	230
4412901	Page:	230
4413082	Page:	98
4413193	Page:	238
4414448	Page:	16, 28, 40, 44
4414978	Page:	52
4414981	Page:	52
4414983	Page:	52
4414984	Page:	52
4416571	Page:	10
4416572	Page:	234
4416573	Page:	234
4416574	Page:	234
4416581	Page:	234
4416583	Page:	234
4416588	Page:	234
4416589	Page:	234
4416752	Page:	24
4417000	Page:	242, 244
4420231	Page:	232
4420273	Page:	244
4457090	Page:	6, 36
4457092	Page:	6, 36
4457093	Page:	6, 36
4457094	Page:	6, 36
4457095	Page:	6, 38
4457096	Page:	6, 38
4460845	Page:	16, 28, 40, 44
4461249	Page:	40
4461266	Page:	168

CLICK HERE TO **DOWNLOAD** THE COMPLETE MANUAL

- Thank you very much for reading the preview of the manual.
- You can download the complete manual from: [www.heydownloads.com](http://www.heydownloads.com) by clicking the link below



- Please note: If there is no response to CLICKING the link, please download this PDF first and then click on it.

CLICK HERE TO **DOWNLOAD** THE COMPLETE MANUAL