

# **SL-15-2-00103 WITH WINCH,FULL RADIO CONT.,SLIDE CARRIER**

**PF1000746-00 WINCH SYSTEM**

**PK1000777-00 FRAME (BODY)**

**PK2001639-00 FRAME UNIT**

**PO1000152-01 INDICATION PLATES**

**PY1000373-00 OPTIONS**

**ASSEMBLY**

CLICK HERE TO **DOWNLOAD** THE COMPLETE MANUAL

- Thank you very much for reading the preview of the manual.
- You can download the complete manual from: [www.heydownloads.com](http://www.heydownloads.com) by clicking the link below



- Please note: If there is no response to CLICKING the link, please download this PDF first and then click on it.

CLICK HERE TO **DOWNLOAD** THE COMPLETE MANUAL

# SL-15-2-00103 WITH WINCH,FULL RADIO CONT.,SLIDE CARRIER

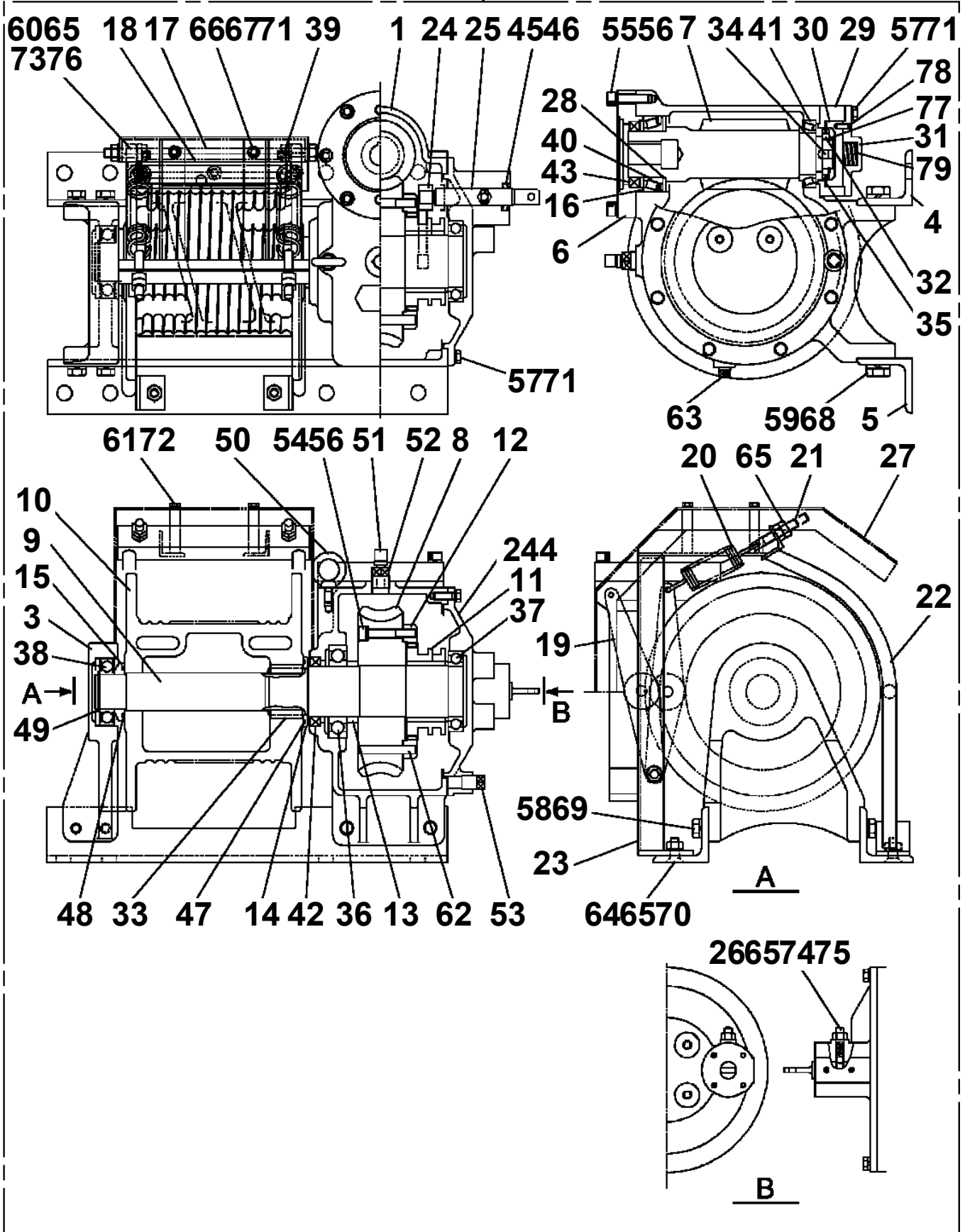
Pos No.	Parts No	Parts Name	Qty	Unit	Technical Data	Serial No (Start)	Serial No (End)	Remarks
11	(*****)	RADIO CONTROLLER ASSY	1					

## SL-15-2-00103 WITH WINCH,FULL RADIO CONT.,SLIDE CARRIER

Pos No.	Parts No	Parts Name	Qty	Unit	Technical Data	Serial No (Start)	Serial No (End)	Remarks	Pages
1	91660007501	SEAL,DUST	1						
2	36033960600	COVER,ROD	1						
3	91694007501	PACKING	1						
4	91410207501	RING,BACKUP	1						
5	91002908500	O-RING	1		1B G85				
6	36052961000	ROD	1						
7	36052962000	CYLINDER	1						
8	36033960200	PISTON	1						
9	91350209001	BEARING,PLAIN	1						
10	91002904500	O-RING	1		1B G45				
11	90211204200	NUT	1		M42X2.0				
50	36027179900	PACKING SET	1		75X90				
100	36052960000	CYLINDER ASSY	1						

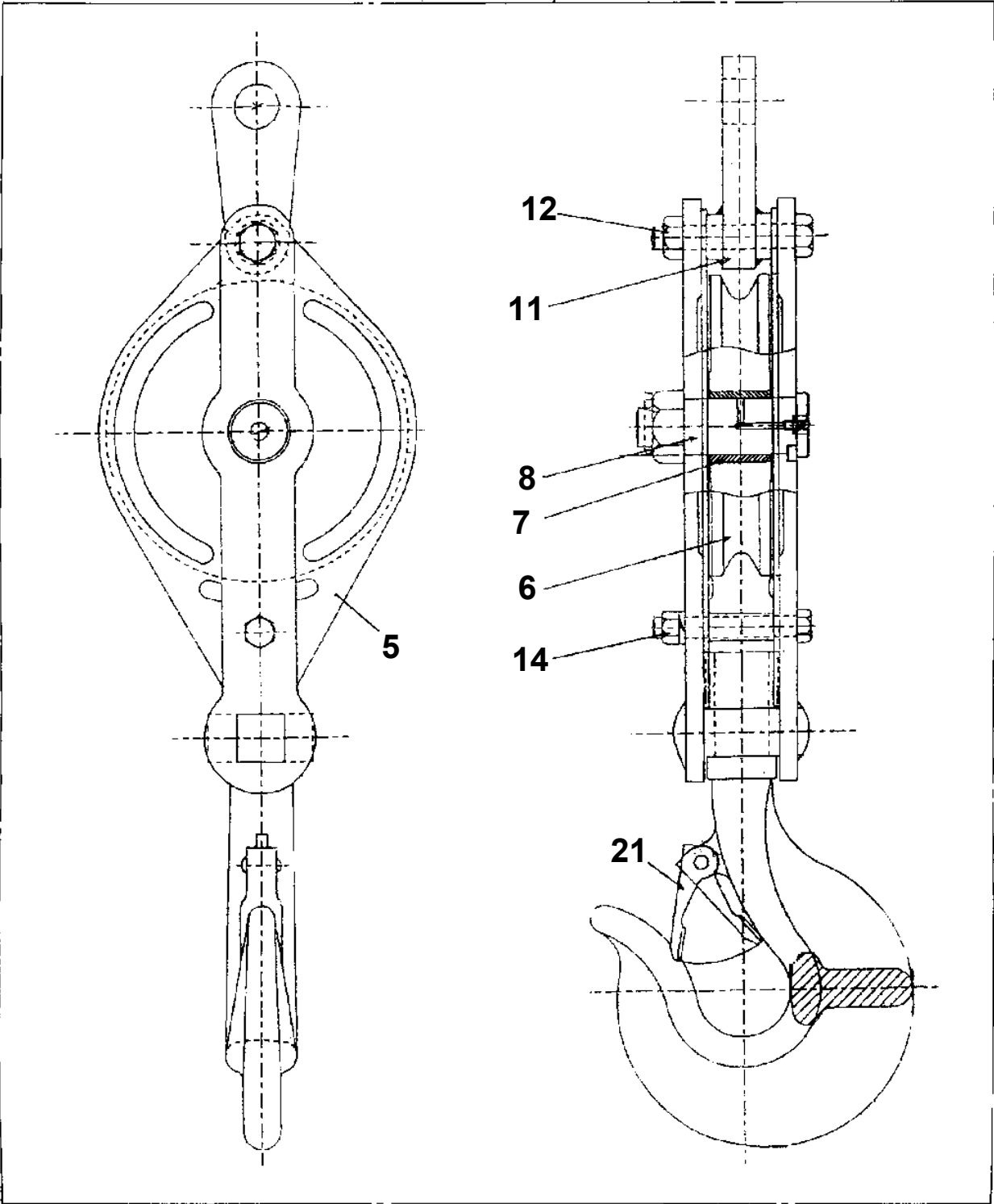
SL-15-2-00103 WITH WINCH,FULL RADIO CONT.,SLIDE CARRIER  
 PF1010207-00 WINCH (HARTYS)

100

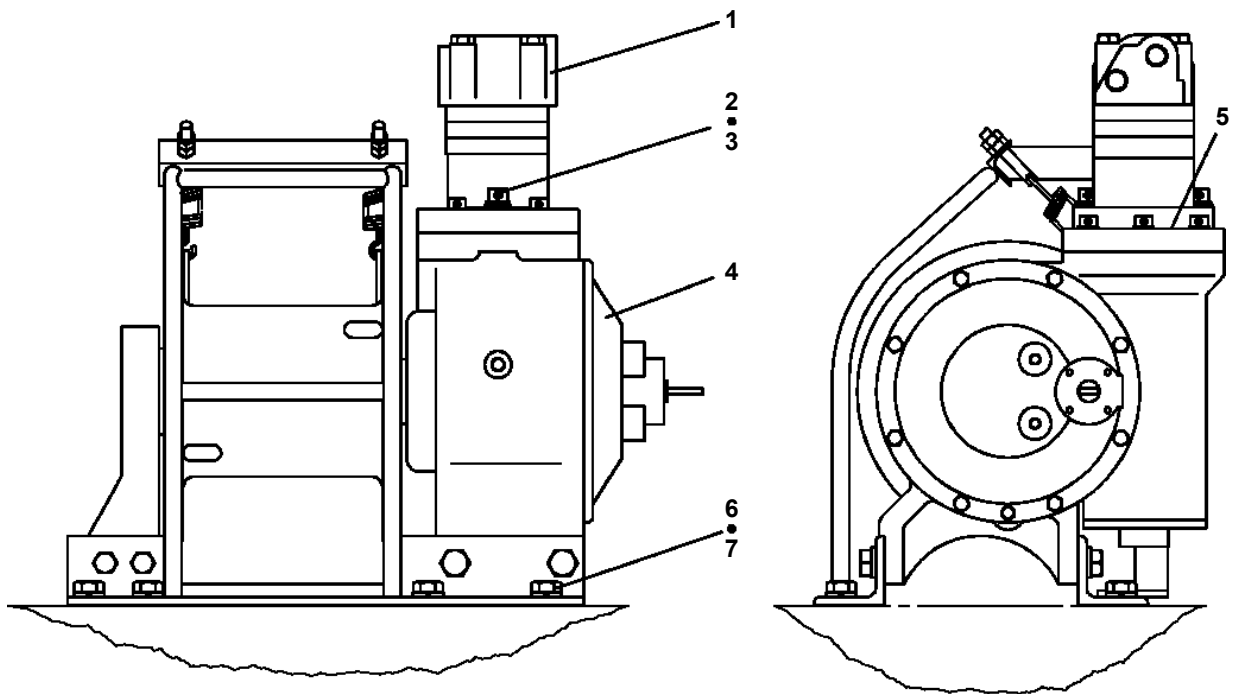


SL-15-2-00103 WITH WINCH,FULL RADIO CONT.,SLIDE CARRIER  
PF1050274-00 HOOK (10TON)

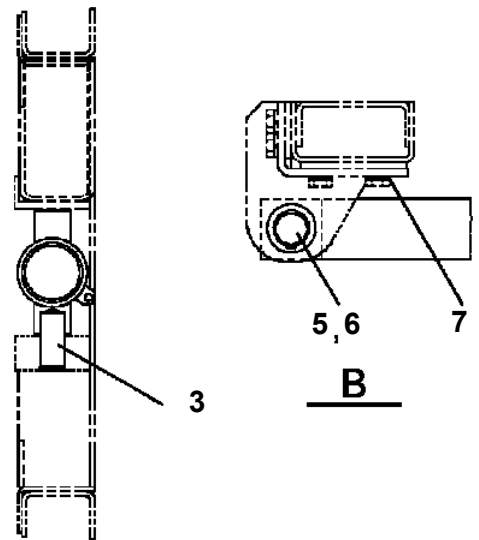
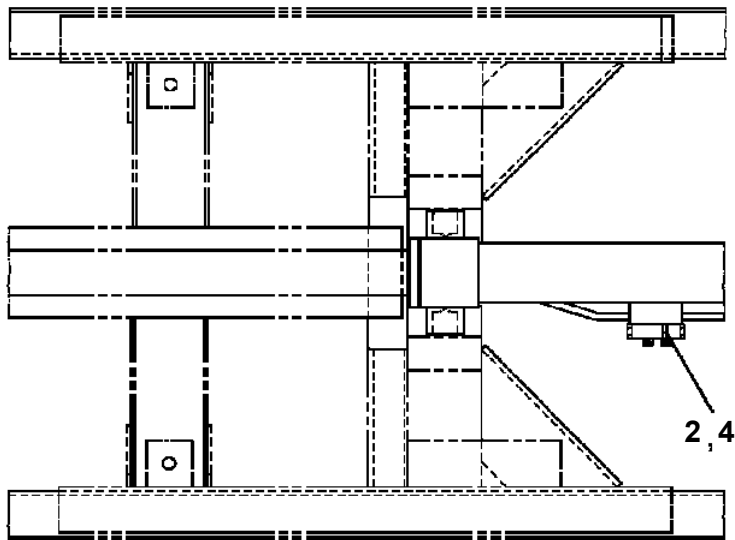
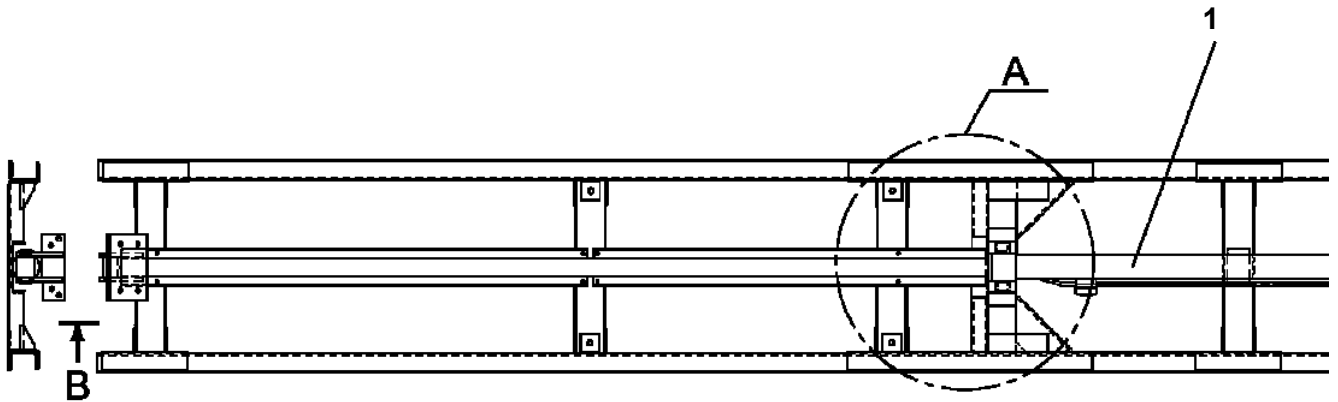
50



**SL-15-2-00103 WITH WINCH,FULL RADIO CONT.,SLIDE CARRIER  
PF1400322-00 MOUNT,WINCH (3T SELF)**



SL-15-2-00103 WITH WINCH,FULL RADIO CONT.,SLIDE CARRIER  
PF5100203-00 FRAME ASSY



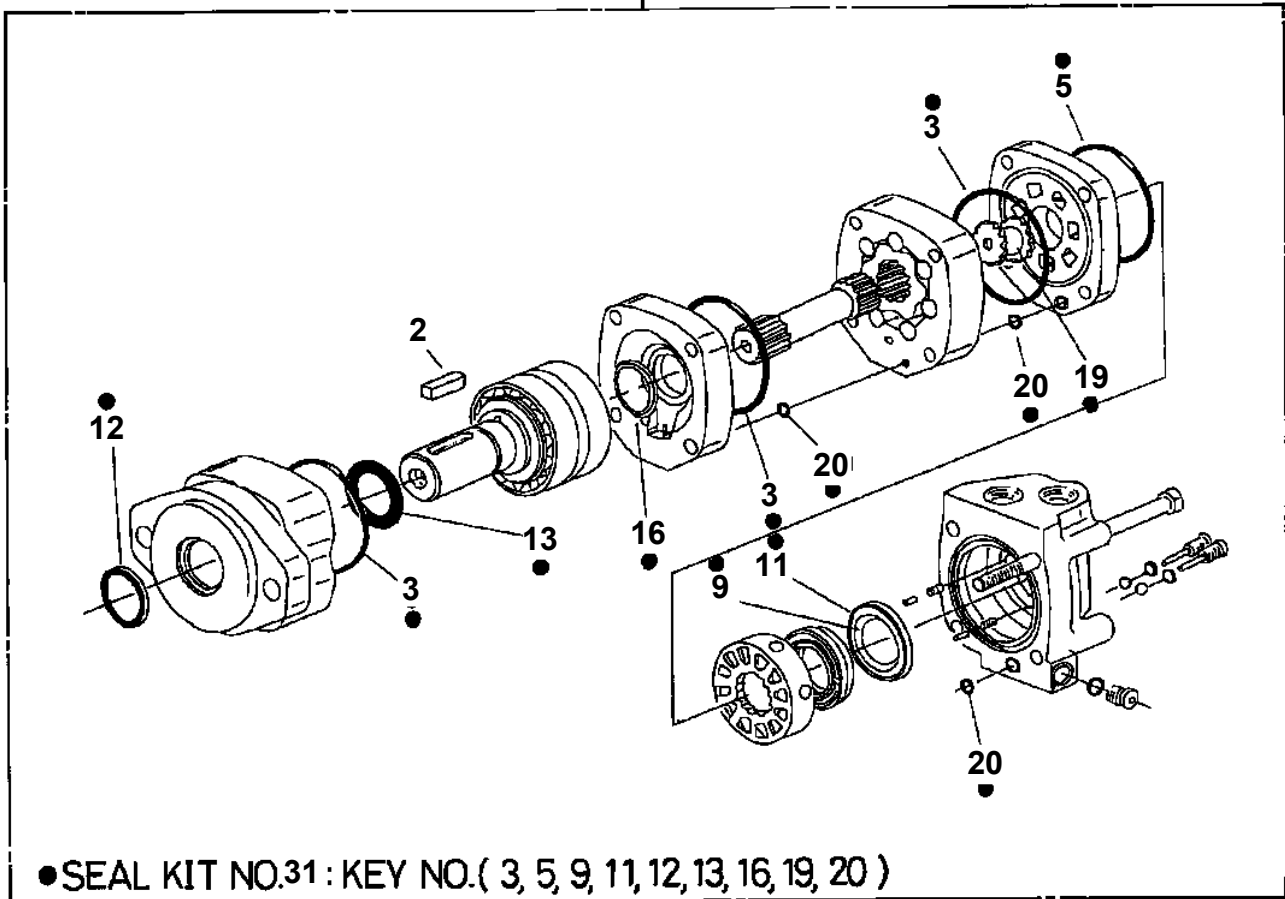
A

B

SL-15-2-00103 WITH WINCH,FULL RADIO CONT.,SLIDE CARRIER  
PI1010117-00 MOTOR, HYDRAULIC

Assembly Name MOTOR, HYDRAULIC

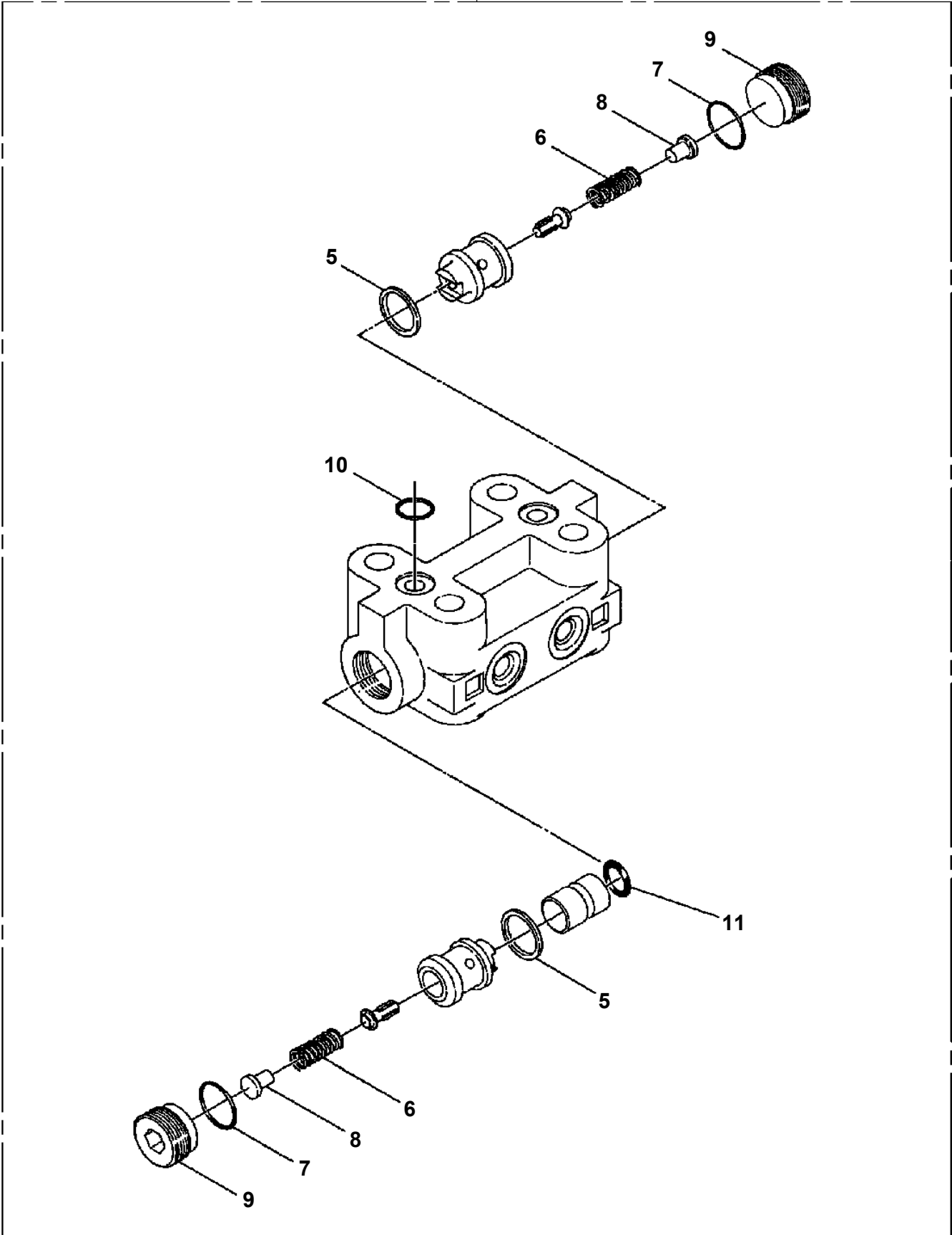
50



●SEAL KIT NO.31 : KEY NO.( 3, 5, 9, 11, 12, 13, 16, 19, 20 )

SL-15-2-00103 WITH WINCH,FULL RADIO CONT.,SLIDE CARRIER  
PI1280067-01 VALVE,PILOT CHECK

100



CLICK HERE TO **DOWNLOAD** THE COMPLETE MANUAL

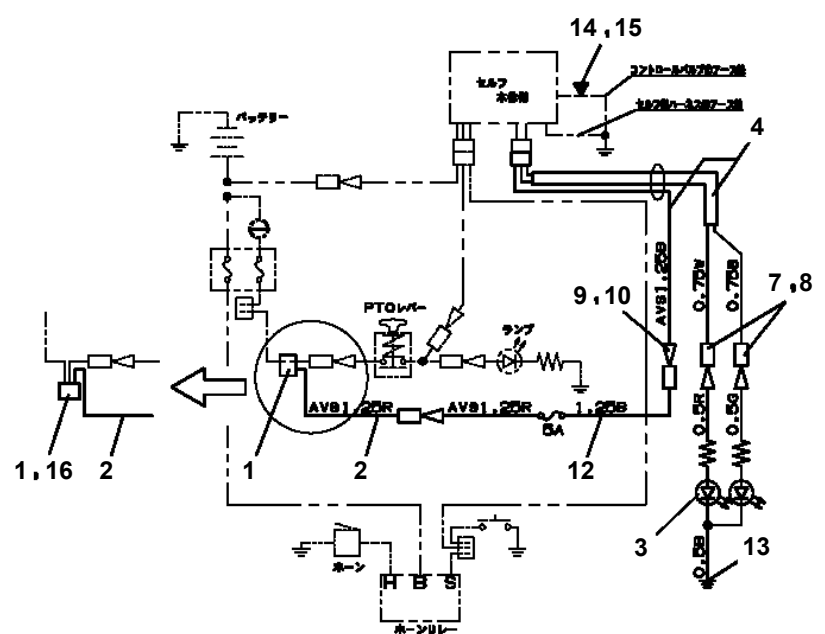
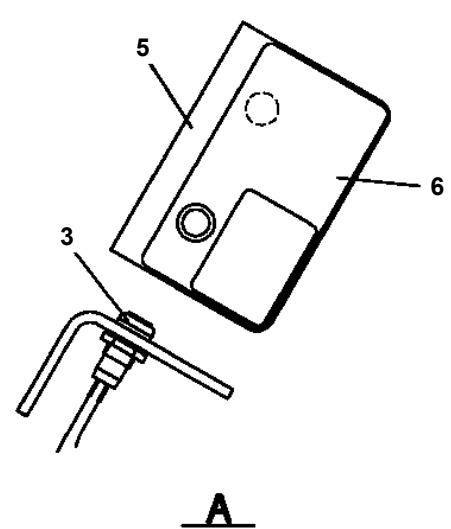
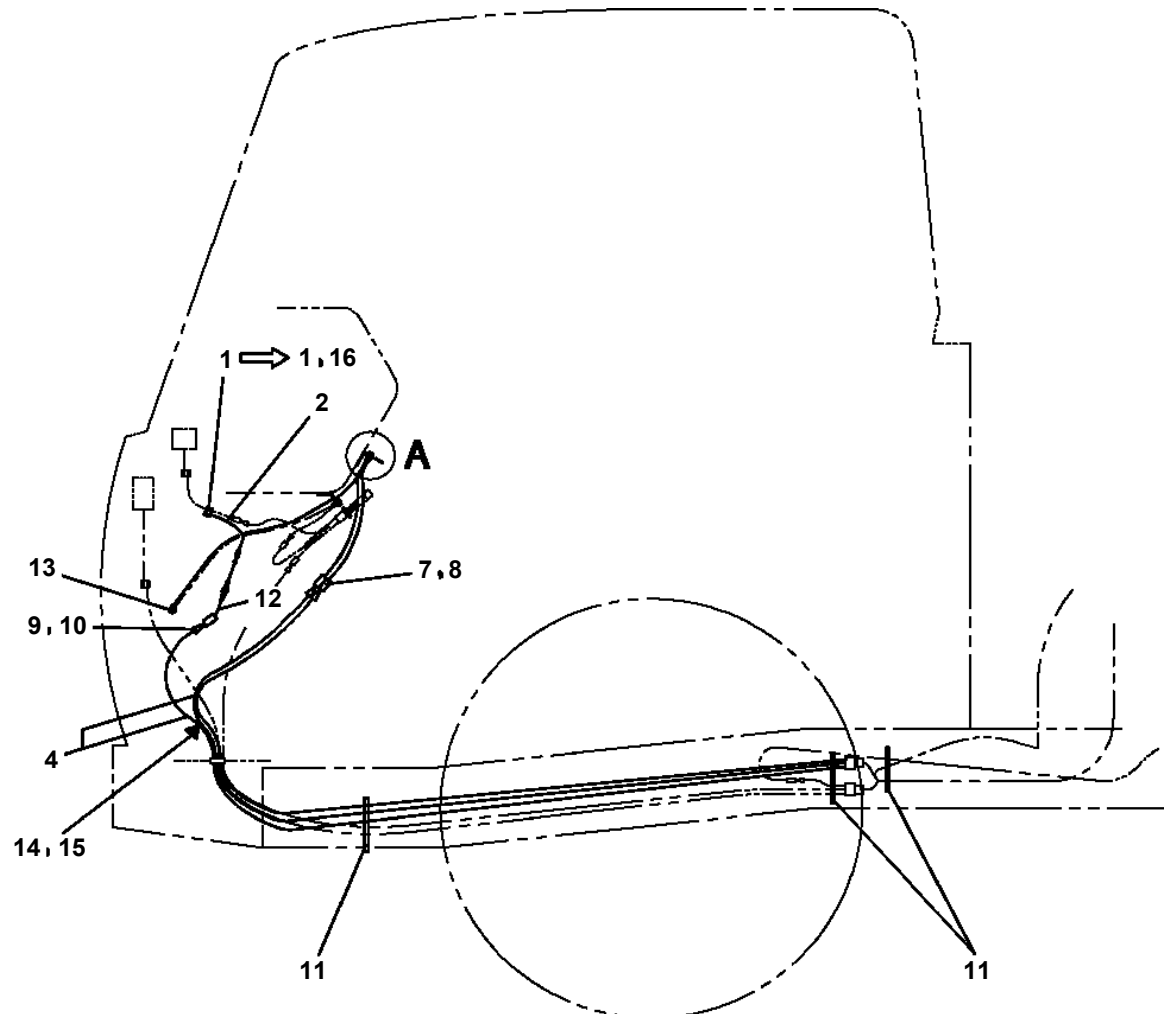
- Thank you very much for reading the preview of the manual.
- You can download the complete manual from: [www.heydownloads.com](http://www.heydownloads.com) by clicking the link below



- Please note: If there is no response to CLICKING the link, please download this PDF first and then click on it.

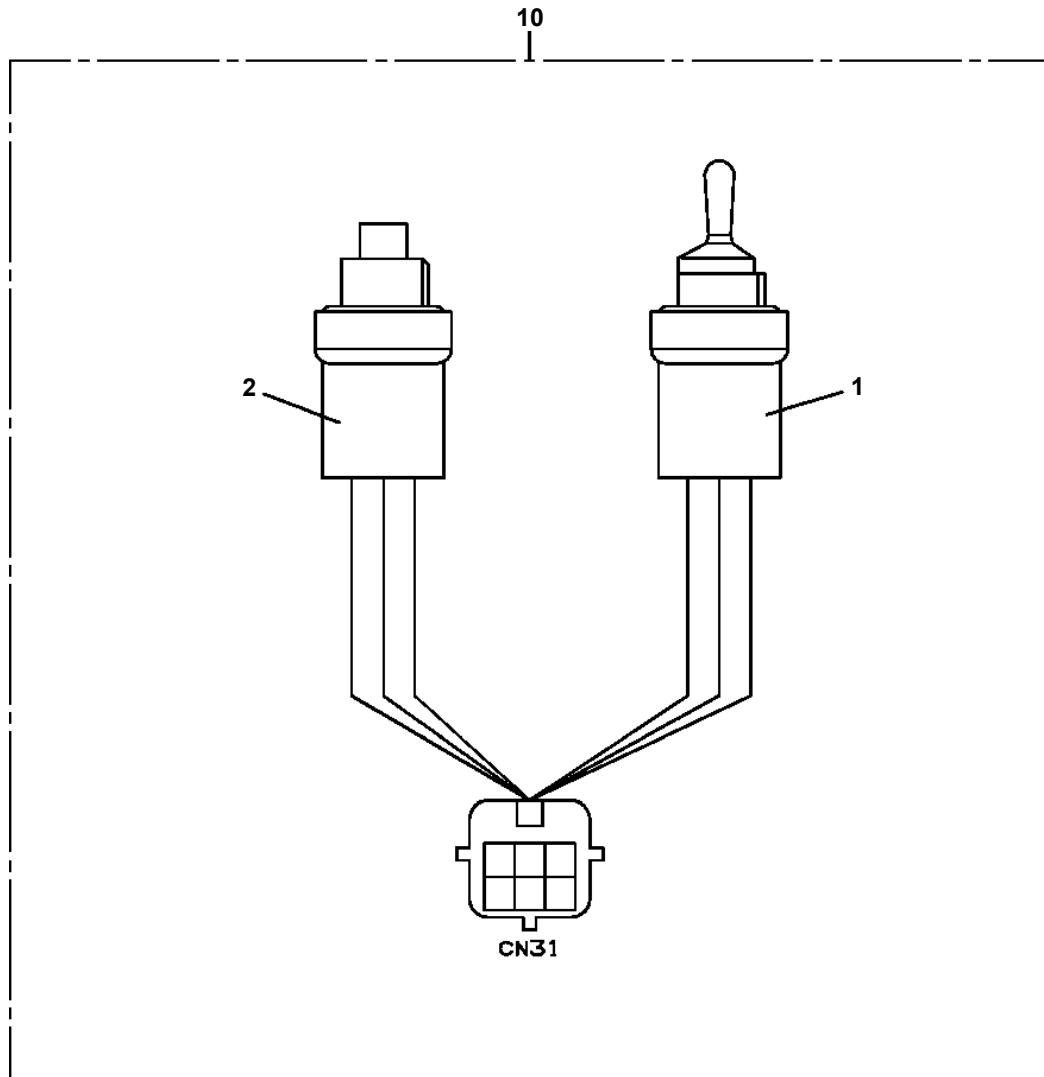
CLICK HERE TO **DOWNLOAD** THE COMPLETE MANUAL

SL-15-2-00103 WITH WINCH,FULL RADIO CONT.,SLIDE CARRIER  
 PN1014395-01 ELEC.ASSY



電気回路 (車両側)

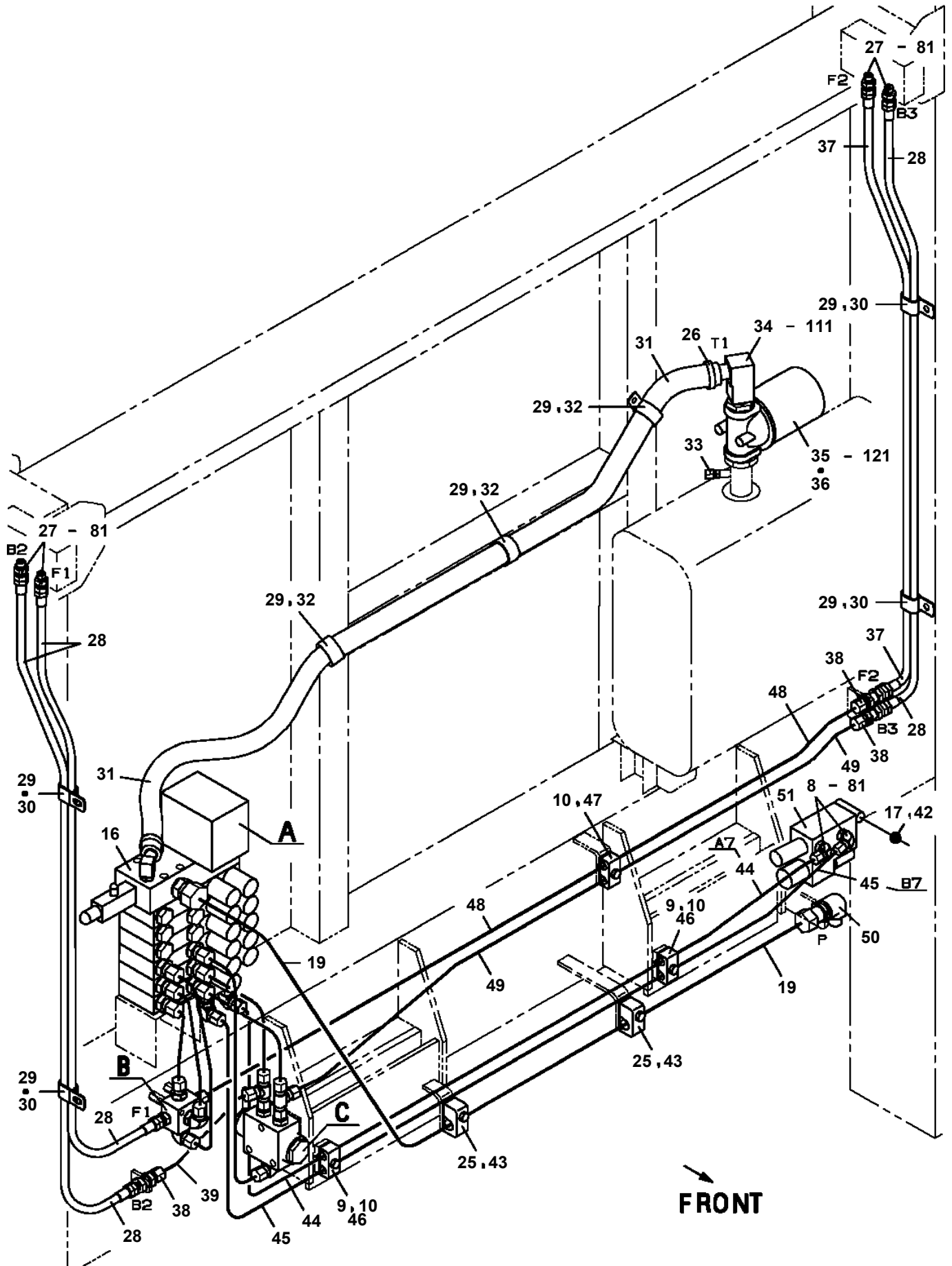
**SL-15-2-00103 WITH WINCH,FULL RADIO CONT.,SLIDE CARRIER  
PN1140234-00 SWITCH ASSY (PLATING:NACC)**



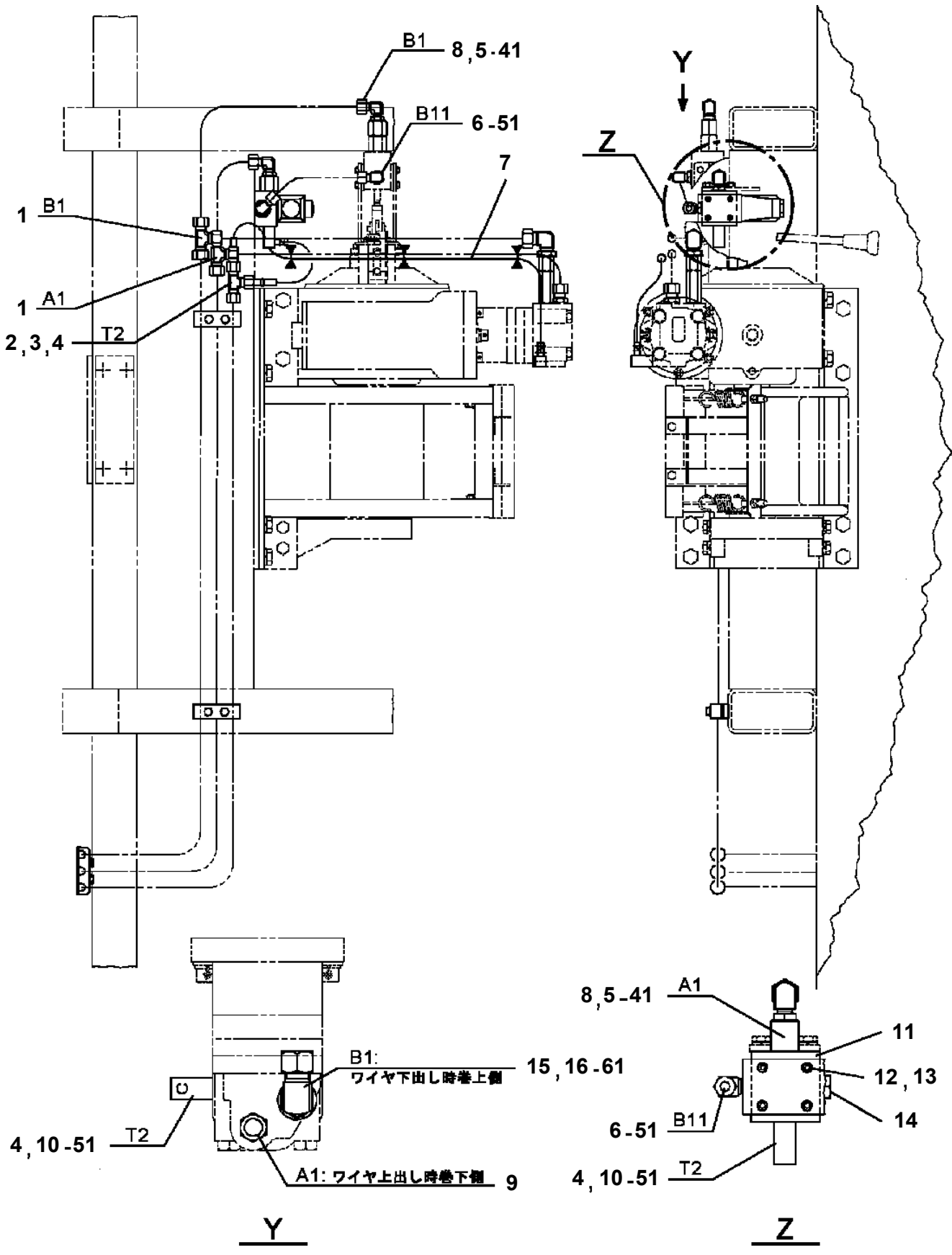
## SL-15-2-00103 WITH WINCH,FULL RADIO CONT.,SLIDE CARRIER

Pos No.	Parts No	Parts Name	Qty	Unit	Technical Data	Serial No (Start)	Serial No (End)	Remark
1	31492870100	PLATE,NAME (SELFSLIDER)	3					
2	31492870200	PLATE,CAUTION	2					
3	31492870300	PLATE,CAUTION	2					
4	31492870400	PLATE,CAUTION	1					
5	31492870500	PLATE	1					
6	37002224000	PLATE,NAME	1					
7	31940890100	PLATE,NAME	1					
8	31940890200	PLATE,NAME	1					
9	37002206490	PLATE,NAME (GREASE)	20					
10	31611300500	PLATE,NAME (WHITE)	4					
11	31490000210	PLATE,CAUTION	1					
12	37002220430	PLATE,CAUTION	2					
13	37002205290	PLATE,NAME (LEVEL,LL)	1					

SL-15-2-00103 WITH WINCH, FULL RADIO CONT., SLIDE CARRIER  
PP6010267-00 PIPING ASSY

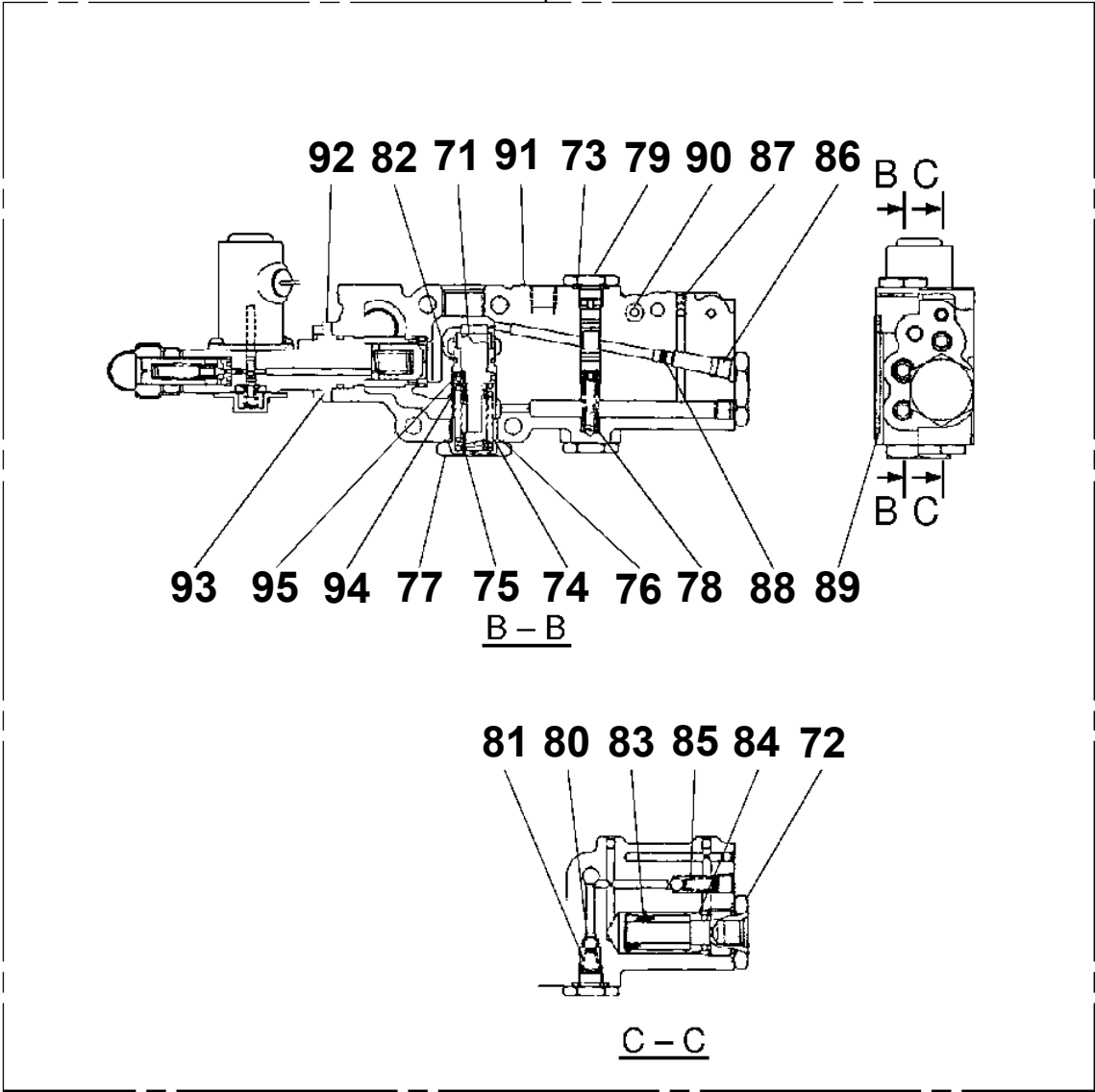


**SL-15-2-00103 WITH WINCH,FULL RADIO CONT.,SLIDE CARRIER  
PP6390028-00 PIPING ASSY,WINCH**

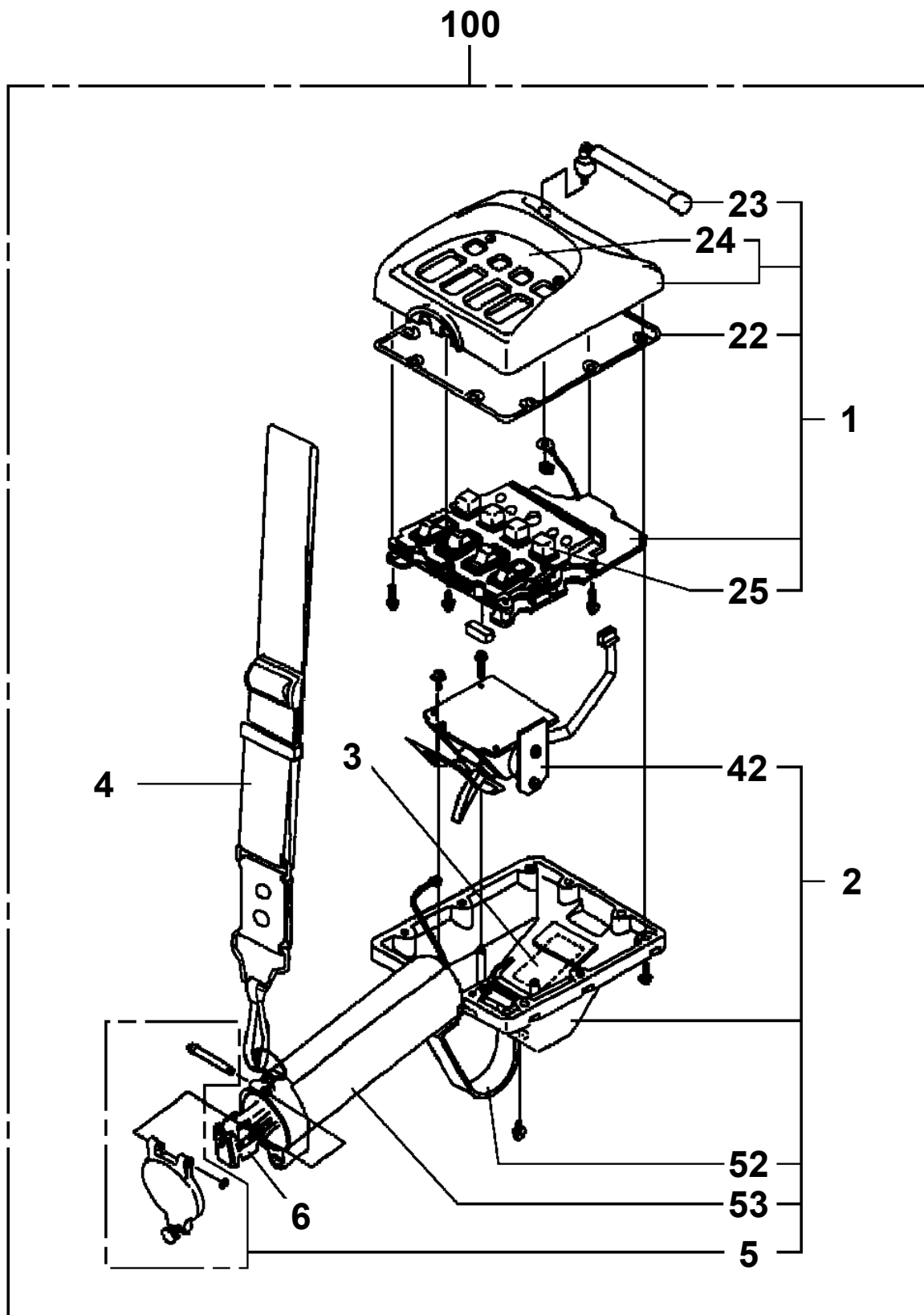


**SL-15-2-00103 WITH WINCH,FULL RADIO CONT.,SLIDE CARRIER  
PV1020156-01 VALVE,REMOTE CONTROL**

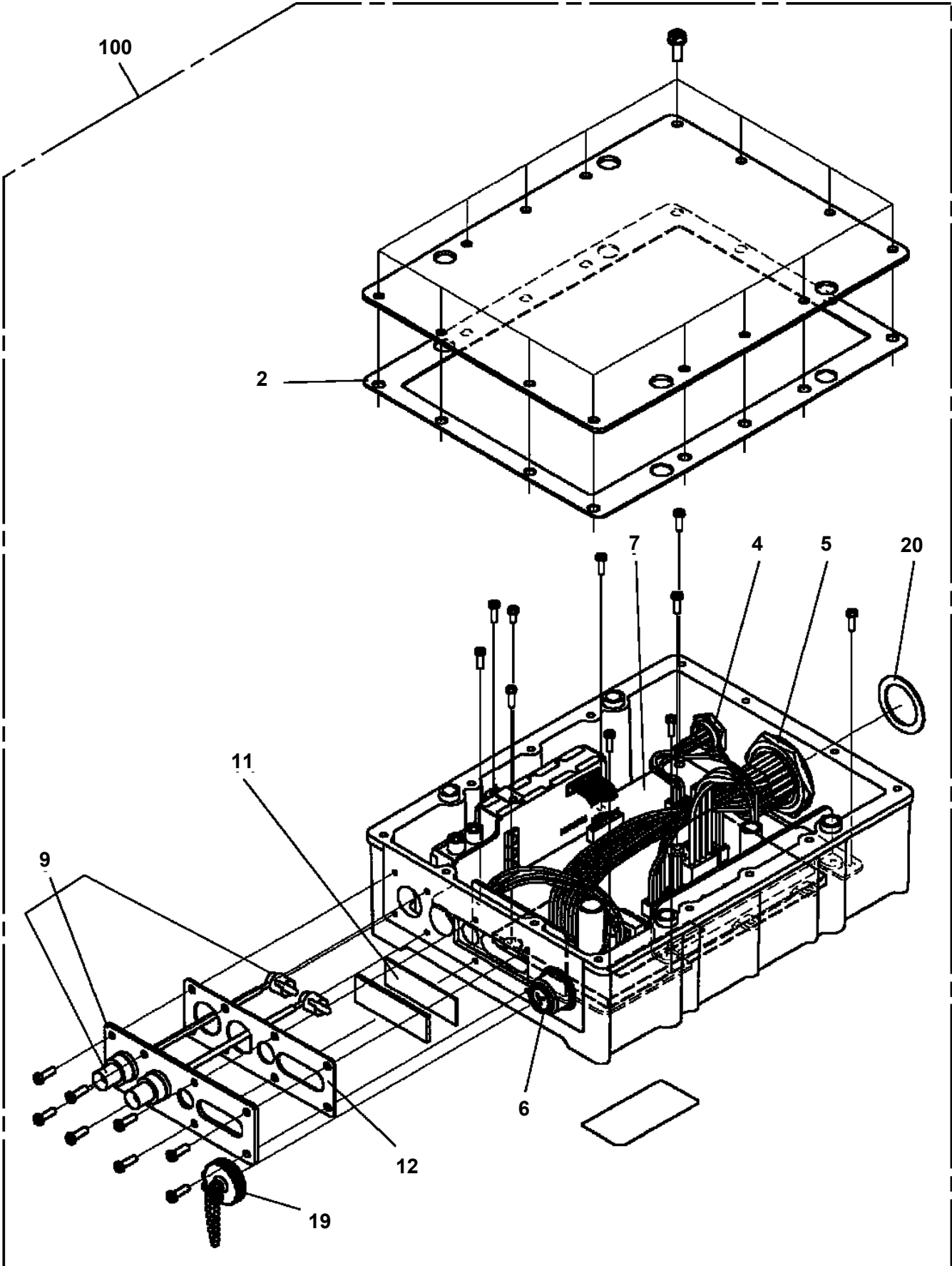
**4**



SL-15-2-00103 WITH WINCH, FULL RADIO CONT., SLIDE CARRIER  
PV1030037-05 SWITCH BOX (RADIO CONTROL, TYPE-E)



SL-15-2-00103 WITH WINCH,FULL RADIO CONT.,SLIDE CARRIER  
PV1040106-00 CONTROL UNIT



**SL-15-2-00103 WITH WINCH,FULL RADIO CONT.,SLIDE CARRIER  
PV1070452-00 RADIO CONTROL**

ラジ オ コントロール  
RADIO CONTROL

〔組立名称一覧〕より選択してください。  
SEE THE CORRESPONDING "ASSEMBLY NAME" LIST.

CLICK HERE TO **DOWNLOAD** THE COMPLETE MANUAL

- Thank you very much for reading the preview of the manual.
- You can download the complete manual from: [www.heydownloads.com](http://www.heydownloads.com) by clicking the link below



- Please note: If there is no response to CLICKING the link, please download this PDF first and then click on it.

CLICK HERE TO **DOWNLOAD** THE COMPLETE MANUAL