

AC-125S-1-80111 3 BOOM,CRAWLER TYPE

PB1000457-00 HYDRAULIC PRESSURE GENERATING SYSTEM

PD1000417-00 SWING SYSTEM

PE1000420-00 ELEVATING SYSTEM

PG1000370-00 TELESCOPING SYSTEM

PH1000376-00 SAFETY DEVICES

PJ3000103-00 PLATFORM SYSTEM

PK1000432-00 FRAME

PL1000439-00 CONTROL DEVICES

PN1000315-00 ELECTRIC EQUIPMENT

PO1000131-03 INDICATION PLATES

PQ1000133-00 DRIVING POWER GENERATING SYSTEM

PW1000097-02 ACCESSORIES & TOOLS

PX1000458-00 MOUNTING PARTS

PY1000384-01 OPTIONS

ASSEMBLY

CLICK HERE TO **DOWNLOAD** THE COMPLETE MANUAL

- Thank you very much for reading the preview of the manual.
- You can download the complete manual from: www.heydownloads.com by clicking the link below



- Please note: If there is no response to CLICKING the link, please download this PDF first and then click on it.

CLICK HERE TO **DOWNLOAD** THE COMPLETE MANUAL

AC-125S-1-80111 3 BOOM,CRAWLER TYPE

Pos No.	Parts No	Parts Name	Qty	Unit	Technical Data	Serial No (Start)	Serial No (End)
1	(***** (*****	CONNECTION,AML SYSTEM (MODIF.)	1				
2	36190031000	CONNECTION,MOMENT LIMITER SYSTEM	1				
		MOTION CONTROLLER (AMC)	1				
101	36131170001	DETECTOR,BOOM LENGTH	1				

AC-125S-1-80111 3 BOOM,CRAWLER TYPE

Pos No.	Parts No	Parts Name	Qty	Unit	Technical Data	Serial No (Start)	Serial No (End)	Remarks	Pages
1	(*****)	PLATE ASSY,NAME	1						000108

AC-125S-1-80111 3 BOOM,CRAWLER TYPE

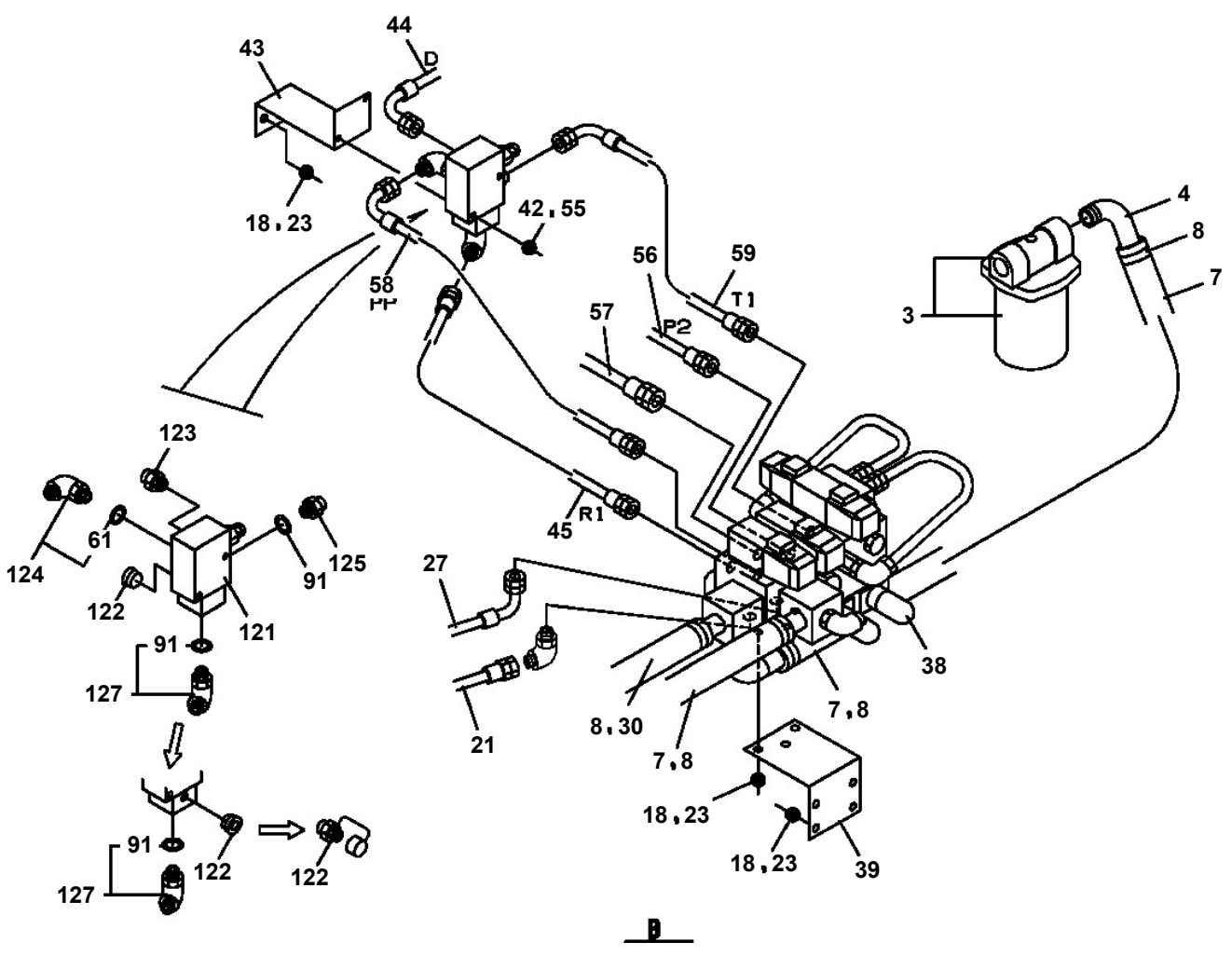
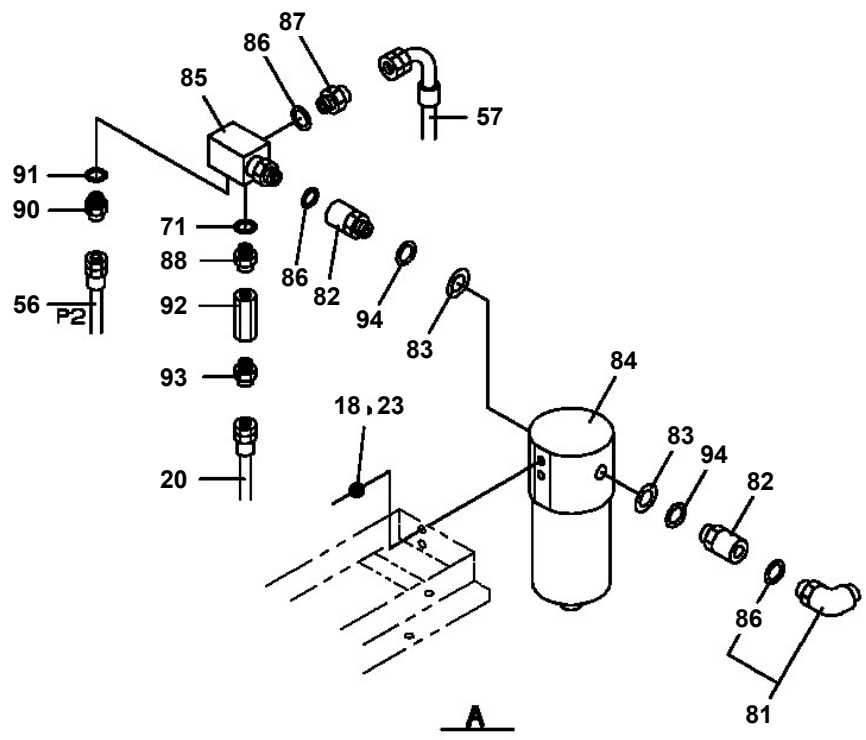
PJ3040022-00 OPE.ASSY (PANEL,CONTROL)
PJ3070019-01 PLATFORM
PJ3070060-00 PLATFORM (MODIF.)
PJ3110023-00 PIPING (PLATFORM FRAME)
PJ3170000-01 SWING UNIT,PLATFORM
PJ3220003-02 JOINT,ROTARY INSTALLATION
PJ3930001-00 ELEC.ASSY (PLATFORM)
PJ3930002-00 ELEC.ASSY (PLATFORM,MODIFICATION)
PJ3930003-00 ELEC.ASSY (BOX,OPERATION)
PJ3930004-00 ELEC.ASSY (PLATFORM FRAME)
PK1100207-00 SWING FRAME
PK1130015-00 COVER,BEARING
PK1200240-01 COVER,SWING FRAME
PK1330065-00 COVER (SWING FRAME)
PL1030471-02 OPE.ASSY,ACCELERATOR
PL1100080-03 BOX,OPERATION (LOWER)
PL1100208-00 BOX,OPERATION (LOWER,MODIF.)
PL1100211-01 BOX,OPERATION (LOWER/ELEC.)
PM1010013-00 PARTS,GREASING
PM5230006-00 MOTOR,OIL
PN1011408-02 ELEC.ASSY (SWING FRAME)
PN1011409-01 ELEC.ASSY (BOOM)
PN1012594-00 ELEC.ASSY (SWING FRAME,MODIF.)
PN1020001-00 POWER SOURCE (AC100V,10A/PLATFORM)
PN1020003-00 POWER SOURCE (AC100A,10A/LOWER)
PN1060112-00 SWITCH PANEL (FOR ADJUSTING)
PN1210043-00 TRANSMITTER,SIGNAL
PN1370071-00 BATTERY INSTALLATION
PO1013264-00 PLATE ASSY,NAME
PO1014367-00 PLATE ASSY,NAME
PQ1020046-03 RADIATOR INSTALLATION
PQ1040017-00 EXHAUST INSTALLATION
PQ1060018-01 AIR INTAKE INSTALLATION
PQ1090056-02 TANK,FUEL INSTALLATION
PQ1140062-01 POWER TRAIN
PQ1330003-00 COOLER,OIL
PR5020005-00 RADIATOR ASSY
PS1320001-00 MOTOR & PUMP UNIT
PS5530450-00 SWITCH ASSY
PT5110001-02 TANK,FUEL
PW1030038-01 TOOLS
PX1220211-00 PUMP INSTALLATION
PX1260093-01 STEP INSTALLATION
PX1260160-00 STEP (MODIFICATION)
PX1290177-01 WEIGHT INSTALLATION
PX1590000-00 JACK,FRAME
PX1700002-01 BOOM SUPPORT INSTALLATION
PY1090001-00 BELT,SAFETY
PY1180156-01 LAMP (PLATFORM)

AC-125S-1-80111 3 BOOM,CRAWLER TYPE

Pos No.	Parts No	Parts Name	Qty	Unit	Technical Data	Serial No (Start)	Serial No (End)	Remarks	Page
1	90101206016	BOLT	4		M6X16				
2	90302040601	WASHER,SPRING	4		6				
3	44630120010	PLATE	1						
4	44630120020	SPACER	1						
5	37000400090	BEARING,PLAIN	1						
6	91531214000	PACKING	2						
7	91100214000	SEAL,RING	5						
8	37000400070	BEARING,PLAIN	1						
9	44630120030	PLATE	1						
10	44630120040	COVER	1						
11	90302041001	WASHER,SPRING	4		10				
12	90101210018	BOLT	4		M10X18				
13	90181006012	BOLT	6		M6X12				
14	90710004060	SCREW,SET	4		M4X6				
15	44630120370	SHAFT	1						
16	44630120110	BODY	1						
17	44630120320	CORE	1						
18	91001205500	O-RING	1		1A G55				
19	44440341400	DETECTOR,ANGLE	1						
20	42804790010	PLUG	1						
21	80316070060	PLUG	1		PF3/8				
22	80316070080	PLUG	4		PF1/2				
31	44630120210	HARNESS	1						
34	82100001406	CONNECTOR (SEAL)	1						
35	44440341410	SUPPORT	1						
36	36140320000	DETECTOR,ANGLE	1						
37	90101204008	BOLT	4		M4X8				
38	90302040401	WASHER,SPRING	4		4				
39	44440341420	SUPPORT	1						
40	80172303006	SCREW,MACHINE	3		M3X6				
41	90302040301	WASHER,SPRING	3		3				

000

AC-125S-1-80111 3 BOOM,CRAWLER TYPE
PB1400206-03 PIPING,UPPER (1)



AC-125S-1-80111 3 BOOM,CRAWLER TYPE

Pos No.	Parts No	Parts Name	Qty	Unit	Technical Data	Serial No (Start)	Serial No (End)	Remarks	Pages
1	37000138780	PIN	1						
2	44440300010	SUPPORT	1						
3	90101210020	BOLT	2		M10X20				
4	90302041001	WASHER,SPRING	2		10				
5	82456101000	NIPPLE,GREASE	1		A-PT1/8				

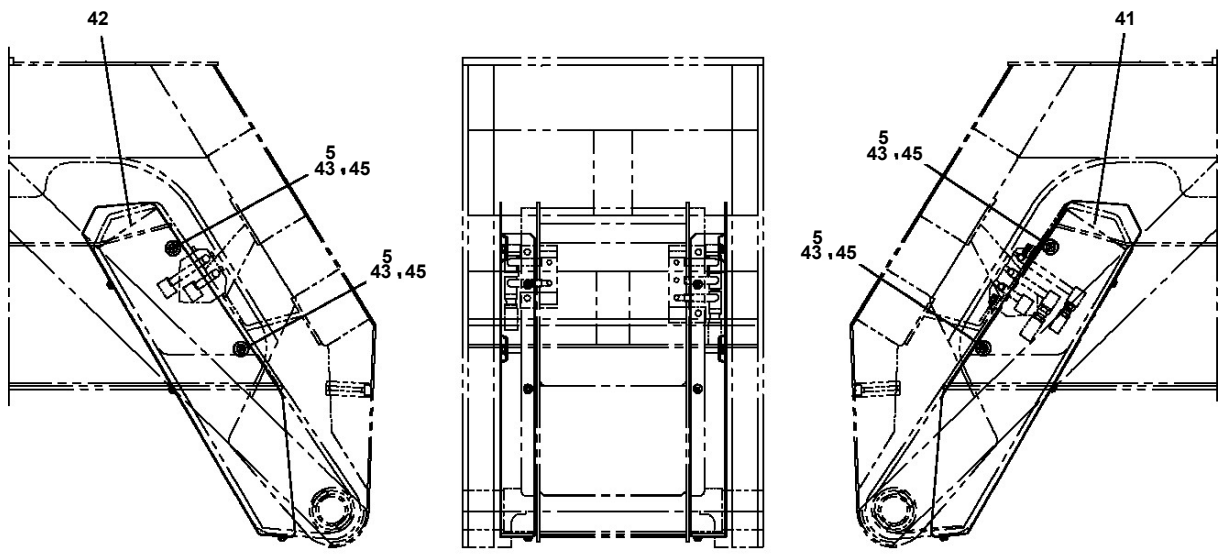
AC-125S-1-80111 3 BOOM,CRAWLER TYPE

Pos No.	Parts No	Parts Name	Qty	Unit	Technical Data	Serial No (Start)	Serial No (End)	Remarks
2	36671085040	COVER,HEAD	1					
3	36671085020	CASE	1					
4	36671085060	FLANGE	1					
5	36671085030	GASKET	1					
7	90131510035	BOLT,HEXAGON SOCKET	4		M10X35			
20	36671085050	ELEMENT KIT	1					
50	36671080000	FILTER ASSY	1					

AC-125S-1-80111 3 BOOM,CRAWLER TYPE

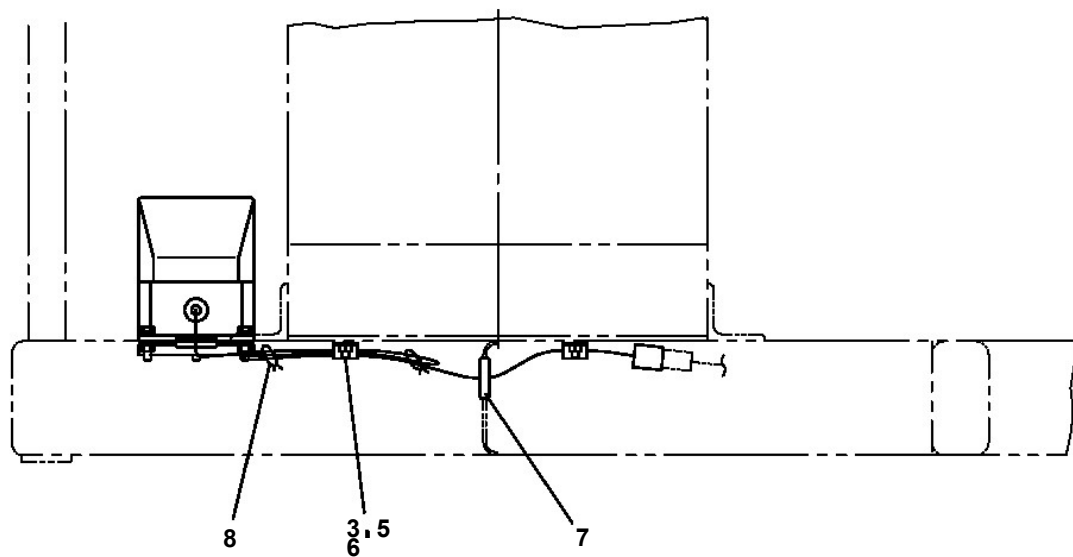
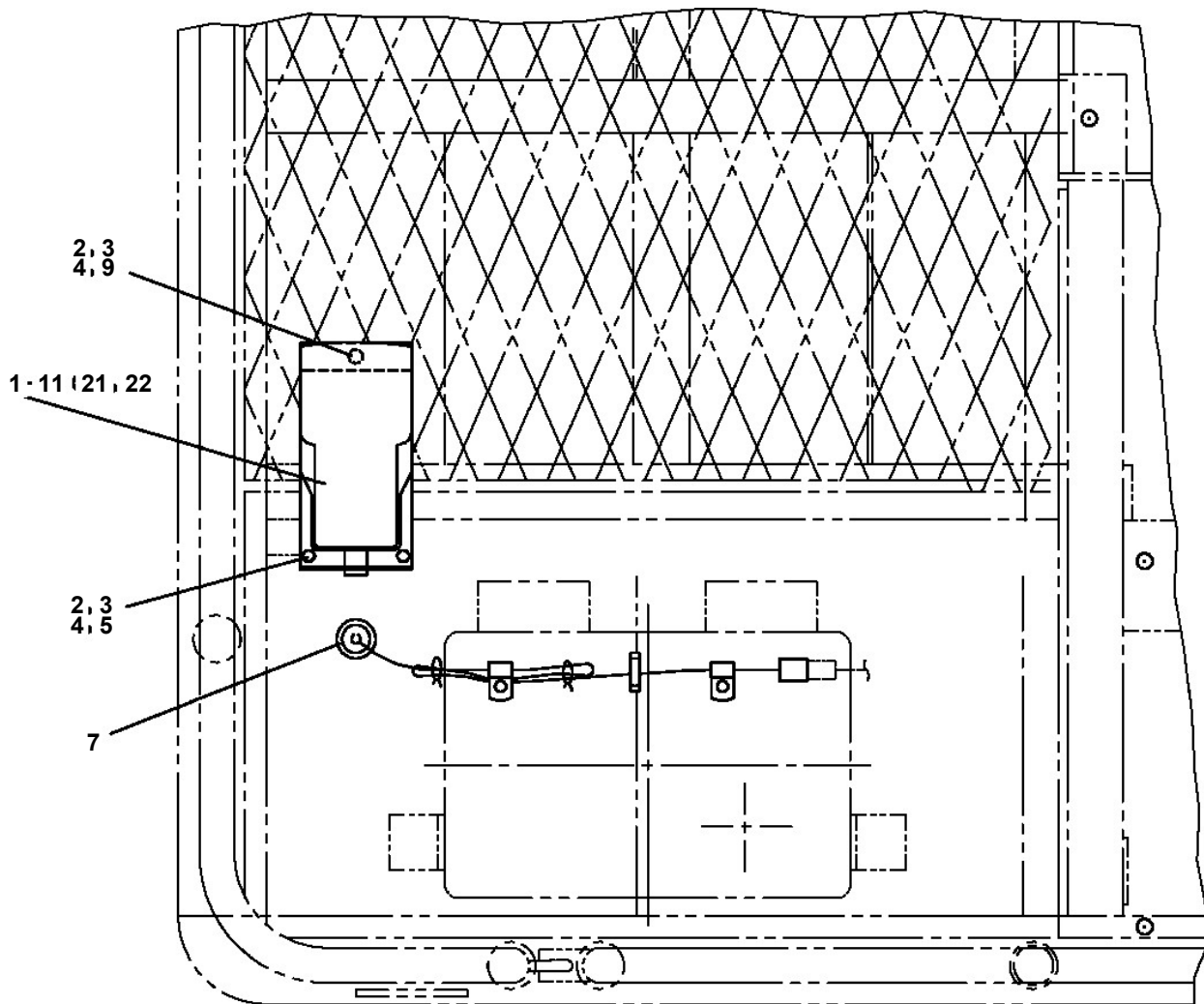
Pos No.	Parts No	Parts Name	Qty	Unit	Technical Data	Serial No (Start)	Serial N
1	91660006001	SEAL,DUST	1				
2	36014495011	COVER,ROD	1				
3	91002908500	O-RING	1		1B G85		
4	91301106000	BEARING,PLAIN	1				
5	91430206002	RING,BACKUP	1				
6	91694006000	PACKING	1				
7	91251100600	RING,DAMPER	1				
8	91411107500	RING,BACKUP	1				
9	91002907500	O-RING	1		1B G75		
11	80612110650	RING,RITAINING	1		AR65		
12	36014495001	ROD	1				
13	36014495202	CYLINDER	1			HA0075	
	36014495201	CYLINDER	1				
14	91002903500	O-RING	1		1B G35		HA0074
15	36014495400	PISTON	1				
16	91431206201	RING,BACKUP	2				
17	91684007501	PACKING	2				
18	91302207500	BEARING,PLAIN	2				
19	90302143601	WASHER,SPRING (M36)	1				
20	90209403600	NUT	1		M36X3		
21	37001101980	ROLLER ASSY (WITH BEARING/ASSY ONLY)	1				
22	37000303150	SPACER	2		L=5		
23	37000119850	PIN	1				
24	80601110250	RING,RITAINING	2		S25		
40	36014499900	PACKING SET	1				
50	36014490001	CYLINDER,TELESCOPING	1				

AC-125S-1-80111 3 BOOM,CRAWLER TYPE
PG1410075-00 COVER,BOOM

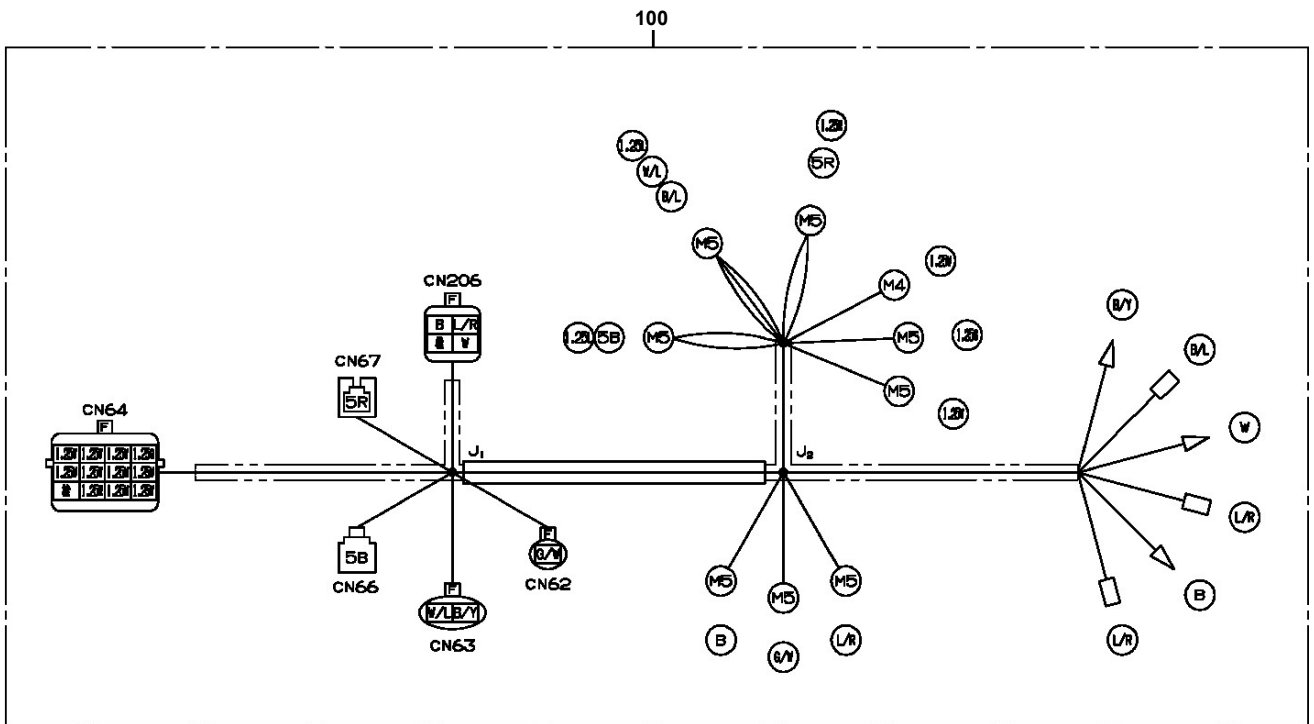


E

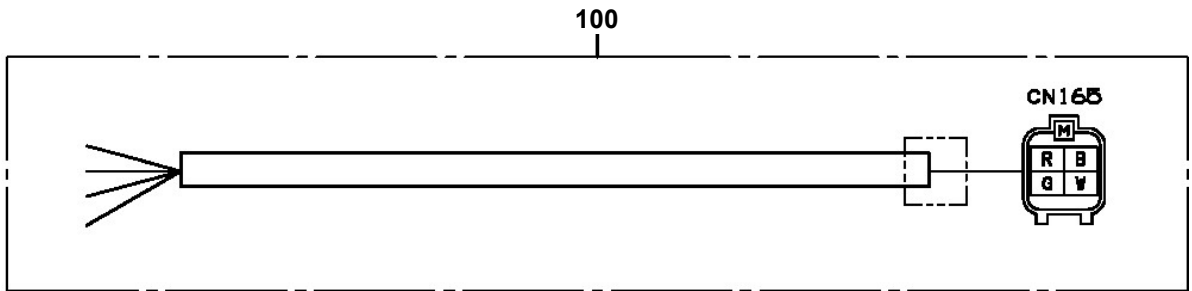
AC-125S-1-80111 3 BOOM,CRAWLER TYPE
PH1540018-02 FOOT SWITCH



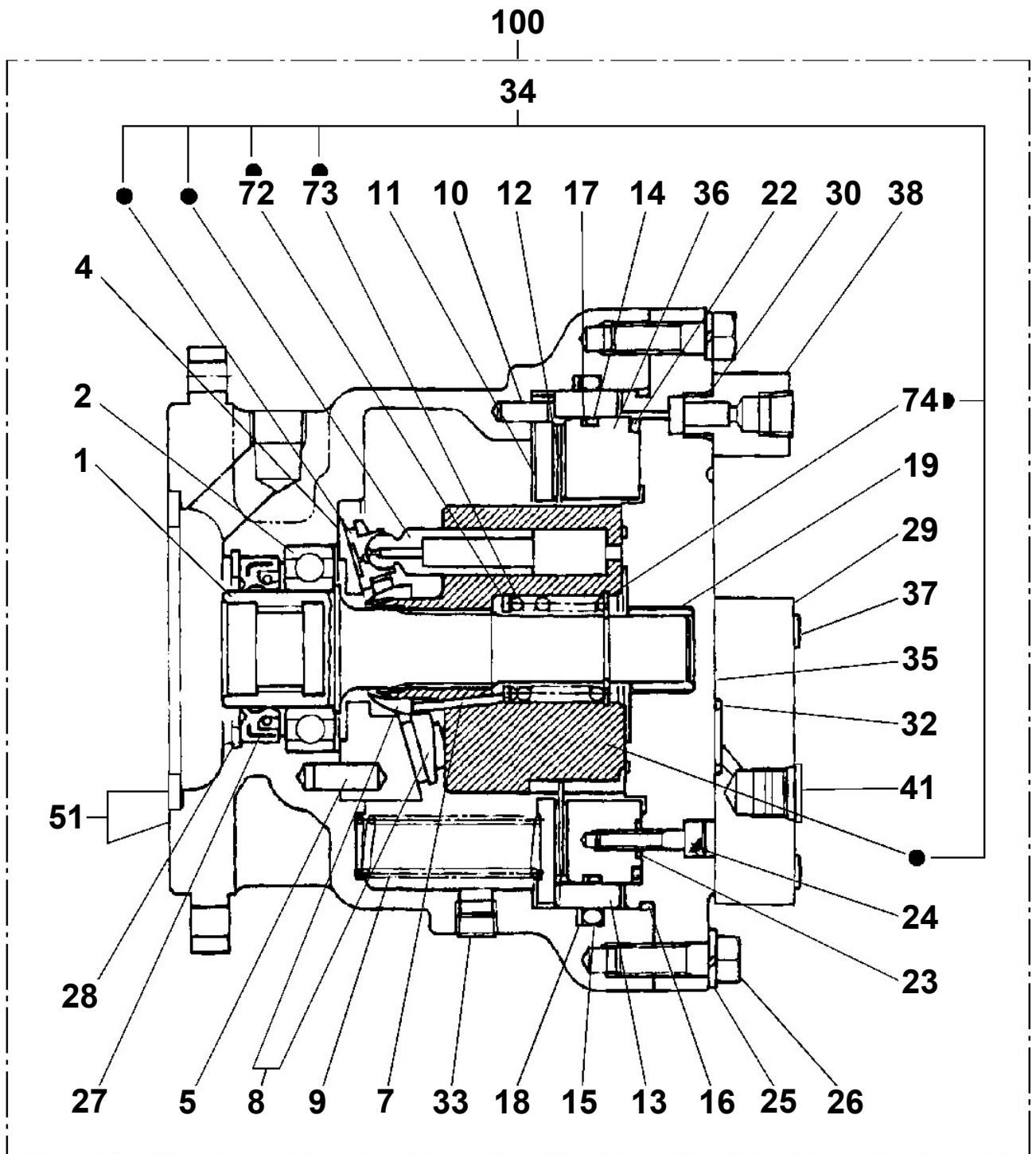
AC-125S-1-80111 3 BOOM,CRAWLER TYPE
PH5034663-00 HARNESS



**AC-125S-1-80111 3 BOOM,CRAWLER TYPE
PH5034668-00 HARNESS**



AC-125S-1-80111 3 BOOM,CRAWLER TYPE
 PI1010091-01 MOTOR,HYDRAULIC (SWING)



● : CYLINDER BARREL ASSY KEY NO 34 (KEY NO.72,73,74)

CLICK HERE TO **DOWNLOAD** THE COMPLETE MANUAL

- Thank you very much for reading the preview of the manual.
- You can download the complete manual from: www.heydownloads.com by clicking the link below

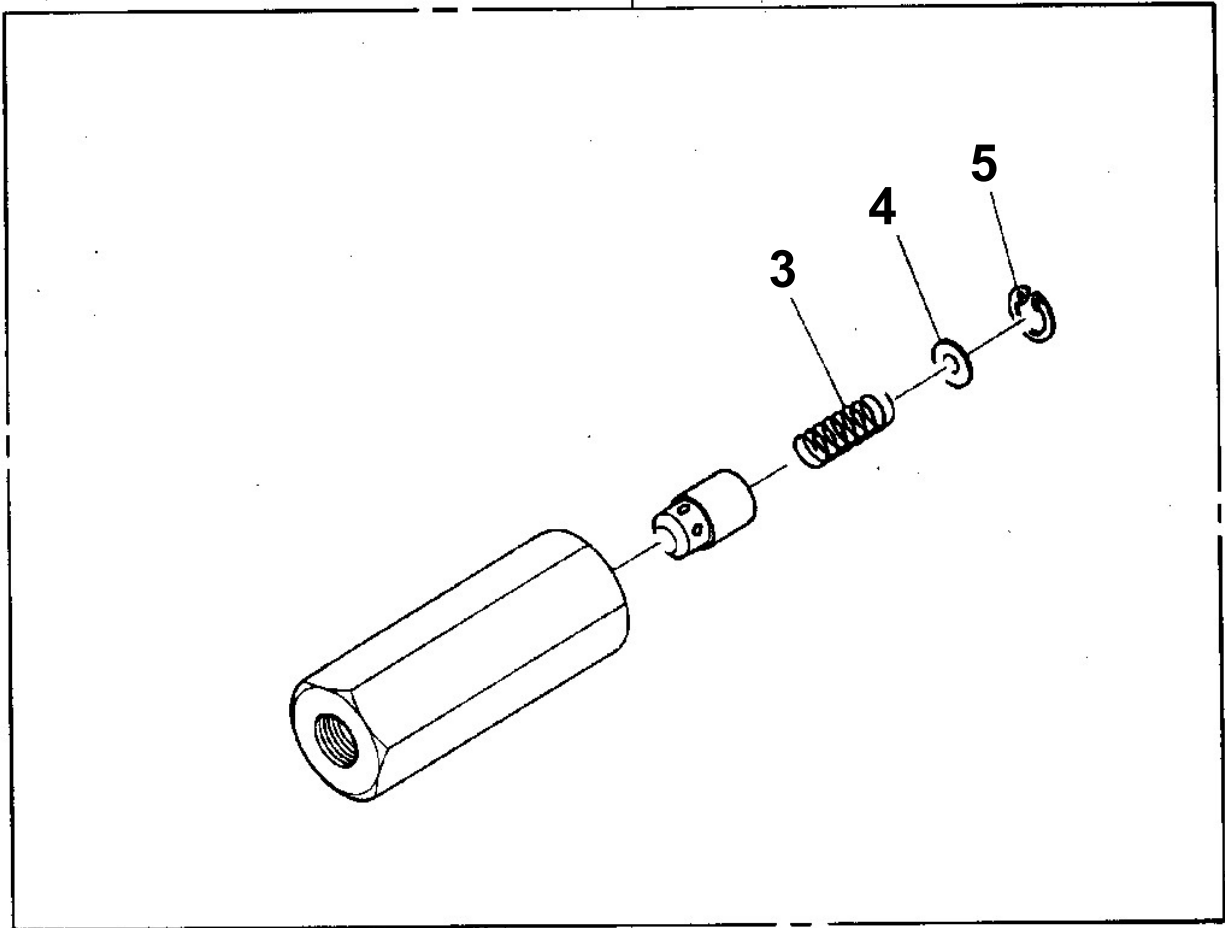


- Please note: If there is no response to CLICKING the link, please download this PDF first and then click on it.

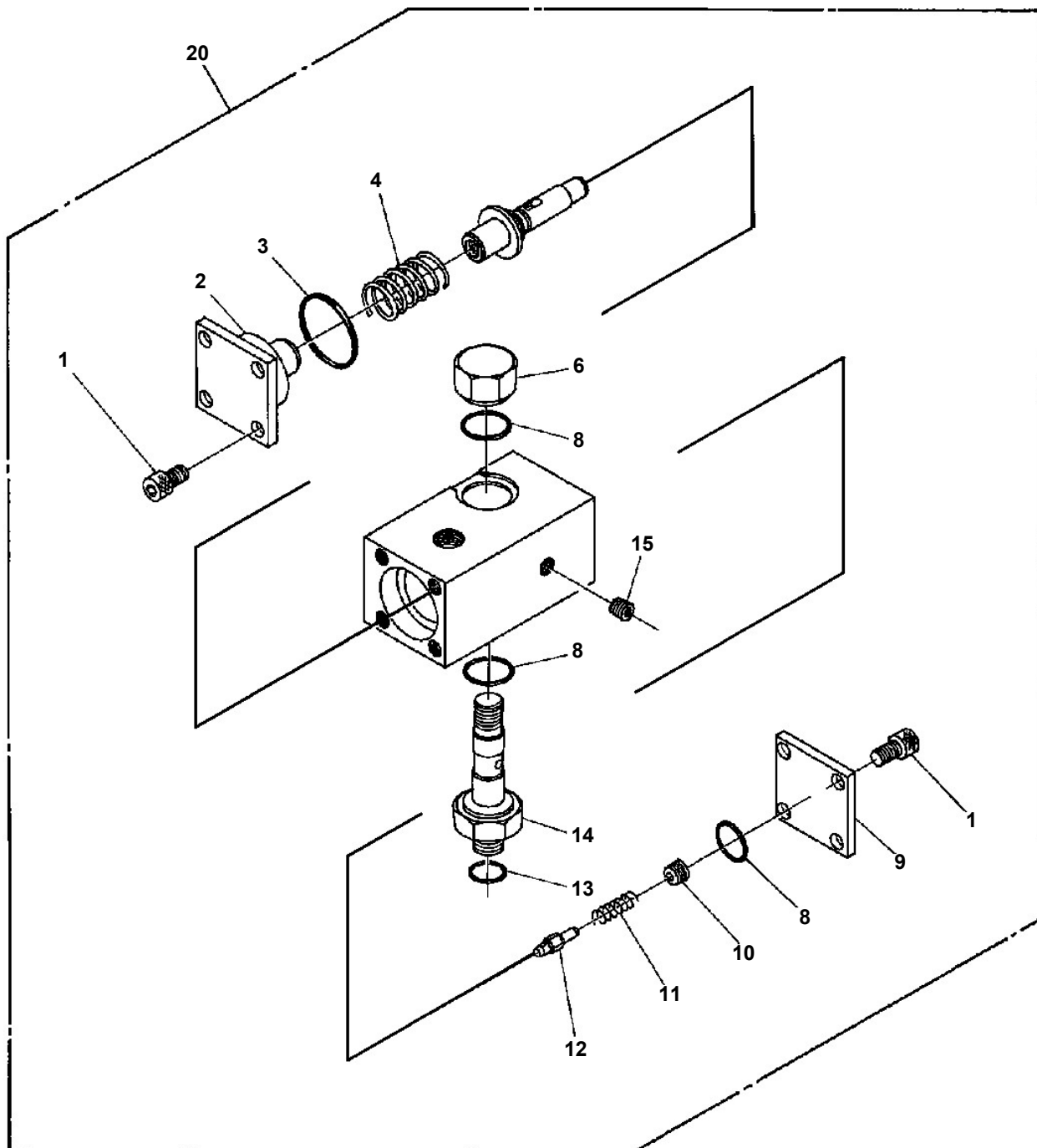
CLICK HERE TO **DOWNLOAD** THE COMPLETE MANUAL

AC-125S-1-80111 3 BOOM,CRAWLER TYPE
PI1140011-00 VALVE,CHECK

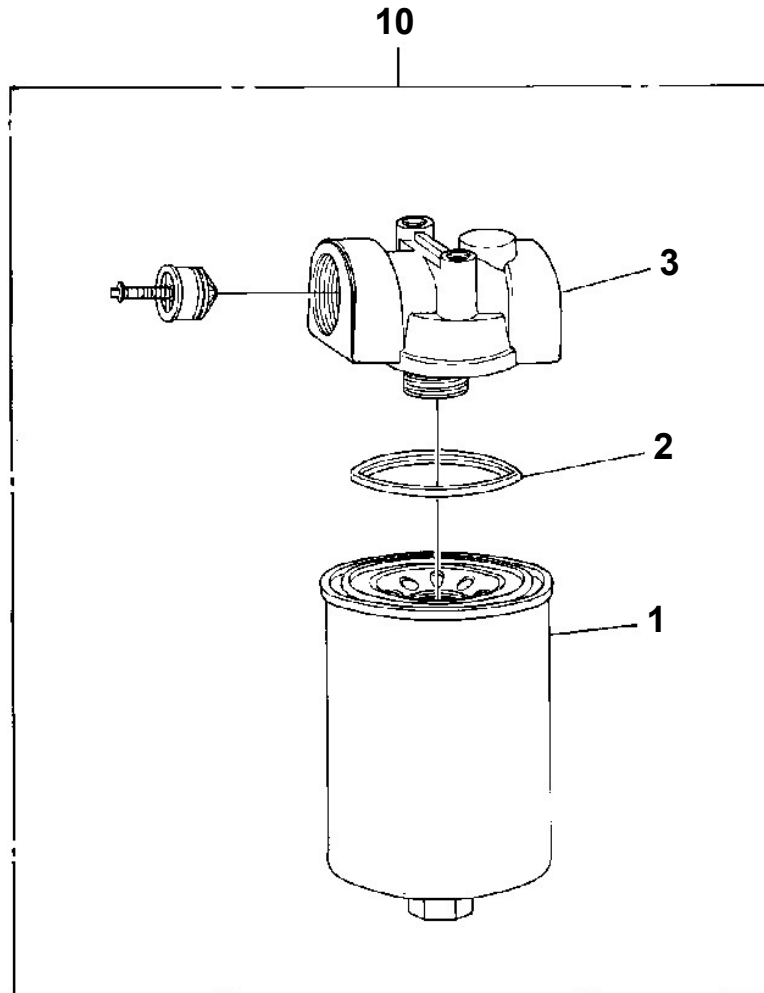
10



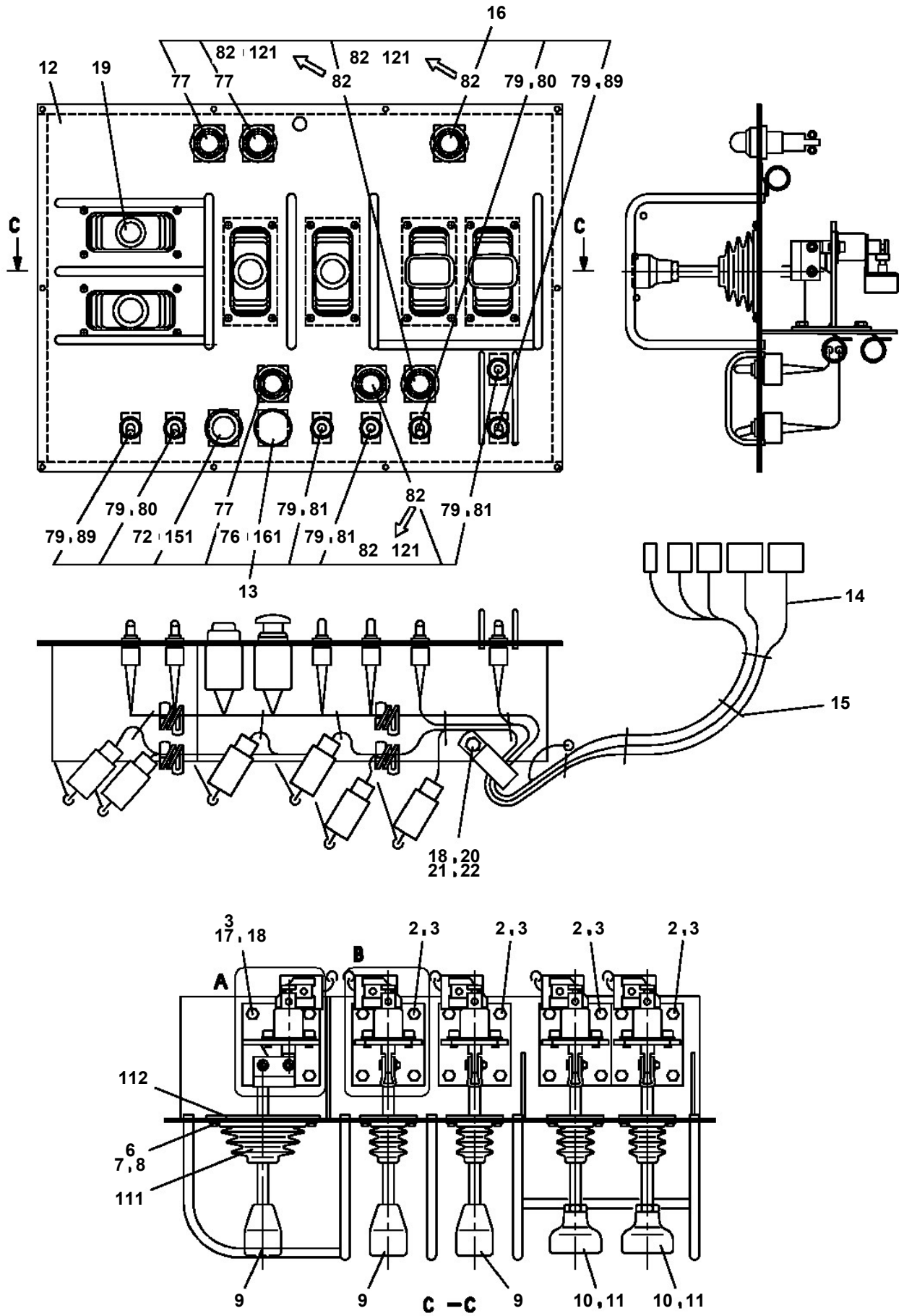
AC-125S-1-80111 3 BOOM,CRAWLER TYPE
PI1250016-01 VALVE,COUNTERBALANCE



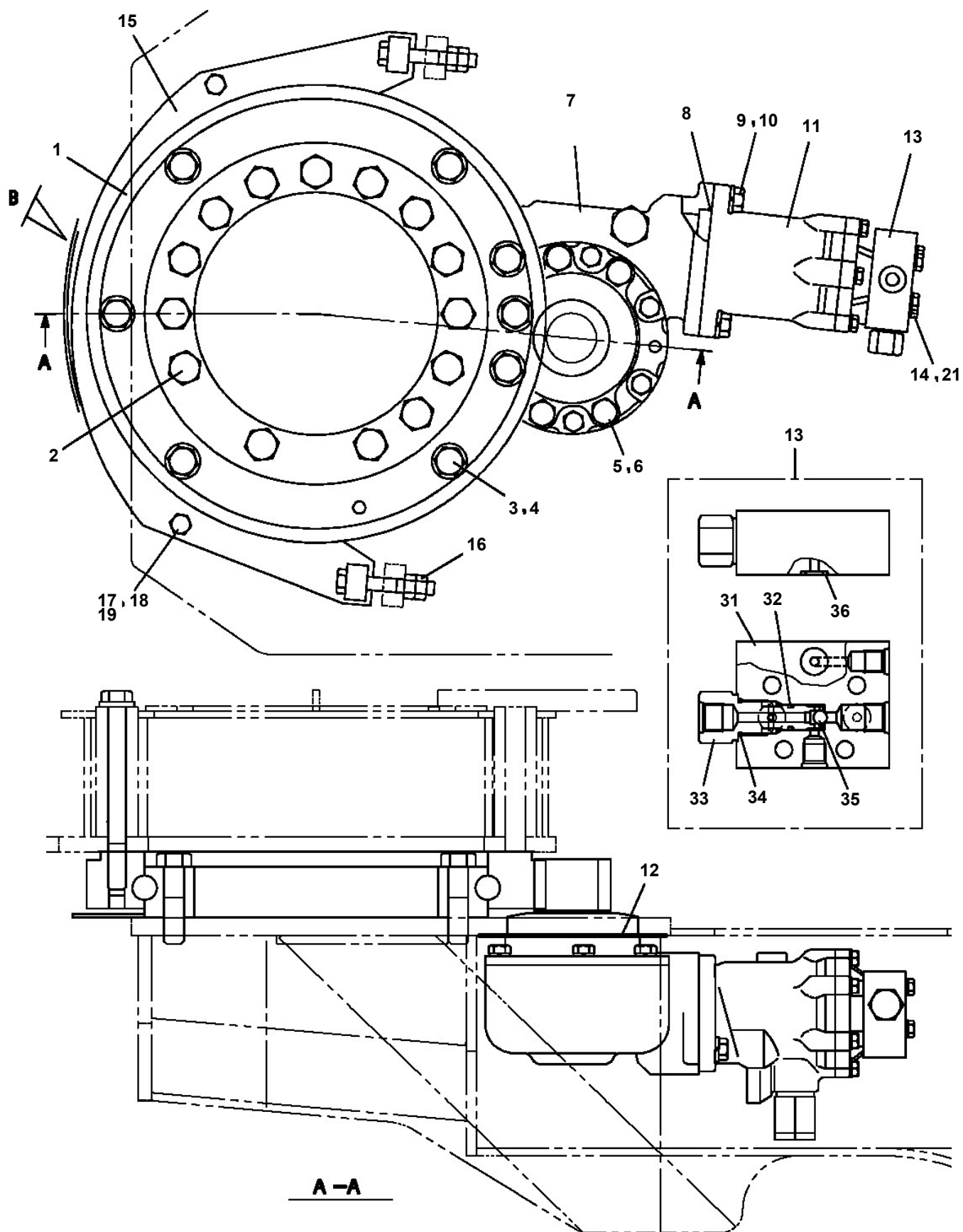
AC-125S-1-80111 3 BOOM,CRAWLER TYPE
PI1300006-00 FILTER,OIL



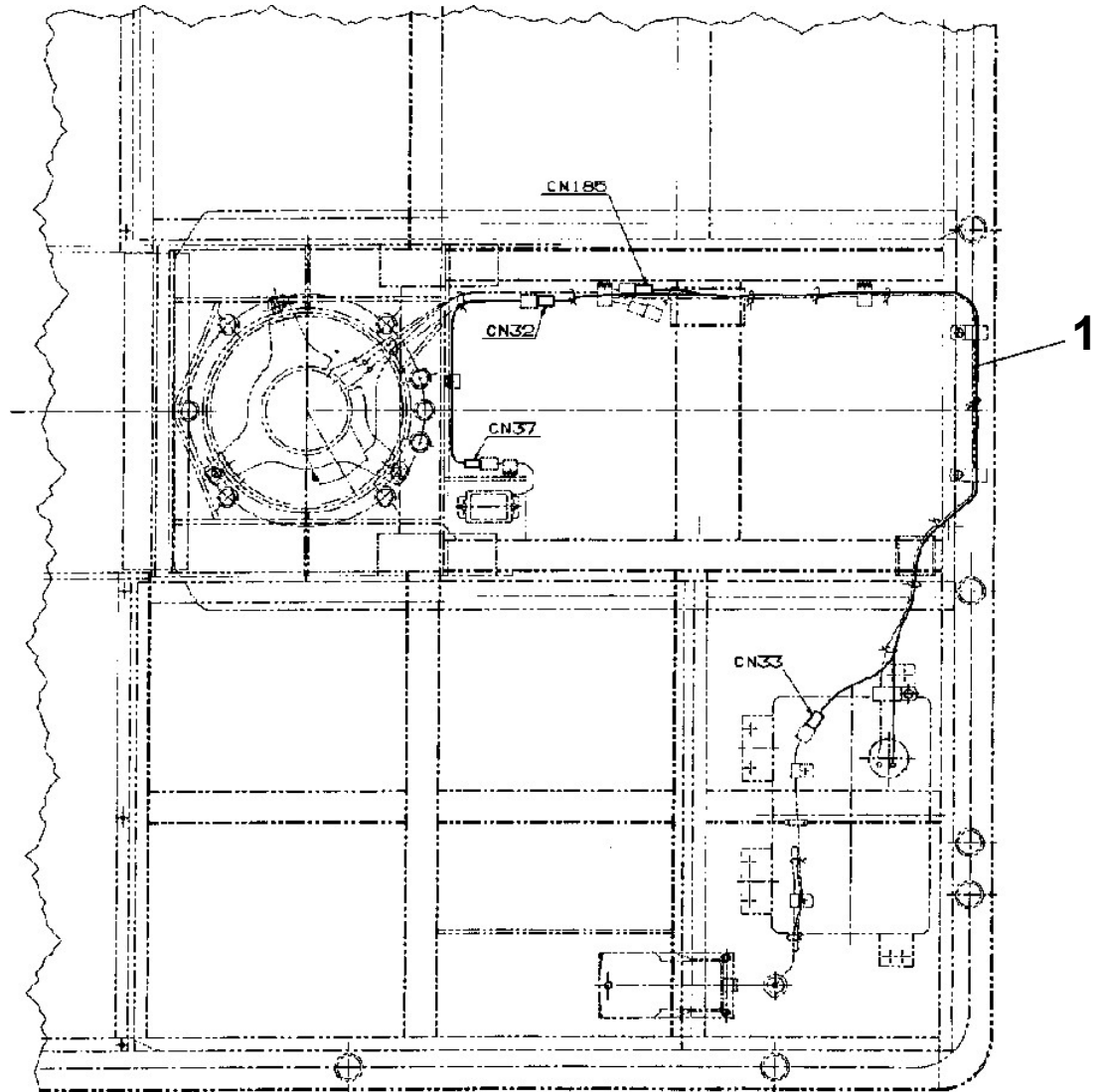
**AC-125S-1-80111 3 BOOM,CRAWLER TYPE
PJ3040022-00 OPE.ASSY (PANEL,CONTROL)**



AC-125S-1-80111 3 BOOM,CRAWLER TYPE
PJ3170000-01 SWING UNIT,PLATFORM



AC-125S-1-80111 3 BOOM,CRAWLER TYPE
PJ3930002-00 ELEC.ASSY (PLATFORM,MODIFICATION)

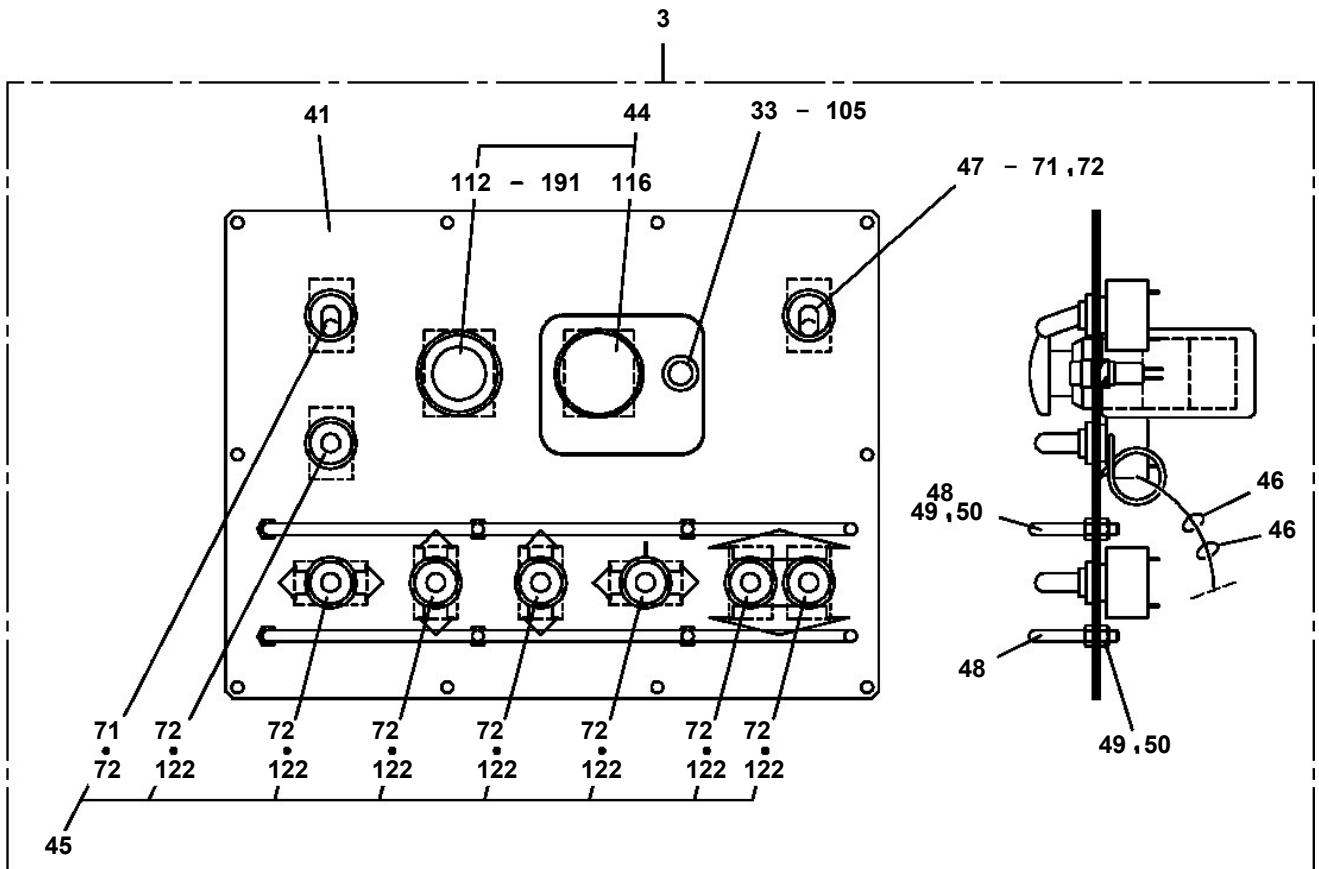
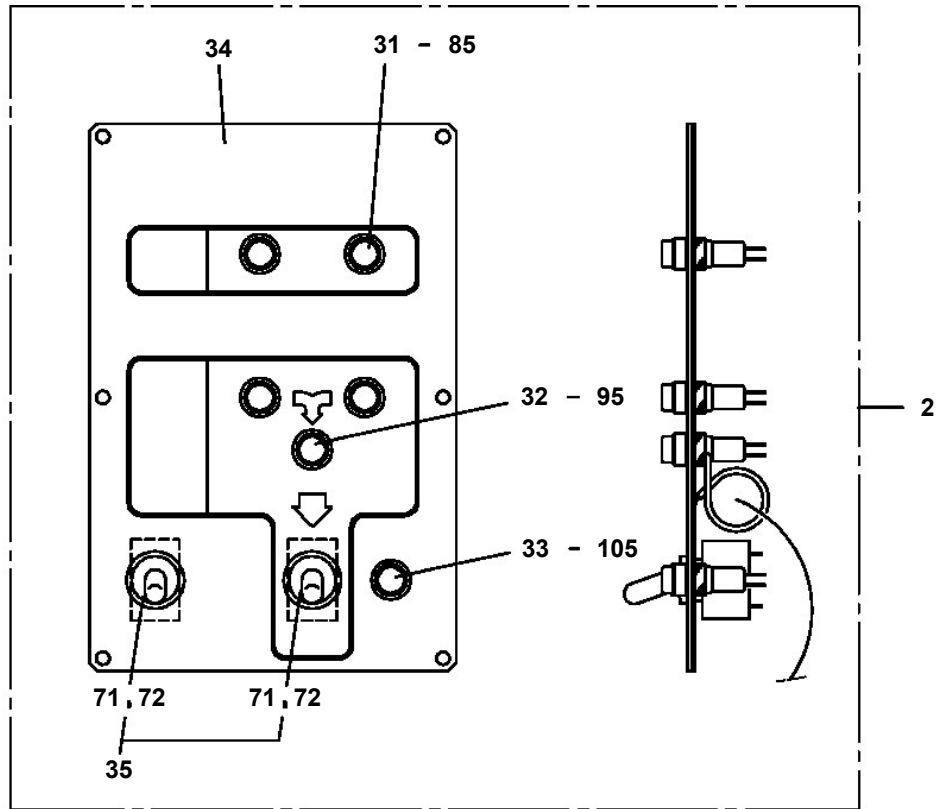


→
FRONT

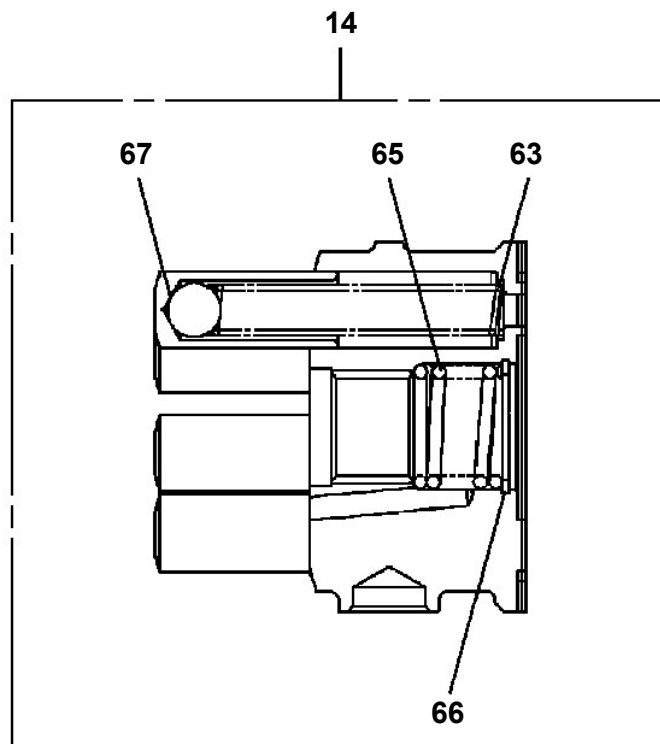
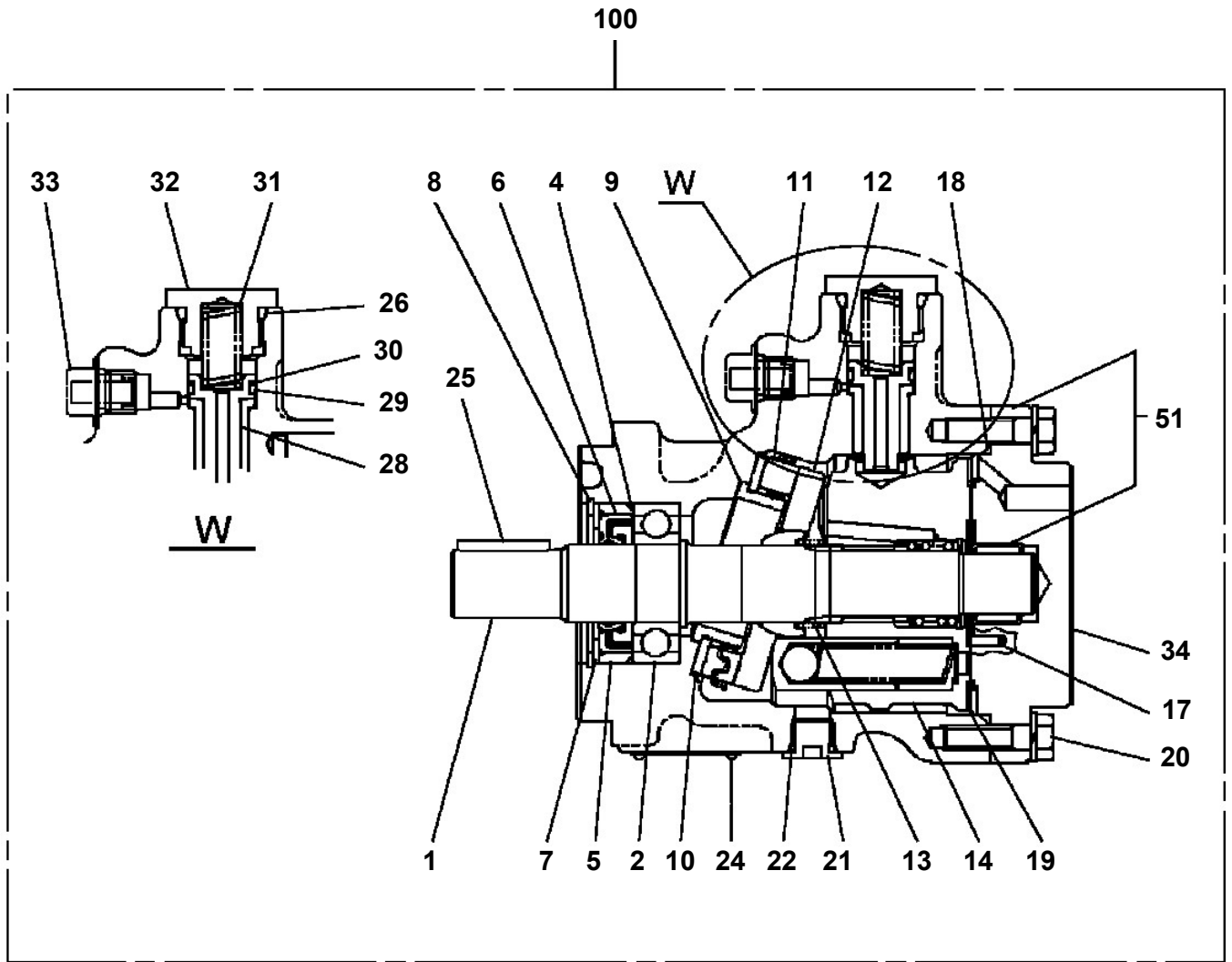
AC-125S-1-80111 3 BOOM,CRAWLER TYPE

Pos No.	Parts No	Parts Name	Qty	Unit	Technical Data	Serial No (Start)	Serial No (End)	Remarks	Pages
1	44270640100	COVER	2						
2	44270640200	COVER	1						
3	90303071001	WASHER,PLAIN	9		10				
4	90302041001	WASHER,SPRING	9		10				
5	90101210020	BOLT	9		M10X20				

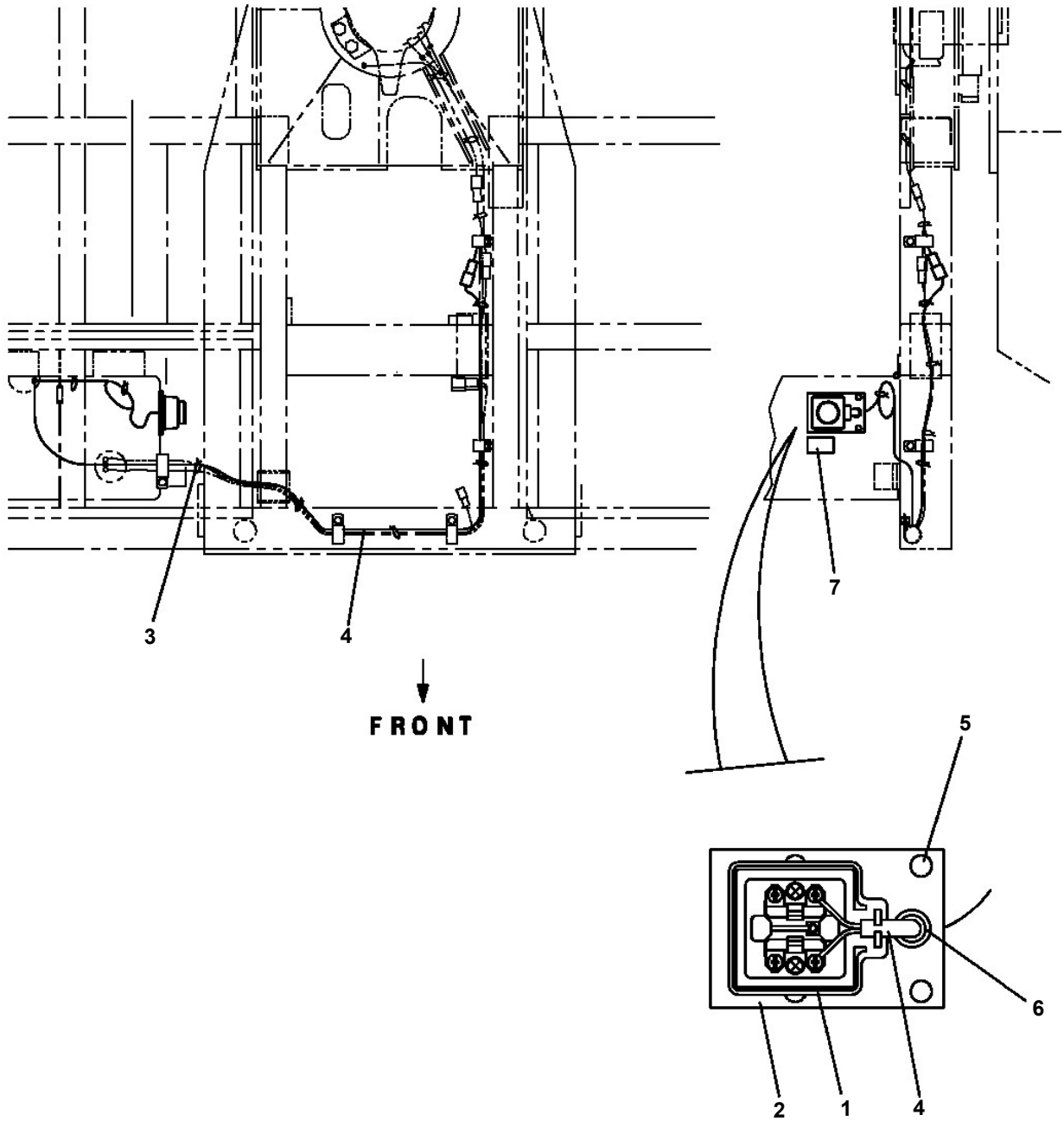
**AC-125S-1-80111 3 BOOM,CRAWLER TYPE
 PL1100080-03 BOX,OPERATION (LOWER)**



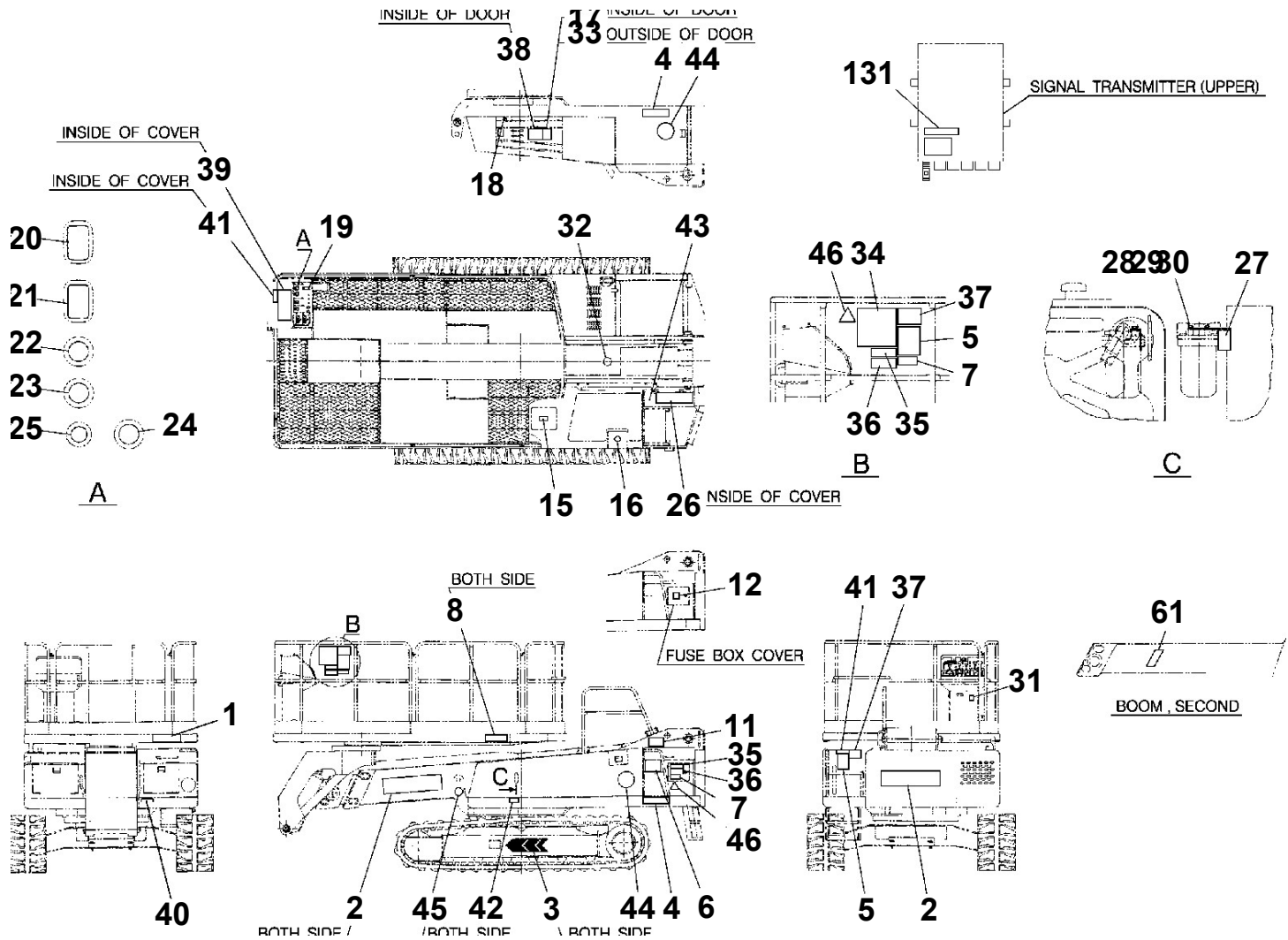
AC-125S-1-80111 3 BOOM,CRAWLER TYPE
PM5230006-00 MOTOR,OIL



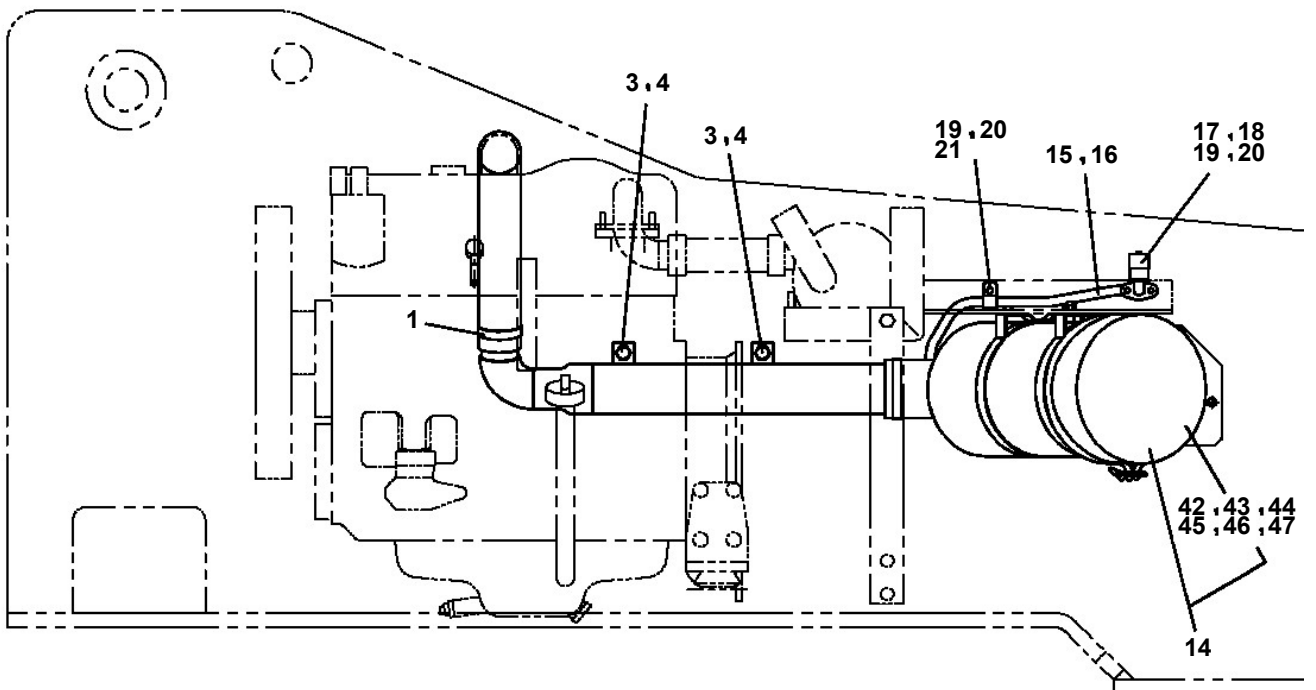
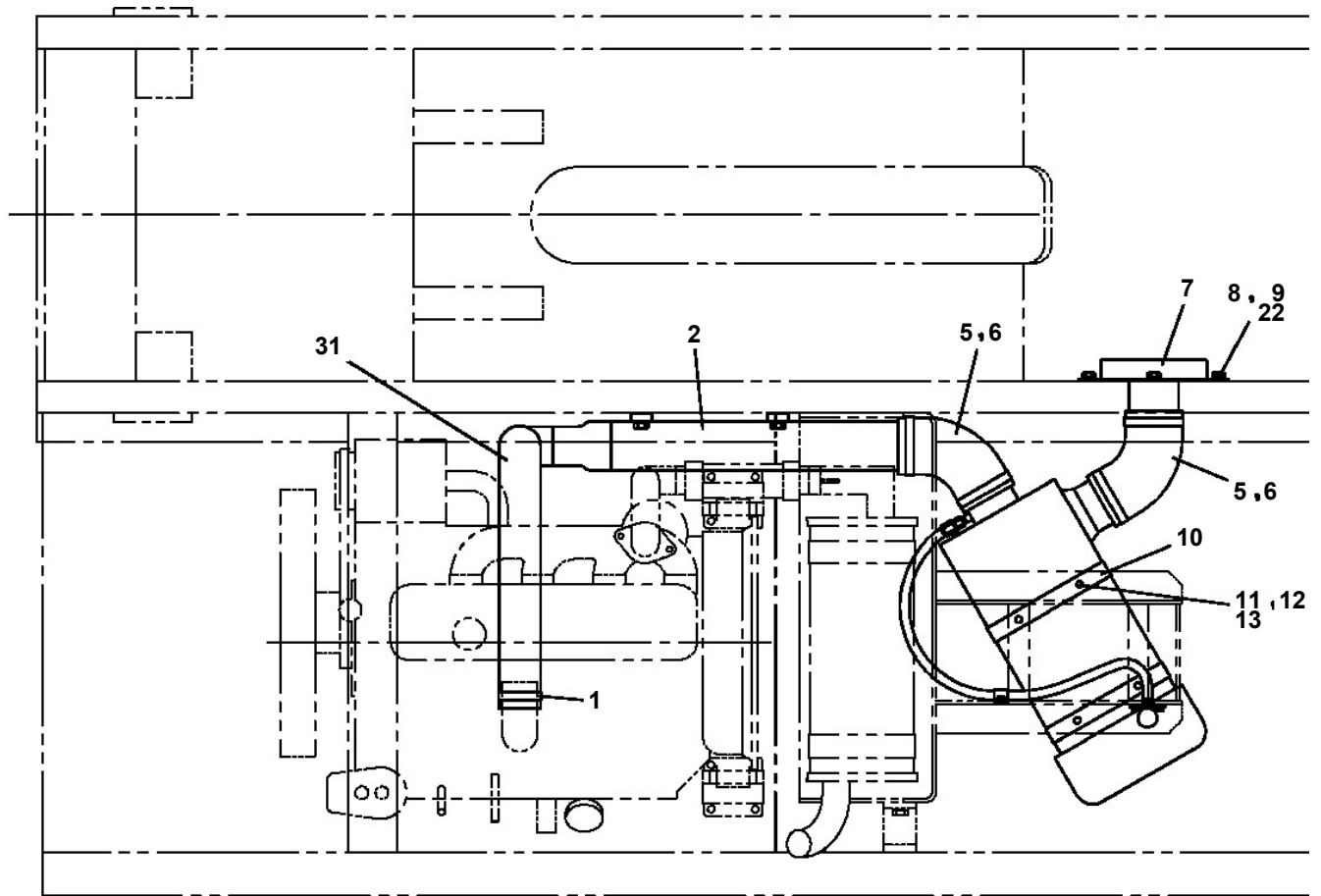
**AC-125S-1-80111 3 BOOM,CRAWLER TYPE
PN1020001-00 POWER SOURCE (AC100V,10A/PLATFORM)**



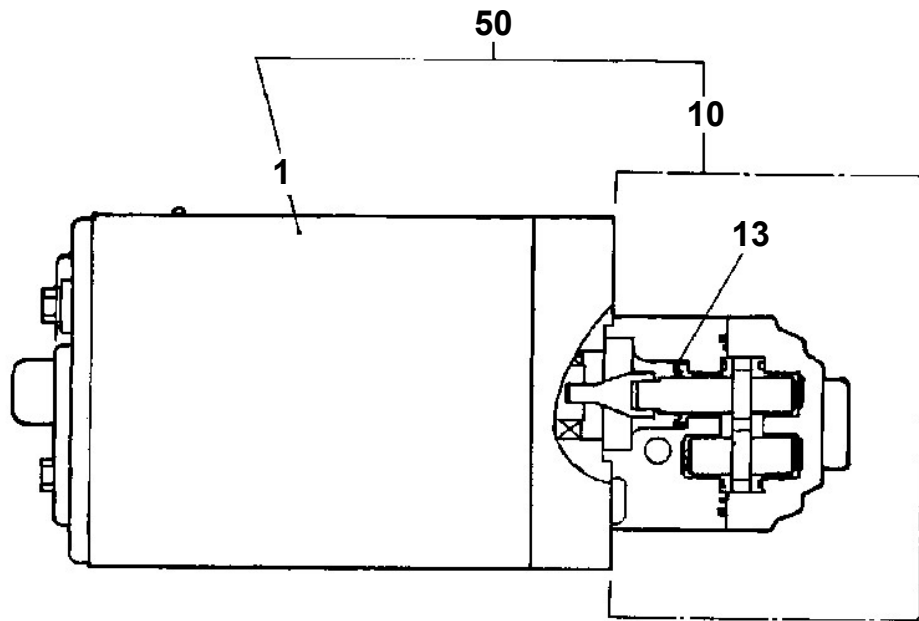
**AC-125S-1-80111 3 BOOM,CRAWLER TYPE
PO1013264-00 PLATE ASSY,NAME**



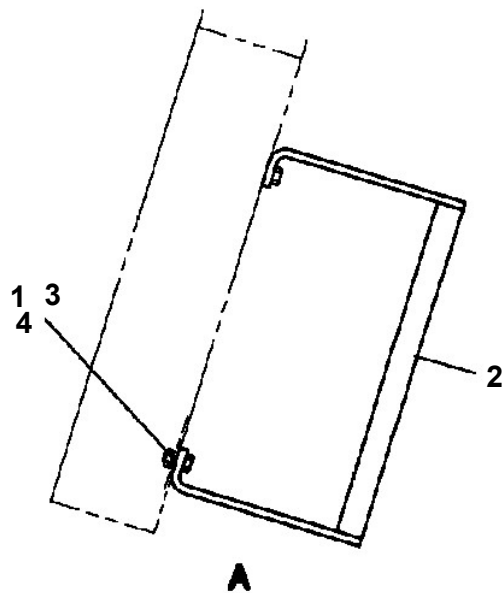
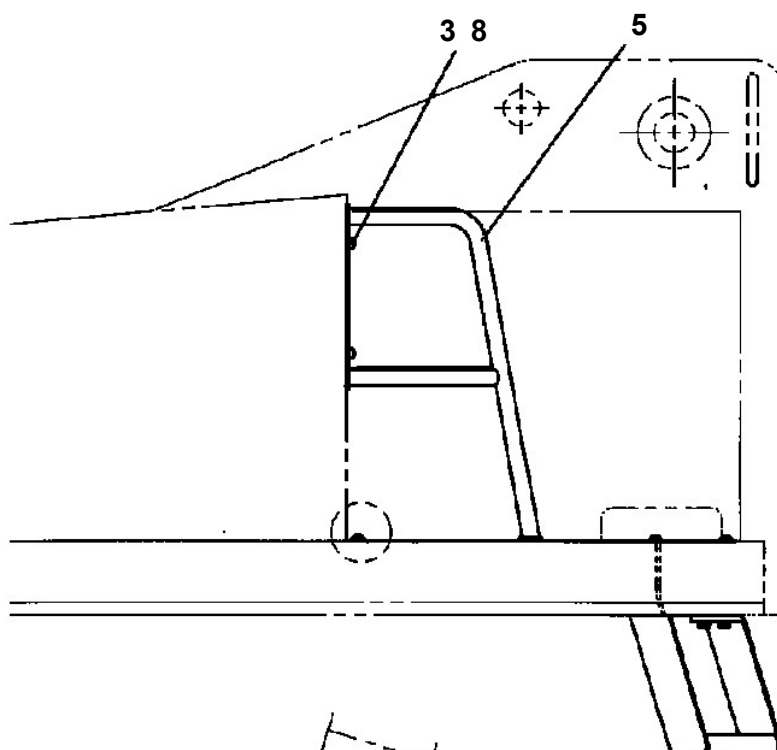
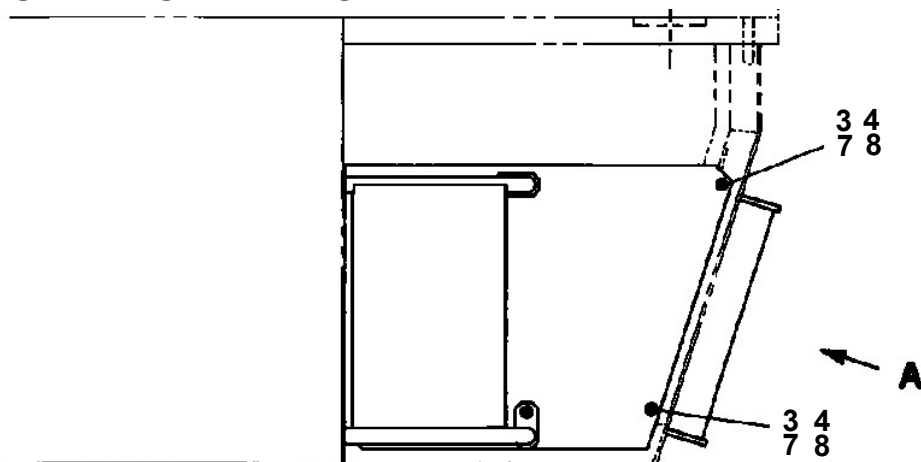
AC-125S-1-80111 3 BOOM,CRAWLER TYPE
PQ1060018-01 AIR INTAKE INSTALLATION



AC-125S-1-80111 3 BOOM,CRAWLER TYPE
PS1320001-00 MOTOR & PUMP UNIT



AC-125S-1-80111 3 BOOM,CRAWLER TYPE
 PX1260093-01 STEP INSTALLATION



ヨーロッパ仕様においては、一部部品が改造されています。PX126 (カイゾウ) を参照して下さい。
 SOME PARTS ARE MODIFIED FOR THE SPECIFICATIONS FOR EUROPE. SEE FIG. PX126 (MODIF.)

CLICK HERE TO **DOWNLOAD** THE COMPLETE MANUAL

- Thank you very much for reading the preview of the manual.
- You can download the complete manual from: www.heydownloads.com by clicking the link below



- Please note: If there is no response to CLICKING the link, please download this PDF first and then click on it.

CLICK HERE TO **DOWNLOAD** THE COMPLETE MANUAL