

GT-800-1-90102 5 BOOM + 2 JIB, 2M2D

PB1000583-00 HYDRAULIC PRESSURE GENERATING SYSTEM
PC1000484-02 OUTRIGGER SYSTEM
PD1000517-00 SWING SYSTEM
PE1000520-00 ELEVATING SYSTEM
PF1000448-00 WINCH SYSTEM
PG1000473-00 TELESCOPING SYSTEM
PH1000490-01 SAFETY DEVICES
PK1000534-03 FRAME
PL1000542-00 CONTROL DEVICES
PN1000434-01 ELECTRIC EQUIPMENT
PO1000144-01 INDICATION PLATES
PQ1000164-00 DRIVING POWER GENERATING SYSTEM
PU1000097-01 SUSPENSION
PW1000097-02 ACCESSORIES & TOOLS
PX1000689-01 MOUNTING PARTS
PY1000592-03 OPTIONS
ASSEMBLY

CLICK HERE TO **DOWNLOAD** THE COMPLETE MANUAL

- Thank you very much for reading the preview of the manual.
- You can download the complete manual from: www.heydownloads.com by clicking the link below



- Please note: If there is no response to CLICKING the link, please download this PDF first and then click on it.

CLICK HERE TO **DOWNLOAD** THE COMPLETE MANUAL

GT-800-1-90102 5 BOOM + 2 JIB, 2M2D

Pos No.	Parts No	Parts Name	Qty	Unit	Technical Data	Serial No (Start)	Serial No (End)	Remarks	P
1	37001807140	ROPE,WIRE (KISWIRE)	1						00
	37001806980	ROPE,WIRE (TSK)	1						00
2	37001807160	ROPE,WIRE (KISWIRE)	1						00
	37001806990	ROPE,WIRE (TSK)	1						00
3	(*****)	SOCKET,ROPE	2						00
4	(*****)	PIPING,WINCH (MAIN)	1						00
5	(*****)	PIPING,WINCH (AUX.)	1						00
6	(*****)	MOUNT,WINCH (MAIN)	1						00
7	(*****)	MOUNT,WINCH (AUX.)	1						00

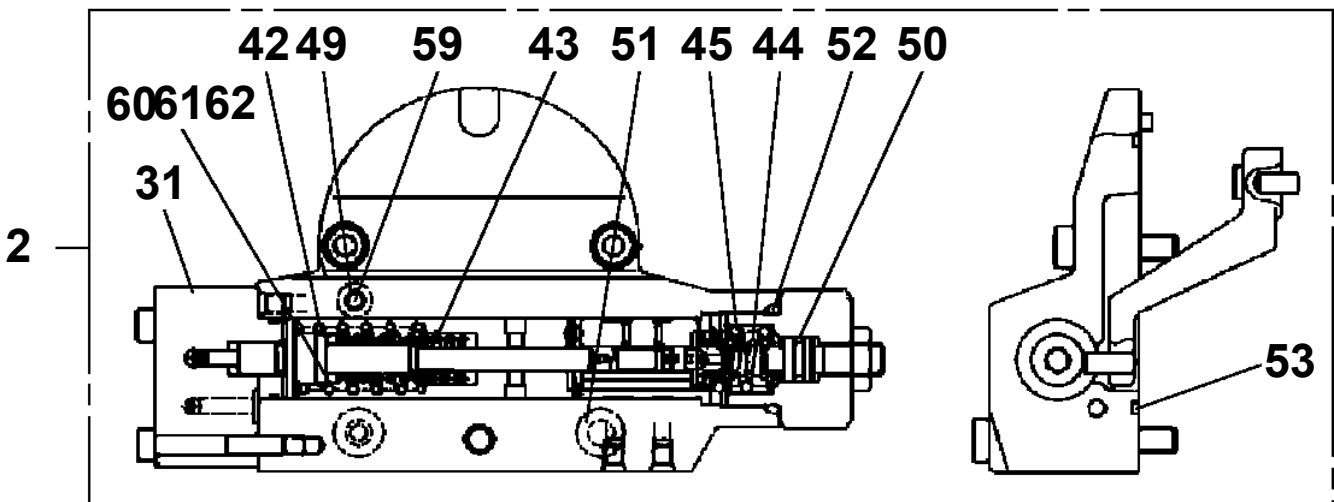
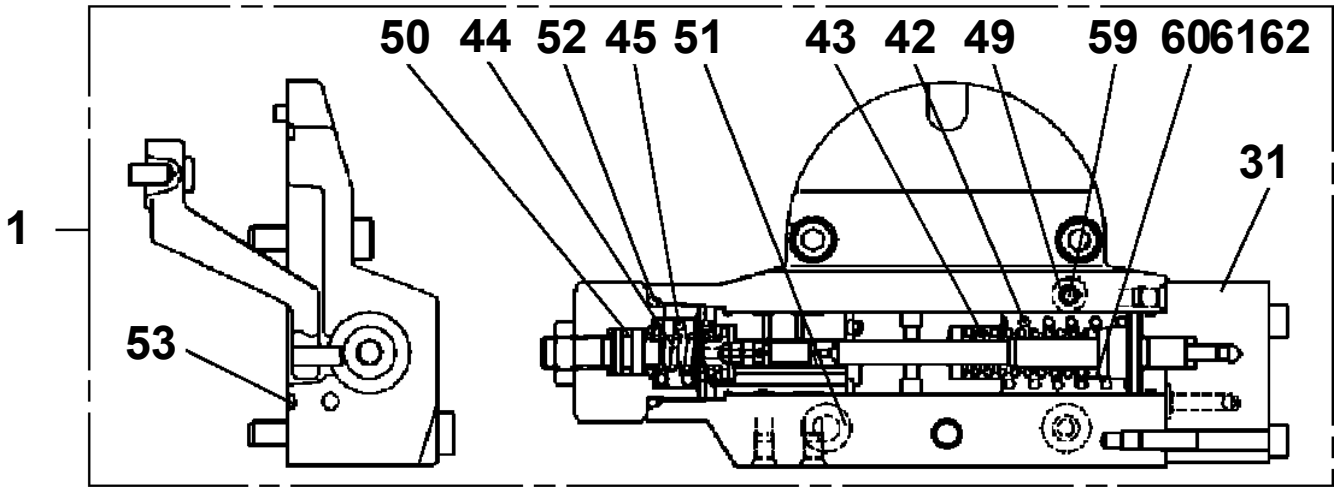
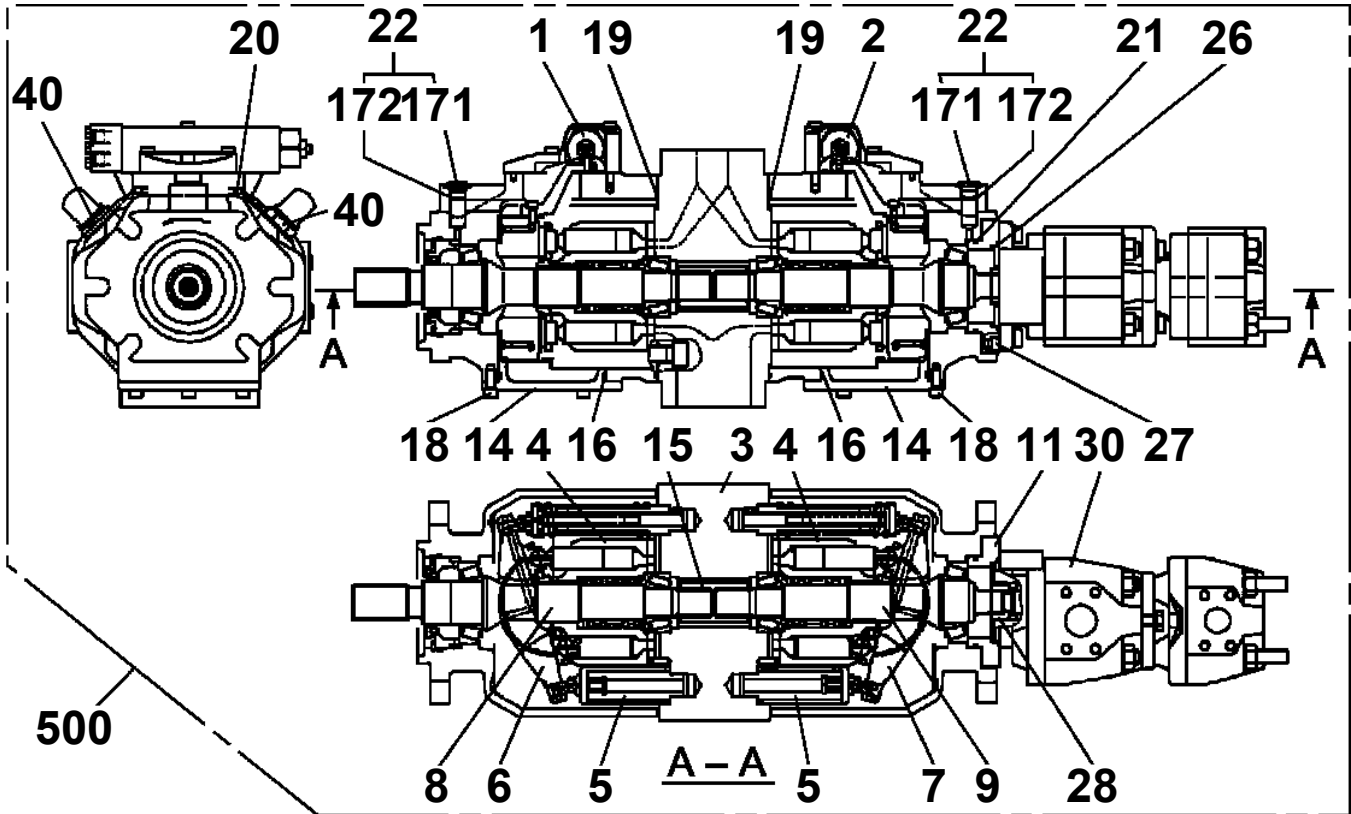
GT-800-1-90102 5 BOOM + 2 JIB, 2M2D

Pos No.	Parts No	Parts Name	Qty	Unit	Technical Data	Serial No (Start)	Serial No (End)
1	(*****)	ELEC.ASSY (UPPER)	1				
2	(*****)	ELEC.ASSY (LOWER)	1				
3	(*****)	ELEC.ASSY (CAB)	1				
4	(*****)	LAMP (REPLACE CLEARANCE LAMP)	1				475365

GT-800-1-90102 5 BOOM + 2 JIB, 2M2D

Pos No.	Parts No	Parts Name	Qty	Unit	Technical Data	Serial No (Start)	Serial No (End)
1	(*****)	FENDER (MODIFI. PARTS)	1				
2	(*****)	ROOM,ENGINE (MODIFI. PARTS)	1				475362
3	(*****)	TANK SUPPORT	1				
4	(*****)	BOOM REST	1				
5	(*****)	MOUNT,SUPPORT (AUX. WINCH)	1				
6	(*****)	MOUNT,SUPPORT (SWING FRAME)	1				
7	(*****)	MOUNT,SUPPORT (AIR CONDITIONER)	1				
8	(*****)	TANK SUPPORT (WASHER TANK)	1			475330	475362

GT-800-1-90102 5 BOOM + 2 JIB, 2M2D
 PB1100249-01 PUMP, HYDRAULIC



GT-800-1-90102 5 BOOM + 2 JIB, 2M2D

Pos No.	Parts No	Parts Name	Qty	Unit	Technical Data	Serial No (Start)	Serial No (End)	Remarks	Pages
1	33643991100	FITTING,FLANGE	1				475326		
	33643991101	FITTING,FLANGE	1			475327			
2	90101208020	BOLT	4		M8X20				
3	90302040801	WASHER,SPRING	4		8				
4	80316070040	PLUG	1		PF1/4				
5	91002801100	O-RING	1		1B P11				
6	37002514410	HOSE	1		L=250				
7	91803601400	CLIP	4		D=110-140				
8	33643991200	JOINT	1				475326		
	33643991201	JOINT	1			475327			
9	90101216040	BOLT	4		M16X40				
10	90302041601	WASHER,SPRING	4		16				
11	91002908500	O-RING	1		1B G85				
12	34640551200	FITTING,FLANGE	2						
13	91002904000	O-RING	2		1B G40				
14	90101210030	BOLT	8		M10X30				
15	90302041001	WASHER,SPRING	8		10				
16	91002911000	O-RING	1		1B G110				
17	37002504200	HOSE	1		L=275				
18	91803600500	CLIP	8		D=35-50				
19	37002504630	HOSE	1		L=600				

GT-800-1-90102 5 BOOM + 2 JIB, 2M2D

Pos No.	Parts No	Parts Name	Qty	Unit	Technical Data	Serial No (Start)	Serial No (End)	Rema
1	90172110030	BOLT,HEXAGON SOCKET	4		M10X30			
2	90302041001	WASHER,SPRING	6		10			
3	34344464200	JOINT	1					
4	91002905500	O-RING	1		1B G55			
5	91803600700	CLIP	8		D=55-70			
6	37002500450	HOSE	1		L=500			
7	90186208014	BOLT,FLANGE	6		M8X14			
8	90302040801	WASHER,SPRING	17		8			
9	80481103040	JOINT	2		L,G3/8-G1/2			
10	91002801400	O-RING	4		1B P14			
11	90186210020	BOLT,FLANGE	7		M10X20			
12	(*****)	COOLER,OIL (MOUNT)	1					
13	36645750000	VALVE,SOLENOID	1					
14	80303130141	FITTING,ELBOW	3		KLO12-020E			
15	81408000160	PIPE,STEEL	1	M	12X1.4T			
16	81408000160	PIPE,STEEL	2	M	12X1.4T			
17	37000711000	CLAMP ASSY	7		12-1			
18	37002404910	HOSE	1		L=600			
19	80301010100	FITTING	1		KUA12-000N			
20	81408000241	PIPE,STEEL	1	M	18X1.9T			
21	81408000241	PIPE,STEEL	2	M	18X1.9T			
22	81408000241	PIPE,STEEL	1	M	18X1.9T			
23	80302090241	FITTING	7		KCO18-040N			
24	91002801800	O-RING	10		1B P18			
25	81408000160	PIPE,STEEL	2	M	12X1.4T			
26	37000701560	CLAMP ASSY	2		18X2			
27	81408000160	PIPE,STEEL	1	M	12X1.4T			
28	81408000241	PIPE,STEEL	2	M	18X1.9T			
29	37002439950	HOSE	2		L=850 TO 800			
30	80430622000	JOINT	1					
31	80400160137	JOINT	1					
32	91002803800	O-RING	1		1B P38			
33	80400160131	JOINT	3					
34	37002413480	HOSE	1		L=750			
35	90186208025	BOLT,FLANGE	1		M8X25			
36	90101210060	BOLT	2		M10X60			
37	36672630000	FILTER (WITH O-RING)	4					
38	91002802900	O-RING	3		1B P29			
39	37002475860	HOSE	1		L=1860			
40	37002475870	HOSE	1		L=2150			
43	81408000160	PIPE,STEEL	2	M	12X1.4T			
44	90101208060	BOLT	2		M8X60		475375	
	90172108060	BOLT,HEXAGON SOCKET	2		M8X60	475376		
45	80302090141	FITTING	7		KCO12-020N			
46	91002801100	O-RING	10		1B P11			
47	37002457800	HOSE	1		L=650			
48	34344464300	JOINT ASSY	1					
49	82100002019	CLAMP	4		WR40			
50	90101208030	BOLT	8		M8X30			
51	81408000241	PIPE,STEEL	1	M	18X1.9T			
52	37002502380	HOSE	1		L=250			
53	80305010160	FITTING,TEE	1		KTA18-000E			
54	34343344200	JOINT	1					
55	80302090322	FITTING	3		KCO28-080N			
56	34344284800	JOINT	1					
57	91002904000	O-RING	2		1B G40			
58	37002508730	HOSE	1		L=150			
59	91803600500	CLIP	4		D=35-50			
60	80305010100	FITTING,TEE	5		KTA12-000N			
61	81408000160	PIPE,STEEL	2	M	12X1.4T			
62	80321112050	VALVE,CHECK	1					
63	81408000160	PIPE,STEEL	1	M	12X1.4T			
64	80305131203	FITTING,TEE	1					

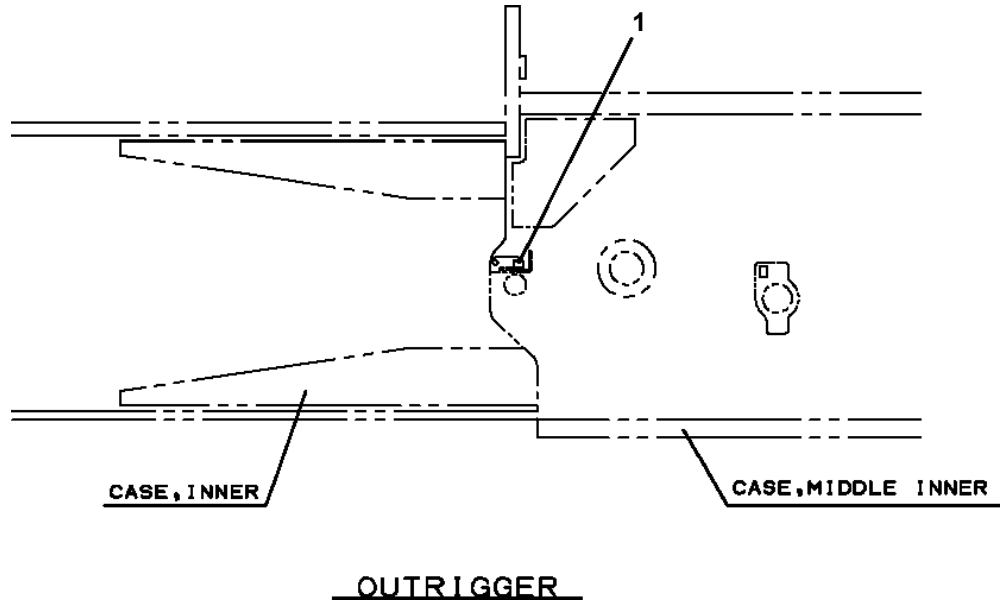
GT-800-1-90102 5 BOOM + 2 JIB, 2M2D

Pos No.	Parts No	Parts Name	Qty	Unit	Technical Data	Serial No (Start)	Serial No (End)	Remarks
1	34630631000	RING,SLIP	1				475327	
	34630631001	RING ASSY,SLIP	1			475328		
2	37000402880	BEARING,PLAIN	1					
3	91624520000	PACKING	2					
4	91150220000	SEAL,RING	2					
5	34630632200	BODY	1					
6	34630632100	CORE	1					
7	34630632300	SHAFT	1					
8	34630632400	CORE	1				475375	
	34630632402	CORE	1					
9	37000403870	BEARING,PLAIN	1					
10	34630571400	SUPPORT	1					
11	82456101000	NIPPLE,GREASE	2		A-PT1/8			
12	37000403890	BEARING,PLAIN	2					
13	91150520000	SEAL,RING	5					
14	91607112000	PACKING	2					
	91606010600	PACKING	2				475375	
15	91151110500	SEAL,RING	1					
16	90101512025	BOLT	2		M12X25			
17	90186208014	BOLT,FLANGE	4		M8X14			
18	34630571800	PLATE	2					
19	82401800100	PLUG (FOR M10)	2					
20	34630571600	PLATE	1					
21	90186206014	BOLT,FLANGE	5		M6X14			
22	82100002014	CLAMP	1		WR20			
23	90201200600	NUT	1		M6			
24	37000505280	PLATE	1					
25	90172108020	BOLT,HEXAGON SOCKET	6		M8X20			
26	91151111500	SEAL,RING	1					
27	82401800080	PLUG (FOR M8)	2					
28	91152012000	SEAL,RING	2					
51	80430621600	JOINT	2					
52	80316030060	PLUG	4		PT3/8			
53	80400160133	JOINT	1					
54	80430620800	JOINT	1					
55	80316070100	PLUG	1		G3/4			
56	91002802400	O-RING	2		1B P24			
57	59457138000	PLUG ASSY	2					
58	42343110200	JOINT	1					
59	37000919040	JOINT	1					
60	80316070040	PLUG	2		PF1/4			
61	91002801100	O-RING	2		1B P11			
62	91002801800	O-RING	3		1B P18			
63	80400160131	JOINT	1					
64	37000911610	JOINT	1		R3/8XRC3/8			
81	91002802900	O-RING	2		1B P29			
91	34630637520	POTENTIOMETER	1			475328		
92	34630637510	BREATHER,AIR	2			475328		

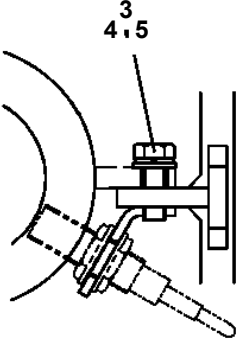
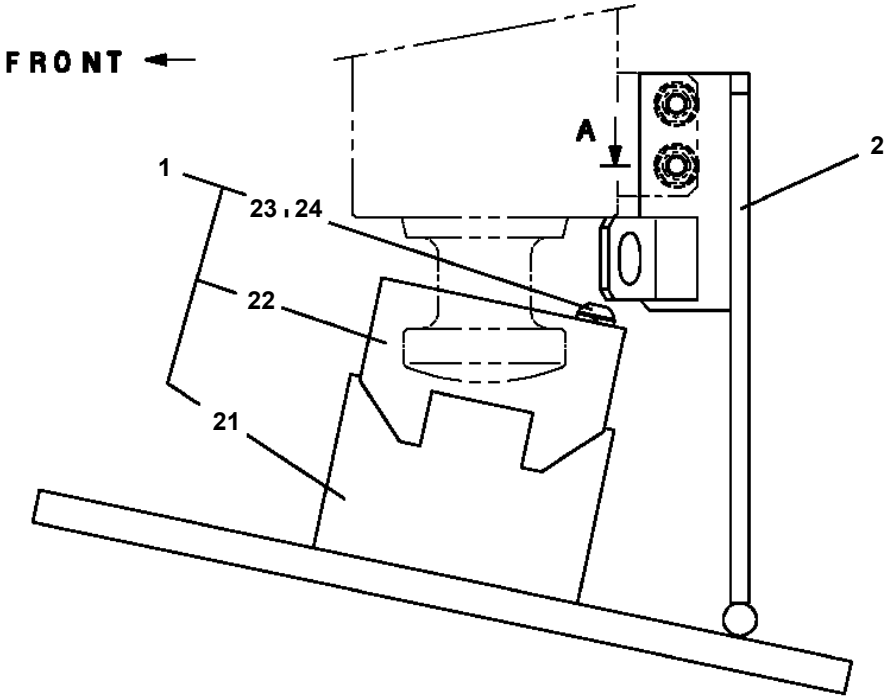
GT-800-1-90102 5 BOOM + 2 JIB, 2M2D

Pos No.	Parts No	Parts Name	Qty	Unit	Technical Data	Serial No (Start)	Serial No (End)	Remarks
6	36640425010	COLLAR	6					
7	36640425100	HOLDER (SPRING)	6					
8	36640425070	PLUG	6					
9	36640425080	SPRING	6					
12	36640425150	SLEEVE	1					
16	36648885050	SOLENOID	6					
21	36640425110	SPRING	3					
22	36640425020	TIE ROD	3					
25	36640425120	END,SPOOL	3					
27	36646975120	PLUG	6		PF1/4			
28	36648135010	BOLT,HEXAGON SOCKET	12		M5X10			
29	90131906080	BOLT,HEXAGON SOCKET	12		M6X80			
31	90267201000	NUT	6		M10			
34	36648135050	O-RING	6		1A P16			
35	91002800600	O-RING	18		1B P6			
37	91002801000	O-RING	6		1B P10			
38	91002801100	O-RING	6		1B P11			
39	91002801200	O-RING	1		1B P12			
41	91002801800	O-RING	1		1B P18			
42	91002802200	O-RING	1		1B P22			
43	91002906500	O-RING	4		1B G65			
44	36640425030	O-RING	6					
61	36640425040	HOUSING ASSY	1					
62	36640425050	INLET ASSY	1					
63	36640425060	SOLENOID ASSY	6					
64	36640425090	HOUSING ASSY	1					
65	36640425130	HOUSING ASSY	2					
66	36640425140	VALVE,RELIEF	1					
100	36640420000	VALVE,SOLENOID CONTROL	1					

GT-800-1-90102 5 BOOM + 2 JIB, 2M2D
PC1010940-00 OUTRIGGER (WHEN O/R IS STOWED AND FIXED)

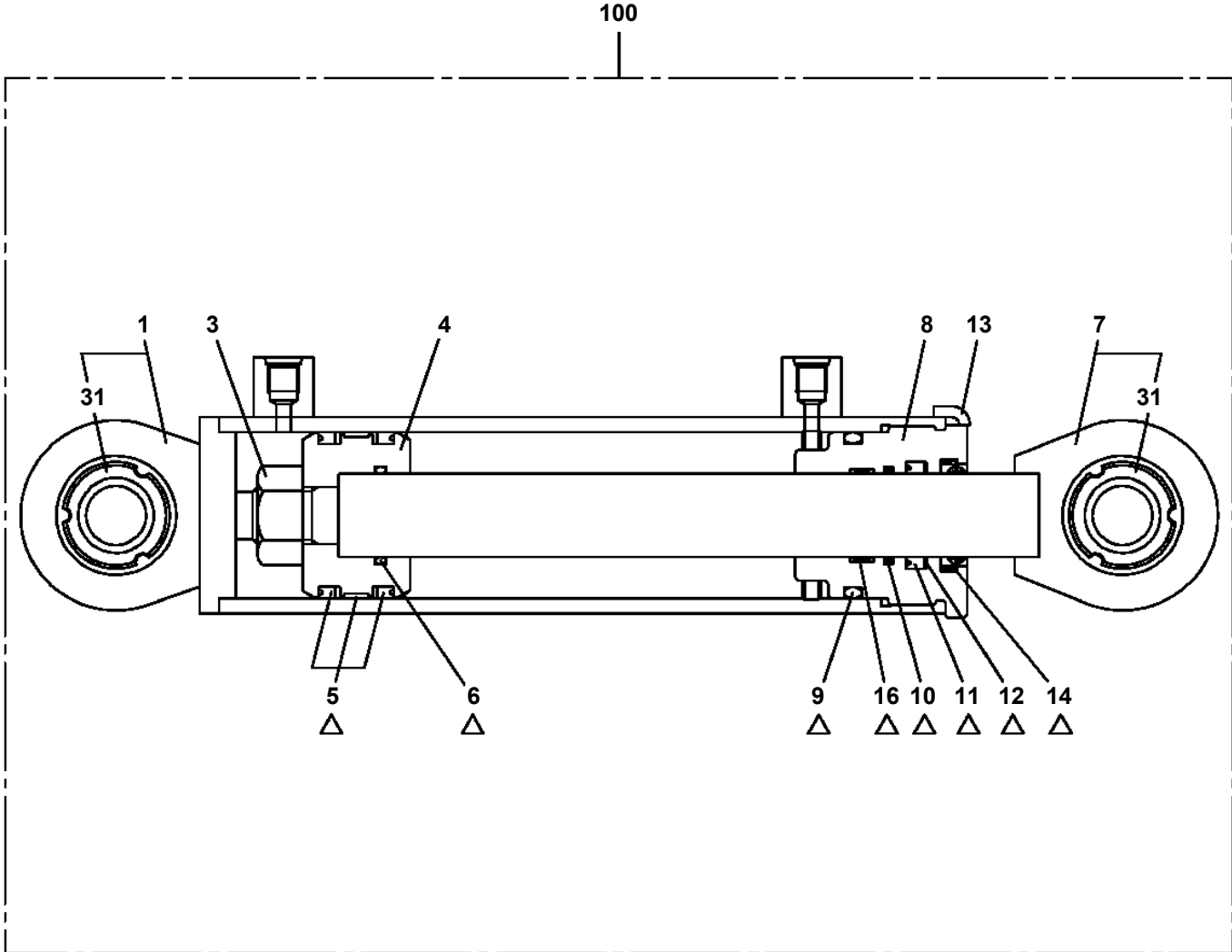


GT-800-1-90102 5 BOOM + 2 JIB, 2M2D
PC1250096-00 FRONT JACK (FLOOT)



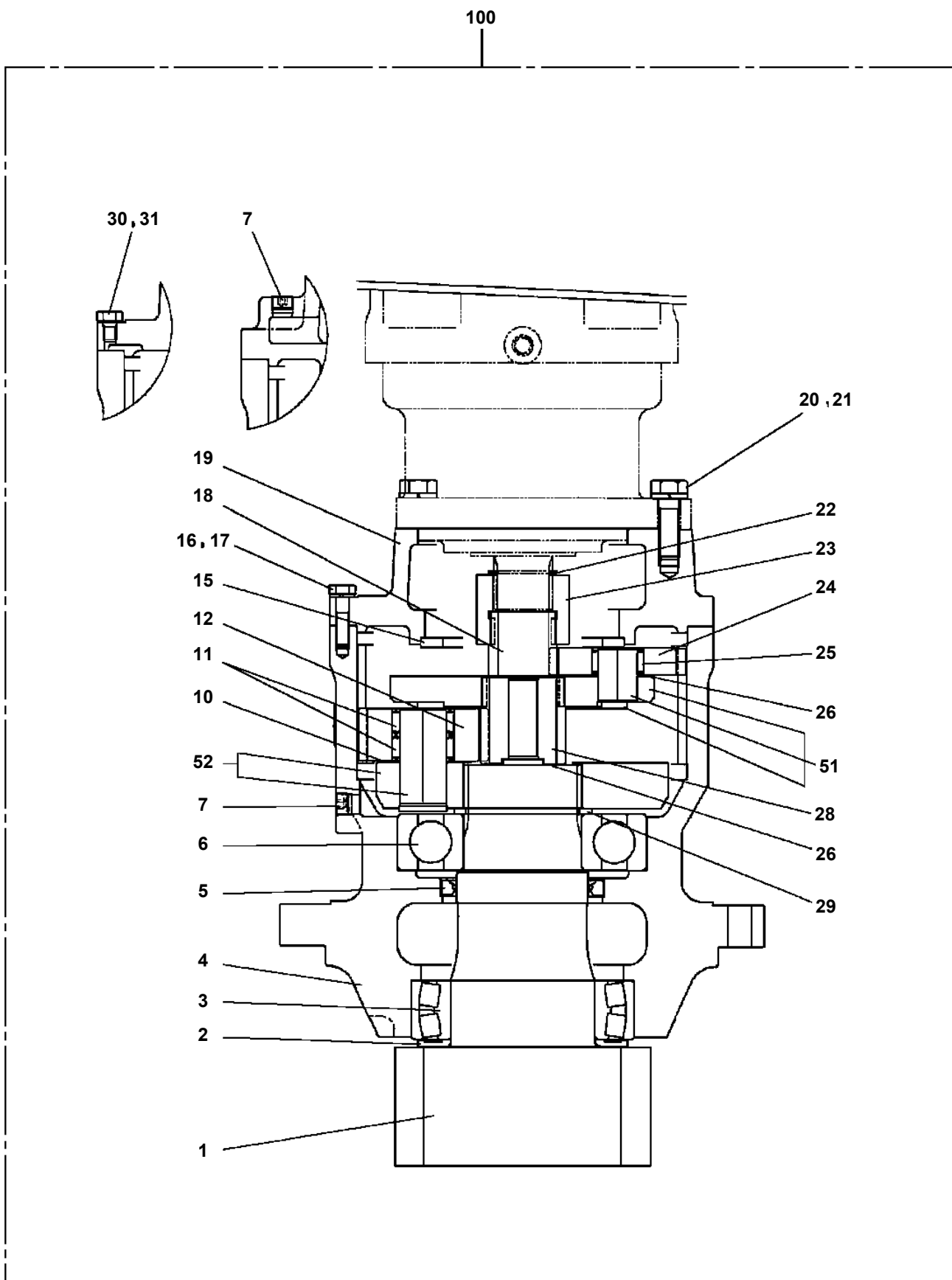
A

GT-800-1-90102 5 BOOM + 2 JIB, 2M2D
PC6200001-02 CYLINDER ASSY (QUICK TURN JIB)



△:PACKING SET KEY NO.50 (KEY NO.5,6,9,10,11,12,14,16)

GT-800-1-90102 5 BOOM + 2 JIB, 2M2D
PD1010174-01 REDUCER, SWING SPEED



GT-800-1-90102 5 BOOM + 2 JIB, 2M2D

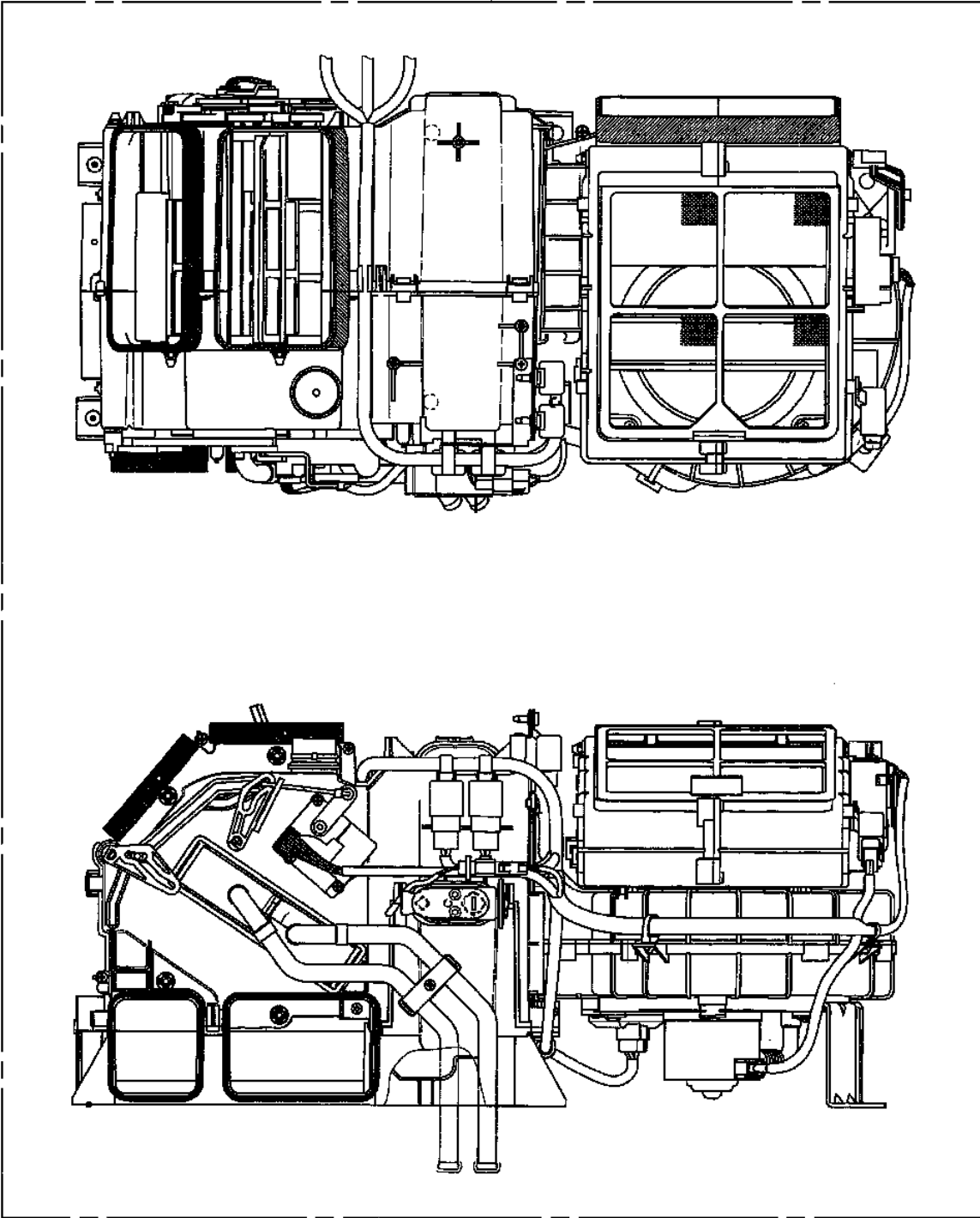
Pos No.	Parts No	Parts Name	Qty	Unit	Technical Data	Serial No (Start)	Serial No (End)
1	37000711140	CLAMP ASSY	1		28X2		
2	81408000290	PIPE,STEEL	1	M	22X2.5T		
3	81408000290	PIPE,STEEL	1	M	22X2.5T		
4	37000711060	CLAMP ASSY	2		28X1		
5	81408000341	PIPE,STEEL	3	M	28X3.1T		
6	90101212020	BOLT	4		M12X20		
7	90302041201	WASHER,SPRING	4		12		
8	36648970000	VALVE,SOLENOID CONTROL (SWING)	1				
9	80303130321	FITTING,ELBOW	1		KLO28-080E		
10	37002400660	HOSE	1		L=600		
11	80320010210	FITTING	1		KUD28-060N		
12	37000300780	SLEEVE	2		28-22		
13	80303130281	FITTING,ELBOW	4		KLO22-060E		
16	80305010200	FITTING,TEE	2		KTA220-000N		
17	81408000290	PIPE,STEEL	2	M	22X2.5T		
18	81408000290	PIPE,STEEL	2	M	22X2.5T		
22	80311010320	FITTING	2		KRE22X180N		
23	81408000241	PIPE,STEEL	1	M	18X1.9T		
24	80303130241	FITTING,ELBOW	2		KLO18-040E		
25	36638110000	VALVE,STOP	1				
26	81408000241	PIPE,STEEL	1	M	18X1.9T		
27	90101208014	BOLT	4		M8X14		
28	90302040801	WASHER,SPRING	4		8		
29	34344473700	SUPPORT	1				
30	90101210016	BOLT	2		M10X16		
31	90302041001	WASHER,SPRING	2		10		
51	91002802900	O-RING	1		1B P29		
61	91002802400	O-RING	4		1B P24		
71	91002801800	O-RING	2		1B P18		

GT-800-1-90102 5 BOOM + 2 JIB, 2M2D

Pos No.	Parts No	Parts Name	Qty	Unit	Technical Data	Serial No (Start)	Serial No (End)	Remarks	Pages
2	34510702620	PACKING	1						
3	34510702630	PACKING	1				475381		
	34510702650	PACKING	1			475382			
100	34510702600	DUCT	1						

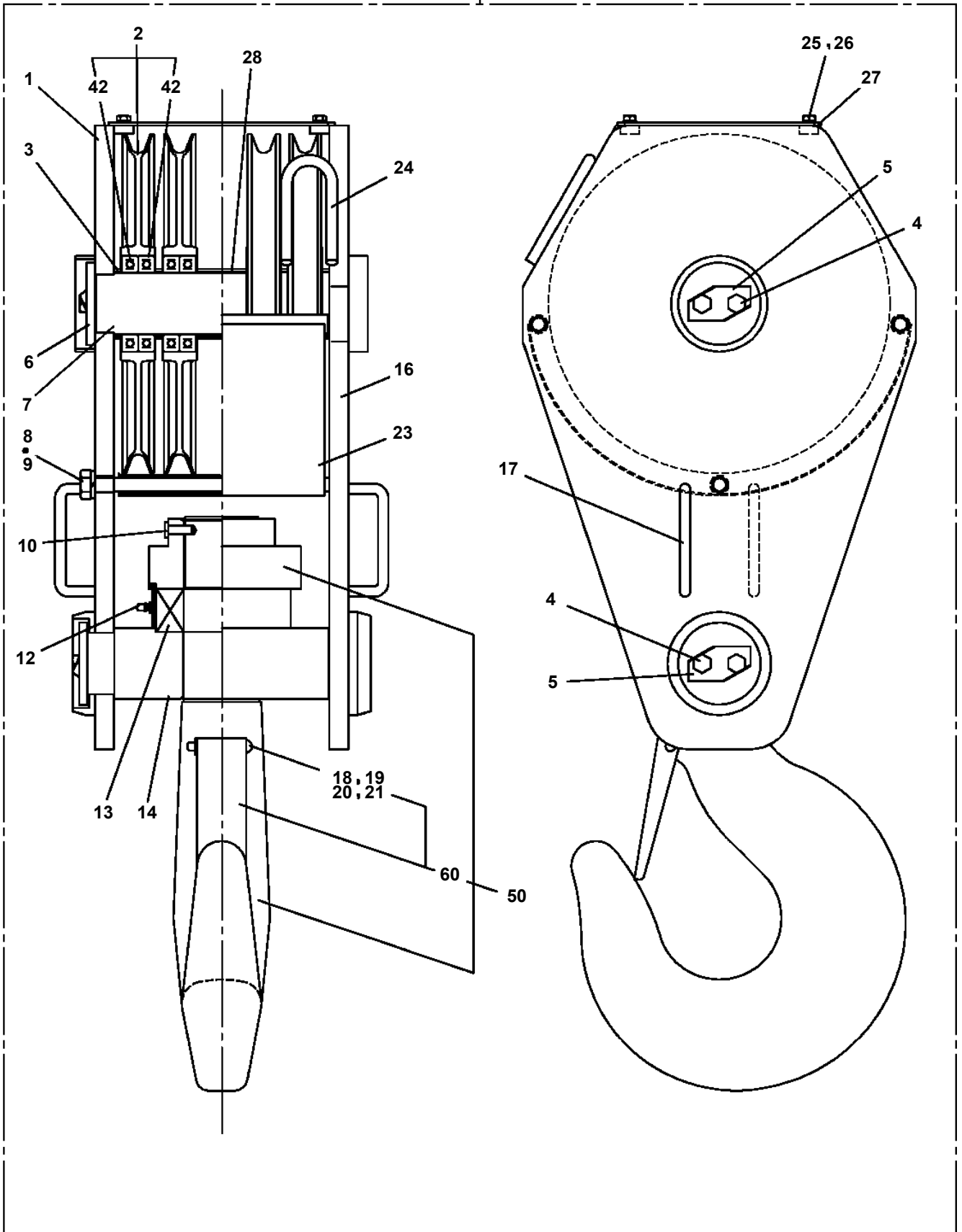
GT-800-1-90102 5 BOOM + 2 JIB, 2M2D
PE5220001-02 EVAPORATOR ASSY

1 → 21



GT-800-1-90102 5 BOOM + 2 JIB, 2M2D
PF1050345-00 HOOK (MAIN,40TON SHEAVE 4PC'S)

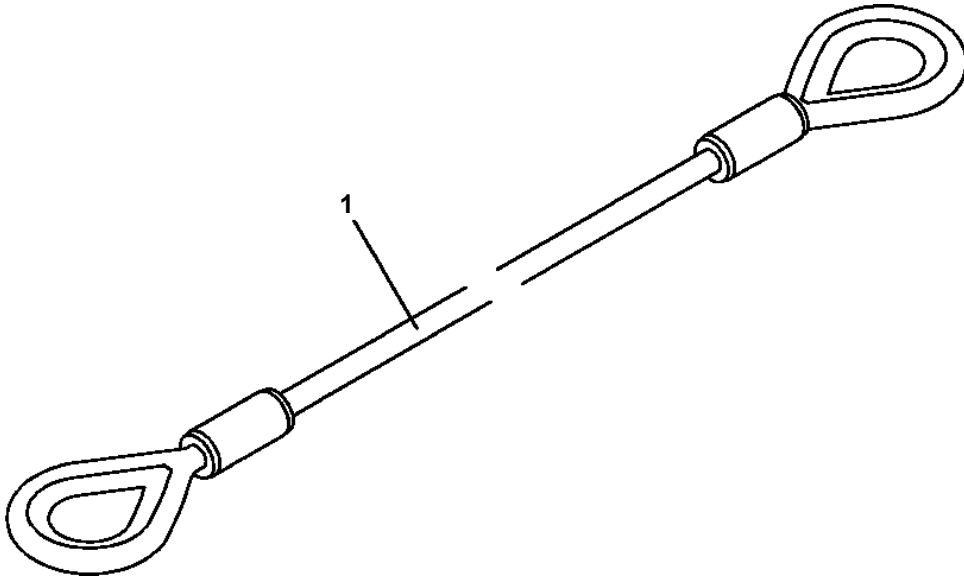
100



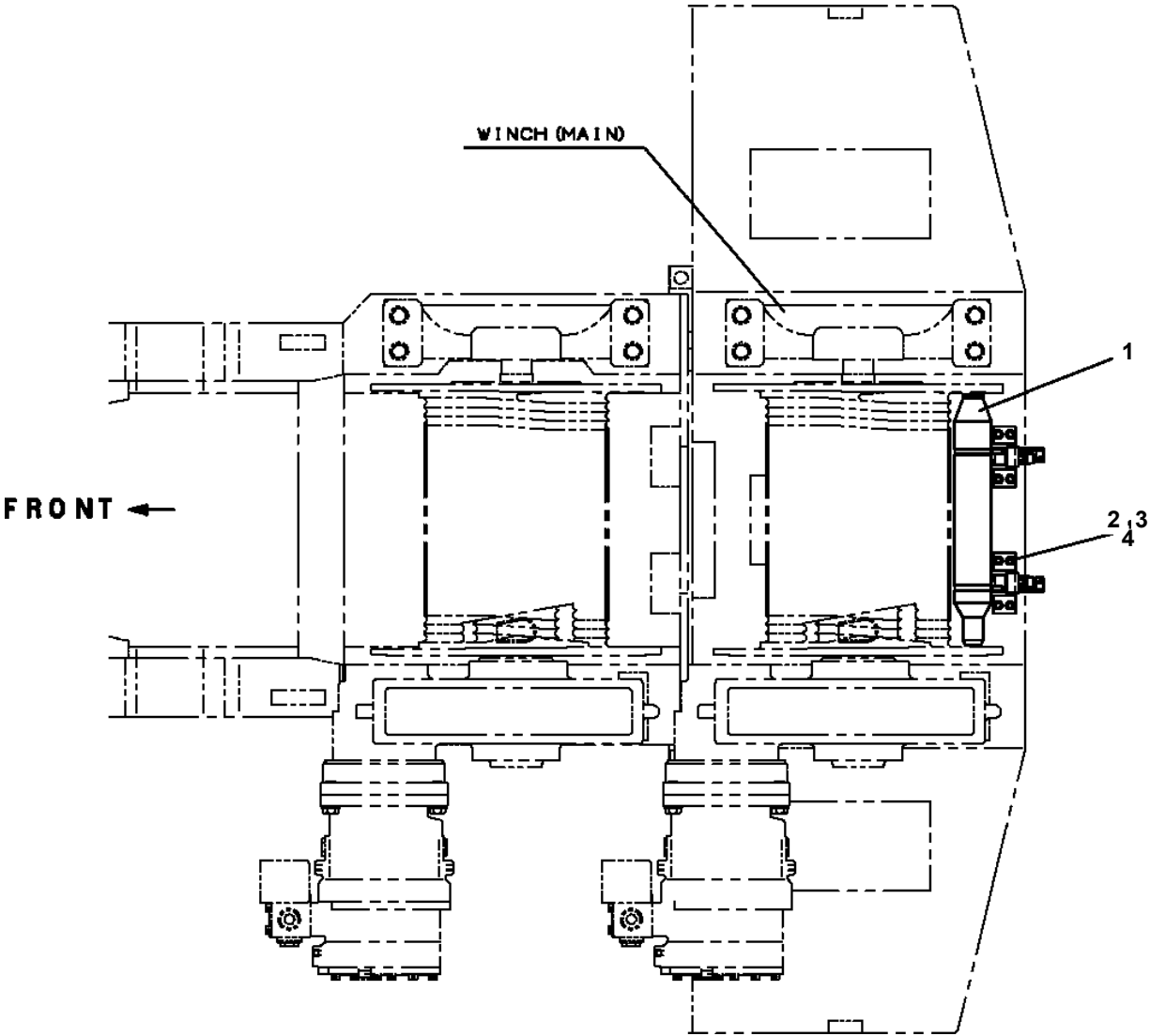
GT-800-1-90102 5 BOOM + 2 JIB, 2M2D
PF1050437-00 HOOK (AUXILIARY)

1	フック HOOK
2	マウント,フック MOUNT,HOOK
3	プレートASSY,ネーム PLATE ASSY,NAME

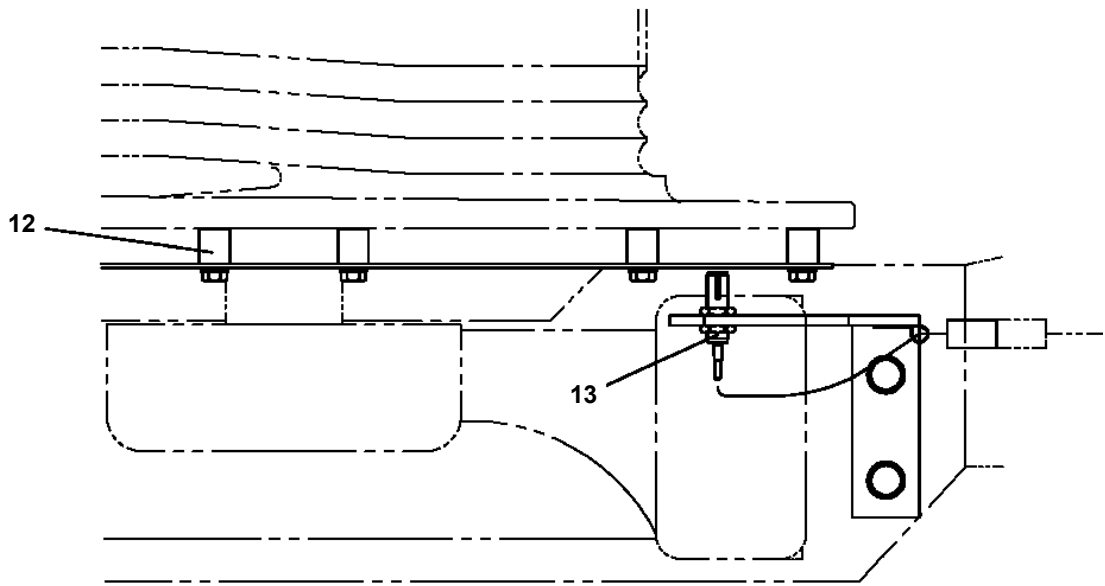
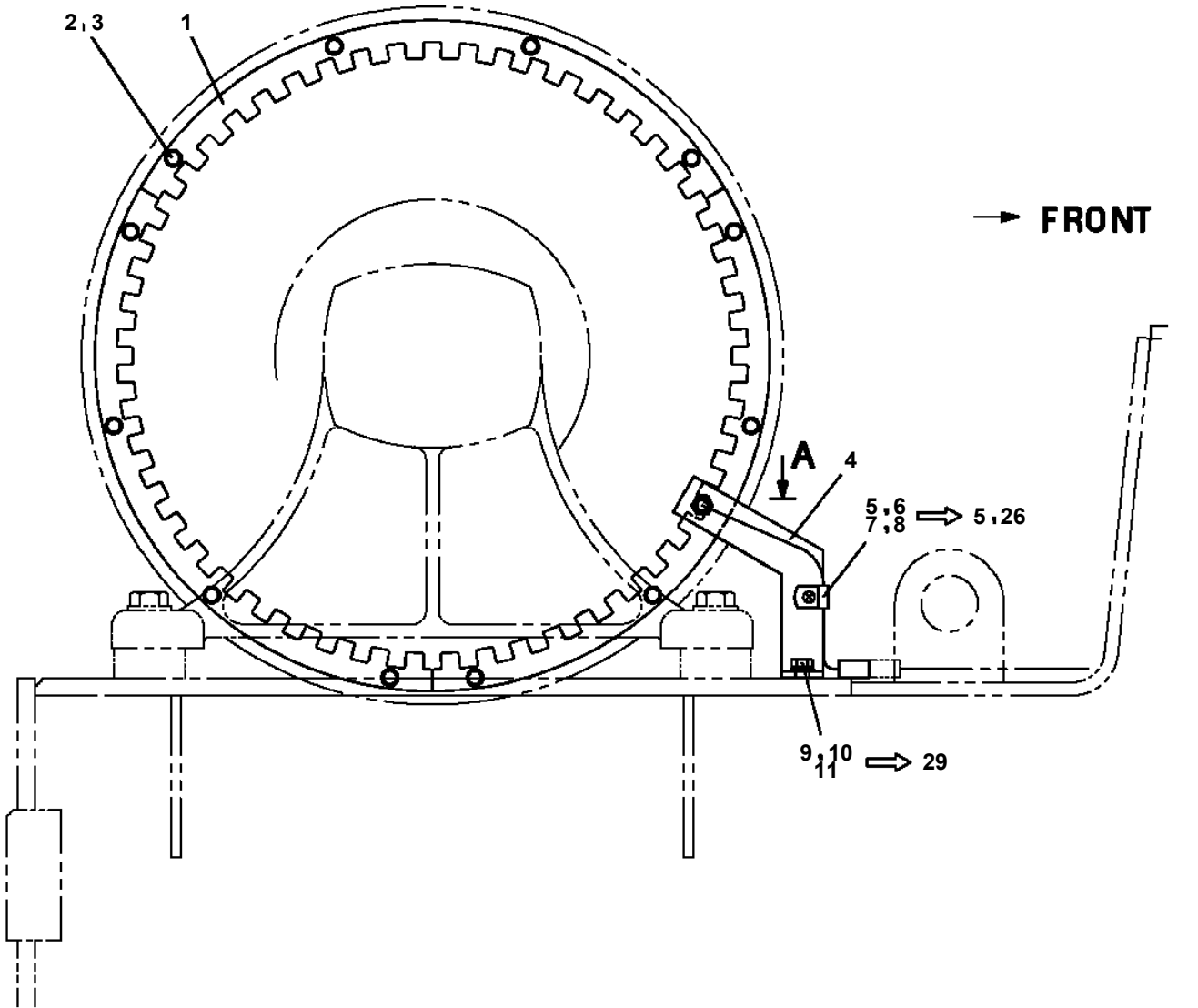
GT-800-1-90102 5 BOOM + 2 JIB, 2M2D
PF1070024-00 ROPE,WIRE (MAIN HOOK STOWING)



GT-800-1-90102 5 BOOM + 2 JIB, 2M2D
PF1180069-00 DETECTOR,DISORDERLY WIND (MAIN)

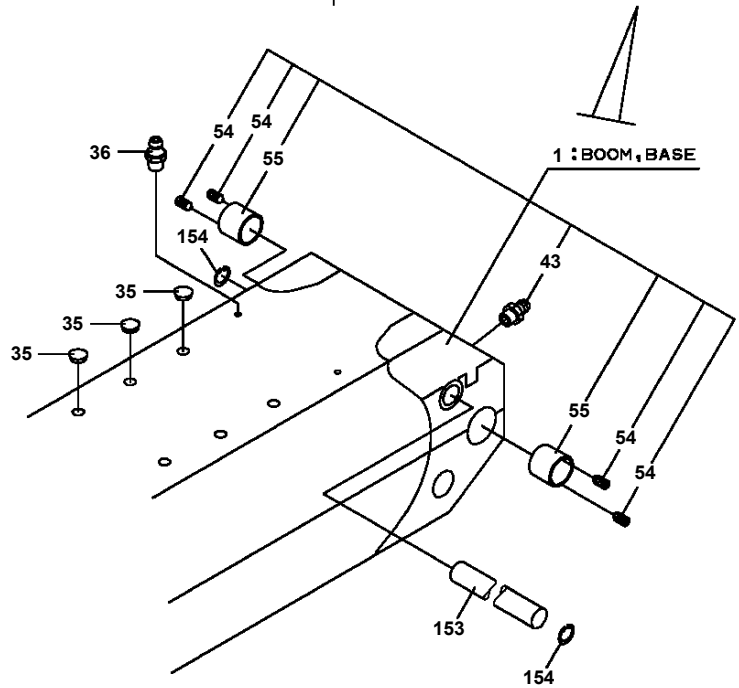
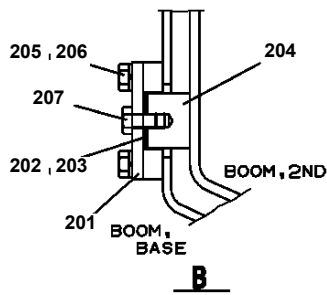
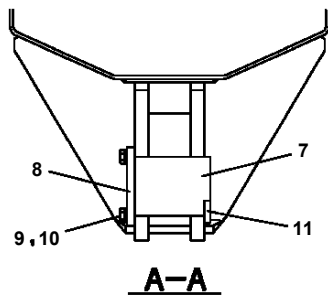
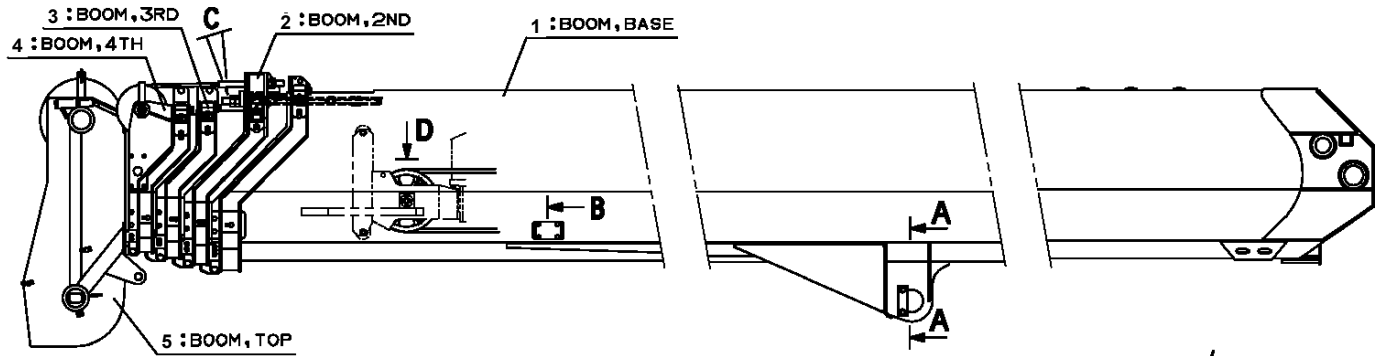


GT-800-1-90102 5 BOOM + 2 JIB, 2M2D
PF1250083-01 DETECTOR, DRUM ROTATION (AUX.)

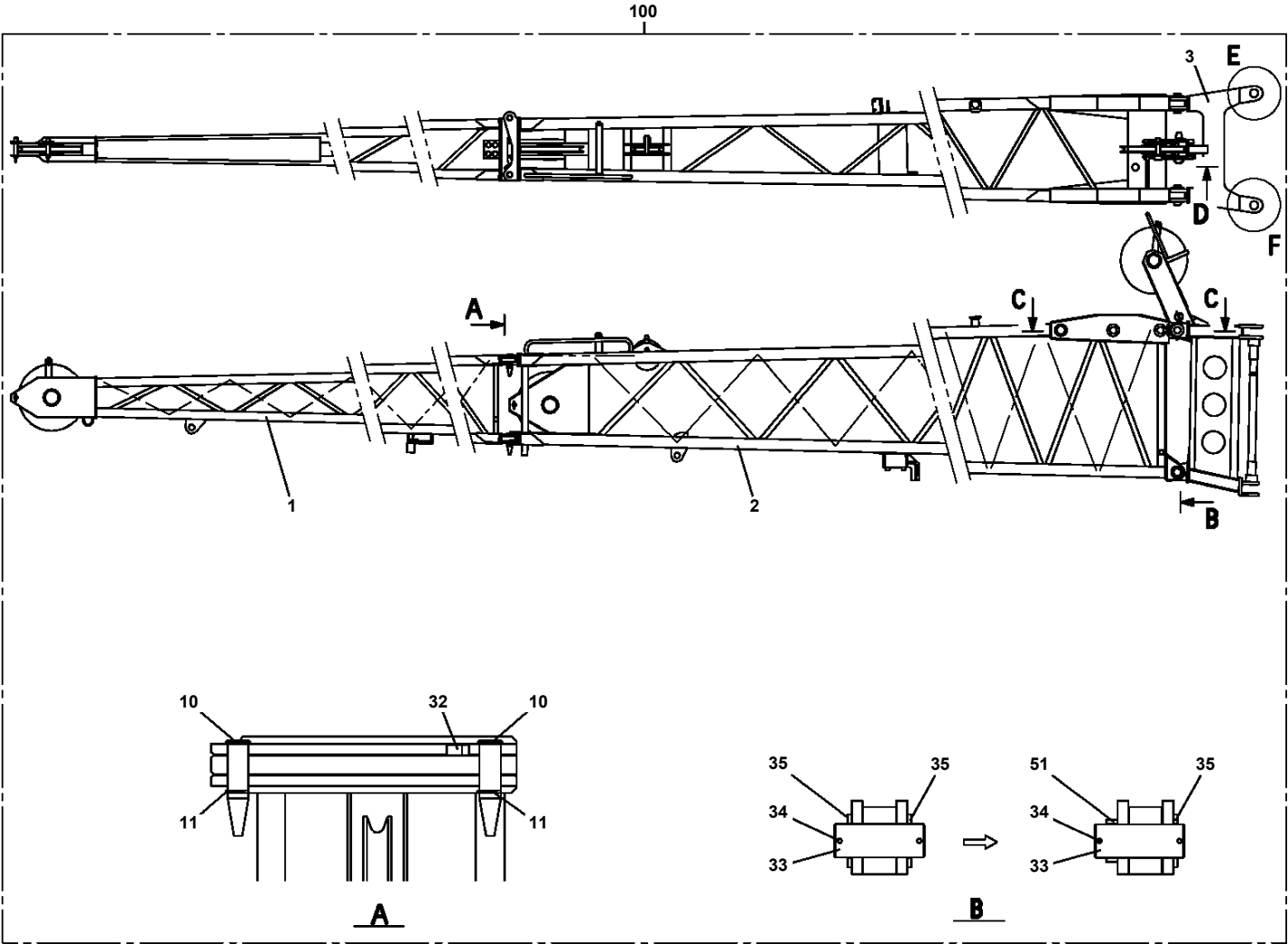


A

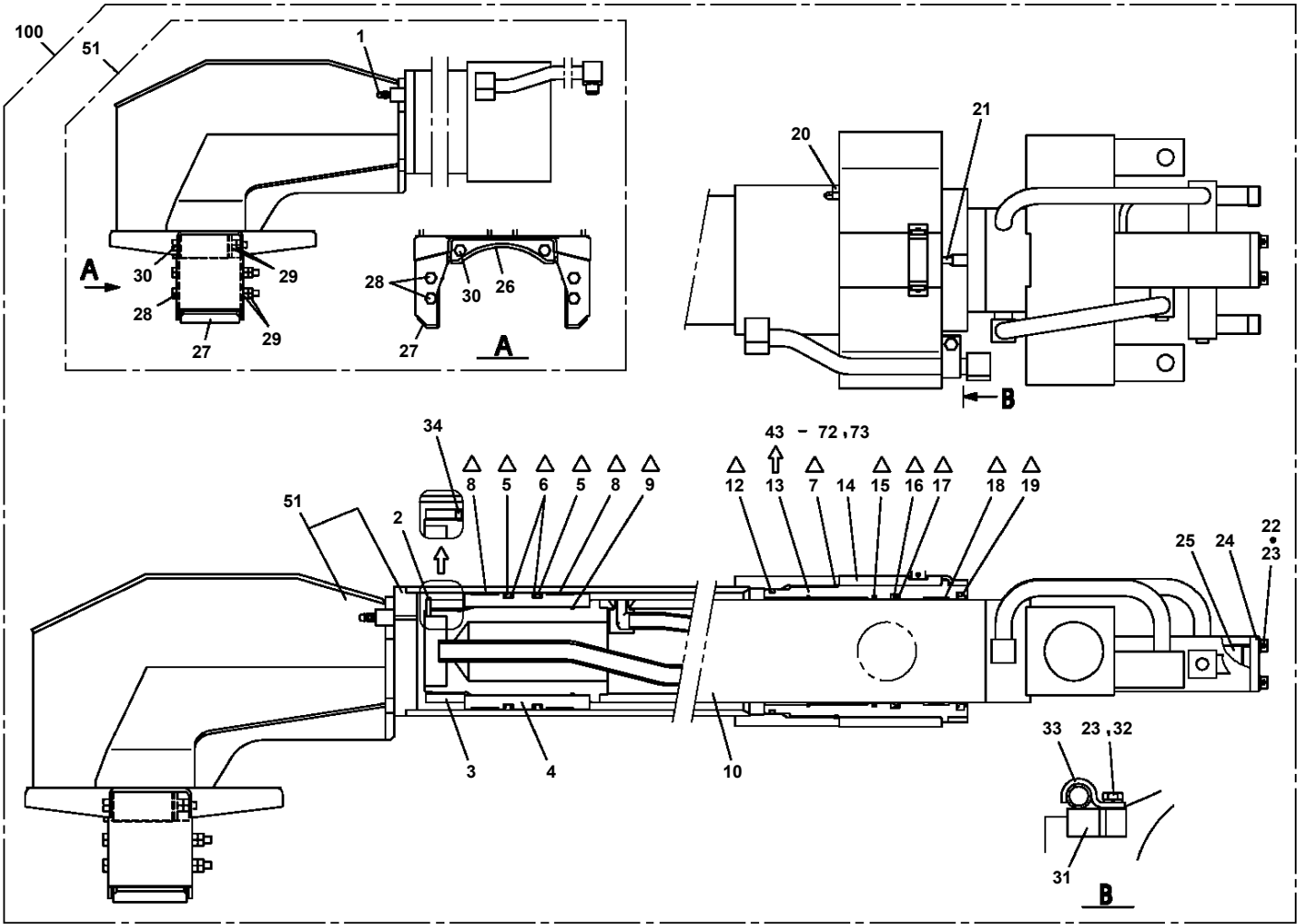
**GT-800-1-90102 5 BOOM + 2 JIB, 2M2D
PG1010781-09 BOOM (5 SECT.)**



GT-800-1-90102 5 BOOM + 2 JIB, 2M2D
PG1040275-03 JIB ASSY

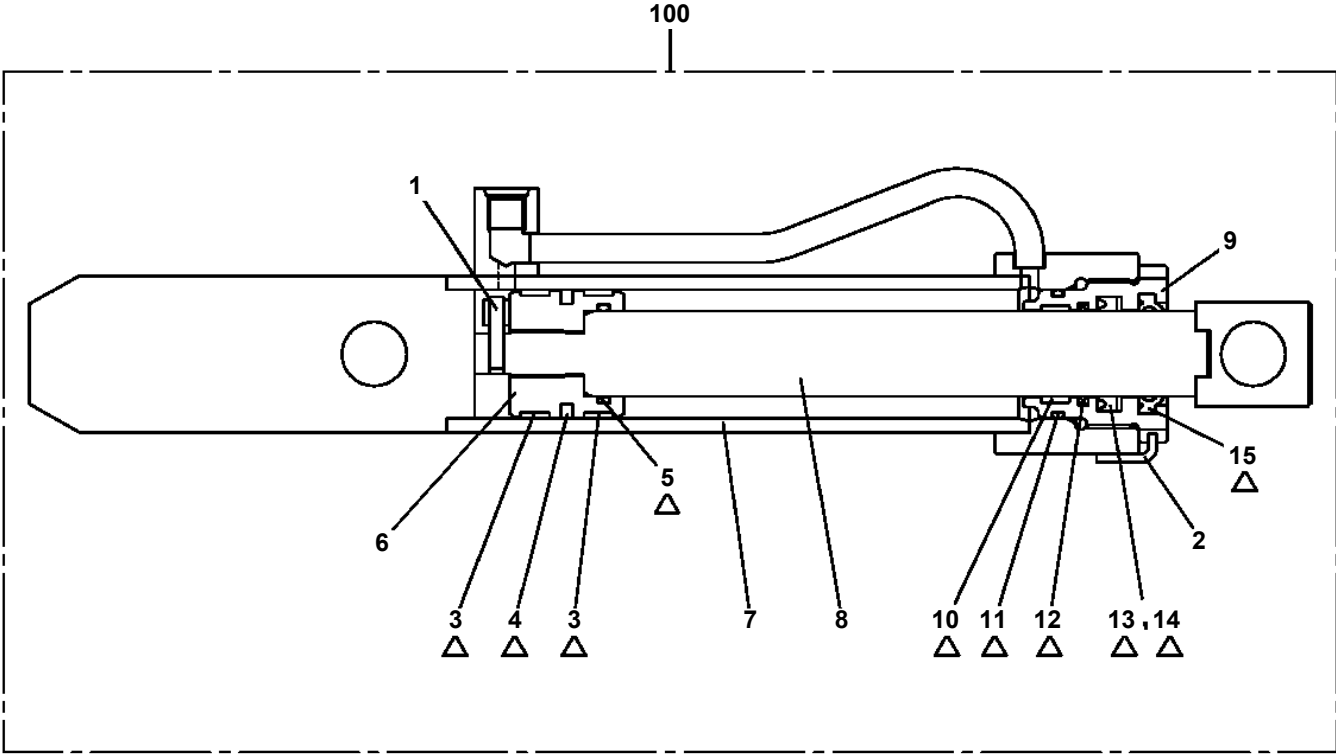


**GT-800-1-90102 5 BOOM + 2 JIB, 2M2D
PG1050479-04 CYLINDER,TELESCOPING (NO.1)**



Δ:PACKING SET KEY NO.61 (KEY NO.5,6,7,8,9,12,15,16,17,18,19)

GT-800-1-90102 5 BOOM + 2 JIB, 2M2D
PG1080073-00 CYLINDER,JIB

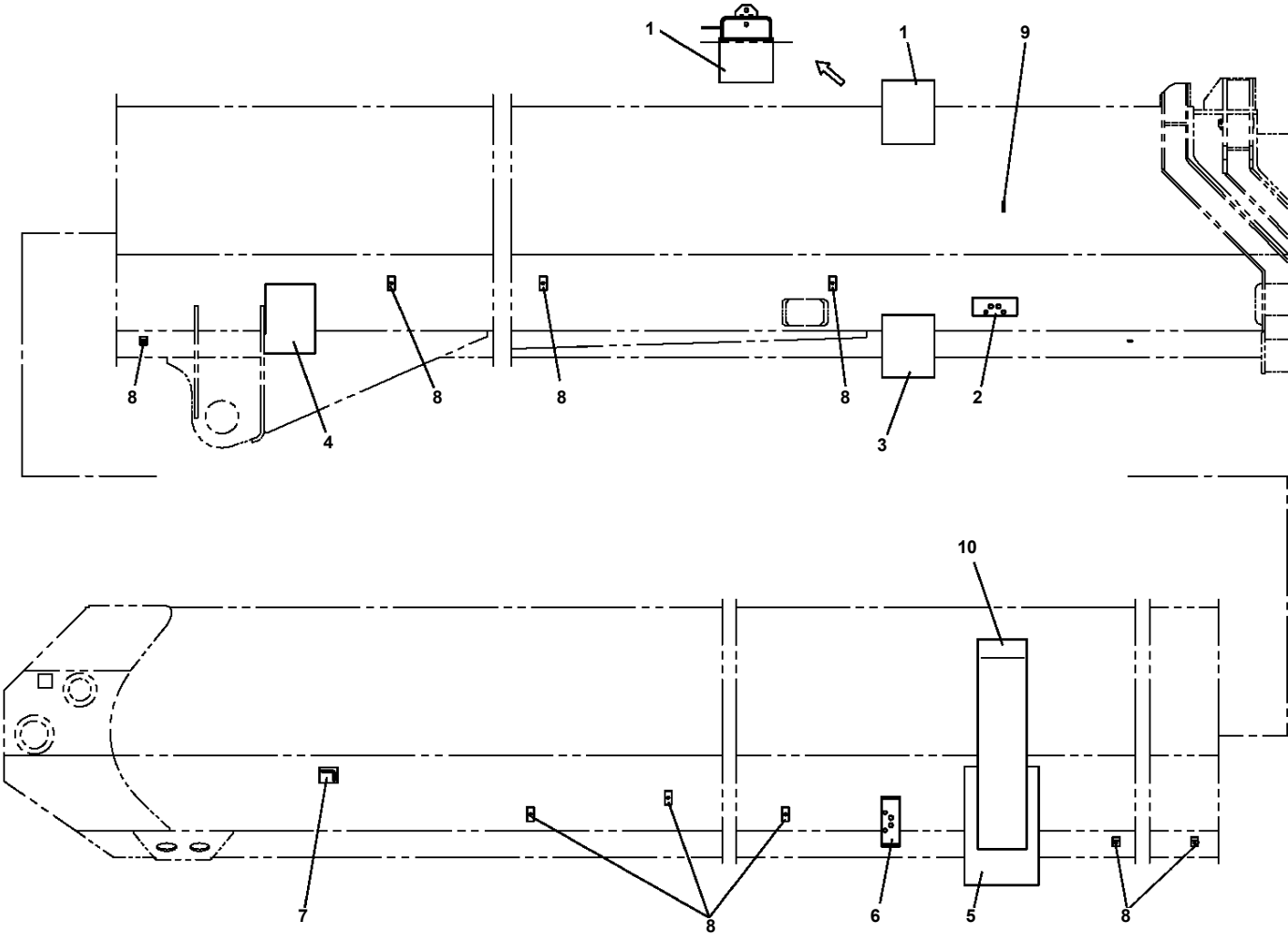


△:PACKING SET KEY NO.41 (KEY NO.3,4,5,10,11,12,13,14,15)

GT-800-1-90102 5 BOOM + 2 JIB, 2M2D

Pos No.	Parts No	Parts Name	Qty	Unit	Technical Data	Serial No (Start)	Serial No (End)
1	36131235010	PLATE (BASE)	1				
2	36131935010	CASE	1				
3	36132285010	DRUM ASSY	1				
4	36130515020	RING ASSY (CONTACT)	1				
5	33370025170	CONTACTOR ASSY (70)	1				
6	33371277520	CONTACTOR ASSY	1				
7	36132005010	CASE (BEARING)	1				
8	36131455030	BEARING	2				
9	80601110150	RING,RITAINING	1		15		
10	80602110320	RING,RITAINING	1		R32		
11	36131495030	REDUCER	1				
13	36130045050	GEAR	2				
14	36130015061	BRACKET	1				
15	36130945010	POTENTIOMETER	1				
16	36131905020	SPRING	1				
17	36131455040	COVER	1				
18	32360005150	CLIP (NYLON)	1				
19	36131455070	SUPPORT	1				
20	36161115040	CLAMP (CORD)	2				
21	36130015080	GUIDE (CORD)	1				
22	36131455080	COLLAR	3				
23	36130045110	PACKING	1				
24	36131455050	PACKING	1				
25	32360005220	PACKING	2				
26	82114102020	CONNECTOR	1				
28	36131935020	LOCK (CORD)	1				
29	80185306014	SCREW,MACHINE	1		M6X14		
32	90201201200	NUT	1		M12		
33	36130335030	WASHER	1				
34	80175305012	SCREW,MACHINE	4		M5X12		
35	99163006012	BOLT	7		M6X12		
36	99163006010	BOLT	6		M6X10		
37	80192433006	SCREW,MACHINE	3		M3X6		
38	36132005030	SCREW,MACHINE (WITH WASHER)	4		M4X25		
39	36132005040	SCREW,MACHINE (WITH WASHER)	2		M4X16		
40	80192434010	SCREW,MACHINE	1		M4X10		
41	80175304006	SCREW,MACHINE	3		M4X6		
42	80175304008	SCREW,MACHINE	4		M4X8		
43	90710004050	SCREW,SET	3		M4X5		
44	90201200400	NUT	1		M4		
45	31370005070	GROMMET	1				
46	36132265010	CABLE ASSY (WITH CONNECTOR)	1				
47	82121102020	HOLDER	1				
48	82111101510	TERMINAL	2				
50	36131455060	DETECTOR,ANGLE	1				
51	82121101085	PLUG (AVS0.85)	2				
52	36131135060	COLLAR	1				
53	90101206016	BOLT	2		M6X16		
54	90302040601	WASHER,SPRING	2		6		
55	90303070601	WASHER,PLAIN	2		6		
56	90101208075	BOLT	3		M8X75		
57	90303070801	WASHER,PLAIN	3		8		
58	90302040801	WASHER,SPRING	3		8		
59	36130045090	CLIP (NYLON)	1				
60	36131905050	COLLAR	3				
71	36132285020	CABLE ASSY	1				
72	36131935100	CORD (2-LINE)	43	M			
127	82114101020	CONNECTOR (2P,MALE)	1				
147	82121102020	HOLDER	1				
149	82111101010	TERMINAL	2				
151	82121101085	PLUG (AVS0.85)	2				
200	36132280000	DETECTOR,BOOM LENGTH (BOOM)	1				

GT-800-1-90102 5 BOOM + 2 JIB, 2M2D
PG1350024-01 WELDED PARTS (BASE BOOM WELDED PARTS)



GT-800-1-90102 5 BOOM + 2 JIB, 2M2D

Pos No.	Parts No	Parts Name	Qty	Unit	Technical Data	Serial No (Start)	Serial No (End)	Remarks	Pages
1	82108901190	SWITCH	1				475379		
	82108501100	SWITCH	1		FL7M-5A6N-901	475380			
2	34951420100	SUPPORT	1						
3	90186208014	BOLT,FLANGE	2		M8X14				

GT-800-1-90102 5 BOOM + 2 JIB, 2M2D

Pos No.	Parts No	Parts Name	Qty	Unit	Technical Data	Serial No (Start)	Serial No (End)	Re
1	34372351300	SUPPORT	1					
2	32370002110	GASKET	1					
3	32370002121	COVER	1					
4	80172303025	SCREW,MACHINE	2		M3X25			
5	90302040301	WASHER,SPRING	2		3			
6	82104102010	SWITCH,LIMIT	1					
7	34372351200	ROD	1					
8	14148373001	SPRING	1					
9	80601110180	RING,RITAINING	1		S18			
10	34371314400	SUPPORT	1					
11	90303070301	WASHER,PLAIN	2		3			
12	82114101020	CONNECTOR (2P,MALE)	1					
13	82111101010	TERMINAL	2					
14	32370005200	CORD	1					
15	32370005210	CORD	1					
16	82100000592	TERMINAL (M40.3 TO 1.25)	2					
17	89630201000	HOSE,VINYL	1		6X8,1M			
18	14148375000	GROMMET	1					
19	90101208045	BOLT	2		M8X45			
20	90302040801	WASHER,SPRING	2		8			
21	82121102020	HOLDER	1					
22	82100001220	INSULATOR	2					
23	82121101085	PLUG (AVS0.85)	2					
24	82400000201	GROMMET	1		KG-016			
30	34372359510	ROD ASSY	1					
42	32370002150	SPACER	1		L=12 TO 11			
43	80720103014	PIN,SPRING	1		3X14			
100	34372351101	SWITCH,OVER WIND DETECTOR	1					

GT-800-1-90102 5 BOOM + 2 JIB, 2M2D

Pos No.	Parts No	Parts Name	Qty	Unit	Technical Data	Serial No (Start)	Serial No (End)	Remarks	Page
1	36180110000	SENDER,PRESSURE	2				475357		
	36180110000	SENDER,PRESSURE	1			475358			
2	82100002004	CLAMP	10		WR8				
3	90280200600	NUT,FLANGE	14		M6				
4	82100002037	CLAMP	3		WE10				
5	90190000008	BOLT,STUD	5		M6X20				
8	82100002014	CLAMP	2		WR20		475363		
	82100002012	CLAMP	2		WR18	475364			
9	90186206014	BOLT,FLANGE	1		M6X14				
10	34362571100	HARNESS	1				475370		000
	34362571101	HARNESS	1			475371			
11	82100002010	CLAMP	1		WR15				
12	91810130250	FASTENER	6						
13	36180160000	SENDER,PRESSURE	1			475358			
31	91002801400	O-RING	2		1B P14		475357		
	91002801400	O-RING	2		1B P14	475358			

GT-800-1-90102 5 BOOM + 2 JIB, 2M2D

Pos No.	Parts No	Parts Name	Qty	Unit	Technical Data	Serial No (Start)	Serial No (End)	Re
100	34352992020	HARNESS (SWING FRAME,LEFT)	1					

GT-800-1-90102 5 BOOM + 2 JIB, 2M2D

Pos No.	Parts No	Parts Name	Qty	Unit	Technical Data	Serial No (Start)	Serial No (End)	Remarks	Pages
100	34362571100	HARNESS	1						

CLICK HERE TO **DOWNLOAD** THE COMPLETE MANUAL

- Thank you very much for reading the preview of the manual.
- You can download the complete manual from: www.heydownloads.com by clicking the link below

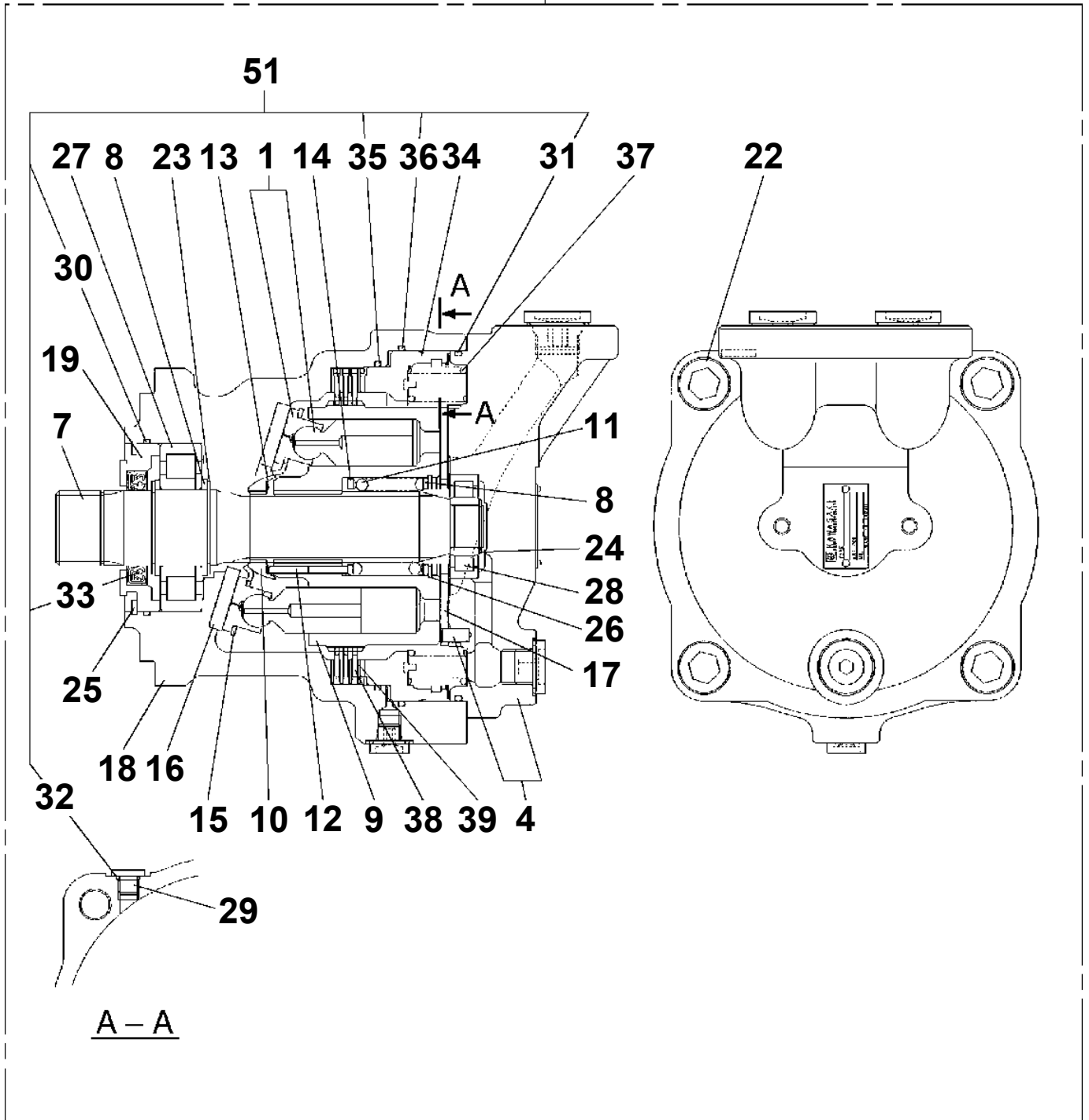


- Please note: If there is no response to CLICKING the link, please download this PDF first and then click on it.

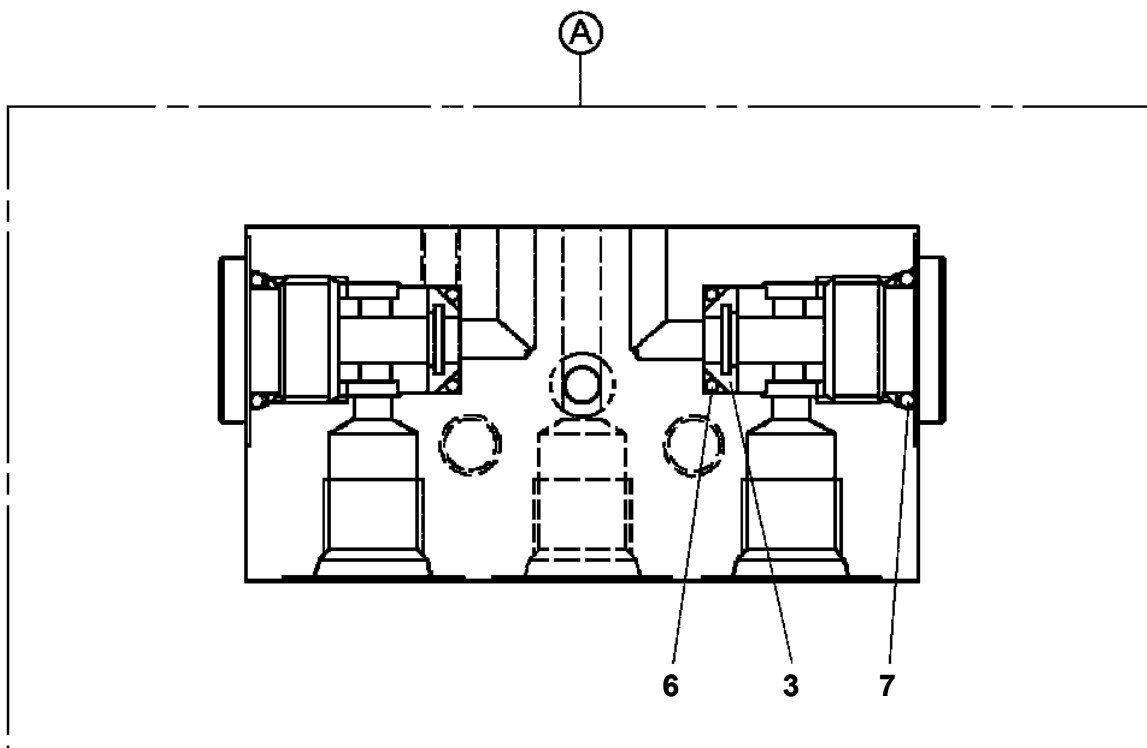
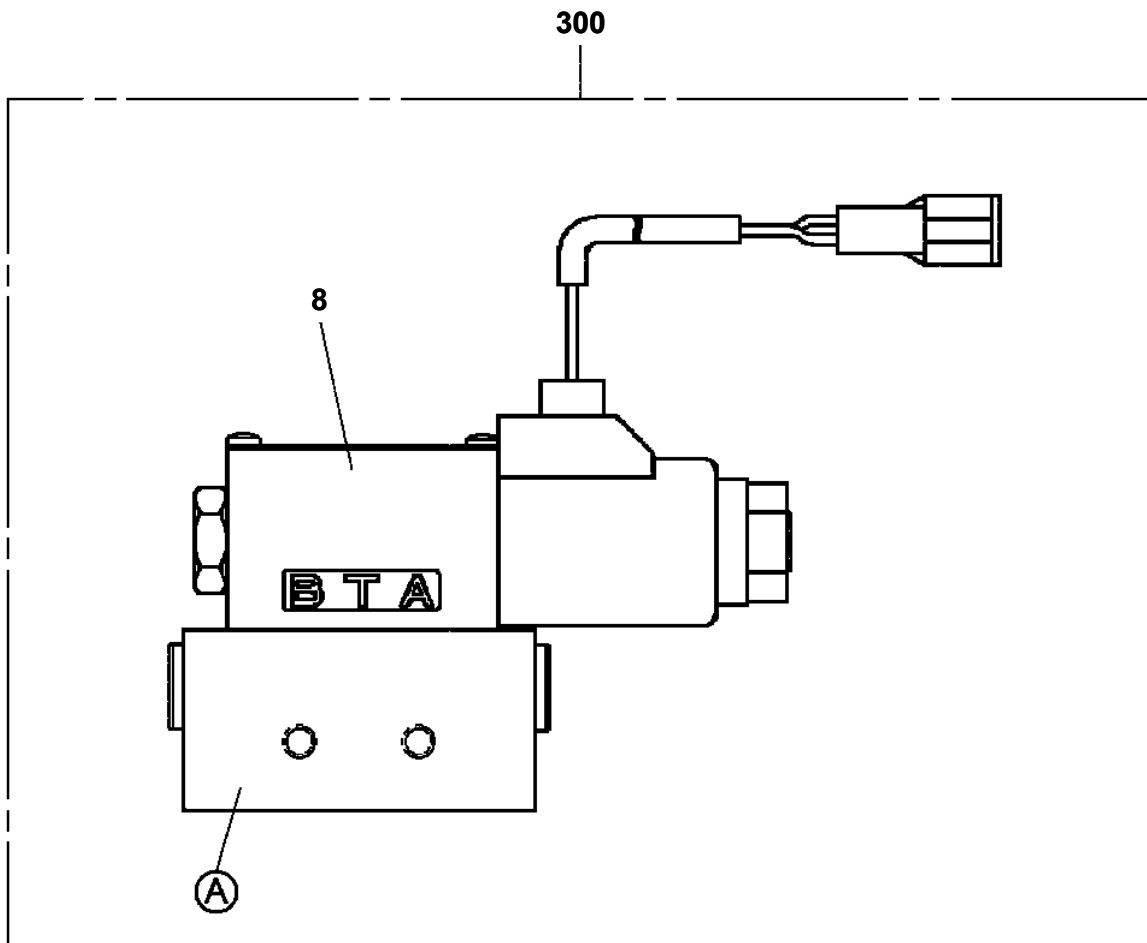
CLICK HERE TO **DOWNLOAD** THE COMPLETE MANUAL

GT-800-1-90102 5 BOOM + 2 JIB, 2M2D
PI1010192-00 MOTOR, HYDRAULIC

100

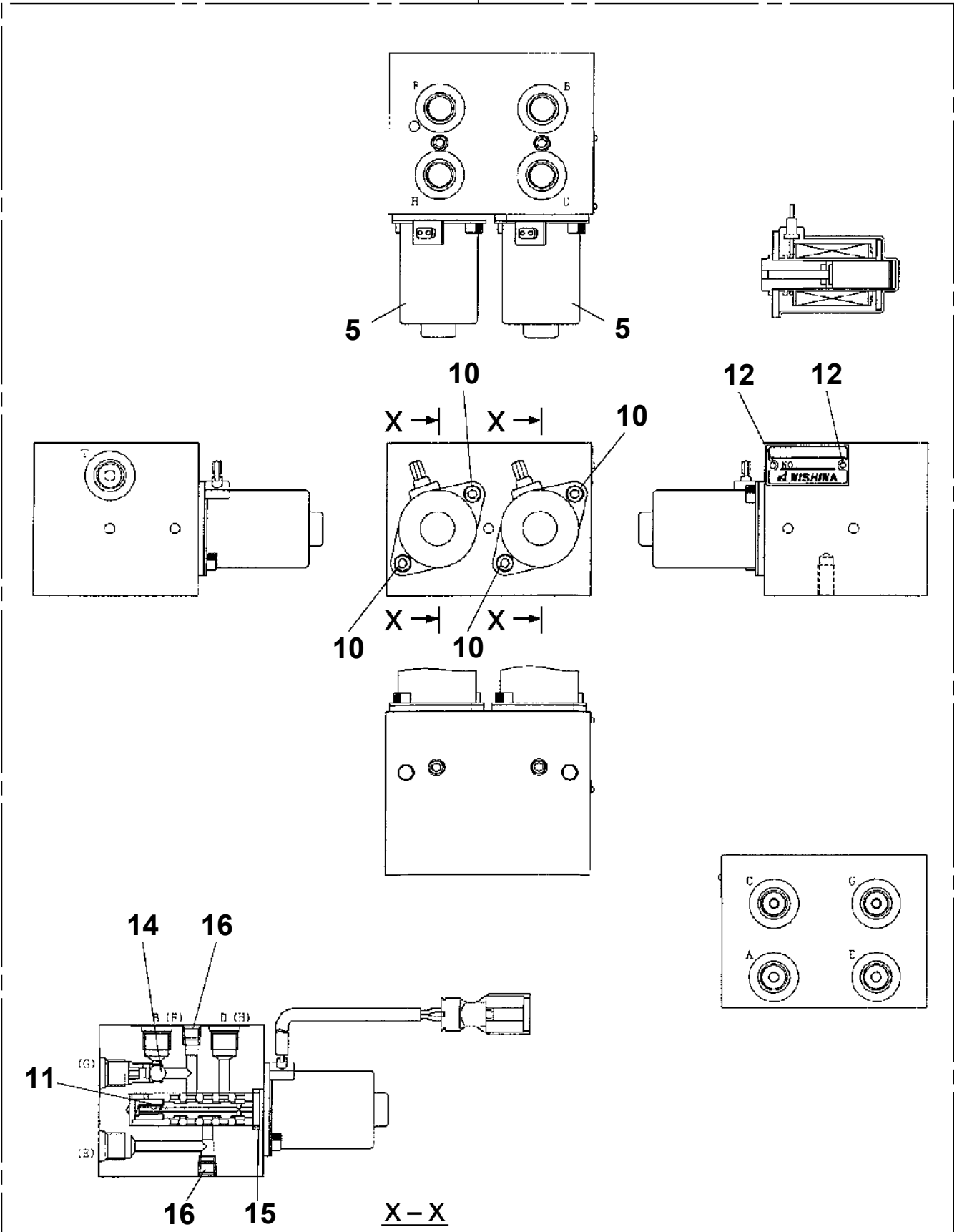


GT-800-1-90102 5 BOOM + 2 JIB, 2M2D
PI1120138-04 VALVE,SOLENOID

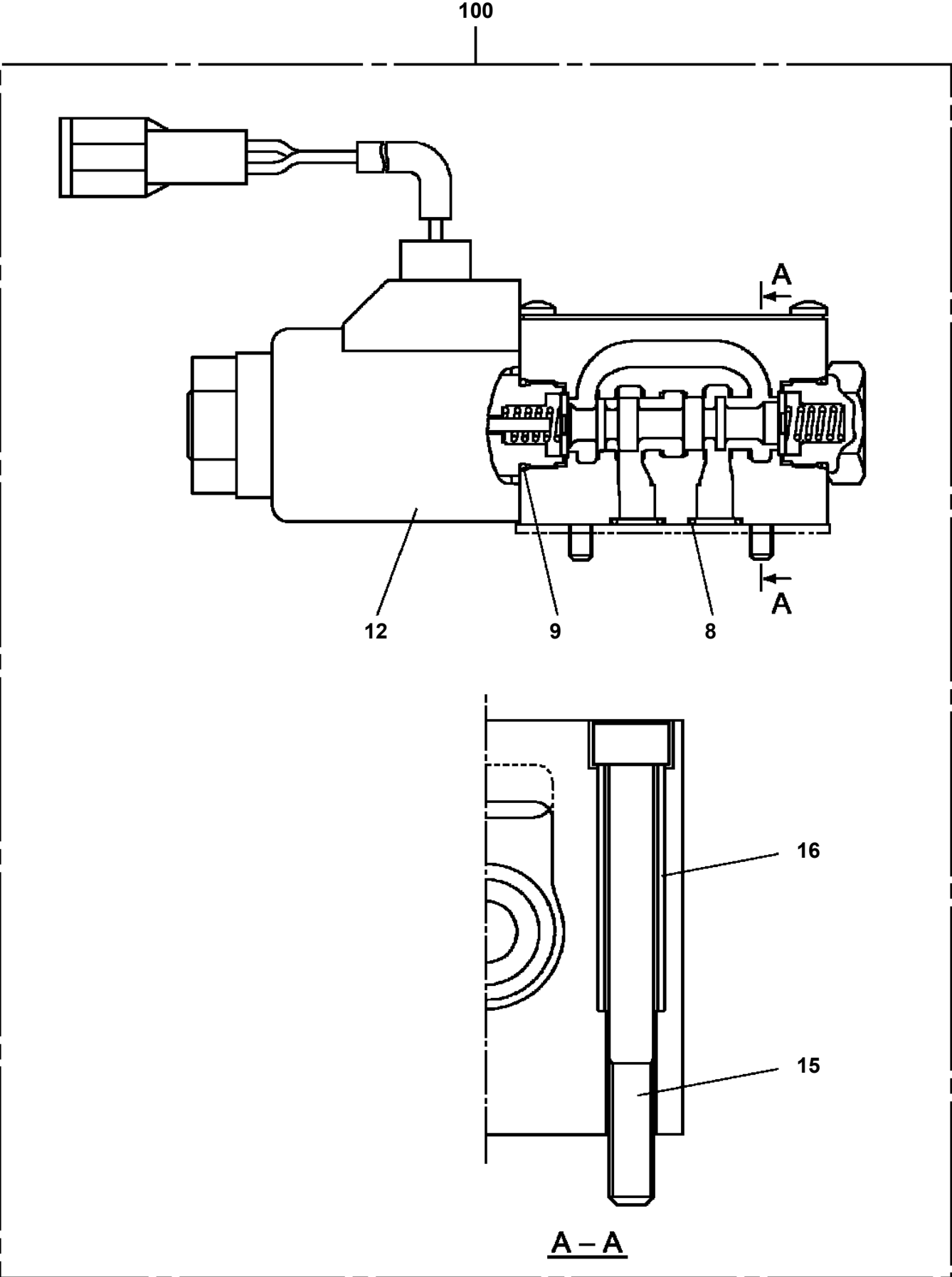


GT-800-1-90102 5 BOOM + 2 JIB, 2M2D
PI1120261-01 VALVE,SOLENOID

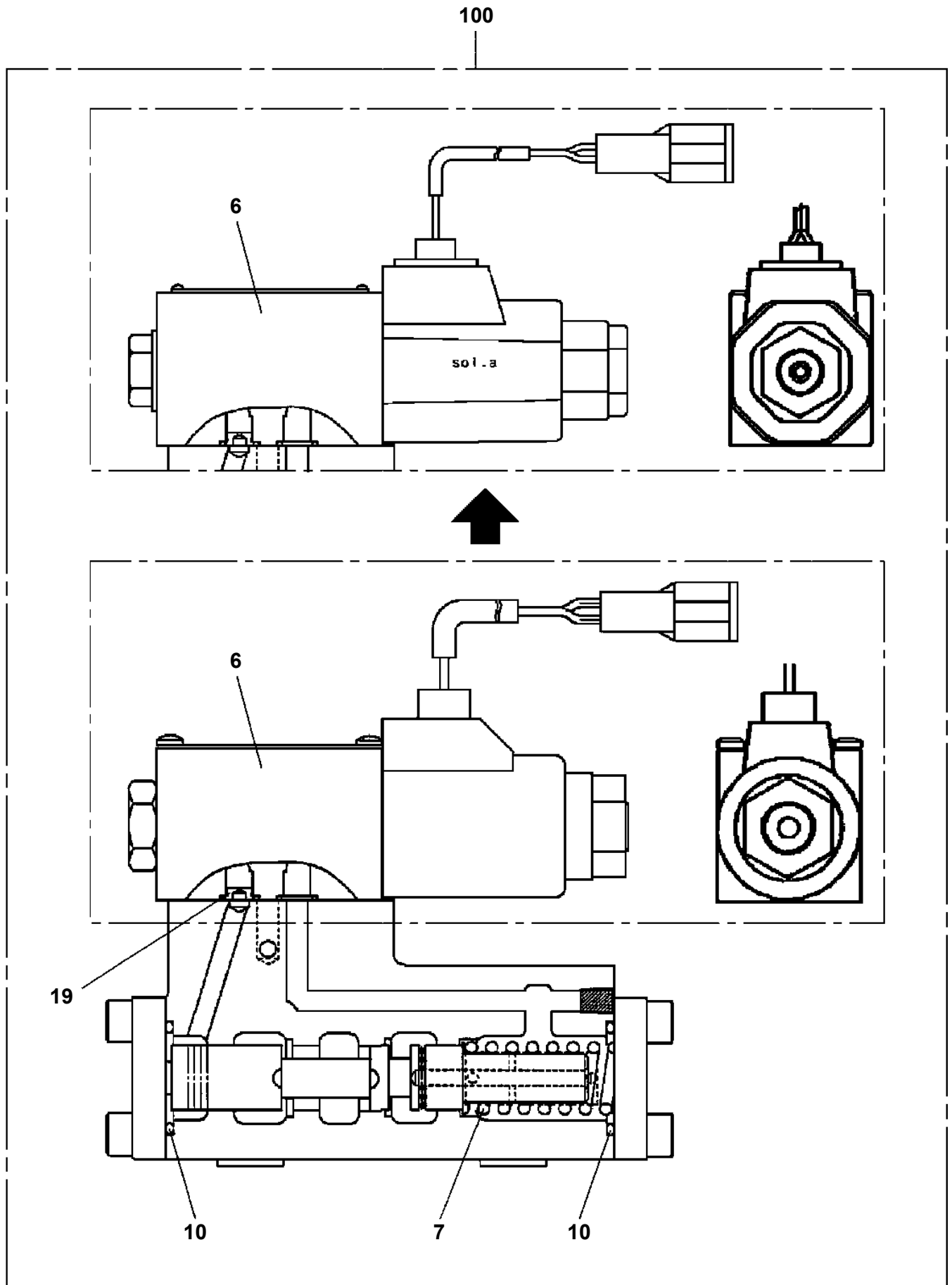
100



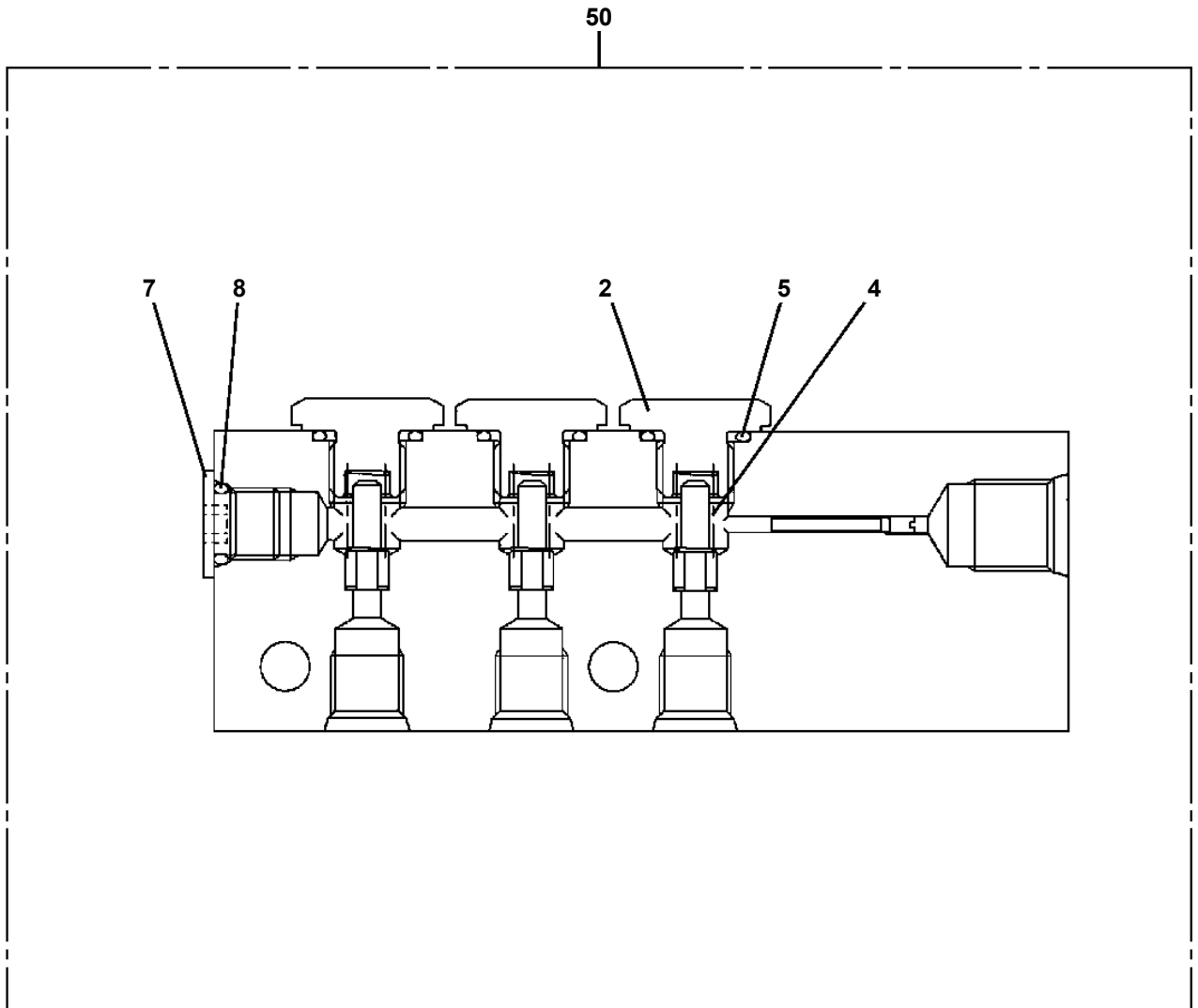
GT-800-1-90102 5 BOOM + 2 JIB, 2M2D
PI1120344-00 VALVE,SOLENOID



GT-800-1-90102 5 BOOM + 2 JIB, 2M2D
PI1130044-02 VALVE, HYDRAULIC

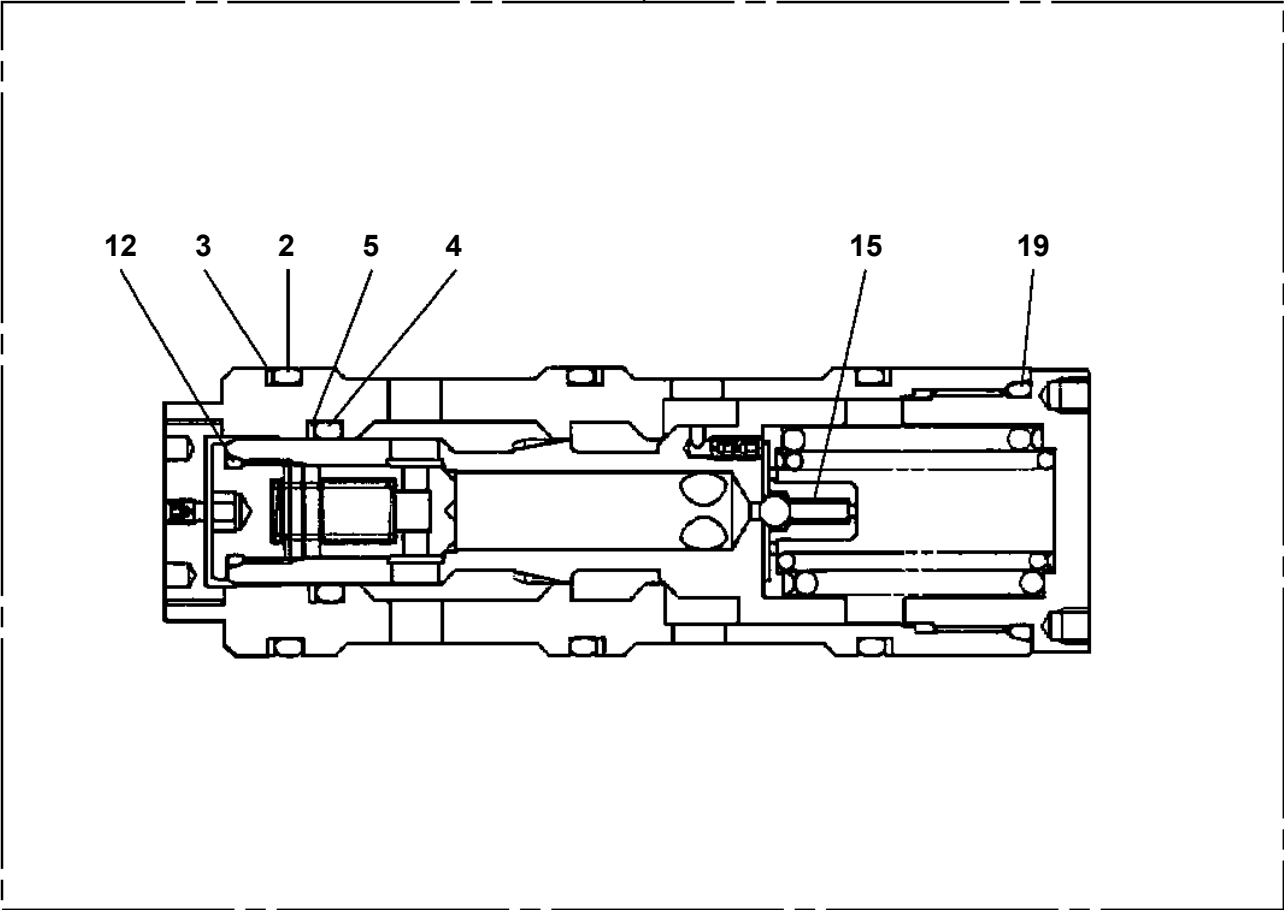


GT-800-1-90102 5 BOOM + 2 JIB, 2M2D
PI1140161-03 VALVE,CHECK



GT-800-1-90102 5 BOOM + 2 JIB, 2M2D
PI1260002-01 CARTRIDGE, COUNTERBALANCE

50



GT-800-1-90102 5 BOOM + 2 JIB, 2M2D

Pos No.	Parts No	Parts Name	Qty	Unit	Technical Data	Serial No (Start)	Serial No (End)	Remarks
1	36672285010	HEAD ASSY	1					
2	36670109511	FILTER,CARTRIDGE	1					
10	36672280000	FILTER,OIL (YAMASHIN)	1					

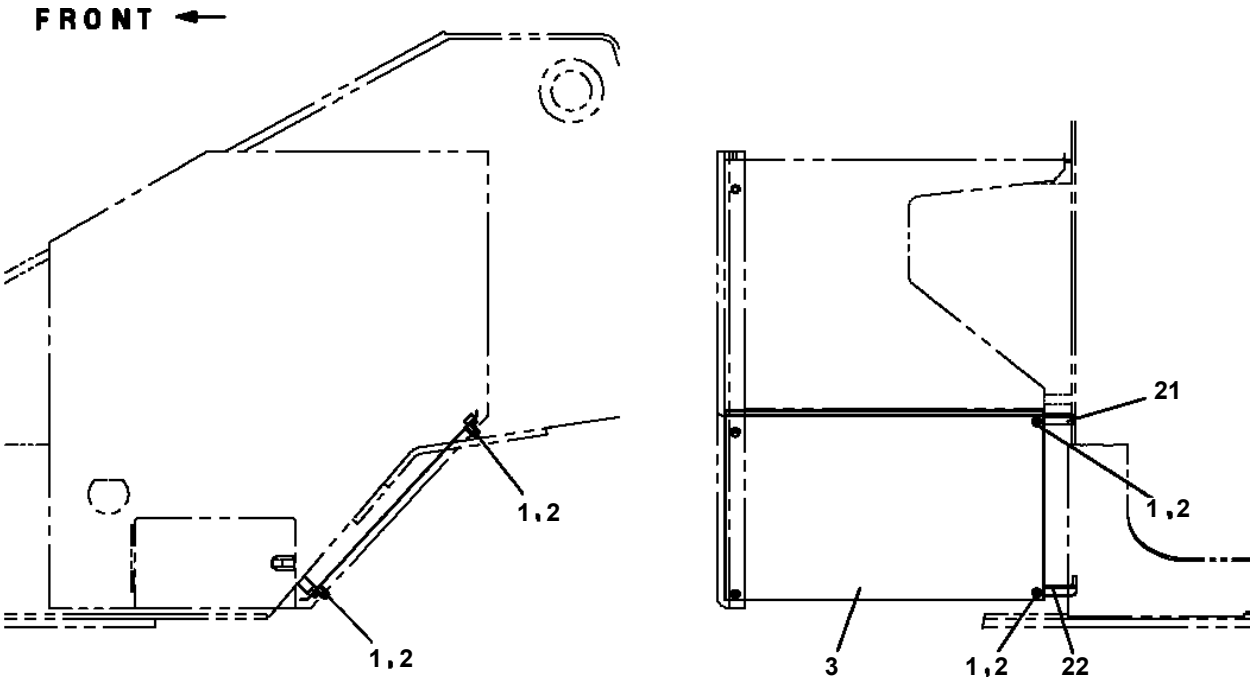
GT-800-1-90102 5 BOOM + 2 JIB, 2M2D

Pos No.	Parts No	Parts Name	Qty	Unit	Technical Data	Serial No (Start)	Serial No (End)
1	90186210020	BOLT,FLANGE	12		M10X20		
2	34250882400	SUPPORT	1				
5	90201200400	NUT	8		M4		
6	80192484016	SCREW,MACHINE	8		M4X16		
7	34250961100	COVER	2				
8	99172108016	BOLT,TAPPING	15		M8X16		
9	34251281000	COVER	3				
10	82100000956	GROMMET	2		SG-36A		
11	34251281100	COVER	2				
12	34251330200	COVER	1				
13	80176405012	SCREW,MACHINE	14		M5X12		475329
	80176405012	SCREW,MACHINE	18		M5X12	475330	
14	90305260501	WASHER	14		B1-5		475329
	90305260501	WASHER	18		B1-5	475330	
15	90186208014	BOLT,FLANGE	3		M8X14		
16	80186406016	SCREW,MACHINE	30		M6X16		475365
	80186406016	SCREW,MACHINE	34		M6X16	475366	
17	90305260601	WASHER	32		B1-6		475329
	90305260601	WASHER	34		B1-6	475330	475365
	90305260601	WASHER	38		B1-6	475366	
18	90186208020	BOLT,FLANGE	1		M8X20		
19	82100000951	GROMMET	5				
20	34251281301	COVER	1				475365
21	82100000920	GROMMET	4				
22	82121800010	PLUG (OTUKA)	3				
23	34251331100	PANEL	1				
24	34251330600	COVER	1				
25	34251280100	SEAT,OPERATOR	1				
26	34251330100	SUPPORT	1				
27	34251330400	COVER	1				
28	34251330500	COVER	1				
29	34251280500	SUPPORT	1				475365
	34251480300	SUPPORT	1			475366	
30	34251330300	COVER	1				
31	34251280600	COVER	1				
32	34251280700	COVER	1				
33	34251280800	BOX	1				475365
34	34251280900	COVER	1				
35	34251330700	COVER	1				
36	82400000468	TRAY,ASH	1				
37	80192484012	SCREW,MACHINE (WITH WASHER)	1		M4X12		
38	80192485014	SCREW,MACHINE (WITH WASHER)	2		M5X14		
39	34251281700	COVER	1				475365
41	82401800100	PLUG (FOR M10)	1				
42	90982050145	SCREW,TAPPING	4				475365
43	90302040501	WASHER,SPRING	4		5		475365
44	34251330800	COVER	1				475329
	34251330800	COVER	1			475332	
45	80176404012	SCREW,MACHINE	2		M4X12		
46	90305270401	WASHER	2				
47	34251330900	COVER	1				
48	34251331200	COVER	1				
49	90303070801	WASHER,PLAIN	4		8		475365
50	80186406012	SCREW,MACHINE	2		M6X12		475329
	80186406012	SCREW,MACHINE	4		M6X12	475330	
51	34251331300	COVER	1			475330	
53	90280201000	NUT,FLANGE	4		M10	475366	
54	34251221700	COVER	1			475366	
71	34251289510	COVER ASSY	1				475365
72	82400000346	CATCH	2				475365
74	92001140100	HINGE	2				475365
75	80147310430	RIVET	8		NSA 4-3		475365
84	34251331150	PLATE,NAME (REMOVED/EQUIPPED)	1			475359	

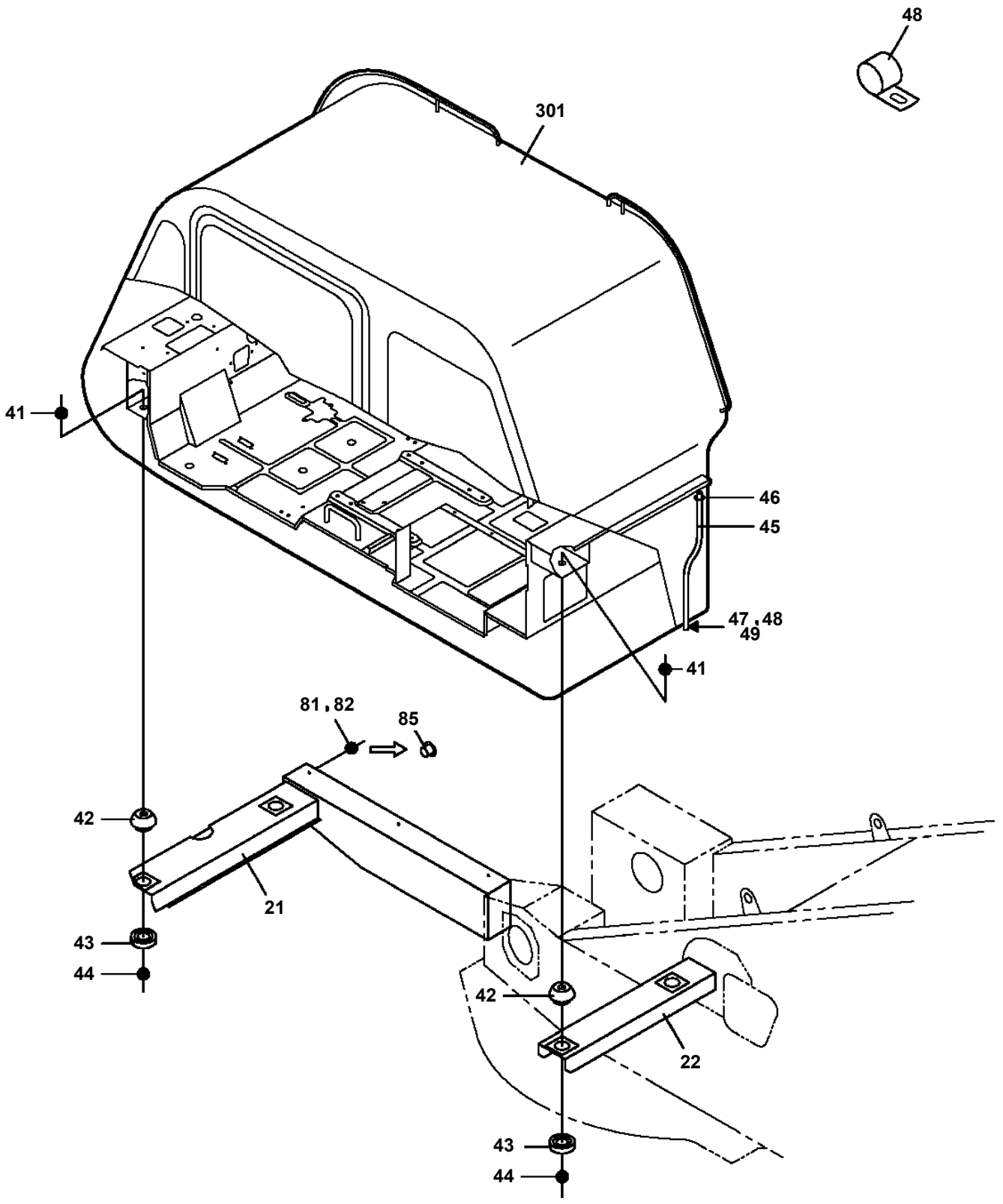
GT-800-1-90102 5 BOOM + 2 JIB, 2M2D

Pos No.	Parts No	Parts Name	Qty	Unit	Technical Data	Serial No (Start)	Serial
121	34260957809	ROD (KEY)	1				
122	34260365010	CLIP (FOR ROD)	4				
123	34260957810	PIN (OPEN)	1				
124	82100001140	CLAMP	6		D=6.8		
125	34260957824	COVER (OUTER HANDLE)	1				
126	80192486012	SCREW,MACHINE	2		M6X12		
127	34260957811	VINYL	1				
128	34260957812	TRIM	1				
129	34260957813	CLIP	16				
130	34260035220	STRIKER,SLIDE	2				
131	80192486016	SCREW,MACHINE	4		M6X16		
132	90303070501	WASHER,PLAIN	1		5		
133	80136015010	PIN,SPLIT	1		1.5X10		
134	90925040121	SCREW,TAPPING	6				
135	80192488016	SCREW,MACHINE	2		M8X16		
136	82100000951	GROMMET	2				
137	34260957890	JUNCTION (BODY SIDE)	1				
138	34260957730	RUBBER	1				
139	34261817580	GROMMET (C-30NG-79-F)	1				
140	34260957814	COVER (SPEAKER)	1				
141	90915040125	SCREW,TAPPING	4		M4X12		
142	34260957760	COVER	1				
143	99164008010	BOLT (M8X10)	8				
146	34261812130	SASH	1			475460	
164	34260957815	RUN CHANNEL	2				47545
165	34260957816	WATER STRIP	1				47545
166	34260639210	LOCK ASSY	1				47545
167	34260639290	LOCK ASSY	1				47545
169	34260639220	PACKING (LOCK)	1				47545
170	32260228190	STRIKER (FRONT)	1				47545
171	34260639230	STRIKER (REAR)	1				47545
172	34260639240	LINING	4				47545
173	34260639250	STOPPER	2				47545
176	34260639260	SPACER	5				47545
177	34260957850	WATER STRIP (WITH FRAME)	1				47545
178	34260639360	STOPPER	1				47545
191	32260015460	SCREW,MACHINE	4		M4X7		47545
192	80171803006	SCREW,MACHINE	2		M3X6		47545
193	80175803008	SCREW,MACHINE	2		M3X8		47545
194	32260228230	SCREW,MACHINE	4		M3X6		47545
195	32260015490	RIVET	2		3X18		47545
201	34260957818	GLASS (RIGHT-FRONT)	1				47545
202	34260957819	GLASS (RIGHT-REAR)	1				47545
221	34260957820	COVER (FUSE BOX)	1				
222	34260757520	KNOB (BLACK)	1				
223	80613110050	RING,RETAINING	1				
224	34260957821	COVER	1				
225	34260957822	COVER (ACRYLIC PLATE)	1				
226	80192484012	SCREW,MACHINE (WITH WASHER)	4		M4X12		
227	80192835010	SCREW,MACHINE	2		M5X10		
228	90303520501	WASHER,PLAIN	2		5		
229	90302510501	WASHER,SPRING	2		5		
230	90240200500	NUT,CAP	2		M5		
245	34260957823	GROMMET	1				
261	34260581310	SUPPORT	1				
262	34260581320	REGULATOR,WINDOW	1				
263	34260581330	MOTOR ASSY (REGULATOR)	1				
264	34260581340	SCREW,TAPPING	3				
265	82100002261	CONNECTOR (2POLES,MALE)	1				
266	82100002256	TERMINAL	2				
272	34260365010	CLIP (FOR ROD)	1				
291	34260237500	RUBBER (BLADE,WIPER)	2		L=714		47540
	34260237501	RUBBER (BLADE,WIPER)	2		L=700	475406	

GT-800-1-90102 5 BOOM + 2 JIB, 2M2D
PK1200380-00 COVER, SWING FRAME (REAR-LEFT)



GT-800-1-90102 5 BOOM + 2 JIB, 2M2D
PK1410051-03 MOUNT,CAB



展開圖有
ILLUSTRATED BREAKDOWN NO. 301

GT-800-1-90102 5 BOOM + 2 JIB, 2M2D

Pos No.	Parts No	Parts Name	Qty	Unit	Technical Data	Serial No (Start)	Serial No (End)	Ren
159	82100000191	TERMINAL	2					
160	82100000183	INSULATOR	2					
161	91810130230	FASTENER	1			475380		
171	34322238010	KNOB ASSY	1					
172	34322478010	KNOB ASSY	1					
181	34322235600	SUPPORT	1					
182	37000118050	PIN	1					
183	90186208010	BOLT,FLANGE	1		M8X10			
184	34321961200	LEVER	2					
185	37000515600	PLATE	2		T=1.0		475459	
	37000515600	PLATE	3		T=1.0	475460		
191	34322232100	BOX,OPERATION (TILT DEVICE)	1					
201	37002450510	HOSE	2		L=1250			
202	37002472030	HOSE	1		L=2460			
205	37002444970	HOSE	1		L=2275			
206	37002473200	HOSE	1		L=2240			
209	82100002002	CLAMP	1		WR6			
216	37002460250	HOSE	1		L=2950			
219	34320903900	KNOB	1					
220	34320904000	KNOB	1					
221	34320904300	KNOB	1					
231	34320908120	KNOB ASSY	1					
232	34322238030	KNOB ASSY	1					
246	34322233600	ROD	1					
254	80801002010	BEARING,PLAIN	8					
265	34321966200	PEDAL	2			475358		

GT-800-1-90102 5 BOOM + 2 JIB, 2M2D

Pos No.	Parts No	Parts Name	Qty	Unit	Technical Data	Serial No (Start)	Serial No (End)	Ren
1	34322237510	BOX	1					
2	34322237520	COVER	1					
3	34322237530	SUPPORT	1					
4	34322237540	LEVER	1					
5	3432090800	RATCHET	1					
6	34320904100	GEAR	1					
7	34320903200	COVER	1					
8	34322237550	ROD	1					
9	19114411000	SPRING	1					
10	80601110160	RING,RITAINING	3		16			
11	90101208025	BOLT	3		M8X25			
12	80182306030	SCREW,MACHINE	1		M6X30			
13	90201200600	NUT	1		M6			
14	34322237560	RING,GRIP	2					
15	80176405012	SCREW,MACHINE	6		M5X12			
16	90305260501	WASHER	6		B1-5			
17	34322237570	COVER	1					
18	90302040801	WASHER,SPRING	3		8			
19	19214024000	SPRING	1					
20	80176404012	SCREW,MACHINE	4		M4X12			
21	90305260401	WASHER	4		4			
100	34322232100	BOX,OPERATION (TILT DEVICE)	1					

GT-800-1-90102 5 BOOM + 2 JIB, 2M2D

Pos No.	Parts No	Parts Name	Qty	Unit	Technical Data	Serial No (Start)	Serial No (End)	R
1	33650030021	HARNESS (FRAME)	1					
2	33650030101	SUPPORT	1					
3	33650030300	COVER	1					
4	36120380000	TRANSMITTER,SIGNAL	1				475358	
	36120550000	TRANSMITTER,SIGNAL	1			475359		
5	90190000008	BOLT,STUD	22		M6X20			
6	90280200600	NUT,FLANGE	23		M6			
7	82100002004	CLAMP	18		WR8			
8	90302040801	WASHER,SPRING	8		8			
9	82100002014	CLAMP	4		WR20			
10	91810130250	FASTENER	20					
11	(*****)	ELEC.ASSY (CARRIER HARNESS)	1					
12	37001600870	NUT	4		M10			
13	82100002737	CABLE	5					
14	37002700180	CABLE	1					
15	90186208016	BOLT,FLANGE	8		M8X16			
17	90101206014	BOLT	4		M6X14			
18	90302040601	WASHER,SPRING	8		6			
19	90303070601	WASHER,PLAIN	8		6			
20	33650030400	RELAY ASSY	1					
21	(*****)	MODIFICATION ASSY	1				475333	
23	80182306014	SCREW,MACHINE	4		M6X14			

GT-800-1-90102 5 BOOM + 2 JIB, 2M2D

Pos No.	Parts No	Parts Name	Qty	Unit	Technical Data	Serial No (Start)	Serial No (End)	Remarks	Pages
1	82100000191	TERMINAL	2						
2	82100000183	INSULATOR	2						
3	82100000192	TERMINAL	2						
4	82100000182	INSULATOR	2						
5	33765336110	HARNESS	1						
6	99708464776	RELAY	2						
7	99707730181	CONNECTOR	2						

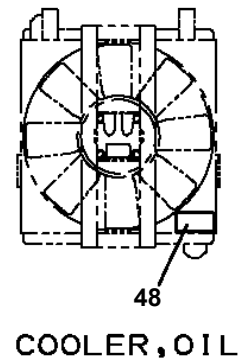
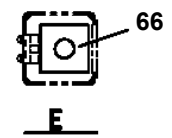
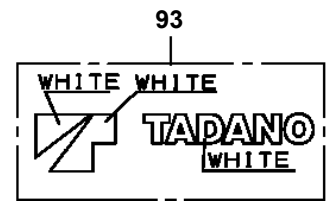
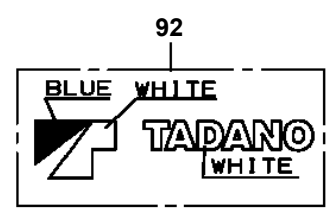
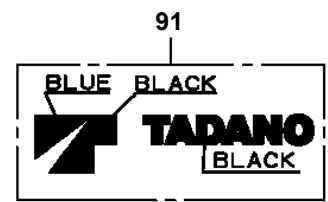
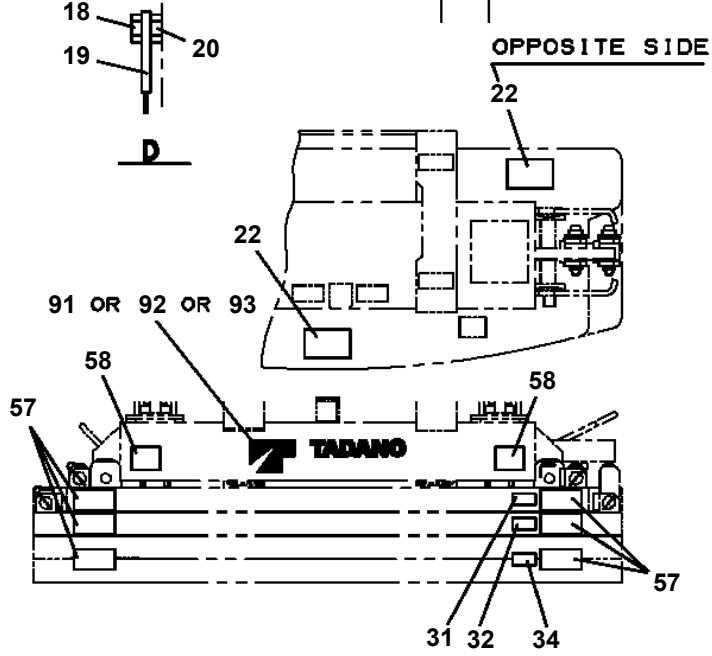
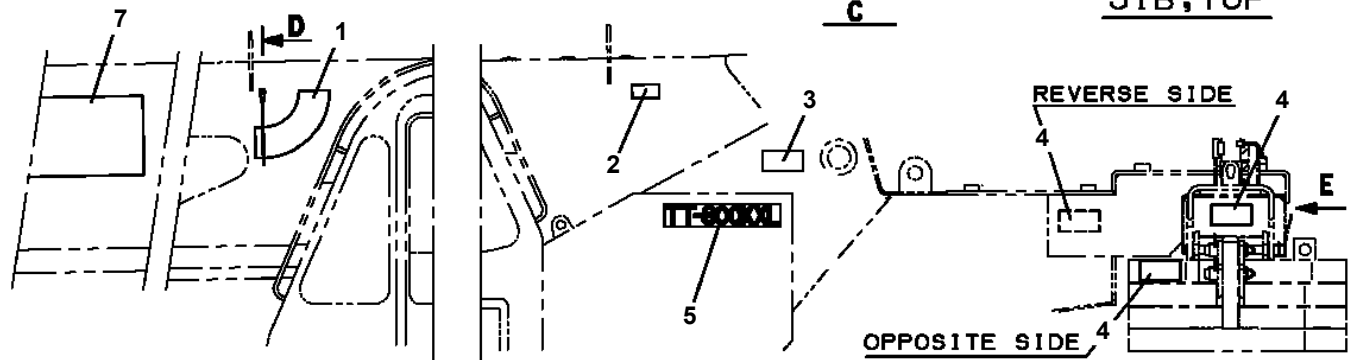
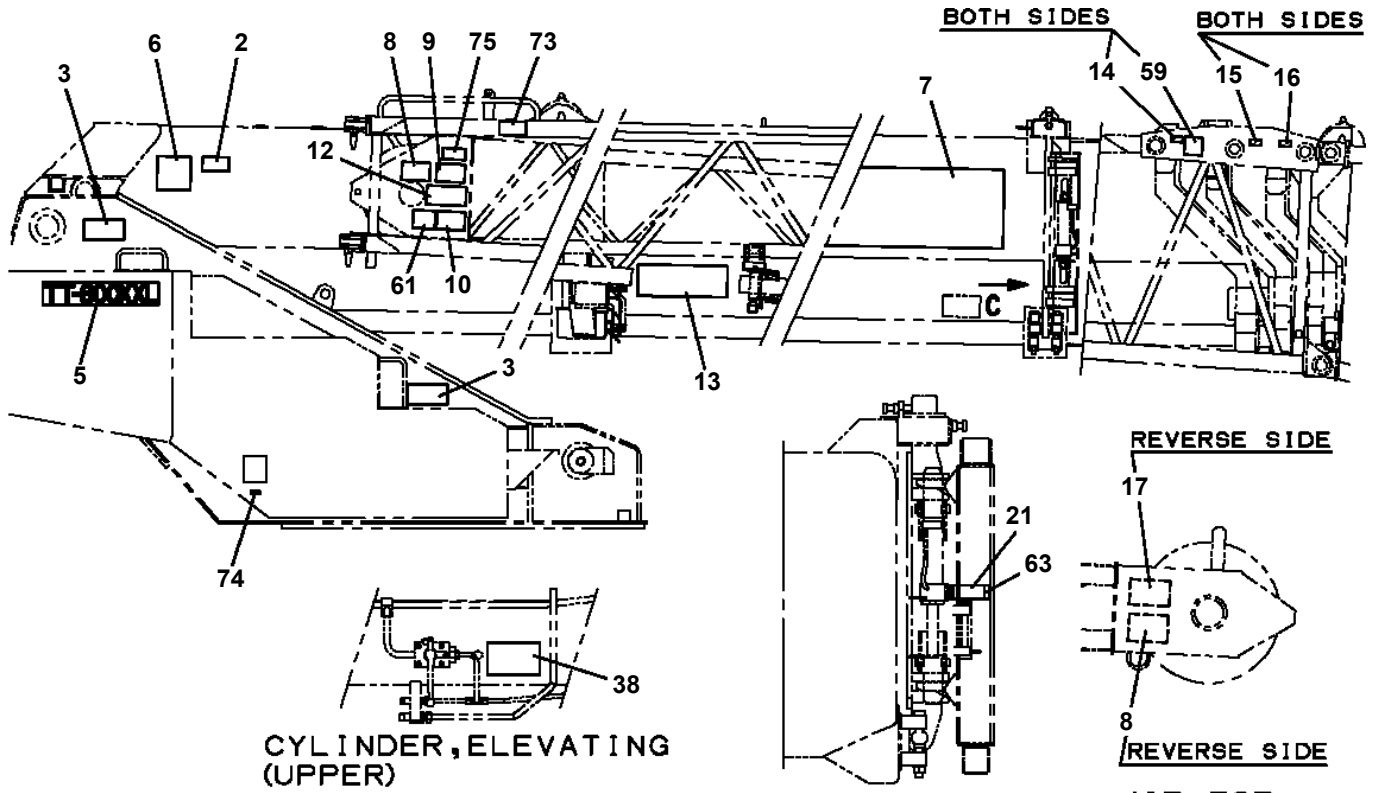
GT-800-1-90102 5 BOOM + 2 JIB, 2M2D

Pos No.	Parts No	Parts Name	Qty	Unit	Technical Data	Serial No (Start)	Serial No (End)
1	34352991210	PANEL	1				
2	82190511503	INDICATOR (WITH BULB)	4				
3	82190596273	COVER	4				
4	34430072050	PLATE,NAME	1				
5	34430551240	PLATE,NAME	1				
6	34430551250	PLATE,NAME	1				
7	34352991290	PLATE,NAME (JIB LOCK)	1				
8	34353031210	PLATE,NAME (!)	1				
9	34352991270	PLATE,NAME (SPECIAL TELESCOP)	1				
10	34352991280	PLATE,NAME (SEQUENTIAL TELES.)	1				
11	34353031230	PLATE,NAME (REAR)	1				
31	82190908582	BULB,LAMP	8		24V 2W		

GT-800-1-90102 5 BOOM + 2 JIB, 2M2D

Pos No.	Parts No	Parts Name	Qty	Unit	Technical Data	Serial No (Start)	Serial No (End)	Remarks
1	36120555010	CASE ASSY	1					
3	36120555020	BOARD (WITHOUT P-ROM)	1					
5	36120555030	SCREW	9		M3X10			
12	(*****)	P-ROM	1					
100	36120550000	TRANSMITTER,SIGNAL	1					

GT-800-1-90102 5 BOOM + 2 JIB, 2M2D
PO1013639-04 PLATE ASSY,NAME (UPPER)



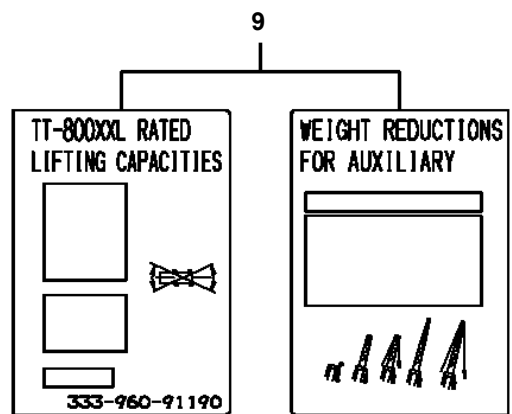
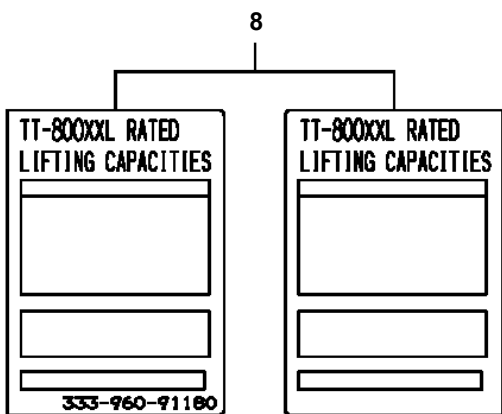
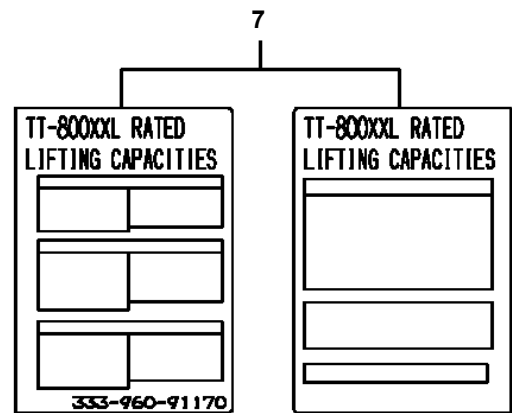
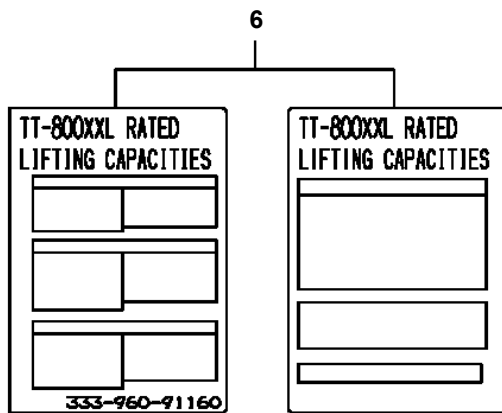
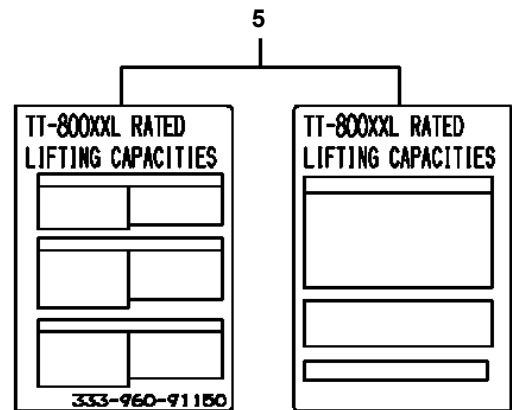
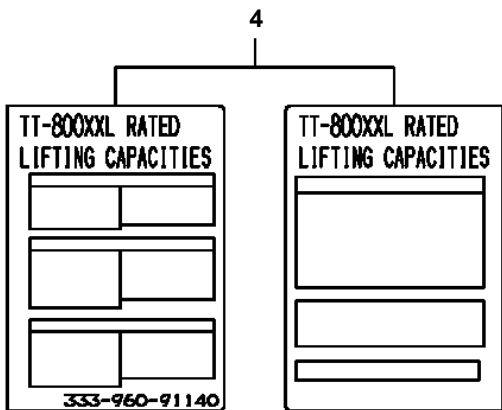
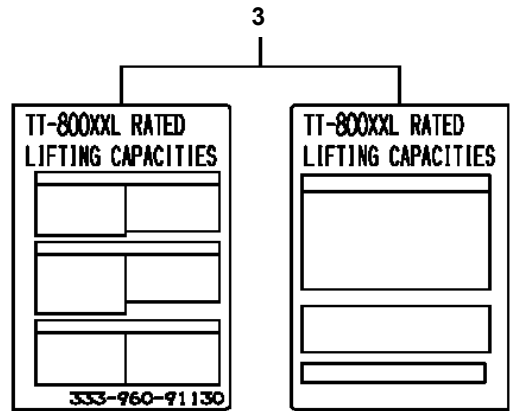
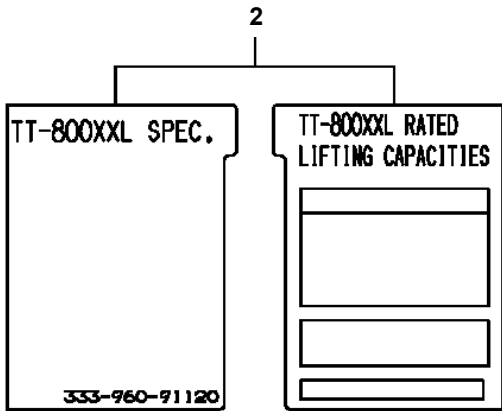
GT-800-1-90102 5 BOOM + 2 JIB, 2M2D

Pos No.	Parts No	Parts Name	Qty	Unit	Technical Data	Serial No (Start)	S
1	34394192040	PLATE,CAUTION (NOTICE HYDRAULIC FLUID)	1				
2	34391201300	PLATE,CAUTION (HAND SIGNALS)	1				
3	14137207000	PLATE,NAME (GREASE)	3				
4	33396092010	PLATE,NAME (LIFTING OF CRANE SHIPMENT)	1				
5	33396092020	PLATE,CAUTION (HAVE ONLY 8000LBS)	3				
6	33396092030	PLATE,CAUTION (KEEP CLEAR OF)	3				
7	33396092040	PLATE,CAUTION (KEEP CLEAR OF)	1				
8	33396092050	PLATE,CAUTION (STOP THE VEHICLE)	1				
9	34391202160	PLATE,CAUTION (!WARNING OVER PRO)	1				
10	34394192030	PLATE,CAUTION (!CAUTION DO NOT)	1				
11	34391202060	PLATE,CAUTION (NO STEP)	2				
12	34321370050	CUSHION	1				
21	99707757348	PLATE,CAUTION (ELECTROCUTION HAXARD)	3				
22	99707745634	PLATE,CAUTION (ELECTROCUTION HAXARD CAN)	3				
23	99707757341	PLATE,CAUTION (SWING STRUCTURE STAY C)	4				
24	99707757340	PLATE,CAUTION (FALLING LOAD OR BOOM CAN)	9				
25	99707757339	PLATE,CAUTION (KEEP CLEAR OF LOWERING)	2				
26	99707757346	PLATE,CAUTION (HAZARDOUS CONDITION CAN)	2				
27	99707741389	PLATE,CAUTION (MOVING O/R BOXES CAN CAU)	4				
28	99707757343	PLATE,CAUTION (ROTATING FAN KEEP HANDS A	2				
29	99707757258	PLATE,CAUTION (STOP! NO ACCESS FOR UNAUT	1				
30	99707757350	PLATE,CAUTION(DO NOT MOUNT OR CLIMB ON)	5				
31	99707757349	PLATE,CAUTION(DO NOT MOUNT OR CLIMB ON)	5				
32	99707757336	PLATE,CAUTION (KEEP CLEAR OF MOVING O/R)	4				
33	99707757335	DANGER SIGN (KEEP CLEAR OF CRANE WHILE)	6				
34	99707757334	PLATE,CAUTION (KEEP CLEAR OF OUTRIGGER)	4				
35	99707757352	PLATE,CAUTION (DO NOT RADIATOR CAP)	1				
36	99707741394	PLATE,CAUTION (INSTALL ALL PINS IN EACH)	4				
37	99707757347	PLATE,CAUTION (DON'T OPERATE THIS CRANE)	1				
38	99707757248	PLATE,CAUTION (BEFORE CHANGING OVER TO)	1				
39	99707757351	PLATE,CAUTION (DON'T STUMBLE OVER PROJE)	2				
40	99707757269	PLATE,CAUTION (HAZARDOUS CONDITION CAN)	1				
41	99707757345	PLATE,NAME (DIESEL FUEL)	1				
42	99707757257	PLATE,CAUTION (NO STEP)	2				
43	99707741396	PLATE,CAUTION (COOLING FLUID SEE OPE.)	1				
44	99707757342	PLATE,CAUTION (HYDRAULIC FLUID ONLY)	1				
45	99707741397	PLATE,CAUTION (HYDRAULIC FLUID SEE OPE.)	1				
46	99707757223	PLATE,CAUTION (CAN BE HOT)	3				
47	99702878149	PLATE,NAME (OIL LEVEL GAUGE)	1				

GT-800-1-90102 5 BOOM + 2 JIB, 2M2D

Pos No.	Parts No	Parts Name	Qty	Unit	Technical Data	Serial No (Start)	Serial No (End)	Remarks	Pages
1	34394241100	PLATE,NAME	1						

**GT-800-1-90102 5 BOOM + 2 JIB, 2M2D
PO1060034-01 LOAD CHART BOOKLET**



GT-800-1-90102 5 BOOM + 2 JIB, 2M2D

Pos No.	Parts No	Parts Name	Qty	Unit	Technical Data	Serial No (Start)	Serial No (End)	Remarks	Pages
1	34310111601	ROLLER	1						
2	37000303200	SPACER	4		L=12.5				
3	80602110520	RING,RITAINING	2		R52				
4	80516006205	BEARING,BALL	2						
5	34310111101	ROLLER	1						
6	33310000232	ROLLER	1						
8	90203201000	NUT	2		M10				
9	90102510050	BOLT	2		M10X50				
10	34310111201	LEVER	1						
11	37000119960	PIN	2						
12	90101210012	BOLT	2		M10X12				
13	90302041001	WASHER,SPRING	2		10				
14	16314011000	SPRING	2						
15	34310111301	SUPPORT	1						
16	34310111401	LEVER	1						
17	34310111501	SUPPORT	1						
31	34310119511	ROLLER ASSY	1						
100	34310111000	ROLLER ASSY	1						

GT-800-1-90102 5 BOOM + 2 JIB, 2M2D

Pos No.	Parts No	Parts Name	Qty	Unit	Technical Data	Serial No (Start)	Serial No (End)	Remarks	Pages
1	33765332710	PLATE	2		T=12				
2	33765332720	PLATE	2		T=12				
3	33765332730	PLATE	4		T=6.0				
4	33765332740	PLATE	4		T=6.0				

GT-800-1-90102 5 BOOM + 2 JIB, 2M2D

Pos No.	Parts No	Parts Name	Qty	Unit	Technical Data	Serial No (Start)	Serial No (End)	Remarks	Pages
1	18023003000	WEDGE	1						

GT-800-1-90102 5 BOOM + 2 JIB, 2M2D

Pos No.	Parts No	Parts Name	Qty	Unit	Technical Data	Serial No (Start)	Serial No (End)	Remarks	Pages
1	33765333100	COVER	1						
2	33765333300	COVER	1						
3	33765333400	SUPPORT	1						
4	33765333500	SUPPORT	1						
5	90201201000	NUT	2		M10				
6	90710010400	SCREW,SET	6		M10X40				
7	90203201000	NUT	6		M10				
21	99708407109	STAR HANDLE	6						
45	82466152401	CATCH	1						
47	82464110004	HINGE	2						
49	80147310430	RIVET	12		NSA 4-3				
50	59424530000	HANDLE	2						
51	80172305016	SCREW,MACHINE	8		M5X16				
52	90201200500	NUT	8		M5				
53	90302040501	WASHER,SPRING	8		5				
61	33765339510	COVER ASSY	1						

GT-800-1-90102 5 BOOM + 2 JIB, 2M2D

Pos No.	Parts No	Parts Name	Qty	Unit	Technical Data	Serial No (Start)	Serial No (End)
1	37001901160	ROPE,WIRE (MAIN HOOK STOWING)	1				
2	83152512200	SHACKLE (SB22)	2				
3	80136350036	PIN,SPLIT	2		5X36		

GT-800-1-90102 5 BOOM + 2 JIB, 2M2D

Pos No.	Parts No	Parts Name	Qty	Unit	Technical Data	Serial No (Start)	Serial No (End)	Remarks	Pages
1	34344460600	SUPPORT	1						
4	37000517210	SUPPORT	1						
5	37000524090	PLATE	2						
6	37000553870	PLATE	1						
7	34310000060	PLATE	1						

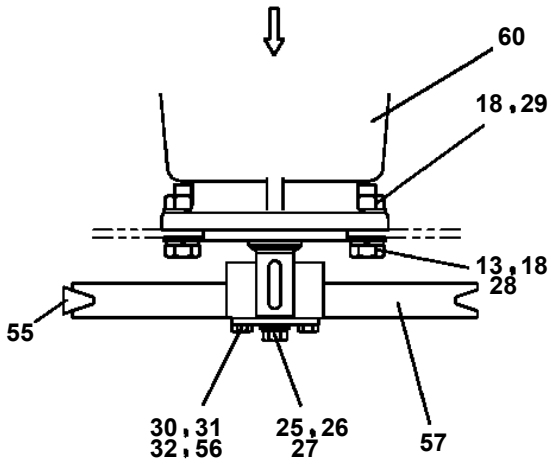
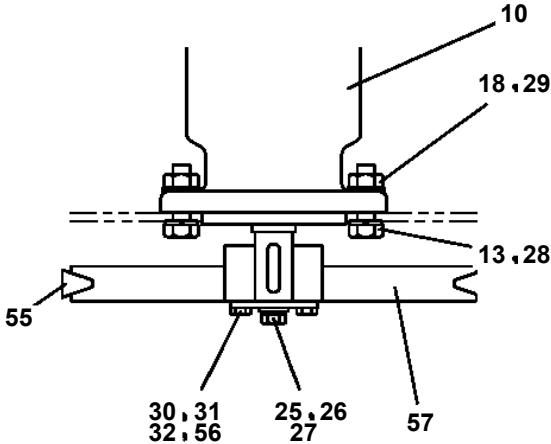
GT-800-1-90102 5 BOOM + 2 JIB, 2M2D

Pos No.	Parts No	Parts Name	Qty	Unit	Technical Data	Serial No (Start)	Serial No (End)	Remarks	Pages
1	36690065010	COOLER,OIL	1				475348		
	36690122600	COOLER,OIL	1			475349			
2	36690065020	DUCT	1				475348		
	36690123000	DUCT	1			475349			
3	36690125010	FAN	1				475348		
	36690121020	FAN	1			475349			
4	90101210020	BOLT	4		M10X20				
5	90303071001	WASHER,PLAIN	4		10				
10	36690121000	COOLER,OIL	1						

GT-800-1-90102 5 BOOM + 2 JIB, 2M2D

Pos No.	Parts No	Parts Name	Qty	Unit	Technical Data	Serial No (Start)	Serial No (End)
1	80192485014	SCREW,MACHINE (WITH WASHER)	8		M5X14		
2	99172108016	BOLT,TAPPING	19		M8X16		
3	90280200800	NUT,FLANGE	5		M8		
4	34510702800	DUCT	1				
5	34510702700	DUCT	1				
6	34510702100	DUCT	1				
7	34510702400	DUCT	1				
8	34510702300	DUCT	1				
9	34510702200	DUCT	1				
10	34510703200	SUPPORT	1				
11	34510702500	DUCT	1				
12	34510702600	DUCT	1				
13	90186208014	BOLT,FLANGE	4		M8X14		
14	34510703300	SUPPORT	1				
15	37000601600	CLAMP	2		WR54		
16	80175404016	SCREW,MACHINE	6		M4X16		
17	34510712200	SUPPORT	1				
18	34510712101	COVER	1				
19	91810130250	FASTENER	7				
21	90186208010	BOLT,FLANGE	2		M8X10		
22	90925050101	SCREW,TAPPING	4		M5X10		
23	91801300500	CLIP	3		D=45-50		
24	90186208025	BOLT,FLANGE	4		M8X25		
25	34510702900	COVER	1				
41	36320562110	DUCT (FOOT)	1				
42	(*****)	EVAPORATOR	1				475435
	(*****)	EVAPORATOR	1			475436	475457
	(*****)	EVAPORATOR ASSY	1			475458	
43	36320562140	DUCT (FLANGE)	1				
44	36320562150	DUCT	1				
45	36320562160	FILTER	1				
46	36320562270	CLIP (CANONE)	2				
47	36320452210	CLAMP (DRAIN HOSE)	2				475457
	36320762250	CLAMP (DRAIN HOSE)	2		13.8	475458	
48	36320562240	HOSE (DRAIN)	2		L=200		
49	36320562060	HOSE (DUCT)	2				475414
	36320562061	HOSE (DUCT)	2		L=900	475415	
50	36320562080	HOSE (CUFF)	1				475414
	36320562081	HOSE (CUFF)	1			475415	
51	36320562090	NOZZLE (END)	2				
52	36320562100	NOZZLE	2				
53	36320452130	DUCT (LOUVER)	3				
54	36320562120	SWITCH ASSY (CONTROL PANEL)	1				475457
	36320762130	SWITCH ASSY (CONTROL PANEL)	1			475458	
55	36320562200	HARNESS (MAIN A)	1				475457
	36320762200	HARNESS (MAIN A)	1			475458	

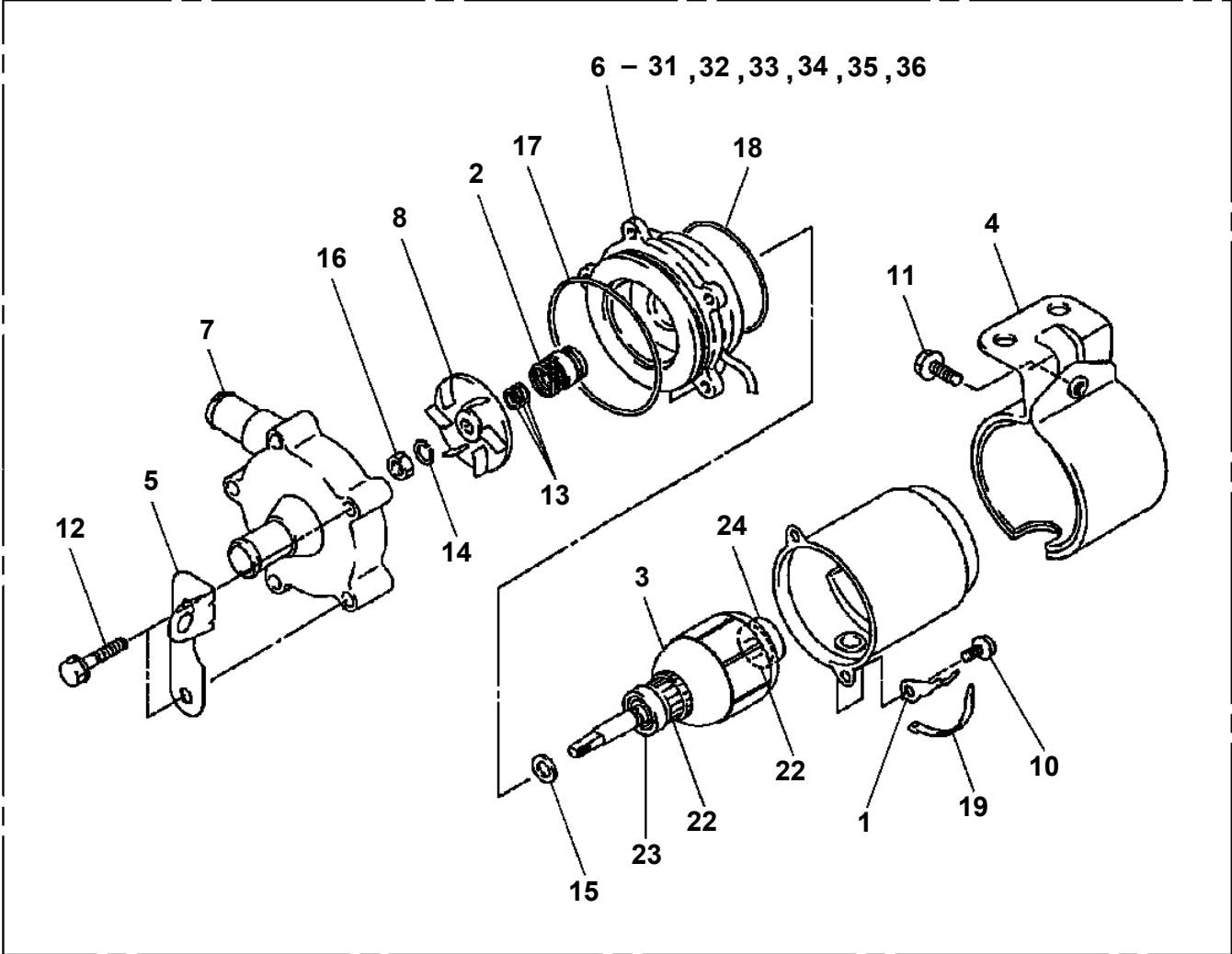
GT-800-1-90102 5 BOOM + 2 JIB, 2M2D
PY1380064-06 COMPRESSOR & CONDENSER ASSY



B

GT-800-1-90102 5 BOOM + 2 JIB, 2M2D
PY2360001-02 PUMP,WATER

50



CLICK HERE TO **DOWNLOAD** THE COMPLETE MANUAL

- Thank you very much for reading the preview of the manual.
- You can download the complete manual from: www.heydownloads.com by clicking the link below



- Please note: If there is no response to CLICKING the link, please download this PDF first and then click on it.

CLICK HERE TO **DOWNLOAD** THE COMPLETE MANUAL