

DT-720-1-41000 LOWER,ISUZU PKG-FRR90S2-JCNYS-M

PB1000397-00 HYDRAULIC PRESSURE GENERATING SYSTEM

PC1000315-01 OUTRIGGER SYSTEM

PK1000637-00 FRAME

PL1000387-01 CONTROL DEVICES

PN1000576-00 ELECTRIC EQUIPMENT

PO1000169-00 INDICATION PLATES

PW1000028-00 ACCESSORIES & TOOLS

PX1001059-00 MOUNTING PARTS

PY1001359-00 OPTIONS

ASSEMBLY

CLICK HERE TO **DOWNLOAD** THE COMPLETE MANUAL

- Thank you very much for reading the preview of the manual.
- You can download the complete manual from: www.heydownloads.com by clicking the link below



- Please note: If there is no response to CLICKING the link, please download this PDF first and then click on it.

CLICK HERE TO **DOWNLOAD** THE COMPLETE MANUAL

DT-720-1-41000 LOWER,ISUZU PKG-FRR90S2-JCNYS-M

Pos No.	Parts No	Parts Name	Qty	Unit	Technical Data	Serial No (Start)	Se
1	(*****)	ELEC.ASSY (TAIL LAMP)	1				
2	(*****)	POWER SUPPLY ASSY	1				
3	(*****)	ELEC.ASSY (WITH BOOM RETRACTION DETECTOR)	1				

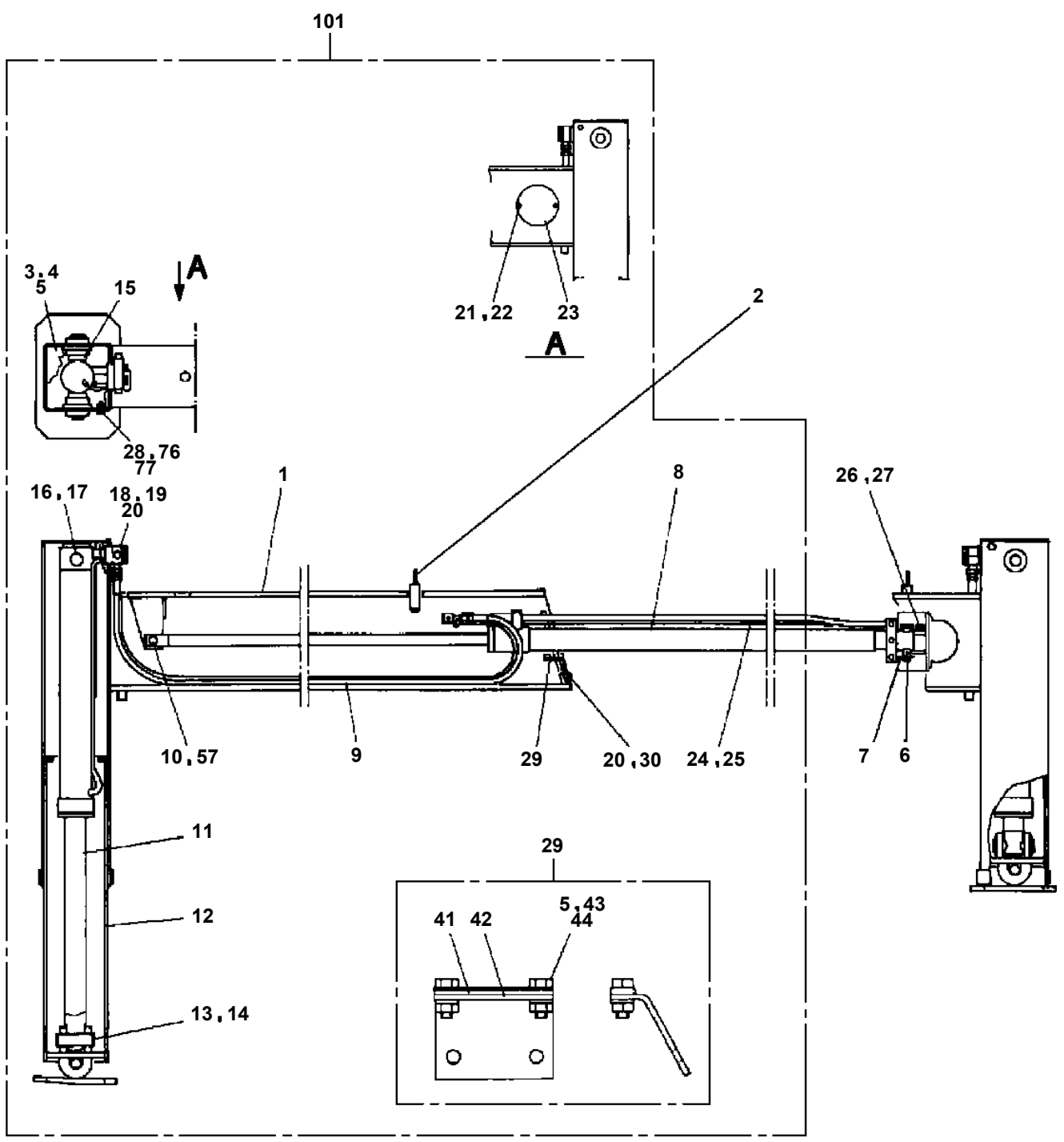
DT-720-1-41000 LOWER,ISUZU PKG-FRR90S2-JCNYS-M

PS5380006-00 STOPPER
PS5530169-01 SWITCH ASSY
PS5530216-00 SWITCH ASSY
PV5040006-00 VALVE ASSY,CHECK
PW1030013-01 TOOLS
PW1050011-00 STOPPER,TIRE
PW1100000-00 CHAIN
PX1030032-01 FENDER
PX1100102-01 TANK SUPPORT INSTALLATION
PX1120127-00 BOOM REST INSTALLATION
PX1200430-01 GUARD,SIDE (FENDER)
PX1270021-02 WOOD BLOCK INSTALLATION
PX1350183-00 TOOL BOX INSTALLATION
PX1350415-01 BOX,TOOL
PX1360094-01 REFLECTOR
PX1540016-01 WEDGE INSTALLATION
PX1940031-00 MOUNT(PUMP SUPPORT)
PX5360071-00 MOUNT ASSY,FRAME
PX5650038-00 MOUNT ASSY,SIDE GUARD
PY1230010-04 OIL COOLER INSTALLATION (ELECTRIC)
PY1300006-02 COOLER,OIL (ELECTRIC)
PY1560009-00 ALARM SYSTEM (OVERRUN/OVER FRONT AREA)
PY1600001-06 CYLINDER,POLE PULLER (STOWING AT LEFT FRONT)
PY1600003-04 CYLINDER,POLE PULLER
PY1650004-00 EARTHING DEVICE
PY1840001-04 BREAKER (BR37)
PY1840002-04 BREAKER (BR45)
PY1840003-03 BREAKER (BR67)
PY1910000-03 HOSE (6M.210KG/CM2)
PY1910001-01 HOSE (6M.70KG/CM2)
PY1910002-01 HOSE (10M.70KG/CM2)
PY1910004-00 HOSE (15M.70KG/CM2)
PY1910005-02 HOSE (15M.210KG/CM2)
PY1920000-00 CHAIN SAW (STANLEY)

DT-720-1-41000 LOWER,ISUZU PKG-FRR90S2-JCNYS-M

Pos No.	Parts No	Parts Name	Qty	Unit	Technical Data	Serial No (Start)	Serial No (End)	Remarks
2	90101508016	BOLT	6		M8X16		390704	
	99163008016	BOLT (M8X16)	6			390705		
3	90302040801	WASHER,SPRING	6		8		390704	
4	53156005000	BREATHER ASSY (OB-10T)	1					
5	36100615010	COVER	1					
6	91001218500	O-RING	1		1A G185			
8	91801300150	CLIP	2		D=13-15		390704	
	91803880040	CLIP	2		D=10-12.2	390705		
9	36100615020	HOSE	1				390704	
	37002516440	HOSE	1		L=140	390705		
10	80316080060	PLUG	1					
11	53156005011	ELEMENT	1					
53	53156005030	PLATE (WITH PACKING)	1					
54	53156005040	PACKING	1					
100	36100610001	TANK,OIL	1					

DT-720-1-41000 LOWER,ISUZU PKG-FRR90S2-JCNYS-M
PC1010043-04 OUTRIGGER (FRONT)



DT-720-1-41000 LOWER,ISUZU PKG-FRR90S2-JCNYS-M

Pos No.	Parts No	Parts Name	Qty	Unit	Technical Data	Serial No (Start)	Serial No (End)	Re
4	91100104500	SEAL,RING	1					
21	91660003001	SEAL,DUST	1					
22	91694003000	PACKING	1					
23	91410203001	RING,BACKUP	1					
24	91002904000	O-RING	1		1B G40			
25	36040655100	COVER,ROD	1					
26	36040655200	CYLINDER	1					
27	36040655400	ROD	1					
28	36041030300	PISTON	1					
30	90302041801	WASHER,SPRING	1		18			
31	90209201800	NUT	1		M18			
41	36042169900	PACKING SET	1		30X45			
100	36040650000	CYLINDER,EXTENSION (FRONT)	1					

DT-720-1-41000 LOWER,ISUZU PKG-FRR90S2-JCNYS-M

Pos No.	Parts No	Parts Name	Qty	Unit	Technical Data	Serial No (Start)	Serial No (End)	Remarks
1	32641990100	JOINT	1					
2	80302010160	FITTING	6		KCT12-030N			
3	37002409730	HOSE	9		L=475			
4	81408000160	PIPE,STEEL	4	M	12X1.4T			
5	81408000160	PIPE,STEEL	4	M	12X1.4T			
6	81408000160	PIPE,STEEL	4	M	12X1.4T			
8	81408000160	PIPE,STEEL	3	M	12X1.4T			
9	81408000160	PIPE,STEEL	3	M	12X1.4T			
10	81408000160	PIPE,STEEL	2	M	12X1.4T			
11	81408000160	PIPE,STEEL	2	M	12X1.4T			
12	81408000160	PIPE,STEEL	2	M	12X1.4T			
13	80302090161	FITTING	10		KCO12-030N			
14	91002801400	O-RING	10		1B P14			
15	80302090201	FITTING	2		KCO15-040N			
16	91002801800	O-RING	15		1B P18			
17	81408000160	PIPE,STEEL	1	M	12X1.4T			
18	80302090151	FITTING	4		KCO12-040N			
19	80400160130	JOINT	3		S,G1/2-G3/8			
20	80302090241	FITTING	2		KCO18-040N			
21	80302090281	FITTING	1		KCO22-060N			
22	91002802400	O-RING	3		1B P24			
23	80301010100	FITTING	11		KUA12-000N			
24	81408000160	PIPE,STEEL	1	M	12X1.4T			
25	81408000160	PIPE,STEEL	1	M	12X1.4T			
26	81408000160	PIPE,STEEL	2	M	12X1.4T			
27	81408000160	PIPE,STEEL	2	M	12X1.4T			
28	81408000160	PIPE,STEEL	2	M	12X1.4T			
29	81408000160	PIPE,STEEL	2	M	12X1.4T			
30	81408000290	PIPE,STEEL	1	M	22X2.5T			
31	81408000160	PIPE,STEEL	2	M	12X1.4T			
32	81408000160	PIPE,STEEL	2	M	12X1.4T			
33	81408000160	PIPE,STEEL	2	M	12X1.4T			
34	81408000160	PIPE,STEEL	2	M	12X1.4T			
35	81408000160	PIPE,STEEL	2	M	12X1.4T			
36	81408000160	PIPE,STEEL	2	M	12X1.4T			
37	81408000160	PIPE,STEEL	2	M	12X1.4T			
38	81408000160	PIPE,STEEL	2	M	12X1.4T			
39	32640220130	JOINT	1				390613	
40	80302010180	FITTING	3		KCT15-030N		390613	
	80302010180	FITTING	2		KCT15-030N	390614	390717	
	80302010180	FITTING	1		KCT15-030N	390718		
41	81408000241	PIPE,STEEL	1	M	18X1.9T			
42	81408000210	PIPE,STEEL	1	M	15X2.0T			
43	36683020000	METER,LOAD	1				390558	
	36684260000	METER,HOOK LOAD	1			390559		
44	80172304010	SCREW,MACHINE	3		M4X10			
45	90302040401	WASHER,SPRING	3		4			
46	37000908850	JOINT	1					
47	14115209000	PACKING	1					
48	80303030100	FITTING,ELBOW	1		KLN10-020N			
49	81408000130	PIPE,STEEL	3	M	10X1.8T			
50	80400160133	JOINT	2					
51	80302090322	FITTING	1		KCO28-080N			
52	91001102900	O-RING	1		1A P29			
53	37002504850	HOSE	1		L=450		390631	
	37002518620	HOSE	1		L=470	390632		
54	91801300530	CLIP	4		D=48-53		390580	
	91803600550	CLIP	4		D=40-55	390581		
55	32640220030	JOINT	1				390717	
56	90101208030	BOLT	2		M8X30		390717	
57	32640220040	JOINT	1				390717	
58	91001203500	O-RING	1		1A G35		390717	
59	36671080000	FILTER ASSY	1				390717	

DT-720-1-41000 LOWER,ISUZU PKG-FRR90S2-JCNYS-M

Pos No.	Parts No	Parts Name	Qty	Unit	Technical Data	Serial No (Start)	Serial No (End)	Remarks	Pages
2	32730520010	SUPPORT	1						
3	90101208020	BOLT	2		M8X20				
4	90201200800	NUT	2		M8				
5	90302040801	WASHER,SPRING	2		8				
11	32700007500	LEVEL	1						

DT-720-1-41000 LOWER,ISUZU PKG-FRR90S2-JCNYS-M

Pos No.	Parts No	Parts Name	Qty	Unit	Technical Data	Serial No (Start)	Serial No (End)	Remarks	P
5	82100001839	FUSE	1		10A.RED				
6	82100002785	HOLDER,FUSE	1						
17	82182809623	DIODE	1						
50	32930690100	HARNESS (INSIDE CAB)	1						

DT-720-1-41000 LOWER,ISUZU PKG-FRR90S2-JCNYS-M

Pos No.	Parts No	Parts Name	Qty	Unit	Technical Data	Serial No (Start)	Serial No (End)	Remarks	Pages
100	32430370500	HARNESS	1						

DT-720-1-41000 LOWER,ISUZU PKG-FRR90S2-JCNYS-M

Pos No.	Parts No	Parts Name	Qty	Unit	Technical Data	Serial No (Start)	Serial No (End)
1	80456010610	JOINT,SELF SEALING	1				
2	91810130240	FASTENER	2				
3	37002427920	HOSE	1		L=10000		
4	80456020610	JOINT,SELF SEALING	1				
10	32730440000	HOSE ASSY (HIGH-PRESSURE:10M,210KG/CM2)	1				
21	42340017550	CAP (DUST)	1				
31	91071011500	O-RING	1		Y22550-115-A		

CLICK HERE TO **DOWNLOAD** THE COMPLETE MANUAL

- Thank you very much for reading the preview of the manual.
- You can download the complete manual from: www.heydownloads.com by clicking the link below



- Please note: If there is no response to CLICKING the link, please download this PDF first and then click on it.

CLICK HERE TO **DOWNLOAD** THE COMPLETE MANUAL

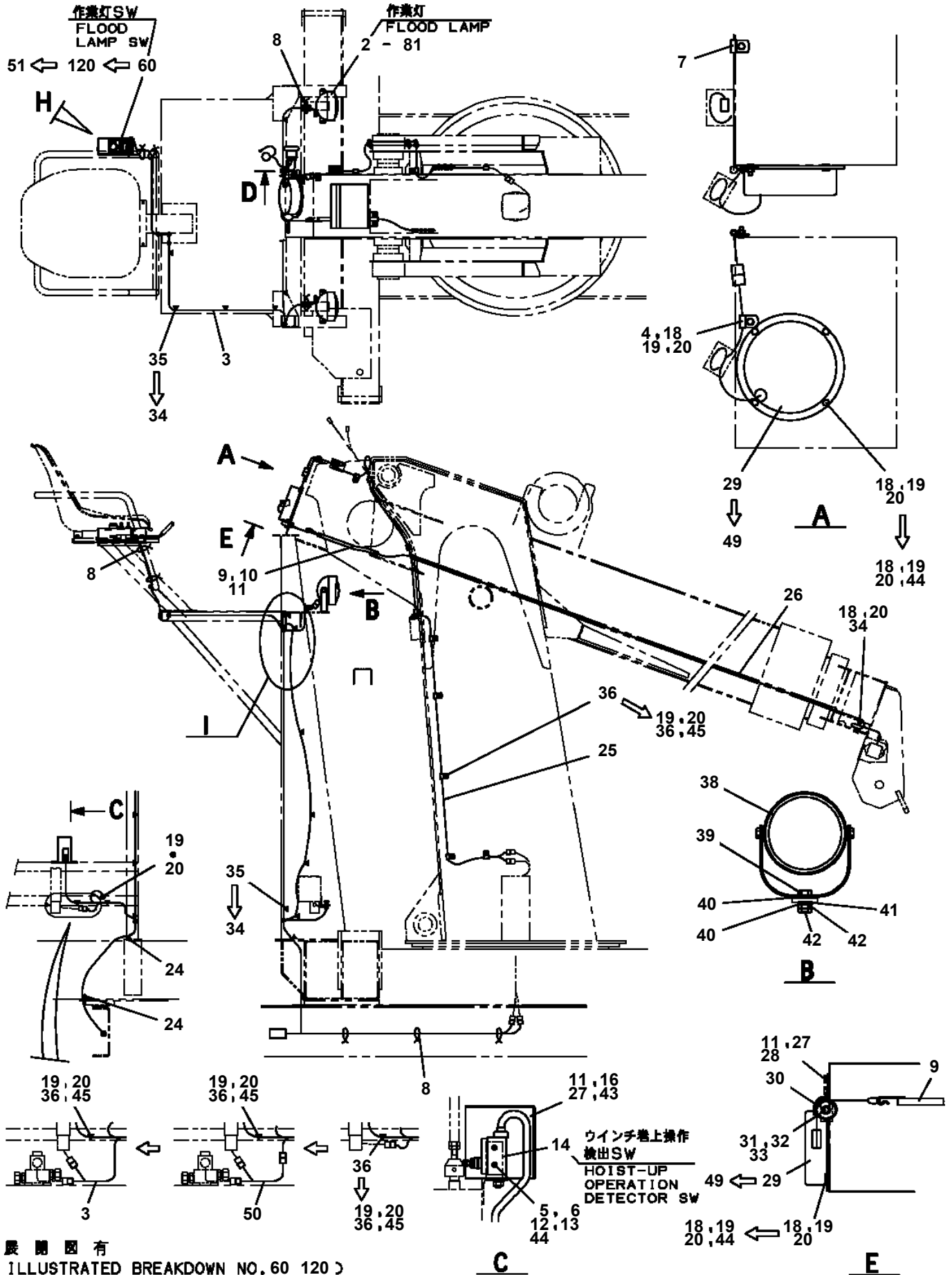
DT-720-1-41000 LOWER,ISUZU PKG-FRR90S2-JCNYS-M

Pos No.	Parts No	Parts Name	Qty	Unit	Technical Data	Serial No (Start)	Serial No (End)	Remarks	Pages
1	36683020000	METER,LOAD	1						

DT-720-1-41000 LOWER,ISUZU PKG-FRR90S2-JCNYS-M

Pos No.	Parts No	Parts Name	Qty	Unit	Technical Data	Serial No (Start)	Serial No (End)	R
1	32320050010	LEVER ASSY	1					
2	32320050020	LEVER ASSY	1					
3	32320050030	LEVER ASSY	1					
4	32320050040	LEVER ASSY	1					
5	32320050050	LEVER ASSY	1					
6	32320050060	LEVER ASSY	1					
7	37000105610	PIN	11		L=18			
9	80136320010	PIN,SPLIT	12		2X10			
11	90302041001	WASHER,SPRING	6		10			
12	90201201000	NUT	6		M10			
13	32320050100	ROD	1					
14	32320050110	ROD	5					
15	90203200800	NUT	6		M8			
16	31320020071	ADJUSTER	5					
17	36632180000	VALVE,MANUAL CONTROL	1					
19	90303071001	WASHER,PLAIN	1		10			
20	90101210035	BOLT	4		M10X35			
21	32320050140	PIN ASSY	1					
22	90101210020	BOLT	2		M10X20			
23	37000134550	PIN	1					
24	32320050150	ADJUSTER	1					
25	80456950401	JOINT,SELF SEALING (COUPLER)	2					
31	31320020010	KNOB (BLACK)	5					
32	31320020020	KNOB (RED)	1					
35	82456106000	NIPPLE,GREASE	6		1/4-28UNF			
	82455106000	NIPPLE,GREASE	6		A-M6F FE	390518	390517	
38	80804022010	BEARING,PLAIN	12					

DT-720-1-41000 LOWER, ISUZU PKG-FRR90S2-JCNYS-M
 PN1012248-07 ELEC.ASSY (WITH BOOM RETRACTION DETECTOR)



展開図有
 ILLUSTRATED BREAKDOWN NO. 60 120 >

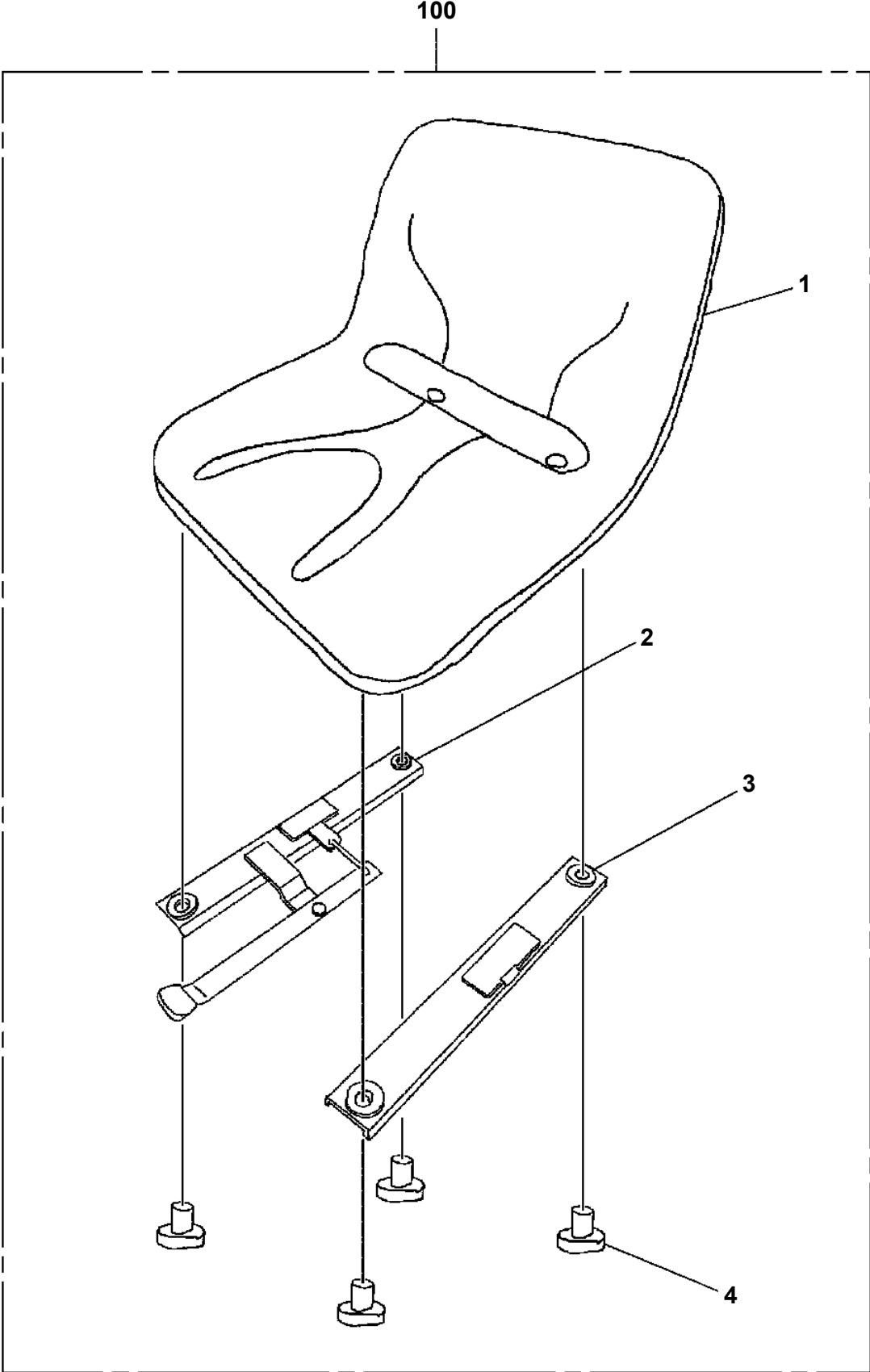
DT-720-1-41000 LOWER,ISUZU PKG-FRR90S2-JCNYS-M

Pos No.	Parts No	Parts Name	Qty	Unit	Technical Data	Serial No (Start)	Serial No (End)	Remarks	Page
5	36160017550	HANDLE	1						
6	36160655020	SHAFT	1						
7	36160017560	WASHER,PLAIN	1						
9	36160025010	CORD ASSY (MAIN)	1						
10	36160025020	CLIP	1						
11	36160025030	COVER (CLIP)	1						
13	36160017590	PLATE (CONTACT)	1						
50	36160020000	REEL,CORD	1						

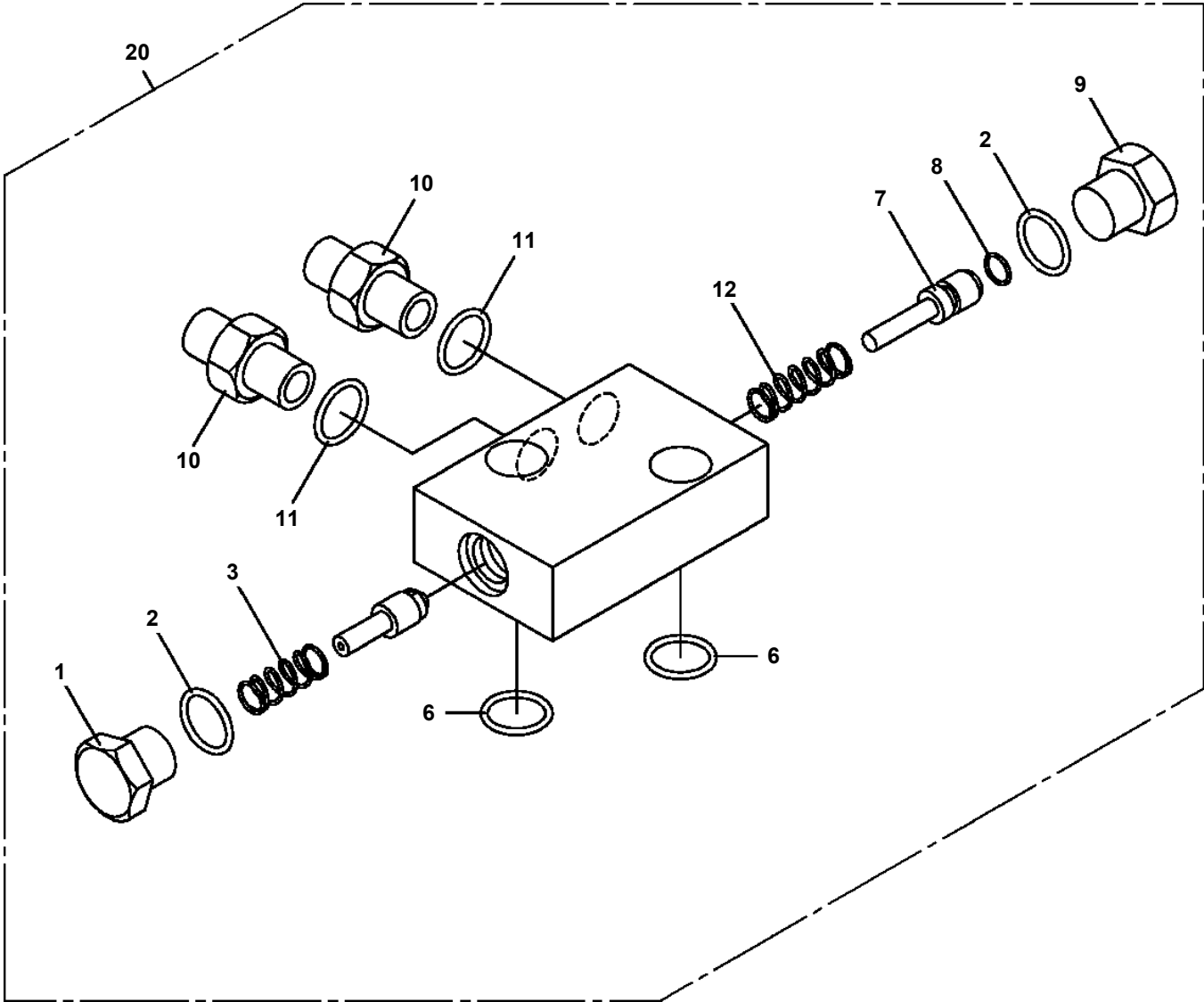
DT-720-1-41000 LOWER,ISUZU PKG-FRR90S2-JCNYS-M

Pos No.	Parts No	Parts Name	Qty	Unit	Technical Data	Serial No (Start)	Serial No (End)	Remarks	Pa
1	37002212160	PLATE,NAME (100KG)	1						

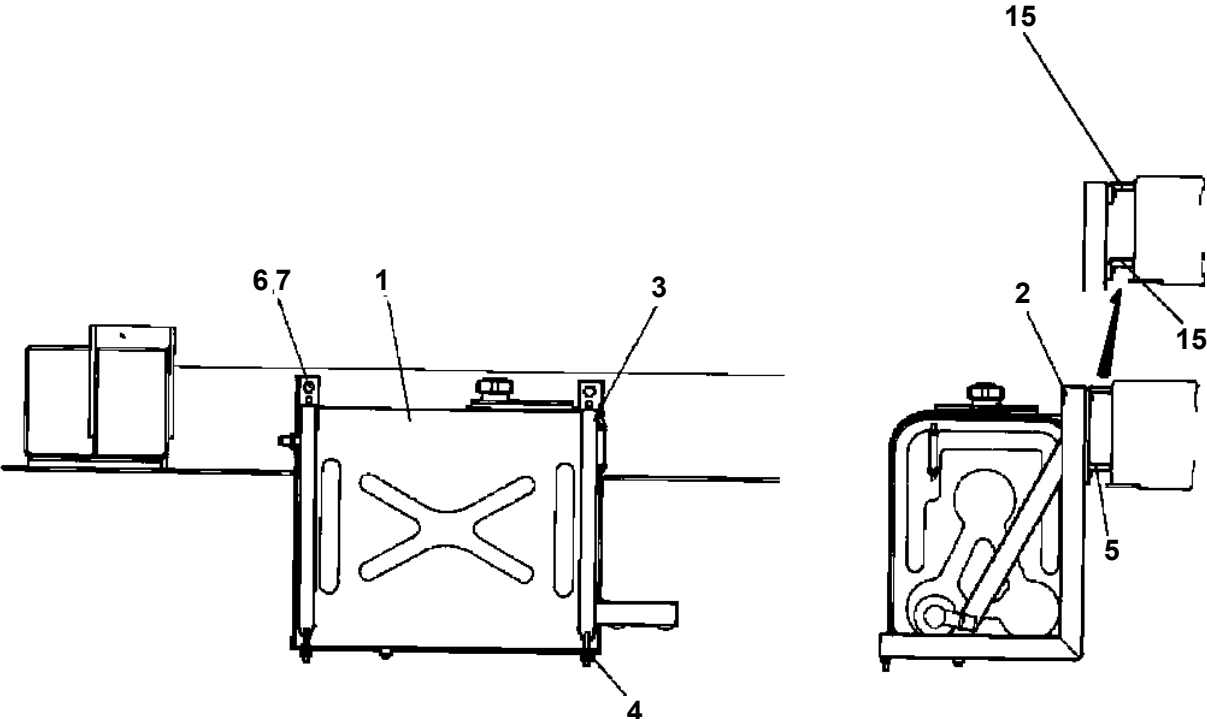
DT-720-1-41000 LOWER,ISUZU PKG-FRR90S2-JCNYS-M
PS5050006-01 SEAT ASSY



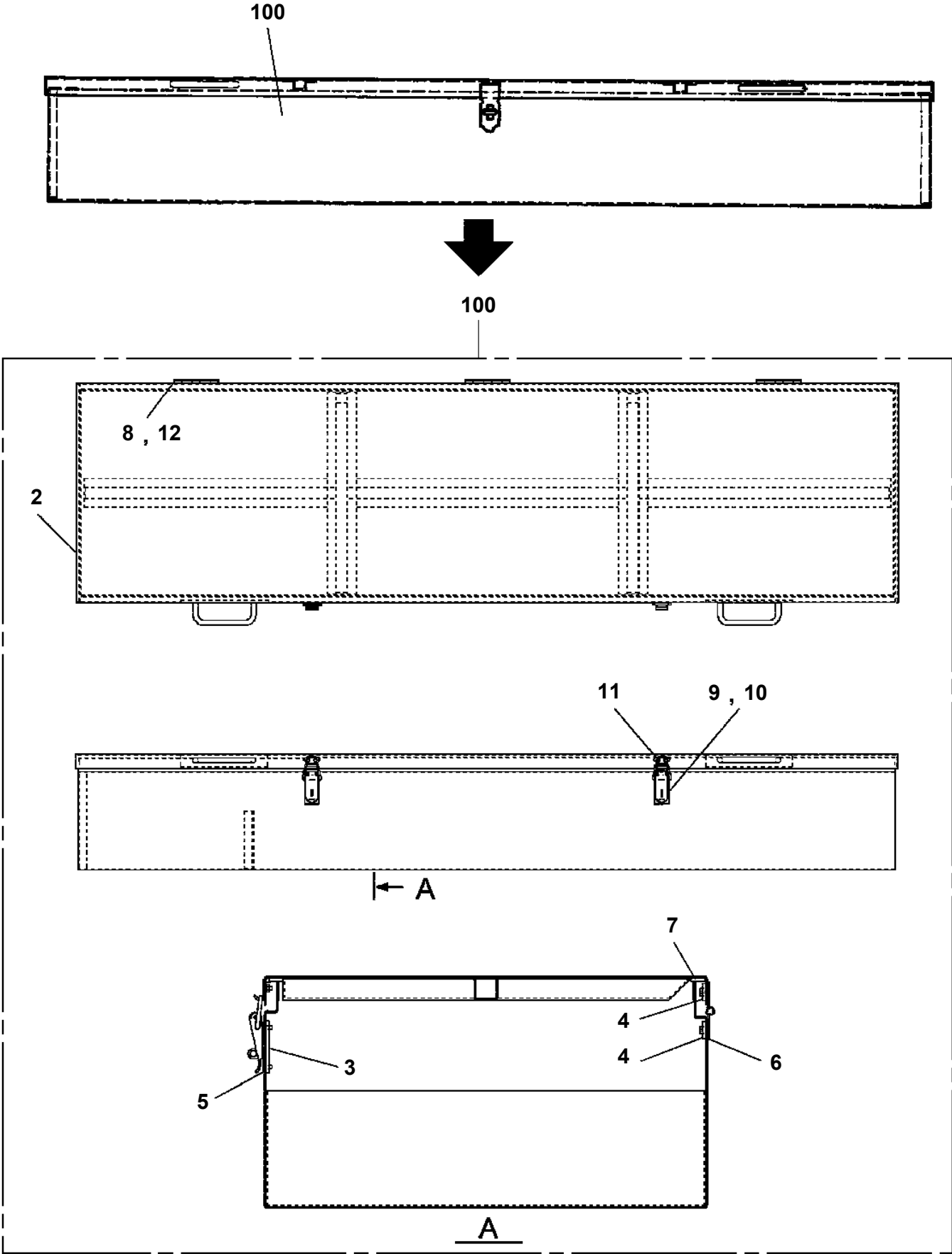
**DT-720-1-41000 LOWER,ISUZU PKG-FRR90S2-JCNYS-M
PV5040006-00 VALVE ASSY,CHECK**



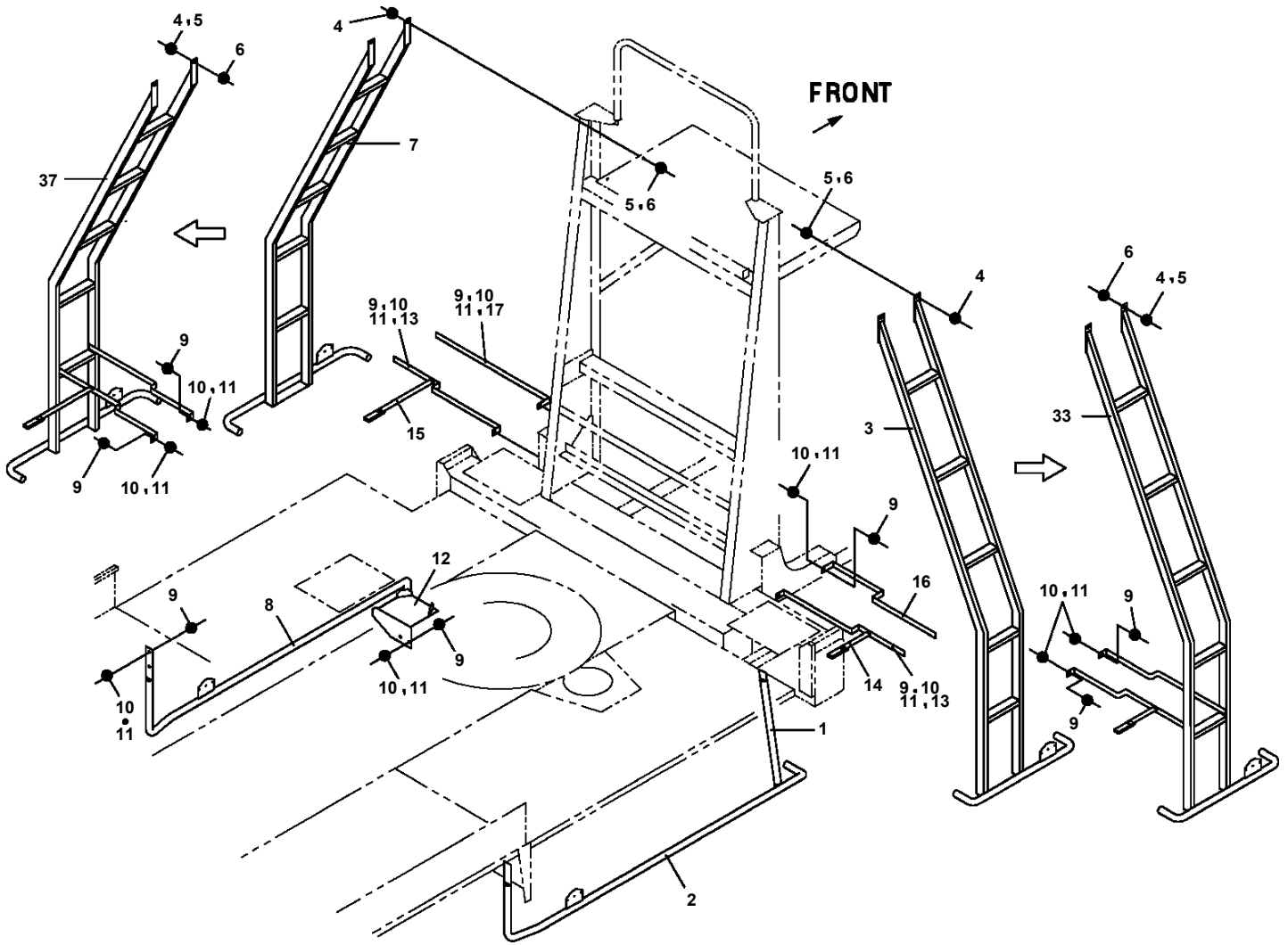
**DT-720-1-41000 LOWER,ISUZU PKG-FRR90S2-JCNYS-M
PX1100102-01 TANK SUPPORT INSTALLATION**



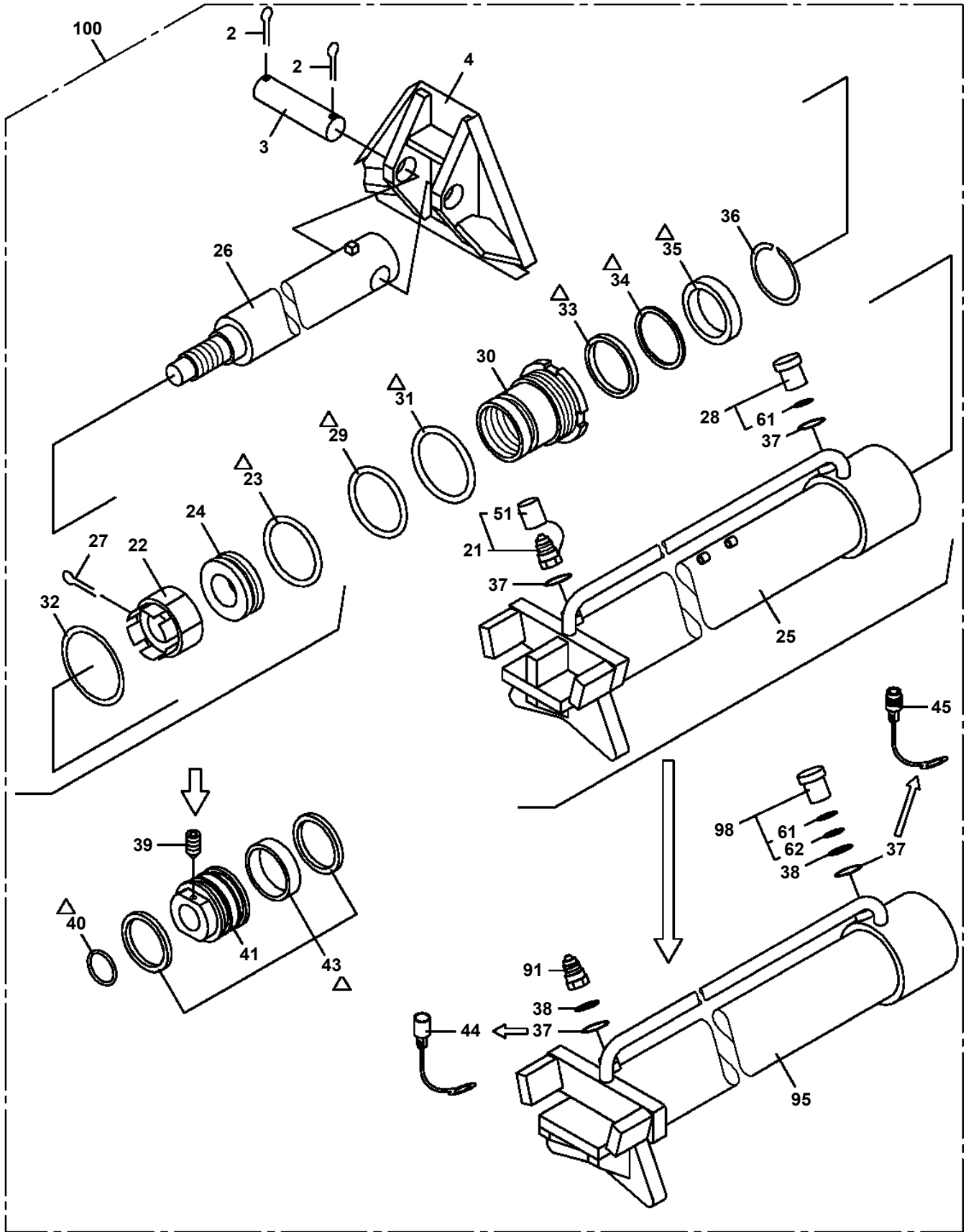
DT-720-1-41000 LOWER,ISUZU PKG-FRR90S2-JCNYS-M
PX1350415-01 BOX,TOOL



**DT-720-1-41000 LOWER,ISUZU PKG-FRR90S2-JCNYS-M
PX5650038-00 MOUNT ASSY,SIDE GUARD**

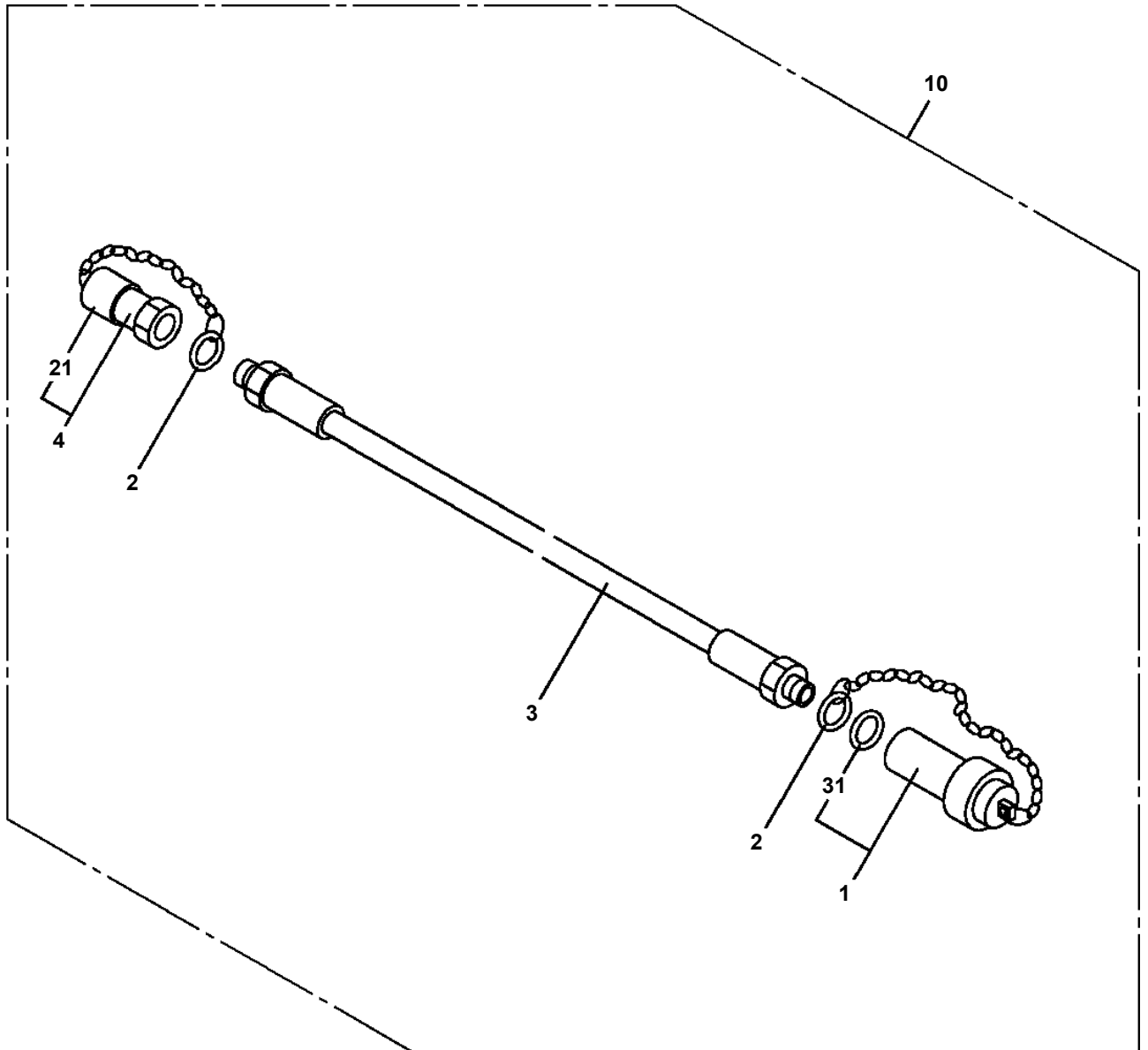


**DT-720-1-41000 LOWER,ISUZU PKG-FRR90S2-JCNYS-M
PY1600003-04 CYLINDER,POLE PULLER**



△:PACKING SET KEY NO.81 (KEY NO.23,29,31,33,34,35)
 ↓
 △:PACKING SET KEY NO.83 (KEY NO.29,31,33,34,35,40,43)

DT-720-1-41000 LOWER,ISUZU PKG-FRR90S2-JCNYS-M
PY1910000-03 HOSE (6M.210KG/CM2)



CLICK HERE TO **DOWNLOAD** THE COMPLETE MANUAL

- Thank you very much for reading the preview of the manual.
- You can download the complete manual from: www.heydownloads.com by clicking the link below



- Please note: If there is no response to CLICKING the link, please download this PDF first and then click on it.

CLICK HERE TO **DOWNLOAD** THE COMPLETE MANUAL