

**AT-150-1 42018120300 LOWER, MITSUBISHI P -> U-FE445CHX**

PX1000107-05 MOUNTING PARTS

PY1000143-03 OPTIONS

ASSEMBLY

CLICK HERE TO **DOWNLOAD** THE COMPLETE MANUAL

- Thank you very much for reading the preview of the manual.
- You can download the complete manual from: [www.heydownloads.com](http://www.heydownloads.com) by clicking the link below



- Please note: If there is no response to CLICKING the link, please download this PDF first and then click on it.

CLICK HERE TO **DOWNLOAD** THE COMPLETE MANUAL

**AT-150-1 42018120300 LOWER,MITSUBISHI P -> U-FE445CHX**

Pos No.	Parts No	Parts Name	Qty	Unit	Technical Data	Serial No (Start)	Serial No (End)	Remark
1	90101508020	BOLT	8		M8X20			
2	90302040801	WASHER,SPRING	8		8			
3	36300140000	SHAFT,PROPELLER (PUMP)	1					
4	32700510010	COUPLING	1					
5	90720008120	SCREW,SET	1		M8X12			
11	36300110020	COUPLING	1					
12	36300144000	PIPE	1					
13	36300110010	COUPLING	1					
14	36300115010	JOINT KIT	2					
15	82456101000	NIPPLE,GREASE	1		A-PT1/8			

# AT-150-1 42018120300 LOWER,MITSUBISHI P -> U-FE445CHX

Pos No.	Parts No	Parts Name	Qty	Unit	Technical Data	Serial No (Start)	Serial No (
1	36630875030	BODY	1				
2	56051331020	BODY ASSY	1				
3	36630875010	VALVE,CONTROL	1				
4	36630875020	VALVE,CONTROL	4				
5	11625101020	BOLT,STUD	4				
6	90201200800	NUT	8		M8		
7	36630875090	VALVE,RELIEF	1				
8	12435101160	RETAINER (VALVE)	3				
9	91002801400	O-RING	3		1B P14		
10	56051331060	VALVE,PILOT CHECK	1				
11	56051331070	RING (A)	2				
12	56051331080	RING (B)	2				
22	80316030040	PLUG	1		PT1/4		
23	12435101040	O-RING	1				
24	91002801001	O-RING	2		1B P10A		
25	91002802000	O-RING	1		1B P20		
41	91000501500	O-RING	2		AS568-015		
42	36630045190	SPRING	1				
44	91002802200	O-RING	2		1B P22		
45	16025153020	SPRING	1				
46	36630045220	NUT	1		M10		
47	91001001600	O-RING	2		1A S16		
48	36630045200	SCREW (ADJUSTING)	1		M10X25		
49	36630295130	NUT,CAP	1				
51	56051331180	SPRING	1				
52	56051331170	PLUG	1				
53	13615104400	PLUG	1				
56	19215101010	O-RING	1				
61	12435101160	RETAINER (VALVE)	2				
62	91002801400	O-RING	2		1B P14		
63	56051331100	SEAL,OIL	10				
64	36630875040	BRACKET	1				
65	36630045140	SPRING	1				
66	12435101170	RETAINER (SPRING)	2				
67	36630875050	SPACER	1				
68	36630875060	END,SPOOL	1				
69	36630215030	COVER (SPRING)	1				
70	90131506020	BOLT,HEXAGON SOCKET	2		M6X20		
71	56051331120	COVER	5				
72	90131506015	BOLT,HEXAGON SOCKET	10		M6X15		
76	91002800500	O-RING	1		1B P5		
77	91002802000	O-RING	6		1B P20		
78	12435101040	O-RING	6				
79	91002801001	O-RING	8		1B P10A		
96	12435101180	RETAINER (SEAL)	8				
97	13115102010	RETAINER (SEAL)	8				
98	36630875070	END,SPOOL	4				
99	13115102030	CASE (BALL)	4				
100	56051331130	RETAINER (BALL)	4				
101	36630875080	COVER (SPRING)	4				
102	13115102040	SPRING	4				
106	80560005000	BALL,STEEL	8		5		
107	90131506025	BOLT,HEXAGON SOCKET	8		M6X25		
110	36630870000	VALVE,MANUAL CONTROL (OUTRIGGER)	1				

# AT-150-1 42018120300 LOWER,MITSUBISHI P -> U-FE445CHX

Pos No.	Parts No	Parts Name	Qty	Unit	Technical Data	Serial No (Start)	Serial No (End)	Remarks
1	42640380300	FITTING,FLANGE	1					
2	91002903000	O-RING	2		1B G30			
3	90101210025	BOLT	8		M10X25			
4	90302041001	WASHER,SPRING	8		10			
5	42640480100	FITTING,FLANGE	1					
6	80430420850	JOINT	1					
7	36621670000	VALVE,CHECK	1					
8	42640380600	JOINT	1					
10	81408000160	PIPE,STEEL	2	M	12X1.4T			
11	80321112050	VALVE,CHECK	1					
13	37002415540	HOSE	1		L=670			
14	82400000205	GROMMET	1					
16	80302090161	FITTING	1		KCO12-030N			
17	91002801400	O-RING	2		1B P14			
18	42640150060	JOINT	1					
20	42640010130	FITTING,FLANGE	1					
21	91001204500	O-RING	2		1A G45			
22	90101208016	BOLT	8		M8X16			
23	90302040801	WASHER,SPRING	8		8			
24	42640010170	FITTING,FLANGE	1					
25	36670100000	FILTER,OIL (YAMASHIN)	1					
26	37000907490	JOINT	1					
27	37002502450	HOSE	1		L=400			
28	91801300240	CLIP	4		D=21-24			
29	37002504300	HOSE	1		L=335			
30	91803600400	CLIP	4		D=27-40			
31	37002503230	HOSE	1		L=425			
32	91801300480	CLIP	4		D=43-48			
33	37002503360	HOSE	1		L=550			
34	91801300300	CLIP	4		D=27-30			
37	42640381000	SWITCH,THERMO	1				595085	
	42731461000	SWITCH,THERMO	1			595086		
41	82109902020	SWITCH,THERMO	1			595095		

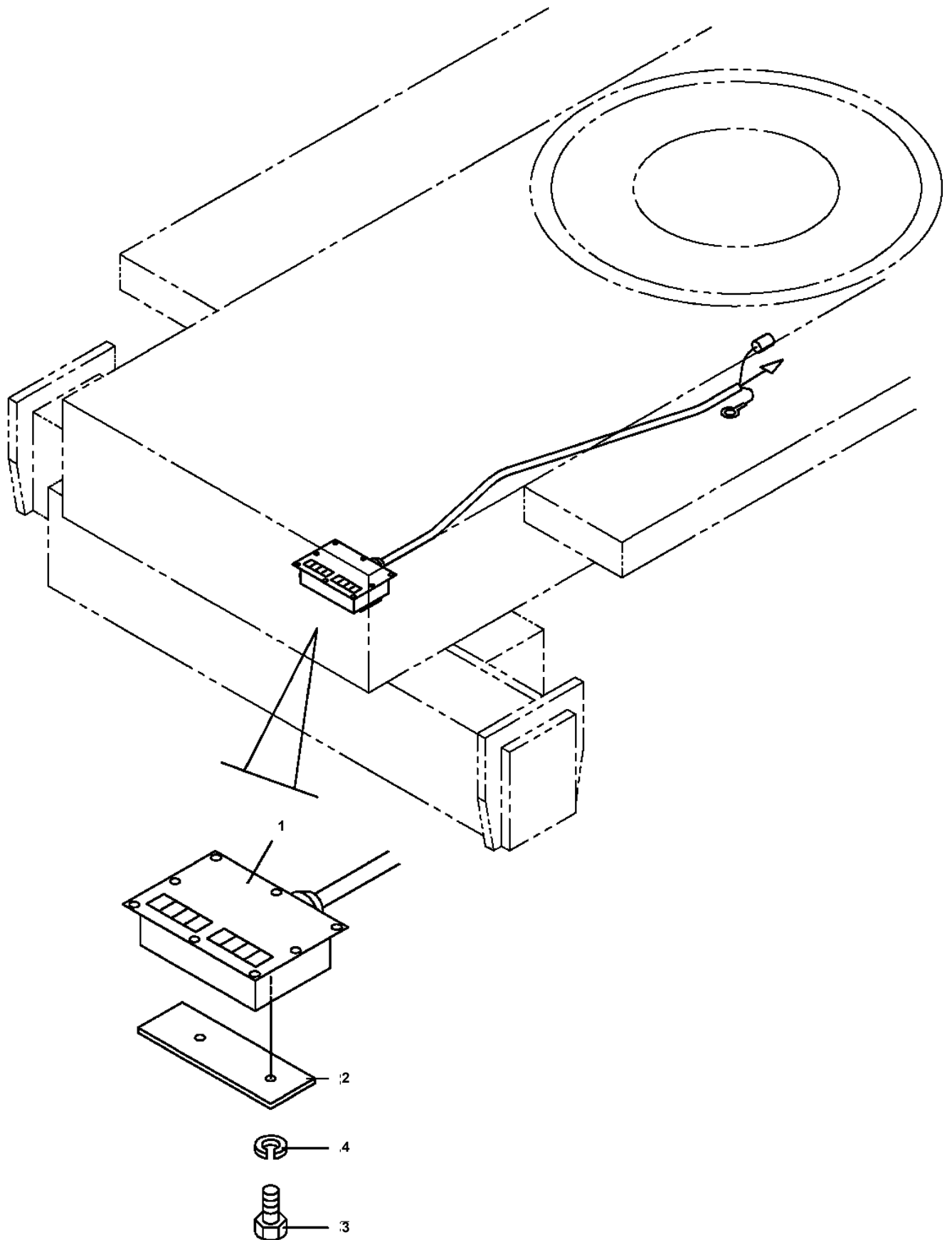
# AT-150-1 42018120300 LOWER,MITSUBISHI P -> U-FE445CHX

Pos No.	Parts No	Parts Name	Qty	Unit	Technical Data	Serial No (Start)	Serial No (End)	Rem
2	91660003001	SEAL,DUST	1					
3	36040335010	WASHER	1				595051	
4	91694003000	PACKING	1					
5	91002904000	O-RING	1		1B G40			
6	36040335021	COVER,ROD	1					
7	36040355031	CYLINDER	1				595051	
	36040355032	CYLINDER	1			595052		
8	36040355041	ROD	1					
10	91684004500	PACKING	2			595319		
12	90209201800	NUT	1		M18			
13	90302041801	WASHER,SPRING	1		18			
15	36041030300	PISTON	1				595318	
16	91100104500	SEAL,RING	1				595318	
17	91002802000	O-RING	1		1B P20	595319		
18	91411203501	RING,BACKUP	2			595319		
22	36042405301	PISTON	1			595319		
40	36042419900	PACKING SET	1		30X45		595318	
50	36042419902	PACKING SET	1		30X45	595319		
100	36040350000	CYLINDER,EXTENSION (REAR)	1					

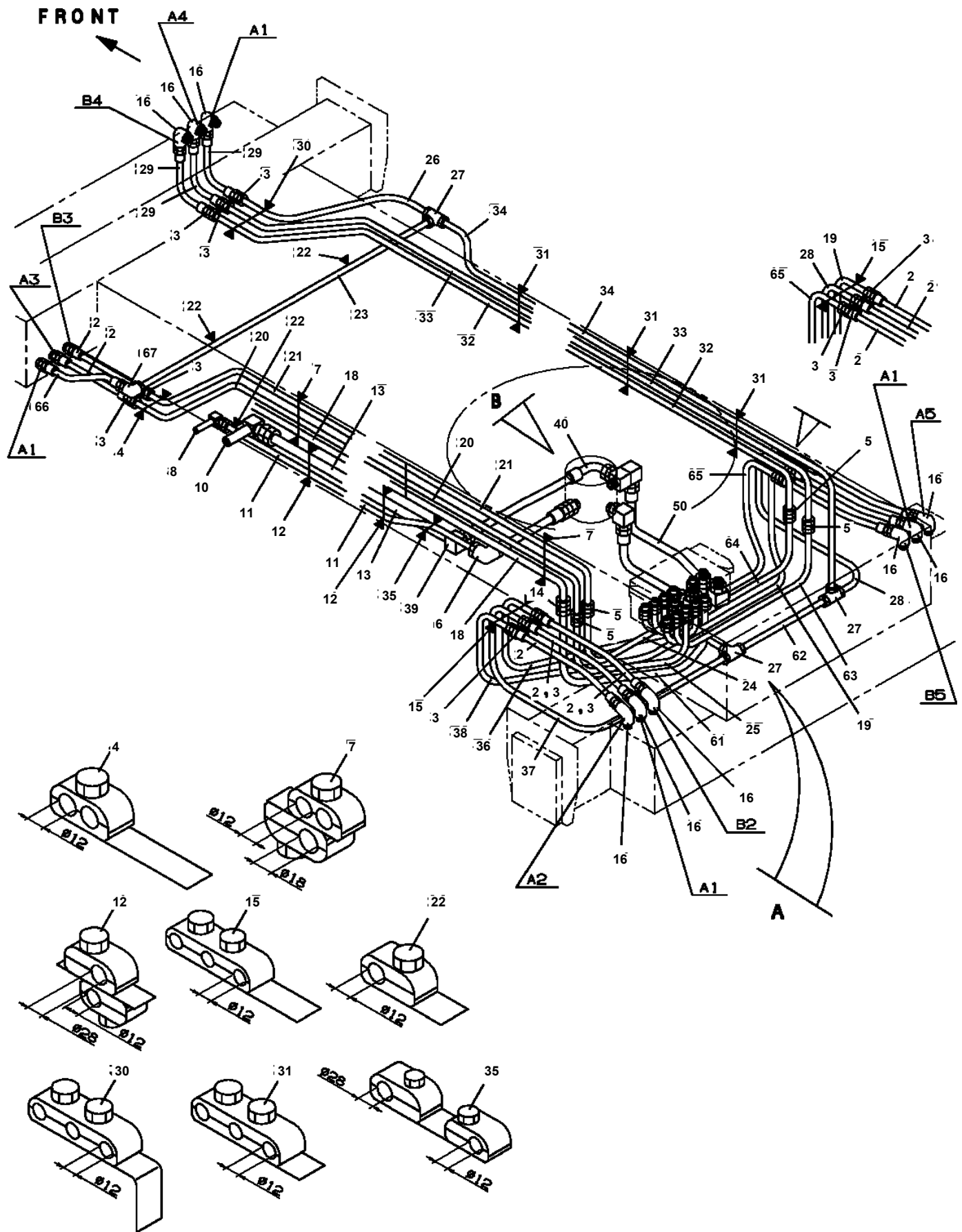
# AT-150-1 42018120300 LOWER,MITSUBISHI P -> U-FE445CHX

Pos No.	Parts No	Parts Name	Qty	Unit	Technical Data	Serial No (Start)	Serial No (End)	Remarks	Pages
1	42700030010	SUPPORT	1						
2	42731560020	LEVER	1						
3	42731560010	PIN	1						
4	80136332020	PIN,SPLIT	1		3.2X20				
5	90101208014	BOLT	4		M8X14				
6	90302040801	WASHER,SPRING	4		8				
7	37001702620	CABLE,CONTROL	1						
8	19114411000	SPRING	1						
9	80136340030	PIN,SPLIT	1		4X30				
10	90303071601	WASHER,PLAIN	1		16				
11	42731560030	LINK	1						
12	37000105720	PIN	2						
13	90303070601	WASHER,PLAIN	2		6				
14	80136320010	PIN,SPLIT	2		2X10				
15	42700030140	PLATE	1						
16	90303071001	WASHER,PLAIN	1		10				
17	42731560050	SUPPORT	1						
18	82100002006	CLAMP	5		WR10				
19	90302040601	WASHER,SPRING	5		6				
22	91810130240	FASTENER	4						
23	82400000205	GROMMET	1						
24	90190000008	BOLT,STUD	4		M6X20				
25	90201200600	NUT	4		M6				
26	82100002037	CLAMP	4		WE10				
28	90101208020	BOLT	1		M8X20				
29	90201200800	NUT	1		M8				
31	90303070801	WASHER,PLAIN	4		8	595273			
40	42731568010	LINK ASSY	1						

**AT-150-1 42018120300 LOWER, MITSUBISHI P -> U-FE445CHX  
PC1190001-00 INDICATOR, OUTRIGGER (4 STATES)**



**AT-150-1 42018120300 LOWER, MITSUBISHI P -> U-FE445CHX  
PC1200334-00 PIPING, OUTRIGGER**



# AT-150-1 42018120300 LOWER,MITSUBISHI P -> U-FE445CHX

Pos No.	Parts No	Parts Name	Qty	Unit	Technical Data	Serial No (Start)	Serial No (End)	Remarks
3	36610445010	SPRING	1					
4	36610705010	SPRING	1					
7	36610445030	PLATE	1					
8	36610445040	NUT	1					
9	36610445050	SCREW,SET	1					
10	91001101800	O-RING	1		1A P18			
11	36610445060	PLUG	1					
12	36610445070	PLUG	1					
13	91002802400	O-RING	1		1B P24			
14	36610445080	WASHER,SPRING	5					
15	36610445090	BOLT	4					
16	91001101200	O-RING	1		1A P12			
30	36610700000	VALVE,FLOW CONTROL	1					

# AT-150-1 42018120300 LOWER,MITSUBISHI P -> U-FE445CHX

Pos No.	Parts No	Parts Name	Qty	Unit	Technical Data	Serial No (Start)	Serial No (End)	Remarks
6	82100000522	CABLE	2					
7	37000704790	CLAMP ASSY	2		D=6			
8	82100000191	TERMINAL	2					
9	82100000183	INSULATOR	2					
10	82100000192	TERMINAL	1					
11	82100000182	INSULATOR	1					
12	37000511060	PLATE	2					
13	90101206012	BOLT	4		M6X12			
14	90302040601	WASHER,SPRING	4		6			
15	42731731000	BOX ASSY (CONNECTOR)	2					
21	82100002399	CONNECTOR	2					
22	82100002129	PLATE	2					
23	80172304008	SCREW,MACHINE	4		M4X8			
24	90302040401	WASHER,SPRING	4		4			
25	42731731010	CASE	2					
26	42731731050	HARNESS	2					
27	42731731060	HARNESS	2					
28	82400000072	GROMMET	2					

CLICK HERE TO **DOWNLOAD** THE COMPLETE MANUAL

- Thank you very much for reading the preview of the manual.
- You can download the complete manual from: [www.heydownloads.com](http://www.heydownloads.com) by clicking the link below



- Please note: If there is no response to CLICKING the link, please download this PDF first and then click on it.

CLICK HERE TO **DOWNLOAD** THE COMPLETE MANUAL

# AT-150-1 42018120300 LOWER,MITSUBISHI P -> U-FE445CHX

Pos No.	Parts No	Parts Name	Qty	Unit	Technical Data	Serial No (Start)	Serial No (End)
85	82100001423	BOX,FUSE	1				
86	80172305016	SCREW,MACHINE	2		M5X16		
87	90303070501	WASHER,PLAIN	2		5		
88	90302040501	WASHER,SPRING	2		5		
89	42710011030	COVER	1				
90	90201200500	NUT	2		M5		
92	82100000745	FUSE	3		10A,6.5X30		
93	82100000793	FUSE	1		30A,6.5X30		
101	42730190100	SUPPORT	1				
102	42730190200	HARNES	1				
103	42730190300	SUPPORT	1				
104	82100001420	LAMP	2				
105	90813108020	BOLT,WING	2		M8X20		
107	90101206020	BOLT	2		M6X20		
108	90201200600	NUT	8		M6		
109	90302040601	WASHER,SPRING	7		6		
110	90303070601	WASHER,PLAIN	3		6		
111	82100002002	CLAMP	7		WR6		
112	42800010070	PACKING	1				
114	90101206014	BOLT	1		M6X14		
115	90190000008	BOLT,STUD	3		M6X20		
116	42731290050	SUPPORT	1				
117	91810130250	FASTENER	1				
118	37002203720	PLATE,NAME (ON-OFF)	1				
121	82100090050	BULB,LAMP	2		24V 50W		
126	82100000895	SWITCH,TOGGLE	3				
133	82100000665	CAP (BLACK)	2				
141	82100002219	METER,HOUR	1				
142	42800500060	SWITCH,TOGGLE	1				
143	42802450110	SUPPORT	1				
144	42800500130	PLATE,NAME	1				
145	42800500070	LAMP ASSY	1				
146	82100001060	PLATE,NAME (ON/OFF)	1				
151	82100000531	LAMP,PILOT (RED)	1				
152	82100000501	BULB,LAMP	1		24V 3W		
161	82100001685	SWITCH,TOGGLE	1				

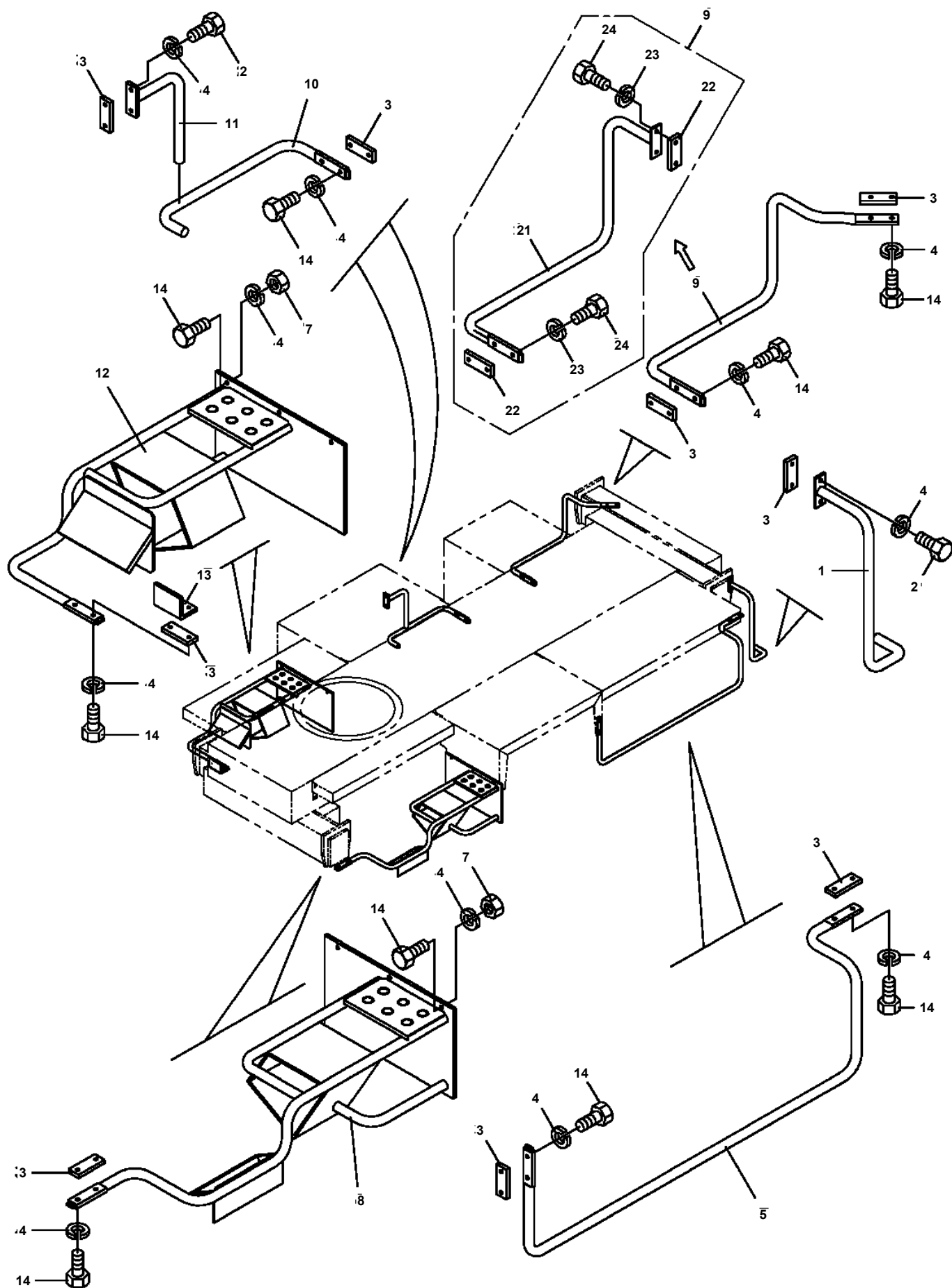
**AT-150-1 42018120300 LOWER,MITSUBISHI P -> U-FE445CHX**

Pos No.	Parts No	Parts Name	Qty	Unit	Technical Data	Serial No (Start)	Serial No (End)	Remarks	Pages
2	36160017530	WASHER,SPRING	1						
3	36160017540	WASHER,PLAIN	1						
4	36160315010	DRUM ASSY	1						
5	36160017550	HANDLE	1						
6	36160655020	SHAFT	1						
7	36160017560	WASHER,PLAIN	1						
8	36160017570	PLATE (RING)	1						
10	36160017590	PLATE (CONTACT)	1						
50	36160390000	REEL,CORD	1						

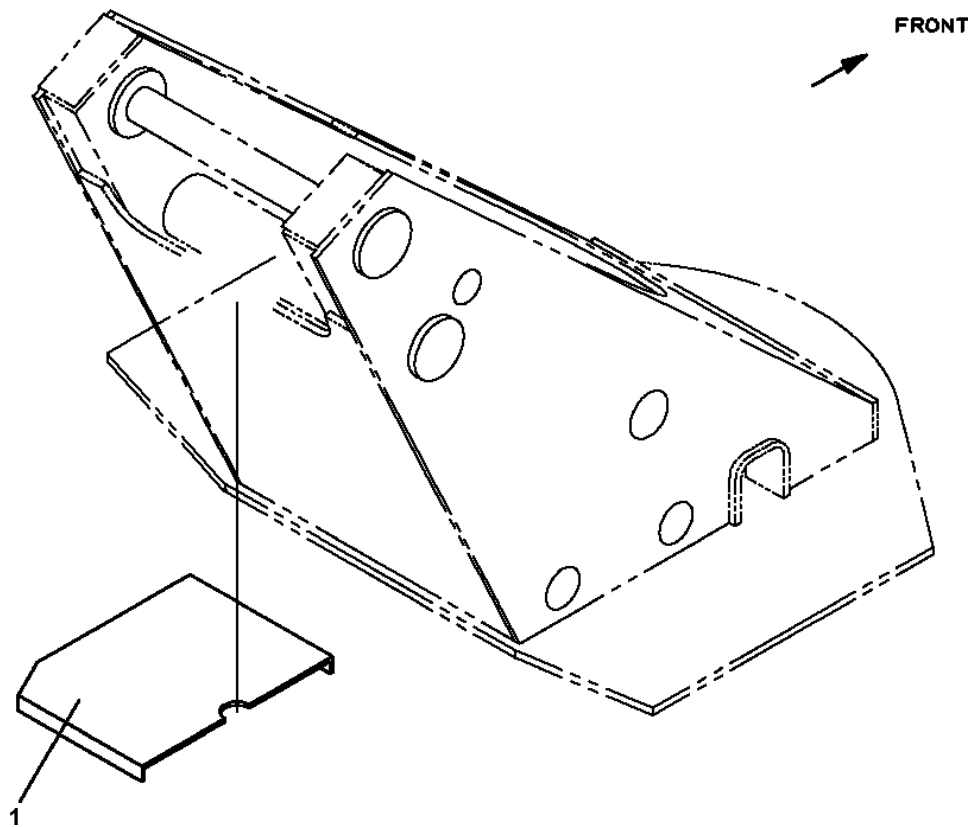
**AT-150-1 42018120300 LOWER,MITSUBISHI P -> U-FE445CHX**

Pos No.	Parts No	Parts Name	Qty	Unit	Technical Data	Serial No (Start)	Serial No (End)	Remarks	Pages
1	42880011000	SUPPORT	1						
2	90201201000	NUT	4		M10				
3	59460009000	BAND	2						
4	37000507620	PLATE	2						
5	56560009000	PIN	2						
6	80136330025	PIN,SPLIT	2						
7	90303071201	WASHER,PLAIN	2		12				
8	42880050010	SUPPORT	1						
9	90101512020	BOLT	4		M12X20				
10	90302041201	WASHER,SPRING	4		12				
11	37000507550	PLATE	2						
20	594600090060	BAND ASSY	2						
29	37000508640	PLATE	4						
30	37000508650	PLATE	2						

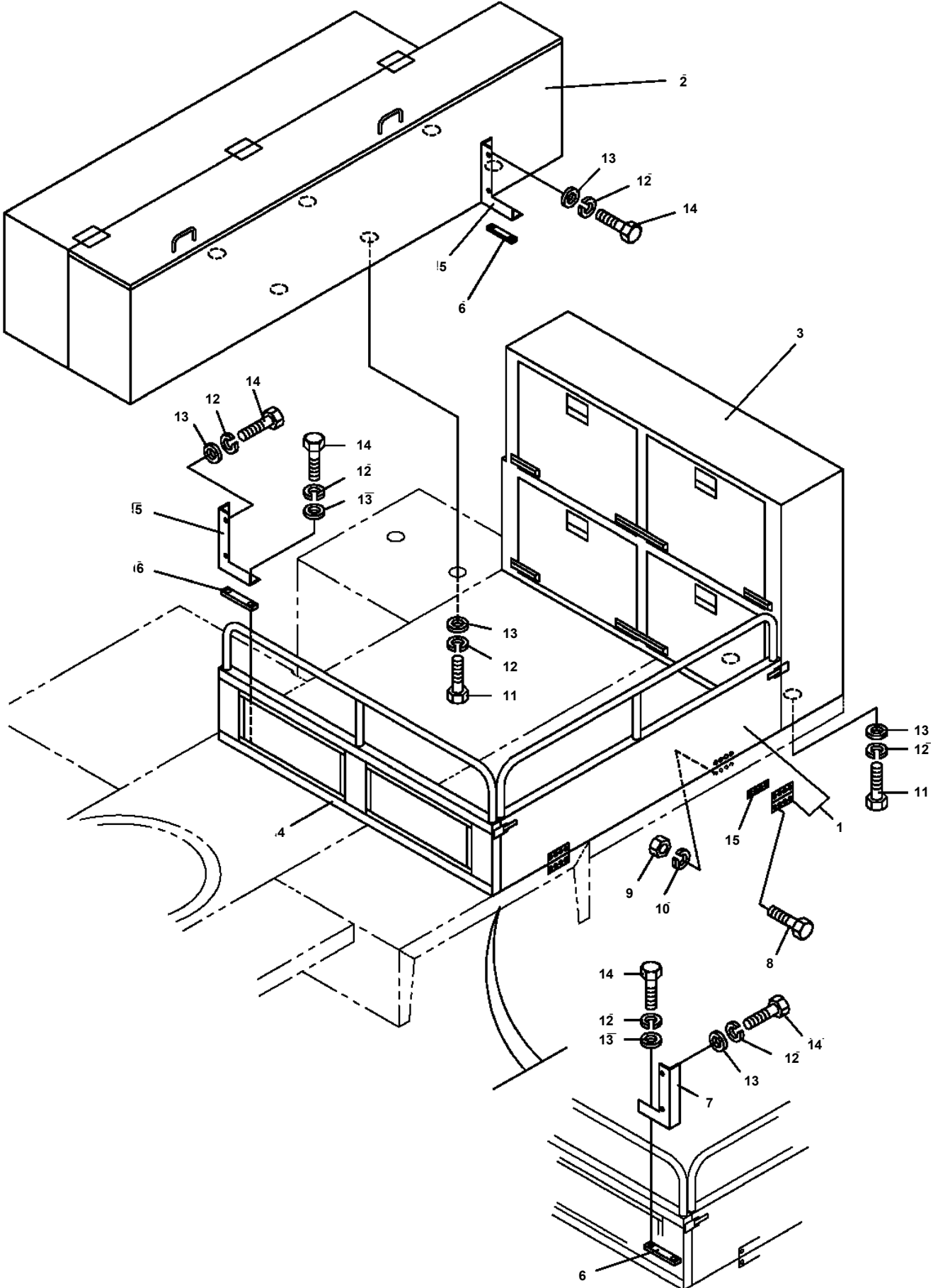
**AT-150-1 42018120300 LOWER, MITSUBISHI P -> U-FE445CHX  
PX1200083-01 SIDE GUARD INSTALLATION**



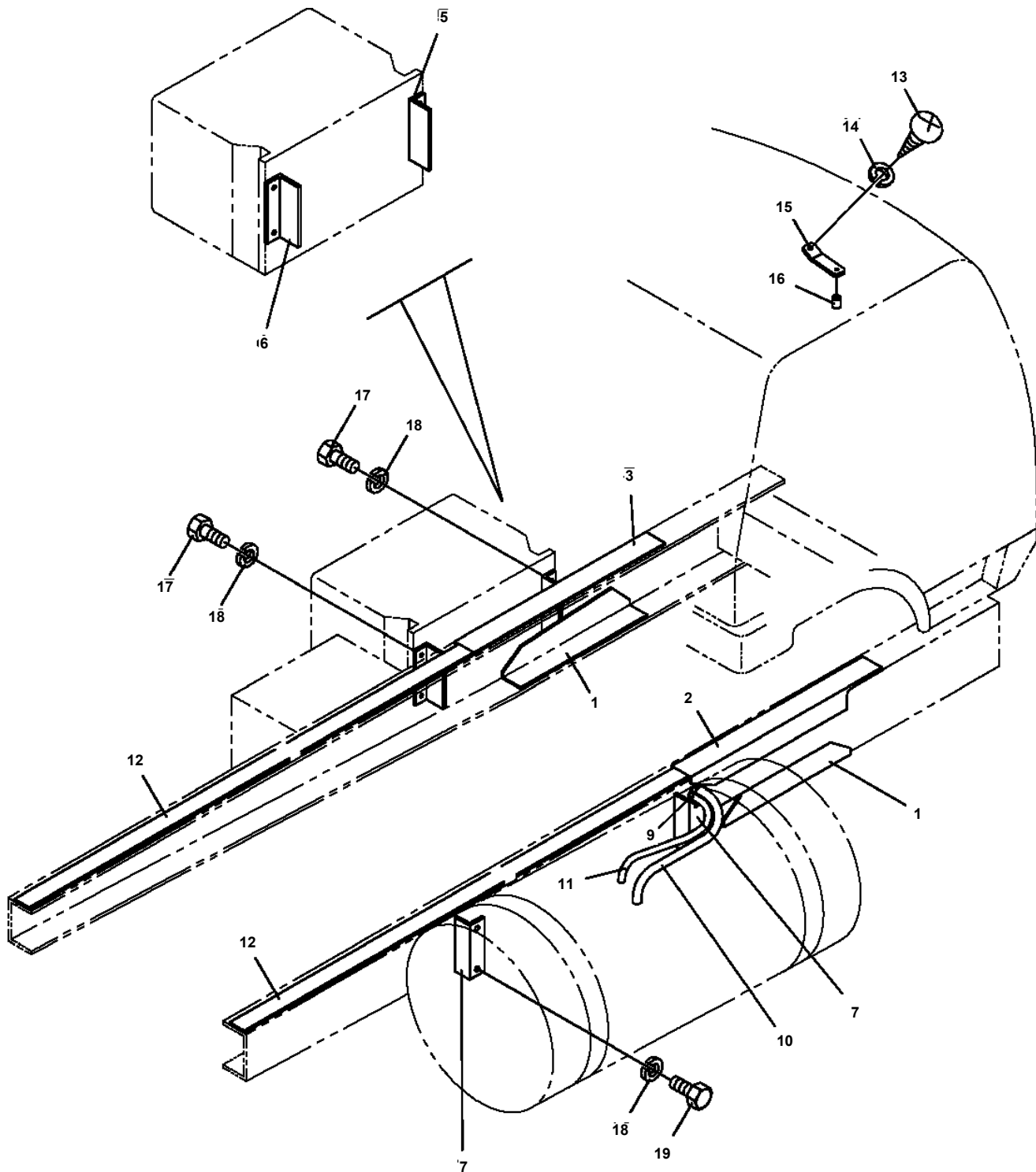
**AT-150-1 42018120300 LOWER, MITSUBISHI P -> U-FE445CHX  
PX1260048-00 STEP (SWING FRAME)**



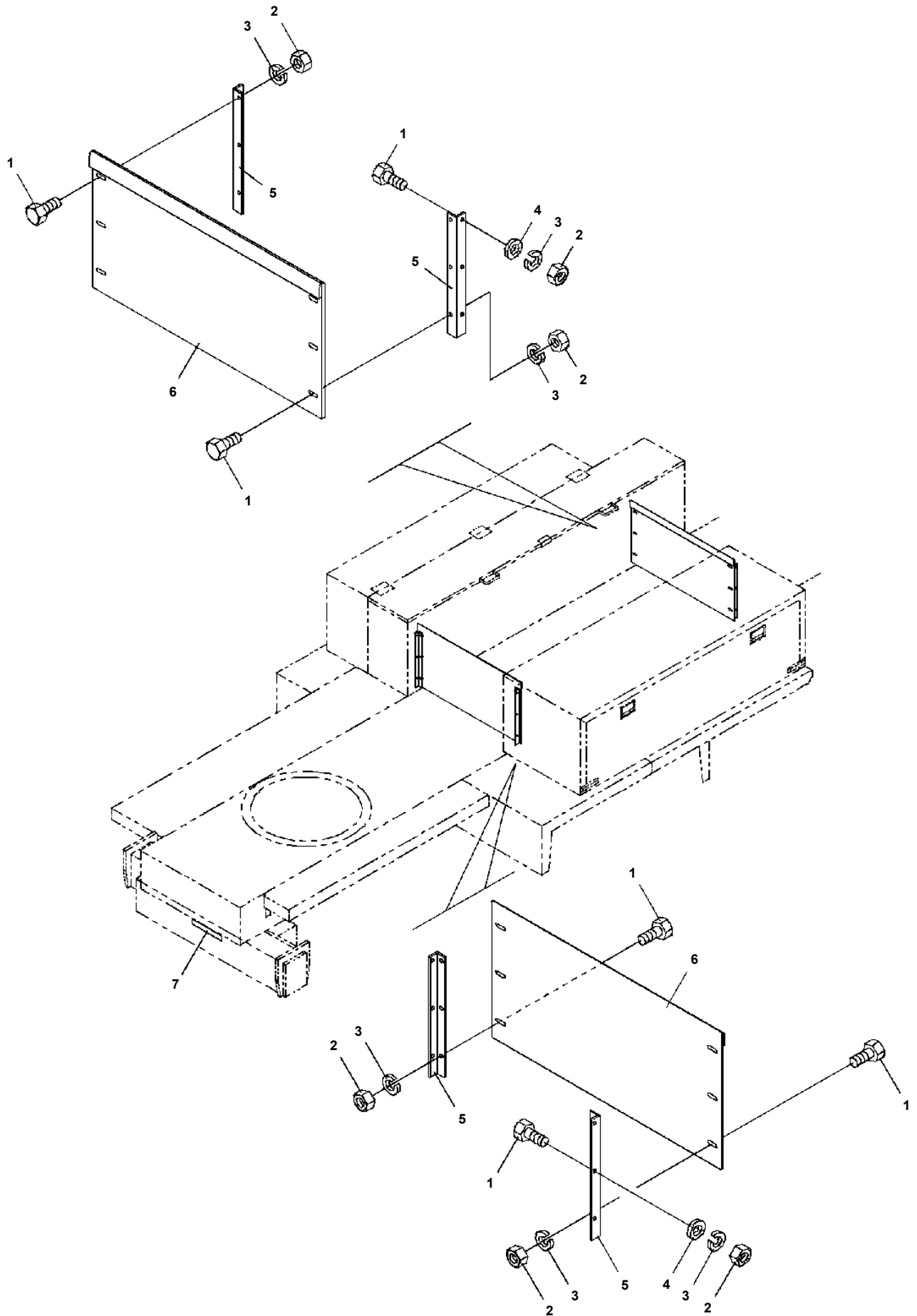
**AT-150-1 42018120300 LOWER, MITSUBISHI P -> U-FE445CHX  
PX1350063-00 TOOL BOX INSTALLATION**



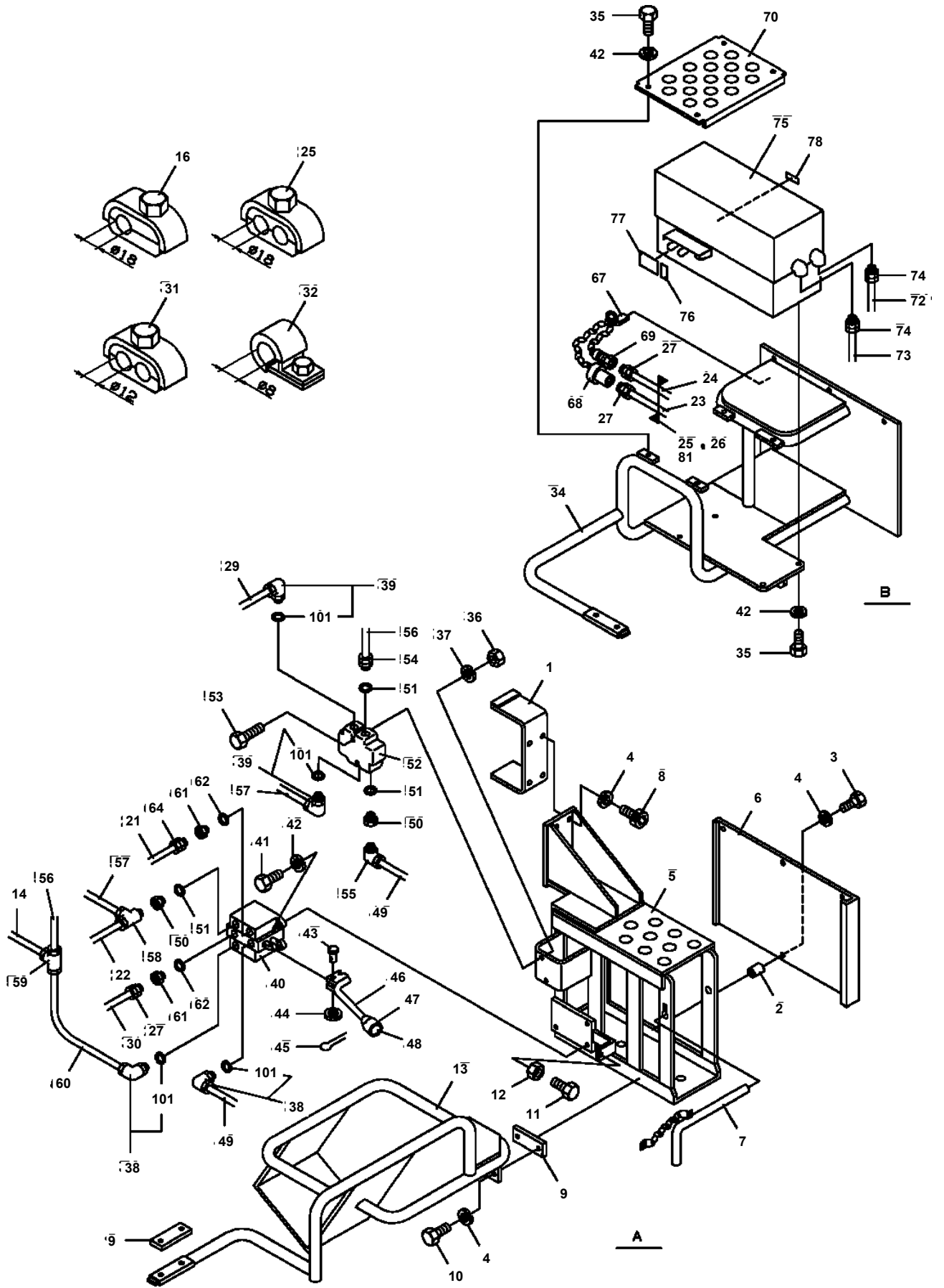
**AT-150-1 42018120300 LOWER, MITSUBISHI P -> U-FE445CHX  
PX1390096-00 PARTS, CHASSIS MODIFICATION**



**AT-150-1 42018120300 LOWER, MITSUBISHI P -> U-FE445CHX  
PX1640000-00 BOARD**



AT-150-1 42018120300 LOWER, MITSUBISHI P -> U-FE445CHX  
PY1210075-00 PIPING, HYDRAULIC OUTLET



# AT-150-1 42018120300 LOWER,MITSUBISHI P -> U-FE445CHX

Pos No.	Parts No	Parts Name	Qty	Unit	Technical Data	Serial No (Start)	Serial No (End)	Remarks	Pages
1	82100002219	METER,HOUR	1						
2	42731300100	SUPPORT	1						
3	42940110100	PLATE,NAME	1						
4	42940010020	PLATE,NAME	1						

CLICK HERE TO **DOWNLOAD** THE COMPLETE MANUAL

- Thank you very much for reading the preview of the manual.
- You can download the complete manual from: [www.heydownloads.com](http://www.heydownloads.com) by clicking the link below



- Please note: If there is no response to CLICKING the link, please download this PDF first and then click on it.

CLICK HERE TO **DOWNLOAD** THE COMPLETE MANUAL