

# **AT-146-1 42095100071 UPPER**

**PD2000064-00 SWING UNIT  
PF1000465-02 WINCH SYSTEM  
PG2000063-00 BOOM UNIT  
PH1000399-00 SAFETY DEVICES  
PJ3000249-02 BUCKET SYSTEM  
PJ5000003-00 BOOSTER UNIT  
PK2000252-00 FRAME UNIT  
PO1000131-03 INDICATION PLATES  
PY1000662-04 OPTIONS,1  
PY2000026-00 OPTIONS,2  
ASSEMBLY**

CLICK HERE TO **DOWNLOAD** THE COMPLETE MANUAL

- Thank you very much for reading the preview of the manual.
- You can download the complete manual from: [www.heydownloads.com](http://www.heydownloads.com) by clicking the link below



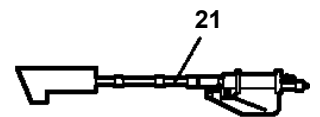
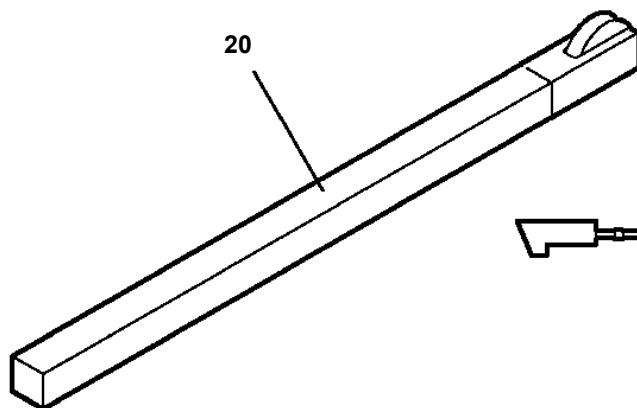
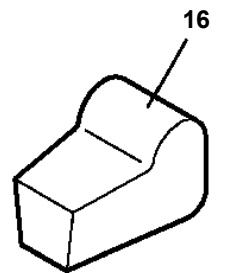
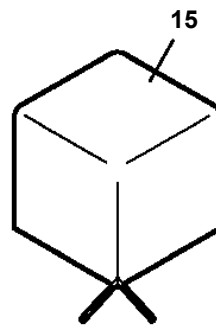
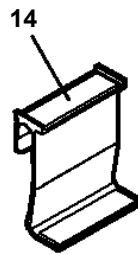
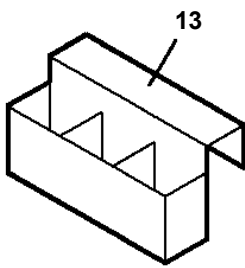
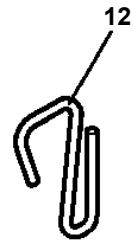
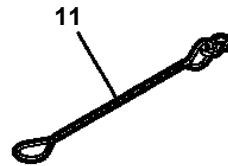
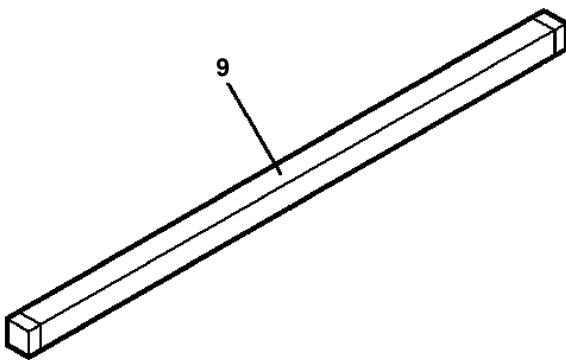
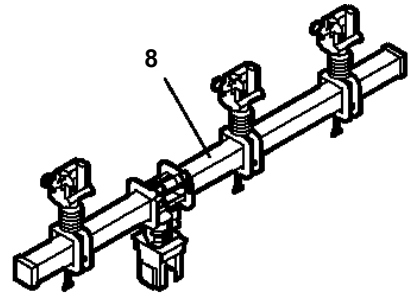
- Please note: If there is no response to CLICKING the link, please download this PDF first and then click on it.

CLICK HERE TO **DOWNLOAD** THE COMPLETE MANUAL

# AT-146-1 42095100071 UPPER

Pos No.	Parts No	Parts Name	Qty	Unit	Technical Data	Serial No (Start)	Serial No (End)
1	(*****)	FRAME	1				
2	(*****)	PIPING (BUCKET)	1				
3	(*****)	ELEC.ASSY (BUCKET)	1				
4	(*****)	OPE.ASSY	1				
5	(*****)	LAMP	1				
6	(*****)	PIPING,GREASE	1				
11	42265711000	BUCKET (WHITE)	1				
12	(*****)	BUCKET (INNER CASE)	1				
13	(*****)	COVER (FRP,WHITE)	1				
14	(*****)	COVER,BOOM (TOP/FRP,WHITE)	1				
15	42264603000	COVER (CLOTH,WHITE)	1				
16	42470341000	ACCESSORIES (BUCKET INNER MAT)	1				

AT-146-1 42095100071 UPPER  
PY2000026-00 OPTIONS,2



# AT-146-1 42095100071 UPPER

Pos No.	Parts No	Parts Name	Qty	Unit	Technical Data	Serial No (Start)	Serial No (End)	Remarks	Pages
10	36653850001	PUMP,HYDRAULIC	1						

# AT-146-1 42095100071 UPPER

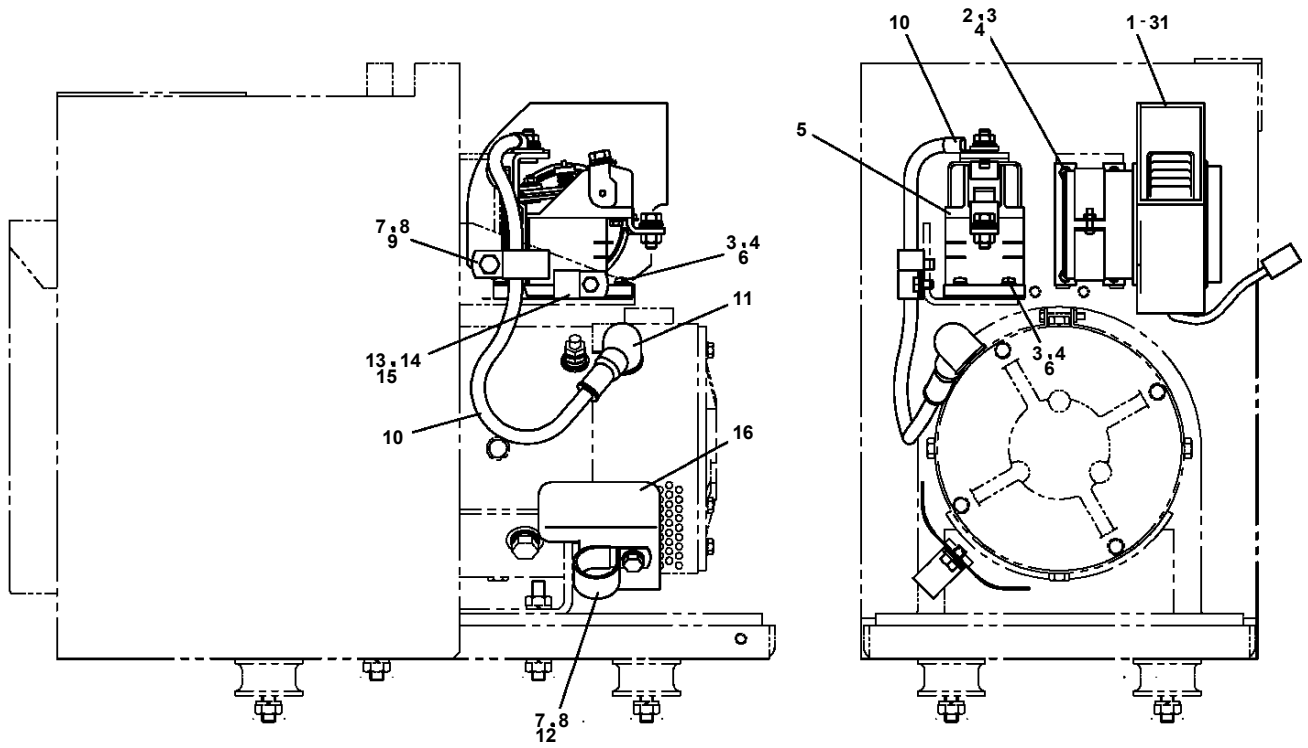
Pos No.	Parts No	Parts Name	Qty	Unit	Technical Data	Serial No (Start)	Serial No (End)	Remarks	P
2	42630841000	BRUSH,ROTARY JOINT	1						0
3	90101208022	BOLT	3		M8X22				
4	90302040801	WASHER,SPRING	3		8				
5	80720105016	PIN,SPRING	1		5X16				
21	53154004000	BUSH (THRUST)	1						
22	42630741100	BODY	1						
23	42630551200	CORE	1						
24	91531211000	PACKING	2						
25	91100211000	SEAL,RING	2						
26	82456101000	NIPPLE,GREASE	1		A-PT1/8				
27	82400000459	CAP	1						
100	42630840000	JOINT,ROTARY	1						

# AT-146-1 4209510071 UPPER

Pos No.	Parts No	Parts Name	Qty	Unit	Technical Data	Serial No (Start)	Serial No (End)	Remarks
1	36637495010	BODY,VALVE	1					
2	36637495020	VALVE,UNLOAD	1				227414	
	36637495200	VALVE,UNLOAD	1			227415	227476	
	36637495210	VALVE,UNLOAD	1			227477		
3	36637495030	VALVE,CONTROL	1					
4	36636655040	VALVE,CONTROL	4					
5	36634515060	BODY	1					
6	36637495040	BOLT,STUD	4					
7	90201200800	NUT	8		M8			
21	36637495050	BODY	1					
22	36637335120	PLUG	1		PF1/4			
23	91002801100	O-RING	1		1B P11			
24	91002802400	O-RING	1		1B P24			
25	91002905500	O-RING	6		1B G55			
31	36637495060	BODY	1					
32	36637495070	SPOOL	1					
33	36637545050	SPRING	1					
34	36634915280	PLUG	1					
35	91002800800	O-RING	2		1B P8			
36	36636005150	SOLENOID ASSY	1				227414	
37	36637495080	SOCKET	1					
38	36637495090	VALVE,UNLOAD	1				227476	
	36637495220	VALVE,UNLOAD	1			227477		
39	36643175050	FILTER	1					
40	36635175100	RING,RETAINING	1		8			
41	36630965100	SPRING	1					
42	36646325100	STOPPER	1					
43	91002801001	O-RING	1		1B P10A			
44	91002801600	O-RING	1		1B P16			
45	36637495100	CASE	1				227476	
	36637495230	CASE	1			227477		
46	36637495110	SCREW (ADJUSTING)	1					
47	14225101010	VALVE,REGULATOR	1					
48	36646005210	SPRING	1					
49	36633845061	O-RING	1		1B S16			
50	91002801500	O-RING	1		1B P15			
51	91002800700	O-RING	1		1B P7			
52	36646005230	RING,BACKUP	1					
53	36637495120	NUT	1					
54	36648615100	BOLT,HEXAGON SOCKET	3		M6X80			
55	36647205050	PLUG	2		NPT1-16			
56	36637335460	SOLENOID ASSY	1			227415		
63	56051331100	SEAL,OIL	10					
64	56051331120	COVER	5					
65	90131906015	BOLT,HEXAGON SOCKET	2		M6X15			
66	12435101180	RETAINER (SEAL)	9					
67	12435101170	RETAINER (SPRING)	2					
68	36630045140	SPRING	1					
69	36636435070	END,SPOOL	1					
70	36637495130	CASE	1					
71	90131906020	BOLT,HEXAGON SOCKET	2		M6X20			
73	36636435130	SWITCH,PUSH	1					
74	90303100401	WASHER,PLAIN	2		4			
75	90131904015	BOLT,HEXAGON SOCKET	2		M4X15			
76	36637495140	PISTON	1					
77	36637495150	PLUG	1					
78	91002801400	O-RING	6		1B P14			
79	19215101010	O-RING	2					
80	36637495160	SOCKET	1					
81	91000501500	O-RING	1		AS568-015			
82	36637495170	VALVE,CHECK	1					
83	56051331180	SPRING	1					
84	36637495180	PLUG	1					



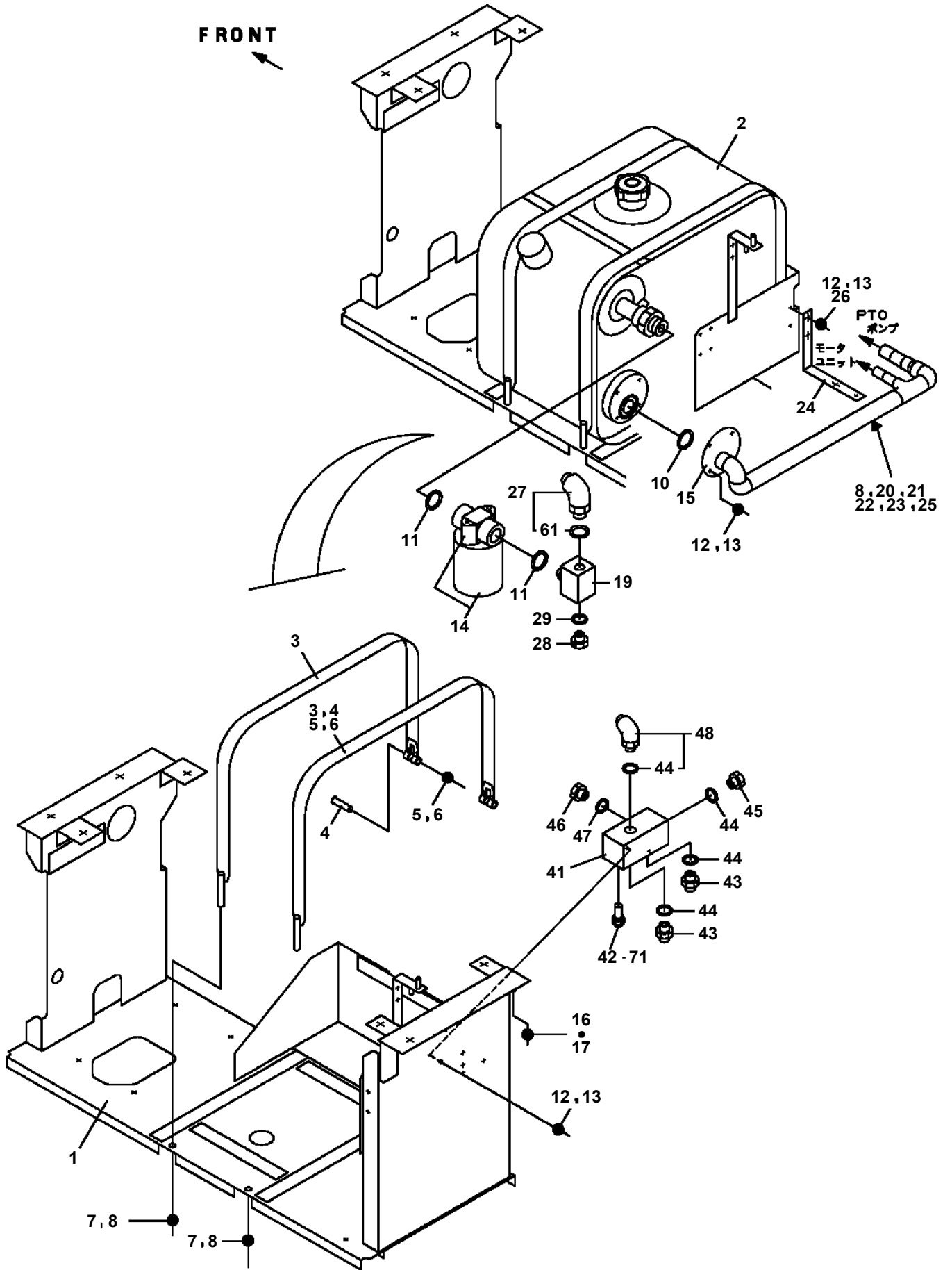
**AT-146-1 42095100071 UPPER**  
**PB1380156-00 POWER SUPPLY (MOTOR/WIRING)**



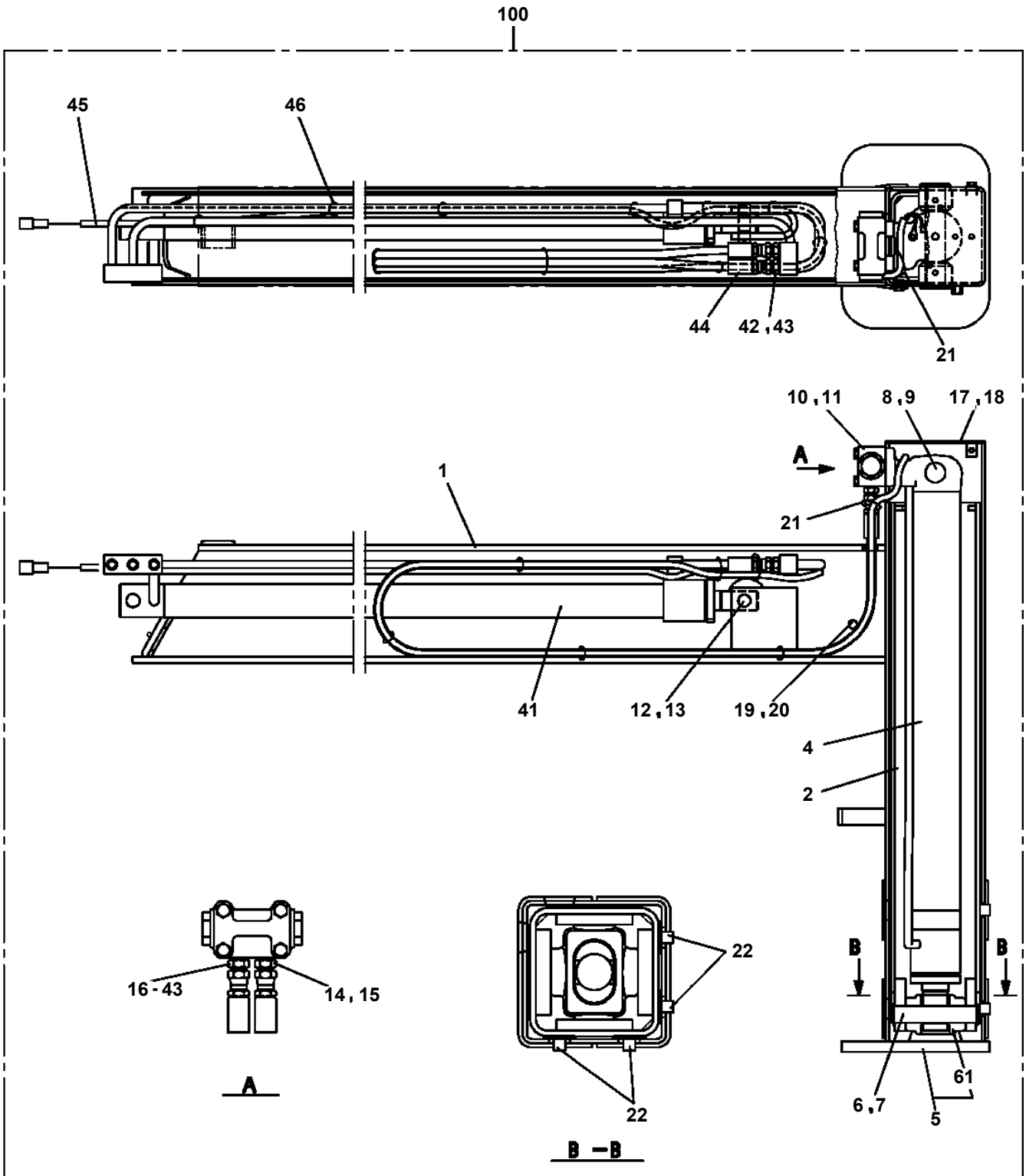
# AT-146-1 42095100071 UPPER

Pos No.	Parts No	Parts Name	Qty	Unit	Technical Data	Serial No (Start)	Serial No (End)
1	42421462000	BATTERY ASSY	2				227661
2	42421461100	SUPPORT	1				
3	90101212020	BOLT	2		M12X20		
4	42420082301	SUPPORT	1				
5	90303071201	WASHER,PLAIN	2		12		
6	90302041201	WASHER,SPRING	2		12		
7	42421353100	CABLE ASSY	1				
8	91810132530	FASTENER	20				
9	82100001802	TUBE,CORRUGATE	2	M	10		
10	91850210545	FASTENER	2		L=545		227661
12	82100001806	TUBE,CORRUGATE	2	M	22		227661
13	42738981000	TANK ASSY (BATTERY,WATER)	1				
	42738981000	TANK ASSY (BATTERY,WATER)	1				227661
14	42420082101	BATTERY ASSY	2		24V	227662	
15	42421893000	BATTERY ASSY (WATER REFILLING)	2				
31	42421467510	SENSOR	2				227661
41	42420087510	BATTERY	24		2V	227662	
42	42420087540	SENSOR (BATTERY FLUIDLEVEL)	2			227662	
43	42420087530	LAMP ASSY (RED+GREEN LAMP)	2			227662	
44	42420397540	CAP (WITH FLOAT)	22			227662	

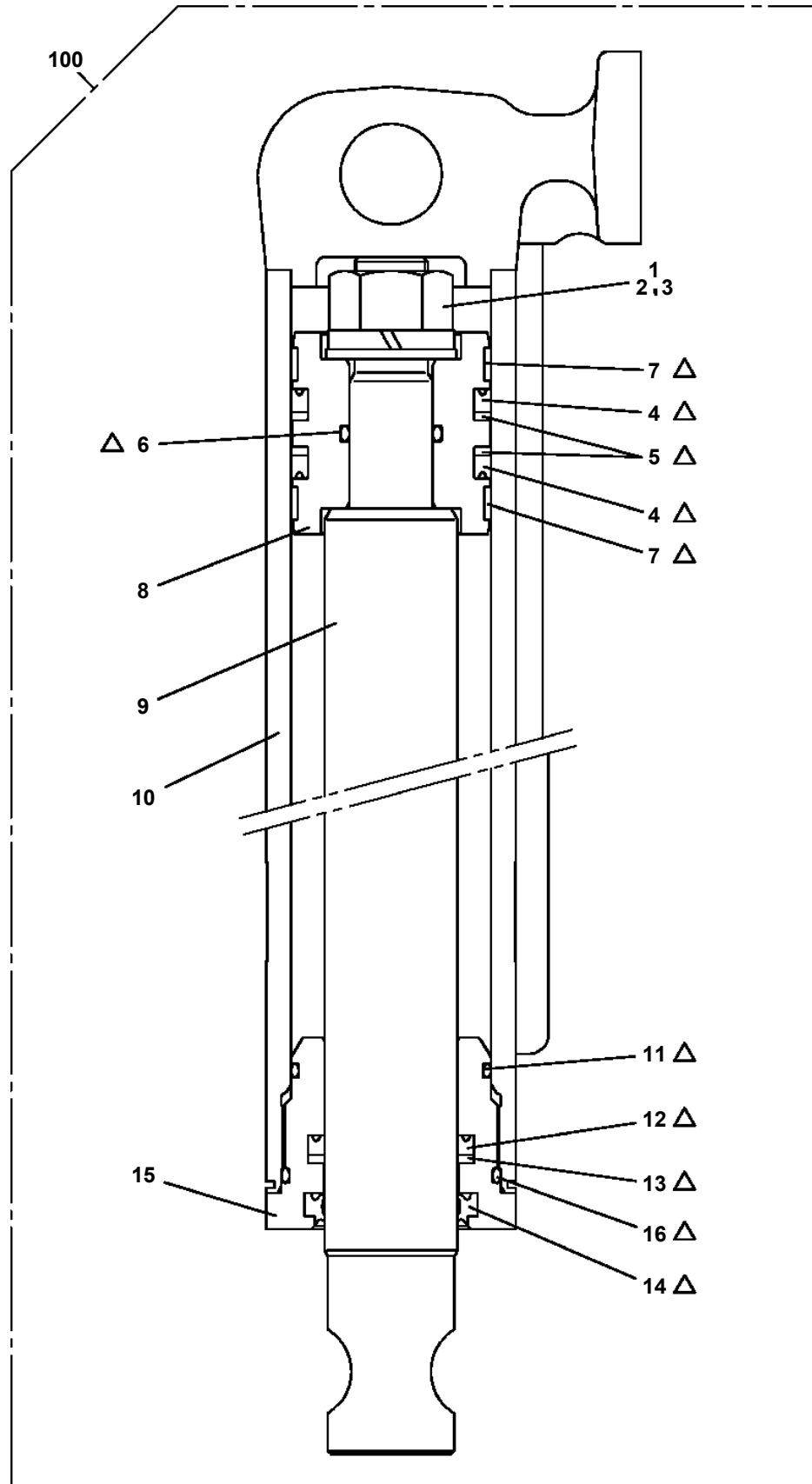
**AT-146-1 42095100071 UPPER  
PB1411366-00 PIPING,LOWER (TANK,OIL)**



AT-146-1 42095100071 UPPER  
PC1010957-00 OUTRIGGER (FRONT,L/INNER CASE)



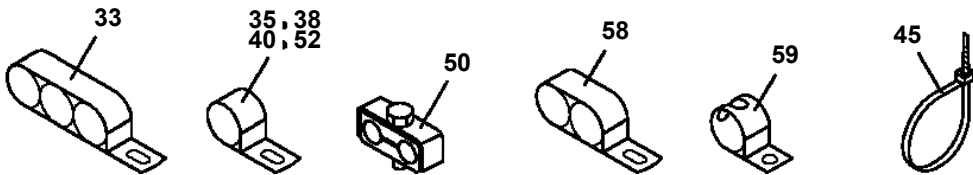
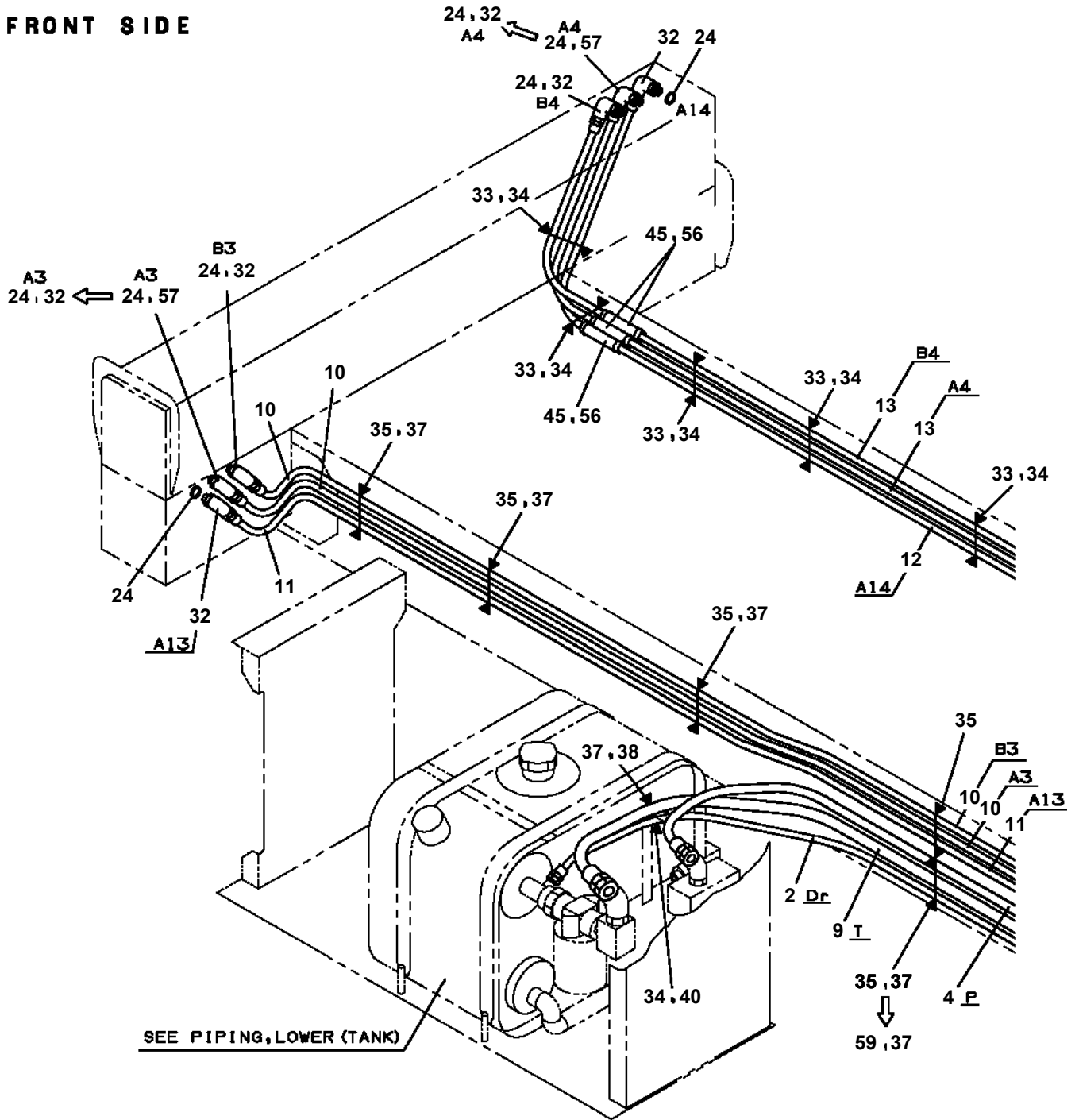
AT-146-1 42095100071 UPPER  
PC1030346-00 CYLINDER,JACK



Δ:PACKING SET KEY NO.50 (KEY NO.4,5,6,7,11,12,13,14,16)

**AT-146-1 42095100071 UPPER  
PC1200477-03 PIPING,OUTRIGGER**

**FRONT SIDE**



# AT-146-1 42095100071 UPPER

Pos No.	Parts No	Parts Name	Qty	Unit	Technical Data	Serial No (Start)	Serial No (End)	Remarks	Pages
1	42478281001	SUPPORT	1						
2	90101208016	BOLT	6		M8X16				
3	90302040801	WASHER,SPRING	6		8				
4	90101210020	BOLT	4		M10X20				
5	90302041001	WASHER,SPRING	4		10				
6	82100002040	CLAMP	1		WE15				
7	90101206012	BOLT	1		M6X12				
8	90302040601	WASHER,SPRING	1		6				
10	42478282001	COVER ASSY	1						
11	90201201000	NUT	4		M10				
12	42478280010	PLATE,CAUTION	1						
13	42478280020	PLATE,NAME	1						
14	90303070601	WASHER,PLAIN	1		6				
16	42392191110	PLATE,NAME	1						
31	42477922000	CHARGER ASSY	1						
32	42507050100	CABLE	1		L=5000				
33	42477921200	CABLE	1		L=10000				
51	90101206020	BOLT	12		M6X20				
52	82464107815	HINGE	2						
53	90302040601	WASHER,SPRING	12		6				
54	37000575480	PLATE	4						
55	42420385020	PLATE	1						
56	80172804012	SCREW,MACHINE	6		M4X12				
57	90302510401	WASHER,SPRING	6		4				
58	82466124001	CATCH	1						
59	42420385010	PLATE	1						
60	42478282101	COVER	1						
61	42478282500	COVER	1						
71	82400000202	GROMMET	1						

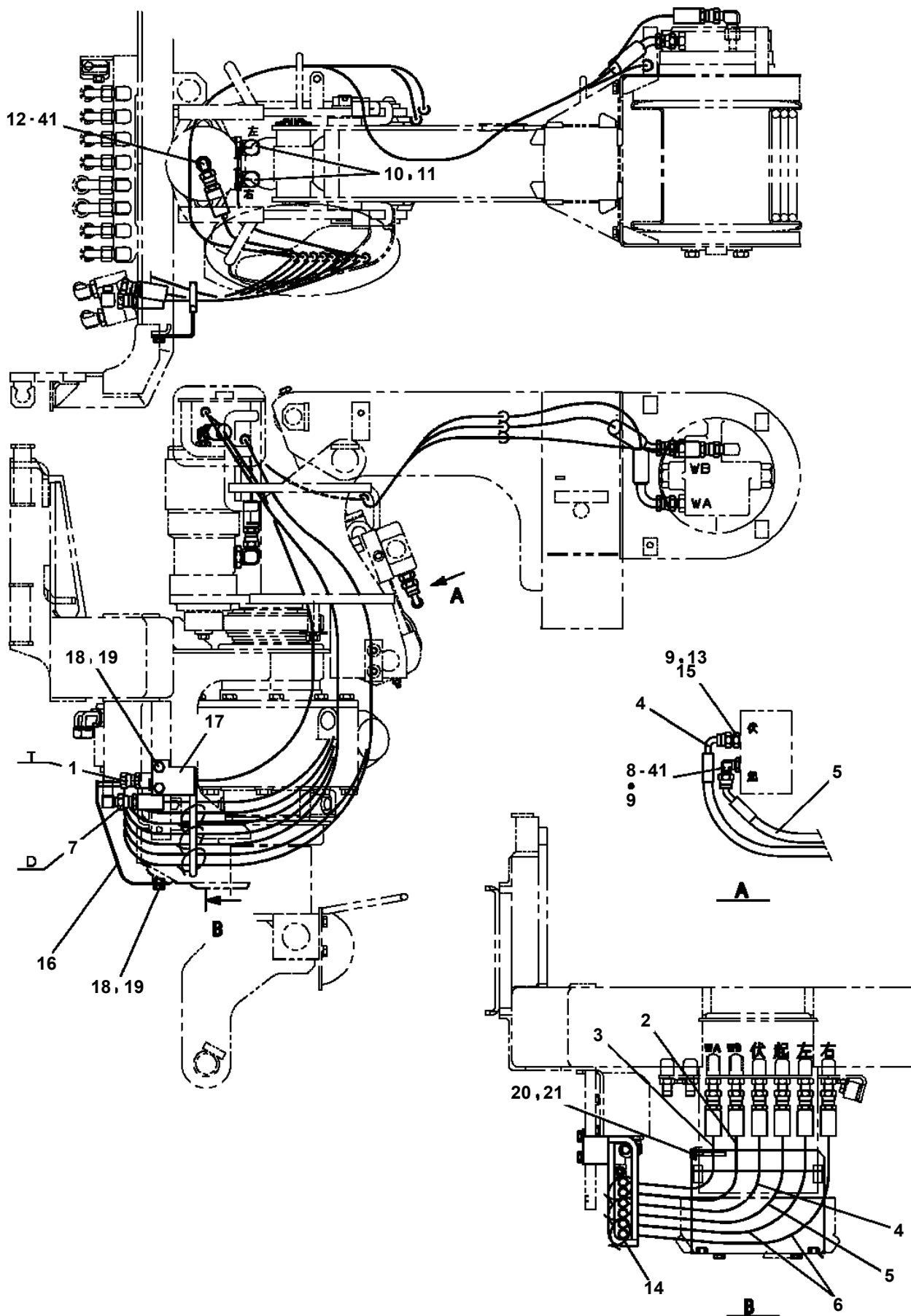
# AT-146-1 42095100071 UPPER

Pos No.	Parts No	Parts Name	Qty	Unit	Technical Data	Serial No (Start)	Serial No (End)
2	36081560000	REDUCER,SWING SPEED	1				
3	90171118070	BOLT (DACRO)	3		M18X70		
4	90303501805	WASHER,PLAIN	6		18		
5	90201781800	NUT (DACRO)	3		M18		
6	90171212035	BOLT (DACRO)	2		M12X35		
7	90710012400	SCREW,SET	2		M12X40		
8	90203201200	NUT	4		M12		
9	90172112035	BOLT,HEXAGON SOCKET	2		M12X35		
10	90302041201	WASHER,SPRING	2		12		
11	36662590000	MOTOR,HYDRAULIC (SWING)	1				
12	91002908500	O-RING	1		1B G85		
31	37002302450	BEARING,SWING (NSK)	1				
32	37002303560	BEARING,SWING (NIHON MONORACE)	1				
33	37002304750	BEARING,SWING (KOYO)	1				
41	37002399010	SEAL (UP,DOWN-SIDE SET)	1				
42	82456201000	NIPPLE,GREASE	6		A-TYPE PT1/8		

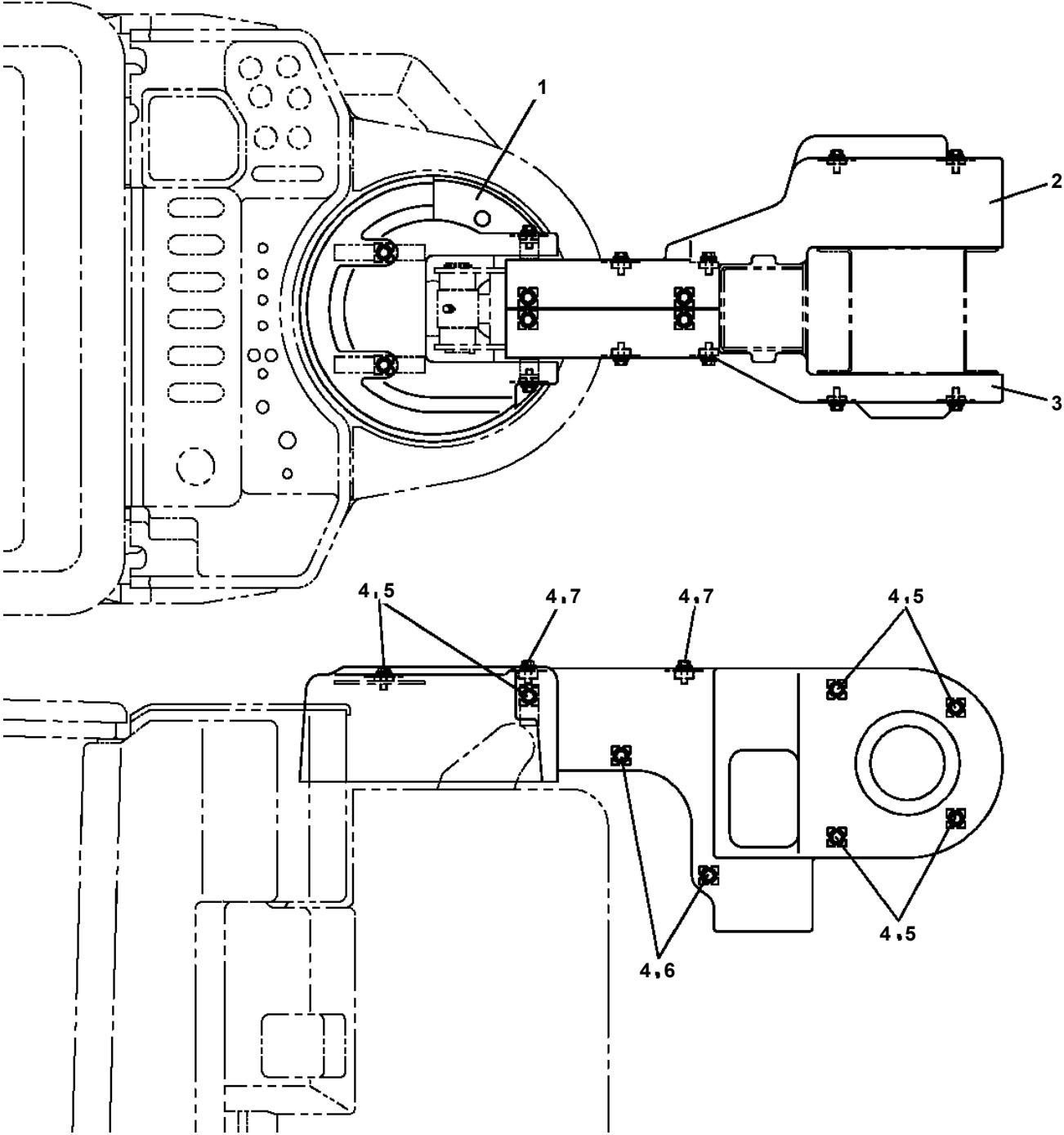
# AT-146-1 4209510071 UPPER

Pos No.	Parts No	Parts Name	Qty	Unit	Technical Data	Serial No (Start)	Serial No (End)	Remarks
1	36073825050	DRUM	1					
5	36072495040	SHAFT	1					
6	36073825140	GEAR,INPUT	1					
10	36072495080	BUSH	1					
12	36072495090	RING,RETAINING	1					
13	36072495100	RING	1					
14	36072495110	DISTANCE PIECE	2					
15	36073825060	SEAL,OIL	1					
16	36072495130	SEAL,OIL	1					
17	36072495140	PIN	26					
18	36073825030	PIN	2					
19	36073825040	BOLT,HEXAGON SOCKET	4					
20	36072495150	BEARING,BALL	1					
21	36072495160	BEARING,BALL	1					
24	36072495170	RING,RETAINING	2					
25	80601110170	RING,RITAINING	4		S17			
26	36072495180	RING,RETAINING	1					
27	91002800900	O-RING	1		1B P9			
30	91001012500	O-RING	1		S125			
33	80316030060	PLUG	2		PT3/8			
34	36072495190	ORIFICE	1					
102	36072495220	SHAFT	1					
103	36072495230	PLATE,THRUST	1					
104	36072495240	BLOCK,CYLINDER	1					
107	36661055260	PLATE (RETAINER)	1					
108	36661055270	PLATE,THRUST	1					
109	36072495260	PLATE,TIMING	1					
110	36072495270	WASHER	2					
112	36073825090	PISTON	1					
113	36072495290	SPRING	2					
114	36072495300	SPRING	1					
115	36661055350	PLATE (FRICTION)	2					
116	36661055360	PLATE (MATING)	2					
118	91002910500	O-RING	1		1B G105			
119	91002912000	O-RING	1		1B G120			
120	91002801200	O-RING	1		1B P12			
121	91002802200	O-RING	2		1B P22			
123	36072495310	PLUG	2					
124	36073825100	STOPPER	1					
125	36072495330	STOPPER	1					
126	36072495340	SPRING	2					
127	36073825110	SPRING	1					
128	36072495350	THROTTLE	2					
129	36661055400	PLUG	1					
130	36661055410	VALVE	1					
131	36661055420	SPRING	1					
132	36661055440	SEAL,OIL	1		15Z-17X35X8			
133	36663495450	BEARING,BALL	1					
134	36072495390	BEARING,BALL	1					
135	36072495400	PIN (STRAIGHT)	2		5X12			
136	80730080020	PIN (STRAIGHT)	2		8X20			
137	36073825120	ROLLER,NEEDLE	3					
138	36072495370	RING,RETAINING	1					
139	90131908025	BOLT,HEXAGON SOCKET	6		M8X25			
143	36661055450	RING,RETAINING	1					
300	36073825010	REDUCER ASSY	1					
310	36073825020	SPINDLE KIT	1					
320	36072495030	GEAR ASSY (RV)	1					
330	36072495070	GEAR,SPUR (2PIECES)	1					
400	36073825070	MOTOR ASSY	1					
410	36073825080	FLANGE SET(REAR)	1					
420	36072495250	PISTON KIT	1					
490	36073825130	SEAL KIT	1					

**AT-146-1 42095100071 UPPER  
PF1200314-00 PIPING,WINCH**



**AT-146-1 42095100071 UPPER  
PF1350066-00 WINCH,JIB (FRP COVER)**

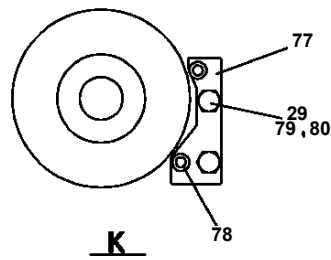
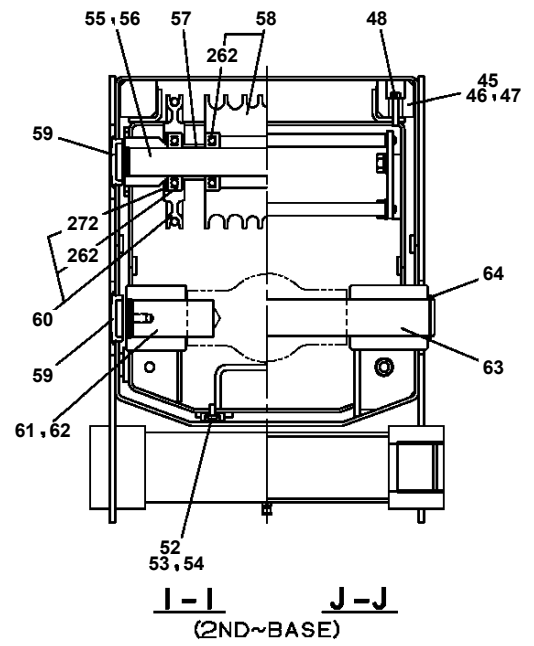
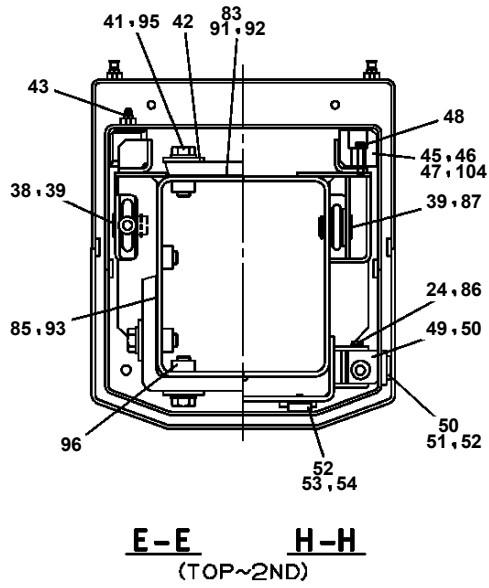


# AT-146-1 42095100071 UPPER

Pos No.	Parts No	Parts Name	Qty	Unit	Technical Data	Serial No (Start)	Serial No (End)	Remarks	Pages
1	42220691000	SUPPORT	1				227949		
	42220691001	SUPPORT	1			227950			
2	42220692000	JIB ASSY	1				227955		
	42220692001	JIB	1			227956	229146		
	42220692002	JIB	1			229147			
3	80601110350	RING,RITAINING	2		S35				
4	37000188130	PIN	1						
5	37001002260	SHEAVE	1						
6	90101216125	BOLT	1		M16X125				
7	90303071601	WASHER,PLAIN	2		16				
8	90302041601	WASHER,SPRING	1		16				
9	90240201600	NUT,CAP	1		M16				
10	37000314520	SPACER	2						
11	42220690100	PLATE	1		T=1.0				
12	42220690200	PLATE	1		T=2.0				
13	42220041050	PLATE,NAME	2						
31	80516006207	BEARING,BALL	1						

AT-146-1 42095100071 UPPER  
PG1010727-02 BOOM

ブーム後端部  
BOOM END  
(TOP~BASE)



# AT-146-1 4209510071 UPPER

Pos No.	Parts No	Parts Name	Qty	Unit	Technical Data	Serial No (Start)	Serial No (End)
1	81408000130	PIPE,STEEL	4	M	10X1.8T		
2	81408000130	PIPE,STEEL	4	M	10X1.8T		
3	81408000241	PIPE,STEEL	4	M	18X1.9T		
4	81408000210	PIPE,STEEL	4	M	15X2.0T		
5	81408000160	PIPE,STEEL	8	M	12X1.4T		
6	80400160201	JOINT	2				
7	37002458200	HOSE	2		L=1850		
8	80320010090	FITTING	1		KUD15-030N		
9	80320010080	FITTING	1		KUD12-030N		
10	80320010140	FITTING	1		KUD18-040N		
11	37000578940	PLATE	4		T=3.0		
12	37002471300	HOSE	4		L=10020		
13	80400160127	JOINT	4				
14	91002801100	O-RING	4		1B P11		
15	37002469220	HOSE	2		L=9700		
16	80430620600	JOINT (WITH O-RING)	1		L,G3/8-G3/8		
17	42345161000	JOINT	1				
18	42343740100	COVER	1				
19	80192486014	SCREW,MACHINE (WITH WASHER)	4		M6X14		
20	90101210020	BOLT	10		M10X20		
21	90302041001	WASHER,SPRING	10		10		
22	42345162000	JOINT	1				
23	80320020080	FITTING	1		KUF12-030N		
24	80320020090	FITTING	1		KUF15-030N		
25	80320020050	FITTING	2		KUF10-020N		
26	37000919790	JOINT	2				
27	91002801400	O-RING	2		1B P14		
28	42344970500	CLAMP	3				
29	42345860100	SUPPORT	1				
30	90180208020	BOLT,BUTTON	2		M8X20		
31	90302040801	WASHER,SPRING	16		8		
32	90171108020	BOLT	4		M8X20		
33	42344970200	ROLLER ASSY	1				
34	42344970600	CLAMP	1				
35	37000556580	PLATE	2				
36	42344970701	CLAMP	1				
37	42344971000	SHEAVE ASSY (MARUCH)	1				
39	90101208045	BOLT	2		M8X45		
40	90101208012	BOLT	2		M8X12		
41	42344970800	SUPPORT	1				
42	37000714020	CLAMP ASSY	1		12X2		
43	37000573430	PLATE	4		T=1		
44	90203201200	NUT	4		M12		
45	90101208020	BOLT	6		M8X20		
46	37000312510	SPACER	2		L=27.5		
47	90303071201	WASHER,PLAIN	4		12		
48	90302041201	WASHER,SPRING	2		12		
49	42344971500	BLADE,WIPER	1				
50	37000564680	PLATE	1				
51	37000576570	PLATE	1				
52	90303070801	WASHER,PLAIN	2		8		
53	42345860200	SUPPORT	1				
75	80316070060	PLUG	2		PF3/8		
76	91002801400	O-RING	5		1B P14		
91	42344970210	SUPPORT	1				
92	37000174180	PIN	1				
93	42340234240	ROLLER	3		W=9		
94	44340392420	ROLLER	4				
95	90303100801	WASHER,PLAIN	14		8		
96	80136320016	PIN,SPLIT	2		2X16		
111	42344971100	SHEAVE (MARUCH)	1				
112	42344971110	PIN	1				
113	80136363050	PIN,SPLIT	2		6.3X50		

# AT-146-1 4209510071 UPPER

Pos No.	Parts No	Parts Name	Qty	Unit	Technical Data	Serial No (Start)	Serial No (End)	Remarks	Pages
1	42442011000	COVER ASSY	1						
2	42442012000	COVER	1						
3	42442012100	COVER	1						
4	42442150100	COVER	1						
6	42442012600	COVER ASSY	1						
7	42442012800	COVER ASSY	1						
8	42442013000	COVER	1						
9	42442013100	COVER	1						
10	90186208014	BOLT,FLANGE	26		M8X14				
12	90303070801	WASHER,PLAIN	26		8				
13	82100000952	GROMMET	4						
14	90101206014	BOLT	2		M6X14				
15	90302040601	WASHER,SPRING	14		6				
16	90303070601	WASHER,PLAIN	16		6				
17	90101206012	BOLT	14		M6X12				
18	42442014001	COVER ASSY	1						
31	42442011100	COVER	1				227407		
	42442011101	COVER	1			227408			
32	42442011201	COVER	1				227407		
	42442011202	COVER	1			227408			
33	37000166900	PIN	1						
34	80136320016	PIN,SPLIT	2		2X16				
35	90303070801	WASHER,PLAIN	2		8				
36	37001109010	ROLLER	1						
37	90101204014	BOLT	8		M4X14				
38	90302040401	WASHER,SPRING	12		4				
39	82464114603	HINGE	2						
40	90201200400	NUT	8		M4				
55	82400000200	GROMMET	1	M	KG-012,L=250				
63	82400000309	GROMMET	1	M	L=1000				
71	42442012610	COVER	1						
72	42442012650	SUPPORT	2						
73	42442012660	BLADE	2						
74	80172305010	SCREW,MACHINE	4		M5X10				
75	90302040501	WASHER,SPRING	4		5				
81	42442012810	COVER	1						
93	42442014300	BLADE	1						
111	42442014400	SUPPORT	1						
112	42442014500	SUPPORT	1						
114	80172304010	SCREW,MACHINE	4		M4X10				
132	82400000311	GROMMET	2	M	L=1000				

# AT-146-1 42095100071 UPPER

Pos No.	Parts No	Parts Name	Qty	Unit	Technical Data	Serial No (Start)	Serial No (End)	Remarks
1	44550527580	SWITCH,MICRO	1					
2	44550527570	COVER	1					
3	44350247560	SPRING (FOR PEDAL)	1					
4	82109901050	PEDAL	1					
5	82109905010	PACKING	1					
6	44350247580	PLATE (WITH SCREW)	1					
22	82116920408	CONNECTOR	1					
23	82122910100	CAP	1					
100	42476260000	FOOT SWITCH (OPTION)	1					

# AT-146-1 42095100071 UPPER

Pos No.	Parts No	Parts Name	Qty	Unit	Technical Data	Serial No (Start)	Serial No (End)
100	42651890300	HARNESS (FOR DETECTOR,O/R LENGTH)	1				

# AT-146-1 42095100071 UPPER

Pos No.	Parts No	Parts Name	Qty	Unit	Technical Data	Serial No (Start)	Serial No (End)	Remarks	Pages
100	42612853350	HARNESS	1						

# AT-146-1 42095100071 UPPER

Pos No.	Parts No	Parts Name	Qty	Unit	Technical Data	Serial No (Start)	Serial No (End)	Rem
4	82105220112	SWITCH,TOGGLE	1					
6	82197518114	CAP (MATSUSHITA/BLACK)	1					
	82197518119	CAP (PLUS ONE MFG./BLACK)	1					
7	82100001382	SWITCH,PUSH (BLACK)	1					
21	82100001169	BUTTON (BLACK)	1					
100	42473710011	HARNESS	1					

**AT-146-1 42095100071 UPPER**

Pos No.	Parts No	Parts Name	Qty	Unit	Technical Data	Serial No (Start)	Serial No (End)	Remark
1	36663085010	SCREW	7					
2	36663085020	GEROLLER	1					
3	36663085030	SHAFT,DRIVING	1					
4	36660405050	CAP (END)	1					
5	36663065050	PLATE (SPACER)	1					
7	36660405070	BALL	2					
9	36663085040	SHAFT (OUTPUT)	1					
10	36661585020	KEY	1		8X7X31.5			
11	36660375050	RACE (BEARING)	1					
12	36660375060	BEARING,THRUST NEEDLE	1					
13	36661585030	SCREW	4					
21	36660375200	PIN,SPRING	4					
22	36660375160	PLUG (CAP)	1					
24	36663085050	SPACER	1					
41	36662755020	SEAL KIT	1					
100	36663080000	MOTOR,HYDRAULIC	1					

# AT-146-1 42095100071 UPPER

Pos No.	Parts No	Parts Name	Qty	Unit	Technical Data	Serial No (Start)	Serial No (End)	Remarks	Pages
4	36606675010	PLUG	2				228585		
	36606675012	PLUG	2			228586			
5	91002902500	O-RING	4		1B G25				
6	36606675020	SPRING	2						
7	36606405070	SPACER	2						
8	80316090020	PLUG	2		KKT PT1/8				
11	36606669010	POPPET ASSY	2						
100	36606670000	VALVE,RELIEF	1						

# AT-146-1 42095100071 UPPER

Pos No.	Parts No	Parts Name	Qty	Unit	Technical Data	Serial No (Start)	Serial No (End)	Remarks	Pages
11	91001101200	O-RING	2		1A P12				
23	36624110300	SEAT	2						
24	36624110400	SPRING	2						
26	36624110600	PISTON	1						
28	91001101800	O-RING	2		1A P18				
30	36624111000	PACKING	2						
31	36624111100	O-RING	1		P12				
41	36624110100	BODY	1						
42	36624110200	PLUG	2						
45	36624110501	PLUNGER	2						
100	36624110000	VALVE,CHECK	1						

# AT-146-1 42095100071 UPPER

Pos No.	Parts No	Parts Name	Qty	Unit	Technical Data	Serial No (Start)	Serial No (End)	Remarks	Pa
2	90101210090	BOLT	2		M10X90				
3	90201201000	NUT	2		M10				
4	90302041001	WASHER,SPRING	2		10				
5	90303071001	WASHER,PLAIN	2		10				
6	42345722100	SUPPORT	1						
7	90101208016	BOLT	2		M8X16				
8	90303070801	WASHER,PLAIN	2		8				
9	90302040801	WASHER,SPRING	2		8				
31	80430620400	JOINT	2						
32	80430620600	JOINT (WITH O-RING)	2		L,G3/8-G3/8				
33	36625760000	VALVE,CHECK	1						
41	91002801100	O-RING	2		1B P11				
51	91002801400	O-RING	2		1B P14				

000

# AT-146-1 42095100071 UPPER

Pos No.	Parts No	Parts Name	Qty	Unit	Technical Data	Serial No (Start)	Serial No (End)	Remarks
1	36672285010	HEAD ASSY	1					
2	36670109511	FILTER,CARTRIDGE	1					
10	36672280000	FILTER,OIL (YAMASHIN)	1					

CLICK HERE TO **DOWNLOAD** THE COMPLETE MANUAL

- Thank you very much for reading the preview of the manual.
- You can download the complete manual from: [www.heydownloads.com](http://www.heydownloads.com) by clicking the link below



- Please note: If there is no response to CLICKING the link, please download this PDF first and then click on it.

CLICK HERE TO **DOWNLOAD** THE COMPLETE MANUAL

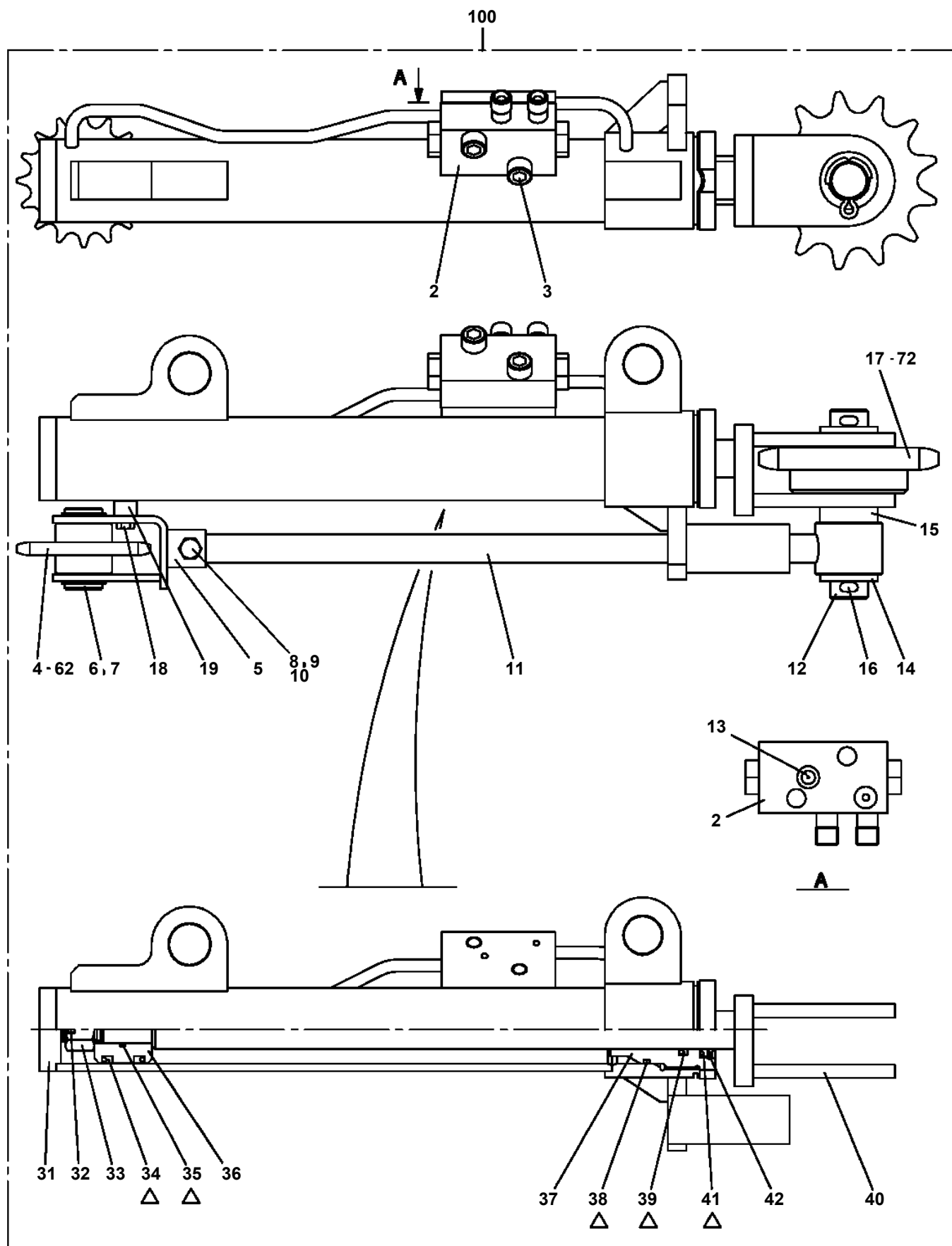
# AT-146-1 42095100071 UPPER

Pos No.	Parts No	Parts Name	Qty	Unit	Technical Data	Serial No (Start)	Serial No (End)	Remarks	Pages
1	42500280100	GUIDE	1						
2	90183106015	BOLT	5		M6X15				

# AT-146-1 4209510071 UPPER

Pos No.	Parts No	Parts Name	Qty	Unit	Technical Data	Serial No (Start)	Serial No (End)	Re
1	37002471920	HOSE	1		L=1580			
2	37002409150	HOSE	1		L=1500			
3	37002471930	HOSE	1		L=1550			
5	90101208014	BOLT	16		M8X14			
6	90302040801	WASHER,SPRING	17		8			
8	42345020700	SUPPORT	1					
9	42345020200	SUPPORT	1					
11	42345020600	SUPPORT	1					
13	37002474410	HOSE	1		L=900			
14	80430620400	JOINT	2					
15	37002468280	HOSE	1		L=800			
16	80481304024	JOINT	2					
17	91002801800	O-RING	2		1B P18			
18	37002460360	HOSE	2		L=780			
19	37002471940	HOSE	1		L=1150		227370	
	37002471950	HOSE	1		L=1120	227371		
20	37002471950	HOSE	1		L=1120		227370	
	37002479570	HOSE	1		L=1090	227371		
21	37002471960	HOSE	3		L=1090			
22	37002471970	HOSE	3		L=1040			
23	37000713180	CLAMP ASSY	2		15X2			
24	37000714020	CLAMP ASSY	2		12X2			
25	37000714080	CLAMP ASSY	1		12X3			
26	91810132530	FASTENER	32					
27	81408000160	PIPE,STEEL	1	M	12X1.4T			
28	81408000160	PIPE,STEEL	1	M	12X1.4T			
29	80320020080	FITTING	2		KUF12-030N			
30	37002464900	HOSE	2		L=430			
31	91002801400	O-RING	2		1B P14			
32	80456120610	JOINT,SELF SEALING (PLUG)	1					
33	80456110610	JOINT,SELF SEALING (SOCKET)	1					
34	37002425870	HOSE	1		L=600			
35	37002471980	HOSE	1		L=520			
36	82100002040	CLAMP	1		WE15			
37	90201200800	NUT	1		M8			
38	82100001735	SLEEVE	4					
39	42310040050	ROPE (TETORON)	2					
40	91810130230	FASTENER	2					
41	82100001412	TUBE,SPIRAL	1	M	SE-12BK			
46	37002471990	HOSE	1		L=1100			
47	37002470800	HOSE	1		L=1050			
48	42345020500	PLATE	1		T=2.0			
49	90101208040	BOLT	2		M8X40			
50	90101208035	BOLT	4		M8X35			
51	90101206010	BOLT	3		M6X1.0			
52	90302040601	WASHER,SPRING	3		6			
71	42345021200	SUPPORT	1					
72	37000928450	JOINT	6					
73	37000928420	JOINT	2					
74	37001600810	NUT	8		PF1/4			
81	42345022100	JOINT	1					
82	80400160127	JOINT	3					
83	80400160129	JOINT	2					
84	80430620400	JOINT	1					
85	80430620600	JOINT (WITH O-RING)	3		L,G3/8-G3/8			
86	80316070040	PLUG	1		PF1/4			
88	91002801100	O-RING	9		1B P11			
89	91002801400	O-RING	15		1B P14			
90	80481302020	JOINT	1		G1/4-G1/4			
101	37000908720	JOINT (WITH O-RING)	2		PF1/2-PF3/8			
102	37000928370	JOINT	1		S,G1/2-G1/2			
103	91002801800	O-RING	4		1B P18			
104	37000908730	JOINT (WITH O-RING)	4		L,G3/8-G1/4			

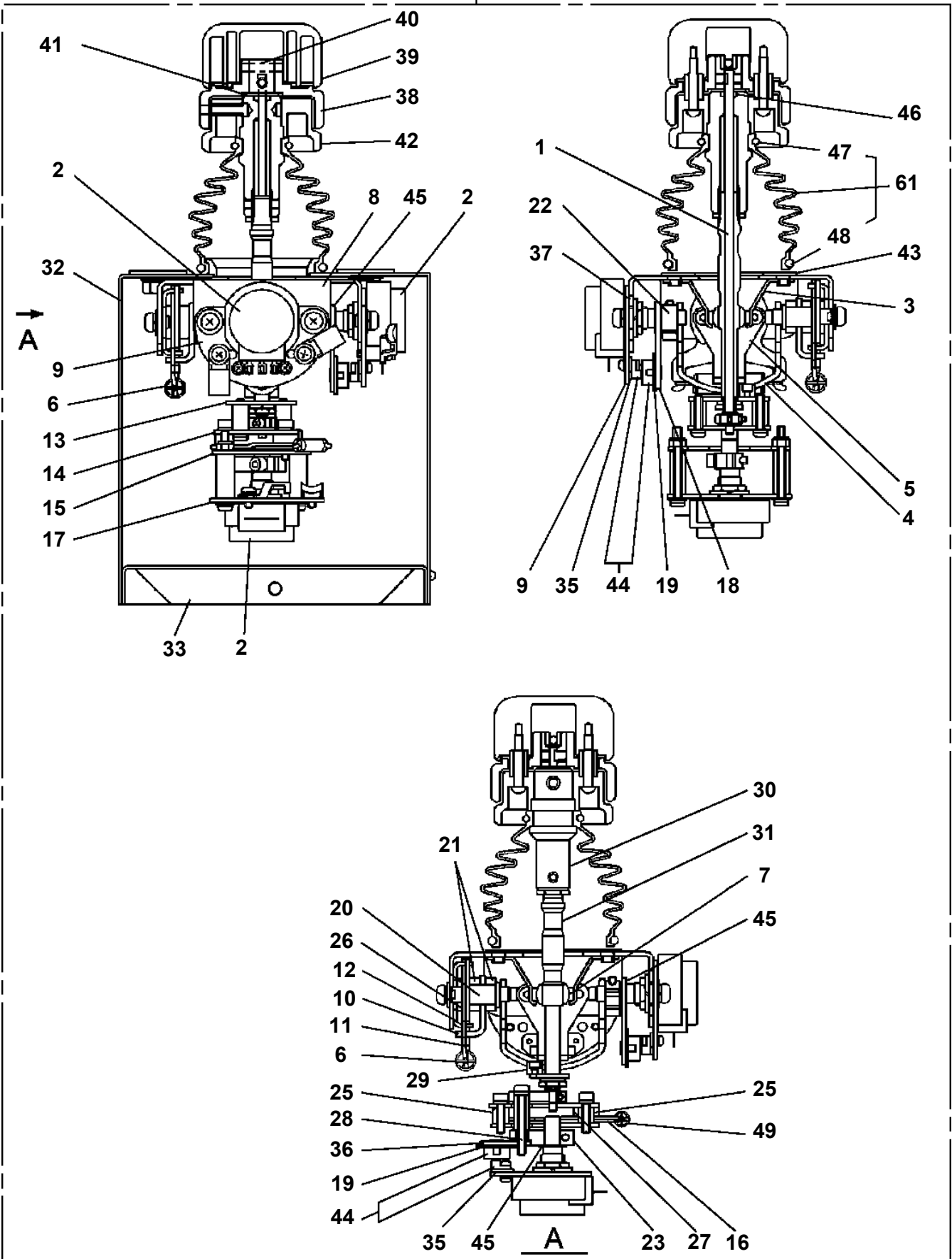
**AT-146-1 42095100071 UPPER  
PJ3340007-00 CYLINDER,LIFT**



△:PACKING SET KEY NO.51 (KEY NO.34,35,38,39,41)

AT-146-1 42095100071 UPPER  
 PL1020056-02 LEVER, CONTROL

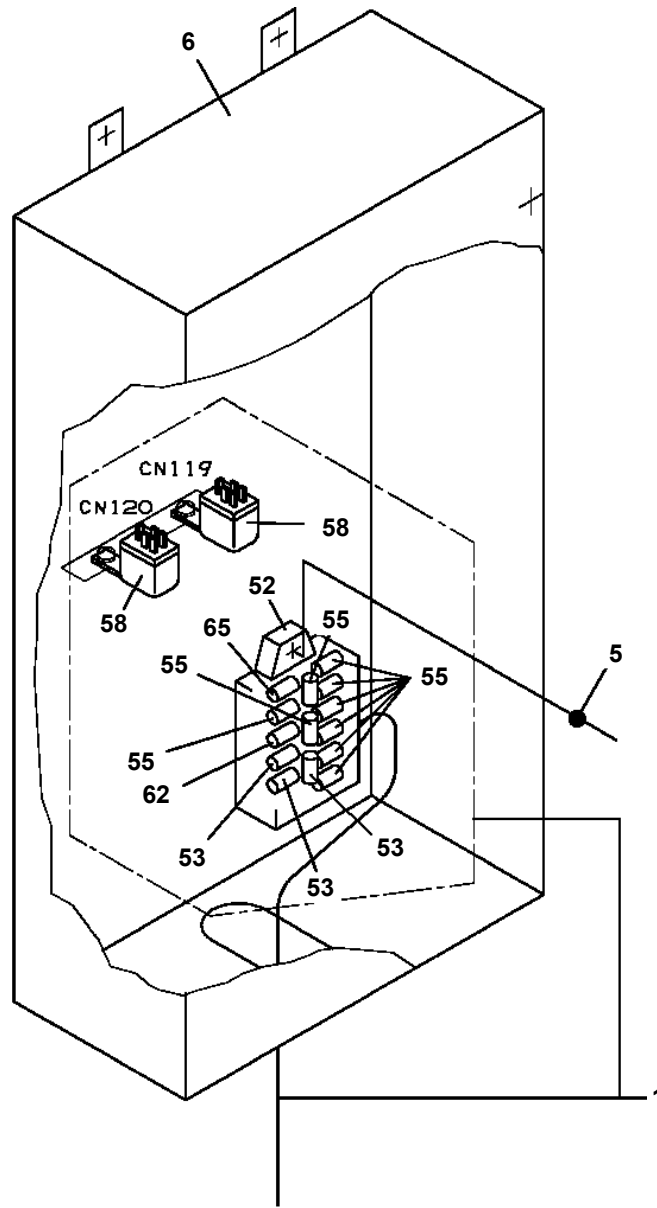
100



# AT-146-1 4209510071 UPPER

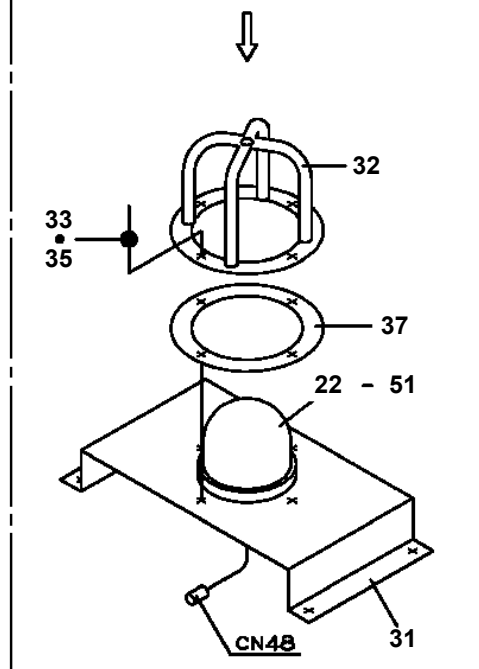
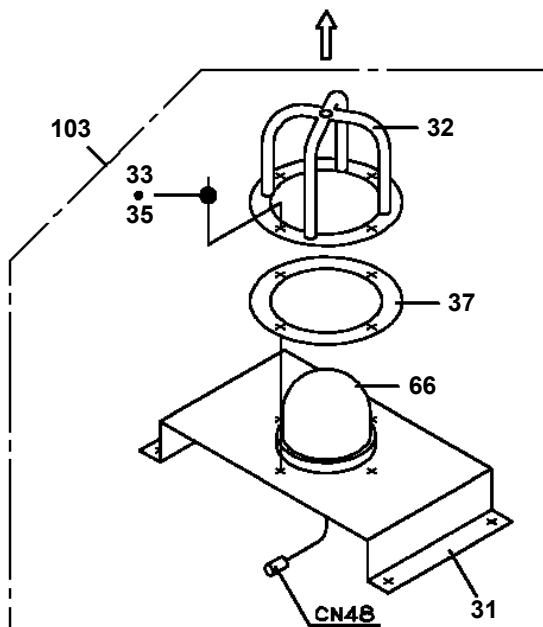
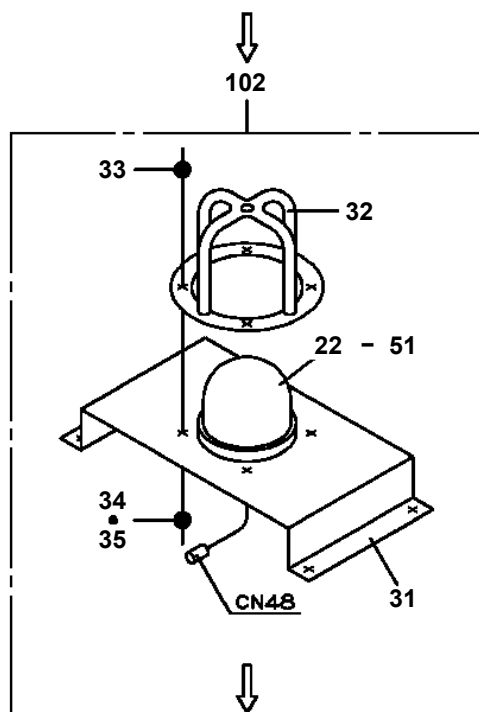
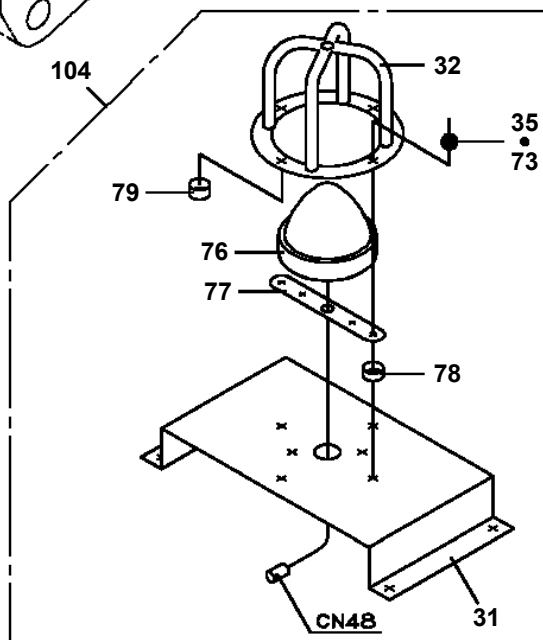
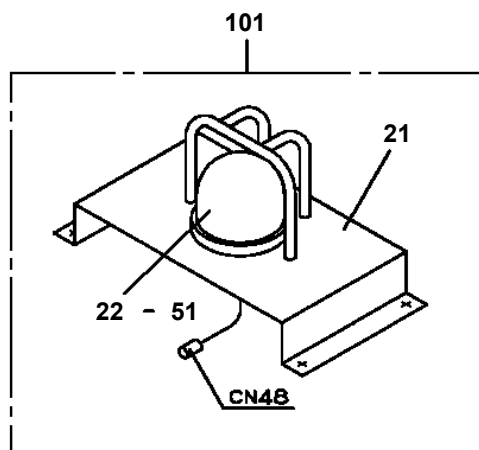
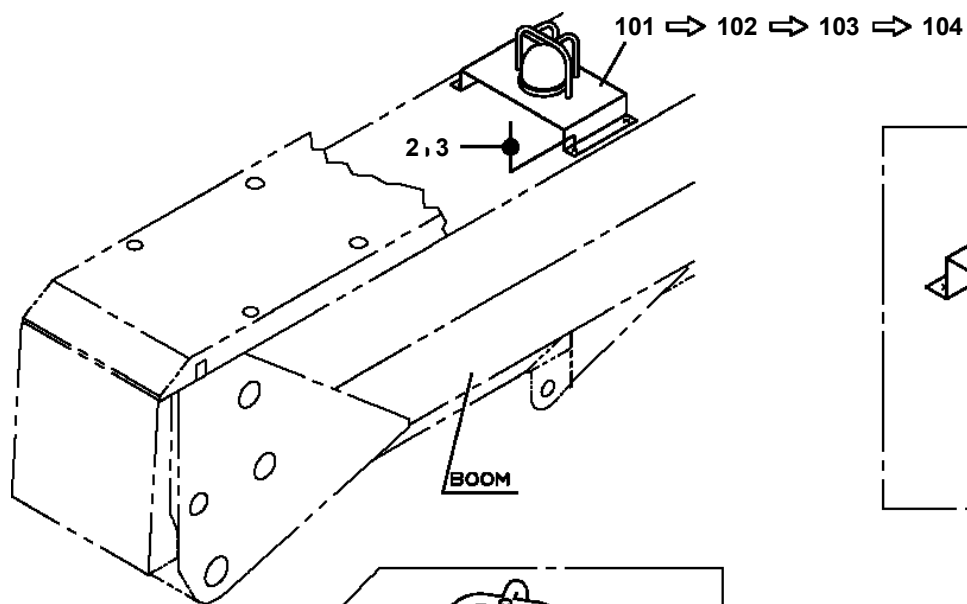
Pos No.	Parts No	Parts Name	Qty	Unit	Technical Data	Serial No (Start)	Serial No (End)	Remarks
1	42352350100	HARNESS	1		L=7000			
2	37000300720	SLEEVE	3		12-10			
3	42353340101	SUPPORT	1					
4	42352350300	HARNESS	1					
5	42353341001	TERMINAL ASSY	1					
8	90171108016	BOLT	2		M8X16			
9	90302040801	WASHER,SPRING	2		8			
11	42352350400	HARNESS	1					
12	91810130240	FASTENER	20					
13	90171110025	BOLT	4		M10X25			
14	90302041001	WASHER,SPRING	6		10			
15	90302040601	WASHER,SPRING	3		6			
16	90201200600	NUT	1		M6			
17	80172804006	SCREW,MACHINE	4		M4X6			
18	82100002002	CLAMP	2		WR6			
19	90101206012	BOLT	2		M6X12			
20	42351480550	HARNESS	1					
21	90303071001	WASHER,PLAIN	6		10			
22	90303070801	WASHER,PLAIN	2		8			
23	37000560050	PLATE	1					
24	42353342002	TERMINAL ASSY	1					
25	90172110030	BOLT,HEXAGON SOCKET	2		M10X30			
26	37000578350	PLATE	3					
41	42353341400	TERMINAL	2					
42	42353341500	SUPPORT	1					
43	80172804020	SCREW,MACHINE	4		M4X20			
44	42353341600	SUPPORT	1					
45	90172105012	BOLT,HEXAGON SOCKET	2		M5X12			
46	90302040501	WASHER,SPRING	2		5			
71	42353342400	TERMINAL	2					
72	42353342500	SUPPORT	2					
73	80136320016	PIN,SPLIT	2		2X16			
74	16311103000	SPRING	1					
75	42353342060	SCREW,SET	2		M6X35			
76	90201200600	NUT	2		M6			
77	90303521401	WASHER,PLAIN	4		14			
78	42353342100	BOLT	2					
79	42353342601	SUPPORT	1					
80	80801001415	BEARING,PLAIN	2					
81	90720005160	SCREW,SET	2		M5X16			
82	90201200500	NUT	2		M5			
83	80820001010	BEARING,PLAIN	2					
84	80801001010	BEARING,PLAIN	2					

**AT-146-1 42095100071 UPPER  
PN1013307-00 ELEC.ASSY (FRAME)**

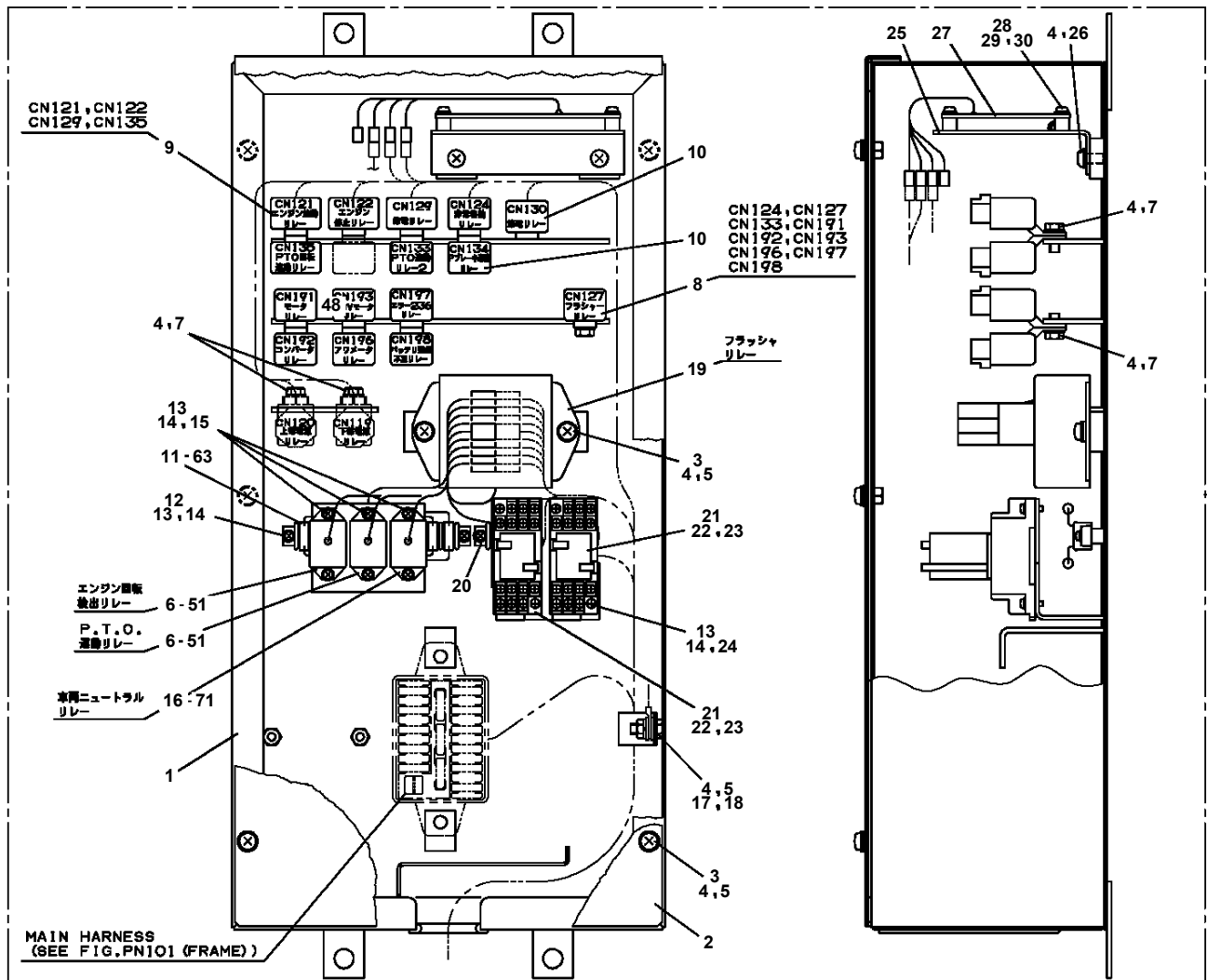


**B**

**AT-146-1 42095100071 UPPER  
PN1080104-04 LAMP (AML)**



# AT-146-1 42095100071 UPPER PN1110331-00 RELAY ASSY (FRAME)



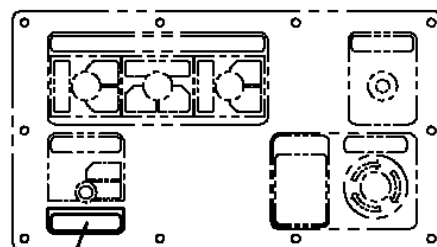
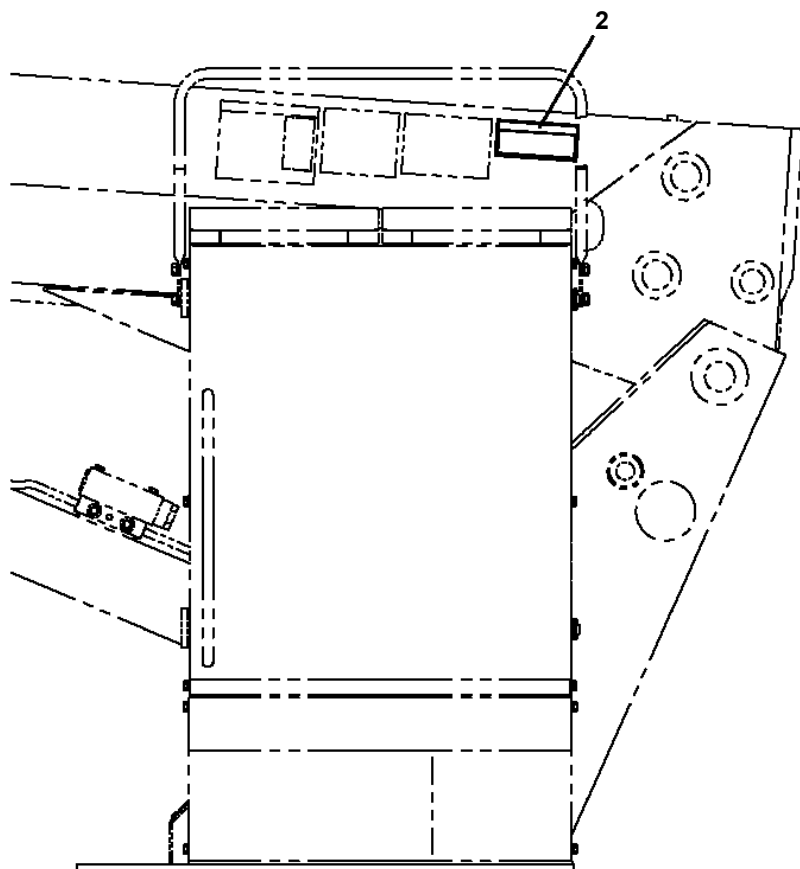
# AT-146-1 42095100071 UPPER

Pos No.	Parts No	Parts Name	Qty	Unit	Technical Data	Serial No (Start)	Serial No (End)	Remarks	Pa
1	42352197510	PLATE	1						
2	42352191040	BOARD,CIRCUIT	1				229521		
	42352191041	BOARD,CIRCUIT	1			229522			
7	42352197520	BOARD (HEAT THINK)	1						
10	42352191000	CONVERTER (DC-DC)	1						

# AT-146-1 42095100071 UPPER

Pos No.	Parts No	Parts Name	Qty	Unit	Technical Data	Serial No (Start)	Serial No (End)
1	42421500300	SUPPORT	1				
2	90302040801	WASHER,SPRING	38		8		
3	90101208012	BOLT	18		M8X12		
4	42420191100	CHARGER ASSY	1				
5	90302041001	WASHER,SPRING	8		10		
6	90101210018	BOLT	4		M10X18		
7	42421503000	COVER ASSY	1				
8	90101208020	BOLT	8		M8X20		
9	90303070801	WASHER,PLAIN	8		8		
10	90101210025	BOLT	4		M10X25		
11	90201201000	NUT	4		M10		
12	36160750000	REEL,CORD	1				
13	90101208016	BOLT	12		M8X16		
14	82100002008	CLAMP	1		WR12		
15	90201200600	NUT	1		M6		
16	90302040601	WASHER,SPRING	1		6		
17	42421500100	SUPPORT	1				227624
	42421500101	SUPPORT	1			227625	
18	90101212022	BOLT	4		M12X22		
19	42421502000	SWITCH ASSY	1				
20	80192486014	SCREW,MACHINE (WITH WASHER)	4		M6X14		
21	82169701030	BREAKER	1				227624
	82169701031	BREAKER	1			227625	
22	80192484025	SCREW,MACHINE	4		M4X25		227624
	80172304055	SCREW,MACHINE	2		M4X55	227625	
23	42420613200	CONVERTER (PAL)	1				
24	42421501000	COVER ASSY	1				
25	42421360010	CABLE	1				
26	91810132530	FASTENER	15				
27	42392191110	PLATE,NAME	1				
28	42421500010	CABLE	1				
29	42421360300	COVER	1				
30	42421500200	COVER	1				
31	90302041201	WASHER,SPRING	4		12		
32	42421500400	PLATE	2				
33	90302040401	WASHER,SPRING	2		4	227625	
41	42420084611	COVER	1				
42	42420084650	COVER	2				
43	42420084660	COVER	4				
44	82400000310	GROMMET			L=1000		
51	42421502100	PANEL	1				
52	42421360220	HARNESS	1				
53	42352130100	LAMP ASSY(DC21V,RED/WITH HARNESS)	2				
54	42421360500	LAMP ASSY (GREEN)	2				
55	82100001704	SWITCH,PUSH	2				
56	82101350123	SWITCH,PUSH	1				
57	42420623600	LAMP ASSY (RED)	1				
58	42420503140	HARNESS	2		L=150		
71	42421501100	COVER	1				
72	42421501200	COVER	1				
73	82464020203	HINGE	2				
74	80175803010	SCREW,MACHINE	8		M3X8		
75	90201200300	NUT	8		M3		
76	90303070301	WASHER,PLAIN	4		3		
77	90302040301	WASHER,SPRING	8		3		
78	80172805008	SCREW,MACHINE	2		M5X8		
79	82480003223	CATCH	1				
80	42693031200	PLATE	1				
81	80175804012	SCREW,MACHINE	2		M4X12		
82	90201200400	NUT	2		M4		
83	90302040401	WASHER,SPRING	2		4		
84	90303070401	WASHER,PLAIN	2		4		
85	82400000393	INSULATOR	1				

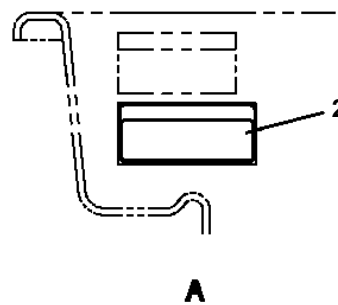
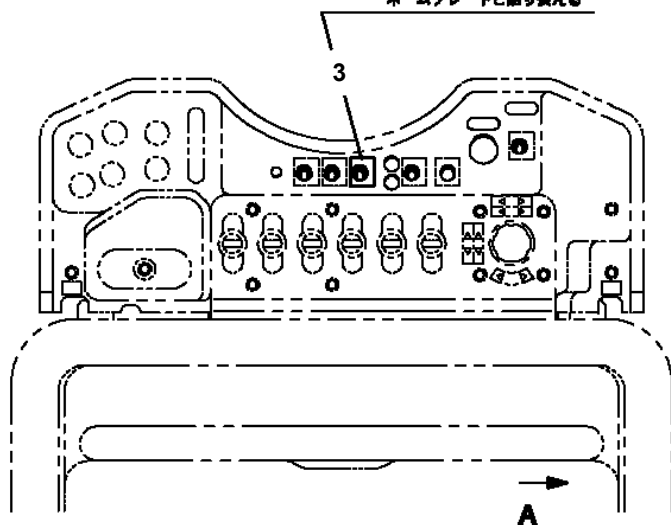
**AT-146-1 42095100071 UPPER  
PO1013446-00 PLATE ASSY,NAME (EMERGENCY PUMP)**



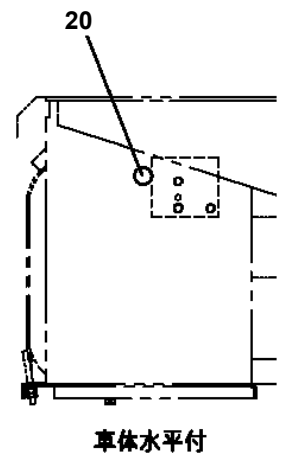
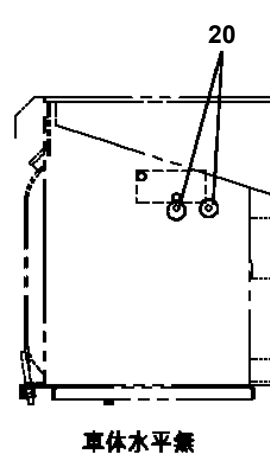
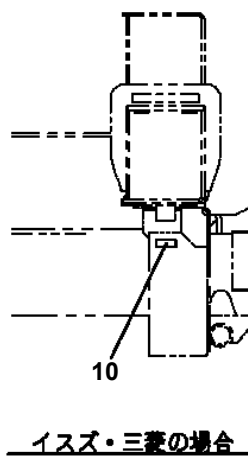
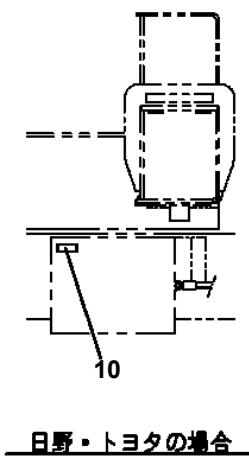
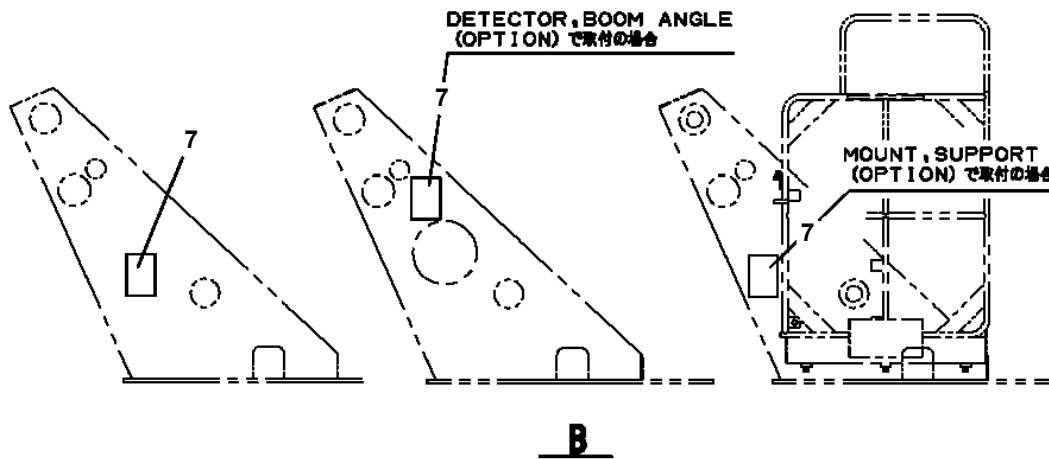
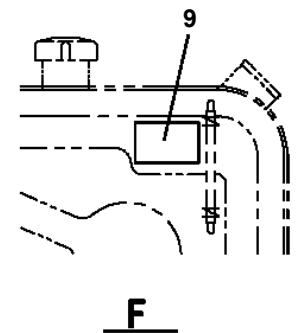
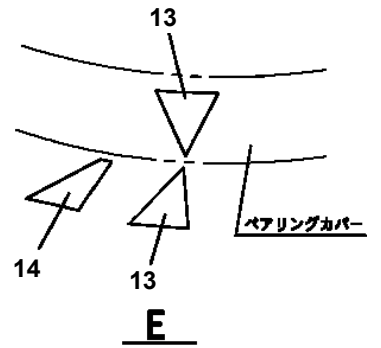
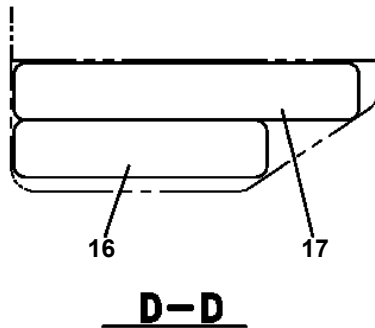
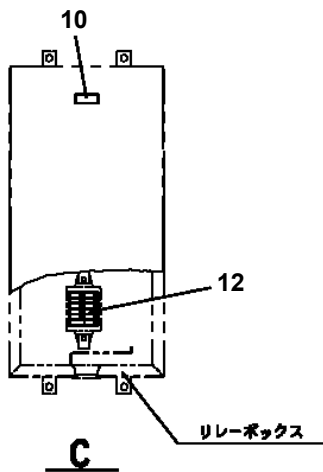
B仕様: 423-949-22010  
ネームプレートと貼り換える

旋回台操作部  
カバーを開けた状態

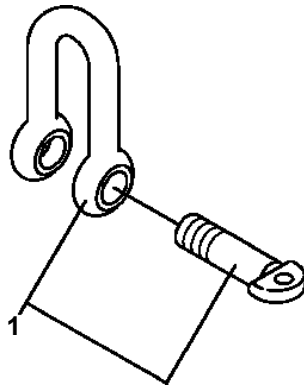
L仕様: 423-947-83010  
B仕様: 423-949-23010  
ネームプレートと貼り換える



**AT-146-1 42095100071 UPPER  
PO1013895-03 PLATE ASSY,NAME**



**AT-146-1 42095100071 UPPER  
PS5150001-00 SHACKLE**



# AT-146-1 42095100071 UPPER

Pos No.	Parts No	Parts Name	Qty	Unit	Technical Data	Serial No (Start)	Serial No (End)
1	42470980100	SWITCH,PUSH	1				
2	82100002220	CABLE	3	M			
3	82116920411	CONNECTOR	1				
4	82122910100	CAP	1				
100	42479580000	SWITCH BOX(BOOSTER,3M/SANWA)	1				

# AT-146-1 42095100071 UPPER

Pos No.	Parts No	Parts Name	Qty	Unit	Technical Data	Serial No (Start)	Serial No (End)	Remarks	Pages
1	82198301221	COVER	6						
2	91810130240	FASTENER	6						

# AT-146-1 4209510071 UPPER

Pos No.	Parts No	Parts Name	Qty	Unit	Technical Data	Serial No (Start)	Serial No (End)	Remarks	Pages
1	42500430100	SUPPORT	3						
2	42500430200	SUPPORT	1						
3	42500180300	CLAMP	8						
4	90101208014	BOLT	20		M8X14				
5	90201200800	NUT	16		M8				
6	90302040801	WASHER,SPRING	16		8				
7	80620210160	PIN,SNAP	4						
8	42310040050	ROPE (TETORON)	5						
9	82100001735	SLEEVE	12						
10	42500430300	COVER	1						
11	42500430400	COVER	1						
12	42500431000	LAMP ASSY	1						
13	42500430500	BAND ASSY	2						
14	80175304010	SCREW,MACHINE	4		M4X10				
15	90201200400	NUT	4		M4				
16	90302040401	WASHER,SPRING	4		4				
35	82400000200	GROMMET	1		KG-012,L=250				
41	42500431100	PLATE	1						
42	42737850100	GUARD	1						
43	90101206018	BOLT	4		M6X18		228117		
	90101206025	BOLT	4		M6X25	228118			
44	90201200600	NUT	4		M6				
45	90302040601	WASHER,SPRING	4		6				
46	42433401300	LAMP	1						
47	42502030100	SUPPORT	1			228118			
61	82100002550	BULB,LAMP	1		24V 20W				

# AT-146-1 42095100071 UPPER

Pos No.	Parts No	Parts Name	Qty	Unit	Technical Data	Serial No (Start)	Serial No (End)	R
1	42470230000	CLAMP HEAD (IZUMI 12TON 3.5M)	1					

# AT-146-1 42095100071 UPPER

Pos No.	Parts No	Parts Name	Qty	Unit	Technical Data	Serial No (Start)	Serial No
1	42472640000	CLAMP HEAD (IZUMI 8TON 3.5M ELECTRIC)	1				

# AT-146-1 42095100071 UPPER

Pos No.	Parts No	Parts Name	Qty	Unit	Technical Data	Serial No (Start)	Serial
1	42470030000	CUTTER HEAD (IZUMI 6.4TON 2.5M ELECTRIC)	1				

# AT-146-1 42095100071 UPPER

Pos No.	Parts No	Parts Name	Qty	Unit	Technical Data	Serial No (Start)	Serial No (End)	Remarks	P
1	42472670000	ROPE (SAFETY,WHITE)	1						

# AT-146-1 42095100071 UPPER

Pos No.	Parts No	Parts Name	Qty	Unit	Technical Data	Serial No (Start)	Serial No (End)	Remarks	Pages
1	42470121000	ARM ASSY	1						
2	42471231000	HOLDER	3						
3	42470123000	CLAMP ASSY	1						
4	42470044000	HOT STICK	1						
5	42475751001	SUPPORT	1						
6	90101216140	BOLT	1		M16X140				
7	90303071601	WASHER,PLAIN	2		16				
8	90201201600	NUT	2		M16				
9	42220011200	SUPPORT	1						
21	42470121100	ARM	1						
22	42470121200	CAP	2						

# AT-146-1 42095100071 UPPER

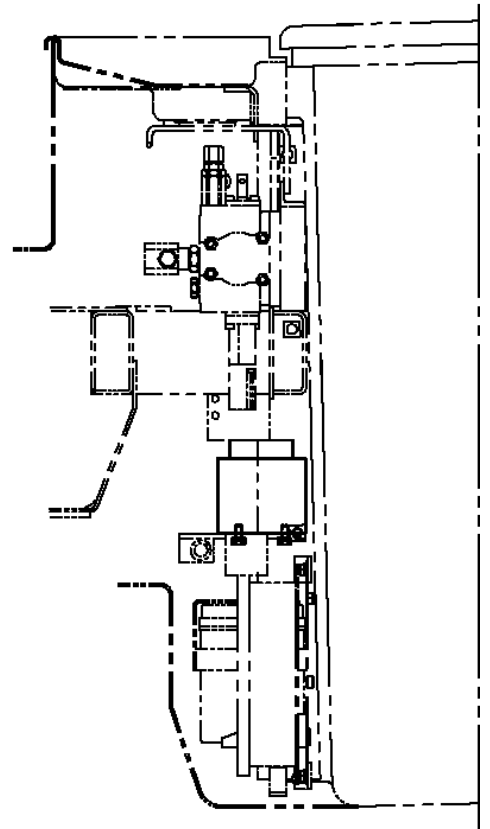
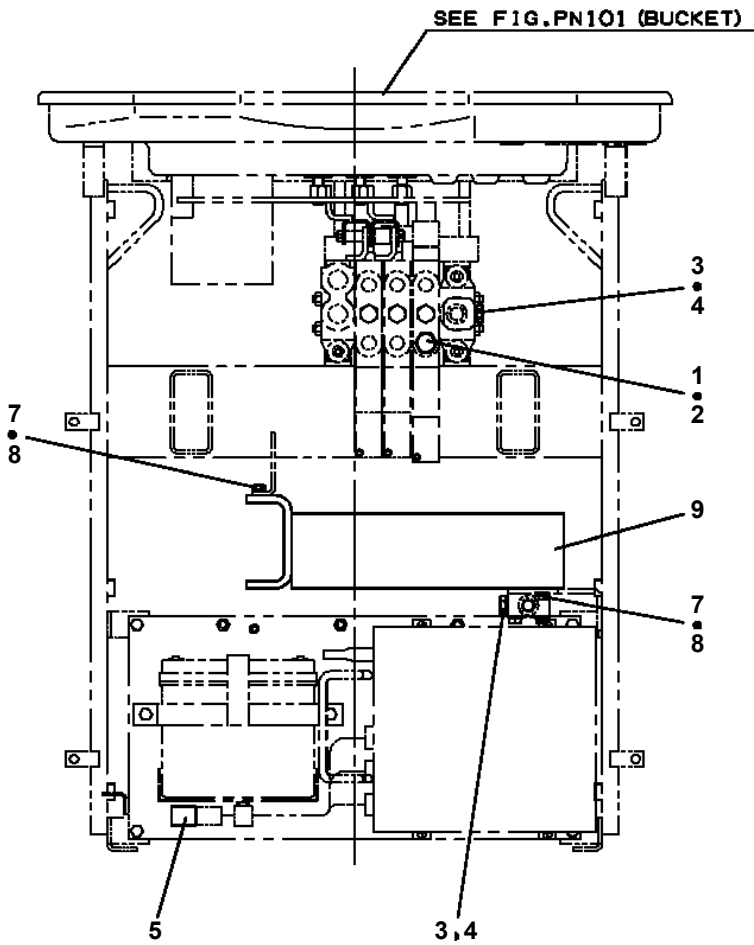
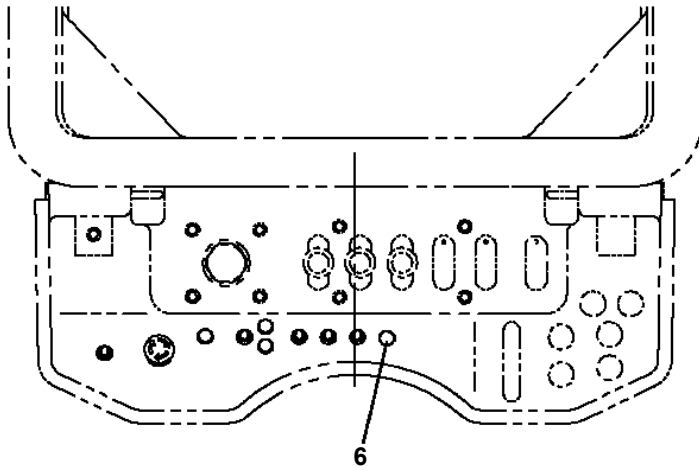
Pos No.	Parts No	Parts Name	Qty	Unit	Technical Data	Serial No (Start)	Serial No (End)	Remarks	Pages
1	42476801100	PLATE,SLIDE	4						

# AT-146-1 42095100071 UPPER

Pos No.	Parts No	Parts Name	Qty	Unit	Technical Data	Serial No (Start)	Serial No (E
1	37002461530	HOSE	1		L=540		
2	80456240600	JOINT,SELF SEALING (WITH DUST CAP)	1				
3	36631120050	NUT	1		M20		
4	82400000422	FASTENER	1				
5	42310040050	ROPE (TETORON)	1				
6	82100001735	SLEEVE	2				
7	91810130230	FASTENER	1				
8	37000925920	JOINT	1				
9	42478162100	JOINT	1				
10	37002471180	HOSE	1		L=465		
12	37000928400	JOINT	1				
31	42471437520	CAP	1				

AT-146-1 42095100071 UPPER  
PY1160092-00 BOOSTER (NON,BOOSTER)

標準バケットの場合



# AT-146-1 42095100071 UPPER

Pos No.	Parts No	Parts Name	Qty	Unit	Technical Data	Serial No (Start)	Serial No (E
1	42479232100	SUPPORT	1				
2	80456240600	JOINT,SELF SEALING (WITH DUST CAP)	2				
3	42475533100	LEVER	1				
4	82430208020	GRIP	1				
5	90101206010	BOLT	2		M6X1.0		
6	90302040601	WASHER,SPRING	2		6		
7	36631120050	NUT	2		M20		
8	42479232201	VALVE,MANUAL CONTROL	1				
9	37002471180	HOSE	1		L=465		
10	82104501180	SWITCH,LIMIT	1				
11	37000929040	JOINT	2				
12	42310040050	ROPE (TETORON)	2				
13	82100001735	SLEEVE	4				
14	91810130230	FASTENER	10				
15	37000925920	JOINT	1				
16	37000526010	PLATE	2				
17	37000928400	JOINT	1				
18	80301050100	FITTING	2				
19	42478183020	PLATE,NAME	1				
20	42478183030	PLATE,NAME	1				
21	81408000160	PIPE,STEEL	1	M	12X1.4T		
22	81408000160	PIPE,STEEL	1	M	12X1.4T		
23	80302090161	FITTING	2		KCO12-030N		
24	80400160209	CAP	1				
25	80400160210	CAP	1				
26	89630701000	HOSE,VINYL	2		10X15,1M		
27	91801300160	CLIP	1		D=14-16		
41	42471437520	CAP	2				

# AT-146-1 42095100071 UPPER

Pos No.	Parts No	Parts Name	Qty	Unit	Technical Data	Serial No (Start)	Serial No (End)	Remarks	Pages
1	42476201000	LAMP	1		12V 60W				
2	90101212020	BOLT	1		M12X20				
3	37000159530	PIN	1						
4	80620210160	PIN,SNAP	1						
5	90302041201	WASHER,SPRING	1		12				
10	42476200000	LAMP ASSY	1						

# AT-146-1 42095100071 UPPER

Pos No.	Parts No	Parts Name	Qty	Unit	Technical Data	Serial No (Start)	Serial No (E
1	(*****)	BOOSTER (AIR&ELECTRIC)	1				
2	(*****)	BOOSTER (WIRING/ELEC.SELECTOR)	1				
3	(*****)	BOOSTER (PIPING/AIR ELEC.,NANABOSHI)	1				

# AT-146-1 42095100071 UPPER

Pos No.	Parts No	Parts Name	Qty	Unit	Technical Data	Serial No (Start)	Serial No (End)
5	80456210600	JOINT,SELF SEALING	2				
10	42472480000	HOSE,BOOSTER (FEMALE-FEMALE,3M)	1				

# AT-146-1 42095100071 UPPER

Pos No.	Parts No	Parts Name	Qty	Unit	Technical Data	Serial No (Start)	Serial No
1	80456210600	JOINT,SELF SEALING	1				
2	42471807510	HOSE ASSY	1		2M		
3	42470362100	JOINT,SELF SEALING	1				
4	42471807520	HOSE,AIR	1		2M		
5	42470362200	PUMP	1				
6	80456240600	JOINT,SELF SEALING (WITH DUST CAP)	1				
7	42470367840	TUBE	2		25X0.15M		
8	42470367780	JOINT	1				
21	42471437520	CAP	1				
50	42471800000	HOSE,BOOSTER (WITH AIR BALLOON,2M)	1				

# AT-146-1 42095100071 UPPER

Pos No.	Parts No	Parts Name	Qty	Unit	Technical Data	Serial No (Start)	Serial No (End)	Remarks	Pages
1	42473340000	STEP,BUCKET	1						

# AT-146-1 42095100071 UPPER

Pos No.	Parts No	Parts Name	Qty	Unit	Technical Data	Serial No (Start)	Serial No (End)	Remarks
1	42474540000	HANGER (FOR BUCKET,FRP)	1					

CLICK HERE TO **DOWNLOAD** THE COMPLETE MANUAL

- Thank you very much for reading the preview of the manual.
- You can download the complete manual from: [www.heydownloads.com](http://www.heydownloads.com) by clicking the link below



- Please note: If there is no response to CLICKING the link, please download this PDF first and then click on it.

CLICK HERE TO **DOWNLOAD** THE COMPLETE MANUAL