

AT-146-1 42095100023 UPPER

PD2000051-00 SWING UNIT
PF1000468-00 WINCH SYSTEM
PG2000059-00 BOOM UNIT
PH1000399-00 SAFETY DEVICES
PJ3000235-00 BUCKET SYSTEM
PJ5000003-00 BOOSTER UNIT
PK2000222-01 FRAME UNIT
PO1000131-03 INDICATION PLATES
PY1000659-03 OPTIONS,1
PY2000026-00 OPTIONS,2
ASSEMBLY

CLICK HERE TO **DOWNLOAD** THE COMPLETE MANUAL

- Thank you very much for reading the preview of the manual.
- You can download the complete manual from: www.heydownloads.com by clicking the link below



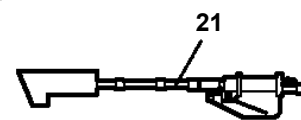
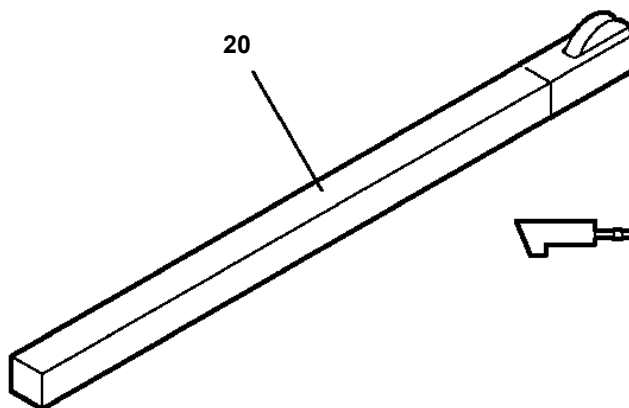
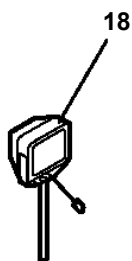
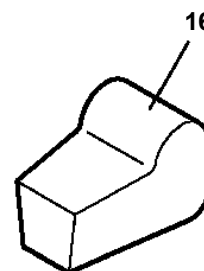
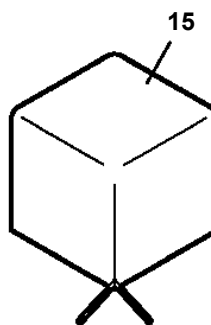
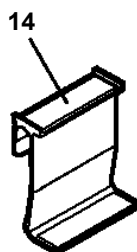
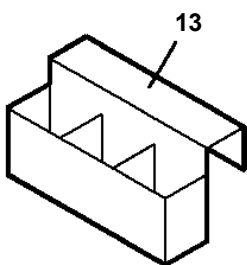
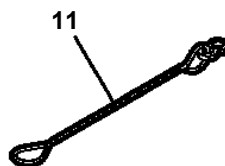
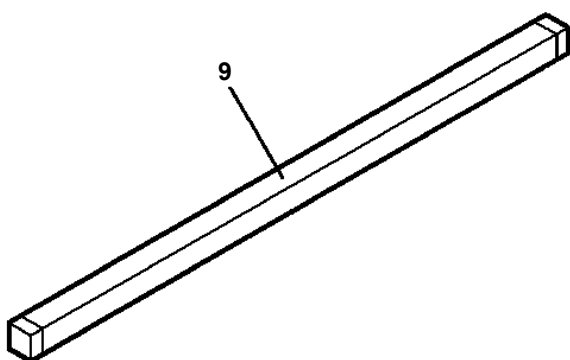
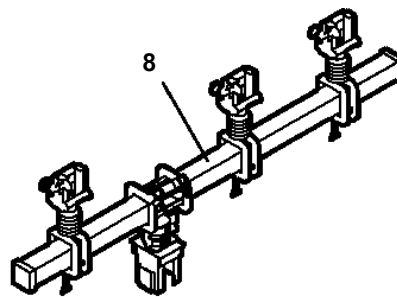
- Please note: If there is no response to CLICKING the link, please download this PDF first and then click on it.

CLICK HERE TO **DOWNLOAD** THE COMPLETE MANUAL

AT-146-1 4209510023 UPPER

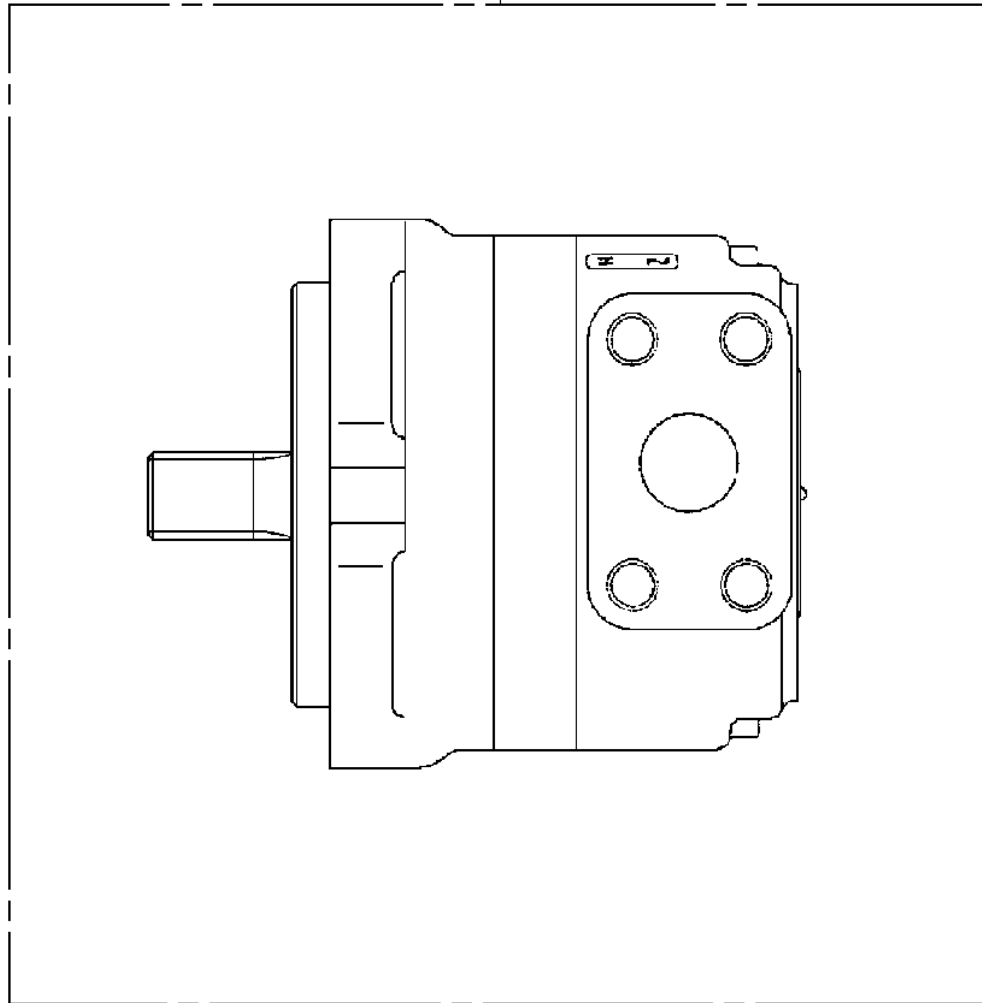
Pos No.	Parts No	Parts Name	Qty	Unit	Technical Data	Serial No (Start)	Serial No (End)
1	(*****)	FRAME	1				
2	(*****)	PIPING (BUCKET)	1				
3	(*****)	ELEC.ASSY (BUCKET)	1				
4	(*****)	OPE.ASSY	1				
5	(*****)	PIPING,GREASE (BUCKET)	1				
	(*****)	PIPING,GREASE	1			227397	227396
6	(*****)	LAMP	1				
11	(*****)	BUCKET (WHITE)	1				
12	(*****)	BUCKET (INNER CASE)	1				
13	(*****)	COVER (FRP,WHITE)	1				
14	(*****)	COVER,BOOM (TOP/FRP,WHITE)	1				
15	42264912000	COVER (CLOTH,WHITE)	1				
16	(*****)	ACCESSORIES (BUCKET INNER MAT)	1				

AT-146-1 42095100023 UPPER
PY2000026-00 OPTIONS,2



**AT-146-1 42095100023 UPPER
PB1100208-00 PUMP, HYDRAULIC**

10



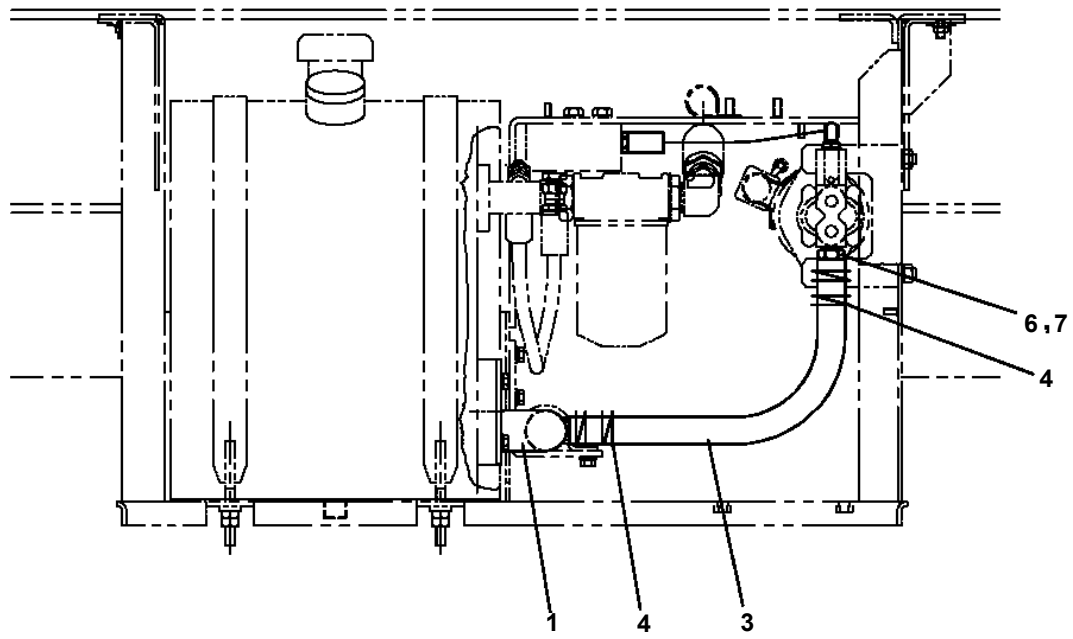
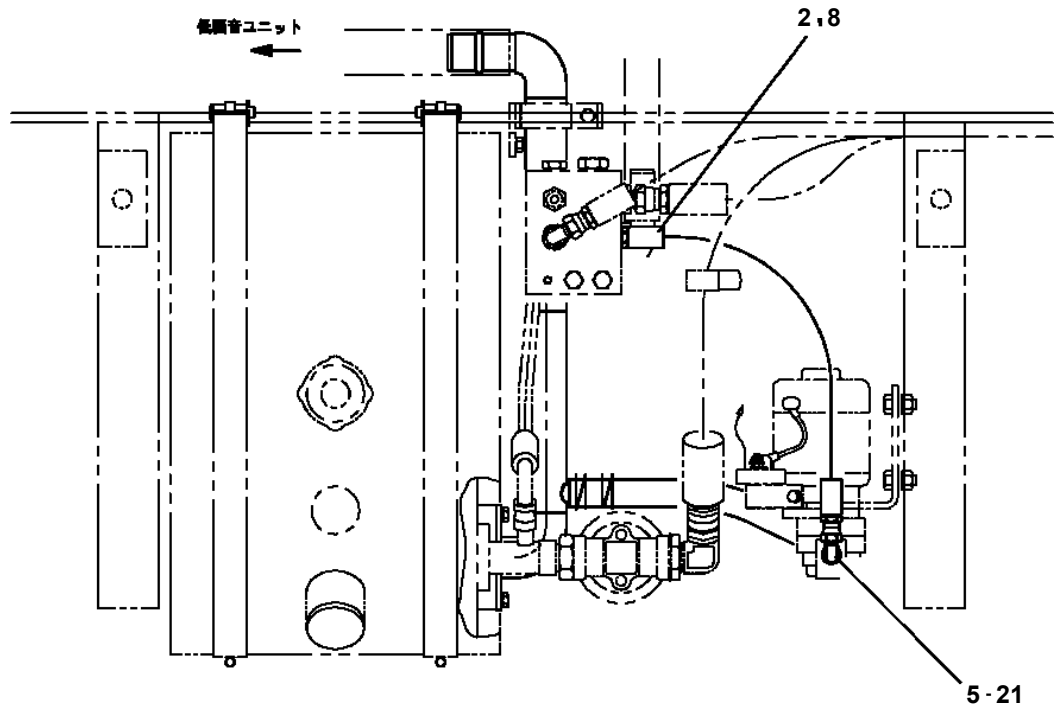
AT-146-1 4209510023 UPPER

Pos No.	Parts No	Parts Name	Qty	Unit	Technical Data	Serial No (Start)	Serial No (End)	Remarks
91	36636435090	SHIM (T=0.3)	1					
92	36636435100	SHIM (T=0.5)	1					
93	36636435110	SHIM (T=0.7)	1					
105	36635045040	RETAINER (VALVE)	4					
108	13115102010	RETAINER (SEAL)	8					
109	36630875070	END,SPOOL	4					
110	13115102030	CASE (BALL)	4					
111	80560005000	BALL,STEEL	8		5			
112	13115102050	RETAINER (BALL)	4					
113	13115102040	SPRING	4					
114	36630875080	COVER (SPRING)	4					
116	90131506015	BOLT,HEXAGON SOCKET	8		M6X15			
117	90131506025	BOLT,HEXAGON SOCKET	8		M6X25			
200	36637490000	VALVE,MANUAL CONTROL	1					

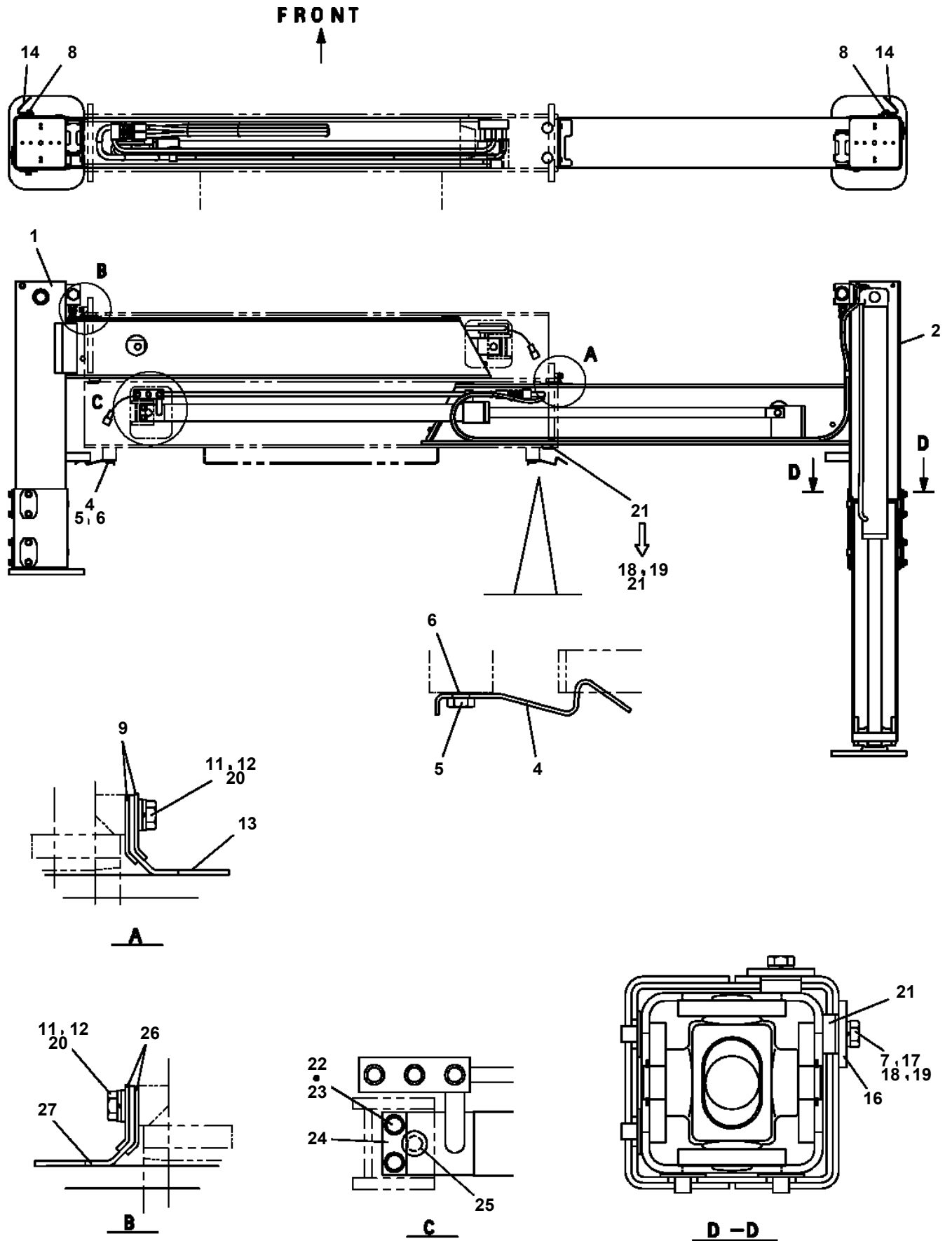
AT-146-1 4209510023 UPPER

Pos No.	Parts No	Parts Name	Qty	Unit	Technical Data	Serial No (Start)	Serial No (End)	Remarks	Pages
1	36900280000	MOTOR,ELECTRIC	1						00015
2	42421151100	SUPPORT	1						
3	90101210018	BOLT	4		M10X18				
4	90302041001	WASHER,SPRING	10		10				
5	90101210025	BOLT	4		M10X25				
6	90303071001	WASHER,PLAIN	6		10				
7	42421151200	SUPPORT	1						
8	42820171600	CUSHION	8						
9	42421151600	SUPPORT	1						
10	90101208022	BOLT	6		M8X22				
11	90302040801	WASHER,SPRING	10		8				
12	90101208016	BOLT	4		M8X16				
13	42421151300	SUPPORT ASSY	1						
14	36653850000	PUMP,HYDRAULIC	1				227355		00001
	36653850001	PUMP,HYDRAULIC	1			227356			00001
15	90101210035	BOLT	2		M10X35				
16	90201200800	NUT	6		M8				
17	42421151700	CUSHION	1						
18	42421151710	CUSHION	1						
32	42421151500	CUSHION	1						

AT-146-1 42095100023 UPPER
PB1411223-00 PIPING,LOWER (MOUNT,EMERGENCY PUMP)



**AT-146-1 42095100023 UPPER
PC1010858-01 OUTRIGGER (FRONT/MOUNT)**



AT-146-1 4209510023 UPPER

Pos No.	Parts No	Parts Name	Qty	Unit	Technical Data	Serial No (Start)	Serial No (End)	R
1	36131485010	CASE	1					
2	36131485020	COVER	1					
3	36131485030	DRUM	1					
4	36131645060	SPRING	1					
5	36131485050	SHAFT	1					
6	36131485060	DRUM,SHAFT	1					
7	36131485230	SCREW,TAPPING	4		M2.6X8			
8	36131645010	WIRE ASSY	1					
9	36131485240	SCREW,TAPPING	1		M2.6X8			
10	36131485080	COVER (REAR)	1					
11	36131485250	BOLT (WITH WASHER)	1		M5X8			
12	36131485260	WASHER,PLAIN	1		M5			
13	36131485270	SCREW,TAPPING	4		M3.5X12			
14	36131645020	GEAR,DRUM	1					
15	36131485160	RING,RETAINING	1					
16	36131485280	SCREW,MACHINE	4		M3X4			
17	36131645030	PLATE	1					
18	36131645040	POTENTIOMETER	1					
19	36131645050	GEAR,POTENTIO	1					
20	36131485170	SCREW,MACHINE (WITH W,SW)	6		M4X10			
21	36131485300	STOPPER,WIRE	1					
22	36131485180	SCREW,MACHINE	5		M3X8			
23	36131485220	CONNECTOR	1					
25	36131485120	PACKING	1					
27	36131485190	WASHER,PLAIN	1		M3.5			
28	36131485310	PACKING	1					
29	36131485210	GASKET (GP7)	1					
30	36131485130	RETAINER (PACKING)	1					
31	36131485140	PACKING	1					
32	36131485200	NUT (SM7)	1					
33	82114101030	CONNECTOR (3P,MALE)	1					
34	36131485150	WASHER,PLAIN	1					
100	36131690000	DETECTOR,OUTRIGGER LENGTH	1					

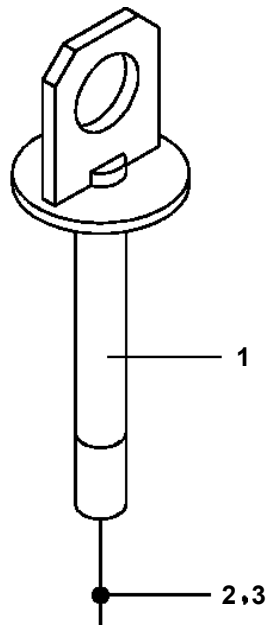
AT-146-1 4209510023 UPPER

Pos No.	Parts No	Parts Name	Qty	Unit	Technical Data	Serial No (Start)	Serial No (End)
1	36081325120	BEARING,TAPER ROLLER	1				
2	36340355010	WORM	1				
3	36071675230	BEARING,ROLLER	1				
4	36071675240	SHIM SET	1				
5	36071675120	SPACER (A)	1				
6	36340365030	RING,SNAP	1				
7	91206145001	SEAL,OIL	1				
8	36340355020	CASE,GEAR	1				
9	36080495050	BOLT,SEMS (M10X25,WITH WASHER)	8				
10	36340355060	RING,THRUST	1				
11	36340365010	WHEEL,WORM	1				
12	36340365020	CASE,GEAR	1				
13	80500006928	BEARING,BALL	1				
14	91280445421	SEAL,OIL	1				
15	36340355050	SHAFT	1				
16	80316090060	PLUG	2		KKT PT3/8		
17	42300227580	GAUGE,OIL	1				
50	36340360000	REDUCER,SWING SPEED	1				

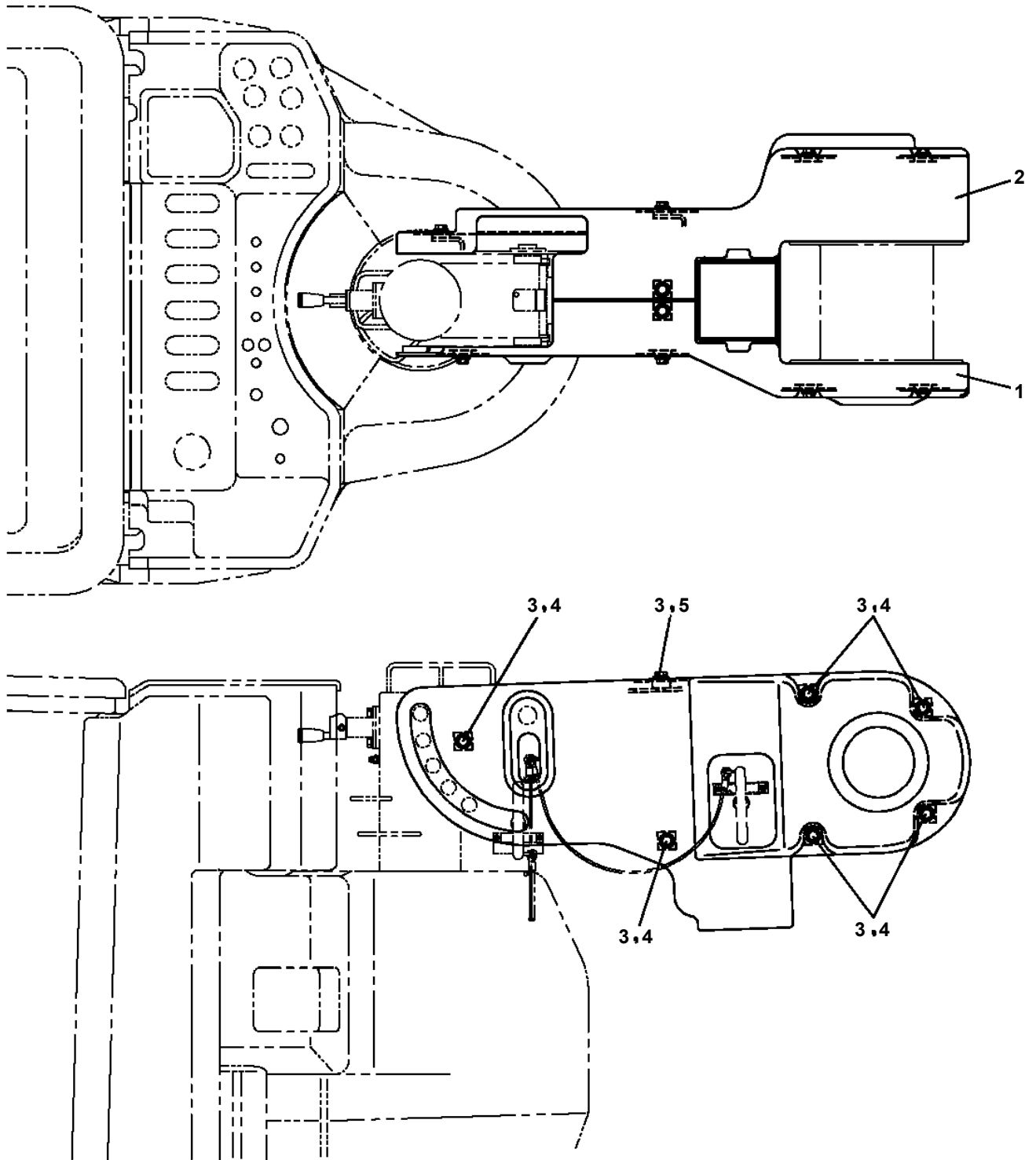
AT-146-1 4209510023 UPPER

Pos No.	Parts No	Parts Name	Qty	Unit	Technical Data	Serial No (Start)	Serial No (End)	Remarks
5	36072495040	SHAFT	1					
7	36072495070	GEAR,SPUR (2PIECES)	1					
10	36072495080	BUSH	1					
12	36072495090	RING,RETAINING	1					
13	36072495100	RING	1					
14	36072495110	DISTANCE PIECE	2					
15	36072495120	SEAL,OIL	1					
16	36072495130	SEAL,OIL	1					
17	36072495140	PIN	26					
20	36072495150	BEARING,BALL	1					
21	36072495160	BEARING,BALL	1					
24	36072495170	RING,RETAINING	2					
25	80601110170	RING,RITAINING	4		S17			
26	36072495180	RING,RETAINING	1					
27	91002800900	O-RING	1		1B P9			
30	91001012500	O-RING	1		S125			
33	80316030060	PLUG	2		PT3/8			
34	36072495190	ORIFICE	1					
51	36072495020	SPINDLE KIT	1					
54	36072495030	GEAR ASSY (RV)	1					
72	36072495220	SHAFT	1					
73	36072495230	PLATE,THRUST	1					
74	36072495240	BLOCK,CYLINDER	1					
77	36661055260	PLATE (RETAINER)	1					
78	36661055270	PLATE,THRUST	1					
79	36072495260	PLATE,TIMING	1					
80	36072495270	WASHER	2					
82	36072495280	PISTON	1					
83	36072495290	SPRING	2					
84	36072495300	SPRING	1					
85	36661055350	PLATE (FRICTION)	2					
86	36661055360	PLATE (MATING)	2					
88	91002910500	O-RING	1		1B G105			
89	91002912000	O-RING	1		1B G120			
90	91002801200	O-RING	1		1B P12			
91	91002802200	O-RING	2		1B P22			
93	36072495310	PLUG	2					
94	36072495320	STOPPER	1					
95	36072495330	STOPPER	1					
96	36072495340	SPRING	2					
98	36072495350	THROTTLE	2					
99	36661055400	PLUG	1					
100	36661055410	VALVE	1					
101	36661055420	SPRING	1					
102	36661055440	SEAL,OIL	1		15Z-17X35X8			
103	80500006203	BEARING,BALL	1					
104	36072495390	BEARING,BALL	1					
105	36072495400	PIN (STRAIGHT)	2		5X12			
106	80730080020	PIN (STRAIGHT)	2		8X20			
107	36072495360	PIN	3					
108	36072495370	RING,RETAINING	1					
109	90131908025	BOLT,HEXAGON SOCKET	6		M8X25			
113	36661055450	RING,RETAINING	1					
121	36072495210	FLANGE SET (REAR)	1					
125	36072495250	PISTON KIT	1					
150	36072495010	REDUCER ASSY	1					
200	36072495200	MOTOR ASSY	1					
250	36072495380	SEAL KIT	1					
300	36072490000	WINCH	1					

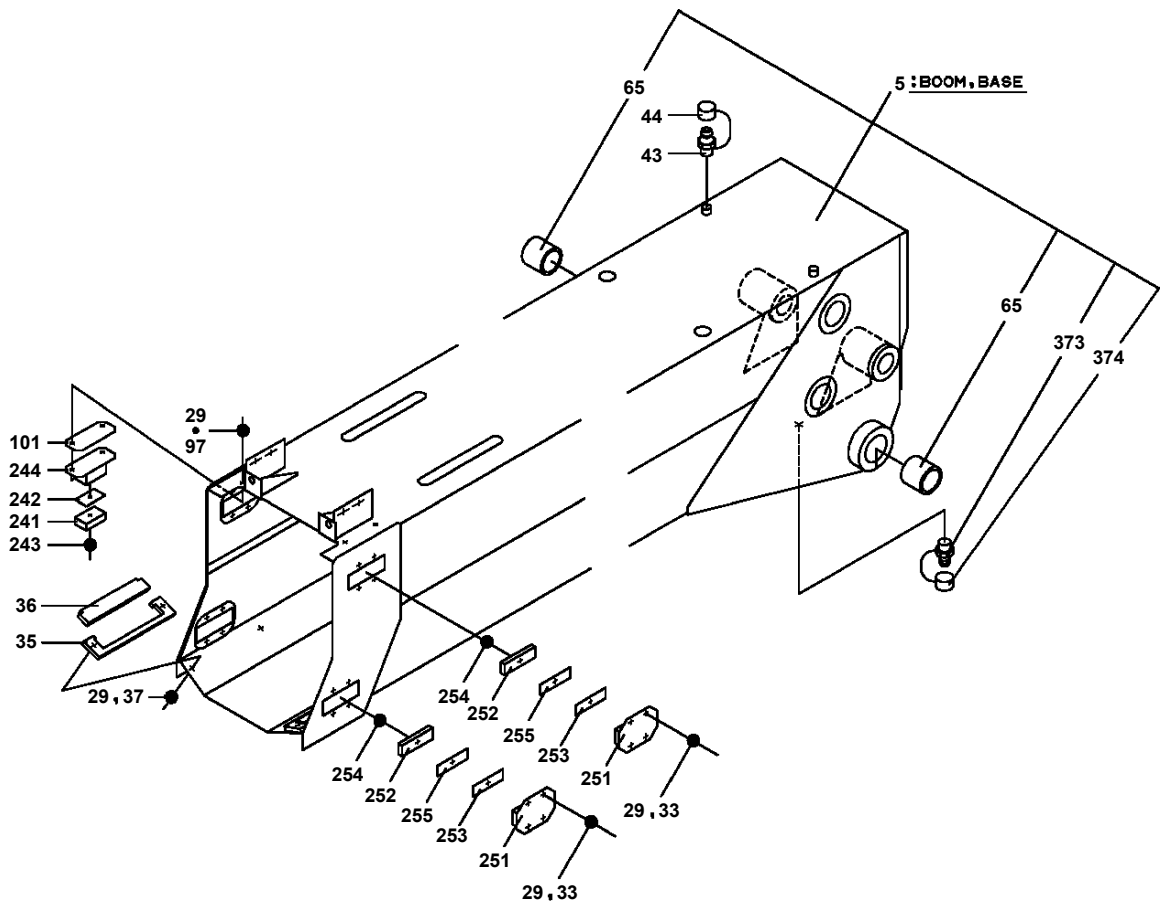
**AT-146-1 42095100023 UPPER
PF1080012-00 SUPPORT (WINCH JIB, FOR HOKURIKUDENKOU)**



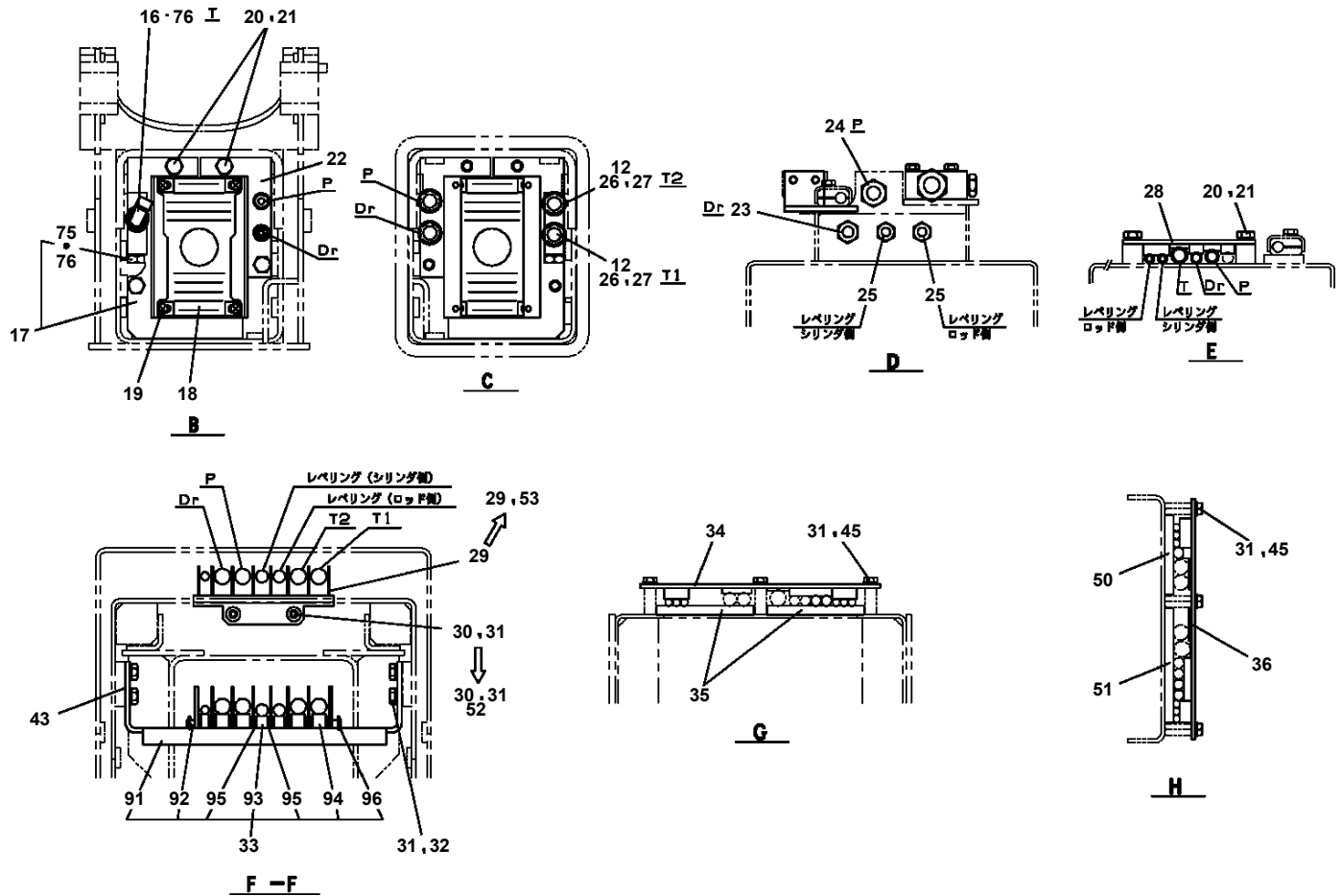
**AT-146-1 42095100023 UPPER
PF1350068-00 WINCH, JIB (FRP COVER)**



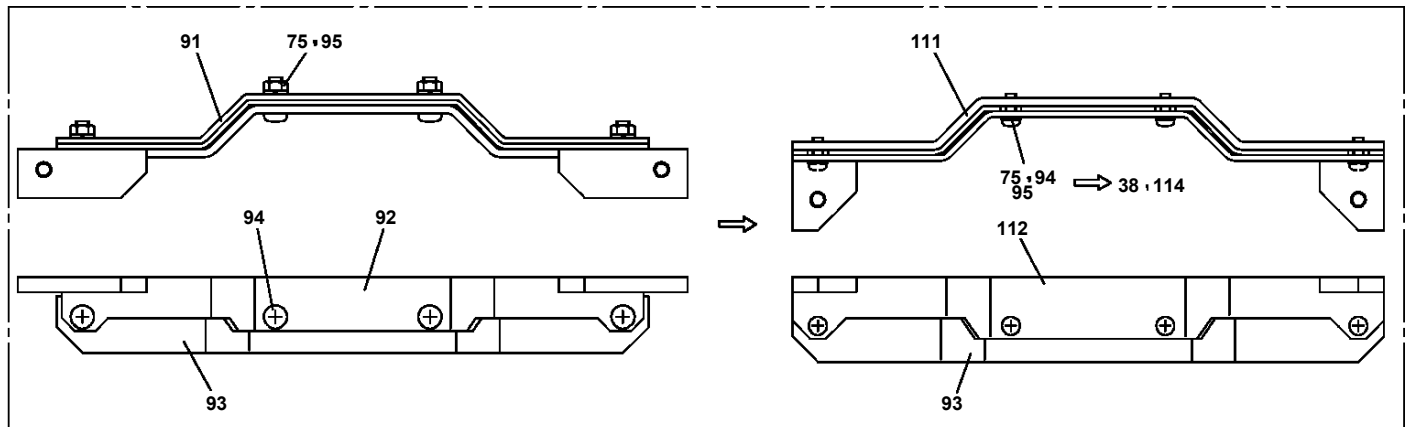
**AT-146-1 42095100023 UPPER
PG1010727-02 BOOM**



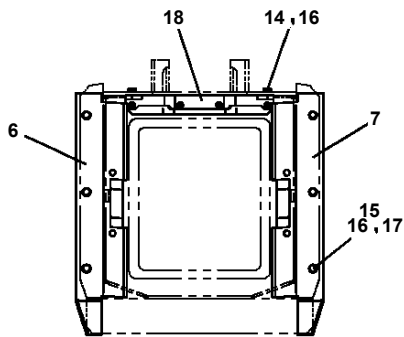
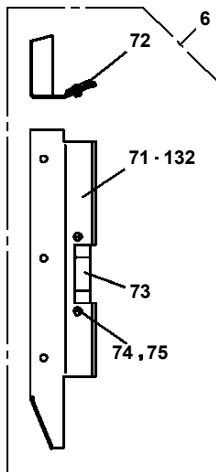
AT-146-1 42095100023 UPPER PG1220065-03 PIPING,BOOM



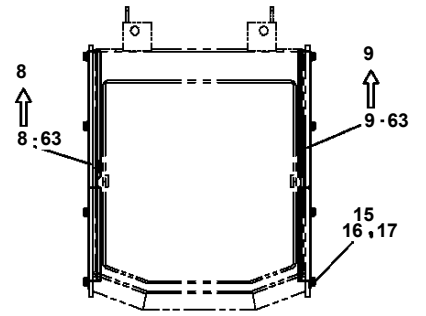
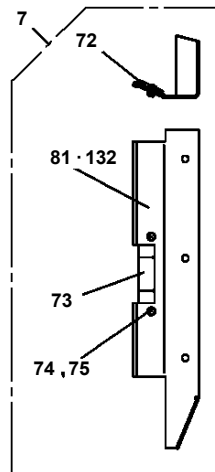
**AT-146-1 42095100023 UPPER
PG1410081-01 COVER,BOOM**



18

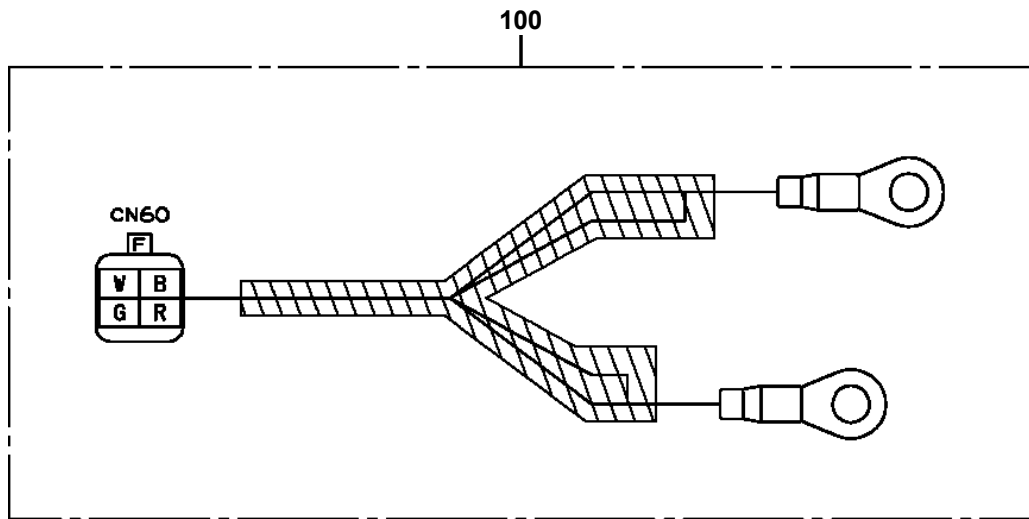


A

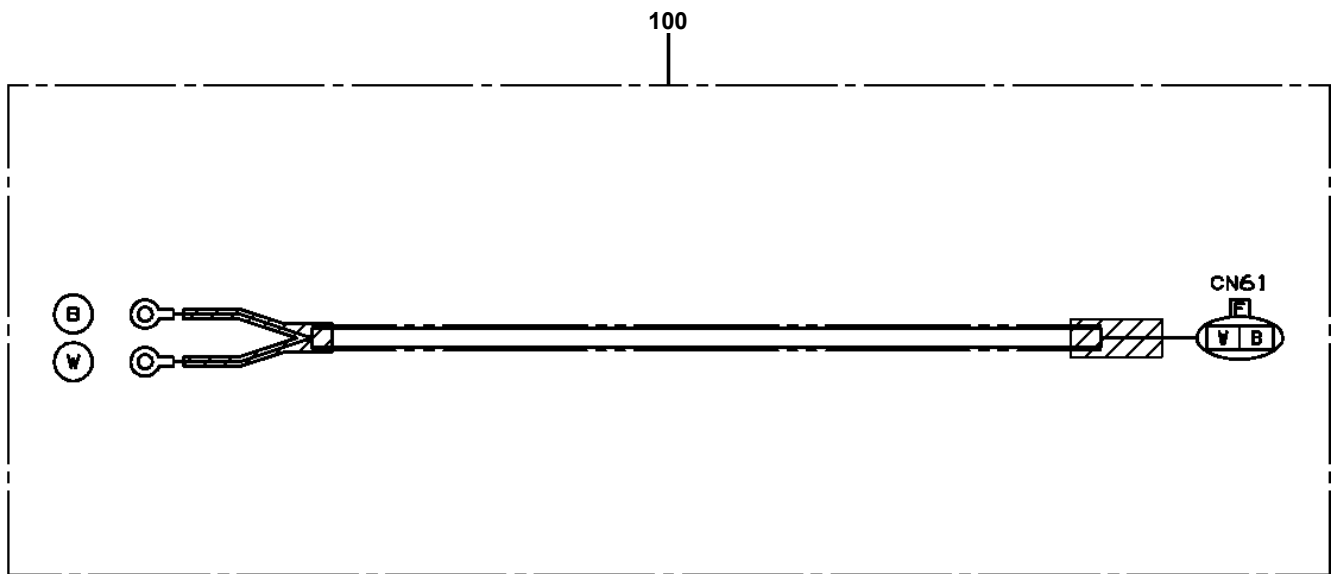


B-B

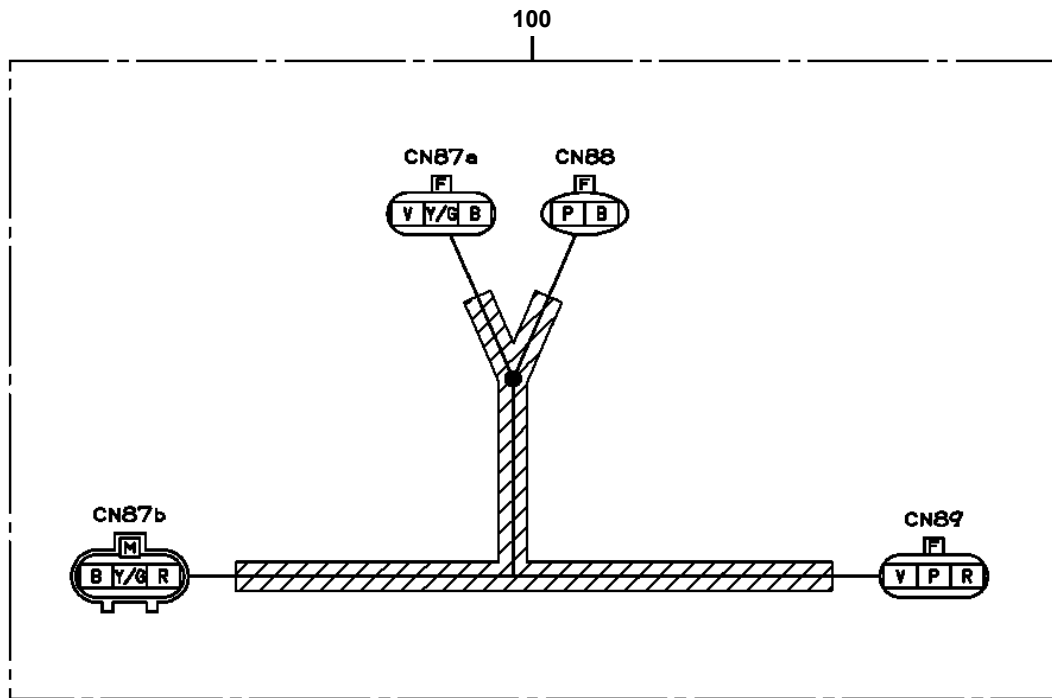
**AT-146-1 42095100023 UPPER
PH5031064-00 HARNESS**



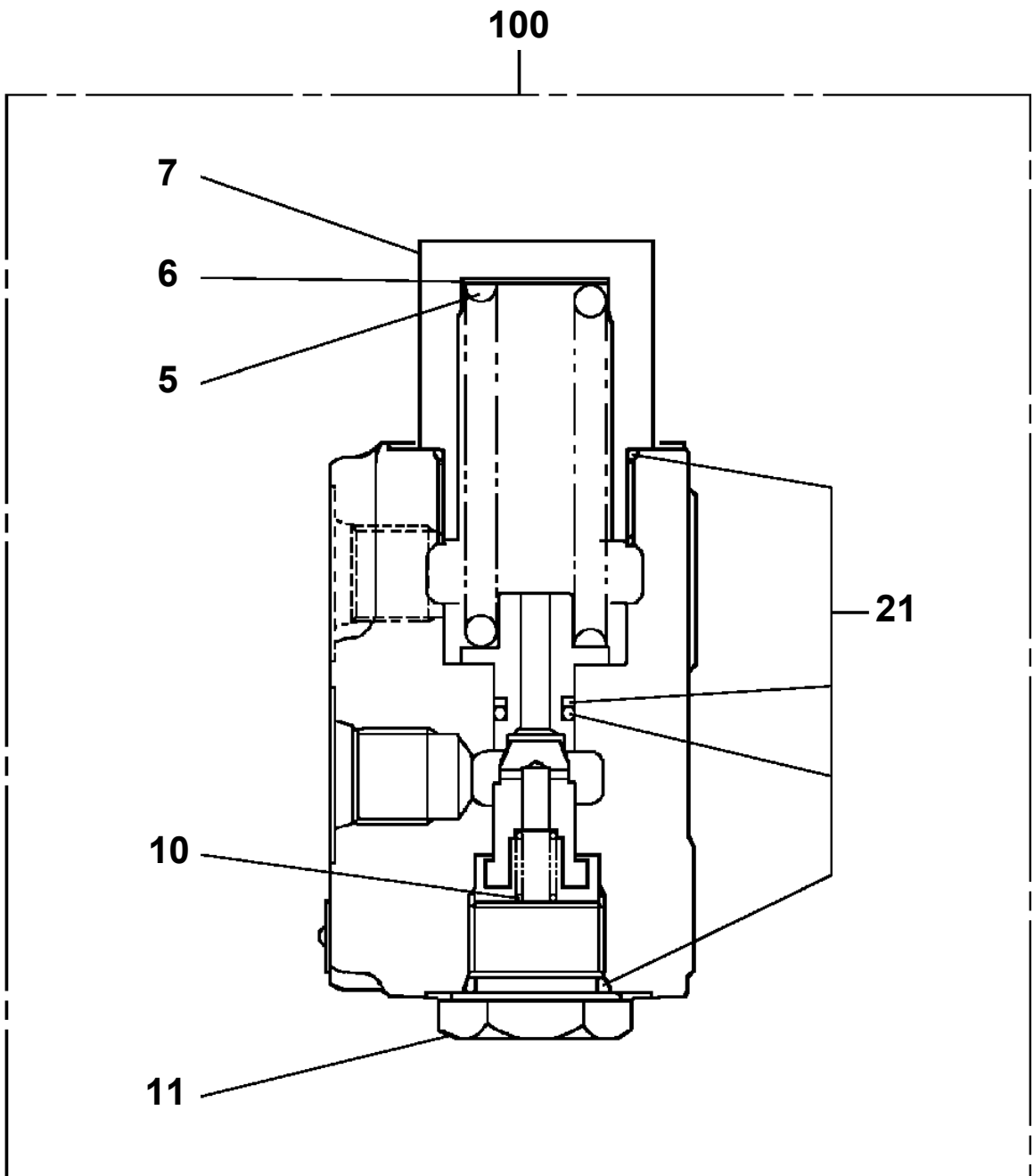
AT-146-1 42095100023 UPPER
PH5032282-00 HARNESS



AT-146-1 42095100023 UPPER
PH5032807-00 HARNESS

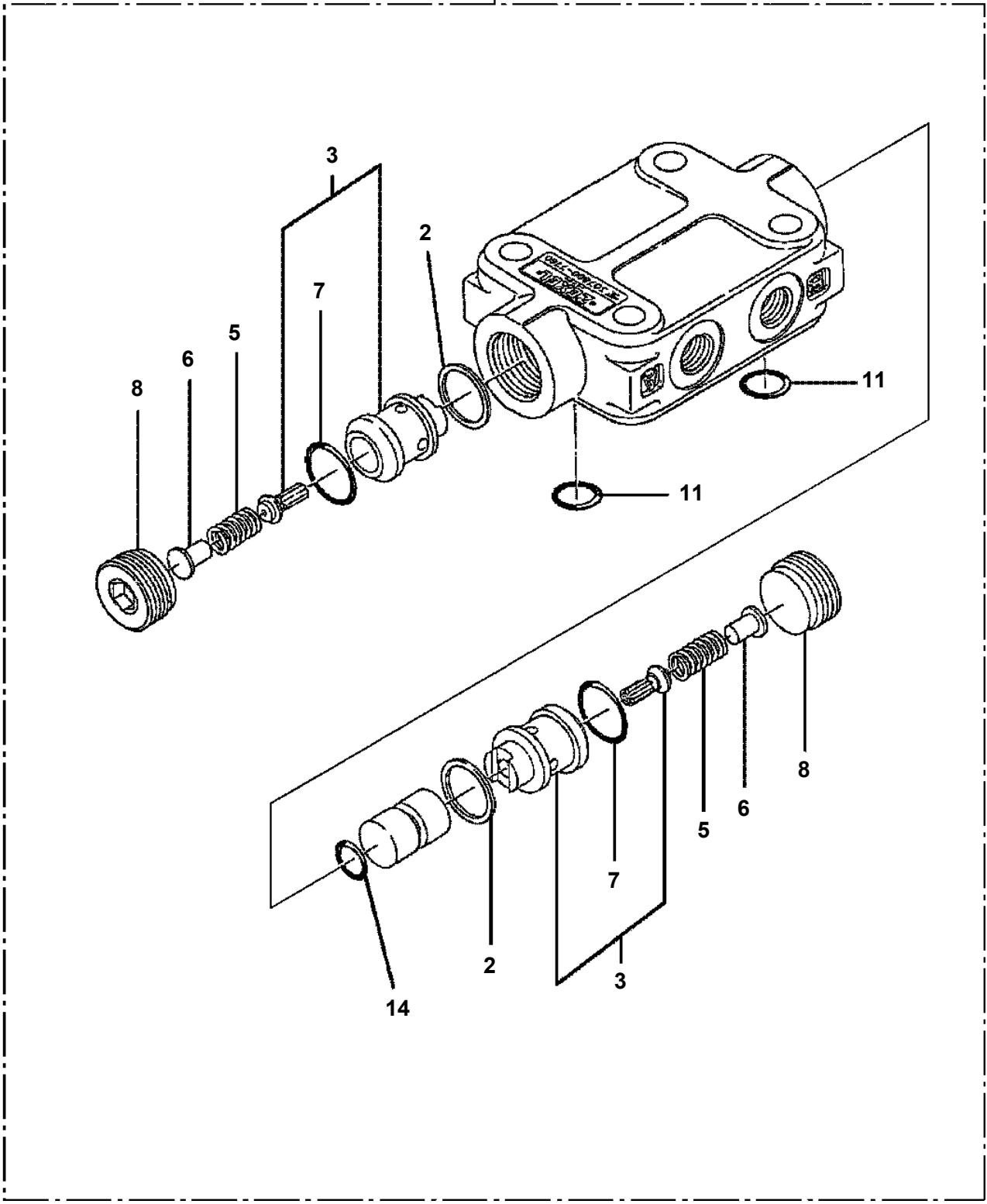


AT-146-1 42095100023 UPPER
PI1100122-00 VALVE,RELIEF

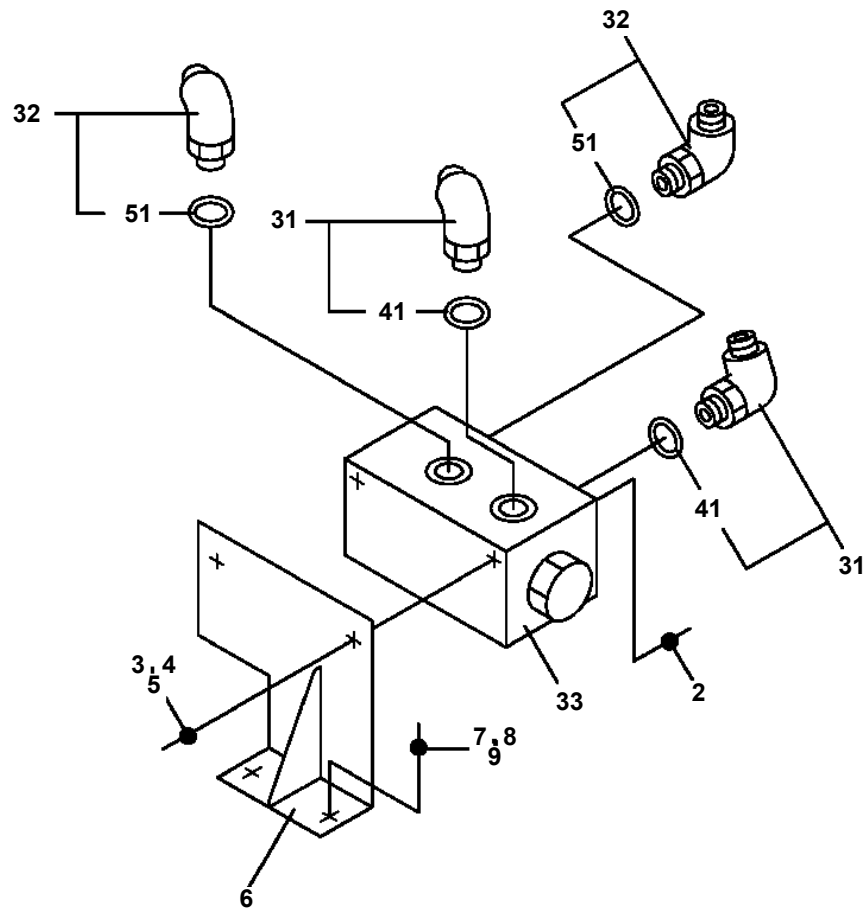


AT-146-1 42095100023 UPPER
PI1140133-01 VALVE,CHECK

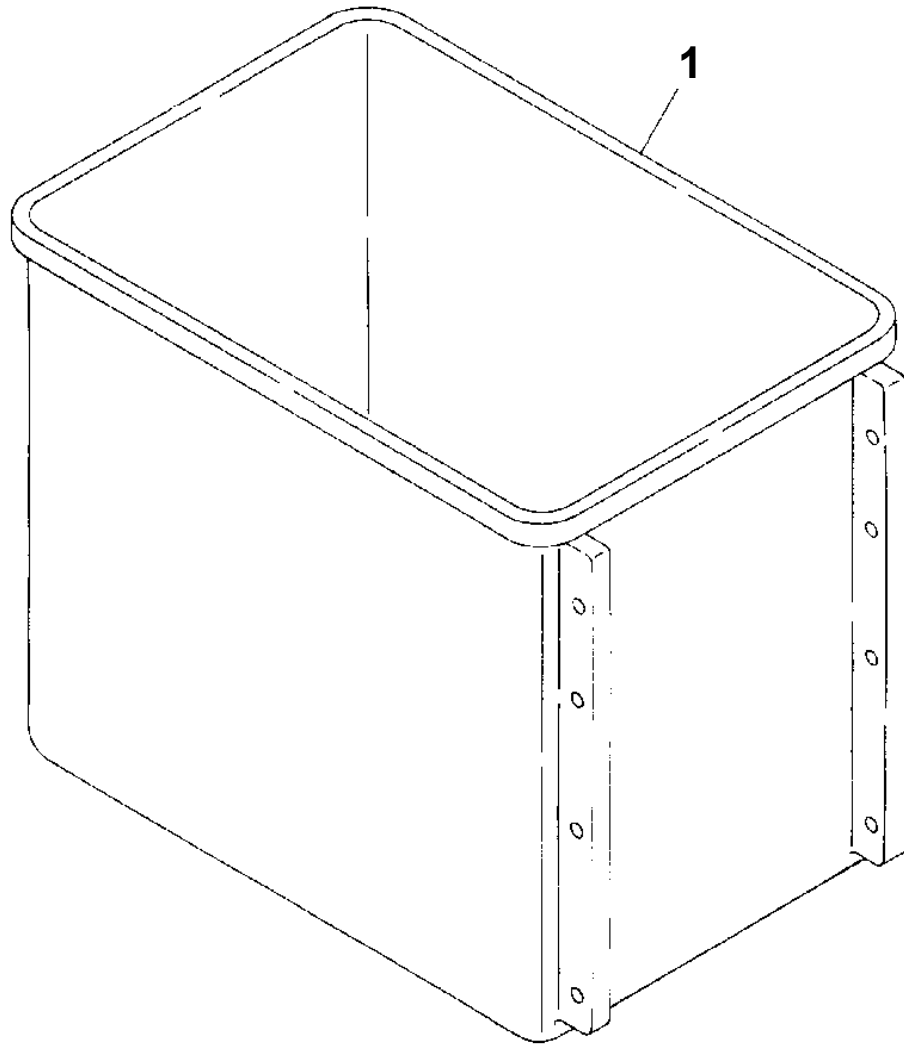
100 → (A)



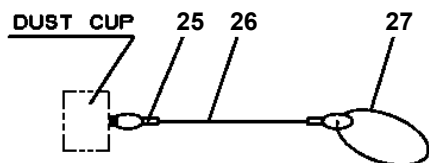
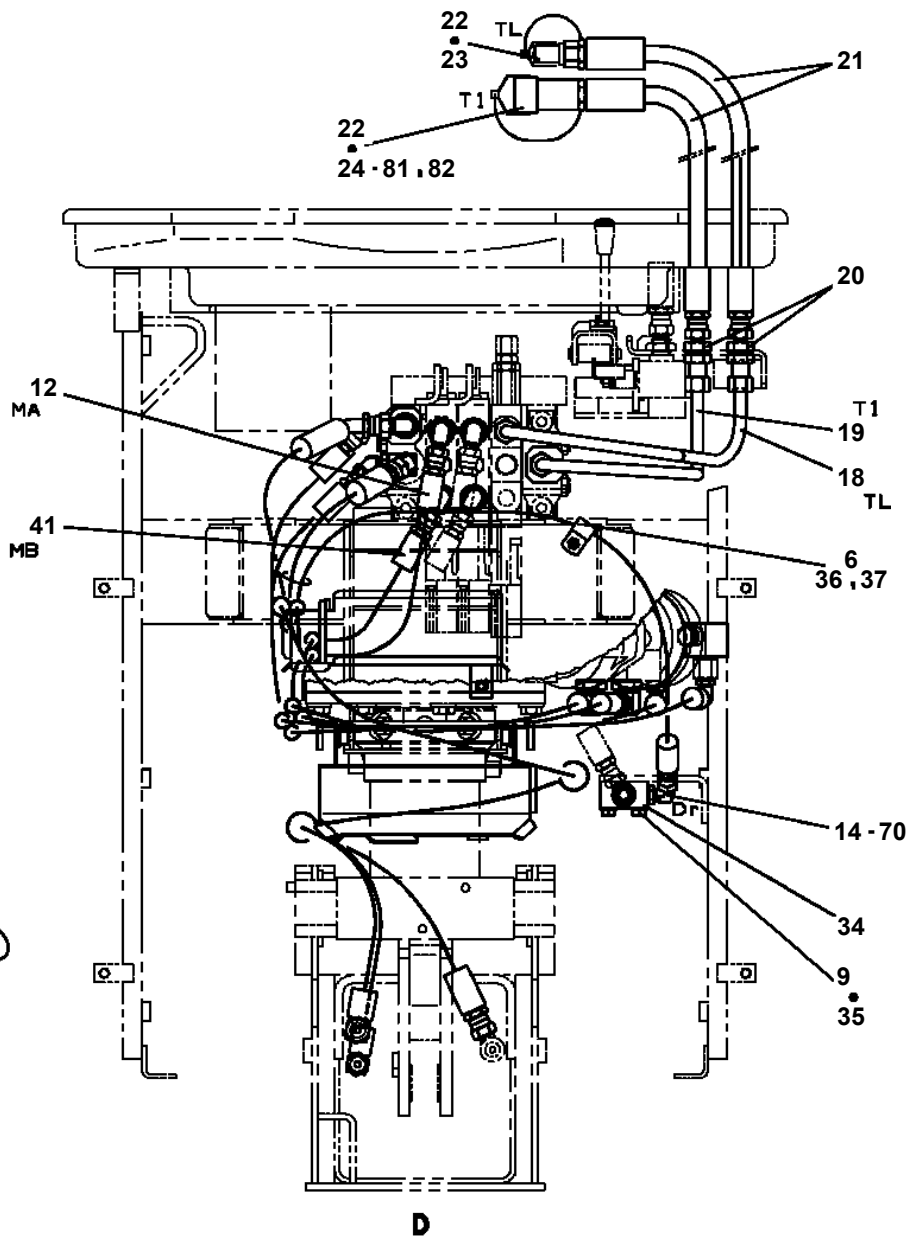
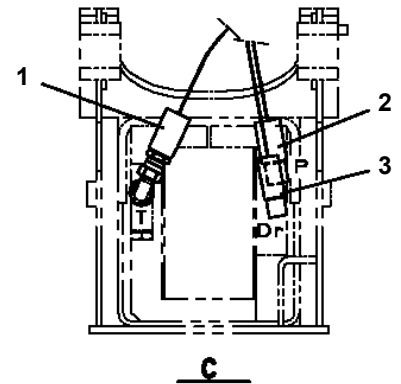
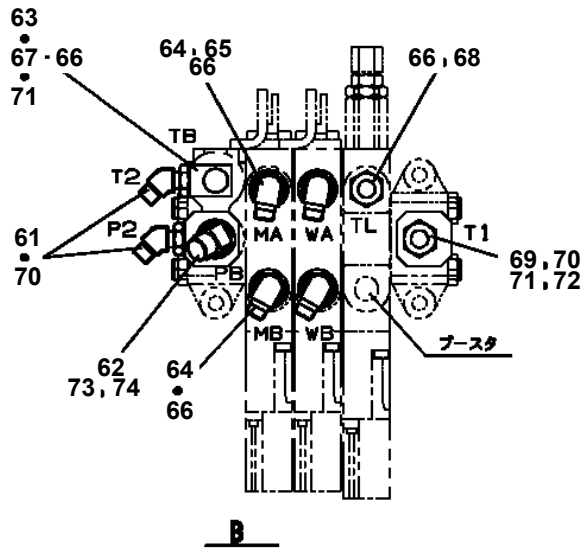
**AT-146-1 42095100023 UPPER
PI1240030-00 VALVE**



AT-146-1 42095100023 UPPER
PJ3010106-00 BUCKET (WHITE)



**AT-146-1 42095100023 UPPER
PJ3110027-01 PIPING (BUCKET)**



CLICK HERE TO **DOWNLOAD** THE COMPLETE MANUAL

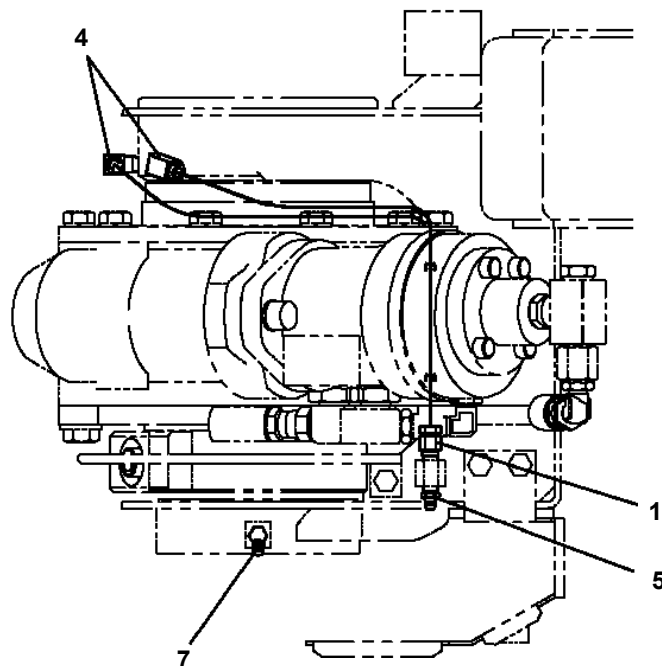
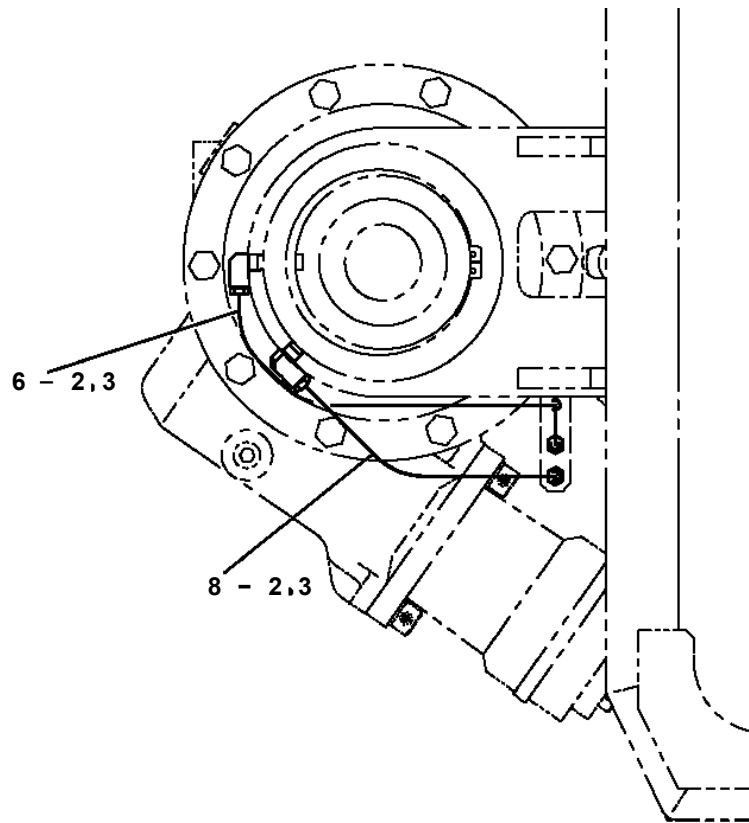
- Thank you very much for reading the preview of the manual.
- You can download the complete manual from: www.heydownloads.com by clicking the link below



- Please note: If there is no response to CLICKING the link, please download this PDF first and then click on it.

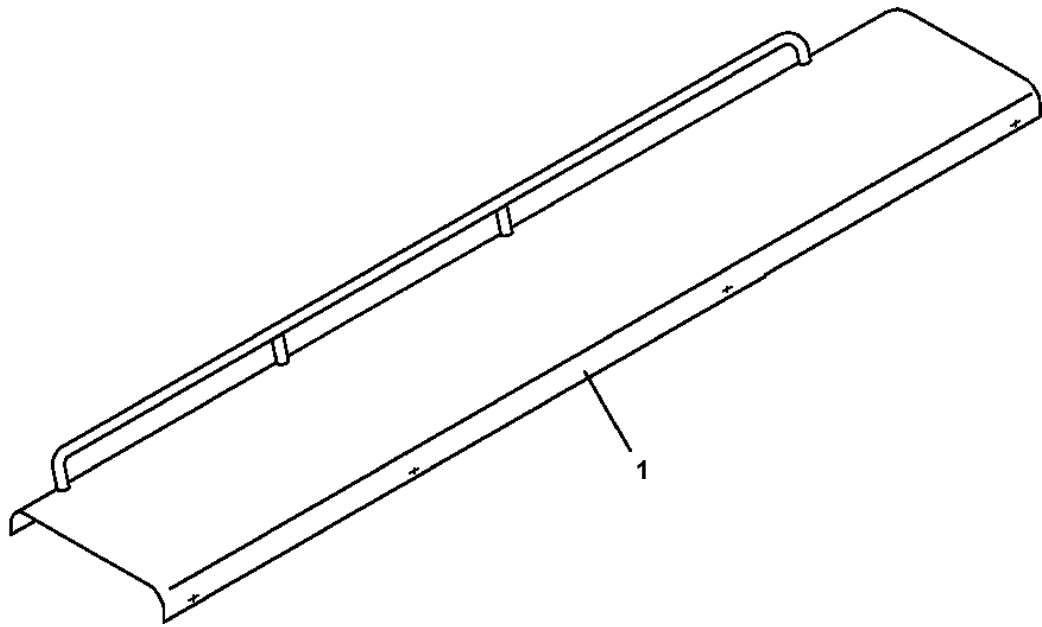
CLICK HERE TO **DOWNLOAD** THE COMPLETE MANUAL

**AT-146-1 42095100023 UPPER
PJ3250012-01 PIPING, GREASE**

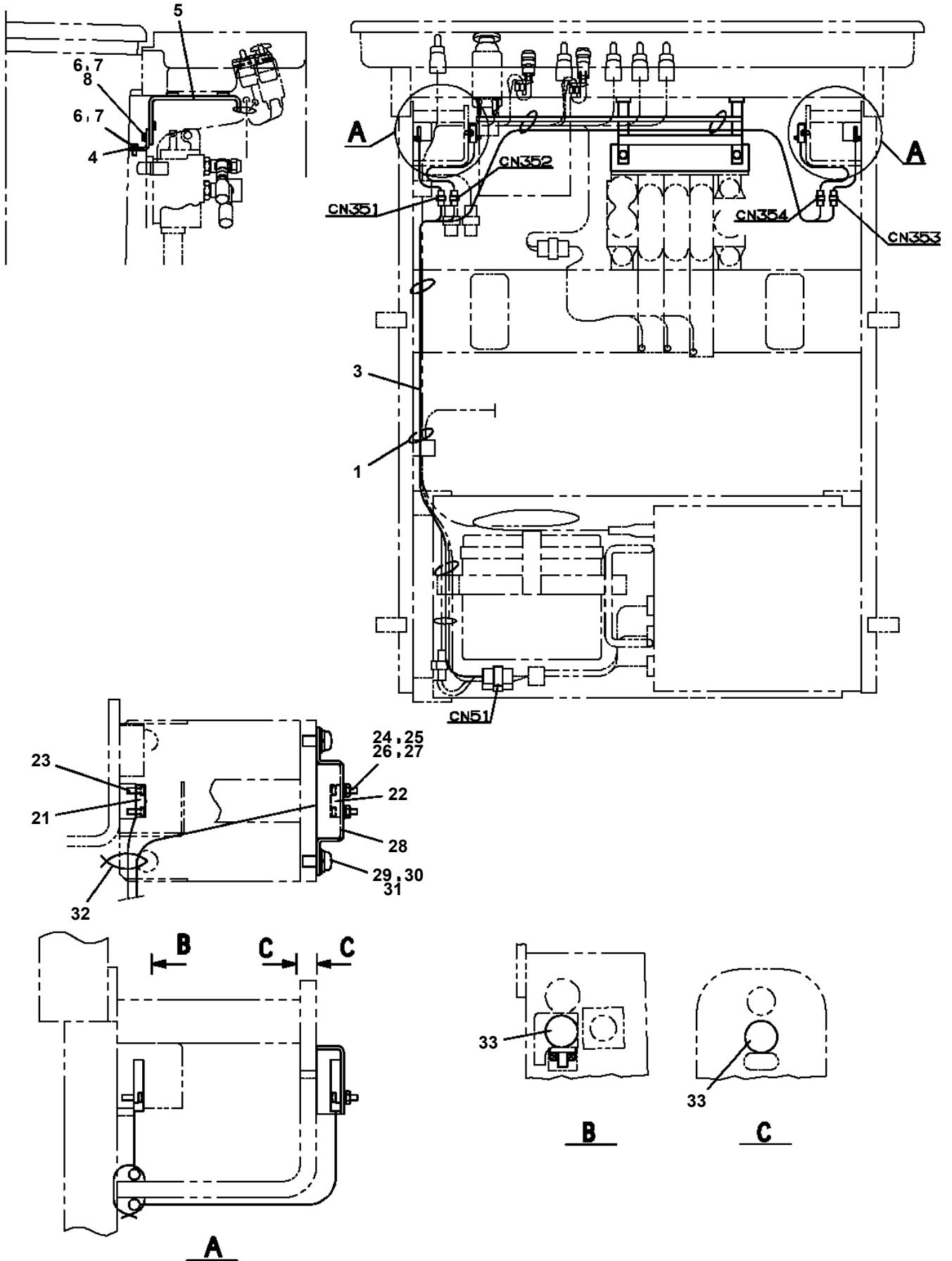


**AT-146-1 42095100023 UPPER
PK1330152-00 COVER (BOOM)**

FRONT
↖



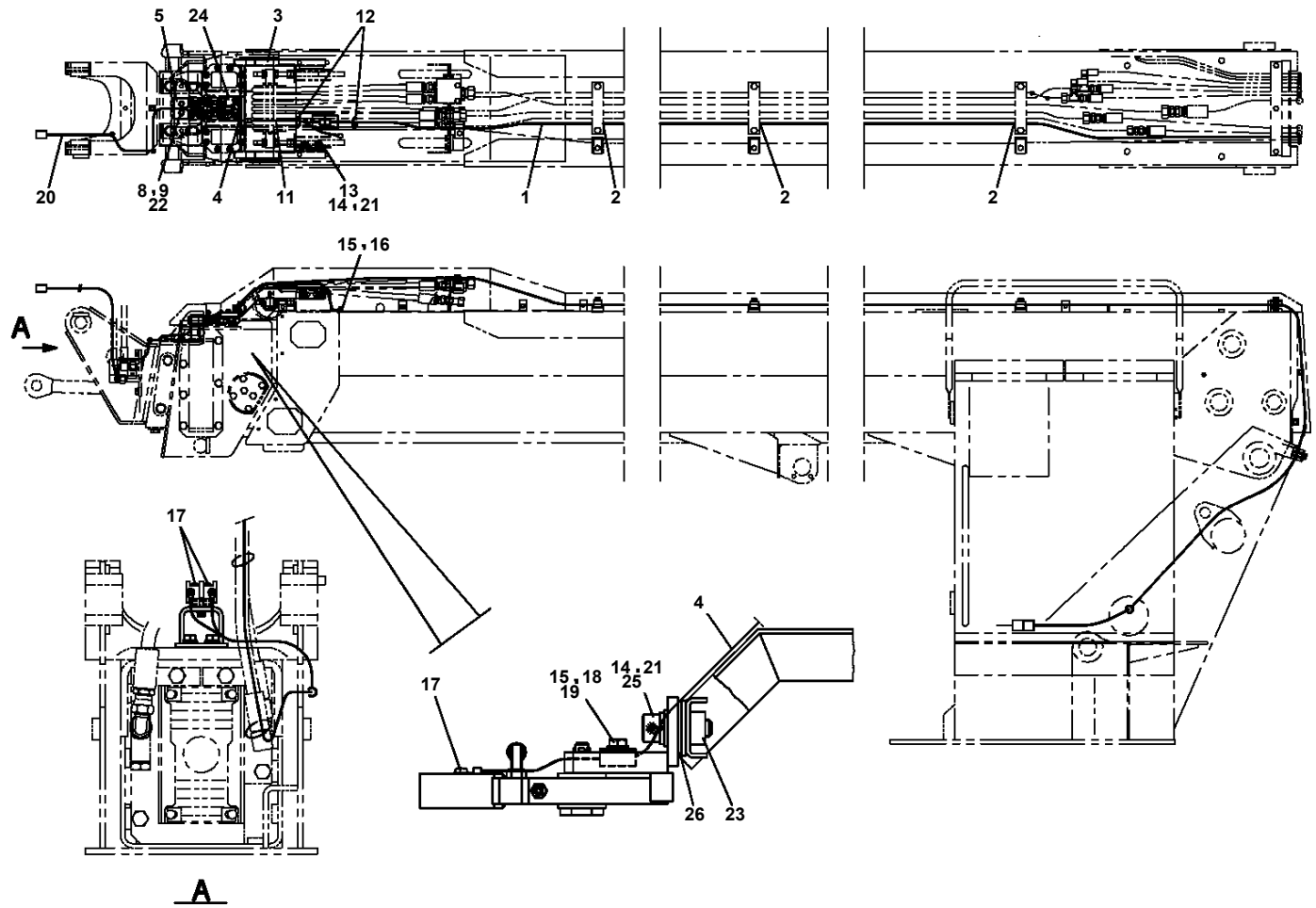
**AT-146-1 42095100023 UPPER
PM5150258-00 MODIFICATION ASSY (BUCKET WIRING)**



AT-146-1 4209510023 UPPER

Pos No.	Parts No	Parts Name	Qty	Unit	Technical Data	Serial No (Start)	Serial No (End)
1	42353380100	HARNESS	1				
2	42352450100	SWITCH ASSY	1				
3	82100002596	RELAY	1				
4	80192486010	SCREW,MACHINE	7		M6X10		
5	80192484016	SCREW,MACHINE	6		M4X16		
6	91850400601	CLAMP	7				
7	91810132530	FASTENER	15				
8	90201200800	NUT	1		M8		
9	90302040801	WASHER,SPRING	1		8		
10	90303070801	WASHER,PLAIN	1		8		
11	42353381000	PANEL ASSY	1				
12	82100002017	CLAMP	1		WR30		
13	90280200600	NUT,FLANGE	3		M6		
14	82100001801	TUBE,CORRUGATE	1	M	7		
16	82100002014	CLAMP	1		WR20		
17	82100001807	TUBE,CORRUGATE	1	M	28		
18	82100002010	CLAMP	1		WR15		
19	82161201010	RELAY	2				
20	42350250150	PLUG (6 POLES,MALE)	1				
21	42352190100	RESISTANCE	1				
22	80172303012	SCREW,MACHINE	2		M3X12		
23	90302040301	WASHER,SPRING	2		3		
24	90303070301	WASHER,PLAIN	2		3		
25	42351460010	HARNESS	1		L=3500		
26	42470201060	PLATE	1				
27	42350250090	PLUG (4 POLES,MALE)	1				
28	80192484012	SCREW,MACHINE (WITH WASHER)	10		M4X12		
47	82100002308	COVER	2				
48	82106301007	SWITCH,ROTARY (WITH KEY)	1				
61	42651306900	SWITCH ASSY	1				
62	42351460100	SWITCH ASSY	1				
63	82100002594	RING	1		OGL-31		
64	42651593400	SWITCH ASSY (WITH HARNESS,1 SW)	1				
65	42651591300	SWITCH ASSY (WITH HARNESS,3 SW)	1				
66	42353381100	PLATE,NAME	1				
67	42353381200	PANEL	1				
68	82197518114	CAP (MATSUSHITA/BLACK)	5				
	82197518119	CAP (PLUS ONE MFG./BLACK)	5				
81	42352191000	CONVERTER (DC-DC)	1				227773
82	42353383100	COVER	1				
83	80172305012	SCREW,MACHINE	4		M5X12		
84	90201200500	NUT	4		M5		
85	90302040501	WASHER,SPRING	4		5		
86	90303070501	WASHER,PLAIN	4		5		
122	82181024473	RESISTANCE	2				
139	82101361453	SWITCH,PUSH	1				
155	82105220193	SWITCH,TOGGLE	1				
175	82105220256	SWITCH,TOGGLE	1				
181	42352457510	KEY	1				
191	82101361003	BUTTON	1				
201	42356091000	CONVERTER (ASSY ONLY)	1			227774	

**AT-146-1 42095100023 UPPER
PN1013873-00 ELEC.ASSY (CHARGER)**



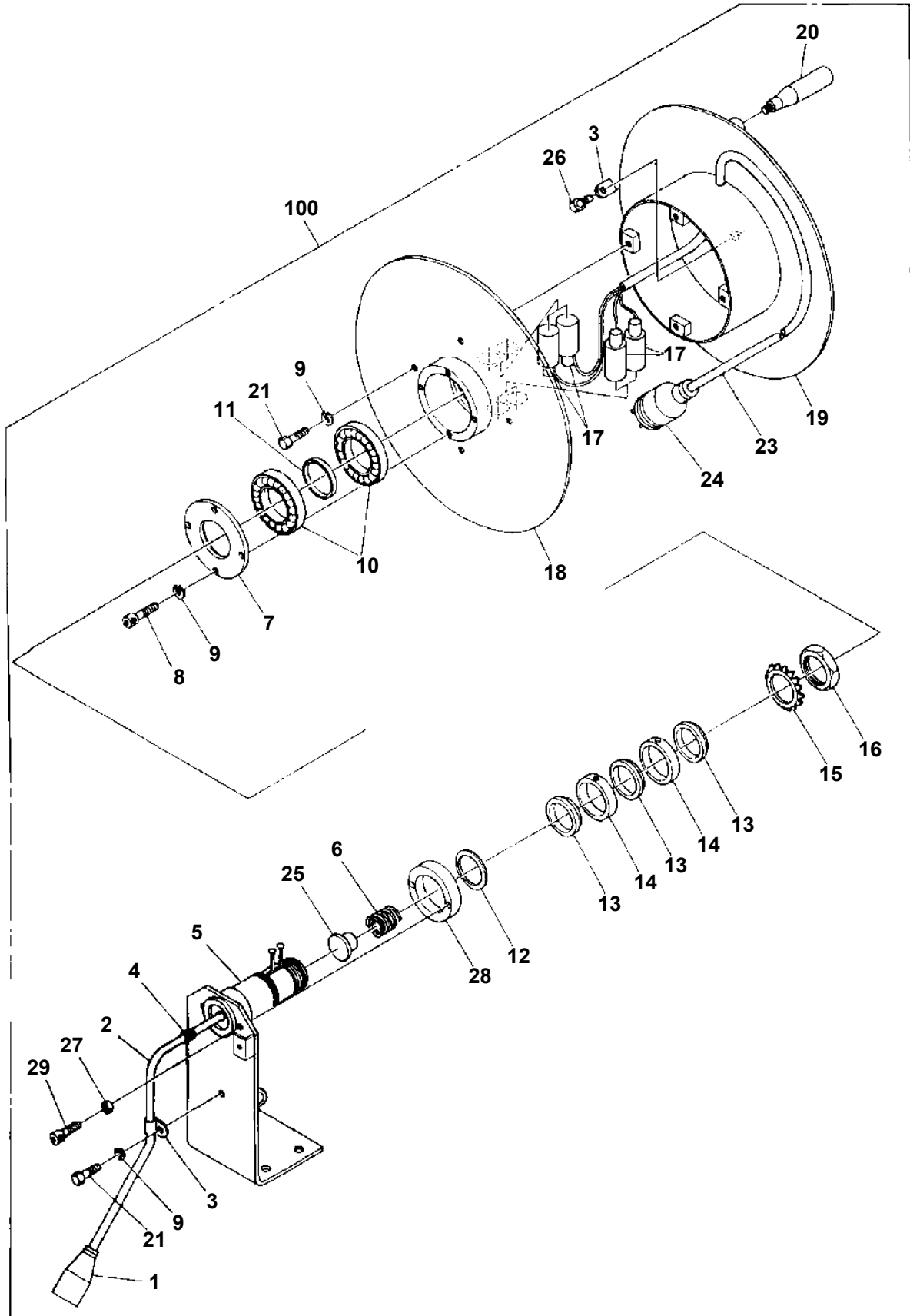
AT-146-1 4209510023 UPPER

Pos No.	Parts No	Parts Name	Qty	Unit	Technical Data	Serial No (Start)	Serial No (End)	Remarks	Pages
2	90101208012	BOLT	4		M8X12				
3	90302040801	WASHER,SPRING	4		8				
21	42353331100	SUPPORT	1				227324		
22	42433401300	LAMP	1				228103		
31	42353332100	SUPPORT	1			227325			
32	42737850100	GUARD	1			227325			
33	90101206018	BOLT	4		M6X18	227325	228117		
	90101206025	BOLT	4		M6X25	228104	228132		
34	90201200600	NUT	4		M6	227325	227547		
35	90302040601	WASHER,SPRING	4		6	227325			
37	42502030100	SUPPORT	1			228104	228132		
51	82100002550	BULB,LAMP	1		24V 20W		228103		
66	42433401301	LAMP	1			228104	228132		
73	90101206030	BOLT	4		M6X30	228133			
76	42433401302	LAMP	1			228133			
77	42502980100	SUPPORT	1			228133			
78	37000306130	SPACER	2		L=8	228133			
79	37000302980	SPACER	2		L=10	228133			
101	42353331000	LAMP ASSY	1				227324		
102	42353332000	LAMP ASSY	1			227325	228103		
103	42353332001	LAMP ASSY	1			228104	228132		
104	42353332002	LAMP ASSY	1			228133			

AT-146-1 42095100023 UPPER

Pos No.	Parts No	Parts Name	Qty	Unit	Technical Data	Serial No (Start)	Serial No (End)	Remarks	Pages
1	42501382010	HARNESS	1						
2	91810132530	FASTENER	15						
3	82108901210	SWITCH	1						
4	90101206016	BOLT	2		M6X16				
5	90303070601	WASHER,PLAIN	2		6				
6	90302040601	WASHER,SPRING	2		6				
7	42501382100	SUPPORT	1						

AT-146-1 42095100023 UPPER
PN1350022-00 REEL, CORD



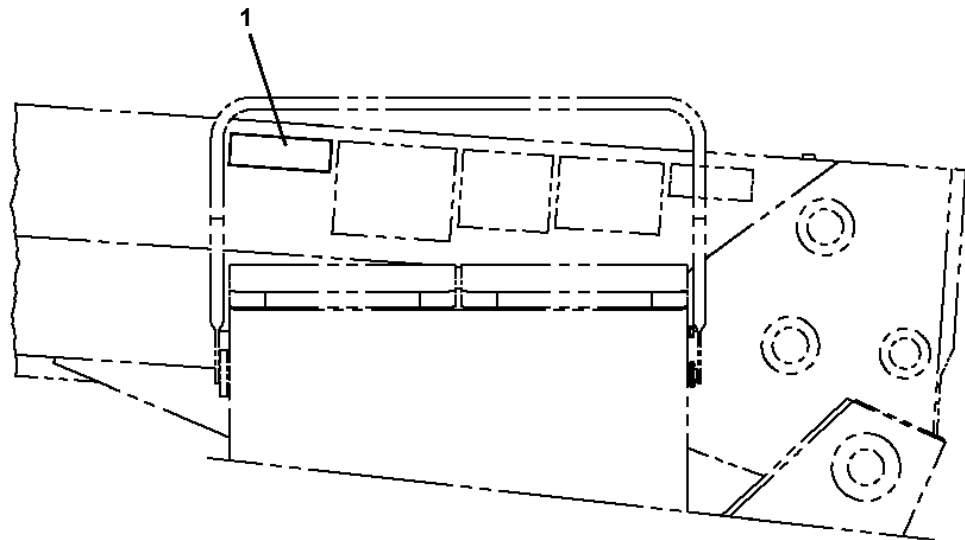
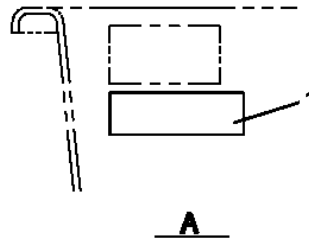
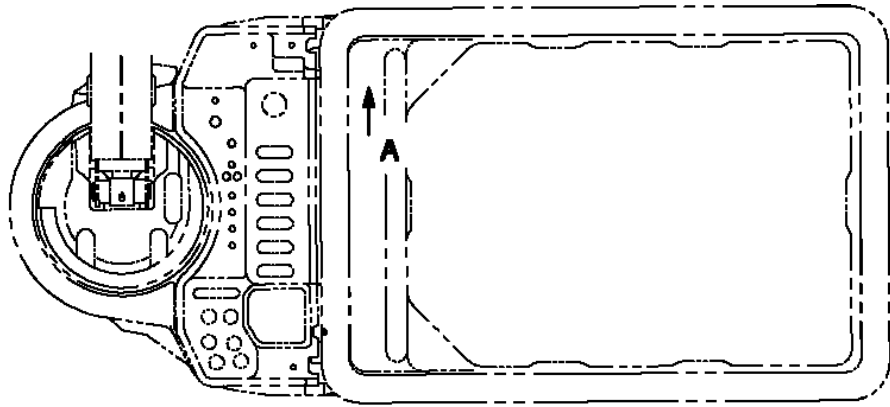
AT-146-1 42095100023 UPPER

Pos No.	Parts No	Parts Name	Qty	Unit	Technical Data	Serial No (Start)	Serial No (End)	Remarks	Pages
1	36900285010	ARMATURE ASSY	1						
5	36900285020	YOKE ASSY	1						
7	36900285030	BRACKET (FRONT)	1						
10	36900285040	BRACKET (REAR)	1						
11	36900285050	BRUSH	2						
12	36900285060	SPRING (BRUSH)	4						
15	36900285070	COVER (BRUSH)	1						
50	36900280000	MOTOR,ELECTRIC	1						

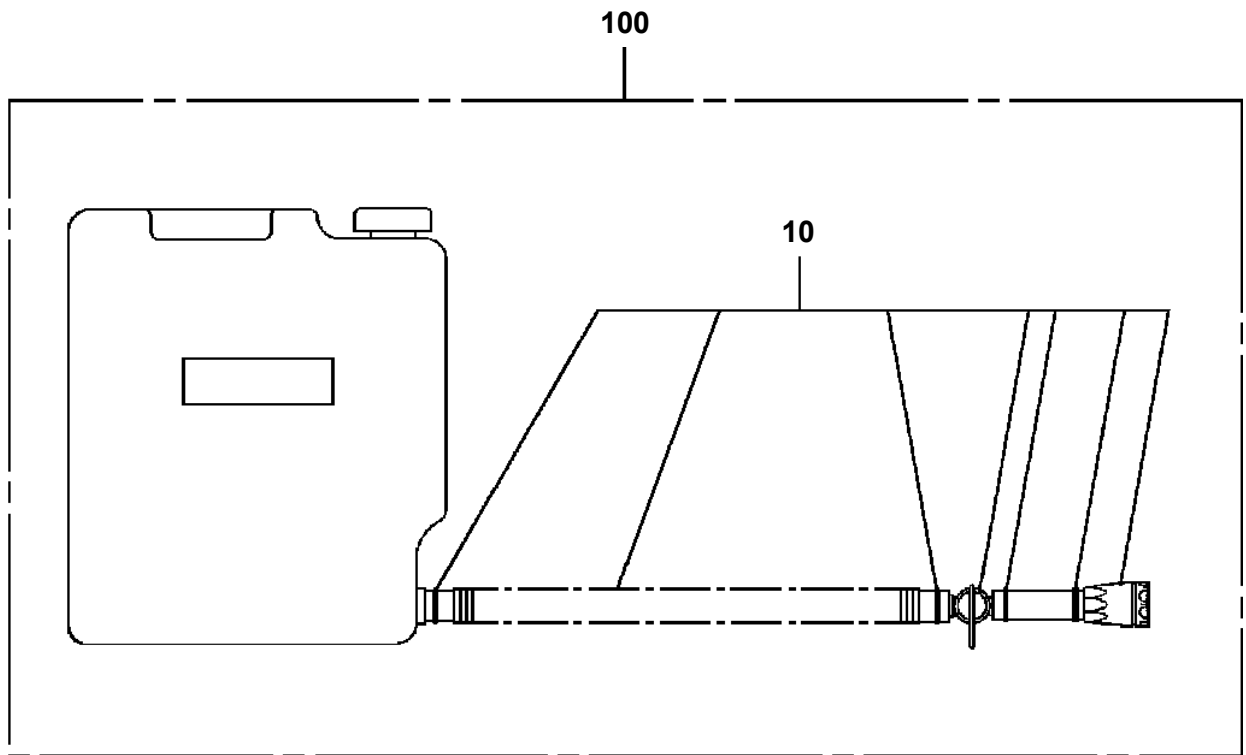
AT-146-1 4209510023 UPPER

Pos No.	Parts No	Parts Name	Qty	Unit	Technical Data	Serial No (Start)	Serial No (End)
1	42392582060	PLATE,CAUTION	1				
2	42392582080	PLATE,CAUTION	1				
3	42394782010	PLATE,CAUTION	1				
4	42390780040	PLATE,NAME (WORKING SWITCH)	1				
5	42390010290	PLATE,NAME (AML)	1				
6	42394271040	PLATE,NAME (AML PREOPERATIONAL)	1				
7	42394783030	PLATE,NAME	1				
8	42394271120	PLATE,NAME (STOP)	1				
9	42394782020	PLATE,CAUTION	1				
10	42394191180	PLATE,CAUTION	1				
11	37002201980	PLATE,NAME	2				
12	42394922010	PLATE,NAME	1				
13	42392652020	PLATE,NAME	1				
14	42394782040	PLATE,CAUTION	1				

AT-146-1 42095100023 UPPER
PO1013844-00 PLATE ASSY,NAME



**AT-146-1 42095100023 UPPER
PT5060011-00 TANK ASSY (BATTERY,WATER)**



AT-146-1 42095100023 UPPER

Pos No.	Parts No	Parts Name	Qty	Unit	Technical Data	Se
1	42470980100	SWITCH,PUSH	1			
2	82100002220	CABLE	3	M		
3	82100002173	CONNECTOR	1			
10	42470983000	SWITCH BOX (ELECTRIC BOOSTER, 3M,NANABOSI,SINKOU DENKI)	1			

AT-146-1 42095100023 UPPER

Pos No.	Parts No	Parts Name	Qty	Unit	Technical Data	Serial No (Start)	Serial No (End)	Remarks	Pages
1	42351420200	SUPPORT	1						
2	42351420100	SUPPORT	1						
3	82430138010	KNOB	3						
4	90101208040	BOLT	2		M8X40				
5	90303070801	WASHER,PLAIN	2		8				
6	37000506550	PLATE	2		T=1.6				
7	90302040801	WASHER,SPRING	2		8				
8	90101208030	BOLT	1		M8X30				

AT-146-1 42095100023 UPPER

Pos No.	Parts No	Parts Name	Qty	Unit	Technical Data	Serial No (Start)	Serial No (End)	R
1	42473180000	CLAMP HEAD (IZUMI 12TON 2.5M)	1					

AT-146-1 42095100023 UPPER

Pos No.	Parts No	Parts Name	Qty	Unit	Technical Data	Serial No (Start)	Serial No
1	42473090000	CLAMP HEAD (IZUMI 7.5TON 3M ELECTRIC)	1				

AT-146-1 4209510023 UPPER

Pos No.	Parts No	Parts Name	Qty	Unit	Technical Data	Serial No (Start)	Serial No (E
1	42470367510	HOOK	1				
2	42470367520	CYLINDER	1				
3	42470367530	HOLDER (DIES)	1				
4	42470367540	STEM	1				
5	42470367550	SPRING (RETURN)	1				
6	42470367560	SEAT,SPRING	1				
7	42470367570	RING,STOP	1				
8	80720103006	PIN,SPRING	1		3X6		
9	91001104000	O-RING	1		1A P40		
10	42470367580	RING (B)	1				
12	42470367590	NOTCH	1				
13	42470367600	PIECE (B)	1				
14	42470367610	PIN (SCREW)	1				
15	42470367620	SPRING ASSY	1				
16	42470367630	PIECE (AL)	1				
17	42470367640	SPRING	1				
18	42470367650	KNOB	1				
19	80720102012	PIN,SPRING	1		2X12		
20	80720103008	PIN,SPRING	1		3X8		
21	42470367660	GUIDE	1				
22	90131505008	BOLT,HEXAGON SOCKET	1		M5X8		
23	90304110501	WASHER (LOCK)	1		5		
24	42470367670	SCRAPER	1				
25	42470367680	SPACER	1				
26	42470367690	BOLT,HEXAGON SOCKET	1				
27	42470367700	NIPPLE	1				
28	42470367710	JOINT,SELF SEALING (WITH CAP)	1				
29	42470367720	GRIP	1				
30	42470367730	PLATE,NAME	1				
31	42470367740	COVER (SAFETY)	1				
50	42470365000	CLAMP HEAD (SANWA,12TON,TITANIUM)	1				

AT-146-1 42095100023 UPPER

Pos No.	Parts No	Parts Name	Qty	Unit	Technical Data	Serial No (Start)	Serial No (End)
1	42472790000	ROPE (SAFETY,YELLOW:TD-TYPE)	1				

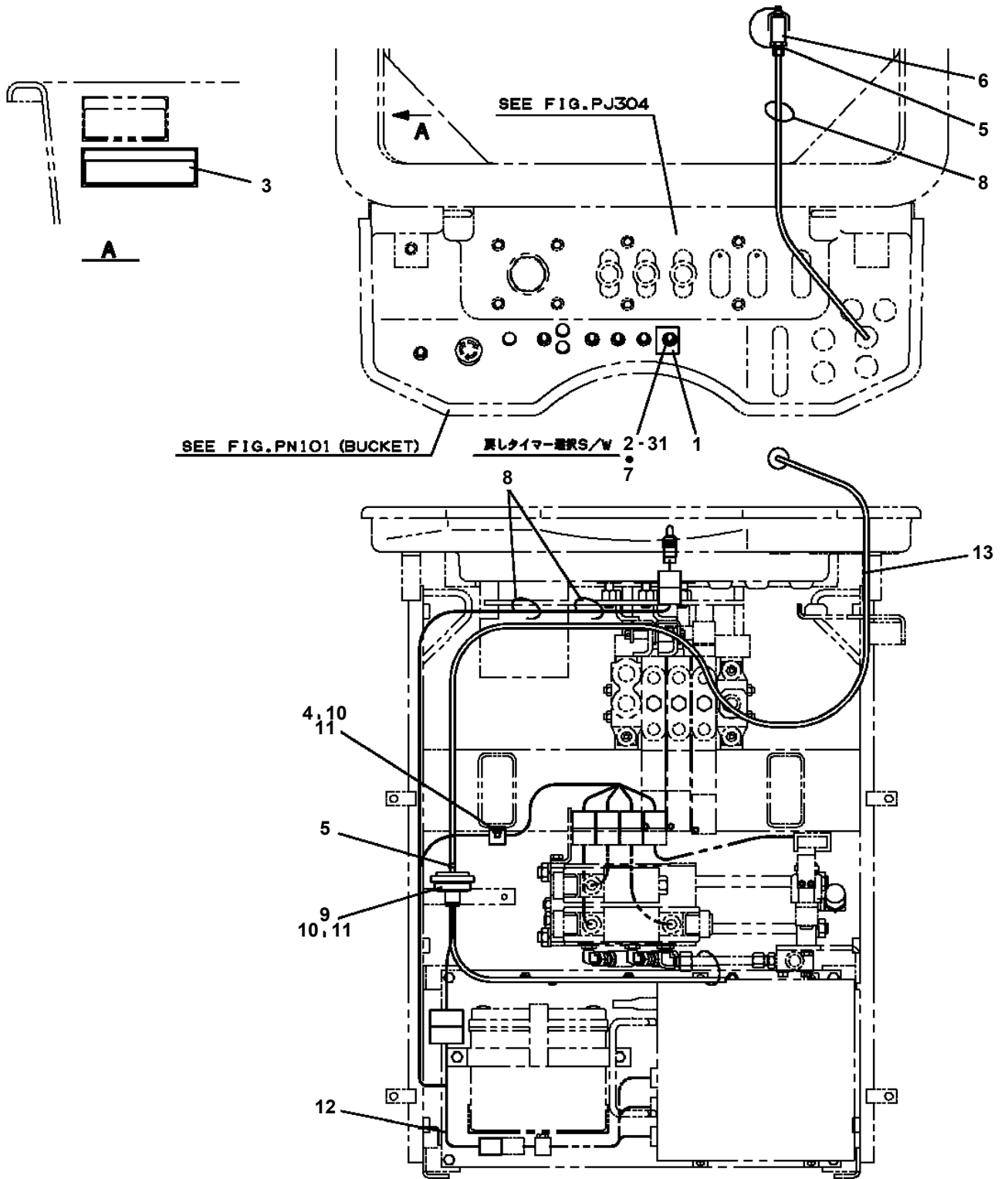
AT-146-1 42095100023 UPPER

Pos No.	Parts No	Parts Name	Qty	Unit	Technical Data	Serial No (Start)	Serial No (End)	Remarks	Pages
1	42470121000	ARM ASSY	1						
2	42471231000	HOLDER	3						
3	42470123000	CLAMP ASSY	1						
4	42470044000	HOT STICK	1						
5	42470045000	SUPPORT	1						
6	90101216130	BOLT	1		M16X130				
7	90303071601	WASHER,PLAIN	2		16				
8	90201201600	NUT	2		M16				
9	42220011200	SUPPORT	1						
21	42470121100	ARM	1						
22	42470121200	CAP	2						

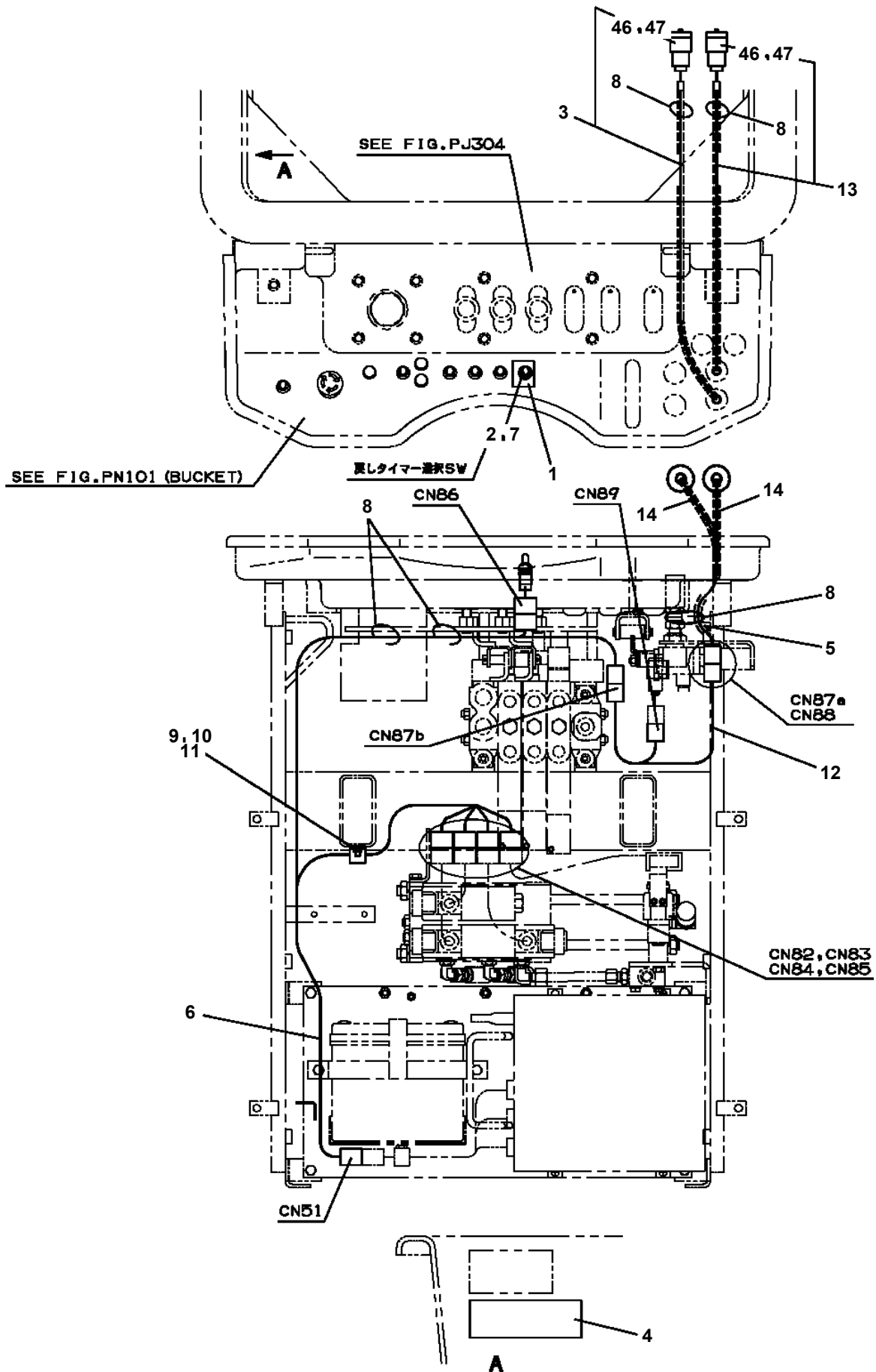
AT-146-1 4209510023 UPPER

Pos No.	Parts No	Parts Name	Qty	Unit	Technical Data	Serial No (Start)	Serial No (End)	Remarks	Pages
1	42470121000	ARM ASSY	1						
2	42471231000	HOLDER	3						
3	42470123000	CLAMP ASSY	1						
4	42475751000	SUPPORT	1						
5	90101216140	BOLT	1		M16X140				
6	90303071601	WASHER,PLAIN	2		16				
7	90201201600	NUT	2		M16				
8	42220011200	SUPPORT	1						
21	42470121100	ARM	1						
22	42470121200	CAP	2						

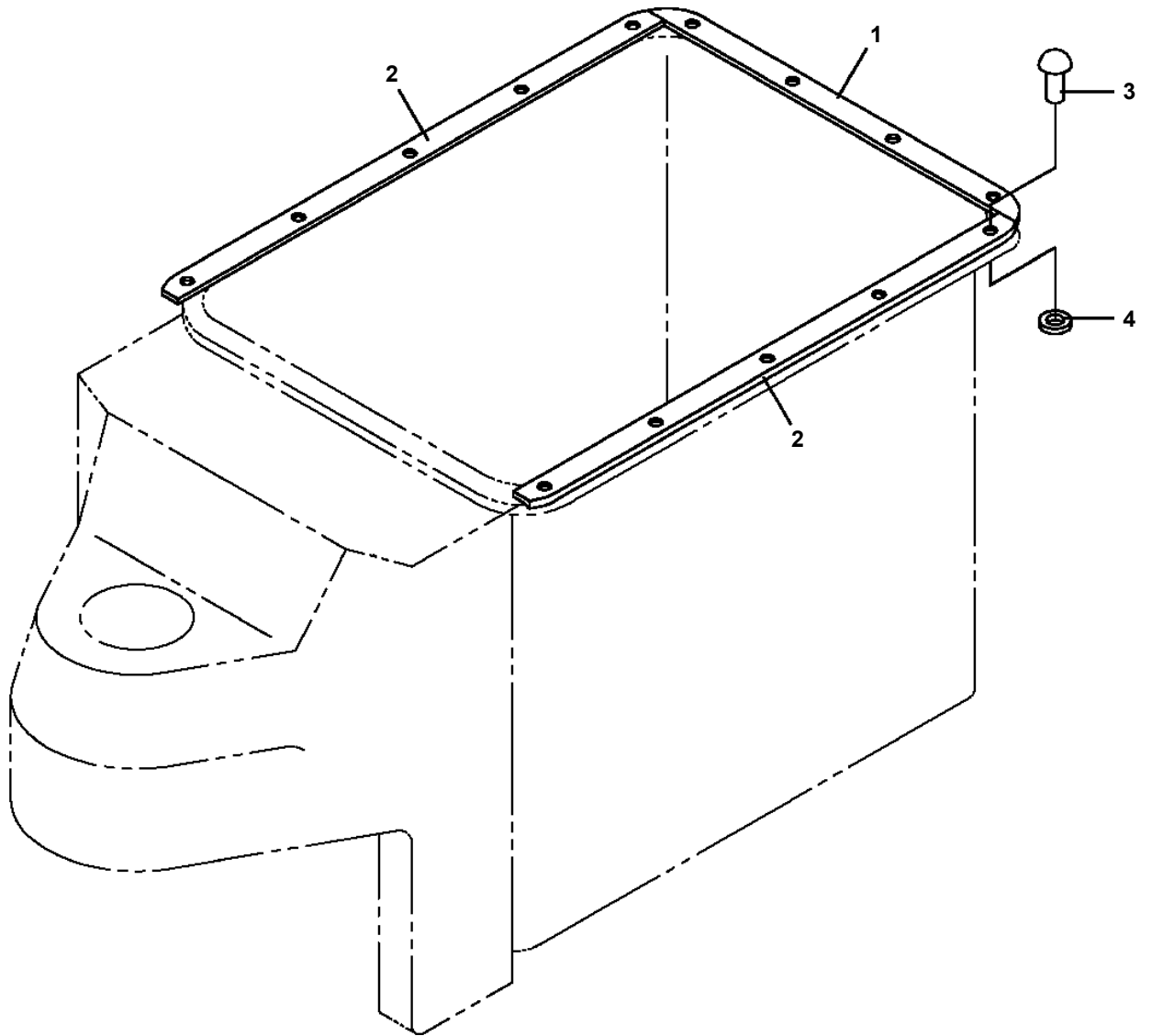
AT-146-1 42095100023 UPPER
PY1160094-02 BOOSTER (WIRING/AIR)



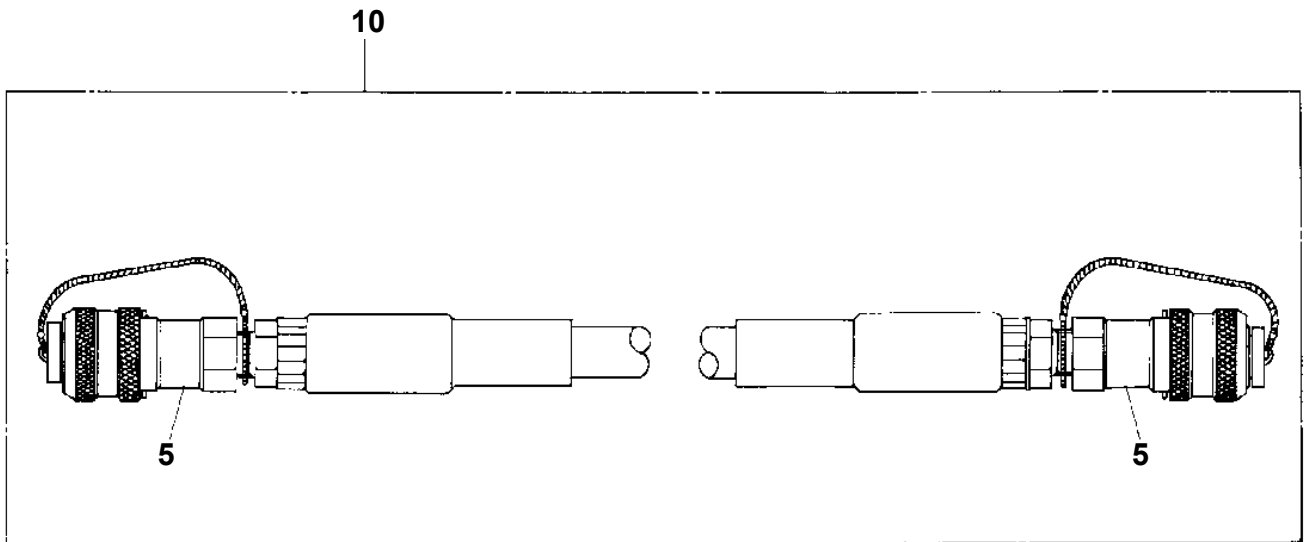
**AT-146-1 42095100023 UPPER
PY1160109-02 BOOSTER (WIRING/ELEC.SERECTOR)**



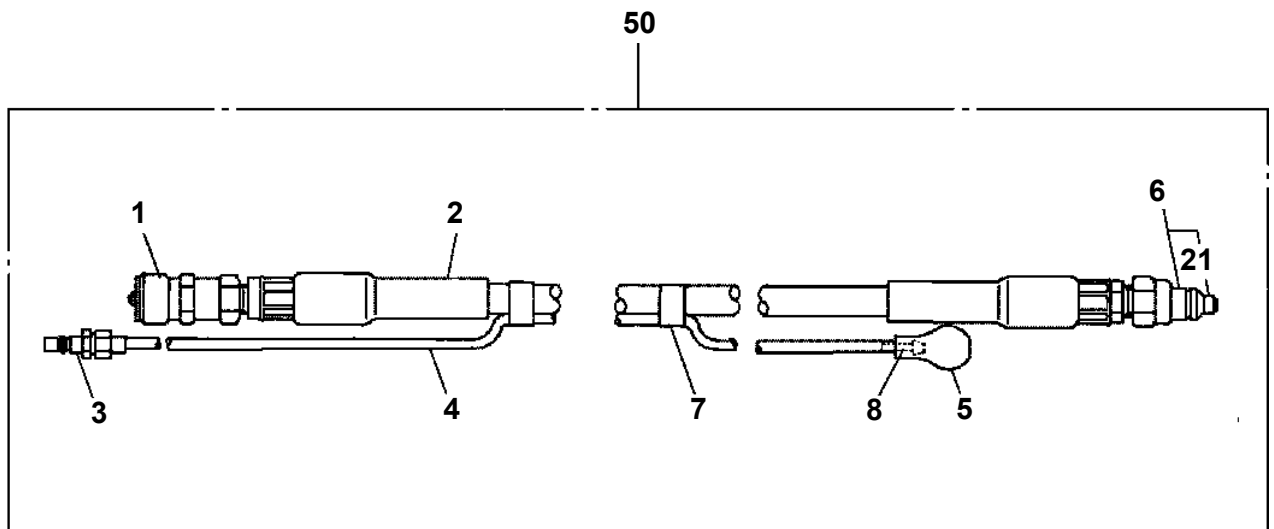
**AT-146-1 42095100023 UPPER
PY1540007-00 COVER,BUCKET (INNER CASE)**



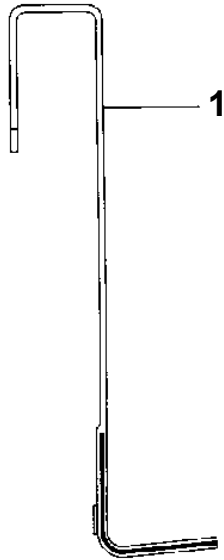
**AT-146-1 42095100023 UPPER
PY1590001-01 HOSE,BOOSTER (FEMALE-FEMALE,3M)**



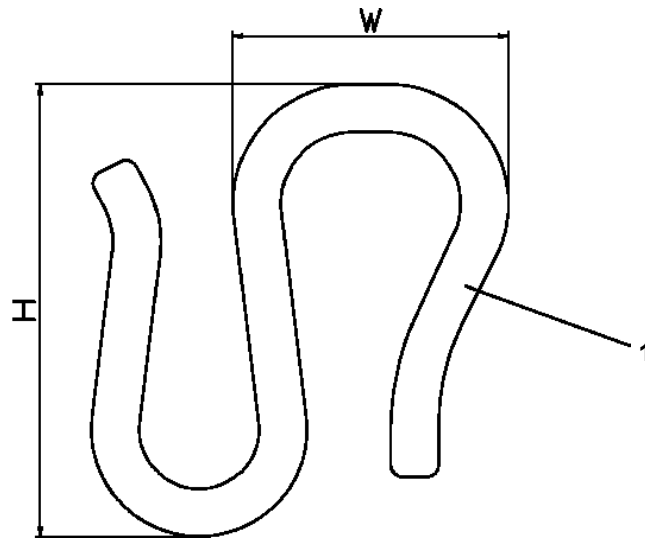
**AT-146-1 42095100023 UPPER
PY1590010-00 HOSE,BOOSTER (WITH AIR BALLOON,2M)**



**AT-146-1 42095100023 UPPER
PY1760001-00 STEP, BUCKET**



**AT-146-1 42095100023 UPPER
PY1790004-01 HANGER (FOR BUCKET,FRP)**



CLICK HERE TO **DOWNLOAD** THE COMPLETE MANUAL

- Thank you very much for reading the preview of the manual.
- You can download the complete manual from: www.heydownloads.com by clicking the link below



- Please note: If there is no response to CLICKING the link, please download this PDF first and then click on it.

CLICK HERE TO **DOWNLOAD** THE COMPLETE MANUAL