

AT-145-1 42043200030 UPPER

PD2000089-00 SWING UNIT

PG2000096-00 BOOM UNIT

PH1000536-00 SAFETY DEVICES

PJ3000311-00 BUCKET SYSTEM

PJ5000003-00 BOOSTER UNIT

PK2000338-00 FRAME UNIT

PO1000131-03 INDICATION PLATES

PY1000800-01 OPTIONS,1

PY2000092-00 OPTIONS.2

ASSEMBLY

CLICK HERE TO **DOWNLOAD** THE COMPLETE MANUAL

- Thank you very much for reading the preview of the manual.
- You can download the complete manual from: www.heydownloads.com by clicking the link below



- Please note: If there is no response to CLICKING the link, please download this PDF first and then click on it.

CLICK HERE TO **DOWNLOAD** THE COMPLETE MANUAL

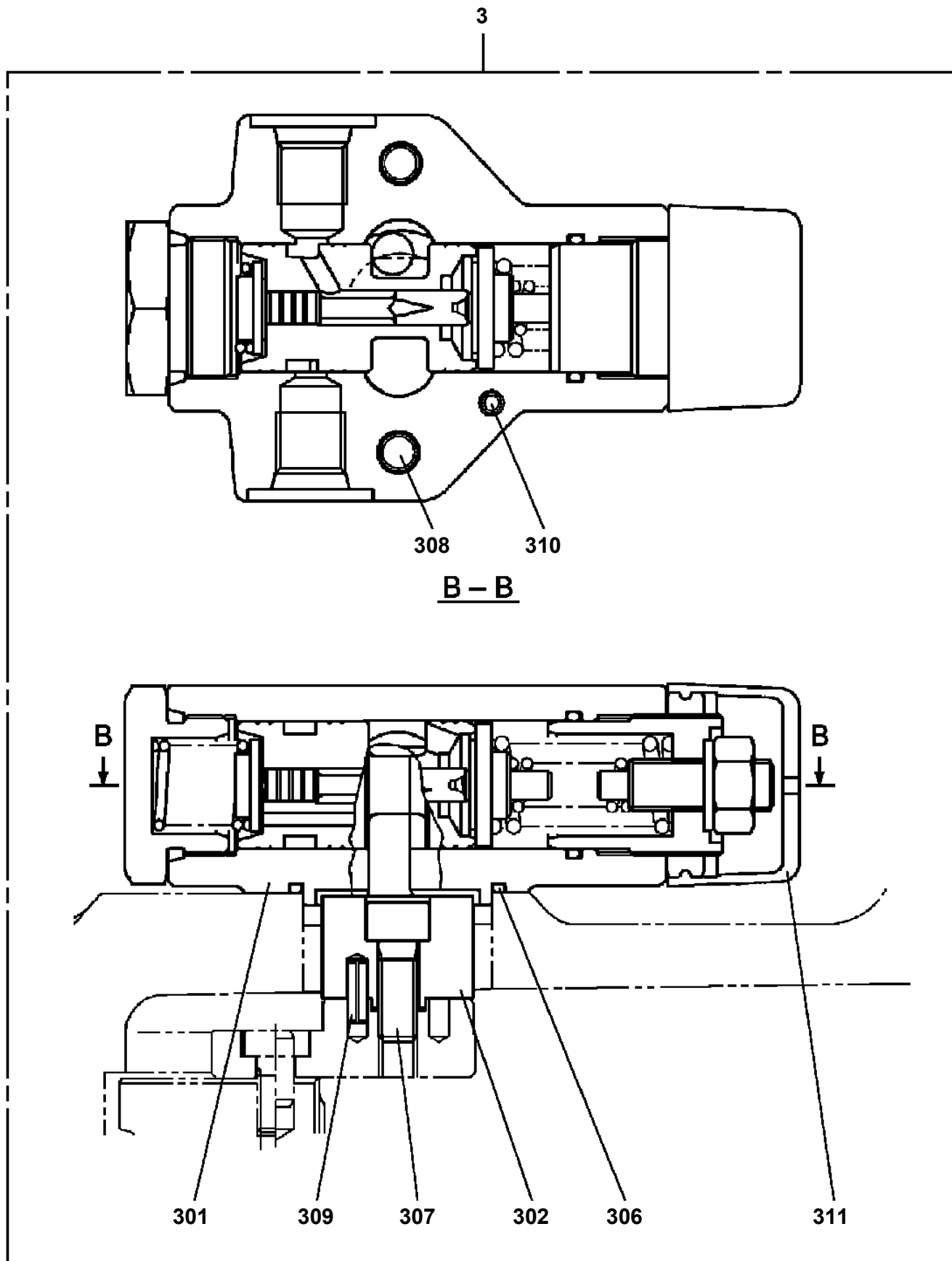
AT-145-1 42043200030 UPPER

Pos No.	Parts No	Parts Name	Qty	Unit	Technical Data	Serial No (Start)	Serial
1	(*****)	BOOSTER (AIR & ELECTRIC)	1				
2	(*****)	BOOSTER (WIRING/AIR SELECTOR)	1				
3	(*****)	PIPING,BOOSTER (SELECTOR/AIR & ELECTRIC)	1				

AT-145-1 42043200030 UPPER

Pos No.	Parts No	Parts Name	Qty	Unit	Technical Data	Se
59	(*****)	MOUNT,LAMP (BUCKET,FOR NTT,OPTION)	1			
61	42476260000	FOOT SWITCH (OPTION)	1			
62	(*****)	ARM,ATTACHMENT (L-TYPE JIB)	1			

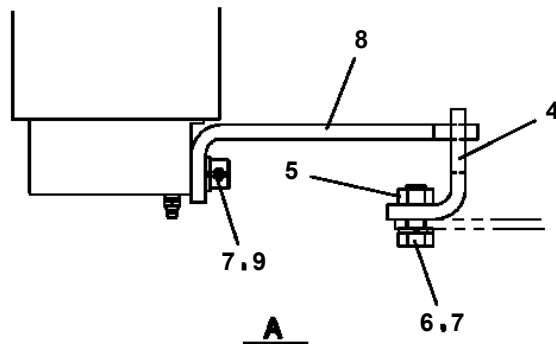
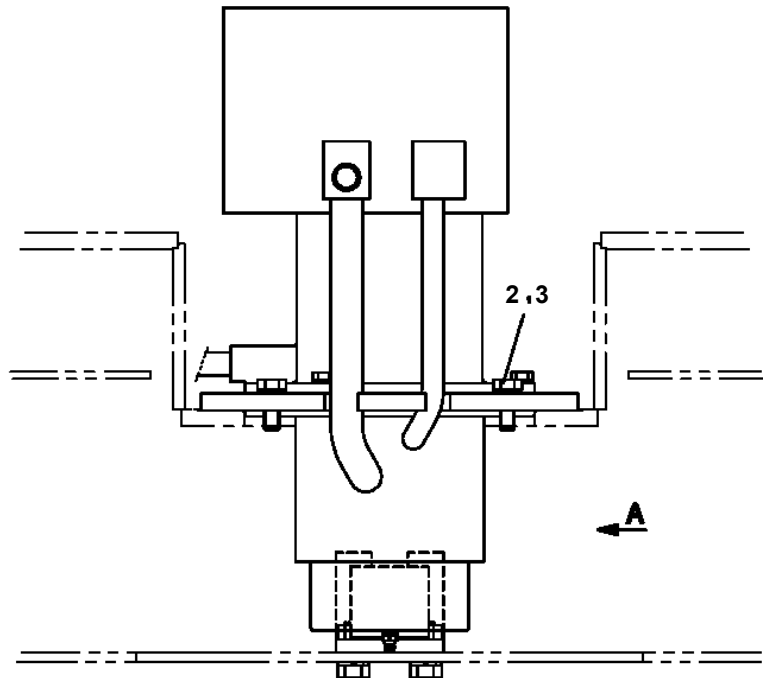
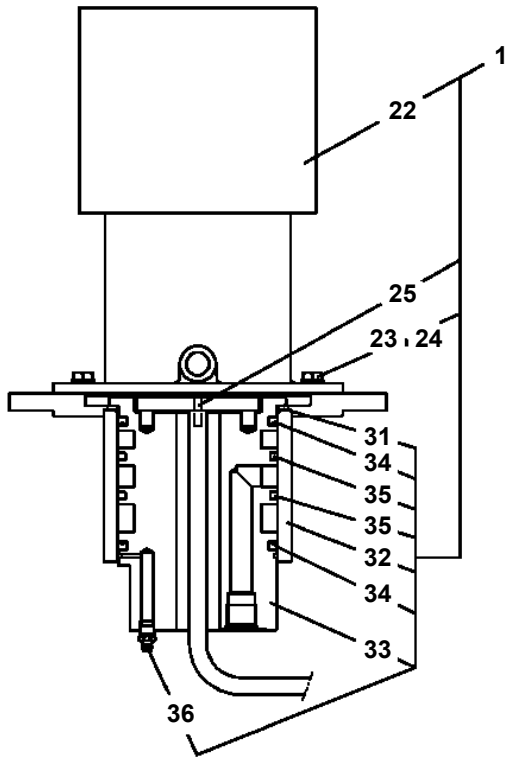
AT-145-1 42043200030 UPPER
PB1100380-01 PUMP, HYDRAULIC



展開圖有
ILLUSTRATED BREAKDOWN NO 301

AT-145-1 42043200030 UPPER
PB1300246-02 JOINT, ROTARY

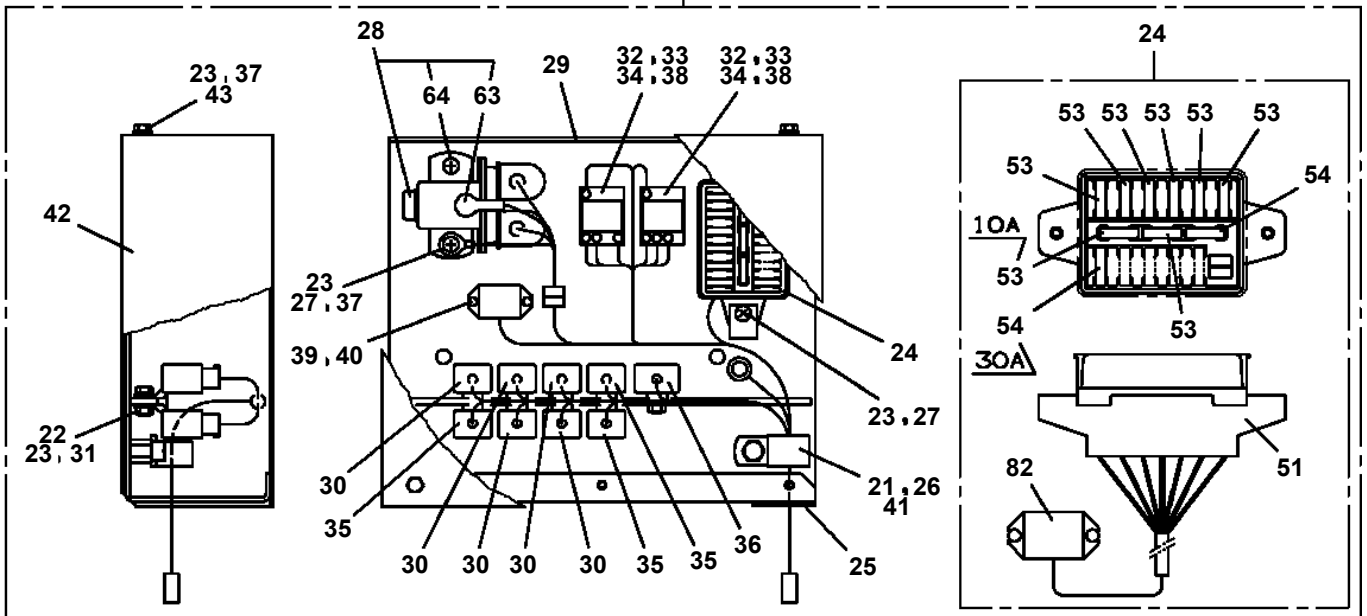
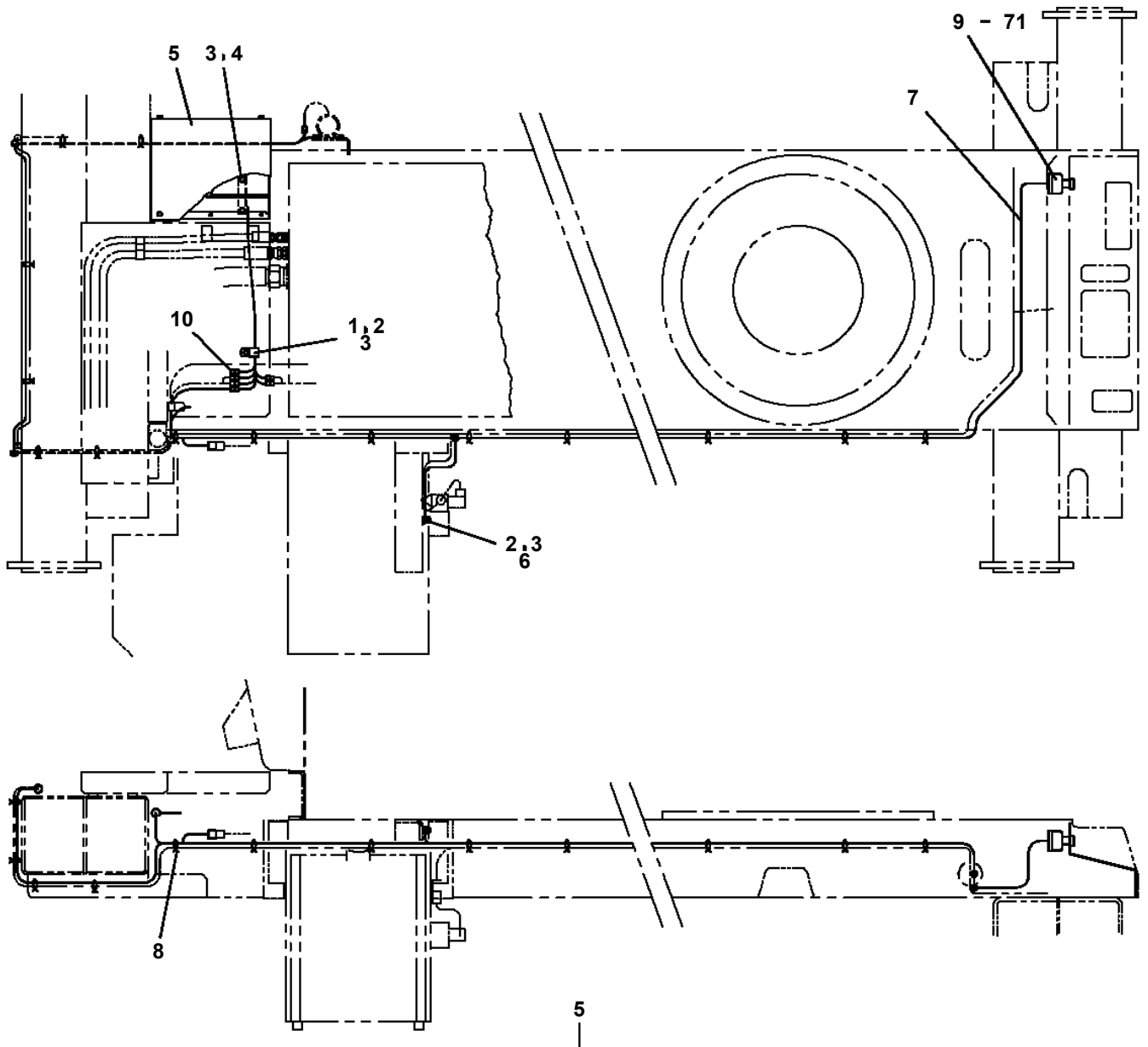
FRONT ←



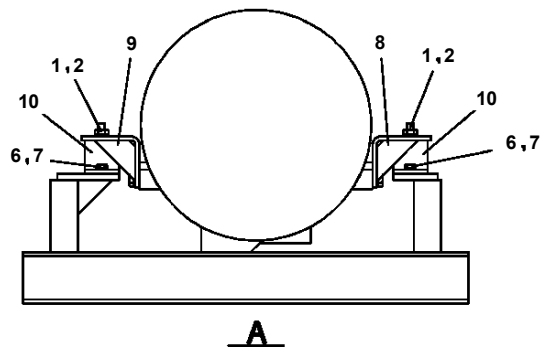
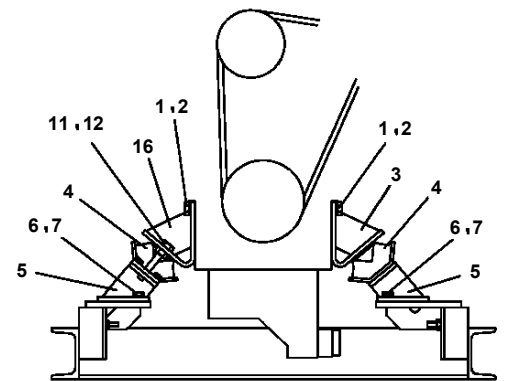
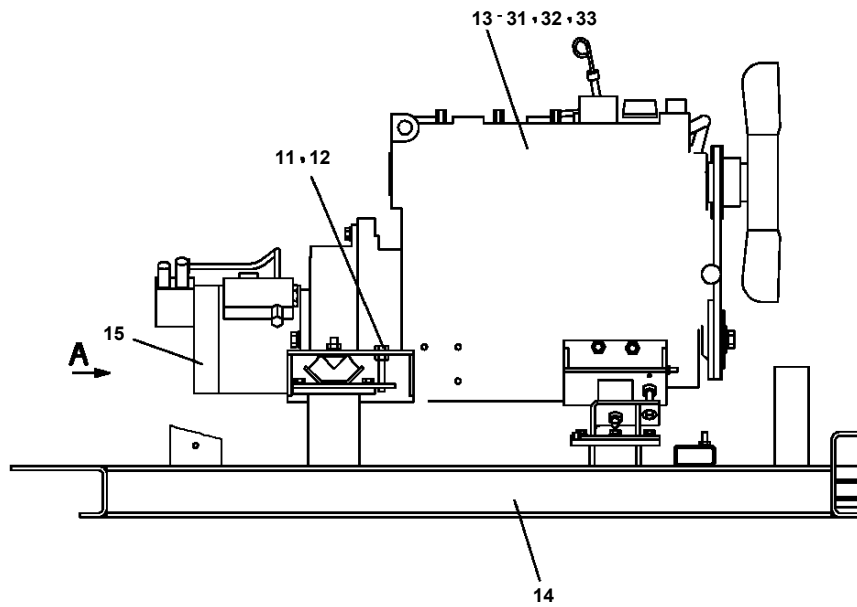
AT-145-1 42043200030 UPPER

Pos No.	Parts No	Parts Name	Qty	Unit	Technical Data	Serial No (Start)	Serial No (End)	Remarks
1	90101208016	BOLT	2		M8X16			
2	90302040801	WASHER,SPRING	2		8			
3	36630910060	NEEDLE	1					
4	36630910030	HOLDER	1					
5	91002801000	O-RING	1		1B P10			
6	91410001000	RING,BACKUP	1		P10			
8	36630910050	POPPET	1					
9	52255101000	SPRING	1					
10	91002801400	O-RING	1		1B P14			
11	36620030050	PLUG	1					
12	82400000350	KNOB	1					
13	37000508510	PLATE	1					
14	80172303006	SCREW,MACHINE	1		M3X6			
100	36636340000	VALVE,MANUAL CONTROL	1					

**AT-145-1 42043200030 UPPER
PB1370078-04 POWER SUPPLY (WIRING, START)**



**AT-145-1 42043200030 UPPER
PB1380356-00 POWER SUPPLY (ENGINE)**



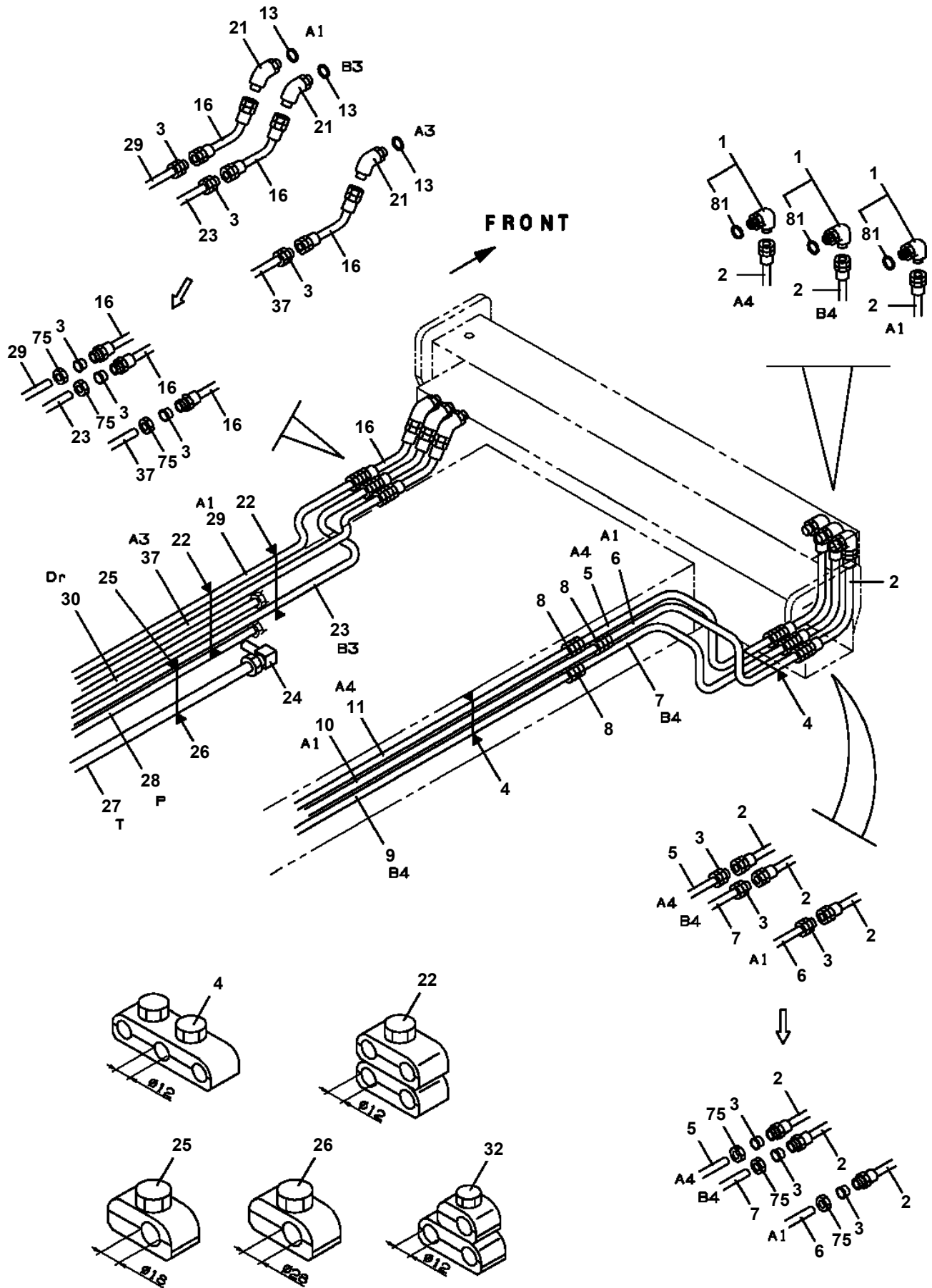
AT-145-1 42043200030 UPPER

Pos No.	Parts No	Parts Name	Qty	Unit	Technical Data	Serial No (Start)	Serial No (End)	F
1	42612132001	CASE,INNER (FRONT)	1					
2	42612131101	CASE,INNER (JACK)	1				226603	
	42612131102	CASE,INNER (JACK)	1			226604		
3	90302040801	WASHER,SPRING	1		8			
5	36034280001	CYLINDER,JACK	1					
6	42612131300	FLOAT ASSY	1					
7	31201770100	PLATE,SLIDE	8		T=3.0			
8	37000138750	PIN	1		18			
9	80601110250	RING,RITAINING	2		S25			
10	42730072000	COVER	1					
11	90101206012	BOLT	6		M6X12			
12	90302040601	WASHER,SPRING	7		6			
13	37000169010	PIN	1		30			
14	80601110300	RING,RITAINING	2		S30			
15	80601110120	RING,RITAINING	2		S12			
16	37000112950	PIN	1					
17	37000168300	PIN	1				226603	
	37000171720	PIN	1			226604		
19	36623930000	VALVE,PILOT CHECK	1					
20	90172110035	BOLT,HEXAGON SOCKET	2		M10X35			
21	90101206016	BOLT	1		M6X16			
22	90201200600	NUT	1		M6			
23	82100002005	CLAMP	1		WRC8			
24	90101208010	BOLT	1		M8X10			
25	91002801000	O-RING	2		1B P10			
26	80400160127	JOINT	2				226794	
	80400160127	JOINT	1			226795		
27	91002801100	O-RING	2		1B P11		226794	
	91002801100	O-RING	1		1B P11	226795		
28	80136332036	PIN,SPLIT	2		3.2X36			
29	36672460000	FILTER (NIPPLE TYPE)	1			226795		
30	42612060010	CHOKE	1					
31	37000562700	PLATE	2		T=2.3	226790		
32	37000555650	PLATE	2		T=3.2	226790		
51	36042560000	CYLINDER,EXTENSION (FRONT)	1					
52	42612131210	HARNESS	1					
53	37002449400	HOSE	2		L=1760			
54	91810130240	FASTENER	18					
55	80400160127	JOINT	2					
56	91002801100	O-RING	2		1B P11			
	91002801100	O-RING	1		1B P11	226795		
63	42612131500	TRUNNION	1					
71	82100002034	CLAMP	1		WEC6			
72	90101208010	BOLT	1		M8X10			
73	90302040801	WASHER,SPRING	3		8			
74	90101208014	BOLT	2		M8X14			
75	42950011010	PLATE	1					
76	42950203010	BOLT	1		M6X18			
77	90201200600	NUT	1		M6			
78	82104502010	SWITCH,LIMIT	1					
79	90101204030	BOLT	2		M4X30			
80	90302040401	WASHER,SPRING	2		4			
81	42611483300	PLATE	1		T=3			
82	42611483200	PLATE	1		T=3			
200	42612371000	OUTRIGGER (INNER,FRONT LEFT)	1					

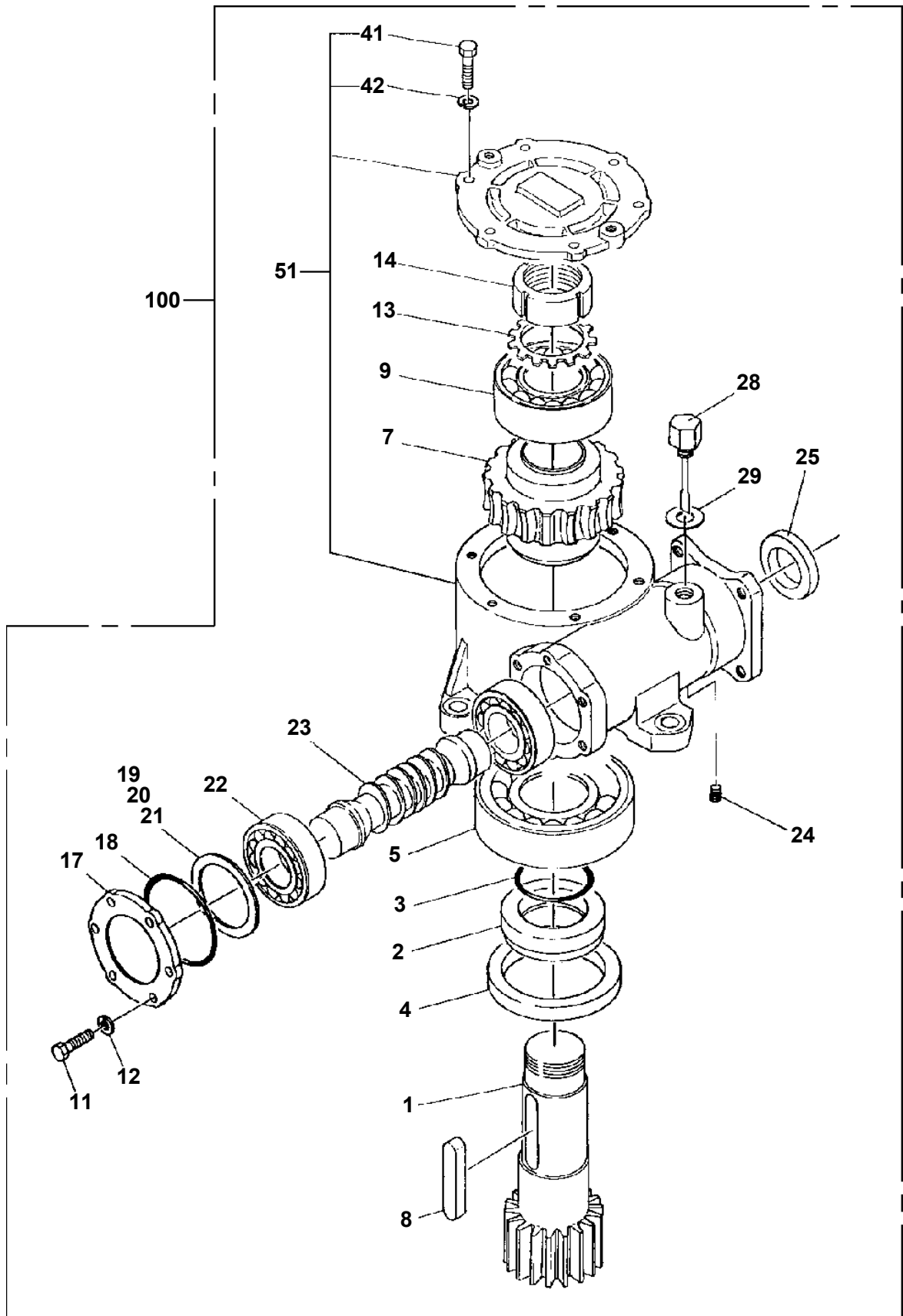
AT-145-1 42043200030 UPPER

Pos No.	Parts No	Parts Name	Qty	Unit	Technical Data	Serial No (Start)	Serial No (End)	Remarks	Pages
1	90201202400	NUT	1		M24				
2	90302042401	WASHER,SPRING	1		24				
3	91684006000	PACKING	2						
4	91431205001	RING,BACKUP	2						
5	91002802100	O-RING	1		1B P21				
6	91302206000	BEARING,PLAIN	2						
7	36030590060	PISTON	1						
8	36034280011	ROD	1						
9	36034280101	CYLINDER	1						
10	91002905500	O-RING	1		1B G55				
11	91694004000	PACKING	1						
12	91410204001	RING,BACKUP	1						
13	91660004001	SEAL,DUST	1						
14	36032910030	COVER,ROD	1						
30	36034289901	PACKING SET	1		40X60				
50	36034280001	CYLINDER,JACK	1						

**AT-145-1 42043200030 UPPER
PC1200345-01 PIPING,OUTRIGGER**

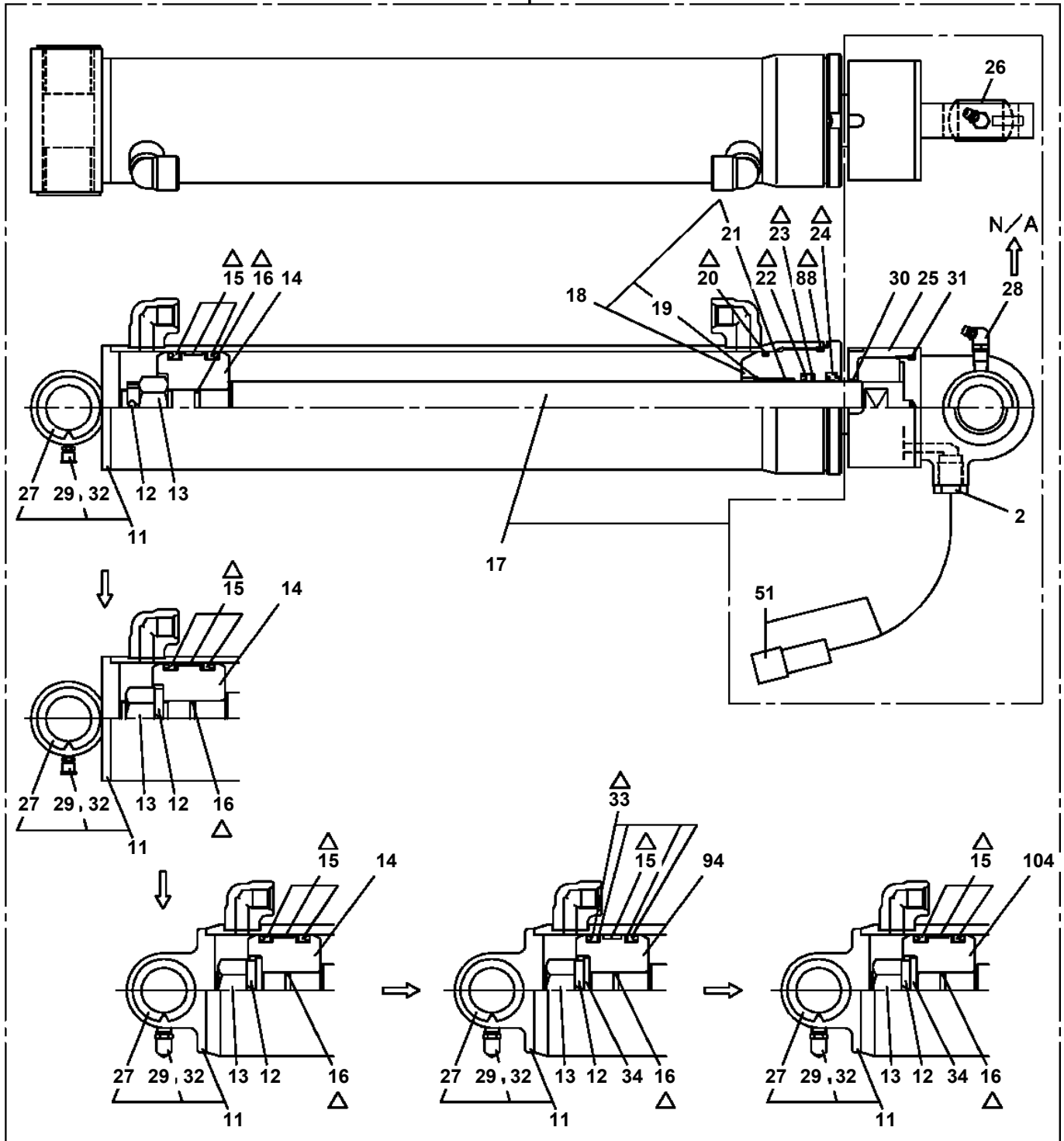


**AT-145-1 42043200030 UPPER
PD1010106-01 REDUCER, SWING SPEED**



**AT-145-1 42043200030 UPPER
PE1050085-06 CYLINDER,LEVELING (LOWER)**

100



- △:PACKING SET KEY NO.70 (KEY NO.15,16,20,22,23,24)
- ↓
- △:PACKING SET KEY NO.71 (KEY NO.15,16,20,22,23,24,88)
- ↓
- △:PACKING SET KEY NO.72 (KEY NO.15,16,20,22,23,24,33,88)
- ↓
- △:PACKING SET KEY NO.71 (KEY NO.15,16,20,22,23,24,88)

AT-145-1 42043200030 UPPER

Pos No.	Parts No	Parts Name	Qty	Unit	Technical Data	Serial No (Start)	Serial No (End)	Remarks	Pages
2	83152011003	SHACKLE	1				227646		
	83152811000	SHACKLE	1			227647			000144
3	12221506000	HOOK	1						
11	12221506010	STOPPER ASSY	1						
21	42290041000	ROPE (TESAC)	1						
22	42310956200	ROPE (TSK)	1						

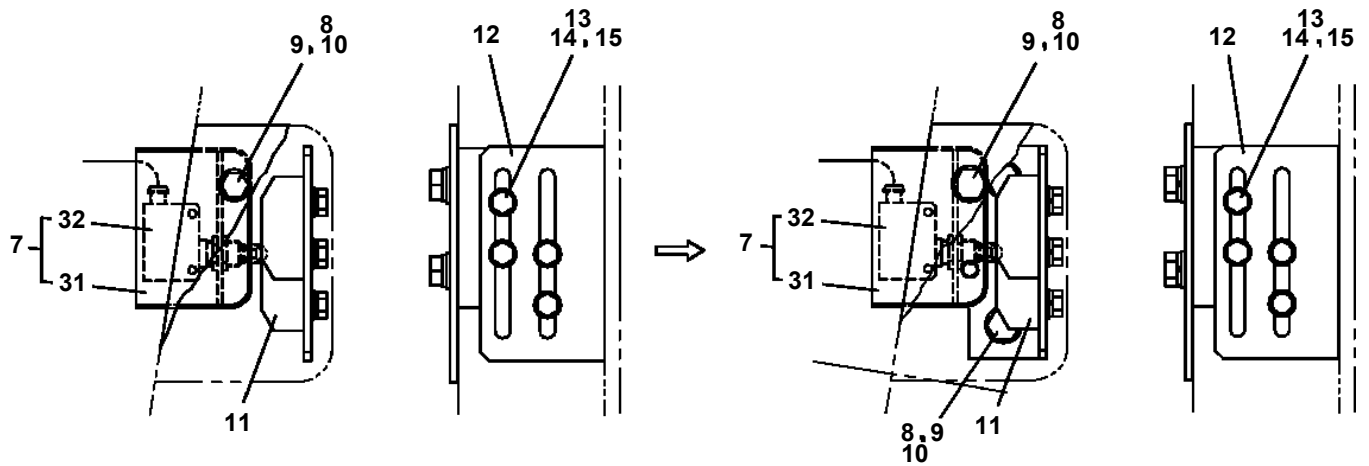
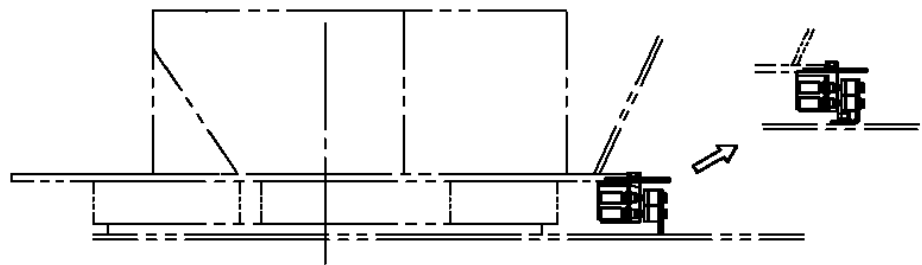
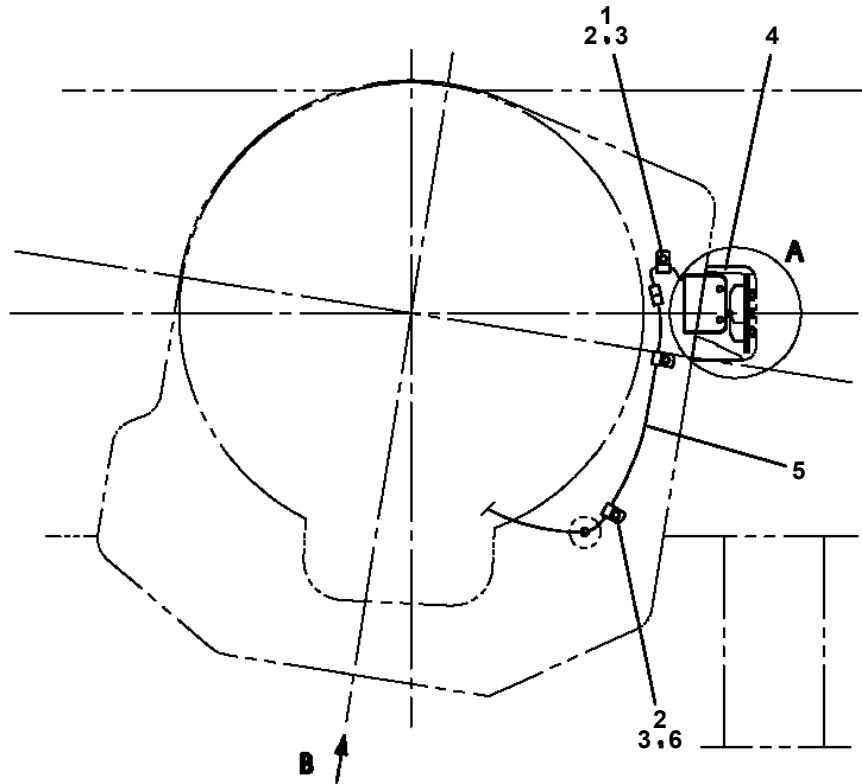
AT-145-1 4204320030 UPPER

Pos No.	Parts No	Parts Name	Qty	Unit	Technical Data	Serial No (Start)	Serial No (End)	Remarks	Pages
1	42310981100	POST	1						
2	42310981500	FRAME	1						
3	42310981010	PIN	2						
4	82400000317	CATCH	2						
5	80175304008	SCREW,MACHINE	4		M4X8				
6	82112001022	SLEEVE	4						
7	42220241030	ROPE,WIRE	2						
8	42220244500	PIN ASSY	1						
9	90101208014	BOLT	4		M8X14				
10	90302040801	WASHER,SPRING	4		8				
11	82440103017	GAS SPRING	2						
12	37001400250	SPRING	1						
13	37000311240	SPACER	2						
14	37000168450	PIN	2						
15	90303070801	WASHER,PLAIN	4		8				
16	80620210080	PIN,SNAP	4						
17	37000168580	PIN	1						
18	80601110250	RING,RITAINING	2		S25				
19	90101508020	BOLT	2		M8X20				
20	90201400800	NUT	2		M8				
21	42310952200	GUIDE	8				226959		
22	82430208020	GRIP	1						
23	42220343200	LEVER	1						
24	37000146540	PIN	1						
25	80613110040	RING,RETAINING	1						
26	42220234500	COVER	1						
27	42220234600	COVER	1						
28	42310952500	GUIDE	4			226960			
29	42310952600	GUIDE	2			227037			
30	42310952700	GUIDE	2			227037			
31	80173304010	SCREW,MACHINE	4		M4X10	227037			
32	90201200600	NUT	2		M6	227037			
41	42220244100	PIN	1						
42	42220343100	SUPPORT	1						
43	37001201220	SPRING	1						
44	90710003100	SCREW,SET	1						
56	82456101000	NIPPLE,GREASE	2		A-PT1/8				

AT-145-1 42043200030 UPPER

Pos No.	Parts No	Parts Name	Qty	Unit	Technical Data	Serial No (Start)	Serial No (End)	Remarks
2	37001007740	SHEAVE ASSY	2					
3	37001106400	ROLLER ASSY	2					
5	37001913680	ROPE,WIRE (TESAC)	2					
6	37001913690	ROPE,WIRE (TESAC)	2					
7	37000168960	PIN	1					
8	42201060100	SHEAVE ASSY	1					
9	80602110400	RING,RITAINING	2		R40			
10	37000144680	PIN	2					
11	80601110400	RING,RITAINING	2		S40			
12	37000144690	PIN	1					
13	37002009170	PLATE,SLIDE	2					
14	37000547580	PLATE	N		T=0.8			
15	80184306012	SCREW,MACHINE	8		M6X12			
16	37002008530	PLATE,SLIDE	4					
17	37000508520	PLATE	N		T=0.8			
18	90171114040	BOLT	21		M14X40			
19	90201481400	NUT	21		M14			
20	90303071401	WASHER,PLAIN	42		14			
21	90302041401	WASHER,SPRING	21		14			
22	42201061000	BOOM,BASE	1					
23	42201062000	BOOM,2ND	1					
24	42201063000	BOOM,TOP (F.R.P)	1					
25	42201063100	SADDLE	1					
26	42201063500	FRAME	1					
27	37000115380	PIN	1					
28	90238403008	NUT,CASTLE	1		M30X2			
29	37000524070	PLATE	1		T=6			
30	80136360050	PIN,SPLIT	1		6X50			
31	90303073001	WASHER,PLAIN	1		30			
32	90171110016	BOLT	20		M10X16			
33	90302041001	WASHER,SPRING	52		10			
34	42200430350	COVER	2					
35	37002009180	PLATE,SLIDE	2					
36	90172110040	BOLT,HEXAGON SOCKET	8		M10X40			
37	37002009160	PLATE,SLIDE	2					
38	90101208012	BOLT	4		M8X12			
39	37000144700	PIN	1					
40	37002006500	PLATE,SLIDE	2					
41	37000168230	PIN	4					
42	80601110200	RING,RITAINING	4		S20			
43	37000545450	PLATE	N		T=1.2			
44	37002009200	PLATE,SLIDE	2					
45	37000512290	PLATE	N		T=0.8			
46	37000512300	PLATE	N		T=0.5			
47	90202481200	NUT	4		M12			
48	90202481600	NUT	4		M16			
51	37001007720	SHEAVE ASSY	2					
52	37002009190	PLATE,SLIDE	2					
53	37000512280	PLATE	N		T=0.8			
54	37000512270	PLATE	N		T=0.5			
55	90171110020	BOLT	10		M10X20			
56	90303071001	WASHER,PLAIN	12		10			
57	42200434400	RETAINER	2					
58	82456201000	NIPPLE,GREASE	1		A-TYPE PT1/8			
59	82400000459	CAP	1					
60	37000144710	PIN	1					
61	37000509190	PLATE	1					
62	90171112030	BOLT	2		M12X30			
63	90302041201	WASHER,SPRING	2		12			
64	42200411040	SPACER	2					
65	37000311170	SPACER	1					
66	37000311180	SPACER	1		L=10.5			
67	37000127870	PIN	4					

**AT-145-1 42043200030 UPPER
PH1140033-01 DETECTOR, SWING ANGLE**



A

AT-145-1 42043200030 UPPER

Pos No.	Parts No	Parts Name	Qty	Unit	Technical Data	Serial No (Start)	Serial No (End)	Remarks	Pages
100	42651090200	HARNESS	1						

AT-145-1 42043200030 UPPER

Pos No.	Parts No	Parts Name	Qty	Unit	Technical Data	Serial No (Start)	Serial No (End)	Remarks	Pages
100	42351480800	HARNESS	1						

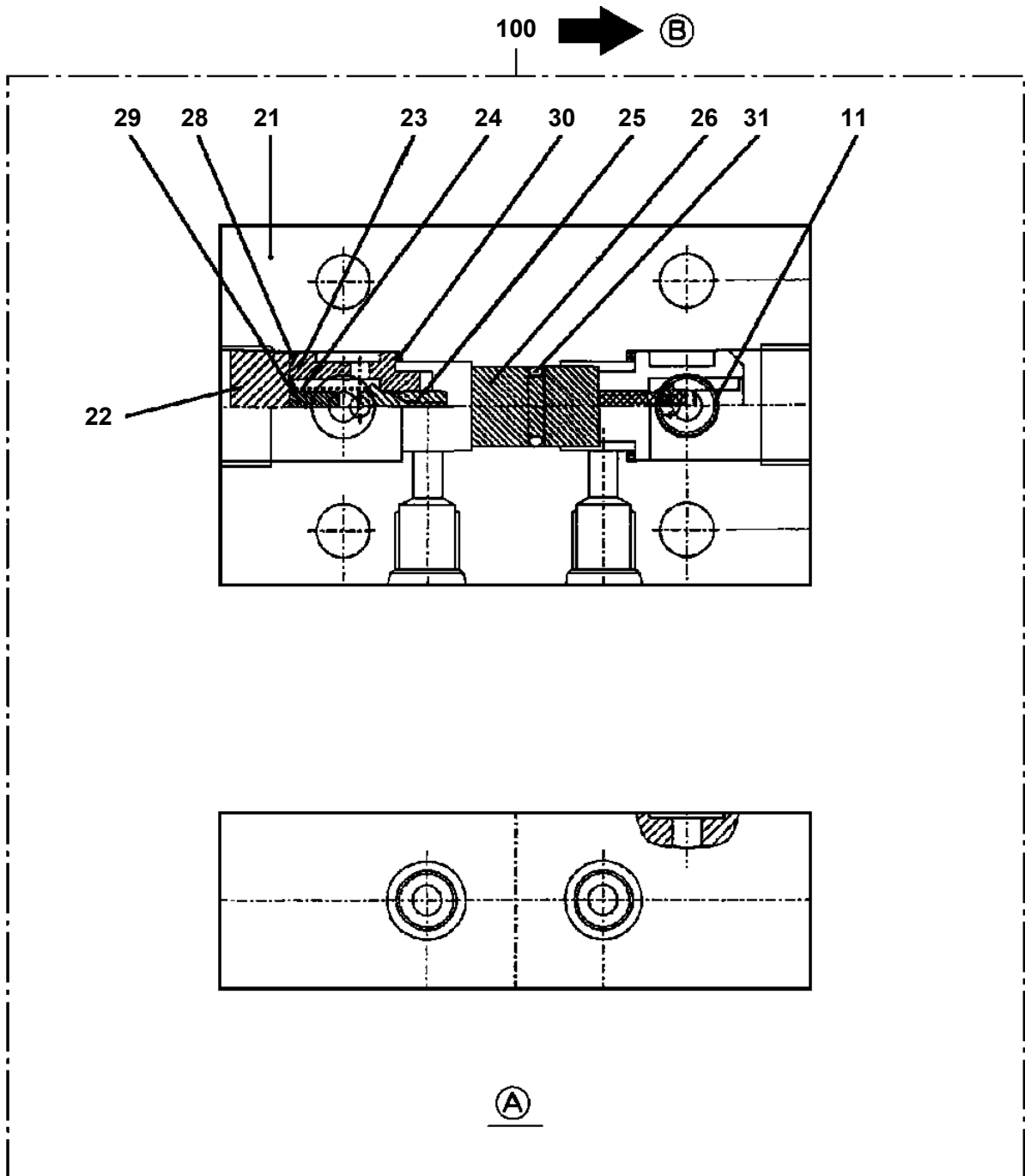
AT-145-1 42043200030 UPPER

Pos No.	Parts No	Parts Name	Qty	Unit	Technical Data	Serial No (Start)	Serial No (End)	Remarks	Pages
100	42475532200	HARNESS	1						

AT-145-1 42043200030 UPPER

Pos No.	Parts No	Parts Name	Qty	Unit	Technical Data	Serial No (Start)	Serial No (End)	Remarks	Page
11	36662775030	KEY	1						
18	36662775010	FLANGE SET	1						
30	36662775020	SEAL KIT	1						
50	36662770000	MOTOR,HYDRAULIC	1						

AT-145-1 42043200030 UPPER
PI1140133-01 VALVE,CHECK



AT-145-1 42043200030 UPPER

Pos No.	Parts No	Parts Name	Qty	Unit	Technical Data	Serial No (Start)	Serial No (End)	Remarks	Pages
1	90171108125	BOLT	4		M8X125				
2	36625750000	VALVE,CHECK	1						000096

AT-145-1 42043200030 UPPER

Pos No.	Parts No	Parts Name	Qty	Unit	Technical Data	Serial No (Start)	Serial No (End)	Remarks	Pa
5	50815054503	PACKING	2						
6	50815054603	SPRING	2						
7	91002801800	O-RING	2		1B P18				
8	50815054703	PIN (STOP)	2						
9	36623835900	PLUG	2						
10	91002801200	O-RING	2		1B P12				
11	36623825200	CAP (SEAL)	1						
100	36624690000	VALVE,PILOT CHECK	1						

CLICK HERE TO **DOWNLOAD** THE COMPLETE MANUAL

- Thank you very much for reading the preview of the manual.
- You can download the complete manual from: www.heydownloads.com by clicking the link below



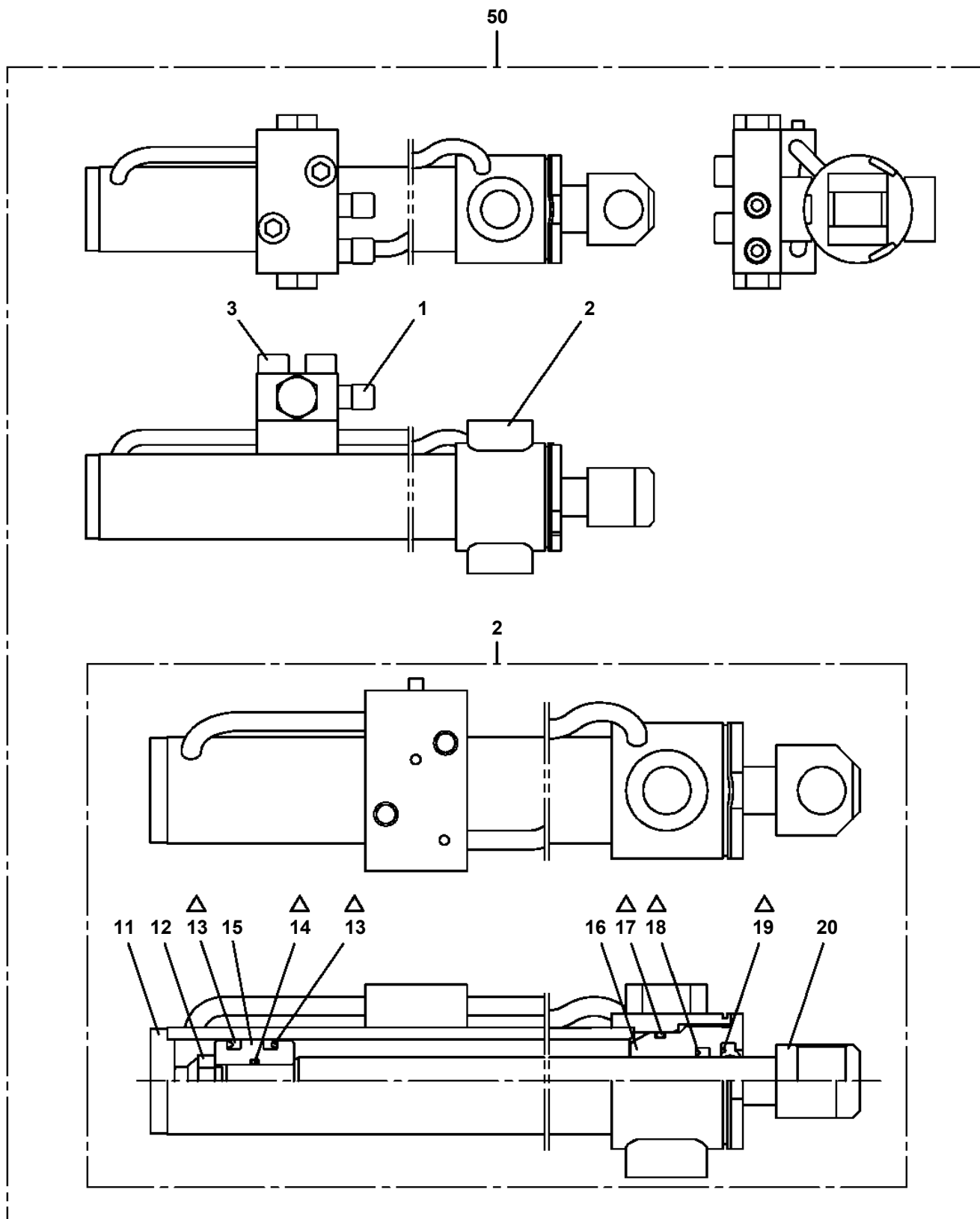
- Please note: If there is no response to CLICKING the link, please download this PDF first and then click on it.

CLICK HERE TO **DOWNLOAD** THE COMPLETE MANUAL

AT-145-1 42043200030 UPPER

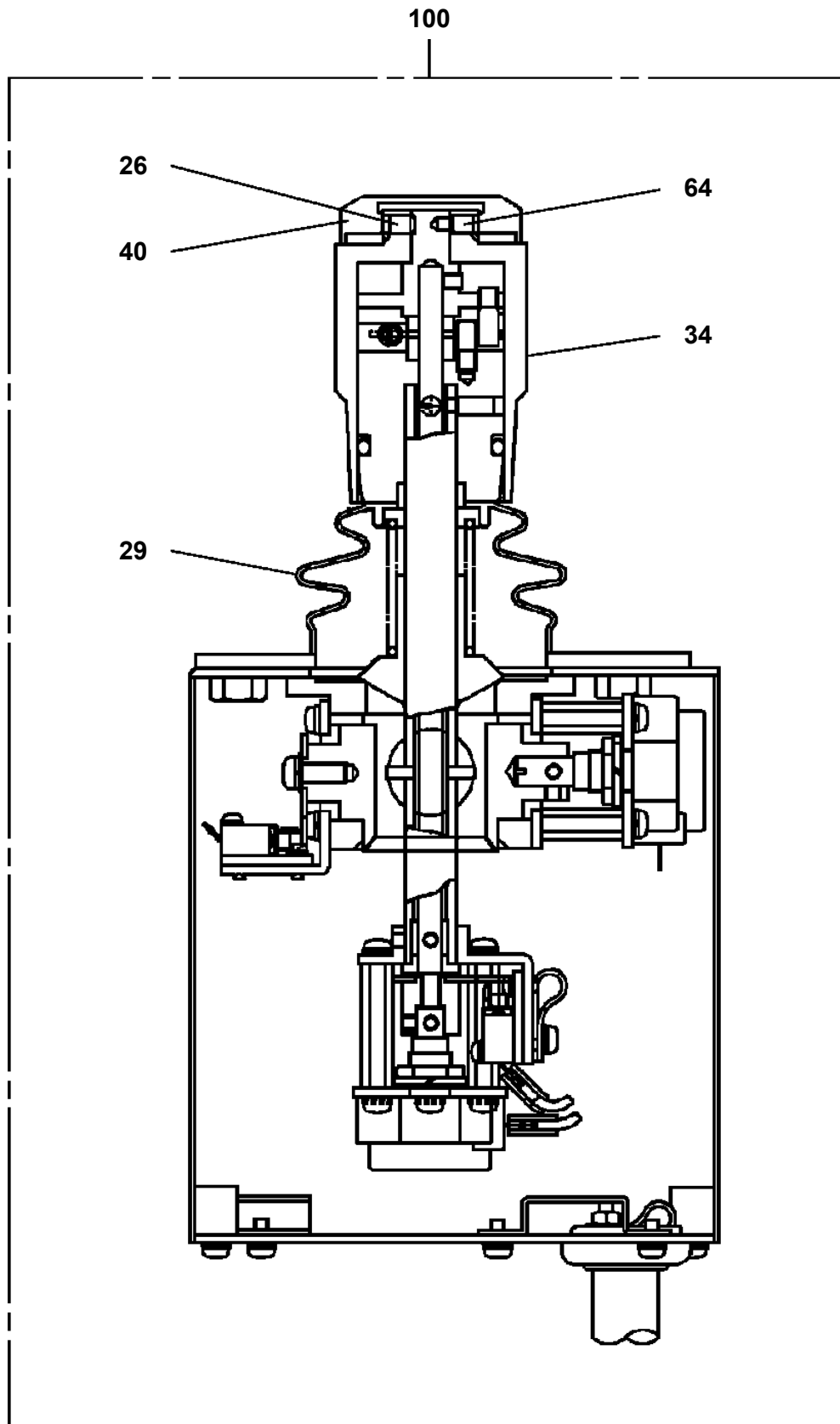
Pos No.	Parts No	Parts Name	Qty	Unit	Technical Data	Serial No (Start)	Serial No (End)	Remarks
1	42262861000	POST ASSY	1				227314	
	42266005000	POST ASSY	1			227315		
2	42262710101	WHEEL,WORM	1					
3	90171112065	BOLT	8		M12X65			
4	90302041201	WASHER,SPRING	8		12			
5	90303071201	WASHER,PLAIN	8		12			
6	42261170010	PLATE	2					
7	37000150340	PIN	2					
8	90101208012	BOLT	3		M8X12			
9	37000118070	PIN	1					
10	42264030100	SUPPORT	1					
11	90710710300	SCREW,SET	4					
12	90203201000	NUT	4		M10			
13	90303501201	WASHER,PLAIN	8		12		227049	
	90303501201	WASHER,PLAIN	10		12	227050		
15	91850210545	FASTENER	1		L=545			
16	37000508520	PLATE	15		T=0.8			
17	42261420500	GUIDE	1					
18	90172108016	BOLT,HEXAGON SOCKET	2		M8X16			
19	90302040801	WASHER,SPRING	15		8			
20	80184306012	SCREW,MACHINE	8		M6X12			
21	42262710800	GUIDE	1					
22	36662770000	MOTOR,HYDRAULIC	1					
23	42262710301	SUPPORT	1					
24	42262710400	SUPPORT	1					
25	42262710501	WORM	1					
26	42262710601	SUPPORT	1					
27	80516005206	BEARING,BALL	2					
28	42262710700	SUPPORT	1					
29	37000311200	SPACER	1					
30	42262710010	SHIM	N		T=0.8			
31	42262710020	SHIM	N		T=0.5			
32	82456201000	NIPPLE,GREASE	1		A-TYPE PT1/8			
33	90101208014	BOLT	8		M8X14			
34	42261370010	PIN ASSY	1					
35	90172112020	BOLT,HEXAGON SOCKET	2		M12X20		227049	
	90172112025	BOLT,HEXAGON SOCKET	2		M12X25	227050		
36	42262932000	FRAME	1					
37	42261620020	PIN	1					
38	80136363050	PIN,SPLIT	1		6.3X50			
39	80601111100	RING,RITAINING	1		S110		227314	
	91001210500	O-RING	1		1A G105	227315		
40	42262933000	FRAME ASSY	1				227314	
	42266001000	FRAME ASSY	1			227315		
41	90172112035	BOLT,HEXAGON SOCKET	8		M12X35			
42	42262715000	GUIDE	1					
43	42262714000	CYLINDER,LIFT (BUCKET)	1					
44	42261561600	PLATE,SLIDE	8					
45	90172110020	BOLT,HEXAGON SOCKET	4		M10X20			
46	90302041001	WASHER,SPRING	4		10			
47	42262930100	SUPPORT	1					
48	80182306012	SCREW,MACHINE	4		M6X12			
49	90302040601	WASHER,SPRING	4		6			
51	80182308014	SCREW,MACHINE	2		M8X14			
52	82456106000	NIPPLE,GREASE	1		1/4-28UNF			
53	82400000459	CAP	1				227142	
54	42266000020	COVER	1			227315		
55	80172304010	SCREW,MACHINE	4		M4X10	227315		
56	90302040401	WASHER,SPRING	4		4	227315		
62	80801003540	BEARING,PLAIN	2					
72	37000401010	BEARING,PLAIN	1				227314	
	37000401010	BEARING,PLAIN	2			227315		
73	80513006022	BEARING,BALL	1					

**AT-145-1 42043200030 UPPER
PJ3340003-02 CYLINDER,LIFT (BUCKET)**



Δ:PACKING SET KEY NO.30 (KEY NO.13,14,17,18,19)

AT-145-1 42043200030 UPPER
PL1020052-01 LEVER,CONTROL



AT-145-1 42043200030 UPPER

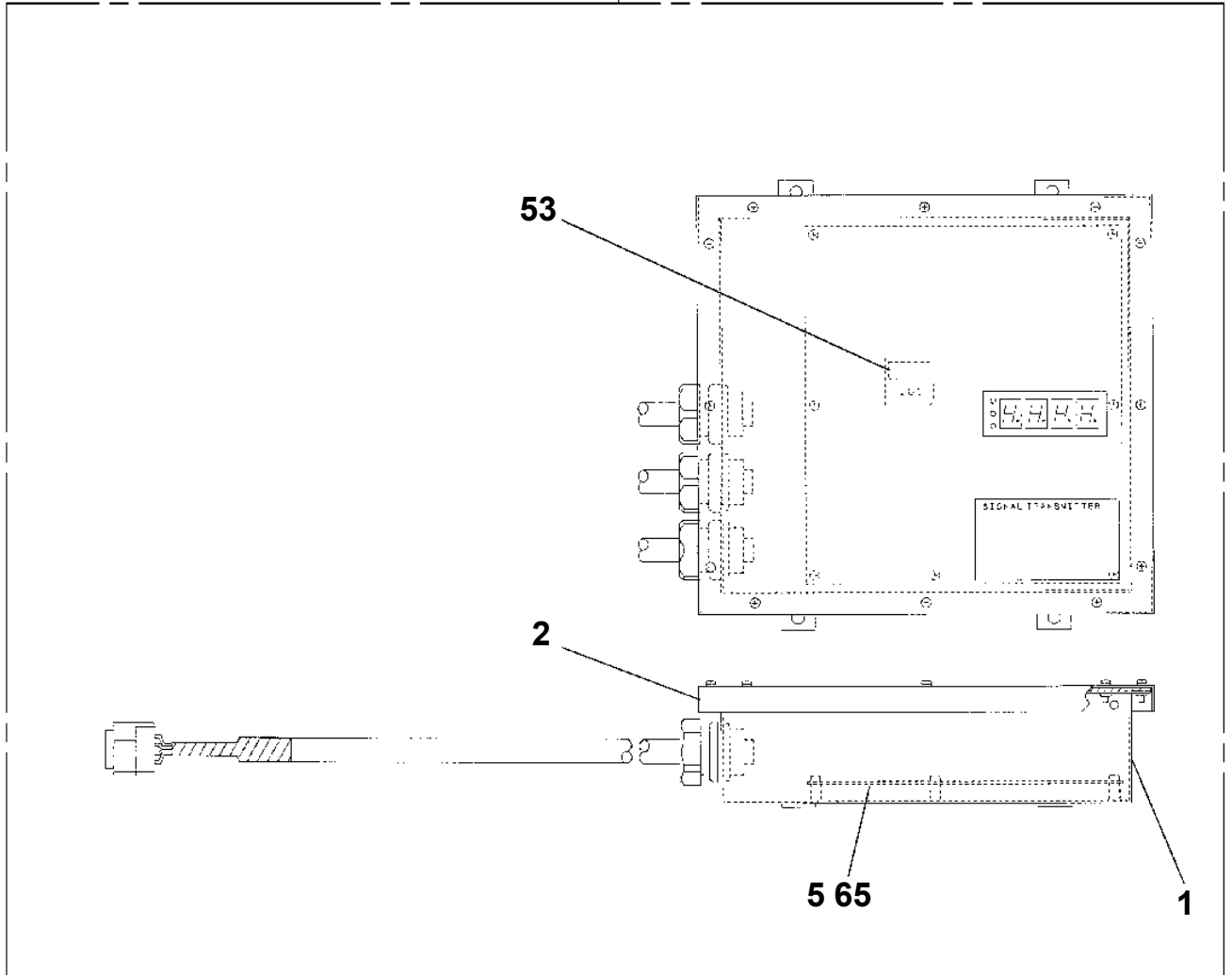
Pos No.	Parts No	Parts Name	Qty	Unit	Technical Data	Serial No (Start)	Serial No (End)
1	42351450010	HARNESS	1				
2	42351450020	HARNESS	1				226728
	42352540010	HARNESS	1			226729	
3	42351720010	HARNESS	1				
4	82100002015	CLAMP	2		WRC20		
5	91810132530	FASTENER	35				
6	42350080201	BUZZER ASSY (WITH CONNECTOR)	1				
7	42351450100	COVER	1				
8	42351450400	SUPPORT	1				
9	42351450300	SUPPORT	1				
10	42350200300	BATTERY ASSY	1				
11	42351451000	TRANSMITTER,SIGNAL	1				226728
	42352461000	TRANSMITTER,SIGNAL (UPPER)	1			226729	
12	82100002039	CLAMP	1				
13	90201200800	NUT	4		M8		
14	90302040801	WASHER,SPRING	10		8		
15	82100002016	CLAMP	1		WR25		
16	82100002009	CLAMP	1		WRC12		
17	82100002013	CLAMP	1		WRC18		
18	42350250070	PLUG (2 POLES,MALE)	1				226714
	42350250070	PLUG (2 POLES,MALE)	2			226715	
21	80161302510	SCREW,MACHINE	2		M2.5X10		
22	90302040251	WASHER,SPRING	2		2.5		
23	90101208012	BOLT	6		M8X12		
24	80181306010	SCREW,MACHINE	4		M6X10		
25	90302040601	WASHER,SPRING	5		6		
26	42352130100	LAMP ASSY(DC21V,RED/WITH HARNESS)	2				
27	82100002014	CLAMP	1		WR20		
28	90101206012	BOLT	1		M6X12		
34	82101361233	SWITCH,PUSH	1				
35	82100002308	COVER	1				
49	82105411150	SWITCH,TOGGLE	1				226728
50	82105411140	SWITCH,TOGGLE	1				226728
51	82105411130	SWITCH,TOGGLE	2				226728
52	82197518115	CAP (YELLOW)	1				
53	82197518117	CAP (GRAY)	2				
54	82197518112	CAP (GREEN)	1				
61	82100002469	BATTERY	1				
63	82100001261	CAP	1				
71	82100002524	LAMP,PILOT	2				
81	82100001939	BUZZER	1				
92	42350200310	HARNESS	1				
101	82101361003	BUTTON	1				
119	82105220193	SWITCH,TOGGLE	1			226729	
120	82105220183	SWITCH,TOGGLE	1			226729	
121	82105220256	SWITCH,TOGGLE	2			226729	
131	82198300503	LENS	2				

AT-145-1 42043200030 UPPER

Pos No.	Parts No	Parts Name	Qty	Unit	Technical Data	Serial No (Start)	Serial No
1	42651090101	HARNESS	1				
2	42651090200	HARNESS	1				
4	42651091001	RELAY BOX ASSY	1				
5	90101210014	BOLT	4		M10X14		
6	90302041001	WASHER,SPRING	4		10		
7	42474530100	LAMP ASSY	1				
8	42650600300	SWITCH ASSY (WITH HARNESS,1 SW)	1				
9	90172105014	BOLT,HEXAGON SOCKET	2		M5X14		
10	82100002018	CLAMP	8		WR35		
11	90201200800	NUT	10		M8		
12	90302040801	WASHER,SPRING	10		8		
13	82100002010	CLAMP	5		WR15		
14	90201200600	NUT	17		M6		
15	90302040601	WASHER,SPRING	17		6		
16	90303070801	WASHER,PLAIN	1		8		
17	82100002007	CLAMP	1		WRC10		
18	91810130240	FASTENER	15				
19	82100002002	CLAMP	6		WR6		
20	82100002012	CLAMP	1		WR18		
21	80182406014	SCREW,MACHINE	6		M6X14		
22	90302350601	WASHER,SPRING (6)	4				
23	37000549450	PLATE	4				
24	82100002014	CLAMP	1		WR20		
25	82104103010	SWITCH,LIMIT	1				
27	42651092000	PANEL,CONTROL	1				
28	42433330020	PLUG (2 POLES,FEMALE)	2				
29	90813108020	BOLT,WING	1		M8X20		
30	42651090300	HARNESS	1		L=1060		
31	82100002006	CLAMP	1		WR10		
32	44430680200	BUZZER ASSY (WITH HARNESS)	1				
47	34351562510	BOX,FUSE	1				
48	82100001841	FUSE	4		20A,YELLOW		
49	82100001839	FUSE	10		10A.RED		
51	42650331300	SWITCH ASSY (WITH 3 SWITCH)	4				226630
52	42950161150	COVER	4				
53	42950421100	SUPPORT	4				
54	80182308012	SCREW,MACHINE	8		M8X12		
55	90302040801	WASHER,SPRING	20		8		
56	90303070801	WASHER,PLAIN	20		8		
57	90101204030	BOLT	24		M4X30		
58	90201200400	NUT	16		M4		
59	90302040401	WASHER,SPRING	24		4		
60	90303070401	WASHER,PLAIN	40		4		
61	90101208012	BOLT	12		M8X12		
62	37000519850	PLATE	4				
71	42650993100	CASE	1				
72	42650993300	COVER	1				
73	80182306014	SCREW,MACHINE	12		M6X14		
74	90302040601	WASHER,SPRING	26		6		
75	90303070601	WASHER,PLAIN	14		6		
76	82161202010	RELAY	2				
77	90101206014	BOLT	9		M6X14		
78	82100002596	RELAY	3				226656
	82100002596	RELAY	4			226657	226707
	82100002596	RELAY	3			226708	
79	82161201010	RELAY	3				226707
	82161201010	RELAY	4			226708	
80	82100002597	RELAY	2				226656
	82100002597	RELAY	1			226657	
81	42650801700	TERMINAL ASSY	1				
82	80172303016	SCREW,MACHINE	2		M3X16		
83	90302040301	WASHER,SPRING	8		3		
84	90303070301	WASHER,PLAIN	8		3		

AT-145-1 42043200030 UPPER
PN1210108-00 TRANSMITTER,SIGNAL (UPPER)

100



AT-145-1 42043200030 UPPER

Pos No.	Parts No	Parts Name	Qty	Unit	Technical Data	Serial No (Start)	Serial N
1	37002202030	PLATE,NAME	1				
2	37002209500	PLATE,NAME (TADANO)	2				
3	37002209560	PLATE,NAME (TADANO)	1				
4	42392581020	PLATE,NAME (AT-145TE)	2				
6	90451700100	SCREW,TAPPING	4		M4X6.4		
7	(*****)	PLATE,NAME (LIVE-LINE WORKING DEVICE)	1				
8	37002212700	PLATE,NAME	1				
9	42391161160	REFLECTOR (YELLOW)	2				
10	42940010070	REFLECTOR (RED)	2				
11	42940170010	PLATE,NAME	1				
12	37002202120	PLATE,NAME (HIGH/LOW)	1				
13	37002201980	PLATE,NAME	2				
14	12117140000	PLATE,NAME (GREASE)	7				
15	42392581010	PLATE,NAME	1				
16	42390960190	REFLECTOR (WHITE/RED)	2				
17	42391670050	REFLECTOR (WHITE/RED)	1				
18	42391670040	PLATE,NAME	1				

AT-145-1 42043200030 UPPER

Pos No.	Parts No	Parts Name	Qty	Unit	Technical Data	Serial No (Start)	Serial No (End)
1	42392584020	PLATE,NAME	1				
2	42392584010	PLATE,NAME	1				
3	37002202100	PLATE,NAME (OUTRIGGER LEFT)	1				
4	37002202090	PLATE,NAME (OUTRIGGER LEFT)	1				
5	37002202080	PLATE,NAME (OUTRIGGER RIGHT)	1				
6	37002202070	PLATE,NAME (OUTRIGGER RIGHT)	1				
7	37002202060	PLATE,NAME (OUTRIGGER)	1				
8	42941821050	PLATE,CAUTION	1				
9	42392920050	PLATE,CAUTION	1				
10	42392582050	PLATE,CAUTION	1				
11	42392584030	PLATE,NAME	1				
12	42392584040	PLATE	1				
13	42940100030	PLATE,NAME (PLUG)	5			226615	
14	37002221080	PLATE,CAUTION	1			226984	
15	37002220410	PLATE,CAUTION	1			226984	

AT-145-1 42043200030 UPPER

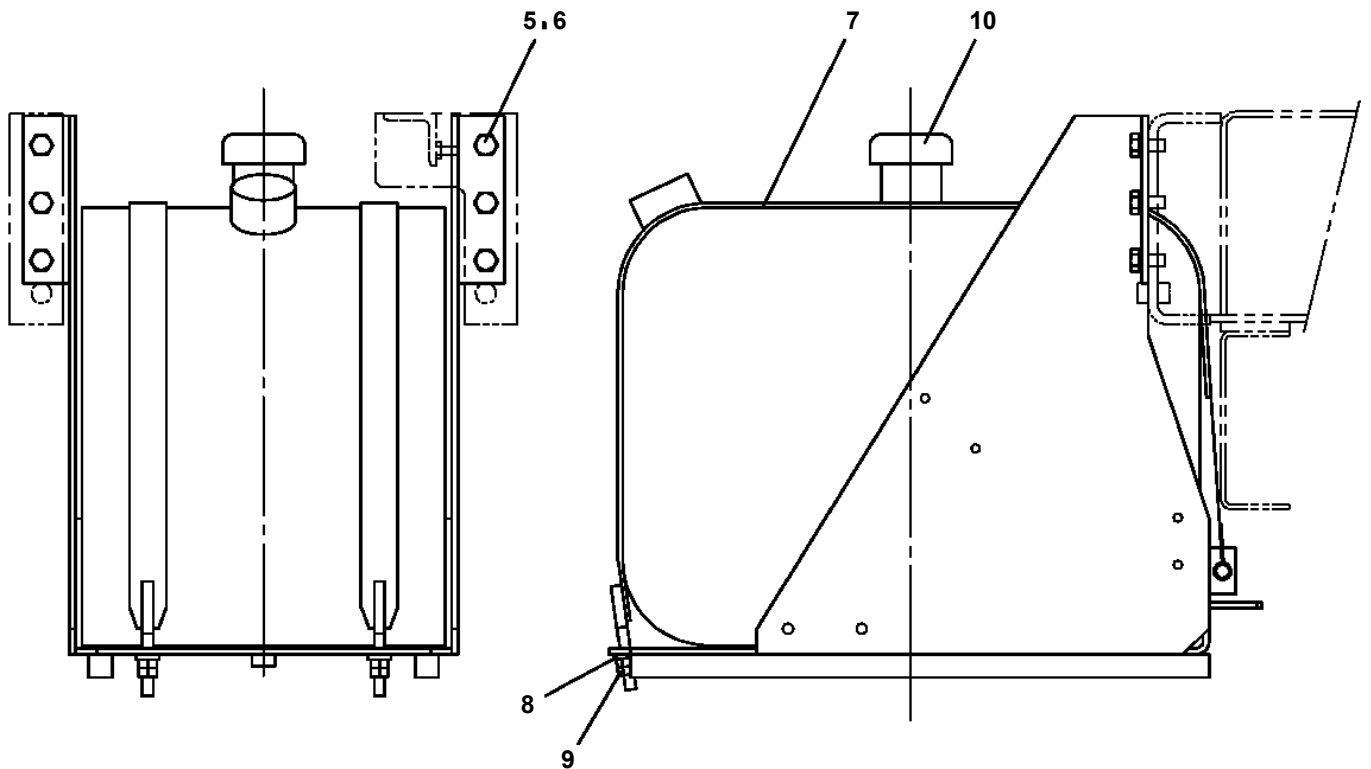
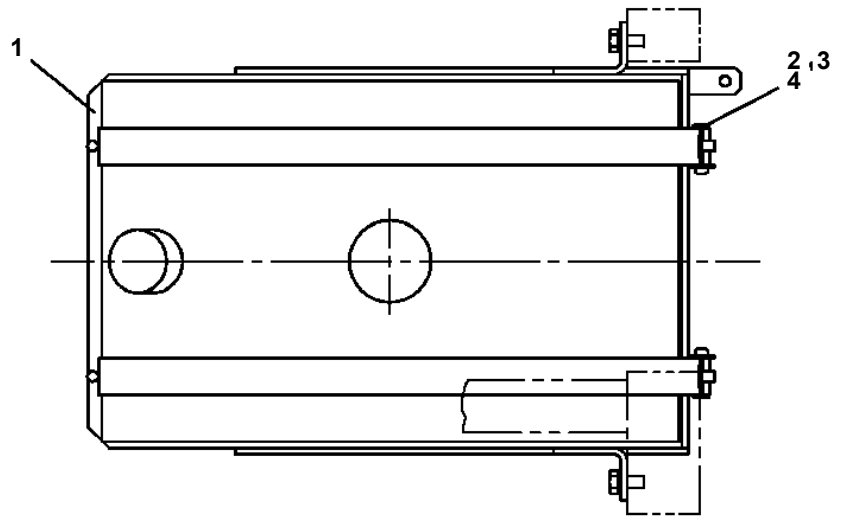
Pos No.	Parts No	Parts Name	Qty	Unit	Technical Data	Serial No (Start)	Serial No (End)	Remarks	Pa
2	42470721010	JOINT	2				229107		
	37000933940	JOINT	2			229108			
3	42470721301	PRUNER	1						
4	80456020410	JOINT,SELF SEALING	1						
5	80456010410	JOINT,SELF SEALING	1						
6	42470721200	HOSE ASSY	1						
7	42470721100	COVER	1						
8	91000590800	O-RING	2		AS568-908	229108			
21	42470727530	CAP (DUST)	1						
24	42470727540	CAP (DUST)	1						
26	42470727520	CAP (DUST)	1						
27	42470727510	CAP (DUST)	1						
51	42340017540	CAP	1						
61	42340017530	CAP	1						

AT-145-1 42043200030 UPPER

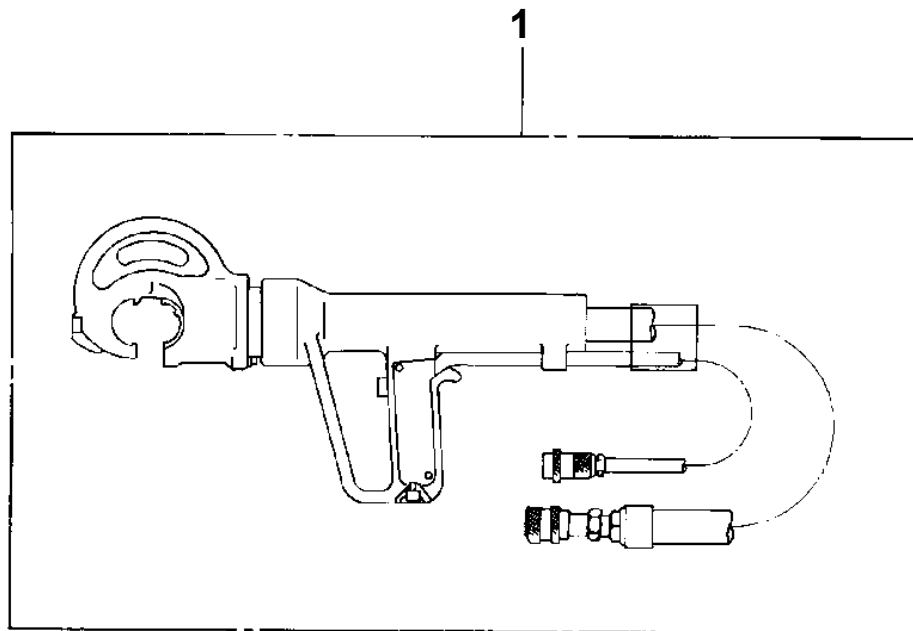
Pos No.	Parts No	Parts Name	Qty	Unit	Technical Data	Serial No (Start)	Serial No (End)	Re
93	36646265110	ADAPTER	3					
94	36645615230	C-BOLT	4		5X12			
95	36636635090	CAP (SEAL)	3					
96	36645615240	LINK	2					
97	36645615250	C-BOLT	6		M5X25			
98	36633365090	CAP (CHECK VALVE)	3					
100	12635101190	SPRING	3					
101	80560055000	BALL,STEEL	9		3/16			
102	80560054000	BALL,STEEL	7		5/32			
105	80172104010	SCREW,MACHINE	14		M4X10			
	80172104010	SCREW,MACHINE	4		M4X10	227328		
106	91001002200	O-RING	6		S22			
107	36646525080	POTENTIOMETER ASSY	3					
108	80172103012	SCREW,MACHINE	6		M3X12			
109	36640625460	PLATE (SEAL)	3					
110	36640625420	ARM	3					
111	80601110140	RING,RITAINING	3		S14			
116	36640625470	BOOT	3					
117	36640625500	WASHER	3		3			
118	36640625480	PLATE (P)	3					
119	36640625490	SCREW,MACHINE	3		M3X6			
120	80720104050	PIN,SPRING	3		4X50			
122	36646525070	VALVE,SOLENOID	6					
154	36645615260	C-BOLT	2		M5X8			
156	36645615270	PLATE	1					
165	36646865150	COVER (FOR SOLENOID)	1			227328		
166	91001102200	O-RING	1		1A P22			
	91001102200	O-RING	1		1A P22	227328		
169	12635101110	SPRING (RETURN)	1					
	12635101110	SPRING (RETURN)	1			227328		
171	36635735130	SPRING (A)	1			227328		
172	36635735140	SPRING (B)	1			227328		
173	36646865160	SEAT,SPRING	1			227328		
175	36646865170	ROD,PUSH	1		8	227328		
176	36646525100	SOLENOID ASSY	1					
177	36640735130	PLUG	1		M6	227328		
178	36640735140	NUT,CAP	1		M6	227328		
179	90203200600	NUT	1		M6	227328		
180	36642065070	WASHER,SEAL	2			227328		
181	36640625680	TUBE (SEAL)	1			227328		
191	36646525160	BODY	1					
193	36645405030	O-RING	1					
200	91002800300	O-RING	1		1B P3			
203	90131503008	BOLT,HEXAGON SOCKET	2		M3X8			
204	36646525110	ROD,PUSH	1					
206	36645495260	RING,BACKUP	1					
207	36646525120	NEEDLE	1					
208	90203200800	NUT	1		M8			
209	36647615110	NUT,CAP	1		M8			
210	36603185150	TUBE	1					
211	91002800400	O-RING	1		1B P4			
251	36640625710	PLUG	1			227328		
253	36646265080	SPRING (A)	1			227328		
254	36646265090	SPRING (B)	1			227328		
256	36645615210	PLUG	1		24	227328		
257	36641075260	SPRING	1			227328		
258	36640625210	CAP	2			227328		
259	80560057000	BALL,STEEL	2		1/4	227328		
260	36640625220	SPRING	1			227328		
263	36640625260	SPRING	1			227328		
264	80316030020	PLUG	5		PT1/8	227328		
270	36646875130	ORIFICE	1		M3	227328		
271	91001101600	O-RING	1		1A P16	227328		

**AT-145-1 42043200030 UPPER
PX1100204-00 TANK SUPPORT INSTALLATION**

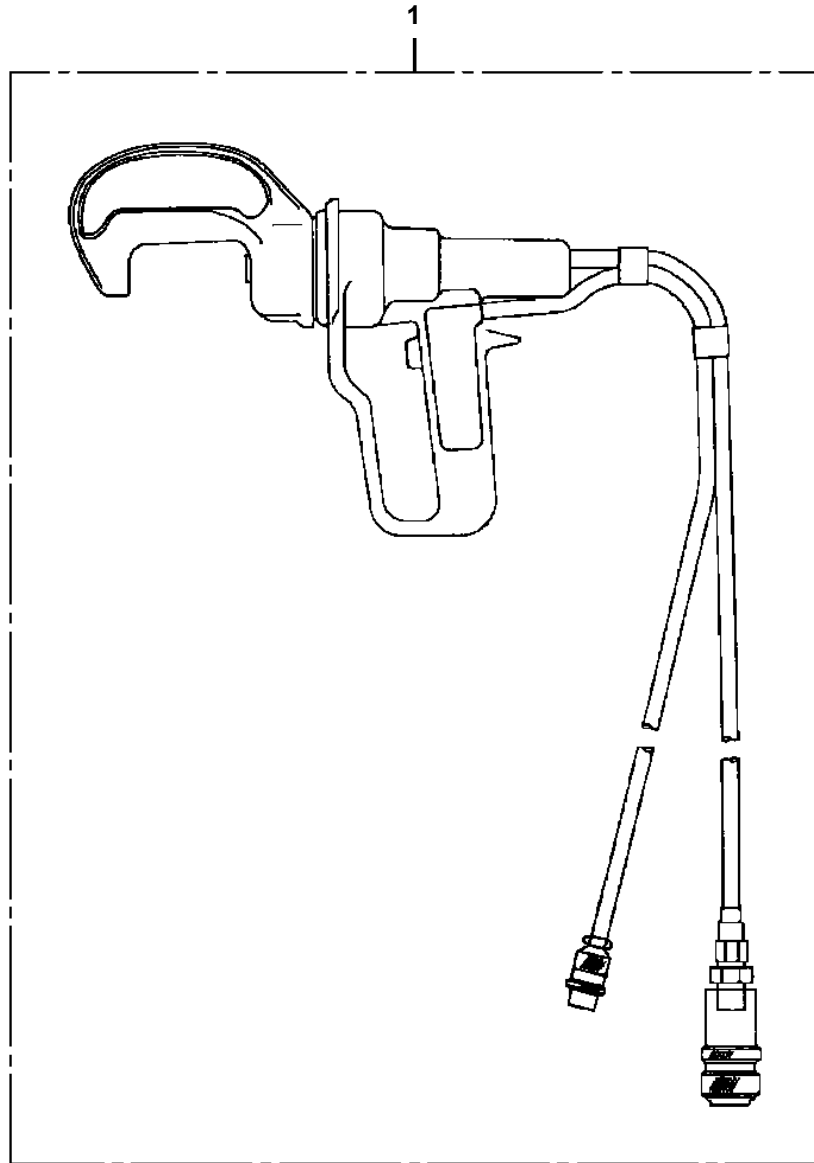
FRONT



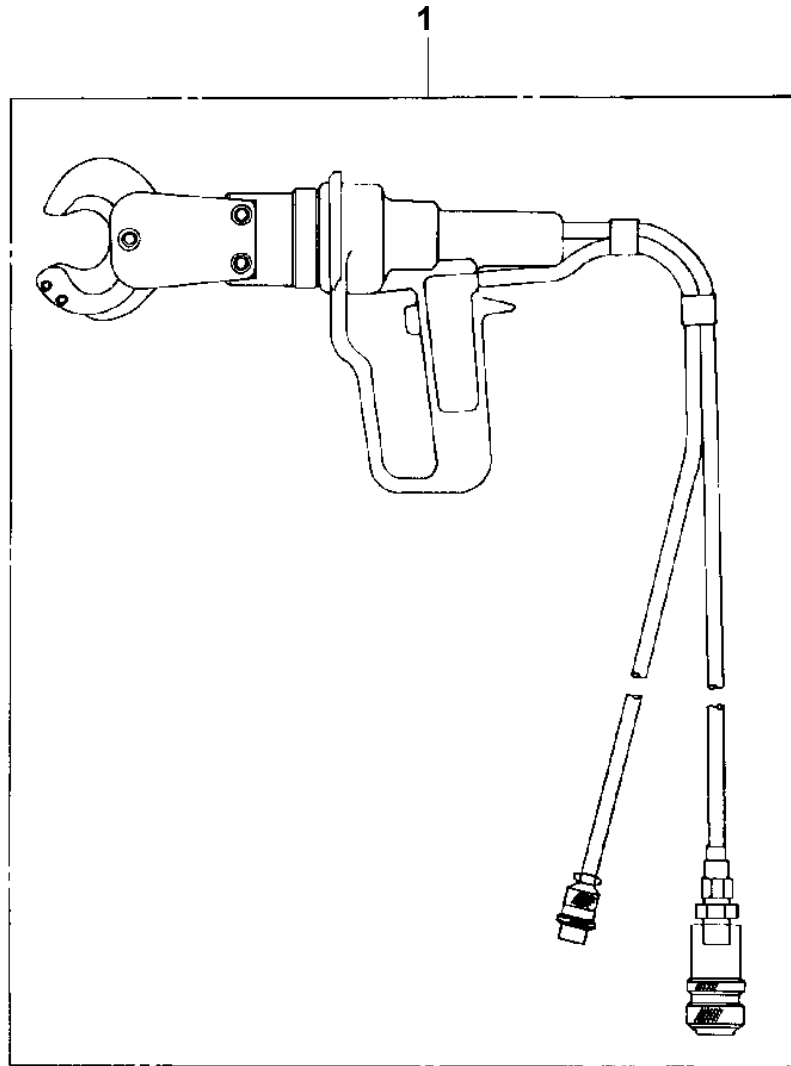
**AT-145-1 42043200030 UPPER
PY1050002-00 CLAMP HEAD (IZUMI 12TON 3.5M)**



**AT-145-1 42043200030 UPPER
PY1050008-01 CLAMP HEAD (IZUMI 8TON 3.5M ELECTRIC)**

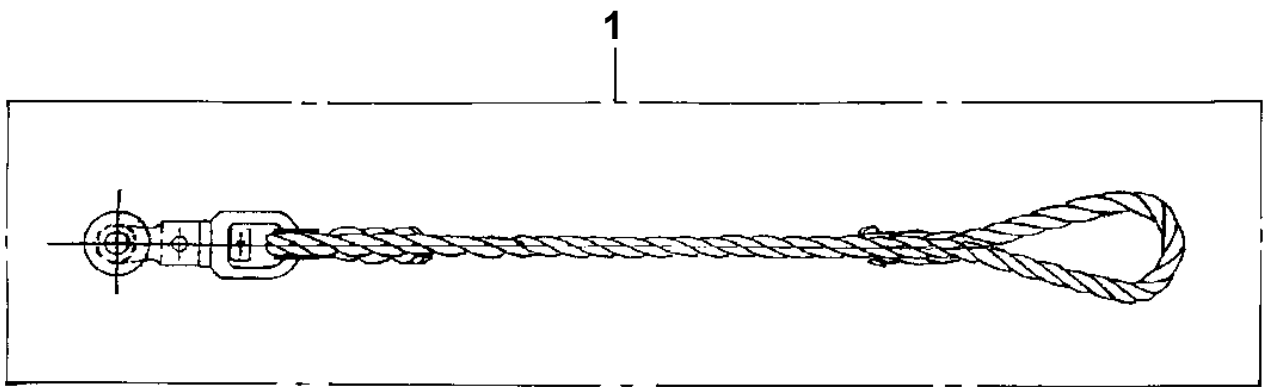


**AT-145-1 42043200030 UPPER
PY1060001-00 CUTTER HEAD (IZUMI 6.4TON 2.5M ELECTRIC)**

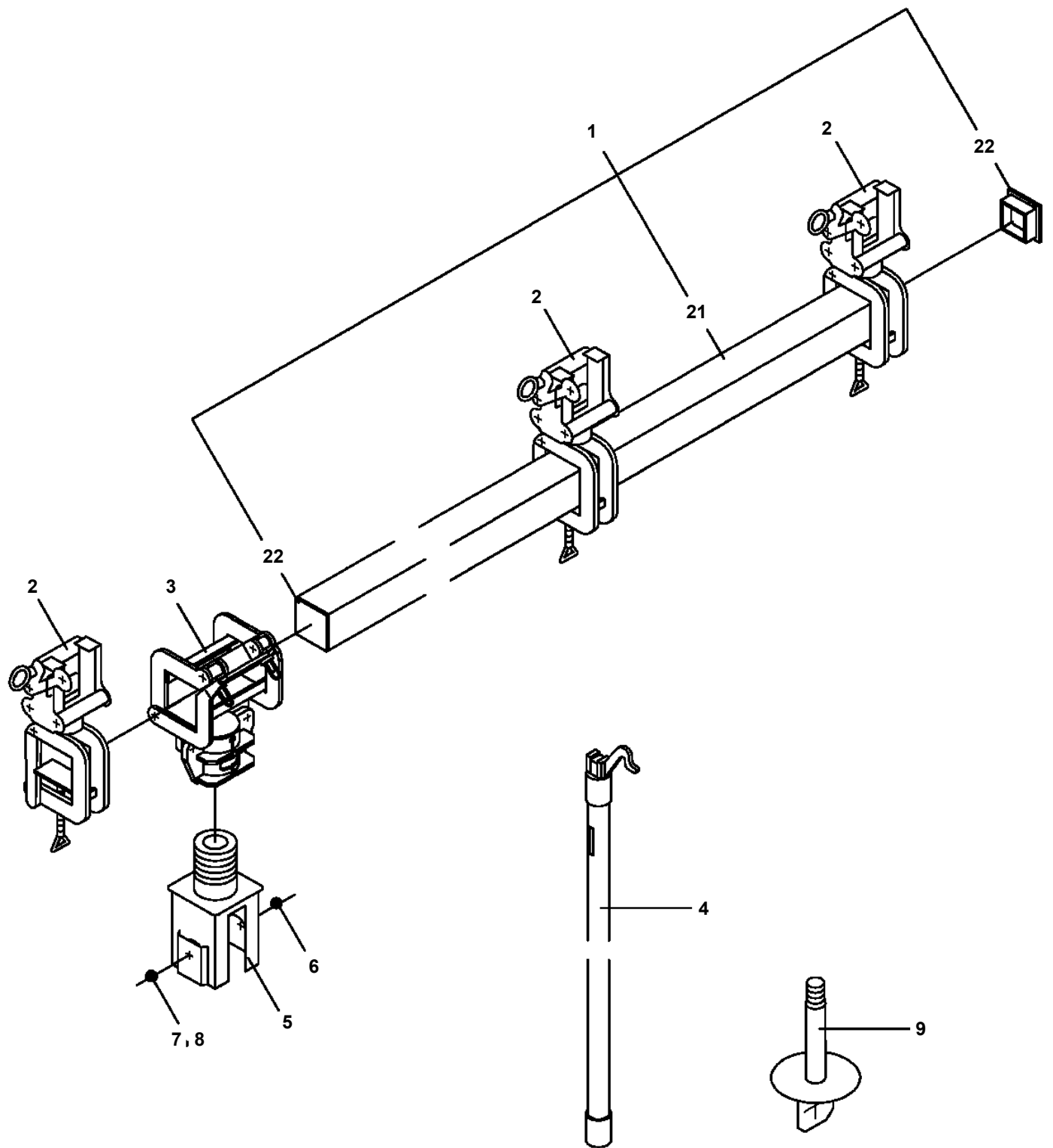


**AT-145-1 42043200030 UPPER
PY1070003-00 ROPE (SAFETY,WHITE)**

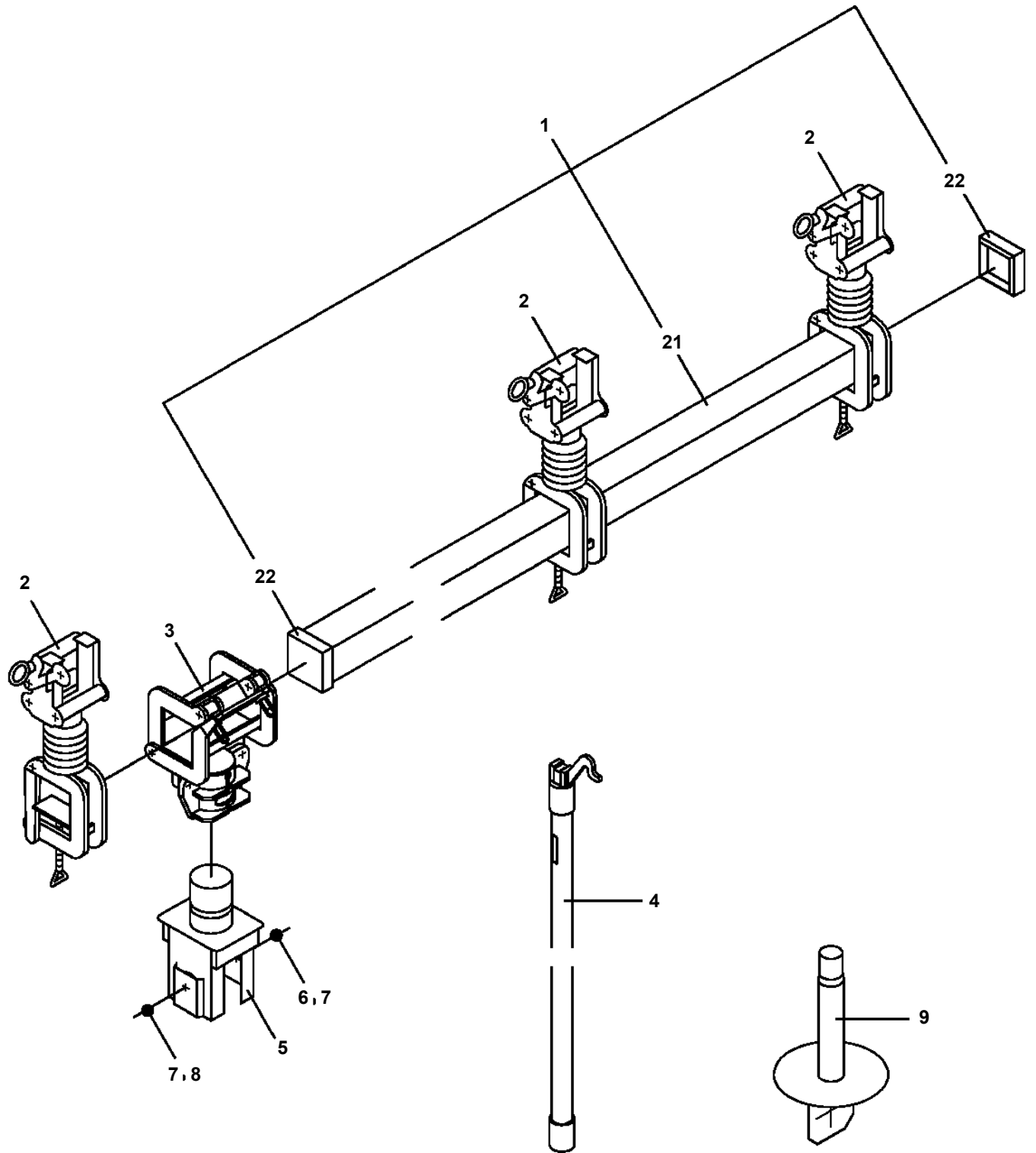
Assembly Name ROPE (SAFETY)



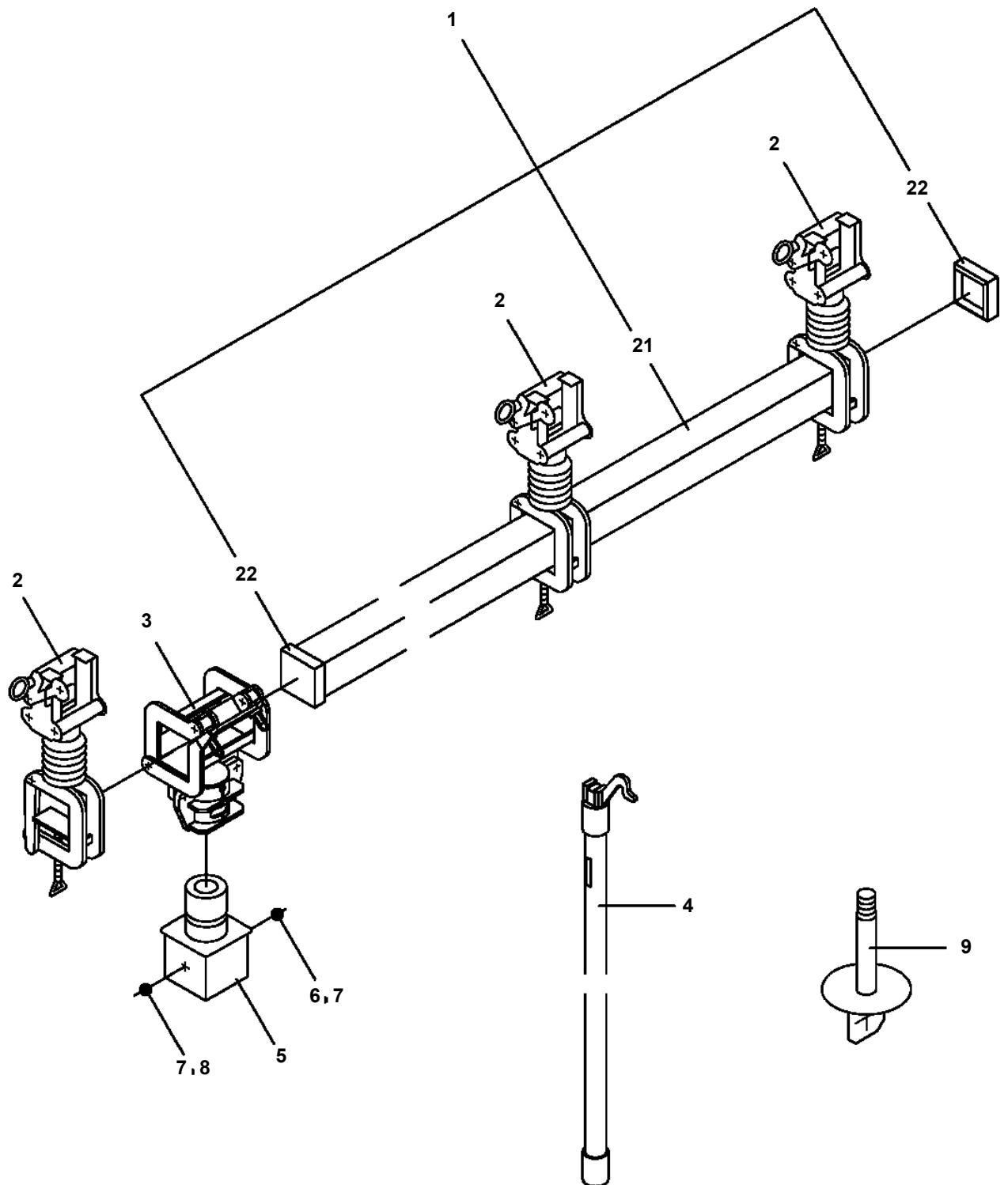
AT-145-1 42043200030 UPPER
PY1080012-00 ARM



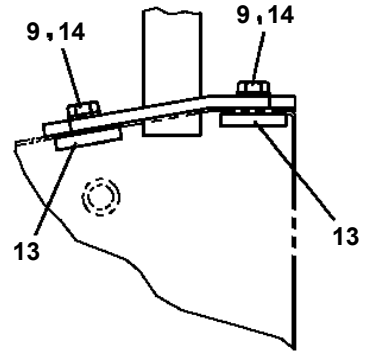
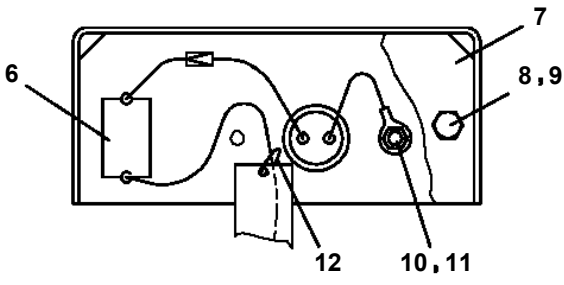
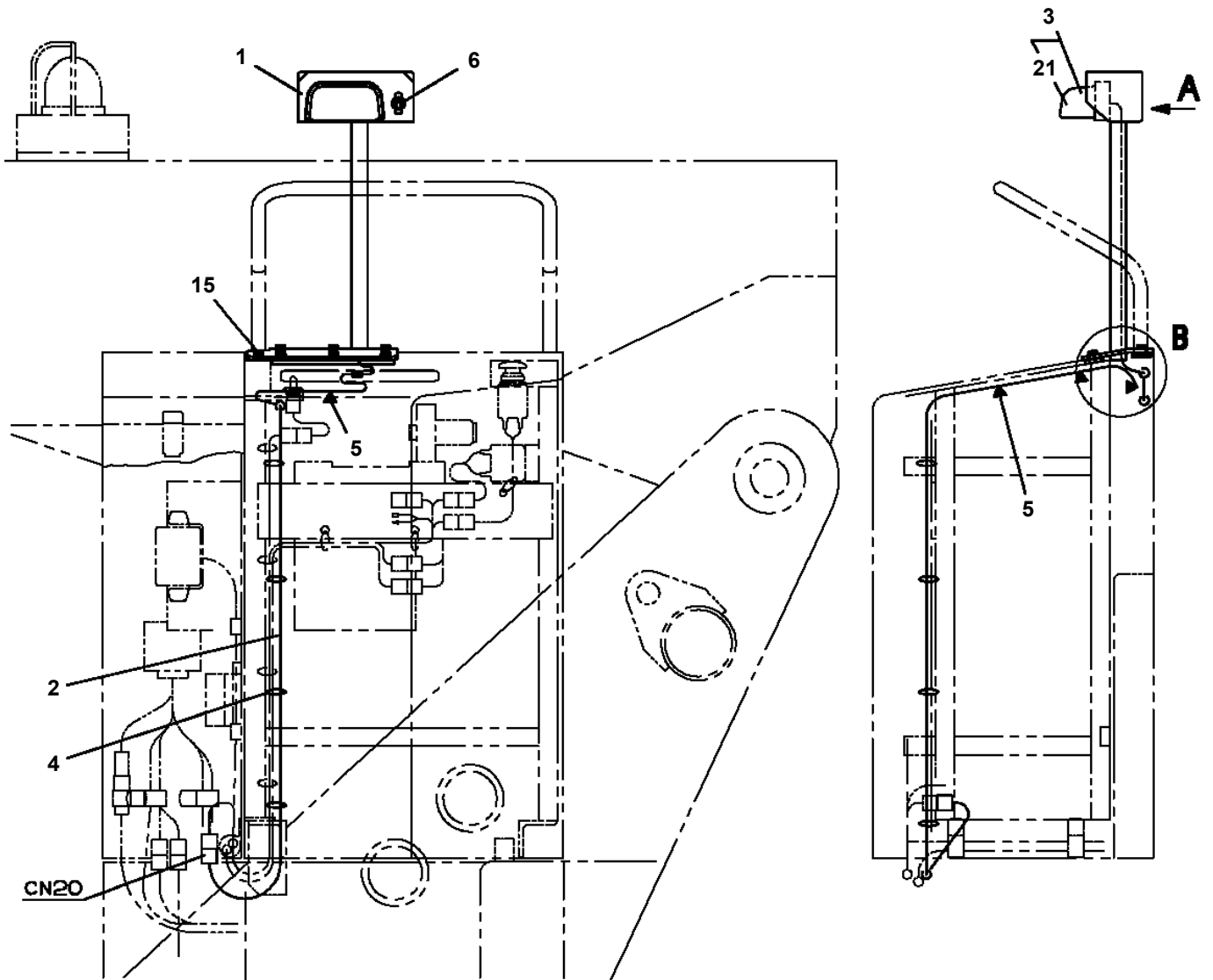
AT-145-1 42043200030 UPPER
PY1080018-00 ARM



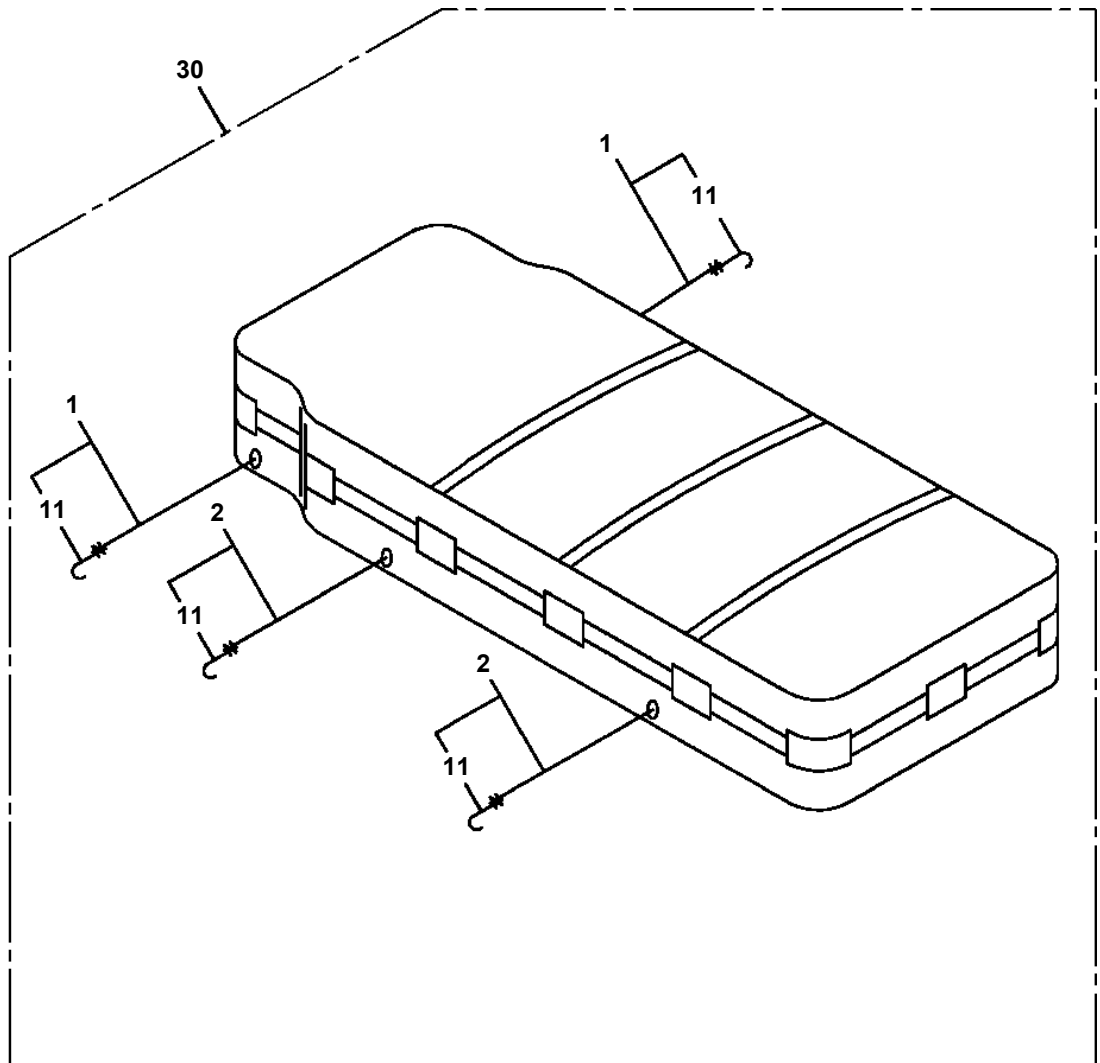
AT-145-1 42043200030 UPPER
PY1080024-00 ARM



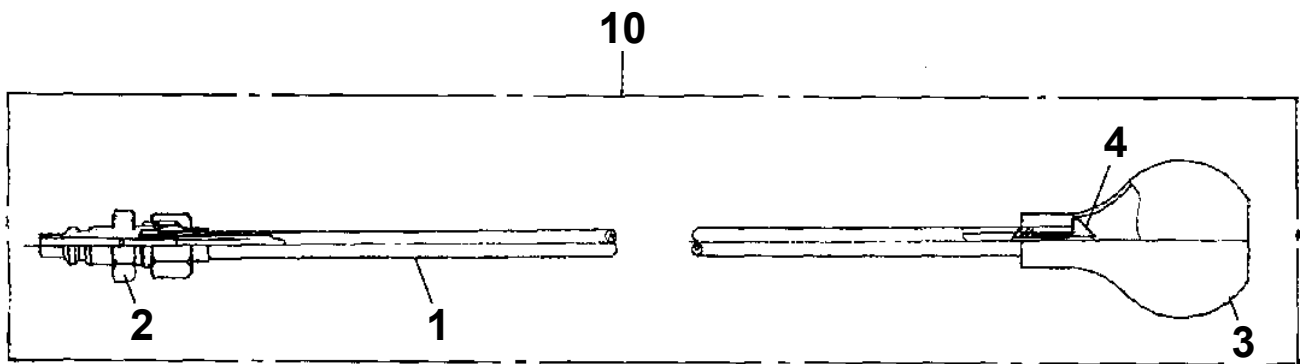
**AT-145-1 42043200030 UPPER
PY1180196-01 LAMP (SWING FRAME)**



AT-145-1 42043200030 UPPER
PY1540010-02 COVER, BUCKET

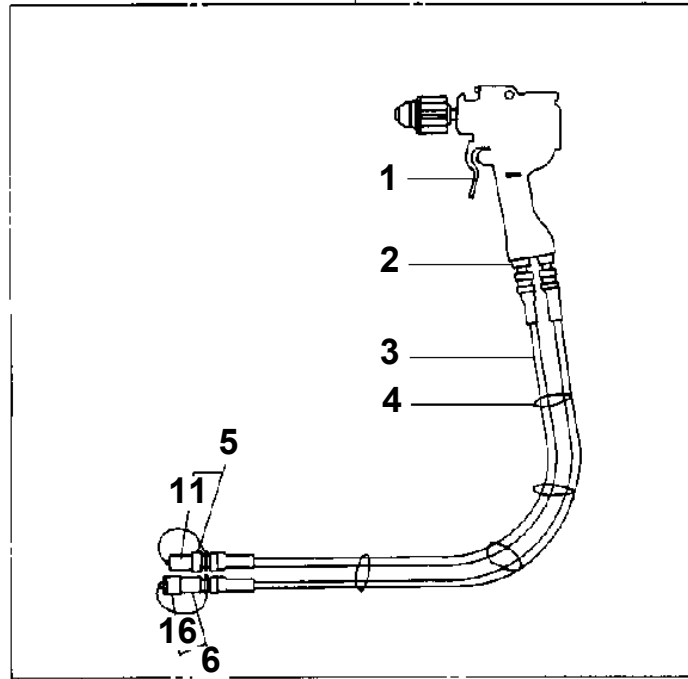


**AT-145-1 42043200030 UPPER
PY1590005-01 HOSE,BOOSTER (SMALL,WITH AIR BALLOON)**



**AT-145-1 42043200030 UPPER
PY1640000-01 DRIL, HYDRAULIC**

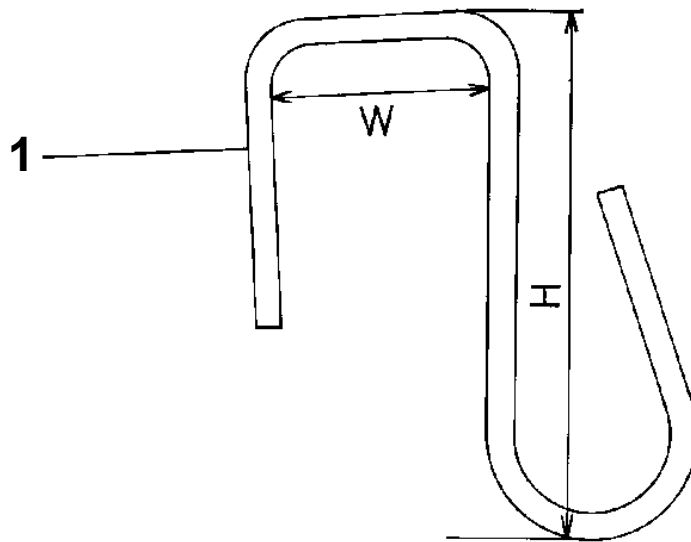
20



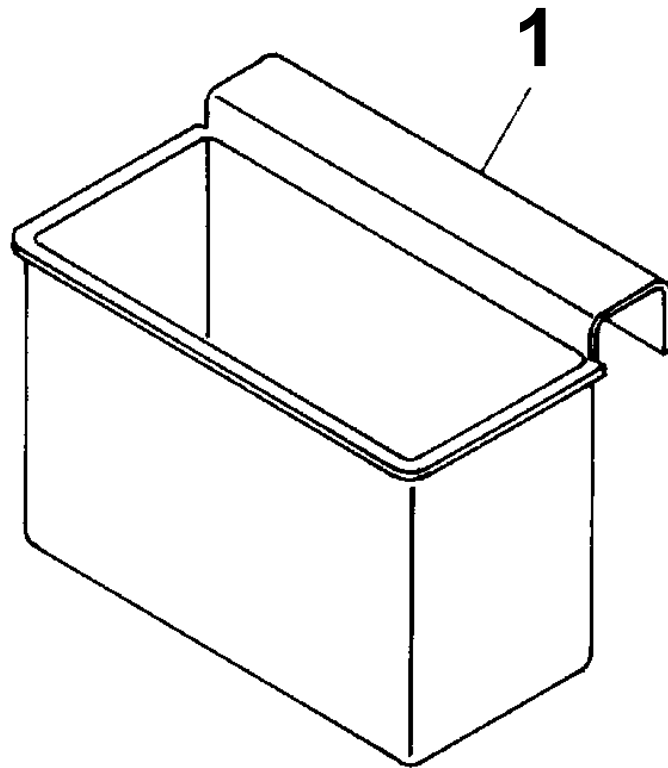
**AT-145-1 42043200030 UPPER
PY1790001-00 HANGER (FOR BUCKET)**

Assembly Name HANGER

1117 0001 00



**AT-145-1 42043200030 UPPER
PY2120001-00 BOX,TOOL (FOR BUCKET)**



CLICK HERE TO **DOWNLOAD** THE COMPLETE MANUAL

- Thank you very much for reading the preview of the manual.
- You can download the complete manual from: www.heydownloads.com by clicking the link below



- Please note: If there is no response to CLICKING the link, please download this PDF first and then click on it.

CLICK HERE TO **DOWNLOAD** THE COMPLETE MANUAL