

AT-110-4 42084400002 UPPER

PD2000134-01 SWING UNIT

PG2000249-00 BOOM UNIT

PH1000550-00 SAFETY DEVICES (MOTION CONTROLLER)

PJ3000400-01 BUCKET SYSTEM

PK2000836-01 FRAME UNIT

PO1000149-00 INDICATION PLATES

PW1000118-00 ACCESSORIES & TOOLS

PY1001063-06 OPTIONS,1

PY2000288-01 OPTION UNIT,2 (UPPER)

ASSEMBLY

CLICK HERE TO **DOWNLOAD** THE COMPLETE MANUAL

- Thank you very much for reading the preview of the manual.
- You can download the complete manual from: www.heydownloads.com by clicking the link below



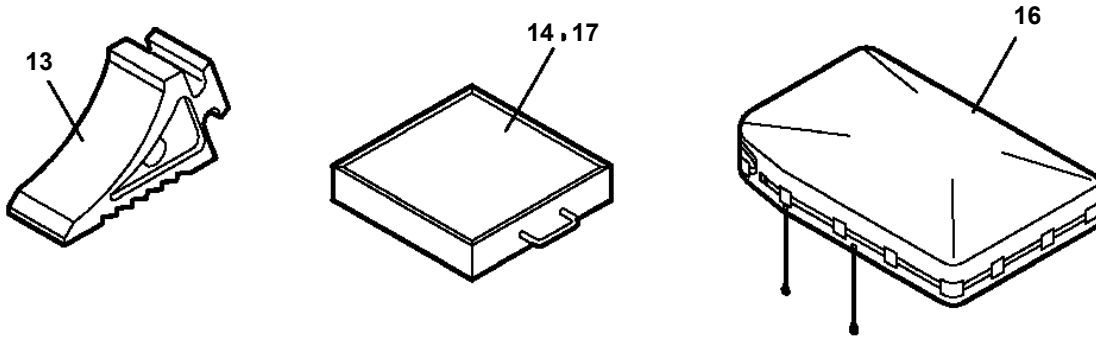
- Please note: If there is no response to CLICKING the link, please download this PDF first and then click on it.

CLICK HERE TO **DOWNLOAD** THE COMPLETE MANUAL

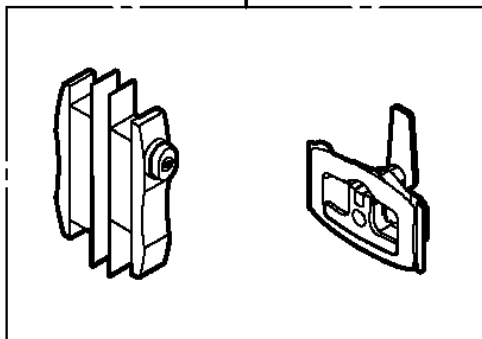
AT-110-4 4208440002 UPPER

Pos No.	Parts No	Parts Name	Qty	Unit	Technical Data	Serial No (Start)	Serial No (End)	Rem
1	(*****)	FRAME	1				218884	
	(*****)	FRAME	1			218885	219144	
	(*****)	FRAME	1			219145	219548	
	(*****)	FRAME	1			219549	219610	
	(*****)	FRAME ASSY	1			219611		
2	(*****)	OUTRIGGER	1					
3	(*****)	PIPING,OUTRIGGER	1				219144	
	(*****)	PIPING,OUTRIGGER	1			219145	219548	
	(*****)	PIPING,OUTRIGGER	1			219549		
5	(*****)	OPE.ASSY,CONT.VALVE	1				218884	
	(*****)	OPE.ASSY,CONT.VALVE	1			218885		
6	(*****)	ELEC.ASSY (FRAME)	1				218884	
	(*****)	ELEC.ASSY (FRAME)	1			218885	219144	
	(*****)	ELEC.ASSY (FRAME)	1			219145		
8	(*****)	ELEC.ASSY	1				218884	
9	(*****)	ELEC.ASSY (LOWER CONTROLS)	1			218885		
10	(*****)	BOOM REST	1				219144	
	(*****)	BOOM REST	1			219145		
11	(*****)	TANK SUPPORT	1					

**AT-110-4 42084400002 UPPER
PY2000288-01 OPTION UNIT,2 (UPPER)**



27, 28, 29, 30, 31
32, 33, 34, 35, 36



37, 38, 39, 40, 41
42, 43, 44, 45, 46



適用製造番号によっては取り付けがないものもあります。

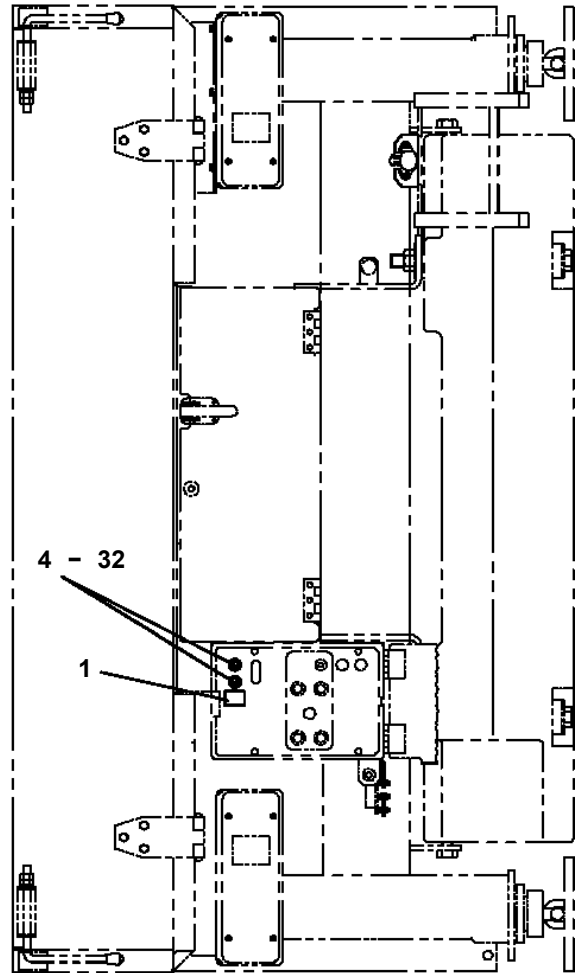
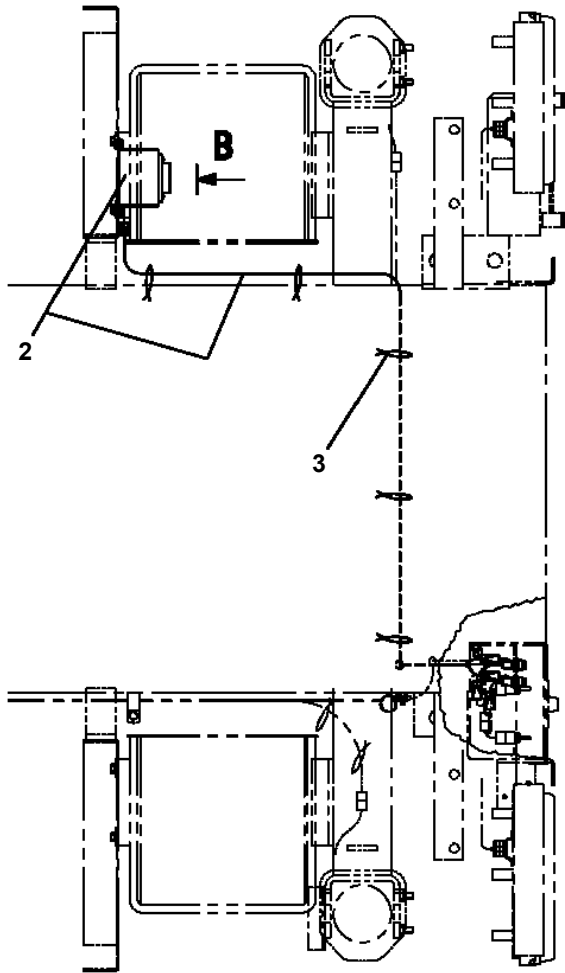
MACHINES OF SOME SERIAL NO. ARE NOT EQUIPPED WITH THESE PARTS.

AT-110-4 42084400002 UPPER

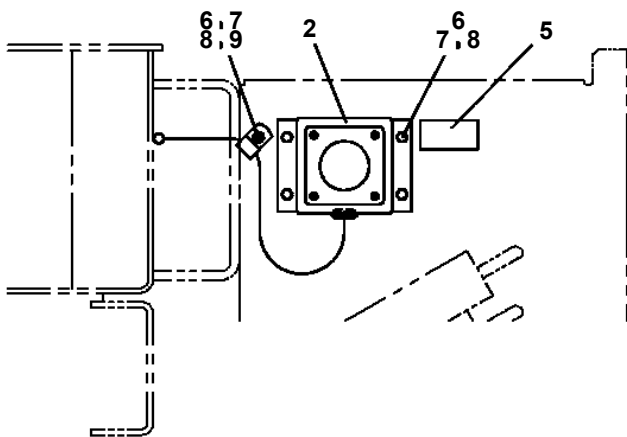
Pos No.	Parts No	Parts Name	Qty	Unit	Technical Data	Serial No (Start)	Serial No (End)	Remarks
1	36102500100	TANK	1					
2	36102120010	CAP	1					
3	37002512230	HOSE	1		L=140		219089	
	37002516440	HOSE	1		L=140	219090		
4	91803880040	CLIP	2		D=10-12.2			
5	36102790010	PLUG	1					
6	53156005000	BREATHER ASSY (OB-10T)	1					
7	91001104800	O-RING	1		1A P48			
8	90303392001	WASHER	1		M20			
21	53156005011	ELEMENT	1					
53	53156005030	PLATE (WITH PACKING)	1					
54	53156005040	PACKING	1					
100	36102500000	TANK,OIL	1					

AT-110-4 4208440002 UPPER
PB1380253-02 POWER SUPPLY (LOWER)

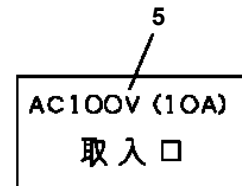
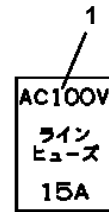
FRONT ←



操作部が左側の場合



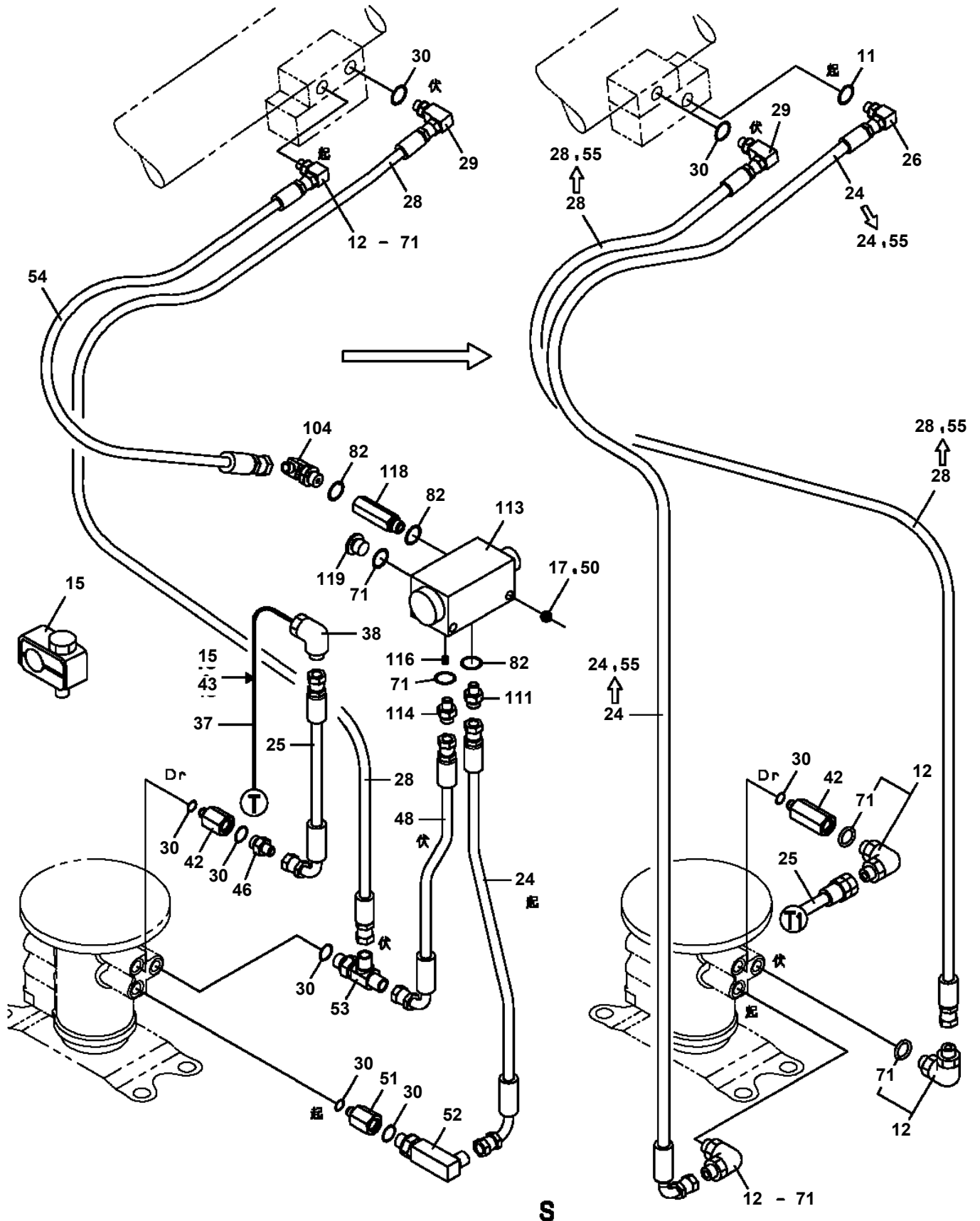
B



AT-110-4 42084400002 UPPER

Pos No.	Parts No	Parts Name	Qty	Unit	Technical Data	Serial No (Start)	Serial No (End)
1	42477762010	PLATE,NAME	1				
2	42474471150	HOLDER ASSY(FUSE,WITH HARNESS)	2				
3	42503472100	BOX	1				
4	42477640090	PLATE,NAME (AC100V)	1				
5	90101208030	BOLT	2		M8X30		
6	90201200800	NUT	2		M8		
7	90302040801	WASHER,SPRING	4		8		
8	90303070801	WASHER,PLAIN	2		8		
9	42503782010	SUPPORT	1				
10	90101208020	BOLT	2		M8X20		
11	82100002006	CLAMP	1		WR10		
12	90201200600	NUT	1		M6		
13	90302040601	WASHER,SPRING	1		6		
14	90101206020	BOLT	1		M6X20		
32	82100001348	FUSE	2		15A,6.5X30		

**AT-110-4 4208440002 UPPER
PB1400431-07 PIPING,UPPER**



AT-110-4 42084400002 UPPER

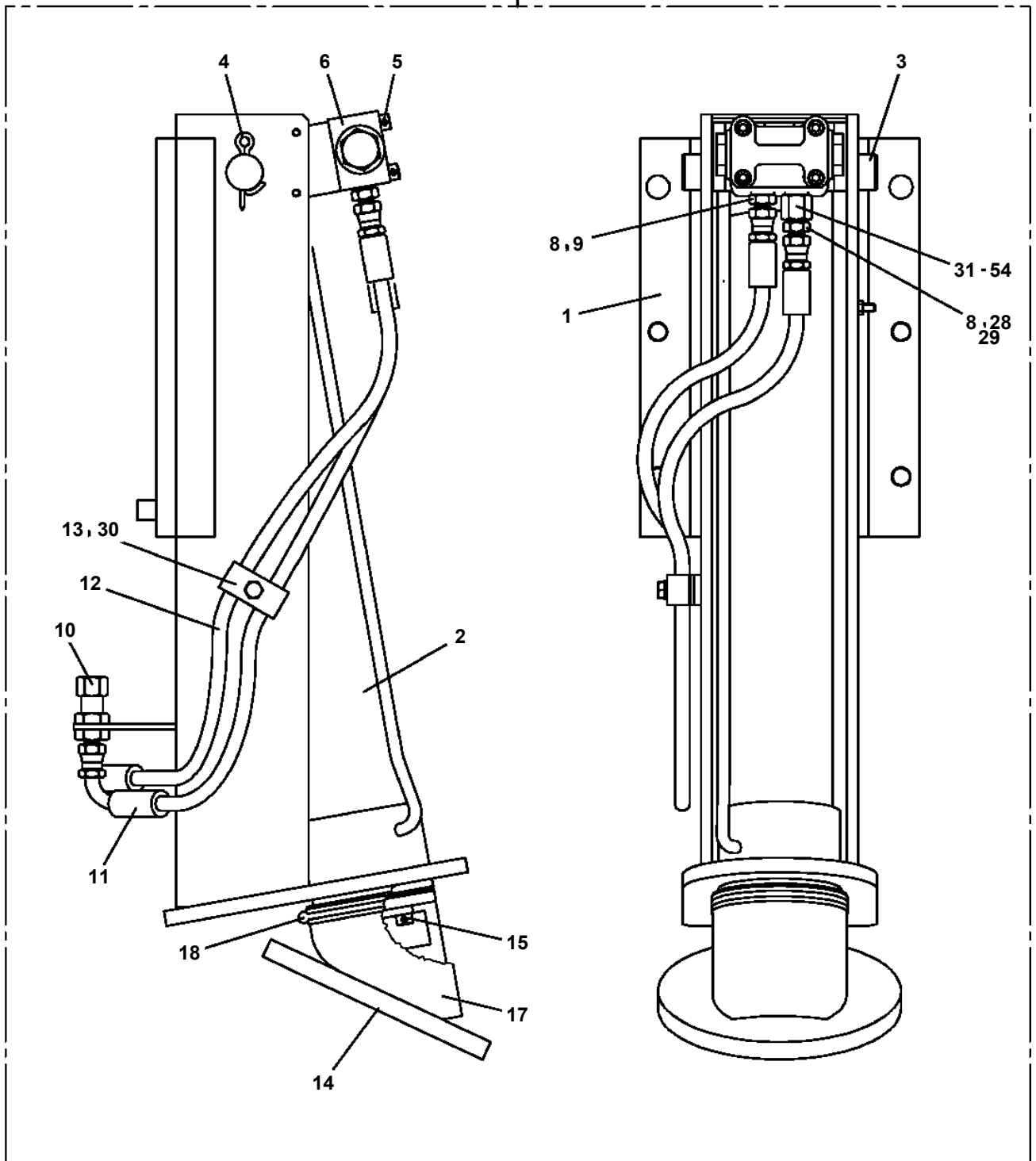
Pos No.	Parts No	Parts Name	Qty	Unit	Technical Data	Serial No (Start)	Serial No (End)	Remarks
1	42653673800	SUPPORT	1					
2	42653673900	COVER ASSY	1					
3	82464107814	HINGE	2					
4	90190205012	BOLT	4		M5X12			
5	90201500500	NUT	8		M5			
6	90302510501	WASHER,SPRING	8		5			
7	90303520501	WASHER,PLAIN	8		5			
8	80172805012	SCREW,MACHINE	4		M5X12			
14	42624600030	PLATE,NAME	4					
31	42653674000	COVER	1					
32	82460025402	CATCH	1					
33	80175805014	SCREW,MACHINE	4		M5X14			
34	90201500500	NUT	4		M5			
35	90302510501	WASHER,SPRING	4		5			
36	90303520501	WASHER,PLAIN	4		5			
37	82466016470	COVER	1					
39	80172803010	SCREW,MACHINE	1		M3X10			
40	42653672450	INSULATOR	1					
41	90303520301	WASHER,PLAIN	2		3			
42	90302510301	WASHER,SPRING (SUS 3)	1					
43	90201500300	NUT	1		M3			
100	42653672004	BOX ASSY	1					

AT-110-4 42084400002 UPPER

Pos No.	Parts No	Parts Name	Qty	Unit	Technical Data	Serial No (Start)	Serial No
1	(*****)	BUCKET (SI,WHITE/WITH INNER)	1				
2	(*****)	ACCESSORIES (MAT/FOR SI BUCKET)	1				
3	(*****)	NAME PLATE ASSY (NON-SLIP/BOOM UPPER)	1				

AT-110-4 42084400002 UPPER
PC1011590-00 OUTRIGGER

100



AT-110-4 42084400002 UPPER

Pos No.	Parts No	Parts Name	Qty	Unit	Technical Data	Serial No (Start)	Serial No (End)	R
1	37000711010	CLAMP ASSY	3		18X1			
2	37000300750	SLEEVE	1		18-15			
3	91002801100	O-RING	4		1B P11			
4	37002472360	HOSE	1		L=650			
5	37002439860	HOSE	1		L=480			
6	91002801400	O-RING	2		1B P14			
7	37000711410	CLAMP ASSY	2		12-4			
8	80302090161	FITTING	2		KCO12-030N			
9	37000711080	CLAMP ASSY	7		12-2			
10	81408000160	PIPE,STEEL	2	M	12X1.4T			
11	81408000160	PIPE,STEEL	2	M	12X1.4T			
12	81408000160	PIPE,STEEL	2	M	12X1.4T			
13	81408000160	PIPE,STEEL	2	M	12X1.4T			
14	37000601630	CLAMP	1		65			
15	90101208016	BOLT	1		M8X16			
16	90302040801	WASHER,SPRING	1		8			
17	81408000241	PIPE,STEEL	1	M	18X1.9T			
18	81408000241	PIPE,STEEL	1	M	18X1.9T			
20	81408000210	PIPE,STEEL	1	M	15X2.0T			
21	81408000160	PIPE,STEEL	2	M	12X1.4T			
22	81408000160	PIPE,STEEL	2	M	12X1.4T			
23	81408000160	PIPE,STEEL	1	M	12X1.4T			
24	81408000160	PIPE,STEEL	1	M	12X1.4T			
25	81408000160	PIPE,STEEL	2	M	12X1.4T			
26	81408000160	PIPE,STEEL	2	M	12X1.4T			
27	81408000160	PIPE,STEEL	2	M	12X1.4T			
28	81408000160	PIPE,STEEL	2	M	12X1.4T			
29	81408000160	PIPE,STEEL	2	M	12X1.4T			
30	81408000160	PIPE,STEEL	2	M	12X1.4T			
31	80301010100	FITTING	4		KUA12-000N			
32	81408000241	PIPE,STEEL	1	M	18X1.9T			
34	80309010105	SLEEVE	4		KK012-000E			
35	80306010105	NUT	4		KKN12-000E			
36	37002472250	HOSE	4		L=530			
37	37000924410	JOINT	2		PF1/4-PF1/4			
38	42645290500	ORIFICE	2		1.6			
39	80400160127	JOINT	2					
40	80305030120	FITTING,TEE	1		KTN18-040N			
41	80307050040	JOINT,SOCKET	1					
42	80456950401	JOINT,SELF SEALING (COUPLER)	1					
43	36672630000	FILTER (WITH O-RING)	2					
44	82100001805	TUBE,CORRUGATE	1	M	19			
61	42647952100	JOINT	1					
62	36625790000	VALVE,CHECK	1					
63	42647952200	JOINT	1					
64	80302090201	FITTING	1		KCO15-040N			
65	91002801800	O-RING	5		1B P18			
66	80471020502	JOINT	1					
67	91002801100	O-RING	3		1B P11			
68	37000908720	JOINT (WITH O-RING)	1		PF1/2-PF3/8			
69	80303130241	FITTING,ELBOW	1		KLO18-040E			
70	80316030060	PLUG	1		PT3/8			

AT-110-4 42084400002 UPPER

Pos No.	Parts No	Parts Name	Qty	Unit	Technical Data	Serial No (Star
1	(*****)	COVER ASSY (REAR COVER,WITH INDICATOR T-HANDLE)	1			
2	(*****)	MODIFICATION ASSY (SUB FRAME REAR SUPPORT)	1			
3	(*****)	MOUNT (CHAIN FOR TRUCK BED)	1			

AT-110-4 42084400002 UPPER

Pos No.	Parts No	Parts Name	Qty	Unit	Technical Data	Serial No (Start)	Serial No (End)	Remarks	Pages
1	42267480100	COVER	1						

AT-110-4 42084400002 UPPER

Pos No.	Parts No	Parts Name	Qty	Unit	Technical Data	Serial No (Start)	Serial No (End)	Remarks	Pages
10	42267480200	COVER	1						

AT-110-4 42084400002 UPPER

Pos No.	Parts No	Parts Name	Qty	Unit	Technical Data	Serial No (Start)	Ser
1	36081325090	RING,SNAP	1				
2	36081325010	SPACER	1				
3	36081325080	SHIM SET	1				
4	36081325110	BEARING,TAPER ROLLER	1				
5	36081325020	WORM	1				
6	36081325120	BEARING,TAPER ROLLER	1				
7	36080755040	GAUGE,OIL	1				
8	36080235080	WASHER,SEAL	1		M16		
9	80316090060	PLUG	1		KKT PT3/8		
12	91280431931	SEAL,OIL	1				
13	36081325050	CASE,GEAR	1				
14	36081325130	BEARING,BALL(METAL SHIELD TYPE 6210ZZC3)	1				
15	36081325140	BEARING,BALL (RUBBER SEAL TYPE 6210LLU)	1				
16	36080495050	BOLT,SEMS (M10X25,WITH WASHER)	9				
17	36080505080	KEY	1				
18	36081325060	WHEEL,WORM	1				
19	36081325070	CASE,GEAR	1				
20	80500006209	BEARING,BALL	1				
21	80601110450	RING,RITAINING	1		S45		
22	36080015000	PIN	2				
23	82400000478	BREATHER	1				
31	36081325500	GEAR,SPUR	1				
50	36081320000	REDUCER,SWING SPEED	1				

AT-110-4 42084400002 UPPER

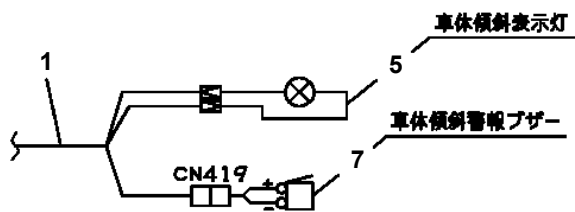
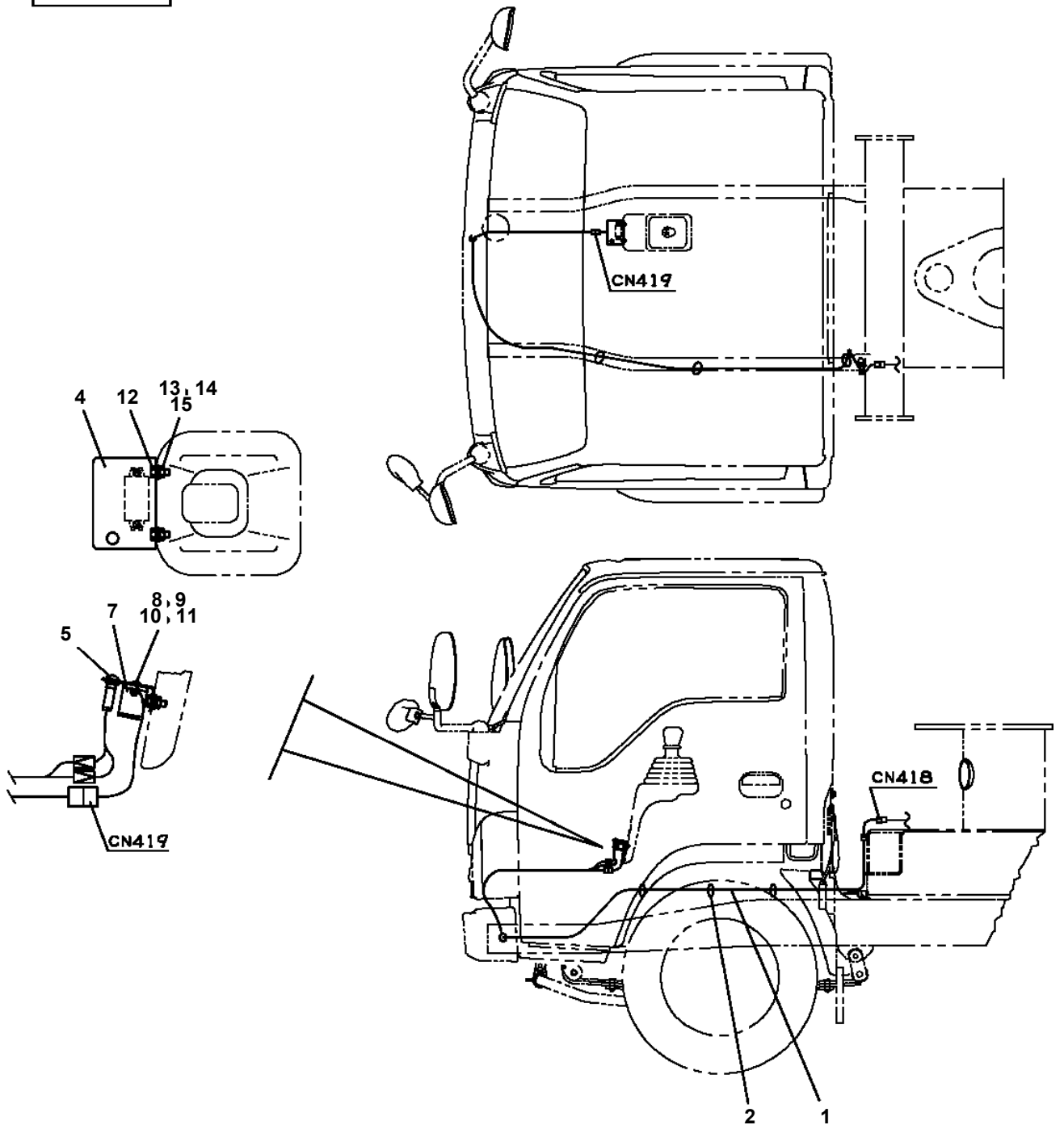
Pos No.	Parts No	Parts Name	Qty	Unit	Technical Data	Serial No (Start)	Serial No (End)	Remarks	P
1	82456101000	NIPPLE,GREASE	1		A-PT1/8		HK0228		
	82455106000	NIPPLE,GREASE	1		A-M6F FE	HK0229			
2	80728105040	PIN,SPRING	1				HK0021		
3	91302209000	BEARING,PLAIN	2						
4	91684009001	PACKING	2						
5	91411207502	RING,BACKUP	2						
6	91002903500	O-RING	1		1B G35				
7	36026894000	PISTON	1				HK0021		
	36027802000	PISTON	1			HK0022			
8	36027539510	ROD ASSY	1				HK0021		
	36027809520	ROD ASSY	1			HK0022			
9	36027809510	CYLINDER ASSY	1				219898		
	36027809511	CYLINDER ASSY	1			219899	HK0228		
10	80612110720	RING,RITAINING	1		AR72				
11	37000403650	BEARING,PLAIN	1						
12	36026899530	COVER,ROD	1						
13	91002909500	O-RING	1		1B G95				
14	91694106500	PACKING	1						
15	91410206503	RING,BACKUP	1						
16	91660006500	SEAL,DUST	1						
17	80622000650	RING,RITAINING	1		SP65				
18	80530000114	BEARING,SPHERICAL	1						
19	80820004040	BEARING,PLAIN	2						
21	91002910500	O-RING	1		1B G105				
22	82400000459	CAP	1				HK0228		
23	36027809512	CYLINDER ASSY	1			HK0229			
24	90730008120	SCREW,SET	1		M8X12	HK0022			
50	36026899900	PACKING SET	1		65X90				
100	36027800000	CYLINDER,ELEVATING	1						

AT-110-4 4208440002 UPPER

Pos No.	Parts No	Parts Name	Qty	Unit	Technical Data	Serial No (Start)	Serial N
1	42507122010	CABLE ASSY	1		L=500		
2	42507122020	CABLE ASSY	1		L=2600 & L=1200		
3	42507122600	BOX ASSY	1				
4	42421175050	CABLE ASSY	1		L=600		
5	42507123500	SWITCH ASSY (SUB BATTERY CHARGER)	1				
6	42507122100	BOX ASSY	1				
7	42507122800	PANEL ASSY	1				
8	42507122400	COVER	1				
9	42504802080	SUPPORT	4				
10	82151510160	BATTERY	2				
11	90101212020	BOLT	4		M12X20		
12	90101208020	BOLT	15		M8X20		
13	42507123100	SUPPORT	1				
14	90201200800	NUT	11		M8		
15	90302041201	WASHER,SPRING	4		12		
16	90302040801	WASHER,SPRING	20		8		
17	90303070801	WASHER,PLAIN	10		8		
18	82119101033	CONNECTOR	1				
19	91810132530	FASTENER	10				
20	42507122050	CABLE ASSY	1		L=1500		
21	82100001803	TUBE,CORRUGATE	3	M	13		
22	80171805012	SCREW,MACHINE	4		M5X12		
23	90302510501	WASHER,SPRING	4		5		
24	90303520501	WASHER,PLAIN	4		5		
25	90101206016	BOLT	4		M6X16		HK0007
	90101206016	BOLT	6		M6X16	HK0008	
26	90201200600	NUT	4		M6		HK0007
	90201200600	NUT	6		M6	HK0008	
27	90302040601	WASHER,SPRING	8		6		HK0007
	90302040601	WASHER,SPRING	10		6	HK0008	
28	82100002018	CLAMP	3		WR35		
29	82100002596	RELAY	1				
30	90186206010	BOLT,FLANGE	1		M6X10		
31	42732052300	CAP	4				
32	90303070601	WASHER,PLAIN	8		6		HK0007
	90303070601	WASHER,PLAIN	10		6	HK0008	
33	42507122090	SENSOR	1				
34	42507122500	LAMP ASSY (WITH HARNESS)	1				
35	80172304010	SCREW,MACHINE	4		M4X10		
36	90302040501	WASHER,SPRING	4		5		HK0007
	90302040401	WASHER,SPRING	4		4	HK0008	
37	42421095251	COVER	1				
38	90172106016	BOLT,HEXAGON SOCKET	4		M6X16		
39	42507123600	HARNESS	1				
40	42507122510	THERMOSTAT (ASSY)	1				
41	80172803005	SCREW,MACHINE	1		M3X5		
42	90302510301	WASHER,SPRING (SUS 3)	1				
43	90101205010	BOLT	1		M5X10		
44	82100002011	CLAMP	2		WRC15		
45	82100002017	CLAMP	1		WR30		
46	37002708930	CABLE	1		L=500		
47	42508261401	HARNESS	1			219520	
48	42508261800	PLATE	1			HK0008	
61	42507122200	BOX	1				
62	42507122300	COVER	1				
63	90813108020	BOLT,WING	4		M8X20		
64	90303070801	WASHER,PLAIN	4		8		
71	82400000203	GROMMET	1		L=250		
82	82400000201	GROMMET	2		KG-016		

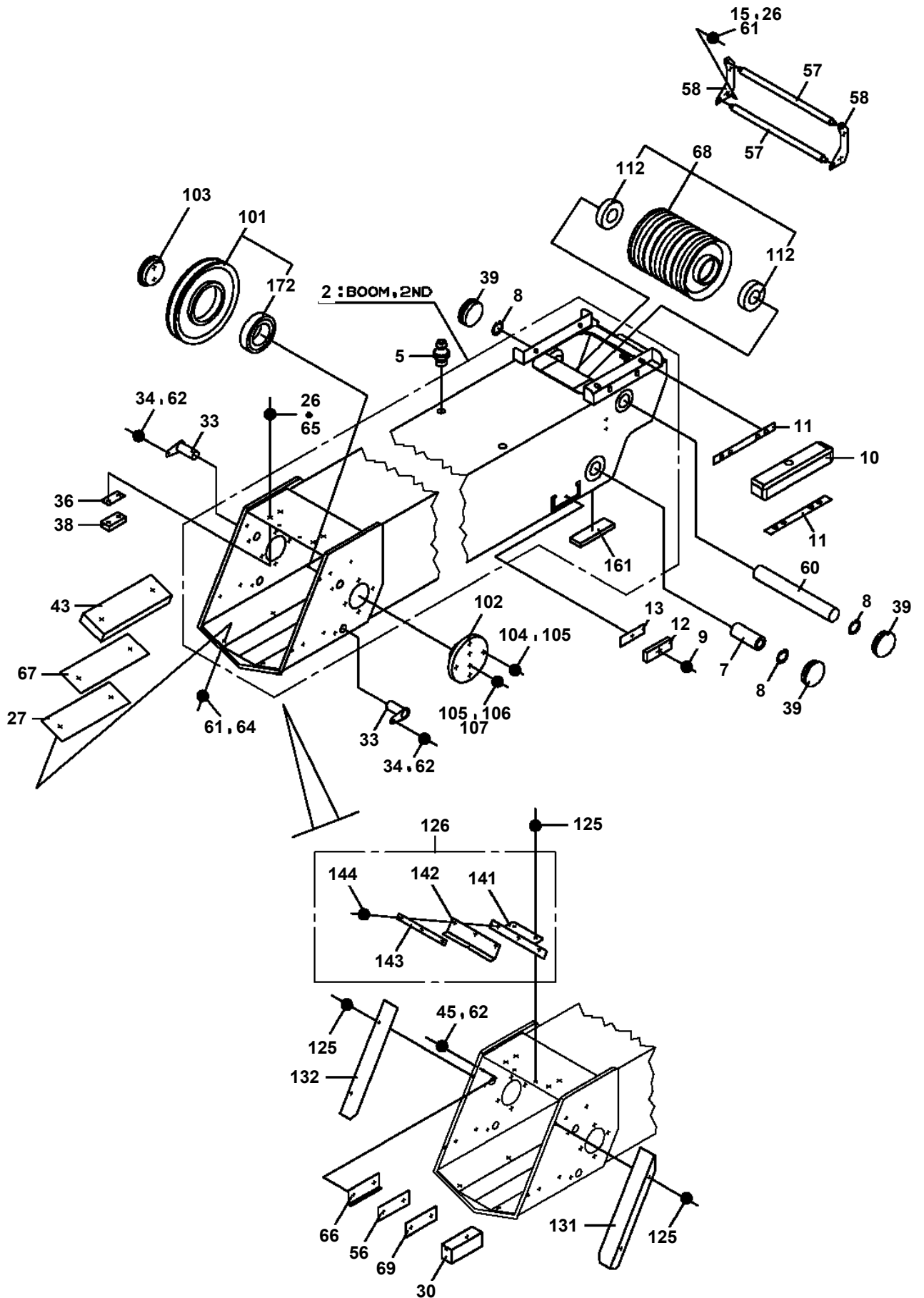
AT-110-4 42084400002 UPPER
 PE5070053-00 ELEC.ASSY,CARRIER

イスズ

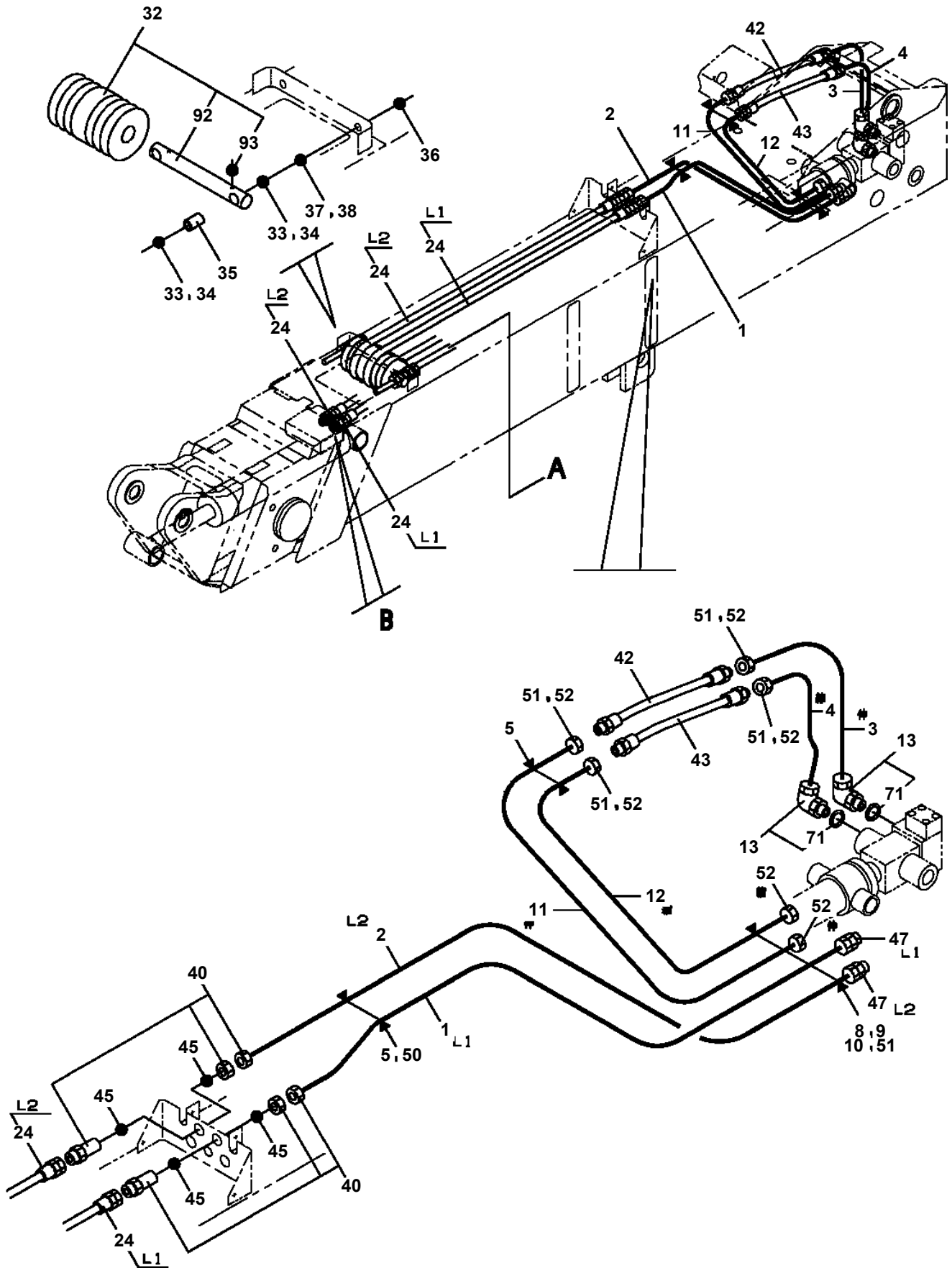


ブザー、表示灯接続図

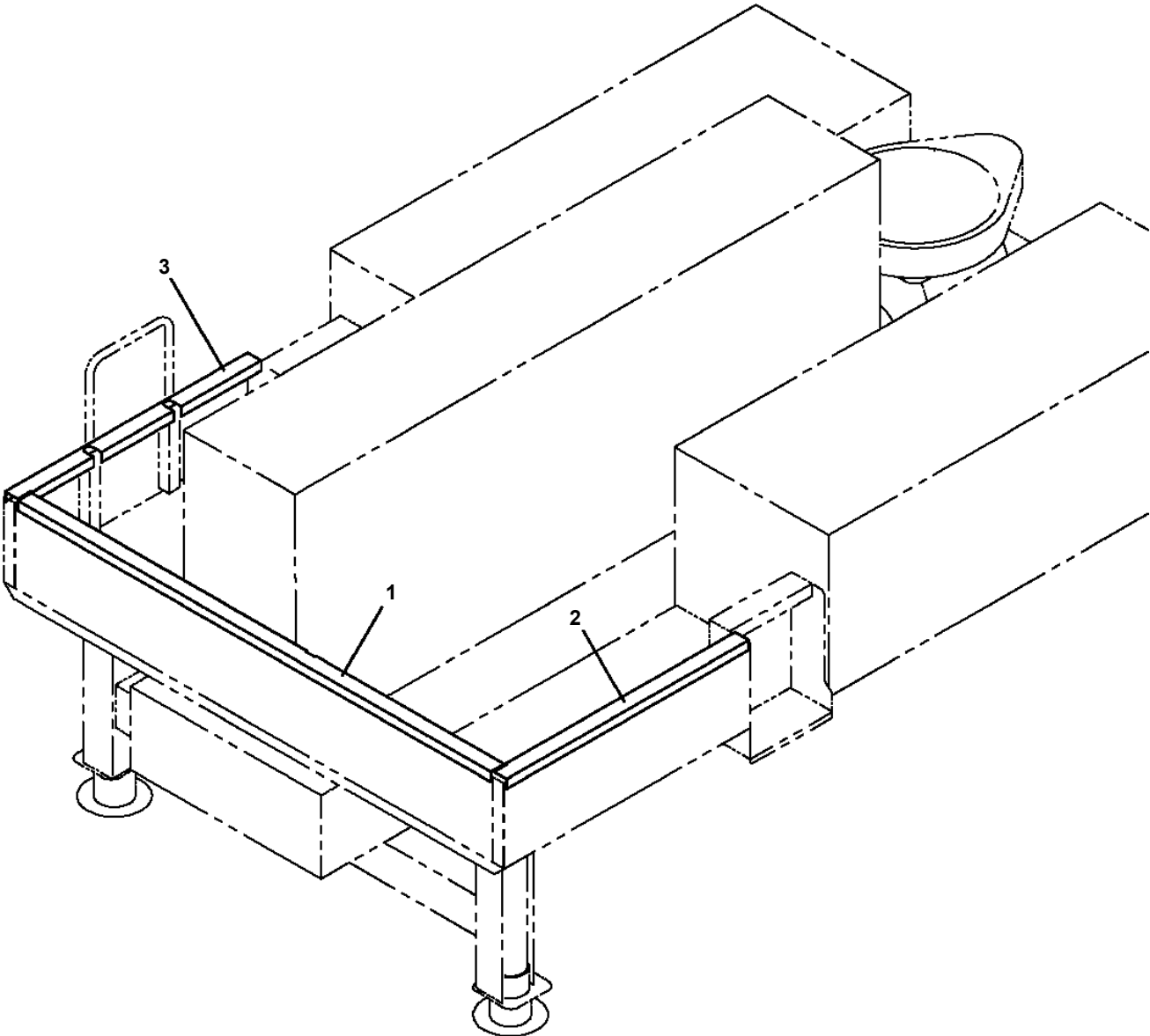
AT-110-4 42084400002 UPPER
PG1010986-04 BOOM



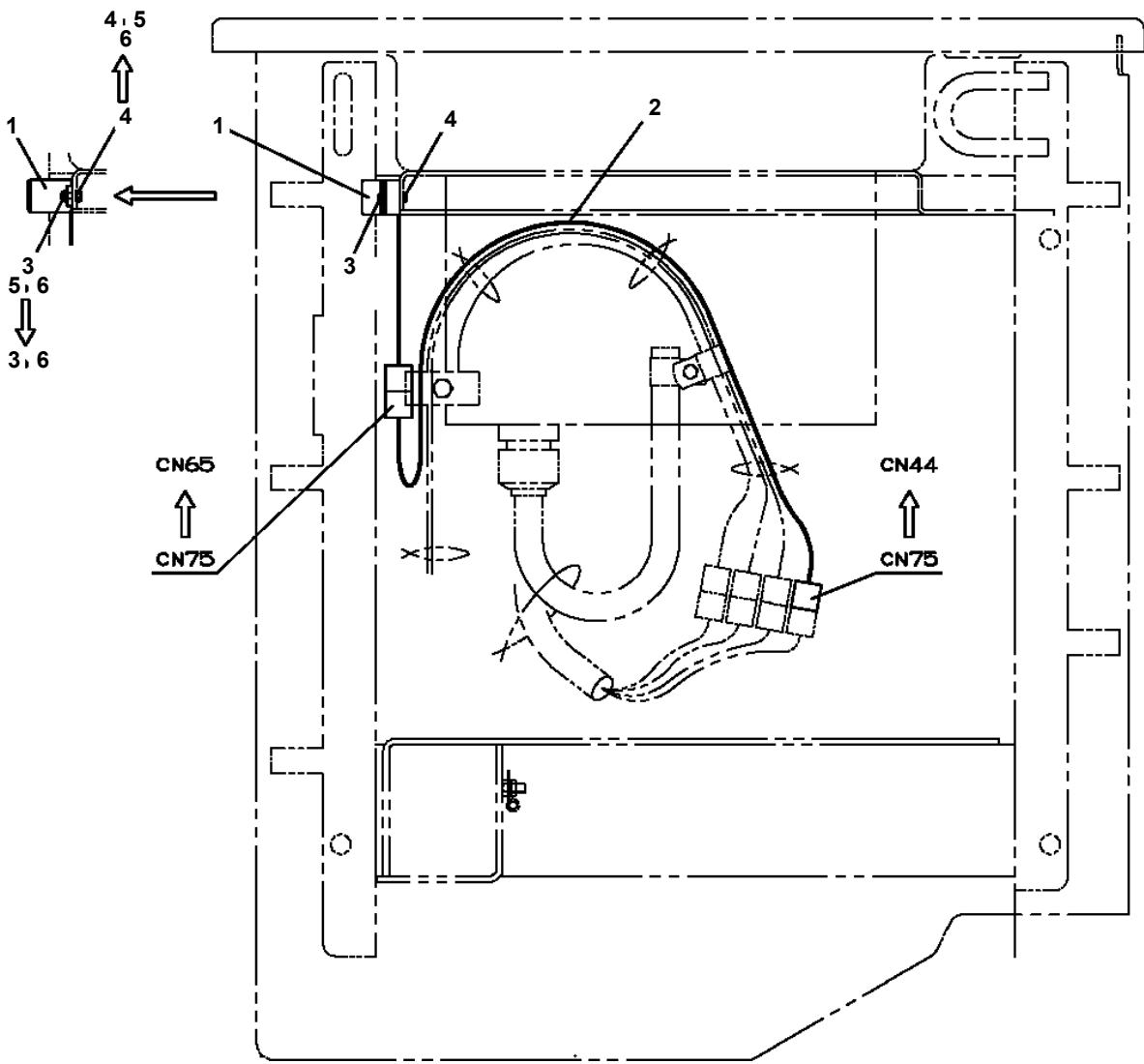
**AT-110-4 42084400002 UPPER
PG1220145-00 PIPING,BOOM**



**AT-110-4 42084400002 UPPER
PG5200050-00 GUARD ASSY (GATE PROTECTOR,LOWER SPEC:42063533000)**

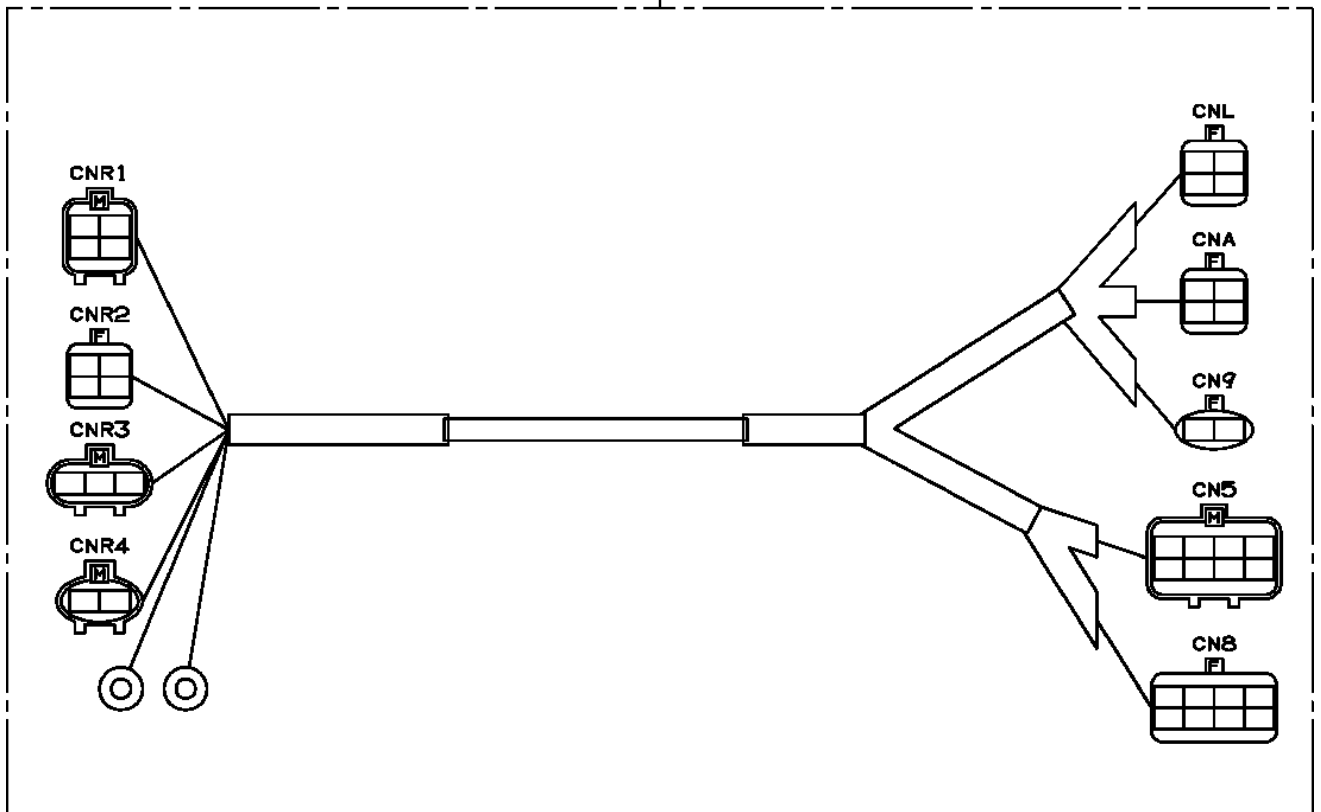


**AT-110-4 42084400002 UPPER
PH1500010-02 BUZZER (JACK ALARM)**

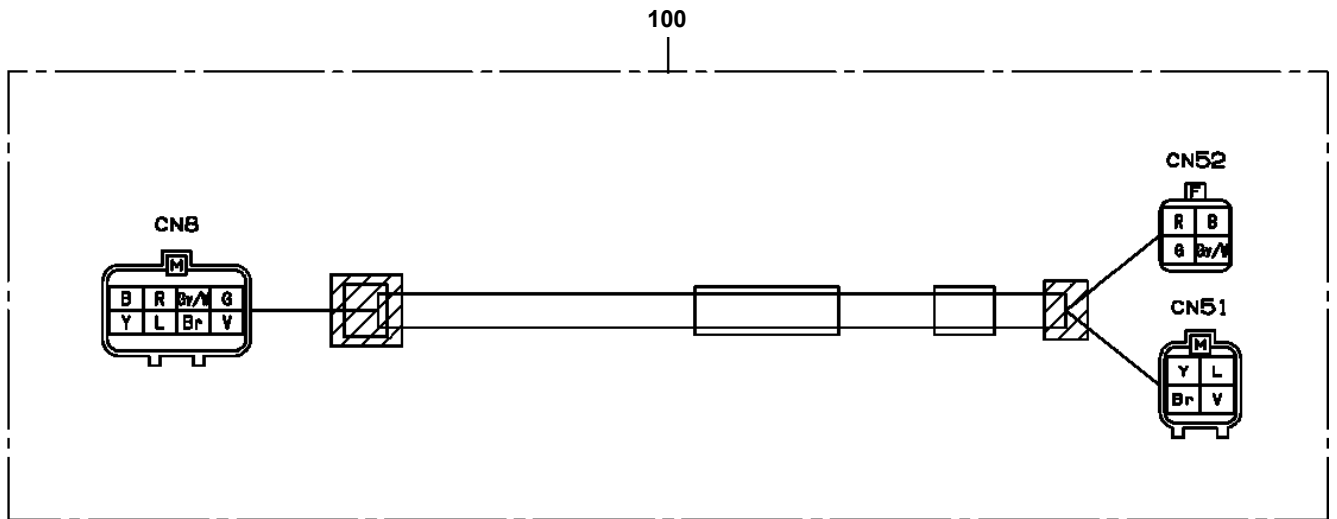


AT-110-4 42084400002 UPPER
PH5030430-00 HARNESS

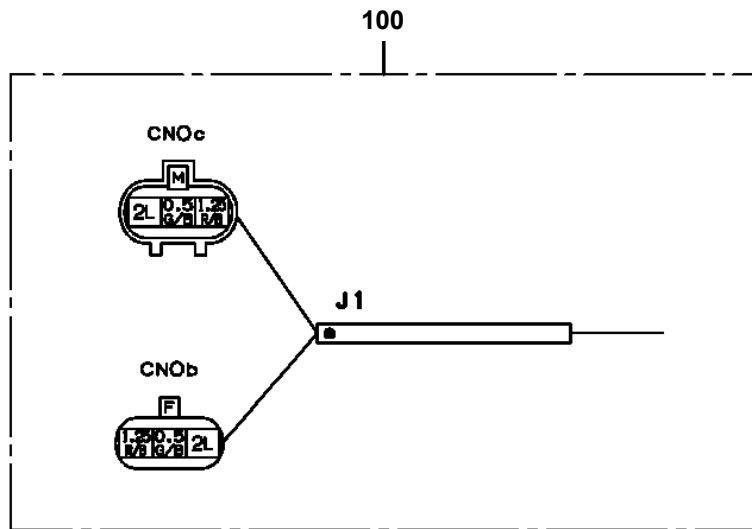
100



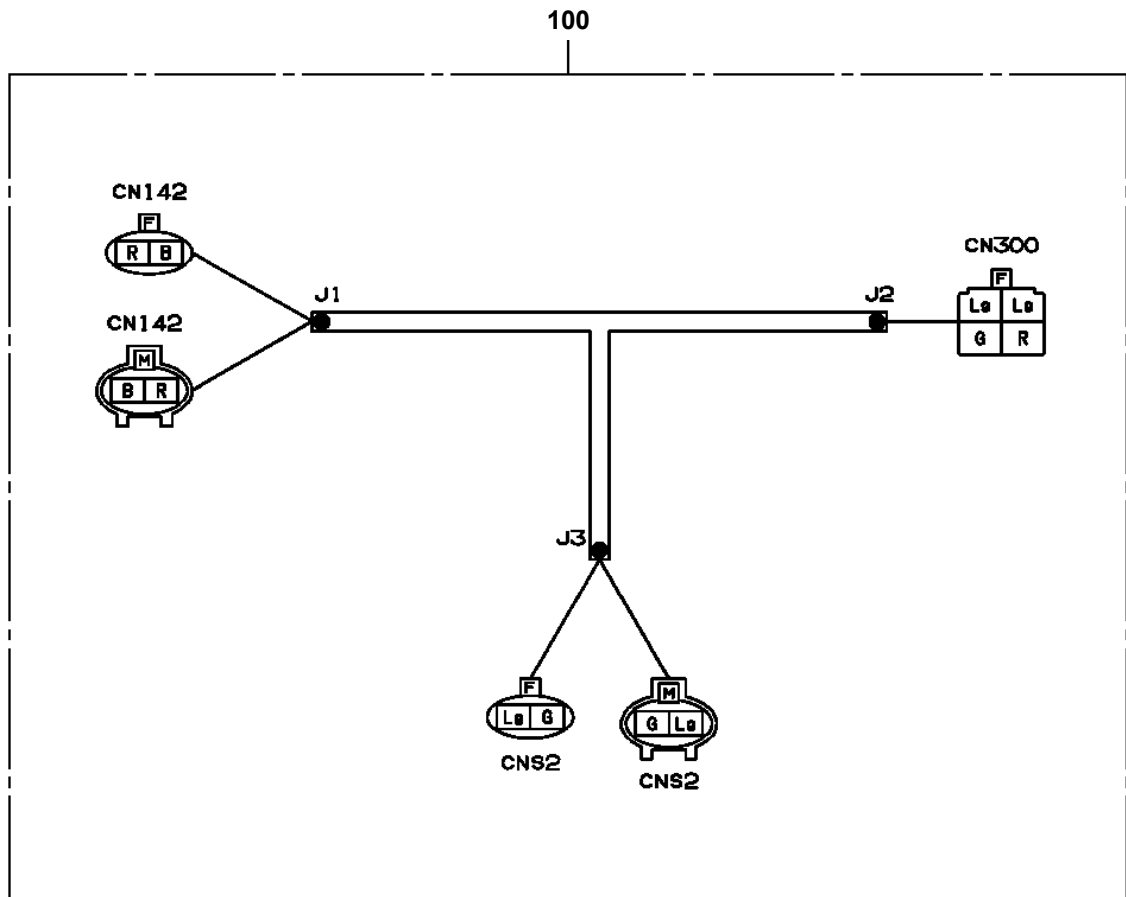
AT-110-4 42084400002 UPPER
PH5030974-00 HARNESS



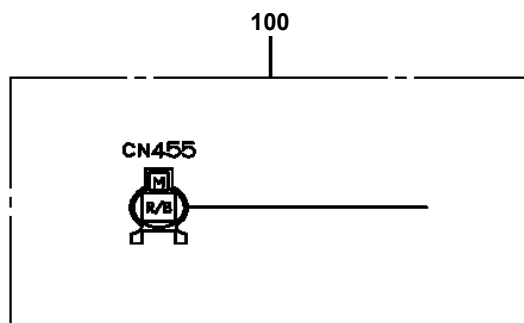
AT-110-4 42084400002 UPPER
PH5031004-00 HARNESS



AT-110-4 42084400002 UPPER
PH5031022-00 HARNESS

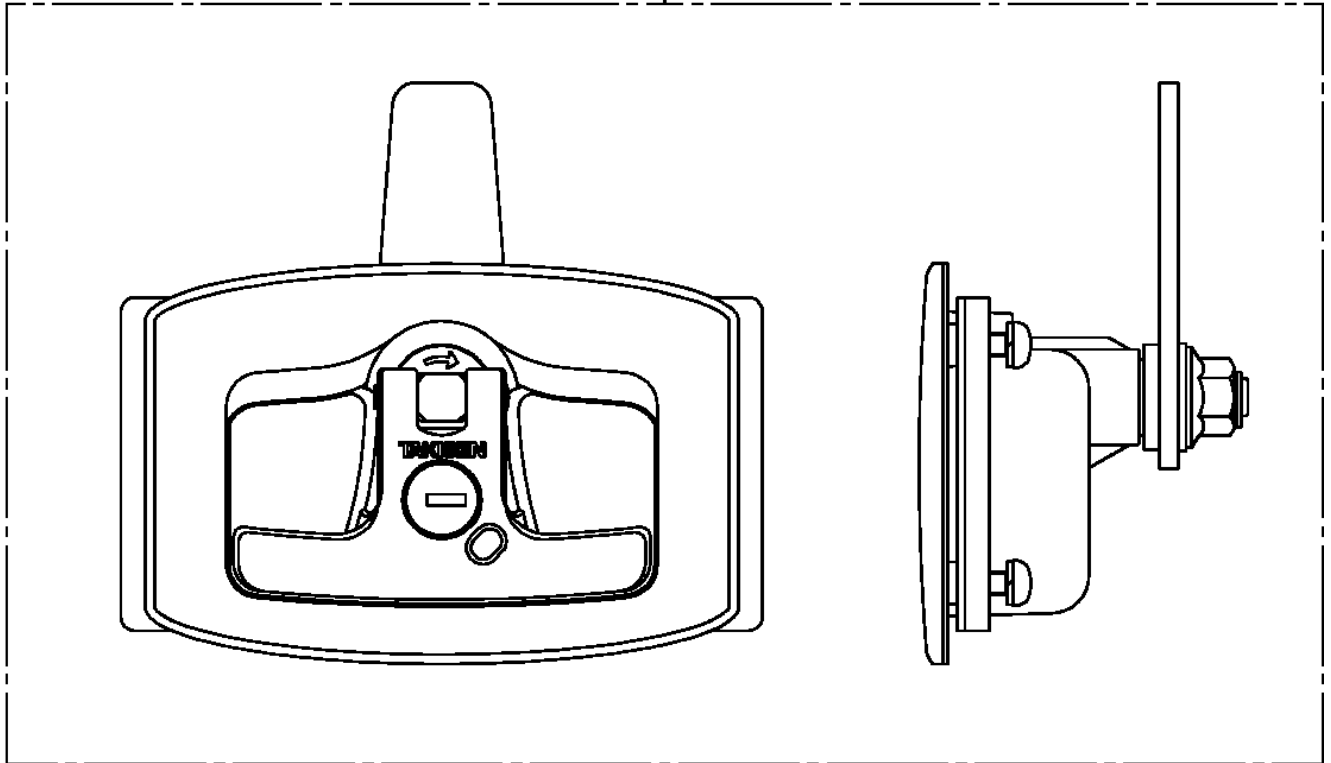


**AT-110-4 42084400002 UPPER
PH5034165-00 HARNESS**



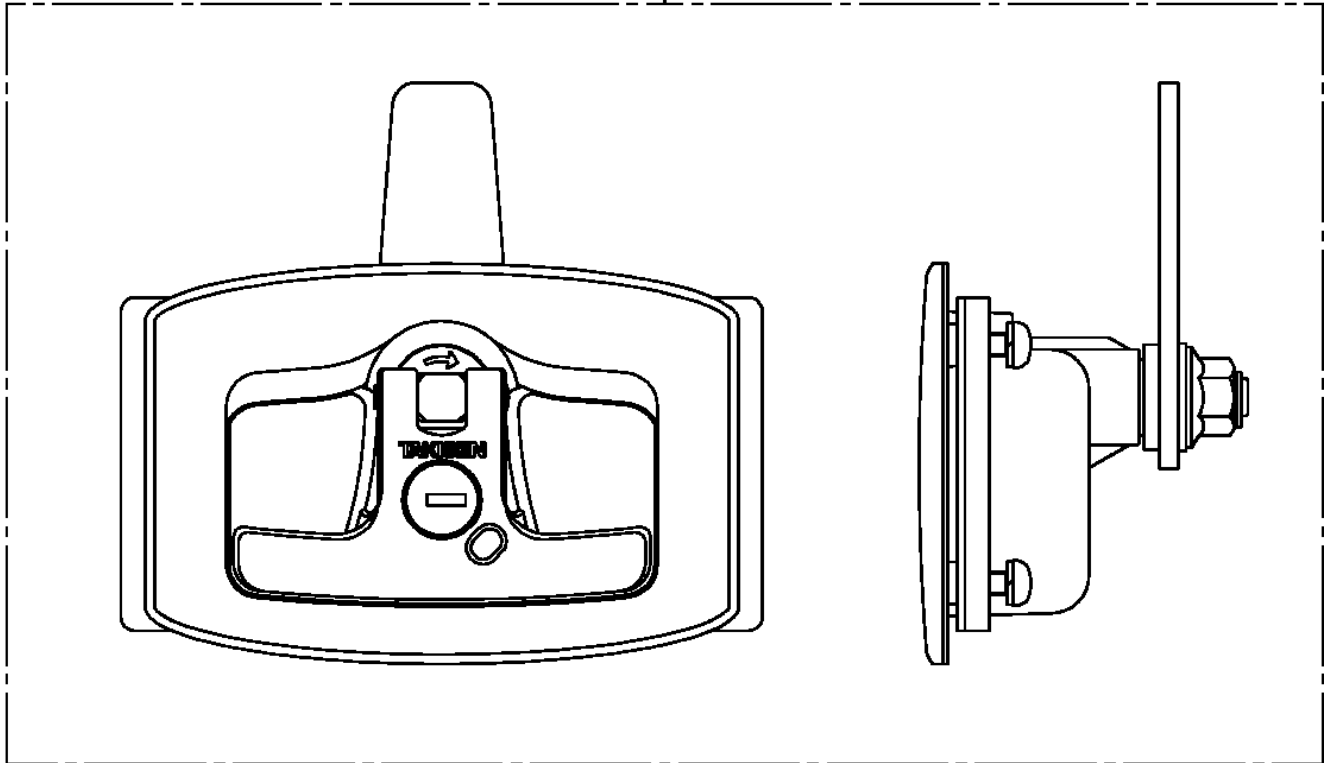
**AT-110-4 42084400002 UPPER
PH5190001-00 HANDLE**

1

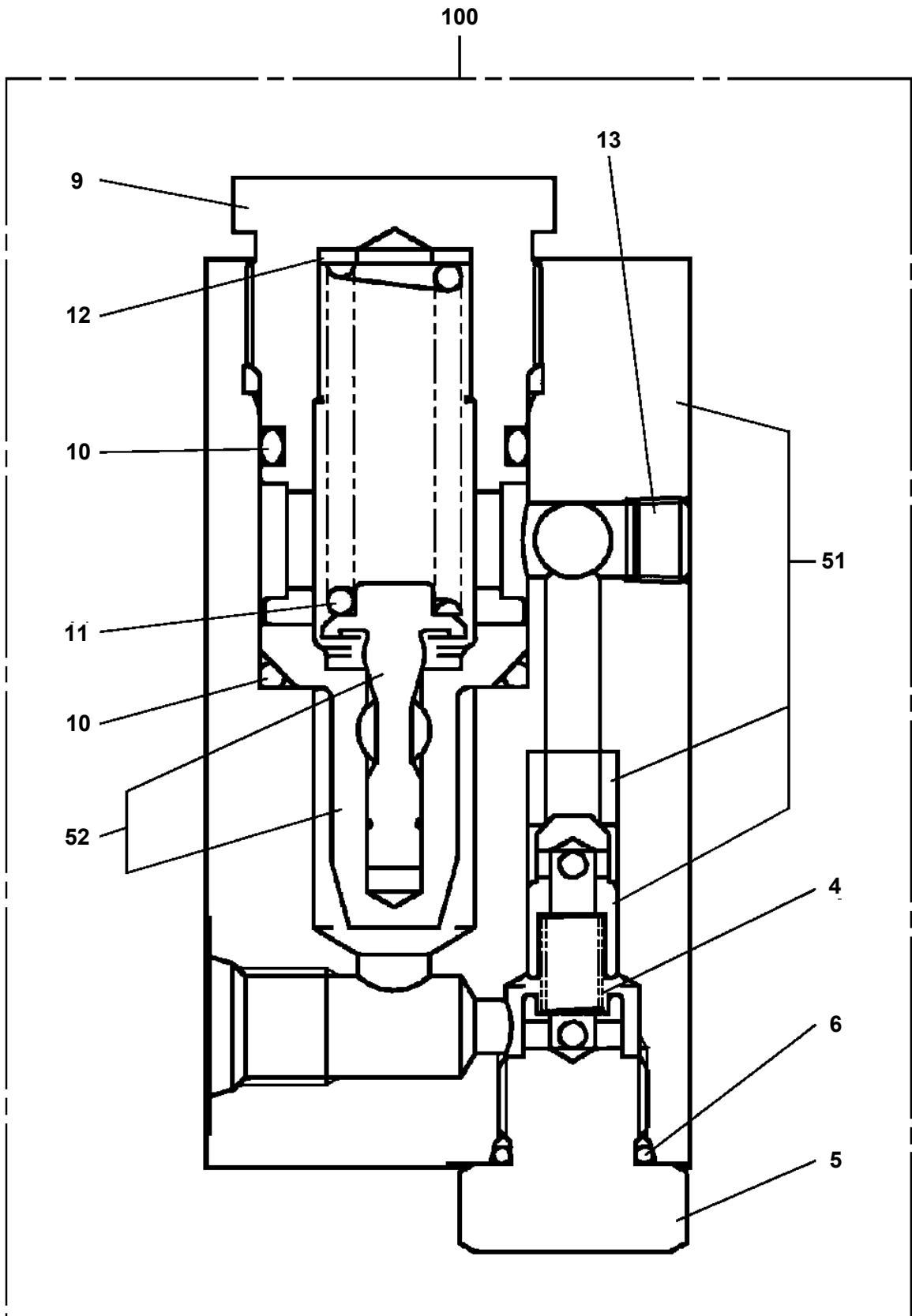


**AT-110-4 42084400002 UPPER
PH5190001-00 HANDLE**

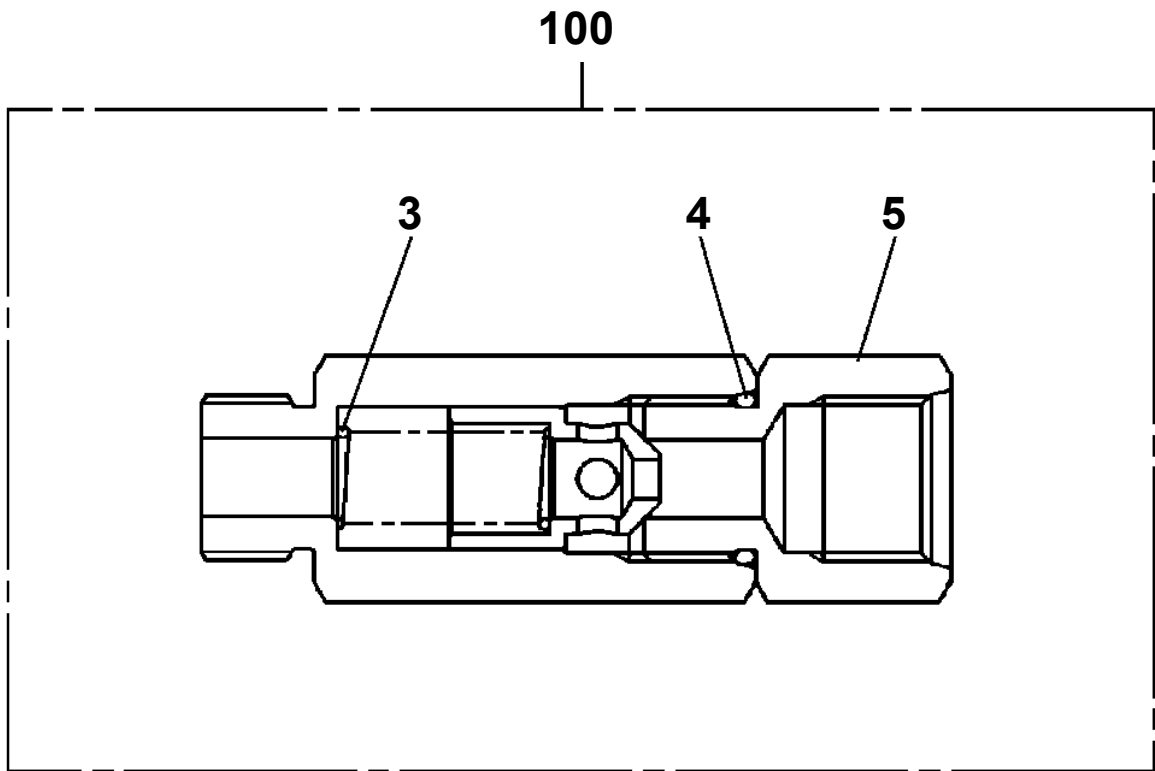
1



AT-110-4 42084400002 UPPER
PI1100128-00 VALVE,RELIEF



**AT-110-4 42084400002 UPPER
PI1140216-00 VALVE,CHECK**

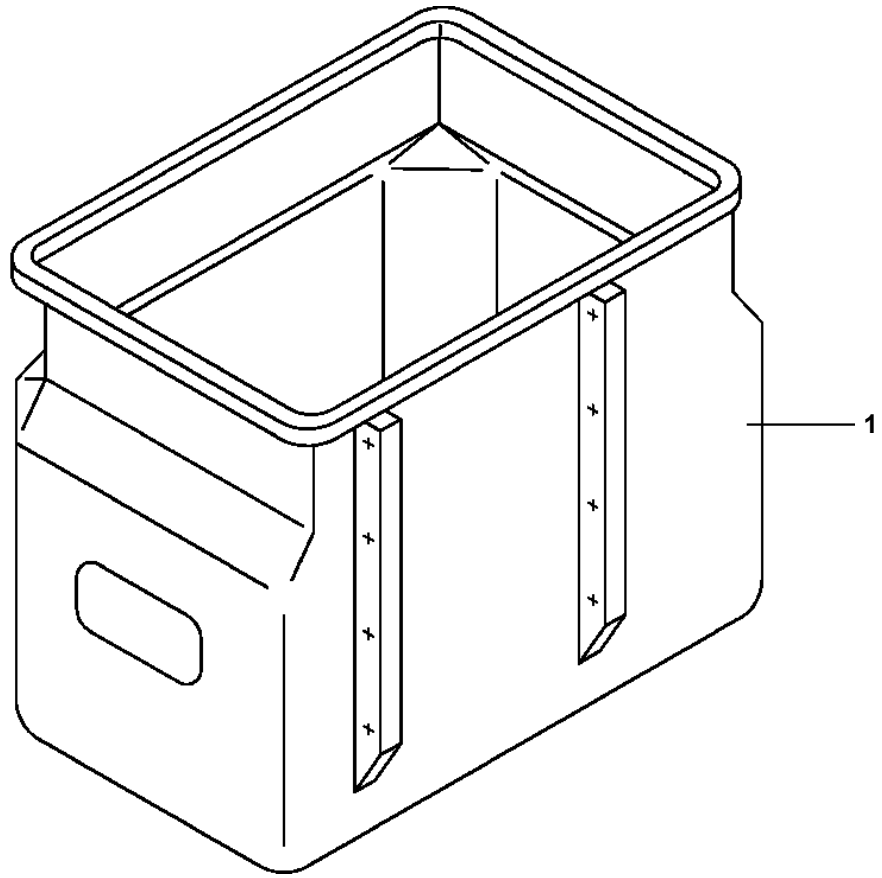


**AT-110-4 42084400002 UPPER
PI5170019-00 INTERLOCK ASSY (11M:RUNAWAY PREVENTION)**

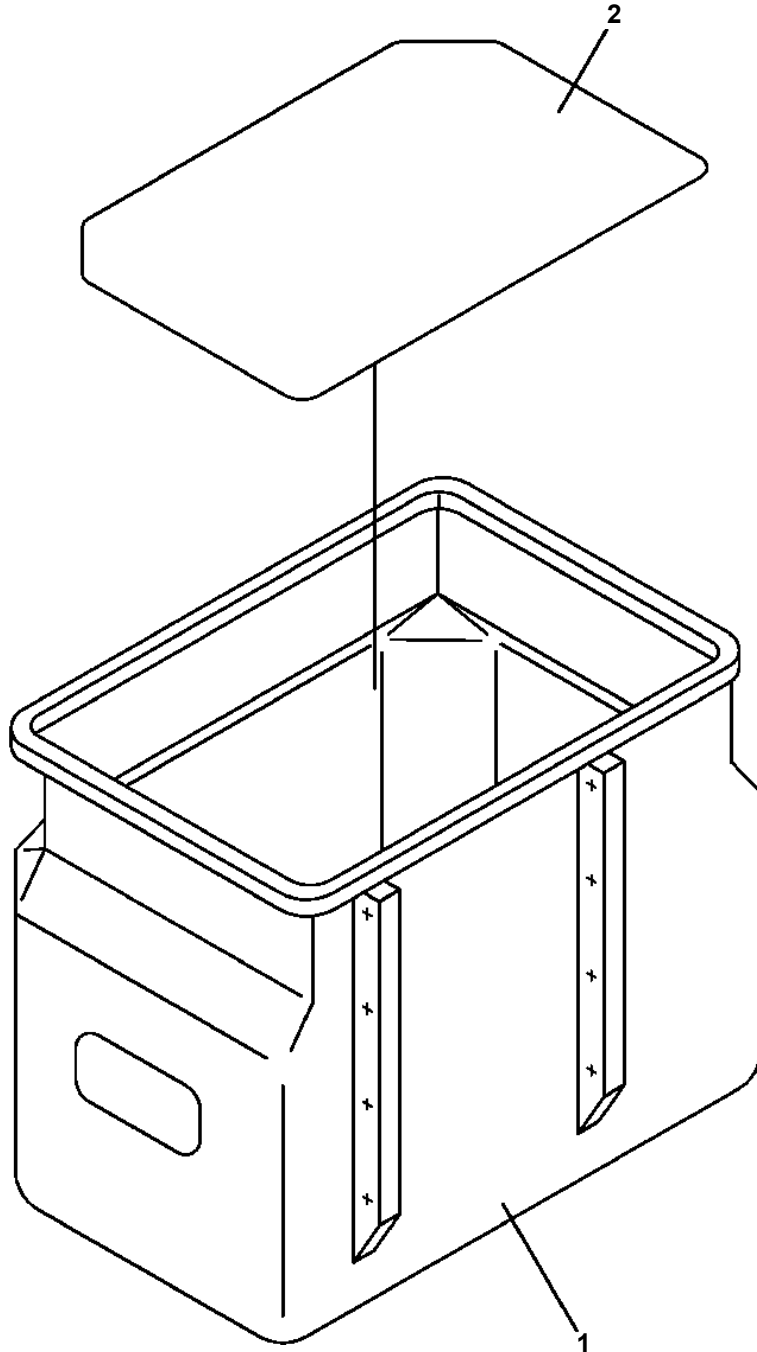
インターロックASSY (11M:イツソウホ ウシ)
INTERLOCK ASSY (11M:RUNAWAY PREVENTION)

【組立名称一覧】より選択してください。
SEE THE CORRESPONDING "ASSEMBLY NAME" LIST.

**AT-110-4 42084400002 UPPER
PJ3010298-00 BUCKET (WHITE/DRAIN HOLE)**



**AT-110-4 42084400002 UPPER
PJ3010366-00 BUCKET (WHITE/WITH BOSS)**



CLICK HERE TO **DOWNLOAD** THE COMPLETE MANUAL

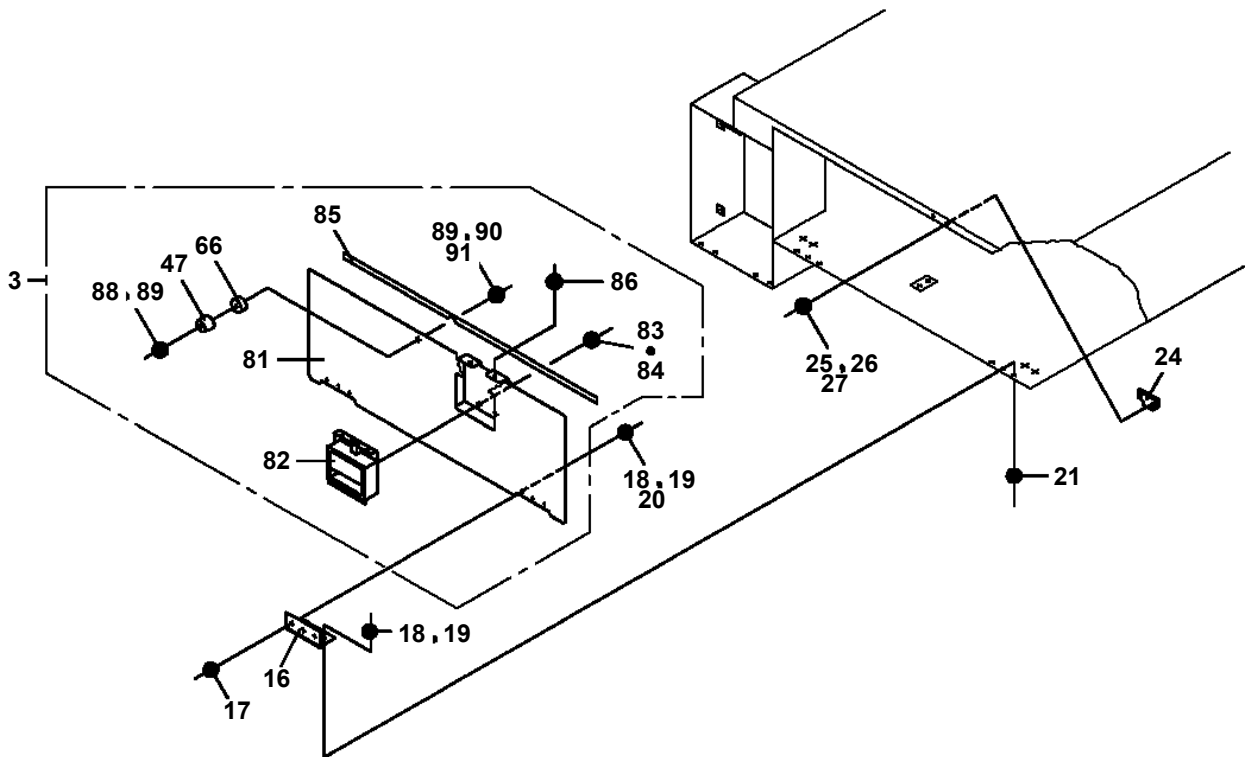
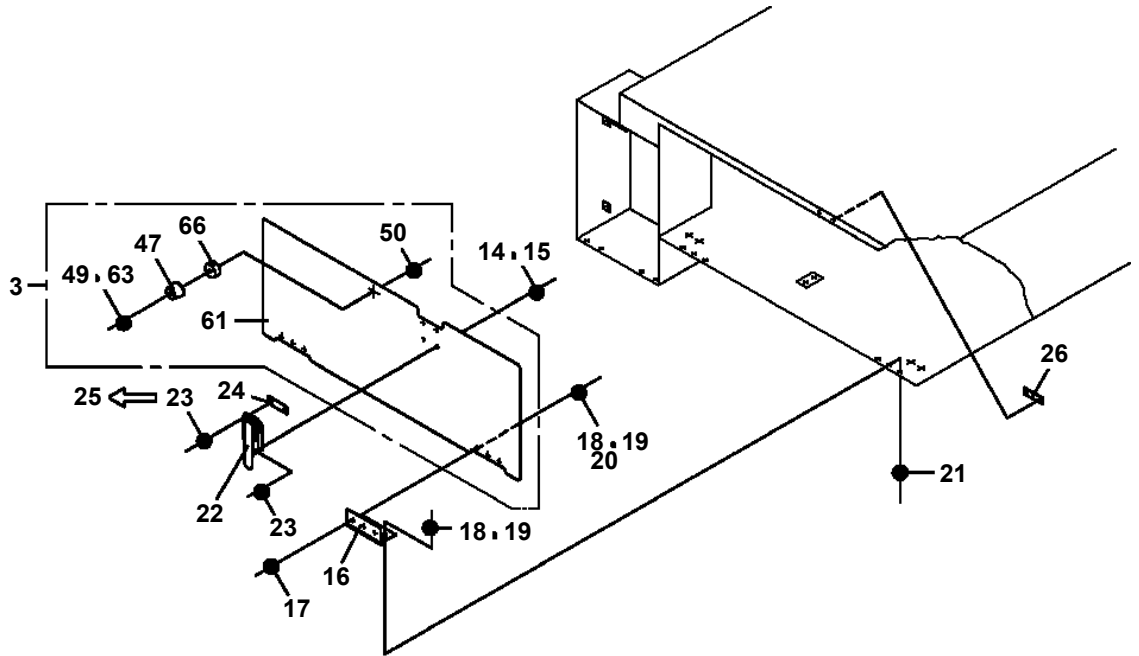
- Thank you very much for reading the preview of the manual.
- You can download the complete manual from: www.heydownloads.com by clicking the link below



- Please note: If there is no response to CLICKING the link, please download this PDF first and then click on it.

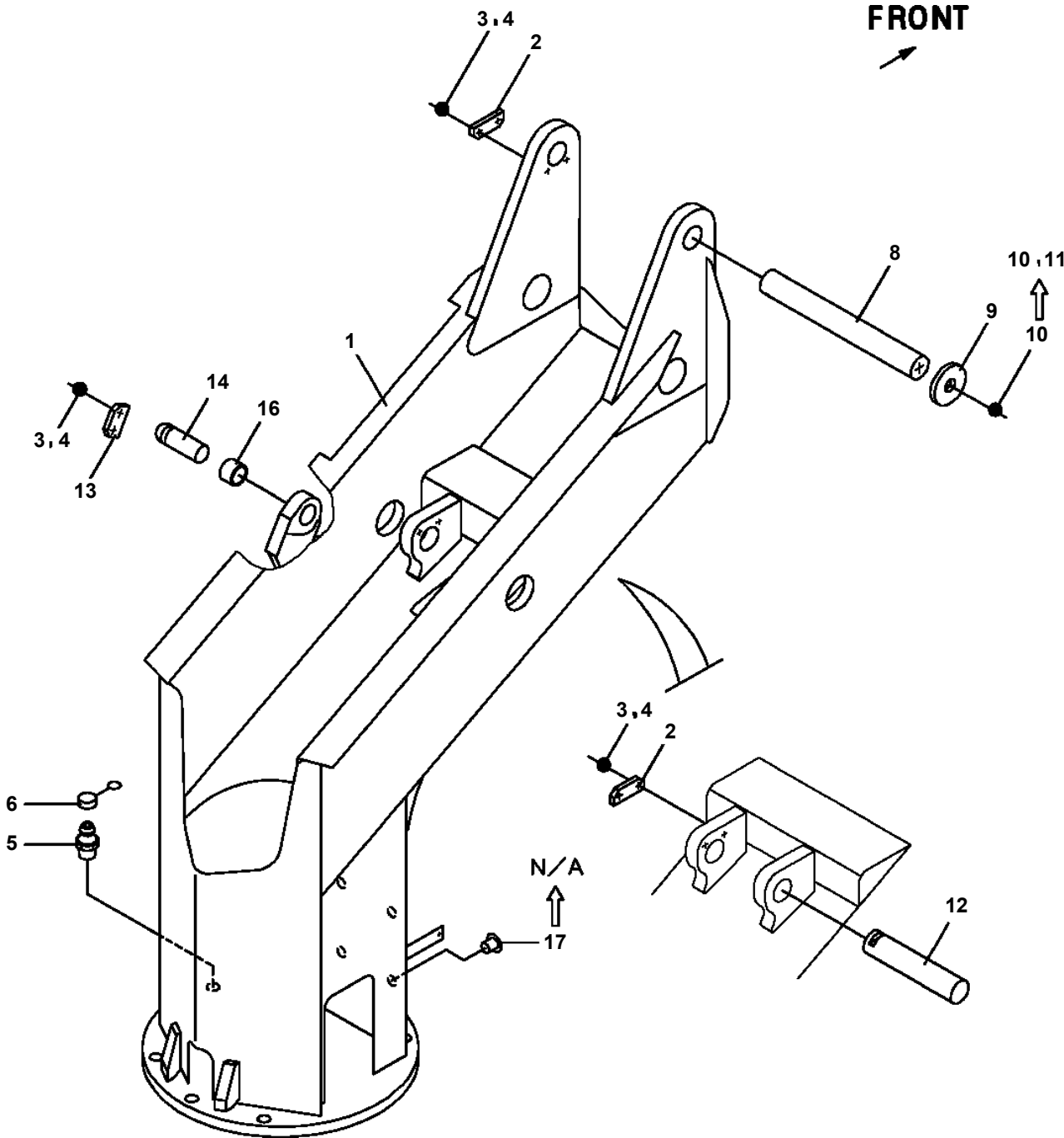
CLICK HERE TO **DOWNLOAD** THE COMPLETE MANUAL

AT-110-4 4208440002 UPPER
PK1011063-01 FRAME



A

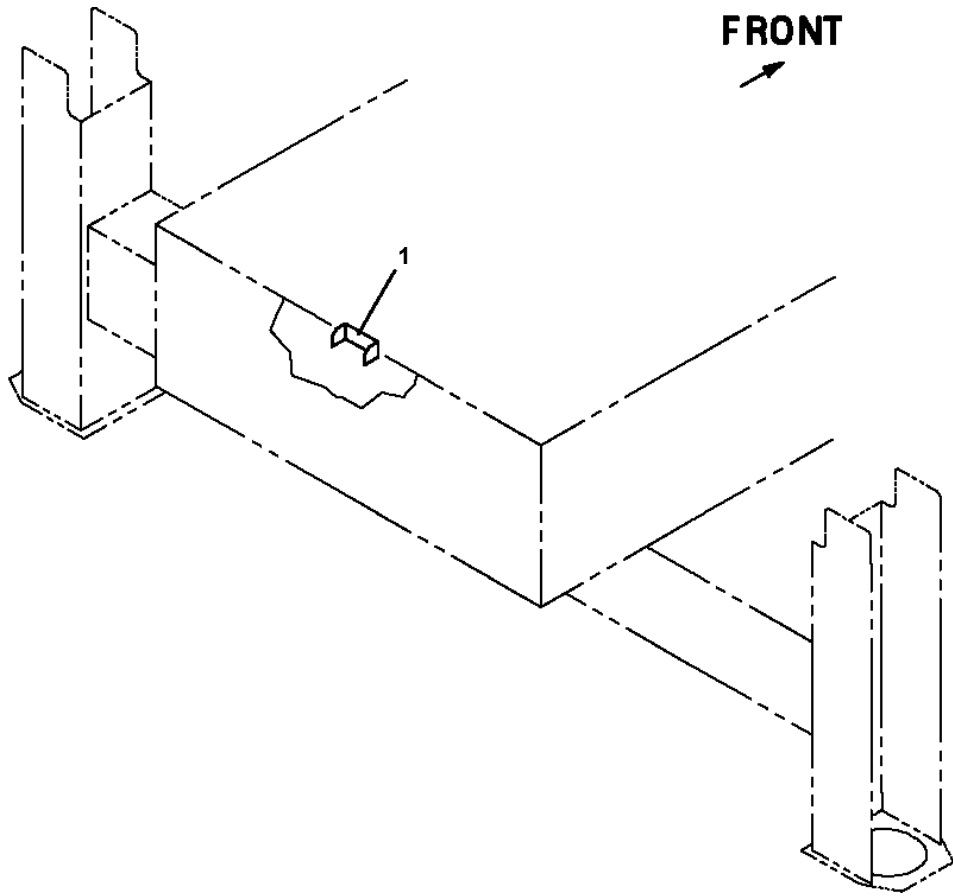
**AT-110-4 42084400002 UPPER
PK1100461-02 SWING FRAME**



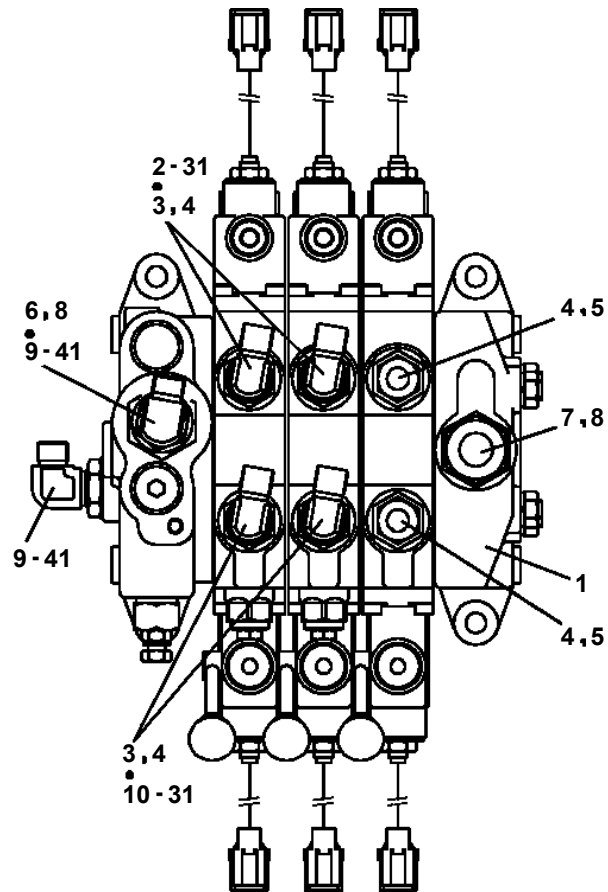
AT-110-4 42084400002 UPPER

Pos No.	Parts No	Parts Name	Qty	Unit	Technical Data	Serial No (Start)	Serial No (End)	Remarks	Pages
1	42502360000	COVER	1						

**AT-110-4 42084400002 UPPER
PK1330467-00 COVER (FOR REAR COVER T-HANDLE)**



**AT-110-4 42084400002 UPPER
PL1250052-00 VALVE,CONTROL**



AT-110-4 42084400002 UPPER

Pos No.	Parts No	Parts Name	Qty	Unit	Technical Data	Serial No (Start)	Serial No (End)	Rema
2	42332512210	JOY STICK	1					
3	42332512220	JOY STICK	1					
7	42332507570	BOARD,CIRCUIT (WITH DATA)	1					
8	42332507520	HARNES ASSY	1					
10	82161161125	RELAY	2					
11	82100002596	RELAY	1					
13	80192383008	SCREW,MACHINE	6		M3X8			
14	80192885012	SCREW,MACHINE	13		M5X12			
15	90201200500	NUT	1		M5			
16	90303070501	WASHER,PLAIN	1		5			
17	90302040501	WASHER,SPRING	1		5			
51	42330037810	KNOB	2					
52	42330037800	BOOT	2					
54	42331497610	SWITCH,MICRO	5					
100	42332512000	OPE.ASSY	1					

AT-110-4 42084400002 UPPER

Pos No.	Parts No	Parts Name	Qty	Unit	Technical Data	Serial No (Start)	Serial No (End)
1	42332511120	PANEL	1				
2	42332503000	OPE.ASSY	1				
3	42809631200	LAMP ASSY (RED,WITH HARNESS)	1				
4	42332521300	SWITCH ASSY (WITH HARNESS)	1				
5	82100002009	CLAMP	1		WRC12		
6	42332531300	SWITCH ASSY (WITH HARNESS,3 SW)	1				
7	80192488020	SCREW,MACHINE	12		M8X20		
8	42504700100	GUARD	1				
9	82199514013	CAP	3				
10	82199504017	NUT	3		AT-401N		
11	37000714020	CLAMP ASSY	1		12X2		
12	82100002012	CLAMP	1		WR18		
13	90280200600	NUT,FLANGE	1		M6		
14	91810130240	FASTENER	10				
15	42332521400	HARNESS	1				
16	90303070601	WASHER,PLAIN	1		6		
17	42350250150	PLUG (6 POLES,MALE)	1				
18	42350250090	PLUG (4 POLES,MALE)	1				
19	42350250080	PLUG (3 POLES,MALE)	2				
20	82100002010	CLAMP	1		WR15		
21	90101206016	BOLT	1		M6X16		
22	90302040601	WASHER,SPRING	1		6		
23	90201200600	NUT	1		M6		
24	42900001200	COVER	1				
39	42355641010	COVER	1				
51	42355641210	BUTTON	1				

AT-110-4 42084400002 UPPER

Pos No.	Parts No	Parts Name	Qty	Unit	Technical Data	Serial No (Start)
1	(*****)	OPE.ASSY (BUCKET)	1			
2	(*****)	PLATE ASSY,NAME (11M:2-OPE.ENABLE SW AMC DATA)	1			
3	(*****)	PLATE ASSY,NAME (INSIDE BUCKET)	1			
4	(*****)	COVER (BUCKET)	1			

AT-110-4 42084400002 UPPER

Pos No.	Parts No	Parts Name	Qty	Unit	Technical Data	Serial No (Start)	Serial No (End)
1	42839551010	LOCK ASSY (U9SL99-2,ASSY ONLY)	2				
2	82460027202	HANDLE	2				

AT-110-4 42084400002 UPPER

Pos No.	Parts No	Parts Name	Qty	Unit	Technical Data	Serial No (Start)	Serial No (End)
1	42839551060	LOCK ASSY (U9SL99-2,ASSY ONLY)	2				
2	82460027207	HANDLE	2				

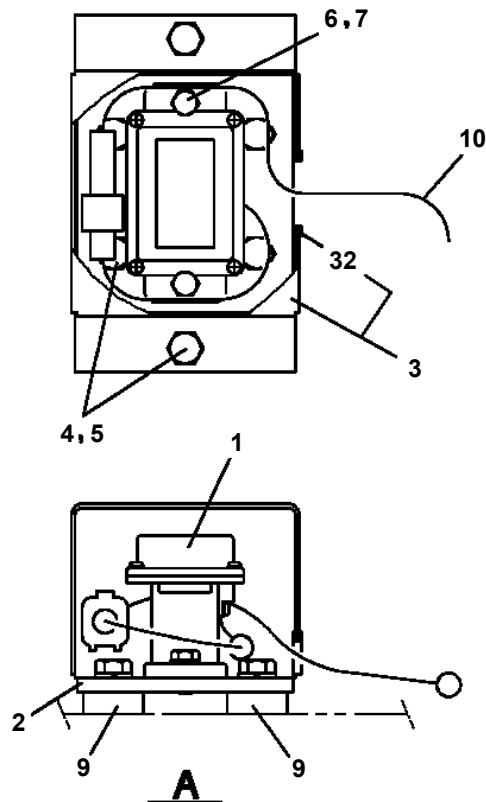
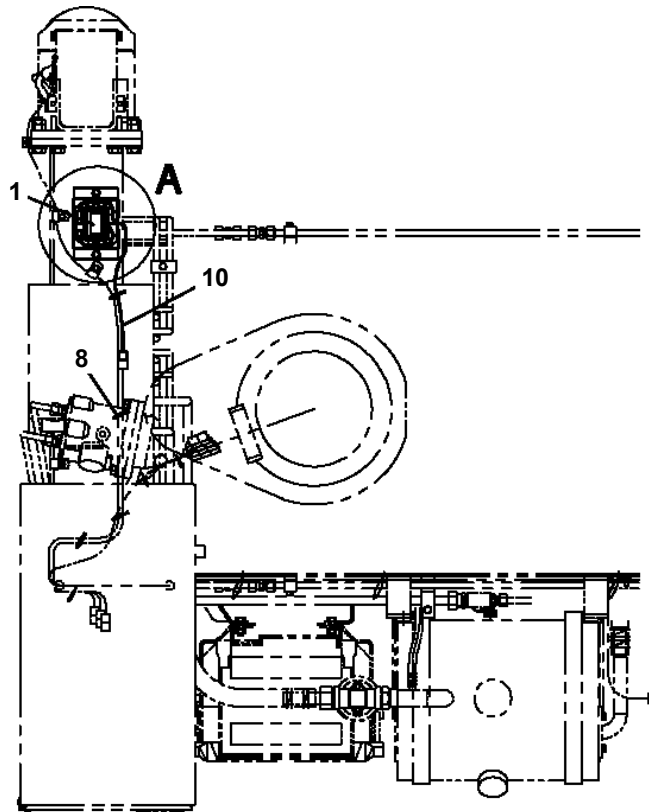
AT-110-4 42084400002 UPPER

Pos No.	Parts No	Parts Name	Qty	Unit	Technical Data	Serial No (Start)	Serial No (End)	Remarks	Pages
1	42626033010	SUPPORT	1						

AT-110-4 42084400002 UPPER

Pos No.	Parts No	Parts Name	Qty	Unit	Technical Data	Serial No (Start)	Serial No (End)	Remarks	Pages
1	42355791000	DETECTOR,ANGLE	1						
2	80172805014	SCREW,MACHINE	2		M5X14				
3	90303520501	WASHER,PLAIN	4		5				
4	90201500500	NUT	2		M5				
5	90302510501	WASHER,SPRING	2		5				
6	42355790100	SUPPORT	1						
7	90101206010	BOLT	2		M6X1.0		HK0296		
	90101206010	BOLT	1		M6X1.0	HK0297			
8	90302040601	WASHER,SPRING	2		6		HK0296		
	90302040601	WASHER,SPRING	1		6	HK0297			
15	90302040801	WASHER,SPRING	1		8				
16	90180208014	BOLT,BUTTON	1		M8X14				
17	42355790300	SUPPORT	1						
18	82100002002	CLAMP	4		WR6				
19	91810130240	FASTENER	10						
20	90280200800	NUT,FLANGE	3		M8				
21	90303070601	WASHER,PLAIN	1		6		HK0296		
22	90710005080	SCREW,SET	1		M5X8	219349			
23	90101206012	BOLT	1		M6X12	HK0297			
24	90201200600	NUT	1		M6	HK0297			

AT-110-4 42084400002 UPPER
PN1013987-00 ELEC.ASSY (AUTOMATIC HORIZONTAL)



AT-110-4 42084400002 UPPER

Pos No.	Parts No	Parts Name	Qty	Unit	Technical Data	Serial No (Start)	Serial No (End)	Remarks	Pages
1	42355810200	COVER	1						
2	90101208014	BOLT	4		M8X14				
3	90303070801	WASHER,PLAIN	6		8				
4	90302040801	WASHER,SPRING	5		8				
5	90201200800	NUT	1		M8				
6	91850400601	CLAMP	3						
7	91810132530	FASTENER	10						
9	82100002015	CLAMP	1		WRC20		219882		
	82100002011	CLAMP	1		WRC15	219883			
10	82100002052	CLAMP	2						
11	90201200600	NUT	2		M6				
12	90302040601	WASHER,SPRING	2		6				
13	82400000347	GROMMET	1		L=320				
22	82400000200	GROMMET	1		KG-012,L=250				

AT-110-4 4208440002 UPPER

Pos No.	Parts No	Parts Name	Qty	Unit	Technical Data	Serial No (Start)	Serial No (End)	Remark
1	37002701690	CABLE ASSY	1		30B,L=2450			
2	37002710690	CABLE ASSY	1		L=2850			
3	37002710700	CABLE ASSY	1		L=450			
4	37002707760	CABLE ASSY	1		L=300			
5	42504802500	SWITCH ASSY	1					
6	42504802600	BOX ASSY	1					
8	42504802090	COVER	1					
9	42504802080	SUPPORT	4					
10	42504802060	BATTERY	2					
11	90101212020	BOLT	4		M12X20			
12	90190208020	BOLT	8		M8X20			
13	90190208016	BOLT	4		M8X16			
14	90201500800	NUT	9		M8			
15	90302041201	WASHER,SPRING	4		12			
16	90302510801	WASHER,SPRING (8)	13					
17	90303520801	WASHER,PLAIN	8		8			
18	82100001216	CAP	1					
19	91810132530	FASTENER	N					
20	42504802070	HARNESS	1					
21	82100001802	TUBE,CORRUGATE	3	M	10			
22	91850310405	CLAMP (BLACK)	1					
23	91810130240	FASTENER	1					
24	42900750300	PLATE,NAME	1					
25	90190206016	BOLT	4		M6X16			
26	90201500600	NUT	4		M6			
27	90302510601	WASHER,SPRING (6)	4					
28	82100002019	CLAMP	1		WR40			
51	82151800010	BATTERY ASSY (CHARGER)	1					
52	42504802140	CABLE	1		L=1900			
53	42504802150	CABLE	2		L=2500			
54	42504802160	CABLE	1		L=750			
71	42504802700	BOX	1					
72	42504802800	COVER	1					
73	82100000957	GROMMET	1		SG-38A			
74	90813108020	BOLT,WING	4		M8X20			
75	90303520801	WASHER,PLAIN	4		8			
92	82400000201	GROMMET	1		KG-016			

AT-110-4 42084400002 UPPER

Pos No.	Parts No	Parts Name	Qty	Unit	Technical Data	Serial No (Start)	Serial No (End)
1	42653673401	PANEL	1				
2	42651591300	SWITCH ASSY (WITH HARNESS,3 SW)	1				
3	42332521300	SWITCH ASSY (WITH HARNESS)	1				
4	42809631200	LAMP ASSY (RED,WITH HARNESS)	1				
5	42651593400	SWITCH ASSY (WITH HARNESS,1 SW)	1				
6	42433932200	SWITCH ASSY (WITH HARNESS,1 SW)	1				
7	42332062500	SWITCH ASSY (WITH HARNESS,1 SW)	1				
8	42433932100	SWITCH ASSY (WITH HARNESS,1 SW)	1				
9	42653673600	SWITCH ASSY (WITH HARNESS,5 SW)	1				
10	42653673700	LAMP ASSY (WITH HARNESS)	1				
11	42900001200	COVER	1				
12	91810130240	FASTENER	1				
29	42355641010	COVER	1				
31	82100005005	LENS (GREEN)	1				
41	42355641210	BUTTON	1				
50	42653673501	SWITCH PANEL	1				

AT-110-4 42084400002 UPPER

Pos No.	Parts No	Parts Name	Qty	Unit	Technical Data	Serial No (Start)	Serial No (End)
6	82105220286	SWITCH,TOGGLE	3				
50	42651591300	SWITCH ASSY (WITH HARNESS,3 SW)	1				

AT-110-4 42084400002 UPPER

Pos No.	Parts No	Parts Name	Qty	Unit	Technical Data	Serial No (Start)	Serial No (End)	Remarks
1	42653672500	SUPPORT	1					
3	82464107814	HINGE	2					
4	90190205012	BOLT	6		M5X12			
5	90201500500	NUT	12		M5			
6	90302510501	WASHER,SPRING	12		5			
7	90303520501	WASHER,PLAIN	12		5			
8	80172805012	SCREW,MACHINE	6		M5X12			
9	82400000202	GROMMET	1					
10	42653672700	COVER	1					
11	90302510601	WASHER,SPRING (6)	6					
12	90190206016	BOLT	6		M6X16			
13	90303520601	WASHER,PLAIN	6		6			
14	42624600030	PLATE,NAME	2					
31	42653672810	COVER	1					
32	82460025402	CATCH	1					
33	80175805014	SCREW,MACHINE	4		M5X14			
34	90201500500	NUT	4		M5			
35	90302510501	WASHER,SPRING	4		5			
36	90303520501	WASHER,PLAIN	4		5			
37	82466016470	COVER	1					
38	42653672620	PLATE	2		T=5.0			
39	80172803010	SCREW,MACHINE	1		M3X10			
40	42653672450	INSULATOR	1					
41	90303520301	WASHER,PLAIN	2		3			
42	90302510301	WASHER,SPRING (SUS 3)	1					
43	90201500300	NUT	1		M3			
100	42653672003	BOX	1					

AT-110-4 42084400002 UPPER

Pos No.	Parts No	Parts Name	Qty	Unit	Technical Data	Serial No (Start)	Serial No (End)	Remarks	Pages
2	82100001839	FUSE	10		10A.RED				
3	82100001841	FUSE	4		20A,YELLOW				
10	34351562510	BOX,FUSE	1						
19	82182809623	DIODE	1						
100	42653360100	HARNESS	1						

AT-110-4 42084400002 UPPER

Pos No.	Parts No	Parts Name	Qty	Unit	Technical Data	Serial No (Start)	Serial No (End)
1	36195634210	PLATE,NAME (AMC,361-956-34100)	1				

AT-110-4 42084400002 UPPER

Pos No.	Parts No	Parts Name	Qty	Unit	Technical Data	Serial No (Start)	Serial No (E
1	42509842510	PLATE,NAME	1				
	42509842510	PLATE,NAME	1				
2	42509573020	PLATE,NAME	1				
	42509573020	PLATE,NAME	1				
3	42509573030	PLATE,NAME (OUTRIGGER OPERATION)	1				
	42509573030	PLATE,NAME (OUTRIGGER OPERATION)	1				
4	42475910010	PLATE,NAME	1				
	42475910010	PLATE,NAME	1				

AT-110-4 42084400002 UPPER
 PO1014435-01 PLATE ASSY,NAME (SPECIFICATION)

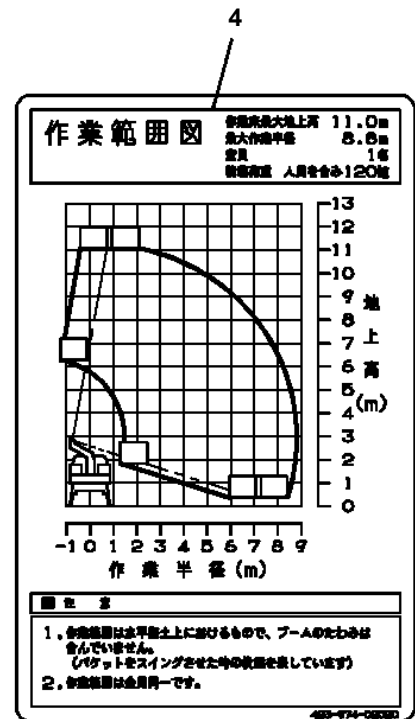
1
AT-110TT
 423-974-02010

2
 積載荷重 **120kg**
 (2人乗り禁止)
 423-974-02040

3
△警告 / 使用上の注意

- 本機の運転は高所作業車技能講習修了者に限られます。
- 取扱説明書をよく読み、操作および取扱い方法を理解してから使用してください。
- 作業開始前点検を実施してください。
- ヘルメット・安全帯を着用してください。
- 積載荷重を守ってください。
- 作業床以外で作業しないでください。
- 強風・雪などの悪天候時には作業しないでください。

取扱説明書を読み
 安全帯を着用

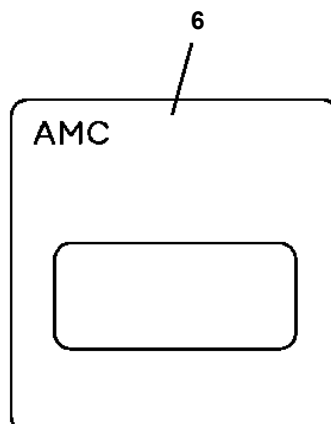


5
非常用ポンプの使用方法

- エンジンの故障時には、非常用ポンプスイッチを押しながら、格納操作をしてください。
- 非常用ポンプの連続使用時間は30秒以内とし、次の使用まで30秒以上の休みを取ってください。

ブーム格納方法

バケットを格納し、ブームを全端にしてください。ブームを水平以上に起こした後、ブーム格納スイッチをONに保持してください。ブームが格納位置まで旋回します。ブーム伏操作にて格納して下さい。(水平以下ではブーム格納スイッチが働きます。)



8
AMC作業開始前点検

点検開始

- フットリガを要由し、昇降を水平に復元する。
- ブーム全端、巻揚状態でバケットを復元しとする。

↓

○スイッチを押してAMCパネル上の全ての表示灯が点滅表示すること。

↓

○スイッチを押しながら、巻揚の巻揚手をしたとき巻揚を止めないこと。

点検完了

○ブーム全端、巻揚状態にする。

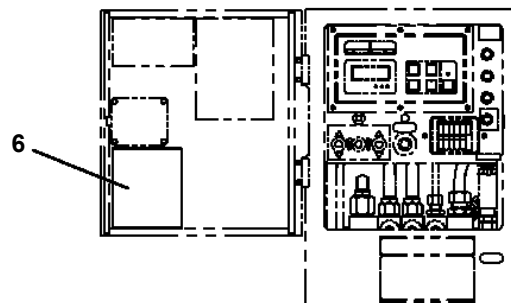
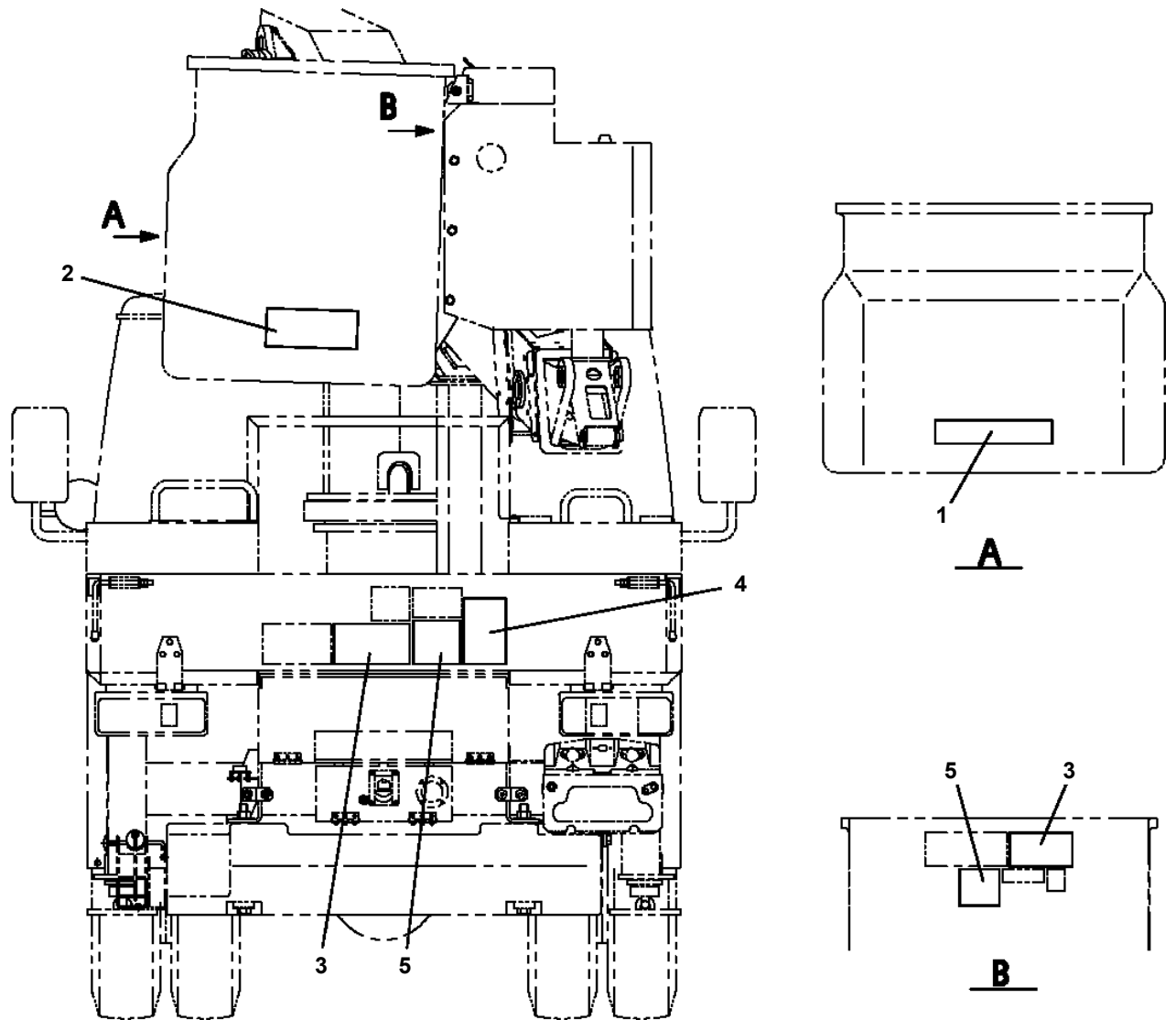
○スイッチを同時に押し、それぞれ別の表示灯が「Good」を点滅表示すること。

○スイッチを押しながら、巻揚の巻揚手をしたとき巻揚を止めないこと。

異なる場合

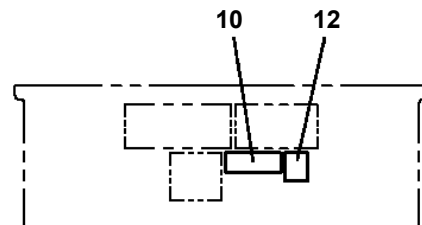
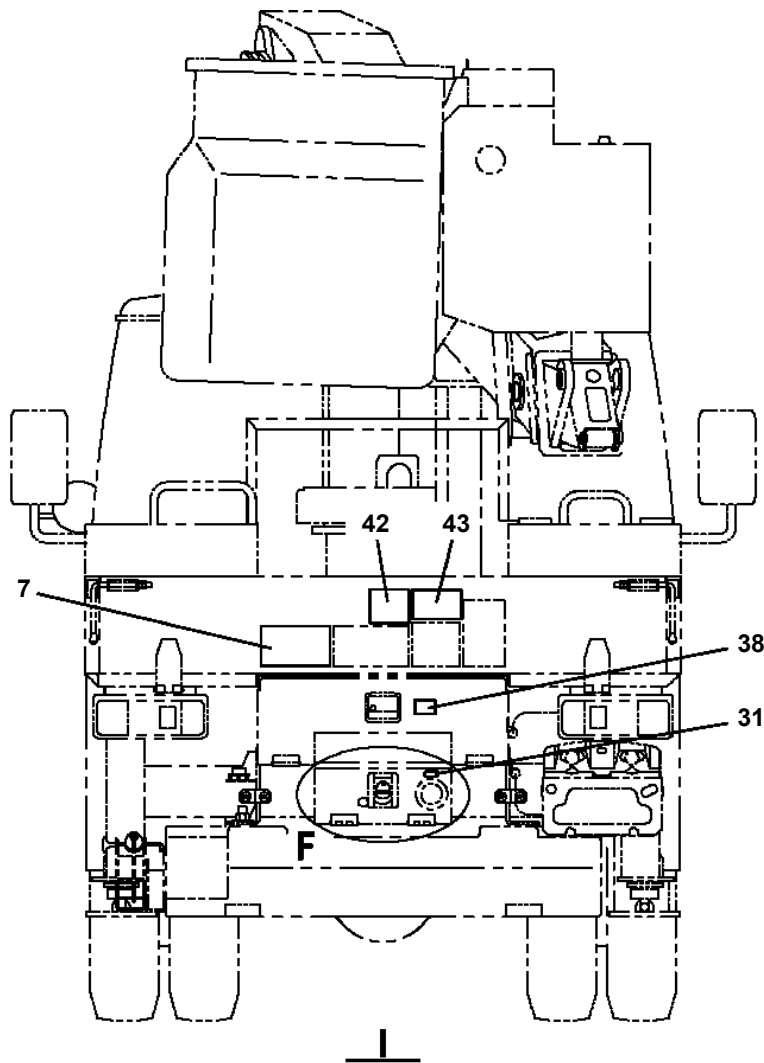
サービス工務(管理)

AT-110-4 42084400002 UPPER
PO1014831-01 PLATE ASSY,NAME (SPECIFICATION)

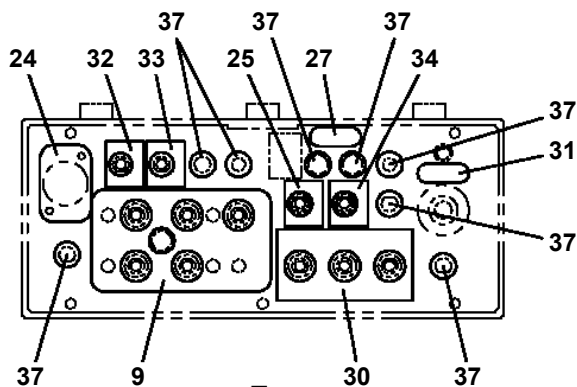


キャブ左後方操作部
扉を開いた状態

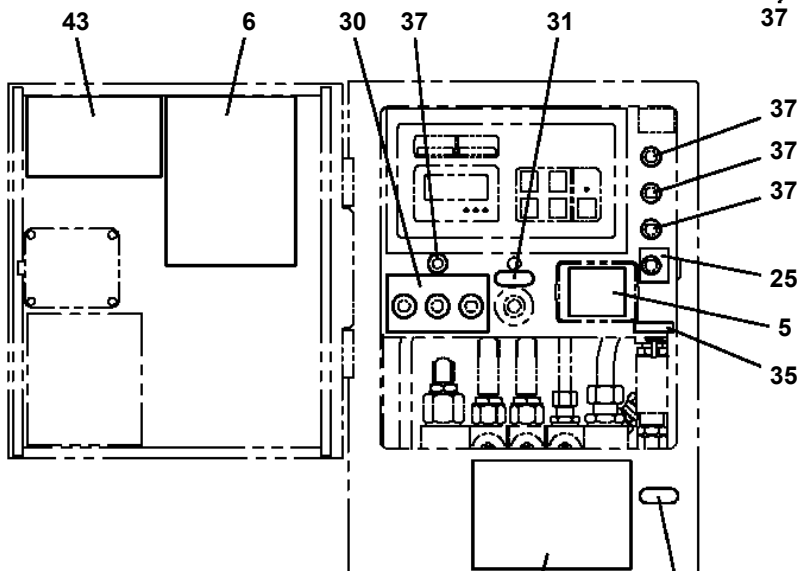
**AT-110-4 4208440002 UPPER
PO1015407-01 PLATE ASSY,NAME (VEHICLE)**



E
バケット内面



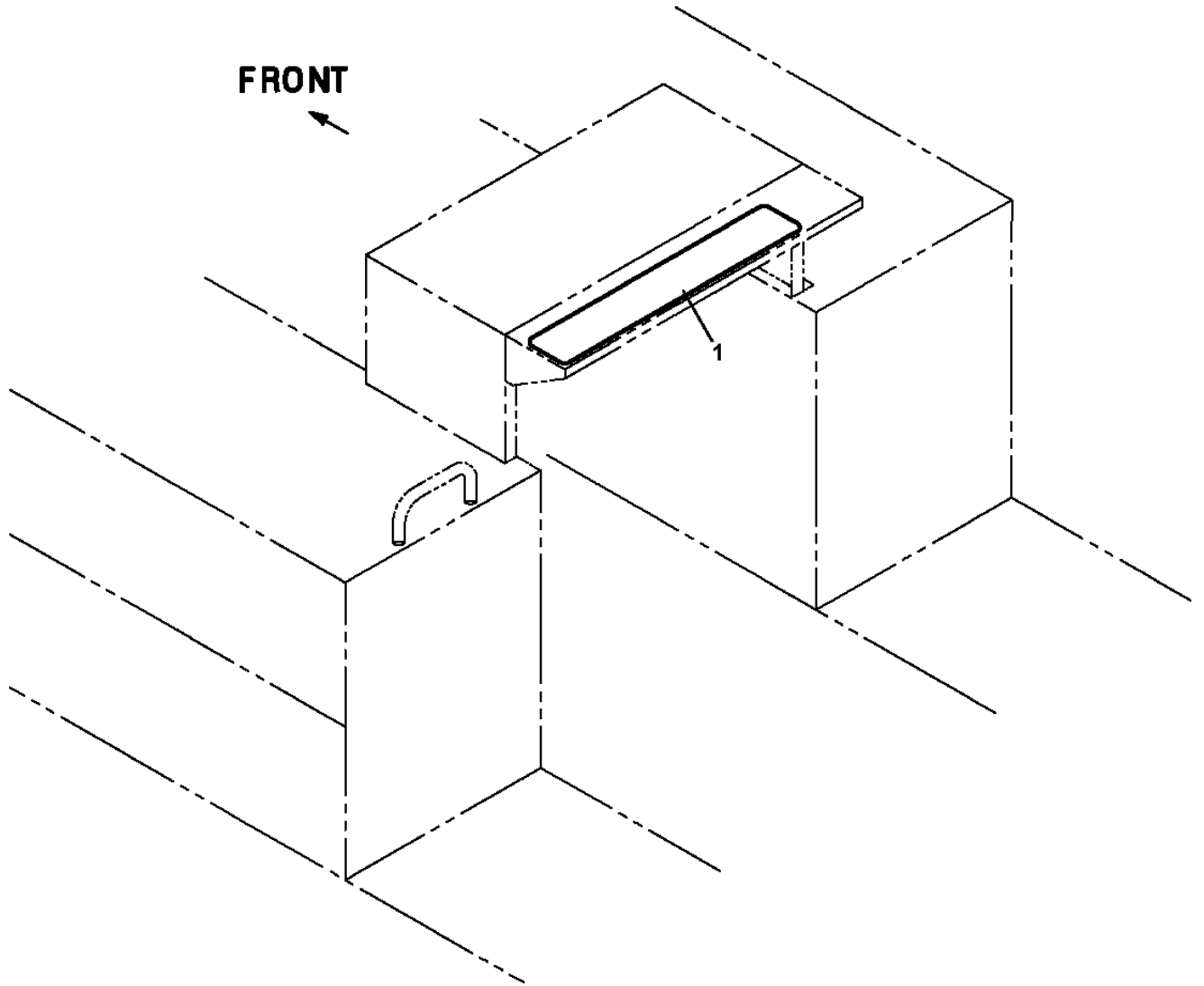
F
扉を開いた状態



H
扉を開いた状態

AT-110-4 42084400002 UPPER

PO1015571-00 PLATE ASSY,NAME (NON-SLIP/TOOL BOX EXTENSION STEP)

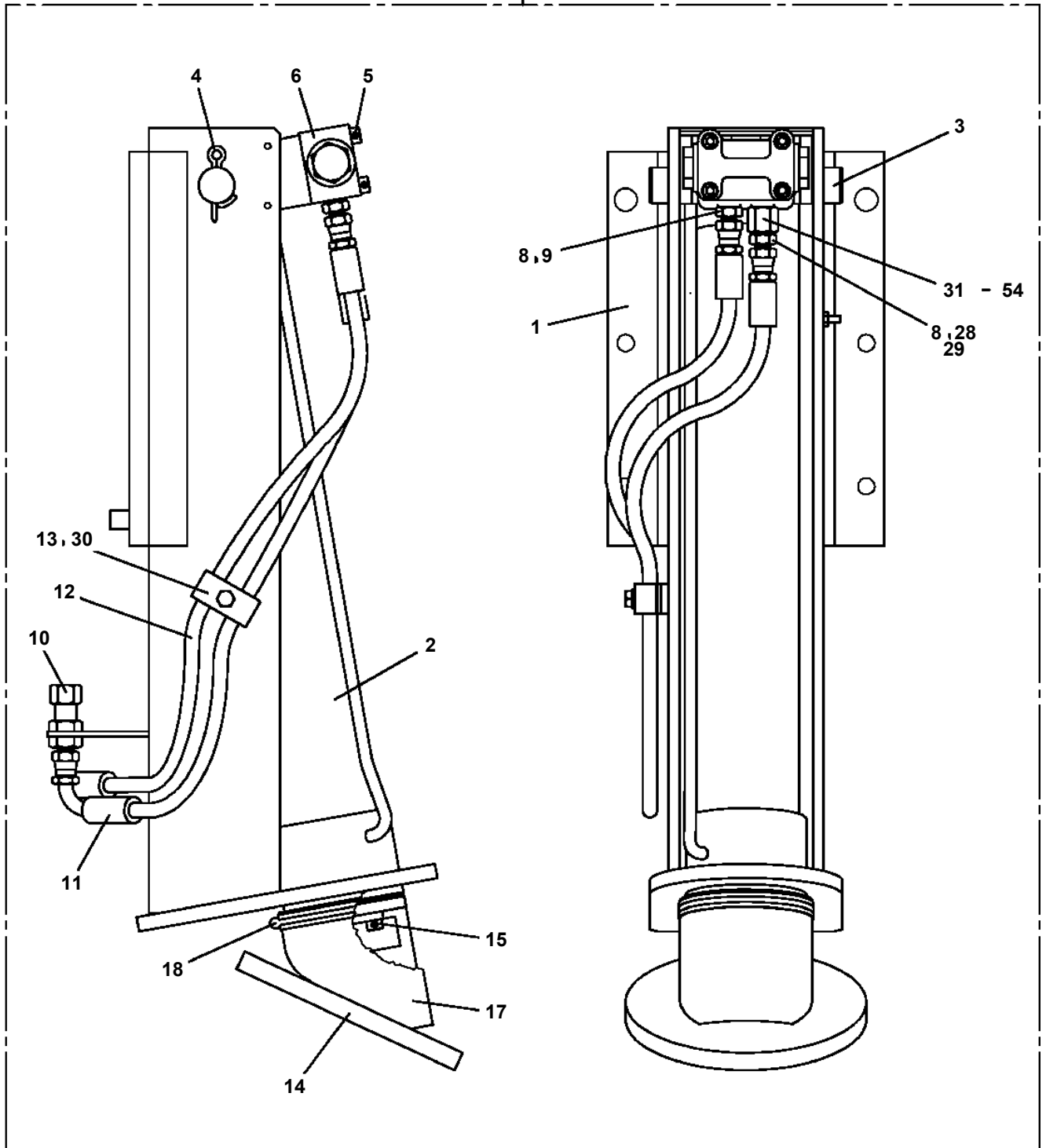


AT-110-4 42084400002 UPPER
PO5050019-00 OPE.ASSY,BUCKET (W/ 2-AXIS ENABLE SW)

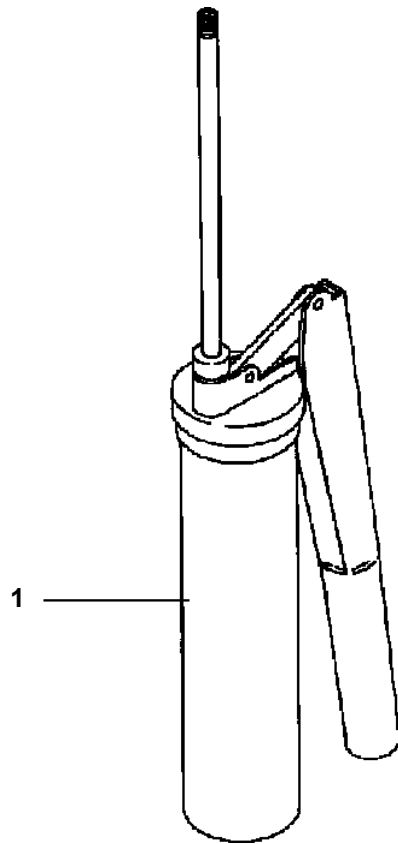
指示番号 KEY NO.	オペ .ASSY,バケツト (2ジクイネーフルSWツキ) OPE.ASSY,BUCKET (WITH 2-AXIS ENABLE SW)
1	オペ .ASSY,バケツト OPE.ASSY,BUCKET
2	プレートASSY,ネーム (バケツトソウサフ) PLATE ASSY,NAME (BUCKET CONTROL)
3	プレートASSY,ネーム (バケツトナイメン) PLATE ASSY,NAME (INSIDE BUCKET)

AT-110-4 42084400002 UPPER
PO5270041-00 OUTRIGGER ASSY

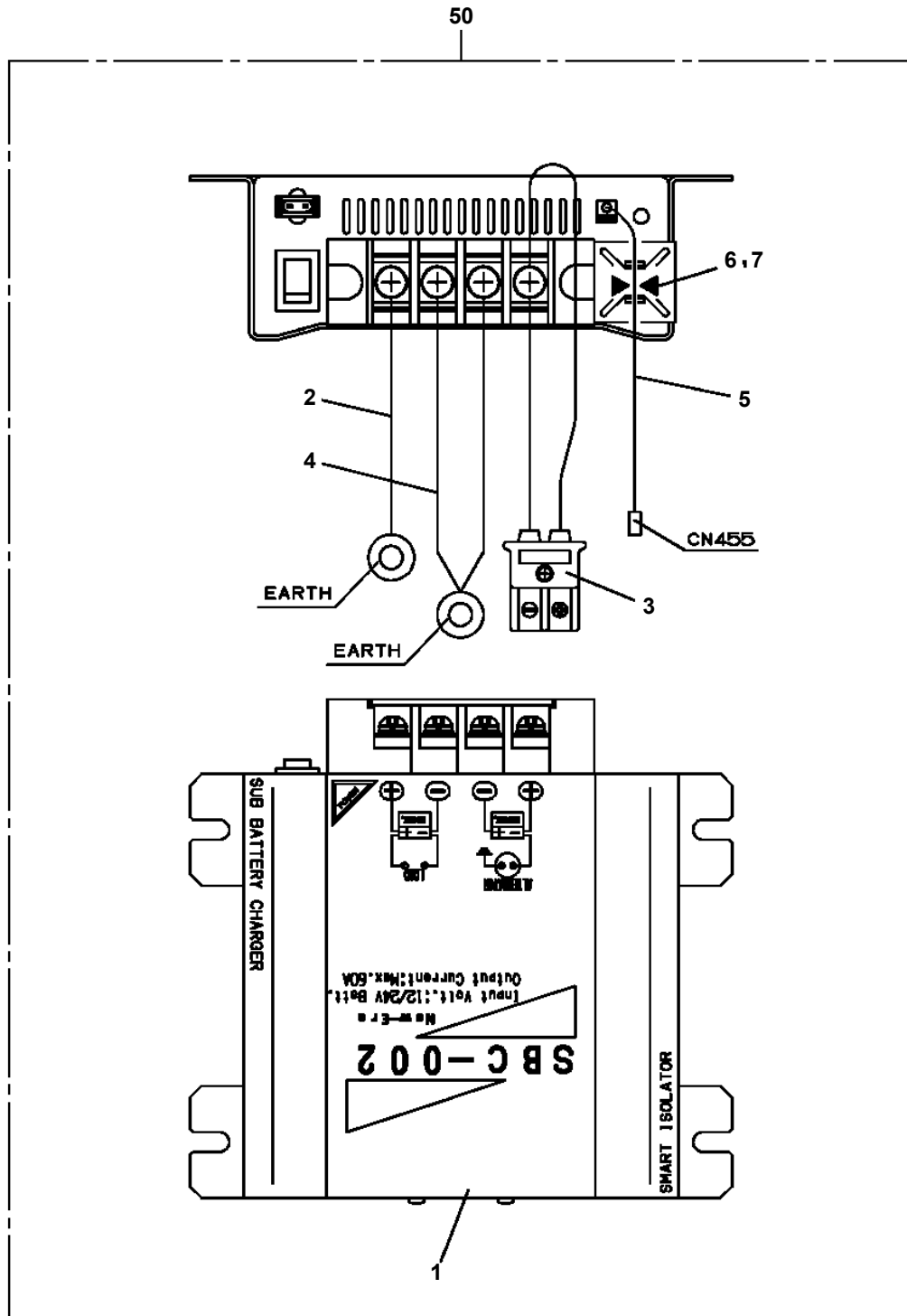
100



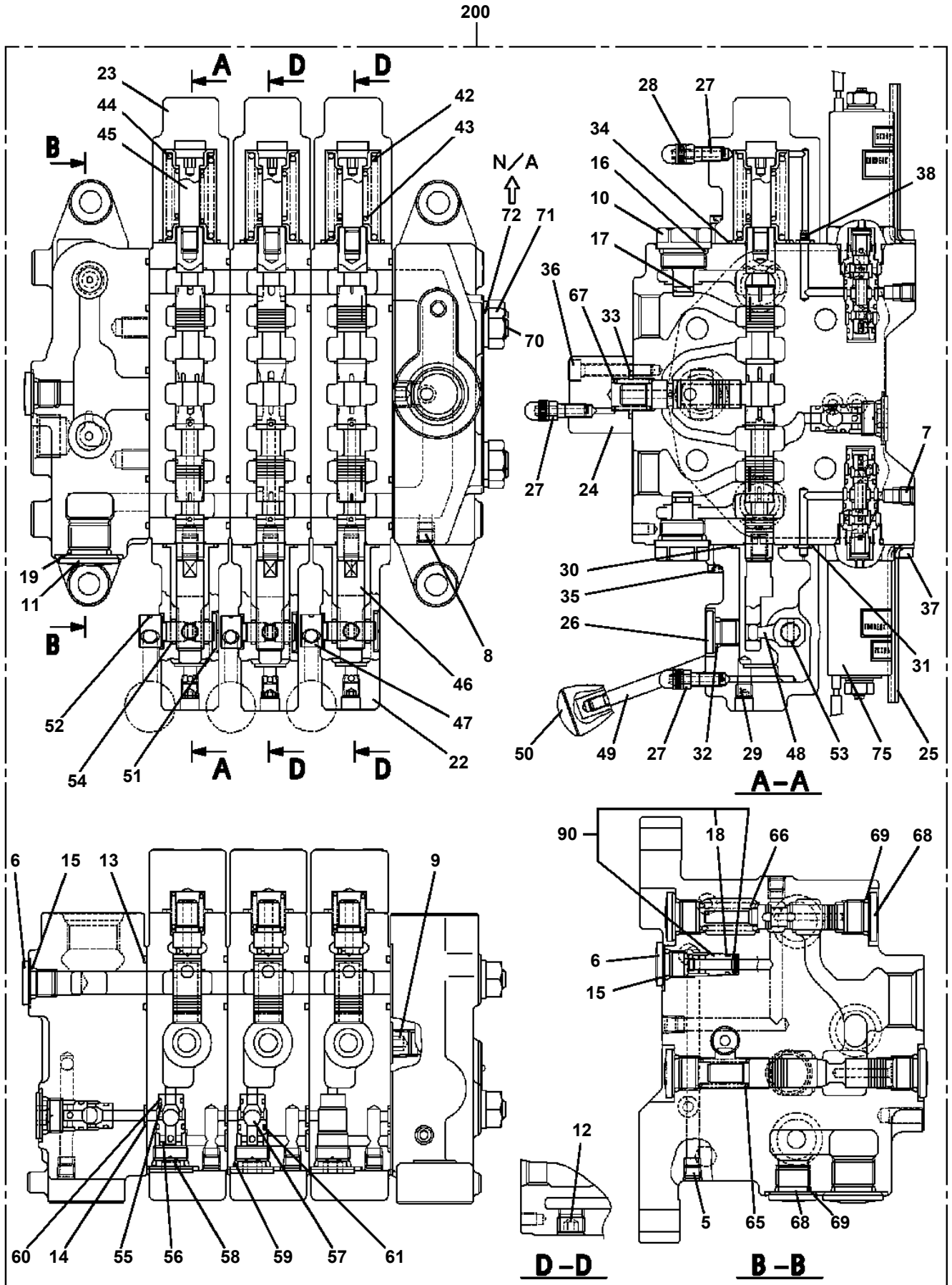
**AT-110-4 42084400002 UPPER
PP5450004-00 PUMP, GREASE (400CC)**



**AT-110-4 42084400002 UPPER
PS5530087-00 SWITCH ASSY (SUB BATTERY CHARGER)**



**AT-110-4 42084400002 UPPER
PV1020305-02 VALVE,REMOTE CONTROL**



AT-110-4 42084400002 UPPER

Pos No.	Parts No	Parts Name	Qty	Unit	Technical Data	Serial No (Start)	Serial No (End)	R
1	91002801400	O-RING	2		1B P14			
100	36606450000	VALVE ASSY,COUNTERBALANCE	1					

AT-110-4 42084400002 UPPER

Pos No.	Parts No	Parts Name	Qty	Unit	Technical Data	Serial No (Start)	Serial No (End)
1	42460012550	WEDGE (STOPPER FOR TIRE/JUSTIN)	1				

AT-110-4 42084400002 UPPER

Pos No.	Parts No	Parts Name	Qty	Unit	Technical Data	Serial No (Start)	Serial No (End)	Remarks	Pages
1	42874720100	SUPPORT	1						
2	90171116035	BOLT	6		M16X35				
3	90302041601	WASHER,SPRING	6		16				
4	32200353500	SHIM	N		T=1.2				
5	31200713400	SHIM	N		T=0.6				

AT-110-4 42084400002 UPPER

Pos No.	Parts No	Parts Name	Qty	Unit	Technical Data	Serial No (Start)	Serial No (End)	Remarks	Pages
1	42501680100	BOX,TOOL	1						
2	42501680200	PLATE	1						
3	90183112025	BOLT	3		M12X25				

AT-110-4 42084400002 UPPER

Pos No.	Parts No	Parts Name	Qty	Unit	Technical Data	Serial No (Start)	Serial No (End)	Remarks	Pages
2	37000501090	PLATE	2						
3	42509205100	SUPPORT	1						
5	42624924020	PLATE	1						

CLICK HERE TO **DOWNLOAD** THE COMPLETE MANUAL

- Thank you very much for reading the preview of the manual.
- You can download the complete manual from: www.heydownloads.com by clicking the link below



- Please note: If there is no response to CLICKING the link, please download this PDF first and then click on it.

CLICK HERE TO **DOWNLOAD** THE COMPLETE MANUAL