

AT-110-1 42084100021 UPPER

PD2000095-00 SWING UNIT

PG2000107-00 BOOM UNIT

PH1000505-00 SAFETY DEVICES

PJ3000349-01 BUCKET SYSTEM

PK2000388-00 FRAME UNIT

PO1000131-03 INDICATION PLATES

PW1000109-01 ACCESSORIES & TOOLS

PY1000823-00 OPTIONS,1

PY2000022-02 OPTIONS,2

ASSEMBLY

CLICK HERE TO **DOWNLOAD** THE COMPLETE MANUAL

- Thank you very much for reading the preview of the manual.
- You can download the complete manual from: www.heydownloads.com by clicking the link below



- Please note: If there is no response to CLICKING the link, please download this PDF first and then click on it.

CLICK HERE TO **DOWNLOAD** THE COMPLETE MANUAL

AT-110-1 42084100021 UPPER

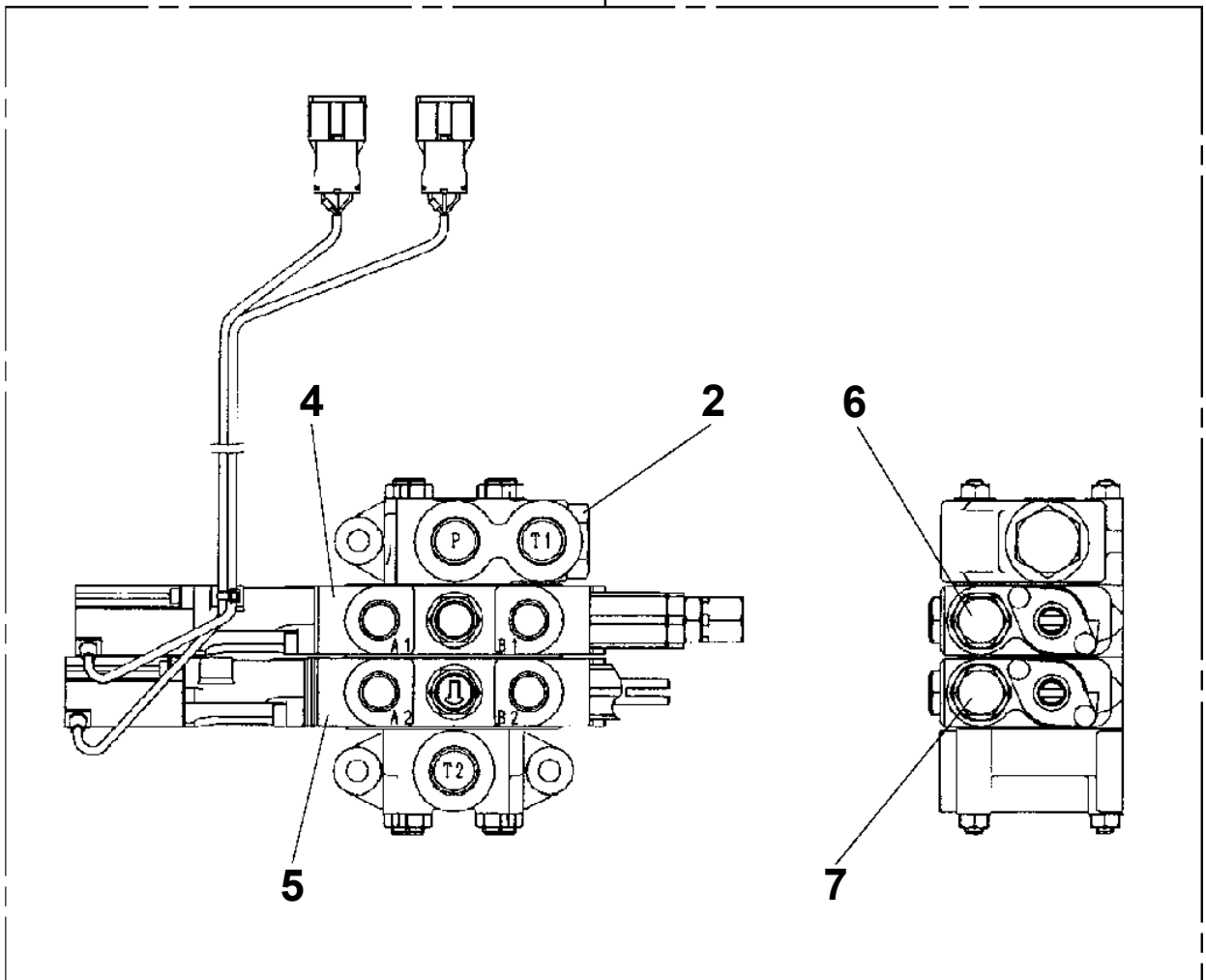
Pos No.	Parts No	Parts Name	Qty	Unit	Technical Data	Serial No (Start)	Serial No (End)	Remarks
1	(*****)	FRAME	1					
2	(*****)	OUTRIGGER	1					
3	(*****)	OPE.ASSY,CONT.VALVE	1					
4	(*****)	PIPING,OUTRIGGER	1					
5	(*****)	ELEC.ASSY (FRAME)	1					
6	(*****)	BOOM REST INSTALLATION	1					
7	(*****)	TANK SUPPORT	1					

AT-110-1 42084100021 UPPER

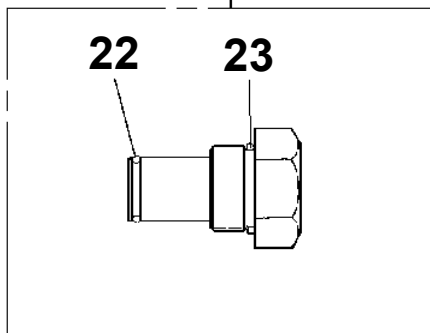
PI1250098-00 VALVE,COUNTERBALANCE
PJ3010047-00 BUCKET (INNER CASE,OPTION)
PJ3010148-03 BUCKET
PJ3040005-02 OPE.ASSY (BUCKET/1-LEVER,3-OPE.)
PJ3040008-03 OPE.ASSY (BUCKET/1-LEVER,2-OPE.)
PJ3100106-03 PIPING,BOOM
PJ3200070-01 PIPING,BUCKET (TOOL)
PK1010594-01 FRAME
PK1100310-00 SWING FRAME
PK1200349-00 COVER,SWING FRAME
PK1330104-00 COVER (BUCKET,FOR SI)
PL1010823-00 OPE.ASSY,CONT.VALVE
PL1011206-01 OPE.ASSY,CONT.VALVE (2-BLOCK VALVE)
PL1020038-00 LEVER,CONTROL
PL1020045-00 LEVER,CONTROL
PM5230001-01 MOTOR,OIL
PN1012439-03 ELEC.ASSY (BOOM)
PN1012443-00 ELEC.ASSY (SWING FRAME)
PN1012444-02 ELEC.ASSY (FRAME)
PN1012497-00 ELEC.ASSY (WINCH)
PN1012500-01 ELEC.ASSY (INTERLOCK)
PN1012501-03 ELEC.ASSY
PN1012502-02 ELEC.ASSY
PN1012503-02 ELEC.ASSY
PN1012637-00 ELEC.ASSY (KANDENKO)
PN1060105-03 SWITCH PANEL
PN1110259-02 RELAY ASSY
PN1110260-02 RELAY ASSY (KANDENKO)
PN1110261-00 RELAY ASSY
PN1110273-00 RELAY
PN1140164-00 SWITCH ASSY (WITH HARNESS,3 SW)
PN1140165-00 SWITCH ASSY
PN1180026-01 CONTROLLER
PN1210121-00 TRANSMITTER,SIGNAL
PN1210122-00 TRANSMITTER,SIGNAL
PN1450048-00 HARNESS
PO1012229-02 PLATE ASSY,NAME (HYDRAULIC OIL)
PO1013112-01 PLATE ASSY,NAME (BUCKET,1-LEVER 3CONT.)
PO1013115-01 PLATE ASSY,NAME (BUCKET,1-LEVER 2-CONT.)
PO1013120-01 PLATE ASSY,NAME (VEHICLE)
PO1013122-01 PLATE ASSY,NAME (HYDRAULIC OIL)
PO1013127-01 PLATE ASSY,NAME (EMERGENCY CONT.)
PO1013171-02 PLATE ASSY,NAME (WINCH)
PO1013176-01 PLATE ASSY,NAME (LOWER CONT.)
PO1013179-01 PLATE ASSY,NAME (BOOSTER,POWER SUPPLY)
PO1050062-00 MARKING
PS5150001-00 SHACKLE
PV1020242-03 VALVE,REMOTE CONTROL
PW1010315-00 ACCESSORIES
PW1030049-01 TOOLS
PW1050018-01 WEDGE (STOPPER FOR TIRE/JUSTIN)
PW5110002-00 WEDGE (STOPPER FOR TIRE/WAZUMI)
PW5110003-00 WEDGE (STOPPER FOR TIRE/NAKAMURA KIKI)
PX1100239-01 TANK SUPPORT
PX1120375-01 BOOM REST INSTALLATION
PX1120381-01 BOOM REST
PY1070000-00 ROPE (SAFETY,YELLOW:TD-TYPE)
PY1160079-00 BOOSTER (40TON AIR)
PY1160080-00 BOOSTER (12TON,AIR&ELECTRIC)
PY1160164-00 BOOSTER
PY1160165-00 BOOSTER
PY1160166-00 BOOSTER
PY1170014-01 BOOSTER
PY1170035-00 BOOSTER

**AT-110-1 42084100021 UPPER
PB1320538-01 VALVE,MANUAL CONTROL**

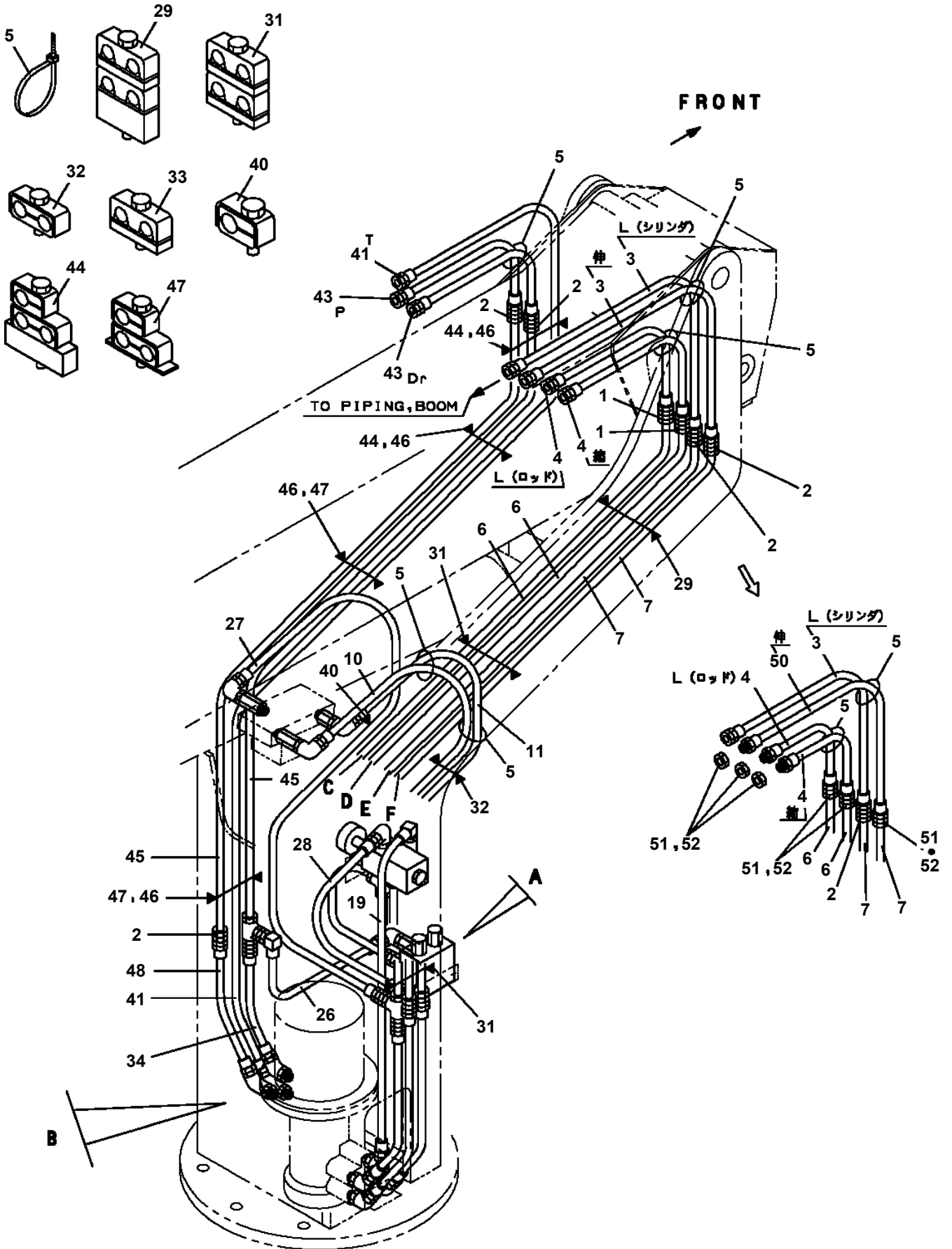
200



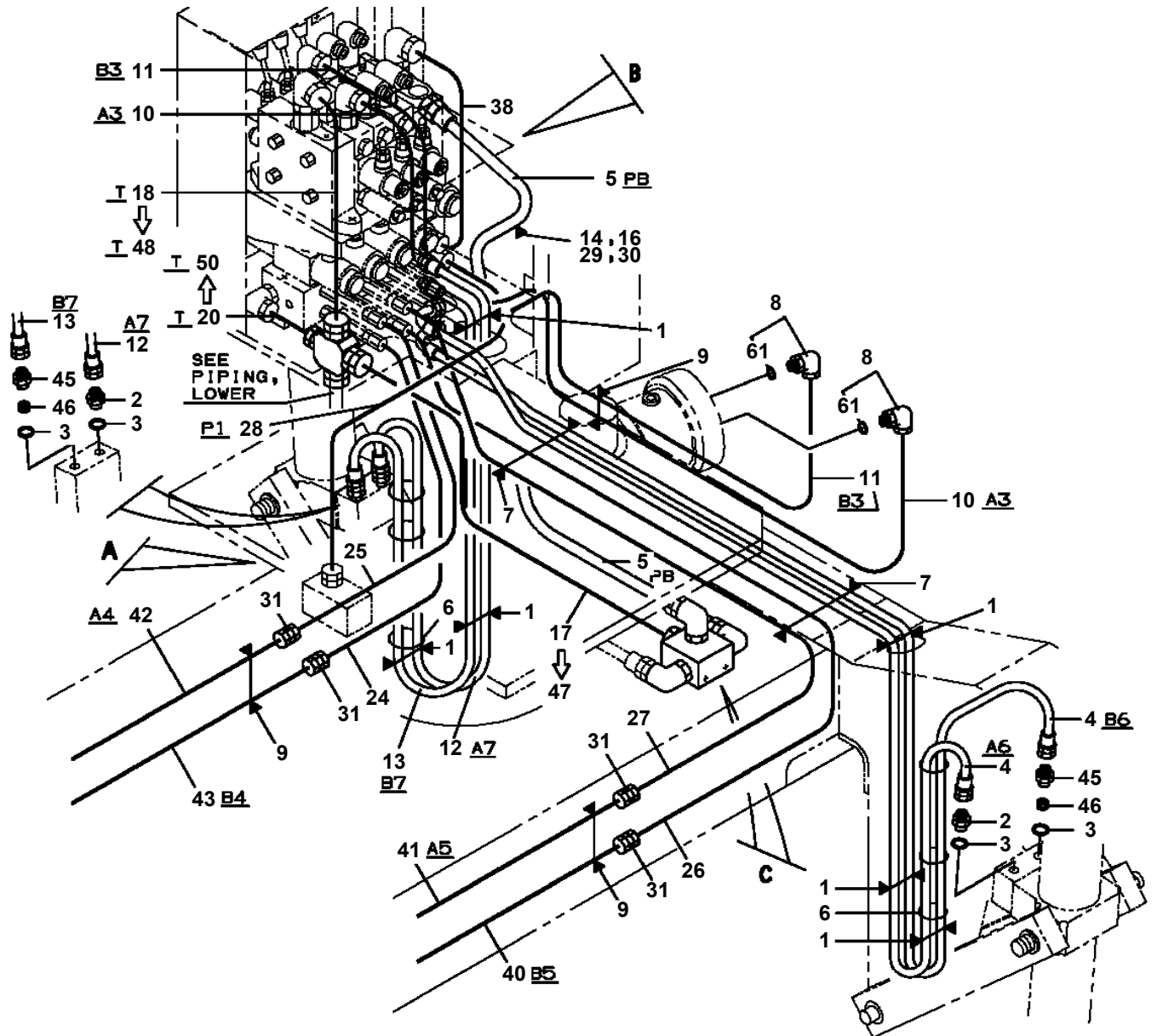
2



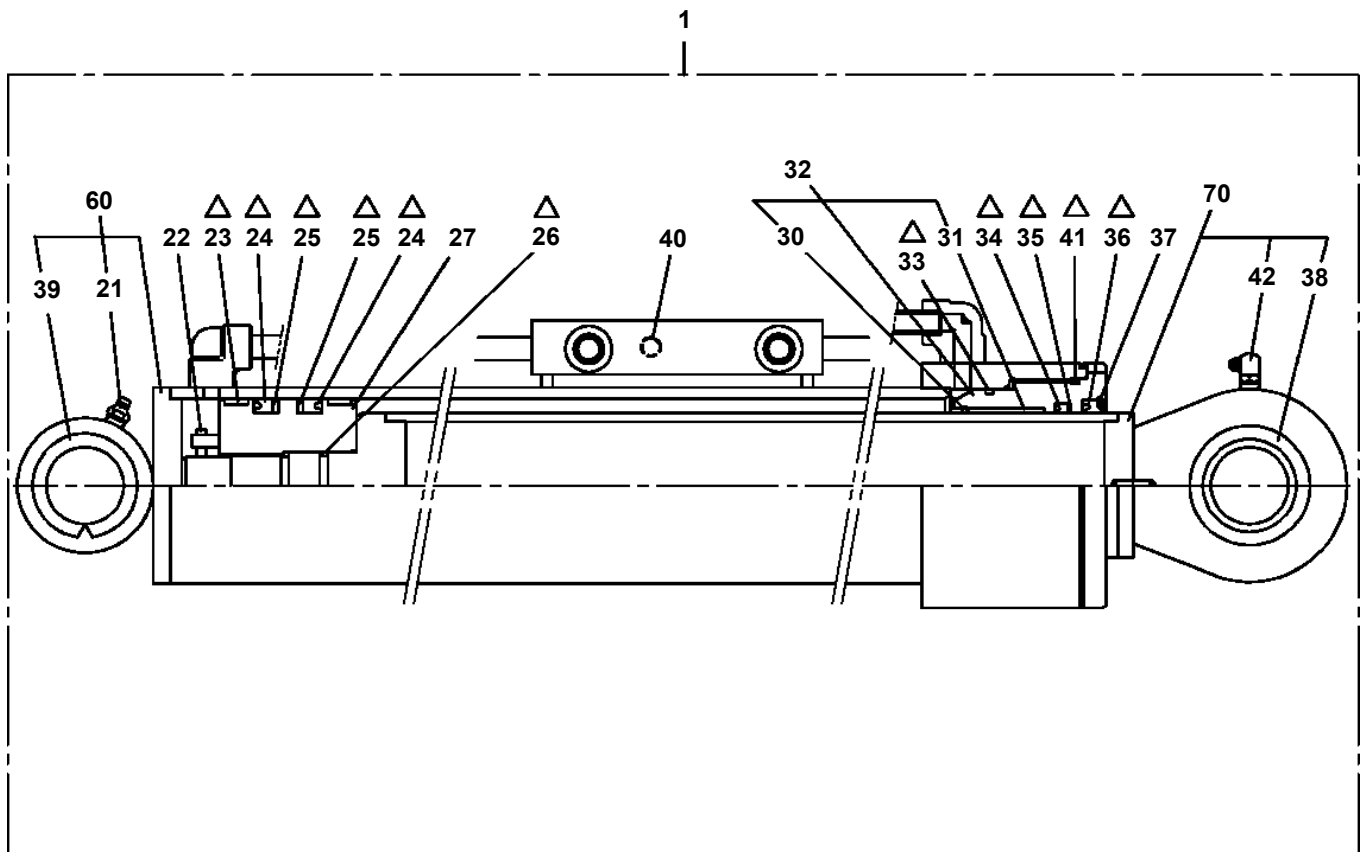
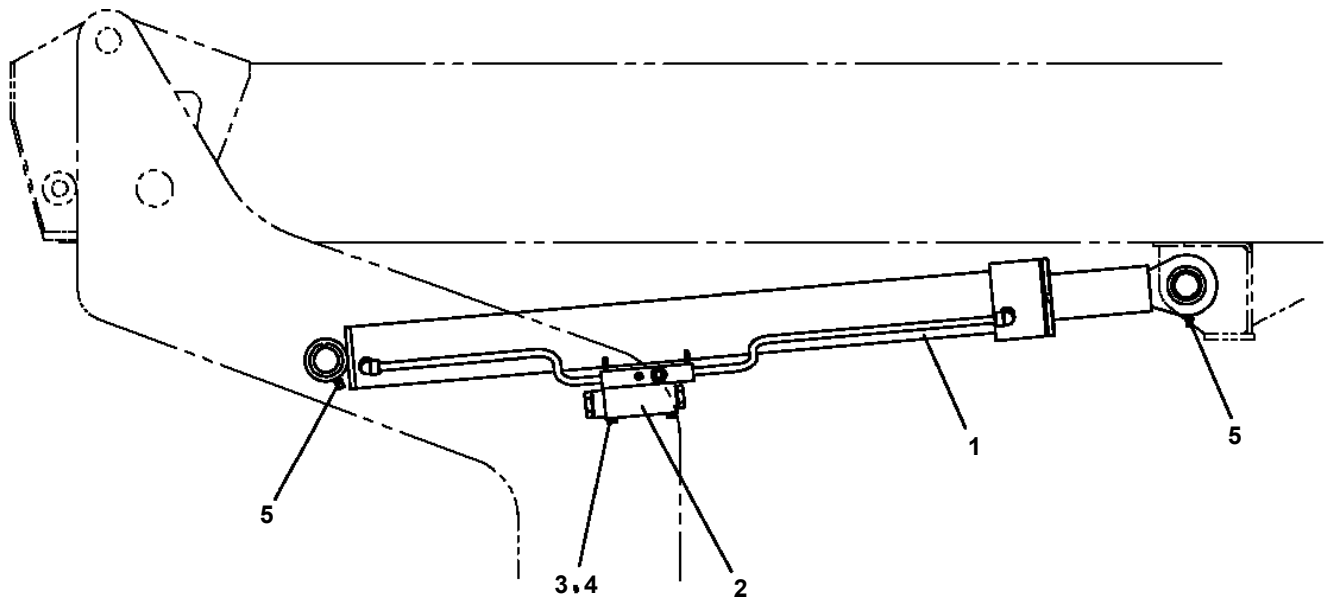
**AT-110-1 42084100021 UPPER
PB1400310-02 PIPING, UPPER**



AT-110-1 42084100021 UPPER
PC1200415-03 PIPING,OUTRIGGER



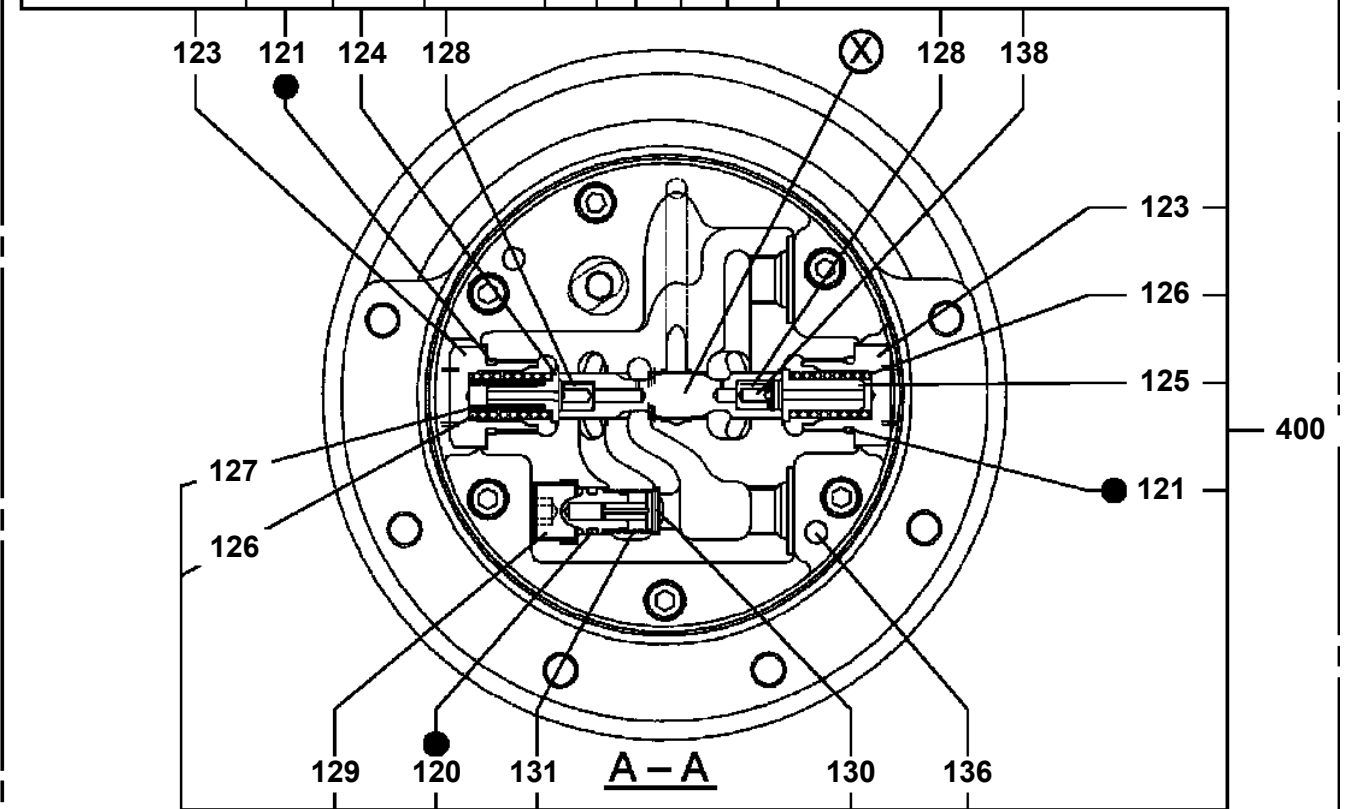
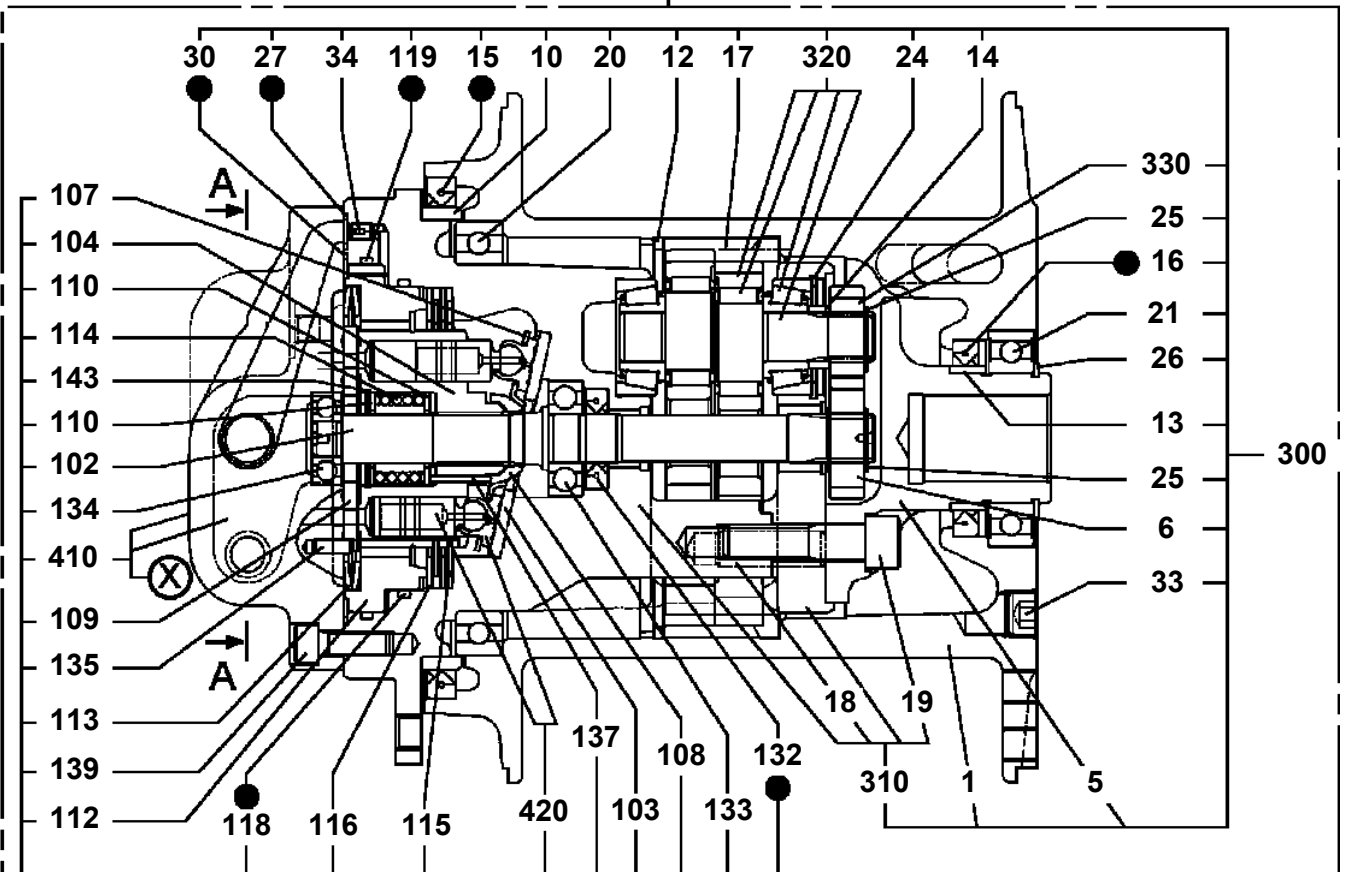
**AT-110-1 42084100021 UPPER
PE1010368-01 CYLINDER,ELEVATING**



△:PACKING SET KEY NO. 80 (KEY NO.23,24,25,26,33,34,35,36,41)

AT-110-1 42084100021 UPPER
PF1010392-01 WINCH

500



● : SEAL KIT KEY NO 490 (KEY NO.15,16,27,30,118,119,120,121,132)

AT-110-1 42084100021 UPPER

Pos No.	Parts No	Parts Name	Qty	Unit	Technical Data	Serial No (Start)	Serial No (End)	Remarks	Pages
1	42311283100	JIB	1						
2	42311283010	PLATE,NAME	2						
3	42220400010	GUIDE	1						
4	42220400020	GUIDE	1						
5	37001505350	BOLT	8		M6X20				
6	42220400030	GUIDE	2						
7	37001002260	SHEAVE	1						
8	37000312570	SPACER	2						
9	37000302490	SPACER	2		L=2				
10	80603110350	RING,RITAINING	2		C35				
11	42220400040	COVER	2						
12	42311283020	PIN	1						
31	80516006207	BEARING,BALL	1						

AT-110-1 42084100021 UPPER

Pos No.	Parts No	Parts Name	Qty	Unit	Technical Data	Serial No (Start)	Serial No (End)
314	80801002015	BEARING,PLAIN	4			217293	
333	37002000290	PLATE,SLIDE	2		100X30		

AT-110-1 42084100021 UPPER

Pos No.	Parts No	Parts Name	Qty	Unit	Technical Data	Serial No (Start)	Serial No (End)	Remarks	Pages
100	42353170400	HARNESS	1						

AT-110-1 42084100021 UPPER

Pos No.	Parts No	Parts Name	Qty	Unit	Technical Data	Serial No (Start)	Serial No (End)	Remarks	Pages
9	82105220153	SWITCH,TOGGLE	1						
100	42353110700	HARNESS	1						

AT-110-1 42084100021 UPPER

Pos No.	Parts No	Parts Name	Qty	Unit	Technical Data	Serial No (Start)	Serial No (End)	Remark
24	42736991030	DIODE (WITH CONNECTOR)	1					
100	42478362100	HARNESS	1					

AT-110-1 42084100021 UPPER

Pos No.	Parts No	Parts Name	Qty	Unit	Technical Data	Serial No (Start)	Serial No (End)	Remarks	Pages
100	42477762100	HARNESS	1						

AT-110-1 42084100021 UPPER

Pos No.	Parts No	Parts Name	Qty	Unit	Technical Data	Serial No (Start)	Serial No (End)	Remarks	Pages
100	42477820100	HARNESS	1						

AT-110-1 42084100021 UPPER

Pos No.	Parts No	Parts Name	Qty	Unit	Technical Data	Serial No (Start)	Serial No (End)	Remarks
1	36643435030	NUT	2				218078	
	36741765010	NUT	2			218079		
2	91000501900	O-RING	2				218078	
	36741765020	O-RING	2			218079		
3	36642765090	CORE ASSY (SOLENOID)	2				218078	
	36741765030	CORE ASSY (SOLENOID)	2			218079		
4	36645925020	COIL,SOLENOID	2				218078	
	36741765040	COIL,SOLENOID	2			218079		
5	36643435070	PACKING	2				218078	
	36648475110	O-RING	2			218079		
6	36642765050	O-RING	2					
8	91000501200	O-RING	4					
10	36642765060	WASHER (CENTER)	2					
11	36642765080	SPRING	2					
12	36643435040	PIN,SPRING	4					
50	36647690000	VALVE,SOLENOID	1					

AT-110-1 42084100021 UPPER

Pos No.	Parts No	Parts Name	Qty	Unit	Technical Data	Serial No (Start)	Serial No (End)	Remarks	Pages
12	91002801400	O-RING	2		1B P14				
100	36625740001	VALVE,CHECK	1						

CLICK HERE TO **DOWNLOAD** THE COMPLETE MANUAL

- Thank you very much for reading the preview of the manual.
- You can download the complete manual from: www.heydownloads.com by clicking the link below



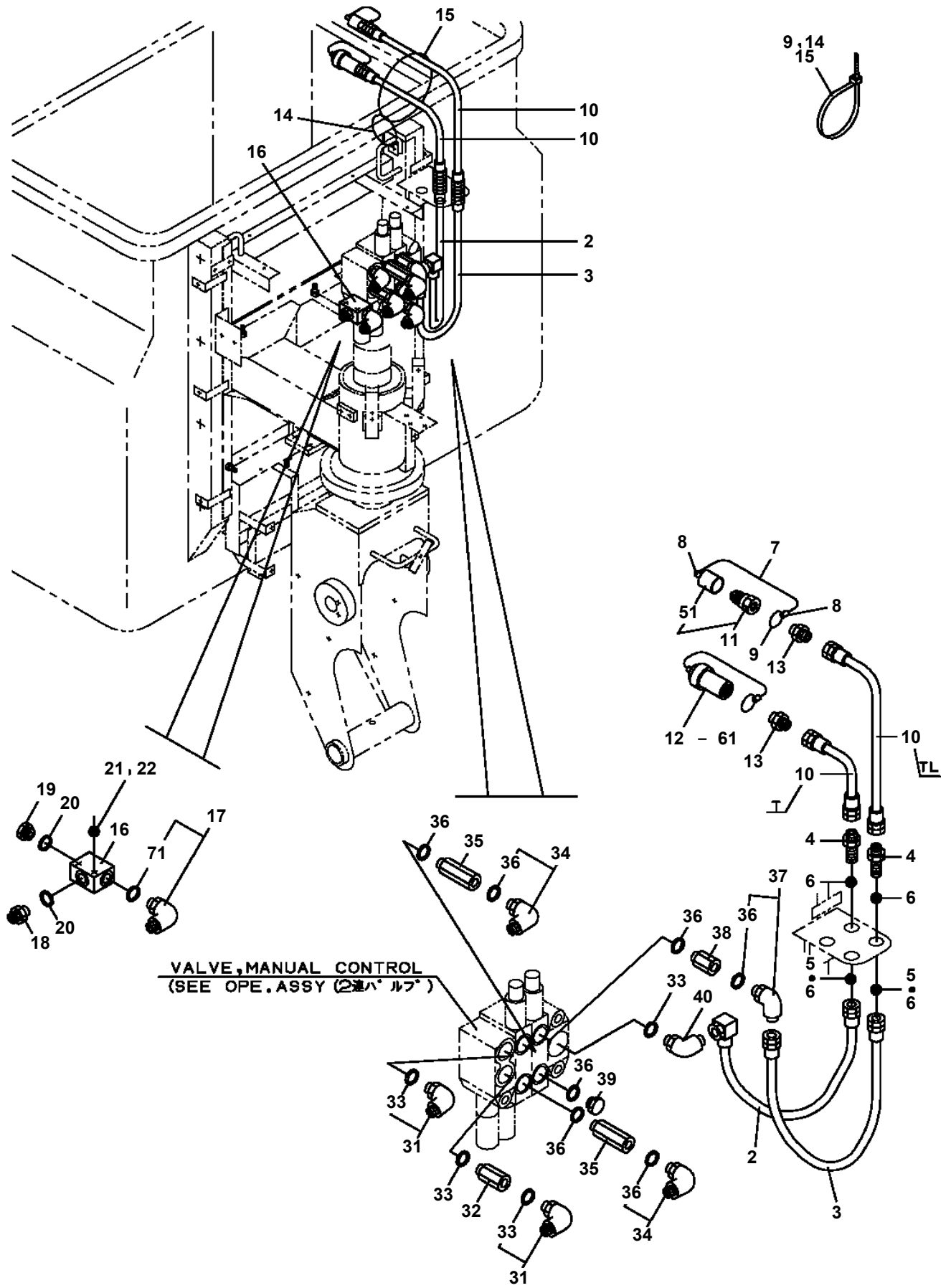
- Please note: If there is no response to CLICKING the link, please download this PDF first and then click on it.

CLICK HERE TO **DOWNLOAD** THE COMPLETE MANUAL

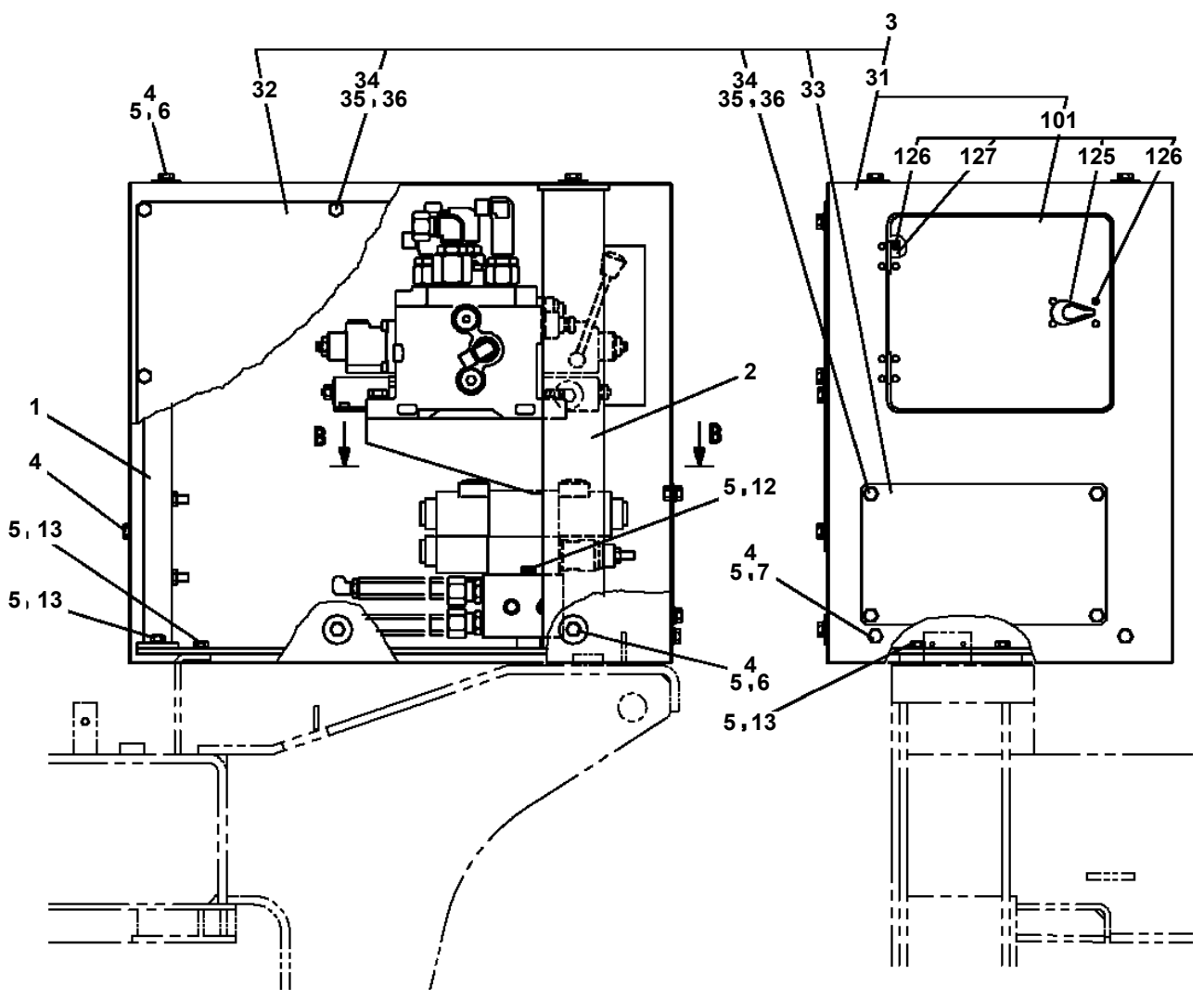
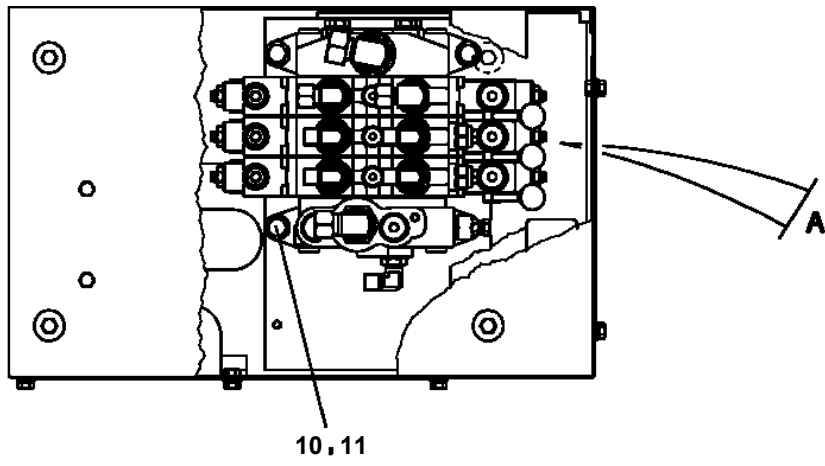
AT-110-1 4208410021 UPPER

Pos No.	Parts No	Parts Name	Qty	Unit	Technical Data	Serial No (Start)	Serial No (End)	Ren
1	42264311001	POST ASSY	1					
2	42264312000	FRAME ASSY	1					
5	42264400400	BUCKET	1					
6	42264200200	PLATE	2		T=1.0			
7	42264200300	GEAR	1					
8	42264200400	GUIDE	1					
9	37000176600	PIN	2					
10	37000524070	PLATE	2		T=6			
11	82458202000	NIPPLE,GREASE	1		B-TYPE PT1/8			
12	82400000459	CAP	1					
13	42262252100	WHEEL,WORM	1					
14	80601110750	RING,RITAINING	1		S75			
15	90303501201	WASHER,PLAIN	10		12			
16	90171112065	BOLT	6		M12X65			
17	90171112050	BOLT	4		M12X50			
18	90201781200	NUT	4		M12			
19	90102212050	BOLT	2		M12X50			
20	90201201200	NUT	2		M12			
21	90171110030	BOLT	8		M10X30			
22	90302041001	WASHER,SPRING	8		10			
23	90303071001	WASHER,PLAIN	4		10			
24	90101208020	BOLT	4		M8X20			
25	90302040801	WASHER,SPRING	10		8			
27	90730006160	SCREW,SET	1		M6X16			
28	90101208014	BOLT	6		M8X14			
29	42264310100	GUIDE	1					
30	42264310200	GUIDE	1					
31	42264310300	COVER	1					
32	90101206008	BOLT	2		M6X8			
33	90302040601	WASHER,SPRING	2		6			
34	42260910100	BUCKET (INNER CASE,OPTION)	1					
35	91850210545	FASTENER	1		L=545			
52	80801003540	BEARING,PLAIN	2					
63	80513006015	BEARING,BALL	2					
71	42262053400	MOTOR,ELECTRIC	1					
72	90172105022	BOLT,HEXAGON SOCKET	3		M5X22			
73	90302040501	WASHER,SPRING	3		5			
75	80913112140	KEY	2					
76	42264154100	GEAR ASSY	1					
77	44260300130	PLATE	1				219045	
78	44260300210	SUPPORT	1				219045	
79	44260300600	COUPLING	1					
80	90710004040	SCREW,SET	1		M4X4		219045	
	90710004040	SCREW,SET	2		M4X4	219046		
81	42264154010	SPACER	1					
82	42264154020	SHIM	N		T=0.5			
91	42264404100	COVER	1					
92	42264404200	COVER	1					
93	42264404300	COVER	1					
94	42264404400	COVER	1					
95	42264404500	COVER	1					
96	42264404600	COVER	1					
97	90183108015	BOLT	23		M8X15			
112	82400000200	GROMMET	1		KG-012,L=250			
121	42262053410	MOTOR,ELECTRIC	1					
122	44260301150	COVER	1					
123	91810132530	FASTENER	2					
131	42264154110	SUPPORT	1					
	42264153550	SUPPORT (IP)	1			219556		
132	42264154300	WORM	1					
133	42264154120	COVER	1					
134	90171108016	BOLT	4		M8X16			
135	90302040801	WASHER,SPRING	4		8			

**AT-110-1 42084100021 UPPER
PJ3200070-01 PIPING,BUCKET (TOOL)**



AT-110-1 42084100021 UPPER
PL1010823-00 OPE.ASSY,CONT.VALVE



AT-110-1 4208410021 UPPER

Pos No.	Parts No	Parts Name	Qty	Unit	Technical Data	Serial No (Start)	Serial No (End)	Remarks
1	36663955100	SHAFT	1					
2	80500006206	BEARING,BALL	1					
4	91001206500	O-RING	1		1A G65			
5	36660025021	COVER (OIL SEAL)	1					
6	36660025140	SEAL,OIL	1					
7	36663485110	RING,RETAINING	1		R72			
8	36663955020	PLATE,THRUST	1					
9	36663955030	BARREL ASSY (CYLINDER)	1					
10	36663955040	PLATE (VALVE)	1					
11	36661925030	COVER (BOTTOM)	1					
12	80500006203	BEARING,BALL	1					
13	36662355110	PIN	2					
14	36663955050	O-RING	1					
15	36663955060	BOLT	6		M10X35			
16	14125151020	KEY	1					
17	36660125060	PLUG	2		PF3/8			
18	36081315130	PROTECTOR (THREAD)	2					
44	36660025100	SPRING (PLUNGER)	5					
45	14125151300	RING,RETAINING	1					
46	12645103171	SPRING (CENTER)	1					
100	36664070000	MOTOR,OIL	1					

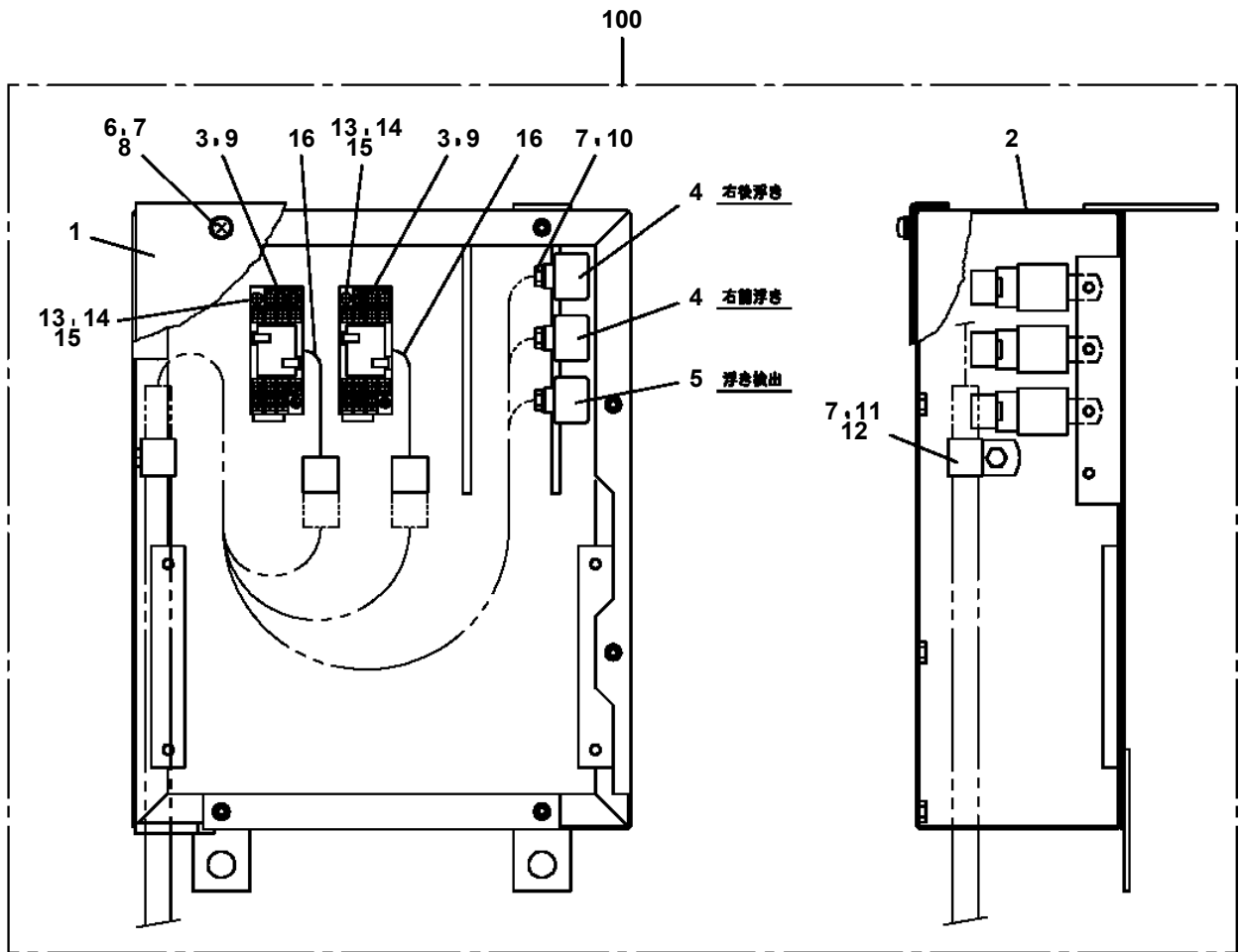
AT-110-1 42084100021 UPPER

Pos No.	Parts No	Parts Name	Qty	Unit	Technical Data	Serial No (Start)	Serial No
1	82104501250	SWITCH,LIMIT (2 PCS/SET,WITH HARNESS)	1				
2	91810130230	FASTENER	5				
3	42311285100	SUPPORT	2				
4	82104501140	SWITCH,LIMIT	2				
5	90101206014	BOLT	4		M6X14		
6	90302040601	WASHER,SPRING	4		6		
7	91810130240	FASTENER	10				
8	90303070601	WASHER,PLAIN	4		6		

AT-110-1 42084100021 UPPER

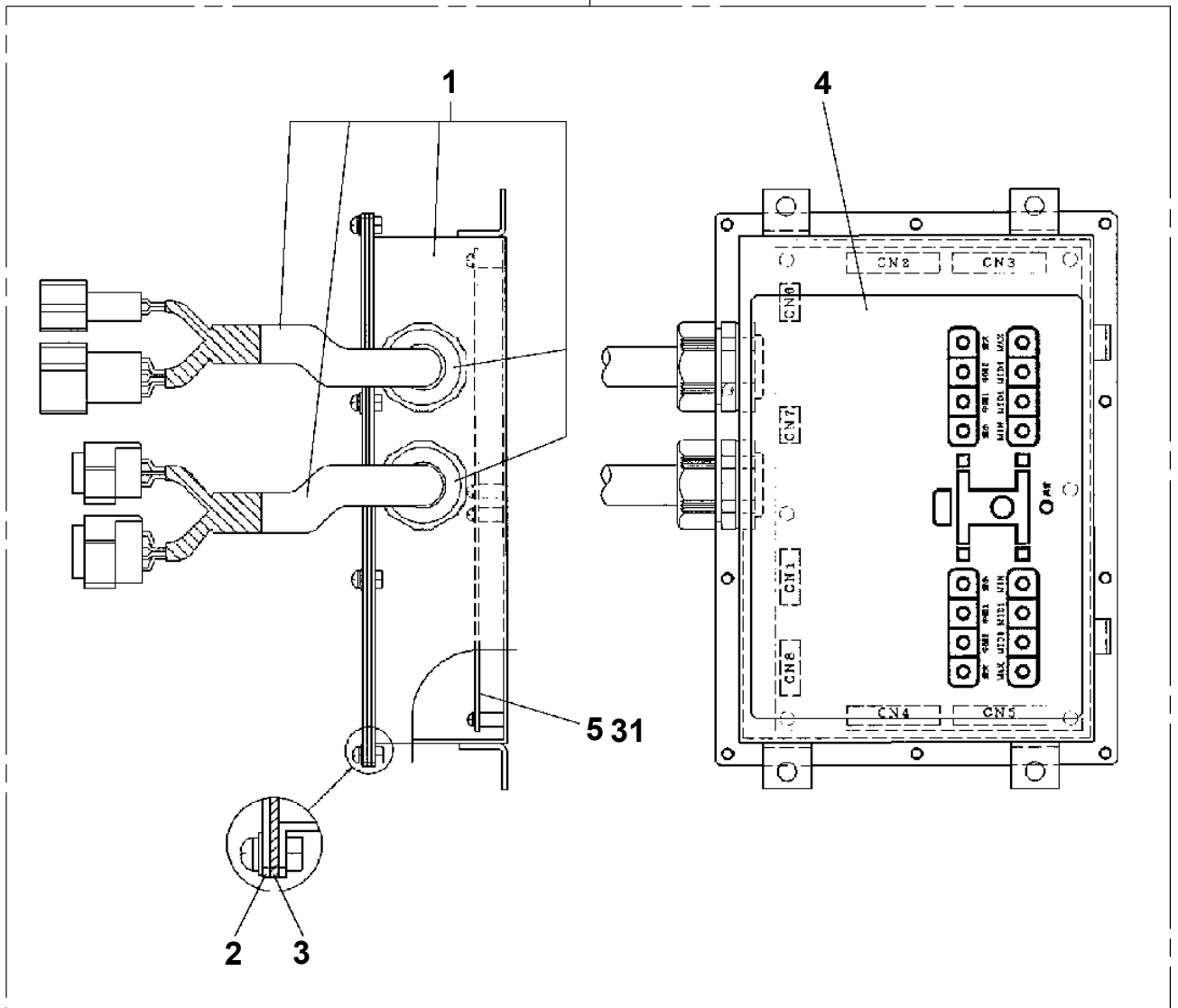
Pos No.	Parts No	Parts Name	Qty	Unit	Technical Data	Serial No (Start)	Serial No (End)	Remarks	Pages
1	42478382100	HARNESS	1						000054
2	42478382500	RELAY ASSY	1						000103
3	90101208016	BOLT	3		M8X16				
4	90302040801	WASHER,SPRING	2		8				
5	37000547660	PLATE	2		T=2.3				
6	91810130240	FASTENER	20						
11	42478382200	HARNESS	1						000061
12	42478383000	RELAY	1						000104
51	37002220430	PLATE,CAUTION	1						

AT-110-1 42084100021 UPPER
PN1110261-00 RELAY ASSY

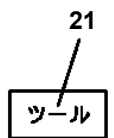
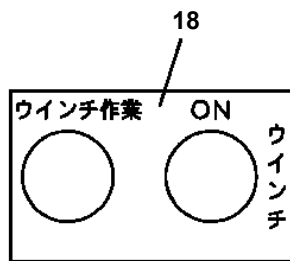
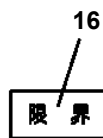
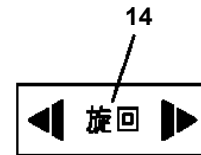
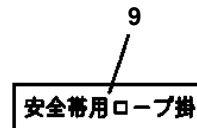
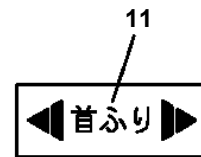
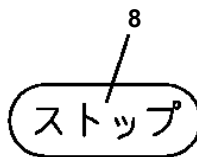
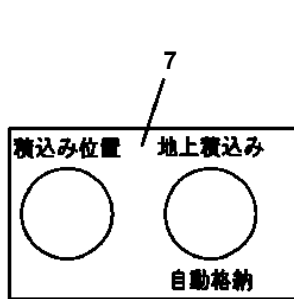
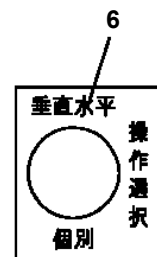
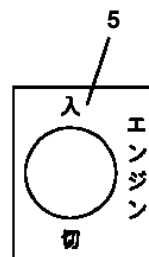
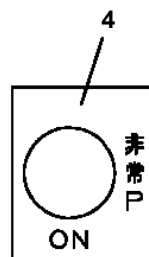
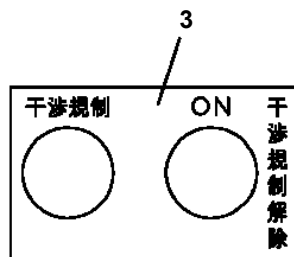
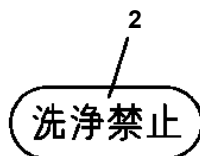
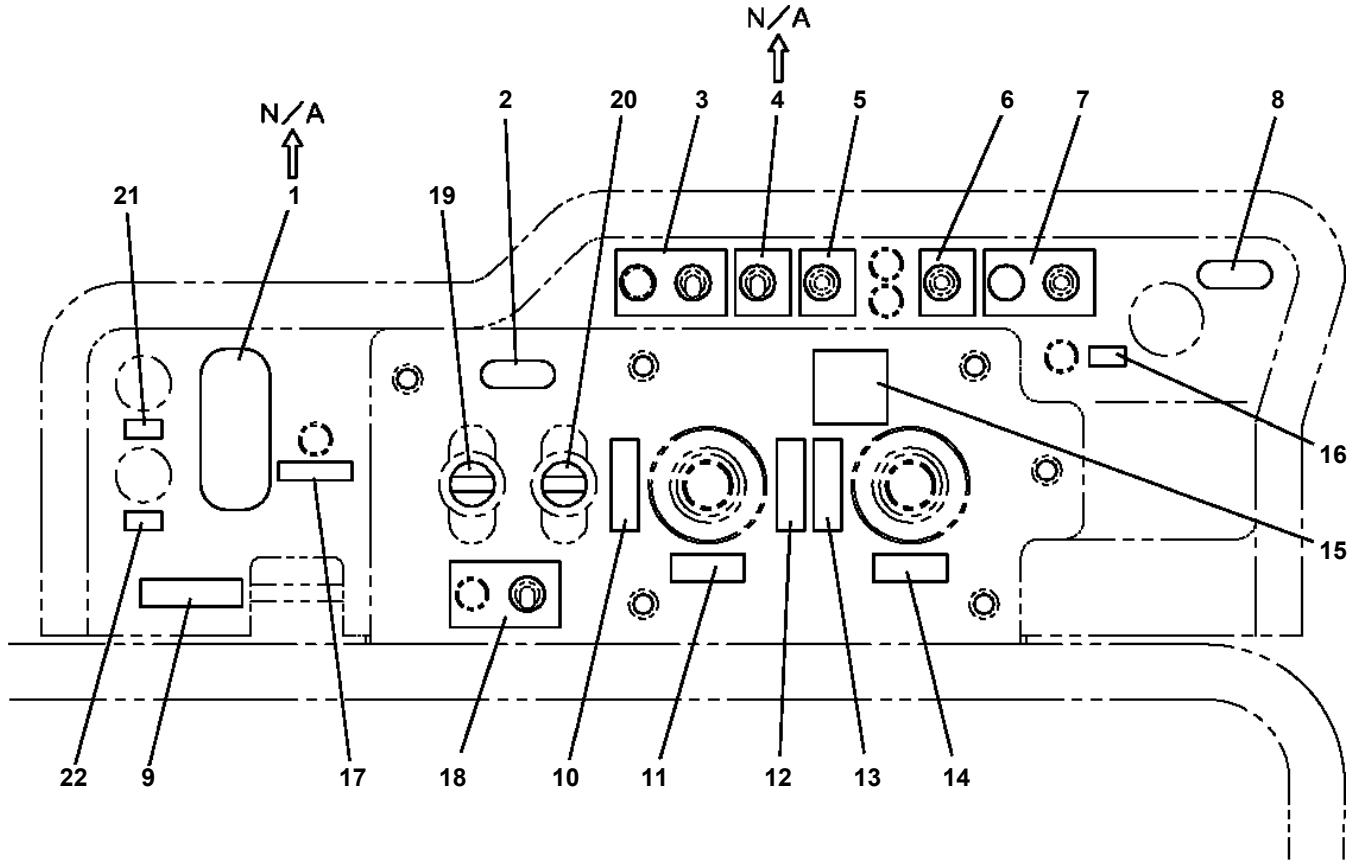


**AT-110-1 42084100021 UPPER
PN1210121-00 TRANSMITTER, SIGNAL**

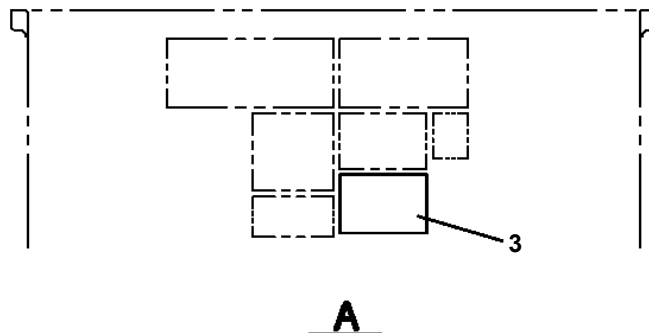
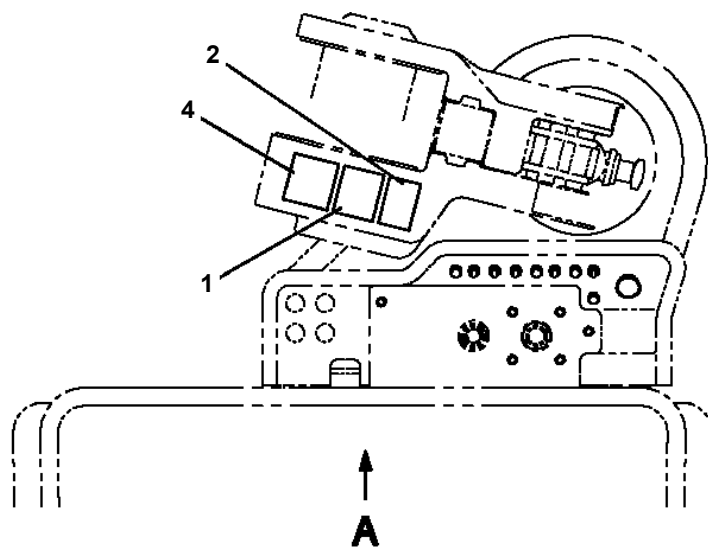
50



AT-110-1 42084100021 UPPER
 PO1013115-01 PLATE ASSY.NAME (BUCKET,1-LEVER 2-CONT.)



AT-110-1 42084100021 UPPER
 PO1013171-02 PLATE ASSY,NAME (WINCH)



1

△警告

○ウインチ作動時にはジブの
 差脚、船伏固定ピンを必ず
 ロックしてください。
 ○走行時にはウインチを後倒
 位置に戻してください。

2

ジブ定格荷重

角度	荷重 (kg)
45°	100

定格荷重を守ってください。

3

△警告 / 首ふり注意

首ふり時には、バケットとウインチロープ (吊り索) との
 接触に注意してください。

首ふり操作ができない場合

ウインチとの干渉防止のために、首ふりが停止する場合が
 あります。そのときには、ジブの前後ロックピンを削除し
 ウインチを前方に戻り出してから、首ふり操作を行って
 ください。

4

△警告

ウインチロープを障害物等に
 接触させないでください。
 特に、荷をつり上げていると
 常に全長等の範囲部に接触す
 ると、ロープが損傷して重大
 事故のおそれがあります。

AT-110-1 42084100021 UPPER

Pos No.	Parts No	Parts Name	Qty	Unit	Technical Data	Serial No (Start)	Serial No (End)	Remarks	Pages
1	83152811000	SHACKLE	1						

AT-110-1 42084100021 UPPER

Pos No.	Parts No	Parts Name	Qty	Unit	Technical Data	Serial No (Start)	Serial No (End)
1	42460012550	WEDGE (STOPPER FOR TIRE/JUSTIN)	1				

AT-110-1 4208410021 UPPER

Pos No.	Parts No	Parts Name	Qty	Unit	Technical Data	Serial No (Start)	Serial No (End)	Remarks
1	42477800100	SUPPORT	1					
2	42477800200	SUPPORT	1					
3	42477800300	SUPPORT	1					
4	90171116035	BOLT	6		M16X35			
5	90302041601	WASHER,SPRING	6		16			
6	37000143020	PIN	1					
7	80601110250	RING,RITAINING	2		S25			
8	37000143030	PIN	1					
9	37000200540	PIN,SNAP	1		D=25			
10	42477800010	PLATE,CAUTION	1					
31	42477801100	HARNESS	1		L=6100			
32	42477801200	TERMINAL ASSY	1					
33	80172303012	SCREW,MACHINE	2		M3X12			
34	90302040301	WASHER,SPRING	2		3			
35	90303070301	WASHER,PLAIN	2		3			
36	82104503104	SWITCH,LIMIT	1					
37	90172105014	BOLT,HEXAGON SOCKET	2		M5X14			
38	91810132530	FASTENER	15					
39	91810130240	FASTENER	10					
40	82401601002	CLAMP	2					
41	91850400601	CLAMP	4					
51	42873030110	RUBBER	2		T=6			

AT-110-1 42084100021 UPPER

Pos No.	Parts No	Parts Name	Qty	Unit	Technical Data	Serial No (Start)	Serial No (End)
1	(*****)	BOOSTER (40TON AIR)	1				
2	(*****)	PLATE ASSY,NAME (BOOSTER,POWER SUPPLY)	1				
3	(*****)	SWITCH INSTALLATION (AIR TYPE OPERATIONSW)	1				

AT-110-1 4208410021 UPPER

Pos No.	Parts No	Parts Name	Qty	Unit	Technical Data	Serial No (Start)	Serial No
1	42477771000	LAMP ASSY	1				
2	42477770100	SUPPORT	1				
3	42477770200	HARNESS	1				
4	90813108020	BOLT,WING	1		M8X20		
5	90101208016	BOLT	2		M8X16		
6	90302040801	WASHER,SPRING	2		8		
7	90201200600	NUT	3		M6		
8	90302040601	WASHER,SPRING	3		6		
9	82100002006	CLAMP	3		WR10		
10	91810130240	FASTENER	10				
31	82165904020	LAMP	1		24V 60W		
32	90101212020	BOLT	1		M12X20		
33	90302041201	WASHER,SPRING	1		12		
34	37000179070	PIN	1				
35	80620210160	PIN,SNAP	1				
60	82100000054	BULB,LAMP	1		24V 60W		
66	82100002838	SWITCH ASSY (WITH HARNESS,TERMINAL)	1				

AT-110-1 42084100021 UPPER

Pos No.	Parts No	Parts Name	Qty	Unit	Technical Data	Serial No (Start)	Serial No (End)
1	42433932200	SWITCH ASSY (WITH HARNESS,1 SW)	1				
2	42477810100	PLATE,NAME	1				
3	82197518119	CAP (PLUS ONE MFG./BLACK)	1				
	82197518114	CAP (MATSUSHITA/BLACK)	1				

AT-110-1 42084100021 UPPER

Pos No.	Parts No	Parts Name	Qty	Unit	Technical Data	Serial No (Start)	Serial No (End)	Remarks	Pages
1	42478300100	BUZZER ASSY	1						
2	80161302520	SCREW,MACHINE	2		M2.5X20				
3	90302040251	WASHER,SPRING	2		2.5				

CLICK HERE TO **DOWNLOAD** THE COMPLETE MANUAL

- Thank you very much for reading the preview of the manual.
- You can download the complete manual from: www.heydownloads.com by clicking the link below



- Please note: If there is no response to CLICKING the link, please download this PDF first and then click on it.

CLICK HERE TO **DOWNLOAD** THE COMPLETE MANUAL