

AT-105-1 42055100005 UPPER

PB1000283-04 HYDRAULIC PRESSURE GENERATING SYSTEM
PC1000217-03 OUTRIGGER SYSTEM
PD1000266-02 SWING SYSTEM
PE1000265-02 ELEVATING SYSTEM
PG1000253-02 TELESCOPING SYSTEM
PJ3000050-03 PLATFORM SYSTEM
PK1000274-00 FRAME
PL1000617-00 CONTROL DEVICES
PN1000536-00 ELECTRIC EQUIPMENT
PO1000144-01 INDICATION PLATES
PQ1000094-02 DRIVING POWER GENERATING SYSTEM
PW1000028-00 ACCESSORIES & TOOLS
PX1000984-00 MOUNTING PARTS
PY1001209-00 OPTIONS
ASSEMBLY

CLICK HERE TO **DOWNLOAD** THE COMPLETE MANUAL

- Thank you very much for reading the preview of the manual.
- You can download the complete manual from: www.heydownloads.com by clicking the link below



- Please note: If there is no response to CLICKING the link, please download this PDF first and then click on it.

CLICK HERE TO **DOWNLOAD** THE COMPLETE MANUAL

AT-105-1 42055100005 UPPER

Pos No.	Parts No	Parts Name	Qty	Unit	Technical Data	Serial No (Start)	Serial No (End)	Remarks	P
1	(*****)	BOOM	1						0
3	(*****)	CYLINDER,TELESCOPING	1						0
4	(*****)	PIPING,BOOM	1						0

AT-105-1 42055100005 UPPER

Pos No.	Parts No	Parts Name	Qty	Unit	Technical Data	Serial No (Start)	Serial No (End)	Remarks	Pages
1	(***** *****)	PLATE,INDICATION	1				215935		000082
	(***** *****)	PLATE,INDICATION	1			215936			000084

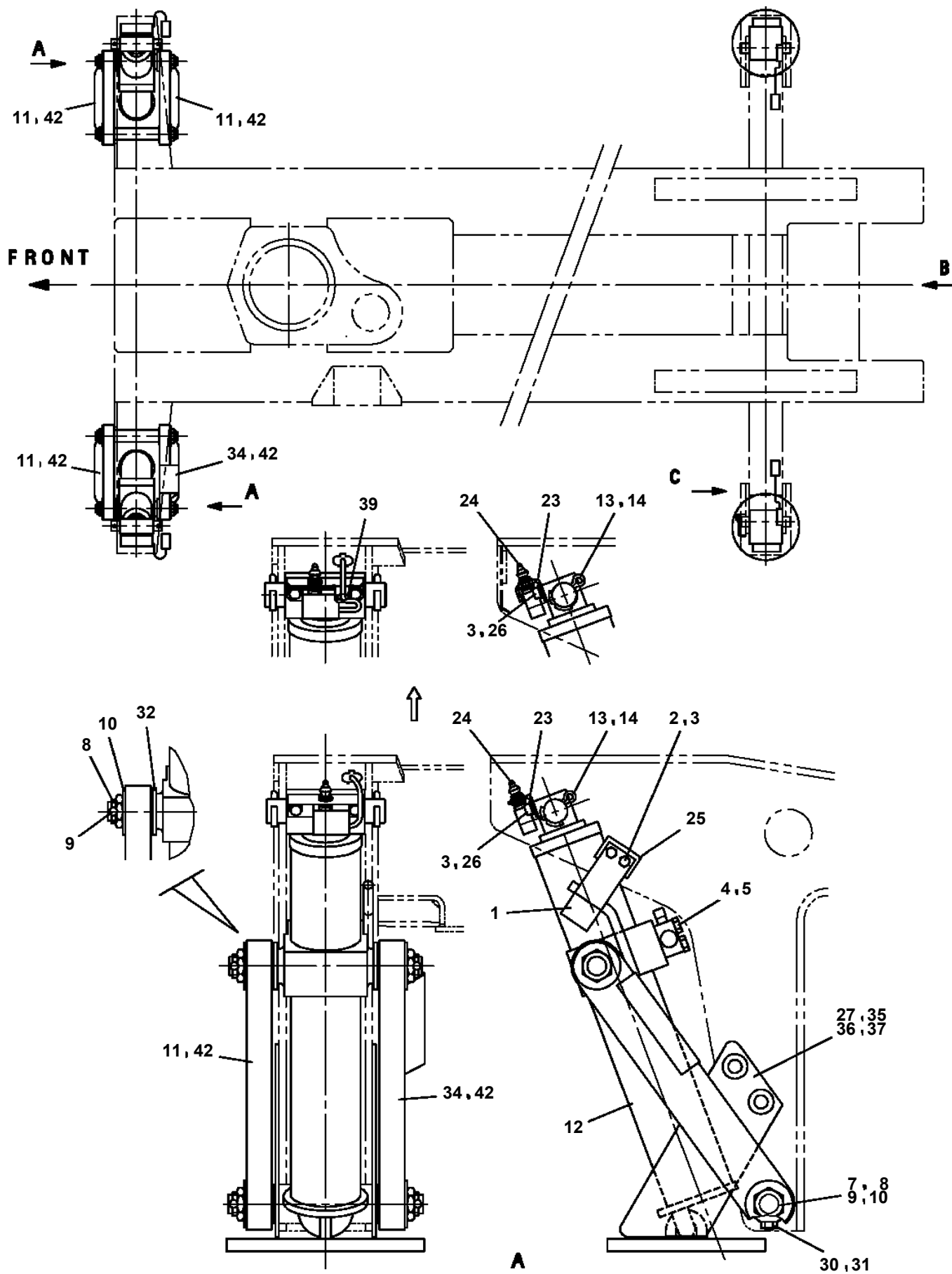
AT-105-1 42055100005 UPPER

PB1100118-00 PUMP, HYDRAULIC
PB1300178-01 JOINT, ROTARY
PB1300255-01 JOINT, ROTARY
PB1310010-00 BRUSH, ROTARY JOINT
PB1310023-00 BRUSH, ROTARY JOINT
PB1320001-00 VALVE, MANUAL CONTROL
PB1320276-00 VALVE, MANUAL CONTROL (OUTRIGGER)
PB1400187-00 PIPING, HYDRAULIC UPPER
PC1010376-02 OUTRIGGER
PC1030169-04 CYLINDER, JACK (FRONT)
PC1030181-04 CYLINDER, JACK
PC1030303-01 CYLINDER, JACK (FRONT)
PC1100136-03 OPERATION SYSTEM, OUTRIGGER
PC1200408-00 PIPING, OUTRIGGER
PC5020050-00 CABLE ASSY
PD1010023-01 REDUCER, SWING SPEED
PD1010062-01 REDUCER, SWING SPEED
PD1010086-00 REDUCER, SWING SPEED
PD1010123-01 REDUCER, SWING SPEED
PD1010133-00 REDUCER, SWING SPEED
PD1010172-00 REDUCER, SWING SPEED
PE1010087-03 CYLINDER, ELEVATING
PE1050060-04 CYLINDER, LEVELING (UPPER)
PE1050061-04 CYLINDER, LEVELING (LOWER)
PG1010384-09 BOOM
PG1050092-06 CYLINDER, TELESCOPING
PH5031336-00 HARNESS (WITH SWITCH)
PH5032087-00 HARNESS
PH5032100-00 HARNESS
PH5034452-00 HARNESS
PI1010074-00 MOTOR, HYDRAULIC (SWING)
PI1010074-00 MOTOR, HYDRAULIC (SWING)
PI1050002-00 RESERVOIR, OIL
PI1100007-00 VALVE, RELIEF
PI1100007-00 VALVE, RELIEF
PI1120032-00 VALVE, SOLENOID
PI1120239-00 VALVE, SOLENOID
PI1140002-00 VALVE, CHECK
PI1140003-01 VALVE, CHECK
PI1140133-01 VALVE, CHECK
PI1140134-00 VALVE, CHECK
PI1140135-00 VALVE, CHECK
PI1250040-02 VALVE, COUNTERBALANCE
PI1250063-00 VALVE, COUNTERBALANCE
PI1280110-01 VALVE, PILOT CHECK
PJ3010047-00 BUCKET (INNER CASE, OPTION)
PJ3010085-04 BUCKET
PJ3010102-00 BUCKET (INNER CASE)
PJ3100065-01 PIPING, BOOM
PK1010376-00 FRAME
PK1010490-00 FRAME
PK1100193-00 SWING FRAME
PK1330104-00 COVER (BUCKET, FOR SI)
PL1010596-01 OPERATION SYSTEM, CONTROL VALVE
PL1050014-02 OPERATION SYSTEM, BUCKET
PL1100089-01 BOX, OPERATION
PL1100114-04 BOX, OPERATION
PL1100190-04 BOX, OPERATION
PM5230001-01 MOTOR, OIL
PN1011252-02 ELEC. ASSY (BOOM)
PN1011481-06 ELEC. ASSY (FRAME)
PN1011483-02 ELEC. ASSY (ENGINE UNIT)
PN1011498-02 ELEC. ASSY (FOOT SWITCH)
PN1012409-01 ELECTRICAL ACCESSORIES

AT-105-1 42055100005 UPPER

Pos No.	Parts No	Parts Name	Qty	Unit	Technical Data	Serial No (Start)	Serial No (End)	Remarks	P
19	91001214500	O-RING	1		1A G145				
50	42630462000	BRUSH,ROTARY JOINT	1						

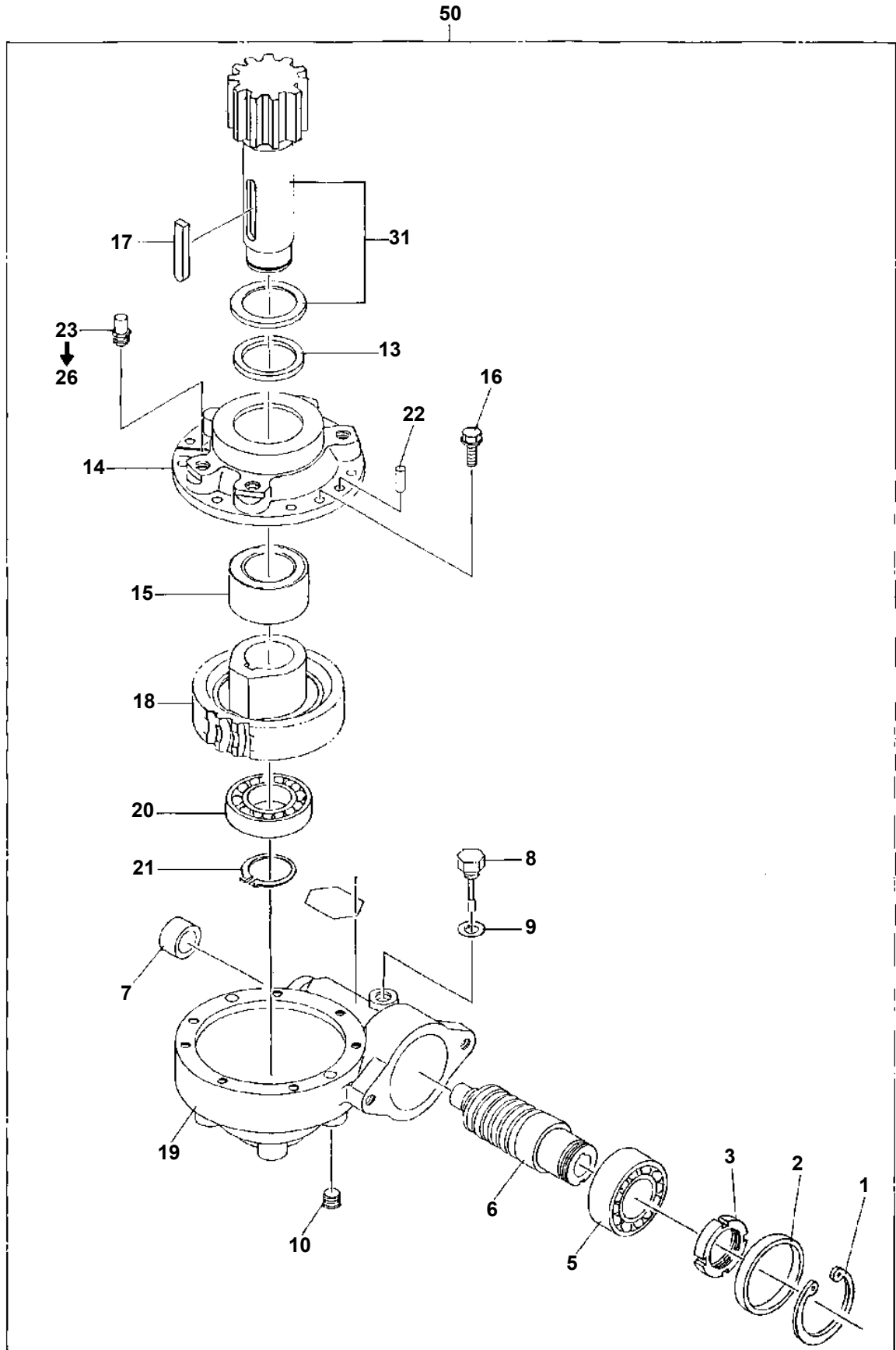
**AT-105-1 42055100005 UPPER
PC1010376-02 OUTRIGGER**



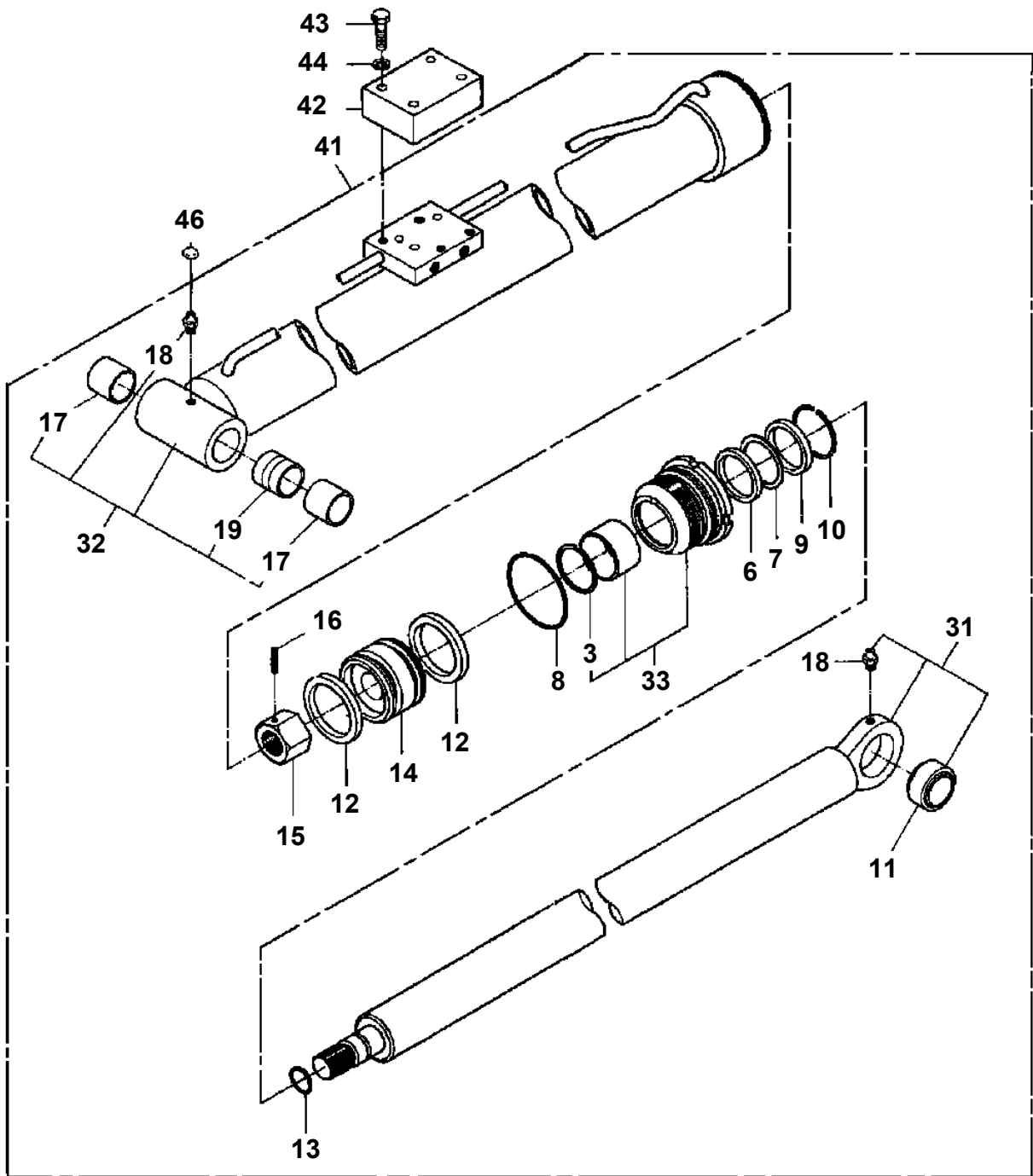
AT-105-1 4205510005 UPPER

Pos No.	Parts No	Parts Name	Qty	Unit	Technical Data	Serial No (Start)	Serial No
1	36635380000	VALVE,MANUAL CONTROL (OUTRIGGER)	1				
2	90101208025	BOLT	3		M8X25		
3	90302040801	WASHER,SPRING	3		8		
4	37000105610	PIN	10		L=18		
5	32700007000	LEVEL ASSY	1				215843
6	80136320010	PIN,SPLIT	10		2X10		
7	42700530200	LEVER	1				
8	31320020020	KNOB (RED)	1				
9	42700530300	LEVER	1				
10	31320020010	KNOB (BLACK)	4				
11	42700530400	LEVER	1				
12	42700530500	LEVER	1				
13	82104103010	SWITCH,LIMIT	1				216321
	82104501250	SWITCH,LIMIT (2 PCS/SET,WITH HARNESS)	1			216322	
14	42700700100	LEVER	1				
15	80456950401	JOINT,SELF SEALING (COUPLER)	1			216164	
21	32700007100	COVER	1				215843
22	82400000303	LEVEL	1				215843
23	32700007200	SUPPORT	1				215843
24	90201200500	NUT	6		M5		215843
25	80183306016	SCREW,MACHINE	1		M6X16		215843
26	90302040601	WASHER,SPRING	1		6		215843
27	90303070601	WASHER,PLAIN	1		6	215759	215843
30	32700007500	LEVEL	1			215844	

AT-105-1 42055100005 UPPER
PD1010062-01 REDUCER, SWING SPEED



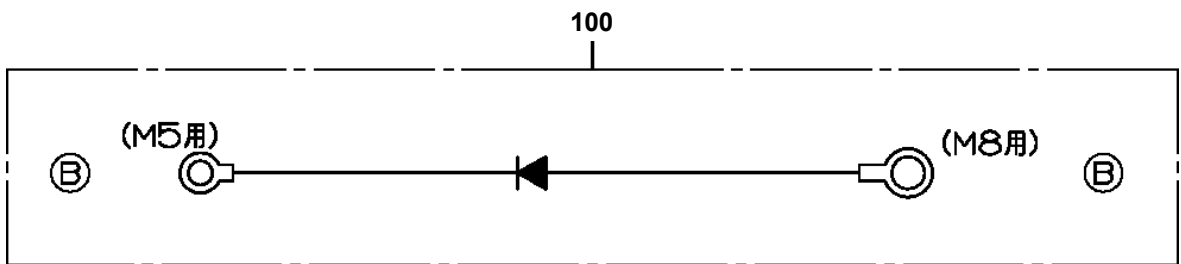
AT-105-1 42055100005 UPPER
PE1010087-03 CYLINDER,ELEVATING



AT-105-1 4205510005 UPPER

Pos No.	Parts No	Parts Name	Qty	Unit	Technical Data	Serial No (Start)	Serial No (End)	Re
53	37000136530	PIN	2					
54	80601110200	RING,RITAINING	8		S20			
55	37000136540	PIN	2					
56	37002005940	PLATE,SLIDE	4					
57	32200180700	PLATE	4		T=0.5			
58	37000539070	PLATE	16		T=0.5			
59	90101510018	BOLT	24		M10X18		215928	
	90171110018	BOLT	24		M10X18	215929	216720	
	90171110018	BOLT	8		M10X18	216721		
60	37000113060	PIN	1					
61	42200383270	ROLLER	2					
62	42200383280	PLATE	2					
63	90101210018	BOLT	4		M10X18			
64	90303071001	WASHER,PLAIN	4		10			
65	90302040801	WASHER,SPRING	2		8			
66	90202481200	NUT	4		M12	215929	216535	
	90202481200	NUT	8		M12	216536		
67	90171112040	BOLT	2		M12X40	215929		
68	90171110025	BOLT	16		M10X25	216721		
81	37001505790	BOLT	6		M8X20			
82	42200810140	COVER	1					
83	37000511280	PLATE	2					
84	37000538590	PLATE	1					
85	42200383011	COVER	1					
86	42200383051	COVER	1					
88	42200810110	PLATE	2					
89	90101208016	BOLT	15		M8X16			
90	90302040801	WASHER,SPRING	19		8			
91	37000553000	PLATE	4					
92	42340233030	COVER	1					
93	42200810120	COVER	1					
94	80182306010	SCREW,MACHINE	6		M6X10			
95	90302040601	WASHER,SPRING	10		6			
96	90303070801	WASHER,PLAIN	4		8			
97	80182306014	SCREW,MACHINE	4		M6X14			
98	90303070601	WASHER,PLAIN	4		6			
99	42200810160	COVER ASSY	1					
100	42200810300	SUPPORT	1					
101	42200810310	SUPPORT	1					
102	80516006206	BEARING,BALL	2					
111	90101208040	BOLT	4		M8X40			
121	42200388140	ROLLER ASSY	2					
131	42200565110	SUPPORT	4				216720	
132	37000148860	PIN	4				216720	
133	42200565150	SPACER	8				216720	
134	42200569510	ROLLER ASSY	4				216720	
141	37001004450	SHEAVE ASSY	2					
142	42200383610	PIN	2					
143	42200383620	PLATE	2					
144	90101510025	BOLT	8		M10X25		215928	
	90171110025	BOLT	8		M10X25	215929		
145	90302041001	WASHER,SPRING	12		10			
146	90101510055	BOLT	4		M10X55		215928	
	90171110055	BOLT	4		M10X55	215929		
151	37000136570	PIN	1					
153	80601110250	RING,RITAINING	4		S25			
154	37000303150	SPACER	4		L=5			
155	42200383910	ROLLER ASSY	2					
156	37000136840	PIN	2					
157	42200388150	PLATE ASSY	2					
158	37000507720	PLATE	1					
159	90101516025	BOLT	1		M16X25			
160	90302041601	WASHER,SPRING	1		16			

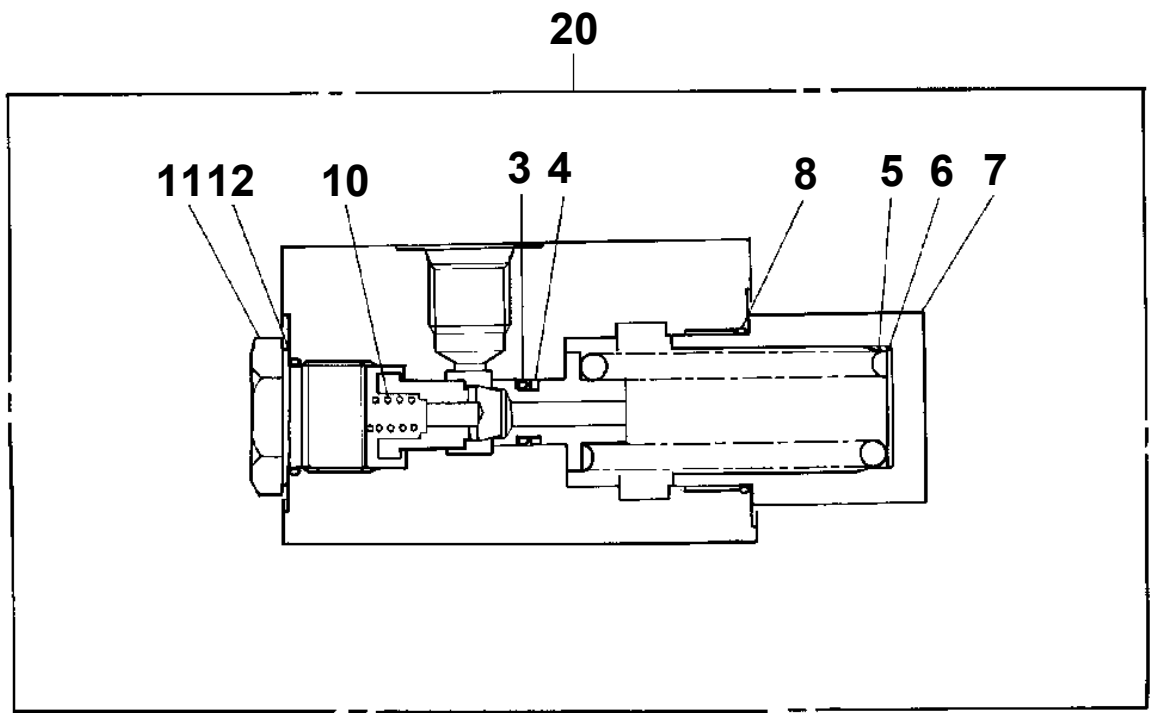
AT-105-1 42055100005 UPPER
PH5034452-00 HARNESS



AT-105-1 42055100005 UPPER
PI1100007-00 VALVE,RELIEF

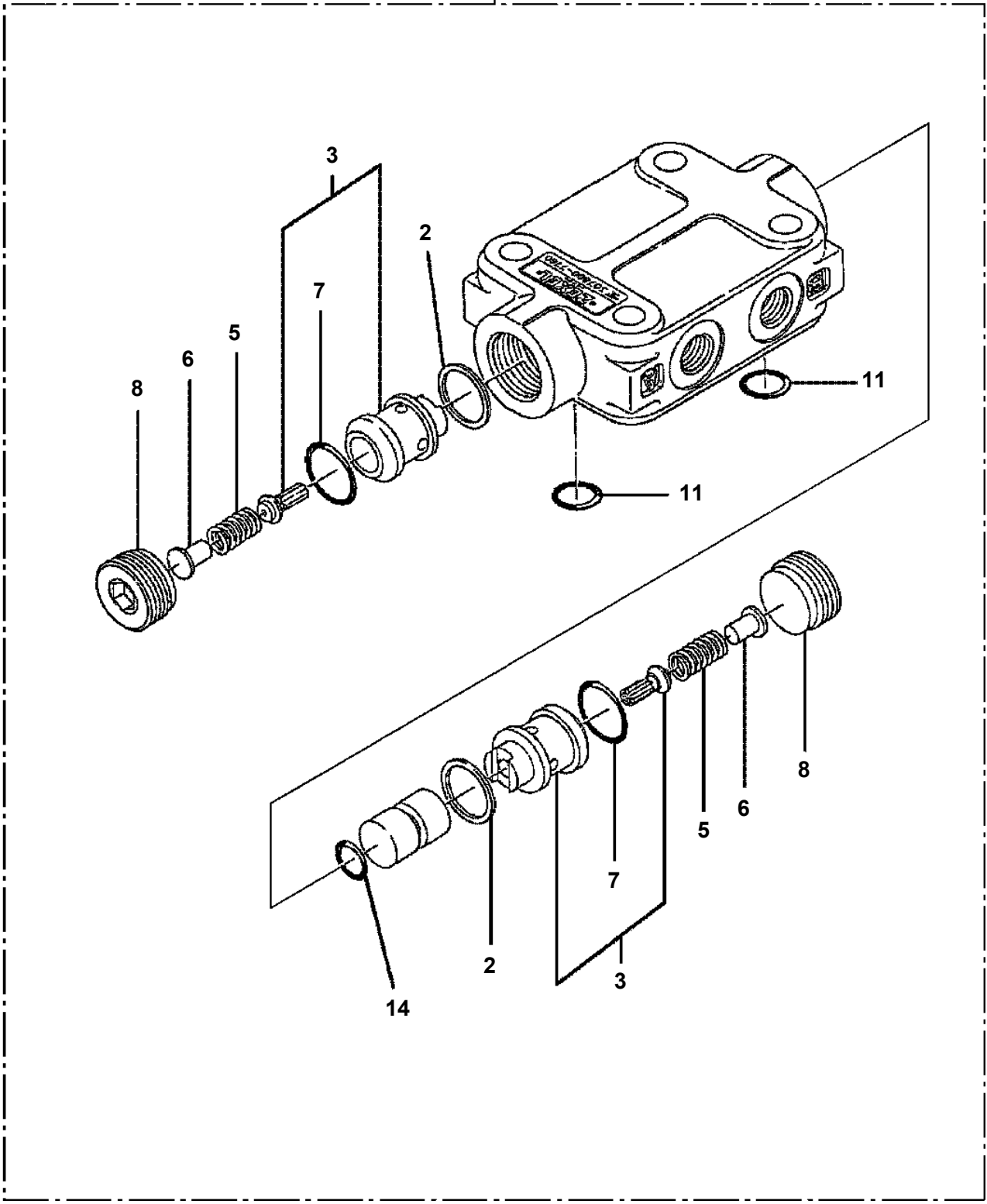
Assembly Name VALVE, RELIEF

PI110-0007 00



AT-105-1 42055100005 UPPER
PI1140133-01 VALVE,CHECK

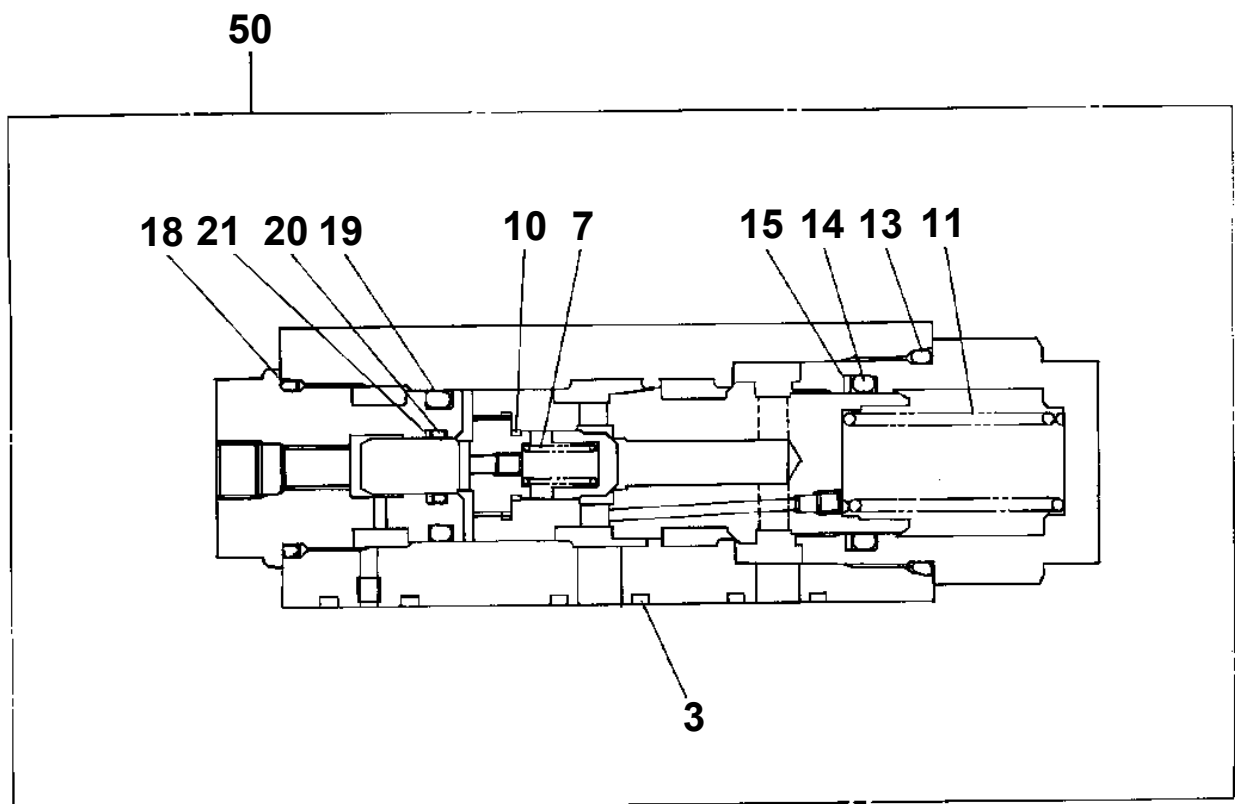
100 → (A)



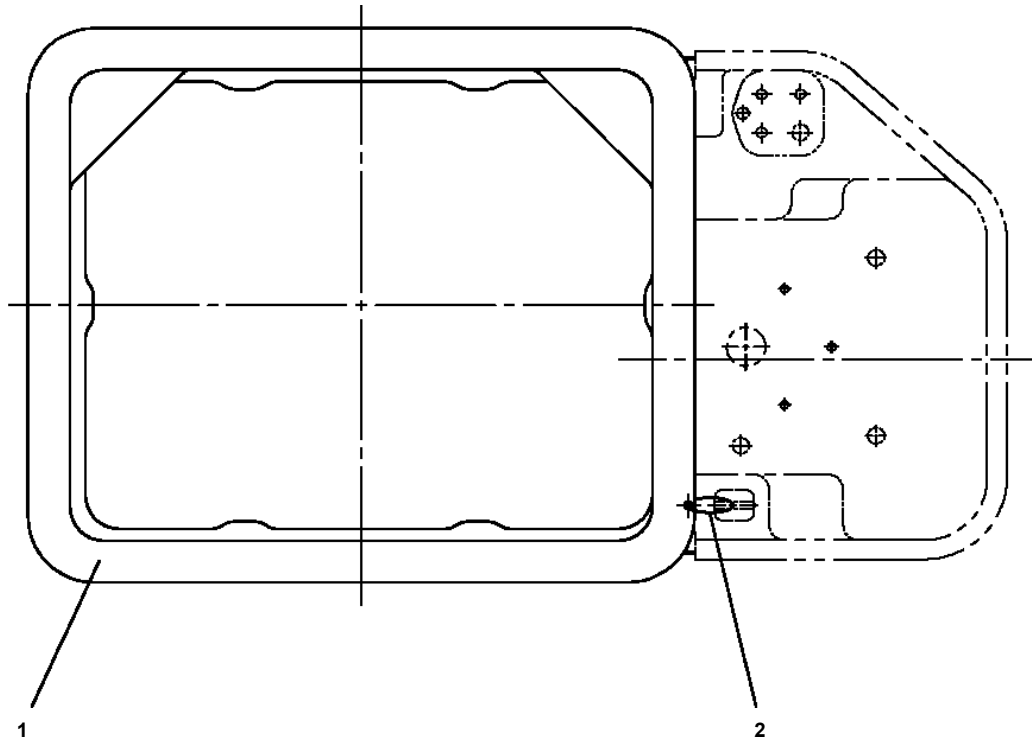
**AT-105-1 42055100005 UPPER
PI1250063-00 VALVE, COUNTERBALANCE**

Assembly Name VALVE, COUNTERBALANCE

PI125-0003-00



**AT-105-1 42055100005 UPPER
PJ3010102-00 BUCKET (INNER CASE)**

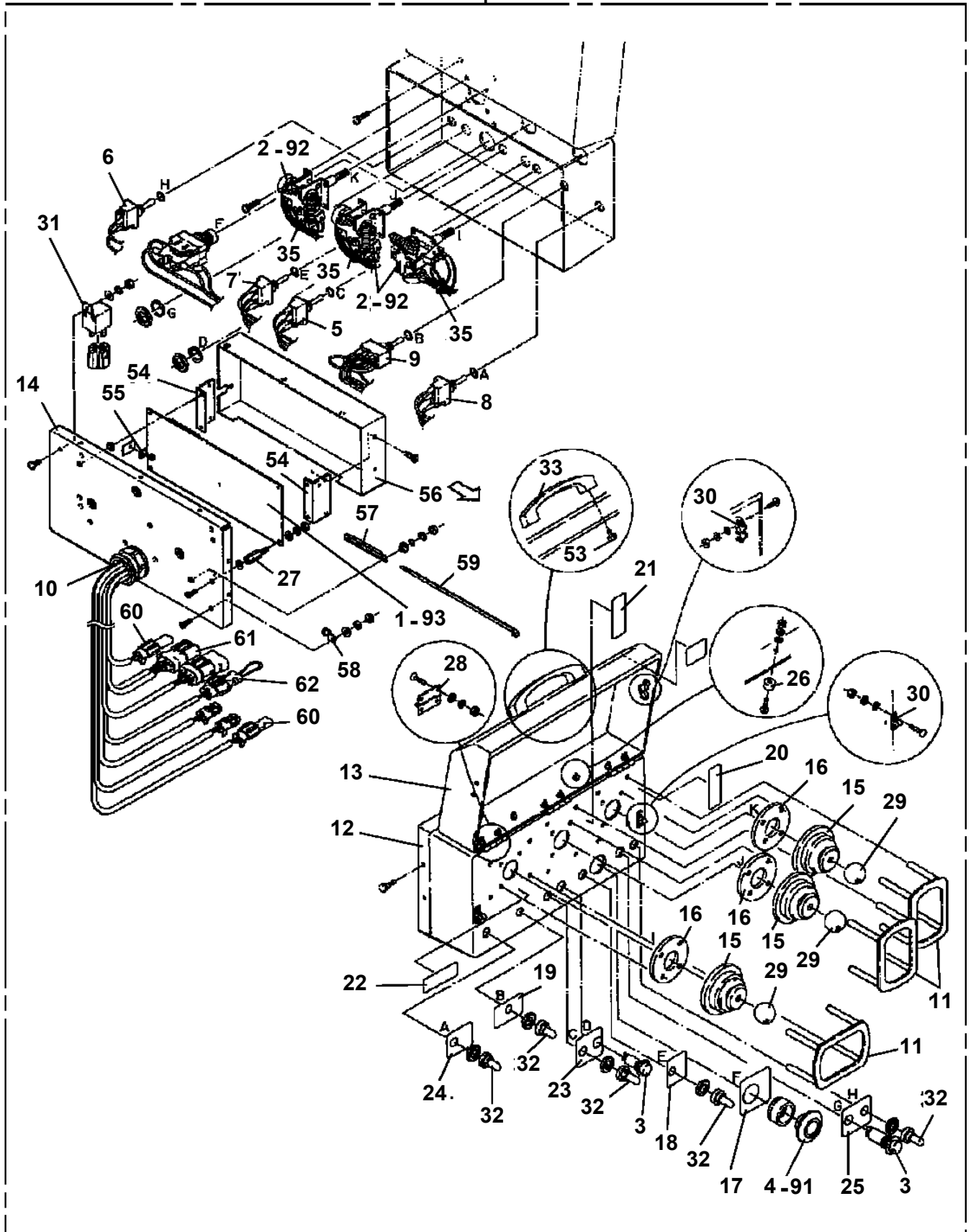


AT-105-1 4205510005 UPPER

Pos No.	Parts No	Parts Name	Qty	Unit	Technical Data	Serial No (Start)	Serial No (End)	Remarks
1	42230671001	TABLE,SLEWING	1					
2	37000558530	PLATE	3		T=9			
3	90191510020	BOLT,HEXAGON SOCKET	6		M10X20			
4	90302041001	WASHER,SPRING	8		10			
5	42230670100	COVER	1					
6	90101208016	BOLT	4		M8X16			
7	90302040801	WASHER,SPRING	4		8			
8	82458202000	NIPPLE,GREASE	1		B-TYPE PT1/8			
9	82400000459	CAP	1					
10	31630030011	PLATE	1					
11	37000160880	PIN	1					
12	37000535670	PLATE	1		T=9			
13	90101520030	BOLT	1					
14	90302042001	WASHER,SPRING	1		20			
15	37000148780	PIN	1					
16	37000159250	PIN	1					
17	90171110025	BOLT	2		M10X25			
18	82400000347	GROMMET	1		L=320			

AT-105-1 42055100005 UPPER
PL1100114-04 BOX, OPERATION

100



CLICK HERE TO **DOWNLOAD** THE COMPLETE MANUAL

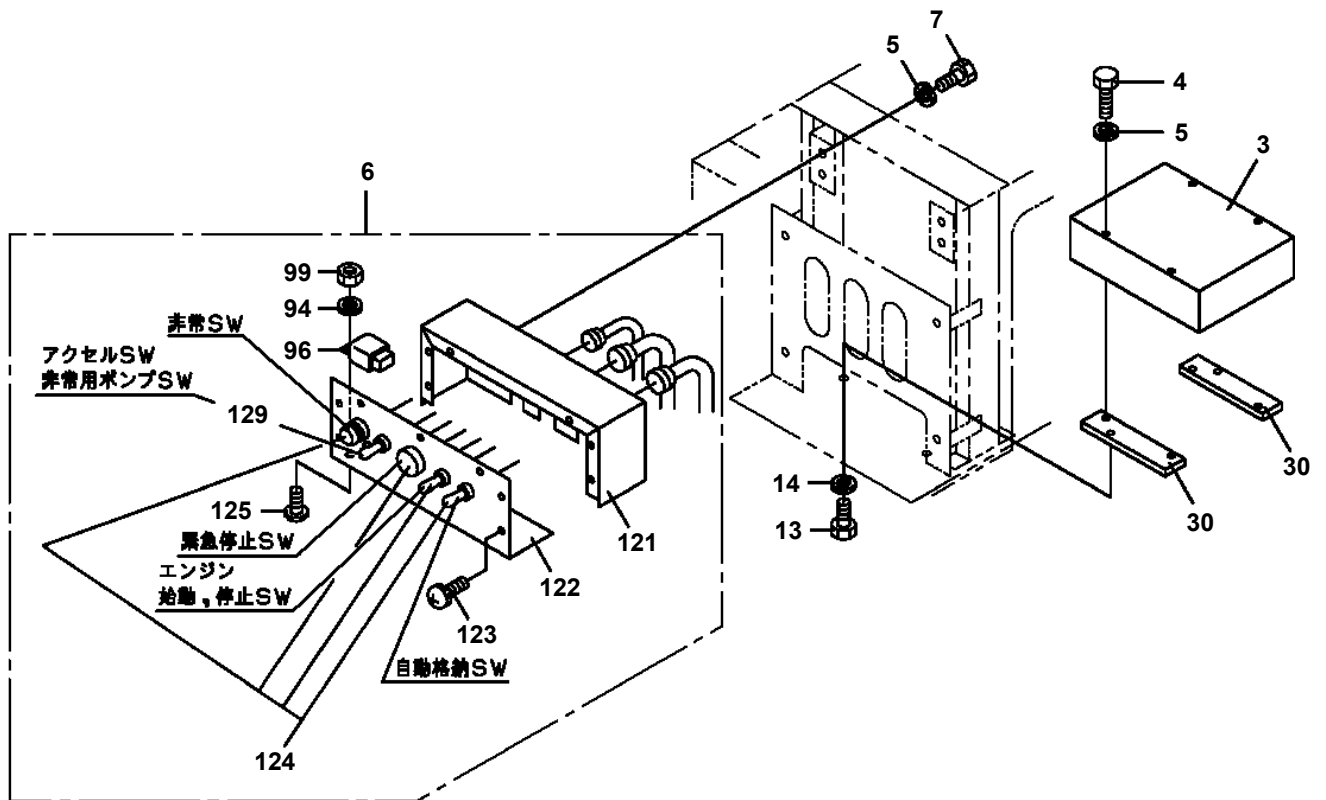
- Thank you very much for reading the preview of the manual.
- You can download the complete manual from: www.heydownloads.com by clicking the link below



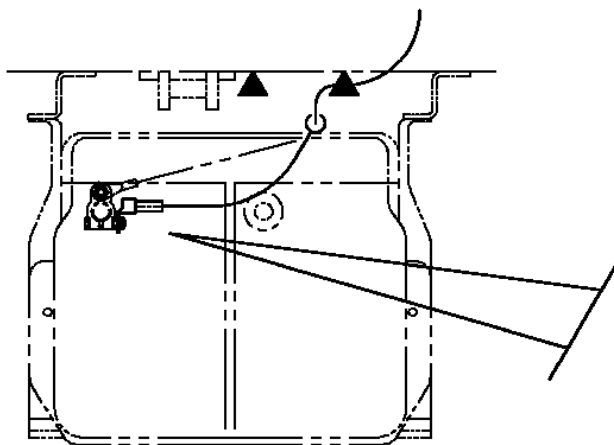
- Please note: If there is no response to CLICKING the link, please download this PDF first and then click on it.

CLICK HERE TO **DOWNLOAD** THE COMPLETE MANUAL

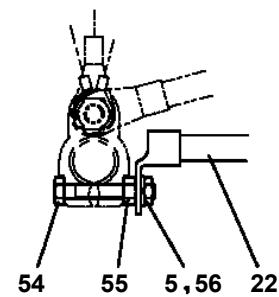
**AT-105-1 42055100005 UPPER
PN1011481-06 ELEC.ASSY (FRAME)**



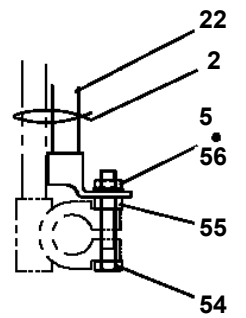
VIEW A



VIEW B

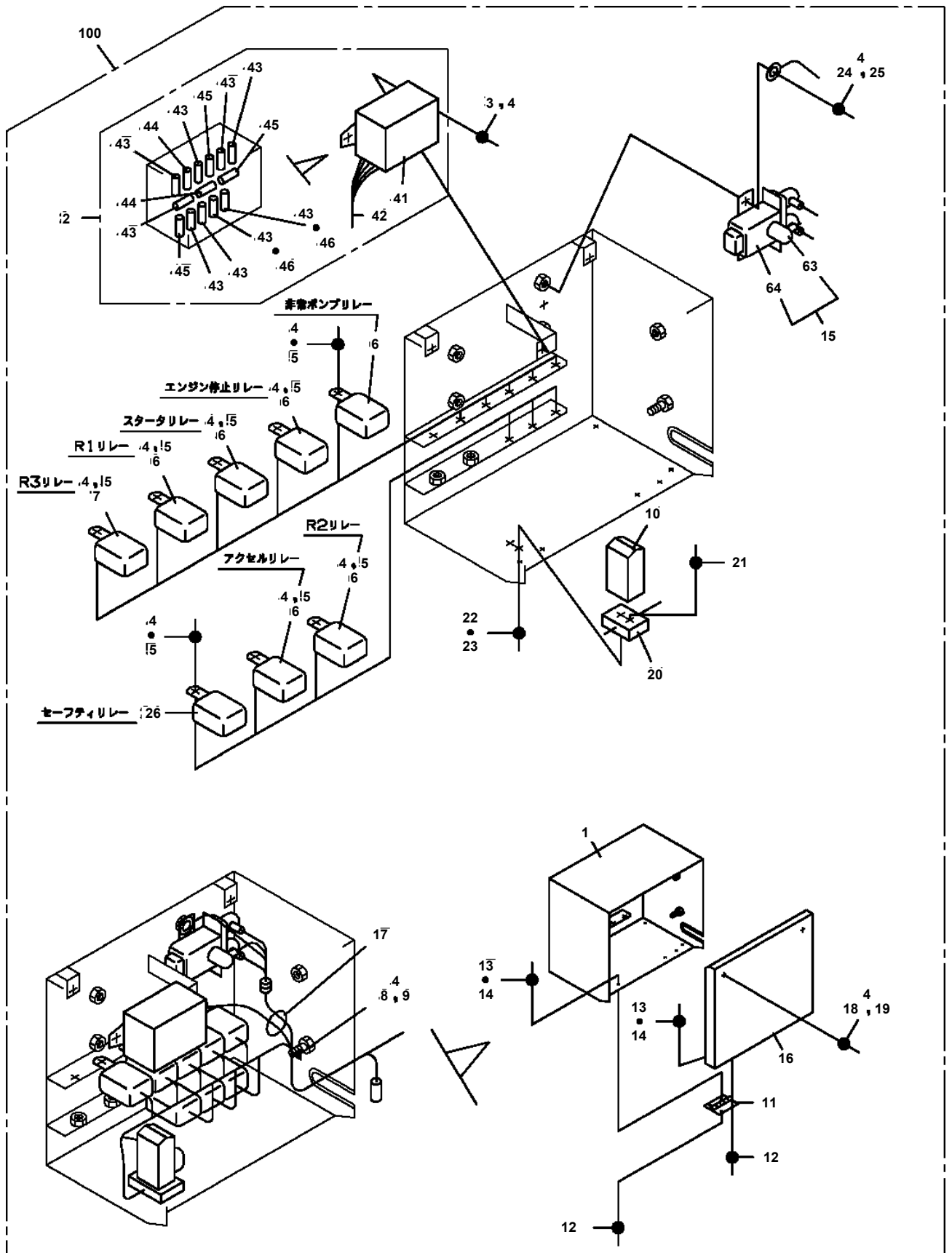


**三菱FE538
トヨタ/日野 BU102**

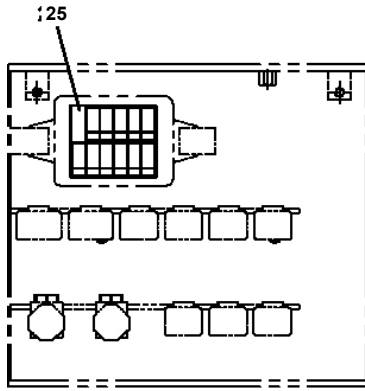


いすゞNKR66

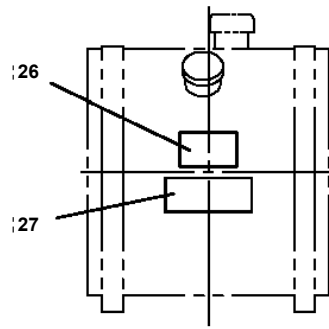
**AT-105-1 42055100005 UPPER
PN1110241-00 RELAY**



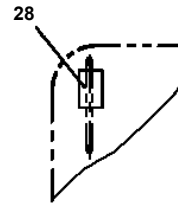
**AT-105-1 42055100005 UPPER
PO1012384-01 PLATE,INDICATION**



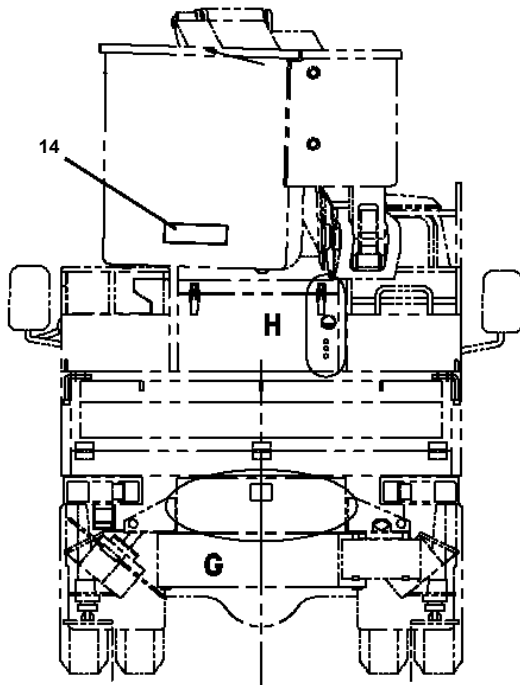
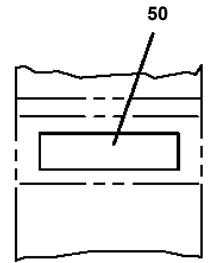
C



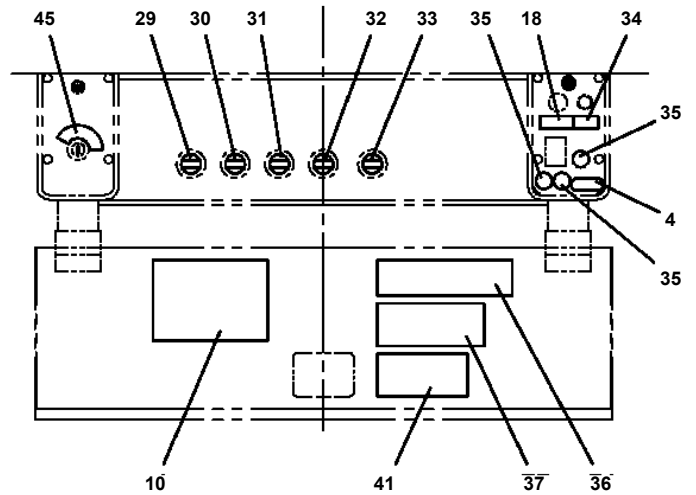
D



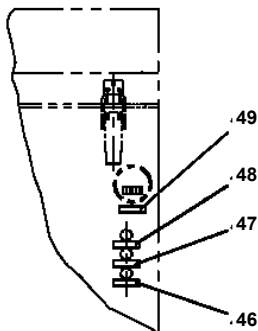
E



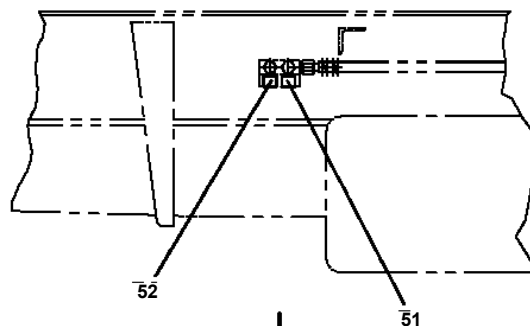
G



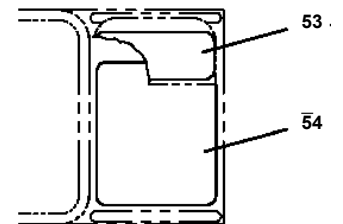
H



I

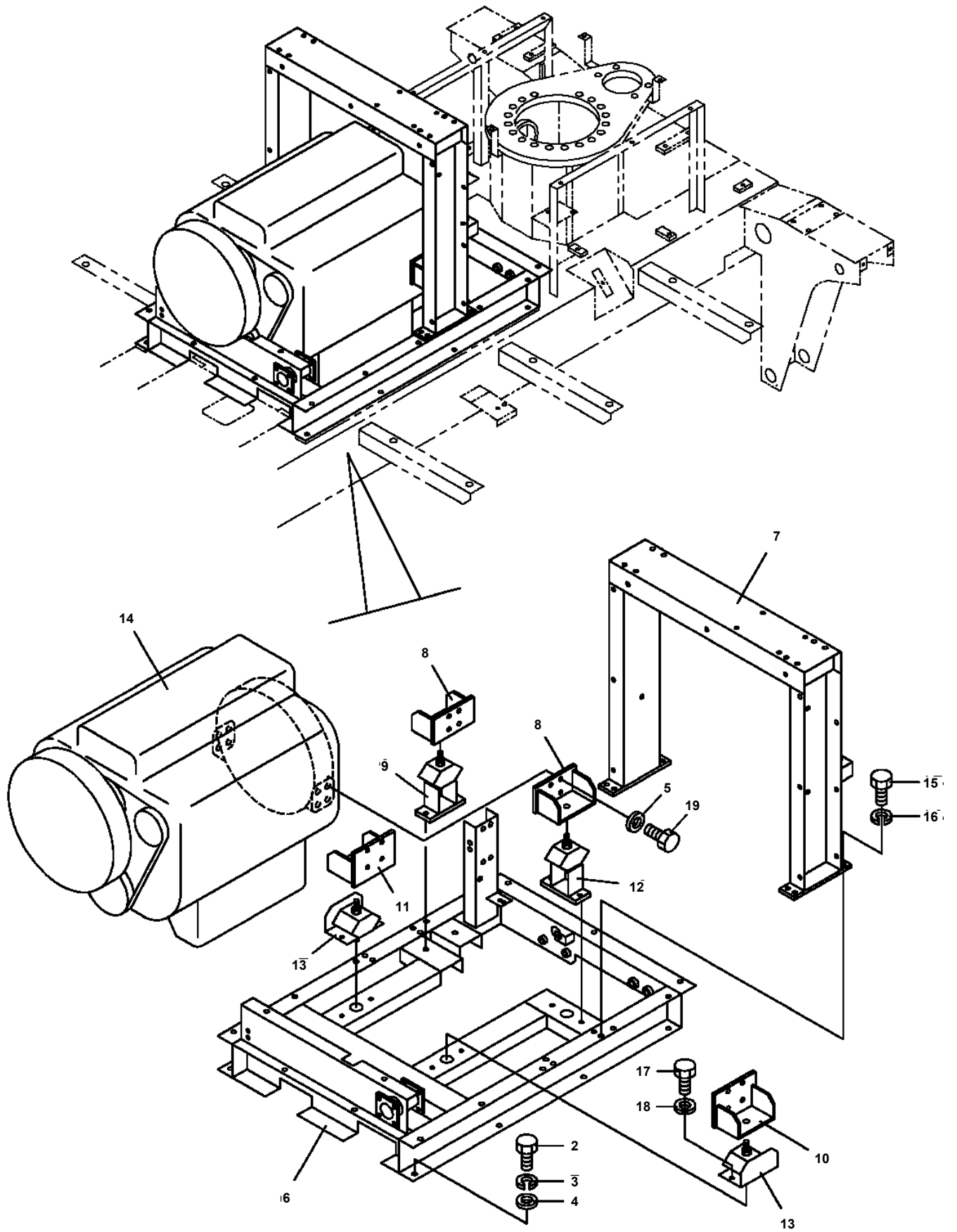


J



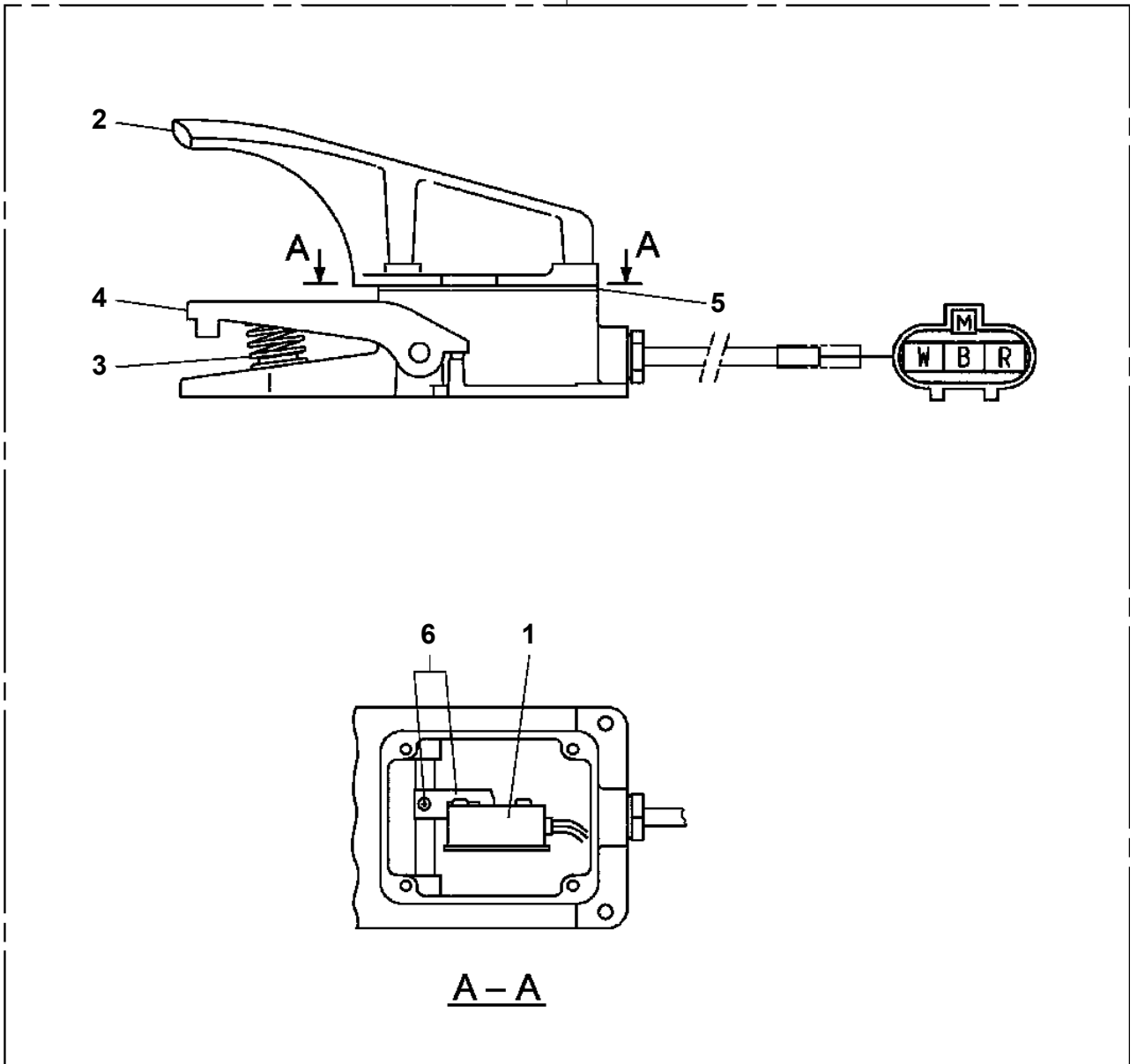
K

**AT-105-1 42055100005 UPPER
PQ1140064-01 POWER TRAIN**



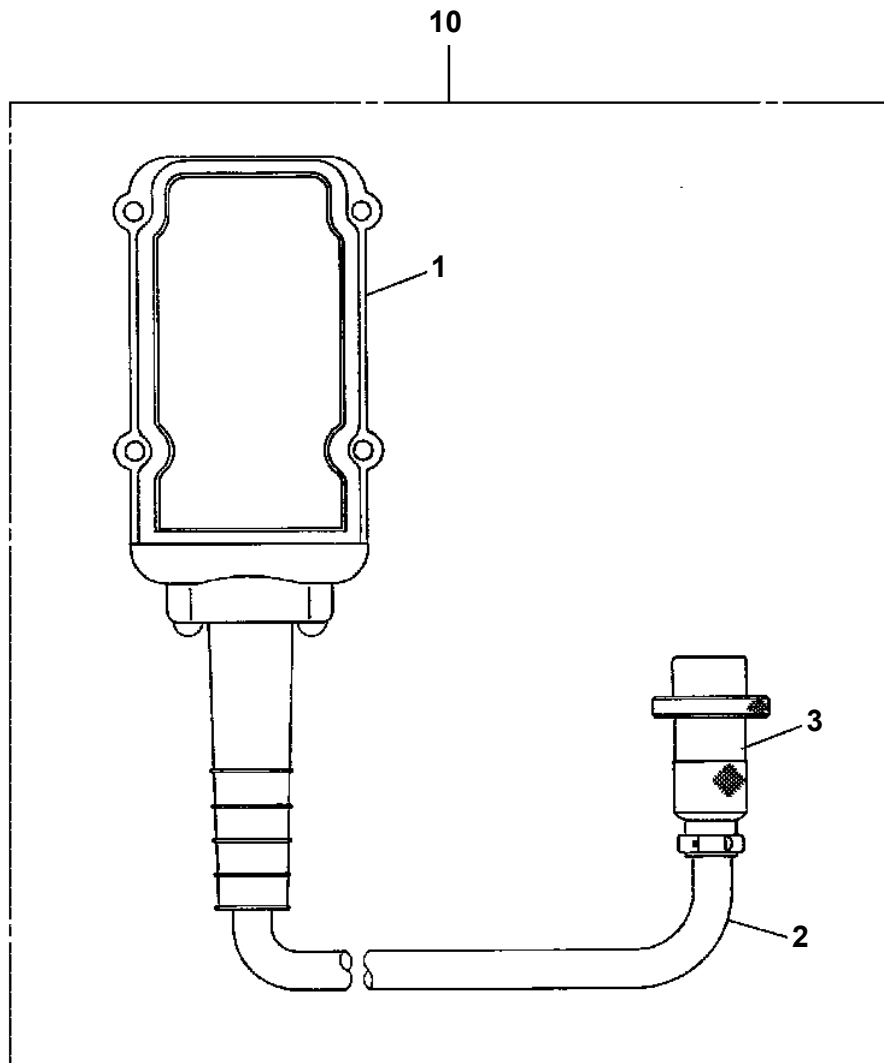
AT-105-1 42055100005 UPPER
PS5530450-00 SWITCH ASSY

100

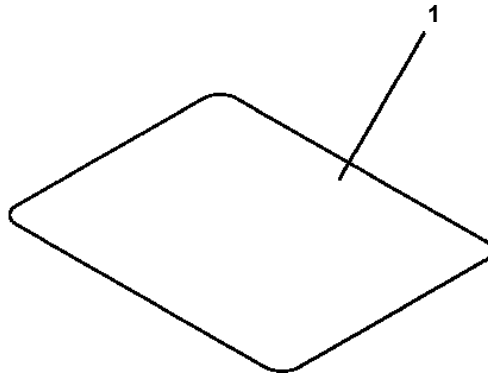


AT-105-1 42055100005 UPPER

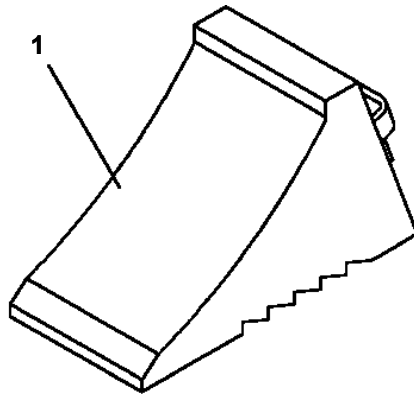
PV1030109-00 SWITCH BOX (ELECTRIC BOOSTER, 3M,NANABOSI,SINKOU DENKI)



**AT-105-1 42055100005 UPPER
PW1010251-00 ACCESSORIES (MAT/FOR SI BUCKET)**

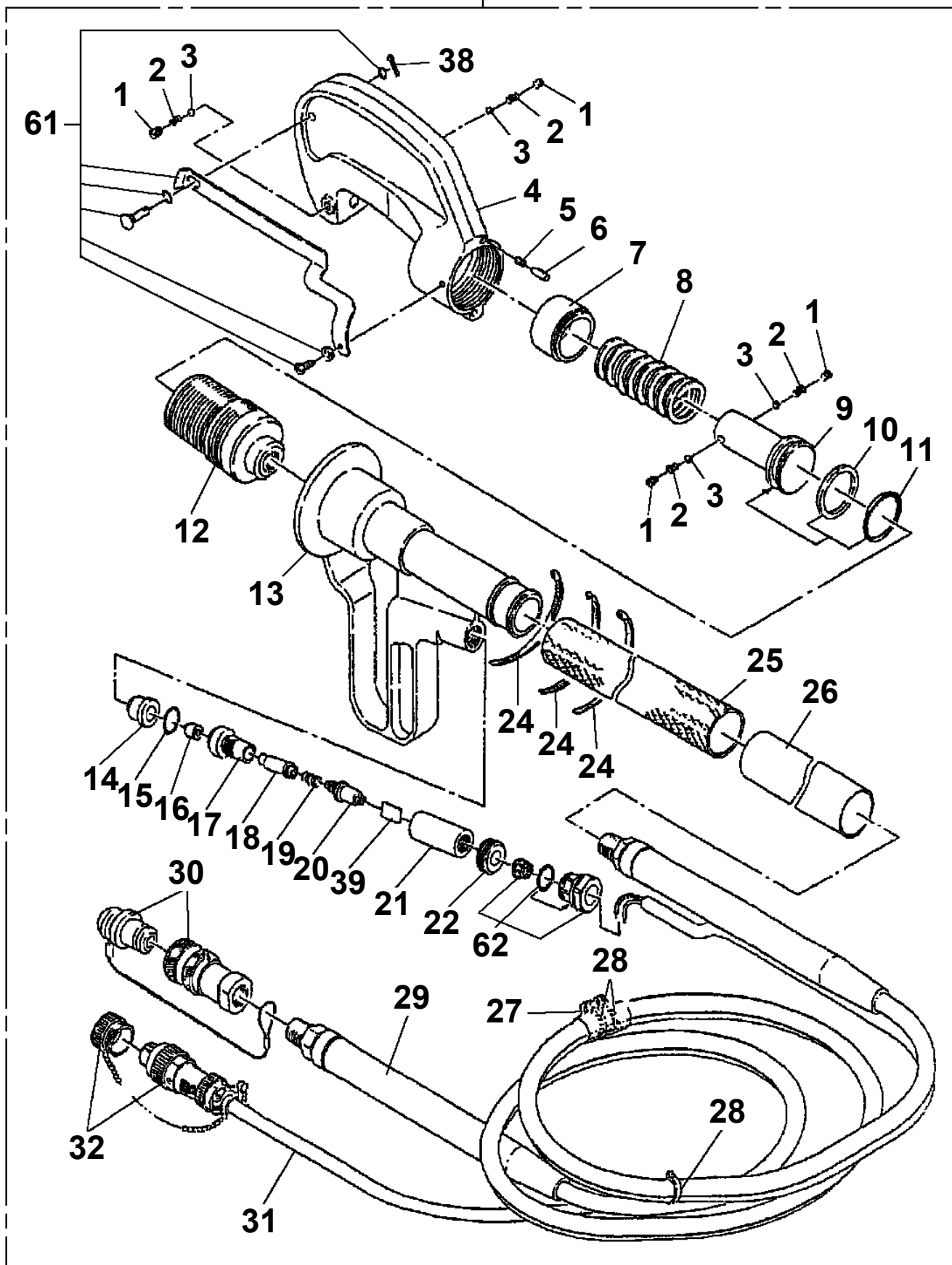


**AT-105-1 42055100005 UPPER
PW5110003-00 WEDGE (STOPPER FOR TIRE/NAKAMURA KIKI)**

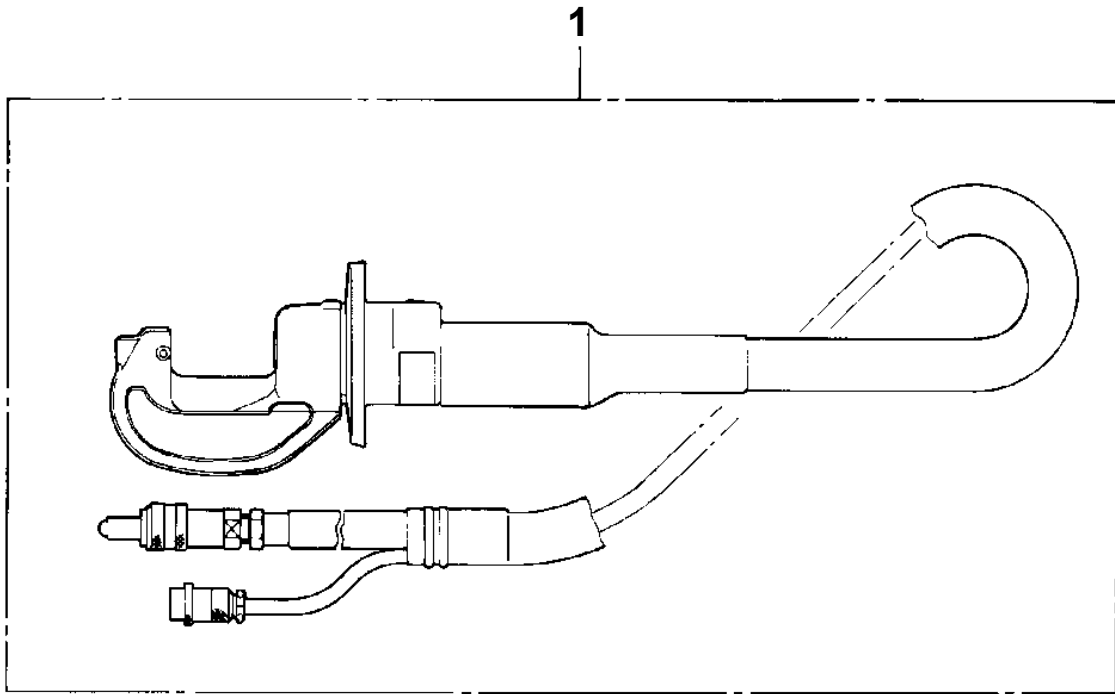


AT-105-1 42055100005 UPPER
PY1050001-01 CLAMP HEAD (IZUMI 8TON,2.5M)

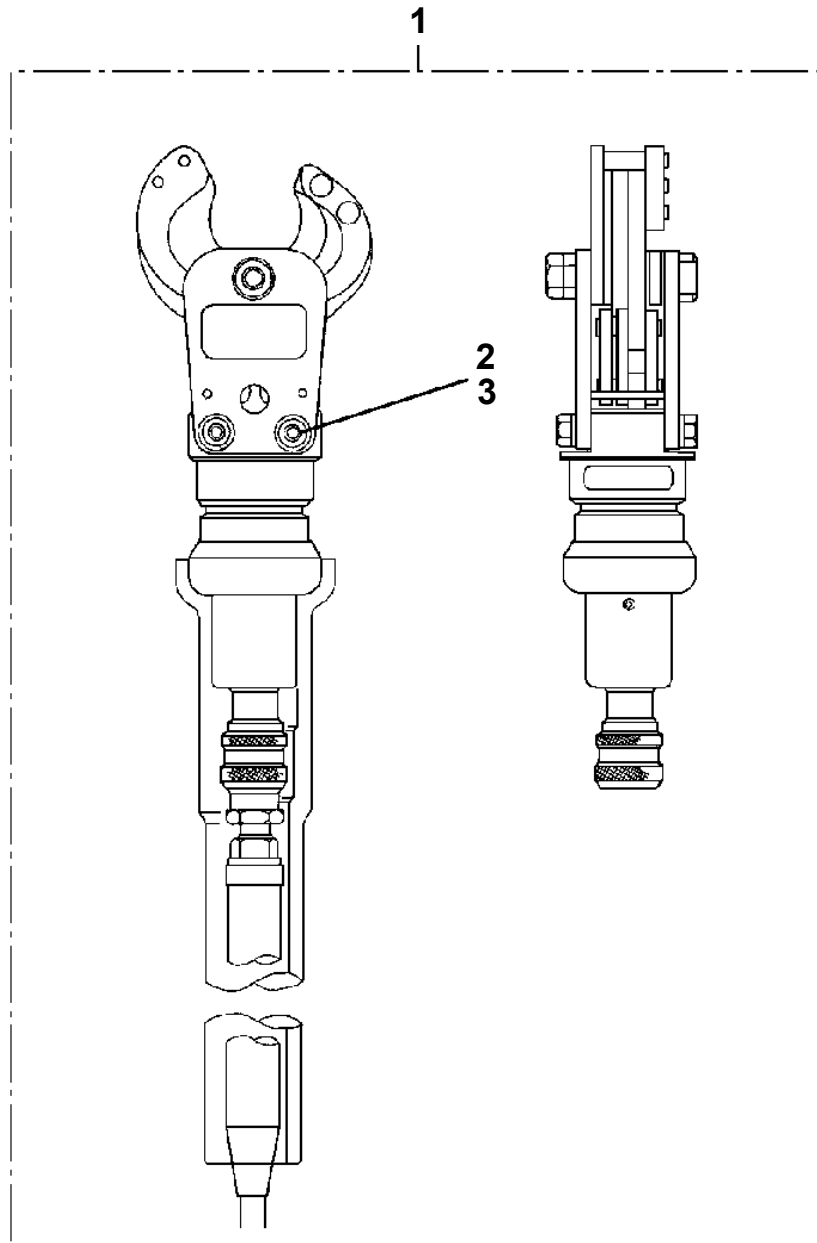
100



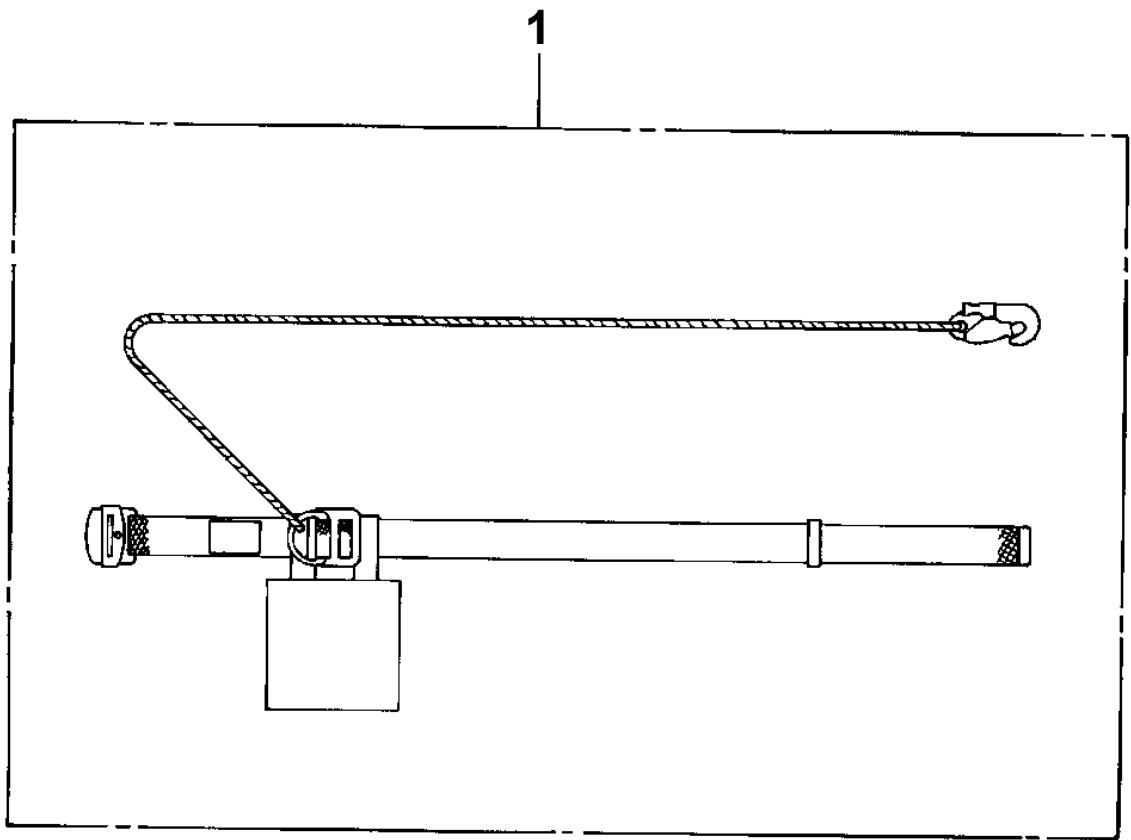
AT-105-1 42055100005 UPPER
PY1050006-00 CLAMP HEAD (IZUMI 7.5TON 3M ELECTRIC)



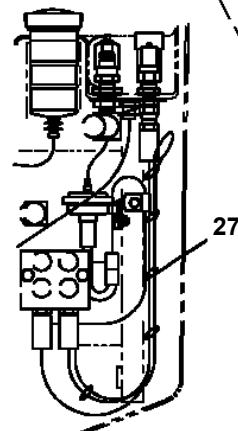
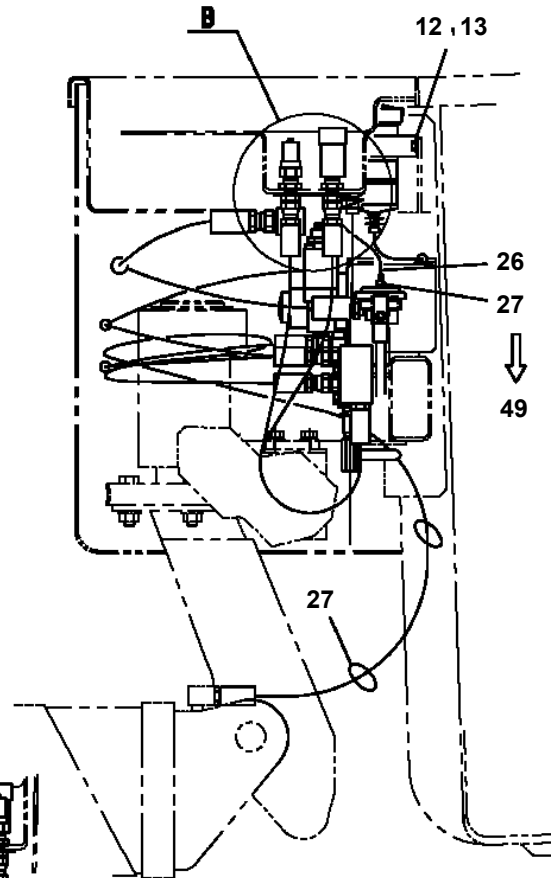
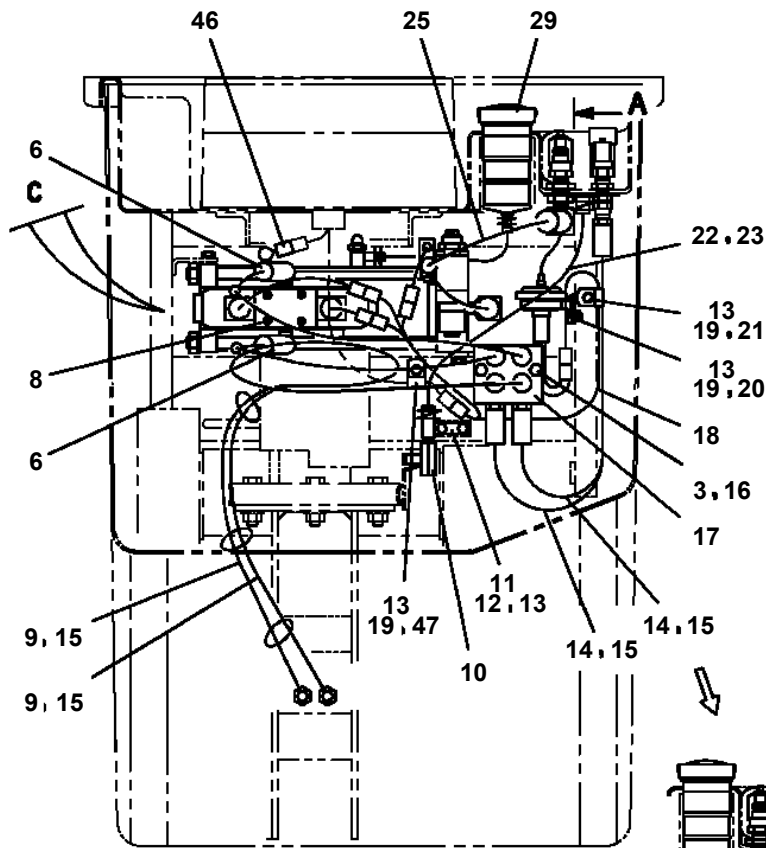
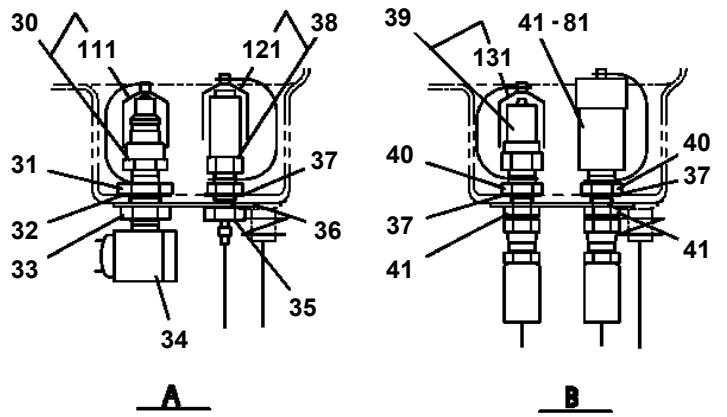
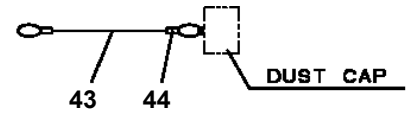
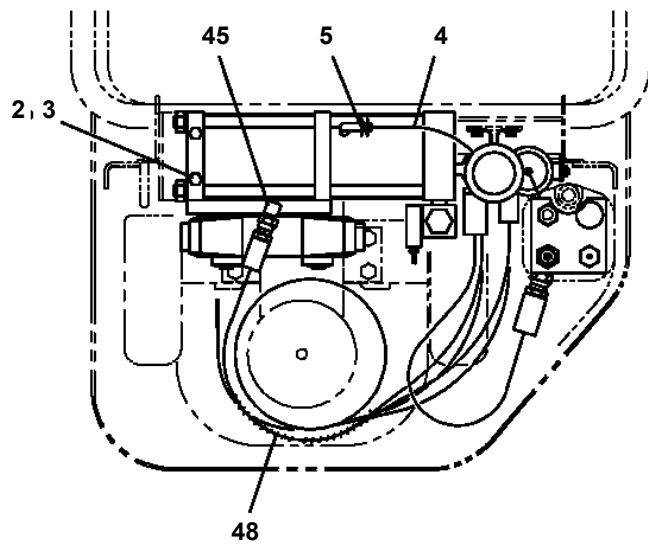
**AT-105-1 42055100005 UPPER
PY1060000-01 CUTTER HEAD (IZUMI 6.4TON AIR)**



AT-105-1 42055100005 UPPER
PY1090001-00 BELT, SAFETY



**AT-105-1 42055100005 UPPER
PY1160047-04 BOOSTER (AIR TYPE)**



AT-105-1 42055100005 UPPER

Pos No.	Parts No	Parts Name	Qty	Unit	Technical Data	Serial No (Start)	Serial No (End)	Remarks
1	42391620400	PLATE,NAME (100V OUTLET)	1					
2	82119422100	CONNECTOR	1					
3	80175304016	SCREW,MACHINE	2		M4X16			
4	37000557870	PLATE	1					
5	82100002008	CLAMP	1		WR12			
6	90201200600	NUT	1		M6			
7	90302040601	WASHER,SPRING	1		6			
8	82100001402	TERMINAL	2					
9	82100001221	INSULATOR	2					

AT-105-1 42055100005 UPPER

Pos No.	Parts No	Parts Name	Qty	Unit	Technical Data	Serial No (Start)	Serial No (E
1	80456210600	JOINT,SELF SEALING	1				
2	42470367750	HOSE ASSY	1		3M		
3	42470362100	JOINT,SELF SEALING	1				
4	42470367770	HOSE,AIR	1		3M		
5	42470362200	PUMP	1				
6	80456240600	JOINT,SELF SEALING (WITH DUST CAP)	1				
7	42470367840	TUBE	2		25X0.15M		
8	42470367780	JOINT	1				
21	42471437520	CAP	1				
50	42470362000	HOSE,BOOSTER	1		L=3000		

AT-105-1 42055100005 UPPER

Pos No.	Parts No	Parts Name	Qty	Unit	Technical Data	Serial No (Start)	Serial No (End)
5	80456210600	JOINT,SELF SEALING	2				
10	42472130000	HOSE,BOOSTER (FEMALE-FEMALE,5M)	1				

AT-105-1 42055100005 UPPER

Pos No.	Parts No	Parts Name	Qty	Unit	Technical Data	Serial No (Start)	Serial No
1	80456210600	JOINT,SELF SEALING	1				
2	42470367810	HOSE ASSY	1		8M		
3	42470362100	JOINT,SELF SEALING	1				
4	42470367820	HOSE,AIR	1		8M		
5	42470362200	PUMP	1				
6	80456240600	JOINT,SELF SEALING (WITH DUST CAP)	1				
7	42470367840	TUBE	2		25X0.15M		
8	42470367780	JOINT	1				
21	42471437520	CAP	1				
50	42470364000	HOSE,BOOSTER (WITH AIR BALLOON,8M)	1				

AT-105-1 42055100005 UPPER

Pos No.	Parts No	Parts Name	Qty	Unit	Technical Data	Serial No (Start)	Serial No (End)	Remarks
1	42472650000	HANGER (FOR BUCKET)	1					

CLICK HERE TO **DOWNLOAD** THE COMPLETE MANUAL

- Thank you very much for reading the preview of the manual.
- You can download the complete manual from: www.heydownloads.com by clicking the link below



- Please note: If there is no response to CLICKING the link, please download this PDF first and then click on it.

CLICK HERE TO **DOWNLOAD** THE COMPLETE MANUAL