

AW-370-1-81013 4 BOOM,WHEEL TYPE

PD2000202-00 SWING UNIT

PG2000261-00 BOOM UNIT

PH1000550-00 SAFETY DEVICES (MOTION CONTROLLER)

PJ3000509-00 BASKET SYSTEM

PO1000168-00 INDICATION PLATES

PQ2000006-00 ENGINE UNIT

PW1000118-00 ACCESSORIES & TOOLS

PX2000984-00 CARRIER UNIT

PY1001288-03 OPTIONS

ASSEMBLY

CLICK HERE TO **DOWNLOAD** THE COMPLETE MANUAL

- Thank you very much for reading the preview of the manual.
- You can download the complete manual from: www.heydownloads.com by clicking the link below



- Please note: If there is no response to CLICKING the link, please download this PDF first and then click on it.

CLICK HERE TO **DOWNLOAD** THE COMPLETE MANUAL

AW-370-1-81013 4 BOOM,WHEEL TYPE

Pos No.	Parts No	Parts Name	Qty	Unit	Technical Data	Serial No (Start)	Serial No (End)	Remarks	Pages
1	(*****)	PLATE ASSY,NAME	1						000127

AW-370-1-81013 4 BOOM,WHEEL TYPE

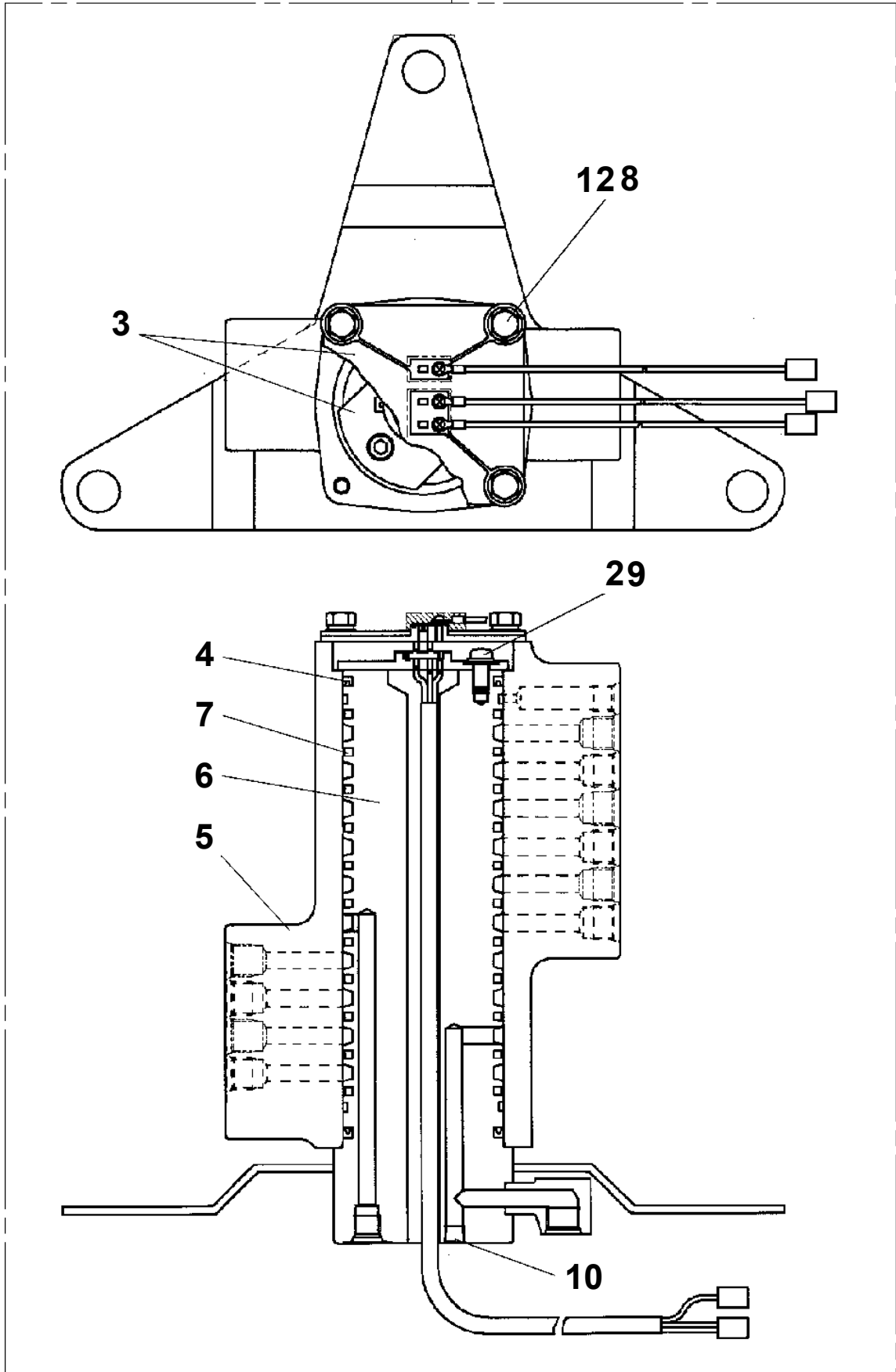
PB1100230-00 PUMP,HYDRAULIC
PB1100308-00 PUMP,HYDRAULIC (EMERGENCY)
PB1130113-03 TANK,OIL
PB1130253-01 TANK,OIL (MOUNT)
PB1200103-00 PIPING,SUCTION
PB1220182-01 PIPING,DELIVERY
PB1220183-00 PIPING,DELIVERY (INSULATOR)
PB1260142-03 PIPING,UPPER RETURN
PB1300321-00 JOINT,ROTARY
PB1300324-00 JOINT,ROTARY (MOUNT)
PB1320475-00 VALVE,MANUAL CONTROL
PB1320600-00 VALVE,MANUAL CONTROL
PB1320621-01 VALVE,MANUAL CONTROL
PB1400190-01 PIPING,UPPER (PUMP)
PB1400268-01 PIPING,UPPER (INSULATOR/EL.BASKET SWING)
PB1400272-02 PIPING,UPPER (B-SWING)
PB1410927-01 PIPING,LOWER (INSULATOR/TELES.,LEVELING)
PB1411616-02 PIPING,LOWER (CARRIER/HYDRAULIC)
PB1411618-02 PIPING,LOWER (SWING,TELES.,LEVELING)
PB1411619-03 PIPING,LOWER (CONTROL VALVE)
PC5290001-00 CLEANER,AIR
PD1010119-01 REDUCER,SWING SPEED
PD1010120-01 REDUCER,SWING SPEED (MOUNT)
PD1140034-00 LOCK,SWING FRAME
PE1010321-03 CYLINDER,ELEVATING
PE1050069-00 CYLINDER,LEVELING (MOUNT)
PE1050091-04 CYLINDER,LEVELING (LOWER)
PE1050092-02 CYLINDER,LEVELING (UPPER)
PE5021216-00 ELEC.ASSY
PE5210009-01 ENGINE ASSY
PF5100101-02 FRAME ASSY (ACTUATED WITH MOTOR/MITSUBISHI)
PG1010835-02 BOOM
PG1050317-01 CYLINDER,TELESCOPING
PG1130084-00 DETECTOR,BOOM LENGTH
PG1220127-02 PIPING,BOOM (TOP-2ND)
PG1220128-00 PIPING,BOOM (2ND-BASE)
PG1220163-01 PIPING,BOOM (INSULATOR/LOWER LEVELING)
PG1410060-04 COVER,BOOM
PG1410109-00 COVER,BOOM
PH1480062-00 MOTION CONTROLLER (AMC)
PH1540017-05 FOOT SWITCH(FLOOR MADE OF STEEL NETTING)
PH1550010-05 TOUCH SWITCH
PH5032559-00 HARNESS
PH5033772-00 HARNESS
PH5033773-00 HARNESS
PH5033774-00 HARNESS
PH5033775-00 HARNESS
PH5033776-00 HARNESS
PI1010097-03 MOTOR,HYDRAULIC
PI1100059-00 VALVE,RELIEF
PI1100060-01 VALVE,RELIEF
PI1100135-00 VALVE,RELIEF
PI1120094-02 VALVE,SOLENOID
PI1120240-02 VALVE,SOLENOID
PI1120353-00 VALVE,SOLENOID
PI1140012-00 VALVE,CHECK
PI1140014-00 VALVE,CHECK
PI1140015-00 VALVE,CHECK
PI1140068-00 VALVE,CHECK
PI1140133-01 VALVE,CHECK
PI1140143-00 VALVE,CHECK
PI1250015-01 VALVE,COUNTERBALANCE
PI1250016-01 VALVE,COUNTERBALANCE
PI1260011-02 CARTRIDGE, COUNTERBALANCE

AW-370-1-81013 4 BOOM,WHEEL TYPE

Pos No.	Parts No	Parts Name	Qty	Unit	Technical Data	Serial No (Start)	Serial No (End)	Remarks	Pages
1	90201201000	NUT	4		M10				000013
2	36101900000	TANK,OIL	1						
3	44420950100	BAND	2						
4	37000156770	PIN	2						
5	80136332025	PIN,SPLIT	4		3.2X25				

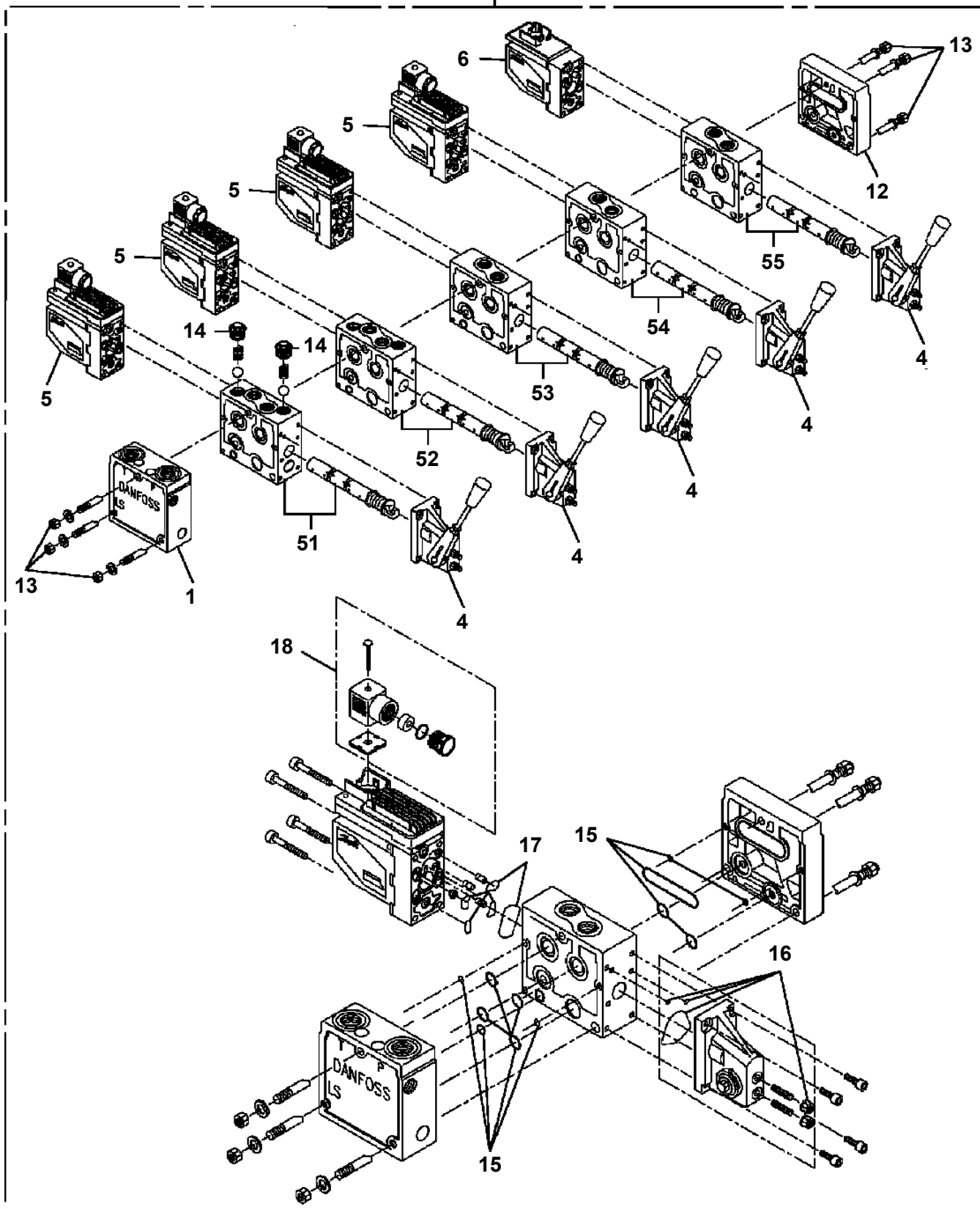
AW-370-1-81013 4 BOOM, WHEEL TYPE
PB1300321-00 JOINT, ROTARY

50



AW-370-1-81013 4 BOOM, WHEEL TYPE
 PB1320621-01 VALVE, MANUAL CONTROL

100



展開圖有

ILLUSTRATED BREAKDOWN NO.1, 52, 53, 54, 55

AW-370-1-81013 4 BOOM,WHEEL TYPE

Pos No.	Parts No	Parts Name	Qty	Unit	Technical Data	Serial No (Start)	Serial No (End)	Remarks	Pages
1	44471704020	TAPE	8	M					

AW-370-1-81013 4 BOOM,WHEEL TYPE

Pos No.	Parts No	Parts Name	Qty	Unit	Technical Data	Serial No (Start)	Serial No (End)	Re
1	37002409200	HOSE	1		L=1850			
2	82100001412	TUBE, SPIRAL	11	M	SE-12BK			
3	37000714030	CLAMP ASSY	1		18X1			
4	37000300750	SLEEVE	5		18-15			
6	90101210020	BOLT	4		M10X20			
7	90302041001	WASHER, SPRING	4		10			
8	80400160131	JOINT	1					
9	80430410450	JOINT	1					
10	44340915010	CLAMP	3					
11	90101208014	BOLT	10		M8X14			
12	90302040801	WASHER, SPRING	14		8			
14	90101208045	BOLT	3		M8X45			
15	37000714090	CLAMP ASSY	1		18X4			
16	80320030140	FITTING, ELBOW	6		KLE18-040N			
17	37002452710	HOSE	1		L=960 TO 980			
18	37002451540	HOSE	1		L=650			
19	37002413460	HOSE	1		L=950			
20	37002481540	HOSE	1		L=760			
21	36601260000	VALVE, COUNTERBALANCE	2					
22	80320030075	FITTING, ELBOW	5		KLE12-020N			
23	37000711180	CLAMP ASSY	1		18X3			
24	37000300740	SLEEVE	1		18-12			
25	81408000241	PIPE, STEEL	1	M	18X1.9T			
26	81408000241	PIPE, STEEL	2	M	18X1.9T			
27	81408000160	PIPE, STEEL	1	M	12X1.4T			
28	81408000160	PIPE, STEEL	1	M	12X1.4T			
29	80302090281	FITTING	1		KCO22-060N			
30	91810130250	FASTENER	10					
31	37002439750	HOSE <L=1625.	2					
32	80400160127	JOINT	2					
33	37002436720	HOSE	2		L=1850			
34	37000918830	JOINT	2					
35	81408000241	PIPE, STEEL	1	M	18X1.9T			
36	81408000160	PIPE, STEEL	2	M	12X1.4T			
37	81408000241	PIPE, STEEL	2	M	18X1.9T			
38	81408000160	PIPE, STEEL	2	M	12X1.4T			
39	37002410940	HOSE	1		L=1220			
40	37000714020	CLAMP ASSY	1		12X2			
41	80320010075	FITTING	1		KUD12-020N			
42	80320010140	FITTING	2		KUD18-040N			
43	37002408400	HOSE	1		L=1000			
45	37002451020	HOSE	2		L=1030			
46	42640140020	ORIFICE	2					
47	37002451030	HOSE	1		L=600			
48	37002435610	HOSE	2		L=530			
49	37002451860	HOSE	1		L=730			
50	80303130241	FITTING, ELBOW	1		KLO18-040E			
51	80303130281	FITTING, ELBOW	1		KLO22-060E			
52	37002410040	HOSE	1		L=800			
53	37002413400	HOSE	1		L=710			
54	44340915020	CLAMP	2					
55	37002418110	HOSE	1		L=1060			
56	91810132530	FASTENER	10					
57	37000601120	CLAMP	1					
58	37000601420	CUSHION	2		18X2			
59	90201200800	NUT	1		M8			
60	37000601430	CUSHION	2		28X2			
61	37000601130	CLAMP	1					
62	80456110810	JOINT, SELF SEALING	1					
63	80456120810	JOINT, SELF SEALING	1					
64	80456110410	JOINT, SELF SEALING (SOCKET)	2					
65	80456120410	JOINT, SELF SEALING (PLUG)	2					
66	91002801800	O-RING	2		1B P18			

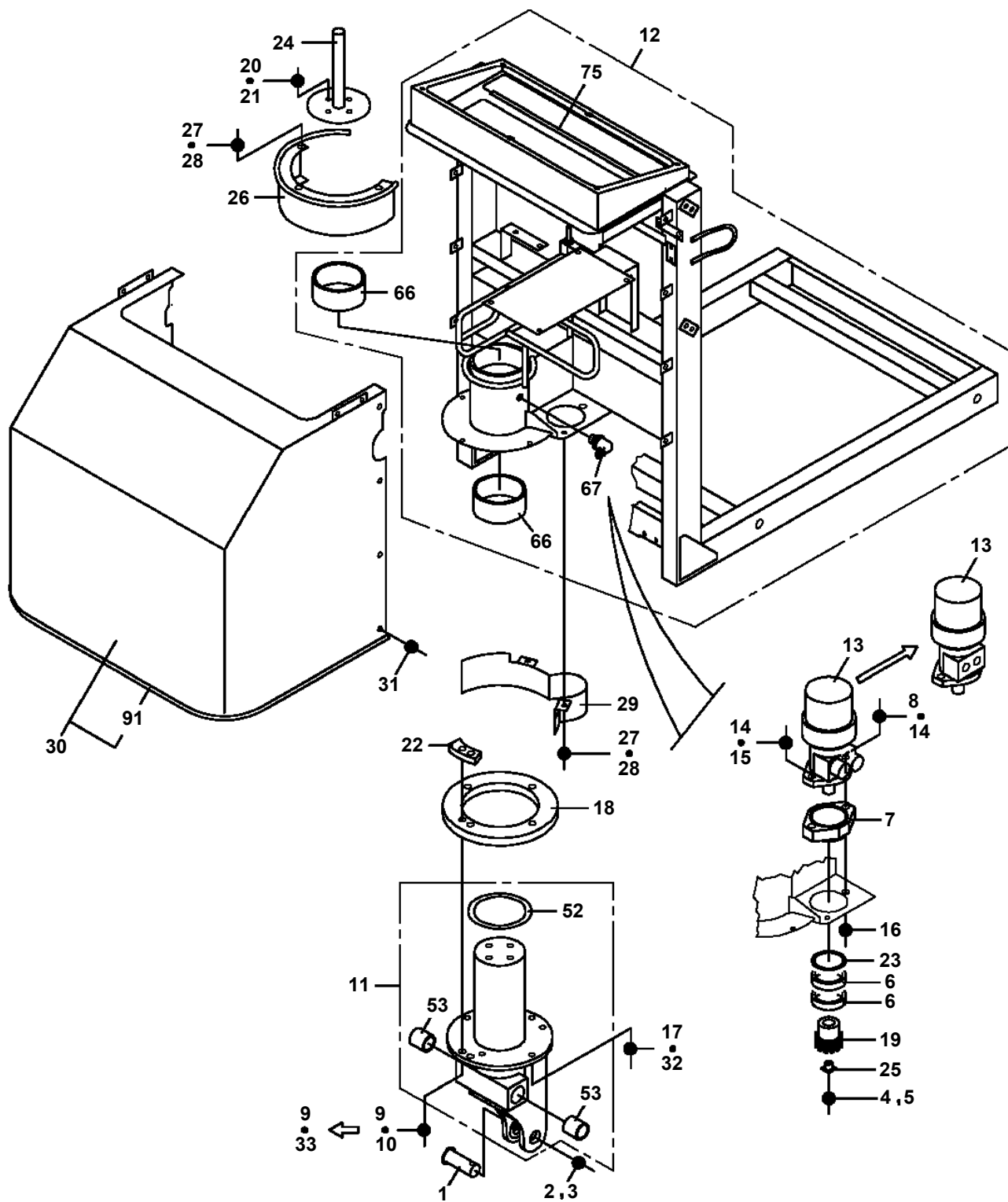
AW-370-1-81013 4 BOOM,WHEEL TYPE

Pos No.	Parts No	Parts Name	Qty	Unit	Technical Data	Serial No (Start)	Serial No (End)	Remark
2	44420077510	ELEMENT	1		D=131,L=279			
3	44420077520	BOLT ASSY (WITH GASKET)	1					
4	44420077530	BAFFLE	1					
5	44420077540	CUP ASSY	1					
6	44420077550	CLAMP ASSY	1					
7	35520017580	CAP (NIPPLE)	1					
100	44420070030	CLEANER,AIR	1					

AW-370-1-81013 4 BOOM,WHEEL TYPE

Pos No.	Parts No	Parts Name	Qty	Unit	Technical Data	Serial No (Start)	Serial No (End)	Rem
1	36025360000	CYLINDER,LEVELING (UPPER)	1					
2	44490171000	CYLINDER,LEVELING (LOWER)	1					
3	36624110000	VALVE,CHECK	1					
4	90131510050	BOLT,HEXAGON SOCKET	4		M10X50			

**AW-370-1-81013 4 BOOM, WHEEL TYPE
PF5100101-02 FRAME ASSY (ACTUATED WITH MOTOR/MITSUBISHI)**



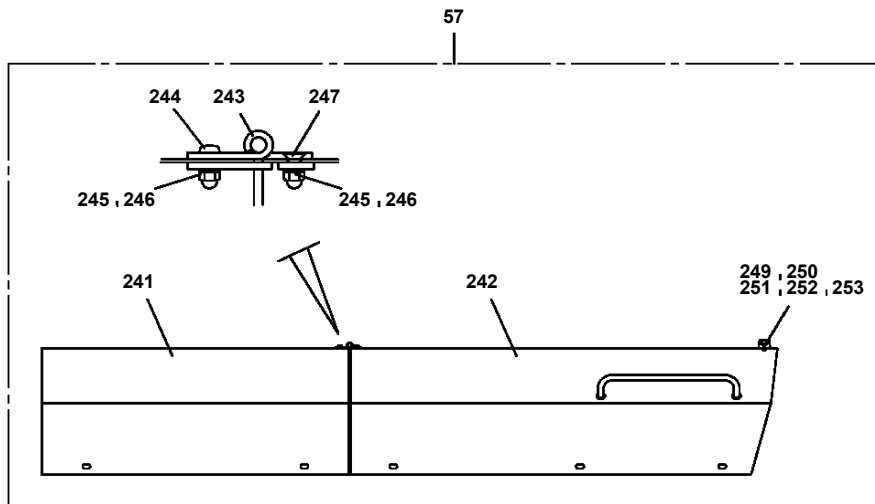
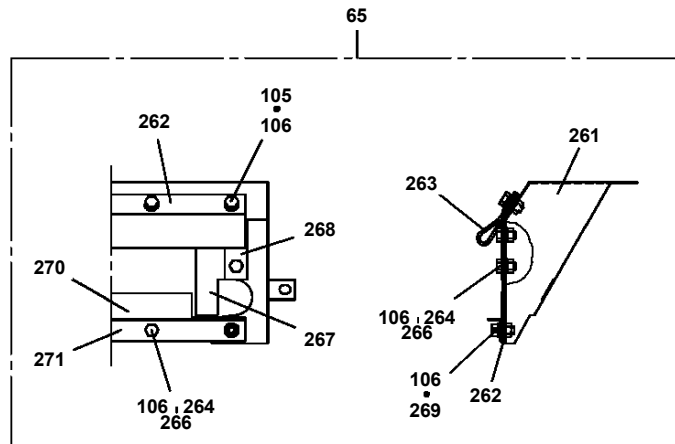
AW-370-1-81013 4 BOOM,WHEEL TYPE

Pos No.	Parts No	Parts Name	Qty	Unit	Technical Data	Serial No (Start)	Serial No (End)	Remark
1	36015650000	CYLINDER,TELESCOPING	1					
2	36621380000	VALVE,CHECK	1					
3	36601110001	VALVE,COUNTERBALANCE	1					
4	90131510140	BOLT,HEXAGON SOCKET	4		M10X140			
5	90302041001	WASHER,SPRING	4		10			
6	90202401600	NUT	2		M16			
7	90102516120	BOLT	2		M16X120			
12	80720105025	PIN,SPRING	1		5X25			
13	16416011000	NUT (PISTON)	1					
14	91302212500	BEARING,PLAIN	2					
15	91684112501	PACKING	2					
16	91431211001	RING,BACKUP (BLACK)	1					
17	36010474001	PISTON	1					
18	91411211001	RING,BACKUP	1					
19	91002908500	O-RING	1		1B G85			
20	36015652000	ROD	1					
21	91002912500	O-RING	1		1B G125			
22	36010476001	COVER,ROD	1					
23	36010476100	SUPPORT	1					
24	91251101050	RING,DAMPER	1					
25	91694110500	PACKING	1					
26	91410210502	RING,BACKUP (WHITE)	1					
27	91301110500	BEARING,PLAIN	1					
28	91660010502	SEAL,DUST	1					
29	80720104032	PIN,SPRING	2		4X32			
30	18616057000	COLLAR	2		L=5			
31	37001100380	ROLLER ASSY	2					
32	36010090600	PLATE	1					
33	16616016000	PLATE	1					
34	59457138000	PLUG ASSY	1					
41	80516006204	BEARING,BALL	2					
42	80602110470	RING,RITAINING	2		R47			
50	36015658810	CYLINDER ASSY	1					
61	36015409900	PACKING SET	1		105X125			

AW-370-1-81013 4 BOOM,WHEEL TYPE

Pos No.	Parts No	Parts Name	Qty	Unit	Technical Data	Serial No (Start)	Serial No (End)	R
86	90101210022	BOLT	16		M10X22			
87	90302041001	WASHER,SPRING	22		10			
88	44340932201	GUIDE	1					
89	80601110200	RING,RITAINING	2		S20			
90	37001101970	ROLLER	2					
91	44340932800	GUIDE	1					
92	90101510028	BOLT	6		M10X28			
93	90303071001	WASHER,PLAIN	6		10			
94	44340932150	COVER	3					
95	44340932160	COVER	1					
96	90201701000	NUT	6		M10			
111	44340932500	BEAR,CABLE	1					
121	44340932950	PLATE,SLIDE	14			HE0221		
	44340932910	PLATE,SLIDE	14				HE0220	
122	90180206010	BOLT,BUTTON	54		M6X10	HE0221		
	90101206008	BOLT	54		M6X8		HE0220	
123	44340932920	PLATE,SLIDE	4				HE0220	
	44340932960	PLATE,SLIDE	4			HE0221		
124	44340932930	PLATE,SLIDE	6					
125	80185806014	SCREW,MACHINE	30		M6X14			
126	44340932940	PLATE,SLIDE	6					
127	90201200600	NUT	20		M6			
128	90303070601	WASHER,PLAIN	20		6			
129	37002009610	PLATE,SLIDE	2					
130	80182806008	SCREW,MACHINE	2		M6X8			
141	91071011500	O-RING	2		Y22550-115-A			
142	91470000600	RING,BACKUP	2		Y22021-06			

**AW-370-1-81013 4 BOOM, WHEEL TYPE
PG1410109-00 COVER, BOOM**



AW-370-1-81013 4 BOOM,WHEEL TYPE

Pos No.	Parts No	Parts Name	Qty	Unit	Technical Data	Serial No (Start)	Serial No (End)	Remarks	Pages
100	42346370210	HARNESS	1						

AW-370-1-81013 4 BOOM,WHEEL TYPE

Pos No.	Parts No	Parts Name	Qty	Unit	Technical Data	Serial No (Start)	Serial No (End)	Remarks	Pages
1	44473154800	HARNESS	1		L=300				

AW-370-1-81013 4 BOOM,WHEEL TYPE

Pos No.	Parts No	Parts Name	Qty	Unit	Technical Data	Serial No (Start)	Serial No (End)	Remarks
1	36642765010	NUT	2					
2	91001102100	O-RING	2		1A P21			
3	36642765020	CORE ASSY (SOLENOID)	2					
4	36642775010	COIL,SOLENOID	2					
5	36642765080	SPRING	2					
6	36642765040	PACKING	2					
7	36642765050	O-RING	2					
8	36642765060	WASHER (CENTER)	2					
10	91000501200	O-RING	4					
50	36643220000	VALVE,SOLENOID	1					

AW-370-1-81013 4 BOOM,WHEEL TYPE

Pos No.	Parts No	Parts Name	Qty	Unit	Technical Data	Serial No (Start)	Serial No (End)	Remarks	Pages
1	36620571000	PLUG	1						
2	91002802600	O-RING	2		1B P26				
4	91411002000	RING,BACKUP	1		P20				
5	91002802000	O-RING	1		1B P20				
8	59155306000	SPRING	1						
9	36620575000	PLUG	1						
11	91002801800	O-RING	1		1B P18				
12	91002802400	O-RING	1		1B P24				
30	36621380000	VALVE,CHECK	1						

AW-370-1-81013 4 BOOM,WHEEL TYPE

Pos No.	Parts No	Parts Name	Qty	Unit	Technical Data	Serial No (Start)	Serial No (End)	Remarks	Pages
1	36624110100	BODY	1						
2	36624110200	PLUG	2						
3	36624110300	SEAT	2						
4	12515186000	SPRING	2						
5	36624110501	PLUNGER	2						
6	36624110600	PISTON	1						
7	91001101200	O-RING	2		1A P12				
8	91001101800	O-RING	2		1A P18				
10	36624111000	PACKING	2						
11	91066101200	O-RING	1		P12				
50	36624560000	VALVE,CHECK	1						

AW-370-1-81013 4 BOOM,WHEEL TYPE

Pos No.	Parts No	Parts Name	Qty	Unit	Technical Data	Serial No (Start)	Serial No (End)	Remarks	Pages
2	36672055020	CASE (LOWER)	1						
8	91002908000	O-RING	1		1B G80				
9	91001103200	O-RING	2		1A P32				
10	91002801100	O-RING	1		1B P11				
11	91002801800	O-RING	1		1B P18				
12	91001101400	O-RING	1		1A P14				
13	91410108000	RING,BACKUP	1		T3 G80				
21	36672055030	ELEMENT KIT	1						
30	36672050000	FILTER,OIL	1						

AW-370-1-81013 4 BOOM,WHEEL TYPE

Pos No.	Parts No	Parts Name	Qty	Unit	Technical Data	Serial No (Start)	Serial No (End)	Remarks	Pa
1	44330650101	GUARD	1			HE0144			
	44330650100	GUARD	1				HE0143		
2	90190208016	BOLT	6		M8X16		HE0300		
3	90302510801	WASHER,SPRING (8)	6				HE0300		
4	90303520801	WASHER,PLAIN	6		8		HE0300		
5	44330651001	LEVER,CONTROL	1			HE0150			000
	44330651000	LEVER,CONTROL	1				HE0149		000
6	80192486016	SCREW,MACHINE	6		M6X16				
12	99172108016	BOLT,TAPPING	6		M8X16	HE0301			

AW-370-1-81013 4 BOOM,WHEEL TYPE

Pos No.	Parts No	Parts Name	Qty	Unit	Technical Data	Serial No (Start)	Serial No (End)	Remarks
1	37000153170	PIN	1					
2	90303073001	WASHER,PLAIN	1		30			
3	80136363063	PIN,SPLIT	1		6.3X63			
4	90302040801	WASHER,SPRING	1		8			
5	90171108035	BOLT	1		M8X35			
6	80516006009	BEARING,BALL	2					
7	44260540100	SUPPORT	1					
8	90131712070	BOLT,HEXAGON SOCKET	1		M12X70			
9	90171112045	BOLT	2		M12X45			
10	42260010200	WASHER	2				HE0300	
11	44260542000	POST ASSY	1					
12	44261141000	FRAME	1					
13	36662360000	MOTOR,HYDRAULIC	1				HE0216	
	36662360001	MOTOR ASSY,OIL	1			HE0217		
14	90309341203	WASHER,SPRING	2		12			
15	90131712055	BOLT,HEXAGON SOCKET	1		M12X55			
16	90201701200	NUT	1		M12			
17	90171112028	BOLT	3		M12X28			
18	44260545400	GEAR	1					
19	44260540200	GEAR	1					
20	90101210020	BOLT	4		M10X20			
21	90302041001	WASHER,SPRING	4		10			
22	44260545600	PLATE	1					
23	44260540300	SPACER	1					
24	44260545700	SUPPORT	1					
25	44260540400	STOPPER	1					
26	44260545100	COVER	1					
27	90101206010	BOLT	5		M6X1.0			
28	90302040601	WASHER,SPRING	5		6			
29	44260545200	COVER	1					
30	44261140100	COVER	1					
31	99172108016	BOLT,TAPPING	6		M8X16			
33	37000586760	WASHER,PLAIN	3		12			
34	44261140010	PLATE	1			HE0301		
52	44260470010	BEARING,PLAIN	1					
53	80801003540	BEARING,PLAIN	2					
66	80801011050	BEARING,PLAIN	2					
69	82458202000	NIPPLE,GREASE	1		B-TYPE PT1/8			
81	82420100813	TRIM	2	M				

CLICK HERE TO **DOWNLOAD** THE COMPLETE MANUAL

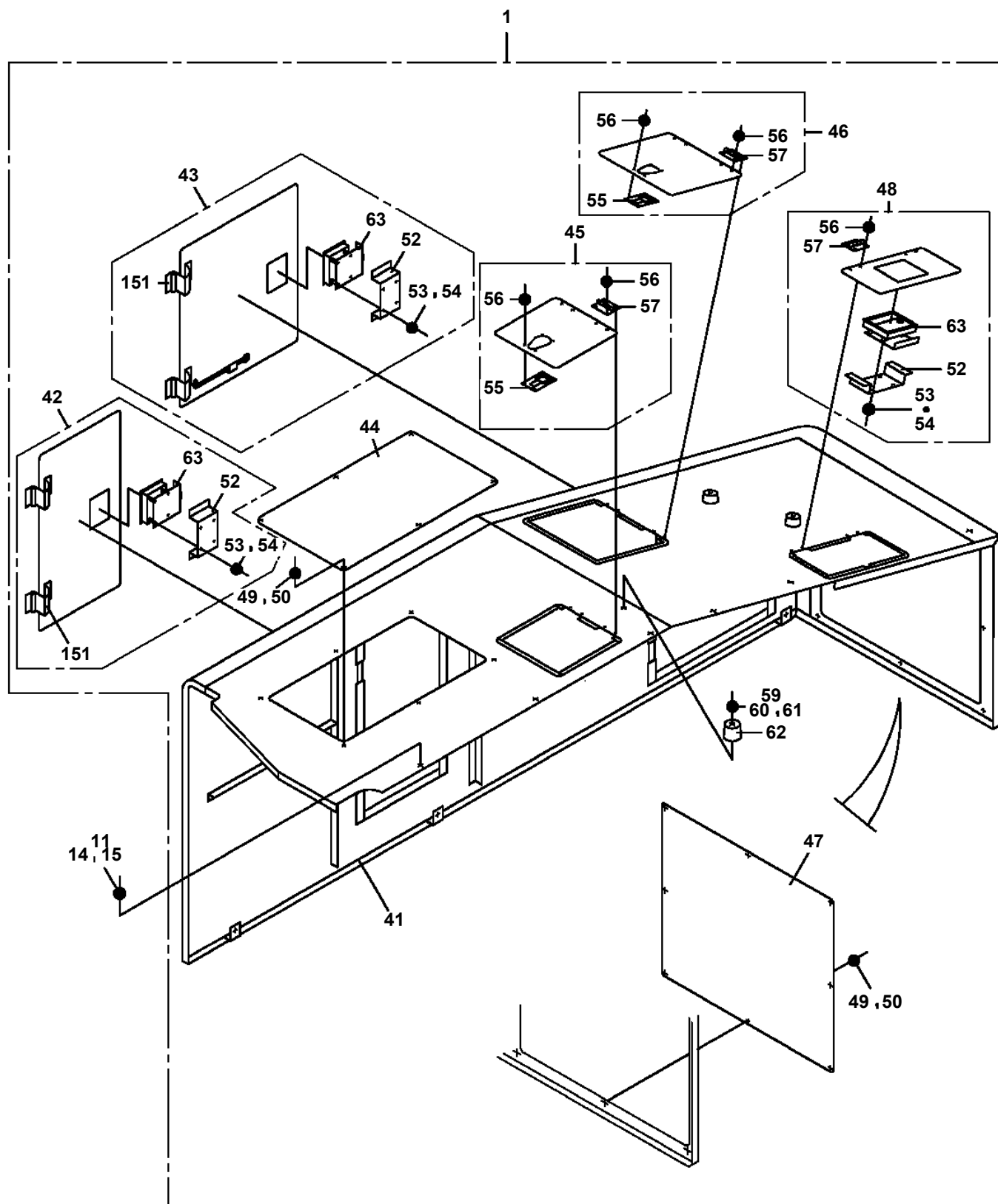
- Thank you very much for reading the preview of the manual.
- You can download the complete manual from: www.heydownloads.com by clicking the link below



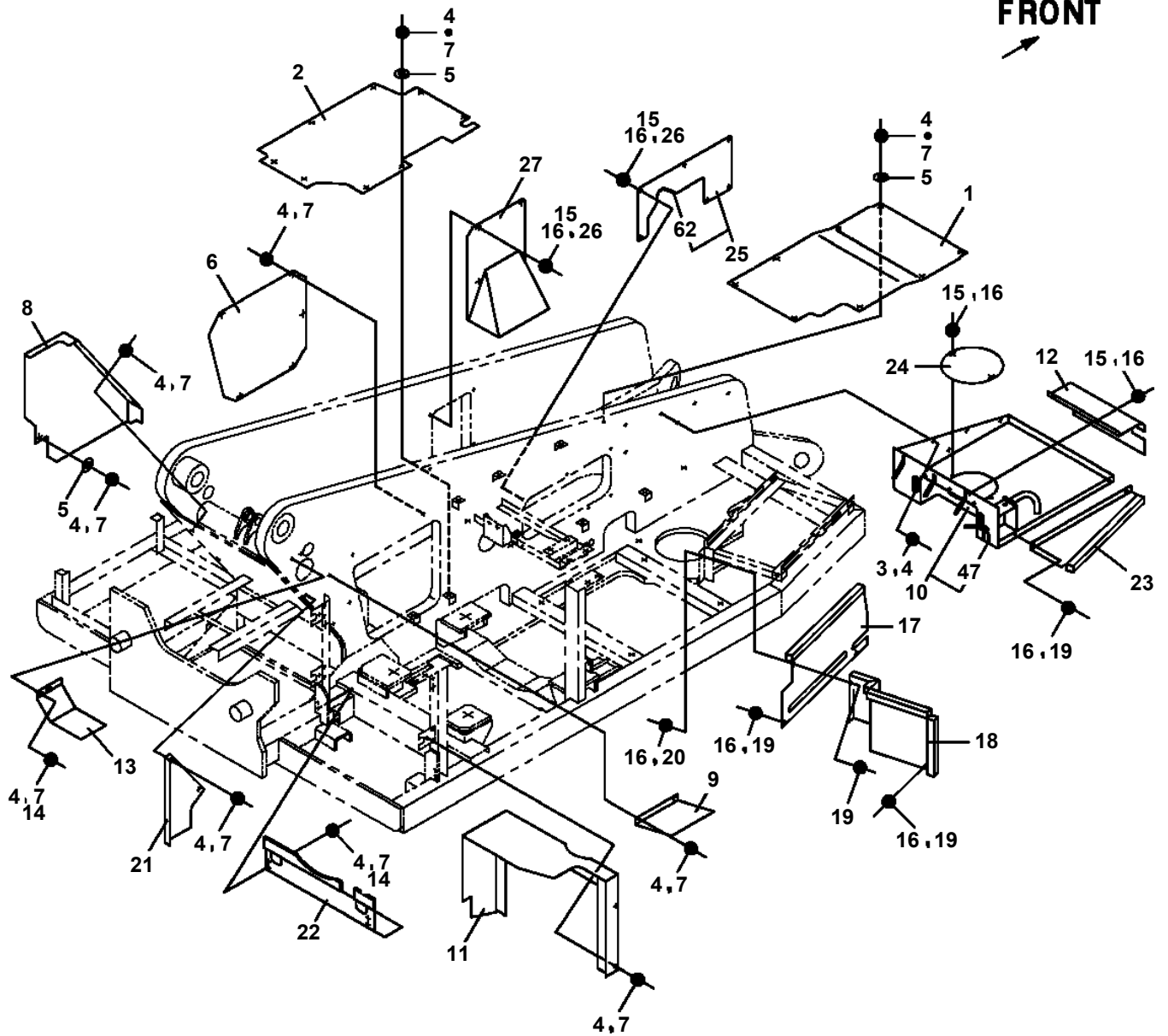
- Please note: If there is no response to CLICKING the link, please download this PDF first and then click on it.

CLICK HERE TO **DOWNLOAD** THE COMPLETE MANUAL

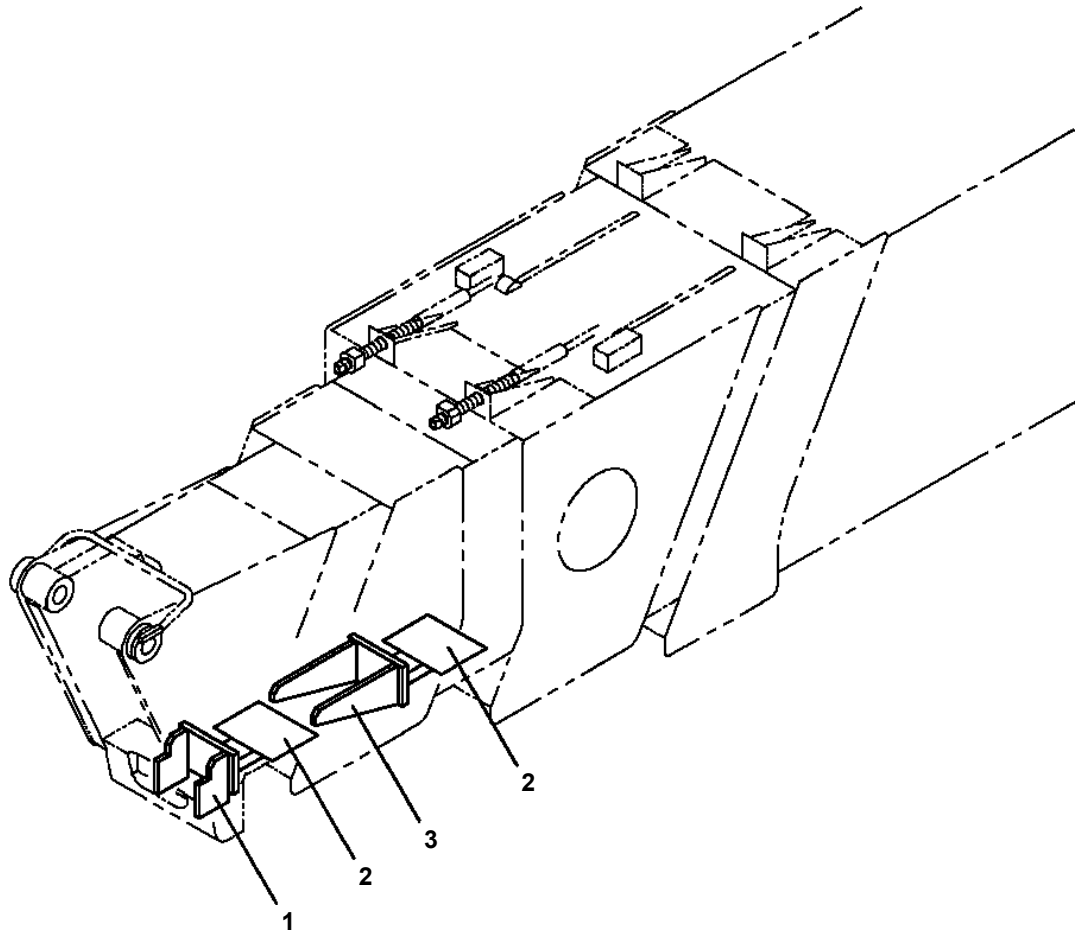
**AW-370-1-81013 4 BOOM, WHEEL TYPE
PK1200411-01 COVER, SWING FRAME**



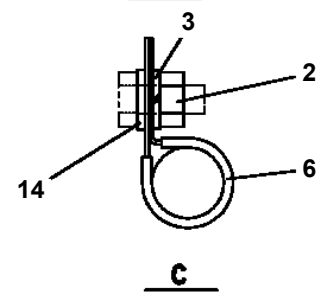
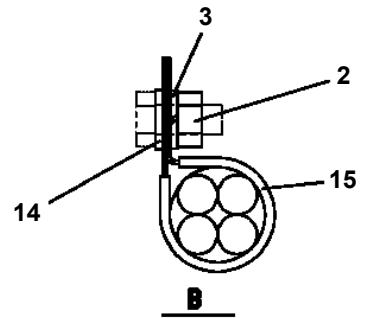
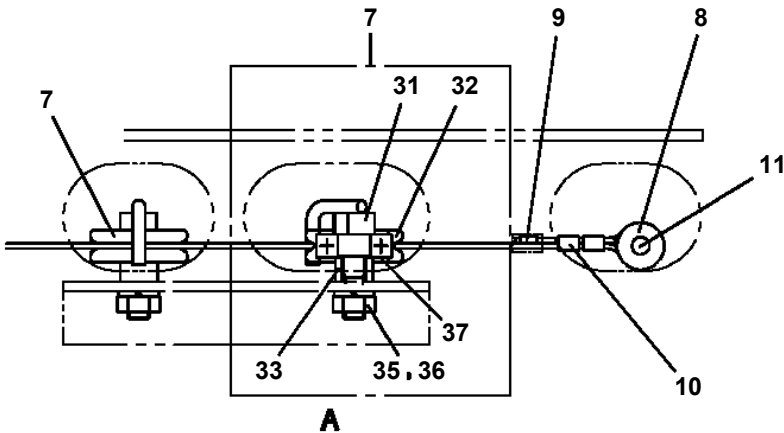
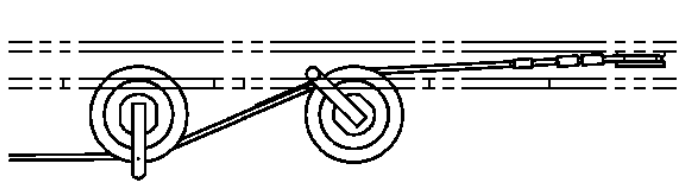
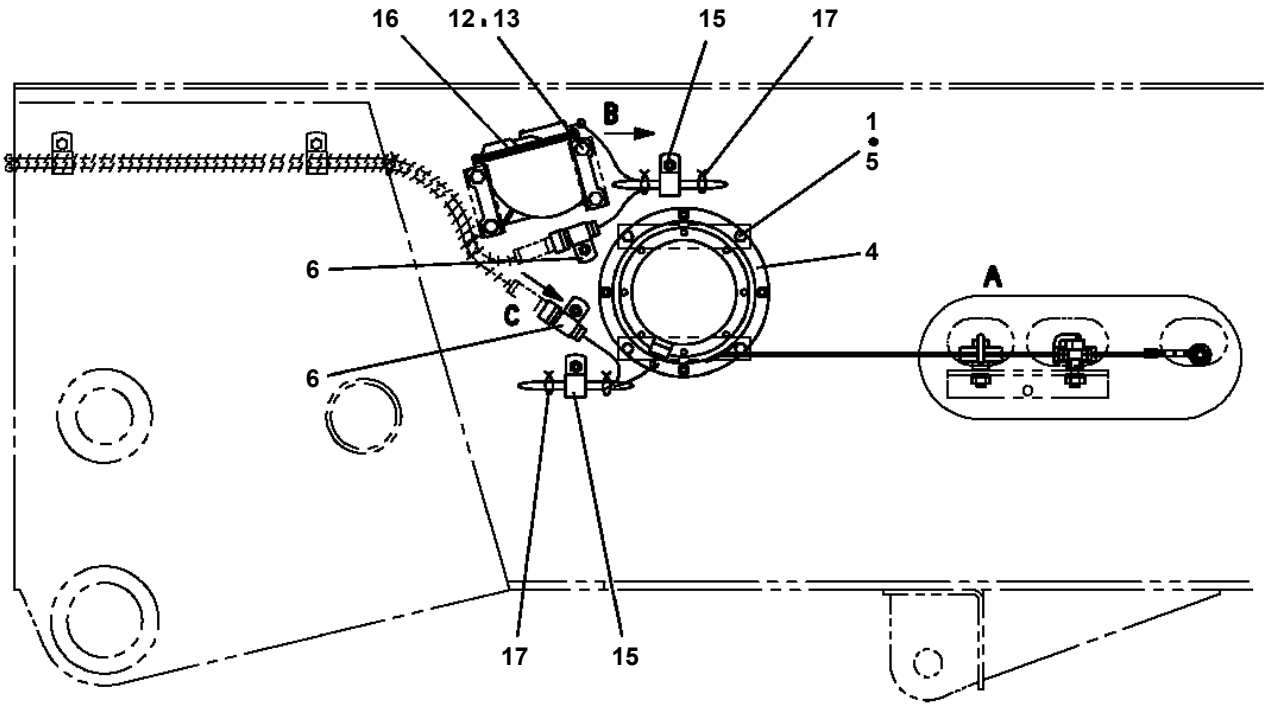
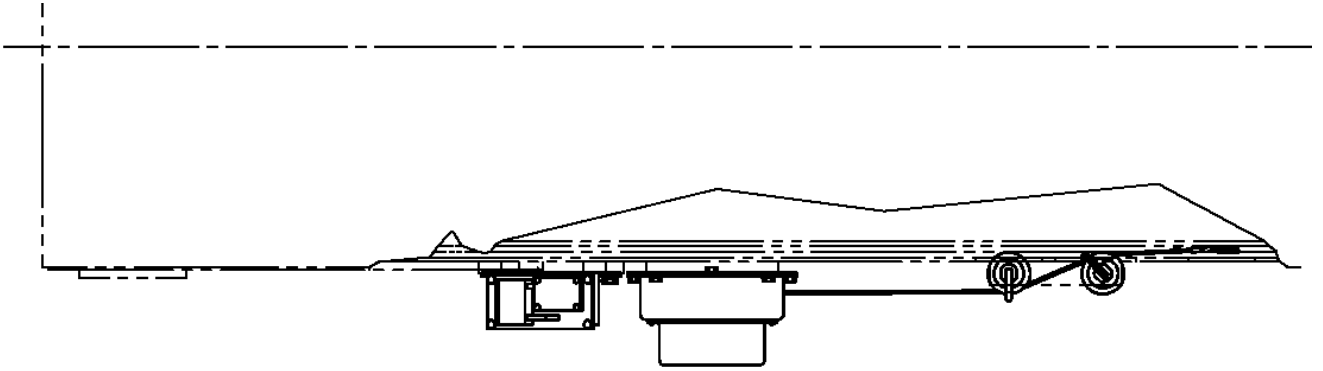
**AW-370-1-81013 4 BOOM, WHEEL TYPE
PK1330200-00 COVER (SWING FRAME)**



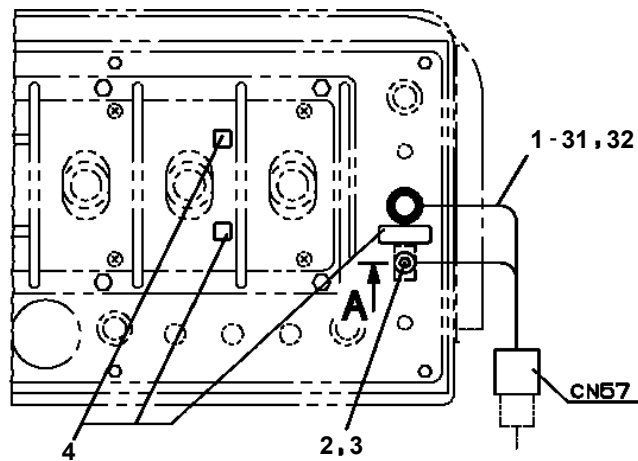
**AW-370-1-81013 4 BOOM,WHEEL TYPE
PM5150195-00 MODIFICATION ASSY (BOOM)**



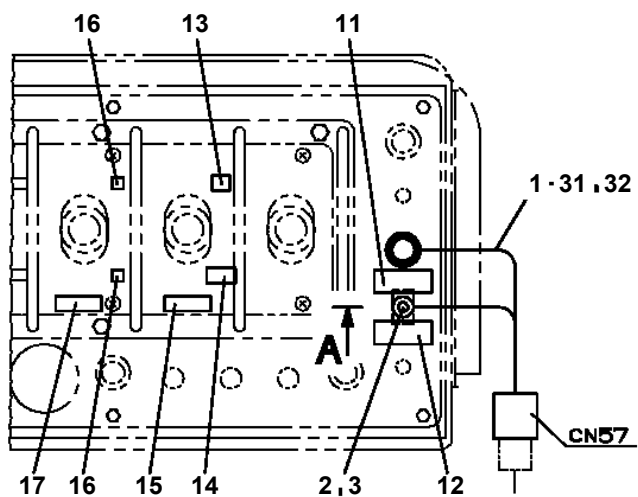
**AW-370-1-81013 4 BOOM, WHEEL TYPE
PN1012098-00 ELEC. ASSY (MOUNT DETECTOR)**



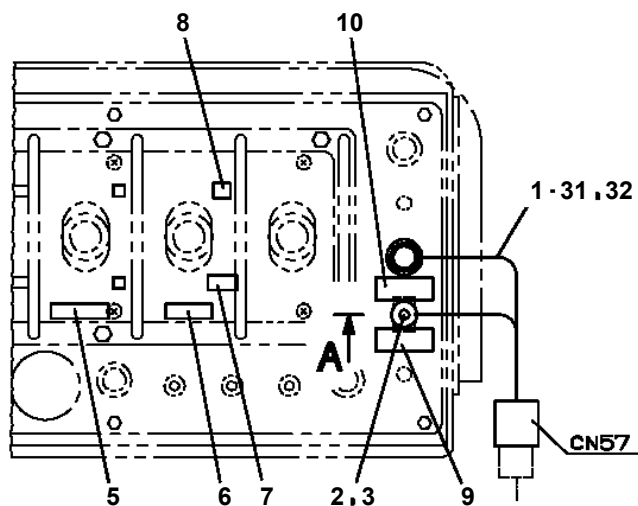
**AW-370-1-81013 4 BOOM, WHEEL TYPE
PN1013571-01 ELEC. ASSY**



日本語選択時

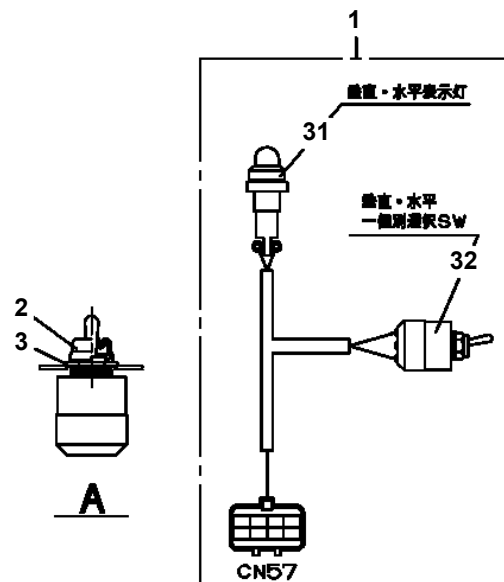
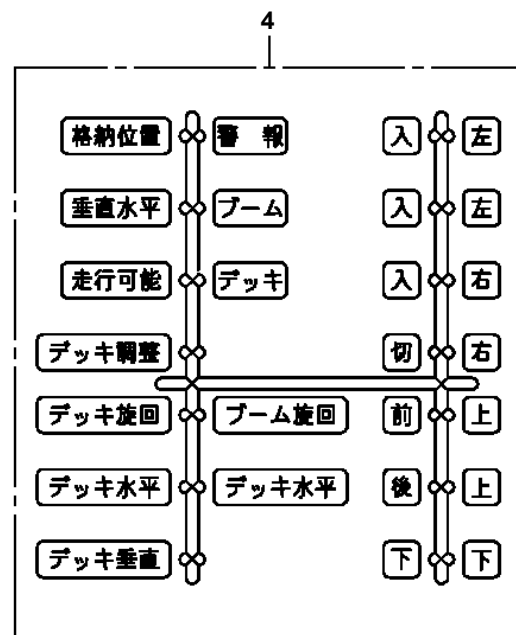


英語・中国語選択時



英語選択時

バスケット操作部



AW-370-1-81013 4 BOOM,WHEEL TYPE

Pos No.	Parts No	Parts Name	Qty	Unit	Technical Data	Serial No (Start)	Serial No (End)	Remarks	Pages
1	44350832200	PANEL	1						
2	44350832100	HARNESS	1						000124
3	82198300302	PLUG	4						
4	82100000951	GROMMET	1						
5	44472000010	CAP	1						
6	80172803014	SCREW,MACHINE	4		M3X14				
7	44472000020	PLATE	1						
8	44350832010	PLATE	1						
9	90201200300	NUT	4		M3				
10	90302040301	WASHER,SPRING	4		3				
11	82199514013	CAP	5						
12	82199504017	NUT	5		AT-401N				
14	42651306900	SWITCH ASSY	1						
100	44350832000	SWITCH PANEL	1						

AW-370-1-81013 4 BOOM,WHEEL TYPE

Pos No.	Parts No	Parts Name	Qty	Unit	Technical Data	Serial No (Start)	Serial No (End)	Remarks	Page
1	82100002596	RELAY	1						
2	44730061010	HARNESS	1						
3	90101206012	BOLT	1		M6X12				
4	90302040601	WASHER,SPRING	5		6				
5	90201200600	NUT	5		M6				
6	44430691102	SWITCH ASSY	1			HE0136			
	44430691100	SWITCH ASSY	1				HE0135		
7	82199514013	CAP	1						
8	44390611011	NAME PLATE ASSY	1						
9	82199504017	NUT	1		AT-401N				
10	91810130240	FASTENER	10						
21	82165908010	LAMP	4		24V 30W				
22	44471922100	HARNESS	1						
23	91810130250	FASTENER	25						
24	82100002006	CLAMP	4		WR10				
51	44620424100	COVER	2						
52	44620424200	COVER	2						
53	44620424300	SUPPORT	4						
54	90101206016	BOLT	4		M6X16				

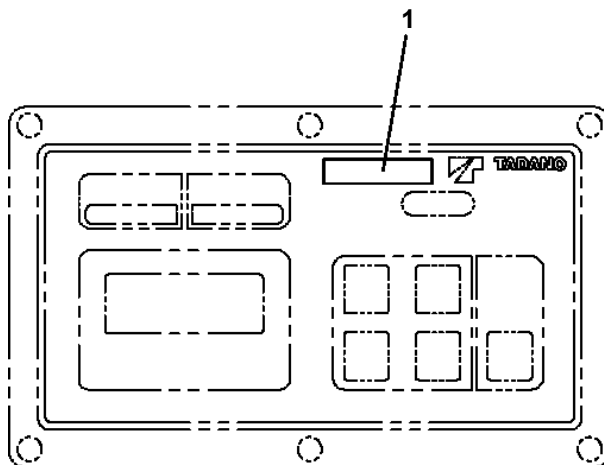
AW-370-1-81013 4 BOOM,WHEEL TYPE

Pos No.	Parts No	Parts Name	Qty	Unit	Technical Data	Serial No (Start)	Serial No (End)	Re
1	44420971000	SUPPORT ASSY	1					
3	44420810100	SUPPORT	1					
4	44420810200	BOLT	2					
5	90258901000	NUT,WING	2		M10			
6	90302041001	WASHER,SPRING	2		10			
7	90303071001	WASHER,PLAIN	2		10			
21	44420971200	SUPPORT	1					
22	80175804008	SCREW,MACHINE	8		M4X8			
23	82466004100	CATCH	2					
31	82100002861	BATTERY (GLOBAL & YUASA)	2					
	37010000030	BATTERY (HYUNDAI ENERCELL)	2					
	82151009531	BATTERY (YUASA)	2					

AW-370-1-81013 4 BOOM,WHEEL TYPE

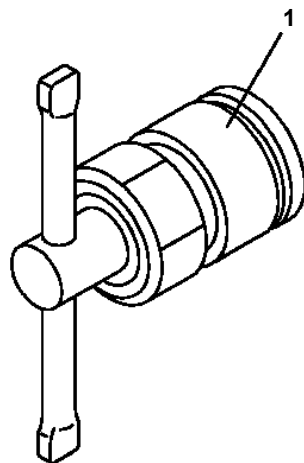
Pos No.	Parts No	Parts Name	Qty	Unit	Technical Data	Serial No (Start)	Serial No (End)	Remarks	Page
1	44390890010	PLATE,NAME	1						
2	37002203530	PLATE,NAME (JACK)	1						
3	37002203540	PLATE,NAME	1						
4	37002203550	PLATE,NAME (JACK)	1						

AW-370-1-81013 4 BOOM,WHEEL TYPE
PO1015511-00 PLATE ASSY,NAME (PART NUMBER OF AMC DATA)



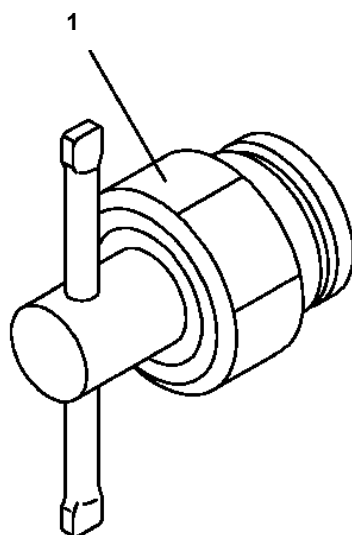
AMCパネル

**AW-370-1-81013 4 BOOM,WHEEL TYPE
PP5550001-00 PRESSURE DEJECTA (MAIL,3/8)**



圧抜き工具 3/8オス用

**AW-370-1-81013 4 BOOM,WHEEL TYPE
PP5550006-00 PRESSURE DEJECTA (FEMALE,1/4)**



圧抜き工具 1/4メス用

AW-370-1-81013 4 BOOM,WHEEL TYPE

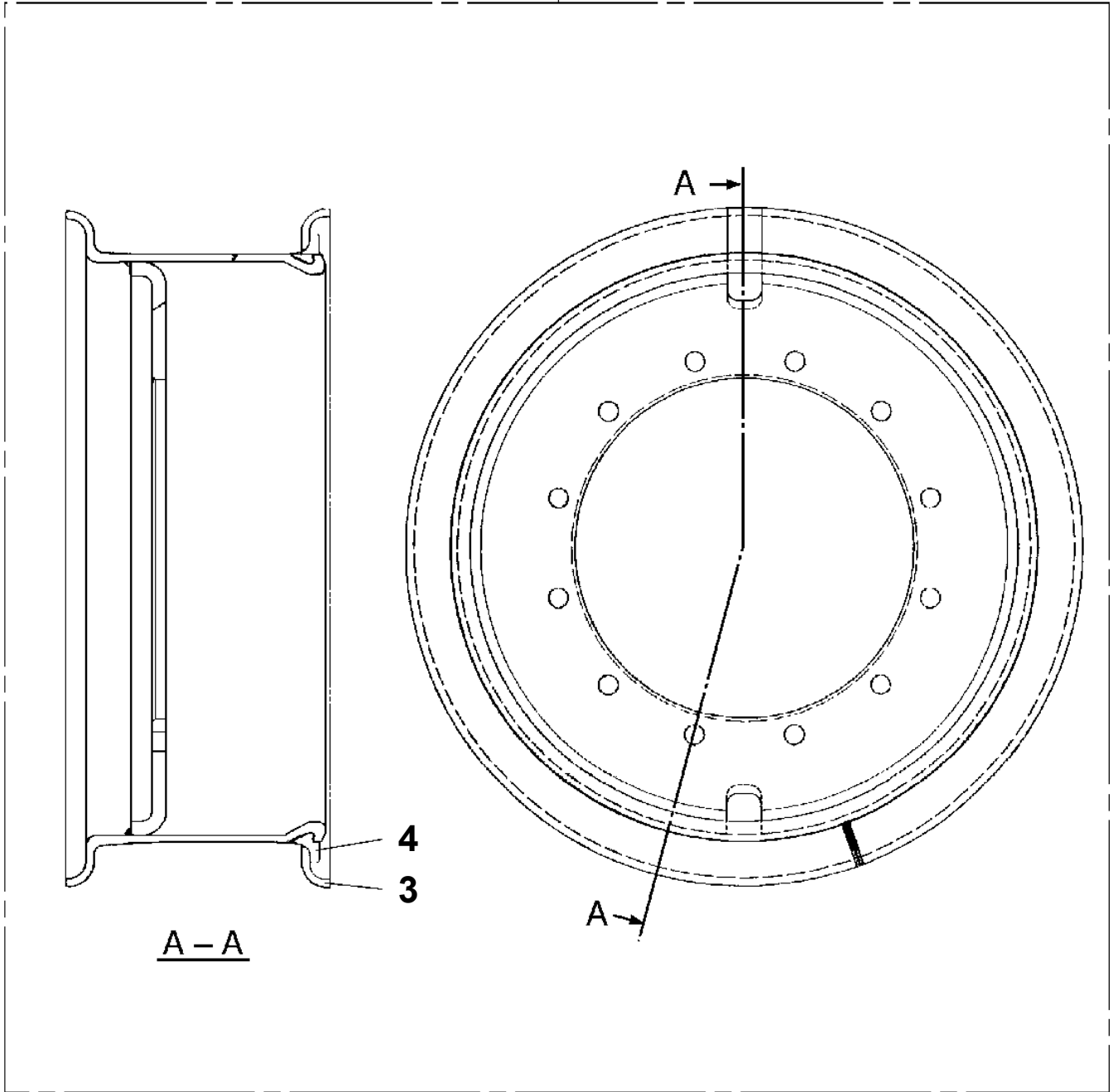
Pos No.	Parts No	Parts Name	Qty	Unit	Technical Data	Serial No (Start)	Serial No (End)	Remarks	Pages
1	44270670100	COVER	1						
2	44270670200	COVER	1						
3	44270670300	COVER	1						
4	44270670400	COVER	1						

AW-370-1-81013 4 BOOM,WHEEL TYPE

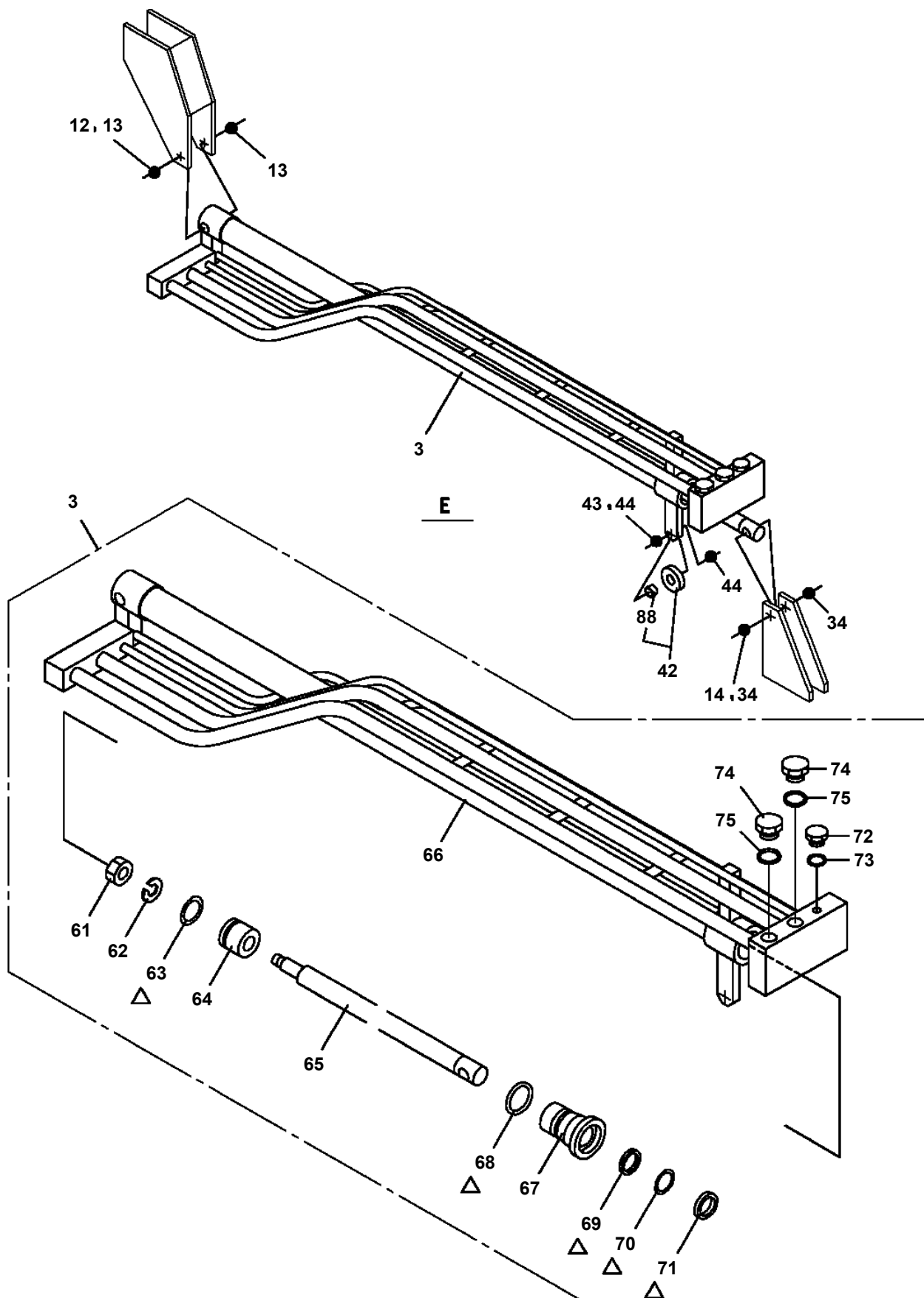
Pos No.	Parts No	Parts Name	Qty	Unit	Technical Data	Serial No (Start)	Serial No (End)	Remarks	Page
1	36101520000	TANK,FUEL (200L)	1						0001
2	36684010000	SENDER,FUEL	1						
3	44420990100	BAND	2						
4	80175305014	SCREW,MACHINE	5		M5X14				
5	90201201000	NUT	4		M10				
6	37000156770	PIN	2						
7	34780000070	ADAPTER	2		8-10				
8	80136332025	PIN,SPLIT	4		3.2X25				
9	82100002042	CLAMP	6		WE20				
10	90101208014	BOLT	2		M8X14				
11	90302040801	WASHER,SPRING	6		8				
12	34880300290	HOSE	2		L=290				
13	91803600160	CLIP	8		D=11-16				
14	90201200800	NUT	4		M8				
15	37002514210	HOSE	2		L=3300				
16	82100001804	TUBE,CORRUGATE	3	M	15				
17	44420990200	ADAPTER	1						
18	44420990300	PACKING	1						
19	80172305012	SCREW,MACHINE	5		M5X12				
20	90302040501	WASHER,SPRING	5		5				
21	91810130250	FASTENER	1						

**AW-370-1-81013 4 BOOM, WHEEL TYPE
PR1820015-00 WHEEL, TIRE**

10

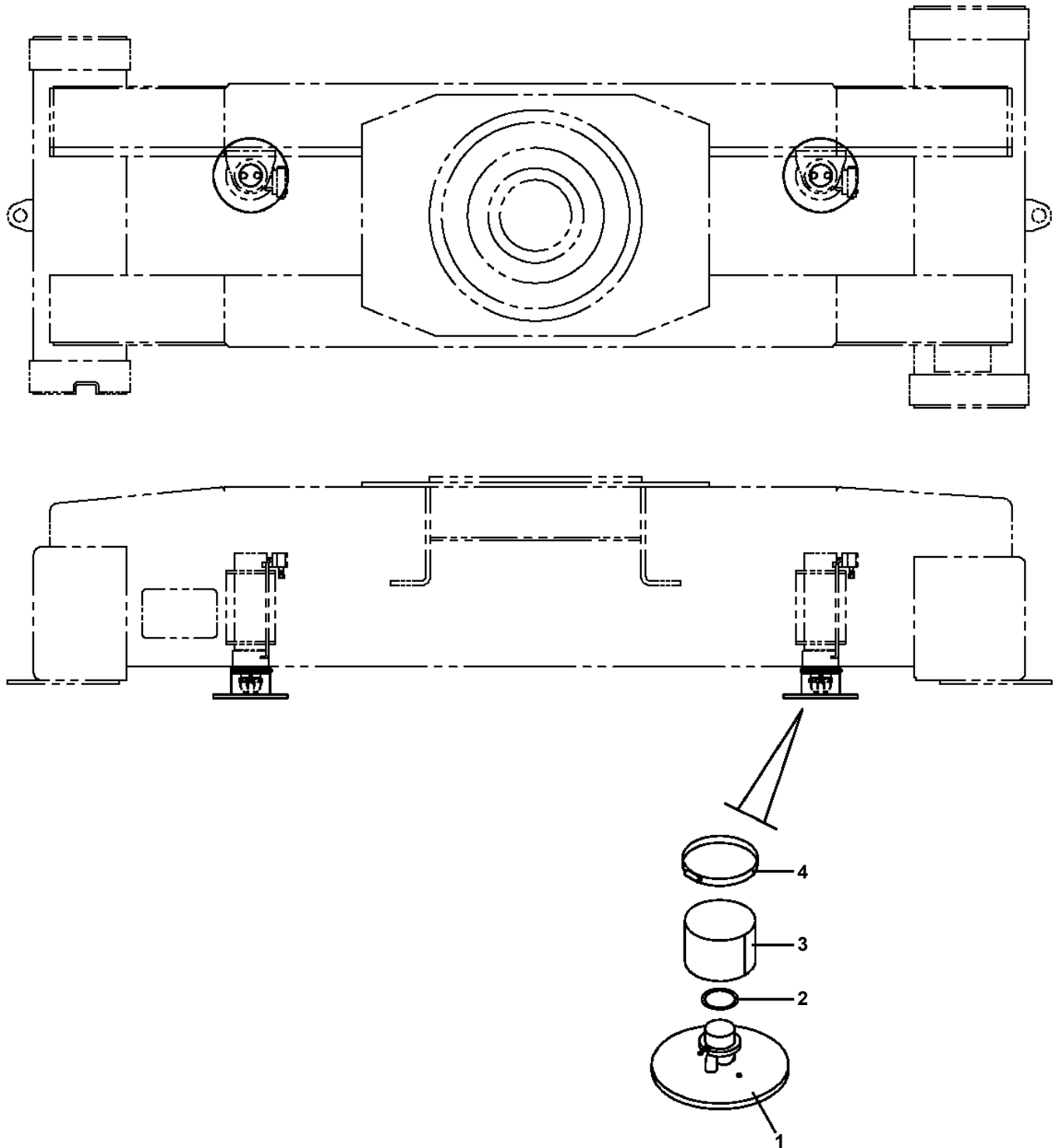


**AW-370-1-81013 4 BOOM, WHEEL TYPE
PR2010038-04 AXLE (REAR)**

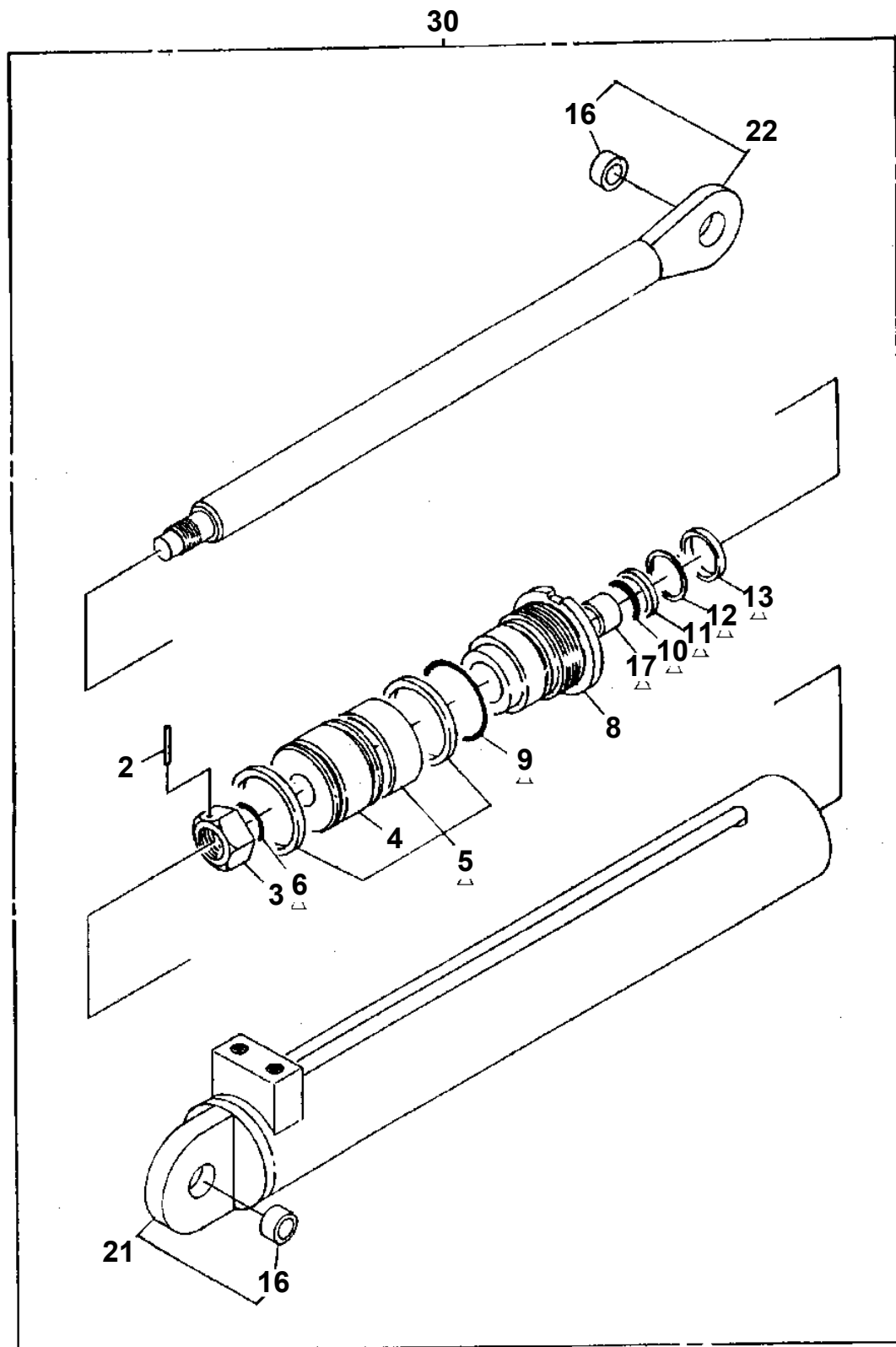


Δ:PACKING SET KEY NO.100 (KEY NO.63,68,69,70,71)

**AW-370-1-81013 4 BOOM, WHEEL TYPE
PR2100004-00 CYLINDER, AXLE JACK (LARGE-SIZE FLOAT)**

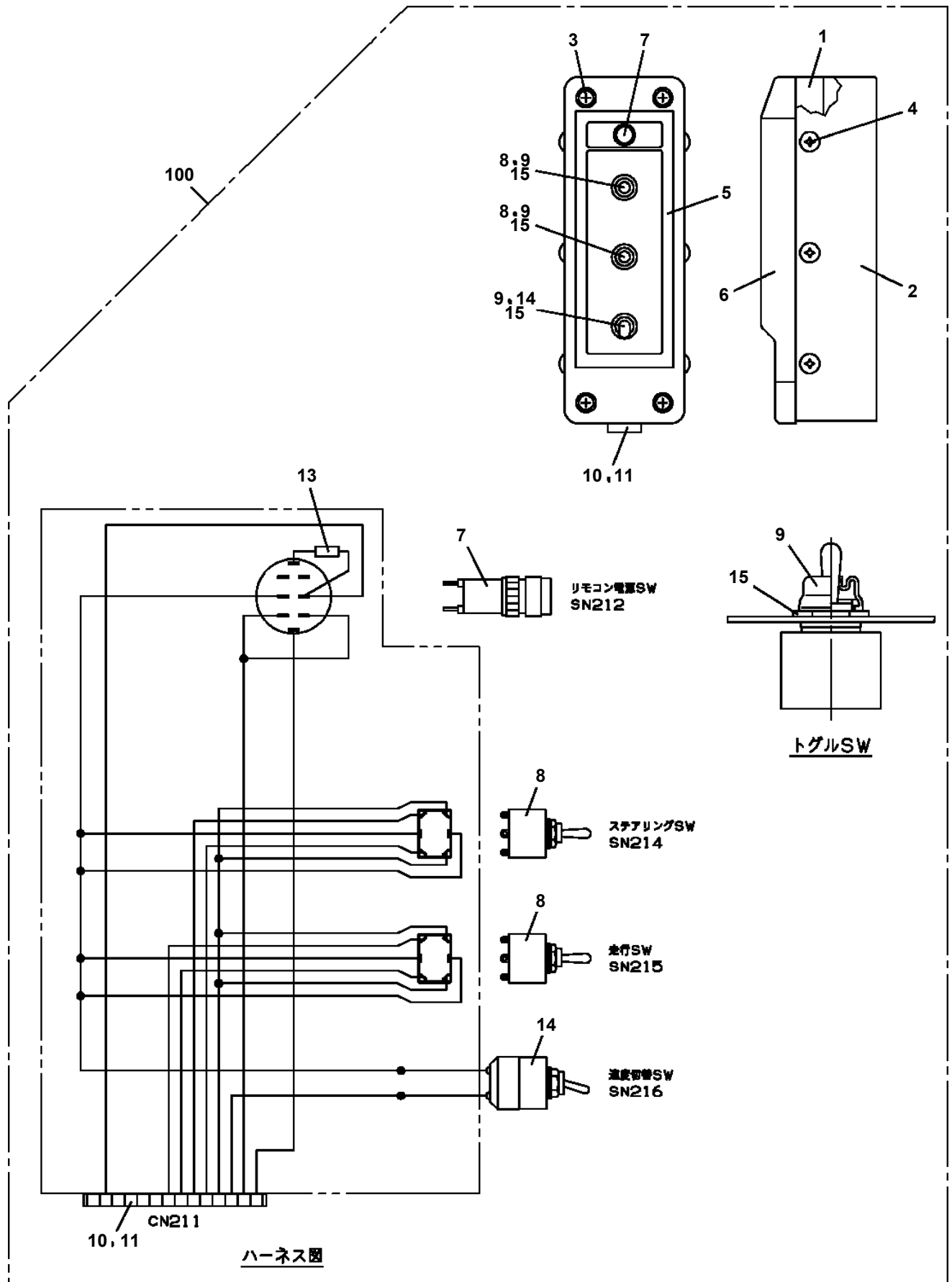


AW-370-1-81013 4 BOOM, WHEEL TYPE
PS1360037-02 CYLINDER, STEERING



△ : PACKING SET KEY NO. **50** (KEY NO.5,6,9,10,11,12,13,17)

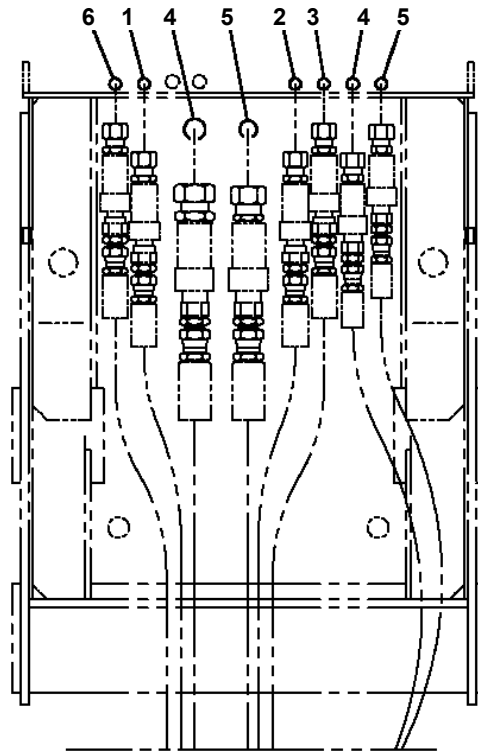
**AW-370-1-81013 4 BOOM, WHEEL TYPE
PV1030103-00 SWITCH BOX**



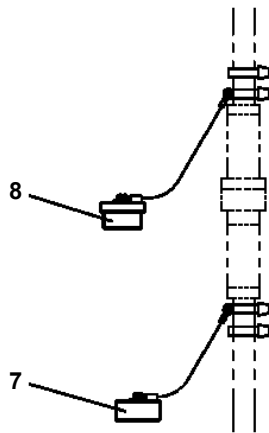
AW-370-1-81013 4 BOOM,WHEEL TYPE

Pos No.	Parts No	Parts Name	Qty	Unit	Technical Data	Serial No (Start)	Serial No (End)
661	91002801400	O-RING	5		1B P14		
875	36649535090	BOLT,STUD	4		M10X270		
879	36648355370	NUT	4				
880	90302041001	WASHER,SPRING	4		10		
901	36648785030	VALVE,REDUCING	8				
902	36645555010	VALVE,SOLENOID	2				
951	36648355460	FILTER ASSY (WITH HOLDER,O-RING)	1				
961	91000501300	O-RING	2		AS568-013		
962	91000501400	O-RING	2		014 1115-70		
963	91000501500	O-RING	2		AS568-015		
964	91002802000	O-RING	2		1B P20		
999	36741740001	VALVE ASSY,CONTROL	1				

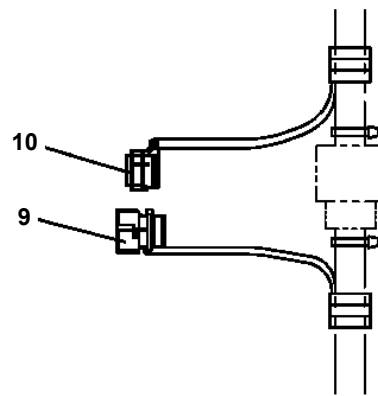
**AW-370-1-81013 4 BOOM, WHEEL TYPE
PW1010383-00 ACCESSORIES (PIPING, FASTNER)**



D

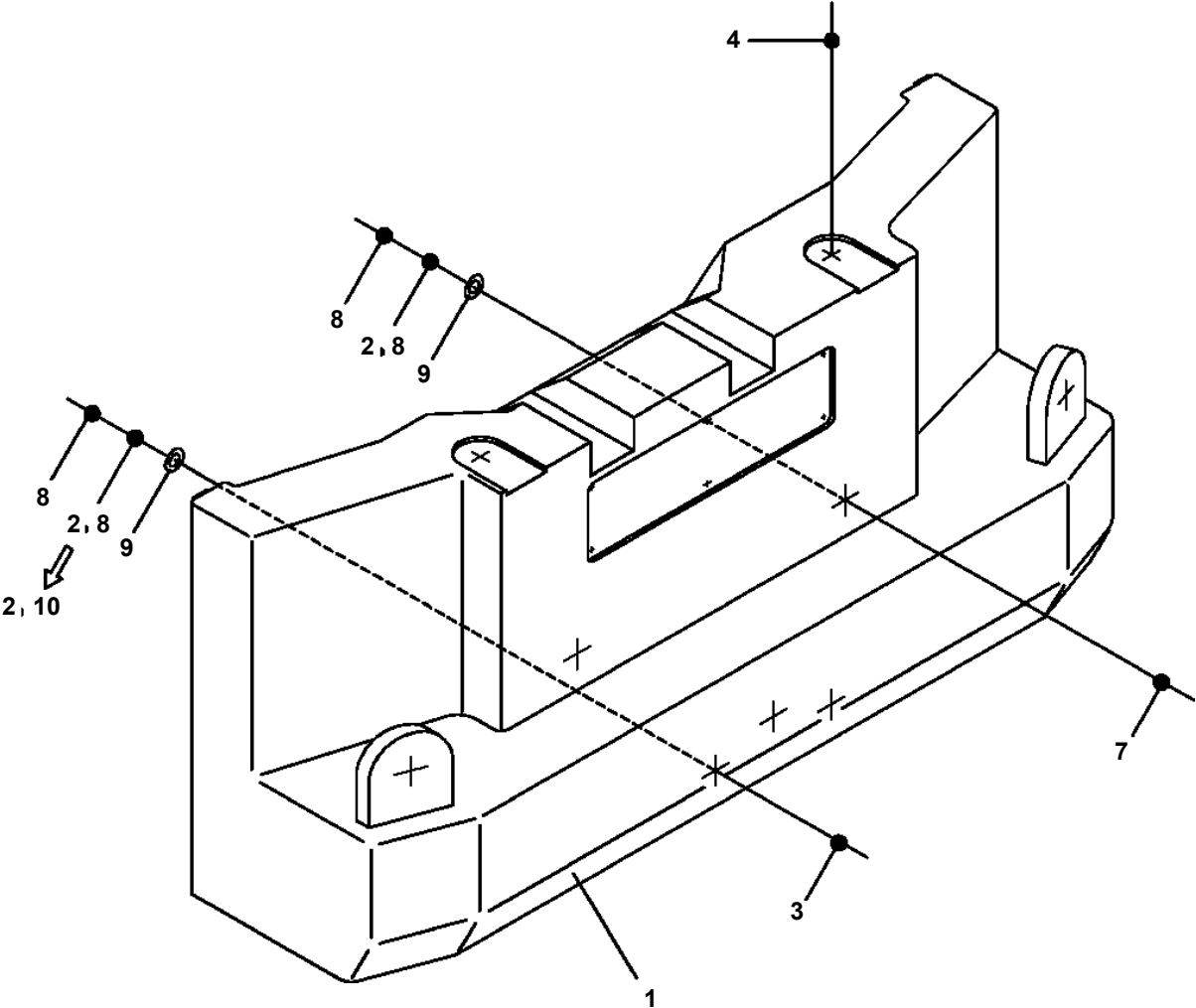


**CNA, CNL
CNML, CNM**



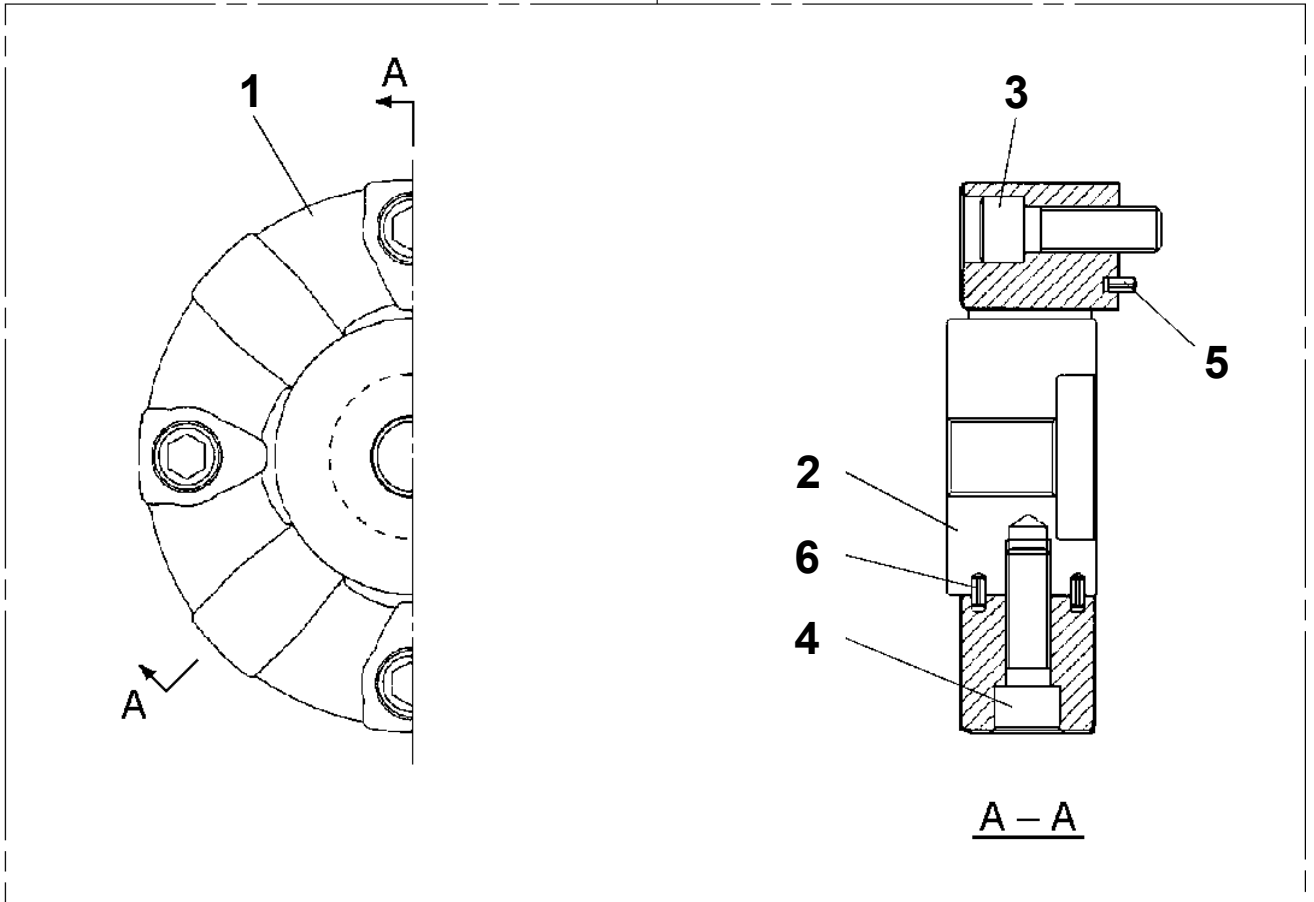
CN1, CN2

**AW-370-1-81013 4 BOOM, WHEEL TYPE
PX1290298-01 WEIGHT INSTALLATION**



**AW-370-1-81013 4 BOOM, WHEEL TYPE
PX1830010-00 COUPLING**

50



CLICK HERE TO **DOWNLOAD** THE COMPLETE MANUAL

- Thank you very much for reading the preview of the manual.
- You can download the complete manual from: www.heydownloads.com by clicking the link below



- Please note: If there is no response to CLICKING the link, please download this PDF first and then click on it.

CLICK HERE TO **DOWNLOAD** THE COMPLETE MANUAL