

AT-185-1 42004100004 UPPER

PB1000013-02 HYDRAULIC PRESSURE GENERATING SYSTEM

PD1000013-03 SWING SYSTEM

PE1000013-02 ELEVATING SYSTEM

PG1000013-02 TELESCOPING SYSTEM

PH1000013-02 SAFETY DEVICES

PJ3000013-02 BUCKET OR BASKET SYSTEM

PK1000013-02 FRAME

PL1000013-03 CONTROL DEVICES

PN1000013-00 ELECTRIC EQUIPMENT

PO1000171-00 INDICATION PLATES

PW1000097-02 ACCESSORIES & TOOLS

PY1000013-04 OPTIONS

ASSEMBLY

CLICK HERE TO **DOWNLOAD** THE COMPLETE MANUAL

- Thank you very much for reading the preview of the manual.
- You can download the complete manual from: www.heydownloads.com by clicking the link below



- Please note: If there is no response to CLICKING the link, please download this PDF first and then click on it.

CLICK HERE TO **DOWNLOAD** THE COMPLETE MANUAL

AT-185-1 42004100004 UPPER

Pos No.	Parts No	Parts Name	Qty	Unit	Technical Data	Serial No (Start)	Serial No (End)
1	(*****)	DETECTOR,SWING ANGLE	1				240316
	(*****)	DETECTOR,SWING ANGLE	1			240317	
2	(*****)	CONNECTION,AWL SYSTEM (BASKE)	1				
3	(*****)	FOOT SWITCH (BASKET)	1				

AT-185-1 42004100004 UPPER

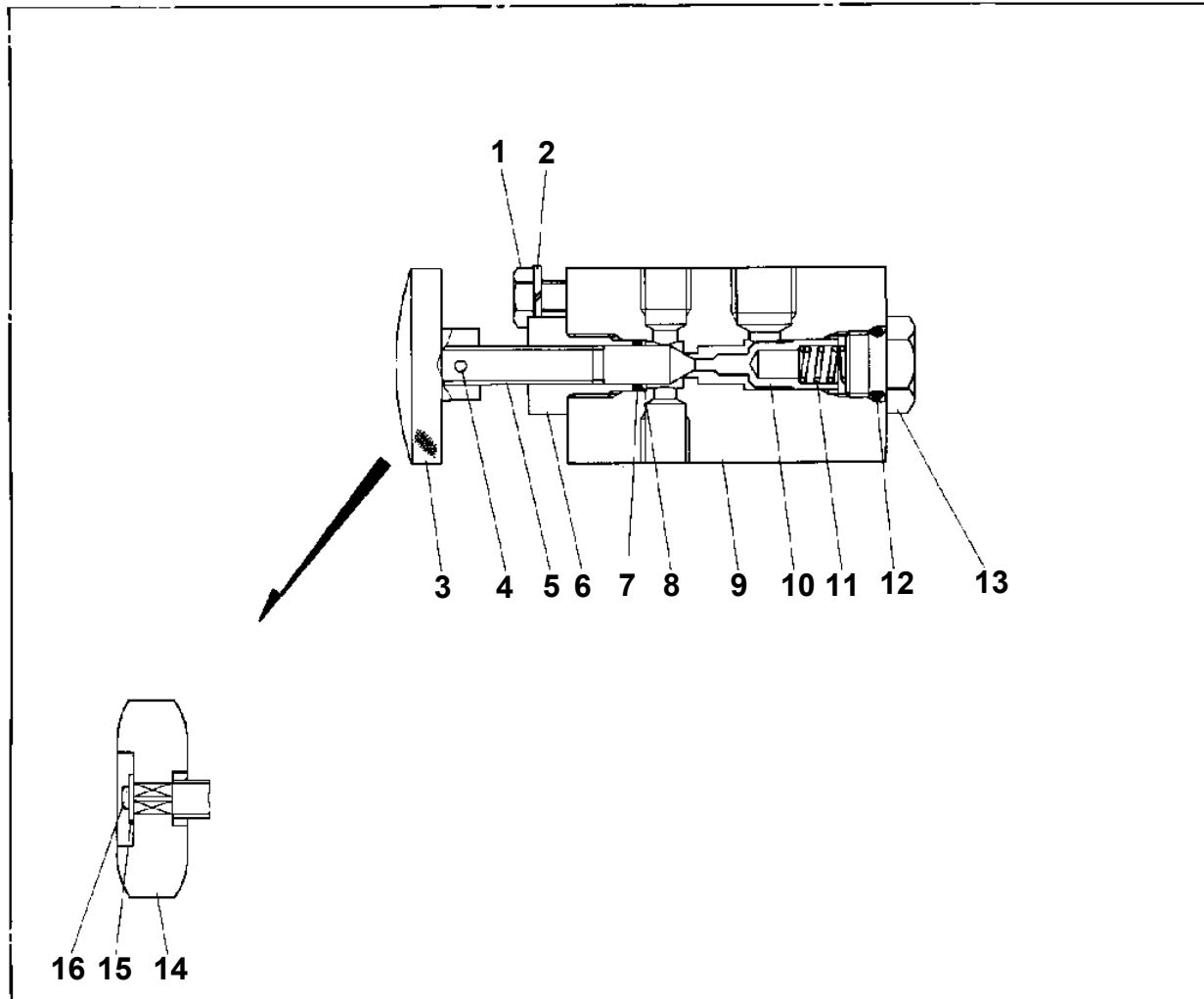
Pos No.	Parts No	Parts Name	Qty	Unit	Technical Data	Serial No (Start)	Serial No (End)
1	(*****)	PLATE ASSY,NAME (UPPER)	1				
2	(*****)	PLATE ASSY,NAME (BASKET,OPTION)	1				
4	(*****)	PLATE ASSY,NAME (FOOT SWITCH)	1				

**AT-185-1 42004100004 UPPER
PB1320001-00 VALVE, MANUAL CONTROL**

Assembly Name VALVE, MANUAL CONTROL

R D I _____

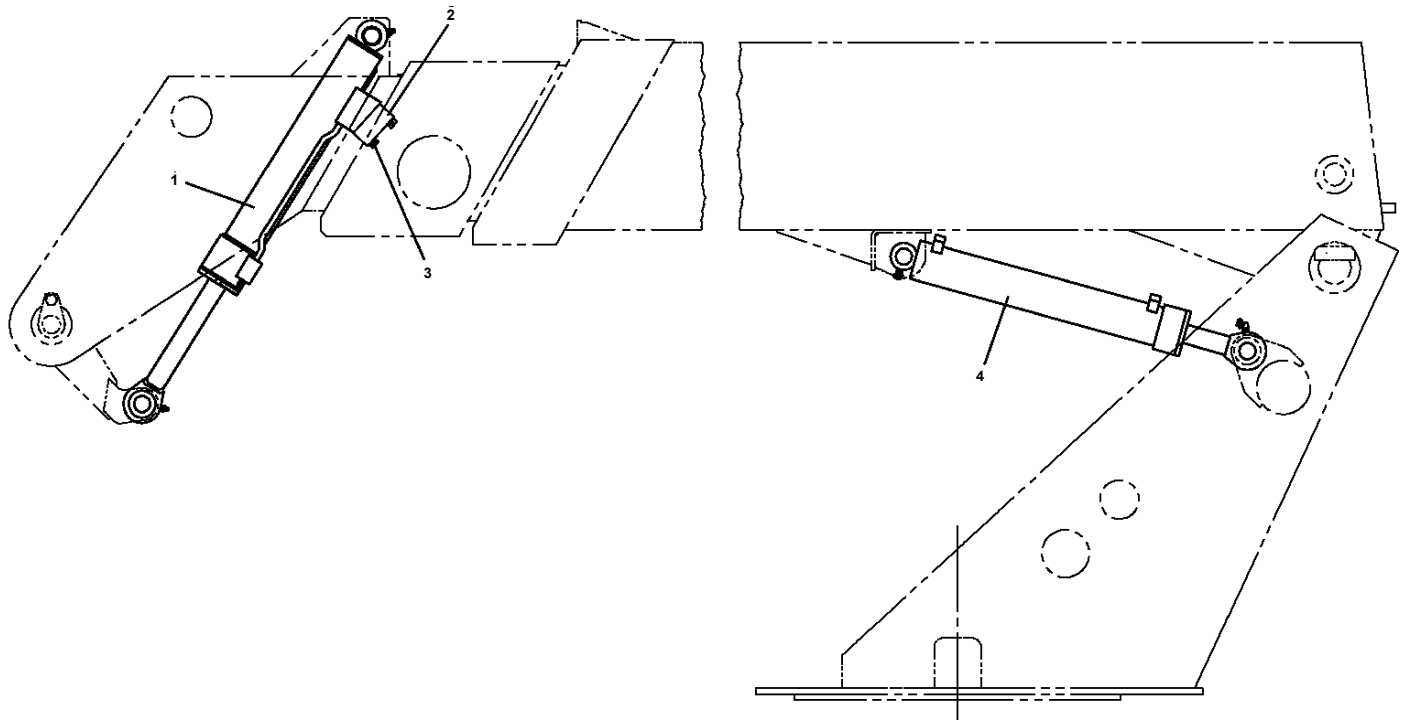
20



AT-185-1 4200410004 UPPER

Pos No.	Parts No	Parts Name	Qty	Unit	Technical Data	Serial No (Start)	Serial No (End)	Remark
4	90101514045	BOLT	2		M14X45			
5	90302041401	WASHER,SPRING	5		14			
6	37000508910	PLATE	2					
7	42300010010	PLATE	1					
8	90101514080	BOLT	3		M14X80			
9	90201701400	NUT	3		M14			
10	90303071401	WASHER,PLAIN	3		14			
11	36080200000	SWING ASSY	1					
12	90102212045	BOLT	2		M12X45			
13	90203201200	NUT	2		M12			
14	90131512030	BOLT,HEXAGON SOCKET	4		M12X30			
15	36660360000	MOTOR,HYDRAULIC	1					
16	42300010020	SHIM	2		T=0.6			
17	42300010030	SHIM	2		T=1.0			
18	37002302450	BEARING,SWING (NSK)	1					
21	36080205010	GEAR	1				240271	
	36080205050	GEAR	1			240272		
22	36080095020	RING,SEAL	1					
23	91001207000	O-RING	1		1A G70			
24	91216105001	SEAL,OIL	1					
25	80515006314	BEARING,BALL	1					
27	36080095040	WHEEL,WORM	1					
28	36080095050	KEY	1					
29	36080095130	BEARING,BALL	1					
31	90101510025	BOLT	12		M10X25			
32	90302041001	WASHER,SPRING	12		10			
33	80562100120	WASHER,PLAIN	1		AW12			
34	80561100120	NUT	1		AN12			
35	36080095072	GAUGE,OIL	1					
36	36080235080	WASHER,SEAL	1		M16			
37	12643302100	RETAINER	1					
38	91001208500	O-RING	1		1A G85			
39	12643302120	SHIM (T=0.1)	N					
40	12643302130	SHIM (T=0.2)	N					
41	12643302140	SHIM (T=0.3)	N					
42	36080095120	BEARING,ROLLER	2					
43	36080095090	WORM	1					
45	36080095110	SEAL,OIL	1					
48	90500000001	CAP	1					
49	36080205040	PIPE	1					
51	36080095150	CASE ASSY	1					
61	37002399010	SEAL (UP,DOWN-SIDE SET)	1					
62	82456201000	NIPPLE,GREASE	4		A-TYPE PT1/8			

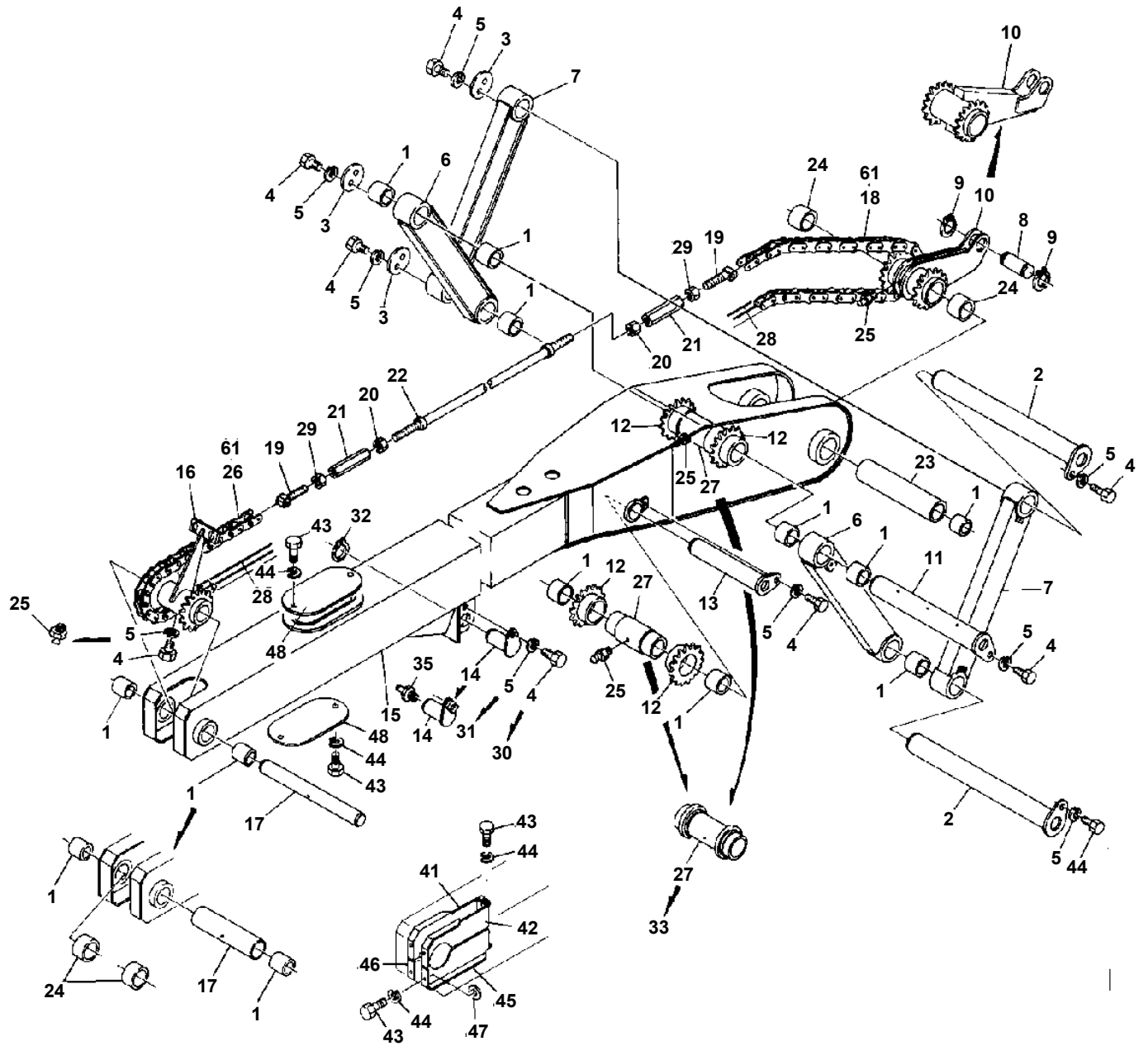
AT-185-1 42004100004 UPPER
PE1050003-04 CYLINDER,LEVELING (UPPER)



AT-185-1 42004100004 UPPER

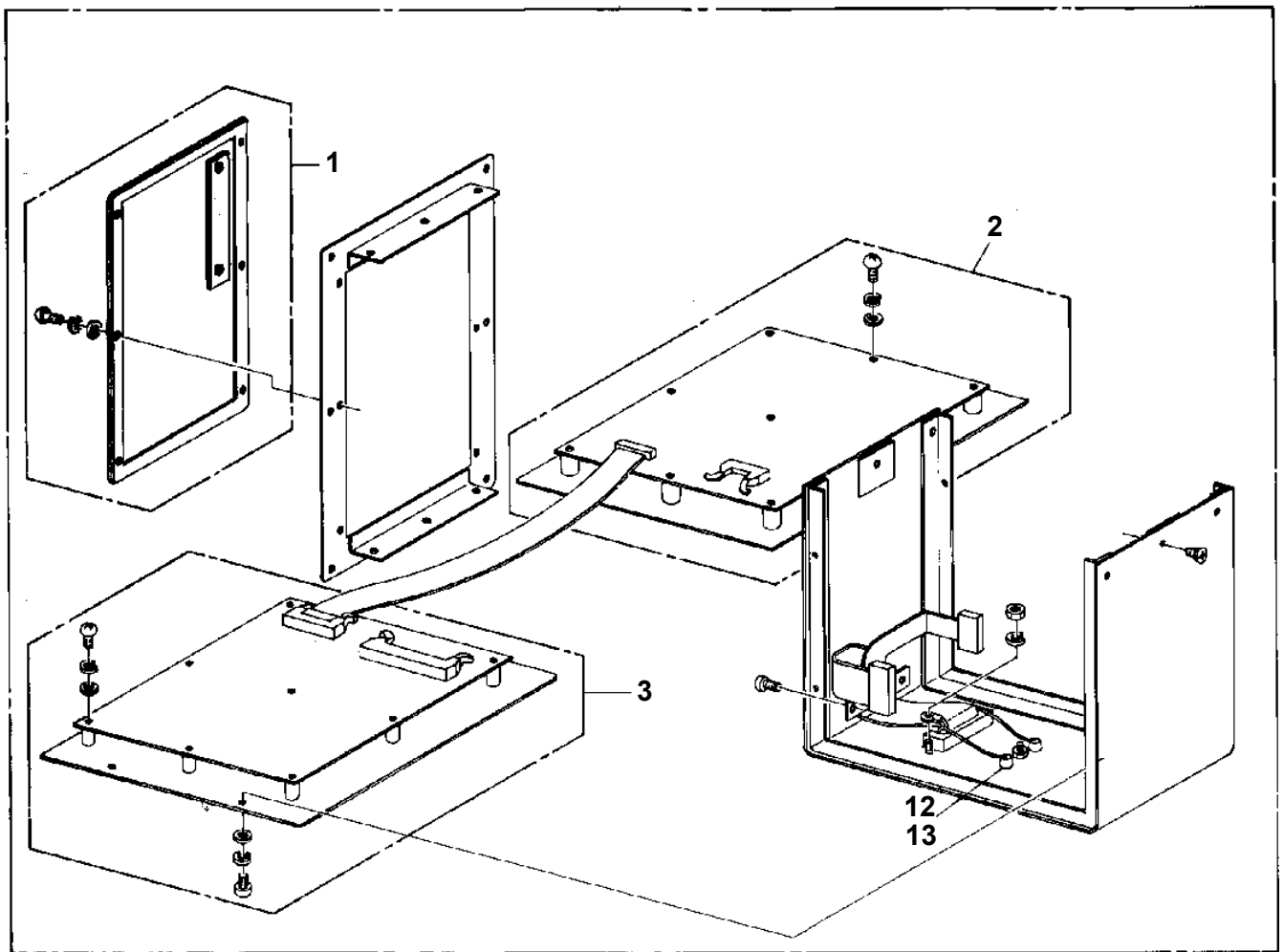
Pos No.	Parts No	Parts Name	Qty	Unit	Technical Data	Serial No (Start)	Serial No (End)	Remarks	Pages
1	37000703020	CLAMP ASSY	2		12X2				
2	37002405600	HOSE	2		L=1900				
3	37000901820	JOINT	2		R3/8-G1/4				

AT-185-1 42004100004 UPPER
PG1040003-05 JIB



AT-185-1 42004100004 UPPER
PH1350001-00 WORKING AREA LIMITER

20



CLICK HERE TO **DOWNLOAD** THE COMPLETE MANUAL

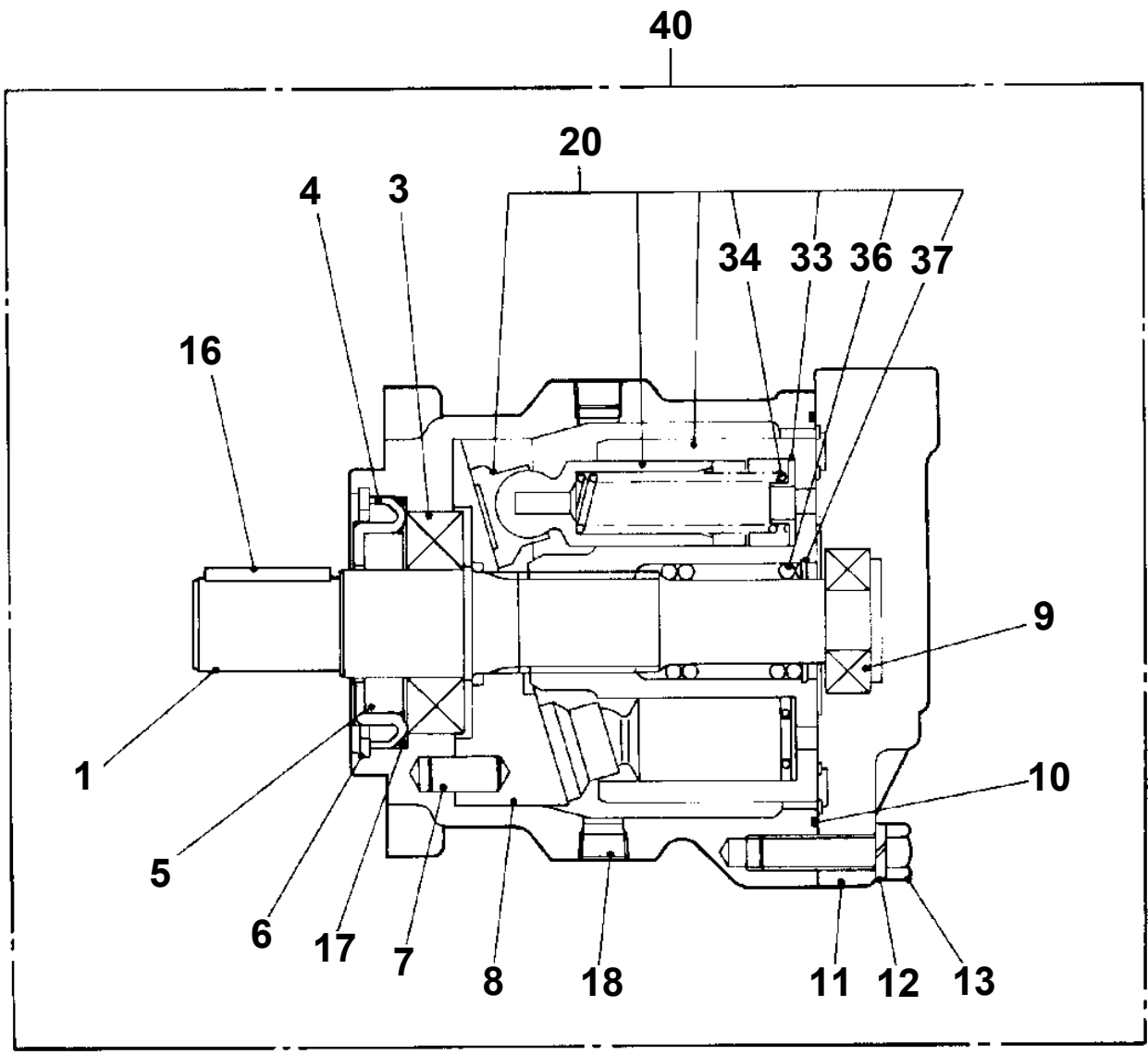
- Thank you very much for reading the preview of the manual.
- You can download the complete manual from: www.heydownloads.com by clicking the link below



- Please note: If there is no response to CLICKING the link, please download this PDF first and then click on it.

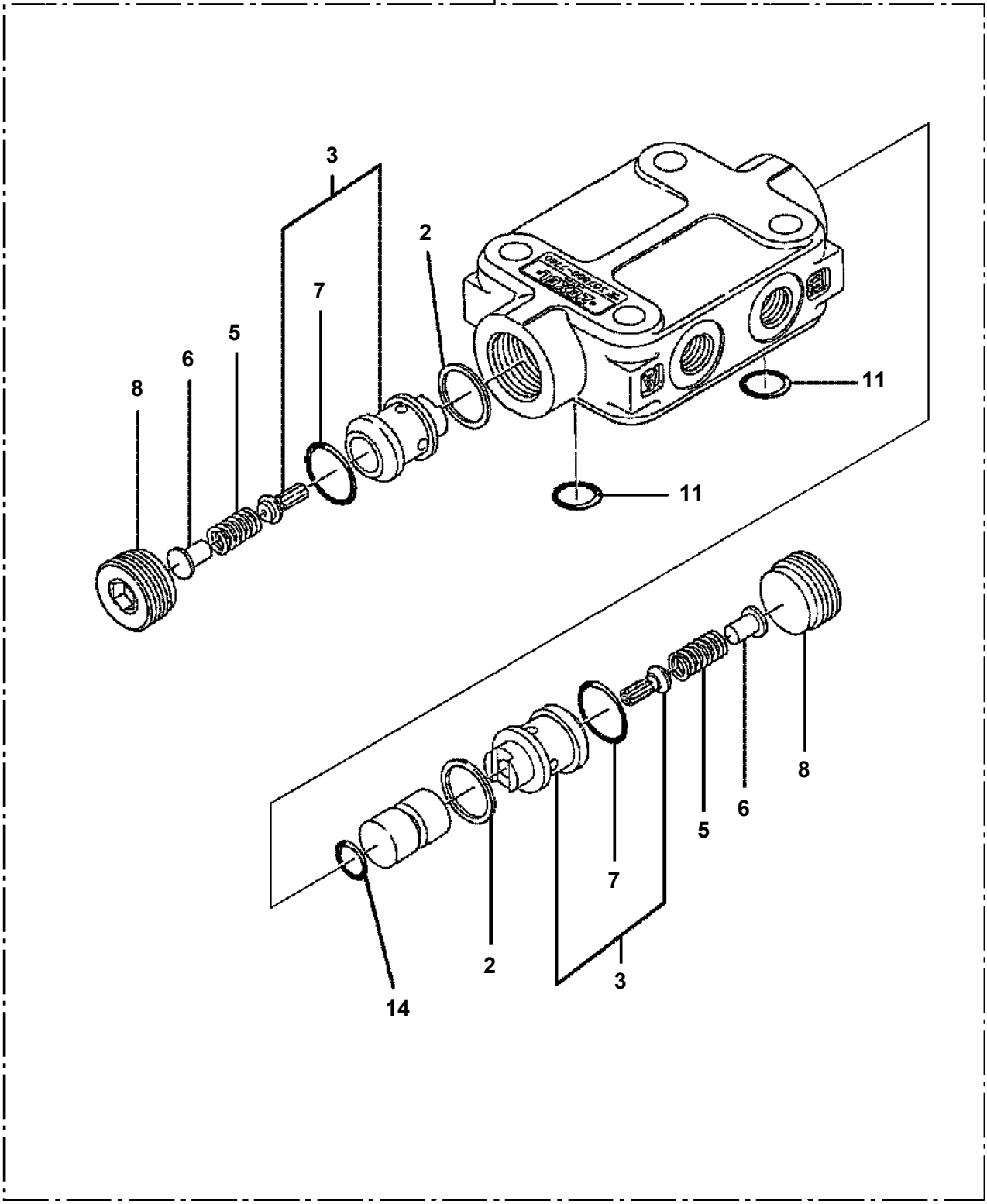
CLICK HERE TO **DOWNLOAD** THE COMPLETE MANUAL

AT-185-1 42004100004 UPPER
PI1010001-00 MOTOR, HYDRAULIC

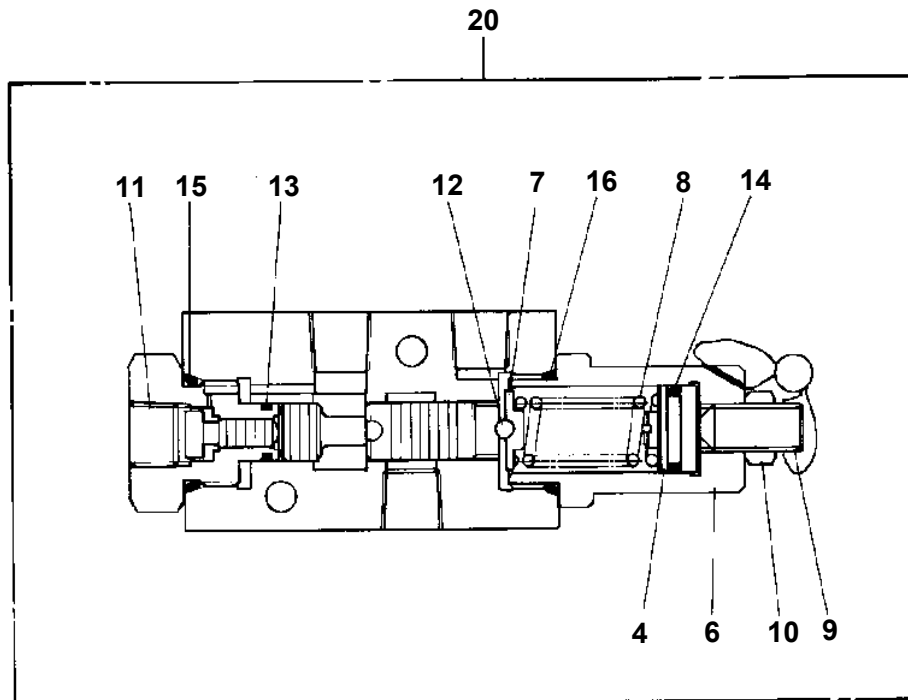


AT-185-1 42004100004 UPPER
PI1140133-01 VALVE,CHECK

100 → (A)



**AT-185-1 42004100004 UPPER
PI1270001-00 VALVE,SEQUENCE**

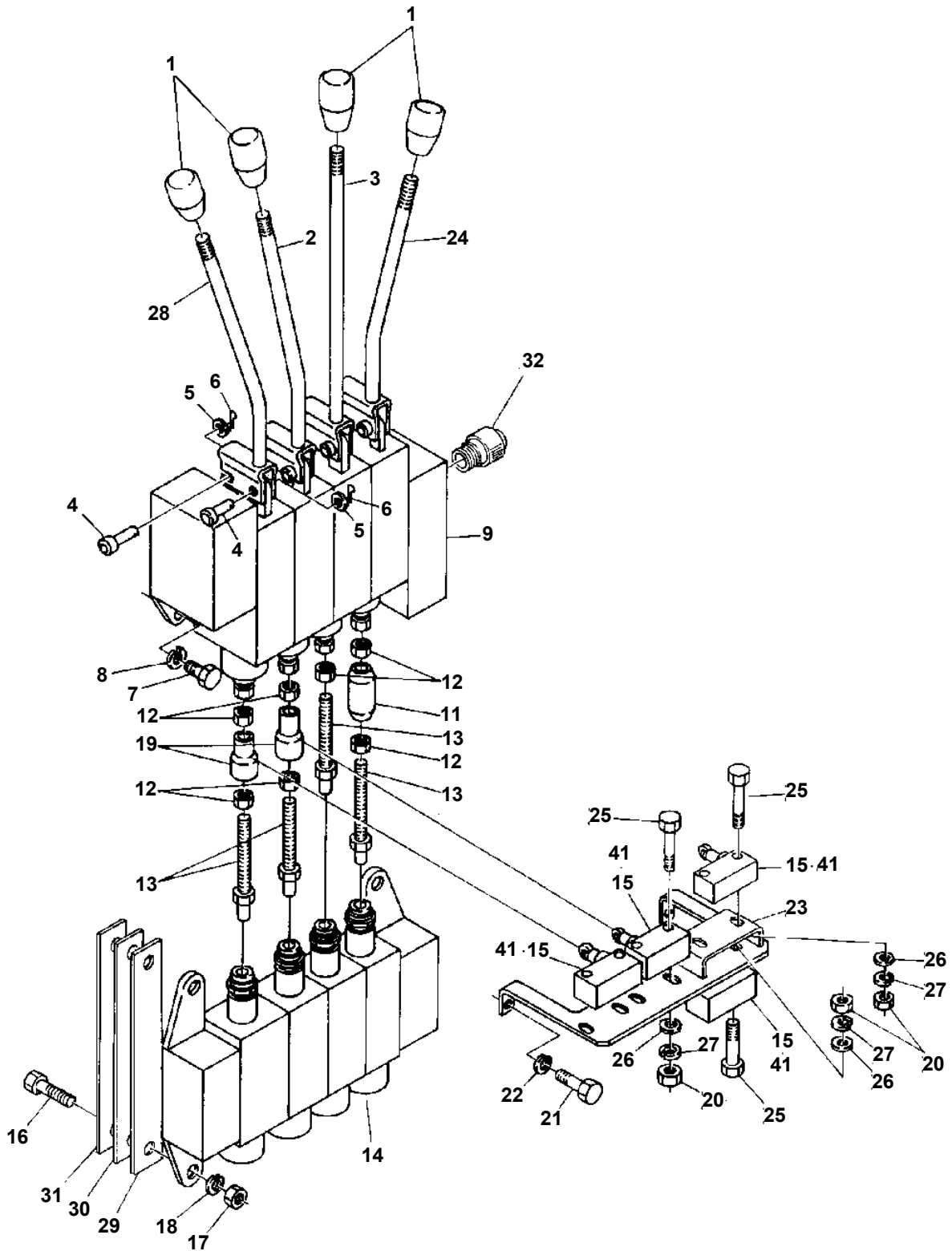


AT-185-1 4200410004 UPPER

Pos No.	Parts No	Parts Name	Qty	Unit	Technical Data	Serial No (Start)	Serial No (End)	Remarks
1	42260682000	BASKET	1				240358	
	42260683000	BASKET	1			240359		
2	42260681000	POST	1					
4	90101512025	BOLT	5		M12X25			
5	90302041201	WASHER,SPRING	13		12			
6	90303071201	WASHER,PLAIN	10		12			
8	80516006015	BEARING,BALL	2					
9	42260308011	FRAME ASSY	1					
10	80562100150	WASHER (LOCK)	1		AW15			
11	42260300400	NUT	2					
12	80562100151	WASHER	1		AW15X			
13	90101208020	BOLT	3		M8X20			
14	90302040801	WASHER,SPRING	3		8			
15	36090020120	PLATE	1					
16	37000156220	PIN	1					
17	42260300030	PLATE	2					
18	42260300040	PLATE	2					
19	90101212080	BOLT	8		M12X80			
20	90201201200	NUT	8		M12			
21	44260062300	PIN ASSY	1					
22	42260680020	SUPPORT	1					
23	42260680050	SUPPORT	1					
24	42260680060	PLATE	1					
31	37003100040	GRIP	1					
32	37003100080	HANDLE	1					
33	42260183160	PLATE	1					
34	90171110016	BOLT	5		M10X16			
35	90302041001	WASHER,SPRING	7		10			
36	42260308050	SUPPORT	1					
37	42260302200	SHAFT	1					
38	44260050500	SHIM	2		T=0.01			
39	44260050040	RETAINER	1					
40	80516005205	BEARING,BALL	1					
41	90131510035	BOLT,HEXAGON SOCKET	1		M10X35			
42	90201401000	NUT	1		M10			
43	37000303620	SPACER	1					
44	90131510030	BOLT,HEXAGON SOCKET	1		M10X30			
45	44260050050	GEAR,WORM	1					
46	80913112500	KEY	1					
47	37000303630	SPACER	1					
48	42260302030	BOLT	1					
49	80513006204	BEARING,BALL	1					
50	90236702000	NUT,CASTLE	1		M20			
51	80136340040	PIN,SPLIT	1		4X40			
52	37000125250	PIN	3					
53	42260302300	WHEEL,WORM	1					
54	42260302400	COVER	1					
55	42260302500	COVER	1					
56	90101206010	BOLT	5		M6X1.0			
57	90302040601	WASHER,SPRING	5		6			
58	90303070601	WASHER,PLAIN	3		6			
59	90101212035	BOLT	2		M12X35			
60	90302041201	WASHER,SPRING	6		12			
61	90303071201	WASHER,PLAIN	2		12			
62	90101212028	BOLT	4		M12X28			
63	42260302010	SHIM	4		T=0.02			
64	42260302020	SHIM	4		T=0.05			
65	90201400800	NUT	1		M8			
66	90302040801	WASHER,SPRING	1		8			
67	90303071001	WASHER,PLAIN	1		10			
71	37003100020	GRIP	1					
72	42260271620	SUPPORT	1					
73	11622018030	SPRING	1					

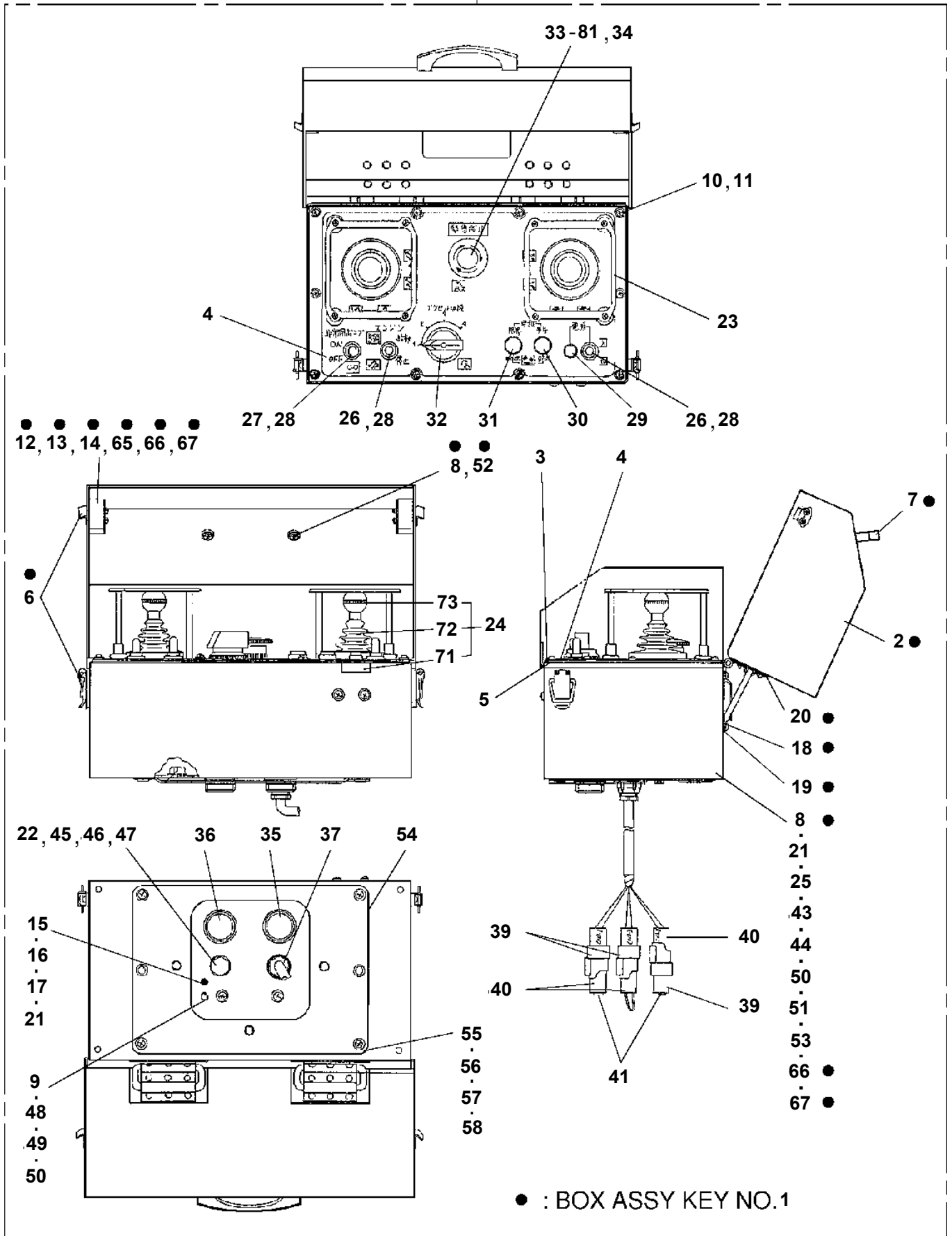
AT-185-1 42004100004 UPPER
PL1010570-03 OPERATION SYSTEM, CONTROL VALVE

OPERATION SYSTEM, CONTROL VALVE

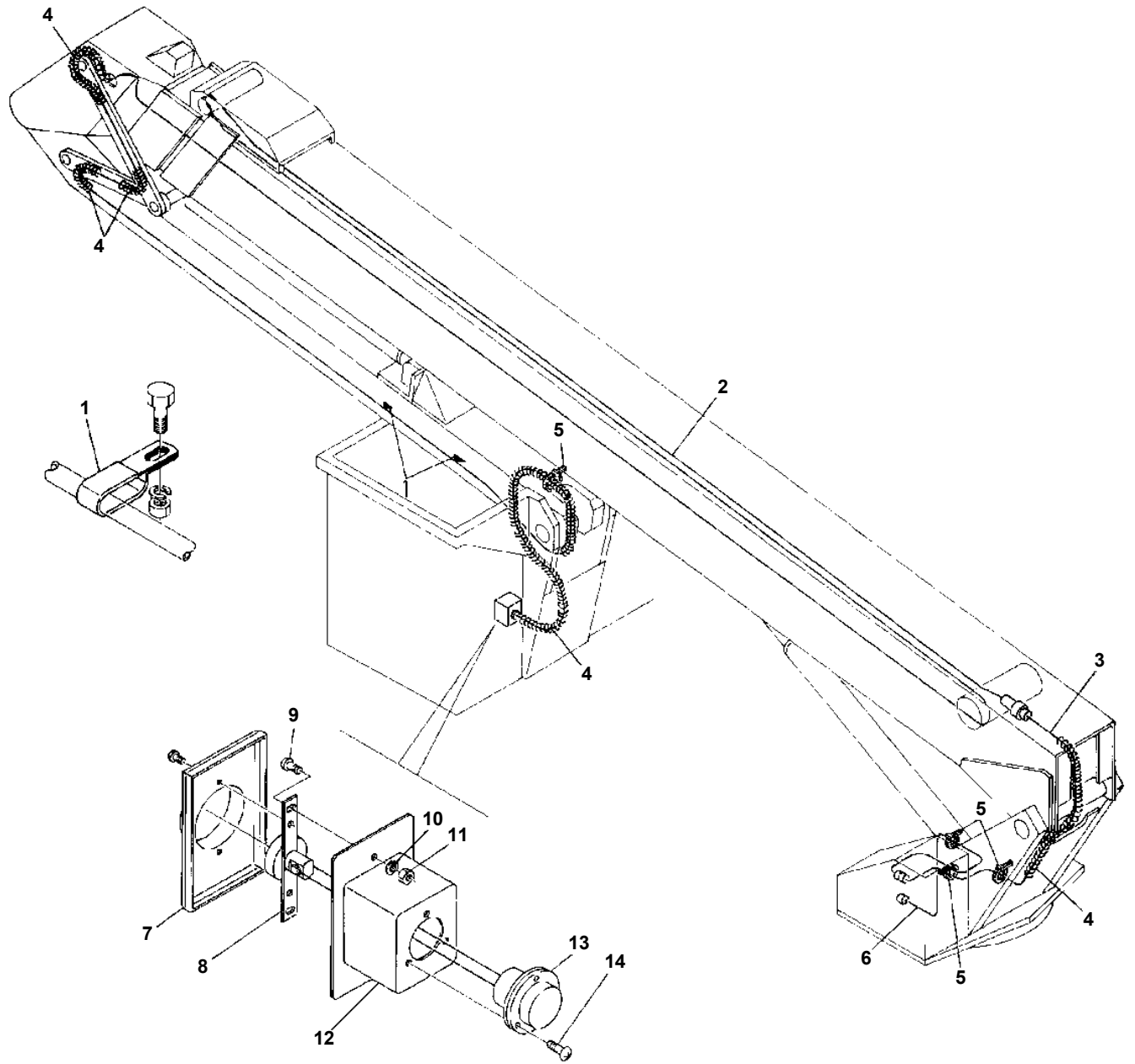


**AT-185-1 4200410004 UPPER
PL1100161-02 BOX, OPERATION**

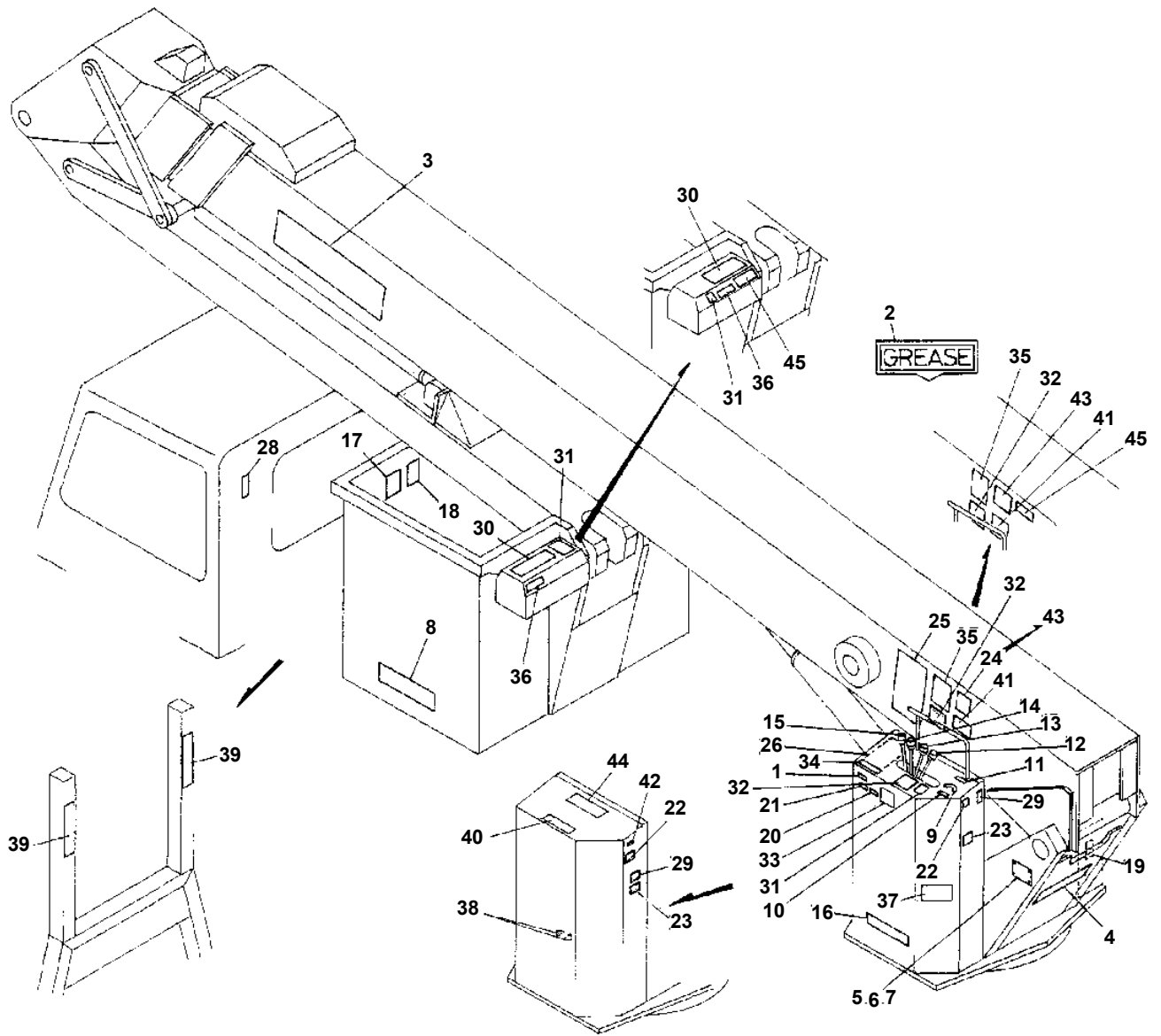
100



**AT-185-1 42004100004 UPPER
PN1010930-00 ELEC.ASSY (OP./POWER SOURCE)**

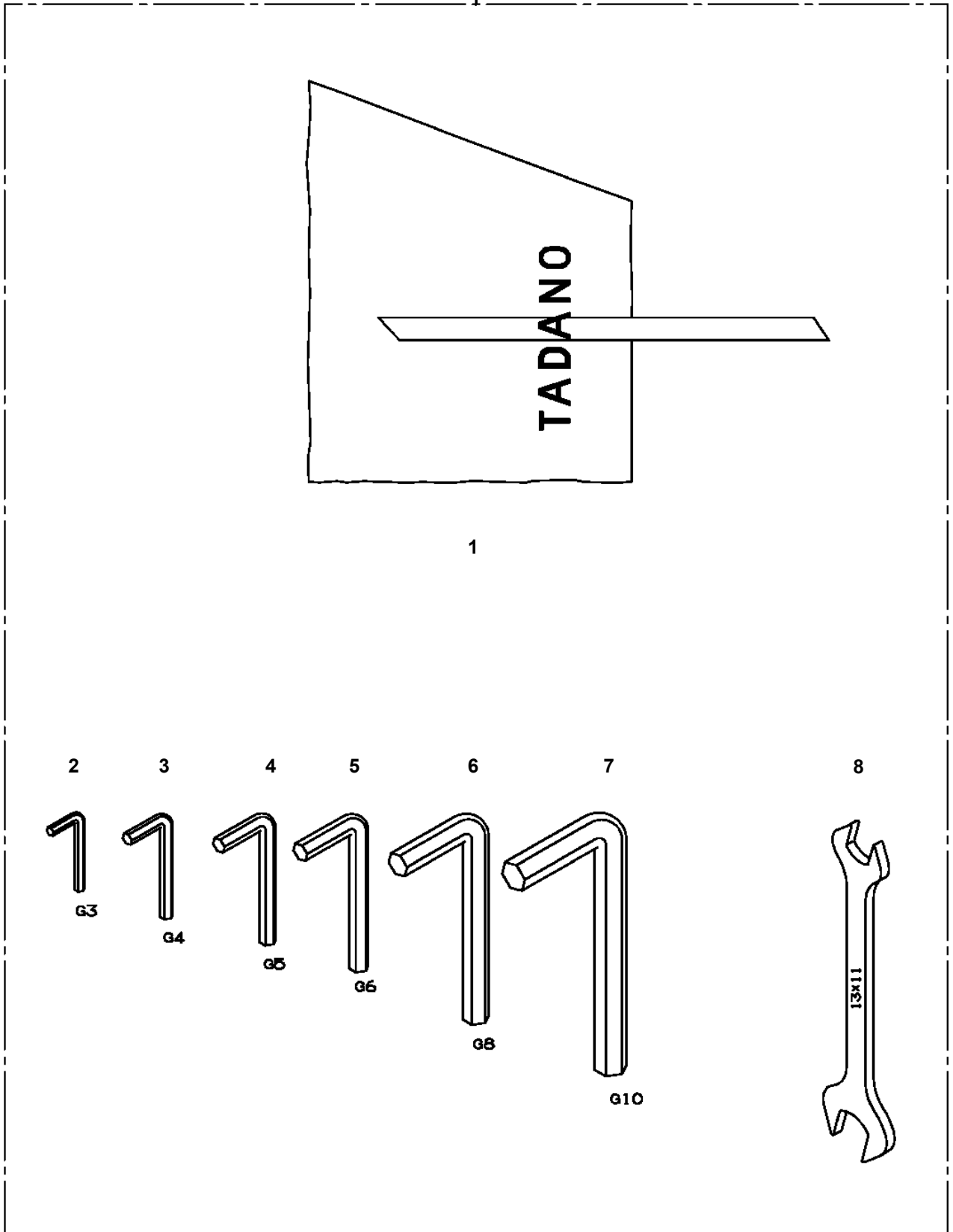


AT-185-1 42004100004 UPPER
PO1011680-05 PLATE ASSY,NAME (UPPER)

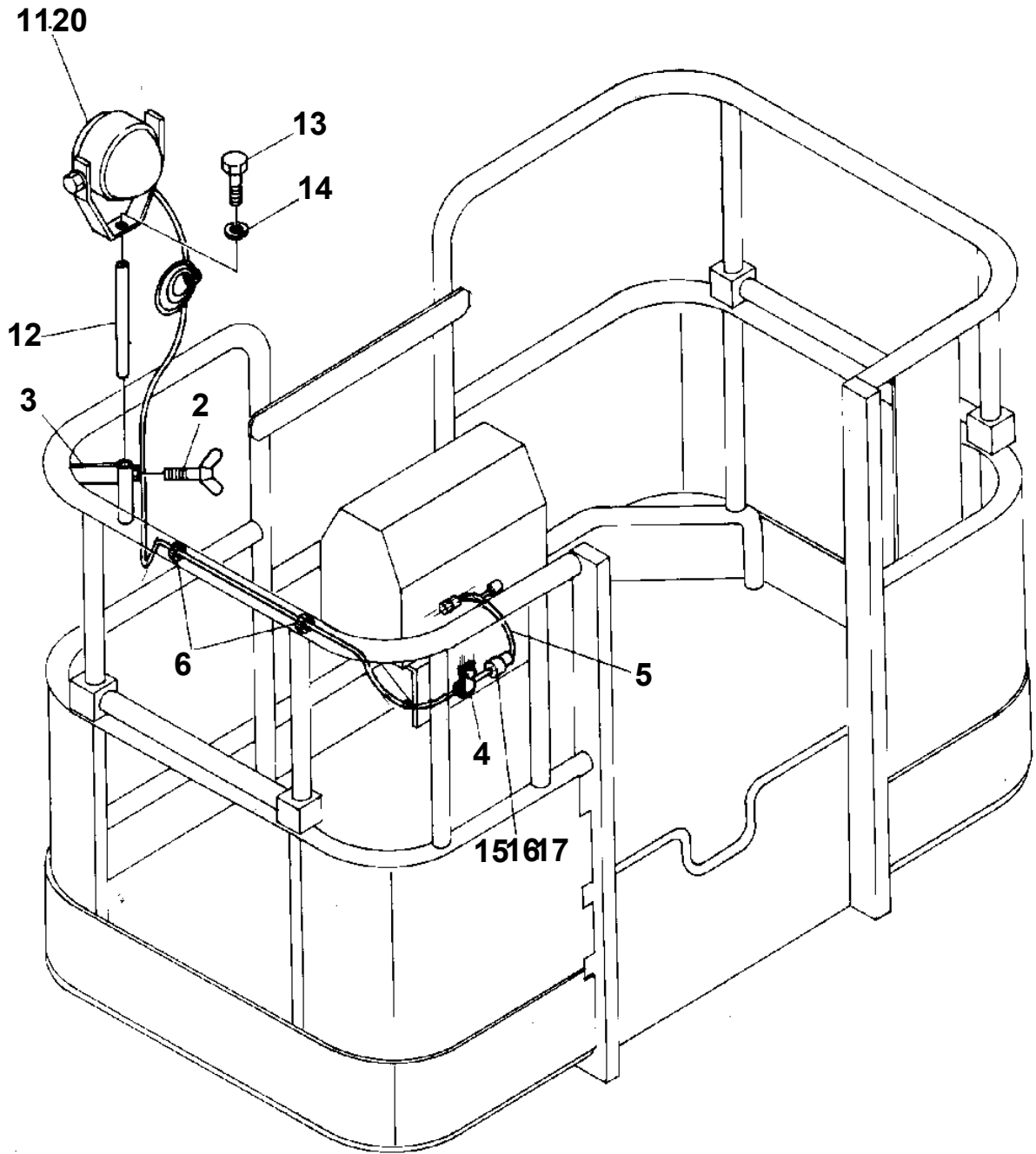


AT-185-1 42004100004 UPPER
PW1030049-01 TOOLS

50



**AT-185-1 42004100004 UPPER
PY1180075-00 LAMP (BASKET)**



CLICK HERE TO **DOWNLOAD** THE COMPLETE MANUAL

- Thank you very much for reading the preview of the manual.
- You can download the complete manual from: www.heydownloads.com by clicking the link below



- Please note: If there is no response to CLICKING the link, please download this PDF first and then click on it.

CLICK HERE TO **DOWNLOAD** THE COMPLETE MANUAL