

# **AT-160-1 42049100001 UPPER**

**PD2000120-00 SWING UNIT**

**PG2000141-00 BOOM UNIT**

**PH1000554-00 SAFETY DEVICES (WORKING AREA LIMITER)**

**PJ3000381-00 BUCKET SYSTEM**

**PK2000605-00 FRAME UNIT**

**PO1000046-01 INDICATION PLATES**

**PY1000761-00 OPTIONS**

**ASSEMBLY**

CLICK HERE TO **DOWNLOAD** THE COMPLETE MANUAL

- Thank you very much for reading the preview of the manual.
- You can download the complete manual from: [www.heydownloads.com](http://www.heydownloads.com) by clicking the link below



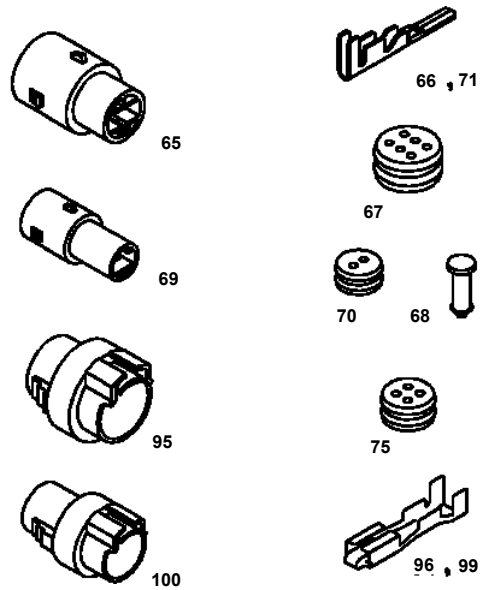
- Please note: If there is no response to CLICKING the link, please download this PDF first and then click on it.

CLICK HERE TO **DOWNLOAD** THE COMPLETE MANUAL

# AT-160-1 4204910001 UPPER

Pos No.	Parts No	Parts Name	Qty	Unit	Technical Data	Serial No (Start)	Serial No (End)	Re
1	(*****)	FRAME	1					
2	(*****)	OUTRIGGER (FRONT)	1					
3	(*****)	OUTRIGGER (REAR)	1					
4	(*****)	PIPING,OUTRIGGER	1					
5	(*****)	OPERATION SYSTEM, OUTRIGGER	1					
6	(*****)	DETECTOR,OUTRIGGER STATE	1					

**AT-160-1 4204910001 UPPER  
PB1300151-01 JOINT,ROTARY**

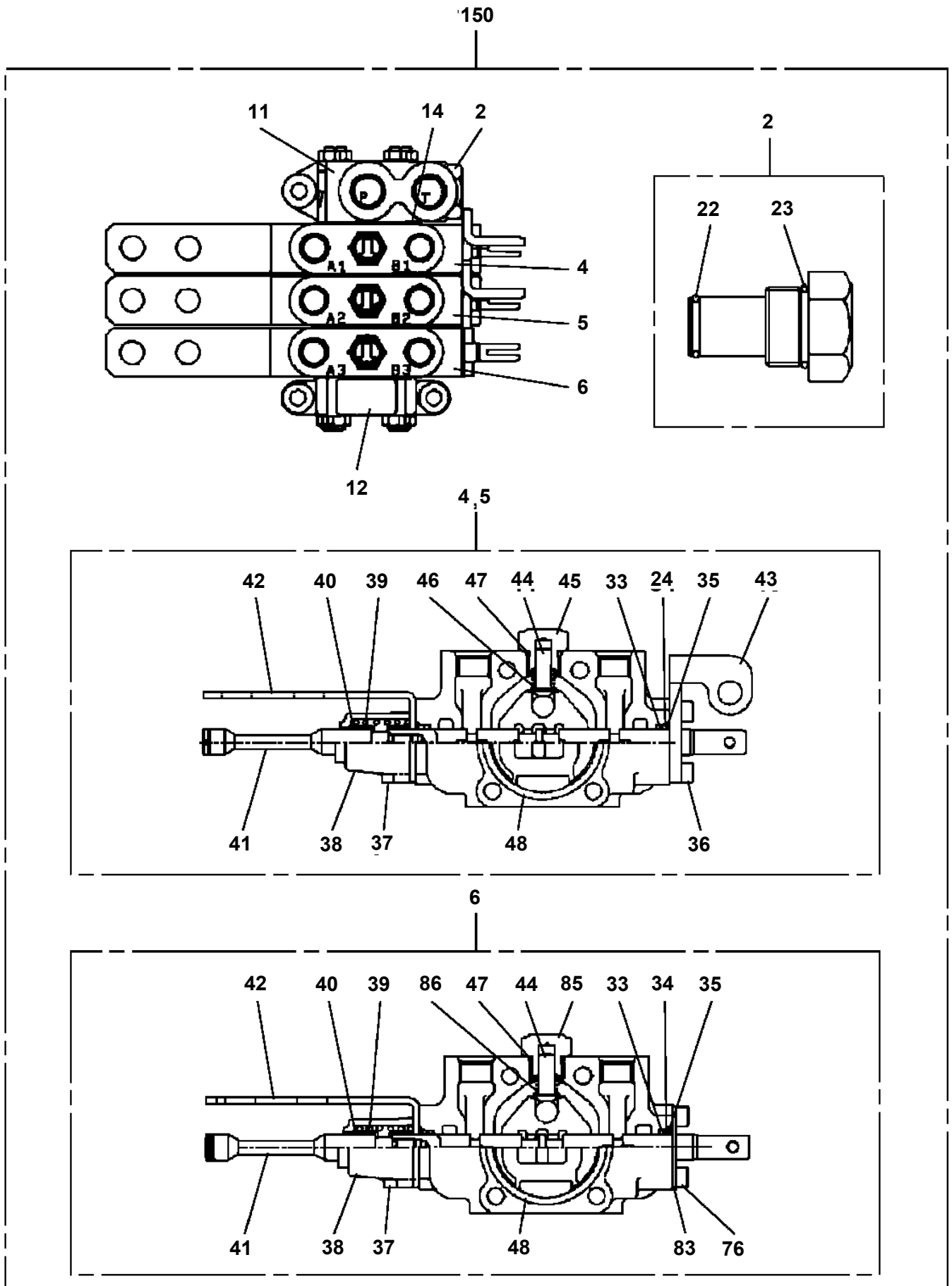


ターミナル等 部品組合表

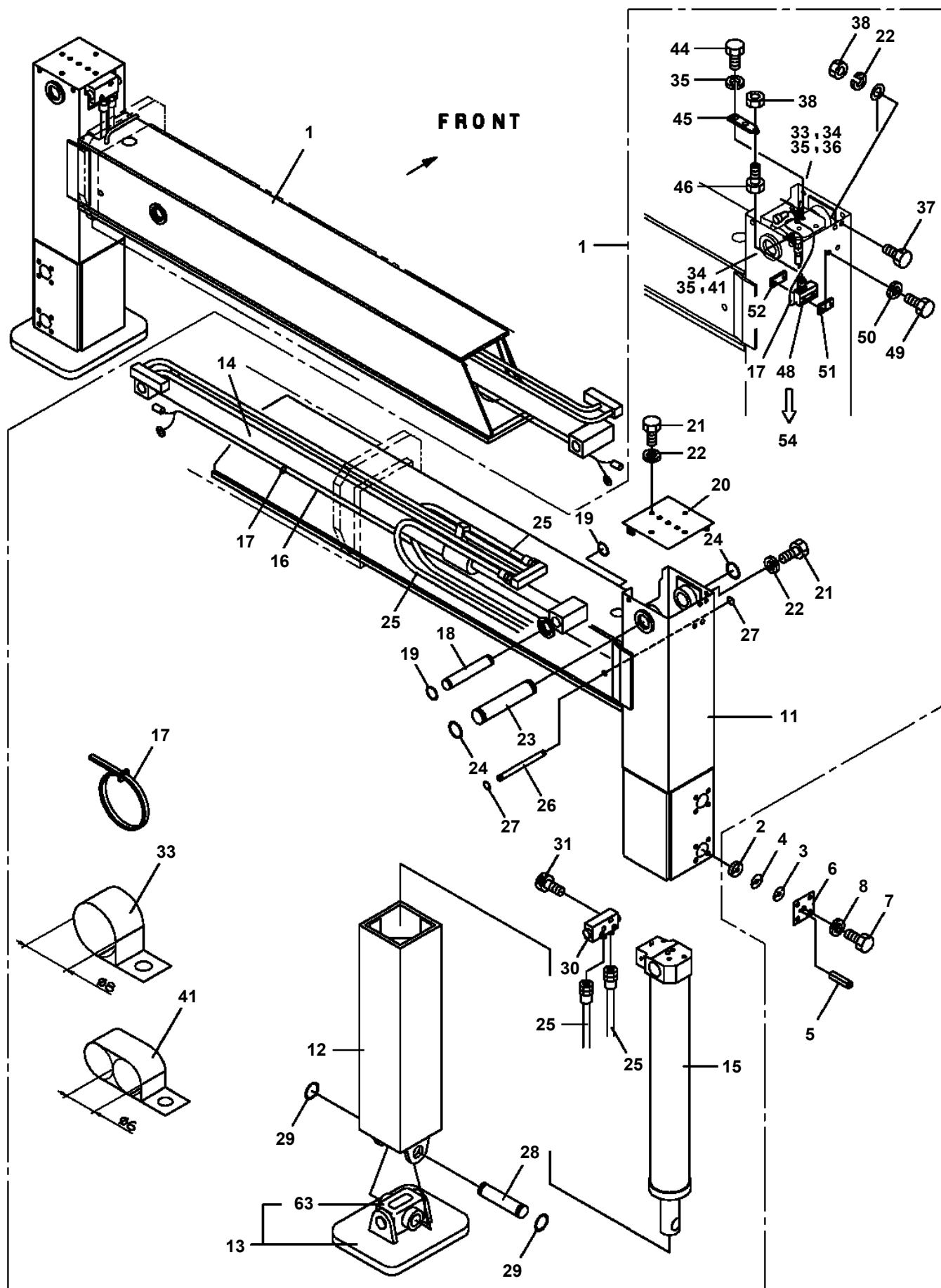
TERMINAL'S COMBINATION TABLE

コネクタ CONNECTOR	ターミナル TERMINAL	プラグ PLUG
65	66	67 , 68
65	71	67 , 68
69	66	70
95	96	67 , 68
95	99	67 , 68
100	99	70

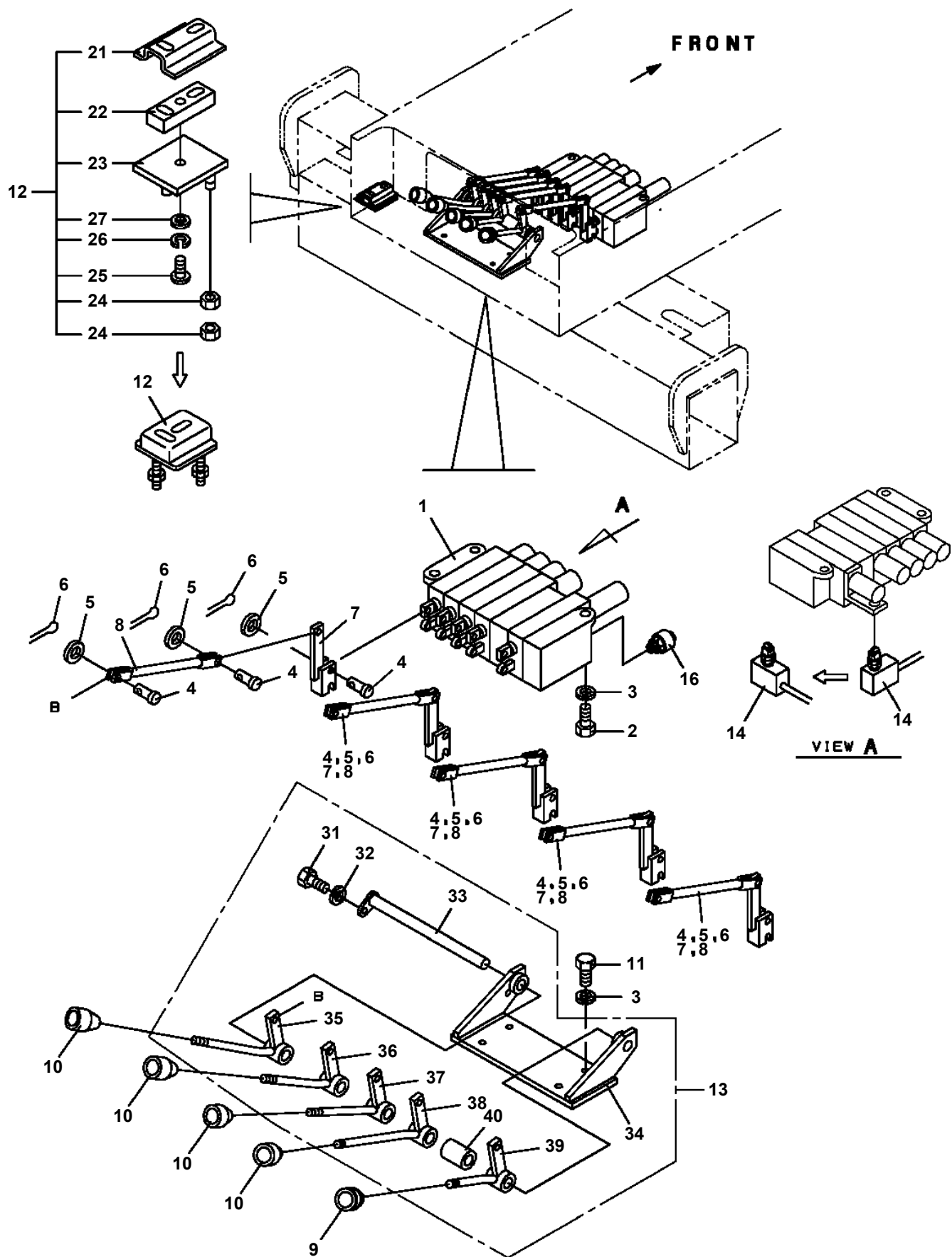
**AT-160-1 4204910001 UPPER  
PB1320356-01 VALVE,MANUAL CONTROL**



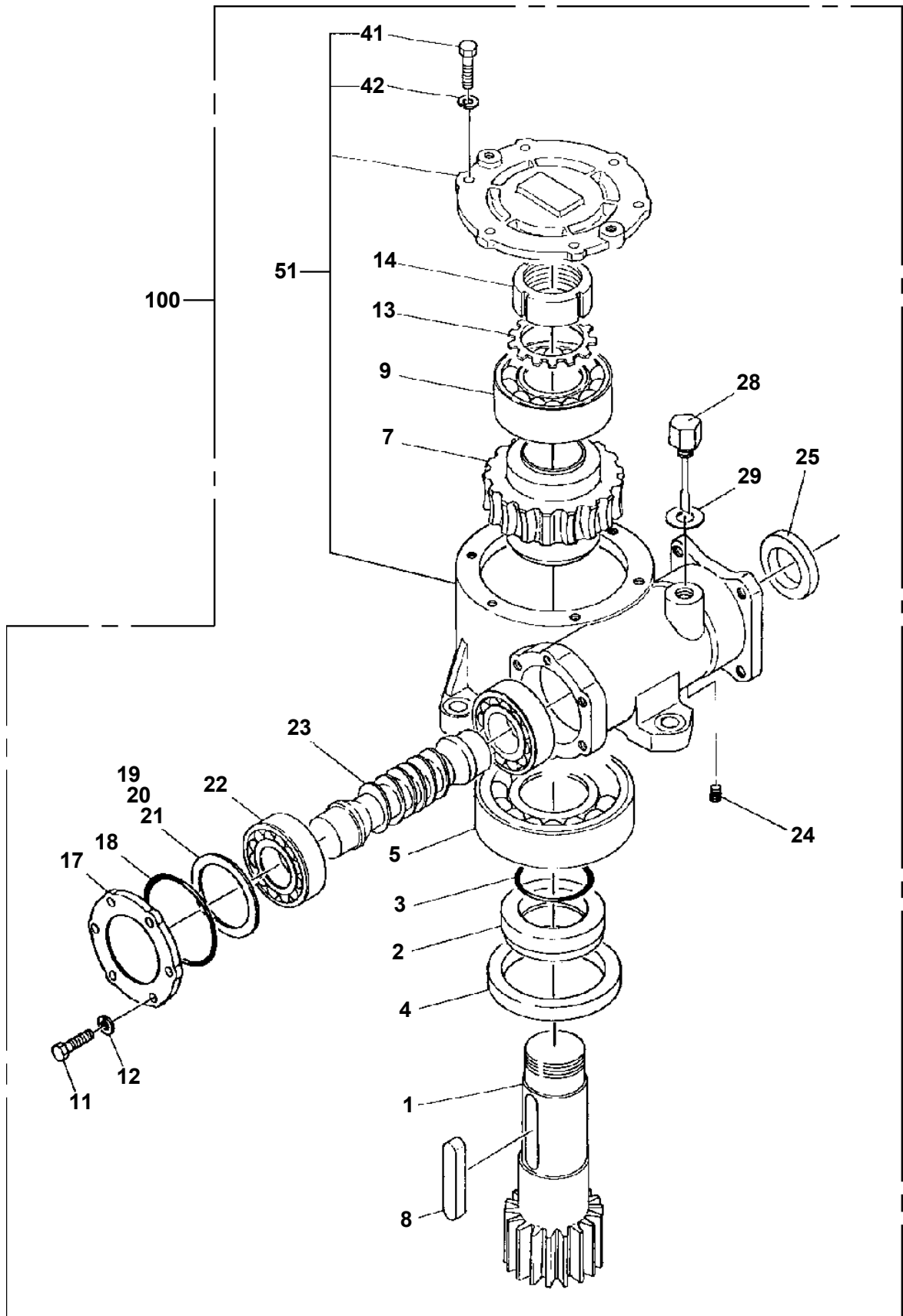
**AT-160-1 4204910001 UPPER  
PC1010293-02 OUTRIGGER (FRONT)**



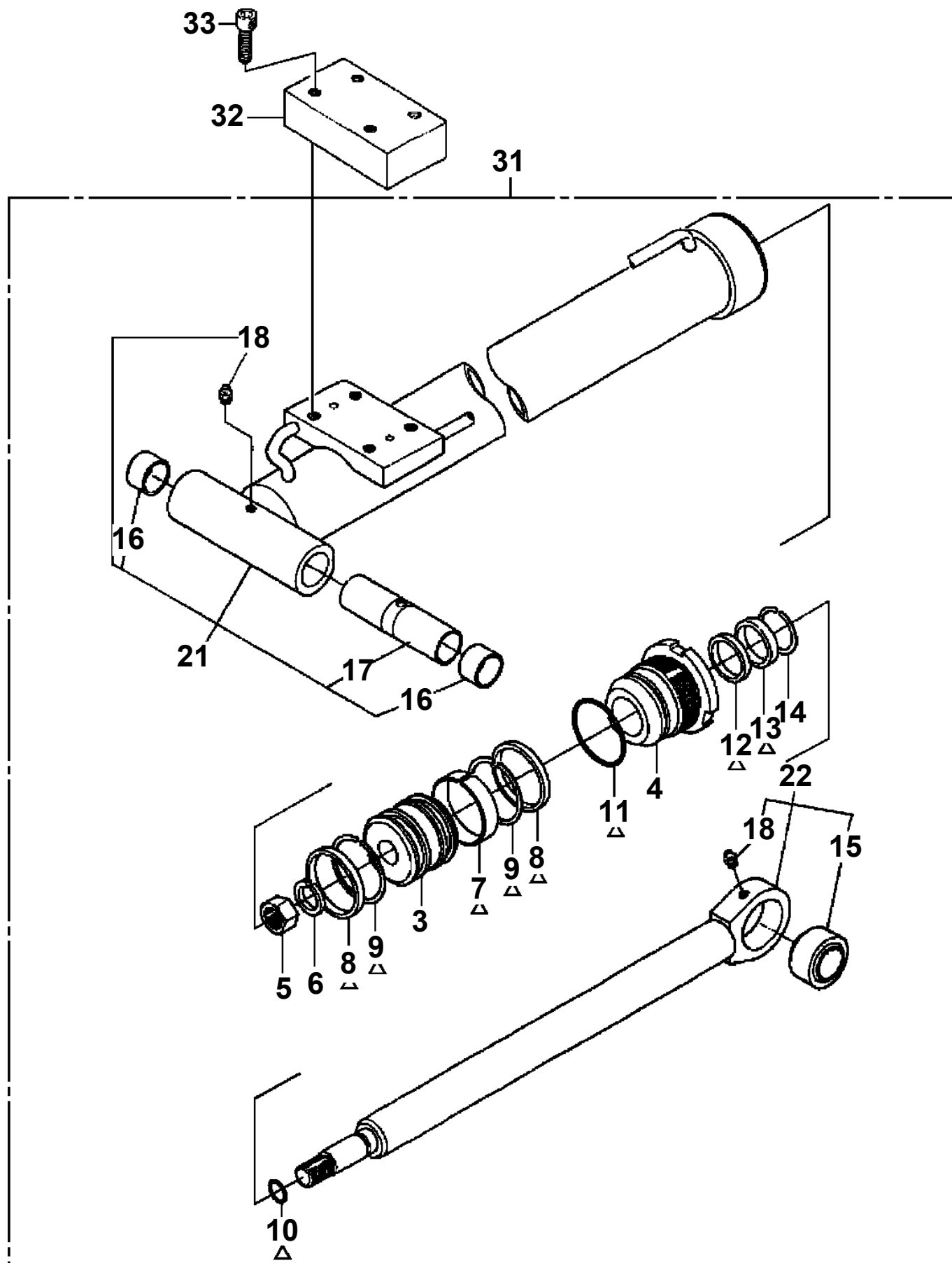
**AT-160-1 4204910001 UPPER  
PC1100121-01 OPERATION SYSTEM, OUTRIGGER**



**AT-160-1 4204910001 UPPER  
PD1010106-01 REDUCER, SWING SPEED**



AT-160-1 4204910001 UPPER  
 PE1050025-02 CYLINDER,LEVELING (UPPER)



Δ: PACKING SET KEY NO.40 (KEY NO. 7, 8, 9, 10, 11, 12, 13)

# AT-160-1 4204910001 UPPER

Pos No.	Parts No	Parts Name	Qty	Unit	Technical Data	Serial No (Start)	Serial No (End)	Remarks
2	42200685000	SHEAVE ASSY	2					
4	42200680010	RETAINER	4				230169	
	42200680100	RETAINER	4			230170		
7	37000144710	PIN	1					
8	37000118790	PIN	1					
9	80602110400	RING,RITAINING	2		R40			
10	37000113850	PIN	2					
11	80601110400	RING,RITAINING	2		S40			
12	37000113840	PIN	1					
13	37002006560	PLATE,SLIDE	4					
14	37000510800	PLATE	16		T=0.8			
15	80184306012	SCREW,MACHINE	12		M6X12			
16	37002006520	PLATE,SLIDE	4					
17	42200021010	PLATE	12		T=0.8			
18	37000144700	PIN	1					
19	12626208001	BUSH	2					
20	82458101000	NIPPLE,GREASE	1		B-PT1/8			
21	90171110025	BOLT	8		M10X25			
22	42200681001	BOOM,BASE	1					
23	42200682000	BOOM,2ND	1					
24	42200683001	BOOM,TOP	1					
25	37002007000	PLATE,SLIDE	2					
26	37000510810	PLATE	12		T=0.6			
27	90101210020	BOLT	4		M10X20			
28	90202481800	NUT	4		M18			
30	37002006980	PLATE,SLIDE	2					
31	90172110035	BOLT,HEXAGON SOCKET	4		M10X35			
32	90171110016	BOLT	28		M10X16			
33	90302041001	WASHER,SPRING	50		10			
34	37002006970	PLATE,SLIDE	2					
35	37002006990	PLATE,SLIDE	2					
36	37000510790	PLATE	16		T=0.6			
39	90303071001	WASHER,PLAIN	12		10			
40	37000553060	PLATE	4					
41	37000132370	PIN	1					
42	90238402408	NUT,CASTLE	1		M24			
44	80136350045	PIN,SPLIT	1		5X45			
45	90303072401	WASHER,PLAIN	1		24			
46	37002006500	PLATE,SLIDE	4					
47	37000508520	PLATE	8		T=0.8			
48	37000112190	PIN	1					
49	80601110300	RING,RITAINING	2		S30			
50	89631501000	HOSE,VINYL	1		18X22,1M			
51	90171112030	BOLT	2		M12X30			
52	37000509190	PLATE	1					
53	37000524070	PLATE	1		T=6			
54	90302041201	WASHER,SPRING	2		12			
55	42200686001	SHEAVE ASSY	1					
56	80601110350	RING,RITAINING	2		S35			
57	42200082300	PLATE	2					
58	42200082310	ROLLER	2					
59	90171110055	BOLT	4		M10X55			
60	42200021510	PLATE	2					
61	42200021520	PIN	2					
63	82454104000	NIPPLE,GREASE	6					
64	90171110020	BOLT	2		M10X20			
66	90202481400	NUT	4		M14			
71	42200013410	SUPPORT	4					
72	37002006500	PLATE,SLIDE	4					
73	37000508520	PLATE	4		T=0.8			
74	80184306012	SCREW,MACHINE	4		M6X12			
82	80612110950	RING,RITAINING	2		AR95			
83	80513006012	BEARING,BALL	2					

CLICK HERE TO **DOWNLOAD** THE COMPLETE MANUAL

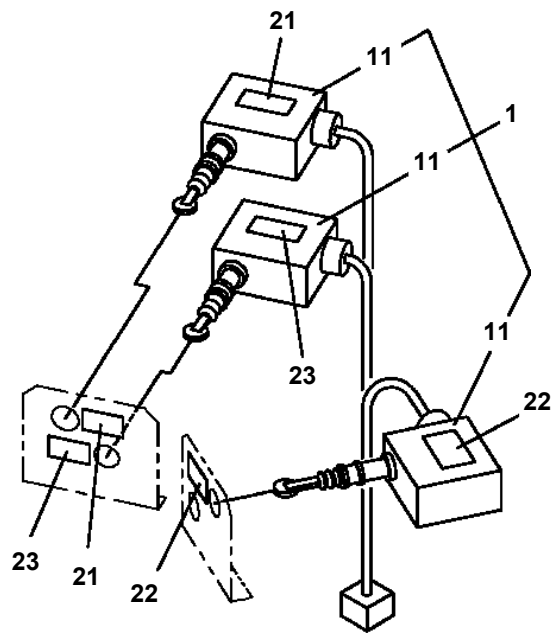
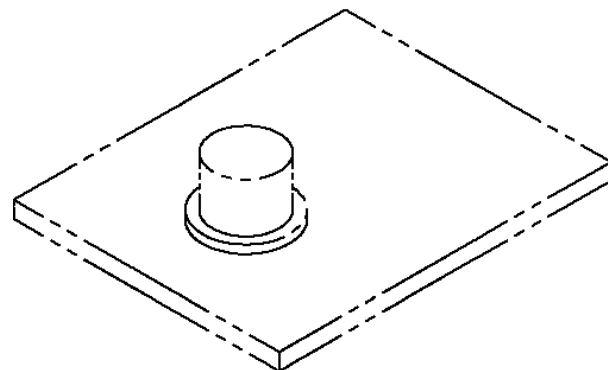
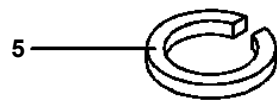
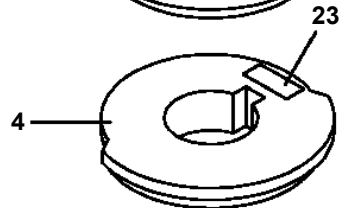
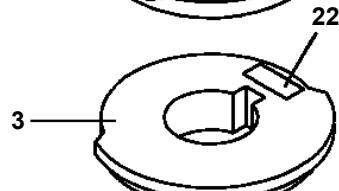
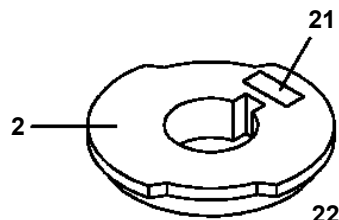
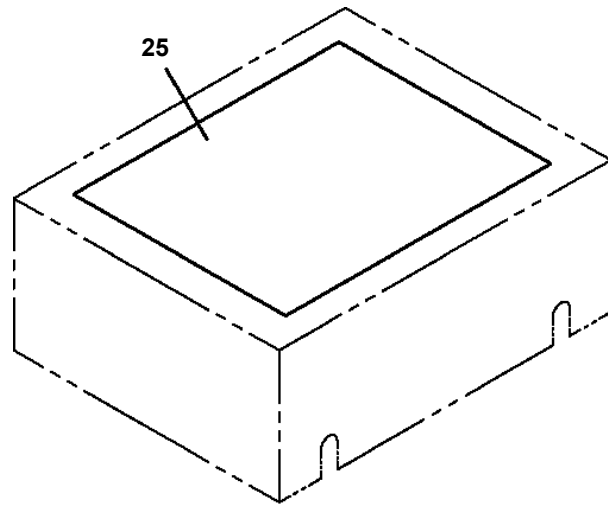
- Thank you very much for reading the preview of the manual.
- You can download the complete manual from: [www.heydownloads.com](http://www.heydownloads.com) by clicking the link below



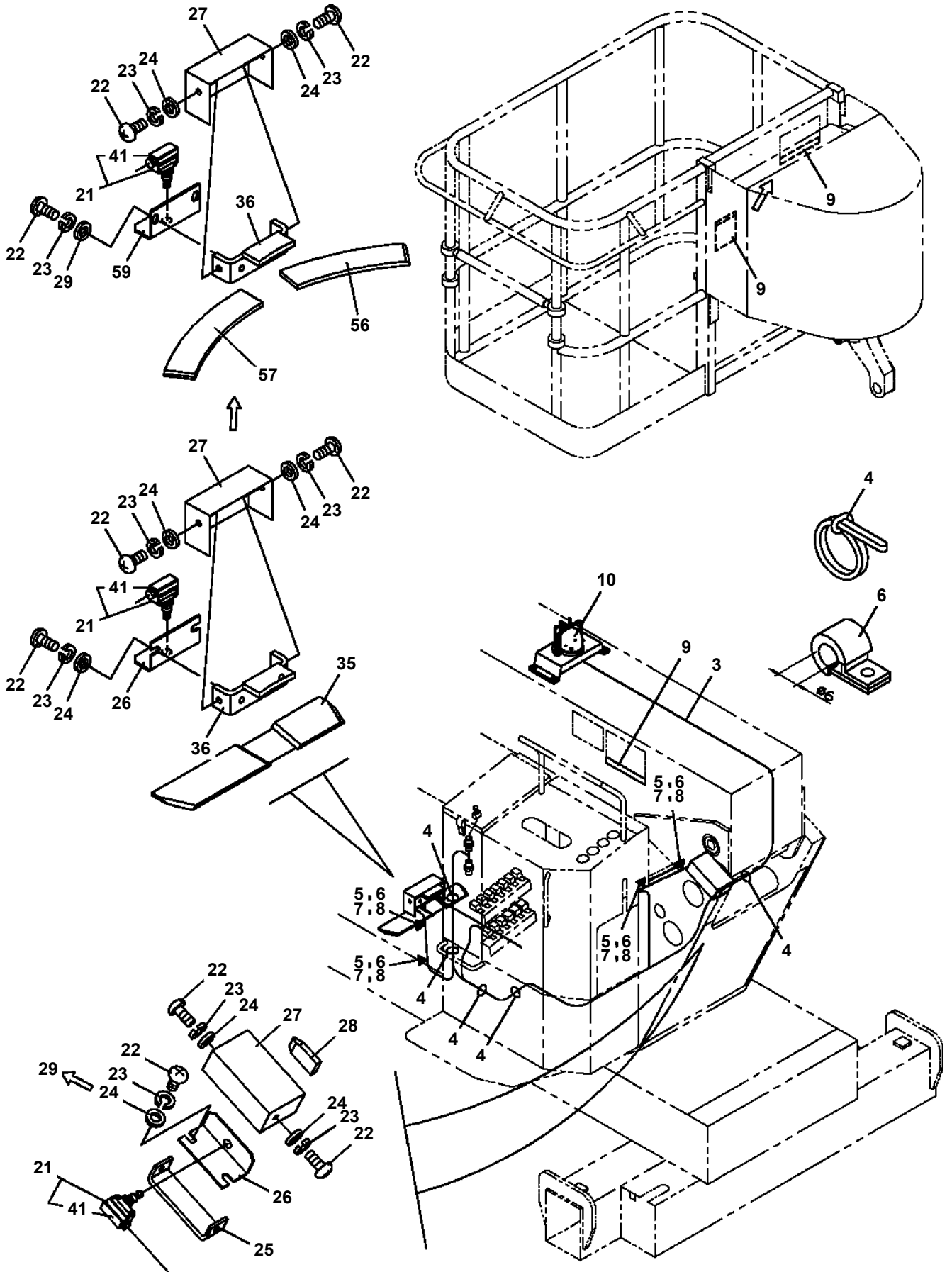
- Please note: If there is no response to CLICKING the link, please download this PDF first and then click on it.

CLICK HERE TO **DOWNLOAD** THE COMPLETE MANUAL

**AT-160-1 4204910001 UPPER  
PH1140028-00 DETECTOR, SWING ANGLE**



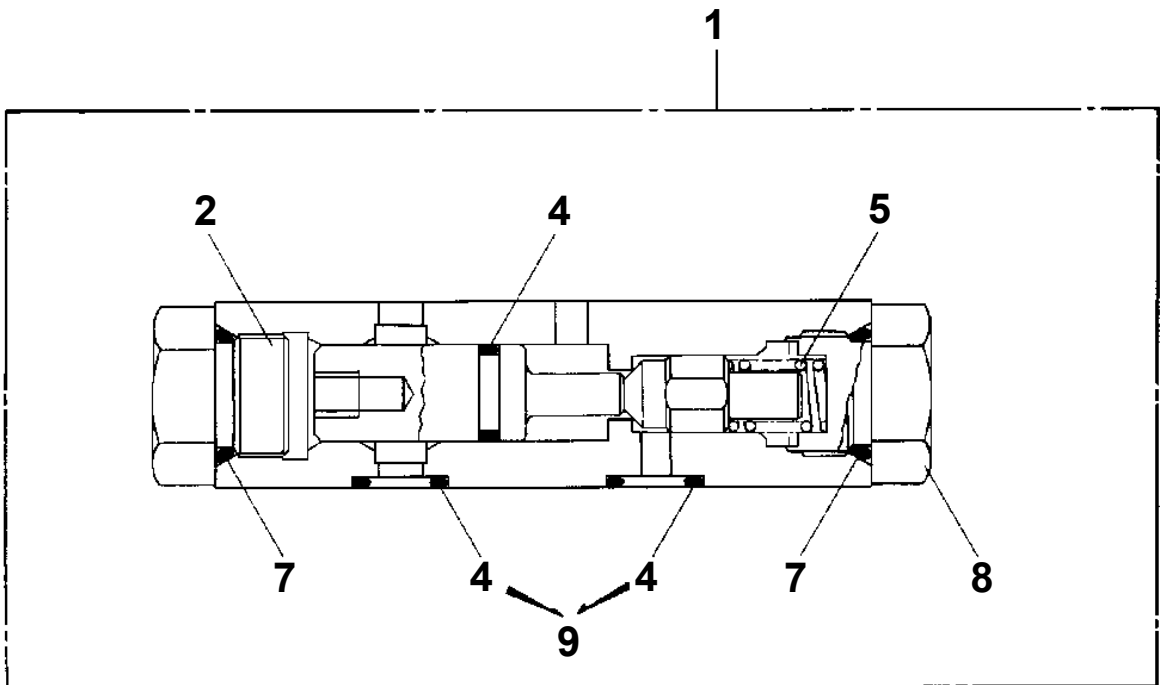
**AT-160-1 4204910001 UPPER  
PH1650001-02 DETECTOR,INTERLOCK (CAB)**



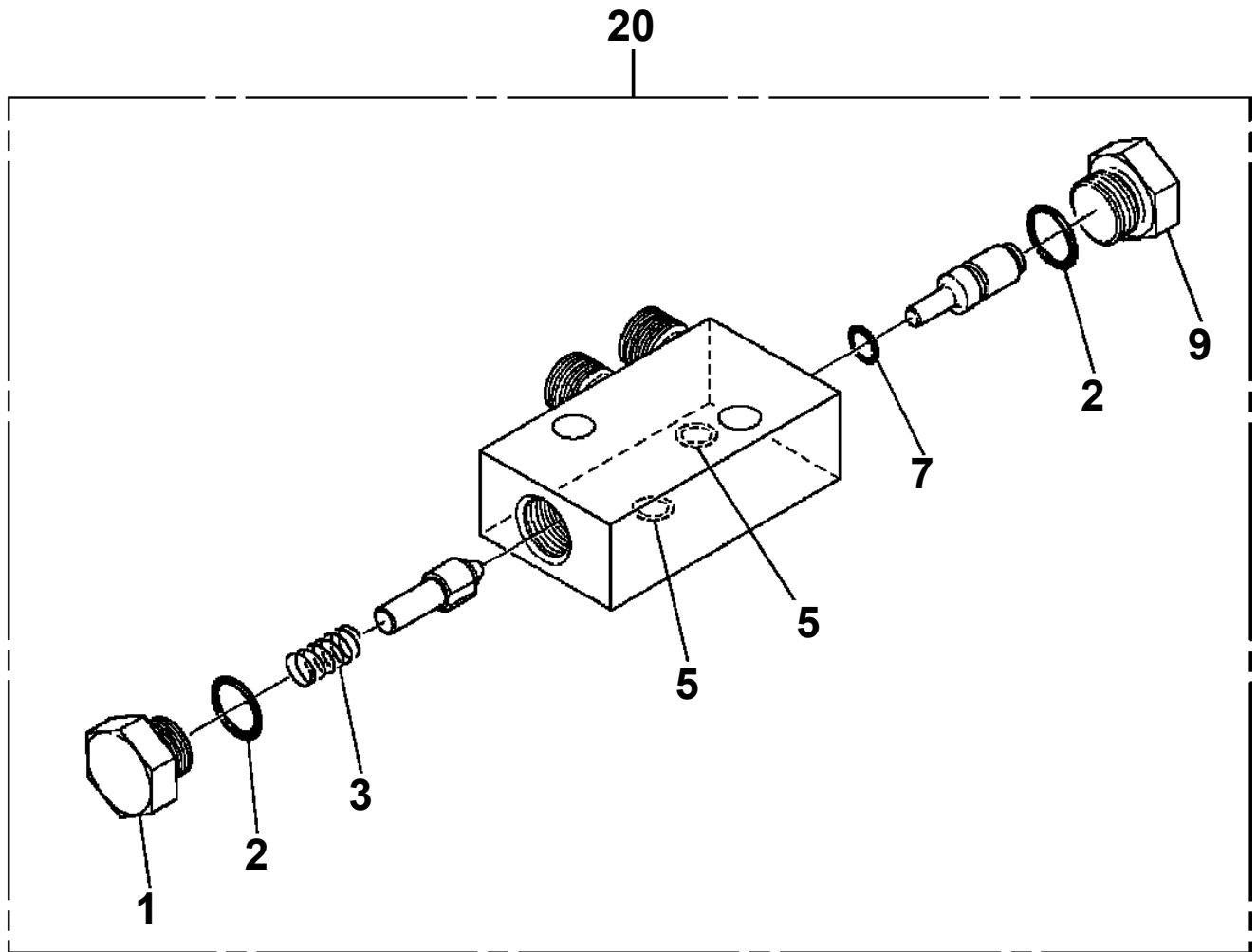
**AT-160-1 4204910001 UPPER**  
**PI1140003-01 VALVE,CHECK**

Assembly Name VALVE, CHECK

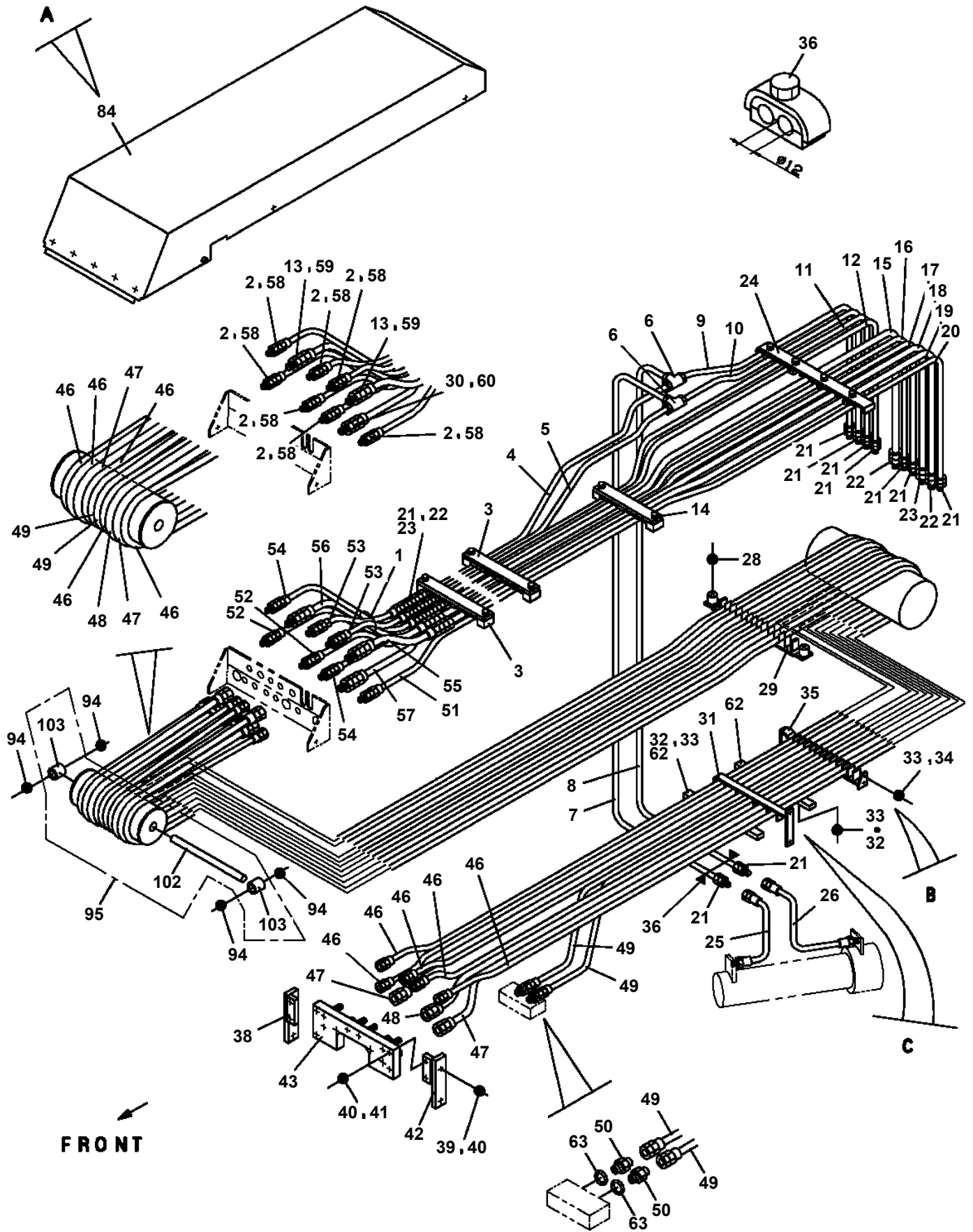
PI114-0003-01



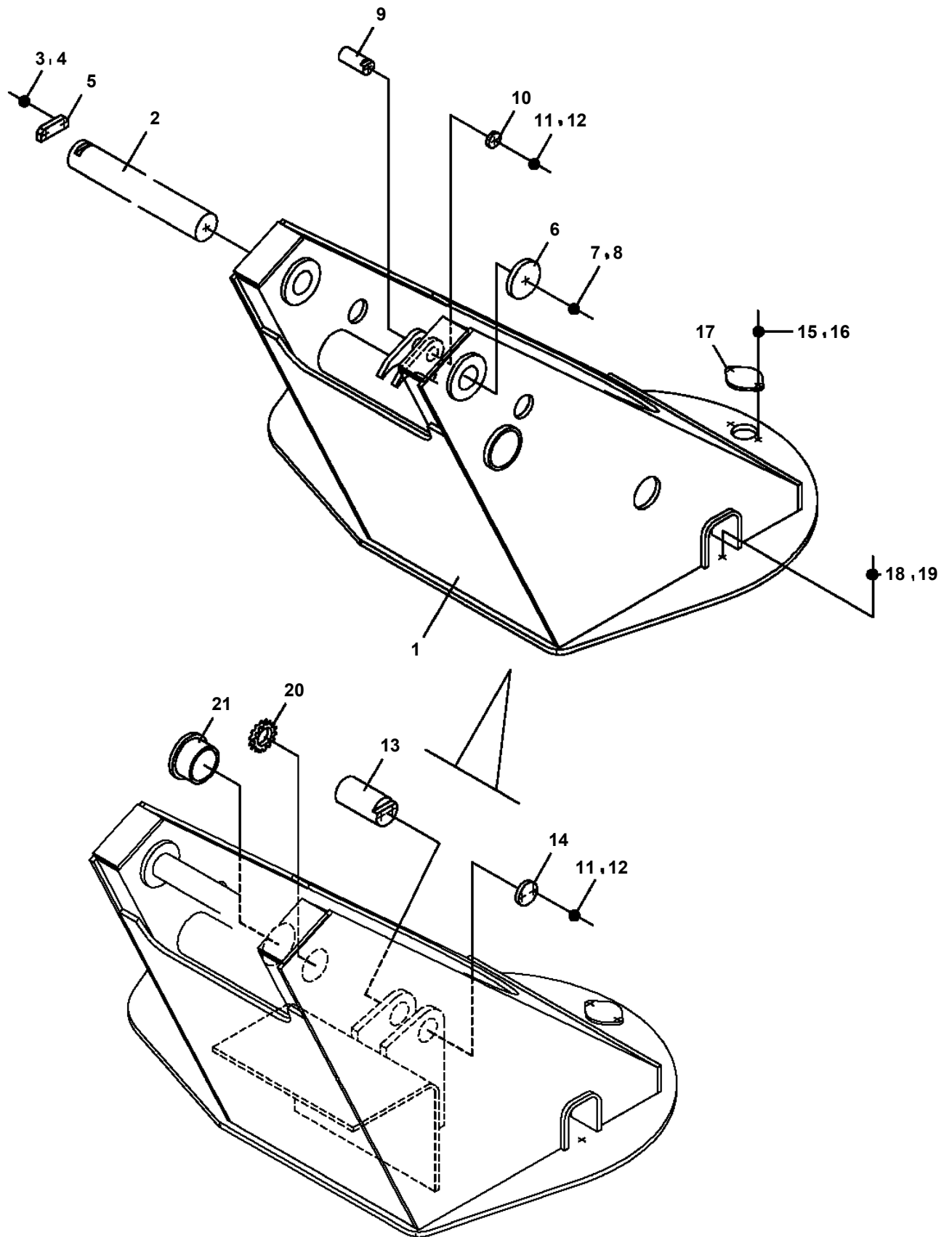
AT-160-1 4204910001 UPPER  
PI1280110-01 VALVE,PILOT CHECK



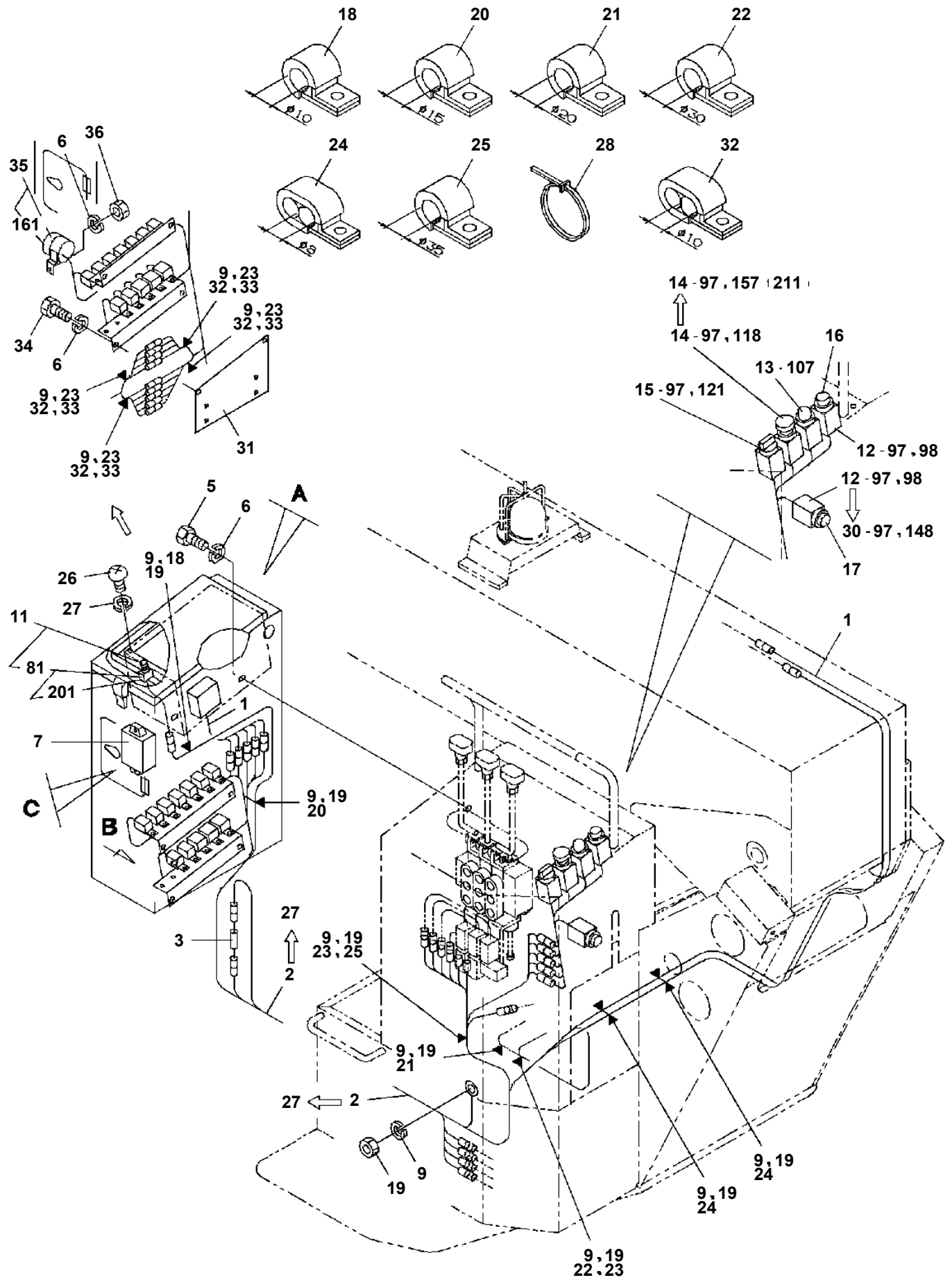
**AT-160-1 4204910001 UPPER  
PJ3100078-00 PIPING,BOOM**



**AT-160-1 4204910001 UPPER  
PK1100245-00 SWING FRAME**



**AT-160-1 4204910001 UPPER  
PN1011027-03 ELEC.ASSY (SWING FRAME)**

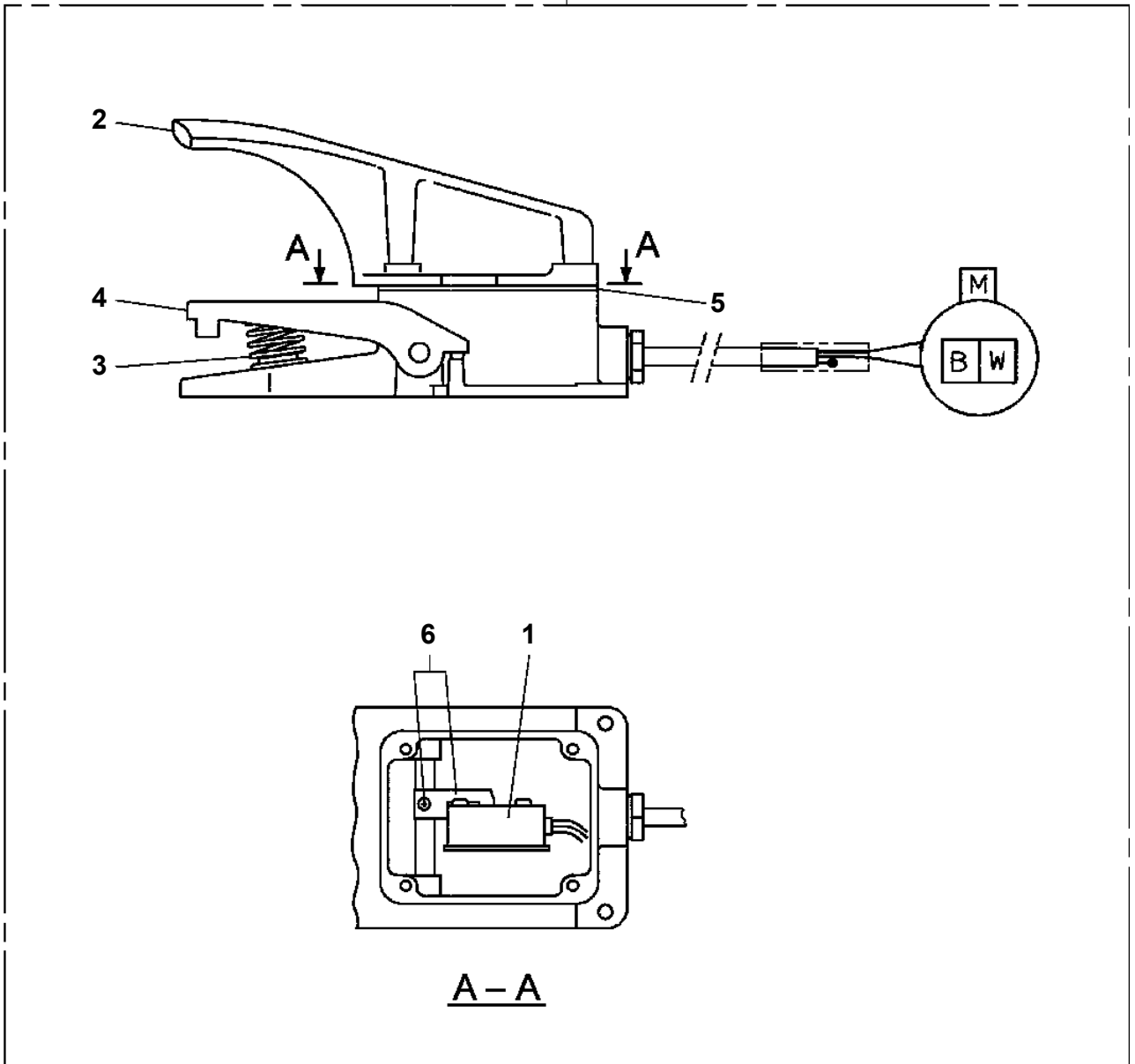


# AT-160-1 42049100001 UPPER

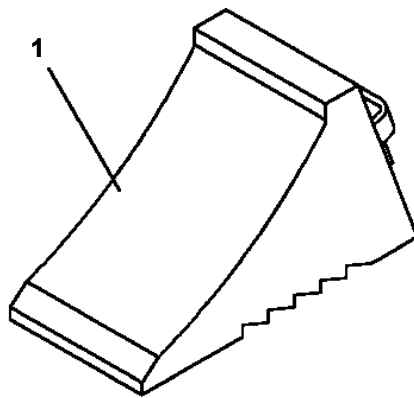
Pos No.	Parts No	Parts Name	Qty	Unit	Technical Data	Serial No (Start)	Serial No (End)
171	44960012000	BUZZER ASSY	1			230174	
181	82198300402	KNOB (RED)	1				230174

AT-160-1 42049100001 UPPER  
PS5530451-00 SWITCH ASSY

100



**AT-160-1 42049100001 UPPER  
PW5110002-00 WEDGE (STOPPER FOR TIRE/WAZUMI)**



CLICK HERE TO **DOWNLOAD** THE COMPLETE MANUAL

- Thank you very much for reading the preview of the manual.
- You can download the complete manual from: [www.heydownloads.com](http://www.heydownloads.com) by clicking the link below



- Please note: If there is no response to CLICKING the link, please download this PDF first and then click on it.

CLICK HERE TO **DOWNLOAD** THE COMPLETE MANUAL