

## **AT-155-2 42011200005 UPPER**

**PB1000411-01 HYDRAULIC PRESSURE GENERATING SYSTEM**  
**PC1000328-01 OUTRIGGER SYSTEM**  
**PD1000379-01 SWING SYSTEM**  
**PE1000381-01 ELEVATING SYSTEM**  
**PG1000344-01 TELESCOPING SYSTEM**  
**PH1000343-01 SAFETY DEVICES**  
**PJ3000204-00 BASKET SYSTEM**  
**PK1000392-00 FRAME**  
**PL1000401-01 CONTROL DEVICES**  
**PN1000132-02 ELECTRIC EQUIPMENT**  
**PO1000131-03 INDICATION PLATES**  
**PW1000118-00 ACCESSORIES & TOOLS**  
**PX1000423-01 MOUNTING PARTS**  
**PY1000360-01 OPTIONS**  
**ASSEMBLY**

CLICK HERE TO **DOWNLOAD** THE COMPLETE MANUAL

- Thank you very much for reading the preview of the manual.
- You can download the complete manual from: [www.heydownloads.com](http://www.heydownloads.com) by clicking the link below



- Please note: If there is no response to CLICKING the link, please download this PDF first and then click on it.

CLICK HERE TO **DOWNLOAD** THE COMPLETE MANUAL

# AT-155-2 42011200005 UPPER

Pos No.	Parts No	Parts Name	Qty	Unit	Technical Data	Serial No (Start)	Serial No (End)	Remarks	P
1	(*****)	BOOM	1						0
2	(*****)	JIB	1						0
3	(*****)	CYLINDER,TELESCOPING	1						0

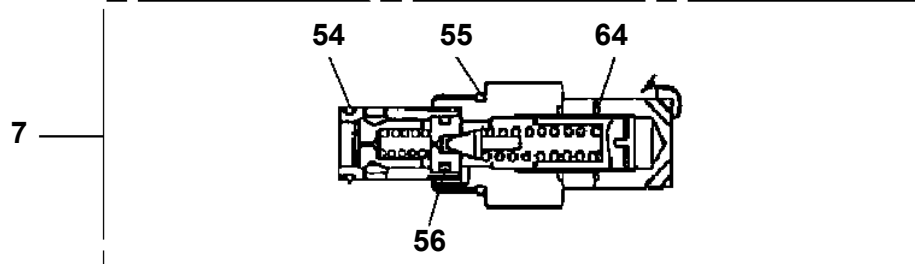
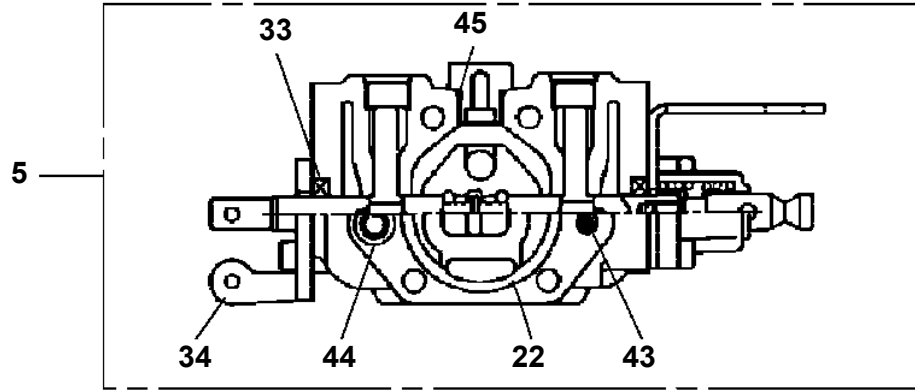
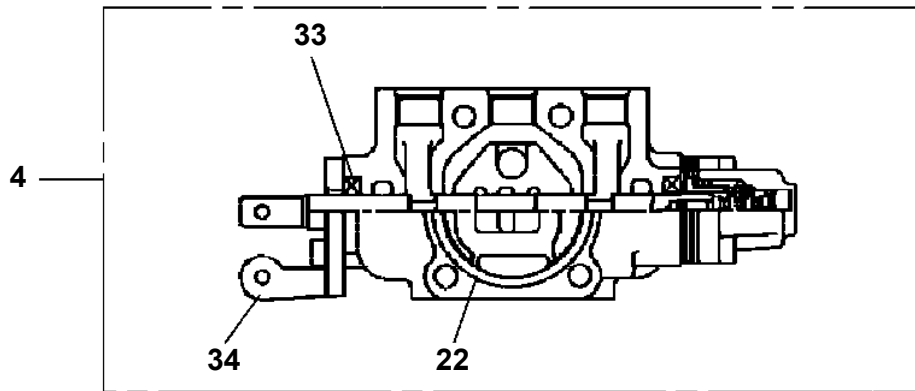
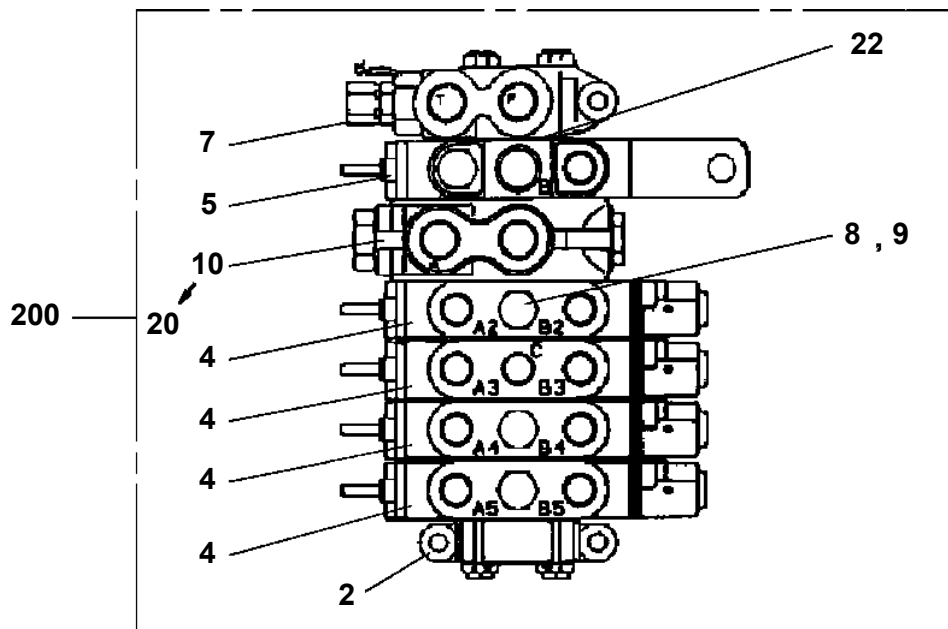
# AT-155-2 42011200005 UPPER

Pos No.	Parts No	Parts Name	Qty	Unit	Technical Data	Serial No (Start)	Serial N
1	(*****)	ELEC.ASSY (BOOM)	1				
2	(*****)	ELEC.ASSY (JIB)	1				
3	(*****)	ELEC.ASSY (BOOM)	1				
4	(*****)	ELEC.ASSY (BASKET)	1				
5	(*****)	ELEC.ASSY (POWER SOUECE,BASKET)	1				
6	(*****)	ELEC.ASSY (SWING FRAME)	1				
7	(*****)	ELEC.ASSY (FRAME)	1				
9	(*****)	ELEC.ASSY (DETECTOR BOOM O/R STOWAGE)	1				
10	(*****)	LAMP (SWING FRAME)	1				
11	(*****)	LAMP (O/R CONTROL LAMP)	1				
12	(*****)	ALARM SYSTEM	1				

## **AT-155-2 42011200005 UPPER**

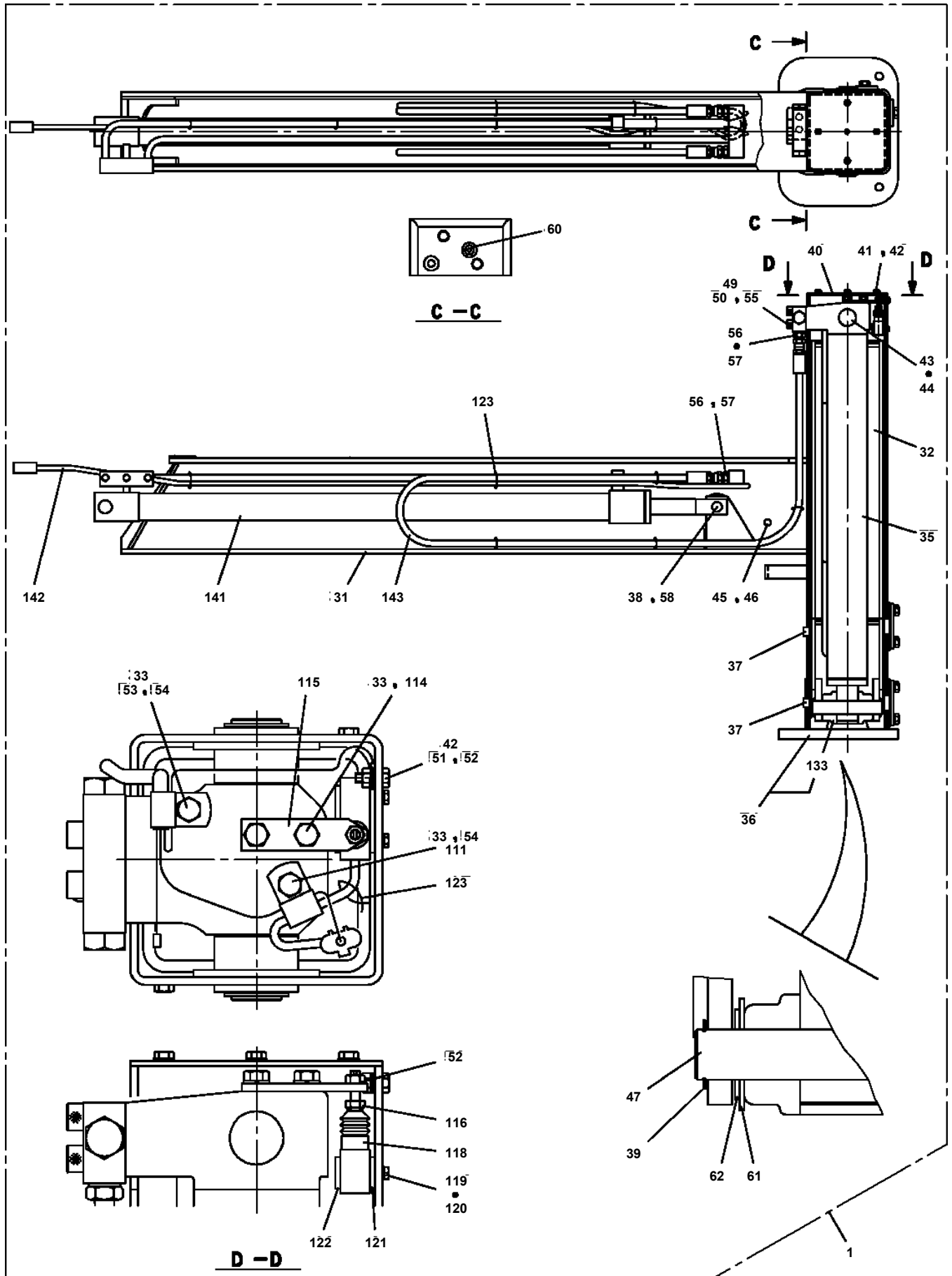
PN1080100-01 LAMP (SWING FRAME)  
PN1080132-00 LAMP (O/R CONTROL LAMP)  
PN1110204-02 RELAY  
PO1012298-01 PLATE ASSY.NAME (OPERATION BOX)  
PO1013050-00 PLATE ASSY,NAME (UPPER)  
PO1013535-00 PLATE ASSY.NAME (BASKET)  
PS5530450-00 SWITCH ASSY  
PV1020160-00 VALVE,REMOTE CONTROL  
PW1010110-07 ACCESSORIES  
PW1030049-01 TOOLS  
PW1050018-01 WEDGE (STOPPER FOR TIRE/JUSTIN)  
PW5110002-00 WEDGE (STOPPER FOR TIRE/WAZUMI)  
PW5110003-00 WEDGE (STOPPER FOR TIRE/NAKAMURA KIKI)  
PX1100204-00 TANK SUPPORT INSTALLATION  
PY1090001-00 BELT,SAFETY  
PY1560015-01 ALARM SYSTEM  
PY1890000-01 COVER,CYLINDER (ELEVATING)  
PY1930004-00 BLOCK,RUBBER (WAZUMI)  
PY1930005-00 BLOCK,RUBBER (NAKAMURA)

AT-155-2 42011200005 UPPER  
 PB1320209-03 VALVE,MANUAL CONTROL (OUTRIGGER)



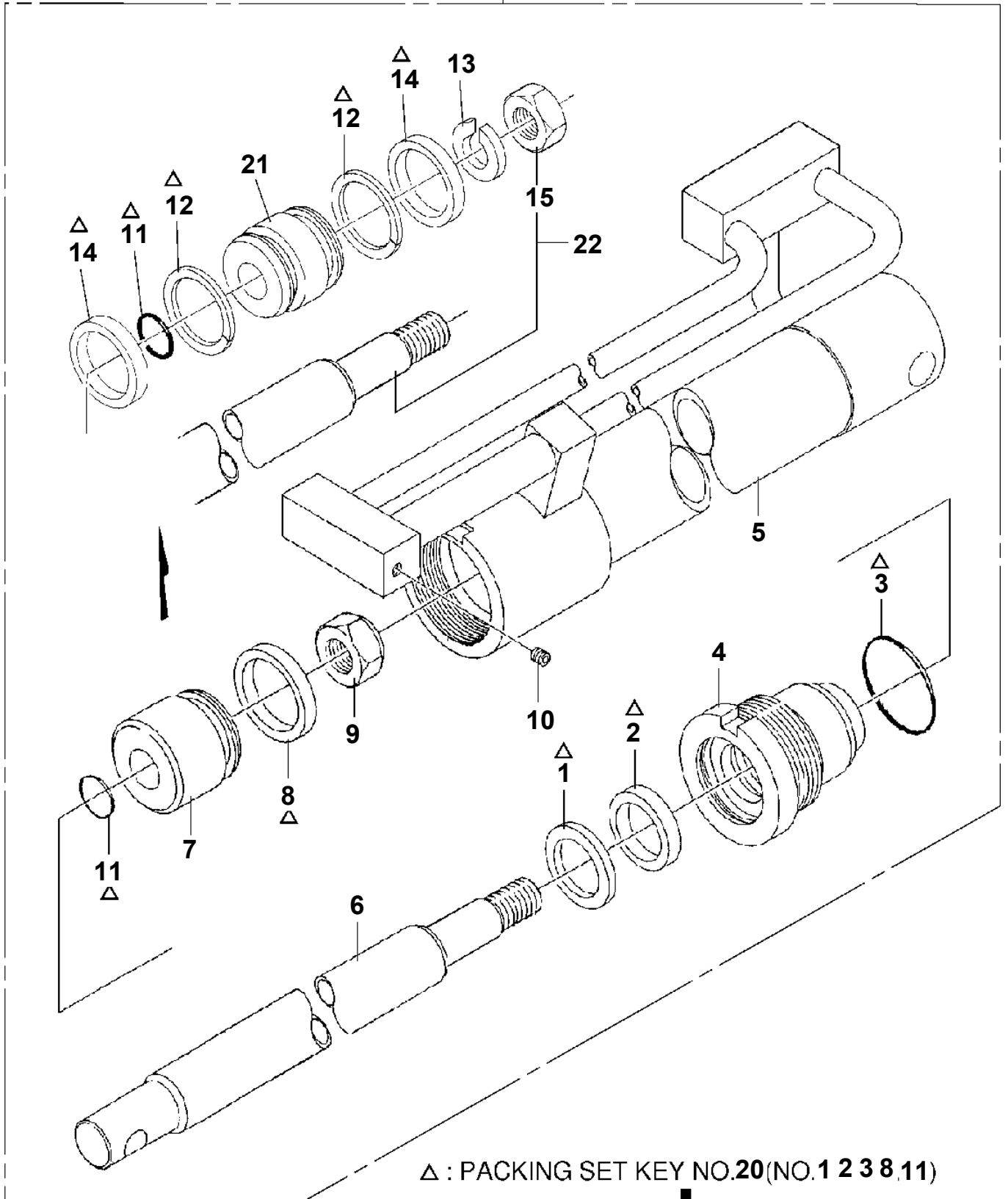
展開図有  
 ILLUSTRATED BREAKDOWN NO.10, 20

**AT-155-2 42011200005 UPPER  
PC1010763-00 OUTRIGGER (FRONT)**



**AT-155-2 42011200005 UPPER  
PC1050168-02 CYLINDER,EXTENSION (FRONT)**

50



Δ : PACKING SET KEY NO.20(NO.1 2 3 8,11)



Δ : PACKING SET KEY NO.30(NO 1 2 3 11,12 14)

# AT-155-2 42011200005 UPPER

Pos No.	Parts No	Parts Name	Qty	Unit	Technical Data	Serial No (Start)	Serial No (End)	Remarks
1	36080905010	GEAR,SPUR	1					
2	36080095020	RING,SEAL	1					
3	91001207000	O-RING	1		1A G70			
4	91216105001	SEAL,OIL	1					
5	80515006314	BEARING,BALL	1					
7	36080895030	WHEEL,WORM	1					
8	36080895040	KEY	1					
9	80516006212	BEARING,BALL	1					
11	90102510025	BOLT	6		M10X25			
12	90302041001	WASHER,SPRING	6		10			
13	80562100120	WASHER,PLAIN	1		AW12			
14	80561100120	NUT	1		AN12			
17	12643302100	RETAINER	1					
18	91001208500	O-RING	1		1A G85			
19	12643302120	SHIM (T=0.1)	N					
20	12643302130	SHIM (T=0.2)	N					
21	12643302140	SHIM (T=0.3)	N					
22	36080095120	BEARING,ROLLER	2					
23	36080095090	WORM	1					
24	80316090040	PLUG SOCKET	1		R1/4			
25	36080095110	SEAL,OIL	1					
28	36080095072	GAUGE,OIL	1					
29	36080235080	WASHER,SEAL	1		M16			
41	90102510025	BOLT	6		M10X25			
42	90302041001	WASHER,SPRING	6		10			
51	36080905020	CASE ASSY	1					
100	36080900000	REDUCER,SWING SPEED	1					

# AT-155-2 42011200005 UPPER

Pos No.	Parts No	Parts Name	Qty	Unit	Technical Data	Serial No (Start)	Serial No (End)	Remarks
1	36020650000	CYLINDER,LEVELING	1					
2	36624110000	VALVE,CHECK	1					
3	90172110050	BOLT,HEXAGON SOCKET	4		M10X50			

# AT-155-2 42011200005 UPPER

Pos No.	Parts No	Parts Name	Qty	Unit	Technical Data	Serial No (Start)	Serial No (End)	Remarks	Pages
1	37000714020	CLAMP ASSY	2		12X2				
2	37002439130	HOSE	2		L=1830				
5	80430450450	JOINT	2		YL502				

# AT-155-2 42011200005 UPPER

Pos No.	Parts No	Parts Name	Qty	Unit	Technical Data	Serial No (Start)	Serial No (End)	F
1	36130235010	PLATE (BASE)	1					
2	36130235020	CASE	1					
3	36130235030	DRUM ASSY	1					
4	36131345010	COVER	1					
5	31370105030	PACKING	1					
6	31370005030	PACKING	1					
7	36130235090	WASHER,SEAL	1					
8	36130235050	BRACKET	1					
9	82100001155	CONNECTOR	1					
10	36131195030	POTENTIOMETER	1					
11	36130235100	CLAMP (CORD)	1					
12	36130045090	CLIP (NYLON)	1					
13	32360005150	CLIP (NYLON)	1					
14	36130235070	GEAR (A)	1					
15	36130235080	GEAR (B)	1					
18	36130235110	CABLE ASSY (WITH CONNECTOR)	1		L=710			
19	31370005080	GUIDE (CORD)	1					
20	31370005050	RING ASSY (CONTACT)	1					
23	32360005240	LOCK (CORD)	1					
25	82100000080	CORD (1-LINE)	7	M				
60	36130230000	DETECTOR,BOOM LENGTH	1					

CLICK HERE TO **DOWNLOAD** THE COMPLETE MANUAL

- Thank you very much for reading the preview of the manual.
- You can download the complete manual from: [www.heydownloads.com](http://www.heydownloads.com) by clicking the link below



- Please note: If there is no response to CLICKING the link, please download this PDF first and then click on it.

CLICK HERE TO **DOWNLOAD** THE COMPLETE MANUAL

# AT-155-2 42011200005 UPPER

Pos No.	Parts No	Parts Name	Qty	Unit	Technical Data	Serial No (Start)	Serial No (End)	Remarks	Pages
100	42351610010	HARNESS	1						

# AT-155-2 42011200005 UPPER

Pos No.	Parts No	Parts Name	Qty	Unit	Technical Data	Serial No (Start)	Serial No (End)	Remarks	Pages
1	36620650000	VALVE,CHECK	1						
2	36620030050	PLUG	1						
4	91002801000	O-RING	1		1B P10				
5	52255101000	SPRING	1						
7	91002801400	O-RING	2		1B P14				
8	36620030010	PLUG	1		PF3/8				
9	91002801200	O-RING	2		1B P12				

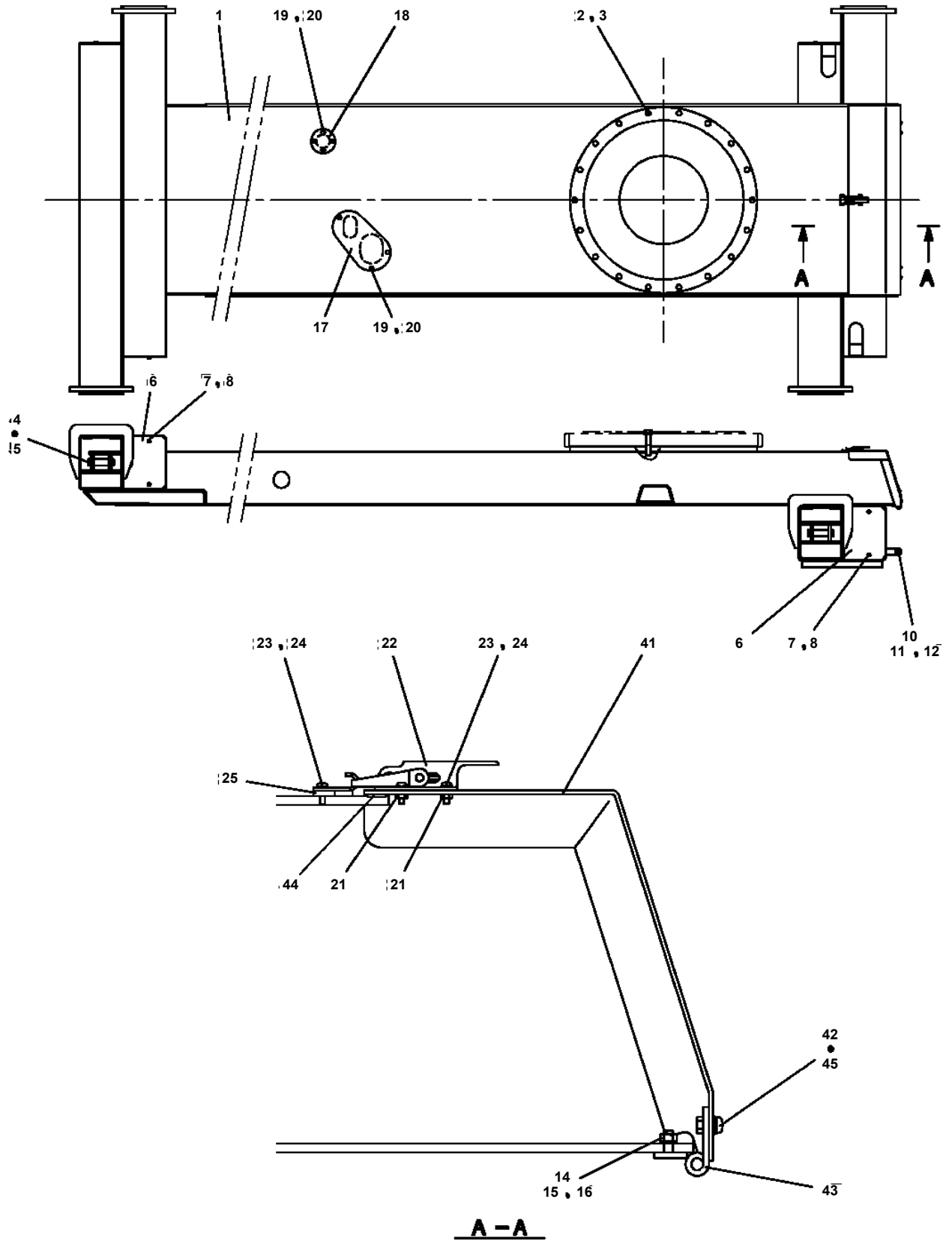
# AT-155-2 42011200005 UPPER

Pos No.	Parts No	Parts Name	Qty	Unit	Technical Data	Serial No (Start)	Serial No (End)	Remark
1	90172108014	BOLT,HEXAGON SOCKET	4		M8X14			
2	36602110101	COVER	1					
3	91001203500	O-RING	1		1A G35			
5	36600070020	SPRING	1					
8	91002801600	O-RING	1		1B P16			
10	36600070070	SPRING	1					
11	80316090020	PLUG	1		KKT PT1/8			
12	36602100300	PLUG	1					
13	91001101200	O-RING	2		1A P12			
14	91002801800	O-RING	1		1B P18			
50	36604630000	VALVE,COUNTERBALANCE	1					

**AT-155-2 42011200005 UPPER**

Pos No.	Parts No	Parts Name	Qty	Unit	Technical Data	Serial No (Start)	Serial No (End)	Remarks	Pages
1	42434200100	SWITCH	6						
3	80172305040	SCREW,MACHINE	24		M5X40				
4	90302040501	WASHER,SPRING	48		5				
5	42434200300	SUPPORT	6						
6	90186208014	BOLT,FLANGE	12		M8X14				
7	90303070801	WASHER,PLAIN	12		8				
9	90201200500	NUT	24		M5				
21	82100002146	SWITCH,LIMIT	6						

AT-155-2 42011200005 UPPER  
PK1010582-00 FRAME



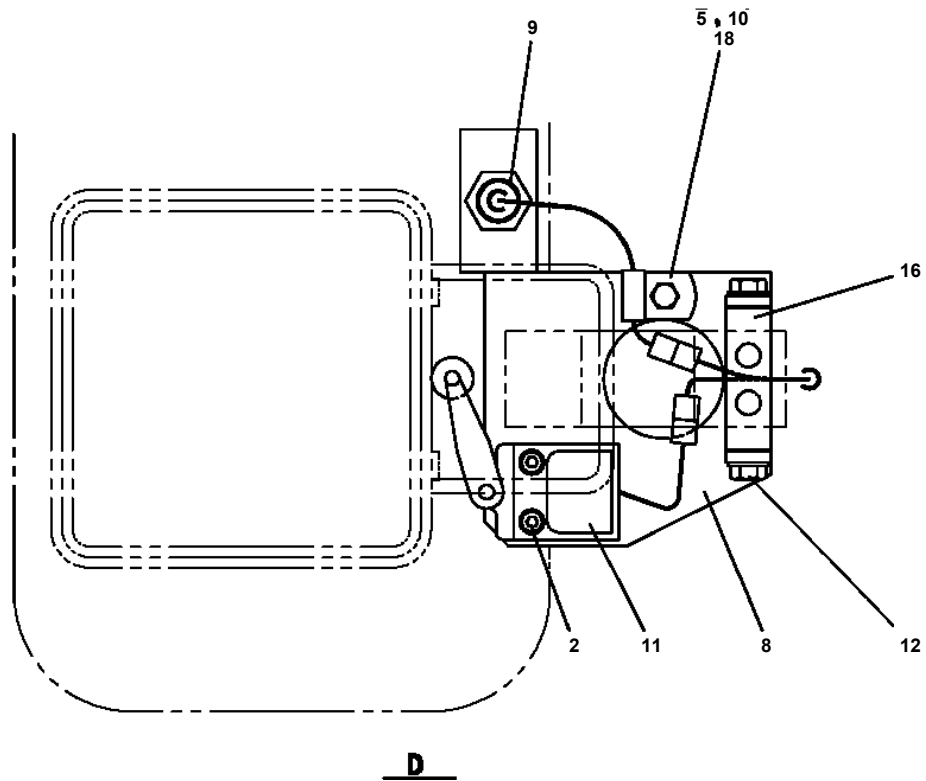
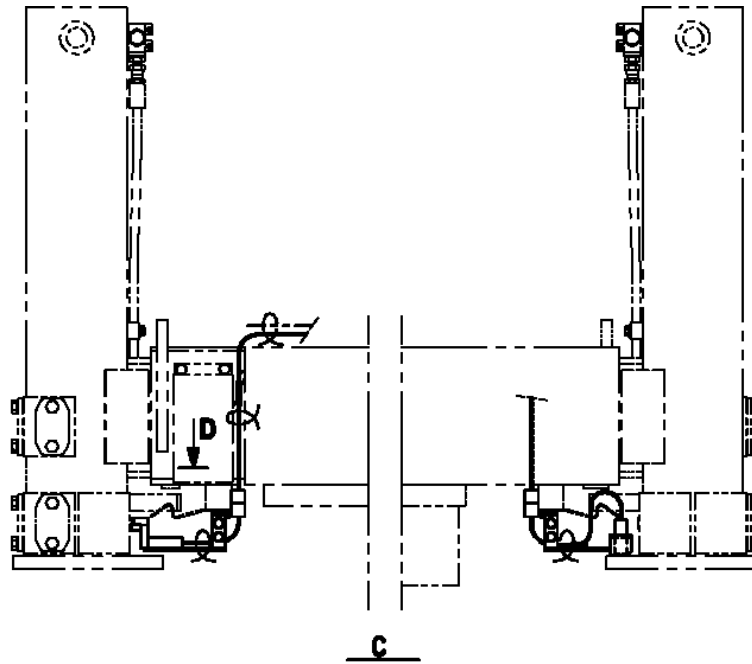
# AT-155-2 42011200005 UPPER

Pos No.	Parts No	Parts Name	Qty	Unit	Technical Data	Serial No (Start)	Serial No (End)	Remark
1	42331217511	CASE ASSY	1					
4	42331217520	COVER (FOR BOARD)	1					
5	42331211260	BOARD,CIRCUIT	1					
21	42331217580	SPACER	7					
22	42351267550	STUD	7					
25	82466100702	CATCH	2					
26	42331217560	HINGE	2					
31	42351457540	FUSE	1		5A 5.2X20L			
37	42330977640	WASHER,SEAL	14		M4			
42	42331217540	JOY STICK,CONTROLLER	2					
43	42331107520	GUARD	2					
44	82101362453	SWITCH,PUSH	1					
45	42331377540	RING	1					
46	82100002486	LAMP,PILOT	2					
47	82105411120	SWITCH,TOGGLE	1					
48	82105411130	SWITCH,TOGGLE	1					
49	82105411140	SWITCH,TOGGLE	1					
50	82105413130	SWITCH,TOGGLE	1					
51	82197518115	CAP (YELLOW)	1					
52	82197518117	CAP (GRAY)	2					
53	82197518112	CAP (GREEN)	1					
63	(*****)	P-ROM	1					
71	42331227700	BUTTON (FOR SWITCH)	1					
72	42331227670	LED	1					
81	42331217590	COVER (CASE)	1					
91	42330037810	KNOB	2					
92	42330037800	BOOT	2					
100	42331211001	BOX,OPERATION (BUCKET)	1					

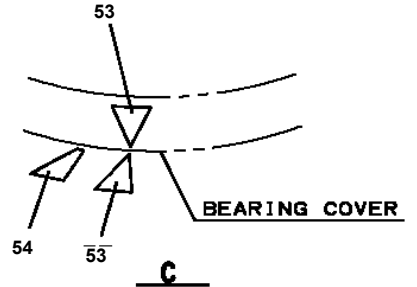
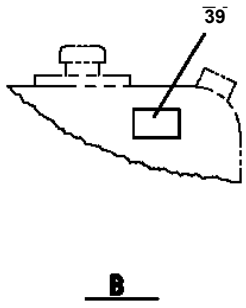
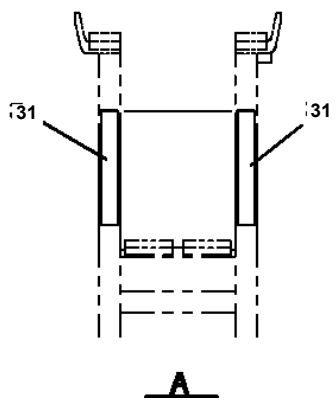
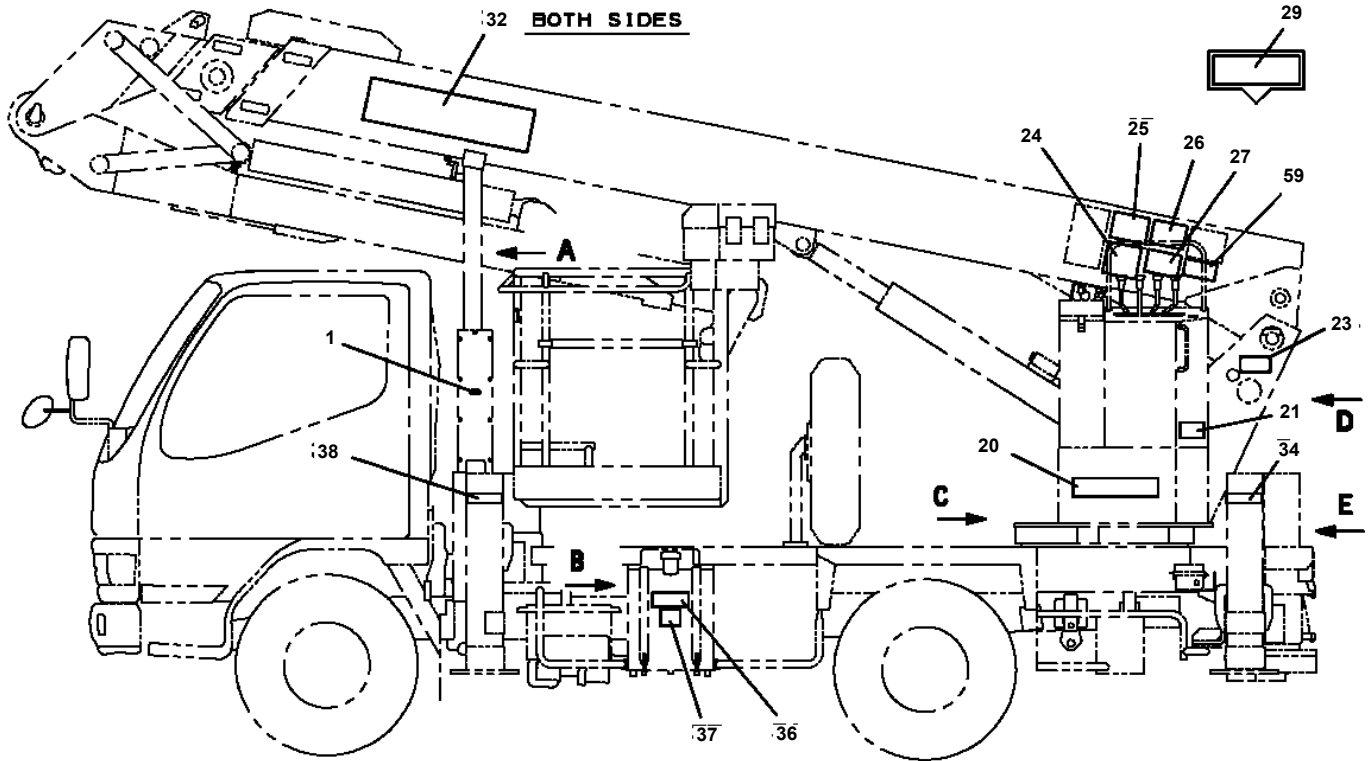
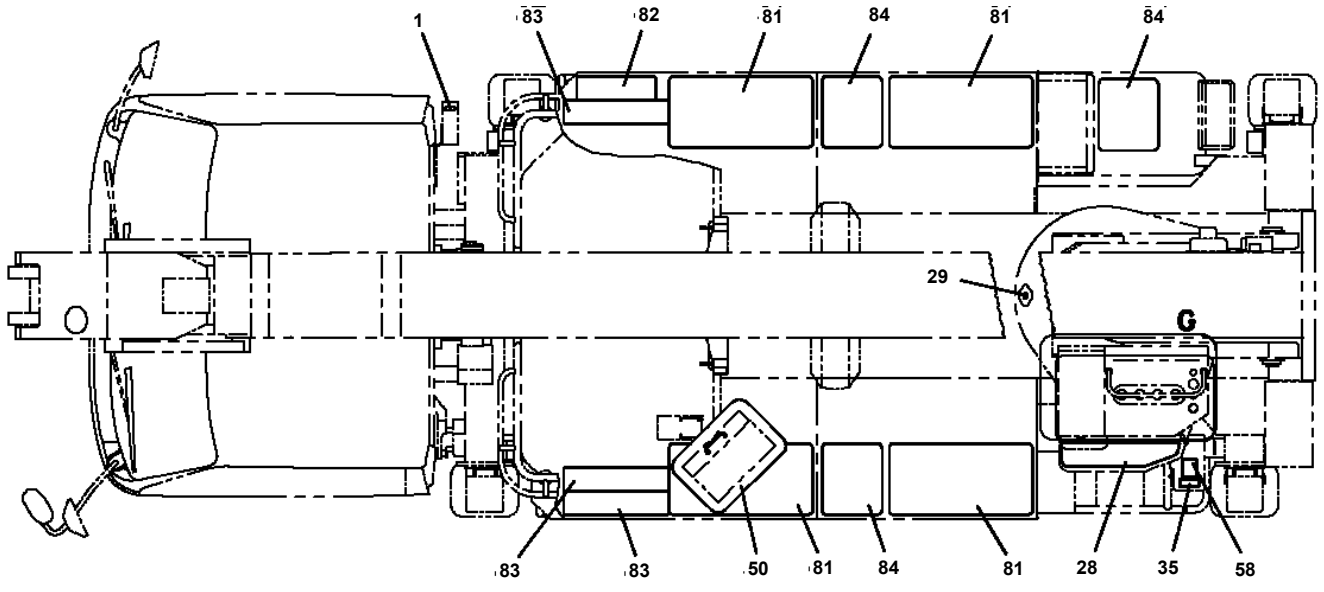
# AT-155-2 42011200005 UPPER

Pos No.	Parts No	Parts Name	Qty	Unit	Technical Data	Serial No (Start)	Serial No (End)	Remarks	Pages
1	37000519410	SUPPORT	1		40X90				
2	37000540480	SUPPORT	1						
3	90101208035	BOLT	1		M8X35				
4	82400000201	GROMMET	1		KG-016				
5	42352580100	HARNESS	1						
6	37000711210	CLAMP ASSY	3						
7	37000510960	SUPPORT	5						
8	90302041001	WASHER,SPRING	5		10				
9	90101210020	BOLT	5		M10X20				

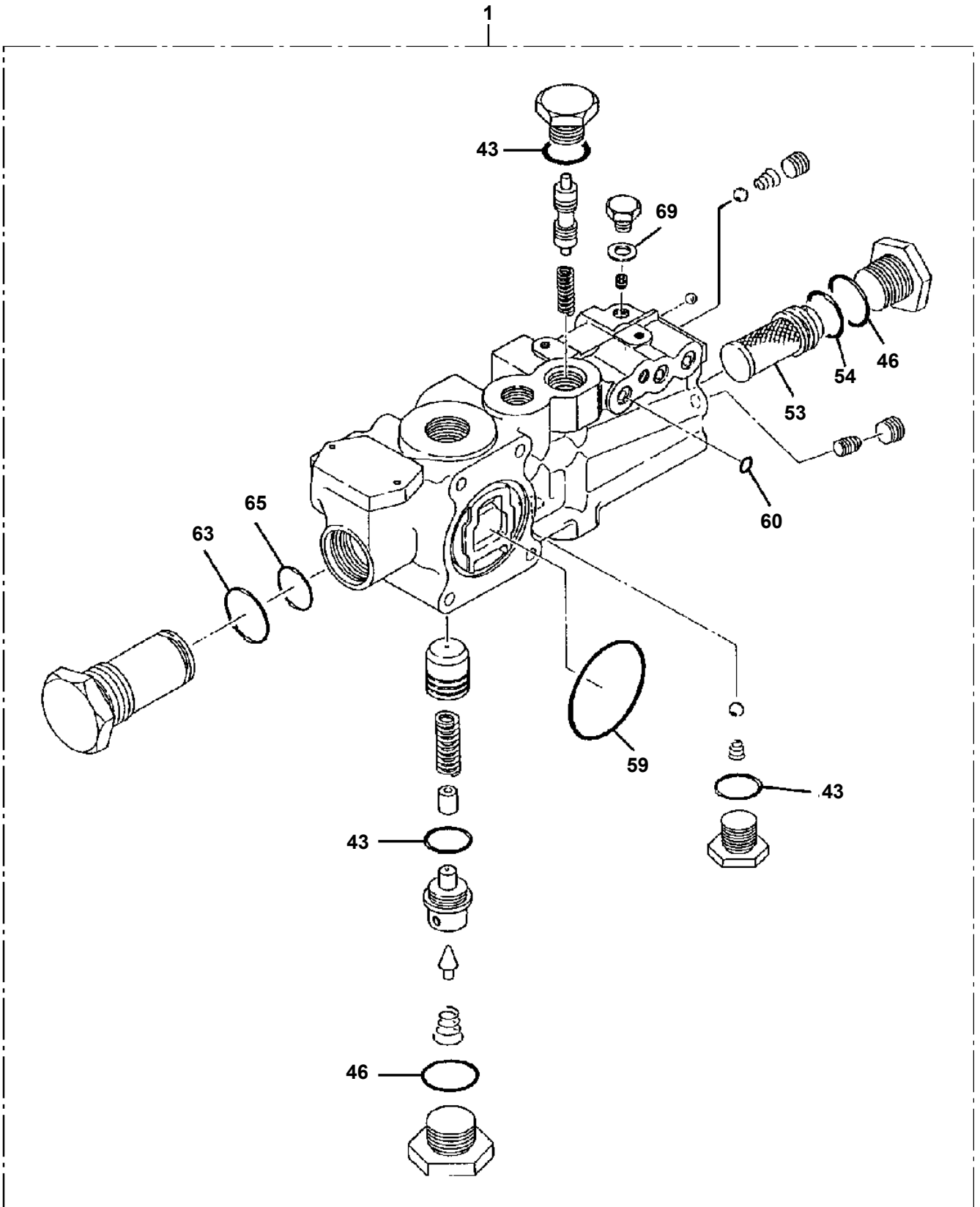
**AT-155-2 42011200005 UPPER  
PN1012884-00 ELEC.ASSY (DETECTOR BOOM O/R STOWAGE)**



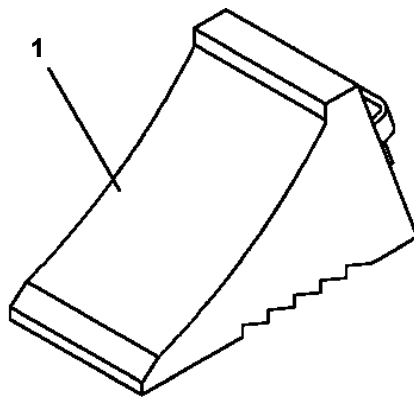
**AT-155-2 42011200005 UPPER  
PO1013050-00 PLATE ASSY,NAME (UPPER)**



AT-155-2 42011200005 UPPER  
PV1020160-00 VALVE,REMOTE CONTROL



**AT-155-2 42011200005 UPPER  
PW5110002-00 WEDGE (STOPPER FOR TIRE/WAZUMI)**



CLICK HERE TO **DOWNLOAD** THE COMPLETE MANUAL

- Thank you very much for reading the preview of the manual.
- You can download the complete manual from: [www.heydownloads.com](http://www.heydownloads.com) by clicking the link below



- Please note: If there is no response to CLICKING the link, please download this PDF first and then click on it.

CLICK HERE TO **DOWNLOAD** THE COMPLETE MANUAL