

## **AT-150S-1 42068100003 UPPER**

**PB1000359-03 HYDRAULIC PRESSURE GENERATING SYSTEM**

**PC1000285-03 OUTRIGGER SYSTEM**

**PD1000339-03 SWING SYSTEM**

**PE1000339-02 ELEVATING SYSTEM**

**PG1000309-02 TELESCOPING SYSTEM**

**PH1000295-00 SAFETY DEVICES**

**PJ3000072-03 PLATFORM SYSTEM**

**PK1000349-01 FRAME**

**PN1000132-02 ELECTRIC EQUIPMENT**

**PO1000131-03 INDICATION PLATES**

**PW1000118-00 ACCESSORIES & TOOLS**

**PX1000371-00 MOUNTING PARTS**

**PY1000310-05 OPTIONS**

**ASSEMBLY**

CLICK HERE TO **DOWNLOAD** THE COMPLETE MANUAL

- Thank you very much for reading the preview of the manual.
- You can download the complete manual from: [www.heydownloads.com](http://www.heydownloads.com) by clicking the link below



- Please note: If there is no response to CLICKING the link, please download this PDF first and then click on it.

CLICK HERE TO **DOWNLOAD** THE COMPLETE MANUAL

# AT-150S-1 42068100003 UPPER

Pos No.	Parts No	Parts Name	Qty	Unit	Technical Data	Serial No (Start)	Serial No (End)	Remarks	P
1	(*****)	BOOM	1						0
2	(*****)	CYLINDER,TELESCOPING	1						0

# AT-150S-1 42068100003 UPPER

Pos No.	Parts No	Parts Name	Qty	Unit	Technical Data	Serial No (Start)	Serial No (End)	Remark
1	(***** )	PLATE ASSY,NAME (UPPER)R)	1					

# AT-150S-1 42068100003 UPPER

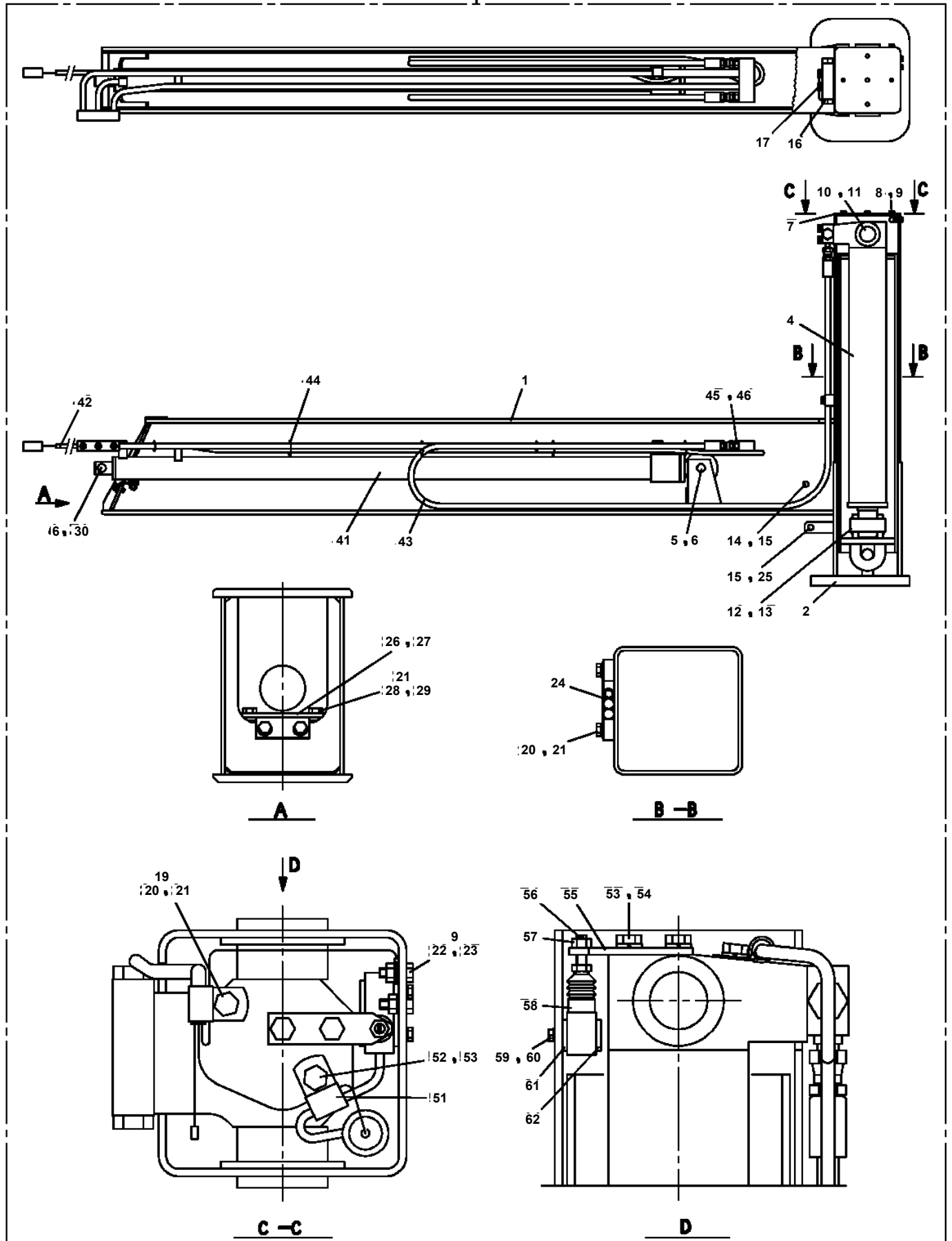
Pos No.	Parts No	Parts Name	Qty	Unit	Technical Data	Serial No (Start)	Serial No (End)	Remarks
1	42630570000	JOINT,ROTARY	1					
2	90101210028	BOLT	4		M10X28			
3	90302041001	WASHER,SPRING	4		10			
4	42441230010	SUPPORT	1					
5	90201781200	NUT	2		M12			
6	90171112030	BOLT	2		M12X30			
7	90302041201	WASHER,SPRING	4		12			
8	42441150020	SUPPORT	1					
9	90172112040	BOLT,HEXAGON SOCKET	2		M12X40			
22	42262561001	BRUSH,ROTARY JOINT	1					
23	90101208040	BOLT	3		M8X40			
24	90302040801	WASHER,SPRING	3		8			
25	80720105020	PIN,SPRING	1		5X20			
26	42630860100	COVER	1					
27	42630760200	SPACER	3		L=13			
31	53154004000	BUSH (THRUST)	1					
32	42630571100	BODY	1					
33	42630551200	CORE	1					
34	91531211000	PACKING	2					
35	91100211000	SEAL,RING	2					
36	82456101000	NIPPLE,GREASE	1		A-PT1/8			
37	82400000459	CAP	1				HD6059	

# AT-150S-1 42068100003 UPPER

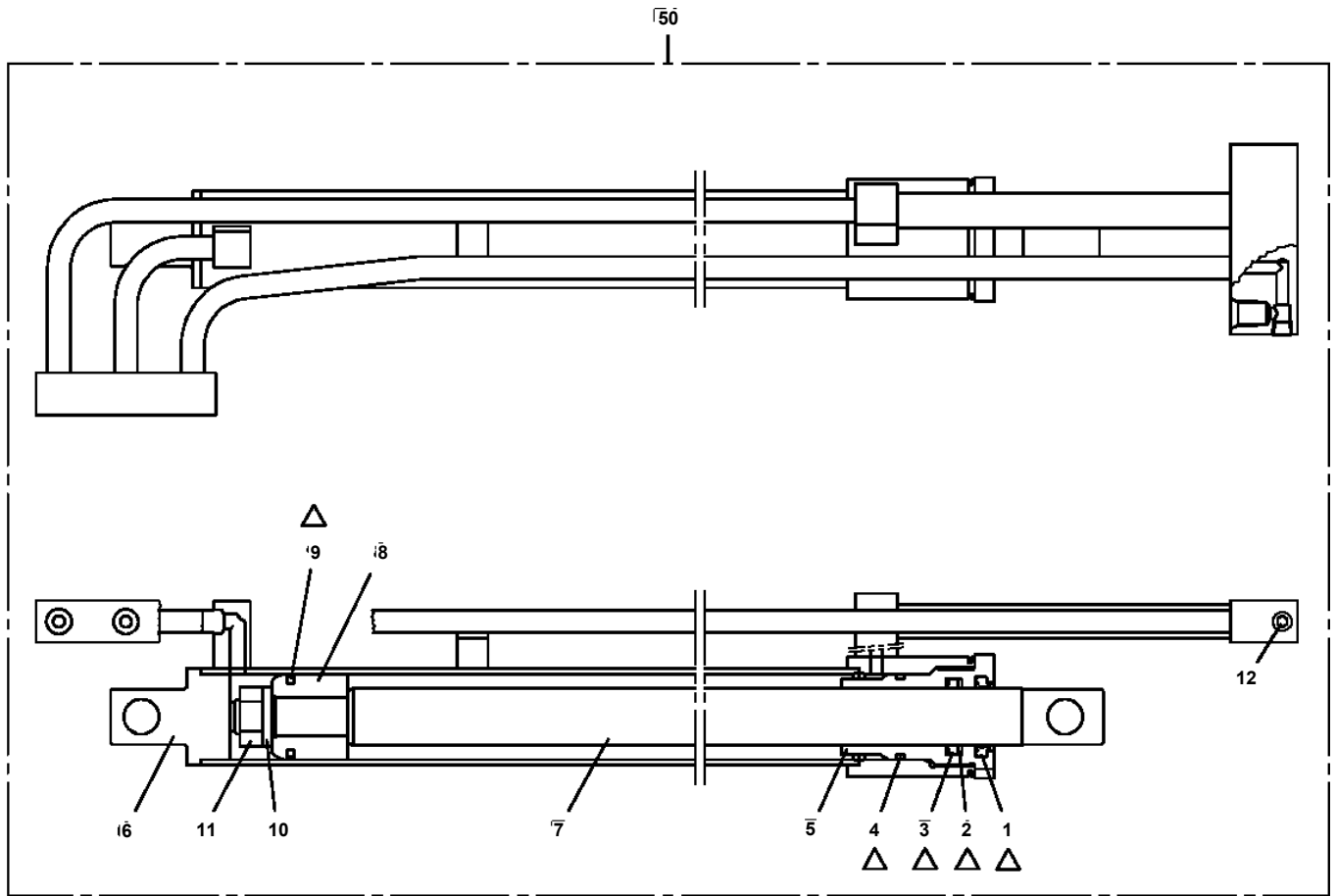
Pos No.	Parts No	Parts Name	Qty	Unit	Technical Data	Serial No (Start)	Serial No (End)	Remarks
2	90101208018	BOLT	4		M8X18			
3	90302040801	WASHER,SPRING	9		8			
4	37002458350	HOSE	1		L=770			
5	37002451510	HOSE	1		L=2300 TO 2180			
6	80430620800	JOINT	1					
7	36645260000	VALVE,SOLENOID	1					
8	80400160127	JOINT	1					
9	91002801100	O-RING	5		1B P11			
10	37002408090	HOSE	1		L=950			
11	42343690400	JOINT	1					
12	80316070040	PLUG	2		PF1/4			
13	36602610000	VALVE,RELIEF	1					
14	90101208060	BOLT	2		M8X60			
15	80430620600	JOINT (WITH O-RING)	4		L,G3/8-G3/8			
16	42340240500	FILTER,OIL	3					
17	80302090161	FITTING	3		KCO12-030N			
18	91002801400	O-RING	3		1B P14			
19	81408000160	PIPE,STEEL	1	M	12X1.4T			
20	37002451490	HOSE	1		L=2000			
21	37002443990	HOSE	1		L=1900			
23	90131508040	BOLT,HEXAGON SOCKET	3		M8X40			
24	37002439860	HOSE	1		L=480			
25	37002453100	HOSE	1		L=1250			
26	37002458780	HOSE	1		L=1100			
27	81408000160	PIPE,STEEL	1	M	12X1.4T			
28	82100001411	TUBE,SPIRAL	1	M	SE-08BK			
30	37002413770	HOSE	1		L=2000			
31	37002451500	HOSE	1		L=2240 TO 2100			
32	81408000081	PIPE,STEEL	2	M	8X1.2T			
33	80303130081	FITTING,ELBOW	1		KLO08-020E			
34	37000908730	JOINT (WITH O-RING)	1		L,G3/8-G1/4			
35	37002457070	HOSE	1		L=2240			
36	37002423450	HOSE	1		L=2300			
38	42343190401	SUPPORT	2					
39	91810130240	FASTENER	25					
40	37000713790	CLAMP ASSY	1		10X2,18X2,14X1			
41	37000713800	CLAMP ASSY	1					
42	80400160131	JOINT	1					
43	91002801800	O-RING	3		1B P18			
44	80316070080	PLUG	2		PF1/2			
45	80491303020	JOINT (WITH O-RING)	1		L,G3/8-G1/4			
46	37000300750	SLEEVE	1		18-15			
47	37002457720	HOSE	1		L=2240			
48	37002411990	HOSE	1		L=2500			
49	37002447610	HOSE	1		L=500			
50	80315040040	JOINT	1					
51	37002413330	HOSE	1		L=900			
52	37000714140	CLAMP ASSY	1		18X3			
54	90101210050	BOLT	2		M10X50			
55	90302041001	WASHER,SPRING	2		10			
56	37002442190	HOSE	1		L=2500			
57	37002404590	HOSE	1		L=560			
58	81408000160	PIPE,STEEL	1	M	12X1.4T			
59	81408000160	PIPE,STEEL	1	M	12X1.4T			
61	36646210001	VALVE,CONTROL	1					
62	42343690600	JOINT	1					
63	91002802400	O-RING	1		1B P24			
64	44340563800	HARNESS	4					
65	42343690500	JOINT	1					
66	91002801800	O-RING	10		1B P18			
67	80400160176	JOINT	2		S,G1/2-1/4			
68	80400160130	JOINT	6		S,G1/2-G3/8			
71	42342580110	JOINT	1					

**AT-150S-1 42068100003 UPPER  
PC1010609-01 OUTRIGGER (REAR,LEFT,RIGHT)**

100



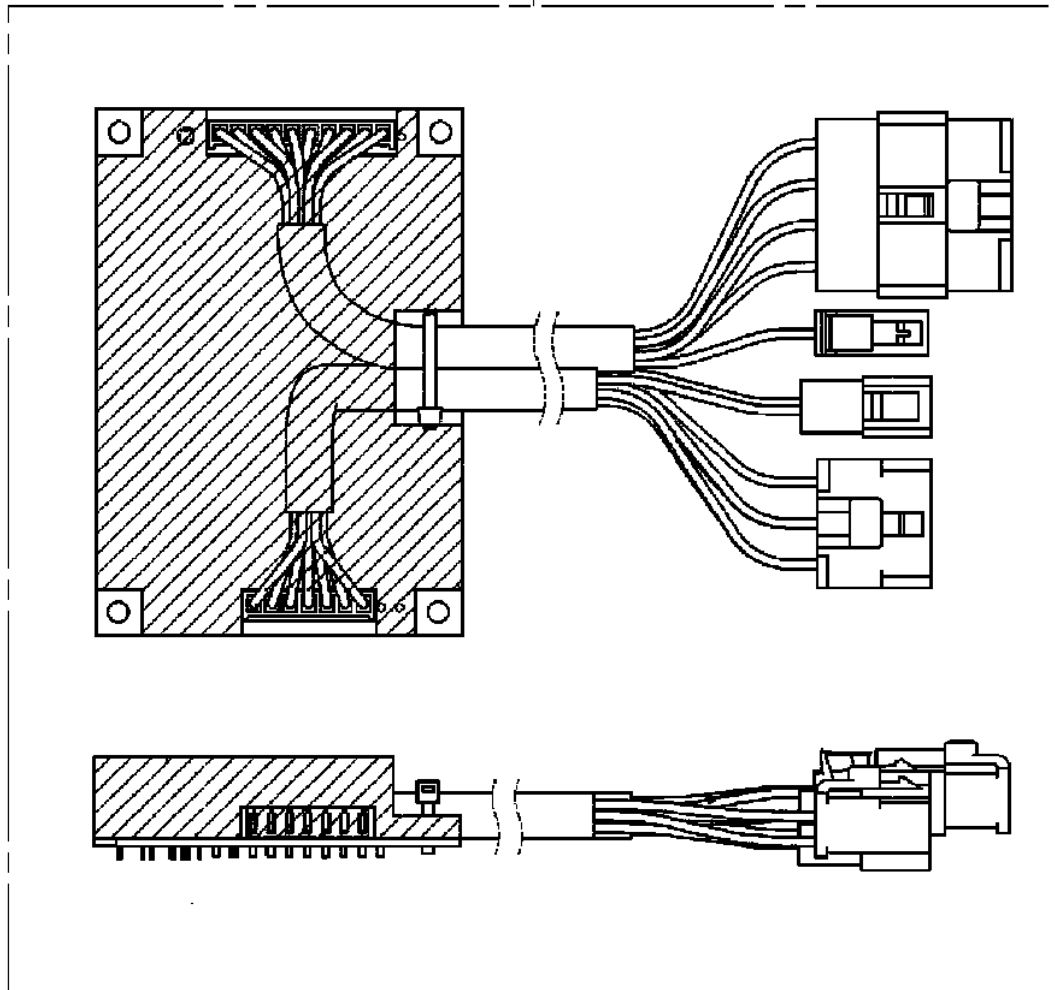
**AT-150S-1 42068100003 UPPER  
PC1050184-02 CYLINDER,EXTENSION (FRONT,REAR)**



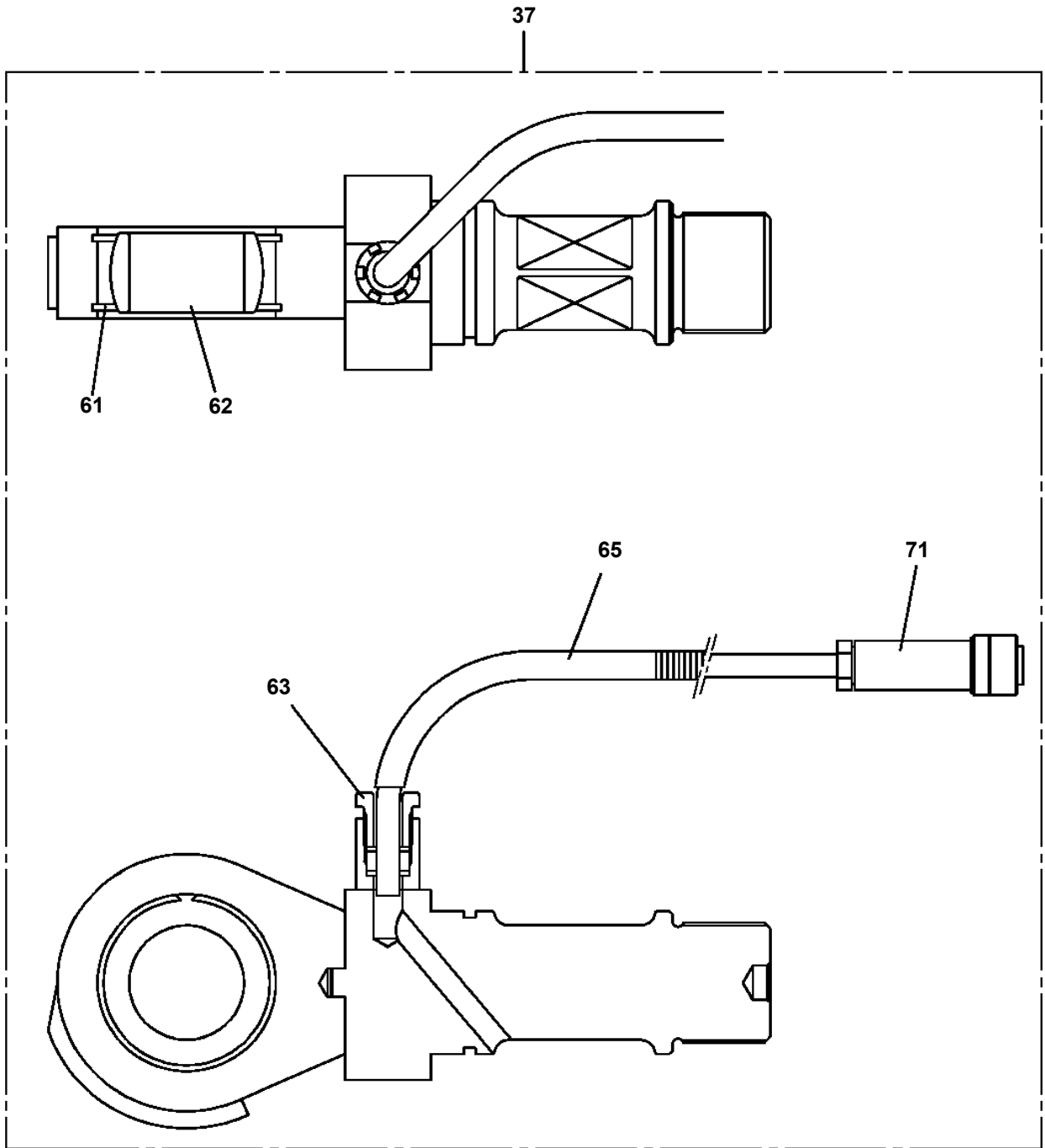
Δ:PACKING SET KEY NO.30 (KEY NO.1,2,3,4,9)

AT-150S-1 42068100003 UPPER  
PC5420023-00 CONTROLLER

100



**AT-150S-1 42068100003 UPPER  
PE1050087-04 CYLINDER,LEVELING**



# AT-150S-1 42068100003 UPPER

Pos No.	Parts No	Parts Name	Qty	Unit	Technical Data	Serial No (Start)	Serial No (End)	F
1	36130235010	PLATE (BASE)	1					
2	36131255010	CASE	1					
3	36131255020	DRUM ASSY	1					
4	36131345010	COVER	1					
5	31370105030	PACKING	1					
6	31370005030	PACKING	1					
7	36130235090	WASHER,SEAL	1					
8	36130235050	BRACKET	1					
9	82100001155	CONNECTOR	1					
10	36131195030	POTENTIOMETER	1					
11	36130235100	CLAMP (CORD)	1					
12	36130045090	CLIP (NYLON)	1					
13	32360005150	CLIP (NYLON)	1					
14	36130885040	GEAR	1		20T			
15	36131255030	GEAR	1		32T			
18	36130235110	CABLE ASSY (WITH CONNECTOR)	1		L=710			
19	31370005080	GUIDE (CORD)	1					
20	82100001406	CONNECTOR (SEAL)	1					
22	36131375020	COLLAR	1					
23	31370005070	GROMMET	1					
24	82100000080	CORD (1-LINE)	7	M				
50	36131250000	DETECTOR,BOOM LENGTH	1					

# AT-150S-1 42068100003 UPPER

Pos No.	Parts No	Parts Name	Qty	Unit	Technical Data	Serial No (Start)	Serial No (End)	Remarks	Pages
100	42476392200	HARNESS	1						

# AT-150S-1 42068100003 UPPER

Pos No.	Parts No	Parts Name	Qty	Unit	Technical Data	Serial No (Start)	Serial No (End)	Remarks	Pages
100	42351640701	HARNESS	1						

# AT-150S-1 42068100003 UPPER

Pos No.	Parts No	Parts Name	Qty	Unit	Technical Data	Serial No (Start)	Serial No (End)	Rema
4	91001206500	O-RING	1		1A G65			
5	36660025021	COVER (OIL SEAL)	1					
6	36660025140	SEAL,OIL	1					
7	80602110720	RING,RITAINING	1		R72			
14	36661925010	O-RING	1					
19	14125151020	KEY	1					
50	36662590000	MOTOR,HYDRAULIC (SWING)	1					

CLICK HERE TO **DOWNLOAD** THE COMPLETE MANUAL

- Thank you very much for reading the preview of the manual.
- You can download the complete manual from: [www.heydownloads.com](http://www.heydownloads.com) by clicking the link below



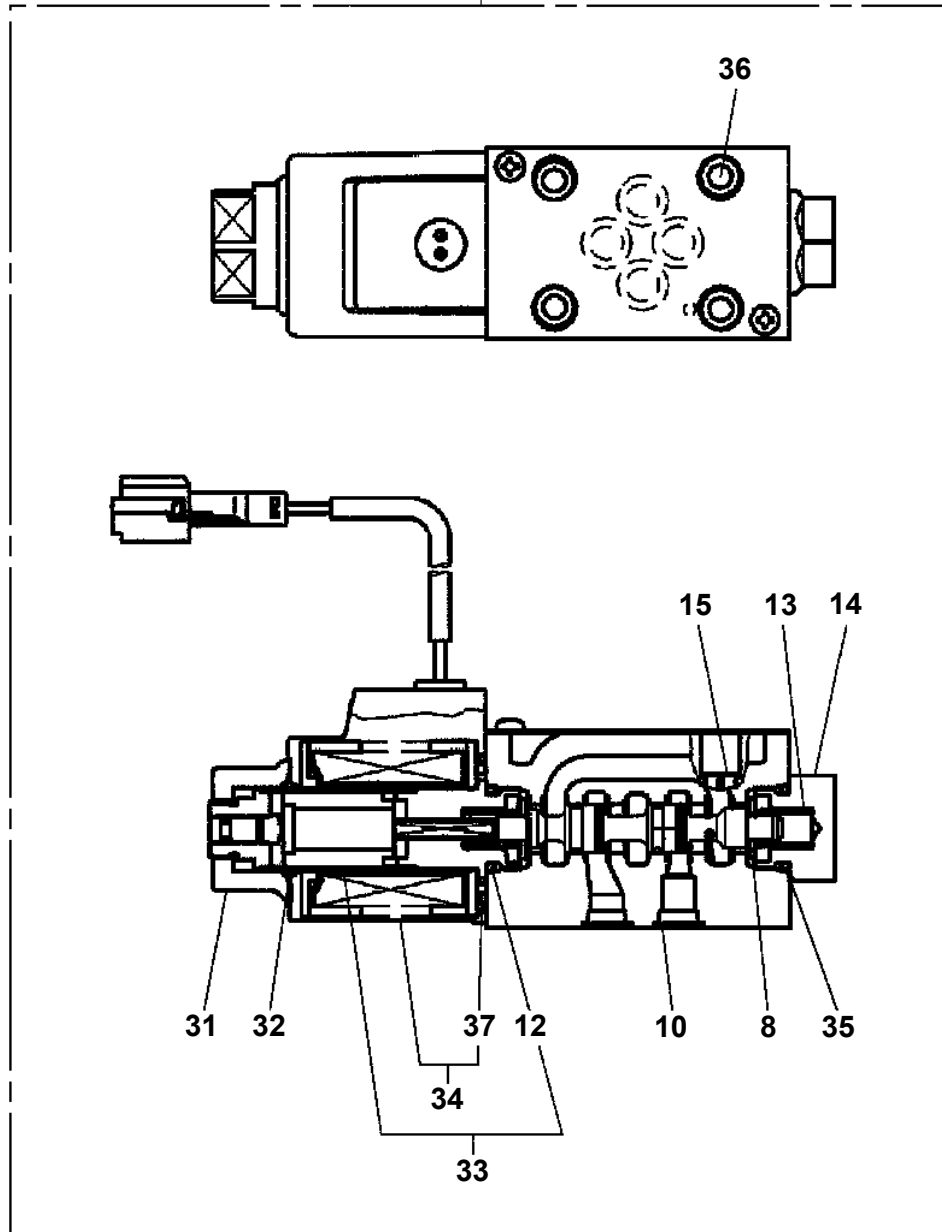
- Please note: If there is no response to CLICKING the link, please download this PDF first and then click on it.

CLICK HERE TO **DOWNLOAD** THE COMPLETE MANUAL

AT-150S-1 42068100003 UPPER  
PI1120235-01 VALVE,SOLENOID



50



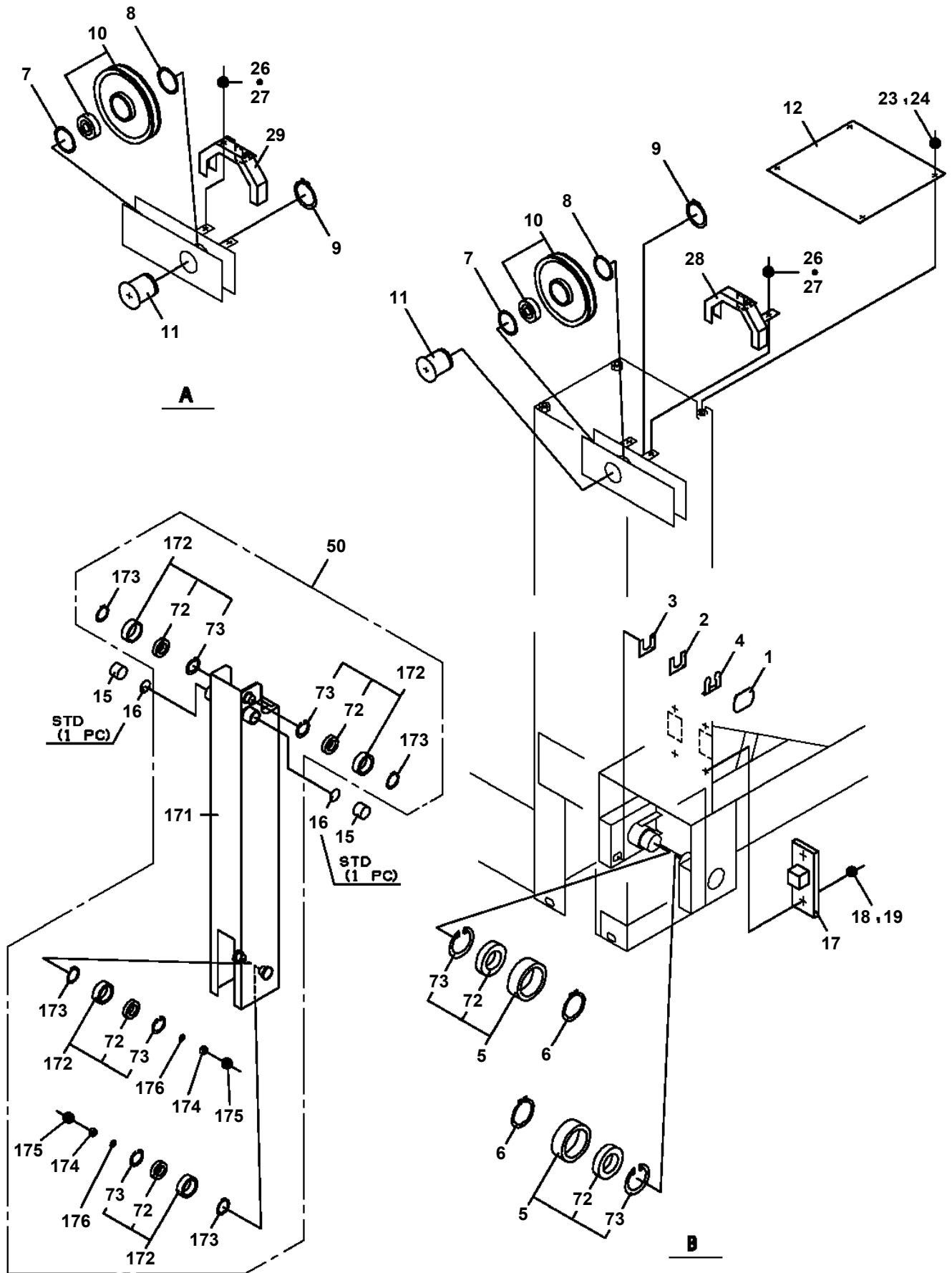
# AT-150S-1 42068100003 UPPER

Pos No.	Parts No	Parts Name	Qty	Unit	Technical Data	Serial No (Start)	Serial No (End)	Remarks
1	36611355010	HANDLE ASSY	1					
2	36611355020	BODY	1					
3	36611355030	COVER	1					
4	36611355040	SCREW (ADJUSTING)	1					
6	36611355050	SPOOL ASSY	1					
8	36611355060	PLUG	1					
9	36611355070	RETAINER	1					
10	36602095020	O-RING	1					
11	36611355080	RING, BACKUP	1					
12	36643385010	O-RING	3					
13	36603675040	O-RING	1					
15	36611355090	O-RING	1					
16	36611355100	SPRING	1					
17	36611355110	RING, SPRING	1					
18	36611355120	PIN (PARALLEL)	1					
19	90131505016	BOLT, HEXAGON SOCKET	3		M5X16			
20	90710004080	SCREW, SET	3					
21	36611355140	BALL, STEEL	1		8			
26	36611355130	RETAINER	1					
28	90131505030	BOLT, HEXAGON SOCKET	4		M5X30			
50	36611350000	VALVE, FLOW CONTROL	1					

# AT-150S-1 42068100003 UPPER

Pos No.	Parts No	Parts Name	Qty	Unit	Technical Data	Serial No (Start)	Serial No (End)	Remarks	Pa
1	36620030010	PLUG	1		PF3/8				
	36620030010	PLUG	1		PF3/8				
2	91002801400	O-RING	2		1B P14				
	91002801400	O-RING	2		1B P14				
3	52255101000	SPRING	1						
	52255101000	SPRING	1						
5	91002801000	O-RING	2		1B P10				
	91002801000	O-RING	2		1B P10				
7	91002800700	O-RING	1		1B P7				
	91002800700	O-RING	1		1B P7				
9	36620030050	PLUG	1						
	36620030050	PLUG	1						
20	36620220001	VALVE,PILOT CHECK	1						
	36620220001	VALVE,PILOT CHECK	1						

**AT-150S-1 42068100003 UPPER  
PJ3070045-04 PLATFORM**

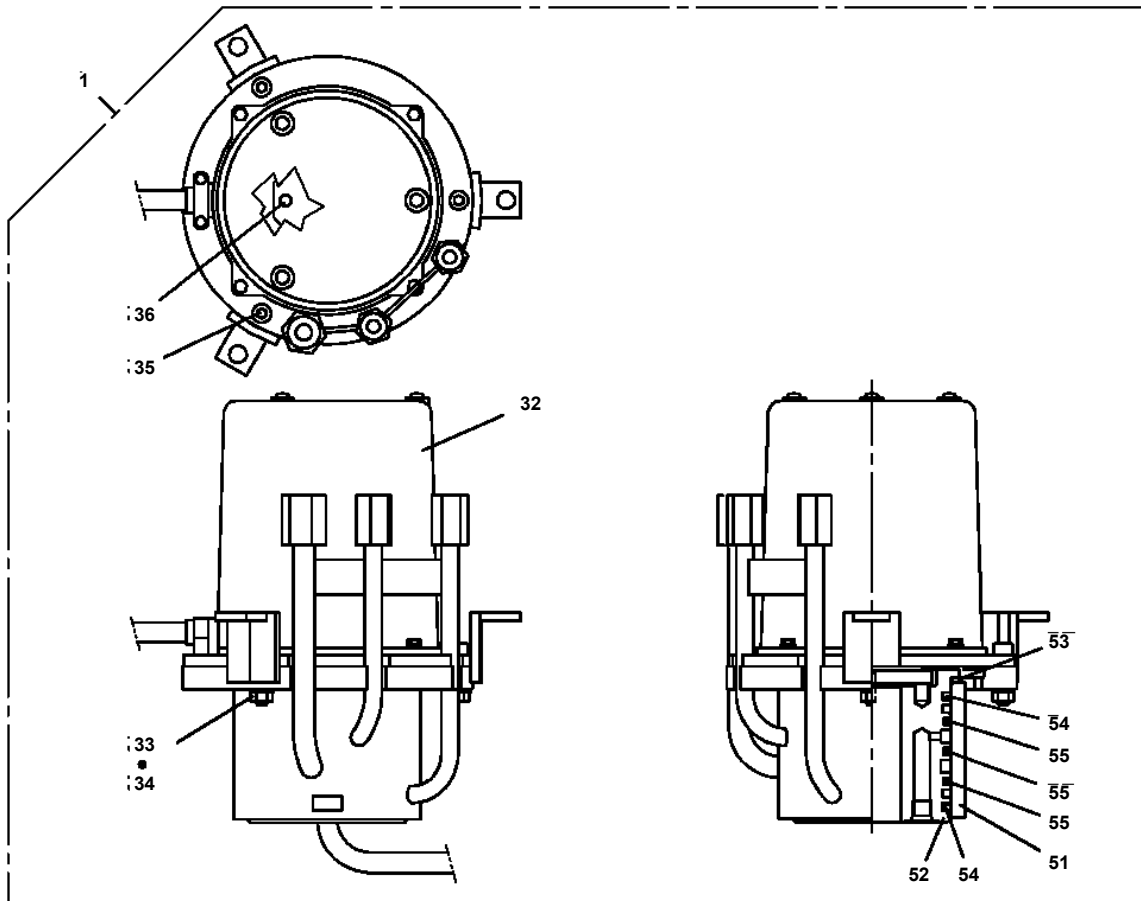
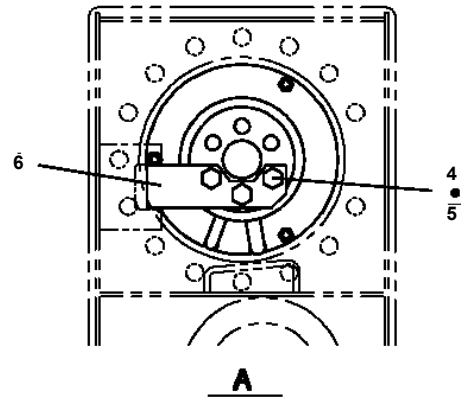
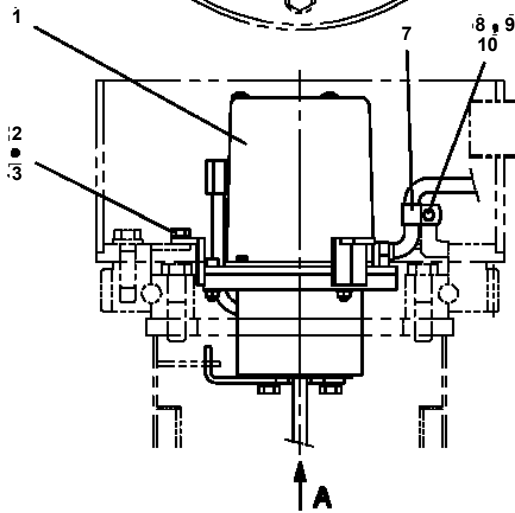
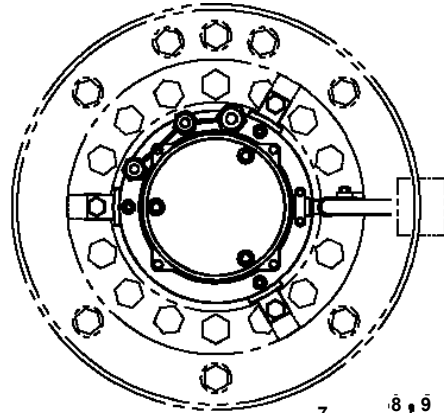


# AT-150S-1 42068100003 UPPER

Pos No.	Parts No	Parts Name	Qty	Unit	Technical Data	Serial No (Start)	Serial No (End)	Remarks
1	37002433300	HOSE	2		L=370		HD5089	
	37002433300	HOSE	1		L=370	HD5090		
3	42344450100	JOINT ASSY	1					
4	90101208070	BOLT	2		M8X70			
5	90302040801	WASHER,SPRING	2		8			
6	37002413250	HOSE	1		L=400			
7	82100001411	TUBE,SPIRAL	5	M	SE-08BK			
8	80471020502	JOINT	1					
9	37002413200	HOSE	1		L=680			
10	80430620400	JOINT	5					
11	91002801100	O-RING	4		1B P11			
13	80400160127	JOINT	1					
14	91810130240	FASTENER	3					
15	90172105045	BOLT,HEXAGON SOCKET	4		M5X45			
16	36647100000	VALVE,SOLENOID	1					
17	37000714050	CLAMP ASSY	1		18X3			
18	37000300750	SLEEVE	1		18-15			
19	37002462670	HOSE	1		L=1100			
20	31474594210	JOINT	1		3-G1/4			
21	37002425700	HOSE	2		L=930 TO 1025			
22	37000712800	CLAMP ASSY	1		14X3			
23	37002447780	HOSE	1		L=1350			
24	80303130081	FITTING,ELBOW	1		KLO08-020E			
25	81408000081	PIPE,STEEL	3	M	8X1.2T			
26	80302090081	FITTING	1		KCO80-020N			
27	37002428630	HOSE	1		L=355	HD5090		
41	91002801100	O-RING	12		1B P11			
51	42344450200	JOINT	1					
52	80471020502	JOINT	2					
53	80400160127	JOINT	4					
55	80316030040	PLUG	2		PT1/4			

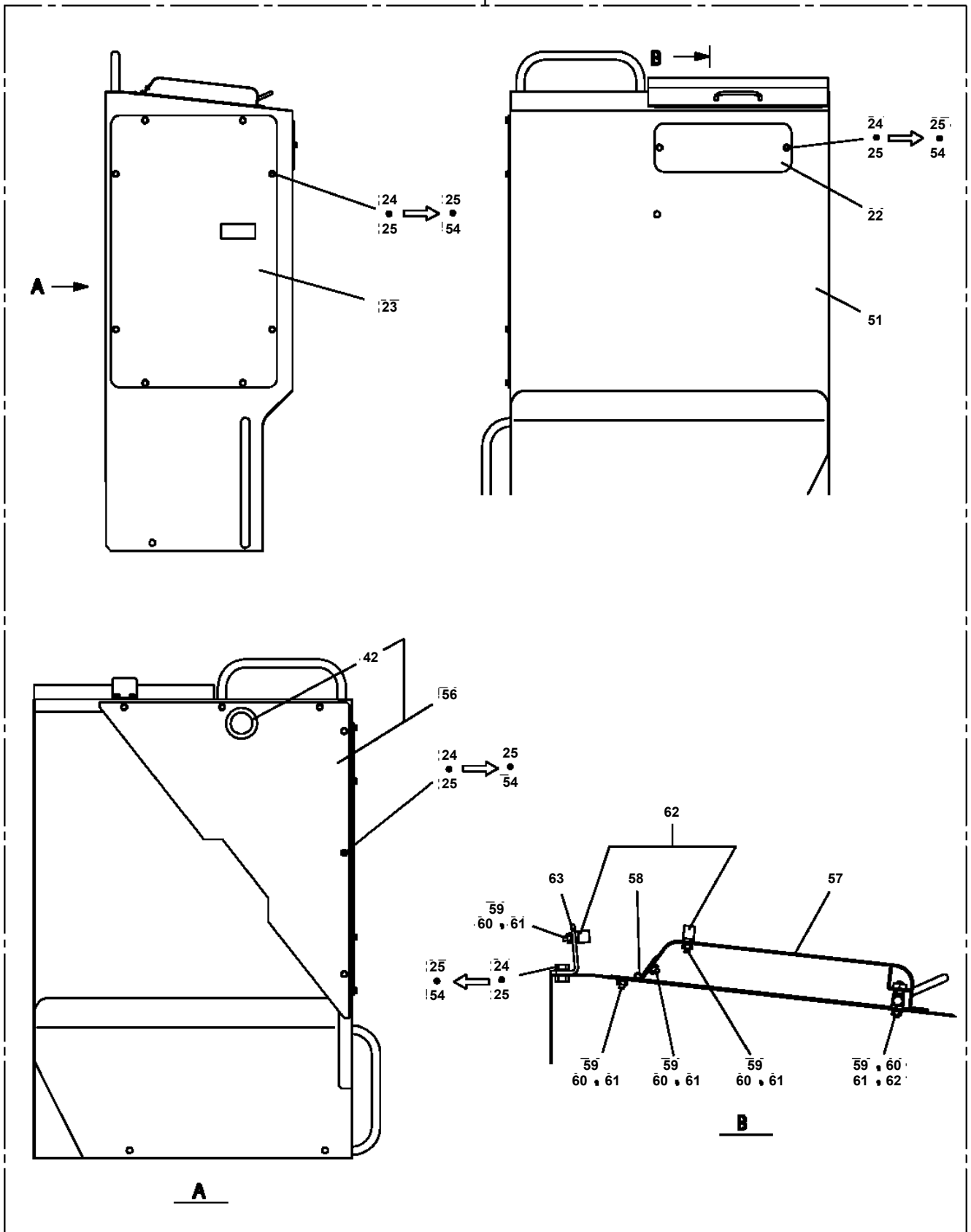
**AT-150S-1 42068100003 UPPER  
PJ3220007-00 JOINT, ROTARY INSTALLATION**

**FRONT**



**AT-150S-1 42068100003 UPPER  
PK1200304-02 COVER, SWING FRAME**

12



# AT-150S-1 42068100003 UPPER

Pos No.	Parts No	Parts Name	Qty	Unit	Technical Data	Serial No (Start)	Serial No (End)	Re
1	36646255010	MODULE (PUMP SIDE)	1					
4	36644235090	ACTUATOR (MECHANICAL)	4					
5	36646935050	ACTUATOR (ELECTRICAL)	4					
6	36646215010	VALVE,CONTROL (DECK SWING)	1				HD5188	
	36646215011	VALVE,CONTROL (DECK SWING)	1			HD5189		
7	36646215030	VALVE,CONTROL	2				HD5188	
	36646215031	VALVE,CONTROL	2			HD5189		
8	36644325040	VALVE,CONTROL (SWING)	1					
9	36643975040	PLATE (END)	1					
10	36645205060	ASSEMBLY KIT	1					
11	36645205070	SEAL KIT	4					
12	36644325010	SEAL KIT	4					
13	36646255110	SEAL KIT	4					
14	36646215050	CONNECTOR ASSY	4					
31	36643975540	SEAL KIT (FOR PVP)	1					
41	36645205160	SEAL KIT (FOR PVB)	3				HD5188	
	36645205160	SEAL KIT (FOR PVB)	3			HD5189		
100	36646210001	VALVE,CONTROL	1					

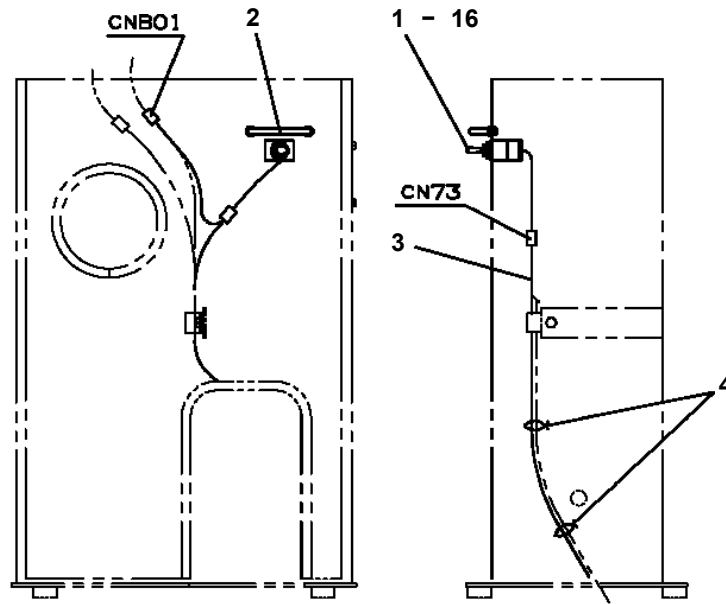
# AT-150S-1 42068100003 UPPER

Pos No.	Parts No	Parts Name	Qty	Unit	Technical Data	Serial No (Start)	Serial No (End)
87	80172804008	SCREW,MACHINE	3		M4X8		
89	82400000370	CATCH	1				
90	42351640250	COVER	1				
91	42351640270	SUPPORT	1				

# AT-150S-1 42068100003 UPPER

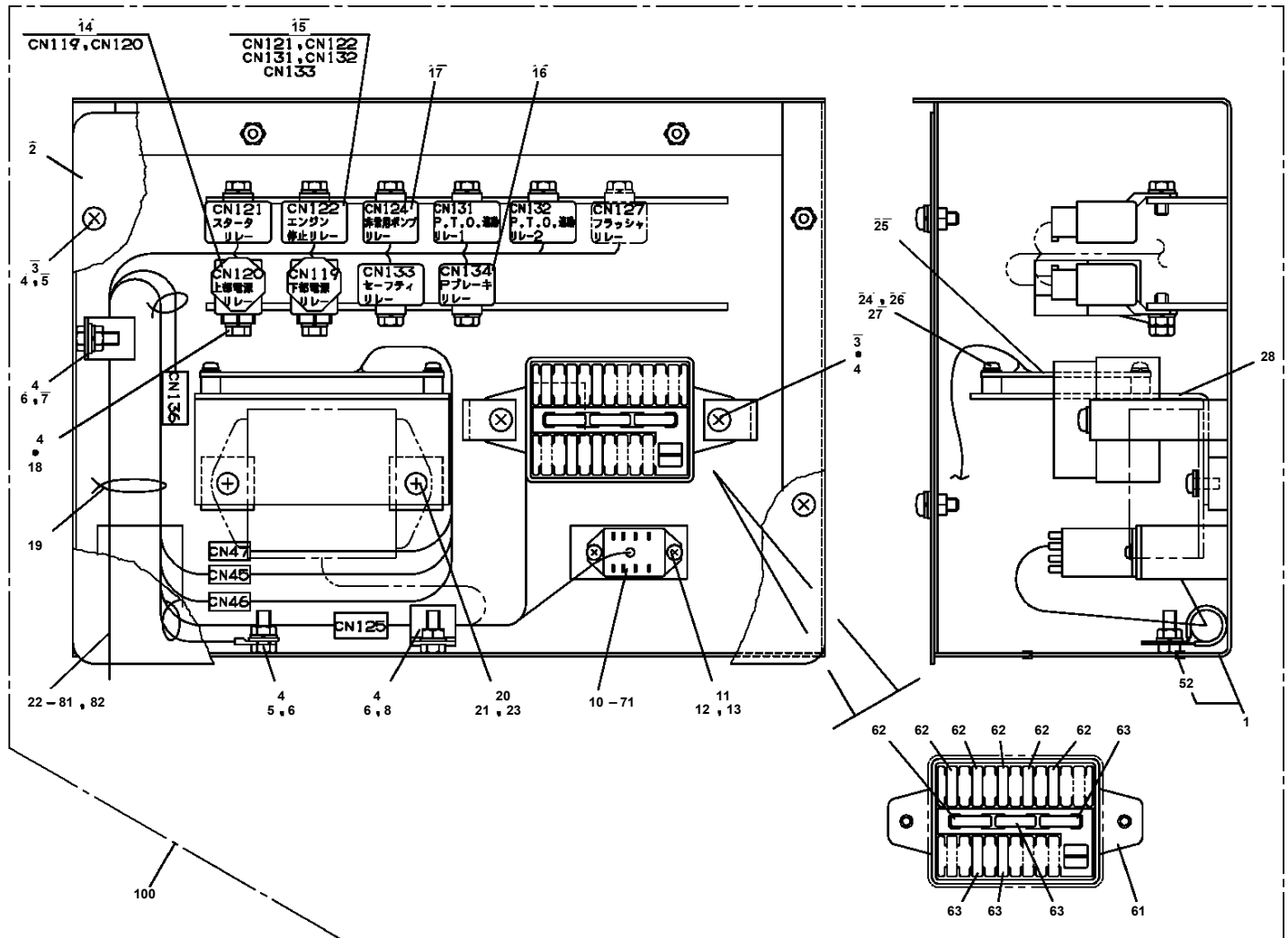
Pos No.	Parts No	Parts Name	Qty	Unit	Technical Data	Serial No (Start)	Serial No (End)	Remarks
1	42476391100	HARNESS	1					
2	91810130240	FASTENER	10					
3	82119422100	CONNECTOR	1					
4	42391620400	PLATE,NAME (100V OUTLET)	1					
5	90201200400	NUT	2		M4			
6	80175304020	SCREW,MACHINE	2		M4X20			
7	90302040401	WASHER,SPRING	2		4			

AT-150S-1 42068100003 UPPER  
PN1013100-01 ELEC.ASSY



操作スタンド内部

# AT-150S-1 42068100003 UPPER PN1110271-00 RELAY ASSY (BOX)



# AT-150S-1 42068100003 UPPER

Pos No.	Parts No	Parts Name	Qty	Unit	Technical Data	Serial No (Start)	Serial No (End)	Remarks
1	37004100040	PUMP,GREASE (DOMESTIC)	1					

# AT-150S-1 42068100003 UPPER

Pos No.	Parts No	Parts Name	Qty	Unit	Technical Data	Serial No (Start)	Serial No (End)
1	42460012530	WEDGE (STOPPER FOR TIRE/WAZUMI)	1				

CLICK HERE TO **DOWNLOAD** THE COMPLETE MANUAL

- Thank you very much for reading the preview of the manual.
- You can download the complete manual from: [www.heydownloads.com](http://www.heydownloads.com) by clicking the link below



- Please note: If there is no response to CLICKING the link, please download this PDF first and then click on it.

CLICK HERE TO **DOWNLOAD** THE COMPLETE MANUAL