

AT-150S-1 42068100009 UPPER

PB1000359-03 HYDRAULIC PRESSURE GENERATING SYSTEM

PC1000285-03 OUTRIGGER SYSTEM

PD1000339-03 SWING SYSTEM

PE1000339-02 ELEVATING SYSTEM

PG1000309-02 TELESCOPING SYSTEM

PH1000295-00 SAFETY DEVICES

PJ3000072-03 PLATFORM SYSTEM

PK1000349-01 FRAME

PN1000132-02 ELECTRIC EQUIPMENT

PO1000131-03 INDICATION PLATES

PW1000118-00 ACCESSORIES & TOOLS

PX1000371-00 MOUNTING PARTS

PY1000310-05 OPTIONS

ASSEMBLY

CLICK HERE TO **DOWNLOAD** THE COMPLETE MANUAL

- Thank you very much for reading the preview of the manual.
- You can download the complete manual from: www.heydownloads.com by clicking the link below



- Please note: If there is no response to CLICKING the link, please download this PDF first and then click on it.

CLICK HERE TO **DOWNLOAD** THE COMPLETE MANUAL

AT-150S-1 42068100009 UPPER

Pos No.	Parts No	Parts Name	Qty	Unit	Technical Data	Serial No (Start)	Serial No (End)	Remarks	P
1	(*****)	BOOM	1						0
2	(*****)	CYLINDER,TELESCOPING	1						0

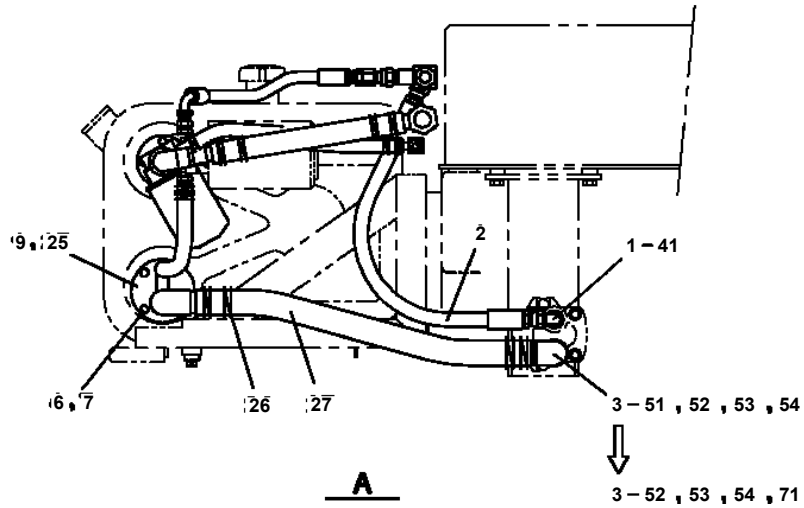
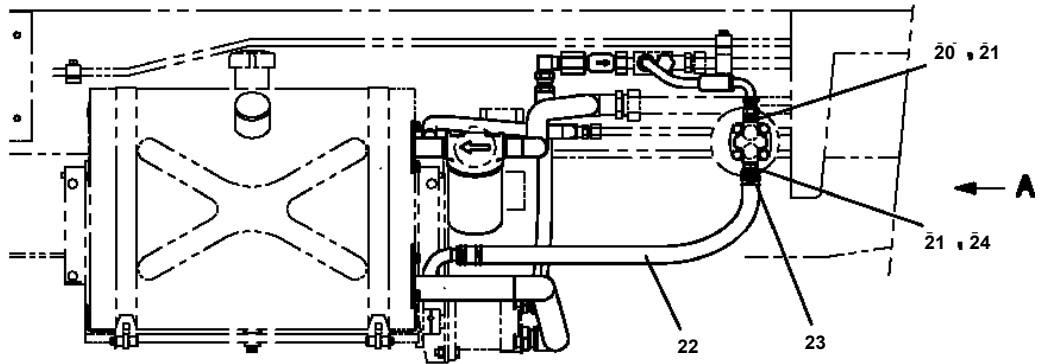
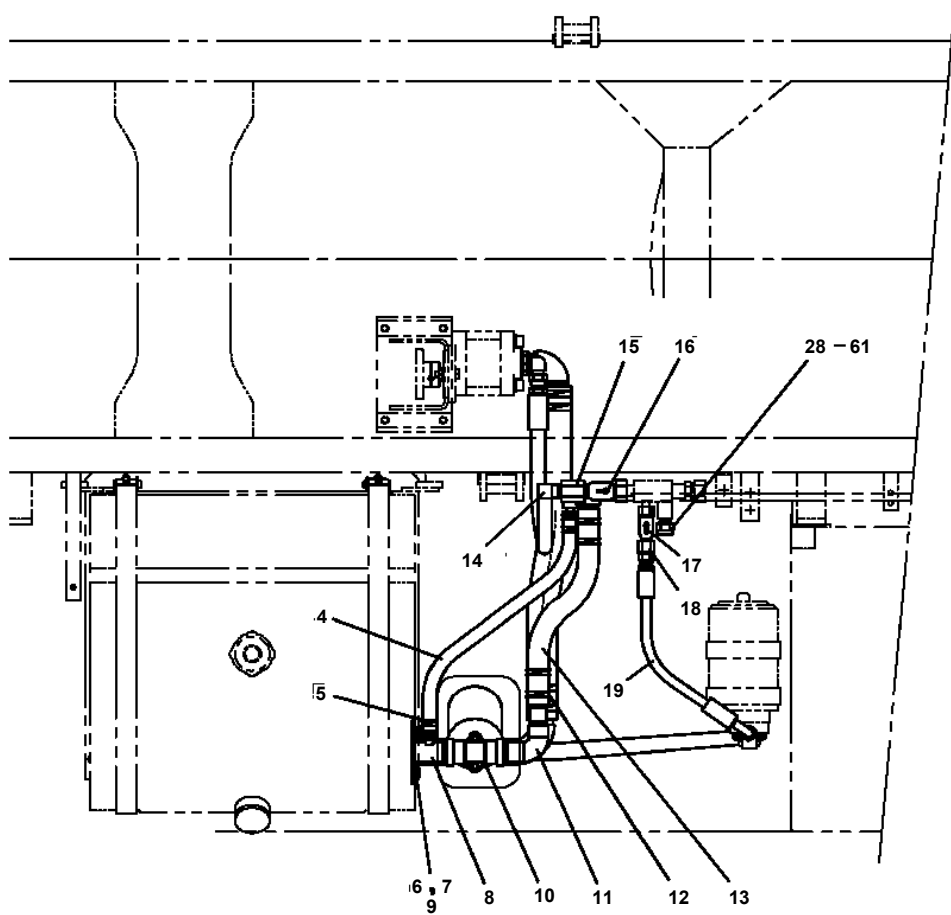
AT-150S-1 42068100009 UPPER

Pos No.	Parts No	Parts Name	Qty	Unit	Technical Data	Serial No (Start)	Serial No (End)	Remarks
1	(*****)	PLATE ASSY,NAME (UPPER)	1					

AT-150S-1 42068100009 UPPER

Pos No.	Parts No	Parts Name	Qty	Unit	Technical Data	Serial No (Start)	Serial No (End)	Remarks
1	42630570000	JOINT,ROTARY	1					
2	90101210028	BOLT	4		M10X28			
3	90302041001	WASHER,SPRING	4		10			
4	42441230010	SUPPORT	1					
5	90201781200	NUT	2		M12			
6	90171112030	BOLT	2		M12X30			
7	90302041201	WASHER,SPRING	4		12			
8	42441150020	SUPPORT	1					
9	90172112040	BOLT,HEXAGON SOCKET	2		M12X40			
22	42262561001	BRUSH,ROTARY JOINT	1					
23	90101208040	BOLT	3		M8X40			
24	90302040801	WASHER,SPRING	3		8			
25	80720105020	PIN,SPRING	1		5X20			
26	42630860100	COVER	1					
27	42630760200	SPACER	3		L=13			
31	53154004000	BUSH (THRUST)	1					
32	42630571100	BODY	1					
33	42630551200	CORE	1					
34	91531211000	PACKING	2					
35	91100211000	SEAL,RING	2					
36	82456101000	NIPPLE,GREASE	1		A-PT1/8			
37	82400000459	CAP	1				HD6059	

**AT-150S-1 42068100009 UPPER
PB1411363-00 PIPING,LOWER (TANK)**



AT-150S-1 42068100009 UPPER

Pos No.	Parts No	Parts Name	Qty	Unit	Technical Data	Serial No (Start)	Serial No (End)	Rem
2	80320030080	FITTING,ELBOW	1		KLE12-030N			
3	80320030075	FITTING,ELBOW	2		KLE12-020N			
4	80320030210	FITTING,ELBOW	1		KLE28-060N			
6	80305010100	FITTING,TEE	3		KTA12-000N			
7	80301010100	FITTING	4		KUA12-000N			
8	80301010160	FITTING	1		KUA18-000N			
9	80320010075	FITTING	10		KUD12-020N			
10	80302090121	FITTING	1		KCO10-030N			
11	37000907450	JOINT	1					
12	37000907470	JOINT	1					
13	42643831100	JOINT	1					
14	80400160127	JOINT	2					
15	80471020502	JOINT	1					
16	80430620600	JOINT (WITH O-RING)	1		L,G3/8-G3/8			
17	37000924070	JOINT	1		S,G1/2-G1/2			
18	80430620400	JOINT	9					
19	42643831200	JOINT	1					
20	37002424130	HOSE	1		L=630			
22	37002413190	HOSE	4		L=550			
23	37002443220	HOSE	5		L=570			
26	37002416590	HOSE	1		L=725			
27	37002412190	HOSE	1		L=400			
29	81408000160	PIPE,STEEL	4	M	12X1.4T			
30	81408000160	PIPE,STEEL	4	M	12X1.4T			
31	81408000160	PIPE,STEEL	2	M	12X1.4T			
32	81408000160	PIPE,STEEL	1	M	12X1.4T			
33	81408000160	PIPE,STEEL	1	M	12X1.4T			
34	81408000160	PIPE,STEEL	1	M	12X1.4T			
35	81408000160	PIPE,STEEL	2	M	12X1.4T			
36	81408000160	PIPE,STEEL	4	M	12X1.4T			
37	81408000160	PIPE,STEEL	5	M	12X1.4T			
38	81408000160	PIPE,STEEL	5	M	12X1.4T			
39	81408000160	PIPE,STEEL	1	M	12X1.4T			
40	81408000160	PIPE,STEEL	1	M	12X1.4T			
41	81408000160	PIPE,STEEL	2	M	12X1.4T			
42	81408000160	PIPE,STEEL	1	M	12X1.4T			
43	81408000160	PIPE,STEEL	1	M	12X1.4T			
44	81408000160	PIPE,STEEL	1	M	12X1.4T			
45	81408000160	PIPE,STEEL	1	M	12X1.4T			
46	81408000160	PIPE,STEEL	1	M	12X1.4T			
47	81408000160	PIPE,STEEL	2	M	12X1.4T			
48	81408000341	PIPE,STEEL	2	M	28X3.1T			
49	81408000241	PIPE,STEEL	3	M	18X1.9T			
50	81408000241	PIPE,STEEL	2	M	18X1.9T			
51	81408000160	PIPE,STEEL	3	M	12X1.4T			
52	81408000160	PIPE,STEEL	1	M	12X1.4T			
54	81408000130	PIPE,STEEL	1	M	10X1.8T			
55	37000711170	CLAMP ASSY	7		12X3			
56	37000711000	CLAMP ASSY	5		12-1			
57	37000711010	CLAMP ASSY	3		18X1			
58	37000711060	CLAMP ASSY	3		28X1			
59	37000711080	CLAMP ASSY	4		12-2			
60	91002801100	O-RING	4		1B P11			
61	91002801800	O-RING	3		1B P18			
62	42643771000	VALVE,SOLENOID	1					
63	90101208060	BOLT	2		M8X60			
64	90302040801	WASHER,SPRING	2		8			
65	81408000130	PIPE,STEEL	1	M	10X1.8T			
66	91002801400	O-RING	1		1B P14			
67	37002416610	HOSE	1		L=530			
68	80302090101	FITTING	1		KCO10-020N			
70	80303130121	FITTING,ELBOW (WITH O-RING)	1		KLO10-030E			
71	37002435590	HOSE	1		L=500			

AT-150S-1 42068100009 UPPER

Pos No.	Parts No	Parts Name	Qty	Unit	Technical Data	Serial No (Start)	Serial No (End)	R
1	36025190000	CYLINDER ASSY	1					
2	36605500000	VALVE,COUNTERBALANCE	1				HD5448	
	36606120000	VALVE ASSY,COUNTERBALANCE	1			HD5449		
3	90172110060	BOLT,HEXAGON SOCKET	3		M10X60			
5	82400000459	CAP	2			HD5449		
11	80720105040	PIN,SPRING	1		5X40			
12	91684112501	PACKING	2					
13	91411211001	RING,BACKUP	2				HD5349	
	91411211001	RING,BACKUP	1			HD5350		
14	91002807500	O-RING	1		1B P75			
15	36025193000	BOOT	1					
16	91803601200	CLIP	1		D=90-120			
17	91803601500	CLIP	1		D=130-150			
18	91002811500	O-RING	1		1B P115			
19	90750006061	SCREW,SET	1		M6X6			
20	91660010000	SEAL,DUST	1					
21	80622001000	RING,RITAINING	1		SP100			
22	36023210100	PISTON	1					
23	91302212500	BEARING,PLAIN	2					
24	36025192001	ROD	1					
25	36025191000	CYLINDER ASSY	1					
26	36023213000	COVER,ROD	1					
27	91251101000	RING,DAMPER	1					
28	91694010000	PACKING	1					
29	91410210000	RING,BACKUP	1					
30	91001206500	O-RING	2		1A G65			
31	36025194000	END,ROD	1					
32	90720008350	SCREW,SET	1		M8X35			
33	91431211001	RING,BACKUP (BLACK)	1			HD5350		
47	82458102000	NIPPLE,GREASE	2		B-PT1/8			
49	37000400950	BEARING,PLAIN	2					
54	82400000459	CAP	1			HD5566		
61	80612111080	RING,RITAINING	1		AR108			
72	80530000112	BEARING,SPHERICAL	1					
74	82100001411	TUBE,SPIRAL	1	M	SE-08BK		HD5976	
	82100001411	TUBE,SPIRAL	2	M	SE-08BK	HD5977		
77	82100000548	CONNECTOR	1					
79	80316090020	PLUG	1		KKT PT1/8			
91	82100001155	CONNECTOR	1					
100	36025199900	PACKING SET	1		100X125		HD5349	
101	36025199901	PACKING SET	1		100X125	HD5350		

AT-150S-1 42068100009 UPPER

Pos No.	Parts No	Parts Name	Qty	Unit	Technical Data	Serial No (Start)	Serial No (End)	Remark
1	36015170000	CYLINDER ASSY	1					
2	90101210090	BOLT	3		M10X90			
3	36604150000	VALVE,COUNTERBALANCE	1					
4	36623810000	VALVE,CHECK	1					
11	36015171001	ROD	1					
12	91660006501	SEAL,DUST	1					
13	36014740200	COVER,ROD	1					
14	91002909500	O-RING	1		1B G95			
15	91301106500	BEARING,PLAIN	1					
16	91410206503	RING,BACKUP	1					
17	91694106500	PACKING	1					
18	91251100650	RING,DAMPER	1					
19	91411108500	RING,BACKUP	1		G85			
20	91002908500	O-RING	1		1B G85			
23	36014740300	PISTON	1					
24	91002903500	O-RING	1		1B G35			
25	91684008501	PACKING	2					
26	91411207002	RING,BACKUP	2					
27	91302208500	BEARING,PLAIN	2					
29	36014180200	PLATE	1					
30	36015178820	CYLINDER ASSY	1					
31	90750006121	SCREW,SET	1		M6X12			
32	36014740400	NUT	1					
42	80612110720	RING,RITAINING	1		AR72			
43	80801006530	BEARING,PLAIN	1					
62	37000159790	PIN	1				HD5462	
	37000186420	PIN	1			HD5463		
63	80601110500	RING,RITAINING	2		S50			
64	37000557720	PLATE	2					
65	37001100380	ROLLER ASSY	1					
66	37000303270	SPACER	2		L=9.5			
67	37000123030	PIN	1					
68	80601110200	RING,RITAINING	1		S20			
69	36014382700	GUIDE	2					
81	80516006204	BEARING,BALL	1					
82	80602110470	RING,RITAINING	1		R47			
100	36014749900	PACKING SET	1		65X85			

AT-150S-1 42068100009 UPPER

Pos No.	Parts No	Parts Name	Qty	Unit	Technical Data	Serial No (Start)	Serial No (End)	Remarks	Page
10	42354251200	HARNESS (L=15500)	1						

AT-150S-1 42068100009 UPPER

Pos No.	Parts No	Parts Name	Qty	Unit	Technical Data	Serial No (Start)	Serial No (End)	Remarks	Pages
100	42475391100	HARNESS	1						

AT-150S-1 42068100009 UPPER

Pos No.	Parts No	Parts Name	Qty	Unit	Technical Data	Serial No (Start)	Serial No (End)	Remarks	Pages
100	42351640301	HARNESS	1						

CLICK HERE TO **DOWNLOAD** THE COMPLETE MANUAL

- Thank you very much for reading the preview of the manual.
- You can download the complete manual from: www.heydownloads.com by clicking the link below



- Please note: If there is no response to CLICKING the link, please download this PDF first and then click on it.

CLICK HERE TO **DOWNLOAD** THE COMPLETE MANUAL

AT-150S-1 42068100009 UPPER

Pos No.	Parts No	Parts Name	Qty	Unit	Technical Data	Serial No (Start)	Serial No (End)	Rema
4	91001206500	O-RING	1		1A G65			
5	36660025021	COVER (OIL SEAL)	1					
6	36660025140	SEAL,OIL	1					
7	80602110720	RING,RITAINING	1		R72			
14	36661925010	O-RING	1					
19	14125151020	KEY	1					
50	36662590000	MOTOR,HYDRAULIC (SWING)	1					

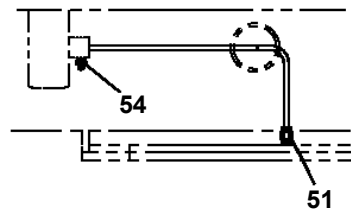
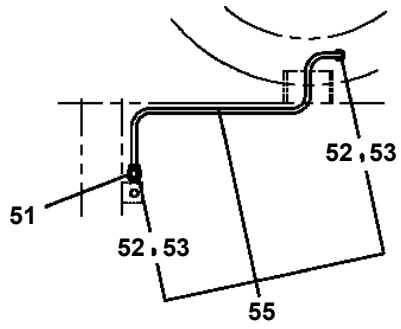
AT-150S-1 42068100009 UPPER

Pos No.	Parts No	Parts Name	Qty	Unit	Technical Data	Serial No (Start)	Serial No (End)	Remarks	Pages
1	36623810000	VALVE,CHECK	1						
2	36620030050	PLUG	1						
3	91002801400	O-RING	2		1B P14				
5	91002801000	O-RING	1		1B P10				
7	37001200350	SPRING	1						
8	36621840040	PLUG	1						
9	91002801200	O-RING	2		1B P12				
10	80316030020	PLUG	3		PT1/8				

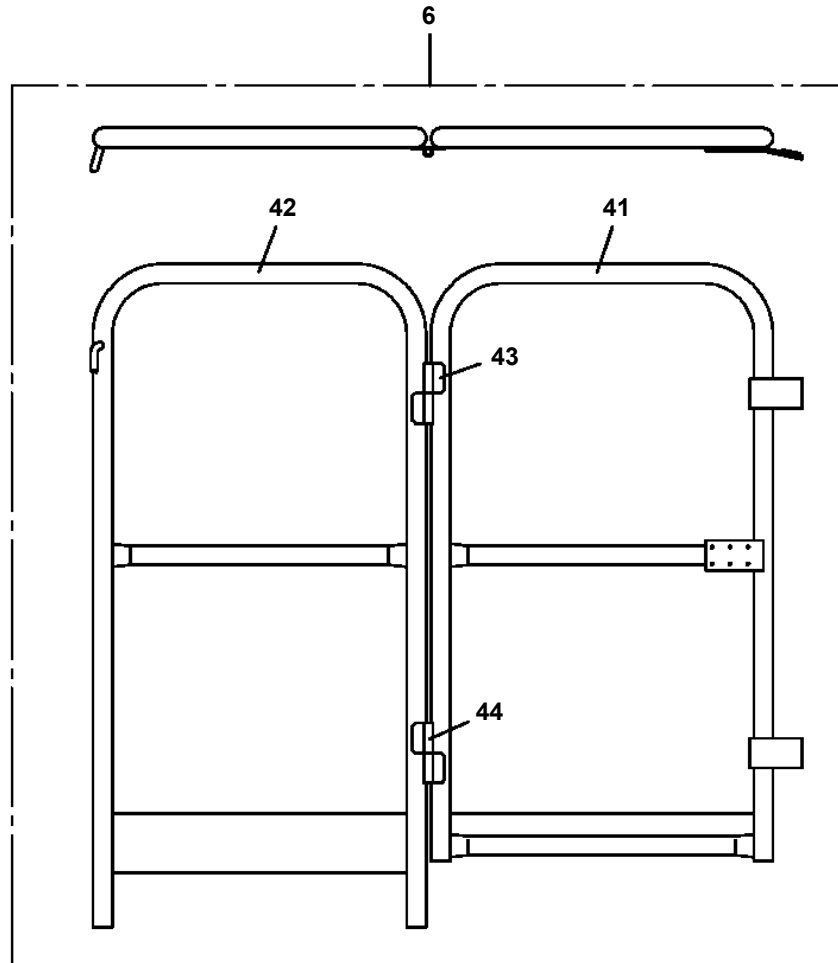
AT-150S-1 42068100009 UPPER

Pos No.	Parts No	Parts Name	Qty	Unit	Technical Data	Serial No (Start)	Serial No (End)	Remark
2	36600915010	PLUG	1					
5	36605155010	BUSHING	1					
6	36602455010	GUIDE,SPRING	1					
7	36600915040	SPRING	1					
8	36600915050	SPRING	1					
10	36600915060	SPRING	1					
12	36600915070	PACKING	1					
13	36600915080	BOLT (ADJUSTING)	1					
14	36600915090	NUT	1					
16	36600915100	RING,RETAINING	1					
17	36730055020	PLUG (HEXAGON SOCKET)	2					
18	36605505010	PLUG	1		TPHA-1/8			
19	36605505020	PLUG	1		TPHA-1/2			
20	91001100600	O-RING	1		1A P6			
21	91002801100	O-RING	1		1B P11			
22	91002801200	O-RING	2		1B P12			
23	91002801800	O-RING	2		1B P18			
24	91002802100	O-RING	1		1B P21			
25	91002802201	O-RING	1		1B P22A			
27	36605505030	PLUG	1		TPHA-3/8			
100	36605500000	VALVE,COUNTERBALANCE	1					

AT-150S-1 42068100009 UPPER
PJ3070044-01 PLATFORM



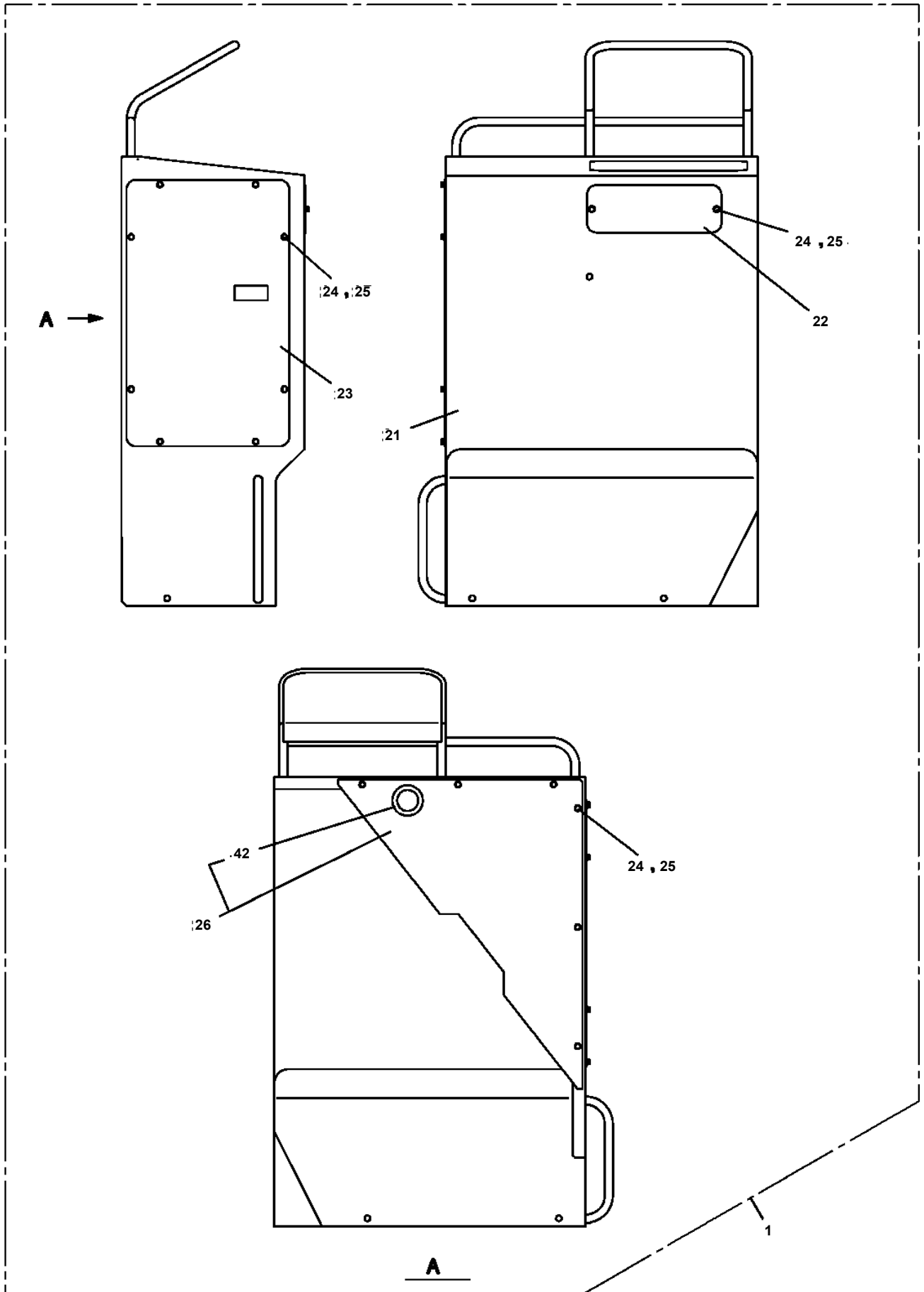
D - D



AT-150S-1 42068100009 UPPER

Pos No.	Parts No	Parts Name	Qty	Unit	Technical Data	Serial No (Start)	Serial No (End)
1	37002304560	BEARING,SWING (NIHON MONORACE)	1				
2	37001504630	BOLT	15		M18X70		
3	37001500240	BOLT	8		M16X50		
4	90171114040	BOLT	4		M14X40		
5	90302041401	WASHER,SPRING	4		14		
6	36080970000	REDUCER,PLATFORM SWING SPEED	1				
7	91001209000	O-RING	1		1A G90		
8	90172112035	BOLT,HEXAGON SOCKET	2		M12X35		
9	90302041201	WASHER,SPRING	2		12		
10	90303501601	WASHER,PLAIN	8		16		
11	36624610000	VALVE,SHUTTLE	1				
12	90101208055	BOLT	4		M8X55		
13	36662490000	MOTOR,HYDRAULIC (PLATFORM)	1				
14	90302040801	WASHER,SPRING	4		8		
17	42262580010	ORIFICE	2				
18	37000914090	JOINT	1				
19	37000910830	JOINT	1				

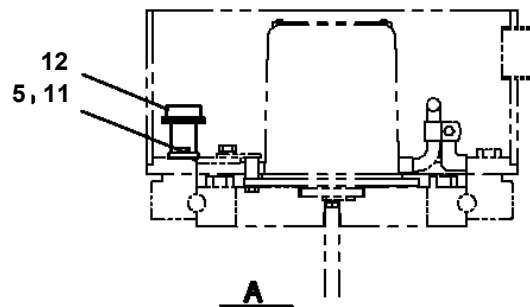
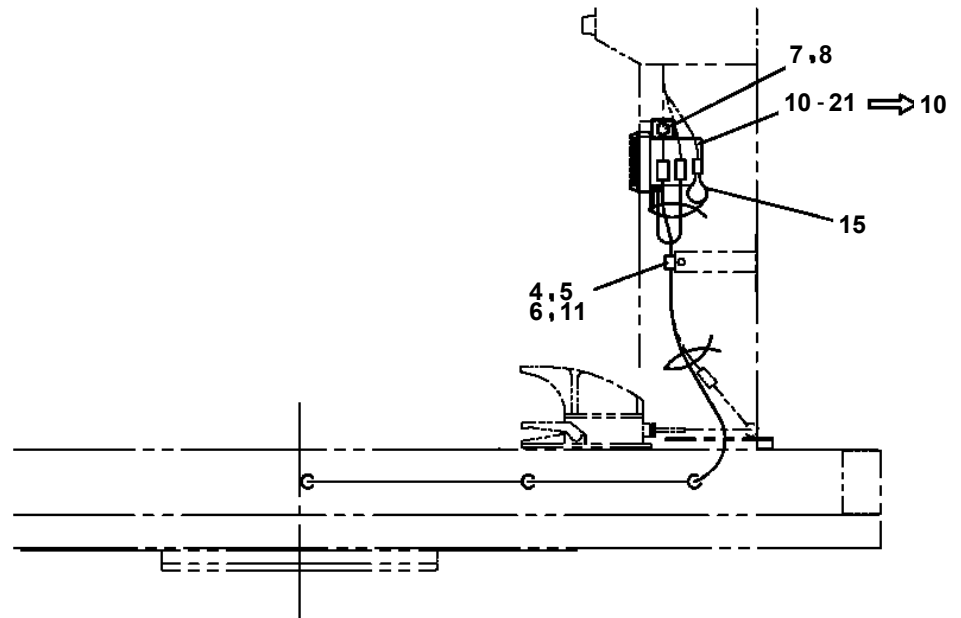
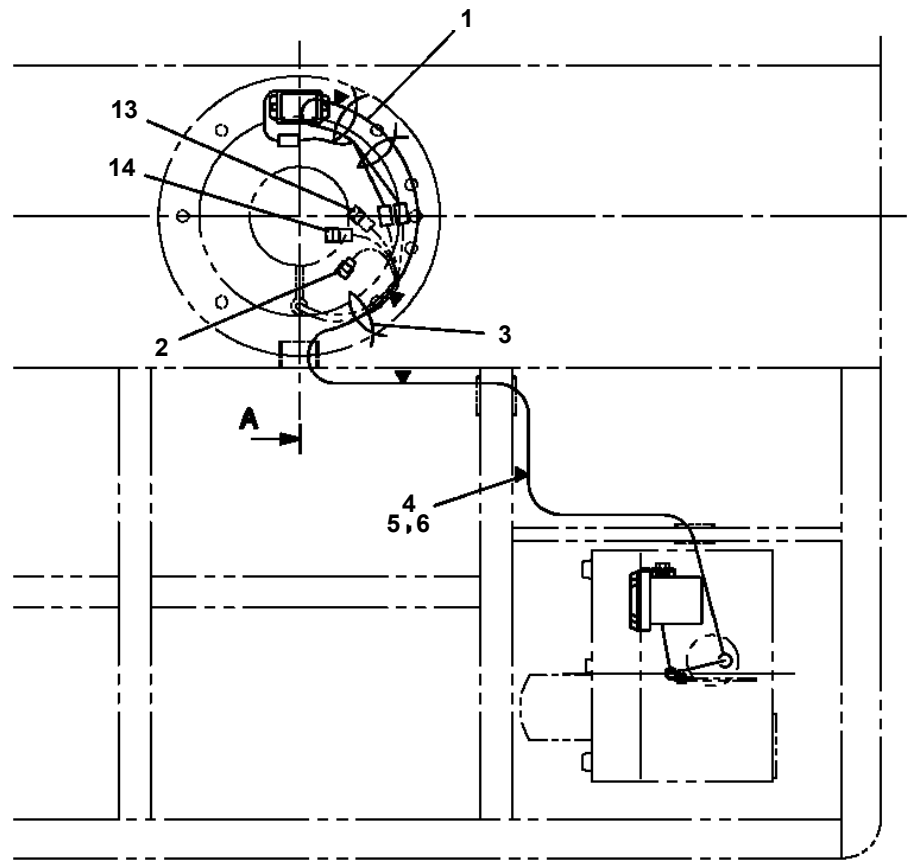
AT-150S-1 42068100009 UPPER
PK1200304-02 COVER, SWING FRAME



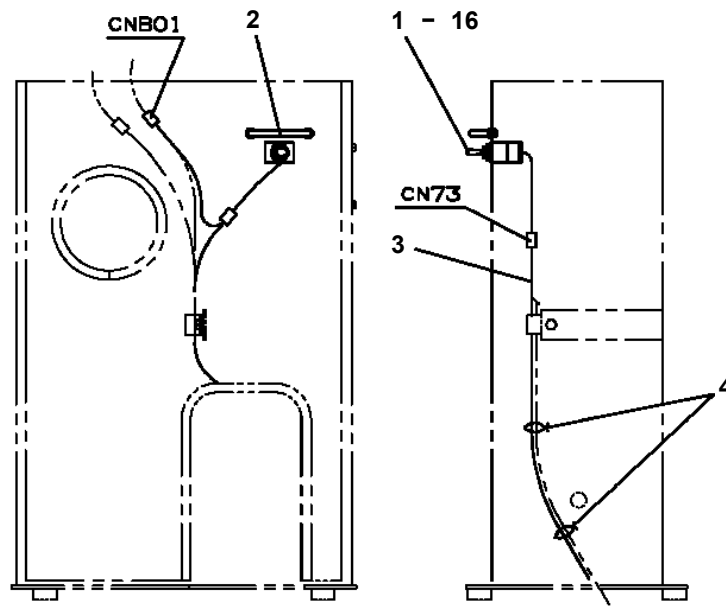
AT-150S-1 42068100009 UPPER

Pos No.	Parts No	Parts Name	Qty	Unit	Technical Data	Serial No (Start)	Serial No (End)	Remarks
1	36663955100	SHAFT	1					
2	80500006206	BEARING,BALL	1					
4	91001206500	O-RING	1		1A G65			
5	36660025021	COVER (OIL SEAL)	1					
6	36660025140	SEAL,OIL	1					
7	36663485110	RING,RETAINING	1		R72			
8	36663955020	PLATE,THRUST	1					
9	36663955030	BARREL ASSY (CYLINDER)	1					
10	36663955040	PLATE (VALVE)	1					
11	36661925030	COVER (BOTTOM)	1					
12	80500006203	BEARING,BALL	1					
13	36662355110	PIN	2					
14	36663955050	O-RING	1					
15	36663955060	BOLT	6		M10X35			
16	14125151020	KEY	1					
17	36660125060	PLUG	2		PF3/8			
18	36081315130	PROTECTOR (THREAD)	2					
44	36660025100	SPRING (PLUNGER)	5					
45	14125151300	RING,RETAINING	1					
46	12645103171	SPRING (CENTER)	1					
100	36664070000	MOTOR,OIL	1					

**AT-150S-1 42068100009 UPPER
PN1011941-03 ELEC.ASSY (3.3M DECK)**

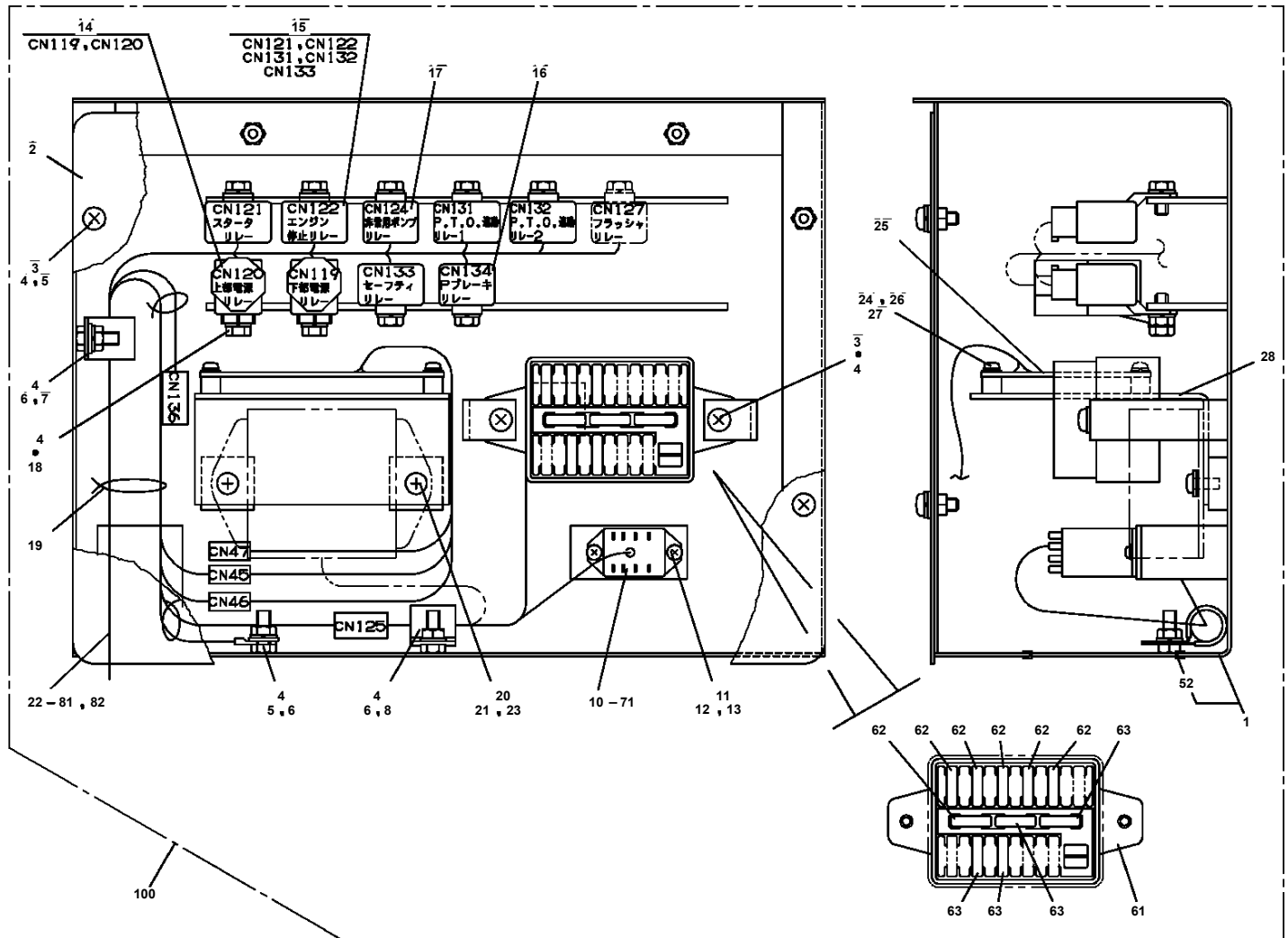


AT-150S-1 42068100009 UPPER
PN1013100-01 ELEC.ASSY



操作スタンド内部

**AT-150S-1 42068100009 UPPER
PN1110271-00 RELAY ASSY (BOX)**



AT-150S-1 42068100009 UPPER

Pos No.	Parts No	Parts Name	Qty	Unit	Technical Data	Serial No (Start)	Serial No (End)	Remark
1	37004100040	PUMP,GREASE (DOMESTIC)	1					

AT-150S-1 42068100009 UPPER

Pos No.	Parts No	Parts Name	Qty	Unit	Technical Data	Serial No (Start)	Serial No (End)
1	42460012530	WEDGE (STOPPER FOR TIRE/WAZUMI)	1				

CLICK HERE TO **DOWNLOAD** THE COMPLETE MANUAL

- Thank you very much for reading the preview of the manual.
- You can download the complete manual from: www.heydownloads.com by clicking the link below



- Please note: If there is no response to CLICKING the link, please download this PDF first and then click on it.

CLICK HERE TO **DOWNLOAD** THE COMPLETE MANUAL