

AT-150S-1 42068100008 UPPER

PB1000359-03 HYDRAULIC PRESSURE GENERATING SYSTEM
PC1000285-03 OUTRIGGER SYSTEM
PD1000339-03 SWING SYSTEM
PE1000339-02 ELEVATING SYSTEM
PG1000309-02 TELESCOPING SYSTEM
PH1000295-00 SAFETY DEVICES
PJ3000072-03 PLATFORM SYSTEM
PK1000349-01 FRAME
PN1000132-02 ELECTRIC EQUIPMENT
PO1000131-03 INDICATION PLATES
PW1000118-00 ACCESSORIES & TOOLS
PX1000371-00 MOUNTING PARTS
PY1000310-05 OPTIONS
ASSEMBLY

CLICK HERE TO **DOWNLOAD** THE COMPLETE MANUAL

- Thank you very much for reading the preview of the manual.
- You can download the complete manual from: www.heydownloads.com by clicking the link below



- Please note: If there is no response to CLICKING the link, please download this PDF first and then click on it.

CLICK HERE TO **DOWNLOAD** THE COMPLETE MANUAL

AT-150S-1 42068100008 UPPER

Pos No.	Parts No	Parts Name	Qty	Unit	Technical Data	Serial No (Start)	Serial No (End)	Remarks	P
1	(*****)	BOOM	1						0
2	(*****)	CYLINDER,TELESCOPING	1						0

AT-150S-1 42068100008 UPPER

Pos No.	Parts No	Parts Name	Qty	Unit	Technical Data	Serial No (Start)	Serial No (End)	Remark
1	(*****)	PLATE ASSY,NAME (UPPER)R)	1					

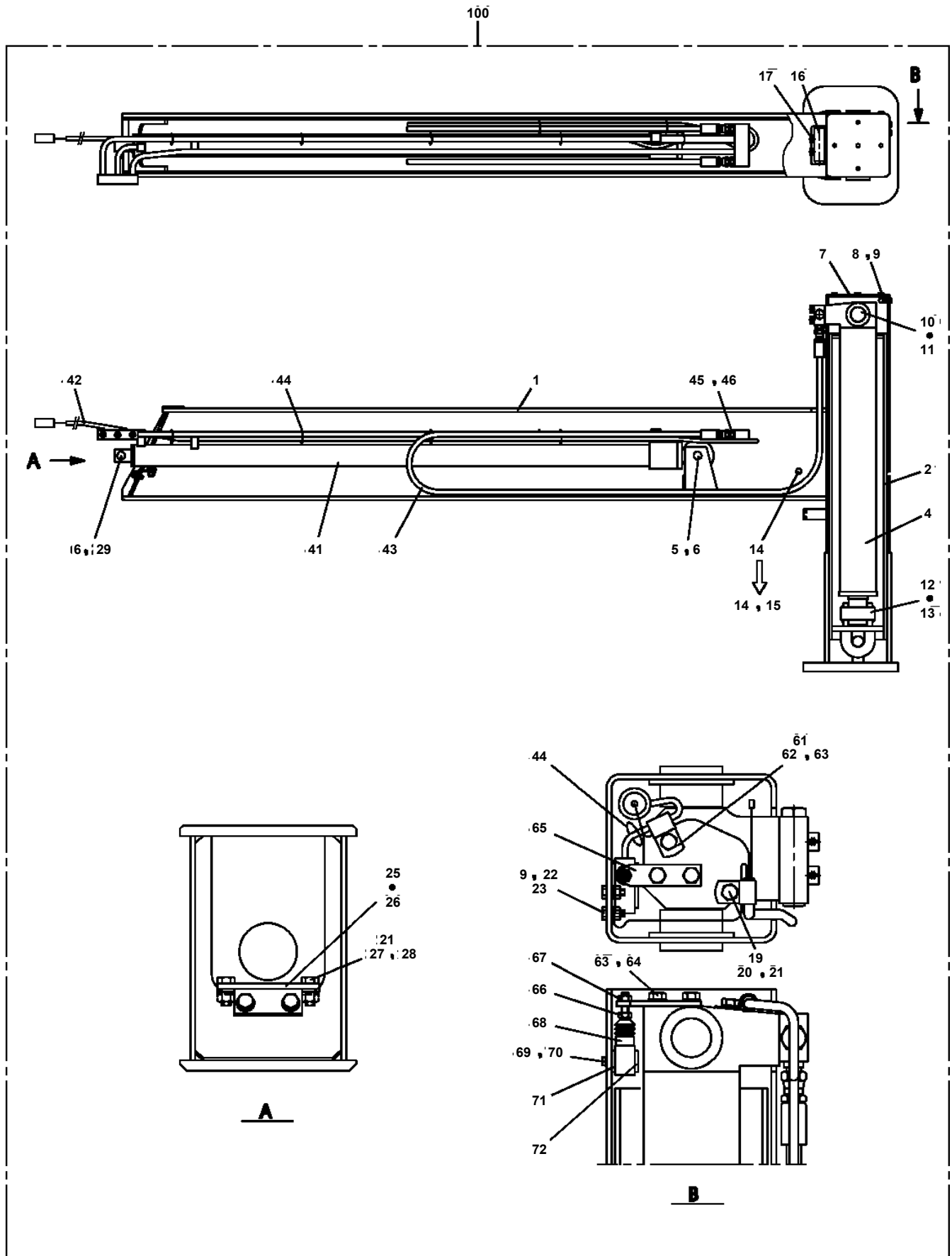
AT-150S-1 42068100008 UPPER

Pos No.	Parts No	Parts Name	Qty	Unit	Technical Data	Serial No (Start)	Serial No (End)	Remarks
1	42630570000	JOINT,ROTARY	1					
2	90101210028	BOLT	4		M10X28			
3	90302041001	WASHER,SPRING	4		10			
4	42441230010	SUPPORT	1					
5	90201781200	NUT	2		M12			
6	90171112030	BOLT	2		M12X30			
7	90302041201	WASHER,SPRING	4		12			
8	42441150020	SUPPORT	1					
9	90172112040	BOLT,HEXAGON SOCKET	2		M12X40			
22	42262561001	BRUSH,ROTARY JOINT	1					
23	90101208040	BOLT	3		M8X40			
24	90302040801	WASHER,SPRING	3		8			
25	80720105020	PIN,SPRING	1		5X20			
26	42630860100	COVER	1					
27	42630760200	SPACER	3		L=13			
31	53154004000	BUSH (THRUST)	1					
32	42630571100	BODY	1					
33	42630551200	CORE	1					
34	91531211000	PACKING	2					
35	91100211000	SEAL,RING	2					
36	82456101000	NIPPLE,GREASE	1		A-PT1/8			
37	82400000459	CAP	1				HD6059	

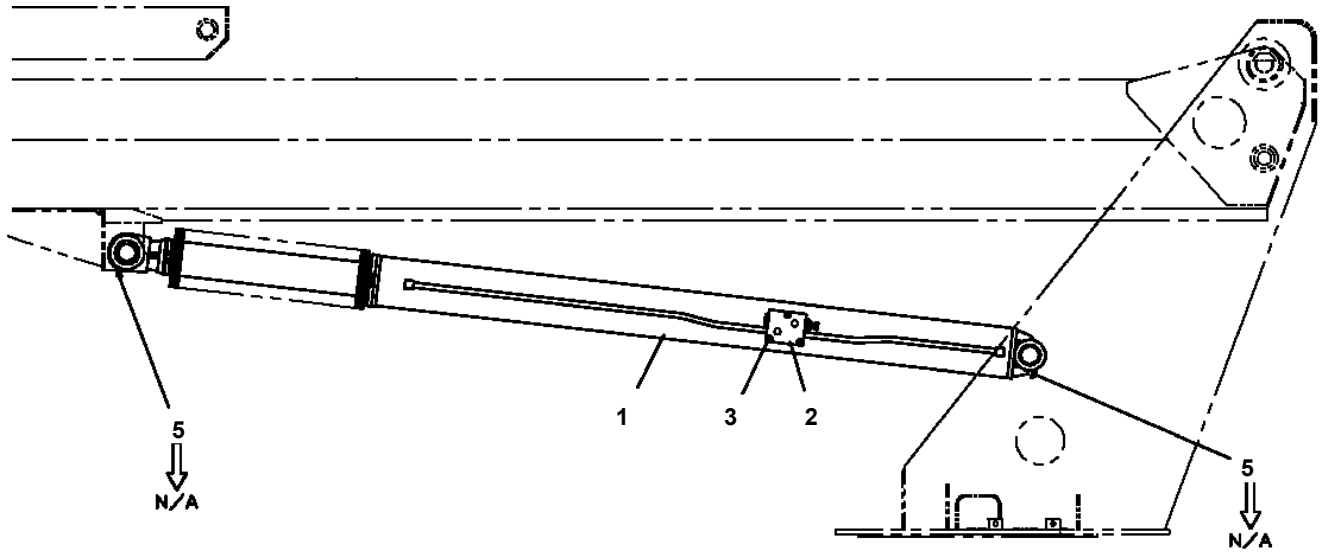
AT-150S-1 42068100008 UPPER

Pos No.	Parts No	Parts Name	Qty	Unit	Technical Data	Serial No (Start)	Serial No (End)	Remarks
2	90101208018	BOLT	4		M8X18			
3	90302040801	WASHER,SPRING	9		8			
4	37002458350	HOSE	1		L=770			
5	37002451510	HOSE	1		L=2300 TO 2180			
6	80430620800	JOINT	1					
7	36645260000	VALVE,SOLENOID	1					
8	80400160127	JOINT	1					
9	91002801100	O-RING	5		1B P11			
10	37002408090	HOSE	1		L=950			
11	42343690400	JOINT	1					
12	80316070040	PLUG	2		PF1/4			
13	36602610000	VALVE,RELIEF	1					
14	90101208060	BOLT	2		M8X60			
15	80430620600	JOINT (WITH O-RING)	4		L,G3/8-G3/8			
16	42340240500	FILTER,OIL	3					
17	80302090161	FITTING	3		KCO12-030N			
18	91002801400	O-RING	3		1B P14			
19	81408000160	PIPE,STEEL	1	M	12X1.4T			
20	37002451490	HOSE	1		L=2000			
21	37002443990	HOSE	1		L=1900			
23	90131508040	BOLT,HEXAGON SOCKET	3		M8X40			
24	37002439860	HOSE	1		L=480			
25	37002453100	HOSE	1		L=1250			
26	37002458780	HOSE	1		L=1100			
27	81408000160	PIPE,STEEL	1	M	12X1.4T			
28	82100001411	TUBE,SPIRAL	1	M	SE-08BK			
30	37002413770	HOSE	1		L=2000			
31	37002451500	HOSE	1		L=2240 TO 2100			
32	81408000081	PIPE,STEEL	2	M	8X1.2T			
33	80303130081	FITTING,ELBOW	1		KLO08-020E			
34	37000908730	JOINT (WITH O-RING)	1		L,G3/8-G1/4			
35	37002457070	HOSE	1		L=2240			
36	37002423450	HOSE	1		L=2300			
38	42343190401	SUPPORT	2					
39	91810130240	FASTENER	25					
40	37000713790	CLAMP ASSY	1		10X2,18X2,14X1			
41	37000713800	CLAMP ASSY	1					
42	80400160131	JOINT	1					
43	91002801800	O-RING	3		1B P18			
44	80316070080	PLUG	2		PF1/2			
45	80491303020	JOINT (WITH O-RING)	1		L,G3/8-G1/4			
46	37000300750	SLEEVE	1		18-15			
47	37002457720	HOSE	1		L=2240			
48	37002411990	HOSE	1		L=2500			
49	37002447610	HOSE	1		L=500			
50	80315040040	JOINT	1					
51	37002413330	HOSE	1		L=900			
52	37000714140	CLAMP ASSY	1		18X3			
54	90101210050	BOLT	2		M10X50			
55	90302041001	WASHER,SPRING	2		10			
56	37002442190	HOSE	1		L=2500			
57	37002404590	HOSE	1		L=560			
58	81408000160	PIPE,STEEL	1	M	12X1.4T			
59	81408000160	PIPE,STEEL	1	M	12X1.4T			
61	36646210001	VALVE,CONTROL	1					
62	42343690600	JOINT	1					
63	91002802400	O-RING	1		1B P24			
64	44340563800	HARNESS	4					
65	42343690500	JOINT	1					
66	91002801800	O-RING	10		1B P18			
67	80400160176	JOINT	2		S,G1/2-1/4			
68	80400160130	JOINT	6		S,G1/2-G3/8			
71	42342580110	JOINT	1					

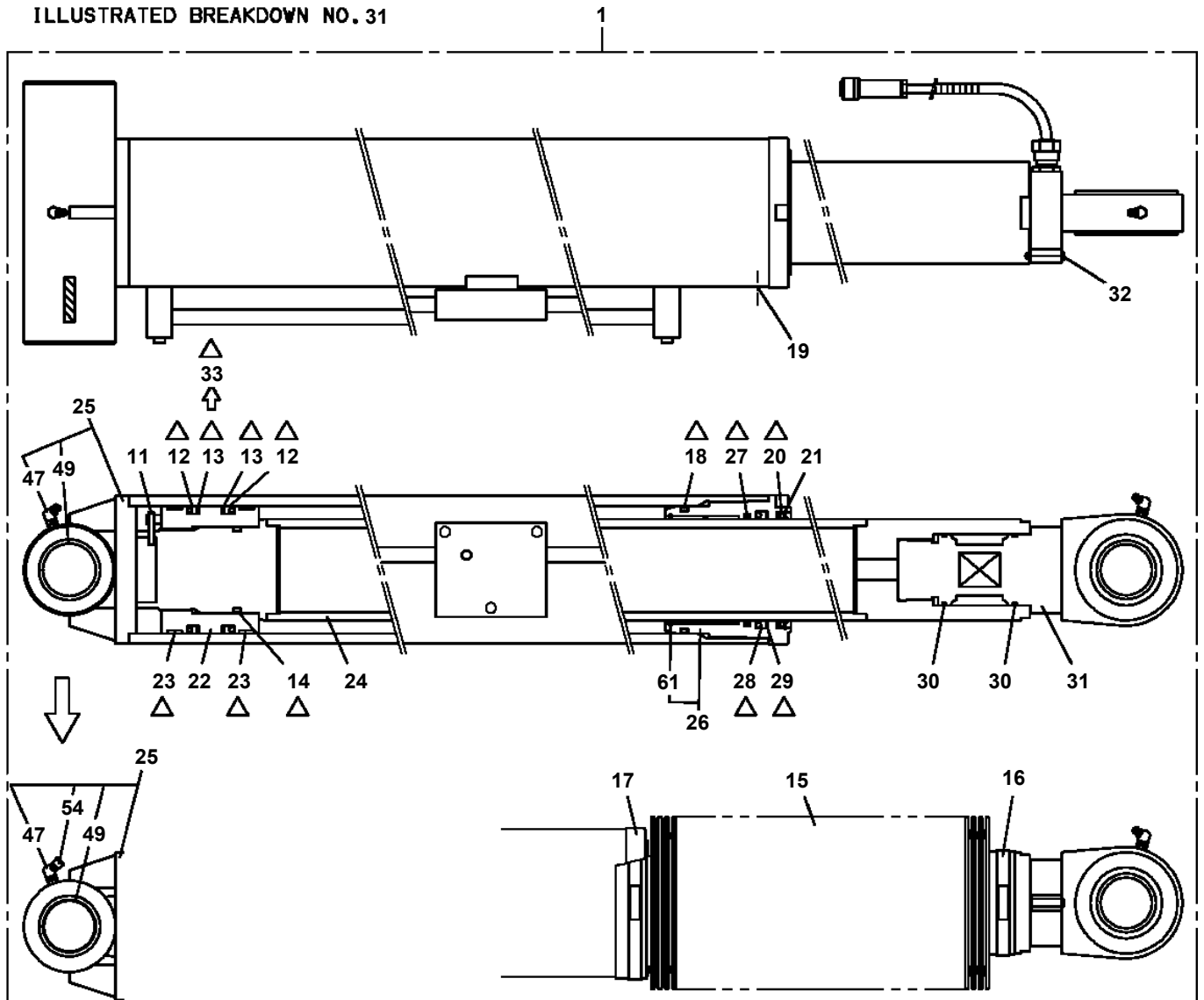
**AT-150S-1 42068100008 UPPER
PC1010702-00 OUTRIGGER (FRONT,LEFT,RIGHT)**



**AT-150S-1 42068100008 UPPER
PE1010304-05 CYLINDER,ELEVATING**



展開図有
ILLUSTRATED BREAKDOWN NO. 31



Δ:PACKING SET KEY NO. 101 (KEY NO.12,13,14,18,20,23,27,28,29,33)

↑
Δ:PACKING SET KEY NO. 100 (KEY NO.12,13,14,18,20,23,27,28,29)

AT-150S-1 42068100008 UPPER

Pos No.	Parts No	Parts Name	Qty	Unit	Technical Data	Serial No (Start)	Serial No (End)	Remarks
56	37002001520	PLATE,SLIDE	4			HD5236		
57	37000510800	PLATE	12		T=0.8		HD5235	
	37000510800	PLATE	4		T=0.8	HD5236		
58	80184306012	SCREW,MACHINE	6		M6X12		HD5235	
	80184306012	SCREW,MACHINE	8		M6X12	HD5236		
59	37000112510	PIN	1					
60	90201201800	NUT	4		M18		HD5235	
	90201481800	NUT	4		M18	HD5236		
61	90710716600	SCREW,SET	2		M16X60			
62	90201481600	NUT	2		M16			
63	90201201600	NUT	4		M16			
66	37000563080	PLATE	1					
67	90172106014	BOLT,HEXAGON SOCKET	2		M6X14			
68	90302040601	WASHER,SPRING	2		6			
69	42201090400	COVER	1					
70	37000566320	PLATE	2		T=1.0			
71	37000566330	PLATE	2		T=0.5			
72	82458202000	NIPPLE,GREASE	1		B-TYPE PT1/8			
73	42201030010	PLATE	8		T=0.5			
74	37002008710	PLATE,SLIDE	8			HD5236		
75	42201510020	PLATE,SLIDE	4			HD5236		
76	42201510030	PLATE	12			HD5236		
82	80520045010	BEARING,ROLLER	1					
92	80513006014	BEARING,BALL	4					
101	37001912390	ROPE,WIRE (TESAC)	2					
102	37001912400	ROPE,WIRE (KOKOKU)	2					
121	37001912410	ROPE,WIRE (TESAC)	1					
122	37001912420	ROPE,WIRE (KOKOKU)	1					
131	42200765600	COVER	2					
133	90101206014	BOLT	8		M6X14			
134	90303070601	WASHER,PLAIN	11		6			
135	90302040601	WASHER,SPRING	14		6			
136	42200765800	COVER	2					
138	42200765750	SUPPORT	1					
139	42200765760	PLATE	1					
140	42200765770	SUPPORT	1					
141	42200765940	SUPPORT	1					
142	42200765960	SUPPORT	1					
143	42200765950	PLATE	1					
144	90201200600	NUT	6		M6			
151	42441820010	SUPPORT	4					

AT-150S-1 42068100008 UPPER

Pos No.	Parts No	Parts Name	Qty	Unit	Technical Data	Serial No (Start)	Serial No (End)	Remarks	Page
10	42351621500	HARNESS (L=15200)	1						

AT-150S-1 42068100008 UPPER

Pos No.	Parts No	Parts Name	Qty	Unit	Technical Data	Serial No (Start)	Serial No (End)	Remarks	Pages
100	42351640500	HARNESS	1						

AT-150S-1 42068100008 UPPER

Pos No.	Parts No	Parts Name	Qty	Unit	Technical Data	Serial No (Start)	Serial No (End)	Remarks	Pages
100	42500004020	HARNESS	1						

AT-150S-1 42068100008 UPPER

Pos No.	Parts No	Parts Name	Qty	Unit	Technical Data	Serial No (Start)	Serial No (End)	Remarks	Pages
1	36642715020	BODY	1						
2	36645165010	VALVE,SOLENOID	1						
21	36640495010	COIL,SOLENOID	1						
23	36642885010	NUT	1						
24	36370105600	O-RING	1						
25	91002801600	O-RING	1		1B P16				
26	91001102100	O-RING	1		1A P21				
27	91000511800	O-RING	1						
28	91001003800	O-RING	1		S38				
31	36641345020	CONNECTOR	1						
100	36645160000	VALVE,SOLENOID	1						

CLICK HERE TO **DOWNLOAD** THE COMPLETE MANUAL

- Thank you very much for reading the preview of the manual.
- You can download the complete manual from: www.heydownloads.com by clicking the link below



- Please note: If there is no response to CLICKING the link, please download this PDF first and then click on it.

CLICK HERE TO **DOWNLOAD** THE COMPLETE MANUAL

AT-150S-1 42068100008 UPPER

Pos No.	Parts No	Parts Name	Qty	Unit	Technical Data	Serial No (Start)	Serial No (End)	Remarks	Pages
1	36623810000	VALVE,CHECK	1						
2	36620030050	PLUG	1						
3	91002801400	O-RING	2		1B P14				
5	91002801000	O-RING	1		1B P10				
7	37001200350	SPRING	1						
8	36621840040	PLUG	1						
9	91002801200	O-RING	2		1B P12				
10	80316030020	PLUG	3		PT1/8				

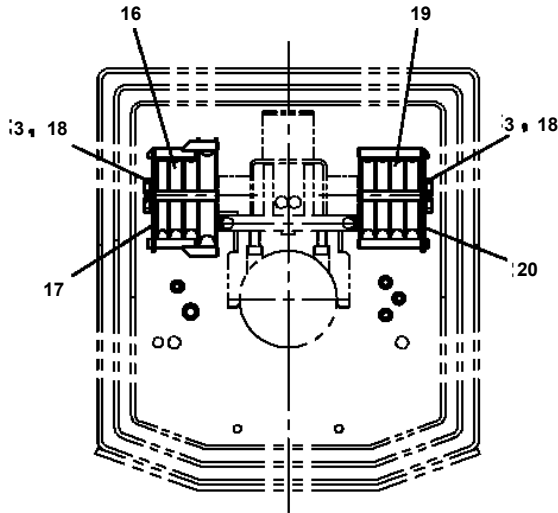
AT-150S-1 42068100008 UPPER

Pos No.	Parts No	Parts Name	Qty	Unit	Technical Data	Serial No (Start)	Serial No (End)	Remark
2	36600915010	PLUG	1					
5	36600915020	BUSH	1					
6	36600915030	GUIDE,SPRING	1					
7	36600915110	SPRING	1					
8	36600915050	SPRING	1					
10	36600915060	SPRING	1					
12	36600915070	PACKING	1					
13	36600915080	BOLT (ADJUSTING)	1					
14	36600915090	NUT	1					
16	36600915100	RING,RETAINING	1					
17	80316030010	PLUG	2		NPTF1-16			
18	80316030020	PLUG	1		PT1/8			
19	80316030080	PLUG	1		PT1/2			
20	91001100600	O-RING	1		1A P6			
21	91002801100	O-RING	1		1B P11			
22	91002801200	O-RING	2		1B P12			
23	91002801800	O-RING	2		1B P18			
24	91002802100	O-RING	1		1B P21			
25	91002802201	O-RING	1		1B P22A			
27	80316030060	PLUG	1		PT3/8			
50	36604150000	VALVE,COUNTERBALANCE	1					

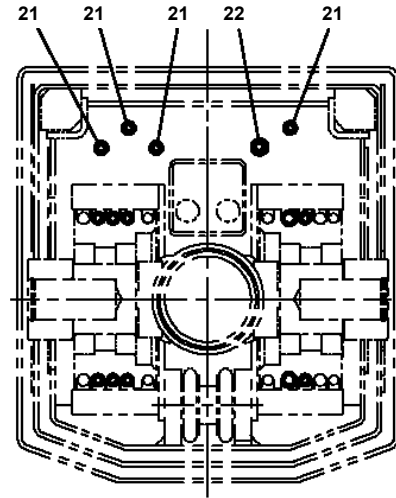
AT-150S-1 42068100008 UPPER

Pos No.	Parts No	Parts Name	Qty	Unit	Technical Data	Serial No (Start)	Serial No (End)	Remarks	Pages
1	90101210014	BOLT	4		M10X14				
2	90302041001	WASHER,SPRING	4		10				
3	31300030010	COVER	1						
4	31300030050	COVER	1						

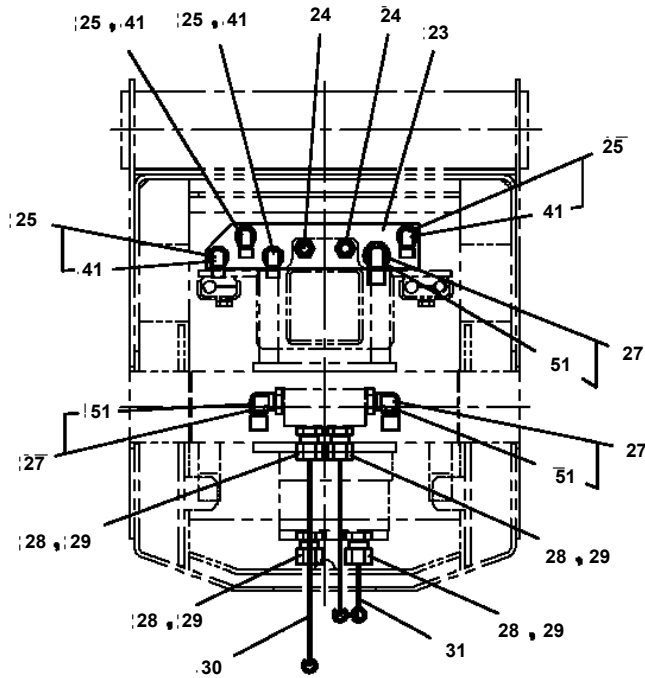
**AT-150S-1 42068100008 UPPER
PJ3100085-00 PIPING,BOOM**



B



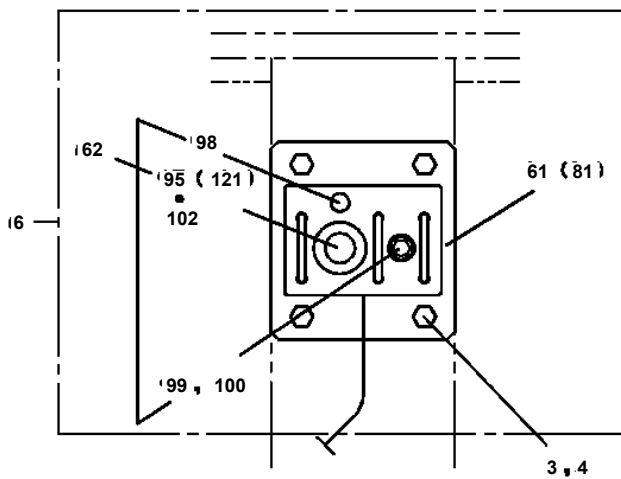
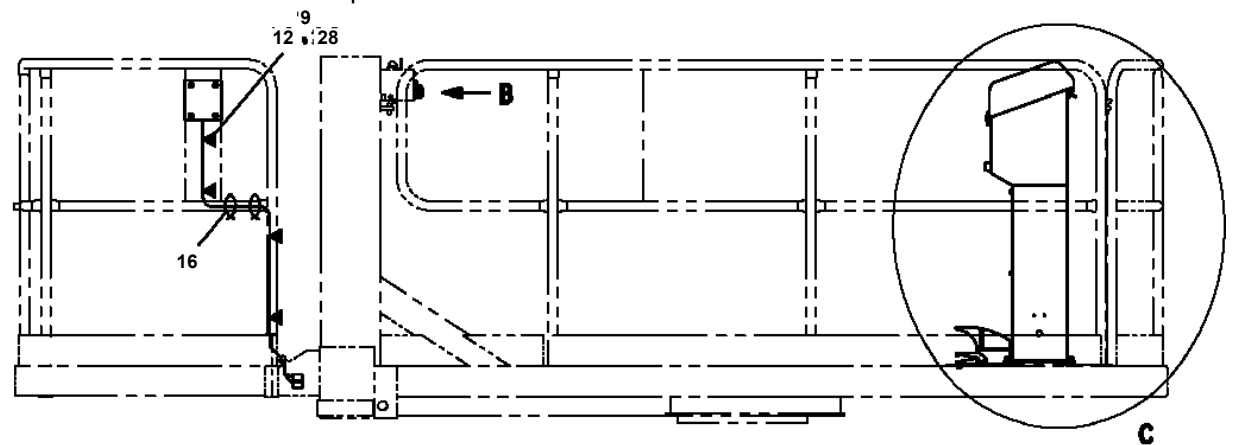
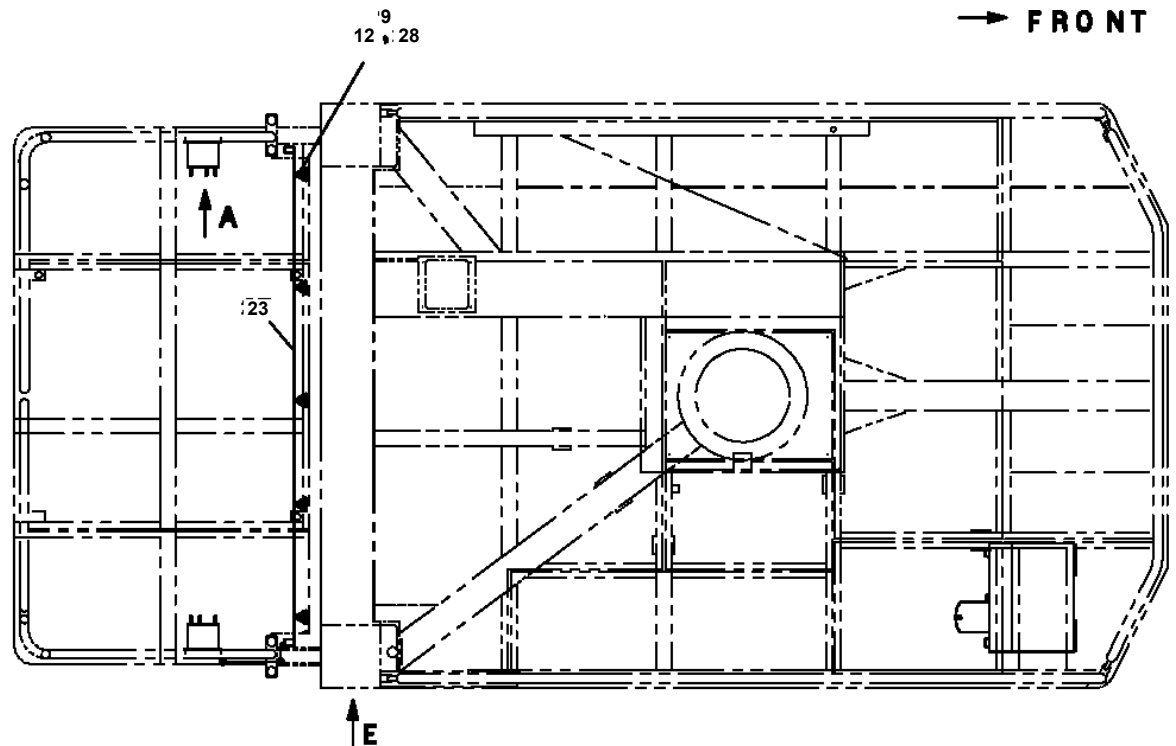
C



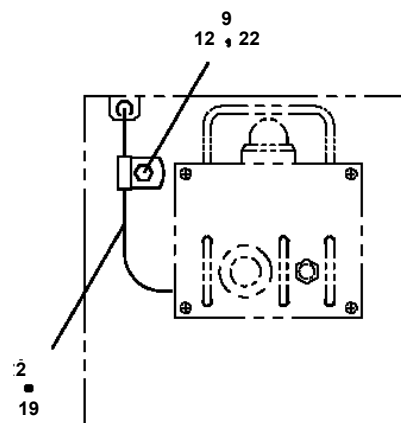
D

**AT-150S-1 42068100008 UPPER
PJ3180002-00 OPE.ASSY,PLATFORM**

→ **FRONT**



A



B

AT-150S-1 42068100008 UPPER

Pos No.	Parts No	Parts Name	Qty	Unit	Technical Data	Serial No (Start)	Serial No (End)	Remarks	Pages
1	42230951000	SWING FRAME	1						
2	37000168440	PIN	2						
3	90171110022	BOLT	4		M10X22				
4	90302041001	WASHER,SPRING	4		10				
5	37000507400	PLATE	2						
6	90101208012	BOLT	2		M8X12				
7	90302040801	WASHER,SPRING	2		8				
8	32610010040	PLATE	1						
9	37001505940	BOLT	21		M18X60				
10	90303501805	WASHER,PLAIN	21		18				
11	37000566420	PLATE	1						
51	37000551320	PLATE	1						
52	90101206016	BOLT	4		M6X16				

AT-150S-1 42068100008 UPPER

Pos No.	Parts No	Parts Name	Qty	Unit	Technical Data	Serial No (Start)	Serial No (End)	Re
1	36646255010	MODULE (PUMP SIDE)	1					
4	36644235090	ACTUATOR (MECHANICAL)	4					
5	36646935050	ACTUATOR (ELECTRICAL)	4					
6	36646215011	VALVE,CONTROL (DECK SWING)	1					
7	36646215031	VALVE,CONTROL	2					
8	36644325040	VALVE,CONTROL (SWING)	1					
9	36643975040	PLATE (END)	1					
10	36645205060	ASSEMBLY KIT	1					
11	36645205070	SEAL KIT	4					
12	36644325010	SEAL KIT	4					
13	36646255110	SEAL KIT	4					
14	36646215050	CONNECTOR ASSY	4					
31	36643975540	SEAL KIT (FOR PVP)	1					
41	36645205160	SEAL KIT (FOR PVB)	3					
100	36646210001	VALVE,CONTROL	1					

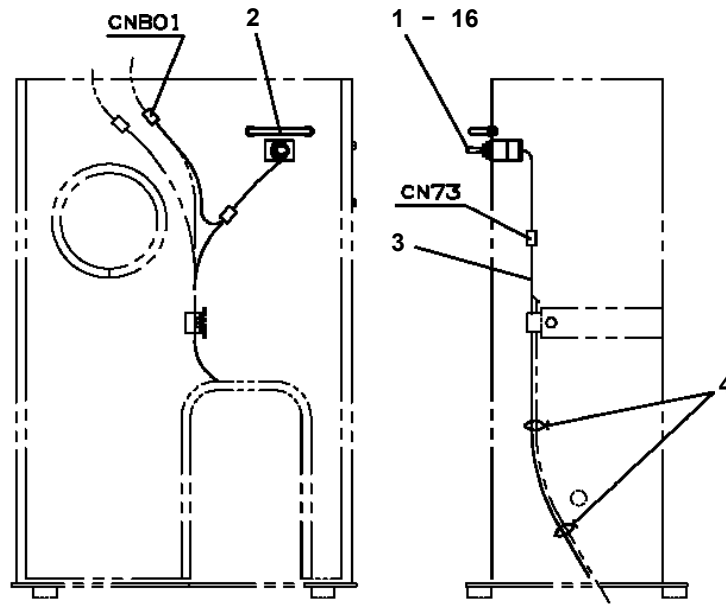
AT-150S-1 42068100008 UPPER

Pos No.	Parts No	Parts Name	Qty	Unit	Technical Data	Serial No (Start)	Serial No (End)
87	80172804008	SCREW,MACHINE	3		M4X8		
89	82400000370	CATCH	1				
90	42351640250	COVER	1				
91	42351640270	SUPPORT	1				

AT-150S-1 42068100008 UPPER

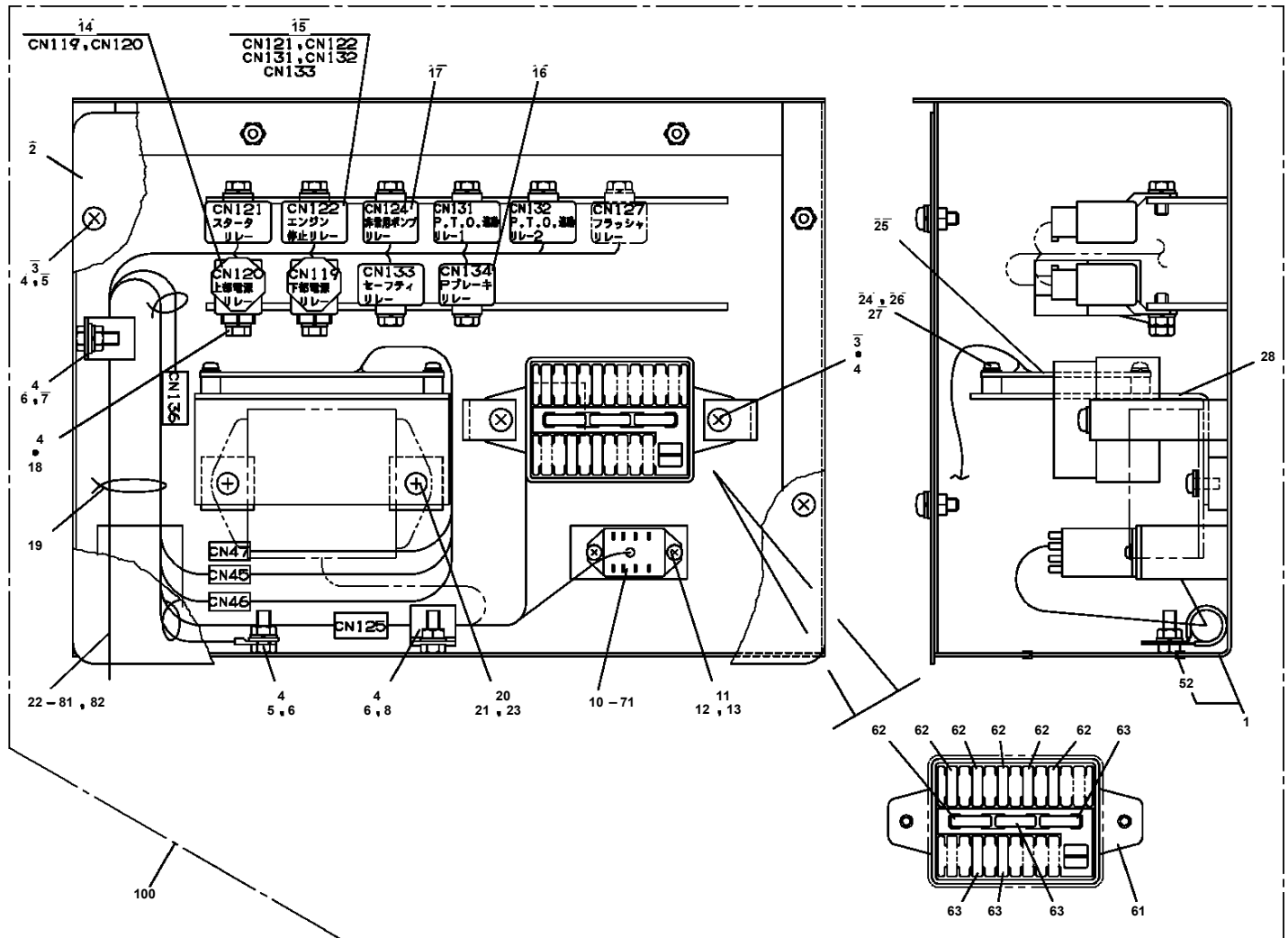
Pos No.	Parts No	Parts Name	Qty	Unit	Technical Data	Serial No (Start)	Serial No (End)	Remarks
1	42476391100	HARNESS	1					
2	91810130240	FASTENER	10					
3	82119422100	CONNECTOR	1					
4	42391620400	PLATE,NAME (100V OUTLET)	1					
5	90201200400	NUT	2		M4			
6	80175304020	SCREW,MACHINE	2		M4X20			
7	90302040401	WASHER,SPRING	2		4			

AT-150S-1 42068100008 UPPER
PN1013100-01 ELEC.ASSY



操作スタンド内部

AT-150S-1 42068100008 UPPER PN1110271-00 RELAY ASSY (BOX)



AT-150S-1 42068100008 UPPER

Pos No.	Parts No	Parts Name	Qty	Unit	Technical Data	Serial No (Start)	Serial No (End)	Remarks
1	37004100040	PUMP,GREASE (DOMESTIC)	1					

AT-150S-1 42068100008 UPPER

Pos No.	Parts No	Parts Name	Qty	Unit	Technical Data	Serial No (Start)	Serial No (End)
1	42460012530	WEDGE (STOPPER FOR TIRE/WAZUMI)	1				

CLICK HERE TO **DOWNLOAD** THE COMPLETE MANUAL

- Thank you very much for reading the preview of the manual.
- You can download the complete manual from: www.heydownloads.com by clicking the link below



- Please note: If there is no response to CLICKING the link, please download this PDF first and then click on it.

CLICK HERE TO **DOWNLOAD** THE COMPLETE MANUAL