

AT-150S-1 42068100001 UPPER

PB1000359-03 HYDRAULIC PRESSURE GENERATING SYSTEM

PC1000285-03 OUTRIGGER SYSTEM

PD1000339-03 SWING SYSTEM

PE1000339-02 ELEVATING SYSTEM

PG1000309-02 TELESCOPING SYSTEM

PH1000624-01 SAFETY DEVICES

PJ3000072-03 PLATFORM SYSTEM

PK1000349-01 FRAME

PN1000132-02 ELECTRIC EQUIPMENT

PO1000131-03 INDICATION PLATES

PW1000118-00 ACCESSORIES & TOOLS

PX1000371-00 MOUNTING PARTS

PY1000310-05 OPTIONS

ASSEMBLY

CLICK HERE TO **DOWNLOAD** THE COMPLETE MANUAL

- Thank you very much for reading the preview of the manual.
- You can download the complete manual from: www.heydownloads.com by clicking the link below



- Please note: If there is no response to CLICKING the link, please download this PDF first and then click on it.

CLICK HERE TO **DOWNLOAD** THE COMPLETE MANUAL

AT-150S-1 42068100001 UPPER

Pos No.	Parts No	Parts Name	Qty	Unit	Technical Data	Serial No (Start)	Serial No (End)	Remarks	P
1	(*****)	BOOM	1						0
2	(*****)	CYLINDER,TELESCOPING	1						0

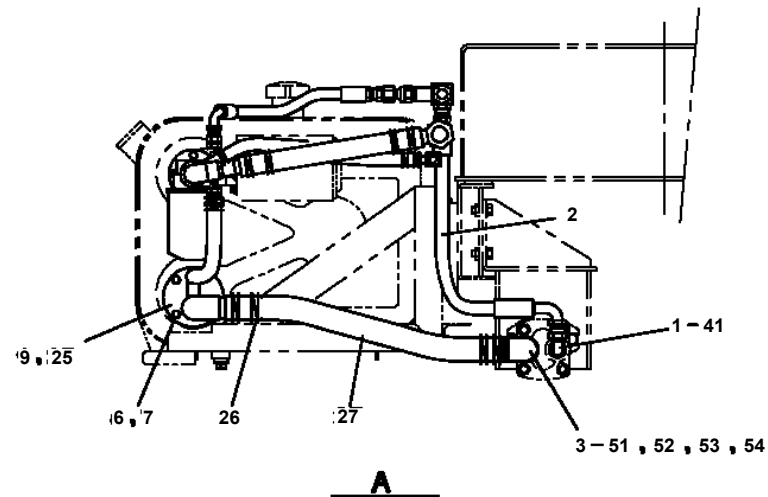
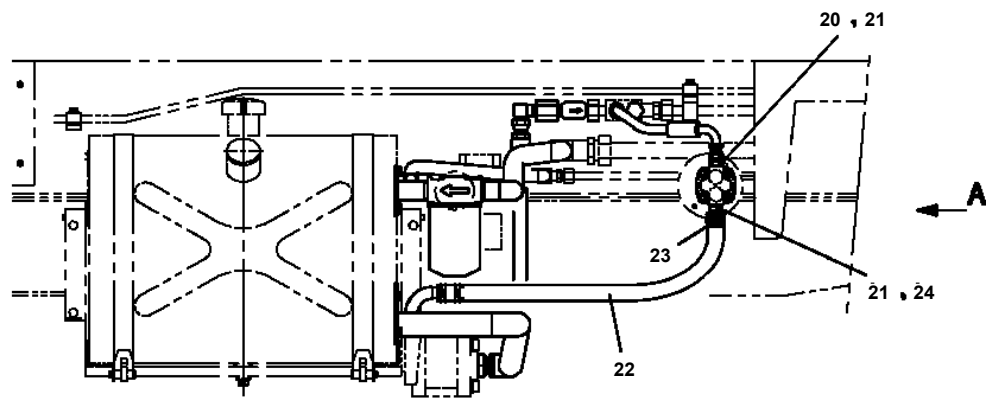
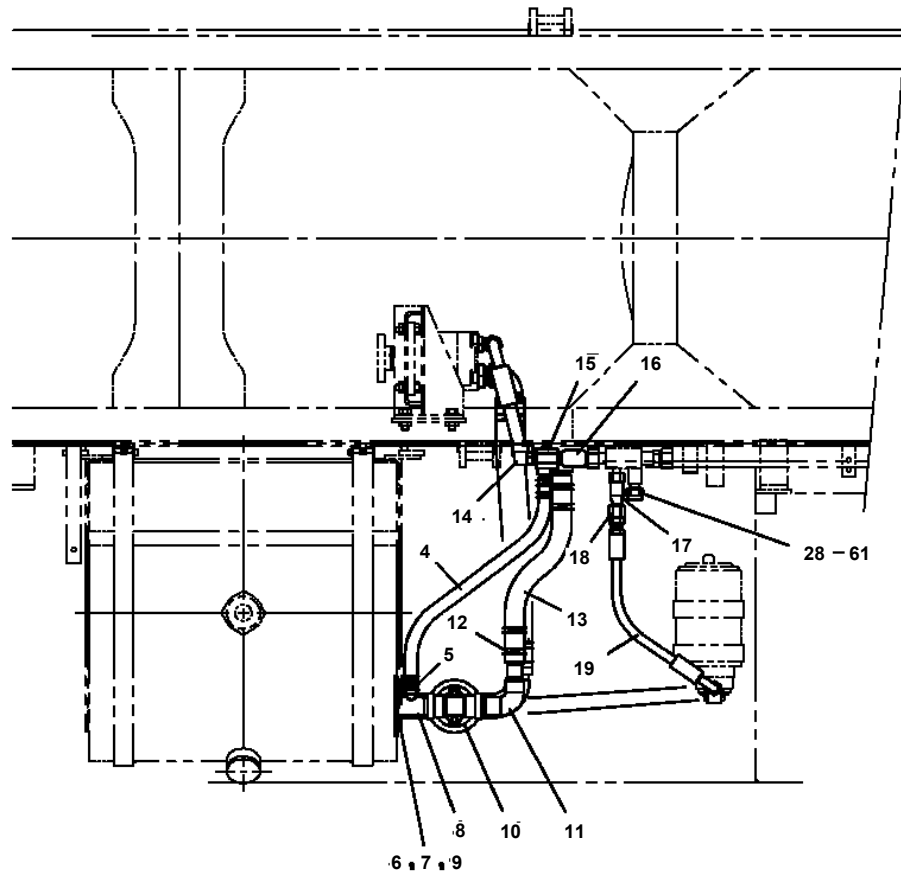
AT-150S-1 42068100001 UPPER

Pos No.	Parts No	Parts Name	Qty	Unit	Technical Data	Serial No (Start)	Serial No (End)	Remarks
1	(*****)	PLATE ASSY,NAME (UPPER)	1					

AT-150S-1 42068100001 UPPER

Pos No.	Parts No	Parts Name	Qty	Unit	Technical Data	Serial No (Start)	Serial No (End)	Remarks
1	42630570000	JOINT,ROTARY	1					
2	90101210028	BOLT	4		M10X28			
3	90302041001	WASHER,SPRING	4		10			
4	42441230010	SUPPORT	1					
5	90201781200	NUT	2		M12			
6	90171112030	BOLT	2		M12X30			
7	90302041201	WASHER,SPRING	4		12			
8	42441150020	SUPPORT	1					
9	90172112040	BOLT,HEXAGON SOCKET	2		M12X40			
22	42262561001	BRUSH,ROTARY JOINT	1					
23	90101208040	BOLT	3		M8X40			
24	90302040801	WASHER,SPRING	3		8			
25	80720105020	PIN,SPRING	1		5X20			
26	42630860100	COVER	1					
27	42630760200	SPACER	3		L=13			
31	53154004000	BUSH (THRUST)	1					
32	42630571100	BODY	1					
33	42630551200	CORE	1					
34	91531211000	PACKING	2					
35	91100211000	SEAL,RING	2					
36	82456101000	NIPPLE,GREASE	1		A-PT1/8			
37	82400000459	CAP	1				HD6059	

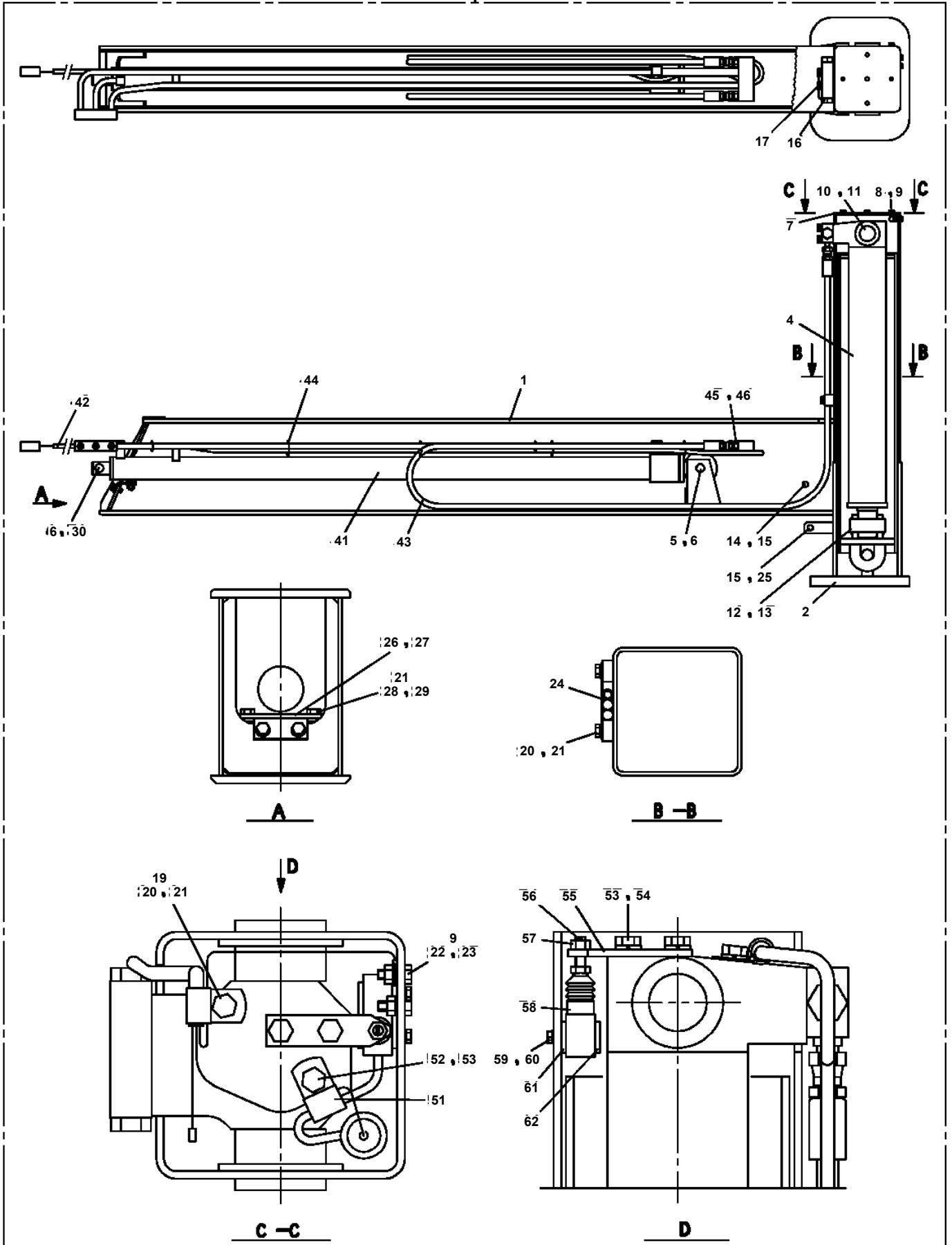
AT-150S-1 42068100001 UPPER
PB1411362-00 PIPING, LOWER (TANK)



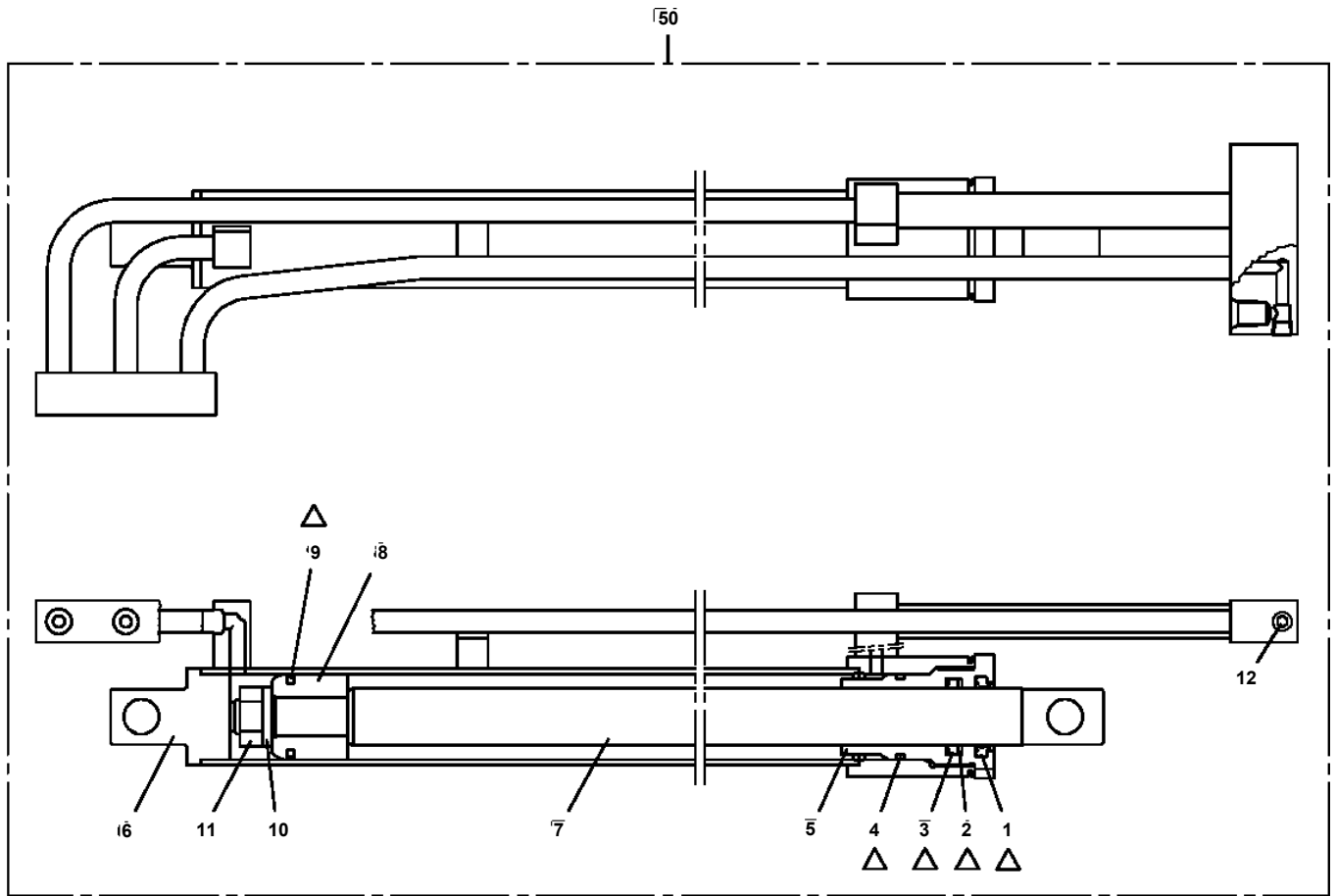
A

**AT-150S-1 42068100001 UPPER
PC1010609-01 OUTRIGGER (REAR,LEFT,RIGHT)**

100



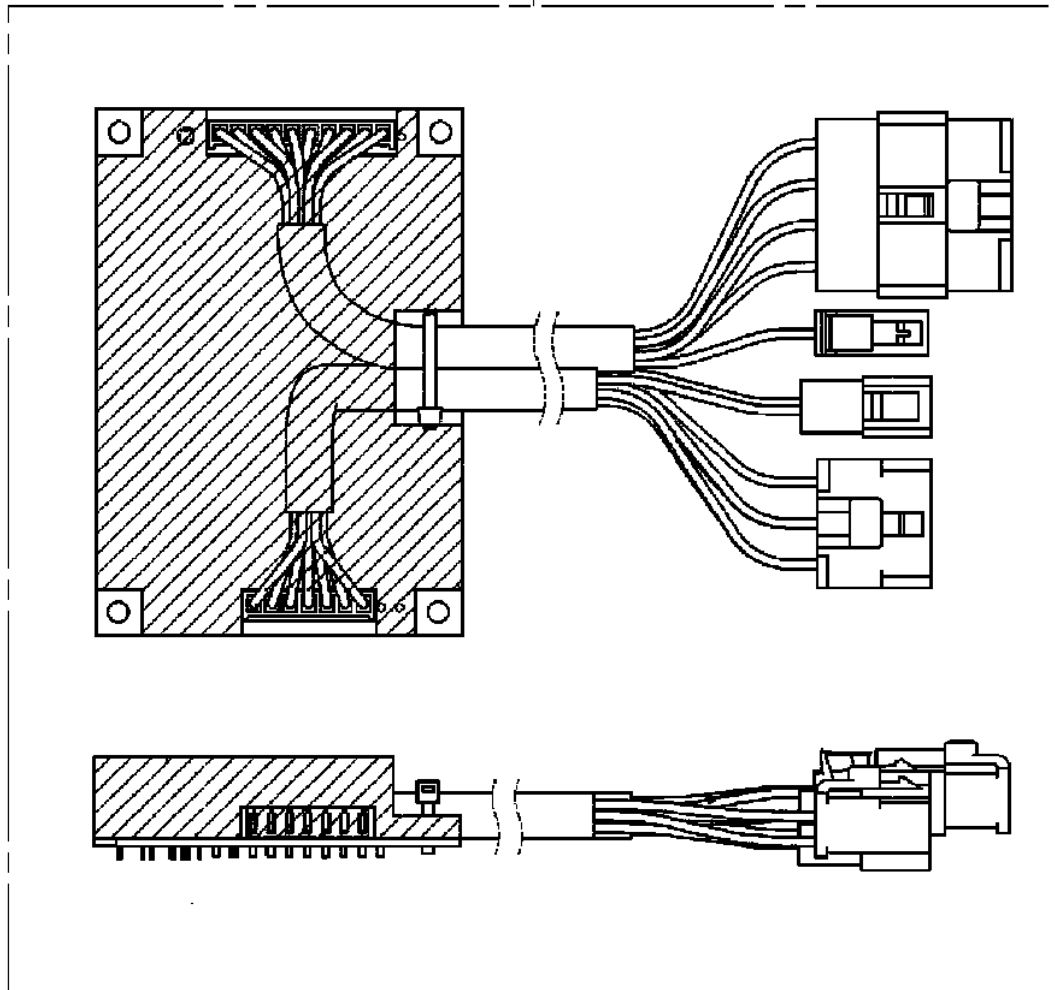
AT-150S-1 42068100001 UPPER
PC1050184-02 CYLINDER,EXTENSION (FRONT,REAR)



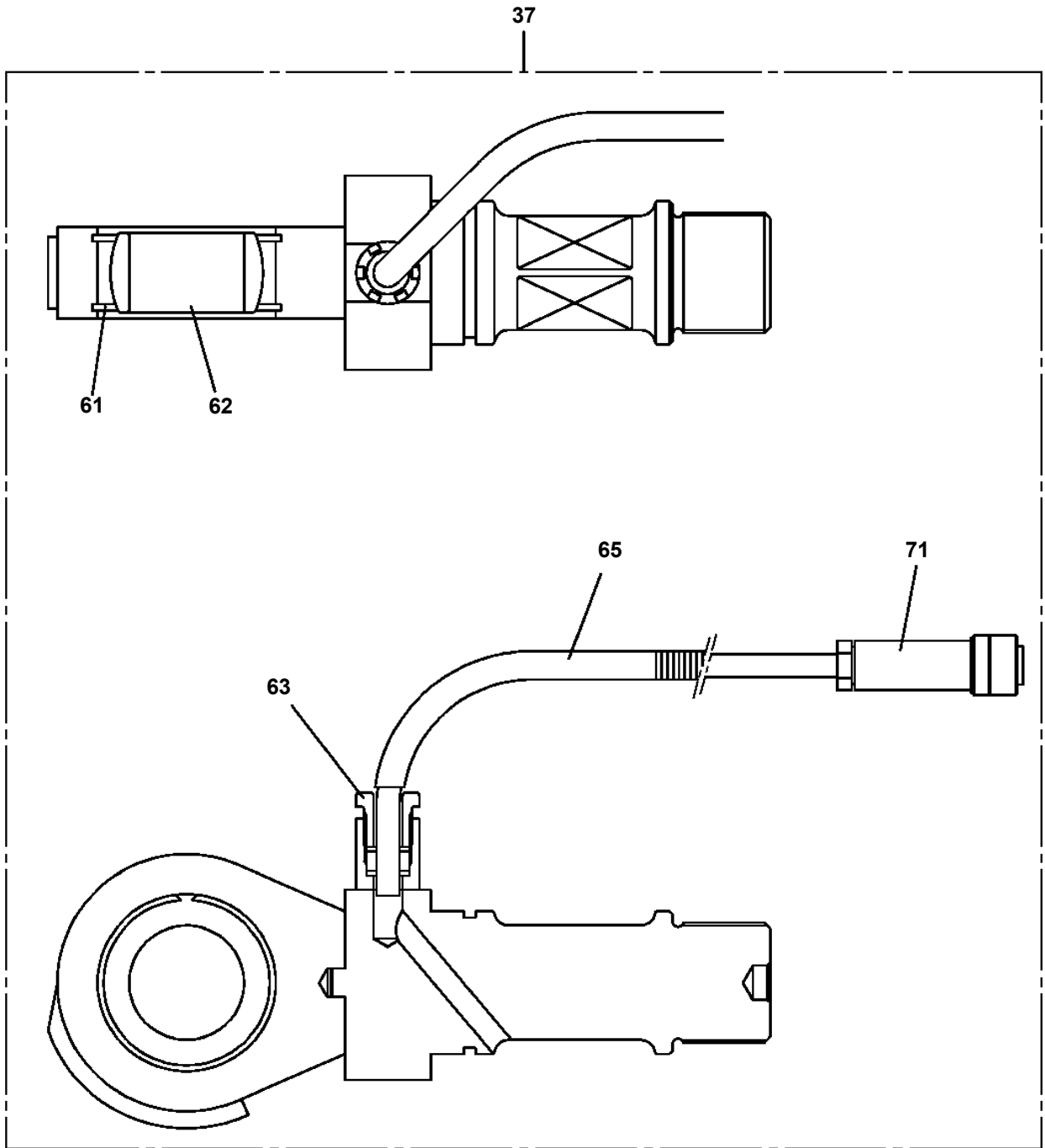
Δ:PACKING SET KEY NO.30 (KEY NO.1,2,3,4,9)

AT-150S-1 42068100001 UPPER
PC5420023-00 CONTROLLER

100



**AT-150S-1 42068100001 UPPER
PE1050087-04 CYLINDER,LEVELING**



AT-150S-1 42068100001 UPPER

Pos No.	Parts No	Parts Name	Qty	Unit	Technical Data	Serial No (Start)	Serial No (End)	F
1	36130235010	PLATE (BASE)	1					
2	36131255010	CASE	1					
3	36131255020	DRUM ASSY	1					
4	36131345010	COVER	1					
5	31370105030	PACKING	1					
6	31370005030	PACKING	1					
7	36130235090	WASHER,SEAL	1					
8	36130235050	BRACKET	1					
9	82100001155	CONNECTOR	1					
10	36131195030	POTENTIOMETER	1					
11	36130235100	CLAMP (CORD)	1					
12	36130045090	CLIP (NYLON)	1					
13	32360005150	CLIP (NYLON)	1					
14	36130885040	GEAR	1		20T			
15	36131255030	GEAR	1		32T			
18	36130235110	CABLE ASSY (WITH CONNECTOR)	1		L=710			
19	31370005080	GUIDE (CORD)	1					
20	82100001406	CONNECTOR (SEAL)	1					
22	36131375020	COLLAR	1					
23	31370005070	GROMMET	1					
24	82100000080	CORD (1-LINE)	7	M				
50	36131250000	DETECTOR,BOOM LENGTH	1					

AT-150S-1 42068100001 UPPER

Pos No.	Parts No	Parts Name	Qty	Unit	Technical Data	Serial No (Start)	Serial No (End)
2	36117425010	COVER ASSY	1				
3	36117425020	PLATE ASSY	1				
7	36117425030	BOARD ASSY	1				
8	36117425040	BOARD ASSY	1				
9	36117425050	BOARD ASSY	1				
10	34478187530	FUSE	1		125V 3A		
11	36117425060	SPACER	6				
12	36117425070	SPACER KIT	1				
13	36117425080	SPACER KIT	4				
21	(*****)	P-ROM	1				
22	(*****)	P-ROM	1				
50	36117421000	MOTION CONTROLLER (AMC,WITHOUT P-ROM)	1				
100	36119160000	MOTION CONTROLLER (AMC)	1				

AT-150S-1 42068100001 UPPER

Pos No.	Parts No	Parts Name	Qty	Unit	Technical Data	Serial No (Start)	Serial No (End)	Remarks	Pages
100	42476391100	HARNESS	1						

AT-150S-1 42068100001 UPPER

Pos No.	Parts No	Parts Name	Qty	Unit	Technical Data	Serial No (Start)	Serial No (End)	Remarks	Pages
100	42351640600	HARNESS	1						

AT-150S-1 42068100001 UPPER

Pos No.	Parts No	Parts Name	Qty	Unit	Technical Data	Serial No (Start)	Serial No (End)	Remarks	Pages
100	42735520300	HARNESS	1						
	42735520300	HARNESS	1						

CLICK HERE TO **DOWNLOAD** THE COMPLETE MANUAL

- Thank you very much for reading the preview of the manual.
- You can download the complete manual from: www.heydownloads.com by clicking the link below



- Please note: If there is no response to CLICKING the link, please download this PDF first and then click on it.

CLICK HERE TO **DOWNLOAD** THE COMPLETE MANUAL

AT-150S-1 42068100001 UPPER

Pos No.	Parts No	Parts Name	Qty	Unit	Technical Data	Serial No (Start)	Serial No (End)	Remarks	Page
2	36645265010	PLUG	1						
4	36645265020	RETAINER	1						
6	36645265030	SPRING	1						
7	80560055000	BALL,STEEL	1		3/16				
8	36643615010	NUT	1						
10	36645265040	ROD	1						
11	36645265050	GUIDE (SOLENOID)	1						
12	36645265060	COIL,SOLENOID	1						
13	36643615040	CASE (COIL)	1						
14	36643615050	YOKE (COIL)	1						
15	36645735010	CONNECTOR	1						
16	36645265090	SCREW	2						
17	91002802800	O-RING	2		1B P28				
18	36643615060	O-RING	5						
19	36643615070	O-RING	1						
20	36645265070	O-RING	1						
27	36645265100	SPACER	4						
50	36645260000	VALVE,SOLENOID	1						

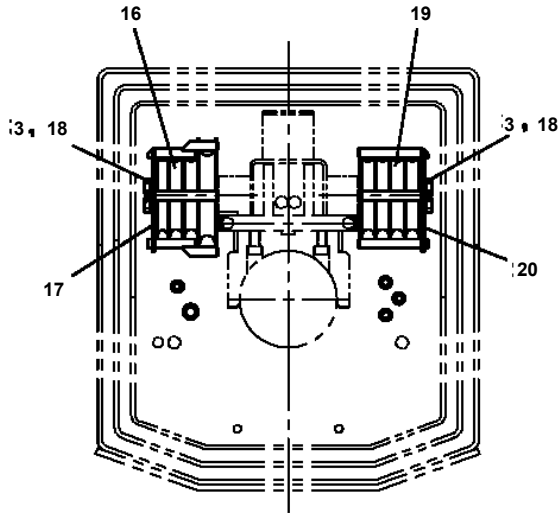
AT-150S-1 42068100001 UPPER

Pos No.	Parts No	Parts Name	Qty	Unit	Technical Data	Serial No (Start)	Serial No (End)	Remark
2	36600915010	PLUG	1					
	36600915010	PLUG	1					
5	36600915020	BUSH	1					
	36600915020	BUSH	1					
6	36600915030	GUIDE,SPRING	1					
	36600915030	GUIDE,SPRING	1					
7	36600915110	SPRING	1					
	36600915110	SPRING	1					
8	36600915050	SPRING	1					
	36600915050	SPRING	1					
10	36600915060	SPRING	1					
	36600915060	SPRING	1					
12	36600915070	PACKING	1					
	36600915070	PACKING	1					
13	36600915080	BOLT (ADJUSTING)	1					
	36600915080	BOLT (ADJUSTING)	1					
14	36600915090	NUT	1					
	36600915090	NUT	1					
16	36600915100	RING,RETAINING	1					
	36600915100	RING,RETAINING	1					
17	80316030010	PLUG	2		NPTF1-16			
	80316030010	PLUG	2		NPTF1-16			
18	80316030020	PLUG	1		PT1/8			
	80316030020	PLUG	1		PT1/8			
19	80316030080	PLUG	1		PT1/2			
	80316030080	PLUG	1		PT1/2			
20	91001100600	O-RING	1		1A P6			
	91001100600	O-RING	1		1A P6			
21	91002801100	O-RING	1		1B P11			
	91002801100	O-RING	1		1B P11			
22	91002801200	O-RING	2		1B P12			
	91002801200	O-RING	2		1B P12			
23	91002801800	O-RING	2		1B P18			
	91002801800	O-RING	2		1B P18			
24	91002802100	O-RING	1		1B P21			
	91002802100	O-RING	1		1B P21			
25	91002802201	O-RING	1		1B P22A			
	91002802201	O-RING	1		1B P22A			
27	80316030060	PLUG	1		PT3/8			
	80316030060	PLUG	1		PT3/8			
50	36604150000	VALVE,COUNTERBALANCE	1					
	36604150000	VALVE,COUNTERBALANCE	1					

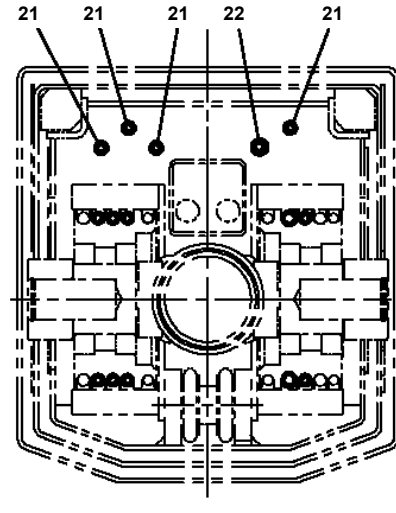
AT-150S-1 42068100001 UPPER

Pos No.	Parts No	Parts Name	Qty	Unit	Technical Data	Serial No (Start)	Serial No (End)	Remarks	Pages
1	42263011000	FRAME ASSY	1				HD5192		
	42263011001	FRAME ASSY	1			HD5193			
2	37000161610	PIN	1						
3	37000521590	PLATE	1						
4	90302041001	WASHER,SPRING	2		10				
5	90101910022	BOLT	2		M10X22		HD5028		
	90171110022	BOLT	2		M10X22	HD5029			
6	42261964010	SPACER	2						
7	82456101000	NIPPLE,GREASE	1		A-PT1/8				
8	90101208020	BOLT	4		M8X20				
9	90302040801	WASHER,SPRING	4		8				
10	42261964050	COVER	1						

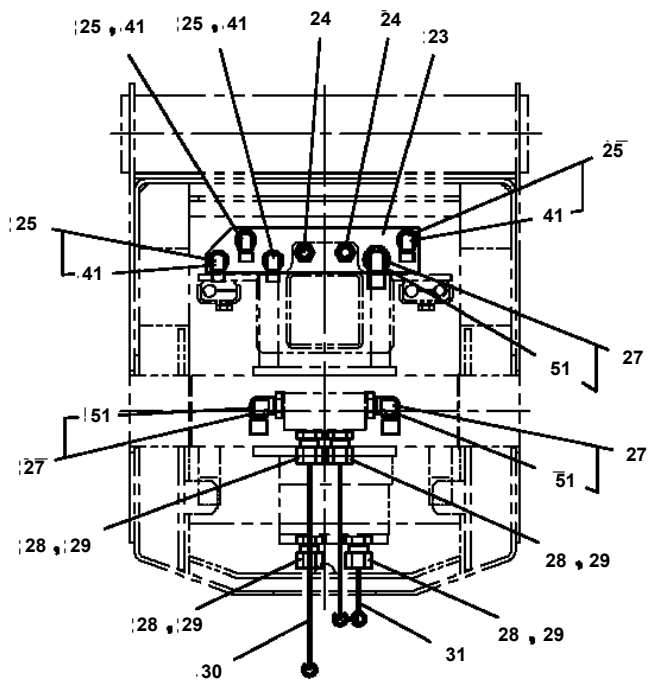
**AT-150S-1 42068100001 UPPER
PJ3100085-00 PIPING,BOOM**



B

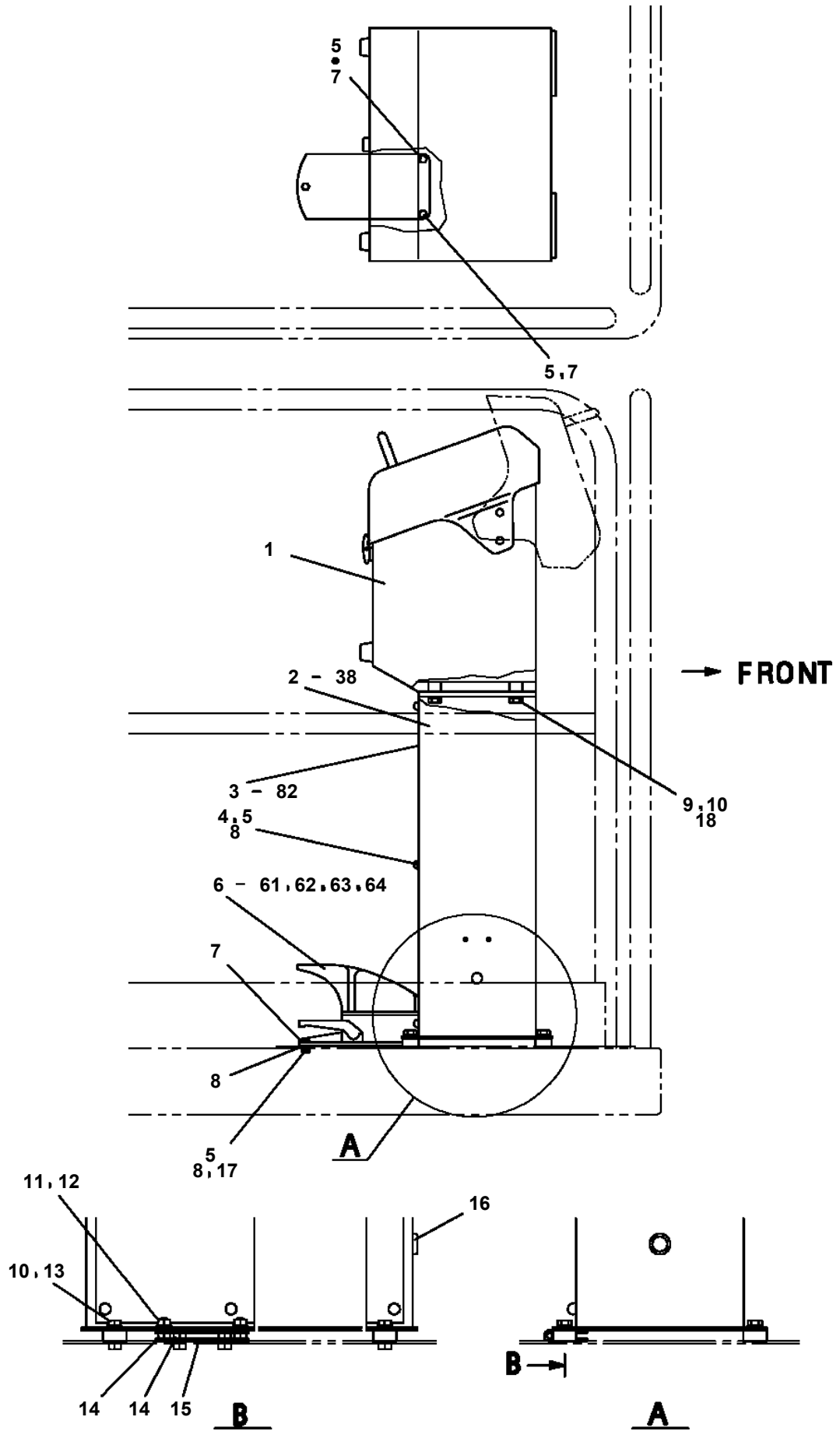


C



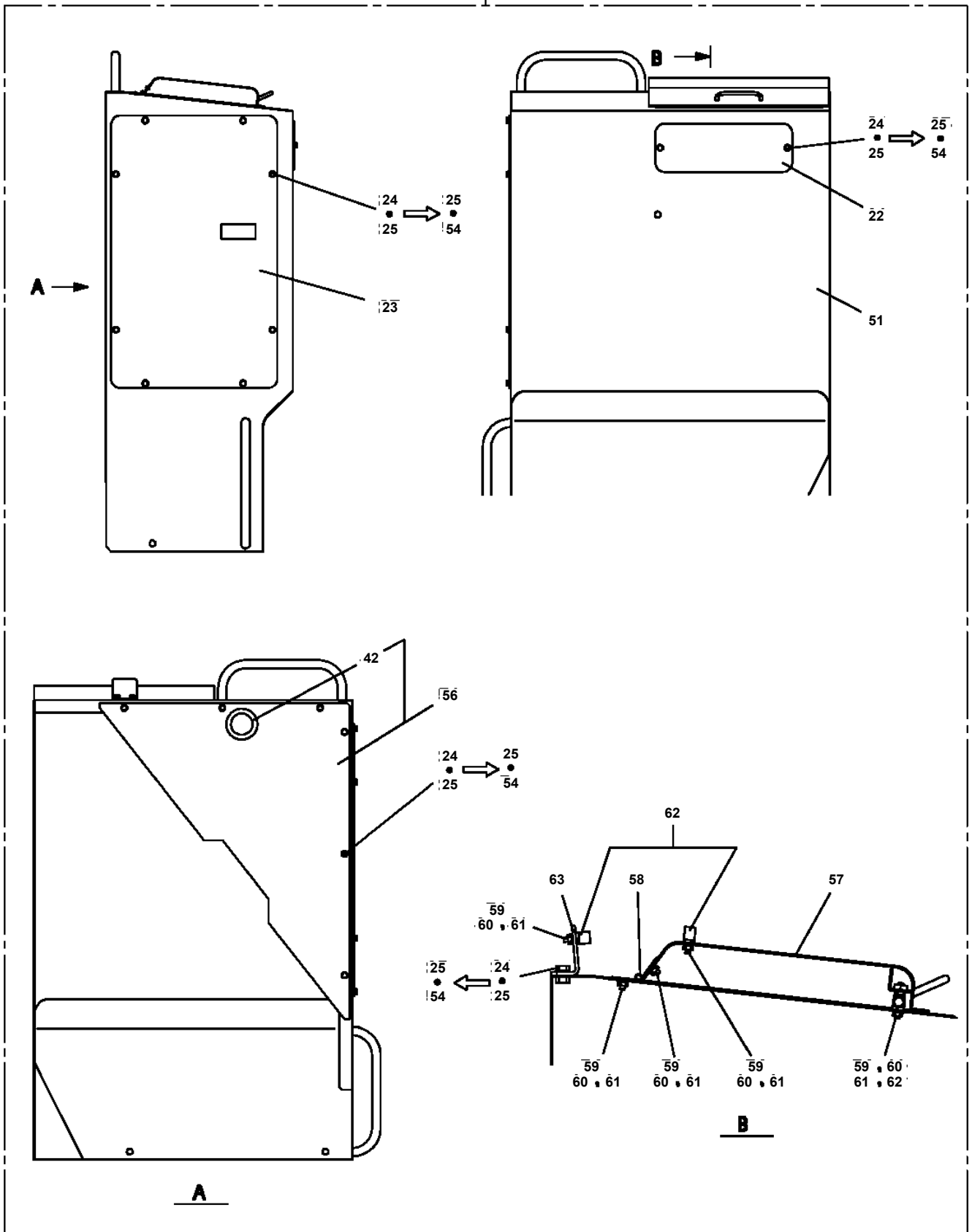
D

**AT-150S-1 42068100001 UPPER
PJ3180004-03 OPE.ASSY,PLATFORM**



AT-150S-1 42068100001 UPPER
PK1200304-02 COVER, SWING FRAME

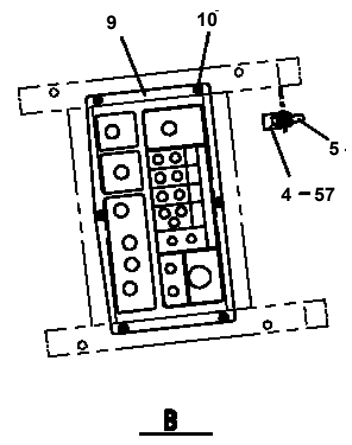
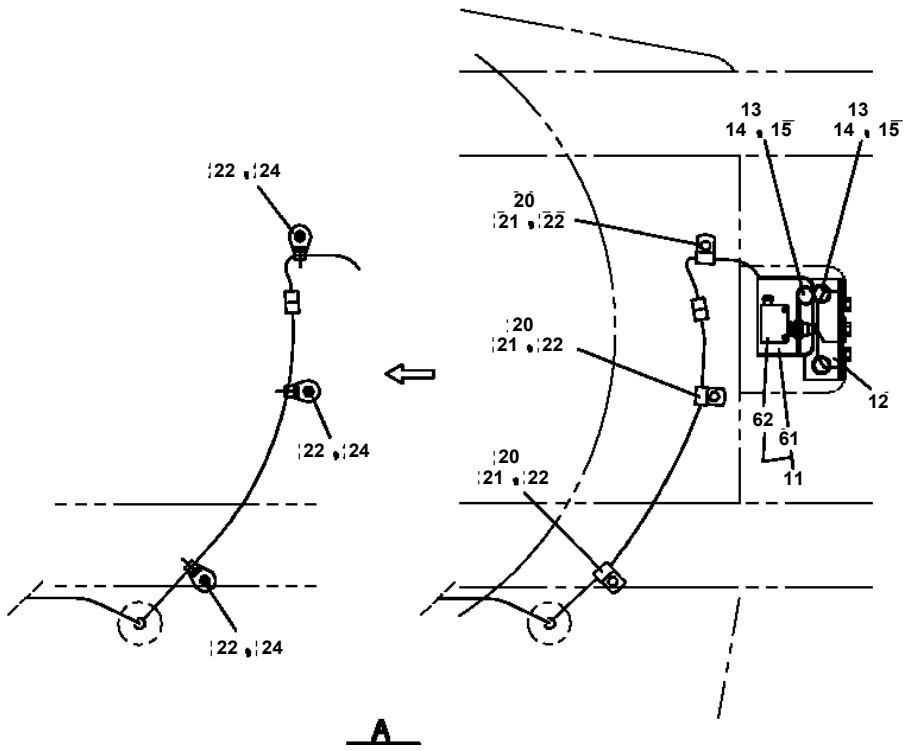
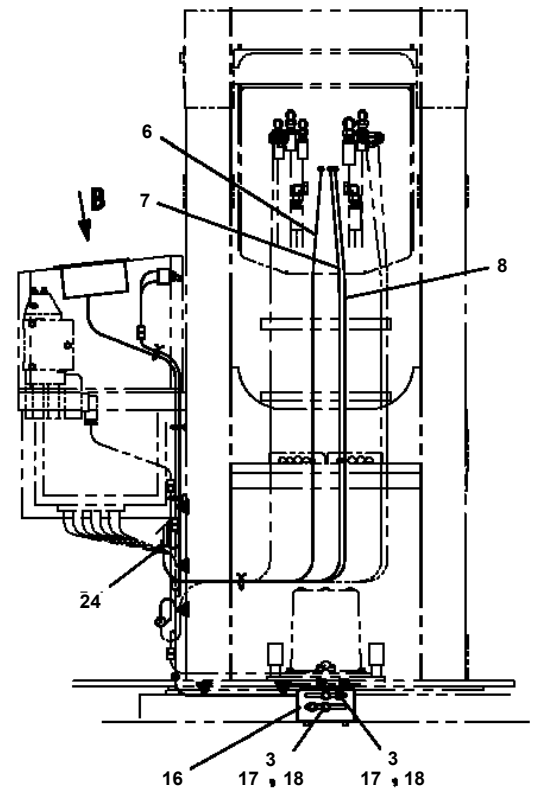
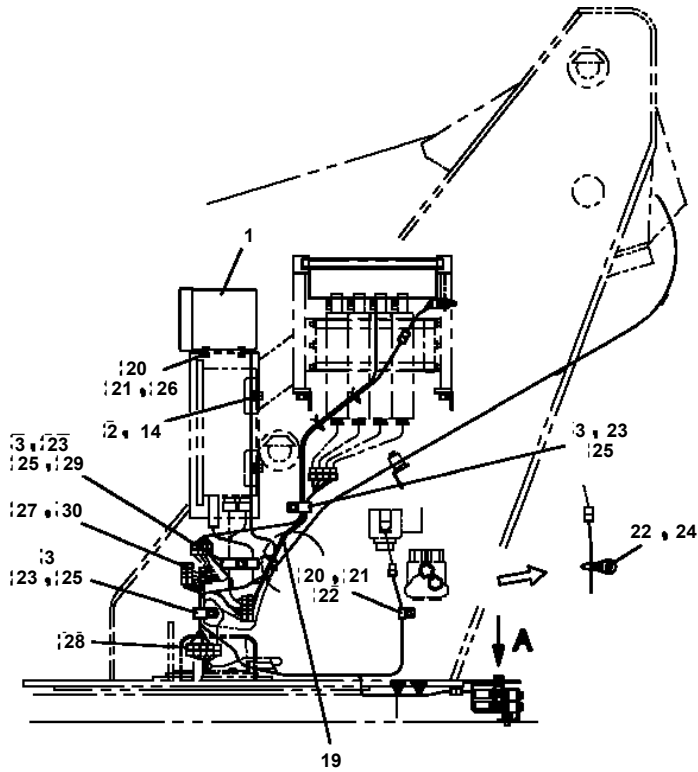
12



AT-150S-1 42068100001 UPPER

Pos No.	Parts No	Parts Name	Qty	Unit	Technical Data	Serial No (Start)	Serial No (End)	Rem
72	(*****)	P-ROM	1					
73	(*****)	P-ROM	1					
81	42331227700	BUTTON (FOR SWITCH)	1					
100	42331701000	BOX,OPERATION	1					

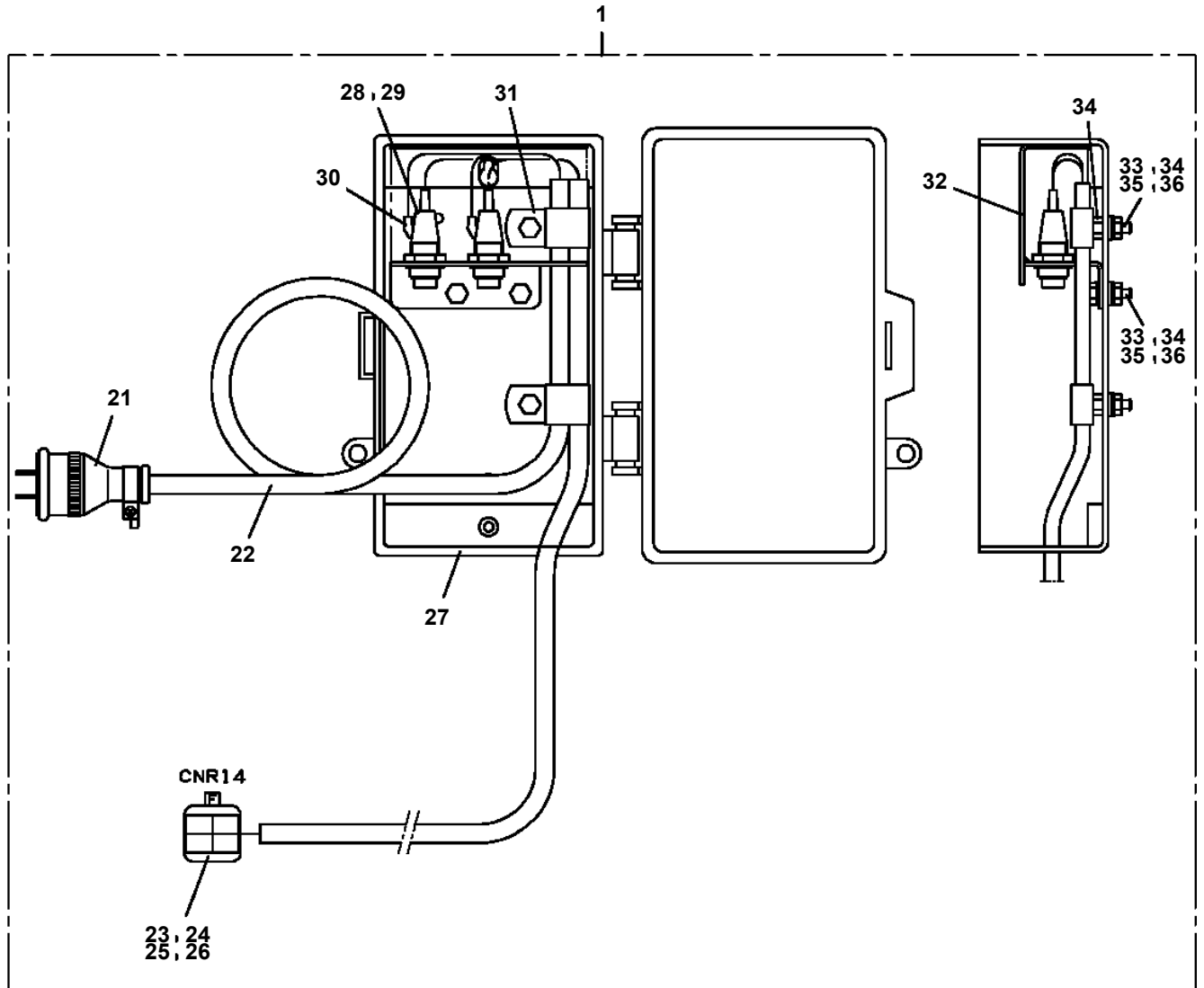
**AT-150S-1 42068100001 UPPER
PN1011937-03 ELEC.ASSY (SWING FRAME)**



AT-150S-1 42068100001 UPPER

Pos No.	Parts No	Parts Name	Qty	Unit	Technical Data	Serial No (Start)	Serial No (End)	Remarks	P
1	42351621700	HARNESS	1						
2	42351621600	HARNESS	1						
3	42351621500	HARNESS (L=15200)	1						0
4	42351621100	CLAMP ASSY	1		12X1				
5	42351621200	CLAMP ASSY	1		12X2				
6	42433462200	SWITCH ASSY	1						
7	91810130230	FASTENER	20						
8	37000711000	CLAMP ASSY	1		12-1				
9	37000711080	CLAMP ASSY	1		12-2				
10	82100002039	CLAMP	1						
11	90101208020	BOLT	1		M8X20				
12	90201200800	NUT	1		M8				
13	90302040801	WASHER,SPRING	1		8				
14	37000300720	SLEEVE	3		12-10				
15	82100002002	CLAMP	2		WR6				
16	90201200600	NUT	2		M6				
17	90302040601	WASHER,SPRING	2		6				
18	44431000010	PLUG	1				HD5055		
	42350250070	PLUG (2 POLES,MALE)	1			HD5056			
19	37000300740	SLEEVE	1		18-12				
31	82104501010	SWITCH,LIMIT	1						

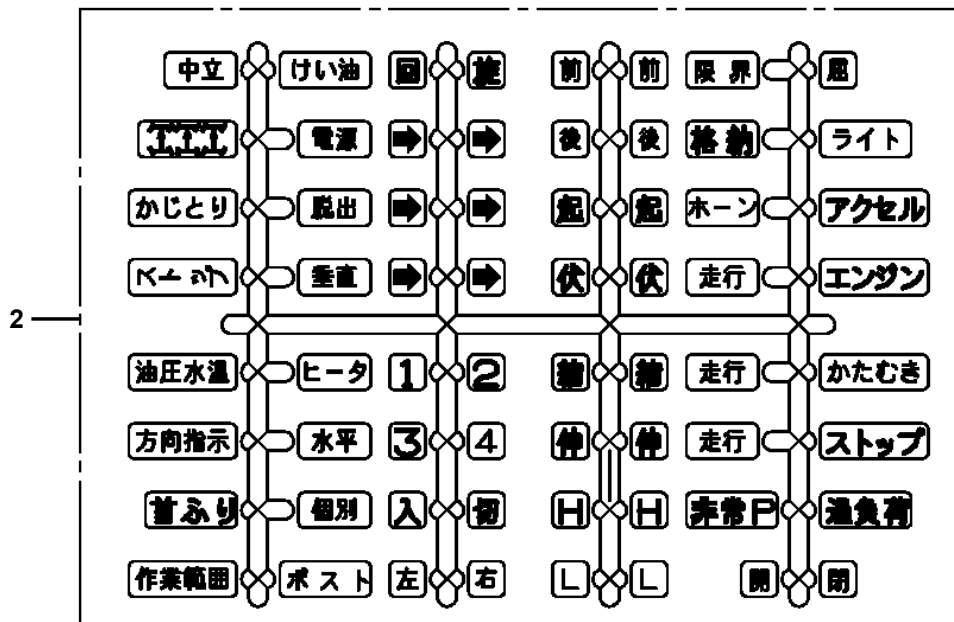
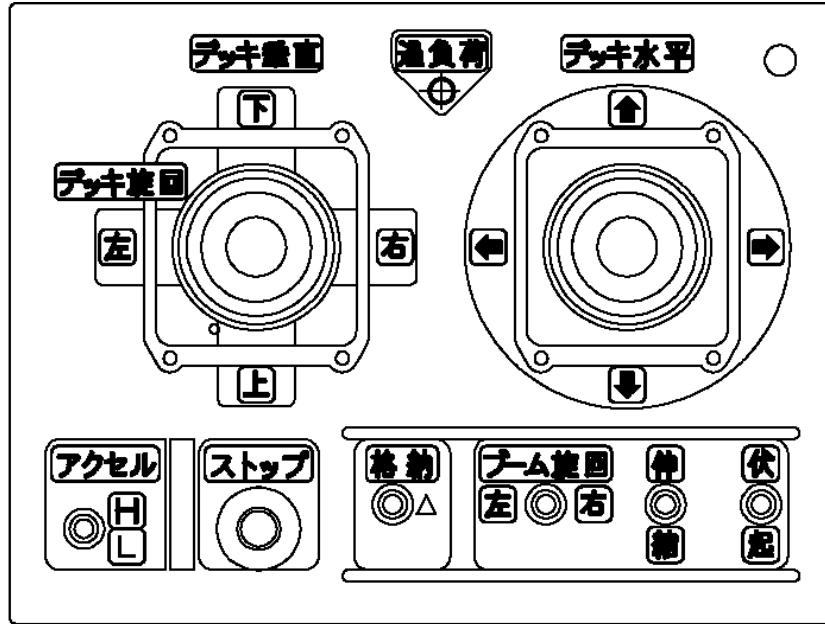
**AT-150S-1 42068100001 UPPER
PN1011944-02 ELEC.ASSY (POWER SOURCE,LOWER)**



AT-150S-1 42068100001 UPPER

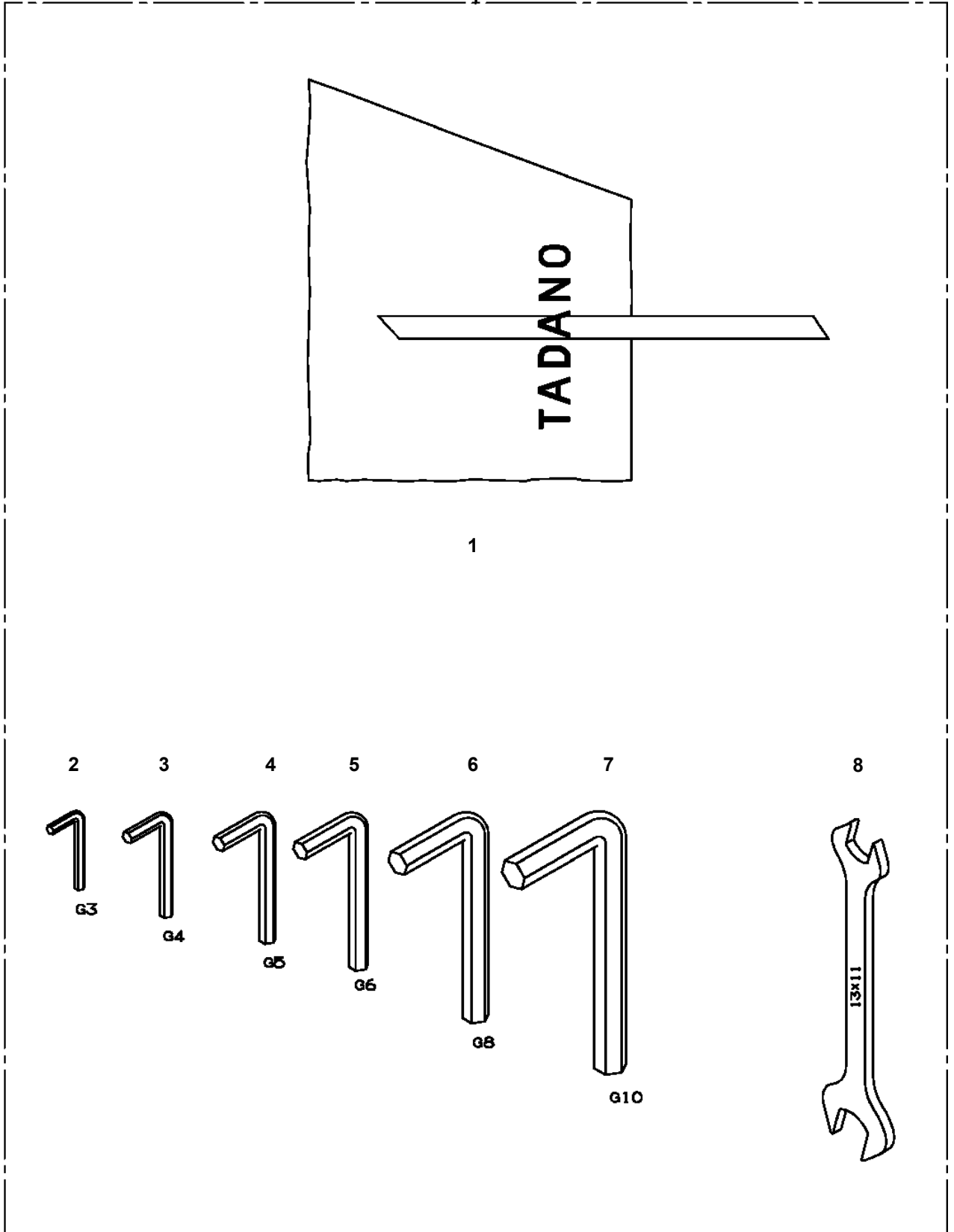
Pos No.	Parts No	Parts Name	Qty	Unit	Technical Data	Serial No (Start)	Serial No (End)
3	42351647550	SEAL (NAME)	1				
4	82100001408	CONNECTOR (SEAL)	1				
5	82100001409	CONNECTOR (SEAL)	2				
6	82101362453	SWITCH,PUSH	1				HD5192
	42351647560	SWITCH,PUSH (WITH LAMP)	1			HD5193	
7	82163351221	LAMP,PILOT	11				
8	82100001170	SWITCH,PUSH (WITHOUT BUTTON)	2				
9	82199504072	BUTTON (GREEN)	1				
10	82199504073	BUTTON (RED)	1				
11	82100002483	SWITCH,TOGGLE	5				
12	44320327510	SWITCH,TOGGLE	1				
13	82100002474	SWITCH,TOGGLE	1				
14	82100000665	CAP (BLACK)	7				
31	42331227700	BUTTON (FOR SWITCH)	1				HD5192
32	42331227670	LED	1				HD5192
50	42351640100	SWITCH PANEL	1				

AT-150S-1 42068100001 UPPER
 PO1012868-00 PLATE ASSY,NAME (BOX,OPERATION)

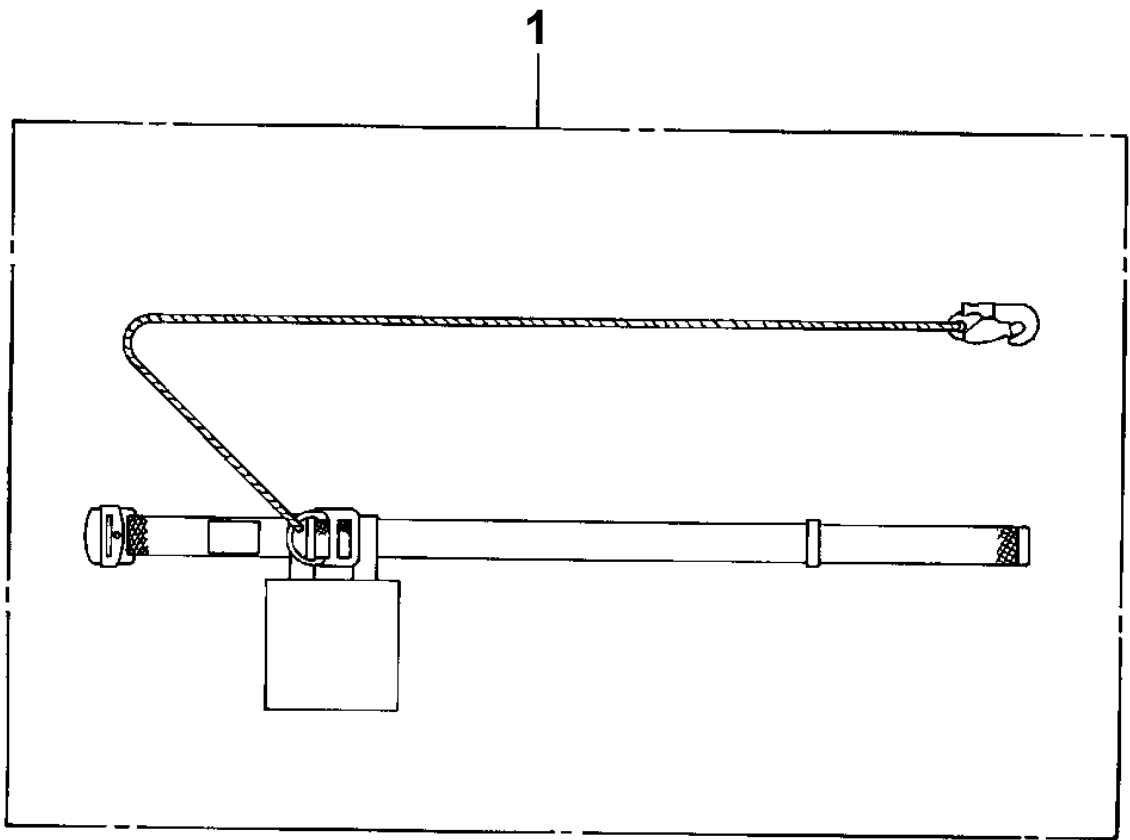


AT-150S-1 42068100001 UPPER
PW1030049-01 TOOLS

50



AT-150S-1 42068100001 UPPER
PY1090001-00 BELT, SAFETY



CLICK HERE TO **DOWNLOAD** THE COMPLETE MANUAL

- Thank you very much for reading the preview of the manual.
- You can download the complete manual from: www.heydownloads.com by clicking the link below



- Please note: If there is no response to CLICKING the link, please download this PDF first and then click on it.

CLICK HERE TO **DOWNLOAD** THE COMPLETE MANUAL