

AT-147-4 43010231959 UPPER,LOWER,HINO 2KG-XZU600F

PB0000300-00 UPPER STRUCTURE SYSTEM

PB0000504-00 LOWER STRUCTURE SYSTEM

ASSEMBLY

CLICK HERE TO **DOWNLOAD** THE COMPLETE MANUAL

- Thank you very much for reading the preview of the manual.
- You can download the complete manual from: www.heydownloads.com by clicking the link below



- Please note: If there is no response to CLICKING the link, please download this PDF first and then click on it.

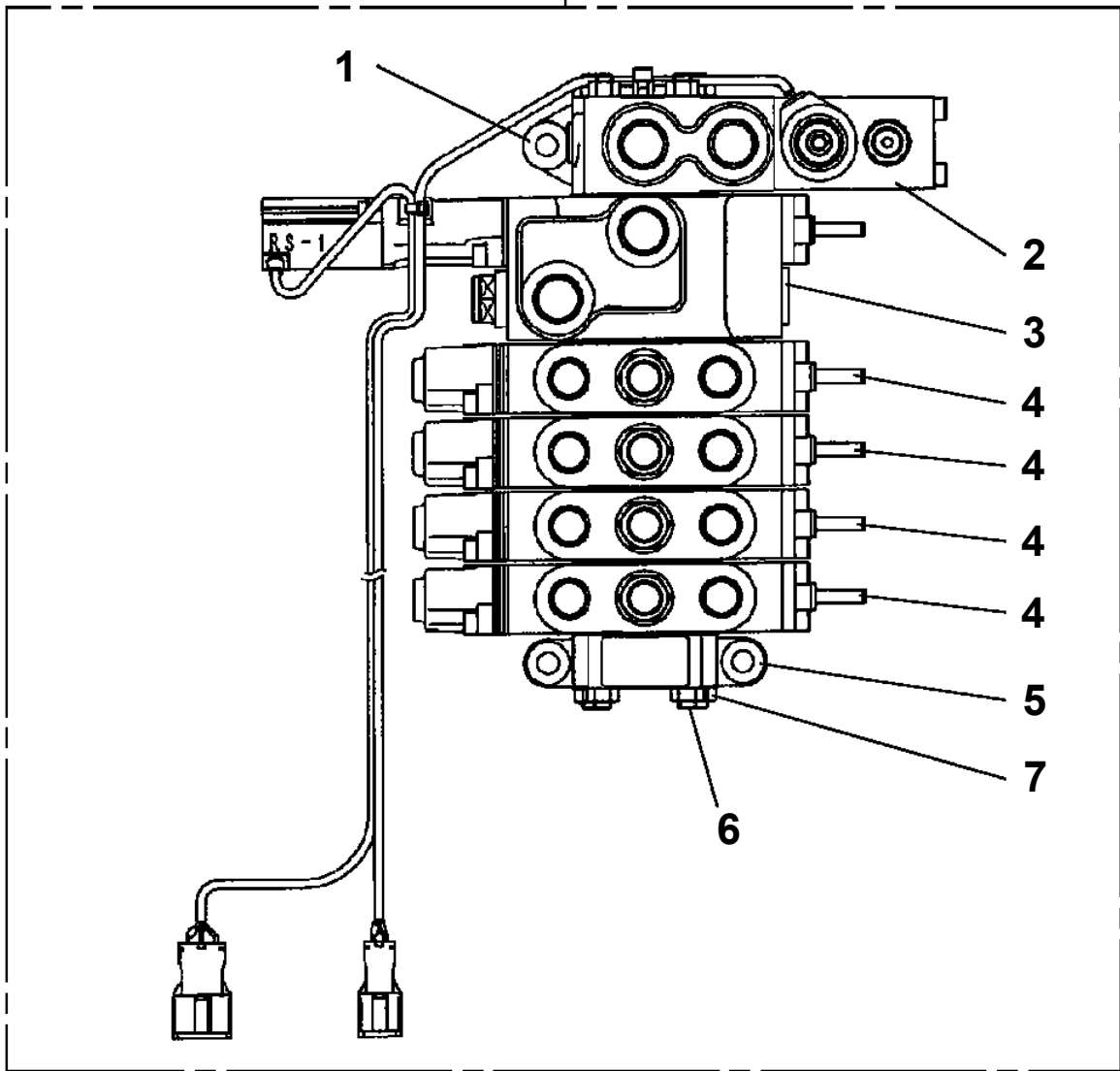
CLICK HERE TO **DOWNLOAD** THE COMPLETE MANUAL

AT-147-4 43010231959 UPPER,LOWER,HINO 2KG-XZU600F

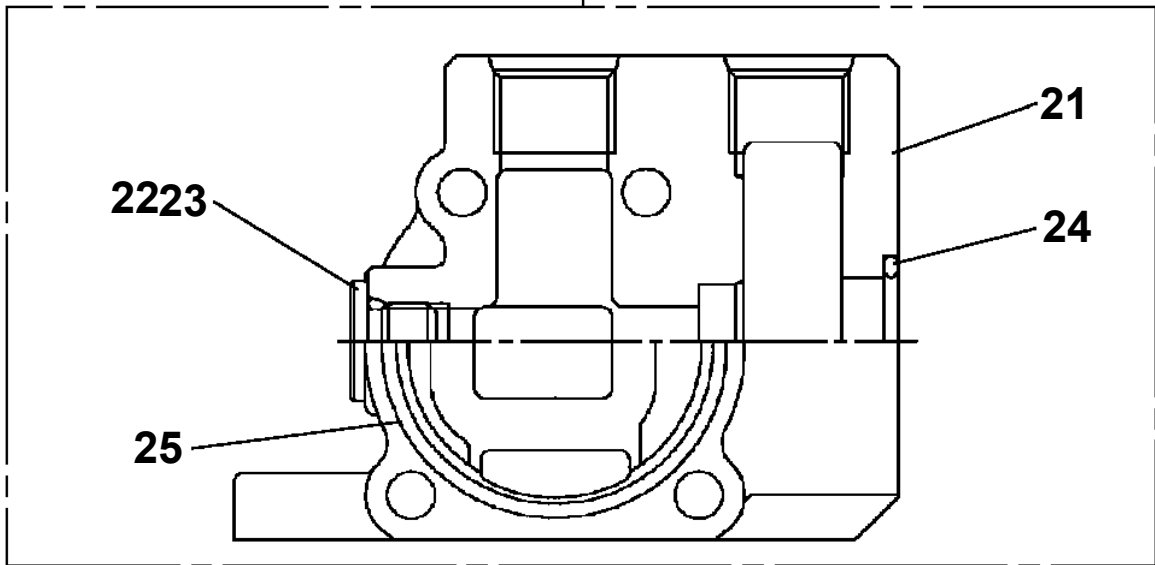
PX1270163-01 BLOCK,WOOD (LEFT REAR:KANSAI DENRYOKU/DETACHABLE TYPE)
PX1270165-00 WOOD BLOCK (KANDEN/DETACHABLE TYPE,B)
PX1310050-00 MOUNT,LAMP (BUCKET,FOR NTT,OPTION)
PX1350832-00 BOX,TOOL
PX1370303-00 GUARD,CAB
PX1410231-01 MOUNT,TIRE
PX1620033-00 MOUNT,COLOR CONE SUPPORT
PX1830013-00 COUPLING
PX1830018-00 COUPLING
PX1940387-00 MOUNT (ANTENNA)
PX5010431-00 MOUNT ASSY (ANTENNA)
PX5010479-00 MOUNT ASSY (OVER FENDER)
PX5010480-00 MOUNT ASSY (HANDRAIL:BOOM SIDE)
PX5010518-00 MOUNT ASSY (GATE)
PX5010588-00 MOUNT ASSY
PX5010621-00 MOUNT ASSY (BATTERY)
PX5060039-00 MOUNT ASSY,BATTERY (UPPER SPARE BATTERY)
PX5110059-00 MOUNT ASSY,BOOM SUPPORT
PX5260028-01 MOUNT ASSY,COVER
PX5310009-00 MOUNT ASSY,ENGINE UNIT (L SPEC.)
PX5430011-00 MOUNT ASSY,GUARD (WITHOUT JIB STOWING FUNCTION)
PX5560011-01 MOUNT ASSY,POWER TRAIN
PX5620003-01 MOUNT ASSY,REFLECTOR (REAR LARGE)
PX5620025-00 MOUNT ASSY,REFLECTOR (SWING STOW POSITION)
PX5690015-00 MOUNT ASSY,SUPPORT (DISTORTED DETECTION/LEVELING CYL)
PX5730012-00 MOUNT ASSY,SWIVEL JOINT
PX5740019-03 MOUNT ASSY,TAIL LAMP
PX5780486-00 MOUNT ASSY,TOOL BOX (HOT STICK STOWING)
PX5780490-00 MOUNT ASSY,TOOL BOX
PX5780526-00 MOUNT ASSY,TOOL BOX (RIGHT/FRONT:GATE,REAR:1-DECK)
PX5780528-00 MOUNT ASSY,TOOL BOX (LEFT/REAR:1-DECK)
PX5780529-00 MOUNT ASSY,TOOL BOX (RIGHT/REAR:1-DECK)
PX5780548-00 MOUNT ASSY,TOOL BOX (LEFT/FRONT:2-DECK,REAR:1-DECK)
PX5780549-00 MOUNT ASSY,TOOL BOX (LEFT/FRONT:2-DECK,ALUMINUM)
PX5820157-00 MOUNT ASSY,WEIGHT
PY1001928-02 OPTION UNIT,1 (UPPER)
PY1050000-00 CLAMP HEAD (IZUMI 12TON 2.5M)
PY1050001-01 CLAMP HEAD (IZUMI 8TON,2.5M)
PY1050004-00 CLAMP HEAD (O.D.K 7.5TON 3M)
PY1050005-00 CLAMP HEAD (O.D.K 10TON ELECTRIC)
PY1050007-00 CLAMP HEAD (SANWA,12TON)
PY1050008-01 CLAMP HEAD (IZUMI 8TON 3.5M ELECTRIC)
PY1050010-00 CLAMP HEAD (IZUMI 8TON,2.5M/YONDENKOU)
PY1050012-00 CLAMP HEAD (SANWA,12TON,TITANIUM)
PY1060000-01 CUTTER HEAD (IZUMI 6.4TON AIR)
PY1060001-00 CUTTER HEAD (IZUMI 6.4TON 2.5M ELECTRIC)
PY1070000-00 ROPE (SAFETY,YELLOW:TD-TYPE)
PY1070000-00 ROPE (SAFETY,YELLOW:TD-TYPE)
PY1070001-00 ROPE (SAFETY,1.5M,WITH HOOK)
PY1070003-00 ROPE (SAFETY,WHITE)
PY1070004-00 ROPE (SAFETY,0.5M,D=24)
PY1080020-00 ARM
PY1080032-00 ARM
PY1080033-00 ARM
PY1080034-00 ARM
PY1080035-00 ARM
PY1080036-00 ARM
PY1080037-00 ARM (HOLDER WITH INSULATOR, FOUR FACE ROLLER,HOT STICK)
PY1180208-00 LAMP (12V60W,WITH CIGARETTE LIGHTER)
PY1590000-02 HOSE,BOOSTER (WITH AIR BALLOON)
PY1590001-01 HOSE,BOOSTER (FEMALE-FEMALE,3M)
PY1590002-02 HOSE,BOOSTER (MAIL-FEMALE,3M)
PY1590005-01 HOSE,BOOSTER (SMALL,WITH AIR BALLOON)
PY1590006-00 HOSE,BOOSTER (LARGE,AIR BALLOON ONLY)

AT-147-4 43010231959 UPPER,LOWER,HINO 2KG-XZU600F
PB1320537-01 VALVE,MANUAL CONTROL

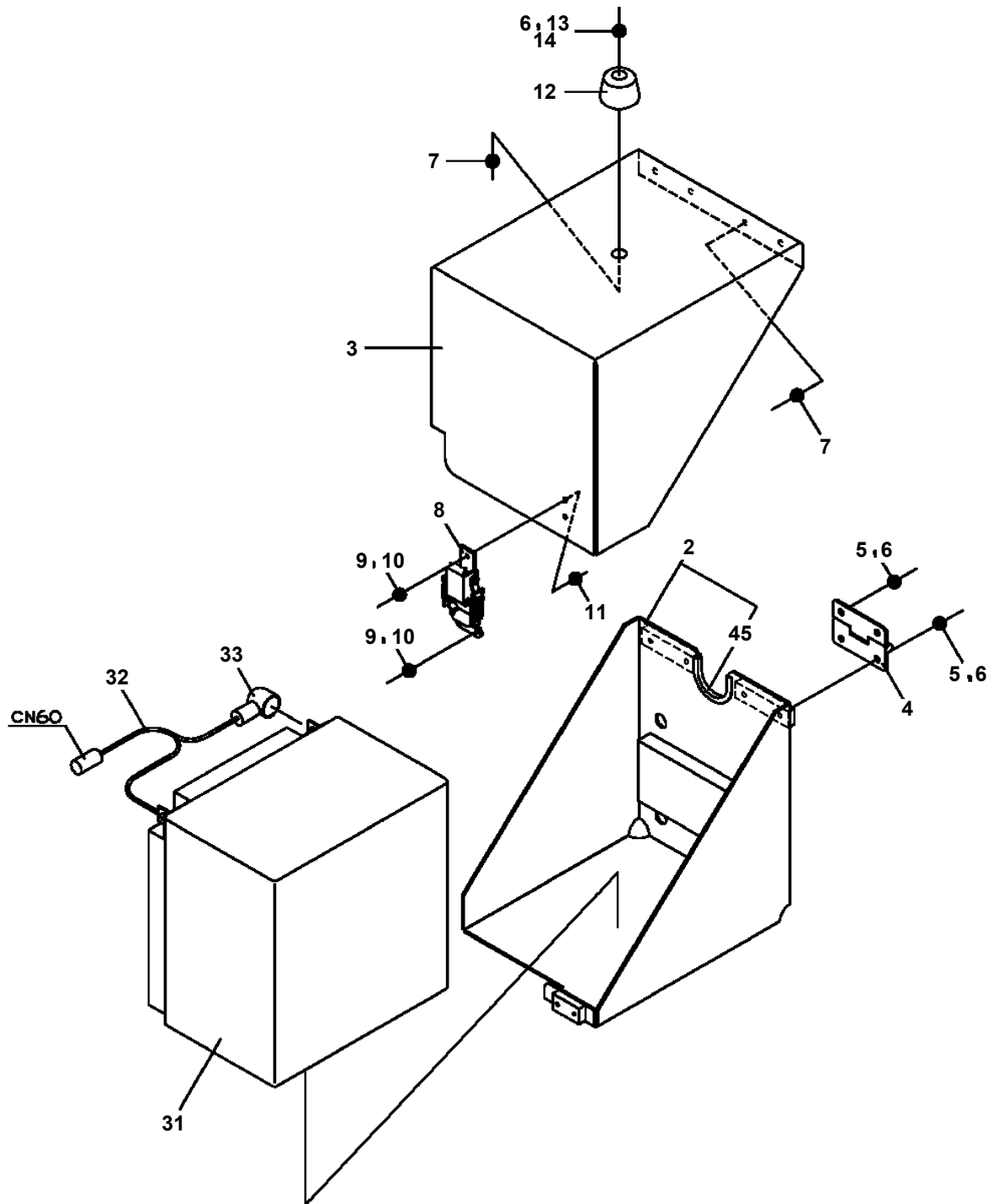
200



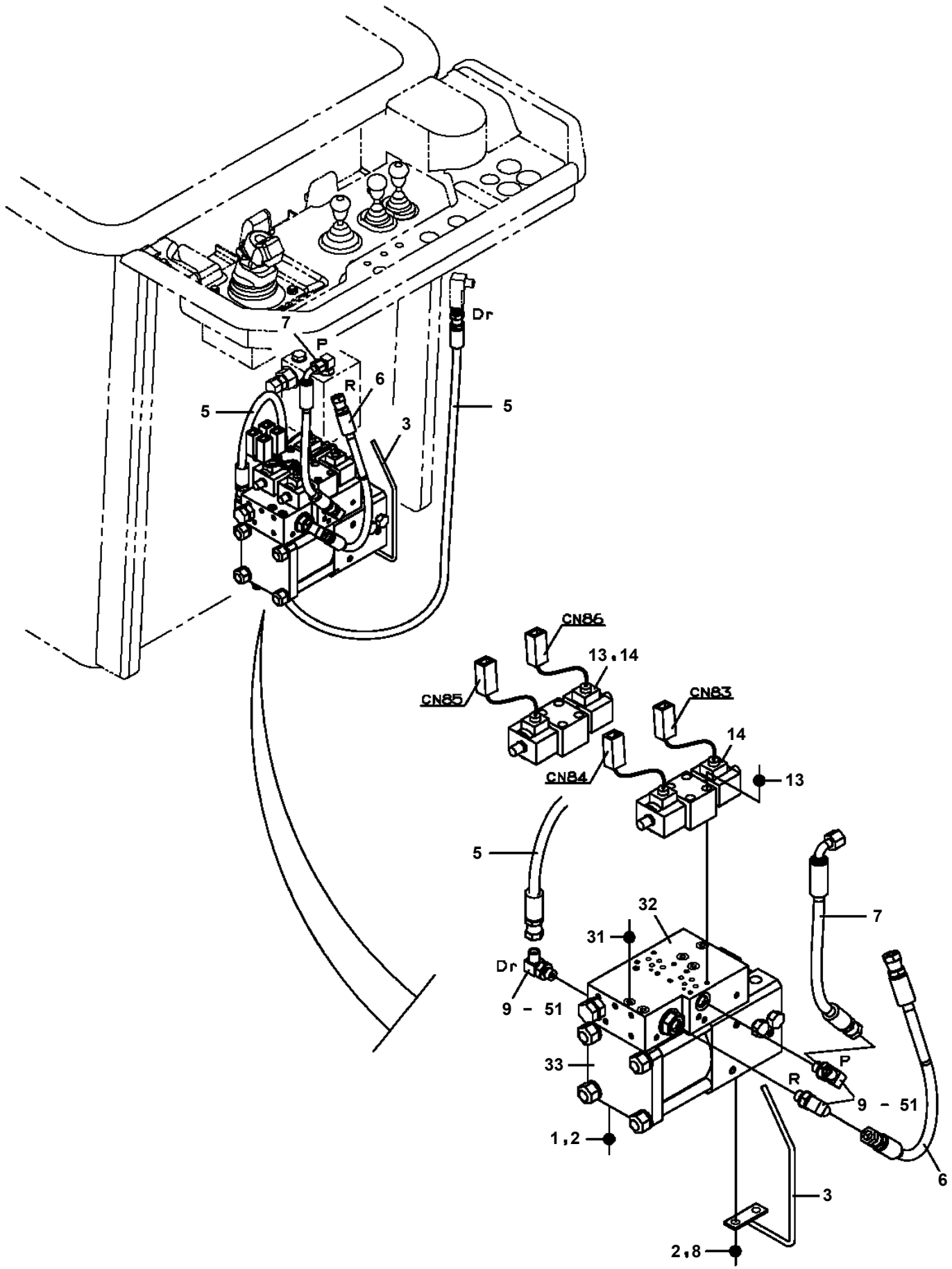
1

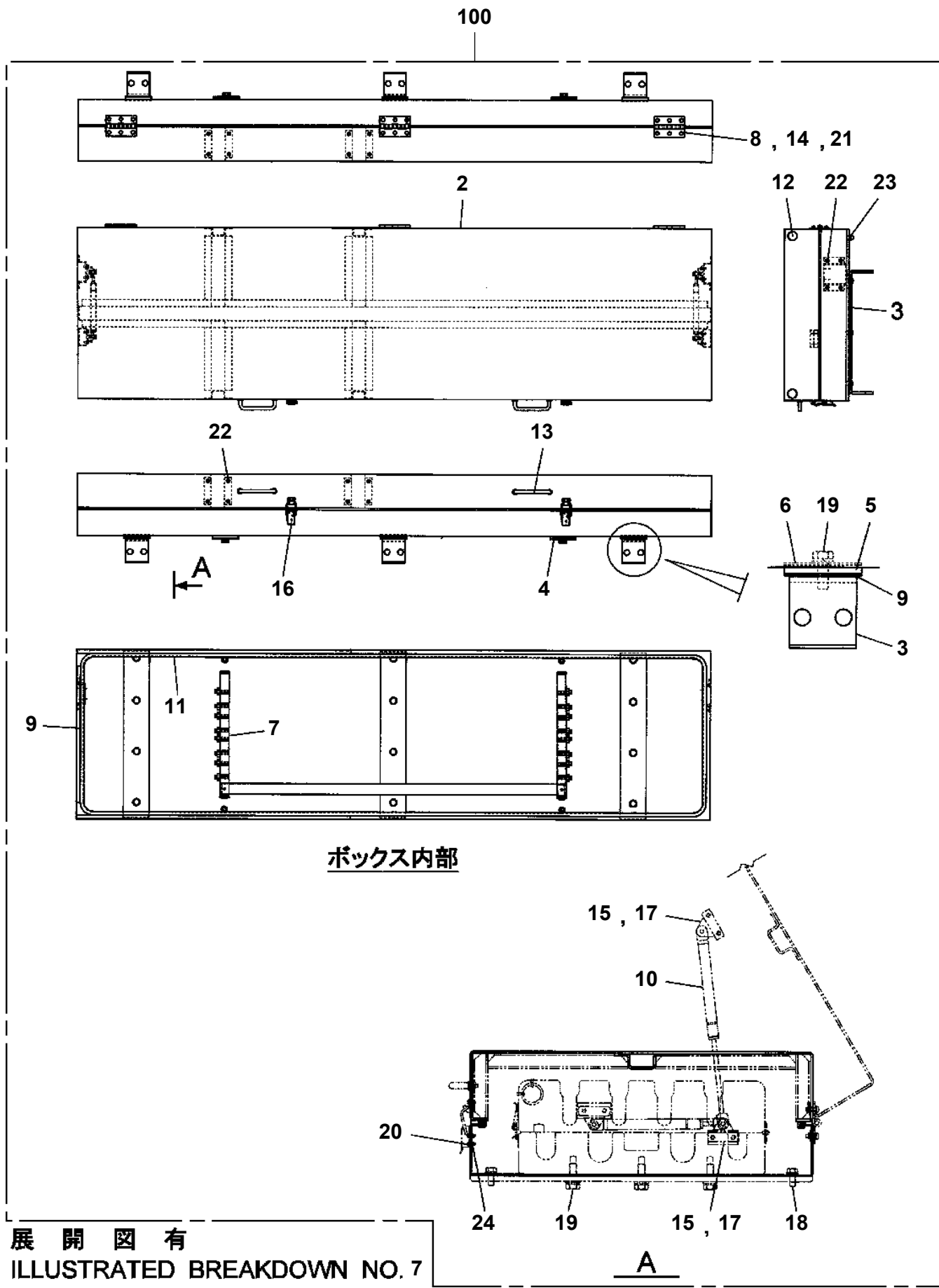


AT-147-4 43010231959 UPPER,LOWER,HINO 2KG-XZU600F
PB5060005-00 BATTERY ASSY



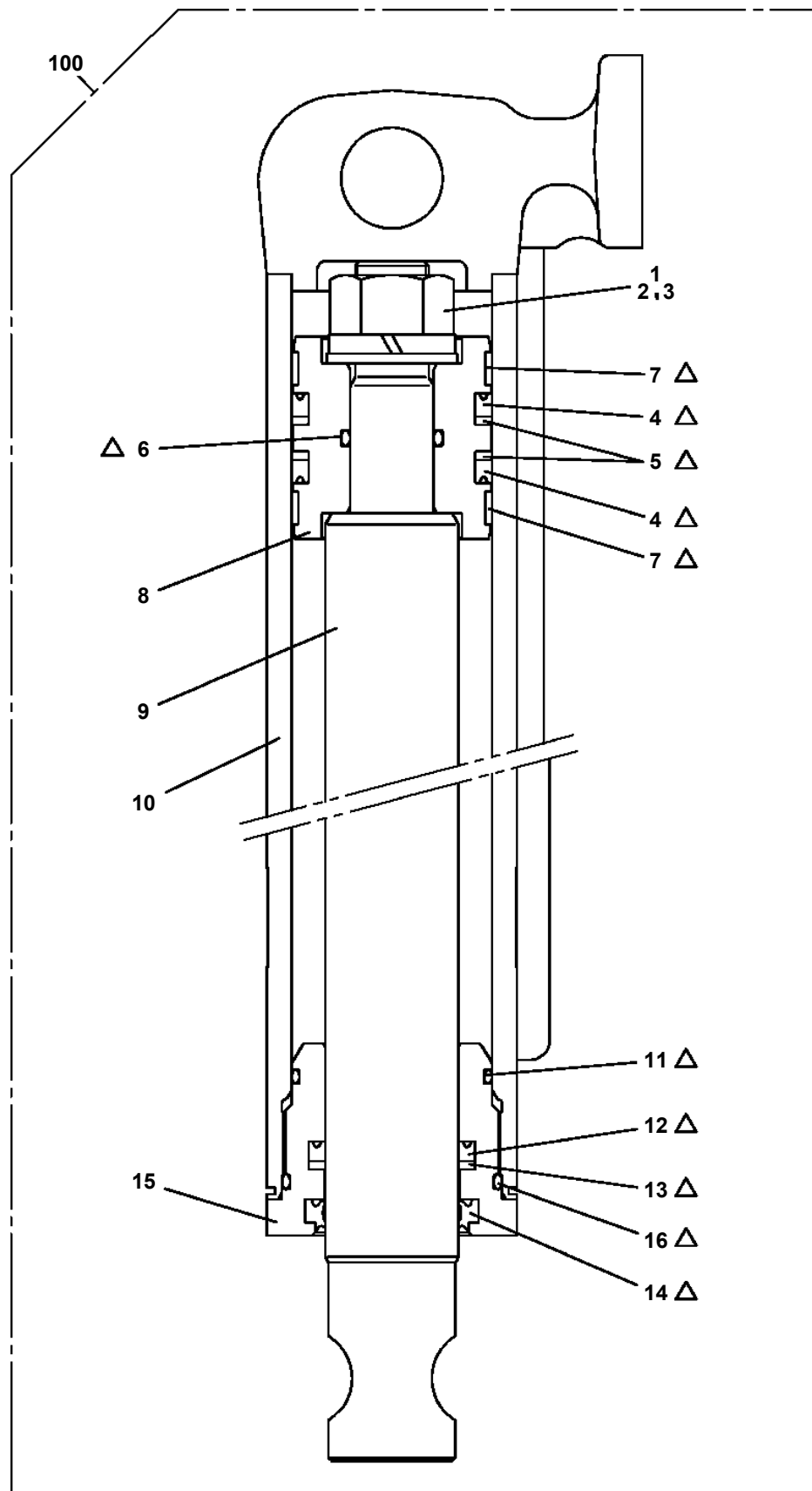
AT-147-4 43010231959 UPPER,LOWER,HINO 2KG-XZU600F
PB5230012-00 BOOSTER ASSY





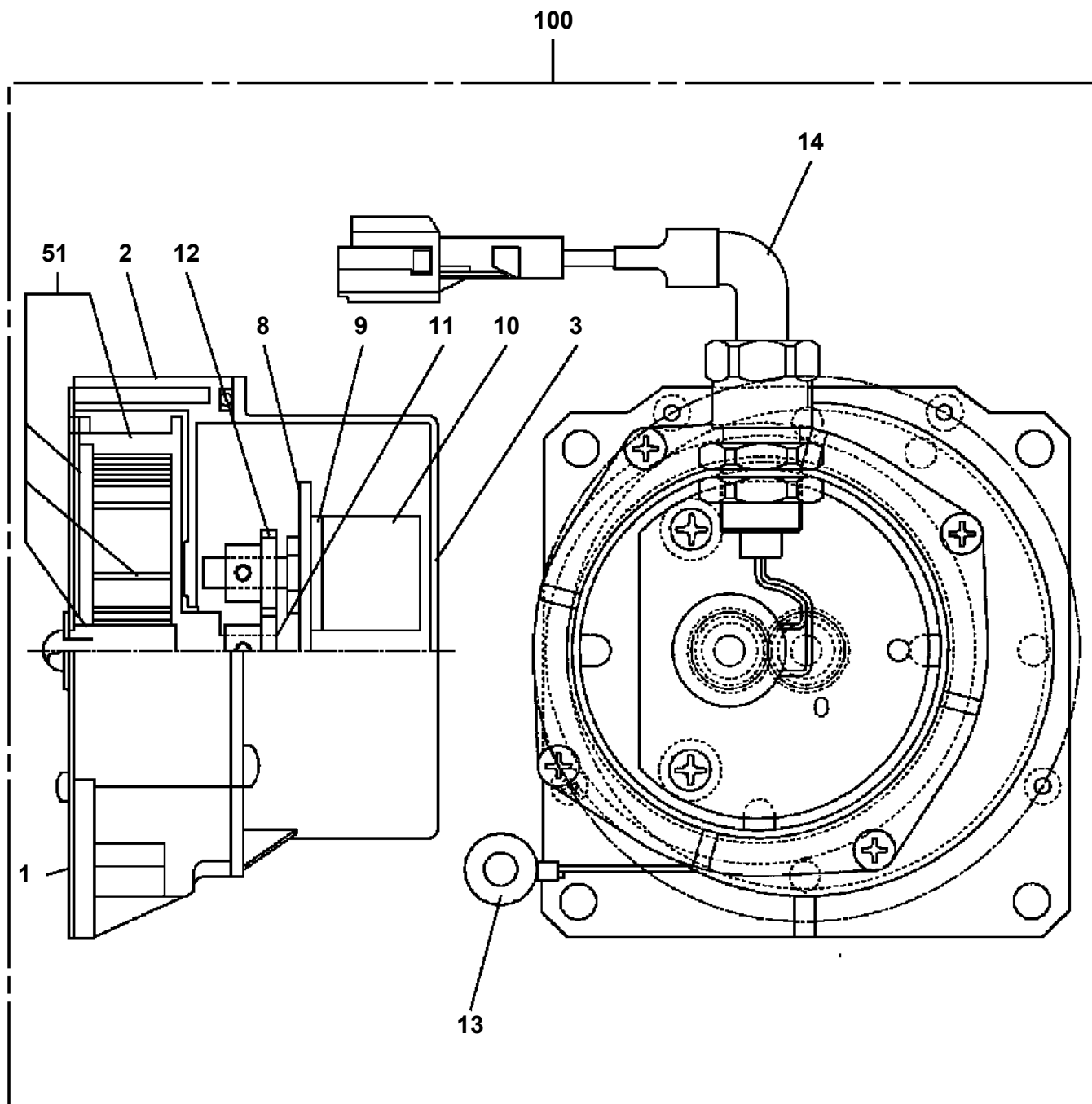
展開図有
ILLUSTRATED BREAKDOWN NO. 7

**AT-147-4 43010231959 UPPER,LOWER,HINO 2KG-XZU600F
PC1030346-00 CYLINDER,JACK**

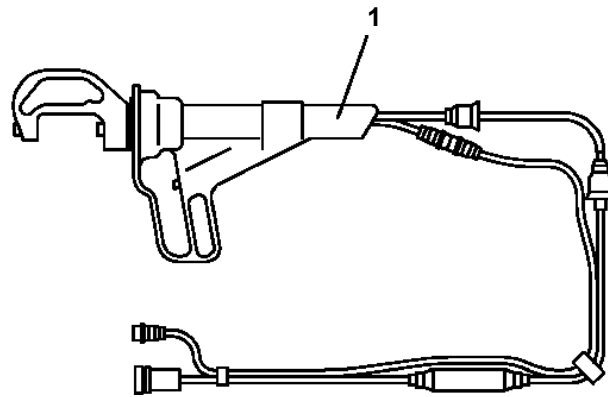


Δ:PACKING SET KEY NO.50 (KEY NO.4,5,6,7,11,12,13,14,16)

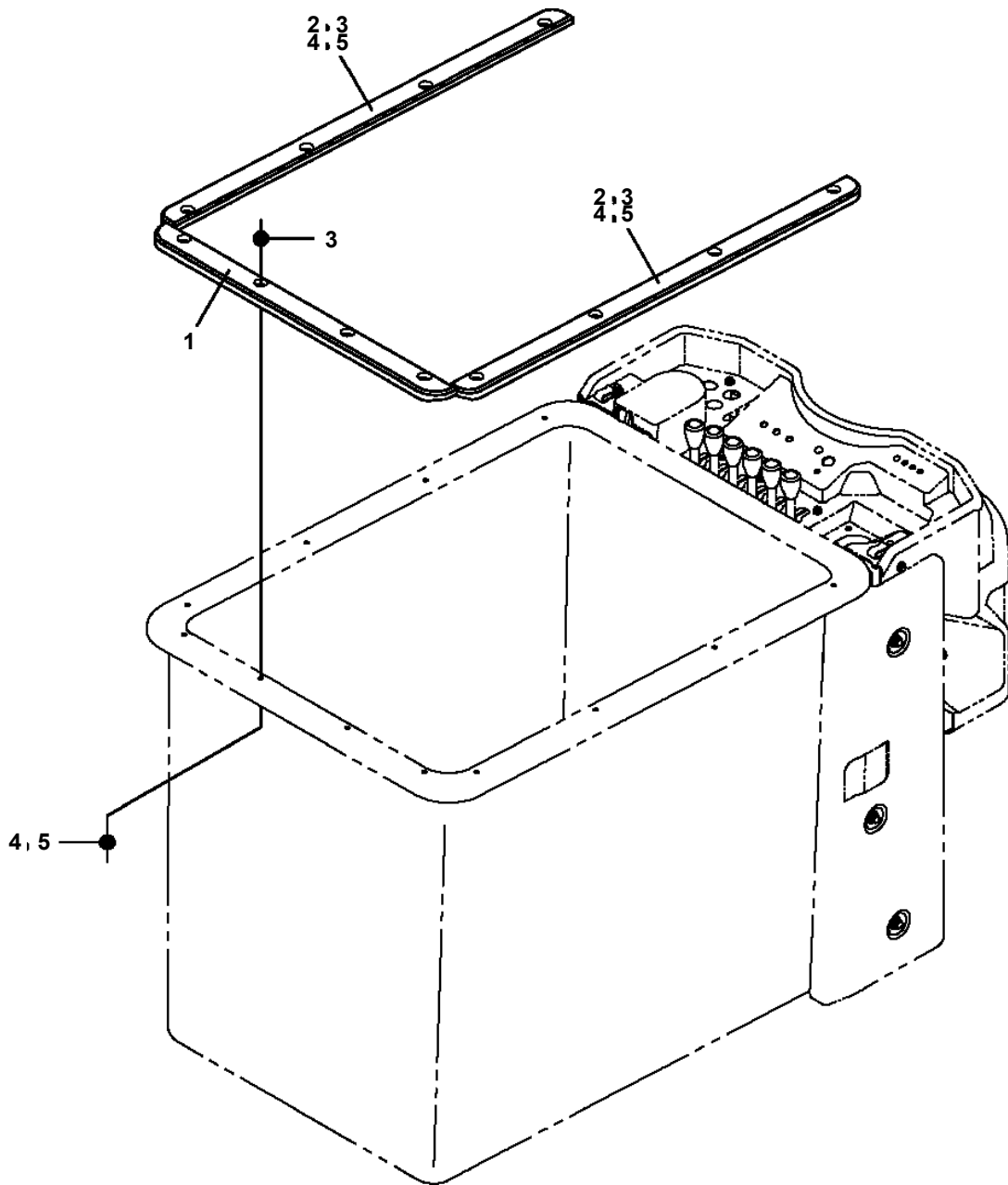
AT-147-4 43010231959 UPPER,LOWER,HINO 2KG-XZU600F
PC1380015-01 DETECTOR,OUTRIGGER LENGTH



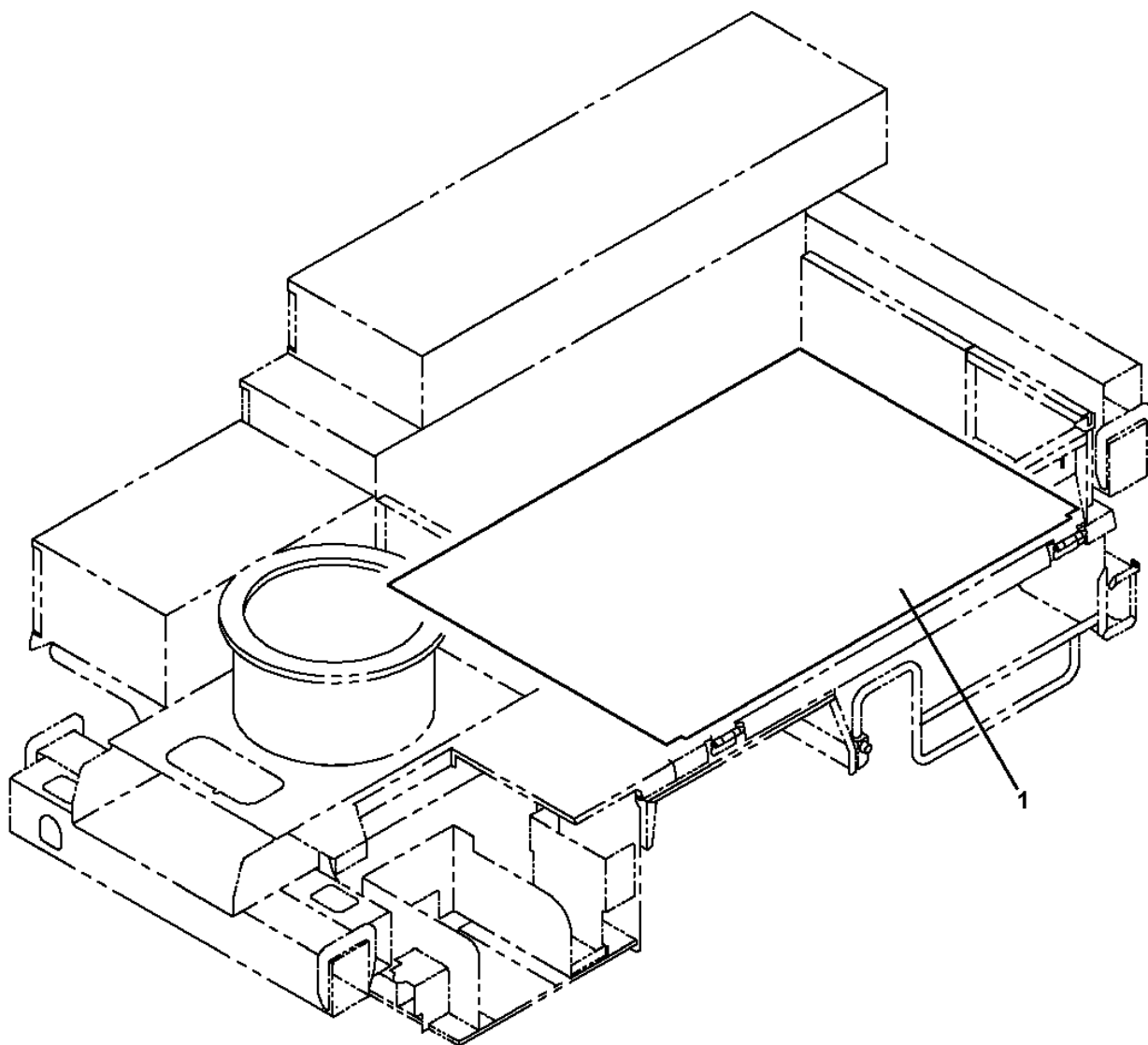
**AT-147-4 43010231959 UPPER,LOWER,HINO 2KG-XZU600F
PC5250001-00 CLAMP HEAD ASSY (YONDENKO/SAFETY HOSE)**



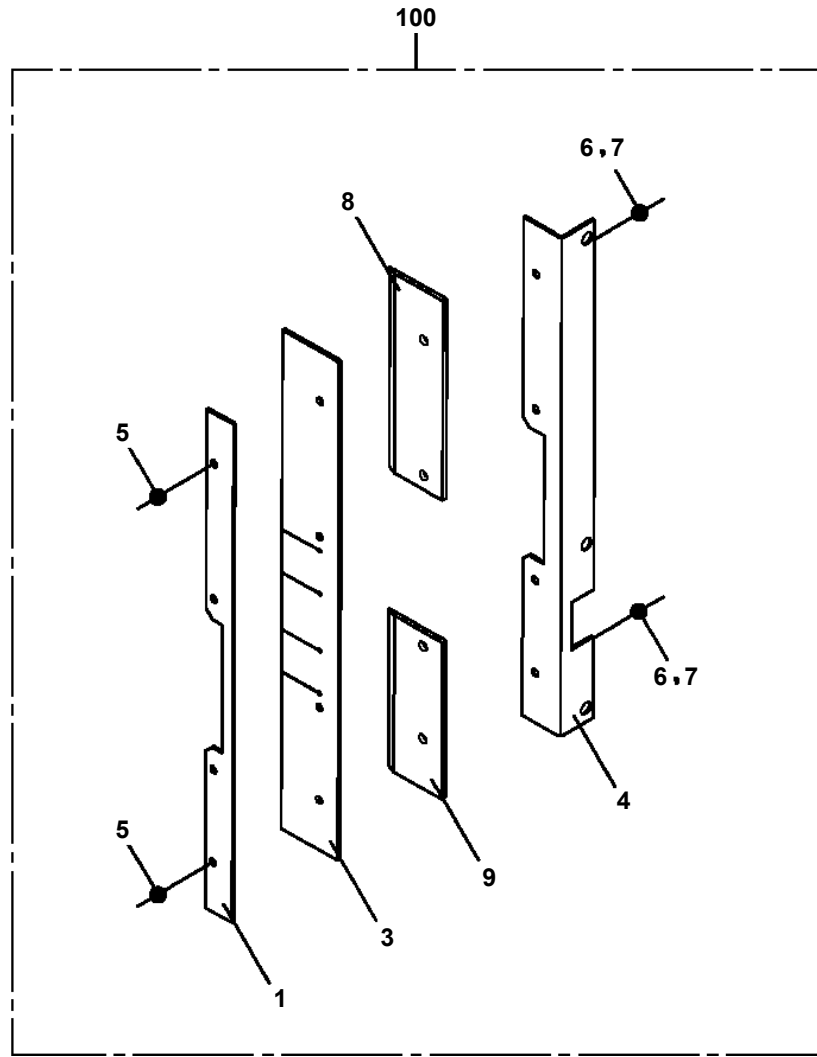
AT-147-4 43010231959 UPPER,LOWER,HINO 2KG-XZU600F
PC5570152-00 COVER ASSY (INNER CASE REINFORCEMENT)



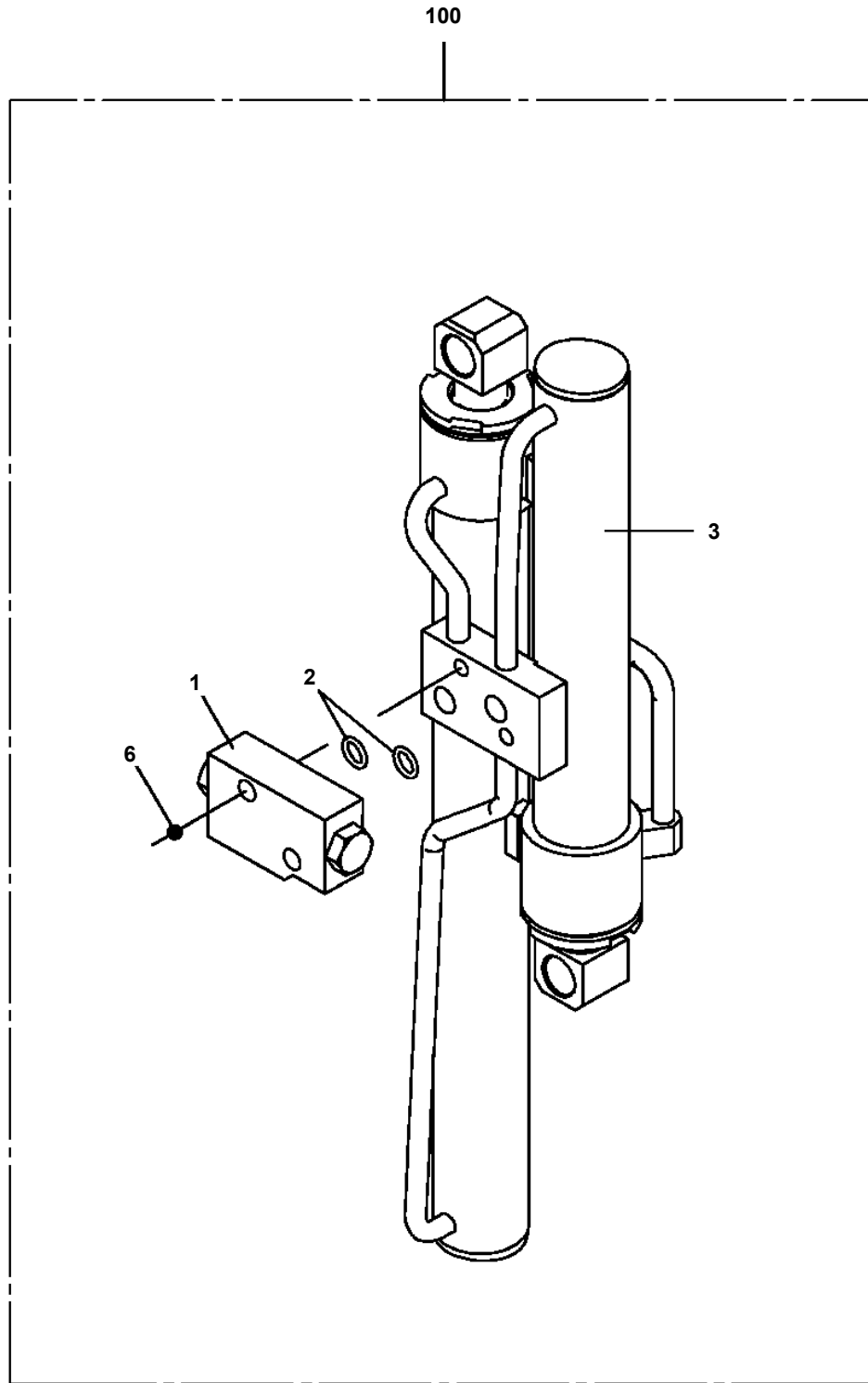
**AT-147-4 43010231959 UPPER,LOWER,HINO 2KG-XZU600F
PC5570205-00 COVER ASSY**



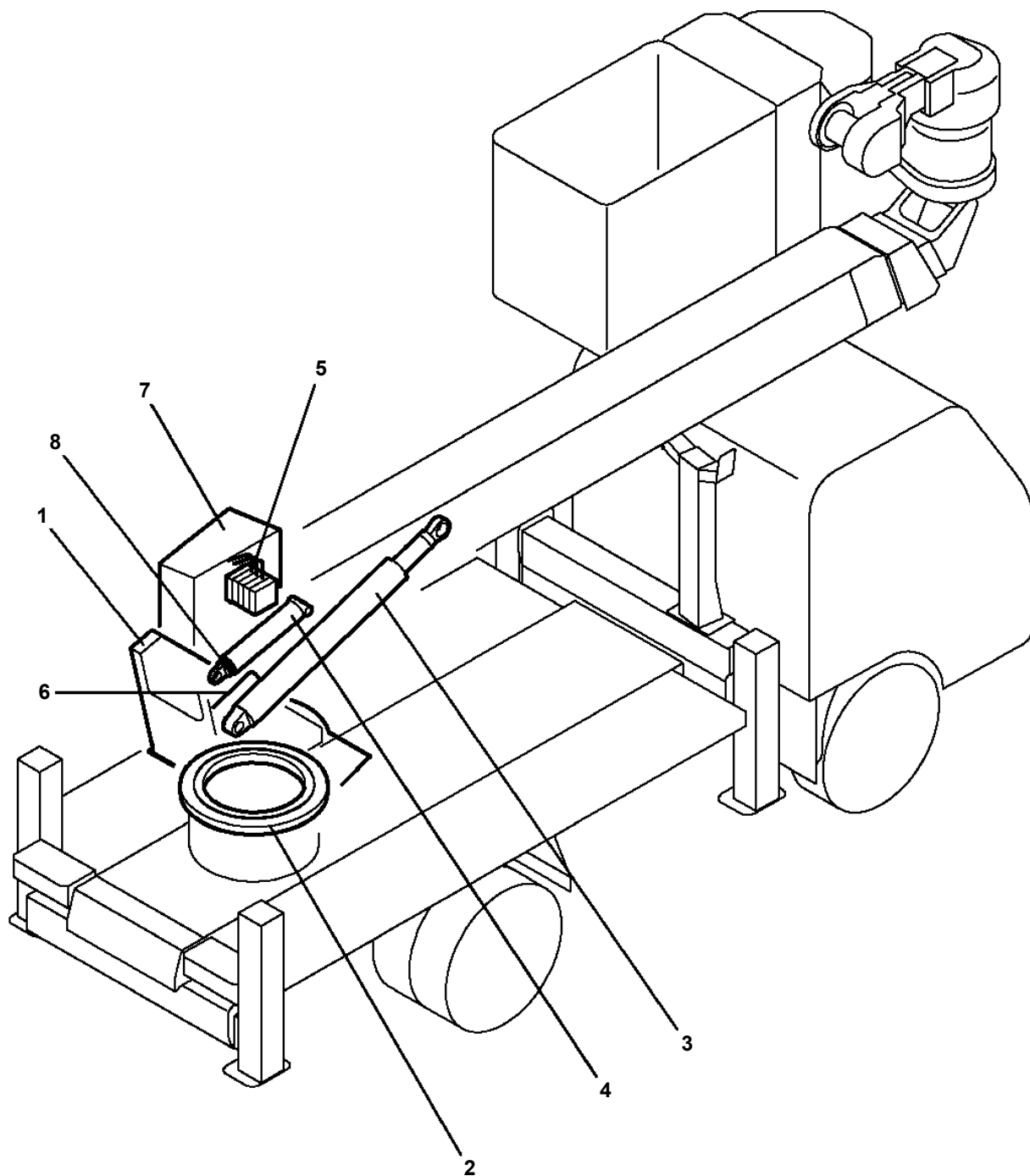
AT-147-4 43010231959 UPPER,LOWER,HINO 2KG-XZU600F
PC5570269-00 COVER ASSY



AT-147-4 43010231959 UPPER,LOWER,HINO 2KG-XZU600F
PC6210002-00 CYLINDER ASSY (LIFT,BUCKET FRAME WITH VALVE)



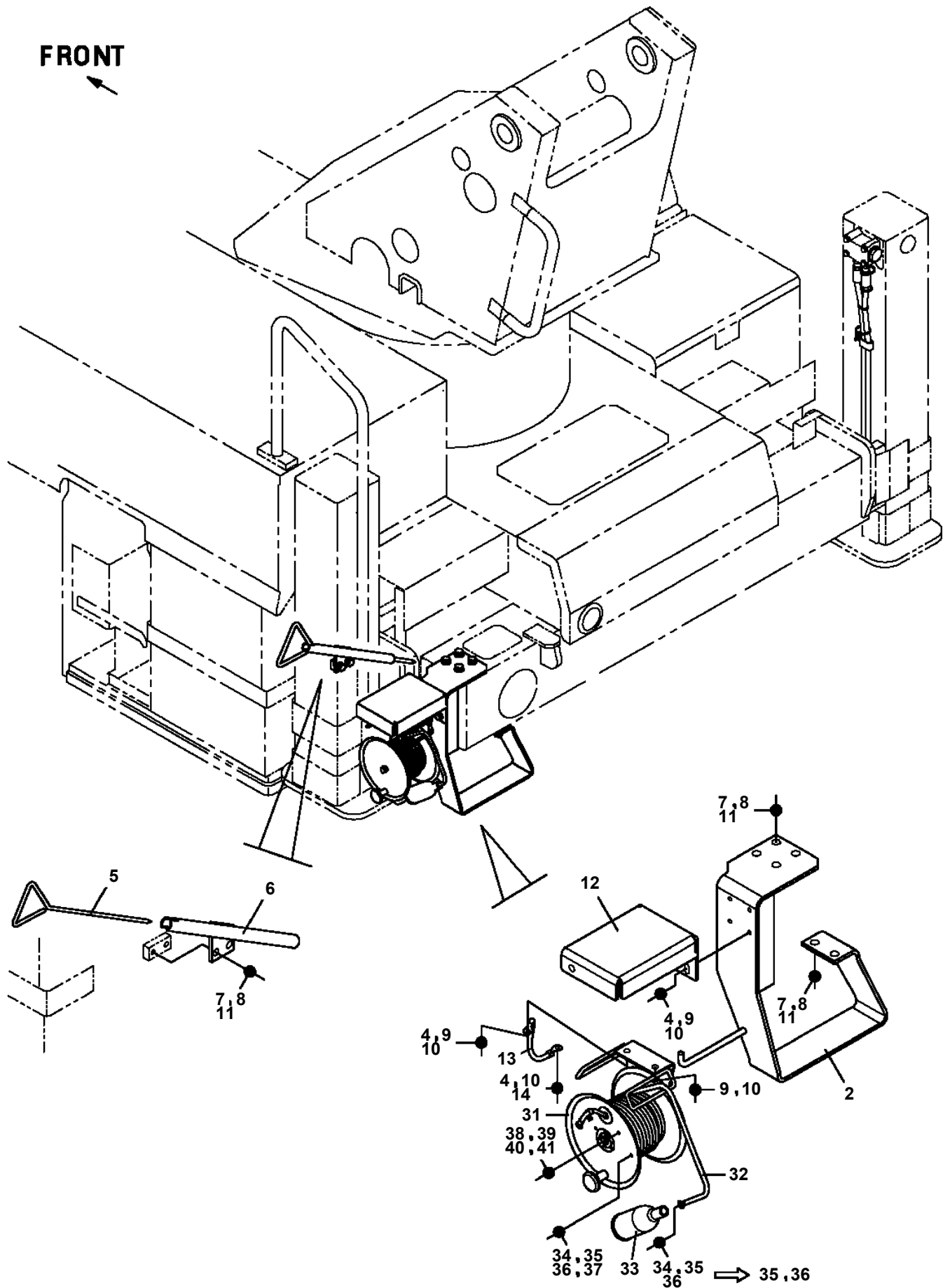
**AT-147-4 43010231959 UPPER,LOWER,HINO 2KG-XZU600F
PD2000268-00 SWING UNIT**



適用製造番号によっては取り付けがないものもあります。

MACHINES OF SOME SERIAL NO. ARE NOT EQUIPPED WITH THESE PARTS.

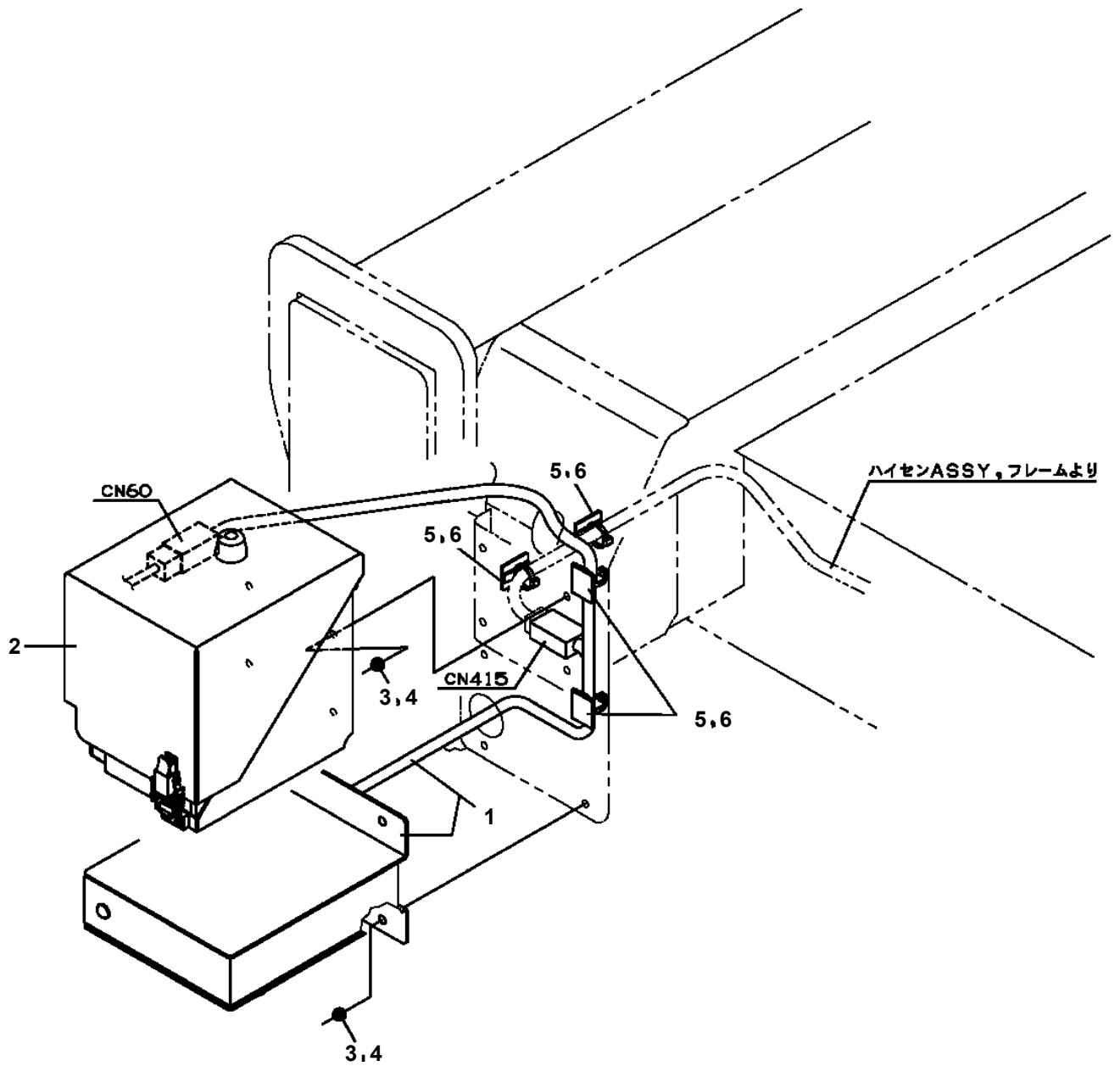
AT-147-4 43010231959 UPPER,LOWER,HINO 2KG-XZU600F
 PE5010032-01 EARTH ASSY (8X10M, TOP CLIP)



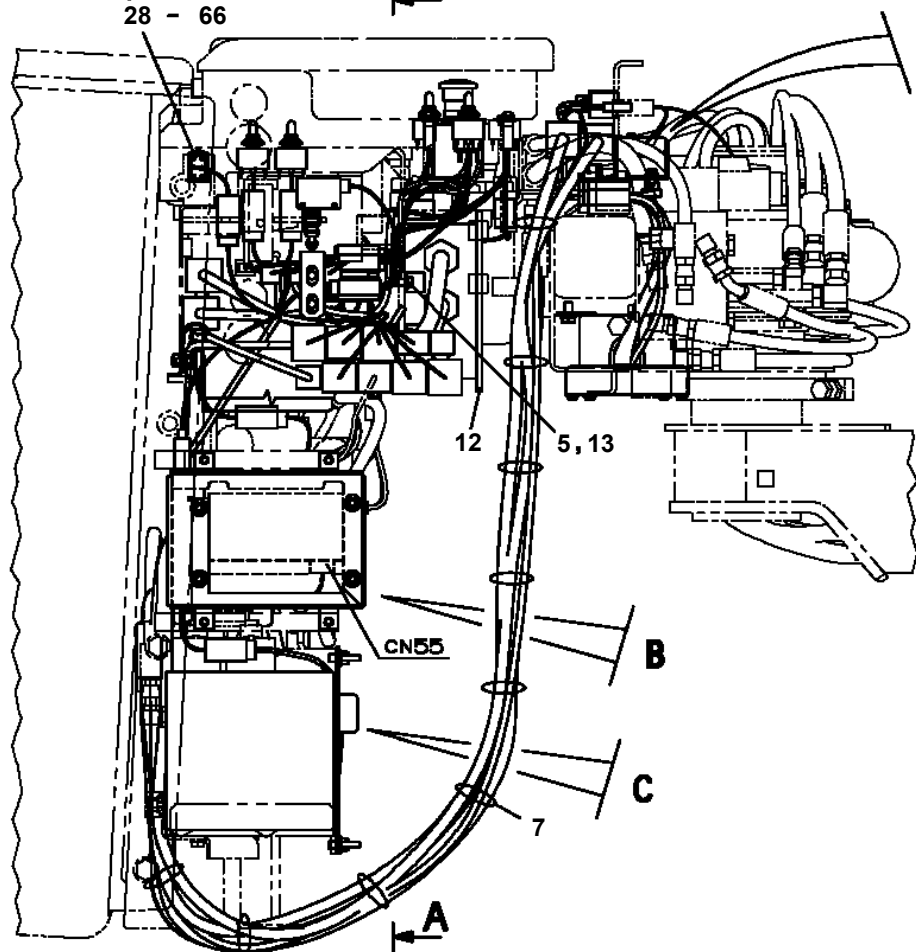
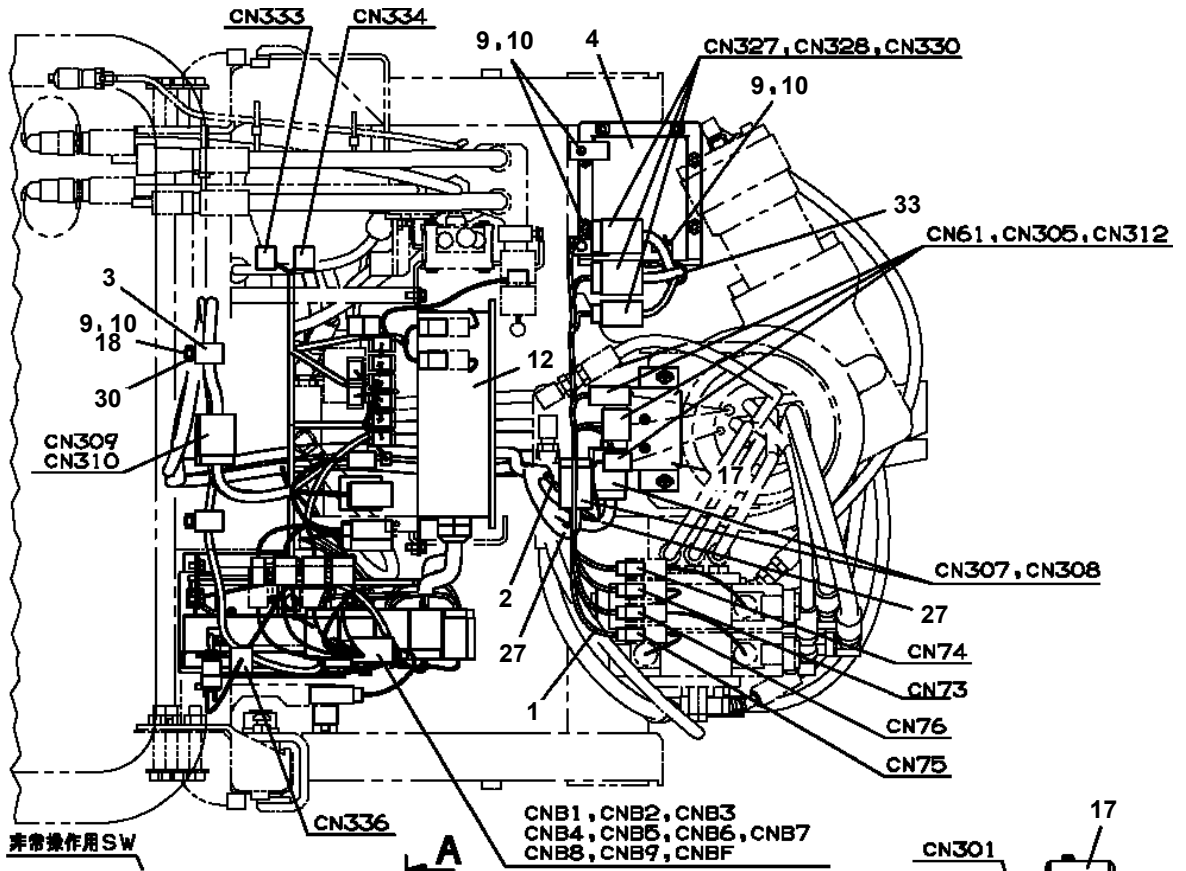
AT-147-4 43010231959 UPPER,LOWER,HINO 2KG-XZU600F

Pos No.	Parts No	Parts Name	Qty	Unit	Technical Data	Serial No (Start)	Serial No (End)	Remarks
1	82199504181	WASHER,PLAIN	1					
2	82199504017	NUT	1		AT-401N			
3	82199541810	CAP	1					
4	42511572100	HARNESS	1					
5	91810130230	FASTENER	2					
6	42475511100	JOINT,SELF SEALING	1					
7	82114101020	CONNECTOR (2P,MALE)	1					
8	91810132530	FASTENER	30					
9	42474421100	SWITCH	1					
10	90201200600	NUT	1		M6			
11	90302040601	WASHER,SPRING	3		6			
12	42511572200	HARNESS	1					
13	89671101800	TUBE	1		L=1800			
14	42392583090	PLATE,CAUTION	1					
15	42358030100	LAMP ASSY	1					
16	42502852010	PLATE,NAME	1					
17	42502852020	PLATE,NAME	1					
18	82121102020	HOLDER	1					
19	42510462200	SENDER,PRESSURE	1					
20	82467300105	PLUG	1					
21	80313040010	GASKET	1					
23	42511572300	SUPPORT	1					
24	90101206012	BOLT	2		M6X12			

AT-147-4 43010231959 UPPER,LOWER,HINO 2KG-XZU600F
PE5021286-00 ELEC.ASSY (BATTERY)



AT-147-4 43010231959 UPPER,LOWER,HINO 2KG-XZU600F
 PE5060039-01 ELEC.ASSY,BUCKET

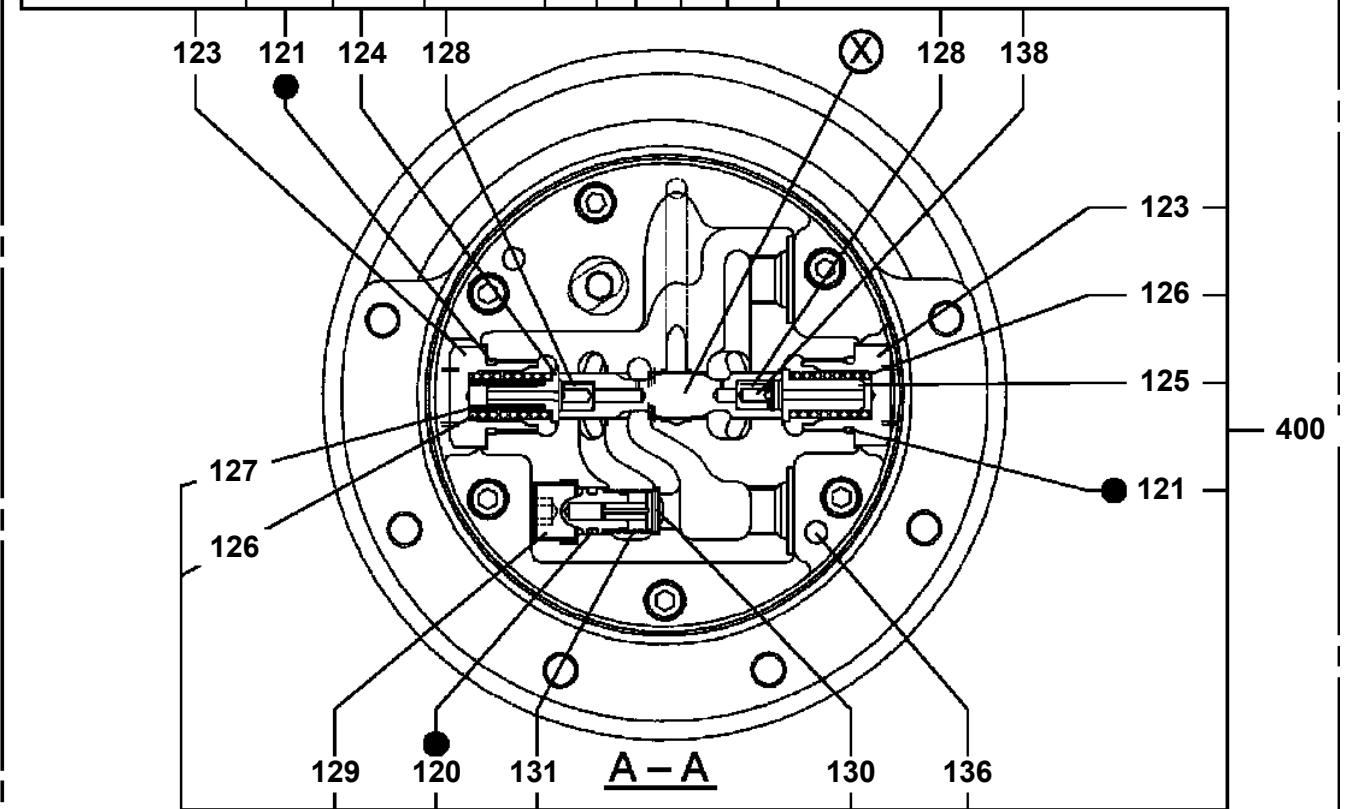
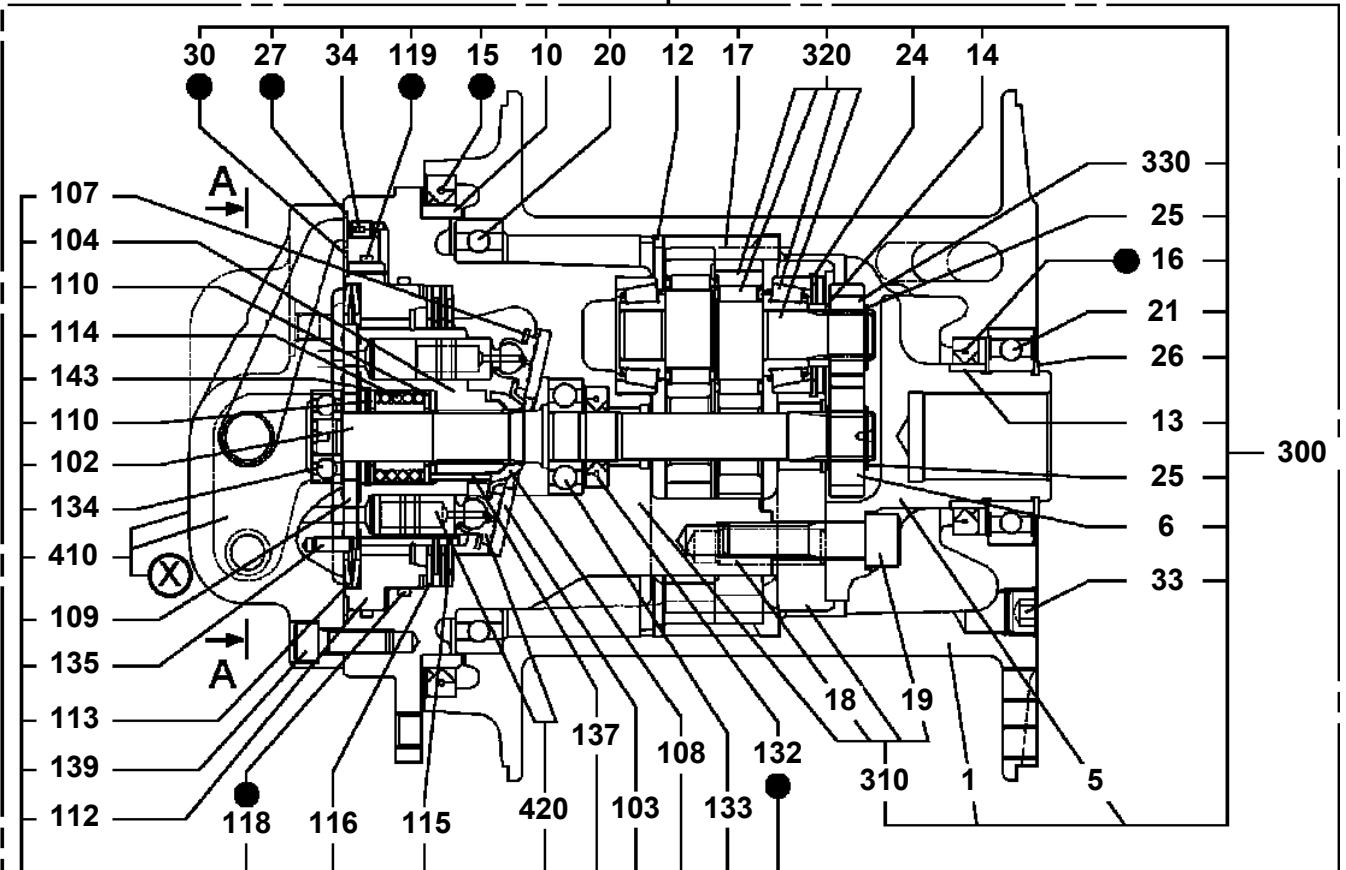


AT-147-4 43010231959 UPPER,LOWER,HINO 2KG-XZU600F

Pos No.	Parts No	Parts Name	Qty	Unit	Technical Data	Serial No (Start)	Serial No (End)	Remarks	Page
1	42902360101	HARNESS	1						0001
2	91810132530	FASTENER	10						
3	90101210016	BOLT	4		M10X16				
4	90302041001	WASHER,SPRING	4		10				
5	80182406014	SCREW,MACHINE	2		M6X14				
6	90303070801	WASHER,PLAIN	2		8				
7	90101208016	BOLT	2		M8X16				
8	90302040801	WASHER,SPRING	2		8				
9	82100002016	CLAMP	1		WR25				
10	90186208014	BOLT,FLANGE	1		M8X14				
11	82100001802	TUBE,CORRUGATE	N		10				
12	37002700660	CABLE	1		L=2360				
13	42902581000	BOX ASSY	1						0000
14	90302040601	WASHER,SPRING	1		6				
15	90101206012	BOLT	1		M6X12				
16	42902681000	RELAY BOX ASSY	1						0002
17	91810130240	FASTENER	1						

AT-147-4 43010231959 UPPER,LOWER,HINO 2KG-XZU600F
 PF1010392-01 WINCH

500



● : SEAL KIT KEY NO 490 (KEY NO.15,16,27,30,118,119,120,121,132)

AT-147-4 43010231959 UPPER,LOWER,HINO 2KG-XZU600F

Pos No.	Parts No	Parts Name	Qty	Unit	Technical Data	Serial No (Start)	Serial No (End)	Remarks	Pages
1	42478760010	SUPPORT	1						
2	90201201600	NUT	1		M16				
3	90303071601	WASHER,PLAIN	1		16				

AT-147-4 43010231959 UPPER,LOWER,HINO 2KG-XZU600F

Pos No.	Parts No	Parts Name	Qty	Unit	Technical Data	Serial No (Start)	Serial No (End)	Remarks	Pages
1	42512910100	PLATE	3						
2	90101212035	BOLT	16		M12X35				
3	90302041201	WASHER,SPRING	16		12				
4	82401800120	PLUG (FOR M12)	6						
5	42515300100	PLATE	1						

AT-147-4 43010231959 UPPER,LOWER,HINO 2KG-XZU600F

Pos No.	Parts No	Parts Name	Qty	Unit	Technical Data	Serial No (Start)	Serial No (End)	Remarks	Pages
1	42974530100	GUARD	1						
2	42974530200	GUARD	1						
3	42974530300	GUARD	2						
4	42974530400	GUARD	1						

AT-147-4 43010231959 UPPER,LOWER,HINO 2KG-XZU600F

Pos No.	Parts No	Parts Name	Qty	Unit	Technical Data	Serial No (Start)	Serial No (End)
1	42356451100	SUPPORT	1				
2	80172305010	SCREW,MACHINE	2		M5X10		
3	90302040501	WASHER,SPRING	2		5		
4	90101206012	BOLT	2		M6X12		
5	90302040601	WASHER,SPRING	2		6		
6	42351692100	DETECTOR,ANGLE (WITH HARNESS)	1				
7	37000576720	PLATE	1				
8	42353581200	SUPPORT	1				
9	90101204012	BOLT	2		M4X12		
10	90302040401	WASHER,SPRING	2		4		
11	90303070401	WASHER,PLAIN	2		4		
12	42351692300	GEAR	1				
13	90710004050	SCREW,SET	1		M4X5		
14	90303070601	WASHER,PLAIN	2		6		
32	82400000203	GROMMET	1		L=250		

AT-147-4 43010231959 UPPER,LOWER,HINO 2KG-XZU600F

Pos No.	Parts No	Parts Name	Qty	Unit	Technical Data	Serial No (Start)	Serial No (End)	Remarks
1	42739951100	VIEW SYSTEM (MAIN UNIT)	1					
2	91810130240	FASTENER	10					

AT-147-4 43010231959 UPPER,LOWER,HINO 2KG-XZU600F

Pos No.	Parts No	Parts Name	Qty	Unit	Technical Data	Serial No (Start)	Serial No (End)	Remarks	Pages
15	82182809623	DIODE	4						
100	42422455100	HARNESS	1						

AT-147-4 43010231959 UPPER,LOWER,HINO 2KG-XZU600F

Pos No.	Parts No	Parts Name	Qty	Unit	Technical Data	Serial No (Start)	Serial No (End)	Remarks	Pages
100	42736670100	HARNESS	1						

AT-147-4 43010231959 UPPER,LOWER,HINO 2KG-XZU600F

Pos No.	Parts No	Parts Name	Qty	Unit	Technical Data	Serial No (Start)	Serial No (End)	Remarks	Pages
100	42937120300	HARNESS	1						

AT-147-4 43010231959 UPPER,LOWER,HINO 2KG-XZU600F

Pos No.	Parts No	Parts Name	Qty	Unit	Technical Data	Serial No (Start)	Serial No (End)	Remarks	Pages
10	82105220112	SWITCH,TOGGLE	1						
100	42511150010	HARNESS	1						

AT-147-4 43010231959 UPPER,LOWER,HINO 2KG-XZU600F

Pos No.	Parts No	Parts Name	Qty	Unit	Technical Data	Serial No (Start)	Serial No (End)	Remarks	Pages
100	42358020080	HARNESS	1						

AT-147-4 43010231959 UPPER,LOWER,HINO 2KG-XZU600F

Pos No.	Parts No	Parts Name	Qty	Unit	Technical Data	Serial No (Start)	Serial No (End)	Remarks	Pages
6	82105220193	SWITCH,TOGGLE	1						
7	82105900010	SWITCH,TOGGLE	1						
8	82105900050	SWITCH,TOGGLE	2						
9	82105900020	SWITCH,TOGGLE	1						
100	42358161100	HARNESS	1						

AT-147-4 43010231959 UPPER,LOWER,HINO 2KG-XZU600F

Pos No.	Parts No	Parts Name	Qty	Unit	Technical Data	Serial No (Start)	Serial No (End)	Remarks	Pages
7	82105220112	SWITCH,TOGGLE	1						
100	42513980100	HARNESS	1						

AT-147-4 43010231959 UPPER,LOWER,HINO 2KG-XZU600F

Pos No.	Parts No	Parts Name	Qty	Unit	Technical Data	Serial No (Start)	Serial No (End)	Remarks	Pages
100	42509603600	HARNESS	1						

AT-147-4 43010231959 UPPER,LOWER,HINO 2KG-XZU600F

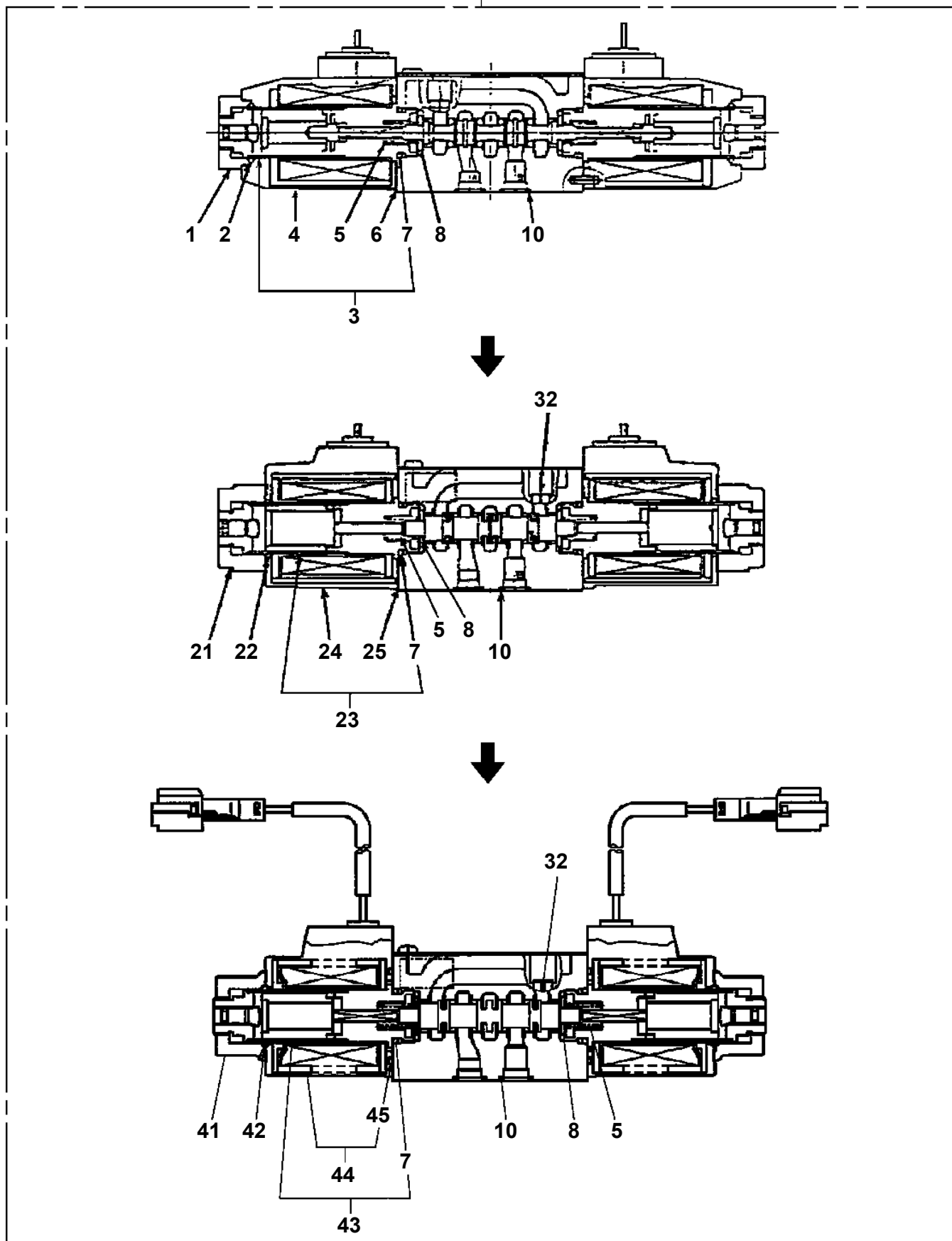
Pos No.	Parts No	Parts Name	Qty	Unit	Technical Data	Serial No (Start)	Serial No (End)	Remarks	Pages
100	42738542100	HARNESS	1						

AT-147-4 43010231959 UPPER,LOWER,HINO 2KG-XZU600F

Pos No.	Parts No	Parts Name	Qty	Unit	Technical Data	Serial No (Start)	Serial No (End)	Remarks	Pages
100	42470044000	HOT STICK	1						

AT-147-4 43010231959 UPPER,LOWER,HINO 2KG-XZU600F
PI1120238-02 VALVE,SOLENOID

100



AT-147-4 43010231959 UPPER,LOWER,HINO 2KG-XZU600F

Pos No.	Parts No	Parts Name	Qty	Unit	Technical Data	Serial No (Start)	Serial No (End)	Remarks	Page
1	36642765010	NUT	2						
2	36645417510	CORE ASSY	2						
3	36741775010	SOLENOID ASSY	2						
4	36741775020	SPRING	2						
5	36647105010	PIN,SPRING	2						
8	91000501200	O-RING	4						
9	36642765060	WASHER (CENTER)	2						
10	36741775030	PACKING	2						
11	91001102100	O-RING	2		1A P21				
12	36643435040	PIN,SPRING	4						
100	36741770000	VALVE,SOLENOID	1						

AT-147-4 43010231959 UPPER,LOWER,HINO 2KG-XZU600F

Pos No.	Parts No	Parts Name	Qty	Unit	Technical Data	Serial No (Start)	Serial No (End)	Remarks	Pages
4	36625525010	CONNECTOR	1						
5	91002801800	O-RING	1		1B P18				
30	36625520000	VALVE,CHECK	1						

AT-147-4 43010231959 UPPER,LOWER,HINO 2KG-XZU600F

Pos No.	Parts No	Parts Name	Qty	Unit	Technical Data	Serial No (Start)	Serial No (End)	Remarks	Page
1	36672815040	HEAD ASSY	1						
3	36672810030	FILTER,CARTRIDGE	1						
10	36672810001	FILTER,OIL	1						

AT-147-4 43010231959 UPPER,LOWER,HINO 2KG-XZU600F

Pos No.	Parts No	Parts Name	Qty	Unit	Technical Data	Serial No (Start)	Serial No (End)	Remarks
2	42630921000	BRUSH ASSY	1					
3	90101208040	BOLT	3		M8X40			
4	90302040801	WASHER,SPRING	3		8			
5	80720105016	PIN,SPRING	1		5X16			
6	42630760200	SPACER	3		L=13			
7	42630760100	COVER	1					
8	42433330020	PLUG (2 POLES,FEMALE)	1					
31	53154004000	BUSH (THRUST)	1					
32	42630891100	BODY	1					
33	42630891200	CORE	1					
34	91531211000	PACKING	2					
35	91100211000	SEAL,RING	2					
36	80601111100	RING,RITAINING	1		S110			
100	42630950000	JOINT ASSY,SWIVEL	1					

AT-147-4 43010231959 UPPER,LOWER,HINO 2KG-XZU600F

Pos No.	Parts No	Parts Name	Qty	Unit	Technical Data	Serial No (Start)	Serial No (End)	Remarks	Pages
1	42505350000	COVER (RACK,B)	1						

AT-147-4 43010231959 UPPER,LOWER,HINO 2KG-XZU600F

Pos No.	Parts No	Parts Name	Qty	Unit	Technical Data	Serial No (Start)	Serial No (End)
1	36028929511	CYLINDER ASSY	1				
3	82455106000	NIPPLE,GREASE	1		A-M6F FE		
4	36027952001	PISTON	1				
5	91350211000	BEARING,PLAIN (WITH PACKINGX2)	1				
6	91002802600	O-RING	1		1B P26		
7	36027969521	ROD ASSY	1				
8	36027959530	COVER,ROD	1				
9	80612110520	RING,RITAINING	1		AR52		
10	91002910500	O-RING	1		1B G105		
11	80801004525	BEARING,PLAIN	1				
12	91694004500	PACKING	1				
13	91410204502	RING,BACKUP	1				
14	91660004501	SEAL,DUST	1				
15	91002911000	O-RING	1		1B G110		
16	80541700030	BEARING,SPHERICAL (NTN)	1		SA4-30B		
17	80820003030	BEARING,PLAIN	2				
19	91001004500	O-RING	1		S45		
20	91001207000	O-RING	1		1A G70		
21	36025230060	COVER	1				
22	90730008120	SCREW,SET	1		M8X12		
40	36027959900	PACKING SET	1		45X110		
62	42360120030	CONNECTOR	1				
71	82100002132	CONNECTOR	1				
100	42491460000	LEVELING ASSY,LOWER	1				

AT-147-4 43010231959 UPPER,LOWER,HINO 2KG-XZU600F

Pos No.	Parts No	Parts Name	Qty	Unit	Technical Data	Serial No (Sta
1	(*****)	MODIFICATION ASSY (YURTEC TYPE/WINCH HOOK)	1			
2	(*****)	MOUNT ASSY, GUARD (WITHOUT JIB STOWING FUNCTION)	1			

AT-147-4 43010231959 UPPER,LOWER,HINO 2KG-XZU600F

Pos No.	Parts No	Parts Name	Qty	Unit	Technical Data	Serial No (Start)	Serial No (End)	Remarks	Pages
50	36663465030	SEAL KIT	1						
100	36663460001	MOTOR ASSY,OIL	1						

CLICK HERE TO **DOWNLOAD** THE COMPLETE MANUAL

- Thank you very much for reading the preview of the manual.
- You can download the complete manual from: www.heydownloads.com by clicking the link below



- Please note: If there is no response to CLICKING the link, please download this PDF first and then click on it.

CLICK HERE TO **DOWNLOAD** THE COMPLETE MANUAL

AT-147-4 43010231959 UPPER,LOWER,HINO 2KG-XZU600F

Pos No.	Parts No	Parts Name	Qty	Unit	Technical Data	Serial No (Start)	Serial No (End)	Re
2	42737850100	GUARD	4					
4	90280200600	NUT,FLANGE	16		M6			
5	42736070100	SWITCH ASSY (WITH HARNESS)	1					
6	82199514013	CAP	1					
7	42502980010	PLATE,NAME	1					
8	82199504017	NUT	1		AT-401N			
9	42502030100	SUPPORT	4					
11	37000306130	SPACER	8		L=8			
12	37000302980	SPACER	8		L=10			
13	90186206030	BOLT,FLANGE	16		M6X30			
21	82199444327	LAMP (YELLOW)	4		24V 12W			
22	90186206025	BOLT,FLANGE	16		M6X25			
23	82199444328	LAMP (YELLOW)	4		24V 12W			
24	42502980100	SUPPORT	4					
25	82199444329	LAMP (YELLOW)	4		24V 12W			
26	42505221200	GUARD	4					
	42505221100	GUARD (STEEL CAST)	4					
27	90280200600	NUT,FLANGE	8		M6			
28	90186206030	BOLT,FLANGE	8		M6X30			
41	82166600010	BULB,LAMP	12		24V/12W			

AT-147-4 43010231959 UPPER,LOWER,HINO 2KG-XZU600F

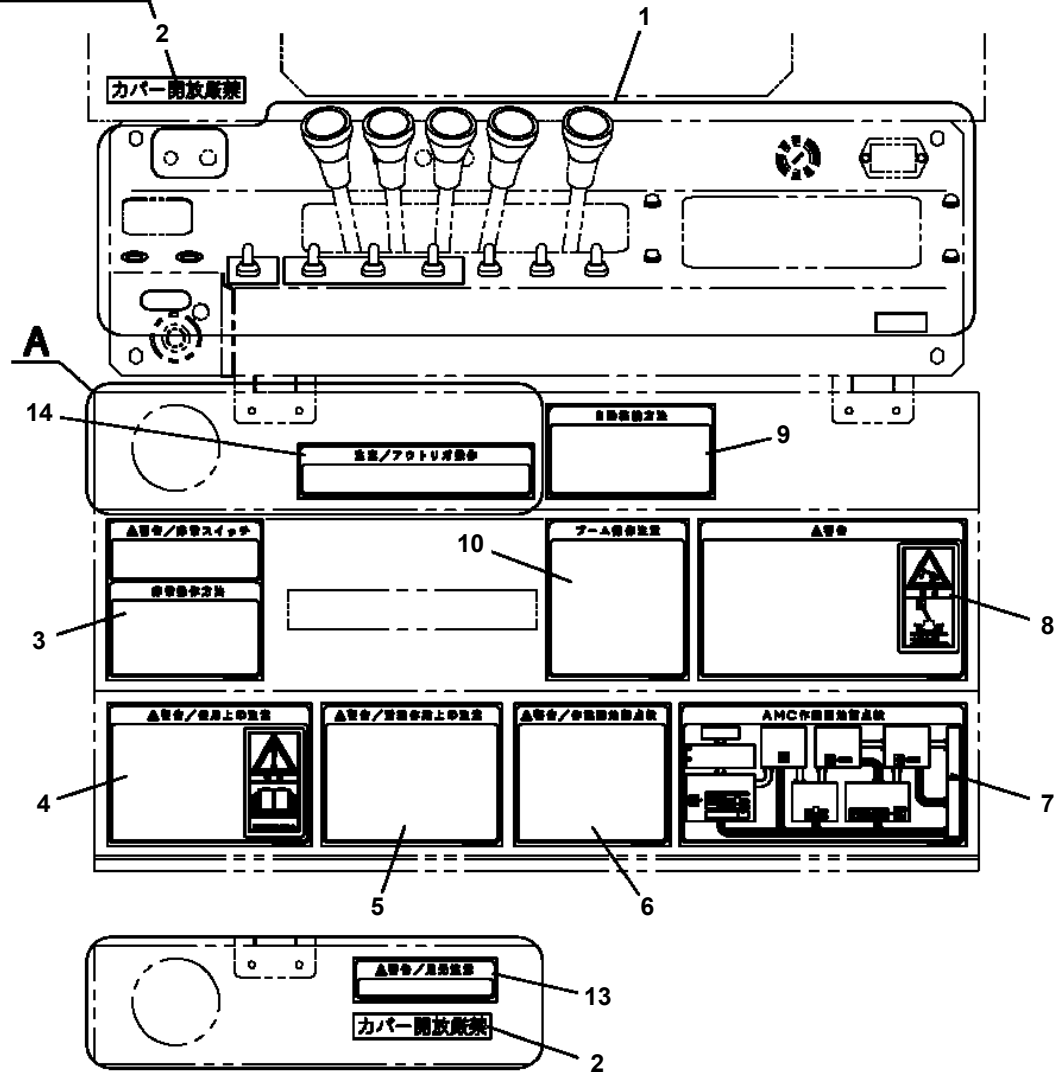
Pos No.	Parts No	Parts Name	Qty	Unit	Technical Data	Serial No (Start)	Serial No (End)
6	82105220286	SWITCH,TOGGLE	3				
50	42651591300	SWITCH ASSY (WITH HARNESS,3 SW)	1				

AT-147-4 43010231959 UPPER,LOWER,HINO 2KG-XZU600F

Pos No.	Parts No	Parts Name	Qty	Unit	Technical Data	Serial No (Start)	Serial
1	34398867400	PLATE,NAME (THIS MACHINE IS JAPAN SPEC)	1				
2	34353831200	PLATE,NAME (TELEMATICS)	1				

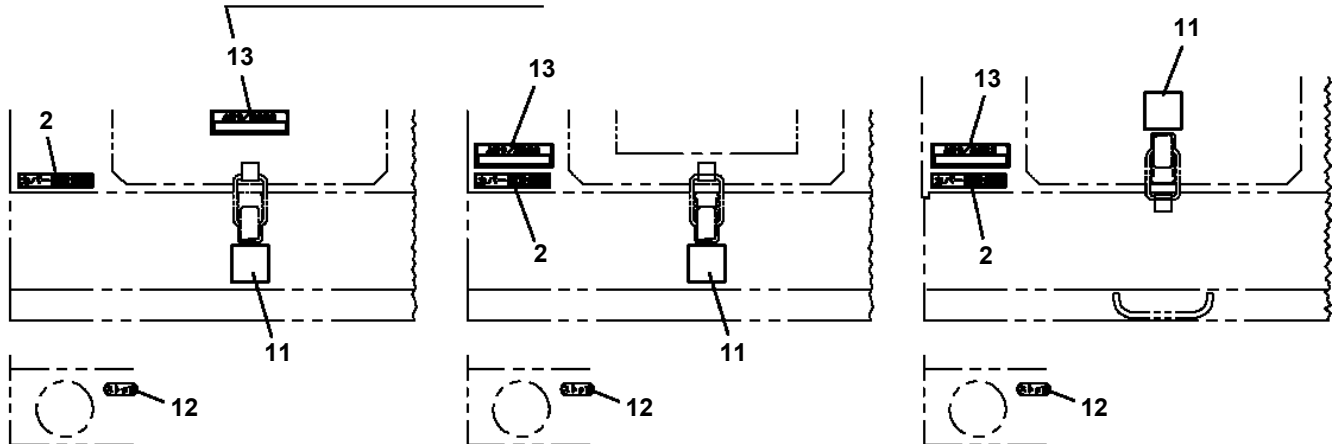
AT-147-4 43010231959 UPPER,LOWER,HINO 2KG-XZU600F
 PN5011907-00 NAME PLATE ASSY (OUTRIGGER CONTROLS,FLJ)

北海電工向け下部リモコン
 選択時貼付け禁止



A
 北海電工向け下部リモコン (OP) 選択時

北海電工向け下部リモコン選択時は
 貼付け禁止



(トーエネック以外の場合)

(トーエネックの場合)

(キャッチが逆向きの場合)

扉上面

AT-147-4 43010231959 UPPER,LOWER,HINO 2KG-XZU600F

Pos No.	Parts No	Parts Name	Qty	Unit	Technical Data	Serial No (Start)	Serial No (
1	(*****)	NAME PLATE ASSY (CONTROLS/L SPEC.)	1				
2	42391164010	PLATE,NAME	1				
3	42398322050	PLATE,NAME	1				
4	42399342020	PLATE,NAME	1				

AT-147-4 43010231959 UPPER,LOWER,HINO 2KG-XZU600F

Pos No.	Parts No	Parts Name	Qty	Unit	Technical Data	Serial No (Start)	Serial No (End)	Remarks	Pages
1	42944052010	PLATE,CAUTION	1						

AT-147-4 43010231959 UPPER,LOWER,HINO 2KG-XZU600F

Pos No.	Parts No	Parts Name	Qty	Unit	Technical Data	Serial No (Start)	Serial No (End)	Remarks	Pages
1	42398364100	PLATE,NAME	1						

AT-147-4 43010231959 UPPER,LOWER,HINO 2KG-XZU600F

Pos No.	Parts No	Parts Name	Qty	Unit	Technical Data	Serial No (Start)	Serial No (End)	Remarks	Pages
1	42333671001	PANEL	1						
2	42332001001	OPE.ASSY	1						00024
3	90183106015	BOLT	12		M6X15				
4	37000568730	PLATE	12		T=1.5				
5	91810130240	FASTENER	2						
6	42332151010	SUPPORT	2						
7	82467300105	PLUG	2						
8	42332000100	SWITCH ASSY	2						
9	42332690100	COVER	2						
10	90183106010	BOLT	1		M6X1.0				
11	82467300103	PLUG	2						
12	90101206014	BOLT	3		M6X14				
13	90302040601	WASHER,SPRING	3		6				
14	90201200600	NUT	1		M6				
15	90303070601	WASHER,PLAIN	3		6				
16	42333572000	OPE.ASSY	1						00024
17	42332690021	SUPPORT	1						
18	42332690030	SUPPORT	1						
19	42332690040	SUPPORT	2						
20	91810132530	FASTENER	2						
21	82467300101	PLUG	2						
22	82467300112	PLUG	1						
41	82109323004	KNOB (BLACK)	2						
42	82109323005	BOOT (BELLOWS)	2						

AT-147-4 43010231959 UPPER,LOWER,HINO 2KG-XZU600F

Pos No.	Parts No	Parts Name	Qty	Unit	Technical Data	Serial No (Start)	Serial No (End)
1	42332062500	SWITCH ASSY (WITH HARNESS,1 SW)	1				
2	42433932100	SWITCH ASSY (WITH HARNESS,1 SW)	1				
3	42900022000	INDICATOR,OUTRIGGER	1				
4	80192486014	SCREW,MACHINE (WITH WASHER)	4		M6X14		
5	90302040601	WASHER,SPRING	4		6		
6	90201200600	NUT	4		M6		
7	42903151100	PANEL	1				
8	82199514013	CAP	7				
9	82154201010	METER,HOUR	2				
10	82109341003	SWITCH,KEY	1				
11	82100002307	COVER (CONTACT BLOCK PROTECTION/BLACK)	1				
12	42651593400	SWITCH ASSY (WITH HARNESS,1 SW)	1				
13	80172303012	SCREW,MACHINE	4		M3X12		
14	90303070301	WASHER,PLAIN	4		3		
15	90201200300	NUT	4		M3		
16	90302040301	WASHER,SPRING	4		3		
17	42433932200	SWITCH ASSY (WITH HARNESS,1 SW)	1				
18	42973180100	LAMP ASSY	5				
19	44320516500	PLUG (12 POLES,FEMALE)	1				
21	42350250150	PLUG (6 POLES,MALE)	1				
22	42651591300	SWITCH ASSY (WITH HARNESS,3 SW)	1				
23	42332521300	SWITCH ASSY (WITH HARNESS)	1				
24	91810130240	FASTENER	1				
25	82199504017	NUT	7		AT-401N		
26	42900001200	COVER	1				
27	82114101020	CONNECTOR (2P,MALE)	6				
28	82121102020	HOLDER	6				
29	42333522200	LAMP ASSY	1				
30	42950583200	SWITCH ASSY	1				
31	82467300103	PLUG	1				
54	82420101603	TRIM	1	M			
71	42421157510	SPARE KEY (2PIECE-1SET)	1				
89	42355641010	COVER	1				
101	42355641210	BUTTON	1				
200	42903211000	PANEL ASSY,CONTROL	1				

AT-147-4 43010231959 UPPER,LOWER,HINO 2KG-XZU600F

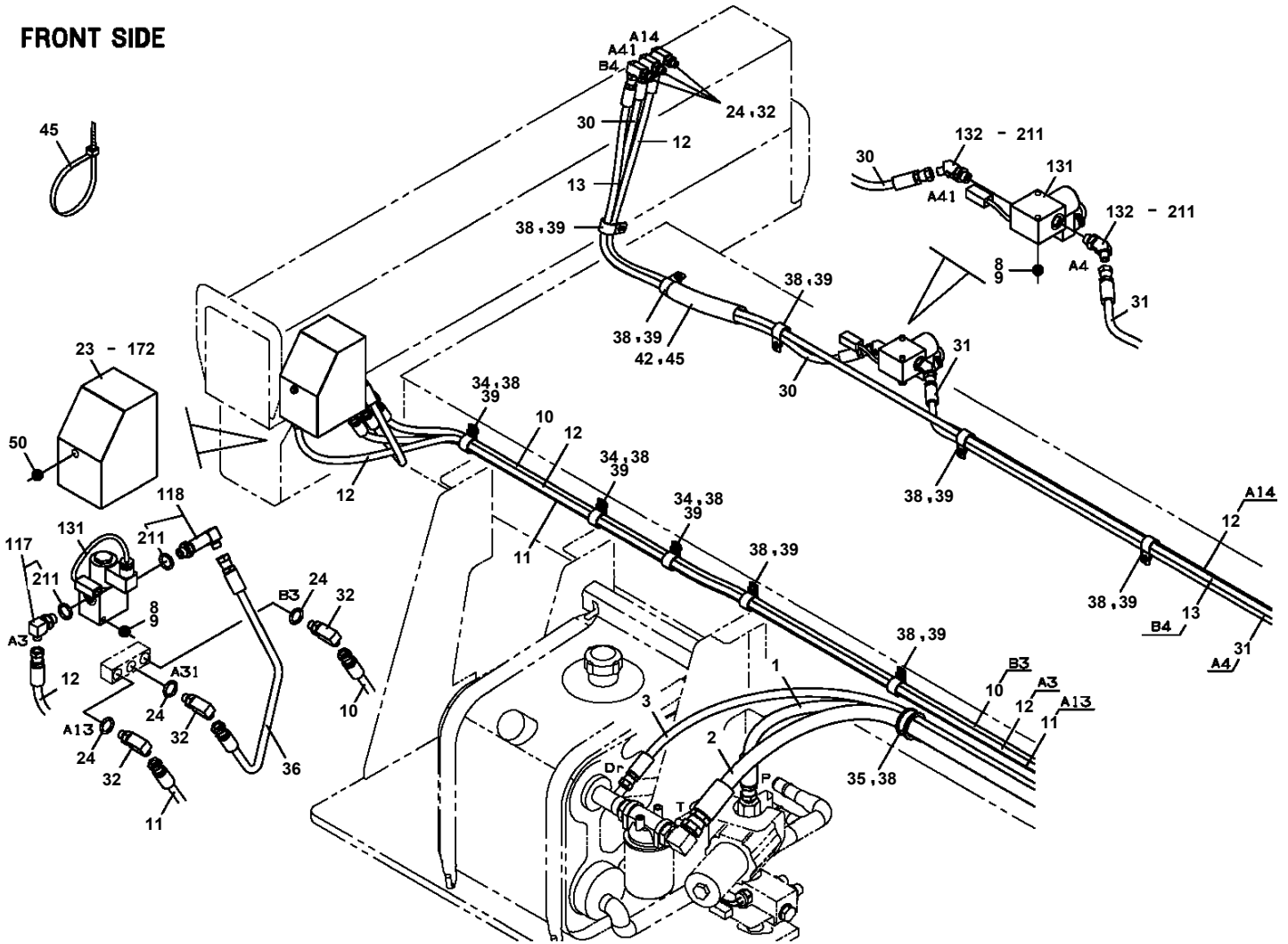
Pos No.	Parts No	Parts Name	Qty	Unit	Technical Data	Serial No (Start)	Serial No (End)	Remarks	Pages
50	36652335010	GASKET	2						
51	36652335020	GASKET	2						
54	53063551010	SEAL,OIL	1						
55	80602110360	RING,RITAINING	1		R36				
100	36652840000	PUMP,OIL (32CC:L)	1						

AT-147-4 43010231959 UPPER,LOWER,HINO 2KG-XZU600F

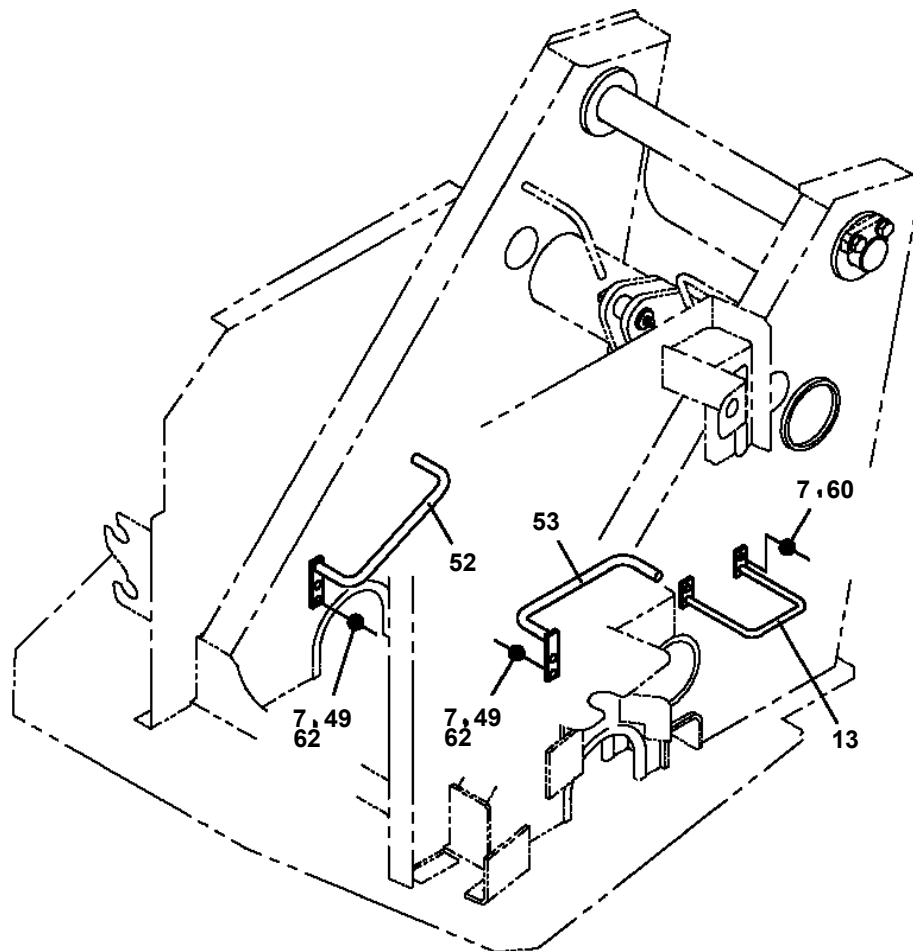
Pos No.	Parts No	Parts Name	Qty	Unit	Technical Data	Serial No (Start)	Serial No (End)	Remarks	Pages
1	37002417490	HOSE	1		L=1800				
2	37002417600	HOSE	1		L=1900				
3	37002418070	HOSE	1		L=1850				
4	82100001411	TUBE, SPIRAL	2	M	SE-08BK				
5	90101208015	BOLT	2		M8X15				
6	90302040801	WASHER, SPRING	2		8				
8	91810130270	FASTENER	20						
9	91002801800	O-RING	2		1B P18				
10	80481304024	JOINT	2						
11	37002406620	HOSE	1		L=1660				
12	37002415120	HOSE	1		L=1650				
13	37002473680	HOSE	1		L=1720				
14	37002437630	HOSE	1		L=1840				
15	42832750010	PLATE	1						
16	37002416230	HOSE	2		L=1040				
17	37002473640	HOSE	1		L=1040				
19	37002471530	HOSE	1		L=2040				
20	37002406670	HOSE	2		L=1610				
21	82420912713	TRIM	1	M					
22	80430620400	JOINT	2						
41	42347241100	JOINT	1						
42	80400160129	JOINT	4						
43	80400160127	JOINT	5						
44	80316090020	PLUG	3		KKT PT1/8				
45	91002801100	O-RING	7		1B P11				
46	91002801400	O-RING	4		1B P14				

**AT-147-4 43010231959 UPPER,LOWER,HINO 2KG-XZU600F
PP6130094-00 PIPING ASSY,FRAME (FLJ,BRAKE LOCK)**

FRONT SIDE



AT-147-4 43010231959 UPPER,LOWER,HINO 2KG-XZU600F
PP6330015-00 PIPING ASSY,SWING FRAME



ガイド取付

AT-147-4 43010231959 UPPER,LOWER,HINO 2KG-XZU600F

Pos No.	Parts No	Parts Name	Qty	Unit	Technical Data	Serial No (Start)	Serial No (End)	Remarks	P
1	36361365110	RADIATOR ASSY	1						
2	36361361110	HOSE (WATER/UPPER)	1						
3	36361361120	HOSE (WATER/LOWER)	1						
4	36361361450	CLAMP	2						
5	36361361460	CLAMP	2						
6	36361361470	CUSHION	2						
7	36361361480	CUSHION	2						
8	36361361490	SPACER	2						
21	36361365120	CAP (RADIATOR)	1						

AT-147-4 43010231959 UPPER,LOWER,HINO 2KG-XZU600F

Pos No.	Parts No	Parts Name	Qty	Unit	Technical Data	Serial No (Start)	Serial No (End)	Remarks
5	82182819823	DIODE	1		1.5A			
9	34354781710	RELAY (WITH BRACKET)	1					
100	34354781720	RELAY (WITH HARNESS)	1					

AT-147-4 43010231959 UPPER,LOWER,HINO 2KG-XZU600F

Pos No.	Parts No	Parts Name	Qty	Unit	Technical Data	Serial No (Start)	Serial No (End)	Remarks	P
1	(*****)	BOOSTER ASSY	1						00
2	(*****)	ELEC.ASSY (BOOSTER)	1						00
3	(*****)	PIPING ASSY (BOOSTER)	1						00

AT-147-4 43010231959 UPPER,LOWER,HINO 2KG-XZU600F

Pos No.	Parts No	Parts Name	Qty	Unit	Technical Data	Serial No (Start)	Serial No (End)	Ren
1	90172112030	BOLT,HEXAGON SOCKET	2		M12X30			
2	80513006813	BEARING,BALL	1					
3	90238402008	NUT,CASTLE	1		M20			
4	90303072001	WASHER,PLAIN	1		20			
5	80136340040	PIN,SPLIT	1		4X40			
6	37000172650	PIN	1					
7	37000516640	PLATE	3		T=1			
8	80136363050	PIN,SPLIT	3		6.3X50			
9	36624630000	VALVE,CHECK	1					
10	90172110050	BOLT,HEXAGON SOCKET	4		M10X50			
11	36051830000	CYLINDER,WINCH JIB (POWER)	1					
12	36663960001	MOTOR ASSY,OIL	1					
13	42311211100	PIN	1					
14	82400000459	CAP	2					
15	37000164330	PIN	1					
16	42220249510	ROPE,WIRE	1	M				
17	82112001022	SLEEVE	2					
21	42311802100	PIN	1					
22	80173304010	SCREW,MACHINE	4		M4X10			
23	42312282001	TABLE,SLEWING	1					
24	42311891060	PIN	1					
25	90101208012	BOLT	2		M8X12			
26	90172112025	BOLT,HEXAGON SOCKET	2		M12X25			
27	42311951102	GEAR ASSY	1					
28	80601110650	RING,RITAINING	1		S65			
29	42311341100	SUPPORT	1					
30	90101210020	BOLT	2		M10X20			
31	90302041001	WASHER,SPRING	2		10			
32	80913136480	KEY	1					
33	42311951200	GEAR	1					
34	37000547660	PLATE	1		T=2.3			
35	901711108016	BOLT	1		M8X16			
36	90302040801	WASHER,SPRING	7		8			
38	37000586760	WASHER,PLAIN	4		12			
39	80801004012	BEARING,PLAIN	2					
40	90201200600	NUT	2		M6			
41	42311951300	SUPPORT	1					
42	42310952600	GUIDE	2					
43	42310952700	GUIDE	2					
44	42311891050	PLATE	1					
45	37001200230	SPRING	1					
46	42311752021	PIN	1					
47	91002802000	O-RING	1		1B P20			
48	42311752011	SUPPORT	1					
49	90180208016	BOLT,BUTTON	4		M8X16			
50	42312402100	SUPPORT	1					
51	42312403002	FRAME	1					
52	80602110320	RING,RITAINING	1		R32			
92	80513006015	BEARING,BALL	1					
102	82400000205	GROMMET	1					
104	82456201000	NIPPLE,GREASE	1		A-TYPE PT1/8			
105	80801003020	BEARING,PLAIN	2					

AT-147-4 43010231959 UPPER,LOWER,HINO 2KG-XZU600F

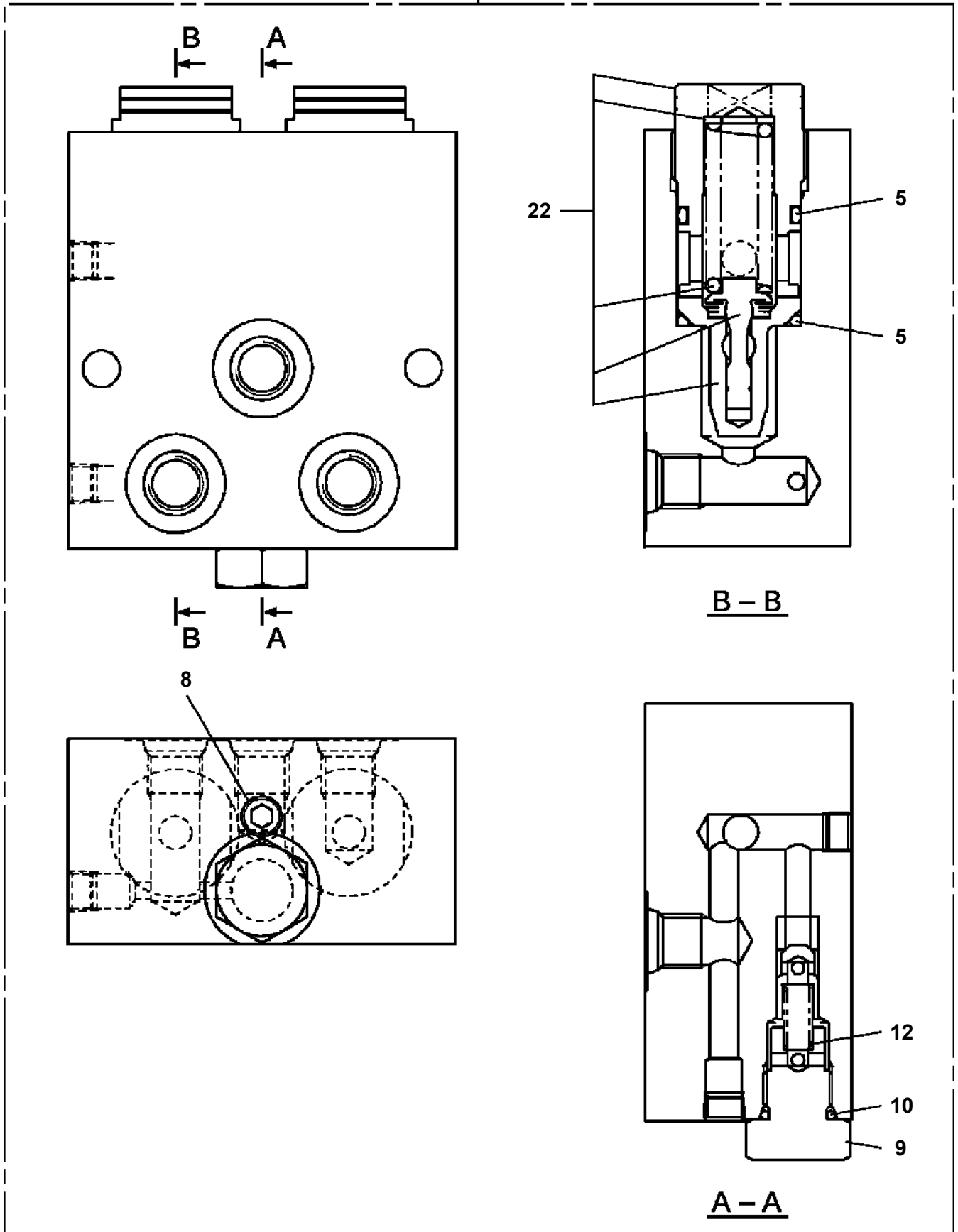
Pos No.	Parts No	Parts Name	Qty	Unit	Technical Data	Se
1	82109833232	SWITCH	1			
2	82100002220	CABLE	4	M		
3	82100002173	CONNECTOR	1			
50	42509160000	SWITCH ASSY (ELEC.BOOSTER, REMOTE:3M,NANABOSI,KASUGA)	1			

AT-147-4 43010231959 UPPER,LOWER,HINO 2KG-XZU600F

Pos No.	Parts No	Parts Name	Qty	Unit	Technical Data	Serial No (Start)	Serial No (End)	Re
1	36018260002	CYLINDER ASSY,TELESCOPING	1					
2	36606330000	VALVE,COUNTERBALANCE	1					
3	90172108065	BOLT,HEXAGON SOCKET	3		M8X65			
4	90171112045	BOLT	2		M12X45			
5	90303071201	WASHER,PLAIN	2		12			
6	90201201200	NUT	2		M12			

AT-147-4 43010231959 UPPER,LOWER,HINO 2KG-XZU600F
PV5140019-00 VALVE ASSY,RELIEF

100



AT-147-4 43010231959 UPPER,LOWER,HINO 2KG-XZU600F PV5450132-00 VIEW SYSTEM

ビュースystem VIEW SYSTEM

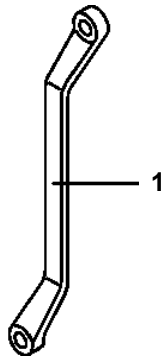
日野・トヨタ専用
市光工業製、ルームミラー型後方確認システム
カラーモニタ、DC12V、DC24V対応

符号	日本語名称	英語名称	備考
1	ハーツASSY,エレクト (モニタ)	PARTS ASSY,ELECTRICITY	
2	ハーツASSY,エレクト (カメラ)	PARTS ASSY,ELECTRICITY	

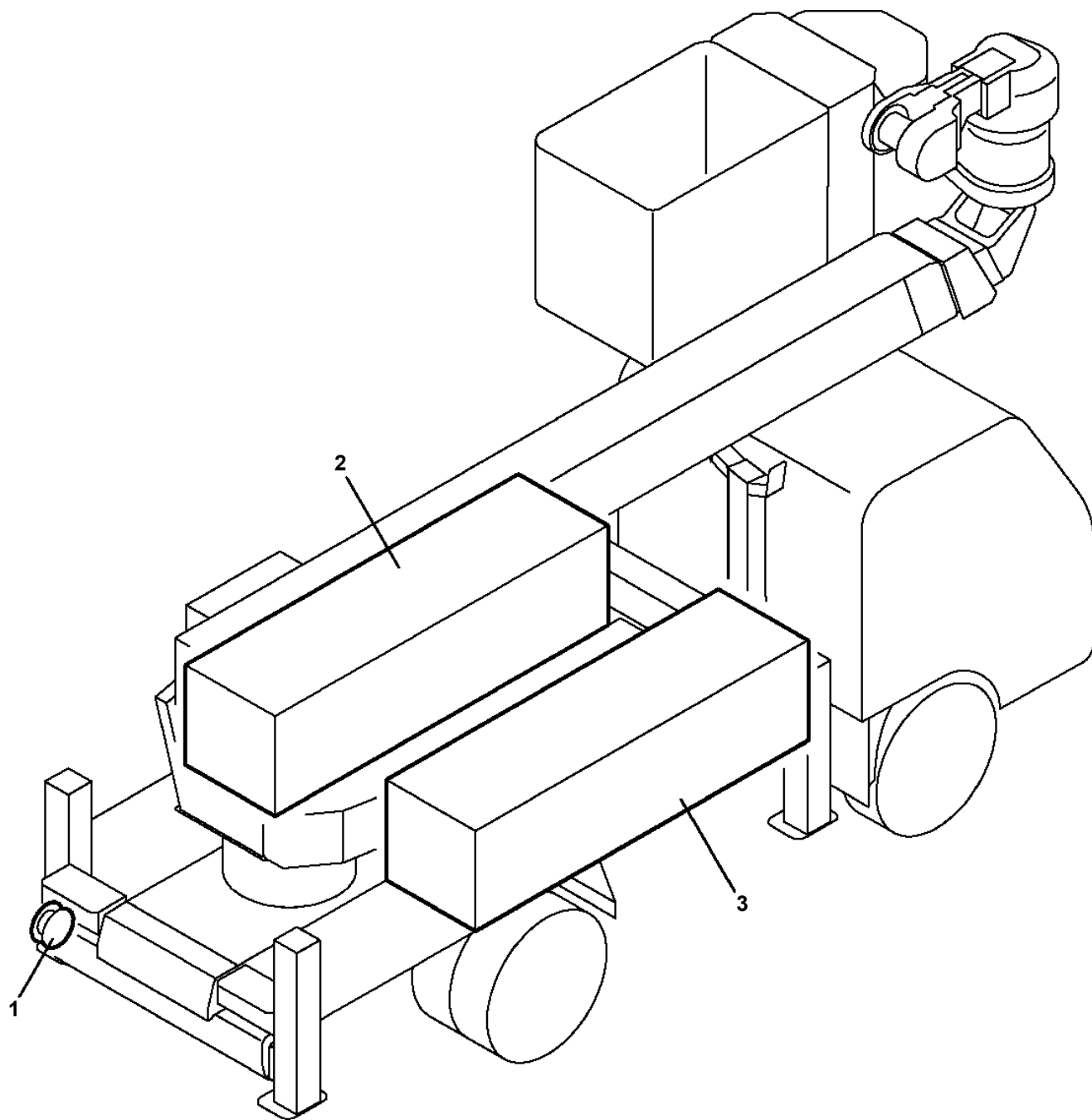
適用製造番号によっては取り付けがないものもあります。

MACHINES OF SOME SERIAL NO. ARE NOT EQUIPPED WITH THESE PARTS.

**AT-147-4 43010231959 UPPER,LOWER,HINO 2KG-XZU600F
PW1010381-00 ACCESSORIES (WRENCH)**



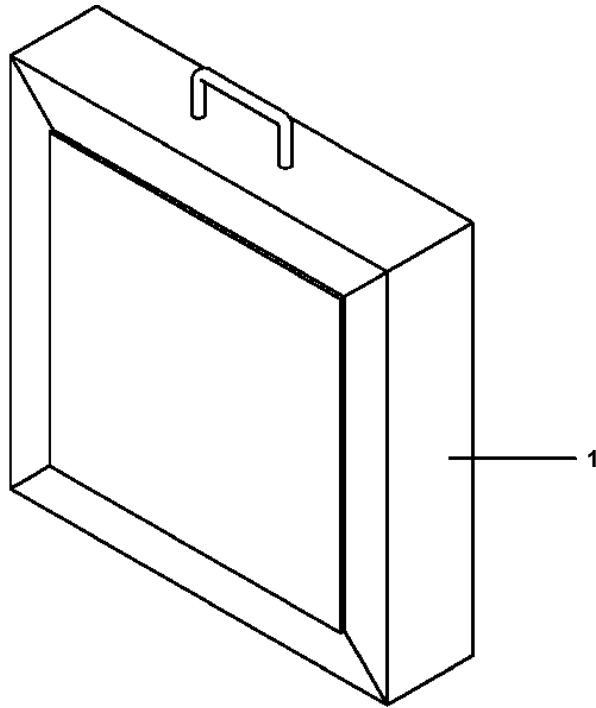
**AT-147-4 43010231959 UPPER,LOWER,HINO 2KG-XZU600F
PX1001337-00 MOUNTING PARTS**



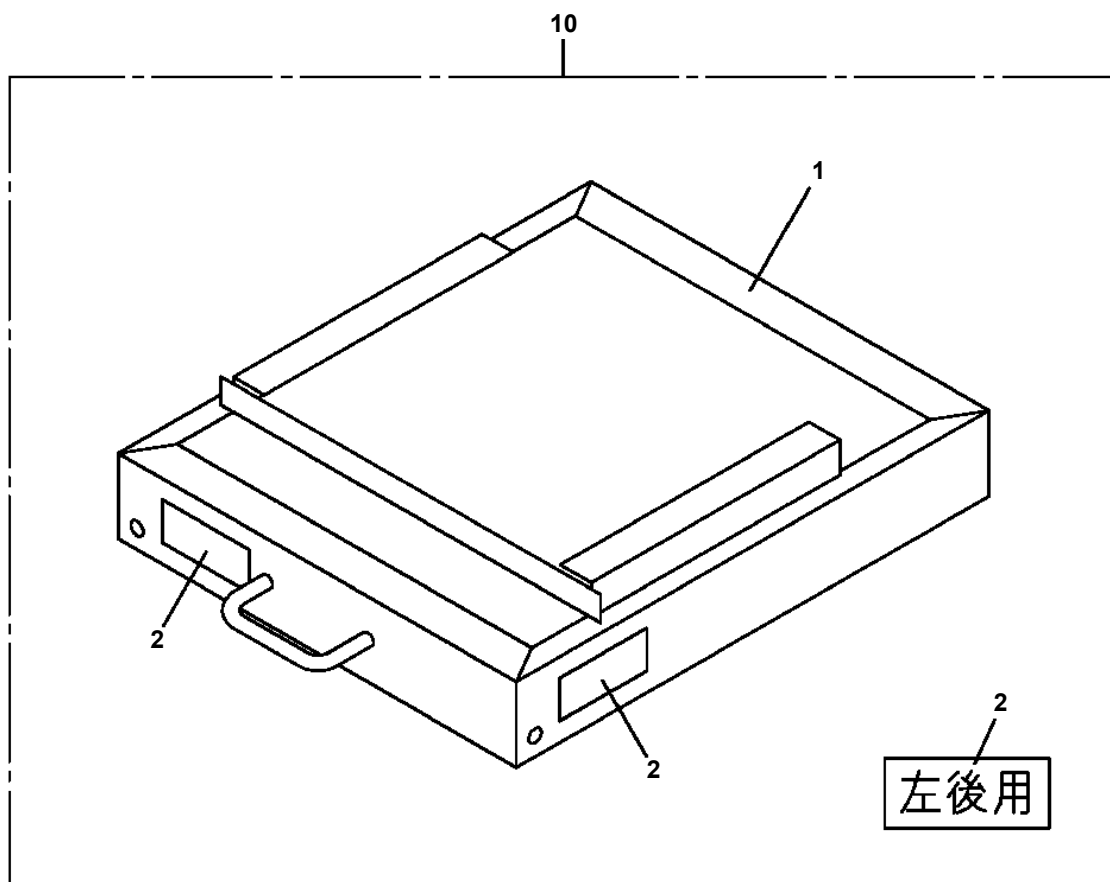
適用製造番号によっては取り付けがないものもあります。

MACHINES OF SOME SERIAL NO. ARE NOT EQUIPPED WITH THESE PARTS.

AT-147-4 43010231959 UPPER,LOWER,HINO 2KG-XZU600F
PX1270086-01 WOOD BLOCK (W=350,H=80)

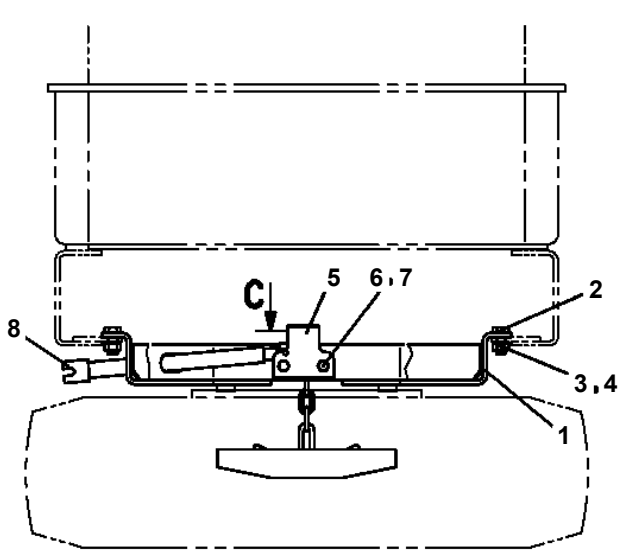
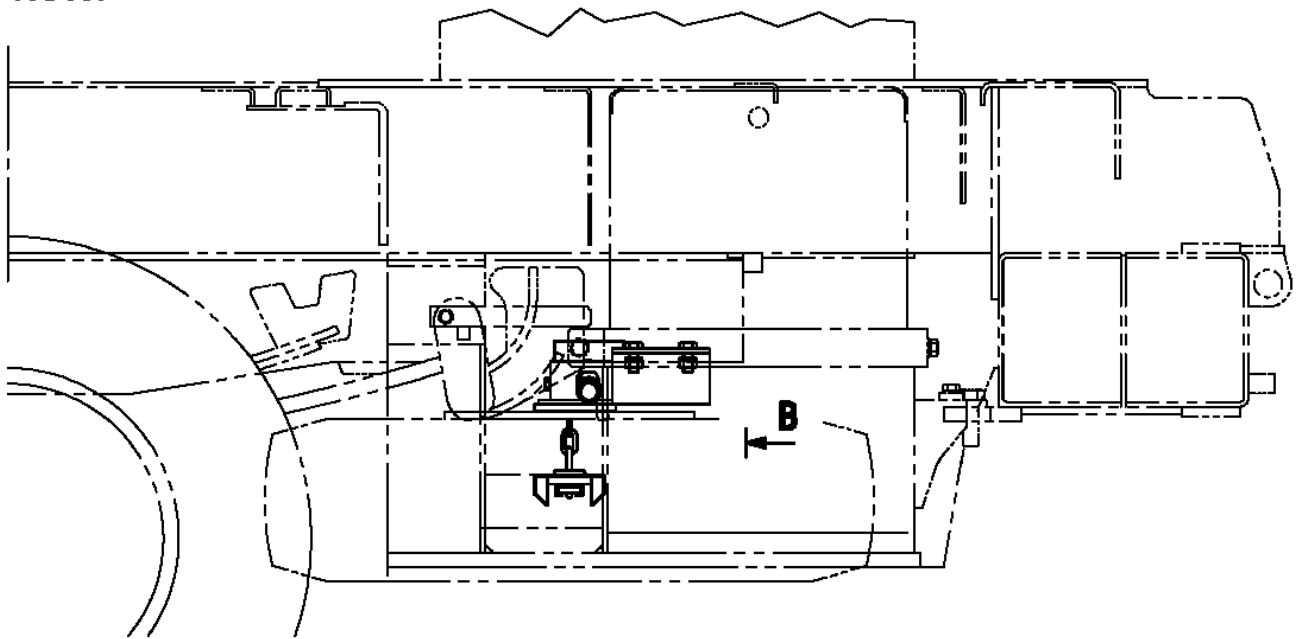


AT-147-4 43010231959 UPPER,LOWER,HINO 2KG-XZU600F
PX1270163-01 BLOCK,WOOD (LEFT REAR:KANSAI DENRYOKU/DETACHABLE TYPE)

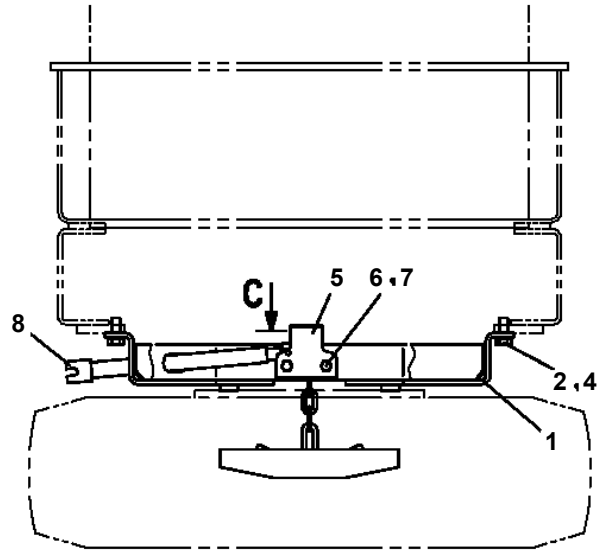


AT-147-4 43010231959 UPPER,LOWER,HINO 2KG-XZU600F
 PX1410231-01 MOUNT,TIRE

FRONT ←

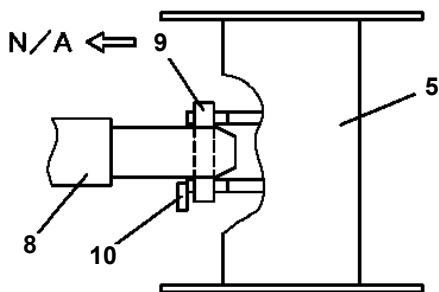


三菱・日野・トヨタ・日産・日デの場合

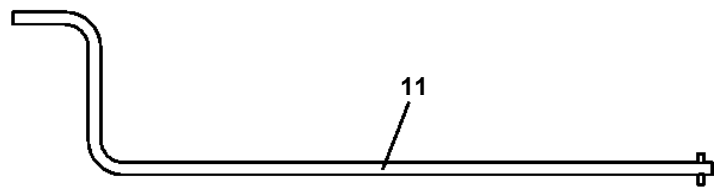


いすゞの場合

B

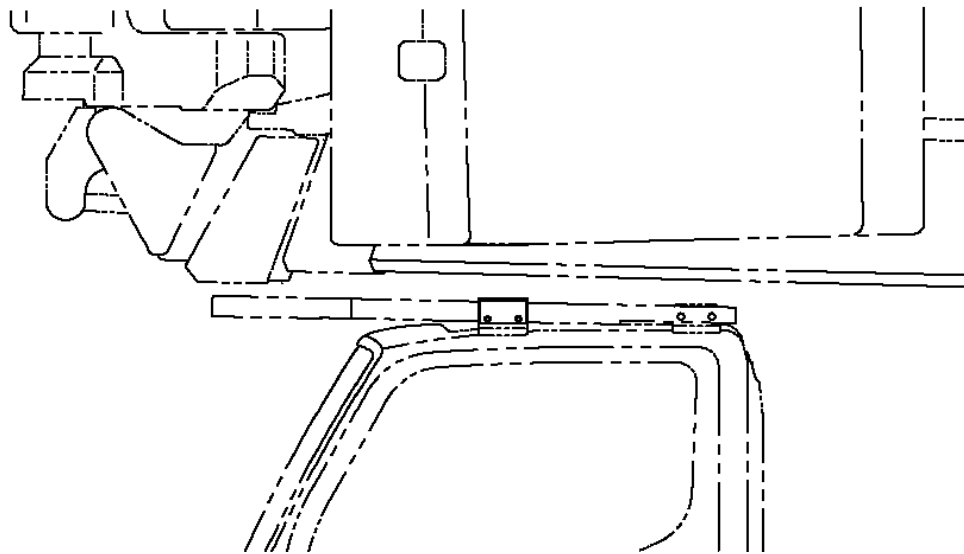
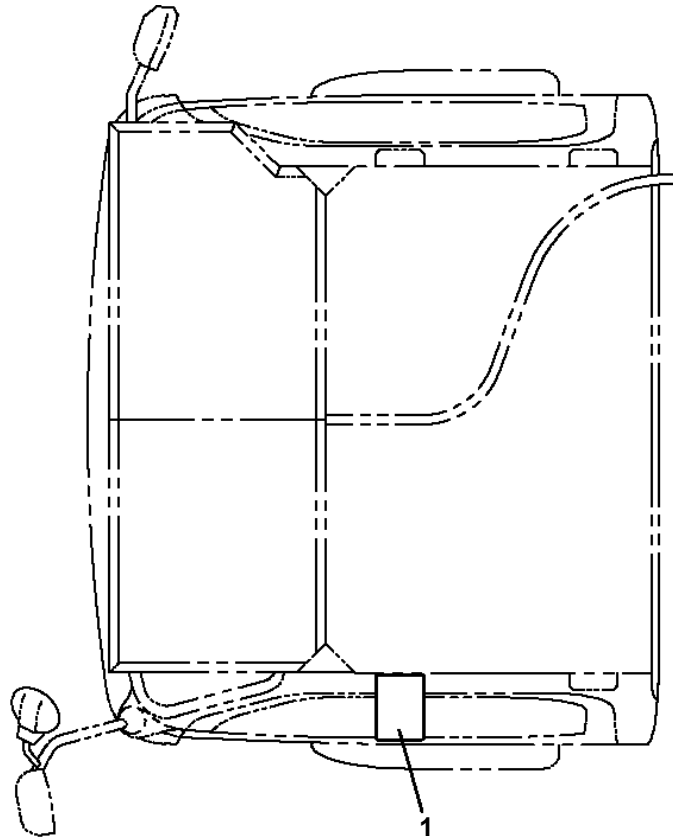


C

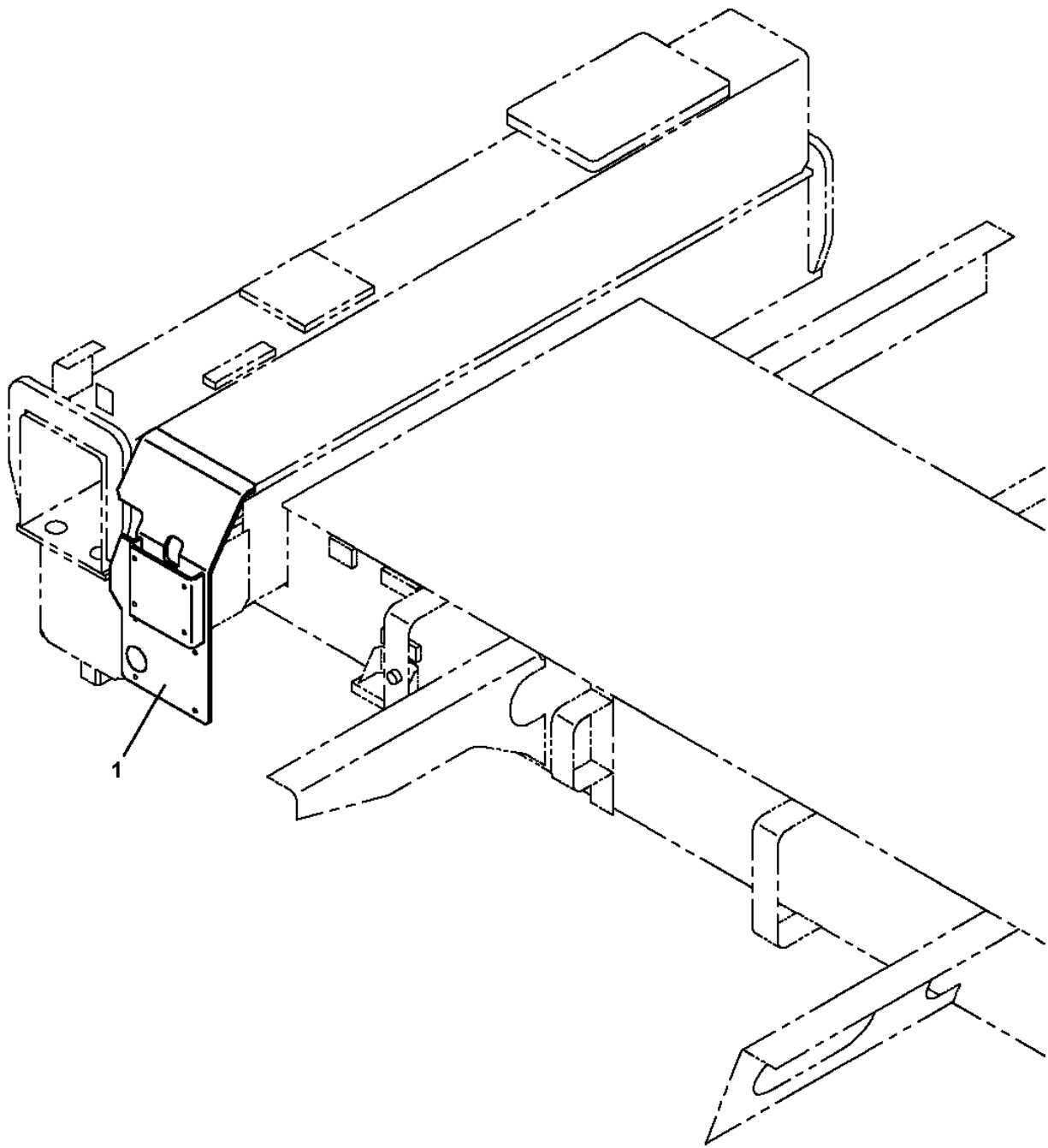


キャブ内積込み

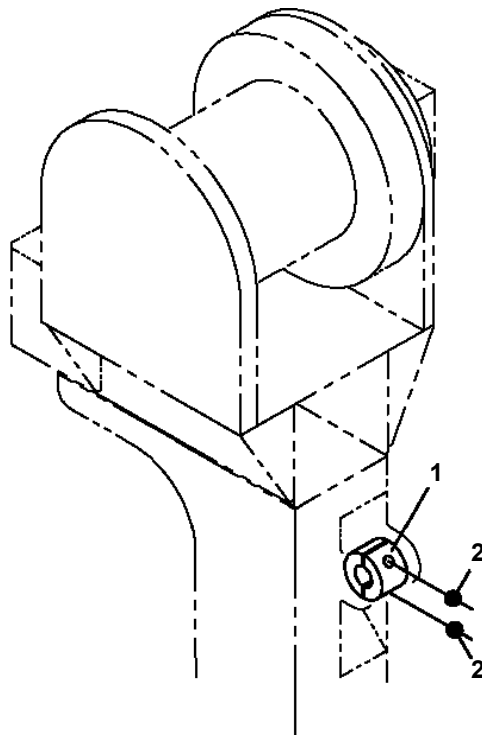
AT-147-4 43010231959 UPPER,LOWER,HINO 2KG-XZU600F
PX5010431-00 MOUNT ASSY (ANTENNA)



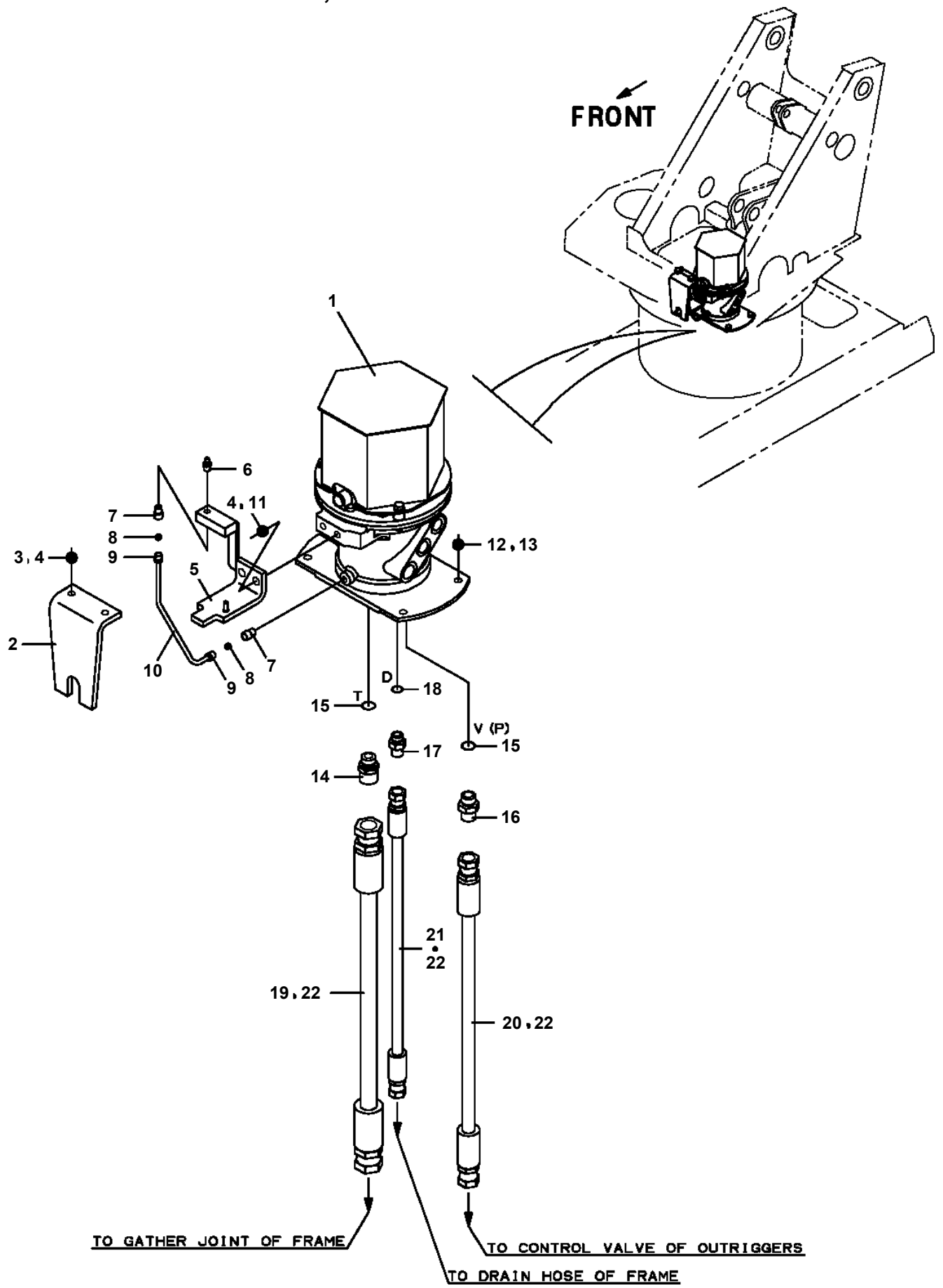
**AT-147-4 43010231959 UPPER,LOWER,HINO 2KG-XZU600F
PX5010621-00 MOUNT ASSY (BATTERY)**



**AT-147-4 43010231959 UPPER,LOWER,HINO 2KG-XZU600F
PX5430011-00 MOUNT ASSY, GUARD (WITHOUT JIB STOWING FUNCTION)**

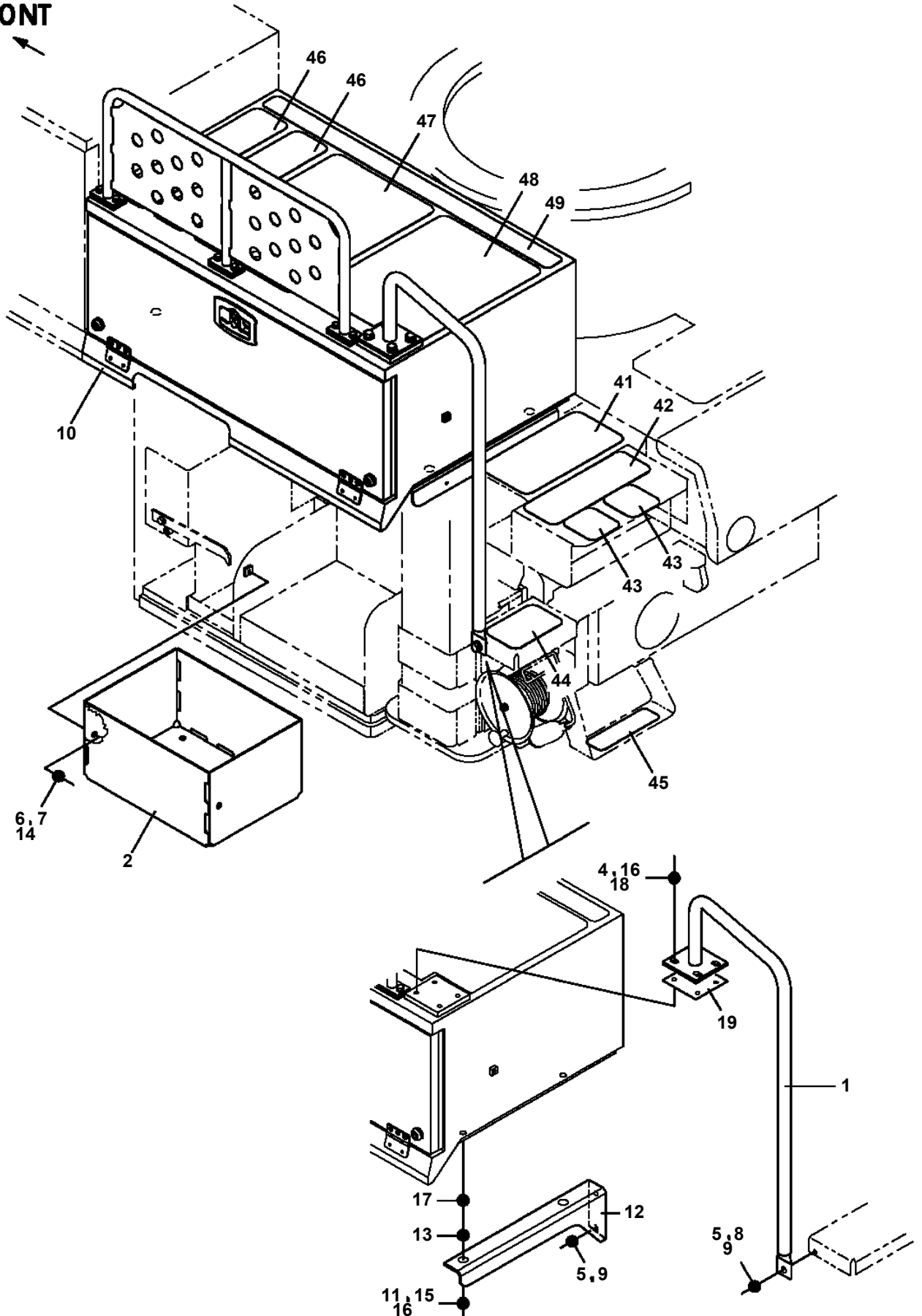


**AT-147-4 43010231959 UPPER,LOWER,HINO 2KG-XZU600F
PX5730012-00 MOUNT ASSY,SWIVEL JOINT**

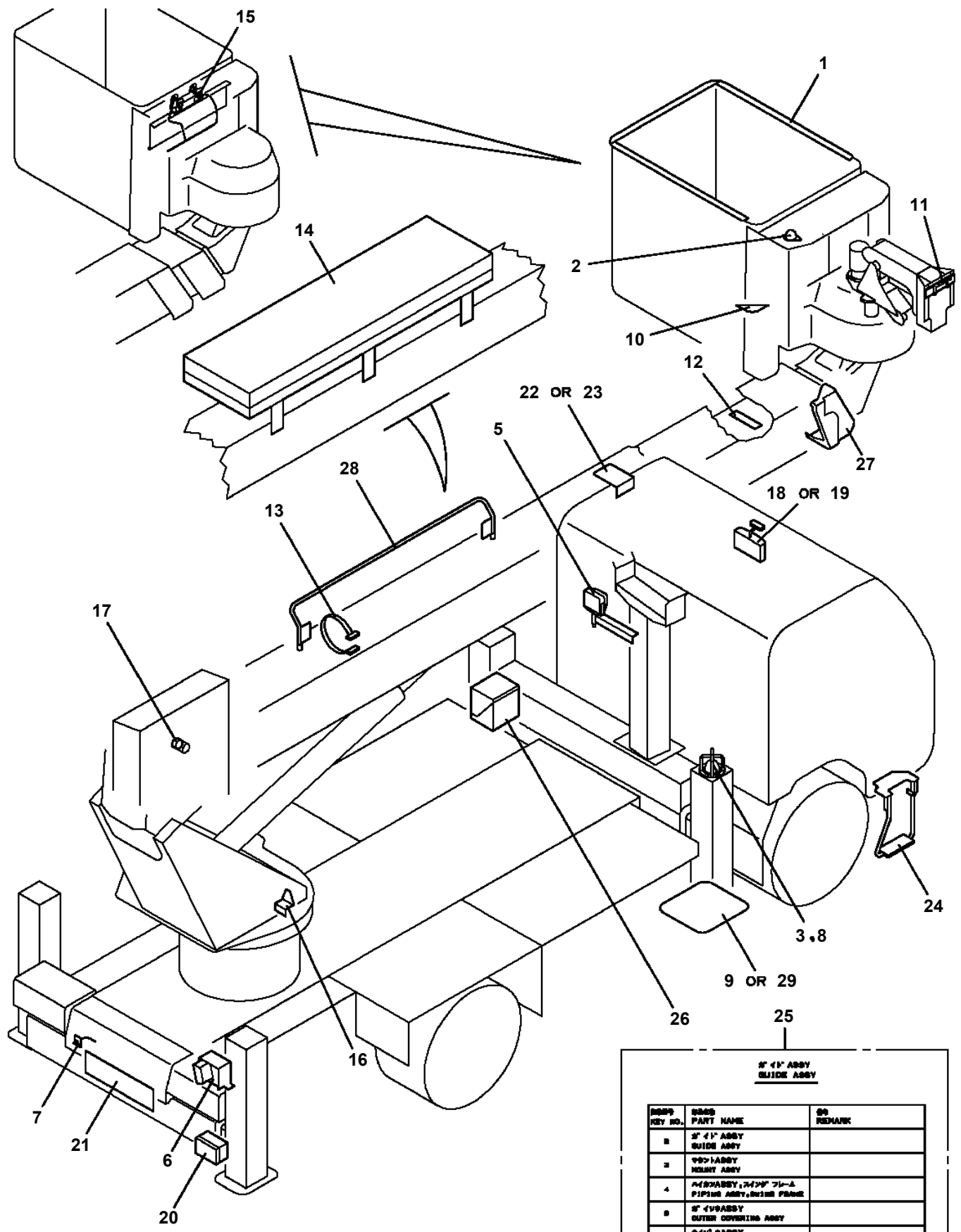


AT-147-4 43010231959 UPPER,LOWER,HINO 2KG-XZU600F
PX5780528-00 MOUNT ASSY,TOOL BOX (LEFT/REAR:1-DECK)

FRONT



**AT-147-4 43010231959 UPPER,LOWER,HINO 2KG-XZU600F
PY1001928-02 OPTION UNIT,1 (UPPER)**



8" 4" ASBY GUIDE ASBY		
ORIG REV NO.	ORIG PART NAME	OR REMARK
1	8" 4" ASBY GUIDE ASBY	
2	9" 4" ASBY HUBBY ASBY	
4	14" 4" ASBY, 14" 4" 7/8-A PIPING ASBY, 14" 4" 7/8-A	
5	8" 4" ASBY OUTER COVERING ASBY	
6	8" 4" ASBY MODIFICATION ASBY	

適用製造番号によっては取り付けがないものもあります。

MACHINES OF SOME SERIAL NO. ARE NOT EQUIPPED WITH THESE PARTS.

AT-147-4 43010231959 UPPER,LOWER,HINO 2KG-XZU600F

Pos No.	Parts No	Parts Name	Qty	Unit	Technical Data	Serial No (Start)	Serial No (End)
1	42471070000	CLAMP HEAD (O.D.K 10TON ELECTRIC)	1				

AT-147-4 43010231959 UPPER,LOWER,HINO 2KG-XZU600F

Pos No.	Parts No	Parts Name	Qty	Unit	Technical Data	Serial No (Start)	Serial No (End)	F
1	42470530000	CUTTER HEAD (IZUMI 6.4TON AIR)	1					
2	42470537510	BOLT	2					
3	42470537520	NUT	2		M8			

AT-147-4 43010231959 UPPER,LOWER,HINO 2KG-XZU600F

Pos No.	Parts No	Parts Name	Qty	Unit	Technical Data	Serial No (Start)	Serial No (End)	Remarks	P
1	42472670000	ROPE (SAFETY,WHITE)	1						

AT-147-4 43010231959 UPPER,LOWER,HINO 2KG-XZU600F

Pos No.	Parts No	Parts Name	Qty	Unit	Technical Data	Serial No (Start)	Serial No (End)	Remarks	Pages
1	42470121000	ARM ASSY	1						
2	42470421000	HOLDER	3						
3	42470123000	CLAMP ASSY	1						
5	42476851000	SUPPORT	1						
6	90101216130	BOLT	1		M16X130				
7	90303071601	WASHER,PLAIN	2		16				
8	90201201600	NUT	2		M16				
9	42220011200	SUPPORT	1						
31	42470121100	ARM	1						
32	42470121200	CAP	2						

AT-147-4 43010231959 UPPER,LOWER,HINO 2KG-XZU600F

Pos No.	Parts No	Parts Name	Qty	Unit	Technical Data	Serial No (Start)	Serial No (E
1	80456210600	JOINT,SELF SEALING	1				
2	42470367750	HOSE ASSY	1		3M		
3	42470362100	JOINT,SELF SEALING	1				
4	42470367770	HOSE,AIR	1		3M		
5	42470362200	PUMP	1				
6	80456240600	JOINT,SELF SEALING (WITH DUST CAP)	1				
7	42470367840	TUBE	2		25X0.15M		
8	42470367780	JOINT	1				
21	42471437520	CAP	1				
50	42470362000	HOSE,BOOSTER	1		L=3000		

AT-147-4 43010231959 UPPER,LOWER,HINO 2KG-XZU600F

Pos No.	Parts No	Parts Name	Qty	Unit	Technical Data	Serial No (Start)	Serial No (End)
5	80456210600	JOINT,SELF SEALING	2				
10	42472130000	HOSE,BOOSTER (FEMALE-FEMALE,5M)	1				

AT-147-4 43010231959 UPPER,LOWER,HINO 2KG-XZU600F

Pos No.	Parts No	Parts Name	Qty	Unit	Technical Data	Serial No (Start)	Serial No (End)	Remarks	Pages
1	42733561000	EARTH	1						
2	42733560100	CABLE	1						
3	90101208016	BOLT	1		M8X16				
4	42733560030	PLATE	1						
5	80720104028	PIN,SPRING	1		4X28				
6	90303070801	WASHER,PLAIN	1		8				

AT-147-4 43010231959 UPPER,LOWER,HINO 2KG-XZU600F

Pos No.	Parts No	Parts Name	Qty	Unit	Technical Data	Serial No (Start)	Serial No (End)	Remarks	Pages
1	42474970100	PLATE	2						

AT-147-4 43010231959 UPPER,LOWER,HINO 2KG-XZU600F

Pos No.	Parts No	Parts Name	Qty	Unit	Technical Data	Serial No (Start)	Serial No (End)	Remarks
1	42475930000	HANGER (FOR BUCKET,FRP)	1					

AT-147-4 43010231959 UPPER,LOWER,HINO 2KG-XZU600F

Pos No.	Parts No	Parts Name	Qty	Unit	Technical Data	S
69	(*****)	SUPPORT (WINCH JIB,OPTION)	1			
70	(*****)	SUPPORT (WINCH JIB,FOR HOKURIKUDENKOU)	1			
71	(*****)	LAMP (12V60W,WITH CIGARETTE LIGHTER)	1			
72	(*****)	LAMP (REOVLVING LAMP)	1			
73	(*****)	MOUNT,LAMP (BUCKET,FOR NTT,OPTION)	1			
74	(*****)	PUMP,GREASE (400CC)	1			
75	42473401000	TOOLS	1			
76	91991601013	ACCESSORIES (WRENCH)	1			
77	42461681000	WEDGE (YELLOW)	1			
78	(*****)	WOOD BLOCK (W=350,H=80)	1			
79	42731680000	WOOD BLOCK (WITH RUBBER,T=80)	1			
80	42738400000	WOOD BLOCK (WITH RUBBER,T=100)	1			
81	42972410000	BLOCK,WOOD	1		T=150	
82	(*****)	WOOD BLOCK (KANDEN/DETACHABLE TYPE,L)	1			
83	42972040000	WOOD BLOCK (KANDEN/DETACHABLE TYPE,B)	1			
84	(*****)	EARTHING DEVICE	1			
85	(*****)	EARTH ASSY	1			
86	(*****)	CABLE	1			
87	42510290000	CABLE ASSY (PC CONNECTION CABLE)	1			
88	(*****)	WINCH,JIB (FRP/INTEGRATED SUPPORT,GRAY)	1			
89	42973990100	SUPPORT (7 DEGREES ANGLE METER MOUNTING)	1			
90	(*****)	GUARD ASSY	1			
91	(*****)	COVER ASSY	1			
92	42514590000	COVER ASSY	1			
93	42512340000	BELT	1			
94	(*****)	JIB ASSY	1			
95	42516050000	MAT	1			
96	(*****)	SWITCH ASSY (2M,ELEC. BOOSTER REMOCON,SANWA,KASUGA)	1			
97	(*****)	SWITCH ASSY (3M,ELEC. BOOSTER REMOCON,SANWA,KASUGA)	1			
98	(*****)	SWITCH ASSY (5M,ELEC. BOOSTER REMOCON,SANWA,KASUGA)	1			

AT-147-4 43010231959 UPPER,LOWER,HINO 2KG-XZU600F

Pos No.	Parts No	Parts Name	Qty	Unit	Technical Data	Serial No (Start)	Serial No (End)
1	42262804000	COVER,WINCH (CLOTH,WHITE/WINCH)	1				

AT-147-4 43010231959 UPPER,LOWER,HINO 2KG-XZU600F
 PY5360042-00 ACCESSORY LIST (ENGINE)

指示番号 KEY NO.	部品名称 PART NAME	備考 REMARK
120	ポンプ ASSY, ヒュエル PUMP ASSY, FUEL	ヒュエルポンプASSY
120 - 71	リペアキット REPAIR KIT	*
121	ジョイント JOINT	エルボコネクタ
122	ジョイント JOINT	エルボコネクタ
123	フィルタASSY FILTER ASSY	ヒュエルフィルタ
124	サポート SUPPORT	フィルタクランプ
125	タイマ TIMER	コントロールタイマ
126	ランプ ASSY LAMP ASSY	グローランプ
127	ホース HOSE	ヒュエルホース L=300
128	ホース HOSE	ヒュエルホース L=700
130	ホース HOSE	ヒュエルホース L=1700
131	ホース HOSE	ヒュエルホース L=2330
133	クリップ CLIP	ホースクリップ
134	ジョイント JOINT	アイジョイント
135	ジョイント JOINT	ホルト, アイ
136	ガスケット GASKET	ガスケット
137	ホースASSY HOSE ASSY	オイルドレーンキット
138	ワッシャ WASHER	シーリング ワッシャ

AT-147-4 43010231959 UPPER,LOWER,HINO 2KG-XZU600F

Pos No.	Parts No	Parts Name	Qty	Unit	Technical Data	Serial No (Start)	Serial No (End)	Remarks	Pages
1	82109833232	SWITCH	1						
2	82100002220	CABLE	N						
3	82116920411	CONNECTOR	1						
4	82122910100	CAP	1						

AT-147-4 43010231959 UPPER,LOWER,HINO 2KG-XZU600F

Pos No.	Parts No	Parts Name	Qty	Unit	Technical Data	Serial No (Start)	Serial No
1	42655950100	HARNESS	1				
2	42655920200	HARNESS	1				
3	91810132530	FASTENER	21				
4	82100002019	CLAMP	7		WR40		
5	82108501140	SWITCH	1				
6	44430680200	BUZZER ASSY (WITH HARNESS)	1				
7	42474530100	LAMP ASSY	1				
8	90302040601	WASHER,SPRING	12		6		
9	90201200800	NUT	2		M8		
10	90302040801	WASHER,SPRING	2		8		
11	91850400601	CLAMP	24				
12	91810130240	FASTENER	33				
13	90813108020	BOLT,WING	1		M8X20		
14	90172106016	BOLT,HEXAGON SOCKET	12		M6X16		
15	36132150000	DETECTOR,OUTRIGGER LENGTH	4				
16	42655920300	CABLE	1		L=510		
17	42433330020	PLUG (2 POLES,FEMALE)	1				
18	90280200600	NUT,FLANGE	4		M6		
19	80136320012	PIN,SPLIT	4		2X12		
20	90303070601	WASHER,PLAIN	36		6		
23	90303070801	WASHER,PLAIN	1		8		
25	82100002004	CLAMP	3		WR8		
26	90280200800	NUT,FLANGE	7		M8		
41	82165904020	LAMP	1		24V 60W		
42	90101212020	BOLT	1		M12X20		
43	90302041201	WASHER,SPRING	1		12		
44	37000159530	PIN	1				
45	80620210160	PIN,SNAP	1				
61	42655202100	SWITCH ASSY	4				
62	42655201010	SUPPORT	1				
63	90101208016	BOLT	2		M8X16		
64	90302040801	WASHER,SPRING	6		8		
65	90303070801	WASHER,PLAIN	2		8		
81	42651893100	COVER	3				
82	90186206014	BOLT,FLANGE	6		M6X14		
83	90101206014	BOLT	6		M6X14		
84	90302040601	WASHER,SPRING	6		6		
85	90303070601	WASHER,PLAIN	6		6		
87	42655202010	SUPPORT	3				
101	82104501250	SWITCH,LIMIT (2 PCS/SET,WITH HARNESS)	2				
102	42653152101	COVER	2				
103	80172304030	SCREW,MACHINE	8		M4X30		
104	90302040401	WASHER,SPRING	8		4		
105	90303070401	WASHER,PLAIN	16		4		
106	90201200400	NUT	8		M4		
107	90101208012	BOLT	4		M8X12		
121	82100000054	BULB,LAMP	1		24V 60W		
139	82100002838	SWITCH ASSY (WITH HARNESS,TERMINAL)	1				
152	82400000200	GROMMET	2		KG-012,L=250		

CLICK HERE TO **DOWNLOAD** THE COMPLETE MANUAL

- Thank you very much for reading the preview of the manual.
- You can download the complete manual from: www.heydownloads.com by clicking the link below



- Please note: If there is no response to CLICKING the link, please download this PDF first and then click on it.

CLICK HERE TO **DOWNLOAD** THE COMPLETE MANUAL