

## **AT-147-3 43010100036 UPPER**

**PD2000186-01 SWING UNIT  
PF1000691-00 WINCH SYSTEM  
PG2000244-00 BOOM UNIT  
PH1000550-00 SAFETY DEVICES (MOTION CONTROLLER)  
PJ3000567-00 BUCKET SYSTEM  
PJ5000003-00 BOOSTER UNIT  
PK2001785-00 FRAME UNIT  
PO1000171-00 INDICATION PLATES  
PW1000118-00 ACCESSORIES & TOOLS  
PX1001290-00 MOUNTING PARTS  
PY1001439-00 OPTIONS  
ASSEMBLY**

CLICK HERE TO **DOWNLOAD** THE COMPLETE MANUAL

- Thank you very much for reading the preview of the manual.
- You can download the complete manual from: [www.heydownloads.com](http://www.heydownloads.com) by clicking the link below



- Please note: If there is no response to CLICKING the link, please download this PDF first and then click on it.

CLICK HERE TO **DOWNLOAD** THE COMPLETE MANUAL

# AT-147-3 43010100036 UPPER

Pos No.	Parts No	Parts Name	Qty	Unit	Technical Data	Serial No (Start)	Serial No (End)
1	42267241000	BUCKET	1				
2	(*****)	BUCKET (INNER CASE)	1				
4	(*****)	ARM ASSY	1				
5	(*****)	PIPING ASSY,ARM	1				
6	(*****)	PIPING ASSY,BUCKET	1				
9	(*****)	COVER,BOOM (TOP/FRP,WHITE)	1				
10	(*****)	BUCKET FRAME ASSY	1				
11	(*****)	COVER (ARM/FRP,WHITE)	1				
12	(*****)	COVER (WINCH/FRP,WHITE)	1				
13	42267274000	COVER (CLOTH,WHITE/BUCKET)	1				
14	(*****)	COVER (BUCKET/FRP,WHITE)	1				
15	(*****)	COVER (ARM HOSE,CLOTH)	1				
16	(*****)	COVER	1				
17	42262804000	COVER,WINCH (CLOTH,WHITE/WINCH)	1				
21	(*****)	OPE.ASSY (BUCKET)	1				
22	(*****)	ELEC.ASSY (ARM)	1				
23	(*****)	ELEC.ASSY,BUCKET	1				
24	(*****)	ACCESSORIES (BUCKET INNER MAT)	1				

# AT-147-3 43010100036 UPPER

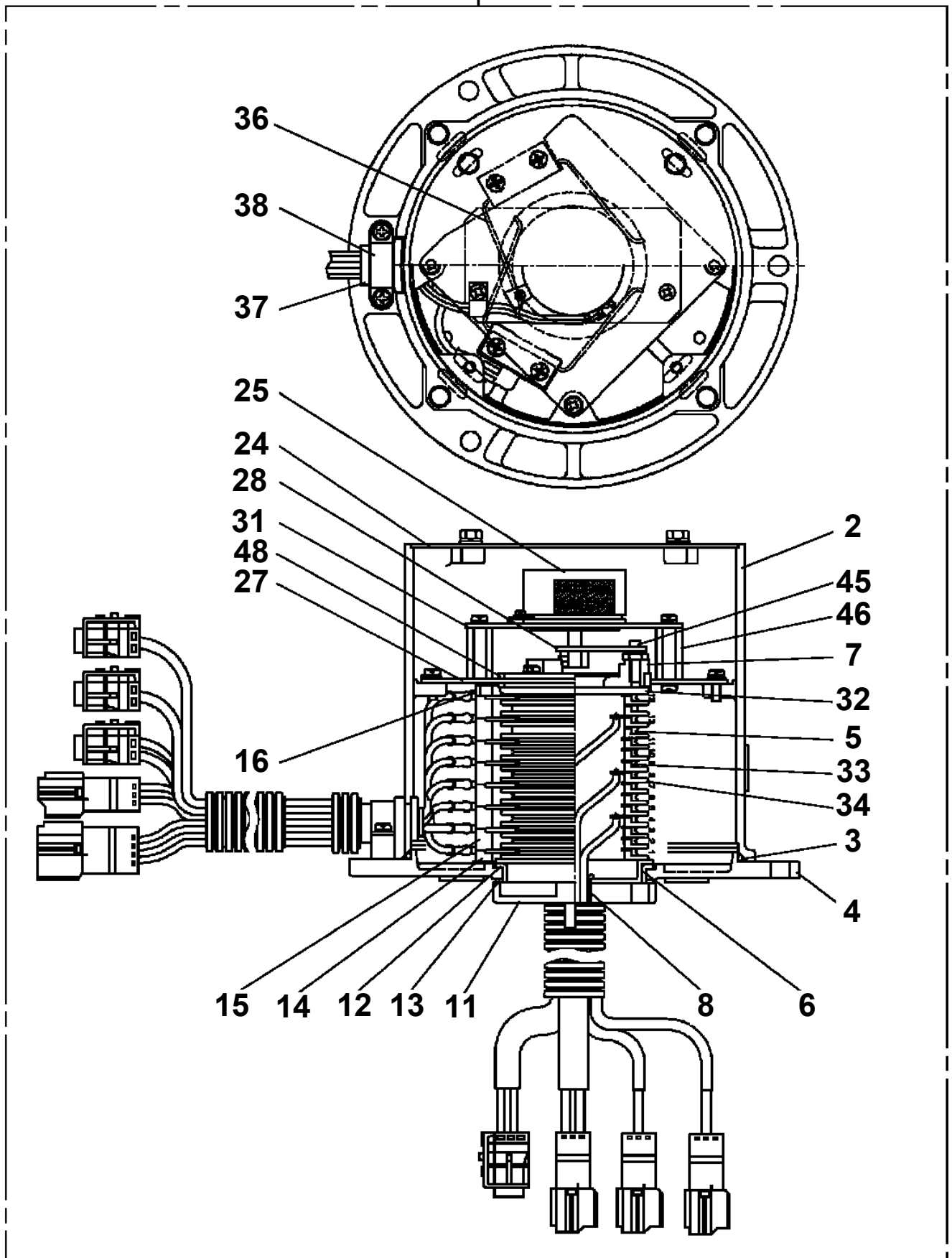
Pos No.	Parts No	Parts Name	Qty	Unit	Technical Data	Serial No (Sta
1	(*****)	MOUNT ASSY,TOOL BOX (LEFT SIDE/F:DOUBLE,R:SINGLE)	1			
2	(*****)	BOX,TOOL (RIGHT/F:2-DECKER,R:NONE)	1			
3	(*****)	EARTHING DEVICE (8X20M, TOP CLIP)	1			
	(*****)	EARTH ASSY (5X10M.CLIP ON THE END,PORTABLE)	1			
	(*****)	EARTHING DEVICE (8X10M, TOP CLIP)	1			
	(*****)	EARTHING DEVICE	1			

# AT-147-3 43010100036 UPPER

Pos No.	Parts No	Parts Name	Qty	Unit	Technical Data	Serial No (Start)	Serial No (End)	Remarks	Pages
1	36654445010	SEAL KIT	1						
100	36654440000	PUMP,HYDRAULIC	1						

AT-147-3 43010100036 UPPER  
PB1310045-00 BRUSH,ROTARY JOINT

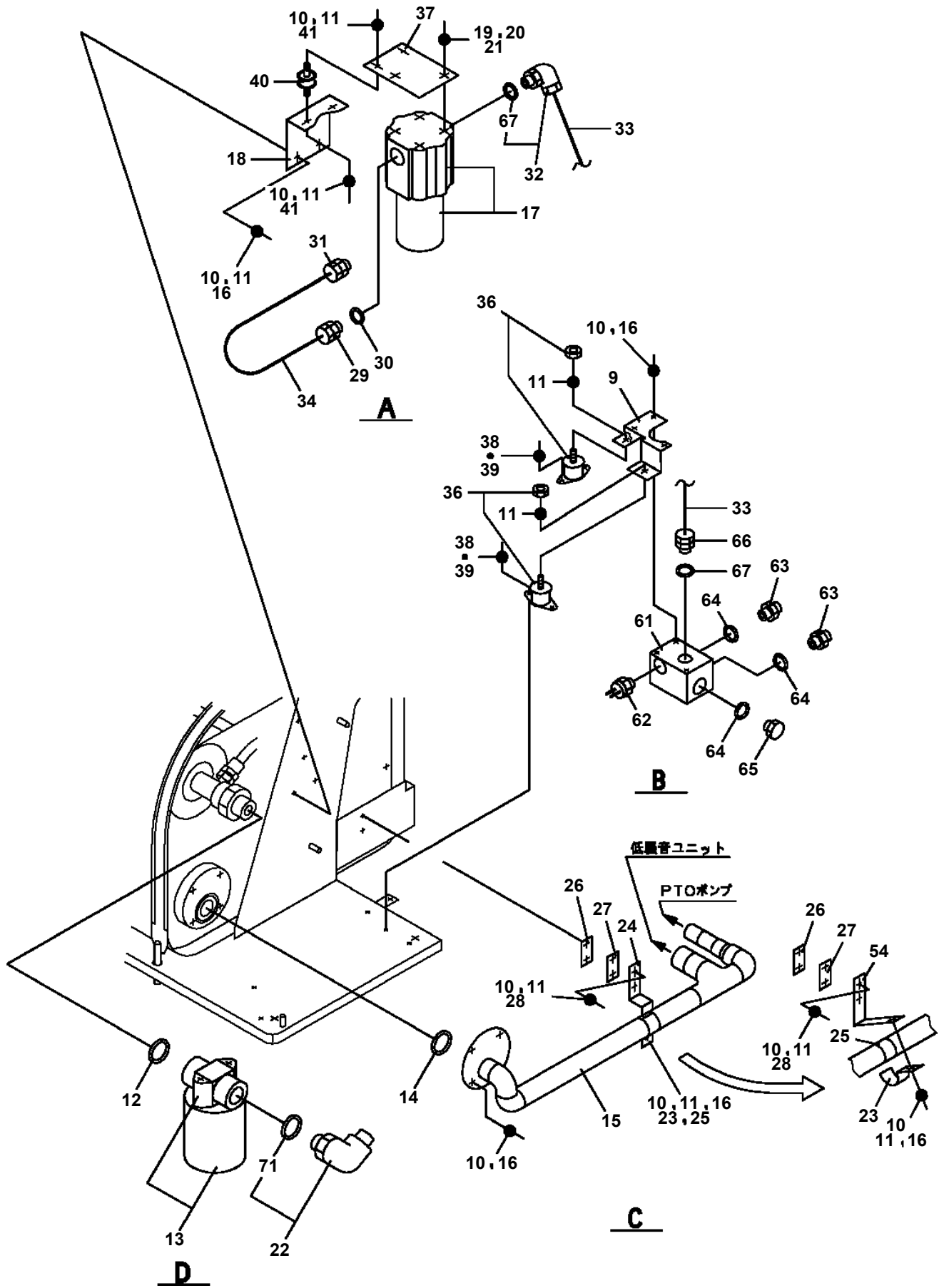
100



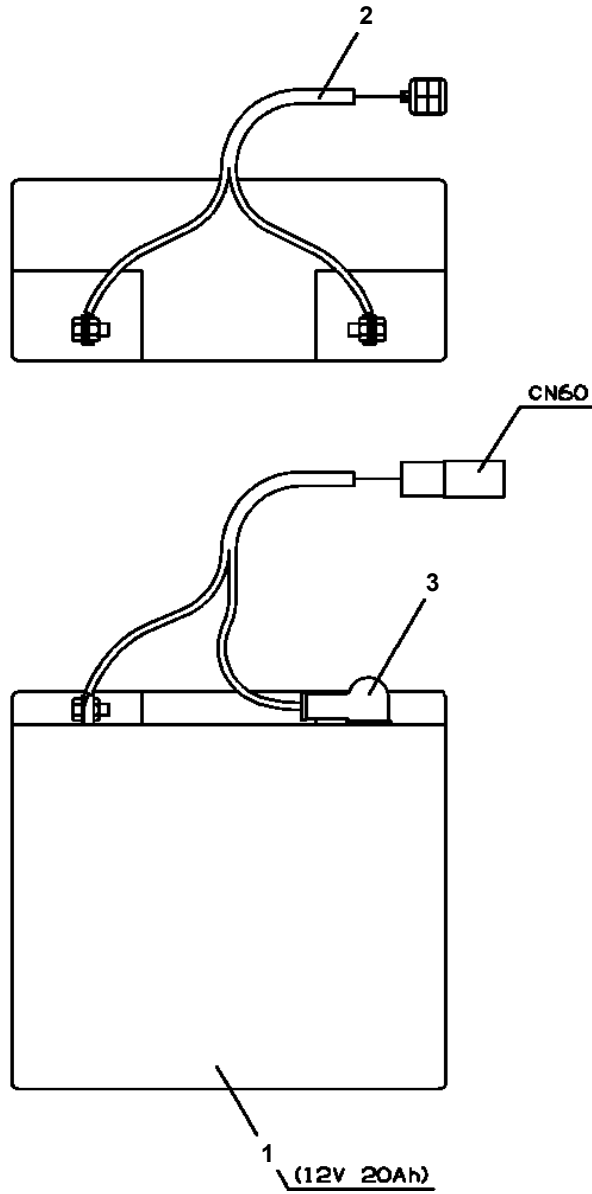
# AT-147-3 43010100036 UPPER

Pos No.	Parts No	Parts Name	Qty	Unit	Technical Data	Serial No (Start)	Serial No (End)	Remarks
2	90101212025	BOLT	8		M12X25			
3	90302041201	WASHER,SPRING	8		12			
4	90303071201	WASHER,PLAIN	8		12			
21	(*****)	MOUNT ASSY,POWER TRAIN	1					
22	(*****)	EXHAUST	1					
23	(*****)	ELEC.ASSY	1					
24	(*****)	PIPING (ENGINE UNIT)	1					
25	(*****)	COVER (ENGINE UNIT)	1				590460	
	(*****)	COVER ASSY (ENGINE UNIT)	1			590461		

**AT-147-3 43010100036 UPPER  
PB1411917-03 PIPING,LOWER (TANK)**



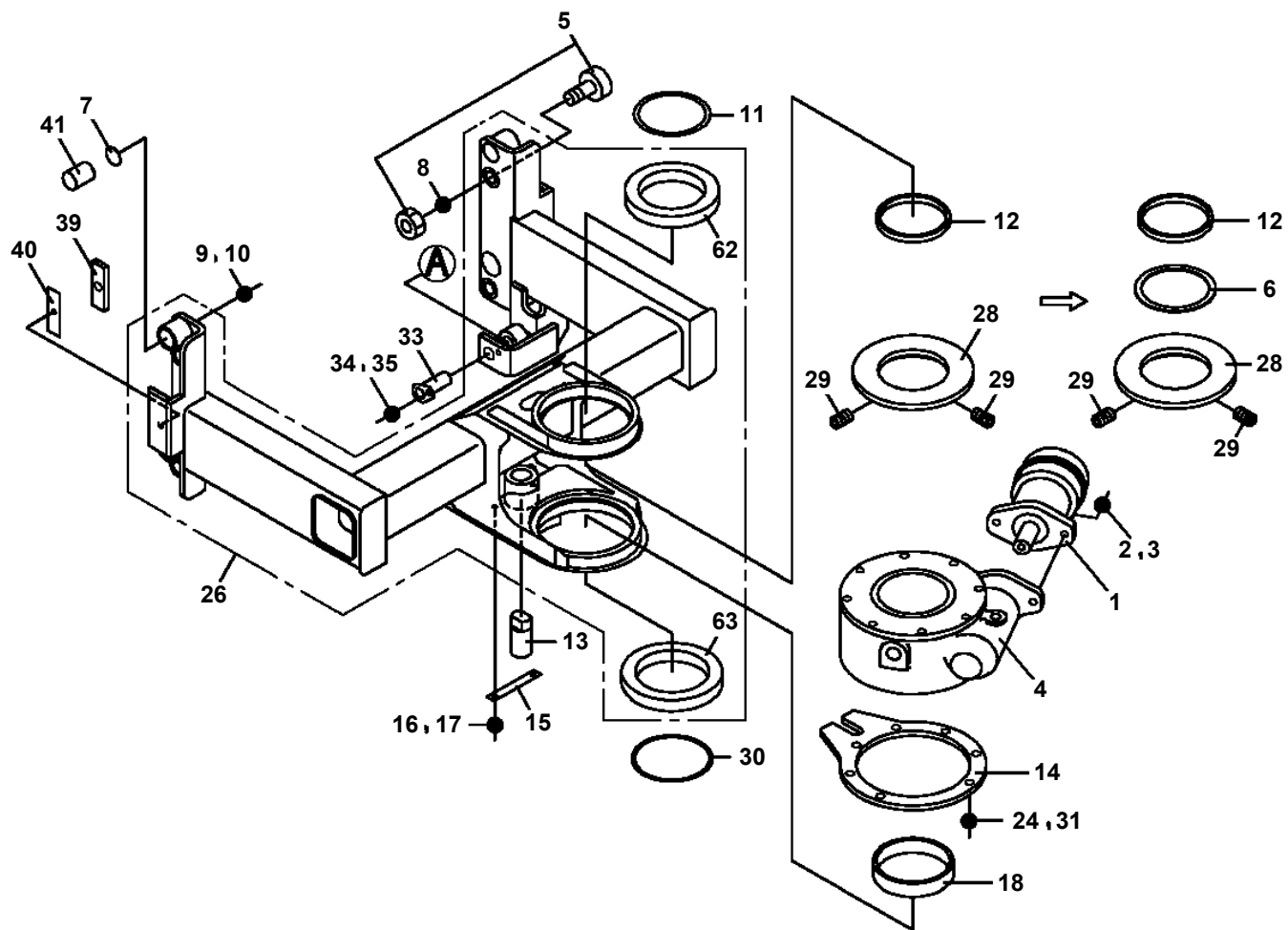
**AT-147-3 43010100036 UPPER  
PB5060001-00 BATTERY ASSY (12V20AH/PANASONIC)**



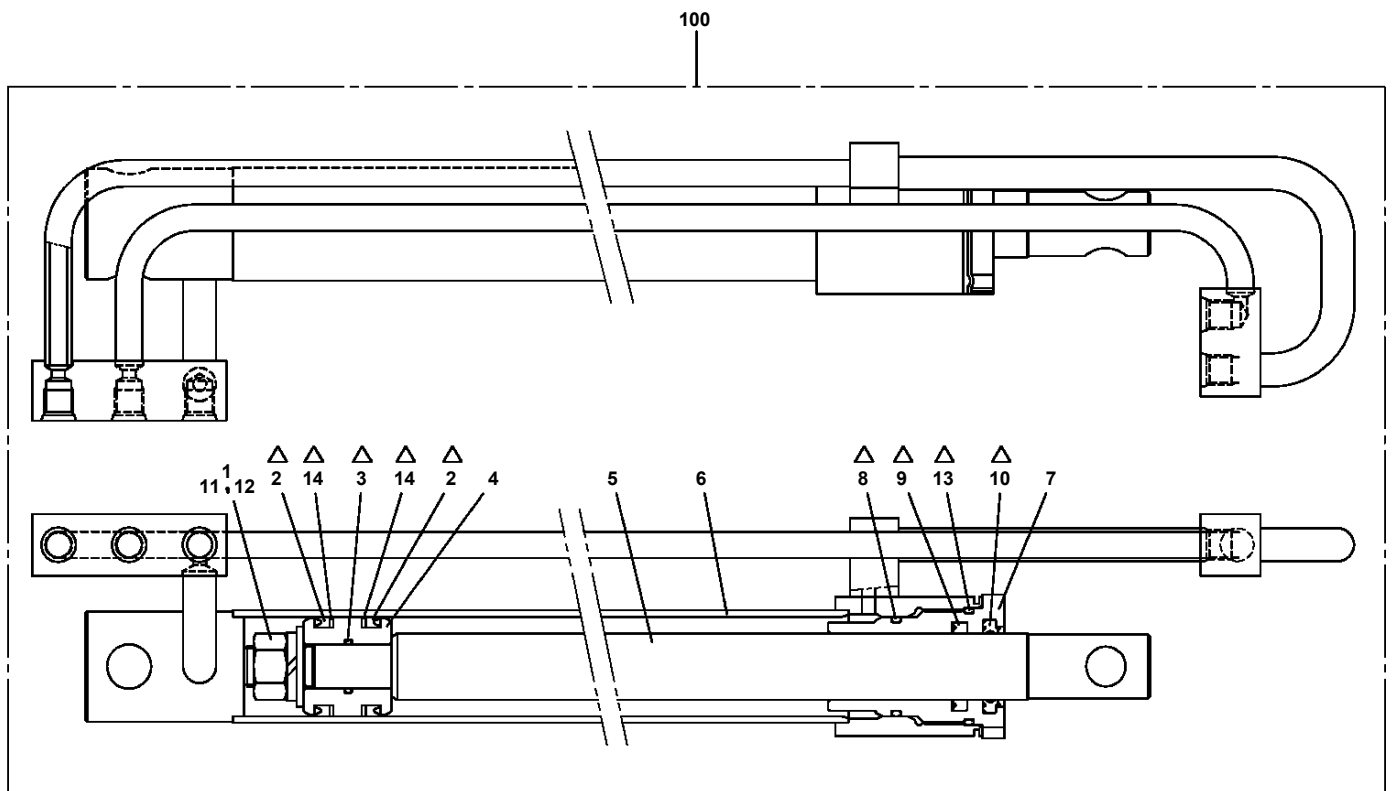
# AT-147-3 43010100036 UPPER

Pos No.	Parts No	Parts Name	Qty	Unit	Technical Data	Serial No (Start)	Serial No (End)	Re
73	80602110300	RING,RITAINING	2		R30			
74	31630482500	CAP	4					
75	37001007240	SHEAVE ASSY	2					
76	80602110400	RING,RITAINING	2		R40			
77	37000176300	PIN	2					
78	80601110400	RING,RITAINING	2		S40			
79	37000176310	PIN	1					
80	37000403580	BEARING,PLAIN (DAIDO METAL)	2					
81	42202700111	PLATE	N		T=0.6			
82	42202700200	SUPPORT	1					
84	90171116050	BOLT	10		M16X50			
85	90309341601	WASHER,CONICAL SPRING	20		16			
86	90171116040	BOLT	10		M16X40			
87	90171112035	BOLT	2		M12X35			
88	90202481200	NUT	4		M12			
89	37002018080	PLATE,SLIDE	2					
90	37002018100	PLATE,SLIDE	4					
91	37000513150	PLATE	N		T=0.5			
92	90201781200	NUT	2		M12			
93	90302041201	WASHER,SPRING	6		12			
94	89631601000	HOSE,VINYL	1		15X20,1M			
95	91810130240	FASTENER	2					
96	90202481600	NUT	4		M16			
97	90174110030	BOLT	2		M10X30			
98	37000573180	PLATE	1					
99	37000144700	PIN	1					
100	90174110020	BOLT	2		M10X20			
101	37000524070	PLATE	1		T=6			
102	42202700020	PIN	1					
103	42201520030	ROLLER	2					
104	42202120100	PLATE	2					
105	90171110018	BOLT	4		M10X18			
106	90303071001	WASHER,PLAIN	4		10			
108	90180212030	BOLT,BUTTON	4		M12X30			
109	90303071201	WASHER,PLAIN	4		12			
110	42202590300	PLATE	2					
111	42202590310	PLATE	2					
112	42202590340	PLATE	N		T=0.8			
113	90180210020	BOLT,BUTTON	8		M10X20			
114	42202700251	SUPPORT	1					
	42203170300	SUPPORT	1			590487	590486	
131	82455106000	NIPPLE,GREASE	1		A-M6F FE			
141	42202701103	FRAME	1					
142	42202701202	JOINT	1					
143	42202701302	JOINT	1					
151	42201700110	ROLLER ASSY	1					
152	37000180121	PIN	1					
153	90238402408	NUT,CASTLE	1		M24			
154	90303072401	WASHER,PLAIN	1		24			
155	80136350045	PIN,SPLIT	1		5X45			
161	37002011650	PLATE,SLIDE	2					
162	42201460370	PLATE	N		T=0.8			
163	80184306020	SCREW,MACHINE	2		M16X20			
164	42202050310	RETAINER	2					
172	80513006012	BEARING,BALL	2					
173	80612110950	RING,RITAINING	2		AR95			
192	80602110620	RING,RITAINING	2		R62			
193	80513006206	BEARING,BALL	4					
201	80801003012	BEARING,PLAIN	2					
202	80601110250	RING,RITAINING	4		S25			
203	42201700120	PLATE	2					
204	37000179820	PIN	2					
205	42201700150	ROLLER ASSY	2					

**AT-147-3 43010100036 UPPER  
PB5370001-02 BUCKET FRAME ASSY**

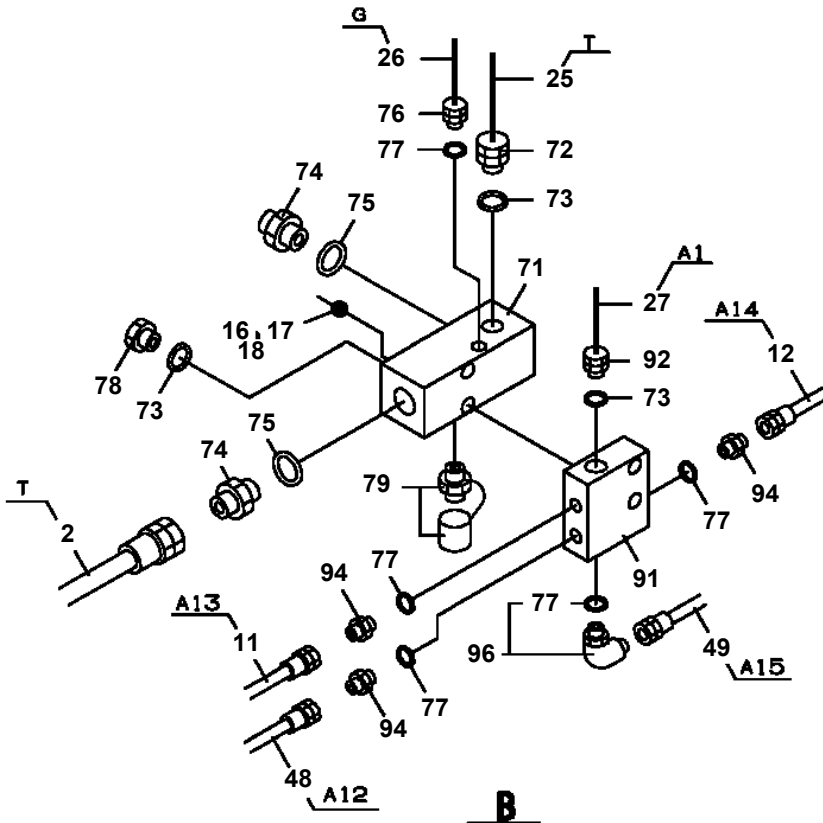
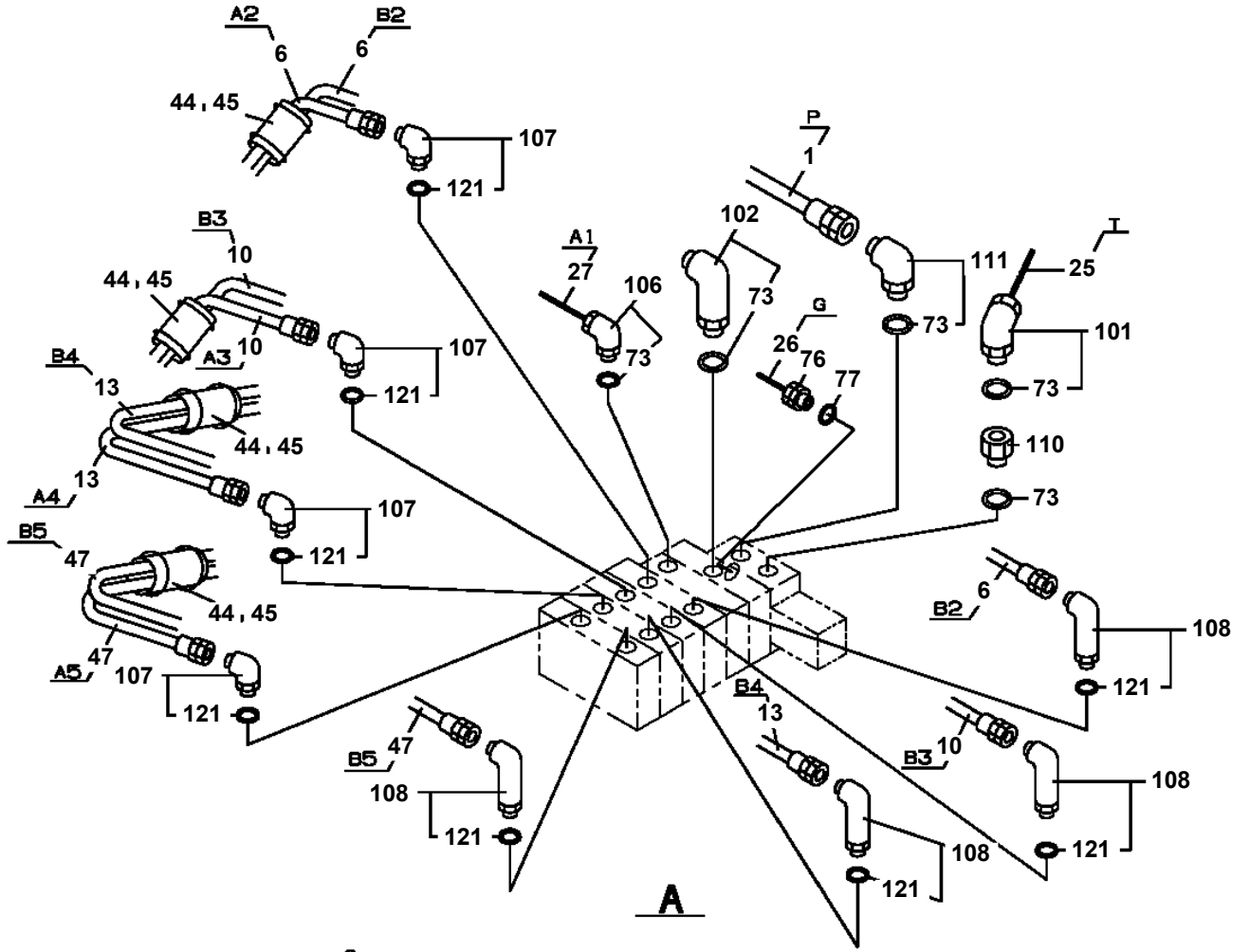


AT-147-3 43010100036 UPPER  
PC1050221-00 CYLINDER,EXTENSION (FRONT)



Δ:PACKING SET KEY NO.30 (KEY NO.2,3,8,9,10,13,14)

**AT-147-3 43010100036 UPPER  
PC1200578-06 PIPING,OUTRIGGER**



# AT-147-3 43010100036 UPPER

Pos No.	Parts No	Parts Name	Qty	Unit	Technical Data	Serial No (Start)	Serial No (End)
1	42614464100	CASE,INNER	1				
2	42613351200	CASE,INNER (JACK)	1				
4	36035100000	CYLINDER,JACK	1				
5	42502970200	FLOAT ASSY	1				
6	37000171720	PIN	1				
7	80601110250	RING,RITAINING	2		S25		
8	37000169010	PIN	1		30		
9	80601110300	RING,RITAINING	2		S30		
10	36625740001	VALVE,CHECK	1				
11	90171108055	BOLT	4		M8X55		
12	37000138750	PIN	1		18		
13	80136332036	PIN,SPLIT	2		3.2X36		
14	80400160127	JOINT	1				
15	91002801100	O-RING	1		1B P11		
16	36672460000	FILTER (NIPPLE TYPE)	1				
17	42612851010	COVER	1				
18	90186206014	BOLT,FLANGE	2		M6X14		
19	37000112320	PIN	1				
20	80601110120	RING,RITAINING	2		S12		
21	91810130240	FASTENER	2				
22	31201770100	PLATE,SLIDE	8		T=3.0		
23	90280200600	NUT,FLANGE	1		M6		
24	37000600700	CLAMP	1		12X3		
25	82467300106	PLUG	4				
41	36042810000	CYLINDER,EXTENSION (FRONT)	1				
42	80400160127	JOINT	2				
43	91002801100	O-RING	3		1B P11		
44	37002485300	HOSE	1		L=1805		
45	42614053350	HARNESS	1				
46	91810130240	FASTENER	13				
63	42612851420	TRUNNION	1				
100	42614464000	CASE ASSY,INNER (FRONT,RIGHT)	1				

# AT-147-3 43010100036 UPPER

Pos No.	Parts No	Parts Name	Qty	Unit	Technical Data	Serial No (Start)	Serial No (End)
1	42508320000	COVER ASSY (BACKET CONTROL)	1				

# AT-147-3 43010100036 UPPER

Pos No.	Parts No	Parts Name	Qty	Unit	Technical Data	Serial No (Start)	Serial No (E
1	90211201200	NUT	2		M12		
2	42220105030	PACKING	4				
3	91002801400	O-RING	2		1B P14		
4	36054010100	PISTON	2				
5	36054431000	CYLINDER	1				
6	36054011000	ROD	1				
7	91002803500	O-RING	2		1B P35		
8	91694002500	PACKING	2				
9	91660002501	SEAL,DUST	2				
10	36054010200	COVER,ROD	2				
11	36054012000	ROD	1				
12	90302041201	WASHER,SPRING	2		12		
13	91410202501	RING,BACKUP	2				
14	91332402500	BEARING,PLAIN	2				
15	91431303501	RING,BACKUP	4				
16	91301403500	BEARING,PLAIN	2				
30	36054019900	PACKING SET	2		25X35		
100	36054430000	CYLINDER ASSY (LIFT,BUCKET FRAME)	1				

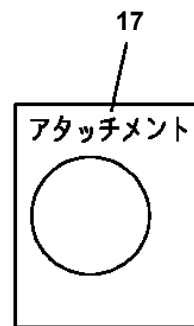
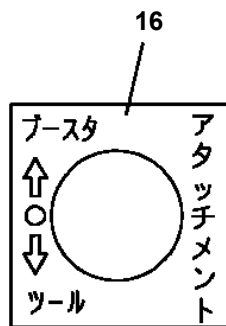
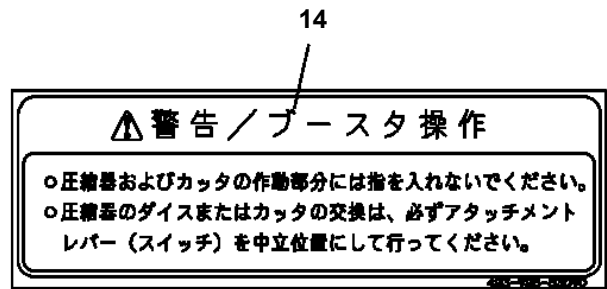
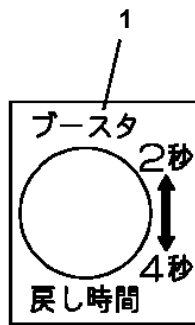
# AT-147-3 43010100036 UPPER

Pos No.	Parts No	Parts Name	Qty	Unit	Technical Data	Serial No (Start)	Serial No (End)
2	36081560000	REDUCER,SWING SPEED	1				
3	90171118070	BOLT (DACRO)	3		M18X70		
4	90303501805	WASHER,PLAIN	6		18		
5	90201781800	NUT (DACRO)	3		M18		
6	90174112035	BOLT	2		M12X35		
7	90710012400	SCREW,SET	2		M12X40		
8	90203201200	NUT	4		M12		
9	90172112035	BOLT,HEXAGON SOCKET	2		M12X35		
10	90302041201	WASHER,SPRING	2		12		
11	36664070000	MOTOR,OIL	1				
12	91002908500	O-RING	1		1B G85		
31	37002302450	BEARING,SWING (NSK)	1				
32	37002304750	BEARING,SWING (KOYO)	1				
	37002303560	BEARING,SWING (NIHON MONORACE)	1				
41	37002399010	SEAL (UP,DOWN-SIDE SET)	1				
42	82456201000	NIPPLE,GREASE	6		A-TYPE PT1/8		

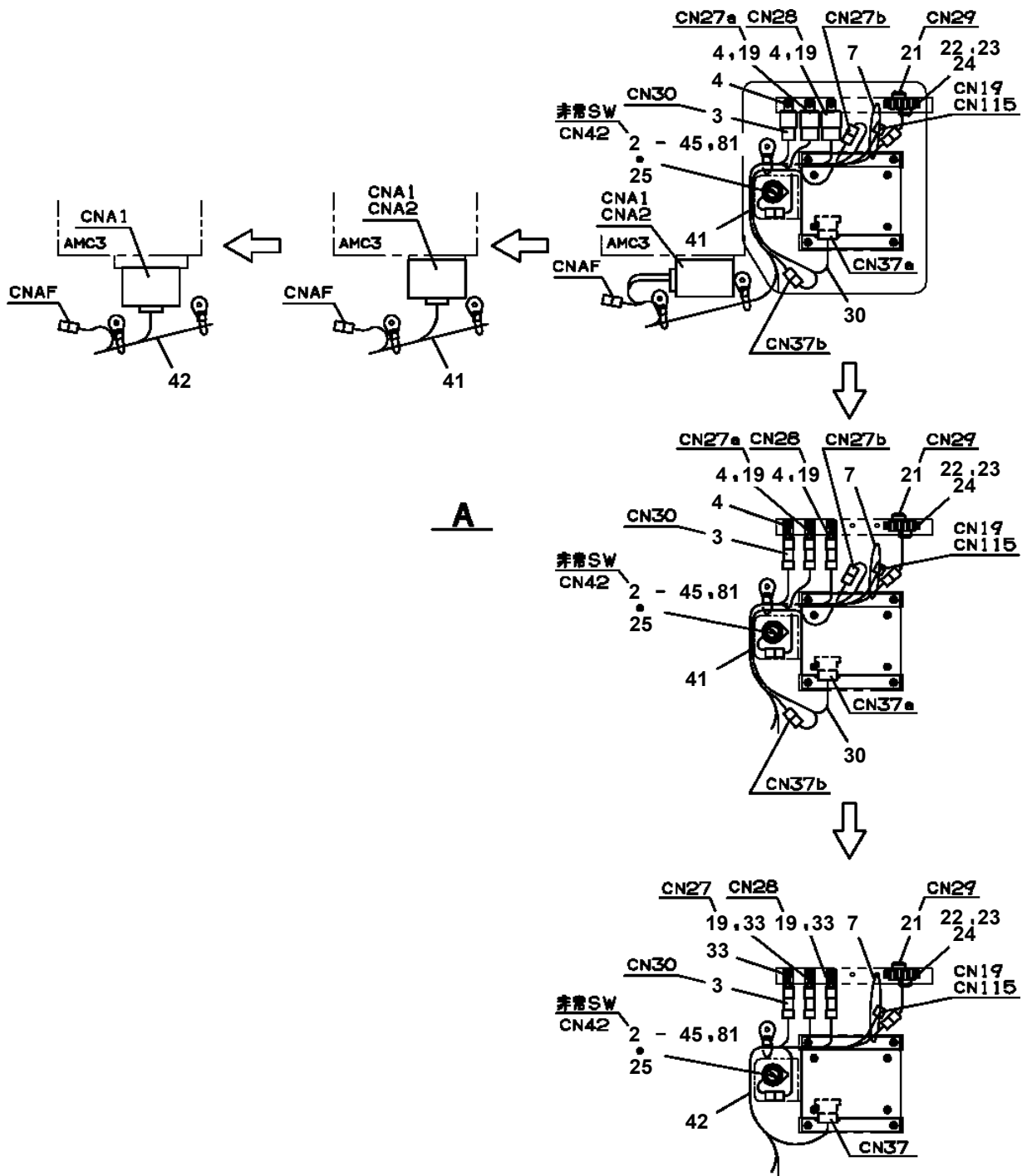
# AT-147-3 43010100036 UPPER

Pos No.	Parts No	Parts Name	Qty	Unit	Technical Data	Serial No (Start)	Serial No (End)	Remarks
2	42972700100	SUPPORT	1					
4	90303070801	WASHER,PLAIN	5		8			
5	42739710200	EARTH	1					
6	42970690400	SUPPORT	1					
7	90101210020	BOLT	8		M10X20			
8	90302041001	WASHER,SPRING	8		10			
9	90101208020	BOLT	4		M8X20	590433	590432	
	90101208020	BOLT	5		M8X20			
10	90302040801	WASHER,SPRING	4		8			
11	90303071001	WASHER,PLAIN	8		10			
12	42972700300	PIN ASSY	1					
13	42972700400	PIN	1					
14	90258300800	NUT,WING	1		M8			
23	42972700201	SUPPORT	1					
31	36160650000	REEL,CORD	1					
32	37002702730	CABLE ASSY	1		8X10000			
33	82198103050	CLIP (WITH CAP/BLACK)	1					
34	90201200500	NUT	1		M5		590423	
	90201200500	NUT	2		M5	590424		
35	90302040501	WASHER,SPRING	1		5		590423	
	90302040501	WASHER,SPRING	2		5	590424		
36	90303070501	WASHER,PLAIN	1		5		590423	
	90303070501	WASHER,PLAIN	2		5	590424		
37	42972701100	SUPPORT	1					
38	90101208012	BOLT	2		M8X12			
39	90302040801	WASHER,SPRING	2		8			
40	42972701500	CABLE	1		L=1000			
41	42698150300	INSULATOR	4					
42	80172304010	SCREW,MACHINE	4		M4X10		590423	
	80172304010	SCREW,MACHINE	5		M4X10	590424		
43	90302040401	WASHER,SPRING	4		4		590423	
	90302040401	WASHER,SPRING	5		4	590424		
44	90303070401	WASHER,PLAIN	4		4		590423	
	90303070401	WASHER,PLAIN	5		4	590424		
45	90201200400	NUT	1		M4	590424		
46	80173305010	SCREW,MACHINE	1			590424		

AT-147-3 43010100036 UPPER  
PE5021145-00 ELEC.ASSY (BOOSTOR)

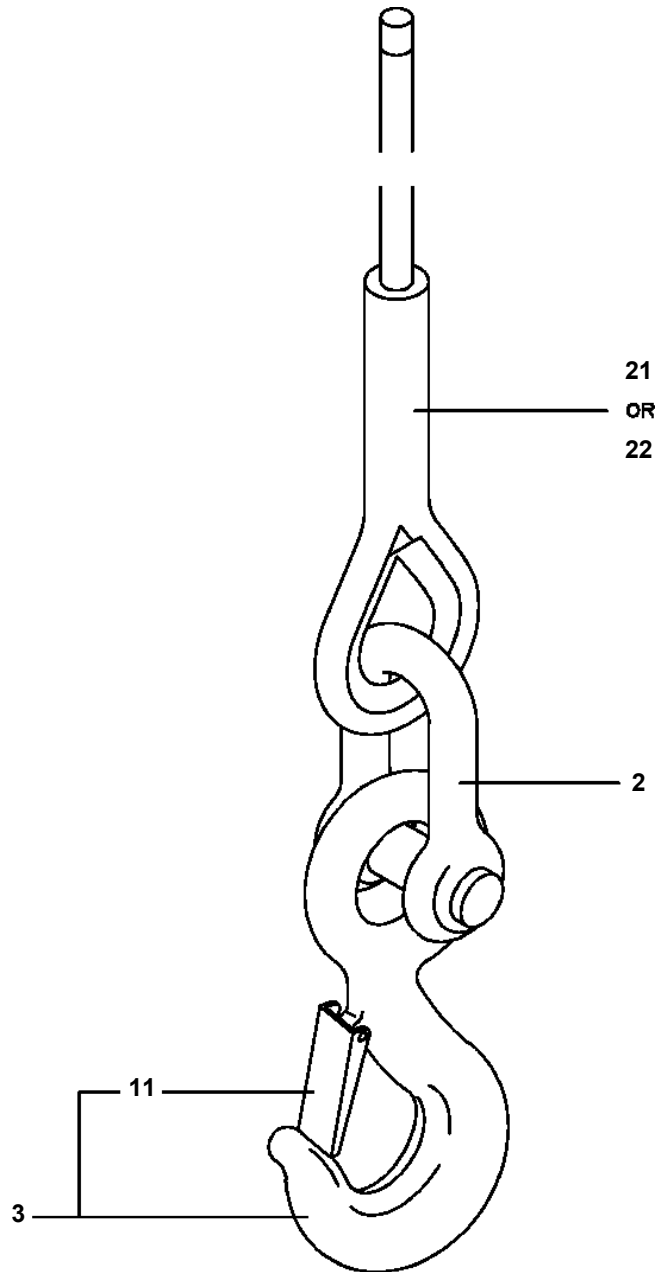


AT-147-3 43010100036 UPPER  
PE5190007-06 ELEC.ASSY,SWING FRAME

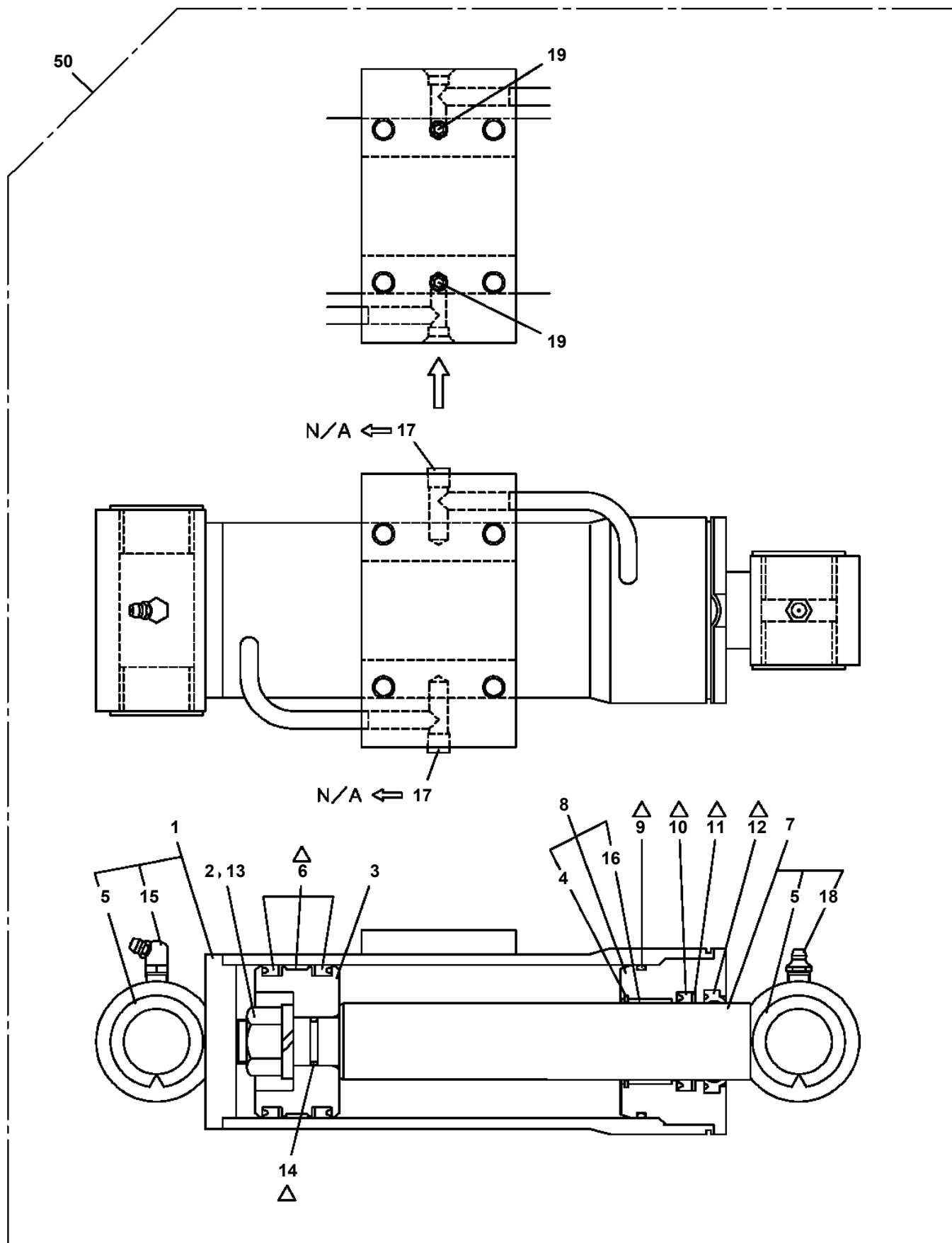


A

AT-147-3 43010100036 UPPER  
PF1050285-00 HOOK (1-PART LINE WITH ROPE)

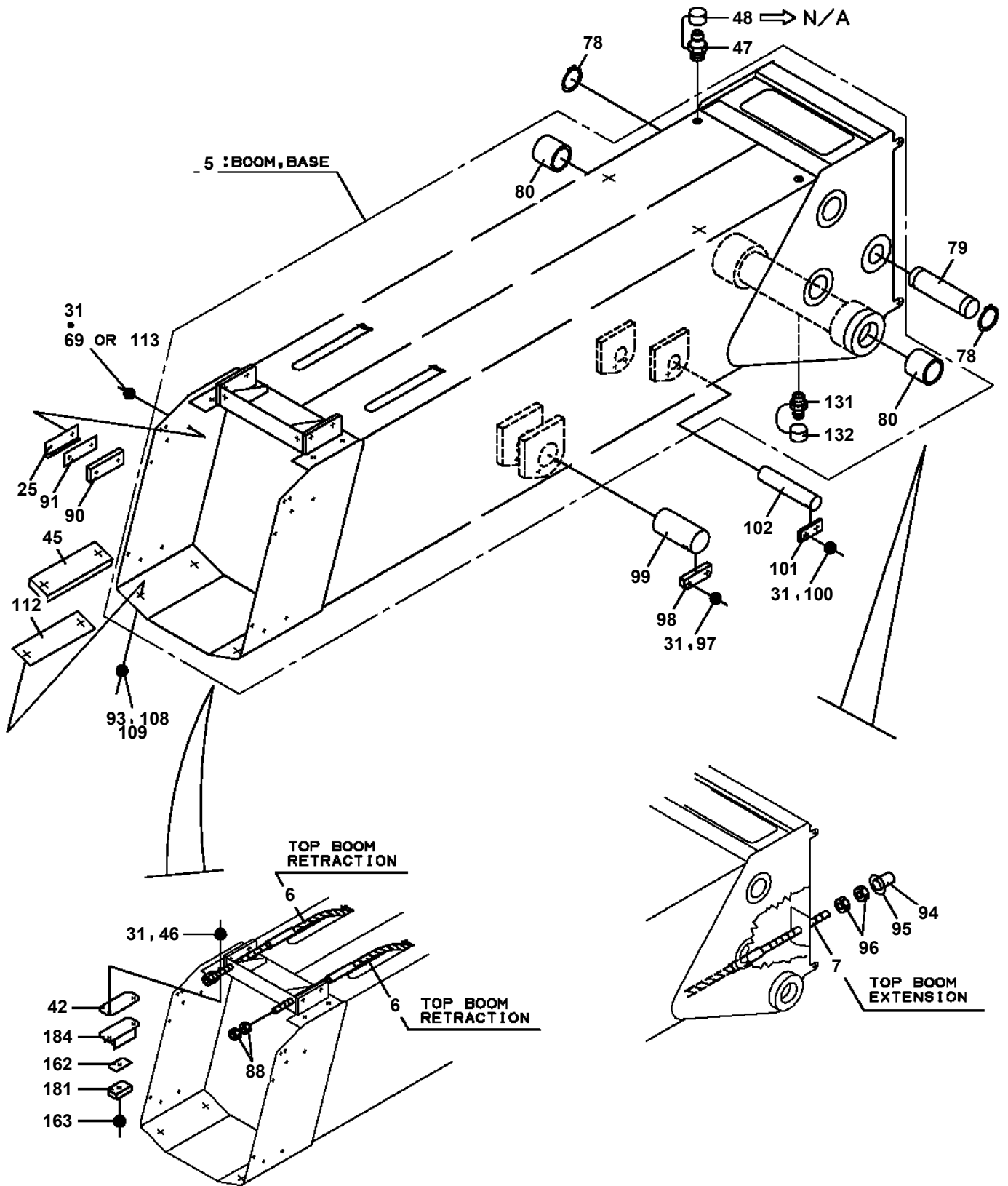


**AT-147-3 43010100036 UPPER  
PF1360003-05 CYLINDER,WINCH JIB (POWER)**

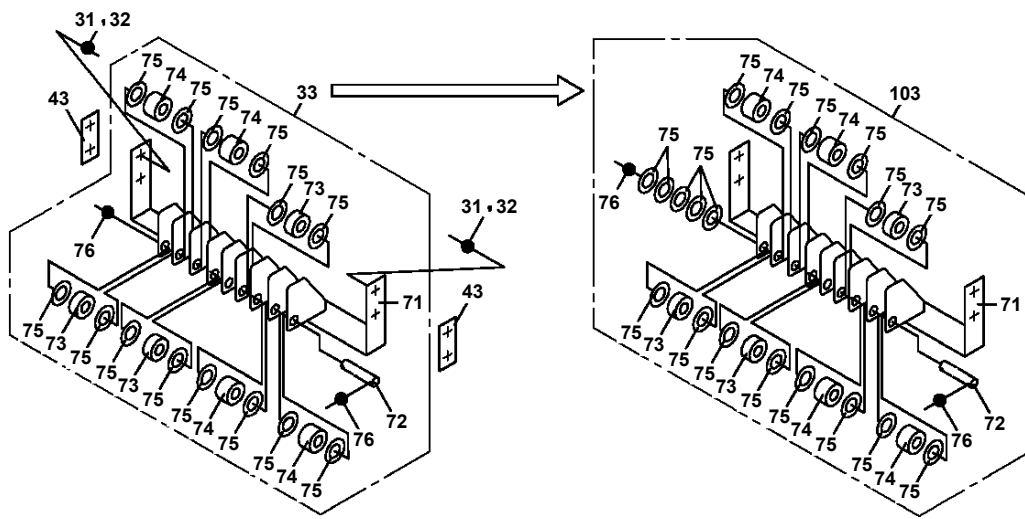


Δ:PACKING SET KEY NO.30 (KEY NO.6,9,10,11,12,14 )

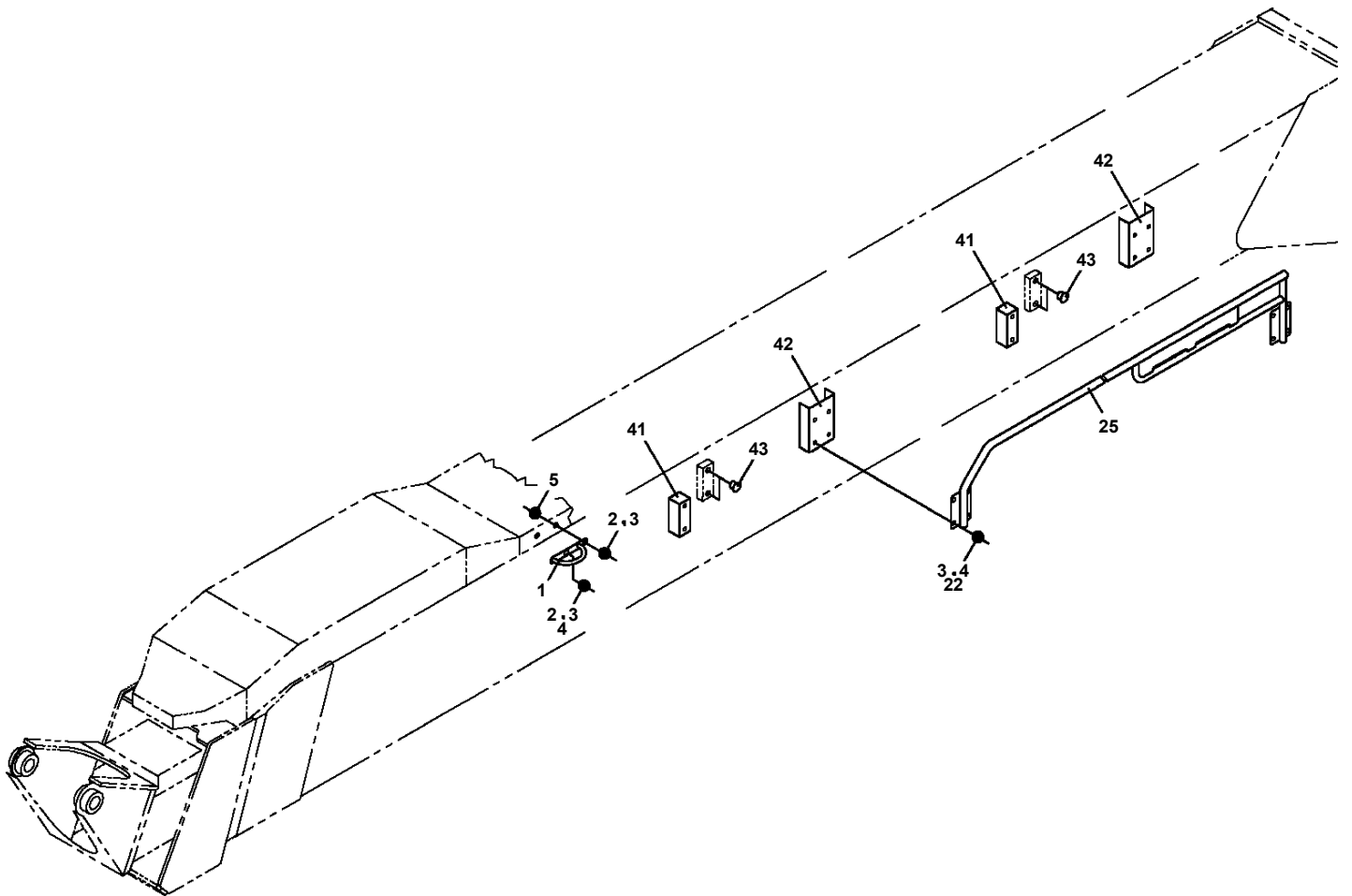
**AT-147-3 43010100036 UPPER  
PG1010981-03 BOOM**



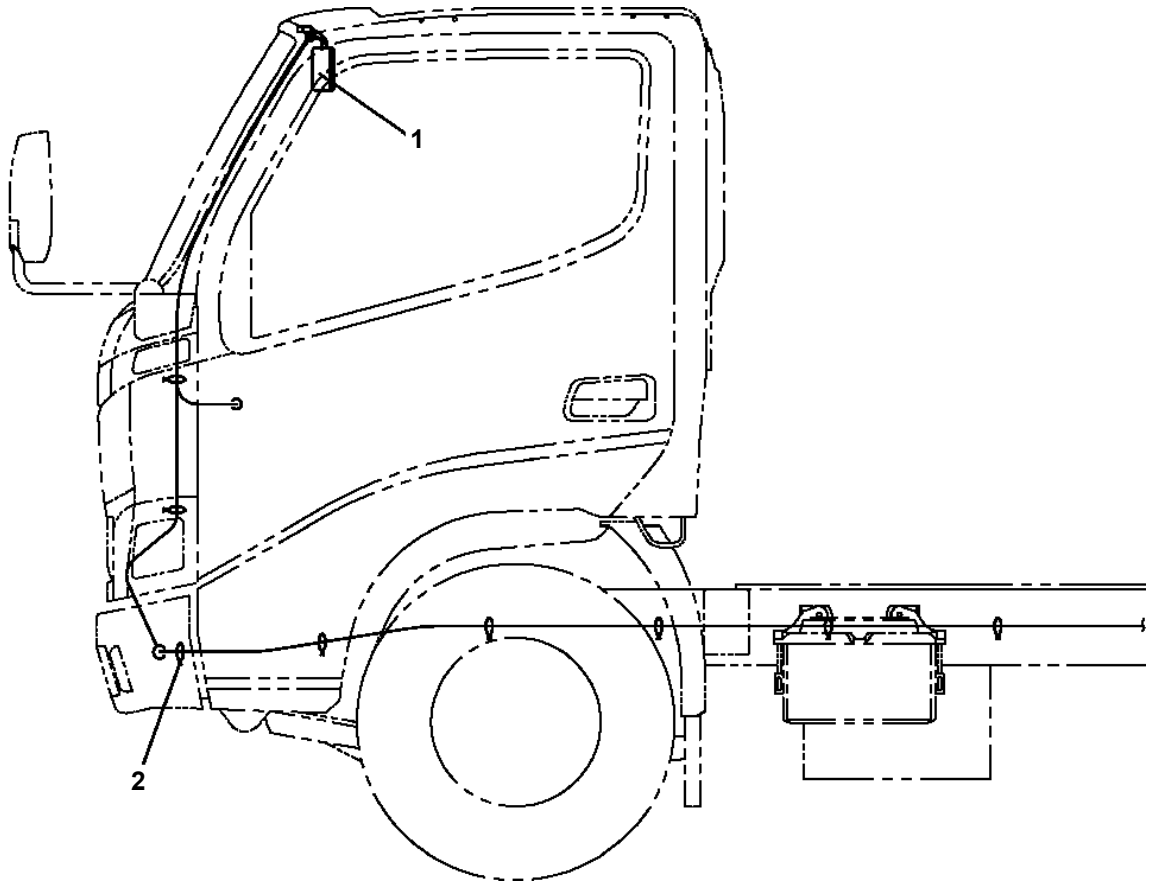
**AT-147-3 43010100036 UPPER  
PG1220176-04 PIPING,BOOM**



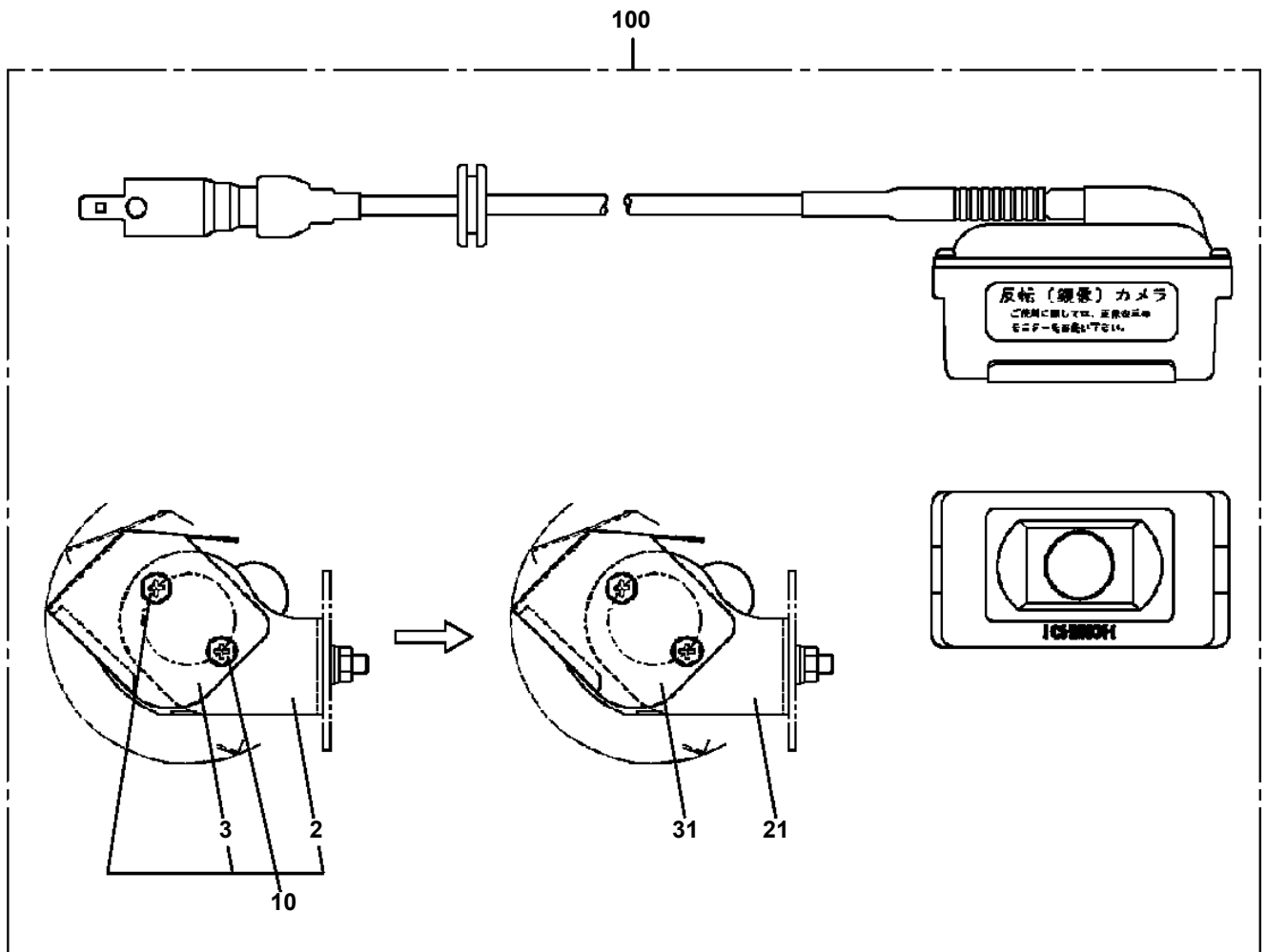
**AT-147-3 43010100036 UPPER  
PG5240007-00 GUIDE ASSY (KANDENKO/BOOM SIDE HOOK GUIDE RAIL)**



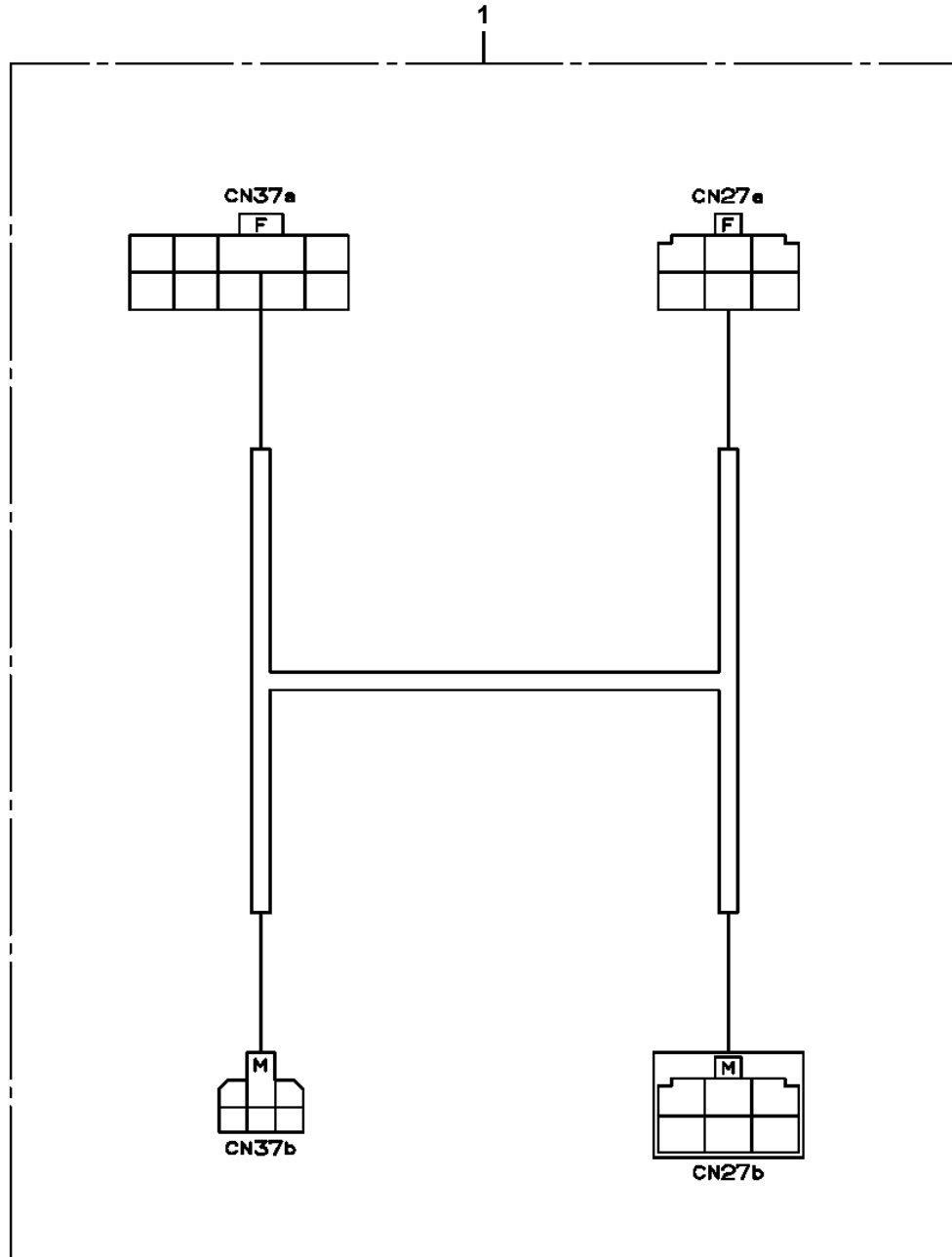
**AT-147-3 43010100036 UPPER  
PH1700240-00 VIEW SYSTEM (MONITOR)**



AT-147-3 43010100036 UPPER  
PH1750007-01 CAMERA

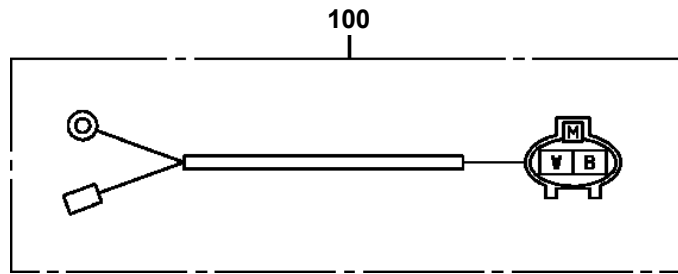


AT-147-3 43010100036 UPPER  
PH5030468-00 HARNESS

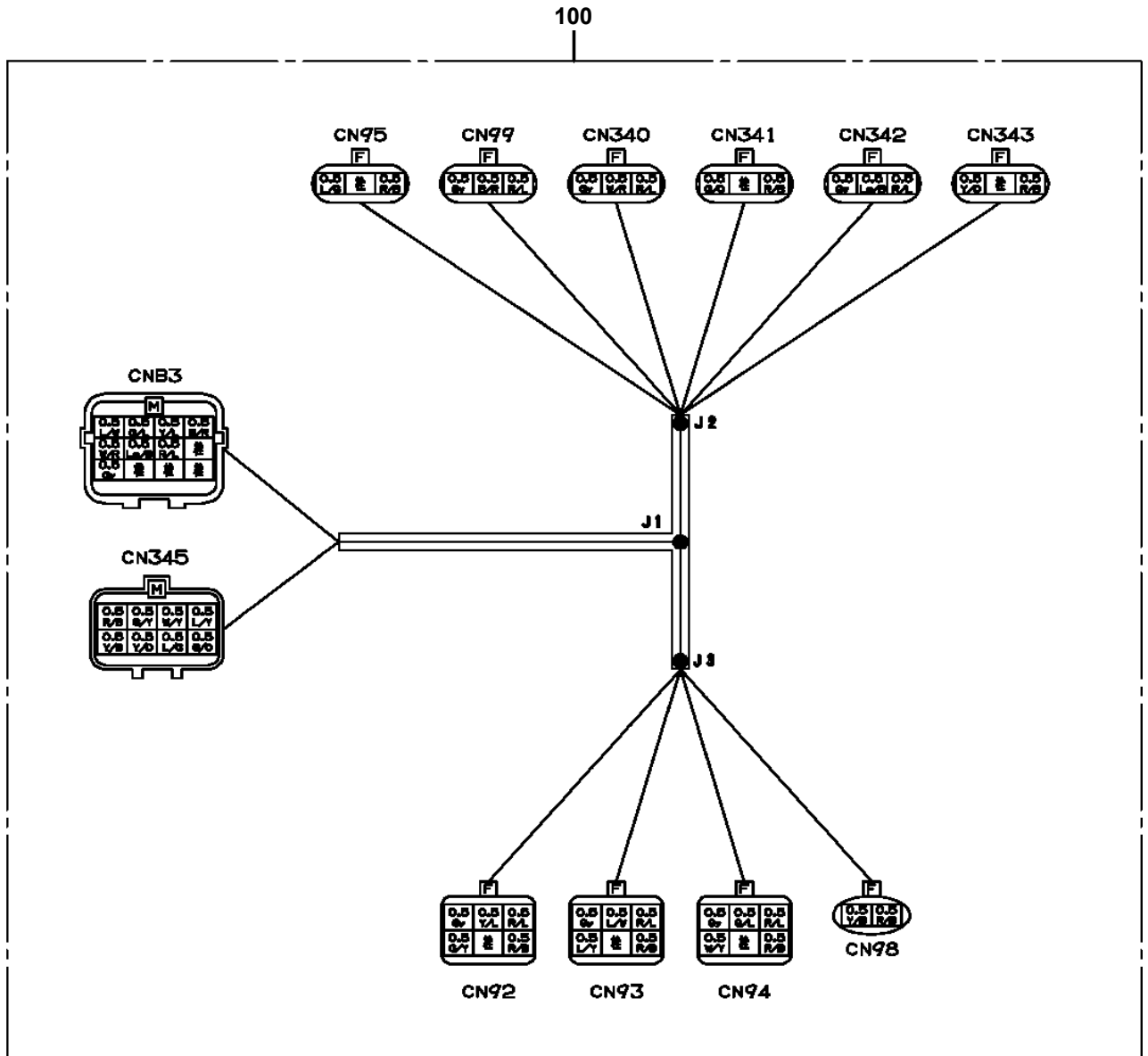




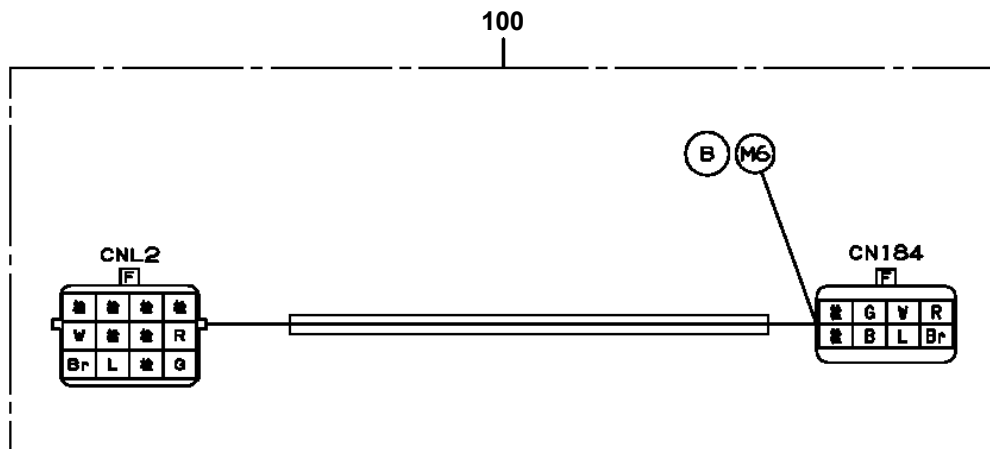
**AT-147-3 43010100036 UPPER  
PH5031078-00 HARNESS**



AT-147-3 43010100036 UPPER  
PH5032334-00 HARNESS

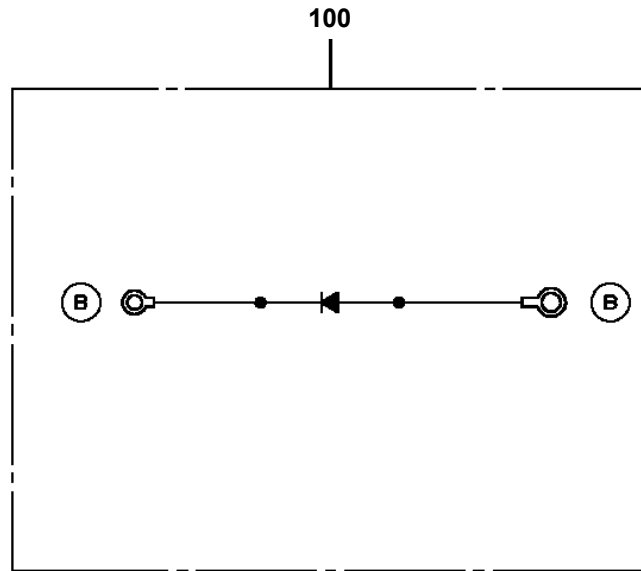


AT-147-3 43010100036 UPPER  
PH5032346-00 HARNESS

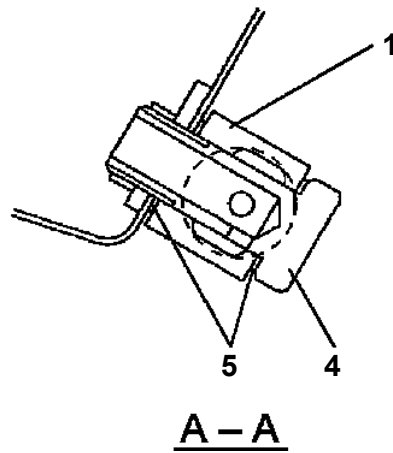
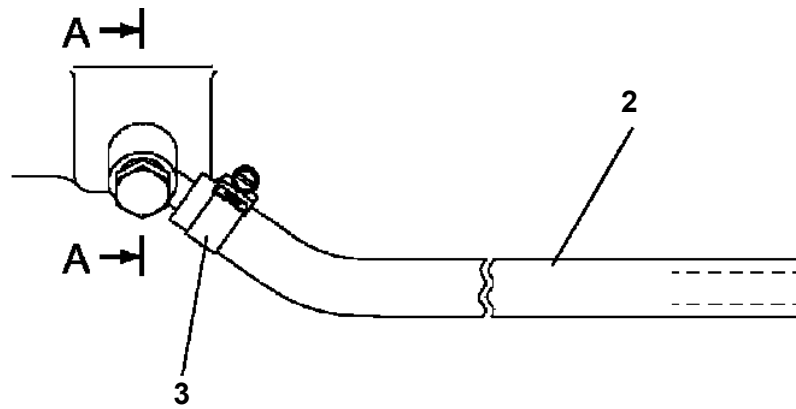




**AT-147-3 43010100036 UPPER  
PH5034227-00 HARNESS**



AT-147-3 43010100036 UPPER  
PH5100004-00 HOSE ASSY



# AT-147-3 43010100036 UPPER

Pos No.	Parts No	Parts Name	Qty	Unit	Technical Data	Serial No (Start)	Serial No (End)	Remarks
103	36641687520	RETAINER (A)	2					
104	36641687530	RETAINER (B)	2					
105	36640175040	SPACER	4					
106	36641687560	SPRING (C)	2				590517	
	36646275020	SPRING (C)	2			590518		
107	36642915020	NUT	2					
108	36641687570	ROD	2					
109	36641687580	GUIDE (SOLENOID)	2				590517	
	36740075010	GUIDE (SOLENOID)	2			590518		
110	36642295010	COIL	2					
113	91000501200	O-RING	4					
114	91001102000	O-RING	2		1A P20		590517	
	36740455020	O-RING	2			590518		
115	91002801800	O-RING	2		1B P18			
116	91001002500	O-RING	2		S25		590517	
	36740455040	O-RING	2			590518		
192	90131905045	BOLT,HEXAGON SOCKET	4		M5X45			
200	36647480000	VALVE,SOLENOID	1					

# AT-147-3 43010100036 UPPER

Pos No.	Parts No	Parts Name	Qty	Unit	Technical Data	Serial No (Start)	Serial No (End)	Remarks	Page
1	36642765010	NUT	2						
2	36645417510	CORE ASSY	2						
3	36741775010	SOLENOID ASSY	2						
4	36741775020	SPRING	2						
5	36647105010	PIN,SPRING	2						
8	91000501200	O-RING	4						
9	36642765060	WASHER (CENTER)	2						
10	36741775030	PACKING	2						
11	91001102100	O-RING	2		1A P21				
12	36643435040	PIN,SPRING	4						
100	36741770000	VALVE,SOLENOID	1						

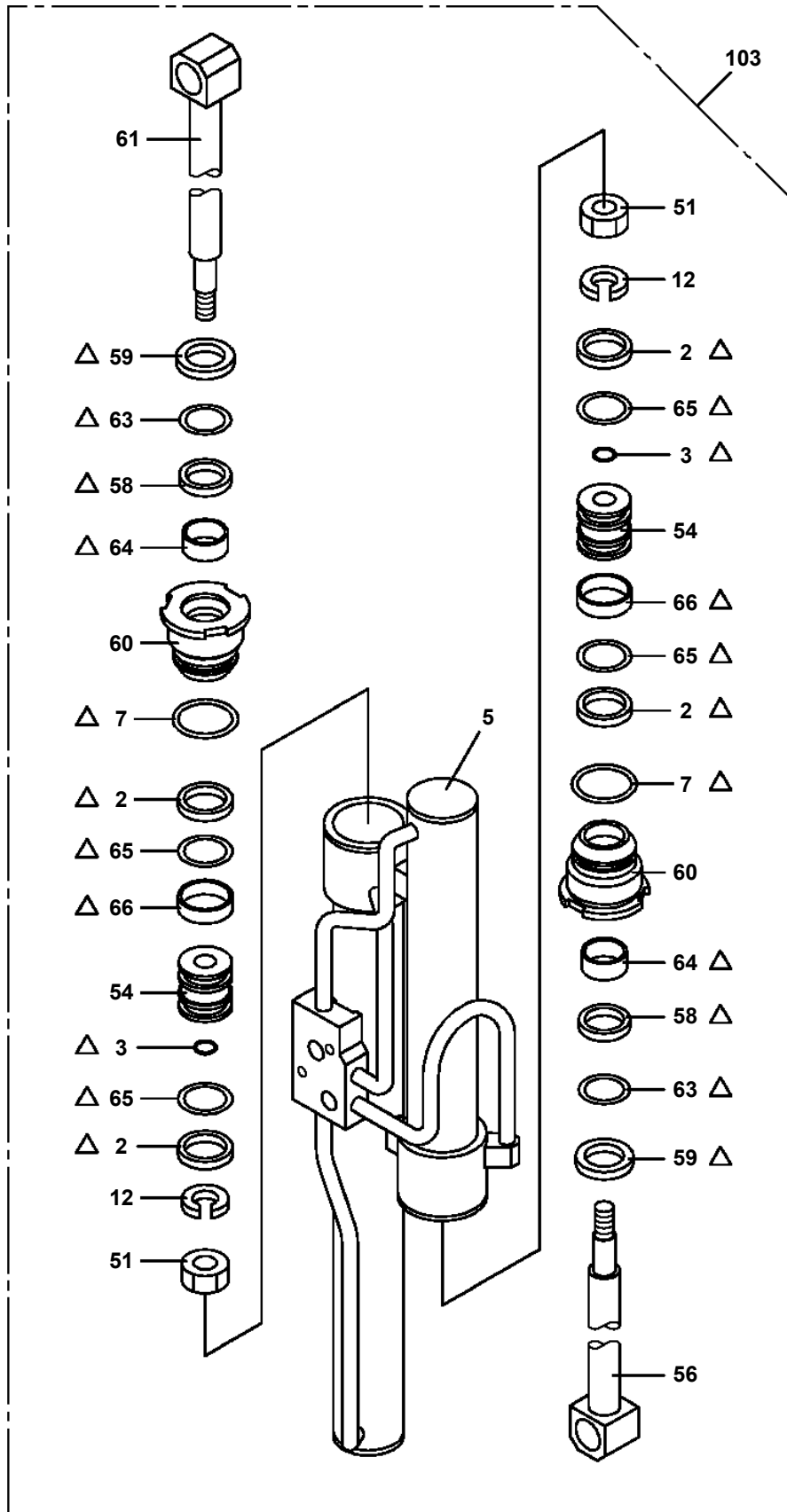
# AT-147-3 43010100036 UPPER

Pos No.	Parts No	Parts Name	Qty	Unit	Technical Data	Serial No (Start)	Serial No (End)	Remarks	Pages
4	36625525010	CONNECTOR	1						
5	91002801800	O-RING	1		1B P18				
30	36625520000	VALVE,CHECK	1						

# AT-147-3 43010100036 UPPER

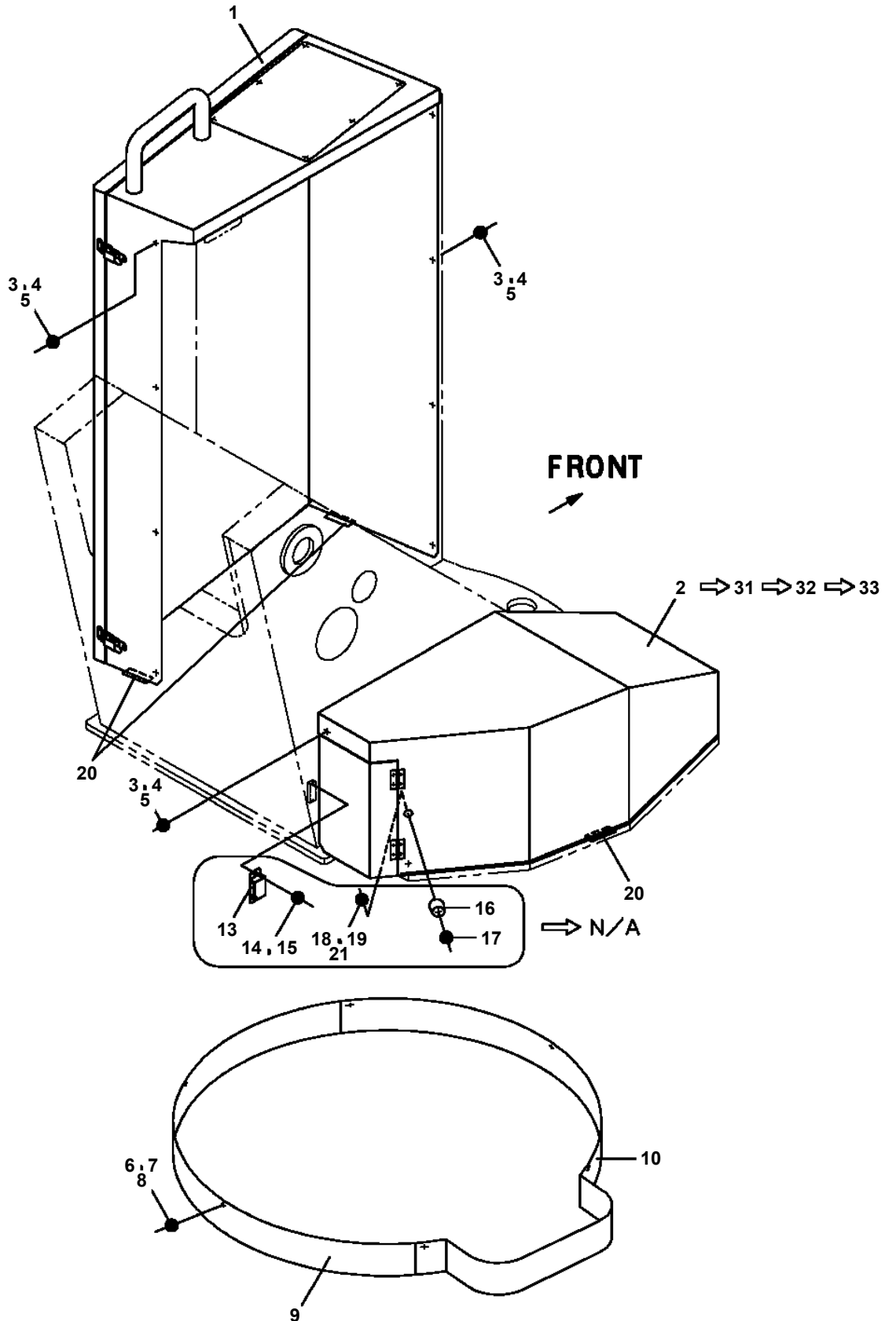
Pos No.	Parts No	Parts Name	Qty	Unit	Technical Data	Serial No (Start)	Serial No (End)	Remarks	Pa
2	91002801400	O-RING	2		1B P14				
6	91002800700	O-RING	1		1B P7				
50	36623930000	VALVE,PILOT CHECK	1						

**AT-147-3 43010100036 UPPER  
PJ3340015-01 CYLINDER,LIFT (BUCKET)**



△: PACKING SET KEY NO. 91 (KEY NO. 2, 3, 7, 58, 59, 63, 64, 65, 66)

AT-147-3 43010100036 UPPER  
 PK1200454-03 COVER, SWING FRAME



展開圖有  
 ILLUSTRATED BREAKDOWN NO. 2, 31, 32, 33

CLICK HERE TO **DOWNLOAD** THE COMPLETE MANUAL

- Thank you very much for reading the preview of the manual.
- You can download the complete manual from: [www.heydownloads.com](http://www.heydownloads.com) by clicking the link below



- Please note: If there is no response to CLICKING the link, please download this PDF first and then click on it.

CLICK HERE TO **DOWNLOAD** THE COMPLETE MANUAL

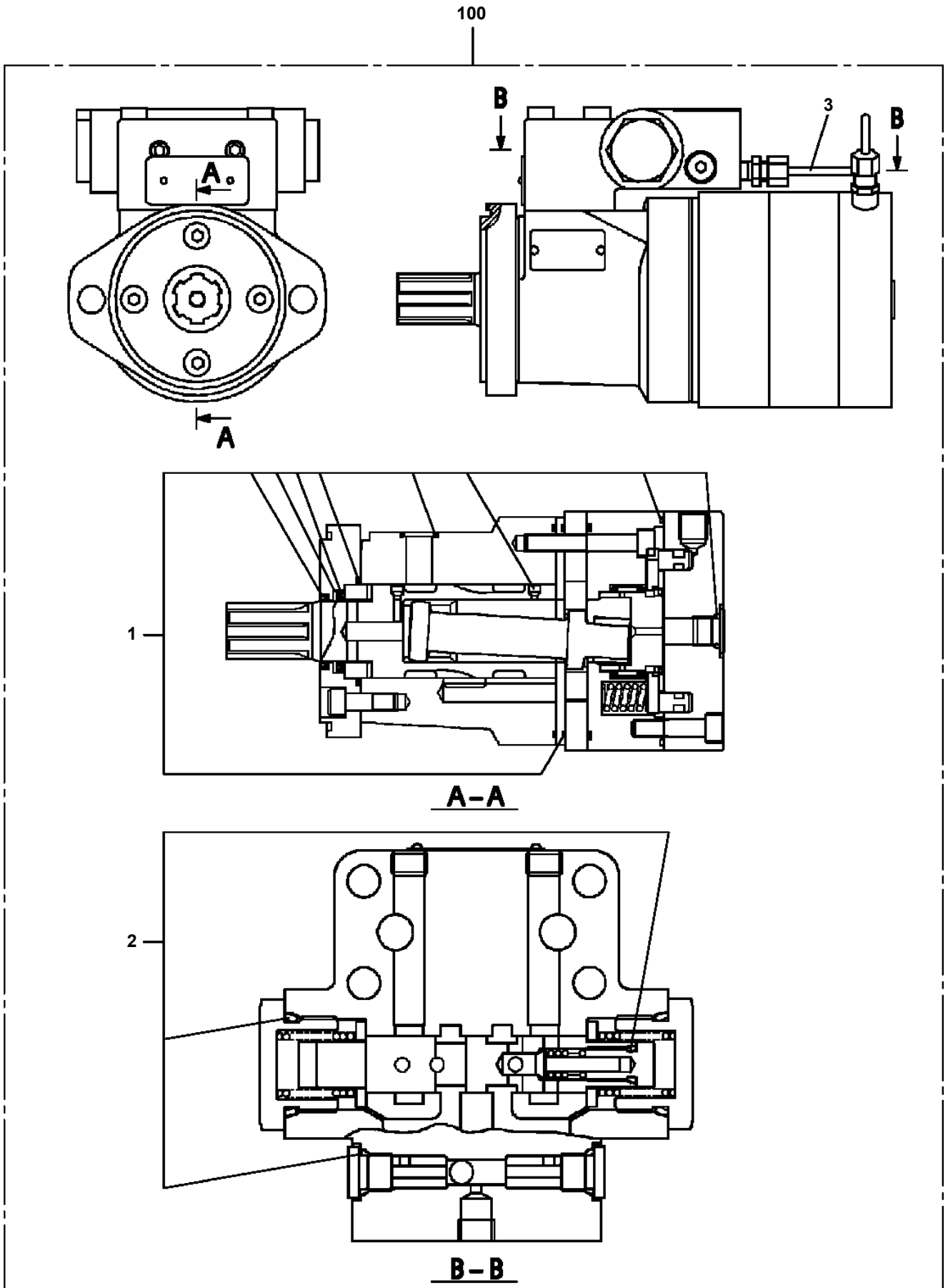
# AT-147-3 43010100036 UPPER

Pos No.	Parts No	Parts Name	Qty	Unit	Technical Data	Serial No (Start)	Serial No (End)	Remarks	Pages
1	42267276101	COVER	1						
2	91810130270	FASTENER	4						

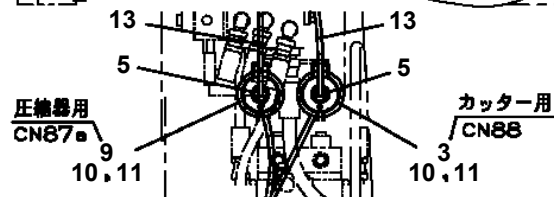
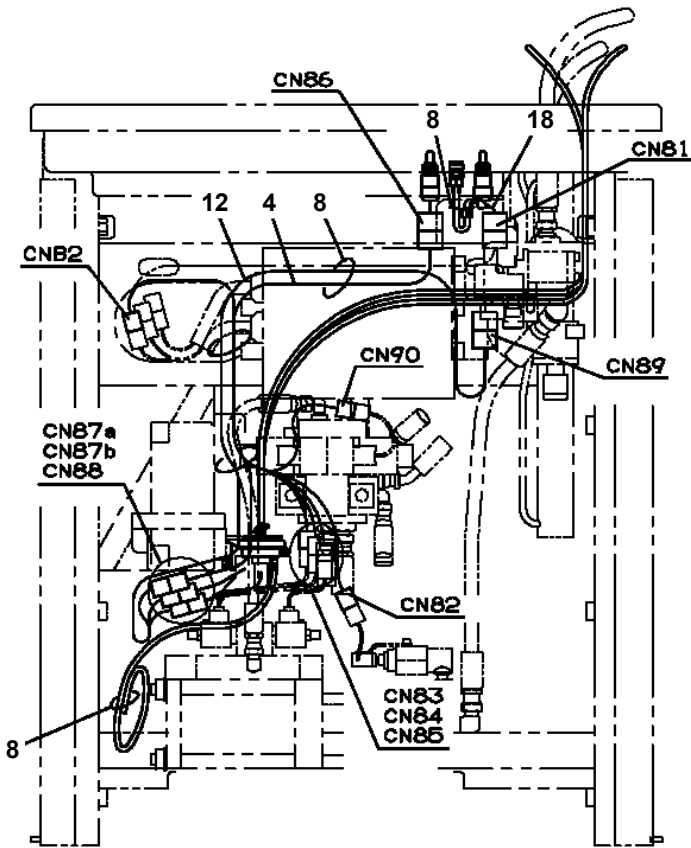
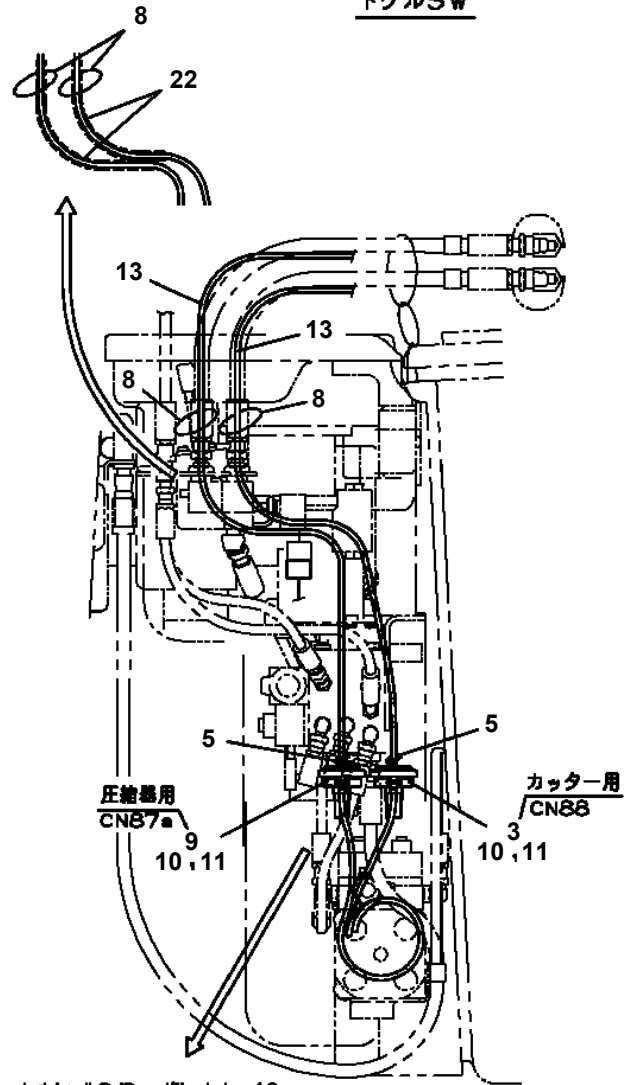
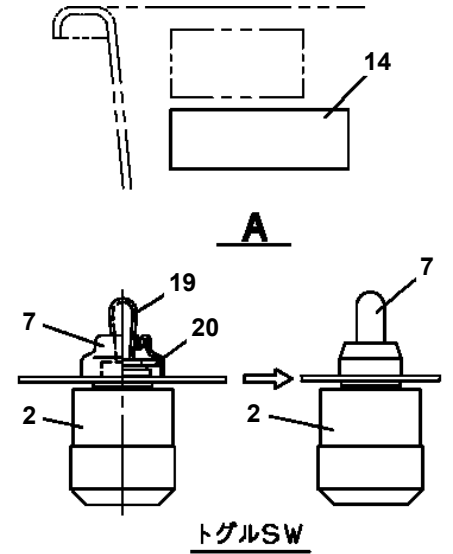
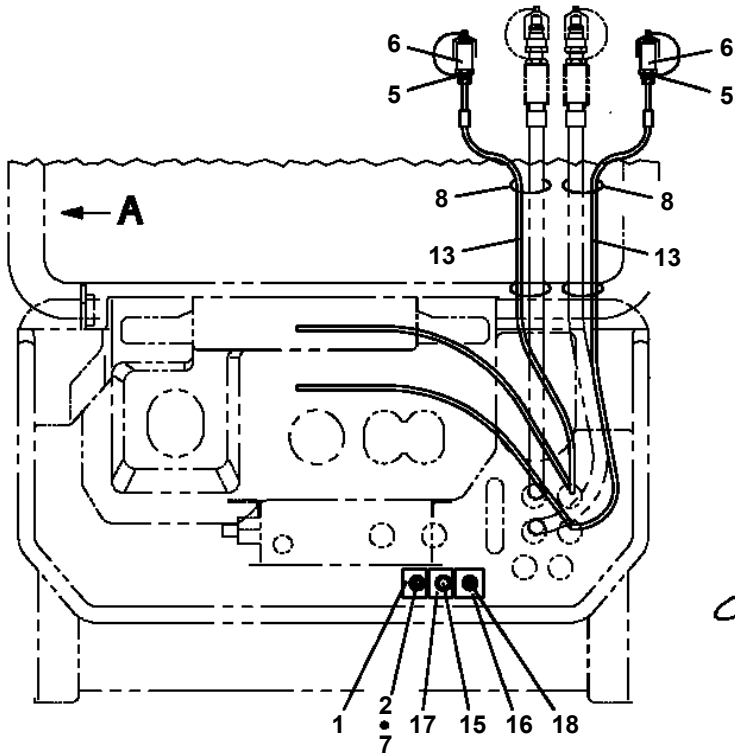
# AT-147-3 43010100036 UPPER

Pos No.	Parts No	Parts Name	Qty	Unit	Technical Data	Serial No (Start)	Serial No (End)	Remarks	Pages
1	42267273100	COVER	1						
2	42267273200	COVER	1						
3	42267273300	COVER	1						
4	42267273400	COVER	1						
5	90183108015	BOLT	15		M8X15		590430		
	90183108015	BOLT	14		M8X15	590431			
8	37000565980	PLATE	8						
9	42310995600	PLATE	5						
10	37000585820	PLATE	2						
12	90183108030	BOLT	5		M8X30				
13	37000576600	PLATE	1		T=8.0				
14	90183108020	BOLT	4		M8X20		590430		
	90183108020	BOLT	5		M8X20	590431			
15	37000517000	PLATE	2			590474			

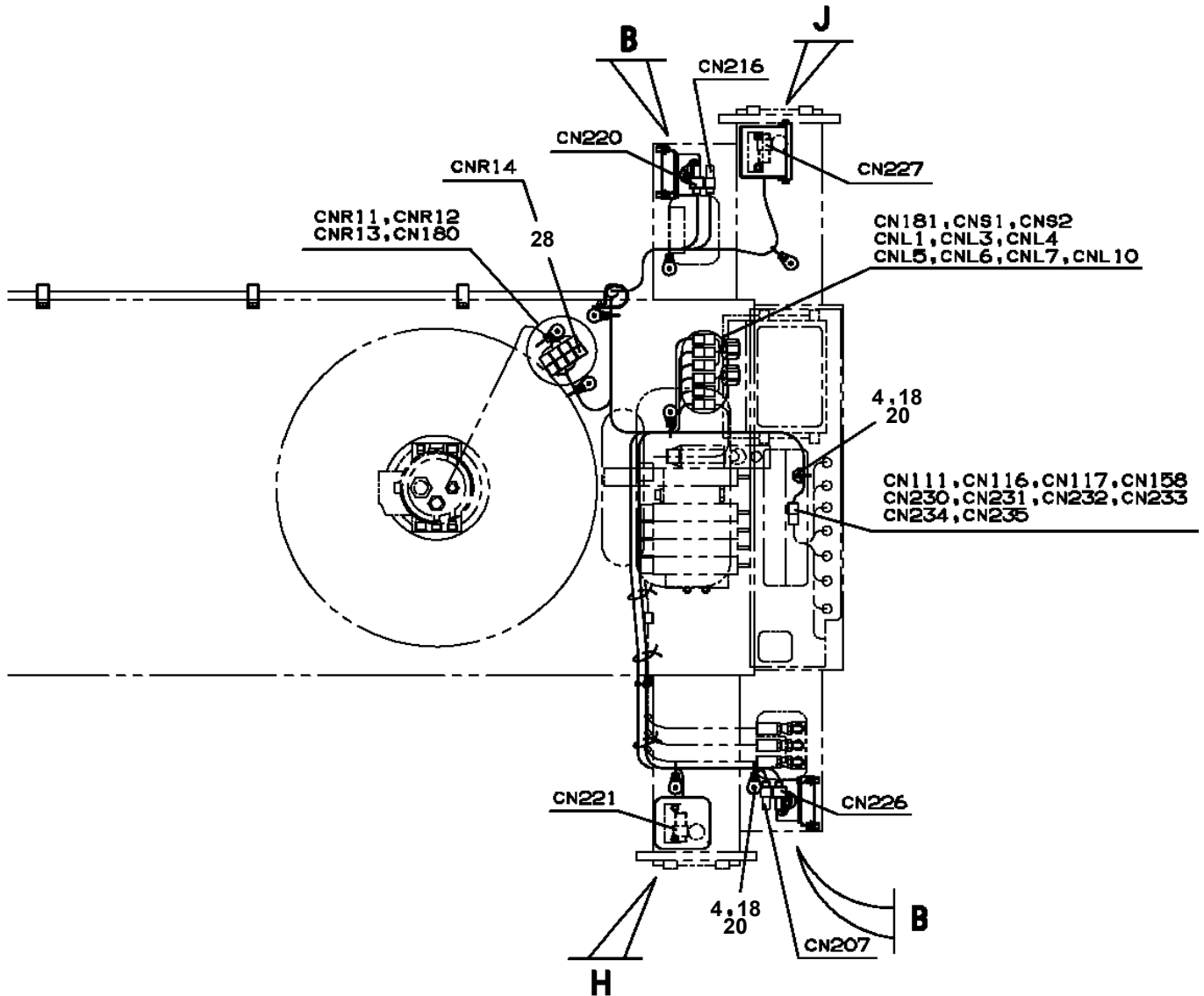
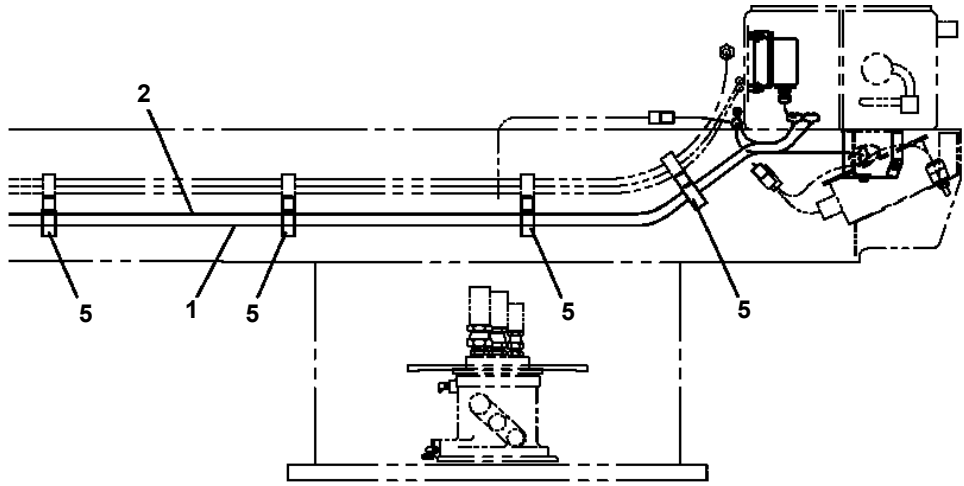
AT-147-3 43010100036 UPPER  
PM5210007-01 MOTOR ASSY,OIL



**AT-147-3 43010100036 UPPER  
PN1014453-03 ELEC.ASSY (BOOSTOR)**



**AT-147-3 43010100036 UPPER  
PN1014929-01 ELEC.ASSY (FRAME)**



**REAR SIDE**

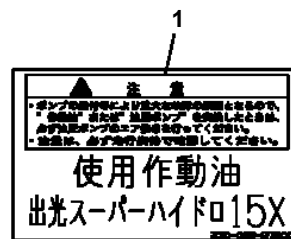
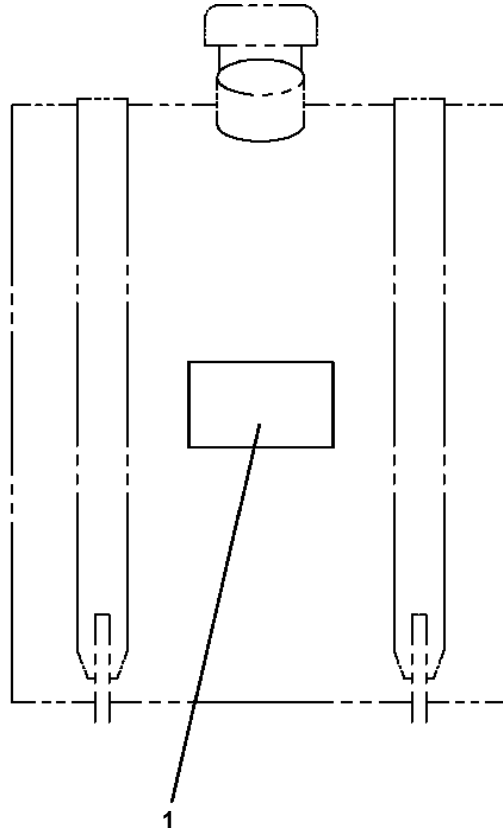
# AT-147-3 43010100036 UPPER

Pos No.	Parts No	Parts Name	Qty	Unit	Technical Data	Serial No (Start)	Serial No (End)	Remarks	Pages
1	91810132530	FASTENER	N						
3	82100002006	CLAMP	2		WR10				
4	90302040601	WASHER,SPRING	2		6				
5	90201200600	NUT	2		M6				
6	80192473010	SCREW,MACHINE	3		M3X10				

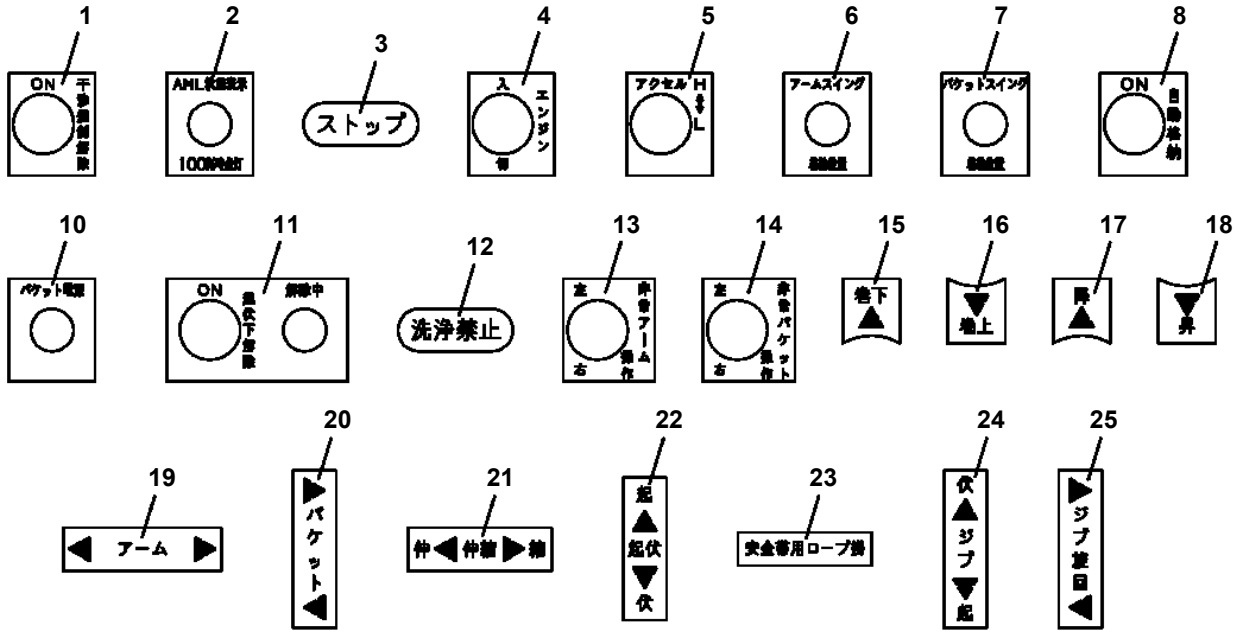
# AT-147-3 43010100036 UPPER

Pos No.	Parts No	Parts Name	Qty	Unit	Technical Data	Serial No (Start)	Serial No (End)	Remarks
2	42356377510	COVER	1					
3	42356377520	SCREW	12		M4X8			
4	42356377530	WASHER	12		M4			
5	42356377540	HARNESS	1					
6	42356377550	HARNESS	1					
7	42356377560	COVER	2					
8	42356377570	SCREW	4		M3X4			
9	42357167510	BOARD,POWER	1					
11	42356371170	BOARD ASSY	1					
12	42356377580	SEAT (SILICONE)	1					
13	42356377590	SEAT (SILICONE)	1					
15	42356377600	SPACER	9					
16	42356377610	SCREW	24		M3X6			
21	42357167530	BOARD,CPU (WITH DATA)	1					
	42357167540	BOARD,CPU (WITH DATA)	1			590480	590479	
100	42357161000	TRANSMITTER,SIGNAL	1					

AT-147-3 43010100036 UPPER  
PO1014931-01 PLATE ASSY,NAME (HYDRAULIC OIL)



AT-147-3 43010100036 UPPER  
PO1015321-01 PLATE ASSY,NAME (BUCKET)



26  
**注意**  
スイング動作（昇降動作）時にはカバーとウインチとの接触に注意してください。

27  
**注意 / バケット電源**  
○バッテリー電圧が低下した場合には、電圧表示灯が点滅します。その後、さらに電圧が低下すると電圧警告ブザーが鳴ります。  
○この場合にはバッテリーを充電してください。

28  
**警告 / 使用上の注意**  
○本機の運転は高所作業車技能講習修了者に限られます。  
○取扱説明書をよく読み、操作および取扱い方法を理解してから使用してください。  
○作業開始前点検を実施してください。  
○ヘルメット・安全帯を着用してください。  
○防護装置を守ってください。  
○作業場以外で作業しないでください。  
○強風・雪などの悪天候時には作業しないでください。

29  
**警告**  
火気厳禁

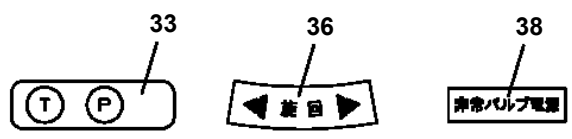
31  
**自動格納方法**  
フームを起起伏伏12°以上にしてください。その後、自動格納スイッチをONに待機してください。バケット・フームスイング、バケット降、縮小、（起こし）、旋回、伏せの順にフームが格納されます。旋回角度が格納位置に近い場合、一旦旋回方向と逆の方向に旋回した後、格納方向に旋回します。

35  
**警告**  
フームレストにフームが格納された状態では、過負荷防止装置は働きます。転倒の恐れがありますので、フーム伸長操作およびウインチによるつり上げ作業を行わないでください。

32  
**起伏下解除方法**  
AMC（過負荷防止装置）が作動して、フームの作業が自動停止したとき、フーム及びアーム・バケットが次の状態にある場合に、起伏下解除スイッチを「ON」にしながら操作を行うと、フーム起起伏伏及び旋回操作を行うことができます。  
条件・フーム全端  
・バケット旋回角度が250°以下であるとき  
・バケット・フーム位置が右側位置付近であるとき

34  
**注意**  
ウインチ吊上げ作業は、下図のジブスイング範囲で使用してください。

**注意 / バケット傾斜**  
○バケットが前後に3°以上傾いたときはバケットの水平調整をしてください。  
○外気温が低下すると起起伏伏時にバケットの液漏れが溢れて傾斜が大きくなる場合があります。このときはバケットを一旦上げて、下げ操作で水平に調整してください。



37  
**警告 / 挟まれ注意**  
○バケットをバケットレストに格納時、パネルとバケットの隙間が狭くなる場合がありますので、手を挟まれないようにしてください。

# AT-147-3 43010100036 UPPER

Pos No.	Parts No	Parts Name	Qty	Unit	Technical Data	Serial No (Start)	Serial No (End)	Remarks	Pages
1	37002201980	PLATE,NAME	1						
3	42736050500	PLATE,NAME	1						
5	42505342100	PLATE,NAME	1						
6	42395081120	PLATE,NAME	1						

# AT-147-3 43010100036 UPPER

Pos No.	Parts No	Parts Name	Qty	Unit	Technical Data	Serial No (Start)	Serial No (End)	Remarks	Pages
1	42332007600	BOOT	2						
2	42330037800	BOOT	1						
3	32350377520	CAP(GRIP)	3						
4	32350377510	GRIP	3						
100	42332001001	OPE.ASSY	1						

# AT-147-3 43010100036 UPPER

Pos No.	Parts No	Parts Name	Qty	Unit	Technical Data	Serial No (Start)	Serial No (End)
109	82464102700	HINGE	2				
110	80172804020	SCREW,MACHINE	1		M4X20		
111	90302510401	WASHER,SPRING	1		4		
112	90303520401	WASHER,PLAIN	1		4		
114	80172803008	SCREW,MACHINE	12		M3X8		
121	91002801400	O-RING	1		1B P14		

# AT-147-3 43010100036 UPPER

Pos No.	Parts No	Parts Name	Qty	Unit	Technical Data	Serial No (Start)	Serial No (End)	Remarks	Page
1	90171108040	BOLT	6		M8X40				
3	90302040801	WASHER,SPRING	8		8				
4	90201780800	NUT	3		M8				
5	42422262300	PIPE,FLEXIBLE	1						
6	90101210020	BOLT	2		M10X20				
7	90302041001	WASHER,SPRING	4		10				
8	90201201000	NUT	6		M10				
9	42422262200	MUFFLER	1						
10	42422262010	PLATE	1						
11	90162260500	U-BOLT	1		50AXM10				
12	42422262020	SUPPORT	1						
13	90101208025	BOLT	2		M8X25				
14	90201200800	NUT	2		M8				
31	36361361040	GASKET (EXHAUST)	2						
51	36361361050	MUFFLER	1						

# AT-147-3 43010100036 UPPER

Pos No.	Parts No	Parts Name	Qty	Unit	Technical Data	Serial No (Start)	Serial No (End)	Remarks	Pages
1	42651711200	CASE	1						
2	42651711100	COVER	1						
3	80182306014	SCREW,MACHINE	8		M6X14				
4	90302040601	WASHER,SPRING	21		6				
5	90303070601	WASHER,PLAIN	10		6				
6	42651091100	RELAY ASSY	1						
7	90101206014	BOLT	12		M6X14				
8	82100002596	RELAY	7						
9	82161201010	RELAY	6						
10	82100002597	RELAY	4						
11	42900002100	TERMINAL ASSY	1						
12	80172303016	SCREW,MACHINE	2		M3X16				
13	90302040301	WASHER,SPRING	4		3				
14	90303070301	WASHER,PLAIN	4		3				
15	80172303008	SCREW,MACHINE	2		M3X8				
16	42900023010	SUPPORT	1						
17	82100002016	CLAMP	1		WR25				
18	90201200600	NUT	1		M6				
100	42901452000	RELAY BOX ASSY	1						

# AT-147-3 43010100036 UPPER

Pos No.	Parts No	Parts Name	Qty	Unit	Technical Data	Serial No (Start)	Serial No (End)	Rem
1	90172112030	BOLT,HEXAGON SOCKET	2		M12X30			
2	80513006813	BEARING,BALL	1					
3	90238402008	NUT,CASTLE	1		M20			
4	90303072001	WASHER,PLAIN	1		20			
5	80136340040	PIN,SPLIT	1		4X40			
6	37000172650	PIN	1					
7	37000516640	PLATE	3		T=1			
8	80136363050	PIN,SPLIT	3		6.3X50			
9	36624630000	VALVE,CHECK	1					
10	90172110050	BOLT,HEXAGON SOCKET	4		M10X50			
11	36051830000	CYLINDER,WINCH JIB (POWER)	1					
12	36663960001	MOTOR ASSY,OIL	1					
13	42311211100	PIN	1					
14	82400000459	CAP	2					
15	37000164330	PIN	1					
16	42220249510	ROPE,WIRE	1	M				
17	82112001022	SLEEVE	2					
18	42311863000	FRAME	1					
19	82400000317	CATCH	1					
20	80175304008	SCREW,MACHINE	2		M4X8			
21	42311011100	PIN	1					
22	80173304010	SCREW,MACHINE	4		M4X10			
23	42312282001	TABLE,SLEWING	1					
24	42311891060	PIN	1					
25	90101208012	BOLT	2		M8X12			
26	90172112025	BOLT,HEXAGON SOCKET	2		M12X25			
27	42311951102	GEAR ASSY	1					
28	80601110650	RING,RITAINING	1		S65			
29	42311341100	SUPPORT	1					
30	90101210020	BOLT	2		M10X20			
31	90302041001	WASHER,SPRING	2		10			
32	80913136480	KEY	1					
33	42311951200	GEAR	1					
34	37000547660	PLATE	1		T=2.3			
35	90171108016	BOLT	1		M8X16			
36	90302040801	WASHER,SPRING	3		8			
38	37000586760	WASHER,PLAIN	4		12			
39	80801004012	BEARING,PLAIN	2					
40	90201200600	NUT	2		M6			
41	42311951300	SUPPORT	1					
42	42310952600	GUIDE	2					
43	42310952700	GUIDE	2					
44	42311891050	PLATE	1					
45	80602110320	RING,RITAINING	1		R32			
62	82400000205	GROMMET	1					
64	82456201000	NIPPLE,GREASE	1		A-TYPE PT1/8			
65	80801003020	BEARING,PLAIN	2					
72	80513006015	BEARING,BALL	1					

# AT-147-3 43010100036 UPPER

Pos No.	Parts No	Parts Name	Qty	Unit	Technical Data	Se
1	82109833232	SWITCH	1			
2	82100002220	CABLE	6	M		
3	82100002173	CONNECTOR	1			
50	42509170000	SWITCH ASSY (ELEC.BOOSTER, REMOTE:5M,NANABOSI,KASUGA)	1			

# AT-147-3 43010100036 UPPER

Pos No.	Parts No	Parts Name	Qty	Unit	Technical Data	Se
1	42470980100	SWITCH,PUSH	1			
2	82100002220	CABLE	3	M		
3	82100002173	CONNECTOR	1			
10	42470983000	SWITCH BOX (ELECTRIC BOOSTER, 3M,NANABOSI,SINKOU DENKI)	1			

# AT-147-3 43010100036 UPPER

Pos No.	Parts No	Parts Name	Qty	Unit	Technical Data	Serial No (Start)	Serial No (End)	Remarks	Page
5	91002902500	O-RING	4		1B G25				
8	80316090020	PLUG	4		KKT PT1/8				
9	36606975020	PLUG	1						
10	91002801400	O-RING	1		1B P14				
12	16066241000	SPRING	1						
22	36606985020	RELIEF ASSY	1						
100	36606980000	VALVE ASSY,RELIEF	1						

# AT-147-3 43010100036 UPPER

Pos No.	Parts No	Parts Name	Qty	Unit	Technical Data	Serial No (Start)	Serial No (End)
1	42460821100	BLOCK,RUBBER (WAZUMI)	4				5904
	42460821200	BLOCK,RUBBER (NAKAMURA)	4				5904
2	42460012540	WEDGE (STOPPER FOR TIRE/NAKAMURA KIKI)	4				5904
	42460012530	WEDGE (STOPPER FOR TIRE/WAZUMI)	4				5904
	42460012550	WEDGE (STOPPER FOR TIRE/JUSTIN)	4			590427	

# AT-147-3 43010100036 UPPER

Pos No.	Parts No	Parts Name	Qty	Unit	Technical Data	Serial No (Start)	Serial No (End)
1	42460012530	WEDGE (STOPPER FOR TIRE/WAZUMI)	1				

# AT-147-3 43010100036 UPPER

Pos No.	Parts No	Parts Name	Qty	Unit	Technical Data	Serial No (Start)	Serial No (End)	Remarks
1	42775711004	GUARD,SIDE	1					
2	42775951000	GUARD,SIDE	1					
4	42775690600	SUPPORT	1					
5	90171112040	BOLT	4		M12X40			
6	90302041201	WASHER,SPRING	4		12			
7	37000586760	WASHER,PLAIN	4		12			
8	90171110030	BOLT	6		M10X30			
9	90201781000	NUT	8		M10			
10	90302041001	WASHER,SPRING	14		10			
11	90303071001	WASHER,PLAIN	12		10			
14	90101208012	BOLT	3		M8X12			
15	90302040801	WASHER,SPRING	3		8			
16	90303070801	WASHER,PLAIN	5		8			
	90303070801	WASHER,PLAIN	1		8	590477	590476	
17	42775710300	SUPPORT	2					
18	90172110020	BOLT,HEXAGON SOCKET	2		M10X20			
19	90201200800	NUT	8		M8			
20	37000520150	PLATE	6					
22	42775690401	SUPPORT	1					
23	90101208025	BOLT	3		M8X25			
24	42775710100	BOX,TOOL	1					
25	90186208035	BOLT,FLANGE	4		M8X35			
26	42775710201	WEIGHT	1					
27	90101210085	BOLT	2		M10X85			
29	37000547660	PLATE	4		T=2.3	590477		

# AT-147-3 43010100036 UPPER

Pos No.	Parts No	Parts Name	Qty	Unit	Technical Data	Serial No (Start)	S
1	42738221000	WOOD BLOCK (KANSAI DENRYOKU/DETACHABLE)	1				

# AT-147-3 43010100036 UPPER

Pos No.	Parts No	Parts Name	Qty	Unit	Technical Data
1	42971852000	BLOCK,WOOD (LEFT REAR:KANSAI DENRYOKU/DETACHABLE TYPE)	1		
2	42738221000	WOOD BLOCK (KANSAI DENRYOKU/DETACHABLE)	3		

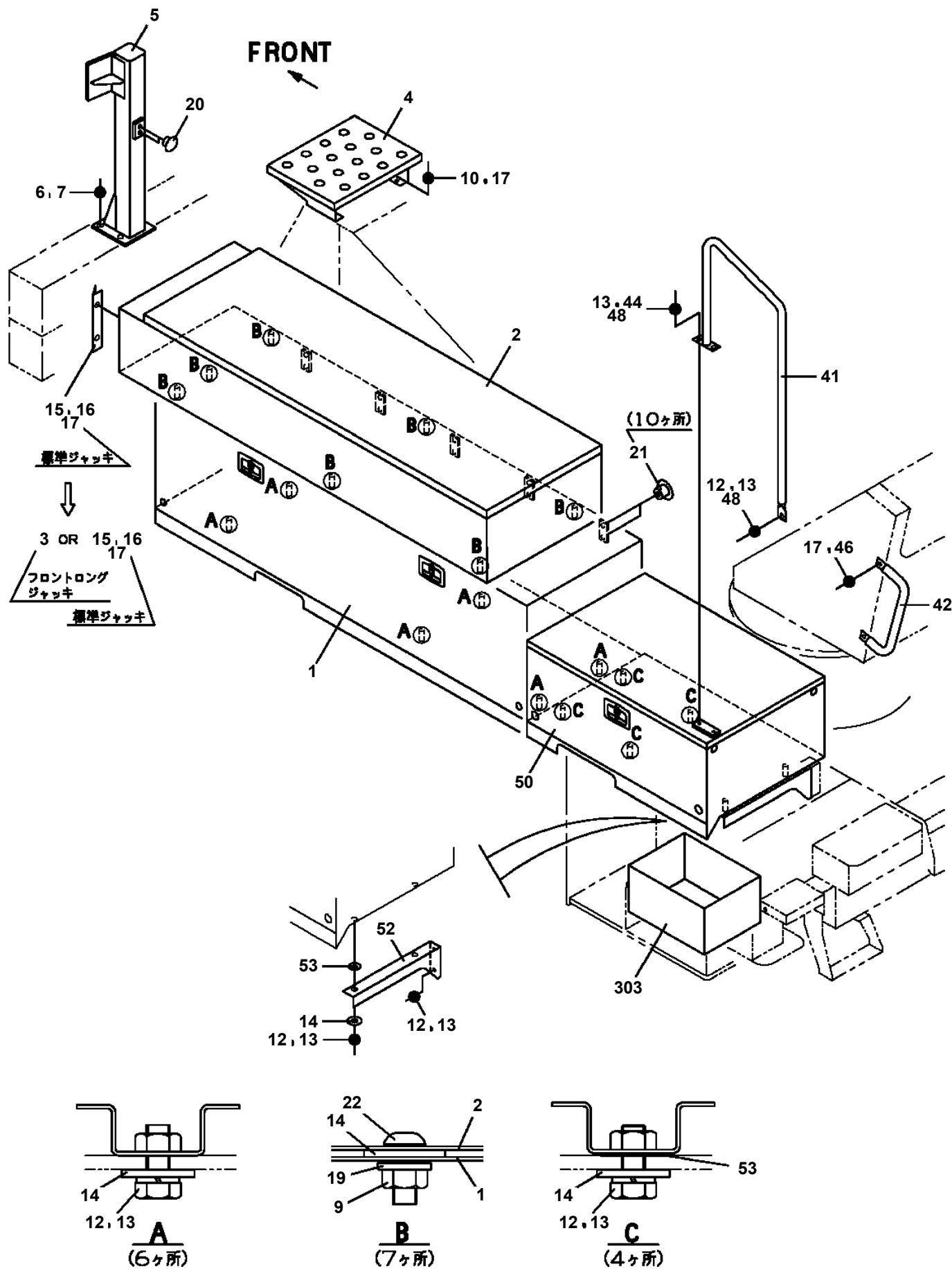
# AT-147-3 43010100036 UPPER

Pos No.	Parts No	Parts Name	Qty	Unit	Technical Data	Serial No (Start)	Serial No (End)
2	42836037510	DOOR	1				
3	42836037520	RACK	1				
5	42836717540	BRACKET	4				
6	42836037530	SEAT	1				
8	42835797550	SEAL	6				
9	42835797560	CUSHION (WITH DOUBLE-STICK TAPE)	2				
10	42831877540	INSULATOR	2				
11	42834687540	WEATHER STRIP	1		L=3510		
12	42835357590	CATCH	2				
13	42835487650	HINGE	3				
14	42835797580	PLUG (HOLE)	6				
15	42833077610	BUSH	8				
16	32830487740	SCREW,MACHINE (SEMS)	2		M4X10		
17	42835837600	SCREW,MACHINE	6		M5X12		
18	80175805012	SCREW,MACHINE	9		M5X12		
19	42836037550	WASHER,TOOTH	4		M10		
20	42836317920	PLATE	3				
100	42836031000	BOX,TOOL	1				

# AT-147-3 43010100036 UPPER

Pos No.	Parts No	Parts Name	Qty	Unit	Technical Data	Serial No (Start)	Serial No (End)	Remarks
1	42422267510	BODY (RUBBER)	1					
3	42422267520	BOLT,HEXAGON SOCKET	6		M12X35			
5	80720105010	PIN,SPRING	6		5X10			
100	42422261810	COUPLING	1					

**AT-147-3 43010100036 UPPER  
PX5780024-02 MOUNT ASSY, TOOL BOX (LEFT SIDE/F:DOUBLE,R:SINGLE)**



AT-147-3 43010100036 UPPER  
PY1020001-10 OPTION UNIT,2

符号	日本語名称	英語名称	備考
58	サポ-トASSY	SUPPORT ASSY	北陸電工向け シ- プ 後端金具一式 (閉閉器支持工法用)
59	ランプ	LAMP	12V60W, シカ- ライター- プ ラク- ツキ
60	マウントASSY (ランプ)	MOUNT ASSY	NTT・TE (四国) 向け ハ- ケット用ランプ サポ- ト
61	ホ- ンプ, グ- リース	PUMP, GREASE	
62	ツールASSY	TOOL ASSY	
63	レンチ, オフセット	WRENCH, OFFSET	10X13
64	ウエツジ	WEDGE	黄色歯止め
65	ブ- ロック, ウツト	BLOCK, WOOD	木製壁木
66	ブ- ロック, ウツト	BLOCK, WOOD	関西電力向け 木製壁木 t150
68	ウツト- ブ- ロック	WOOD BLOCK	関西電力向け 扇着式木製壁木
69	ア- スASSY	EARTH ASSY	ア- ス棒, ケ- プ- ル付
70	ケ- プ- ルASSY	CABLE ASSY	北海道電力向け 充電用10mケ- プ- ル
71	シ- プ ASSY	JIB ASSY	一体型先端FRPサポ- ト (色: グ- レ- ) アイチ対応絶縁シ- プ (色: グ- レ- )
72	ホ- ツクス	BOX	タ- ンハ- ト製造工具箱
73	ステップ ASSY (キャブ- 昇降用)	STEP ASSY	いすゞKR用ステップ
74	ランプ ASSY	LAMP ASSY	北陸電工向け 回転灯, 保護カバー付
75	ア- スASSY	EARTH ASSY	移動式ア- スリール
76	カバー ASSY	COVER ASSY	きんでん向け アプリ布カバー
87	カバー ASSY	COVER ASSY	AT-146-3 札幌電工用 ハ- ケット操作部カバー- 対応布カバー
89	ア- ムASSY	ARM ASSY	AT-145-2用荷込みFRPシ- プ用 碇子付ホルタ-, ホツトステイツク付
92	ハ- ツテリASSY	BATTERY ASSY	上部ハ- ツテリ Panasonic
95	ケ- プ- ルASSY	CABLE ASSY	ハ- プ 日立工業製インハ- タユニット フ- ログ- ラム管換用PC接軸ケ- プ- ル
96	アクセサリ	ACCESSORIES	ハ- ケットインナー中敷
97	ウエツジ	WEDGE	歯止め (黒色)
98	ブ- ロック, ラバ-	BLOCK, RUBBER	コ- ム製壁木 シ- ヤステイン (K355X t50)
99	ア- ムASSY	ARM ASSY	丸電工用 アイチ製板支持用板ア- ム&四面ローラ
101	ベ- ルト	BELT	キャブ- 乗込み用ベ- ルト (FLJ対応)
102	サポ- ト	SUPPORT	7度角度計 (島商事) 取付サポ- ト (日野・いすゞ車用) 荷込み部品
103	シ- プ ASSY	JIB ASSY	北陸電力 配電ロボット I型サブア- ム用FRPジブ

適用製造番号によっては取り付けがないものもあります。

MACHINES OF SOME SERIAL NO. ARE NOT EQUIPPED WITH THESE PARTS.

# AT-147-3 43010100036 UPPER

Pos No.	Parts No	Parts Name	Qty	Unit	Technical Data	Serial No (Start)	Serial No (End)
1	42471070000	CLAMP HEAD (O.D.K 10TON ELECTRIC)	1				

# AT-147-3 43010100036 UPPER

Pos No.	Parts No	Parts Name	Qty	Unit	Technical Data	Serial No (Start)	Serial No (E
1	42470367510	HOOK	1				
2	42470367520	CYLINDER	1				
3	42470367530	HOLDER (DIES)	1				
4	42470367540	STEM	1				
5	42470367550	SPRING (RETURN)	1				
6	42470367560	SEAT,SPRING	1				
7	42470367570	RING,STOP	1				
8	80720103006	PIN,SPRING	1		3X6		
9	91001104000	O-RING	1		1A P40		
10	42470367580	RING (B)	1				
12	42470367590	NOTCH	1				
13	42470367600	PIECE (B)	1				
14	42470367610	PIN (SCREW)	1				
15	42470367620	SPRING ASSY	1				
16	42470367630	PIECE (AL)	1				
17	42470367640	SPRING	1				
18	42470367650	KNOB	1				
19	80720102012	PIN,SPRING	1		2X12		
20	80720103008	PIN,SPRING	1		3X8		
21	42470367660	GUIDE	1				
22	90131505008	BOLT,HEXAGON SOCKET	1		M5X8		
23	90304110501	WASHER (LOCK)	1		5		
24	42470367670	SCRAPER	1				
25	42470367680	SPACER	1				
26	42470367690	BOLT,HEXAGON SOCKET	1				
27	42470367700	NIPPLE	1				
28	42470367710	JOINT,SELF SEALING (WITH CAP)	1				
29	42470367720	GRIP	1				
30	42470367730	PLATE,NAME	1				
31	42470367740	COVER (SAFETY)	1				
50	42470365000	CLAMP HEAD (SANWA,12TON,TITANIUM)	1				

# AT-147-3 43010100036 UPPER

Pos No.	Parts No	Parts Name	Qty	Unit	Technical Data	Serial No (Start)	Serial No (End)
1	42472790000	ROPE (SAFETY,YELLOW:TD-TYPE)	1				

# AT-147-3 43010100036 UPPER

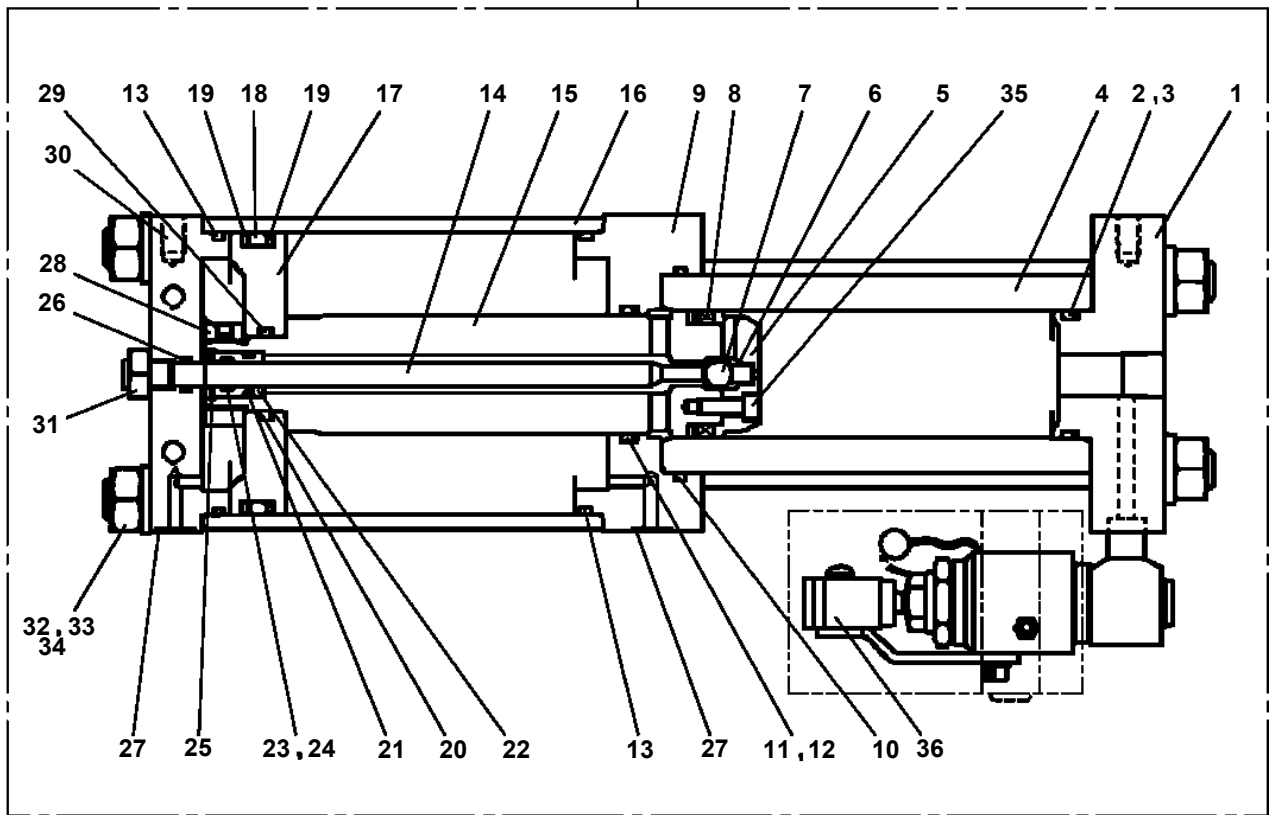
Pos No.	Parts No	Parts Name	Qty	Unit	Technical Data	Serial No (Start)	Serial No (End)	Remarks	Pages
1	42470121000	ARM ASSY	1						
2	42470421000	HOLDER	3						
3	42470123000	CLAMP ASSY	1						
4	42470044000	HOT STICK	1						
5	42476851000	SUPPORT	1						
6	90101216130	BOLT	1		M16X130				
7	90303071601	WASHER,PLAIN	2		16				
8	90201201600	NUT	2		M16				
9	42220011200	SUPPORT	1						
31	42470121100	ARM	1						
32	42470121200	CAP	2						

# AT-147-3 43010100036 UPPER

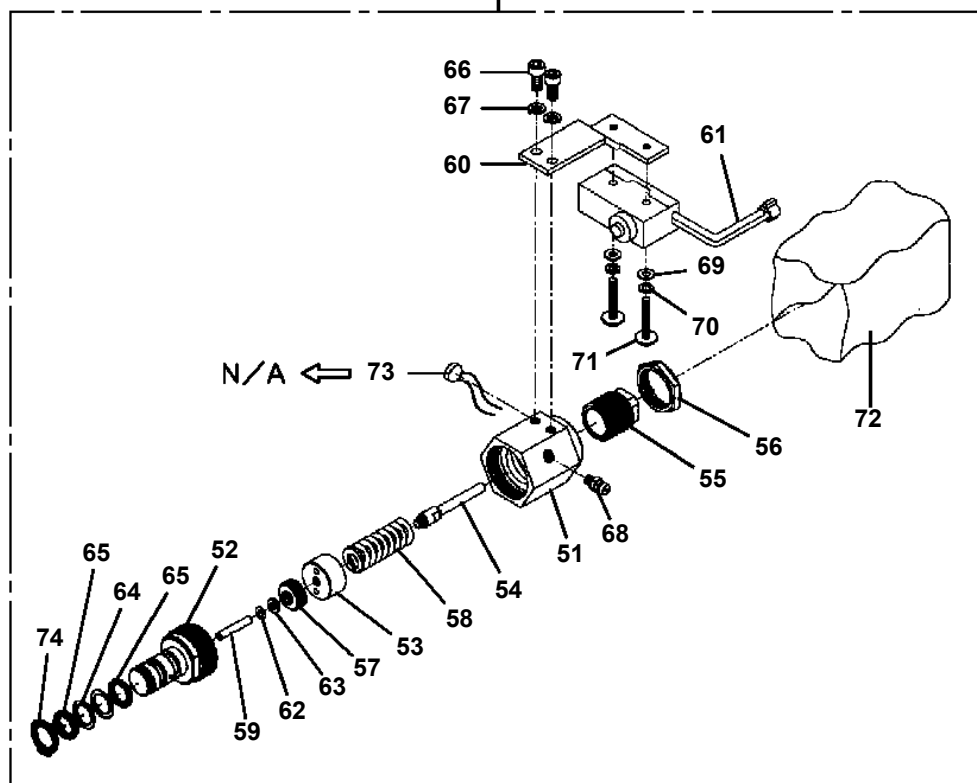
Pos No.	Parts No	Parts Name	Qty	Unit	Technical Data	Serial No (Start)	Serial No (End)	Remarks	Pages
1	42470121000	ARM ASSY	1						
2	42470421000	HOLDER	3						
3	42470123000	CLAMP ASSY	1						
4	42470044000	HOT STICK	1						
5	42504011000	SUPPORT	1						
6	90101216130	BOLT	1		M16X130				
7	90303071601	WASHER,PLAIN	3		16				
8	90201201600	NUT	2		M16				
9	42220011200	SUPPORT	1						
10	90302041601	WASHER,SPRING	1		16				
31	42470121100	ARM	1						
32	42470121200	CAP	2						

**AT-147-3 43010100036 UPPER  
PY1160213-02 BOOSTER**

100



36



# AT-147-3 43010100036 UPPER

Pos No.	Parts No	Parts Name	Qty	Unit	Technical Data	Serial No (Start)	Serial No (End)	Remarks	Pa
1	(*****)	BOOSTER	1						00
2	(*****)	ELEC.ASSY (BOOSTOR)	1				590487		00
	(*****)	ELEC.ASSY (BOOSTOR)	1			590488			00
3	(*****)	PIPING,BOOSTER	1						00

# AT-147-3 43010100036 UPPER

Pos No.	Parts No	Parts Name	Qty	Unit	Technical Data	Serial No (Start)	Serial No (E
5	80456210600	JOINT,SELF SEALING	1				
6	80456240600	JOINT,SELF SEALING (WITH DUST CAP)	1				
11	42471437520	CAP	1				
30	42471080000	HOSE,BOOSTER (MAIL-FEMALE,3M)	1				

# AT-147-3 43010100036 UPPER

Pos No.	Parts No	Parts Name	Qty	Unit	Technical Data	Serial No (Start)	Serial No
1	80456210600	JOINT,SELF SEALING	1				
2	42471807510	HOSE ASSY	1		2M		
3	42470362100	JOINT,SELF SEALING	1				
4	42471807520	HOSE,AIR	1		2M		
5	42470362200	PUMP	1				
6	80456240600	JOINT,SELF SEALING (WITH DUST CAP)	1				
7	42470367840	TUBE	2		25X0.15M		
8	42470367780	JOINT	1				
21	42471437520	CAP	1				
50	42471800000	HOSE,BOOSTER (WITH AIR BALLOON,2M)	1				

# AT-147-3 43010100036 UPPER

Pos No.	Parts No	Parts Name	Qty	Unit	Technical Data	Serial No (Start)	Serial No (End)	Remarks	Pages
1	(*****)	REEL ASSY,CORD	1						00022
2	42970690500	SUPPORT	1						
4	90303070801	WASHER,PLAIN	6		8				
5	42739710200	EARTH	1						
6	42970690400	SUPPORT	1						
7	90101210020	BOLT	8		M10X20				
8	90302041001	WASHER,SPRING	8		10				
9	90101208020	BOLT	6		M8X20				
10	90302040801	WASHER,SPRING	7		8				
11	90303071001	WASHER,PLAIN	8		10				
12	42970690700	SUPPORT	1						
13	37002701590	CABLE ASSY	1		30B,L=280				
14	90201200800	NUT	1		M8				

# AT-147-3 43010100036 UPPER

Pos No.	Parts No	Parts Name	Qty	Unit	Technical Data	Serial No (Start)	Serial No
1	42474030000	STEP, BUCKET (GRAY, FOR BUCKET INNER)	1				

# AT-147-3 43010100036 UPPER

Pos No.	Parts No	Parts Name	Qty	Unit	Technical Data	Serial No (Start)	Serial No (End)	Remarks
1	42475930000	HANGER (FOR BUCKET,FRP)	1					

# AT-147-3 43010100036 UPPER

Pos No.	Parts No	Parts Name	Qty	Unit	Technical Data	Serial No (Start)	Serial No (End)	Rem
1	42503180000	BOX,TOOL (FOR BUCKET,FRP)	1					

# AT-147-3 43010100036 UPPER

Pos No.	Parts No	Parts Name	Qty	Unit	Technical Data	Serial No (Start)	Serial No (End)	Remarks
1	42267971000	ARM ASSY	1					
2	42267130100	GEAR	1					
3	90730006140	SCREW,SET	2		M6X14			
4	90180212035	BOLT,BUTTON	2					
5	80601111000	RING,RETAINING	1		S100			
6	42267120400	SPACER	1					
7	42267120500	SPACER	1					
8	90171212035	BOLT (DACRO)	2		M12X35			
9	90203401200	NUT	4		M16			
10	90171112030	BOLT	7		M12X30			
11	37000586760	WASHER,PLAIN	7		12			
12	42267120300	SPACER	1					
13	42267120200	PIN	1					
14	42267140100	PLATE	1					
15	37000582110	PLATE	1					
16	90180206012	BOLT,BUTTON	2		M6X12			
17	90302040601	WASHER,SPRING	2		6			
18	42267144002	POST ASSY	1					
19	42267120700	GUIDE	1					
20	90101208014	BOLT	2		M8X14			
21	90302040801	WASHER,SPRING	2		8			
22	36663460001	MOTOR ASSY,OIL	1					
23	90172112030	BOLT,HEXAGON SOCKET	2		M12X30			
24	90309341203	WASHER,SPRING	2		12			
25	36340380000	REDUCER,SWING SPEED	1					
26	80136363050	PIN,SPLIT	1		6.3X50			
27	42265980010	PIN	1					
28	82455106000	NIPPLE,GREASE	1		A-M6F FE			
29	82400000459	CAP	1					
30	42267250020	SPACER	2		L=1.6			
31	37010501080	PLATE	1			590406		
52	80513006920	BEARING,BALL	1					
53	80513006922	BEARING,BALL	1					
72	80801003540	BEARING,PLAIN	2					
73	82456101000	NIPPLE,GREASE	1		A-PT1/8			

CLICK HERE TO **DOWNLOAD** THE COMPLETE MANUAL

- Thank you very much for reading the preview of the manual.
- You can download the complete manual from: [www.heydownloads.com](http://www.heydownloads.com) by clicking the link below



- Please note: If there is no response to CLICKING the link, please download this PDF first and then click on it.

CLICK HERE TO **DOWNLOAD** THE COMPLETE MANUAL