

AT-147-3 43010100066 UPPER

**PD2000186-01 SWING UNIT
PF1000691-00 WINCH SYSTEM
PG2000244-00 BOOM UNIT
PH1000550-00 SAFETY DEVICES (MOTION CONTROLLER)
PJ3000567-00 BUCKET SYSTEM
PJ5000003-00 BOOSTER UNIT
PK2001786-00 FRAME UNIT
PO1000171-00 INDICATION PLATES
PW1000118-00 ACCESSORIES & TOOLS
PX1001291-00 MOUNTING PARTS
PY1001439-00 OPTIONS
ASSEMBLY**

CLICK HERE TO **DOWNLOAD** THE COMPLETE MANUAL

- Thank you very much for reading the preview of the manual.
- You can download the complete manual from: www.heydownloads.com by clicking the link below



- Please note: If there is no response to CLICKING the link, please download this PDF first and then click on it.

CLICK HERE TO **DOWNLOAD** THE COMPLETE MANUAL

AT-147-3 43010100066 UPPER

Pos No.	Parts No	Parts Name	Qty	Unit	Technical Data	Serial No (Start)	Serial No (End)
1	42267241000	BUCKET	1				
2	(*****)	BUCKET (INNER CASE)	1				
4	(*****)	ARM ASSY	1				
5	(*****)	PIPING ASSY,ARM	1				
6	(*****)	PIPING ASSY,BUCKET	1				
9	(*****)	COVER,BOOM (TOP/FRP,WHITE)	1				
10	(*****)	BUCKET FRAME ASSY	1				
11	(*****)	COVER (ARM/FRP,WHITE)	1				
12	(*****)	COVER (WINCH/FRP,WHITE)	1				
13	42267274000	COVER (CLOTH,WHITE/BUCKET)	1				
14	(*****)	COVER (BUCKET/FRP,WHITE)	1				
15	(*****)	COVER (ARM HOSE,CLOTH)	1				
16	(*****)	COVER	1				
17	42262804000	COVER,WINCH (CLOTH,WHITE/WINCH)	1				
21	(*****)	OPE.ASSY (BUCKET)	1				
22	(*****)	ELEC.ASSY (ARM)	1				
23	(*****)	ELEC.ASSY,BUCKET	1				
24	(*****)	ACCESSORIES (BUCKET INNER MAT)	1				

AT-147-3 43010100066 UPPER

Pos No.	Parts No	Parts Name	Qty	Unit	Technical Data	Serial No (Start)	Se
1	(***** *****)	MOUNT ASSY,TOOL BOX (LEFT)	1				59
	(***** *****)	MOUNT ASSY,TOOL BOX (LEFT)	1			590412	
2	(***** *****)	MOUNT ASSY,TOOL BOX (RIGHT)	1				
3	(***** *****)	EARTH ASSY (5X10M.CLIP ON THE END,PORTABLE)	1				
	(***** *****)	EARTHING DEVICE	1				
	(***** *****)	EARTHING DEVICE (8X10M, TOP CLIP)	1				
	(***** *****)	EARTHING DEVICE (8X20M, TOP CLIP)	1				

AT-147-3 43010100066 UPPER

Pos No.	Parts No	Parts Name	Qty	Unit	Technical Data	Serial No (Start)	Serial No (End)	Remarks	Pages
11	36654185010	SEAL KIT	1						
100	36654180000	PUMP,HYDRAULIC	1						

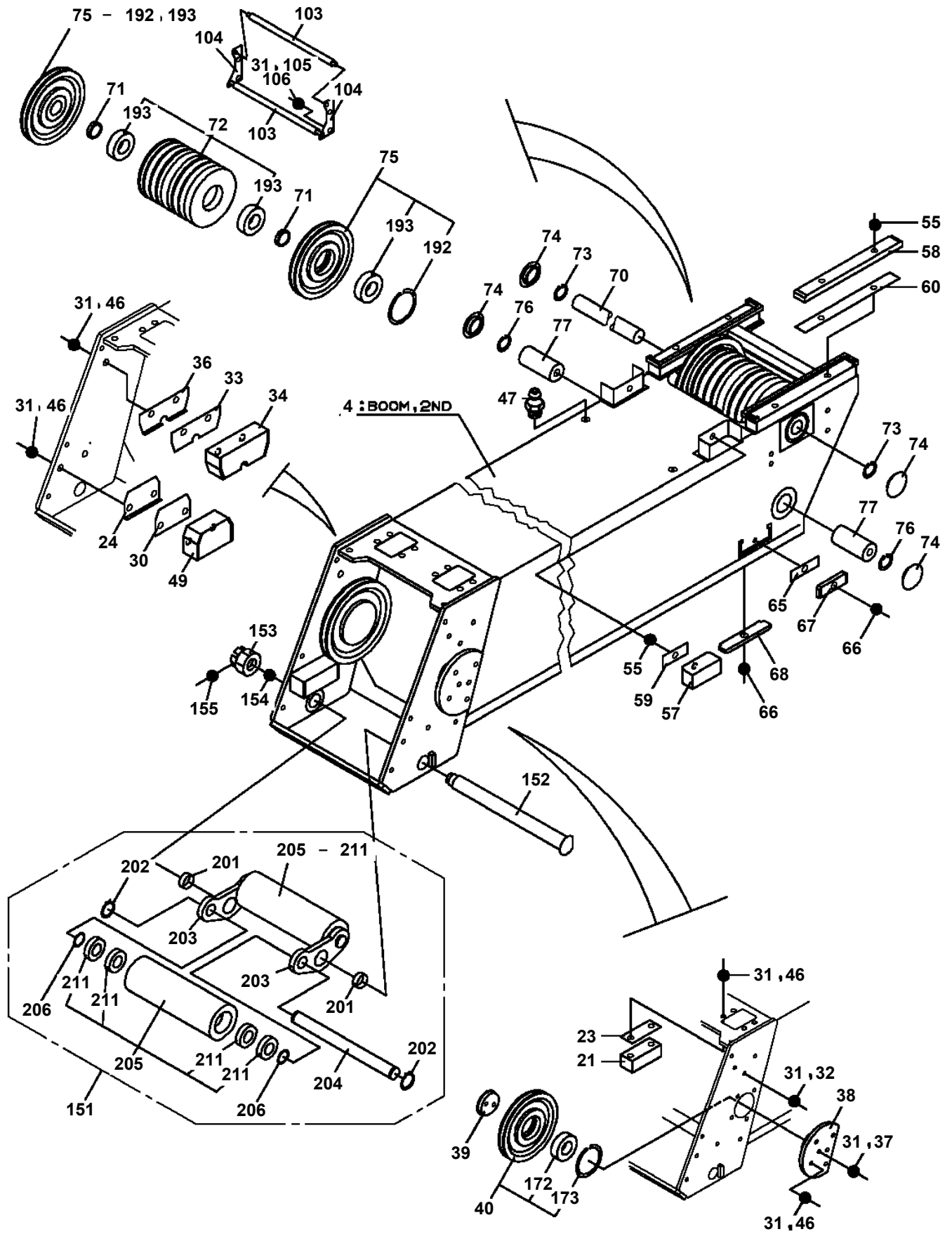
AT-147-3 43010100066 UPPER

Pos No.	Parts No	Parts Name	Qty	Unit	Technical Data	Serial No (Start)	Serial No (End)	Remarks
1	90101208016	BOLT	2		M8X16			
2	90302040801	WASHER,SPRING	2		8			
3	36630910060	NEEDLE	1					
4	36630910030	HOLDER	1					
5	91002801000	O-RING	1		1B P10			
6	91410001000	RING,BACKUP	1		P10			
8	36630910050	POPPET	1					
9	52255101000	SPRING	1					
10	91002801400	O-RING	1		1B P14			
11	36620030050	PLUG	1					
12	82400000350	KNOB	1					
13	37000508510	PLATE	1					
14	80172303006	SCREW,MACHINE	1		M3X6			
100	36636340000	VALVE,MANUAL CONTROL	1					

AT-147-3 43010100066 UPPER

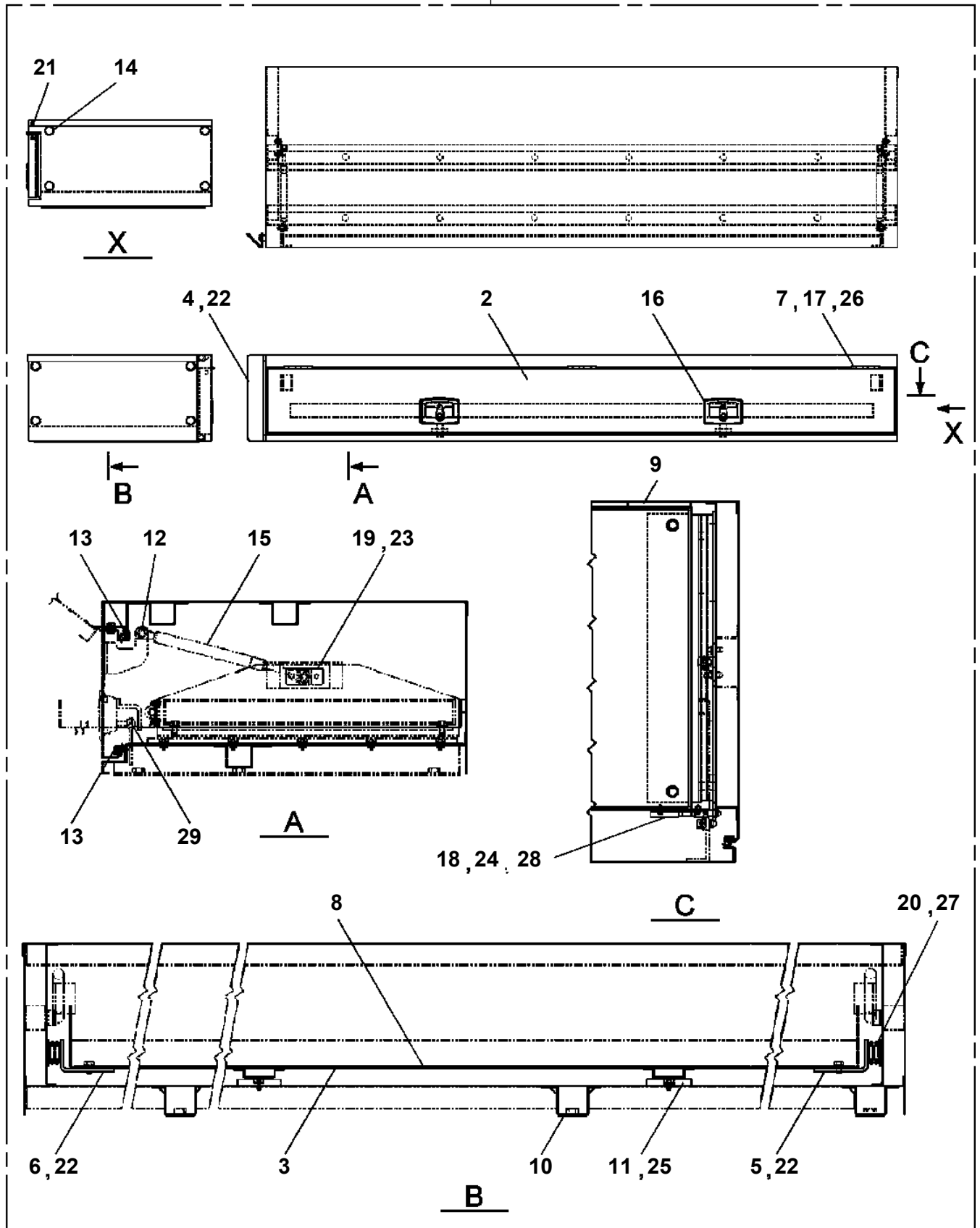
Pos No.	Parts No	Parts Name	Qty	Unit	Technical Data	Serial No (Start)	Serial No (End)	Remarks
1	42882263001	SUPPORT	1					
2	36102590000	TANK,OIL	1					
3	31660360300	BAND	2					
4	90171112025	BOLT	6		M12X25			
5	90302041201	WASHER,SPRING	6		12			
7	90301021001	WASHER	2					
8	90201201000	NUT	4		M10			
9	42882260600	SUPPORT	1					
10	90302040801	WASHER,SPRING	17		8			
11	90303070801	WASHER,PLAIN	12		8			
12	91002802900	O-RING	1		1B P29			
13	36672810001	FILTER,OIL	1					
14	91001204500	O-RING	1		1A G45			
15	42881460101	FITTING,FLANGE	1					
16	90101208016	BOLT	7		M8X16			
17	36673320000	FILTER,OIL	1					
	36673730000	FILTER ASSY	1			590460	590459	
18	42882260501	SUPPORT	1					
19	90302041001	WASHER,SPRING	2		10			
20	90303071001	WASHER,PLAIN	2		10			
21	90101210020	BOLT	2		M10X20			
22	37000913040	JOINT (WITH O-RING)	1		L,G1-G3/4			
23	37000600520	CLAMP	1		R=22			
25	37000542310	PLATE	1					
26	37000587190	PLATE	N		T=3.0			
27	37000587200	PLATE	N		T=1.0			
28	90101208025	BOLT	2		M8X25			
29	80302090281	FITTING	1		KCO22-060N			
30	91002802400	O-RING	1		1B P24			
31	80320010170	FITTING	1		KUD22-040N			
32	80303130281	FITTING,ELBOW	1		KLO22-060E			
33	81408000290	PIPE,STEEL	1	M	22X2.5T			
34	81408000290	PIPE,STEEL	1	M	22X2.5T			
35	31660360400	CUSHION	2					
36	82410124004	INSULATOR	2					
37	42882260701	SUPPORT	1					
38	90101206012	BOLT	4		M6X12			
39	90302040601	WASHER,SPRING	4		6			
40	34471141300	CUSHION	2					
41	90201200800	NUT	4		M8			
42	90101208020	BOLT	4		M8X20			
43	82401800080	PLUG (FOR M8)	2					
51	42882260800	PLATE	1					
61	42882264100	JOINT	1					
62	42643051000	SWITCH ASSY (THERMO)	1					
63	80400160131	JOINT	2					
64	91002801800	O-RING	3		1B P18			
65	80316070080	PLUG	1		PF1/2			
66	80302090281	FITTING	1		KCO22-060N			
67	91002802400	O-RING	2		1B P24			
71	91002802900	O-RING	1		1B P29			

**AT-147-3 43010100066 UPPER
PB5190089-01 BOOM ASSY**

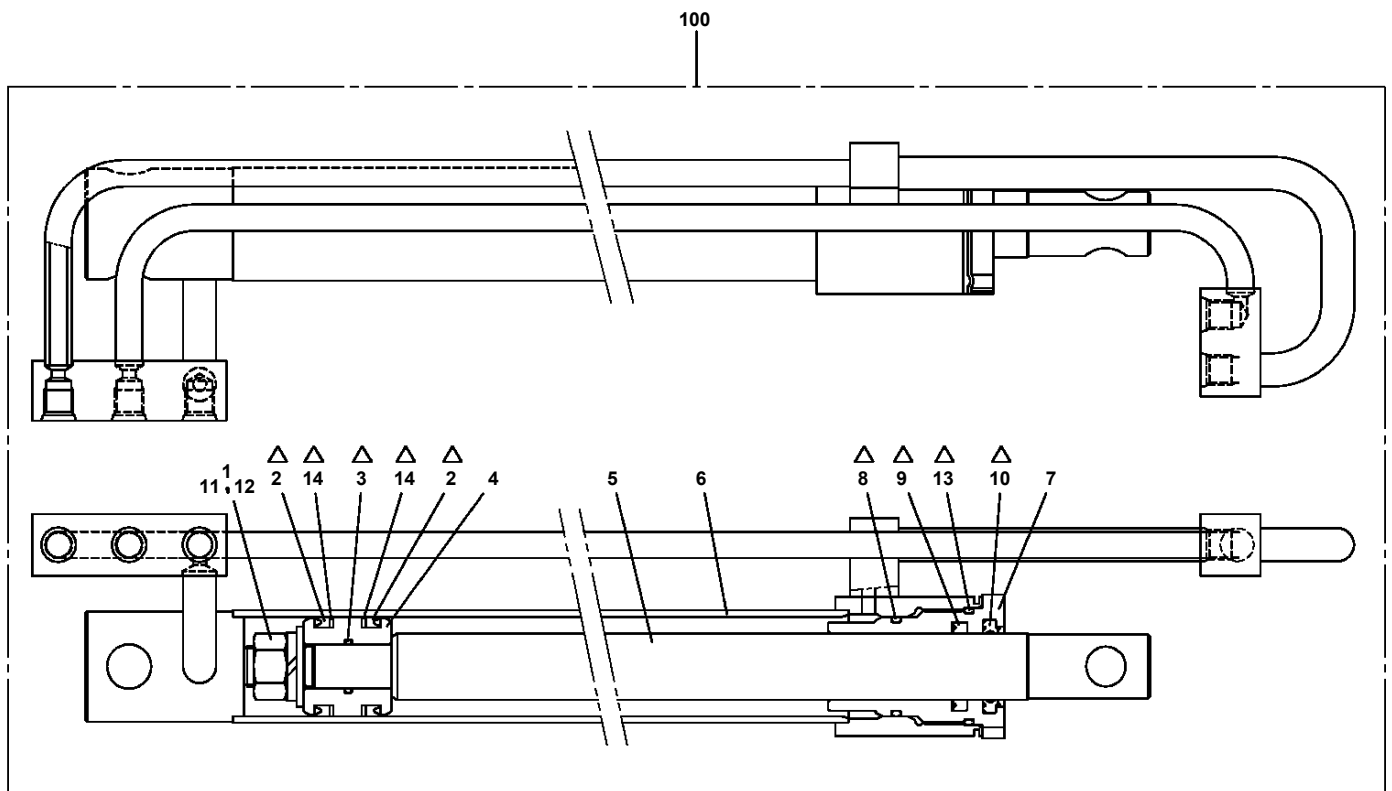


AT-147-3 43010100066 UPPER
PB5410097-00 BOX, TOOL

100

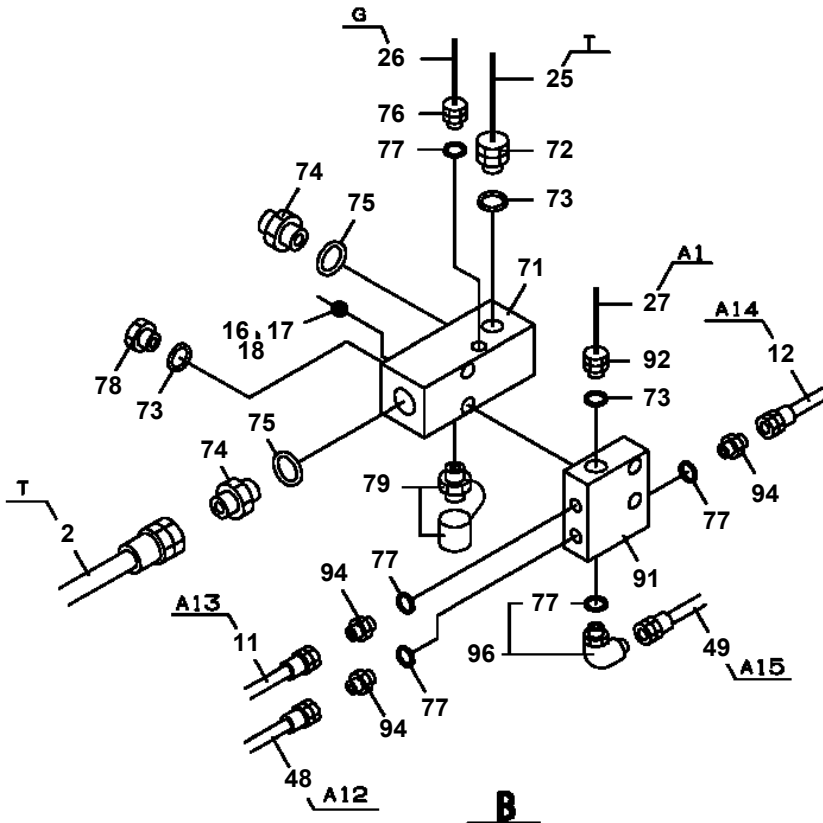
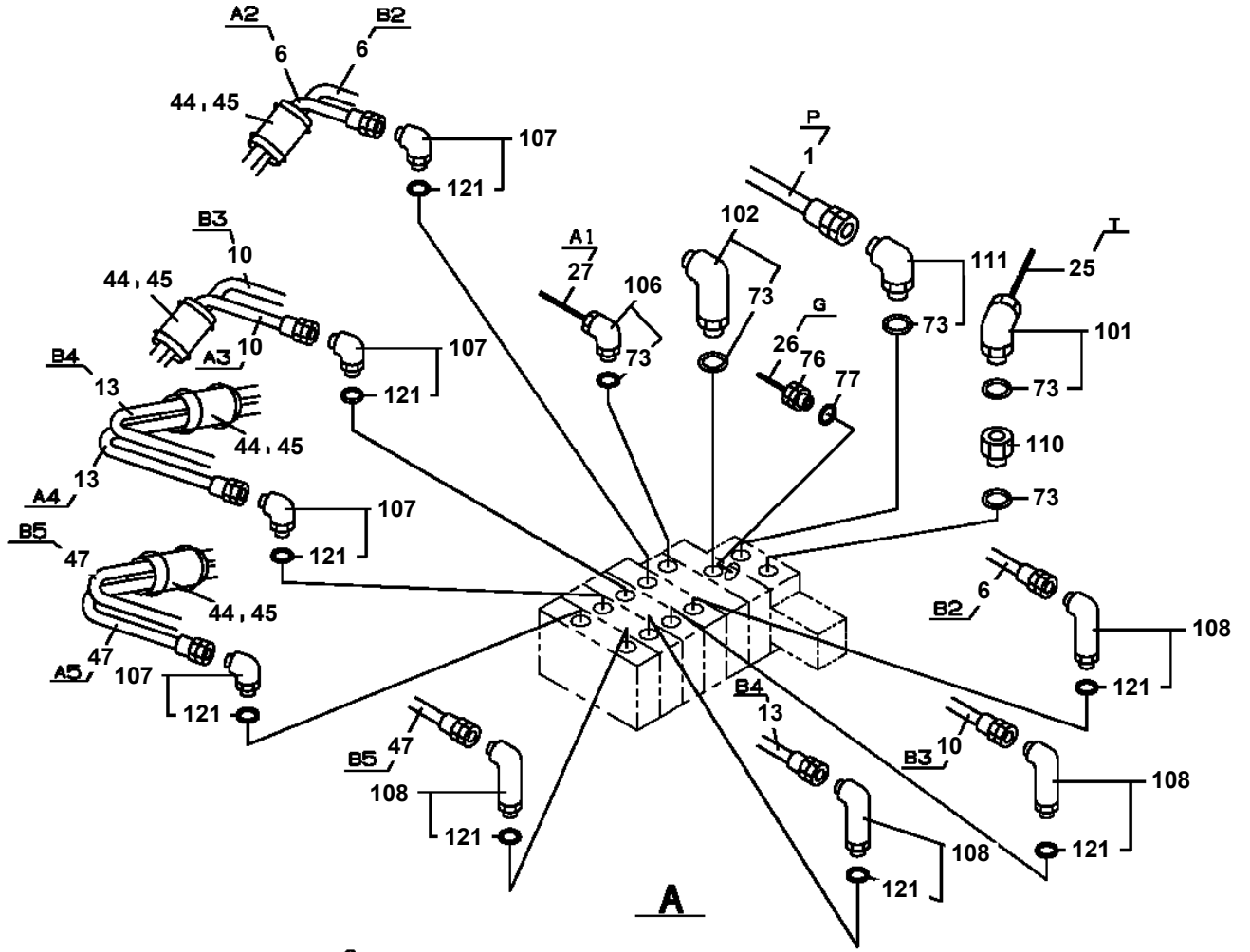


AT-147-3 43010100066 UPPER
PC1050221-00 CYLINDER,EXTENSION (FRONT)



Δ:PACKING SET KEY NO.30 (KEY NO.2,3,8,9,10,13,14)

**AT-147-3 43010100066 UPPER
PC1200578-06 PIPING,OUTRIGGER**



AT-147-3 43010100066 UPPER

Pos No.	Parts No	Parts Name	Qty	Unit	Technical Data	Serial No (Start)	Serial No (End)
1	42614464100	CASE,INNER	1				
2	42613351200	CASE,INNER (JACK)	1				
4	36035100000	CYLINDER,JACK	1				
5	42502970200	FLOAT ASSY	1				
6	37000171720	PIN	1				
7	80601110250	RING,RITAINING	2		S25		
8	37000169010	PIN	1		30		
9	80601110300	RING,RITAINING	2		S30		
10	36625740001	VALVE,CHECK	1				
11	90171108055	BOLT	4		M8X55		
12	37000138750	PIN	1		18		
13	80136332036	PIN,SPLIT	2		3.2X36		
14	80400160127	JOINT	1				
15	91002801100	O-RING	1		1B P11		
16	36672460000	FILTER (NIPPLE TYPE)	1				
17	42612851010	COVER	1				
18	90186206014	BOLT,FLANGE	2		M6X14		
19	37000112320	PIN	1				
20	80601110120	RING,RITAINING	2		S12		
21	91810130240	FASTENER	2				
22	31201770100	PLATE,SLIDE	8		T=3.0		
23	90280200600	NUT,FLANGE	1		M6		
24	37000600700	CLAMP	1		12X3		
25	82467300106	PLUG	4				
41	36042810000	CYLINDER,EXTENSION (FRONT)	1				
42	80400160127	JOINT	2				
43	91002801100	O-RING	3		1B P11		
44	37002485300	HOSE	1		L=1805		
45	42614053350	HARNESS	1				
46	91810130240	FASTENER	13				
63	42612851420	TRUNNION	1				
100	42614464000	CASE ASSY,INNER (FRONT,RIGHT)	1				

AT-147-3 43010100066 UPPER

Pos No.	Parts No	Parts Name	Qty	Unit	Technical Data	Serial No (Start)	Serial No (End)	Remarks
1	42272361104	COVER	1				590479	
	42272361105	COVER	1			590480		
2	42272361202	COVER	1					
3	42272361301	COVER	1					
4	90101206016	BOLT	8		M6X16			
5	80172803008	SCREW,MACHINE	8		M3X8			
6	90201500300	NUT	8		M3			
7	90302510301	WASHER,SPRING (SUS 3)	8					
8	82466100702	CATCH	2					
9	80172804012	SCREW,MACHINE	12		M4X12			
10	90201500400	NUT	12		M4			
11	90302510401	WASHER,SPRING	12		4			
12	82464110305	HINGE	2					
13	90302040601	WASHER,SPRING	8		6			
14	90303070601	WASHER,PLAIN	8		6			
15	82467300105	PLUG	1			590480		
50	42272361005	COVER ASSY	1					

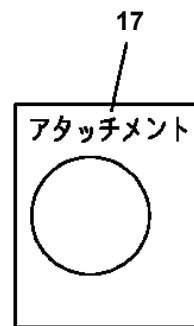
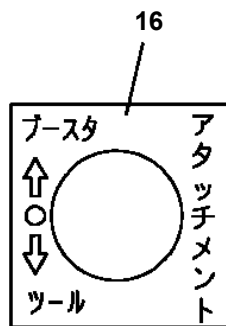
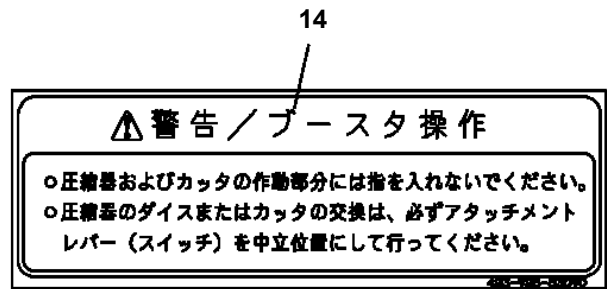
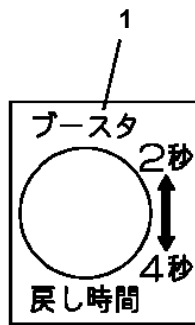
AT-147-3 43010100066 UPPER

Pos No.	Parts No	Parts Name	Qty	Unit	Technical Data	Serial No (Start)	Serial N
1	91660005501	SEAL,DUST	1				
2	36018269510	COVER,ROD	1				
3	91002908500	O-RING	1		1B G85		
4	91301105500	BEARING,PLAIN	1				
5	91410205501	RING,BACKUP	1				
6	91694005500	PACKING	1				
7	91251100550	RING,DAMPER	1		DR-55		
8	91411107500	RING,BACKUP	1				
9	91002907500	O-RING	1		1B G75		
10	80801005530	BEARING,PLAIN	1				
11	80612110600	RING,RITAINING	1		AR60		
12	36018263000	ROD	1				
13	36018261001	CYLINDER	1				
14	91002903000	O-RING	1		1B G30		
15	36018260500	PISTON	1				
16	91411206201	RING,BACKUP	2				
17	91684007501	PACKING	2				
18	91302207500	BEARING,PLAIN	2				
19	90730006100	SCREW,SET	1		M6X10		
20	36018250100	NUT	1				
21	37001101980	ROLLER ASSY (WITH BEARING/ASSY ONLY)	1				
22	36011560200	SPACER	2				
23	37000154450	PIN	1				
24	80601110250	RING,RITAINING	2		S25		
41	36015959900	PACKING SET	1		55X75		
100	36018260002	CYLINDER ASSY,TELESCOPING	1				

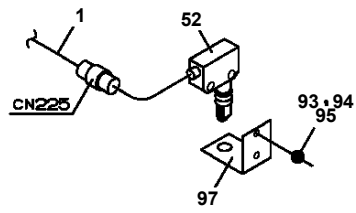
AT-147-3 43010100066 UPPER

Pos No.	Parts No	Parts Name	Qty	Unit	Technical Data	Serial No (Start)	Serial No (End)
1	36027959510	CYLINDER ASSY	1				
3	82455106000	NIPPLE,GREASE	1		A-M6F FE		
4	36027952001	PISTON	1				
5	91350211000	BEARING,PLAIN (WITH PACKINGX2)	1				
6	91002802600	O-RING	1		1B P26		
7	36027959521	ROD ASSY	1				
8	36027959530	COVER,ROD	1				
9	80612110520	RING,RITAINING	1		AR52		
10	91002910500	O-RING	1		1B G105		
11	80801004525	BEARING,PLAIN	1				
12	91694004500	PACKING	1				
13	91410204502	RING,BACKUP	1				
14	91660004501	SEAL,DUST	1				
15	91002911000	O-RING	1		1B G110		
16	80541700030	BEARING,SPHERICAL (NTN)	1		SA4-30B		
17	80820003030	BEARING,PLAIN	2				
18	90730008120	SCREW,SET	1		M8X12		
41	36027959900	PACKING SET	1		45X110		
101	36027950000	CYLINDER,LEVELING (UPPER)	1				
102	36624110000	VALVE,CHECK	1				
103	90172110050	BOLT,HEXAGON SOCKET	4		M10X50		590499
	90180210050	BOLT,BUTTON	4		M10X50	590500	

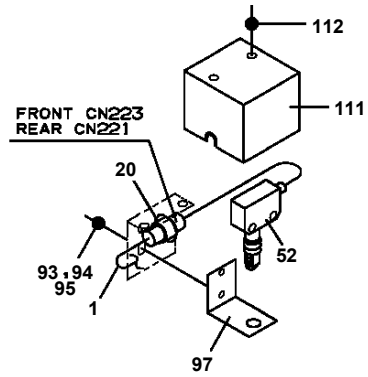
AT-147-3 43010100066 UPPER
PE5021145-00 ELEC.ASSY (BOOSTOR)



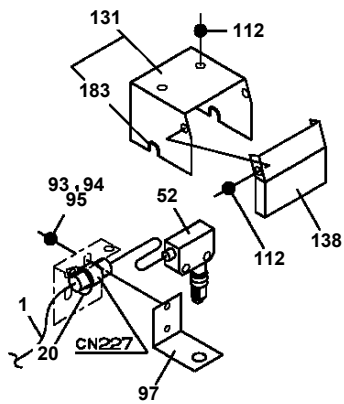
**AT-147-3 43010100066 UPPER
PE5110007-00 ELEC.ASSY,FRAME**



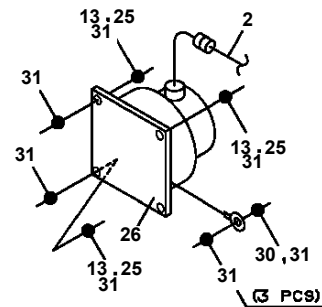
D



E
(2ヶ所)



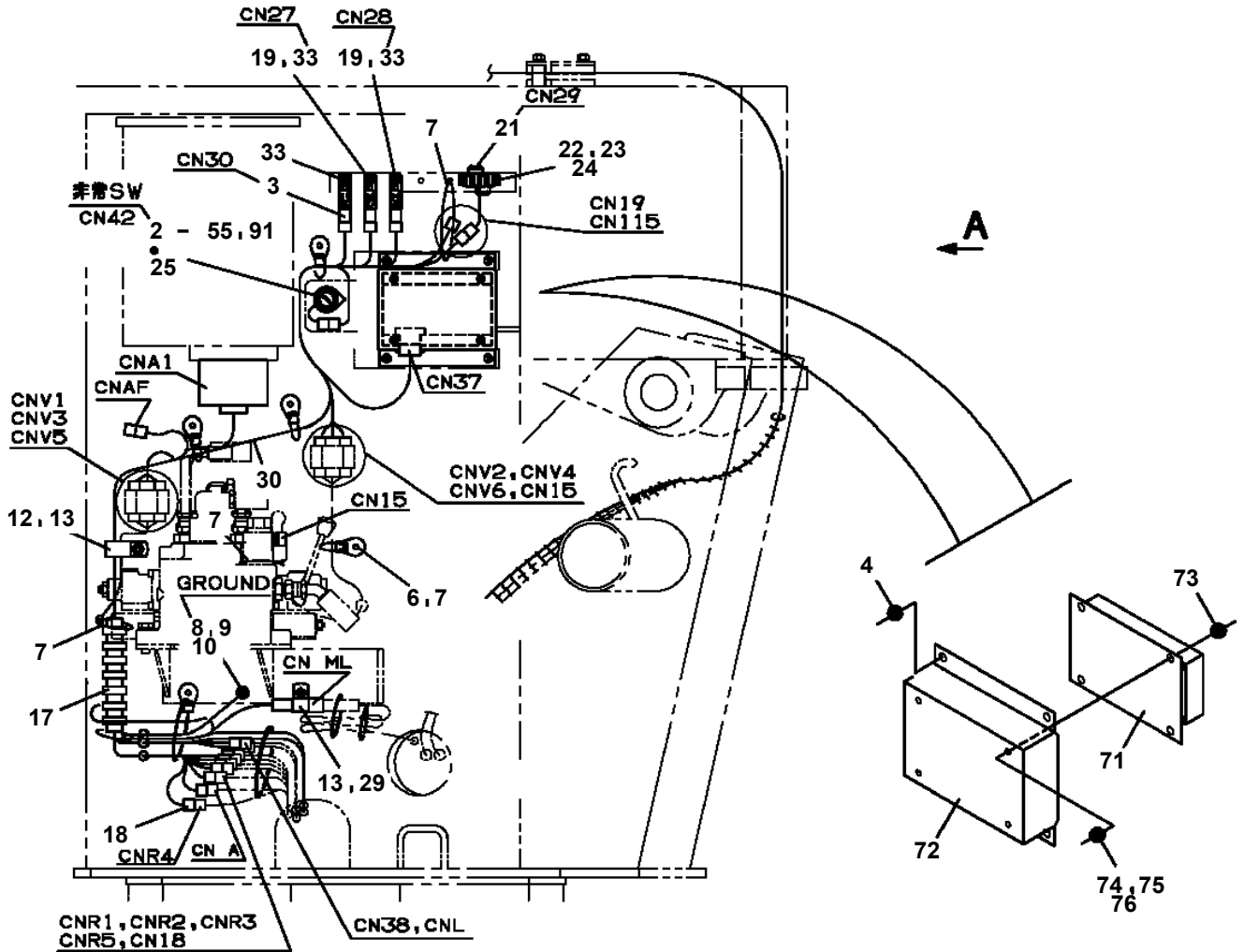
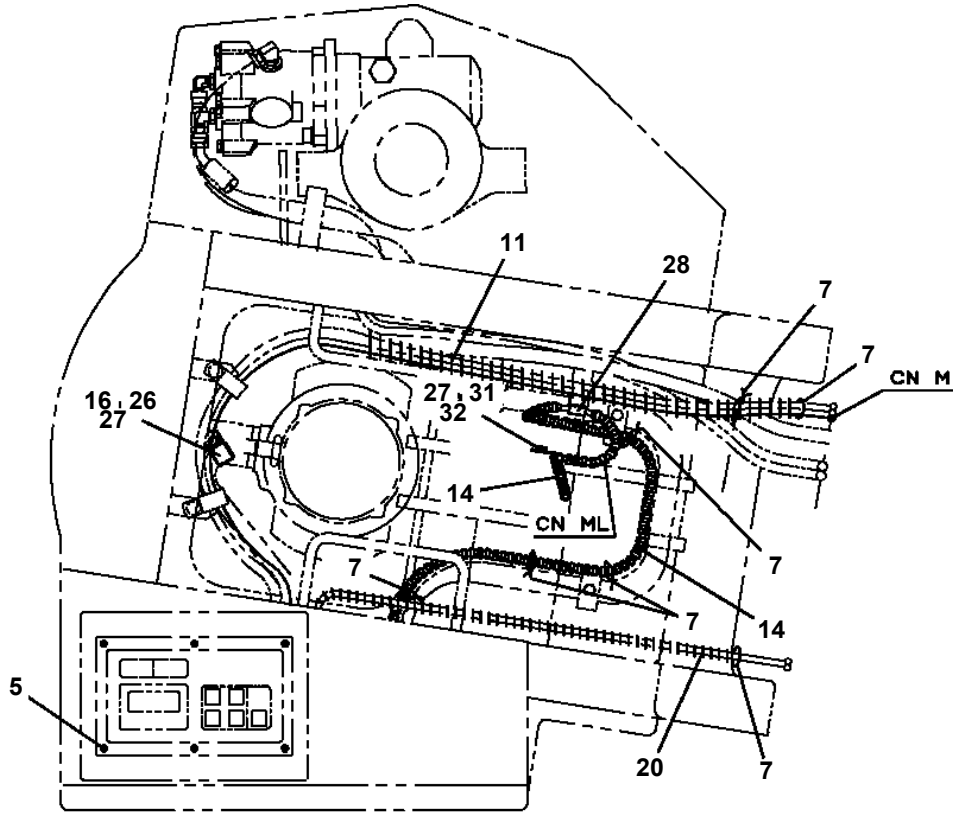
F



C
(4ヶ所)

(3 PCS)

**AT-147-3 43010100066 UPPER
PE5190027-00 ELEC.ASSY,SWING FRAME**



AT-147-3 43010100066 UPPER

Pos No.	Parts No	Parts Name	Qty	Unit	Technical Data	Serial No (Start)	Serial No (End)	Remarks	Pages
1	42220011200	SUPPORT	1						
2	90201201600	NUT	1		M16				
3	90303071601	WASHER,PLAIN	1		16				

AT-147-3 43010100066 UPPER

Pos No.	Parts No	Parts Name	Qty	Unit	Technical Data	Serial No (Start)	Serial No (End)
1	36051839511	CYLINDER ASSY	1				
2	90267402000	NUT	1				
3	36051091500	PISTON	1				
4	80612110400	RING,RITAINING	1		AR40		
5	80820003020	BEARING,PLAIN	4				
6	91350207000	BEARING,PLAIN (WITH PACKINGX2)	1				
7	36051839520	ROD ASSY	1				
8	36051839530	COVER,ROD	1				
9	91002906500	O-RING	1		1B G65		
10	91694003500	PACKING	1				
11	91410203501	RING,BACKUP	1				
12	91660003501	SEAL,DUST	1				
13	90302042001	WASHER,SPRING	1		20		
14	91002801800	O-RING	1		1B P18		
15	82458202000	NIPPLE,GREASE	1		B-TYPE PT1/8		
16	80801003520	BEARING,PLAIN	1				
18	82456201000	NIPPLE,GREASE	1		A-TYPE PT1/8		
19	42342460320	ORIFICE	2		1.0		
30	36051099900	PACKING SET	1		35X70		
50	36051830000	CYLINDER,WINCH JIB (POWER)	1				

AT-147-3 43010100066 UPPER

Pos No.	Parts No	Parts Name	Qty	Unit	Technical Data	Serial No (Start)	Serial No (End)	Re
2	42202592000	BOOM, TOP	1					
3	42202593002	SADDLE	1					
4	42202594000	BOOM, 2ND	1					
5	42202709510	BOOM, BASE	1					
6	37001922851	ROPE, WIRE (TESAC)	2		8X4.795M			
7	37001922871	ROPE, WIRE (TESAC)	2		10X9.22M			
9	37000115380	PIN	1					
10	90238403008	NUT, CASTLE	1		M30X2			
11	80136360050	PIN, SPLIT	1		6X50			
12	90303073001	WASHER, PLAIN	1		30			
16	42202700010	PIN	1					
17	80601110300	RING, RITAINING	2		S30			
18	42202590051	PLATE	N		T=0.8			
19	42202590061	PLATE	N		T=0.5			
20	42202590330	PLATE	N		T=0.5			
21	37002019390	PLATE, SLIDE	2					
22	37002019420	PLATE, SLIDE	2					
23	37000586481	PLATE	N		T=0.6			
24	37000588300	PLATE	2		T=0.6			
25	42202590090	PLATE	4		T=0.5			
26	42202590200	PLATE	N		T=0.8			
27	90201701600	NUT	10		M16			
28	90303501601	WASHER, PLAIN	10		16			
29	42202590281	SPACER	10					
30	37000588310	PLATE	8		T=0.6			
31	90302041001	WASHER, SPRING	48		10			
32	90180210045	BOLT, BUTTON	4		M10X45			
33	37000588320	PLATE	8		T=0.6			
34	37002019410	PLATE, SLIDE	2					
36	37000588330	PLATE	2		T=0.6			
37	90180210055	BOLT, BUTTON	4					
38	42202590360	PIN	2					
39	42200021510	PLATE	2					
40	37001007740	SHEAVE ASSY	2					
41	42202700120	PLATE	1		T=0.8			
42	42201630570	PLATE	N		T=2.3			
44	42202700130	PLATE	1		T=1.0			
45	37002018110	PLATE, SLIDE	2					
46	90180210025	BOLT, BUTTON	24		M10X25			
47	82455106000	NIPPLE, GREASE	4		A-M6F FE			
50	80601110200	RING, RITAINING	4		S20			
51	42202590220	PLATE	N		T=0.8			
52	42202590230	PLATE	N		T=0.5			
53	42202590240	PLATE	N		T=0.5			
54	42202590250	PLATE	N		T=1.0			
55	90172106008	BOLT, HEXAGON SOCKET	16		M6X8			
57	37002018070	PLATE, SLIDE	2					
58	37002018060	PLATE, SLIDE	4					
59	37000586470	PLATE	N		T=1.0			
60	37000586460	PLATE	N		T=1.0			
62	37000155020	PIN	4					
63	42202590210	PLATE	N		T=0.8			
64	37002018120	PLATE, SLIDE	2					
65	37000508520	PLATE	N		T=0.8			
66	80184306012	SCREW, MACHINE	4		M6X12			
67	37002006500	PLATE, SLIDE	2					
68	37002010340	PLATE, SLIDE	2					
69	90180210016	BOLT, BUTTON	8		M10X16			
70	37000176290	PIN	1					
71	37000303050	SPACER	2		L=9			
72	42202590100	SHEAVE ASSY	1					
73	80602110300	RING, RITAINING	2		R30			
74	31630482500	CAP	4					

AT-147-3 43010100066 UPPER

Pos No.	Parts No	Parts Name	Qty	Unit	Technical Data	Serial No (Start)	Serial No (End)	Remarks
1	81408000130	PIPE,STEEL	4	M	10X1.8T			
2	81408000130	PIPE,STEEL	4	M	10X1.8T			
3	81408000241	PIPE,STEEL	2	M	18X1.9T			
4	81408000160	PIPE,STEEL	4	M	12X1.4T			
5	81408000210	PIPE,STEEL	4	M	15X2.0T			
6	80400160201	JOINT	2					
7	37002471140	HOSE	2		L=1750			
8	80320010090	FITTING	1		KUD15-030N			
9	80320010080	FITTING	1		KUD12-030N			
10	80320010140	FITTING	1		KUD18-040N			
11	42347061001	SUPPORT	1					
12	37002478770	HOSE	4		L=9200			
13	80400160127	JOINT	4					
14	91002801100	O-RING	4		1B P11			
15	37002488250	HOSE	2		L=9380			
17	42347062001	SUPPORT	1					
18	42343740100	COVER	1					
19	80192486010	SCREW,MACHINE	4		M6X10			
20	90101210020	BOLT	4		M10X20			
21	90302041001	WASHER,SPRING	4		10			
23	80320020080	FITTING	1		KUF12-030N			
24	80320020090	FITTING	1		KUF15-030N			
25	80320020050	FITTING	2		KUF10-020N			
28	42346820401	CLAMP	3					
29	42346820100	SUPPORT	1					
30	90180208020	BOLT,BUTTON	2		M8X20			
31	90302040801	WASHER,SPRING	27		8			
32	90171108018	BOLT	4		M8X18			
33	42346820200	ROLLER ASSY	1				590445	
35	37000587400	PLATE	2		T=6			
37	42346820300	SHEAVE ASSY (MARUCH)	1					
39	90101208045	BOLT	2		M8X45			
40	90101208012	BOLT	2		M8X12			
41	42344970800	SUPPORT	1					
43	37000573430	PLATE	10		T=1			
44	90203201200	NUT	4		M12			
45	90101208020	BOLT	7		M8X20			
46	37000312510	SPACER	3		L=27.5			
47	90303071201	WASHER,PLAIN	4		12			
48	90302041201	WASHER,SPRING	2		12			
49	42346820603	CLAMP	1					
50	42346820502	CLAMP	1					
51	90303070801	WASHER,PLAIN	6		8			
52	42346820150	SUPPORT	1					
53	90201200800	NUT	9		M8			
54	37000304160	SPACER	8		L=30			
55	37000587440	PLATE	2		T=6			
56	42346820350	SUPPORT	2					
57	91810132530	FASTENER	2					
58	37000601410	CUSHION	2					
59	37000601110	CLAMP	1					
60	90101208035	BOLT	1		M8X35			
71	42346820210	SUPPORT	1					
72	37000189860	PIN	1					
73	42340234240	ROLLER	3		W=9			
74	44340392420	ROLLER	4					
75	90303100801	WASHER,PLAIN	14		8		590445	
	90303100801	WASHER,PLAIN	N		8	590446		
76	80136320016	PIN,SPLIT	2		2X16			
81	37000928200	JOINT	1					
82	80400160129	JOINT	2					
83	91002801400	O-RING	3		1B P14			
84	80316070060	PLUG	1		PF3/8			

AT-147-3 43010100066 UPPER

Pos No.	Parts No	Parts Name	Qty	Unit	Technical Data	Serial No (Start)	Serial No (End)	Remarks	Pages
1	42267243101	COVER	1						
2	42267243201	COVER	1						
3	90183108015	BOLT	6		M8X15				

AT-147-3 43010100066 UPPER

Pos No.	Parts No	Parts Name	Qty	Unit	Technical Data	Serial No (Start)	Serial No (End)	Remarks	Pages
6	82100000665	CAP (BLACK)	1						
7	82105900040	SWITCH,TOGGLE	1						
10	42502852203	HARNESS	1						

AT-147-3 43010100066 UPPER

Pos No.	Parts No	Parts Name	Qty	Unit	Technical Data	Serial No (Start)	Serial No (End)	Remarks	Pages
100	42350200310	HARNESS	1						

AT-147-3 43010100066 UPPER

Pos No.	Parts No	Parts Name	Qty	Unit	Technical Data	Serial No (Start)	Serial No (End)	Remarks	Pages
100	42614053350	HARNESS	1						

AT-147-3 43010100066 UPPER

Pos No.	Parts No	Parts Name	Qty	Unit	Technical Data	Serial No (Start)	Serial No (End)	Remarks	Pages
100	42503832300	HARNESS	1						

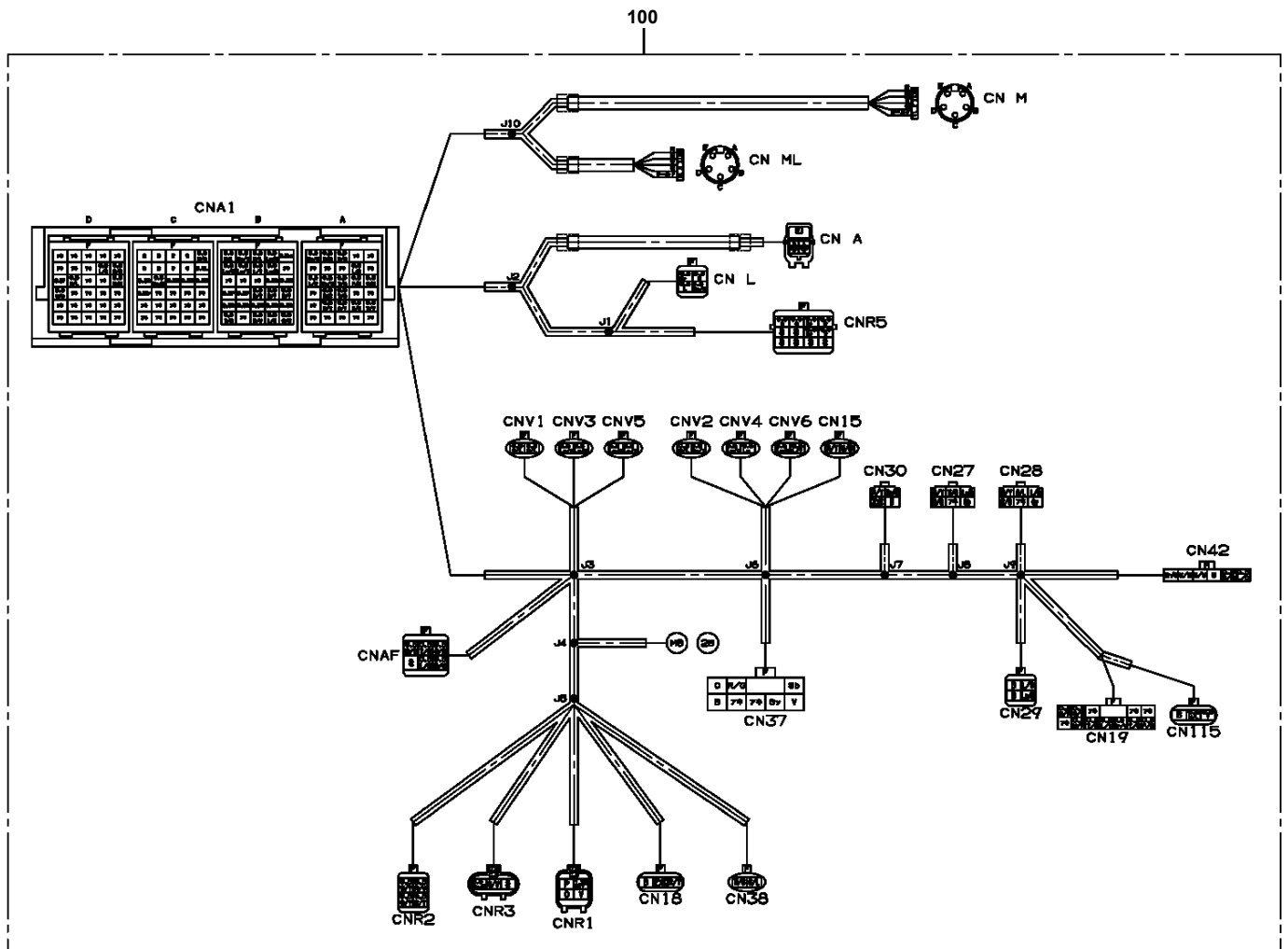
AT-147-3 43010100066 UPPER

Pos No.	Parts No	Parts Name	Qty	Unit	Technical Data	Serial No (Start)	Serial No (End)	Remarks	Pages
100	42356440200	HARNESS	1						

AT-147-3 43010100066 UPPER

Pos No.	Parts No	Parts Name	Qty	Unit	Technical Data	Serial No (Start)	Serial No (End)	Remarks	Pages
100	42312285100	HARNESS	1						

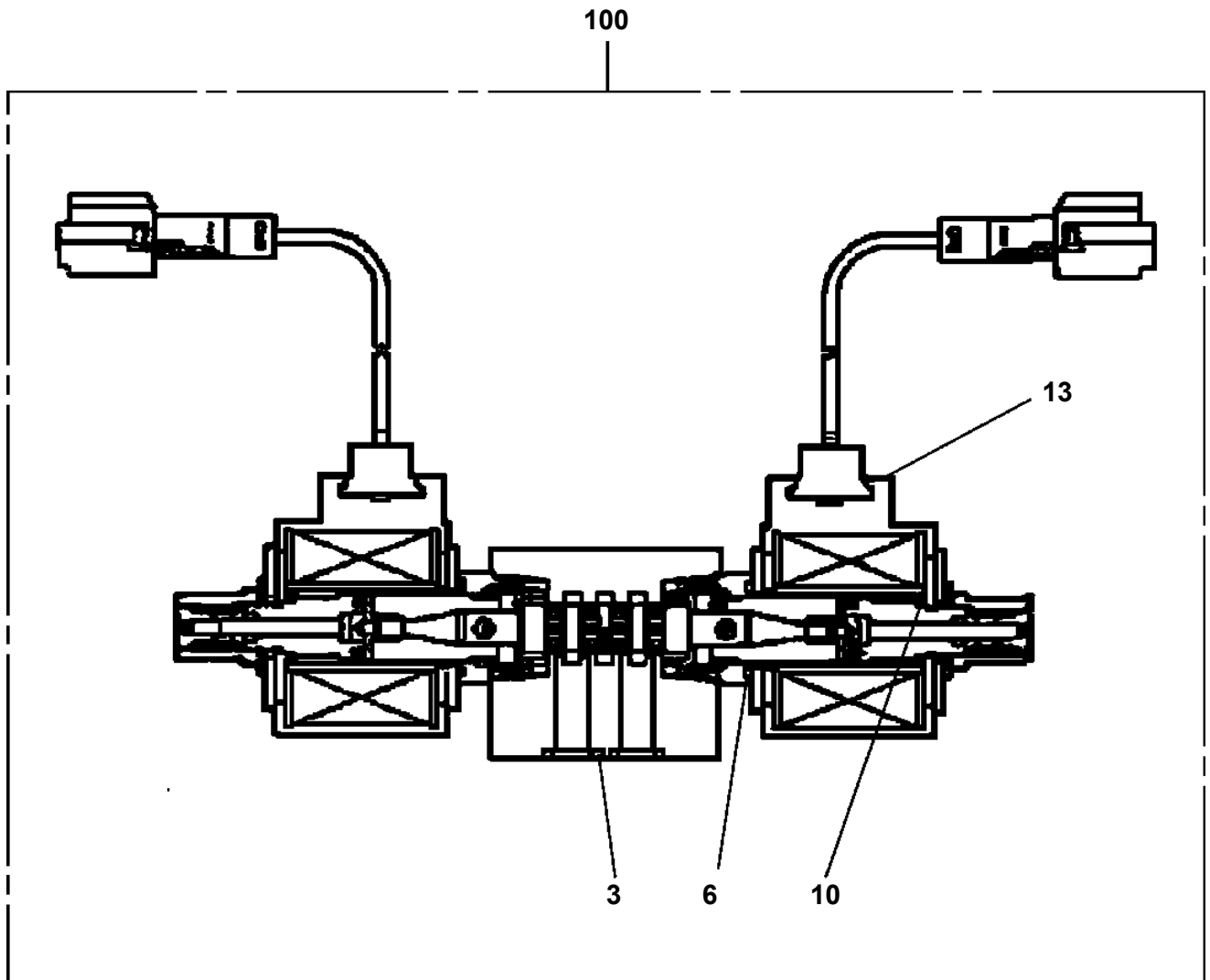
AT-147-3 43010100066 UPPER PH5033252-00 HARNESS



AT-147-3 43010100066 UPPER

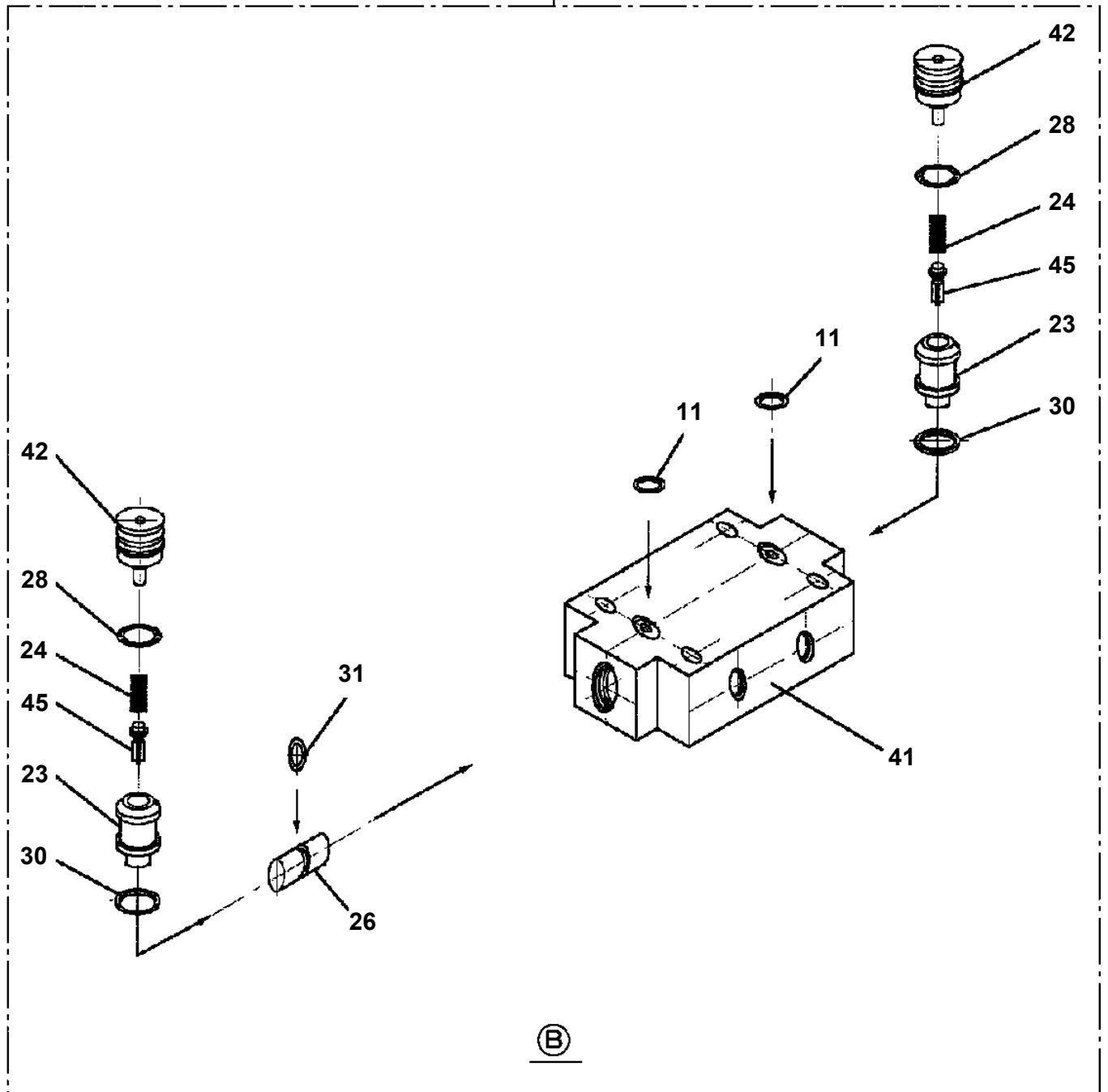
Pos No.	Parts No	Parts Name	Qty	Unit	Technical Data	Serial No (Start)	Serial No (End)	Remarks	Pages
100	42354820200	HARNESS	1						

AT-147-3 43010100066 UPPER
PI1120335-00 VALVE,SOLENOID



AT-147-3 43010100066 UPPER
PI1140133-01 VALVE,CHECK

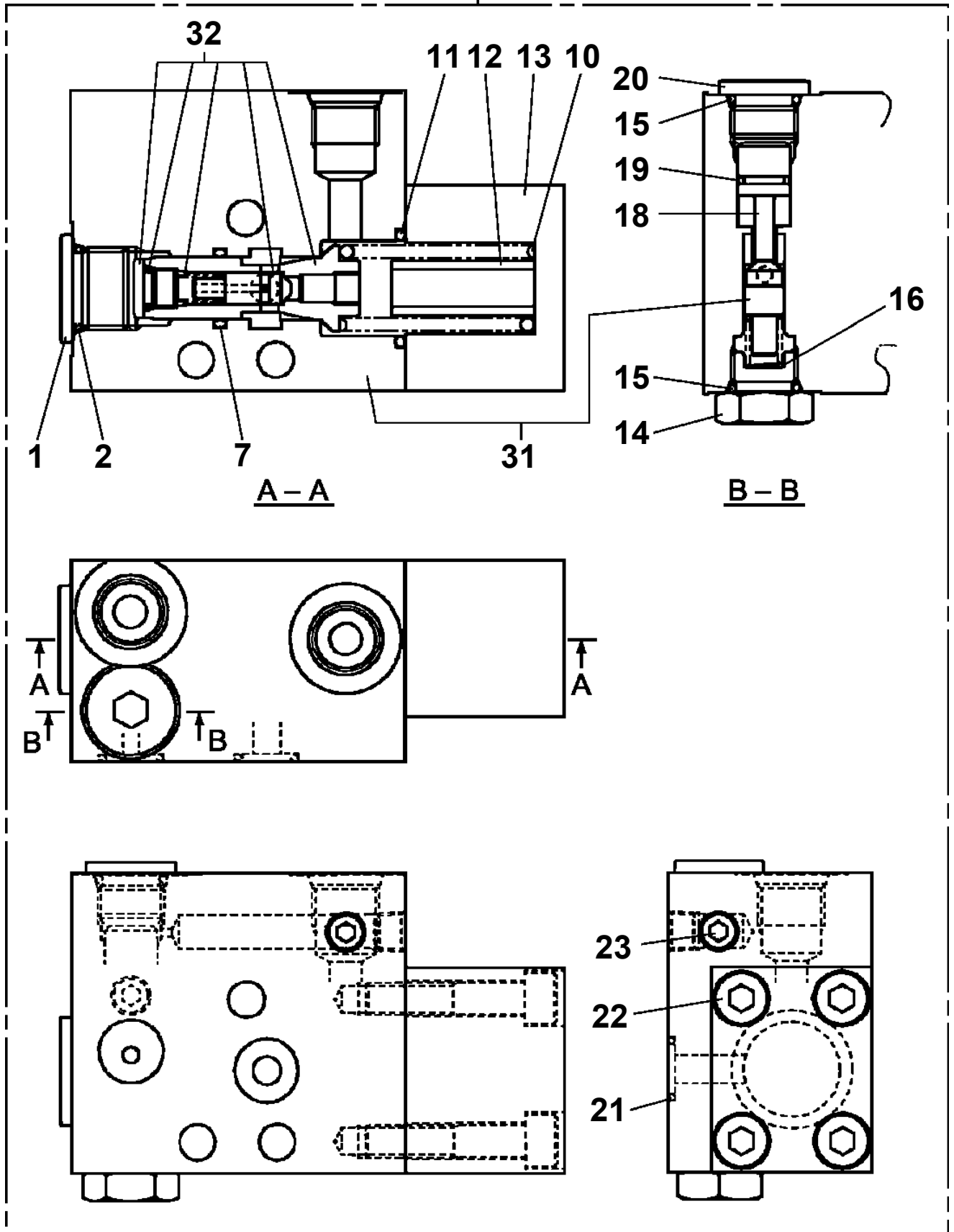
100



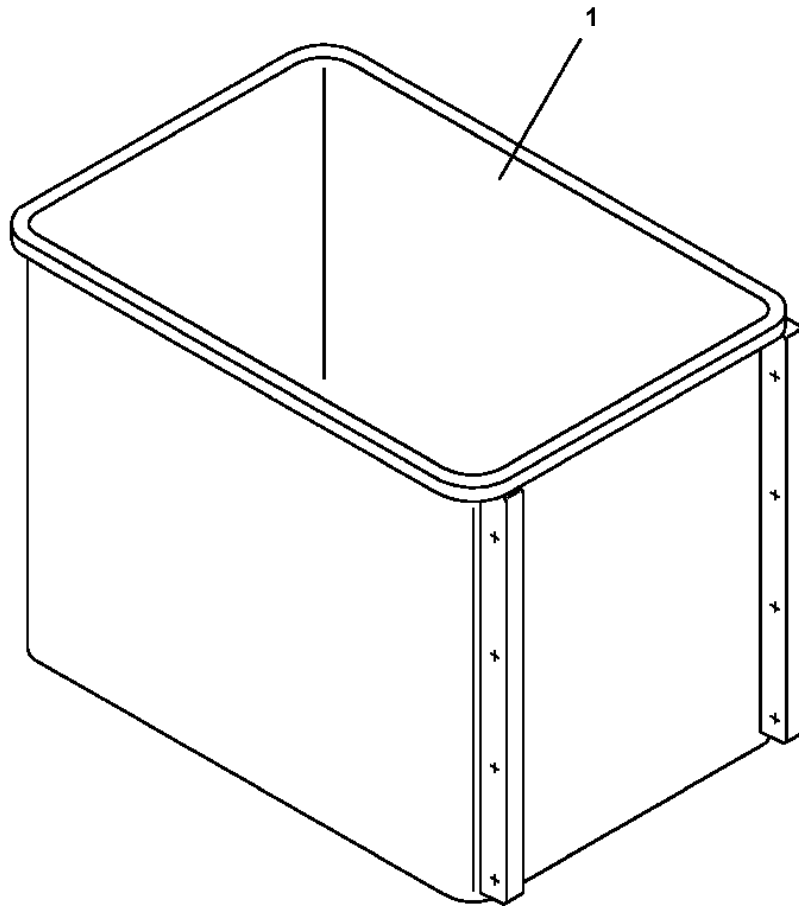
Ⓑ

AT-147-3 43010100066 UPPER
PI1250153-00 VALVE,COUNTERBALANCE

100



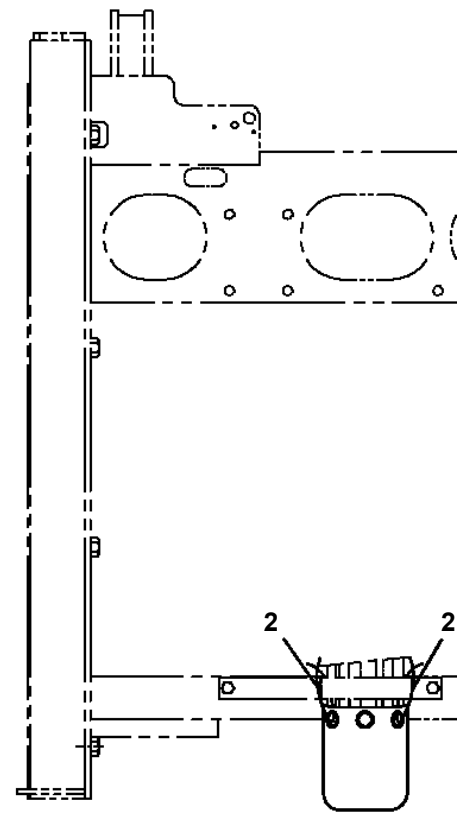
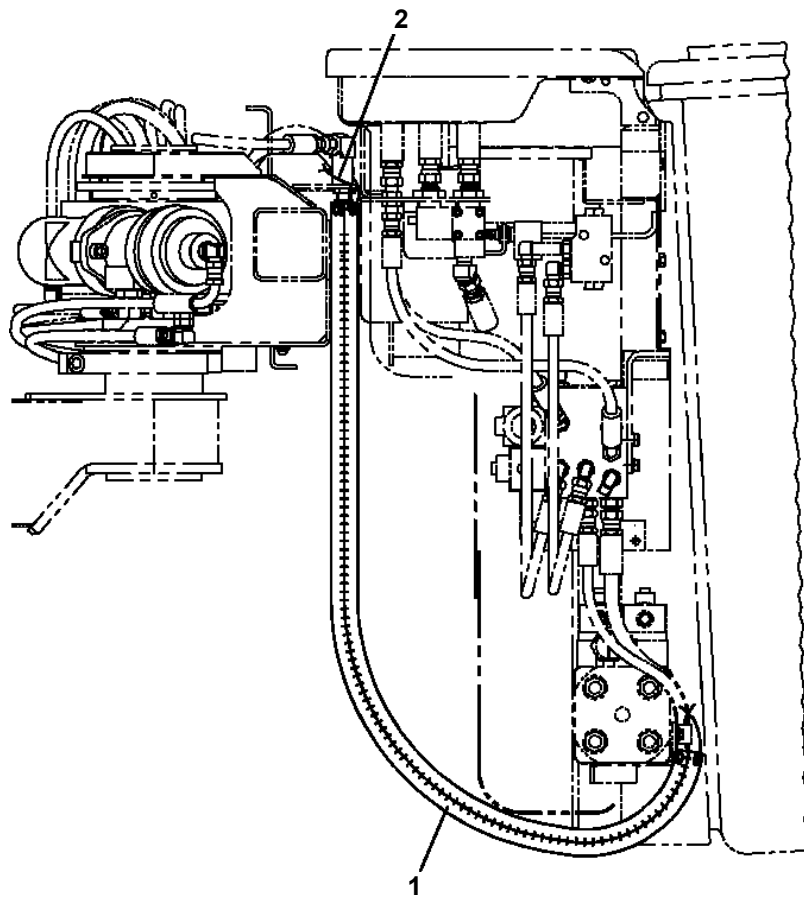
**AT-147-3 43010100066 UPPER
PJ3010320-00 BUCKET**



AT-147-3 43010100066 UPPER

Pos No.	Parts No	Parts Name	Qty	Unit	Technical Data	Serial No (Start)	Serial No (End)	Remarks	Pages
1	42232191000	TABLE,SLEWING	1						
2	31630482500	CAP	1						
3	37001500250	BOLT	15		M16X70				
4	90303501601	WASHER,PLAIN	15		16				
5	37000507560	PLATE	1						
6	90171110022	BOLT	3		M10X22				
7	90302041001	WASHER,SPRING	3		10				
8	37000112690	PIN	1						
9	37000509190	PLATE	1						
10	90171112030	BOLT	2		M12X30				
11	90302041201	WASHER,SPRING	2		12				
12	37000175720	PIN	1						
13	42230210010	PIN	1						
14	37000505950	PLATE	1		T=3.2				
15	37000507730	PLATE	1						
16	90171320045	BOLT	1		M20X45				
17	90302042001	WASHER,SPRING	1		20				
19	82420404813	TRIM	3	M					
21	82459103000	NIPPLE,GREASE	1		C-PT1/8				
22	82400000459	CAP	1						

AT-147-3 43010100066 UPPER
PK1330400-00 COVER



CLICK HERE TO **DOWNLOAD** THE COMPLETE MANUAL

- Thank you very much for reading the preview of the manual.
- You can download the complete manual from: www.heydownloads.com by clicking the link below



- Please note: If there is no response to CLICKING the link, please download this PDF first and then click on it.

CLICK HERE TO **DOWNLOAD** THE COMPLETE MANUAL

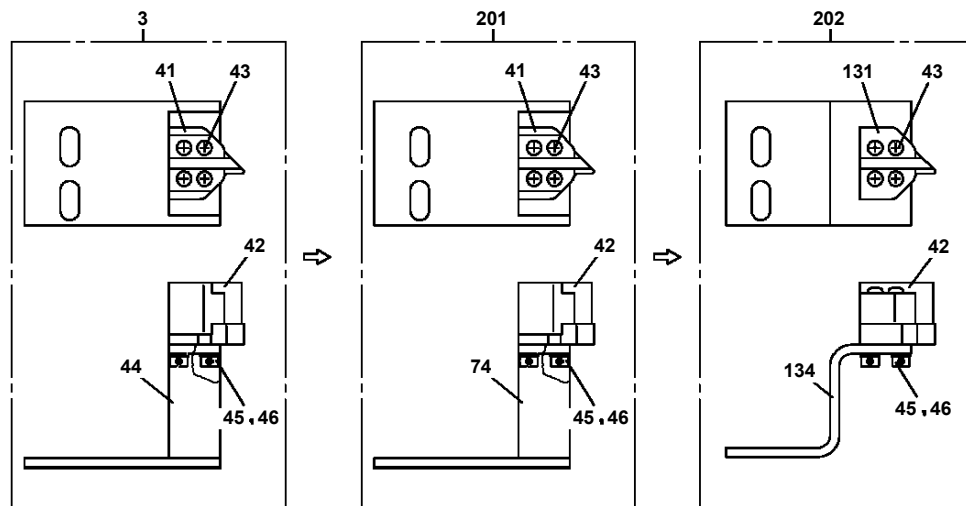
AT-147-3 43010100066 UPPER

Pos No.	Parts No	Parts Name	Qty	Unit	Technical Data	Serial No (Start)	Serial No (End)	Rema
2	42332001000	LEVER,CONTROL	1				590495	
	42332001001	OPE.ASSY	1			590496		
3	90183106015	BOLT	12		M6X15			
4	37000568730	PLATE	N		T=1.5			
5	91810130240	FASTENER	2					
6	42332151010	SUPPORT	2					
7	42332672002	OPE.ASSY (LEVER,CONTROL)	1					
8	42332000100	SWITCH ASSY	2					
9	42332690100	COVER	2					
10	42332691002	PANEL	1					
12	90101206014	BOLT	3		M6X14			
13	90302040601	WASHER,SPRING	3		6			
14	42332672003	OPE.ASSY (LEVER,CONTROL)	1				590489	
	42333572000	OPE.ASSY	1			590490		
15	42332690020	SUPPORT	1				590462	
	42332690021	SUPPORT	1			590463		
16	42332690030	SUPPORT	1					
17	90303070601	WASHER,PLAIN	2		6			
18	42332690040	SUPPORT	2					
19	91810132530	FASTENER	2					
20	42332671010	PLATE	1			590412	590489	
31	82109323004	KNOB (BLACK)	2					
32	82109323005	BOOT (BELLOWS)	2					

AT-147-3 43010100066 UPPER

Pos No.	Parts No	Parts Name	Qty	Unit	Technical Data	Serial No (Start)	Serial No (End)	Remarks
1	36663955100	SHAFT	1					
2	80500006206	BEARING,BALL	1					
4	91001206500	O-RING	1		1A G65			
5	36660025021	COVER (OIL SEAL)	1					
6	36660025140	SEAL,OIL	1					
7	36663485110	RING,RETAINING	1		R72			
8	36663955020	PLATE,THRUST	1					
9	36663955030	BARREL ASSY (CYLINDER)	1					
10	36663955040	PLATE (VALVE)	1					
11	36661925030	COVER (BOTTOM)	1					
12	80500006203	BEARING,BALL	1					
13	36662355110	PIN	2					
14	36663955050	O-RING	1					
15	36663955060	BOLT	6		M10X35			
16	14125151020	KEY	1					
17	36660125060	PLUG	2		PF3/8			
18	36081315130	PROTECTOR (THREAD)	2					
44	36660025100	SPRING (PLUNGER)	5					
45	14125151300	RING,RETAINING	1					
46	12645103171	SPRING (CENTER)	1					
100	36664070000	MOTOR,OIL	1					

**AT-147-3 43010100066 UPPER
PN1014491-03 ELEC.ASSY (CHARGER)**



AT-147-3 43010100066 UPPER

Pos No.	Parts No	Parts Name	Qty	Unit	Technical Data	Serial No (Start)	Serial No (End)
1	42509051000	CABLE ASSY,SIGNAL(ASSY ONLY)	1				
2	37000714010	CLAMP ASSY	4		12X1		
3	37000300710	SLEEVE	4		12-8		
4	91810130240	FASTENER	N				
5	80192473010	SCREW,MACHINE	3		M3X10		
6	82100002004	CLAMP	2		WR8		
7	90302040601	WASHER,SPRING	2		6		
8	90201200600	NUT	2		M6		

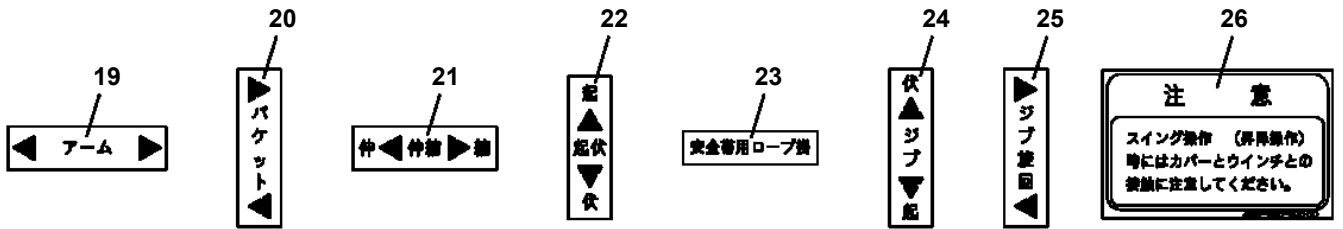
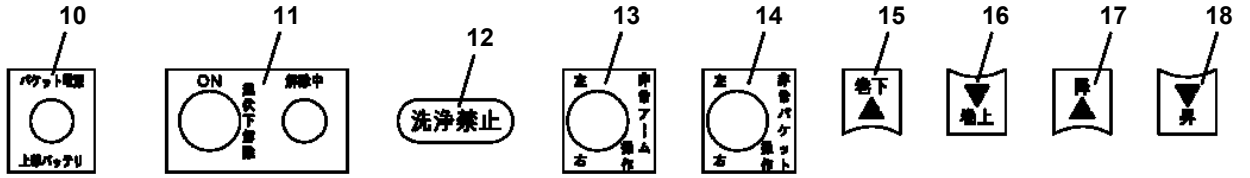
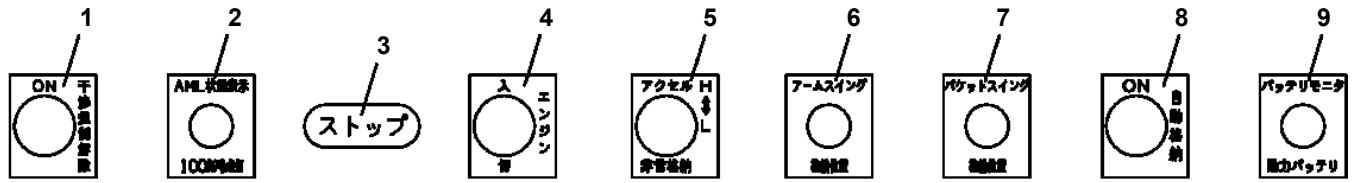
AT-147-3 43010100066 UPPER

Pos No.	Parts No	Parts Name	Qty	Unit	Technical Data	Serial No (Start)	Serial No (End)	Remarks	Pages
1	42651711200	CASE	1						
2	42651711100	COVER	1						
3	80182306014	SCREW,MACHINE	8		M6X14				
4	90302040601	WASHER,SPRING	21		6				
5	90303070601	WASHER,PLAIN	10		6				
7	90101206014	BOLT	11		M6X14				
8	82100002596	RELAY	7						
9	82161201010	RELAY	5						
10	82100002597	RELAY	2						
11	42900002100	TERMINAL ASSY	1						
12	80172303016	SCREW,MACHINE	2		M3X16				
13	90302040301	WASHER,SPRING	4		3				
14	90303070301	WASHER,PLAIN	4		3				
15	42808712100	RELAY ASSY	3						
16	42900002200	SUPPORT	1						
17	82100002016	CLAMP	1		WR25				
18	90201200600	NUT	1		M6				
19	42651091100	RELAY ASSY	1						
20	80172303008	SCREW,MACHINE	2		M3X8				
100	42900002001	RELAY BOX	1						

AT-147-3 43010100066 UPPER

Pos No.	Parts No	Parts Name	Qty	Unit	Technical Data	Serial No (Start)	Serial No (End)	Remarks	Pages
5	36160017550	HANDLE	1						
	36160017550	HANDLE	1						
6	36160655020	SHAFT	1						
	36160655020	SHAFT	1						
7	36160017560	WASHER,PLAIN	1						
	36160017560	WASHER,PLAIN	1						
8	36160655050	PLATE (RING)	1						
	36160655050	PLATE (RING)	1						
10	36160017590	PLATE (CONTACT)	1						
	36160017590	PLATE (CONTACT)	1						
50	36160650000	REEL,CORD	1						
	36160650000	REEL,CORD	1						

AT-147-3 43010100066 UPPER PN5011441-01 NAME PLATE ASSY (BUCKET)



注意 / バケット電源

- バッテリー電圧が低下した場合には、電源表示灯が点滅します。その後、さらに電圧が低下すると電圧警告アザーが鳴ります。
- この場合にはバッテリーを充電してください。

警告 / 使用上の注意

- 本機の搭載は高所作業事故の危険を伴います。
- 取扱説明書をよく読み、操作および取扱い方法を理解してから使用してください。
- 作業開始前必ず安全確認を徹底してください。
- ヘルメット・安全帯を着用してください。
- 整備作業を怠らないでください。
- 作業中以外で作業しないでください。
- 風雨・雪などの悪天候時には作業しないでください。

警告

火気厳禁

注意 / バッテリー電圧

- 電動ポンプ用バッテリーの電圧が低下した場合にはバッテリーモニターが点滅し、自動停止します。
- この場合には非常停止スイッチを押しながらアームを降下し、バッテリーを充電してください。

電動ポンプの使用方法

運送後使用時は20分以内とし、次の使用まで使用時間と同等以上の休息を取ってください。

自動格納方法

アームを傾斜角12°以上にしてください。その後、自動格納スイッチをONに操作してください。バック・アームスイング、バック降、巻小、(回こし)、巻取、巻取の間にアームが格納されます。巻取内蔵が巻取状態にない場合、一旦巻取方向と逆方向に巻取した後、巻取方向に巻取します。

警告

アームレストにアームが接触された状態では、過剰な阻止装置は動作しません。異常の恐れがありますので、アーム作業時およびウインチによるつり上げ作業を行わないでください。

注意 / バケット傾斜

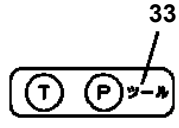
- バケットが傾斜に3°以上傾いたときはバケットの水平調整をしてください。
- 外気温が低下すると膨張剤が時にバケットの油圧が落ちて傾斜が大きくなる恐れがあります。このときはバケットを一旦上げて、下げ操作で水平に戻してください。

起伏下解除方法

AMC (過負荷防止装置) が作動して、アームの作動が自動停止したとき、アーム及びアーム・バケットが次の位置にある場合に、起伏下解除スイッチを「ON」にしながら操作を行うと、アーム起伏下及び起伏解除を行うことができます。

条件・アーム全周

- ・バケット後部位置が 250mm以下あるとき
- ・バケット・アーム位置が右側位置付近にあるとき

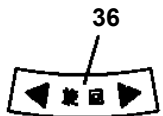


注意

ラインチ昇り装置は、アップ下側のグアシング機構で利用してください。

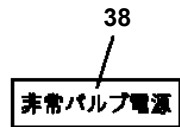
注意 / バケットライナ

バケットライナが膨張バンドでバケットフレームに固定されていないと、走行時にバケットライナが脱落します。必ずバケットライナとバケットフレームの穴を膨張バンドで固定してください。



警告 / 挟まれ注意

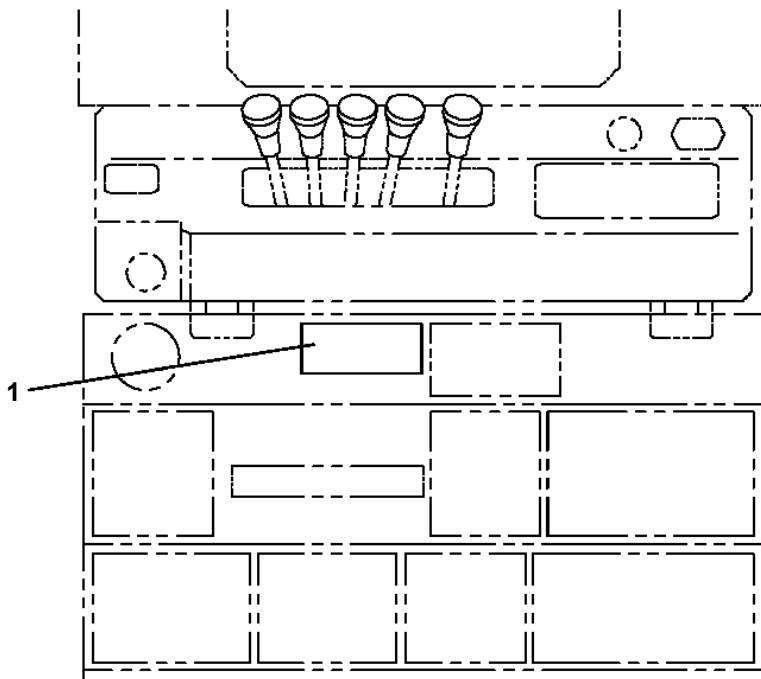
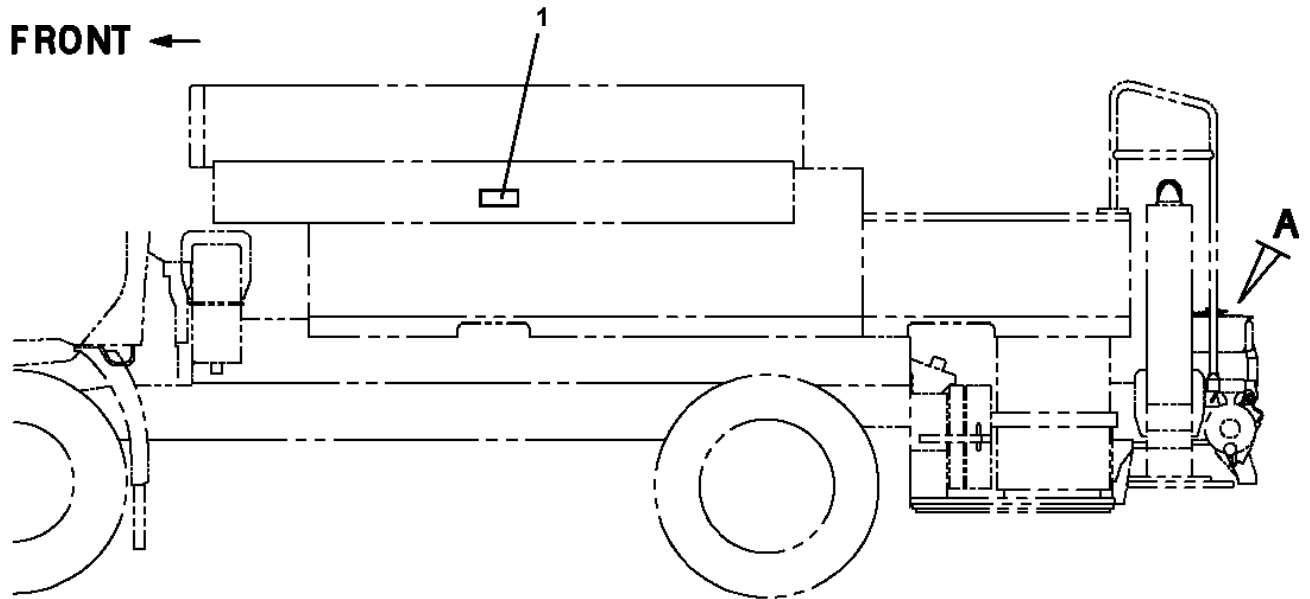
○バケットをバケットレストに移動時、バネとバケットの隙間が狭くなるため、手を挟まれないようにしてください。



AT-147-3 43010100066 UPPER

Pos No.	Parts No	Parts Name	Qty	Unit	Technical Data	Serial No (Start)	Serial No (End)	Remarks	Pages
1	42398364100	PLATE,NAME	1						

AT-147-3 43010100066 UPPER
PO1015605-01 PLATE ASSY,NAME

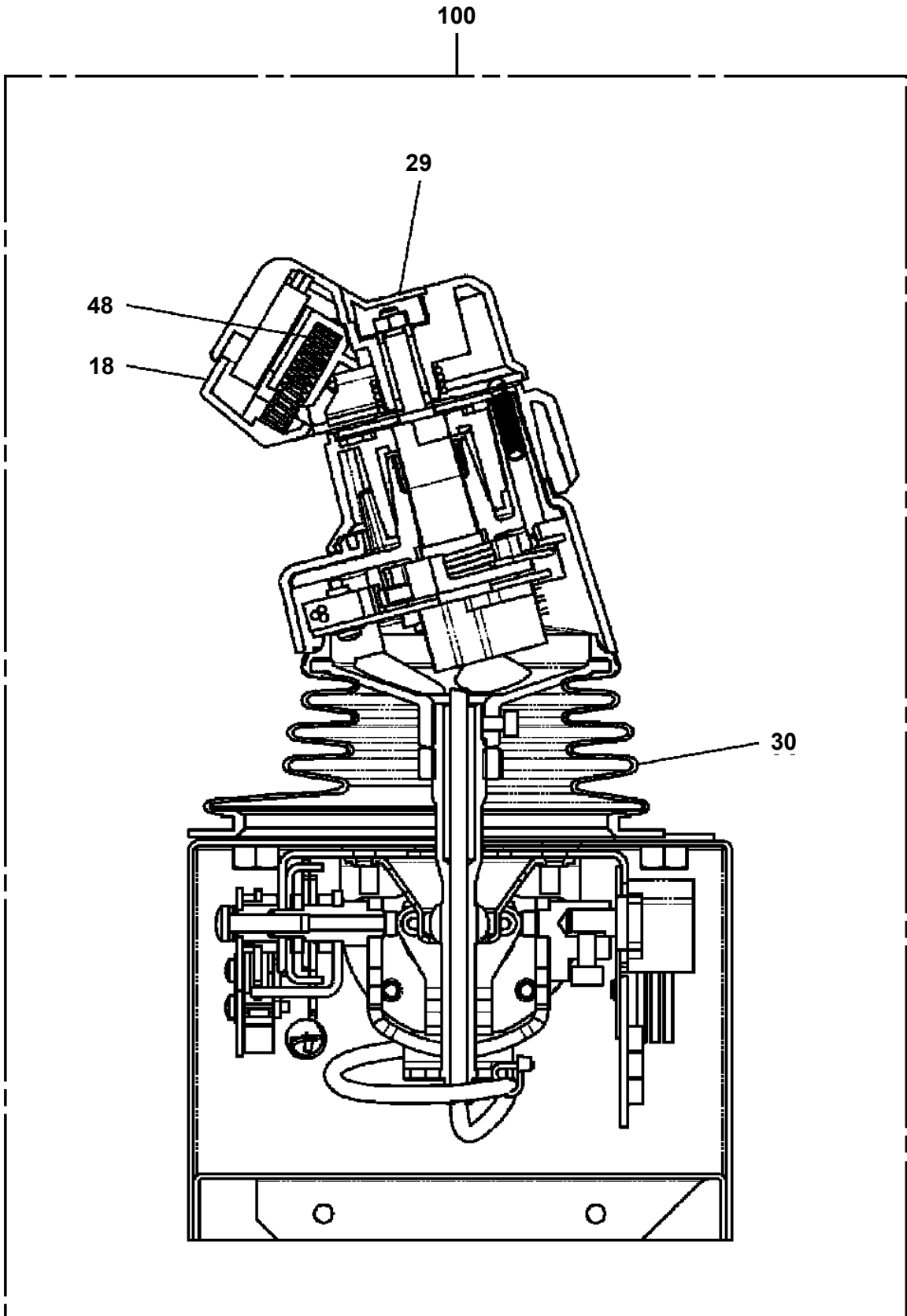


1

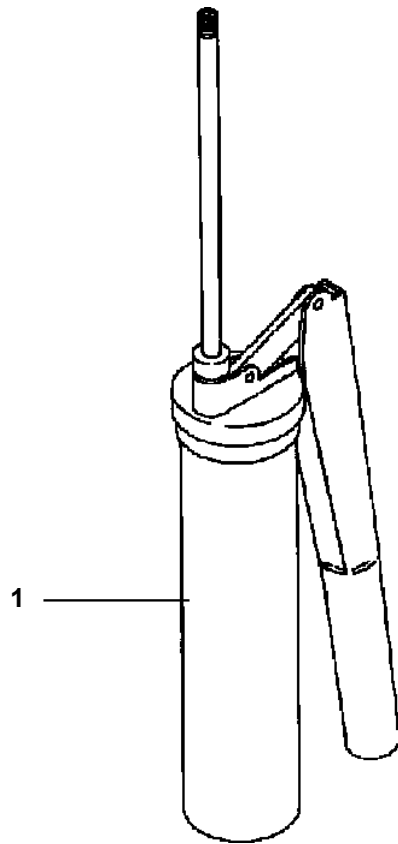
▲注意/アウトリガ操作
工具物の取付を完了した状態でアウトリガ操作を行
うと、工具物を損傷します。必ず工具物の取付
完了した状態でアウトリガ操作をしてください。

A
(カバーを開いた状態)

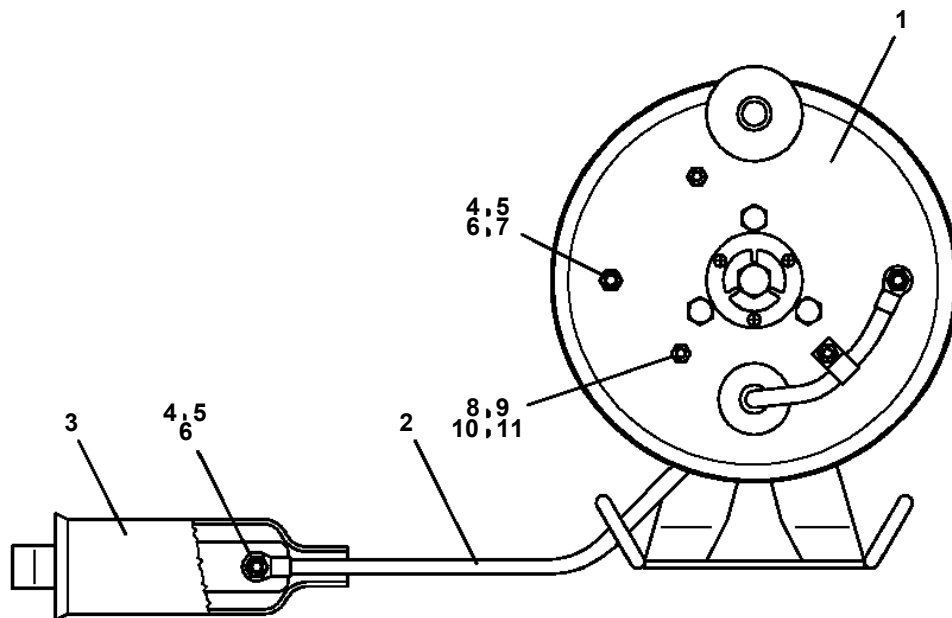
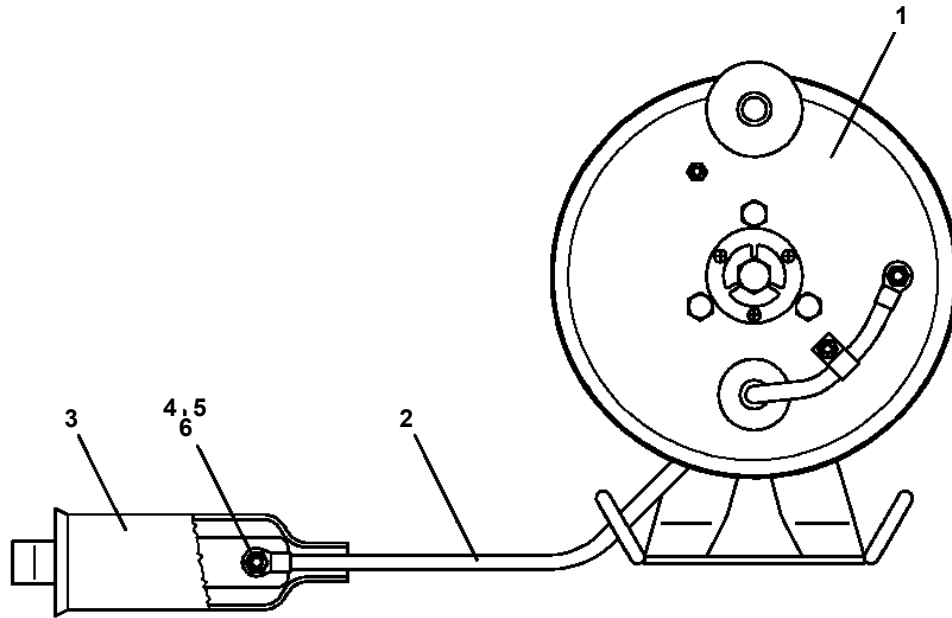
AT-147-3 43010100066 UPPER
PO5010010-00 OPE.ASSY (LEVER,CONTROL)



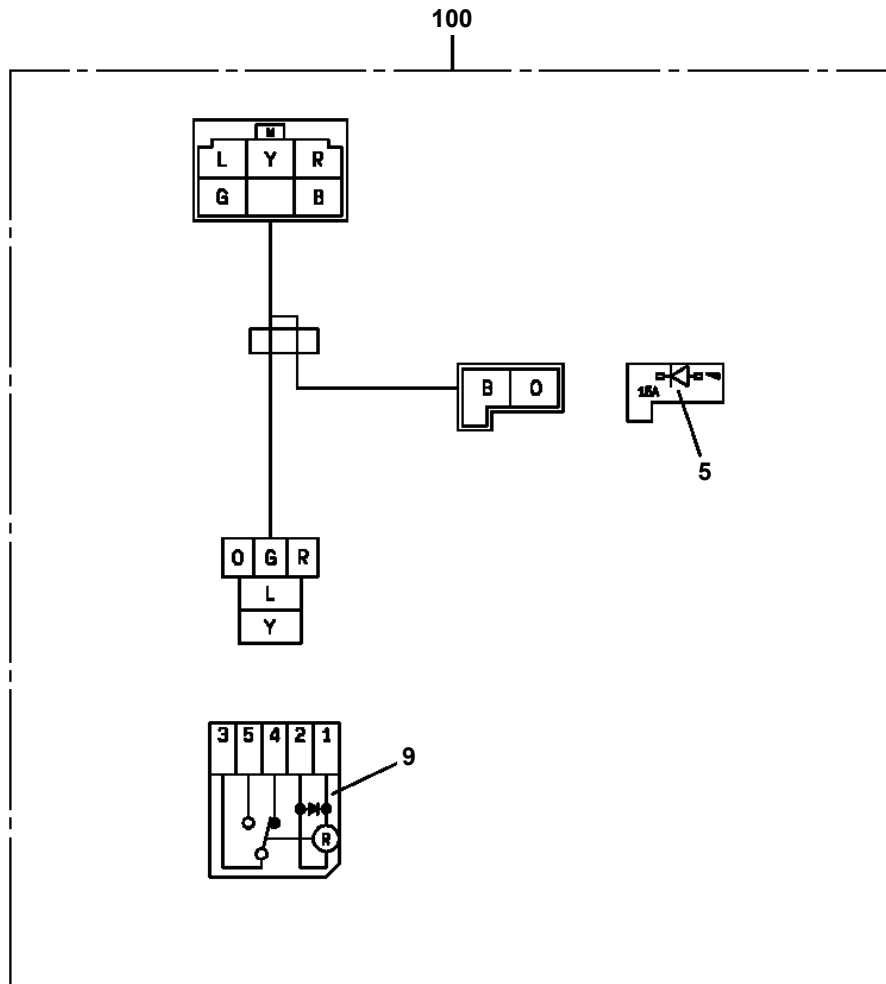
**AT-147-3 43010100066 UPPER
PP5450004-00 PUMP, GREASE (400CC)**



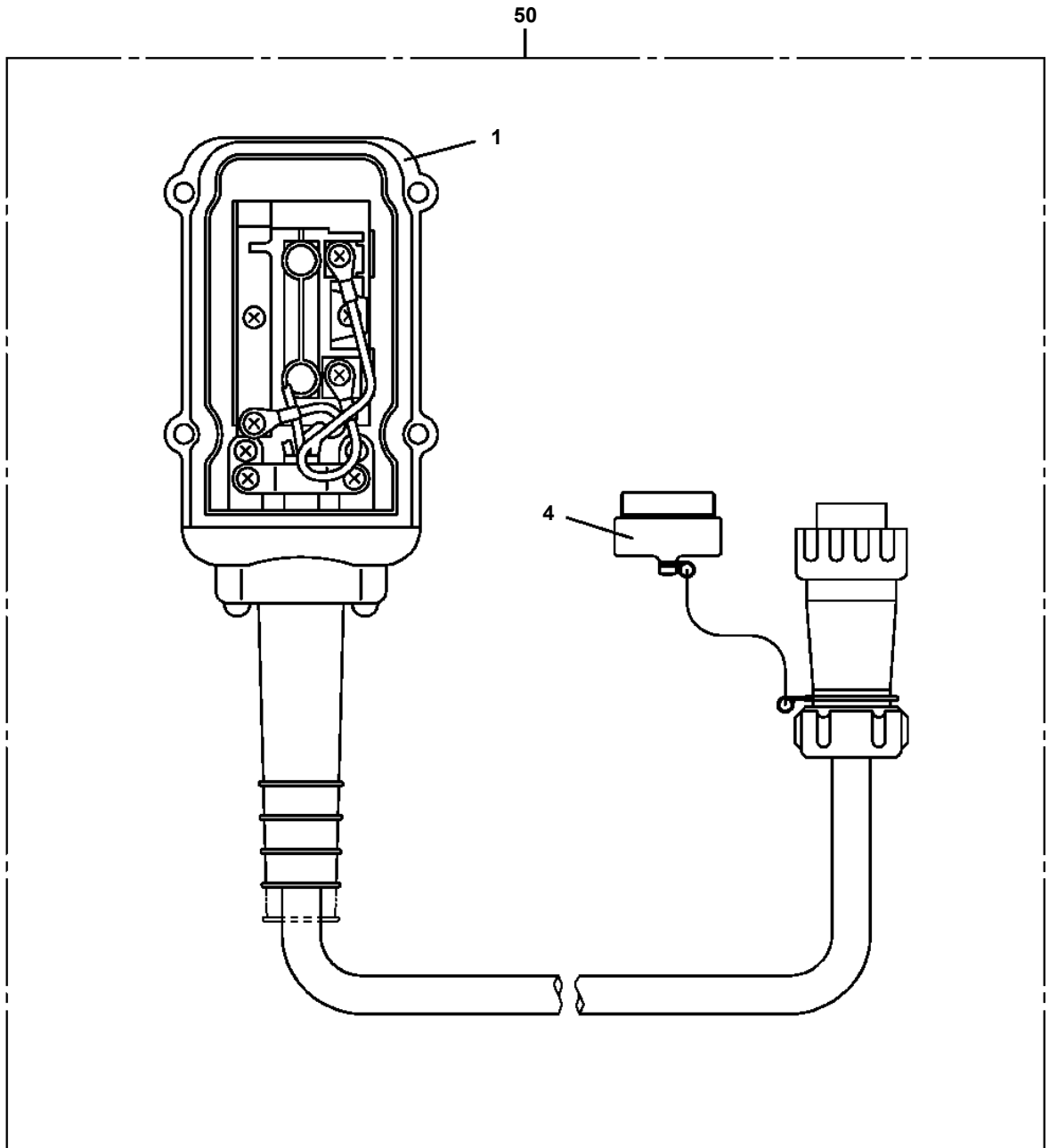
AT-147-3 43010100066 UPPER
PR5050031-00 REEL ASSY,CORD



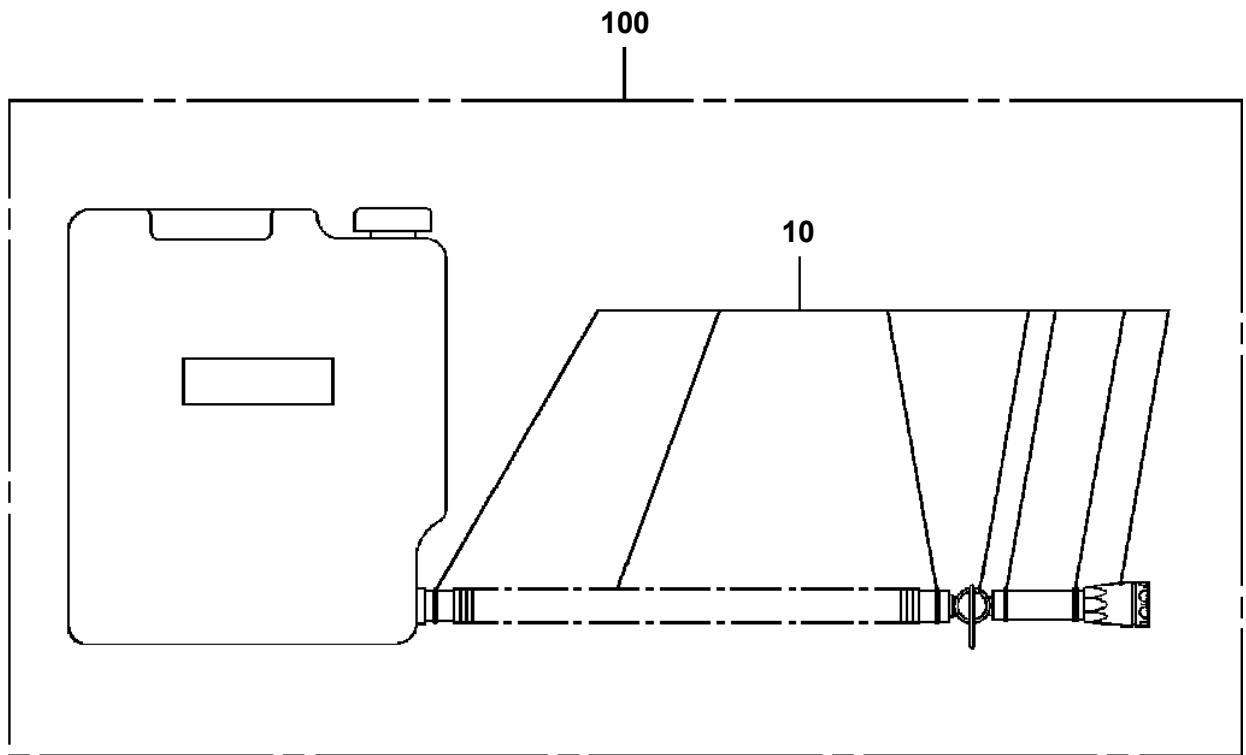
AT-147-3 43010100066 UPPER
PR5210003-00 RELAY



**AT-147-3 43010100066 UPPER
PS5530103-00 SWITCH ASSY (3M,ELECTLIC BOOSTER REMOCON)**

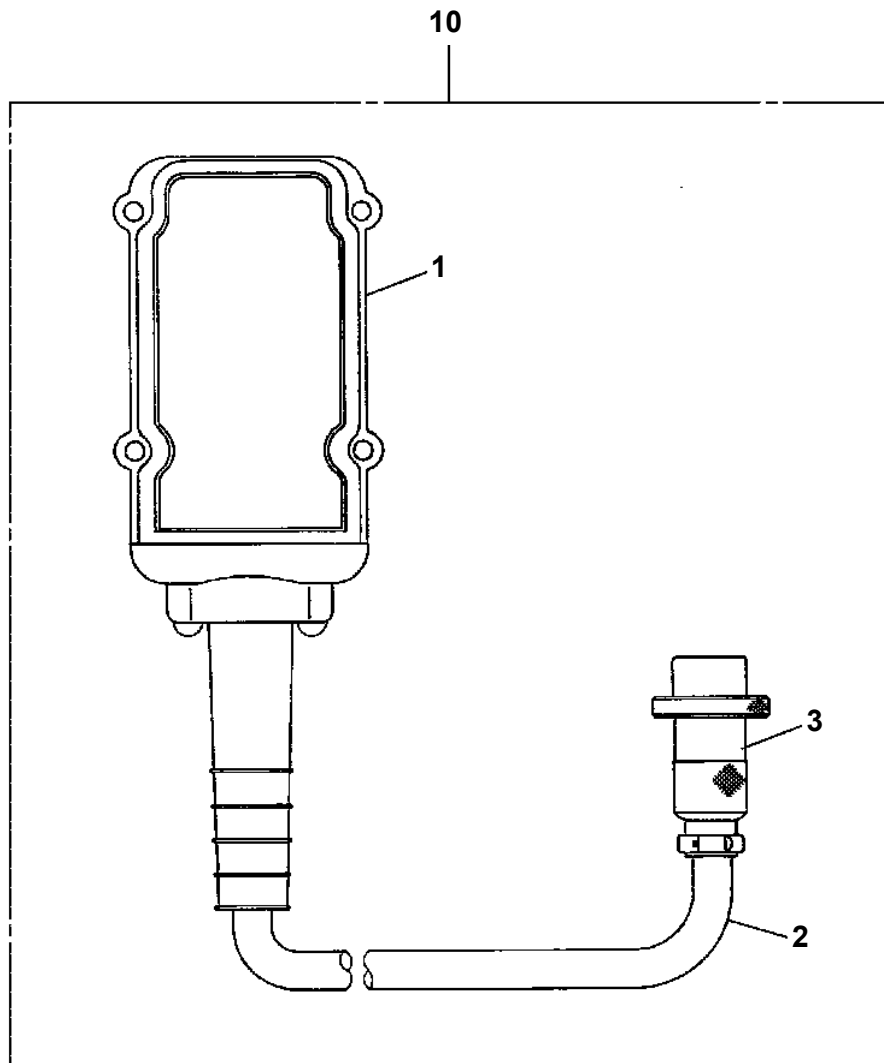


**AT-147-3 43010100066 UPPER
PT5060011-00 TANK ASSY (BATTERY,WATER)**

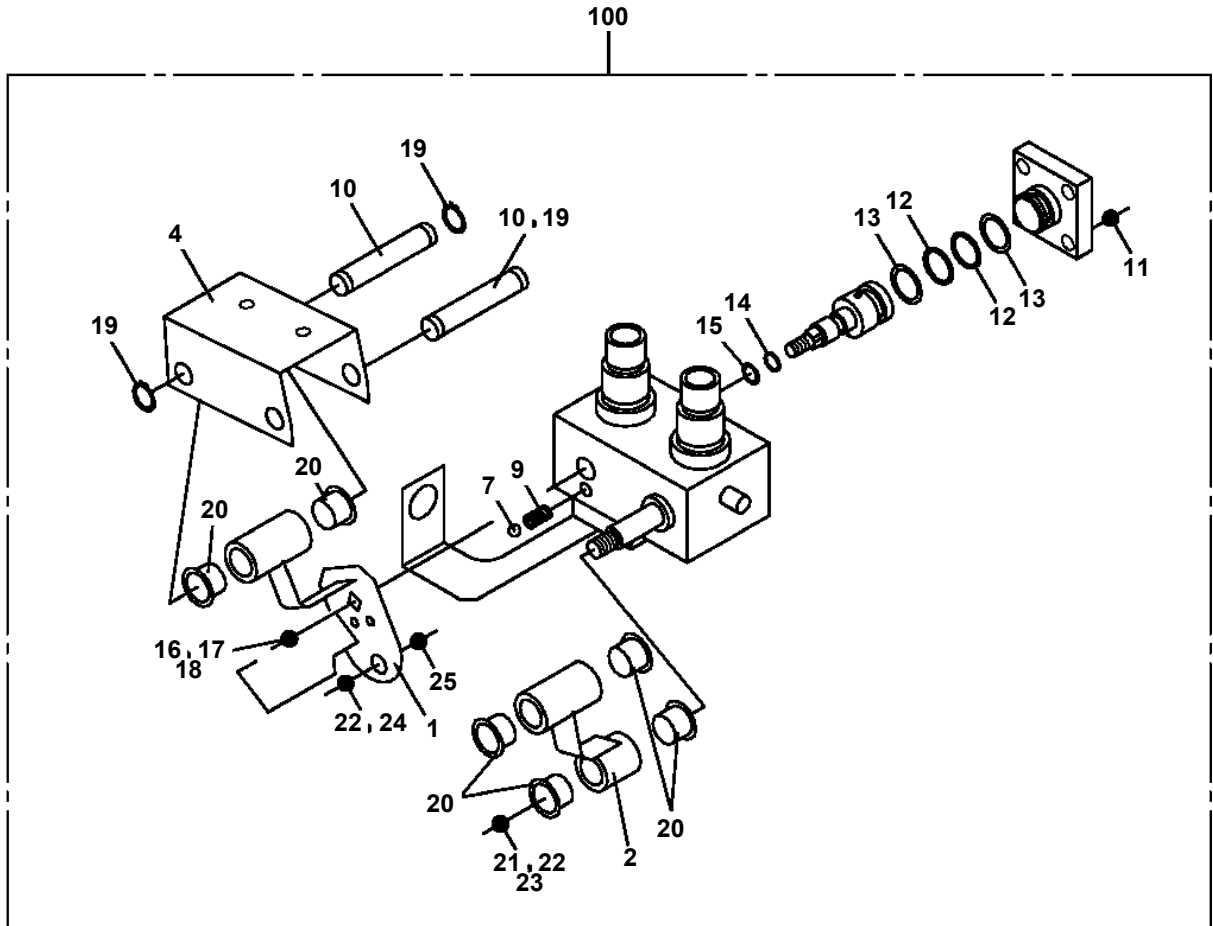


AT-147-3 43010100066 UPPER

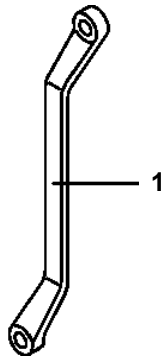
PV1030110-00 SWITCH BOX (ELECTRIC BOOSTER, 5M,NANABOSI,SINKOU DENKI)



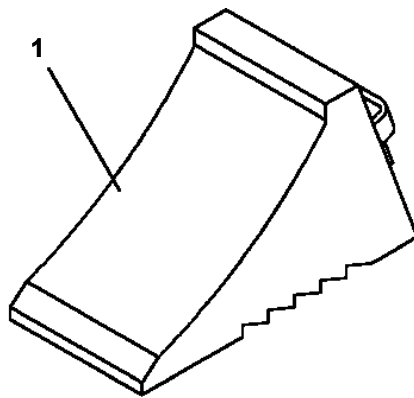
**AT-147-3 43010100066 UPPER
PV5170004-00 VALVE ASSY,SELECTOR**



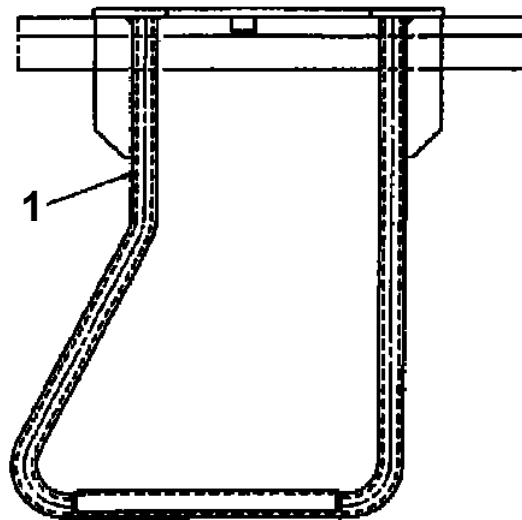
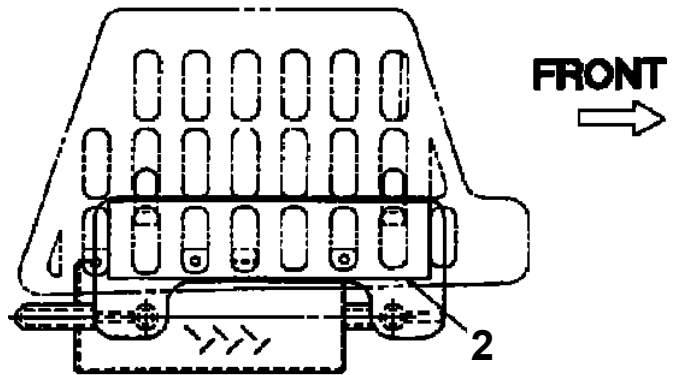
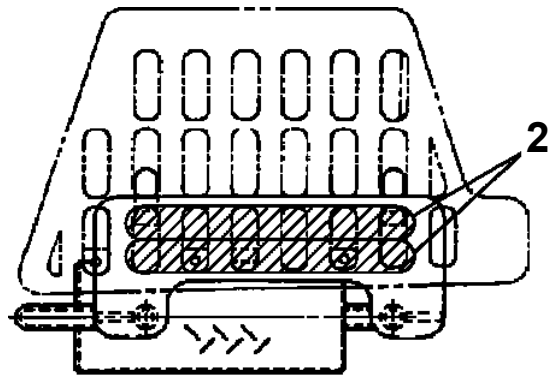
**AT-147-3 43010100066 UPPER
PW1010381-00 ACCESSORIES (WRENCH)**



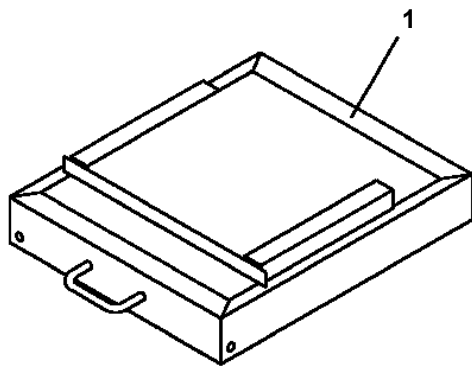
**AT-147-3 43010100066 UPPER
PW5110003-00 WEDGE (STOPPER FOR TIRE/NAKAMURA KIKI)**



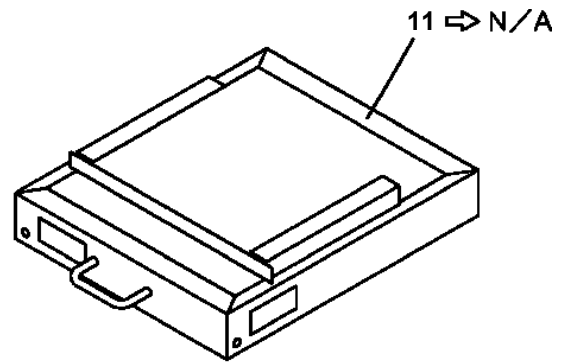
AT-147-3 43010100066 UPPER
PX1260143-01 STEP (FOR ENTRY INTO CAB)



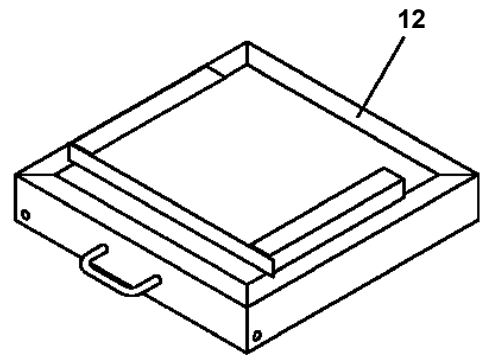
AT-147-3 43010100066 UPPER
PX1270161-01 WOOD BLOCK (KANDEN/DETACHABLE TYPE,L)



(左右前後)

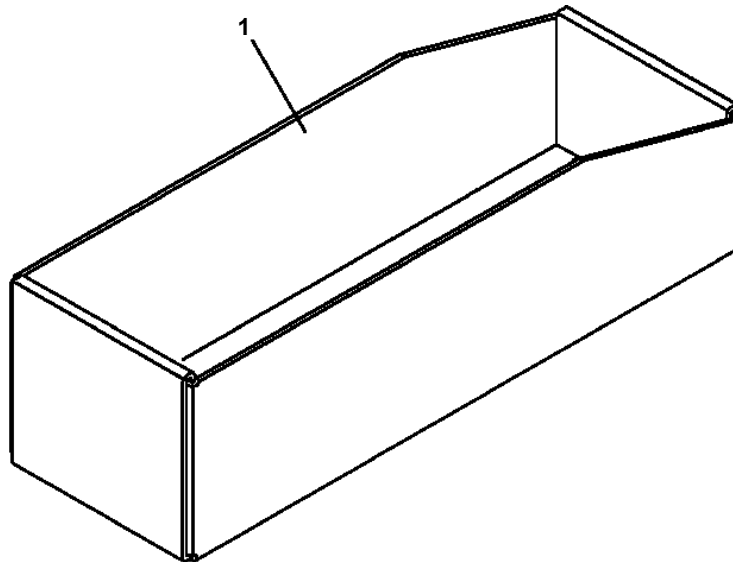


(左後)

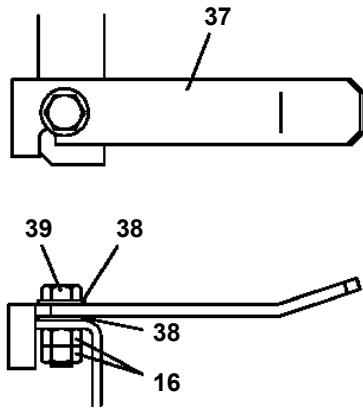


(左前・右前後) ⇨ (左右前後)

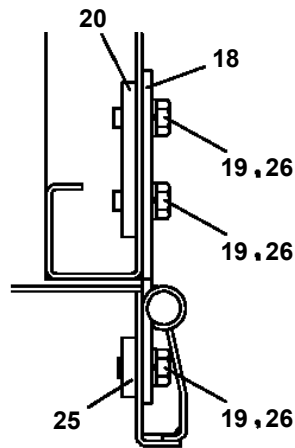
AT-147-3 43010100066 UPPER
PX1350832-00 BOX,TOOL



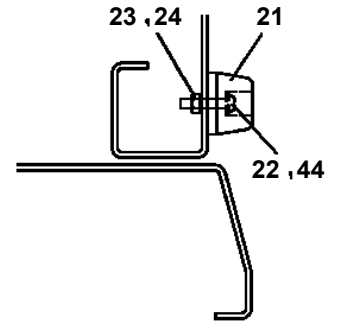
**AT-147-3 43010100066 UPPER
PX5010403-01 MOUNT ASSY**



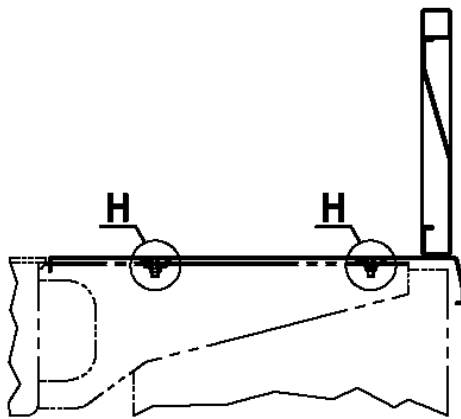
M



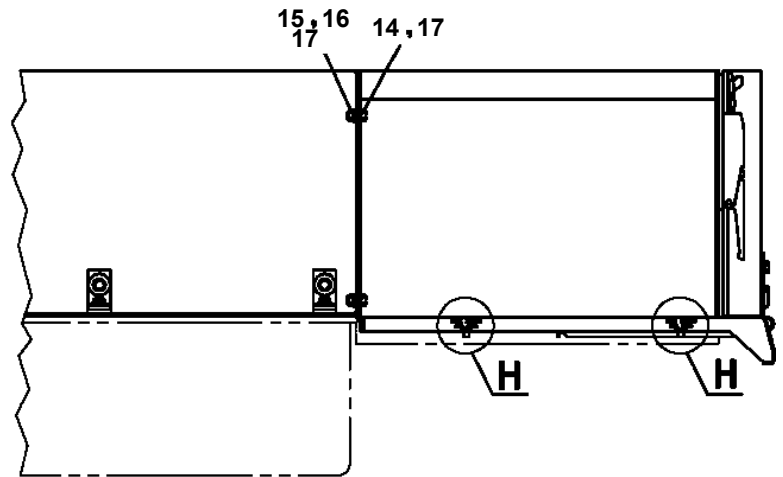
K
(2 PLACES)
(2ヶ所)



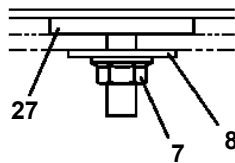
J
(2 PLACES)
(2ヶ所)



F
(2 PLACES)
(2ヶ所)

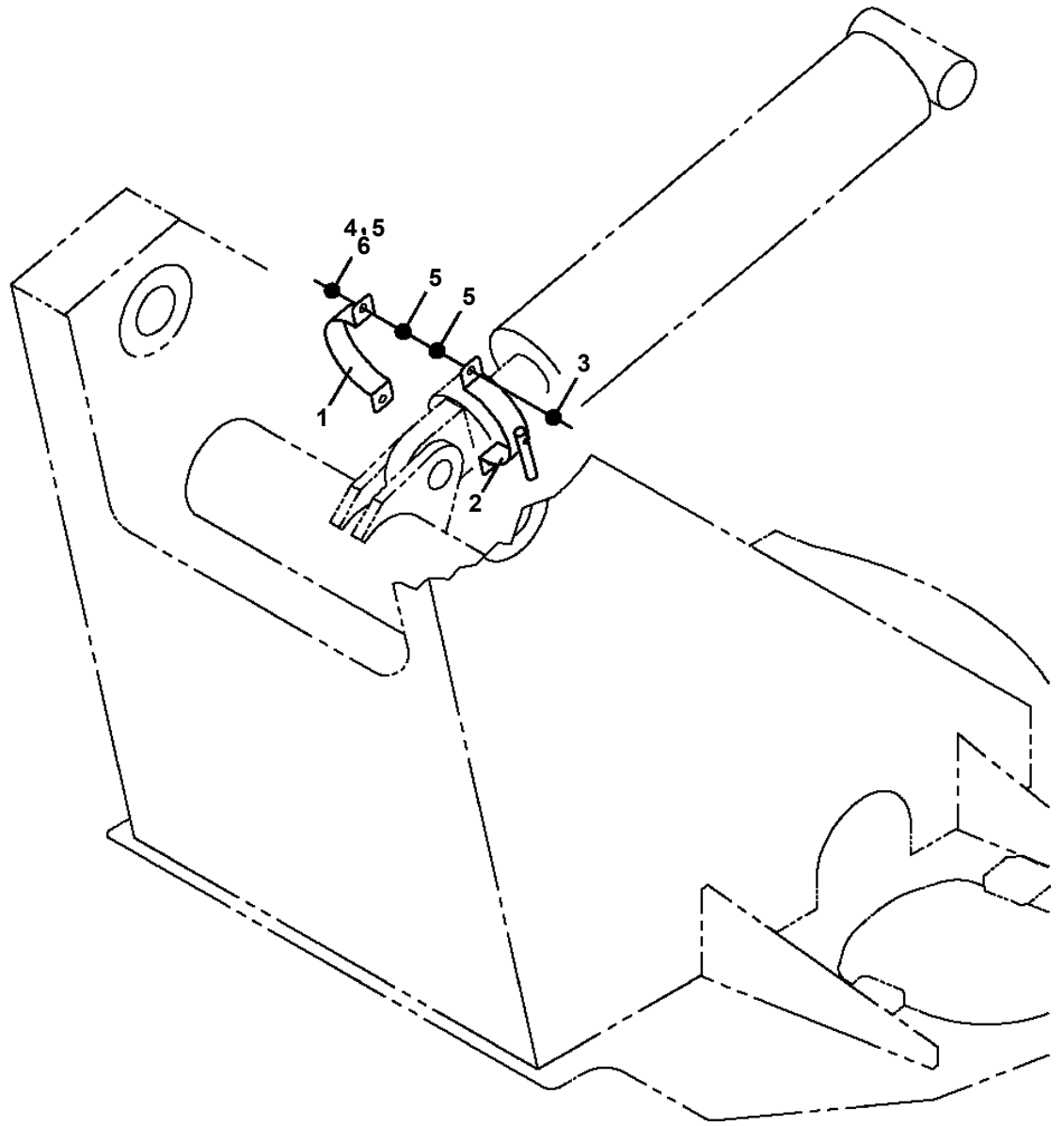


N



H
(6 PLACES)
(6ヶ所)

AT-147-3 43010100066 UPPER
PX5690010-00 MOUNT ASSY,SUPPORT



AT-147-3 43010100066 UPPER
PX5780203-00 MOUNT ASSY,TOOL BOX (LEFT)

NO.	部品名称/PART NAME	備考/REMARK
1	マウントASSY, ツールボックス MOUNT ASSY, TOOL BOX	左前2段工具箱
2	マウントASSY, ツールボックス MOUNT ASSY, TOOL BOX	左後工具箱+後方乗込手摺り

AT-147-3 43010100066 UPPER

Pos No.	Parts No	Parts Name	Qty	Unit	Technical Data	Serial No (Start)	Serial No (End)
3	(*****)	POWER SOURCE (24V)	1				
7	(*****)	FLOAT ASSY (FOR STD JACK/LARGE SIZE RUBBER)	1				
9	(*****)	MODIFICATION ASSY	1				
11	(*****)	ATTACHMENT,JIB	1				
21	(*****)	LAMP (WORKING/BOX,TOOL.LEFT)	1				
23	(*****)	SWITCH ASSY (VERTICAL/HORIZONTAL CONTROL)	1				
30	(*****)	COVER,BUCKET (INNER CASE)	1				
31	(*****)	COVER (2ND BOOM FRP/WHITE)	1				59
	(*****)	COVER ASSY	1			590493	
36	(*****)	SUPPORT (BOOM RIGHT SIDE/ PROTECTION NET)	1				

AT-147-3 43010100066 UPPER

Pos No.	Parts No	Parts Name	Qty	Unit	Technical Data	Serial No (Start)	Serial No (End)	R
1	42470180000	CLAMP HEAD (IZUMI 12TON 2.5M)	1					

AT-147-3 43010100066 UPPER

Pos No.	Parts No	Parts Name	Qty	Unit	Technical Data	Serial No (Start)	Serial No
1	42472640000	CLAMP HEAD (IZUMI 8TON 3.5M ELECTRIC)	1				

AT-147-3 43010100066 UPPER

Pos No.	Parts No	Parts Name	Qty	Unit	Technical Data	Serial No (Start)	Serial
1	42470030000	CUTTER HEAD (IZUMI 6.4TON 2.5M ELECTRIC)	1				

AT-147-3 43010100066 UPPER

Pos No.	Parts No	Parts Name	Qty	Unit	Technical Data	Serial No (Start)	Serial No (End)	Remarks	P
1	42472670000	ROPE (SAFETY,WHITE)	1						

AT-147-3 43010100066 UPPER

Pos No.	Parts No	Parts Name	Qty	Unit	Technical Data	Serial No (Start)	Serial No (End)	Remarks	Pages
1	42470121000	ARM ASSY	1						
2	42470421000	HOLDER	3						
3	42470123000	CLAMP ASSY	1						
5	42476851000	SUPPORT	1						
6	90101216130	BOLT	1		M16X130				
7	90303071601	WASHER,PLAIN	2		16				
8	90201201600	NUT	2		M16				
9	42220011200	SUPPORT	1						
31	42470121100	ARM	1						
32	42470121200	CAP	2						

AT-147-3 43010100066 UPPER

Pos No.	Parts No	Parts Name	Qty	Unit	Technical Data	Serial No (Start)	Serial No (End)	Remarks
1	90131508035	BOLT,HEXAGON SOCKET	4		M8X35			
2	36053842000	BOOSTER (JOINT)	1					
3	36053841001	BOOSTER	1					

AT-147-3 43010100066 UPPER

Pos No.	Parts No	Parts Name	Qty	Unit	Technical Data	Serial No (Start)	Serial No (End)	Remarks	Pages
1	42502890102	COVER	1						
2	42502890200	COVER	2						
3	90183108030	BOLT	12		M8X30				
4	90270200800	NUT	12		M8				
5	90303070801	WASHER,PLAIN	12		8				

AT-147-3 43010100066 UPPER

Pos No.	Parts No	Parts Name	Qty	Unit	Technical Data	Serial No (Start)	Serial
1	42470367770	HOSE,AIR	1		3M		
2	42470362100	JOINT,SELF SEALING	1				
3	42470362200	PUMP	1				
4	42470367780	JOINT	1				
10	42471561000	HOSE,BOOSTER (SMALL,WITH AIR BALLOON)	1				

AT-147-3 43010100066 UPPER

Pos No.	Parts No	Parts Name	Qty	Unit	Technical Data	Serial No (Start)	Serial No
1	80456210600	JOINT,SELF SEALING	1				
2	42470367790	HOSE ASSY	1		5M		
3	42470362100	JOINT,SELF SEALING	1				
4	42470367800	HOSE,AIR	1		5M		
5	42470362200	PUMP	1				
6	80456240600	JOINT,SELF SEALING (WITH DUST CAP)	1				
7	42470367840	TUBE	2		25X0.15M		
8	42470367780	JOINT	1				
21	42471437520	CAP	1				
50	42470363000	HOSE,BOOSTER (WITH AIR BALLOON,5M)	1				

AT-147-3 43010100066 UPPER

Pos No.	Parts No	Parts Name	Qty	Unit	Technical Data	Serial No (Start)	Serial No (End)	Remarks
2	42970690500	SUPPORT	1					
3	80720103020	PIN,SPRING	1		3X20			
4	90303070801	WASHER,PLAIN	6		8			
5	42738470100	EARTH	1					
6	42970710100	SUPPORT	1					
7	90101210020	BOLT	8		M10X20			
8	90302041001	WASHER,SPRING	8		10			
9	90101208020	BOLT	6		M8X20			
10	90302040801	WASHER,SPRING	7		8			
11	90303071001	WASHER,PLAIN	8		10			
12	42970690700	SUPPORT	1					
13	37002701590	CABLE ASSY	1		30B,L=280			
14	90201200800	NUT	1		M8			
31	36160650000	REEL,CORD	1					
32	37002702730	CABLE ASSY	1		8X10000			
33	82198103050	CLIP (WITH CAP/BLACK)	1					
34	90201200500	NUT	1		M5		590423	
	90201200500	NUT	2		M5	590424	590503	
	90201200500	NUT	1		M5	590504		
35	90302040501	WASHER,SPRING	1		5		590423	
	90302040501	WASHER,SPRING	2		5	590424		
36	90303070501	WASHER,PLAIN	1		5		590423	
	90303070501	WASHER,PLAIN	2		5	590424		
37	80173305010	SCREW,MACHINE	1			590424		
38	80173304010	SCREW,MACHINE	1		M4X10	590424		
39	90201200400	NUT	1		M4	590424		
40	90302040401	WASHER,SPRING	1		4	590424		
41	90303070401	WASHER,PLAIN	1		4	590424		

AT-147-3 43010100066 UPPER

Pos No.	Parts No	Parts Name	Qty	Unit	Technical Data	Serial No (Start)	Serial No (End)	Remarks	Pages
1	42501650000	STEP,BUCKET	1						

AT-147-3 43010100066 UPPER

Pos No.	Parts No	Parts Name	Qty	Unit	Technical Data	Serial No (Start)	Serial No (End)	Rem
1	42460821200	BLOCK,RUBBER (NAKAMURA)	1					
	42460821200	BLOCK,RUBBER (NAKAMURA)	1					

CLICK HERE TO **DOWNLOAD** THE COMPLETE MANUAL

- Thank you very much for reading the preview of the manual.
- You can download the complete manual from: www.heydownloads.com by clicking the link below



- Please note: If there is no response to CLICKING the link, please download this PDF first and then click on it.

CLICK HERE TO **DOWNLOAD** THE COMPLETE MANUAL