

## **AT-147-3 43010100028 UPPER**

**PD2000186-01 SWING UNIT  
PF1000691-00 WINCH SYSTEM  
PG2000244-00 BOOM UNIT  
PH1000550-00 SAFETY DEVICES (MOTION CONTROLLER)  
PJ3000567-00 BUCKET SYSTEM  
PJ5000003-00 BOOSTER UNIT  
PK2001255-00 FRAME UNIT  
PO1000171-00 INDICATION PLATES  
PW1000118-00 ACCESSORIES & TOOLS  
PX1001153-00 MOUNTING PARTS  
PY1001439-00 OPTIONS  
ASSEMBLY**

CLICK HERE TO **DOWNLOAD** THE COMPLETE MANUAL

- Thank you very much for reading the preview of the manual.
- You can download the complete manual from: [www.heydownloads.com](http://www.heydownloads.com) by clicking the link below



- Please note: If there is no response to CLICKING the link, please download this PDF first and then click on it.

CLICK HERE TO **DOWNLOAD** THE COMPLETE MANUAL

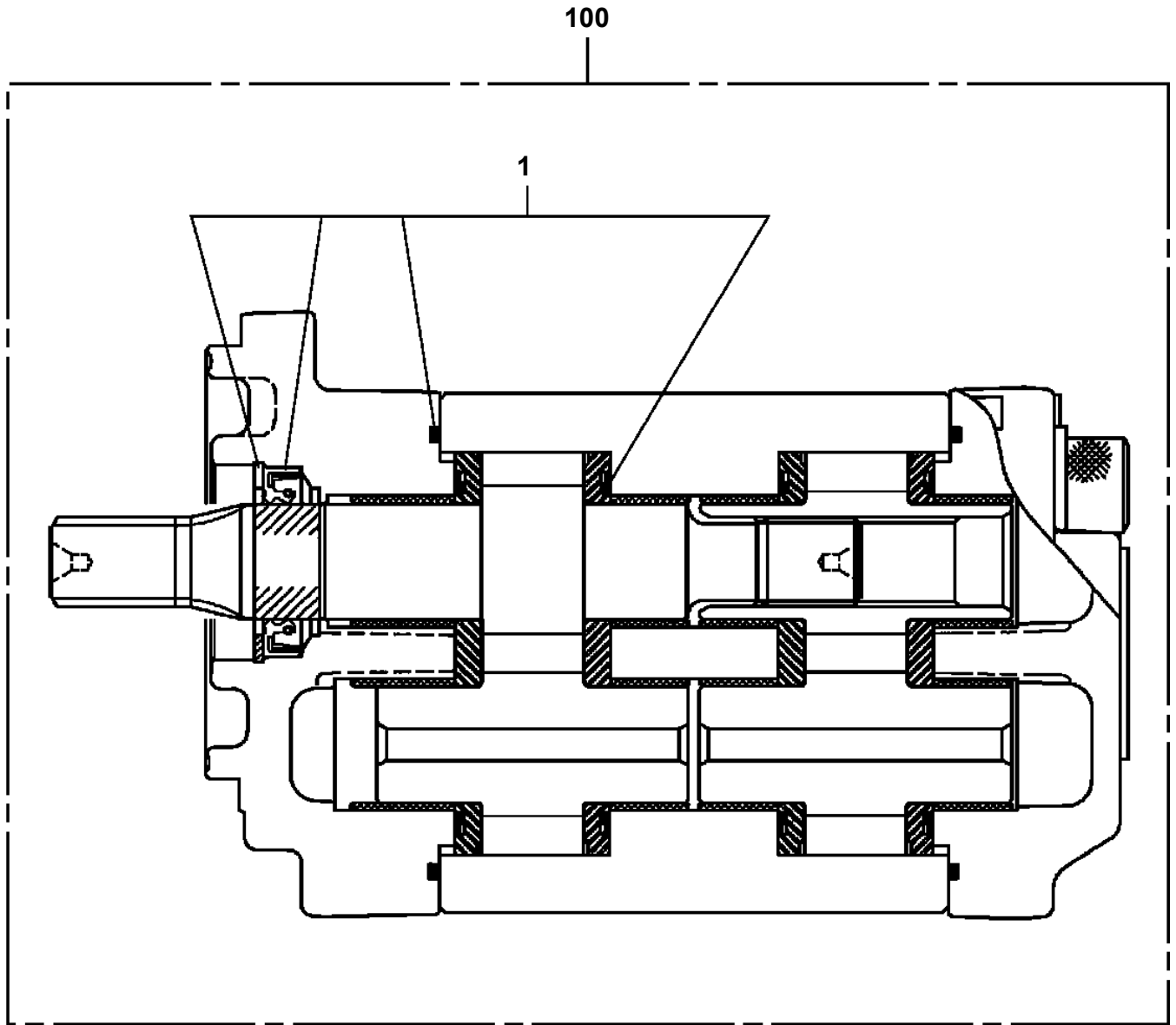
# AT-147-3 43010100028 UPPER

Pos No.	Parts No	Parts Name	Qty	Unit	Technical Data	Serial No (Start)	Serial No (End)
1	42267241000	BUCKET	1				
2	(*****)	BUCKET (INNER CASE)	1				
4	(*****)	ARM	1				590392
	(*****)	ARM ASSY	1			590393	
5	(*****)	PIPING ASSY,ARM	1				
6	(*****)	PIPING ASSY,BUCKET	1				
9	(*****)	COVER,BOOM (TOP/FRP,WHITE)	1				
10	(*****)	FRAME (BUCKET)	1				590392
	(*****)	BUCKET FRAME ASSY	1			590393	
11	(*****)	COVER (ARM/FRP,WHITE)	1				
12	(*****)	COVER (WINCH/FRP,WHITE)	1				
13	42267274000	COVER (CLOTH,WHITE/BUCKET)	1				
14	(*****)	COVER (BUCKET/FRP,WHITE)	1				
15	(*****)	COVER (ARM HOSE,CLOTH)	1				
16	(*****)	COVER	1				
17	42262804000	COVER,WINCH (CLOTH,WHITE/WINCH)	1				
21	(*****)	OPE.ASSY (BUCKET)	1				
22	(*****)	ELEC.ASSY (ARM)	1				
23	(*****)	ELEC.ASSY (BUCKET)	1				590392
	(*****)	ELEC.ASSY,BUCKET	1			590393	
24	(*****)	ACCESSORIES (BUCKET INNER MAT)	1				

# AT-147-3 43010100028 UPPER

Pos No.	Parts No	Parts Name	Qty	Unit	Technical Data	Serial No (Sta
1	(***** *****)	BOX, TOOL (LEFT/F:2-DECKER,R:1-DECKER)	1			
	(***** *****)	MOUNT ASSY, TOOL BOX (LEFT SIDE/F:DOUBLE,R:SINGLE)	1			590361
2	(***** *****)	BOX, TOOL (RIGHT/F:2-DECKER,R:NONE)	1			
3	(***** *****)	EARTHING DEVICE	1			
	(***** *****)	EARTHING DEVICE (8X10M, TOP CLIP)	1			
	(***** *****)	EARTH ASSY (5X10M.CLIP ON THE END, PORTABLE)	1			
	(***** *****)	EARTHING DEVICE (8X20M, TOP CLIP)	1			

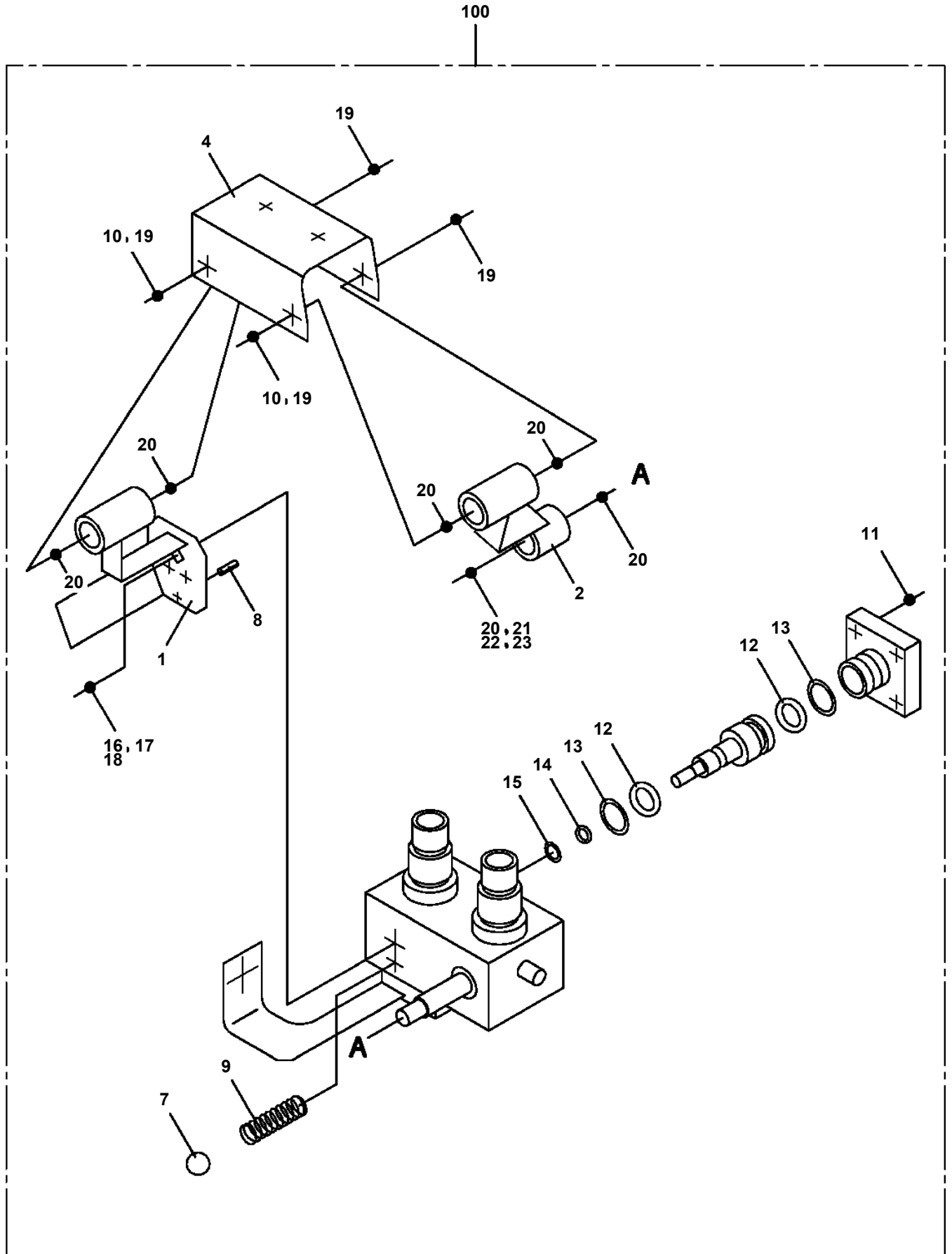
AT-147-3 43010100028 UPPER  
PB1100358-00 PUMP, HYDRAULIC



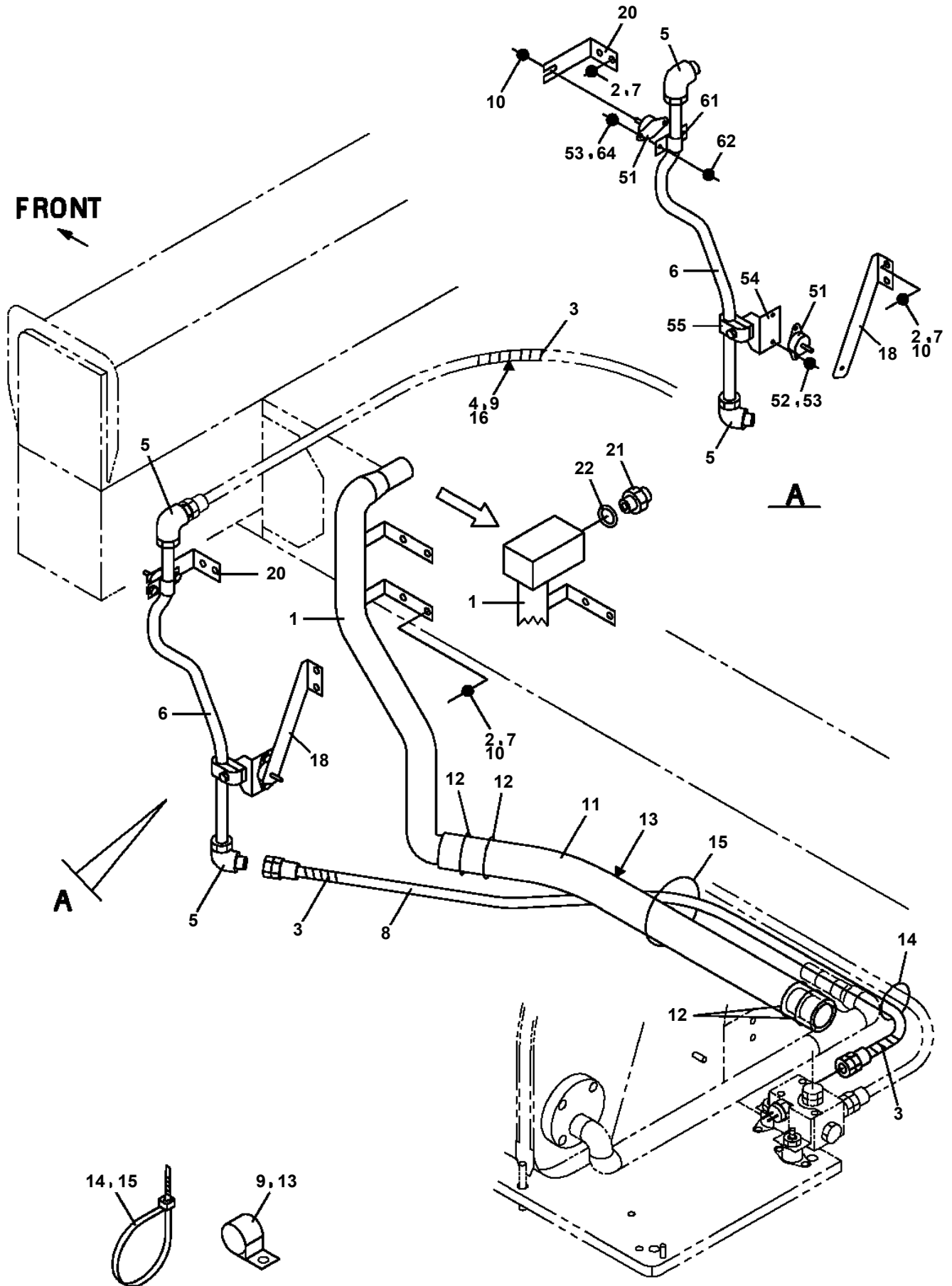
# AT-147-3 43010100028 UPPER

Pos No.	Parts No	Parts Name	Qty	Unit	Technical Data	Serial No (Start)	Serial No (End)	Remarks	F
2	42441873001	BRUSH,ROTARY JOINT	1						0
3	90101208040	BOLT	3		M8X40				
4	90302040801	WASHER,SPRING	3		8				
5	80720105016	PIN,SPRING	1		5X16				
6	42630760200	SPACER	3		L=13				
7	42630760100	COVER	1						
31	53154004000	BUSH (THRUST)	1						
32	42630891100	BODY	1						
33	42630891200	CORE	1						
34	91531211000	PACKING	2						
35	91100211000	SEAL,RING	2						
37	82400000459	CAP	1						
38	82458202000	NIPPLE,GREASE	1		B-TYPE PT1/8				
39	80601111100	RING,RITAINING	1		S110				
50	42630890000	JOINT,ROTARY	1						

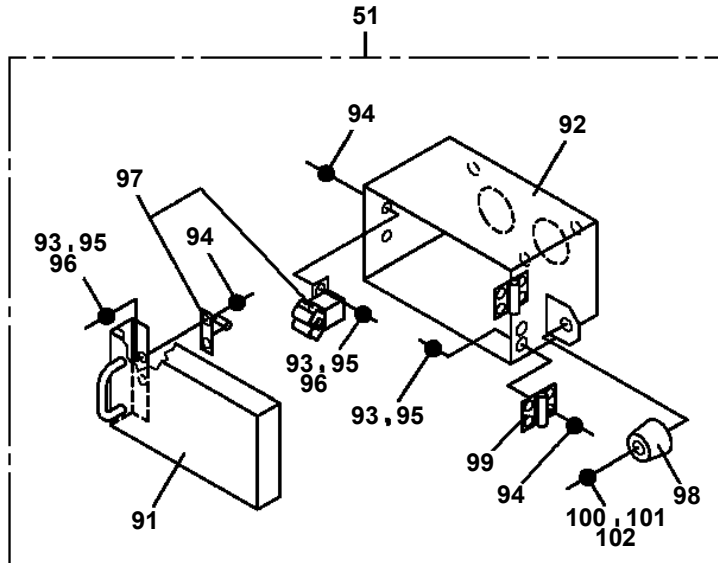
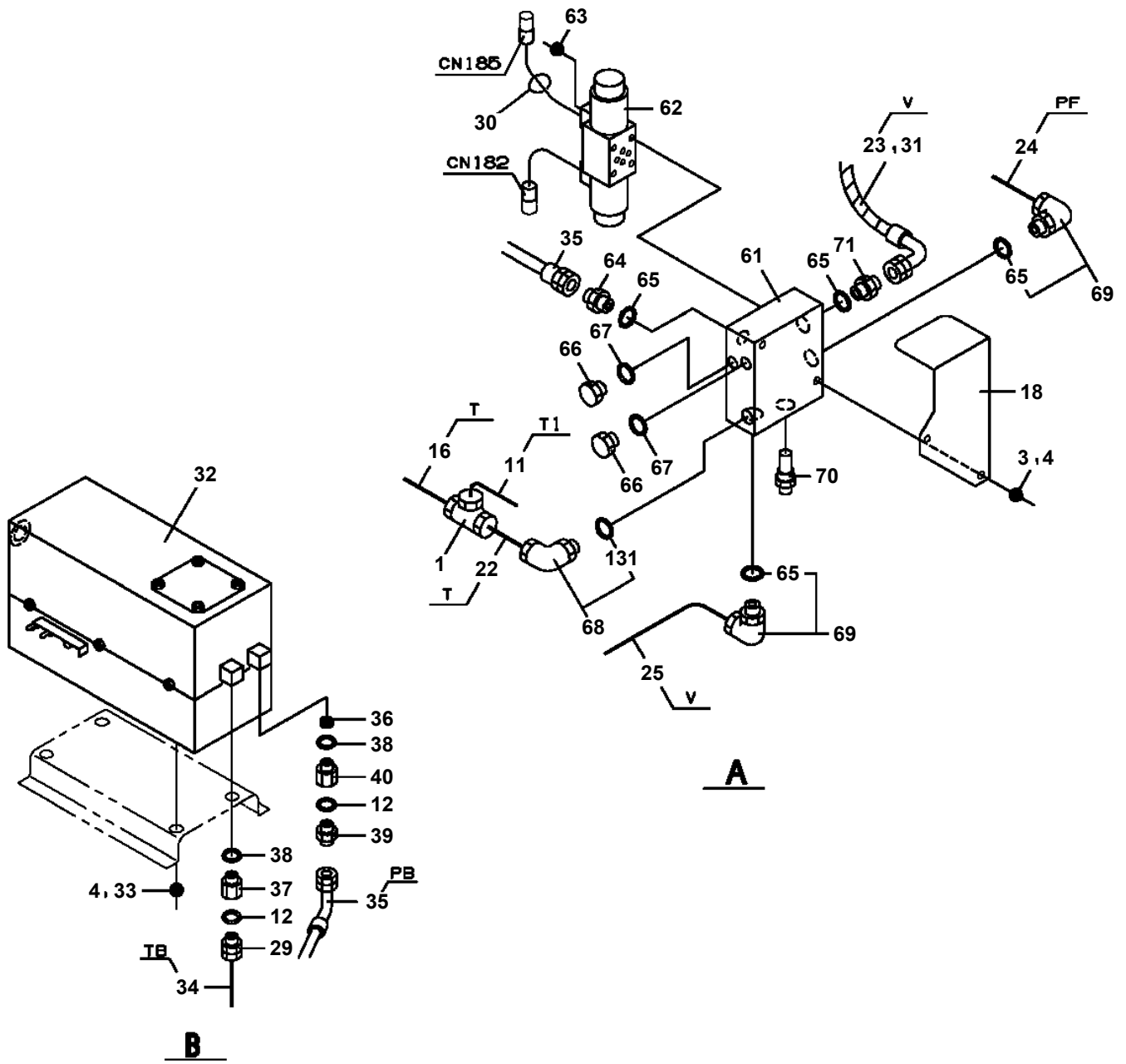
**AT-147-3 43010100028 UPPER  
PB1320589-01 VALVE, MANUAL CONTROL (BOOSTER)**



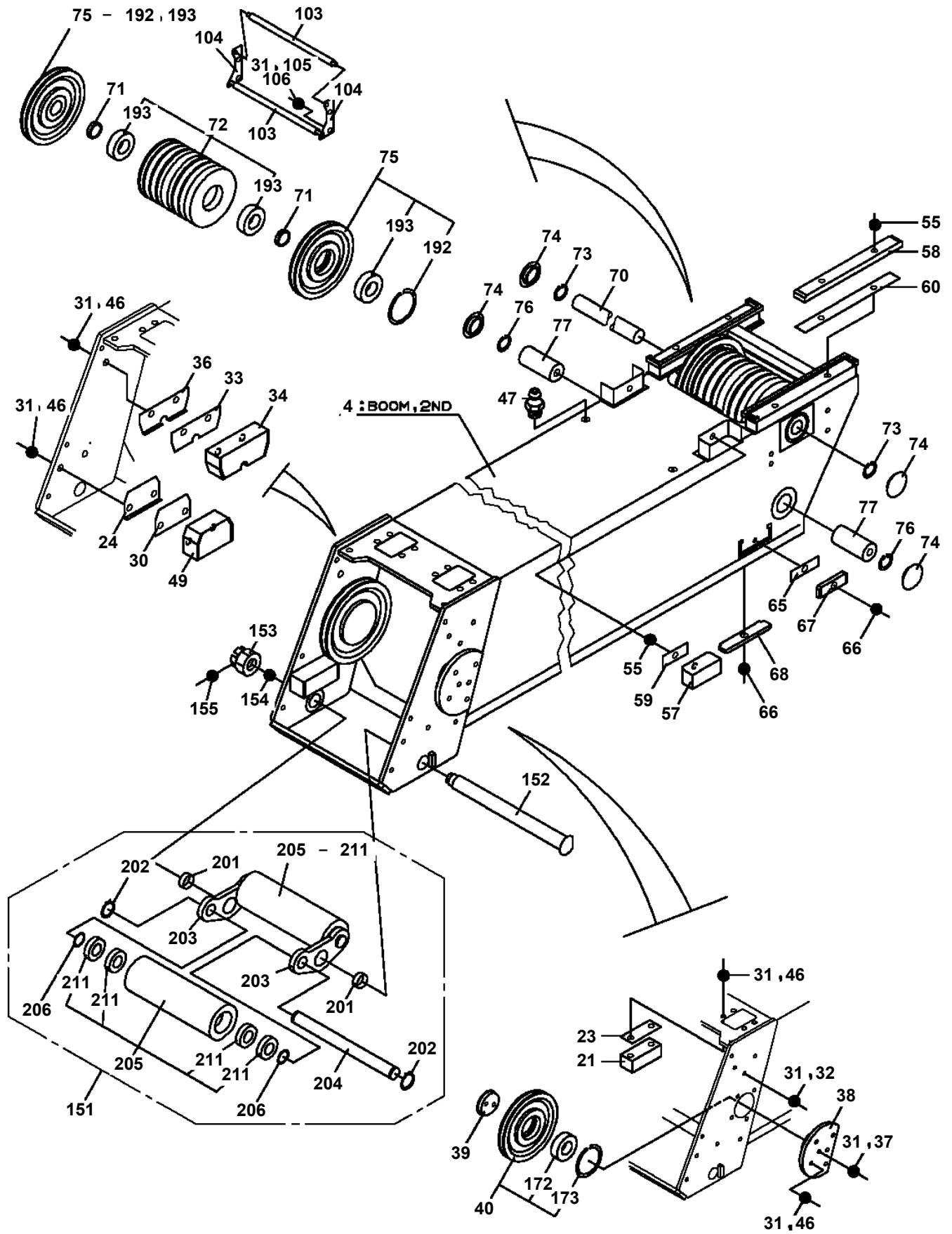
AT-147-3 43010100028 UPPER  
PB1411916-02 PIPING, LOWER



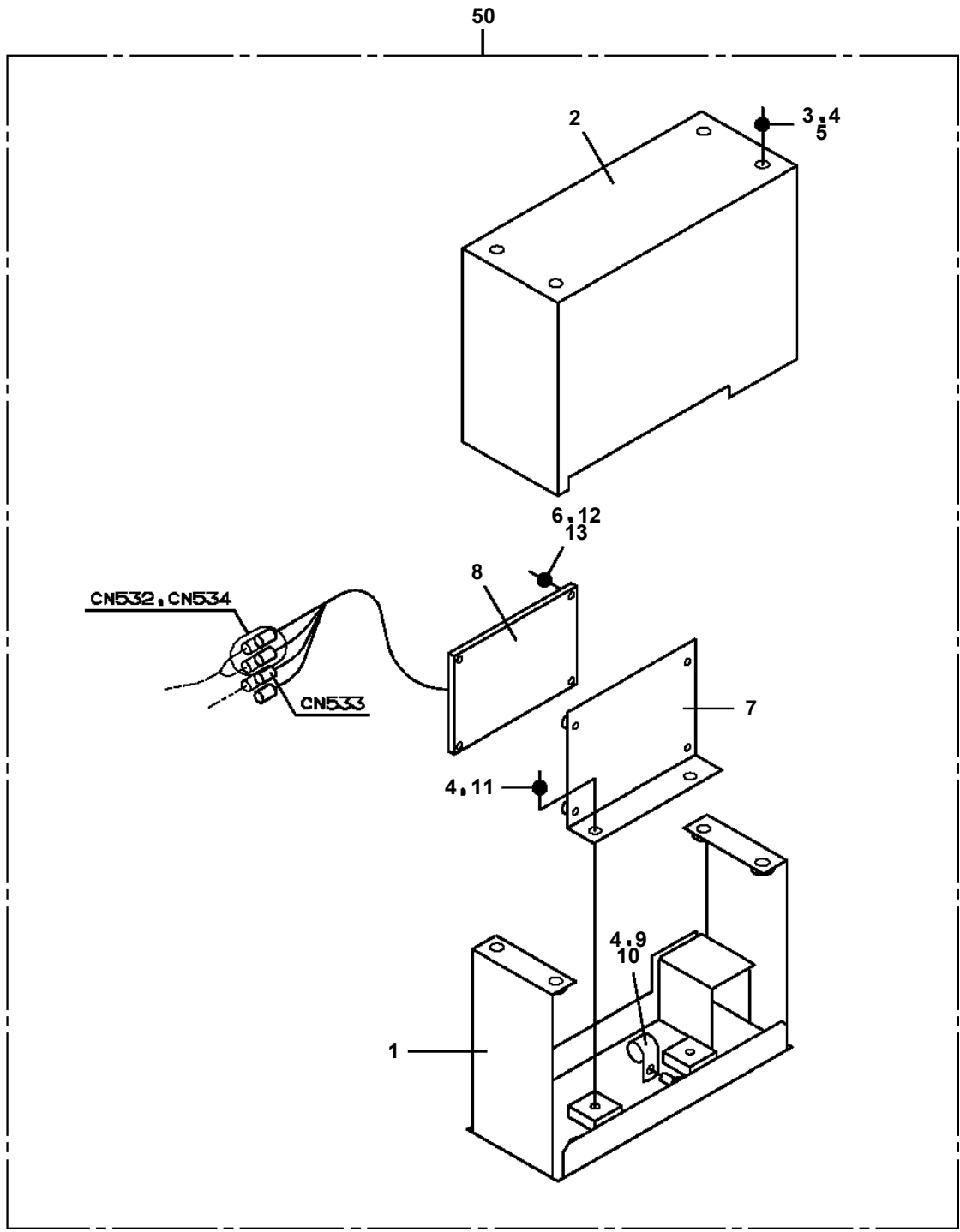
**AT-147-3 43010100028 UPPER  
PB1910231-04 PIPING**



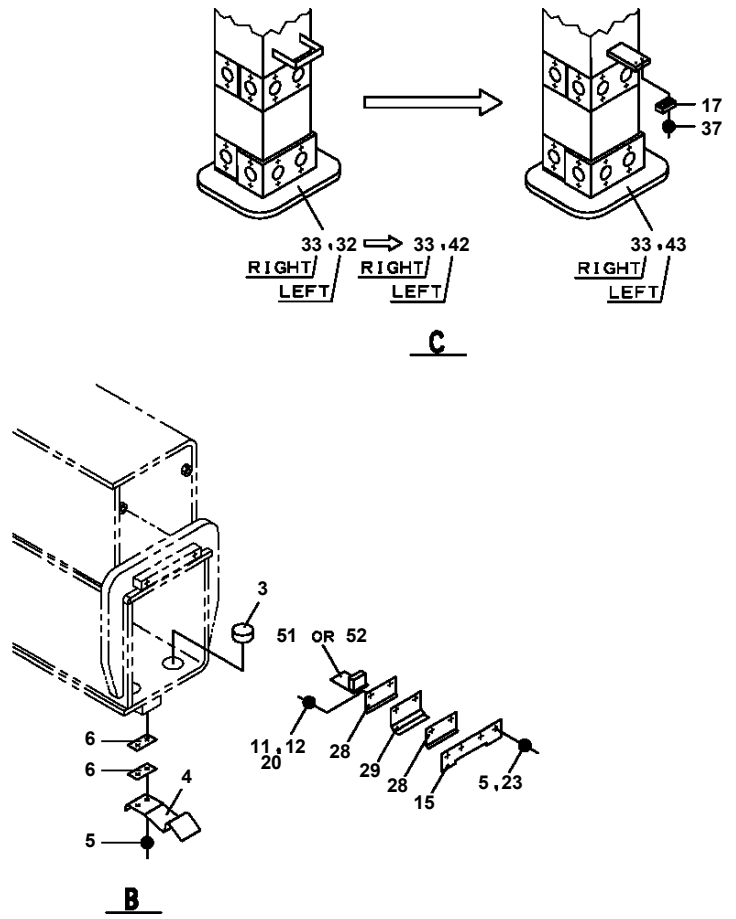
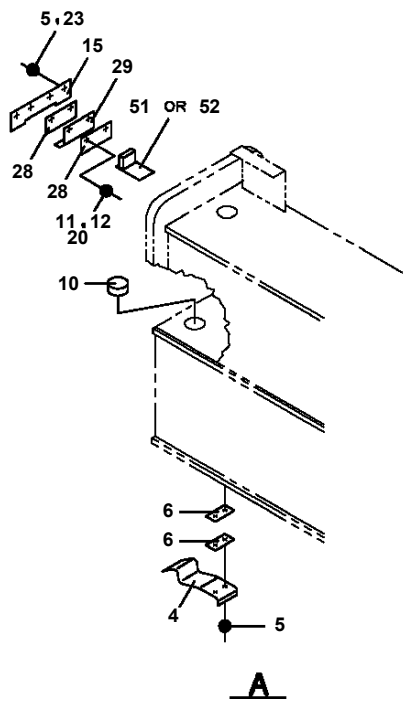
**AT-147-3 43010100028 UPPER  
PB5190089-01 BOOM ASSY**



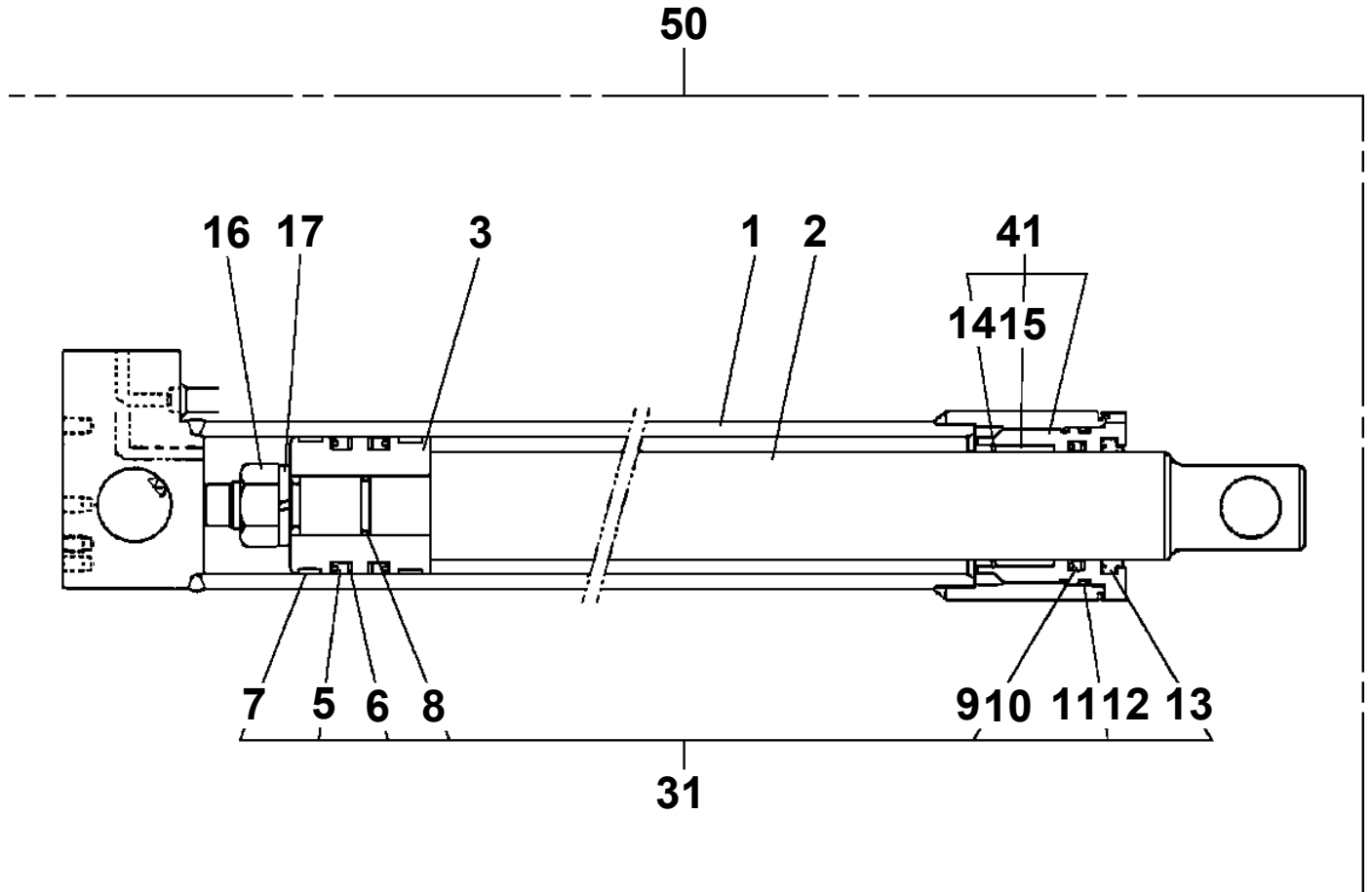
AT-147-3 43010100028 UPPER  
PB5260030-00 BOX ASSY



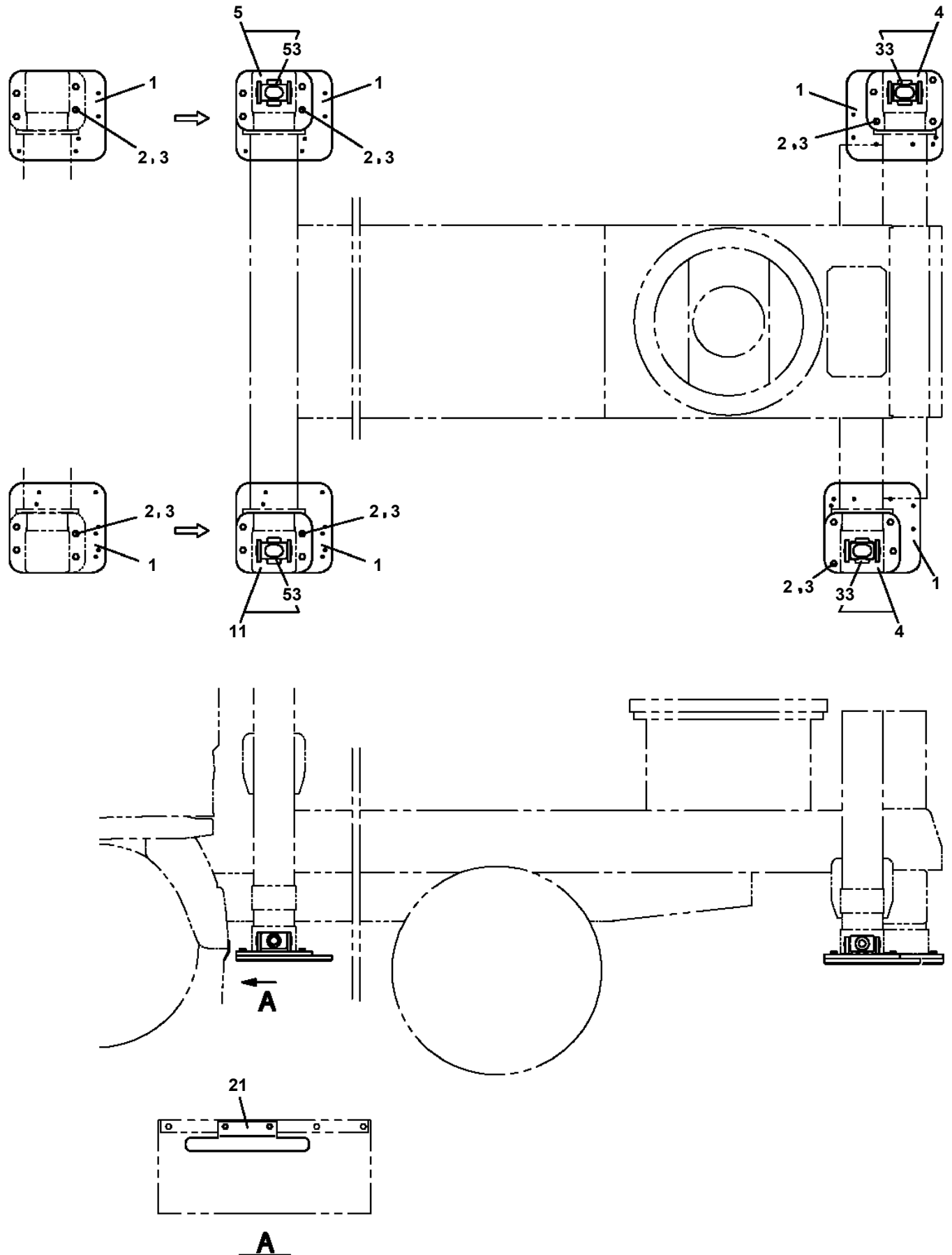
**AT-147-3 43010100028 UPPER  
PC1011547-04 OUTRIGGER (FRONT)**



AT-147-3 43010100028 UPPER  
PC1030328-00 CYLINDER,JACK



**AT-147-3 43010100028 UPPER  
PC1070010-01 FLOAT (FOR FRONT LONG JACK/LARGE SIZE RUBBER)**



# AT-147-3 43010100028 UPPER

Pos No.	Parts No	Parts Name	Qty	Unit	Technical Data	Serial No (Start)	Serial No (End)	R
79	80456960401	JOINT,SELF SEAL	1			590500		
91	37000927760	JOINT	1					
92	80302090151	FITTING	1		KCO12-040N			
94	80400160127	JOINT	3					
96	80430620400	JOINT	1					
101	80303130241	FITTING,ELBOW	1		KLO18-040E			
102	80491304040	JOINT (WITH O-RING)	1					
106	80303130171	FITTING,ELBOW	1		KLO12-040E			
107	37000908730	JOINT (WITH O-RING)	5		L,G3/8-G1/4			
108	80491303020	JOINT (WITH O-RING)	4		L,G3/8-G1/4			
110	37000927930	JOINT	1					
111	80430620800	JOINT	1					
121	36646360000	VALVE,SOLENOID	2					
122	80491403020	JOINT (WITH O-RING)	2					
123	91002801400	O-RING	12		1B P14			
132	80302090121	FITTING	1		KCO10-030N			
142	82400000200	GROMMET	1		KG-012,L=250			

# AT-147-3 43010100028 UPPER

Pos No.	Parts No	Parts Name	Qty	Unit	Technical Data	Serial No (Start)	Serial No (End)
1	42614582100	CASE,INNER	1				
2	42613851201	CASE,INNER	1				
4	36035010000	CYLINDER,JACK	1				
5	42505670100	FLOAT ASSY	1				
6	37000131820	PIN	1				
7	80601110300	RING,RITAINING	2		S30		
8	37000112330	PIN	1				
9	80601110350	RING,RITAINING	2		S35		
10	36625740001	VALVE,CHECK	1				
11	90171108050	BOLT	4		M8X50		
12	37000138750	PIN	1		18		
13	80136332036	PIN,SPLIT	2		3.2X36		
14	80400160127	JOINT	1				
15	91002801100	O-RING	1		1B P11		
16	36672460000	FILTER (NIPPLE TYPE)	1				
17	42612851010	COVER	1				
18	90186206014	BOLT,FLANGE	2		M6X14		
19	37000112320	PIN	1				
20	80601110120	RING,RITAINING	2		S12		
21	91810130240	FASTENER	1				
22	31201770100	PLATE,SLIDE	8		T=3.0		
23	90280200600	NUT,FLANGE	2		M6		
24	37000600700	CLAMP	2		12X3		
25	82100002005	CLAMP	1		WRC8		
26	90186208010	BOLT,FLANGE	1		M8X10		
27	37002016610	PLATE,SLIDE	2				
28	80184306010	SCREW,MACHINE	2		M6X10		
29	82467300106	PLUG	4				
41	36042810000	CYLINDER,EXTENSION (FRONT)	1				
42	80400160127	JOINT	2				
43	91002801100	O-RING	3		1B P11		
44	37002421410	HOSE,TWIN	1		L=2150		
45	42614642110	HARNESS	1				
46	91810130240	FASTENER	15				
63	42610263100	TRUNNION	1				
100	42614642002	CASE ASSY,INNER (FRONT,RIGHT)	1				

# AT-147-3 43010100028 UPPER

Pos No.	Parts No	Parts Name	Qty	Unit	Technical Data	Serial No (Start)	Serial No (End)
1	42614584101	CASE ASSY,INNER	1				
2	42613851201	CASE,INNER	1				
4	36035010000	CYLINDER,JACK	1				
5	42505670100	FLOAT ASSY	1				
6	37000131820	PIN	1				
7	80601110300	RING,RITAINING	2		S30		
8	37000112330	PIN	1				
9	80601110350	RING,RITAINING	2		S35		
10	36625740001	VALVE,CHECK	1				
11	90171108050	BOLT	4		M8X50		
12	37000138750	PIN	1		18		
13	80136332036	PIN,SPLIT	2		3.2X36		
14	80400160127	JOINT	1				
15	91002801100	O-RING	1		1B P11		
16	36672460000	FILTER (NIPPLE TYPE)	1				
17	42612851010	COVER	1				
18	90186206014	BOLT,FLANGE	2		M6X14		
19	37000112320	PIN	1				
20	80601110120	RING,RITAINING	2		S12		
21	91810130240	FASTENER	1				
22	31201770100	PLATE,SLIDE	8		T=3.0		
23	90280200600	NUT,FLANGE	2		M6		
24	37000600700	CLAMP	2		12X3		
25	82100002005	CLAMP	1		WRC8		
26	90186208010	BOLT,FLANGE	1		M8X10		
27	37002016610	PLATE,SLIDE	2				
28	80184306010	SCREW,MACHINE	2		M6X10		
29	82467300106	PLUG	4				
41	36042810000	CYLINDER,EXTENSION (FRONT)	1				
42	80400160127	JOINT	2				
43	91002801100	O-RING	3		1B P11		
44	37002421410	HOSE,TWIN	1		L=2150		
45	42614642110	HARNESS	1				
46	91810130240	FASTENER	15				
63	42610263100	TRUNNION	1				
100	42614644001	CASE ASSY,INNER (FRONT,RIGHT)	1				

# AT-147-3 43010100028 UPPER

Pos No.	Parts No	Parts Name	Qty	Unit	Technical Data	Serial No (Start)	Serial No (End)	Remarks
1	42272361102	COVER	1					
2	42272361201	COVER	1					
3	42272361300	COVER	1					
4	90101206016	BOLT	6		M6X16			
5	80172803008	SCREW,MACHINE	8		M3X8			
6	90201500300	NUT	8		M3			
7	90302510301	WASHER,SPRING (SUS 3)	8					
8	82466100702	CATCH	2					
9	80172804012	SCREW,MACHINE	12		M4X12			
10	90201500400	NUT	12		M4			
11	90302510401	WASHER,SPRING	12		4			
12	82464110305	HINGE	2					
13	90302040601	WASHER,SPRING	6		6			
14	90303070601	WASHER,PLAIN	6		6			
100	42272361003	COVER ASSY	1					

# AT-147-3 43010100028 UPPER

Pos No.	Parts No	Parts Name	Qty	Unit	Technical Data	Serial No (Start)	Se
1	42972390000	CUTTER HEAD ASSY (YONDENKO/SAFETY HOSE)	1				

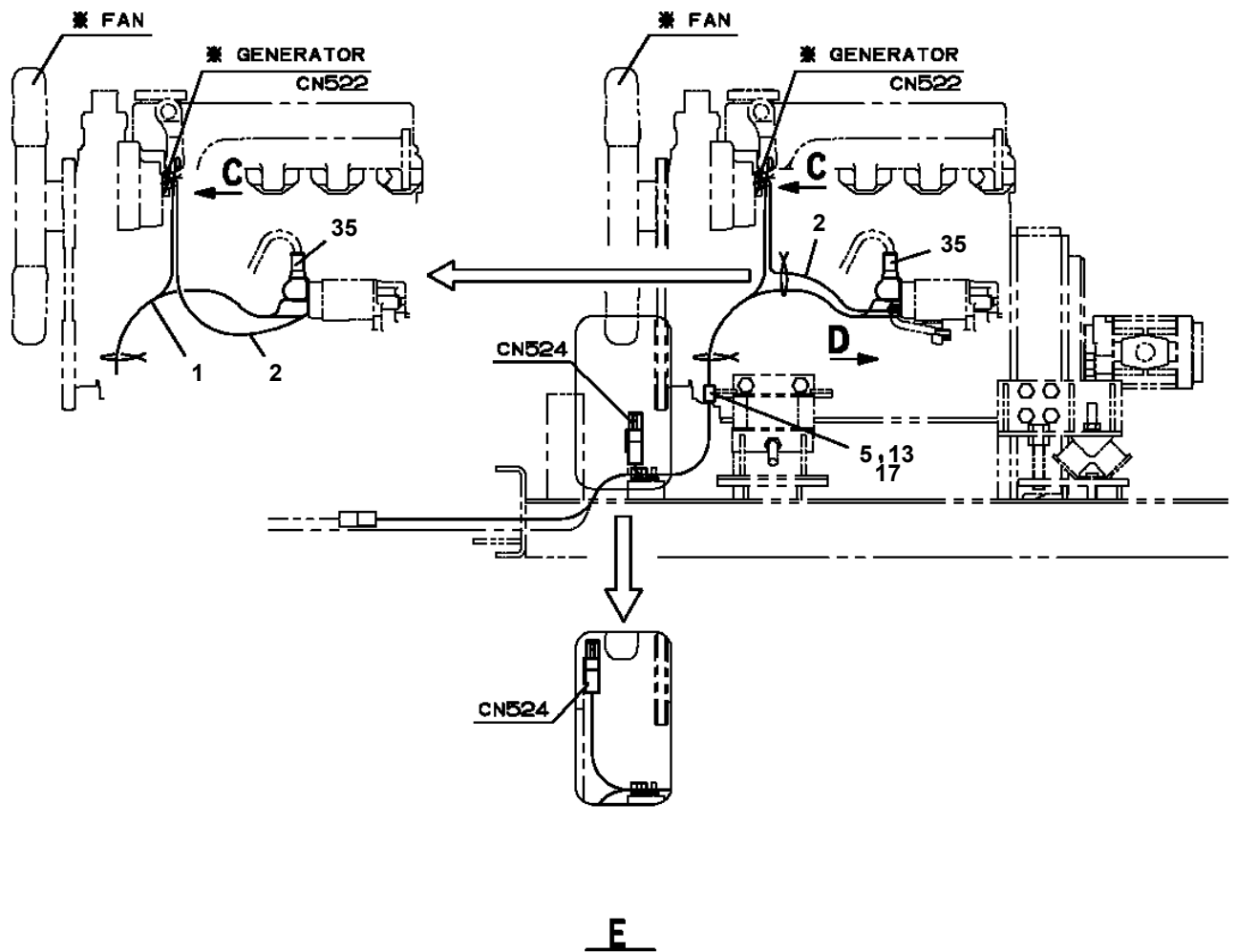
# AT-147-3 43010100028 UPPER

Pos No.	Parts No	Parts Name	Qty	Unit	Technical Data	Serial No (Start)	Serial No (End)	Remarks
3	91280439941	SEAL,OIL	1					
4	36081565010	CASE,GEAR	1					
5	80515006312	BEARING,BALL	1					
6	36081395040	KEY	1					
7	36081395050	WHEEL,WORM	1		4X32-34			
8	90102510025	BOLT	6		M10X25			
9	90302041001	WASHER,SPRING	6		10			
10	80516006211	BEARING,BALL	1					
11	80601110550	RING,RITAINING	1		S55			
12	36081395060	CASE,GEAR	1					
13	36072725350	BEARING,TAPER ROLLER	1					
14	36081395070	WORM	1		4X20			
15	36081325110	BEARING,TAPER ROLLER	1					
16	36081325080	SHIM SET	1					
17	36081325010	SPACER	1					
18	36081325090	RING,SNAP	1					
19	36080495090	GAUGE,OIL	1					
20	36080235080	WASHER,SEAL	1		M16			
21	80316090040	PLUG SOCKET	1		R1/4			
31	36081395500	GEAR,SPUR	1					
50	36081560000	REDUCER,SWING SPEED	1					

# AT-147-3 4301010028 UPPER

Pos No.	Parts No	Parts Name	Qty	Unit	Technical Data	Serial No (Start)	Serial No (End)
1	36027969510	CYLINDER ASSY	1				
2	80720105025	PIN,SPRING	1		5X25		590377
3	82455106000	NIPPLE,GREASE	1		A-M6F FE		
4	36027952000	PISTON	1				590377
	36027952001	PISTON	1			590378	
5	91350211000	BEARING,PLAIN (WITH PACKINGX2)	1				
6	91002802600	O-RING	1		1B P26		
7	36027969520	ROD ASSY	1				590377
	36027969521	ROD ASSY	1			590378	
8	36027959530	COVER,ROD	1				
9	80612110520	RING,RITAINING	1		AR52		
10	91002910500	O-RING	1		1B G105		
11	80801004525	BEARING,PLAIN	1				
12	91694004500	PACKING	1				
13	91410204502	RING,BACKUP	1				
14	91660004501	SEAL,DUST	1				
15	91002911000	O-RING	1		1B G110		
16	80541700030	BEARING,SPHERICAL (NTN)	1		SA4-30B		
17	80820003030	BEARING,PLAIN	2				
18	82400000459	CAP	1				
19	91001004500	O-RING	1		S45		
20	91001207000	O-RING	1		1A G70		
21	36025230060	COVER	1				
22	90730008120	SCREW,SET	1		M8X12	590378	
32	42360120030	CONNECTOR	1				
51	36027959900	PACKING SET	1		45X110		
61	82100002132	CONNECTOR	1				
100	42491388010	CYLINDER,LEVELING (LOWER)	1				

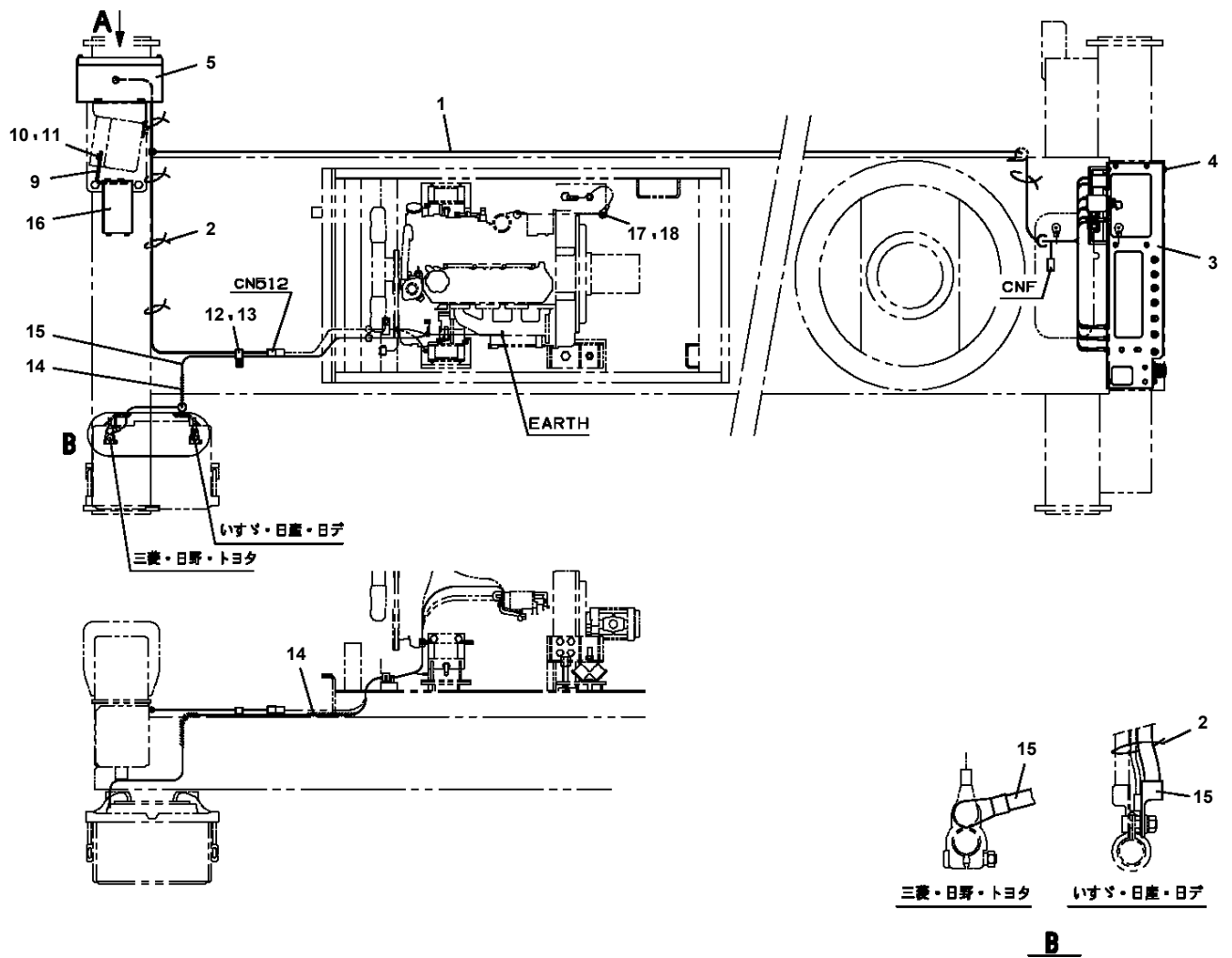
AT-147-3 43010100028 UPPER  
PE5020276-05 ELEC.ASSY



※材は〔付属品リスト〕より検索してください。

FOR THE PART ※, SEE THE CORRESPONDING "ACCESSORY LIST."

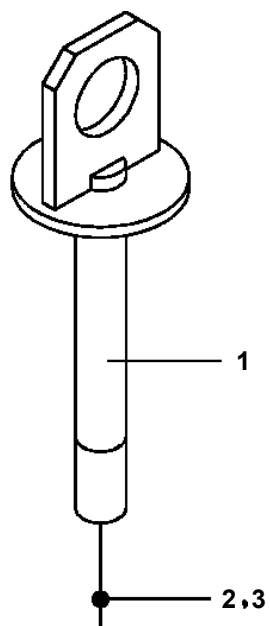
**AT-147-3 43010100028 UPPER  
PE5180013-01 ELEC.ASSY,POWER UNIT**



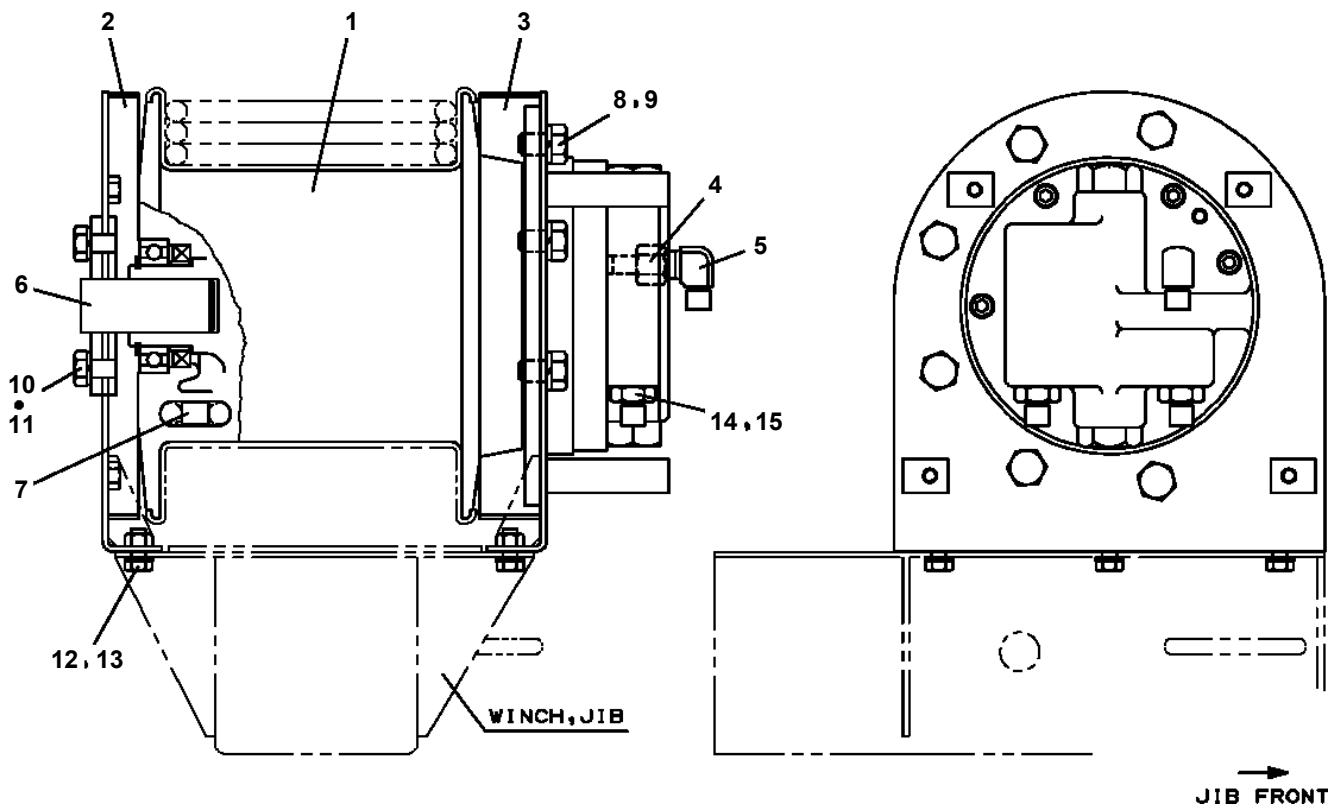
# AT-147-3 43010100028 UPPER

Pos No.	Parts No	Parts Name	Qty	Unit	Technical Data	Serial No (Start)	Serial No (End)	Remarks	P
2	42354740200	SWITCH ASSY	1						
3	34354781730	RELAY	1						0
4	80192486010	SCREW,MACHINE	4		M6X10				
5	80192484016	SCREW,MACHINE	6		M4X16				
6	91850400601	CLAMP	5						
7	91810132530	FASTENER	20						
8	90201200800	NUT	1		M8				
9	90302040801	WASHER,SPRING	1		8				
10	90303070801	WASHER,PLAIN	1		8				
11	82127020180	TUBE,SPIRAL	1	M					
12	82100002017	CLAMP	1		WR30				
13	90280200600	NUT,FLANGE	2		M6				
14	82100001802	TUBE,CORRUGATE	2	M	10				
16	82100002014	CLAMP	1		WR20				
17	82100001807	TUBE,CORRUGATE	1	M	28				
18	42350250070	PLUG (2 POLES,MALE)	1						
19	34354781740	RELAY	2						0
20	82100001819	TUBE,SPIRAL	1	M	SE-18BK				
21	42352190100	RESISTANCE	1						
22	80172303012	SCREW,MACHINE	2		M3X12				
23	90302040301	WASHER,SPRING	2		3				
24	90303070301	WASHER,PLAIN	2		3				
25	42470201060	PLATE	1						
26	90201200600	NUT	1		M6				
27	90302040601	WASHER,SPRING	2		6				
28	82100002005	CLAMP	1		WRC8				
29	82100002010	CLAMP	1		WR15				
30	42356380300	HARNESS	1						0
31	90101206010	BOLT	1		M6X1.0				
32	82100002004	CLAMP	1		WR8				
33	80197586012	SCREW,MACHINE	3		M6X12				
55	82100002308	COVER	1						
71	42356381000	CONVERTER	1				590499		
	42356381001	CONVERTER	1			590500			
72	42353383100	COVER	1						
73	80172305012	SCREW,MACHINE	4		M5X12				
74	90201200500	NUT	4		M5				
75	90302040501	WASHER,SPRING	4		5				
76	90303070501	WASHER,PLAIN	4		5				
91	42352457510	KEY	1						

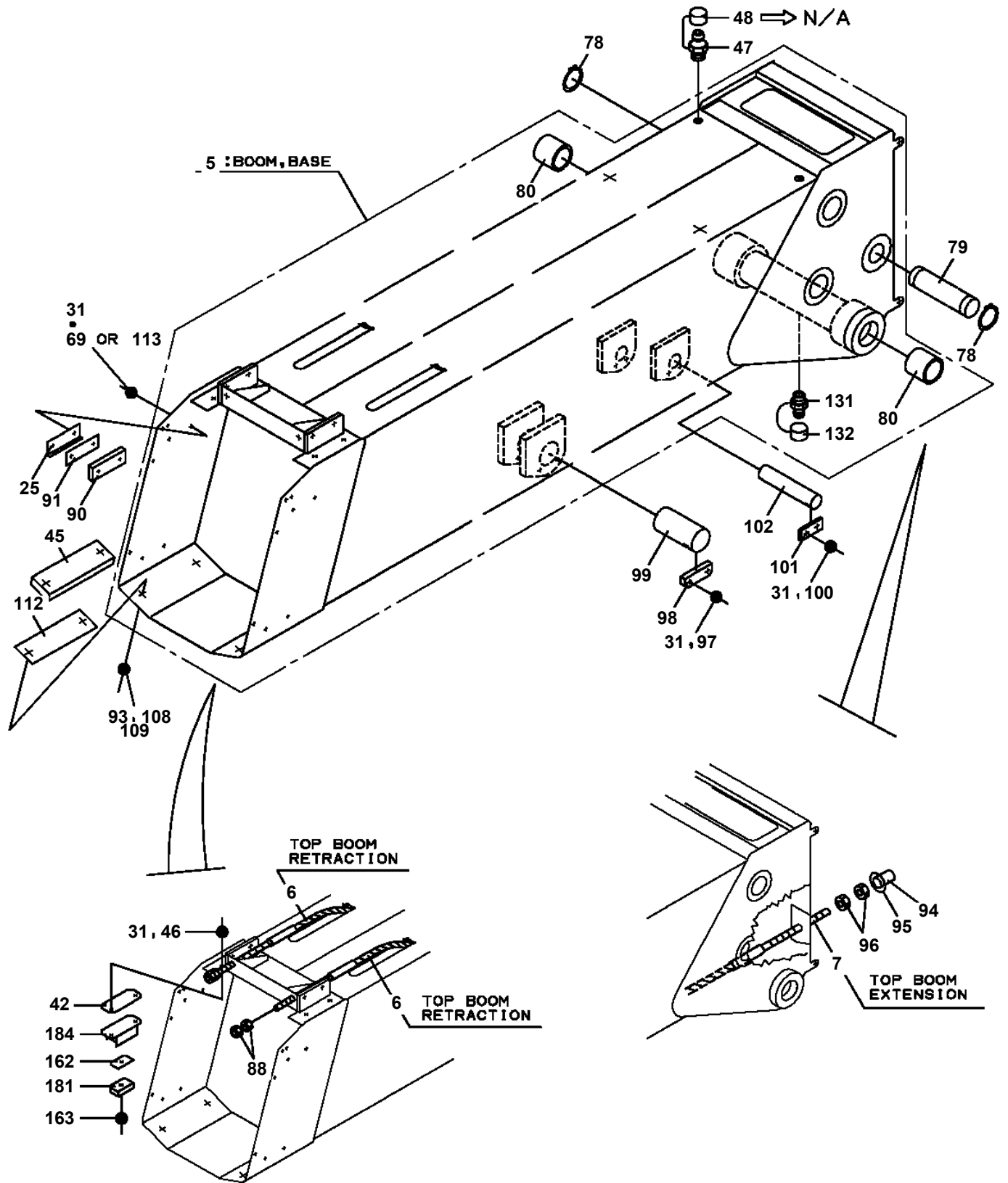
**AT-147-3 43010100028 UPPER  
PF1080012-00 SUPPORT (WINCH JIB, FOR HOKURIKUDENKOU)**



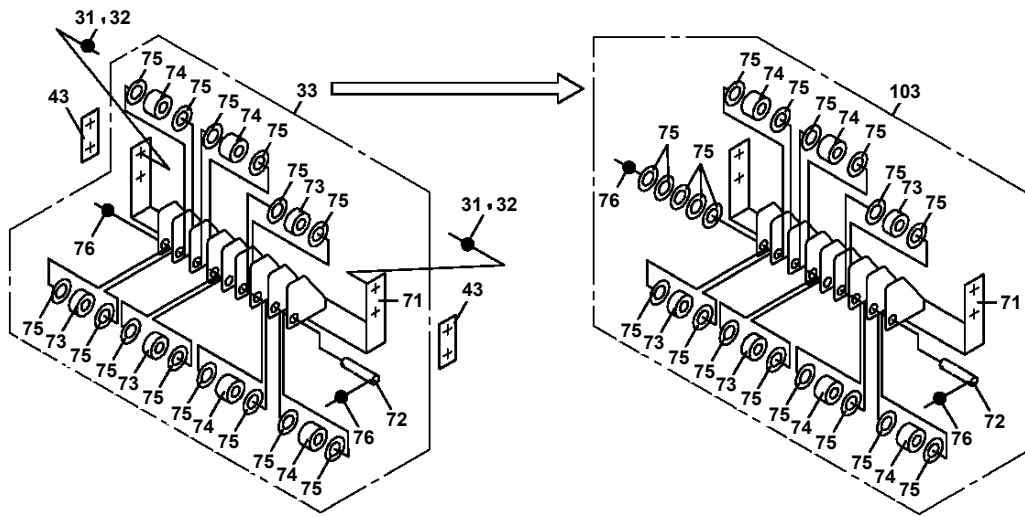
**AT-147-3 43010100028 UPPER  
PF1400451-00 MOUNT,WINCH**



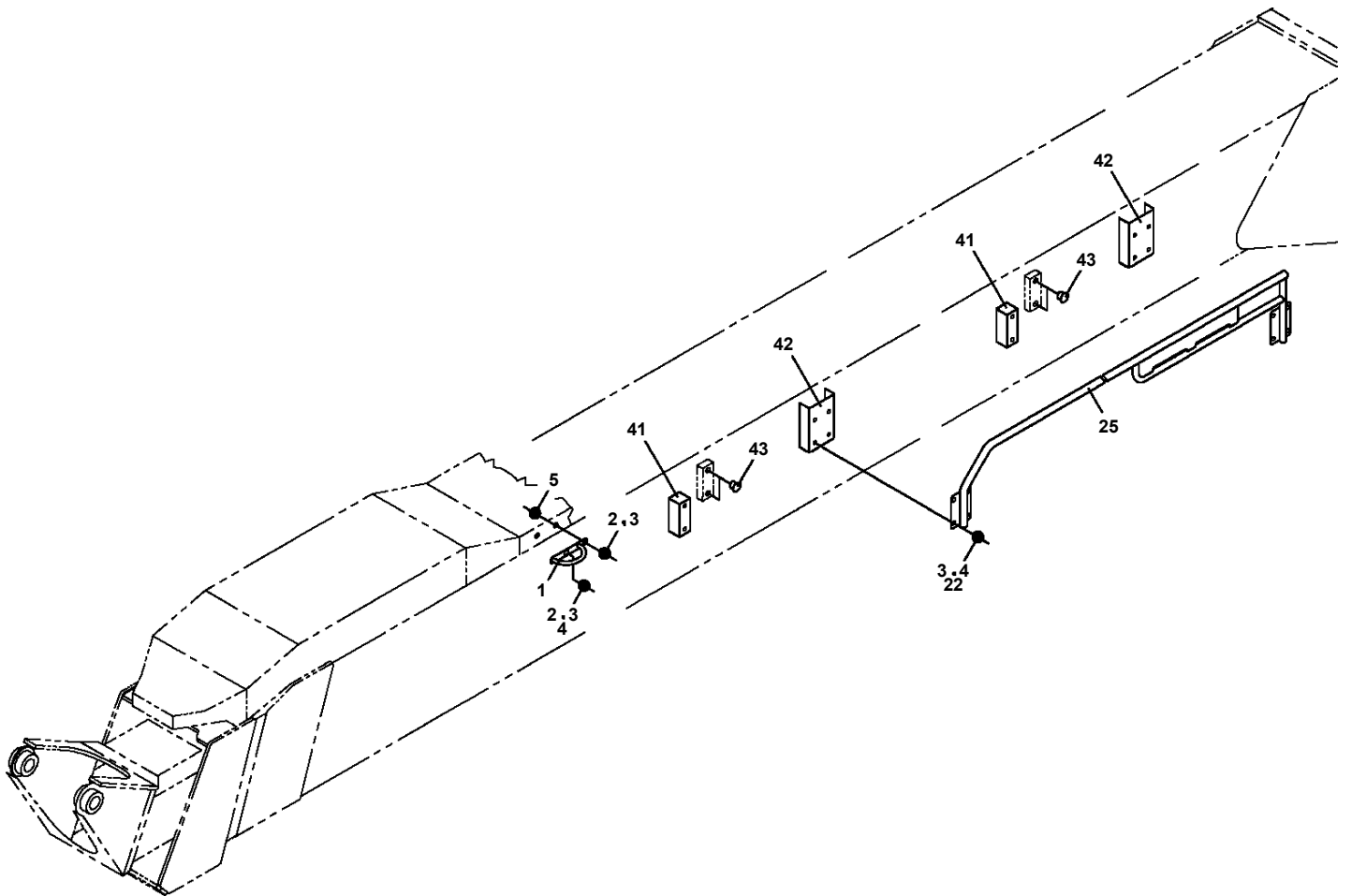
AT-147-3 43010100028 UPPER  
PG1010981-03 BOOM



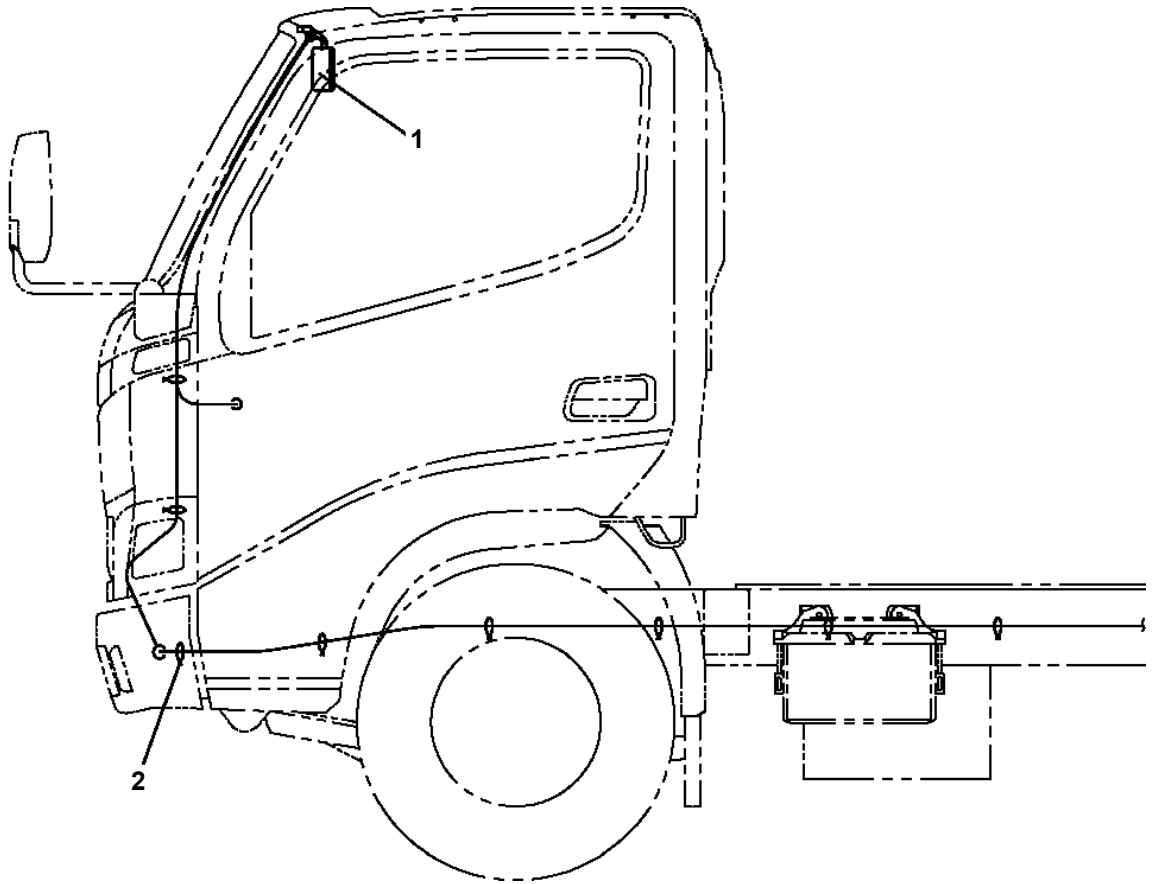
**AT-147-3 43010100028 UPPER  
PG1220176-04 PIPING,BOOM**



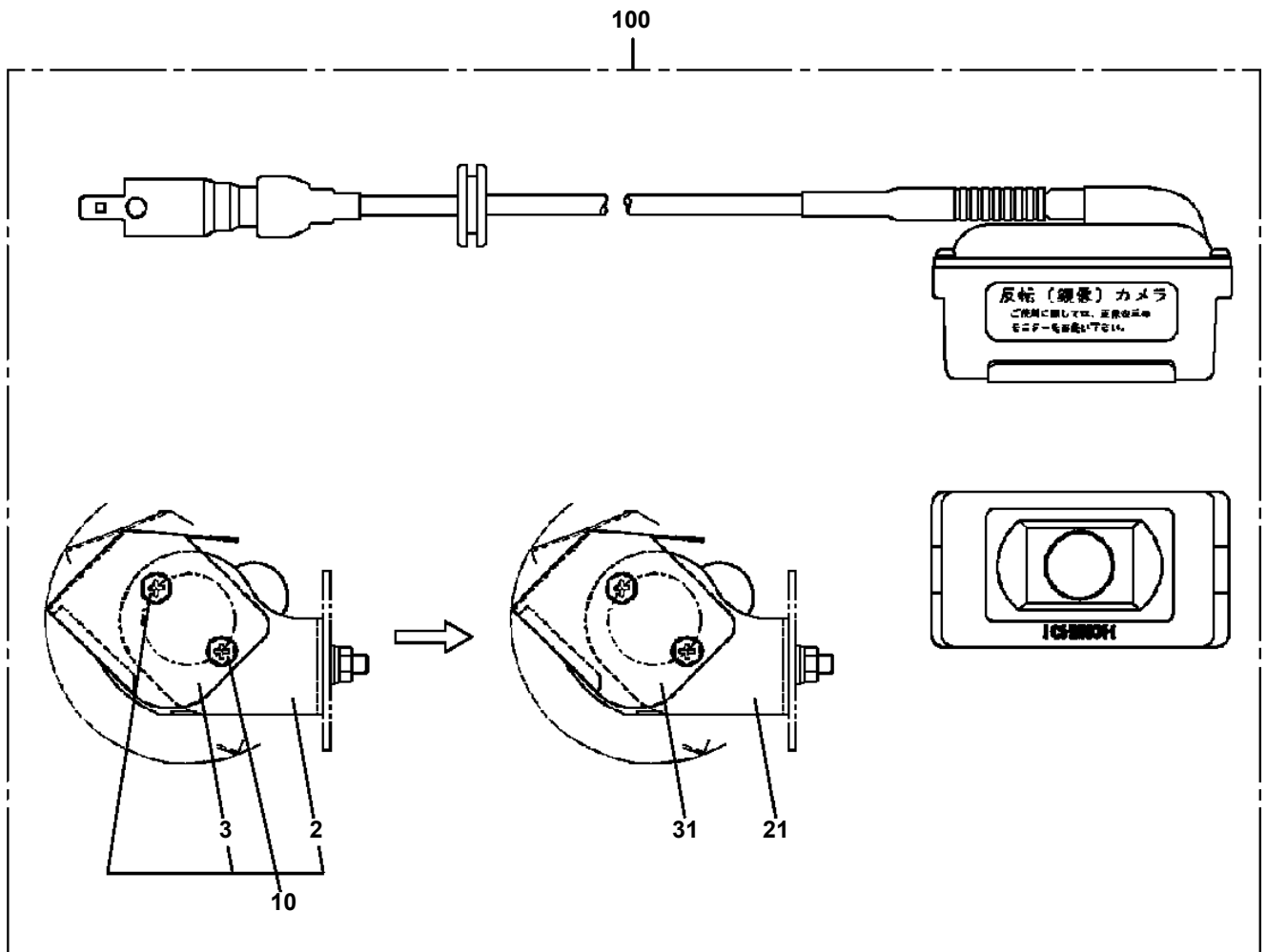
**AT-147-3 43010100028 UPPER  
PG5240007-00 GUIDE ASSY (KANDENKO/BOOM SIDE HOOK GUIDE RAIL)**



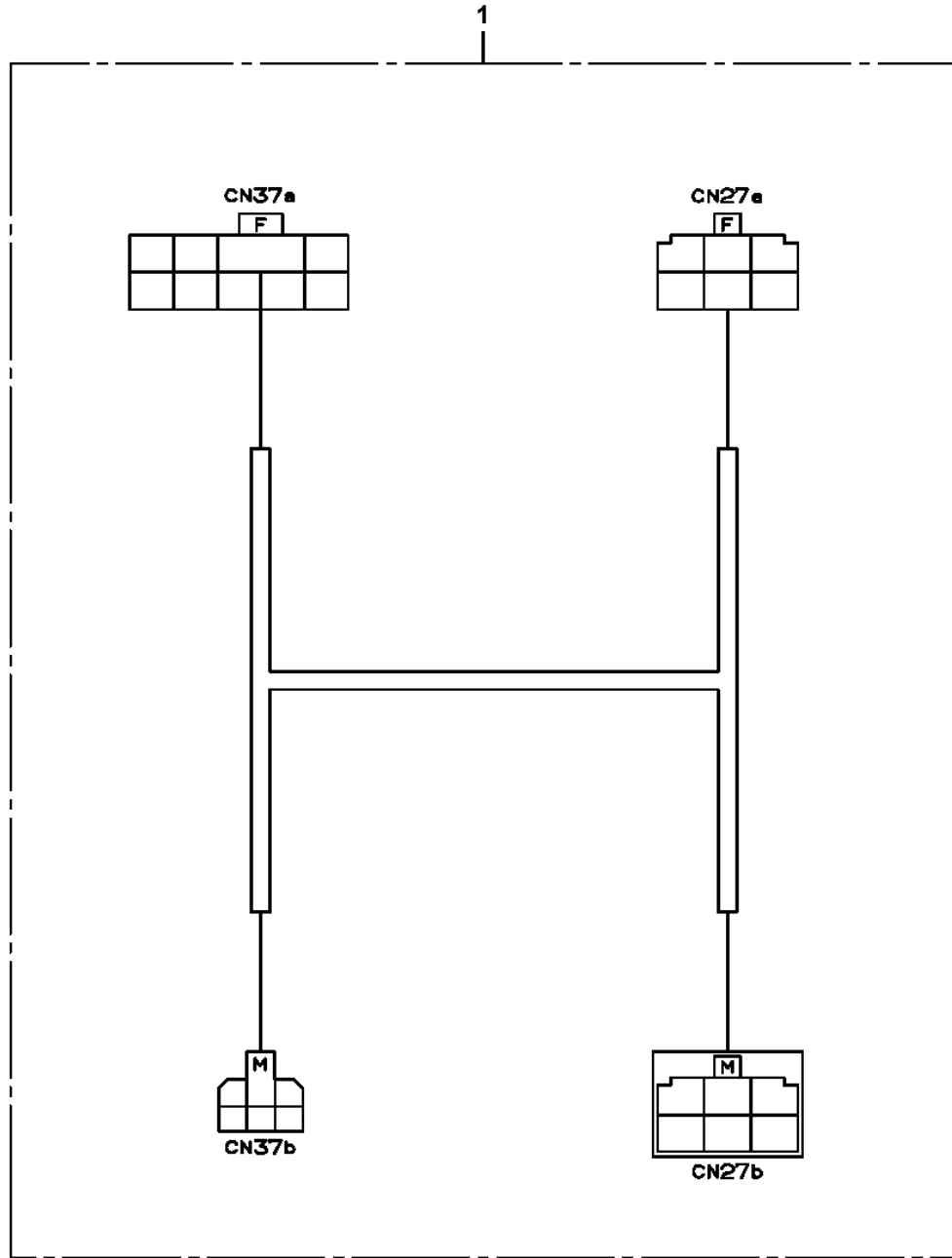
**AT-147-3 43010100028 UPPER  
PH1700240-00 VIEW SYSTEM (MONITOR)**



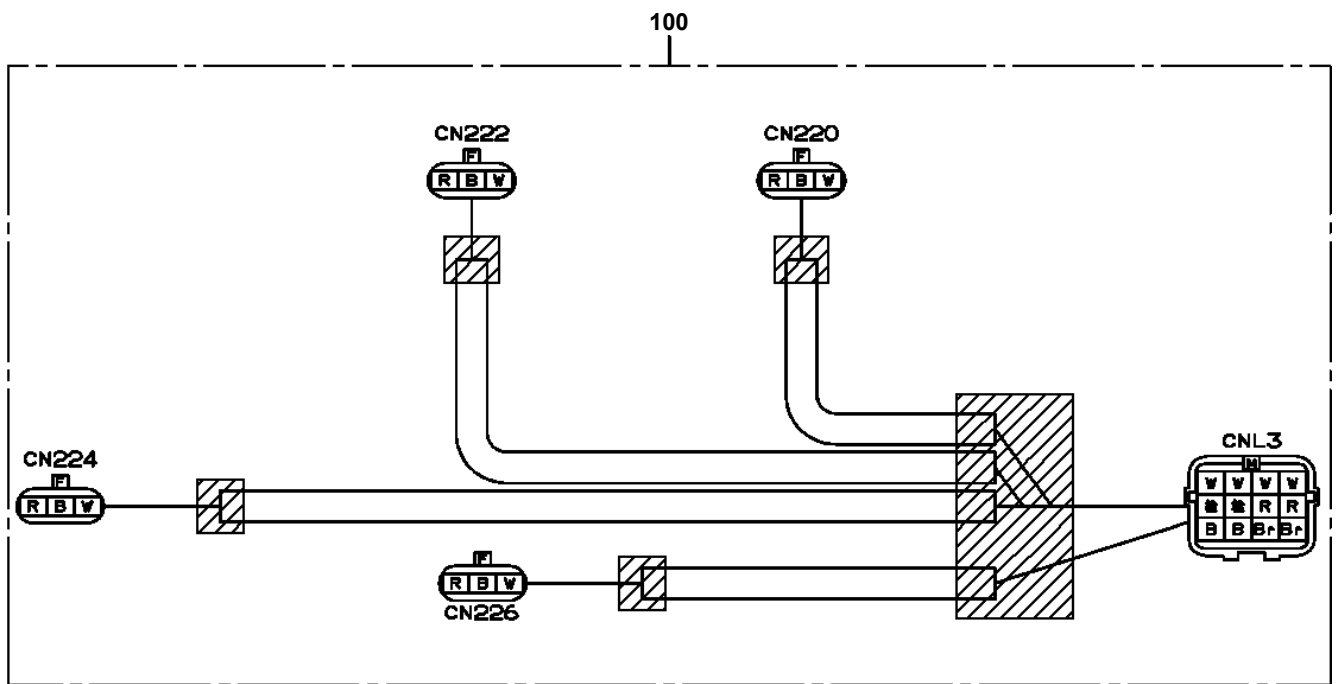
AT-147-3 43010100028 UPPER  
PH1750007-01 CAMERA



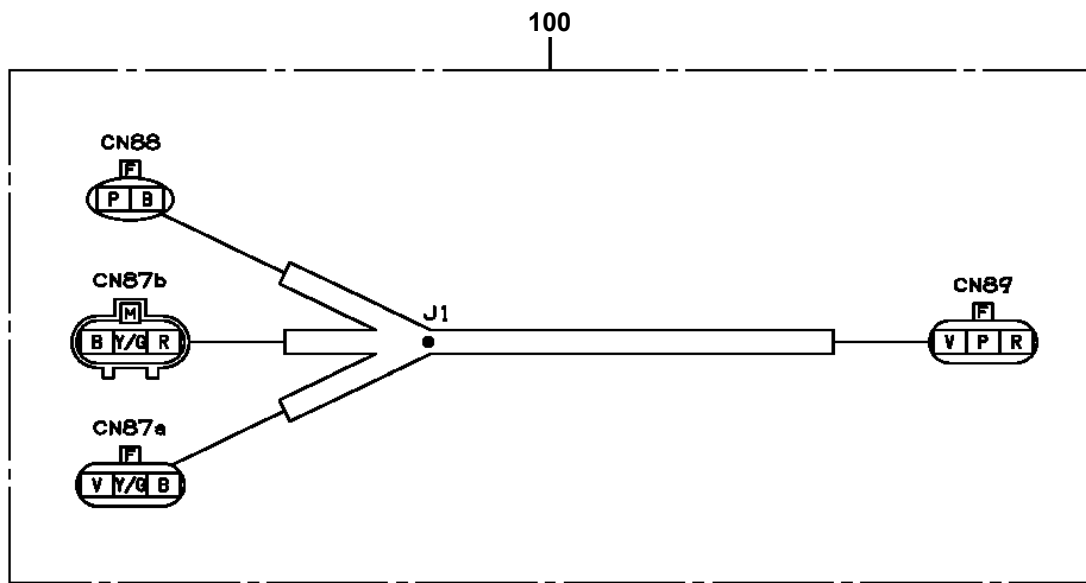
**AT-147-3 43010100028 UPPER  
PH5030468-00 HARNESS**



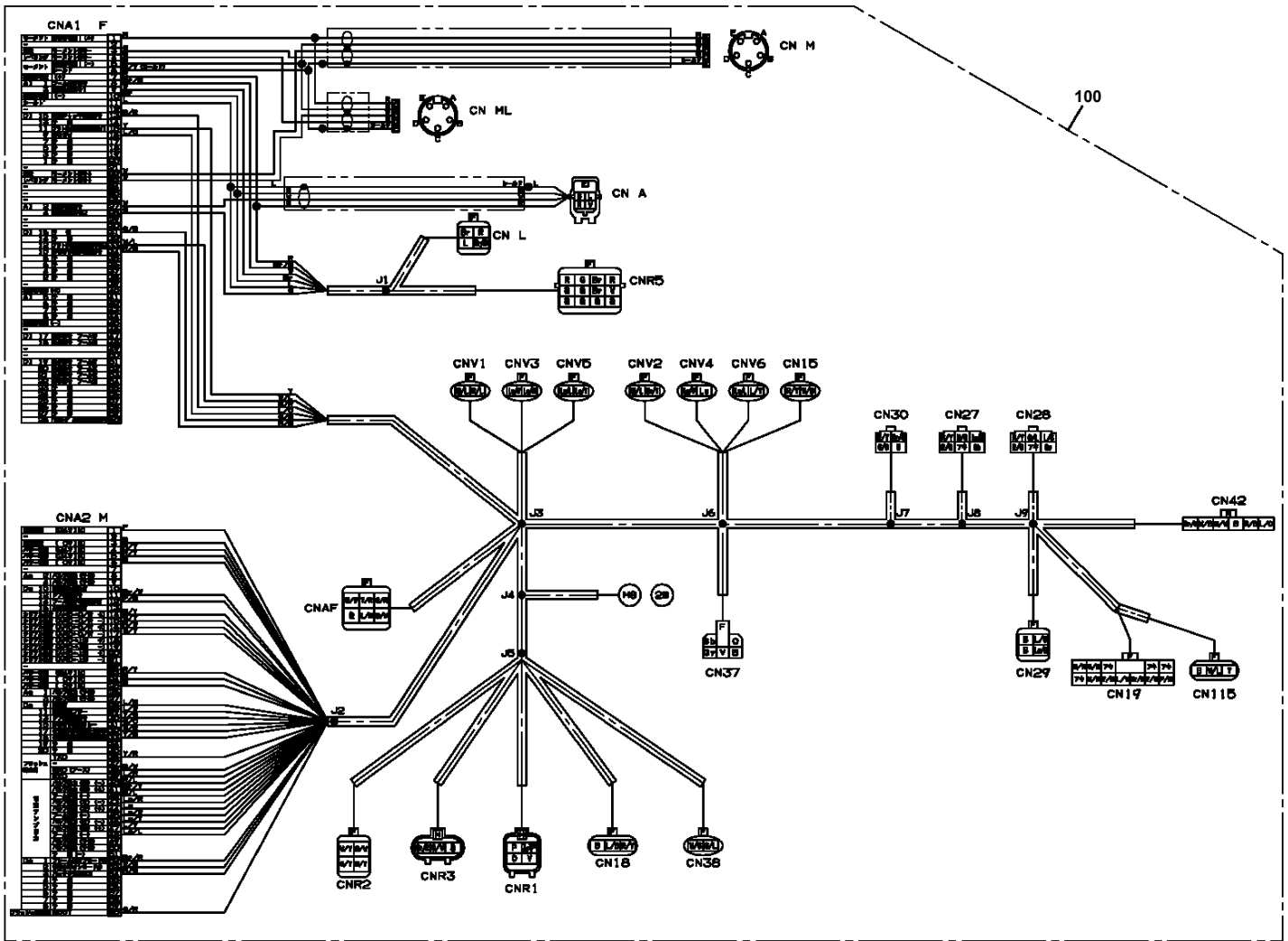
AT-147-3 43010100028 UPPER  
PH5031066-00 HARNESS



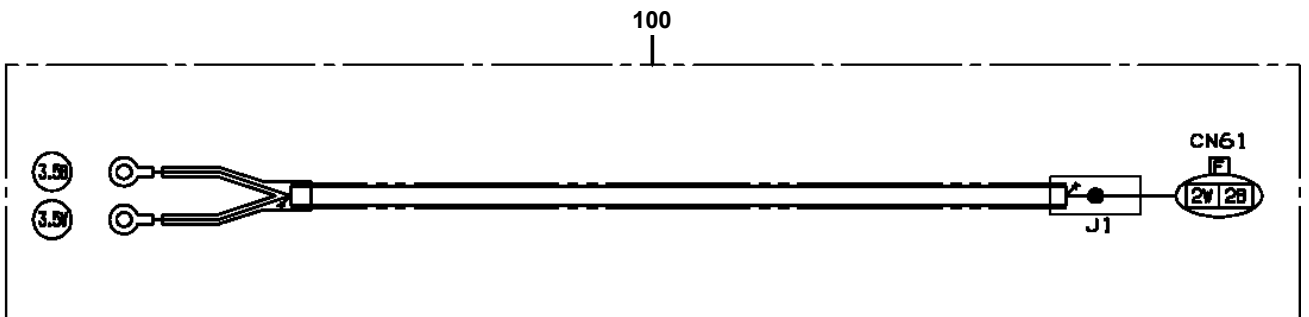
AT-147-3 43010100028 UPPER  
PH5031089-00 HARNESS



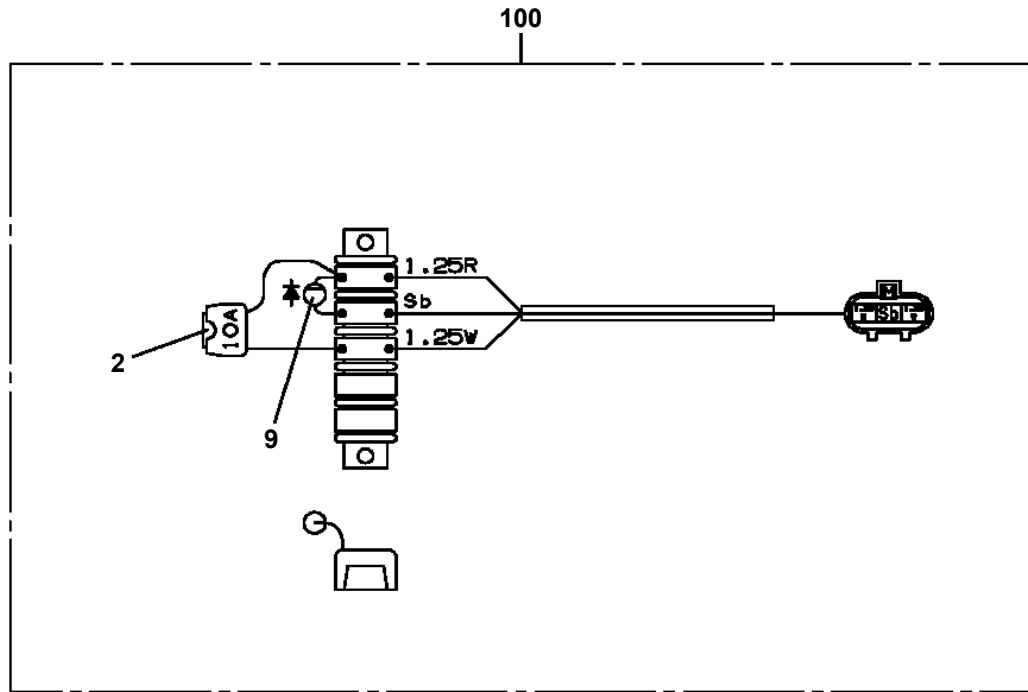
# AT-147-3 43010100028 UPPER PH5032053-00 HARNESS



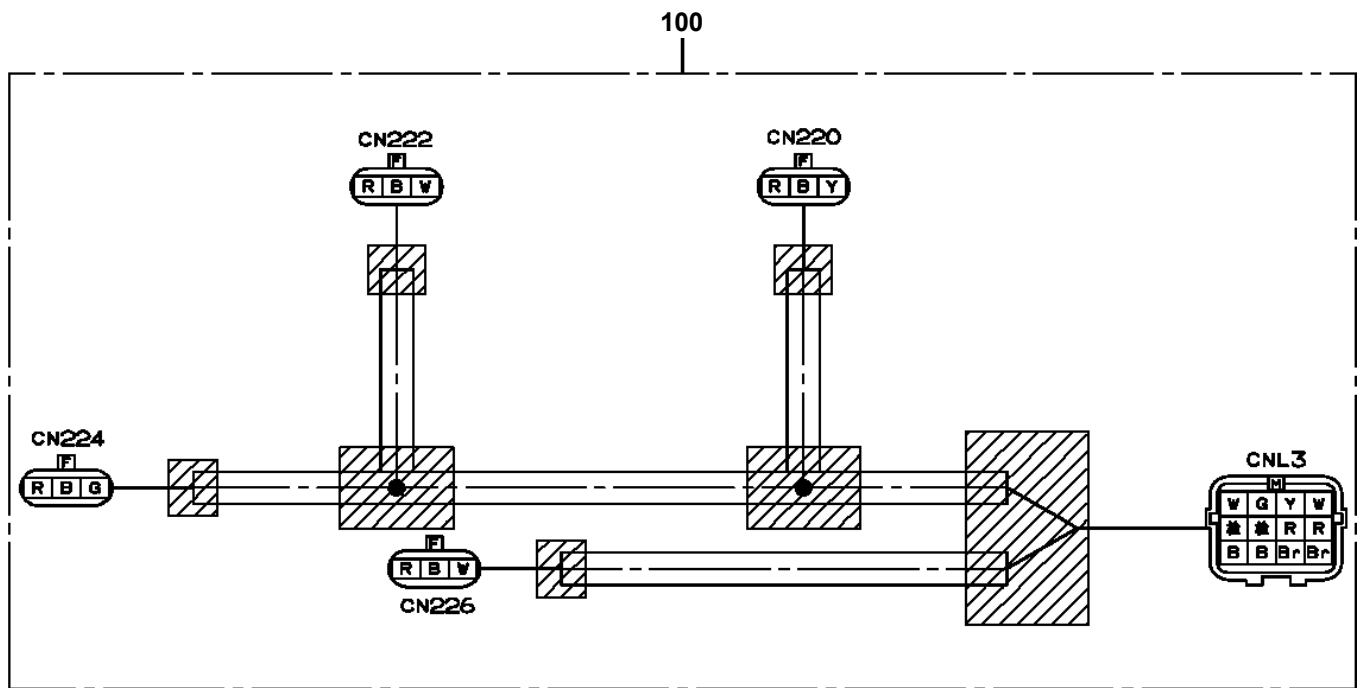
AT-147-3 43010100028 UPPER  
PH5032336-00 HARNESS



AT-147-3 43010100028 UPPER  
PH5032348-01 HARNESS

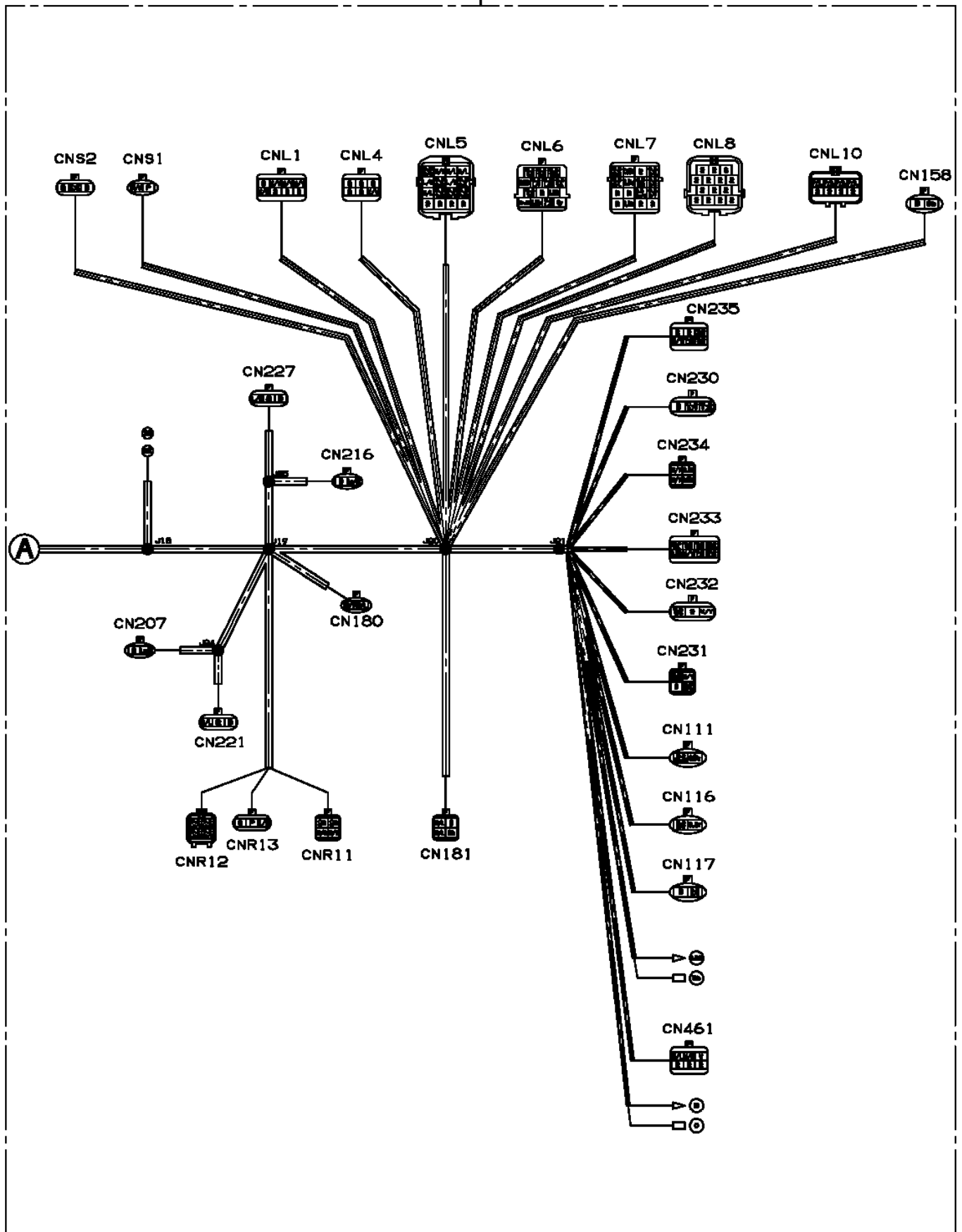


AT-147-3 43010100028 UPPER  
PH5032366-00 HARNESS

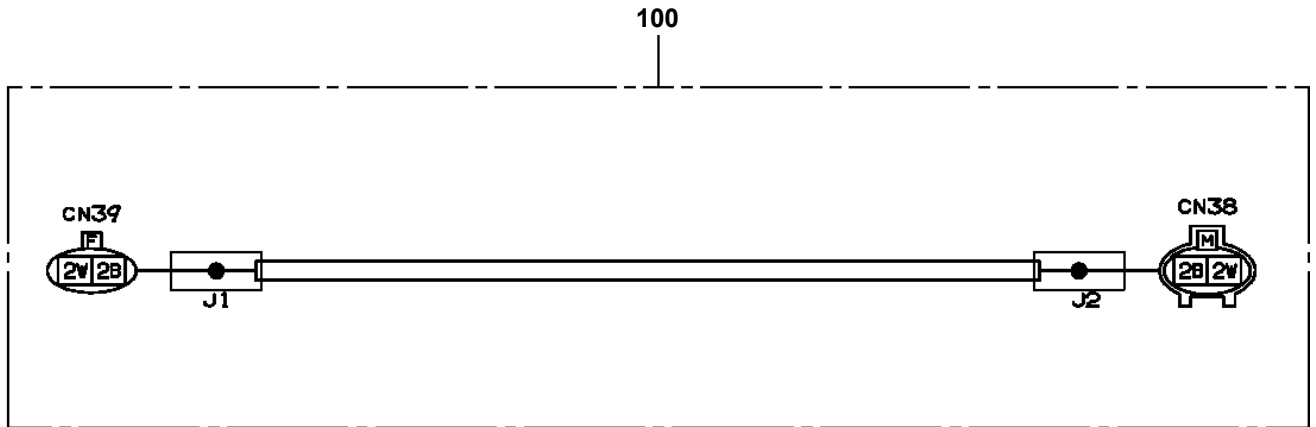


AT-147-3 43010100028 UPPER  
PH5033347-00 HARNESS (MAIN)

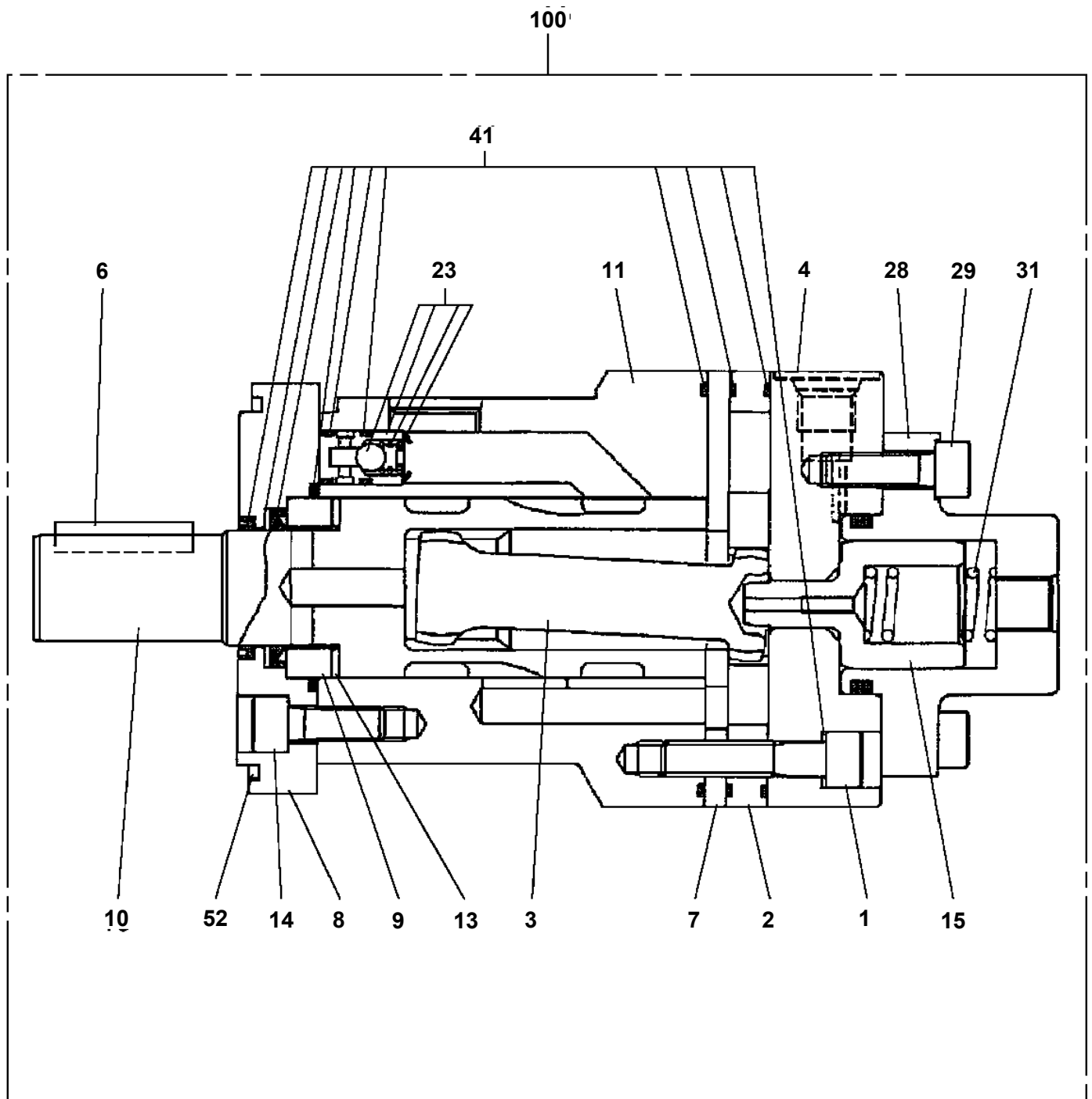
100



AT-147-3 43010100028 UPPER  
PH5034371-00 HARNESS

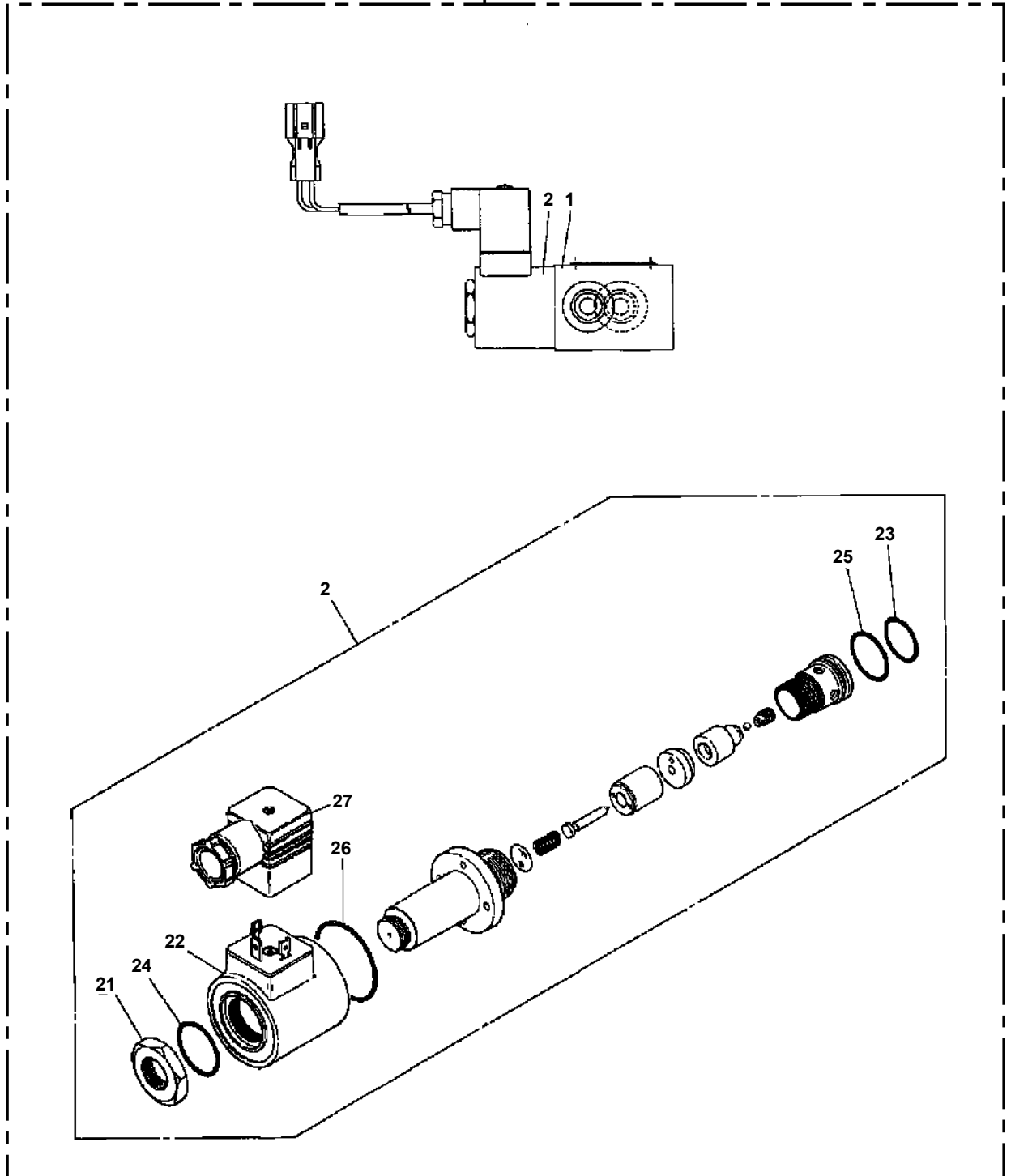


AT-147-3 43010100028 UPPER  
PI1010176-00 MOTOR, HYDRAULIC



AT-147-3 43010100028 UPPER  
PI1120148-01 VALVE,SOLENOID

100



# AT-147-3 43010100028 UPPER

Pos No.	Parts No	Parts Name	Qty	Unit	Technical Data	Serial No (Start)	Serial No (End)	Remarks	Pages
1	36640355010	COIL,SOLENOID	1						
5	59251502170	O-RING	1						
9	59251502190	O-RING	4						
17	91001300700	O-RING	1		WP7				
100	36640360000	VALVE,SOLENOID	1						

# AT-147-3 43010100028 UPPER

Pos No.	Parts No	Parts Name	Qty	Unit	Technical Data	Serial No (Start)	Serial No (End)	Remarks	Pages
1	36624110100	BODY	1						
2	36624110200	PLUG	2						
3	36624110300	SEAT	2						
4	36624110400	SPRING	2						
5	36624110501	PLUNGER	2						
6	36624110600	PISTON	1						
7	91001101200	O-RING	2		1A P12				
8	91001101800	O-RING	2		1A P18				
10	36624111000	PACKING	2						
30	36624630000	VALVE,CHECK	1						

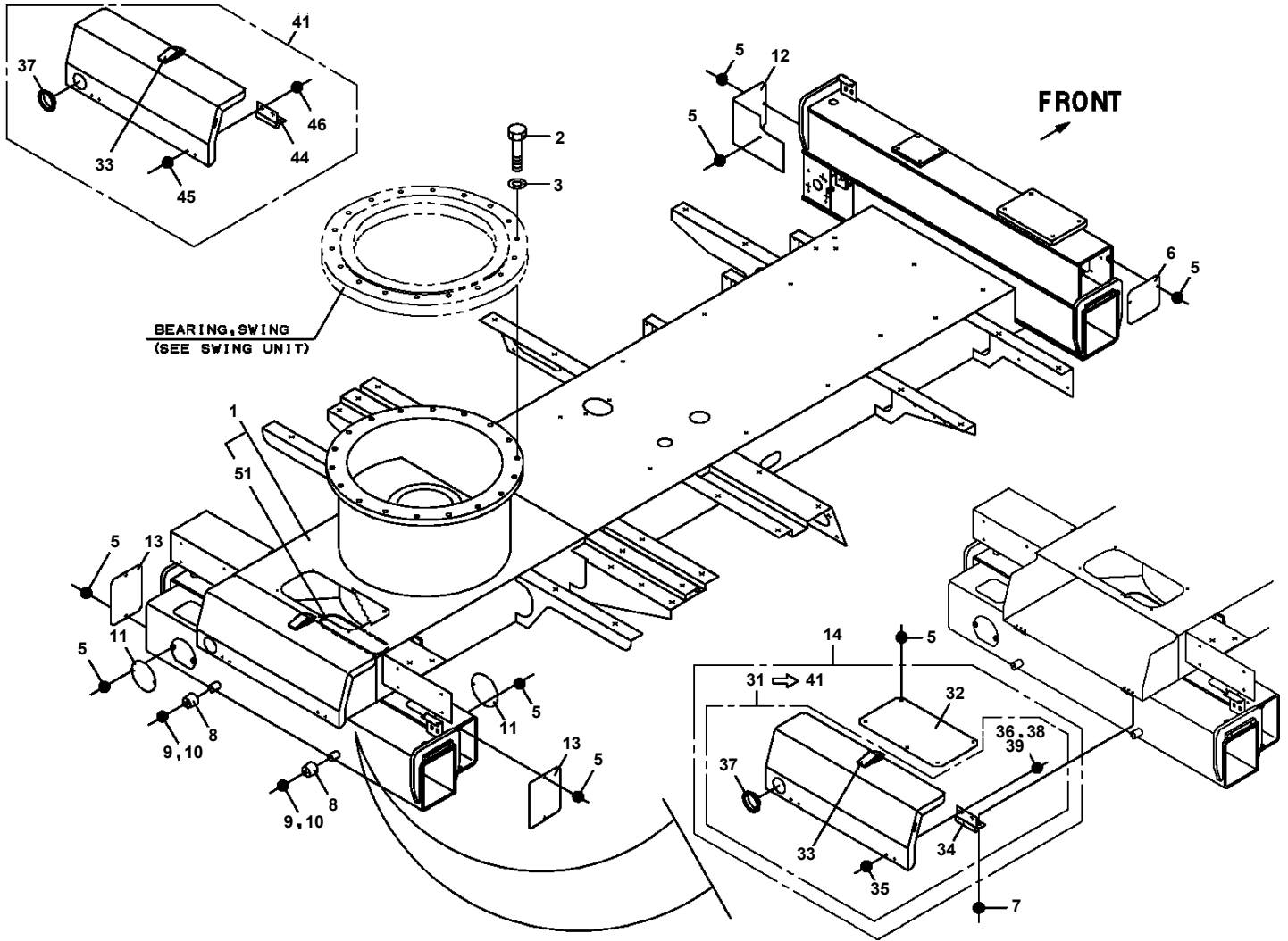
# AT-147-3 43010100028 UPPER

Pos No.	Parts No	Parts Name	Qty	Unit	Technical Data	Serial No (Start)	Serial No (End)	Remarks	Pages
12	91002801400	O-RING	2		1B P14				
	91002801400	O-RING	2		1B P14				
100	36625740001	VALVE,CHECK	1						
	36625740001	VALVE,CHECK	1						

# AT-147-3 43010100028 UPPER

Pos No.	Parts No	Parts Name	Qty	Unit	Technical Data	Serial No (Start)	Serial No (End)	Remarks	Pages
1	42260171500	CASE,INNER	1						

# AT-147-3 43010100028 UPPER PK1011433-01 FRAME



CLICK HERE TO **DOWNLOAD** THE COMPLETE MANUAL

- Thank you very much for reading the preview of the manual.
- You can download the complete manual from: [www.heydownloads.com](http://www.heydownloads.com) by clicking the link below



- Please note: If there is no response to CLICKING the link, please download this PDF first and then click on it.

CLICK HERE TO **DOWNLOAD** THE COMPLETE MANUAL

# AT-147-3 43010100028 UPPER

Pos No.	Parts No	Parts Name	Qty	Unit	Technical Data	Serial No (Start)	Serial No (End)	Remarks
1	42272361002	COVER	1				590360	
	42272361003	COVER ASSY	1			590361	590405	
	42272361004	COVER ASSY	1			590406	590433	
	42272361005	COVER ASSY	1			590434		
2	42272362001	COVER ASSY	1				590360	
3	90101208016	BOLT	12		M8X16			
4	90302040801	WASHER,SPRING	12		8			
5	90303070801	WASHER,PLAIN	12		8			
6	90101206014	BOLT	6		M6X14			
7	90302040601	WASHER,SPRING	6		6			
8	37000512320	PLATE	6					
9	42270480020	COVER	1					
10	42272360100	COVER	1					
13	82466009202	CATCH	1				590399	
14	80172803008	SCREW,MACHINE	2		M3X8		590399	
15	90303520301	WASHER,PLAIN	2		3		590399	
16	82400000393	INSULATOR	1				590399	
17	80172804016	SCREW,MACHINE	1		M4X16		590399	
18	90201500400	NUT	1		M4		590399	
19	90302510401	WASHER,SPRING	1		4		590399	
20	37000550890	PLATE	3			590361		
21	90303070401	WASHER,PLAIN	1		4	590394	590399	
31	42272362002	COVER ASSY	1			590361	590371	
32	42272362003	COVER ASSY	1			590372	590399	
33	42272362004	COVER ASSY	1			590400		
41	42272362102	COVER	1				590371	
42	42272362200	COVER	1				590360	
43	82464107501	HINGE	2					
44	90201500300	NUT	8		M3		590371	
	90201500300	NUT	14		M3	590372		
45	90302510301	WASHER,SPRING (SUS 3)	8				590371	
	90302510301	WASHER,SPRING (SUS 3)	14			590372		
46	80175803008	SCREW,MACHINE	8		M3X8			
47	82400000310	GROMMET	1		L=1000		590360	
62	42272362201	COVER	1			590361	590371	
71	42272362103	COVER	1			590372	590399	
72	42272362202	COVER	1			590372	590399	
77	82466117003	LOCK	1			590372		
78	80175803010	SCREW,MACHINE	6		M3X8	590372		
79	90303520301	WASHER,PLAIN	2		3	590372		
91	42272362104	COVER	1			590400		
92	42272362203	COVER	1			590400		
100	42272362010	PLATE	4		T=0.5	590402		
101	42272362020	PLATE	1		T=0.5	590402		
102	42272362030	PLATE	1		T=0.5	590402		

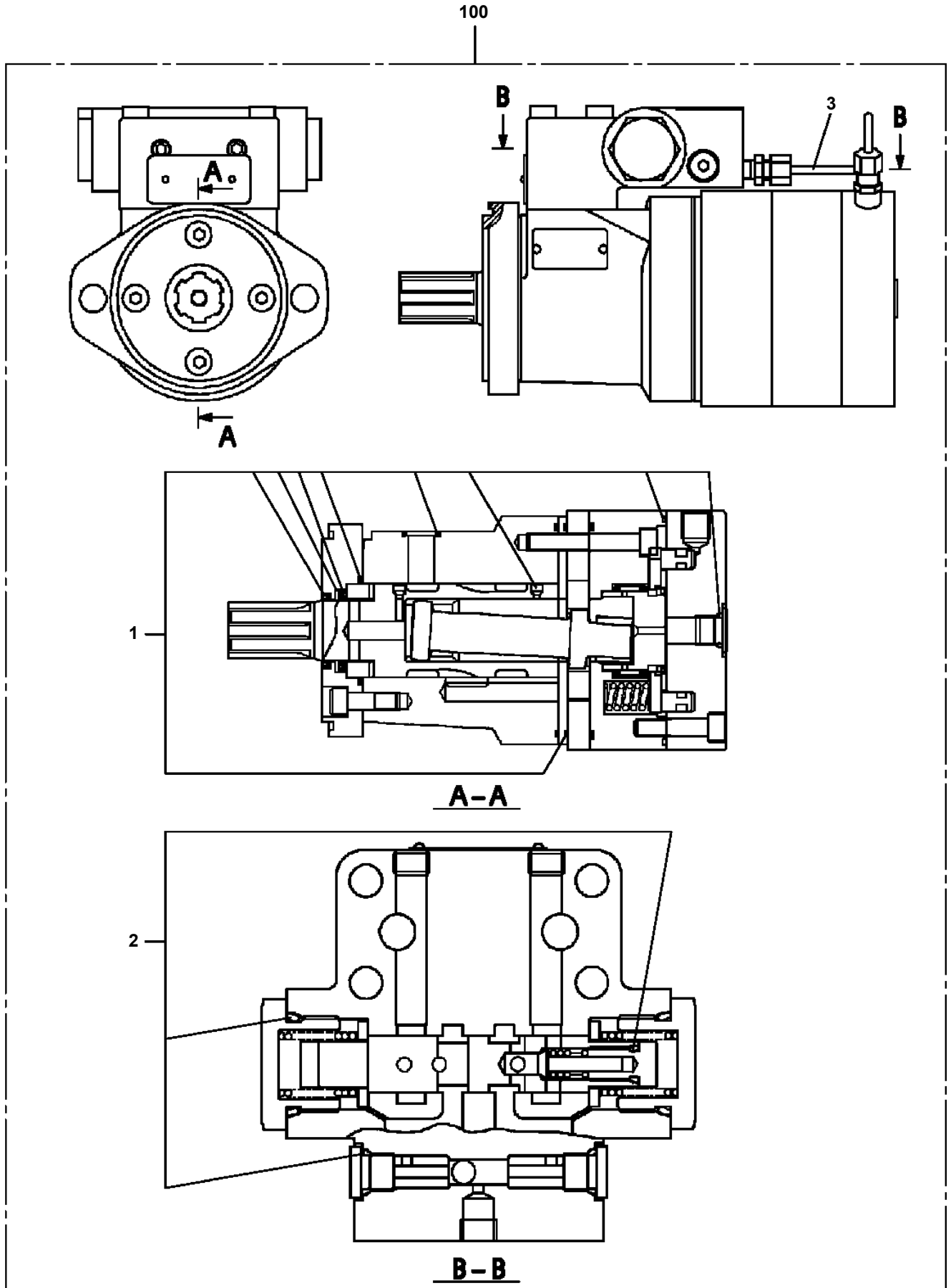
# AT-147-3 43010100028 UPPER

Pos No.	Parts No	Parts Name	Qty	Unit	Technical Data	Serial No (Start)	Serial No (End)	Remarks	Pages
1	42267276101	COVER	1						
2	91810130270	FASTENER	4						

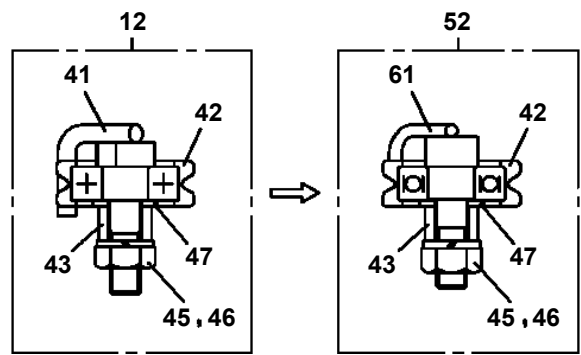
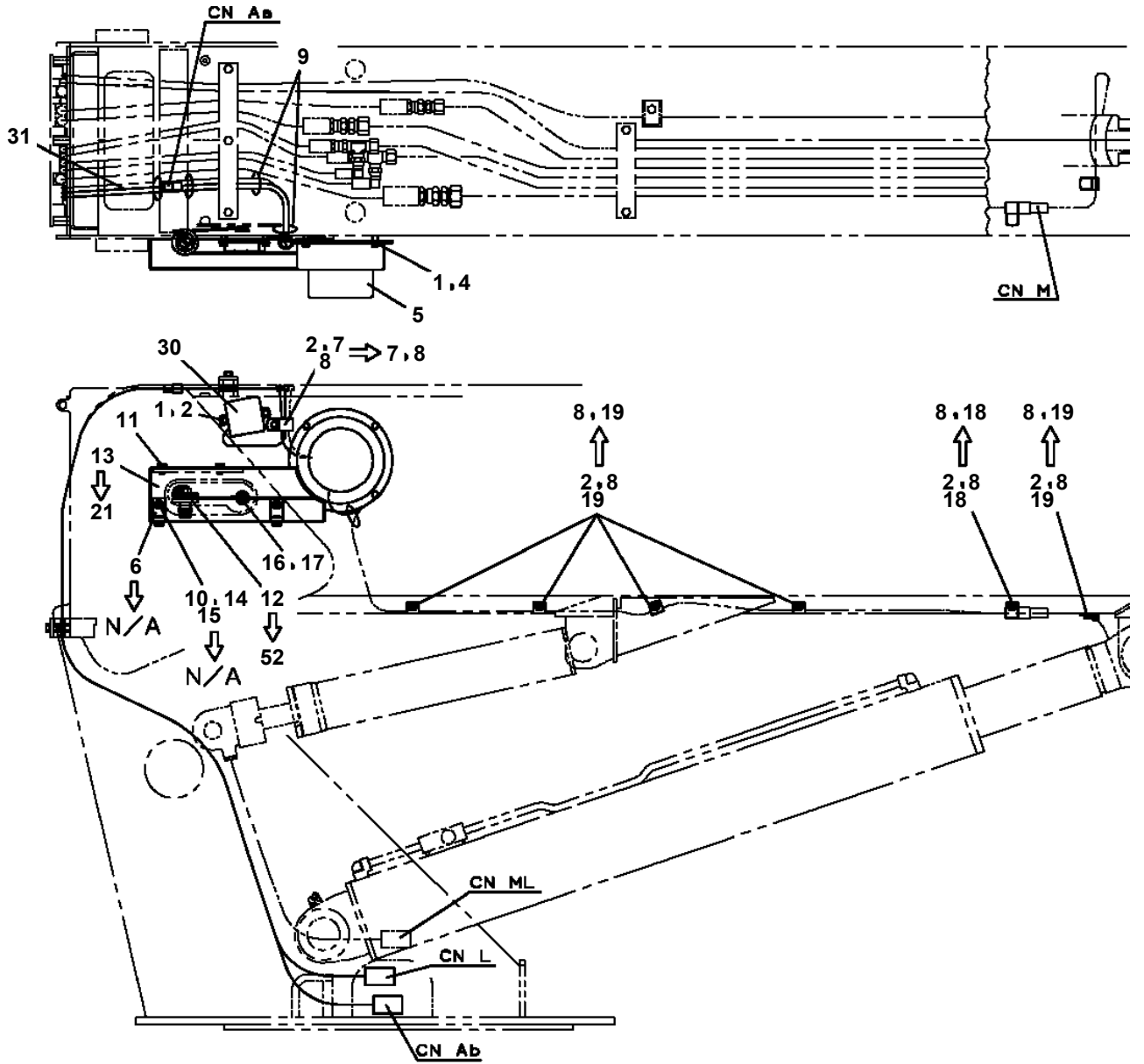
# AT-147-3 43010100028 UPPER

Pos No.	Parts No	Parts Name	Qty	Unit	Technical Data	Serial No (Start)	Serial No (End)	Remarks	Pages
1	42267273100	COVER	1						
2	42267273200	COVER	1						
3	42267273300	COVER	1						
4	42267273400	COVER	1						
5	90183108015	BOLT	15		M8X15		590430		
	90183108015	BOLT	14		M8X15	590431			
8	37000565980	PLATE	8						
9	42310995600	PLATE	5						
10	37000585820	PLATE	2						
12	90183108030	BOLT	5		M8X30				
13	37000576600	PLATE	1		T=8.0				
14	90183108020	BOLT	4		M8X20		590430		
	90183108020	BOLT	5		M8X20	590431			
15	37000517000	PLATE	2			590474			

AT-147-3 43010100028 UPPER  
PM5210007-01 MOTOR ASSY,OIL



**AT-147-3 43010100028 UPPER  
PN1014441-05 ELEC.ASSY (BOOM)**



# AT-147-3 43010100028 UPPER

Pos No.	Parts No	Parts Name	Qty	Unit	Technical Data	Serial No (Start)	Serial No (End)	Remarks
1	42354820200	HARNESS	1					
2	37000300720	SLEEVE	3		12-10			
5	42356350101	SUPPORT	1					
6	42352350300	HARNESS	1					
7	90171110016	BOLT	4		M10X16			
8	90302040801	WASHER,SPRING	2		8			
9	90303070801	WASHER,PLAIN	2		8			
10	91810130240	FASTENER	20					
11	90171108020	BOLT	2		M8X20			
12	42352350400	HARNESS	1					
14	90302040601	WASHER,SPRING	4		6			
15	90201200600	NUT	1		M6			
16	80172804006	SCREW,MACHINE	2		M4X6			
17	82100002002	CLAMP	1		WR6			
18	90101206012	BOLT	3		M6X12			
19	90172110025	BOLT,HEXAGON SOCKET	2		M10X25			
20	90302041001	WASHER,SPRING	6		10			
21	90303071001	WASHER,PLAIN	6		10			
24	82100002012	CLAMP	2		WR18			
42	42353341500	SUPPORT	1					
43	80172804020	SCREW,MACHINE	4		M4X20			
45	90172105012	BOLT,HEXAGON SOCKET	2		M5X12			
46	90302040501	WASHER,SPRING	2		5			
54	16311103000	SPRING	1					
55	42353342060	SCREW,SET	2		M6X35			
56	90201200600	NUT	2		M6			
60	80801001415	BEARING,PLAIN	2			590330		
62	90201200500	NUT	2		M5			
63	80820001010	BEARING,PLAIN	2					
64	80801001010	BEARING,PLAIN	2					
81	42356352200	TERMINAL	2					
82	42356352300	SUPPORT	2				590329	
83	90201200800	NUT	2		M8			
87	90303071401	WASHER,PLAIN	4		14			
88	90101208045	BOLT	2		M8X45			
89	42356352500	SUPPORT	1					
90	42356352400	SPACER	2				590329	
91	90720005200	SCREW,SET	2		M5X16		590510	
	90720705200	SCREW,SET	2		M5X20	590511		
95	90302040801	WASHER,SPRING	2		8			
96	90303070801	WASHER,PLAIN	2		8			
112	42356352301	SUPPORT	2			590330		
120	42356352401	SPACER	2		L=20.5	590330		
131	42356351200	TERMINAL	2					
134	42356351300	SUPPORT	1					
202	42356351003	TERMINAL ASSY	1					
211	42356352001	TERMINAL ASSY	1				590329	
212	42356352002	TERMINAL ASSY	1			590330		



# AT-147-3 43010100028 UPPER

Pos No.	Parts No	Parts Name	Qty	Unit	Technical Data	Serial No (Start)	Serial No (End)
1	42433851001	CABLE,SIGNAL	1				590407
	42509051000	CABLE ASSY,SIGNAL(ASSY ONLY)	1			590408	
2	37000714010	CLAMP ASSY	4		12X1		
3	37000300710	SLEEVE	4		12-8		
4	91810130240	FASTENER	N				
5	80192473010	SCREW,MACHINE	3		M3X10		
6	82100002004	CLAMP	2		WR8		
7	90302040601	WASHER,SPRING	2		6		
8	90201200600	NUT	2		M6		

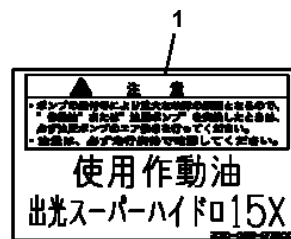
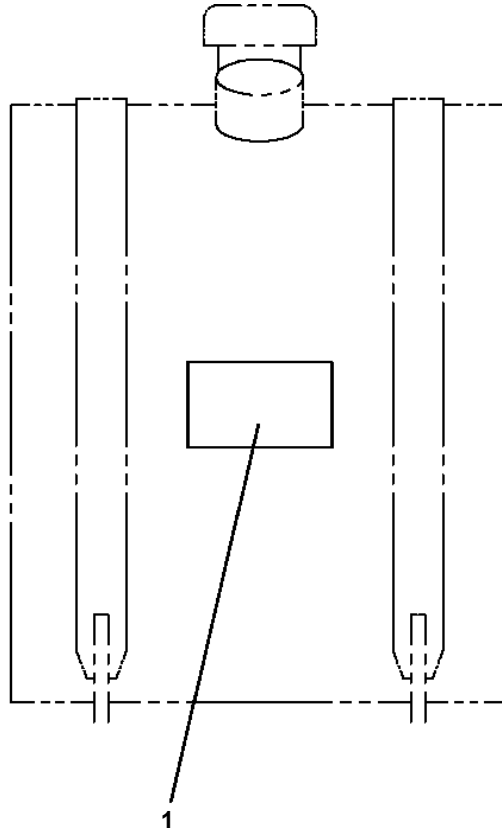
# AT-147-3 43010100028 UPPER

Pos No.	Parts No	Parts Name	Qty	Unit	Technical Data	Serial No (Start)	Serial No (End)	Remarks	Pages
1	42900252101	CASE	1						
2	42900252200	COVER	1						
3	80182306014	SCREW,MACHINE	8		M6X14				
4	90302040601	WASHER,SPRING	22		6				
5	90303070601	WASHER,PLAIN	10		6				
7	90101206014	BOLT	13		M6X14				
8	82100002596	RELAY	9						
9	82161201010	RELAY	6						
10	82100002597	RELAY	6						
11	42900002100	TERMINAL ASSY	1						
12	80172303016	SCREW,MACHINE	2		M3X16				
13	90302040301	WASHER,SPRING	4		3				
14	90303070301	WASHER,PLAIN	4		3				
17	82100002016	CLAMP	1		WR25				
18	90201200600	NUT	1		M6				
19	42651091100	RELAY ASSY	1						
20	80172303008	SCREW,MACHINE	2		M3X8				
100	42901162000	RELAY BOX	1						

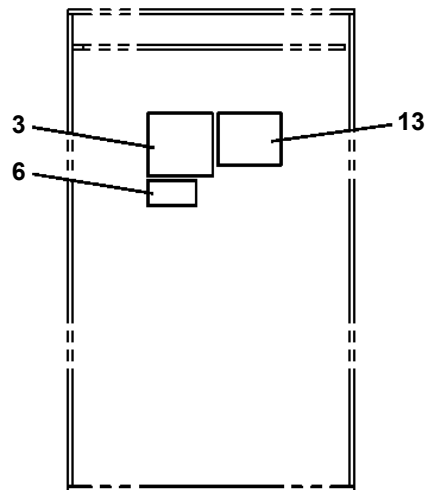
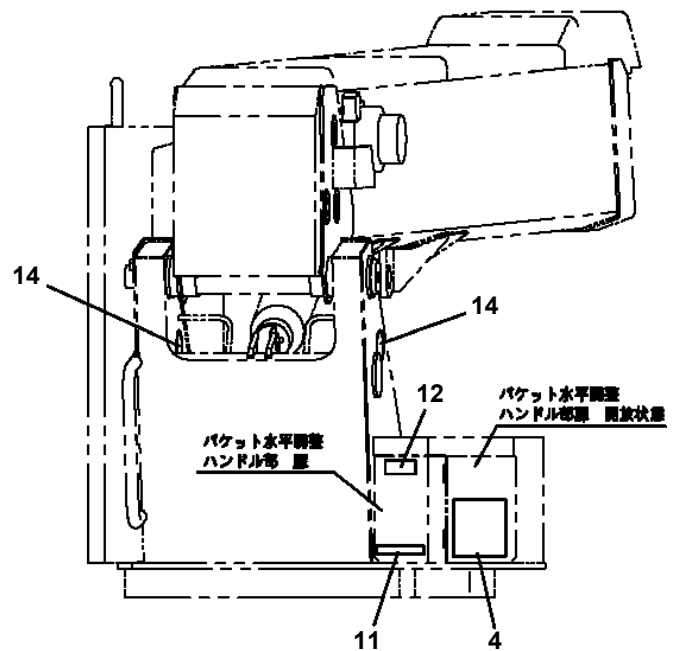
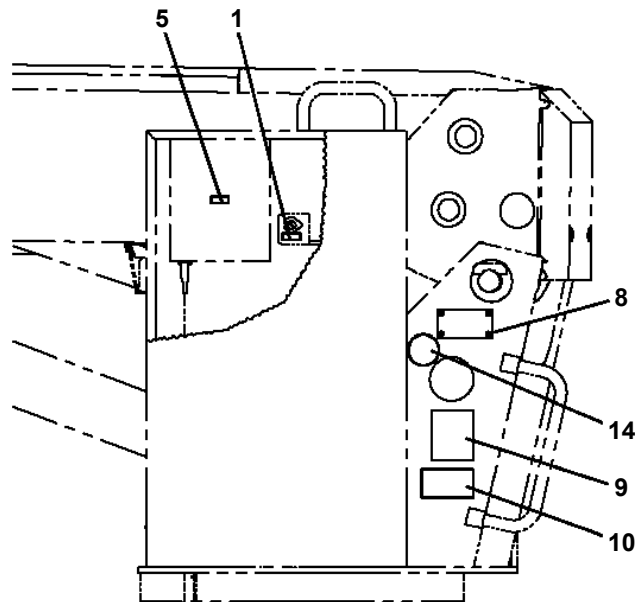
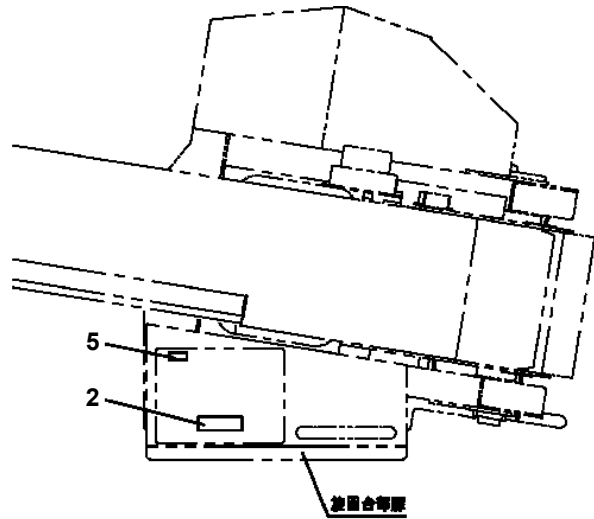
# AT-147-3 43010100028 UPPER

Pos No.	Parts No	Parts Name	Qty	Unit	Technical Data	Serial No (Start)	Serial No (End)	Remarks	Pages
8	82100000665	CAP (BLACK)	5						
14	82105220193	SWITCH,TOGGLE	1						
15	82105220183	SWITCH,TOGGLE	1						
16	82105220256	SWITCH,TOGGLE	2						
17	82105220153	SWITCH,TOGGLE	1						
100	42356443102	HARNESS	1						

AT-147-3 43010100028 UPPER  
PO1014931-01 PLATE ASSY,NAME (HYDRAULIC OIL)



AT-147-3 43010100028 UPPER  
 PO1014999-01 PLATE ASSY,NAME (SWING FRAME)



旋回合部裏内側

# AT-147-3 43010100028 UPPER

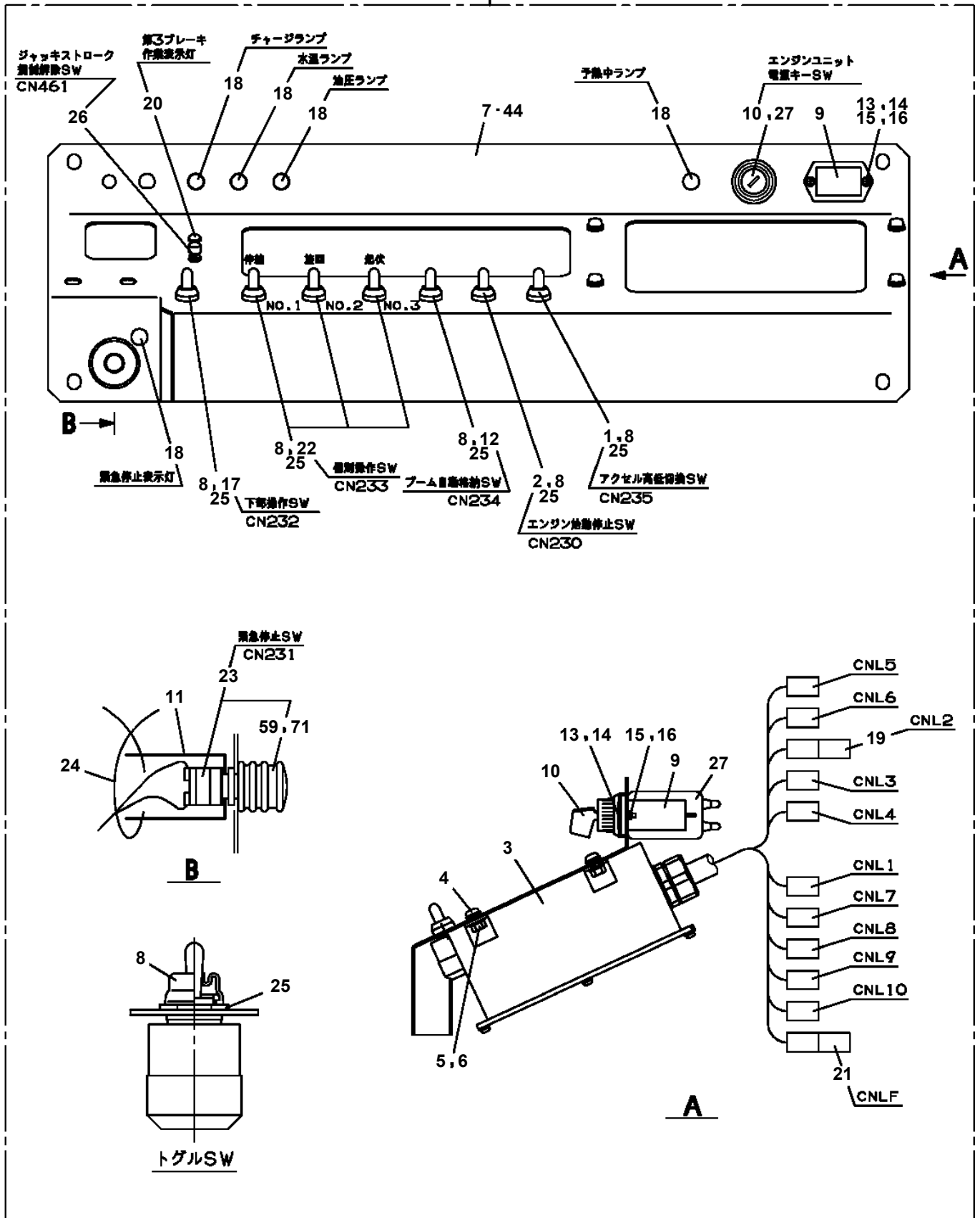
Pos No.	Parts No	Parts Name	Qty	Unit	Technical Data	Serial No (Start)	Serial No (End)	Remarks	Pages
1	37002201980	PLATE,NAME	1						
2	42504755100	PLATE,NAME	1						
3	42736050500	PLATE,NAME	1						
4	42505342100	PLATE,NAME	1						

**AT-147-3 43010100028 UPPER  
PO1080059-00 PLATE,NAME (LIVE-LINE WORKING DEVICE)**

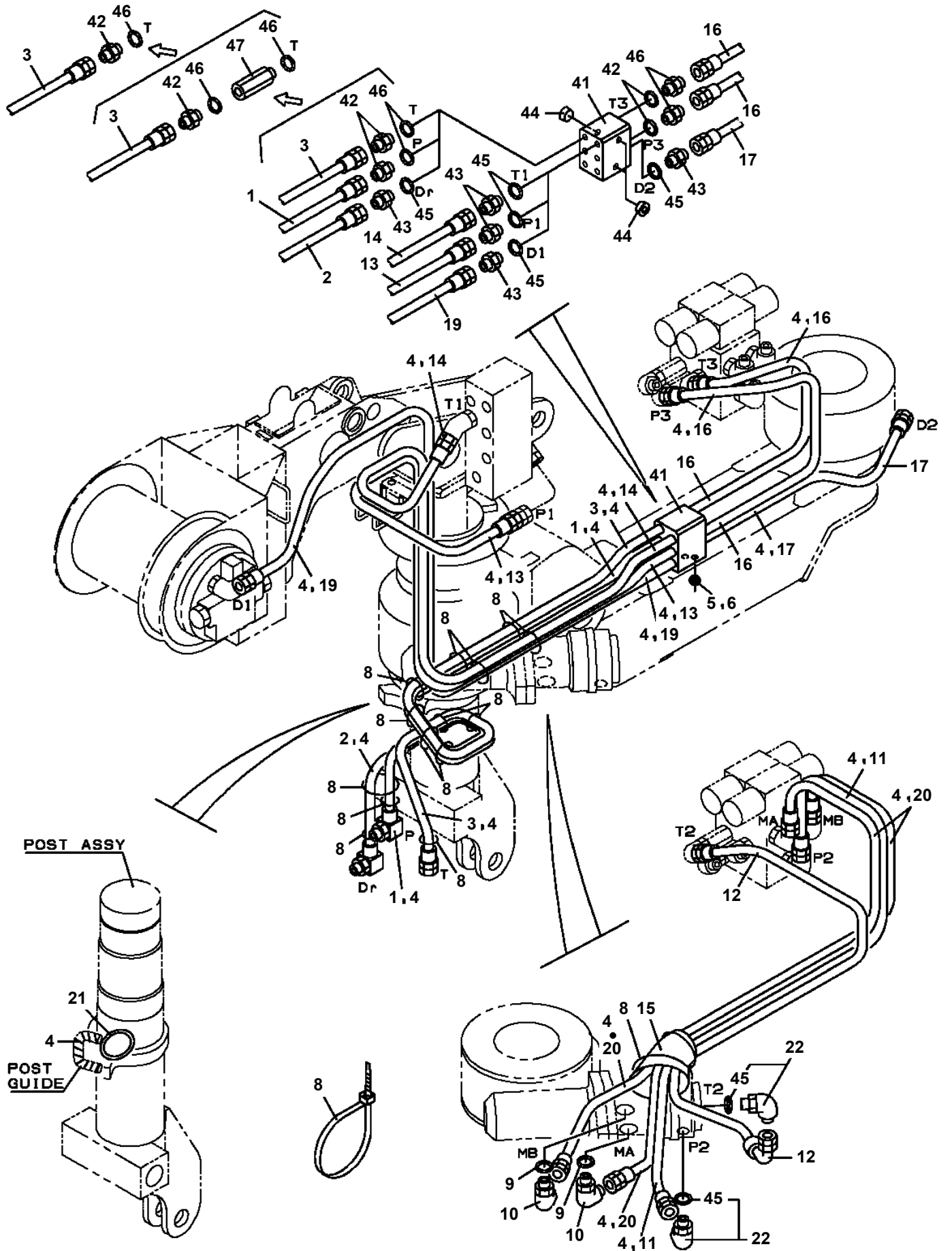
当銘板については、弊社出先サービス員経由で御用命ください。

AT-147-3 43010100028 UPPER  
 PP5020011-00 PANEL ASSY,CONTROL

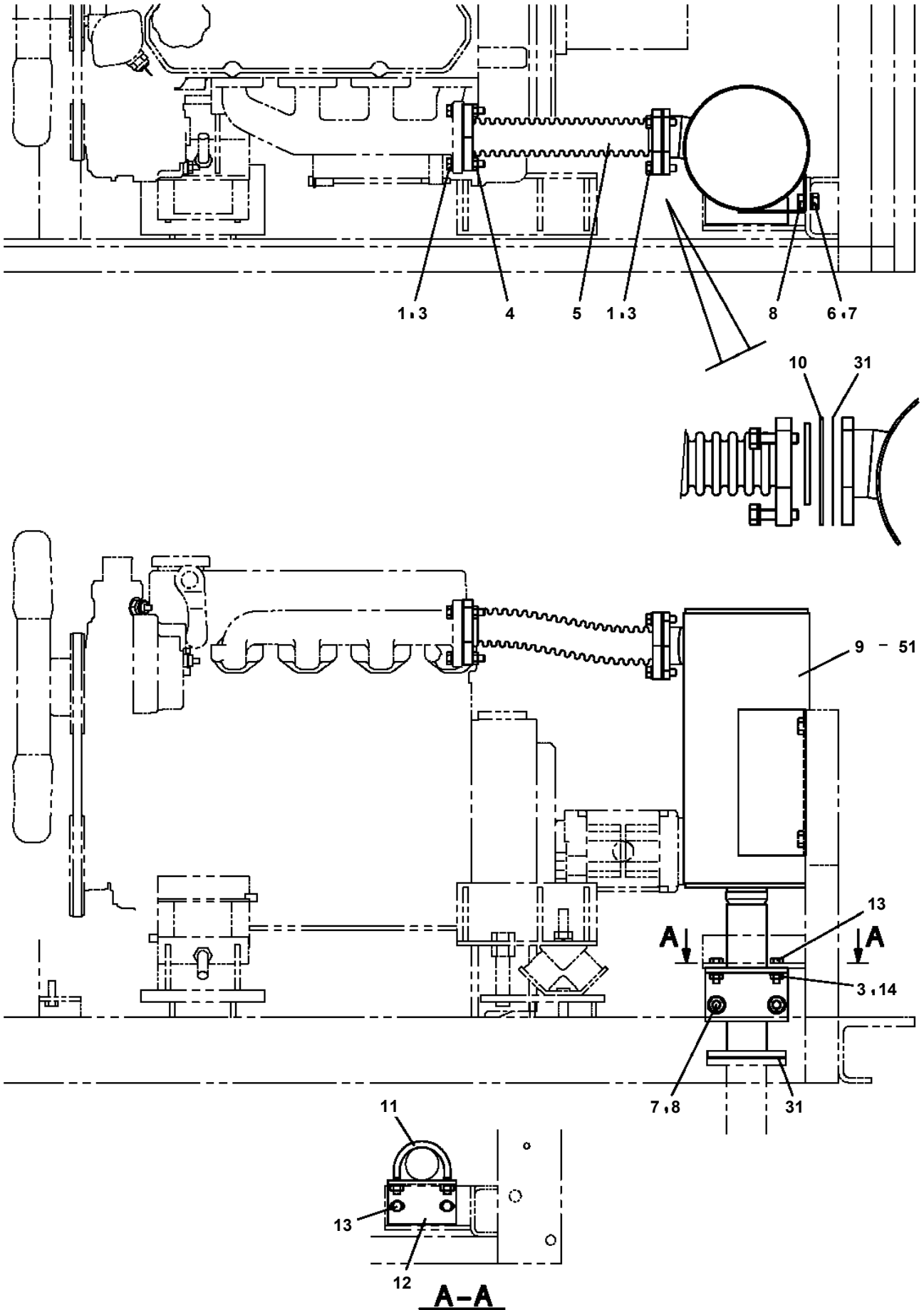
100



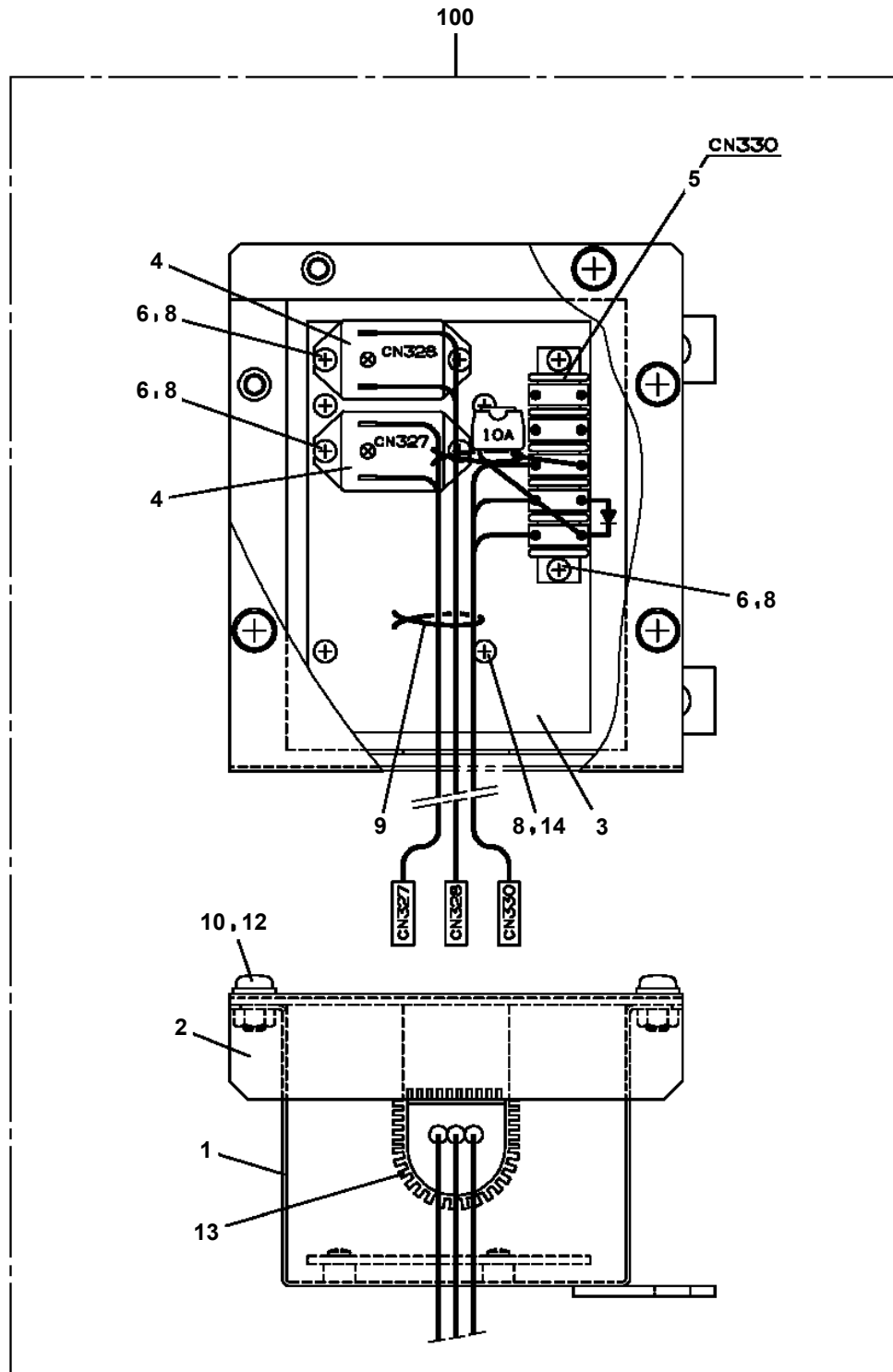
**AT-147-3 43010100028 UPPER  
PP6040002-00 PIPING ASSY,ARM**



**AT-147-3 43010100028 UPPER  
PQ1040079-03 EXHAUST**



AT-147-3 43010100028 UPPER  
PR5100008-01 RELAY BOX ASSY



# AT-147-3 43010100028 UPPER

Pos No.	Parts No	Parts Name	Qty	Unit	Technical Data	Serial No (Start)	Serial No (End)	Remarks
5	82182819823	DIODE	1		1.5A			
	82182819823	DIODE	1		1.5A			
9	34354781710	RELAY (WITH BRACKET)	1					
	34354781710	RELAY (WITH BRACKET)	1					
100	34354781740	RELAY	1					
	34354781740	RELAY	1					

# AT-147-3 43010100028 UPPER

Pos No.	Parts No	Parts Name	Qty	Unit	Technical Data	Serial No (Start)
1	42508450100	SWITCH,PUSH	1			
4	82122730100	CAP	1			
50	42508450000	SWITCH ASSY (3M,ELECTLIC BOOSTER REMOCON)	1			

**AT-147-3 43010100028 UPPER**

Pos No.	Parts No	Parts Name	Qty	Unit	Technical Data	Serial No (Start)	Serial No (End)	Re
1	36018260001	CYLINDER ASSY,TELESCOPING	1				590437	
	36018260002	CYLINDER ASSY,TELESCOPING	1			590438		
2	36606330000	VALVE,COUNTERBALANCE	1					
3	90172108065	BOLT,HEXAGON SOCKET	3		M8X65			
4	90171112045	BOLT	2		M12X45			
5	90303071201	WASHER,PLAIN	2		12			
6	90201201200	NUT	2		M12			

# AT-147-3 43010100028 UPPER

Pos No.	Parts No	Parts Name	Qty	Unit	Technical Data	Serial No (Start)	Serial No (End)	Remarks	Pages
1	42739760000	CABLE	1		L=10000				

# AT-147-3 43010100028 UPPER

Pos No.	Parts No	Parts Name	Qty	Unit	Technical Data	Serial No (Start)	Serial No (End)	Remarks
1	90101208016	BOLT	2		M8X16			
2	90302040801	WASHER,SPRING	2		8			
3	36630910061	NEEDLE	1				590470	
	36630910062	NEEDLE	1			590471		
4	36630910031	HOLDER	1					
5	91002801000	O-RING	1		1B P10			
6	91410001000	RING,BACKUP	1		P10			
7	36636340010	BODY	1					
8	52255101000	SPRING	1					
9	36630910050	POPPET	1					
10	91002801400	O-RING	1		1B P14			
11	36620030050	PLUG	1					
12	82400000350	KNOB	1					
13	37000508510	PLATE	1					
14	80172303006	SCREW,MACHINE	1		M3X6			
15	91002800800	O-RING	1		1B P8			
100	36636340001	VALVE ASSY,SELECTOR	1					

# AT-147-3 43010100028 UPPER

Pos No.	Parts No	Parts Name	Qty	Unit	Technical Data	Serial No (Start)	Serial No (End)	Rem
1	42460015010	BAG,TOOL	1					
2	91991510003	HEXAGON BARWRENCH (G3)	1					
3	91991510004	HEXAGON BARWRENCH (G4)	1					
4	91991510005	HEXAGON BARWRENCH (G5)	1					
5	91991510006	HEXAGON BARWRENCH (G6)	1					
6	91991510008	HEXAGON BARWRENCH (G8)	1					
7	91991510010	HEXAGON BARWRENCH (G10)	1					
8	91991310024	SPANNER	1		24			
50	42473401000	TOOLS	1					

# AT-147-3 43010100028 UPPER

Pos No.	Parts No	Parts Name	Qty	Unit	Technical Data	Serial No (Start)	Serial No (End)	Remarks	Pages
1	42461681000	WEDGE (YELLOW)	1						

# AT-147-3 43010100028 UPPER

Pos No.	Parts No	Parts Name	Qty	Unit	Technical Data	Serial No (Start)	Serial No (End)	Remarks	Pages
1	42812000100	STEP	1						
2	90101210016	BOLT	4		M10X16				
3	90302041001	WASHER,SPRING	4		10	590498			

# AT-147-3 43010100028 UPPER

Pos No.	Parts No	Parts Name	Qty	Unit	Technical Data	Serial No (Start)	Serial No (End)
1	42738400000	WOOD BLOCK (WITH RUBBER,T=100)	1				

# AT-147-3 43010100028 UPPER

Pos No.	Parts No	Parts Name	Qty	Unit	Technical Data	Serial No (Start)	Serial No (End)	Remarks	Pages
1	42351420200	SUPPORT	1						
2	42351420100	SUPPORT	1						
3	82430138010	KNOB	3						
4	90101208040	BOLT	2		M8X40				
5	90303070801	WASHER,PLAIN	2		8				
6	37000506550	PLATE	2		T=1.6				
7	90302040801	WASHER,SPRING	2		8				
8	90101208030	BOLT	1		M8X30				

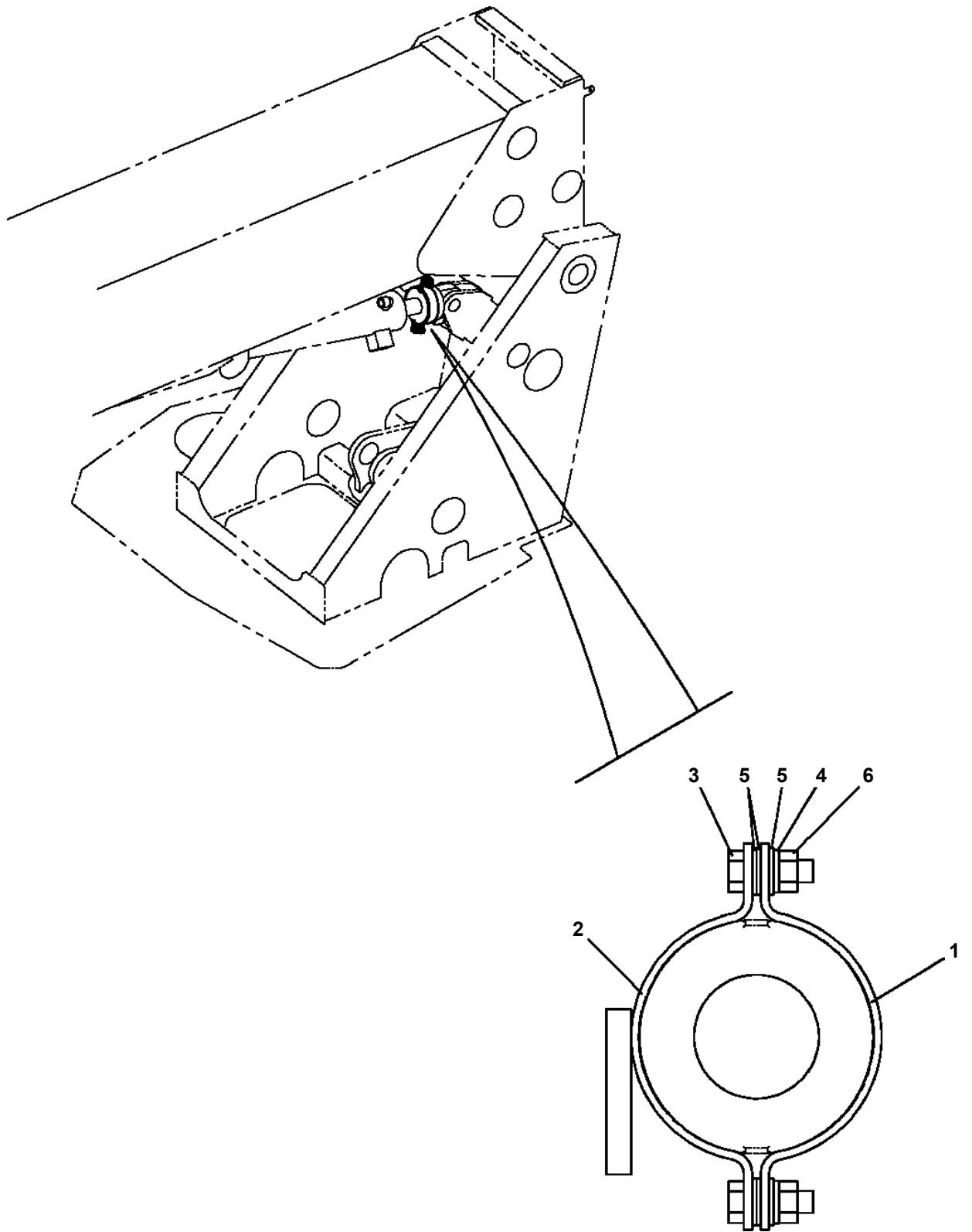
# AT-147-3 43010100028 UPPER

Pos No.	Parts No	Parts Name	Qty	Unit	Technical Data	Serial No (Start)	Serial No (End)	Remarks
2	42836027510	DOOR	1					
3	42836027520	SUPPORT	1					
4	42835357540	PLATE	6				590411	
5	42836027530	RUBBER	3					
6	42836027540	SEAT	1					
7	42835797630	PACKING	6				590411	
8	42833607570	BOLT ASSY	2					
9	42836027550	WEATHER STRIP	1		L=1675			
10	42836027560	WEATHER STRIP	1		L=1360			
11	42835357590	CATCH	2					
12	82464110007	HINGE	3					
13	42835797580	PLUG (HOLE)	4					
14	42832697600	BRACKET (FOR GAS SPRING)	2					
15	42833607560	GAS SPRING	2				590411	
16	42833077610	BUSH	8					
17	42835797660	BOLT (WITH W,SW)	2		M8X14			
18	99164806015	BOLT (WITH W,SW SUS)	4		M6X15			
19	42835257960	SCREW,MACHINE	18		M4X10			
20	42835987620	PLATE	6			590412		
21	42836037550	WASHER,TOOTH	4		M10	590412		
22	82440850080	GAS SPRING	2			590412		
100	42836032000	BOX,TOOL	1					

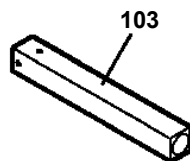
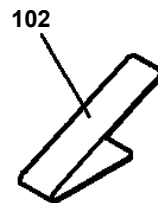
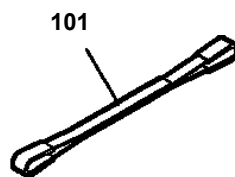
# AT-147-3 43010100028 UPPER

Pos No.	Parts No	Parts Name	Qty	Unit	Technical Data	Serial No (Start)	Serial No (End)	Remarks	Pages
1	42443130300	SUPPORT	1						
2	90101208018	BOLT	4		M8X18				
3	90302040801	WASHER,SPRING	4		8				
4	42443130401	SUPPORT	1						
5	90201200800	NUT	2		M8				

AT-147-3 43010100028 UPPER  
PX5690015-00 MOUNT ASSY,SUPPORT (DISTORTED DETECTION/LEVELING CYL)



AT-147-3 43010100028 UPPER  
PY1020001-10 OPTION UNIT,2



適用製造番号によっては取り付けがないものもあります。

MACHINES OF SOME SERIAL NO. ARE NOT EQUIPPED WITH THESE PARTS.

# AT-147-3 43010100028 UPPER

Pos No.	Parts No	Parts Name	Qty	Unit	Technical Data	Serial No (Start)	Serial No (End)	Re
1	42470590000	CLAMP HEAD (O.D.K 7.5TON 3M)	1					

# AT-147-3 4301010028 UPPER

Pos No.	Parts No	Parts Name	Qty	Unit	Technical Data	Serial No (Start)	Serial
1	42473857510	SCREW	4				
2	42473857515	SPRING	4				
3	80560053000	BALL,STEEL	4		1/8		
4	42470027510	HEAD (SCM)	1				
5	42473857530	SPRING	1				
6	42473857535	PIN	1				
7	42470027520	COLLAR	1				
8	42473857545	SPRING	1				
9	42473857550	PISTON	1				
10	91411003500	RING,BACKUP	1				
11	91001103500	O-RING	1		1A P35		
12	42470027530	CYLINDER	1				
13	42473857570	HOLDER	1				
14	42473857575	CAP	1				
15	91001101400	O-RING	1		1A P14		
16	42473857580	CAP	1				
17	42473857590	COVER	1				
18	42473857595	BUTTON (PUSH )	1				
19	42473857600	SPRING	1				
20	42473857605	SWITCH	1				
21	42473857610	HOLDER (SWITCH)	1				
22	42473857615	SCREW	1				
24	42473857620	BINDER	4				
25	42473857625	TUBE	1				
26	42473857630	TUBE	1				
27	42473857635	TUBE	1				
28	42473857640	BINDER	6				
29	42473857645	HOSE	1				
30	42473857650	JOINT	1				
31	42473857655	CABLE	1				
32	42473857660	PLUG (SANWA)	1				
38	80136320010	PIN,SPLIT	1		2X10		
39	42473857675	SEPARATOR	1				
61	42473857670	PROTECTOR ASSY	1				
62	42473857690	CLAMP ASSY	1				
100	42470021000	CLAMP HEAD (IZUMI 8TON,2.5M/YONDENKOU)	1				

# AT-147-3 43010100028 UPPER

Pos No.	Parts No	Parts Name	Qty	Unit	Technical Data	Serial No (Start)	Serial No (End)
1	42470330000	ROPE (SAFETY,YELLOW:TD-TYPE)	1				

# AT-147-3 43010100028 UPPER

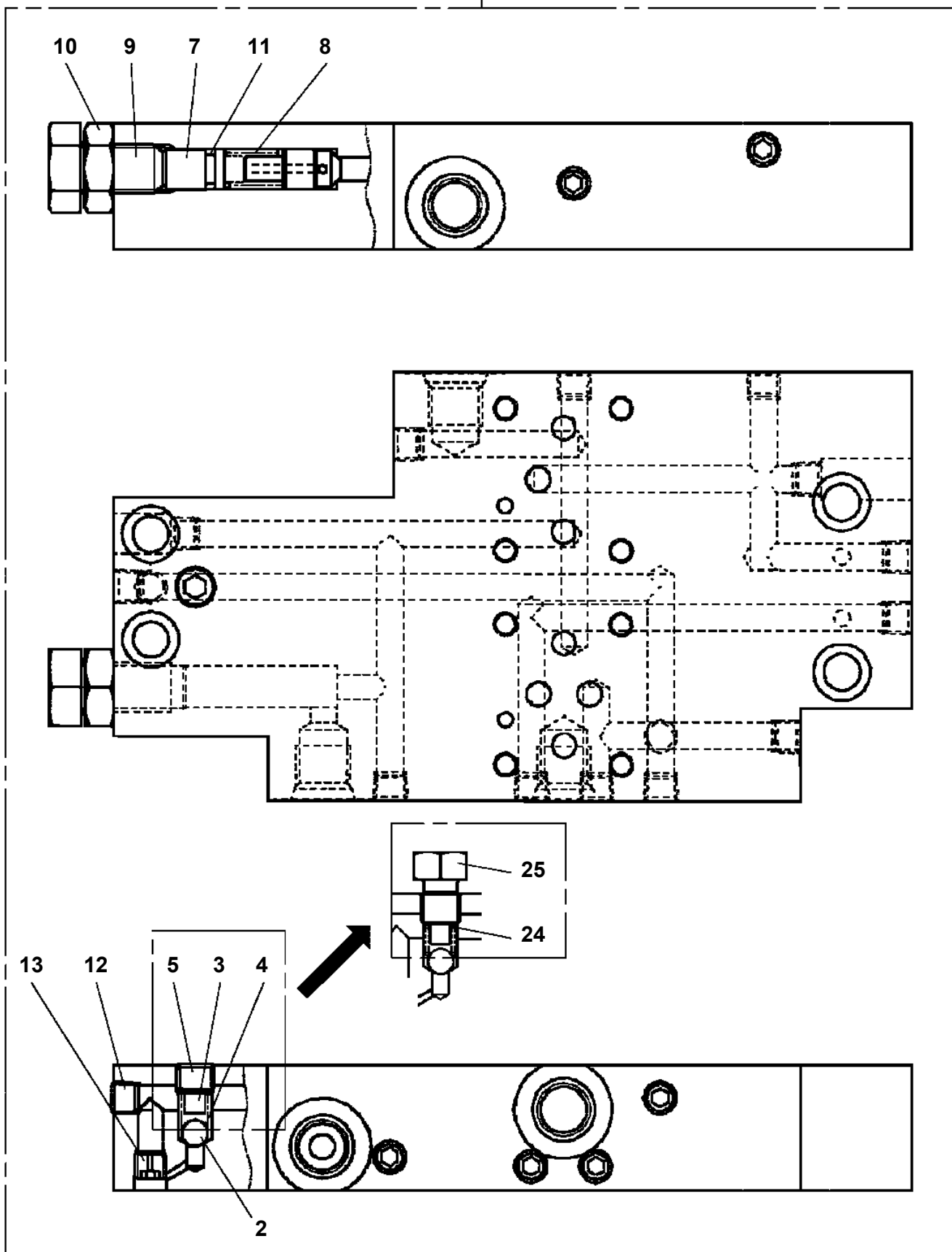
Pos No.	Parts No	Parts Name	Qty	Unit	Technical Data	Serial No (Start)	Serial No (End)	Remarks	Pages
1	42470121000	ARM ASSY	1						
2	42470421000	HOLDER	3						
3	42470123000	CLAMP ASSY	1						
4	42470044000	HOT STICK	1						
5	42475751001	SUPPORT	1						
6	90101216150	BOLT	1		M16X150				
7	90303071601	WASHER,PLAIN	2		16				
8	90201201600	NUT	2		M16				
9	42220011200	SUPPORT	1						
21	42470121100	ARM	1						
22	42470121200	CAP	2						

# AT-147-3 43010100028 UPPER

Pos No.	Parts No	Parts Name	Qty	Unit	Technical Data	Serial No (Start)	Serial No (End)	Remarks	Pages
1	42470121000	ARM ASSY	1						
2	42471231000	HOLDER	3						
3	42470123000	CLAMP ASSY	1						
5	42476851000	SUPPORT	1						
6	90101216130	BOLT	1		M16X130				
7	90303071601	WASHER,PLAIN	2		16				
8	90201201600	NUT	2		M16				
9	42220011200	SUPPORT	1						
31	42470121100	ARM	1						
32	42470121200	CAP	2						

AT-147-3 43010100028 UPPER  
PY1160211-01 BOOSTER (JOINT)

100



# AT-147-3 43010100028 UPPER

Pos No.	Parts No	Parts Name	Qty	Unit	Technical Data	Serial No (Start)	Serial No (End)	Remarks
1	42736653010	COVER (SIDE)	1					
2	91002806000	O-RING	1		1B P60			
3	91411006000	RING,BACKUP	1		P60			
4	36050345020	HEAD	1					
5	12235104020	SPRING	1					
6	80560061000	BALL,STEEL	1		3/8			
7	36050345030	PACKING SET	1					
8	36051485020	TUBE	1					
9	42736653020	TUBE	1					
10	91001209500	O-RING	2		1A G95			
11	36050395042	COVER (B)	1					
12	91411004200	RING,BACKUP	1		P42			
13	91001104200	O-RING	1		1A P42			
14	36050395051	ROD	1					
15	36050395061	TUBE	1					
16	36050395071	ROD,PUSH	1					
17	91002802600	O-RING	1		1B P26			
18	36050345090	PISTON	1					
19	91411009000	RING,BACKUP	2		P90			
20	91001109000	O-RING	1		1A P90			
21	36050125110	NUT	1					
22	36050845012	COVER (SIDE)	1					
23	91002801200	O-RING	1		1B P12			
24	80602110170	RING,RITAINING	1		R17			
25	91002801000	O-RING	2		1B P10			
26	90201201000	NUT	1		M10			
27	36050125130	BUSH	1					
28	91001100800	O-RING	1		1A P8			
29	91411000800	RING,BACKUP	1					
30	36050395102	BOLT,STUD	4		M14X1.5			
31	90209701400	NUT	4		M14			
32	36050801400	WASHER,PLAIN	4					
33	91002909500	O-RING	2		1B G95			
34	90131505015	BOLT,HEXAGON SOCKET	4		M5X15			
35	90740006060	SCREW,SET	1		M6X6			
36	42732457530	PLATE ASSY	1					
38	90131508020	BOLT,HEXAGON SOCKET	4		M8X20			
39	42475953000	SWITCH,BOOSTER	1					
40	80316030040	PLUG	1		PT1/4			
41	91002800800	O-RING	1		1B P8			
50	42736603000	BOOSTER	1					

# AT-147-3 43010100028 UPPER

Pos No.	Parts No	Parts Name	Qty	Unit	Technical Data	Serial No (Start)	Serial No (E
1	80456210600	JOINT,SELF SEALING	1				
2	42470367750	HOSE ASSY	1		3M		
3	42470362100	JOINT,SELF SEALING	1				
4	42470367770	HOSE,AIR	1		3M		
5	42470362200	PUMP	1				
6	80456240600	JOINT,SELF SEALING (WITH DUST CAP)	1				
7	42470367840	TUBE	2		25X0.15M		
8	42470367780	JOINT	1				
21	42471437520	CAP	1				
50	42470362000	HOSE,BOOSTER	1		L=3000		

# AT-147-3 43010100028 UPPER

Pos No.	Parts No	Parts Name	Qty	Unit	Technical Data	Serial No (Start)	Serial No (End)
5	80456210600	JOINT,SELF SEALING	2				
10	42472130000	HOSE,BOOSTER (FEMALE-FEMALE,5M)	1				

# AT-147-3 43010100028 UPPER

Pos No.	Parts No	Parts Name	Qty	Unit	Technical Data	Serial No (Start)	Serial No (End)	Remarks	Pages
1	42733561000	EARTH	1						
2	42733560100	CABLE	1						
3	90101208016	BOLT	1		M8X16				
4	42733560030	PLATE	1						
5	80720104028	PIN,SPRING	1		4X28				
6	90303070801	WASHER,PLAIN	1		8				

# AT-147-3 43010100028 UPPER

Pos No.	Parts No	Parts Name	Qty	Unit	Technical Data	Serial No (Start)	Serial No (End)
1	42472191000	WRENCH,IMPACT	1				
2	80460003080	JOINT	2		S,G3/8-3/4-16UNF		
3	37002417130	HOSE	2		L=2900		
4	91810132530	FASTENER	5				
5	80456020610	JOINT,SELF SEALING	1				
6	42340013200	JOINT,SELF SEALING (WITH CAP)	1				
11	42340017550	CAP (DUST)	1				
16	42340017510	CAP (DUST)	1				

# AT-147-3 43010100028 UPPER

Pos No.	Parts No	Parts Name	Qty	Unit	Technical Data	Serial No (Start)	Serial No (End)	Remarks
1	42474160000	HANGER (FOR BUCKET)	1					

# AT-147-3 43010100028 UPPER

Pos No.	Parts No	Parts Name	Qty	Unit	Technical Data	Serial No (Start)	Serial No (End)	Remarks
1	42472530000	BOX,TOOL (FOR BUCKET)	1					

# AT-147-3 43010100028 UPPER

Pos No.	Parts No	Parts Name	Qty	Unit	Technical Data	Serial No (Start)	Serial No (E
1	42475965000	COVER,WINCH (GRAY,FOR KANDENKO)	1				

CLICK HERE TO **DOWNLOAD** THE COMPLETE MANUAL

- Thank you very much for reading the preview of the manual.
- You can download the complete manual from: [www.heydownloads.com](http://www.heydownloads.com) by clicking the link below



- Please note: If there is no response to CLICKING the link, please download this PDF first and then click on it.

CLICK HERE TO **DOWNLOAD** THE COMPLETE MANUAL