

AT-147-3 43010100011 UPPER

**PD2000186-01 SWING UNIT
PF1000690-00 WINCH SYSTEM
PG2000244-00 BOOM UNIT
PH1000550-00 SAFETY DEVICES (MOTION CONTROLLER)
PJ3000570-00 BUCKET SYSTEM
PJ5000003-00 BOOSTER UNIT
PK2000894-02 FRAME UNIT
PO1000171-00 INDICATION PLATES
PW1000118-00 ACCESSORIES & TOOLS
PX1000918-00 MOUNTING PARTS
PY1001439-00 OPTIONS
ASSEMBLY**

CLICK HERE TO **DOWNLOAD** THE COMPLETE MANUAL

- Thank you very much for reading the preview of the manual.
- You can download the complete manual from: www.heydownloads.com by clicking the link below



- Please note: If there is no response to CLICKING the link, please download this PDF first and then click on it.

CLICK HERE TO **DOWNLOAD** THE COMPLETE MANUAL

AT-147-3 43010100011 UPPER

Pos No.	Parts No	Parts Name	Qty	Unit	Technical Data	Serial No (Start)	Serial No (End)
1	42267241000	BUCKET	1				
2	(*****)	BUCKET (INNER CASE)	1				
3	(*****)	ARM ASSY	1				
5	(*****)	PIPING ASSY,ARM	1				
6	(*****)	PIPING ASSY,BUCKET	1				
9	(*****)	COVER,BOOM (TOP/FRP,WHITE)	1				
10	(*****)	BUCKET FRAME ASSY	1				
11	(*****)	COVER (ARM/FRP,WHITE)	1				
12	(*****)	COVER (WINCH/FRP,WHITE)	1				
13	42267274000	COVER (CLOTH,WHITE/BUCKET)	1				
14	(*****)	COVER (BUCKET/FRP,WHITE)	1				
15	(*****)	COVER (ARM HOSE,CLOTH)	1				
16	(*****)	COVER	1				
17	42262804000	COVER,WINCH (CLOTH,WHITE/WINCH)	1				
21	(*****)	OPE.ASSY (BUCKET)	1				
22	(*****)	ELEC.ASSY (ARM)	1				
23	(*****)	ELEC.ASSY,BUCKET	1				
24	(*****)	ACCESSORIES (BUCKET INNER MAT)	1				

AT-147-3 43010100011 UPPER

Pos No.	Parts No	Parts Name	Qty	Unit	Technical Data	Serial No (Sta	
1	(*****)	MOUNT ASSY,TOOL BOX (LEFT/F:2-DECKER,R:1-DECKER)	1				
	(*****)	MOUNT ASSY,TOOL BOX (LEFT/F:2-DECKER,R:NONE)	1				
	(*****)	BOX,TOOL (LEFT SIDE/F:SINGLE,R:SINGLE)	1				
	(*****)	BOX,TOOL	1				
	(*****)	BOX,TOOL (LEFT SIDE/F:DOUBLE,R:WITHOUT)	1				
	(*****)	BOX,TOOL (LEFT SIDE/F:SINGLE,R:WITHOUT)	1				
	(*****)	BOX,TOOL (LEFT/F:2-DECKER,R:1-DECKER)	1				
2	(*****)	BOX,TOOL (RIGHT/F:2-DECKER,R:NONE)	1				
	(*****)	MOUNT (RIGHT/F:RACK,R:NONE)	1				
	(*****)	BOX,TOOL (RIGHT/F:2-DECKER,R:1-DECKER)	1				
	(*****)	BOX,TOOL (RIGHT/F:RACK,R:1-DECKER)	1				
	(*****)	BOX,TOOL (RIGHT/F:1-DECKER,R:1-DECKER)	2				
	(*****)	MOUNT ASSY (RIGHT/FRONT,GATE,REAR,FENDER DECK)	1				
	(*****)	BOX,TOOL (RIGHT/F:1-DECKER,R:NONE)	2				
	(*****)	MOUNT ASSY,TOOL BOX (RIGHT/F:RACK,R:1DECKER)	1				
	3	(*****)	EARTHING DEVICE (8X20M, TOP CLIP)	1			
		(*****)	EARTHING DEVICE (8X10M, TOP CLIP)	1			
(*****)		EARTHING DEVICE	1				
(*****)		EARTH ASSY (5X10M.CLIP ON THE END,PORTABLE)	1				

590438

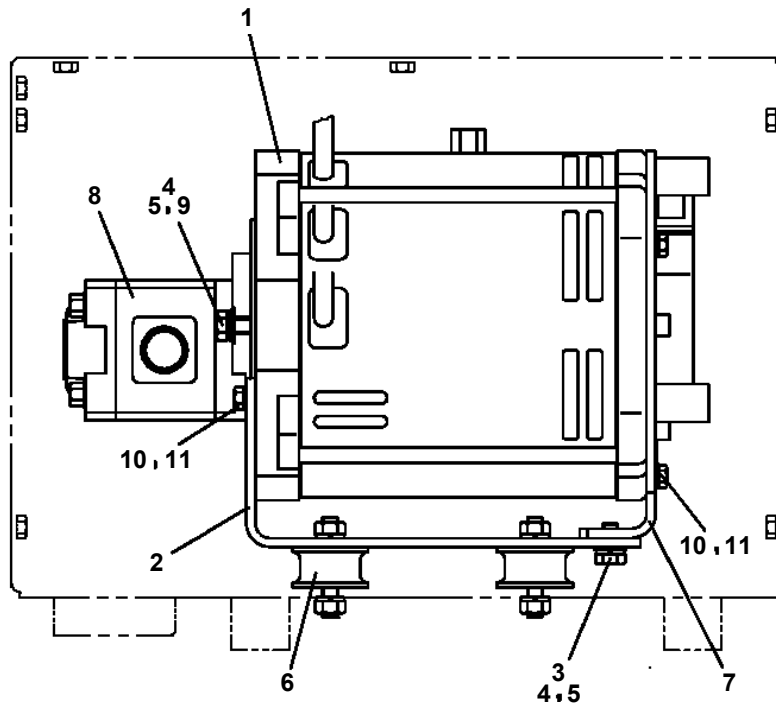
AT-147-3 43010100011 UPPER

PY1680000-02 WRENCH,IMPACT (HYDRAULIC)
PY1760001-00 STEP,BUCKET
PY1760003-00 STEP,BUCKET (GRAY,FOR BUCKET INNER)
PY1760004-00 STEP,BUCKET (NON SLIP)
PY1760005-00 STEP,BUCKET
PY1790001-00 HANGER (FOR BUCKET)
PY1790001-00 HANGER (FOR BUCKET)
PY1790004-01 HANGER (FOR BUCKET,FRP)
PY1790005-01 HANGER (FOR BUCKET,FRP)
PY1930004-00 BLOCK,RUBBER (WAZUMI)
PY1930005-00 BLOCK,RUBBER (NAKAMURA)
PY2120000-00 BOX,TOOL (FOR BUCKET)
PY2120001-00 BOX,TOOL (FOR BUCKET)
PY2120005-00 BOX,TOOL (FOR BUCKET,FRP)
PY2130001-00 COVER,LAMP (WORKING)
PY2170005-00 COVER,WINCH (CLOTH,WHITE/WINCH)
PY2170006-01 COVER,WINCH (GRAY,FOR KANDENKO)
PY2350004-01 SWITCH,BOOSTER
PY2370026-01 PANEL,CONTROL
PY5240003-01 ARM ASSY
PY5240006-01 ARM ASSY

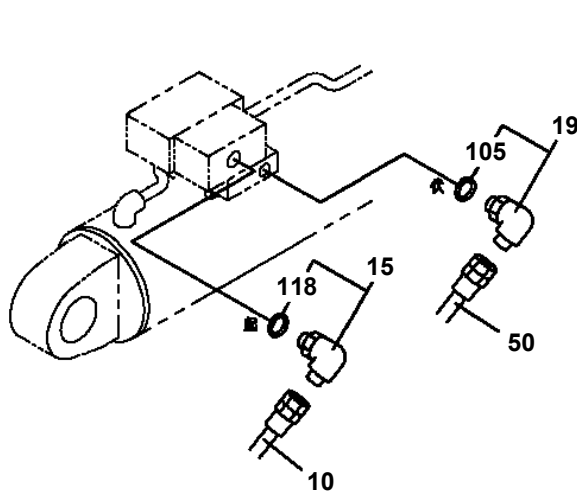
AT-147-3 43010100011 UPPER

Pos No.	Parts No	Parts Name	Qty	Unit	Technical Data	Serial No (Start)	Serial No (End)	Remarks	P
2	42630737510	HOUSING	1						
3	42630617630	O-RING	1						
4	42630737520	BASE	1						
5	31631457530	SPACER	2						
6	31631457580	BRACKET (SHAFT)	1						
7	42630737530	PLATE	1						
8	42630617550	BUSH	1						
11	42630617560	COUPLING	1						
12	31631457590	BEARING	1						
13	42442407540	BEARING	1						
14	31631457670	HOLDER,BRUSH	1						
15	31631457680	HOLDER,BRUSH	12						
16	31631457690	HOLDER,BRUSH	2						
24	42630737540	COVER	1						
25	42630737550	POTENTIOMETER	1						
27	42441877520	PLATE	1						
28	42630737570	ARM ASSY	1						
31	42630737580	PLATE	1						
32	31631457520	INSULATOR	1						
33	31631457550	RING,SLIP	13						
34	31631457540	INSULATOR	15						
36	42630617620	BRUSH ASSY	13						
37	31631457700	GROMMET	1						
38	42442407550	CLAMP	1						
45	42630737610	PIN	1						
46	42630737620	STUD	4						
48	42630737630	BUSHING	1						
100	42441873001	BRUSH,ROTARY JOINT	1						

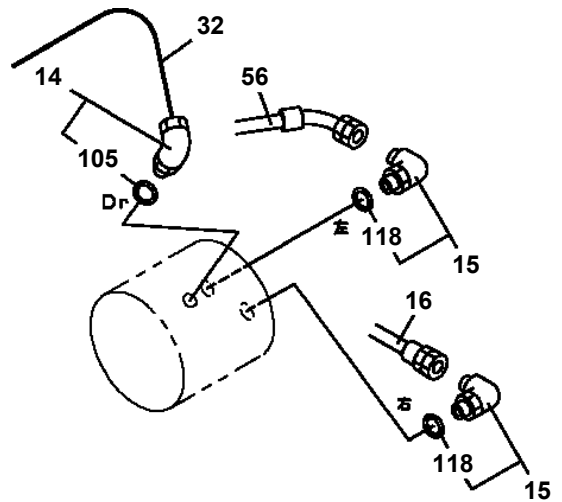
AT-147-3 43010100011 UPPER
PB1380294-00 POWER SUPPLY (MOTOR UNIT)



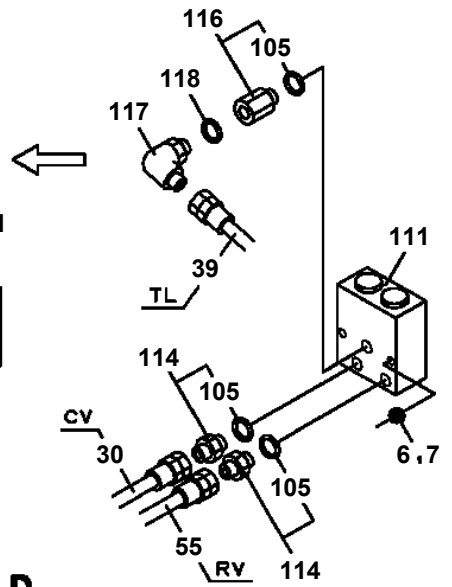
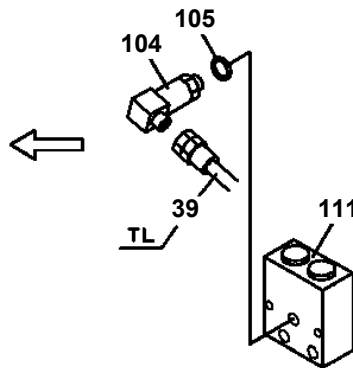
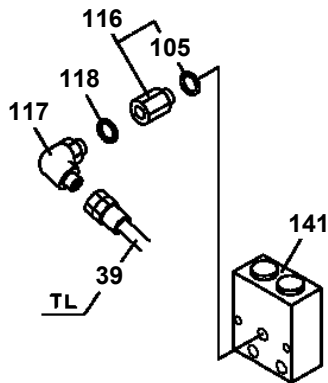
**AT-147-3 43010100011 UPPER
PB1400435-02 PIPING,UPPER**



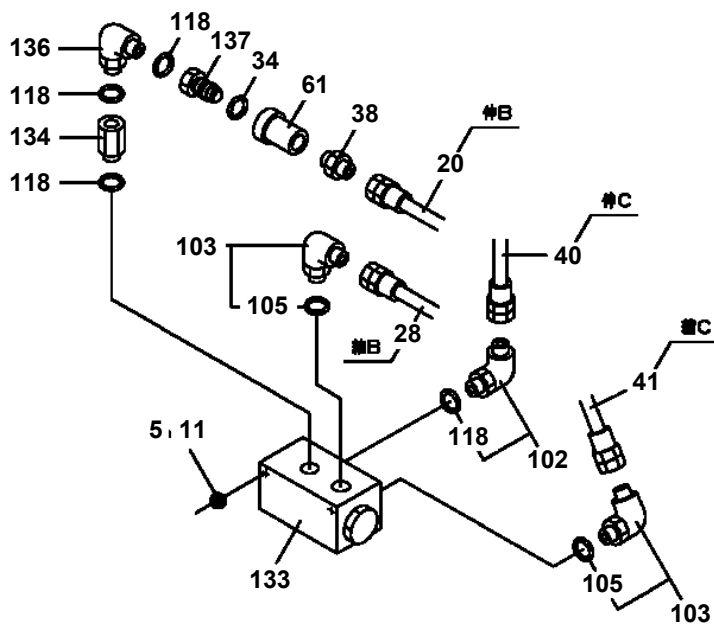
B



C



D



E

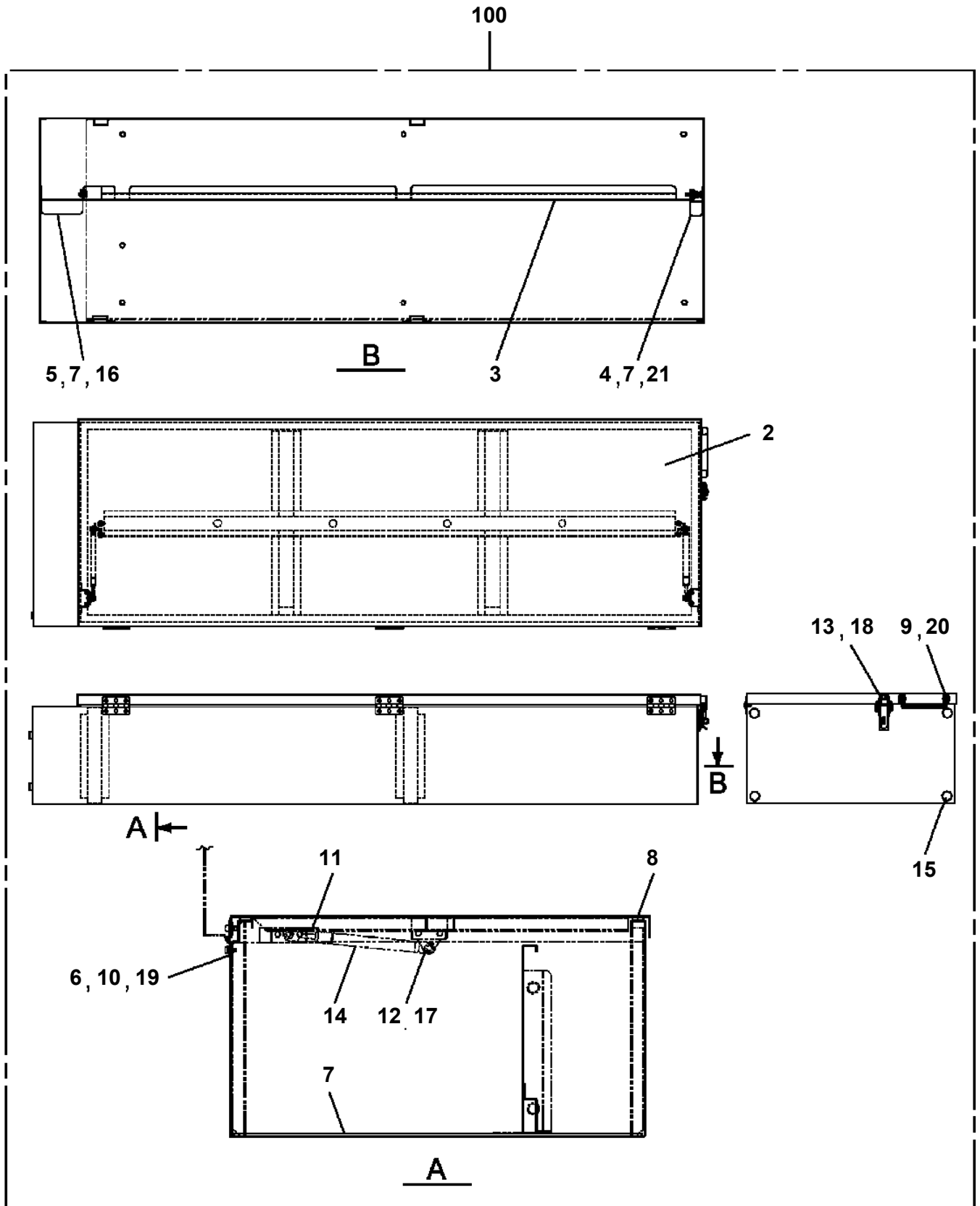
AT-147-3 43010100011 UPPER

Pos No.	Parts No	Parts Name	Qty	Unit	Technical Data	Serial No (Start)	Serial No (End)	Remarks	Pages
1	37002503400	HOSE	1		L=710				
2	91803600300	CLIP	4		D=22-30				
3	37002406360	HOSE	1		L=900				
4	91810150020	FASTENER	1		L=488				
5	82100002017	CLAMP	1		WR30				
6	82100001412	TUBE, SPIRAL	1	M	SE-12BK				

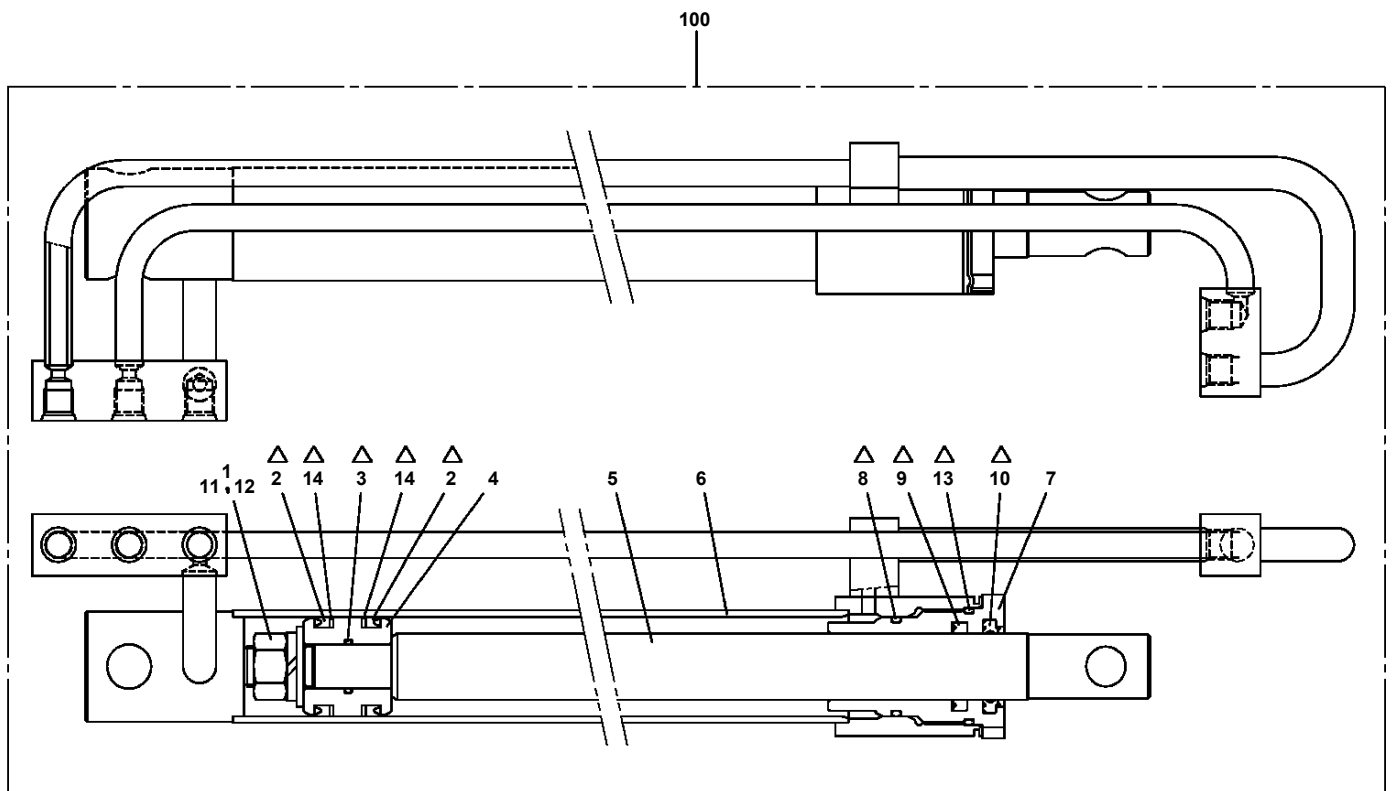
AT-147-3 43010100011 UPPER

Pos No.	Parts No	Parts Name	Qty	Unit	Technical Data	Serial No (Start)	Serial No (End)	Remarks	Pages
1	42972410000	BLOCK,WOOD	1		T=150				

AT-147-3 43010100011 UPPER
PB5410007-00 BOX, TOOL

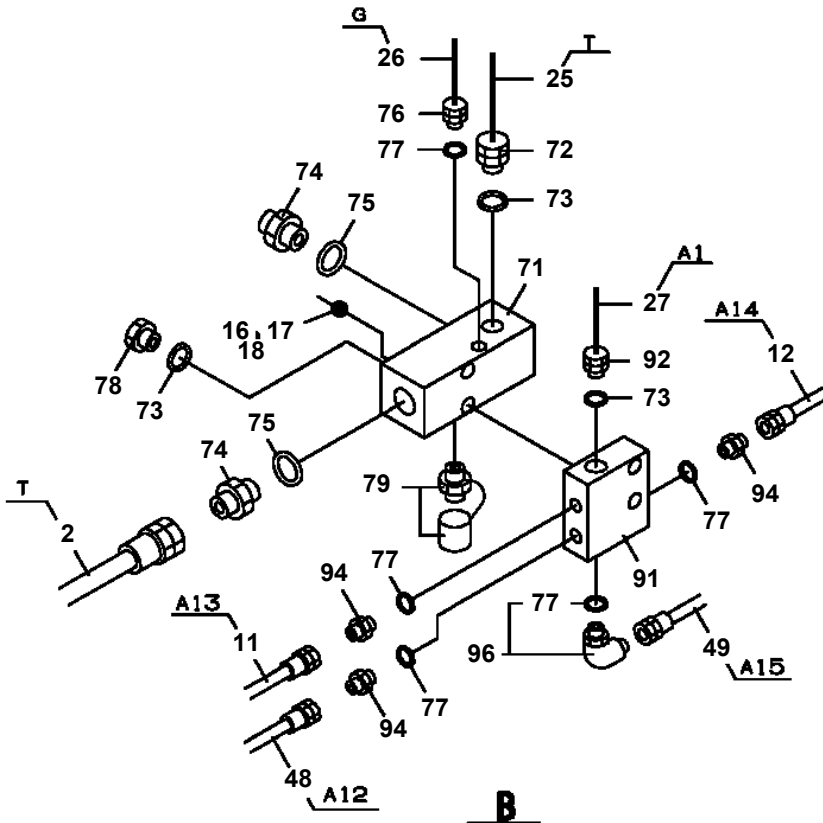
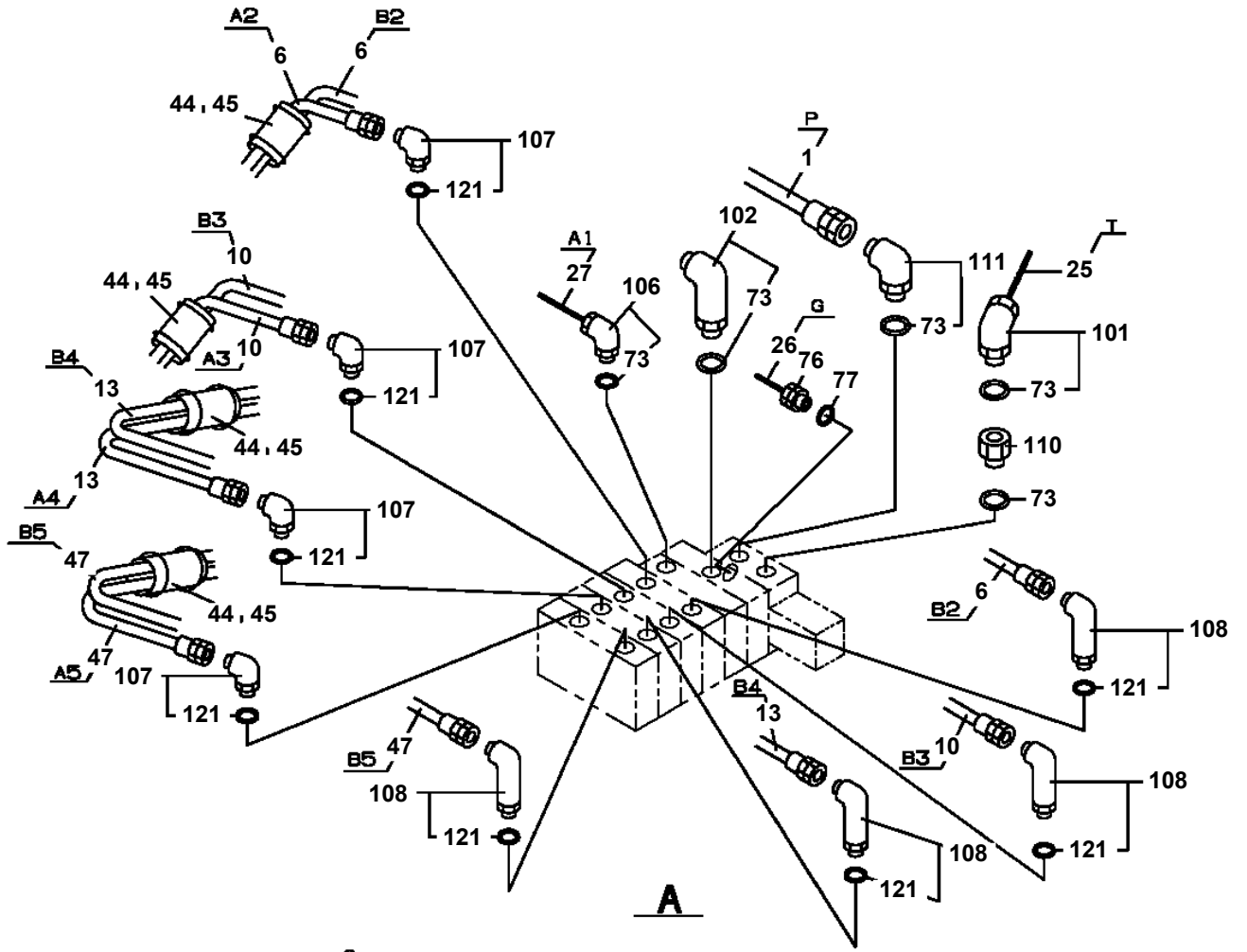


AT-147-3 43010100011 UPPER
PC1050221-00 CYLINDER,EXTENSION (FRONT)



Δ:PACKING SET KEY NO.30 (KEY NO.2,3,8,9,10,13,14)

**AT-147-3 43010100011 UPPER
PC1200578-06 PIPING,OUTRIGGER**



AT-147-3 43010100011 UPPER

Pos No.	Parts No	Parts Name	Qty	Unit	Technical Data	Serial No (Start)	Serial No (End)
1	42614464100	CASE,INNER	1				
2	42613351200	CASE,INNER (JACK)	1				
4	36035100000	CYLINDER,JACK	1				
5	42502970200	FLOAT ASSY	1				
6	37000171720	PIN	1				
7	80601110250	RING,RITAINING	2		S25		
8	37000169010	PIN	1		30		
9	80601110300	RING,RITAINING	2		S30		
10	36625740001	VALVE,CHECK	1				
11	90171108055	BOLT	4		M8X55		
12	37000138750	PIN	1		18		
13	80136332036	PIN,SPLIT	2		3.2X36		
14	80400160127	JOINT	1				
15	91002801100	O-RING	1		1B P11		
16	36672460000	FILTER (NIPPLE TYPE)	1				
17	42612851010	COVER	1				
18	90186206014	BOLT,FLANGE	2		M6X14		
19	37000112320	PIN	1				
20	80601110120	RING,RITAINING	2		S12		
21	91810130240	FASTENER	2				
22	31201770100	PLATE,SLIDE	8		T=3.0		
23	90280200600	NUT,FLANGE	1		M6		
24	37000600700	CLAMP	1		12X3		
25	82467300106	PLUG	4				
41	36042810000	CYLINDER,EXTENSION (FRONT)	1				
42	80400160127	JOINT	2				
43	91002801100	O-RING	3		1B P11		
44	37002485300	HOSE	1		L=1805		
45	42614053350	HARNESS	1				
46	91810130240	FASTENER	13				
63	42612851420	TRUNNION	1				
100	42614464000	CASE ASSY,INNER (FRONT,RIGHT)	1				

AT-147-3 43010100011 UPPER

Pos No.	Parts No	Parts Name	Qty	Unit	Technical Data	Serial No (Start)	Serial No (End)	Remarks
1	42272361103	COVER	1					
2	42272361201	COVER	1					
3	42272361301	COVER	1					
4	90101206016	BOLT	8		M6X16			
5	80172803008	SCREW,MACHINE	8		M3X8			
6	90201500300	NUT	8		M3			
7	90302510301	WASHER,SPRING (SUS 3)	8					
8	82466100702	CATCH	2					
9	80172804012	SCREW,MACHINE	12		M4X12			
10	90201500400	NUT	12		M4			
11	90302510401	WASHER,SPRING	12		4			
12	82464110305	HINGE	2					
13	90302040601	WASHER,SPRING	8		6			
14	90303070601	WASHER,PLAIN	8		6			
50	42272361004	COVER ASSY	1					

AT-147-3 43010100011 UPPER

Pos No.	Parts No	Parts Name	Qty	Unit	Technical Data	Serial No (Start)	Serial N
1	91660005501	SEAL,DUST	1				
2	36018269510	COVER,ROD	1				
3	91002908500	O-RING	1		1B G85		
4	91301105500	BEARING,PLAIN	1				
5	91410205501	RING,BACKUP	1				
6	91694005500	PACKING	1				
7	91251100550	RING,DAMPER	1		DR-55		
8	91411107500	RING,BACKUP	1				
9	91002907500	O-RING	1		1B G75		
10	80801005530	BEARING,PLAIN	1				
11	80612110600	RING,RITAINING	1		AR60		
12	36018263000	ROD	1				
13	36018261001	CYLINDER	1				
14	91002903000	O-RING	1		1B G30		
15	36018260500	PISTON	1				
16	91411206201	RING,BACKUP	2				
17	91684007501	PACKING	2				
18	91302207500	BEARING,PLAIN	2				
19	90730006100	SCREW,SET	1		M6X10		
20	36018250100	NUT	1				
21	37001101980	ROLLER ASSY (WITH BEARING/ASSY ONLY)	1				
22	36011560200	SPACER	2				
23	37000154450	PIN	1				
24	80601110250	RING,RITAINING	2		S25		
41	36015959900	PACKING SET	1		55X75		
100	36018260002	CYLINDER ASSY,TELESCOPING	1				

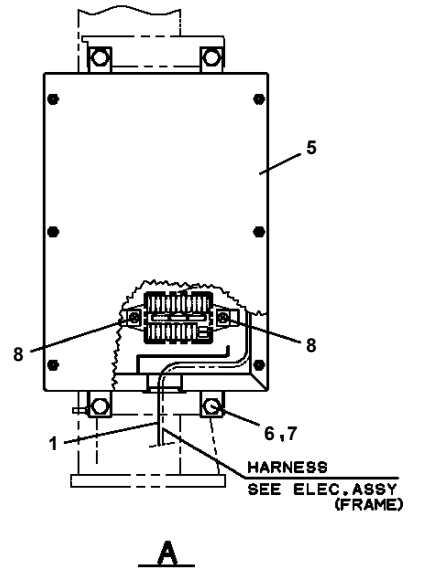
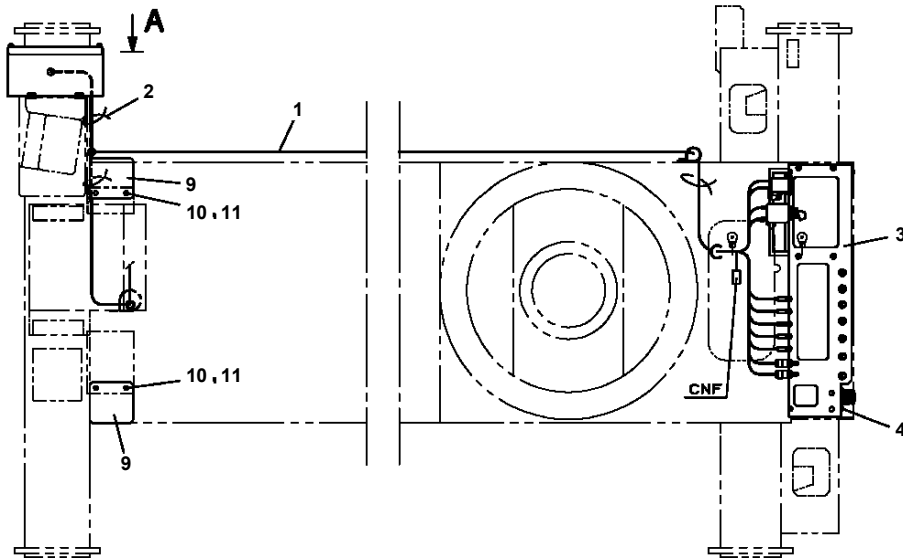
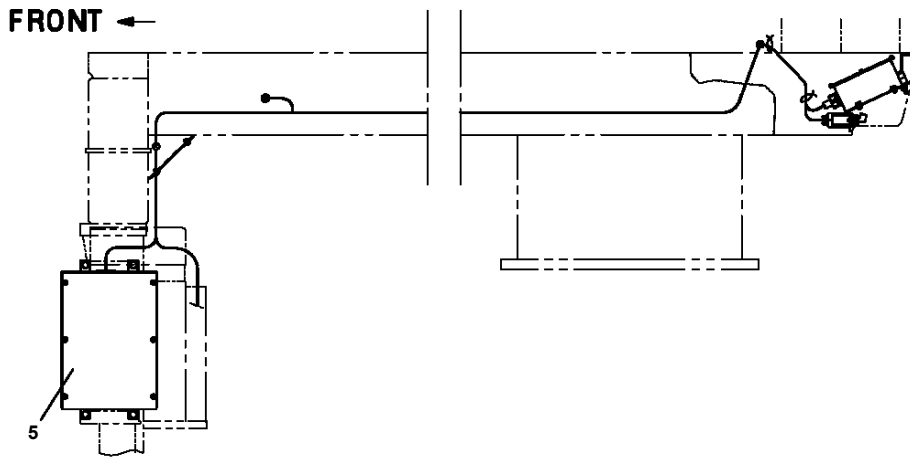
AT-147-3 43010100011 UPPER

Pos No.	Parts No	Parts Name	Qty	Unit	Technical Data	Serial No (Start)	Serial No (End)
1	36027959510	CYLINDER ASSY	1				
3	82455106000	NIPPLE,GREASE	1		A-M6F FE		
4	36027952001	PISTON	1				
5	91350211000	BEARING,PLAIN (WITH PACKINGX2)	1				
6	91002802600	O-RING	1		1B P26		
7	36027959521	ROD ASSY	1				
8	36027959530	COVER,ROD	1				
9	80612110520	RING,RITAINING	1		AR52		
10	91002910500	O-RING	1		1B G105		
11	80801004525	BEARING,PLAIN	1				
12	91694004500	PACKING	1				
13	91410204502	RING,BACKUP	1				
14	91660004501	SEAL,DUST	1				
15	91002911000	O-RING	1		1B G110		
16	80541700030	BEARING,SPHERICAL (NTN)	1		SA4-30B		
17	80820003030	BEARING,PLAIN	2				
18	90730008120	SCREW,SET	1		M8X12		
41	36027959900	PACKING SET	1		45X110		
101	36027950000	CYLINDER,LEVELING (UPPER)	1				
102	36624110000	VALVE,CHECK	1				
103	90172110050	BOLT,HEXAGON SOCKET	4		M10X50		590499
	90180210050	BOLT,BUTTON	4		M10X50	590500	

AT-147-3 43010100011 UPPER

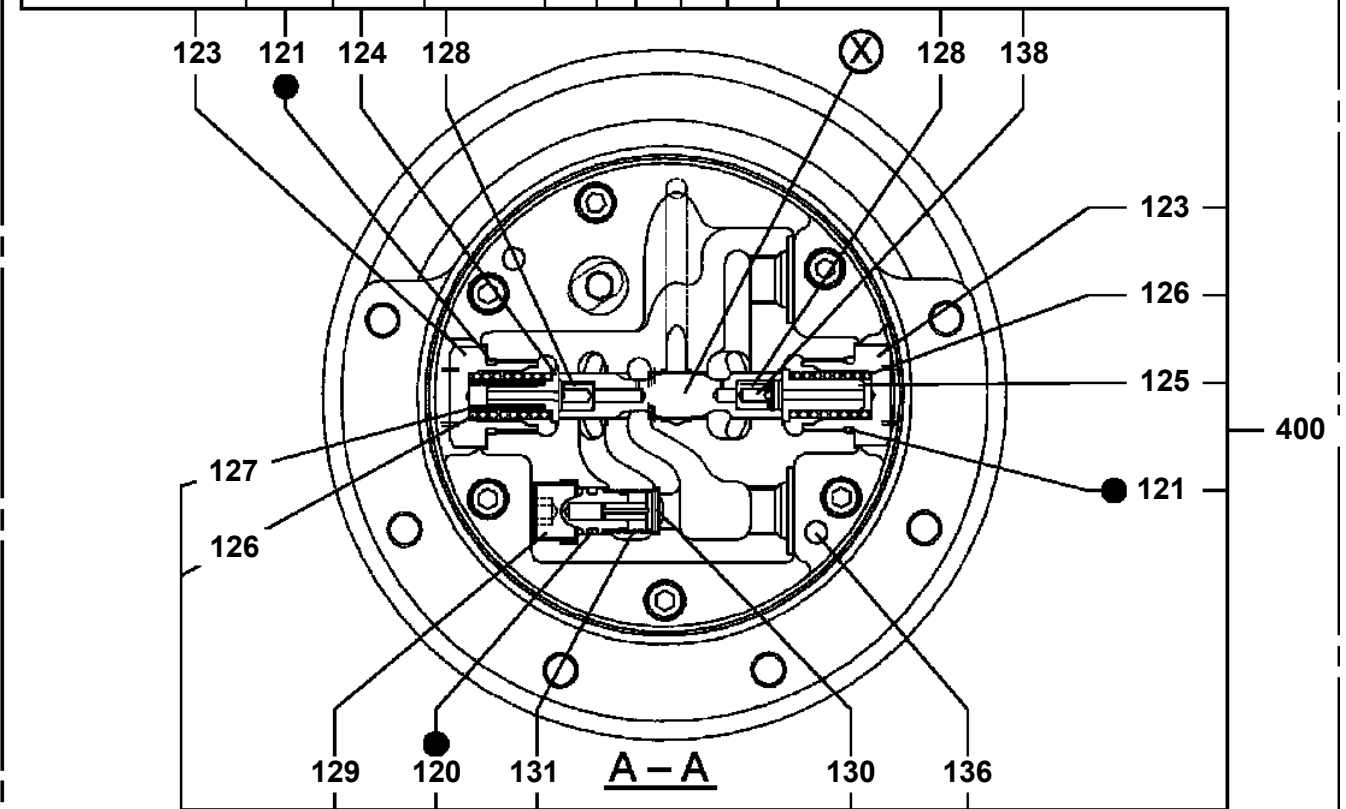
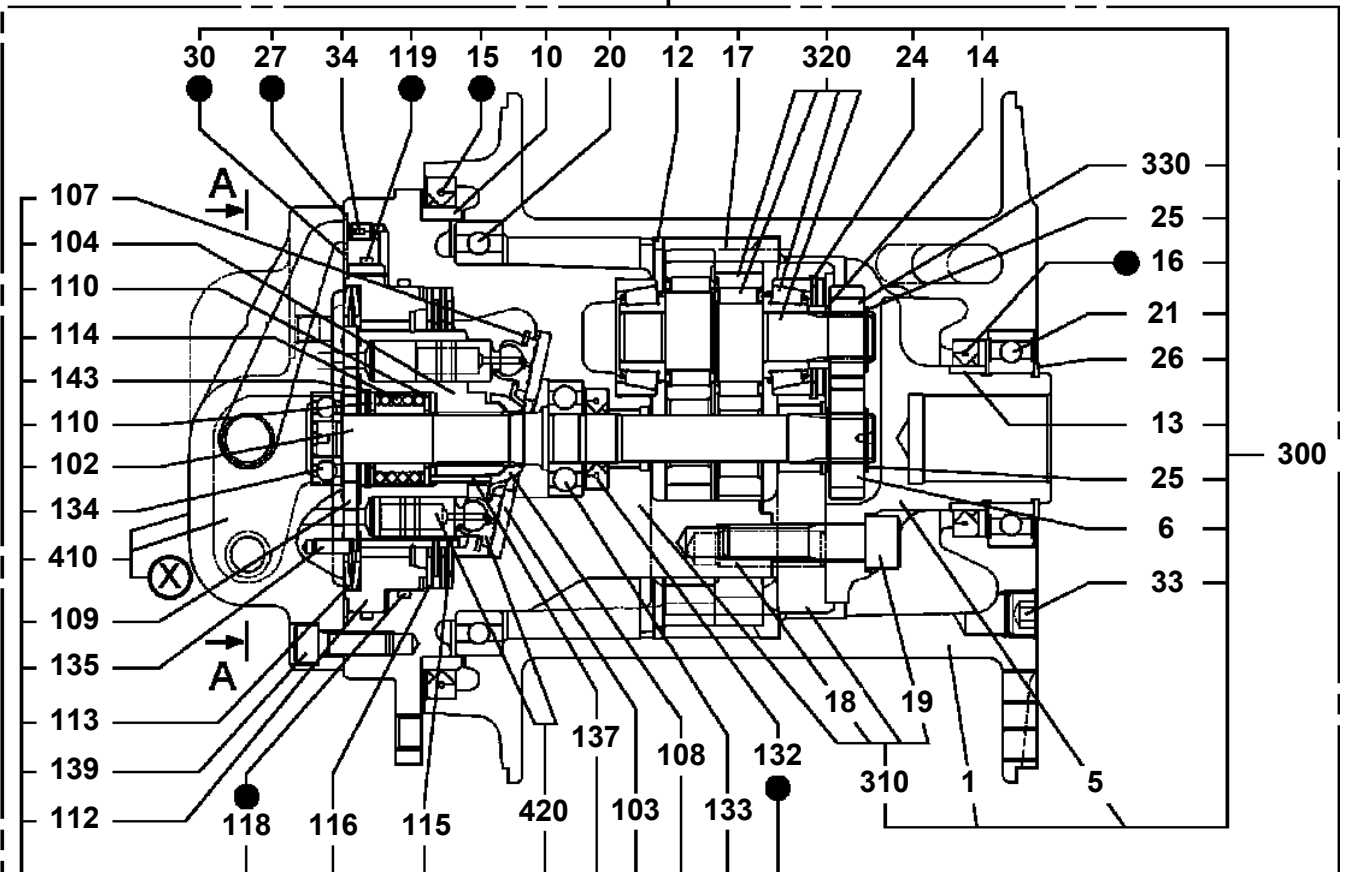
Pos No.	Parts No	Parts Name	Qty	Unit	Technical Data	Serial No (Start)	Serial No (End)	R
1	42502782010	PLATE,NAME	1					
2	42736070100	SWITCH ASSY (WITH HARNESS)	1					
4	42502852100	HARNESS	1					
5	91810130230	FASTENER	2					
6	42506731100	PLATE	1					
7	82100000665	CAP (BLACK)	1					
8	91810132530	FASTENER	20					
9	42474421100	SWITCH	1					
10	90201200600	NUT	4		M6			
11	90302040601	WASHER,SPRING	4		6			
13	89671101500	TUBE	1		L=1500			
14	42392583090	PLATE,CAUTION	1					
15	42503390200	LAMP ASSY (DC12V RED)	1					
16	42502852010	PLATE,NAME	1					
17	42502852020	PLATE,NAME	1					
18	42502852203	HARNESS	1					
19	42470400100	JOINT,SELF SEALING (WITH CAP)	1					
20	42473440020	JOINT	1					
21	90183106020	BOLT	3		M6X20			
22	90303070601	WASHER,PLAIN	3		6			
41	42470407570	CAP	1					

AT-147-3 43010100011 UPPER
PE5180027-01 ELEC.ASSY,POWER UNIT



AT-147-3 43010100011 UPPER
 PF1010392-01 WINCH

500



● : SEAL KIT KEY NO 490 (KEY NO.15,16,27,30,118,119,120,121,132)

AT-147-3 43010100011 UPPER

Pos No.	Parts No	Parts Name	Qty	Unit	Technical Data	Serial No (Start)	Serial No (End)	Remarks	Pages
1	42478760010	SUPPORT	1						
2	90201201600	NUT	1		M16				
3	90303071601	WASHER,PLAIN	1		16				

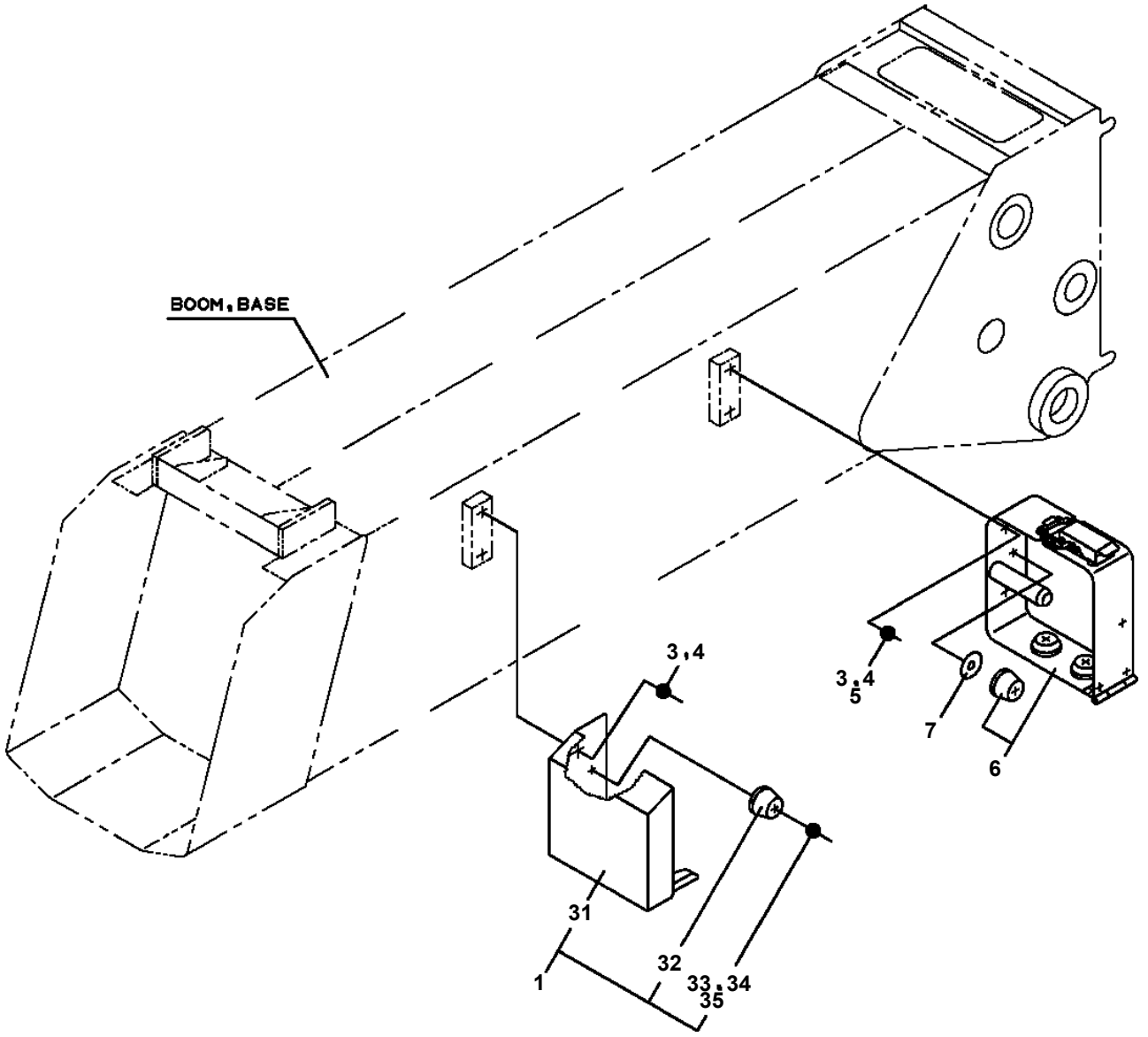
AT-147-3 43010100011 UPPER

Pos No.	Parts No	Parts Name	Qty	Unit	Technical Data	Serial No (Start)	Serial No (End)	Remarks	Pages
1	42475580100	PLATE	3						
2	90101212035	BOLT	16		M12X35				
3	90302041201	WASHER,SPRING	16		12				
6	90101208045	BOLT	4		M8X45		590476		
7	90302040801	WASHER,SPRING	4		8		590476		
8	90303070801	WASHER,PLAIN	4		8		590476		
9	90303071201	WASHER,PLAIN	8		12		590476		
10	90201201200	NUT	8		M12		590476		
11	42502970300	PLATE	1						
12	82401800120	PLUG (FOR M12)	18						

AT-147-3 43010100011 UPPER

Pos No.	Parts No	Parts Name	Qty	Unit	Technical Data	Serial No (Start)	Serial N
1	91660005501	SEAL,DUST	1				
2	36018269510	COVER,ROD	1				
3	91002908500	O-RING	1		1B G85		
4	91301105500	BEARING,PLAIN	1				
5	91410205501	RING,BACKUP	1				
6	91694005500	PACKING	1				
7	91251100550	RING,DAMPER	1		DR-55		
8	91411107500	RING,BACKUP	1				
9	91002907500	O-RING	1		1B G75		
10	80801005530	BEARING,PLAIN	1				
11	80612110600	RING,RITAINING	1		AR60		
12	36018262000	ROD	1				
13	36018261001	CYLINDER	1				
14	91002903000	O-RING	1		1B G30		
15	36013980400	PISTON	1				
16	91411206201	RING,BACKUP	2				
17	91684007501	PACKING	2				
18	91302207500	BEARING,PLAIN	2				
19	90302043001	WASHER,SPRING	1		30		
20	90209403000	NUT	1		M30		
21	37001101980	ROLLER ASSY (WITH BEARING/ASSY ONLY)	1				
22	36011560200	SPACER	2				
23	37000154450	PIN	1				
24	80601110250	RING,RITAINING	2		S25		
41	36015959900	PACKING SET	1		55X75		
100	36018260001	CYLINDER ASSY,TELESCOPING	1				

AT-147-3 43010100011 UPPER
PG1250024-02 ATTACHMENT, JIB (JIB)



AT-147-3 43010100011 UPPER

Pos No.	Parts No	Parts Name	Qty	Unit	Technical Data	Serial No (Start)	Serial No (End)	Remarks	Pages
1	42267243101	COVER	1						
2	42267243201	COVER	1						
3	90183108015	BOLT	6		M8X15				

AT-147-3 43010100011 UPPER

Pos No.	Parts No	Parts Name	Qty	Unit	Technical Data	Serial No (Start)	Serial No (End)	Remarks
2	36191071030	BOARD,CIRCUIT	1					
3	36190191071	BOARD ASSY	1					
4	36190185150	SEAT	1					
5	36190185050	BOX	1					
6	36190185060	PANEL ASSY	1					
7	36190185070	FITTING (SET)	1					
8	36190185080	COVER (SET)	1					
9	36190195020	STAY SET	1				590479	
10	36190185100	FRAME ASSY	1					
11	36190185111	HARNESS ASSY	1				590479	
12	36190185121	HARNESS ASSY	1				590479	
14	36190185160	HARNESS	1					
15	36191075020	STAY SET	1			590480		
16	36191075030	HARNESS ASSY	1			590480		
31	36195135010	BOARD,CPU (WITH DATA)	1					
100	36195130000	MOTION CONTROLLER (AMC)	1					

AT-147-3 43010100011 UPPER

Pos No.	Parts No	Parts Name	Qty	Unit	Technical Data	Serial No (Start)	Serial No (End)	Remarks
1	42739941110	DISPLAY	1					
2	42739931300	CABLE	1					
3	42739931150	CAMERA	1					
4	42807471210	CABLE (MONITOR SIDE)	1					
5	42807471220	CABLE (CAMERA SIDE)	1					
30	42739941100	VIEW SYSTEM	1					

AT-147-3 43010100011 UPPER

Pos No.	Parts No	Parts Name	Qty	Unit	Technical Data	Serial No (Start)	Serial No (End)	Remarks	I
1	(*****)	VIEW SYSTEM (MONITOR)	1						0
2	(*****)	VIEW SYSTEM (CAMERA)	1						0

AT-147-3 43010100011 UPPER

Pos No.	Parts No	Parts Name	Qty	Unit	Technical Data	Serial No (Start)	Serial No (End)	Remarks	Pages
2	42739937510	BRACKET	1				590455		
3	42739937520	HOOD	1				590455		
10	42739937530	BRACKET ASSY	1				590455		
21	42739937511	BRACKET	1			590456			
31	42739937521	HOOD	1			590456			
100	42739931150	CAMERA	1						

AT-147-3 43010100011 UPPER

Pos No.	Parts No	Parts Name	Qty	Unit	Technical Data	Serial No (Start)	Serial No (End)	Remarks	Pages
100	42356800100	HARNESS	1						

AT-147-3 43010100011 UPPER

Pos No.	Parts No	Parts Name	Qty	Unit	Technical Data	Serial No (Start)	Serial No (End)	Remarks	Pages
100	42350200310	HARNESS	1						

AT-147-3 43010100011 UPPER

Pos No.	Parts No	Parts Name	Qty	Unit	Technical Data	Serial No (Start)	Serial No (End)	Remarks	Pages
100	42614053350	HARNESS	1						

AT-147-3 43010100011 UPPER

Pos No.	Parts No	Parts Name	Qty	Unit	Technical Data	Serial No (Start)	Serial No (End)	Remarks	Pages
100	42475540010	HARNESS	1						

AT-147-3 43010100011 UPPER

Pos No.	Parts No	Parts Name	Qty	Unit	Technical Data	Serial No (Start)	Serial No (End)	Remarks	Pages
1	42422307100	HARNESS	1						

AT-147-3 43010100011 UPPER

Pos No.	Parts No	Parts Name	Qty	Unit	Technical Data	Serial No (Start)	Serial No (End)	Remarks	Pages
100	42356440301	HARNESS	1						

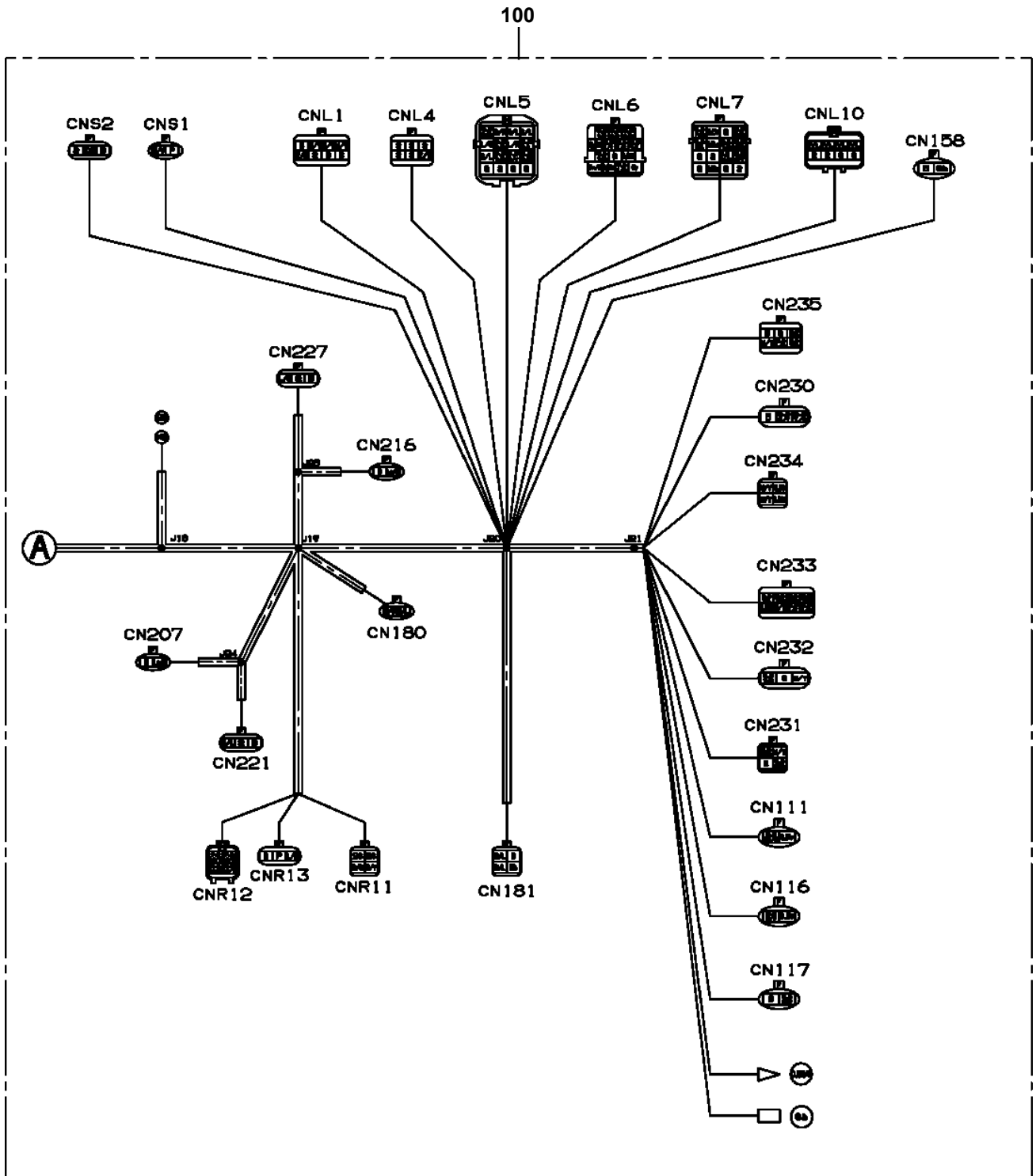
AT-147-3 43010100011 UPPER

Pos No.	Parts No	Parts Name	Qty	Unit	Technical Data	Serial No (Start)	Serial No (End)	Remarks	Pages
100	42508002200	HARNESS	1						
	42508002200	HARNESS	1						

AT-147-3 43010100011 UPPER

Pos No.	Parts No	Parts Name	Qty	Unit	Technical Data	Serial No (Start)	Serial No (End)	Remarks	Pages
100	42736991020	HARNESS	1						

AT-147-3 43010100011 UPPER
PH5032428-00 HARNESS (MAIN)



AT-147-3 43010100011 UPPER

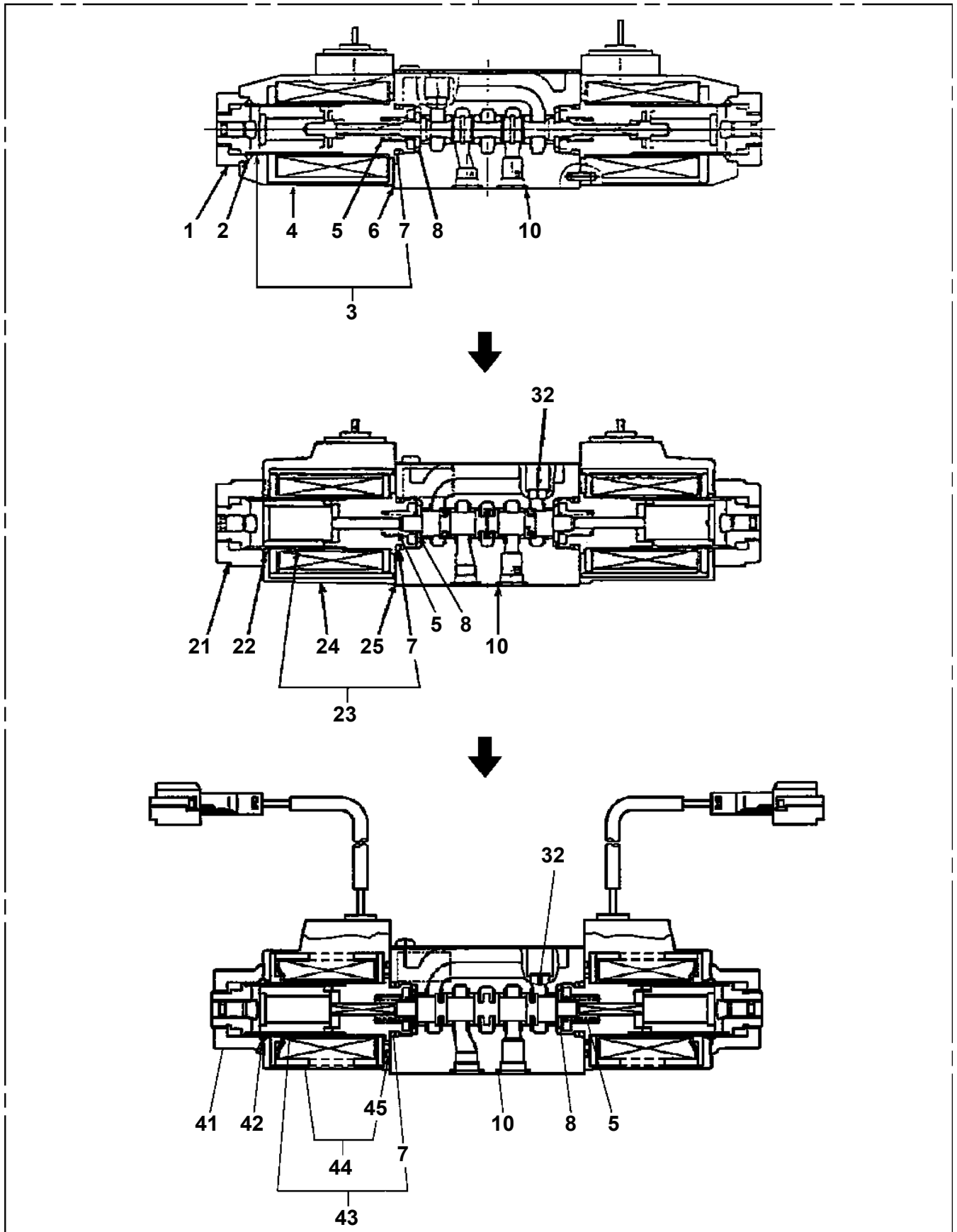
Pos No.	Parts No	Parts Name	Qty	Unit	Technical Data	Serial No (Start)	Serial No (End)	Remarks	Pages
100	42356450101	HARNESS	1						

AT-147-3 43010100011 UPPER

Pos No.	Parts No	Parts Name	Qty	Unit	Technical Data	Serial No (Start)	Serial No (End)	Remarks	Pages
1	82400000547	HOOK	1						
2	82400000566	SPACER	1						

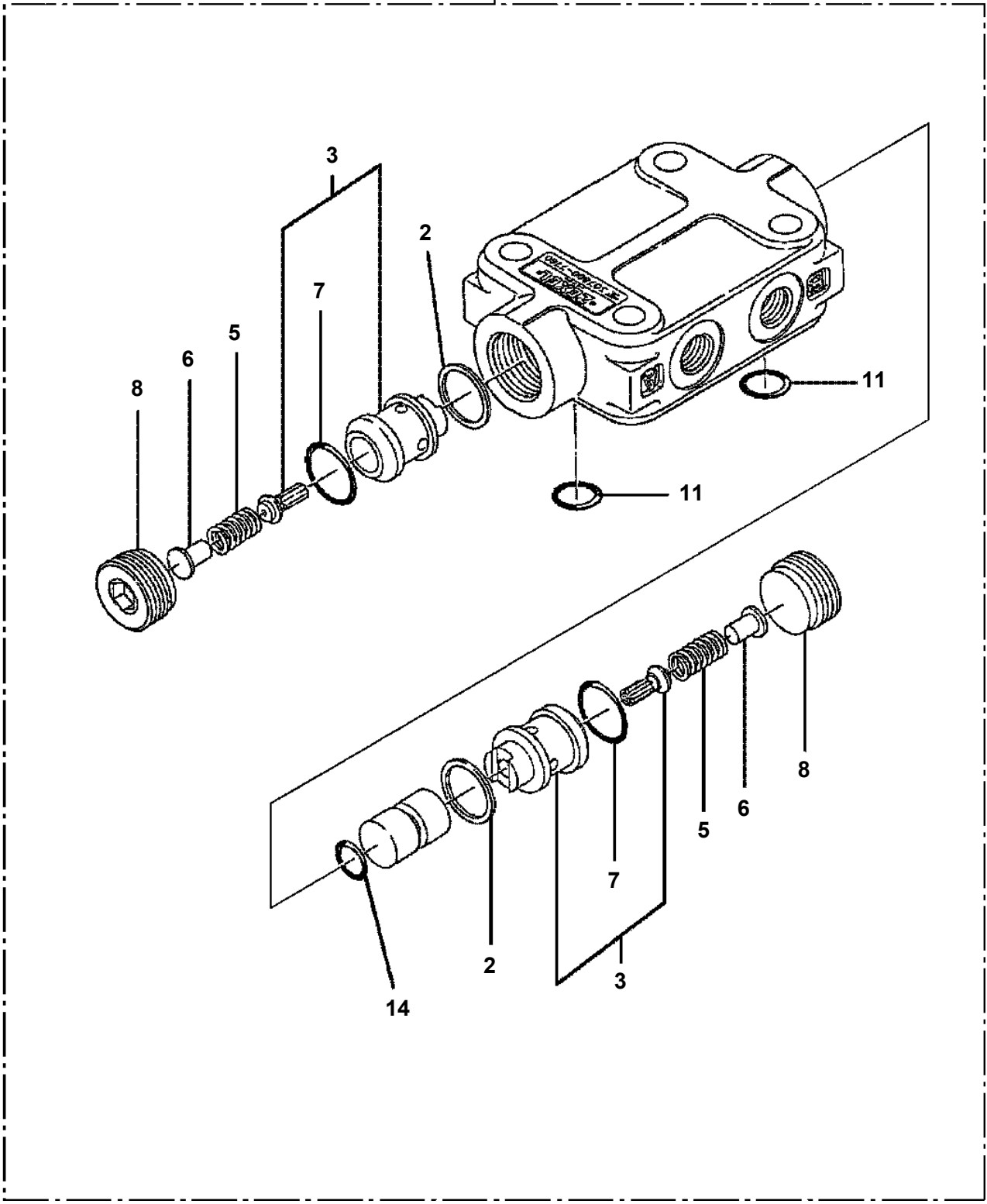
AT-147-3 43010100011 UPPER
PI1120238-02 VALVE,SOLENOID

100



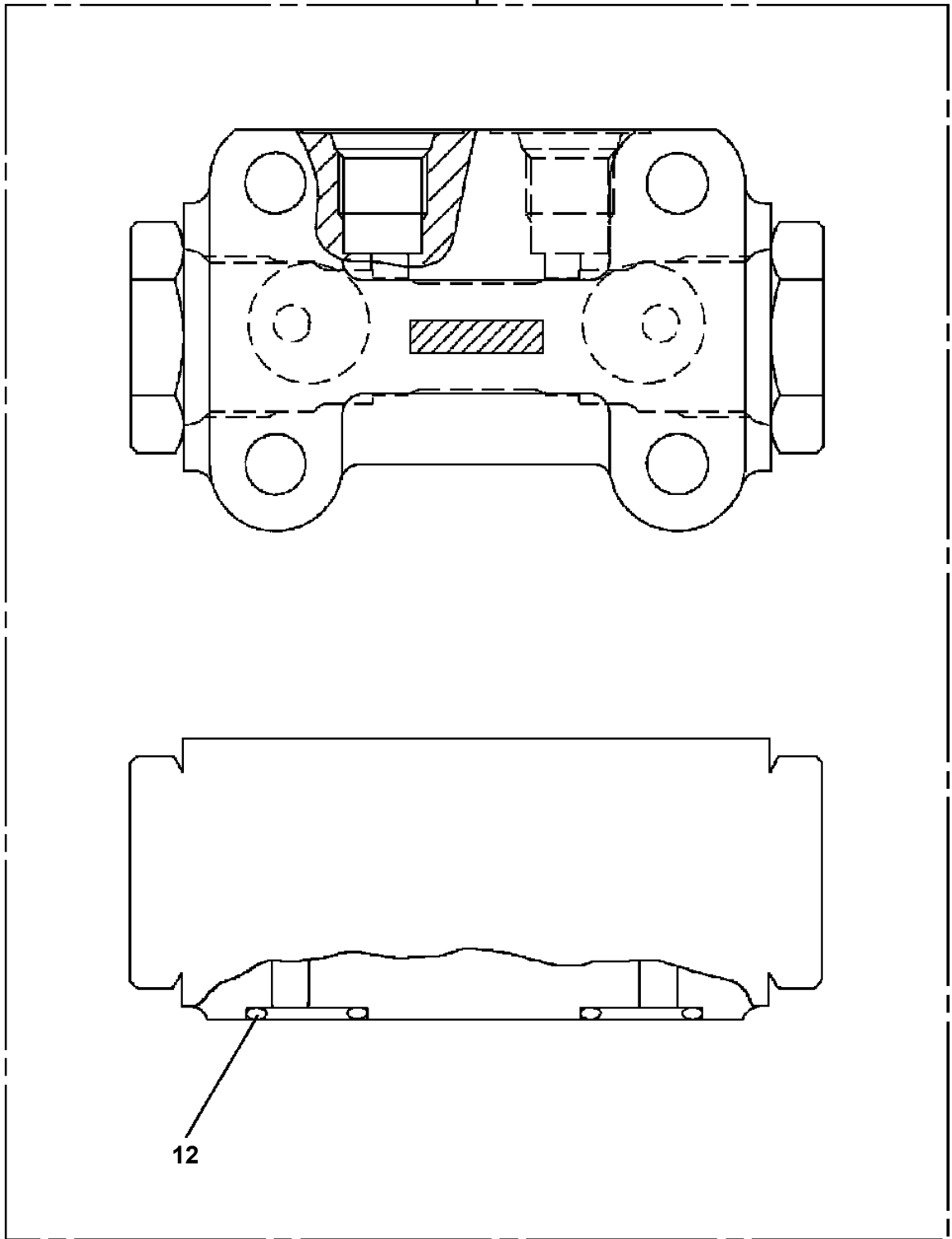
AT-147-3 43010100011 UPPER
PI1140133-01 VALVE,CHECK

100 → (A)



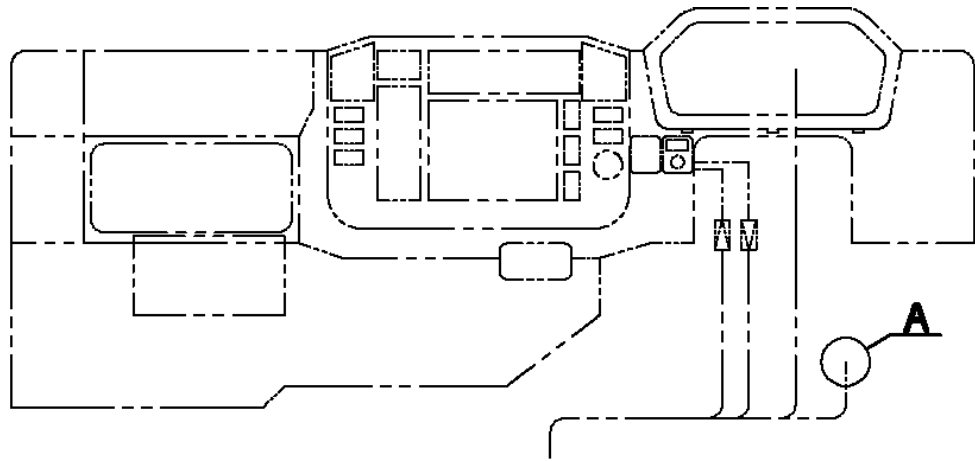
AT-147-3 43010100011 UPPER
PI1140227-00 VALVE,CHECK

100

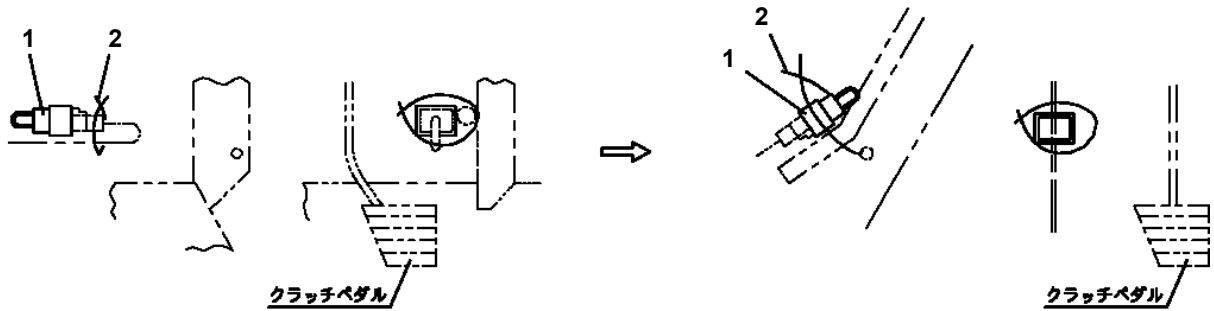


12

AT-147-3 43010100011 UPPER
PI5170001-05 INTERLOCK ASSY (HINO≠TOYOTA, FOR NO.3 BRAKE)

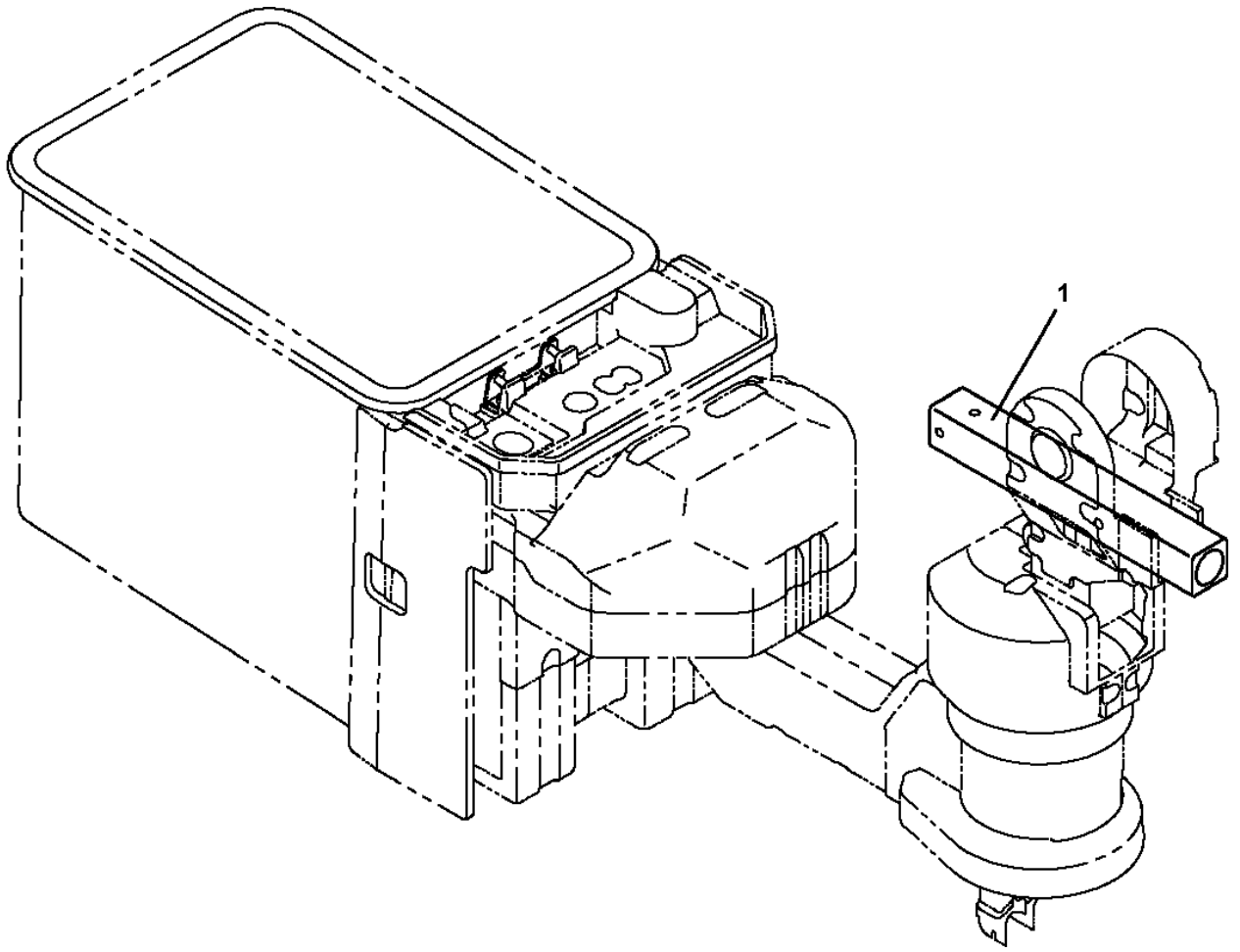


キャブ内



A

**AT-147-3 43010100011 UPPER
PJ5050119-00 JIB ASSY**



AT-147-3 43010100011 UPPER

Pos No.	Parts No	Parts Name	Qty	Unit	Technical Data	Serial No (Start)	Serial No (End)	Remarks
1	42272361004	COVER ASSY	1				590433	
	42272361005	COVER ASSY	1			590434		
3	90101208016	BOLT	12		M8X16			
4	90302040801	WASHER,SPRING	12		8			
5	90303070801	WASHER,PLAIN	12		8			
6	90101206014	BOLT	6		M6X14			
7	90302040601	WASHER,SPRING	6		6			
8	37000512320	PLATE	6					
9	42270480020	COVER	1					
10	42272360100	COVER	1					
20	37000550890	PLATE	3					
33	42272362004	COVER ASSY	1					
43	82464107501	HINGE	2					
44	90201500300	NUT	14		M3			
45	90302510301	WASHER,SPRING (SUS 3)	14					
46	80175803008	SCREW,MACHINE	8		M3X8			
77	82466117003	LOCK	1					
78	80175803010	SCREW,MACHINE	6		M3X8			
79	90303520301	WASHER,PLAIN	2		3			
91	42272362104	COVER	1					
92	42272362203	COVER	1					
100	42272362010	PLATE	4		T=0.5			
101	42272362020	PLATE	1		T=0.5			
102	42272362030	PLATE	1		T=0.5			

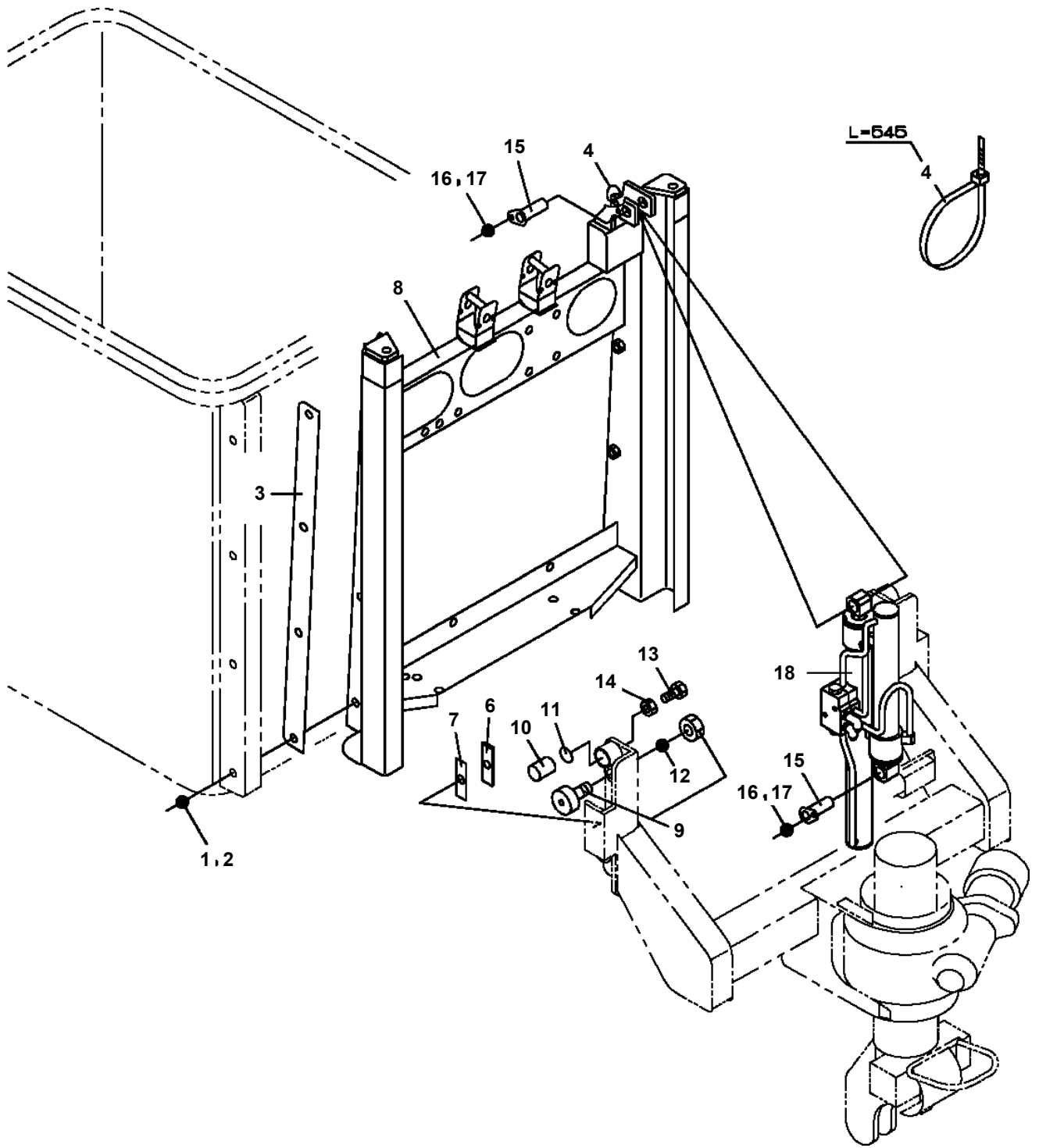
AT-147-3 43010100011 UPPER

Pos No.	Parts No	Parts Name	Qty	Unit	Technical Data	Serial No (Start)	Serial No (End)	Remarks	Pages
1	42505350000	COVER (RACK,B)	1						

AT-147-3 43010100011 UPPER

Pos No.	Parts No	Parts Name	Qty	Unit	Technical Data	Serial No (Start)	Serial No (End)	Remark
1	42332007510	PANEL	1					
2	42332007520	COVER	1					
3	42332007530	JOY STICK,CONTROLLER	1					
4	42332007540	JOY STICK,CONTROLLER	1					
5	42332007550	JOY STICK,CONTROLLER	1					
6	42331247540	PACKING	1					
7	42332007610	PACKING	1					
8	42331247630	GROMMET	1					
9	82114101030	CONNECTOR (3P,MALE)	8					
10	82121102030	HOLDER (3P,BOTH)	8					
11	82111101010	TERMINAL	15					
12	82111101018	TERMINAL	9					
13	82121101050	PLUG (BLACK/AV0.3 TO 0.5)	24					
14	80192483006	SCREW,MACHINE	4		M3X6			
31	42332007570	BOOT	1					
32	42332007580	KNOB	3					
33	42332007590	CAP	3					
41	42332007600	BOOT	2					
100	42332001000	LEVER,CONTROL	1					

AT-147-3 43010100011 UPPER
PM5150169-00 MODIFICATION ASSY (BUCKET FRAME)



CLICK HERE TO **DOWNLOAD** THE COMPLETE MANUAL

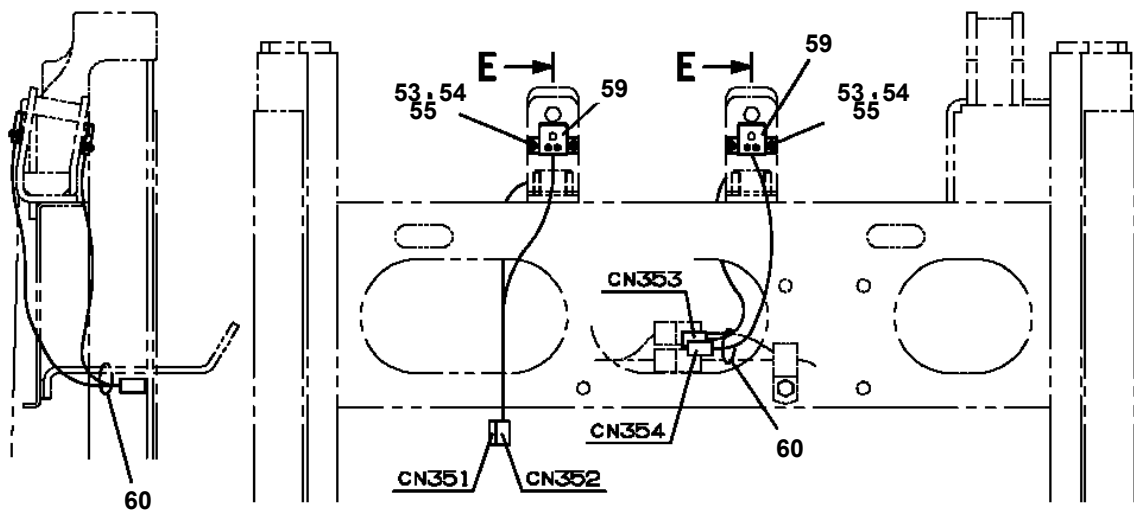
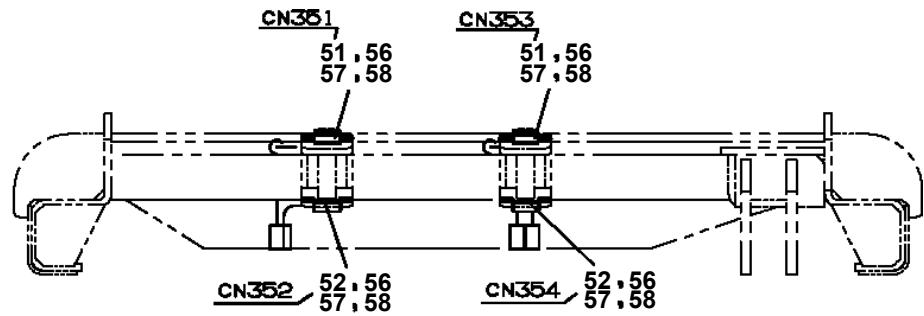
- Thank you very much for reading the preview of the manual.
- You can download the complete manual from: www.heydownloads.com by clicking the link below



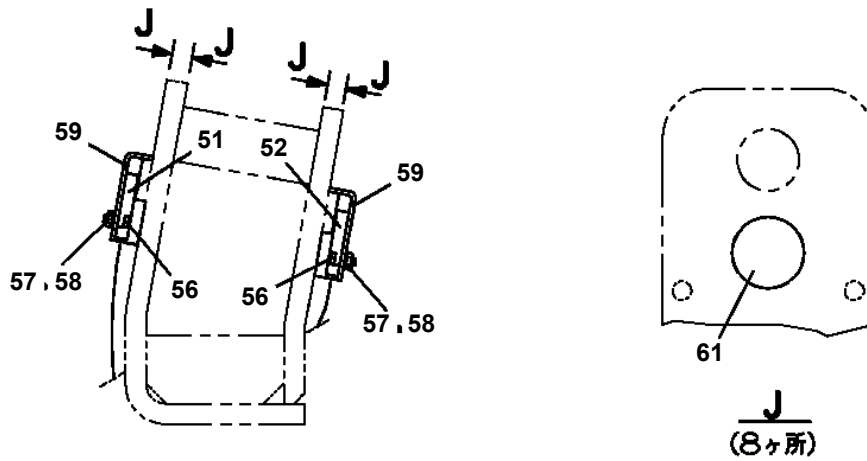
- Please note: If there is no response to CLICKING the link, please download this PDF first and then click on it.

CLICK HERE TO **DOWNLOAD** THE COMPLETE MANUAL

**AT-147-3 43010100011 UPPER
PM5150175-00 MODIFICATION ASSY (BUCKET ELECTRIC)**



D



E

J
(8ヶ所)

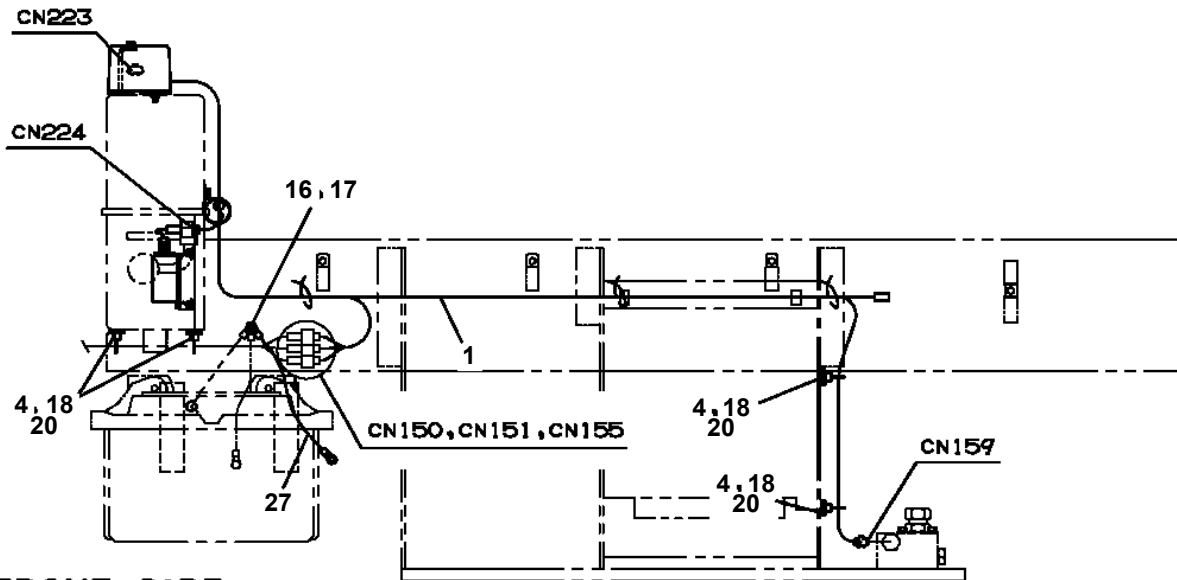
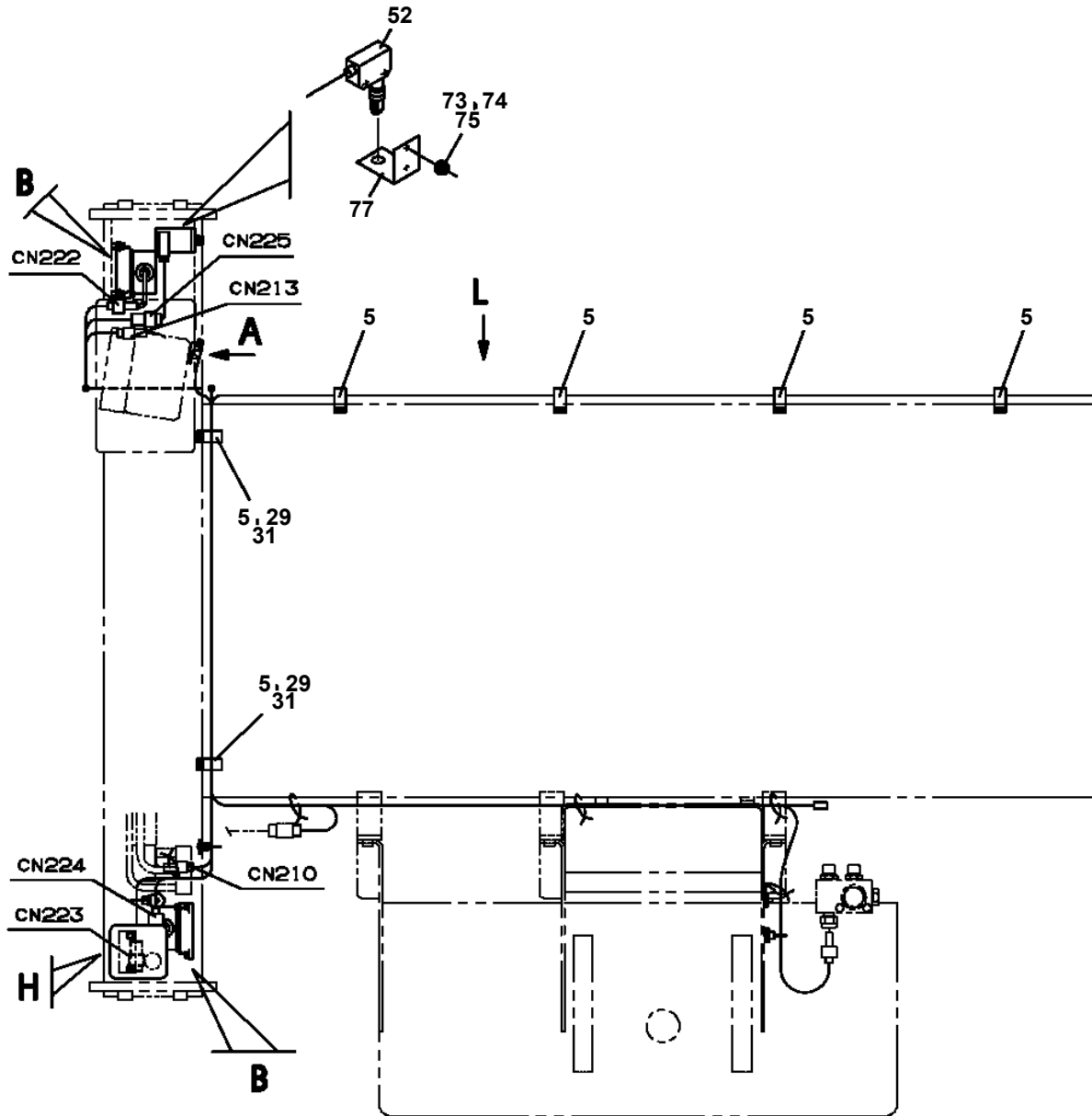
AT-147-3 43010100011 UPPER

Pos No.	Parts No	Parts Name	Qty	Unit	Technical Data	Serial No (Start)	Serial No (End)	Remarks	Pages
1	90102206050	BOLT	1		M6X50				
2	90201200600	NUT	4		M6				
3	42515230010	PLATE	2						

AT-147-3 43010100011 UPPER

Pos No.	Parts No	Parts Name	Qty	Unit	Technical Data	Serial No (Start)	Serial No (End)	Remarks	Pages
50	36663465030	SEAL KIT	1						
100	36663460001	MOTOR ASSY,OIL	1						

**AT-147-3 43010100011 UPPER
PN1014486-02 ELEC.ASSY (FRAME)**

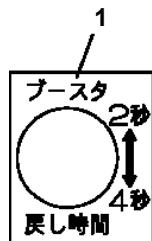
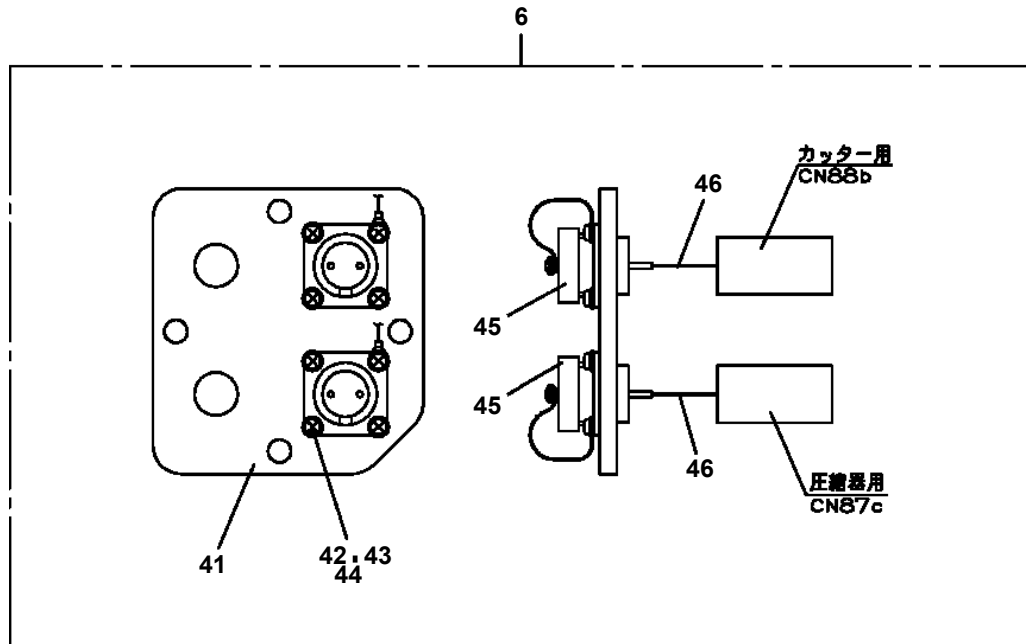


FRONT SIDE

AT-147-3 43010100011 UPPER

Pos No.	Parts No	Parts Name	Qty	Unit	Technical Data	Serial No (Start)	Serial No (End)	Re
1	42502782010	PLATE,NAME	1					
2	42736070100	SWITCH ASSY (WITH HARNESS)	1					
3	82100000665	CAP (BLACK)	1					
4	91810132530	FASTENER	20					
5	42500351100	HARNESS	1					
6	42476321100	CABLE ASSY	1		L=1000			
7	82100001411	TUBE, SPIRAL	1		SE-08BK			
8	42392583090	PLATE, CAUTION	1					
9	42503390200	LAMP ASSY (DC12V RED)	1					
10	42502852010	PLATE,NAME	1					
11	42502852020	PLATE,NAME	1					
12	42502852203	HARNESS	1					
13	82100001802	TUBE, CORRUGATE	1	M	10			
27	82100001655	CAP	1					

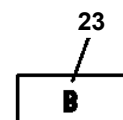
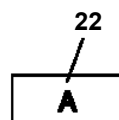
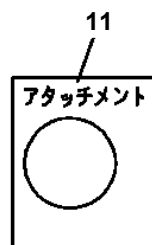
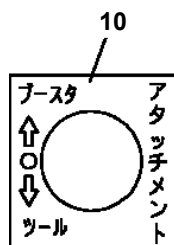
AT-147-3 43010100011 UPPER
 PN1014856-02 ELEC.ASSY



⚠ 警告 / ブースタ操作

- 圧縮器およびカッターの作動部分には指を入れないでください。
- 圧縮器のダイヤスまたはカッターの交換は、必ずアタッチメントレバー（スイッチ）を中立位置にして行ってください。

433-920-83070



AT-147-3 43010100011 UPPER

Pos No.	Parts No	Parts Name	Qty	Unit	Technical Data	Serial No (Start)	Serial No (End)	Re
1	42502951000	BOX ASSY (PLUG SOCKET)	2					
2	91810132530	FASTENER	16					
3	90101206016	BOLT	4		M6X16			
4	90302040601	WASHER,SPRING	4		6			
5	42442470050	PLATE	2					
6	42502950100	HARNESS	1					
7	82401601002	CLAMP	8				590499	
	82401601002	CLAMP	9			590500		
8	91810130240	FASTENER	8				590499	
	91810130240	FASTENER	9			590500		
9	42733650040	PLATE,NAME (POWER SOURCE)	2					
21	82114101020	CONNECTOR (2P,MALE)	2					
22	82121102020	HOLDER	2					
23	82111101010	TERMINAL	4					
24	82121101085	PLUG (AVS0.85)	4					
25	82100001425	CABLE	2	M				
26	82100000592	TERMINAL (M40.3 TO 1.25)	4					
27	82100001220	INSULATOR	4					
28	82100002399	CONNECTOR	2					
29	82100002129	PLATE	2					
30	80172304008	SCREW,MACHINE	4		M4X8			
31	90302040401	WASHER,SPRING	4		4			
32	42502951200	CASE	2					
33	82400000214	GROMMET	2					

AT-147-3 43010100011 UPPER

Pos No.	Parts No	Parts Name	Qty	Unit	Technical Data	Serial No (Start)	Serial No (End)	Re
2	42737850100	GUARD	4					
4	90280200600	NUT,FLANGE	16		M6			
5	42736070100	SWITCH ASSY (WITH HARNESS)	1					
6	82199514013	CAP	1					
7	42502980010	PLATE,NAME	1					
8	82199504017	NUT	1		AT-401N			
9	42502030100	SUPPORT	4					
11	37000306130	SPACER	8		L=8			
12	37000302980	SPACER	8		L=10			
13	90186206030	BOLT,FLANGE	16		M6X30			
21	82199444327	LAMP (YELLOW)	4		24V 12W			
22	90186206025	BOLT,FLANGE	16		M6X25			
23	82199444328	LAMP (YELLOW)	4		24V 12W			
24	42502980100	SUPPORT	4					
25	82199444329	LAMP (YELLOW)	4		24V 12W			
26	42505221100	GUARD (STEEL CAST)	4					
	42505221200	GUARD	4					
27	90280200600	NUT,FLANGE	8		M6			
28	90186206030	BOLT,FLANGE	8		M6X30			
41	82166600010	BULB,LAMP	12		24V/12W			

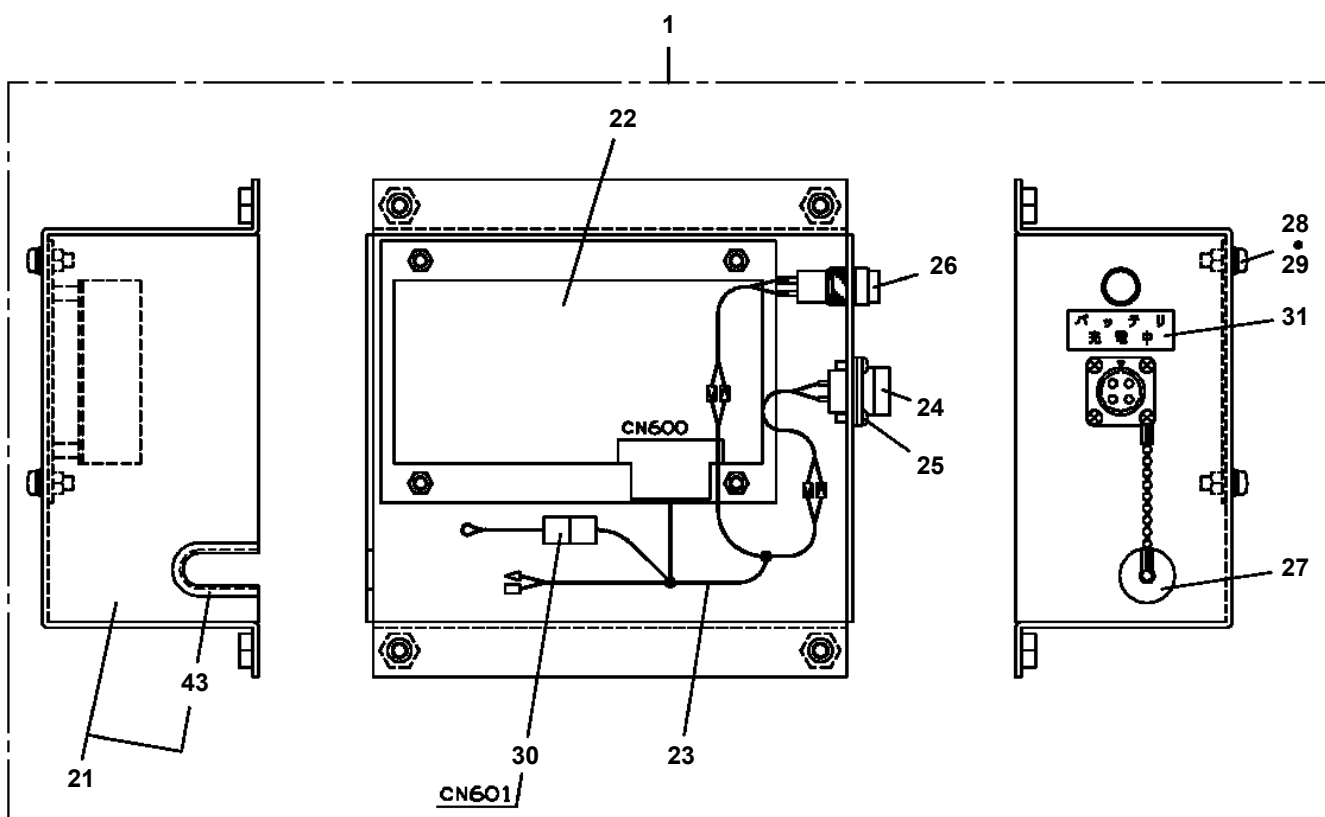
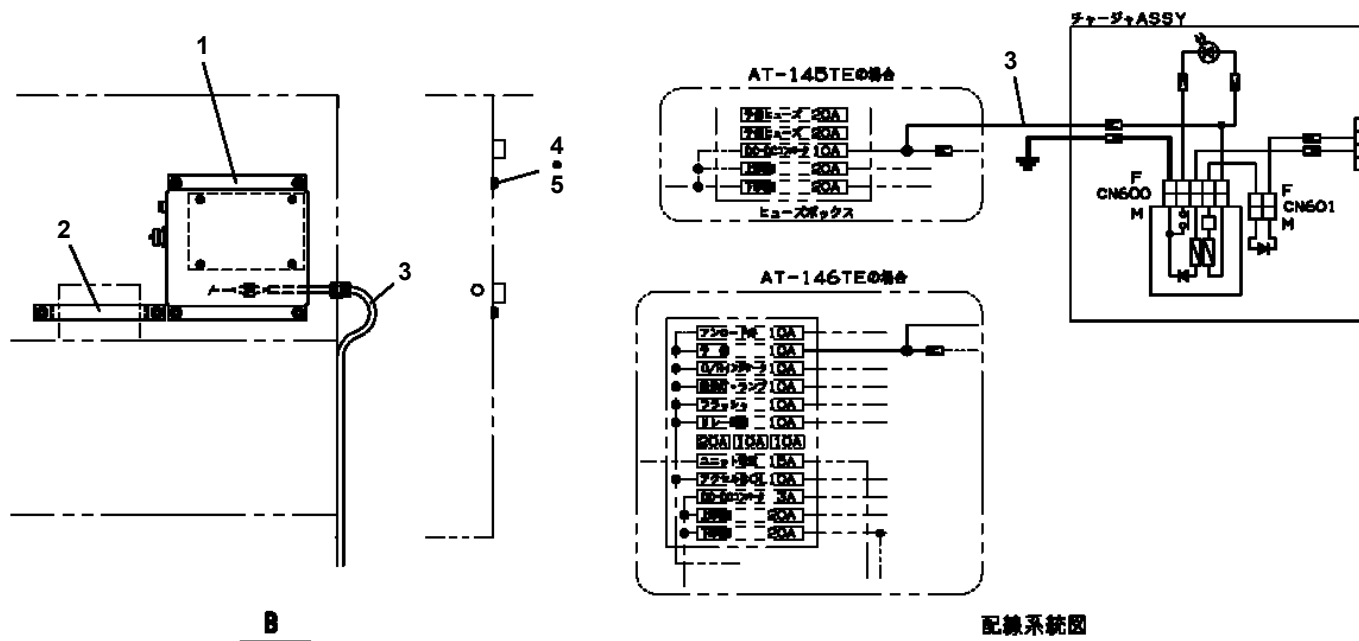
AT-147-3 43010100011 UPPER

Pos No.	Parts No	Parts Name	Qty	Unit	Technical Data	Serial No (Start)	Serial No (End)	Remarks	Pages
1	42503861000	LAMP ASSY	1						
2	42503860100	SUPPORT	1						
3	42503860200	GUARD	1						
4	90201200600	NUT	4		M6				
5	90302040601	WASHER,SPRING	4		6				
6	82430138010	KNOB	1						
7	90101208030	BOLT	1		M8X30				

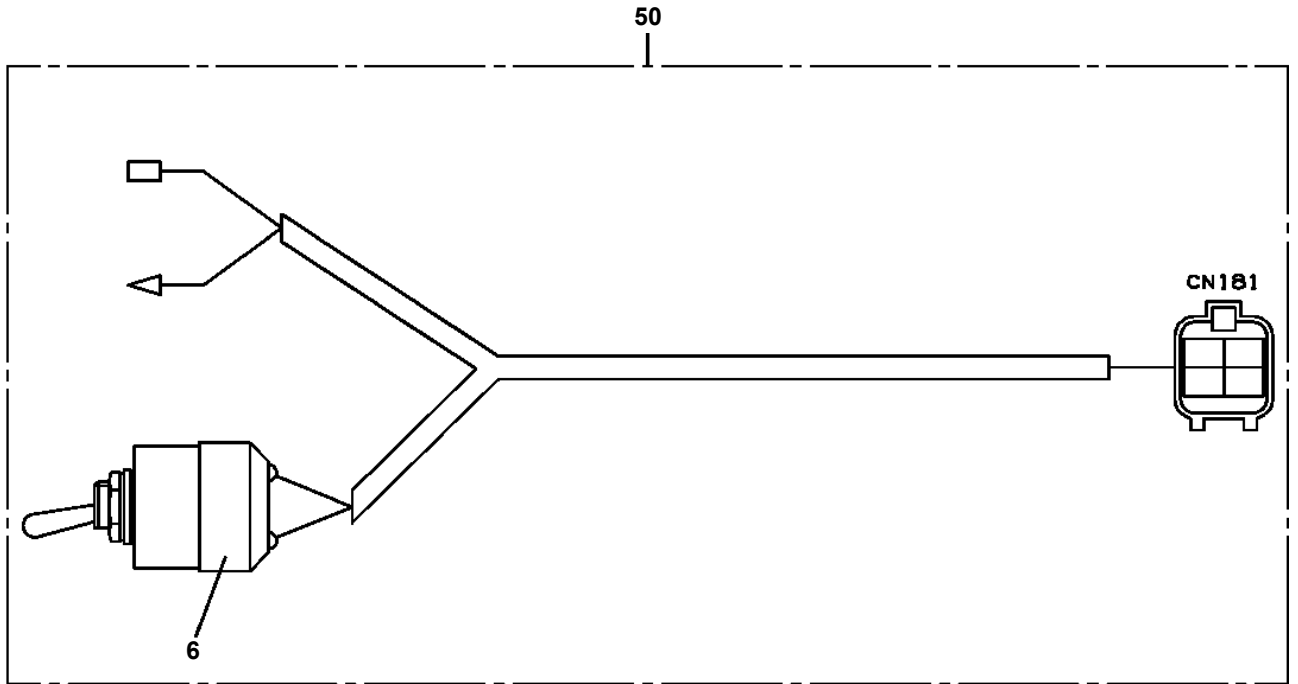
AT-147-3 43010100011 UPPER

Pos No.	Parts No	Parts Name	Qty	Unit	Technical Data	Serial No (Start)	Serial No (End)
6	82105220286	SWITCH,TOGGLE	3				
50	42651591300	SWITCH ASSY (WITH HARNESS,3 SW)	1				

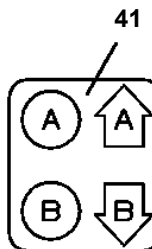
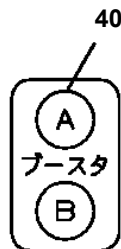
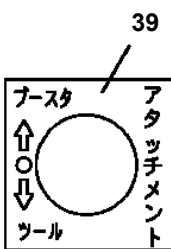
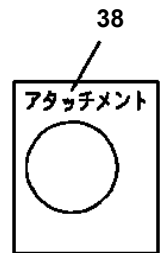
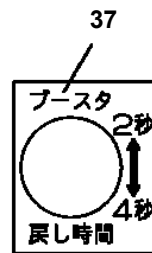
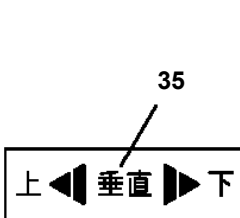
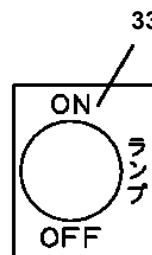
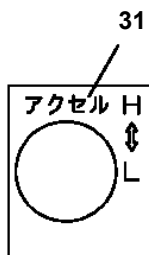
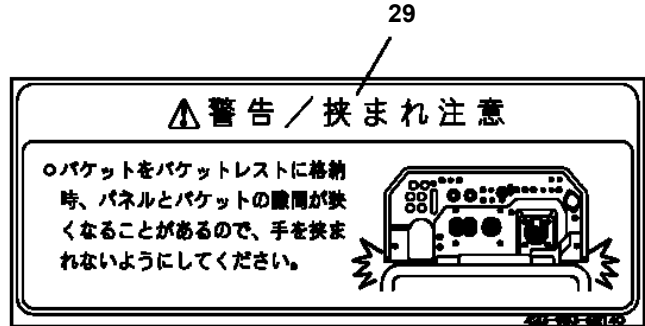
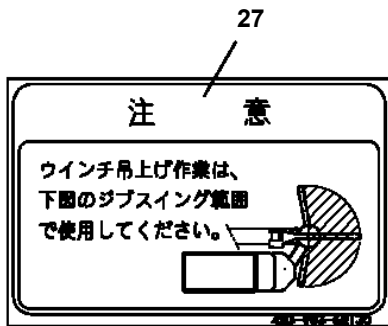
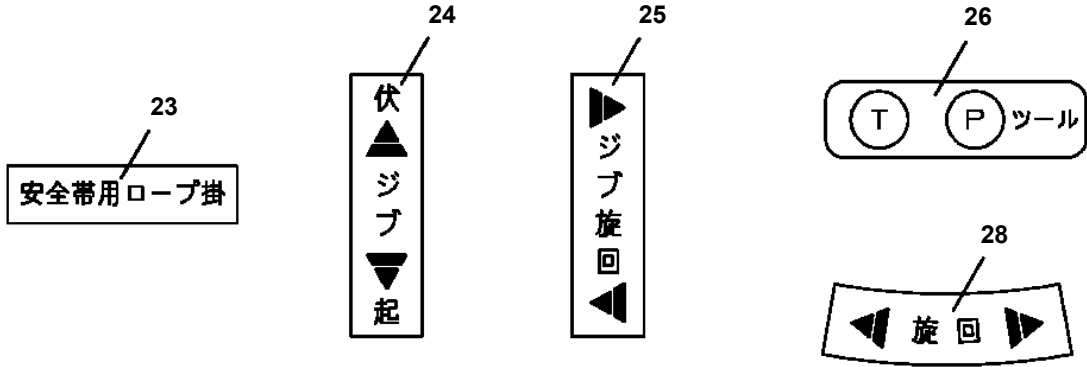
AT-147-3 43010100011 UPPER PN1360001-01 CHARGER INSTALLATION (MECHANICAL ARM)



**AT-147-3 43010100011 UPPER
PN1450022-00 HARNESS**



AT-147-3 43010100011 UPPER
 PN5010254-00 NAME PLATE ASSY (BUCKET PANEL)



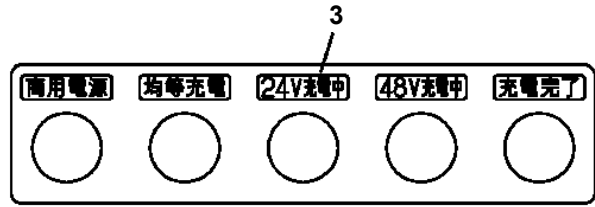
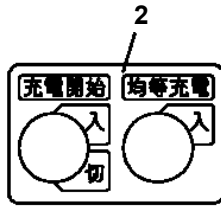
AT-147-3 43010100011 UPPER

Pos No.	Parts No	Parts Name	Qty	Unit	Technical Data	Serial No (Start)	Serial No (End)	Remarks	Pa
1	82444100200	PLATE,NAME (200KG)	1						

AT-147-3 43010100011 UPPER

Pos No.	Parts No	Parts Name	Qty	Unit	Technical Data	Serial No (Start)	Serial No (End)	Remarks	Pages
1	82444100400	PLATE,NAME	1						

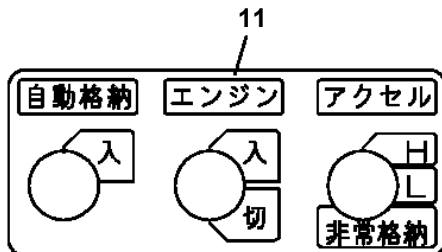
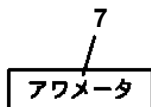
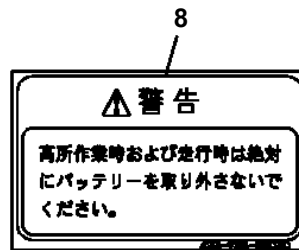
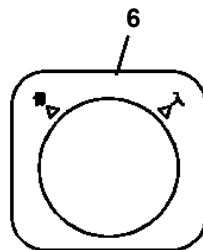
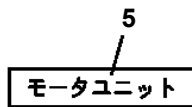
AT-147-3 43010100011 UPPER
 PO1014990-01 PLATE ASSY,NAME (MOTOR UNIT)



4

バッテリーの充電方法

- モーターユニットメインスイッチを「切」にしてください。
 電源コードを指定の電源に接続してください。
 「商用電源」表示灯が点灯します。このまま放置すると
 第1時間後に「24V充電中」表示灯が点灯します。
- 「充電開始」スイッチを「入」にしてください。
 「48V充電中」・「24V充電中」表示灯が点灯します。
 このまま充電を継続すると自動的に充電が完了し、
 「充電完了」表示灯が点灯します。
 充電途中で中止する場合は、必ず「充電開始」スイッチを
 「切」にしてから電源を切ってください。
- 夏場は2週間に1回、冬場は1週間に1回を目安に均等充電
 をしてください。バッテリーが完全に上がった場合や、使用後、
 すみやかに充電しなかった場合も均等充電してください。
 「充電開始」スイッチを「入」にしたのち、「均等充電」
 スイッチを「入」にしてください。
 「48V充電中」・「均等充電」表示灯が点灯します。

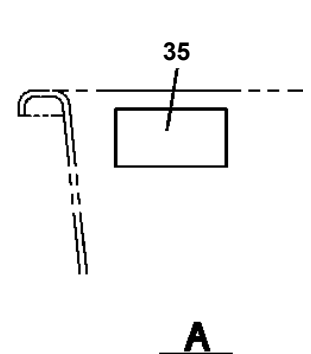
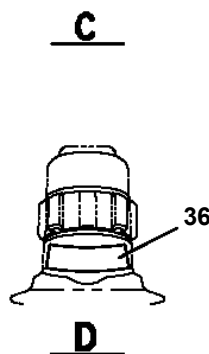
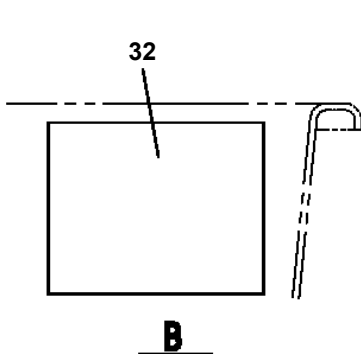
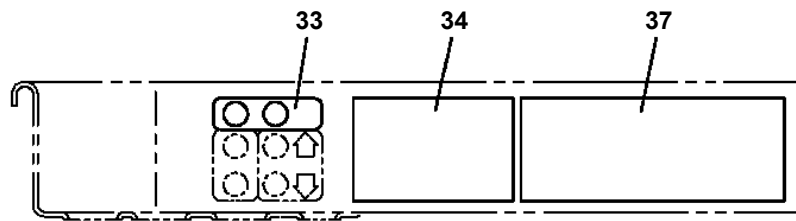
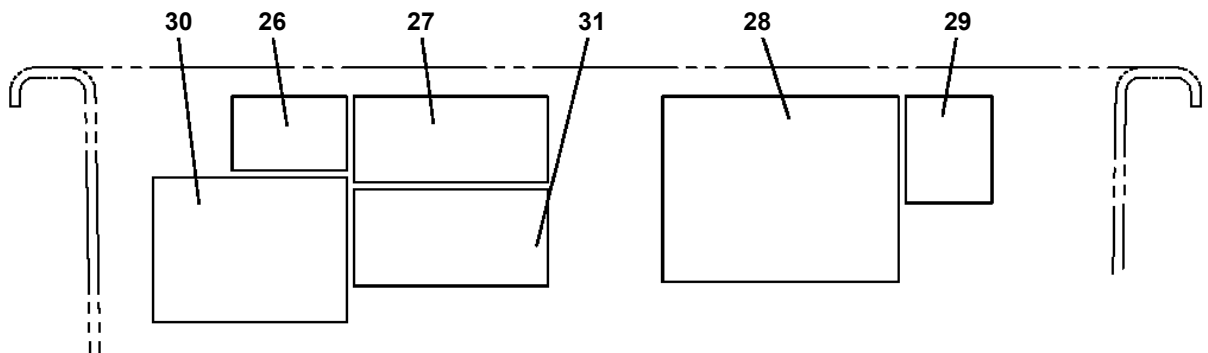
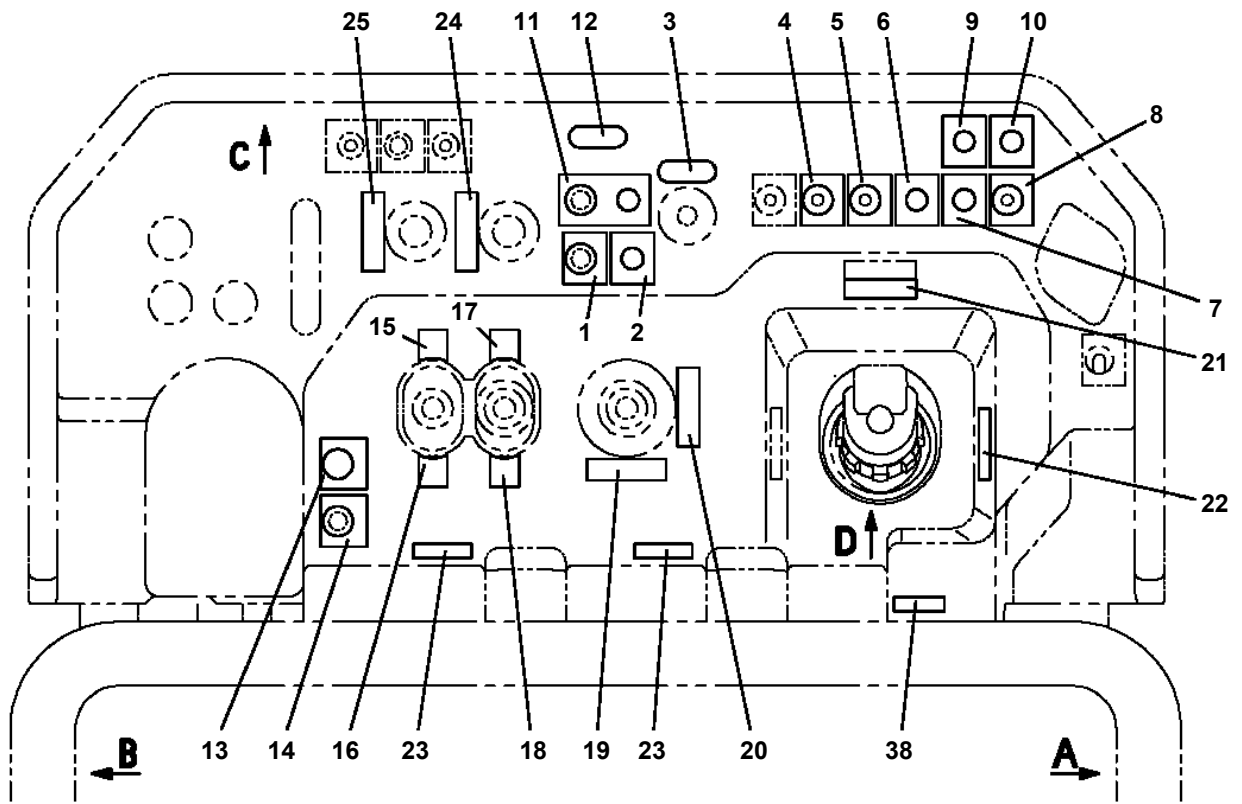


12

電動ポンプの使用法

連続使用時間は8分以内とし、次の使用まで
 使用時間と同等以上の休みを取ってください。

**AT-147-3 43010100011 UPPER
PO1015604-01 PLATE ASSY,NAME (BUCKET)**



AT-147-3 43010100011 UPPER

Pos No.	Parts No	Parts Name	Qty	Unit	Technical Data	Serial No (Start)	Serial No (End)	Remarks	Pages
1	42504520010	PLATE,NAME	1						

AT-147-3 43010100011 UPPER

Pos No.	Parts No	Parts Name	Qty	Unit	Technical Data	Serial No (Start)	Serial No (End)	Remarks	Pages
7	42332677560	SPRING	1						
11	42332677520	PLUG	1						
12	42332677530	BOOT	1						
21	42332677610	COVER	1						
22	42332677620	CAP	1						
23	42332671010	PLATE	1						
47	42332677630	BEARING	2						
48	42332677540	SPRING	1						
49	42332677650	SPRING	2						
54	42332677660	WASHER	1						
100	42333572000	OPE.ASSY	1						

AT-147-3 43010100011 UPPER

Pos No.	Parts No	Parts Name	Qty	Unit	Technical Data	Serial No (Start)	Serial No (End)	Remarks	Pages
1	37002417490	HOSE	1		L=1800				
2	37002417600	HOSE	1		L=1900				
3	37002418070	HOSE	1		L=1850				
4	82100001411	TUBE, SPIRAL	2	M	SE-08BK				
5	90101208015	BOLT	2		M8X15				
6	90302040801	WASHER, SPRING	2		8				
8	91810130270	FASTENER	20						
9	91002801800	O-RING	2		1B P18				
10	80481304024	JOINT	2						
11	37002406620	HOSE	1		L=1660				
12	37002415120	HOSE	1		L=1650				
13	37002473680	HOSE	1		L=1720				
14	37002437630	HOSE	1		L=1840				
15	42832750010	PLATE	1						
16	37002416230	HOSE	2		L=1040				
17	37002473640	HOSE	1		L=1040				
19	37002471530	HOSE	1		L=2040				
20	37002406670	HOSE	2		L=1610				
21	82420912713	TRIM	1	M					
22	80430620400	JOINT	2						
41	42347241100	JOINT	1						
42	80400160129	JOINT	4						
43	80400160127	JOINT	5						
44	80316090020	PLUG	3		KKT PT1/8				
45	91002801100	O-RING	7		1B P11				
46	91002801400	O-RING	4		1B P14				

AT-147-3 43010100011 UPPER

Pos No.	Parts No	Parts Name	Qty	Unit	Technical Data	Serial No (Start)	Serial No (End)	Remarks	Pages
1	42356443552	CASE	1						
2	42356443600	COVER	1						
3	42355192100	PLATE	1						
4	42351693500	RELAY ASSY	2						
5	42355192200	HARNESS	1						
6	80174303010	SCREW,MACHINE	6		M3X10				
8	90302040301	WASHER,SPRING	10		3				
9	91810132530	FASTENER	2						
10	80182306012	SCREW,MACHINE	6		M6X12				
12	90302040601	WASHER,SPRING	6		6				
13	82400000201	GROMMET	1		KG-016				
14	80174303006	SCREW,MACHINE	4		M3X6				
100	42356443502	RELAY BOX ASSY	1						00015

AT-147-3 43010100011 UPPER

Pos No.	Parts No	Parts Name	Qty	Unit	Technical Data	Serial No (Start)	Serial No (End)	Remarks	P
1	(*****)	BOOSTER	1						00
2	(*****)	ELEC.ASSY (BOOSTER)	1						00
3	(*****)	PIPING ASSY (BOOSTER)	1						00

AT-147-3 43010100011 UPPER

Pos No.	Parts No	Parts Name	Qty	Unit	Technical Data	Serial No (Start)	Serial No (End)	Remarks	Pages
1	42443243100	SUPPORT	1						
2	42443243200	SUPPORT	1						
3	82466154603	CATCH	1						
4	80175803006	SCREW,MACHINE	3		M3X6				
5	42698150300	INSULATOR	3						
6	80172804010	SCREW,MACHINE	3		M4X10				
7	90302510401	WASHER,SPRING	8		4				
8	90303520401	WASHER,PLAIN	4		4				
9	82400000393	INSULATOR	1						
10	80172804014	SCREW,MACHINE	1		M4X14				
11	82464107812	HINGE	1						
12	80172804008	SCREW,MACHINE	4		M4X8				
13	80175804006	SCREW,MACHINE	2		M4X6				
14	42875640010	PLATE	2		T=0.5	590456			
100	42443243002	SUPPORT ASSY	1						

AT-147-3 43010100011 UPPER

Pos No.	Parts No	Parts Name	Qty	Unit	Technical Data	Serial No (Start)	S
1	42973990100	SUPPORT (7 DEGREES ANGLE METER MOUNTING)	1				

AT-147-3 43010100011 UPPER

Pos No.	Parts No	Parts Name	Qty	Unit	Technical Data	Se
1	42470980100	SWITCH,PUSH	1			
2	82100002220	CABLE	3	M		
3	82100002173	CONNECTOR	1			
10	42470983000	SWITCH BOX (ELECTRIC BOOSTER, 3M,NANABOSI,SINKOU DENKI)	1			

AT-147-3 43010100011 UPPER

Pos No.	Parts No	Parts Name	Qty	Unit	Technical Data	Serial No (Start)	Serial No (End)	Remarks	Page
5	91002902500	O-RING	4		1B G25				
8	80316090020	PLUG	4		KKT PT1/8				
9	36606975020	PLUG	1						
10	91002801400	O-RING	1		1B P14				
12	16066241000	SPRING	1						
22	36606985020	RELIEF ASSY	1						
100	36606980000	VALVE ASSY,RELIEF	1						

AT-147-3 43010100011 UPPER

Pos No.	Parts No	Parts Name	Qty	Unit	Technical Data	Serial No (Start)	Serial No (End)	Remarks
3	59251502190	O-RING	4					
6	59251502170	O-RING	2					
10	91001300700	O-RING	2		WP7			
13	36640355010	COIL,SOLENOID	2					
100	36742710000	VALVE ASSY,SOLENOID	1					

AT-147-3 43010100011 UPPER

Pos No.	Parts No	Parts Name	Qty	Unit	Technical Data	Serial No (Start)	Serial No (End)
1	42460012550	WEDGE (STOPPER FOR TIRE/JUSTIN)	1				
	42460012550	WEDGE (STOPPER FOR TIRE/JUSTIN)	1				

AT-147-3 43010100011 UPPER

Pos No.	Parts No	Parts Name	Qty	Unit	Technical Data	Serial No (Start)	Serial No (End)	Remarks	Pages
1	42698900500	FENDER	1				590455		
	42698900501	FENDER	1			590456	590496		
2	90186208020	BOLT,FLANGE	8		M8X20				
3	90280200800	NUT,FLANGE	8		M8				
4	42698900602	FENDER	1				590525		
	42698900603	FENDER	1			590526			
5	90101208014	BOLT	6		M8X14				
6	90302040801	WASHER,SPRING	8		8				
7	42698900700	FENDER	1				590455		
	42698900701	FENDER	1			590456			
8	42698900802	FENDER	1						
9	42698900901	SUPPORT	1						
10	37000511290	PLATE	1						
11	90101208030	BOLT	1		M8X30				
12	90201200800	NUT	2		M8				
13	90303070801	WASHER,PLAIN	3		8				
16	42698900502	FENDER	1			590497			
17	82467300103	PLUG	2			590497			

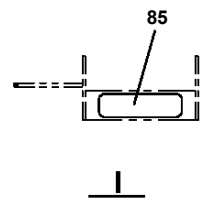
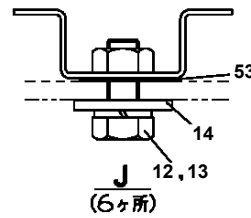
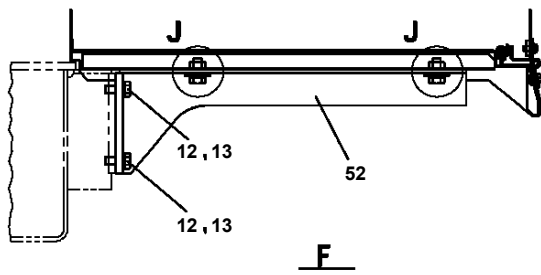
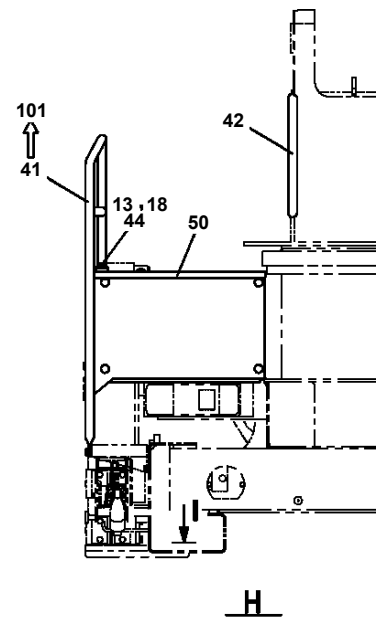
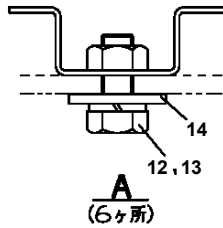
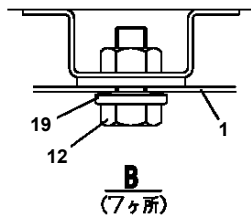
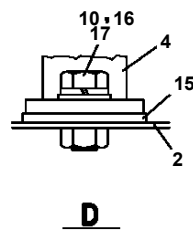
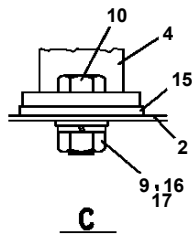
AT-147-3 43010100011 UPPER

Pos No.	Parts No	Parts Name	Qty	Unit	Technical Data	Serial No (Start)	Serial No (End)
1	42731680000	WOOD BLOCK (WITH RUBBER,T=80)	1				

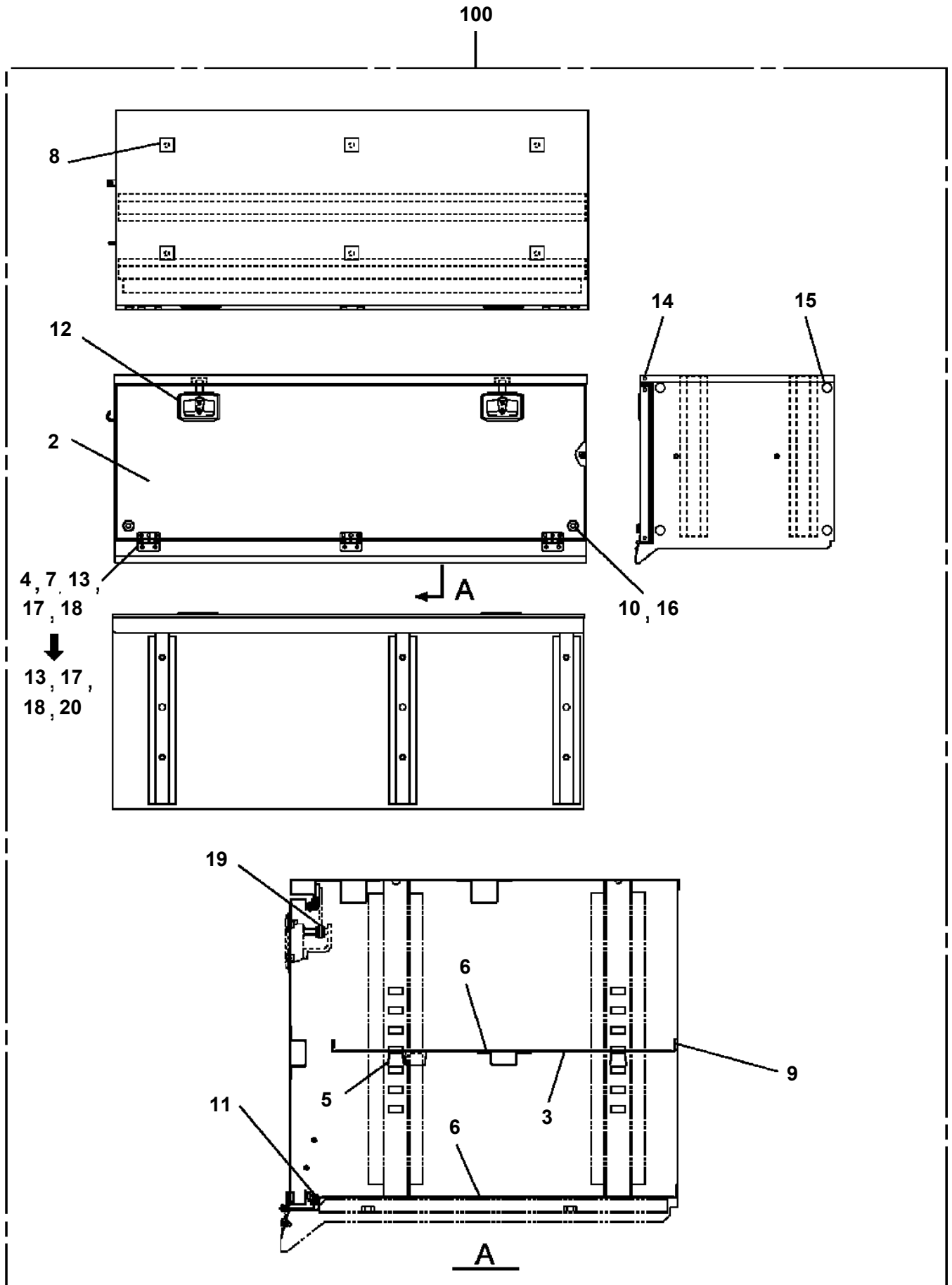
AT-147-3 43010100011 UPPER

Pos No.	Parts No	Parts Name	Qty	Unit	Technical Data	Serial No (Start)	S
1	42971851000	WOOD BLOCK (KANSAI DENRYOKU/DETACHABLE)	1				

**AT-147-3 43010100011 UPPER
PX1350972-02 BOX, TOOL**



AT-147-3 43010100011 UPPER
PX1351074-01 BOX, TOOL

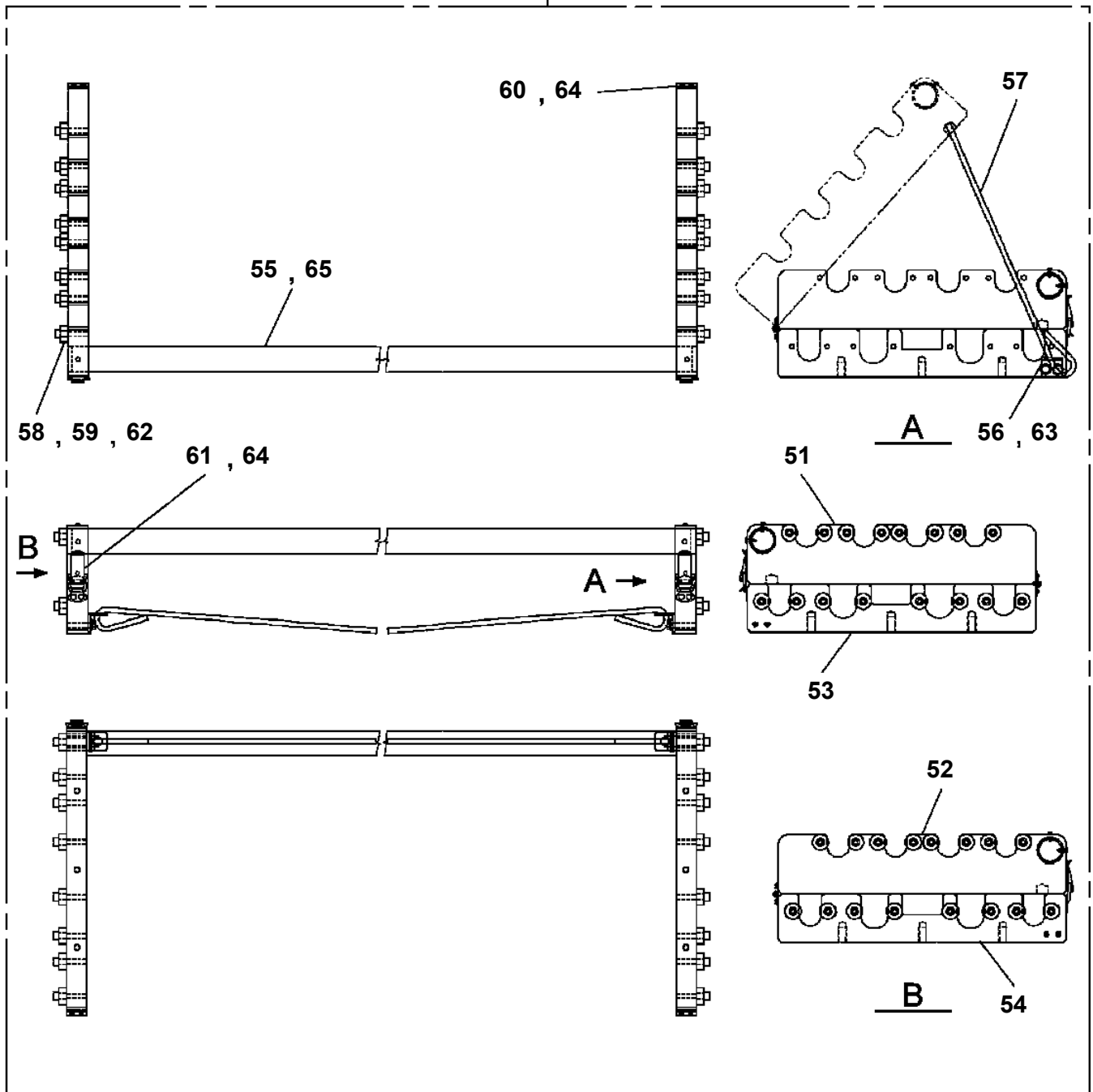


AT-147-3 43010100011 UPPER

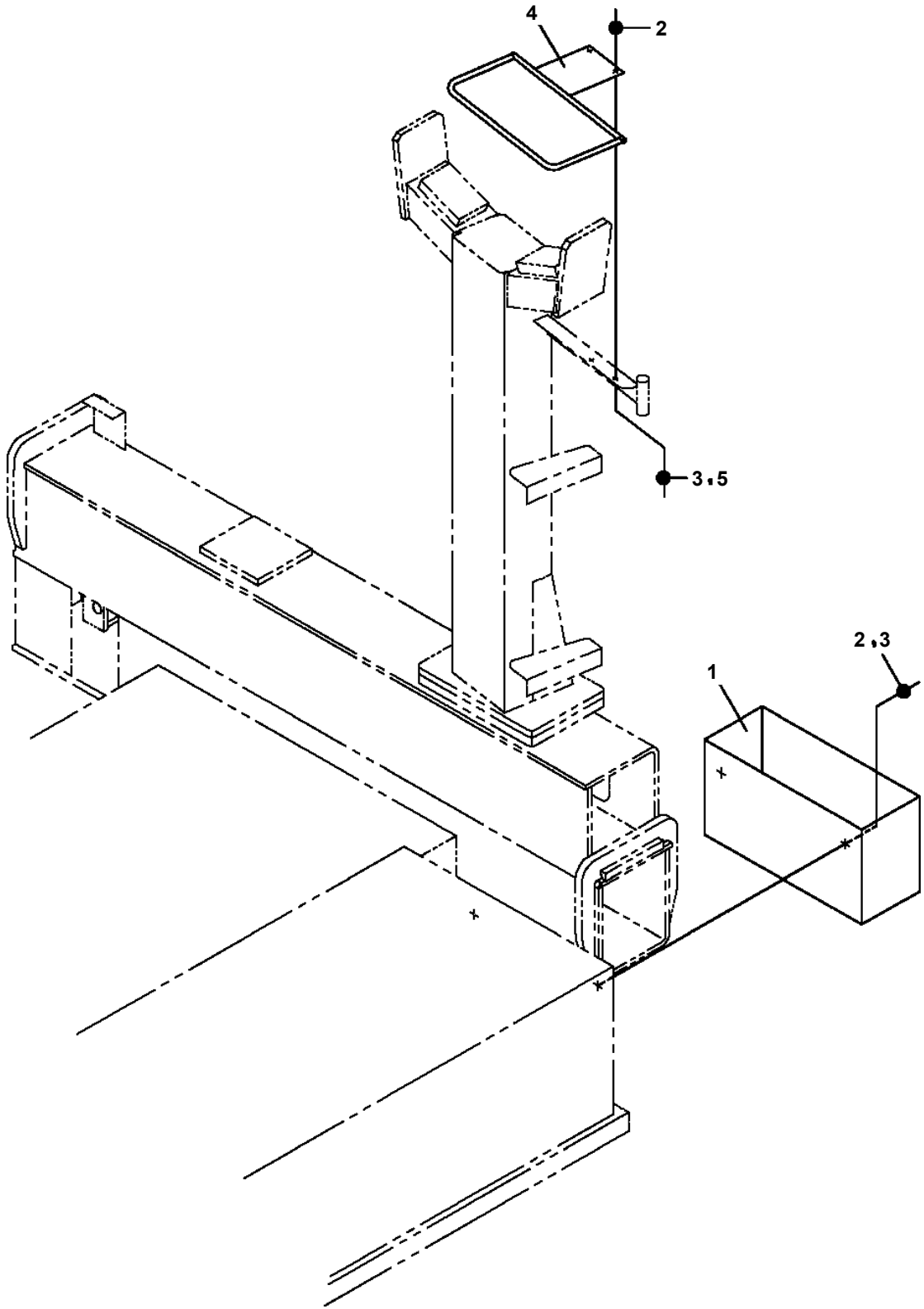
Pos No.	Parts No	Parts Name	Qty	Unit	Technical Data	Serial No (Start)	Serial No (End)	Remarks	Pages
1	42836031000	BOX,TOOL	1						000369
2	42836032000	BOX,TOOL	1						000370
3	82401800080	PLUG (FOR M8)	8						
4	42836034001	FENDER	1						
5	82400000345	CHAIN (QTY=L)	1	M			590489		
	82400000575	CHAIN	1	M		590490			
6	90186206016	BOLT,FLANGE	1		M6X16				
7	90280200600	NUT,FLANGE	1		M6				
8	90101210025	BOLT	12		M10X25				
9	90302041001	WASHER,SPRING	8		10				
10	37000505950	PLATE	15		T=3.2				
11	42835802010	SUPPORT	1						
12	90101210020	BOLT	2		M10X20				
13	90280200800	NUT,FLANGE	9		M8				
14	37000506530	PLATE	9		T=4.5				
15	82466102910	WASHER	6		M10				
16	42836651100	GUARD,SIDE	1						
17	90186210025	BOLT,FLANGE	2		M10X25				
18	90280201000	NUT,FLANGE	2		M10				
19	42775690301	SUPPORT	1						
20	90201200800	NUT	2		M8				
21	37000520150	PLATE	2						
22	90101208025	BOLT	1		M8X25				
23	90186210014	BOLT,FLANGE	2		M10X14				
24	90240201000	NUT,CAP	2		M10				
41	42836041103	SUPPORT	1				590437		
	42836041104	FENDER	1			590438			
46	37000581940	PLATE	N		T=0.5				

AT-147-3 43010100011 UPPER
PX1351200-01 BOX, TOOL

5



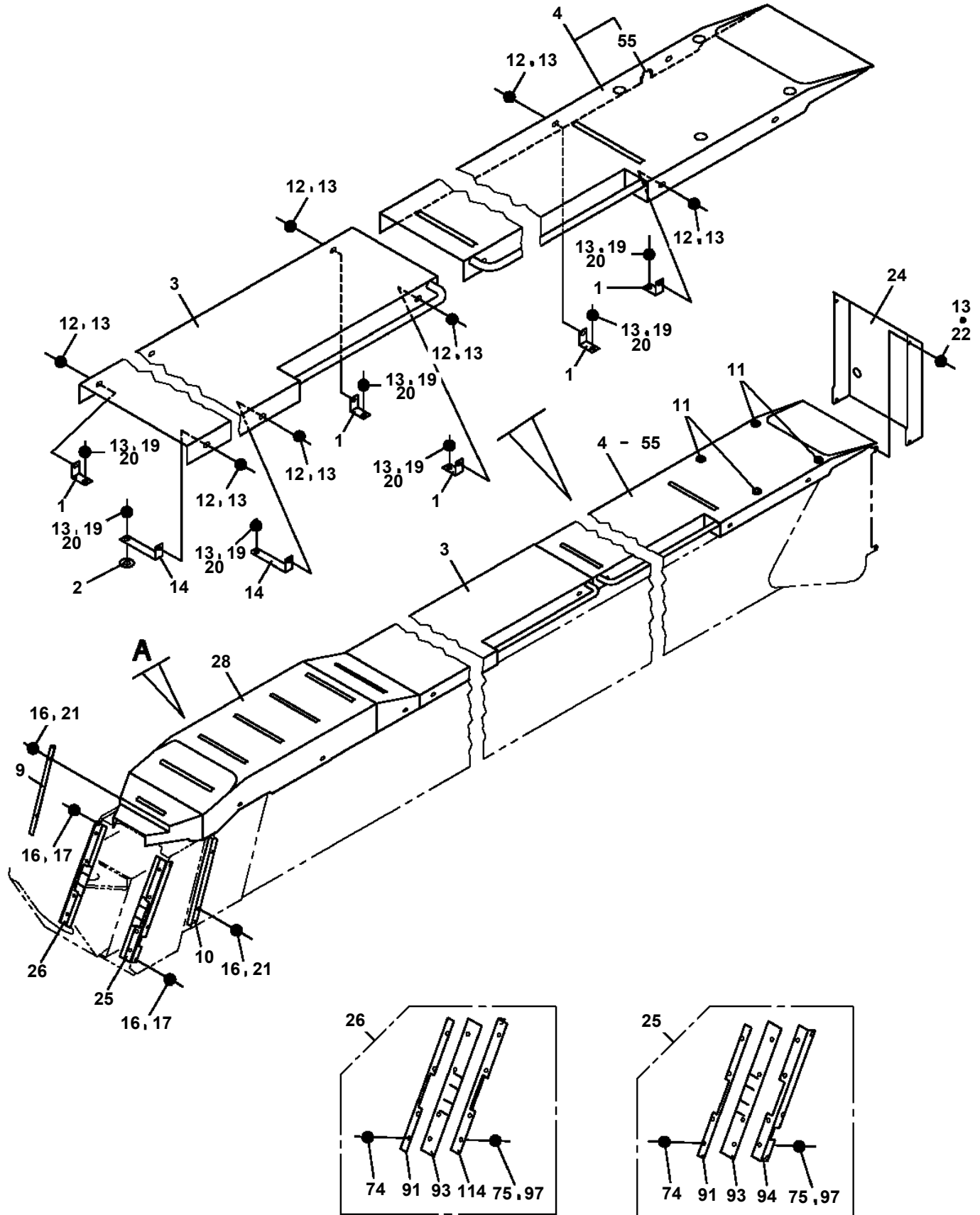
**AT-147-3 43010100011 UPPER
PX1620033-00 MOUNT,COLOR CONE SUPPORT**



AT-147-3 43010100011 UPPER

Pos No.	Parts No	Parts Name	Qty	Unit	Technical Data	Serial No (Start)	Serial No (End)	Remarks	Pa
1	42508002200	HARNES	1						000
2	91810132530	FASTENER	20						
3	(*****)	BATTERY	1						000
4	(*****)	BATTERY	1						000
5	90201200800	NUT	4		M8				
6	90302040801	WASHER,SPRING	8		8				
7	90101208012	BOLT	4		M8X12				
8	90101208020	BOLT	4		M8X20				
9	82100002009	CLAMP	1		WRC12				
10	82100001837	FUSE	2		5A				
11	42508002010	PLATE	1			590482			
31	42626302100	PLATE	2						
42	42508271200	SUPPORT	1						
51	37002201980	PLATE,NAME	2						
52	42930890210	PLATE,NAME	1						
73	42399001010	PLATE,NAME (FUSE)	1			590426			

AT-147-3 43010100011 UPPER
 PX5260017-02 MOUNT ASSY,COVER (BOOM)

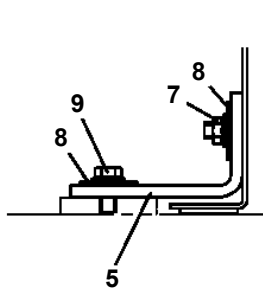


展開圖有
 ILLUSTRATED BREAKDOWN NO. 28

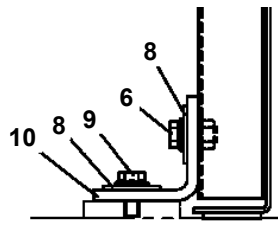
AT-147-3 43010100011 UPPER

Pos No.	Parts No	Parts Name	Qty	Unit	Technical Data	Serial No (Start)	Serial No (End)	Remarks	Pages
1	42444270100	CLAMP	1		R=42.5				
2	42444270200	CLAMP	1		R=42.5				
3	90101208025	BOLT	2		M8X25				
4	90302040801	WASHER,SPRING	2		8				
5	90303070801	WASHER,PLAIN	6		8				
6	90201200800	NUT	2		M8				

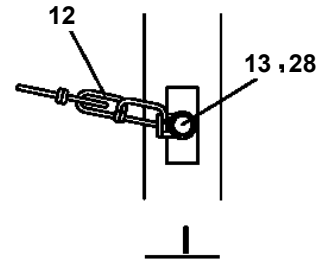
**AT-147-3 43010100011 UPPER
PX5780245-01 MOUNT ASSY, TOOL BOX (RIGHT/F:RACK,R:1DECKER)**



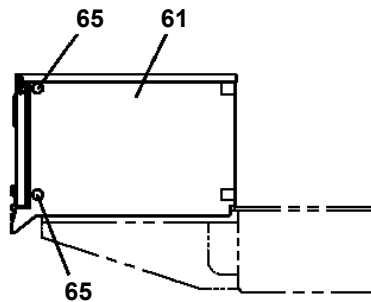
A
(4ヶ所)



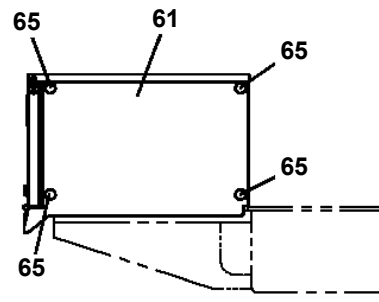
B
(2ヶ所)



I

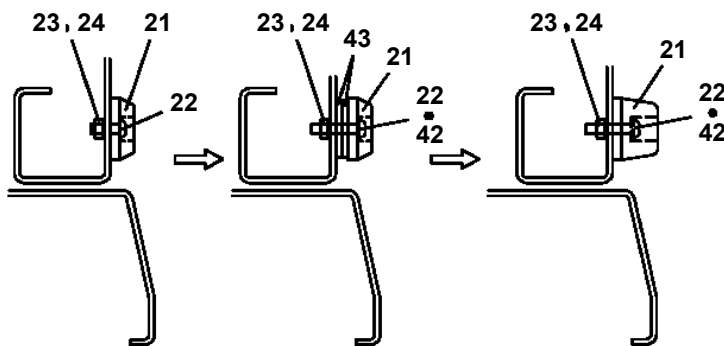


左前アフリ仕様

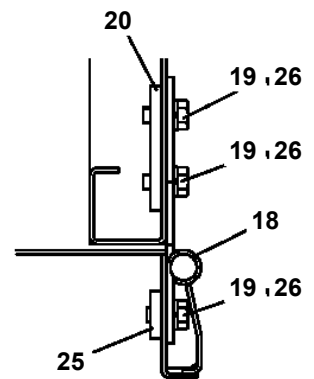


左前工具箱仕様

N



J
(2ヶ所)



K
(2ヶ所)

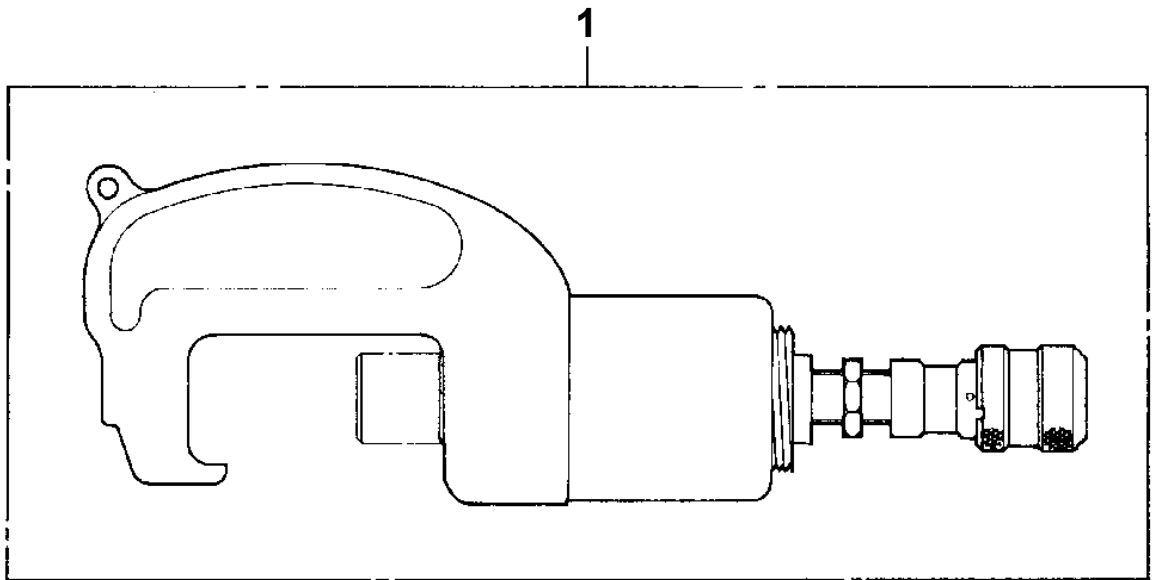
AT-147-3 43010100011 UPPER
PY1020001-10 OPTION UNIT,2

符号	日本語名称	英語名称	備考
1	クランプ ヘッド ASSY	CLAMP HEAD ASSY	電気式
7	クランプ ヘッド ASSY	CLAMP HEAD ASSY	ヘッド 単体
11	クランプ ヘッド ASSY	CLAMP HEAD ASSY	イス ミ8・ 電気式 2.5・ 三和電気4極コネクタ、四国電力向け
13	クランプ ヘッド ASSY	CLAMP HEAD ASSY	イス ミ電気式、8・、チタン ホース3・、三和電気コネクタ (四国電力向け)
14	カッタヘッド ASSY	CUTTER HEAD ASSY	イス ミ 6.4・ 電気式 2.5・
15	カッタヘッド ASSY	CUTTER HEAD ASSY	イス ミ 6.4・ ヘッド 単体
16	カッタヘッド ASSY	CUTTER HEAD ASSY	イス ミ電気式、6.4・、 ホース2.5・、三和電気コネクタ (四国電力向け)
17	ホースASSY	HOSE ASSY	700塩・・、エアハ ルン (小) 付
20	ホースASSY	HOSE ASSY	700塩・・
22	ホースASSY	HOSE ASSY	700塩・・、両端メス
24	ホースASSY	HOSE ASSY	エアハ ルーン
25	スイッチASSY	SWITCH ASSY	電気式フ ースタリモコンスイッチ
29	スイッチASSY	SWITCH ASSY	フツスイッチ (フ ースタSW) 三和製コネクタ、4極
30	ドリルASSY	DRILL ASSY	スタンレー ホース 2.5・
31	レンチ、インパクト	WRENCH, IMPACT	スタンレー ホース 2.9・
32	フ ルナーASSY	PRUNER ASSY	スタンレー ホース 2.0・
33	アームASSY	ARM ASSY	
34	アームASSY	ARM ASSY	活線仮アーム用L型金物 垂直搬送用リンク付
39	ロープ ASSY	ROPE ASSY	1.5・フック付 φ10
40	ロープ ASSY	ROPE ASSY	0.5m・8字環付
43	ロープ ASSY	ROPE ASSY	東京電力仕様金具付0.5m
44	ハンガー	HANGER	ハ ケット用物吊り
48	ボックス、ツール	BOX, TOOL	ハ ケット用物入れ (FRP)
49	ボックス、ツール	BOX, TOOL	ハ ケット用物入れ (FRP) シキリ付、巾370X奥行100X高140
51	ステップ	STEP	乗降り用ステップ
52	ステップ	STEP	高さ560 ハ ケットインナ用
53	ステップ	STEP	高さ560 ハ ケット両面用
54	カバー	COVER	作業灯布製カバー
55	カバー	COVER	ユアテック向け クランプ ASSY (シ フ アーム) 用カバー
56	サポートASSY	SUPPORT ASSY	シ フ 後端金具一式
57	サポートASSY	SUPPORT ASSY	東京電力向け シ フ 後端金具一式

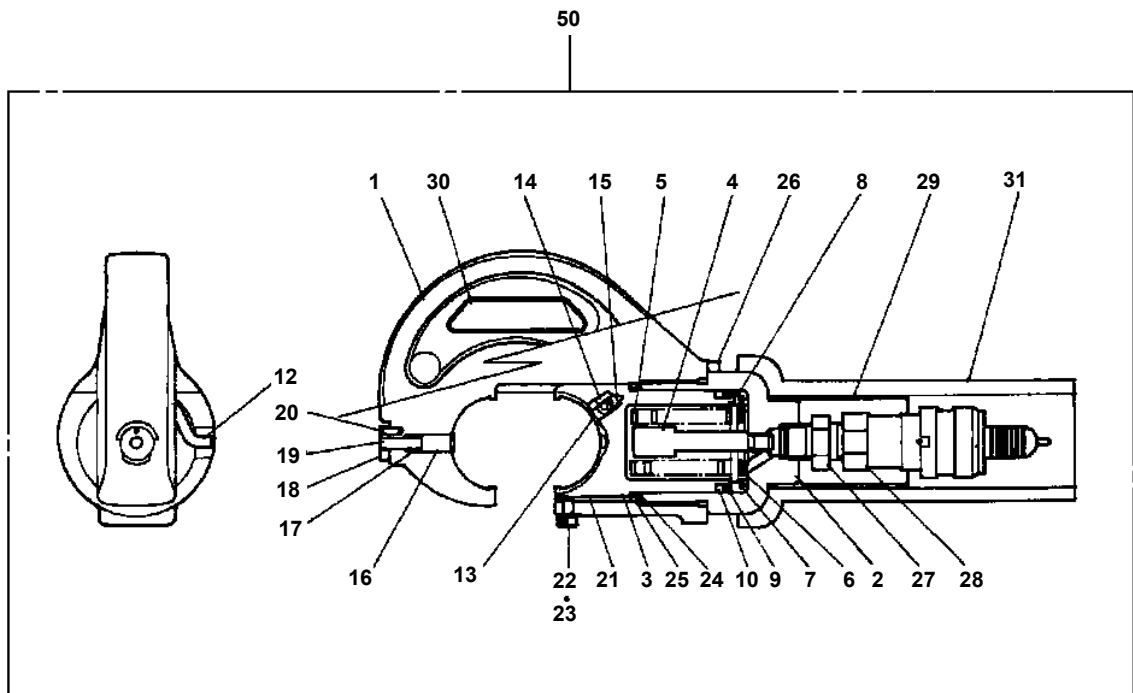
適用製造番号によっては取り付けがないものもあります。

MACHINES OF SOME SERIAL NO. ARE NOT EQUIPPED WITH THESE PARTS.

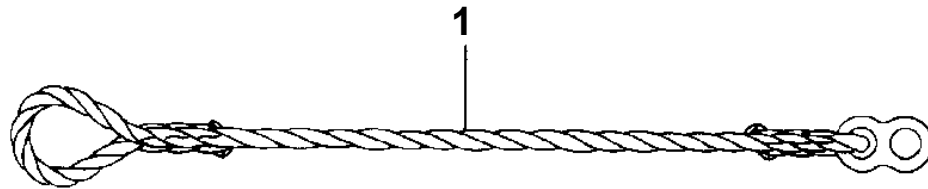
**AT-147-3 43010100011 UPPER
PY1050005-00 CLAMP HEAD (O.D.K 10TON ELECTRIC)**



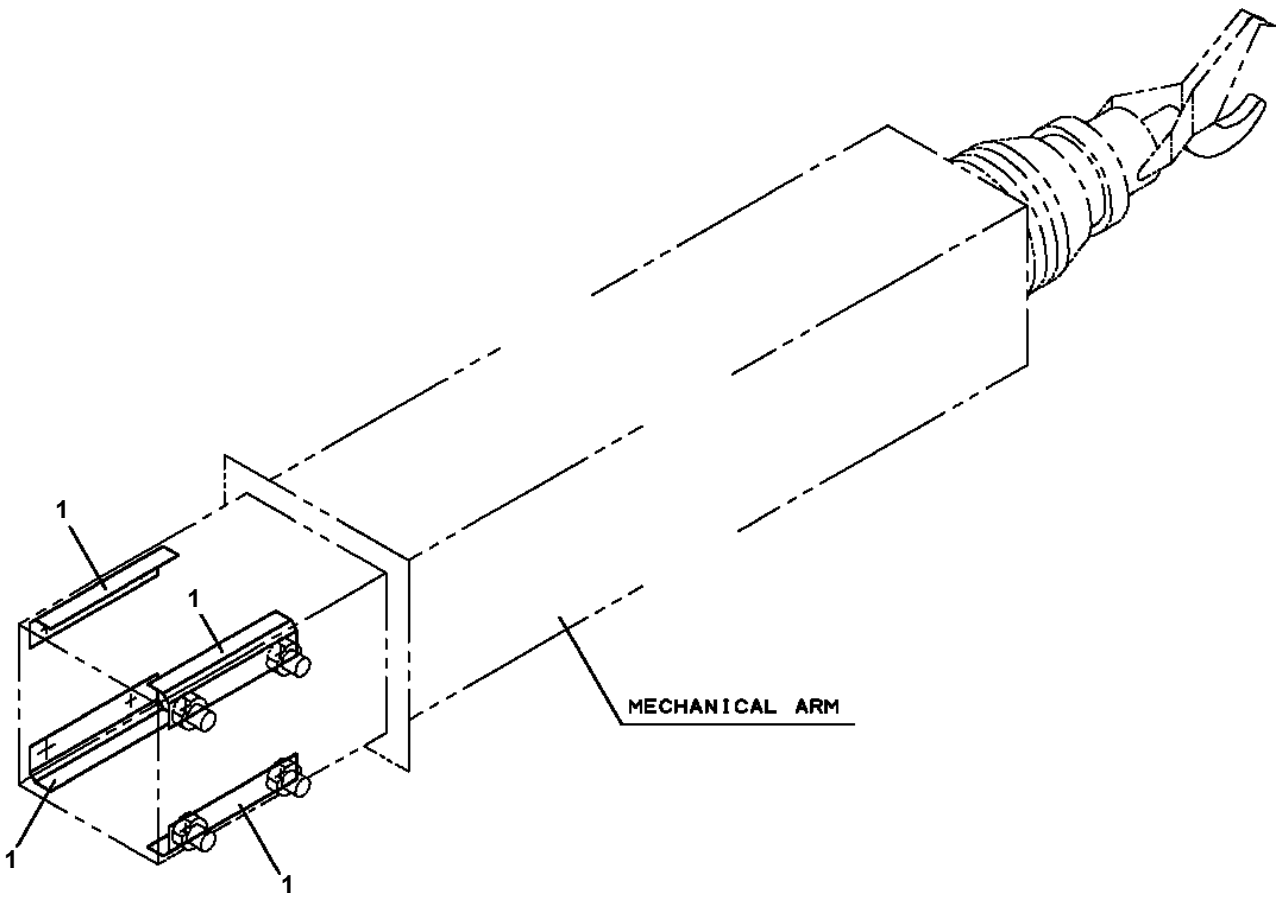
**AT-147-3 43010100011 UPPER
PY1050012-00 CLAMP HEAD (SANWA,12TON,TITANIUM)**



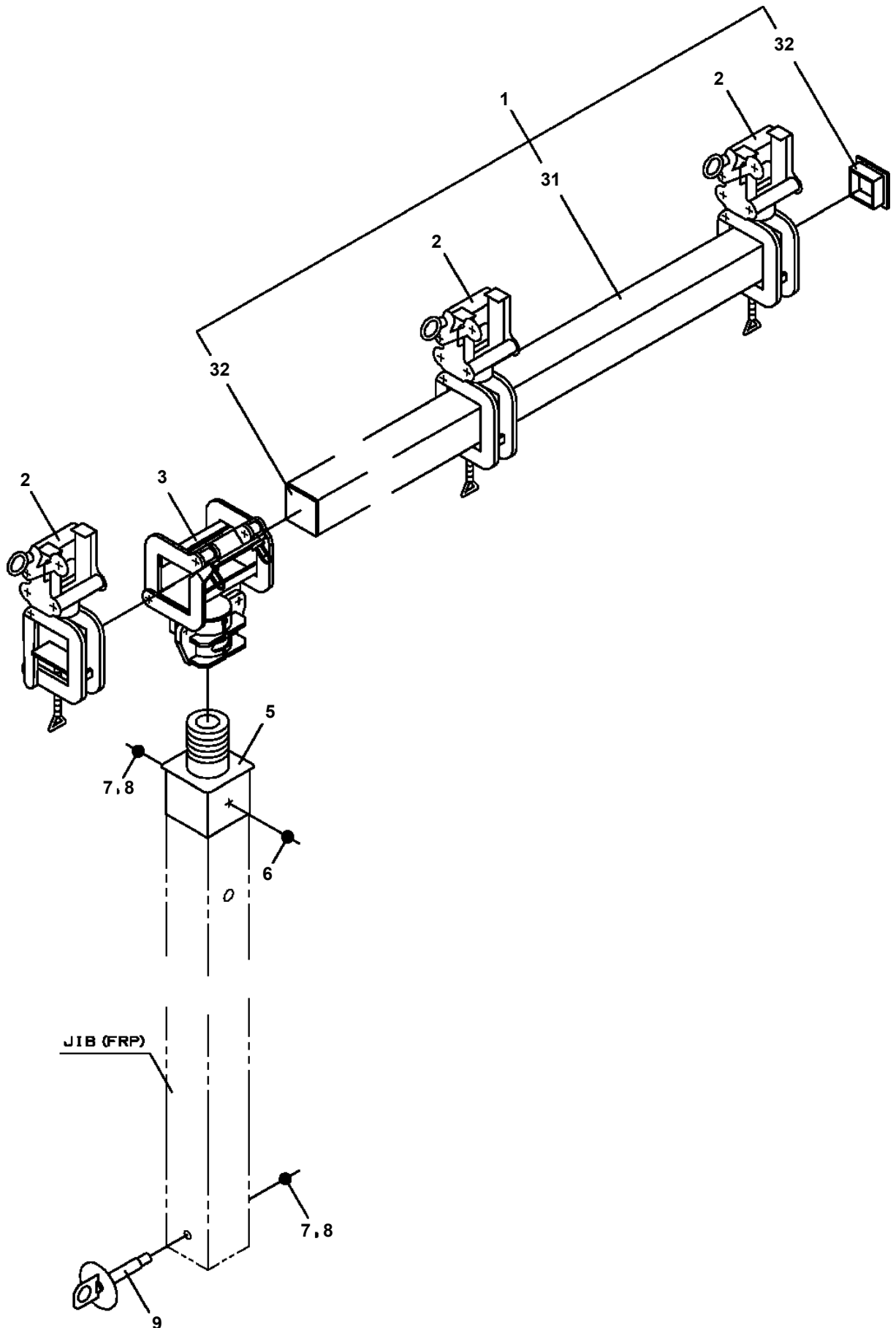
AT-147-3 43010100011 UPPER
PY1070000-00 ROPE (SAFETY, YELLOW:TD-TYPE)



**AT-147-3 43010100011 UPPER
PY1080023-00 ARM (REPLACE PLATE,SLIDE)**



AT-147-3 43010100011 UPPER
PY1080036-00 ARM



AT-147-3 43010100011 UPPER
PY1160208-00 BOOSTER (ELECTRIC,NANABOSHI)

指示番号 KEY NO.	ブースタ (エレキ, ナナボシ) BOOSTER (ELECTRIC, NANABOSHI)
1	ブースタ BOOSTER
2	ハイセンASSY ELEC. ASSY
3	パイピング, ブースタ PIPING, BOOSTER

AT-147-3 43010100011 UPPER

Pos No.	Parts No	Parts Name	Qty	Unit	Technical Data	Serial No (Start)	Serial No (End)	Remarks
32	36052131570	BOLT,STUD	8					
33	36050801400	WASHER,PLAIN	8					
	36050801400	WASHER,PLAIN	8					
34	90209701400	NUT	8		M14			
	90209701400	NUT	8		M14			
35	90131505015	BOLT,HEXAGON SOCKET	4		M5X15			
	90131505015	BOLT,HEXAGON SOCKET	4		M5X15			
36	36053841200	SWITCH ASSY	1					
	36053841200	SWITCH ASSY	1					
51	42475950010	GUIDE	1					
	42475950010	GUIDE	1					
52	42475950020	ADAPTER	1					
	42475950020	ADAPTER	1					
53	42475950030	SLEEVE	1					
	42475950030	SLEEVE	1					
54	42475950040	ROD	1					
	42475950040	ROD	1					
55	42475950052	ADJUSTER	1					
	42475950052	ADJUSTER	1					
56	42475950060	NUT,LOCK	1					
	42475950060	NUT,LOCK	1					
57	42475950090	BOLT	1					
	42475950090	BOLT	1					
58	42475950070	SPRING	1					
	42475950070	SPRING	1					
59	42475950100	PISTON	1					
	42475950100	PISTON	1					
60	42475950080	BRACKET	1					
	42475950080	BRACKET	1					
61	42475950220	SWITCH ASSY	1					
	42475950220	SWITCH ASSY	1					
62	91001100400	O-RING	1		1A P4			
	91001100400	O-RING	1		1A P4			
63	91410000400	RING,BACKUP	1		P4			
	91410000400	RING,BACKUP	1		P4			
64	91002801200	O-RING	2		1B P12			
	91002801200	O-RING	2		1B P12			
65	91411001200	RING,BACKUP	2		P12			
	91411001200	RING,BACKUP	2		P12			
66	90131705012	BOLT,HEXAGON SOCKET	2		M5X12			
	90131705012	BOLT,HEXAGON SOCKET	2		M5X12			
67	90302040501	WASHER,SPRING	2		5			
	90302040501	WASHER,SPRING	2		5			
68	82455106000	NIPPLE,GREASE	1		A-M6F FE			
	82455106000	NIPPLE,GREASE	1		A-M6F FE			
69	90303130401	WASHER,PLAIN	2		4			
	90303130401	WASHER,PLAIN	2		4			
70	90302040401	WASHER,SPRING	2		4			
	90302040401	WASHER,SPRING	2		4			
71	80173304025	SCREW,MACHINE	2		M4X25			
	80173304025	SCREW,MACHINE	2		M4X25			
72	36053841210	COVER	1					
	36053841210	COVER	1					
73	12235104340	SEAL	1				590465	
74	80601110160	RING,RITAINING	1		16			
	80601110160	RING,RITAINING	1		16			
100	36053841001	BOOSTER	1					
	36053841001	BOOSTER	1					

AT-147-3 43010100011 UPPER

Pos No.	Parts No	Parts Name	Qty	Unit	Technical Data	Serial No (Start)	Serial No (End)	Remarks	Pages
1	(*****)	BOOSTER	1						000426
2	(*****)	ELEC.ASSY	1						000238
3	(*****)	PIPING,BOOSTER	1						000443

AT-147-3 43010100011 UPPER

Pos No.	Parts No	Parts Name	Qty	Unit	Technical Data	Serial No (Start)	Serial No (E
1	82400000422	FASTENER	2				
2	80456240600	JOINT,SELF SEALING (WITH DUST CAP)	2				
3	42502783100	LEVER	1				
4	82430208020	GRIP	1				
5	90101206010	BOLT	2		M6X1.0		
6	90302040601	WASHER,SPRING	2		6		
7	36631120050	NUT	2		M20		
8	42478183102	VALVE ASSY,SELECTOR	1				
9	37002459180	HOSE	1		L=565		
10	82104501180	SWITCH,LIMIT	1				
11	42502853010	PLATE,NAME	1				
12	42310040050	ROPE (TETORON)	2				
13	82100001735	SLEEVE	4				
14	91810130230	FASTENER	2				
15	37000925920	JOINT	1				
16	37000526010	PLATE	2				
17	37000928400	JOINT	1				
18	37002461530	HOSE	2		L=540		
19	42502853020	PLATE,NAME	1				
41	42471437520	CAP	2				

CLICK HERE TO **DOWNLOAD** THE COMPLETE MANUAL

- Thank you very much for reading the preview of the manual.
- You can download the complete manual from: www.heydownloads.com by clicking the link below



- Please note: If there is no response to CLICKING the link, please download this PDF first and then click on it.

CLICK HERE TO **DOWNLOAD** THE COMPLETE MANUAL