

AT-146-4A 43011831753 UPPER, LOWER, HINO 2KG-XZU600F

PB0000300-00 UPPER STRUCTURE SYSTEM

PB0000504-00 LOWER STRUCTURE SYSTEM

ASSEMBLY

CLICK HERE TO **DOWNLOAD** THE COMPLETE MANUAL

- Thank you very much for reading the preview of the manual.
- You can download the complete manual from: www.heydownloads.com by clicking the link below



- Please note: If there is no response to CLICKING the link, please download this PDF first and then click on it.

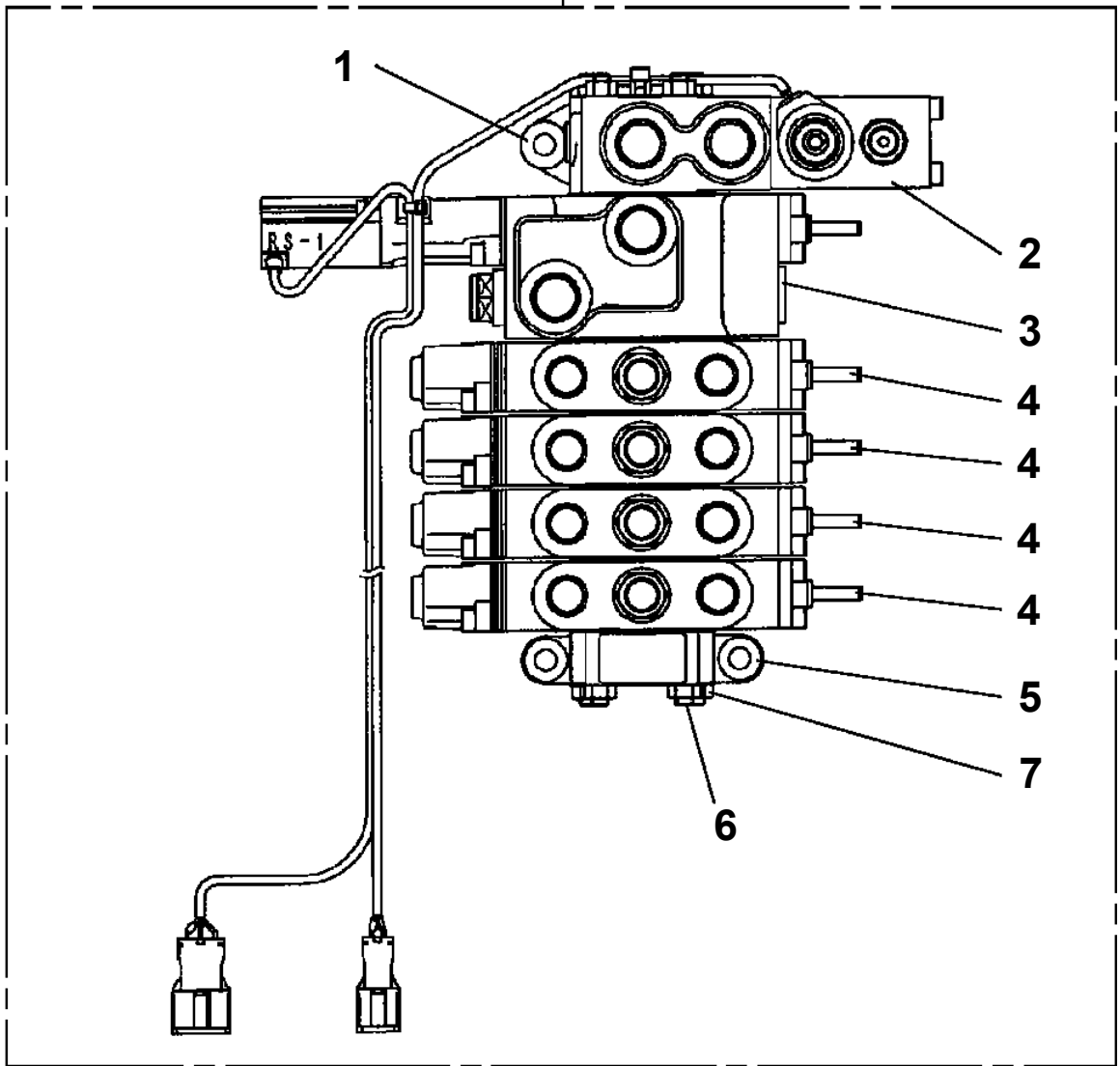
CLICK HERE TO **DOWNLOAD** THE COMPLETE MANUAL

AT-146-4A 43011831753 UPPER, LOWER, HINO 2KG-XZU600F

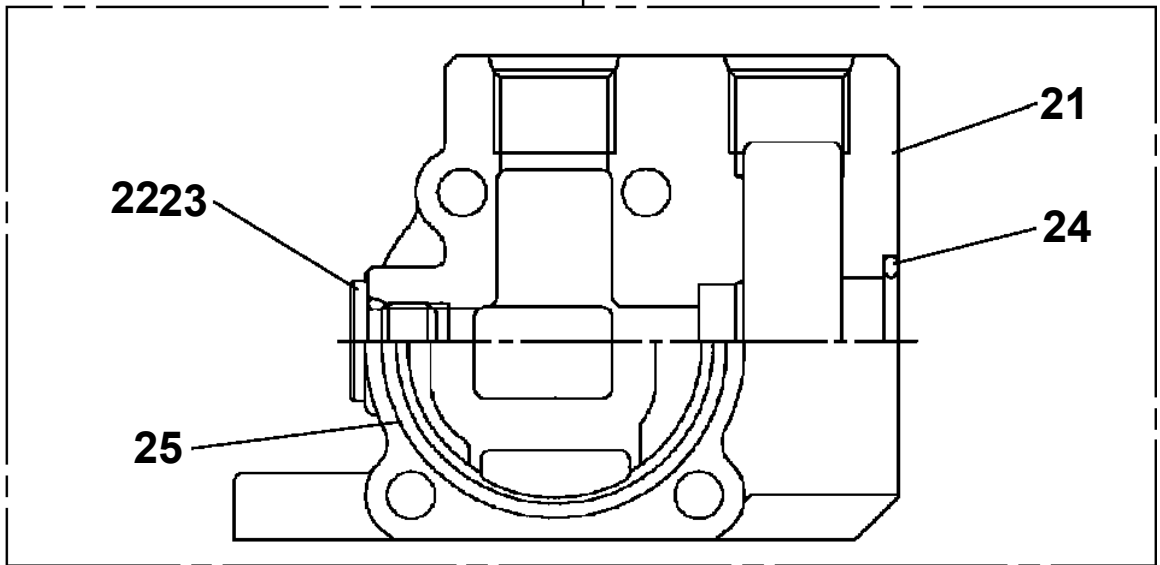
PX1830013-00 COUPLING
PX1830018-00 COUPLING
PX1940306-00 MOUNT (BOOM SIDE,INSTALLATION PLUG FOR JIB SUPPORT)
PX5010140-00 MOUNT ASSY (STEP FOR DECK ON CAB)
PX5010367-00 MOUNT ASSY (RIGHT-REAR CONE SUPPORT)
PX5010479-00 MOUNT ASSY (OVER FENDER)
PX5010480-00 MOUNT ASSY (HANDRAIL:BOOM SIDE)
PX5010519-00 MOUNT ASSY,TOOL BOX (LEFT/REAR:1-DECK+HANDRAIL)
PX5010737-00 MOUNT ASSY (RIGHT/FRONT:GATE)
PX5110058-00 MOUNT ASSY,BOOM SUPPORT
PX5260027-01 MOUNT ASSY,COVER (BOOM)
PX5260035-00 MOUNT ASSY,COVER
PX5280047-00 MOUNT ASSY,DECK (RIGHT-REAR FENDER)
PX5280080-00 MOUNT ASSY,DECK (LEFT/REAR:NONE+HANDRAIL)
PX5310009-00 MOUNT ASSY,ENGINE UNIT (L SPEC.)
PX5430030-01 MOUNT ASSY,GUARD (FILTER)
PX5560011-01 MOUNT ASSY,POWER TRAIN
PX5620025-00 MOUNT ASSY,REFLECTOR (SWING STOW POSITION)
PX5650135-00 MOUNT ASSY,SIDE GUARD (L SPEC.)
PX5690014-00 MOUNT ASSY,SUPPORT
PX5730012-00 MOUNT ASSY,SWIVEL JOINT
PX5740019-03 MOUNT ASSY,TAIL LAMP
PX5780165-00 MOUNT ASSY,TOOL BOX (RIGHT-REAR UTILITYBOX)
PX5780337-01 MOUNT ASSY,TOOL BOX (LEFT/FRONT:1-DECK)
PX5780350-00 MOUNT ASSY,TOOL BOX (LEFT/F:1-D,REAR:1-D+HANDRAIL)
PX5780364-01 MOUNT ASSY,TOOL BOX (RIGHT/REAR:1-DECK)
PX5780413-00 MOUNT ASSY,TOOL BOX (LEFT/REAR:1-DECK+HANDRAIL)
PX5780415-00 MOUNT ASSY,TOOL BOX (RIGHT/FRONT:2-D,REAR:1-D+RACK)
PX5780416-00 MOUNT ASSY,TOOL BOX (RIGHT/F:2-D,R:1-D,SIDE GUARD)
PX5780417-01 MOUNT ASSY,TOOL BOX (RIGHT/FRONT:2-D+SIGNBOAR,REAR:1-D)
PX5780418-01 MOUNT ASSY,TOOL BOX(RIGHT/FRONT:2-D+SIGNBOAR,REAR:NONE)
PX5780556-00 MOUNT ASSY,TOOL BOX (LEFT/FRONT:2-DECK,REAR:1-DECK)
PX5780557-00 MOUNT ASSY,TOOL BOX (LEFT/FRONT:2-DECK,OPEN UPWARDS)
PX5780558-00 MOUNT ASSY,TOOL BOX (LEFT/FRONT:2-DECK,REAR:NONE)
PX5780614-00 MOUNT ASSY,TOOL BOX (LEFT/FRONT:2-DECK,REAR:1-DECK)
PX5780616-00 MOUNT ASSY,TOOL BOX (LEFT/FRONT:2-DECK,REAR:NONE)
PX5780633-00 MOUNT ASSY,TOOL BOX (RIGHT/FRONT:GATE,REAR:NONE)
PX5780634-00 MOUNT ASSY,TOOL BOX (RIGHT/FRONT:GATE,RAER:1-DECK)
PX5820113-00 MOUNT ASSY,WEIGHT
PY1001898-06 OPTION UNIT,1 (UPPER)
PY1050000-00 CLAMP HEAD (IZUMI 12TON 2.5M)
PY1050001-01 CLAMP HEAD (IZUMI 8TON,2.5M)
PY1050004-00 CLAMP HEAD (O.D.K 7.5TON 3M)
PY1050005-00 CLAMP HEAD (O.D.K 10TON ELECTRIC)
PY1050007-00 CLAMP HEAD (SANWA,12TON)
PY1050008-01 CLAMP HEAD (IZUMI 8TON 3.5M ELECTRIC)
PY1050010-00 CLAMP HEAD (IZUMI 8TON,2.5M/YONDENKOU)
PY1050012-00 CLAMP HEAD (SANWA,12TON,TITANIUM)
PY1060000-01 CUTTER HEAD (IZUMI 6.4TON AIR)
PY1060001-00 CUTTER HEAD (IZUMI 6.4TON 2.5M ELECTRIC)
PY1070000-00 ROPE (SAFETY,YELLOW:TD-TYPE)
PY1070000-00 ROPE (SAFETY,YELLOW:TD-TYPE)
PY1070001-00 ROPE (SAFETY,1.5M,WITH HOOK)
PY1070003-00 ROPE (SAFETY,WHITE)
PY1070004-00 ROPE (SAFETY,0.5M,D=24)
PY1080020-00 ARM
PY1080023-00 ARM (REPLACE PLATE,SLIDE)
PY1080032-00 ARM
PY1080033-00 ARM
PY1080034-00 ARM
PY1080035-00 ARM
PY1080036-00 ARM
PY1080037-00 ARM (HOLDER WITH INSULATOR, FOUR FACE ROLLER,HOT STICK)
PY1180208-00 LAMP (12V60W,WITH CIGARETTE LIGHTER)

AT-146-4A 43011831753 UPPER, LOWER, HINO 2KG-XZU600F
PB1320537-01 VALVE, MANUAL CONTROL

200



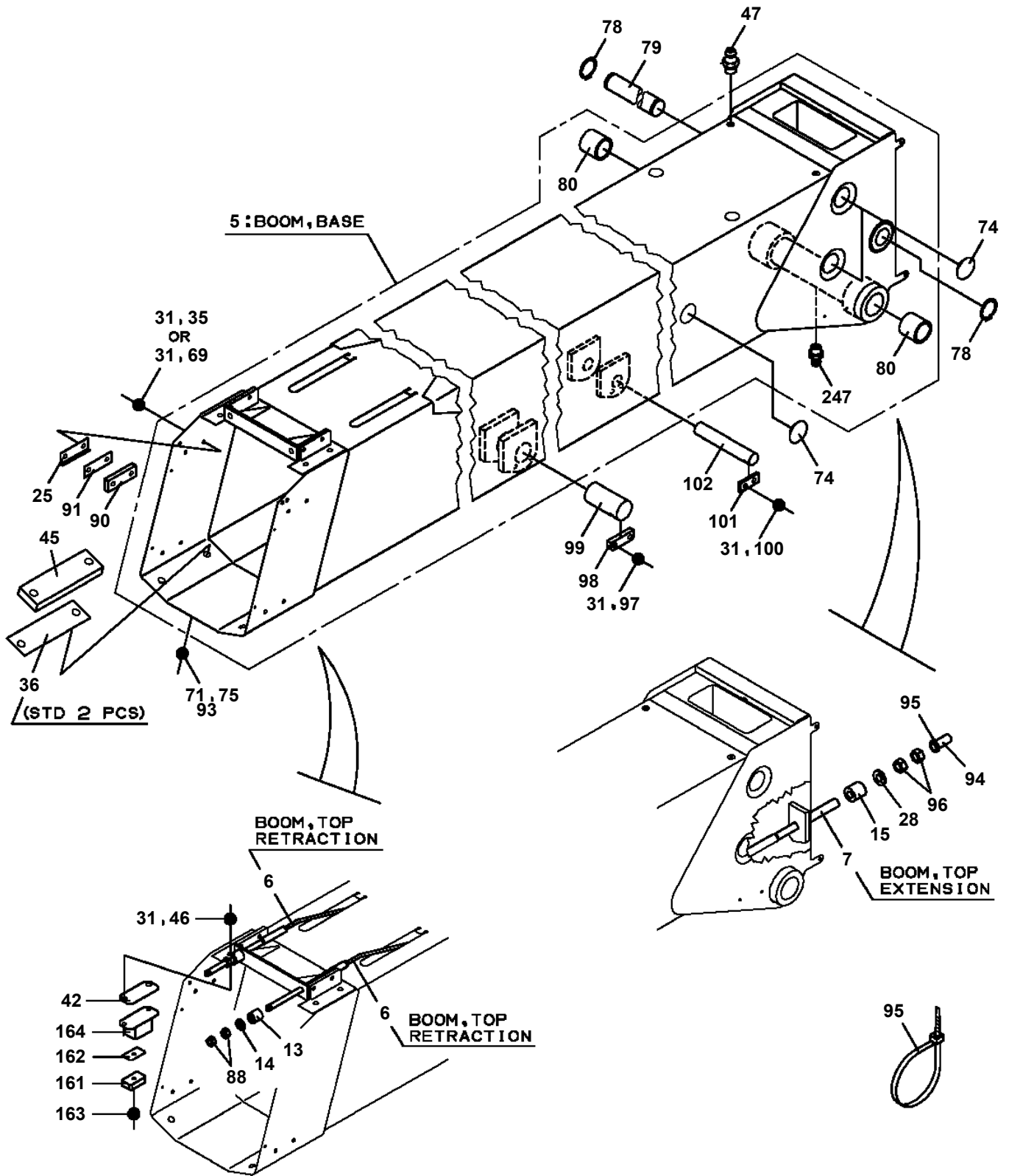
1



AT-146-4A 43011831753 UPPER, LOWER, HINO 2KG-XZU600F

Pos No.	Parts No	Parts Name	Qty	Unit	Technical Data	Serial No (Start)	Serial No (End)
65	36637625040	INSULOCK (TIE)	1				
71	36636435090	SHIM (T=0.3)	5				
	36636435090	SHIM (T=0.3)	5				
72	36636435100	SHIM (T=0.5)	5				
	36636435100	SHIM (T=0.5)	5				
73	36636435110	SHIM (T=0.7)	5				
	36636435110	SHIM (T=0.7)	5				
85	36636435120	COVER (SPRING)	3				
	36636435120	COVER (SPRING)	3				
94	36643175030	O-RING	8		P13		
	36643175030	O-RING	8		P13		
109	90131506020	BOLT,HEXAGON SOCKET	6		M6X20		
	90131506020	BOLT,HEXAGON SOCKET	6		M6X20		
110	90131504015	BOLT,HEXAGON SOCKET	8		M4X15		
	90131504015	BOLT,HEXAGON SOCKET	8		M4X15		
111	90303070401	WASHER,PLAIN	9		4		
	90303070401	WASHER,PLAIN	9		4		
125	90131506010	BOLT,HEXAGON SOCKET	6		M6X10		
	90131506010	BOLT,HEXAGON SOCKET	6		M6X10		
131	36636415040	SWITCH,LEAD (WINCH)	2				
	36636415040	SWITCH,LEAD (WINCH)	2				
141	36636435150	SWITCH,LEAD (WITH CONNECTOR)	2				
	36636435150	SWITCH,LEAD (WITH CONNECTOR)	2				
158	90131506015	BOLT,HEXAGON SOCKET	2		M6X15		
	90131506015	BOLT,HEXAGON SOCKET	2		M6X15		
163	80185804008	SCREW,MACHINE	1		M4X8		
	80185804008	SCREW,MACHINE	1		M4X8		
164	36636435170	FASTENER	1				
	36636435170	FASTENER	1				
165	36636435180	TIE (INSULOCK)	1				
	36636435180	TIE (INSULOCK)	1				
172	13115102010	RETAINER (SEAL)	2				
	13115102010	RETAINER (SEAL)	2				
173	36636435140	END,SPOOL	1				
	36636435140	END,SPOOL	1				
174	80560005000	BALL,STEEL	2		5		
	80560005000	BALL,STEEL	2		5		
175	13115102030	CASE (BALL)	1				
	13115102030	CASE (BALL)	1				
176	13115102050	RETAINER (BALL)	1				
	13115102050	RETAINER (BALL)	1				
177	13115102040	SPRING	1				
	13115102040	SPRING	1				
181	90131506025	BOLT,HEXAGON SOCKET	2		M6X25		
	90131506025	BOLT,HEXAGON SOCKET	2		M6X25		
211	36636435130	SWITCH,PUSH	2				
	36636435130	SWITCH,PUSH	2				
300	36638490000	VALVE,MANUAL CONTROL	1				
	36638490000	VALVE,MANUAL CONTROL	1				

**AT-146-4A 43011831753 UPPER, LOWER, HINO 2KG-XZU600F
PB5190171-01 BOOM ASSY**



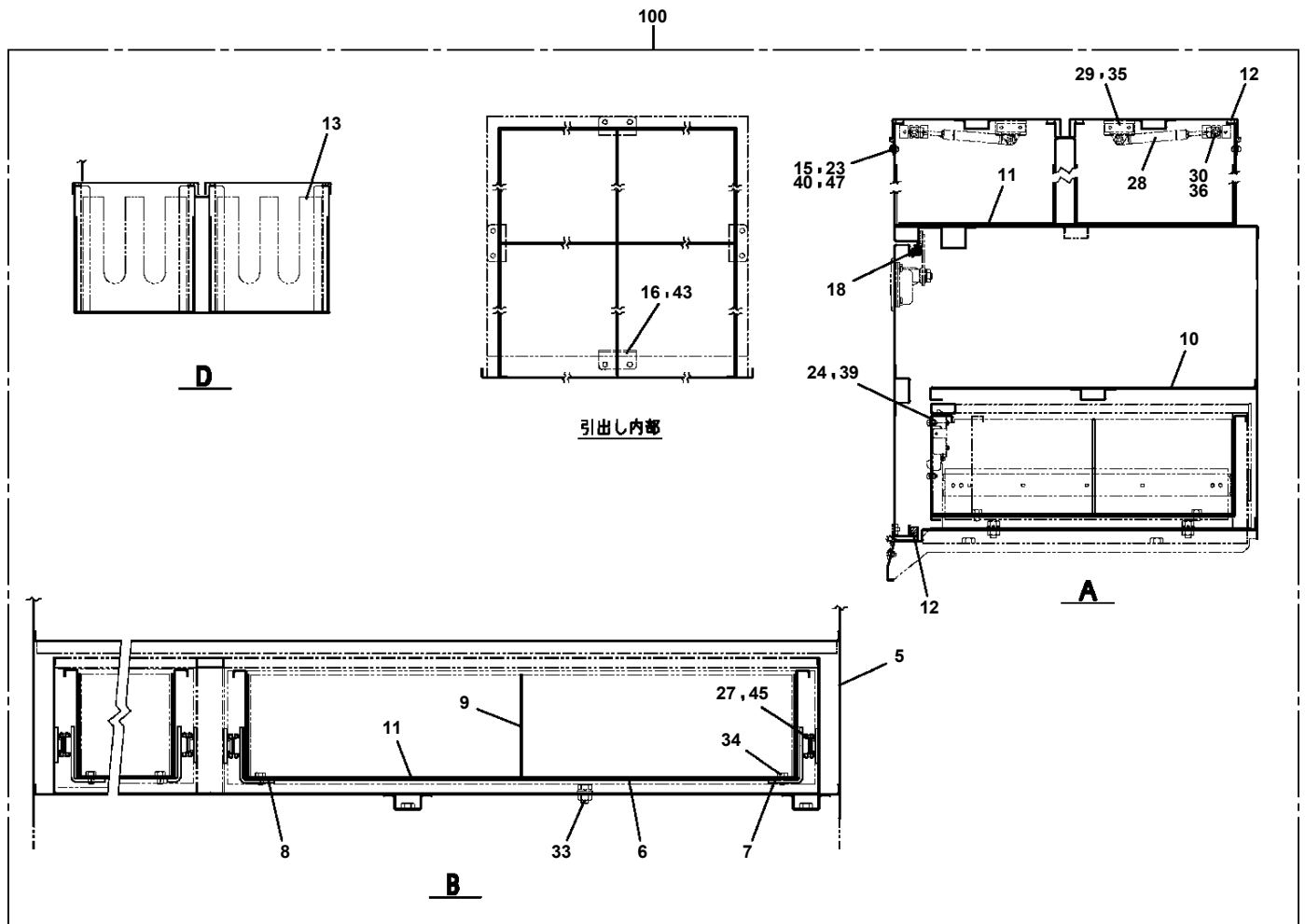
AT-146-4A 43011831753 UPPER, LOWER, HINO 2KG-XZU600F

Pos No.	Parts No	Parts Name	Qty	Unit	Technical Data	Serial No (Start)	Serial No (End)	Remarks	Pages
1	42902581100	BOX	1						
2	42902581200	COVER	1						
3	90101206016	BOLT	7		M6X16				
4	90302040601	WASHER,SPRING	7		6				
5	90303070601	WASHER,PLAIN	7		6				
6	42902581300	SUPPORT	1						
7	42652131301	CONTROLLER	1						000042
8	80172304010	SCREW,MACHINE	4		M4X10				
9	90302040401	WASHER,SPRING	4		4				
10	90303070401	WASHER,PLAIN	4		4				
11	82100002010	CLAMP	1		WR15				
12	91850310305	CLAMP	2						
13	91810130240	FASTENER	1						
100	42902581000	BOX ASSY	1						

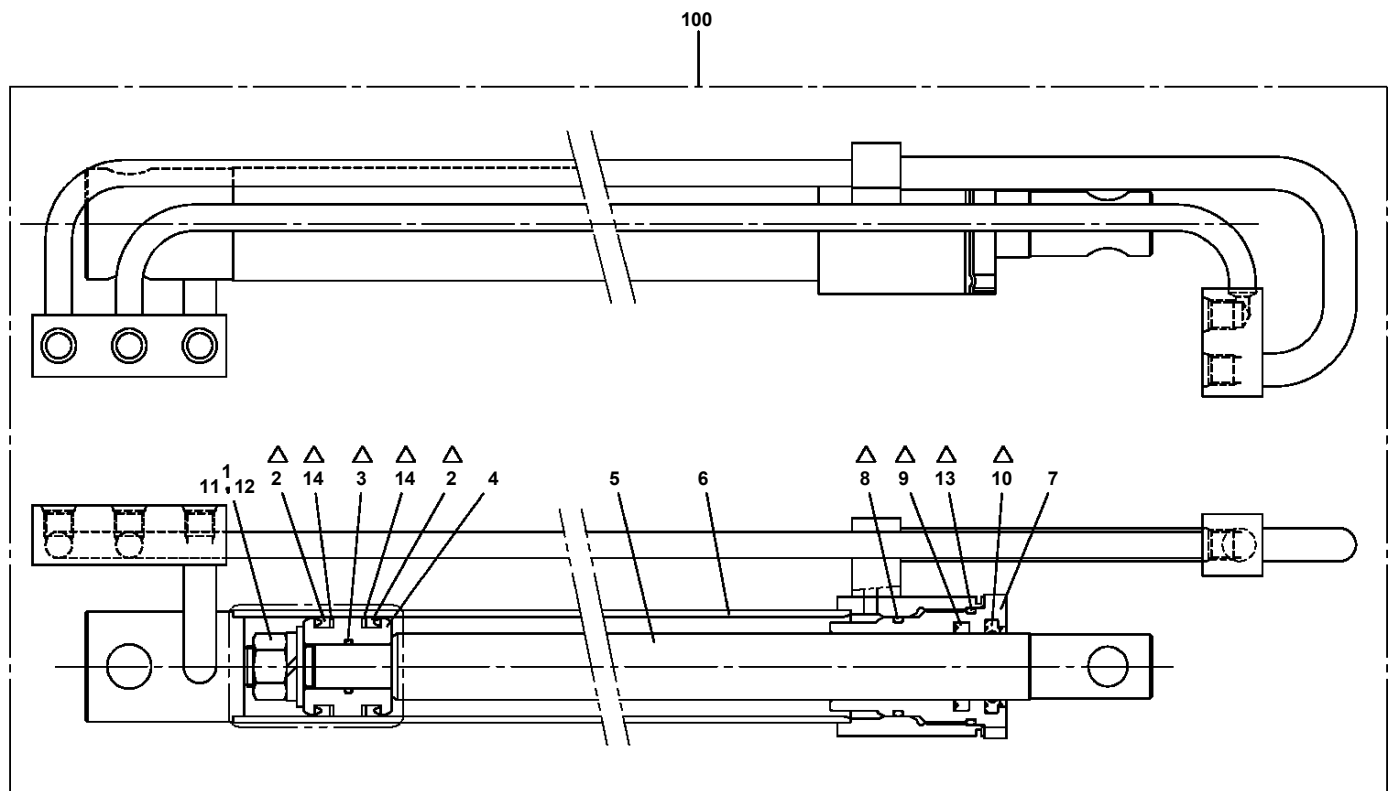
AT-146-4A 43011831753 UPPER, LOWER, HINO 2KG-XZU600F

Pos No.	Parts No	Parts Name	Qty	Unit	Technical Data	Serial No (Start)	Serial No (End)	Remarks
2	42839777580	DOOR	1					
3	42839777620	RACK	1					
4	42839117730	SUPPORT	4					
5	42836317920	PLATE	3					
6	42836317930	PLATE	3					
7	42839777610	MAT	1					
8	42831877540	INSULATOR	2					
9	42839787530	SEAL	8					
10	42836317950	WEATHER STRIP	5	M				
11	42833077610	BUSH	4					
12	42835867870	CATCH	1					
13	42838117510	CATCH	1					
14	42835487650	HINGE	3					
15	42835797580	PLUG (HOLE)	4					
16	32830487740	SCREW,MACHINE (SEMS)	2		M4X10			
18	42835837600	SCREW,MACHINE	6		M5X12			
19	80175805012	SCREW,MACHINE	9		M5X12			
100	42839773000	BOX,TOOL	1					

AT-146-4A 43011831753 UPPER, LOWER, HINO 2KG-XZU600F
PB5410221-00 BOX, TOOL



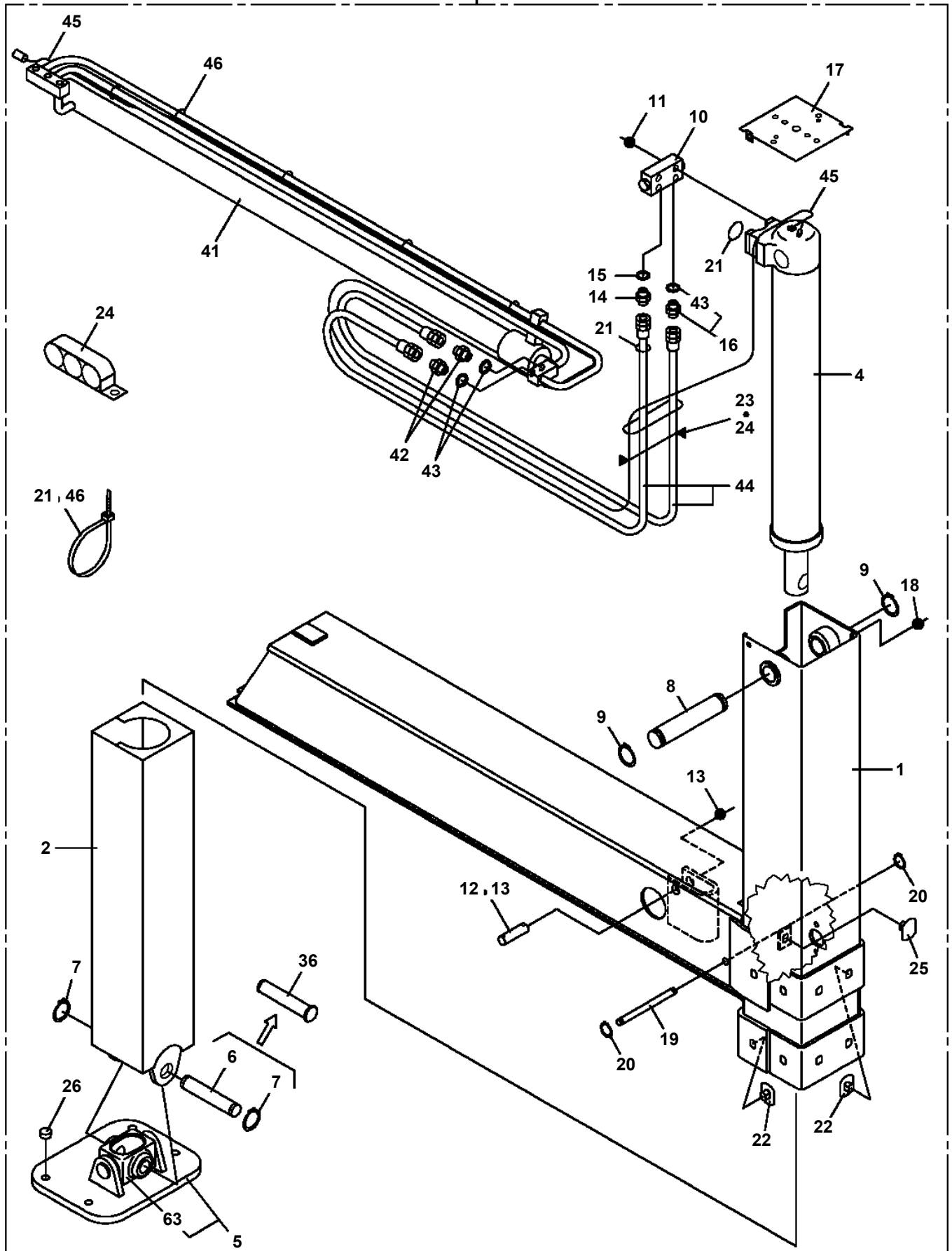
**AT-146-4A 43011831753 UPPER, LOWER, HINO 2KG-XZU600F
PC1050222-00 CYLINDER,EXTENSION (REAR)**



△:PACKING SET KEY NO.30 (KEY NO.2,3,8,9,10,13,14)

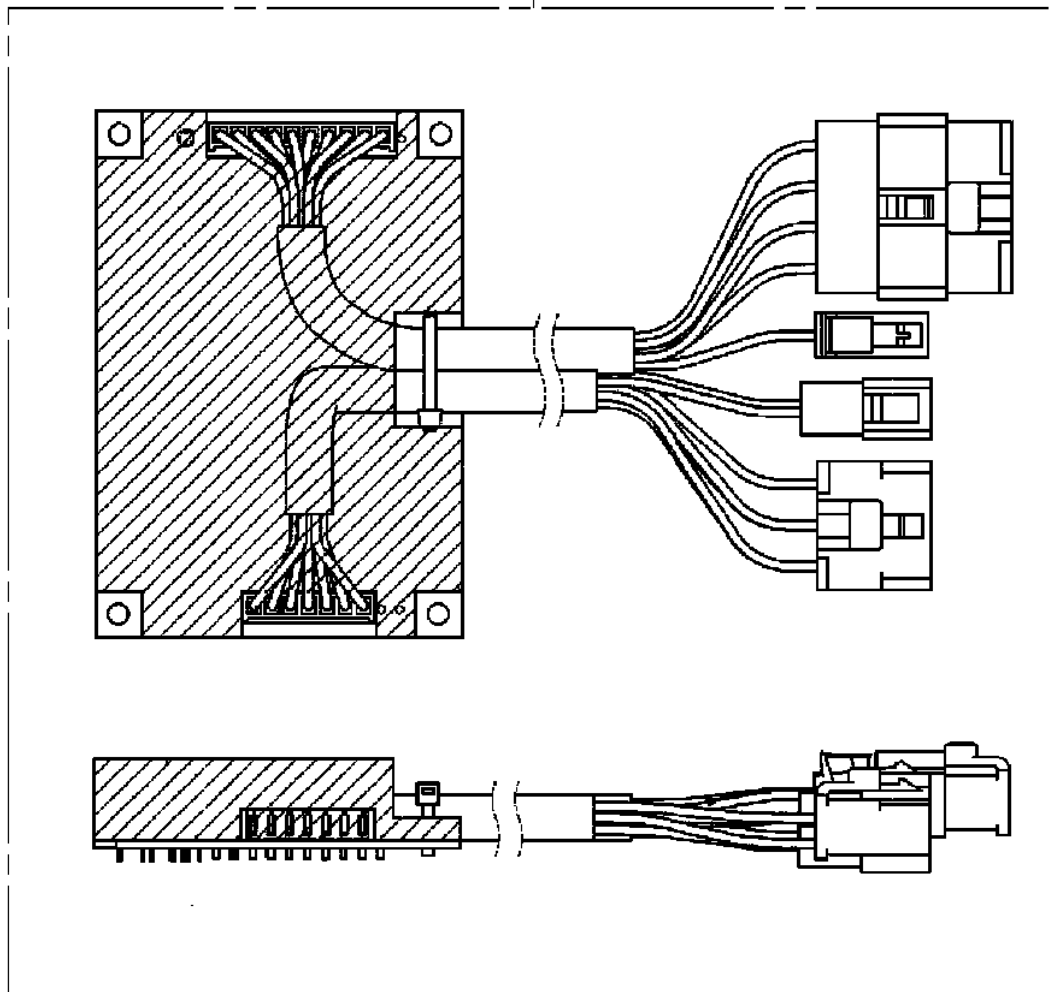
AT-146-4A 43011831753 UPPER, LOWER, HINO 2KG-XZU600F
PC5150210-01 CASE ASSY, INNER (REAR)

100

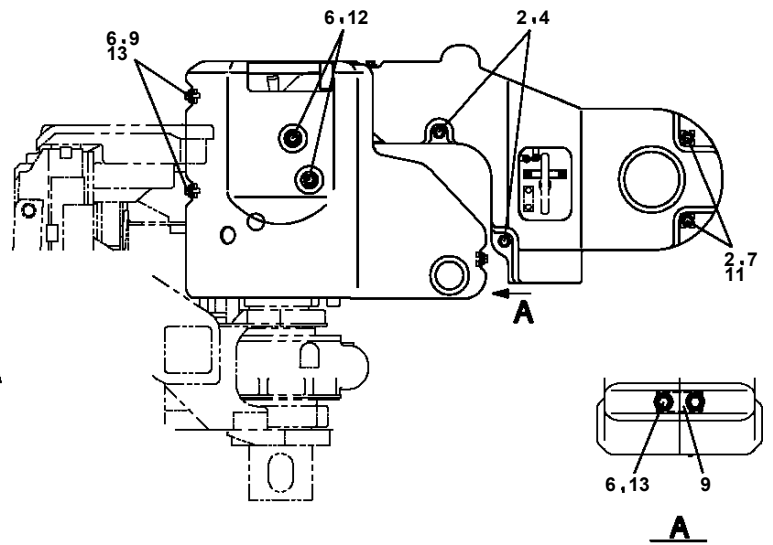
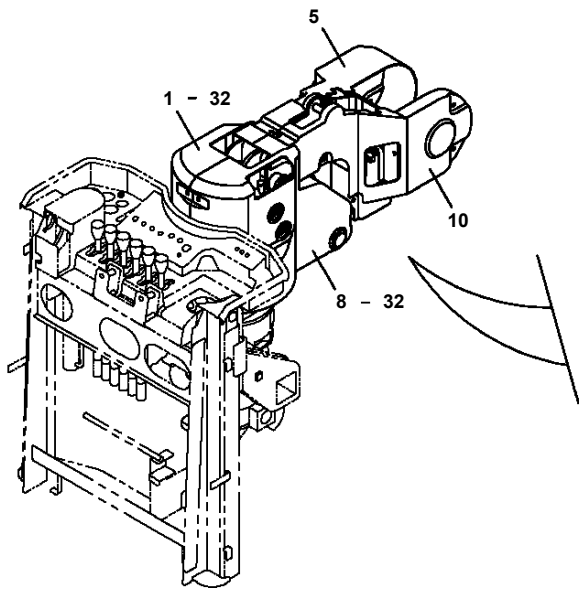
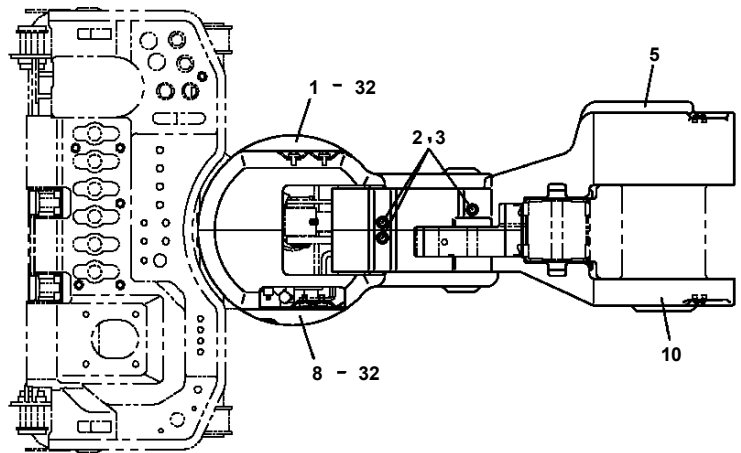


AT-146-4A 43011831753 UPPER, LOWER, HINO 2KG-XZU600F
PC5420023-00 CONTROLLER

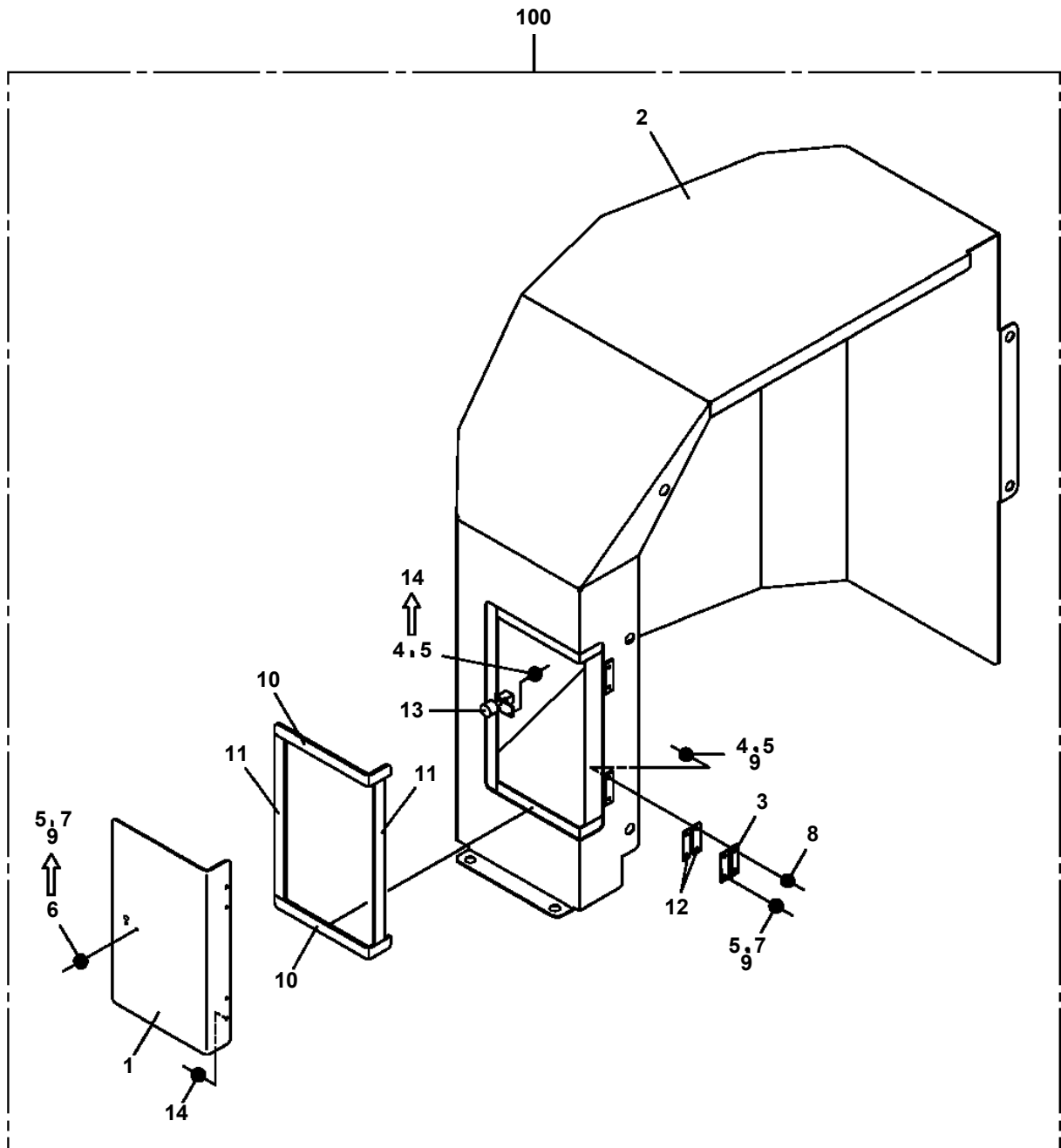
100



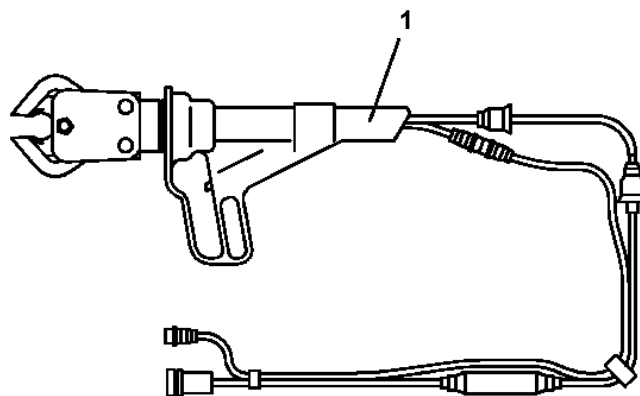
**AT-146-4A 43011831753 UPPER, LOWER, HINO 2KG-XZU600F
PC5570154-00 COVER ASSY (WINCH/FRP COVER)**



AT-146-4A 43011831753 UPPER, LOWER, HINO 2KG-XZU600F
PC5570207-00 COVER ASSY

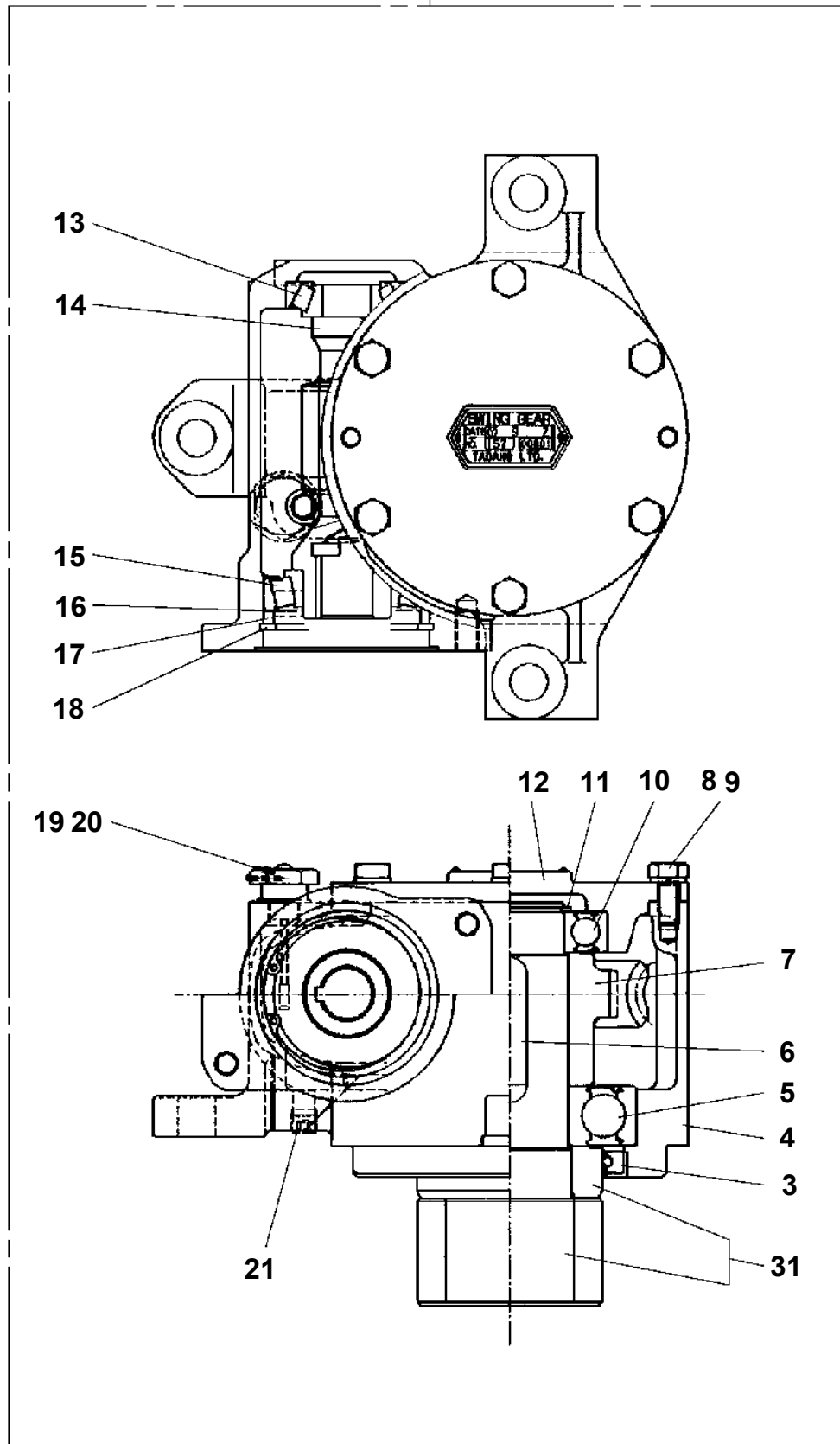


**AT-146-4A 43011831753 UPPER, LOWER, HINO 2KG-XZU600F
PC5640001-00 CUTTER HEAD ASSY (YONDENKO/SAFETY HOSE)**

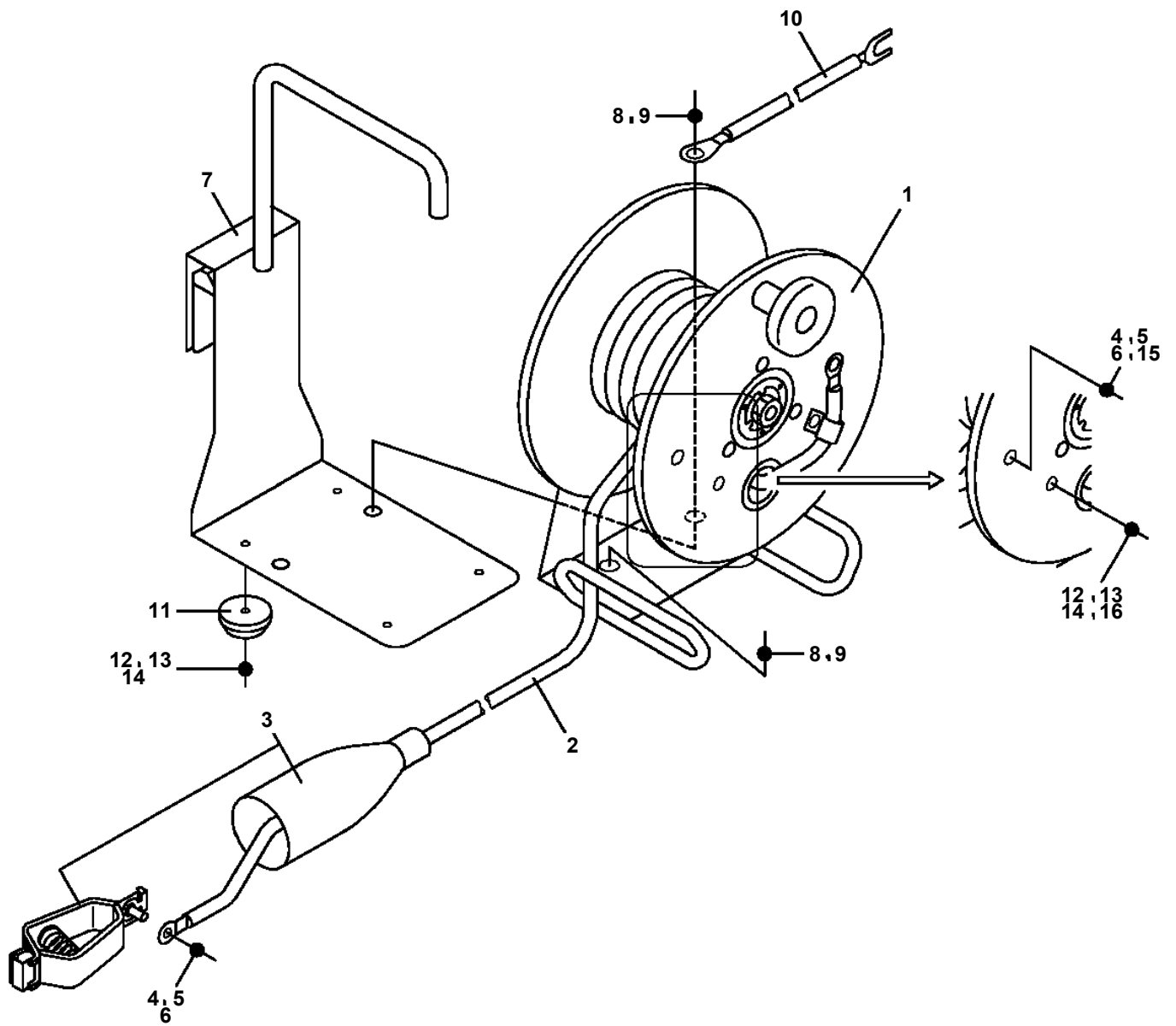


AT-146-4A 43011831753 UPPER, LOWER, HINO 2KG-XZU600F
PD1010160-00 REDUCER, SWING SPEED

50



AT-146-4A 43011831753 UPPER, LOWER, HINO 2KG-XZU600F
PE5010004-01 EARTH ASSY



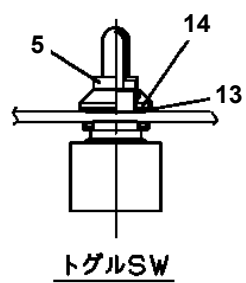
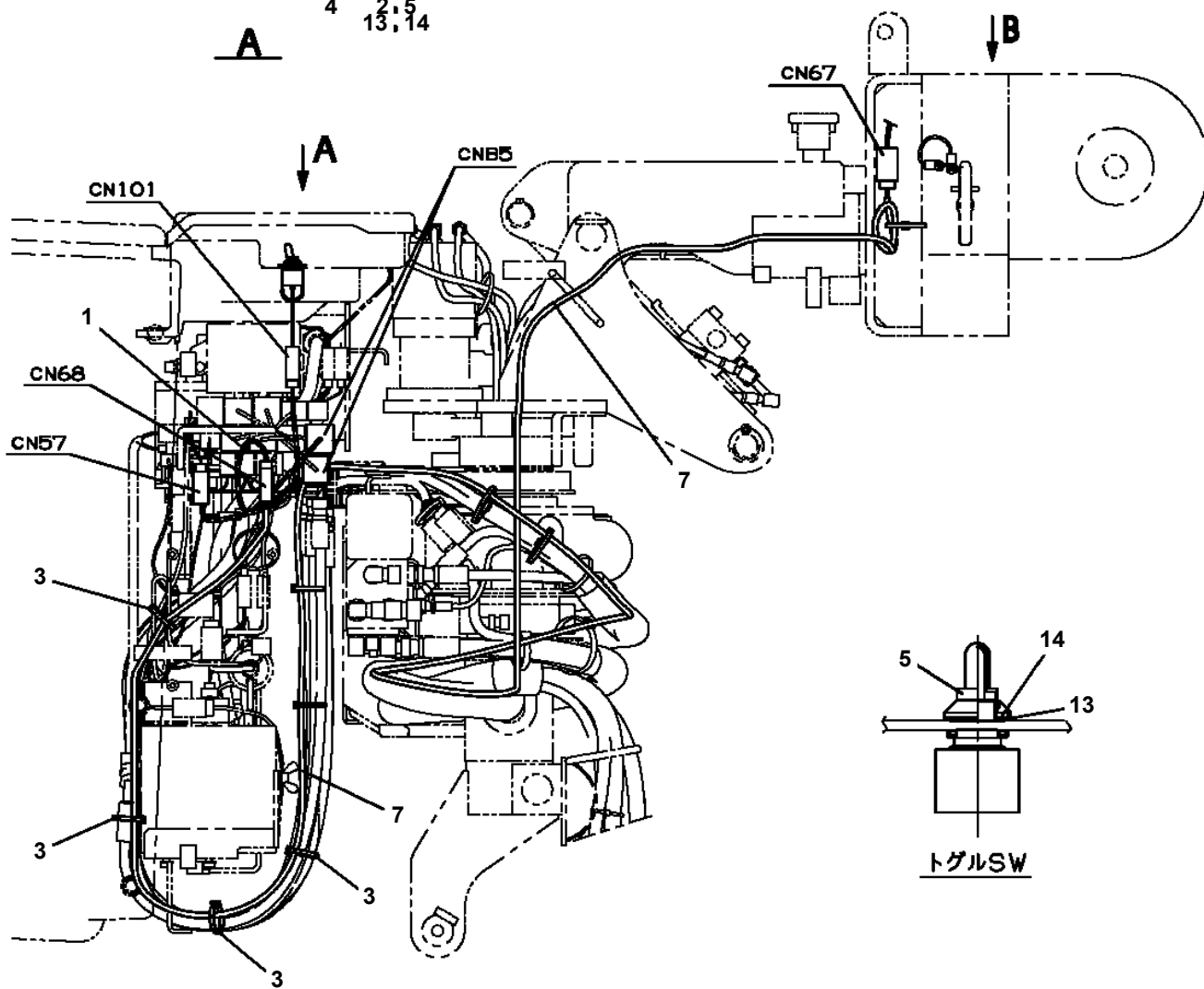
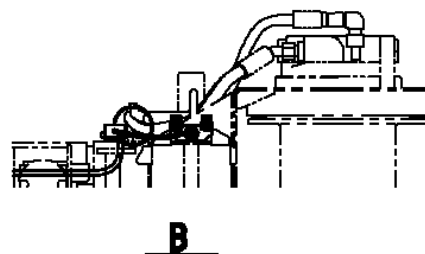
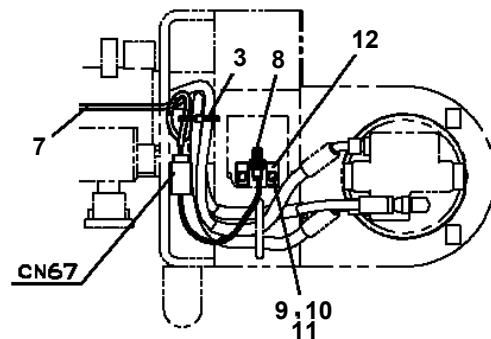
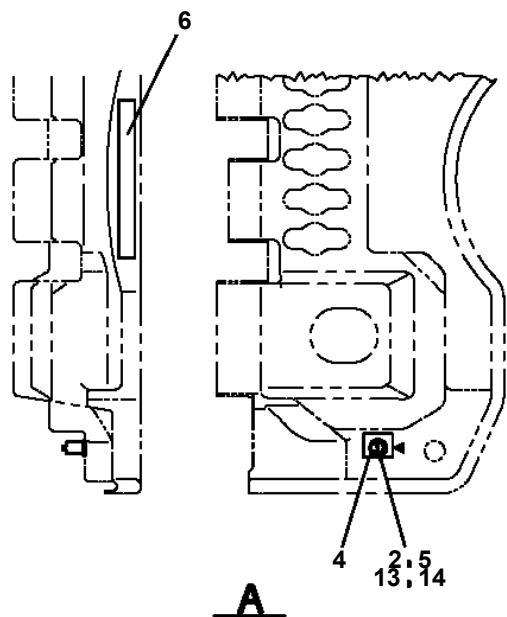
AT-146-4A 43011831753 UPPER, LOWER, HINO 2KG-XZU600F

Pos No.	Parts No	Parts Name	Qty	Unit	Technical Data	Serial No (Start)	Serial No (End)	Re
1	42937120300	HARNESS	1					
2	91810132530	FASTENER	10					
3	42937120400	HARNESS	1					
4	42509603600	HARNESS	1					
5	42937120600	SUPPORT	1					
7	82100002016	CLAMP	1		WR25			
8	34494770200	ANTENNA (GPS,ASSY ONLY)	1					
9	36172820000	CONTROLLER (ICF,ASSY ONLY)	1					
10	36172650000	CONTROLLER (GSMT)	1					
11	90101208020	BOLT	2		M8X20			
12	90302040801	WASHER,SPRING	2		8			
13	90303070801	WASHER,PLAIN	2		8			
14	90101206020	BOLT	2		M6X20			
15	90302040601	WASHER,SPRING	5		6			
16	90303070601	WASHER,PLAIN	5		6			
18	90101206010	BOLT	3		M6X1.0			
20	82100001805	TUBE,CORRUGATE	1	M	19			
23	82400000366	INSULATOR	1					
24	90302040501	WASHER,SPRING	1		5			
25	80172305020	SCREW,MACHINE	1		M5X20			

AT-146-4A 43011831753 UPPER, LOWER, HINO 2KG-XZU600F
 PE5021161-00 ELEC.ASSY (JIB FIXING PIN DETECTION/ELEVATION BUCKET)



注意 バケット・ブーム操作を行うときは、必ずブロックピンを差してください。



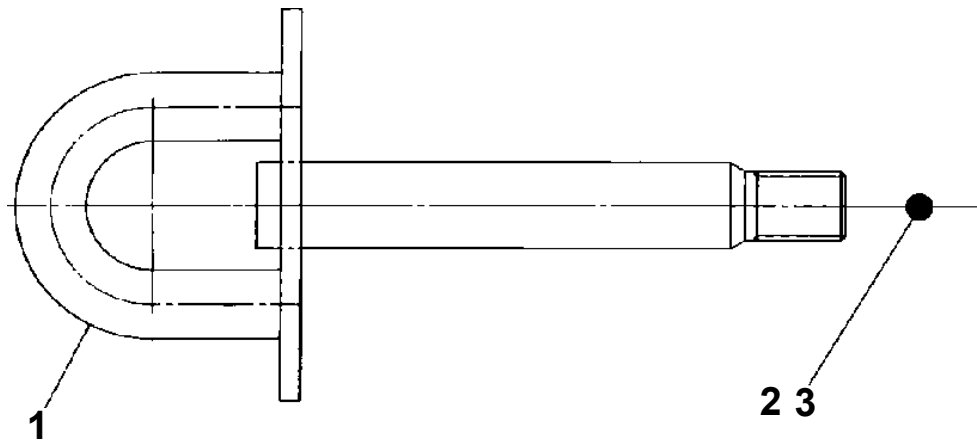
AT-146-4A 43011831753 UPPER, LOWER, HINO 2KG-XZU600F

Pos No.	Parts No	Parts Name	Qty	Unit	Technical Data	Serial No (Start)	Serial No (End)	Remarks
1	42357710200	HARNESS	1					
2	37000300720	SLEEVE	3		12-10			
3	42356351003	TERMINAL ASSY	1					
4	42357711000	TERMINAL ASSY	1					
5	42357710100	SUPPORT	1					
6	42352350300	HARNESS	1					
7	90171110018	BOLT	4		M10X18			
8	90302040801	WASHER,SPRING	2		8			
9	90303070801	WASHER,PLAIN	2		8			
10	91810130240	FASTENER	15					
11	90180208020	BOLT,BUTTON	2		M8X20			
12	42352350400	HARNESS	1					
13	82100002008	CLAMP	2		WR12			
14	90302040601	WASHER,SPRING	4		6			
15	90201200600	NUT	1		M6			
16	80172804006	SCREW,MACHINE	4		M4X6			
17	82100002002	CLAMP	1		WR6			
18	90101206012	BOLT	3		M6X12			
19	90172110025	BOLT,HEXAGON SOCKET	2		M10X25			
20	90302041001	WASHER,SPRING	6		10			
21	90303071001	WASHER,PLAIN	6		10			
41	42356351200	TERMINAL	2					
42	42353341500	SUPPORT	1					
43	80172804020	SCREW,MACHINE	4		M4X20			
44	42356351300	SUPPORT	1					
45	90172105012	BOLT,HEXAGON SOCKET	2		M5X12			
46	90302040501	WASHER,SPRING	2		5			

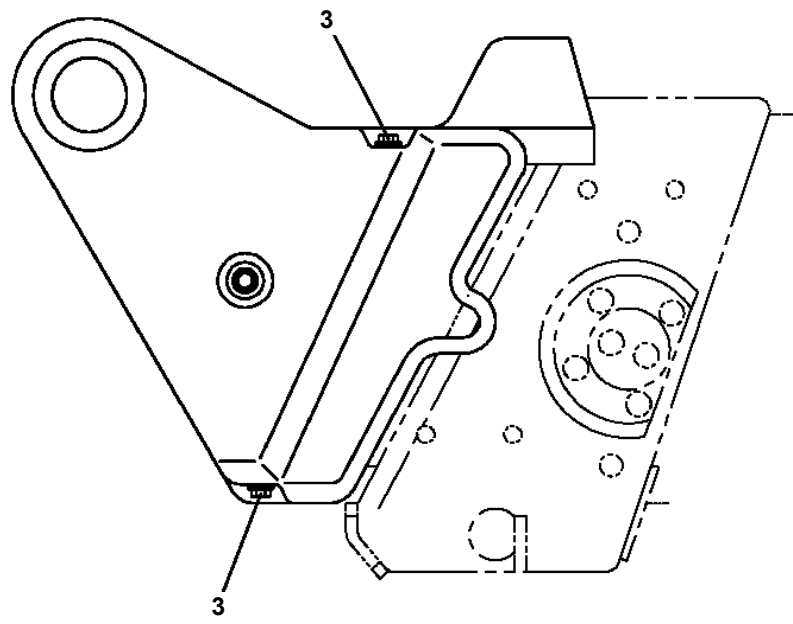
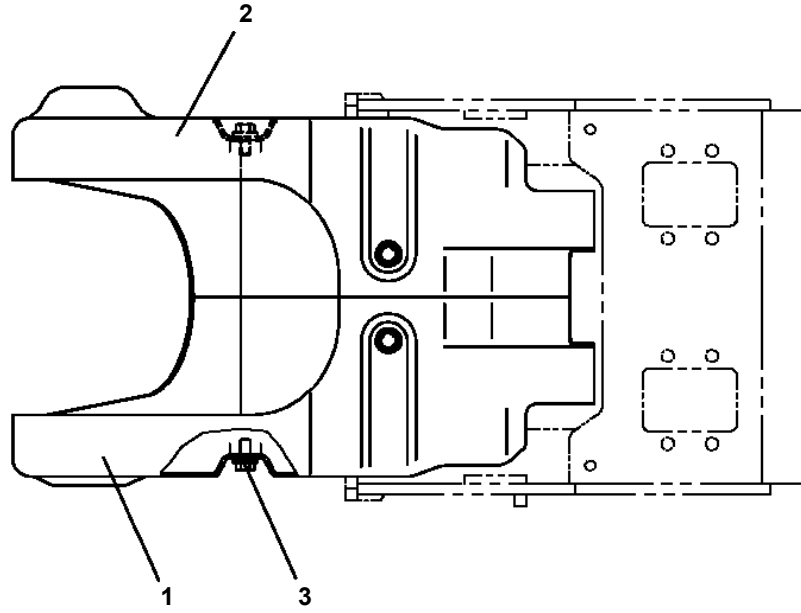
AT-146-4A 43011831753 UPPER, LOWER, HINO 2KG-XZU600F

Pos No.	Parts No	Parts Name	Qty	Unit	Technical Data	Serial No (Start)	Serial No (End)	Remarks	Pages
1	42899420100	PIPE	1						
2	42898280201	COVER	1						
3	90101208012	BOLT	2		M8X12				
4	90302040801	WASHER,SPRING	5		8				
5	90101208020	BOLT	3		M8X20				
6	90303070801	WASHER,PLAIN	2		8				

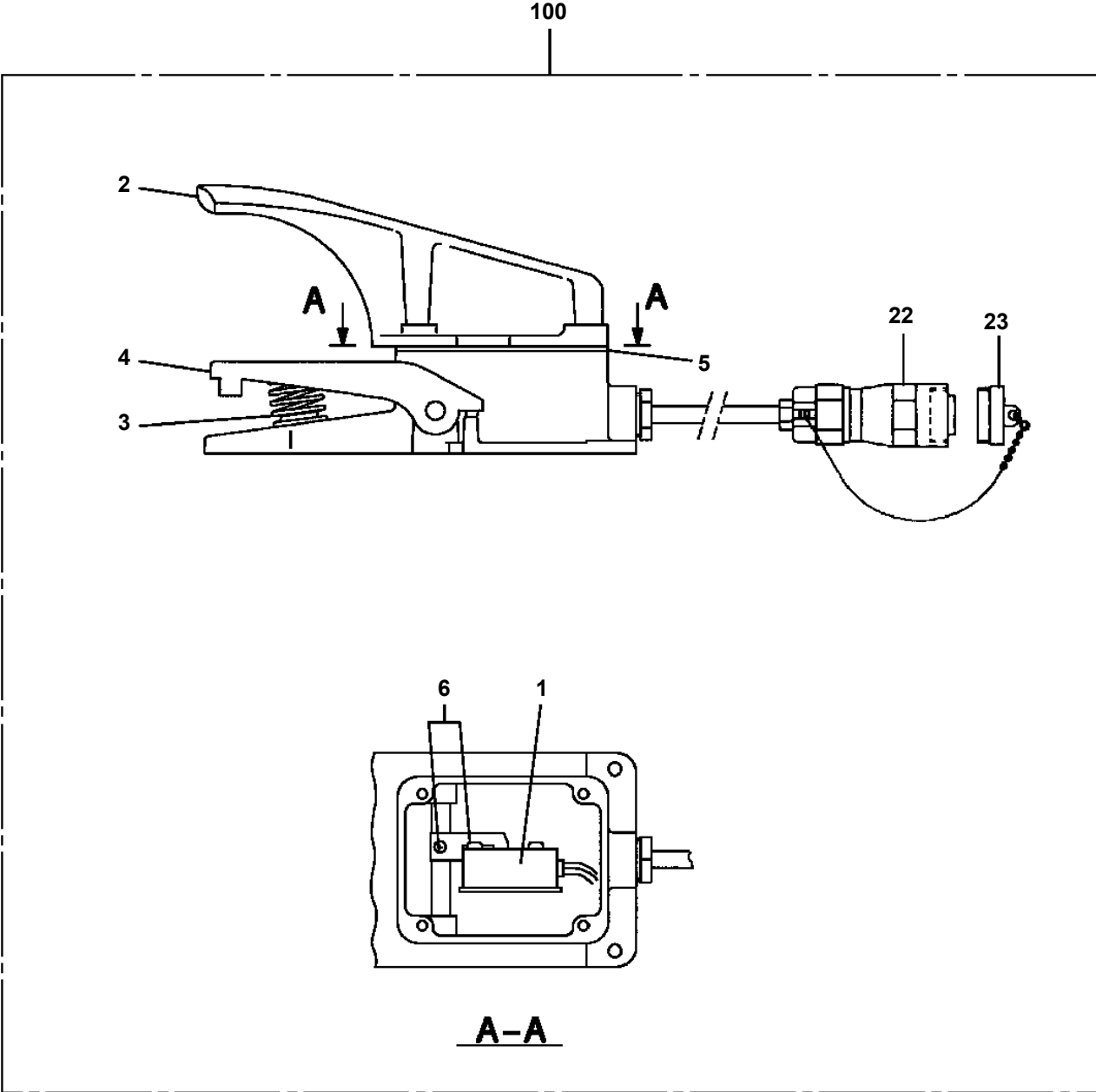
**AT-146-4A 43011831753 UPPER, LOWER, HINO 2KG-XZU600F
PF1080009-00 SUPPORT (WINCH JIB,OPTION)**



**AT-146-4A 43011831753 UPPER, LOWER, HINO 2KG-XZU600F
PG1410105-00 COVER,BOOM (TOP/FRP,WHITE)**

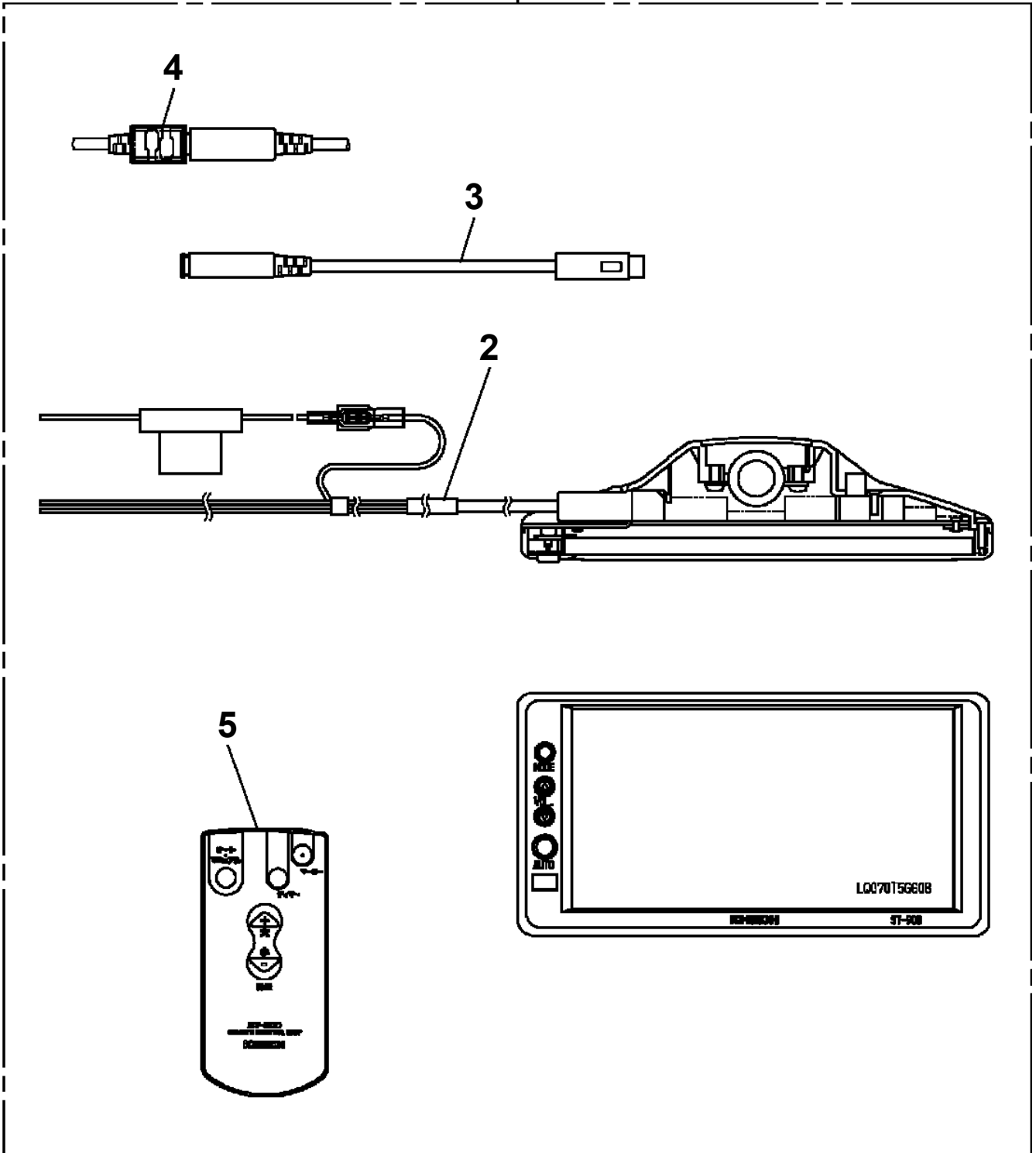


AT-146-4A 43011831753 UPPER, LOWER, HINO 2KG-XZU600F
PH1540019-04 FOOT SWITCH (OPTION)

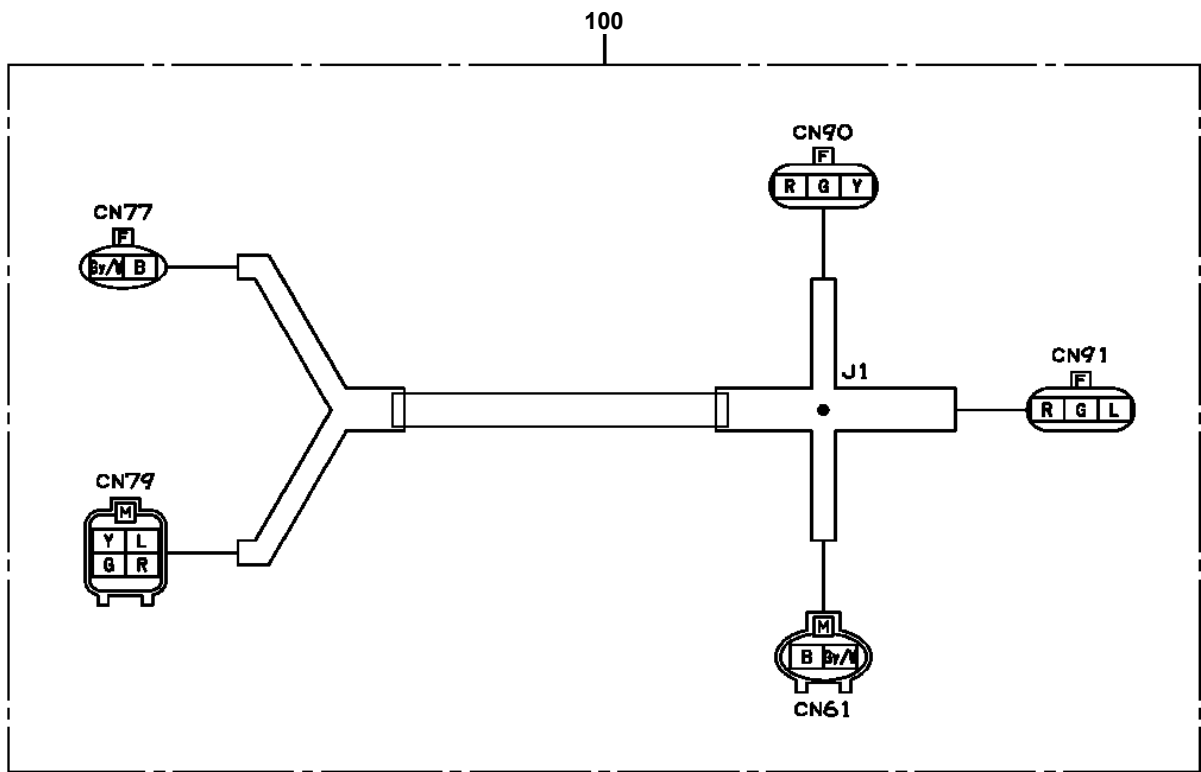


AT-146-4A 43011831753 UPPER, LOWER, HINO 2KG-XZU600F
PH1710015-00 DISPLAY

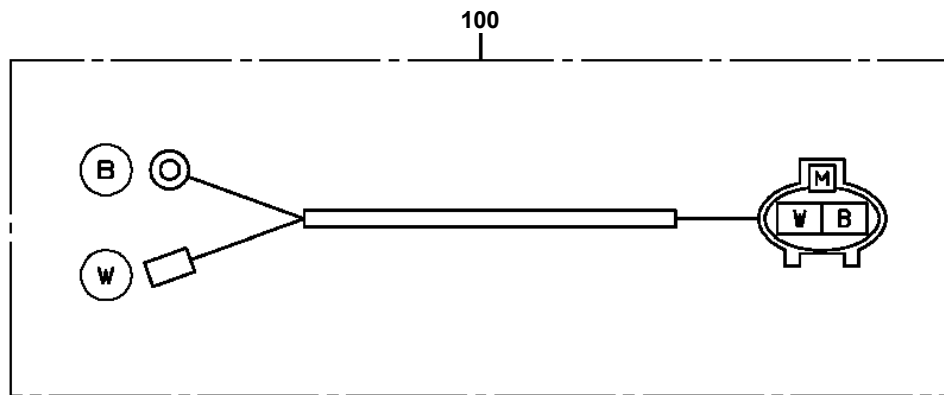
100



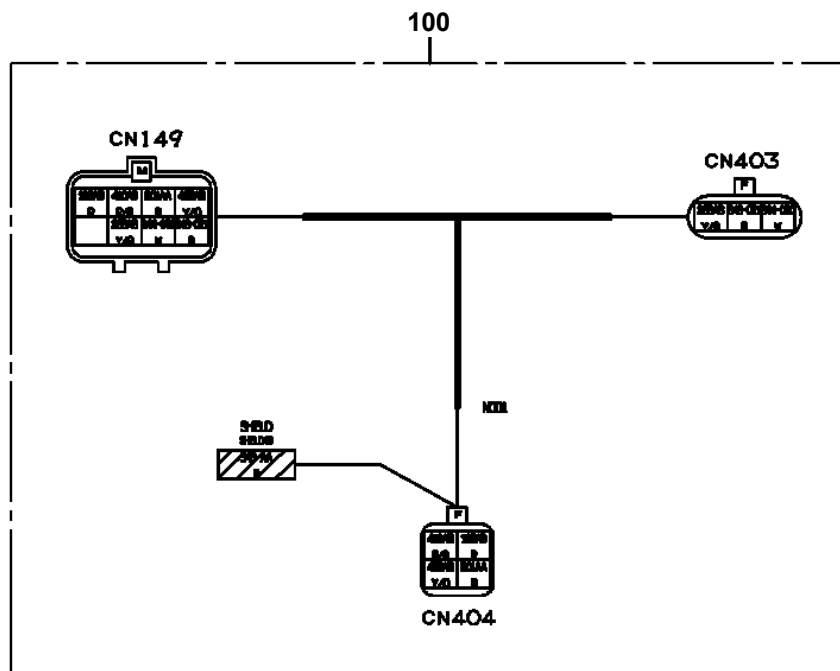
AT-146-4A 43011831753 UPPER, LOWER, HINO 2KG-XZU600F
PH5031029-00 HARNESS



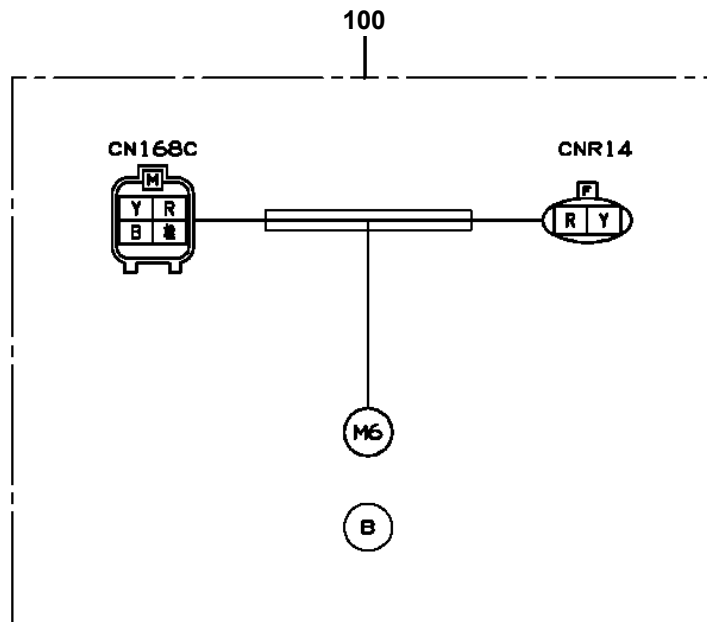
AT-146-4A 43011831753 UPPER, LOWER, HINO 2KG-XZU600F
PH5031072-00 HARNESS



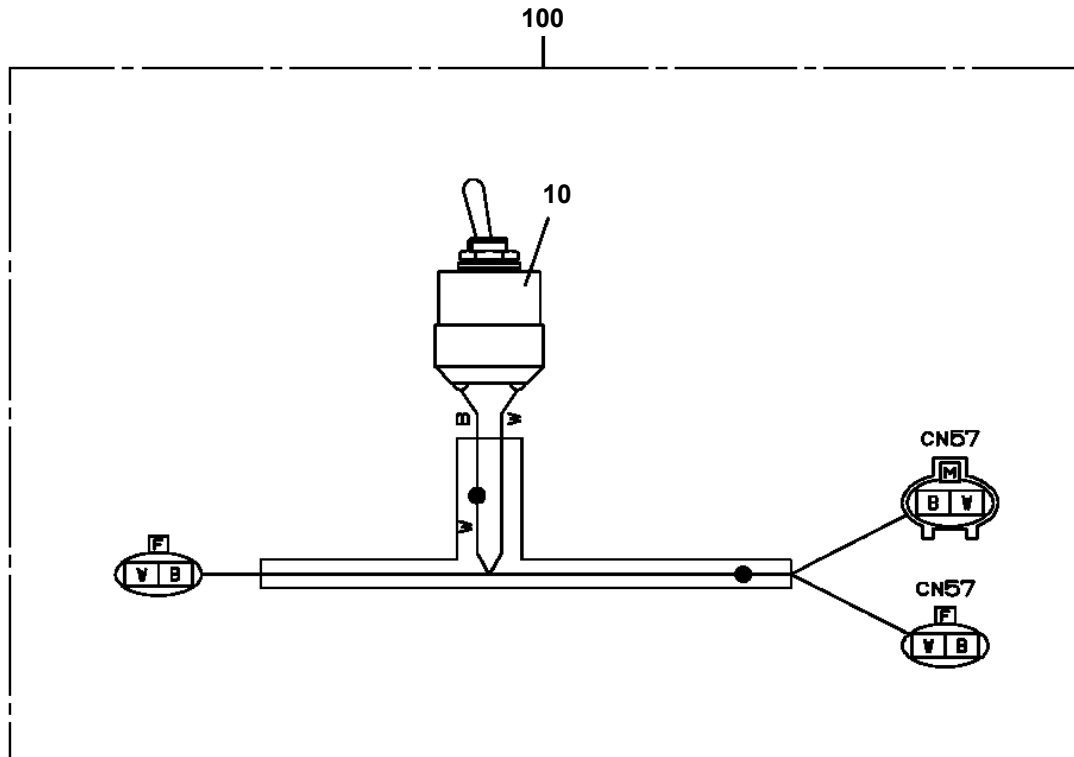
AT-146-4A 43011831753 UPPER, LOWER, HINO 2KG-XZU600F
PH5031984-00 HARNESS



**AT-146-4A 43011831753 UPPER, LOWER, HINO 2KG-XZU600F
PH5032364-00 HARNESS**

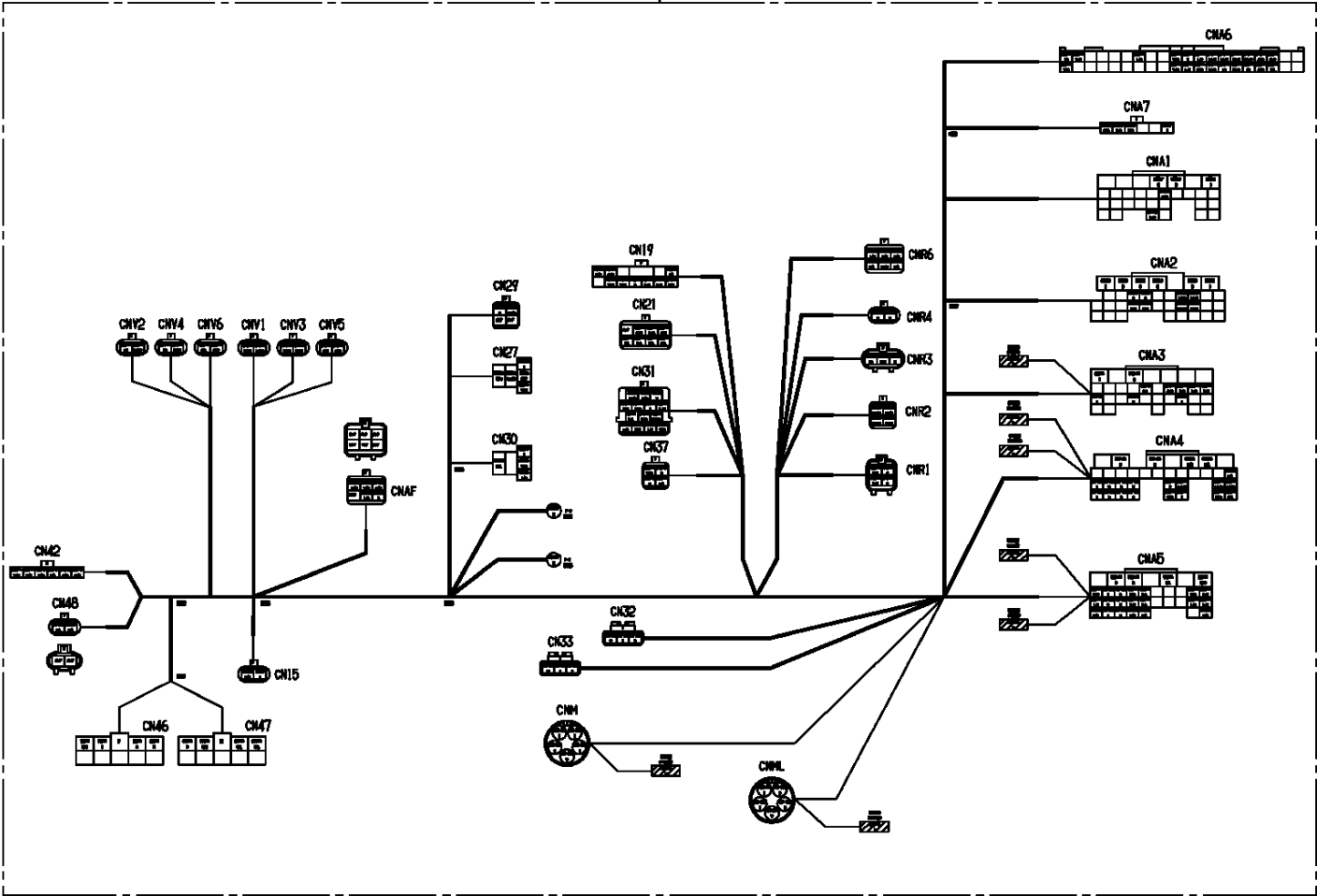


AT-146-4A 43011831753 UPPER, LOWER, HINO 2KG-XZU600F
PH5032890-00 HARNESS

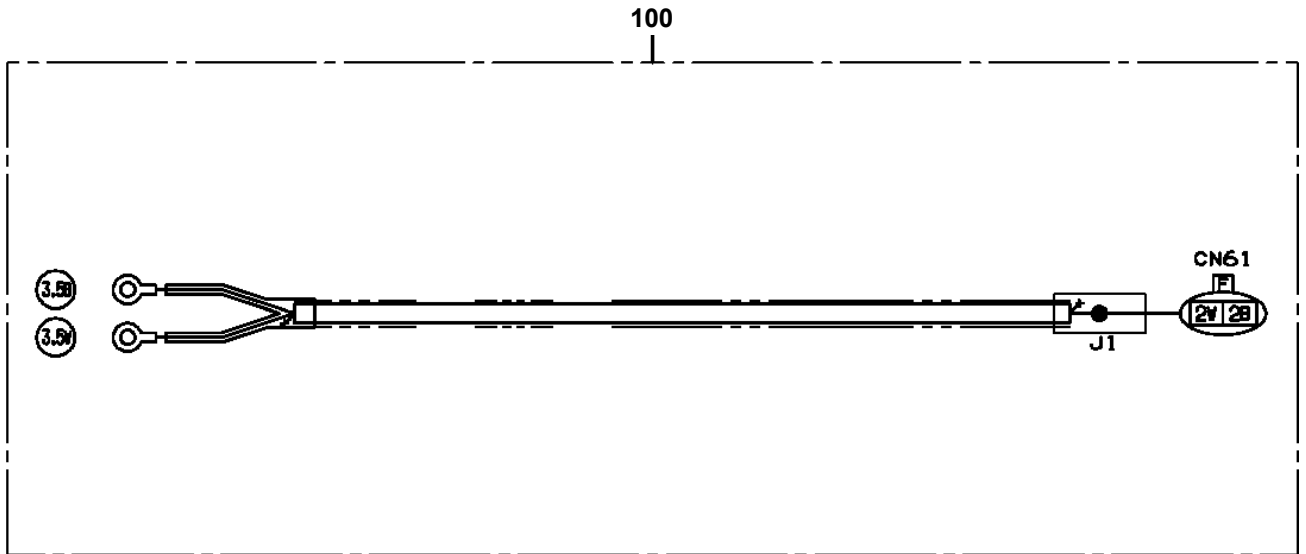


AT-146-4A 43011831753 UPPER, LOWER, HINO 2KG-XZU600F
PH5033044-00 HARNESS

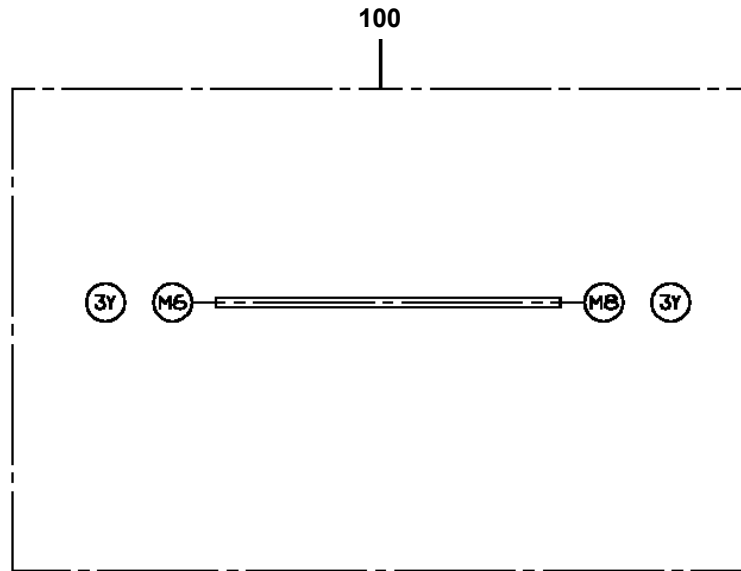
100



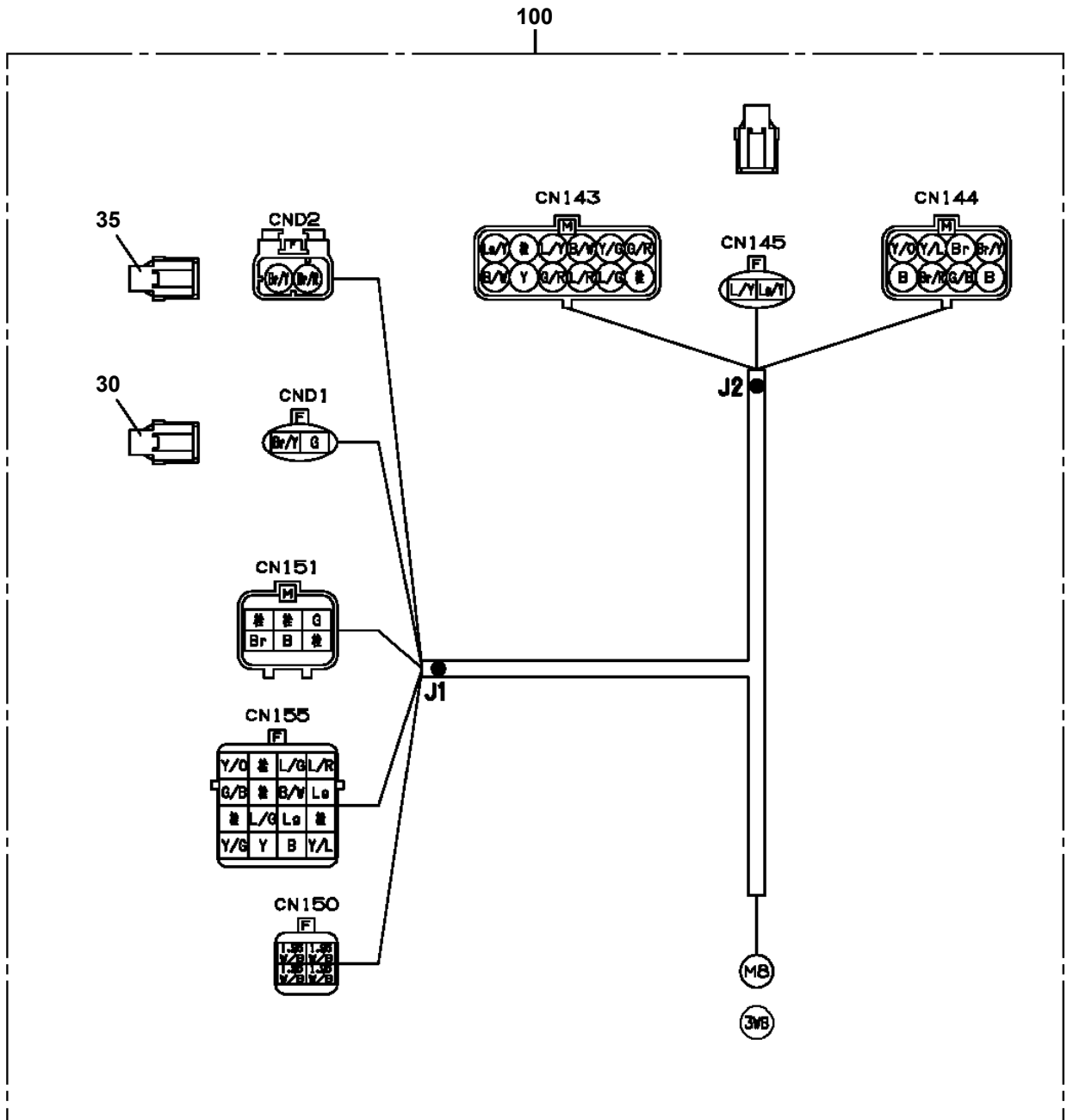
AT-146-4A 43011831753 UPPER, LOWER, HINO 2KG-XZU600F
PH5033786-00 HARNESS



AT-146-4A 43011831753 UPPER, LOWER, HINO 2KG-XZU600F
PH5034228-00 HARNESS

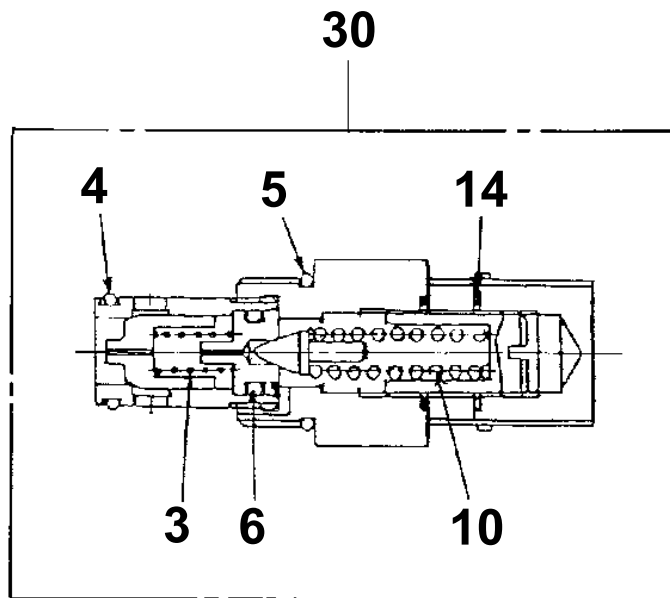


AT-146-4A 43011831753 UPPER, LOWER, HINO 2KG-XZU600F
 PH5034544-00 HARNESS



**AT-146-4A 43011831753 UPPER, LOWER, HINO 2KG-XZU600F
PI1100061-00 VALVE,RELIEF**

Assembly Name VALVE, RELIEF



AT-146-4A 43011831753 UPPER, LOWER, HINO 2KG-XZU600F

Pos No.	Parts No	Parts Name	Qty	Unit	Technical Data	Serial No (Start)	Serial No (End)	Remarks	Pages
1	36624110100	BODY	1						
2	36624110200	PLUG	2						
3	36624110300	SEAT	2						
4	36624110400	SPRING	2						
5	36624110501	PLUNGER	2						
6	36624110600	PISTON	1						
7	91001101200	O-RING	2		1A P12				
8	91001101800	O-RING	2		1A P18				
10	36624111000	PACKING	2						
30	36624630000	VALVE,CHECK	1						

AT-146-4A 43011831753 UPPER, LOWER, HINO 2KG-XZU600F

Pos No.	Parts No	Parts Name	Qty	Unit	Technical Data	Serial No (Start)	Serial No (End)	Remark
1	80316100040	PLUG	1		PF1/2			
2	91002801800	O-RING	1		1B P18			
7	91002801600	O-RING	1		1B P16			
10	36606335030	SPRING	1					
11	91002902500	O-RING	1		1B G25			
12	36606335020	GUIDE	1					
13	36606335010	COVER	1					
14	36620030010	PLUG	1		PF3/8			
15	91002801400	O-RING	2		1B P14			
16	52255101000	SPRING	1					
18	36605515060	PISTON	1					
19	91002801000	O-RING	1		1B P10			
20	80316100030	PLUG	1		G3/8			
21	91002801200	O-RING	2		1B P12			
22	90172108040	BOLT,HEXAGON SOCKET	4		M8X40			
23	80316090020	PLUG	3		KKT PT1/8			
31	36605515070	BODY ASSY	1					
32	36605515082	VALVE,CHECK	1					
100	36606330000	VALVE,COUNTERBALANCE	1					

AT-146-4A 43011831753 UPPER, LOWER, HINO 2KG-XZU600F

Pos No.	Parts No	Parts Name	Qty	Unit	Technical Data	Serial No (Start)	Serial No (End)
1	(*****)	SELECTOR ASSY,BOOSTER (ELECTRIC)	1				

AT-146-4A 43011831753 UPPER, LOWER, HINO 2KG-XZU600F

Pos No.	Parts No	Parts Name	Qty	Unit	Technical Data	Serial No (Start)	Serial No (End)	Remarks	Pages
1	42897860100	COVER	1						
2	90186208014	BOLT,FLANGE	4		M8X14				
23	82400000202	GROMMET	1						

AT-146-4A 43011831753 UPPER, LOWER, HINO 2KG-XZU600F

Pos No.	Parts No	Parts Name	Qty	Unit	Technical Data	Serial No (Start)	Serial No
1	82165904020	LAMP	1		24V 60W		
2	90813108020	BOLT,WING	1		M8X20		
3	91810130240	FASTENER	3				
7	42736670100	HARNESS	1				
8	42513240100	SUPPORT	1				
9	90101212020	BOLT	1		M12X20		
10	90302041201	WASHER,SPRING	1		12		
11	37000189040	PIN	1				
12	80620210160	PIN,SNAP	1				
13	90101208012	BOLT	2		M8X12		
14	90302040801	WASHER,SPRING	2		8		
15	91850400601	CLAMP	2				
31	82100000054	BULB,LAMP	1		24V 60W		
32	82100002838	SWITCH ASSY (WITH HARNESS,TERMINAL)	1				

AT-146-4A 43011831753 UPPER, LOWER, HINO 2KG-XZU600F

Pos No.	Parts No	Parts Name	Qty	Unit	Technical Data	Serial No (Start)	Serial No (End)	Remarks
2	(*****)	NAME PLATE ASSY (AMC DATA)	1					

AT-146-4A 43011831753 UPPER, LOWER, HINO 2KG-XZU600F

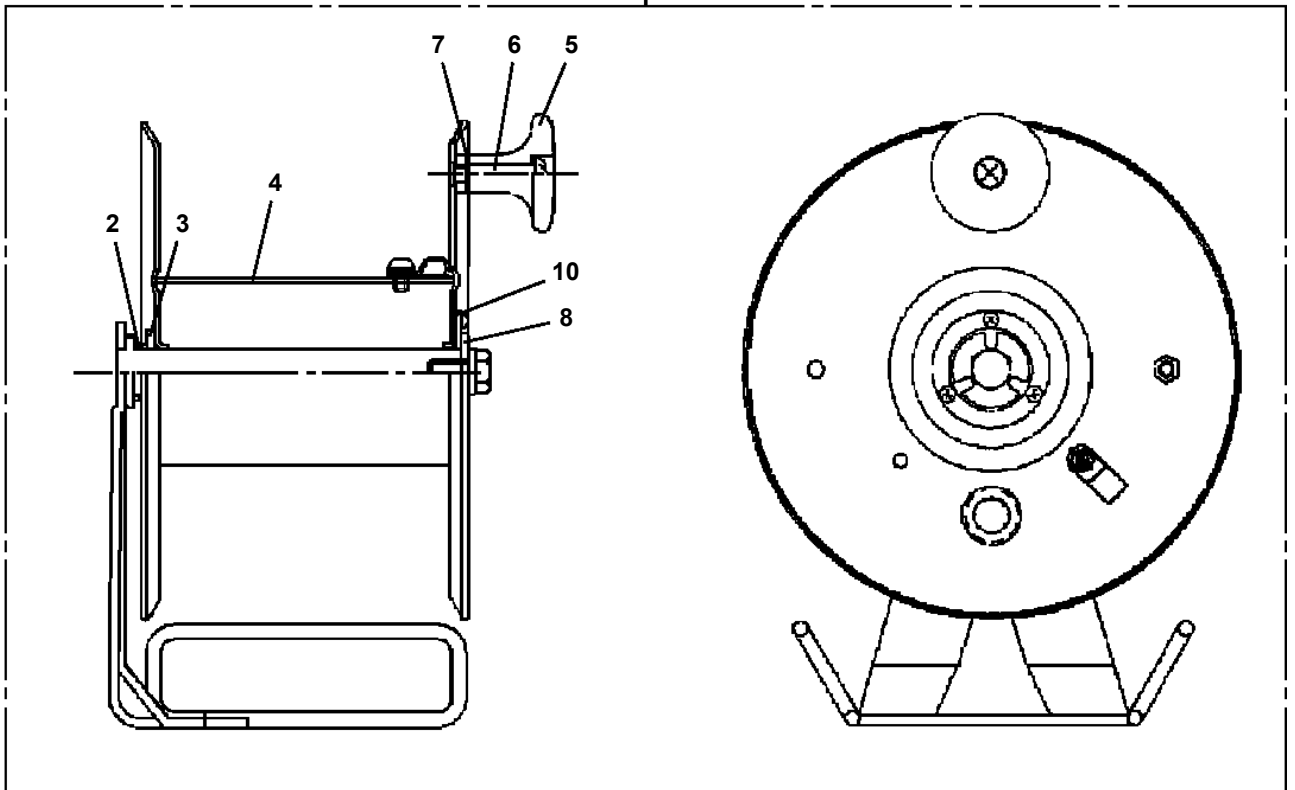
Pos No.	Parts No	Parts Name	Qty	Unit	Technical Data	Serial No (Start)	Serial No (End)	Remarks
1	36663955100	SHAFT	1					
2	80500006206	BEARING,BALL	1					
4	91001206500	O-RING	1		1A G65			
5	36660025021	COVER (OIL SEAL)	1					
6	36660025140	SEAL,OIL	1					
7	36663485110	RING,RETAINING	1		R72			
8	36663955020	PLATE,THRUST	1					
9	36663955030	BARREL ASSY (CYLINDER)	1					
10	36663955040	PLATE (VALVE)	1					
11	36661925030	COVER (BOTTOM)	1					
12	80500006203	BEARING,BALL	1					
13	36662355110	PIN	2					
14	36663955050	O-RING	1					
15	36663955060	BOLT	6		M10X35			
16	14125151020	KEY	1					
17	36660125060	PLUG	2		PF3/8			
18	36081315130	PROTECTOR (THREAD)	2					
44	36660025100	SPRING (PLUNGER)	5					
45	14125151300	RING,RETAINING	1					
46	12645103171	SPRING (CENTER)	1					
100	36664070000	MOTOR,OIL	1					

AT-146-4A 43011831753 UPPER, LOWER, HINO 2KG-XZU600F

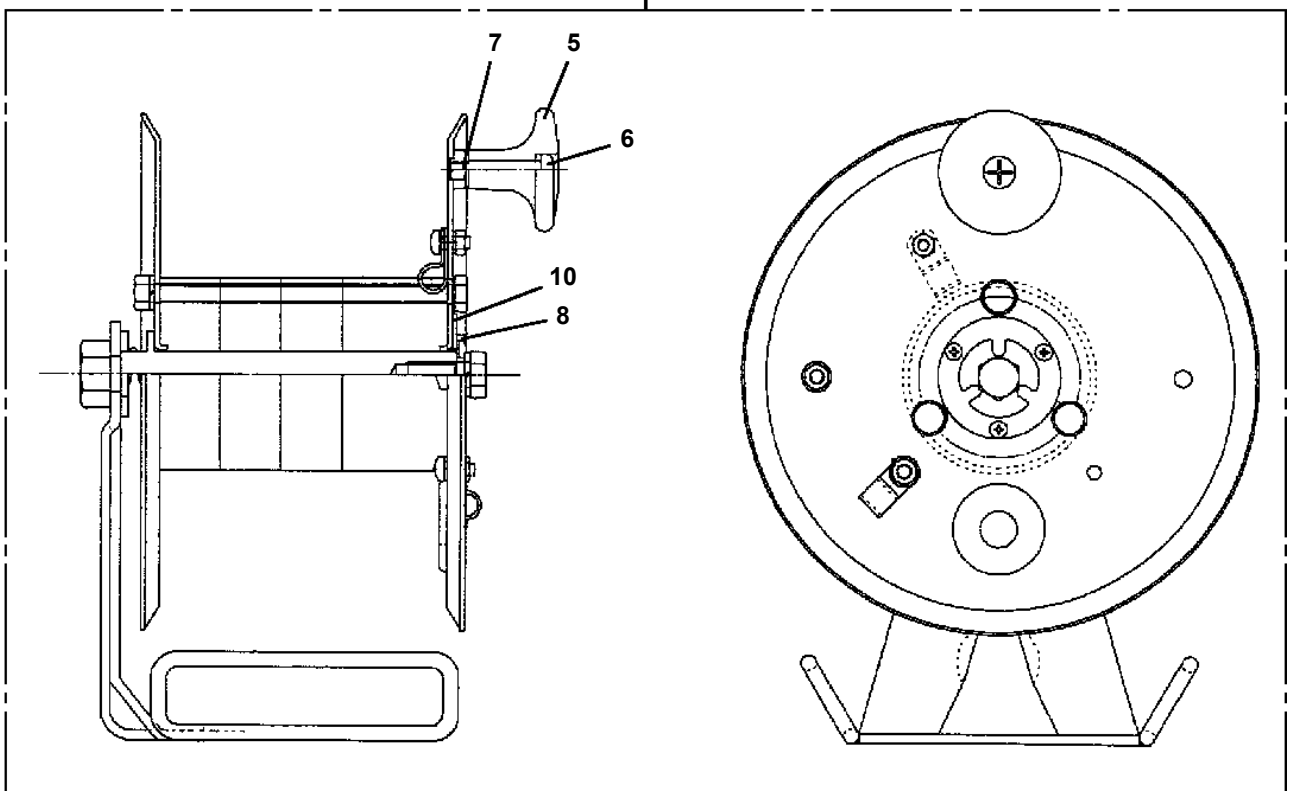
Pos No.	Parts No	Parts Name	Qty	Unit	Technical Data	Serial No (Start)	Serial No (End)	Remarks	Pages
1	42503861000	LAMP ASSY	1						
2	42503860100	SUPPORT	1						
3	42503860200	GUARD	1						
4	90201200600	NUT	4		M6				
5	90302040601	WASHER,SPRING	4		6				
6	82430138010	KNOB	1						
7	90101208030	BOLT	1		M8X30				

AT-146-4A 43011831753 UPPER, LOWER, HINO 2KG-XZU600F
PN1350032-02 REEL, CORD

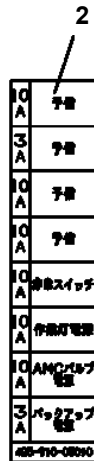
50



50



AT-146-4A 43011831753 UPPER, LOWER, HINO 2KG-XZU600F
 PN5011483-01 NAME PLATE ASSY (SWING TABLE)



3

△警告/非常スイッチ

非常スイッチを使用すると作業範囲規制は発生しません。転倒の恐れがありますので必ずブームを全閉させてから作業範囲を拡大しよう作業して発給してください。

非常操作方法

AMCの故障等で通常の操作ができない場合、非常スイッチをONしながら手動レバーにて強制操作をしてください。

4

バケット水平調整

- 2つのノブを左に押し金剛してください。
- ブーム伸縮操作により、バケットを水平に調整してください。
 ○後側の場合、右側に操作。
 ○後側の場合、左側に操作。
- 2つのノブを右に押し戻してください。
- 調整後は起状及び伸縮操作を行いバケットの水平が狂わないことを確認してください。

5

洗浄禁止

6

注 意

定額金額を超過したままに操作する場合には、器具やサブ等との使用に注意してください。

9

品名	部品名	品番
トップブーム	FRP	400-910-0800
ブームスライフレード	PA, POM	
ブームスライフレード	PA	
クランプ	FRP	
クランプ	PA	
クランプ	PA, PET	
バケット	FRP	
バケットライナー	PE	
バケット上蓋プロテクタ	PE	
バケット側板	FRP	
バケット側板パネル	FRP	
操作レバーノブ	ABS	
アトミックスライフレード	PA	
ケーブル・ホース	PA, PE, PP	
クランプ	PA	
クランプ	PE, PPA, PVC	
クランプ	PA	
クランプ	PUR	
クランプ	ABS	
クランプ	PEUR	

10

6	対応作業停止時間	7
5	特定自主検査 (法定年次検査)	8
4	を記録しましょう	9
3	第1回検査は 年 月 日	10
2		11
1	記録検査実施済企業情報部会 (労働安全)	12

11

カバー開放厳禁

12

バケット水平調整ハンドル

13

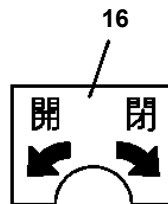
△警告

- 非常スイッチの操作により、強制範囲は解除状態となります。転倒・干渉に十分注意をして操作を行ってください。
- ・AMC (過負荷防止装置) が故障した状態 (緊急停止表示灯が点滅をしている) で非常操作を行うと、過負荷防止機能、およびブーム干渉防止機能が解除されます。
- ・ブーム伸縮操作を行う場合は、作業範囲拡大による作業範囲を拡大しないように、必ずブームを全閉させてから行ってください。

15

△警告/バケット水平調整

バケット水平調整時にはバケット内の人・工具等を傷めるしてください。



AT-146-4A 43011831753 UPPER, LOWER, HINO 2KG-XZU600F

Pos No.	Parts No	Parts Name	Qty	Unit	Technical Data	Serial No (Start)	Serial No (End)	Remarks
1	42391413080	PLATE,NAME	2					
2	42311915010	PLATE,NAME	2					
3	42392583120	PLATE,NAME	1					
4	42311895040	PLATE,CAUTION	1					
5	42311305580	PLATE,CAUTION	1					
6	42311895060	REFLECTOR	1					
7	42312622100	PLATE,NAME	1					
8	42311305560	PLATE,CAUTION	1					
9	42392350070	PLATE,CAUTION	1					
11	42311895030	PLATE,CAUTION	1					
12	12117140000	PLATE,NAME (GREASE)	2					
13	42311895080	PLATE,NAME (JIB LOCK PIN)	1					

CLICK HERE TO **DOWNLOAD** THE COMPLETE MANUAL

- Thank you very much for reading the preview of the manual.
- You can download the complete manual from: www.heydownloads.com by clicking the link below



- Please note: If there is no response to CLICKING the link, please download this PDF first and then click on it.

CLICK HERE TO **DOWNLOAD** THE COMPLETE MANUAL

AT-146-4A 43011831753 UPPER, LOWER, HINO 2KG-XZU600F

Pos No.	Parts No	Parts Name	Qty	Unit	Technical Data	Serial No (Start)	Serial
1	(*****)	NAME PLATE ASSY (OUTRIGGER CONTROLS)	1				
2	42395081120	PLATE,NAME	1				
3	42398294050	PLATE,CAUTION	1				
4	42591004010	PLATE,CAUTION	1				
5	42398294070	PLATE,CAUTION	1				
6	42398294080	PLATE,CAUTION	1				
7	42398294090	PLATE,NAME	1				
8	42394191140	PLATE,CAUTION	1				
9	42398294100	PLATE,NAME	1				
10	42398294110	PLATE,NAME	1				
11	42392584040	PLATE	1				
12	42331782100	PLATE,NAME	1				
13	42398294120	PLATE,CAUTION	1				

AT-146-4A 43011831753 UPPER, LOWER, HINO 2KG-XZU600F

Pos No.	Parts No	Parts Name	Qty	Unit	Technical Data	Serial No (Start)	Serial N
1	(*****)	PLATE ASSY,NAME (VEHICLE HEIGHT 3.4M)	1				
2	(*****)	PLATE ASSY,NAME (ANTENNA)	1				
11	(*****)	NAME PLATE ASSY (TELEMATICS)	1				
12	(*****)	NAME PLATE ASSY (CAUTION FOR COLLISION)	1				

AT-146-4A 43011831753 UPPER, LOWER, HINO 2KG-XZU600F

Pos No.	Parts No	Parts Name	Qty	Unit	Technical Data	Serial No (Start)	Serial No (End)	Remarks	Pa
1	37002212160	PLATE,NAME (100KG)	1						

AT-146-4A 43011831753 UPPER, LOWER, HINO 2KG-XZU600F

Pos No.	Parts No	Parts Name	Qty	Unit	Technical Data	Serial No (Start)	Serial No (End)	Remarks	Pages
1	37002218760	PLATE,NAME	1						

AT-146-4A 43011831753 UPPER, LOWER, HINO 2KG-XZU600F

Pos No.	Parts No	Parts Name	Qty	Unit	Technical Data	Serial No (Start)	Serial No (End)	Remarks	Pages
7	42332677560	SPRING	1						
11	42332677520	PLUG	1						
12	42332677530	BOOT	1						
21	42332677610	COVER	1						
22	42332677620	CAP	1						
23	42332671010	PLATE	1						
47	42332677630	BEARING	2						
48	42332677540	SPRING	1						
49	42332677650	SPRING	2						
54	42332677660	WASHER	1						
100	42333572000	OPE.ASSY	1						

AT-146-4A 43011831753 UPPER, LOWER, HINO 2KG-XZU600F

Pos No.	Parts No	Parts Name	Qty	Unit	Technical Data	Serial No (Start)	Serial No (End)	Remarks	Pages
1	42272511000	COVER ASSY	1						000048
3	90101208016	BOLT	14		M8X16				
4	90302040801	WASHER,SPRING	16		8				
5	90303070801	WASHER,PLAIN	14		8				
6	90101206010	BOLT	6		M6X1.0				
7	90302040601	WASHER,SPRING	6		6				
8	90303070601	WASHER,PLAIN	6		6				
9	42272510102	COVER	1						
10	42272500200	COVER	1						
12	42835795200	SUPPORT	1						
13	90101208025	BOLT	2		M8X25				
14	42272510200	COVER	1						
15	80172305012	SCREW,MACHINE	3		M5X12				
16	90302040501	WASHER,SPRING	3		5				
17	90303070501	WASHER,PLAIN	3		5				
18	42272513000	COVER ASSY	1						000052
19	82401800060	PLUG (FOR M6)	2						
20	82401800080	PLUG (FOR M8)	2						

AT-146-4A 43011831753 UPPER, LOWER, HINO 2KG-XZU600F

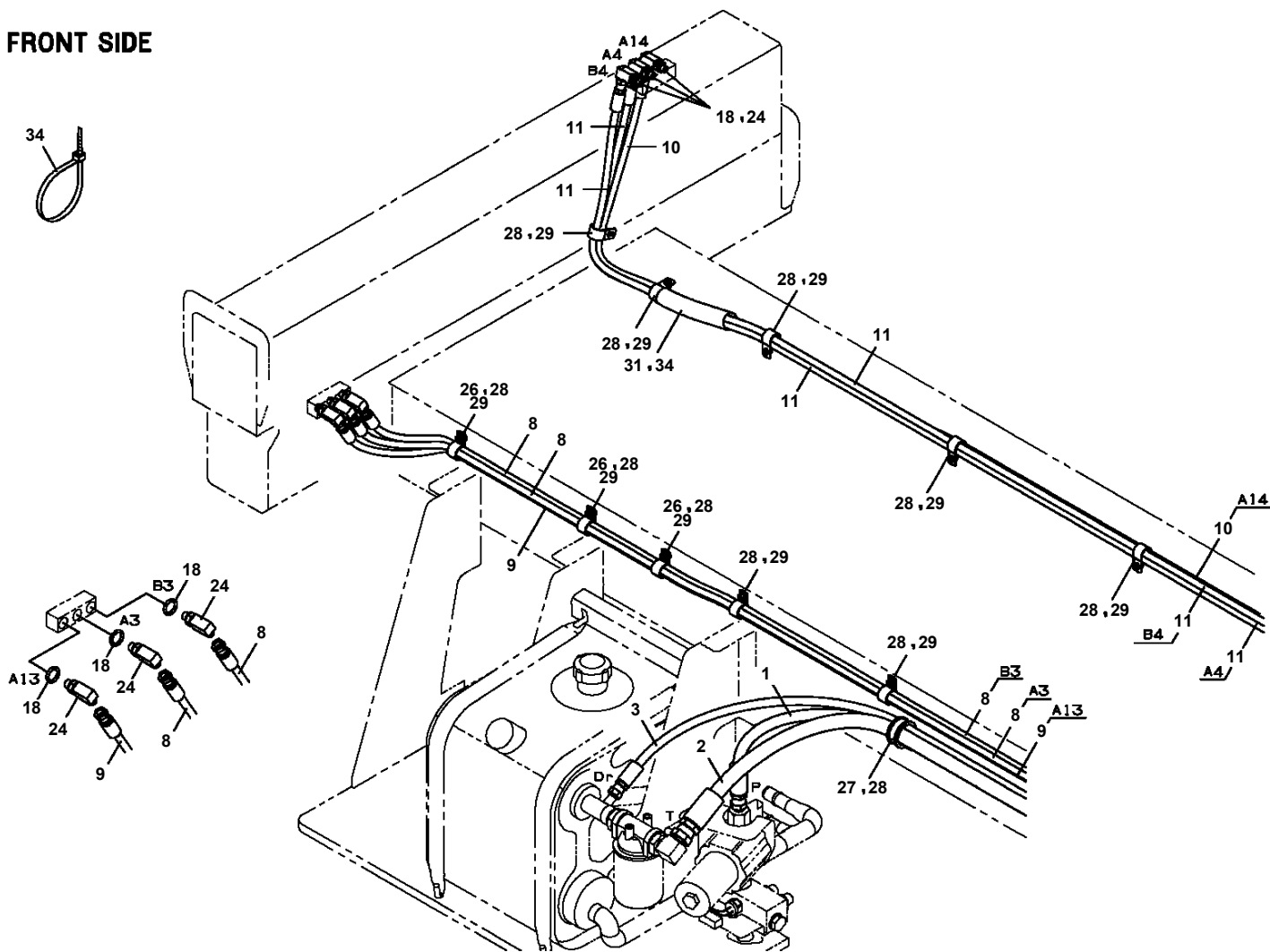
Pos No.	Parts No	Parts Name	Qty	Unit	Technical Data	Serial No (Start)	Serial No (End)	Remarks	Pa
1	42509041000	CABLE ASSY,SIGNAL	1						
2	37000714010	CLAMP ASSY	3		12X1				
3	37000300710	SLEEVE	3		12-8				
4	91810130240	FASTENER	20						
5	80192473010	SCREW,MACHINE	6		M3X10				
6	82100002004	CLAMP	2		WR8				
7	90302040601	WASHER,SPRING	2		6				
8	90201200600	NUT	2		M6				

AT-146-4A 43011831753 UPPER, LOWER, HINO 2KG-XZU600F

Pos No.	Parts No	Parts Name	Qty	Unit	Technical Data	Serial No (Start)	Serial No (End)	Remarks	Page
1	42422852100	SUPPORT	1						
2	90101208016	BOLT	24		M8X16				
3	90302040801	WASHER,SPRING	29		8				
4	42422454102	SUPPORT	1						
5	42422454700	SUPPORT	1						
6	42422264200	SUPPORT	1						
7	91002802900	O-RING	1		1B P29				
8	90101208030	BOLT	2		M8X30				
9	90201200800	NUT	2		M8				
10	42422852010	PLATE	1						
11	42422264300	PLATE	1						
12	37002514860	HOSE	1		L=2200				
13	37000300740	SLEEVE	2		18-12				
14	42421133300	CLAMP ASSY	1						
15	37000926180	JOINT	1		L,G1/2-G1/2				
16	91002801800	O-RING	2		1B P18				
17	36625520000	VALVE,CHECK	1						0001
	36625510000	VALVE,CHECK	1						0001
18	37002457330	HOSE	1		L=2000				
19	80481308080	JOINT	1		L,G1-G1				
20	37012400350	HOSE	1		L=1660				
21	90101206025	BOLT	2		M6X25				
22	90302040601	WASHER,SPRING	13		6				
24	90101206016	BOLT	10		M6X16				
25	42422852020	SUPPORT	1						
26	82100002014	CLAMP	1		WR20				
27	82100002042	CLAMP	1		WE20				
28	82100002017	CLAMP	2		WR30				
29	82100001804	TUBE,CORRUGATE	2	M	15				
30	82100001803	TUBE,CORRUGATE	5	M	13				
31	82100002012	CLAMP	3		WR18				
32	82100001806	TUBE,CORRUGATE	2	M	22				
33	82100002008	CLAMP	2		WR12				
34	91810130250	FASTENER	20						
35	90201200600	NUT	2		M6				
36	82100002009	CLAMP	1		WRC12				
37	42422454401	SUPPORT	1						
38	42422454600	SUPPORT	1						
39	90103210016	BOLT	2		M10X16				
40	90302041001	WASHER,SPRING	2		10				
41	91803600160	CLIP	2		D=11-16				
42	90101208025	BOLT	3		M8X25				
62	37000601020	CLAMP	2						
63	90201200600	NUT	2		M6				
64	90101206012	BOLT	2		M6X12				
65	90302040601	WASHER,SPRING	2		6				
66	42421133310	CUSHION	2						
67	42421133320	PLATE	1						
68	90101208045	BOLT	2		M8X45				
69	90302040801	WASHER,SPRING	2		8				
71	42340170960	CUSHION	4						
82	42422852300	PLATE	1						

AT-146-4A 43011831753 UPPER, LOWER, HINO 2KG-XZU600F PP6130095-00 PIPING ASSY,FRAME

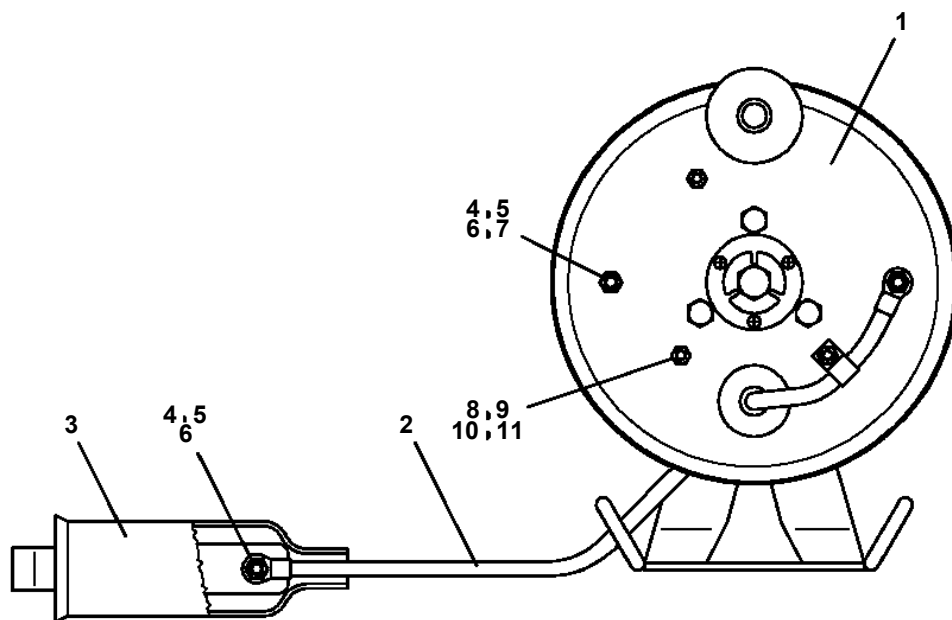
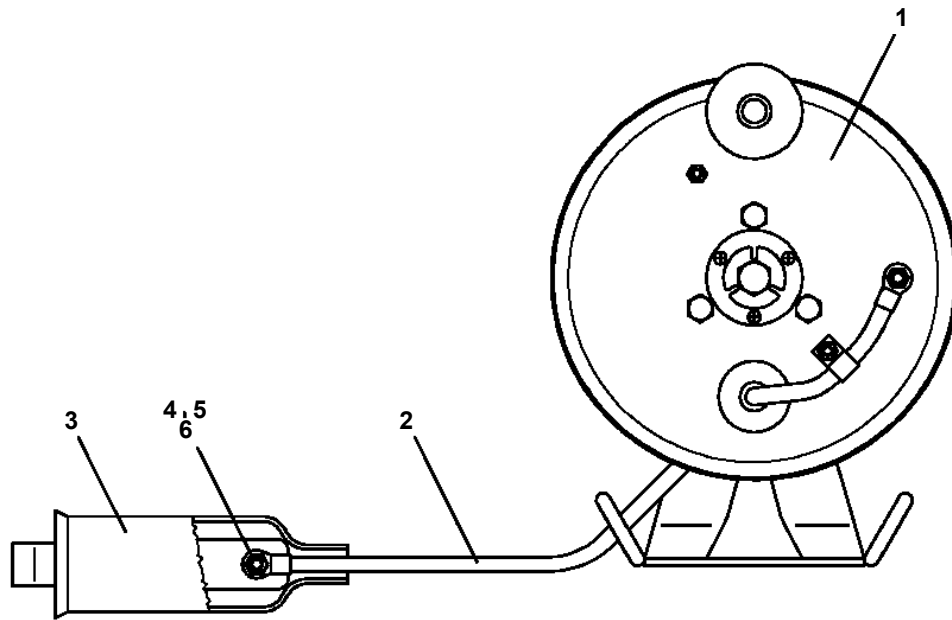
FRONT SIDE



AT-146-4A 43011831753 UPPER, LOWER, HINO 2KG-XZU600F

Pos No.	Parts No	Parts Name	Qty	Unit	Technical Data	Serial No (Start)	Serial No (End)	Remarks
4	90101210035	BOLT	3		M10X35			
5	90302041001	WASHER,SPRING	5		10			
6	90101208065	BOLT	2		M8X65			
7	90302040801	WASHER,SPRING	12		8			
8	37002418340	HOSE	2		L=2350			
9	80481103030	JOINT	1		L,G3/8-G3/8			
10	37002418360	HOSE	1		L=1800			
11	90101210085	BOLT	2		M10X85			
12	37002418880	HOSE	1		L=1000			
13	42347660500	GUIDE	1					
14	80441030604	FITTING,ELBOW	2					
15	37000908730	JOINT (WITH O-RING)	3		L,G3/8-G1/4			
16	37002418310	HOSE	1		L=1930			
17	37000300740	SLEEVE	1		18-12			
18	91002801800	O-RING	2		1B P18			
19	80430620400	JOINT	1					
20	37002471990	HOSE	1		L=1100			
21	37002489550	HOSE	1		L=2090			
22	91002801100	O-RING	3		1B P11			
23	37000922070	JOINT	1		S,G1/4-G1/4			
24	37002418890	HOSE	1		L=1930			
25	37002418350	HOSE	1		L=2030			
27	91810132530	FASTENER	21					
28	37002456680	HOSE	1		L=990			
29	37000714020	CLAMP ASSY	2		12X2			
30	37002418330	HOSE	1		L=1530			
31	80400160128	JOINT	1		S,G3/8-G1/4			
32	89640201000	HOSE	1		660-NFK,1M			
33	80400160131	JOINT	2					
34	91002801400	O-RING	4		1B P14			
35	37002489630	HOSE	1		L=1320			
36	80400160127	JOINT	1					
37	37002489610	HOSE	1		L=2200			
38	80400160129	JOINT	2					
39	37002418950	HOSE	1		L=990			
40	37002489580	HOSE	1		L=850			
41	37002459240	HOSE	1		L=940			
42	37000925950	JOINT	1		S,G1/4-G1/4			
43	37002413300	HOSE	1		L=670			
45	82100001819	TUBE,SPIRAL	N		SE-18BK			
46	37000714040	CLAMP ASSY	1		18X2			
47	37012406050	HOSE	1		L=1920			
48	82100002018	CLAMP	2		WR35			
49	90201200800	NUT	4		M8			
50	37002469010	HOSE	1		L=1720			
52	42347660300	GUIDE	1					
53	42347660400	GUIDE	1					
54	37000714881	CLAMP ASSY	1					
55	37002418550	HOSE	1		L=1540			
56	37012408940	HOSE	1		L=1930			
57	37000714030	CLAMP ASSY	1		18X1			
58	82100001411	TUBE,SPIRAL	N		SE-08BK			
59	37000714240	CLAMP ASSY	1					
60	90101208012	BOLT	4		M8X12			
61	90172108060	BOLT,HEXAGON SOCKET	2		M8X60			
62	90303070801	WASHER,PLAIN	4		8			
63	81408000210	PIPE,STEEL	1	M	15X2.0T			
64	82100001413	TUBE,SPIRAL	N		SE-15BK			
81	36742560000	VALVE ASSY,CONTROL	1					
82	80400160130	JOINT	1		S,G1/2-G3/8			
83	37000928120	JOINT	3		G1/2,G1/2			
84	91002801800	O-RING	11		1B P18			
85	37000930420	JOINT	1					

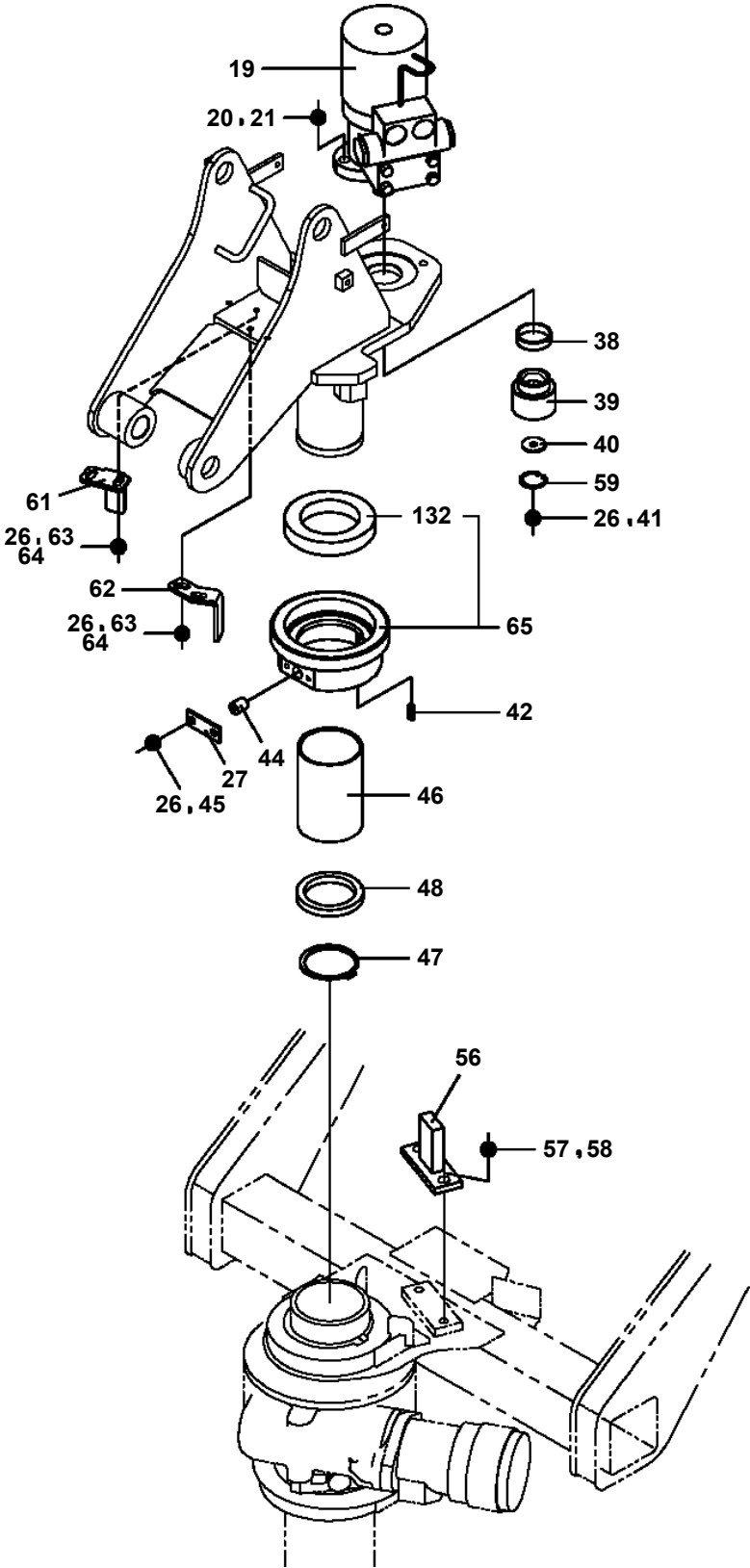
AT-146-4A 43011831753 UPPER, LOWER, HINO 2KG-XZU600F
PR5050031-00 REEL ASSY,CORD



AT-146-4A 43011831753 UPPER, LOWER, HINO 2KG-XZU600F

Pos No.	Parts No	Parts Name	Qty	Unit	Technical Data	Serial No (Start)	Serial No (End)	Remarks	P
1	(*****)	BOOSTER ASSY	1						00
2	(*****)	ELEC.ASSY (BOOSTER)	1						00
3	(*****)	PIPING ASSY (BOOSTER)	1						00

**AT-146-4A 43011831753 UPPER, LOWER, HINO 2KG-XZU600F
PS5420420-00 SUPPORT ASSY**



AT-146-4A 43011831753 UPPER, LOWER, HINO 2KG-XZU600F

Pos No.	Parts No	Parts Name	Qty	Unit	Technical Data	Serial No (Start)	Serial No (End)	Remarks	Pages
1	42232371003	TABLE,SLEWING	1						
2	31630482500	CAP	1						
3	37001500250	BOLT	15		M16X70				
4	90303501601	WASHER,PLAIN	15		16				
5	37000507560	PLATE	1						
6	90171110022	BOLT	3		M10X22				
7	90302041001	WASHER,SPRING	3		10				
8	37000112690	PIN	1						
9	37000509190	PLATE	1						
10	90171112030	BOLT	2		M12X30				
11	90302041201	WASHER,SPRING	2		12				
12	37000175720	PIN	1						
13	42230210010	PIN	1						
14	37000505950	PLATE	1		T=3.2				
16	42232370800	SUPPORT	1						
17	90201200800	NUT	10		M8				
18	42232370400	SUPPORT	1						
19	82420404813	TRIM	3	M					
20	42232370500	SUPPORT	3						
21	82458102000	NIPPLE,GREASE	1		B-PT1/8				
22	90302042001	WASHER,SPRING	1		20				
23	42232370600	SUPPORT	1						
24	42232370701	SUPPORT	1						
25	90101208016	BOLT	10		M8X16				
26	90302040801	WASHER,SPRING	20		8				
27	90303070801	WASHER,PLAIN	18		8				
28	37000507730	PLATE	1						
29	90171320045	BOLT	1		M20X45				
30	42232370301	SUPPORT	1						

AT-146-4A 43011831753 UPPER, LOWER, HINO 2KG-XZU600F

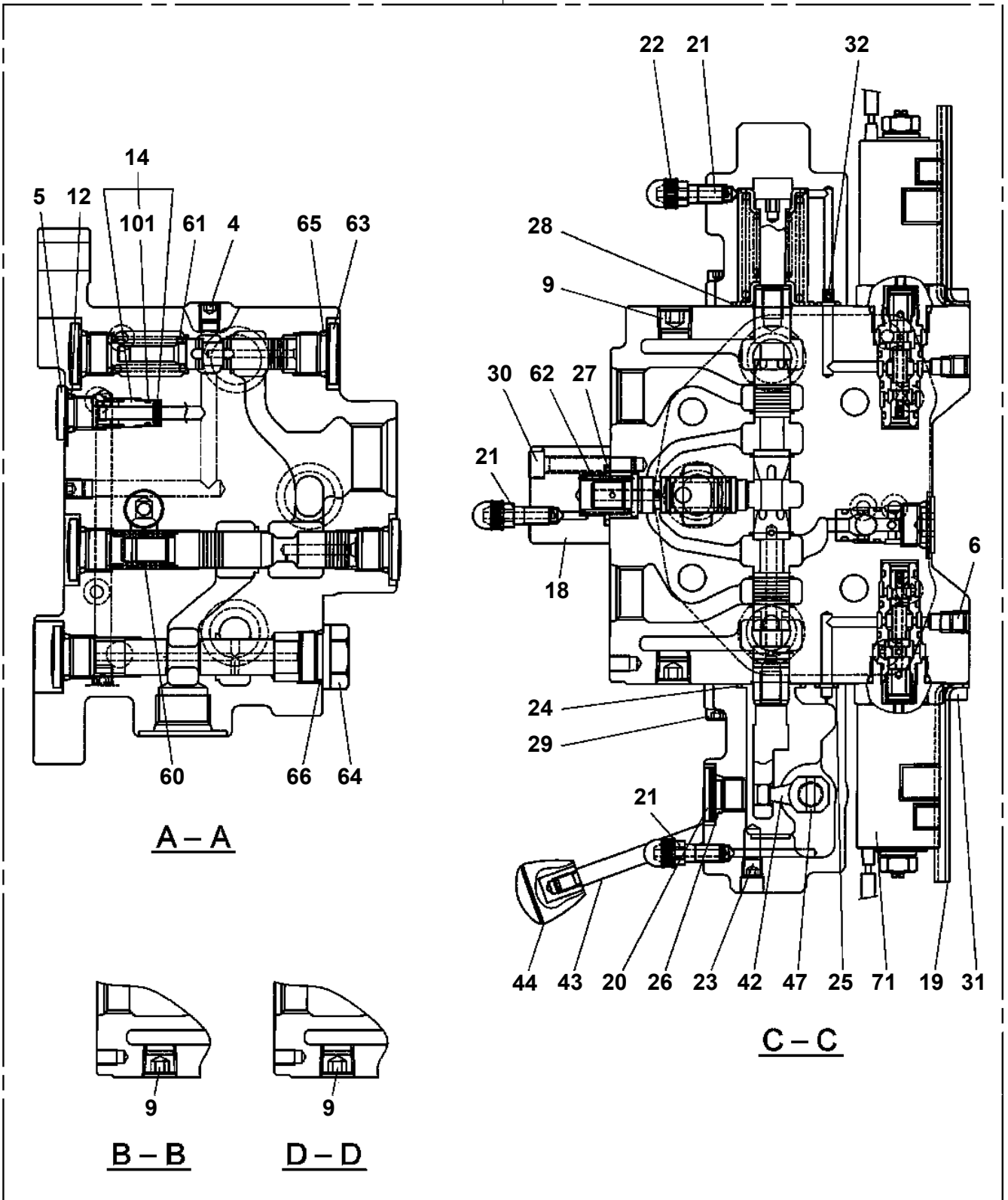
Pos No.	Parts No	Parts Name	Qty	Unit	Technical Data	Se
1	82109833232	SWITCH	1			
2	82100002220	CABLE	6	M		
3	82100002173	CONNECTOR	1			
50	42509170000	SWITCH ASSY (ELEC.BOOSTER, REMOTE:5M,NANABOSI,KASUGA)	1			

AT-146-4A 43011831753 UPPER, LOWER, HINO 2KG-XZU600F

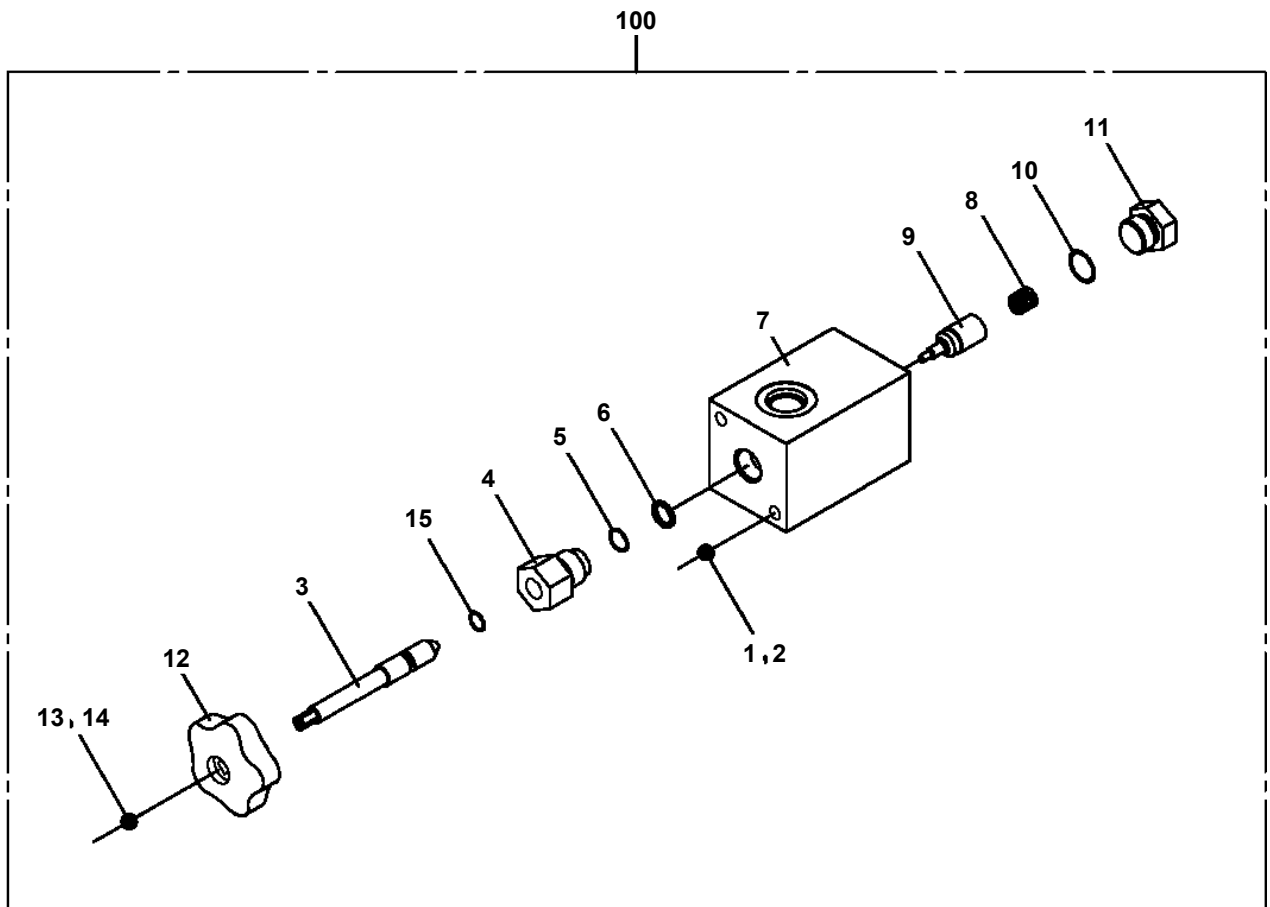
Pos No.	Parts No	Parts Name	Qty	Unit	Technical Data	Serial No (Start)	Serial No (End)	Remarks	Pages
1	42357711100	TERMINAL	2						
2	42356352301	SUPPORT	2						
3	90201200800	NUT	2		M8				
4	16311103000	SPRING	1						
5	42353342060	SCREW,SET	2		M6X35				
6	90201200600	NUT	2		M6				
7	90303071401	WASHER,PLAIN	4		14				
8	90101208045	BOLT	2		M8X45				
9	42356352500	SUPPORT	1						
10	42356352401	SPACER	2		L=20.5				
11	90720705200	SCREW,SET	2		M5X20				
12	90201200500	NUT	2		M5				
13	80820001010	BEARING,PLAIN	2						
14	80801001010	BEARING,PLAIN	2						
15	90302040801	WASHER,SPRING	2		8				
16	90303070801	WASHER,PLAIN	2		8				
17	80801001415	BEARING,PLAIN	2						
100	42357711000	TERMINAL ASSY	1						

AT-146-4A 43011831753 UPPER, LOWER, HINO 2KG-XZU600F
PV5060025-00 VALVE ASSY,CONTROL

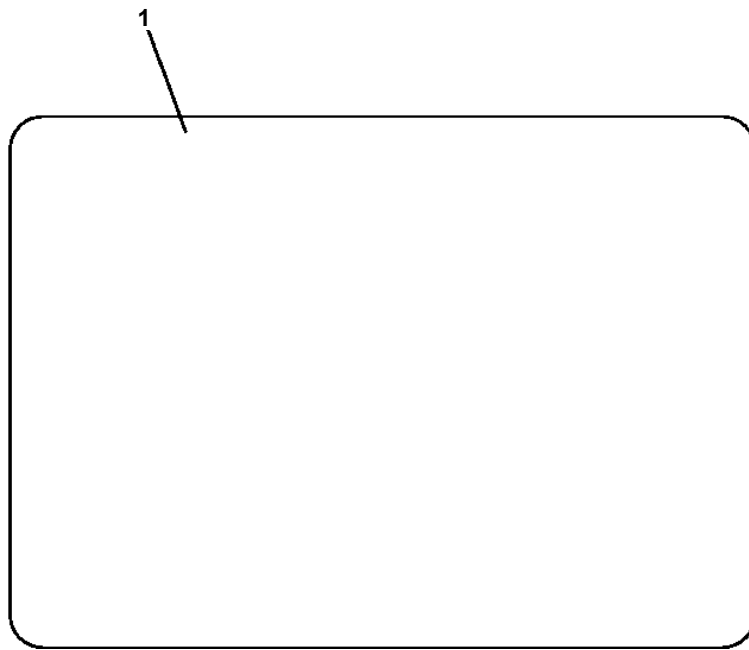
500



AT-146-4A 43011831753 UPPER, LOWER, HINO 2KG-XZU600F
PV5170018-00 VALVE ASSY,SELECTOR

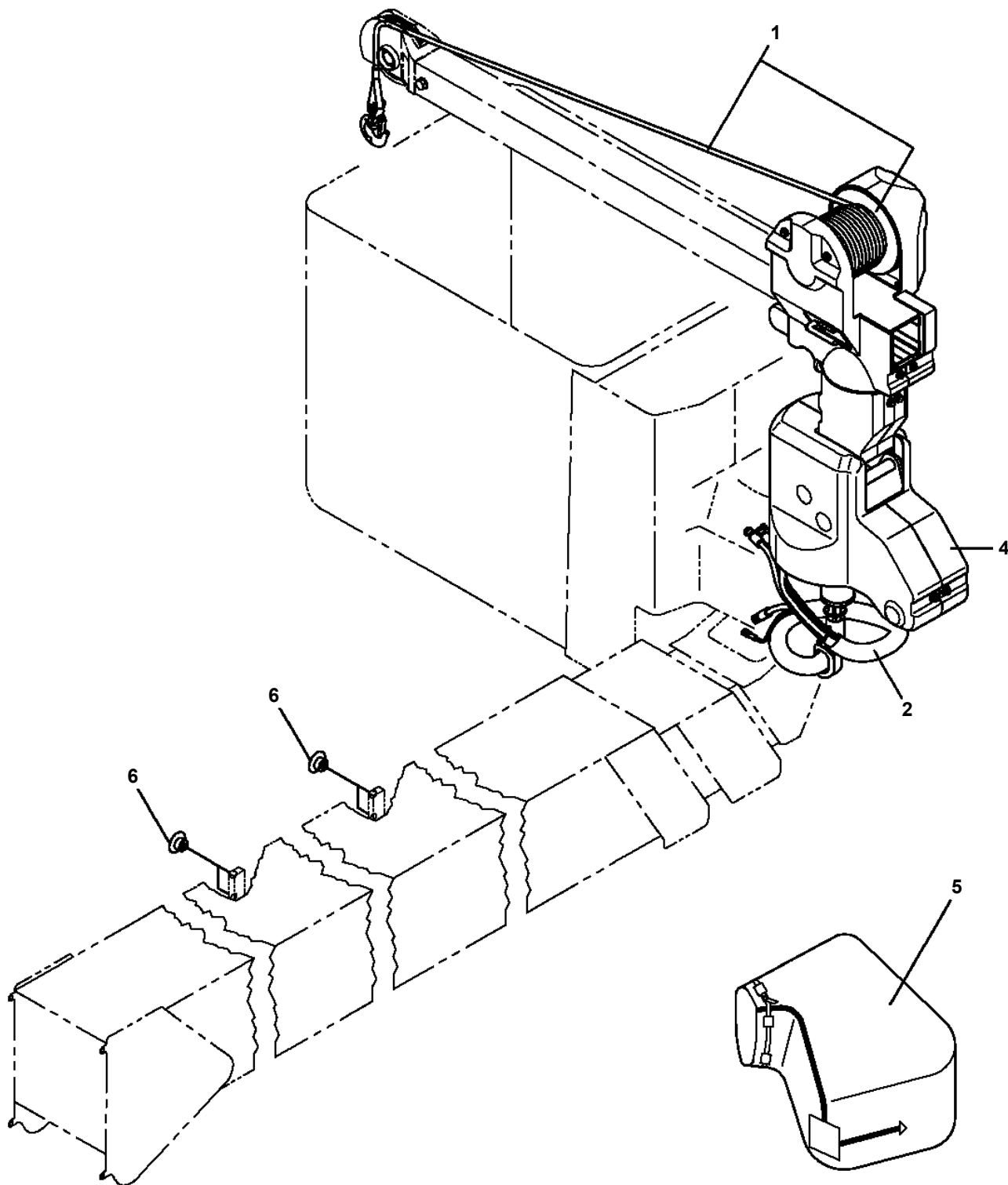


**AT-146-4A 43011831753 UPPER, LOWER, HINO 2KG-XZU600F
PW1010092-00 ACCESSORIES (BUCKET INNER MAT)**

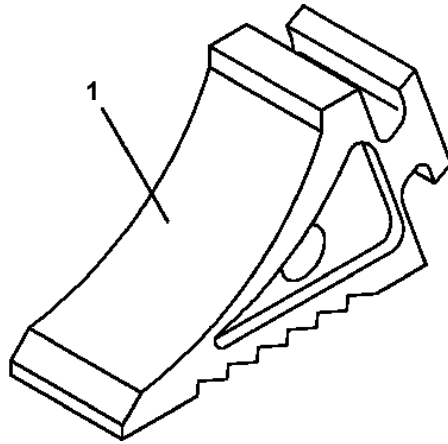


**AT-146-4A 43011831753 UPPER, LOWER, HINO 2KG-XZU600F
PW5060017-00 WINCH ASSY (WITH JIB STOWING,WITHOUT FREE LOCK)**

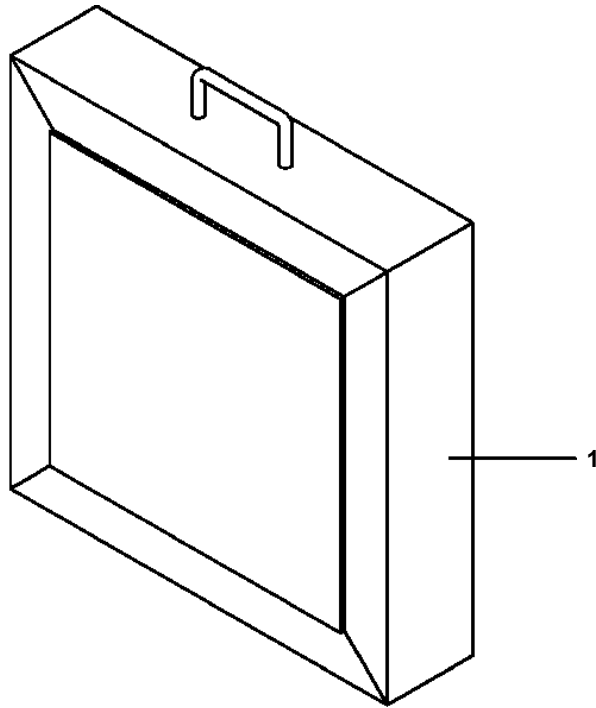
ウインチASSY (ジブ かくノウキノウ:ツキ,フリーロック:ナシ)
WINCH ASSY (WITH JIB STOWING,WITHOUT FREE LOCK)



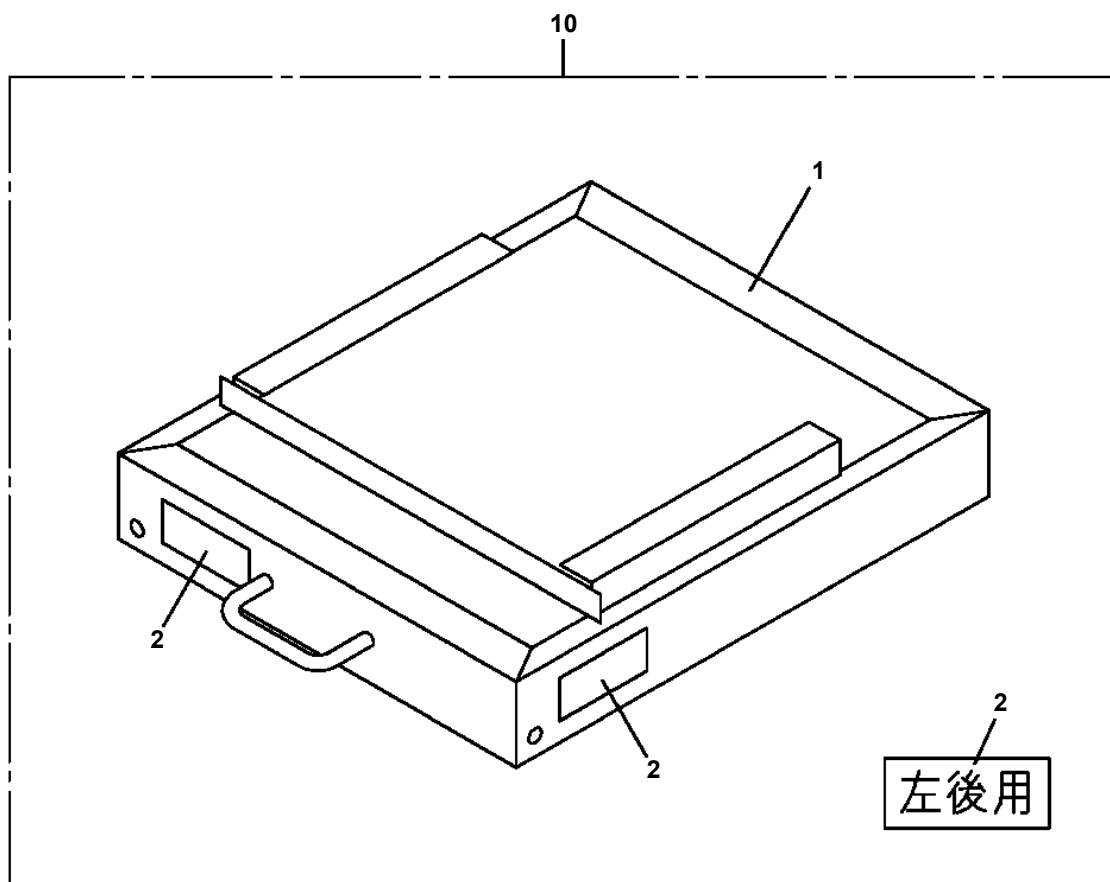
AT-146-4A 43011831753 UPPER, LOWER, HINO 2KG-XZU600F
PW5110005-00 WEDGE (YELLOW)



AT-146-4A 43011831753 UPPER, LOWER, HINO 2KG-XZU600F
PX1270086-01 WOOD BLOCK (W=350,H=80)



AT-146-4A 43011831753 UPPER, LOWER, HINO 2KG-XZU600F
PX1270163-01 BLOCK,WOOD (LEFT REAR:KANSAI DENRYOKU/DETACHABLE TYPE)

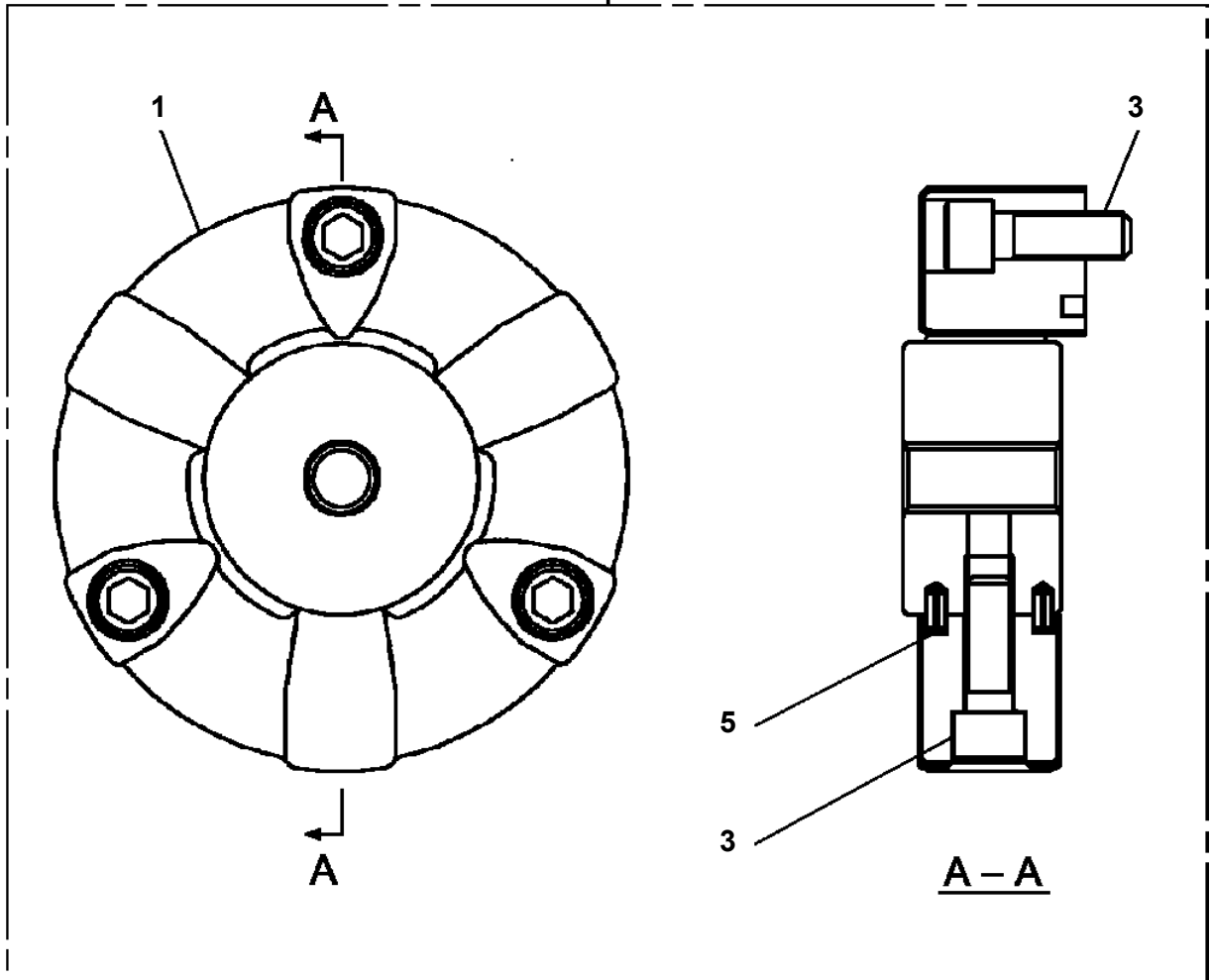


AT-146-4A 43011831753 UPPER, LOWER, HINO 2KG-XZU600F

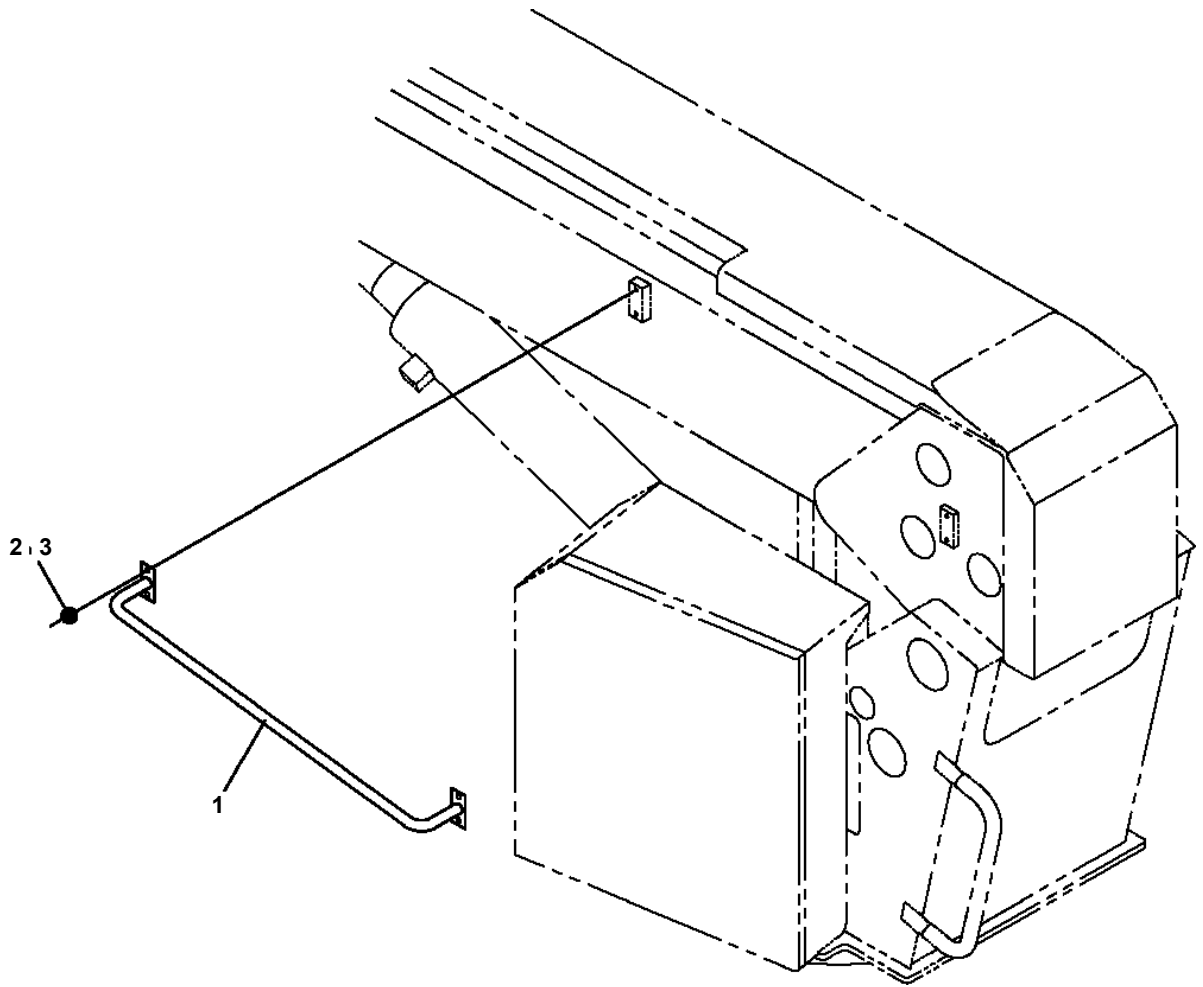
Pos No.	Parts No	Parts Name	Qty	Unit	Technical Data	Serial No (Start)	Serial No (End)	Remarks	Pages
1	42501710000	BOX,TOOL	1						

AT-146-4A 43011831753 UPPER, LOWER, HINO 2KG-XZU600F
PX1830018-00 COUPLING

100



**AT-146-4A 43011831753 UPPER, LOWER, HINO 2KG-XZU600F
PX5010480-00 MOUNT ASSY (HANDRAIL:BOOM SIDE)**



AT-146-4A 43011831753 UPPER, LOWER, HINO 2KG-XZU600F

Pos No.	Parts No	Parts Name	Qty	Unit	Technical Data	Serial No (Start)	Serial No (End)	Remarks	Pages
1	42444161001	COVER ASSY	1						
2	42444160401	COVER	1						
3	42444160301	COVER	1						
4	42444160250	COVER	1						
5	99172108016	BOLT,TAPPING	22		M8X16				
8	42443101002	COVER ASSY	1						
9	42443100501	COVER	1						
10	42443100601	COVER	1						
11	42444160101	COVER ASSY	1						
12	90180206016	BOLT,BUTTON	8		M6X16				
13	90180206012	BOLT,BUTTON	4		M6X12				
14	82100000952	GROMMET	4						
15	90180206020	BOLT,BUTTON	3		M6X20				
16	90302040601	WASHER,SPRING	15		6				
26	42443101205	COVER ASSY	1						000055
27	42443101305	COVER ASSY	1						000056
31	42444161100	COVER	1						
32	42444161200	BLADE	2						
33	80172304010	SCREW,MACHINE	13		M4X10				
34	90302040401	WASHER,SPRING	13		4				
35	42443102300	SUPPORT	2						
54	82400000200	GROMMET	1		KG-012,L=250				
111	42443101010	SUPPORT	1						
112	42443101102	SUPPORT	1						
113	42443101020	BLADE	1						
131	42444160111	SUPPORT	1						
132	42444160121	BLADE	1						
133	42444160131	PLATE	1						

AT-146-4A 43011831753 UPPER, LOWER, HINO 2KG-XZU600F

Pos No.	Parts No	Parts Name	Qty	Unit	Technical Data	Serial No (Start)	Serial No (End)	Remarks	Pages
2	90101210016	BOLT	2		M10X16				
3	90302041001	WASHER,SPRING	2		10				
4	90303071001	WASHER,PLAIN	2		10				
21	34444883650	PLATE	1		T=12				
31	42513661101	GUARD	1						
37	31642171600	PLATE,NAME	1						

AT-146-4A 43011831753 UPPER, LOWER, HINO 2KG-XZU600F

Pos No.	Parts No	Parts Name	Qty	Unit	Technical Data	Serial No (Start)	Serial No (End)	Remarks	Page
1	42630950000	JOINT ASSY,SWIVEL	1						000
2	42443110100	SUPPORT	1						
3	90171112030	BOLT	2		M12X30				
4	90302041201	WASHER,SPRING	4		12				
5	42444150101	SUPPORT	1						
6	82456101000	NIPPLE,GREASE	1		A-PT1/8				
7	16715401000	NIPPLE	2						
8	16715403000	SLEEVE	2						
9	16715404000	NIPPLE	2						
10	42444150011	PIPE	1						
11	90171112025	BOLT	2		M12X25				
12	90171110025	BOLT	4		M10X25				
13	90302041001	WASHER,SPRING	4		10				
14	80481004060	JOINT	1		S G3/4-G1/2				
15	91002801800	O-RING	2		1B P18				
16	80400160131	JOINT	1						
17	80400160129	JOINT	1						
18	91002801400	O-RING	1		1B P14				
19	37002456810	HOSE	1		L=680				
20	37002443110	HOSE	1		L=710				
21	37002434090	HOSE	1		L=550				
22	82100001413	TUBE,SPIRAL	1	M	SE-15BK				

AT-146-4A 43011831753 UPPER, LOWER, HINO 2KG-XZU600F

Pos No.	Parts No	Parts Name	Qty	Unit	Technical Data	Serial No (Start)	Serial No (End)	Remarks	Pages
1	42910562000	BOX,TOOL	1						000023
2	90101210025	BOLT	3		M10X25				
3	90302041001	WASHER,SPRING	3		10				
4	37000505950	PLATE	3		T=3.2				
5	82400000528	GROMMET	2						
6	37000581940	PLATE	N		T=0.5				
7	42835875100	BOX,TOOL	1						
8	90101208012	BOLT	4		M8X12				
9	90302040801	WASHER,SPRING	4		8				

AT-146-4A 43011831753 UPPER, LOWER, HINO 2KG-XZU600F

Pos No.	Parts No	Parts Name	Qty	Unit	Technical Data	Serial No (Start)	Serial No (End)	Remarks	Pages
1	42910912000	BOX,TOOL	1						000026
2	(*****)	SUPPORT ASSY	1						000270
4	42836710102	FENDER	1						
5	82400000575	CHAIN	1	M					
6	90186206016	BOLT,FLANGE	1		M6X16				
7	90280200600	NUT,FLANGE	1		M6				
8	90101210025	BOLT	6		M10X25				
9	90302041001	WASHER,SPRING	8		10				
10	37000505950	PLATE	24		T=3.2				
11	42835802010	SUPPORT	1						
12	90101210020	BOLT	2		M10X20				
13	90280200800	NUT,FLANGE	7		M8				
14	37000506530	PLATE	5		T=4.5				
15	90186208016	BOLT,FLANGE	3		M8X16				
16	90303070801	WASHER,PLAIN	3		8				

AT-146-4A 43011831753 UPPER, LOWER, HINO 2KG-XZU600F

Pos No.	Parts No	Parts Name	Qty	Unit	Technical Data	Serial No (Start)	Se
1	(*****)	MOUNT ASSY,TOOL BOX (LEFT/FRONT:2-DECK)	1				
2	(*****)	MOUNT ASSY,DECK (LEFT/REAR:NONE+HANDRAIL)	1				

AT-146-4A 43011831753 UPPER, LOWER, HINO 2KG-XZU600F

Pos No.	Parts No	Parts Name	Qty	Unit	Technical Data	Serial No
1	(*****)	COVER ASSY (INNER CASE REINFORCEMENT)	1			
2	(*****)	LAMP ASSY (BUCKET)	1			
3	(*****)	LAMP (MARKER)	1			
4	(*****)	LAMP ASSY (WORK LAMP:BOOM)	1			
5	(*****)	LAMP (O/R CONTROL PANEL)	1			
6	(*****)	LAMP (LEVEL GAUGE)	1			
7	(*****)	MODIFICATION ASSY (YELLOW MARKER LAMP/LED)	1			
8	(*****)	SWITCH ASSY (VERTICAL/HORIZONTAL CONTROL)	1			
9	(*****)	SWITCH ASSY (AUTOMATIC STOWING)	1			
10	(*****)	STEP,BUCKET (NON SLIP)	1			
11	(*****)	MARKING (BOOM)	1			
12	(*****)	MOUNT ASSY,REFLECTOR (SWING STOW POSITION)	1			
13	(*****)	ATTACHMENT,JIB	1			
14	(*****)	GUIDE (BOOM SIDE HOOK GUIDE RAIL/D17.3XT2.3)	1			
15	(*****)	VIEW SYSTEM	1			
16	(*****)	VIEW SYSTEM	1			
17	(*****)	POWER SUPPLY	1			
20	(*****)	LAMP ASSY (WORKING:BOOM REST LEFT SIDE)	1			
21	(*****)	CABLE (CHARGE:200V,PANASONIC/WF7630)	1			
22	(*****)	REMOTE CONTROL ASSY (LOWER)	1			
23	(*****)	STEP ASSY	1			
24	(*****)	BOX,TOOL (DECK ON CAB, W/O JK,SAFETY RAIL,ISUZU/HINO)	1			
25	(*****)	MOUNT ASSY,GUARD (FILTER)	1			
26	(*****)	COVER ASSY (BUCKET CONTROL)	1			
27	(*****)	MODIFICATION ASSY (DATA)	1			
28	(*****)	MOUNT ASSY (STEP FOR DECK ON CAB)	1			
29	(*****)	PLATE ASSY,NAME (LOADING CAPACITY 100KG)	1			
30	(*****)	PLATE ASSY,NAME (LOADING CAPACITY)	1			
31	(*****)	PLATE ASSY,NAME (LOADING CAPACITY 200KG)	1			
32	(*****)	PLATE ASSY,NAME (LOADING CAPACITY 250KG)	1			
33	(*****)	PLATE ASSY,NAME (LOADING CAPACITY 300KG)	1			
34	(*****)	PLATE ASSY,NAME (LOADING CAPACITY 350KG)	1			
35	(*****)	PLATE ASSY,NAME (LOADING CAPACITY 400KG)	1			
36	(*****)	PLATE ASSY,NAME (LOADING CAPACITY 450KG)	1			
37	(*****)	PLATE ASSY,NAME (LOADING CAPACITY 500KG)	1			
38	(*****)	MOUNT ASSY,COVER	1			
101	(*****)	ELEC.ASSY (JIB FIXING PIN DETECTION/STDBUCKET)	1			
102	(*****)	ELEC.ASSY (JIB FIXING PIN DETECTION/ELEVATION BUCKET)	1			

AT-146-4A 43011831753 UPPER, LOWER, HINO 2KG-XZU600F

Pos No.	Parts No	Parts Name	Qty	Unit	Technical Data	Serial No (Start)	Serial No (End)
1	42470367510	HOOK	1				
2	42470367520	CYLINDER	1				
3	42470367530	HOLDER (DIES)	1				
4	42470367540	STEM	1				
5	42470367550	SPRING (RETURN)	1				
6	42470367560	SEAT,SPRING	1				
7	42470367570	RING,STOP	1				
8	80720103006	PIN,SPRING	1		3X6		
9	91001104000	O-RING	1		1A P40		
10	42470367580	RING (B)	1				
12	42470367590	NOTCH	1				
13	42470367600	PIECE (B)	1				
14	42470367610	PIN (SCREW)	1				
15	42470367620	SPRING ASSY	1				
16	42470367630	PIECE (AL)	1				
17	42470367640	SPRING	1				
18	42470367650	KNOB	1				
19	80720102012	PIN,SPRING	1		2X12		
20	80720103008	PIN,SPRING	1		3X8		
21	42470367660	GUIDE	1				
22	90131505008	BOLT,HEXAGON SOCKET	1		M5X8		
23	90304110501	WASHER (LOCK)	1		5		
24	42470367670	SCRAPER	1				
25	42470367680	SPACER	1				
26	42470367690	BOLT,HEXAGON SOCKET	1				
27	42470367700	NIPPLE	1				
28	42470367710	JOINT,SELF SEALING (WITH CAP)	1				
29	42470367720	GRIP	1				
30	42470367730	PLATE,NAME	1				
31	42470367740	COVER (SAFETY)	1				
50	42470361000	CLAMP HEAD ASSY (SANWA,12TON)	1				

AT-146-4A 43011831753 UPPER, LOWER, HINO 2KG-XZU600F

Pos No.	Parts No	Parts Name	Qty	Unit	Technical Data	Serial No (Start)	Serial
1	42470030000	CUTTER HEAD (IZUMI 6.4TON 2.5M ELECTRIC)	1				

AT-146-4A 43011831753 UPPER, LOWER, HINO 2KG-XZU600F

Pos No.	Parts No	Parts Name	Qty	Unit	Technical Data	Serial No (Start)	Serial No (End)	Remarks
1	42473650000	ROPE (SAFETY,0.5M,D=24)	1					

AT-146-4A 43011831753 UPPER, LOWER, HINO 2KG-XZU600F

Pos No.	Parts No	Parts Name	Qty	Unit	Technical Data	Serial No (Start)	Serial No (End)	Remarks	Pages
1	42470121000	ARM ASSY	1						
2	42470421000	HOLDER	3						
3	42470123000	CLAMP ASSY	1						
5	42476851000	SUPPORT	1						
6	90101216130	BOLT	1		M16X130				
7	90303071601	WASHER,PLAIN	2		16				
8	90201201600	NUT	2		M16				
9	42220011200	SUPPORT	1						
31	42470121100	ARM	1						
32	42470121200	CAP	2						

AT-146-4A 43011831753 UPPER, LOWER, HINO 2KG-XZU600F

Pos No.	Parts No	Parts Name	Qty	Unit	Technical Data	Serial No (Start)	Serial No (E
1	80456210600	JOINT,SELF SEALING	1				
2	42470367750	HOSE ASSY	1		3M		
3	42470362100	JOINT,SELF SEALING	1				
4	42470367770	HOSE,AIR	1		3M		
5	42470362200	PUMP	1				
6	80456240600	JOINT,SELF SEALING (WITH DUST CAP)	1				
7	42470367840	TUBE	2		25X0.15M		
8	42470367780	JOINT	1				
21	42471437520	CAP	1				
50	42470362000	HOSE,BOOSTER	1		L=3000		

AT-146-4A 43011831753 UPPER, LOWER, HINO 2KG-XZU600F

Pos No.	Parts No	Parts Name	Qty	Unit	Technical Data	Serial No (Start)	Serial No (End)
5	80456210600	JOINT,SELF SEALING	2				
10	42472130000	HOSE,BOOSTER (FEMALE-FEMALE,5M)	1				

AT-146-4A 43011831753 UPPER, LOWER, HINO 2KG-XZU600F

Pos No.	Parts No	Parts Name	Qty	Unit	Technical Data	Serial No (Start)	Serial No (End)	Remarks	Pages
1	42733561000	EARTH	1						
2	42733560100	CABLE	1						
3	90101208016	BOLT	1		M8X16				
4	42733560030	PLATE	1						
5	80720104028	PIN,SPRING	1		4X28				
6	90303070801	WASHER,PLAIN	1		8				

AT-146-4A 43011831753 UPPER, LOWER, HINO 2KG-XZU600F

Pos No.	Parts No	Parts Name	Qty	Unit	Technical Data	Serial No (Start)	Serial No (End)	Remarks	Pages
1	42474970100	PLATE	2						

AT-146-4A 43011831753 UPPER, LOWER, HINO 2KG-XZU600F

Pos No.	Parts No	Parts Name	Qty	Unit	Technical Data	Serial No (Start)	Serial No (End)	Remarks
1	42475930000	HANGER (FOR BUCKET,FRP)	1					

AT-146-4A 43011831753 UPPER, LOWER, HINO 2KG-XZU600F

Pos No.	Parts No	Parts Name	Qty	Unit	Technical Data	S
69	(*****)	SUPPORT (WINCH JIB,OPTION)	1			
70	(*****)	SUPPORT (WINCH JIB,FOR HOKURIKUDENKOU)	1			
71	(*****)	LAMP (12V60W,WITH CIGARETTE LIGHTER)	1			
72	(*****)	LAMP (REOVLVING LAMP)	1			
73	(*****)	MOUNT,LAMP (BUCKET,FOR NTT,OPTION)	1			
74	(*****)	PUMP,GREASE (400CC)	1			
75	42473401000	TOOLS	1			
76	91991601013	ACCESSORIES (WRENCH)	1			
77	42461681000	WEDGE (YELLOW)	1			
78	(*****)	WOOD BLOCK (W=350,H=80)	1			
79	42731680000	WOOD BLOCK (WITH RUBBER,T=80)	1			
80	42738400000	WOOD BLOCK (WITH RUBBER,T=100)	1			
81	42972410000	BLOCK,WOOD	1		T=150	
82	(*****)	WOOD BLOCK (KANDEN/DETACHABLE TYPE,L)	1			
83	42972040000	WOOD BLOCK (KANDEN/DETACHABLE TYPE,B)	1			
84	(*****)	EARTHING DEVICE	1			
85	(*****)	EARTH ASSY	1			
86	(*****)	CABLE	1			
87	42510290000	CABLE ASSY (PC CONNECTION CABLE)	1			
88	(*****)	WINCH,JIB (FRP/INTEGRATED SUPPORT,GRAY)	1			
89	42973990100	SUPPORT (7 DEGREES ANGLE METER MOUNTING)	1			
90	(*****)	GUARD ASSY	1			
91	(*****)	COVER ASSY	1			
92	42514590000	COVER ASSY	1			
93	42512340000	BELT	1			
94	(*****)	JIB ASSY	1			
95	42516050000	MAT	1			
96	(*****)	SWITCH ASSY (2M,ELEC. BOOSTER REMOCON,SANWA,KASUGA)	1			
97	(*****)	SWITCH ASSY (3M,ELEC. BOOSTER REMOCON,SANWA,KASUGA)	1			
98	(*****)	SWITCH ASSY (5M,ELEC. BOOSTER REMOCON,SANWA,KASUGA)	1			

AT-146-4A 43011831753 UPPER, LOWER, HINO 2KG-XZU600F

Pos No.	Parts No	Parts Name	Qty	Unit	Technical Data	Serial No (Start)	Serial No (End)
1	42262804000	COVER,WINCH (CLOTH,WHITE/WINCH)	1				

AT-146-4A 43011831753 UPPER, LOWER, HINO 2KG-XZU600F
 PY5360042-00 ACCESSORY LIST (ENGINE)

指示番号 KEY NO.	部品名称 PART NAME	備考 REMARK
120	ポンプ ASSY, ヒュエル PUMP ASSY, FUEL	ヒュエルポンプASSY
120 - 71	リペアキット REPAIR KIT	*
121	ジョイント JOINT	エルボコネクタ
122	ジョイント JOINT	エルボコネクタ
123	フィルタASSY FILTER ASSY	ヒュエルフィルタ
124	サポート SUPPORT	フィルタクランプ
125	タイマ TIMER	コントロールタイマ
126	ランプ ASSY LAMP ASSY	グローランプ
127	ホース HOSE	ヒュエルホース L=300
128	ホース HOSE	ヒュエルホース L=700
130	ホース HOSE	ヒュエルホース L=1700
131	ホース HOSE	ヒュエルホース L=2330
133	クリップ CLIP	ホースクリップ
134	ジョイント JOINT	アイジョイント
135	ジョイント JOINT	ホルト, アイ
136	ガスケット GASKET	ガスケット
137	ホースASSY HOSE ASSY	オイルドレーンキット
138	ワッシャ WASHER	シーリング ワッシャ

AT-146-4A 43011831753 UPPER, LOWER, HINO 2KG-XZU600F

Pos No.	Parts No	Parts Name	Qty	Unit	Technical Data	Serial No (Start)	Serial No (End)	Remarks	Pages
1	82109833232	SWITCH	1						
2	82100002220	CABLE	N						
3	82116920411	CONNECTOR	1						
4	82122910100	CAP	1						

AT-146-4A 43011831753 UPPER, LOWER, HINO 2KG-XZU600F

Pos No.	Parts No	Parts Name	Qty	Unit	Technical Data	Serial No (Start)	Serial No (End)	Remarks	Page
1	42789170100	SUPPORT	1						
2	42789170200	SUPPORT	2						
3	90101208035	BOLT	2		M8X35				
4	90201200800	NUT	9		M8				
5	42789170300	SUPPORT	1						
6	82100001803	TUBE,CORRUGATE	N		13	229724			
7	82100002015	CLAMP	1		WRC20	229724			
8	82100002014	CLAMP	1		WR20	229724			
9	90303070601	WASHER,PLAIN	2		6	229724			
10	90302040601	WASHER,SPRING	2		6	229724			
11	90101206020	BOLT	2		M6X20	229724			
12	91810160010	HOLDER	1						
13	91810132530	FASTENER	13				229723		
	91810132530	FASTENER	17			229724			
14	42789170410	SUPPORT	1						
15	91860100018	CLAMP	3		KCR-W18				
16	90101208020	BOLT	6		M8X20				
17	90302040801	WASHER,SPRING	11		8				
18	90303070801	WASHER,PLAIN	9		8		229723		
	90303070801	WASHER,PLAIN	10		8	229724			
19	42789060700	SUPPORT	1						
20	42789060800	COVER	1						
21	42789170500	SUPPORT	1						
22	90101208025	BOLT	2		M8X25				
23	82100001804	TUBE,CORRUGATE	N		15				
24	42789170600	SUPPORT	1			229741			
25	42789170700	SUPPORT	1			229741			
26	90171110030	BOLT	4		M10X30	229741			
27	90302041001	WASHER,SPRING	4		10	229741			
28	31784410100	HOSE	1		L=1500	229741			

CLICK HERE TO **DOWNLOAD** THE COMPLETE MANUAL

- Thank you very much for reading the preview of the manual.
- You can download the complete manual from: www.heydownloads.com by clicking the link below



- Please note: If there is no response to CLICKING the link, please download this PDF first and then click on it.

CLICK HERE TO **DOWNLOAD** THE COMPLETE MANUAL