

AT-146-1 42095100012 UPPER

PD2000046-00 SWING UNIT
PF1000462-01 WINCH SYSTEM
PG2000059-00 BOOM UNIT
PH1000399-00 SAFETY DEVICES
PJ3000233-00 BUCKET SYSTEM
PJ5000003-00 BOOSTER UNIT
PK2000215-00 FRAME UNIT
PO1000131-03 INDICATION PLATES
PY1000659-03 OPTIONS,1
PY2000026-00 OPTIONS,2
ASSEMBLY

CLICK HERE TO **DOWNLOAD** THE COMPLETE MANUAL

- Thank you very much for reading the preview of the manual.
- You can download the complete manual from: www.heydownloads.com by clicking the link below



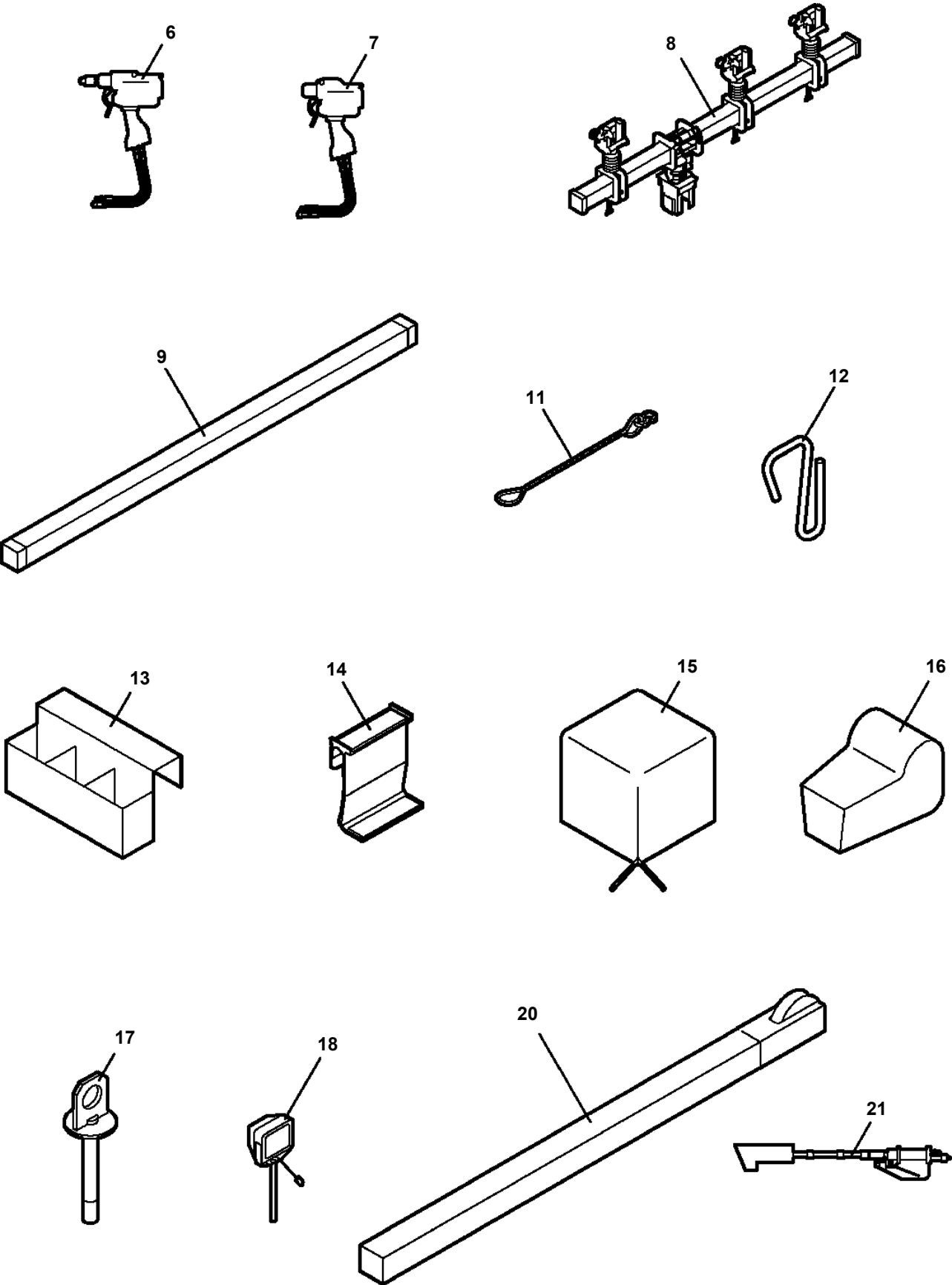
- Please note: If there is no response to CLICKING the link, please download this PDF first and then click on it.

CLICK HERE TO **DOWNLOAD** THE COMPLETE MANUAL

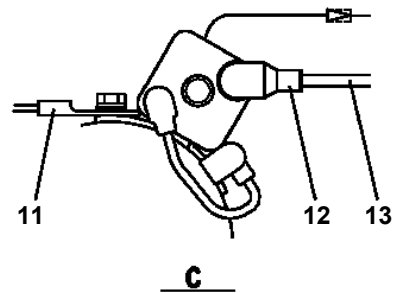
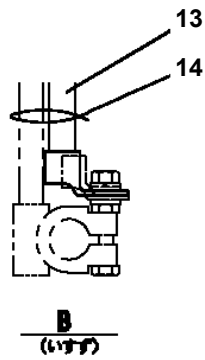
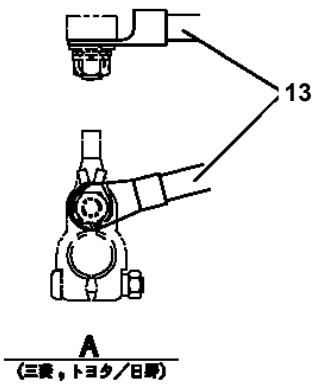
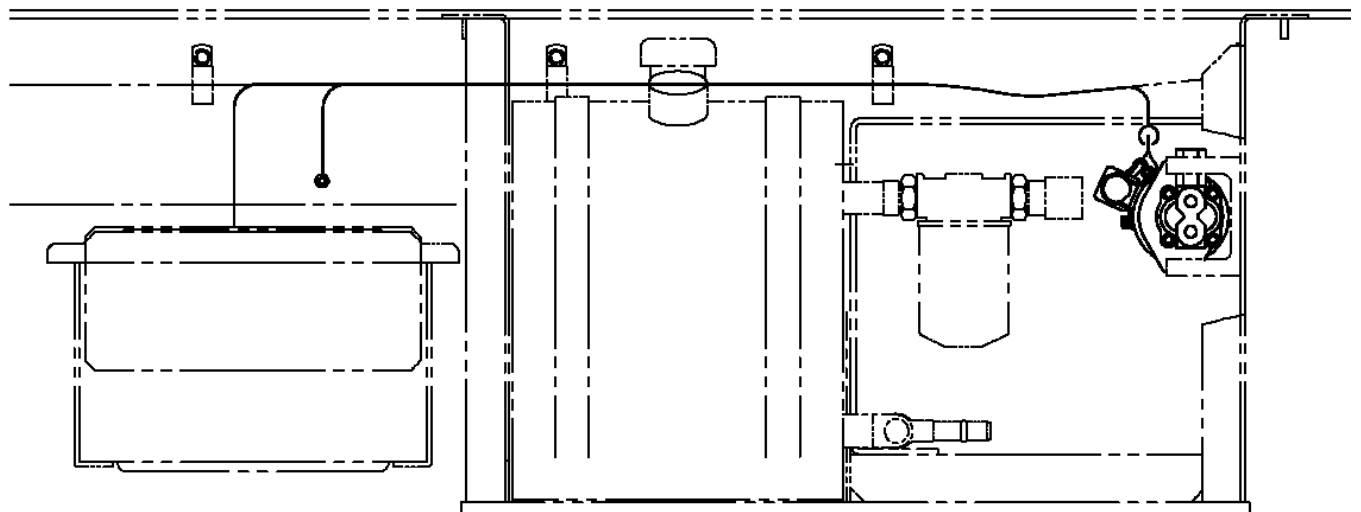
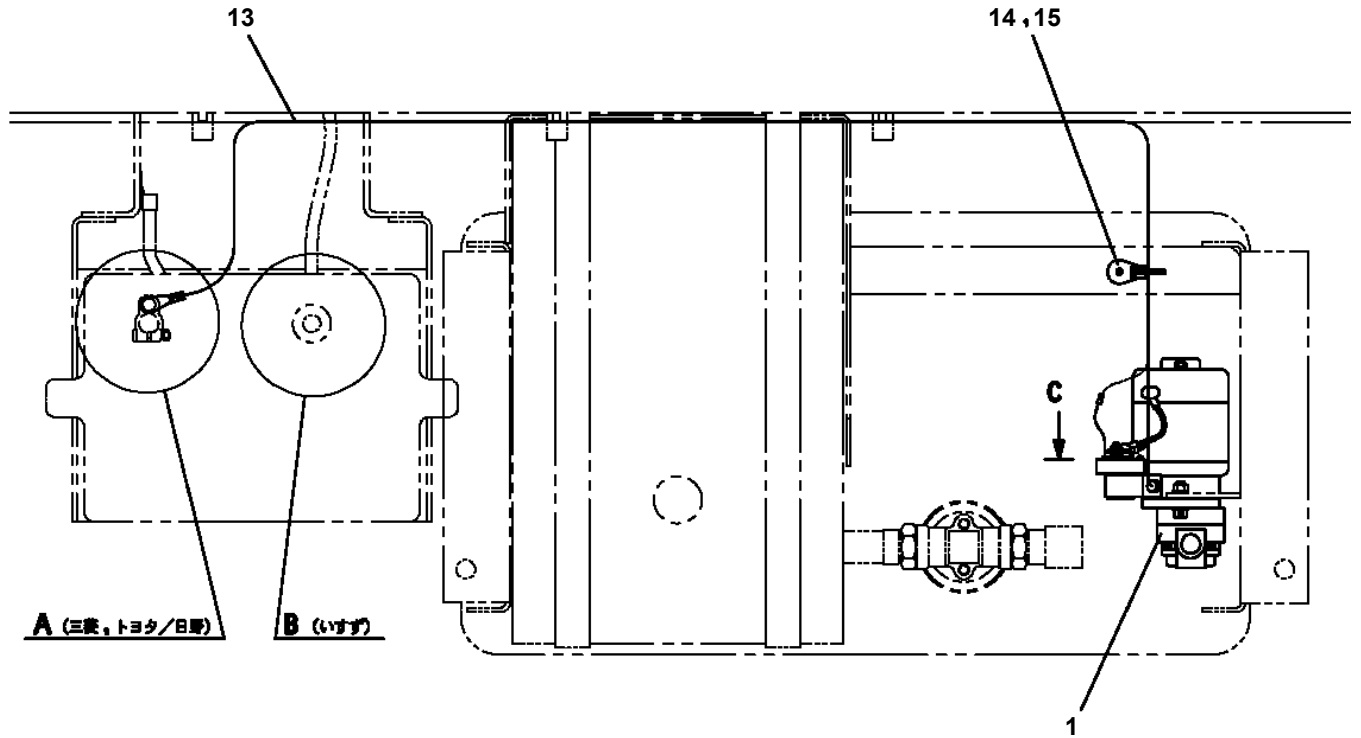
AT-146-1 42095100012 UPPER

Pos No.	Parts No	Parts Name	Qty	Unit	Technical Data	Serial No (Start)	Serial No (End)
1	(*****)	FRAME	1				
2	(*****)	PIPING (BUCKET)	1				
3	(*****)	ELEC.ASSY (BUCKET)	1				
4	(*****)	OPE.ASSY	1				
5	(*****)	PIPING,GREASE (BUCKET)	1				
11	(*****)	BUCKET (WHITE)	1				
12	(*****)	BUCKET (INNER CASE)	1				
13	(*****)	COVER (FRP,WHITE)	1				
14	(*****)	COVER,BOOM (TOP/FRP,WHITE)	1				
15	42264912000	COVER (CLOTH,WHITE)	1				
16	(*****)	ACCESSORIES (BUCKET INNER MAT)	1				

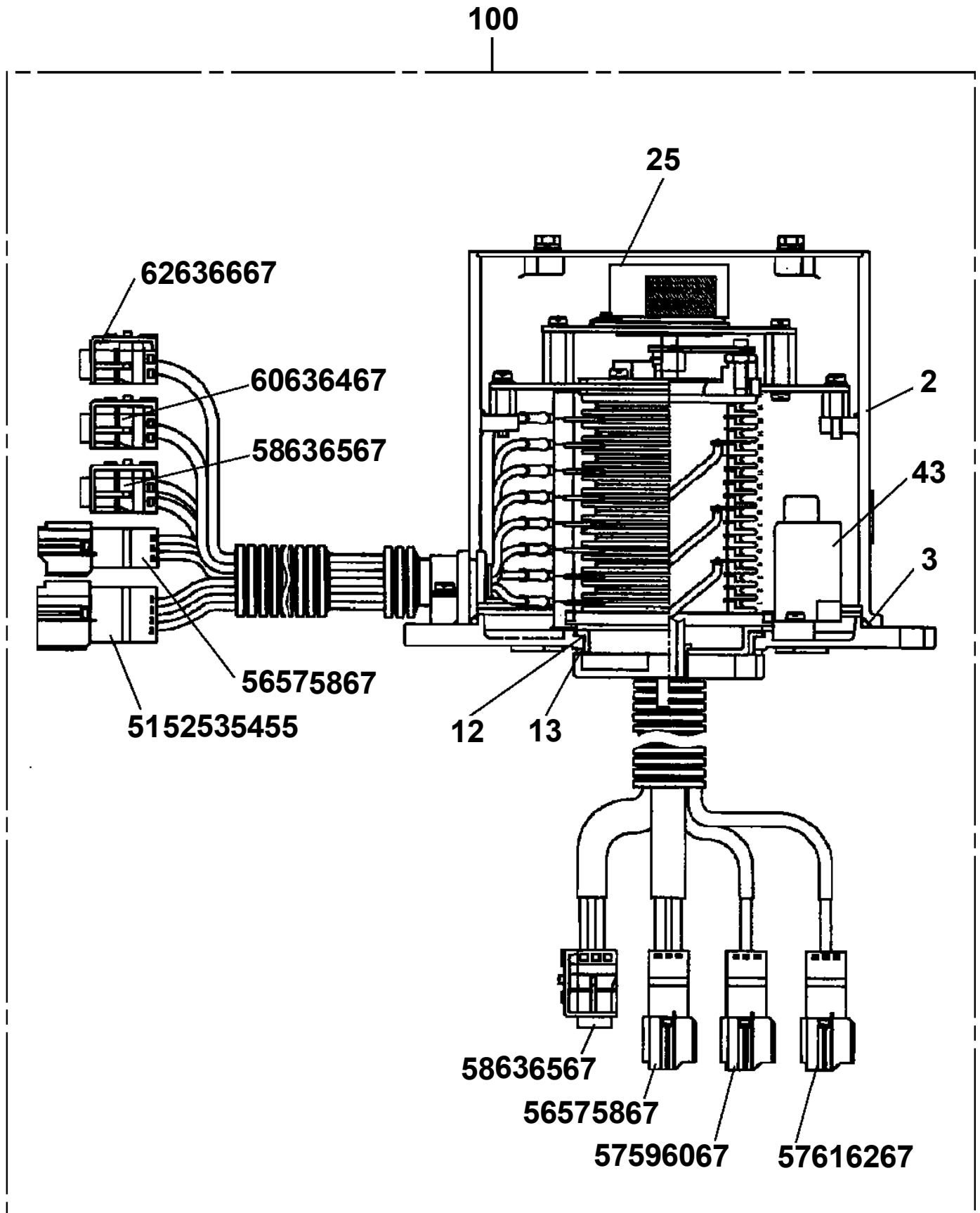
AT-146-1 42095100012 UPPER
PY2000026-00 OPTIONS,2



**AT-146-1 42095100012 UPPER
PB1110010-00 MOUNT,PUMP (EMERGENCY)**

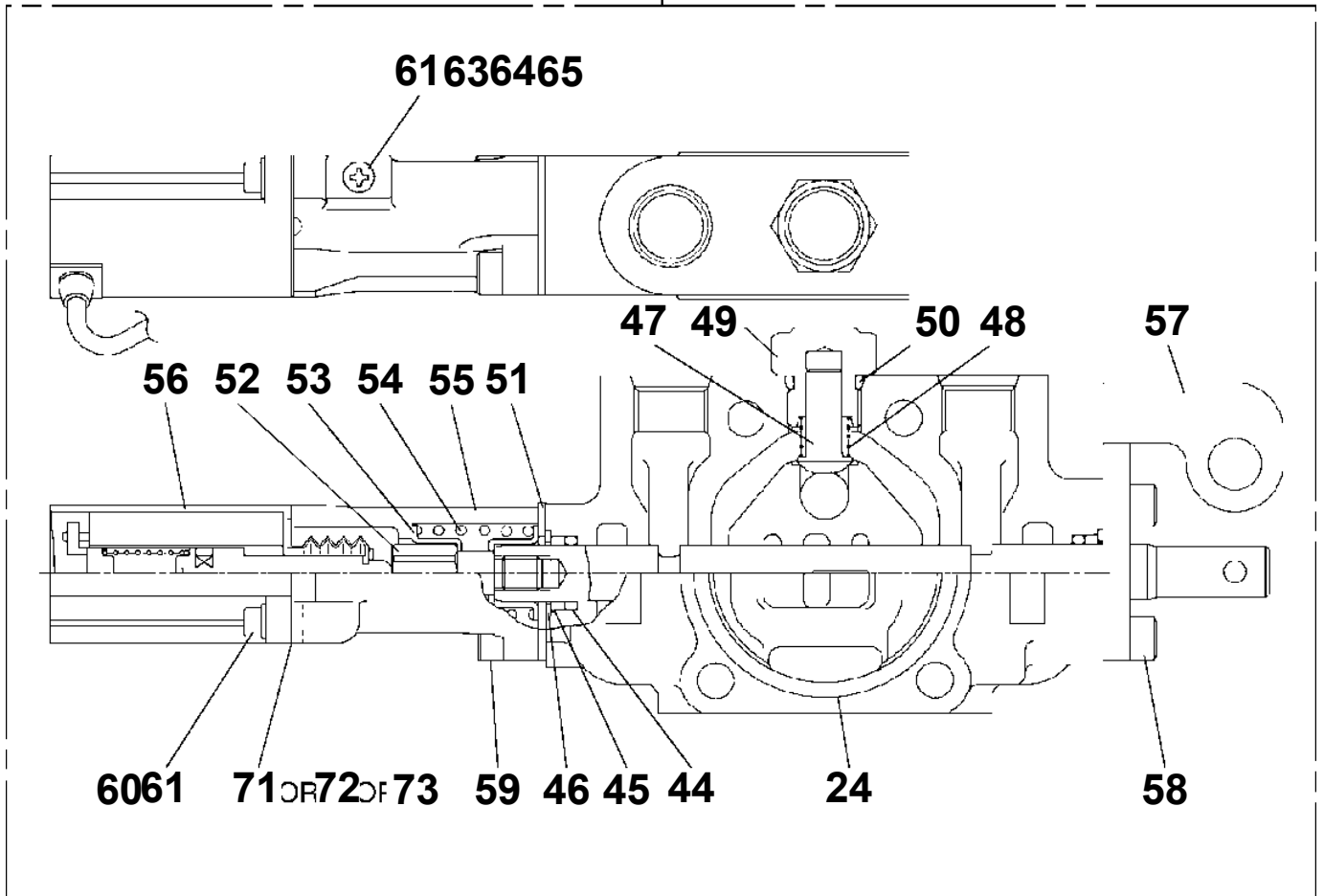


AT-146-1 42095100012 UPPER
PB1310037-01 BRUSH,ROTARY JOINT

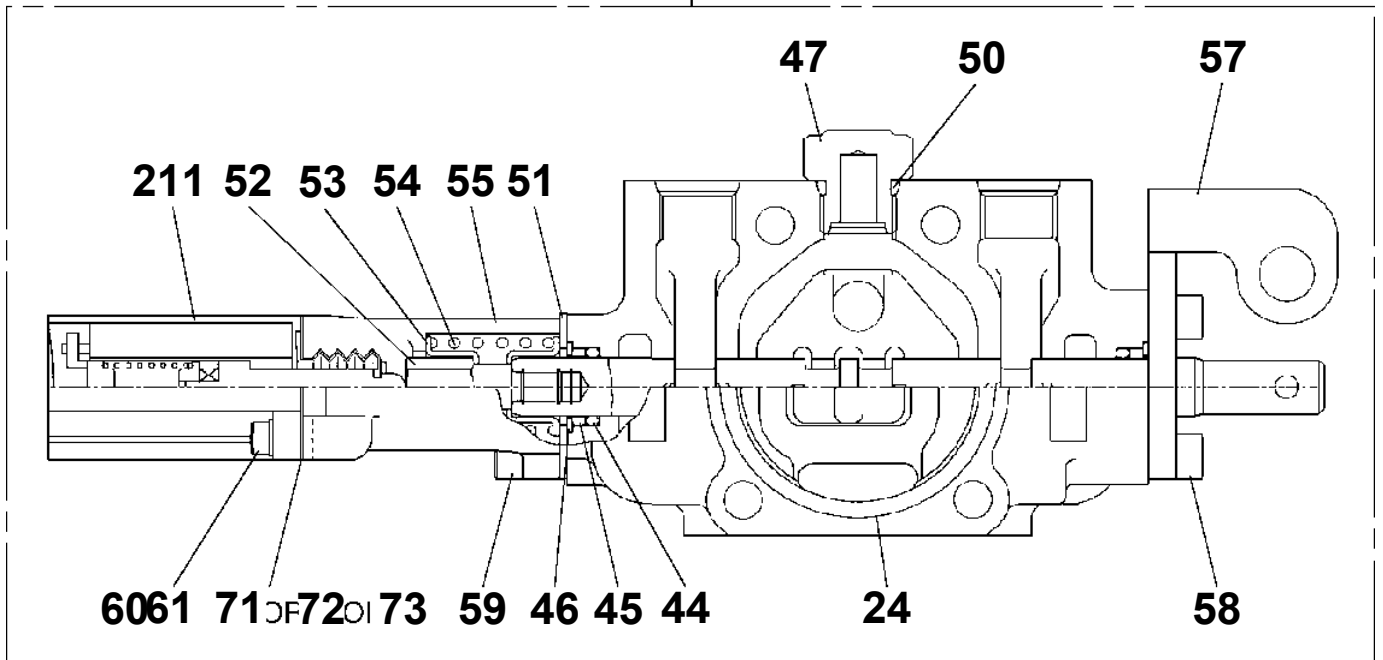


AT-146-1 42095100012 UPPER
PB1320575-00 VALVE, MANUAL CONTROL

4



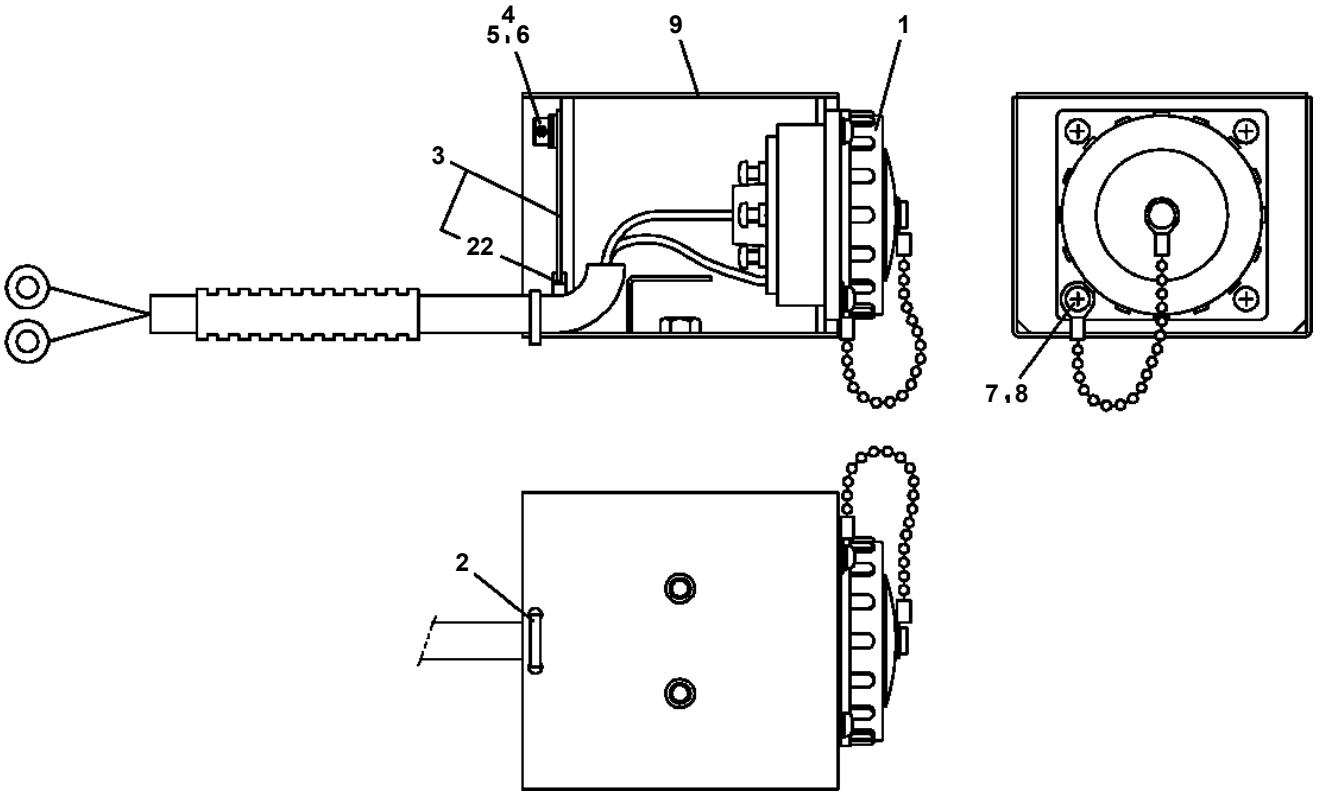
5



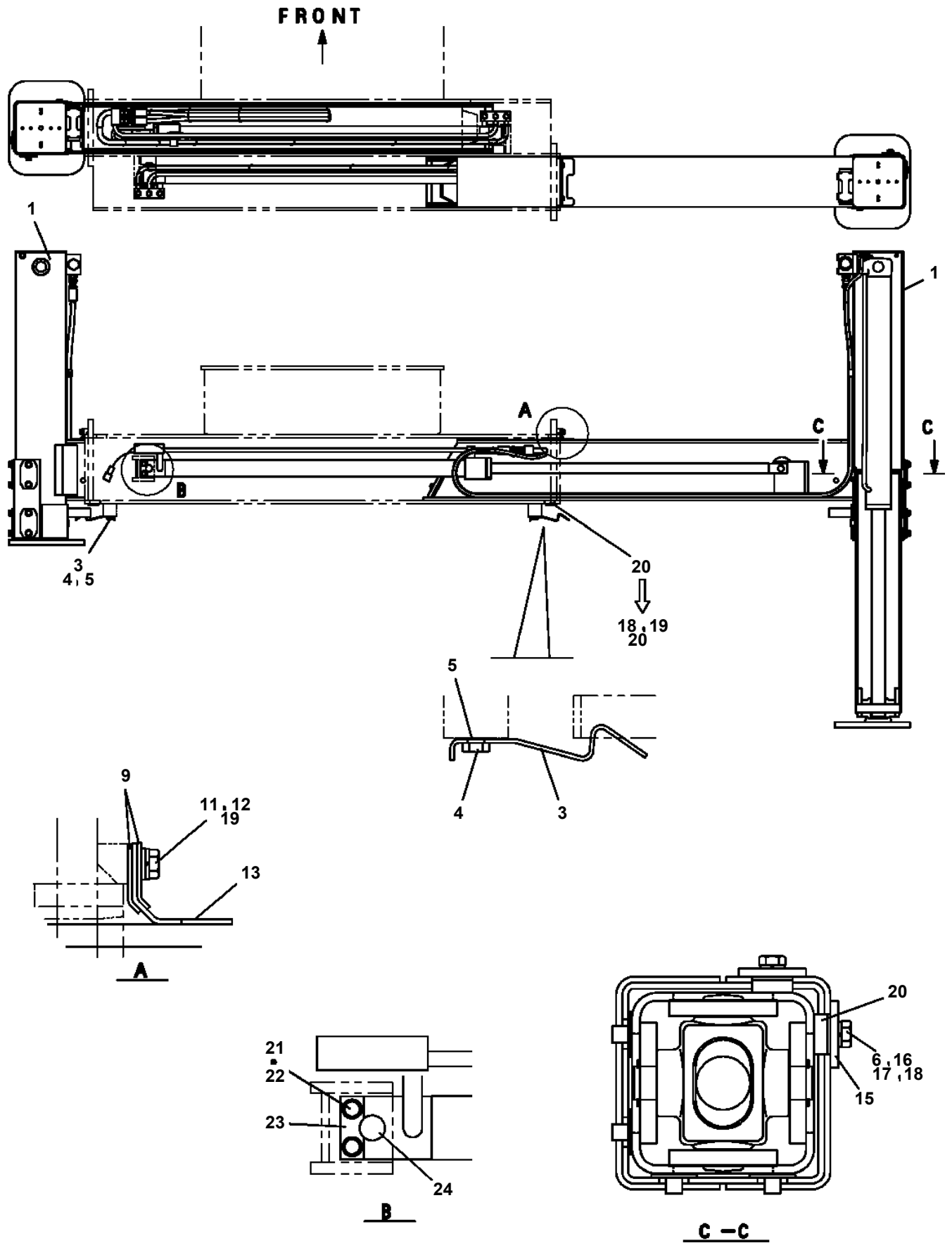
AT-146-1 42095100012 UPPER

Pos No.	Parts No	Parts Name	Qty	Unit	Technical Data	Serial No (Start)	Serial No (End)	Remarks
85	91002801400	O-RING	8		1B P14			
	91002801400	O-RING	1		1B P14		227949	
86	80430620600	JOINT (WITH O-RING)	3		L,G3/8-G3/8			
87	80430620400	JOINT	2					
101	36601610001	VALVE,RELIEF	1				227656	
102	42340240500	FILTER,OIL	1				227949	
103	80491303020	JOINT (WITH O-RING)	1		L,G3/8-G1/4		227949	
104	36672530000	FILTER (WITH O-RING)	2					
114	80400160128	JOINT	1		S,G3/8-G1/4			
131	37000927870	JOINT	1					
134	80400160131	JOINT	1					
136	80441010604	FITTING	1					
143	37000928370	JOINT	1		S,G1/2-G1/2			
151	36625000000	VALVE ASSY,CHECK	1					

AT-146-1 42095100012 UPPER
PB5260011-00 BOX ASSY

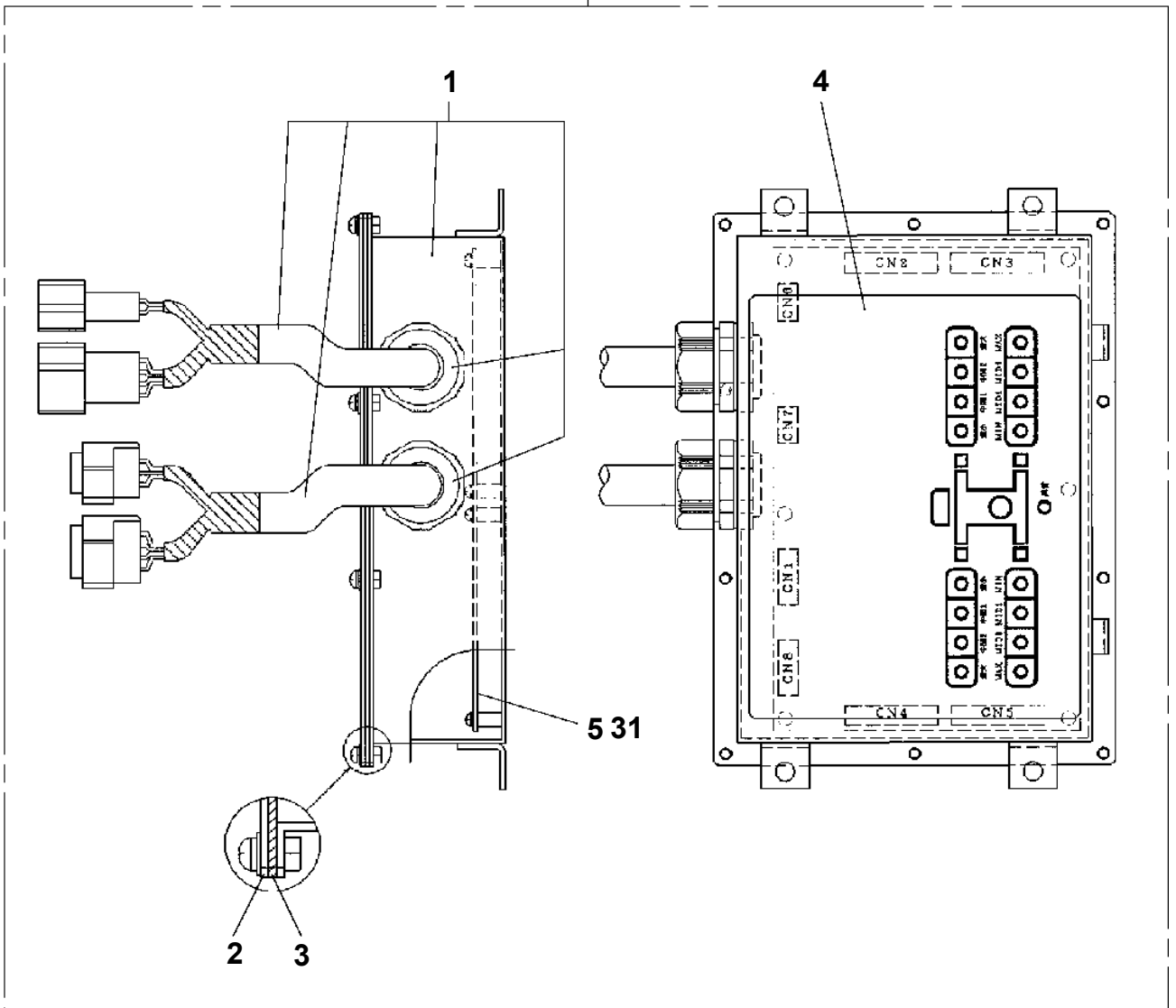


AT-146-1 42095100012 UPPER
PC1010859-01 OUTRIGGER (REAR/MOUNT)



AT-146-1 42095100012 UPPER
PC1190031-00 INDICATOR,OUTRIGGER

50



AT-146-1 42095100012 UPPER

Pos No.	Parts No	Parts Name	Qty	Unit	Technical Data	Serial No (Start)	Serial No (End)
1	42478281001	SUPPORT	1				
2	90101208016	BOLT	6		M8X16		
3	90302040801	WASHER,SPRING	6		8		
4	90101210020	BOLT	4		M10X20		
5	90302041001	WASHER,SPRING	4		10		
6	82100002040	CLAMP	1		WE15		
7	90101206012	BOLT	1		M6X12		
8	90302040601	WASHER,SPRING	1		6		
10	42478282001	COVER ASSY	1				
11	90201201000	NUT	4		M10		
12	42478280010	PLATE,CAUTION	1				
13	42507050010	PLATE,NAME	1				
14	90303070601	WASHER,PLAIN	1		6		
15	(***** *****)	BOX ASSY	1				
16	42420922100	PLATE,NAME (AC200V)	1				
31	42507052000	CHARGER ASSY (200V,ASSY ONLY)	1				
32	42507050100	CABLE	1		L=5000		
33	42477921200	CABLE	1		L=10000		
51	90101206020	BOLT	12		M6X20		
52	82464107815	HINGE	2				
53	90302040601	WASHER,SPRING	12		6		
54	37000575480	PLATE	4				
55	42420385020	PLATE	1				
56	80172804012	SCREW,MACHINE	6		M4X12		
57	90302510401	WASHER,SPRING	6		4		
58	82466124001	CATCH	1				
59	42420385010	PLATE	1				
60	42478282101	COVER	1				
61	42478282500	COVER	1				
71	82400000202	GROMMET	1				

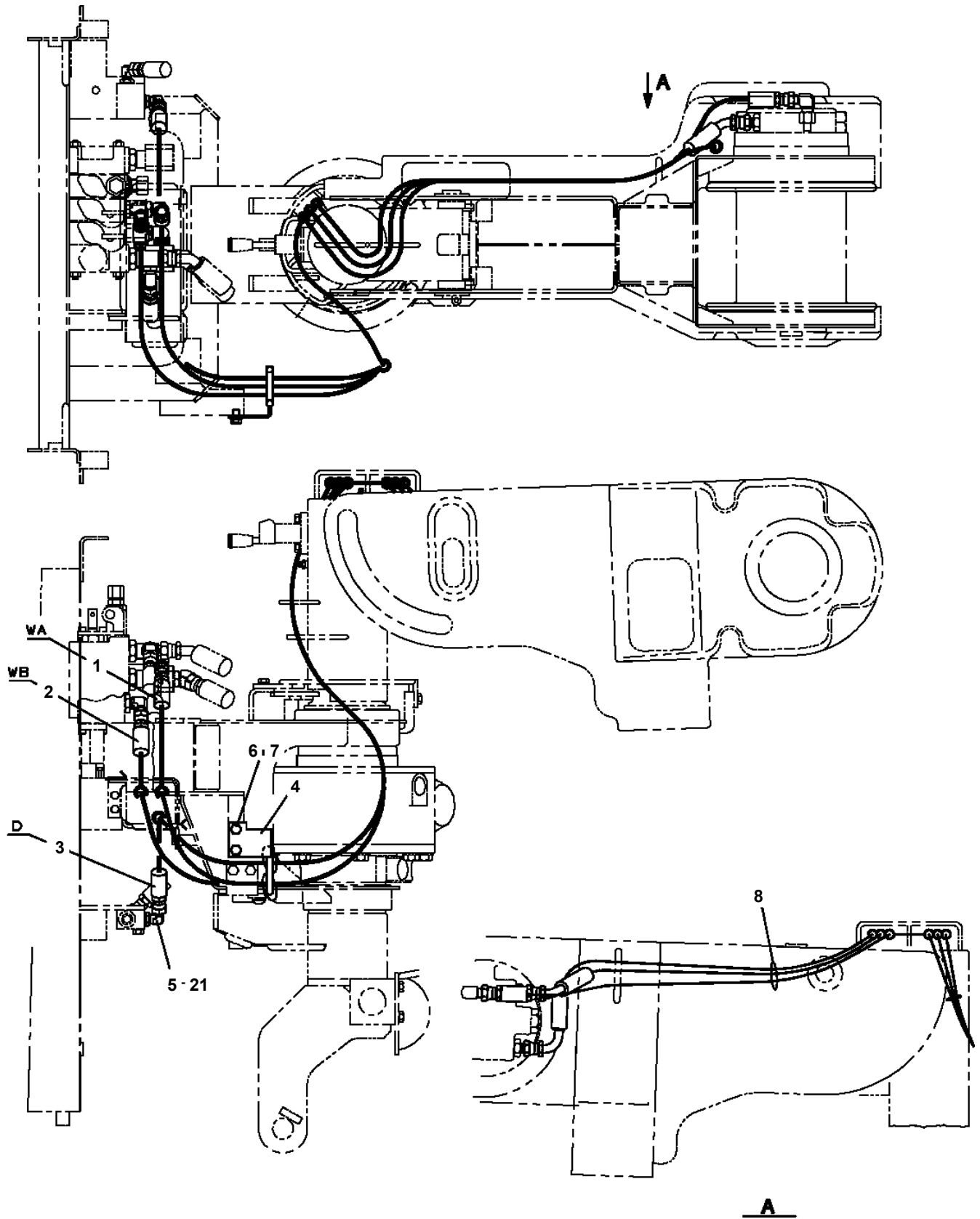
AT-146-1 42095100012 UPPER

Pos No.	Parts No	Parts Name	Qty	Unit	Technical Data	Serial No (Start)	Serial No (End)
2	36081560000	REDUCER,SWING SPEED	1				
3	90171118070	BOLT (DACRO)	3		M18X70		
4	90303501805	WASHER,PLAIN	6		18		
5	90201781800	NUT (DACRO)	3		M18		
6	90171212035	BOLT (DACRO)	2		M12X35		
7	90710012400	SCREW,SET	2		M12X40		
8	90203201200	NUT	4		M12		
9	90172112035	BOLT,HEXAGON SOCKET	2		M12X35		
10	90302041201	WASHER,SPRING	2		12		
11	36662590000	MOTOR,HYDRAULIC (SWING)	1				
12	91002908500	O-RING	1		1B G85		
31	37002302450	BEARING,SWING (NSK)	1				
32	37002303560	BEARING,SWING (NIHON MONORACE)	1				
33	37002304750	BEARING,SWING (KOYO)	1				
41	37002399010	SEAL (UP,DOWN-SIDE SET)	1				
42	82456201000	NIPPLE,GREASE	6		A-TYPE PT1/8		

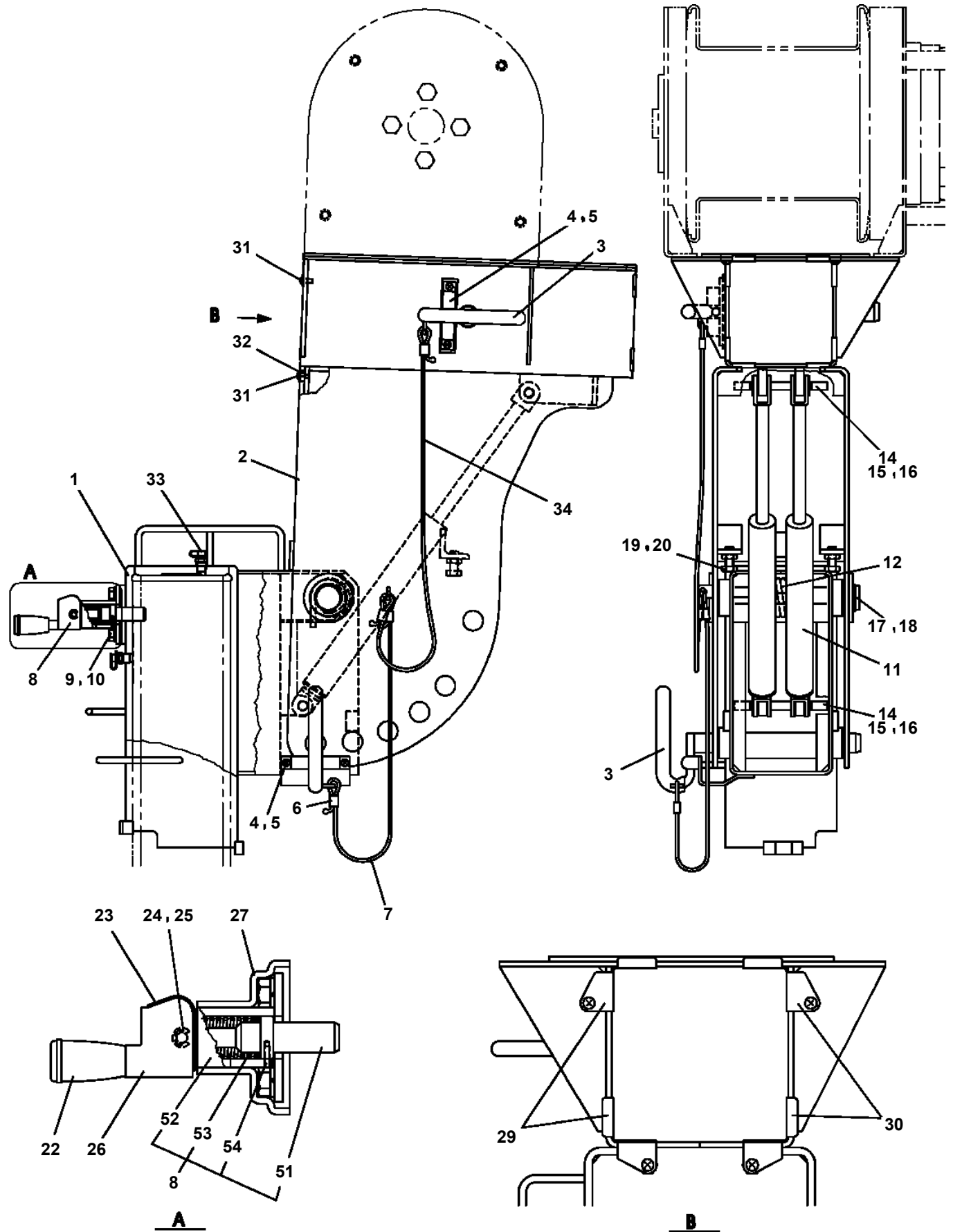
AT-146-1 42095100012 UPPER

Pos No.	Parts No	Parts Name	Qty	Unit	Technical Data	Serial No (Start)	Serial No (End)	Remarks
1	36073825050	DRUM	1					
5	36072495040	SHAFT	1					
6	36073825140	GEAR,INPUT	1					
10	36072495080	BUSH	1					
12	36072495090	RING,RETAINING	1					
13	36072495100	RING	1					
14	36072495110	DISTANCE PIECE	2					
15	36073825060	SEAL,OIL	1					
16	36072495130	SEAL,OIL	1					
17	36072495140	PIN	26					
18	36073825030	PIN	2					
19	36073825040	BOLT,HEXAGON SOCKET	4					
20	36072495150	BEARING,BALL	1					
21	36072495160	BEARING,BALL	1					
24	36072495170	RING,RETAINING	2					
25	80601110170	RING,RITAINING	4		S17			
26	36072495180	RING,RETAINING	1					
27	91002800900	O-RING	1		1B P9			
30	91001012500	O-RING	1		S125			
33	80316030060	PLUG	2		PT3/8			
34	36072495190	ORIFICE	1					
102	36072495220	SHAFT	1					
103	36072495230	PLATE,THRUST	1					
104	36072495240	BLOCK,CYLINDER	1					
107	36661055260	PLATE (RETAINER)	1					
108	36661055270	PLATE,THRUST	1					
109	36072495260	PLATE,TIMING	1					
110	36072495270	WASHER	2					
112	36073825090	PISTON	1					
113	36072495290	SPRING	2					
114	36072495300	SPRING	1					
115	36661055350	PLATE (FRICTION)	2					
116	36661055360	PLATE (MATING)	2					
118	91002910500	O-RING	1		1B G105			
119	91002912000	O-RING	1		1B G120			
120	91002801200	O-RING	1		1B P12			
121	91002802200	O-RING	2		1B P22			
123	36072495310	PLUG	2					
124	36073825100	STOPPER	1					
125	36072495330	STOPPER	1					
126	36072495340	SPRING	2					
127	36073825110	SPRING	1					
128	36072495350	THROTTLE	2					
129	36661055400	PLUG	1					
130	36661055410	VALVE	1					
131	36661055420	SPRING	1					
132	36661055440	SEAL,OIL	1		15Z-17X35X8			
133	36663495450	BEARING,BALL	1					
134	36072495390	BEARING,BALL	1					
135	36072495400	PIN (STRAIGHT)	2		5X12			
136	80730080020	PIN (STRAIGHT)	2		8X20			
137	36073825120	ROLLER,NEEDLE	3					
138	36072495370	RING,RETAINING	1					
139	90131908025	BOLT,HEXAGON SOCKET	6		M8X25			
143	36661055450	RING,RETAINING	1					
300	36073825010	REDUCER ASSY	1					
310	36073825020	SPINDLE KIT	1					
320	36072495030	GEAR ASSY (RV)	1					
330	36072495070	GEAR,SPUR (2PIECES)	1					
400	36073825070	MOTOR ASSY	1					
410	36073825080	FLANGE SET(REAR)	1					
420	36072495250	PISTON KIT	1					
490	36073825130	SEAL KIT	1					

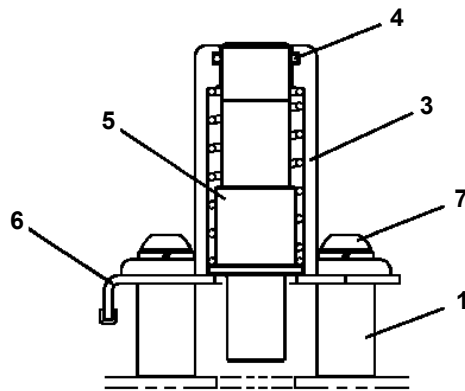
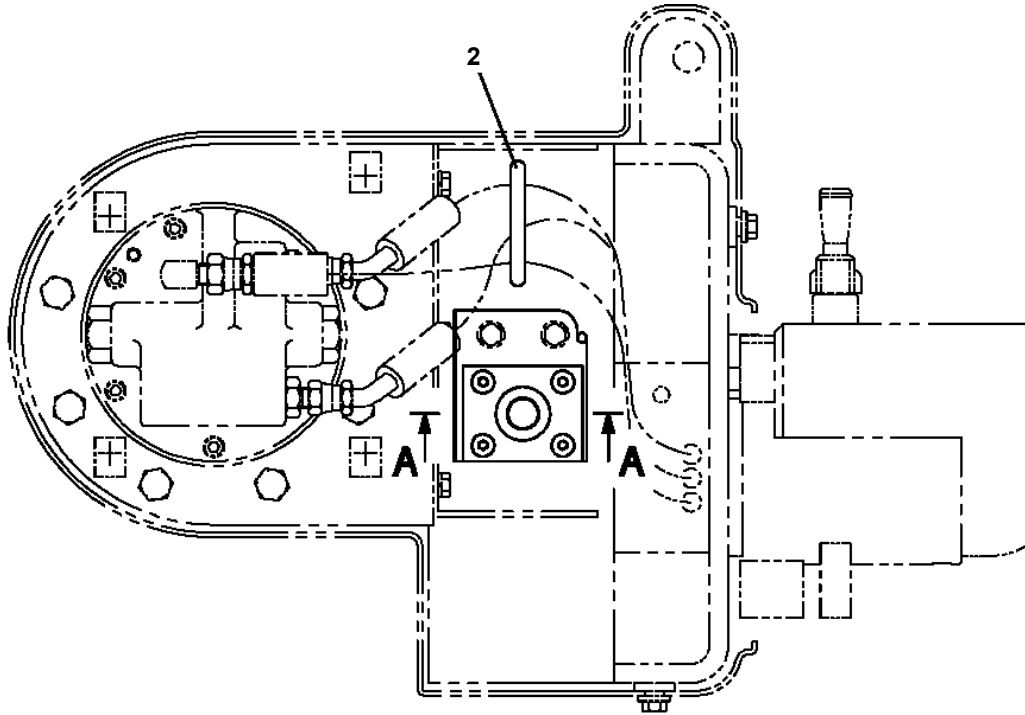
AT-146-1 42095100012 UPPER
PF1200317-00 PIPING,WINCH



**AT-146-1 42095100012 UPPER
PF1350067-00 WINCH, JIB (SUPPORT)**



**AT-146-1 42095100012 UPPER
PF1350122-00 WINCH, JIB (FRAME)**

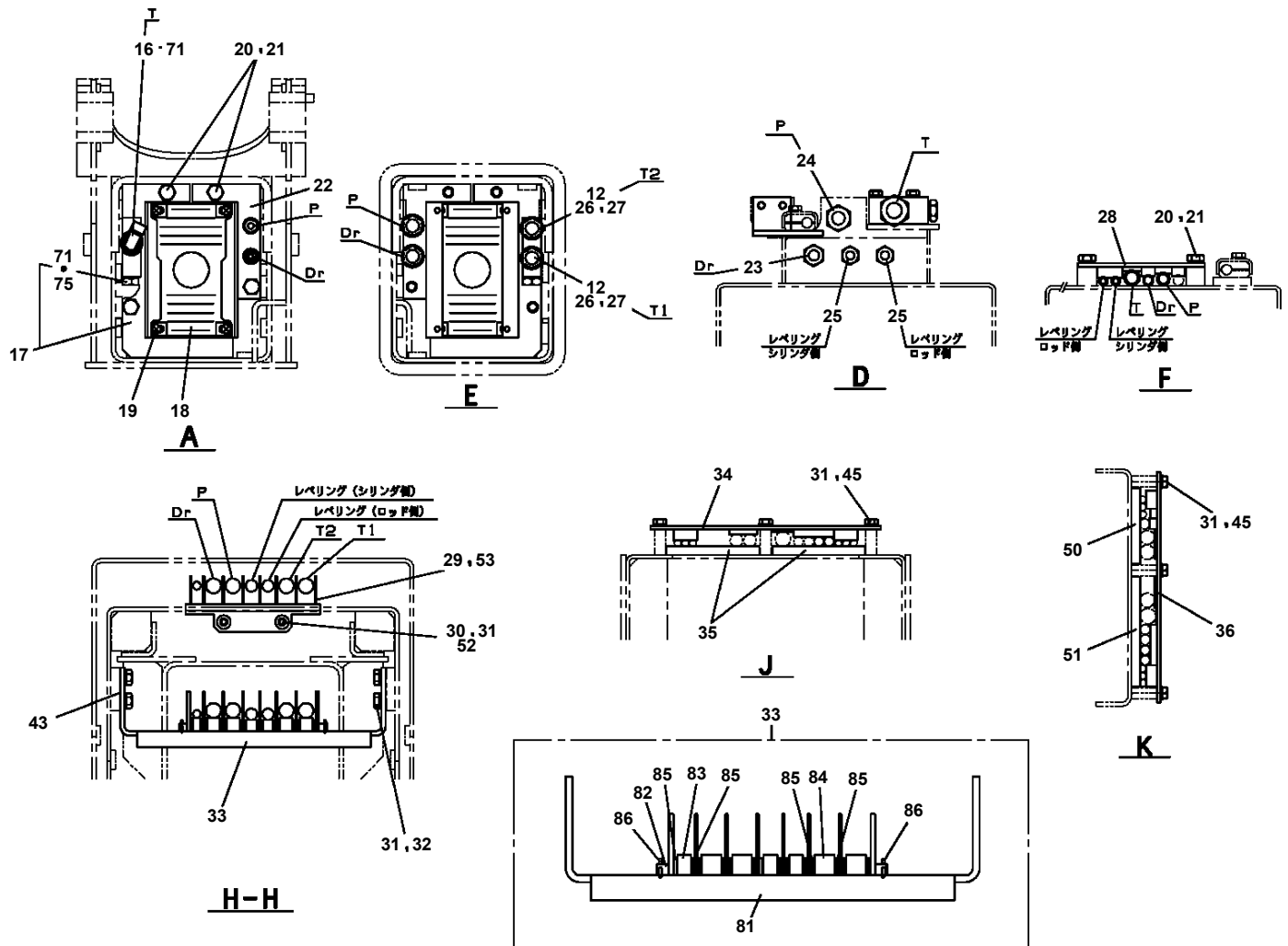


A-A

AT-146-1 42095100012 UPPER

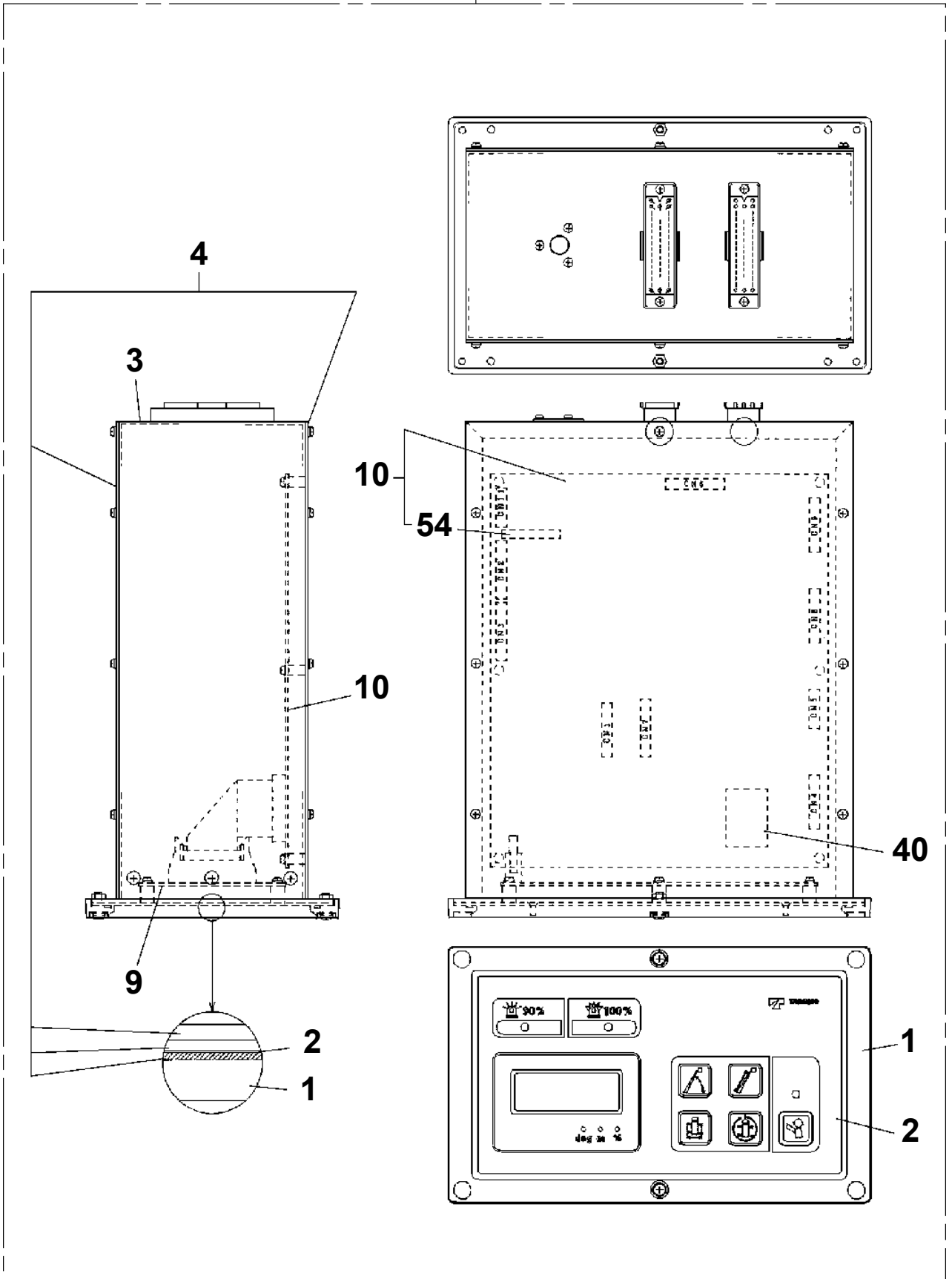
Pos No.	Parts No	Parts Name	Qty	Unit	Technical Data	Serial No (Start)	Serial No (End)	Re
251	42200013410	SUPPORT	4					
252	37002006500	PLATE,SLIDE	4					
253	37000508520	PLATE	8		T=0.8			
254	80184306012	SCREW,MACHINE	4		M6X12			
255	42200690090	SHIM	8		T=0.3			
262	80513006206	BEARING,BALL	4					
272	80612110620	RING,RITAINING	2		AR62	228035	228034	
	80602110620	RING,RITAINING	2		R62			
282	80513006012	BEARING,BALL	2					
283	80612110950	RING,RITAINING	2		AR95			
291	80801003012	BEARING,PLAIN	2					
292	80601110250	RING,RITAINING	4		S25			
293	42201700120	PLATE	2					
294	37000179820	PIN	2					
295	42201700150	ROLLER ASSY	2					
311	80513006005	BEARING,BALL	16					
321	42201522910	PLATE,NAME	1					
373	82455106000	NIPPLE,GREASE	1		A-M6F FE			
374	82400000459	CAP	1					

**AT-146-1 42095100012 UPPER
PG1220140-00 PIPING,BOOM**

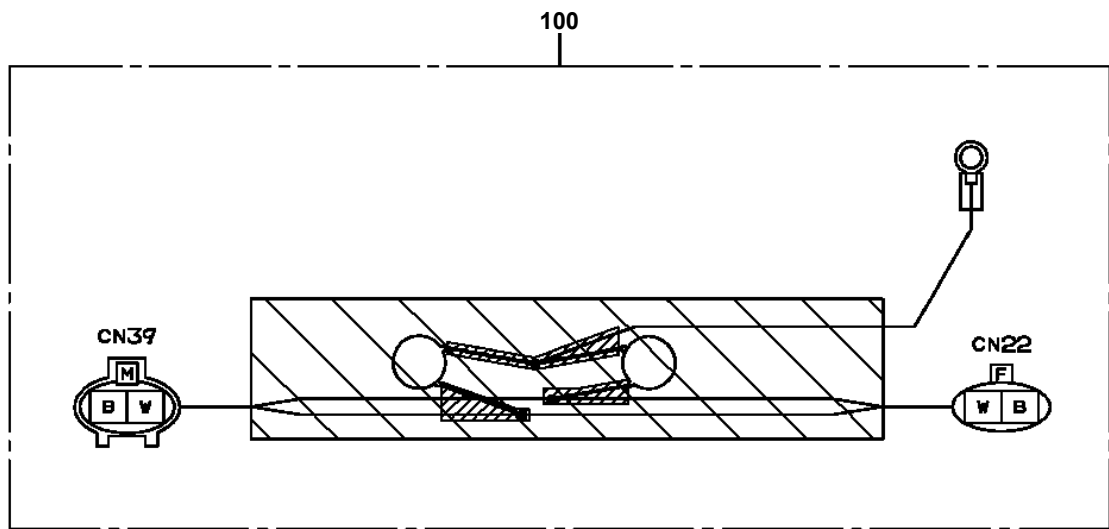


AT-146-1 42095100012 UPPER
PH1250053-00 MOMENT LIMITER (H2)

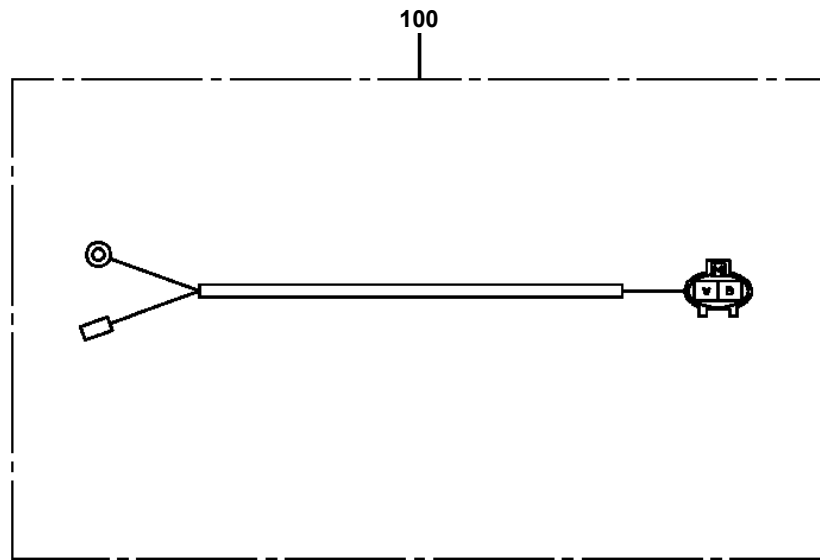
100



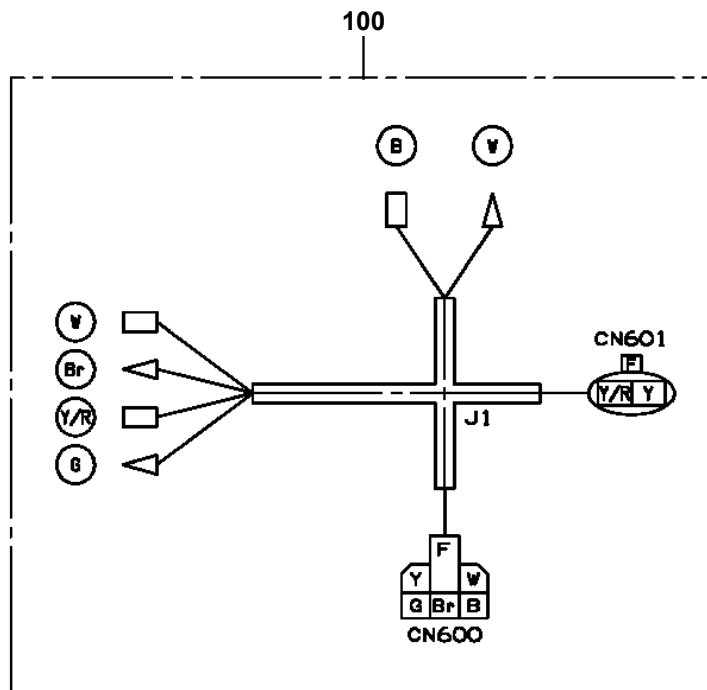
AT-146-1 42095100012 UPPER
PH5031070-00 HARNESS



**AT-146-1 42095100012 UPPER
PH5032326-00 HARNESS**



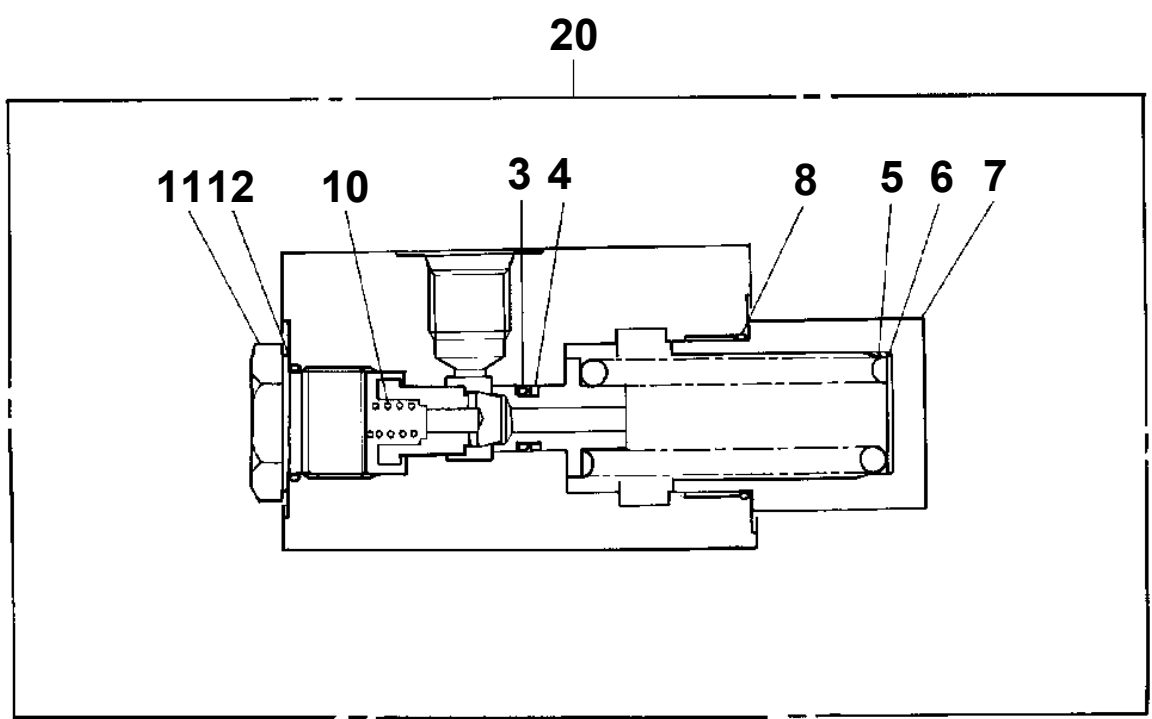
AT-146-1 42095100012 UPPER
PH5032351-00 HARNESS



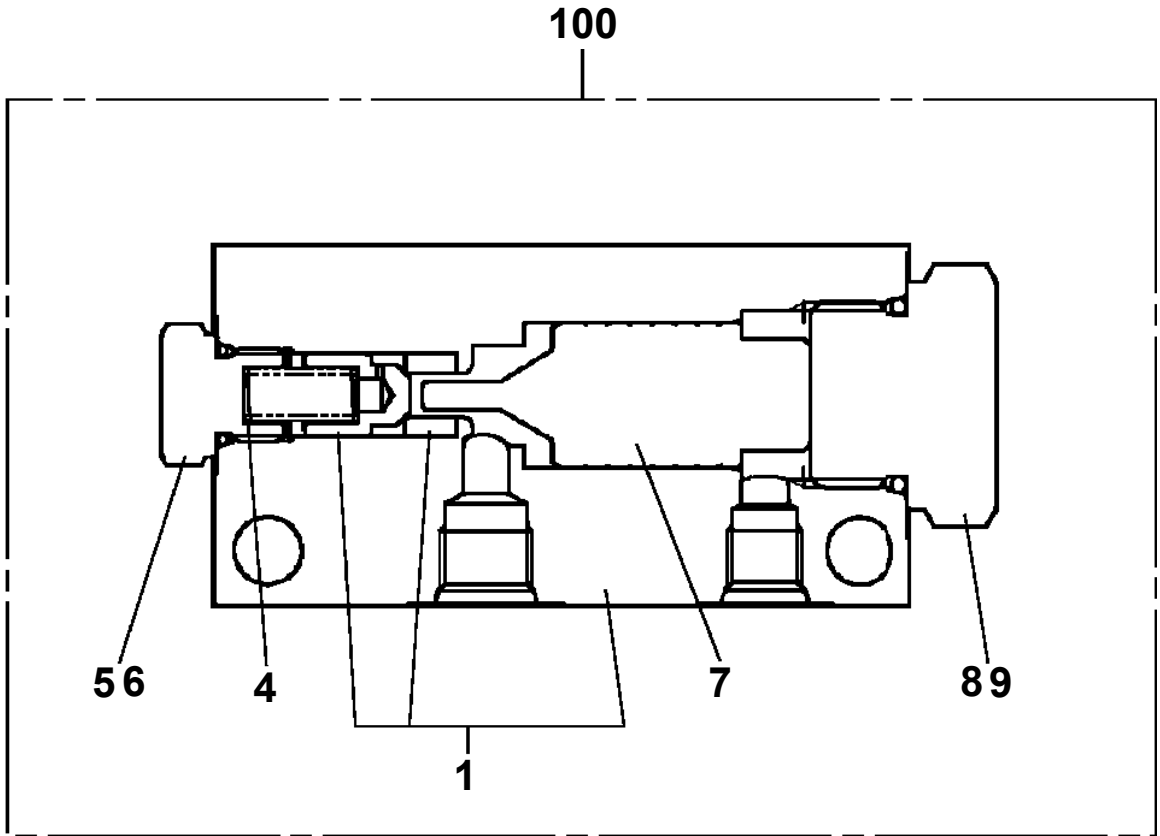
AT-146-1 42095100012 UPPER
PI1100007-00 VALVE,RELIEF

Assembly Name VALVE, RELIEF

PI110-0007-00

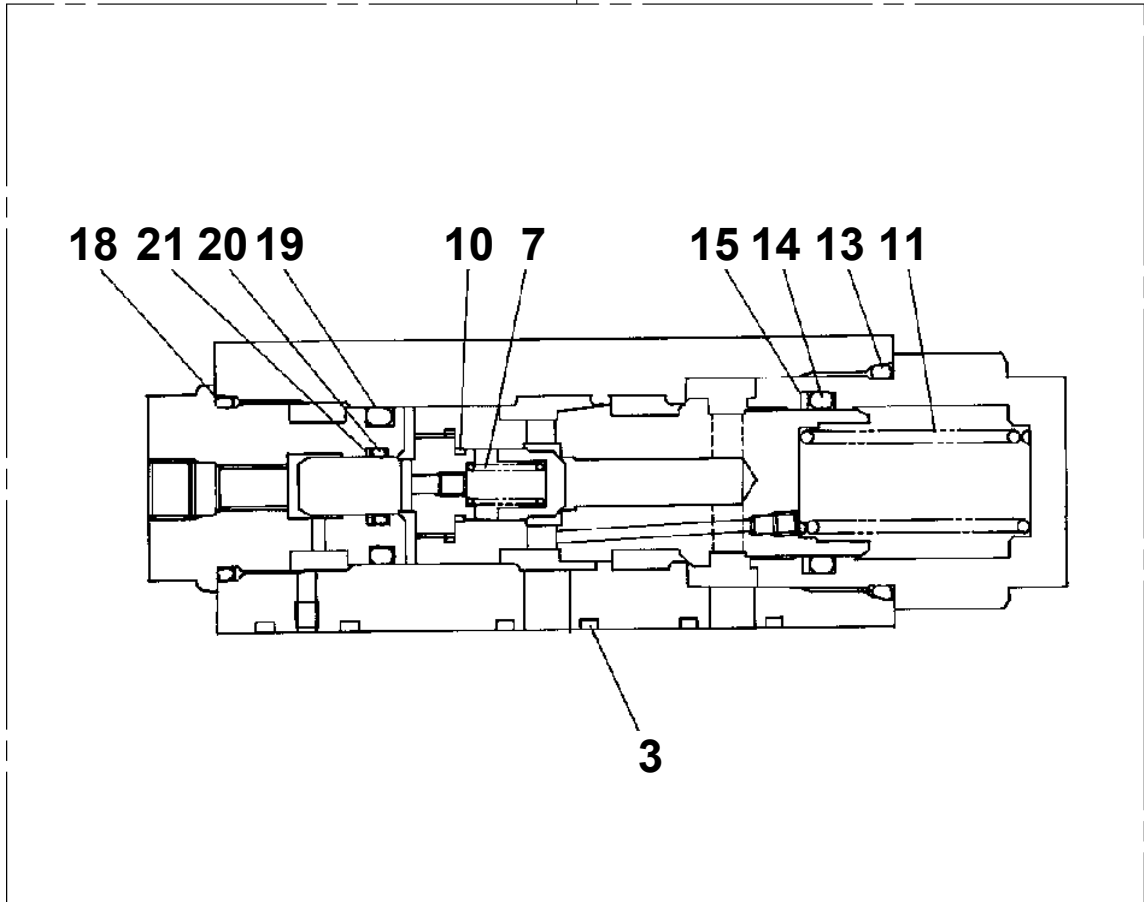


**AT-146-1 42095100012 UPPER
PI1140212-00 VALVE,CHECK**

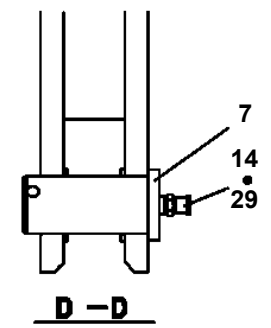
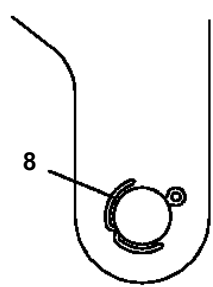
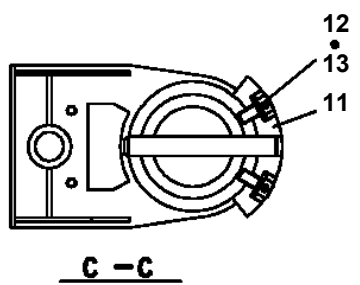
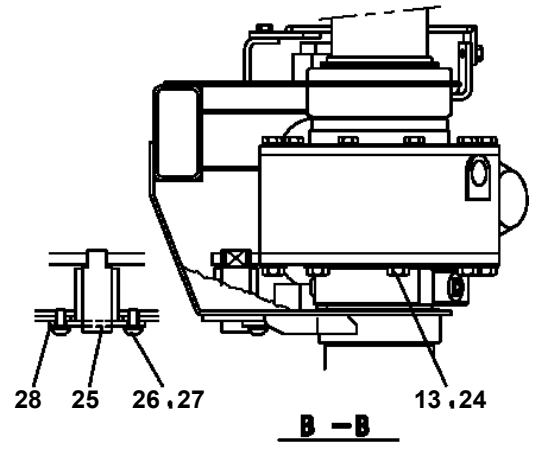
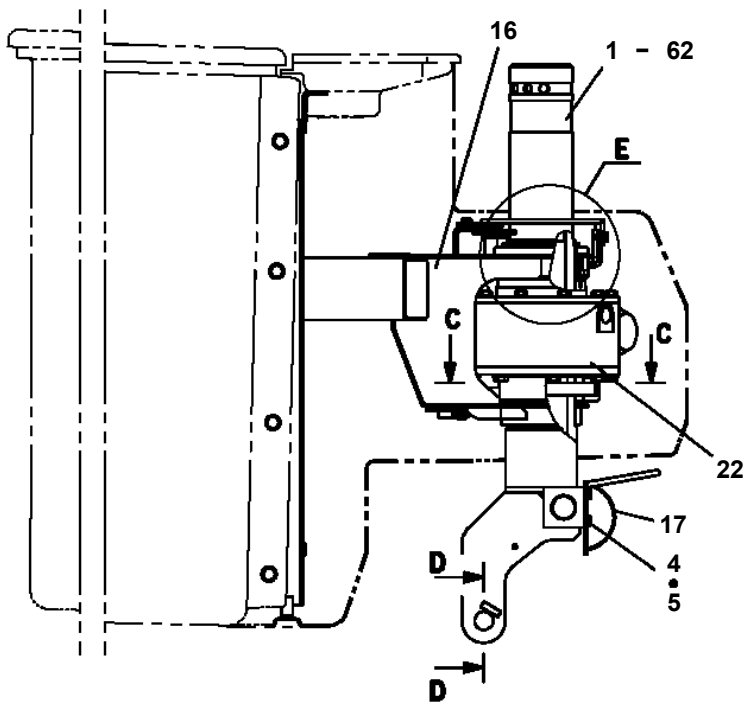
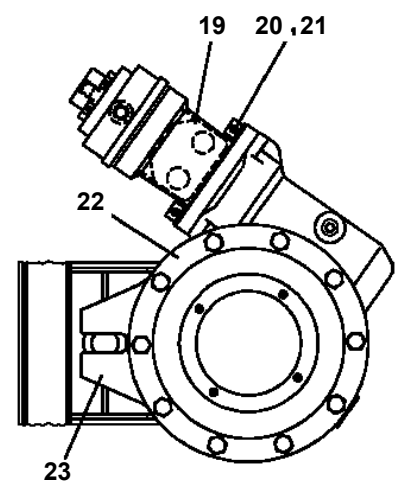
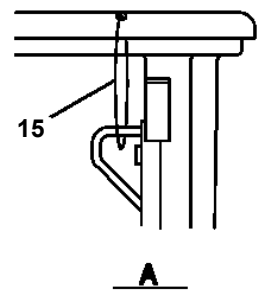
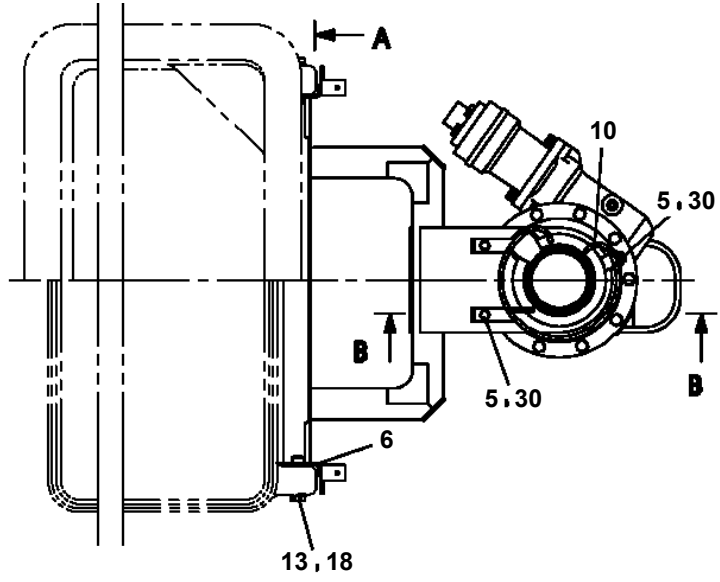


**AT-146-1 42095100012 UPPER
PI1250141-00 VALVE,COUNTERBALANCE**

50



**AT-146-1 42095100012 UPPER
PJ3020020-02 FRAME**



**展開圖有
ILLUSTRATED BREAKDOWN NO. 16**

CLICK HERE TO **DOWNLOAD** THE COMPLETE MANUAL

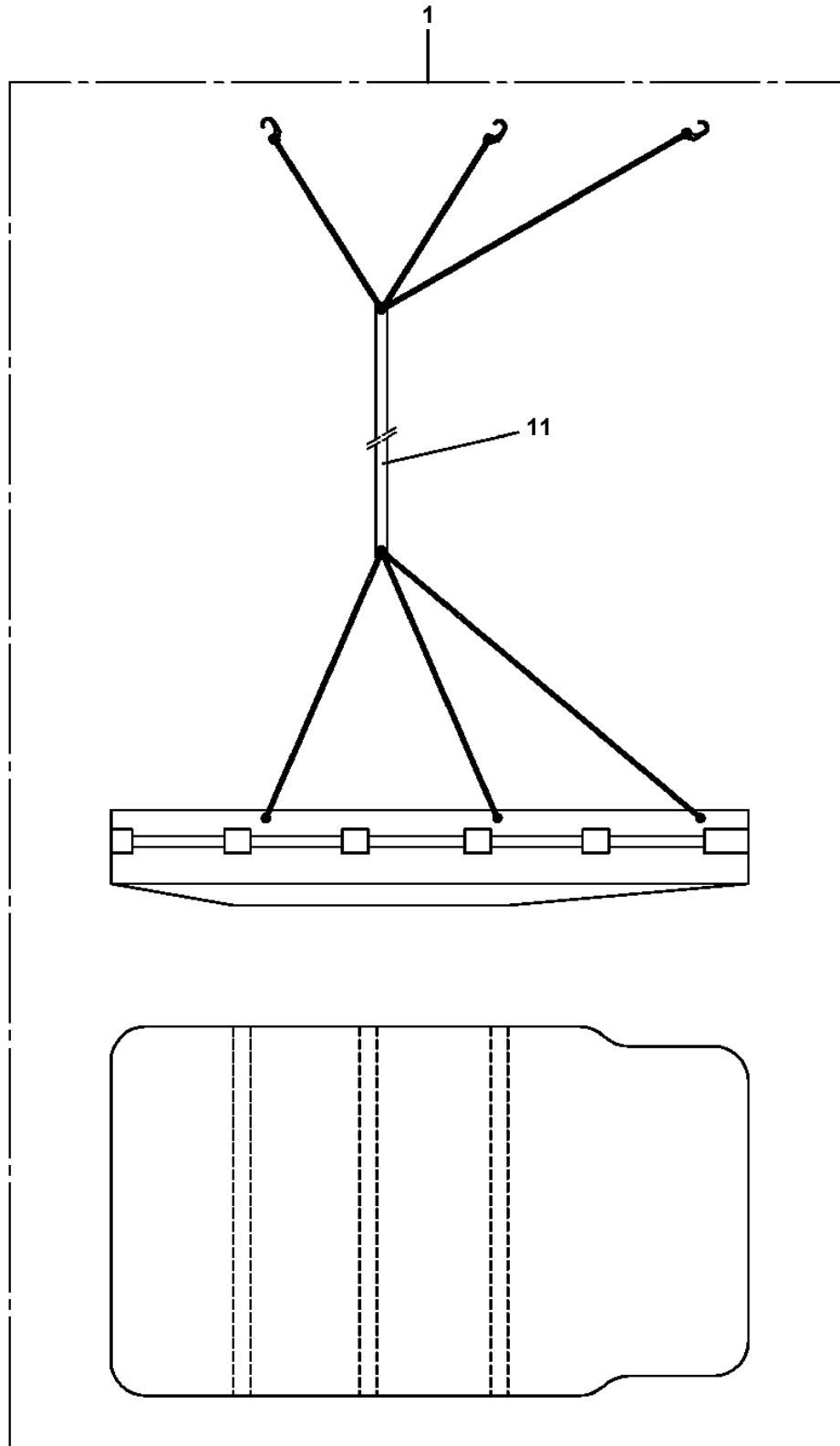
- Thank you very much for reading the preview of the manual.
- You can download the complete manual from: www.heydownloads.com by clicking the link below



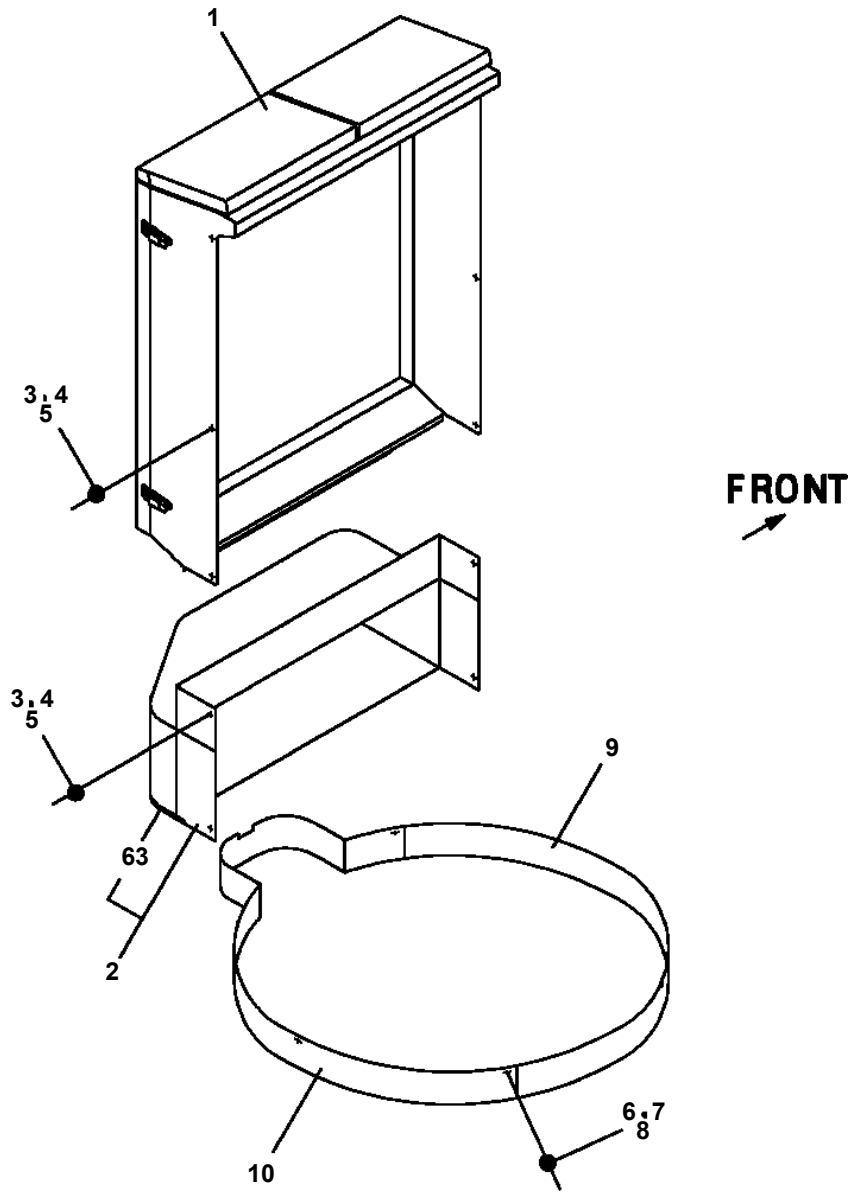
- Please note: If there is no response to CLICKING the link, please download this PDF first and then click on it.

CLICK HERE TO **DOWNLOAD** THE COMPLETE MANUAL

AT-146-1 42095100012 UPPER
PJ3240009-01 COVER (CLOTH,WHITE)



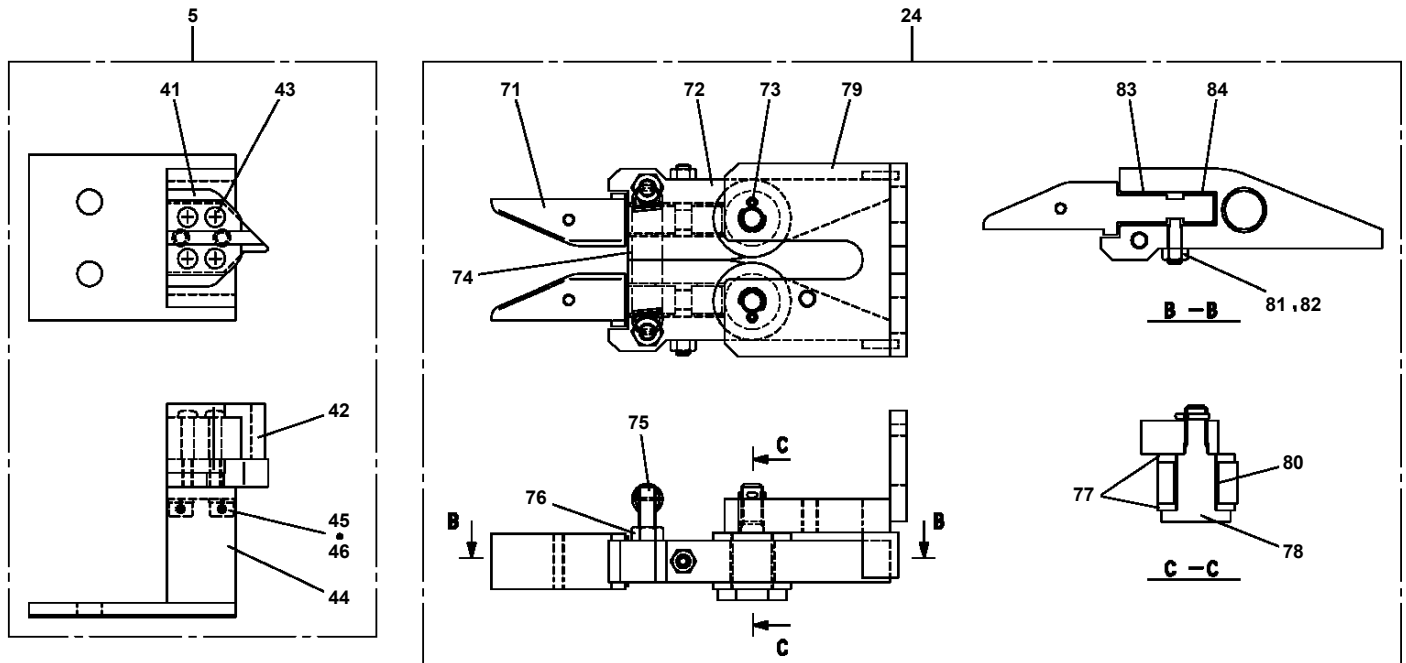
AT-146-1 42095100012 UPPER
PK1200354-04 COVER, SWING FRAME



AT-146-1 42095100012 UPPER**PM5150256-00 MODIFICATION ASSY(SAFETY ROPE INTERLOCK/STD BUCKET,L,B)**

指示番号 KEY NO.	カイゾウ ASSY (セーフティロープ インタロックツイカ/STDバケツト,L,Bシヨウ) MODIFICATION ASSY (SAFETY ROPE INTERLOCK/STD BUCKET,L,B)
1	カイゾウ ASSY (パネル,レバー) MODIFICATION ASSY (PANEL,LEVER)
3	カイゾウ ASSY (バケツトフレーム) MODIFICATION ASSY (BUCKET FRAME)
4	カイゾウ ASSY (バケツトフワイセン) MODIFICATION ASSY (BUCKET WIRING)
6	ネームプレート ASSY NAME PLATE ASSY

**AT-146-1 42095100012 UPPER
PN1012670-01 ELEC.ASSY (CHARGER)**



AT-146-1 42095100012 UPPER

Pos No.	Parts No	Parts Name	Qty	Unit	Technical Data	Serial No (Start)	Serial No
1	42651890100	HARNESS	1				
2	42651890300	HARNESS (FOR DETECTOR,O/R LENGTH)	1				
3	82100002002	CLAMP	2		WR6		
4	91810132530	FASTENER	16				
5	80182406014	SCREW,MACHINE	2		M6X14		
6	42652071000	RELAY BOX ASSY	1				
7	90101210014	BOLT	4		M10X14		
8	90302041001	WASHER,SPRING	4		10		
9	82104503104	SWITCH,LIMIT	1				
10	90172105014	BOLT,HEXAGON SOCKET	2		M5X14		
11	44430680200	BUZZER ASSY (WITH HARNESS)	1				
12	42474530100	LAMP ASSY	1				
13	90302040601	WASHER,SPRING	16		6		
16	90201200800	NUT	1		M8		
17	90302040801	WASHER,SPRING	1		8		
18	91850400601	CLAMP	36				
19	42350980010	PLUG (6POLES,FEMALE)	1				
20	91810130240	FASTENER	19				
21	42651892000	PANEL,CONTROL	1				
22	80192486014	SCREW,MACHINE (WITH WASHER)	4		M6X14		
23	90172206035	BOLT,HEXAGON SOCKET	4		M6X35		
24	90813108020	BOLT,WING	1		M8X20		
25	90172106016	BOLT,HEXAGON SOCKET	12		M6X16		
26	36131690000	DETECTOR,OUTRIGGER LENGTH	4				
29	90280200600	NUT,FLANGE	3		M6		
30	80136320012	PIN,SPLIT	4		2X12		
31	90303070601	WASHER,PLAIN	6		6		
36	82100002016	CLAMP	2		WR25	227228	
81	42651891100	CASE	1				
82	42651891200	COVER	1				
83	80182306014	SCREW,MACHINE	8		M6X14		
84	90302040601	WASHER,SPRING	21		6		
85	90303070601	WASHER,PLAIN	10		6		
86	42651091100	RELAY ASSY	2				
87	90101206014	BOLT	8		M6X14		
88	82100002596	RELAY	3				
89	82161201010	RELAY	4				
90	82100002597	RELAY	2				
91	42651714100	TERMINAL ASSY	1				
92	80172303016	SCREW,MACHINE	2		M3X16		
93	90302040301	WASHER,SPRING	8		3		
94	90303070301	WASHER,PLAIN	8		3		
95	80172303008	SCREW,MACHINE	6		M3X8		
96	42651132400	RELAY ASSY	1				
97	82100002014	CLAMP	1		WR20		
98	90201200600	NUT	5		M6		
99	42735530100	FLASHER UNIT	1				
100	42651714010	CONNECTOR	1				
121	82165904020	LAMP	1		24V 60W		
122	90101212020	BOLT	1		M12X20		
123	90302041201	WASHER,SPRING	1		12		
124	37000159530	PIN	1				
125	80620210160	PIN,SNAP	1				
131	42736070100	SWITCH ASSY (WITH HARNESS)	1				
132	42433932100	SWITCH ASSY (WITH HARNESS,1 SW)	1				
133	42651721000	INDICATOR,OUTRIGGER	1				
134	80192486014	SCREW,MACHINE (WITH WASHER)	4		M6X14		
137	42651892100	PANEL	1				
138	82197518119	CAP (PLUS ONE MFG./BLACK)	2				
	82197518114	CAP (MATSUSHITA/BLACK)	2				
153	90101208020	BOLT	8		M8X20		
154	90302040801	WASHER,SPRING	8		8		
155	90303070801	WASHER,PLAIN	8		8		

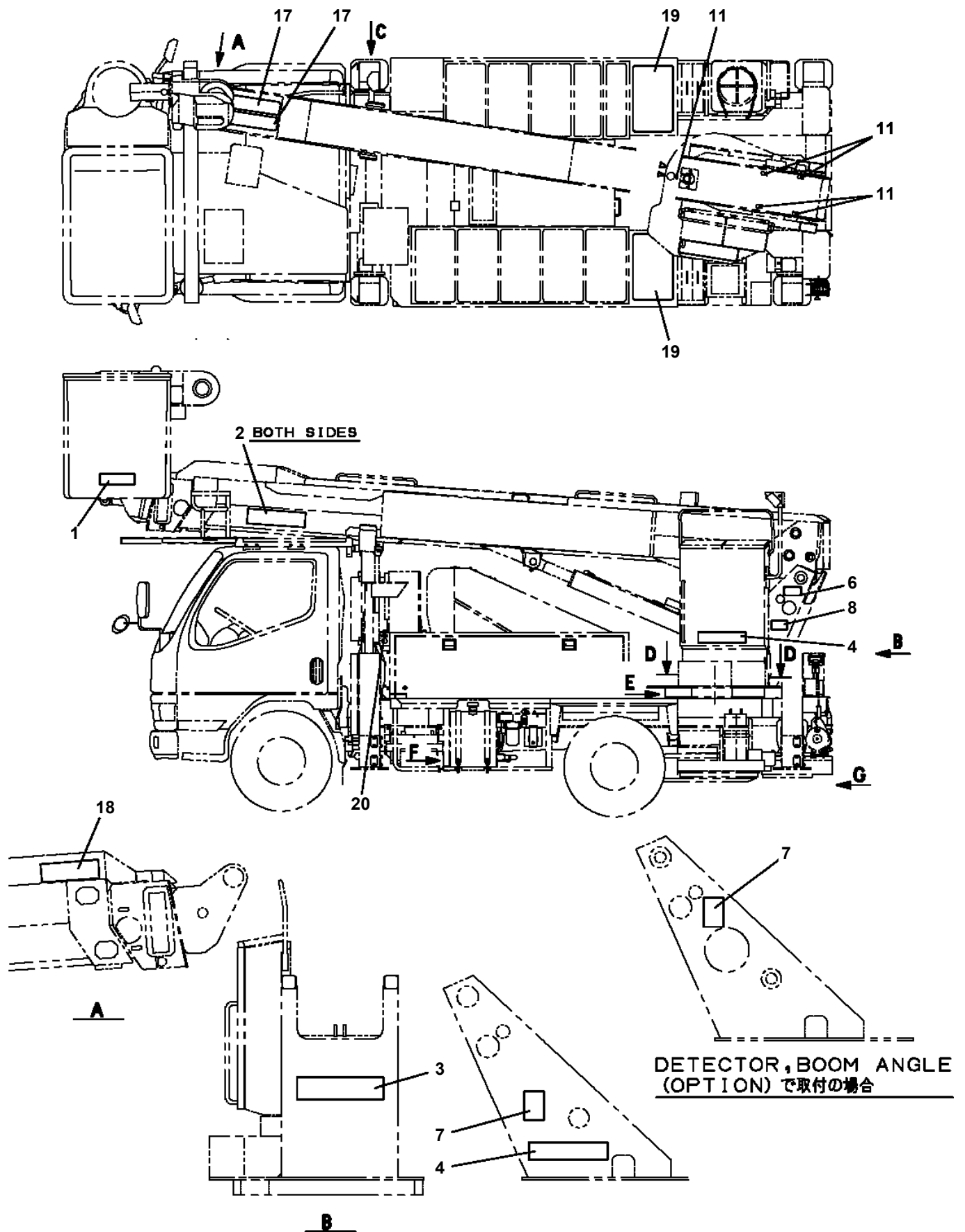
AT-146-1 42095100012 UPPER

Pos No.	Parts No	Parts Name	Qty	Unit	Technical Data	Serial No (Start)	Serial No (End)	F
1	(*****)	ELEC.ASSY (WINCH)	1					
2	(*****)	SWITCH,DETECTOR (JIB FIXING PIN)	1					
3	(*****)	WINCH,JIB (FRAME)	1					

AT-146-1 42095100012 UPPER

Pos No.	Parts No	Parts Name	Qty	Unit	Technical Data	Serial No (Start)	Serial No (End)	Remarks	Pages
1	42473740011	HARNESS	1						000084
2	91810130240	FASTENER	5						
3	42475560010	PLATE,NAME	1						
4	42473740030	LAMP ASSY	1						
5	82100002051	CLAMP	1		WS-A55				
6	80162305020	SCREW,MACHINE	2		M5X20				
7	90302040501	WASHER,SPRING	2		5				
8	90303070501	WASHER,PLAIN	2		5				
9	90201200500	NUT	2		M5				
31	82100002538	LAMP	1						

**AT-146-1 42095100012 UPPER
PO1013355-01 PLATE ASSY,NAME**



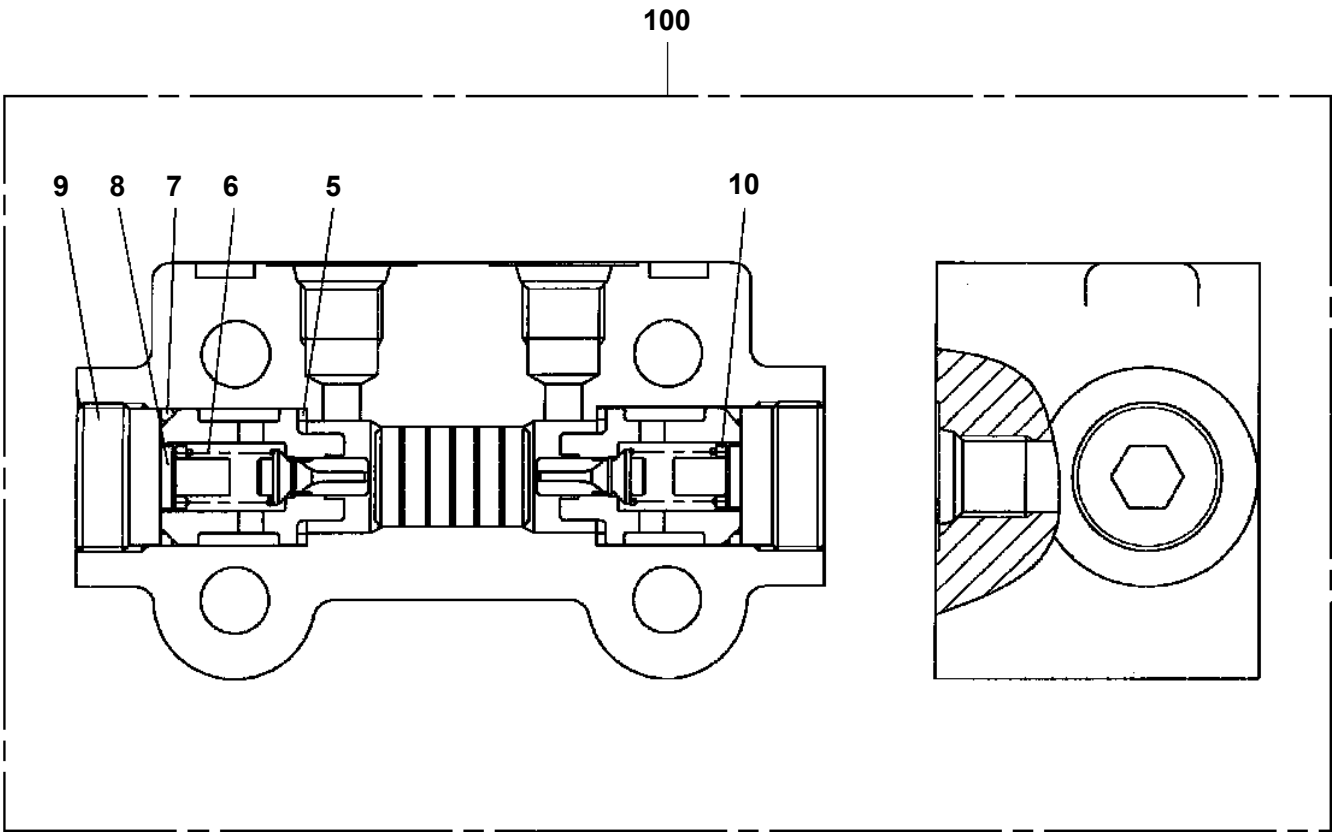
AT-146-1 42095100012 UPPER

Pos No.	Parts No	Parts Name	Qty	Unit	Technical Data	Serial No (Start)	Serial No (End)	Remarks	Pages
1	42395275010	PLATE,NAME	1						
2	42394271100	PLATE (NON-SLIP)	1						

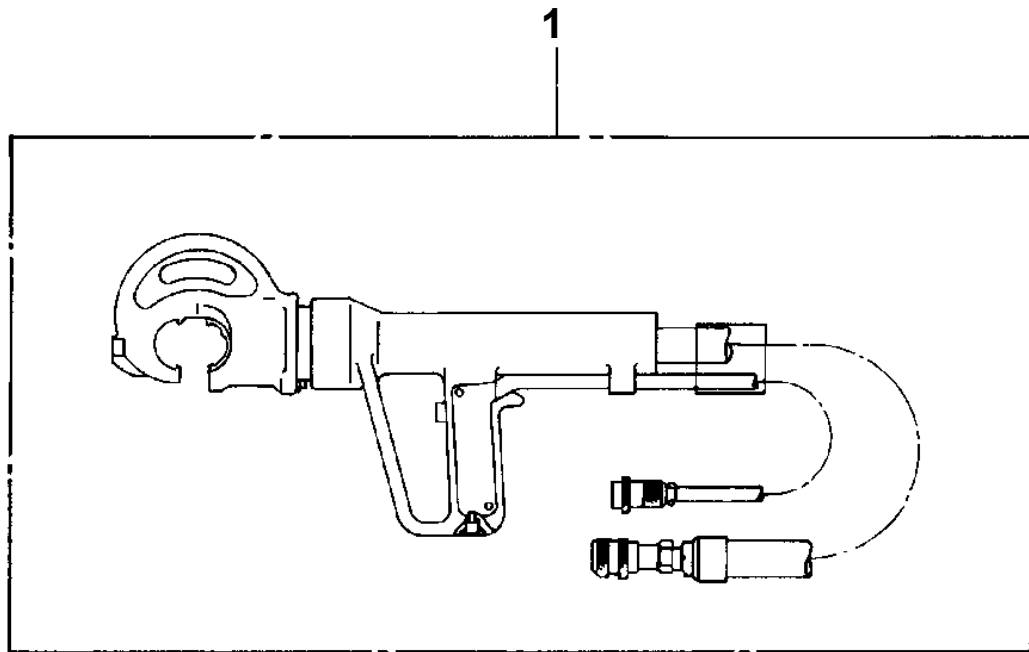
AT-146-1 42095100012 UPPER

Pos No.	Parts No	Parts Name	Qty	Unit	Technical Data	Serial No (Start)	Serial No (End)	Remarks	Pages
1	83152811000	SHACKLE	1						

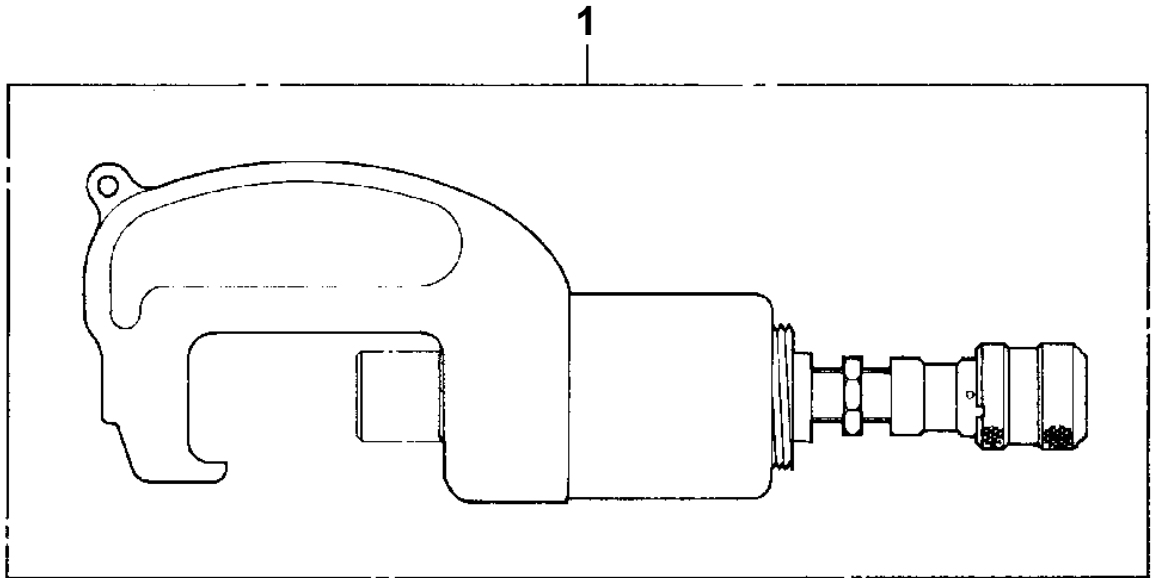
**AT-146-1 42095100012 UPPER
PV5040021-00 VALVE ASSY,CHECK**



AT-146-1 42095100012 UPPER
PY1050000-00 CLAMP HEAD (IZUMI 12TON 2.5M)

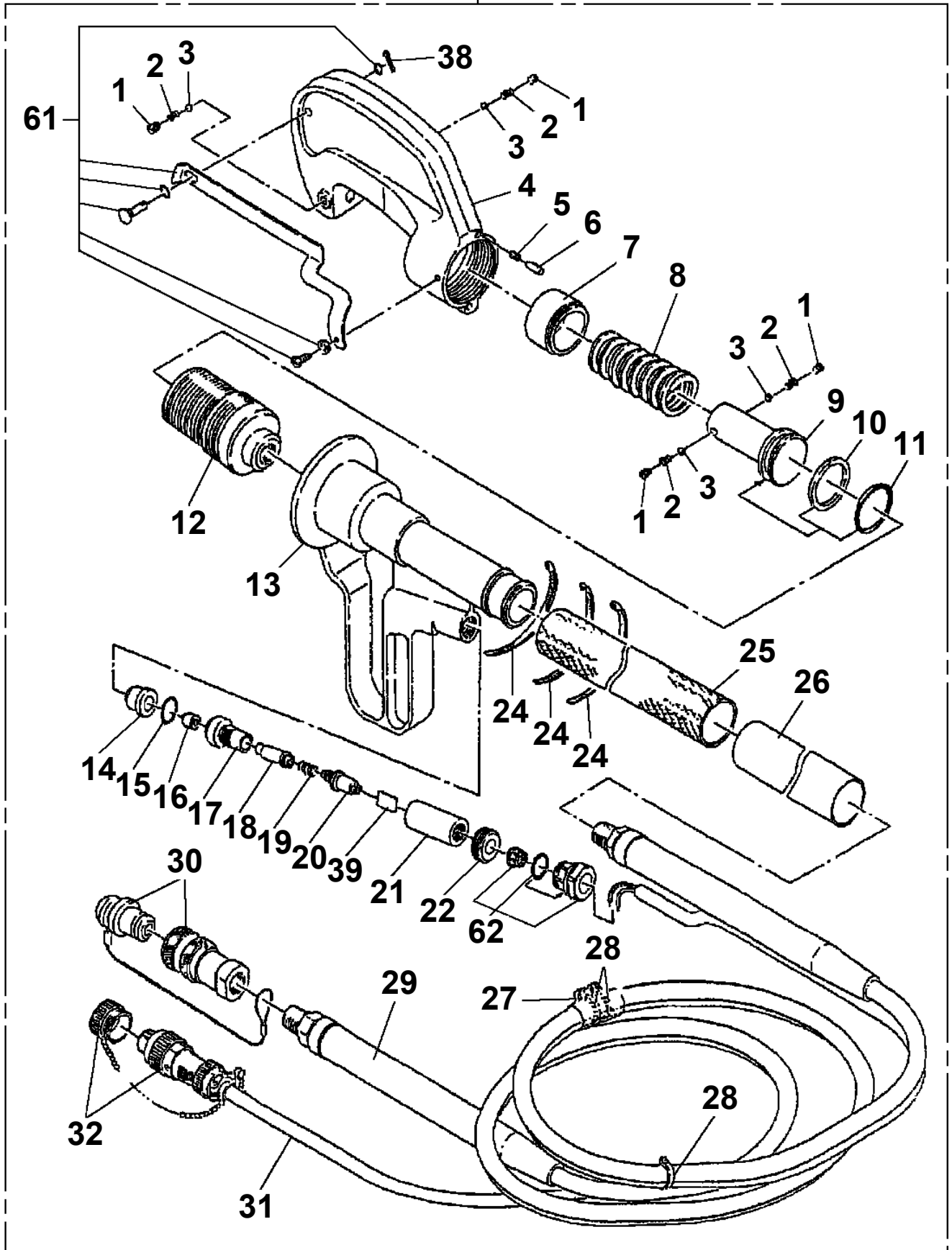


**AT-146-1 42095100012 UPPER
PY1050005-00 CLAMP HEAD (O.D.K 10TON ELECTRIC)**

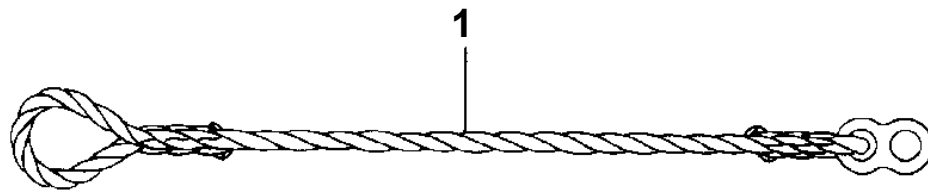


AT-146-1 42095100012 UPPER
PY1050010-00 CLAMP HEAD (IZUMI 8TON,2.5M/YONDENKOU)

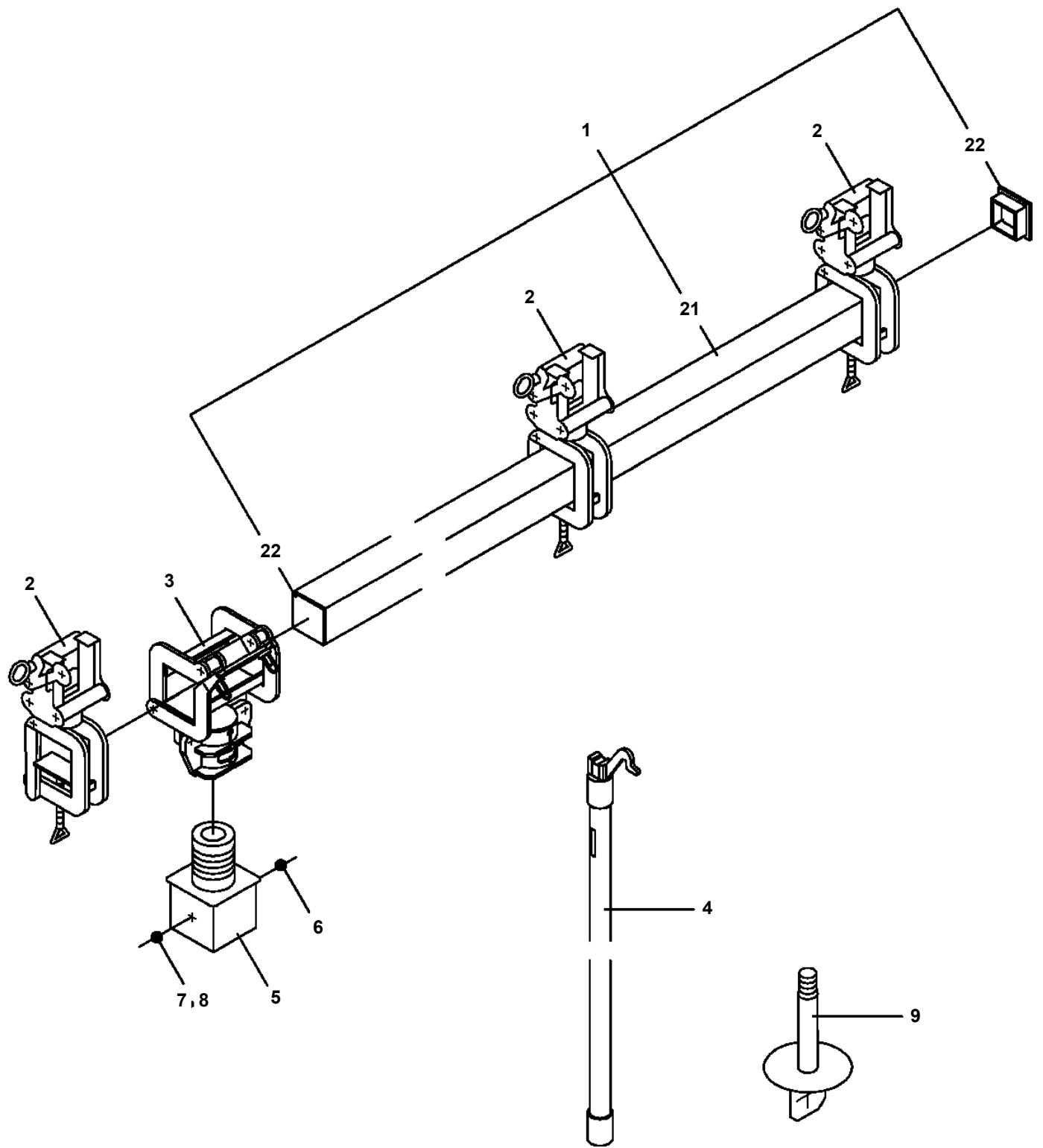
100



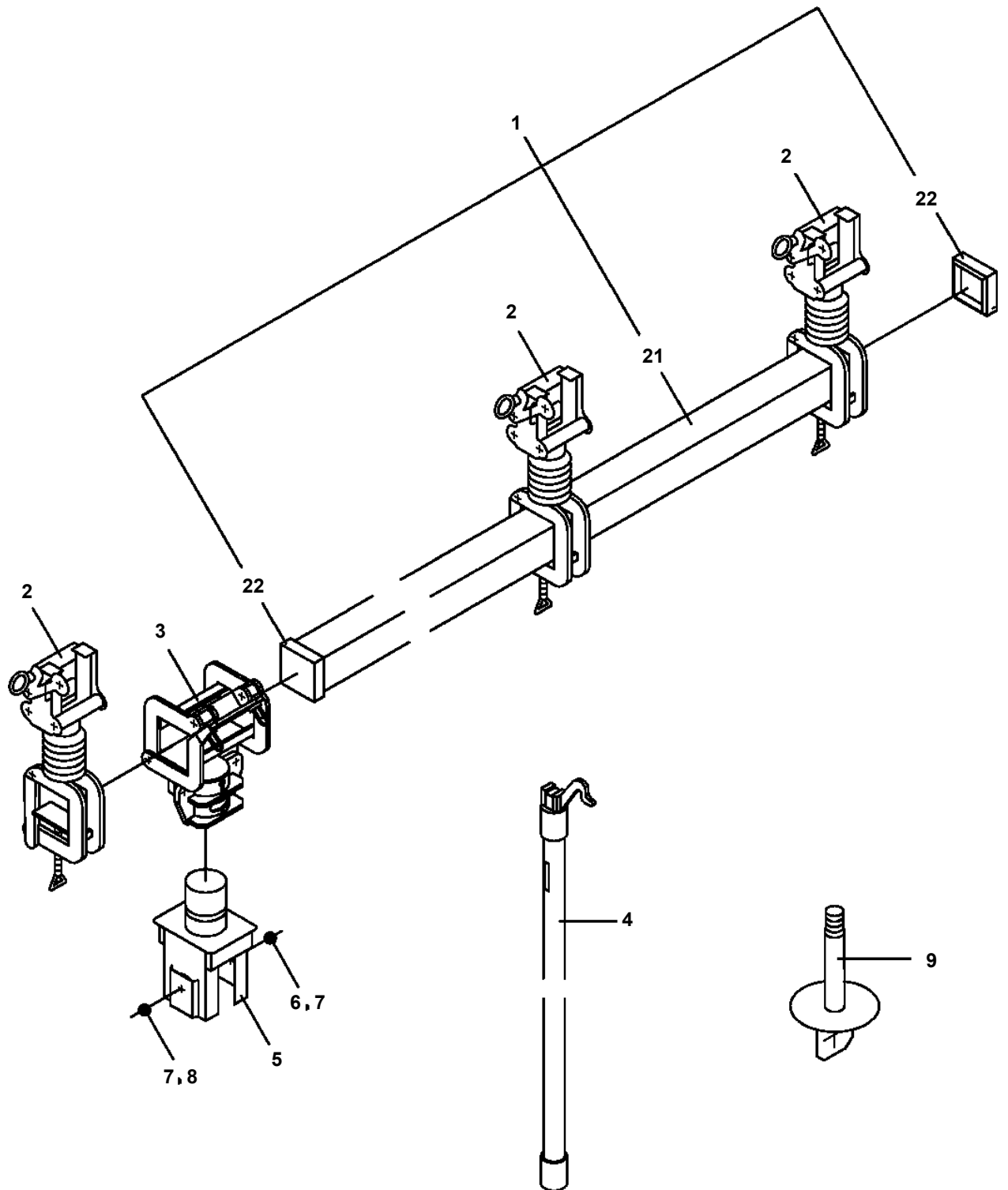
**AT-146-1 42095100012 UPPER
PY1070000-00 ROPE (SAFETY, YELLOW:TD-TYPE)**



AT-146-1 42095100012 UPPER
PY1080010-00 ARM

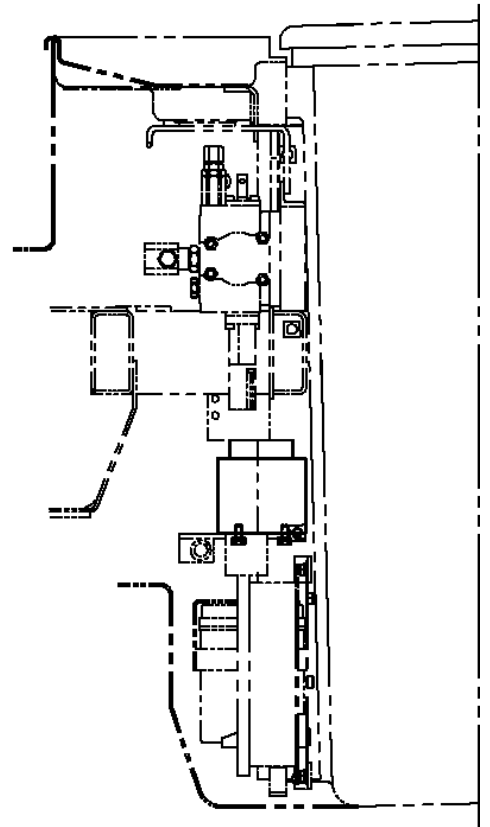
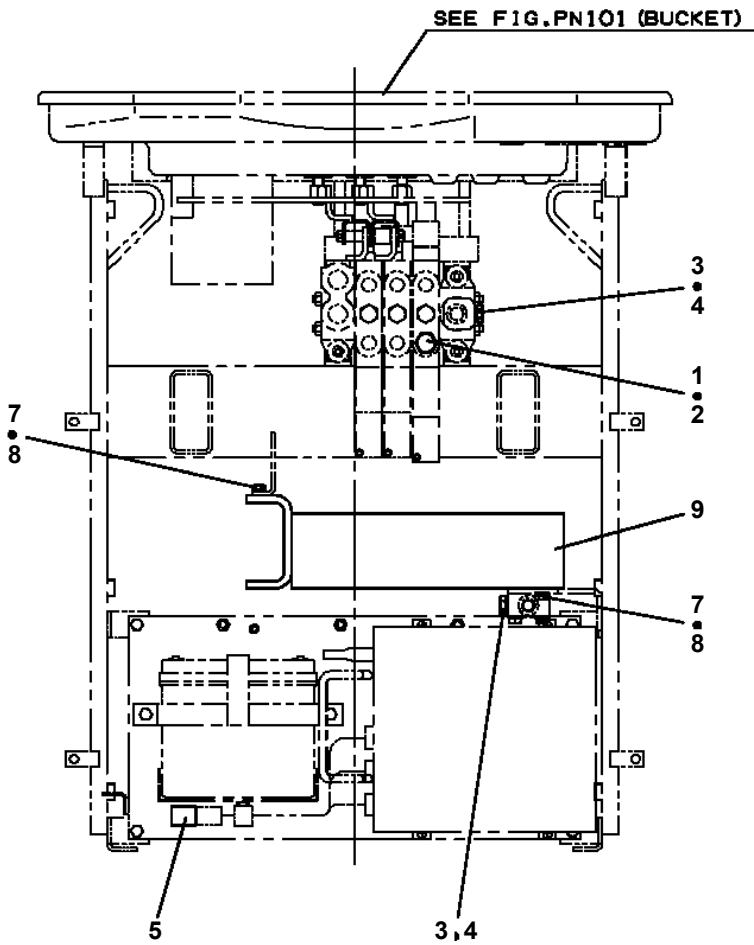
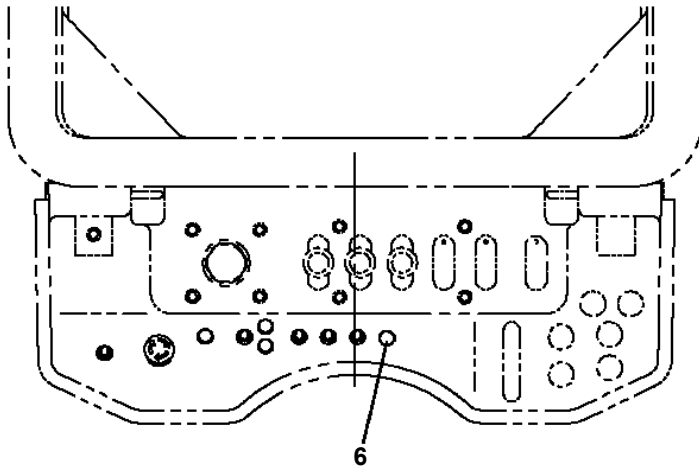


AT-146-1 42095100012 UPPER
PY1080020-00 ARM



AT-146-1 42095100012 UPPER
PY1160092-00 BOOSTER (NON,BOOSTER)

標準バケットの場合



AT-146-1 42095100012 UPPER

Pos No.	Parts No	Parts Name	Qty	Unit	Technical Data	Serial No (Start)	Serial No (End)	Remarks
1	90101208016	BOLT	3		M8X16			
2	90302040801	WASHER,SPRING	3		8			
3	36646770000	VALVE,SOLENOID	1					
4	90172105045	BOLT,HEXAGON SOCKET	8		M5X45			
5	36053020000	BOOSTER	1					
6	36646780000	VALVE,SOLENOID	1					
7	37000924960	JOINT (WITH O-RING)	1					
8	80430620400	JOINT	1					
9	36033124000	ORIFICE	1					
10	80481103020	JOINT	1		PF3/8-PF1/4			
11	80471020502	JOINT	1					
12	91002801400	O-RING	1		1B P14			
13	37002453410	HOSE	1		L=790			
14	37002416590	HOSE	1		L=725			
15	82100001411	TUBE,SPIRAL	1	M	SE-08BK			
16	91002801100	O-RING	2		1B P11			
17	80303130141	FITTING,ELBOW	1		KLO12-020E			
18	80302090141	FITTING	1		KCO12-020N			
19	81408000160	PIPE,STEEL	1	M	12X1.4T			
31	91002801100	O-RING	3		1B P11			

AT-146-1 42095100012 UPPER

Pos No.	Parts No	Parts Name	Qty	Unit	Technical Data	Serial No (Start)	Serial No (End)	R
1	(*****)	BOOSTER (AIR&ELECTRIC)	1					
2	(*****)	BOOSTER (WIRING/ELECTRIC)	1					
3	(*****)	PIPING,BOOSTER (AIR & ELECTRIC)	1					

AT-146-1 42095100012 UPPER

Pos No.	Parts No	Parts Name	Qty	Unit	Technical Data	Serial No (Start)	Serial No (End)
1	(*****)	BOOSTER (AIR&ELECTRIC)	1				
2	(*****)	BOOSTER (WIRING/ELEC.SERECTOR)	1				
3	(*****)	BOOSTER (PIPING/AIR&ELEC.SELECT.)	1				

AT-146-1 42095100012 UPPER

Pos No.	Parts No	Parts Name	Qty	Unit	Technical Data	Serial No (Start)	Serial No (End)	Remarks	Pages
1	90101208020	BOLT	6		M8X20				
2	90302040801	WASHER,SPRING	6		8				
3	90303070801	WASHER,PLAIN	6		8				
21	42693793100	SUPPORT	1						
22	42693793500	PIN	1						
23	90101208016	BOLT	2		M8X16				
24	90302040801	WASHER,SPRING	2		8				
25	90303070801	WASHER,PLAIN	2		8				
26	42693793300	SUPPORT	1						
27	82430153010	KNOB	1						
28	90101212030	BOLT	1		M12X30				
29	42693793400	ROD	1						
30	37000311380	PIN	2						
31	37000169080	PIN	2						
32	80601110100	RING,RITAINING	4		S10				
33	80172803006	SCREW,MACHINE	2		M3X6				
34	90302040301	WASHER,SPRING	2		3				

AT-146-1 42095100012 UPPER

Pos No.	Parts No	Parts Name	Qty	Unit	Technical Data	Serial No (Start)	Serial
1	42470367770	HOSE,AIR	1		3M		
2	42470362100	JOINT,SELF SEALING	1				
3	42470362200	PUMP	1				
4	42470367780	JOINT	1				
10	42471561000	HOSE,BOOSTER (SMALL,WITH AIR BALLOON)	1				

AT-146-1 42095100012 UPPER

Pos No.	Parts No	Parts Name	Qty	Unit	Technical Data	Serial No (Start)	Serial No (End)
1	42471271000	DRILL ASSY	1				
2	80460003080	JOINT	2		S,G3/8-3/4-16UNF		
3	37002425110	HOSE	2		L=2500		
4	91810132530	FASTENER	4				
5	80456020610	JOINT,SELF SEALING	1				
6	42340013200	JOINT,SELF SEALING (WITH CAP)	1				
11	42340017550	CAP (DUST)	1				
16	42340017510	CAP (DUST)	1				
20	42471270000	DRIL,HYDRAULIC	1				

AT-146-1 42095100012 UPPER

Pos No.	Parts No	Parts Name	Qty	Unit	Technical Data	Serial No (Start)	Serial No (End)	Remarks	Pages
1	42474970100	PLATE	2						

AT-146-1 42095100012 UPPER

Pos No.	Parts No	Parts Name	Qty	Unit	Technical Data	Serial No (Start)	Serial No (End)	Remarks
1	42472530000	BOX,TOOL (FOR BUCKET)	1					

CLICK HERE TO **DOWNLOAD** THE COMPLETE MANUAL

- Thank you very much for reading the preview of the manual.
- You can download the complete manual from: www.heydownloads.com by clicking the link below



- Please note: If there is no response to CLICKING the link, please download this PDF first and then click on it.

CLICK HERE TO **DOWNLOAD** THE COMPLETE MANUAL