

AT-146-3 43011100084 UPPER

PD2000204-01 SWING UNIT
PF1000675-00 WINCH SYSTEM
PG2000267-00 BOOM UNIT
PH1000550-00 SAFETY DEVICES (MOTION CONTROLLER)
PJ3000512-00 BUCKET SYSTEM
PJ5000003-00 BOOSTER UNIT
PK2001401-01 FRAME UNIT
PO1000171-00 INDICATION PLATES
PW1000118-00 ACCESSORIES & TOOLS
PX1001226-00 MOUNTING PARTS
PY1001439-00 OPTIONS
ASSEMBLY

CLICK HERE TO **DOWNLOAD** THE COMPLETE MANUAL

- Thank you very much for reading the preview of the manual.
- You can download the complete manual from: www.heydownloads.com by clicking the link below



- Please note: If there is no response to CLICKING the link, please download this PDF first and then click on it.

CLICK HERE TO **DOWNLOAD** THE COMPLETE MANUAL

AT-146-3 43011100084 UPPER

Pos No.	Parts No	Parts Name	Qty	Unit	Technical Data	Serial No (Start)	Serial No (End)
1	(***** *****)	FRAME	1				228521
	(***** *****)	BUCKET FRAME ASSY	1			228522	228535
	(***** *****)	BUCKET FRAME ASSY	1			228536	
2	(***** *****)	PIPING, BUCKET	1				228535
	(***** *****)	PIPING ASSY, BUCKET	1			228536	
3	(***** *****)	ELEC. ASSY (BUCKET)	1				228521
	(***** *****)	ELEC. ASSY, BUCKET	1			228522	
4	(***** *****)	OPE. ASSY	1				
11	42267241000	BUCKET	1				
12	(***** *****)	BUCKET (INNER CASE)	1				
13	(***** *****)	COVER (BUCKET, FRP, WHITE)	1				
14	(***** *****)	COVER, BOOM (TOP/FRP, WHITE)	1				
15	42267244000	COVER (CLOTH, WHITE)	1				
16	(***** *****)	ACCESSORIES (BUCKET INNER MAT)	1				

AT-146-3 43011100084 UPPER

Pos No.	Parts No	Parts Name	Qty	Unit	Technical Data	Serial No (Start)	Serial No (End)
1	(*****)	MOUNT ASSY,TOOL BOX (LEFT)	1				
2	(*****)	BOX,TOOL (RIGHT/F:2-DECKER,R:NONE)	1				
3	(*****)	EARTHING DEVICE (8X10M, TOP CLIP)	1				

AT-146-3 43011100084 UPPER

Pos No.	Parts No	Parts Name	Qty	Unit	Technical Data	Serial No (Start)	Serial No (End)	Remarks	Pages
11	36654185010	SEAL KIT	1						
100	36654180000	PUMP,HYDRAULIC	1						

AT-146-3 43011100084 UPPER

Pos No.	Parts No	Parts Name	Qty	Unit	Technical Data	Serial No (Start)	Serial No (End)	Remarks
1	90101208016	BOLT	2		M8X16			
2	90302040801	WASHER,SPRING	2		8			
3	36630910060	NEEDLE	1					
4	36630910030	HOLDER	1					
5	91002801000	O-RING	1		1B P10			
6	91410001000	RING,BACKUP	1		P10			
8	36630910050	POPPET	1					
9	52255101000	SPRING	1					
10	91002801400	O-RING	1		1B P14			
11	36620030050	PLUG	1					
12	82400000350	KNOB	1					
13	37000508510	PLATE	1					
14	80172303006	SCREW,MACHINE	1		M3X6			
100	36636340000	VALVE,MANUAL CONTROL	1					

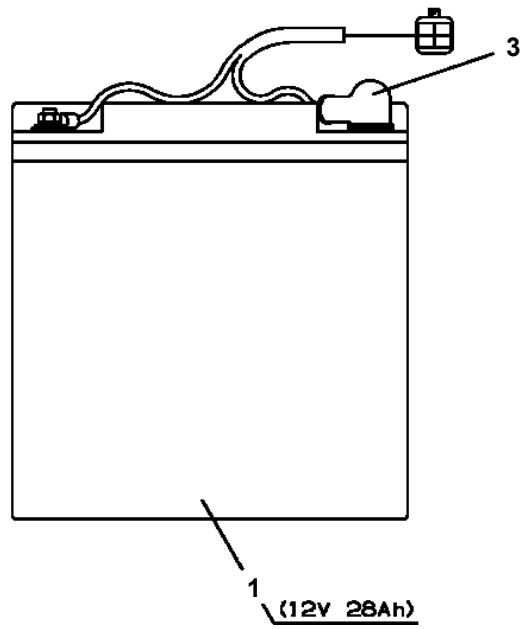
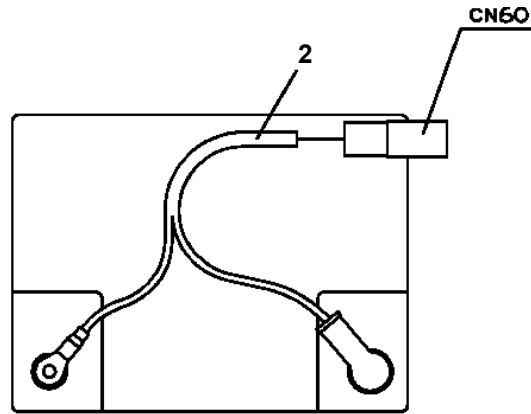
AT-146-3 43011100084 UPPER

Pos No.	Parts No	Parts Name	Qty	Unit	Technical Data	Serial No (Start)	Serial No (End)
2	36634515010	PLUG ASSY	1				
3	13115102070	BOLT	4		L=269		
4	36638475010	VALVE,CONTROL	1				
5	36636435020	VALVE,CONTROL (WINCH)	1				
6	36636435030	VALVE,CONTROL (JIB ELEVATING)	1				
7	36636435040	VALVE,CONTROL (JIB SWING)	1				
8	36636435050	VALVE,CONTROL (ATTACHMENT)	1				
9	36634365090	VALVE,RELIEF	1				229344
11	36638505010	VALVE ASSY,RELIEF	1			229345	
24	91002905500	O-RING	6		1B G55		
32	91000501500	O-RING	1		AS568-015		
33	91002802200	O-RING	1		1B P22		
44	36631975010	O-RING	2				
45	36634365190	WIPER,DUST	10				
46	36634365200	RETAINER (SEAL)	10				
47	36636435060	VALVE,CHECK	4				
48	36635555080	SPRING	4				
49	36635045040	RETAINER (VALVE)	5				
50	91002801400	O-RING	5		1B P14		
51	12435101180	RETAINER (SEAL)	9				
52	36636435070	END,SPOOL	4				
53	12435101170	RETAINER (SPRING)	8				
54	36630045140	SPRING	4				
55	36636435080	COVER (SPRING)	2				
56	36635535150	SWITCH,PUSH	3				
57	36630045150	COVER	2				
58	90131906015	BOLT,HEXAGON SOCKET	2		M6X15		
59	90131906020	BOLT,HEXAGON SOCKET	2		M6X20		
60	90131904015	BOLT,HEXAGON SOCKET	2		M4X15		
61	90303100401	WASHER,PLAIN	3		4		
63	80172304008	SCREW,MACHINE	1		M4X8		
64	36637625030	TIE (MOUNT)	1				
65	36637625040	INSULOCK (TIE)	1				
71	36636435090	SHIM (T=0.3)	5				
72	36636435100	SHIM (T=0.5)	5				
73	36636435110	SHIM (T=0.7)	5				
85	36636435120	COVER (SPRING)	3				
94	36643175030	O-RING	8		P13		
109	90131506020	BOLT,HEXAGON SOCKET	6		M6X20		
110	90131504015	BOLT,HEXAGON SOCKET	8		M4X15		
111	90303070401	WASHER,PLAIN	9		4		
125	90131506010	BOLT,HEXAGON SOCKET	6		M6X10		
131	36636415040	SWITCH,LEAD (WINCH)	2				
141	36636435150	SWITCH,LEAD (WITH CONNECTOR)	2				
158	90131506015	BOLT,HEXAGON SOCKET	2		M6X15		
163	80185804008	SCREW,MACHINE	1		M4X8		
164	36636435170	FASTENER	1				
165	36636435180	TIE (INSULOCK)	1				
172	13115102010	RETAINER (SEAL)	2				
173	36636435140	END,SPOOL	1				
174	80560005000	BALL,STEEL	2		5		
175	13115102030	CASE (BALL)	1				
176	13115102050	RETAINER (BALL)	1				
177	13115102040	SPRING	1				
181	90131506025	BOLT,HEXAGON SOCKET	2		M6X25		
195	91001101001	O-RING	1		1A P10A		229344
196	36634365100	RING,BACKUP	1				229344
197	19215101010	O-RING	2				229344
203	91001001600	O-RING	2		1A S16		229344
205	36634365110	RING,BACKUP	1				229344
206	91001100600	O-RING	1		1A P6		229344
211	36636435130	SWITCH,PUSH	2				
300	36638490000	VALVE,MANUAL CONTROL	1				

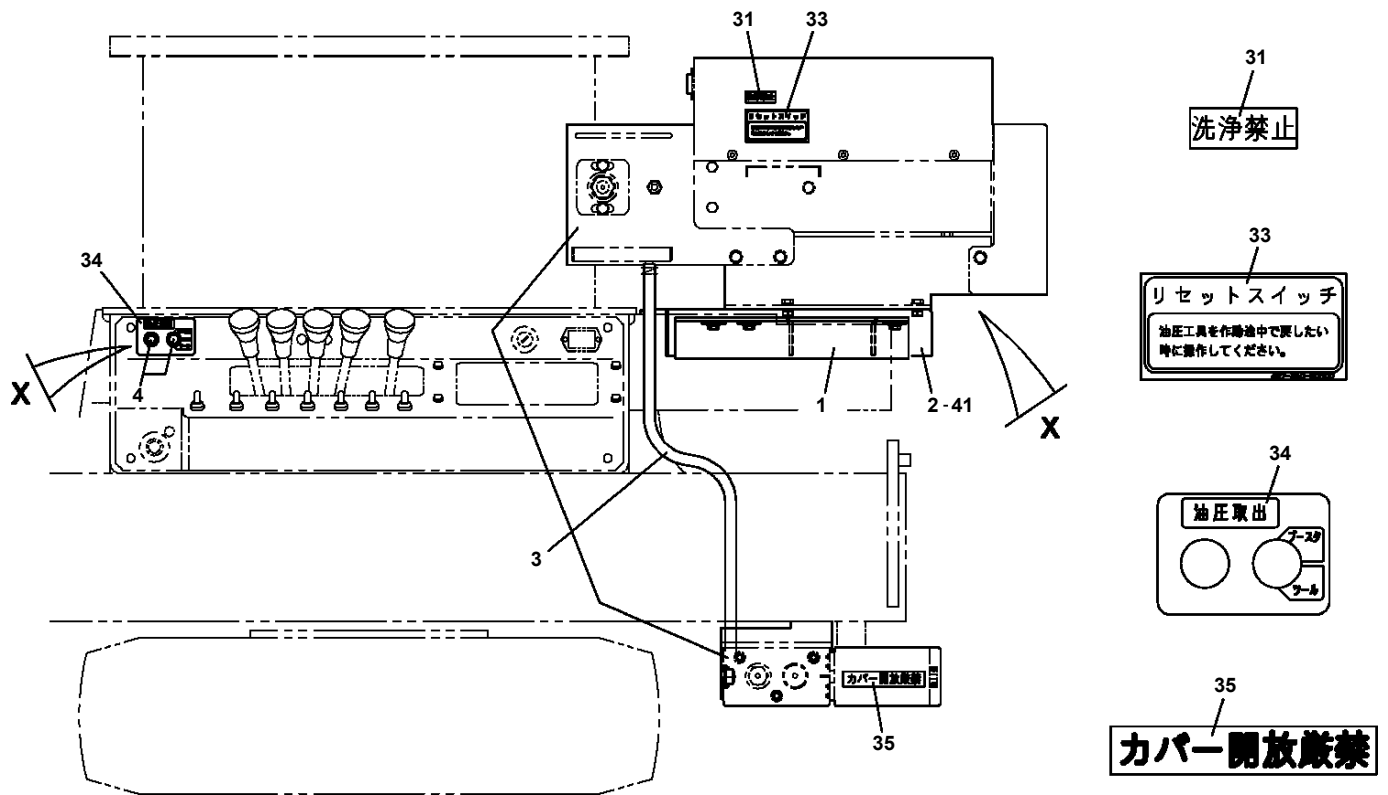
AT-146-3 43011100084 UPPER

Pos No.	Parts No	Parts Name	Qty	Unit	Technical Data	Serial No (Start)	Serial No (End)	Remarks
87	37000908720	JOINT (WITH O-RING)	1		PF1/2-PF3/8			
88	37000928630	JOINT	1		S,PF3/4,PF1/2			
89	80430620800	JOINT	1					
90	37000928370	JOINT	3		S,G1/2-G1/2	228941		
91	37000912910	JOINT	2		G1/2,G3/8	228941		
93	37000928120	JOINT	4		G1/2,G1/2	228941		
101	36636340000	VALVE,MANUAL CONTROL	2				229145	
	36636340001	VALVE ASSY,SELECTOR	2			229146		
102	80430620600	JOINT (WITH O-RING)	4		L,G3/8-G3/8			
103	80430620400	JOINT	6					
104	80481302020	JOINT	2		G1/4-G1/4			
	80481302020	JOINT	1		G1/4-G1/4		228859	
105	91002801100	O-RING	16		1B P11			
111	36606670000	VALVE,RELIEF	1				228859	
	36606990000	VALVE ASSY,RELIEF	1			228860		
112	42340240500	FILTER,OIL	1			228860		
113	80481103020	JOINT	1		PF3/8-PF1/4			
	80481103020	JOINT	1		PF3/8-PF1/4	228860		
114	36672460000	FILTER (NIPPLE TYPE)	2					
115	91002801400	O-RING	9		1B P14			
	91002801400	O-RING	1		1B P14	228860		
121	36625000000	VALVE ASSY,CHECK	1					
122	80400160127	JOINT	2					
133	36625760000	VALVE,CHECK	1					
134	80400160129	JOINT	1					
140	37002418360	HOSE	1		L=1800	228941		
153	37002418450	HOSE	1		L=450	228941		
154	37002418480	HOSE	1		L=1600	228941		
155	37002418490	HOSE	1		L=1790	228941		
173	37002418500	HOSE	1		L=470	228941		
180	37002418510	HOSE	1		L=1670	228941		

**AT-146-3 43011100084 UPPER
PB5060002-00 BATTERY ASSY (12V28AH/PANASONIC)**



AT-146-3 43011100084 UPPER
 PB5230002-00 BOOSTER ASSY (B,W/O VEHICLE LEVELLING FUNCTION)



AT-146-3 43011100084 UPPER

Pos No.	Parts No	Parts Name	Qty	Unit	Technical Data	Serial No (Start)	Serial No (End)	Remarks	Pages
1	42512340000	BELT	1						

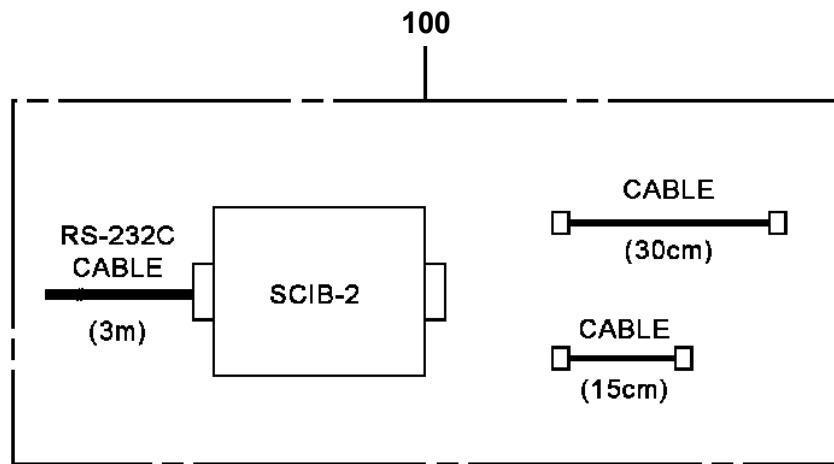
AT-146-3 43011100084 UPPER

Pos No.	Parts No	Parts Name	Qty	Unit	Technical Data	Serial No (Start)	Serial No (End)	R
1	42614471105	CASE,INNER	1					
2	42613351200	CASE,INNER (JACK)	1					
4	36035100000	CYLINDER,JACK	1					
5	42613351400	FLOAT ASSY	1					
6	37000171720	PIN	1					
7	80601110250	RING,RITAINING	2		S25			
8	37000169010	PIN	1		30			
9	80601110300	RING,RITAINING	2		S30			
10	36625740001	VALVE,CHECK	1					
11	90171108055	BOLT	4		M8X55			
12	37000138750	PIN	1		18			
13	80136332036	PIN,SPLIT	2		3.2X36			
14	80400160127	JOINT	1					
15	91002801100	O-RING	1		1B P11			
16	36672460000	FILTER (NIPPLE TYPE)	1					
17	42612851010	COVER	1					
18	90186206014	BOLT,FLANGE	2		M6X14			
19	37000112320	PIN	1					
20	80601110120	RING,RITAINING	2		S12			
21	91810130240	FASTENER	2					
22	31201770100	PLATE,SLIDE	8		T=3.0			
23	90280200600	NUT,FLANGE	1		M6			
24	37000600700	CLAMP	1		12X3			
25	42614471010	PLATE,SLIDE	1		T=2.0			
41	36042820000	CYLINDER,EXTENSION (REAR)	1					
42	80400160127	JOINT	2					
43	91002801100	O-RING	3		1B P11			
44	37002474980	HOSE	1		L=2075			
45	42612861350	HARNESS	1				228539	
46	91810130240	FASTENER	13					
51	42612851420	TRUNNION	1					
100	42614471006	OUTRIGGER (REAR/INNER CASE)	1					

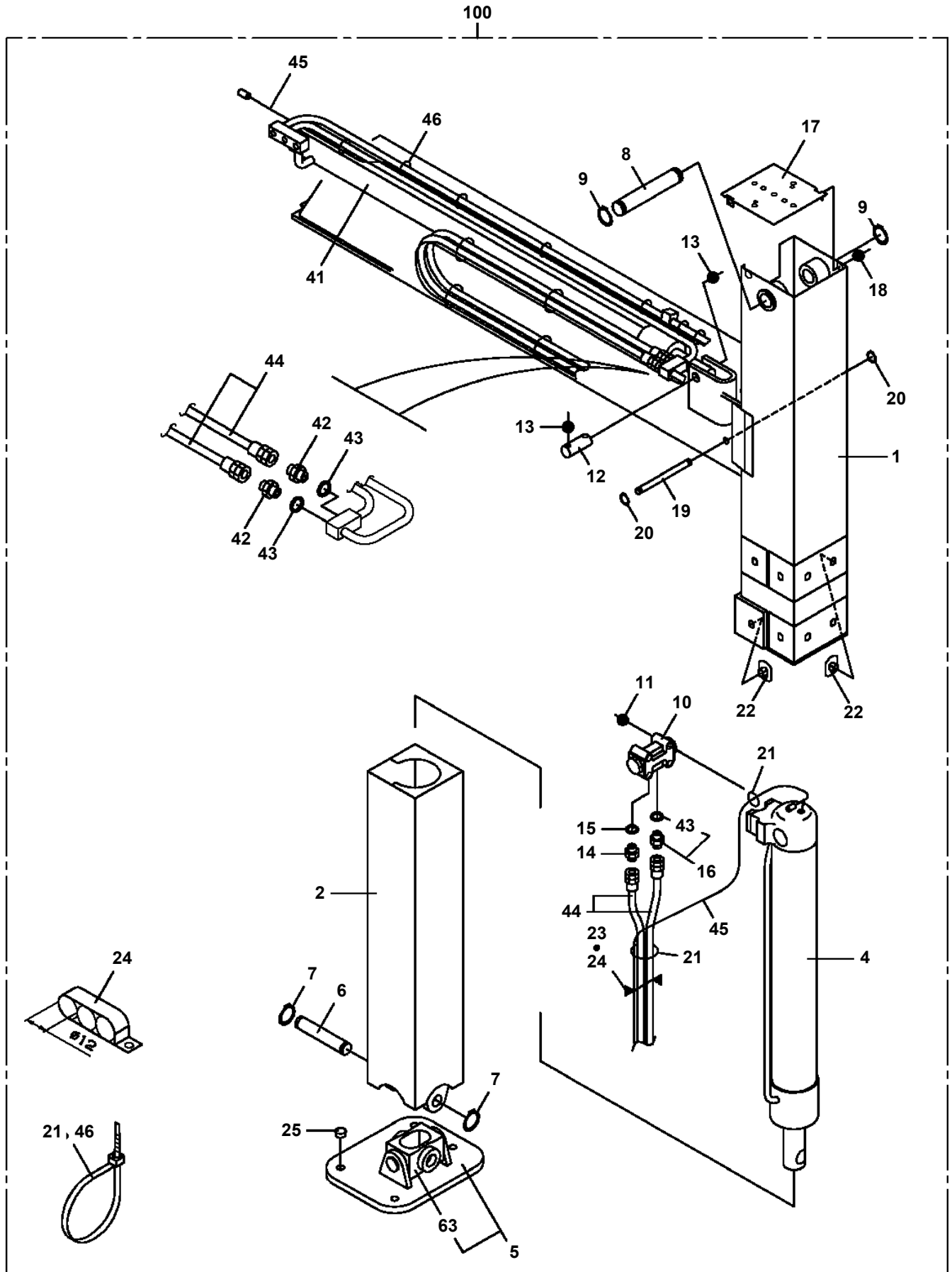
AT-146-3 43011100084 UPPER

Pos No.	Parts No	Parts Name	Qty	Unit	Technical Data	Serial No (Start)	Serial No (End)	Remarks
2	42356377510	COVER	1					
3	42356377520	SCREW	12		M4X8			
4	42356377530	WASHER	12		M4			
5	42900027510	HARNESS	1					
6	42900027520	HARNESS	1					
7	42356377560	COVER	1					
8	42356377570	SCREW	2		M3X4			
9	42900022160	BOARD,POWER	1					
11	42900022180	BOARD,DISPLAY	1				228621	
	42900022181	BOARD,DISPLAY	1			228622		
12	42356371170	BOARD ASSY	1					
13	42356377580	SEAT (SILICONE)	1					
14	42356377590	SEAT (SILICONE)	1					
16	42356377600	SPACER	9					
17	42356377610	SCREW	24		M3X6			
18	42900027530	SPACER	9					
21	42900027540	BOARD,CPU (WITH DATA)	1				228621	
	42900027550	BOARD,CPU (WITH DATA)	1			228622	229360	
	42900027560	BOARD,CPU (WITH DATA)	1			229361		
100	42900022000	INDICATOR,OUTRIGGER	1					

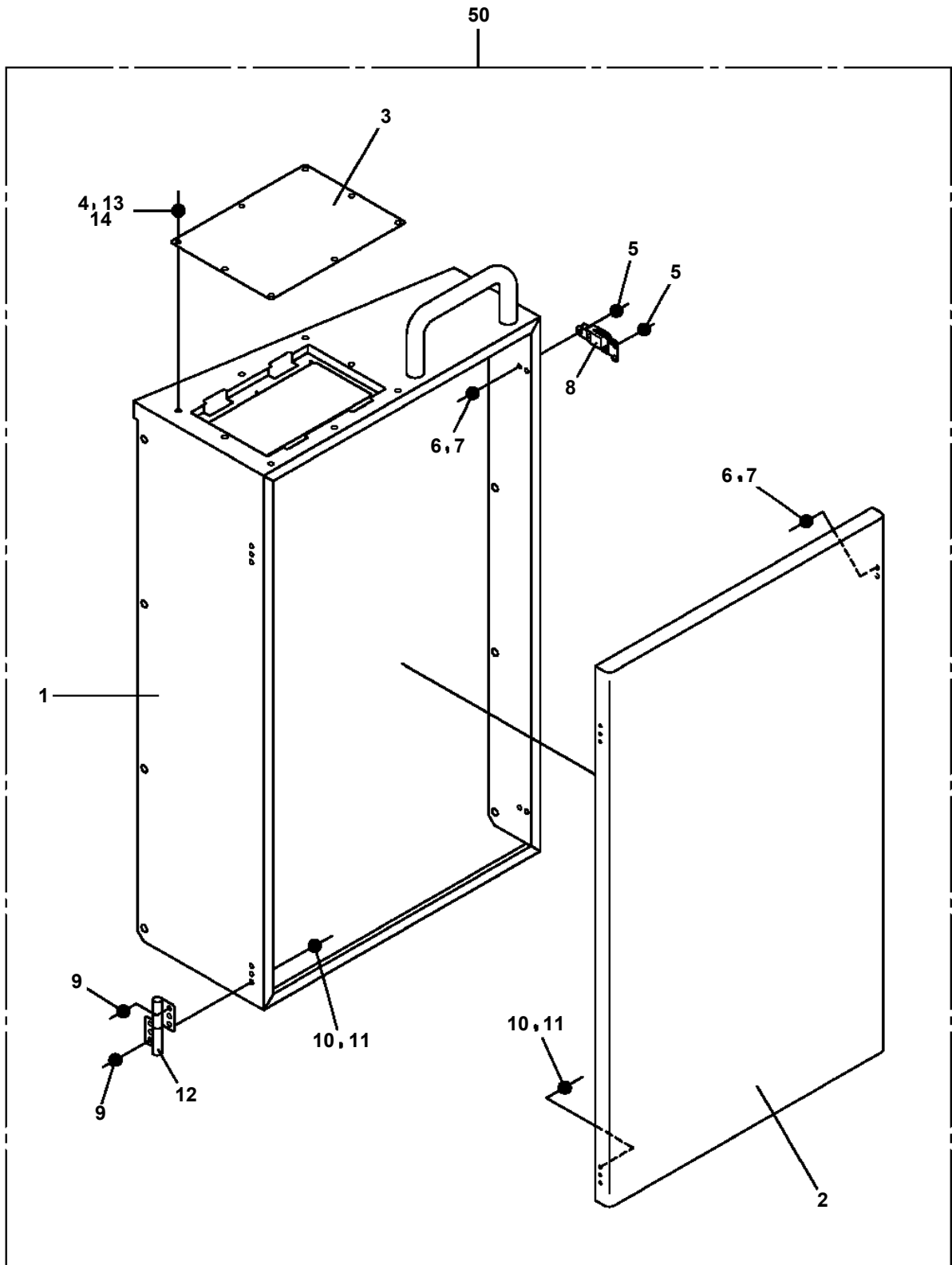
**AT-146-3 43011100084 UPPER
PC5020022-00 CABLE ASSY (PC CONNECTION CABLE)**



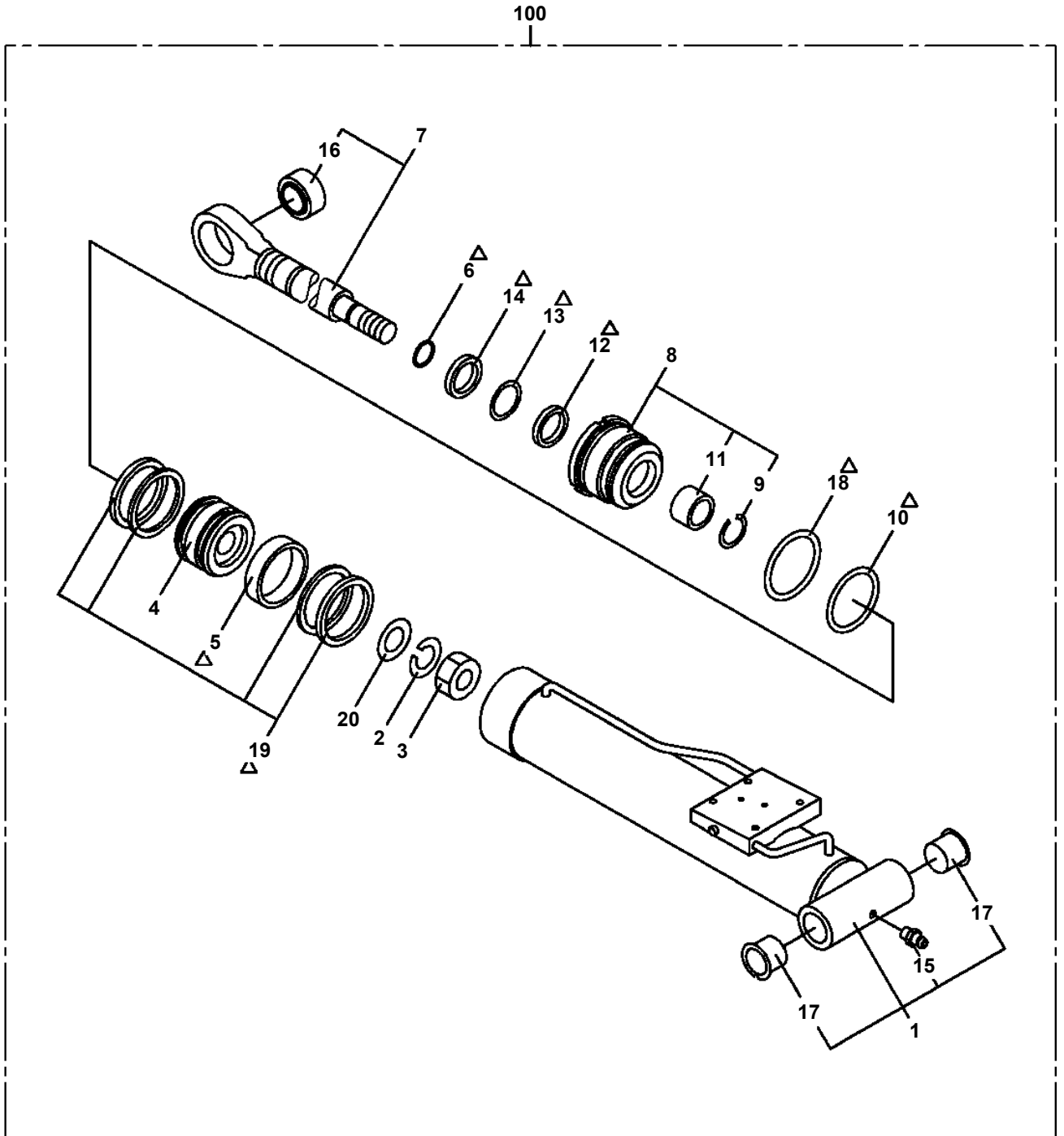
AT-146-3 43011100084 UPPER
PC5150055-00 CASE ASSY,INNER (FRONT,RIGHT)



AT-146-3 43011100084 UPPER
PC5570078-00 COVER ASSY

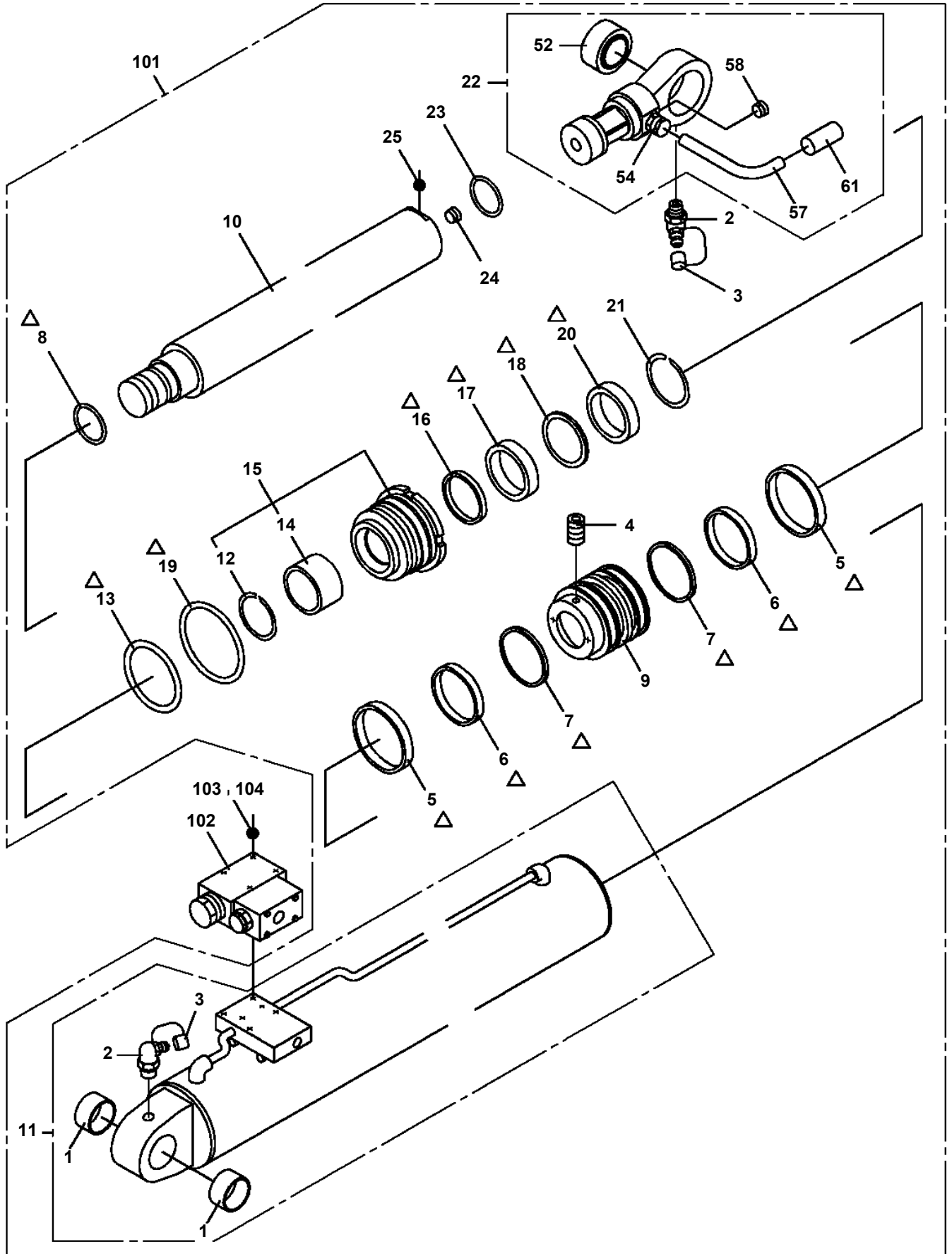


AT-146-3 43011100084 UPPER
PC6400004-00 CYLINDER ASSY,LEVELING (UPPER)



Δ:PACKING SET KEY NO. 30 (KEY NO.5,6,10,12,13,14,18,19)

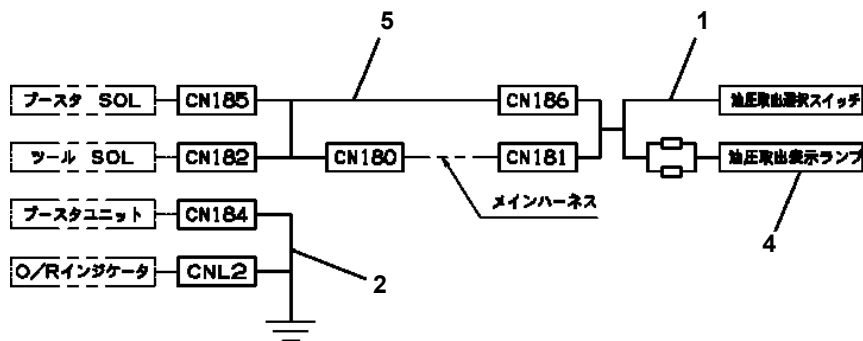
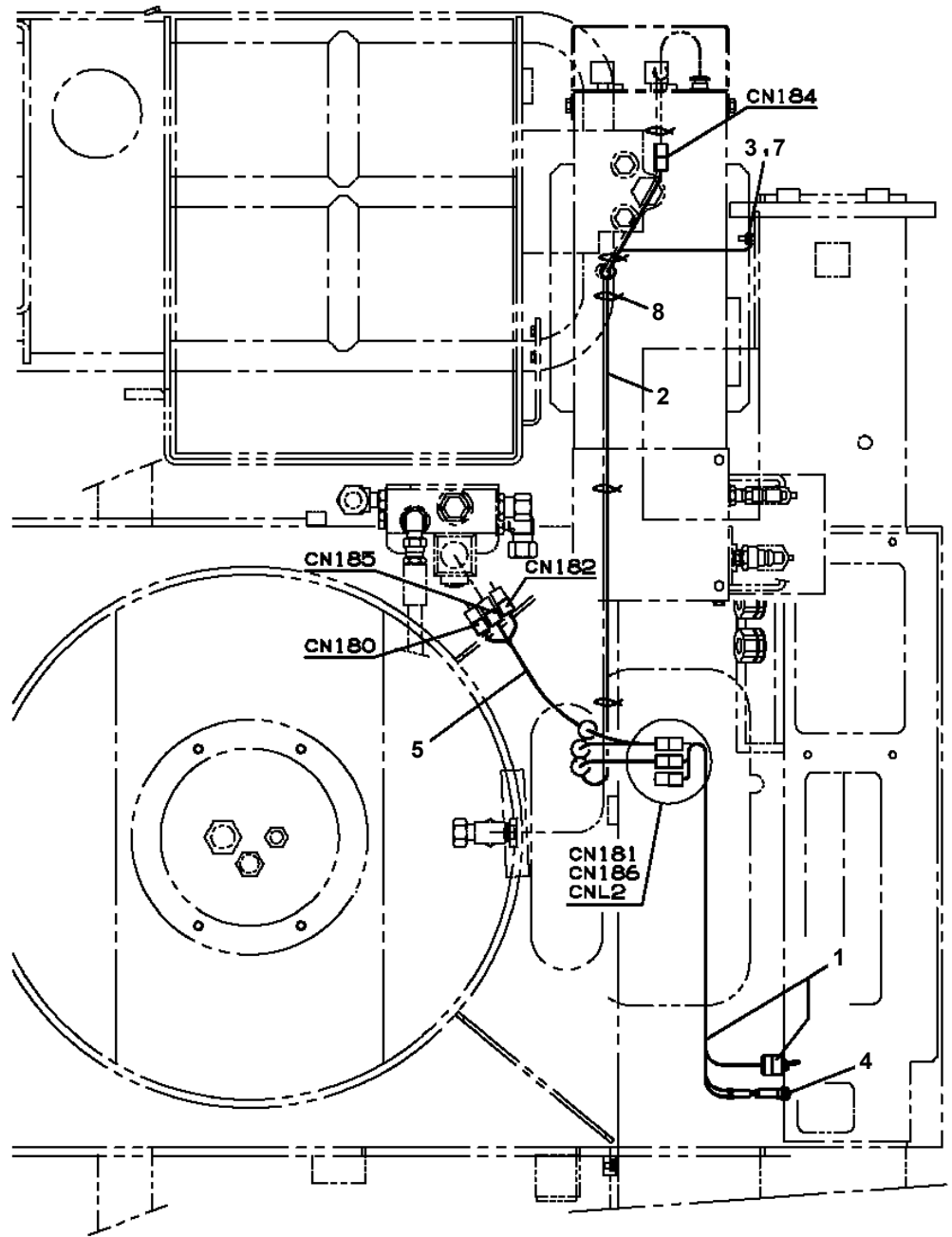
**AT-146-3 43011100084 UPPER
PE1010486-00 CYLINDER,ELEVATING**



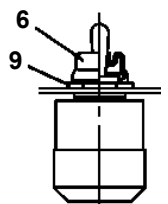
△:PACKING SET KEY NO.41 (KEY NO.5,6,7,8,13,16,17,18,19,20)

AT-146-3 43011100084 UPPER
PE5020238-00 ELEC.ASSY

FRONT ←



配線詳細図

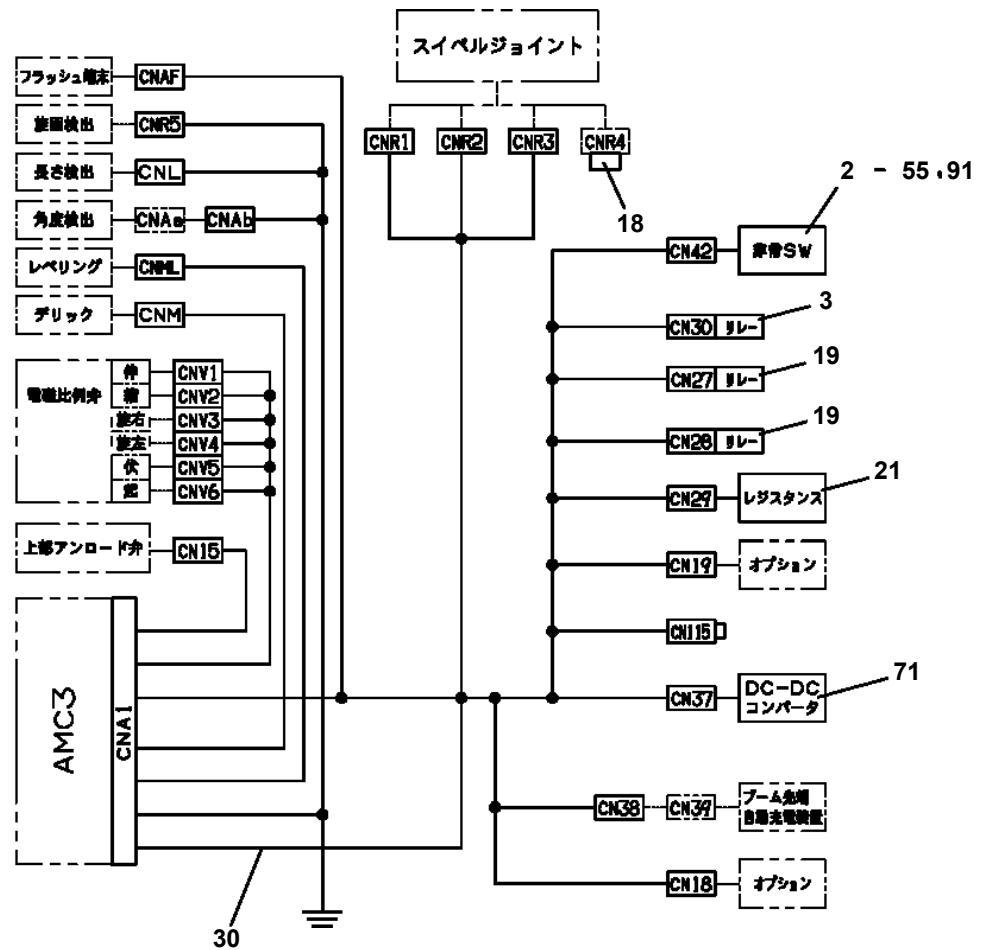


トグルSW

AT-146-3 43011100084 UPPER

Pos No.	Parts No	Parts Name	Qty	Unit	Technical Data	Serial No (Start)	Serial No (End)	Rema
1	82100002019	CLAMP	2		WR40		228862	
	37000604630	CLAMP	2		48	228863		
2	90302040801	WASHER,SPRING	3		8			
3	90101208016	BOLT	3		M8X16			
4	91810132530	FASTENER	20					
5	90201200600	NUT	1		M6			
6	90303070801	WASHER,PLAIN	1		8			
7	37000601600	CLAMP	2		WR54		228862	
	37000601630	CLAMP	2		65	228863		
8	42421657030	CABLE ASSY	1		L=1400			
9	42422307100	HARNESS	1					
10	42422307010	CABLE ASSY (WHITE TAPE)	1		L=2600			
11	42422307020	CABLE ASSY (YELLOW TAPE)	1		L=2600			
12	42422307030	CABLE ASSY	1		L=2600			
13	90302040601	WASHER,SPRING	1		6			
14	42422307040	CABLE ASSY (GREEN TAPE)	1		L=1200			
15	90303070601	WASHER,PLAIN	1		6			

AT-146-3 43011100084 UPPER
PE5190027-00 ELEC.ASSY,SWING FRAME



AT-146-3 43011100084 UPPER

Pos No.	Parts No	Parts Name	Qty	Unit	Technical Data	Serial No (Start)	Serial No (End)	Remarks	Pages
1	42220011200	SUPPORT	1						
2	90201201600	NUT	1		M16				
3	90303071601	WASHER,PLAIN	1		16				

AT-146-3 43011100084 UPPER

Pos No.	Parts No	Parts Name	Qty	Unit	Technical Data	Serial No (Start)
1	(***** *****)	WINCH,JIB (SUPPORT,JU,FREE/LOCK)	1			
	(***** *****)	WINCH,JIB (SUPPORT)	1			229023
2	(***** *****)	MOUNT,WINCH (WITHOUT JIB STOWING)	1			
	(***** *****)	WINCH ASSY (MOUNT/J:WITHOUT SWIVEL FUNCTION)	1			228368
3	(***** *****)	HOOK (1-PART LINE WITH ROPE)	1			

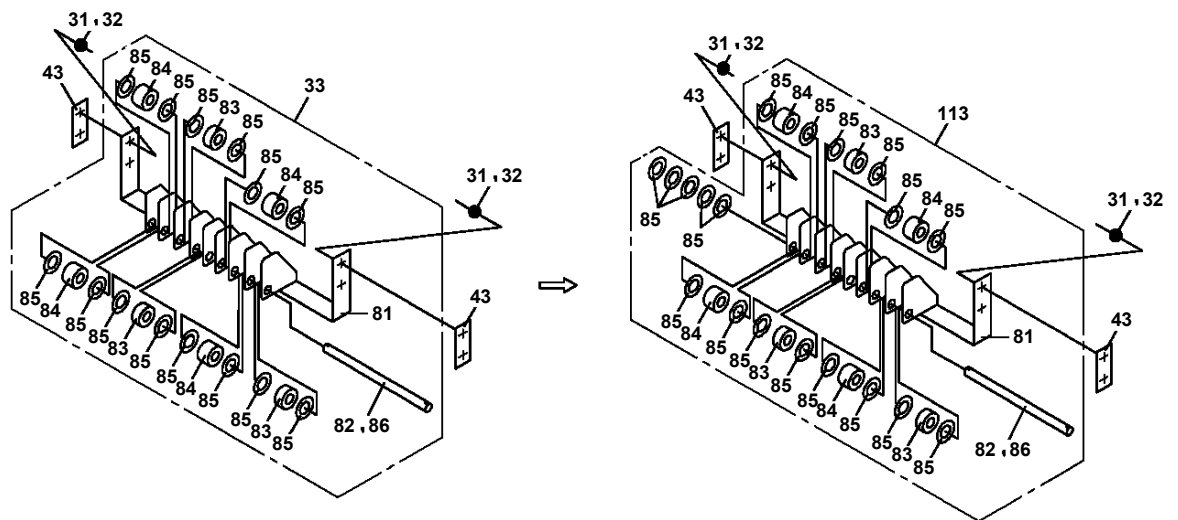
AT-146-3 43011100084 UPPER

Pos No.	Parts No	Parts Name	Qty	Unit	Technical Data	Serial No (Start)	Serial No (End)	Remarks
64	80801001220	BEARING,PLAIN	1					
65	42311301900	GUIDE	1					
66	90180208012	BOLT,BUTTON	6		M8X12			
67	42311891050	PLATE	1					
82	82400000205	GROMMET	1					
83	80820003020	BEARING,PLAIN	2					
84	82455106000	NIPPLE,GREASE	1		A-M6F FE			
92	80513006015	BEARING,BALL	1					
101	80810000240	BEARING,PLAIN	1					

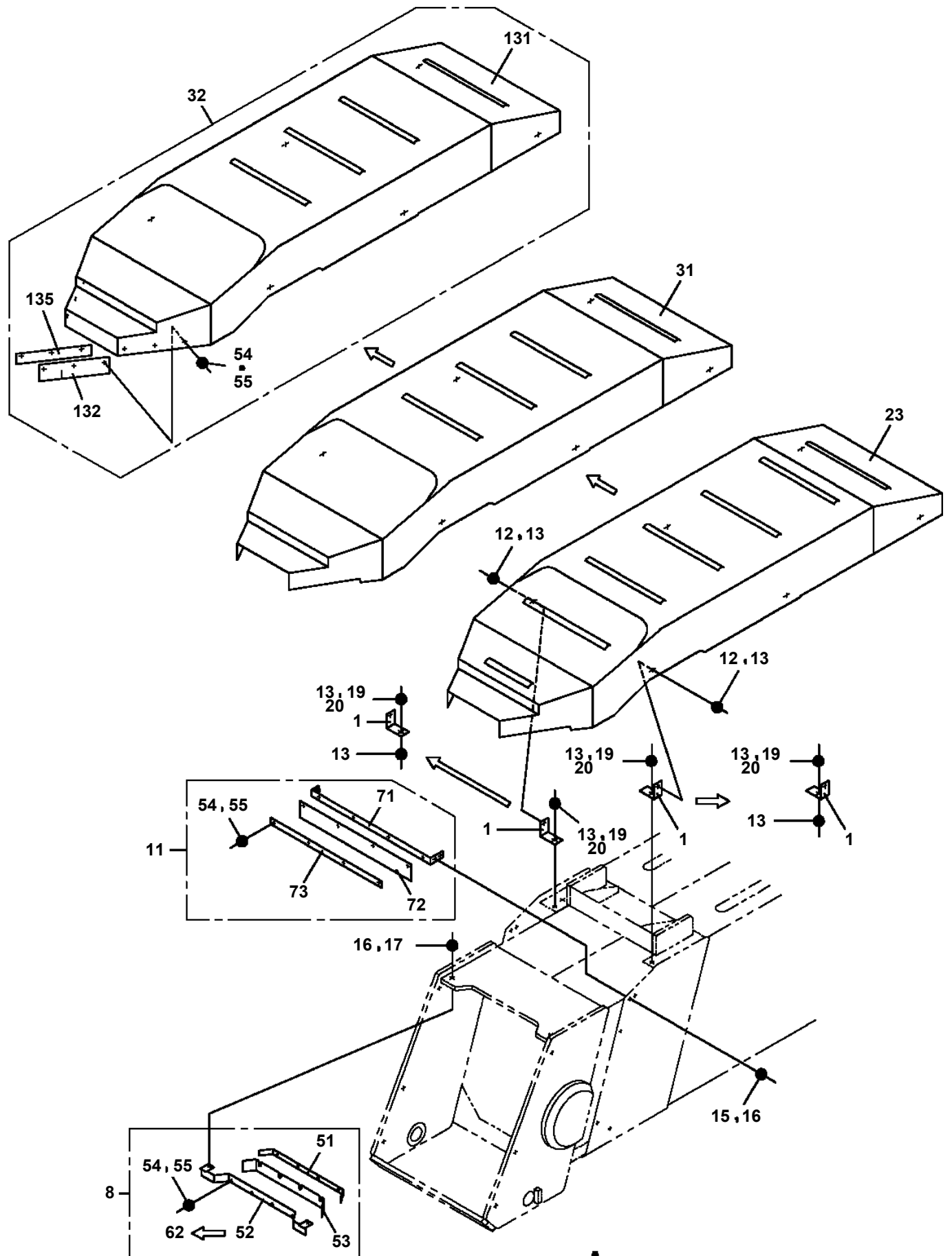
AT-146-3 43011100084 UPPER

Pos No.	Parts No	Parts Name	Qty	Unit	Technical Data	Serial No (Start)	Serial No (End)	Re
1	42202591003	FRAME	1					
2	42202592000	BOOM, TOP	1					
3	42202593002	SADDLE	1					
4	42202594000	BOOM, 2ND	1					
5	42202599510	BOOM, BASE	1					
6	37001922851	ROPE, WIRE (TESAC)	2		8X4.795M			
7	37001922871	ROPE, WIRE (TESAC)	2		10X9.22M			
9	37000115380	PIN	1					
10	90238403008	NUT, CASTLE	1		M30X2			
11	80136360050	PIN, SPLIT	1		6X50			
12	90303073001	WASHER, PLAIN	1		30			
16	37000168750	PIN	1					
17	80601110300	RING, RITAINING	2		S30			
18	42202590051	PLATE	N		T=0.8			
19	42202590061	PLATE	N		T=0.5			
20	42202590330	PLATE	N		T=0.5			
21	37002019390	PLATE, SLIDE	2					
22	37002019400	PLATE, SLIDE	4					
23	37000586481	PLATE	N		T=0.6			
24	42202590011	PLATE	4					
25	42202590090	PLATE	4		T=0.5			
26	42202590200	PLATE	N		T=0.8			
27	90201701600	NUT	10		M16			
28	90303501601	WASHER, PLAIN	10		16			
29	42202590281	SPACER	10					
31	90302041001	WASHER, SPRING	48		10			
32	90180210045	BOLT, BUTTON	4		M10X45			
37	90180210055	BOLT, BUTTON	4					
38	42202590360	PIN	2					
39	42200021510	PLATE	2					
40	37001007740	SHEAVE ASSY	2					
41	42202700120	PLATE	1		T=0.8			
42	42201630570	PLATE	N		T=2.3			
44	42202700130	PLATE	1		T=1.0			
45	37002018110	PLATE, SLIDE	2					
46	90180210025	BOLT, BUTTON	24		M10X25			
47	82455106000	NIPPLE, GREASE	1		A-M6F FE			
48	82400000459	CAP	1					
50	80601110200	RING, RITAINING	4		S20			
51	42202590220	PLATE	N		T=0.8			
52	42202590230	PLATE	N		T=0.5			
53	42202590240	PLATE	N		T=0.5			
54	42202590250	PLATE	N		T=1.0			
55	90172106008	BOLT, HEXAGON SOCKET	16		M6X8			
57	37002018070	PLATE, SLIDE	2					
58	37002018060	PLATE, SLIDE	4					
59	37000586470	PLATE	N		T=1.0			
60	37000586460	PLATE	N		T=1.0			
61	42202700111	PLATE	N		T=0.6			
62	37000155020	PIN	4					
63	42202590210	PLATE	N		T=0.8			
64	37002018120	PLATE, SLIDE	2					
65	37000508520	PLATE	N		T=0.8			
66	80184306012	SCREW, MACHINE	4		M6X12			
67	37002006500	PLATE, SLIDE	2					
68	37002010340	PLATE, SLIDE	2					
69	90180210016	BOLT, BUTTON	8		M10X16			
70	37000176290	PIN	1					
71	37000303050	SPACER	2		L=9			
72	42202590100	SHEAVE ASSY	1					
73	80602110300	RING, RITAINING	2		R30			
74	31630482500	CAP	4					
75	37001007240	SHEAVE ASSY	2					

**AT-146-3 43011100084 UPPER
PG1220171-04 PIPING,BOOM**



AT-146-3 43011100084 UPPER
PG1410106-02 COVER,BOOM



A

AT-146-3 43011100084 UPPER

Pos No.	Parts No	Parts Name	Qty	Unit	Technical Data	Serial No (Start)	Serial No (End)	Remarks	Pages
10	42900000101	HARNESS	1						

AT-146-3 43011100084 UPPER

Pos No.	Parts No	Parts Name	Qty	Unit	Technical Data	Serial No (Start)	Serial No (End)	Remarks	Pages
100	42504752301	HARNESS	1						

AT-146-3 43011100084 UPPER

Pos No.	Parts No	Parts Name	Qty	Unit	Technical Data	Serial No (Start)	Serial No (End)	Remarks	Pages
100	42356350200	HARNESS	1						

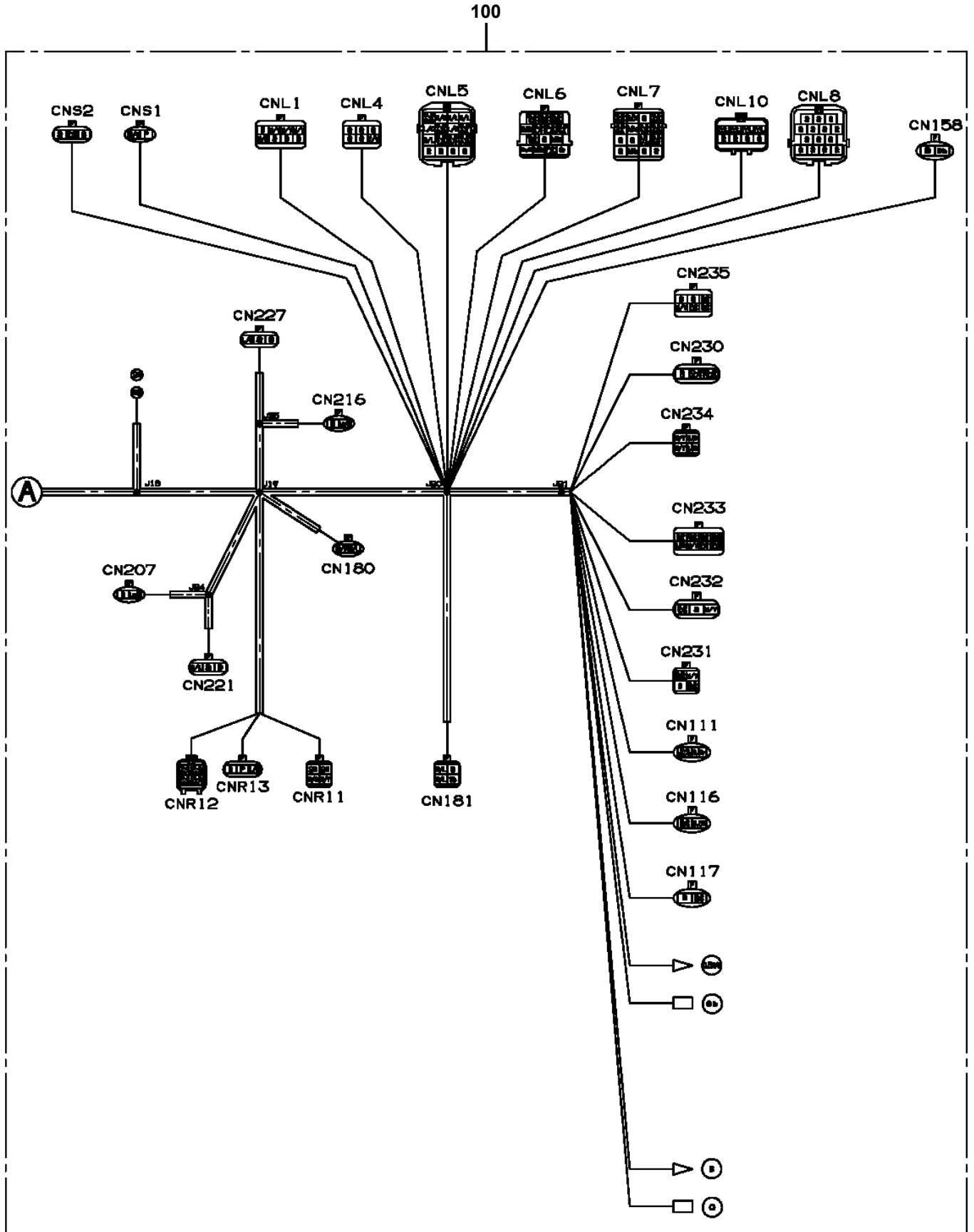
AT-146-3 43011100084 UPPER

Pos No.	Parts No	Parts Name	Qty	Unit	Technical Data	Serial No (Start)	Serial No (End)	Remarks	Pages
100	42505440100	HARNESS	1						

AT-146-3 43011100084 UPPER

Pos No.	Parts No	Parts Name	Qty	Unit	Technical Data	Serial No (Start)	Serial No (End)	Remarks	Pages
100	42612853350	HARNESS	1						

AT-146-3 43011100084 UPPER
PH5032429-00 HARNESS (MAIN)



AT-146-3 43011100084 UPPER

Pos No.	Parts No	Parts Name	Qty	Unit	Technical Data	Serial No (Start)	Serial No (End)	Remarks	Pages
100	42513830100	HARNESS	1						

AT-146-3 43011100084 UPPER

Pos No.	Parts No	Parts Name	Qty	Unit	Technical Data	Serial No (Start)	Serial No (End)	Remarks	Page
1	42310427510	SEAL KIT	1						
2	36081605110	SEAL KIT	1						
100	36663960000	MOTOR,HYDRAULIC	1						

AT-146-3 43011100084 UPPER

Pos No.	Parts No	Parts Name	Qty	Unit	Technical Data	Serial No (Start)	Serial No (End)	Remarks	Pages
1	36640355010	COIL,SOLENOID	1						
5	59251502170	O-RING	1						
9	59251502190	O-RING	4						
17	91001300700	O-RING	1		WP7				
100	36640360000	VALVE,SOLENOID	1						

AT-146-3 43011100084 UPPER

Pos No.	Parts No	Parts Name	Qty	Unit	Technical Data	Serial No (Start)	Serial No (End)	Remarks	Pages
12	91002801400	O-RING	2		1B P14				
100	36625740001	VALVE,CHECK	1						

AT-146-3 43011100084 UPPER

Pos No.	Parts No	Parts Name	Qty	Unit	Technical Data	Serial No (Start)	Serial No (End)	Remarks	Pages
1	42267241000	BUCKET	1						

AT-146-3 43011100084 UPPER

Pos No.	Parts No	Parts Name	Qty	Unit	Technical Data	Serial No (Start)	Serial No (End)	Remarks	P
1	42267244000	COVER (CLOTH,WHITE)	1						

AT-146-3 43011100084 UPPER

Pos No.	Parts No	Parts Name	Qty	Unit	Technical Data	Serial No (Start)	Serial No (End)	Remarks	Pages
1	42232191000	TABLE,SLEWING	1						
2	31630482500	CAP	1						
3	37001500250	BOLT	15		M16X70				
4	90303501601	WASHER,PLAIN	15		16				
5	37000507560	PLATE	1						
6	90171110022	BOLT	3		M10X22				
7	90302041001	WASHER,SPRING	3		10				
8	37000112690	PIN	1						
9	37000509190	PLATE	1						
10	90171112030	BOLT	2		M12X30				
11	90302041201	WASHER,SPRING	2		12				
12	37000175720	PIN	1						
13	42230210010	PIN	1						
14	37000505950	PLATE	1		T=3.2				
15	37000507730	PLATE	1						
16	90171320045	BOLT	1		M20X45				
17	90302042001	WASHER,SPRING	1		20				
19	82420404813	TRIM	3	M					
21	82459103000	NIPPLE,GREASE	1		C-PT1/8				
22	82400000459	CAP	1						

CLICK HERE TO **DOWNLOAD** THE COMPLETE MANUAL

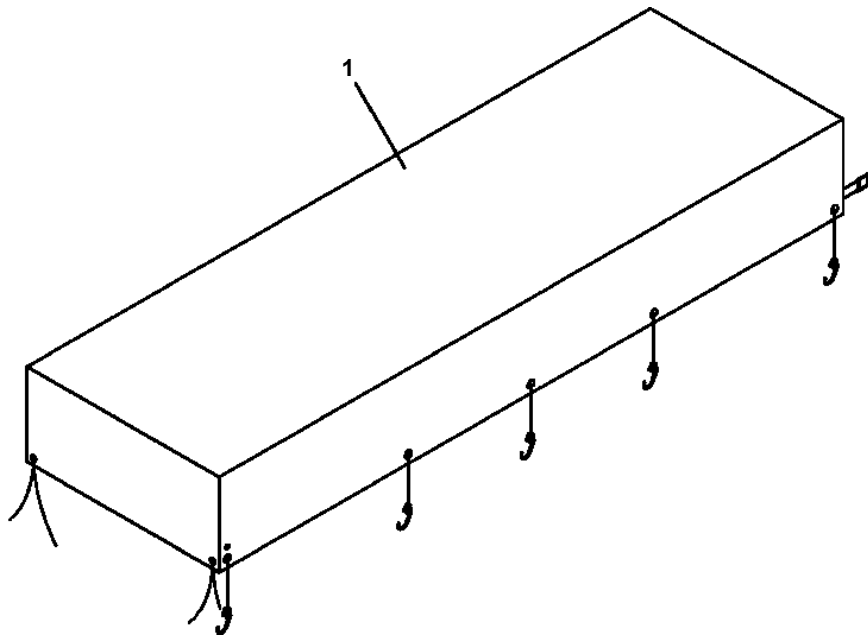
- Thank you very much for reading the preview of the manual.
- You can download the complete manual from: www.heydownloads.com by clicking the link below



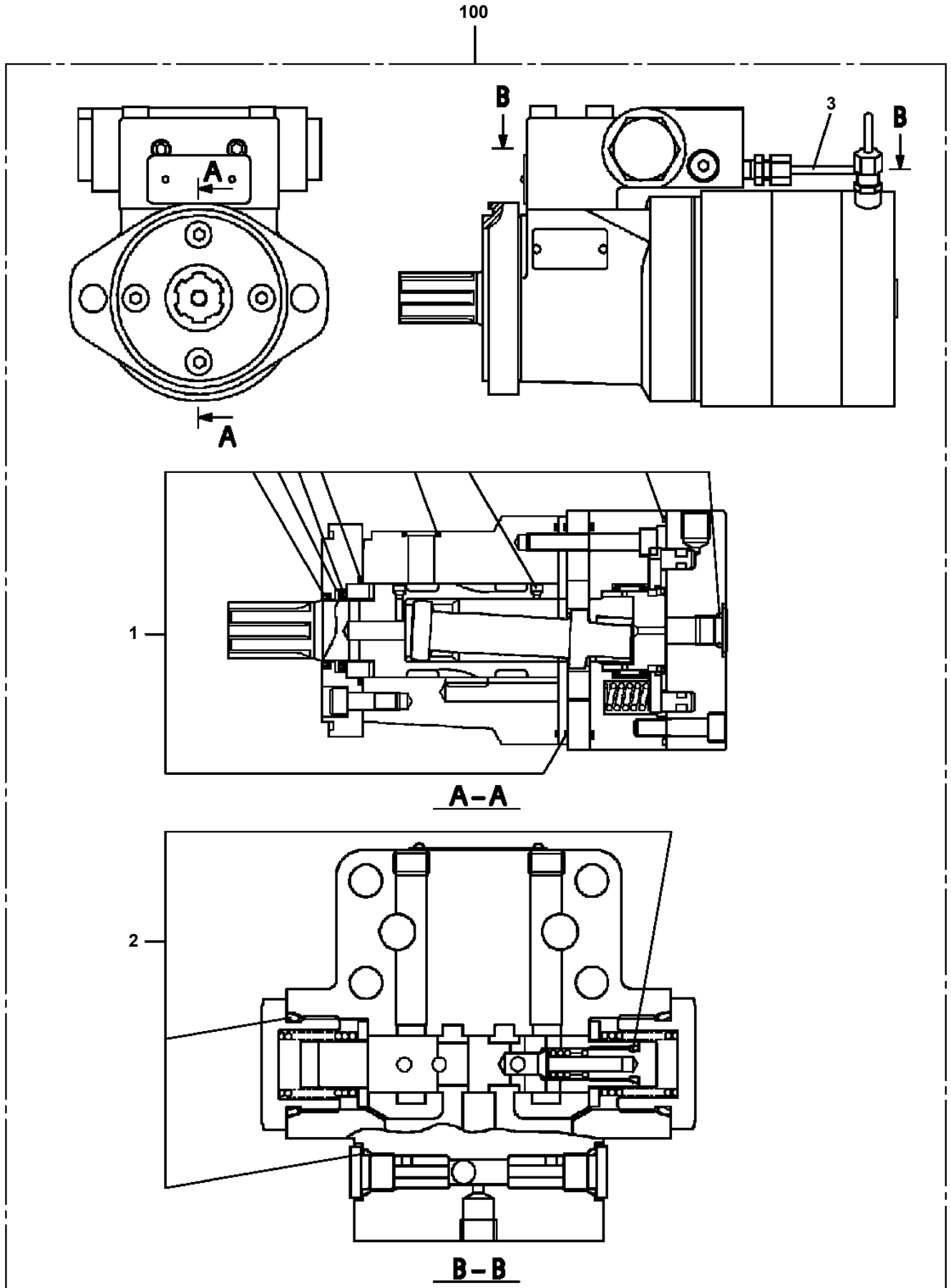
- Please note: If there is no response to CLICKING the link, please download this PDF first and then click on it.

CLICK HERE TO **DOWNLOAD** THE COMPLETE MANUAL

AT-146-3 43011100084 UPPER
PK1330432-00 COVER (RACK,L)



AT-146-3 43011100084 UPPER
PM5210007-01 MOTOR ASSY,OIL



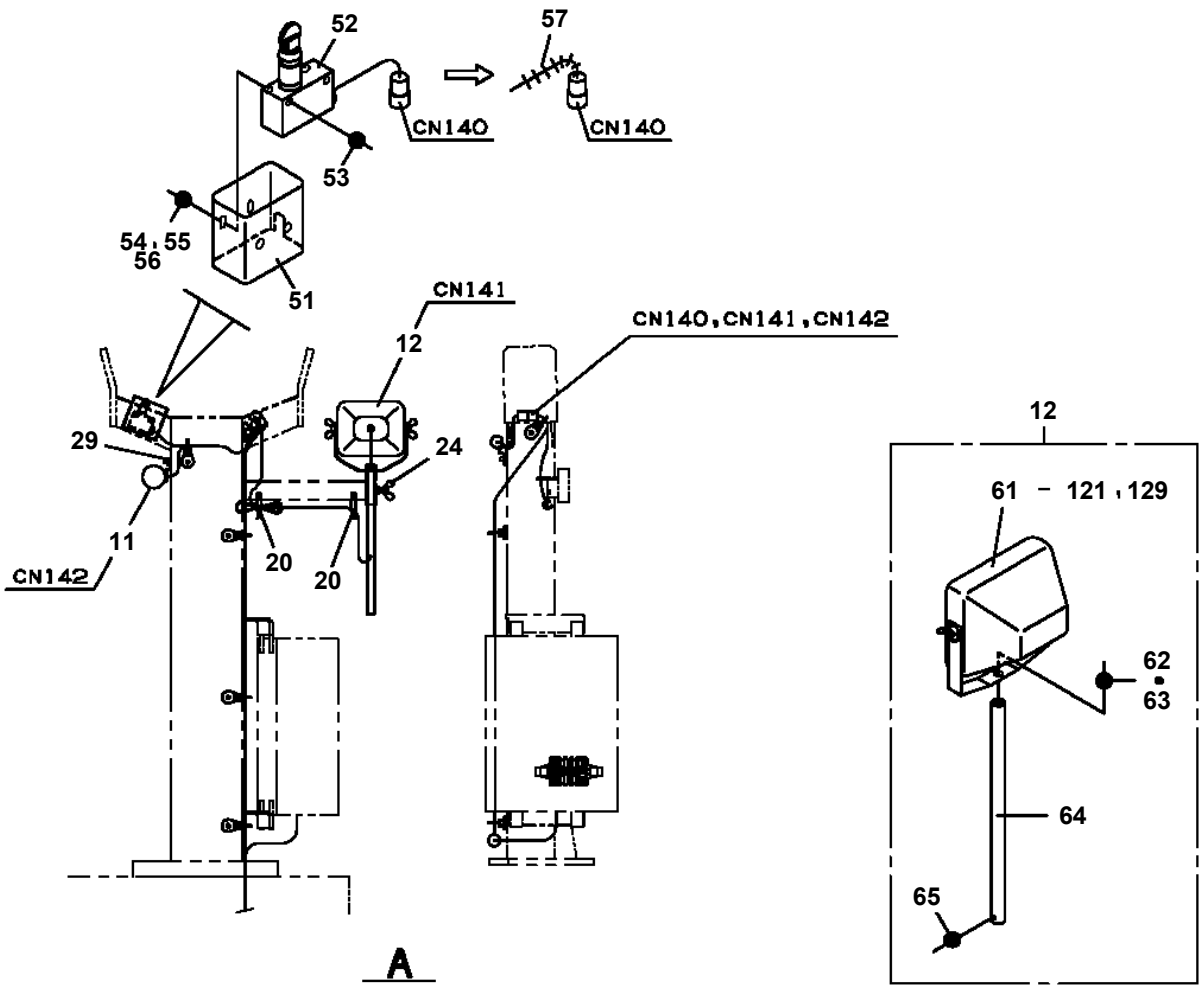
AT-146-3 43011100084 UPPER

Pos No.	Parts No	Parts Name	Qty	Unit	Technical Data	Serial No (Start)	Serial No (End)	Remarks
1	42354820200	HARNESS	1					
2	37000300720	SLEEVE	3		12-10			
5	42356350101	SUPPORT	1					
6	42352350300	HARNESS	1					
7	90171110016	BOLT	4		M10X16			
8	90302040801	WASHER,SPRING	2		8			
9	90303070801	WASHER,PLAIN	2		8			
10	91810130240	FASTENER	N					
11	901711108020	BOLT	2		M8X20			
12	42352350400	HARNESS	1					
13	42356350200	HARNESS	1					
14	90302040601	WASHER,SPRING	4		6			
15	90201200600	NUT	1		M6			
16	80172804006	SCREW,MACHINE	4		M4X6			
17	82100002002	CLAMP	1		WR6			
18	90101206012	BOLT	3		M6X12			
19	90172110025	BOLT,HEXAGON SOCKET	2		M10X25			
20	90302041001	WASHER,SPRING	6		10			
21	90303071001	WASHER,PLAIN	6		10			
24	82100002012	CLAMP	2		WR18			
42	42353341500	SUPPORT	1					
43	80172804020	SCREW,MACHINE	4		M4X20			
45	90172105012	BOLT,HEXAGON SOCKET	2		M5X12			
46	90302040501	WASHER,SPRING	2		5			
54	16311103000	SPRING	1					
55	42353342060	SCREW,SET	2		M6X35			
56	90201200600	NUT	2		M6			
60	80801001415	BEARING,PLAIN	2					
62	90201200500	NUT	2		M5			
63	80820001010	BEARING,PLAIN	2					
64	80801001010	BEARING,PLAIN	2					
71	42356351200	TERMINAL	2					
74	42356351300	SUPPORT	1					
81	42356352200	TERMINAL	2					
83	90201200800	NUT	2		M8			
87	90303071401	WASHER,PLAIN	4		14			
88	90101208045	BOLT	2		M8X45			
89	42356352500	SUPPORT	1					
91	90720005200	SCREW,SET	2		M5X16		229556	
	90720705200	SCREW,SET	2		M5X20	229557		
95	90302040801	WASHER,SPRING	2		8			
96	90303070801	WASHER,PLAIN	2		8			
112	42356352301	SUPPORT	2					
120	42356352401	SPACER	2		L=20.5			
201	42356351003	TERMINAL ASSY	1					
212	42356352002	TERMINAL ASSY	1					

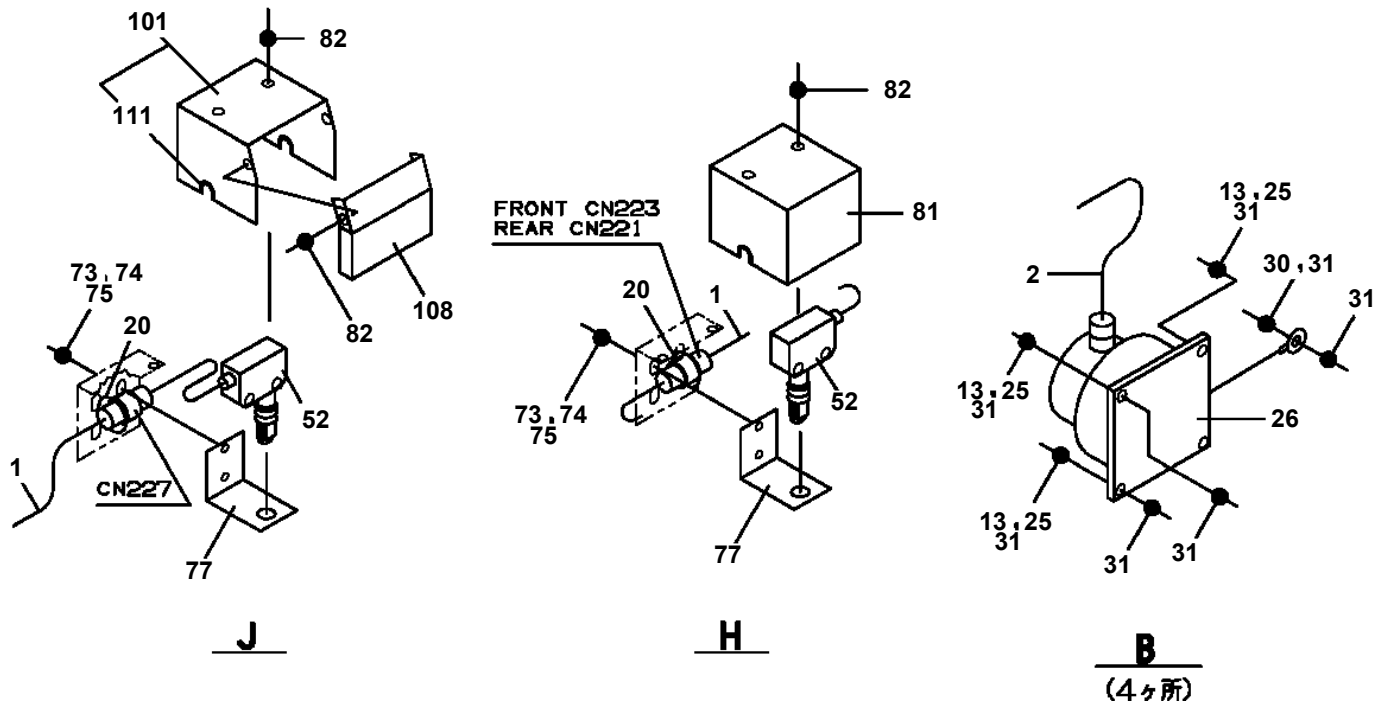
AT-146-3 43011100084 UPPER

Pos No.	Parts No	Parts Name	Qty	Unit	Technical Data	Serial No (Start)	Serial No (End)	Remarks
1	42356380101	HARNESS	1					
2	42354740200	SWITCH ASSY	1					
3	82100002597	RELAY	1					
4	80192486010	SCREW,MACHINE	7		M6X10			
5	80192484016	SCREW,MACHINE	6		M4X16			
6	91850400601	CLAMP	5					
7	91810132530	FASTENER	N					
8	90201200800	NUT	1		M8			
9	90302040801	WASHER,SPRING	1		8			
10	90303070801	WASHER,PLAIN	1		8			
11	82127020180	TUBE,SPIRAL	1	M				
12	82100002017	CLAMP	1		WR30			
13	90280200600	NUT,FLANGE	2		M6			
14	82100001801	TUBE,CORRUGATE	N		7			
16	82100002014	CLAMP	1		WR20			
17	82100001807	TUBE,CORRUGATE	1	M	28			
18	42350250070	PLUG (2 POLES,MALE)	1					
19	82161201010	RELAY	2					
20	82100001819	TUBE,SPIRAL	1	M	SE-18BK			
21	42352190100	RESISTANCE	1					
22	80172303012	SCREW,MACHINE	2		M3X12			
23	90302040301	WASHER,SPRING	2		3			
24	90303070301	WASHER,PLAIN	2		3			
25	42470201060	PLATE	1					
26	90201200600	NUT	1		M6			
27	90302040601	WASHER,SPRING	1		6			
28	82100002005	CLAMP	1		WRC8			
29	82100002010	CLAMP	1		WR15			
55	82100002308	COVER	1					
61	42356091000	CONVERTER (ASSY ONLY)	1					
62	42353383100	COVER	1					
63	80172305012	SCREW,MACHINE	4		M5X12			
64	90201200500	NUT	4		M5			
65	90302040501	WASHER,SPRING	4		5			
66	90303070501	WASHER,PLAIN	4		5			
81	42352457510	KEY	1					

**AT-146-3 43011100084 UPPER
PN1014929-01 ELEC.ASSY (FRAME)**



A

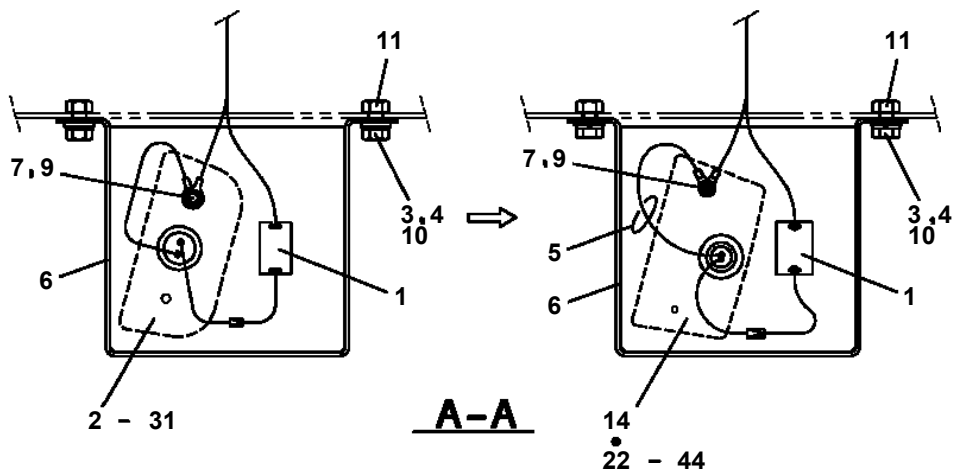
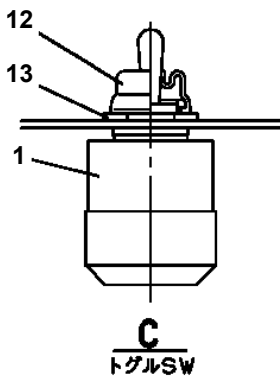
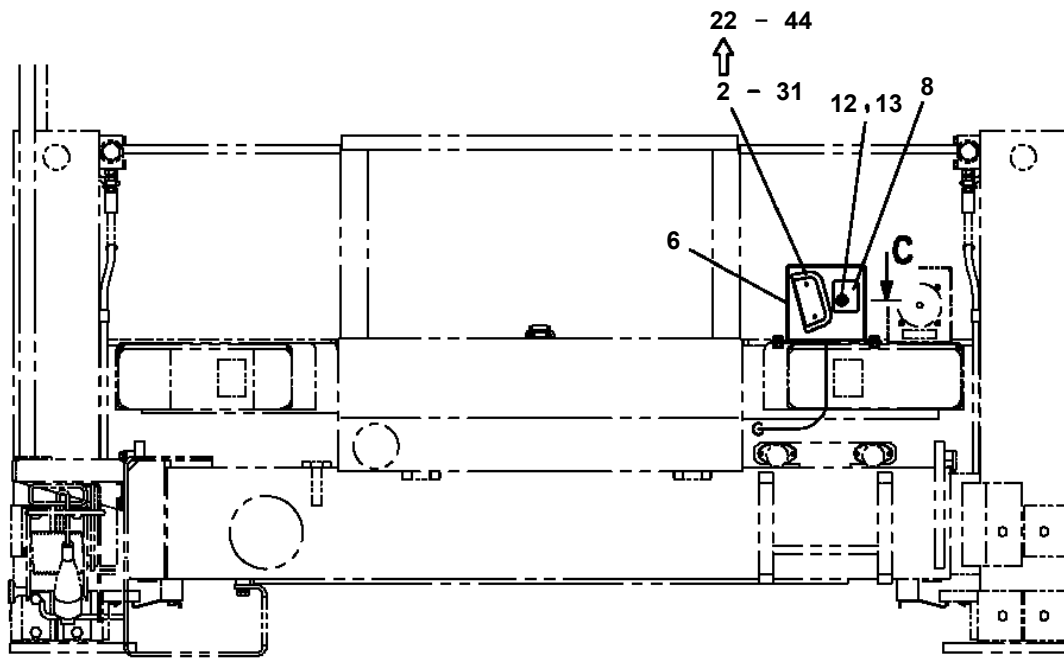
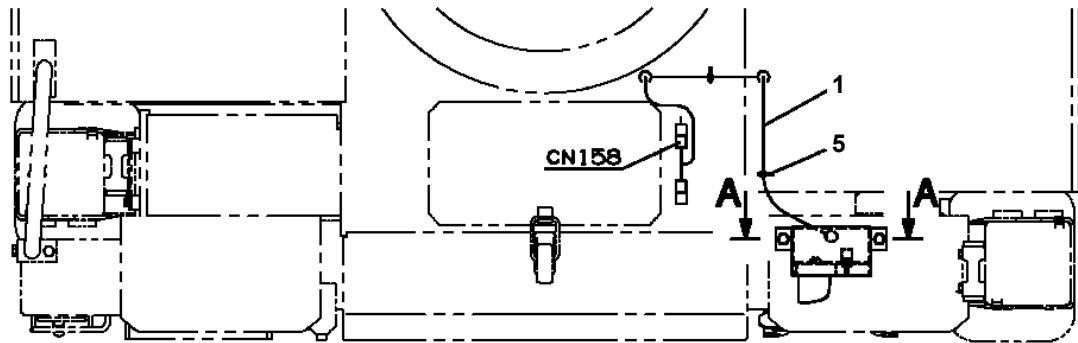


J

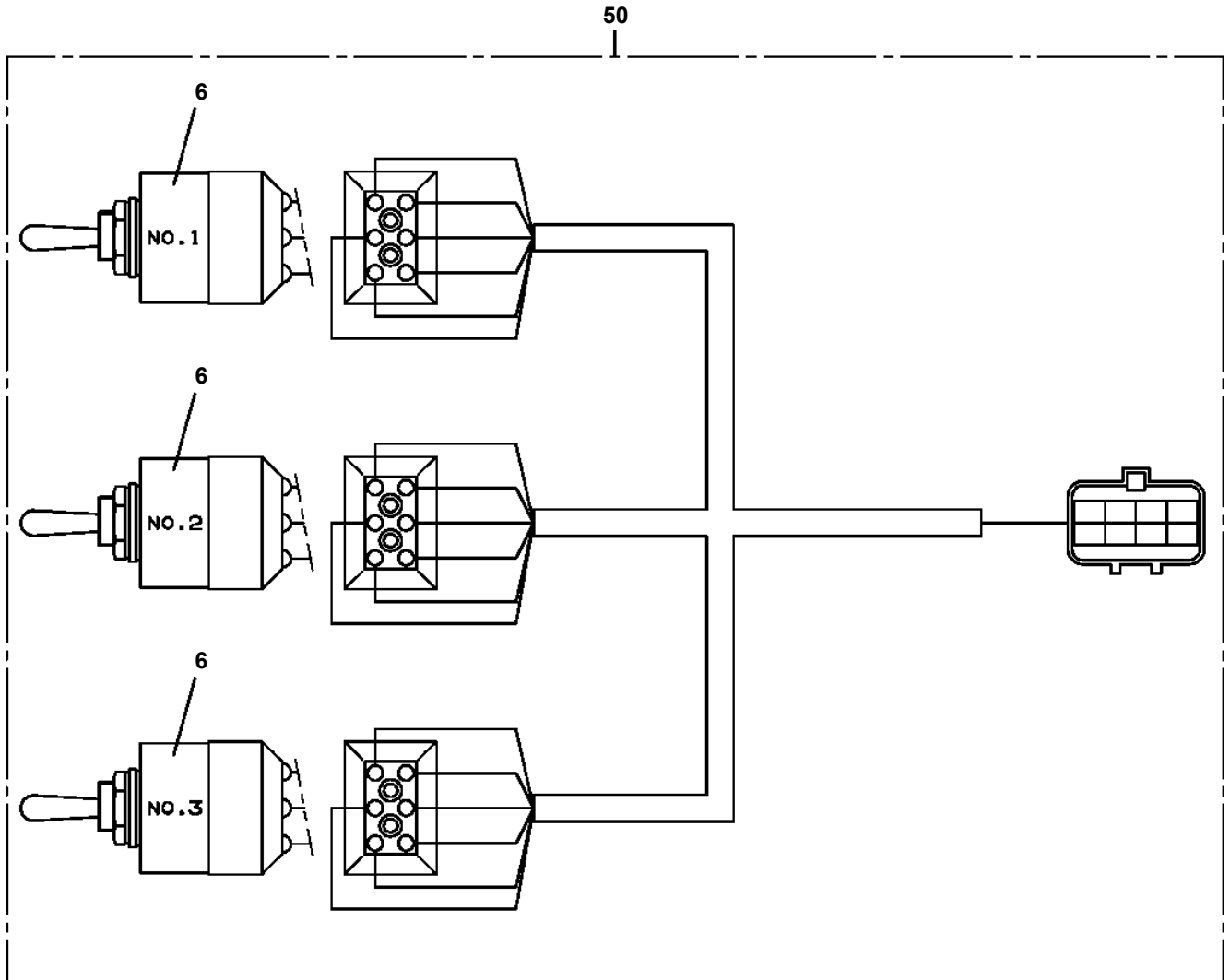
H

B
(4ヶ所)

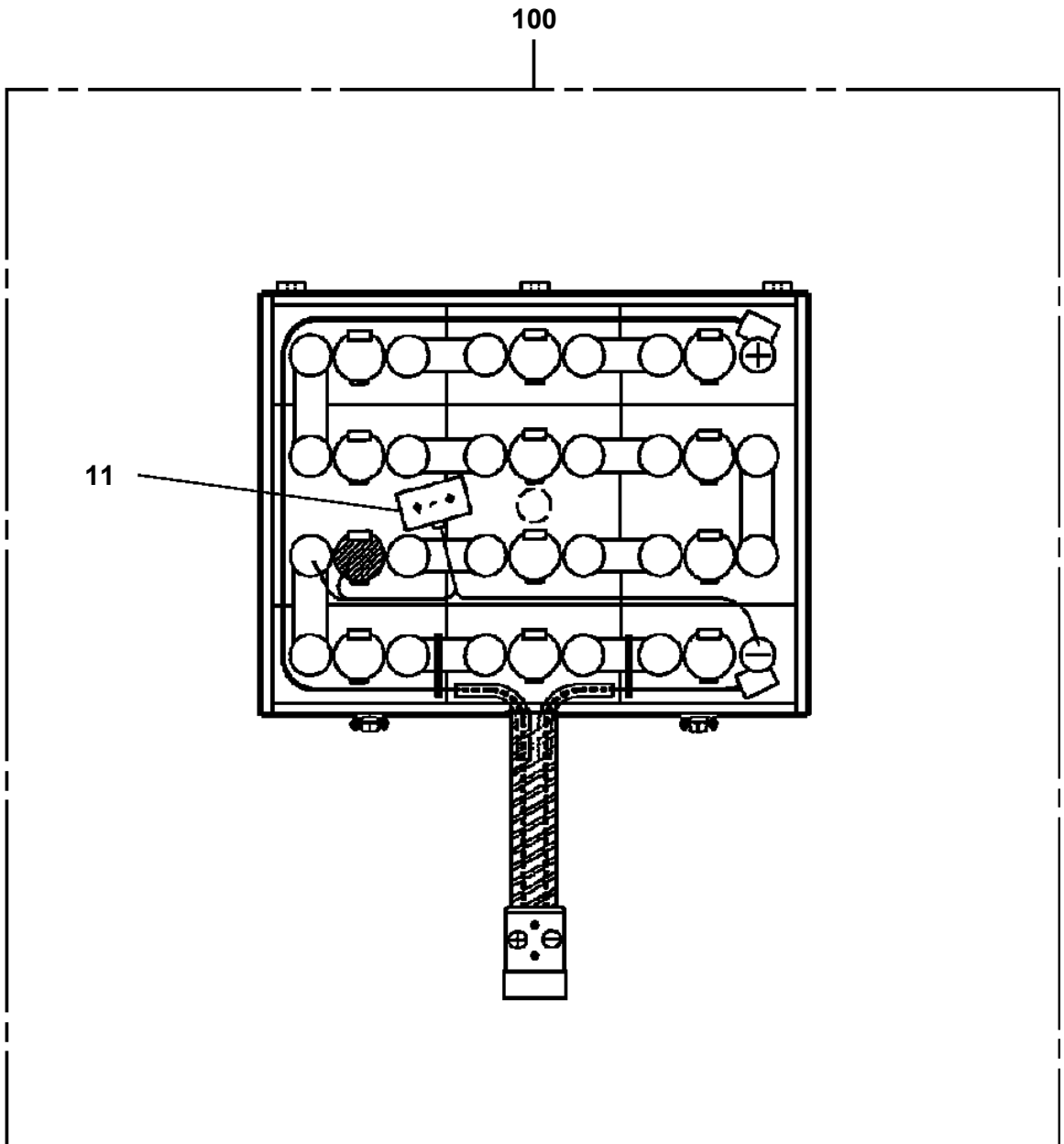
AT-146-3 43011100084 UPPER
 PN1080394-03 LAMP (O/R CONTROL PANEL)



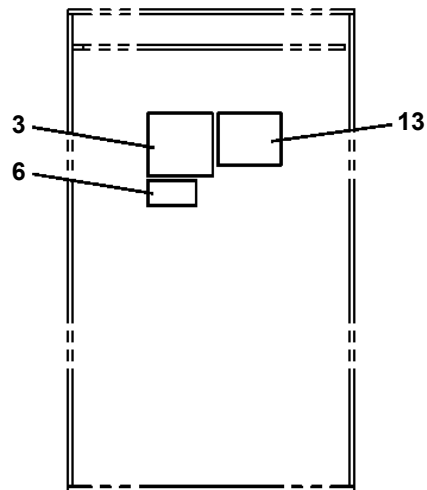
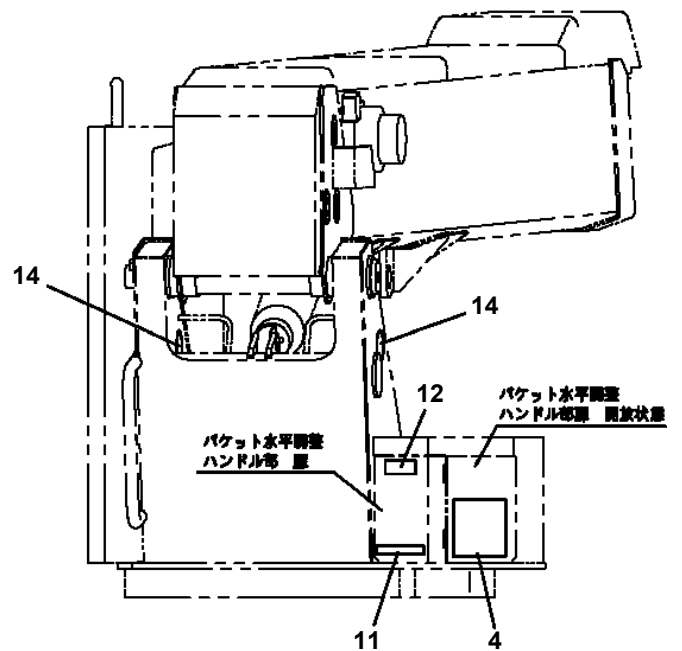
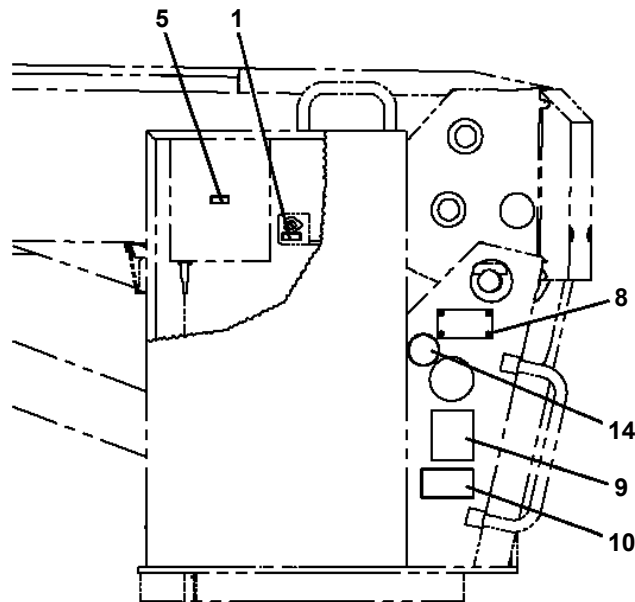
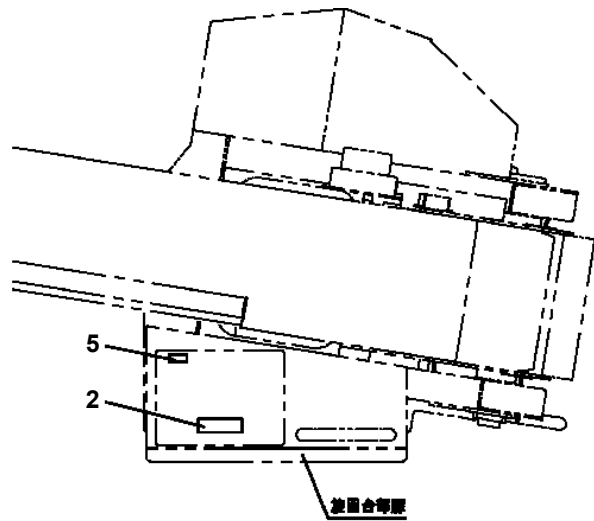
**AT-146-3 43011100084 UPPER
PN1140164-00 SWITCH ASSY (WITH HARNESS,3 SW)**



AT-146-3 43011100084 UPPER
PN1370154-00 BATTERY



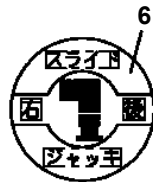
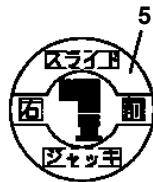
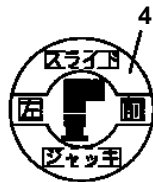
AT-146-3 43011100084 UPPER
 PO1014999-01 PLATE ASSY,NAME (SWING FRAME)



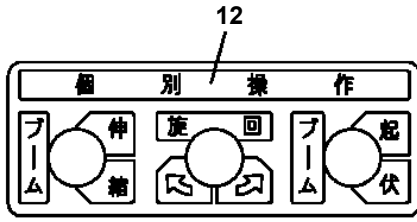
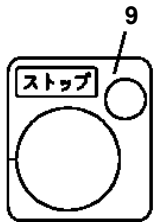
旋回合部裏内側

AT-146-3 43011100084 UPPER
PO1015456-02 PLATE ASSY,NAME (OUTRIGGER CONTROLS)

1
カバー開放厳禁



8
洗浄禁止



13

△警告/非常スイッチ
非常スイッチを使用すると安全装置は機能しません。従後の操作ができませんのでブームを後退してからアウトリガ操作をしてください。

非常操作方法
AMCの故障等で通常の操作ができない場合、緊急時限りの操作方法にしたがって、ブームを後退してください。その後、非常スイッチをONにしながらアウトリガを後退してください。

14

△警告/使用上の注意

- 本機の取組は再作業時必ず作業完了後に戻されます。
- 取組時必ずよく読み、取組および取組の注意を参照してから使用してください。
- 作業開始前点検を実施してください。
- ヘルメット・安全帯を着用してください。
- 取組作業を止めてください。
- 取組作業以外で作業しないでください。
- 取組・取組中の取組時には作業しないでください。

15

△警告/活線作業上の注意

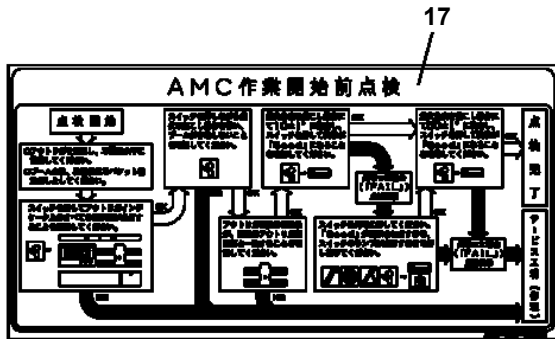
- 活線作業用機器として使用する場合には、6ヵ月ごとに点検整備について自主点検を行なってください。
- パケット (ジャッキライナ) 等機器ブームが覆われていたり、汚れていたりすると接地性能が低下します。作業前に正しい状態で使うとってください。
- 活線作業用機器として使用する場合には、作業開始前必ずアース線を接続してください。
- 作業時には接地性能が低下しますので、接地性能および接地状態を確認を行なわないでください。

16

△警告/作業開始前点検

その日の作業を行う前には取組要領書に合わせて次の「作業開始前点検」を行ってください。

- AMC (遠隔停止・作動制御装置) の点検。
- AMC作業開始前点検装置に接続を確認。
- アウトリガ、ブーム、パケットの点検確認。
- 昇降、ゴタツキ、揺動等がないこと。
- パケット水平調整の作業確認。
- 最低作業時に水平の揺れがないこと。
- 緊急停止装置等安全装置の作業確認。
- 確認に必ずすること。



18

△警告

アウトリガ操作注意

- 作業中は適切な位置に水平に設置してください。
- タイヤは4輪とも厚く、アウトリガインジケータが点検から点検に変わることを確認してください。
- アウトリガインジケータの点検位置が調整されたアウトリガ位置と一致することを確認してください。
- アウトリガを調整・点検後は、すべてのレバーを必ず中立位置に戻してカバーをしてください。

走行時の注意

- パケットの取組物を降ろしてください。
- パケット、ブームを後退してください。
- アウトリガを後退してください。

19

自動格納方法

下部優先スイッチを「入」に保持したまま、自動格納スイッチを「入」に保持してください。格納が、(聞こえ)、音、袋の間にブームが格納されます。格納完了音が鳴るまで待機し、一旦格納方向と逆の方向に進出した後、格納方向に進出します。

20

ブーム操作方法

1. ブーム操作は下部優先スイッチを「入」に保持したまま、ブーム操作スイッチを操作してください。
2. 下部優先スイッチを操作している間はパケット部でのブーム操作はできません。
3. 取組台座を下げたままでは操作する場合には、取組台座やブームとの接触に注意してください。
4. ブーム上げ及び格納操作時は、必ず常にブームが近づきます。格納中は、ブームに注意してください。

23

△警告/足元注意

アウトリガ操作時、足元に注意してください。

22
ストップ

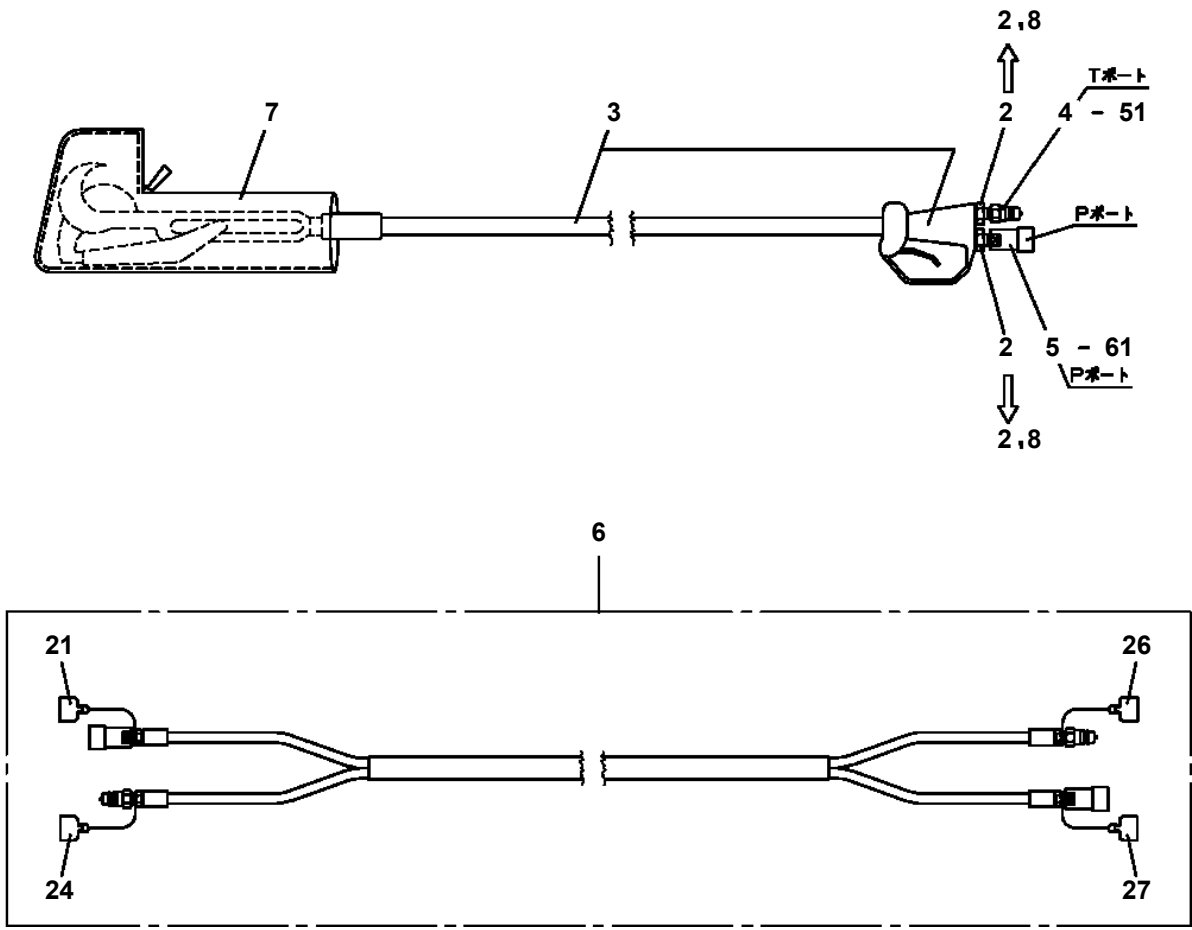
24
第3ブレーキ

25

注意/アウトリガ操作

アウトリガ操作を行う場合は第3ブレーキを作業させてください。車両エンジンが停止すると第3ブレーキは解除される場合があります。

AT-146-3 43011100084 UPPER
PP5390001-00 PRUNER ASSY



AT-146-3 43011100084 UPPER

Pos No.	Parts No	Parts Name	Qty	Unit	Technical Data	Serial No (Start)	Serial No (End)	Remarks
1	81408000130	PIPE,STEEL	4	M	10X1.8T			
2	81408000130	PIPE,STEEL	4	M	10X1.8T			
3	81408000241	PIPE,STEEL	4	M	18X1.9T			
4	81408000160	PIPE,STEEL	4	M	12X1.4T			
5	81408000200	PIPE,STEEL	4	M	12X2.0T			
6	80400160201	JOINT	2					
7	37002471140	HOSE	1		L=1750			
8	80320010090	FITTING	1		KUD15-030N			
9	80320010080	FITTING	1		KUD12-030N			
10	80320010140	FITTING	1		KUD18-040N			
11	42346823001	JOINT	1					
12	37002488260	HOSE	4		L=9680			
13	80400160127	JOINT	4					
14	91002801100	O-RING	4		1B P11			
15	37002488250	HOSE	2		L=9380			
16	80491303030	JOINT (WITH O-RING)	1		L,PF3/8-PF3/8			
17	42346821001	JOINT	1					
18	42343740100	COVER	1					
19	80192486010	SCREW,MACHINE	4		M6X10			
20	90101210020	BOLT	4		M10X20			
21	90302041001	WASHER,SPRING	4		10			
23	80320020080	FITTING	1		KUF12-030N			
24	80320020090	FITTING	1		KUF15-030N			
25	80320020050	FITTING	2		KUF10-020N			
26	37000919790	JOINT	2					
27	91002801400	O-RING	2		1B P14			
28	42346820401	CLAMP	3					
29	42346820100	SUPPORT	1					
30	90180208020	BOLT,BUTTON	2		M8X20			
31	90302040801	WASHER,SPRING	27		8			
32	90171108018	BOLT	4		M8X18			
33	42346820200	ROLLER ASSY	1				229039	
35	37000587400	PLATE	2		T=6			
37	42346820300	SHEAVE ASSY (MARUCH)	1					
39	90101208045	BOLT	2		M8X45			
40	90101208012	BOLT	2		M8X12			
41	42344970800	SUPPORT	1					
43	37000573430	PLATE	10		T=1			
44	90203201200	NUT	4		M12			
45	90101208020	BOLT	7		M8X20			
46	37000312510	SPACER	3		L=27.5			
47	90303071201	WASHER,PLAIN	4		12			
48	90302041201	WASHER,SPRING	2		12			
49	42346820603	CLAMP	1					
50	42346820502	CLAMP	1					
51	90303070801	WASHER,PLAIN	6		8			
52	42346820150	SUPPORT	1					
53	90201200800	NUT	9		M8			
54	37000304160	SPACER	8		L=30			
55	37000587440	PLATE	2		T=6			
56	42346820350	SUPPORT	2					
57	91810132530	FASTENER	2					
58	37000601410	CUSHION	2					
59	37000601110	CLAMP	1					
60	90101208035	BOLT	1		M8X35			
61	37002450020	HOSE	1		L=1800			
62	82100001413	TUBE,SPIRAL	1	M	SE-15BK	228539		
75	80316070060	PLUG	2		PF3/8			
76	91002801400	O-RING	5		1B P14			
82	42346820320	PIN	1					
83	80136363050	PIN,SPLIT	2		6.3X50			
91	42346820210	SUPPORT	1					
92	37000189860	PIN	1					

AT-146-3 43011100084 UPPER

Pos No.	Parts No	Parts Name	Qty	Unit	Technical Data	Serial No (Start)	Serial No (End)	Remarks
5	82182819823	DIODE	1		1.5A			
9	34354781710	RELAY (WITH BRACKET)	1					
100	34354781730	RELAY	1					

AT-146-3 43011100084 UPPER

Pos No.	Parts No	Parts Name	Qty	Unit	Technical Data	Serial No (Start)
1	42508450100	SWITCH,PUSH	1			
4	82122730100	CAP	1			
50	42508450000	SWITCH ASSY (3M,ELECTLIC BOOSTER REMOCON)	1			

AT-146-3 43011100084 UPPER

Pos No.	Parts No	Parts Name	Qty	Unit	Technical Data	Serial No (Start)	Serial No (End)	Ren
10	42738987600	HOSE ASSY	1					
100	42738981000	TANK ASSY (BATTERY,WATER)	1					

AT-146-3 43011100084 UPPER

Pos No.	Parts No	Parts Name	Qty	Unit	Technical Data	Serial No (Start)	Serial No (End)	Remarks	Pages
1	42739760000	CABLE	1		L=10000				

AT-146-3 43011100084 UPPER

Pos No.	Parts No	Parts Name	Qty	Unit	Technical Data	Serial No (Start)	Serial No (End)	Remarks	Page
5	91002902500	O-RING	4		1B G25				
8	80316090020	PLUG	4		KKT PT1/8				
9	36606975020	PLUG	1						
10	91002801400	O-RING	1		1B P14				
12	16066241000	SPRING	1						
22	36606995020	RELIEF ASSY	1						
100	36606990000	VALVE ASSY,RELIEF	1						

AT-146-3 43011100084 UPPER

Pos No.	Parts No	Parts Name	Qty	Unit	Technical Data	Serial No (Start)	Serial No (End)	Rem
1	42460015010	BAG,TOOL	1					
2	91991510003	HEXAGON BARWRENCH (G3)	1					
3	91991510004	HEXAGON BARWRENCH (G4)	1					
4	91991510005	HEXAGON BARWRENCH (G5)	1					
5	91991510006	HEXAGON BARWRENCH (G6)	1					
6	91991510008	HEXAGON BARWRENCH (G8)	1					
7	91991510010	HEXAGON BARWRENCH (G10)	1					
8	91991310024	SPANNER	1		24			
50	42473401000	TOOLS	1					

AT-146-3 43011100084 UPPER

Pos No.	Parts No	Parts Name	Qty	Unit	Technical Data	Serial No (Start)	Serial No (End)	Remarks	Pages
1	42461681000	WEDGE (YELLOW)	1						

AT-146-3 43011100084 UPPER

Pos No.	Parts No	Parts Name	Qty	Unit	Technical Data	Serial No (Start)	Serial No (End)
1	42731680000	WOOD BLOCK (WITH RUBBER,T=80)	1				

AT-146-3 43011100084 UPPER

Pos No.	Parts No	Parts Name	Qty	Unit	Technical Data	Serial No (Start)	S
1	42971851000	WOOD BLOCK (KANSAI DENRYOKU/DETACHABLE)	1				

AT-146-3 43011100084 UPPER

Pos No.	Parts No	Parts Name	Qty	Unit	Technical Data	Serial No (Start)	Serial No (End)
2	42835797510	DOOR	1				
3	42835797520	RACK	1				
5	42835867530	BRACKET	4				
6	42835797530	SEAT	1				
8	42835797550	SEAL	9				
9	42835797560	CUSHION (WITH DOUBLE-STICK TAPE)	2				
10	42831877540	INSULATOR	2				
11	42835797570	WEATHER STRIP	1		L=4410		
12	42835357590	CATCH	2				
14	42835797580	PLUG (HOLE)	4				
15	42833077610	BUSH	6				
16	32830487740	SCREW,MACHINE (SEMS)	2		M4X10		
17	42835837600	SCREW,MACHINE	6		M5X12		
18	80175805012	SCREW,MACHINE	9		M5X12		
19	42835487650	HINGE	3				
20	42836037550	WASHER,TOOTH	4		M10		
21	42836317920	PLATE	3				
100	42835791000	BOX,TOOL	1				

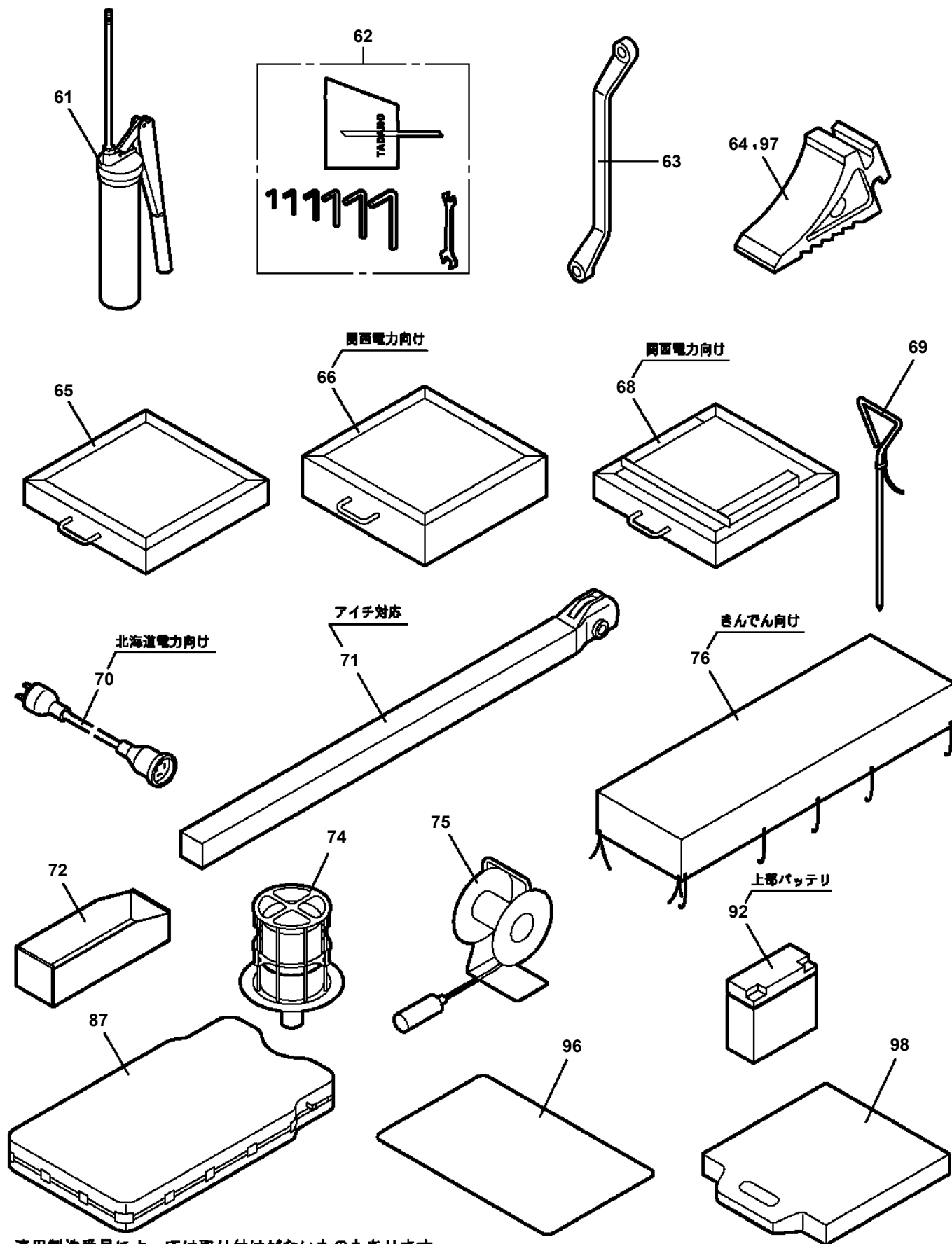
AT-146-3 43011100084 UPPER

Pos No.	Parts No	Parts Name	Qty	Unit	Technical Data	Serial No (Start)	Serial No (End)	Remarks	Pages
1	42443130300	SUPPORT	1						
2	90101208018	BOLT	4		M8X18				
3	90302040801	WASHER,SPRING	4		8				
4	42443130401	SUPPORT	1						
5	90201200800	NUT	2		M8				

AT-146-3 43011100084 UPPER

Pos No.	Parts No	Parts Name	Qty	Unit	Technical Data	Serial No (Start)	Serial No (End)	Remarks	Pages
1	42444260100	CLAMP	1		R40				
2	42444260200	CLAMP	1		R40				
3	90101208025	BOLT	2		M8X25				
4	90302040801	WASHER,SPRING	2		8				
5	90303070801	WASHER,PLAIN	6		8				
6	90201200800	NUT	2		M8				

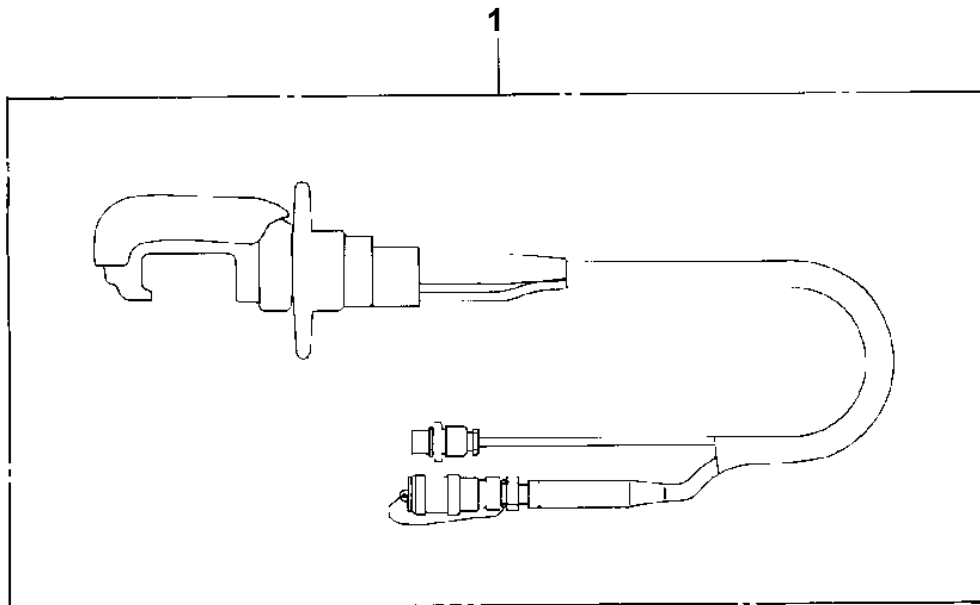
AT-146-3 43011100084 UPPER
 PY1020001-10 OPTION UNIT,2



適用製造番号によっては取り付けがないものもあります。

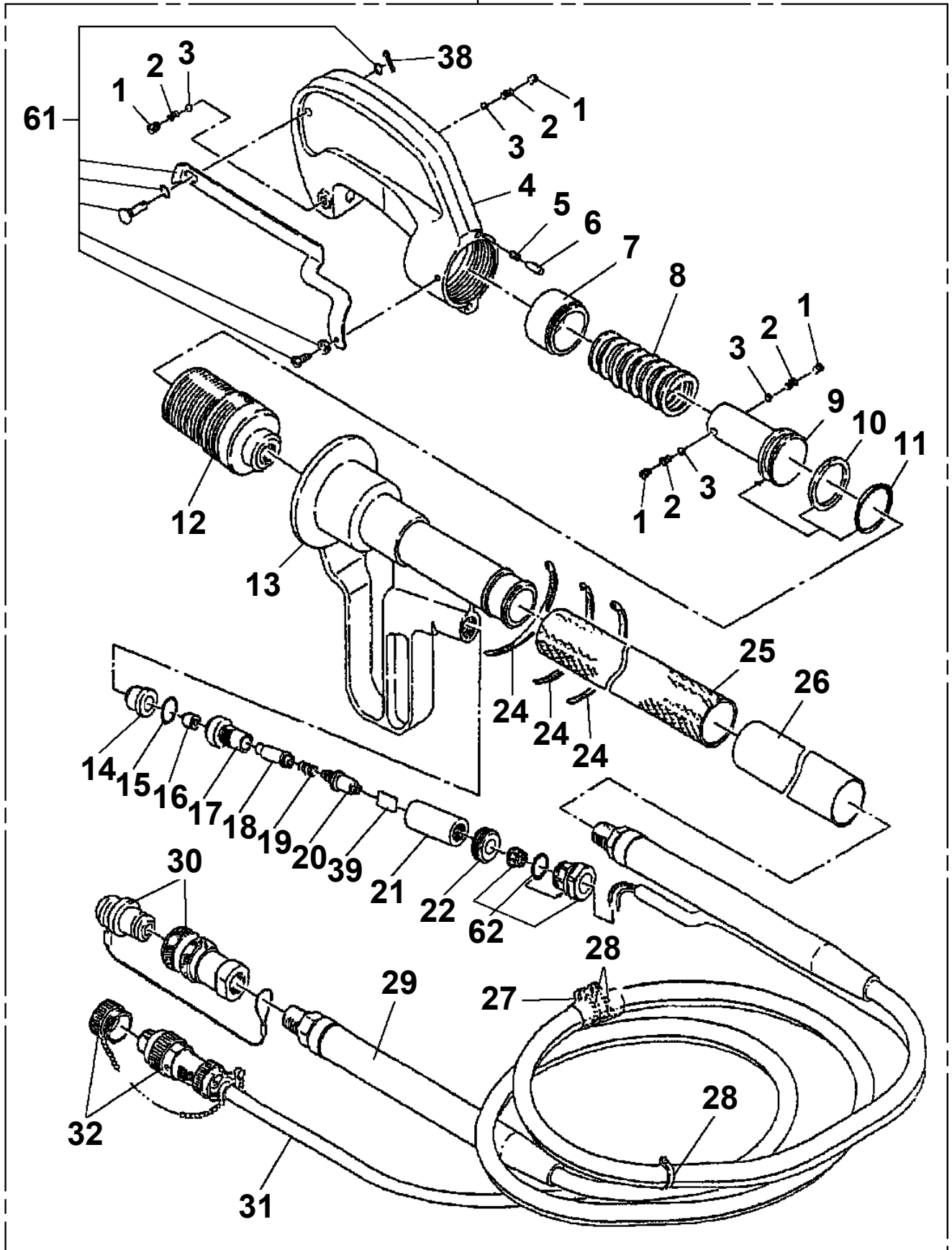
MACHINES OF SOME SERIAL NO. ARE NOT EQUIPPED WITH THESE PARTS.

**AT-146-3 43011100084 UPPER
PY1050004-00 CLAMP HEAD (O.D.K 7.5TON 3M)**

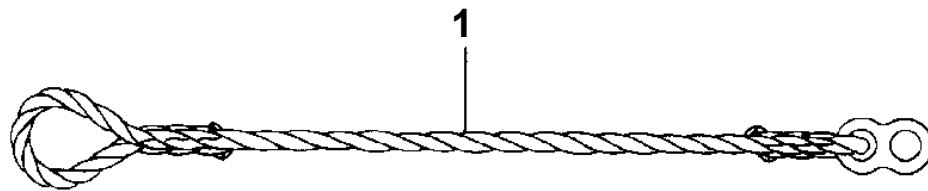


AT-146-3 43011100084 UPPER
PY1050010-00 CLAMP HEAD (IZUMI 8TON,2.5M/YONDENKOU)

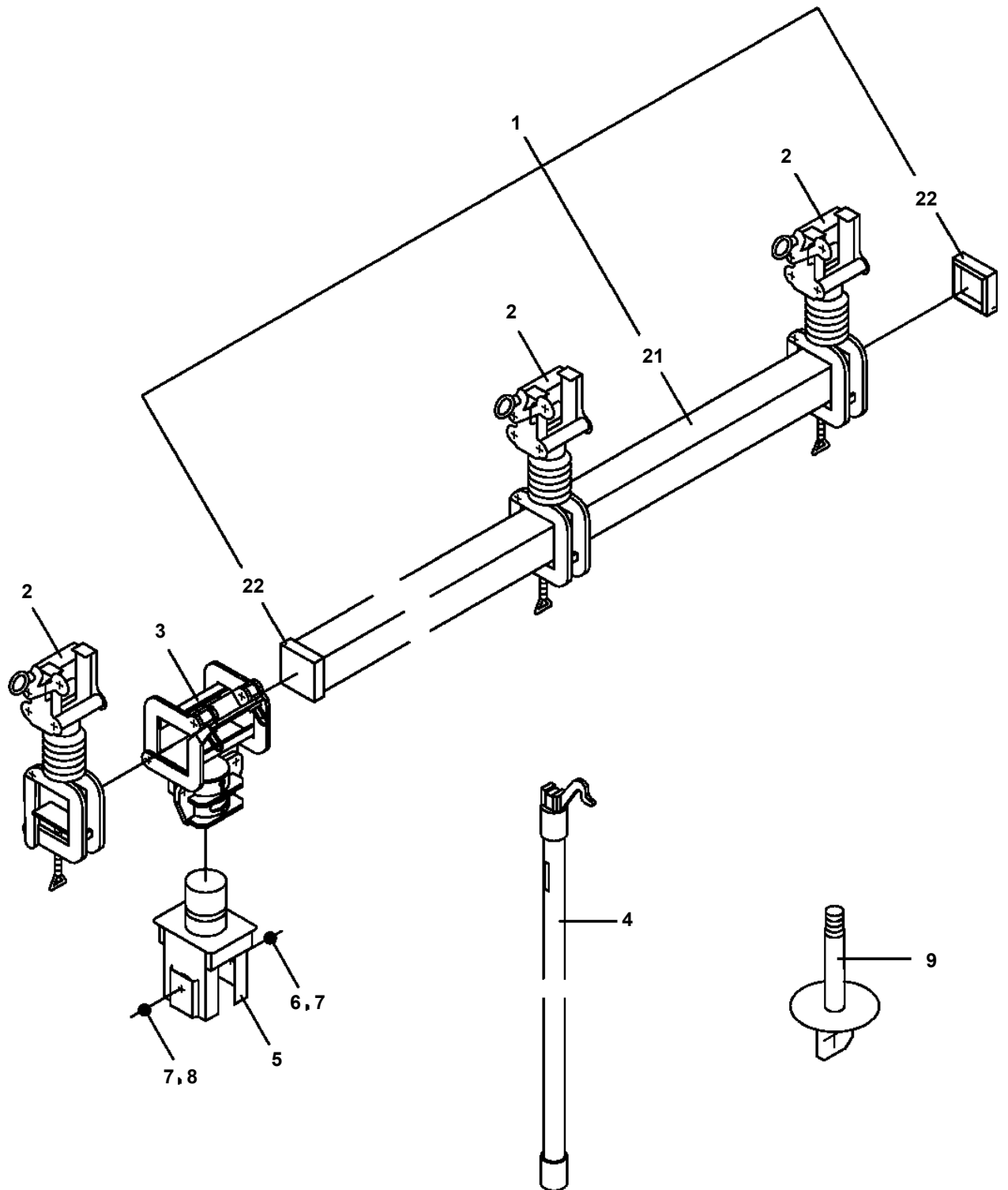
100



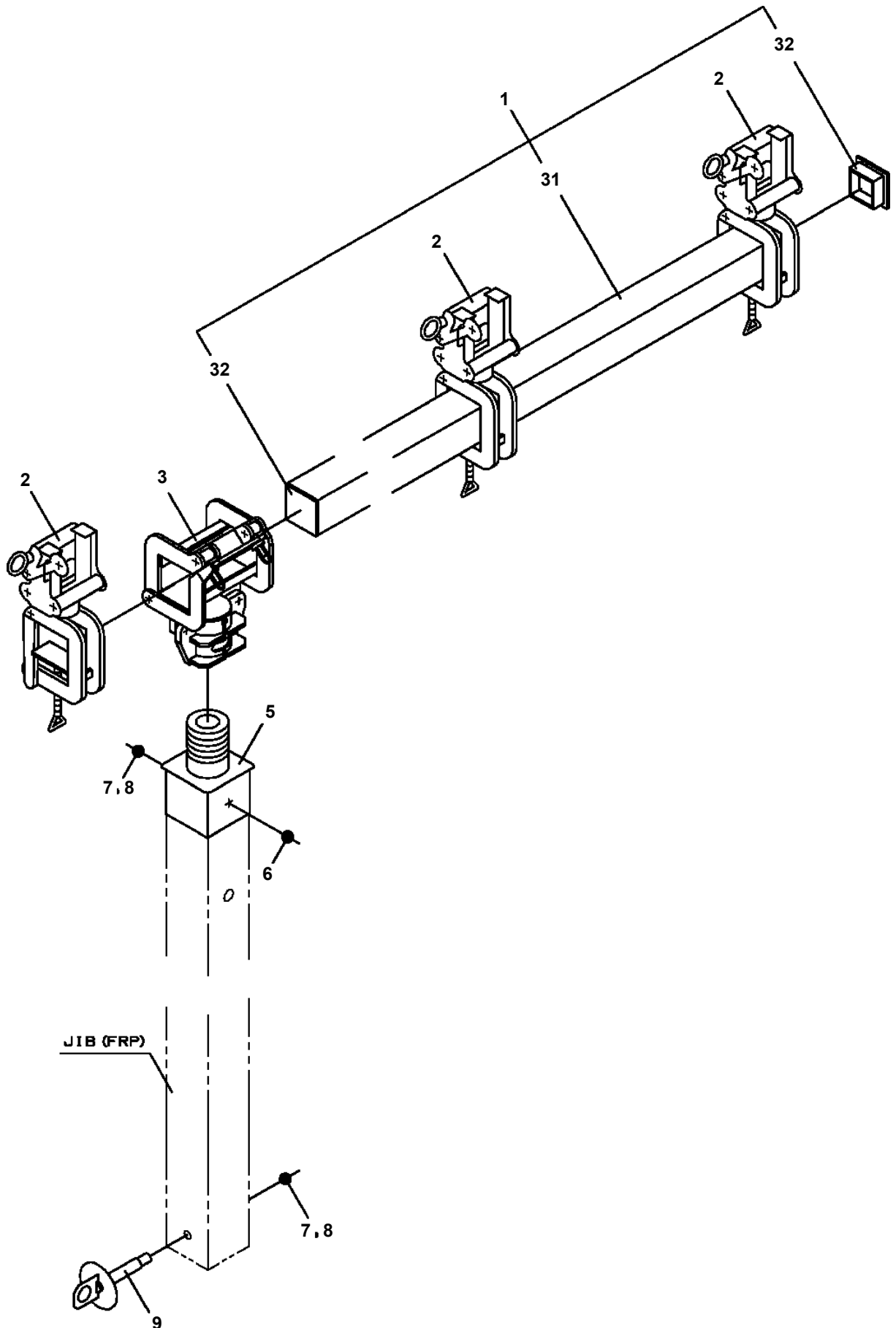
**AT-146-3 43011100084 UPPER
PY1070000-00 ROPE (SAFETY, YELLOW:TD-TYPE)**



AT-146-3 43011100084 UPPER
PY1080020-00 ARM

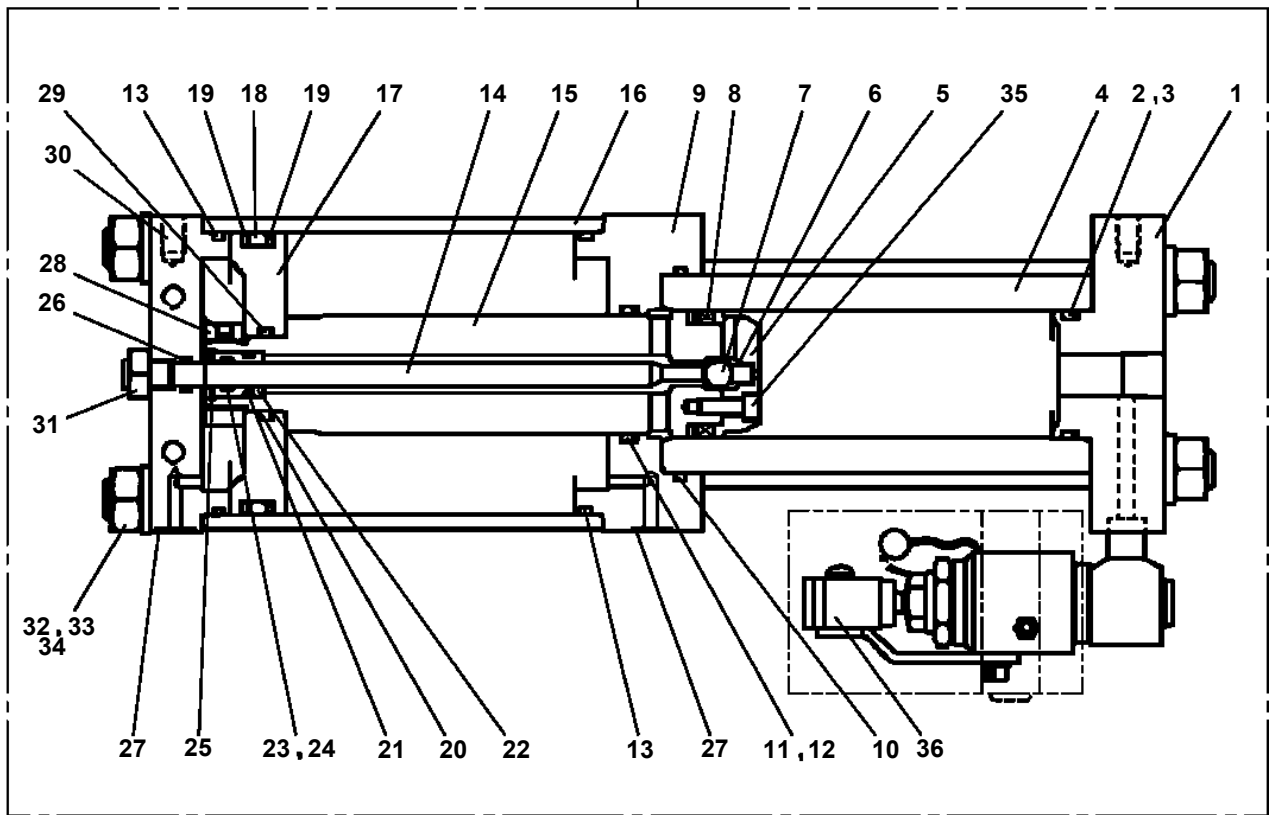


AT-146-3 43011100084 UPPER
PY1080036-00 ARM

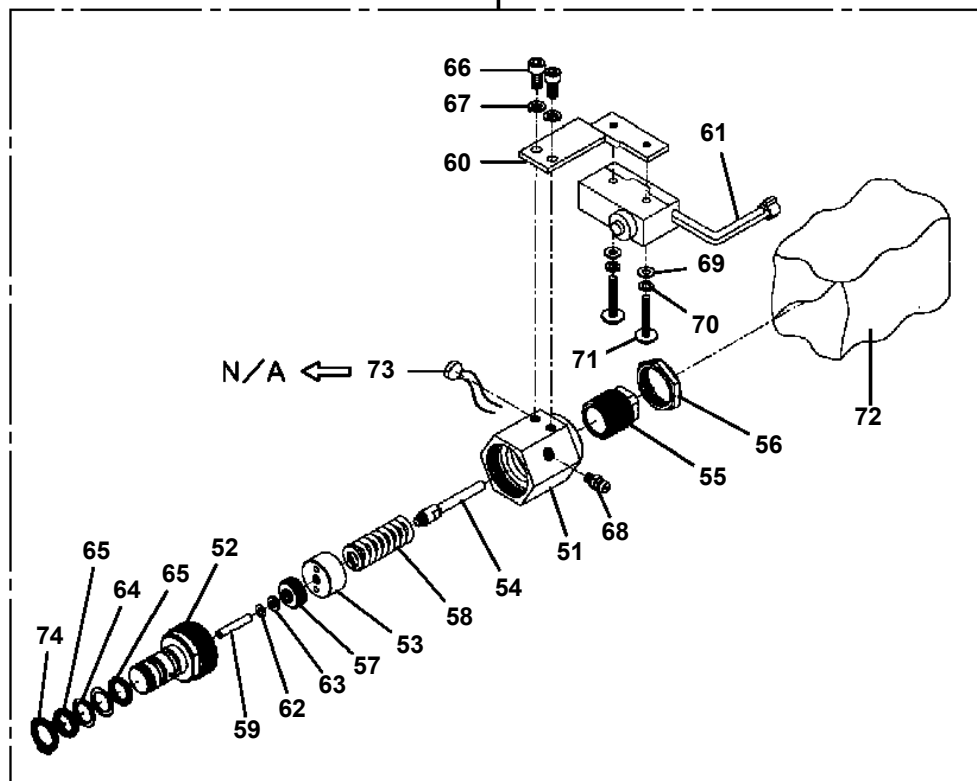


AT-146-3 43011100084 UPPER
PY1160213-02 BOOSTER

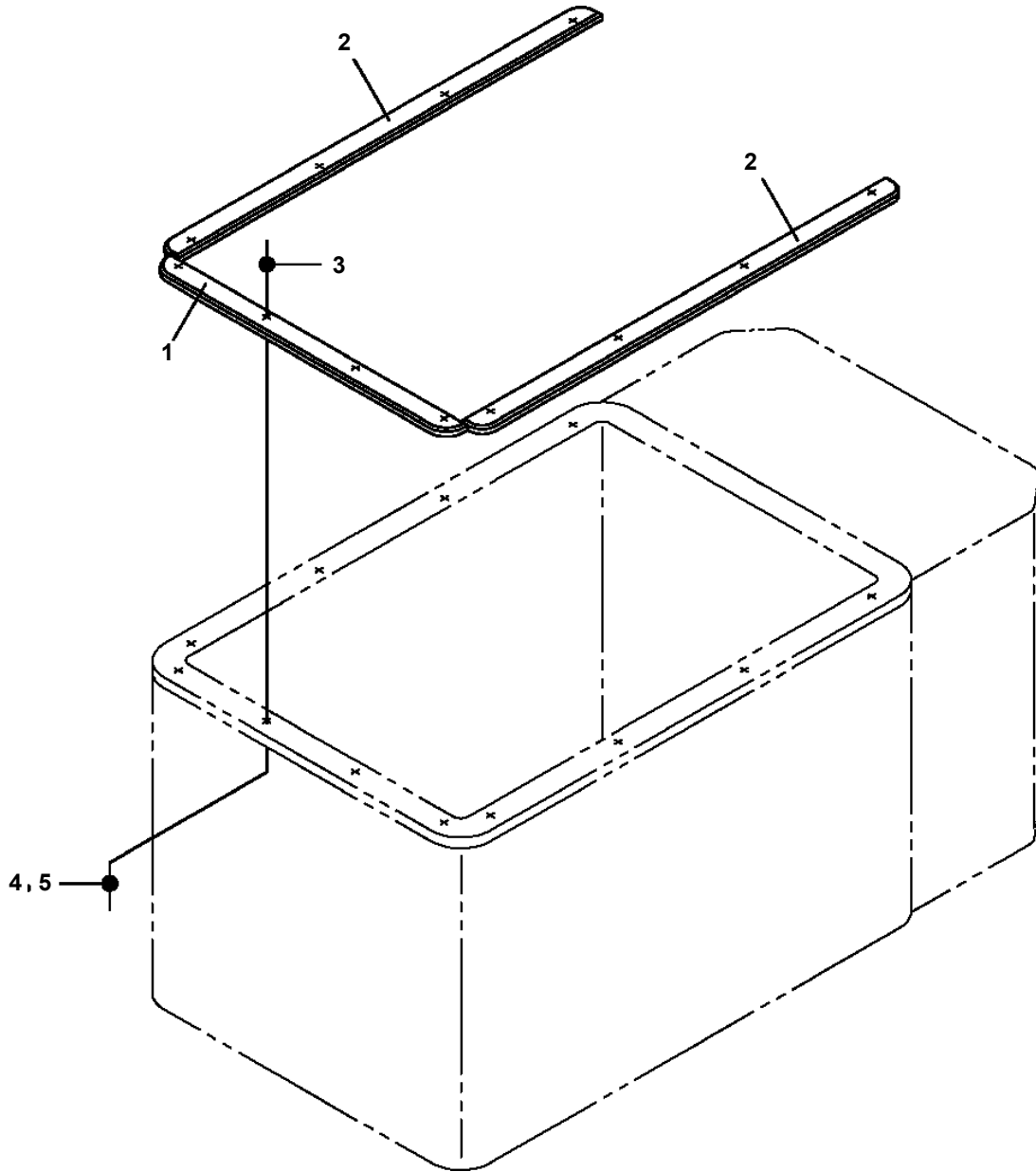
100



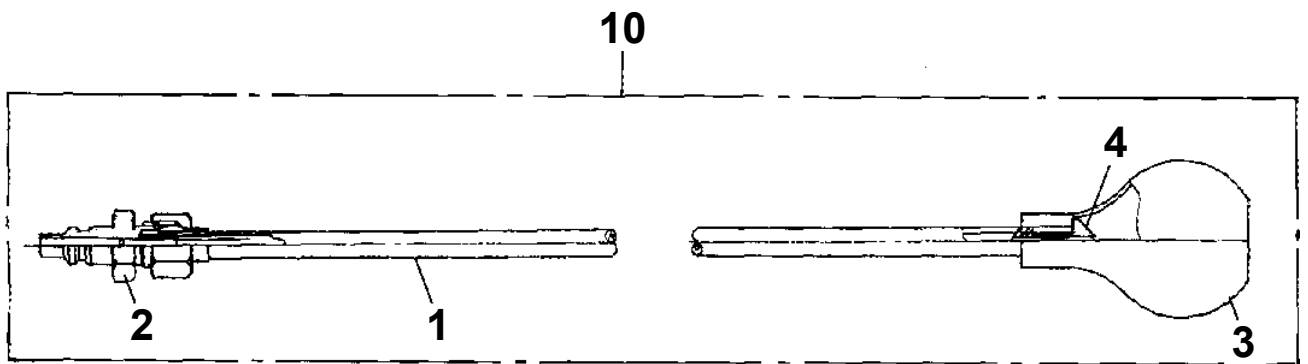
36



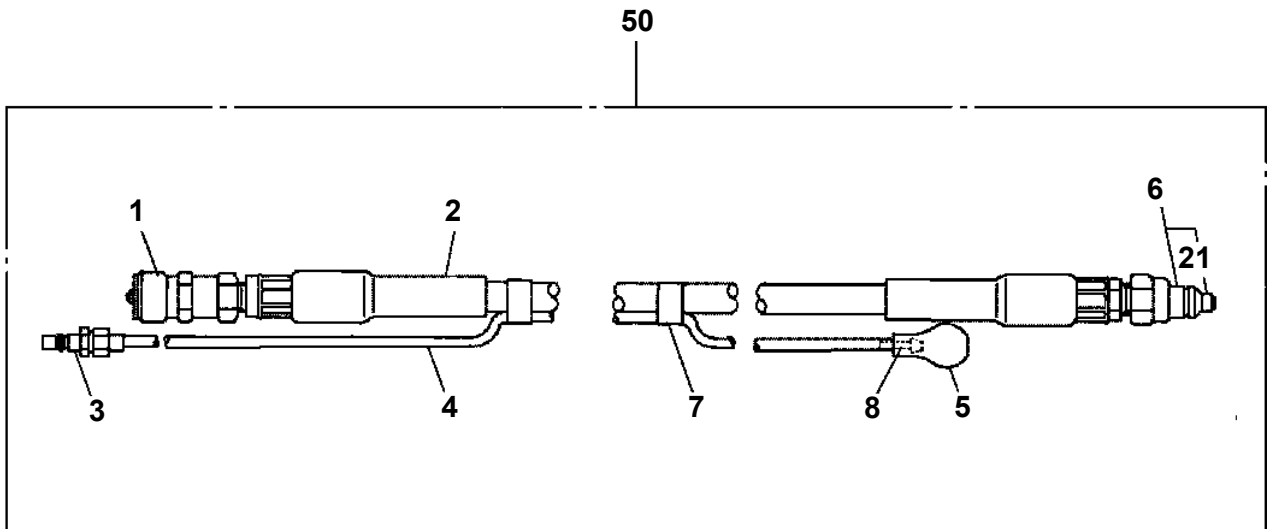
**AT-146-3 43011100084 UPPER
PY1540039-00 COVER,BUCKET (INNER CASE)**



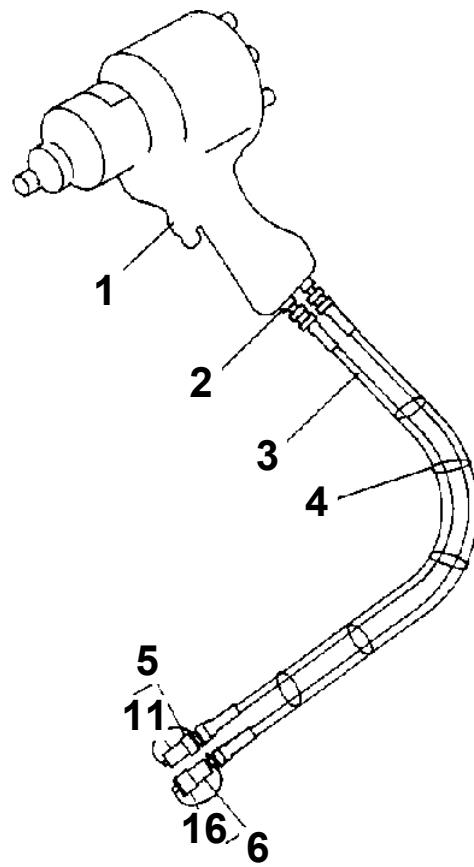
**AT-146-3 43011100084 UPPER
PY1590005-01 HOSE,BOOSTER (SMALL,WITH AIR BALLOON)**



**AT-146-3 43011100084 UPPER
PY1590012-00 HOSE,BOOSTER (WITH AIR BALLOON,5M)**



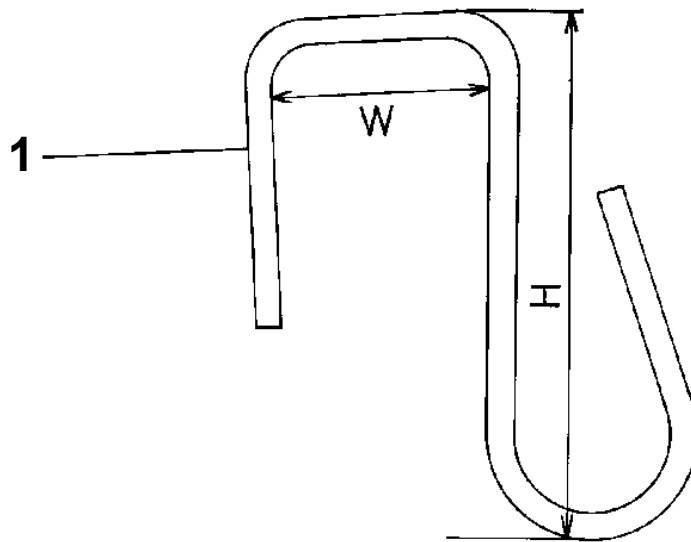
**AT-146-3 43011100084 UPPER
PY1680000-02 WRENCH,IMPACT (HYDRAULIC)**



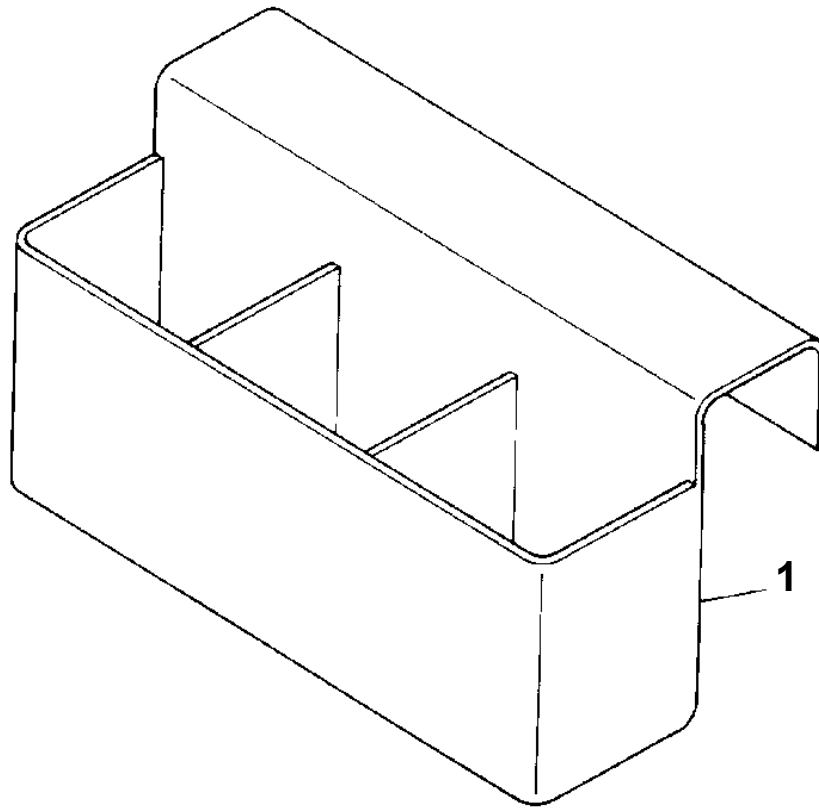
**AT-146-3 43011100084 UPPER
PY1790001-00 HANGER (FOR BUCKET)**

Assembly Name HANGER

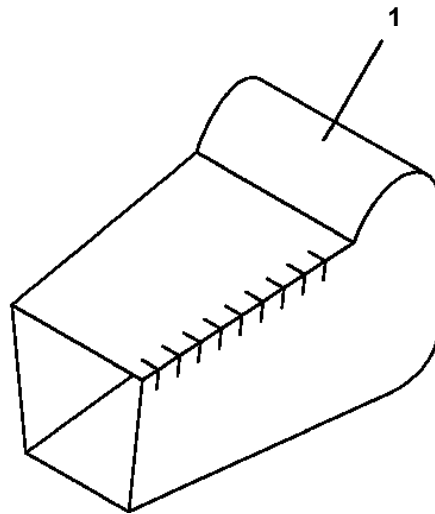
1117 0001 00



**AT-146-3 43011100084 UPPER
PY2120000-00 BOX, TOOL (FOR BUCKET)**



**AT-146-3 43011100084 UPPER
PY2170006-01 COVER,WINCH (GRAY,FOR KANDENKO)**



CLICK HERE TO **DOWNLOAD** THE COMPLETE MANUAL

- Thank you very much for reading the preview of the manual.
- You can download the complete manual from: www.heydownloads.com by clicking the link below



- Please note: If there is no response to CLICKING the link, please download this PDF first and then click on it.

CLICK HERE TO **DOWNLOAD** THE COMPLETE MANUAL