

AT-146-3 43011100088 UPPER

PD2000237-01 SWING UNIT
PF1000722-00 WINCH SYSTEM
PG2000319-01 BOOM UNIT
PH1000550-00 SAFETY DEVICES (MOTION CONTROLLER)
PJ3000512-00 BUCKET SYSTEM
PJ5000003-00 BOOSTER UNIT
PK2001389-00 FRAME UNIT
PO1000171-00 INDICATION PLATES
PW1000118-00 ACCESSORIES & TOOLS
PX1001230-00 MOUNTING PARTS
PY1001439-00 OPTIONS
ASSEMBLY

CLICK HERE TO **DOWNLOAD** THE COMPLETE MANUAL

- Thank you very much for reading the preview of the manual.
- You can download the complete manual from: www.heydownloads.com by clicking the link below



- Please note: If there is no response to CLICKING the link, please download this PDF first and then click on it.

CLICK HERE TO **DOWNLOAD** THE COMPLETE MANUAL

AT-146-3 43011100088 UPPER

Pos No.	Parts No	Parts Name	Qty	Unit	Technical Data	Serial No (Start)	Serial No (End)
1	(***** *****)	FRAME	1				228521
	(***** *****)	BUCKET FRAME ASSY	1			228522	228535
	(***** *****)	BUCKET FRAME ASSY	1			228536	
2	(***** *****)	PIPING, BUCKET	1				228535
	(***** *****)	PIPING ASSY, BUCKET	1			228536	
3	(***** *****)	ELEC. ASSY (BUCKET)	1				228521
	(***** *****)	ELEC. ASSY, BUCKET	1			228522	
4	(***** *****)	OPE. ASSY	1				
11	42267241000	BUCKET	1				
12	(***** *****)	BUCKET (INNER CASE)	1				
13	(***** *****)	COVER (BUCKET, FRP, WHITE)	1				
14	(***** *****)	COVER, BOOM (TOP/FRP, WHITE)	1				
15	42267244000	COVER (CLOTH, WHITE)	1				
16	(***** *****)	ACCESSORIES (BUCKET INNER MAT)	1				

AT-146-3 43011100088 UPPER

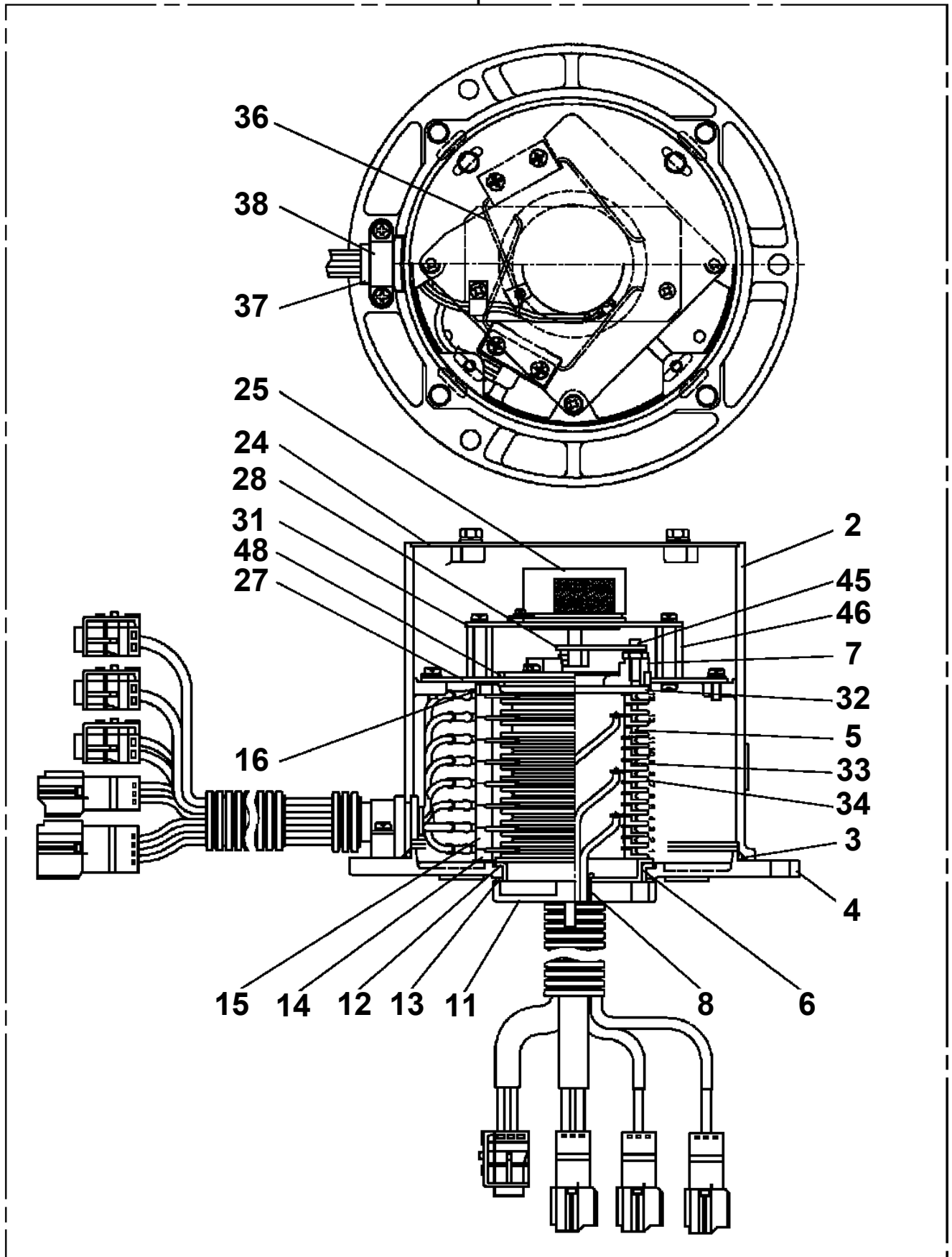
Pos No.	Parts No	Parts Name	Qty	Unit	Technical Data	Serial
1	(*****)	MOUNT ASSY,TOOL BOX (LEFT/F:2-DECKER,UPWERD,R:1-NONE)	1			
2	(*****)	BOX,TOOL (RIGHT/F:2-DECKER,R:NONE)	1			
3	(*****)	EARTHING DEVICE (8X20M, TOP CLIP)	1			

AT-146-3 43011100088 UPPER

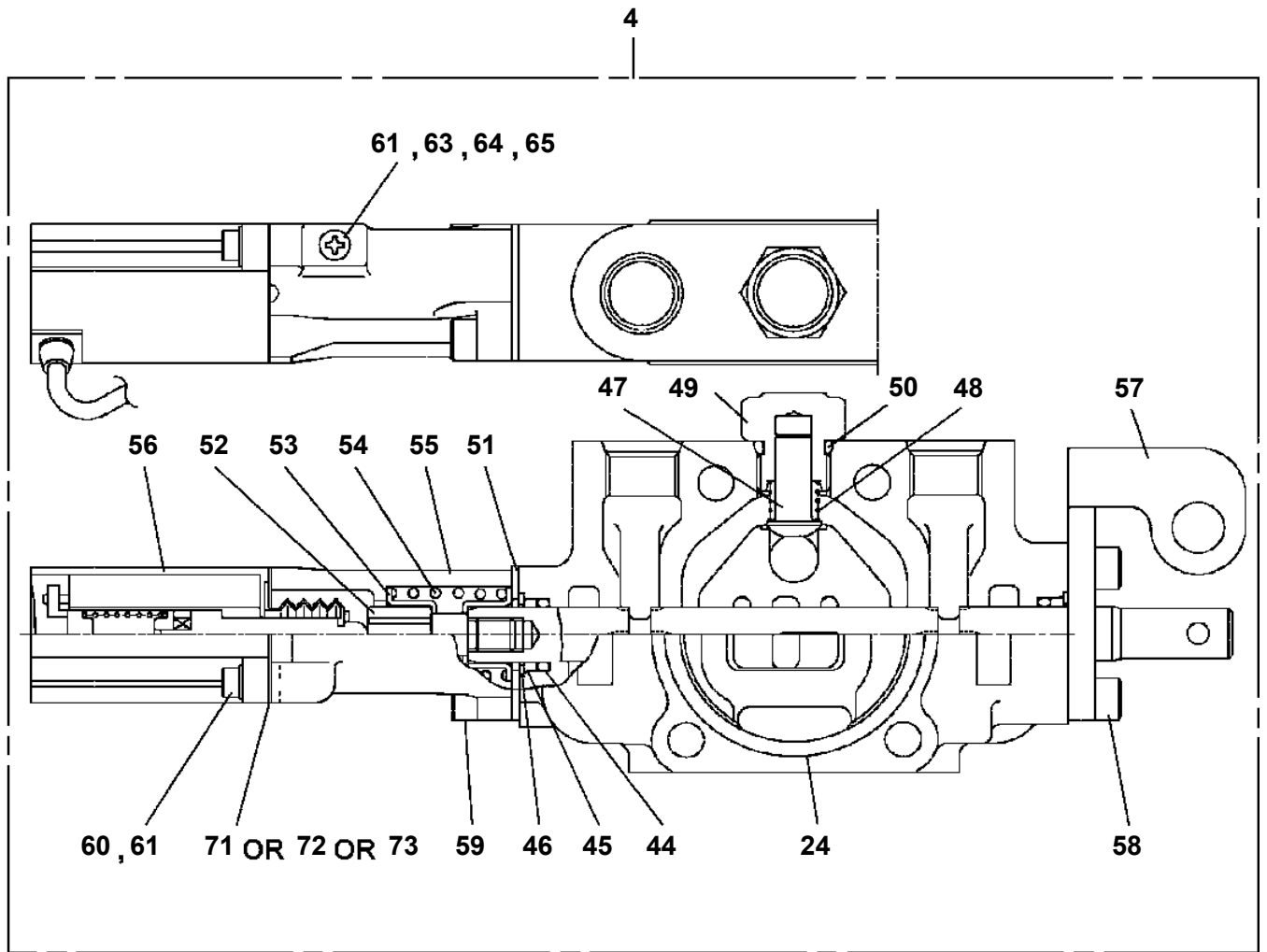
Pos No.	Parts No	Parts Name	Qty	Unit	Technical Data	Serial No (Start)	Serial No (End)	Remarks	Pages
1	36654445010	SEAL KIT	1						
100	36654440000	PUMP,HYDRAULIC	1						

AT-146-3 43011100088 UPPER
PB1310045-00 BRUSH,ROTARY JOINT

100



**AT-146-3 43011100088 UPPER
PB1320628-01 VALVE,MANUAL CONTROL**



AT-146-3 43011100088 UPPER

Pos No.	Parts No	Parts Name	Qty	Unit	Technical Data	Serial No (Start)	Serial No (End)	Remarks
4	90101210035	BOLT	3		M10X35			
5	90302041001	WASHER,SPRING	7		10			
6	90101208065	BOLT	2		M8X65			
7	90302040801	WASHER,SPRING	8		8			
8	37002402610	HOSE	2		L=1980			
9	80481103030	JOINT	1		L,G3/8-G3/8			
10	37002488300	HOSE	1		L=1800		228940	
11	90101210085	BOLT	2		M10X85			
12	37002452740	HOSE	1		L=1000			
13	90101210065	BOLT	2		M10X65			
14	80441030604	FITTING,ELBOW	2					
15	37000908730	JOINT (WITH O-RING)	3		L,G3/8-G1/4			
16	37002416380	HOSE	1		L=1980			
17	37000300740	SLEEVE	1		18-12			
18	91002801800	O-RING	2		1B P18			
19	80430620400	JOINT	1					
20	37002479110	HOSE	1		L=900			
21	37002489550	HOSE	1		L=2090			
22	91002801100	O-RING	2		1B P11			
23	37002488320	HOSE	1		L=450		228940	
24	37002489560	HOSE	1		L=1600		228940	
25	37002489570	HOSE	1		L=1790		228940	
27	91810132530	FASTENER	20					
28	37002411640	HOSE	1		L=750			
29	37000714020	CLAMP ASSY	2		12X2			
30	37002489600	HOSE	1		L=1140			
31	80400160128	JOINT	1		S,G3/8-G1/4			
32	89640201000	HOSE	1		660-NFK,1M			
33	80400160131	JOINT	2					
34	91002801400	O-RING	4		1B P14			
35	37002489630	HOSE	1		L=1320			
36	80400160127	JOINT	1					
37	37002489610	HOSE	1		L=2200			
38	80400160129	JOINT	2					
39	37002411650	HOSE	1		L=850			
40	37002489580	HOSE	1		L=850			
41	37002459240	HOSE	1		L=940			
42	37000925950	JOINT	1		S,G1/4-G1/4			
43	37002488330	HOSE	1		L=470		228940	
45	82127020180	TUBE,SPIRAL	2	M				
46	37000714040	CLAMP ASSY	1		18X2			
47	37002489590	HOSE	1		L=2020			
48	82100002017	CLAMP	2		WR30			
49	90201200800	NUT	4		M8			
50	37002488310	HOSE	1		L=1670		228940	
52	42346840600	GUIDE	1					
53	42346840700	GUIDE	1					
54	37000714881	CLAMP ASSY	1					
55	37002489650	HOSE	1		L=1070			
56	37002489540	HOSE	1		L=1850			
57	37000714030	CLAMP ASSY	1		18X1			
58	82100001411	TUBE,SPIRAL	1	M	SE-08BK			
59	37000714240	CLAMP ASSY	1					
60	90101208012	BOLT	2		M8X12			
81	36741260000	VALVE,CONTROL	1					
82	80400160130	JOINT	3		S,G1/2-G3/8		228940	
	80400160130	JOINT	1		S,G1/2-G3/8	228941		
83	80400160176	JOINT	4		S,G1/2-1/4		228940	
84	91002801800	O-RING	7		1B P18		228940	
	91002801800	O-RING	2		1B P18			
	91002801800	O-RING	10		1B P18	228941		
85	37000925660	JOINT	1		S,G3/4-G1/2			
86	91002802400	O-RING	2		1B P24			

AT-146-3 43011100088 UPPER

Pos No.	Parts No	Parts Name	Qty	Unit	Technical Data	Serial No (Start)	Serial No (End)	Rema
77	36361361490	SPACER	2			228835		
78	36361361180	TANK ASSY	1				228834	
	36361361500	TANK ASSY	1			228835		
79	36361361190	SUPPORT (RESERVOR TANK)	1				228834	
80	36361361200	PUMP ASSY,FUEL	1					
81	36361361210	JOINT	1					
82	36361361220	JOINT	1					
83	36361361230	FILTER ASSY (FUEL)	1					
84	36361361240	SUPPORT	1					
87	36361361270	HOSE (FUEL)	1		L=300			
88	36361361280	HOSE (FUEL)	1		L=700			
90	36361361300	HOSE	1		L=1700			
91	36361361310	HOSE	1		L=2330			
93	36361361330	CLAMP (HOSE)	12					
96	36361361360	GASKET	1					
97	(*****)	HOSE ASSY	1					
121	37000711030	CLAMP ASSY	1		22X1		229422	
122	37000601020	CLAMP	1			229423		
123	90201200600	NUT	2		M6			
124	90101206012	BOLT	2		M6X12			
125	90302040601	WASHER,SPRING	2		6			
126	42421133310	CUSHION	1					
127	42421133320	PLATE	1					
128	90101208045	BOLT	1		M8X45	229423		
129	90302040801	WASHER,SPRING	1		8	229423		
131	42340170960	CUSHION	2			229423		
142	36361365040	ELEMENT ASSY	1					
161	36361365030	REPAIR KIT	1					

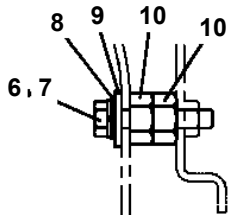
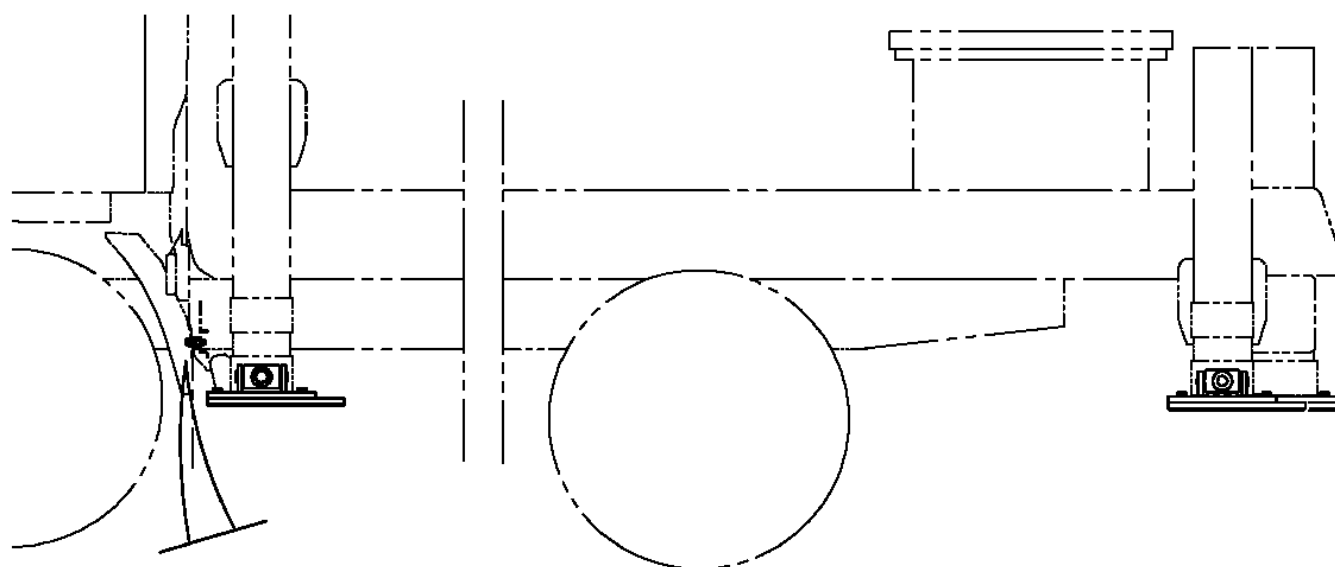
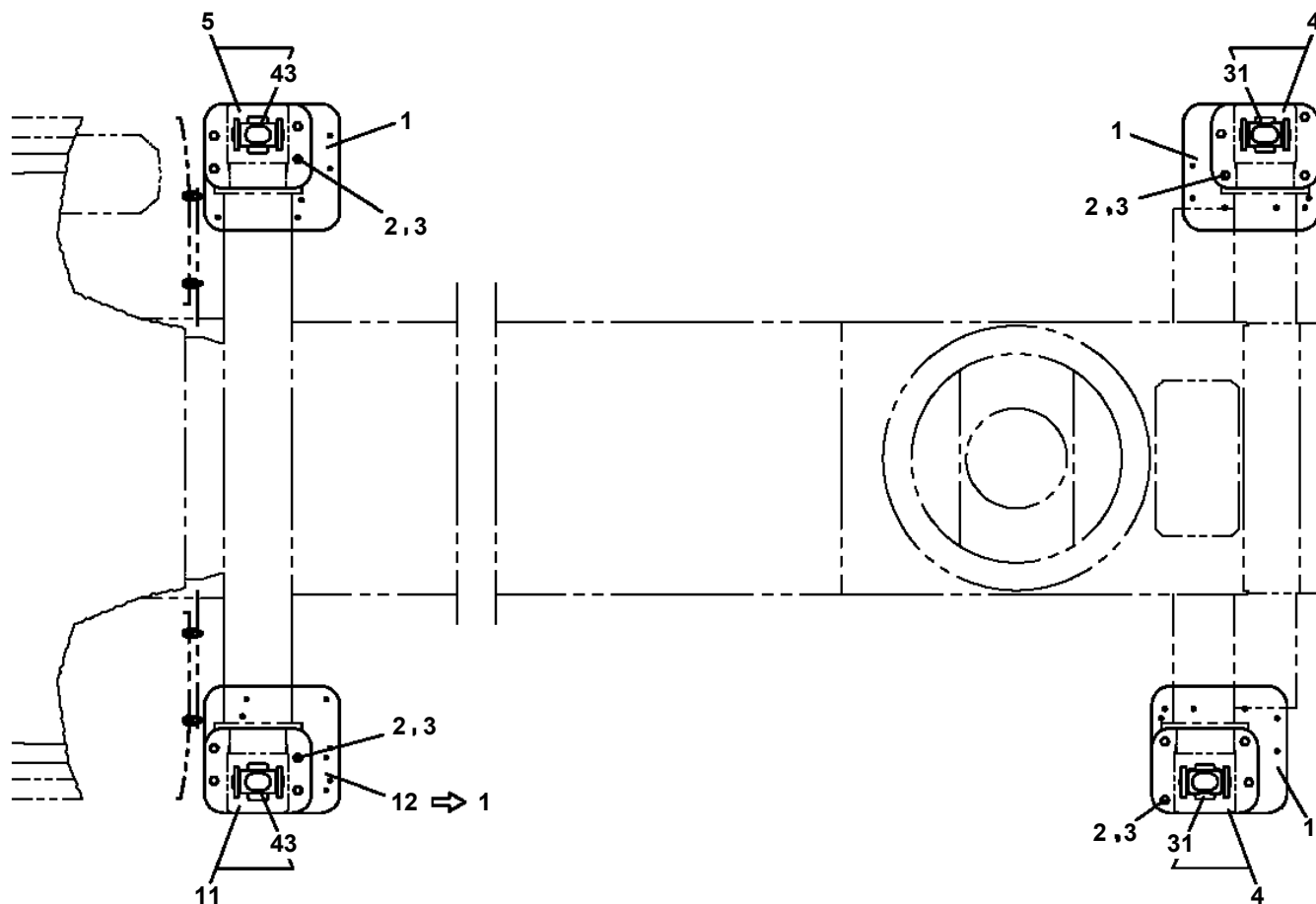
AT-146-3 43011100088 UPPER

Pos No.	Parts No	Parts Name	Qty	Unit	Technical Data	Serial No (Start)	Serial No (End)	Re
2	42202592000	BOOM, TOP	1					
3	42202593002	SADDLE	1					
4	42202594101	BOOM, 2ND	1					
5	42202599510	BOOM, BASE	1					
6	37001922851	ROPE, WIRE (TESAC)	2		8X4.795M			
7	37001922871	ROPE, WIRE (TESAC)	2		10X9.22M			
9	37000115380	PIN	1					
10	90238403008	NUT, CASTLE	1		M30X2			
11	80136360050	PIN, SPLIT	1		6X50			
12	90303073001	WASHER, PLAIN	1		30			
16	37000168750	PIN	1					
17	80601110300	RING, RITAINING	2		S30			
18	42202590051	PLATE	N		T=0.8			
19	42202590061	PLATE	N		T=0.5			
20	42202590330	PLATE	N		T=0.5			
21	37002019390	PLATE, SLIDE	2					
22	37002019400	PLATE, SLIDE	4					
23	37000586481	PLATE	N		T=0.6			
24	42202590011	PLATE	4					
25	42202590090	PLATE	4		T=0.5			
26	42202590200	PLATE	N		T=0.8			
27	90201701600	NUT	10		M16			
28	90303501601	WASHER, PLAIN	10		16			
29	42202590281	SPACER	10					
31	90302041001	WASHER, SPRING	48		10			
32	90180210045	BOLT, BUTTON	4		M10X45			
33	42202591003	FRAME	1					
37	90180210055	BOLT, BUTTON	4					
38	42202590360	PIN	2					
39	42200021510	PLATE	2					
40	37001007740	SHEAVE ASSY	2					
41	42202700120	PLATE	1		T=0.8			
42	42201630570	PLATE	N		T=2.3			
44	42202700130	PLATE	1		T=1.0			
45	37002018110	PLATE, SLIDE	2					
46	90180210025	BOLT, BUTTON	24		M10X25			
47	82455106000	NIPPLE, GREASE	4		A-M6F FE			
48	82400000459	CAP	1					
50	80601110200	RING, RITAINING	4		S20			
51	42202590220	PLATE	N		T=0.8			
52	42202590230	PLATE	N		T=0.5			
53	42202590240	PLATE	N		T=0.5			
54	42202590250	PLATE	N		T=1.0			
55	90172106008	BOLT, HEXAGON SOCKET	16		M6X8			
57	37002018070	PLATE, SLIDE	2					
58	37002018060	PLATE, SLIDE	4					
59	37000586470	PLATE	N		T=1.0			
60	37000586460	PLATE	N		T=1.0			
61	42202700111	PLATE	N		T=0.6			
62	37000155020	PIN	4					
	37000168230	PIN	4					
63	42202590210	PLATE	N		T=0.8	229213	229212	
64	37002018120	PLATE, SLIDE	2					
65	37000508520	PLATE	N		T=0.8			
66	80184306012	SCREW, MACHINE	4		M6X12			
67	37002006500	PLATE, SLIDE	2					
68	37002010340	PLATE, SLIDE	2					
69	90180210016	BOLT, BUTTON	8		M10X16			
70	37000176290	PIN	1					
71	37000303050	SPACER	2		L=9			
72	42202590100	SHEAVE ASSY	1					
73	80602110300	RING, RITAINING	2		R30			
74	31630482500	CAP	4					

AT-146-3 43011100088 UPPER

Pos No.	Parts No	Parts Name	Qty	Unit	Technical Data	Serial No (Start)	Serial No (End)	Remarks	Pages
1	42512340000	BELT	1						

**AT-146-3 43011100088 UPPER
PC1070009-00 FLOAT (FOR FRONT LONG JACK/LARGE SIZE RUBBER)**



(いすゞのみ)

AT-146-3 43011100088 UPPER

Pos No.	Parts No	Parts Name	Qty	Unit	Technical Data	Serial No (Start)	Serial No (End)	R
91	37000927760	JOINT	1					
92	80302090151	FITTING	1		KCO12-040N			
94	80400160127	JOINT	3					
96	80430620400	JOINT	1					
101	80303130241	FITTING,ELBOW	1		KLO18-040E			
102	80491304040	JOINT (WITH O-RING)	1					
106	80303130171	FITTING,ELBOW	1		KLO12-040E			
107	37000908730	JOINT (WITH O-RING)	5		L,G3/8-G1/4			
108	80491303020	JOINT (WITH O-RING)	4		L,G3/8-G1/4			
110	37000927930	JOINT	1					
111	80430620800	JOINT	1					
121	36646360000	VALVE,SOLENOID	2					
122	80491403020	JOINT (WITH O-RING)	2					
123	91002801400	O-RING	12		1B P14			
132	80302090121	FITTING	1		KCO10-030N			
142	82400000200	GROMMET	1		KG-012,L=250			

AT-146-3 43011100088 UPPER

Pos No.	Parts No	Parts Name	Qty	Unit	Technical Data	Serial No (Start)	Serial No (End)
1	42614582100	CASE,INNER	1				
2	42613851201	CASE,INNER	1				
4	36035010000	CYLINDER,JACK	1				
5	42505670100	FLOAT ASSY	1				
6	37000131820	PIN	1				
7	80601110300	RING,RITAINING	2		S30		
8	37000112330	PIN	1				
9	80601110350	RING,RITAINING	2		S35		
10	36625740001	VALVE,CHECK	1				
11	90171108050	BOLT	4		M8X50		
12	37000138750	PIN	1		18		
13	80136332036	PIN,SPLIT	2		3.2X36		
14	80400160127	JOINT	1				
15	91002801100	O-RING	1		1B P11		
16	36672460000	FILTER (NIPPLE TYPE)	1				
17	42612851010	COVER	1				
18	90186206014	BOLT,FLANGE	2		M6X14		
19	37000112320	PIN	1				
20	80601110120	RING,RITAINING	2		S12		
21	91810130240	FASTENER	1				
22	31201770100	PLATE,SLIDE	8		T=3.0		
23	90280200600	NUT,FLANGE	2		M6		
24	37000600700	CLAMP	2		12X3		
25	82100002005	CLAMP	1		WRC8		
26	90186208010	BOLT,FLANGE	1		M8X10		
27	37002016610	PLATE,SLIDE	2				
28	80184306010	SCREW,MACHINE	2		M6X10		
29	82467300106	PLUG	4				
41	36042810000	CYLINDER,EXTENSION (FRONT)	1				
42	80400160127	JOINT	2				
43	91002801100	O-RING	3		1B P11		
44	37002421410	HOSE,TWIN	1		L=2150		
45	42614642110	HARNESS	1				
46	91810130240	FASTENER	15				
63	42610263100	TRUNNION	1				
100	42614642002	CASE ASSY,INNER (FRONT,RIGHT)	1				

AT-146-3 43011100088 UPPER

Pos No.	Parts No	Parts Name	Qty	Unit	Technical Data	Serial No (Start)	Serial No (End)
1	42614584101	CASE ASSY,INNER	1				
2	42613851201	CASE,INNER	1				
4	36035010000	CYLINDER,JACK	1				
5	42505670100	FLOAT ASSY	1				
6	37000131820	PIN	1				
7	80601110300	RING,RITAINING	2		S30		
8	37000112330	PIN	1				
9	80601110350	RING,RITAINING	2		S35		
10	36625740001	VALVE,CHECK	1				
11	90171108050	BOLT	4		M8X50		
12	37000138750	PIN	1		18		
13	80136332036	PIN,SPLIT	2		3.2X36		
14	80400160127	JOINT	1				
15	91002801100	O-RING	1		1B P11		
16	36672460000	FILTER (NIPPLE TYPE)	1				
17	42612851010	COVER	1				
18	90186206014	BOLT,FLANGE	2		M6X14		
19	37000112320	PIN	1				
20	80601110120	RING,RITAINING	2		S12		
21	91810130240	FASTENER	1				
22	31201770100	PLATE,SLIDE	8		T=3.0		
23	90280200600	NUT,FLANGE	2		M6		
24	37000600700	CLAMP	2		12X3		
25	82100002005	CLAMP	1		WRC8		
26	90186208010	BOLT,FLANGE	1		M8X10		
27	37002016610	PLATE,SLIDE	2				
28	80184306010	SCREW,MACHINE	2		M6X10		
29	82467300106	PLUG	4				
41	36042810000	CYLINDER,EXTENSION (FRONT)	1				
42	80400160127	JOINT	2				
43	91002801100	O-RING	3		1B P11		
44	37002421410	HOSE,TWIN	1		L=2150		
45	42614642110	HARNESS	1				
46	91810130240	FASTENER	15				
63	42610263100	TRUNNION	1				
100	42614644001	CASE ASSY,INNER (FRONT,RIGHT)	1				

AT-146-3 43011100088 UPPER

Pos No.	Parts No	Parts Name	Qty	Unit	Technical Data	Serial No (Start)	Serial No (End)	Remarks
1	42272361102	COVER	1					
2	42272361201	COVER	1					
3	42272361300	COVER	1					
4	90101206016	BOLT	6		M6X16			
5	80172803008	SCREW,MACHINE	8		M3X8			
6	90201500300	NUT	8		M3			
7	90302510301	WASHER,SPRING (SUS 3)	8					
8	82466100702	CATCH	2					
9	80172804012	SCREW,MACHINE	12		M4X12			
10	90201500400	NUT	12		M4			
11	90302510401	WASHER,SPRING	12		4			
12	82464110305	HINGE	2					
13	90302040601	WASHER,SPRING	6		6			
14	90303070601	WASHER,PLAIN	6		6			
100	42272361003	COVER ASSY	1					

AT-146-3 43011100088 UPPER

Pos No.	Parts No	Parts Name	Qty	Unit	Technical Data	Serial No (Start)	Serial No (End)
1	42972390000	CUTTER HEAD ASSY (YONDENKO/SAFETY HOSE)	1				

AT-146-3 43011100088 UPPER

Pos No.	Parts No	Parts Name	Qty	Unit	Technical Data	Serial No (Start)	Serial No (End)	Remarks
3	91280439941	SEAL,OIL	1					
4	36081565010	CASE,GEAR	1					
5	80515006312	BEARING,BALL	1					
6	36081395040	KEY	1					
7	36081395050	WHEEL,WORM	1		4X32-34			
8	90102510025	BOLT	6		M10X25			
9	90302041001	WASHER,SPRING	6		10			
10	80516006211	BEARING,BALL	1					
11	80601110550	RING,RITAINING	1		S55			
12	36081395060	CASE,GEAR	1					
13	36072725350	BEARING,TAPER ROLLER	1					
14	36081395070	WORM	1		4X20			
15	36081325110	BEARING,TAPER ROLLER	1					
16	36081325080	SHIM SET	1					
17	36081325010	SPACER	1					
18	36081325090	RING,SNAP	1					
19	36080495090	GAUGE,OIL	1					
20	36080235080	WASHER,SEAL	1		M16			
21	80316090040	PLUG SOCKET	1		R1/4			
31	36081395500	GEAR,SPUR	1					
50	36081560000	REDUCER,SWING SPEED	1					

AT-146-3 43011100088 UPPER

Pos No.	Parts No	Parts Name	Qty	Unit	Technical Data	Serial No (Start)	Serial No (End)	Remarks	Pages
1	(*****)	REEL ASSY,CORD	1						00022
2	42512320100	SUPPORT	1						
3	42512320200	SUPPORT	1						
4	90101208020	BOLT	2		M8X20				
5	90302040801	WASHER,SPRING	2		8				
6	42421721500	CABLE ASSY	1		L=700				

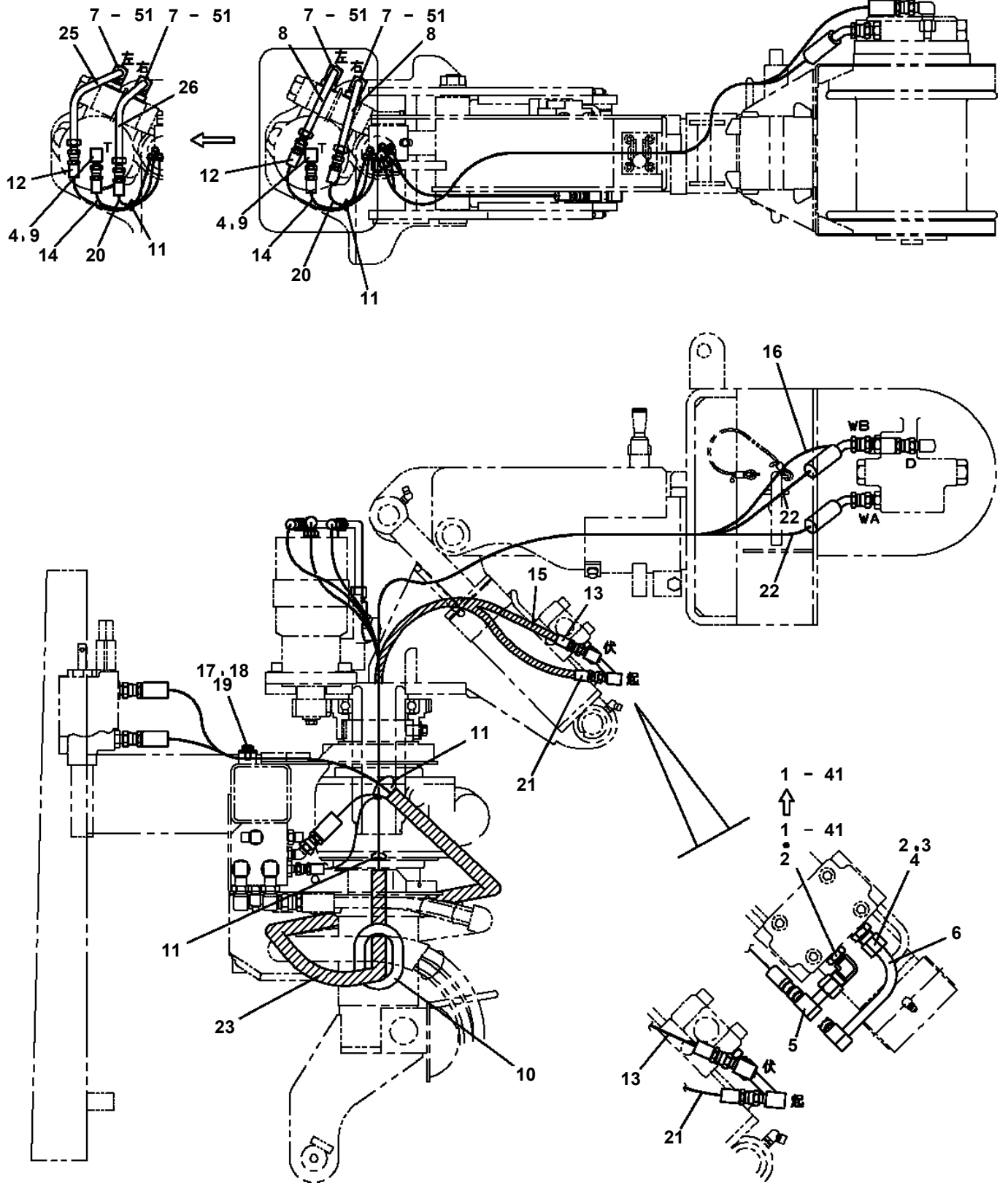
AT-146-3 43011100088 UPPER

Pos No.	Parts No	Parts Name	Qty	Unit	Technical Data	Serial No (Start)	Serial No (End)
1	42901450100	HARNESS	1				229051
	42901450101	HARNESS	1			229052	
2	91810132530	FASTENER	10				
3	42901921000	PANEL ASSY,CONTROL	1				
4	80192486014	SCREW,MACHINE (WITH WASHER)	4		M6X14		
5	42901922000	RELAY BOX ASSY	1				229051
	42901922001	RELAY BOX ASSY	1			229052	
6	90101210014	BOLT	4		M10X14		
7	90302041001	WASHER,SPRING	4		10		
8	80182406014	SCREW,MACHINE	2		M6X14		
9	42901450200	SUPPORT	1				
10	90101208018	BOLT	5		M8X18		
11	90302040801	WASHER,SPRING	5		8		
12	82100002016	CLAMP	1		WR25		
13	90186208014	BOLT,FLANGE	1		M8X14		
14	82100001802	TUBE,CORRUGATE	1	M	10		
15	37002700660	CABLE	1		L=2360		
16	42901453000	BOX ASSY	1				
17	90302040601	WASHER,SPRING	1		6		
18	90101206012	BOLT	1		M6X12		

AT-146-3 43011100088 UPPER

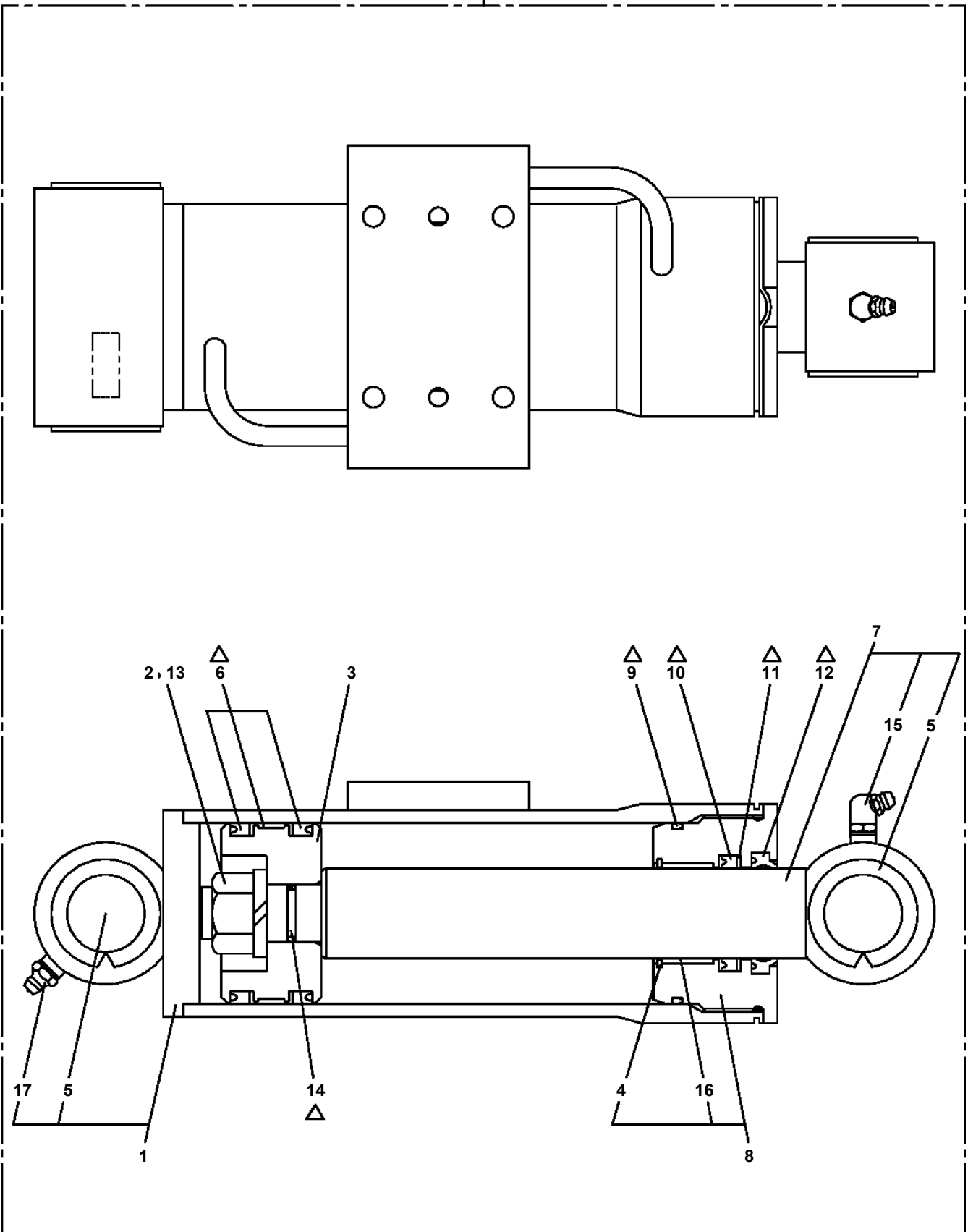
Pos No.	Parts No	Parts Name	Qty	Unit	Technical Data	Serial No (Start)	Serial No (End)	Remarks
1	36073825050	DRUM	1					
5	36072495040	SHAFT	1					
6	36073825140	GEAR,INPUT	1					
10	36072495080	BUSH	1					
12	36072495090	RING,RETAINING	1					
13	36072495100	RING	1					
14	36072495110	DISTANCE PIECE	2					
15	36073825060	SEAL,OIL	1					
16	36072495130	SEAL,OIL	1					
17	36072495140	PIN	26					
18	36073825030	PIN	2					
19	36073825040	BOLT,HEXAGON SOCKET	4					
20	36072495150	BEARING,BALL	1					
21	36072495160	BEARING,BALL	1					
24	36072495170	RING,RETAINING	2					
25	80601110170	RING,RITAINING	4		S17			
26	36072495180	RING,RETAINING	1					
27	91002800900	O-RING	1		1B P9			
30	91001012500	O-RING	1		S125			
33	80316030060	PLUG	2		PT3/8			
34	36072495190	ORIFICE	1					
102	36072495220	SHAFT	1					
103	36072495230	PLATE,THRUST	1					
104	36072495240	BLOCK,CYLINDER	1					
107	36661055260	PLATE (RETAINER)	1					
108	36661055270	PLATE,THRUST	1					
109	36072495260	PLATE,TIMING	1					
110	36072495270	WASHER	2					
112	36073825090	PISTON	1					
113	36072495290	SPRING	2					
114	36072495300	SPRING	1					
115	36661055350	PLATE (FRICTION)	2					
116	36661055360	PLATE (MATING)	2					
118	91002910500	O-RING	1		1B G105			
119	91002912000	O-RING	1		1B G120			
120	91002801200	O-RING	1		1B P12			
121	91002802200	O-RING	2		1B P22			
123	36072495310	PLUG	2					
124	36073825100	STOPPER	1					
125	36072495330	STOPPER	1					
126	36072495340	SPRING	2					
127	36073825110	SPRING	1					
128	36072495350	THROTTLE	2					
129	36661055400	PLUG	1					
130	36661055410	VALVE	1					
131	36661055420	SPRING	1					
132	36661055440	SEAL,OIL	1		15Z-17X35X8			
133	36663495450	BEARING,BALL	1					
134	36072495390	BEARING,BALL	1					
135	36072495400	PIN (STRAIGHT)	2		5X12			
136	80730080020	PIN (STRAIGHT)	2		8X20			
137	36073825120	ROLLER,NEEDLE	3					
138	36072495370	RING,RETAINING	1					
139	90131908025	BOLT,HEXAGON SOCKET	6		M8X25			
143	36661055450	RING,RETAINING	1					
300	36073825010	REDUCER ASSY	1					
310	36073825020	SPINDLE KIT	1					
320	36072495030	GEAR ASSY (RV)	1					
330	36072495070	GEAR,SPUR (2PIECES)	1					
400	36073825070	MOTOR ASSY	1					
410	36073825080	FLANGE SET(REAR)	1					
420	36072495250	PISTON KIT	1					
490	36073825130	SEAL KIT	1					

**AT-146-3 43011100088 UPPER
PF1200428-01 PIPING,WINCH**



AT-146-3 43011100088 UPPER
PF1360007-01 CYLINDER,WINCH JIB

50



Δ:PACKING SET KEY NO.30 (KEY NO.6,9,10,11,12,14)

AT-146-3 43011100088 UPPER

Pos No.	Parts No	Parts Name	Qty	Unit	Technical Data	Serial No (Start)	Serial No (End)	Re
76	80602110400	RING,RITAINING	2		R40			
77	37000176300	PIN	2					
78	80601110400	RING,RITAINING	2		S40			
79	37000176310	PIN	1					
80	37000403580	BEARING,PLAIN (DAIDO METAL)	2					
82	42202700200	SUPPORT	1					
84	90171116050	BOLT	10		M16X50			
85	90309341601	WASHER,CONICAL SPRING	20		16			
86	90171116040	BOLT	10		M16X40			
87	90171112035	BOLT	2		M12X35			
88	90202481200	NUT	4		M12			
89	37002018080	PLATE,SLIDE	2					
90	37002018100	PLATE,SLIDE	4					
91	37000513150	PLATE	N		T=0.5			
92	90201781200	NUT	2		M12			
93	90302041201	WASHER,SPRING	6		12			
94	89631601000	HOSE,VINYL	1		15X20,1M			
95	91810130240	FASTENER	2					
96	90202481600	NUT	4		M16			
97	90174110030	BOLT	2		M10X30			
98	37000573180	PLATE	1					
99	37000144700	PIN	1					
100	90174110020	BOLT	2		M10X20			
101	37000524070	PLATE	1		T=6			
102	37000168250	PIN	1					
103	42202590320	ROLLER	2			228631	228630	
	42201520030	ROLLER	2					
104	42202120100	PLATE	2					
105	90171110018	BOLT	4		M10X18			
106	90303071001	WASHER,PLAIN	4		10			
108	90180212030	BOLT,BUTTON	4		M12X30			
109	90303071201	WASHER,PLAIN	4		12			
110	42202590300	PLATE	2					
111	42202590310	PLATE	2					
112	42202590340	PLATE	N		T=0.8			
113	90180210020	BOLT,BUTTON	8		M10X20			
114	42202700251	SUPPORT	1					
115	42202590130	PLATE	N		T=0.2			
131	42201700110	ROLLER ASSY	1					
132	37000180121	PIN	1					
133	90238402408	NUT,CASTLE	1		M24			
134	90303072401	WASHER,PLAIN	1		24			
135	80136350045	PIN,SPLIT	1		5X45			
142	42201460370	PLATE	N		T=0.8			
143	80184306020	SCREW,MACHINE	2		M16X20			
152	80513006012	BEARING,BALL	2					
153	80612110950	RING,RITAINING	2		AR95			
161	37002011650	PLATE,SLIDE	2					
164	42202050310	RETAINER	2					
172	80513006206	BEARING,BALL	4					
182	80602110620	RING,RITAINING	2		R62			
191	80801003012	BEARING,PLAIN	2					
192	80601110250	RING,RITAINING	4		S25			
193	42201700120	PLATE	2					
194	37000179820	PIN	2					
195	42201700150	ROLLER ASSY	2					
196	37000312280	SPACER	4					
201	80513006005	BEARING,BALL	8					
211	42202590180	PLATE	2					
222	42202700410	PLATE	2					

AT-146-3 43011100088 UPPER

Pos No.	Parts No	Parts Name	Qty	Unit	Technical Data	Serial No (Start)	Serial No (End)	Remarks	Pages
1	42267243101	COVER	1						
2	42267243201	COVER	1						
3	90183108015	BOLT	6		M8X15				

AT-146-3 43011100088 UPPER

Pos No.	Parts No	Parts Name	Qty	Unit	Technical Data	Serial No (Start)	Serial No (End)	Remarks
1	42739931100	VIEW SYSTEM (MAIN UNIT)	1					
2	91810130240	FASTENER	10					

AT-146-3 43011100088 UPPER

Pos No.	Parts No	Parts Name	Qty	Unit	Technical Data	Serial No (Start)	Serial No (End)	Remarks
1	42739693110	DISPLAY	1					
2	42739931300	CABLE	1					
3	42739931150	CAMERA	1					
4	42807471210	CABLE (MONITOR SIDE)	1					
5	42807471220	CABLE (CAMERA SIDE)	1					
30	42739951100	VIEW SYSTEM (MAIN UNIT)	1					

AT-146-3 43011100088 UPPER

Pos No.	Parts No	Parts Name	Qty	Unit	Technical Data	Serial No (Start)	Serial No (End)	Remarks
2	42739697510	CABLE ASSY	1					
3	42739697540	CABLE ASSY	1					
4	42739697520	CLIP	1					
5	42739697530	REMOTE CONTROL ASSY	1					
100	42739931110	DISPLAY	1					

AT-146-3 43011100088 UPPER

Pos No.	Parts No	Parts Name	Qty	Unit	Technical Data	Serial No (Start)	Serial No (End)	Remarks	Pages
27	82182809623	DIODE	1						
50	42901450100	HARNESS	1						

AT-146-3 43011100088 UPPER

Pos No.	Parts No	Parts Name	Qty	Unit	Technical Data	Serial No (Start)	Serial No (End)	Remarks	Pages
100	42356400021	HARNESS	1						

AT-146-3 43011100088 UPPER

Pos No.	Parts No	Parts Name	Qty	Unit	Technical Data	Serial No (Start)	Serial No (End)	Remarks	Pages
100	42356350200	HARNESS	1						

AT-146-3 43011100088 UPPER

Pos No.	Parts No	Parts Name	Qty	Unit	Technical Data	Serial No (Start)	Serial No (End)	Remarks	Pages
100	42900020200	HARNESS	1						

AT-146-3 43011100088 UPPER

Pos No.	Parts No	Parts Name	Qty	Unit	Technical Data	Serial No (Start)	Serial No (End)	Remarks	Pages
100	42504641200	HARNESS	1						

AT-146-3 43011100088 UPPER

Pos No.	Parts No	Parts Name	Qty	Unit	Technical Data	Serial No (Start)	Serial No (End)	Remarks	Pages
32	34351562510	BOX,FUSE	1						
33	82100001841	FUSE	3		20A,YELLOW				
35	82100001839	FUSE	7		10A.RED				
52	82100001836	FUSE	2		3A				
55	82100001840	FUSE	2		15A,BLUE				
69	82182819823	DIODE	5		1.5A				
100	42654240102	HARNESS (MAIN)	1						

AT-146-3 43011100088 UPPER

Pos No.	Parts No	Parts Name	Qty	Unit	Technical Data	Serial No (Start)	Serial No (End)	Remarks	Pages
100	42800040030	HARNESS	1						

AT-146-3 43011100088 UPPER

Pos No.	Parts No	Parts Name	Qty	Unit	Technical Data	Serial No (Start)	Serial No (End)	Remarks	Pages
1	36642715020	BODY	1						
2	36646365010	VALVE,SOLENOID	1						
21	36640075020	NUT	1						
22	36640495010	COIL,SOLENOID	1						
23	91002801600	O-RING	1		1B P16				
24	91001102100	O-RING	1		1A P21				
25	36642465220	O-RING	1						
26	91001003800	O-RING	1		S38				
27	36645735010	CONNECTOR	1						
100	36646360000	VALVE,SOLENOID	1						

AT-146-3 43011100088 UPPER

Pos No.	Parts No	Parts Name	Qty	Unit	Technical Data	Serial No (Start)	Serial No (End)	Remarks	Pages
12	91002801400	O-RING	2		1B P14				
	91002801400	O-RING	2		1B P14				
100	36625740001	VALVE,CHECK	1						
	36625740001	VALVE,CHECK	1						

AT-146-3 43011100088 UPPER

Pos No.	Parts No	Parts Name	Qty	Unit	Technical Data	Serial No (Start)	Serial No (End)	Remarks	Pages
1	42267241000	BUCKET	1						

CLICK HERE TO **DOWNLOAD** THE COMPLETE MANUAL

- Thank you very much for reading the preview of the manual.
- You can download the complete manual from: www.heydownloads.com by clicking the link below



- Please note: If there is no response to CLICKING the link, please download this PDF first and then click on it.

CLICK HERE TO **DOWNLOAD** THE COMPLETE MANUAL

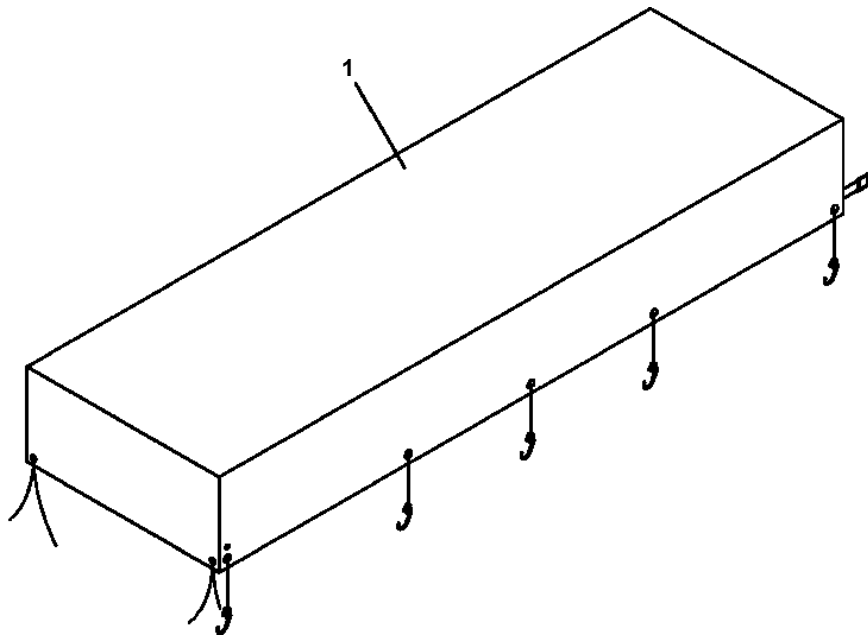
AT-146-3 43011100088 UPPER

Pos No.	Parts No	Parts Name	Qty	Unit	Technical Data	Serial No (Start)	Serial No (End)	Remarks	P
1	42267244000	COVER (CLOTH,WHITE)	1						

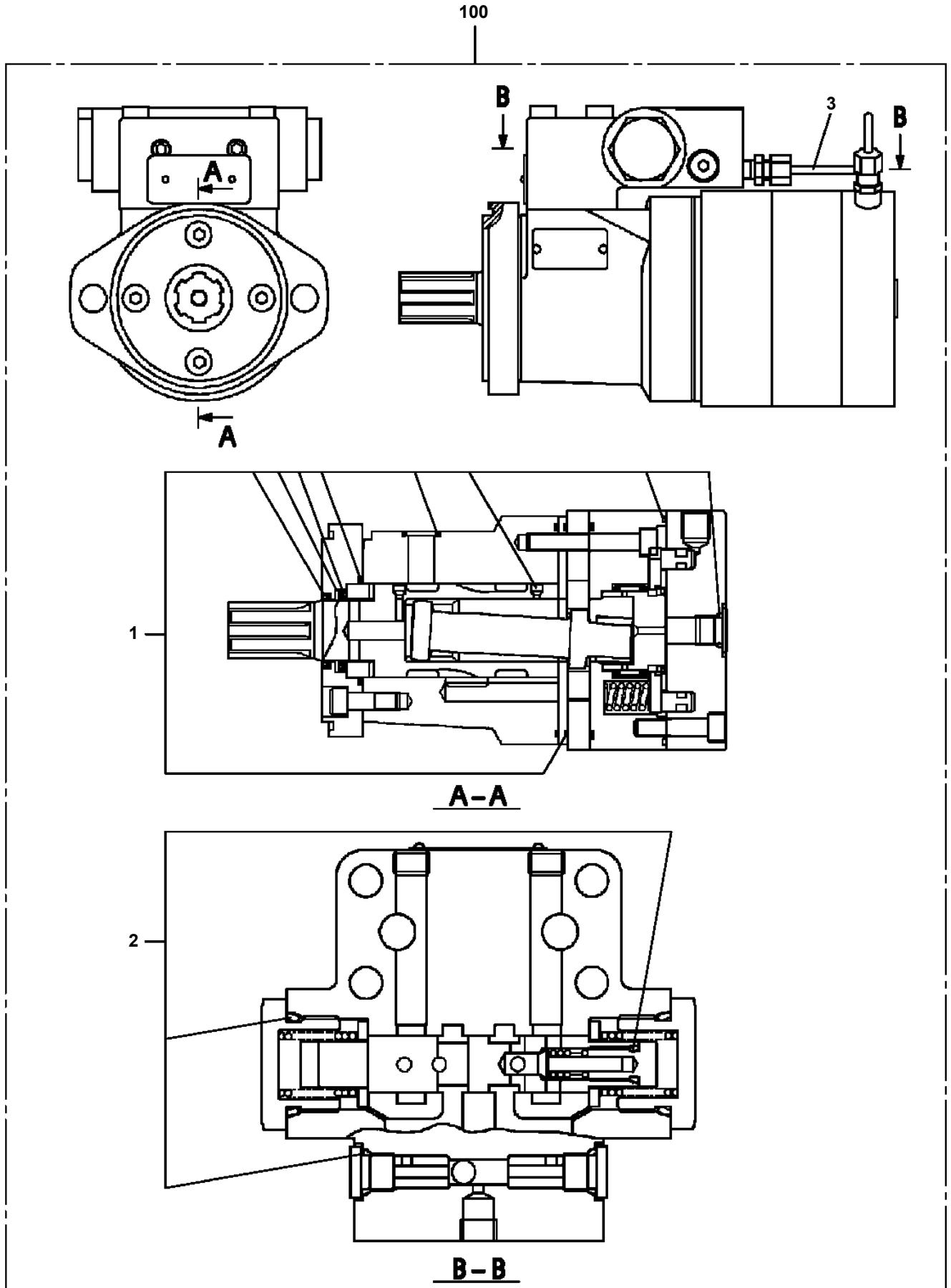
AT-146-3 43011100088 UPPER

Pos No.	Parts No	Parts Name	Qty	Unit	Technical Data	Serial No (Start)	Serial No (End)	Remarks	Pages
1	42232191000	TABLE,SLEWING	1						
2	31630482500	CAP	1						
3	37001500250	BOLT	15		M16X70				
4	90303501601	WASHER,PLAIN	15		16				
5	37000507560	PLATE	1						
6	90171110022	BOLT	3		M10X22				
7	90302041001	WASHER,SPRING	3		10				
8	37000112690	PIN	1						
9	37000509190	PLATE	1						
10	90171112030	BOLT	2		M12X30				
11	90302041201	WASHER,SPRING	2		12				
12	37000175720	PIN	1						
13	42230210010	PIN	1						
14	37000505950	PLATE	1		T=3.2				
15	37000507730	PLATE	1						
16	90171320045	BOLT	1		M20X45				
17	90302042001	WASHER,SPRING	1		20				
19	82420404813	TRIM	3	M					
21	82459103000	NIPPLE,GREASE	1		C-PT1/8				
22	82400000459	CAP	1						

AT-146-3 43011100088 UPPER
PK1330432-00 COVER (RACK,L)



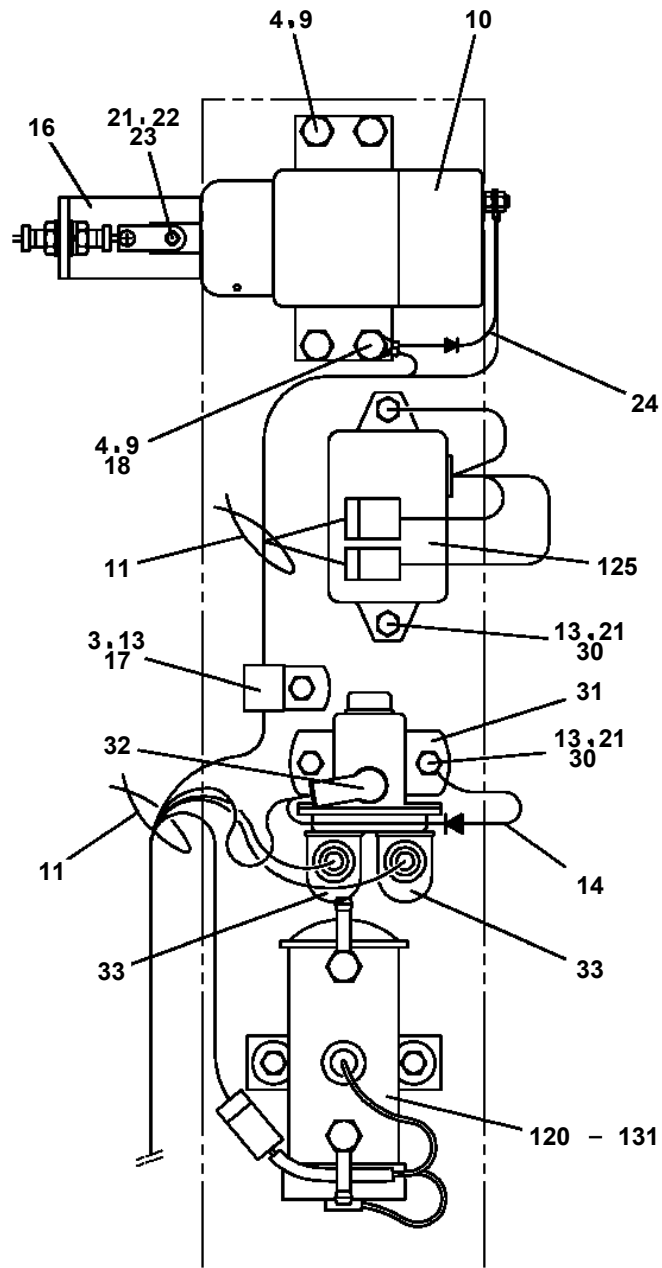
AT-146-3 43011100088 UPPER
PM5210007-01 MOTOR ASSY,OIL



AT-146-3 43011100088 UPPER

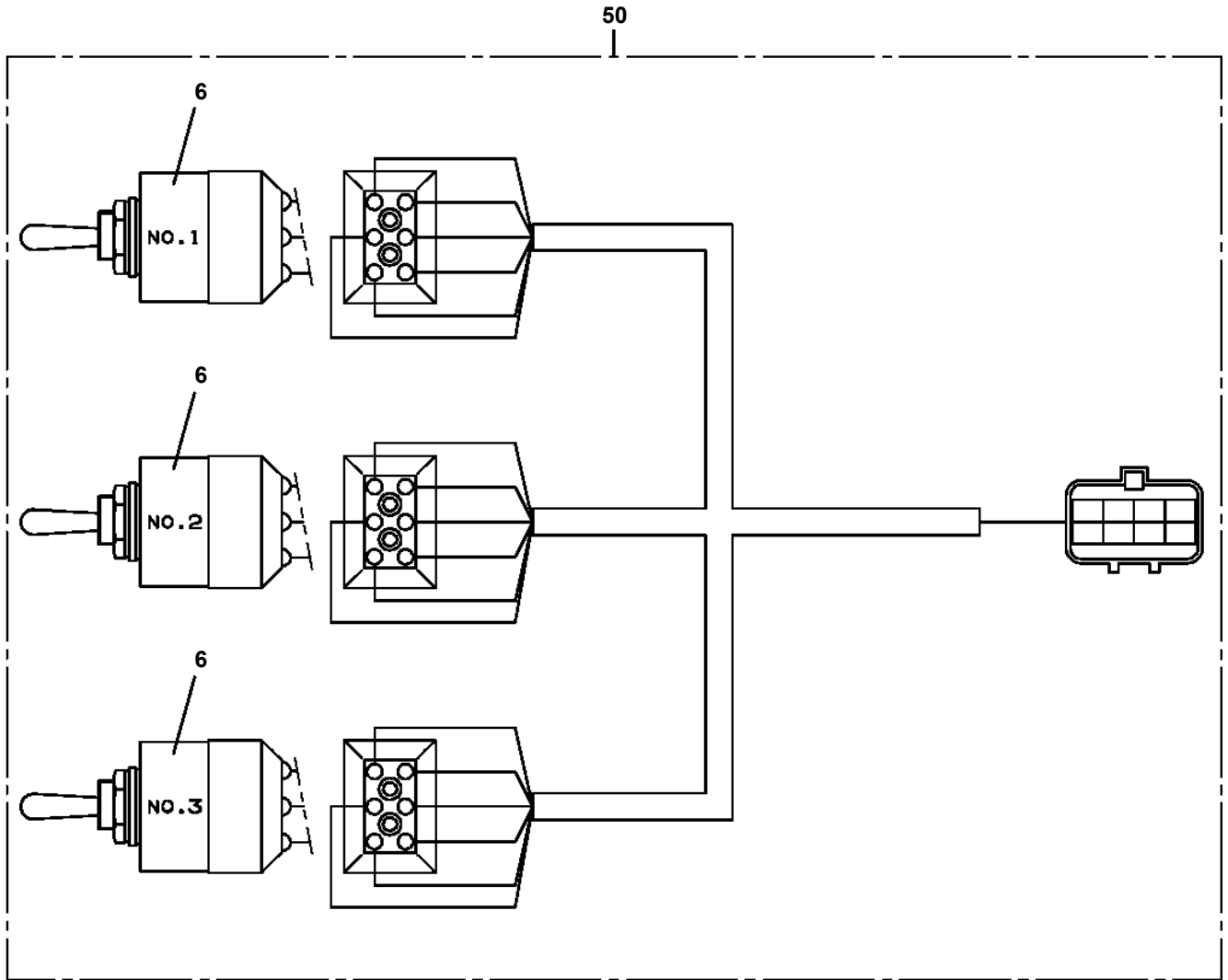
Pos No.	Parts No	Parts Name	Qty	Unit	Technical Data	Serial No (Start)	Serial No (End)	Remarks
1	42354820200	HARNESS	1					
2	37000300720	SLEEVE	3		12-10			
5	42356350101	SUPPORT	1					
6	42352350300	HARNESS	1					
7	90171110016	BOLT	4		M10X16			
8	90302040801	WASHER,SPRING	2		8			
9	90303070801	WASHER,PLAIN	2		8			
10	91810130240	FASTENER	N					
11	90171108020	BOLT	2		M8X20			
12	42352350400	HARNESS	1					
13	42356350200	HARNESS	1					
14	90302040601	WASHER,SPRING	4		6			
15	90201200600	NUT	1		M6			
16	80172804006	SCREW,MACHINE	4		M4X6			
17	82100002002	CLAMP	1		WR6			
18	90101206012	BOLT	3		M6X12			
19	90172110025	BOLT,HEXAGON SOCKET	2		M10X25			
20	90302041001	WASHER,SPRING	6		10			
21	90303071001	WASHER,PLAIN	6		10			
24	82100002012	CLAMP	2		WR18			
42	42353341500	SUPPORT	1					
43	80172804020	SCREW,MACHINE	4		M4X20			
45	90172105012	BOLT,HEXAGON SOCKET	2		M5X12			
46	90302040501	WASHER,SPRING	2		5			
54	16311103000	SPRING	1					
55	42353342060	SCREW,SET	2		M6X35			
56	90201200600	NUT	2		M6			
60	80801001415	BEARING,PLAIN	2					
62	90201200500	NUT	2		M5			
63	80820001010	BEARING,PLAIN	2					
64	80801001010	BEARING,PLAIN	2					
71	42356351200	TERMINAL	2					
74	42356351300	SUPPORT	1					
81	42356352200	TERMINAL	2					
83	90201200800	NUT	2		M8			
87	90303071401	WASHER,PLAIN	4		14			
88	90101208045	BOLT	2		M8X45			
89	42356352500	SUPPORT	1					
91	90720005200	SCREW,SET	2		M5X16		229556	
	90720705200	SCREW,SET	2		M5X20	229557		
95	90302040801	WASHER,SPRING	2		8			
96	90303070801	WASHER,PLAIN	2		8			
112	42356352301	SUPPORT	2					
120	42356352401	SPACER	2		L=20.5			
201	42356351003	TERMINAL ASSY	1					
212	42356352002	TERMINAL ASSY	1					

**AT-146-3 43011100088 UPPER
PN1015065-02 ELEC.ASSY (ENGINE UNIT)**

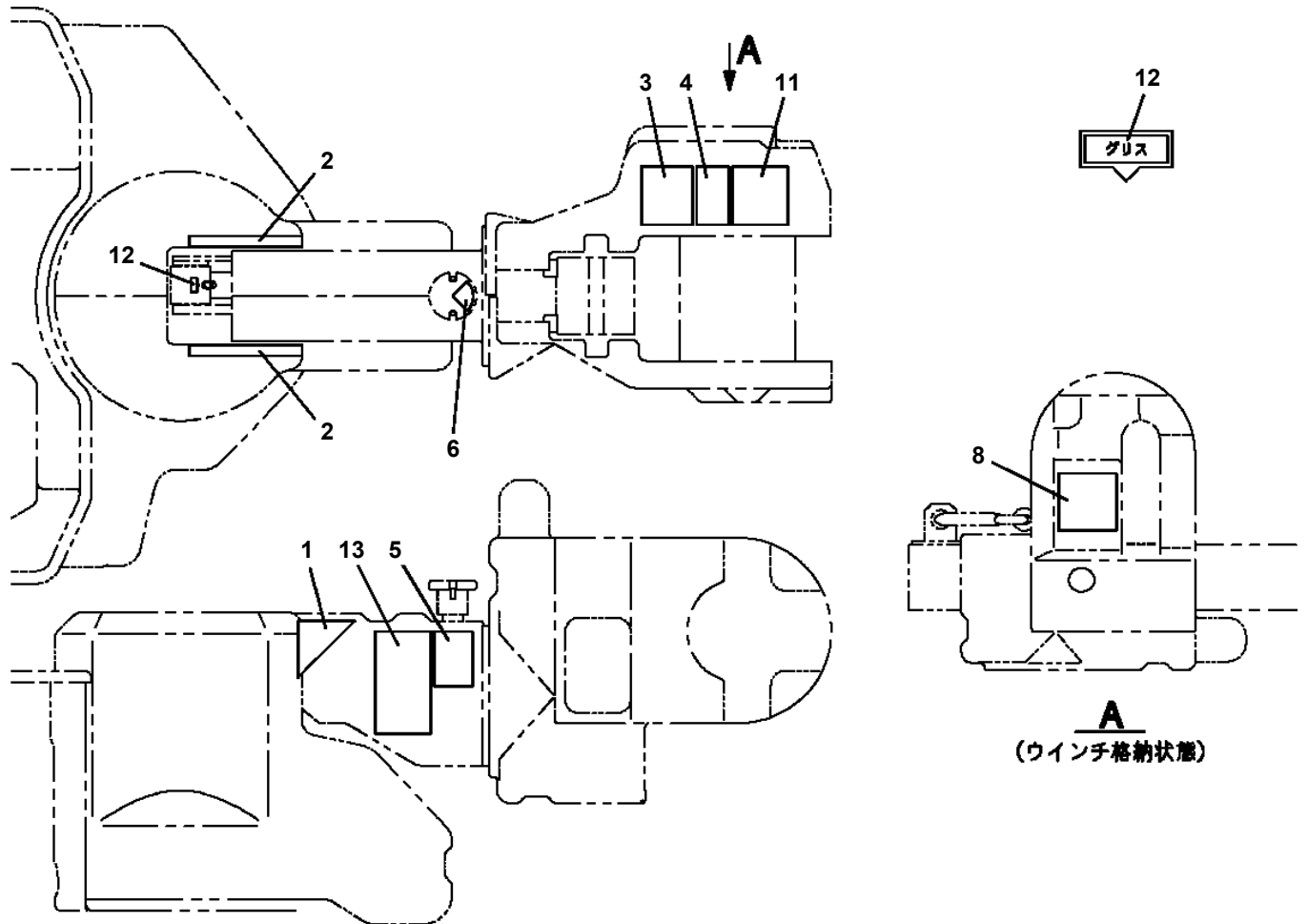


B

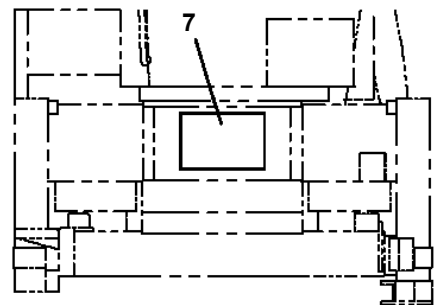
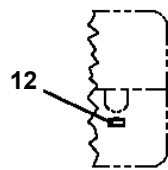
**AT-146-3 43011100088 UPPER
PN1140164-00 SWITCH ASSY (WITH HARNESS,3 SW)**



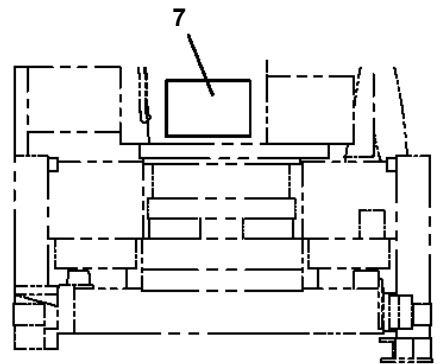
AT-146-3 43011100088 UPPER
 PN5010113-01 NAME PLATE ASSY (WINCH)



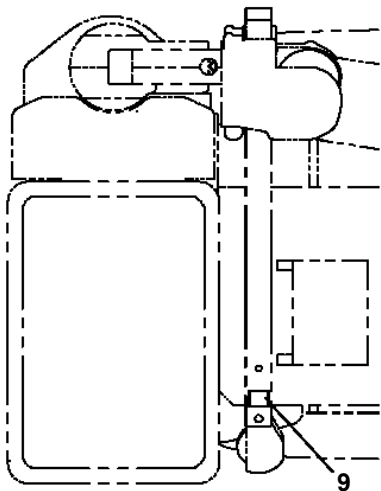
A
 (ウインチ格納状態)



下部リモコン (OP) 非装着車



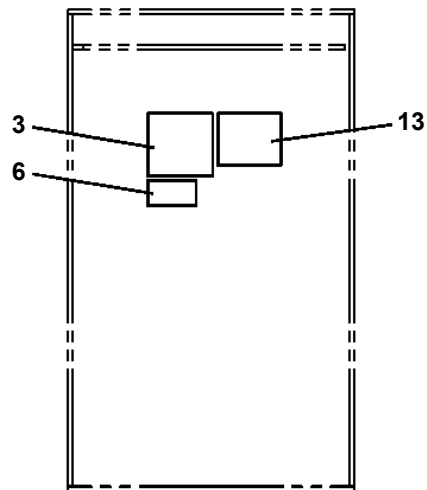
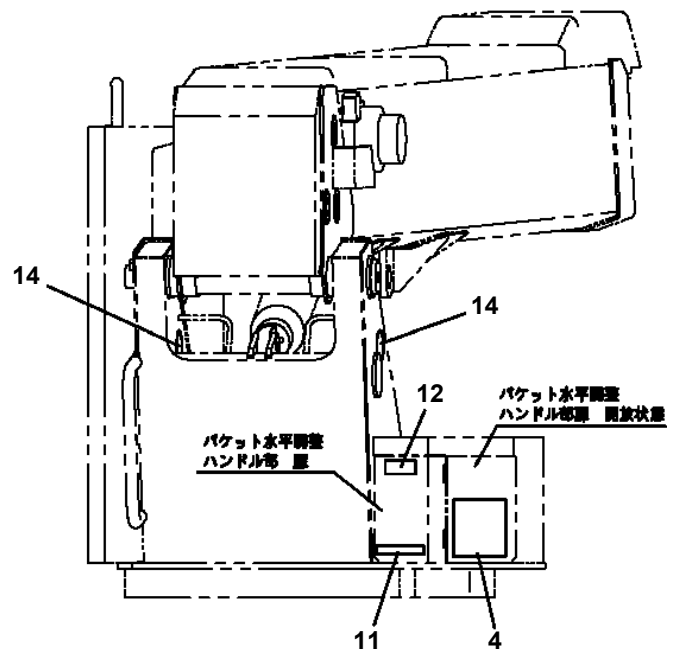
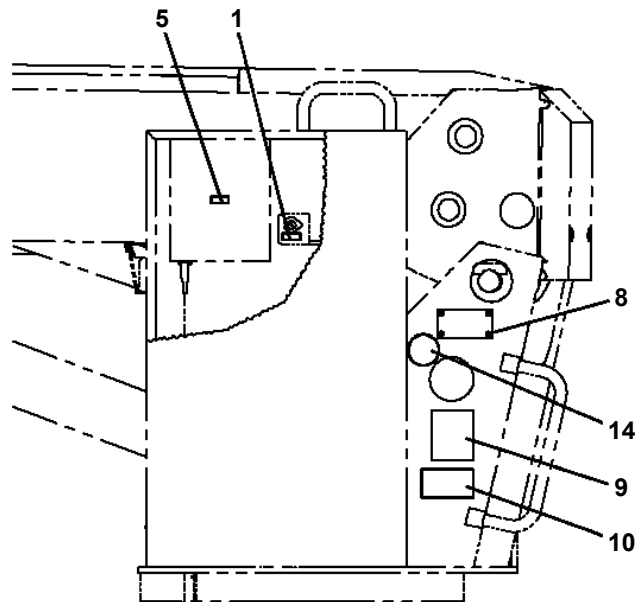
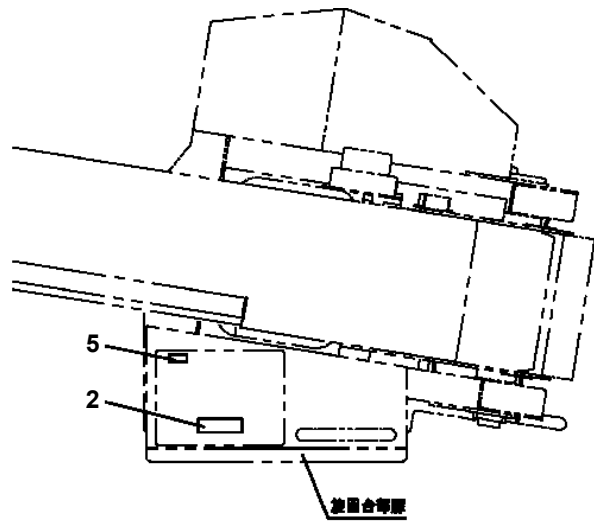
下部リモコン (OP) 装着車



バケット部

サブフレーム部

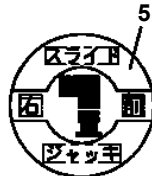
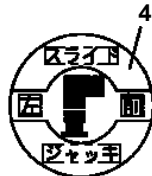
AT-146-3 43011100088 UPPER
 PO1014999-01 PLATE ASSY,NAME (SWING FRAME)



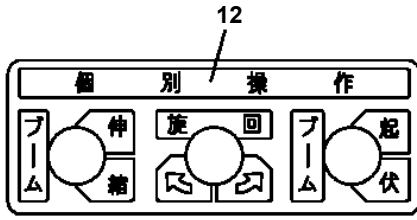
旋回合部裏内側

AT-146-3 43011100088 UPPER
PO1015455-03 PLATE ASSY,NAME (OUTRIGGER CONTROLS)

1
カバー開放厳禁



8
洗浄禁止



13
△警告/非常スイッチ
非常スイッチを使用すると安全装置は機能しません。従後の操作がなされますので必ずブームを後退してからアウトリガ操作をしてください。

非常操作方法
AMCの故障等で通常の操作ができない場合、緊急時限りの操作方法にしたがって、ブームを後退してください。その後、非常スイッチをONにしてからアウトリガを後退してください。

14
△警告/使用上の注意

- 本機の設置は所定作業手順書に従って行なわれなければなりません。
- 取扱説明書をよく読み、安全および取扱い方法を理解してから使用してください。
- 作業開始前点検を実施してください。
- ヘルメット・安全帯を着用してください。
- 作業荷重を守ってください。
- 作業範囲内で作業しないでください。
- 強風・雷などの悪天候時には作業しないでください。

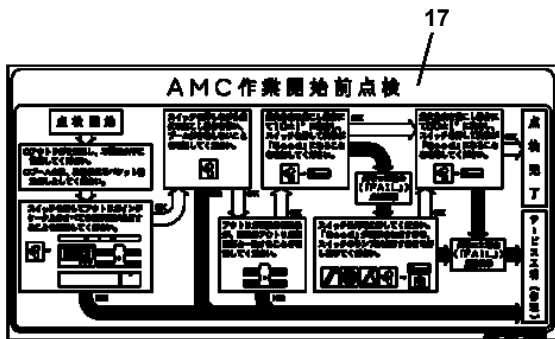
15
△警告/活線作業上の注意

- 活線作業用機として使用する場合には、6ヵ月ごとに絶縁性能について自主検査を行なってください。
- パケット（ジャッキライナ）や巻揚ブームが露れていたり、汚れていたりすると絶縁性能が低下します。作業前に洗い拭きで拭きとってください。
- 活線作業用機として使用する場合には、作業開始前必ずアース線を接続してください。
- 長時間には絶縁性能が低下しますので、活線作業および活線作業中は行なわないでください。

16
△警告/作業開始前点検

その日の作業を行う前には取扱説明書に従って次の「作業開始前点検」を行ってください。

- AMC（遠隔停止・作業制御装置）の点検。
- AMC作業開始前点検装置に接続して確認。
- アウトリガ、ブーム、パケットの点検確認。
- タイヤ、ゴタツキ、油漏れ等の点検。
- パケット水平調整の作業確認。
- 巻揚機作動時に水平の狂いが無いこと。
- 緊急停止装置等安全装置の作業確認。
- 確認に必ずすること。



18
△警告

アウトリガ操作注意

- 作業中は適切な位置に水平に設置してください。
- タイヤは4輪とも厚か、アウトリガインジケータが点検から点検に変わることを確認してください。
- アウトリガインジケータの点検位置が異なるアウトリガ位置と一致することを確認してください。
- アウトリガを展開・後退時は、すべてのレバーを必ず中立位置に戻してカバーをしてください。

走行時の注意

- パケットの取付け物を外さないでください。
- パケット、ブームを後退してください。
- アウトリガを後退してください。

19
自動格納方法

下部優先スイッチを「入」に保持したまま、自動格納スイッチを「入」に保持してください。格納（巻こし）、展開、後退の際にブームが格納されます。強風時及び格納位置に近い場合、一旦巻揚方向と巻揚方向に巻戻しの上、巻揚方向に巻戻します。

20
ブーム操作方法

1. ブーム操作は下部優先スイッチを「入」に保持したまま、ブーム操作スイッチを操作してください。
2. 下部優先スイッチを操作している間はパケット部でのブーム操作はできません。
3. 展開側面を向けたままで操作する場合には、足止めやクランプとの接触に注意してください。
4. ブーム後退及び格納操作時は、必ず常にブームが近づいてきます。操作中は、ブームに注意してください。

25
注意/アウトリガ操作

アウトリガ操作を行う場合は必ずブレーキを操作させてください。車両エンゲージを必ず止せると必ずブレーキは掛かる状態にしてください。

22
ストップ

23
ジャッキ制限解除

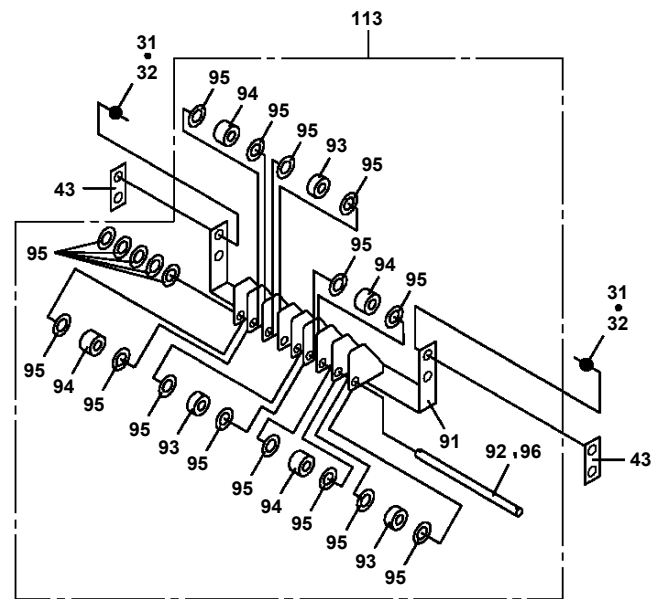
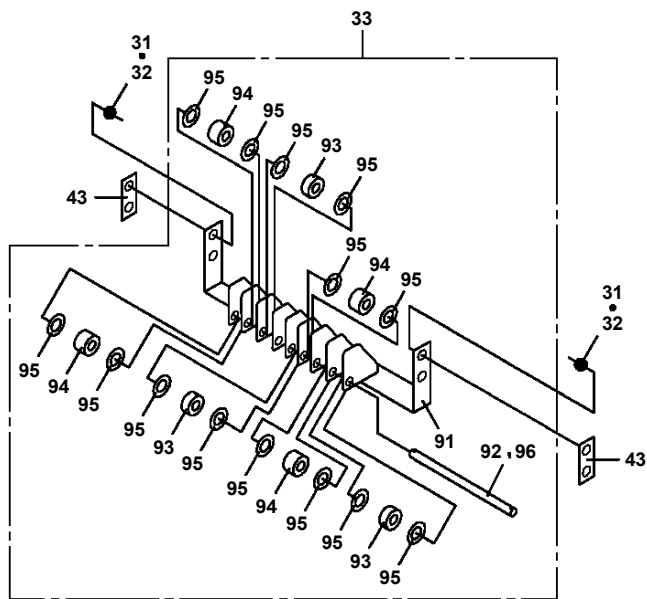
24
第3ブレーキ

26
△警告/足元注意
アウトリガ操作時、足元に注意してください

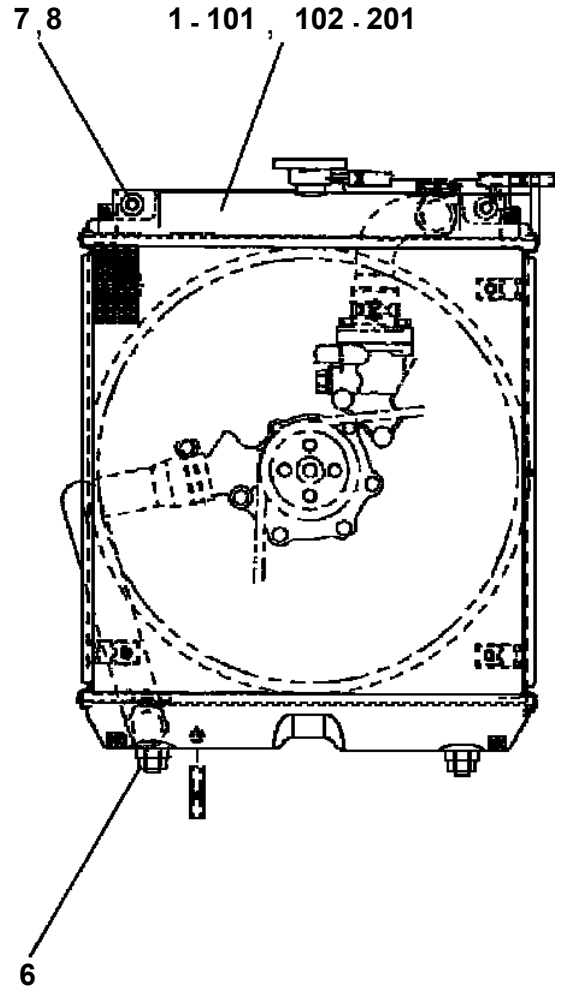
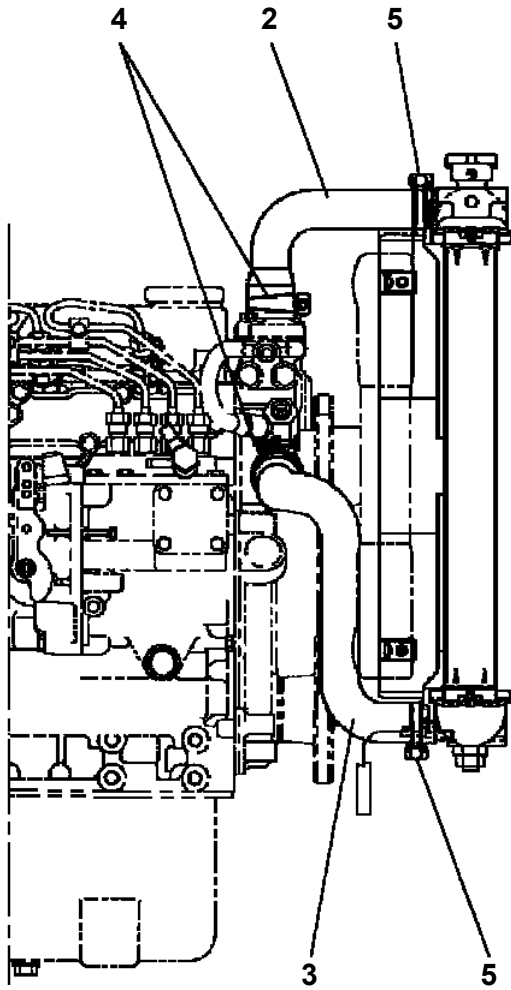
AT-146-3 43011100088 UPPER

Pos No.	Parts No	Parts Name	Qty	Unit	Technical Data	Serial No (Start)	Serial No (End)	Rema
20	42332677560	SPRING	1					
25	42332677520	PLUG	1					
26	42332677530	BOOT	1					
36	42332677590	STOPPER	1					
41	42332677600	SPRING	2					
45	42332677610	COVER	1					
46	42332677620	CAP	1					
53	42332677630	BEARING	2					
54	42332677540	SPRING	1					
55	42332677650	SPRING	2					
61	42332677660	WASHER	1					
100	42332672003	OPE.ASSY (LEVER,CONTROL)	1					

**AT-146-3 43011100088 UPPER
PP6060002-02 PIPING ASSY,BOOM**



AT-146-3 43011100088 UPPER
PR5020008-00 RADIATOR ASSY



AT-146-3 43011100088 UPPER

Pos No.	Parts No	Parts Name	Qty	Unit	Technical Data	Serial No (Start)	Serial No (End)	Remarks
1	42900252102	CASE	1					
2	42900252201	COVER ASSY	1					
3	80182306014	SCREW,MACHINE	8		M6X14			
4	90302040601	WASHER,SPRING	9		6			
5	90303070601	WASHER,PLAIN	10		6			
7	80197585012	SCREW,MACHINE	22		M5X12			
8	34354781710	RELAY (WITH BRACKET)	18					
9	34354781740	RELAY	1					
10	82161324080	RELAY	2					
11	42900002100	TERMINAL ASSY	1					
12	80172303016	SCREW,MACHINE	2		M3X16			
13	90302040301	WASHER,SPRING	4		3			
14	90303070301	WASHER,PLAIN	4		3			
16	90186206010	BOLT,FLANGE	4		M6X10			
17	82100002016	CLAMP	1		WR25			
18	90201200600	NUT	1		M6			
19	42651091100	RELAY ASSY	1					
20	80172303008	SCREW,MACHINE	2		M3X8			
25	42900252300	SUPPORT	1					
26	34354781730	RELAY	1					
41	42900252230	COVER	1					
42	42653235321	COVER	1					
43	90813106015	BOLT	2		M6X15			
44	90302040601	WASHER,SPRING	2		6			
45	90303070601	WASHER,PLAIN	2		6			
100	42901922001	RELAY BOX ASSY	1					

AT-146-3 43011100088 UPPER

Pos No.	Parts No	Parts Name	Qty	Unit	Technical Data	Serial No (Start)
1	42508450100	SWITCH,PUSH	1			
4	82122730100	CAP	1			
50	42508450000	SWITCH ASSY (3M,ELECTLIC BOOSTER REMOCON)	1			

AT-146-3 43011100088 UPPER

Pos No.	Parts No	Parts Name	Qty	Unit	Technical Data	Serial No (Start)	Serial No (End)	Rem
1	42470980100	SWITCH,PUSH	1					
2	82100002220	CABLE	2	M				
3	82100002173	CONNECTOR	1					
10	42470980000	SWITCH BOX (FOR BOOSTER)	1					

AT-146-3 43011100088 UPPER

Pos No.	Parts No	Parts Name	Qty	Unit	Technical Data	Serial No (Start)	Serial No (End)	Remarks	Page
5	50815054503	PACKING	2						
6	36624970600	SPRING	2						
7	91002801800	O-RING	2		1B P18				
8	50815054703	PIN (STOP)	2						
9	36623835900	PLUG	2						
10	36624971100	SPACER	2						
100	36625000000	VALVE ASSY,CHECK	1						

AT-146-3 43011100088 UPPER

Pos No.	Parts No	Parts Name	Qty	Unit	Technical Data	Serial No (Start)	Serial No (End)	Remarks	Pages
1	42470340000	MAT	1		1000X630 T=6				
	42470340000	MAT	1		1000X630 T=6				

AT-146-3 43011100088 UPPER

Pos No.	Parts No	Parts Name	Qty	Unit	Technical Data	Serial No (Start)	Serial No (End)	Remarks	Pages
1	36073820000	WINCH	1						000083
2	42310951100	SUPPORT	1						
3	42311303100	SUPPORT	1						
4	42310951020	JOINT	1						
5	80320030050	FITTING,ELBOW	1		KLE10-020N				
6	42310951300	PIN	1						
7	37002600400	WEDGE	1						
8	90101212018	BOLT	6		M12X18				
9	90302041201	WASHER,SPRING	6		12				
10	90101210016	BOLT	4		M10X16				
11	90302041001	WASHER,SPRING	4		10				
12	90101208018	BOLT	4		M8X18				
13	90302040801	WASHER,SPRING	6		8		228516		
	90302040801	WASHER,SPRING	8		8	228517			
14	80400160128	JOINT	2		S,G3/8-G1/4				
15	91002801400	O-RING	2		1B P14				
16	42311917100	SUPPORT	1						
17	90102208035	BOLT	2		M8X35				
18	90201200800	NUT	2		M8				
19	90303070801	WASHER,PLAIN	2		8				

AT-146-3 43011100088 UPPER

Pos No.	Parts No	Parts Name	Qty	Unit	Technical Data	Serial No (Start)	Serial No (End)	Remarks	Pages
1	42875211002	SUPPORT ASSY	1				228593		
	42875211003	SUPPORT ASSY	1			228594			
2	42875100300	PLATE,SLIDE	2						
3	90171114035	BOLT	4		M14X35				
4	90302041401	WASHER,SPRING	4		14				
5	90180208020	BOLT,BUTTON	8		M8X20				
6	90303070801	WASHER,PLAIN	8		8				
8	82401800080	PLUG (FOR M8)	2			228594			

AT-146-3 43011100088 UPPER

Pos No.	Parts No	Parts Name	Qty	Unit	Technical Data	Serial No (Start)	Serial No (End)	Remarks	Pages
1	42890034000	BLOCK,WOOD	1		W=350,H=80				

AT-146-3 43011100088 UPPER

Pos No.	Parts No	Parts Name	Qty	Unit	Technical Data
1	42971851000	WOOD BLOCK (KANSAI DENRYOKU/DETACHABLE)	1		
2	42971852010	PLATE,NAME (LEFT REAR)	3		
10	42971852000	BLOCK,WOOD (LEFT REAR:KANSAI DENRYOKU/DETACHABLE TYPE)	1		

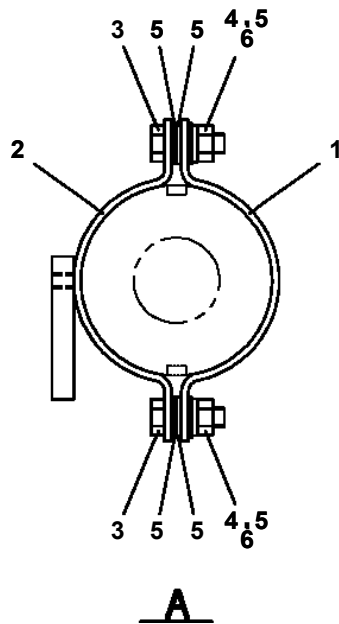
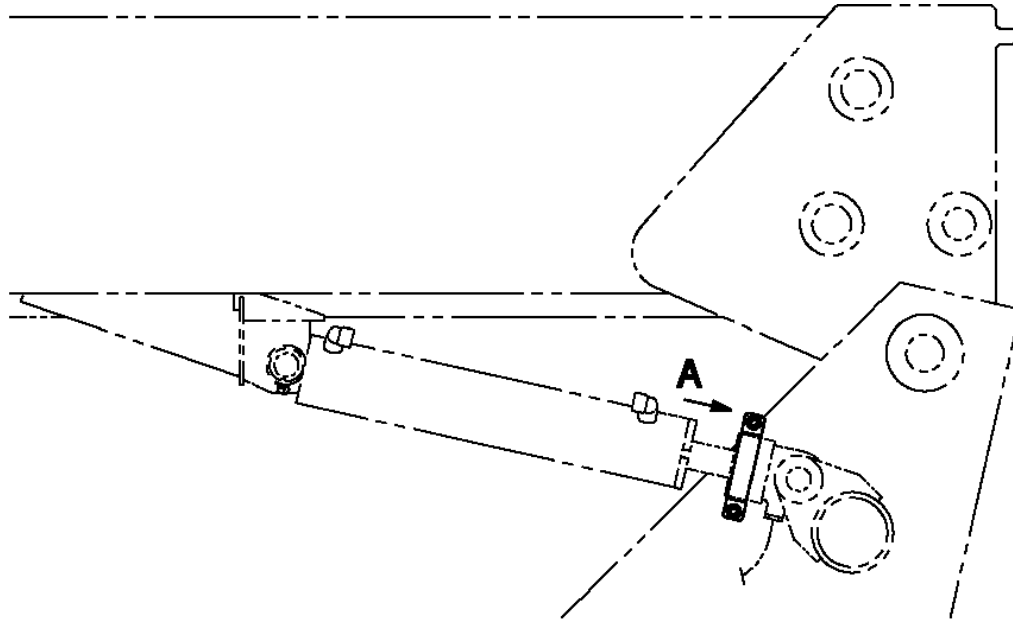
AT-146-3 43011100088 UPPER

Pos No.	Parts No	Parts Name	Qty	Unit	Technical Data	Serial No (Start)	Serial No (End)
2	42836037510	DOOR	1				
3	42836037520	RACK	1				
5	42836717540	BRACKET	4				
6	42836037530	SEAT	1				
8	42835797550	SEAL	6				
9	42835797560	CUSHION (WITH DOUBLE-STICK TAPE)	2				
10	42831877540	INSULATOR	2				
11	42834687540	WEATHER STRIP	1		L=3510		
12	42835357590	CATCH	2				
13	42835487650	HINGE	3				
14	42835797580	PLUG (HOLE)	6				
15	42833077610	BUSH	8				
16	32830487740	SCREW,MACHINE (SEMS)	2		M4X10		
17	42835837600	SCREW,MACHINE	6		M5X12		
18	80175805012	SCREW,MACHINE	9		M5X12		
19	42836037550	WASHER,TOOTH	4		M10		
20	42836317920	PLATE	3				
100	42836031000	BOX,TOOL	1				

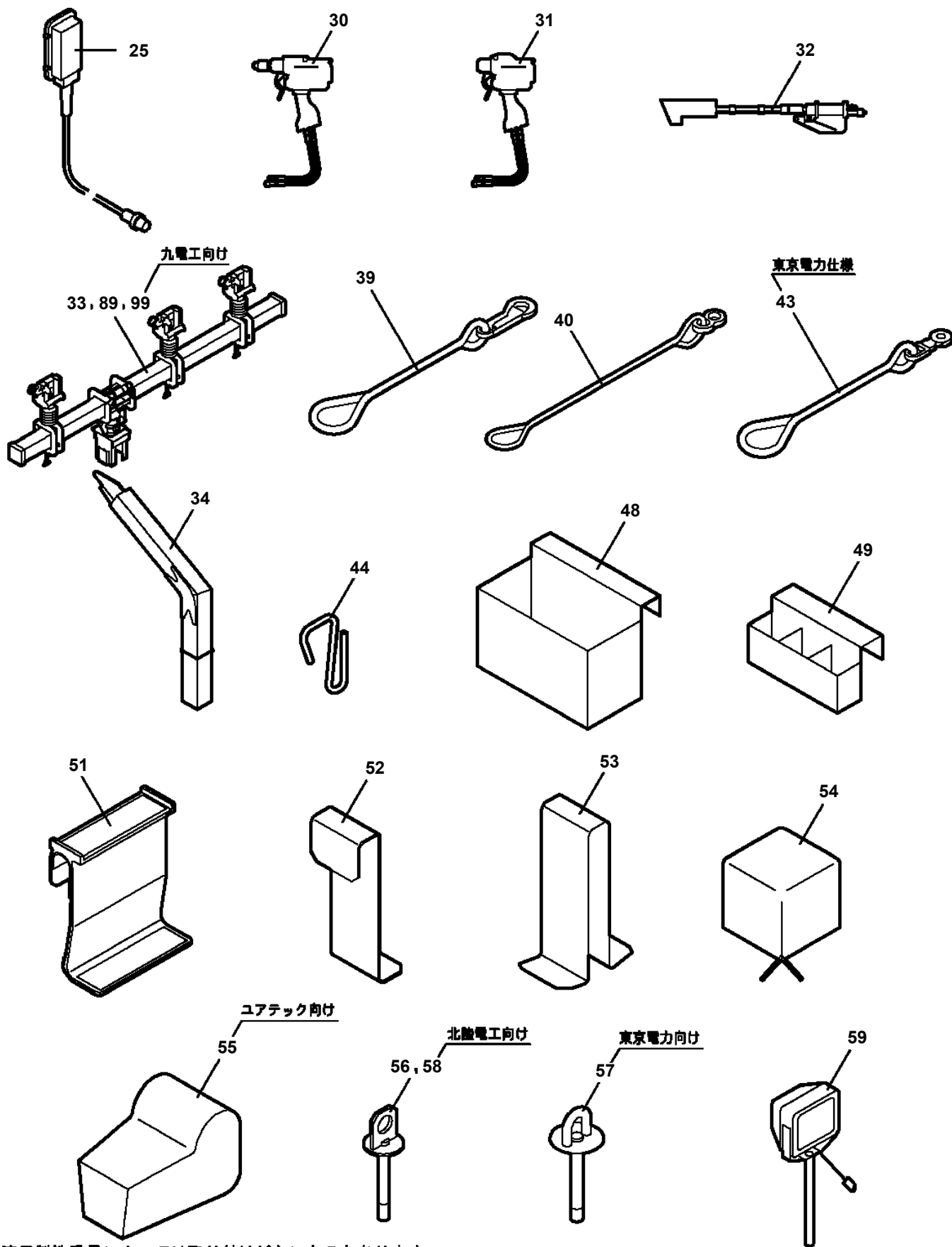
AT-146-3 43011100088 UPPER

Pos No.	Parts No	Parts Name	Qty	Unit	Technical Data	Serial No (Start)	Serial No (End)	Remarks	Pages
1	42443130300	SUPPORT	1						
2	90101208018	BOLT	4		M8X18				
3	90302040801	WASHER,SPRING	4		8				
4	42443130401	SUPPORT	1						
5	90201200800	NUT	2		M8				

AT-146-3 43011100088 UPPER
PX5690011-00 MOUNT ASSY,SUPPORT



AT-146-3 43011100088 UPPER
PY1020001-10 OPTION UNIT,2



適用製造番号によっては取り付けがないものもあります。

MACHINES OF SOME SERIAL NO. ARE NOT EQUIPPED WITH THESE PARTS.

AT-146-3 43011100088 UPPER

Pos No.	Parts No	Parts Name	Qty	Unit	Technical Data	Serial No (Start)	Serial No (End)	Re
1	42473857510	SCREW	4					
2	42473857515	SPRING	4					
3	80560053000	BALL,STEEL	4		1/8			
4	42470027510	HEAD (SCM)	1					
5	42473857530	SPRING	1					
6	42473857535	PIN	1					
7	42470027520	COLLAR	1					
8	42473857545	SPRING	1					
9	42473857550	PISTON	1					
10	91411003500	RING,BACKUP	1					
11	91001103500	O-RING	1		1A P35			
12	42470027530	CYLINDER	1					
13	42473857570	HOLDER	1					
14	42473857575	CAP	1					
15	91001101400	O-RING	1		1A P14			
16	42473857580	CAP	1					
17	42473857590	COVER	1					
18	42473857595	BUTTON (PUSH)	1					
19	42473857600	SPRING	1					
20	42473857605	SWITCH	1					
21	42473857610	HOLDER (SWITCH)	1					
22	42473857615	SCREW	1					
24	42473857620	BINDER	4					
25	42473857625	TUBE	1					
26	42473857630	TUBE	1					
27	42473857635	TUBE	1					
28	42473857640	BINDER	6					
29	42473857645	HOSE	1					
30	42473857650	JOINT	1					
31	42473857655	CABLE	1					
32	82100002173	CONNECTOR	1					
38	80136320010	PIN,SPLIT	1		2X10			
39	42473857675	SEPARATOR	1					
61	42473857670	PROTECTOR ASSY	1					
62	42473857690	CLAMP ASSY	1					
100	42470020000	CLAMP HEAD (IZUMI 8TON,2.5M)	1					

AT-146-3 43011100088 UPPER

Pos No.	Parts No	Parts Name	Qty	Unit	Technical Data	Serial No (Start)	Serial No (End)	Rem
1	42473857510	SCREW	4					
2	42473857515	SPRING	4					
3	80560053000	BALL,STEEL	4		1/8			
4	42473857520	HEAD (TITAN)	1					
5	42473857530	SPRING	1					
6	42473857535	PIN	1					
7	42473857540	COLLAR	1					
8	42473857545	SPRING	1					
9	42473857550	PISTON	1					
10	91411003500	RING,BACKUP	1					
11	91001103500	O-RING	1		1A P35			
12	42473857560	CYLINDER	1					
13	42473857570	HOLDER	1					
14	42473857575	CAP	1					
15	91001101400	O-RING	1		1A P14			
16	42473857580	CAP	1					
17	42473857590	COVER	1					
18	42473857595	BUTTON (PUSH)	1					
19	42473857600	SPRING	1					
20	42473857605	SWITCH	1					
21	42473857610	HOLDER (SWITCH)	1					
22	42473857615	SCREW	1					
24	42473857620	BINDER	4					
25	42473857625	TUBE	1					
26	42473857630	TUBE	1					
27	42473857635	TUBE	1					
28	42473857640	BINDER	6					
29	42473857645	HOSE	1					
30	42473857650	JOINT	1					
31	42473857655	CABLE	1					
32	42473857660	PLUG (SANWA)	1					
38	80136320010	PIN,SPLIT	1		2X10			
39	42473857675	SEPARATOR	1					
61	42473857670	PROTECTOR ASSY	1					
62	42473857690	CLAMP ASSY	1					
100	42473850000	CLAMP HEAD (IZUMI 8TO,3.5M)	1					

AT-146-3 43011100088 UPPER

Pos No.	Parts No	Parts Name	Qty	Unit	Technical Data	Serial No (Start)
1	42473190000	CUTTER HEAD (IZUMI 6.4TON 2.5M ELECTRICSANWA)	1			

AT-146-3 43011100088 UPPER

Pos No.	Parts No	Parts Name	Qty	Unit	Technical Data	Serial No (Start)	Serial No (End)	Remarks
1	42473650000	ROPE (SAFETY,0.5M,D=24)	1					

AT-146-3 43011100088 UPPER

Pos No.	Parts No	Parts Name	Qty	Unit	Technical Data	Serial No (Start)	Serial No (End)	Remarks	Pages
1	42470121000	ARM ASSY	1						
2	42471231000	HOLDER	3						
3	42470123000	CLAMP ASSY	1						
4	42470044000	HOT STICK	1						
5	42476851000	SUPPORT	1						
6	90101216130	BOLT	1		M16X130				
7	90303071601	WASHER,PLAIN	2		16				
8	90201201600	NUT	2		M16				
9	42220011200	SUPPORT	1						
31	42470121100	ARM	1						
32	42470121200	CAP	2						

AT-146-3 43011100088 UPPER

Pos No.	Parts No	Parts Name	Qty	Unit	Technical Data	Serial No (Start)	Serial No (End)	Remarks	Pages
1	42502890102	COVER	1						
2	42502890200	COVER	2						
3	90183108030	BOLT	12		M8X30				
4	90270200800	NUT	12		M8				
5	90303070801	WASHER,PLAIN	12		8				

AT-146-3 43011100088 UPPER

Pos No.	Parts No	Parts Name	Qty	Unit	Technical Data	Serial No (Start)	Serial No (End)
1	42470367770	HOSE,AIR	1		3M		
2	42470362100	JOINT,SELF SEALING	1				
3	42506287510	PUMP	1				
4	42470367780	JOINT	1				
100	42506280000	HOSE,BOOSTER (LARGE,AIR BALLOON ONLY)	1				

AT-146-3 43011100088 UPPER

Pos No.	Parts No	Parts Name	Qty	Unit	Technical Data	Serial No (Start)	Serial No (End)
1	42471271000	DRILL ASSY	1				
2	80460003080	JOINT	2		S,G3/8-3/4-16UNF		
3	37002425110	HOSE	2		L=2500		
4	91810132530	FASTENER	4				
5	80456020610	JOINT,SELF SEALING	1				
6	42340013200	JOINT,SELF SEALING (WITH CAP)	1				
11	42340017550	CAP (DUST)	1				
16	42340017510	CAP (DUST)	1				
20	42471270000	DRIL,HYDRAULIC	1				

AT-146-3 43011100088 UPPER

Pos No.	Parts No	Parts Name	Qty	Unit	Technical Data	Serial No (Start)	Serial No (End)	Remarks	Pages
1	42473340000	STEP,BUCKET	1						

AT-146-3 43011100088 UPPER

Pos No.	Parts No	Parts Name	Qty	Unit	Technical Data	Serial No (Start)	Serial No (End)	Remarks
1	42474540000	HANGER (FOR BUCKET,FRP)	1					

AT-146-3 43011100088 UPPER

Pos No.	Parts No	Parts Name	Qty	Unit	Technical Data	Serial No (Start)	Serial No (End)	Remarks
1	42472990000	BOX,TOOL (FOR BUCKET)	1					

AT-146-3 43011100088 UPPER

Pos No.	Parts No	Parts Name	Qty	Unit	Technical Data	Serial No (Start)	Serial No (End)
1	42332062500	SWITCH ASSY (WITH HARNESS,1 SW)	1				
2	42433932100	SWITCH ASSY (WITH HARNESS,1 SW)	1				
3	42900022000	INDICATOR,OUTRIGGER	1				
4	80192486014	SCREW,MACHINE (WITH WASHER)	4		M6X14		
5	90302040601	WASHER,SPRING	4		6		
6	90201200600	NUT	4		M6		
7	42901101100	PANEL	1				
8	82199514013	CAP	7				
9	82154201010	METER,HOUR	1				
10	82100002638	SWITCH,STARTER (WITH KEY)	1				
11	42900001200	COVER	1				
12	42651593400	SWITCH ASSY (WITH HARNESS,1 SW)	1				
13	80172303012	SCREW,MACHINE	2		M3X12		
14	90303070301	WASHER,PLAIN	2		3		
15	90201200300	NUT	2		M3		
16	90302040301	WASHER,SPRING	2		3		
17	42433932200	SWITCH ASSY (WITH HARNESS,1 SW)	1				
18	42809631200	LAMP ASSY (RED,WITH HARNESS)	4				
19	44320516500	PLUG (12 POLES,FEMALE)	1				
20	42653673200	LAMP ASSY (GREEN,WITH HARNESS)	1				
21	42350250150	PLUG (6 POLES,MALE)	1				
22	42651591300	SWITCH ASSY (WITH HARNESS,3 SW)	1				
23	42332521300	SWITCH ASSY (WITH HARNESS)	1				
24	91810130240	FASTENER	1				
25	82199504017	NUT	7		AT-401N		
26	42950583200	SWITCH ASSY	1				
41	44430517520	SPARE KEY (2 PCS.)	1				
51	42355641010	COVER	1				
61	42355641210	BUTTON	1				
100	42901161000	PANEL,CONTROL	1				

CLICK HERE TO **DOWNLOAD** THE COMPLETE MANUAL

- Thank you very much for reading the preview of the manual.
- You can download the complete manual from: www.heydownloads.com by clicking the link below



- Please note: If there is no response to CLICKING the link, please download this PDF first and then click on it.

CLICK HERE TO **DOWNLOAD** THE COMPLETE MANUAL