

## **AT-146-3 43011100047 UPPER**

**PD2000237-01 SWING UNIT**  
**PF1000674-00 WINCH SYSTEM**  
**PG2000319-01 BOOM UNIT**  
**PH1000550-00 SAFETY DEVICES (MOTION CONTROLLER)**  
**PJ3000511-00 BUCKET SYSTEM**  
**PJ5000003-00 BOOSTER UNIT**  
**PK2000978-01 FRAME UNIT**  
**PO1000171-00 INDICATION PLATES**  
**PW1000118-00 ACCESSORIES & TOOLS**  
**PX1001213-00 MOUNTING PARTS**  
**PY1001439-00 OPTIONS**  
**ASSEMBLY**

CLICK HERE TO **DOWNLOAD** THE COMPLETE MANUAL

- Thank you very much for reading the preview of the manual.
- You can download the complete manual from: [www.heydownloads.com](http://www.heydownloads.com) by clicking the link below



- Please note: If there is no response to CLICKING the link, please download this PDF first and then click on it.

CLICK HERE TO **DOWNLOAD** THE COMPLETE MANUAL

# AT-146-3 43011100047 UPPER

Pos No.	Parts No	Parts Name	Qty	Unit	Technical Data	Serial No (Start)	Serial No (End)
1	(*****)	FRAME	1				228521
	(*****)	BUCKET FRAME ASSY	1			228522	228535
	(*****)	BUCKET FRAME ASSY	1			228536	228597
	(*****)	BUCKET FRAME ASSY	1			228598	
2	(*****)	PIPING, BUCKET	1				228535
	(*****)	PIPING ASSY, BUCKET	1			228536	228597
	(*****)	PIPING ASSY, BUCKET	1			228598	
3	(*****)	ELEC. ASSY (BUCKET)	1				228521
	(*****)	ELEC. ASSY, BUCKET	1			228522	
4	(*****)	OPE. ASSY	1				
11	42267241000	BUCKET	1				
12	(*****)	BUCKET (INNER CASE)	1				
13	(*****)	COVER (BUCKET, FRP, WHITE)	1				
14	(*****)	COVER, BOOM (TOP/FRP, WHITE)	1				
15	42267244000	COVER (CLOTH, WHITE)	1				
16	(*****)	ACCESSORIES (BUCKET INNER MAT)	1				

# AT-146-3 43011100047 UPPER

Pos No.	Parts No	Parts Name	Qty	Unit	Technical Data	Serial No (Start)	Se
1	(*****)	BOX, TOOL (LEFT/F:1-DECKER,R:1-DECKER)	1				
2	(*****)	BOX, TOOL (RIGHT/F:2-DECKER,R:NONE)	1				
3	(*****)	EARTHING DEVICE (8X10M, TOP CLIP)	1				
	(*****)	EARTHING DEVICE	1				
	(*****)	EARTH ASSY (5X10M.CLIP ON THE END, PORTABLE)	1				
	(*****)	EARTHING DEVICE (8X20M, TOP CLIP)	1				

# AT-146-3 43011100047 UPPER

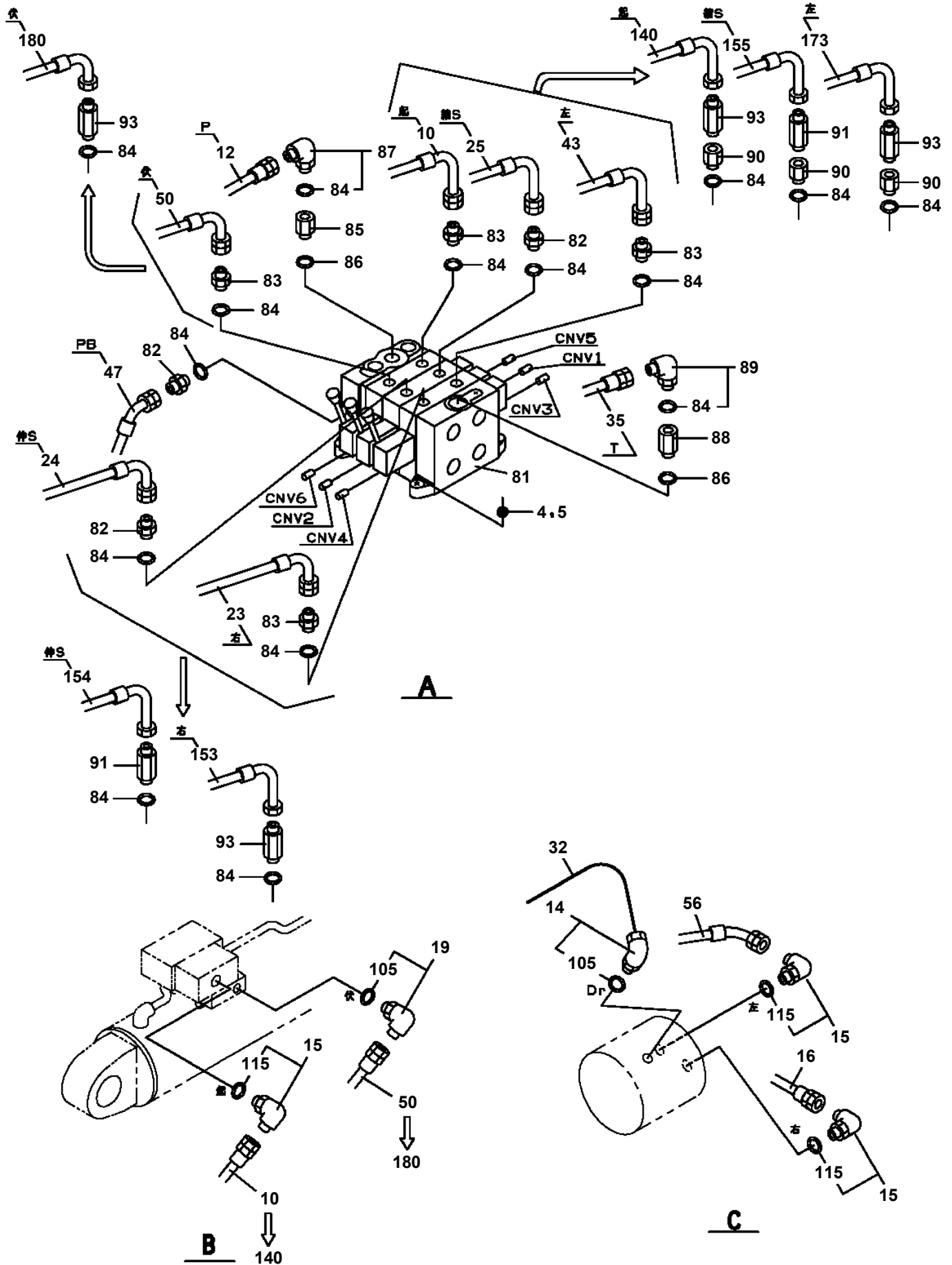
Pos No.	Parts No	Parts Name	Qty	Unit	Technical Data	Serial No (Start)	Serial No (End)	Remarks	Pages
1	36654445010	SEAL KIT	1						
100	36654440000	PUMP,HYDRAULIC	1						



# AT-146-3 43011100047 UPPER

Pos No.	Parts No	Parts Name	Qty	Unit	Technical Data	Serial No (Start)	Serial No (End)
1	42478183300	LEVER	1				
2	42475431200	LINK	1				
4	42478183400	SUPPORT	1				
7	80560006000	BALL,STEEL	1		6		
8	80720103010	PIN,SPRING	1		3X10		
9	37001200370	SPRING	1				
10	37000133460	PIN	2				
11	90172106020	BOLT,HEXAGON SOCKET	4		M6X20		
12	91002801400	O-RING	2		1B P14		
13	91410001400	RING,BACKUP	2		P14		
14	91002800700	O-RING	1		1B P7		
15	91410000700	RING,BACKUP	1		P7		
16	90303070601	WASHER,PLAIN	1		6		
17	90302040601	WASHER,SPRING	1		6		
18	90201200600	NUT	1		M6		
19	80601110100	RING,RITAINING	4		S10		
20	37000401040	BEARING,PLAIN	6				
21	90201200800	NUT	1		M8		
22	90302040801	WASHER,SPRING	1		8		
23	90303070801	WASHER,PLAIN	1		8		
100	42478183101	VALVE,MANUAL CONTROL (BOOSTER)	1				

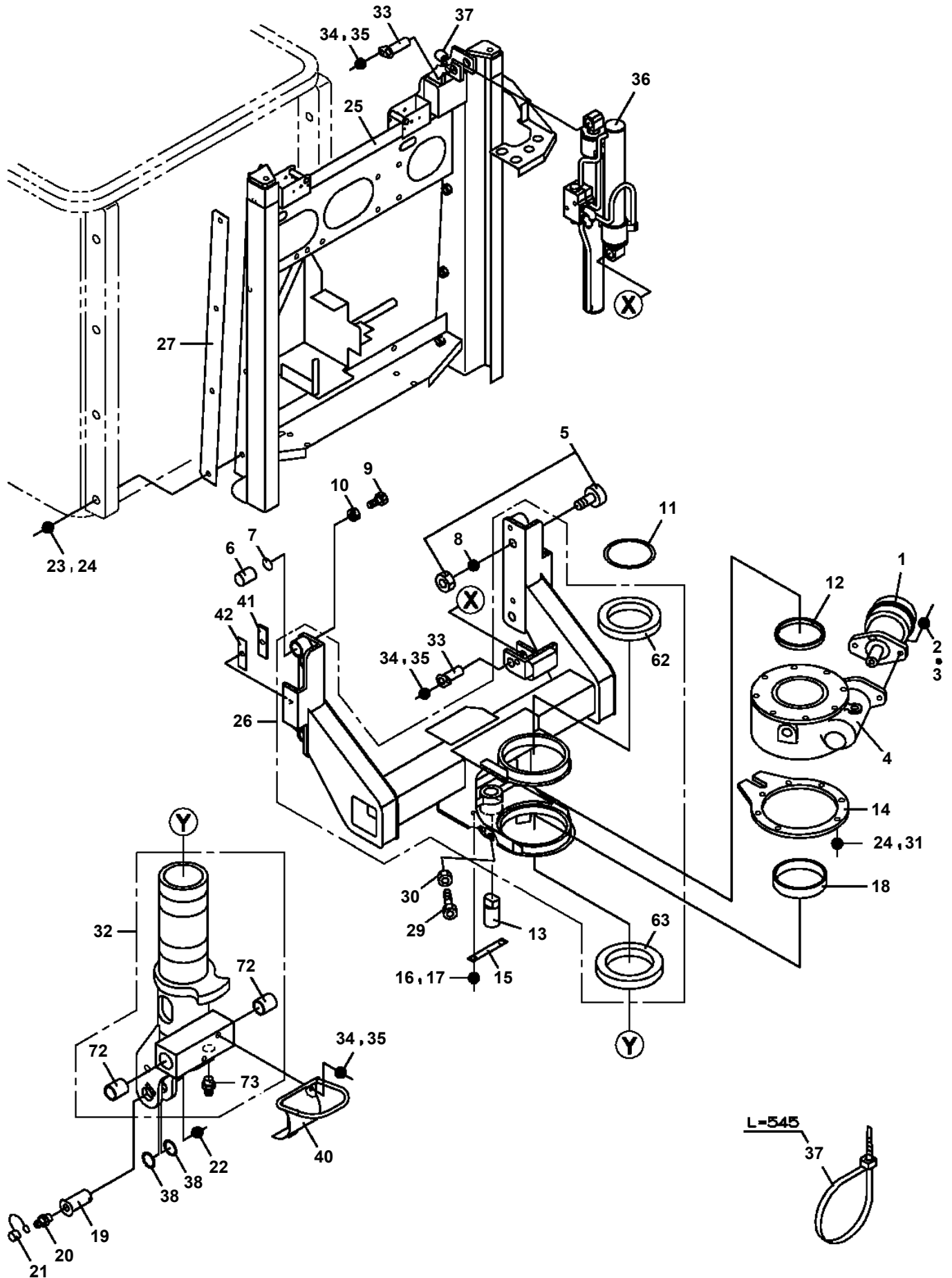
**AT-146-3 43011100047 UPPER  
PB1400433-03 PIPING, UPPER**







**AT-146-3 43011100047 UPPER  
PB5370014-00 BUCKET FRAME ASSY**



# AT-146-3 43011100047 UPPER

Pos No.	Parts No	Parts Name	Qty	Unit	Technical Data	Serial No (Start)	Serial No (End)
1	42614471006	OUTRIGGER (REAR/INNER CASE)	2				228503
	42614471007	CASE ASSY,INNER (REAR/OUTRIGGER)	2			228504	228714
2	37002012620	PLATE,SLIDE	4				
3	42614460300	PLATE	2				
4	31611640150	SPRING	2				
5	90171108016	BOLT	8		M8X16		
6	37000504780	PLATE	N		T=0.6		
7	90302041001	WASHER,SPRING	24		10		
10	42614472000	CASE ASSY,INNER (REAR/OUTRIGGER)	2			228715	
11	90101206014	BOLT	4		M6X14		
12	90302040601	WASHER,SPRING	4		6		
13	42614460500	BLADE	2				
14	42614050020	PLATE,SLIDE	2			228715	
15	37001510810	BOLT	4		M8X25	228715	
16	42613350100	PLATE	12				
18	37000581940	PLATE	N		T=0.5		
19	37000506590	PLATE	N		T=1.6		
20	90303070601	WASHER,PLAIN	4		6		
21	37002011280	PLATE,SLIDE	12		T=9.5		
22	90101208012	BOLT	4		M8X12		
23	90302040801	WASHER,SPRING	8		8		
24	37000575240	PLATE	2		T=3		
25	37000178190	PIN	2				
26	90171110025	BOLT	24		M10X25		
28	42614460400	PLATE	4				
41	42614460800	SUPPORT	4		T=5		228436
	42614461900	SUPPORT	4		T=4	228437	
	42614461950	SUPPORT (CAST STEEL)	4		T=4	228437	
42	42614461700	SUPPORT (CAST STEEL)	4		T=6		
	42614461600	SUPPORT	4		T=6		

# AT-146-3 43011100047 UPPER

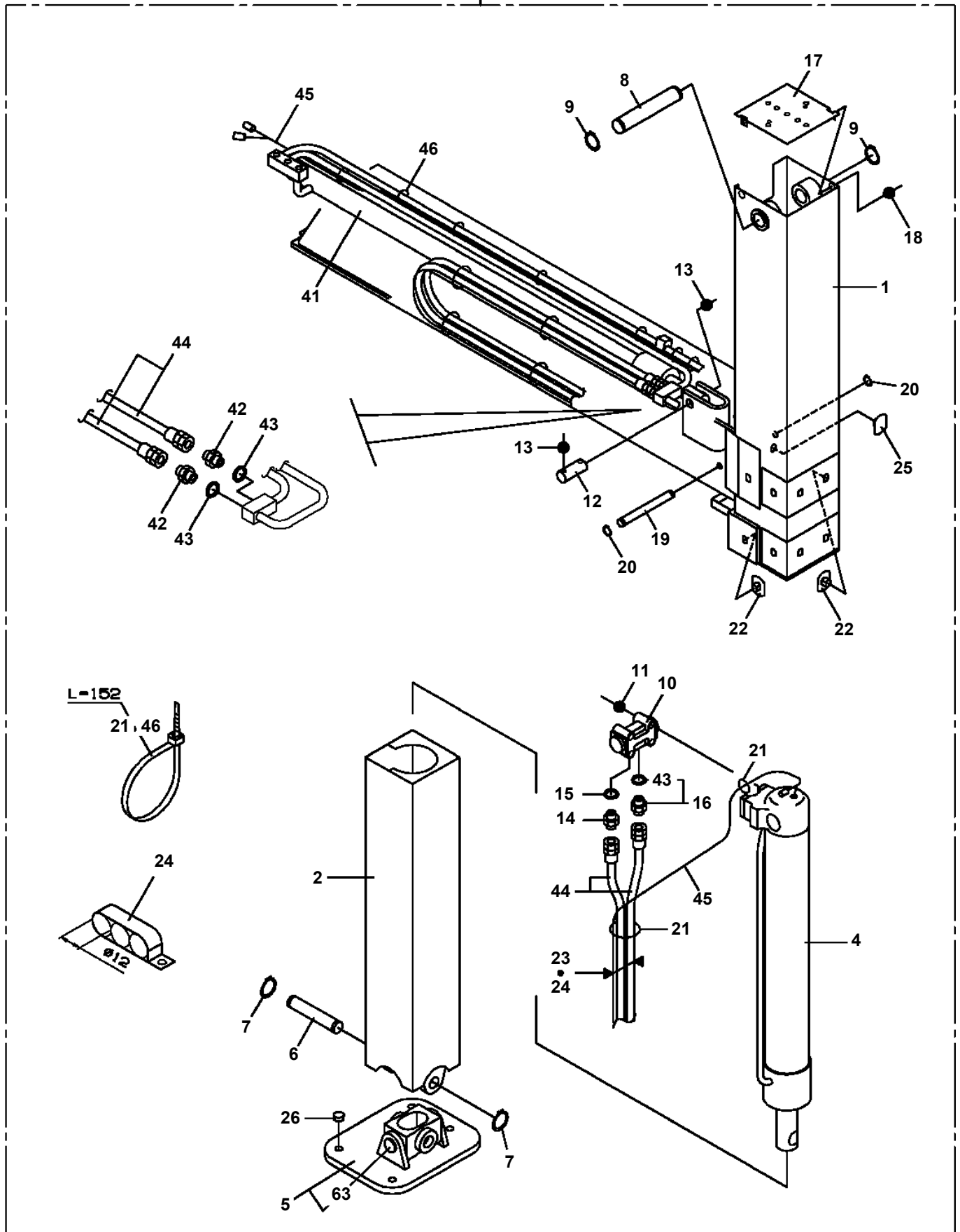
Pos No.	Parts No	Parts Name	Qty	Unit	Technical Data	Serial No (Start)	Serial No (End)	Re
1	90209201800	NUT	1		M18			
2	91684004500	PACKING	2					
3	91002802000	O-RING	1		1B P20			
4	36042810400	PISTON	1					
5	36042810200	ROD	1					
6	36042811000	CYLINDER	1					
7	36042810300	COVER,ROD	1					
8	91002904000	O-RING	1		1B G40			
9	91694003000	PACKING	1					
10	91660003001	SEAL,DUST	1					
11	90302041801	WASHER,SPRING	1		18			
12	90303071801	WASHER,PLAIN	1		18			
13	91002904500	O-RING	1		1B G45			
14	91411203501	RING,BACKUP	2					
30	36042819900	PACKING SET	1		30X45			
100	36042810000	CYLINDER,EXTENSION (FRONT)	1					

# AT-146-3 43011100047 UPPER

Pos No.	Parts No	Parts Name	Qty	Unit	Technical Data	Serial No (Start)	Serial No (End)	R
1	37002462640	HOSE	1		L=2850			
2	37002488530	HOSE	1		L=2450			
3	37002430010	HOSE	1		L=2600			
4	37000908660	JOINT	1					
5	37000700280	CLAMP ASSY	1		22X1			
6	37002474660	HOSE	2		L=1150			
7	90201200800	NUT	3		M8		228983	
	90201200800	NUT	4		M8	228984		
10	37002474530	HOSE	2		L=3780			
11	37002411280	HOSE	1		L=3550			
12	37002436880	HOSE	1		L=3930			
13	37002474540	HOSE	2		L=4280			
16	90171110115	BOLT	2		M10X115			
17	90302041001	WASHER,SPRING	2		10			
18	90303071001	WASHER,PLAIN	2		10			
21	91810160010	HOLDER	1			229466		
22	82100001412	TUBE,SPIRAL	1	M	SE-12BK	229466		
24	91002801100	O-RING	12		1B P11			
25	81408000241	PIPE,STEEL	1	M	18X1.9T			
26	81408000130	PIPE,STEEL	1	M	10X1.8T			
27	81408000160	PIPE,STEEL	1	M	12X1.4T			
28	80430620400	JOINT	4					
29	37000925950	JOINT	6		S,G1/4-G1/4			
32	80481302025	JOINT	6		L,G1/4-G1/4			
33	37000600700	CLAMP	22		12X3		229159	
	37000600700	CLAMP	18		12X3	229160		
34	90280200600	NUT,FLANGE	23		M6		229159	
	90280200600	NUT,FLANGE	19		M6	229160		
35	37000713480	CLAMP	4				228708	
	82100003005	CLAMP	4			228709		
36	90280200800	NUT,FLANGE	8		M8	229160		
37	82100002016	CLAMP	4		WR25	229160		
40	82100002010	CLAMP	1		WR15			
42	82100001807	TUBE,CORRUGATE	1	M	28			
43	82100001804	TUBE,CORRUGATE	1	M	15			
44	82100001806	TUBE,CORRUGATE	N		22			
45	91810130250	FASTENER	30				229465	
	91810130250	FASTENER	32			229466		
47	37002474550	HOSE	2		L=1030			
48	37002416170	HOSE	1		L=875			
49	37002430140	HOSE	1		L=660			
51	90186206016	BOLT,FLANGE	2		M6X16			
52	82100002012	CLAMP	1		WR18			
53	37000924960	JOINT (WITH O-RING)	2					
54	42646650010	ORIFICE	2					
56	82100002039	CLAMP	2					
57	42648660100	CLAMP ASSY	1		22X2			
58	90101208050	BOLT	1		M8X50			
71	42648661100	JOINT	1				229520	
	42648661101	JOINT	1			229521		
72	80302090241	FITTING	1		KCO18-040N			
73	91002801800	O-RING	5		1B P18			
	91002801800	O-RING	3		1B P18		228983	
	91002801800	O-RING	3		1B P18	228984		
74	80400160133	JOINT	2					
75	91002802400	O-RING	2		1B P24			
76	80302090101	FITTING	2		KCO10-020N			
77	91002801100	O-RING	12		1B P11			
78	80316070080	PLUG	1		PF1/2			
79	80456950401	JOINT,SELF SEALING (COUPLER)	1				229520	
	80456960401	JOINT,SELF SEAL	1			229521		
91	37000927760	JOINT	1					
92	80302090151	FITTING	1		KCO12-040N			

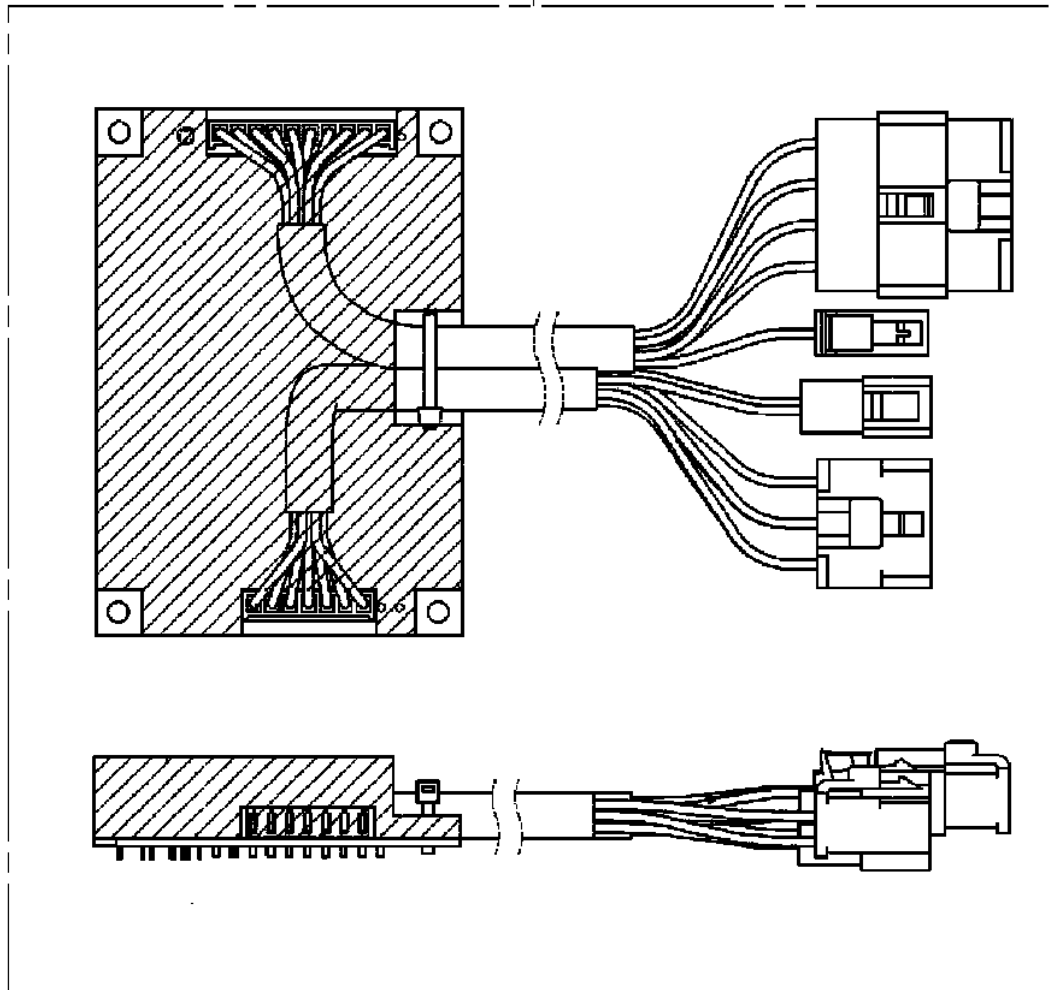
AT-146-3 43011100047 UPPER  
PC5150017-00 CASE ASSY,INNER (REAR/OUTRIGGER)

100

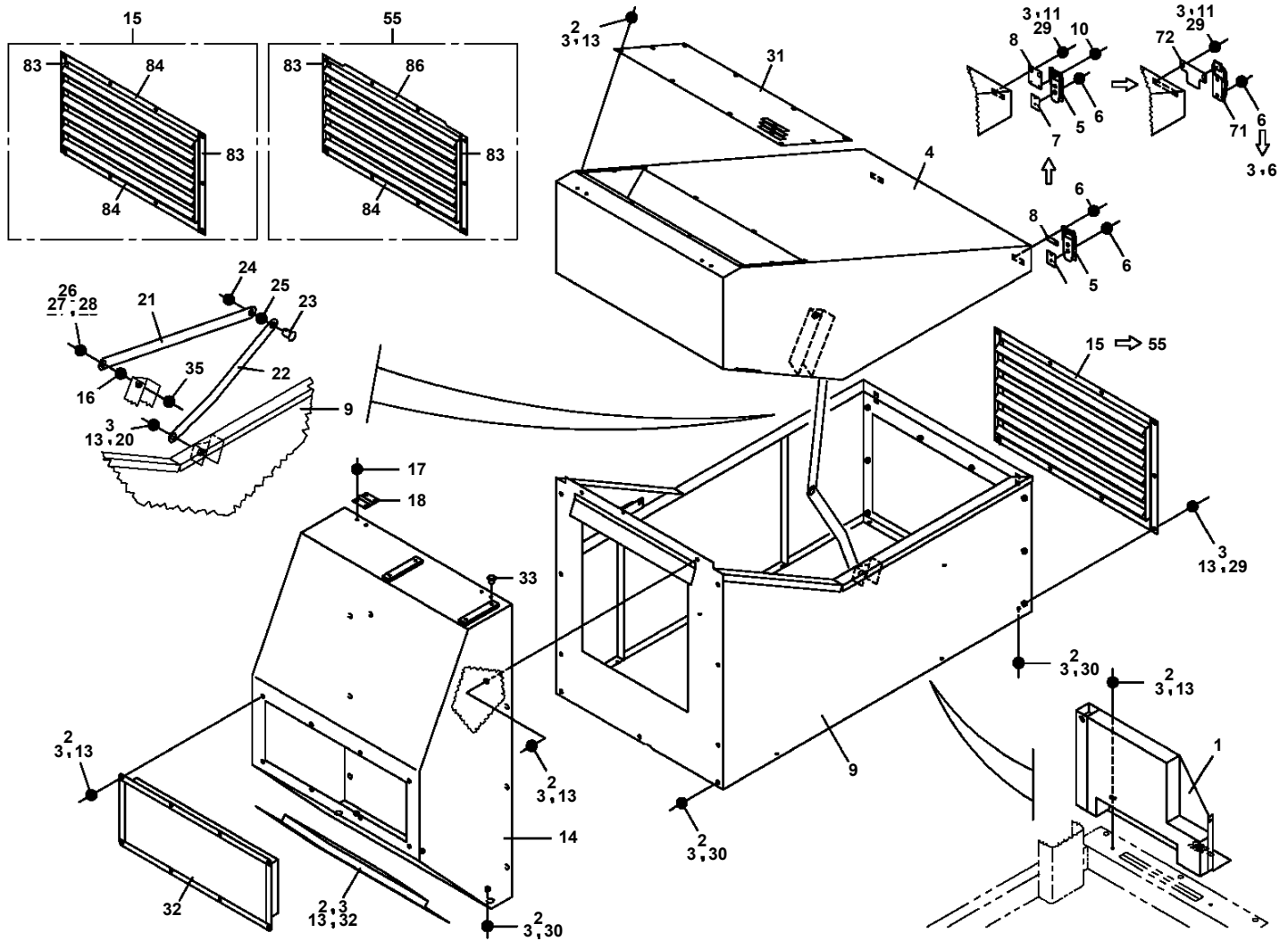


AT-146-3 43011100047 UPPER  
PC5420023-00 CONTROLLER

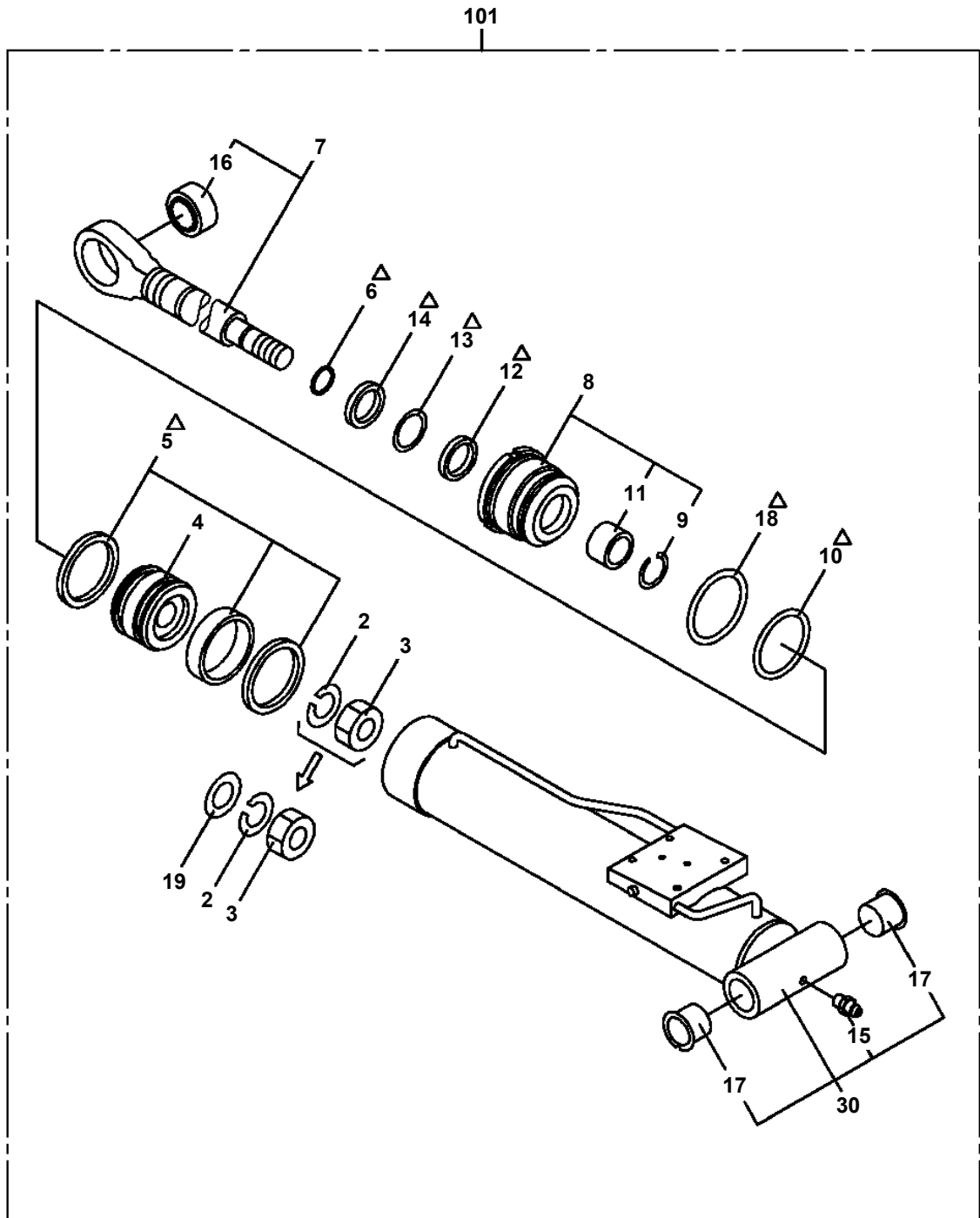
100



# AT-146-3 43011100047 UPPER PC5570167-03 COVER ASSY (ENGINE UNIT)

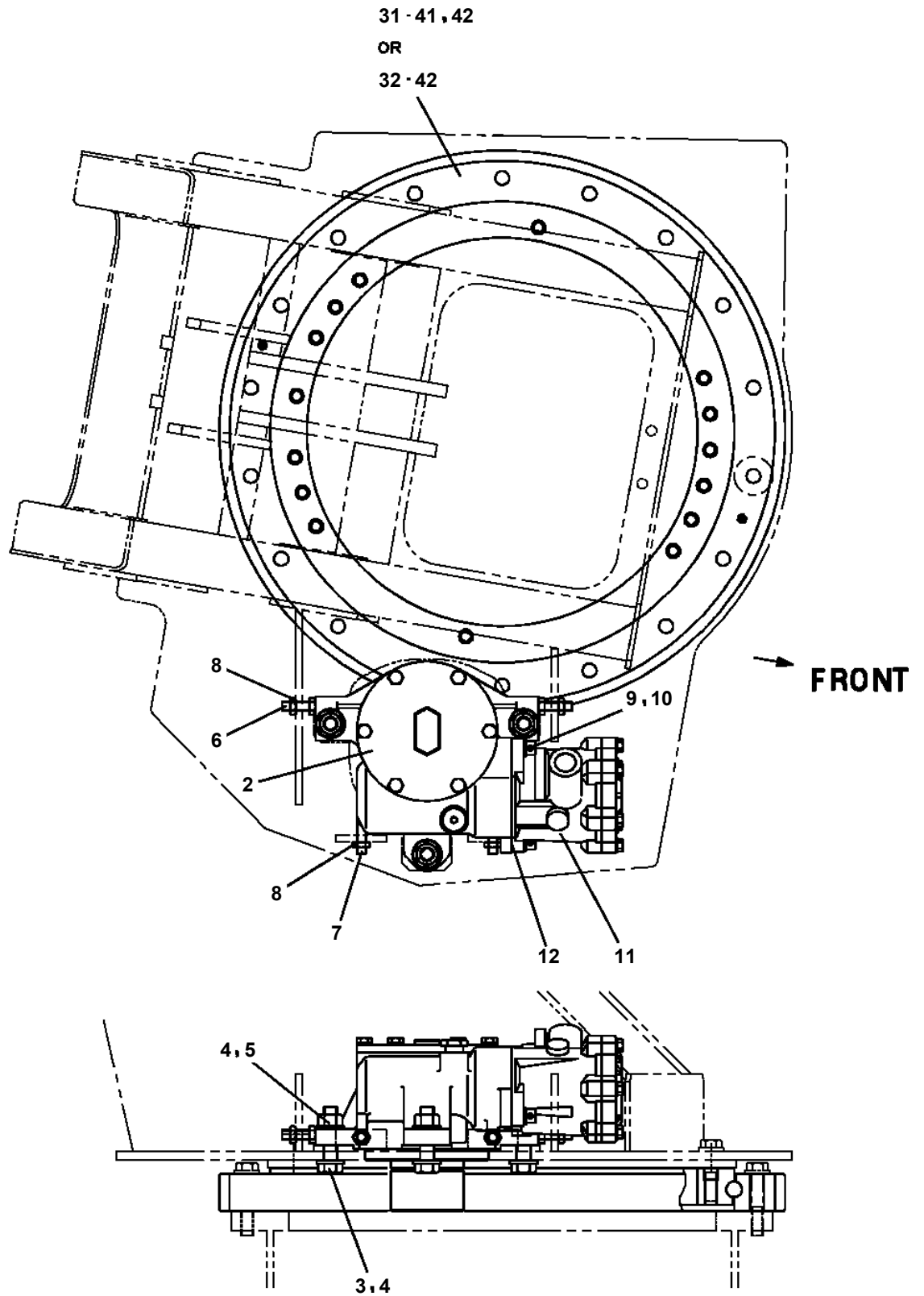


AT-146-3 43011100047 UPPER  
PC6400003-00 CYLINDER ASSY,LEVELING (UPPER)

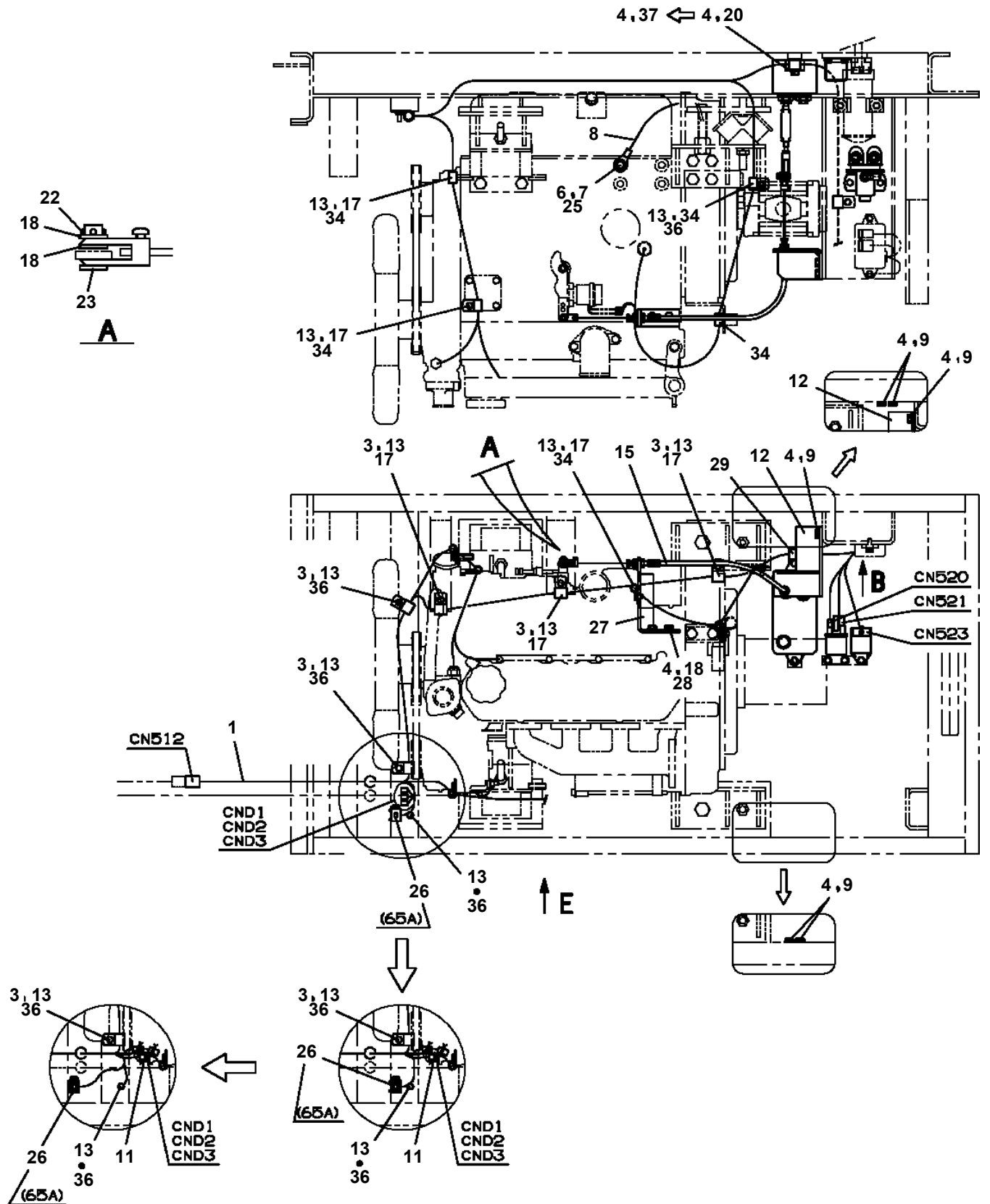


Δ:PACKING SET KEY NO. 50 (KEY NO.5,6,10,12,13,14,18)

AT-146-3 43011100047 UPPER  
PD1020067-00 SWING UNIT



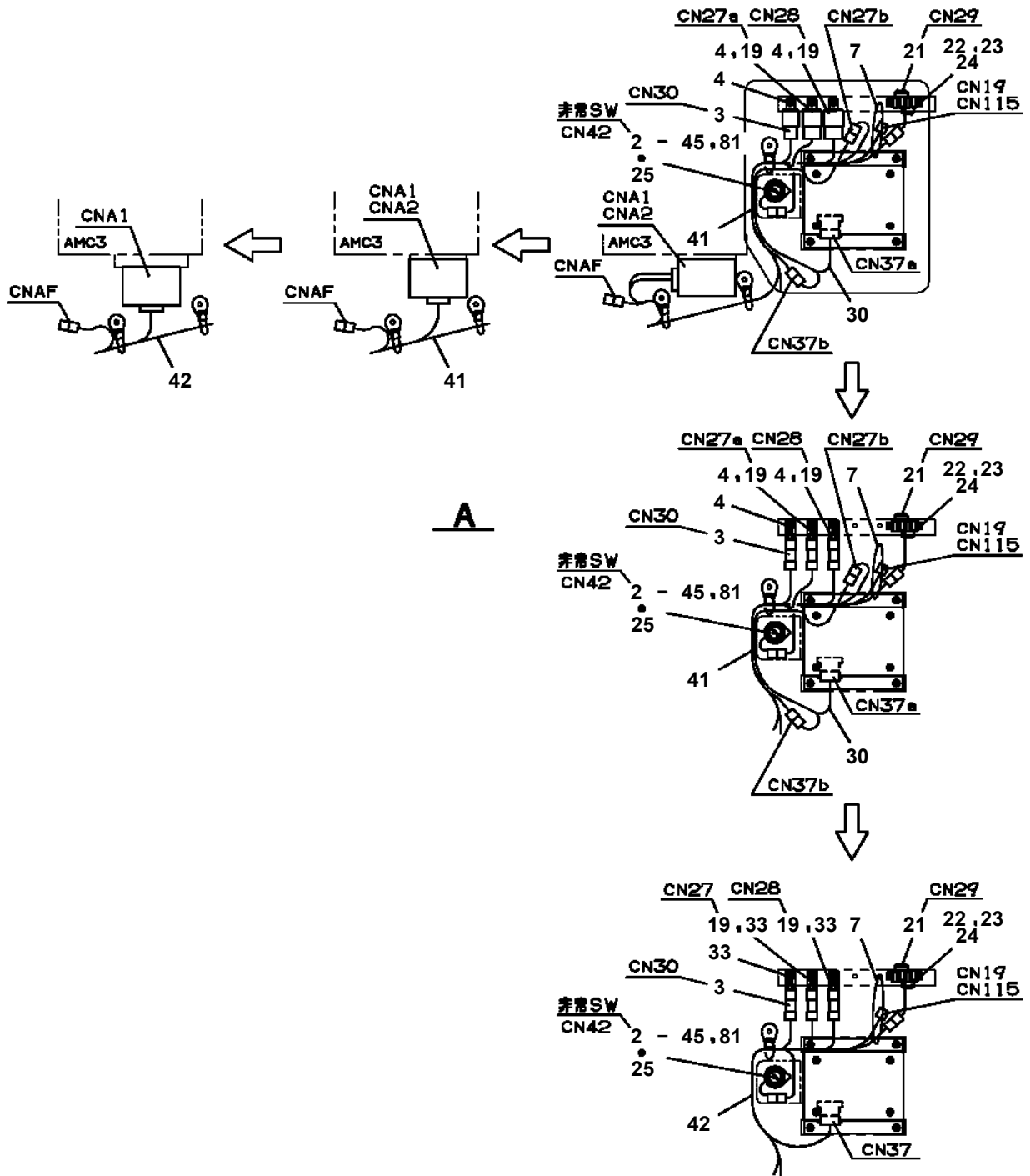
AT-146-3 43011100047 UPPER  
PE5020276-05 ELEC.ASSY



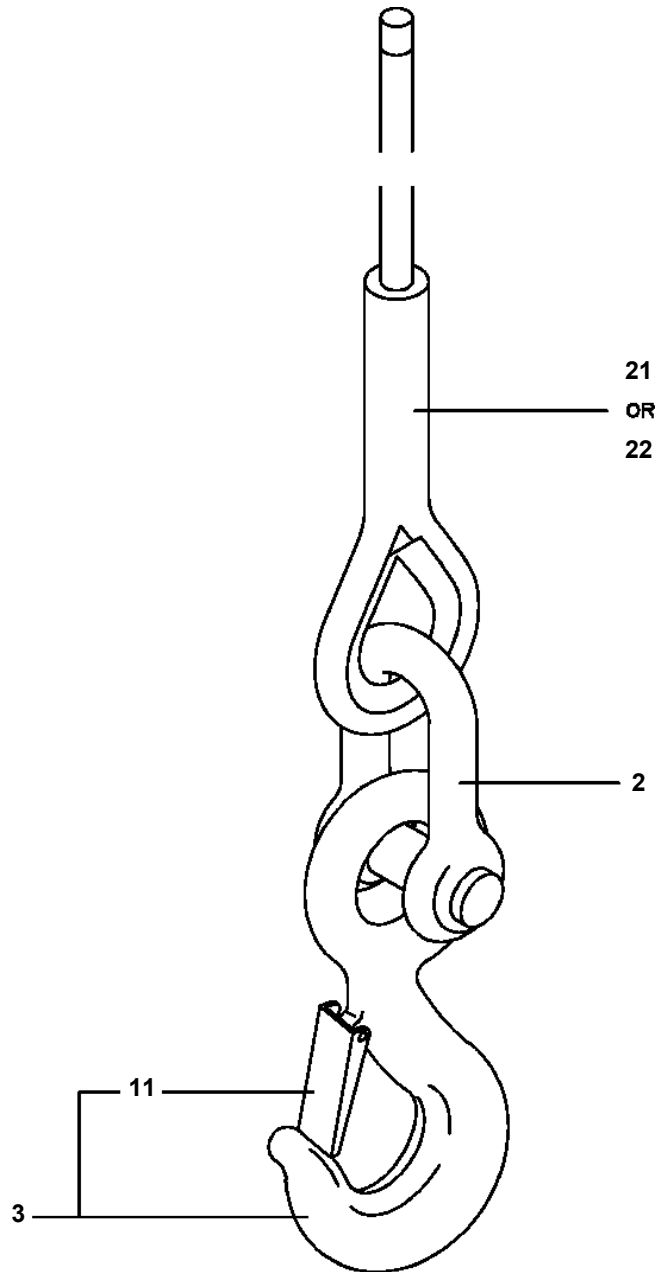
※材は〔付属品リスト〕より検索してください。

FOR THE PART ※, SEE THE CORRESPONDING "ACCESSORY LIST."

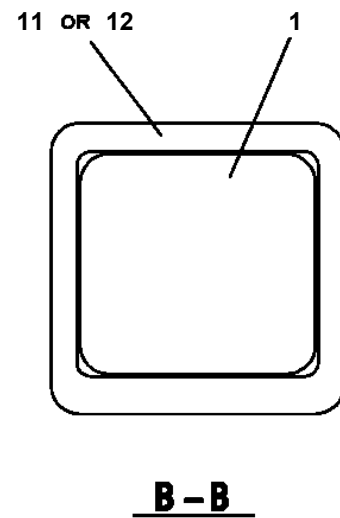
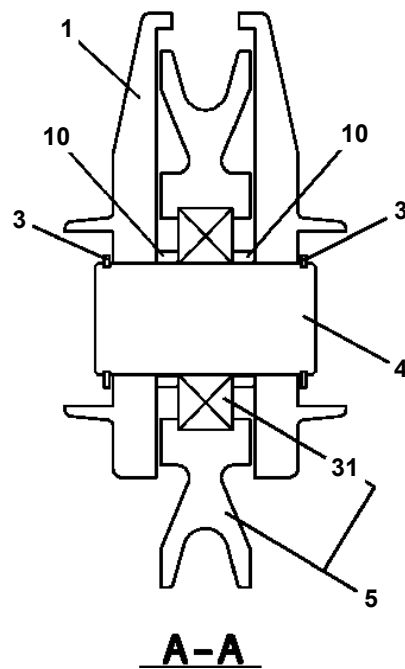
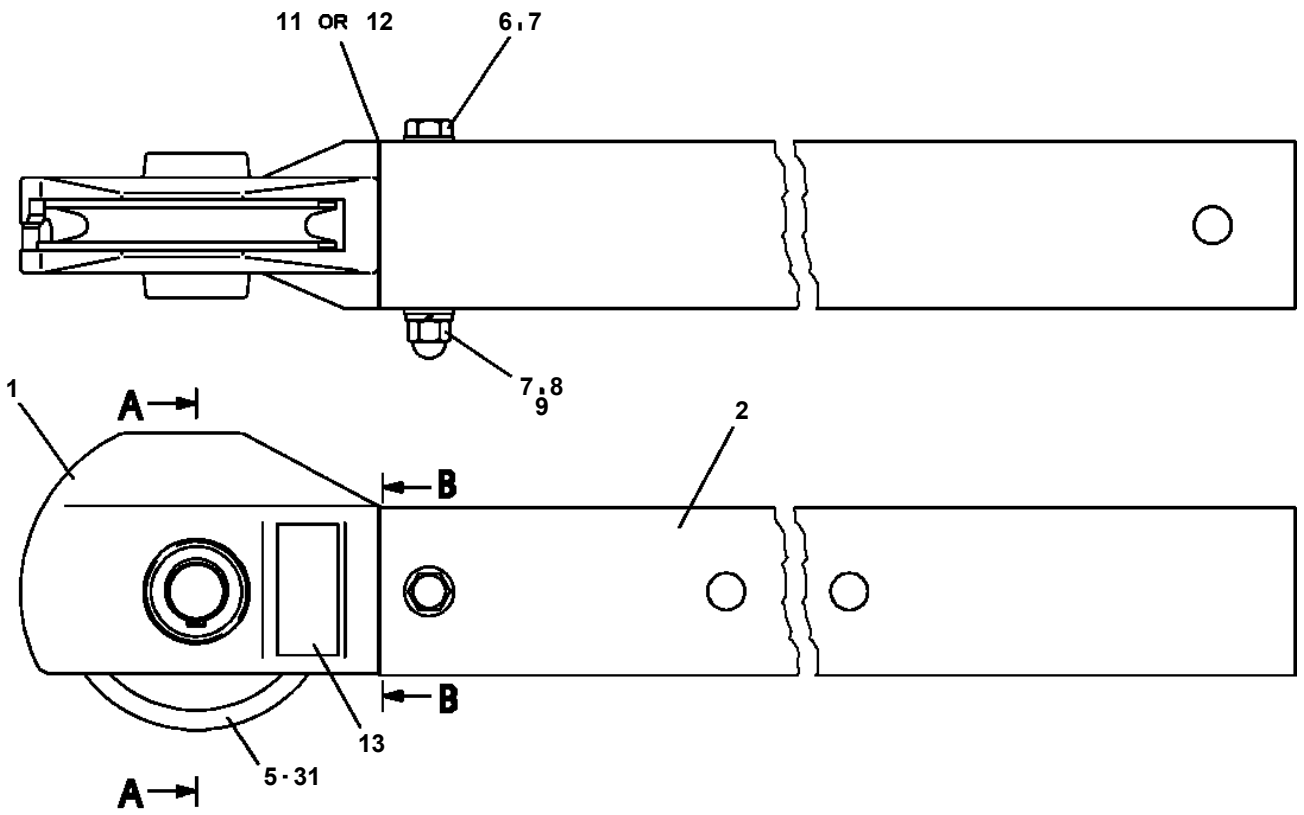
AT-146-3 43011100047 UPPER  
 PE5190007-06 ELEC.ASSY,SWING FRAME



AT-146-3 43011100047 UPPER  
PF1050285-00 HOOK (1-PART LINE WITH ROPE)

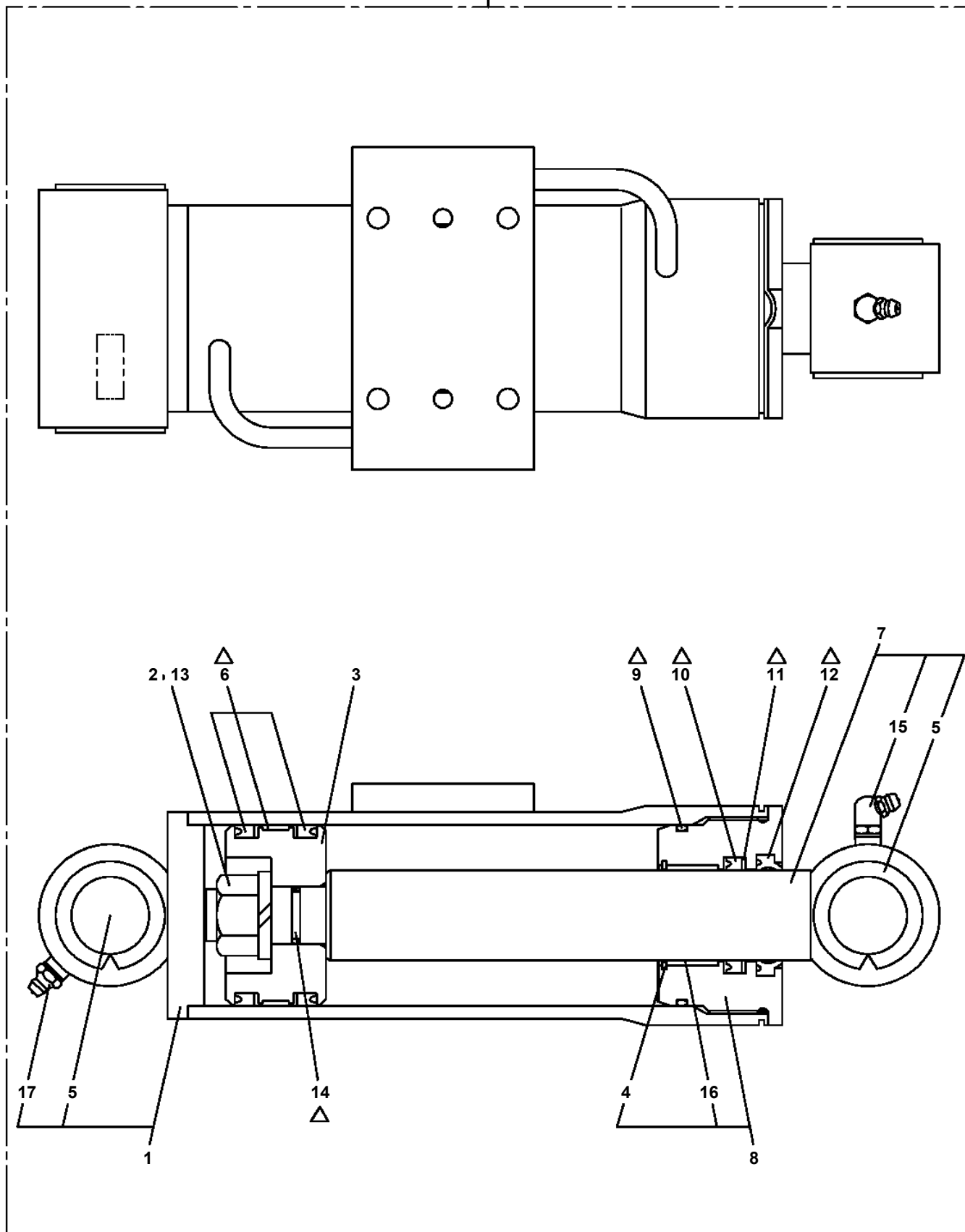


**AT-146-3 43011100047 UPPER  
PF1350107-00 WINCH,JIB (FRP/INTEGRATED SUPPORT,GRAY)**



AT-146-3 43011100047 UPPER  
PF1360007-01 CYLINDER,WINCH JIB

50

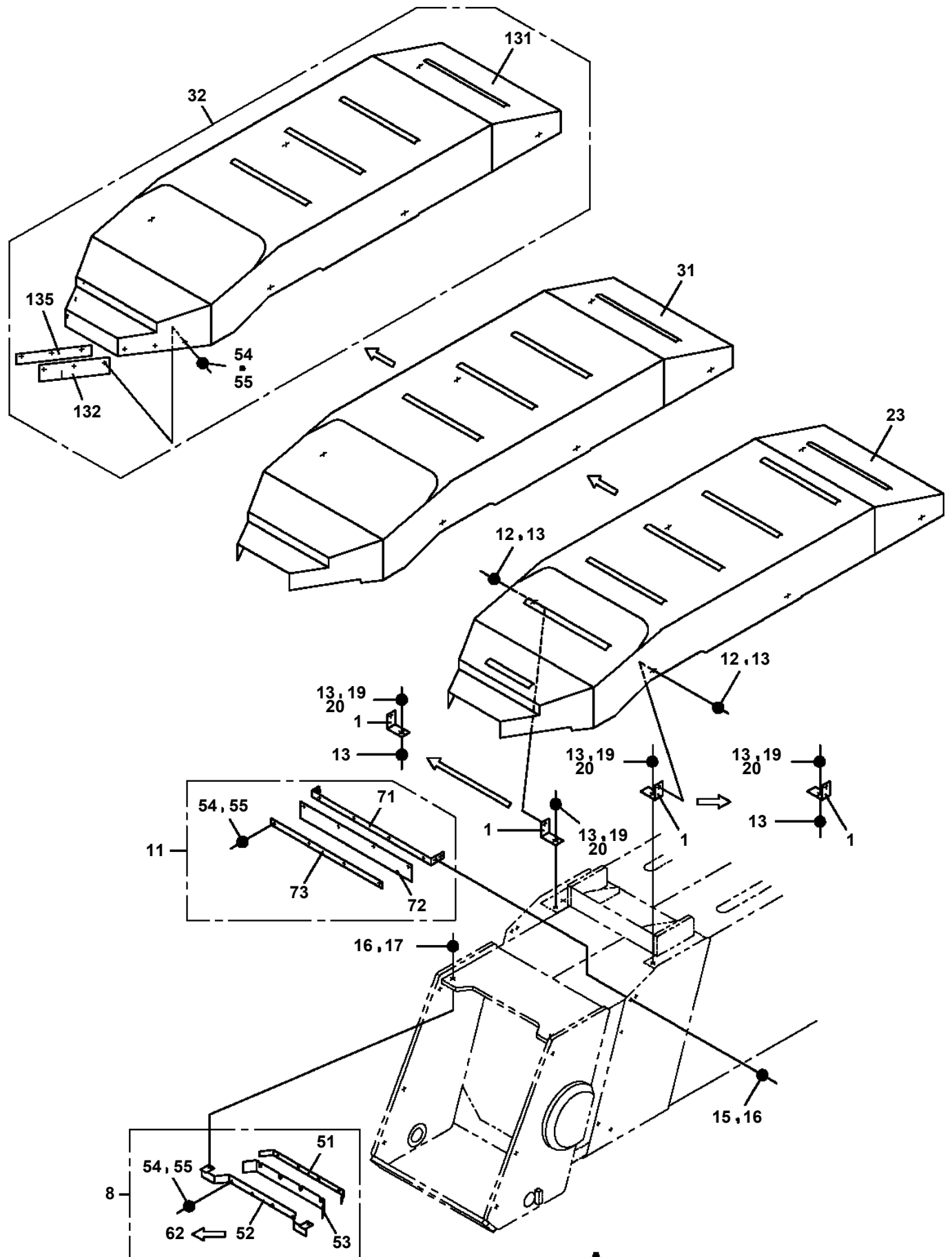


Δ:PACKING SET KEY NO. 30 (KEY NO.6,9,10,11,12,14)

**AT-146-3 43011100047 UPPER**

Pos No.	Parts No	Parts Name	Qty	Unit	Technical Data	Serial No (Start)	Serial No (End)	Re
1	36018250000	CYLINDER,TELESCOPING	1				229007	
	36018250001	CYLINDER ASSY,TELESCOPING	1			229008		
2	36606330000	VALVE,COUNTERBALANCE	1					
3	90172108065	BOLT,HEXAGON SOCKET	3		M8X65			
4	90171112045	BOLT	2		M12X45			
5	90303071201	WASHER,PLAIN	2		12			
6	90201201200	NUT	2		M12			

AT-146-3 43011100047 UPPER  
PG1410106-02 COVER,BOOM



A

# AT-146-3 43011100047 UPPER

Pos No.	Parts No	Parts Name	Qty	Unit	Technical Data	Serial No (Start)	Serial No (End)	Remarks	I
1	(*****)	VIEW SYSTEM (MONITOR)	1						0
2	(*****)	VIEW SYSTEM (CAMERA)	1						0

# AT-146-3 43011100047 UPPER

Pos No.	Parts No	Parts Name	Qty	Unit	Technical Data	Serial No (Start)	Serial No (End)	Remarks	Pages
27	82182809623	DIODE	1						
50	42901450100	HARNESS	1						

# AT-146-3 43011100047 UPPER

Pos No.	Parts No	Parts Name	Qty	Unit	Technical Data	Serial No (Start)	Serial No (End)	Remarks	Pages
100	42502782100	HARNESS	1						

# AT-146-3 43011100047 UPPER

Pos No.	Parts No	Parts Name	Qty	Unit	Technical Data	Serial No (Start)	Serial No (End)	Remarks	Pages
100	42352350400	HARNESS	1						

# AT-146-3 43011100047 UPPER

Pos No.	Parts No	Parts Name	Qty	Unit	Technical Data	Serial No (Start)	Serial No (End)	Remarks	Pages
100	42504471100	HARNESS	1						

# AT-146-3 43011100047 UPPER

Pos No.	Parts No	Parts Name	Qty	Unit	Technical Data	Serial No (Start)	Serial No (End)	Remarks	Pages
100	42612853350	HARNESS	1						

# AT-146-3 43011100047 UPPER

Pos No.	Parts No	Parts Name	Qty	Unit	Technical Data	Serial No (Start)	Serial No (End)	Remarks	Pages
100	42504641200	HARNESS	1						

# AT-146-3 43011100047 UPPER

Pos No.	Parts No	Parts Name	Qty	Unit	Technical Data	Serial No (Start)	Serial No (End)	Remarks	Pages
32	34351562510	BOX,FUSE	1						
33	82100001841	FUSE	3		20A,YELLOW				
35	82100001839	FUSE	7		10A.RED				
52	82100001836	FUSE	2		3A				
55	82100001840	FUSE	2		15A,BLUE				
68	82182819823	DIODE	4		1.5A				
100	42653720104	HARNESS (MAIN)	1						

# AT-146-3 43011100047 UPPER

Pos No.	Parts No	Parts Name	Qty	Unit	Technical Data	Serial No (Start)	Serial No (End)	Remarks	Pages
100	42800040030	HARNESS	1						

**AT-146-3 43011100047 UPPER**

Pos No.	Parts No	Parts Name	Qty	Unit	Technical Data	Serial No (Start)	Serial No (End)	Remarks	Pages
4	36606675010	PLUG	2				228585		
	36606675012	PLUG	2			228586			
5	91002902500	O-RING	4		1B G25				
6	36606675020	SPRING	2						
7	36606405070	SPACER	2						
8	80316090020	PLUG	2		KKT PT1/8				
11	36606669010	POPPET ASSY	2						
100	36606670000	VALVE,RELIEF	1						

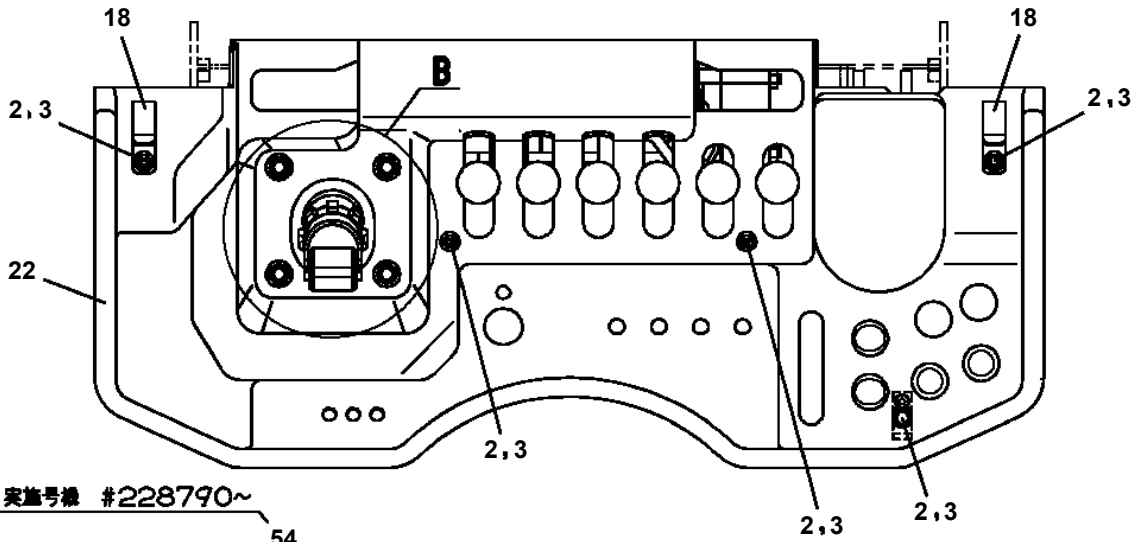
# AT-146-3 43011100047 UPPER

Pos No.	Parts No	Parts Name	Qty	Unit	Technical Data	Serial No (Start)	Serial No (End)	Remarks	Pages
4	36625525010	CONNECTOR	1						
5	91002801800	O-RING	1		1B P18				
30	36625520000	VALVE,CHECK	1						

# AT-146-3 43011100047 UPPER

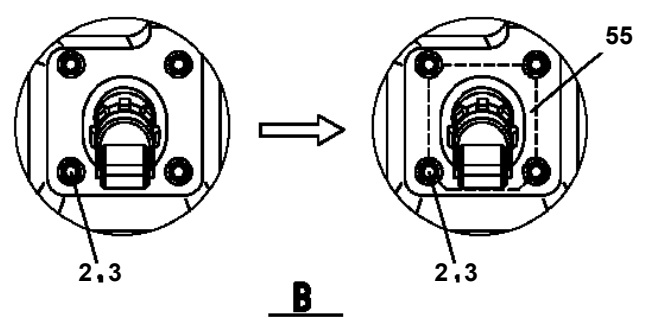
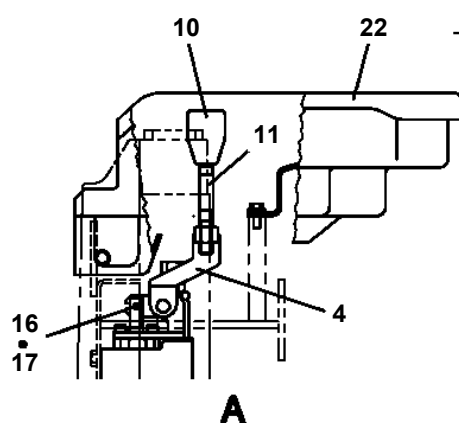
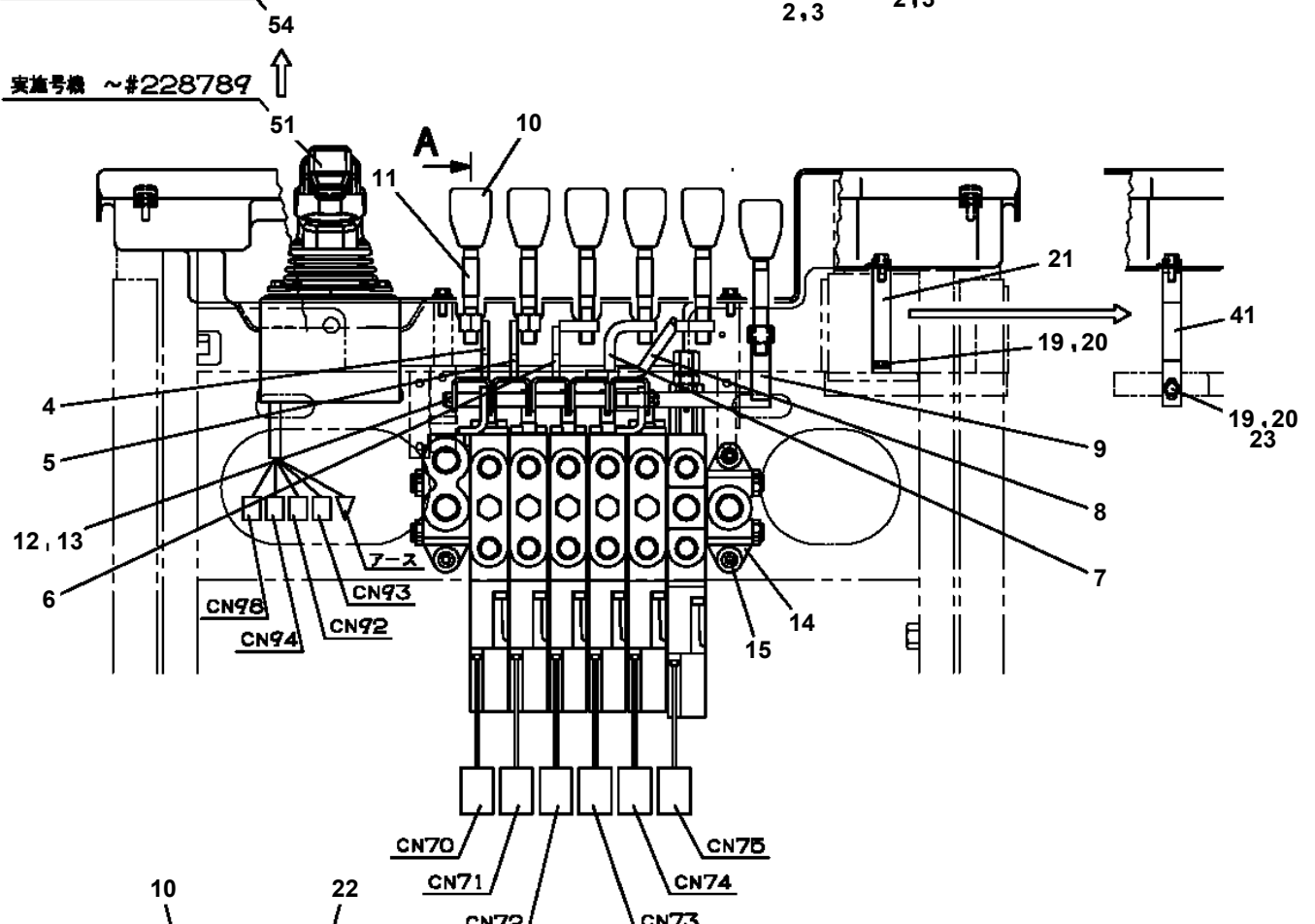
Pos No.	Parts No	Parts Name	Qty	Unit	Technical Data	Serial No (Start)	Serial No (End)	Remarks	Page
1	36672815040	HEAD ASSY	1						
3	36672815030	FILTER,CARTRIDGE	1				229521		
	36672810030	FILTER,CARTRIDGE	1			229522			
10	36672810001	FILTER,OIL	1						

**AT-146-3 43011100047 UPPER  
PJ3040048-04 OPE.ASSY**

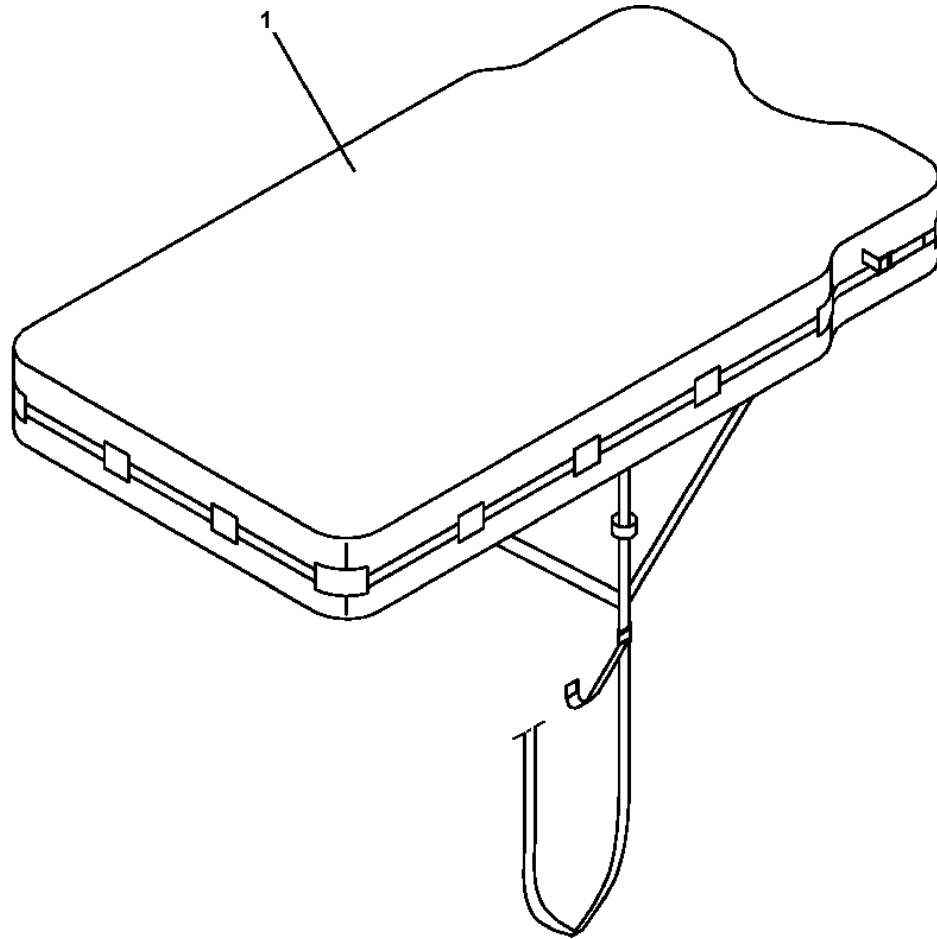


実施号繰 #228790~

実施号繰 ~#228789



**AT-146-3 43011100047 UPPER  
PJ3240037-00 COVER (CLOTH,WHITE)**



# AT-146-3 43011100047 UPPER

Pos No.	Parts No	Parts Name	Qty	Unit	Technical Data	Serial No (Start)	Serial No (End)	Remarks	Pages
2	31630482500	CAP	1						
3	37001500250	BOLT	15		M16X70				
4	90303501601	WASHER,PLAIN	15		16				
5	37000507560	PLATE	1						
6	90171110022	BOLT	3		M10X22				
7	90302041001	WASHER,SPRING	3		10				
8	37000112690	PIN	1						
9	37000509190	PLATE	1						
10	90171112030	BOLT	2		M12X30				
11	90302041201	WASHER,SPRING	2		12				
12	37000175720	PIN	1						
13	42230210010	PIN	1						
14	37000505950	PLATE	1		T=3.2				
15	37000507730	PLATE	1						
16	90171320045	BOLT	1		M20X45				
17	90302042001	WASHER,SPRING	1		20				
19	82420404813	TRIM	3	M					
21	82459103000	NIPPLE,GREASE	1		C-PT1/8				
22	82400000459	CAP	1						
23	42232061007	TABLE,SLEWING	1						

CLICK HERE TO **DOWNLOAD** THE COMPLETE MANUAL

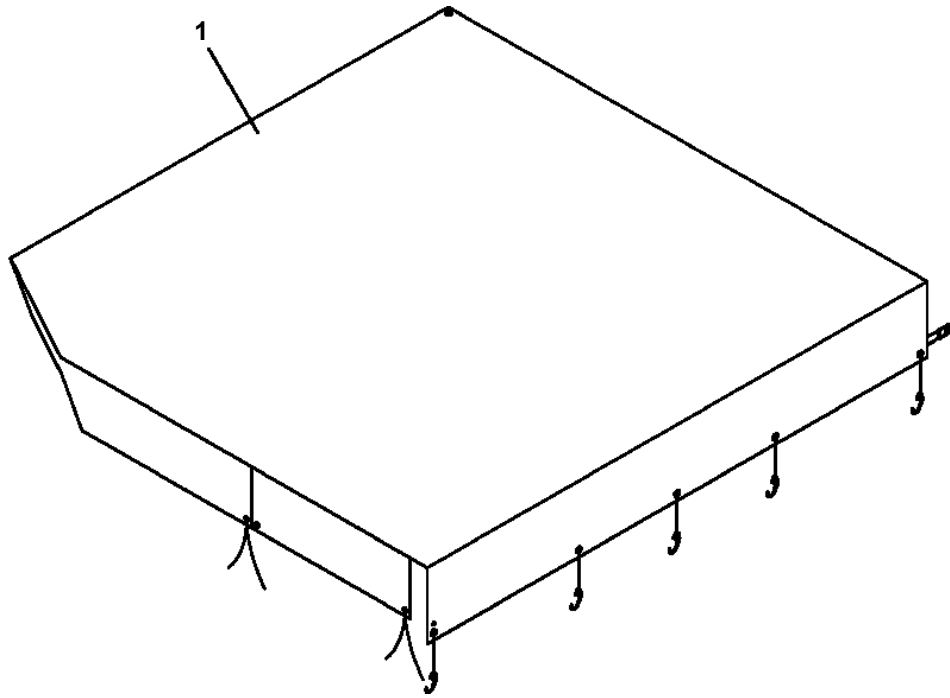
- Thank you very much for reading the preview of the manual.
- You can download the complete manual from: [www.heydownloads.com](http://www.heydownloads.com) by clicking the link below



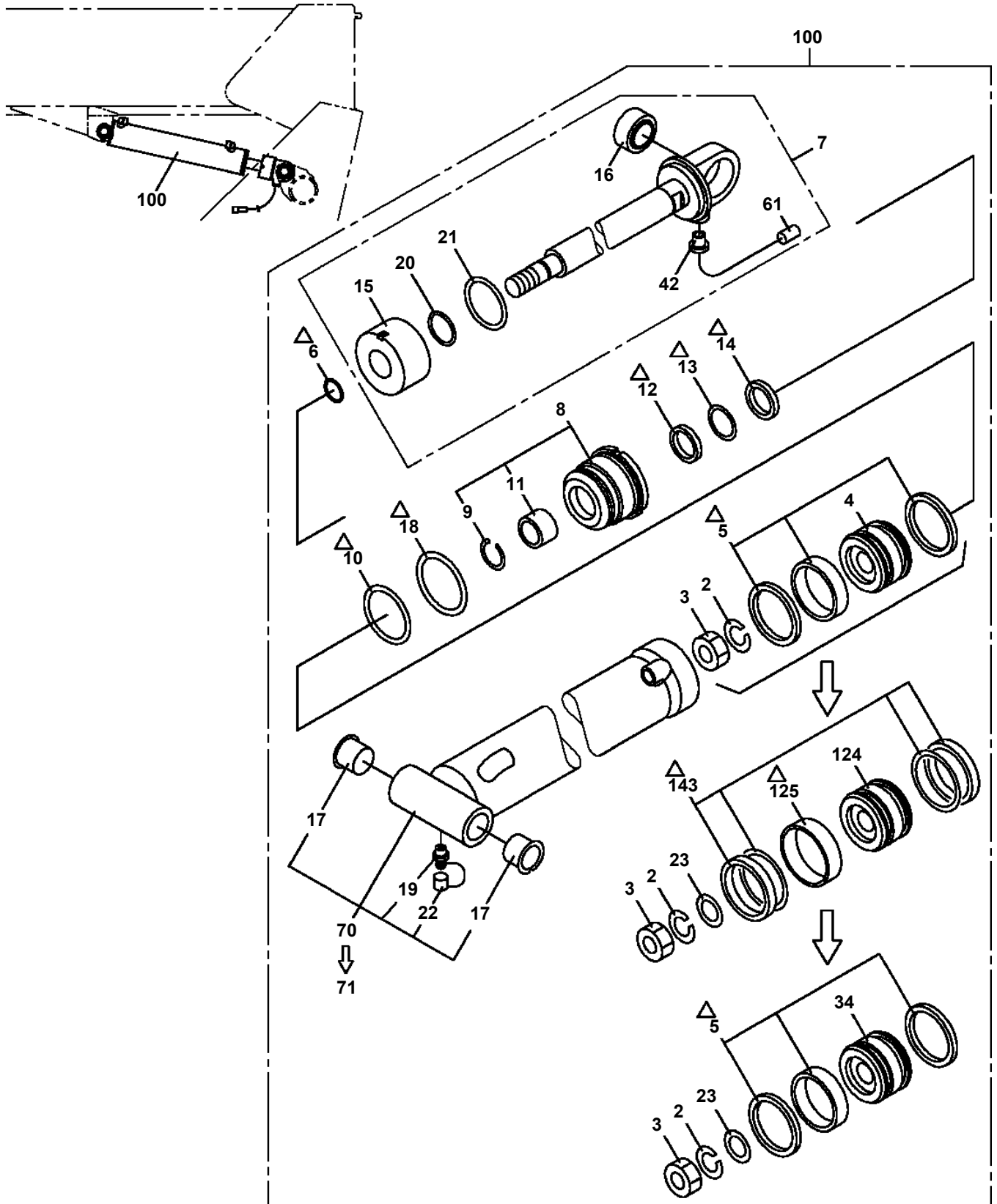
- Please note: If there is no response to CLICKING the link, please download this PDF first and then click on it.

CLICK HERE TO **DOWNLOAD** THE COMPLETE MANUAL

AT-146-3 43011100047 UPPER  
PK1330431-00 COVER (RACK,B)



**AT-146-3 43011100047 UPPER  
 PL5170001-02 CYLINDER ASSY,LEVELING (LOWER)**



△:PACKING SET KEY NO. 80 (KEY NO.5,6,10,12,13,14,18)

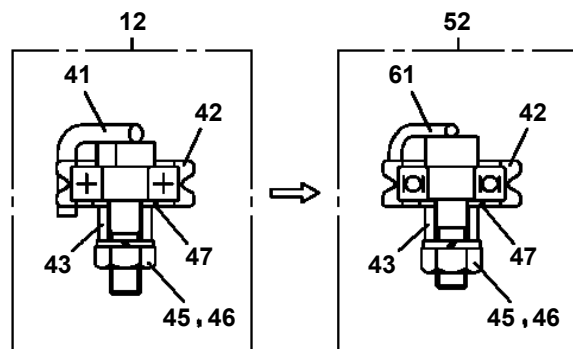
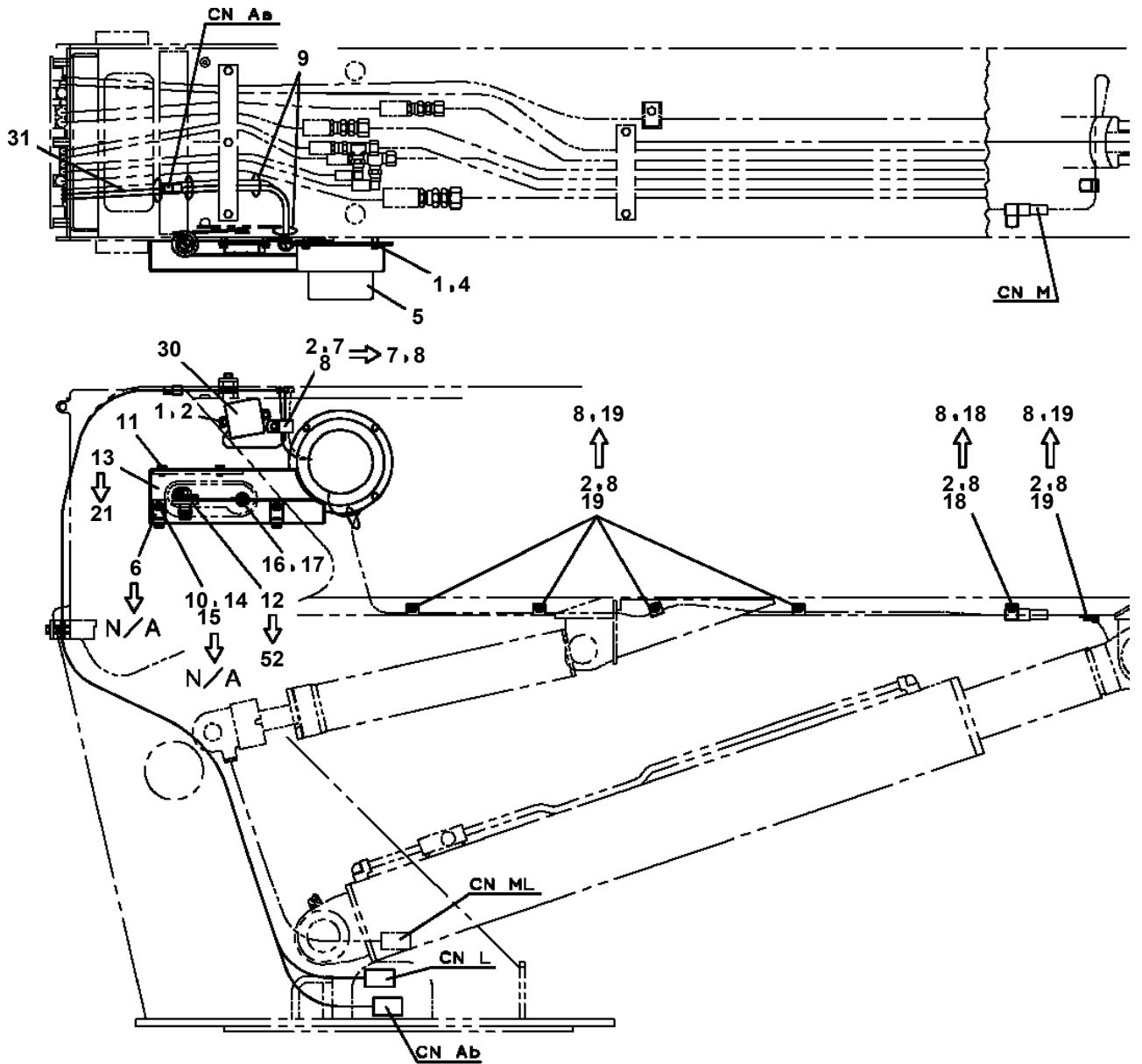


△:PACKING SET KEY NO. 150 (KEY NO.6,10,12,13,14,18,125,143)

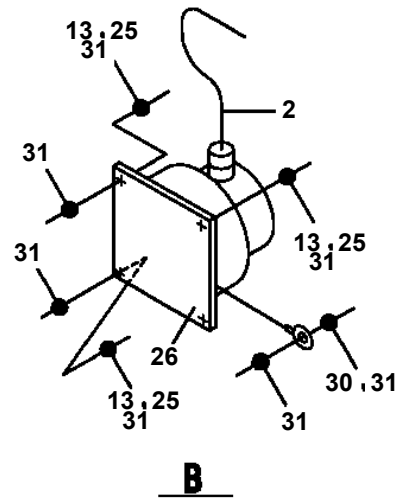
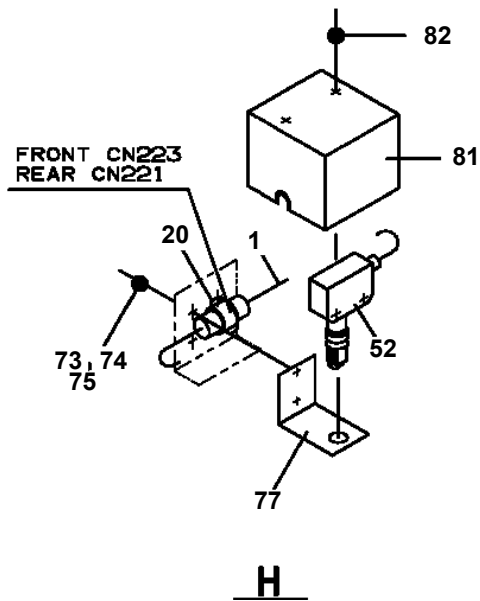
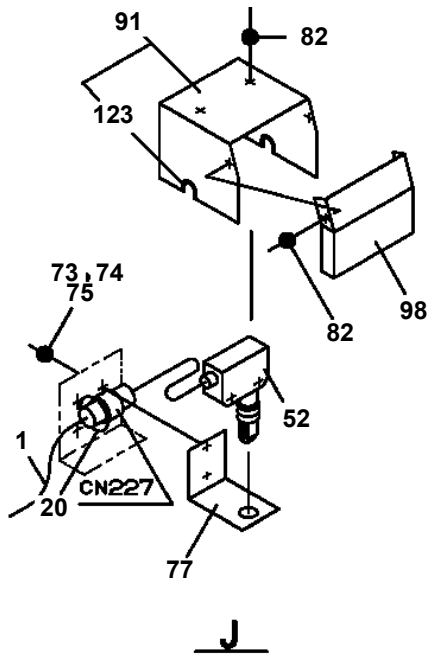


△:PACKING SET KEY NO. 80 (KEY NO.5,6,10,12,13,14,18)

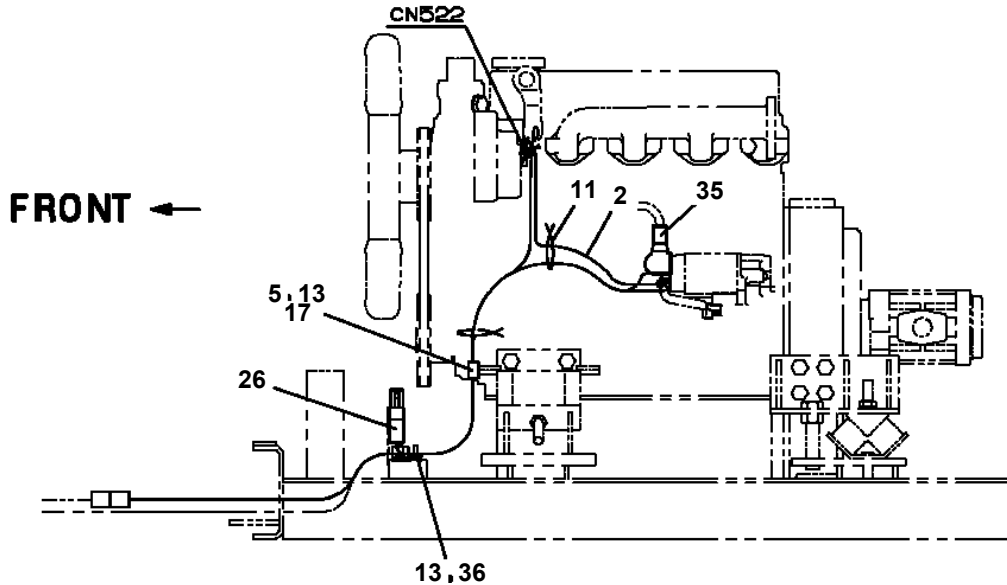
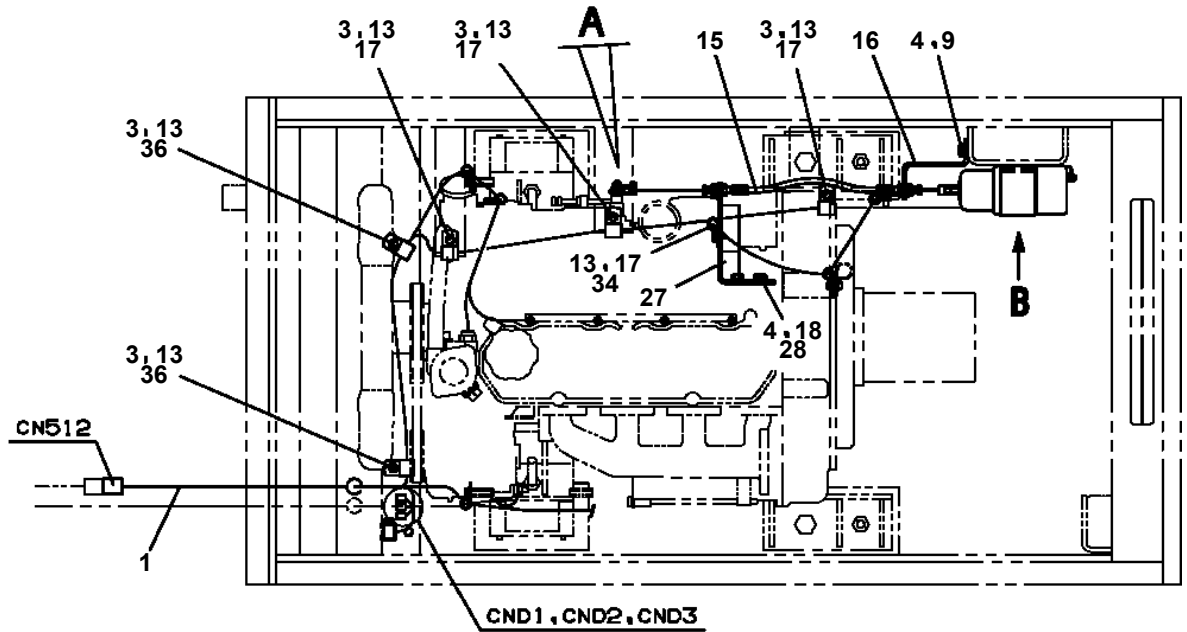
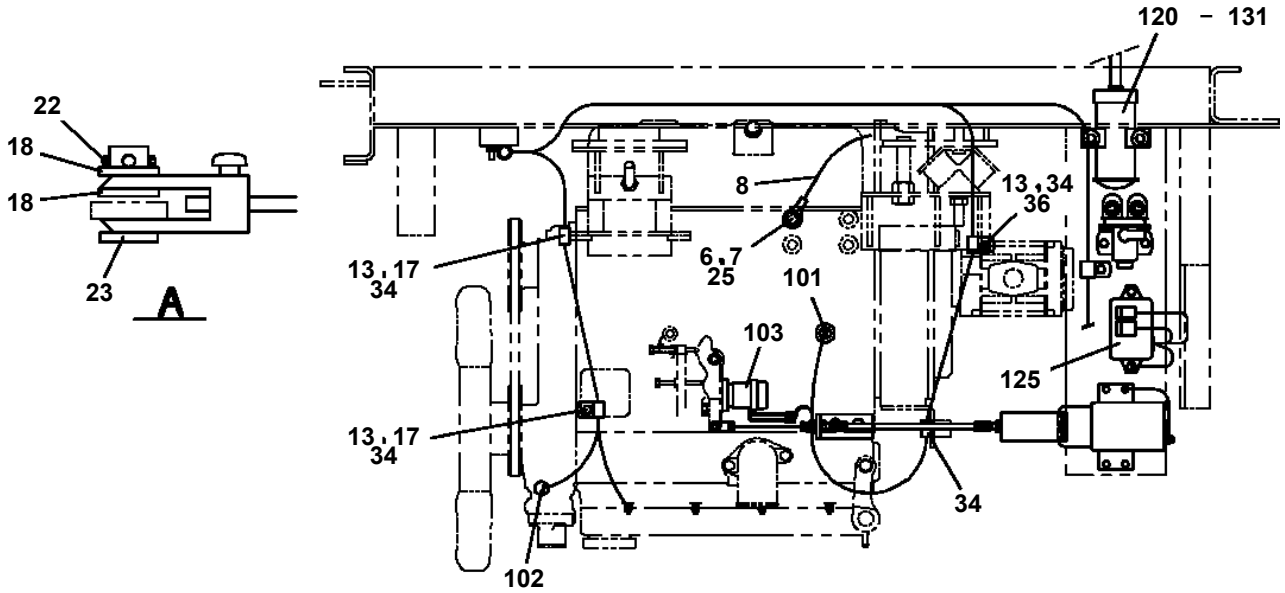
**AT-146-3 43011100047 UPPER  
PN1014441-05 ELEC.ASSY (BOOM)**



**AT-146-3 43011100047 UPPER  
PN1014486-02 ELEC.ASSY (FRAME)**



**AT-146-3 43011100047 UPPER  
PN1015065-02 ELEC.ASSY (ENGINE UNIT)**



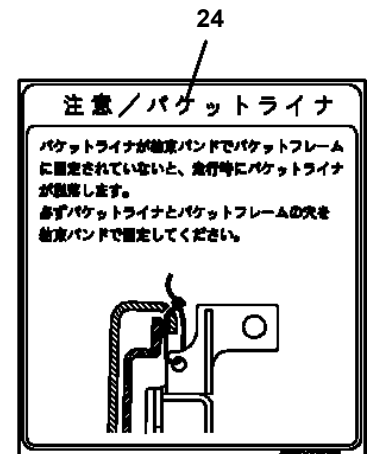
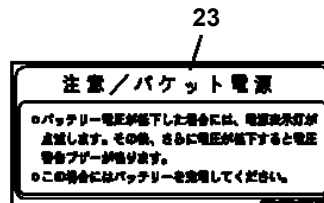
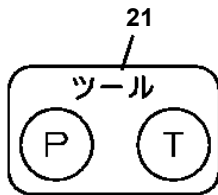
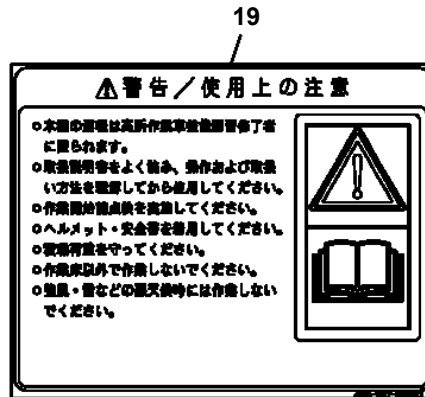
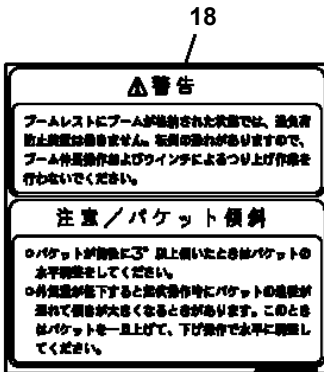
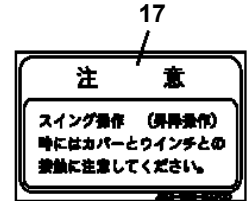
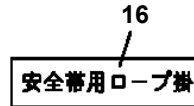
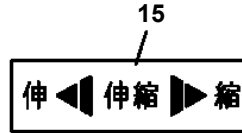
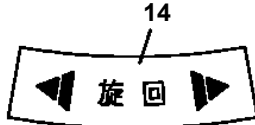
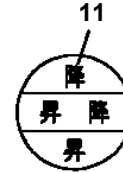
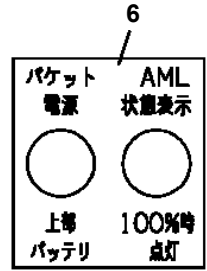
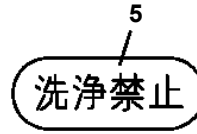
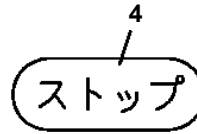
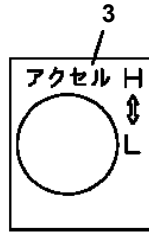
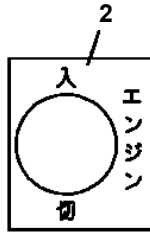
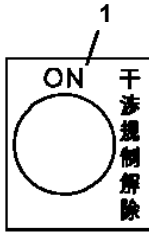
# AT-146-3 43011100047 UPPER

Pos No.	Parts No	Parts Name	Qty	Unit	Technical Data	Serial No (Start)	Serial No (End)	Remarks	Pages
1	42651711200	CASE	1						
2	42651711100	COVER	1						
3	80182306014	SCREW,MACHINE	8		M6X14				
4	90302040601	WASHER,SPRING	21		6				
5	90303070601	WASHER,PLAIN	10		6				
7	90101206014	BOLT	12		M6X14				
8	82100002596	RELAY	8						
9	82161201010	RELAY	6						
10	82100002597	RELAY	4						
11	42900002100	TERMINAL ASSY	1						
12	80172303016	SCREW,MACHINE	2		M3X16				
13	90302040301	WASHER,SPRING	4		3				
14	90303070301	WASHER,PLAIN	4		3				
16	42900023010	SUPPORT	1						
17	82100002016	CLAMP	1		WR25				
18	90201200600	NUT	1		M6				
19	42651091100	RELAY ASSY	1						
20	80172303008	SCREW,MACHINE	2		M3X8				
100	42900023002	RELAY BOX	1						

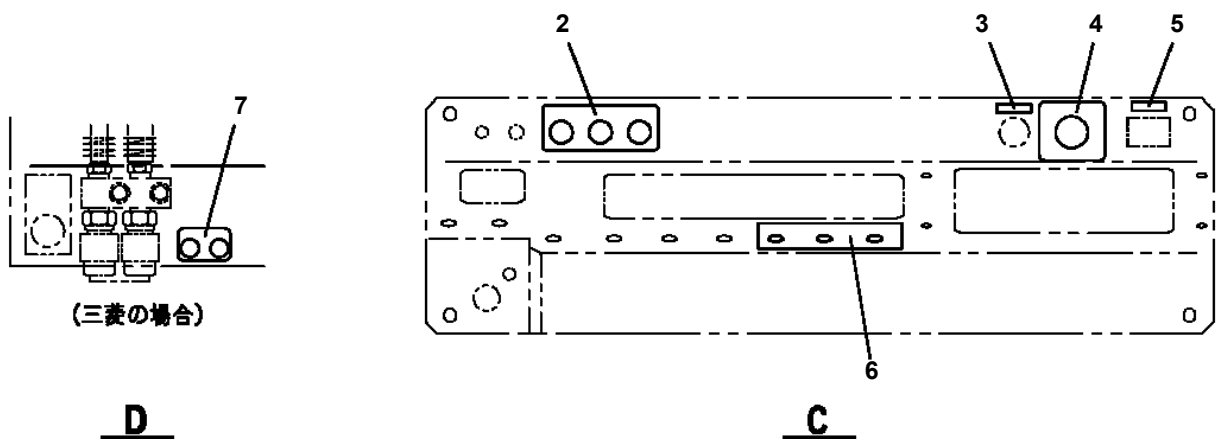
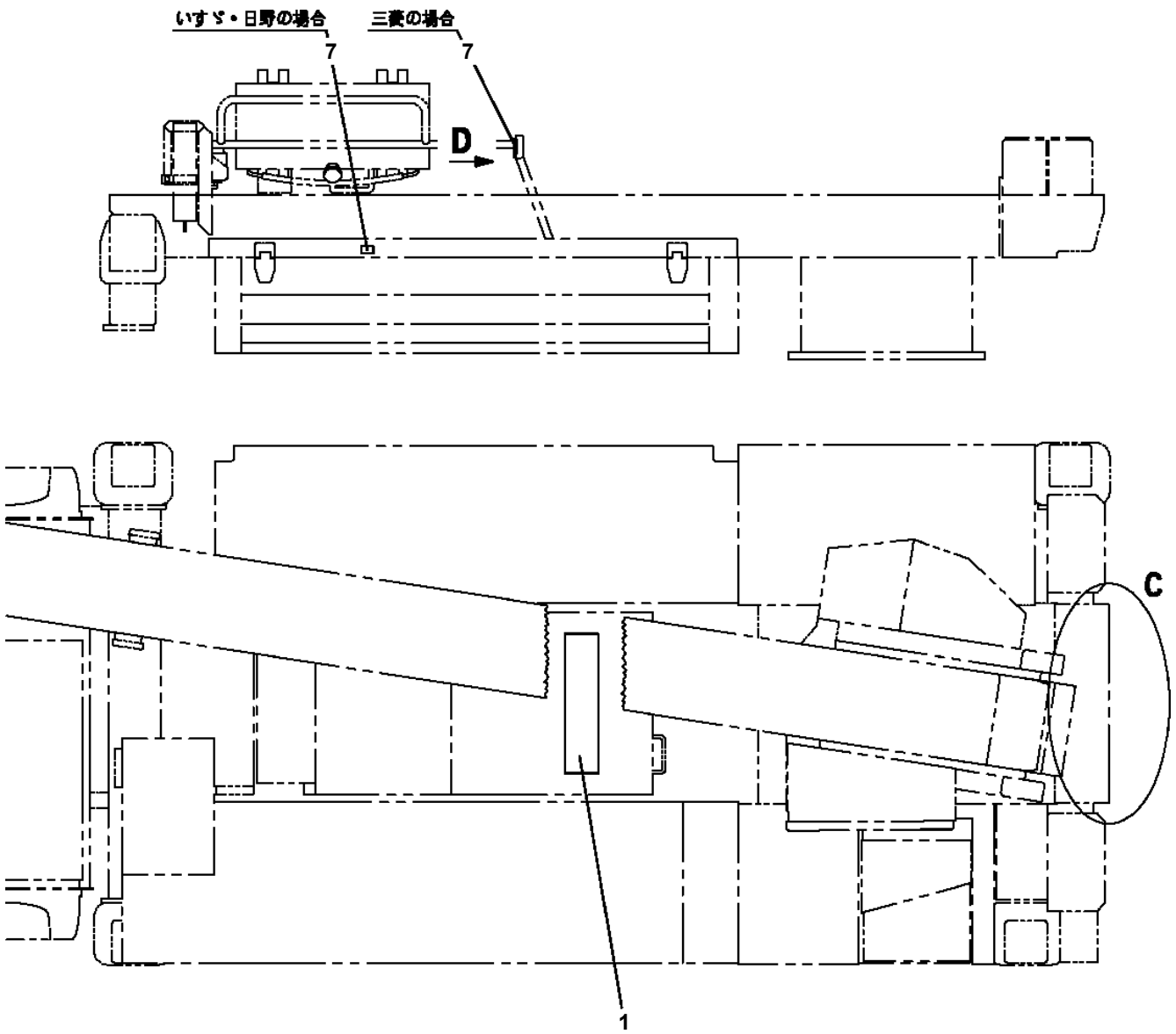
**AT-146-3 43011100047 UPPER**

Pos No.	Parts No	Parts Name	Qty	Unit	Technical Data	Serial No (Start)	Serial No (End)	Remarks	Pages
32	34351562510	BOX,FUSE	1						
33	82100001841	FUSE	3		20A,YELLOW				
35	82100001839	FUSE	7		10A.RED				
48	82161202010	RELAY	2						
52	82100001836	FUSE	2		3A				
55	82100001840	FUSE	2		15A,BLUE				
100	42653720102	HARNESS	1						

AT-146-3 43011100047 UPPER  
PN5011468-00 NAME PLATE ASSY (BUCKET)



AT-146-3 43011100047 UPPER  
PO1015065-02 PLATE ASSY,NAME (POWER UNIT)



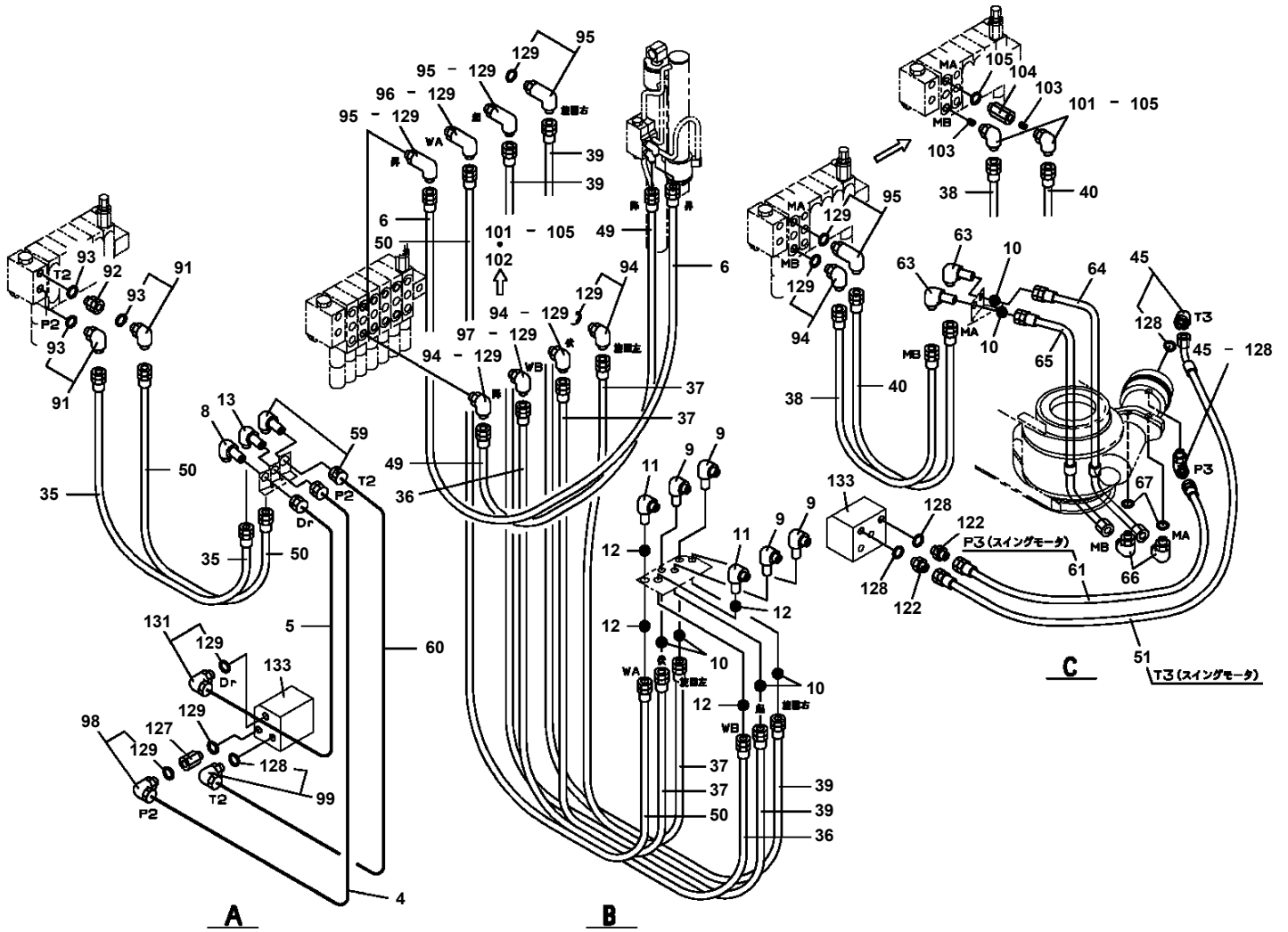
# AT-146-3 43011100047 UPPER

Pos No.	Parts No	Parts Name	Qty	Unit	Technical Data	Serial No (Start)	Serial No (End)	Remarks	Pages
1	42504520010	PLATE,NAME	1						

# AT-146-3 43011100047 UPPER

Pos No.	Parts No	Parts Name	Qty	Unit	Technical Data	Serial No (Start)	Serial No (End)
1	42332062500	SWITCH ASSY (WITH HARNESS,1 SW)	1				
2	42433932100	SWITCH ASSY (WITH HARNESS,1 SW)	1				
3	42900022000	INDICATOR,OUTRIGGER	1				
4	80192486014	SCREW,MACHINE (WITH WASHER)	4		M6X14		
5	90302040601	WASHER,SPRING	4		6		
6	90201200600	NUT	4		M6		
7	42901451100	PANEL	1				
8	82199514013	CAP	7				
9	82154201010	METER,HOUR	1				
10	82109341004	SWITCH	1				
11	82100002307	COVER (CONTACT BLOCK PROTECTION/BLACK)	1				
12	42651593400	SWITCH ASSY (WITH HARNESS,1 SW)	1				
13	80172303012	SCREW,MACHINE	2		M3X12		
14	90303070301	WASHER,PLAIN	2		3		
15	90201200300	NUT	2		M3		
16	90302040301	WASHER,SPRING	2		3		
17	42433932200	SWITCH ASSY (WITH HARNESS,1 SW)	1				
18	42809631200	LAMP ASSY (RED,WITH HARNESS)	5				
19	44320516500	PLUG (12 POLES,FEMALE)	1				
20	42809023300	PLUG (14 POLES,MALE)	1				
21	42350250150	PLUG (6 POLES,MALE)	1				
22	42651591300	SWITCH ASSY (WITH HARNESS,3 SW)	1				
23	42332521300	SWITCH ASSY (WITH HARNESS)	1				
24	91810130240	FASTENER	1				
25	82199504017	NUT	7		AT-401N		
26	42900001200	COVER	1				
54	82420101603	TRIM	1	M			
69	42355641010	COVER	1				
81	42355641210	BUTTON	1				
100	42901451000	PANEL ASSY,CONTROL	1				

**AT-146-3 43011100047 UPPER  
PP6080002-01 PIPING ASSY, BUCKET**



# AT-146-3 43011100047 UPPER

Pos No.	Parts No	Parts Name	Qty	Unit	Technical Data	Serial No (Start)	Serial No (End)	Remark
1	90171312025	BOLT	16		M12X25			
2	90303501201	WASHER,PLAIN	16		12			
3	42422451100	SUPPORT	2					
4	90102216080	BOLT	2		M16X80			
5	82449030600	INSULATOR	4					
6	42422451200	SUPPORT	2					
7	90203201600	NUT	4		M16			
8	90101208020	BOLT	6		M8X20			
9	90302040801	WASHER,SPRING	6		8			
10	42422451400	SUPPORT	1					
11	42422451300	SUPPORT	1					
12	36361360000	ENGINE ASSY	1					
13	42422451601	FRAME	1					
31	36654440000	PUMP,HYDRAULIC	1					
32	42422261810	COUPLING	1					
33	42422261850	SUPPORT	1					
34	90103710030	BOLT	2		M10X30			
35	90302041001	WASHER,SPRING	10		10			
36	90303071001	WASHER,PLAIN	2		10			
37	90103210025	BOLT	8		M10X25			
51	(*****)	ACCESSORY LIST (ENGINE)	1				228834	

# AT-146-3 43011100047 UPPER

Pos No.	Parts No	Parts Name	Qty	Unit	Technical Data	Serial No (Start)	Serial No (End)	Remarks
1	42900002300	CASE	1					
2	42654272100	COVER ASSY	1					
3	34354781710	RELAY (WITH BRACKET)	15					
4	34354781740	RELAY	1					
5	34354781730	RELAY	1					
6	80197585012	SCREW,MACHINE	19		M5X12			
7	90302040601	WASHER,SPRING	7		6			
8	90201200600	NUT	1		M6			
9	90303070601	WASHER,PLAIN	8		6			
10	82100002016	CLAMP	1		WR25			
11	80182306014	SCREW,MACHINE	6		M6X14			
12	82161324080	RELAY	2					
13	42900002400	SUPPORT	1					
15	90186206010	BOLT,FLANGE	3		M6X10			
17	42900002100	TERMINAL ASSY	1					
18	80172303016	SCREW,MACHINE	2		M3X16			
19	90302040301	WASHER,SPRING	4		3			
20	90303070301	WASHER,PLAIN	4		3			
21	42651091100	RELAY ASSY	1					
22	80172303008	SCREW,MACHINE	2		M3X8			
41	42654272110	COVER	1					
42	42653235321	COVER	1					
43	90813106015	BOLT	2		M6X15			
44	90302040601	WASHER,SPRING	2		6			
45	90303070601	WASHER,PLAIN	2		6			
100	42901452001	RELAY BOX ASSY	1					

# AT-146-3 43011100047 UPPER

Pos No.	Parts No	Parts Name	Qty	Unit	Technical Data	Se
1	82109833232	SWITCH	1			
2	82100002220	CABLE	3	M		
3	82100002173	CONNECTOR	1			
50	42509150000	SWITCH ASSY (ELEC.BOOSTER, REMOTE:2M,NANABOSI,KASUGA)	1			

# AT-146-3 43011100047 UPPER

Pos No.	Parts No	Parts Name	Qty	Unit	Technical Data	Serial No (Start)	Serial No (End)
1	42470980100	SWITCH,PUSH	1				
2	82100002220	CABLE	3	M			
3	82116920411	CONNECTOR	1				
4	82122910100	CAP	1				
100	42479580000	SWITCH BOX(BOOSTER,3M/SANWA)	1				

# AT-146-3 43011100047 UPPER

Pos No.	Parts No	Parts Name	Qty	Unit	Technical Data	Serial No (Start)	Serial No (End)	R
2	80316100010	PLUG	4		GPF1/8			
3	91002800800	O-RING	6		1B P8			
4	36606760010	PLUG	2					
5	91002801400	O-RING	4		1B P14			
6	36606760020	SLEEVE	2					
7	36606760030	POPPET	2					
8	91000501300	O-RING	2		AS568-013			
9	37001202150	SPRING	2					
10	37001202160	SPRING	2					
11	36606760040	PLUG	2					
12	36606760051	PLUG	2					
13	91002802000	O-RING	2		1B P20			
14	91000501500	O-RING	2		AS568-015			
15	36606760061	SLEEVE	2					
16	36606760070	SPOOL	2					
17	91002800900	O-RING	2		1B P9			
19	91002801200	O-RING	2		1B P12			
20	91000501600	O-RING	2					
100	36606760000	VALVE ASSY,COUNTERBALANCE	1					

# AT-146-3 43011100047 UPPER

Pos No.	Parts No	Parts Name	Qty	Unit	Technical Data	Serial No (Start)	Serial No (End)	Remarks	Pages
1	42470340000	MAT	1		1000X630 T=6				
	42470340000	MAT	1		1000X630 T=6				

# AT-146-3 43011100047 UPPER

Pos No.	Parts No	Parts Name	Qty	Unit	Technical Data	Serial No (Start)	Serial No (End)	Remarks	Pages
1	36073820000	WINCH	1						000082
2	42310951100	SUPPORT	1						
3	42311303100	SUPPORT	1						
4	42310951020	JOINT	1						
5	80320030050	FITTING,ELBOW	1		KLE10-020N				
6	42310951300	PIN	1						
7	37002600400	WEDGE	1						
8	90101212018	BOLT	6		M12X18				
9	90302041201	WASHER,SPRING	6		12				
10	90101210016	BOLT	4		M10X16				
11	90302041001	WASHER,SPRING	4		10				
12	90101208018	BOLT	4		M8X18				
13	90302040801	WASHER,SPRING	6		8	228517	228516		
	90302040801	WASHER,SPRING	8		8				
14	80400160128	JOINT	2		S,G3/8-G1/4				
15	91002801400	O-RING	2		1B P14				
16	42311917100	SUPPORT	1						
17	90102208035	BOLT	2		M8X35				
18	90201200800	NUT	2		M8				
19	90303070801	WASHER,PLAIN	2		8				

**AT-146-3 43011100047 UPPER**

Pos No.	Parts No	Parts Name	Qty	Unit	Technical Data	Serial No (Start)	Serial No (End)	Remarks	Pages
1	42875211002	SUPPORT ASSY	1				228593		
	42875211003	SUPPORT ASSY	1			228594			
2	42875100200	PLATE,SLIDE	2				228444		
	42875100300	PLATE,SLIDE	2			228445			
3	90171114035	BOLT	4		M14X35				
4	90302041401	WASHER,SPRING	4		14				
5	90180208020	BOLT,BUTTON	8		M8X20				
6	90303070801	WASHER,PLAIN	8		8				
8	82401800080	PLUG (FOR M8)	2			228594			

# AT-146-3 43011100047 UPPER

Pos No.	Parts No	Parts Name	Qty	Unit	Technical Data	Serial No (Start)	S
1	42738221000	WOOD BLOCK (KANSAI DENRYOKU/DETACHABLE)	1				

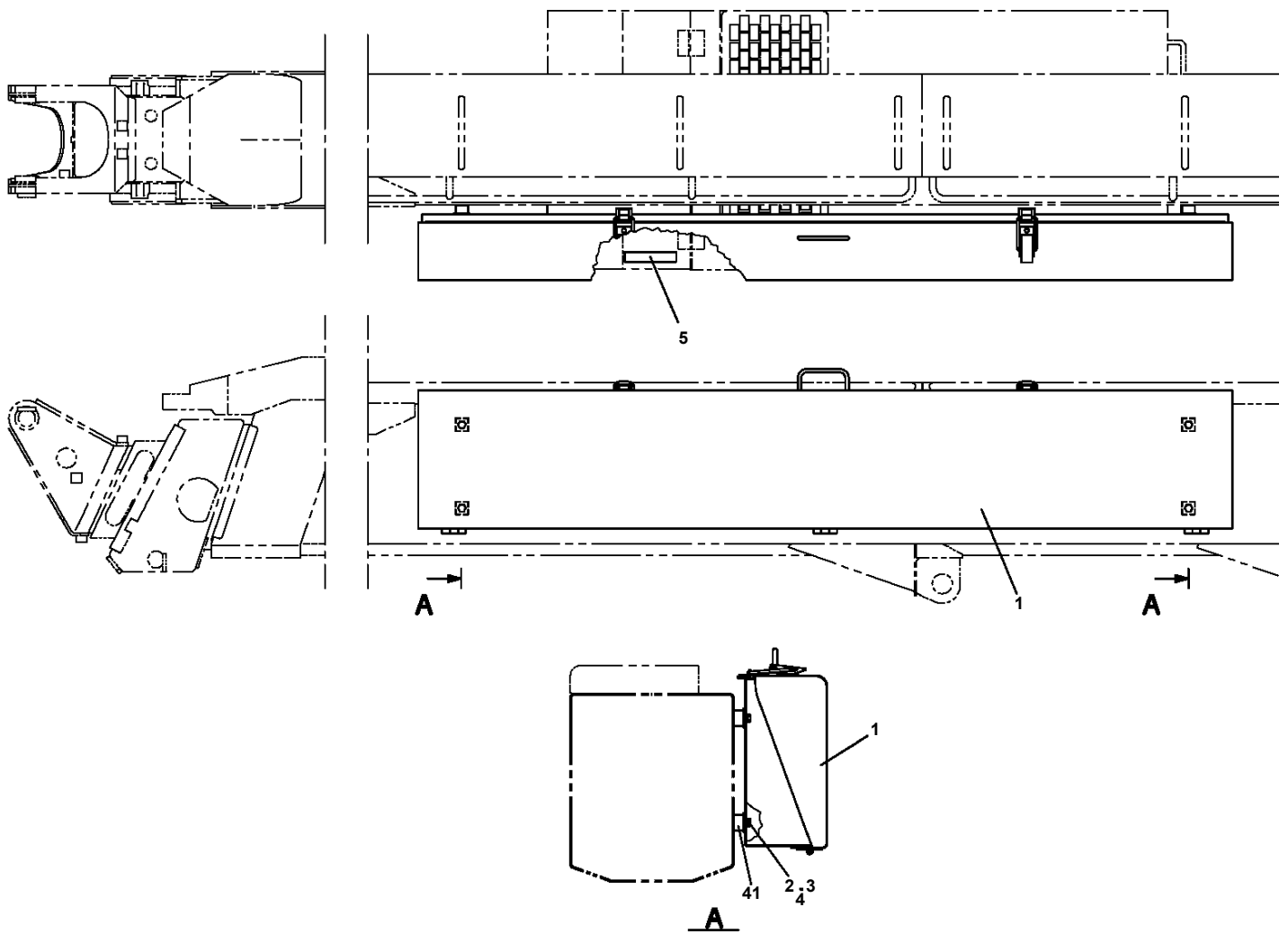
# AT-146-3 43011100047 UPPER

Pos No.	Parts No	Parts Name	Qty	Unit	Technical Data
1	42971852000	BLOCK,WOOD (LEFT REAR:KANSAI DENRYOKU/DETACHABLE TYPE)	1		
2	42738221000	WOOD BLOCK (KANSAI DENRYOKU/DETACHABLE)	3		

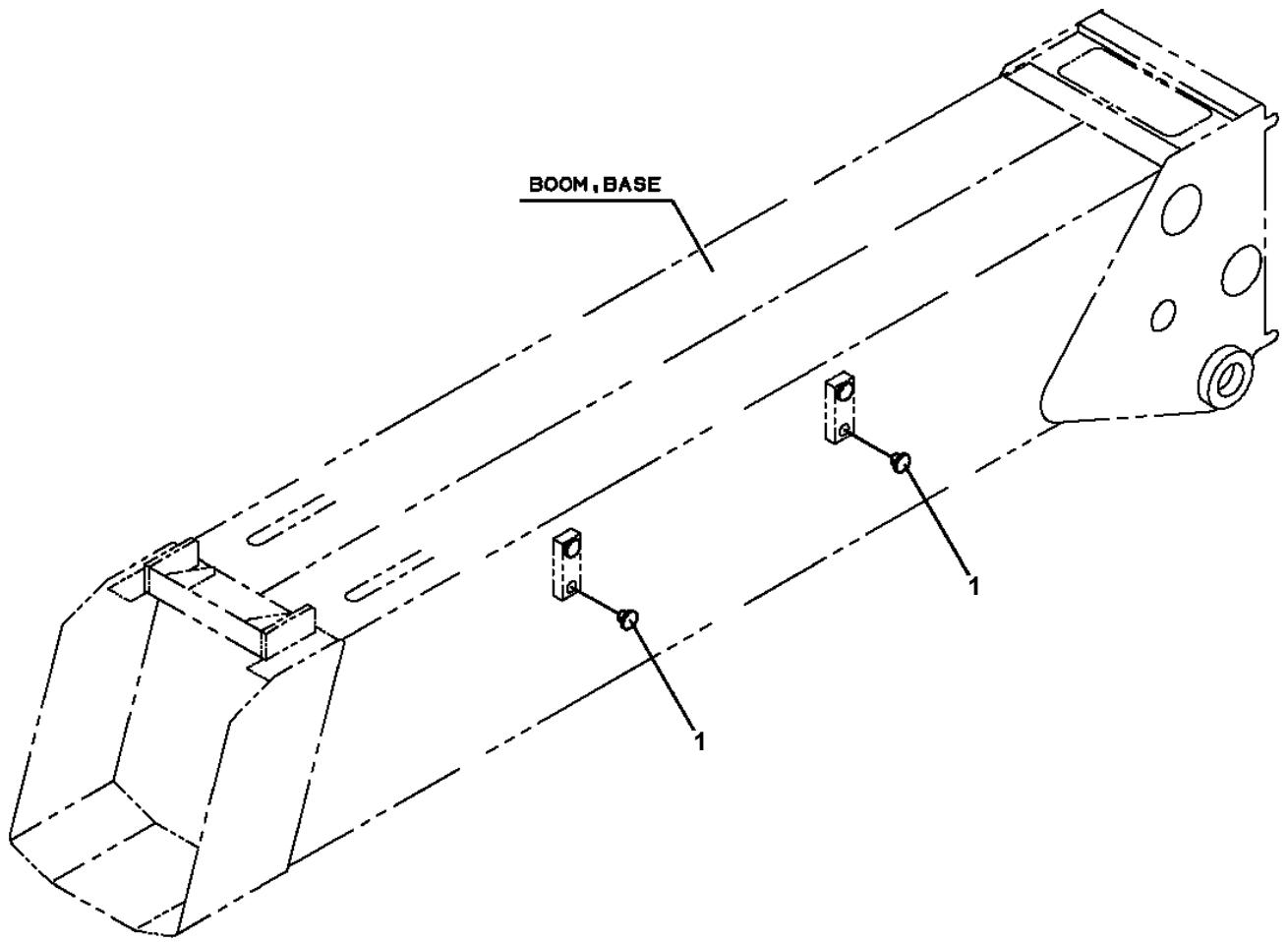
# AT-146-3 43011100047 UPPER

Pos No.	Parts No	Parts Name	Qty	Unit	Technical Data	Serial No (Start)	Serial No (End)
2	42836037510	DOOR	1				
3	42836037520	RACK	1				
5	42836717540	BRACKET	4				
6	42836037530	SEAT	1				
8	42835797550	SEAL	6				
9	42835797560	CUSHION (WITH DOUBLE-STICK TAPE)	2				
10	42831877540	INSULATOR	2				
11	42834687540	WEATHER STRIP	1		L=3510		
12	42835357590	CATCH	2				
13	42835487650	HINGE	3				
14	42835797580	PLUG (HOLE)	6				
15	42833077610	BUSH	8				
16	32830487740	SCREW,MACHINE (SEMS)	2		M4X10		
17	42835837600	SCREW,MACHINE	6		M5X12		
18	80175805012	SCREW,MACHINE	9		M5X12		
19	42836037550	WASHER,TOOTH	4		M10		
20	42836317920	PLATE	3				
100	42836031000	BOX,TOOL	1				

**AT-146-3 43011100047 UPPER  
PX1351318-00 BOX,TOOL (BOOM SIDE)**



**AT-146-3 43011100047 UPPER  
PX1940306-00 MOUNT (BOOM SIDE,INSTALLATION PLUG FOR JIB SUPPORT)**



# AT-146-3 43011100047 UPPER

Pos No.	Parts No	Parts Name	Qty	Unit	Technical Data	Serial No (Start)	Serial No (End)	Remarks	Pages
1	42444260100	CLAMP	1		R40				
2	42444290100	CLAMP	1		R40				
3	90101208025	BOLT	2		M8X25				
4	90302040801	WASHER,SPRING	2		8				
5	90303070801	WASHER,PLAIN	6		8				
6	90201200800	NUT	2		M8				

# AT-146-3 43011100047 UPPER

Pos No.	Parts No	Parts Name	Qty	Unit	Technical Data	Se
60	(*****)	MOUNT,LAMP (BUCKET,FOR NTT,OPTION)	1			
61	(*****)	PUMP,GREASE (400CC)	1			
62	42473401000	TOOLS	1			
63	91991601013	ACCESSORIES (WRENCH)	1			
64	42461681000	WEDGE (YELLOW)	1			
65	42738400000	WOOD BLOCK (WITH RUBBER,T=100)	1			
	(*****)	WOOD BLOCK (W=350,H=80)	1			
	42731680000	WOOD BLOCK (WITH RUBBER,T=80)	1			
66	42972410000	BLOCK,WOOD	1		T=150	
68	(*****)	WOOD BLOCK (KANDEN/DETACHABLE TYPE,L)	1			
	42972040000	WOOD BLOCK (KANDEN/DETACHABLE TYPE,B)	1			
69	(*****)	EARTHING DEVICE	1			
70	(*****)	CABLE	1			
71	(*****)	WINCH,JIB (FRP/INTEGRATED SUPPORT,GRAY)	1			
72	42501710000	BOX,TOOL	1			
73	(*****)	STEP (FOR ENTRY INTO CAB)	1			
74	(*****)	LAMP (REOVLVING LAMP)	1			
75	(*****)	EARTH ASSY	1			
	(*****)	EARTH ASSY (FOR LOCAL MOUNTING)	1			
76	42505350000	COVER (RACK,B)	1			
	42505360000	COVER (RACK,L)	1			
87	42508320000	COVER ASSY (BACKET CONTROL)	1			
89	(*****)	ARM	1			
92	(*****)	BATTERY ASSY (12V28AH/PANASONIC)	1			
	(*****)	BATTERY ASSY (12V20AH/PANASONIC)	1			
95	42510290000	CABLE ASSY (PC CONNECTION CABLE)	1			
96	(*****)	ACCESSORIES (BUCKET INNER MAT)	1			
97	42460012550	WEDGE (STOPPER FOR TIRE/JUSTIN)	1			
98	42460821200	BLOCK,RUBBER (NAKAMURA)	1			
99	(*****)	ARM ASSY	1			
101	42512340000	BELT	1			
102	42973990100	SUPPORT (7 DEGREES ANGLE METER MOUNTING)	1			
103	(*****)	JIB ASSY	1			

# AT-146-3 43011100047 UPPER

Pos No.	Parts No	Parts Name	Qty	Unit	Technical Data	Serial No (Start)	Serial No (End)
1	42470367510	HOOK	1				
2	42470367520	CYLINDER	1				
3	42470367530	HOLDER (DIES)	1				
4	42470367540	STEM	1				
5	42470367550	SPRING (RETURN)	1				
6	42470367560	SEAT,SPRING	1				
7	42470367570	RING,STOP	1				
8	80720103006	PIN,SPRING	1		3X6		
9	91001104000	O-RING	1		1A P40		
10	42470367580	RING (B)	1				
12	42470367590	NOTCH	1				
13	42470367600	PIECE (B)	1				
14	42470367610	PIN (SCREW)	1				
15	42470367620	SPRING ASSY	1				
16	42470367630	PIECE (AL)	1				
17	42470367640	SPRING	1				
18	42470367650	KNOB	1				
19	80720102012	PIN,SPRING	1		2X12		
20	80720103008	PIN,SPRING	1		3X8		
21	42470367660	GUIDE	1				
22	90131505008	BOLT,HEXAGON SOCKET	1		M5X8		
23	90304110501	WASHER (LOCK)	1		5		
24	42470367670	SCRAPER	1				
25	42470367680	SPACER	1				
26	42470367690	BOLT,HEXAGON SOCKET	1				
27	42470367700	NIPPLE	1				
28	42470367710	JOINT,SELF SEALING (WITH CAP)	1				
29	42470367720	GRIP	1				
30	42470367730	PLATE,NAME	1				
31	42470367740	COVER (SAFETY)	1				
50	42470361000	CLAMP HEAD ASSY (SANWA,12TON)	1				

# AT-146-3 43011100047 UPPER

Pos No.	Parts No	Parts Name	Qty	Unit	Technical Data	Serial No (Start)	Serial No (End)	F
1	42470530000	CUTTER HEAD (IZUMI 6.4TON AIR)	1					
2	42470537510	BOLT	2					
3	42470537520	NUT	2		M8			

# AT-146-3 43011100047 UPPER

Pos No.	Parts No	Parts Name	Qty	Unit	Technical Data	Serial No (Start)	Serial No (End)	R
1	42470050000	ROPE (SAFETY,1.5M,WITH HOOK)	1					

# AT-146-3 43011100047 UPPER

Pos No.	Parts No	Parts Name	Qty	Unit	Technical Data	Serial No (Start)	Serial No (End)	Remarks	Pages
1	42470121000	ARM ASSY	1						
2	42470122000	HOLDER	3						
3	42470123000	CLAMP ASSY	1						
4	42470044000	HOT STICK	1						
5	42476851000	SUPPORT	1						
6	90101216130	BOLT	1		M16X130				
7	90303071601	WASHER,PLAIN	2		16				
8	90201201600	NUT	2		M16				
9	42220011200	SUPPORT	1						
31	42470121100	ARM	1						
32	42470121200	CAP	2						

# AT-146-3 43011100047 UPPER

Pos No.	Parts No	Parts Name	Qty	Unit	Technical Data	Serial No (Start)	Serial No (End)	Remarks
1	90131508035	BOLT,HEXAGON SOCKET	4		M8X35			
2	36053842000	BOOSTER (JOINT)	1					
3	36053841001	BOOSTER	1					

# AT-146-3 43011100047 UPPER

Pos No.	Parts No	Parts Name	Qty	Unit	Technical Data	Serial No (Start)	Serial No (End)	Remarks	Pa
1	(*****)	BOOSTER	1						000
2	(*****)	ELEC.ASSY (BOOSTER)	1						000
3	(*****)	PIPING,BOOSTER	1						000

# AT-146-3 43011100047 UPPER

Pos No.	Parts No	Parts Name	Qty	Unit	Technical Data	Serial No (Start)	Serial No (E
5	80456210600	JOINT,SELF SEALING	1				
6	80456240600	JOINT,SELF SEALING (WITH DUST CAP)	1				
11	42471437520	CAP	1				
30	42471080000	HOSE,BOOSTER (MAIL-FEMALE,3M)	1				

# AT-146-3 43011100047 UPPER

Pos No.	Parts No	Parts Name	Qty	Unit	Technical Data	Serial No (Start)	Serial No
1	80456210600	JOINT,SELF SEALING	1				
2	42471807510	HOSE ASSY	1		2M		
3	42470362100	JOINT,SELF SEALING	1				
4	42471807520	HOSE,AIR	1		2M		
5	42470362200	PUMP	1				
6	80456240600	JOINT,SELF SEALING (WITH DUST CAP)	1				
7	42470367840	TUBE	2		25X0.15M		
8	42470367780	JOINT	1				
21	42471437520	CAP	1				
50	42471800000	HOSE,BOOSTER (WITH AIR BALLOON,2M)	1				

# AT-146-3 43011100047 UPPER

Pos No.	Parts No	Parts Name	Qty	Unit	Technical Data	Serial No (Start)	Serial No (End)	Remarks	Pages
1	(*****)	REEL ASSY,CORD	1						00022
2	42970690500	SUPPORT	1						
4	90303070801	WASHER,PLAIN	6		8				
5	42739710200	EARTH	1						
6	42970690400	SUPPORT	1						
7	90101210020	BOLT	8		M10X20				
8	90302041001	WASHER,SPRING	8		10				
9	90101208020	BOLT	6		M8X20				
10	90302040801	WASHER,SPRING	7		8				
11	90303071001	WASHER,PLAIN	8		10				
12	42970690700	SUPPORT	1						
13	37002701590	CABLE ASSY	1		30B,L=280				
14	90201200800	NUT	1		M8				

# AT-146-3 43011100047 UPPER

Pos No.	Parts No	Parts Name	Qty	Unit	Technical Data	Serial No (Start)	Serial No
1	42474030000	STEP,BUCKET (GRAY,FOR BUCKET INNER)	1				

# AT-146-3 43011100047 UPPER

Pos No.	Parts No	Parts Name	Qty	Unit	Technical Data	Serial No (Start)	Serial No (End)	Remarks
1	42475930000	HANGER (FOR BUCKET,FRP)	1					

# AT-146-3 43011100047 UPPER

Pos No.	Parts No	Parts Name	Qty	Unit	Technical Data	Serial No (Start)	Serial No (End)	Rem
1	42503180000	BOX,TOOL (FOR BUCKET,FRP)	1					

# AT-146-3 43011100047 UPPER

Pos No.	Parts No	Parts Name	Qty	Unit	Technical Data	Serial No (Start)	Serial No (End)	Remarks	Pages
3	90101216110	BOLT	1		M16X110				
4	90303071601	WASHER,PLAIN	2		16				
5	90302041601	WASHER,SPRING	1		16				
6	90240201600	NUT,CAP	1		M16				
7	42511040100	SUPPORT	1						
8	42511040011	SPACER	1						
9	42511040200	PIN ASSY	2						
31	42511041100	ARM	1						
32	42470121200	CAP	2						
41	42511042000	HOLDER	3						
42	42511043000	INSULATOR	3						
43	90105544025	BOLT	3						
44	80620210120	PIN,SNAP	3						
45	42511044060	PIN	3						
46	42511044301	SUPPORT	3				229008		
	42511044302	SUPPORT	3			229009			
47	42511044100	SUPPORT	3						
48	42511044040	NUT	3						
49	42511044010	BOLT	3						
50	37000132680	PIN	3						
51	80136320016	PIN,SPLIT	3		2X16				
52	37010103820	PIN	3						
53	80136332020	PIN,SPLIT	6		3.2X20				
54	37010103830	PIN	3						
55	80136340020	PIN,SPLIT	6		4X20				
56	42511044200	SUPPORT	3						
57	82100001735	SLEEVE	10						
58	42310040050	ROPE (TETORON)	5	M					
59	90303071001	WASHER,PLAIN	6		10				
60	90303071201	WASHER,PLAIN	6		12				
71	42511040300	PIN	2						
74	80620210160	PIN,SNAP	2						

CLICK HERE TO **DOWNLOAD** THE COMPLETE MANUAL

- Thank you very much for reading the preview of the manual.
- You can download the complete manual from: [www.heydownloads.com](http://www.heydownloads.com) by clicking the link below



- Please note: If there is no response to CLICKING the link, please download this PDF first and then click on it.

CLICK HERE TO **DOWNLOAD** THE COMPLETE MANUAL