

AT-146-2 42095200056 UPPER

PB3000129-00 POWER UNIT
PD2000151-01 SWING UNIT
PF1000554-01 WINCH SYSTEM
PG2000090-00 BOOM UNIT
PH1000463-01 SAFETY DEVICES (MOTION CONTROLLER)
PJ3000417-01 BUCKET SYSTEM
PJ5000003-00 BOOSTER UNIT
PK2000685-00 FRAME UNIT
PO1000127-01 INDICATION PLATES
PW1000109-01 ACCESSORIES & TOOLS
PX1000836-00 MOUNTING PARTS
PY1000986-02 OPTIONS,1
PY2000152-00 OPTIONS,2
ASSEMBLY

CLICK HERE TO **DOWNLOAD** THE COMPLETE MANUAL

- Thank you very much for reading the preview of the manual.
- You can download the complete manual from: www.heydownloads.com by clicking the link below



- Please note: If there is no response to CLICKING the link, please download this PDF first and then click on it.

CLICK HERE TO **DOWNLOAD** THE COMPLETE MANUAL

AT-146-2 42095200056 UPPER

Pos No.	Parts No	Parts Name	Qty	Unit	Technical Data	Serial No (Start)	Serial No (End)	Remarks
1	36191070001	MOTION CONTROLLER (AMC)	1					

AT-146-2 42095200056 UPPER

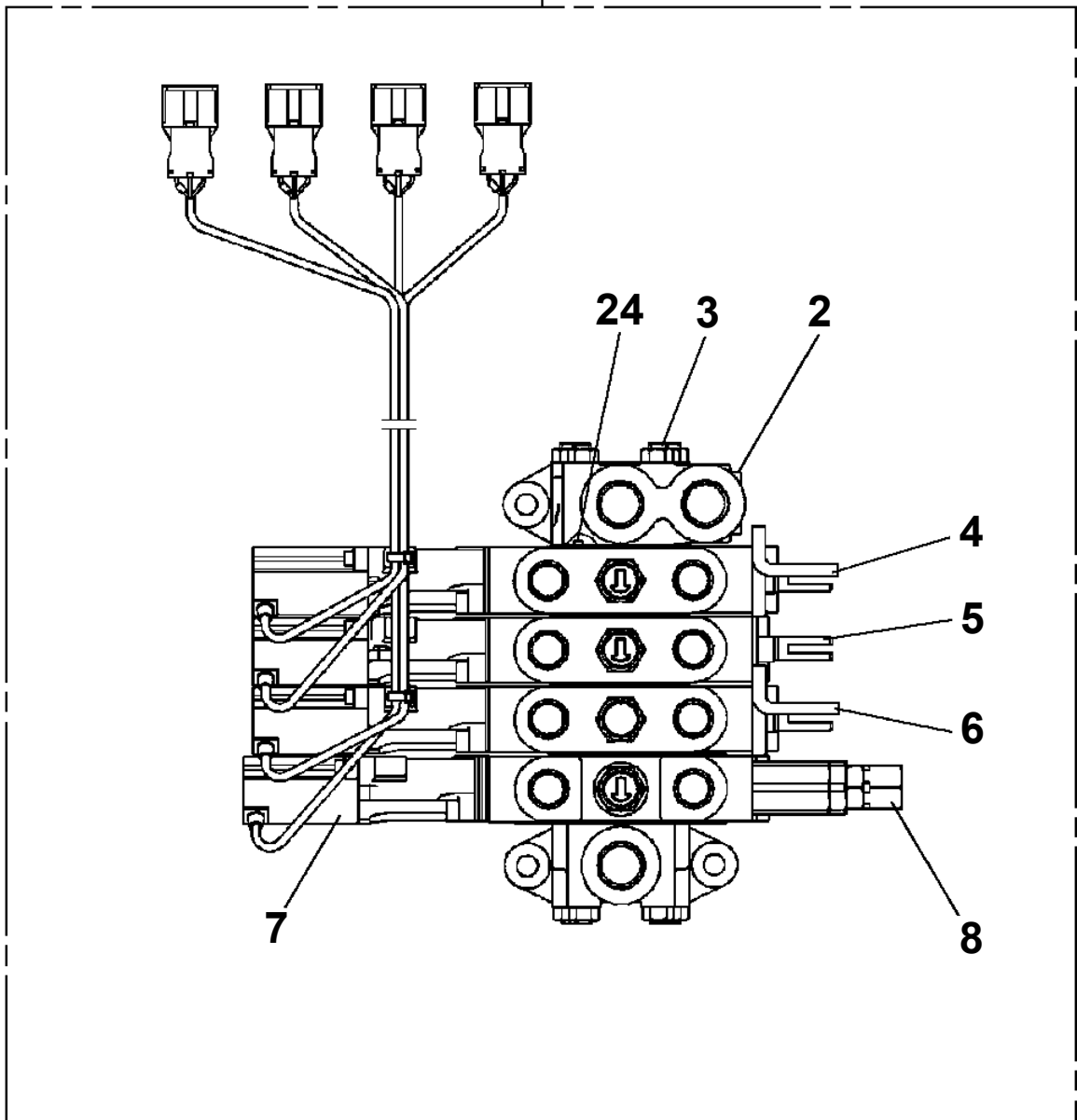
Pos No.	Parts No	Parts Name	Qty	Unit	Technical Data	Serial No (Start)	Serial No (End)	Remarks	Pages
1	(*****)	ACCESSORIES	1						000179

AT-146-2 42095200056 UPPER

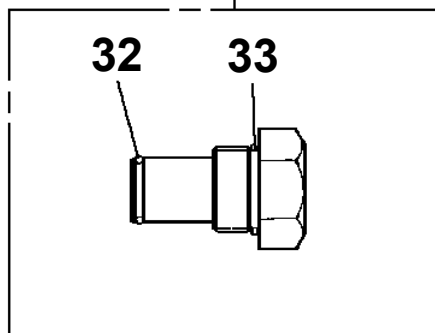
PN1080196-00 LAMP (BOOM REST,RIGHT)
PN1080292-03 LAMP (YELLOW)
PN1110364-00 RELAY ASSY
PN1110365-00 RELAY ASSY (JACK AUTO.EXTEND)
PN1140117-00 SWITCH,DETECTOR (INTERLOCK/SWING FRAME)
PN1140118-01 SWITCH,DETECTOR
PN1140119-00 SWITCH,DETECTOR
PN1140153-00 SWITCH ASSY (WITH HARNESS,3 SWITCH)
PN1190002-00 CONVERTER (DC-DC)
PN1210130-00 TRANSMITTER,SIGNAL
PN1240004-00 INVERTER
PN1350016-00 REEL,CORD
PN1350032-02 REEL,CORD
PN1370110-02 BATTERY (MOUNT/MOTOR UNIT)
PO1012228-01 PLATE ASSY,NAME (HYDRAULIC OIL)
PO1013350-00 PLATE ASSY,NAME (WINCH)
PO1013886-01 PLATE ASSY,NAME
PO1014040-01 PLATE ASSY,NAME (OUTRIGGER)
PO1014041-00 PLATE ASSY,NAME (MOTOR UNIT)
PO1014042-00 PLATE ASSY,NAME
PO1014283-00 PLATE ASSY,NAME (SWING FRAME)
PO1014521-00 PLATE ASSY,NAME (BUCKET)
PO1014546-00 PLATE ASSY,NAME (BUCKET)
PO1014727-00 PLATE ASSY,NAME (BUCKET)
PO1014808-01 PLATE ASSY,NAME (INTERLOCK EQUIPMENT)
PO1014837-00 PLATE ASSY,NAME (WINCH ROPE)
PO1014931-01 PLATE ASSY,NAME (HYDRAULIC OIL)
PO1015623-00 PLATE ASSY,NAME
PO1080059-00 PLATE,NAME (LIVE-LINE WORKING DEVICE)
PO1090022-00 NON-SLIP PLATE (STEP)
PO1090054-00 NON-SLIP PLATE
PP5450004-00 PUMP,GREASE (400CC)
PS5150001-00 SHACKLE
PT5060011-00 TANK ASSY (BATTERY,WATER)
PV1020301-02 VALVE,REMOTE CONTROL
PV5040021-00 VALVE ASSY,CHECK
PW1010378-00 ACCESSORIES
PW1010381-00 ACCESSORIES (WRENCH)
PW1030047-01 TOOLS
PW5110002-00 WEDGE (STOPPER FOR TIRE/WAZUMI)
PW5110003-00 WEDGE (STOPPER FOR TIRE/NAKAMURA KIKI)
PX1030640-00 FENDER
PX1120551-00 BOOM REST
PX1200513-00 SIDE GUARD
PX1210114-01 GUARD
PX1270075-01 WOOD BLOCK (WITH RUBBER,T=80)
PX1270125-00 WOOD BLOCK (WITH RUBBER,T=100)
PX1350482-00 BOX,TOOL (LEFT)
PX1350583-00 BOX,TOOL (CAB)
PX1350599-02 BOX,TOOL
PX1350637-01 BOX,TOOL (FRAME)
PX1350832-00 BOX,TOOL
PX1360050-00 REFLECTOR
PX1360062-00 REFLECTOR
PX1390709-00 MODIFICATION PARTS
PX1810158-00 MOUNT,SUPPORT (CONE BAR)
PX1810183-00 MOUNT,SUPPORT
PX1810200-00 MOUNT,SUPPORT
PX1810201-00 MOUNT,SUPPORT
PX1940001-00 MOUNT
PY1050012-00 CLAMP HEAD (SANWA,12TON,TITANIUM)
PY1070000-00 ROPE (SAFETY,YELLOW:TD-TYPE)
PY1080021-00 ARM
PY1130017-00 INTERLOCK (SAFETY,ROPE)

**AT-146-2 42095200056 UPPER
PB1320573-00 VALVE, MANUAL CONTROL**

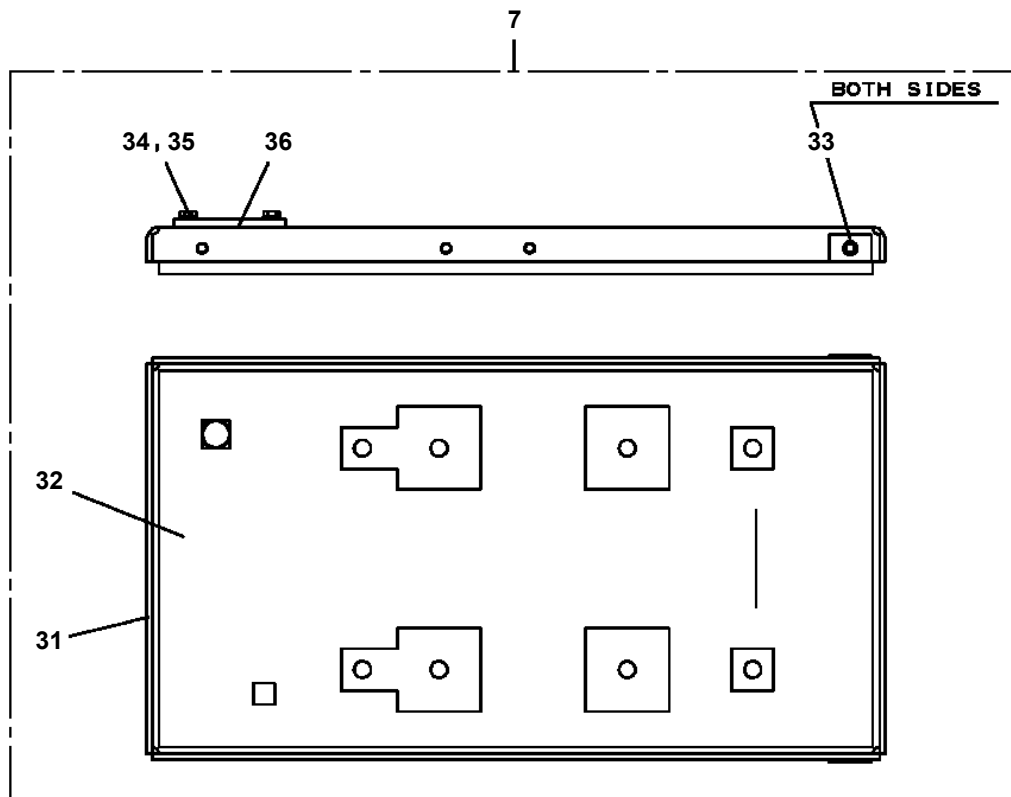
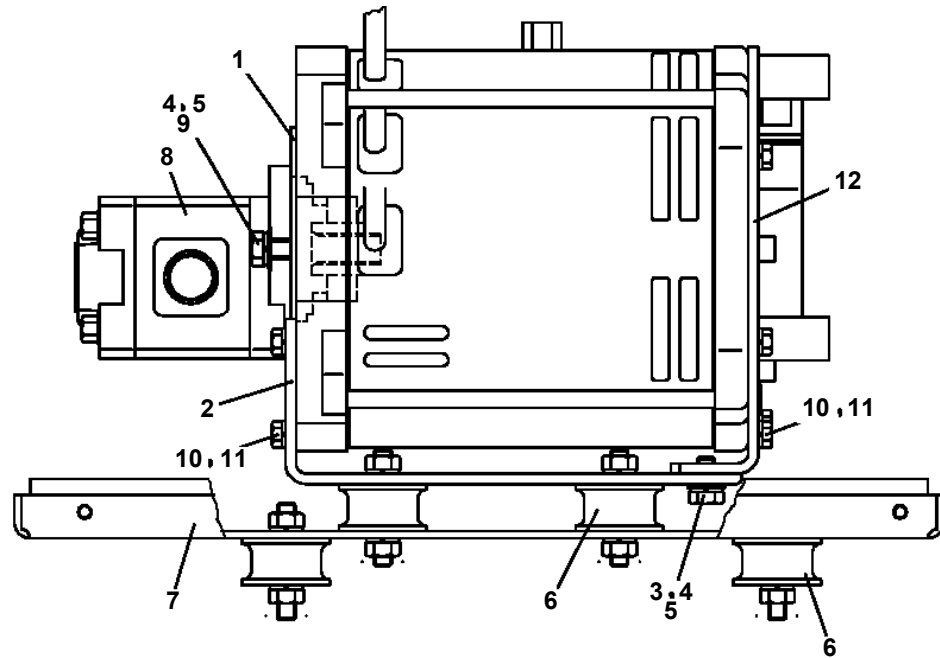
300



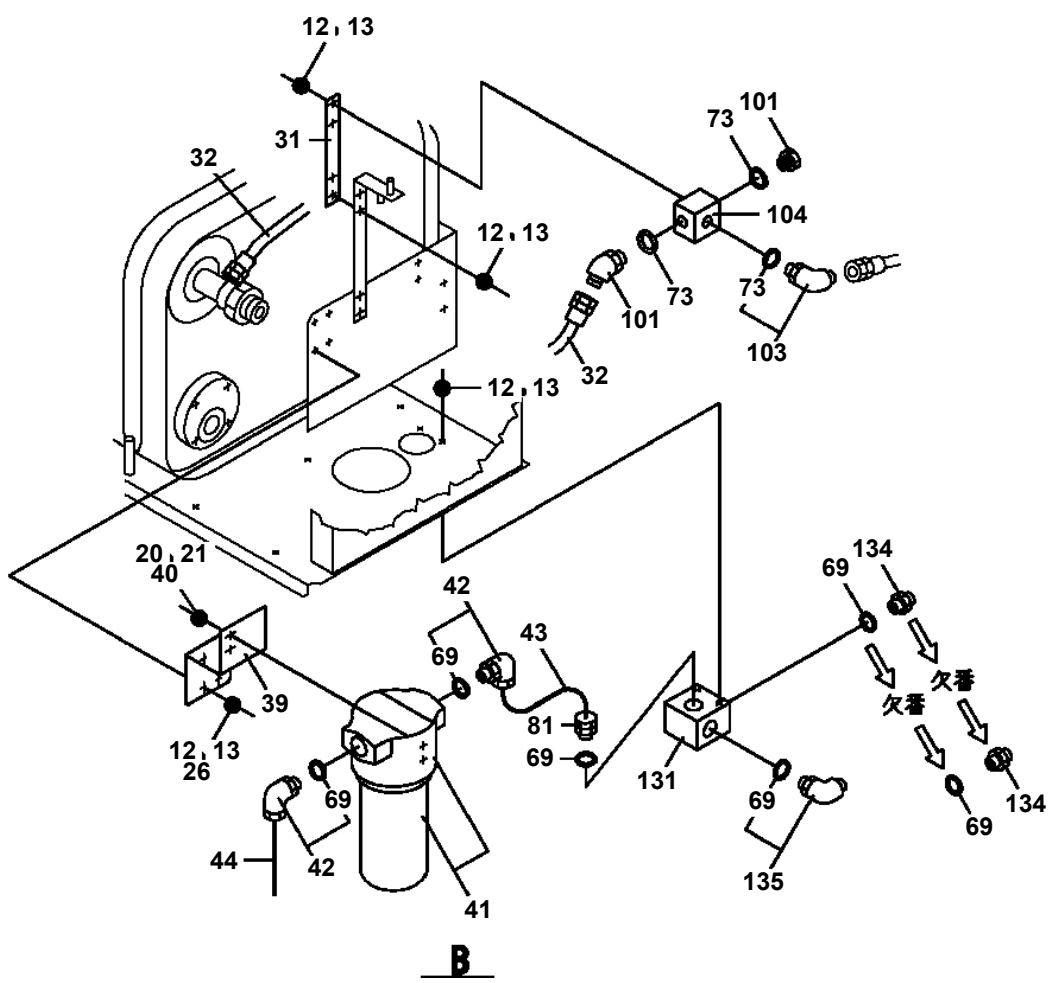
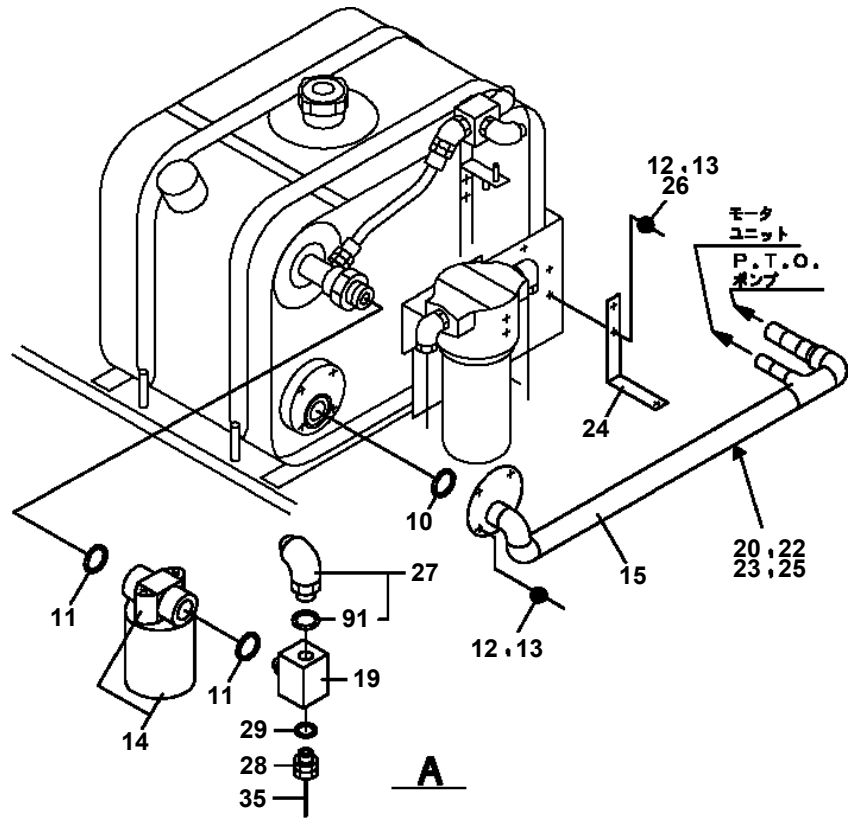
2



**AT-146-2 42095200056 UPPER
PB1380200-00 POWER SUPPLY (MOUNT/MOTOR UNIT)**

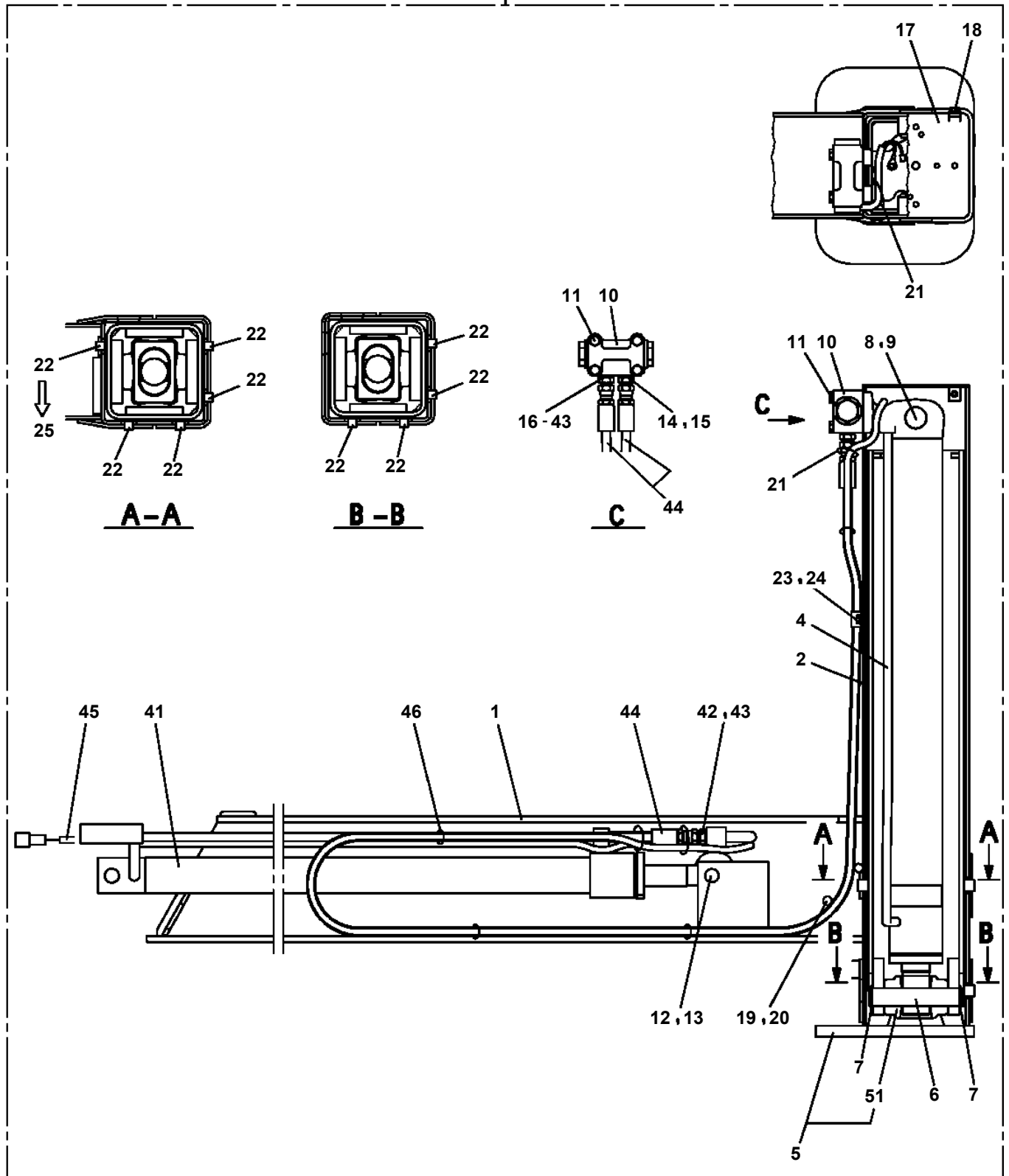


**AT-146-2 42095200056 UPPER
PB1411673-01 PIPING,LOWER (TANK)**

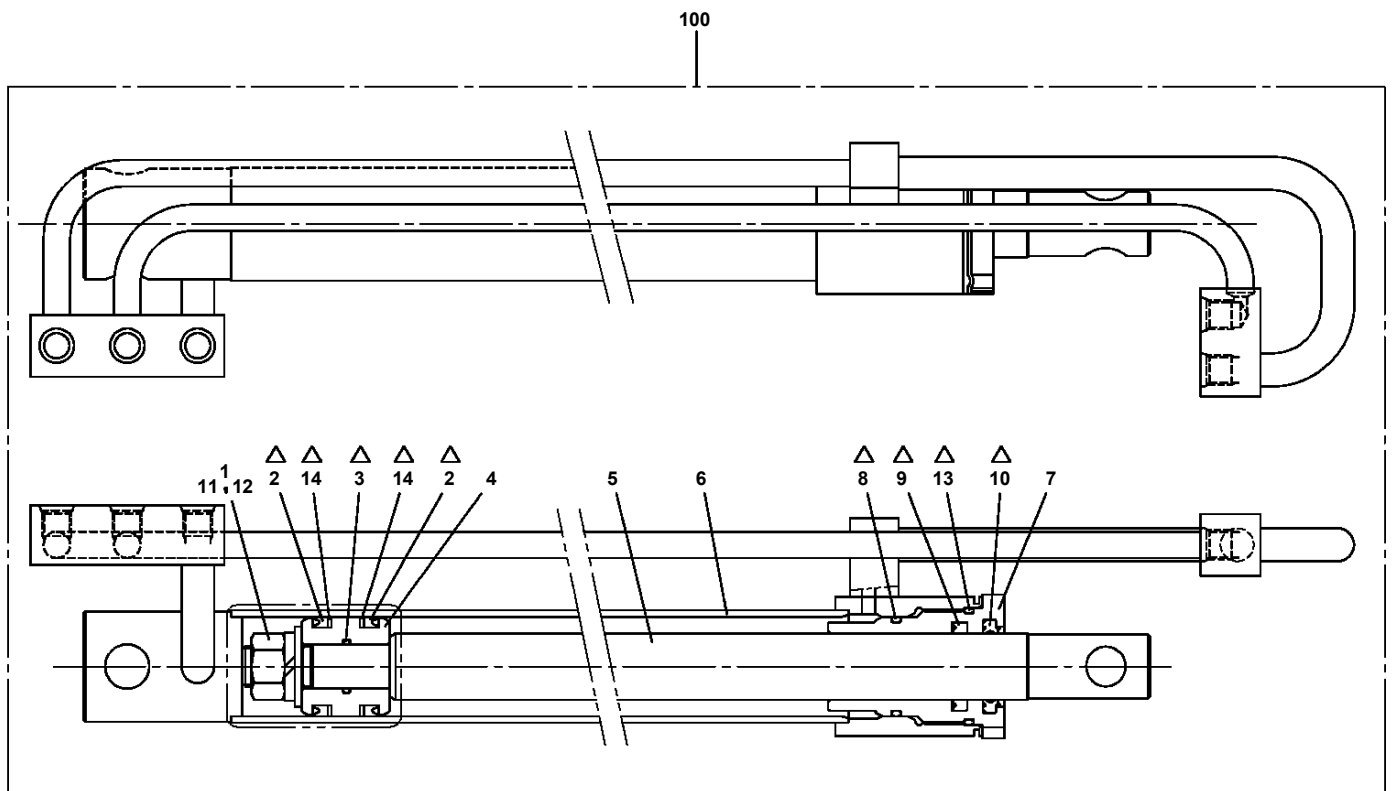


AT-146-2 42095200056 UPPER
PC1011444-00 OUTRIGGER (REAR/INNER CASE)

100



AT-146-2 42095200056 UPPER
PC1050222-00 CYLINDER,EXTENSION (REAR)



△:PACKING SET KEY NO.30 (KEY NO.2,3,8,9,10,13,14)

AT-146-2 42095200056 UPPER

Pos No.	Parts No	Parts Name	Qty	Unit	Technical Data	Serial No (Start)	Serial No (End)	R
1	36132155010	PLATE (BASE)	1					
2	36132155020	CASE	1					
3	36132155030	COVER	1					
8	36132155080	BRACKET	1					
9	36131805010	PACKING	1					
10	36131745010	POTENTIOMETER	1					
11	36132155090	GEAR	1					
12	36132155100	GEAR	1					
13	36132155110	WIRE ASSY	1					
14	36132155120	CORD ASSY	1					
51	36132155140	SPRING ASSY	1					
100	36132150000	DETECTOR,OUTRIGGER LENGTH	1					

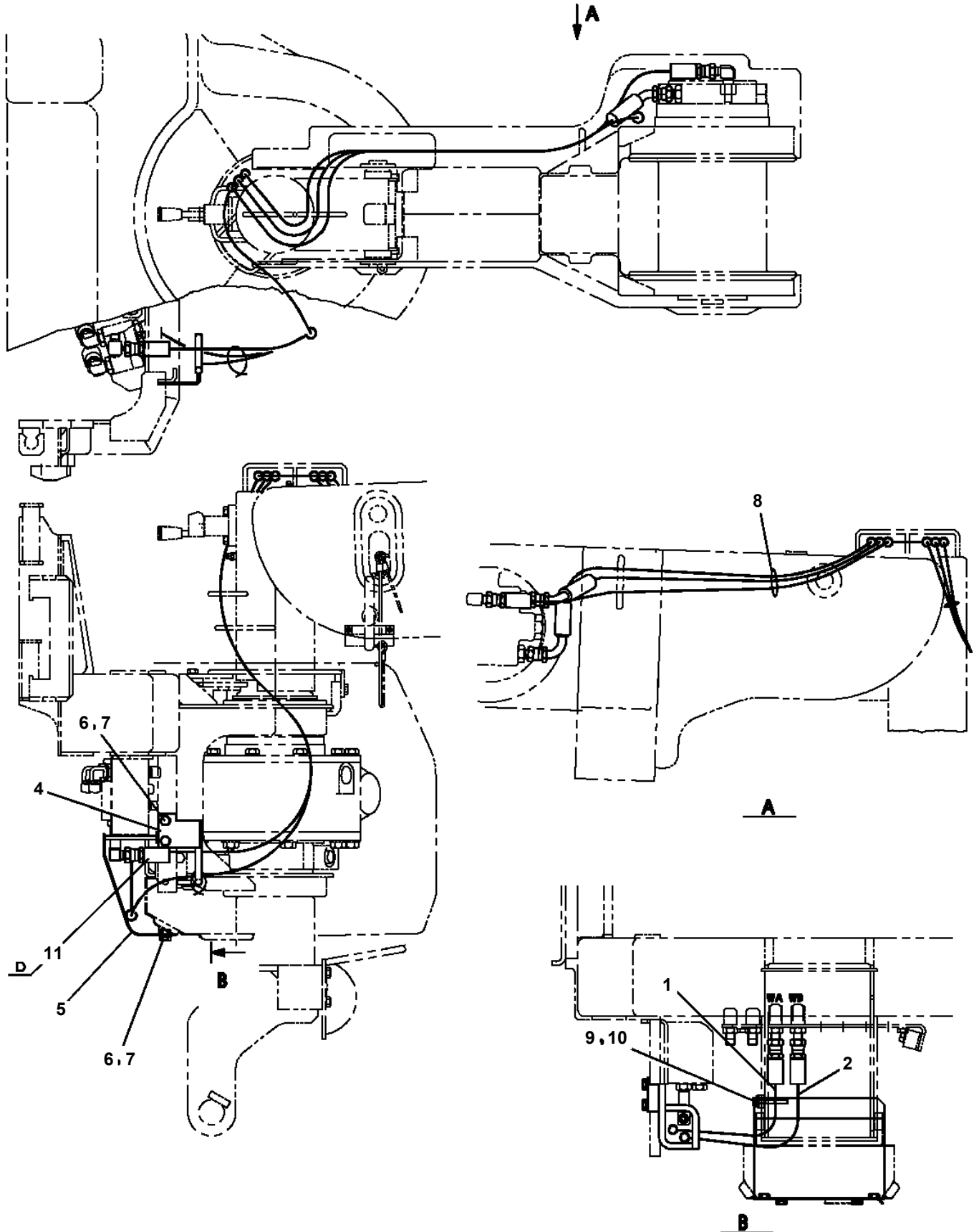
AT-146-2 42095200056 UPPER

Pos No.	Parts No	Parts Name	Qty	Unit	Technical Data	Serial No (Start)	Serial No (End)
2	36081560000	REDUCER,SWING SPEED	1				
3	90171118070	BOLT (DACRO)	3		M18X70		
4	90303501805	WASHER,PLAIN	6		18		
5	90201781800	NUT (DACRO)	3		M18		
6	90171212035	BOLT (DACRO)	2		M12X35		
7	90710012400	SCREW,SET	2		M12X40		
8	90203201200	NUT	4		M12		
9	90172112035	BOLT,HEXAGON SOCKET	2		M12X35		
10	90302041201	WASHER,SPRING	2		12		
11	36662590000	MOTOR,HYDRAULIC (SWING)	1				
12	91002908500	O-RING	1		1B G85		
31	37002302450	BEARING,SWING (NSK)	1				
32	37002303560	BEARING,SWING (NIHON MONORACE)	1				
33	37002304750	BEARING,SWING (KOYO)	1				
41	37002399010	SEAL (UP,DOWN-SIDE SET)	1				
42	82456201000	NIPPLE,GREASE	6		A-TYPE PT1/8		

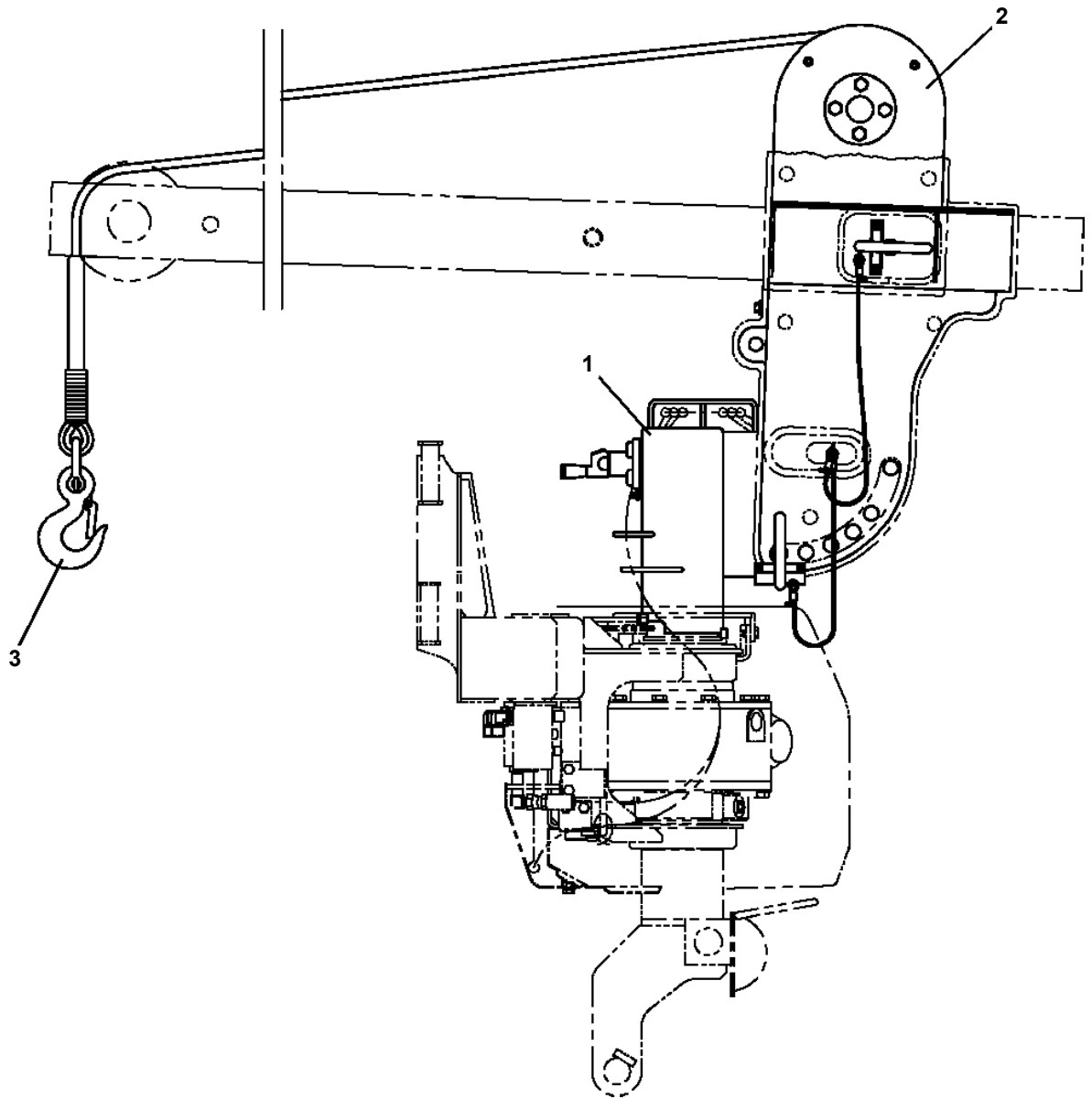
AT-146-2 42095200056 UPPER

Pos No.	Parts No	Parts Name	Qty	Unit	Technical Data	Serial No (Start)	Serial No (End)	Remarks
1	36073825050	DRUM	1					
5	36072495040	SHAFT	1					
6	36073825140	GEAR,INPUT	1					
10	36072495080	BUSH	1					
12	36072495090	RING,RETAINING	1					
13	36072495100	RING	1					
14	36072495110	DISTANCE PIECE	2					
15	36073825060	SEAL,OIL	1					
16	36072495130	SEAL,OIL	1					
17	36072495140	PIN	26					
18	36073825030	PIN	2					
19	36073825040	BOLT,HEXAGON SOCKET	4					
20	36072495150	BEARING,BALL	1					
21	36072495160	BEARING,BALL	1					
24	36072495170	RING,RETAINING	2					
25	80601110170	RING,RITAINING	4		S17			
26	36072495180	RING,RETAINING	1					
27	91002800900	O-RING	1		1B P9			
30	91001012500	O-RING	1		S125			
33	80316030060	PLUG	2		PT3/8			
34	36072495190	ORIFICE	1					
102	36072495220	SHAFT	1					
103	36072495230	PLATE,THRUST	1					
104	36072495240	BLOCK,CYLINDER	1					
107	36661055260	PLATE (RETAINER)	1					
108	36661055270	PLATE,THRUST	1					
109	36072495260	PLATE,TIMING	1					
110	36072495270	WASHER	2					
112	36073825090	PISTON	1					
113	36072495290	SPRING	2					
114	36072495300	SPRING	1					
115	36661055350	PLATE (FRICTION)	2					
116	36661055360	PLATE (MATING)	2					
118	91002910500	O-RING	1		1B G105			
119	91002912000	O-RING	1		1B G120			
120	91002801200	O-RING	1		1B P12			
121	91002802200	O-RING	2		1B P22			
123	36072495310	PLUG	2					
124	36073825100	STOPPER	1					
125	36072495330	STOPPER	1					
126	36072495340	SPRING	2					
127	36073825110	SPRING	1					
128	36072495350	THROTTLE	2					
129	36661055400	PLUG	1					
130	36661055410	VALVE	1					
131	36661055420	SPRING	1					
132	36661055440	SEAL,OIL	1		15Z-17X35X8			
133	36663495450	BEARING,BALL	1					
134	36072495390	BEARING,BALL	1					
135	36072495400	PIN (STRAIGHT)	2		5X12			
136	80730080020	PIN (STRAIGHT)	2		8X20			
137	36073825120	ROLLER,NEEDLE	3					
138	36072495370	RING,RETAINING	1					
139	90131908025	BOLT,HEXAGON SOCKET	6		M8X25			
143	36661055450	RING,RETAINING	1					
300	36073825010	REDUCER ASSY	1					
310	36073825020	SPINDLE KIT	1					
320	36072495030	GEAR ASSY (RV)	1					
330	36072495070	GEAR,SPUR (2PIECES)	1					
400	36073825070	MOTOR ASSY	1					
410	36073825080	FLANGE SET(REAR)	1					
420	36072495250	PISTON KIT	1					
490	36073825130	SEAL KIT	1					

**AT-146-2 42095200056 UPPER
PF1200313-00 PIPING,WINCH**



AT-146-2 42095200056 UPPER
PF1350129-00 WINCH, JIB



AT-146-2 42095200056 UPPER

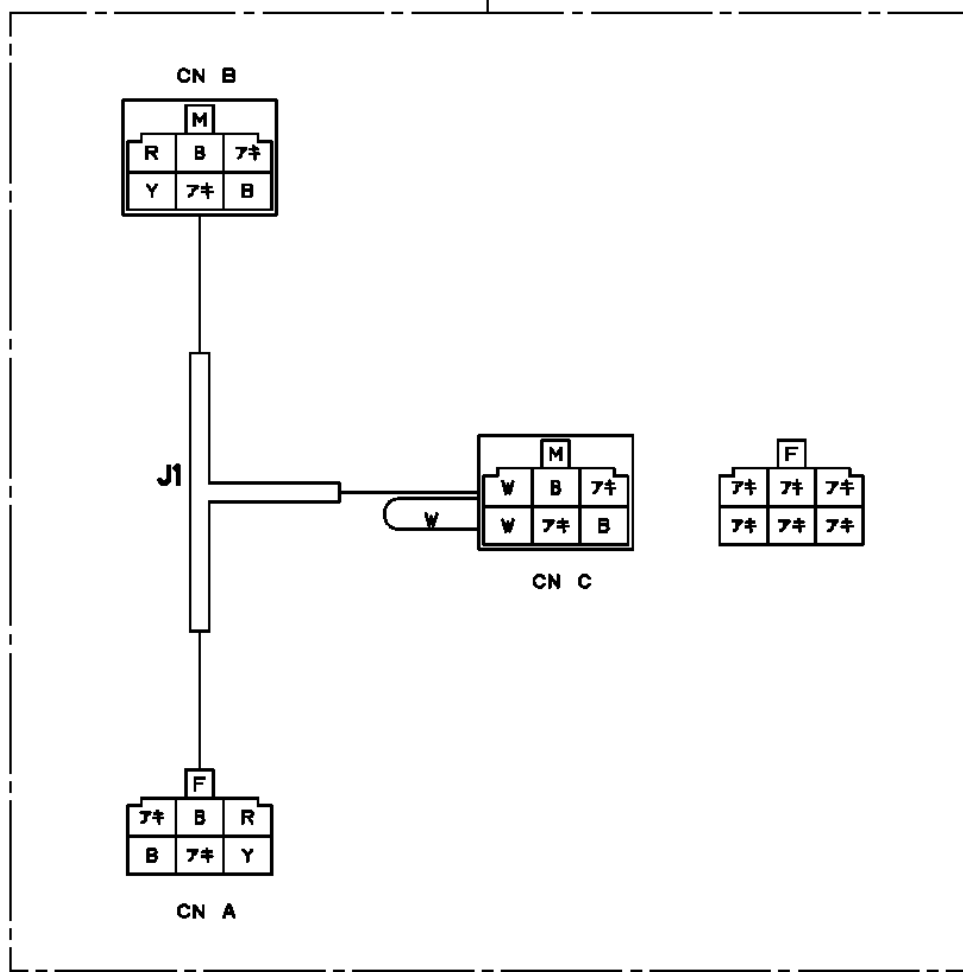
Pos No.	Parts No	Parts Name	Qty	Unit	Technical Data	Serial No (Start)	Serial No (End)	Re
241	42201522910	PLATE,NAME	1					
251	80801003012	BEARING,PLAIN	2					
252	80601110250	RING,RITAINING	4		S25			
253	42201700120	PLATE	2					
254	37000179820	PIN	2					
255	42201700150	ROLLER ASSY	2					
261	80513006005	BEARING,BALL	20					
291	42202131010	PLATE	2					
292	42202131020	PLATE	2					
293	42202131030	PLATE	1					
301	42202131510	PLATE	8					
311	42202379510	ROLLER ASSY	2					
312	37000186860	PIN	2					
313	37000312110	SPACER	4					
315	37000584280	SHIM (T=1.0)	N					
316	42202050600	SUPPORT	2					

AT-146-2 42095200056 UPPER

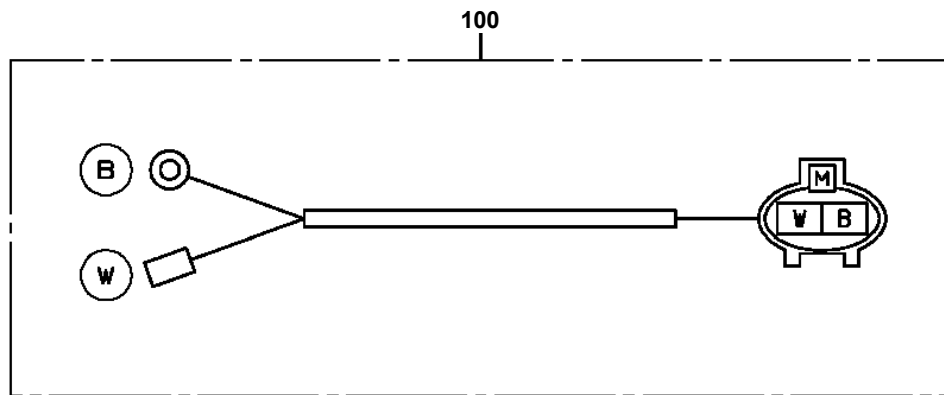
Pos No.	Parts No	Parts Name	Qty	Unit	Technical Data	Serial No (Start)	Serial No (End)	Remarks	Pages
1	42442142100	SUPPORT	1						
2	90101208014	BOLT	10		M8X14				
3	90302040801	WASHER,SPRING	10		8				
4	90303070801	WASHER,PLAIN	2		8				
6	42441622400	SUPPORT	1						
7	42441622700	CUSHION	2						
8	90101206016	BOLT	4		M6X16				
9	37000551250	PLATE	4						
21	42441622300	SUPPORT	1						
22	42693793300	SUPPORT	1						
23	82430153010	KNOB	1						
24	90101212030	BOLT	1		M12X30				
25	42693793400	ROD	1						
26	37000311380	PIN	2						
27	37000169080	PIN	2						
28	80601110100	RING,RITAINING	4		S10				
29	80172803006	SCREW,MACHINE	2		M3X6				
30	90302040301	WASHER,SPRING	2		3				

**AT-146-2 42095200056 UPPER
PH5030628-00 HARNESS**

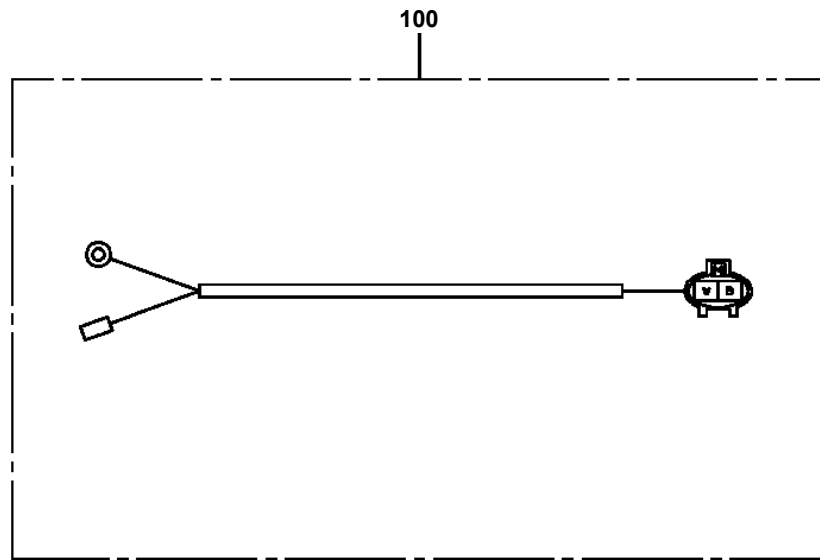
10



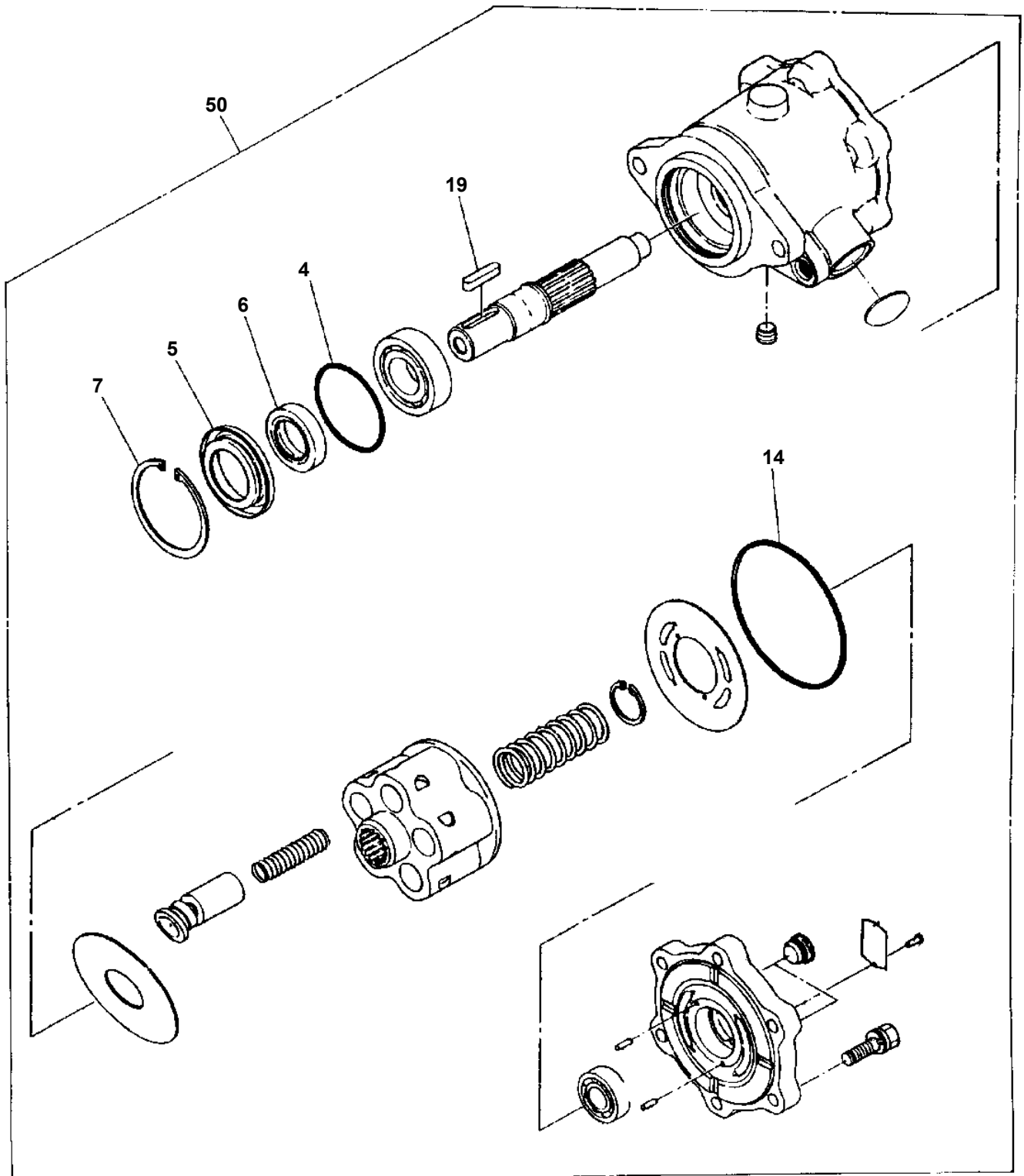
**AT-146-2 42095200056 UPPER
PH5031072-00 HARNESS**



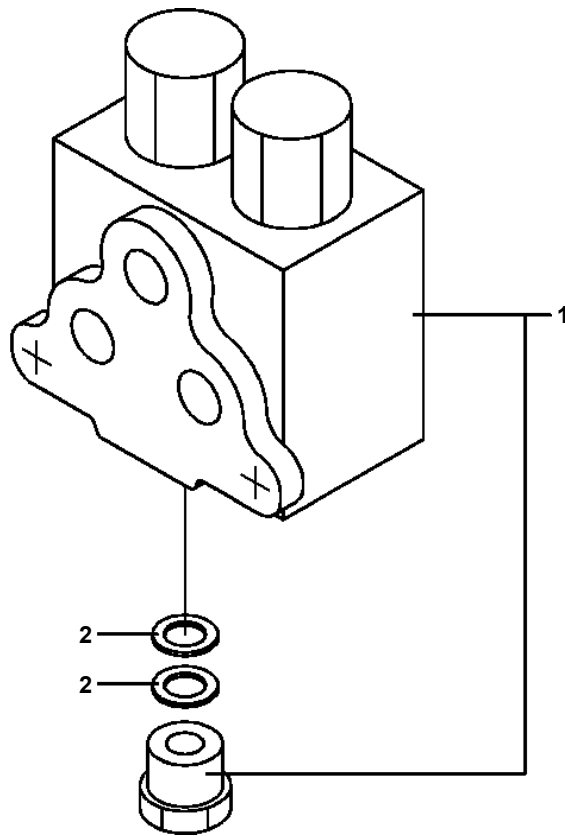
**AT-146-2 42095200056 UPPER
PH5032326-00 HARNESS**



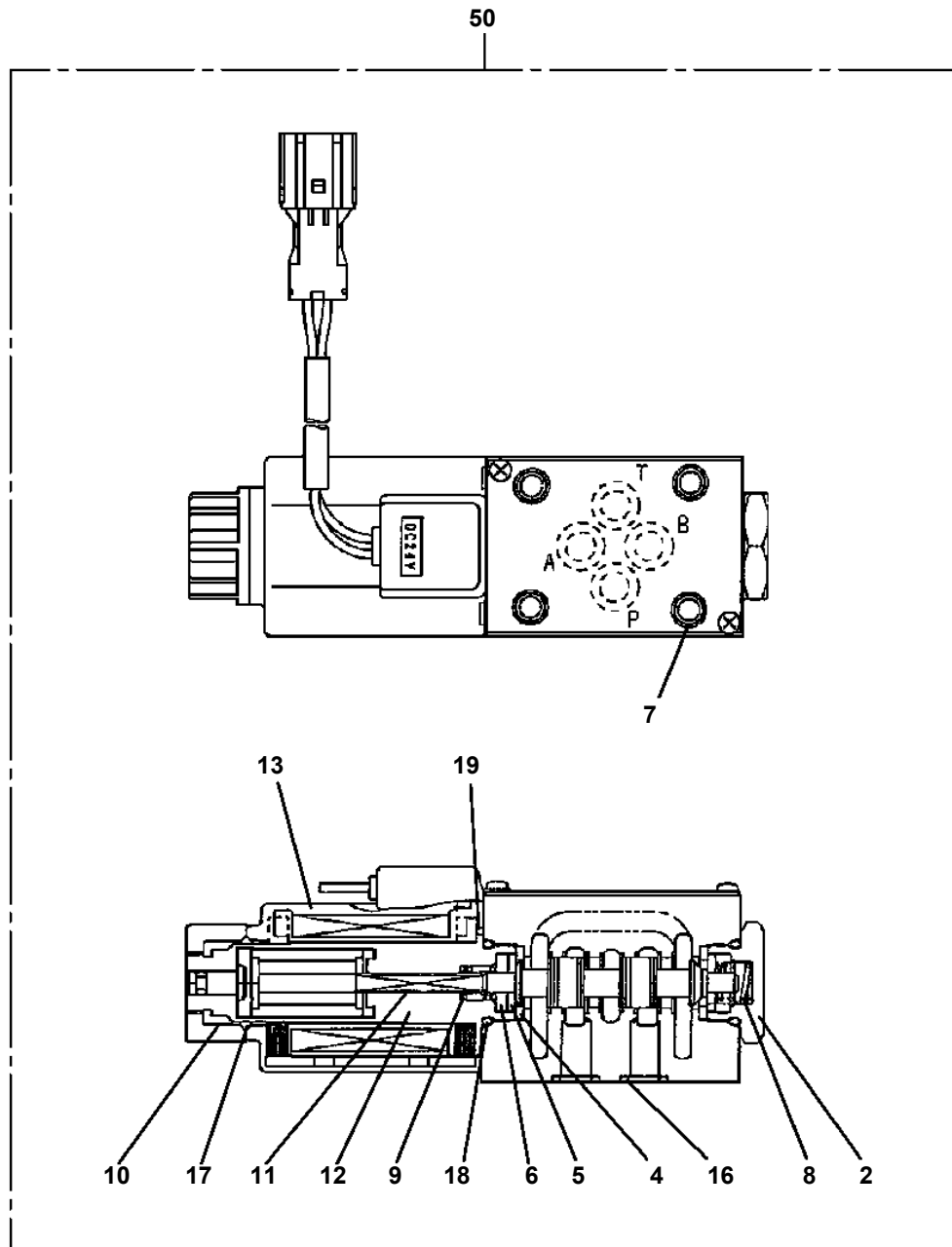
**AT-146-2 42095200056 UPPER
PI1010074-00 MOTOR, HYDRAULIC (SWING)**



**AT-146-2 42095200056 UPPER
PI1100134-01 VALVE,RELIEF**

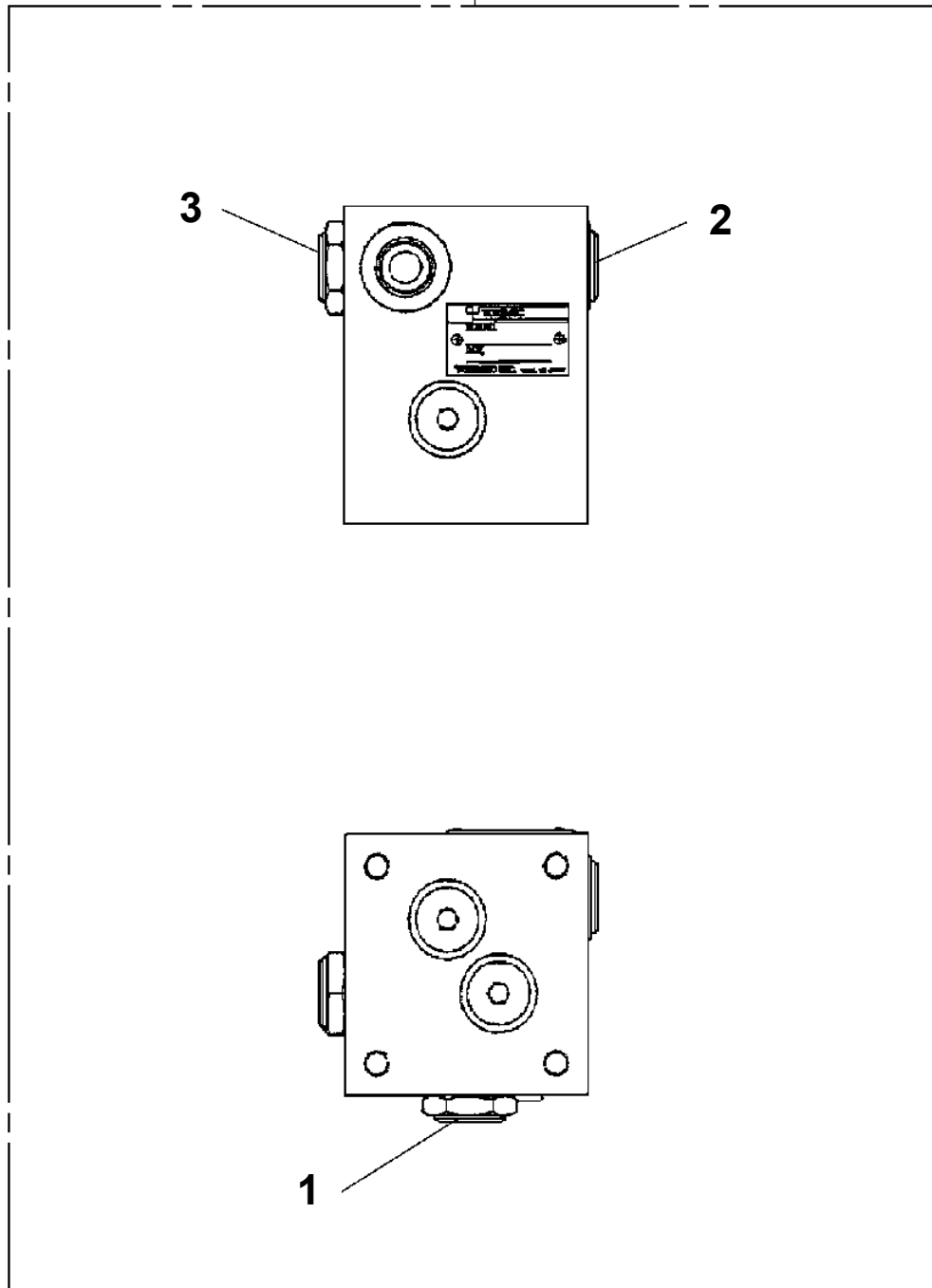


**AT-146-2 42095200056 UPPER
PI1120272-01 VALVE,SOLENOID**

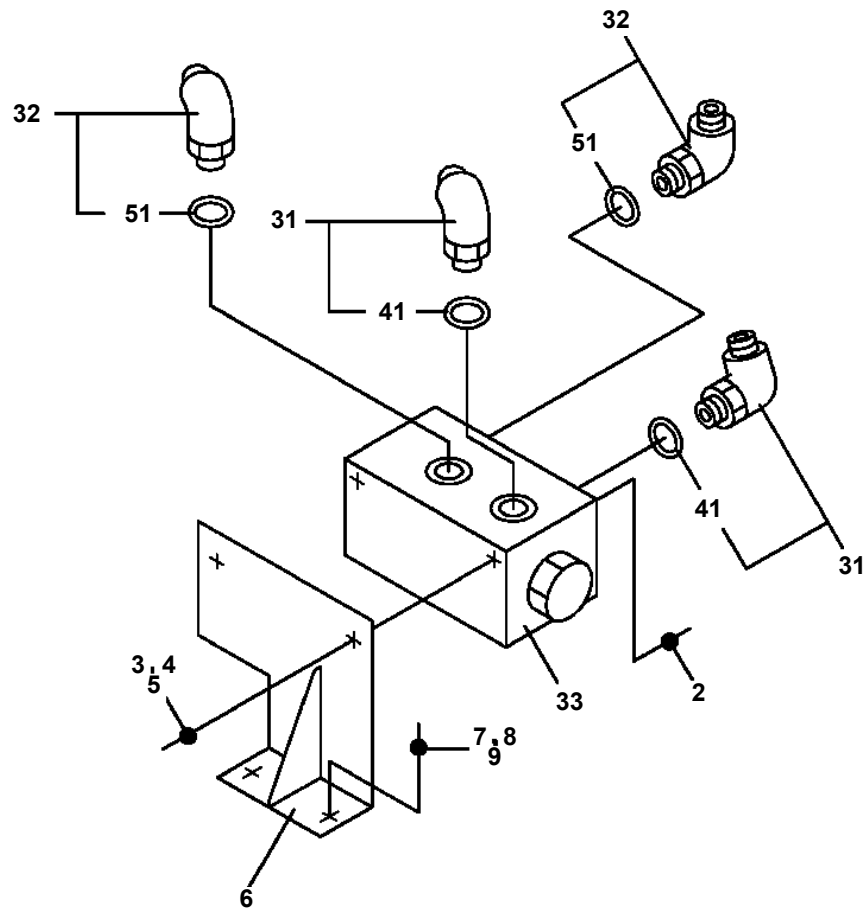


**AT-146-2 42095200056 UPPER
PI1140172-00 VALVE,CHECK**

100



**AT-146-2 42095200056 UPPER
PI1240030-00 VALVE**



CLICK HERE TO **DOWNLOAD** THE COMPLETE MANUAL

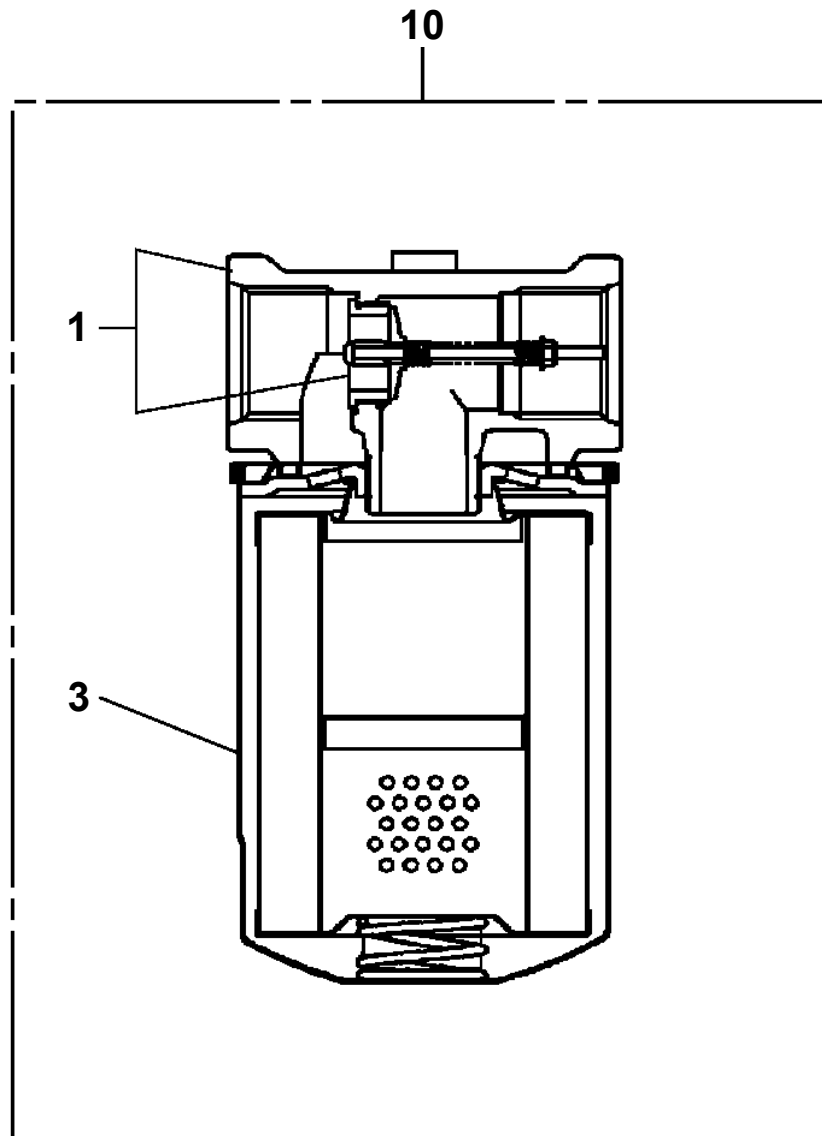
- Thank you very much for reading the preview of the manual.
- You can download the complete manual from: www.heydownloads.com by clicking the link below



- Please note: If there is no response to CLICKING the link, please download this PDF first and then click on it.

CLICK HERE TO **DOWNLOAD** THE COMPLETE MANUAL

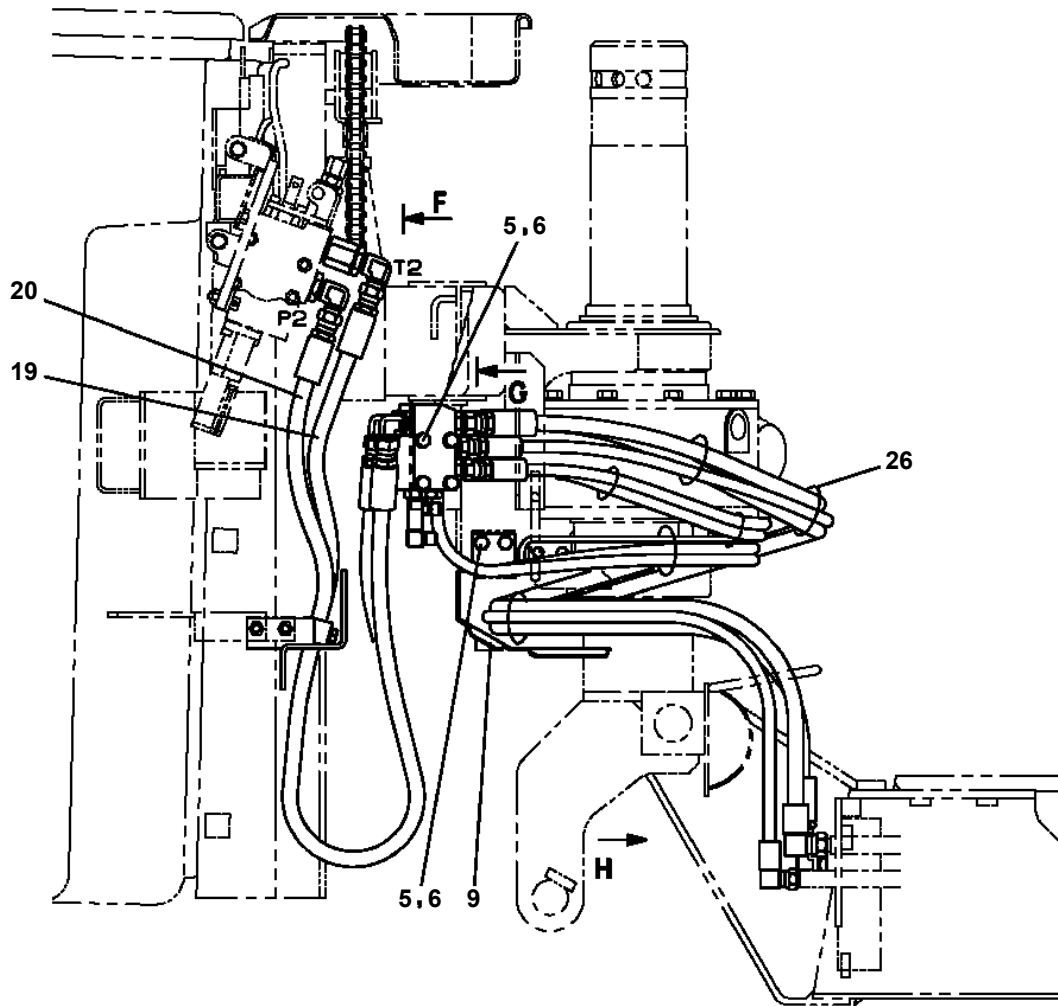
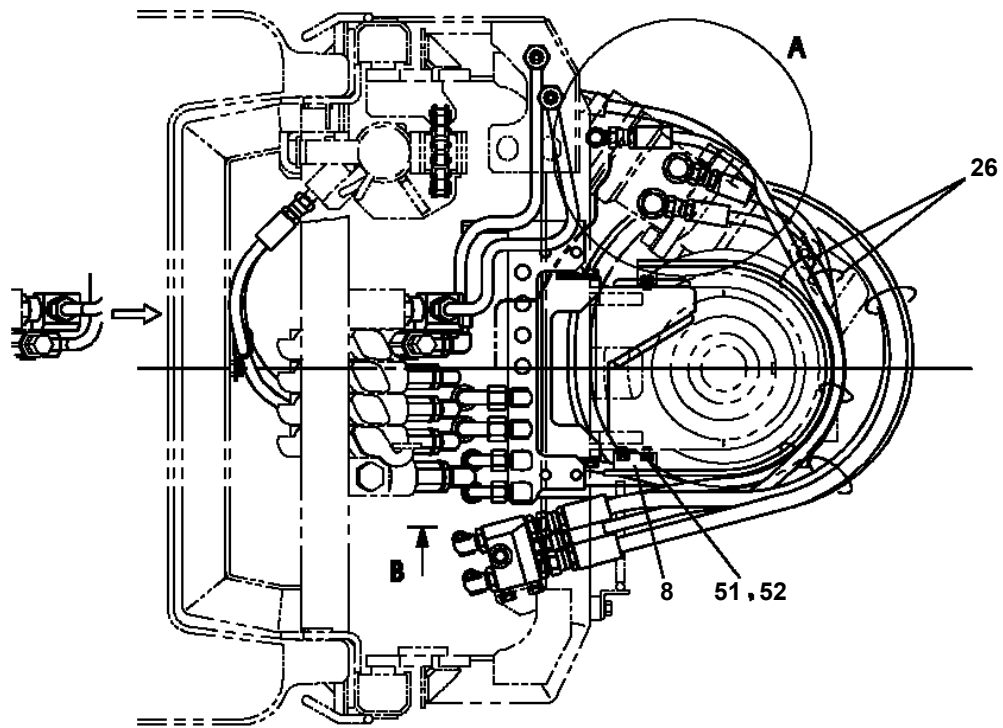
AT-146-2 42095200056 UPPER
PI1300041-00 FILTER,OIL



AT-146-2 42095200056 UPPER

Pos No.	Parts No	Parts Name	Qty	Unit	Technical Data	Serial No (Start)	Serial No (End)	Remarks
1	42265592000	FRAME	1					
2	42261170010	PLATE	2					
3	90171112065	BOLT	8		M12X65			
4	90303501201	WASHER,PLAIN	17		12		227847	
5	42265751000	FRAME ASSY	1					
6	80136363050	PIN,SPLIT	1		6.3X50			
7	42265980010	PIN	1					
8	82455106000	NIPPLE,GREASE	1		A-M6F FE			
9	82400000459	CAP	1					
10	90172112025	BOLT,HEXAGON SOCKET	2		M12X25			
11	42261370010	PIN ASSY	1					
12	42265752000	POST ASSY	1					
13	91001211000	O-RING	1		1A G110			
14	42261420080	BEARING,PLAIN	1					
15	80175303008	SCREW,MACHINE	4		M3X8			
16	42262715000	GUIDE	1					
17	90101208014	BOLT	9		M8X14			
18	90302040801	WASHER,SPRING	9		8			
19	36663470000	MOTOR,HYDRAULIC	1					
20	90172112030	BOLT,HEXAGON SOCKET	2		M12X30			
21	90309341203	WASHER,SPRING	2		12			
22	36340360000	REDUCER,SWING SPEED	1					
23	42264510100	PLATE	1					
24	90171112030	BOLT	7		M12X30			
25	42264510201	PIN	1					
26	90180210020	BOLT,BUTTON	2		M10X20			
27	90302041001	WASHER,SPRING	8		10			
28	37000179440	PIN	2					
29	42265590100	GUIDE	1					
30	37000510170	PLATE	1					
31	37000575630	PLATE	1					
32	42264510300	CHAIN	1		15.875X41			
33	42264514000	CYLINDER,LIFT	1					
34	42264510400	CHAIN	1		25.4X27			
35	90201481600	NUT	4		M16			
36	90302041601	WASHER,SPRING	1		16			
37	42264510500	ROD	2					
38	90201481200	NUT	5		M12			
39	90302041201	WASHER,SPRING	3		12			
40	42260440090	ROD	2					
41	90171112035	BOLT	1		M12X35			
42	37000508520	PLATE	N		T=0.8			
43	42261561600	PLATE,SLIDE	12					
44	80184306012	SCREW,MACHINE	12		M6X12			
45	91850210545	FASTENER	1		L=545			
46	90171110014	BOLT	6		M10X14			
47	42264510010	PLATE	2					
48	37000520110	PLATE	1					
49	37002012150	PLATE,SLIDE	2					
50	37000577290	PLATE	N		T=0.8			
51	90101212020	BOLT	2		M12X20			
52	42264750100	GUIDE	1					
53	42265750100	COVER	1					
54	80172304010	SCREW,MACHINE	4		M4X10			
55	90302040401	WASHER,SPRING	4		4			
72	37000401010	BEARING,PLAIN	2					
82	80801003540	BEARING,PLAIN	2					

**AT-146-2 42095200056 UPPER
PJ3110025-01 PIPING (BUCKET)**



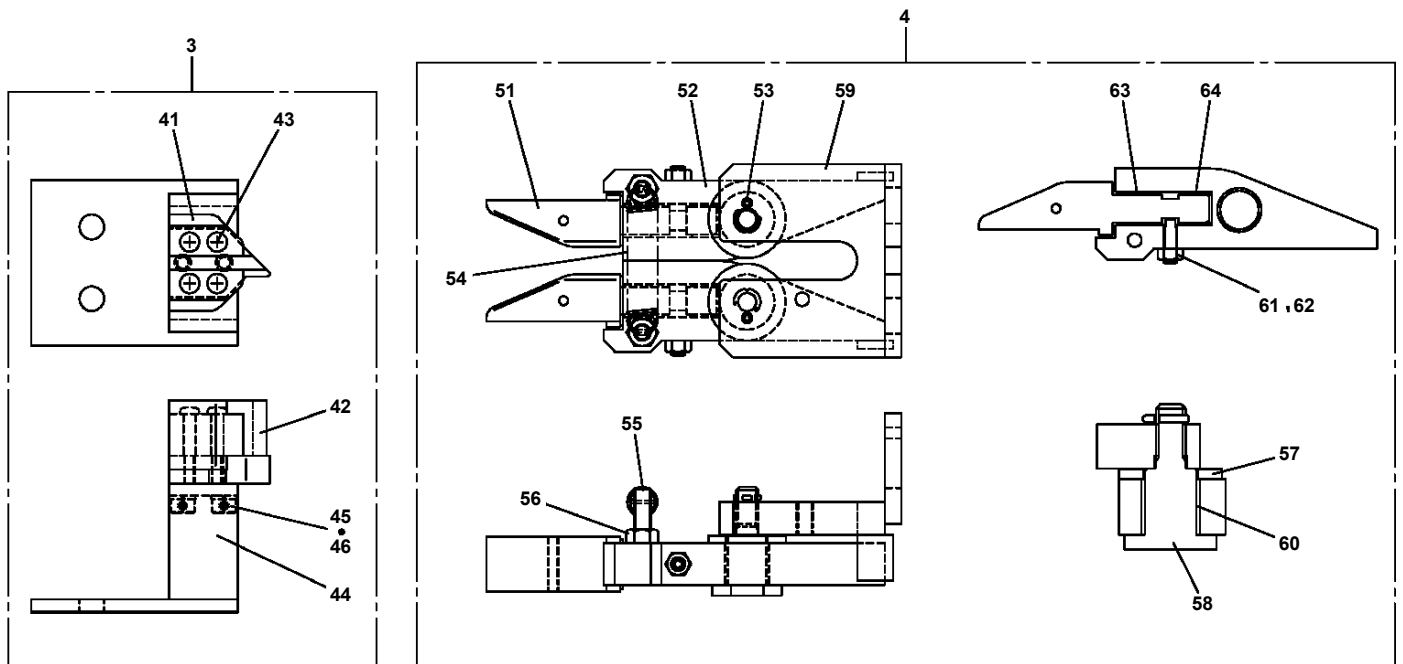
AT-146-2 42095200056 UPPER

Pos No.	Parts No	Parts Name	Qty	Unit	Technical Data	Serial No (Start)	Serial No (End)	Remarks	Pages
1	16715401000	NIPPLE	2						
2	16715403000	SLEEVE	4						
3	16715404000	NIPPLE	4						
4	16715402000	FITTING,ELBOW	2						
5	82456101000	NIPPLE,GREASE	2		A-PT1/8				
6	42345289510	PIPE ASSY	1						
7	82459103000	NIPPLE,GREASE	1		C-PT1/8				
8	42345849510	PIPE ASSY	1						

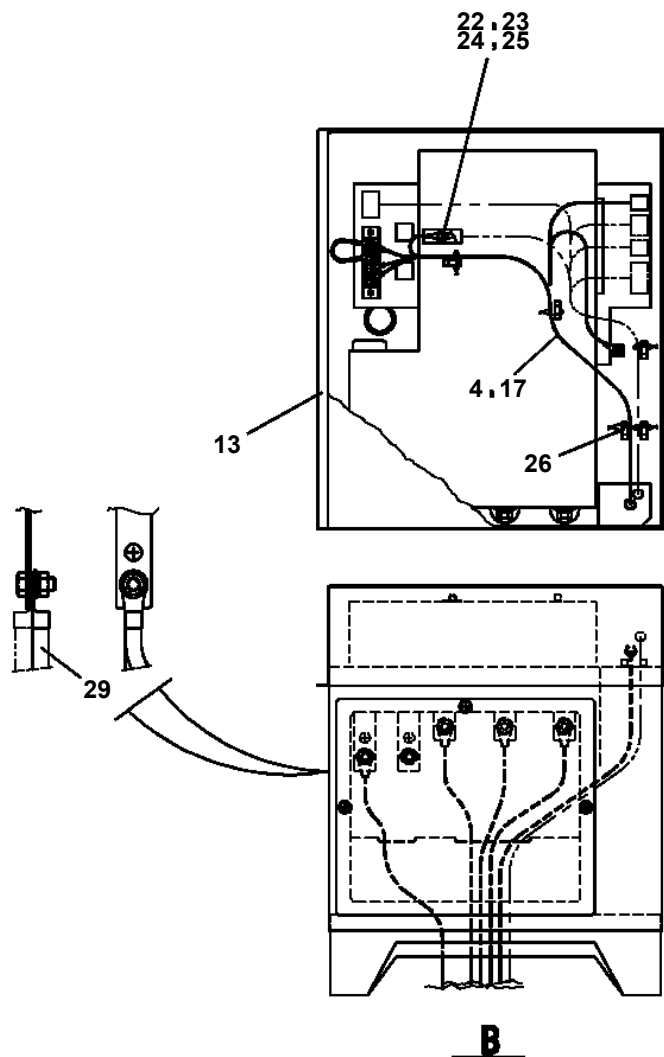
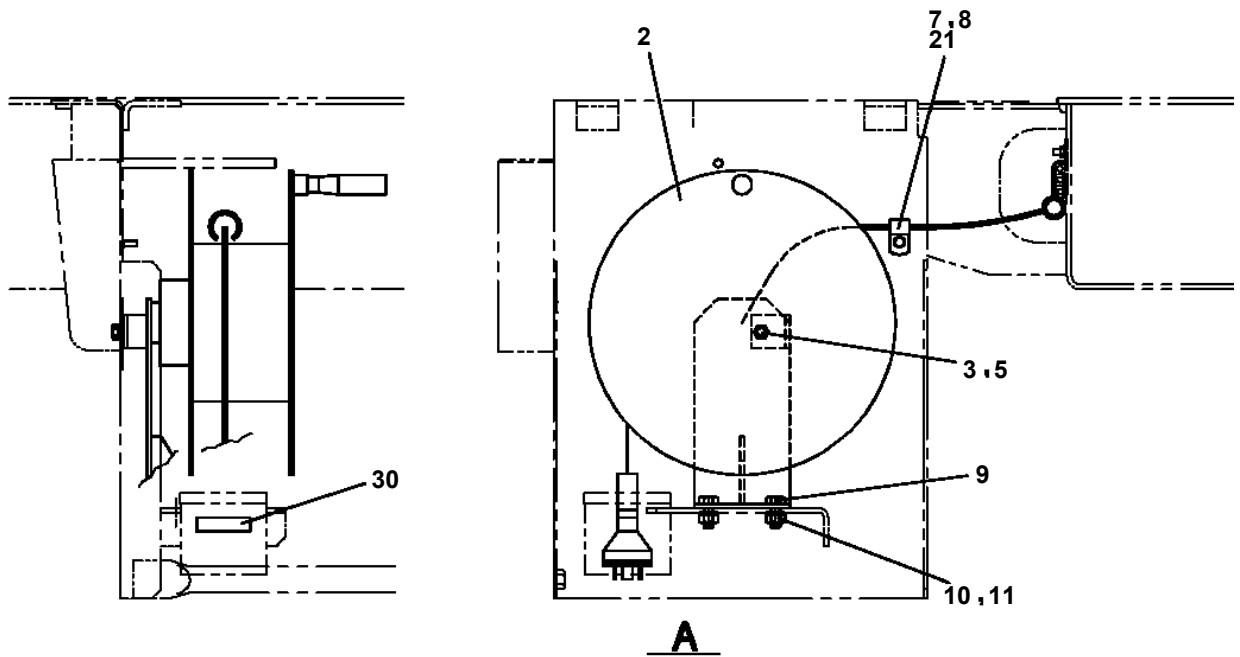
AT-146-2 42095200056 UPPER

Pos No.	Parts No	Parts Name	Qty	Unit	Technical Data	Serial No (Start)	Serial No (End)	Remarks	Pages
1	42421654100	COVER ASSY	1						
3	90101208012	BOLT	6		M8X12				
4	90302040801	WASHER,SPRING	12		8				
7	90813108016	BOLT,WING	6		M8X16				
8	42421654300	COVER	1						
9	90101206010	BOLT	21		M6X1.0				
10	90302040601	WASHER,SPRING	21		6				
11	42421654200	COVER ASSY	1						
12	42421344601	COVER	1						
13	42421344030	PLATE	1						
14	37000512320	PLATE	4						
15	42421344900	COVER	1						
17	37000547660	PLATE	6		T=2.3				
18	42421172700	FAN ASSY	1						
19	90101204035	BOLT	4		M4X35				
20	90302040401	WASHER,SPRING	4		4				
21	90303070401	WASHER,PLAIN	4		4				
22	90201200400	NUT	4		M4				
41	42421654110	COVER	1						
42	42421654140	CUSHION	1						
43	42421654150	CUSHION	1						
44	42421654160	CUSHION	1						
45	42421654170	CUSHION	1						
46	42421654020	PLATE	2						
47	42421654180	CUSHION	1						
48	42421654190	CUSHION	1						
61	42421654210	COVER	1						
62	42421654240	CUSHION	1						
63	42421654250	CUSHION	1						
64	42421654260	CUSHION	1						
65	42421654270	CUSHION	1						

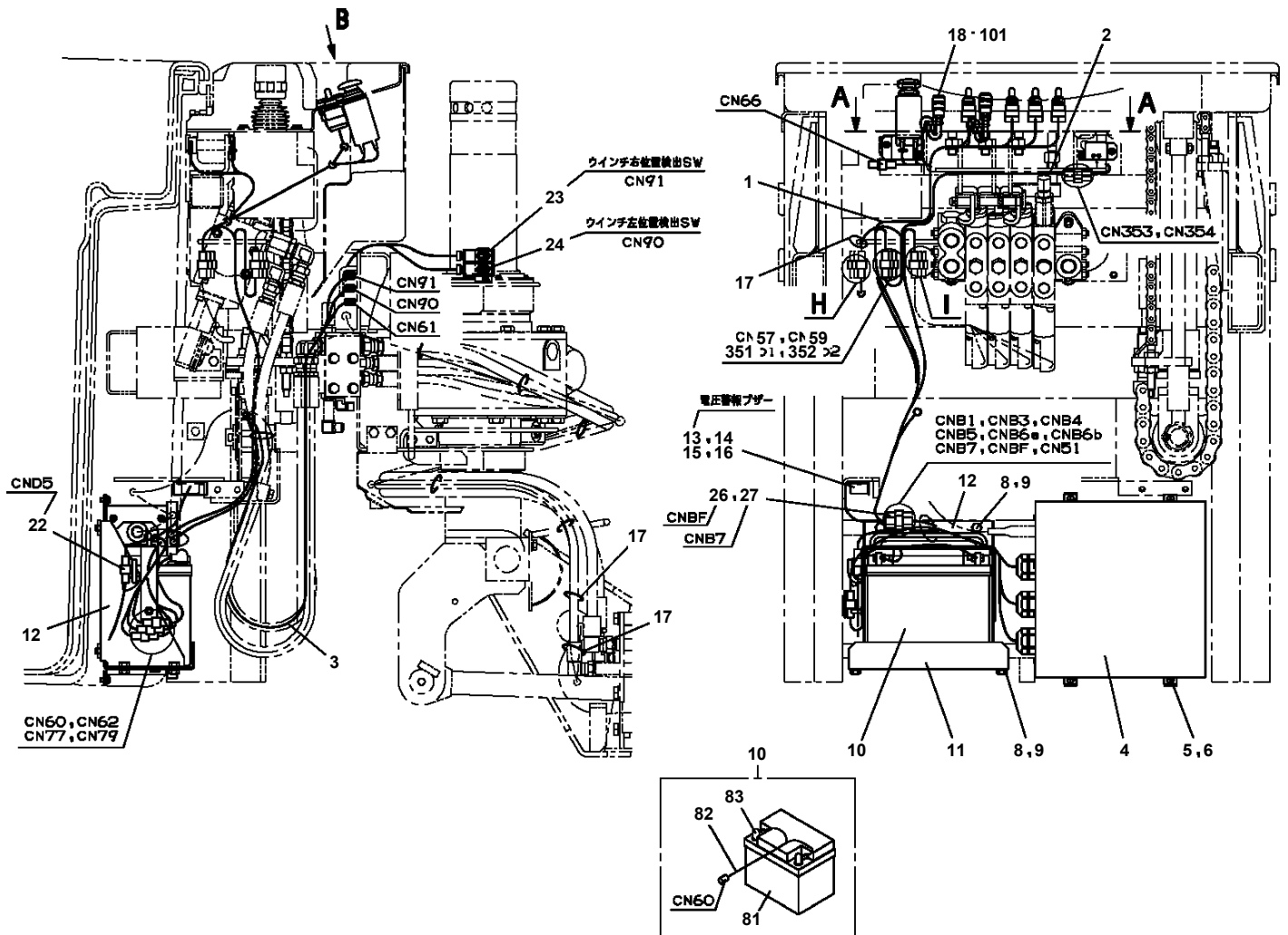
**AT-146-2 42095200056 UPPER
PN1013475-02 ELEC.ASSY (CHARGER)**



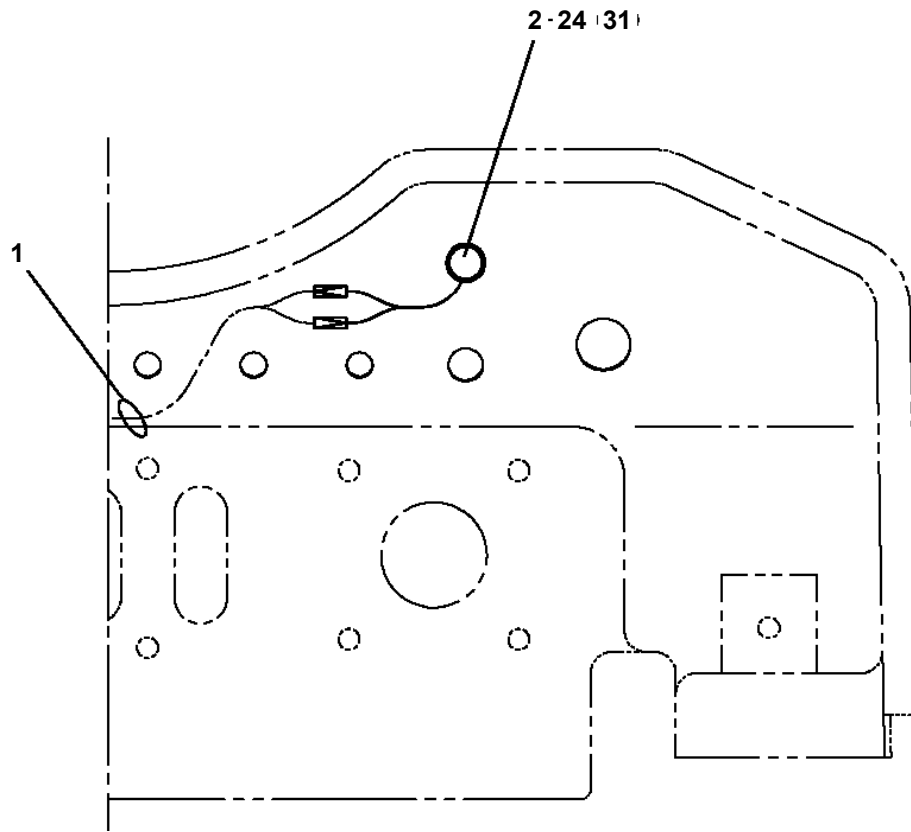
**AT-146-2 42095200056 UPPER
PN1013527-00 ELEC.ASSY (MOTOR UNIT)**



**AT-146-2 42095200056 UPPER
PN1014343-01 ELEC.ASSY (BUCKET)**



**AT-146-2 42095200056 UPPER
PN1080105-00 LAMP**



AT-146-2 42095200056 UPPER

Pos No.	Parts No	Parts Name	Qty	Unit	Technical Data	Serial No (Start)	Serial No (End)	Remarks	Pages
1	42652411100	CASE	1						
2	42652411200	COVER	1						
3	80182306014	SCREW,MACHINE	8		M6X14				
4	90302040601	WASHER,SPRING	22		6				
5	90303070601	WASHER,PLAIN	10		6				
6	42651091100	RELAY ASSY	2						
7	90101206014	BOLT	11		M6X14				
8	82100002596	RELAY	5						
9	82161201010	RELAY	5						
10	82100002597	RELAY	2						
11	42651891300	TERMINAL ASSY	1						
12	80172303016	SCREW,MACHINE	2		M3X16				
13	90302040301	WASHER,SPRING	8		3				
14	90303070301	WASHER,PLAIN	8		3				
15	80172303008	SCREW,MACHINE	6		M3X8				
16	42651132400	RELAY ASSY	1						
17	82100002014	CLAMP	1		WR20				
18	90201200600	NUT	1		M6				
19	42735530100	FLASHER UNIT	1						
20	42652131100	SUPPORT	1						
21	80172306012	SCREW,MACHINE	2		M6X12				
22	42652131301	CONTROLLER	1						000039
23	80172304010	SCREW,MACHINE	4		M4X10				
24	90302040401	WASHER,SPRING	4		4				
25	90303070401	WASHER,PLAIN	4		4				
26	42808712100	RELAY ASSY	3						
41	34350003500	RELAY	2						
53	82100000638	DIODE	5						
61	34350003400	RELAY	1						
71	82161201050	RELAY	3						
100	42808712000	RELAY ASSY	1						

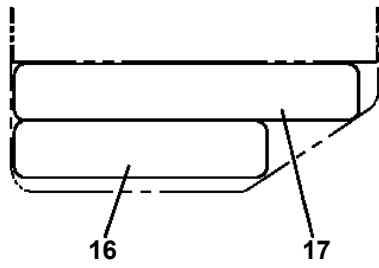
AT-146-2 42095200056 UPPER

Pos No.	Parts No	Parts Name	Qty	Unit	Technical Data	Serial No (Start)	Serial No (End)
1	42500520100	SWITCH ASSY	1				
2	42475721010	PLATE,NAME	1				
3	42354541200	SWITCH ASSY (WITH HARNESS,1 SW)	1				
4	42500521000	PANEL	1				
5	42394922010	PLATE,NAME	1				
6	82197518114	CAP (MATSUSHITA/BLACK)	1				
	82197518119	CAP (PLUS ONE MFG./BLACK)	1				
7	91810130240	FASTENER	2				
8	42394783030	PLATE,NAME	2				
21	82105220256	SWITCH,TOGGLE	1				
22	82100000665	CAP (BLACK)	1				
31	82105221254	SWITCH,TOGGLE	1				
41	42353381100	PLATE,NAME	1				
42	42353381200	PANEL	1				

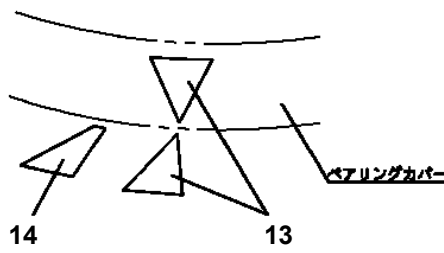
AT-146-2 42095200056 UPPER

Pos No.	Parts No	Parts Name	Qty	Unit	Technical Data	Serial No (Start)	Serial No (End)
1	36160755100	CONNECTOR	1				
2	36160755200	CABLE	1				
3	82100002006	CLAMP	2		WR10		
4	16318217000	GROMMET	1				
5	36160755500	REEL (BASE)	1				
6	36160205030	SPRING	1				
7	36160205040	RETAINER (BEARING)	1				
8	90172206016	BOLT,HEXAGON SOCKET (DACRO)	4		M6X16		
9	90302040601	WASHER,SPRING	9		6		
10	80515006008	BEARING,BALL	2				
11	36160205050	COLLAR	1				
12	80601110400	RING,RITAINING	1		S40		
13	36160205060	INSULATOR	5				
14	36160205070	RING,SLIP	4				
15	80562100070	WASHER,PLAIN	1		AW07		
16	80561100070	NUT	1		AN07		
17	82100001990	BRUSH	4				
18	36160756800	CASE (A)	1				
19	36160756900	CASE (B)	1				
20	36160205140	HANDLE	1				
21	90101206015	BOLT	5		M6X15		
23	36160757300	CABLE	1				
24	36160757400	CONNECTOR	1				
25	36160205100	GUIDE,SPRING	1				
26	90101206010	BOLT	2		M6X1.0		
27	90201200600	NUT	2		M6		
28	36160205120	SHOE,BRAKE	1				
29	90172206014	BOLT,HEXAGON SOCKET	2		M6X14		
50	36160750000	REEL,CORD	1				

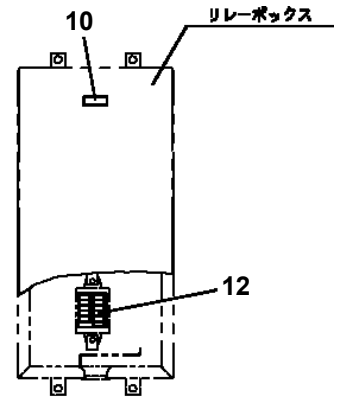
AT-146-2 42095200056 UPPER
 PO1013886-01 PLATE ASSY,NAME



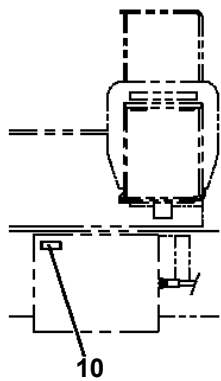
D-D



E

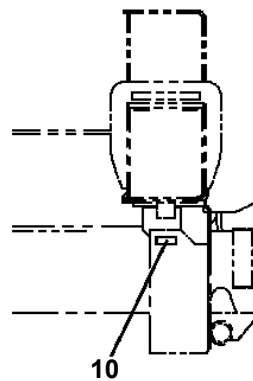


F



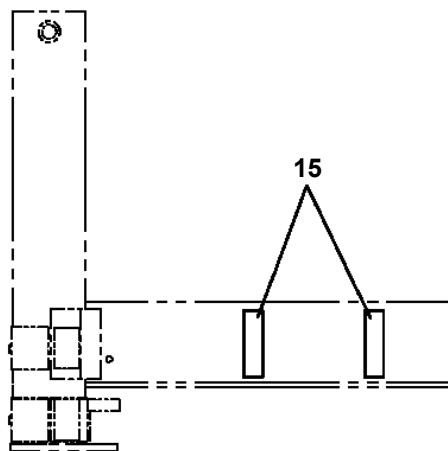
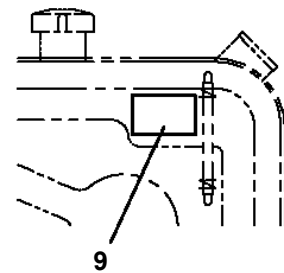
日野・トヨタの場合

G

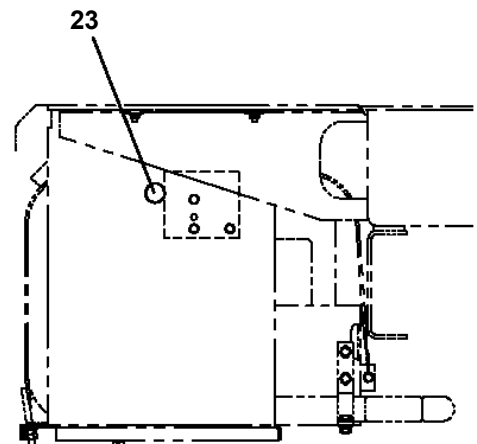


いすゞ・三菱の場合

H

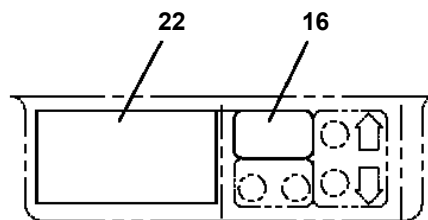
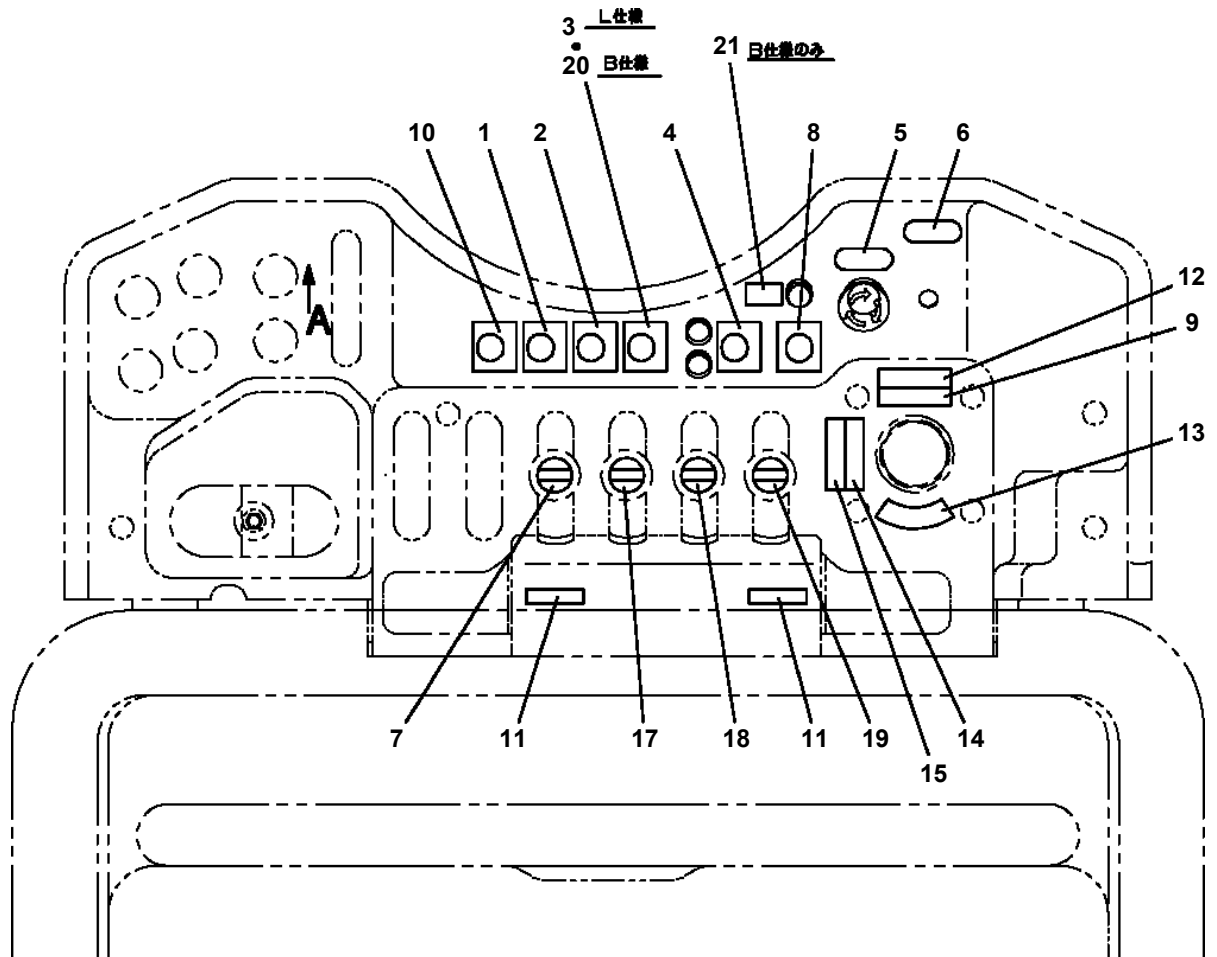


I



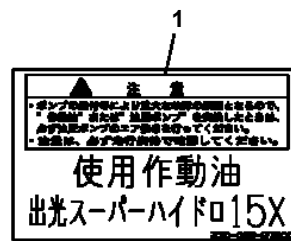
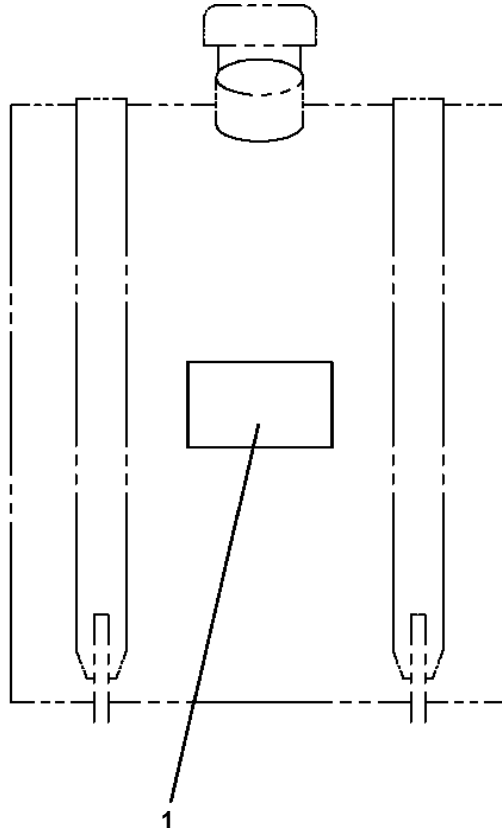
J

AT-146-2 42095200056 UPPER
PO1014521-00 PLATE ASSY,NAME (BUCKET)

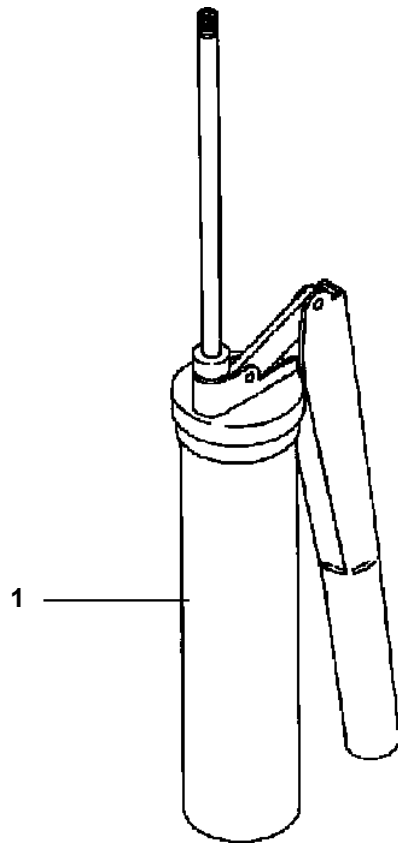


A

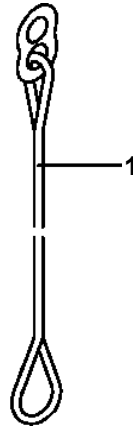
AT-146-2 42095200056 UPPER
PO1014931-01 PLATE ASSY,NAME (HYDRAULIC OIL)



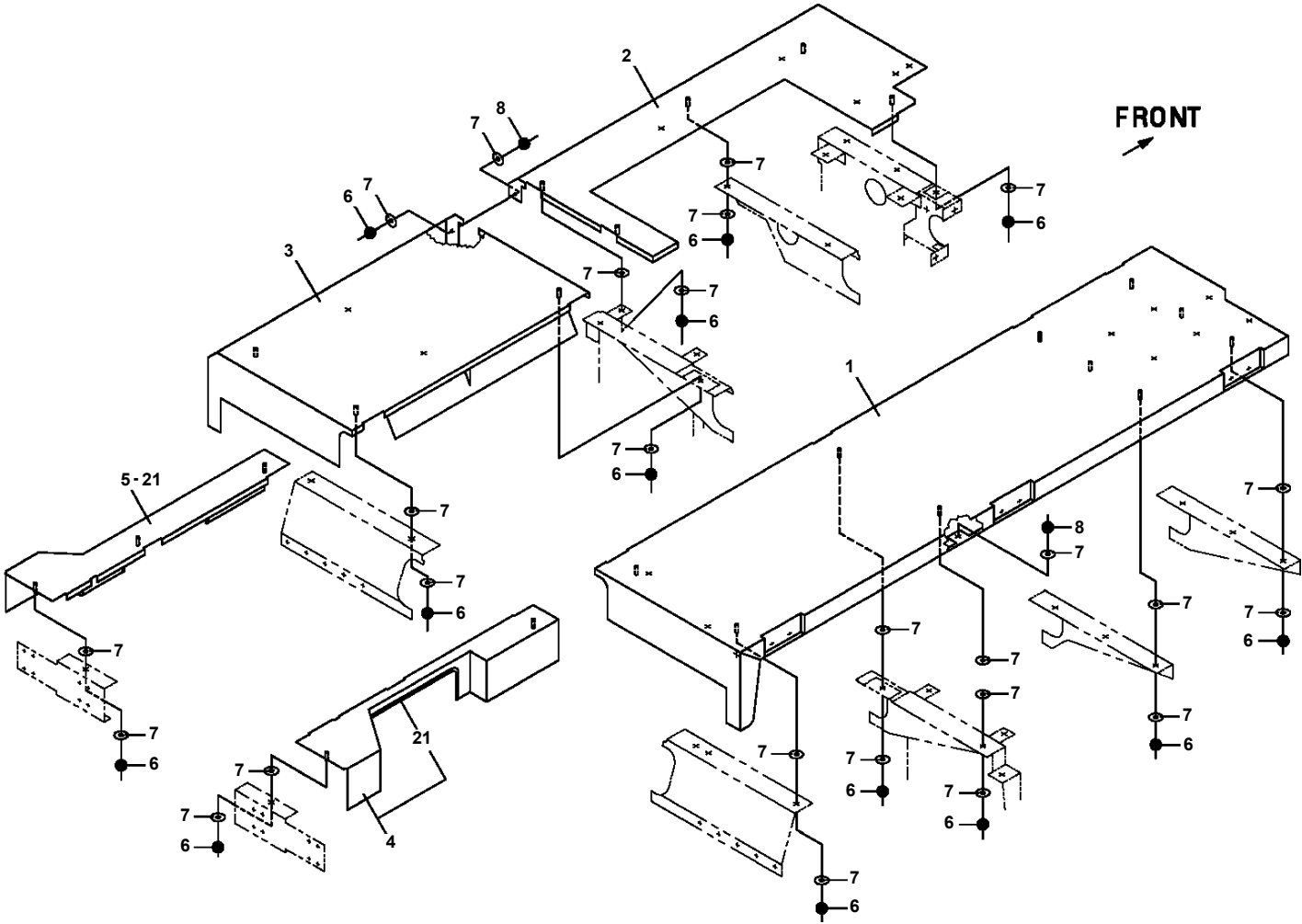
**AT-146-2 42095200056 UPPER
PP5450004-00 PUMP, GREASE (400CC)**



**AT-146-2 42095200056 UPPER
PW1010378-00 ACCESSORIES**



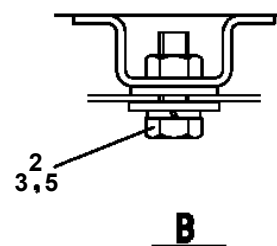
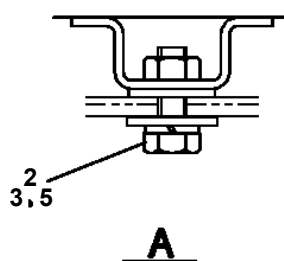
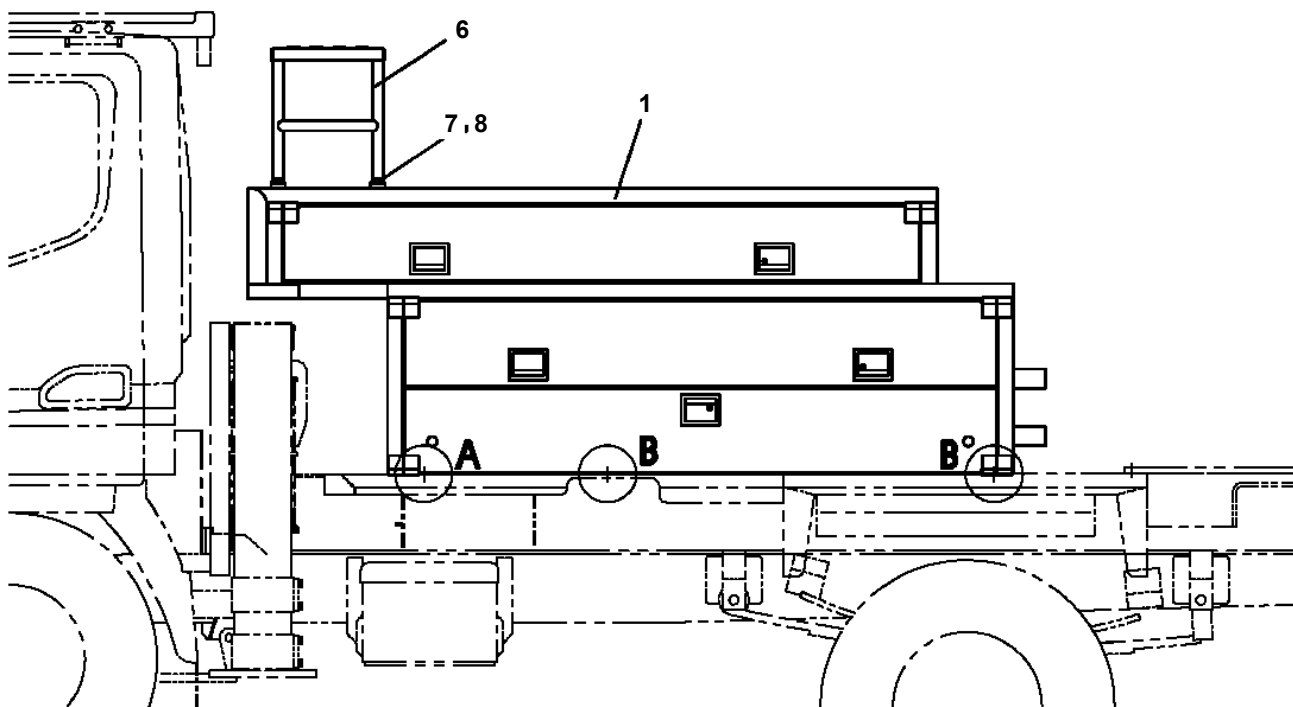
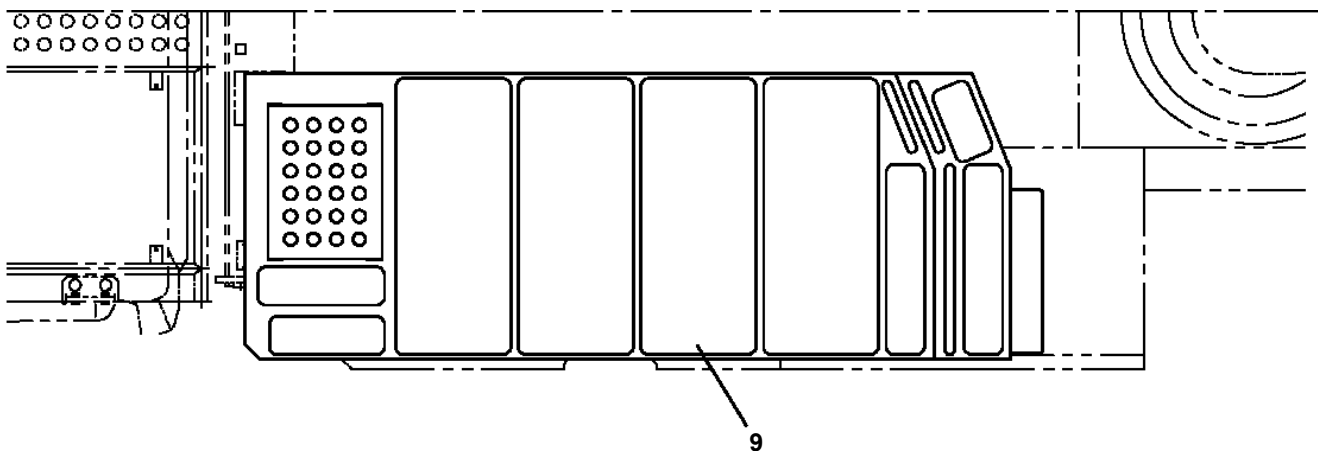
**AT-146-2 42095200056 UPPER
PX1030640-00 FENDER**



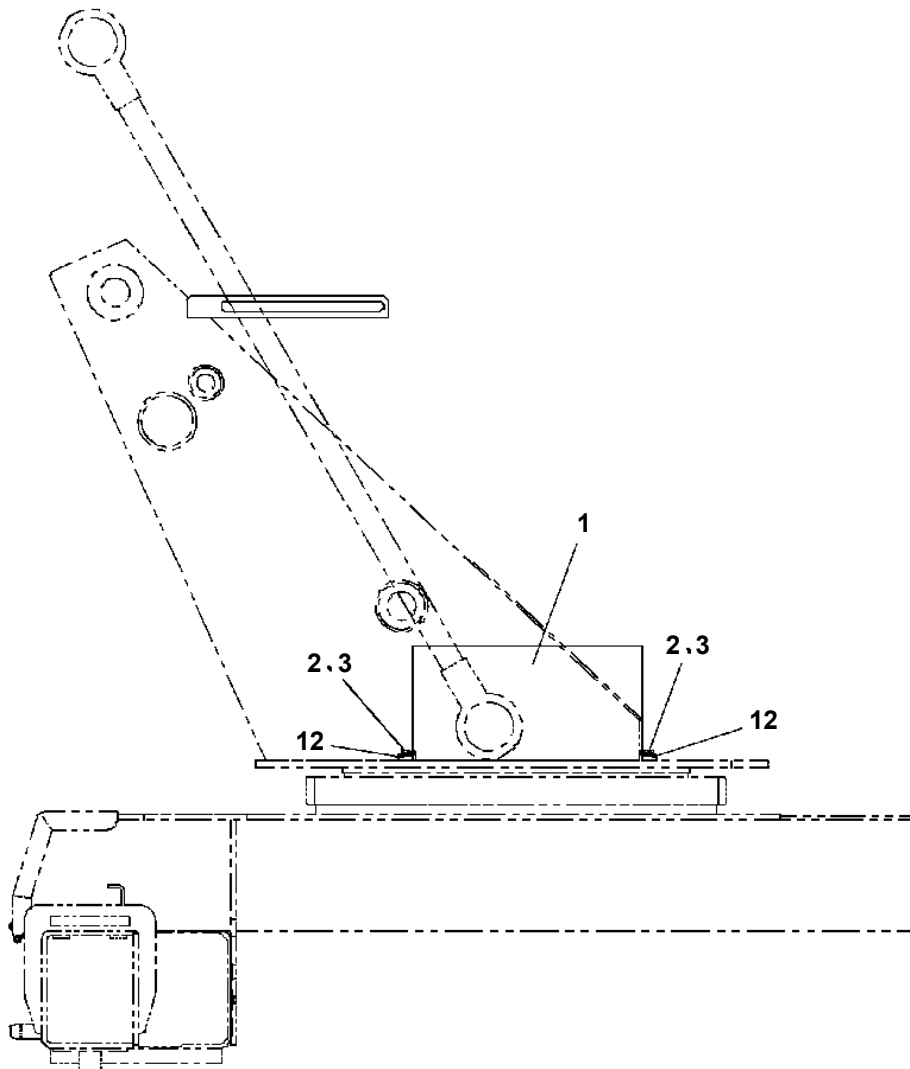
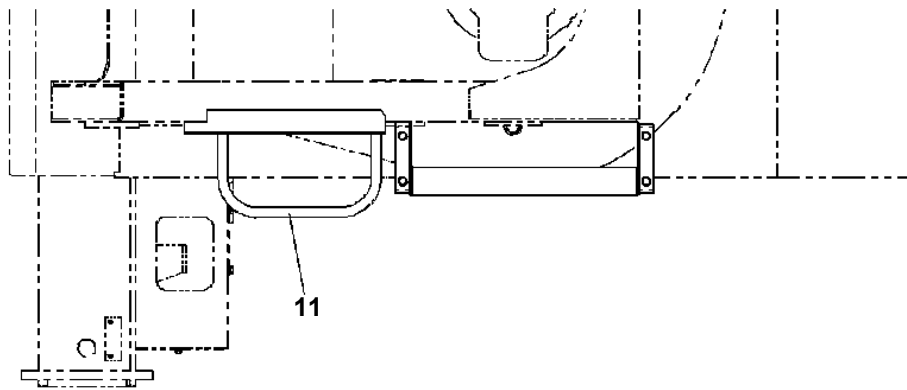
AT-146-2 42095200056 UPPER

Pos No.	Parts No	Parts Name	Qty	Unit	Technical Data	Serial No (Start)	Serial No (End)
1	42731680000	WOOD BLOCK (WITH RUBBER,T=80)	1				

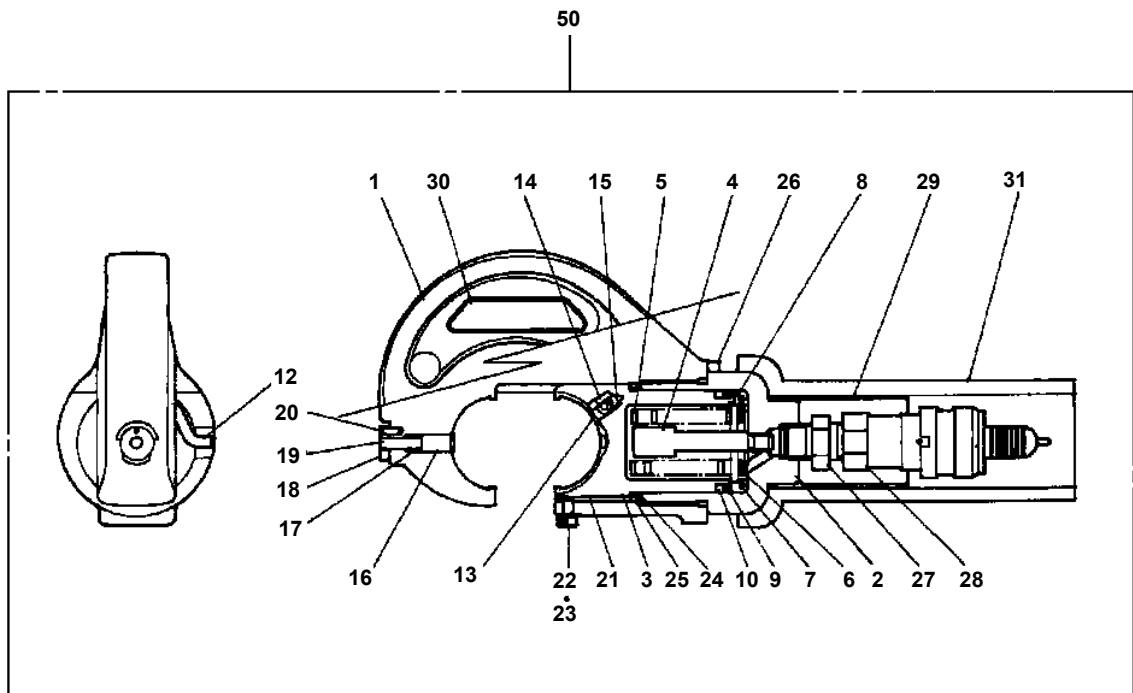
**AT-146-2 42095200056 UPPER
PX1350637-01 BOX, TOOL (FRAME)**



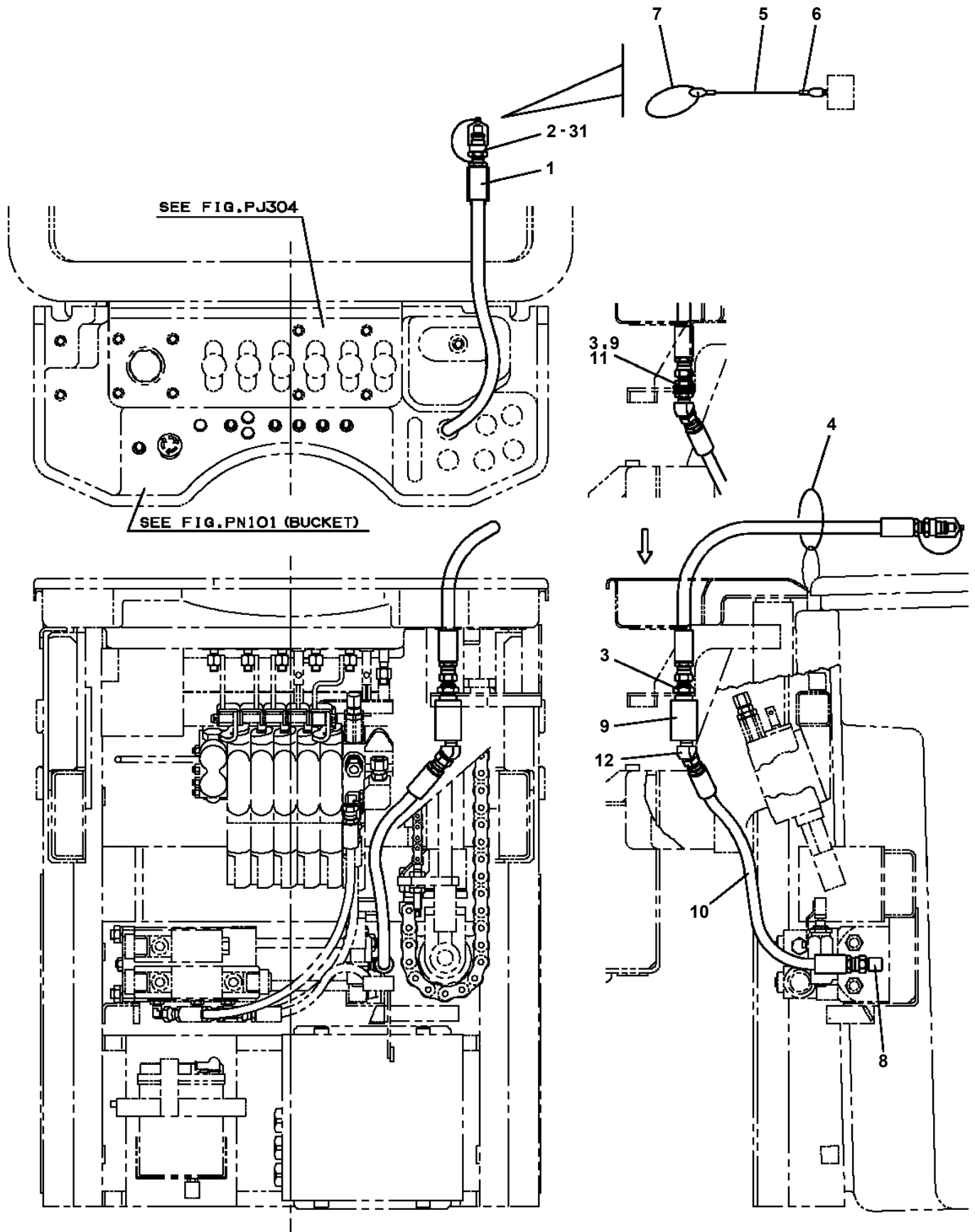
**AT-146-2 42095200056 UPPER
PX1810158-00 MOUNT,SUPPORT (CONE BAR)**



**AT-146-2 42095200056 UPPER
PY1050012-00 CLAMP HEAD (SANWA,12TON,TITANIUM)**



**AT-146-2 42095200056 UPPER
PY1160087-00 BOOSTER (PIPING/AIR&ELECTRIC)**



AT-146-2 42095200056 UPPER

Pos No.	Parts No	Parts Name	Qty	Unit	Technical Data	Serial No (Start)	Serial No (End)	Remarks	Pages
1	42472561000	COVER	1						
2	42472562000	COVER	2						
3	80146708020	RIVET	14						
4	90303070801	WASHER,PLAIN	14		8				

CLICK HERE TO **DOWNLOAD** THE COMPLETE MANUAL

- Thank you very much for reading the preview of the manual.
- You can download the complete manual from: www.heydownloads.com by clicking the link below



- Please note: If there is no response to CLICKING the link, please download this PDF first and then click on it.

CLICK HERE TO **DOWNLOAD** THE COMPLETE MANUAL