

AT-146-2 42095200096 UPPER

PB3000190-00 POWER UNIT
PD2000078-00 SWING UNIT
PF1000465-02 WINCH SYSTEM
PG2000086-01 BOOM UNIT
PH1000463-01 SAFETY DEVICES (MOTION CONTROLLER)
PJ3000277-02 BUCKET SYSTEM
PJ5000003-00 BOOSTER UNIT
PK2000877-00 FRAME UNIT
PO1000127-01 INDICATION PLATES
PW1000109-01 ACCESSORIES & TOOLS
PX1000905-00 MOUNTING PARTS
PY1000748-11 OPTIONS,1
PY2000059-06 OPTIONS,2
ASSEMBLY

CLICK HERE TO **DOWNLOAD** THE COMPLETE MANUAL

- Thank you very much for reading the preview of the manual.
- You can download the complete manual from: www.heydownloads.com by clicking the link below



- Please note: If there is no response to CLICKING the link, please download this PDF first and then click on it.

CLICK HERE TO **DOWNLOAD** THE COMPLETE MANUAL

AT-146-2 42095200096 UPPER

Pos No.	Parts No	Parts Name	Qty	Unit	Technical Data	Serial No (Start)	Serial No (End)	Remarks
1	36193270000	MOTION CONTROLLER (AMC)	1					

AT-146-2 42095200096 UPPER

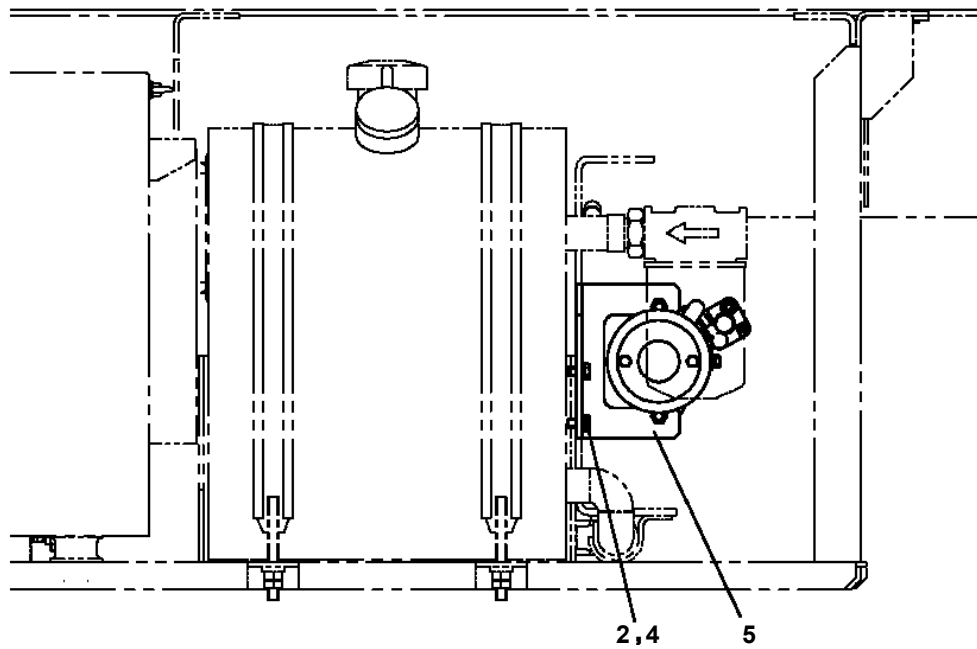
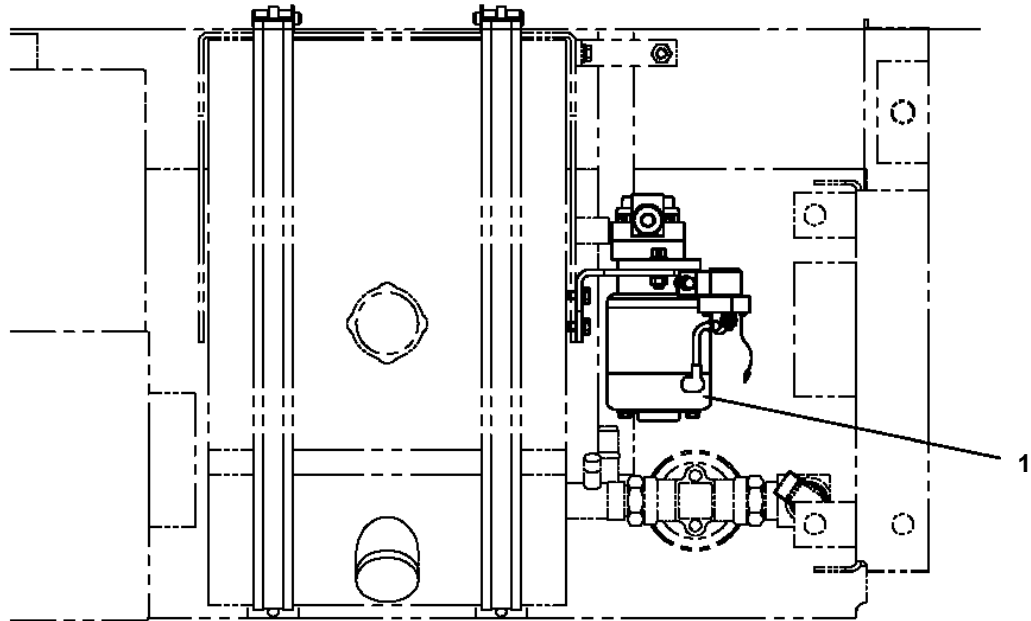
Pos No.	Parts No	Parts Name	Qty	Unit	Technical Data	Serial No (Start)	Serial No (End)	Remarks	Pages
1	(*****)	ACCESSORIES	1						000282

AT-146-2 42095200096 UPPER

Pos No.	Parts No	Parts Name	Qty	Unit	Technical Data	Se
30	42738400000	WOOD BLOCK (WITH RUBBER,T=100)	1			
	(*****)	WOOD BLOCK (W=350,H=80)	1			
31	(*****)	EARTHING DEVICE	1			
33	42475965000	COVER,WINCH (GRAY,FOR KANDENKO)	1			
34	(*****)	MOUNT,LAMP (BUCKET,FOR NTT,OPTION)	1			
35	42738221000	WOOD BLOCK (KANSAI DENRYOKU/DETACHABLE)	1			
	(*****)	WOOD BLOCK	1			
36	(*****)	CABLE	1			
37	(*****)	SUPPORT (WINCH JIB,OPTION)	1			
38	(*****)	SUPPORT (WINCH JIB,FOR HOKURIKUDENKOU)	1			
39	42501650000	STEP,BUCKET	1			
40	(*****)	WINCH,JIB (FRP/INTEGRATED SUPPORT,GRAY)	1			
41	42510290000	CABLE ASSY (PC CONNECTION CABLE)	1			

**AT-146-2 42095200096 UPPER
PB1100259-00 PUMP, HYDRAULIC (EMERGENCY, MOUNT)**

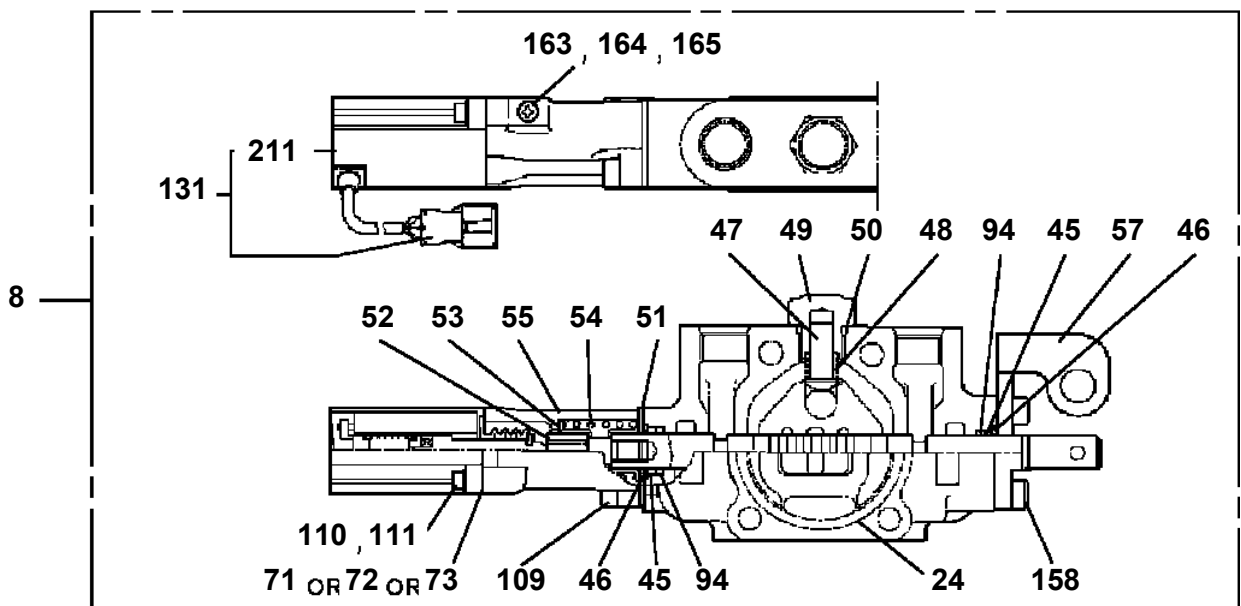
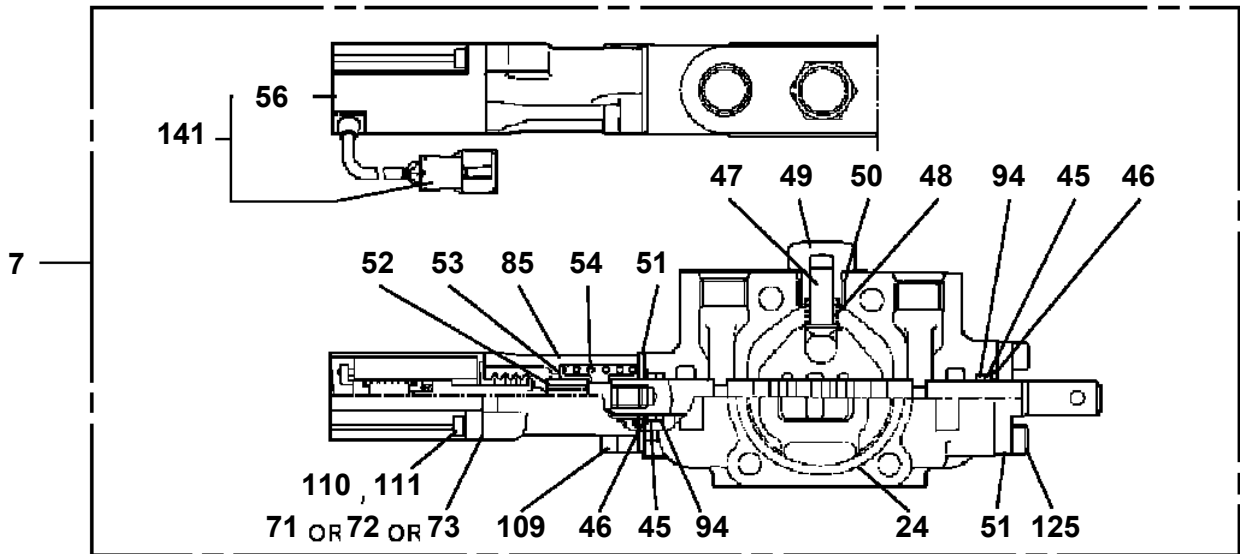
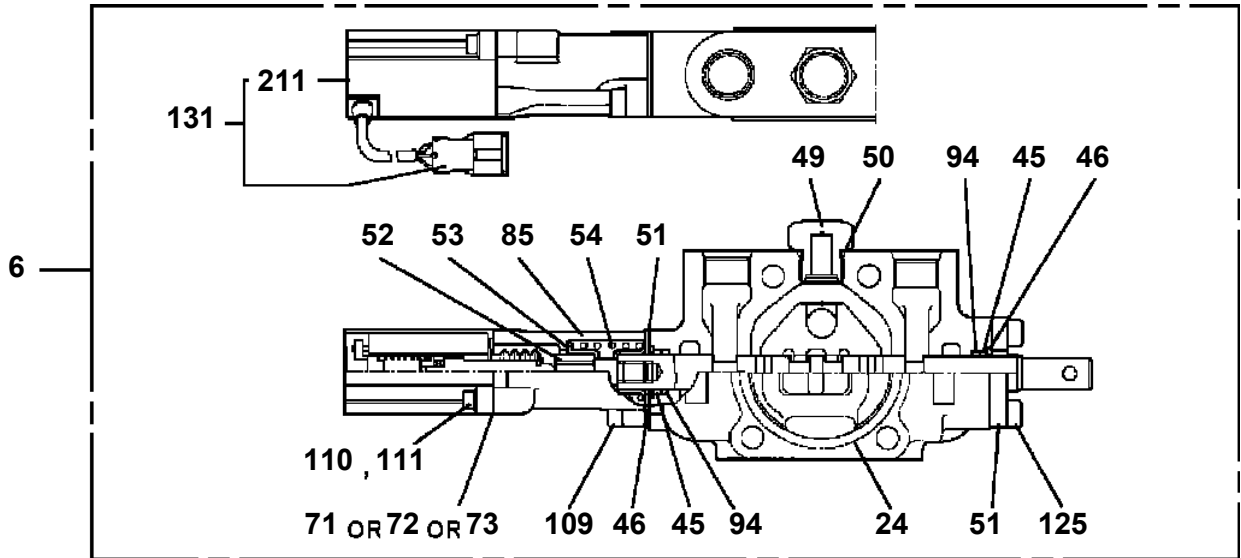
FRONT ←



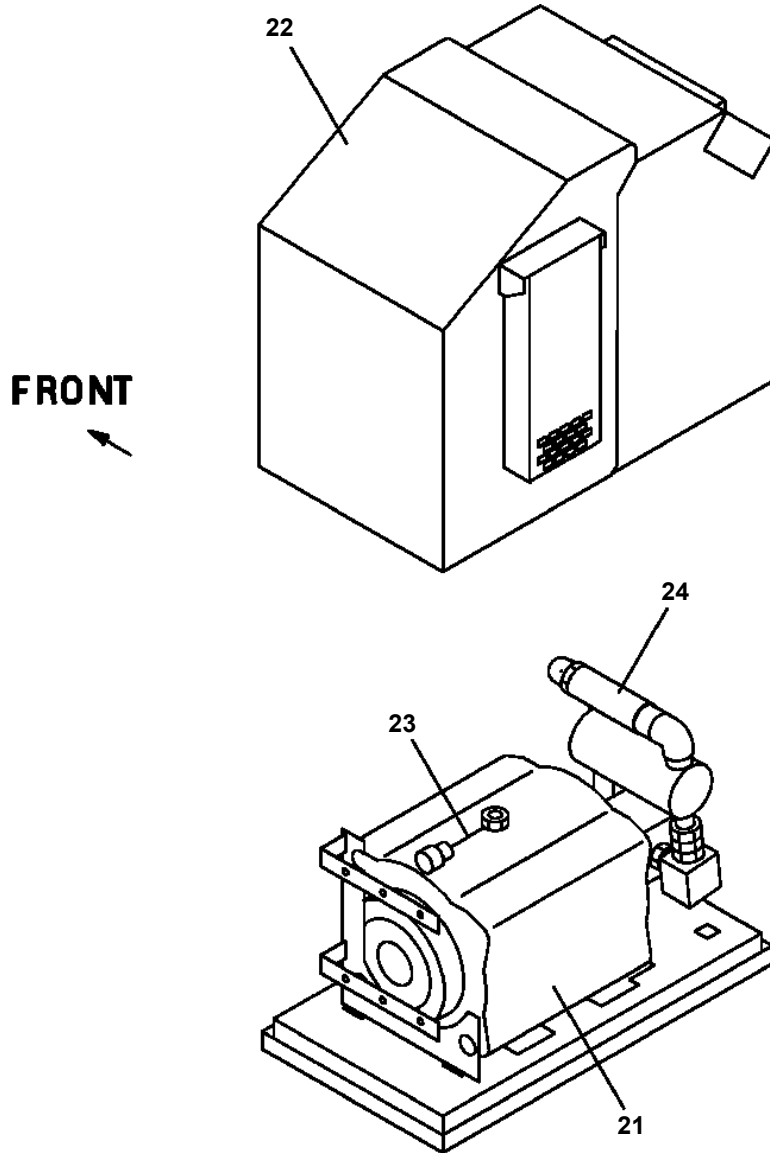
**AT-146-2 42095200096 UPPER
PB1110022-00 MOUNT,PUMP (EMERGENCY/L:HIGH PRESSURE)**

指示番号 KEY NO.	マウント,ポンプ (ヒシヨウヨウ/Lシヨウ:コウアツフィルタツキ) MOUNT,PUMP (EMERGENCY/L:HIGH PRESSURE FILTER)
1	ポンプ,ハイドロリック PUMP,HYDRAULIC
2	ハイセンASSY ELEC.ASSY (EMERGENCY PUMP)
3	パイピング,ロー PIPING,LOWER
4	プレートASSY,ネーム PLATE ASSY,NAME
5	ハイセンASSY ELEC.ASSY (EMERGENCY PUMP RELAY)

**AT-146-2 42095200096 UPPER
PB1320572-01 VALVE, MANUAL CONTROL**



**AT-146-2 42095200096 UPPER
PB1380196-01 POWER SUPPLY (MOUNT/MOTOR UNIT)**



AT-146-2 42095200096 UPPER

Pos No.	Parts No	Parts Name	Qty	Unit	Technical Data	Serial No (Start)	Serial No (End)	Remarks
92	80400160129	JOINT	2					
93	91002801400	O-RING	1		1B P14		227949	
	91002801400	O-RING	8		1B P14			
94	80400160131	JOINT	1					
96	80441010604	FITTING	1					
97	80400160127	JOINT	7					
98	91002801100	O-RING	2		1B P11		227976	
	91002801100	O-RING	13		1B P11			
	91002801100	O-RING	1		1B P11		227949	
	91002801100	O-RING	1		1B P11	227950	227976	
	91002801100	O-RING	3		1B P11	227977		
100	80430620600	JOINT (WITH O-RING)	3		L,G3/8-G3/8			
103	37000928370	JOINT	1		S,G1/2-G1/2			
111	36625000000	VALVE ASSY,CHECK	1					
121	36636340000	VALVE,MANUAL CONTROL	2					
127	80430620400	JOINT	2					
131	36606420000	VALVE,RELIEF	1				227949	
	(*****)	VALVE,RELIEF	1			227950	227976	
132	42340240500	FILTER,OIL	1				227949	
133	80491303020	JOINT (WITH O-RING)	1		L,G3/8-G1/4		227949	
134	36672530000	FILTER (WITH O-RING)	2					
136	80481302025	JOINT	1		L,G1/4-G1/4	227950		
141	36606670000	VALVE,RELIEF	1			227977		
154	80400160128	JOINT	1		S,G3/8-G1/4			

AT-146-2 42095200096 UPPER

Pos No.	Parts No	Parts Name	Qty	Unit	Technical Data	Serial No (Start)	Serial No (End)	R
1	42882081000	SUPPORT ASSY	1					
2	36102590000	TANK,OIL	1					
3	42880550100	BAND	2					
4	56560009000	PIN	2					
5	80136330025	PIN,SPLIT	2					
6	90303071201	WASHER,PLAIN	4		12			
7	90301021001	WASHER	2					
8	90201201000	NUT	4		M10			
9	42881880100	SUPPORT	1					
10	91001204500	O-RING	1		1A G45			
11	91002802900	O-RING	2		1B P29			
12	90101208016	BOLT	19		M8X16			
13	90302040801	WASHER,SPRING	25		8			
14	36672810001	FILTER,OIL	1					
15	42881460100	FITTING,FLANGE	1					
16	90280200800	NUT,FLANGE	4		M8			
17	37000547660	PLATE	4		T=2.3			
19	42881490100	JOINT	1					
20	90302041001	WASHER,SPRING	3		10			
21	90303071001	WASHER,PLAIN	2		10			
22	90101210016	BOLT	1		M10X16			
23	37000600520	CLAMP	1		R=22			
24	42882080100	SUPPORT	1					
25	37000542310	PLATE	1					
26	90303070801	WASHER,PLAIN	6		8			
27	80430621200	JOINT	1					
28	80302090181	FITTING	1		KCO15-030N			
29	91002801400	O-RING	1		1B P14			
31	42881670020	SUPPORT	1					
32	37002447230	HOSE	1		L=220			
33	90171112025	BOLT	2		M12X25			
34	90302041201	WASHER,SPRING	2		12			
35	81408000210	PIPE,STEEL	1	M	15X2.0T			
36	42882080200	COVER	1					
37	90101208012	BOLT	6		M8X12			
38	42882080300	COVER	1					
39	42882080400	SUPPORT	1					
40	90101210020	BOLT	2		M10X20			
41	36672760000	FILTER,OIL	1					
42	80303130241	FITTING,ELBOW	2		KLO18-040E			
43	81408000241	PIPE,STEEL	1	M	18X1.9T			
44	81408000241	PIPE,STEEL	1	M	18X1.9T			
61	42881671100	FITTING,FLANGE	1					
62	36648281000	VALVE,SOLENOID	1					
63	36604490000	VALVE,RELIEF	1					
64	36645930000	VALVE,SOLENOID	1					
65	80481003040	JOINT	1		S,G1/2-G3/8			
66	80491303030	JOINT (WITH O-RING)	1		L,PF3/8-PF3/8			
67	37000926260	JOINT	2					
68	80303130181	FITTING,ELBOW	1		KLO15-030E			
69	91002801800	O-RING	8		1B P18			
70	80400160130	JOINT	1		S,G1/2-G3/8			
71	90172105085	BOLT,HEXAGON SOCKET	4		M5X85			
72	80456950401	JOINT,SELF SEALING (COUPLER)	1					
73	91002801400	O-RING	11		1B P14			
74	90172105045	BOLT,HEXAGON SOCKET	4		M5X45			
77	80316070040	PLUG	1		PF1/4			
78	91002801100	O-RING	1		1B P11			
79	80303080020	JOINT	1		SSTL1/4			
80	80316070060	PLUG	4		PF3/8			
81	80302090241	FITTING	2		KCO18-040N			
82	80316070080	PLUG	1		PF1/2			
83	42643051000	SWITCH ASSY (THERMO)	1					

AT-146-2 42095200096 UPPER

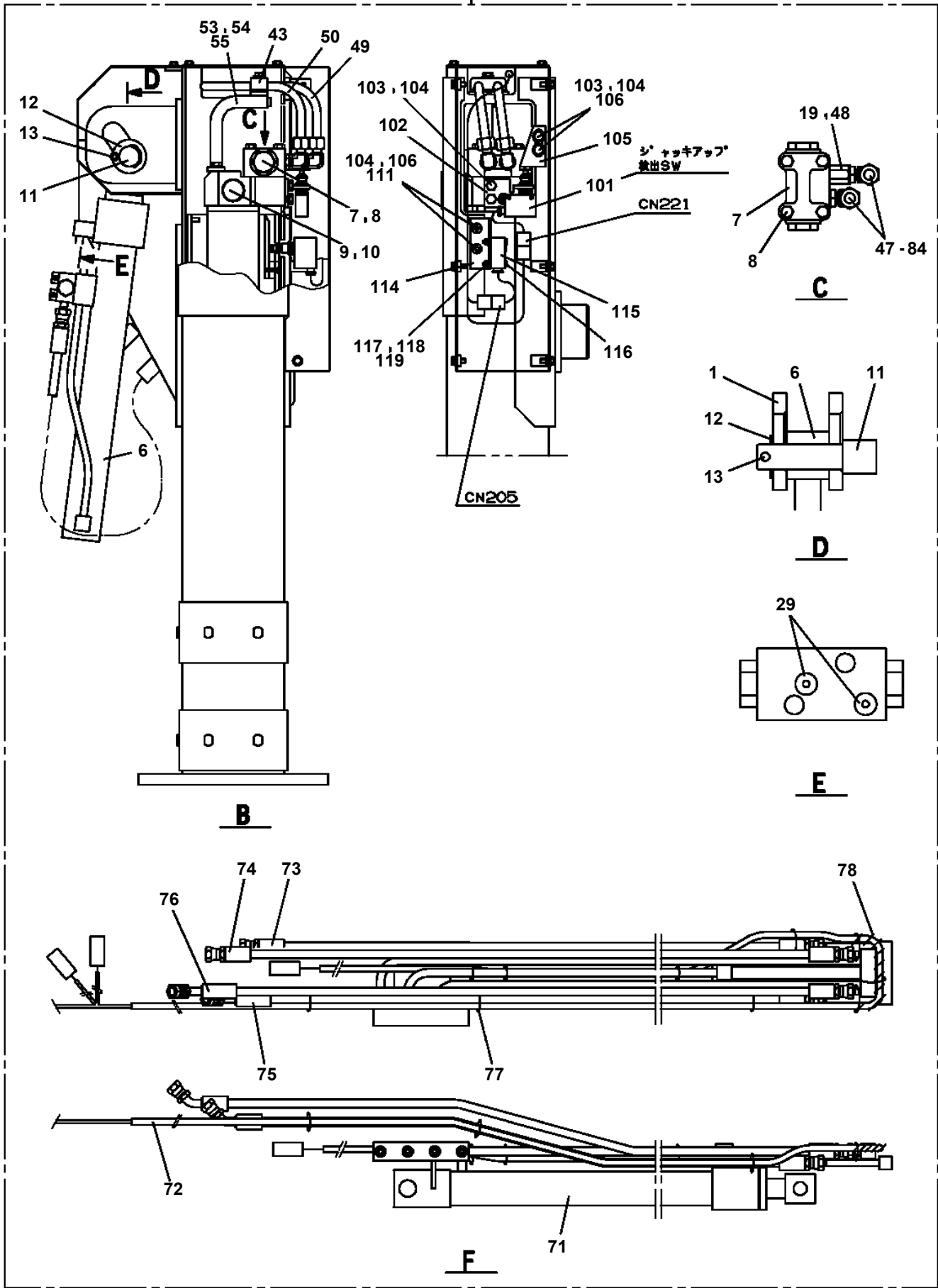
Pos No.	Parts No	Parts Name	Qty	Unit	Technical Data	Serial No (Start)	Serial No (End)	Re
1	42647201000	BOOSTER	1				227935	
	42647201001	BOOSTER	1					
2	90302040801	WASHER,SPRING	8		8			
3	90101208014	BOLT	4		M8X14			
4	80305010120	FITTING,TEE	1		ZKTA15-000N			
5	80301010120	FITTING	3		KUA15-000N			
7	90172108060	BOLT,HEXAGON SOCKET	2		M8X60			
8	37002476240	HOSE	1		L=1950			
12	91002801400	O-RING	6		1B P14			
13	80302090181	FITTING	4		KCO15-030N			
14	37000920740	JOINT	1					
15	91002801100	O-RING	2		1B P11			
16	37000931400	JOINT	1					
17	42344041110	ORIFICE	1					
18	80456110610	JOINT,SELF SEALING (SOCKET)	1					
19	80456120610	JOINT,SELF SEALING (PLUG)	1					
20	81408000210	PIPE,STEEL	1	M	15X2.0T			
21	81408000210	PIPE,STEEL	1	M	15X2.0T			
22	81408000210	PIPE,STEEL	1	M	15X2.0T			
23	81408000210	PIPE,STEEL	1	M	15X2.0T			
24	81408000210	PIPE,STEEL	1	M	15X2.0T			
25	81408000210	PIPE,STEEL	1	M	15X2.0T			
26	81408000210	PIPE,STEEL	1	M	15X2.0T			
27	81408000210	PIPE,STEEL	1	M	15X2.0T			
28	81408000210	PIPE,STEEL	1	M	15X2.0T			
30	91810132530	FASTENER	10					
32	81408000210	PIPE,STEEL	1	M	15X2.0T			
33	37000929270	JOINT	1					
34	90101208016	BOLT	2		M8X16			
35	42646641500	JOINT	1					
51	42736711100	FITTING,FLANGE	1					
52	36645930000	VALVE,SOLENOID	1					
53	90172105050	BOLT,HEXAGON SOCKET	4		M5X50			
54	80302090201	FITTING	2		KCO15-040N			
55	91002801800	O-RING	4		1B P18			
56	80316070040	PLUG	2		PF1/4			
57	91002801100	O-RING	2		1B P11			
58	80305131503	FITTING,TEE	1		T,15-G3/8-15			
59	91002801400	O-RING	1		1B P14			
60	37000908720	JOINT (WITH O-RING)	1		PF1/2-PF3/8			
61	36604750000	VALVE,RELIEF	1					
62	80303130201	FITTING,ELBOW	1		KLO15-040E			
71	91071011500	O-RING	1		Y22550-115-A			
72	91470000600	RING,BACKUP	1		Y22021-06			

AT-146-2 42095200096 UPPER

Pos No.	Parts No	Parts Name	Qty	Unit	Technical Data	Serial No (Start)	Serial No (End)	R
1	42738821001	CASE,INNER	1					
2	42738841001	CASE,INNER	1					
3	82440710230	PLATE,REFLECTOR	1					
4	82440710240	PLATE,REFLECTOR	2					
5	80182306012	SCREW,MACHINE	12		M6X12			
6	90303070601	WASHER,PLAIN	12		6			
21	42613361001	OUTRIGGER (REAR/INNER CASE)	2					
22	90288106015	NUT	8		M6			

**AT-146-2 42095200096 UPPER
PC1011450-00 OUTRIGGER (REAR/INNER CASE)**

200



AT-146-2 42095200096 UPPER

Pos No.	Parts No	Parts Name	Qty	Unit	Technical Data	Serial No (Start)	Serial No (End)	Remarks	Pa
1	90209202200	NUT	1		M22				
2	90302042201	WASHER,SPRING (22)	1						
3	90303072201	WASHER,PLAIN	1		22				
4	91684006000	PACKING	2						
5	91431205001	RING,BACKUP	2						
6	91002802500	O-RING	1		1B P25				
7	91302206000	BEARING,PLAIN	2						
8	36034700060	PISTON	1						
9	36035100200	ROD	1						
10	36035100100	CYLINDER	1						
11	91002905500	O-RING	1		1B G55				
12	91694004000	PACKING	1						
13	91410204001	RING,BACKUP	1						
14	91660004001	SEAL,DUST	1						
15	36034700300	COVER,ROD	1						
16	91002906000	O-RING	1		1B G60				
50	36034709900	PACKING SET	1		40X60				
100	36035100000	CYLINDER,JACK	1						

AT-146-2 42095200096 UPPER

Pos No.	Parts No	Parts Name	Qty	Unit	Technical Data	Serial No (Start)	Serial No (End)	Remarks
1	36050771000	CYLINDER	1					
2	90268402000	NUT	1					
3	90302042001	WASHER,SPRING	1		20			
4	91002801800	O-RING	1		1B P18			
5	91684004500	PACKING	2					
6	36050510010	PISTON	1					
8	91001204000	O-RING	1		1A G40			
9	91694003000	PACKING	1					
10	36021760010	WASHER	1					
11	91660003001	SEAL,DUST	1					
12	36050510070	COVER,ROD	1					
13	80804030040	BEARING,PLAIN	1					
14	82456101000	NIPPLE,GREASE	1		A-PT1/8			
20	36050769510	ROD ASSY	1					
30	36050779900	PACKING SET	1		30X45			
50	36050770000	CYLINDER,JACK (FRONT)	1					

AT-146-2 42095200096 UPPER

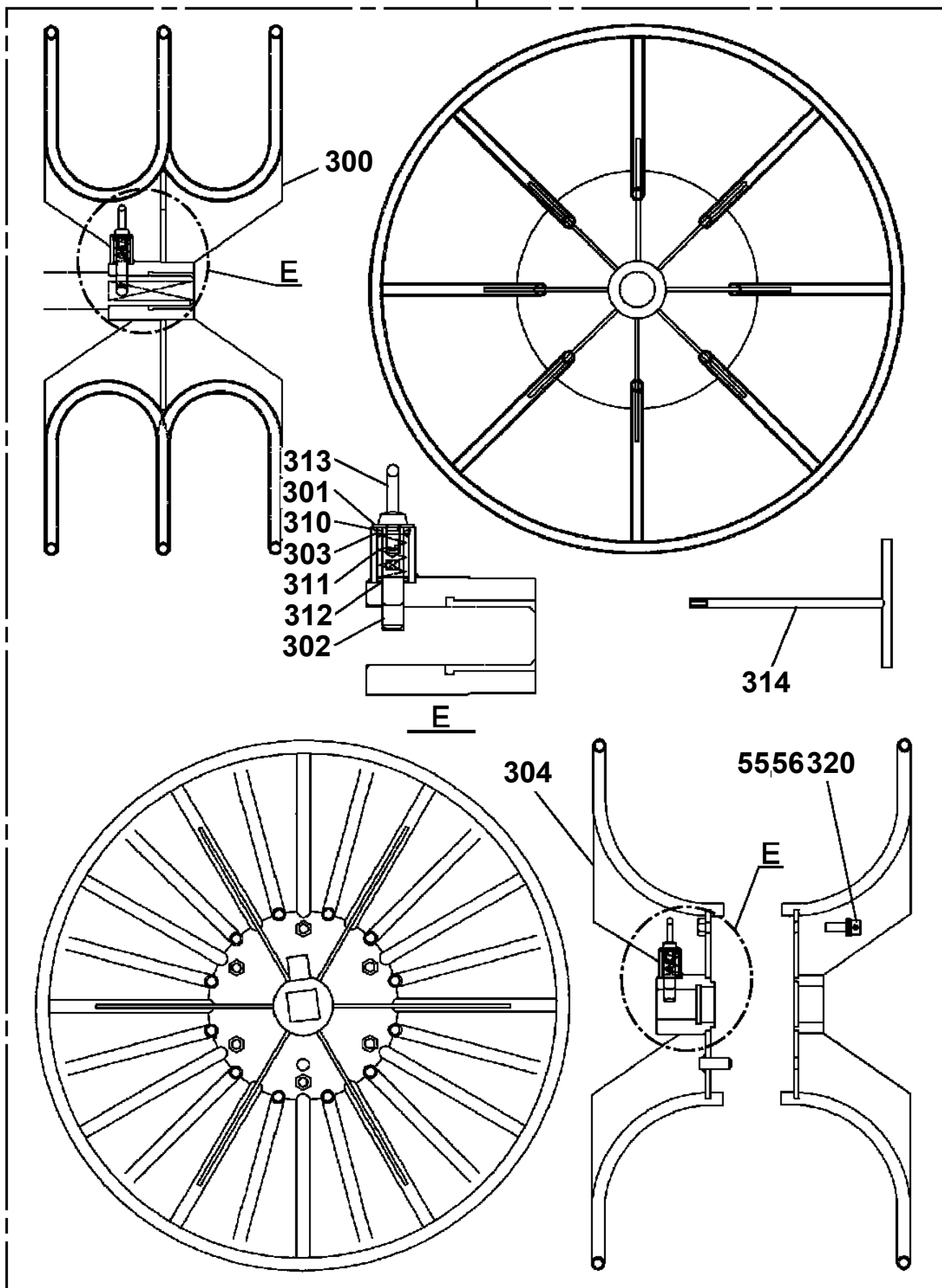
Pos No.	Parts No	Parts Name	Qty	Unit	Technical Data	Serial No (Start)	Serial No (End)	Remarks	Pages
100	42652131301	CONTROLLER	1						

AT-146-2 42095200096 UPPER

Pos No.	Parts No	Parts Name	Qty	Unit	Technical Data	Serial No (Start)	Serial No (End)	Remark
1	36026278010	CYLINDER,ELEVATING	1					
2	36605570000	VALVE,COUNTERBALANCE	1					
3	90171108125	BOLT	4		M8X125			
4	90302040801	WASHER,SPRING	4		8			
5	36625750000	VALVE,CHECK	1					
21	80801005025	BEARING,PLAIN	2					
22	82458102000	NIPPLE,GREASE	2		B-PT1/8			
23	82400000459	CAP	2					
24	80720105025	PIN,SPRING	1		5X25			
25	91302211500	BEARING,PLAIN	2					
26	91684011500	PACKING	2					
27	91411210001	RING,BACKUP	2					
28	91002804400	O-RING	1		1B P44			
29	36026081000	PISTON	1					
30	36026271000	ROD	1					
32	80612110860	RING,RITAINING	1		AR86			
33	91002810500	O-RING	1		1B P105			
34	37000400170	BEARING,PLAIN	1					
36	91001206500	O-RING	1		1A G65			
37	91694008000	PACKING	1					
38	91410208000	RING,BACKUP	1					
39	91002911500	O-RING	1		1B G115			
40	91660008000	SEAL,DUST	1					
41	80622000800	RING,RITAINING	1		SP80			
42	80720104020	PIN,SPRING	1		4X20			
43	80316030020	PLUG	2		PT1/8			
44	36023182000	END,ROD	1					
51	36026089510	CYLINDER ASSY	1					
52	36026089530	COVER,ROD	1					
53	36026089901	PACKING SET	1		80X115			
62	80541700050	BEARING,SPHERICAL	1					
64	82100000548	CONNECTOR	1					
67	82100001411	TUBE,SPIRAL	1	M	SE-08BK			
68	80316090020	PLUG	1		KKT PT1/8			
81	82100001155	CONNECTOR	1					

AT-146-2 42095200096 UPPER
PF1010294-00 WINCH

500



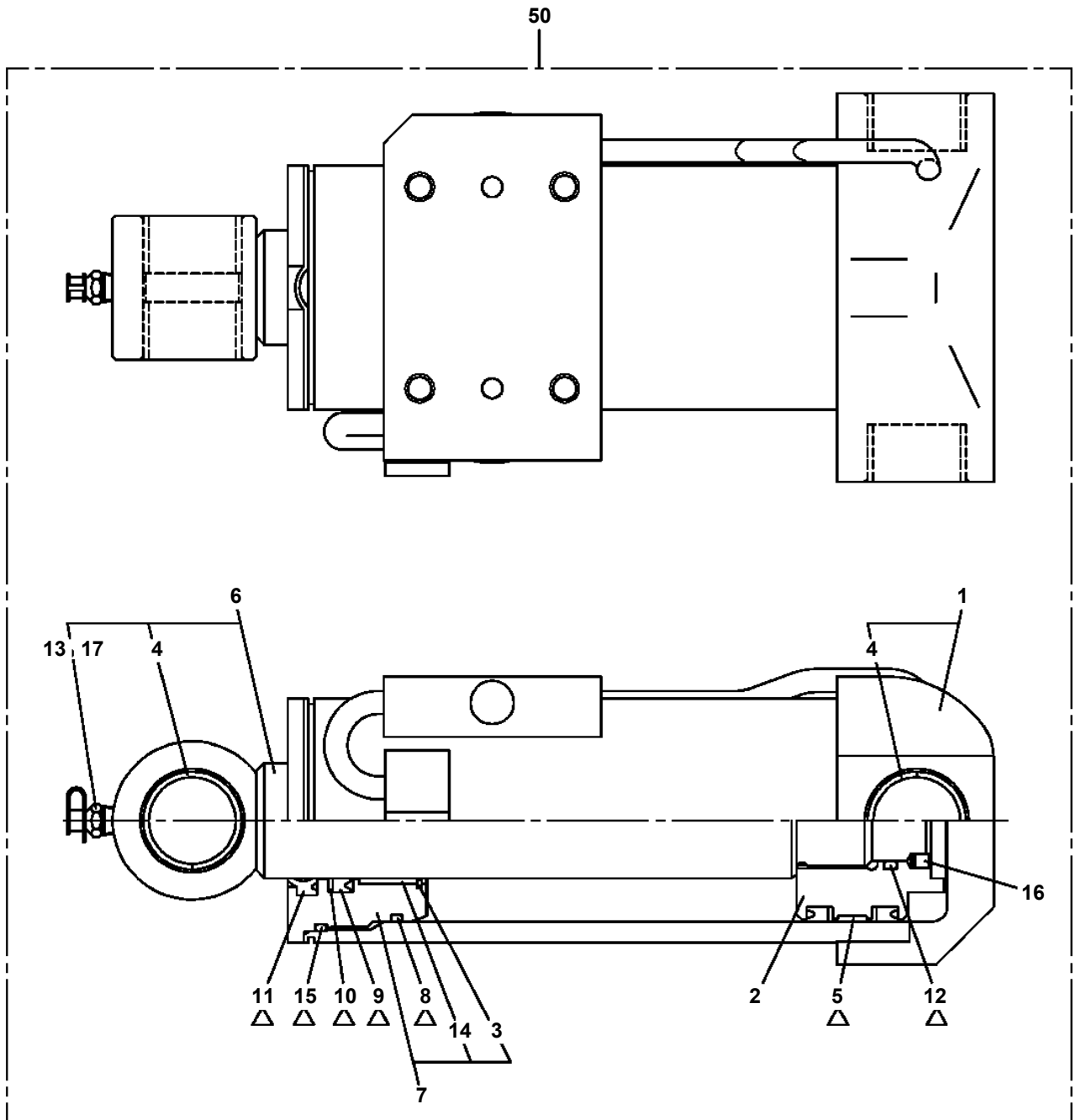
AT-146-2 42095200096 UPPER

Pos No.	Parts No	Parts Name	Qty	Unit	Technical Data	Serial No (Start)	Serial No (End)	Remarks	Pages
1	42220011200	SUPPORT	1						
2	90201201600	NUT	1		M16				
3	90303071601	WASHER,PLAIN	1		16				

AT-146-2 42095200096 UPPER

Pos No.	Parts No	Parts Name	Qty	Unit	Technical Data	Serial No (Start)	Serial No (End)	Remarks	Pages
2	42220041050	PLATE,NAME	2						
3	42220400010	GUIDE	1						
4	42220400020	GUIDE	1						
5	90183106020	BOLT	12		M6X20				
6	90201200600	NUT	8		M6				
7	37001002260	SHEAVE	1						
8	37000312170	SPACER	2						
9	37000302490	SPACER	2		L=2				
10	80603110350	RING,RITAINING	2		C35				
11	42220400040	COVER	2						
12	42220400050	PIN	1						
13	42220580010	GUIDE	2						
14	42220580020	GUIDE	2						
15	42220580030	SHIM	6		T=0.5				
31	42220400201	JIB (FRP)	1						
41	80516006207	BEARING,BALL	1						

**AT-146-2 42095200096 UPPER
PF1360005-00 CYLINDER,WINCH JIB**



△:PACKING SET KEY NO.40 (KEY NO.5,8,9,10,11,12,15)

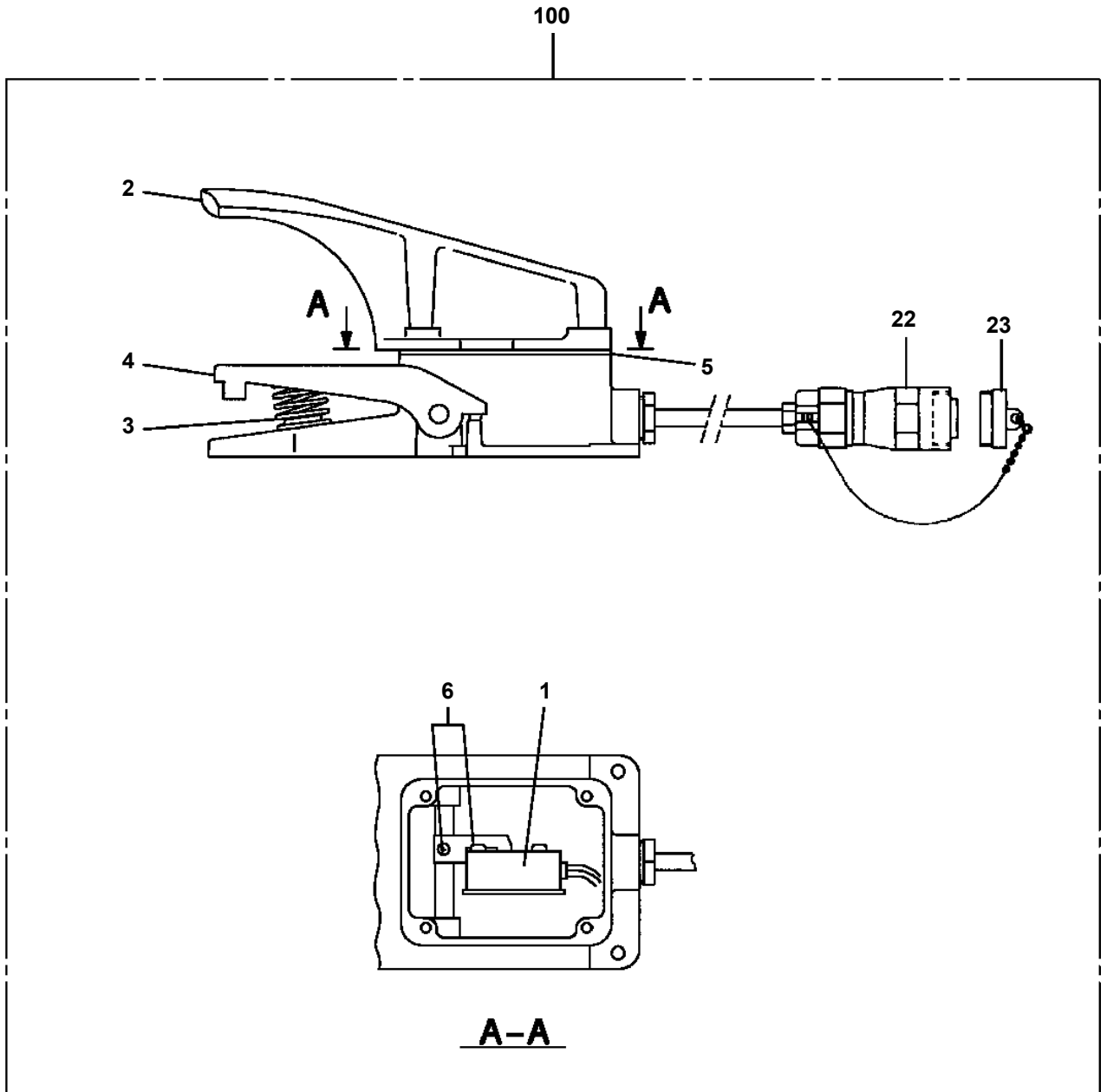
AT-146-2 42095200096 UPPER

Pos No.	Parts No	Parts Name	Qty	Unit	Technical Data	Serial No (Start)	Serial No (End)	Re
1	42201701000	FRAME (BOOM, TOP)	1					
2	42201632200	BOOM, TOP	1					
3	42202051000	SADDLE	1					
4	42202052000	BOOM, 2ND	1					
5	42202059510	BOOM, BASE	1					
6	37001913810	ROPE, WIRE (TESAC)	2		8X4.98M			
	37001920700	ROPE, WIRE (KOKOKU)	2		8X4.89M			
7	37001918600	ROPE, WIRE (KOKOKU)	2		10X9.415M			
	37001918590	ROPE, WIRE (TESAC)	2		10X9.415M			
9	37000115380	PIN	1					
10	90238403008	NUT, CASTLE	1		M30X2			
11	80136360050	PIN, SPLIT	1		6X50			
12	90303073001	WASHER, PLAIN	1		30			
13	42201630510	PLATE	N		T=0.8			
14	42201630520	PLATE	N		T=0.5			
15	42201630530	PLATE	N		T=0.5			
16	37000168750	PIN	1					
17	80601110300	RING, RITAINING	2		S30			
18	42201630060	PLATE	N		T=0.8			
19	42201630500	PLATE	N		T=0.5			
20	42201700400	PLATE	N		T=0.5			
21	42201700500	PLATE	N		T=0.5			
22	42201700200	ROLLER ASSY	1					
23	42201700300	ROLLER ASSY	1					
24	42201700010	PLATE	N		T=0.8			
25	42201700020	PLATE	N		T=0.5			
26	42201700030	PLATE	N		T=0.5			
27	42201700040	PLATE	N		T=0.5			
28	42202050500	ROLLER ASSY	2					
29	42201630910	PLATE	N		T=1.0			
30	42201630920	PLATE	N		T=2.3			
31	90302041001	WASHER, SPRING	56		10			
32	90180210025	BOLT, BUTTON	12		M10X25			
33	37000155100	PIN	4					
34	90171106012	BOLT	6		M6X12			
35	90302040601	WASHER, SPRING	6		6			
36	90171110025	BOLT	8		M10X25			
37	90171110065	BOLT	4		M10X65			
38	42202050010	PIN	2					
39	42200021510	PLATE	2					
40	37001007740	SHEAVE ASSY	2					
41	90172110016	BOLT, HEXAGON SOCKET	4		M10X16			
42	42201630570	PLATE	N		T=2.3			
44	42202050040	RETAINER	2					
45	37002013650	PLATE, SLIDE	2				228041	
	37002017270	PLATE, SLIDE	2			228042		
46	90171110014	BOLT	4		M10X14			
47	82455106000	NIPPLE, GREASE	5		A-M6F FE			
48	82400000459	CAP	3					
49	37000163720	PIN	2					
50	80601110200	RING, RITAINING	4		S20			
51	42201630050	PLATE	N		T=0.8			
52	42201630560	PLATE	N		T=0.5			
53	37000572020	PLATE	8					
54	42201630030	PLATE	N		T=0.8			
55	42201630540	PLATE	N		T=0.5			
56	42201630550	PLATE	N		T=0.5			
58	37002014700	PLATE, SLIDE	4					
	37002017260	PLATE, SLIDE	4			228042		228041
59	37000574810	PLATE	N		T=1.0			
60	37000574820	PLATE	N		T=1.0			
61	37000576810	PLATE	N		T=1.0			
62	37000155020	PIN	2					

AT-146-2 42095200096 UPPER

Pos No.	Parts No	Parts Name	Qty	Unit	Technical Data	Serial No (Start)	Serial No (End)
101	37000928200	JOINT	1				
102	80400160129	JOINT	2				
105	80302090241	FITTING	1		KCO18-040N		
106	91002801800	O-RING	1		1B P18		

AT-146-2 42095200096 UPPER
PH1540019-04 FOOT SWITCH (OPTION)



AT-146-2 42095200096 UPPER

Pos No.	Parts No	Parts Name	Qty	Unit	Technical Data	Serial No (Start)	Serial No (End)	Rem
2	42737471100	SUPPORT	1					
3	90105225012	BOLT	1		1/4-20UNC L=12			
4	37000561860	PLATE	1					
5	90101205020	BOLT	3		M5X20			
6	90303070501	WASHER,PLAIN	3		5			
7	82400000095	GROMMET	1					
8	90303070601	WASHER,PLAIN	3		6			
9	91810130240	FASTENER	20					
10	42738461100	HARNESS	1					
11	82401601002	CLAMP	5					
12	82100000191	TERMINAL	5					
13	82100000183	INSULATOR	5					
14	90302040501	WASHER,SPRING	3		5			
15	42738461200	SUPPORT	1					
16	42738461300	SUPPORT	1					
17	90101206012	BOLT	3		M6X12			
18	90302040601	WASHER,SPRING	5		6			
19	90101204012	BOLT	4		M4X12			
20	90302040401	WASHER,SPRING	4		4			
21	42738381300	SUPPORT	1					
22	42476331200	SWITCH ASSY	1					
23	42738381010	PLATE,NAME	1					
24	90101206018	BOLT	2		M6X18			
25	90201200600	NUT	2		M6			
41	42738385000	VIEW SYSTEM	1					
42	42737324800	PLATE,NAME	1					
43	42738385300	HARNESS	1					
44	42738385400	HARNESS	1					
55	82105220133	SWITCH,TOGGLE	1					
56	82197518114	CAP (MATSUSHITA/BLACK)	1					
	82197518119	CAP (PLUS ONE MFG./BLACK)	1					
61	34381402000	DISPLAY	1					
62	34381401200	CONTROLLER (POWER BOX)	1					
63	34381401600	HARNESS (ASSY ONLY)	1					
64	42737324300	CABLE	1		L=15000			
65	42737324400	CABLE	1		L=200			
66	42737324500	CABLE	1		L=2100			
67	34490060100	CAMERA (ASSY ONLY)	1					

AT-146-2 42095200096 UPPER

Pos No.	Parts No	Parts Name	Qty	Unit	Technical Data	Serial No (Start)	Serial No (End)	Remarks
1	42739081110	DISPLAY (ASSY ONLY)	1					
2	42807401150	CABLE	1					
3	42807401170	CAMERA	1					
4	42807471210	CABLE (MONITOR SIDE)	1					
5	42807471220	CABLE (CAMERA SIDE)	1					
50	42739081100	VIEW SYSTEM	1					

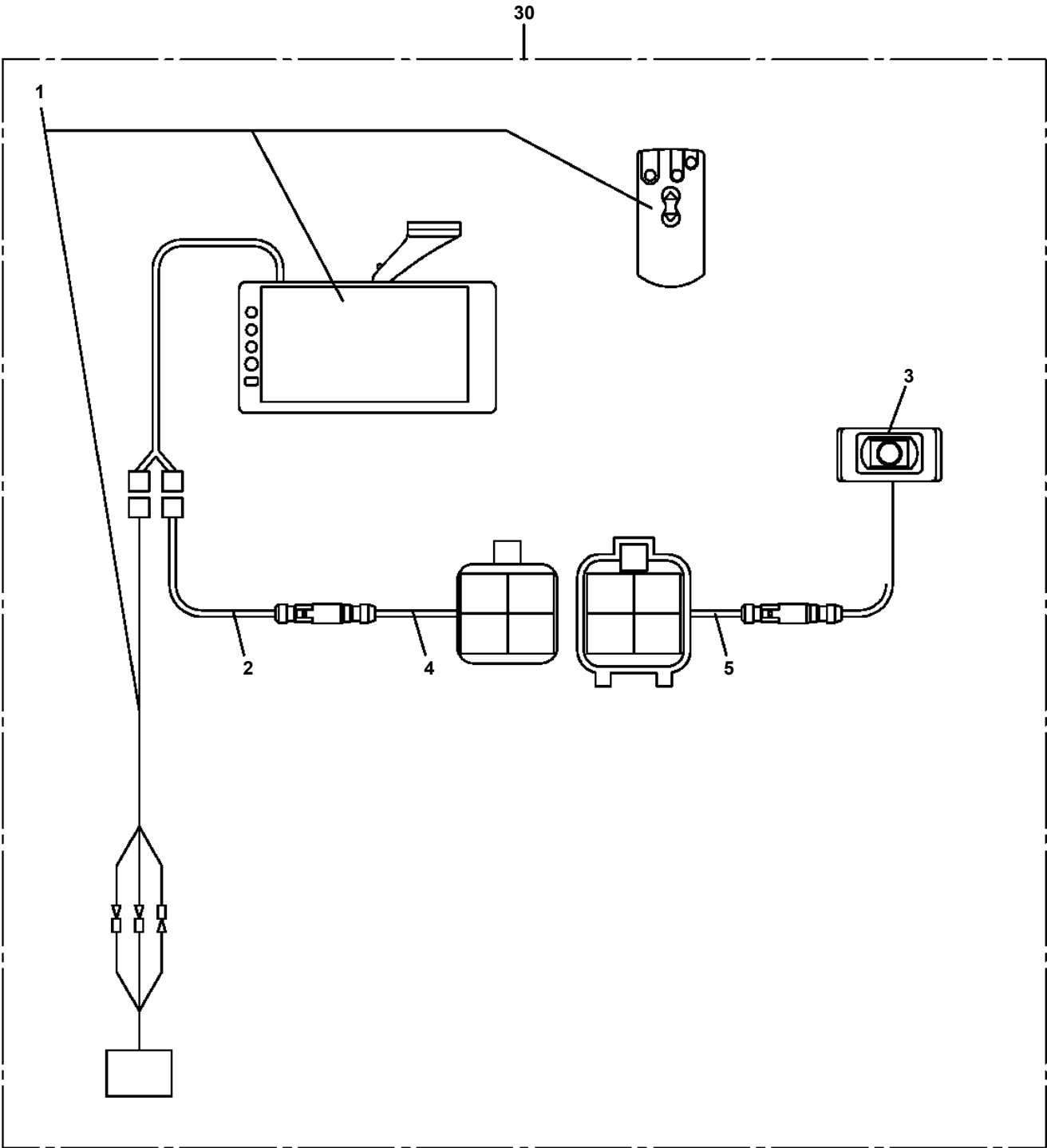
AT-146-2 42095200096 UPPER
PH1700180-01 VIEW SYSTEM (COLOR MONITOR, ICHIKOH)

指示番号 KEY NO.	ビユー システム (カラーモニタ, イチコウセイ ST-800/ミツビシ) VIEW SYSTEM (COLOR MONITOR, ICHIKOH ST-800)
1	ビユー システム (モニタ) VIEW SYSTEM (MONITOR)
2	ビユー システム (カメラ) VIEW SYSTEM (CAMERA)

AT-146-2 42095200096 UPPER
PH1700234-00 VIEW SYSTEM (COLOR MONITOR, ICHIKOH)

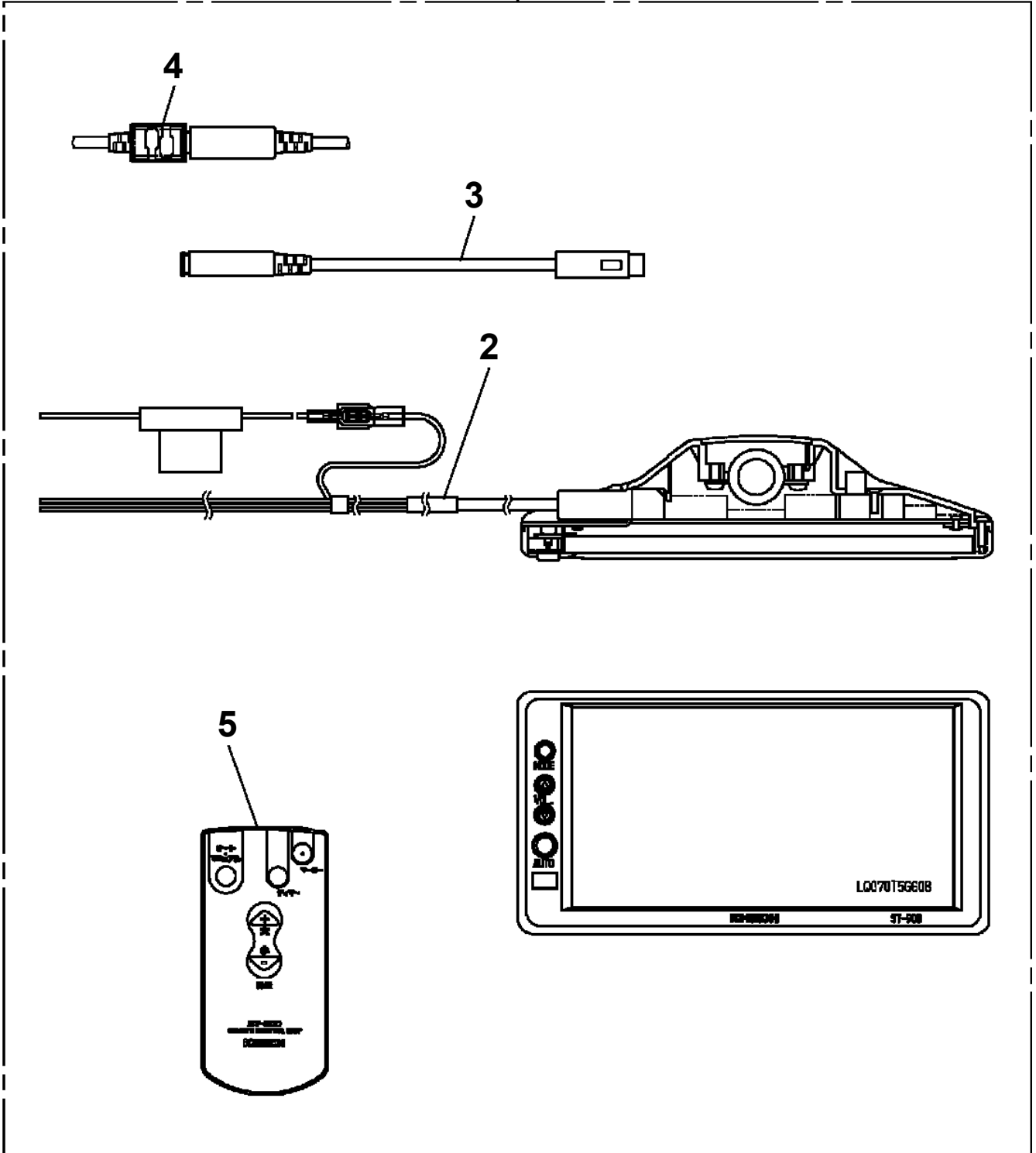
指示番号 KEY NO.	ビユー システム (カラーモニタ, イチコウセイ ST-900/ヒノ, トヨタ) VIEW SYSTEM (COLOR MONITOR, ICHIKOH ST-900)
1	ビユー システム (モニタ) VIEW SYSTEM (MONITOR)
2	ビユー システム (カメラ) VIEW SYSTEM (CAMERA)

**AT-146-2 42095200096 UPPER
PH1700239-00 VIEW SYSTEM**

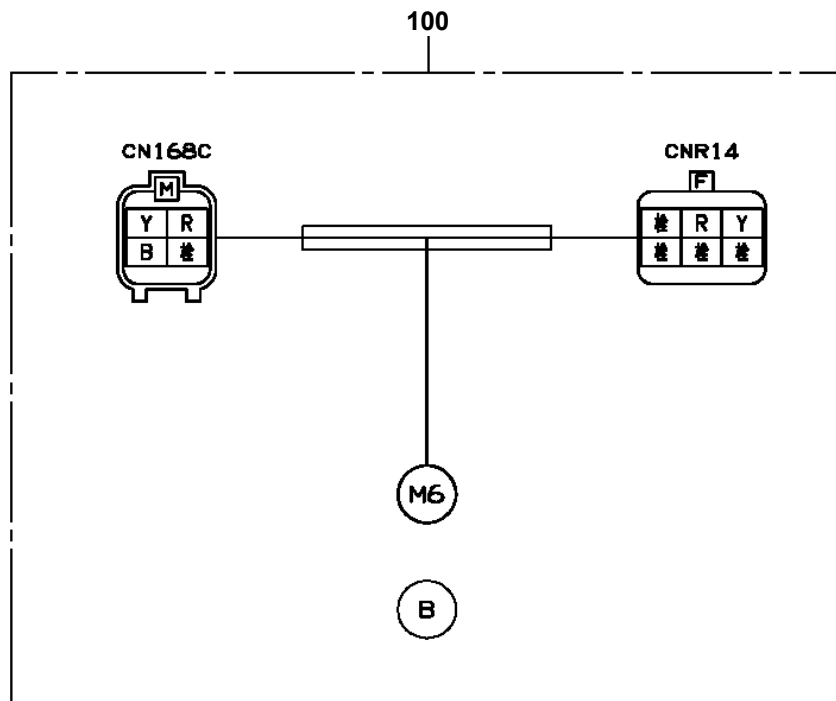


AT-146-2 42095200096 UPPER
PH1710016-00 DISPLAY

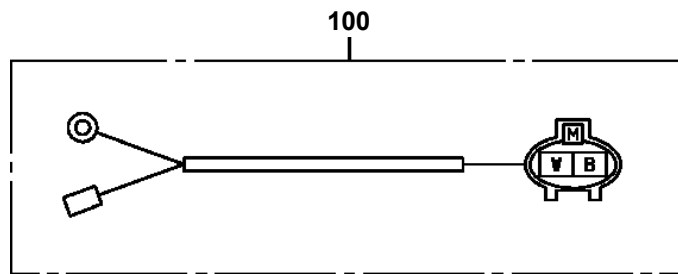
100



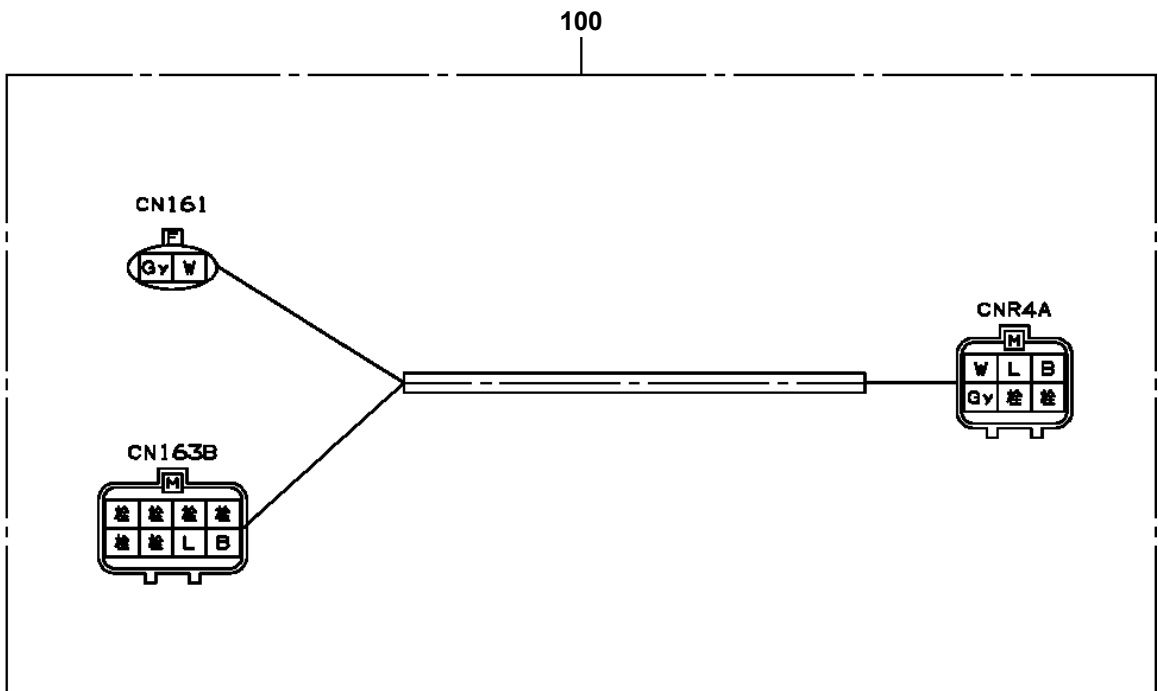
**AT-146-2 42095200096 UPPER
PH5031067-00 HARNESS**



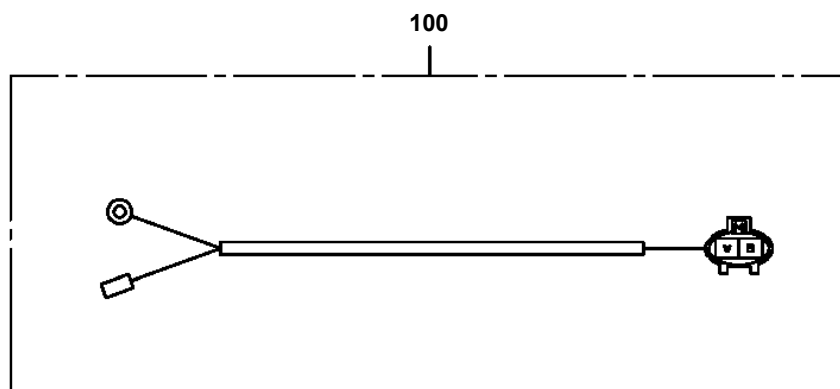
**AT-146-2 42095200096 UPPER
PH5031078-00 HARNESS**



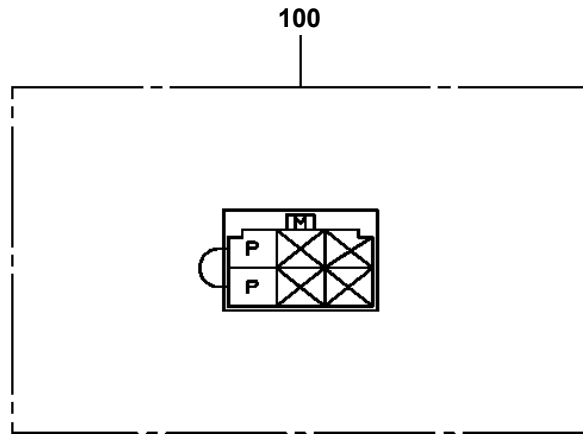
AT-146-2 42095200096 UPPER
PH5031823-00 HARNESS



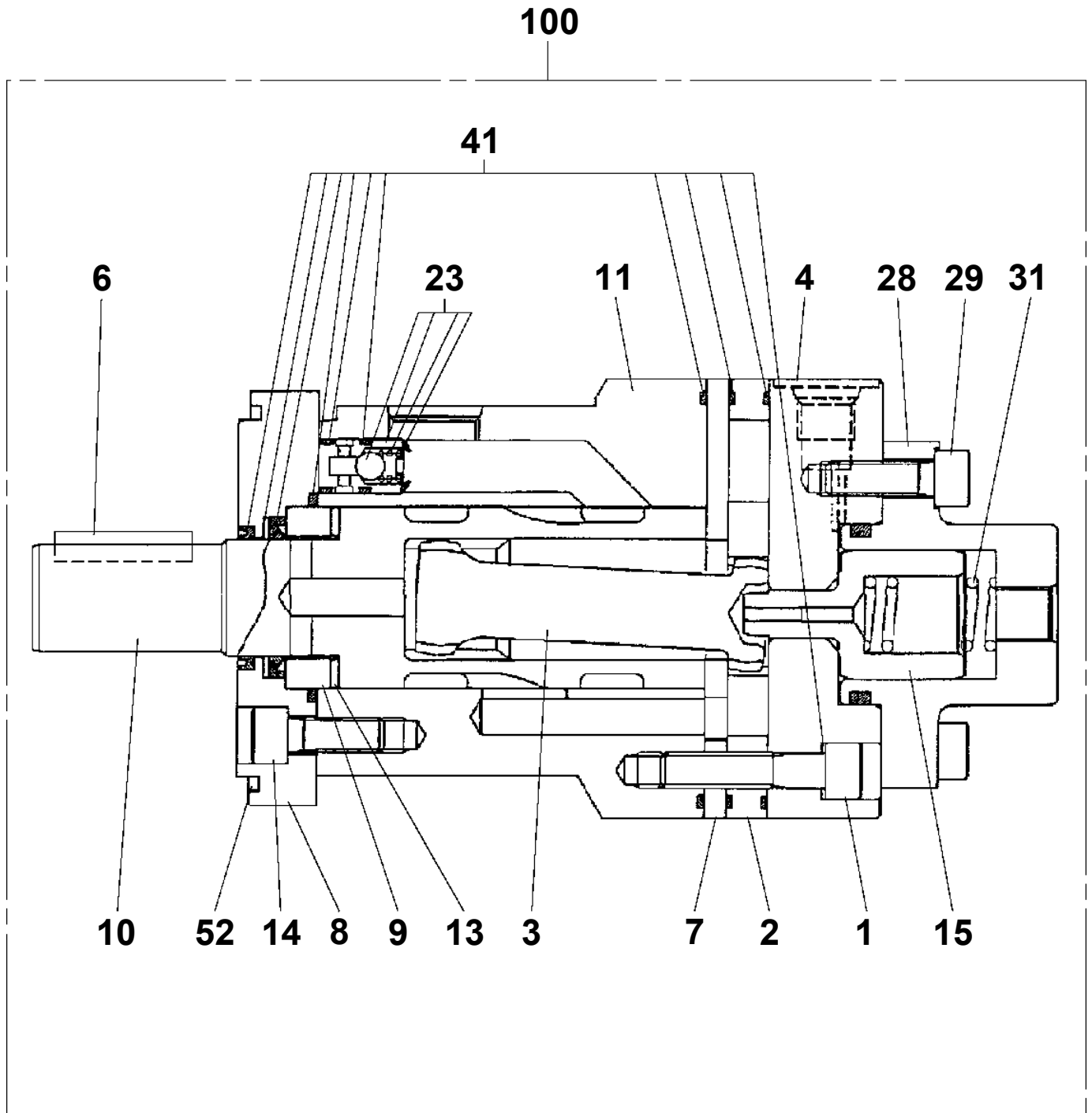
**AT-146-2 42095200096 UPPER
PH5032328-00 HARNESS**



**AT-146-2 42095200096 UPPER
PH5034365-00 HARNESS**

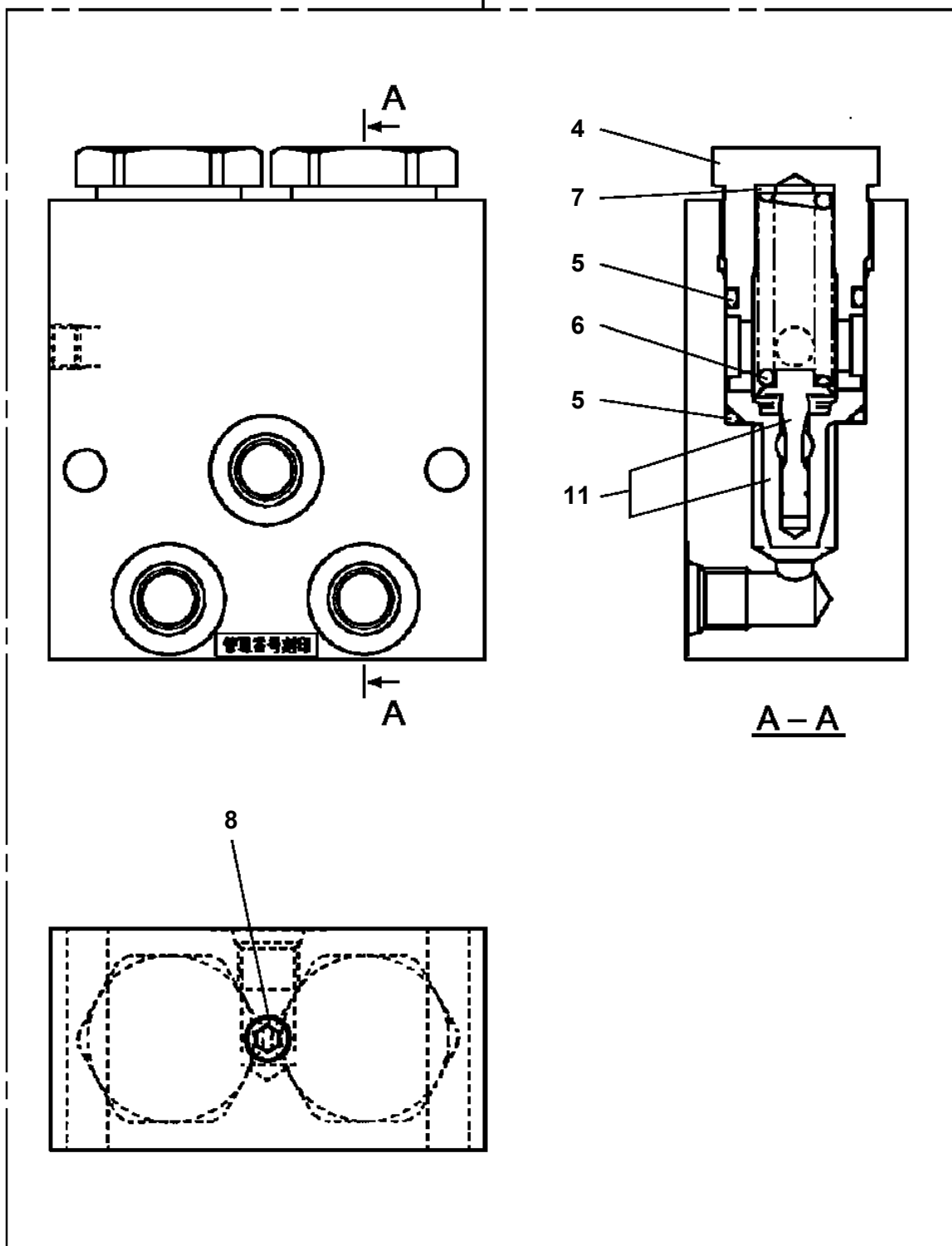


**AT-146-2 42095200096 UPPER
PI1010177-00 MOTOR, HYDRAULIC**

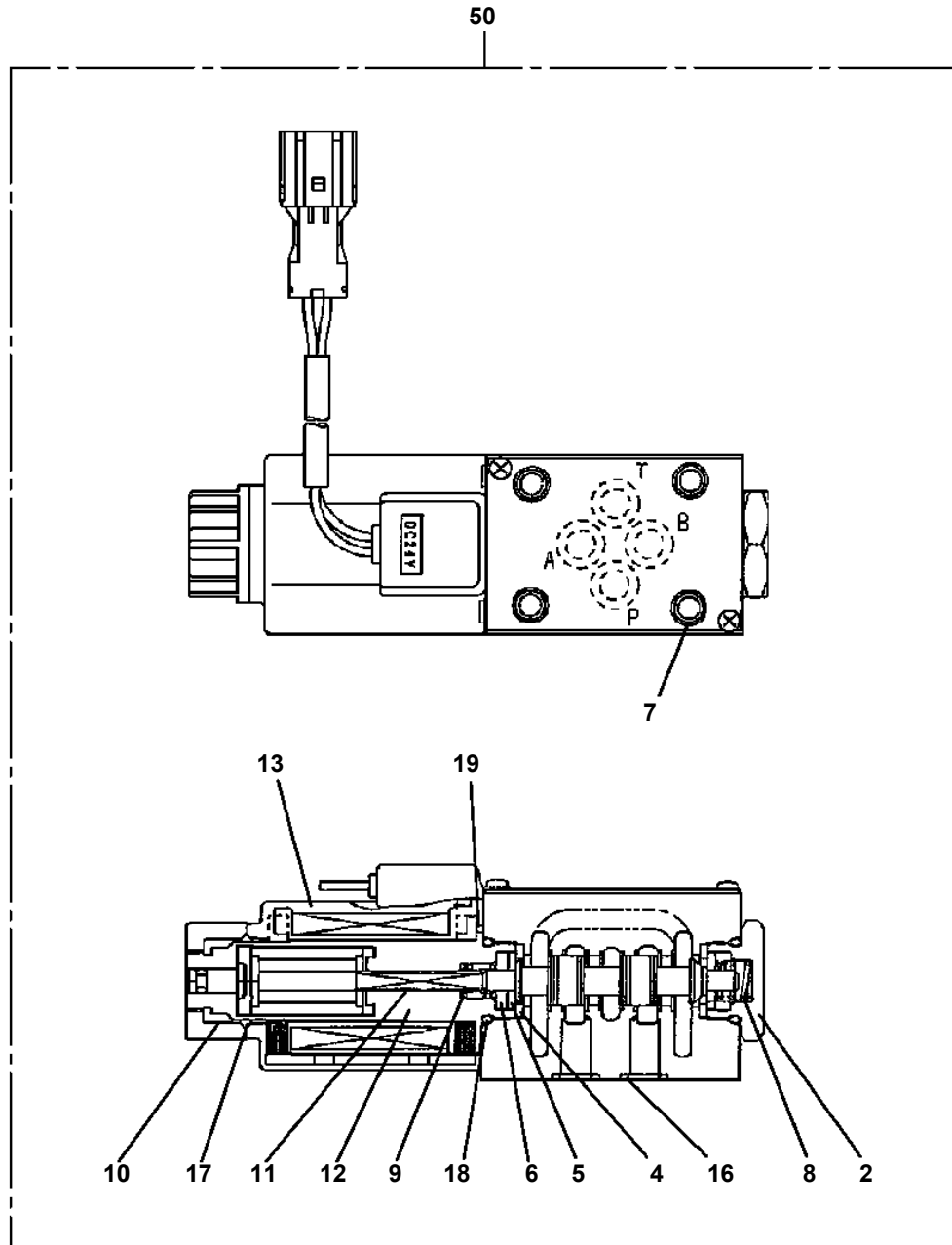


AT-146-2 42095200096 UPPER
PI1100135-00 VALVE,RELIEF

100

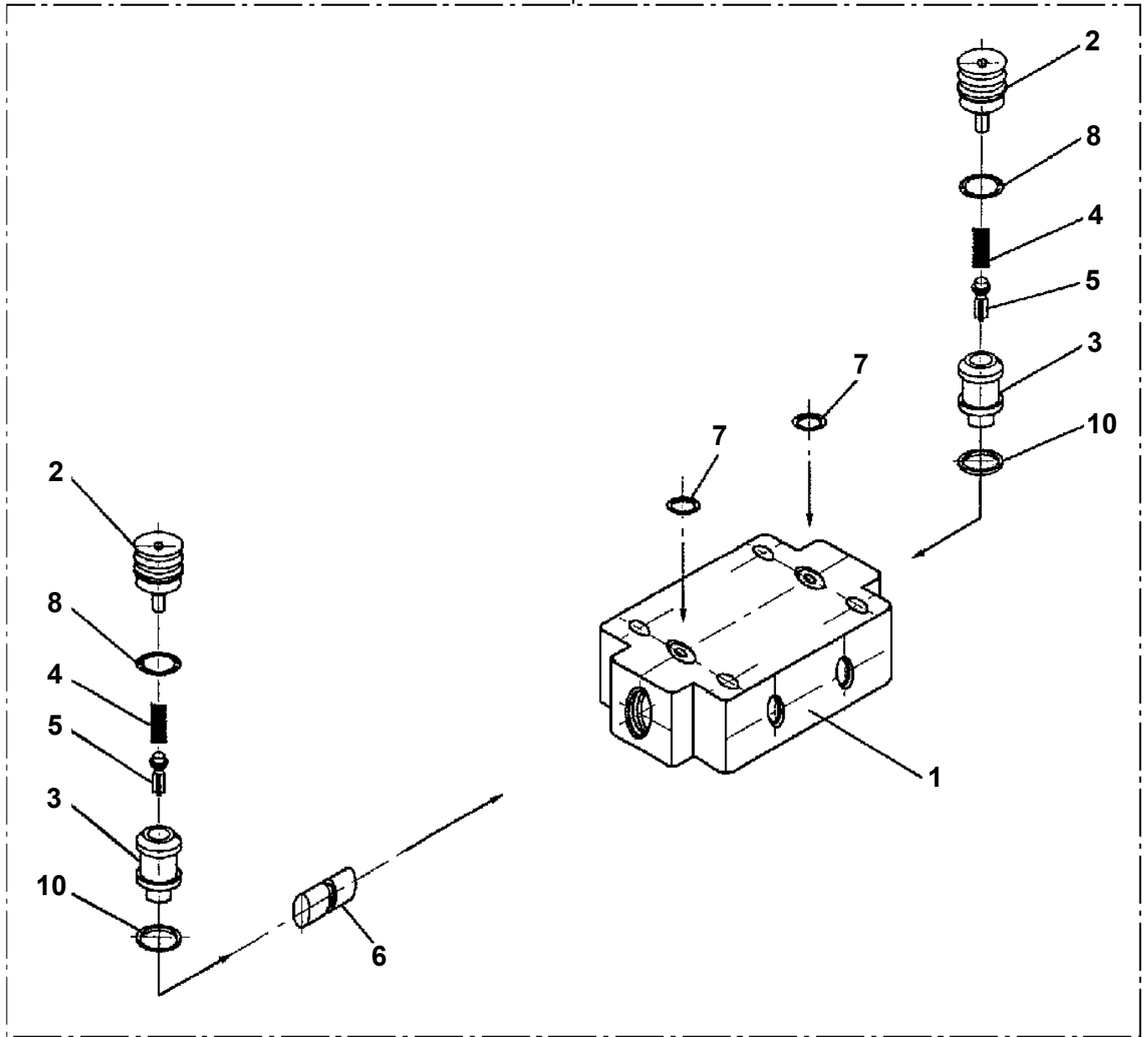


**AT-146-2 42095200096 UPPER
PI1120272-01 VALVE,SOLENOID**

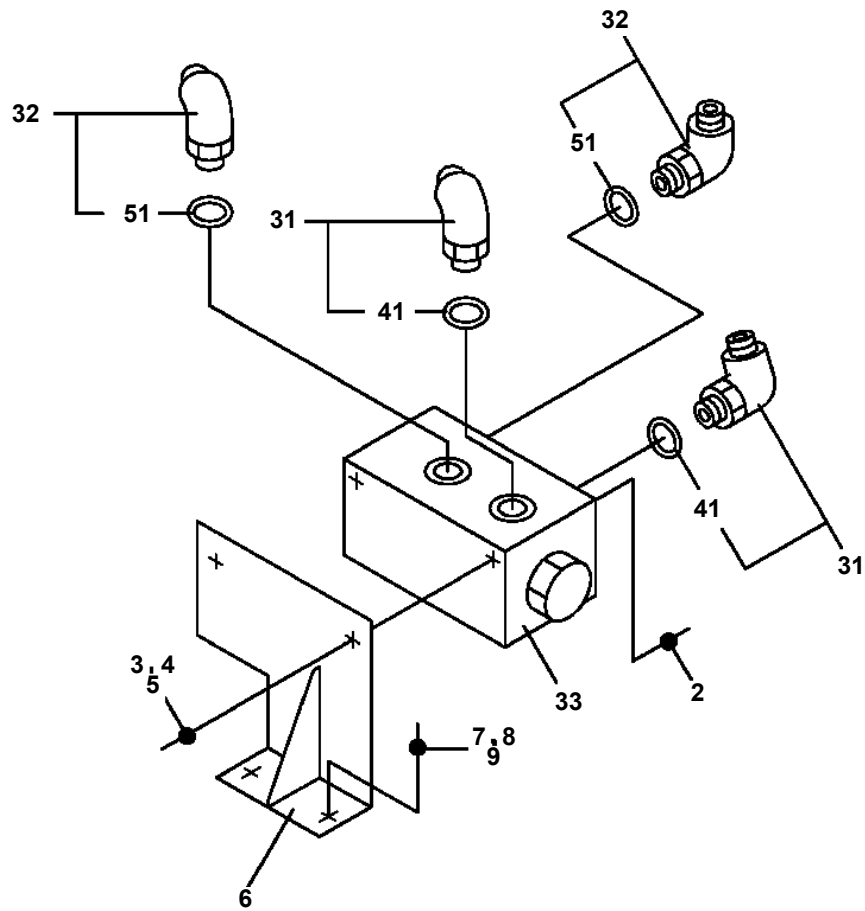


AT-146-2 42095200096 UPPER
PI1140136-01 VALVE,CHECK

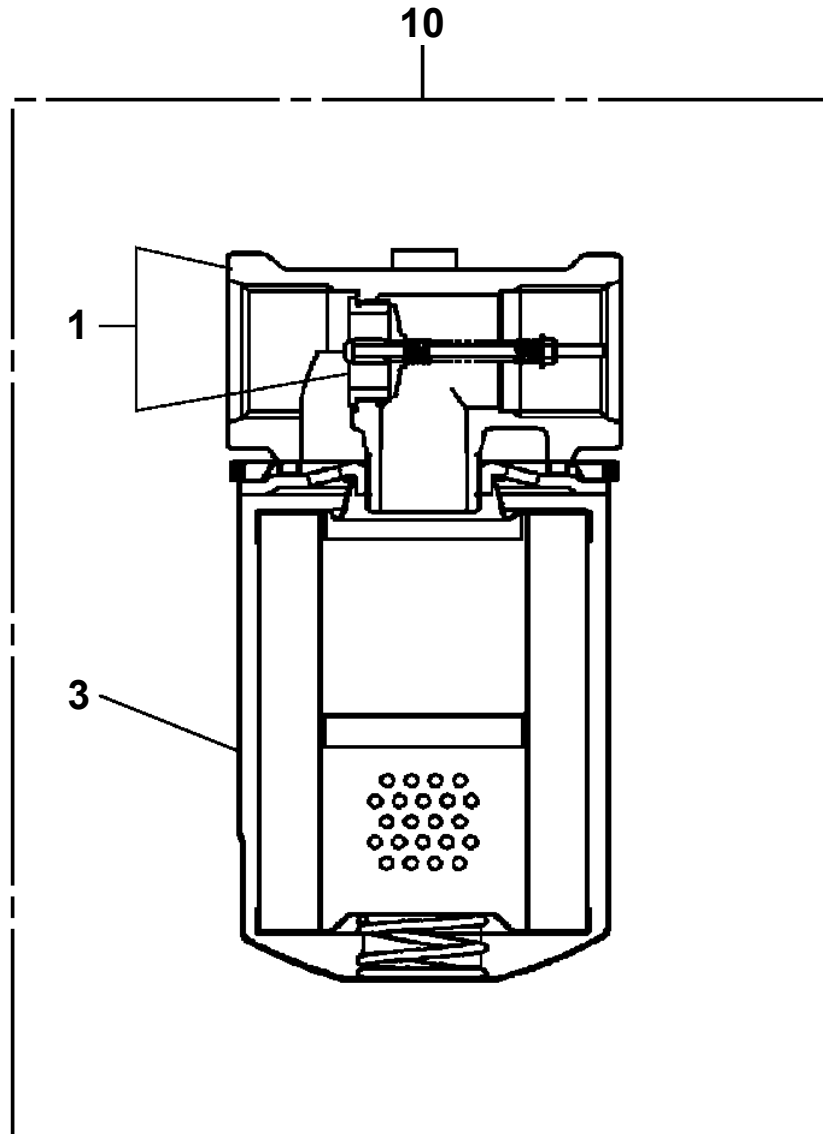
30



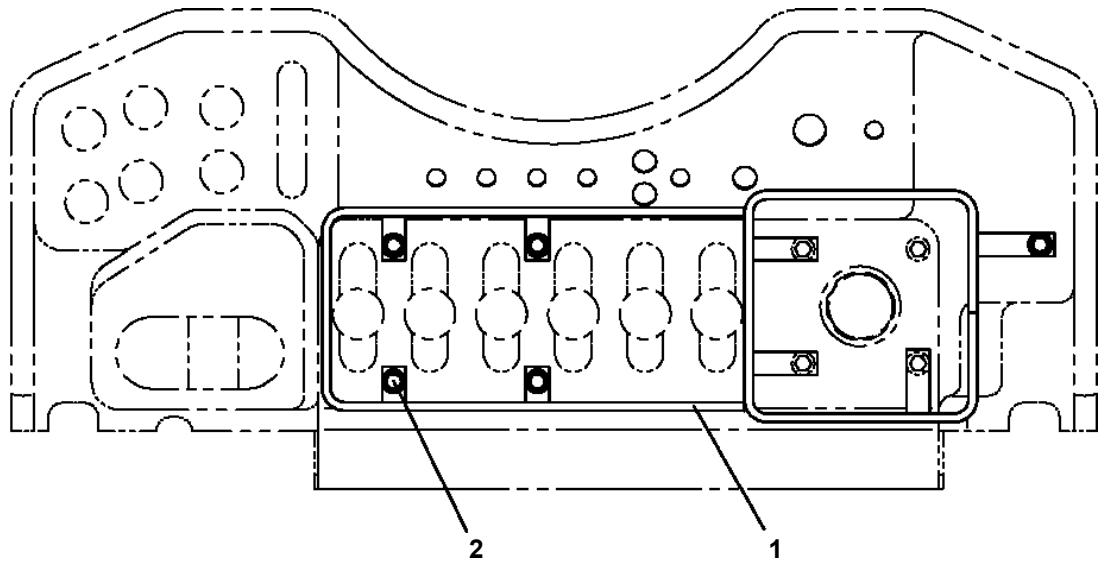
**AT-146-2 42095200096 UPPER
PI1240030-00 VALVE**



AT-146-2 42095200096 UPPER
PI1300041-00 FILTER,OIL



**AT-146-2 42095200096 UPPER
PJ3010227-00 BUCKET (GUIDE)**



CLICK HERE TO **DOWNLOAD** THE COMPLETE MANUAL

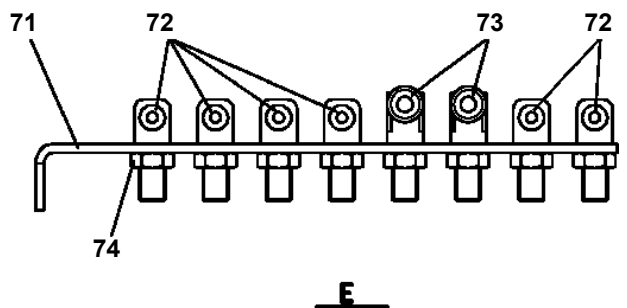
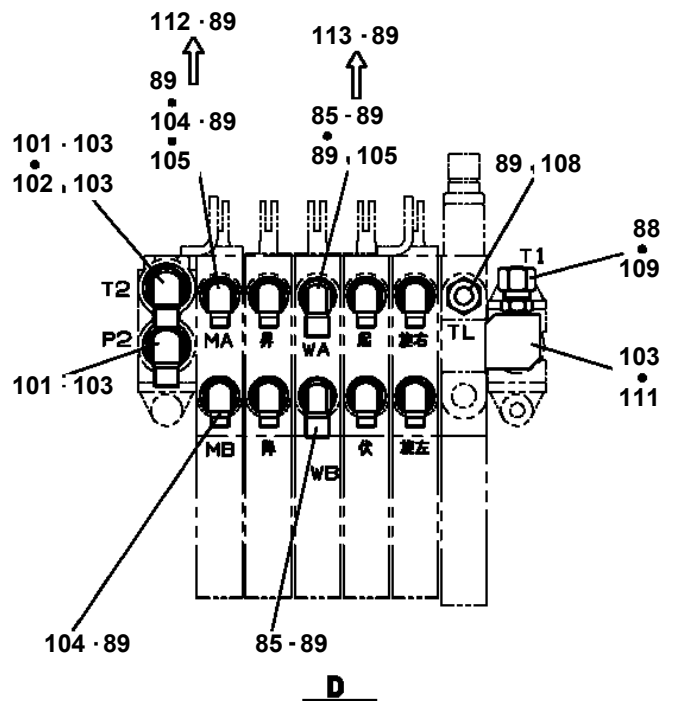
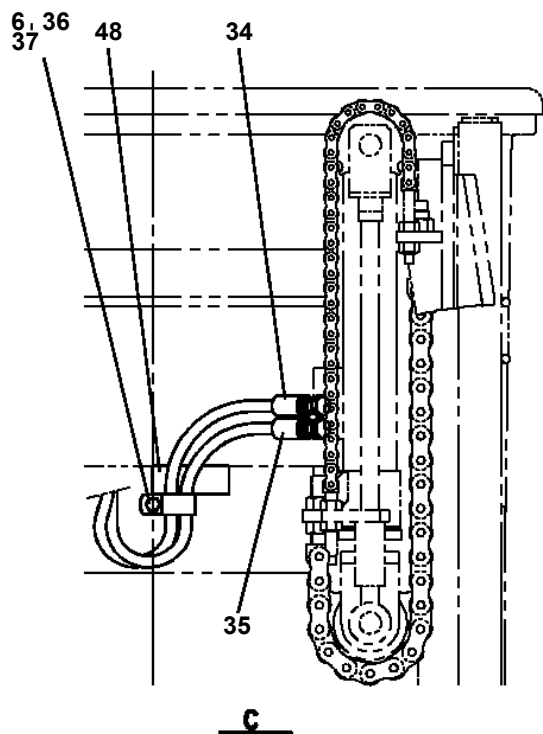
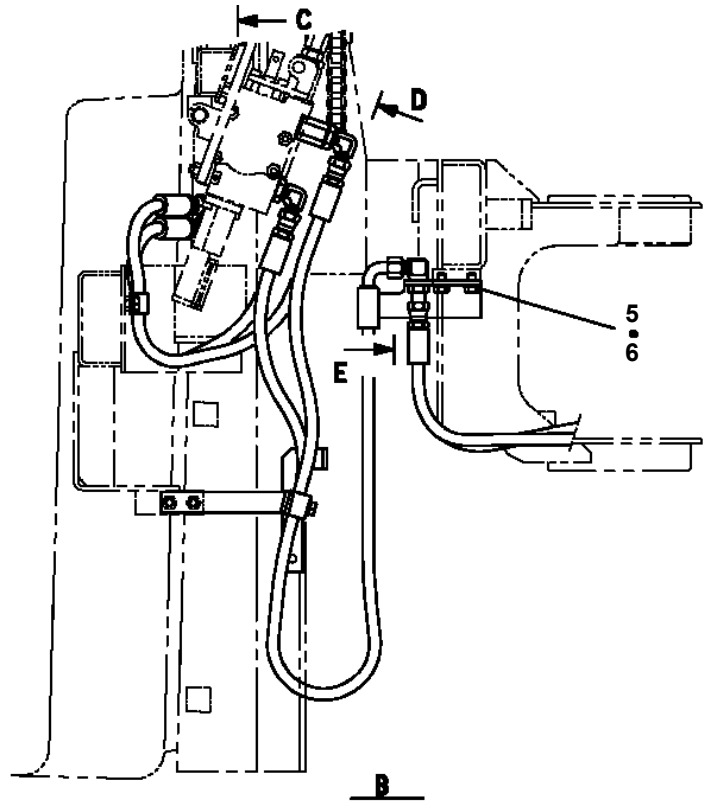
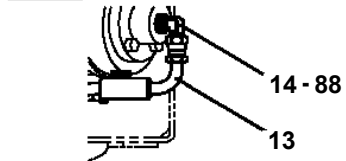
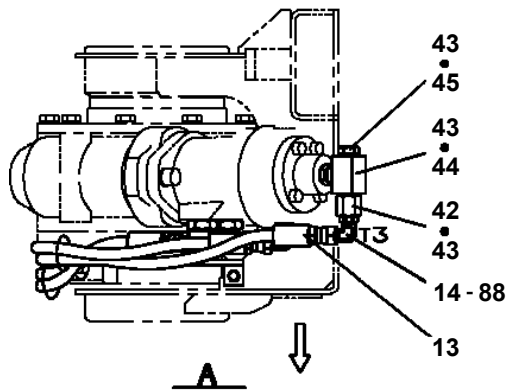
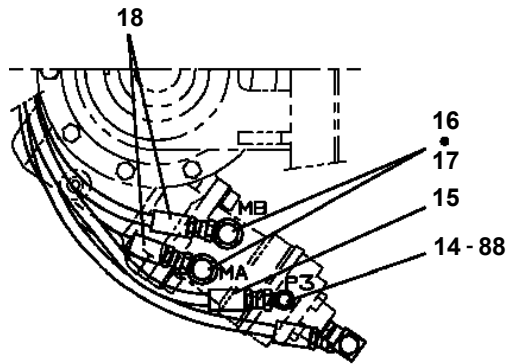
- Thank you very much for reading the preview of the manual.
- You can download the complete manual from: www.heydownloads.com by clicking the link below



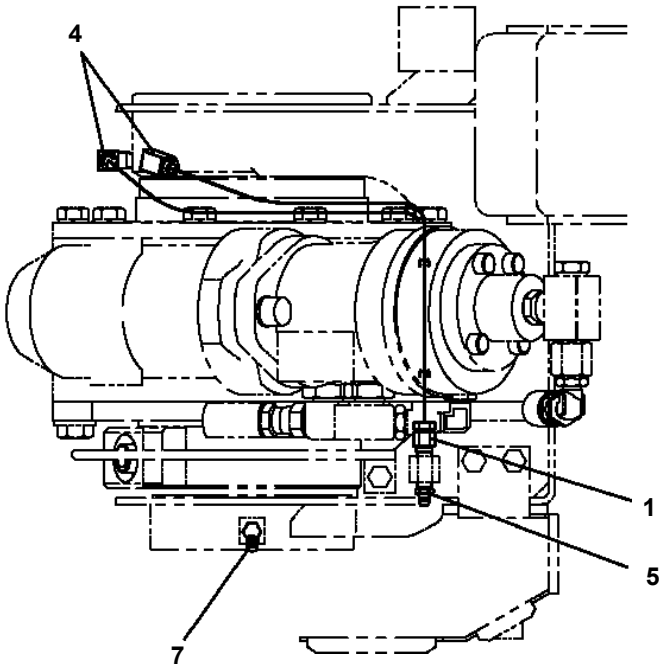
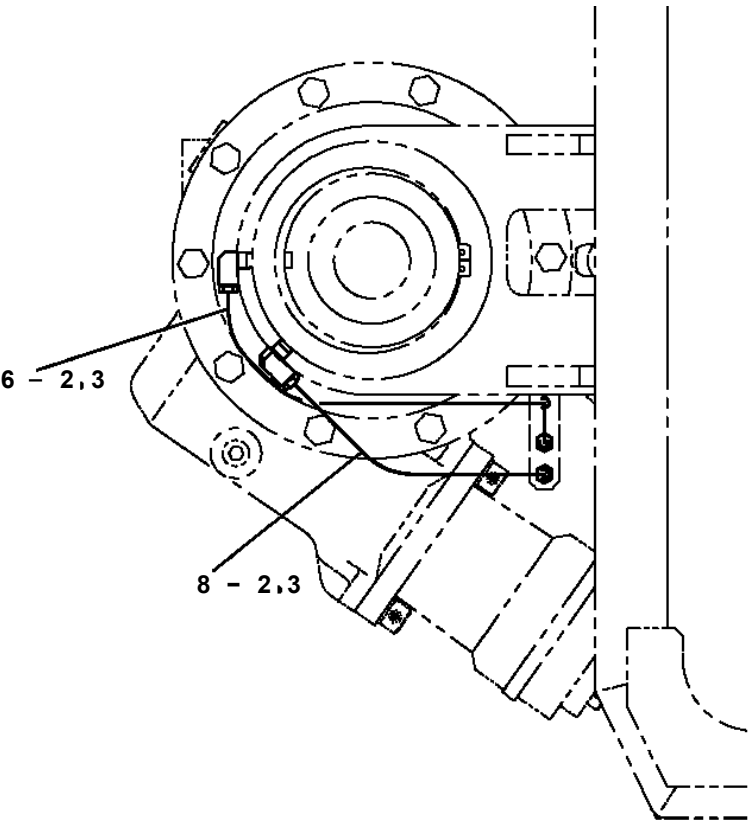
- Please note: If there is no response to CLICKING the link, please download this PDF first and then click on it.

CLICK HERE TO **DOWNLOAD** THE COMPLETE MANUAL

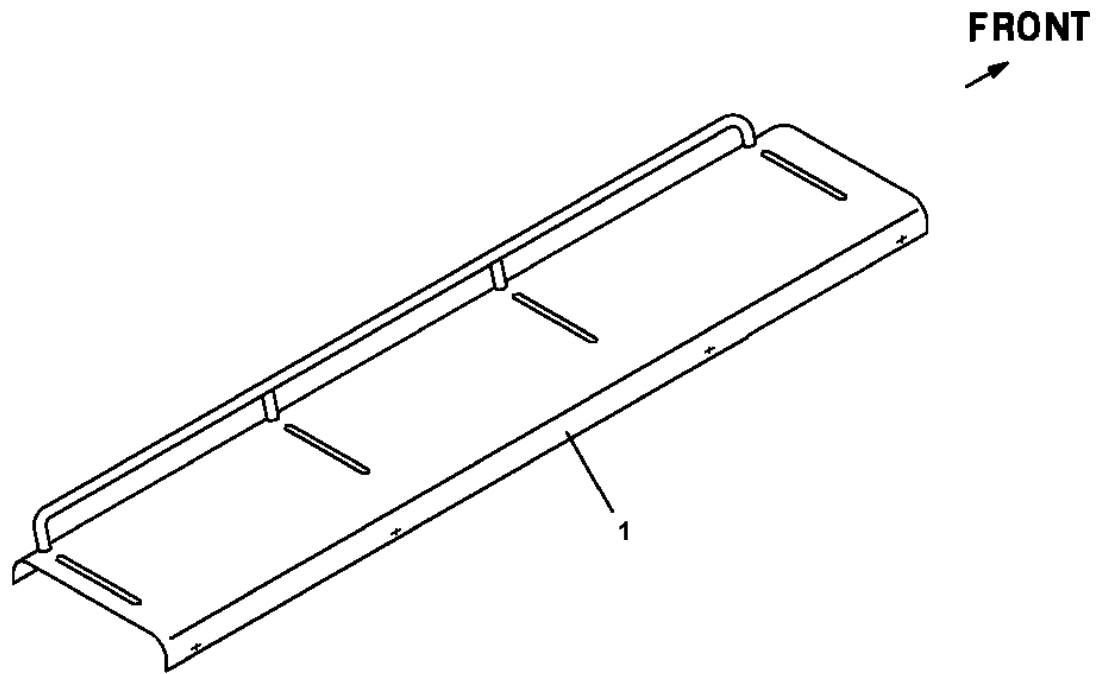
**AT-146-2 42095200096 UPPER
PJ3110024-01 PIPING (BUCKET)**



**AT-146-2 42095200096 UPPER
PJ3250012-01 PIPING, GREASE**



**AT-146-2 42095200096 UPPER
PK1330180-00 COVER (BOOM)**



AT-146-2 42095200096 UPPER

Pos No.	Parts No	Parts Name	Qty	Unit	Technical Data	Serial No (Start)	Serial No (End)	Remarks	P
1	42624675100	COVER	1						
2	42624675200	COVER	1				227935		
	42624675201	COVER	1			227936			
3	90180208012	BOLT,BUTTON	9		M8X12				
4	90302040801	WASHER,SPRING	13		8				
5	90303070801	WASHER,PLAIN	9		8				
6	42693031200	PLATE	1						
7	80175804014	SCREW,MACHINE	2		M4X14				
8	82460015192	CATCH (WITHOUT KEY)	1						
9	80175805008	SCREW,MACHINE	2		M5X8		227935		
	80188205008	SCREW,MACHINE	2		M5X8	227936			
10	82400000314	HINGE	2						
11	80173305012	SCREW,MACHINE	4		M5X12				
12	90201200500	NUT	4		M5				
13	90302040501	WASHER,SPRING	6		5				
14	80175305010	SCREW,MACHINE	6		M5X10				
15	82400000393	INSULATOR	2						
16	80172303012	SCREW,MACHINE	2		M3X12				
17	90303070301	WASHER,PLAIN	2		3				
18	42624675300	COVER	1						
19	90101208012	BOLT	4		M8X12				
20	90201200400	NUT	2		M4				
21	90302040401	WASHER,SPRING	2		4				
22	90303070401	WASHER,PLAIN	2		4				
23	80172805008	SCREW,MACHINE	2		M5X8				
24	90303070501	WASHER,PLAIN	2		5				
45	82464102702	HINGE	2						
46	80147310420	RIVET	12		3.2X6				
47	82480001103	CATCH	2						
48	80172303008	SCREW,MACHINE	4		M3X8				
49	90302040301	WASHER,SPRING	4		3				
50	90303070301	WASHER,PLAIN	4		3				

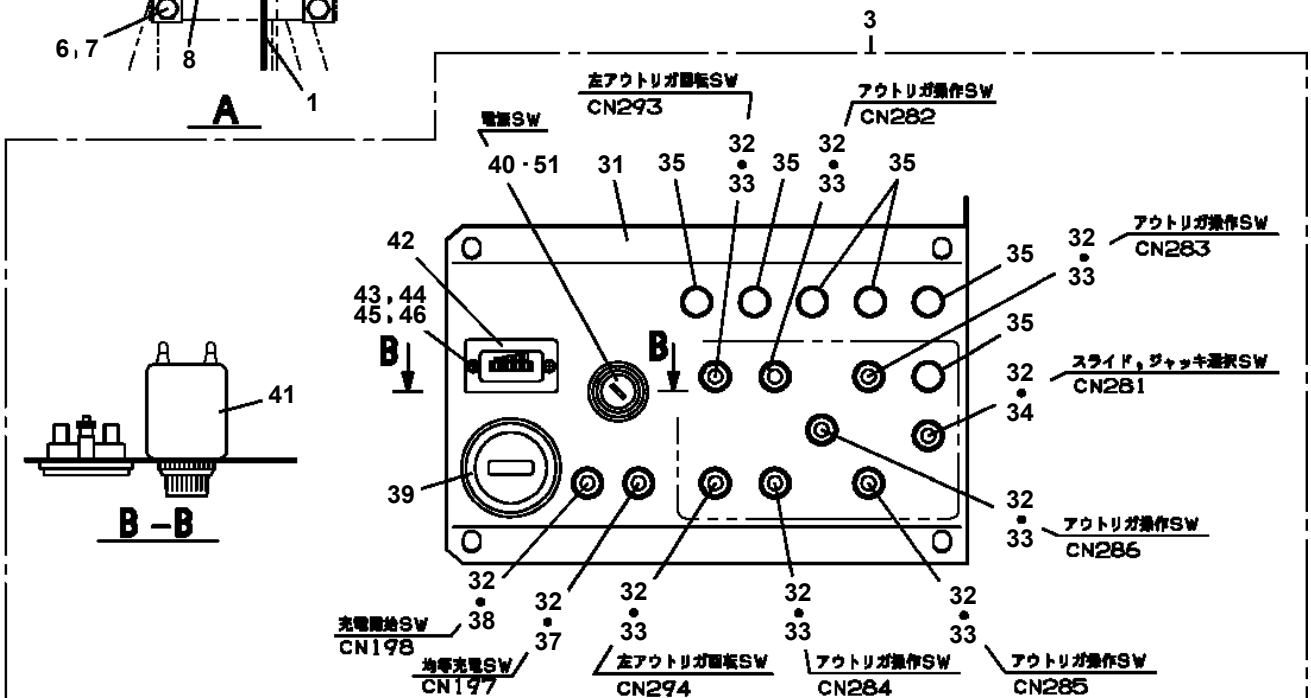
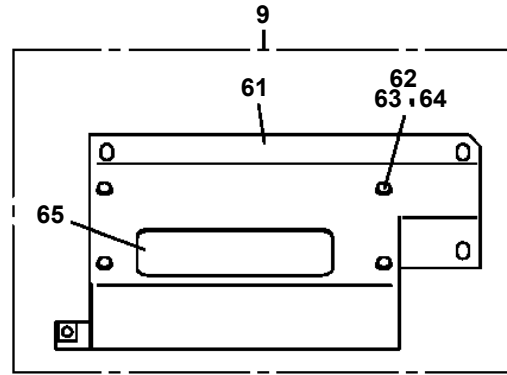
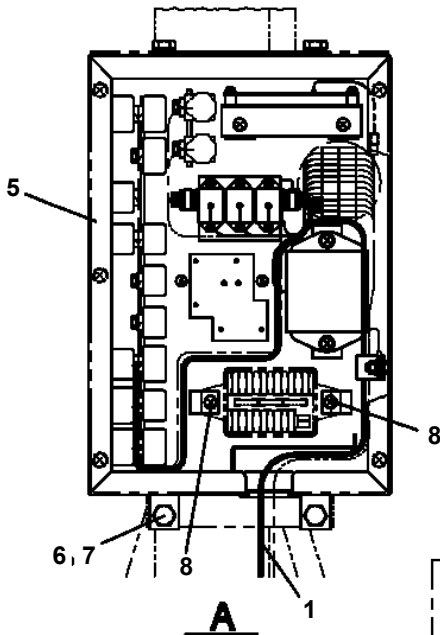
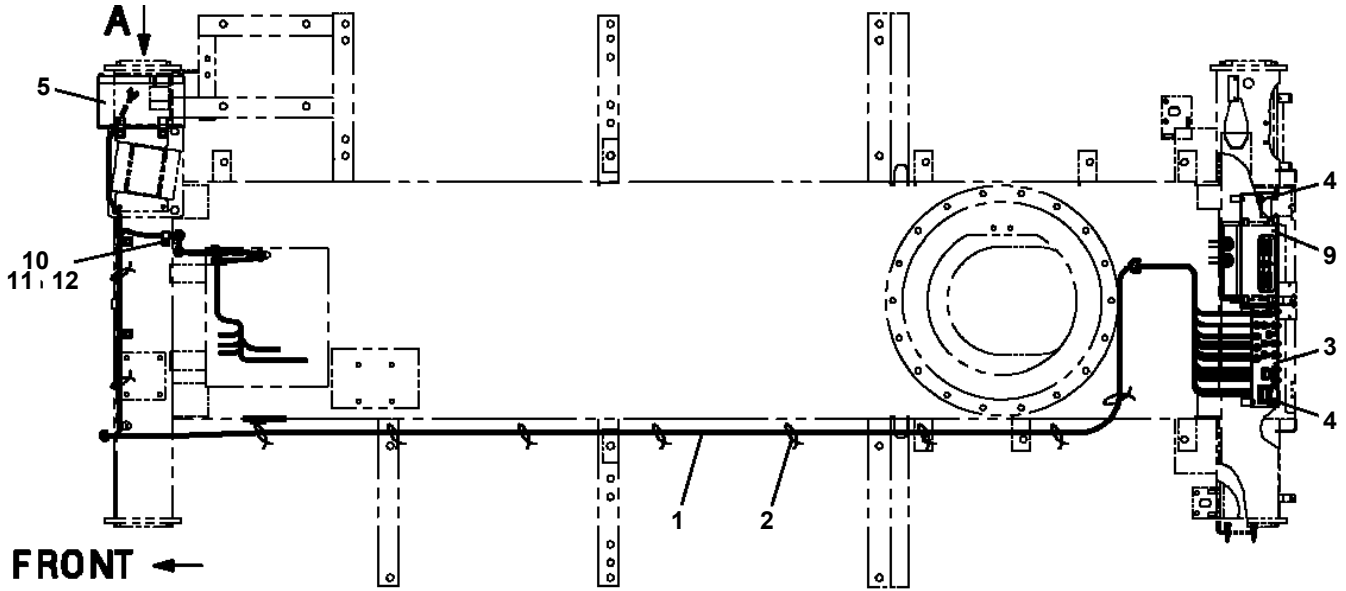
AT-146-2 42095200096 UPPER

Pos No.	Parts No	Parts Name	Qty	Unit	Technical Data	Serial No (Start)	Serial No (End)	Remarks	Pages
1	42502251100	PANEL	1						
2	42332151200	SUPPORT	1						
3	90101208012	BOLT	4		M8X12				
4	42332151010	SUPPORT	2						
5	90183106015	BOLT	2		M6X15				
6	37000568730	PLATE	7		T=1.5				
7	31320020010	KNOB (BLACK)	4						
8	42331991500	ROD	3						
9	42331991400	ROD	1						
10	42502251200	LEVER	1						

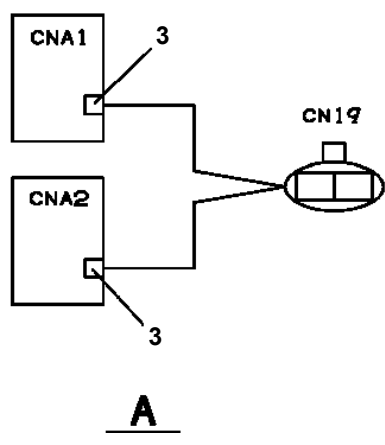
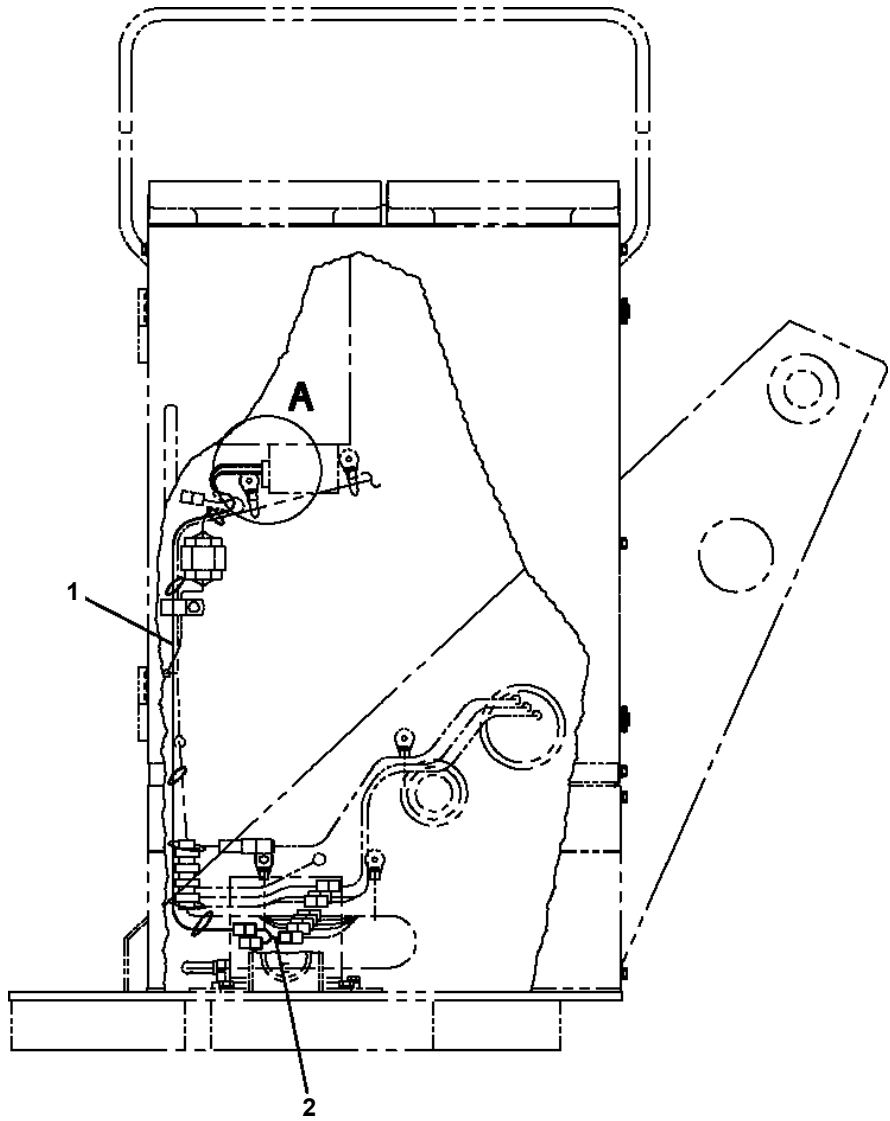
AT-146-2 42095200096 UPPER

Pos No.	Parts No	Parts Name	Qty	Unit	Technical Data	Serial No (Start)	Serial No (End)
1	42354610010	HARNESS	1				
3	42353370030	HARNESS	1				
4	42354611000	TRANSMITTER,SIGNAL	1				
5	80181306010	SCREW,MACHINE	4		M6X10		
6	90302040601	WASHER,SPRING	8		6		
8	90101208012	BOLT	8		M8X12		
9	90302040801	WASHER,SPRING	8		8		
10	42350200300	BATTERY ASSY	1				
11	42353371100	SUPPORT	1				
12	42353371200	SUPPORT	1				
13	42350080201	BUZZER ASSY (WITH CONNECTOR)	1				
14	42351450100	COVER	1				
15	80161302510	SCREW,MACHINE	2		M2.5X10		
16	90302040251	WASHER,SPRING	2		2.5		
17	91810132530	FASTENER	30				
18	42352130100	LAMP ASSY(DC21V,RED/WITH HARNESS)	3				
19	42353370800	SUPPORT	1				
20	42353370040	SHIM	4		T=1.2		
22	42736991030	DIODE (WITH CONNECTOR)	1				
23	82104503133	SWITCH,LIMIT	1				
24	82104503104	SWITCH,LIMIT	1				
25	90172105014	BOLT,HEXAGON SOCKET	4		M5X14		
26	42353370400	SUPPORT	1				
27	90101206012	BOLT	4		M6X12		
28	90303070601	WASHER,PLAIN	4		6		
29	42350250150	PLUG (6 POLES,MALE)	1				
30	42350980010	PLUG (6POLES,FEMALE)	1				
45	82101361233	SWITCH,PUSH	1				
46	82100002308	COVER	1				
49	82105220193	SWITCH,TOGGLE	1				
50	82105220183	SWITCH,TOGGLE	2				
51	82105220256	SWITCH,TOGGLE	2				
52	82100000665	CAP (BLACK)	5				
61	82100002469	BATTERY	1				
62	42350200310	HARNESS	1				
63	82100001261	CAP	1				
71	82100001939	BUZZER	1				
84	82100002524	LAMP,PILOT	3				
91	82101361003	BUTTON	1				
101	82198300503	LENS	3				

**AT-146-2 42095200096 UPPER
PN1013727-01 ELEC.ASSY (POWER UNIT)**



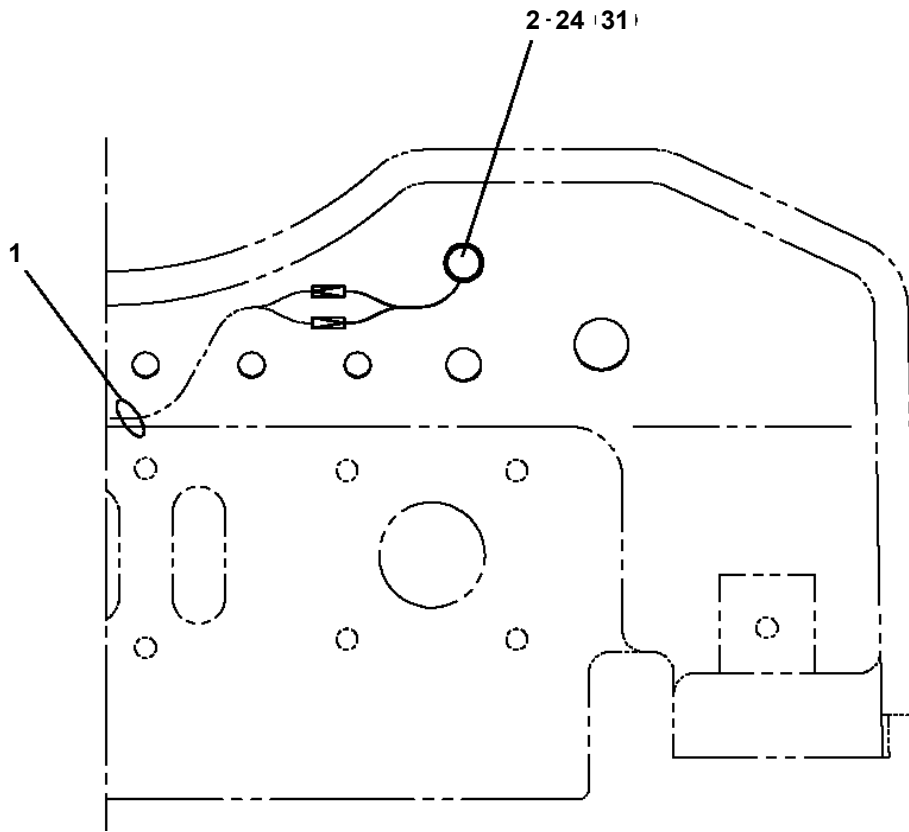
**AT-146-2 42095200096 UPPER
PN1013890-00 ELEC.ASSY (SWING FRAME)**



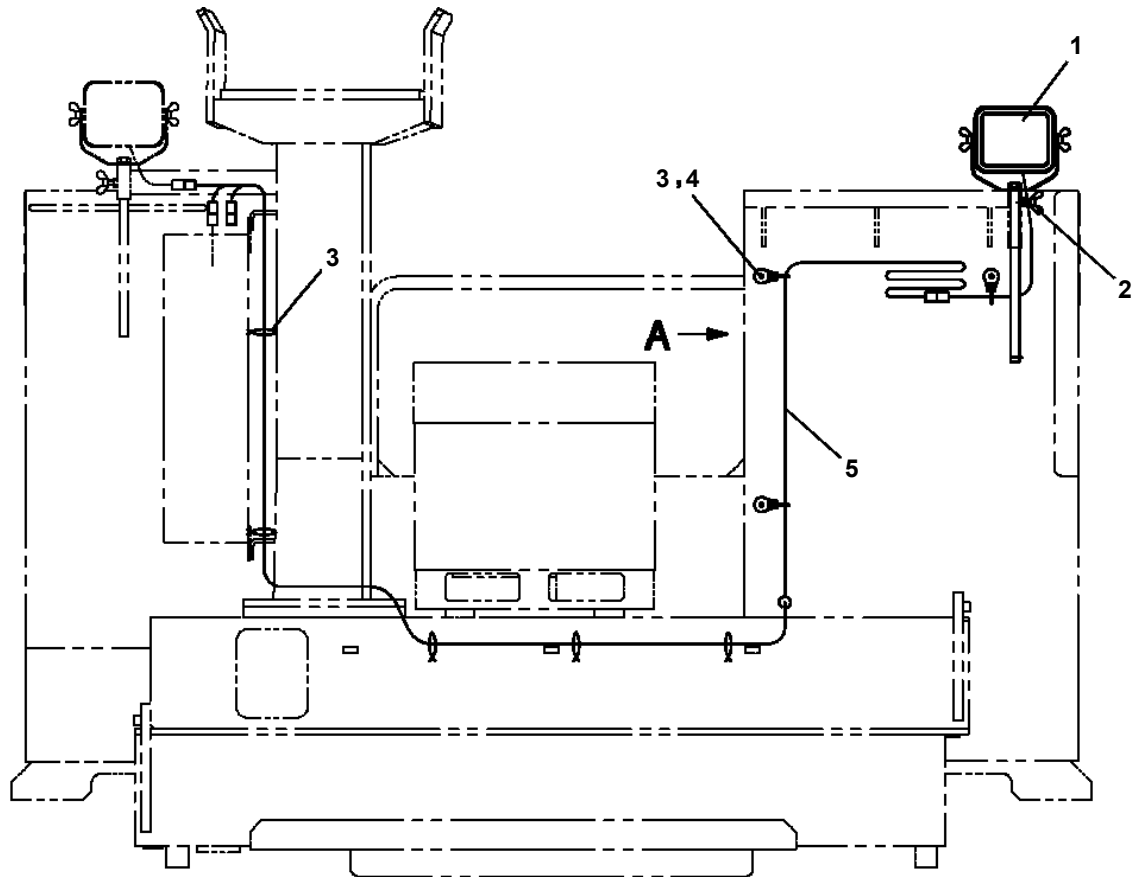
AT-146-2 42095200096 UPPER

Pos No.	Parts No	Parts Name	Qty	Unit	Technical Data	Serial No (Start)	Serial No (End)
1	42501381010	HARNESS	1				
2	42433932200	SWITCH ASSY (WITH HARNESS,1 SW)	1				
3	91810132530	FASTENER	30				
4	42397043010	PLATE,NAME	1				
5	82100000665	CAP (BLACK)	1				
6	42501381020	PLATE,NAME	1				
7	42312143040	HARNESS	1				
8	82108901210	SWITCH	1				
9	90101206016	BOLT	2		M6X16		
10	90303070601	WASHER,PLAIN	2		6		
11	90302040601	WASHER,SPRING	2		6		
12	42501382100	SUPPORT	1				
31	82105220153	SWITCH,TOGGLE	1				

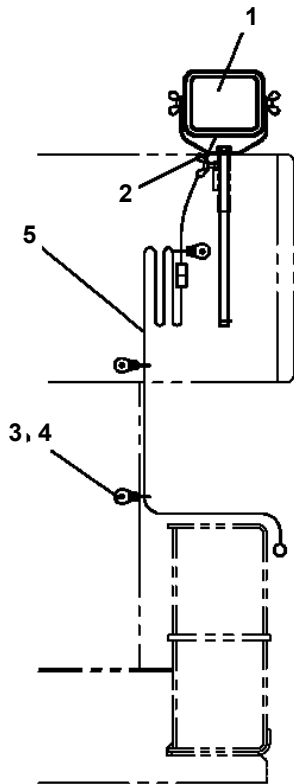
**AT-146-2 42095200096 UPPER
PN1080105-00 LAMP**



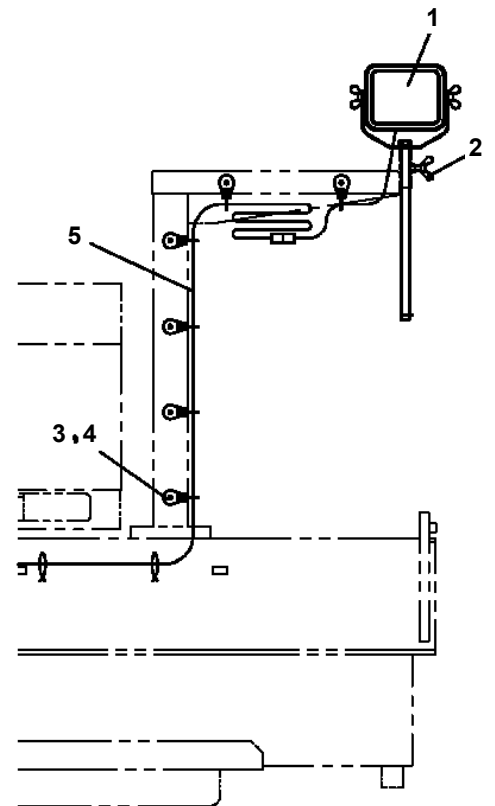
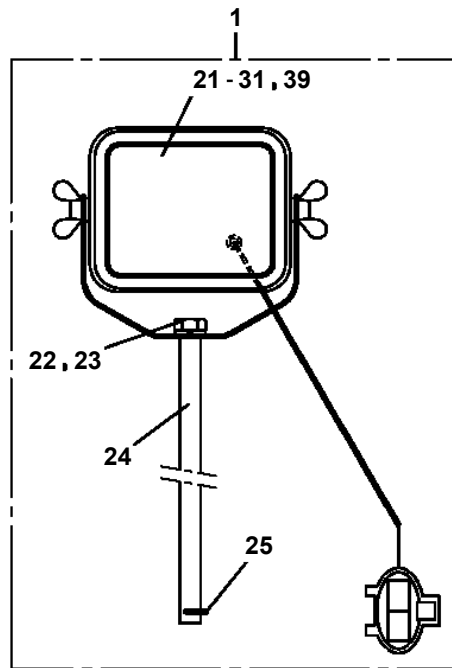
**AT-146-2 42095200096 UPPER
PN1080225-01 LAMP (LEFT, TOOL BOX)**



前方より後方を見る
(シャッター式工具箱の場合)

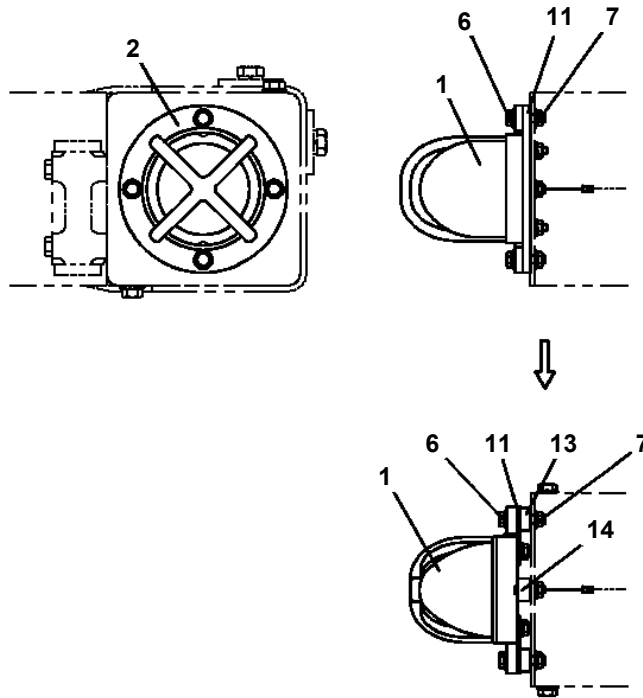


A
(左2段工具箱の場合)

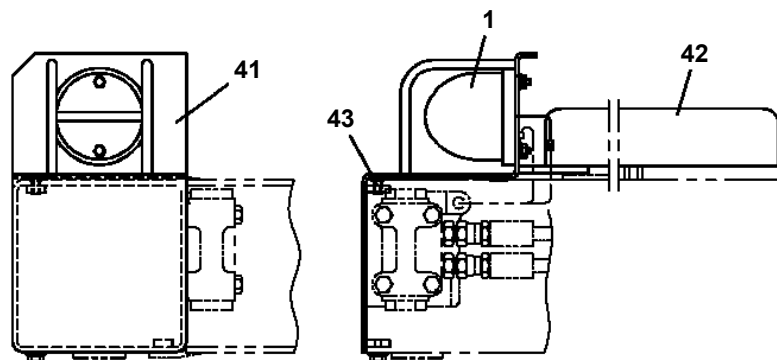


(左1段工具箱の場合)

AT-146-2 42095200096 UPPER
PN1080293-01 LAMP (YELLOW)



アウトリガジャッキ上部
(右前, 右後, 左後)



アウトリガジャッキ上部
(左前)

AT-146-2 42095200096 UPPER

Pos No.	Parts No	Parts Name	Qty	Unit	Technical Data	Serial No (Start)	Serial No (End)	Remarks	Pages
1	42653201100	CASE	1						
2	42652521200	COVER	1						
3	80182306014	SCREW,MACHINE	6		M6X14				
4	90302040601	WASHER,SPRING	19		6				
5	90303070601	WASHER,PLAIN	8		6				
6	42950564100	RELAY ASSY	3						
7	90101206014	BOLT	12		M6X14				
8	82100002596	RELAY	10						
9	82161201010	RELAY	4						
10	82100002597	RELAY	7						
11	42653201200	TERMINAL ASSY	1						
12	80172303016	SCREW,MACHINE	4		M3X16				
13	90302040301	WASHER,SPRING	14		3				
14	90303070301	WASHER,PLAIN	14		3				
15	80172303008	SCREW,MACHINE	8		M3X8				
16	42651091100	RELAY ASSY	1						
17	82100002014	CLAMP	1		WR20				
18	90201200600	NUT	1		M6				
19	42652831300	TERMINAL ASSY	1						
21	82193101010	TIMER	1						
22	82199603010	SUPPORT	2						
23	82100002645	SOCKET	1						
24	80172303014	SCREW,MACHINE	2		M3X14				
25	42652521800	HARNESS	1						
27	82193104010	TIMER	1						
28	82199607110	SOCKET	1						
29	80172304035	SCREW,MACHINE	2		M4X35				
30	90302040401	WASHER,SPRING	2		4				
51	34650000140	RELAY	3						
63	82100000638	DIODE	4						
71	34350003500	RELAY	1						
91	82182809623	DIODE	1						
100	42653201000	RELAY ASSY	1						

AT-146-2 42095200096 UPPER

Pos No.	Parts No	Parts Name	Qty	Unit	Technical Data	Serial No (Start)	Serial No
1	82105221286	SWITCH,TOGGLE	3				
30	42354541400	SWITCH ASSY (WITH HARNESS,3 SWITCH)	1				

AT-146-2 42095200096 UPPER

Pos No.	Parts No	Parts Name	Qty	Unit	Technical Data	Serial No (Start)	Serial No (End)	Remarks	Pages
1	82119417330	CONNECTOR	1						

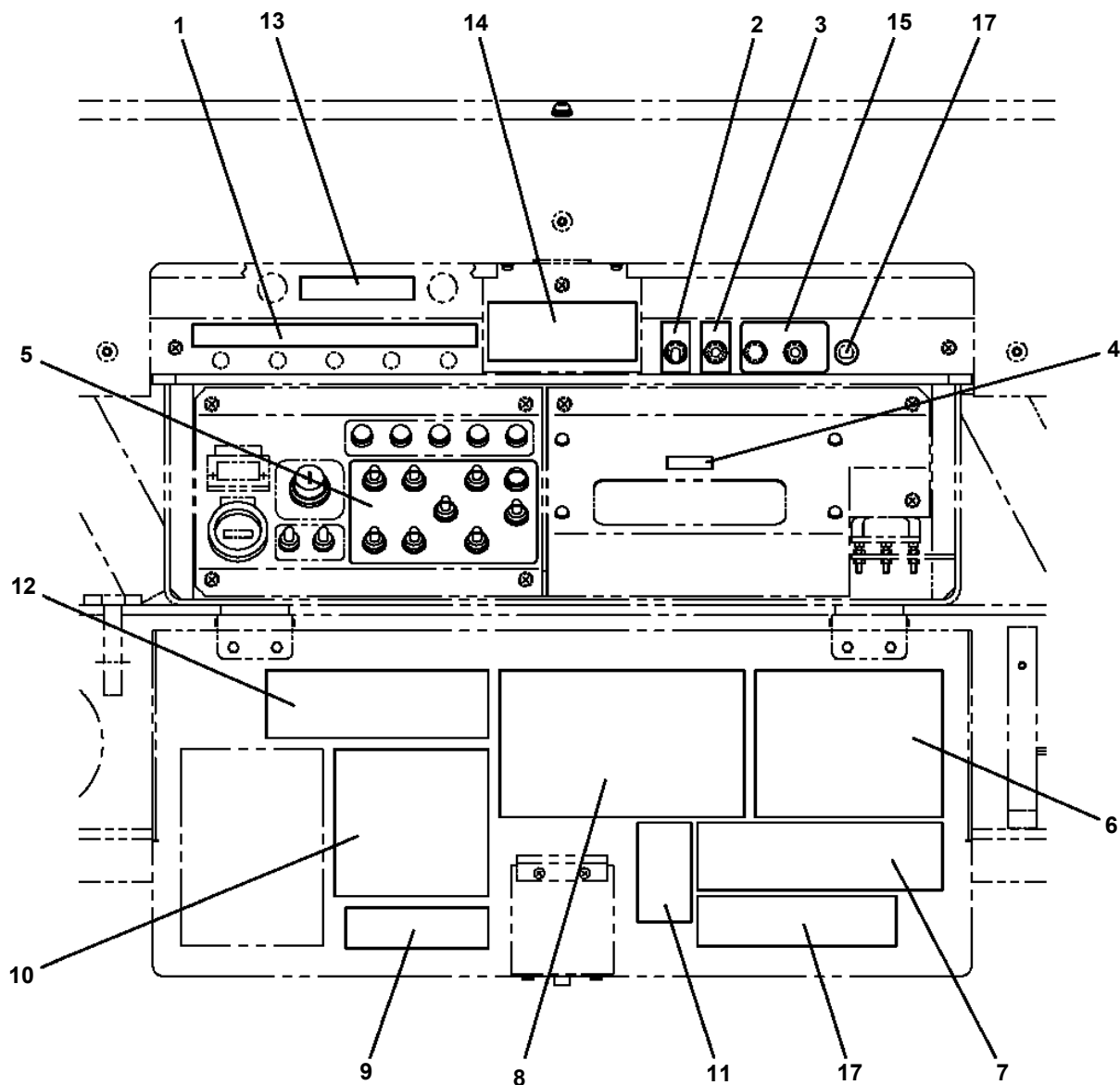
AT-146-2 42095200096 UPPER

Pos No.	Parts No	Parts Name	Qty	Unit	Technical Data	Serial No (Start)	Serial No (End)	Remarks	Pages
1	42470480020	PLATE,NAME	1						

AT-146-2 42095200096 UPPER

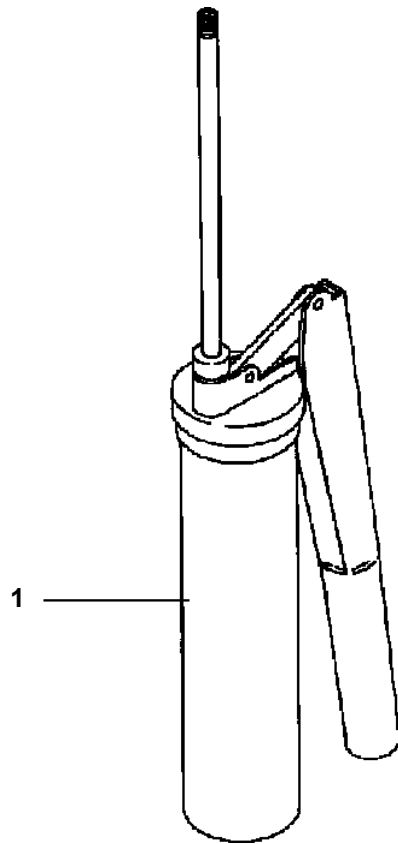
Pos No.	Parts No	Parts Name	Qty	Unit	Technical Data	Serial No (Start)	Serial No (End)	Remarks
1	37002201980	PLATE,NAME	2					
2	42396843010	PLATE,NAME	1					
3	42397073050	PLATE,NAME	1					
4	42396843030	PLATE,NAME	1					
6	42393204010	PLATE,NAME	1					
7	42394925020	PLATE,NAME	1					
8	42394925030	PLATE,NAME	1					
9	42392655030	PLATE,CAUTION	1					
10	31642171600	PLATE,NAME	1					
11	42395702010	PLATE,NAME (HIGH LOW)	1					

AT-146-2 42095200096 UPPER
PO1014789-00 PLATE ASSY,NAME (OUTRIGGER CONTROL)



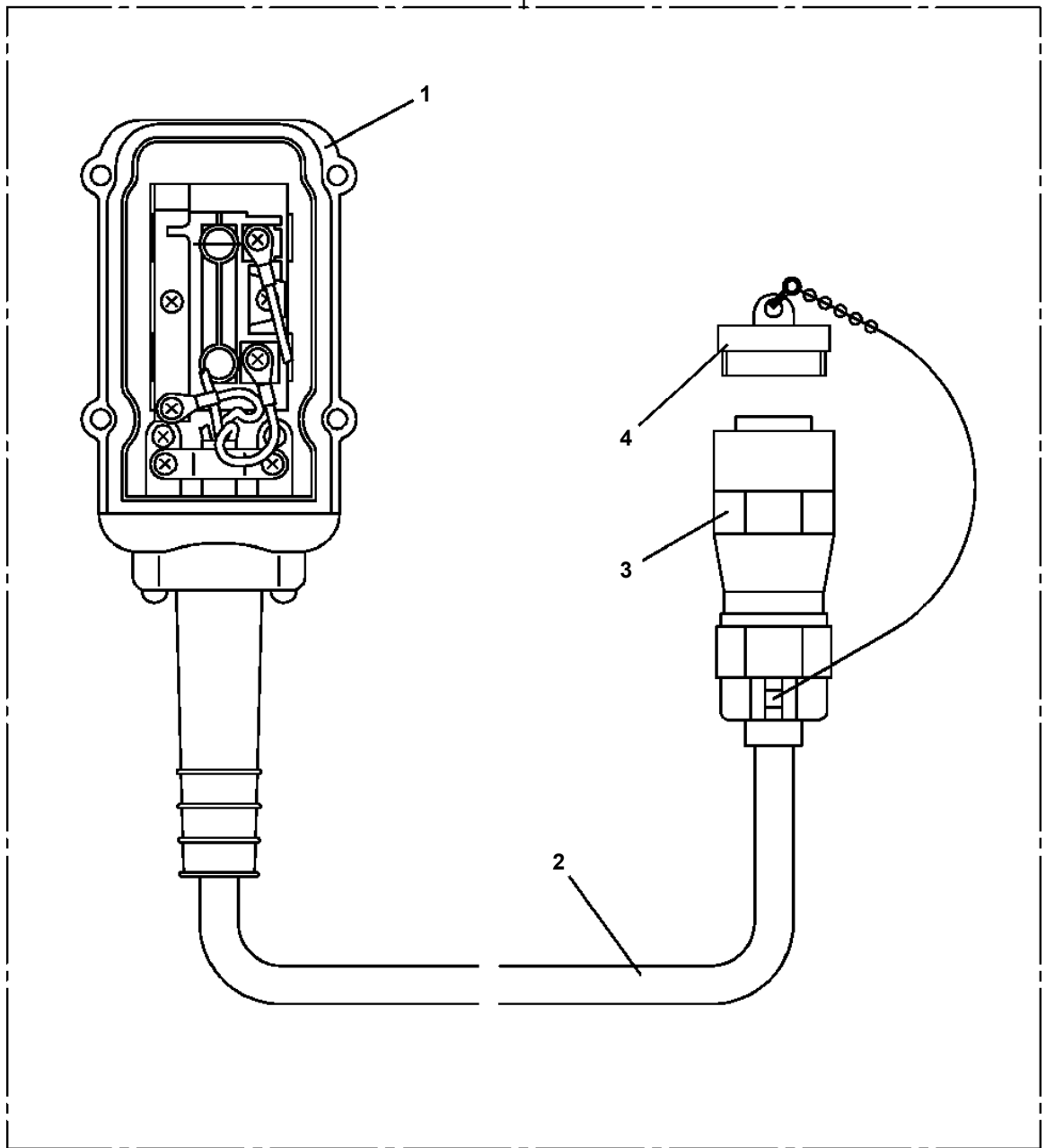
車両後方
カバーを開いた状態

**AT-146-2 42095200096 UPPER
PP5450004-00 PUMP, GREASE (400CC)**

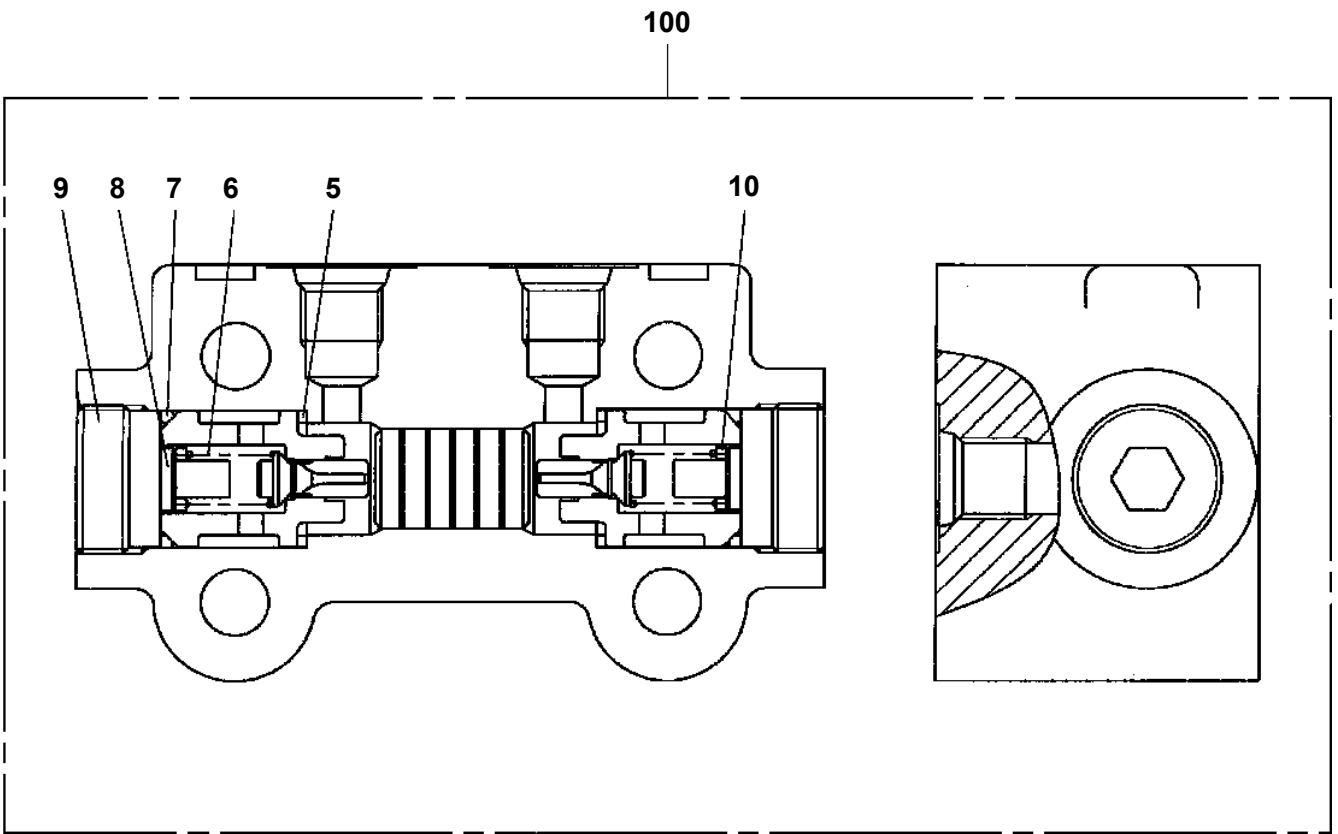


AT-146-2 42095200096 UPPER
PV1030069-00 SWITCH BOX(BOOSTER,3M/SANWA)

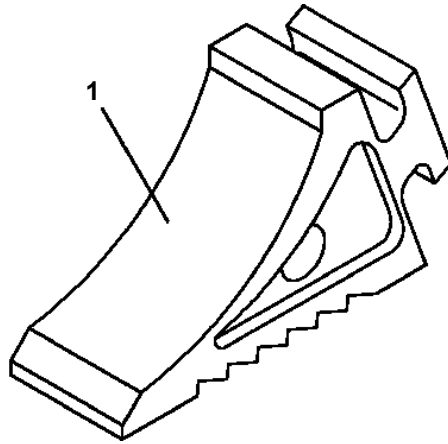
100



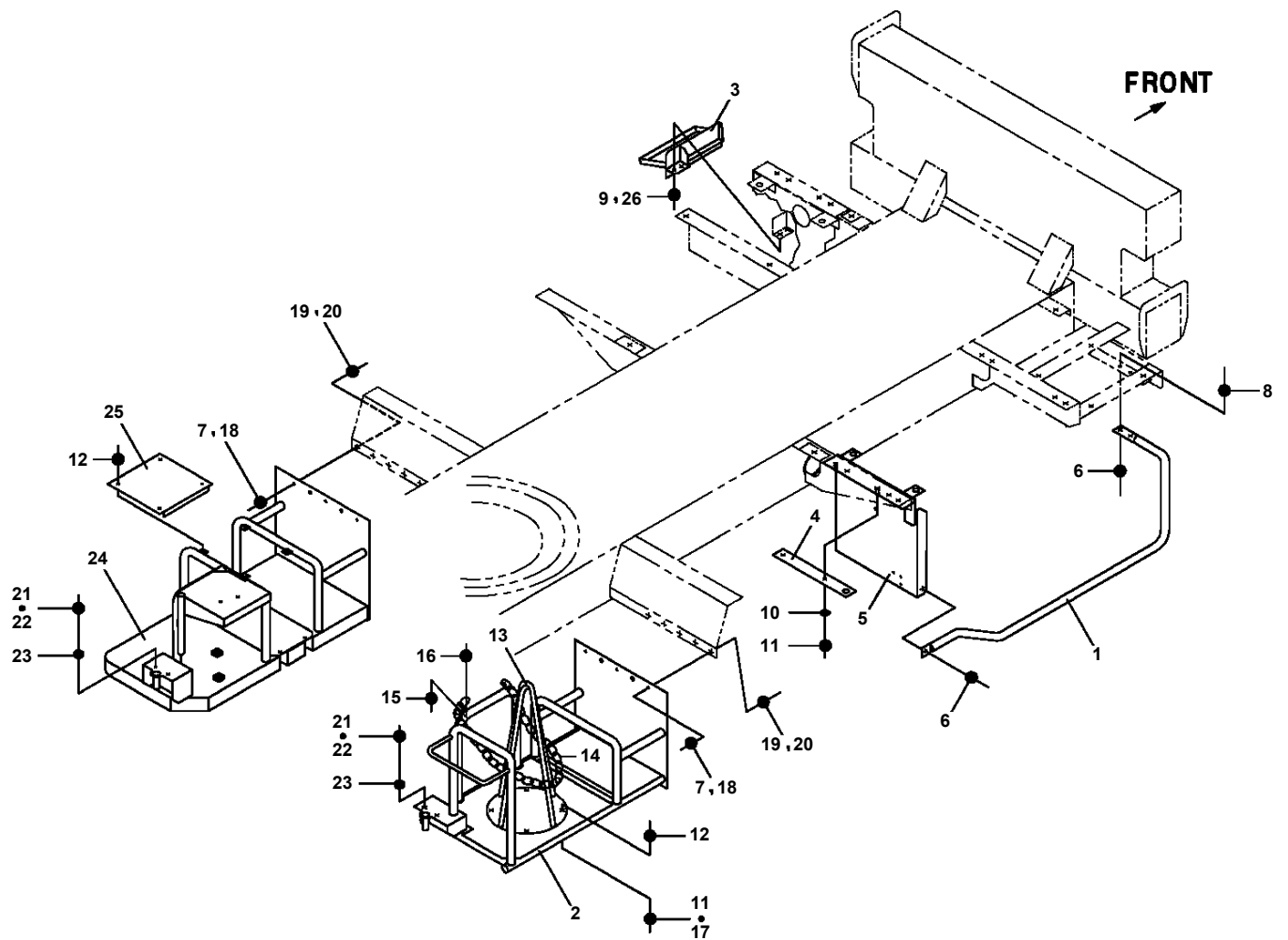
**AT-146-2 42095200096 UPPER
PV5040021-00 VALVE ASSY,CHECK**



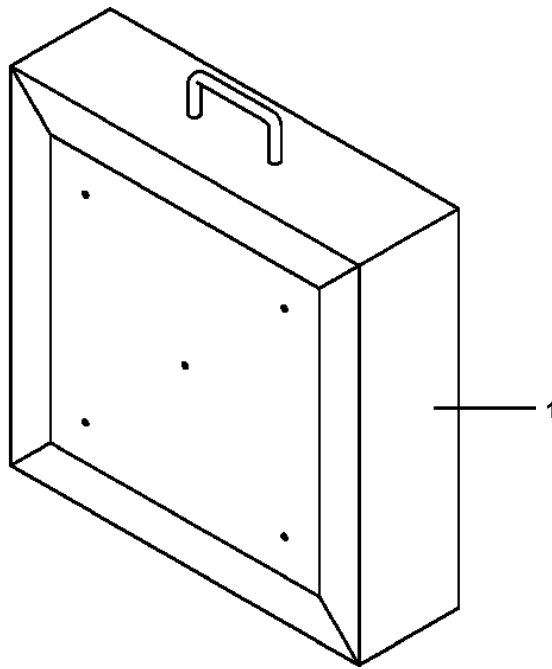
**AT-146-2 42095200096 UPPER
PW1050018-01 WEDGE (STOPPER FOR TIRE/JUSTIN)**



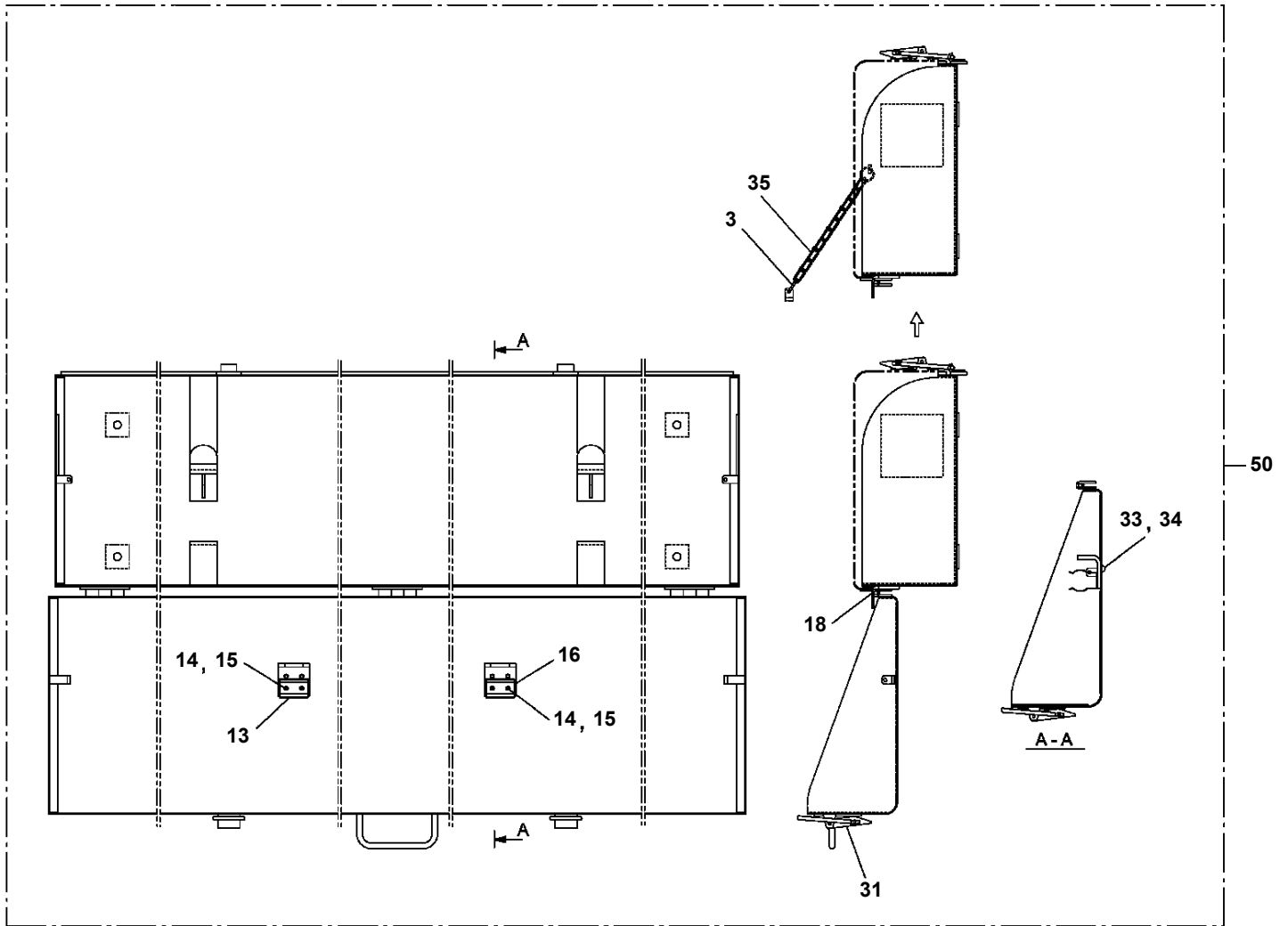
**AT-146-2 42095200096 UPPER
PX1200639-00 SIDE GUARD**



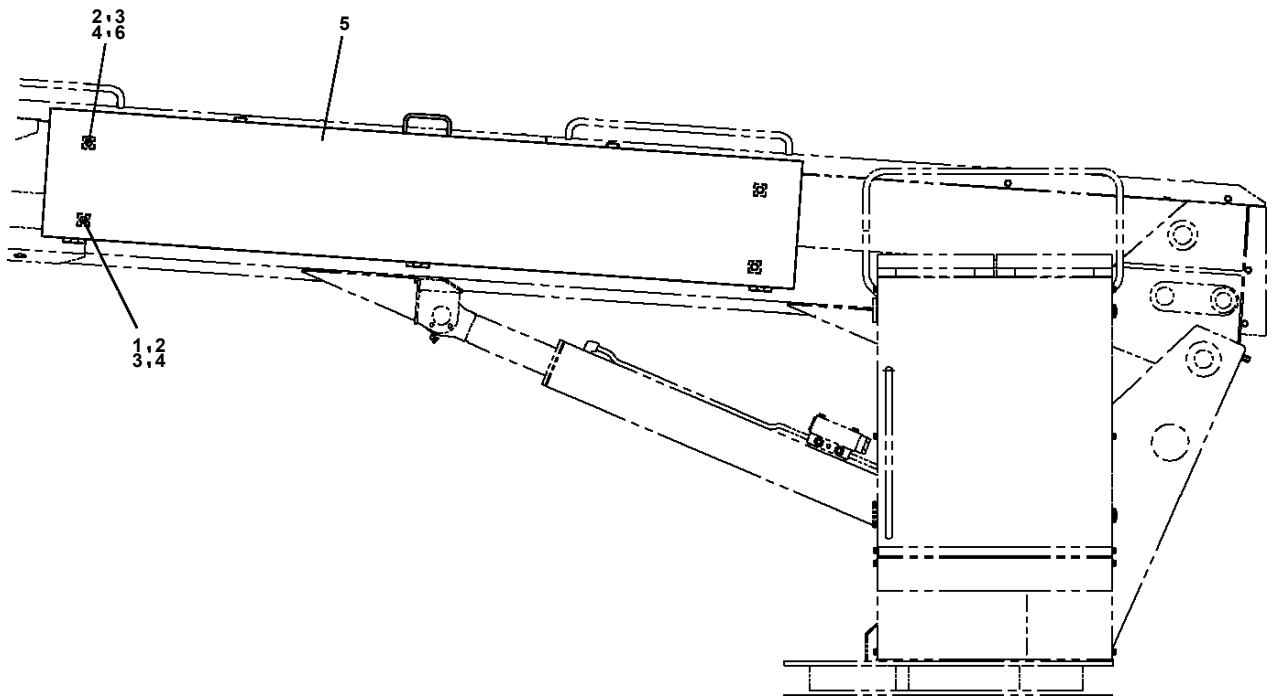
**AT-146-2 42095200096 UPPER
PX1270125-00 WOOD BLOCK (WITH RUBBER,T=100)**



**AT-146-2 42095200096 UPPER
PX1350304-01 BOX, TOOL (BOOM, LEFT SIDE)**



AT-146-2 42095200096 UPPER
PX1350620-00 BOX,TOOL (MOUNT,BOOM LEFT)



AT-146-2 42095200096 UPPER

Pos No.	Parts No	Parts Name	Qty	Unit	Technical Data	Serial No (Start)	Serial No (End)	Remarks	Pages
1	42442560100	COVER	1						
2	42442560200	COVER	1						
3	42500431000	LAMP ASSY	1				228171		
	42500431001	LAMP ASSY	1			228172			
4	90101208014	BOLT	4		M8X14				
5	42834691000	BOX,TOOL	1						
6	90101212025	BOLT	8		M12X25				
7	90302041201	WASHER,SPRING	8		12				
21	42202252100	SUPPORT	4						
35	82400000200	GROMMET	1	M	KG-012,L=250				
41	42500431100	PLATE	1						
42	42737850100	GUARD	1						
43	90101206018	BOLT	4		M6X18		228117		
	90101206025	BOLT	4		M6X25	228118	228171		
44	90201200600	NUT	4		M6				
45	90302040601	WASHER,SPRING	4		6				
46	42433401300	LAMP	1				228171		
47	42502030100	SUPPORT	1			228118	228171		
61	82100002550	BULB,LAMP	1		24V 20W		228171		
73	90101206030	BOLT	4		M6X30	228172			
76	42433401302	LAMP	1			228172			
77	42502980100	SUPPORT	1			228172			
78	37000306130	SPACER	2		L=8	228172			
79	37000302980	SPACER	2		L=10	228172			

000308

AT-146-2 42095200096 UPPER

Pos No.	Parts No	Parts Name	Qty	Unit	Technical Data	Serial No (Start)	Serial No (End)	Remarks	Pages
1	42442142100	SUPPORT	1						
2	90101208014	BOLT	10		M8X14				
3	90302040801	WASHER,SPRING	10		8				
4	90303070801	WASHER,PLAIN	2		8				
6	42441622400	SUPPORT	1						
7	42441622700	CUSHION	2						
8	90101206016	BOLT	4		M6X16				
9	37000551250	PLATE	4						
21	37000570750	PLATE	1						
22	37000570760	PLATE	3						
23	37000571630	PLATE	1						
31	42441622300	SUPPORT	1						
32	42693793300	SUPPORT	1						
33	82430153010	KNOB	1						
34	90101212030	BOLT	1		M12X30				
35	42693793400	ROD	1						
36	37000311380	PIN	2						
37	37000169080	PIN	2						
38	80601110100	RING,RITAINING	4		S10				
39	80172803006	SCREW,MACHINE	2		M3X6				
40	90302040301	WASHER,SPRING	2		3				

AT-146-2 42095200096 UPPER

Pos No.	Parts No	Parts Name	Qty	Unit	Technical Data	Serial No (Start)	Serial No (End)	R
1	42470230000	CLAMP HEAD (IZUMI 12TON 3.5M)	1					

AT-146-2 42095200096 UPPER

Pos No.	Parts No	Parts Name	Qty	Unit	Technical Data	Serial No (Start)	Serial No
1	42472640000	CLAMP HEAD (IZUMI 8TON 3.5M ELECTRIC)	1				

AT-146-2 42095200096 UPPER

Pos No.	Parts No	Parts Name	Qty	Unit	Technical Data	Serial No (Start)	Serial
1	42470030000	CUTTER HEAD (IZUMI 6.4TON 2.5M ELECTRIC)	1				

AT-146-2 42095200096 UPPER

Pos No.	Parts No	Parts Name	Qty	Unit	Technical Data	Serial No (Start)	Serial No (End)	Remarks	P
1	42472670000	ROPE (SAFETY,WHITE)	1						

AT-146-2 42095200096 UPPER

Pos No.	Parts No	Parts Name	Qty	Unit	Technical Data	Serial No (Start)	Serial No (End)	Remarks	Pages
1	42470121000	ARM ASSY	1						
2	42471231000	HOLDER	3						
3	42470123000	CLAMP ASSY	1						
4	42470044000	HOT STICK	1						
5	42475751001	SUPPORT	1						
6	90101216150	BOLT	1		M16X150				
7	90303071601	WASHER,PLAIN	2		16				
8	90201201600	NUT	2		M16				
9	42220011200	SUPPORT	1						
21	42470121100	ARM	1						
22	42470121200	CAP	2						

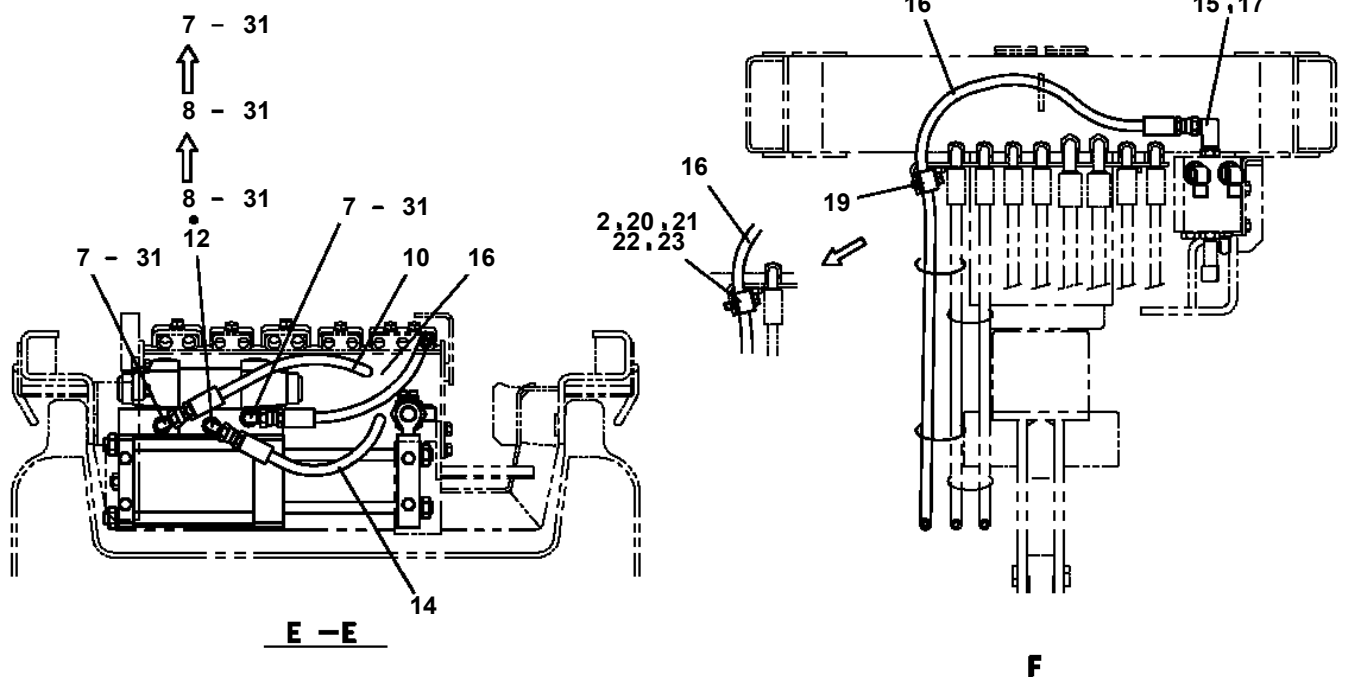
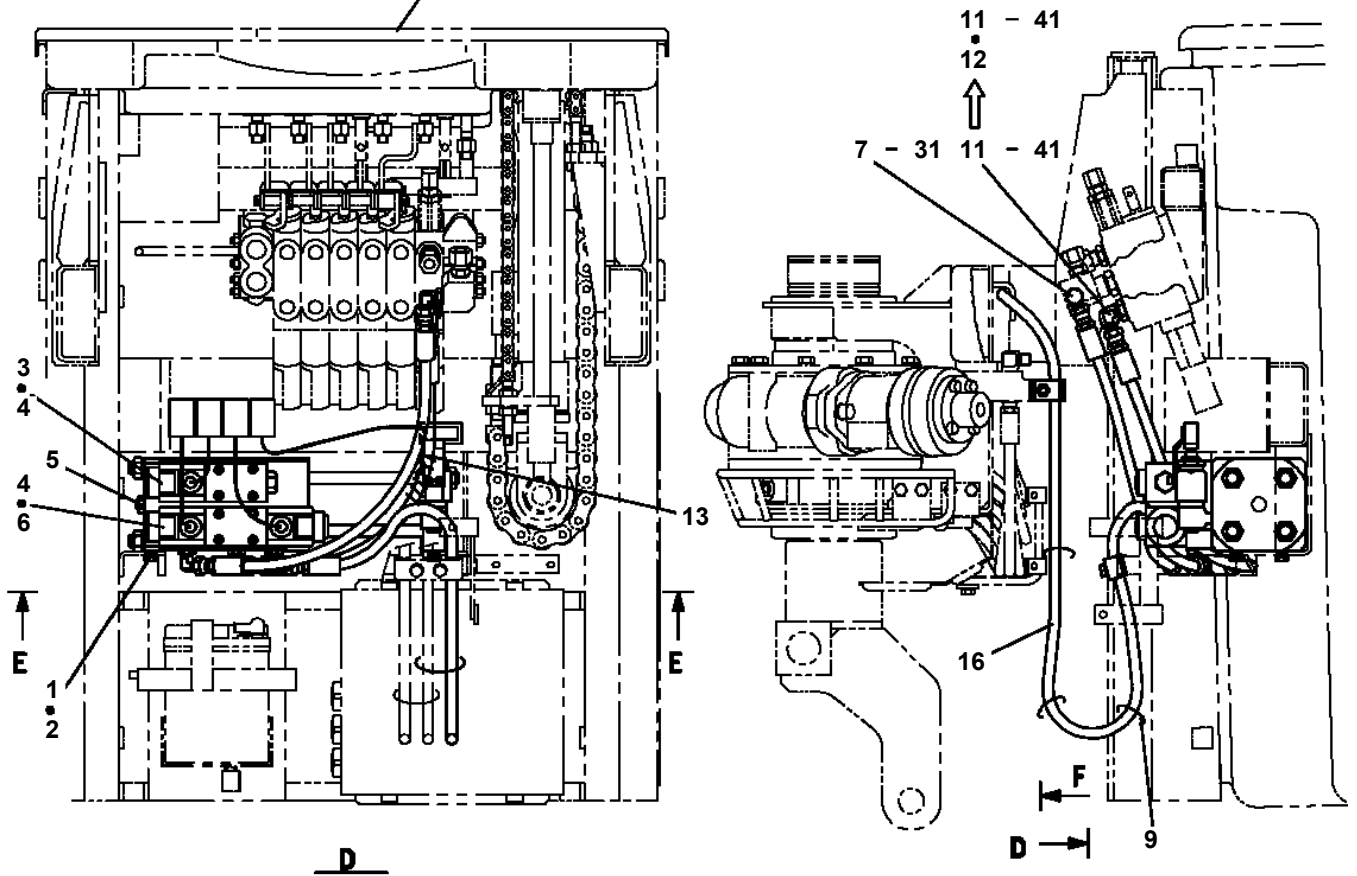
AT-146-2 42095200096 UPPER

Pos No.	Parts No	Parts Name	Qty	Unit	Technical Data	Serial No (Start)	Serial No (End)	Remarks	Pages
1	42470121000	ARM ASSY	1						
2	42470421000	HOLDER	3						
3	42470123000	CLAMP ASSY	1						
4	42470044000	HOT STICK	1						
5	42476851000	SUPPORT	1						
6	90101216130	BOLT	1		M16X130				
7	90303071601	WASHER,PLAIN	2		16				
8	90201201600	NUT	2		M16				
9	42220011200	SUPPORT	1						
21	42470121100	ARM	1						
22	42470121200	CAP	2						

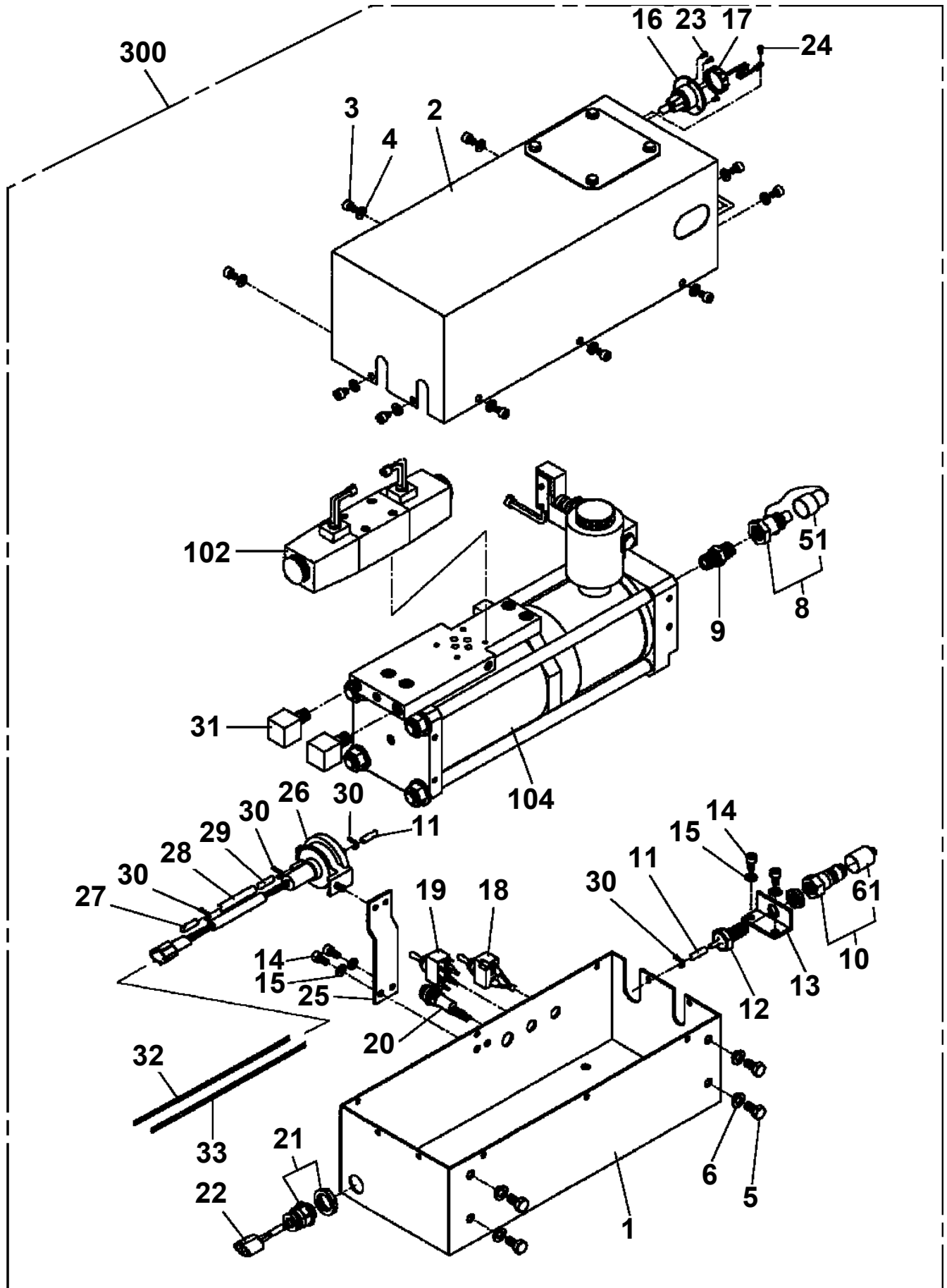
AT-146-2 42095200096 UPPER
 PY1160089-03 BOOSTER (AIR&ELECTRIC)

動力ジブの場合

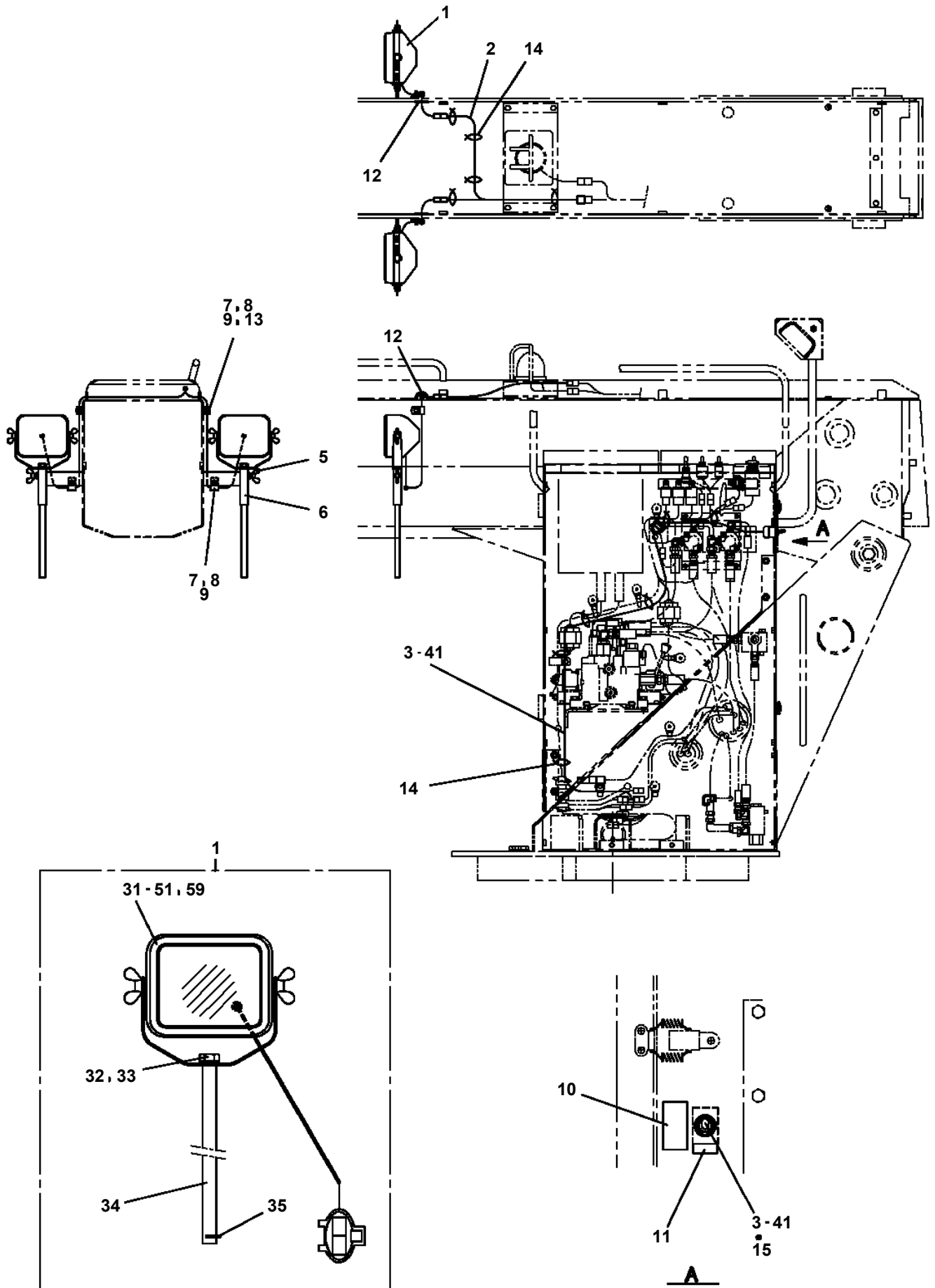
SEE ELEC. ASSY (BUCKET)



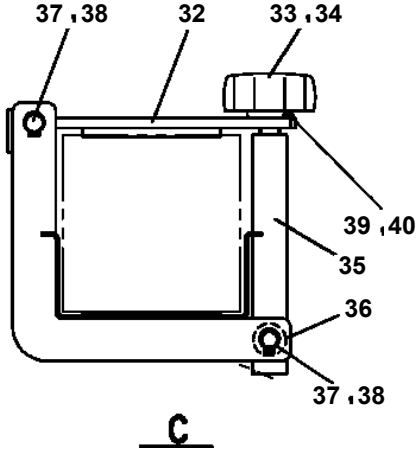
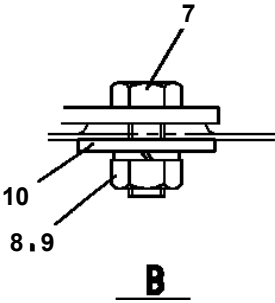
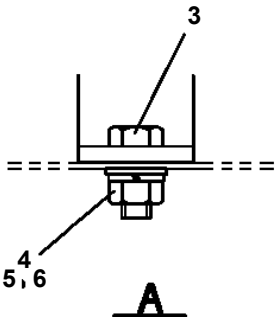
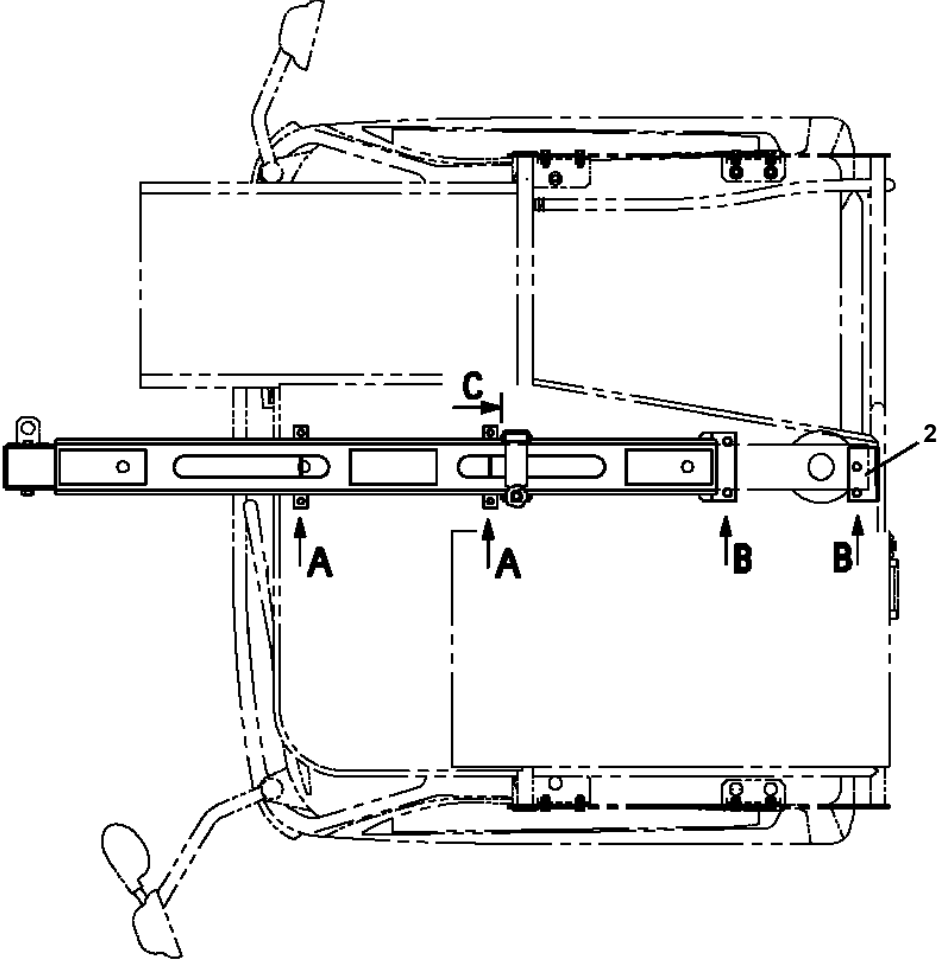
AT-146-2 42095200096 UPPER
PY1170041-00 BOOSTER



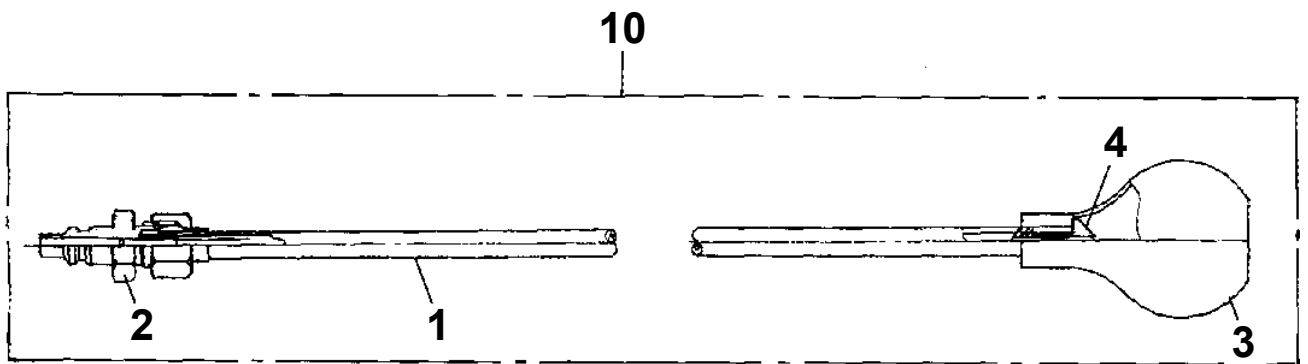
**AT-146-2 42095200096 UPPER
PY1180301-00 LAMP (BOOM,WORKING)**



**AT-146-2 42095200096 UPPER
PY1550031-00 TOOL SUPPORT (FOR JIB STOWING)**

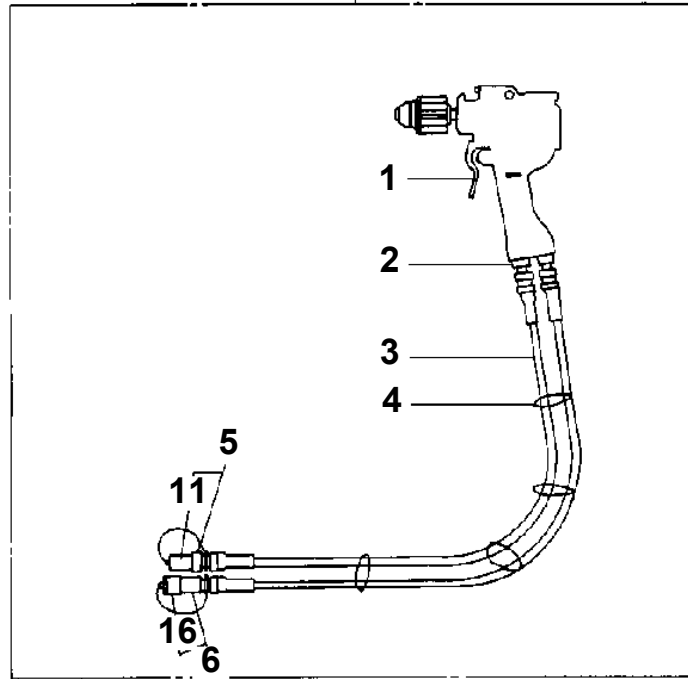


**AT-146-2 42095200096 UPPER
PY1590005-01 HOSE,BOOSTER (SMALL,WITH AIR BALLOON)**

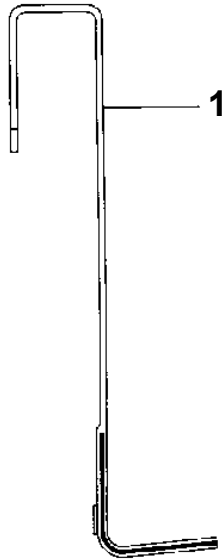


**AT-146-2 42095200096 UPPER
PY1640000-01 DRIL, HYDRAULIC**

20



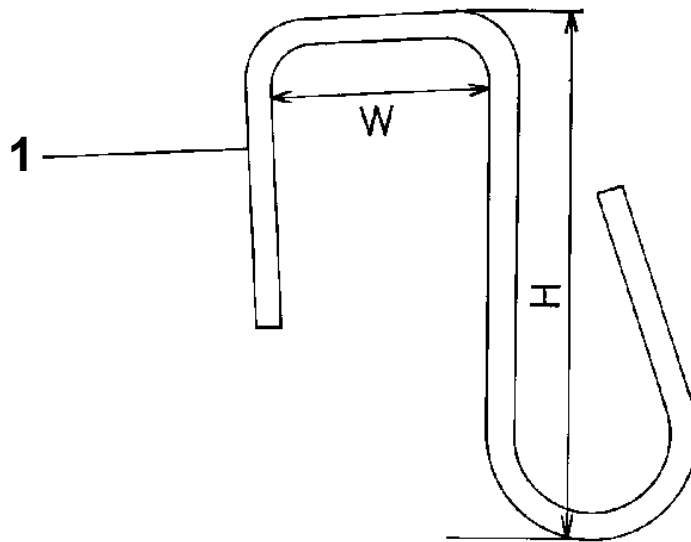
**AT-146-2 42095200096 UPPER
PY1760001-00 STEP, BUCKET**



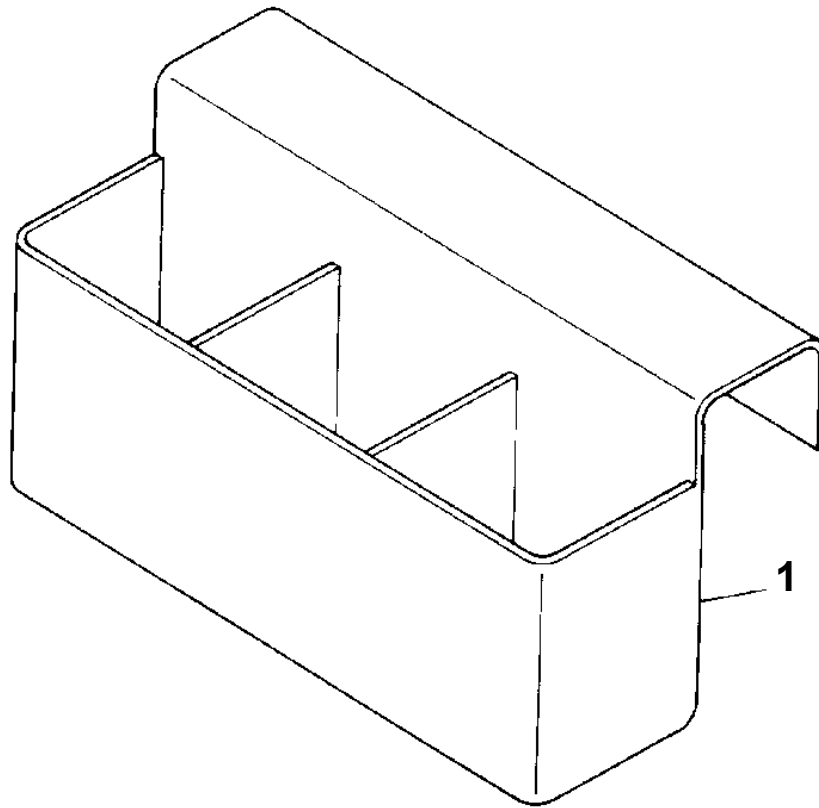
**AT-146-2 42095200096 UPPER
PY1790001-00 HANGER (FOR BUCKET)**

Assembly Name HANGER

1117 0001 00



**AT-146-2 42095200096 UPPER
PY2120000-00 BOX, TOOL (FOR BUCKET)**



CLICK HERE TO **DOWNLOAD** THE COMPLETE MANUAL

- Thank you very much for reading the preview of the manual.
- You can download the complete manual from: www.heydownloads.com by clicking the link below



- Please note: If there is no response to CLICKING the link, please download this PDF first and then click on it.

CLICK HERE TO **DOWNLOAD** THE COMPLETE MANUAL